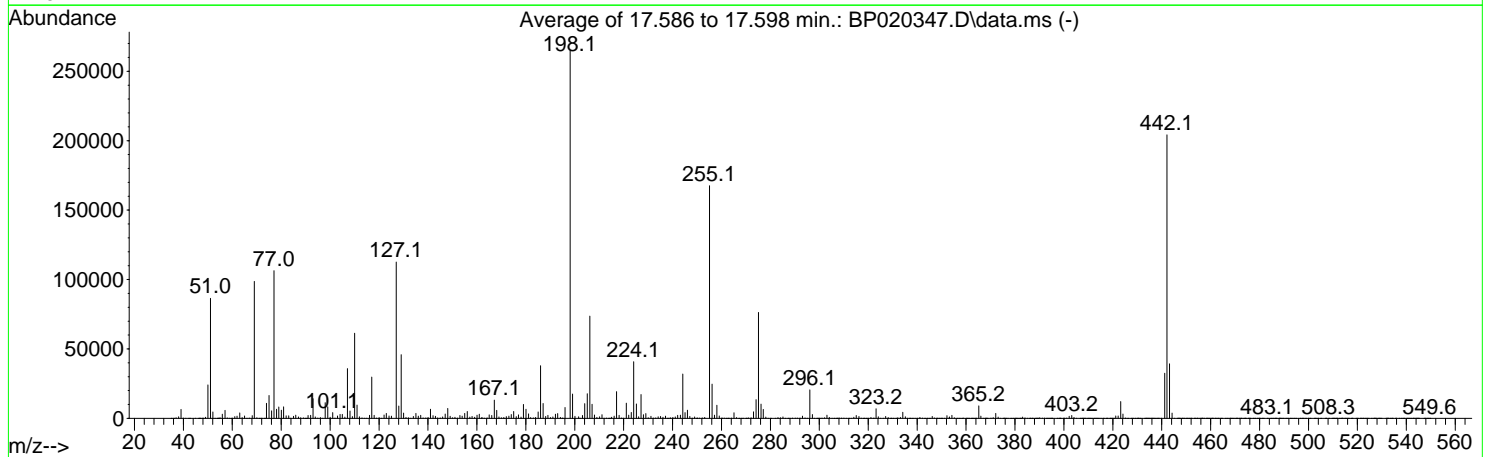
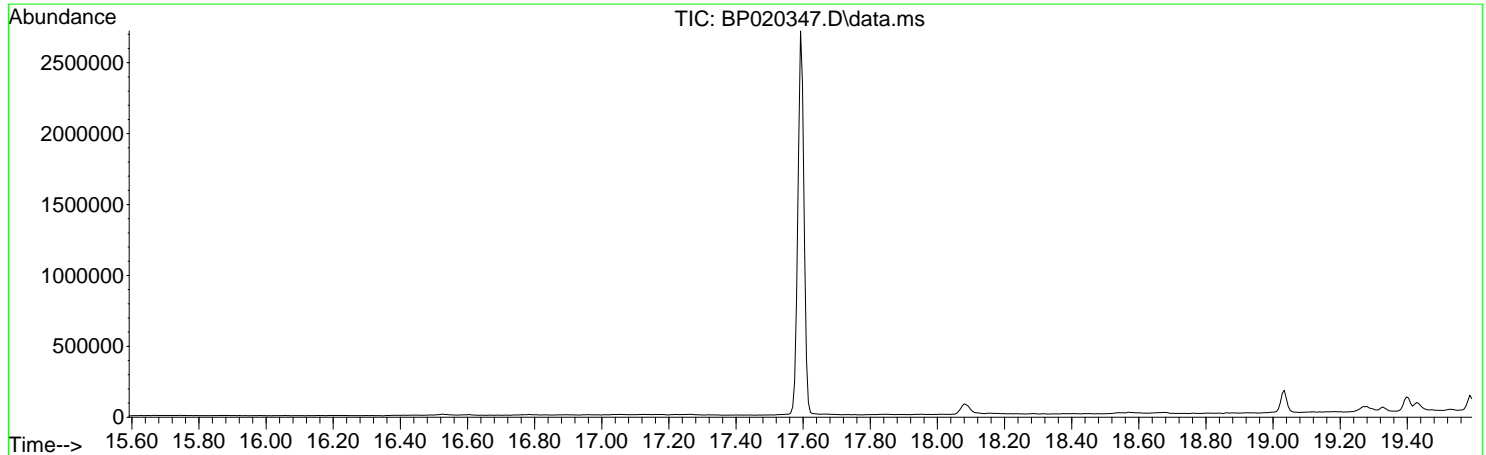


Data Path : Z:\svoasrv\HPCHEM1\BNA\_P\Data\BP051324\  
 Data File : BP020347.D  
 Acq On : 13 May 2024 06:57  
 Operator : MA/JU  
 Sample : DFTPP723  
 Misc :  
 ALS Vial : 1 Sample Multiplier: 1

**Instrument :**  
 BNA\_P  
**ClientSampleId :**  
 DFTPP723

Integration File: LSCINT.P

Method : Z:\svoasrv\HPCHEM1\BNA\_P\Methods\SFAM-EPA-BP050124.MA.M  
 Title : SVOA CALIBRATION  
 Last Update : Mon May 13 10:50:47 2024



AutoFind: Scans 2465, 2466, 2467; Background Corrected with Scan 2458

Target Mass	Rel. to Mass	Lower Limit%	Upper Limit%	Rel. Abn%	Raw Abn	Result Pass/Fail
51	198	10	80	32.6	86499	PASS
68	69	0.00	2	2.0	1958	PASS
69	198	0.00	100	37.3	98717	PASS
70	69	0.00	2	0.5	473	PASS
127	198	10	80	42.5	112664	PASS
197	198	0.00	2	0.0	0	PASS
198	198	100	100	100.0	264973	PASS
199	198	5	9	6.6	17520	PASS
275	198	10	60	28.8	76269	PASS
365	198	1	100	3.4	9026	PASS
441	198	0.01	100	12.3	32464	PASS
442	198	50	100	77.1	204228	PASS
443	442	15	24	19.2	39257	PASS

m/z	Abundance
36.10	36.0
37.00	3.0
37.70	4.0
38.90	194.0
39.90	328.0
41.00	228.0
41.90	49.0
43.10	242.0
44.00	1572.0
44.90	105.0
45.80	8.0
46.80	34.0
47.90	15.0
48.80	142.0
50.00	73.0
51.00	93.0
51.80	40.0
52.30	12.0
52.90	38.0
54.10	20.0
55.00	211.0
55.90	99.0
57.10	223.0
57.80	2.0
59.00	41.0
59.60	7.0
60.30	19.0
60.90	43.0
61.80	18.0
63.10	82.0
64.10	64.0
65.00	216.0
66.00	81.0
67.10	89.0
67.90	63.0
69.20	187.0
70.10	128.0
71.10	110.0
72.00	13.0
73.10	1344.0
74.00	153.0
75.00	134.0
75.80	44.0
76.90	213.0
78.20	58.0
78.90	73.0
80.10	121.0
81.00	139.0
82.10	64.0
82.70	36.0
83.30	70.0
83.90	140.0
84.90	141.0
85.90	61.0
87.10	22.0
88.30	55.0
88.80	26.0
89.90	19.0
91.00	145.0
92.00	15.0
93.10	59.0
93.80	6.0
95.10	75.0
96.00	100.0
96.90	264.0
98.10	67.0
98.90	10.0
100.00	5.0
100.80	1.0
101.50	3.0
102.00	24.0
102.60	24.0
103.00	22.0
104.90	158.0
106.20	18.0
106.90	63.0
107.70	20.0
109.10	59.0
110.10	20.0
111.00	78.0
111.90	15.0
113.00	14.0
113.60	10.0
114.10	5.0
115.10	190.0
116.10	14.0
117.00	101.0
118.10	32.0
119.10	78.0
120.20	17.0
121.10	59.0
121.80	21.0

Instrument :  
BNA\_P  
ClientSampleId :  
DFTPP723

123.00	18.0
123.60	8.0
124.10	7.0
124.80	8.0
125.20	10.0
126.10	15.0
127.00	5.0
128.10	73.0
129.30	19.0
130.20	31.0
131.00	35.0
132.20	9.0
133.00	217.0
133.90	41.0
135.00	88.0
136.20	19.0
137.10	28.0
138.00	32.0
138.80	44.0
139.20	15.0
139.60	16.0
140.20	48.0
141.00	119.0
142.50	7.0
143.10	43.0
144.10	24.0
145.10	18.0
146.00	17.0
147.00	469.0
148.20	88.0
149.30	53.0
150.10	18.0
151.30	70.0
152.10	90.0
153.10	9.0
153.90	8.0
154.90	21.0
156.00	10.0
156.70	3.0
157.20	5.0
158.10	2.0
158.50	2.0
159.30	18.0
160.00	6.0
160.90	3.0
161.60	5.0
162.90	78.0
163.80	11.0
164.60	20.0
165.10	68.0
166.10	129.0
167.20	629.0
168.40	16.0
169.10	53.0
170.00	3.0
170.50	2.0
171.30	7.0
172.10	23.0
173.30	34.0
174.00	19.0
175.00	41.0
176.40	15.0
177.00	87.0
178.20	60.0
178.90	86.0
180.00	20.0
180.80	1.0
182.00	5.0
182.70	18.0
183.40	11.0
184.00	6.0
185.00	7.0
186.00	17.0
187.20	24.0
188.30	43.0
189.00	47.0
189.80	13.0
190.10	10.0
191.10	222.0
192.10	54.0
193.00	178.0
193.90	12.0
194.20	11.0
194.90	66.0
195.20	57.0
196.00	20.0
197.00	1.0
197.60	2.0
198.20	8.0
198.80	1.0
199.40	13.0
200.20	3.0
200.90	16.0
201.60	1.0
202.20	8.0
203.30	16.0

Instrument :  
BNA\_P  
ClientSampleId :  
DFTPP723

204.30	14.0
205.00	44.0
207.10	1523.0
208.10	403.0
209.00	216.0
210.20	3.0
211.20	2.0
212.00	18.0
213.00	8.0
213.70	2.0
214.40	2.0
215.20	11.0
216.80	7.0
217.30	12.0
218.20	9.0
219.00	14.0
219.50	2.0
220.10	10.0
221.30	251.0
222.20	85.0
223.20	135.0
224.00	23.0
224.50	16.0
225.20	1.0
226.10	18.0
226.70	0.0
227.40	18.0
228.40	0.0
229.00	20.0
229.70	1.0
230.20	2.0
230.50	2.0
231.40	10.0
232.30	20.0
233.10	3.0
233.50	2.0
234.50	0.0
235.30	11.0
236.00	17.0
236.90	2.0
237.70	2.0
238.50	4.0
239.10	12.0
240.10	19.0
241.30	6.0
242.30	8.0
243.30	12.0
245.00	2.0
246.40	5.0
247.20	17.0
248.00	12.0
249.00	29.0
249.90	13.0
250.70	4.0
251.20	8.0
251.80	9.0
252.50	14.0
253.20	46.0
253.90	2.0
254.80	9.0
255.50	15.0
255.90	4.0
257.30	2.0
257.50	2.0
258.20	1.0
259.30	7.0
260.40	12.0
261.00	2.0
262.10	10.0
263.10	1.0
263.70	3.0
265.10	29.0
266.30	14.0
267.10	174.0
268.10	7.0
268.90	8.0
270.00	12.0
271.10	10.0
272.00	2.0
272.20	2.0
272.70	1.0
273.30	41.0
274.70	3.0
275.80	3.0
276.30	3.0
277.90	3.0
279.10	19.0
279.90	24.0
281.20	657.0
282.00	109.0
283.10	108.0
284.30	5.0
285.30	8.0
285.80	10.0
286.30	3.0
287.20	3.0

**Instrument :**  
 BNA\_P  
**ClientSampleId :**  
 DFTPP723

287.70	2.0
288.40	2.0
289.00	10.0
289.70	1.0
290.40	12.0
291.90	2.0
292.60	0.0
293.10	4.0
293.60	4.0
294.30	0.0
295.20	10.0
295.70	13.0
296.60	4.0
297.20	8.0
298.00	12.0
298.90	3.0
299.40	2.0
299.90	3.0
300.40	1.0
301.40	3.0
302.20	9.0
302.80	1.0
303.30	22.0
304.60	14.0
306.20	2.0
306.50	2.0
307.70	4.0
308.20	2.0
309.00	5.0
309.60	2.0
310.40	2.0
311.00	2.0
312.00	9.0
312.70	13.0
314.00	4.0
314.40	2.0
315.60	3.0
316.20	3.0
317.00	3.0
317.60	1.0
318.00	1.0
318.70	4.0
319.10	3.0
320.40	8.0
321.10	2.0
321.80	3.0
322.70	17.0
323.60	4.0
324.20	14.0
324.90	11.0
325.50	6.0
326.00	0.0
326.60	3.0
327.30	16.0
328.20	15.0
328.80	14.0
329.30	23.0
330.50	11.0
331.00	2.0
331.60	2.0
332.10	1.0
333.00	3.0
334.00	3.0
334.80	15.0
336.10	28.0
337.30	4.0
337.90	2.0
338.60	4.0
339.30	4.0
340.00	13.0
340.60	5.0
341.20	108.0
342.20	17.0
343.40	13.0
344.20	19.0
345.00	11.0
345.60	3.0
346.30	1.0
347.00	14.0
347.70	1.0
348.60	4.0
349.20	17.0
350.00	23.0
351.70	3.0
353.20	2.0
354.20	13.0
354.60	18.0
355.20	134.0
356.10	121.0
357.30	78.0
358.00	11.0
358.90	4.0
359.70	2.0
360.10	1.0
361.50	4.0
362.70	5.0

Instrument :  
BNA\_P  
ClientSampleId :  
DFTPP723

363.40	2.0
364.20	9.0
365.20	1.0
365.90	3.0
366.50	2.0
367.00	1.0
367.60	4.0
368.30	1.0
369.00	2.0
370.30	12.0
371.10	7.0
372.10	2.0
372.50	3.0
372.90	2.0
373.80	4.0
374.40	1.0
375.50	3.0
376.10	5.0
376.80	3.0
377.40	12.0
378.50	4.0
379.40	18.0
380.40	2.0
381.00	12.0
381.70	5.0
382.70	2.0
383.20	2.0
384.10	11.0
385.00	13.0
385.50	11.0
386.10	1.0
386.50	2.0
387.10	1.0
387.80	12.0
389.50	4.0
390.10	1.0
390.60	1.0
391.20	3.0
392.70	3.0
393.60	1.0
394.30	4.0
395.00	1.0
396.00	22.0
396.60	1.0
397.30	4.0
397.90	3.0
398.50	0.0
399.00	8.0
399.60	0.0
400.40	14.0
401.10	25.0
402.30	27.0
403.20	8.0
404.00	3.0
405.00	5.0
406.10	9.0
406.90	3.0
408.10	3.0
408.70	2.0
409.20	1.0
410.00	4.0
410.60	2.0
411.50	3.0
412.30	1.0
413.60	3.0
415.20	19.0
416.20	18.0
416.80	2.0
417.20	2.0
417.60	2.0
418.10	1.0
419.40	5.0
420.90	4.0
421.70	2.0
422.30	2.0
422.70	3.0
423.50	3.0
424.10	3.0
424.80	1.0
425.30	2.0
426.00	3.0
426.60	2.0
427.20	4.0
427.70	2.0
428.70	12.0
429.40	29.0
430.80	21.0
431.70	3.0
432.30	24.0
432.90	1.0
433.60	3.0
435.20	4.0
435.90	1.0
436.30	2.0
436.80	2.0
437.10	2.0

Instrument :  
BNA\_P  
ClientSampleId :  
DFTPP723

438.10	2.0
438.50	2.0
439.10	1.0
439.90	5.0
440.50	2.0
441.40	3.0
442.00	1.0
443.10	2.0
443.70	4.0
444.50	4.0
445.00	2.0
446.20	3.0
447.60	2.0
447.90	2.0
449.00	2.0
449.50	4.0
450.70	1.0
451.20	2.0
452.30	2.0
452.80	2.0
453.30	1.0
453.90	2.0
454.90	2.0
455.80	4.0
457.20	4.0
457.70	1.0
458.20	1.0
458.90	3.0
459.70	1.0
460.20	2.0
461.40	19.0
462.20	7.0
463.50	4.0
464.40	1.0
465.00	2.0
465.50	3.0
466.40	3.0
466.80	2.0
467.30	1.0
468.40	4.0
469.70	3.0
470.30	1.0
471.30	3.0
471.80	1.0
472.90	4.0
473.40	1.0
474.60	3.0
475.10	5.0
476.10	2.0
477.10	10.0
478.40	7.0
479.30	2.0
479.90	1.0
480.60	2.0
481.30	2.0
481.90	2.0
482.50	3.0
483.80	2.0
484.20	2.0
484.90	10.0
485.80	1.0
486.30	1.0
487.30	3.0
488.70	2.0
489.30	2.0
489.90	3.0
490.40	2.0
491.20	2.0
491.90	5.0
492.70	1.0
493.50	2.0
494.30	3.0
495.00	4.0
495.50	2.0
496.20	3.0
497.00	9.0
498.20	3.0
499.10	1.0
499.70	2.0
500.10	2.0
501.10	3.0
501.80	2.0
503.20	13.0
504.40	10.0
505.40	13.0
506.00	2.0
506.70	2.0
507.40	3.0
507.80	2.0
508.70	1.0
509.30	3.0
510.60	2.0
511.00	1.0
511.60	1.0
512.20	4.0
513.00	2.0

Instrument :  
BNA\_P  
ClientSampleId :  
DFTPP723

514.10	3.0
515.40	2.0
515.90	1.0
516.80	2.0
517.30	2.0
517.90	2.0
518.40	2.0
519.10	2.0
520.30	3.0
521.10	1.0
521.60	4.0
522.70	2.0
523.70	3.0
524.70	3.0
525.40	1.0
526.30	2.0
526.80	1.0
528.10	3.0
528.80	0.0
529.40	3.0
530.30	2.0
531.10	3.0
531.70	1.0
532.30	2.0
532.90	3.0
533.90	10.0
534.70	10.0
535.20	1.0
536.00	10.0
536.60	1.0
537.40	8.0
538.10	2.0
538.70	1.0
539.40	3.0
540.00	1.0
540.70	3.0
542.10	8.0
543.60	3.0
545.30	3.0
545.70	4.0
546.90	4.0
547.60	1.0
548.10	2.0
549.20	2.0

**Instrument :**  
BNA\_P  
**ClientSampleId :**  
DFTPP723



m/z	Abundance
35.90	98.0
37.10	360.0
38.00	983.0
39.10	6003.0
40.00	597.0
41.00	312.0
41.90	84.0
42.90	239.0
44.00	1197.0
45.00	164.0
45.80	2.0
46.50	10.0
46.90	41.0
48.00	118.0
49.00	845.0
50.10	21600.0
51.10	80800.0
52.10	4450.0
53.00	173.0
54.10	76.0
55.00	658.0
56.00	2640.0
57.00	5113.0
58.00	292.0
59.00	245.0
60.10	99.0
61.10	1255.0
62.00	1445.0
63.10	3785.0
64.00	676.0
65.00	1807.0
66.10	189.0
67.00	393.0
68.10	1746.0
69.00	88672.0
70.10	632.0
71.00	116.0
71.80	28.0
73.10	945.0
74.10	9384.0
75.00	15467.0
76.10	5343.0
77.10	94072.0
78.10	6477.0
79.00	7679.0
80.00	4983.0
81.00	7768.0
82.10	1669.0
83.10	1638.0
84.00	225.0
85.00	1320.0
86.00	2068.0
87.10	970.0
87.90	379.0
89.10	397.0
89.90	49.0
91.00	2251.0
92.00	1778.0
93.00	13140.0
93.90	851.0
95.10	451.0
96.10	666.0
97.10	371.0
98.00	10271.0
99.00	7008.0
100.00	675.0
101.00	3564.0
102.10	223.0
103.10	1514.0
104.10	2688.0
105.00	2947.0
106.10	876.0
107.10	32088.0
108.10	4694.0
109.10	1347.0
110.00	53864.0
111.00	8302.0
112.00	1431.0
113.00	353.0
114.10	20.0
115.00	409.0
116.10	1898.0
117.10	26472.0
118.00	2004.0
119.10	297.0
120.10	475.0
121.00	125.0
122.10	2101.0
123.00	3555.0
124.00	1435.0
125.00	1178.0
127.10	98832.0

Instrument :  
BNA\_P  
ClientSampleId :  
DFTPP723

128. 10	8051. 0
129. 00	39104. 0
130. 00	3240. 0
131. 00	732. 0
132. 00	471. 0
132. 90	300. 0
134. 10	1299. 0
135. 10	2967. 0
136. 10	1308. 0
137. 10	2016. 0
138. 00	469. 0
139. 20	506. 0
140. 10	536. 0
141. 00	5460. 0
142. 10	1714. 0
143. 00	1380. 0
143. 90	320. 0
145. 20	414. 0
146. 00	949. 0
147. 10	3328. 0
148. 10	6208. 0
149. 10	1464. 0
150. 00	342. 0
151. 00	881. 0
152. 10	211. 0
153. 00	1840. 0
154. 10	1532. 0
155. 10	3158. 0
156. 10	4077. 0
157. 10	780. 0
158. 10	1157. 0
159. 10	722. 0
160. 10	1850. 0
161. 10	2382. 0
161. 90	577. 0
163. 10	498. 0
164. 20	208. 0
165. 00	2324. 0
166. 10	2182. 0
167. 10	12405. 0
168. 10	5101. 0
169. 00	1091. 0
170. 10	382. 0
171. 00	918. 0
172. 10	1047. 0
173. 10	1437. 0
174. 10	2286. 0
175. 10	4214. 0
176. 10	1027. 0
177. 00	1759. 0
178. 10	539. 0
179. 10	8411. 0
180. 10	5418. 0
181. 10	3109. 0
182. 10	450. 0
183. 10	287. 0
184. 10	717. 0
185. 10	3747. 0
186. 10	31064. 0
187. 10	8574. 0
188. 10	1102. 0
189. 10	2010. 0
190. 10	628. 0
191. 10	1160. 0
192. 10	2305. 0
193. 10	3191. 0
194. 10	782. 0
194. 80	255. 0
196. 10	6140. 0
198. 10	213632. 0
199. 10	15416. 0
200. 10	1265. 0
201. 60	1035. 0
203. 10	1402. 0
204. 10	9093. 0
205. 10	15869. 0
206. 20	60944. 0
207. 10	10366. 0
208. 10	2069. 0
209. 10	861. 0
210. 20	1167. 0
211. 20	2128. 0
213. 10	265. 0
213. 80	78. 0
214. 20	73. 0
215. 00	764. 0
216. 20	1459. 0
217. 10	15361. 0
218. 10	2059. 0
219. 00	345. 0
221. 10	9162. 0
222. 00	2343. 0
223. 10	3331. 0
224. 20	33376. 0
225. 20	8512. 0
226. 20	1147. 0

**Instrument :**  
BNA\_P  
**ClientSampleId :**  
DFTPP723

227. 10	13113. 0
228. 10	2226. 0
229. 10	2705. 0
230. 10	490. 0
231. 10	1216. 0
232. 20	219. 0
233. 20	105. 0
234. 10	886. 0
235. 10	970. 0
236. 10	546. 0
237. 10	1213. 0
238. 30	228. 0
239. 00	528. 0
240. 10	537. 0
241. 10	721. 0
242. 10	1597. 0
243. 20	1578. 0
244. 20	26008. 0
245. 10	3238. 0
246. 10	5066. 0
247. 10	1129. 0
248. 00	211. 0
249. 10	910. 0
250. 10	359. 0
251. 00	208. 0
252. 10	386. 0
253. 10	545. 0
255. 10	131136. 0
256. 20	20480. 0
257. 10	1683. 0
258. 10	7090. 0
259. 10	1626. 0
260. 00	149. 0
261. 10	169. 0
261. 90	1. 0
262. 60	21. 0
263. 20	106. 0
264. 00	248. 0
265. 10	2943. 0
266. 20	477. 0
267. 20	138. 0
268. 20	80. 0
269. 00	40. 0
270. 00	37. 0
271. 10	283. 0
272. 20	326. 0
273. 10	3404. 0
274. 10	10515. 0
275. 10	57112. 0
276. 20	8008. 0
277. 10	4815. 0
278. 10	751. 0
279. 00	157. 0
280. 10	25. 0
281. 20	551. 0
282. 10	234. 0
283. 10	674. 0
284. 20	350. 0
285. 20	887. 0
286. 10	95. 0
288. 00	98. 0
289. 00	200. 0
290. 20	140. 0
291. 10	121. 0
292. 10	220. 0
293. 20	1235. 0
294. 20	223. 0
295. 20	597. 0
296. 20	15011. 0
297. 10	1946. 0
298. 10	140. 0
299. 10	24. 0
301. 20	276. 0
302. 20	280. 0
303. 10	1626. 0
304. 10	551. 0
305. 10	82. 0
306. 00	48. 0
307. 00	11. 0
308. 10	273. 0
309. 10	178. 0
310. 10	202. 0
311. 20	36. 0
312. 10	20. 0
313. 10	134. 0
314. 10	590. 0
315. 10	1631. 0
316. 20	863. 0
317. 20	173. 0
317. 90	11. 0
318. 30	8. 0
319. 20	43. 0
319. 90	14. 0
320. 40	11. 0
321. 10	497. 0
322. 40	283. 0

**Instrument :**  
BNA\_P  
**ClientSampleId :**  
DFTPP723

323. 20	4813. 0
324. 20	783. 0
325. 00	120. 0
326. 10	193. 0
327. 10	1169. 0
328. 20	352. 0
328. 90	13. 0
329. 40	31. 0
330. 20	12. 0
331. 20	11. 0
332. 00	261. 0
333. 20	569. 0
334. 20	3119. 0
335. 20	961. 0
336. 10	89. 0
336. 70	11. 0
337. 20	13. 0
338. 50	2. 0
339. 20	79. 0
340. 20	138. 0
341. 20	492. 0
342. 20	134. 0
343. 20	15. 0
344. 30	4. 0
345. 00	10. 0
346. 10	694. 0
347. 10	191. 0
348. 20	66. 0
349. 40	13. 0
350. 20	46. 0
351. 10	30. 0
352. 20	1332. 0
353. 00	716. 0
354. 20	1576. 0
355. 20	474. 0
356. 00	8. 0
356. 50	2. 0
357. 30	73. 0
358. 30	11. 0
359. 10	132. 0
360. 00	22. 0
361. 10	27. 0
362. 10	13. 0
362. 60	15. 0
363. 10	12. 0
363. 60	7. 0
365. 20	6055. 0
366. 10	1084. 0
367. 20	58. 0
368. 00	1. 0
368. 60	3. 0
370. 30	80. 0
371. 30	291. 0
372. 20	2656. 0
373. 20	1003. 0
374. 20	112. 0
374. 90	2. 0
375. 50	18. 0
376. 40	14. 0
377. 20	80. 0
378. 20	22. 0
379. 20	3. 0
379. 90	6. 0
380. 70	9. 0
381. 50	20. 0
382. 20	7. 0
383. 20	766. 0
384. 10	238. 0
385. 20	92. 0
386. 00	11. 0
386. 80	2. 0
387. 90	11. 0
388. 60	8. 0
390. 20	339. 0
391. 20	151. 0
392. 20	281. 0
393. 00	1. 0
393. 50	2. 0
394. 30	1. 0
394. 90	19. 0
395. 90	16. 0
397. 10	14. 0
398. 30	3. 0
398. 90	3. 0
400. 30	17. 0
401. 20	173. 0
402. 20	1187. 0
403. 20	1487. 0
404. 10	391. 0
405. 30	157. 0
406. 10	5. 0
407. 00	1. 0
407. 90	2. 0
408. 40	15. 0
409. 60	21. 0
410. 60	8. 0

Instrument :

BNA\_P

ClientSampleId :

DFTPP723

411.30	9.0
412.40	3.0
412.90	8.0
413.50	8.0
414.10	3.0
415.20	146.0
416.20	12.0
417.60	3.0
418.80	4.0
419.60	1.0
421.20	1170.0
422.20	1094.0
423.20	7757.0
424.20	2450.0
425.10	206.0
426.70	2.0
427.10	3.0
428.20	2.0
429.00	15.0
429.40	13.0
430.20	8.0
431.00	9.0
432.20	15.0
433.20	2.0
433.70	14.0
434.50	11.0
435.30	10.0
436.00	11.0
436.90	14.0
437.60	10.0
438.30	41.0
439.00	94.0
439.80	224.0
441.20	20928.0
442.20	128720.0
443.20	26160.0
444.20	2610.0
445.30	100.0
446.20	2.0
447.10	3.0
447.50	2.0
448.50	4.0
449.40	1.0
450.40	2.0
451.00	1.0
451.70	4.0
452.40	2.0
453.20	2.0
454.20	0.0
454.90	3.0
456.10	21.0
456.70	1.0
457.20	13.0
458.20	16.0
459.40	9.0
460.40	1.0
461.20	2.0
462.70	3.0
463.20	2.0
463.70	1.0
464.60	4.0
465.20	1.0
466.00	4.0
467.00	1.0
467.50	1.0
467.80	1.0
468.40	1.0
469.30	3.0
470.20	17.0
470.90	2.0
471.70	2.0
472.30	4.0
473.60	2.0
474.10	3.0
475.30	7.0
476.00	3.0
476.90	3.0
477.50	1.0
478.10	1.0
478.60	2.0
479.10	2.0
480.10	6.0
480.70	2.0
481.50	2.0
481.80	2.0
482.40	1.0
483.20	12.0
484.50	2.0
485.10	3.0
485.60	1.0
486.20	2.0
486.80	1.0
487.40	2.0
487.90	2.0
488.60	3.0
489.60	3.0

Instrument :  
BNA\_P  
ClientSampleId :  
DFTPP723

491.00	4.0
491.80	2.0
492.40	1.0
493.00	13.0
494.10	2.0
494.70	2.0
495.10	1.0
496.10	3.0
497.30	2.0
497.80	3.0
498.80	3.0
499.00	3.0
499.90	8.0
500.60	4.0
501.00	2.0
502.10	2.0
502.40	2.0
503.50	2.0
503.70	2.0
504.40	2.0
504.90	2.0
505.50	3.0
506.10	1.0
506.90	4.0
507.60	2.0
508.30	3.0
510.10	3.0
511.00	2.0
511.70	4.0
512.40	0.0
513.00	4.0
513.60	2.0
514.80	4.0
515.20	2.0
516.30	3.0
516.80	2.0
517.90	4.0
519.40	3.0
520.00	2.0
521.20	3.0
521.70	1.0
522.40	5.0
523.10	2.0
523.80	13.0
524.50	2.0
525.70	4.0
526.60	2.0
527.50	4.0
528.00	1.0
528.90	3.0
529.70	1.0
531.00	3.0
532.10	2.0
533.00	1.0
533.80	4.0
534.30	2.0
535.50	2.0
536.10	7.0
536.60	2.0
537.00	2.0
538.20	3.0
538.70	10.0
540.00	3.0
540.50	13.0
541.20	1.0
541.80	2.0
542.90	3.0
543.40	2.0
544.00	2.0
544.40	2.0
545.10	2.0
545.90	2.0
546.70	3.0
547.20	2.0
548.00	4.0
548.40	2.0
549.00	1.0
549.50	3.0

**Instrument :**  
BNA\_P  
**ClientSampleId :**  
DFTPP723

m/z	Abundance
35.90	69.0
37.00	540.0
38.10	1672.0
39.10	8177.0
40.00	800.0
41.00	319.0
42.10	86.0
43.10	216.0
44.00	1408.0
44.90	393.0
45.80	7.0
47.00	48.0
48.00	57.0
49.10	932.0
50.10	30136.0
51.10	104992.0
52.00	5397.0
53.00	304.0
53.80	15.0
54.40	94.0
55.00	568.0
56.00	3767.0
57.00	7947.0
58.00	331.0
58.90	174.0
60.10	149.0
61.00	1395.0
62.00	2222.0
63.00	4902.0
64.00	735.0
65.10	2485.0
66.00	307.0
67.00	318.0
68.20	2202.0
69.00	121128.0
70.00	748.0
71.00	125.0
73.10	1851.0
74.10	13367.0
75.10	19952.0
76.10	6498.0
77.10	129528.0
78.10	8141.0
79.10	9972.0
80.00	7537.0
81.00	9949.0
82.00	2195.0
83.00	2061.0
83.90	311.0
85.10	2015.0
86.00	2679.0
87.00	1326.0
88.00	654.0
89.10	333.0
89.70	101.0
91.00	2459.0
92.00	2744.0
93.00	16576.0
94.00	1226.0
94.90	320.0
96.00	600.0
97.20	610.0
98.00	13988.0
99.10	10357.0
100.00	1163.0
101.10	5019.0
101.90	266.0
103.00	2138.0
104.10	3575.0
105.00	3586.0
106.00	1050.0
107.10	42328.0
108.10	6653.0
109.10	1448.0
110.10	73840.0
111.00	11412.0
112.00	1339.0
113.10	383.0
114.20	185.0
115.20	309.0
116.10	2630.0
117.10	35592.0
118.00	2397.0
119.00	274.0
120.10	547.0
121.00	393.0
122.00	2952.0
123.00	4184.0
124.00	2153.0
125.10	2043.0
127.10	133184.0
128.10	10583.0

**Instrument :**  
BNA\_P  
**ClientSampleId :**  
DFTPP723

129. 10	54896. 0
130. 10	4678. 0
131. 00	882. 0
132. 00	635. 0
133. 00	348. 0
134. 00	1857. 0
135. 10	4488. 0
136. 10	1784. 0
137. 10	2638. 0
138. 10	407. 0
139. 10	397. 0
140. 00	696. 0
141. 10	8061. 0
142. 10	2230. 0
143. 10	1657. 0
144. 00	473. 0
145. 10	473. 0
146. 00	1277. 0
147. 10	4239. 0
148. 10	8473. 0
149. 10	1886. 0
150. 10	656. 0
151. 00	941. 0
152. 10	469. 0
153. 10	2472. 0
154. 10	1908. 0
155. 10	4374. 0
156. 10	6068. 0
157. 10	1093. 0
158. 10	1802. 0
159. 10	1140. 0
160. 10	2987. 0
161. 00	3524. 0
162. 10	1188. 0
163. 00	339. 0
164. 10	448. 0
165. 10	2832. 0
166. 10	2639. 0
167. 10	15211. 0
168. 10	6959. 0
169. 10	1189. 0
170. 00	463. 0
171. 00	941. 0
172. 10	1518. 0
173. 10	1944. 0
174. 10	3613. 0
175. 10	5727. 0
176. 10	1523. 0
177. 10	3289. 0
178. 00	1346. 0
179. 10	11794. 0
180. 10	7978. 0
181. 10	3666. 0
182. 00	652. 0
183. 00	470. 0
184. 10	862. 0
185. 10	5437. 0
186. 10	44360. 0
187. 10	13504. 0
188. 10	1742. 0
189. 10	2747. 0
190. 10	551. 0
191. 10	1504. 0
192. 10	3995. 0
193. 10	4584. 0
194. 10	645. 0
195. 10	532. 0
196. 10	9863. 0
198. 10	319040. 0
199. 10	20600. 0
200. 10	1648. 0
201. 70	1180. 0
203. 20	2719. 0
204. 10	12088. 0
205. 20	19944. 0
206. 20	87400. 0
207. 20	13697. 0
208. 10	3529. 0
209. 10	1088. 0
210. 10	1337. 0
211. 20	3043. 0
212. 00	538. 0
213. 00	271. 0
214. 20	104. 0
215. 10	961. 0
216. 20	1774. 0
217. 10	22832. 0
218. 20	2533. 0
219. 20	320. 0
219. 90	237. 0
221. 10	13626. 0
222. 10	2638. 0
223. 10	5284. 0
224. 20	47528. 0
225. 20	11670. 0
226. 20	1221. 0

**Instrument :**  
BNA\_P  
**ClientSampleId :**  
DFTPP723



227.10	20424.0
228.10	2882.0
229.10	4071.0
230.10	559.0
231.20	1565.0
232.10	342.0
233.10	494.0
234.10	1212.0
235.10	1280.0
236.10	982.0
237.20	2138.0
238.00	206.0
239.20	901.0
240.10	819.0
241.10	1181.0
242.10	2585.0
243.20	2798.0
244.20	36824.0
245.20	4778.0
246.10	6384.0
247.10	1748.0
248.20	445.0
249.10	1236.0
249.80	114.0
250.30	231.0
251.10	307.0
252.10	297.0
253.10	698.0
255.10	191424.0
256.10	28848.0
257.10	2422.0
258.10	11632.0
259.10	1814.0
260.20	273.0
261.20	321.0
261.90	11.0
262.50	7.0
263.20	193.0
264.10	352.0
265.10	4520.0
266.10	716.0
267.00	193.0
268.20	87.0
269.10	110.0
269.90	97.0
271.10	393.0
272.20	488.0
273.10	5447.0
274.10	15184.0
275.20	88376.0
276.20	12285.0
277.10	7786.0
278.10	1181.0
279.10	226.0
280.20	33.0
281.10	622.0
282.10	363.0
283.10	822.0
284.10	519.0
285.10	1111.0
286.20	226.0
287.20	24.0
288.00	126.0
289.10	461.0
290.10	232.0
291.00	300.0
292.20	363.0
293.10	1745.0
294.10	455.0
296.10	24032.0
297.20	3280.0
298.10	295.0
299.00	35.0
300.10	14.0
301.10	253.0
302.20	595.0
303.20	2897.0
304.10	887.0
305.20	160.0
306.00	11.0
306.60	3.0
307.20	15.0
308.10	324.0
309.10	147.0
310.00	272.0
311.20	79.0
312.10	122.0
313.10	136.0
314.20	930.0
315.10	2518.0
316.20	1659.0
317.10	220.0
318.00	9.0
319.20	46.0
319.90	110.0
321.20	826.0

Instrument :  
BNA\_P  
ClientSampleId :  
DFTPP723

322. 10	354. 0
323. 20	7791. 0
324. 20	1456. 0
325. 10	134. 0
326. 10	136. 0
327. 10	1619. 0
328. 20	739. 0
329. 30	52. 0
330. 10	26. 0
331. 20	57. 0
332. 10	422. 0
333. 20	901. 0
334. 20	5284. 0
335. 20	1239. 0
336. 20	253. 0
336. 80	21. 0
338. 10	16. 0
339. 10	163. 0
340. 10	146. 0
341. 10	960. 0
342. 20	215. 0
343. 00	20. 0
344. 00	9. 0
345. 00	18. 0
346. 20	1472. 0
347. 00	297. 0
348. 20	83. 0
349. 30	11. 0
350. 20	96. 0
352. 20	2366. 0
353. 20	1665. 0
354. 20	2475. 0
355. 20	691. 0
356. 10	14. 0
356. 40	17. 0
357. 20	139. 0
358. 30	4. 0
359. 10	202. 0
360. 10	14. 0
361. 10	43. 0
361. 70	7. 0
362. 50	1. 0
363. 10	32. 0
363. 70	87. 0
365. 20	10144. 0
366. 10	2060. 0
367. 20	65. 0
368. 00	12. 0
370. 20	337. 0
371. 10	653. 0
372. 20	3697. 0
373. 10	958. 0
374. 10	153. 0
375. 00	16. 0
375. 70	1. 0
376. 20	7. 0
377. 10	174. 0
378. 20	36. 0
379. 00	64. 0
379. 90	1. 0
380. 40	9. 0
381. 30	14. 0
382. 00	13. 0
383. 10	1058. 0
384. 10	416. 0
385. 20	124. 0
386. 20	17. 0
386. 90	1. 0
388. 20	6. 0
389. 00	20. 0
390. 20	708. 0
391. 20	312. 0
392. 20	202. 0
392. 90	18. 0
393. 30	11. 0
394. 00	8. 0
394. 50	14. 0
394. 90	18. 0
395. 70	23. 0
397. 20	35. 0
398. 00	10. 0
398. 90	3. 0
400. 00	10. 0
400. 40	9. 0
401. 30	263. 0
402. 10	1884. 0
403. 20	2214. 0
404. 20	908. 0
405. 10	109. 0
405. 90	9. 0
406. 60	13. 0
407. 90	15. 0
408. 70	18. 0
409. 40	1. 0
410. 20	72. 0
411. 20	11. 0

Instrument :

BNA\_P

ClientSampleId :

DFTPP723

413.40	18.0
415.20	146.0
416.10	34.0
417.00	1.0
417.60	15.0
418.30	1.0
419.10	21.0
419.70	12.0
420.40	91.0
421.20	1939.0
422.20	2023.0
423.20	13288.0
424.20	3027.0
425.30	363.0
426.30	2.0
426.70	3.0
427.40	14.0
428.00	1.0
428.60	13.0
429.20	10.0
429.90	18.0
431.20	3.0
432.00	2.0
433.00	10.0
433.80	7.0
435.00	12.0
435.60	7.0
436.80	14.0
438.50	89.0
439.00	156.0
441.20	35344.0
442.20	222848.0
443.20	42584.0
444.20	3950.0
445.20	290.0
446.00	2.0
446.70	2.0
447.30	9.0
449.10	17.0
450.20	2.0
450.70	3.0
451.60	2.0
452.00	3.0
452.60	2.0
453.30	1.0
453.80	2.0
454.30	2.0
455.50	4.0
456.30	8.0
457.10	3.0
457.80	1.0
458.40	10.0
458.90	11.0
459.40	11.0
460.20	3.0
460.60	9.0
461.70	2.0
462.00	2.0
463.10	1.0
464.10	8.0
465.00	2.0
466.20	2.0
466.90	1.0
468.10	3.0
468.60	2.0
469.70	2.0
470.70	1.0
471.20	2.0
471.60	2.0
472.50	1.0
473.00	2.0
473.90	3.0
474.50	3.0
476.10	16.0
476.80	1.0
477.30	3.0
478.00	3.0
478.60	1.0
479.10	3.0
479.40	2.0
480.90	4.0
481.50	1.0
482.30	4.0
483.10	1.0
483.80	2.0
485.30	3.0
485.70	1.0
486.50	1.0
486.80	1.0
487.50	2.0
488.10	2.0
488.40	2.0
489.00	1.0
490.70	11.0
491.70	4.0
492.30	2.0

Instrument :  
BNA\_P  
ClientSampleId :  
DFTPP723

493.10	3.0
493.90	2.0
494.80	3.0
496.50	3.0
497.80	3.0
498.80	2.0
499.60	4.0
501.10	3.0
502.90	2.0
504.30	3.0
505.30	1.0
506.00	2.0
507.10	2.0
507.50	3.0
508.20	7.0
509.20	2.0
509.60	1.0
510.30	1.0
510.70	2.0
511.70	2.0
512.20	3.0
512.70	3.0
513.30	1.0
513.80	2.0
515.40	3.0
516.20	1.0
516.70	2.0
517.10	3.0
517.50	2.0
518.50	3.0
520.10	4.0
520.80	0.0
521.40	1.0
522.10	2.0
523.20	3.0
524.90	2.0
525.50	1.0
526.30	4.0
527.20	1.0
528.30	10.0
529.10	1.0
529.60	2.0
530.50	2.0
531.10	2.0
531.70	3.0
532.60	3.0
534.00	3.0
534.70	2.0
535.80	4.0
536.40	1.0
537.50	2.0
538.10	0.0
538.80	3.0
539.10	2.0
540.20	3.0
540.60	3.0
541.00	2.0
541.70	3.0
542.10	3.0
542.90	2.0
543.60	3.0
545.00	3.0
546.60	3.0
547.50	1.0
548.50	4.0
549.60	20.0

**Instrument :**  
BNA\_P  
**ClientSampleId :**  
DFTPP723

m/z	Abundance
35.00	17.0
35.80	37.0
36.90	459.0
38.10	953.0
39.10	5628.0
40.00	417.0
41.00	370.0
42.10	43.0
43.10	250.0
44.00	1236.0
45.10	202.0
45.70	3.0
46.20	9.0
47.00	51.0
47.70	58.0
49.00	782.0
50.10	20864.0
51.10	73984.0
52.00	4129.0
53.00	163.0
54.20	17.0
55.00	661.0
56.00	2925.0
57.00	5007.0
58.00	301.0
58.90	143.0
59.60	32.0
60.20	90.0
61.00	1401.0
62.00	1389.0
63.10	3251.0
64.10	645.0
65.10	1575.0
66.00	304.0
66.90	345.0
68.20	1926.0
69.00	86912.0
70.00	423.0
71.10	185.0
72.00	12.0
73.10	1395.0
74.00	10079.0
75.00	14404.0
76.10	4485.0
77.10	96184.0
78.10	5424.0
79.00	7114.0
80.10	5598.0
81.00	7800.0
82.00	2029.0
83.10	1890.0
84.00	290.0
85.00	1482.0
86.00	2350.0
87.10	887.0
88.00	424.0
89.00	232.0
89.70	74.0
90.30	112.0
91.10	1892.0
92.10	2117.0
93.00	13110.0
94.00	975.0
95.00	328.0
96.00	658.0
97.00	242.0
98.00	9865.0
99.00	7627.0
100.10	585.0
101.10	4011.0
102.10	313.0
103.10	1574.0
104.00	2460.0
105.00	2470.0
106.10	1075.0
107.10	33432.0
108.10	4436.0
109.20	1227.0
110.00	56424.0
111.10	9111.0
112.00	894.0
113.10	426.0
114.20	79.0
115.10	138.0
116.10	2001.0
117.10	27512.0
118.00	2230.0
118.90	325.0
120.00	613.0
120.90	202.0
122.00	2069.0
123.00	3181.0

Instrument :  
BNA\_P  
ClientSampleId :  
DFTPP723

124. 10	1755. 0
125. 00	1526. 0
127. 10	105992. 0
128. 10	8412. 0
129. 10	43480. 0
130. 10	3752. 0
131. 00	708. 0
132. 00	477. 0
133. 00	336. 0
134. 00	1211. 0
135. 10	3514. 0
136. 00	1716. 0
137. 10	1884. 0
138. 10	424. 0
139. 10	382. 0
140. 10	858. 0
141. 10	6440. 0
142. 00	2134. 0
143. 00	1495. 0
144. 10	255. 0
144. 90	310. 0
146. 00	988. 0
147. 10	3108. 0
148. 10	7117. 0
149. 10	1221. 0
150. 00	463. 0
151. 10	720. 0
151. 90	366. 0
153. 10	2098. 0
154. 00	1512. 0
155. 10	3186. 0
156. 10	4746. 0
157. 10	1033. 0
158. 00	1106. 0
159. 00	729. 0
160. 10	1969. 0
161. 10	3134. 0
162. 10	757. 0
163. 00	260. 0
164. 20	410. 0
165. 10	2660. 0
166. 00	1866. 0
167. 10	13756. 0
168. 10	5380. 0
169. 10	939. 0
170. 00	446. 0
171. 20	470. 0
172. 00	1160. 0
173. 10	1481. 0
174. 10	2595. 0
175. 10	4956. 0
176. 10	1464. 0
177. 10	2736. 0
178. 10	1088. 0
179. 10	10268. 0
180. 10	6415. 0
181. 10	2813. 0
182. 10	496. 0
183. 20	374. 0
184. 00	678. 0
185. 10	4837. 0
186. 10	38480. 0
187. 10	10158. 0
188. 10	1401. 0
189. 10	2108. 0
190. 10	470. 0
191. 10	1294. 0
192. 10	2815. 0
193. 10	3175. 0
194. 20	591. 0
195. 20	495. 0
196. 10	7466. 0
198. 10	262272. 0
199. 10	16544. 0
200. 10	1543. 0
201. 60	1100. 0
202. 20	520. 0
203. 10	2271. 0
204. 10	10615. 0
205. 10	17768. 0
206. 10	72752. 0
207. 20	10946. 0
208. 10	2731. 0
209. 10	856. 0
210. 20	1088. 0
211. 10	2814. 0
213. 10	133. 0
213. 90	21. 0
215. 10	902. 0
216. 10	1525. 0
217. 10	19600. 0
218. 10	1950. 0
219. 20	450. 0
221. 10	10806. 0
222. 10	2121. 0
223. 10	4513. 0

**Instrument :**  
BNA\_P  
**ClientSampleId :**  
DFTPP723

224. 10	41640. 0
225. 20	10906. 0
226. 20	1313. 0
227. 10	17856. 0
228. 10	2743. 0
229. 10	3713. 0
230. 00	397. 0
231. 10	1871. 0
232. 20	343. 0
233. 20	390. 0
234. 10	1236. 0
235. 10	1832. 0
236. 10	945. 0
237. 10	1592. 0
238. 00	337. 0
239. 10	710. 0
240. 20	721. 0
241. 10	1189. 0
242. 10	2527. 0
243. 20	2641. 0
244. 20	33056. 0
245. 20	4648. 0
246. 10	6393. 0
247. 00	1362. 0
248. 00	314. 0
249. 10	1066. 0
250. 10	258. 0
251. 10	334. 0
252. 20	326. 0
253. 20	850. 0
255. 10	180096. 0
256. 10	24808. 0
257. 20	2693. 0
258. 10	9808. 0
259. 10	1773. 0
260. 20	426. 0
261. 10	185. 0
262. 20	20. 0
263. 10	135. 0
264. 10	283. 0
265. 10	4719. 0
266. 10	683. 0
267. 10	267. 0
268. 20	17. 0
269. 10	147. 0
270. 20	118. 0
271. 00	536. 0
272. 20	517. 0
273. 10	5666. 0
274. 20	14867. 0
275. 20	83320. 0
276. 20	10358. 0
277. 10	6873. 0
278. 20	1007. 0
279. 20	248. 0
280. 00	37. 0
281. 20	491. 0
282. 10	188. 0
283. 10	625. 0
284. 10	494. 0
285. 20	1093. 0
286. 10	202. 0
287. 20	18. 0
288. 00	85. 0
289. 20	212. 0
290. 10	243. 0
291. 10	185. 0
292. 10	295. 0
293. 10	1876. 0
294. 10	338. 0
296. 10	22600. 0
297. 10	2982. 0
298. 00	132. 0
298. 90	34. 0
299. 50	8. 0
301. 00	221. 0
302. 20	581. 0
303. 20	2363. 0
304. 10	741. 0
305. 30	77. 0
307. 10	27. 0
308. 10	336. 0
309. 10	352. 0
310. 10	399. 0
311. 00	114. 0
312. 00	68. 0
313. 00	137. 0
314. 20	1089. 0
315. 10	2009. 0
316. 20	1580. 0
317. 20	298. 0
318. 00	3. 0
319. 20	91. 0
320. 00	100. 0
321. 20	859. 0
322. 30	455. 0

**Instrument :**  
BNA\_P  
**ClientSampleId :**  
DFTPP723

323. 20	8329. 0
324. 10	1212. 0
325. 20	166. 0
326. 20	197. 0
327. 10	1522. 0
328. 20	767. 0
329. 10	86. 0
330. 20	24. 0
331. 30	67. 0
332. 20	618. 0
333. 20	575. 0
334. 20	4754. 0
335. 20	1310. 0
336. 10	252. 0
337. 00	9. 0
338. 00	5. 0
339. 20	73. 0
340. 00	98. 0
341. 20	1045. 0
342. 10	319. 0
343. 00	14. 0
343. 40	12. 0
344. 10	3. 0
345. 00	17. 0
346. 20	2009. 0
347. 10	472. 0
347. 90	10. 0
349. 00	3. 0
349. 70	7. 0
350. 20	30. 0
351. 20	206. 0
352. 20	2208. 0
353. 20	1429. 0
354. 20	2587. 0
355. 20	499. 0
356. 10	19. 0
357. 20	53. 0
357. 90	18. 0
359. 10	256. 0
360. 00	17. 0
360. 50	10. 0
361. 20	20. 0
362. 00	5. 0
362. 40	12. 0
363. 00	44. 0
364. 10	100. 0
365. 20	10883. 0
366. 10	1691. 0
367. 00	86. 0
367. 70	15. 0
368. 20	13. 0
370. 10	228. 0
371. 20	924. 0
372. 20	4217. 0
373. 20	938. 0
374. 20	172. 0
375. 10	7. 0
375. 70	4. 0
376. 30	18. 0
377. 10	93. 0
378. 20	33. 0
379. 10	39. 0
380. 30	8. 0
381. 10	2. 0
382. 30	23. 0
383. 10	1114. 0
384. 10	506. 0
385. 20	131. 0
385. 90	6. 0
387. 10	12. 0
388. 20	123. 0
389. 00	23. 0
389. 30	27. 0
390. 20	529. 0
391. 20	456. 0
392. 10	284. 0
393. 30	24. 0
394. 10	2. 0
395. 10	15. 0
397. 20	112. 0
398. 00	3. 0
398. 50	1. 0
399. 70	8. 0
400. 30	9. 0
401. 10	281. 0
402. 20	1418. 0
403. 20	2602. 0
404. 20	917. 0
405. 20	109. 0
406. 00	10. 0
407. 20	2. 0
407. 50	2. 0
408. 20	15. 0
409. 00	2. 0
409. 50	4. 0
410. 10	100. 0

Instrument :  
BNA\_P  
ClientSampleId :  
DFTPP723



411.30	10.0
412.30	9.0
413.30	7.0
414.00	2.0
415.30	43.0
416.00	61.0
417.30	12.0
418.80	26.0
419.70	4.0
420.20	79.0
421.20	2009.0
422.20	2011.0
423.20	15217.0
424.20	3839.0
425.10	445.0
426.10	9.0
426.70	0.0
427.50	7.0
427.90	3.0
429.10	18.0
430.40	18.0
431.10	4.0
432.30	13.0
433.40	17.0
434.10	4.0
434.80	2.0
435.50	10.0
436.30	16.0
437.40	119.0
438.40	213.0
441.20	41128.0
442.20	261120.0
443.20	49032.0
444.20	4920.0
445.20	159.0
446.30	1.0
446.90	3.0
447.60	1.0
448.20	3.0
449.30	1.0
449.90	4.0
450.40	2.0
451.30	2.0
451.70	1.0
452.60	1.0
453.20	3.0
453.50	3.0
454.50	3.0
455.50	5.0
456.50	4.0
458.10	7.0
459.30	3.0
459.70	2.0
460.20	3.0
460.80	3.0
462.30	2.0
462.80	2.0
464.00	3.0
464.50	0.0
465.40	3.0
466.80	5.0
467.70	2.0
468.30	6.0
468.70	5.0
469.30	1.0
470.00	2.0
470.50	1.0
471.50	2.0
472.20	3.0
473.40	3.0
474.20	9.0
474.90	2.0
475.60	2.0
476.20	2.0
477.30	7.0
478.40	11.0
478.90	1.0
479.60	3.0
481.10	2.0
481.90	2.0
483.10	12.0
484.50	3.0
486.00	3.0
486.80	1.0
487.30	2.0
487.90	2.0
488.40	2.0
489.30	3.0
489.80	1.0
490.30	3.0
490.60	3.0
491.40	2.0
491.80	1.0
492.50	2.0
493.80	2.0
494.60	1.0

Instrument :  
BNA\_P  
ClientSampleId :  
DFTPP723

495.50	3.0
496.80	3.0
497.30	2.0
497.80	5.0
498.70	3.0
499.40	0.0
500.10	3.0
500.90	1.0
501.90	2.0
502.70	1.0
503.30	15.0
503.80	1.0
504.90	3.0
505.50	1.0
505.90	1.0
506.50	2.0
507.70	3.0
508.20	2.0
509.60	3.0
510.30	2.0
510.90	3.0
511.30	2.0
511.70	2.0
512.50	2.0
513.30	1.0
514.20	2.0
514.60	2.0
515.90	4.0
516.70	0.0
517.70	3.0
518.30	1.0
519.00	3.0
519.70	0.0
520.50	2.0
521.00	2.0
522.10	3.0
523.20	8.0
523.90	2.0
524.30	3.0
525.30	3.0
526.80	4.0
528.40	4.0
528.90	1.0
529.70	1.0
530.40	4.0
530.90	1.0
531.50	4.0
532.30	16.0
533.00	2.0
533.40	2.0
533.80	1.0
534.70	3.0
535.70	2.0
536.20	2.0
537.40	2.0
537.90	3.0
538.60	8.0
539.40	2.0
541.10	3.0
542.60	3.0
543.50	1.0
544.20	2.0
544.70	2.0
545.80	4.0
547.20	3.0
547.70	2.0
548.50	2.0
548.90	2.0
549.50	3.0

**Instrument :**  
BNA\_P  
**ClientSampleId :**  
DFTPP723