

Data Path : Z:\svoasrv\HPCHEM1\BNA\_P\Data\BP051523\  
 Data File : BP015081.D  
 Acq On : 15 May 2023 19:08  
 Operator : CG/JU  
 Sample : 02592-08  
 Misc :  
 ALS Vial : 16 Sample Multiplier: 1

Instrument :  
 BNA\_P  
 ClientSampleId :  
 JREF4

Integration Parameters: LSCINT.P

Integrator: RTE  
 Smoothing : OFF Filtering: 5  
 Sampling : 1 Min Area: 0.1 % of largest Peak  
 Start Thrs: 0.2 Max Peaks: 100  
 Stop Thrs : 0 Peak Location: TOP

If leading or trailing edge < 100 prefer < Baseline drop else tangent >  
 Peak separation: 5

Method : Z:\svoasrv\HPCHEM1\BNA\_P\Methods\SFAM-EPA-BP051123.MA.M  
 Title : SVOA CALIBRATION

Signal : TIC: BP015081.D\data.ms

peak #	R.T. min	first scan	max scan	last scan	PK TY	peak height	corr. area	corr. % max.	% of total
1	3.434	5	8	17	rVB	38421	65513	0.70%	0.068%
2	3.881	81	84	98	rBV	398023	624563	6.67%	0.647%
3	4.117	122	124	131	rVB	16710	24057	0.26%	0.025%
4	4.222	138	142	148	rVB	18463	26764	0.29%	0.028%
5	5.175	300	304	312	rVB2	16266	33074	0.35%	0.034%
6	7.287	656	663	679	rBV	1394475	2298466	24.55%	2.382%
7	7.458	685	692	703	rVB	1237346	1952645	20.86%	2.024%
8	7.663	719	727	737	rBV	1453332	2358331	25.19%	2.444%
9	7.740	738	740	744	rVB4	8714	10106	0.11%	0.010%
10	8.140	799	808	815	rBV	1180984	1938593	20.71%	2.009%
11	8.846	921	928	943	rBV	1916492	3122995	33.36%	3.237%
12	8.969	943	949	960	rVB	147373	246721	2.64%	0.256%
13	9.310	1000	1007	1022	rBV	1434814	2410533	25.75%	2.498%
14	9.710	1070	1075	1081	rBV2	11228	19620	0.21%	0.020%
15	10.040	1122	1131	1144	rBV	1218129	2037089	21.76%	2.111%
16	10.399	1187	1192	1198	rVB3	14490	24186	0.26%	0.025%
17	10.581	1216	1223	1239	rBV	1827342	3133229	33.46%	3.247%
18	10.969	1281	1289	1302	rBV	1824167	3053050	32.61%	3.164%
19	11.104	1304	1312	1335	rBV	1935437	3372778	36.02%	3.496%
20	11.769	1417	1425	1436	rBV8	11081	40575	0.43%	0.042%
21	12.204	1493	1499	1504	rVB6	5740	9424	0.10%	0.010%
22	12.551	1553	1558	1566	rVB4	11302	18778	0.20%	0.019%
23	13.663	1741	1747	1752	rBV4	17614	27331	0.29%	0.028%
24	13.745	1757	1761	1769	rVB9	5661	11961	0.13%	0.012%
25	14.181	1828	1835	1845	rBV	3677858	4945724	52.82%	5.126%
26	14.304	1852	1856	1861	rVB8	5305	9931	0.11%	0.010%
27	14.475	1877	1885	1904	rBV	4289385	6261632	66.88%	6.490%
28	14.781	1929	1937	1947	rBV	2864628	4295615	45.88%	4.452%
29	14.875	1949	1953	1957	rVB6	5237	9894	0.11%	0.010%
30	14.963	1962	1968	1993	rBV	1485737	2455969	26.23%	2.545%
31	15.187	2002	2006	2012	rVB8	21915	36079	0.39%	0.037%
32	15.581	2067	2073	2079	rBV2	14936	24556	0.26%	0.025%
33	15.769	2098	2105	2118	rBV	5126096	7515070	80.27%	7.789%
34	15.887	2118	2125	2136	rBV	1676718	2334031	24.93%	2.419%
35	16.010	2141	2146	2155	rVB	26530	45148	0.48%	0.047%
36	16.981	2307	2311	2317	rVB5	8296	12366	0.13%	0.013%

Data Path : Z:\svoasrv\HPCHEM1\BNA\_P\Data\BP051523\  
 Data File : BP015081.D  
 Acq On : 15 May 2023 19:08  
 Operator : CG/JU  
 Sample : 02592-08  
 Misc :  
 ALS Vial : 16 Sample Multiplier: 1

Instrument :  
 BNA\_P  
 ClientSampleId :  
 JREF4

Integration Parameters: LSCINT.P  
 Integrator: RTE  
 Smoothing : OFF Filtering: 5  
 Sampling : 1 Min Area: 0.1 % of largest Peak  
 Start Thrs: 0.2 Max Peaks: 100  
 Stop Thrs : 0 Peak Location: TOP

If leading or trailing edge < 100 prefer < Baseline drop else tangent >  
 Peak separation: 5

Method : Z:\svoasrv\HPCHEM1\BNA\_P\Methods\SFAM-EPA-BP051123.MA.M  
 Title : SVOA CALIBRATION

37	17.204	2346	2349	2353	rVB6	8296	9710	0.10%	0.010%
38	17.322	2365	2369	2376	rVB3	8585	14593	0.16%	0.015%
39	17.533	2398	2405	2415	rBV	3674871	5179849	55.32%	5.369%
40	17.633	2415	2422	2432	rBV	5526542	8102457	86.54%	8.398%
41	18.386	2547	2550	2554	rBV6	14041	21526	0.23%	0.022%
42	18.463	2560	2563	2566	rBV	15415	17070	0.18%	0.018%
43	18.951	2642	2646	2651	rBV2	34202	47678	0.51%	0.049%
44	19.163	2680	2682	2687	rVB	16120	18186	0.19%	0.019%
45	19.427	2723	2727	2734	rVB3	94923	133740	1.43%	0.139%
46	19.851	2793	2799	2808	rBV	7244018	9362823	100.00%	9.704%
47	20.598	2923	2926	2930	rBV	112284	137903	1.47%	0.143%
48	21.610	3093	3098	3108	rBV	3800811	5113535	54.62%	5.300%
49	24.015	3499	3507	3520	rVB2	3937480	8514259	90.94%	8.824%
50	24.180	3528	3535	3552	rVB	2250648	5005574	53.46%	5.188%

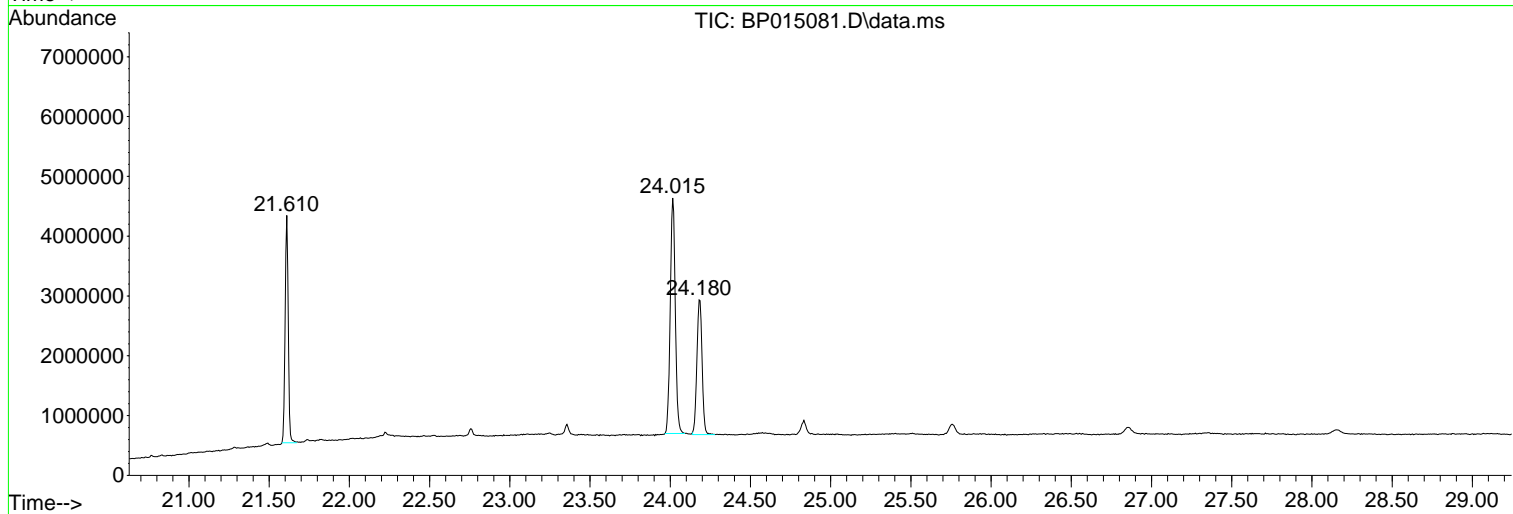
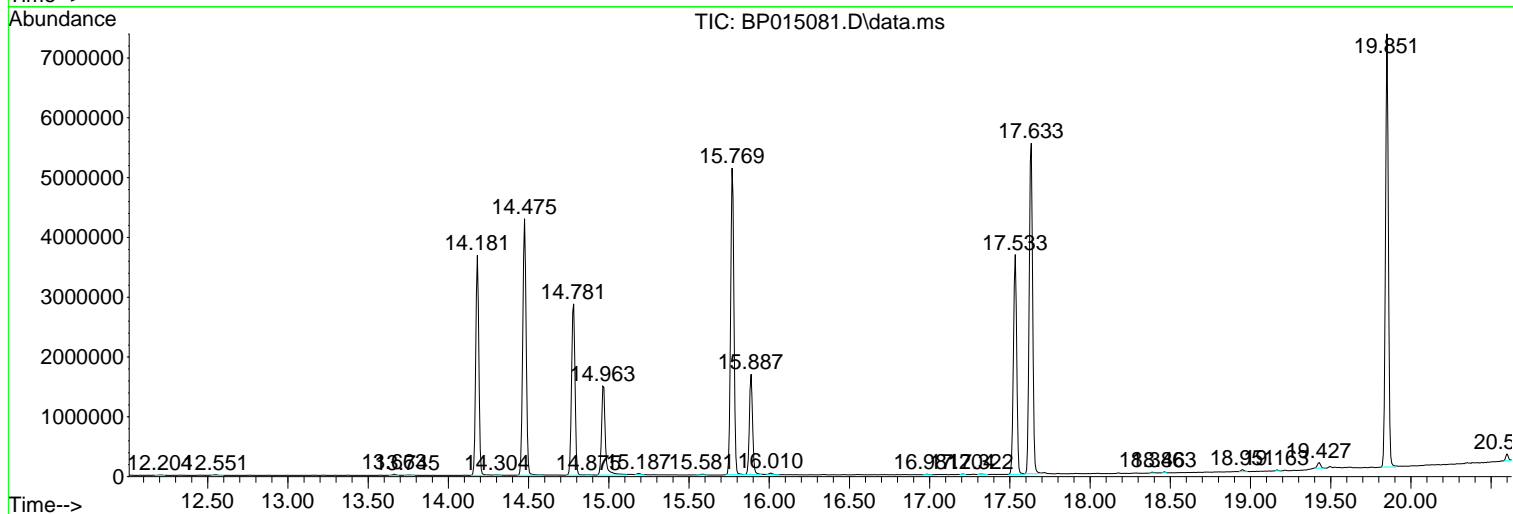
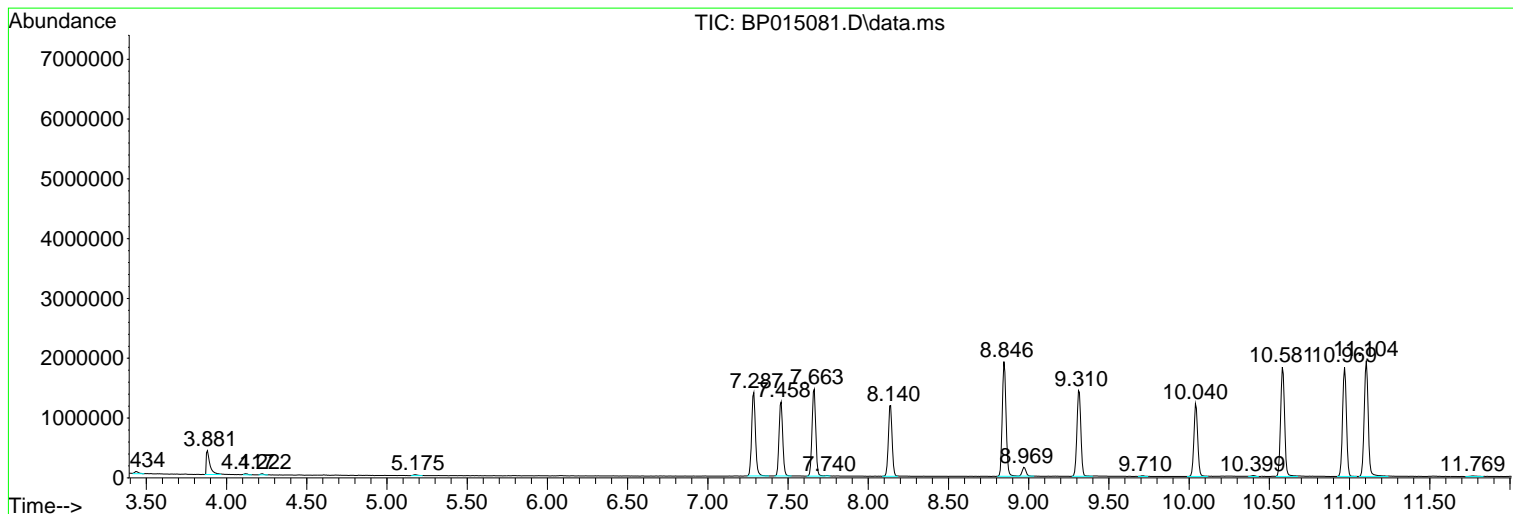
Sum of corrected areas: 96485300

Data Path : Z:\svoasrv\HPCHEM1\BNA\_P\Data\BP051523\  
 Data File : BP015081.D  
 Acq On : 15 May 2023 19:08  
 Operator : CG/JU  
 Sample : 02592-08  
 Misc :  
 ALS Vial : 16 Sample Multiplier: 1

Instrument :  
 BNA\_P  
 ClientSampleId :  
 JREF4

Quant Method : Z:\svoasrv\HPCHEM1\BNA\_P\Methods\SFAM-EPA-BP051123.MA.M  
 Quant Title : SVOA CALIBRATION

TIC Library : C:\DATABASE\NIST20.L  
 TIC Integration Parameters: LSCINT.P



Library Search Compound Report

Data Path : Z:\svoasrv\HPCHEM1\BNA\_P\Data\BP051523\  
Data File : BP015081.D  
Acq On : 15 May 2023 19:08  
Operator : CG/JU  
Sample : 02592-08  
Misc :  
ALS Vial : 16 Sample Multiplier: 1

Instrument :  
BNA\_P  
ClientSampleId :  
JREF4

Quant Method : Z:\svoasrv\HPCHEM1\BNA\_P\Methods\SFAM-EPA-BP051123.MA.M  
Quant Title : SVOA CALIBRATION

TIC Library : C:\DATABASE\NIST20.L  
TIC Integration Parameters: LSCINT.P

No Library Search Compounds Detected

\*\*\*\*\*

Data Path : Z:\svoasrv\HPCHEM1\BNA\_P\Data\BP051523\  
Data File : BP015081.D  
Acq On : 15 May 2023 19:08  
Operator : CG/JU  
Sample : 02592-08  
Misc :  
ALS Vial : 16 Sample Multiplier: 1

Instrument :  
BNA\_P  
ClientSampleId :  
JREF4

Quant Method : Z:\svoasrv\HPCHEM1\BNA\_P\Methods\SFAM-EPA-BP051123.MA.M  
Quant Title : SVOA CALIBRATION

TIC Library : C:\DATABASE\NIST20.L  
TIC Integration Parameters: LSCINT.P

TIC Top Hit name	RT	EstConc	Units	Response	--Internal Standard--			
					#	RT	Resp	Conc

---