

Data Path : Z:\svoasrv\HPCHEM1\BNA_P\Data\BP051625\
 Data File : BP024654.D
 Acq On : 16 May 2025 12:52
 Operator : RC/JU
 Sample : PB168019BSD
 Misc :
 ALS Vial : 5 Sample Multiplier: 1

Instrument :
 BNA_P
 ClientSampleId :
 PB168019BSD

Quant Time: May 16 13:49:07 2025
 Quant Method : Z:\svoasrv\HPCHEM1\BNA_P\Methods\8270E-BP051325.M
 Quant Title : ASP BNA STANDARDS FOR 5 POINT CALIBRATION
 QLast Update : Tue May 13 16:21:39 2025
 Response via : Initial Calibration

Compound	R.T.	QIon	Response	Conc	Units	Dev(Min)	
Internal Standards							
1) 1,4-Dichlorobenzene-d4	7.663	152	147952	20.000	ng	0.00	
21) Naphthalene-d8	10.428	136	579806	20.000	ng	0.00	
39) Acenaphthene-d10	14.292	164	357092	20.000	ng	-0.01	
64) Phenanthrene-d10	17.098	188	726416	20.000	ng	0.00	
76) Chrysene-d12	21.521	240	844726	20.000	ng	0.00	
86) Perylene-d12	24.809	264	972873	20.000	ng	0.00	
System Monitoring Compounds							
5) 2-Fluorophenol	5.287	112	752510	86.992	ng	0.00	
7) Phenol-d6	6.857	99	927195	83.984	ng	0.00	
23) Nitrobenzene-d5	8.810	82	861453	75.070	ng	0.00	
42) 2,4,6-Tribromophenol	15.816	330	524171	86.586	ng	0.00	
45) 2-Fluorobiphenyl	12.904	172	2087294	76.580	ng	0.00	
79) Terphenyl-d14	19.822	244	3859931	78.352	ng	0.01	
Target Compounds							
2) 1,4-Dioxane	3.222	88	128376	31.605	ng		97
3) Pyridine	3.616	79	326526	36.253	ng		99
4) n-Nitrosodimethylamine	3.528	42	157847	39.697	ng		99
6) Aniline	7.005	93	434340	30.472	ng		99
8) 2-Chlorophenol	7.240	128	435499	44.348	ng		97
9) Benzaldehyde	6.816	77	262514	36.732	ng		99
10) Phenol	6.881	94	504277	44.255	ng		98
11) bis(2-Chloroethyl)ether	7.093	93	369408	39.454	ng		99
12) 1,3-Dichlorobenzene	7.552	146	458912	40.619	ng		99
13) 1,4-Dichlorobenzene	7.699	146	470982	41.449	ng		99
14) 1,2-Dichlorobenzene	8.010	146	449280	40.576	ng		99
15) Benzyl Alcohol	7.904	79	355925	42.424	ng		99
16) 2,2'-oxybis(1-Chloropr...	8.181	45	435386	38.828	ng		99
17) 2-Methylphenol	8.116	107	349368	42.748	ng		97
18) Hexachloroethane	8.728	117	175434	40.289	ng		99
19) n-Nitroso-di-n-propyla...	8.463	70	285818	37.426	ng		99
20) 3+4-Methylphenols	8.440	107	471356	42.399	ng		98
22) Acetophenone	8.481	105	608591	42.020	ng	#	98
24) Nitrobenzene	8.851	77	427725	42.356	ng		96
25) Isophorone	9.375	82	805775	40.480	ng		99
26) 2-Nitrophenol	9.557	139	231916	46.867	ng		99
27) 2,4-Dimethylphenol	9.622	122	394802	45.252	ng		99
28) bis(2-Chloroethoxy)met...	9.851	93	488418	41.070	ng		99
29) 2,4-Dichlorophenol	10.098	162	392538	46.429	ng		98
30) 1,2,4-Trichlorobenzene	10.293	180	409692	43.002	ng		97
31) Naphthalene	10.481	128	1276618	42.489	ng		100
32) Benzoic acid	9.787	122	273730	45.524	ng		95
33) 4-Chloroaniline	10.598	127	305616	25.207	ng		99
34) Hexachlorobutadiene	10.763	225	261280	42.334	ng		98
35) Caprolactam	11.393	113	137717	45.022	ng		96
36) 4-Chloro-3-methylphenol	11.734	107	452611	43.899	ng		98
37) 2-Methylnaphthalene	12.087	142	813582	41.818	ng		99
38) 1-Methylnaphthalene	12.316	142	855997	41.121	ng		99
40) 1,2,4,5-Tetrachloroben...	12.469	216	460173	44.377	ng		99
41) Hexachlorocyclopentadiene	12.440	237	654888	104.153	ng		96
43) 2,4,6-Trichlorophenol	12.716	196	324138	48.260	ng		97

Data Path : Z:\svoasrv\HPCHEM1\BNA_P\Data\BP051625\
 Data File : BP024654.D
 Acq On : 16 May 2025 12:52
 Operator : RC/JU
 Sample : PB168019BSD
 Misc :
 ALS Vial : 5 Sample Multiplier: 1

Instrument :
 BNA_P
 ClientSampleId :
 PB168019BSD

Quant Time: May 16 13:49:07 2025
 Quant Method : Z:\svoasrv\HPCHEM1\BNA_P\Methods\8270E-BP051325.M
 Quant Title : ASP BNA STANDARDS FOR 5 POINT CALIBRATION
 QLast Update : Tue May 13 16:21:39 2025
 Response via : Initial Calibration

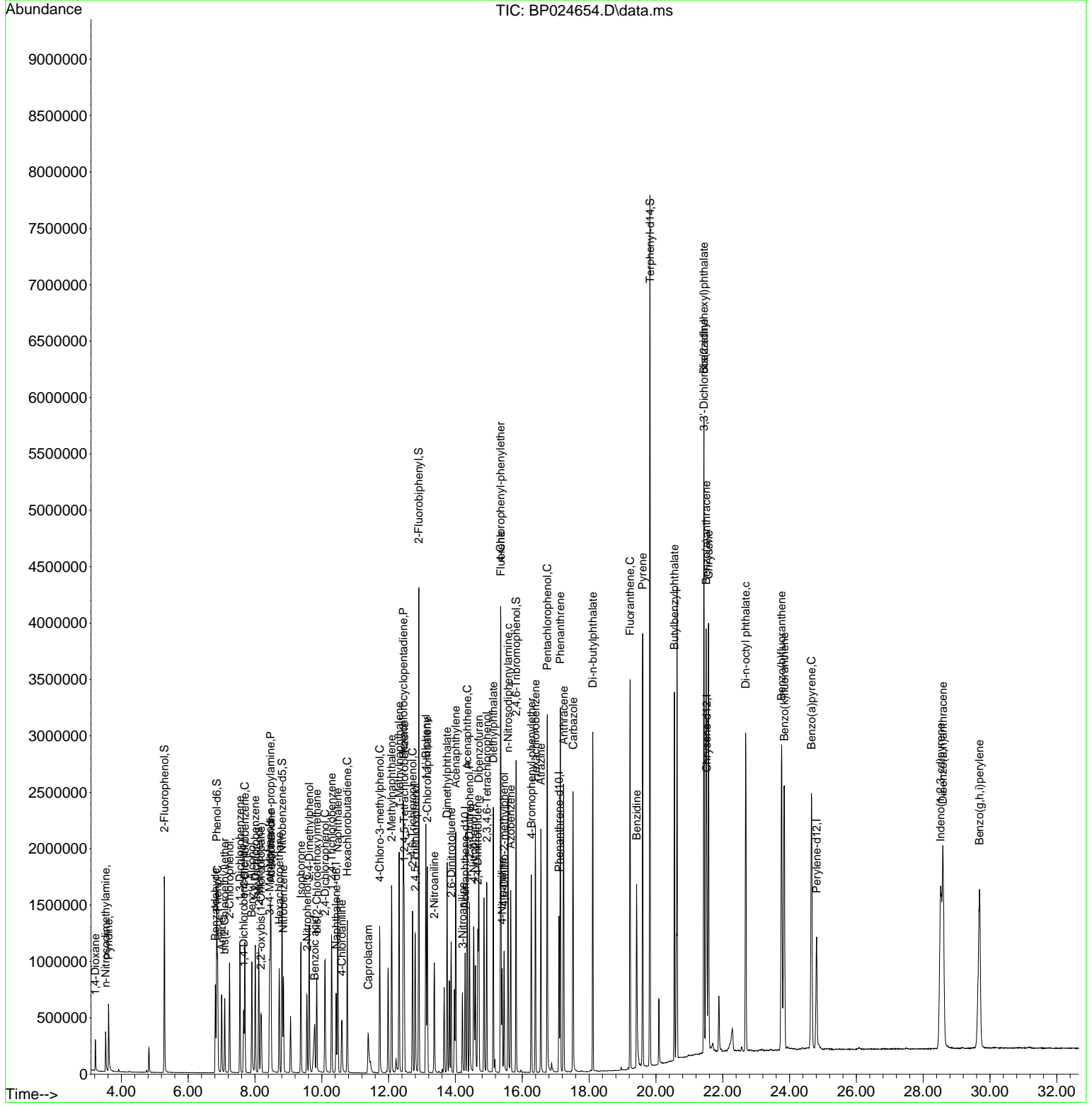
Compound	R.T.	QIon	Response	Conc	Units	Dev(Min)
44) 2,4,5-Trichlorophenol	12.798	196	354828	47.461	ng	97
46) 1,1'-Biphenyl	13.116	154	1164104	44.106	ng	99
47) 2-Chloronaphthalene	13.157	162	889761	44.214	ng	99
48) 2-Nitroaniline	13.369	65	275207	46.192	ng	98
49) Acenaphthylene	14.010	152	1446925	42.965	ng	100
50) Dimethylphthalate	13.751	163	1177714	43.270	ng	100
51) 2,6-Dinitrotoluene	13.875	165	258025	44.888	ng	97
52) Acenaphthene	14.357	154	826699	42.700	ng	100
53) 3-Nitroaniline	14.210	138	177158	30.184	ng	98
54) 2,4-Dinitrophenol	14.422	184	342573	93.349	ng	99
55) Dibenzofuran	14.698	168	1323841	42.869	ng	99
56) 4-Nitrophenol	14.545	139	465297	90.957	ng	97
57) 2,4-Dinitrotoluene	14.669	165	380475	46.949	ng	98
58) Fluorene	15.357	166	1111447	44.140	ng	99
59) 2,3,4,6-Tetrachlorophenol	14.939	232	323226	46.605	ng	97
60) Diethylphthalate	15.134	149	1205785	43.832	ng	99
61) 4-Chlorophenyl-phenyle...	15.351	204	553179	44.052	ng	100
62) 4-Nitroaniline	15.398	138	258489	45.611	ng	97
63) Azobenzene	15.651	77	1028400	43.700	ng	98
65) 4,6-Dinitro-2-methylph...	15.457	198	228099	48.613	ng	100
66) n-Nitrosodiphenylamine	15.575	169	994292	44.562	ng	99
67) 4-Bromophenyl-phenylether	16.275	248	379075	44.286	ng	96
68) Hexachlorobenzene	16.392	284	473270	43.512	ng	98
69) Atrazine	16.557	200	386199	47.230	ng	98
70) Pentachlorophenol	16.751	266	637096	104.347	ng	99
71) Phenanthrene	17.139	178	1771396	43.866	ng	100
72) Anthracene	17.239	178	1793685	44.148	ng	99
73) Carbazole	17.522	167	1701427	46.268	ng	99
74) Di-n-butylphthalate	18.110	149	2219654	46.933	ng	100
75) Fluoranthene	19.227	202	2160499	45.769	ng	99
77) Benzidine	19.422	184	1148711	49.929	ng	100
78) Pyrene	19.604	202	2263607	44.723	ng	100
80) Butylbenzylphthalate	20.557	149	1092181	48.519	ng	96
81) Benzo(a)anthracene	21.504	228	2396325	45.178	ng	99
82) 3,3'-Dichlorobenzidine	21.433	252	653618	33.177	ng	99
83) Chrysene	21.574	228	2248251	44.714	ng	99
84) Bis(2-ethylhexyl)phtha...	21.439	149	1573600	47.561	ng	100
85) Di-n-octyl phthalate	22.686	149	2702361	49.947	ng	99
87) Indeno(1,2,3-cd)pyrene	28.521	276	3263412	45.947	ng	# 93
88) Benzo(b)fluoranthene	23.762	252	2541459	45.639	ng	99
89) Benzo(k)fluoranthene	23.845	252	2543806	44.332	ng	99
90) Benzo(a)pyrene	24.657	252	2456998	45.941	ng	99
91) Dibenzo(a,h)anthracene	28.592	278	2690369	46.561	ng	99
92) Benzo(g,h,i)perylene	29.686	276	2624013	45.666	ng	99

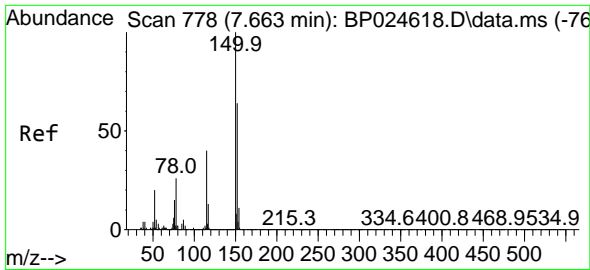
(#) = qualifier out of range (m) = manual integration (+) = signals summed

Data Path : Z:\svoasrv\HPCHEM1\BNA_P\Data\BP051625\
 Data File : BP024654.D
 Acq On : 16 May 2025 12:52
 Operator : RC/JU
 Sample : PB168019BSD
 Misc :
 ALS Vial : 5 Sample Multiplier: 1

Instrument :
 BNA_P
 ClientSampleId :
 PB168019BSD

Quant Time: May 16 13:49:07 2025
 Quant Method : Z:\svoasrv\HPCHEM1\BNA_P\Methods\8270E-BP051325.M
 Quant Title : ASP BNA STANDARDS FOR 5 POINT CALIBRATION
 QLast Update : Tue May 13 16:21:39 2025
 Response via : Initial Calibration

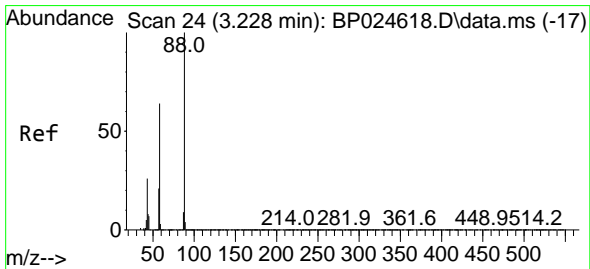
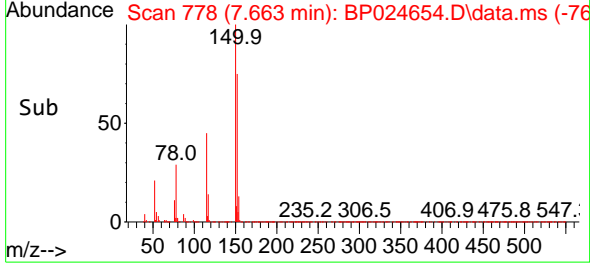
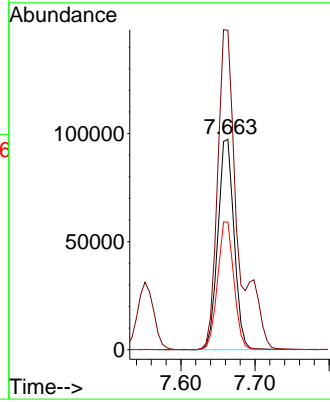
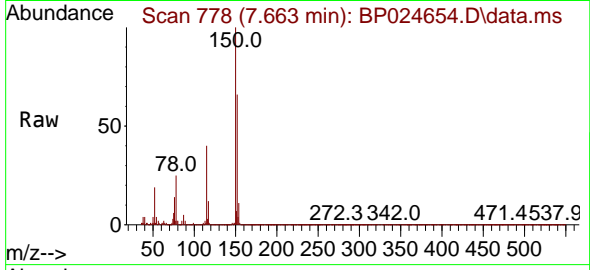




#1
 1,4-Dichlorobenzene-d4
 Concen: 20.000 ng
 RT: 7.663 min Scan# 7
 Delta R.T. 0.000 min
 Lab File: BP024654.D
 Acq: 16 May 2025 12:52

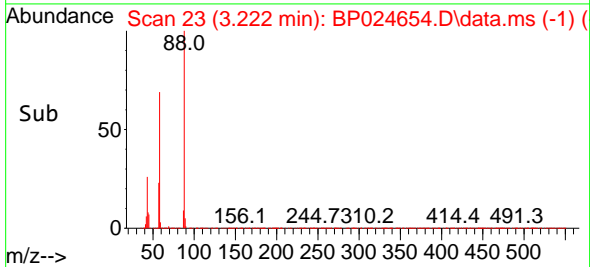
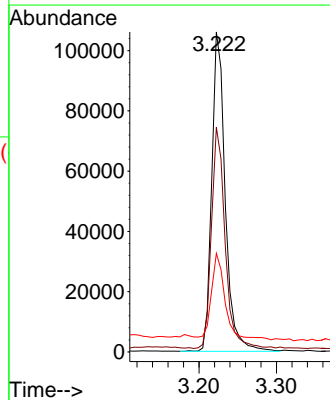
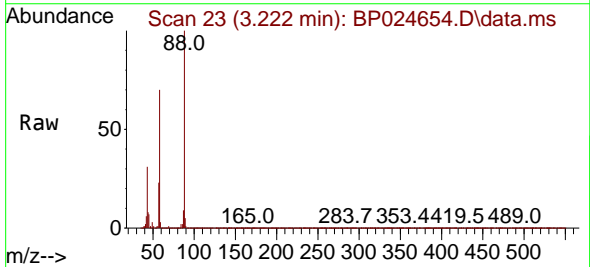
Instrument :
 BNA_P
 ClientSampleId :
 PB168019BSD

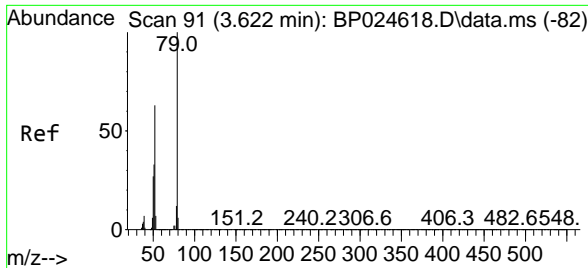
Tgt Ion: 152 Resp: 147952
 Ion Ratio Lower Upper
 152 100
 150 151.7 125.9 188.9
 115 60.7 50.1 75.1



#2
 1,4-Dioxane
 Concen: 31.605 ng
 RT: 3.222 min Scan# 23
 Delta R.T. -0.006 min
 Lab File: BP024654.D
 Acq: 16 May 2025 12:52

Tgt Ion: 88 Resp: 128376
 Ion Ratio Lower Upper
 88 100
 58 70.4 54.0 81.0
 43 27.5 21.4 32.0

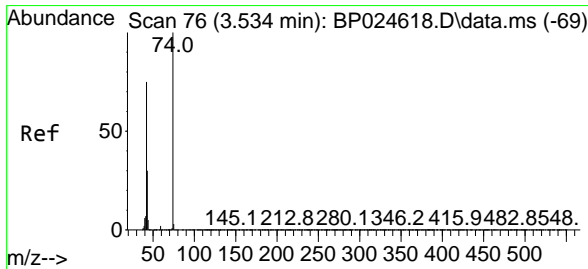
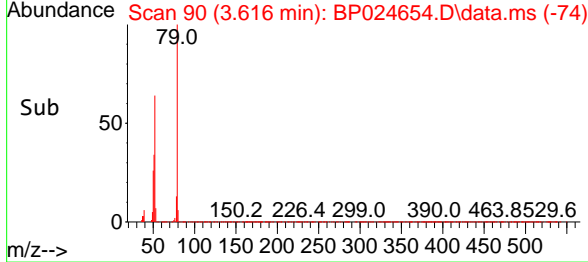
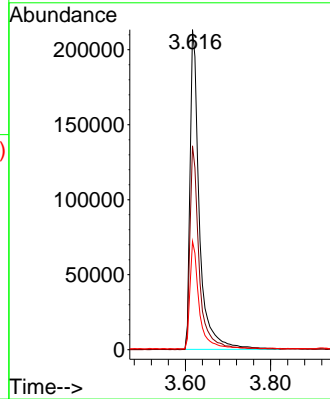
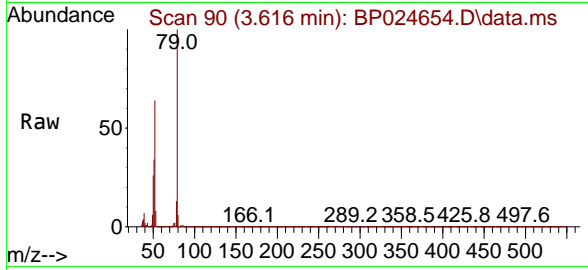




#3
 Pyridine
 Concen: 36.253 ng
 RT: 3.616 min Scan# 90
 Delta R.T. -0.006 min
 Lab File: BP024654.D
 Acq: 16 May 2025 12:52

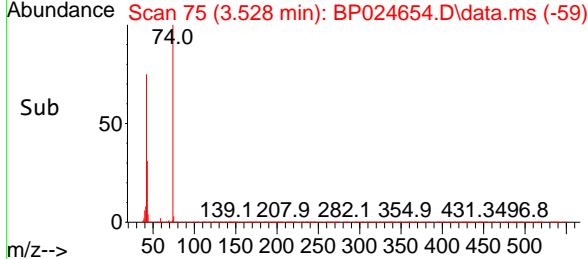
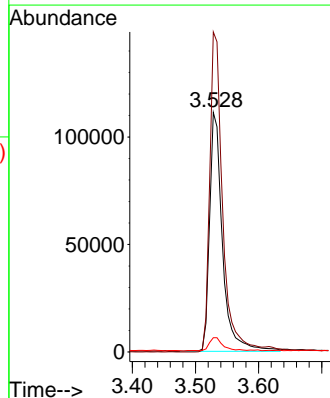
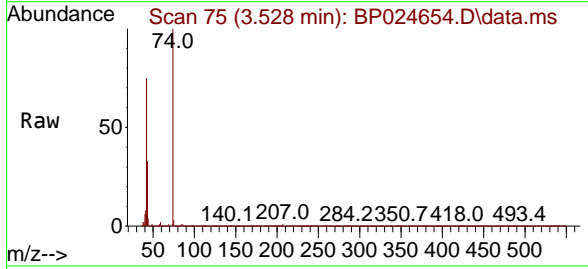
Instrument :
 BNA_P
 ClientSampleId :
 PB168019BSD

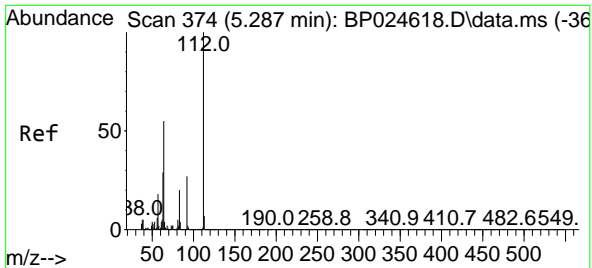
Tgt Ion: 79 Resp: 326526
 Ion Ratio Lower Upper
 79 100
 52 63.7 50.2 75.2
 51 33.8 26.8 40.2



#4
 n-Nitrosodimethylamine
 Concen: 39.697 ng
 RT: 3.528 min Scan# 75
 Delta R.T. -0.006 min
 Lab File: BP024654.D
 Acq: 16 May 2025 12:52

Tgt Ion: 42 Resp: 157847
 Ion Ratio Lower Upper
 42 100
 74 133.6 106.2 159.2
 44 5.9 5.4 8.2



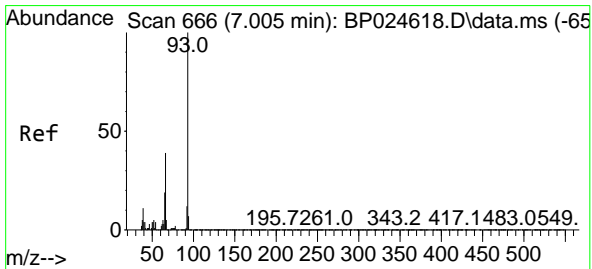
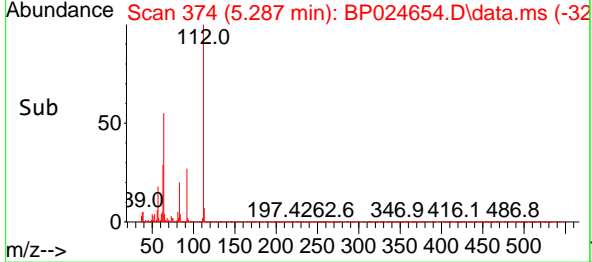
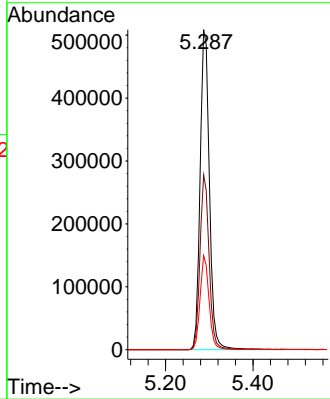
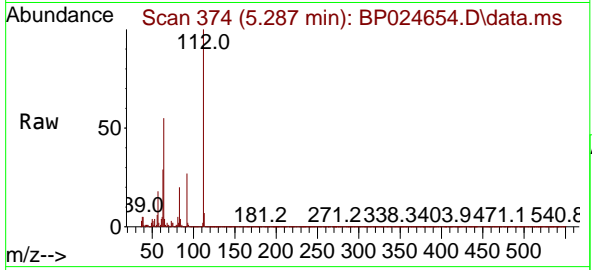


#5
 2-Fluorophenol
 Concen: 86.992 ng
 RT: 5.287 min Scan# 31
 Delta R.T. -0.000 min
 Lab File: BP024654.D
 Acq: 16 May 2025 12:52

Instrument : BNA_P
 ClientSampleId : PB168019BSD

Tgt Ion: 112 Resp: 752510

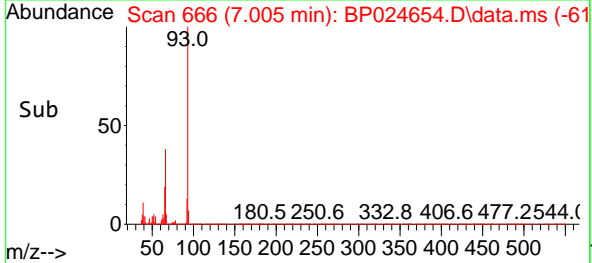
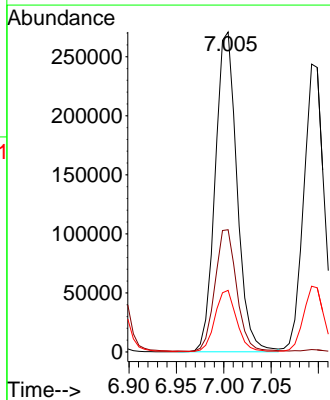
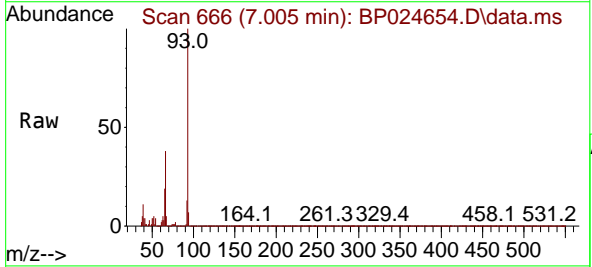
Ion	Ratio	Lower	Upper
112	100		
64	54.6	44.1	66.1
63	29.4	23.5	35.3

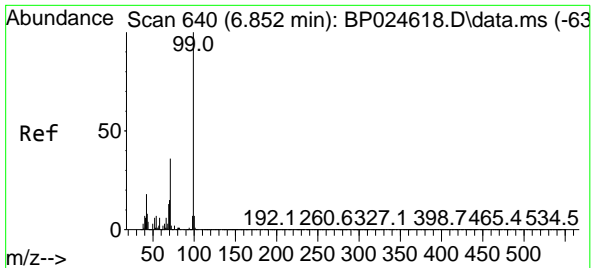


#6
 Aniline
 Concen: 30.472 ng
 RT: 7.005 min Scan# 666
 Delta R.T. -0.000 min
 Lab File: BP024654.D
 Acq: 16 May 2025 12:52

Tgt Ion: 93 Resp: 434340

Ion	Ratio	Lower	Upper
93	100		
66	38.2	31.0	46.6
65	19.3	15.5	23.3

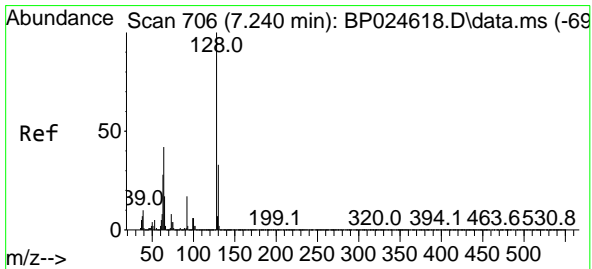
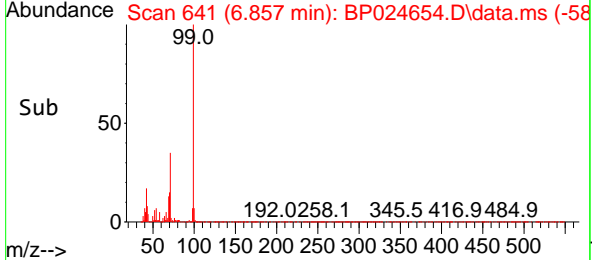
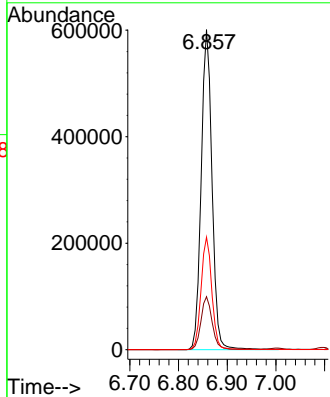
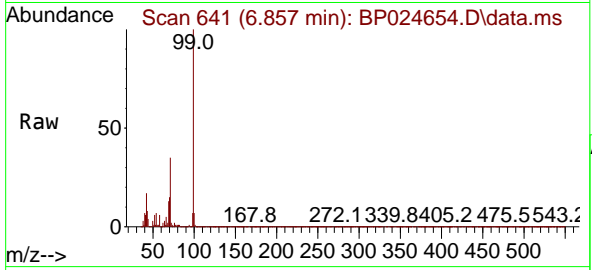




#7
 Phenol-d6
 Concen: 83.984 ng
 RT: 6.857 min Scan# 641
 Delta R.T. 0.006 min
 Lab File: BP024654.D
 Acq: 16 May 2025 12:52

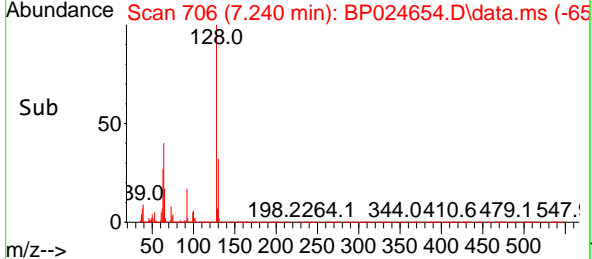
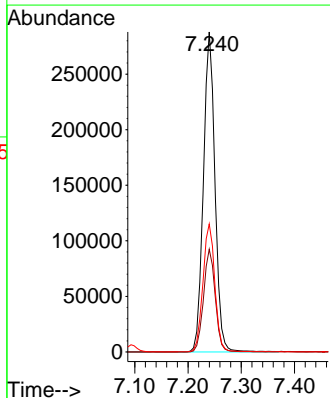
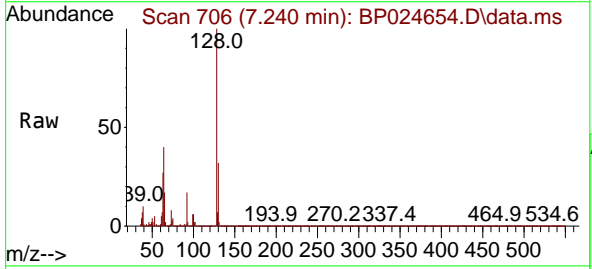
Instrument : BNA_P
 Client Sample Id : PB168019BSD

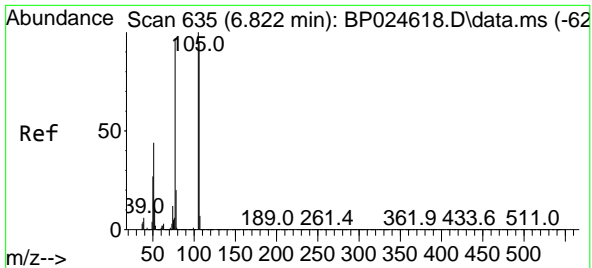
Tgt Ion	Resp	Lower	Upper
99	100		
42	16.6	14.4	21.6
71	35.2	29.2	43.8



#8
 2-Chlorophenol
 Concen: 44.348 ng
 RT: 7.240 min Scan# 706
 Delta R.T. -0.000 min
 Lab File: BP024654.D
 Acq: 16 May 2025 12:52

Tgt Ion	Resp	Lower	Upper
128	100		
130	32.1	13.0	53.0
64	40.0	22.3	62.3



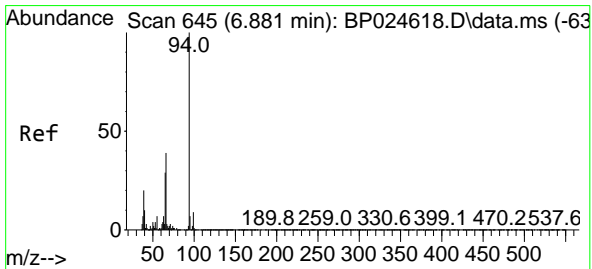
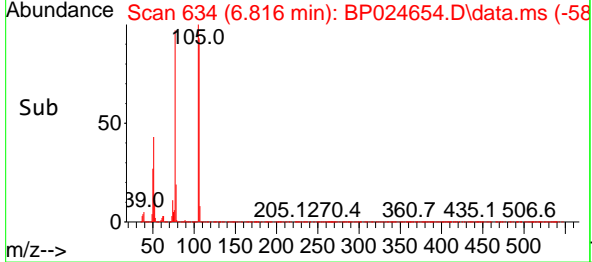
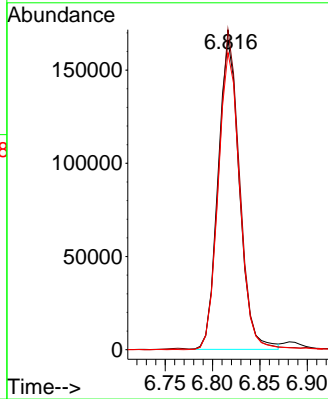
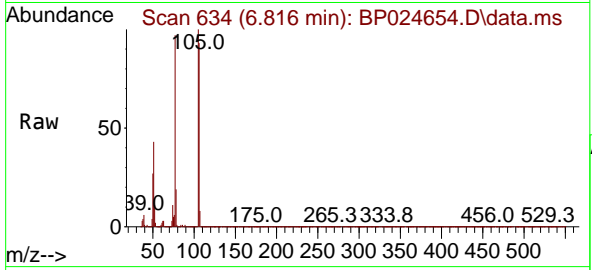


#9
Benzaldehyde
Concen: 36.732 ng
RT: 6.816 min Scan# 61
Delta R.T. -0.006 min
Lab File: BP024654.D
Acq: 16 May 2025 12:52

Instrument :
BNA_P
ClientSampleId :
PB168019BSD

Tgt Ion: 77 Resp: 262514

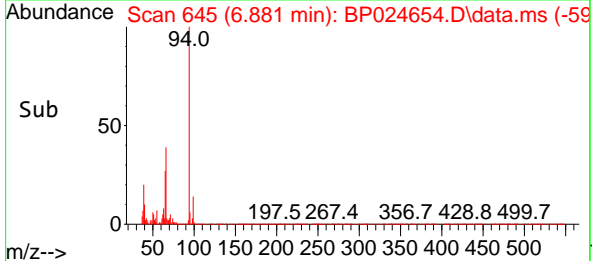
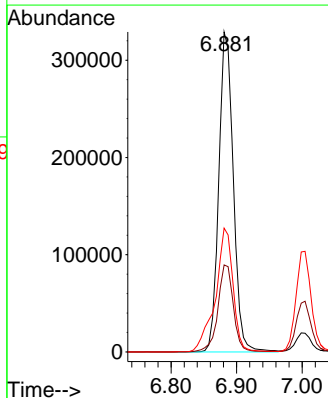
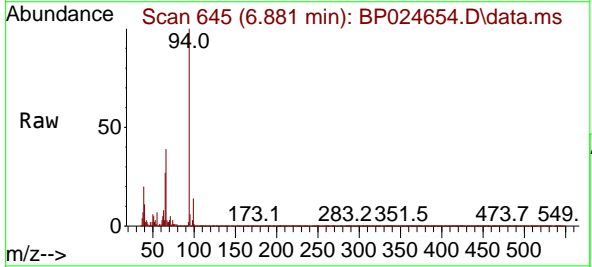
Ion	Ratio	Lower	Upper
77	100		
105	103.4	83.3	123.3
106	96.0	78.0	118.0

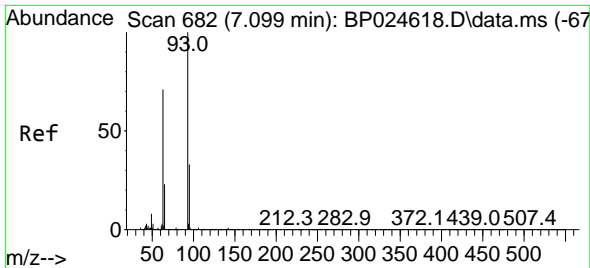


#10
Phenol
Concen: 44.255 ng
RT: 6.881 min Scan# 645
Delta R.T. -0.000 min
Lab File: BP024654.D
Acq: 16 May 2025 12:52

Tgt Ion: 94 Resp: 504277

Ion	Ratio	Lower	Upper
94	100		
65	27.2	8.7	48.7
66	38.7	19.4	59.4

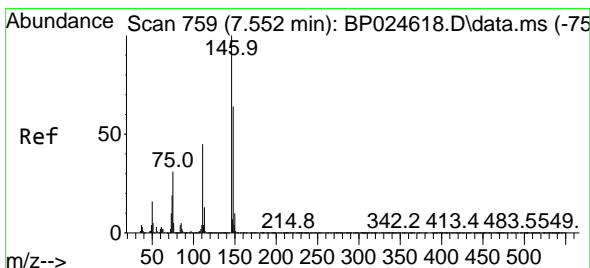
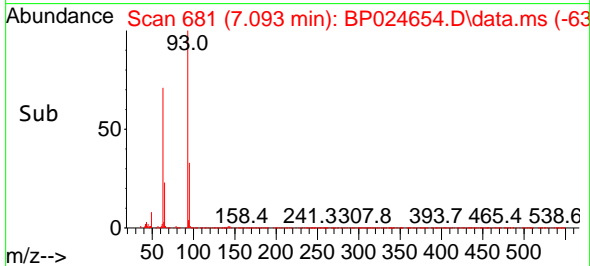
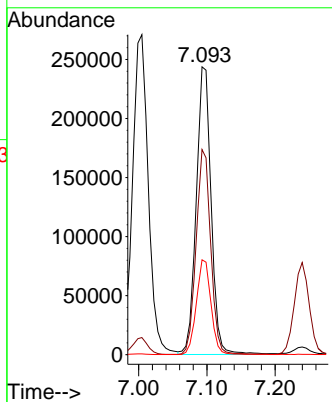
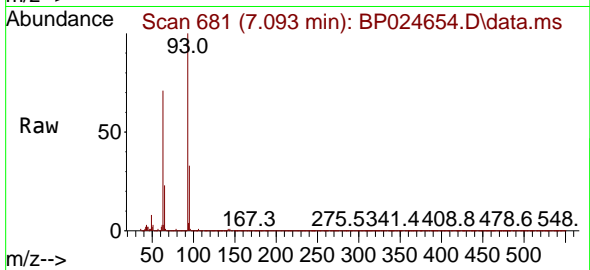




#11
 bis(2-Chloroethyl)ether
 Concen: 39.454 ng
 RT: 7.093 min Scan# 681
 Delta R.T. -0.006 min
 Lab File: BP024654.D
 Acq: 16 May 2025 12:52

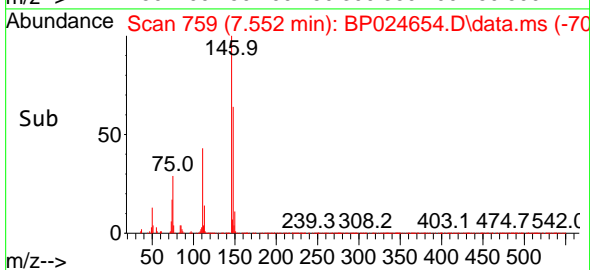
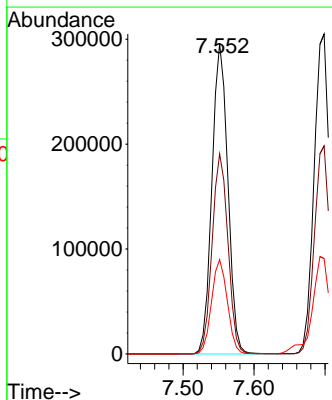
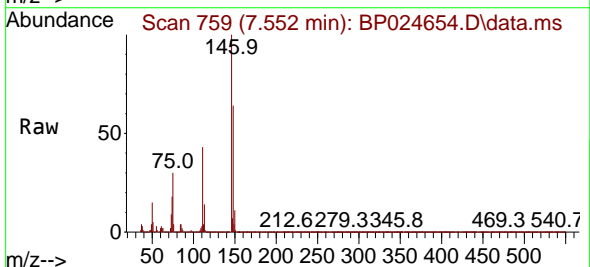
Instrument :
 BNA_P
 ClientSampleId :
 PB168019BSD

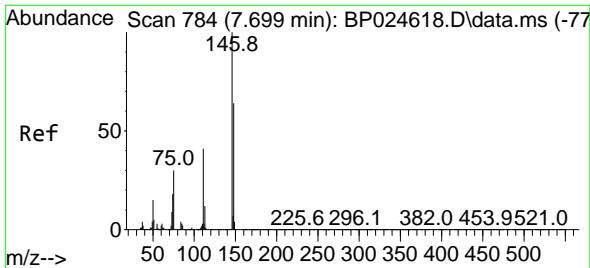
Tgt Ion: 93 Resp: 369408
 Ion Ratio Lower Upper
 93 100
 63 71.3 50.6 90.6
 95 33.0 12.9 52.9



#12
 1,3-Dichlorobenzene
 Concen: 40.619 ng
 RT: 7.552 min Scan# 759
 Delta R.T. -0.000 min
 Lab File: BP024654.D
 Acq: 16 May 2025 12:52

Tgt Ion: 146 Resp: 458912
 Ion Ratio Lower Upper
 146 100
 148 64.5 51.4 77.2
 75 30.4 25.2 37.8

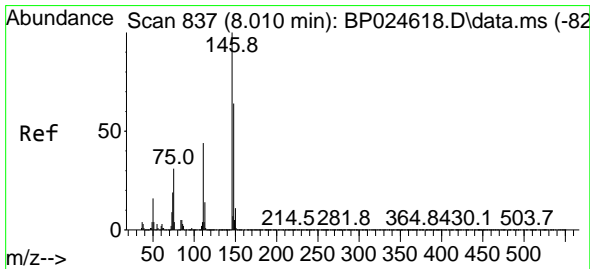
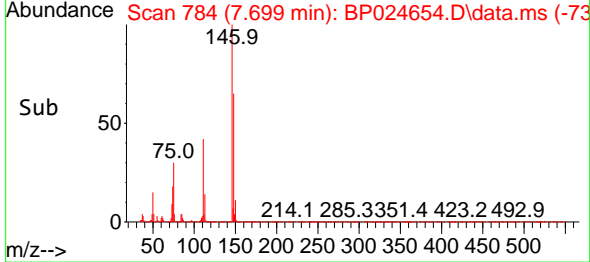
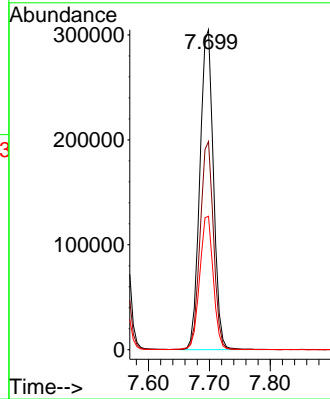
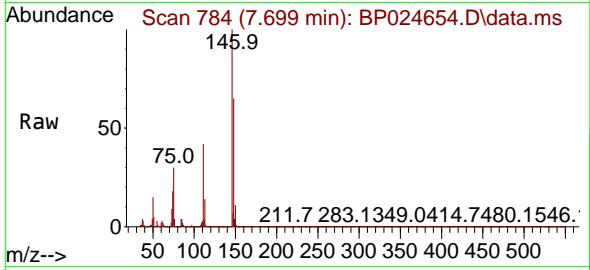




#13
 1,4-Dichlorobenzene
 Concen: 41.449 ng
 RT: 7.699 min Scan# 784
 Delta R.T. -0.000 min
 Lab File: BP024654.D
 Acq: 16 May 2025 12:52

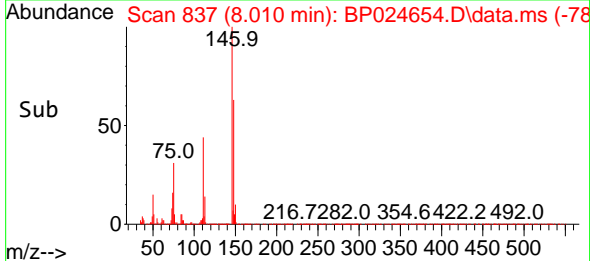
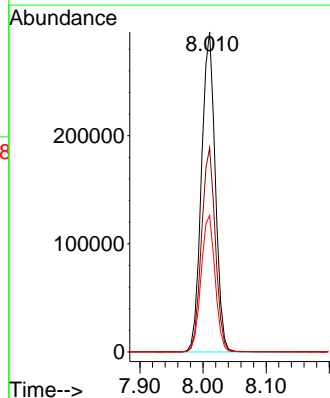
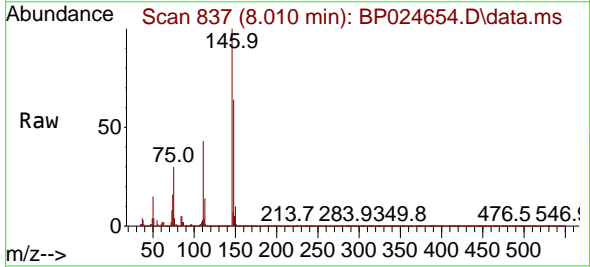
Instrument :
 BNA_P
 Client Sample Id :
 PB168019BSD

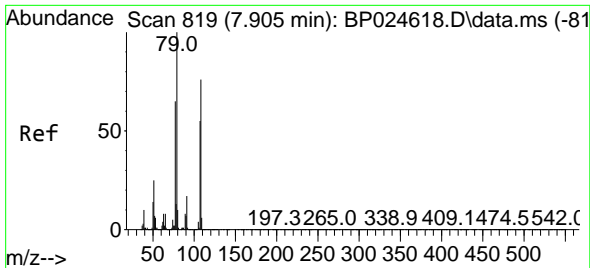
Tgt Ion	Resp	Lower	Upper
146	470982		
146	100		
148	65.0	51.0	76.6
111	41.7	33.0	49.6



#14
 1,2-Dichlorobenzene
 Concen: 40.576 ng
 RT: 8.010 min Scan# 837
 Delta R.T. -0.000 min
 Lab File: BP024654.D
 Acq: 16 May 2025 12:52

Tgt Ion	Resp	Lower	Upper
146	449280		
146	100		
148	63.8	51.0	76.4
111	42.6	35.2	52.8



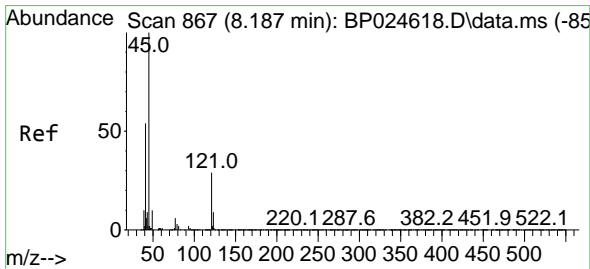
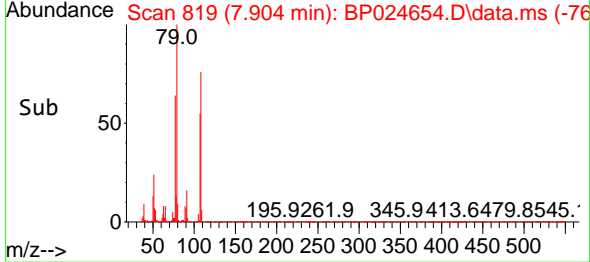
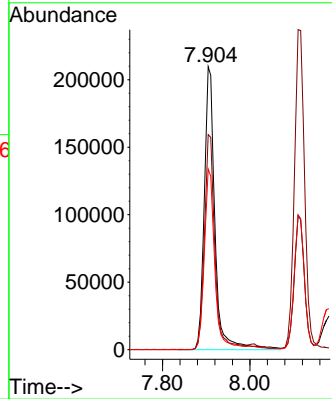
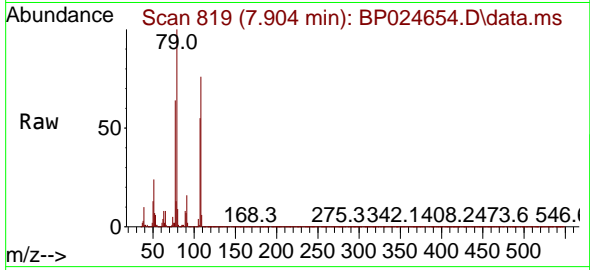


#15
 Benzyl Alcohol
 Concen: 42.424 ng
 RT: 7.904 min Scan# 819
 Delta R.T. -0.000 min
 Lab File: BP024654.D
 Acq: 16 May 2025 12:52

Instrument :
 BNA_P
 ClientSampleId :
 PB168019BSD

Tgt Ion: 79 Resp: 355925

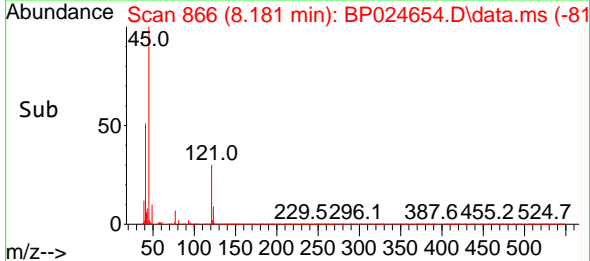
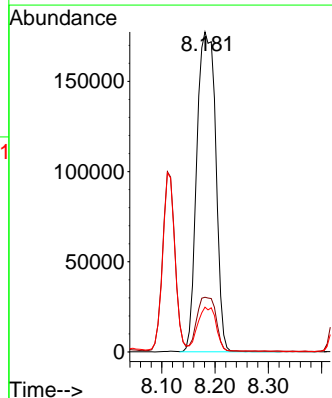
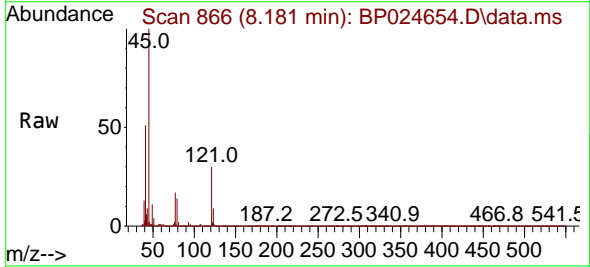
Ion	Ratio	Lower	Upper
79	100		
108	76.0	60.8	91.2
77	63.8	51.9	77.9

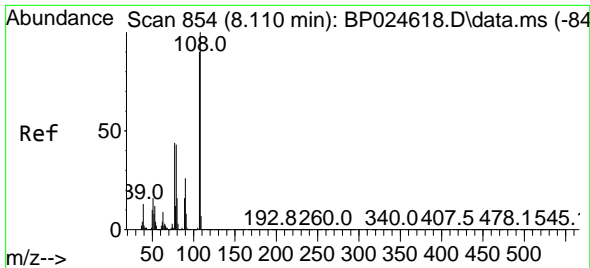


#16
 2,2'-oxybis(1-Chloropropane)
 Concen: 38.828 ng
 RT: 8.181 min Scan# 866
 Delta R.T. -0.006 min
 Lab File: BP024654.D
 Acq: 16 May 2025 12:52

Tgt Ion: 45 Resp: 435386

Ion	Ratio	Lower	Upper
45	100		
77	17.1	0.0	37.7
79	14.0	0.0	34.0

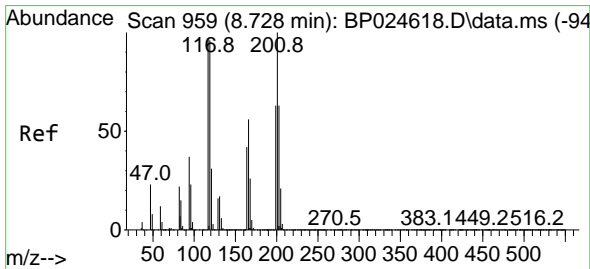
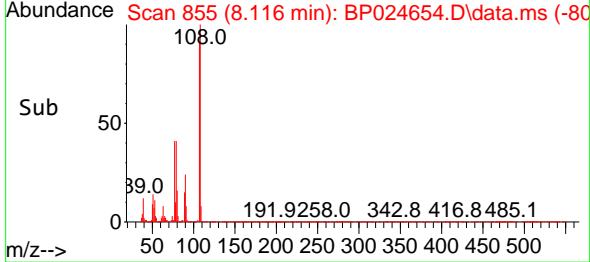
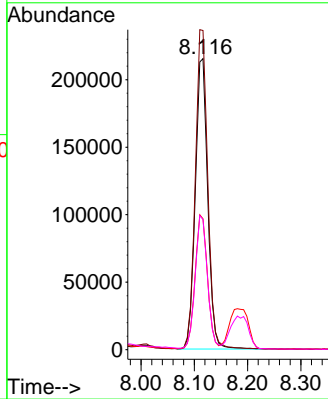
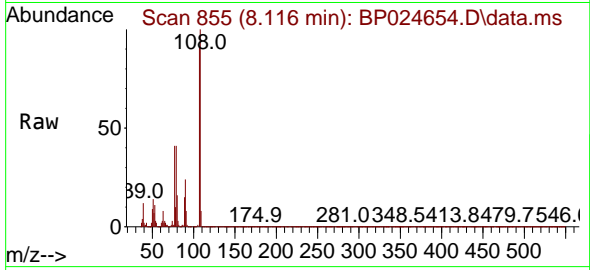




#17
 2-Methylphenol
 Concen: 42.748 ng
 RT: 8.116 min Scan# 811
 Delta R.T. 0.006 min
 Lab File: BP024654.D
 Acq: 16 May 2025 12:52

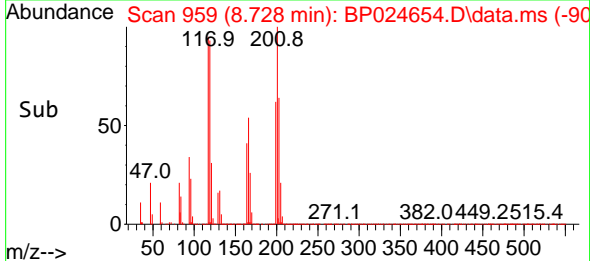
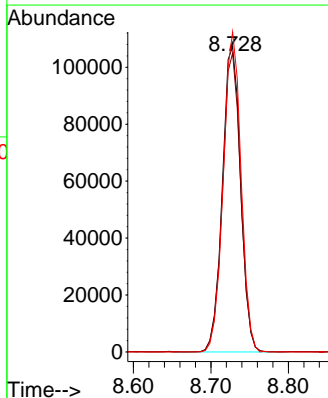
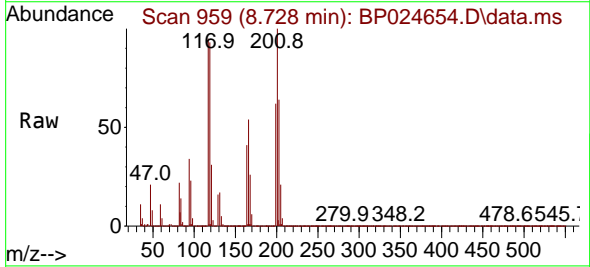
Instrument : BNA_P
 ClientSampleId : PB168019BSD

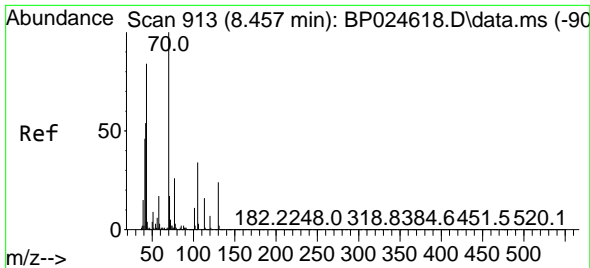
Tgt Ion	Resp	Lower	Upper
107	100		
108	109.7	88.9	133.3
77	45.0	39.0	58.6
79	44.7	38.4	57.6



#18
 Hexachloroethane
 Concen: 40.289 ng
 RT: 8.728 min Scan# 959
 Delta R.T. -0.000 min
 Lab File: BP024654.D
 Acq: 16 May 2025 12:52

Tgt Ion	Resp	Lower	Upper
117	100		
119	97.9	79.4	119.0
201	104.8	82.7	124.1



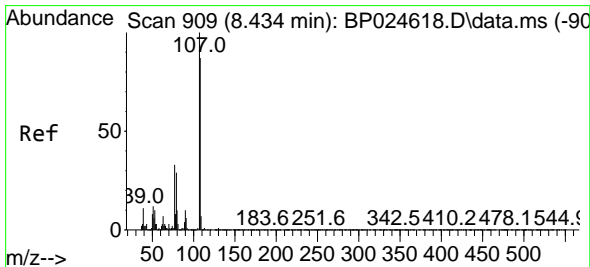
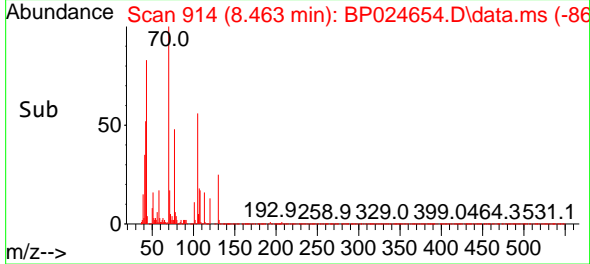
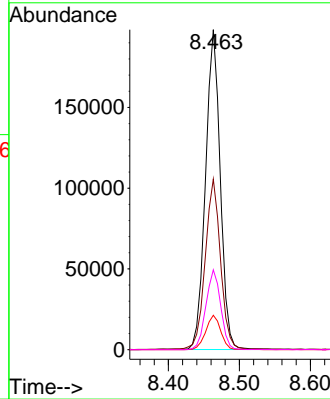
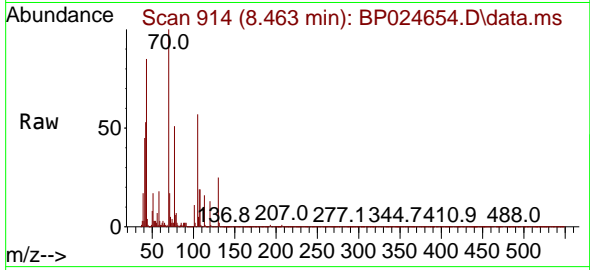


#19
 n-Nitroso-di-n-propylamine
 Concen: 37.426 ng
 RT: 8.463 min Scan# 913
 Delta R.T. 0.006 min
 Lab File: BP024654.D
 Acq: 16 May 2025 12:52

Instrument :
 BNA_P
 ClientSampleId :
 PB168019BSD

Tgt Ion: 70 Resp: 285818

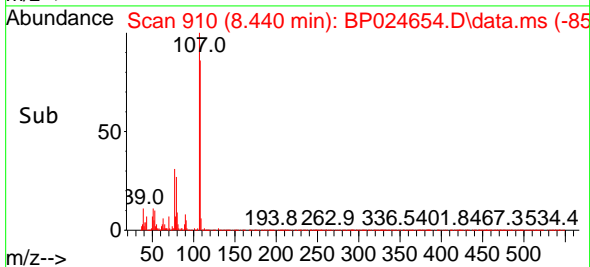
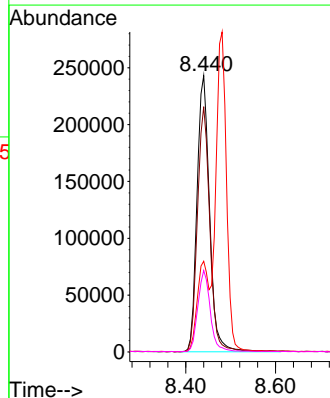
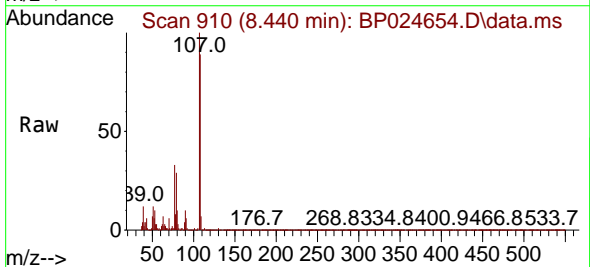
Ion	Ratio	Lower	Upper
70	100		
42	53.3	43.0	64.6
101	10.8	8.7	13.1
130	24.9	19.4	29.0

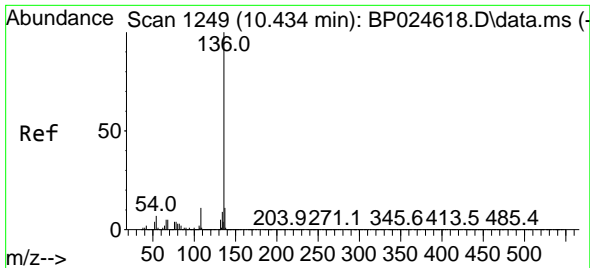


#20
 3+4-Methylphenols
 Concen: 42.399 ng
 RT: 8.440 min Scan# 910
 Delta R.T. 0.006 min
 Lab File: BP024654.D
 Acq: 16 May 2025 12:52

Tgt Ion: 107 Resp: 471356

Ion	Ratio	Lower	Upper
107	100		
108	88.8	66.7	106.7
77	32.8	13.1	53.1
79	29.5	8.9	48.9

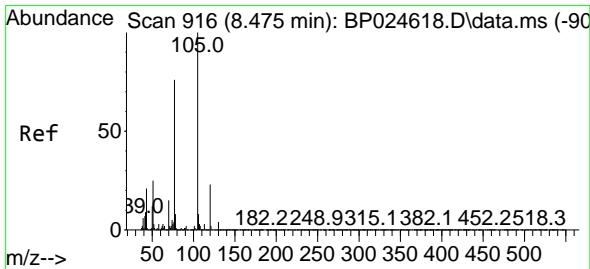
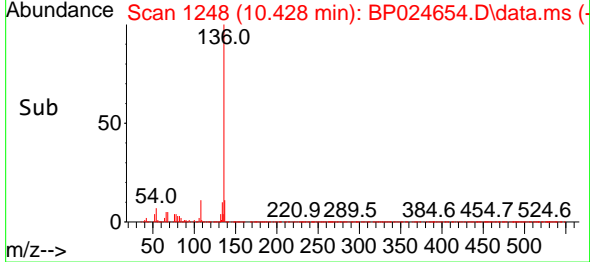
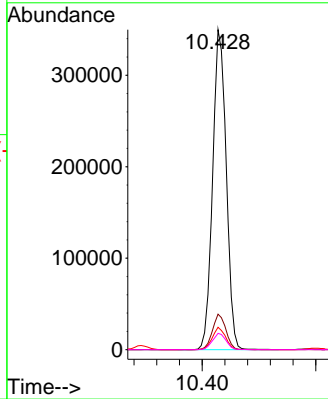
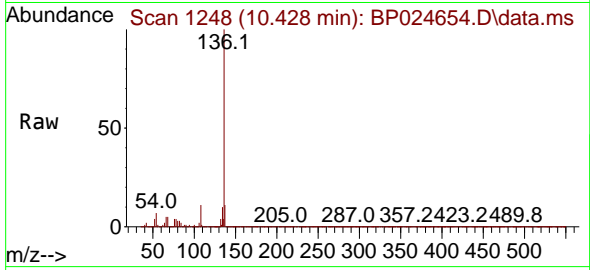




#21
 Naphthalene-d8
 Concen: 20.000 ng
 RT: 10.428 min Scan# 11
 Delta R.T. -0.006 min
 Lab File: BP024654.D
 Acq: 16 May 2025 12:52

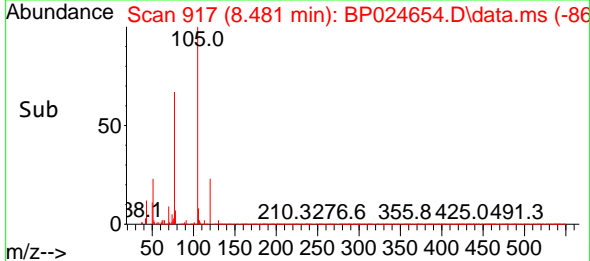
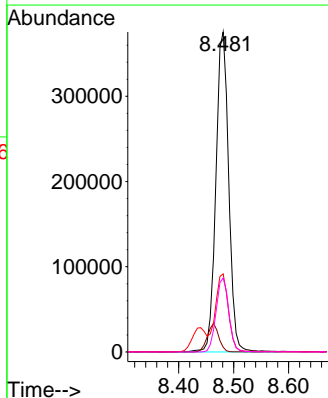
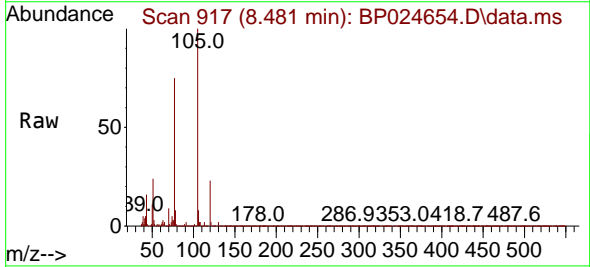
Instrument : BNA_P
 Client Sample Id : PB168019BSD

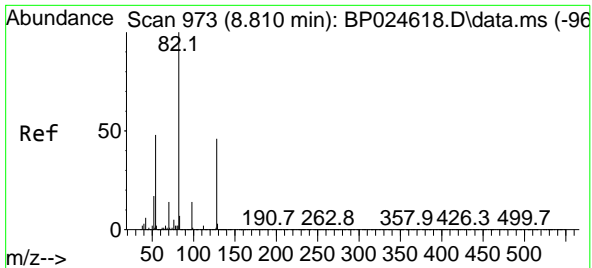
Tgt Ion	Resp	Lower	Upper
136	100		
137	11.1	8.8	13.2
54	7.0	5.5	8.3
68	5.1	4.2	6.2



#22
 Acetophenone
 Concen: 42.020 ng
 RT: 8.481 min Scan# 917
 Delta R.T. 0.006 min
 Lab File: BP024654.D
 Acq: 16 May 2025 12:52

Tgt Ion	Resp	Lower	Upper
105	100		
71	1.5	2.0	3.0#
51	24.4	20.4	30.6
120	23.1	18.1	27.1



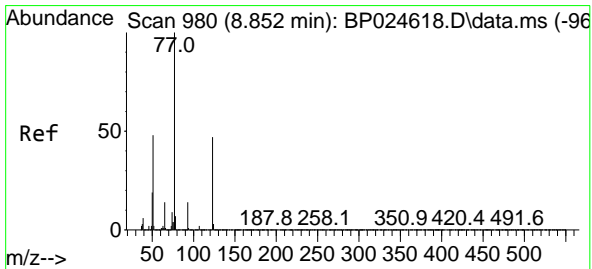
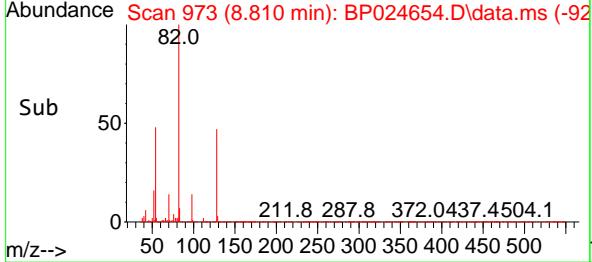
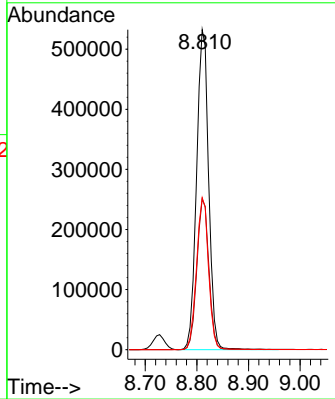
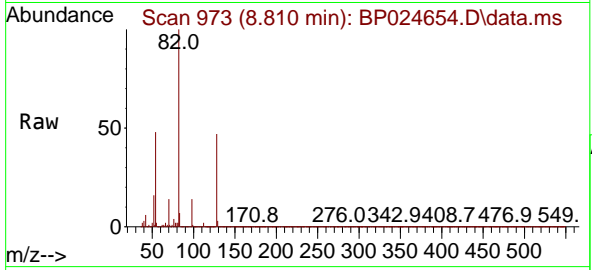


#23
 Nitrobenzene-d5
 Concen: 75.070 ng
 RT: 8.810 min Scan# 91
 Delta R.T. -0.000 min
 Lab File: BP024654.D
 Acq: 16 May 2025 12:52

Instrument :
 BNA_P
 ClientSampleId :
 PB168019BSD

Tgt Ion: 82 Resp: 861453

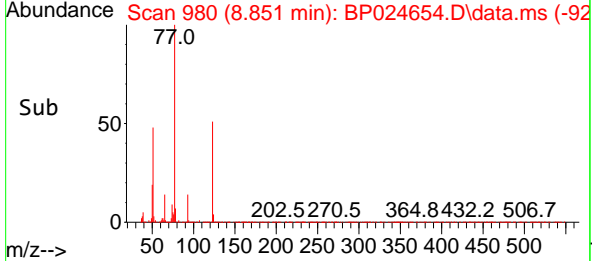
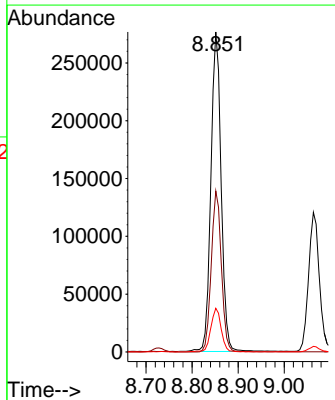
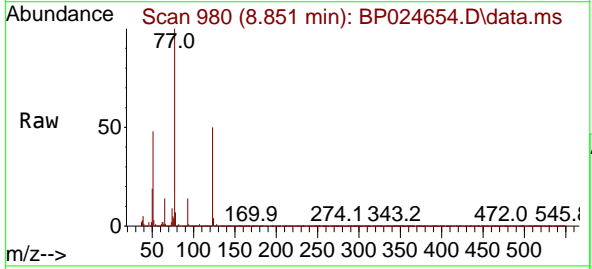
Ion	Ratio	Lower	Upper
82	100		
128	47.1	37.0	55.4
54	47.5	38.7	58.1

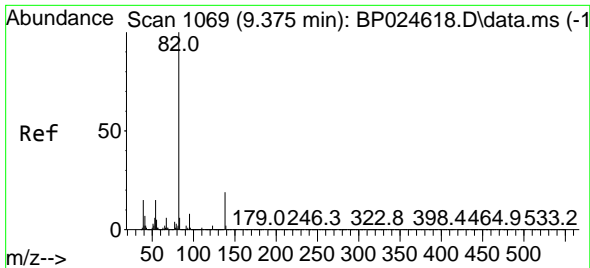


#24
 Nitrobenzene
 Concen: 42.356 ng
 RT: 8.851 min Scan# 980
 Delta R.T. -0.000 min
 Lab File: BP024654.D
 Acq: 16 May 2025 12:52

Tgt Ion: 77 Resp: 427725

Ion	Ratio	Lower	Upper
77	100		
123	50.3	37.4	56.0
65	13.7	11.3	16.9



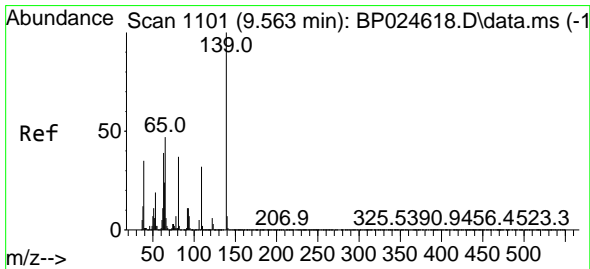
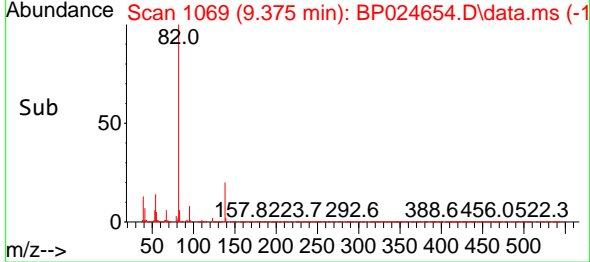
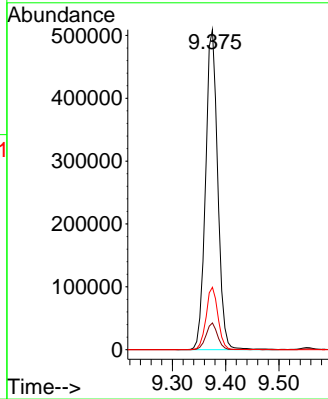
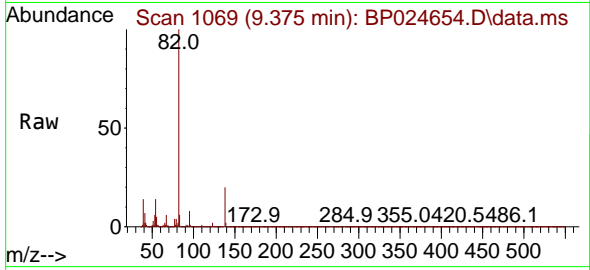


#25
 Isophorone
 Concen: 40.480 ng
 RT: 9.375 min Scan# 1069
 Delta R.T. -0.000 min
 Lab File: BP024654.D
 Acq: 16 May 2025 12:52

Instrument :
 BNA_P
 ClientSampleId :
 PB168019BSD

Tgt Ion: 82 Resp: 805775

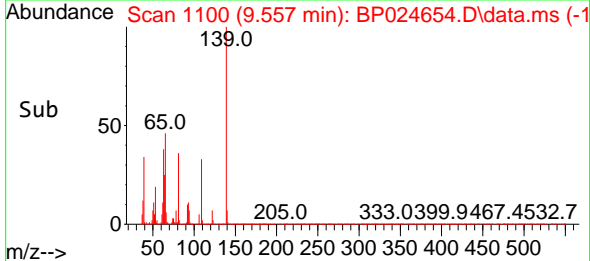
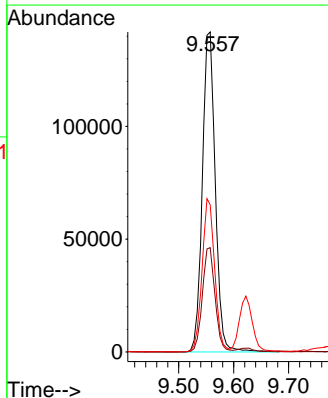
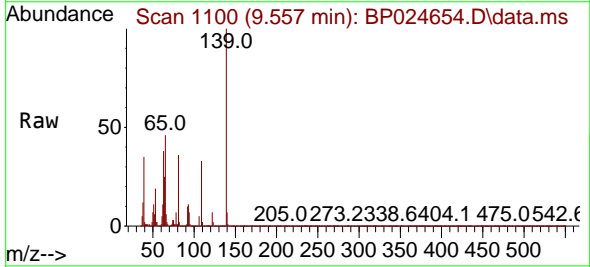
Ion	Ratio	Lower	Upper
82	100		
95	8.3	6.3	9.5
138	19.5	15.3	22.9

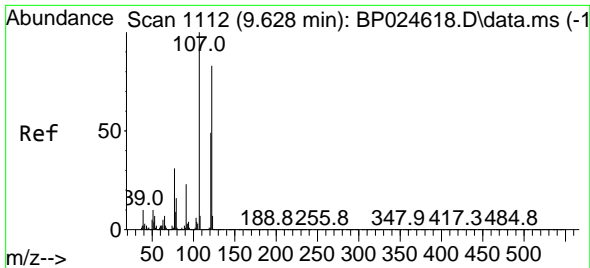


#26
 2-Nitrophenol
 Concen: 46.867 ng
 RT: 9.557 min Scan# 1100
 Delta R.T. -0.006 min
 Lab File: BP024654.D
 Acq: 16 May 2025 12:52

Tgt Ion: 139 Resp: 231916

Ion	Ratio	Lower	Upper
139	100		
109	32.6	25.9	38.9
65	46.0	37.9	56.9

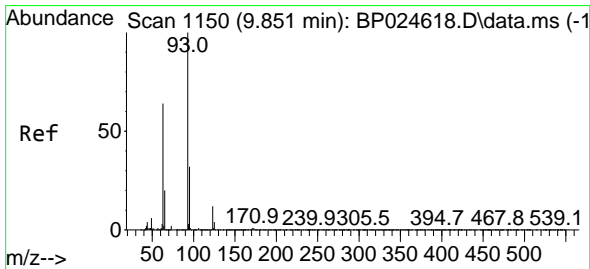
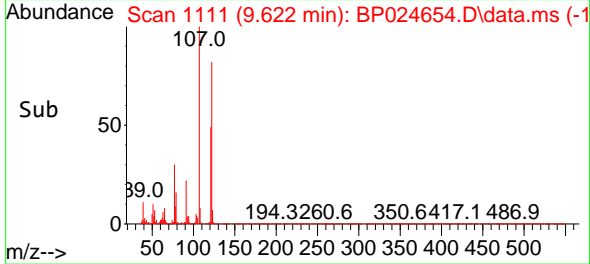
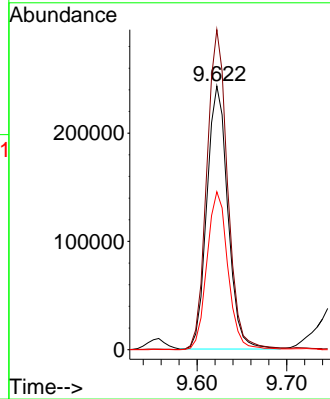
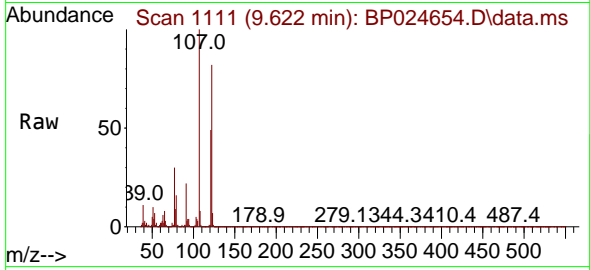




#27
 2,4-Dimethylphenol
 Concen: 45.252 ng
 RT: 9.622 min Scan# 1112
 Delta R.T. -0.006 min
 Lab File: BP024654.D
 Acq: 16 May 2025 12:52

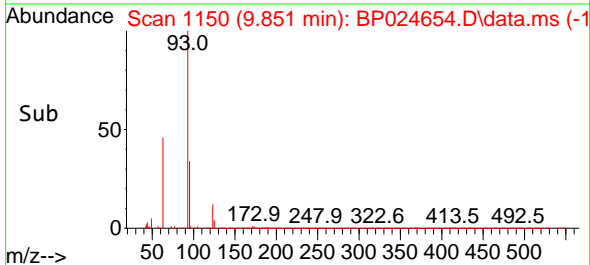
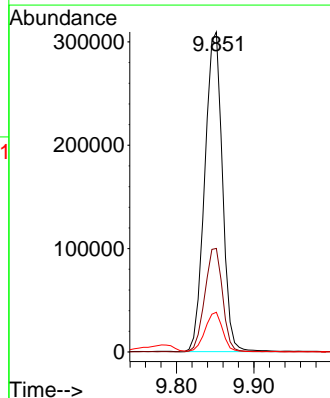
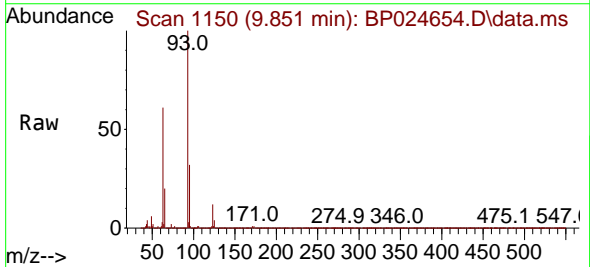
Instrument :
 BNA_P
 ClientSampleId :
 PB168019BSD

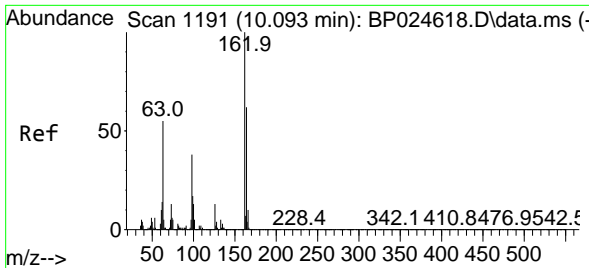
Tgt Ion:122 Resp: 394802
 Ion Ratio Lower Upper
 122 100
 107 121.3 96.2 144.2
 121 59.9 47.6 71.4



#28
 bis(2-Chloroethoxy)methane
 Concen: 41.070 ng
 RT: 9.851 min Scan# 1150
 Delta R.T. -0.000 min
 Lab File: BP024654.D
 Acq: 16 May 2025 12:52

Tgt Ion: 93 Resp: 488418
 Ion Ratio Lower Upper
 93 100
 95 32.3 25.5 38.3
 123 12.4 9.7 14.5





#29
 2,4-Dichlorophenol
 Concen: 46.429 ng
 RT: 10.098 min Scan# 1191
 Delta R.T. 0.006 min
 Lab File: BP024654.D
 Acq: 16 May 2025 12:52

Instrument :

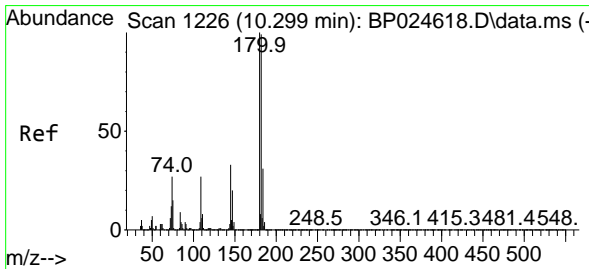
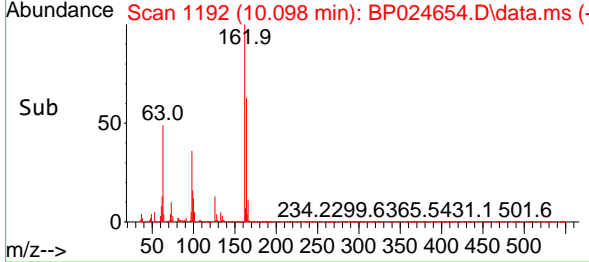
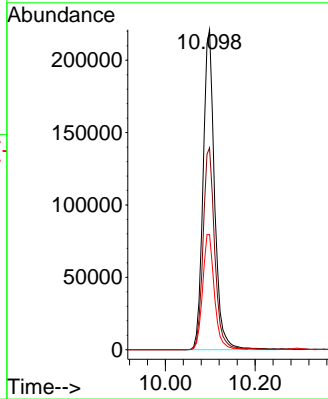
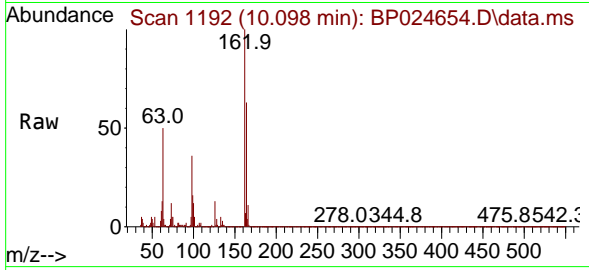
BNA_P

ClientSampleId :

PB168019BSD

Tgt Ion:162 Resp: 392538

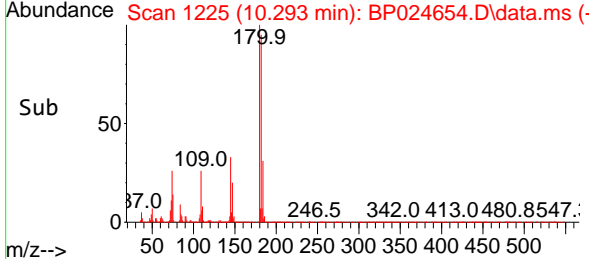
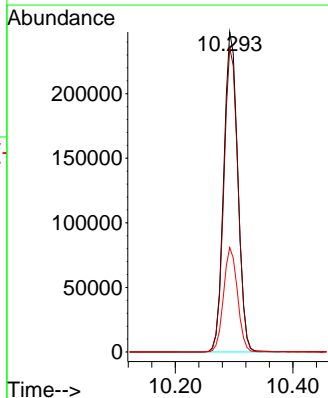
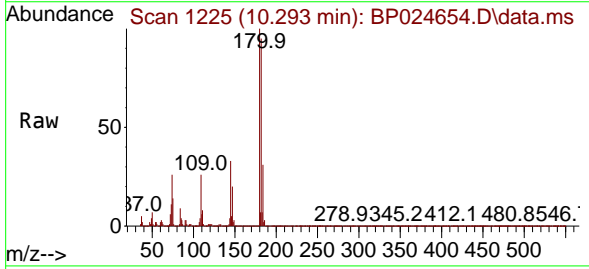
Ion	Ratio	Lower	Upper
162	100		
164	63.1	42.3	82.3
98	36.0	18.4	58.4

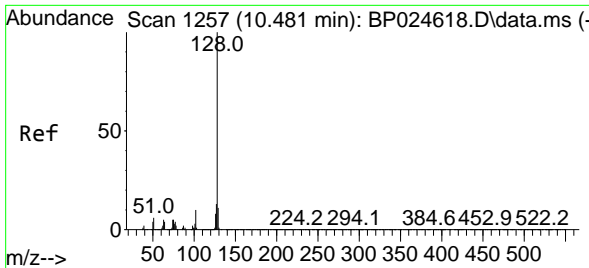


#30
 1,2,4-Trichlorobenzene
 Concen: 43.002 ng
 RT: 10.293 min Scan# 1225
 Delta R.T. -0.006 min
 Lab File: BP024654.D
 Acq: 16 May 2025 12:52

Tgt Ion:180 Resp: 409692

Ion	Ratio	Lower	Upper
180	100		
182	95.1	79.0	118.4
145	32.7	26.6	39.8



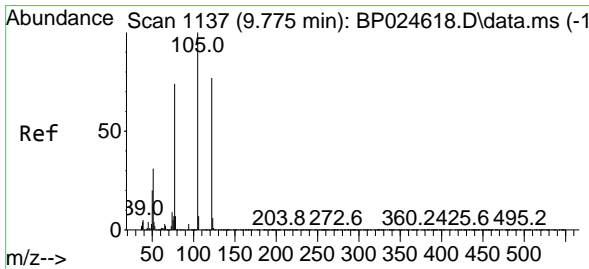
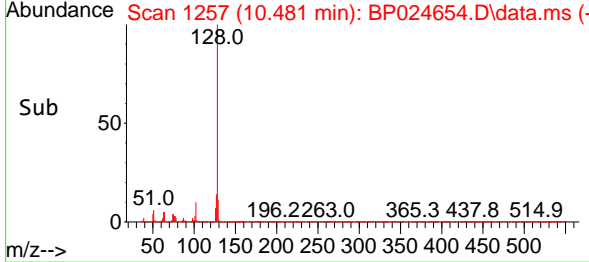
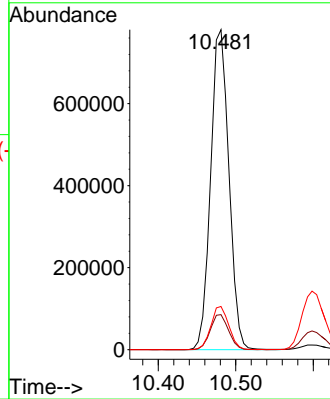
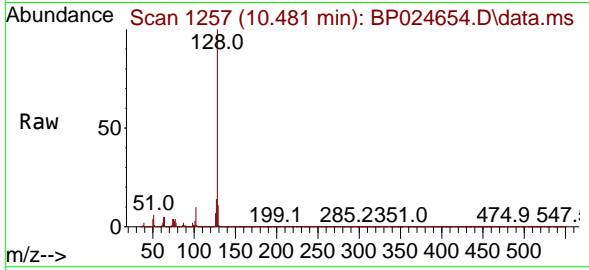


#31
 Naphthalene
 Concen: 42.489 ng
 RT: 10.481 min Scan# 1139
 Delta R.T. -0.000 min
 Lab File: BP024654.D
 Acq: 16 May 2025 12:52

Instrument :
 BNA_P
 ClientSampleId :
 PB168019BSD

Tgt Ion:128 Resp: 1276618

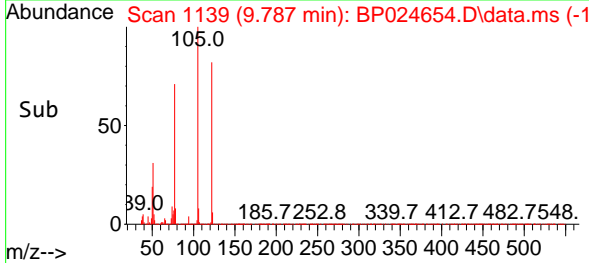
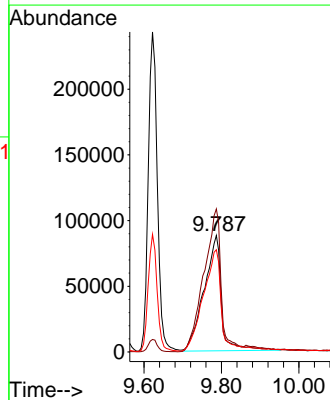
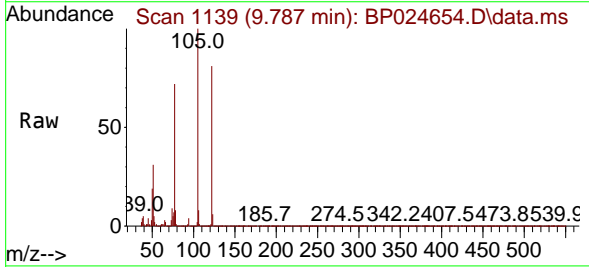
Ion	Ratio	Lower	Upper
128	100		
129	10.9	8.8	13.2
127	13.5	10.7	16.1

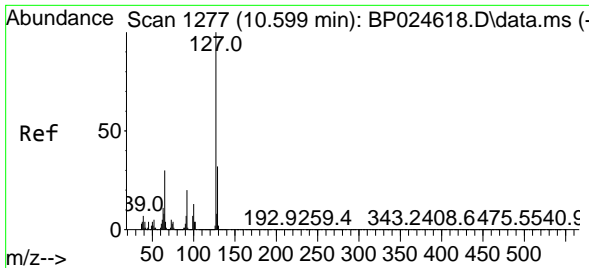


#32
 Benzoic acid
 Concen: 45.524 ng
 RT: 9.787 min Scan# 1139
 Delta R.T. 0.012 min
 Lab File: BP024654.D
 Acq: 16 May 2025 12:52

Tgt Ion:122 Resp: 273730

Ion	Ratio	Lower	Upper
122	100		
105	122.7	106.9	146.9
77	87.8	75.1	115.1



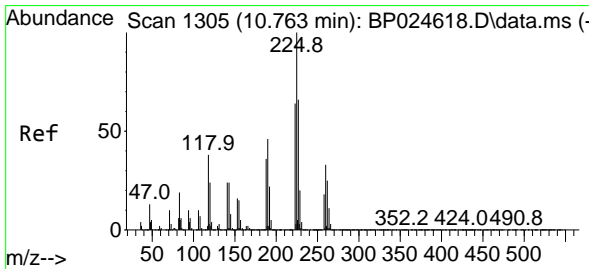
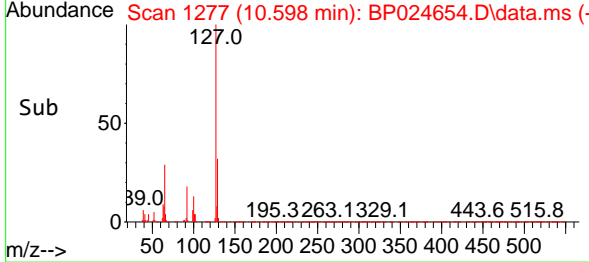
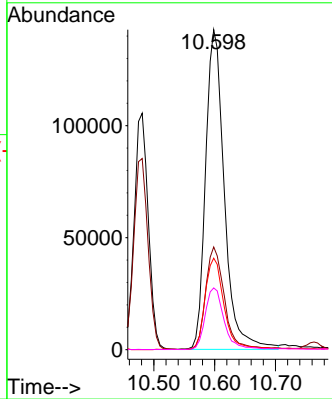
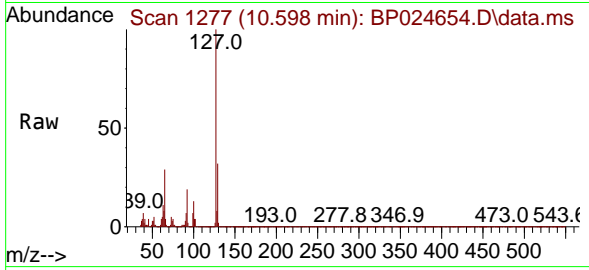


#33
 4-Chloroaniline
 Concen: 25.207 ng
 RT: 10.598 min Scan# 11
 Delta R.T. -0.000 min
 Lab File: BP024654.D
 Acq: 16 May 2025 12:52

Instrument : BNA_P
 Client Sample Id : PB168019BSD

Tgt Ion:127 Resp: 305616

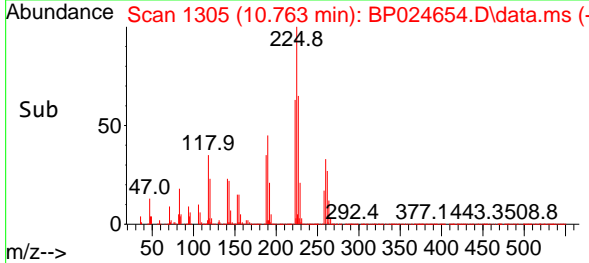
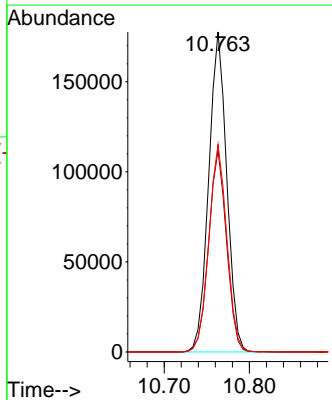
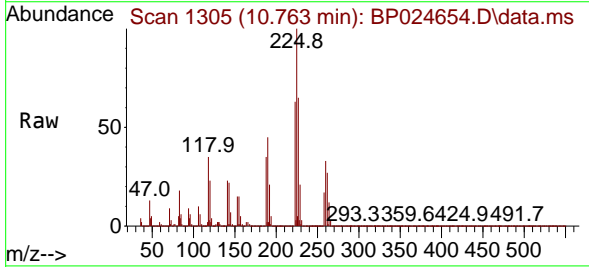
Ion	Ratio	Lower	Upper
127	100		
129	32.1	25.8	38.6
65	28.6	23.9	35.9
92	19.3	16.1	24.1

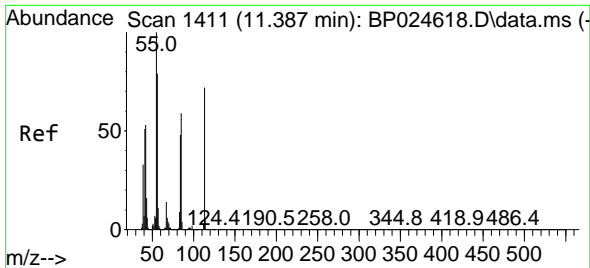


#34
 Hexachlorobutadiene
 Concen: 42.334 ng
 RT: 10.763 min Scan# 1305
 Delta R.T. -0.000 min
 Lab File: BP024654.D
 Acq: 16 May 2025 12:52

Tgt Ion:225 Resp: 261280

Ion	Ratio	Lower	Upper
225	100		
223	62.9	51.0	76.6
227	64.9	53.1	79.7

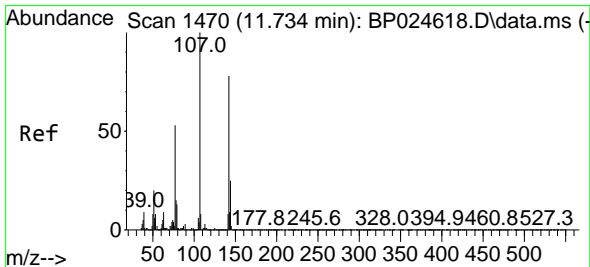
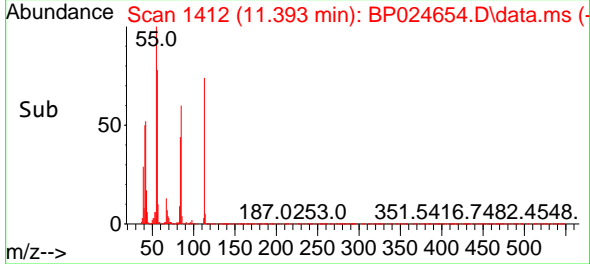
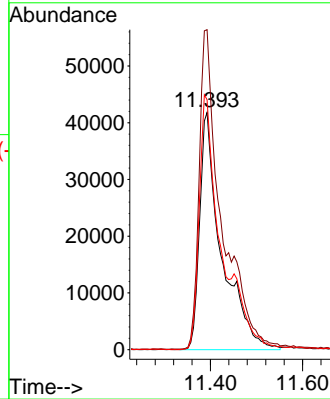
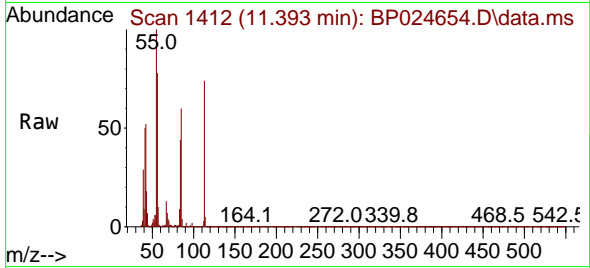




#35
 Caprolactam
 Concen: 45.022 ng
 RT: 11.393 min Scan# 1411
 Delta R.T. 0.006 min
 Lab File: BP024654.D
 Acq: 16 May 2025 12:52

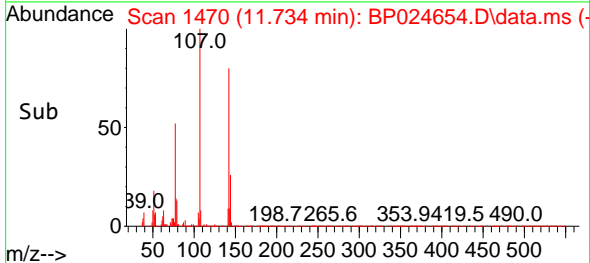
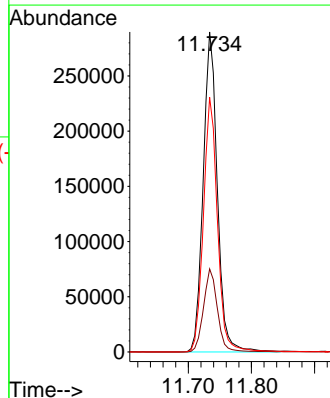
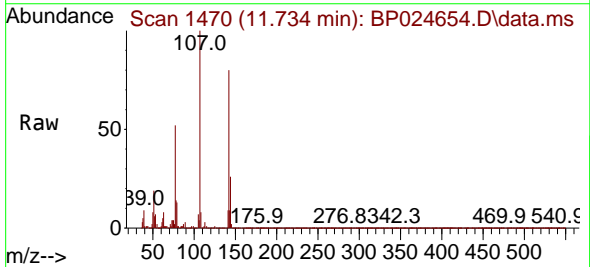
Instrument :
 BNA_P
 ClientSampleId :
 PB168019BSD

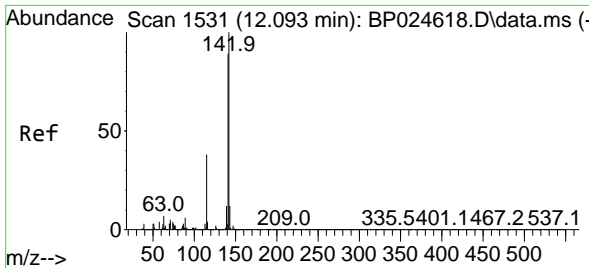
Tgt Ion:113 Resp: 137717
 Ion Ratio Lower Upper
 113 100
 55 134.9 119.0 159.0
 56 105.3 90.3 130.3



#36
 4-Chloro-3-methylphenol
 Concen: 43.899 ng
 RT: 11.734 min Scan# 1470
 Delta R.T. -0.000 min
 Lab File: BP024654.D
 Acq: 16 May 2025 12:52

Tgt Ion:107 Resp: 452611
 Ion Ratio Lower Upper
 107 100
 144 26.0 20.1 30.1
 142 79.6 62.1 93.1



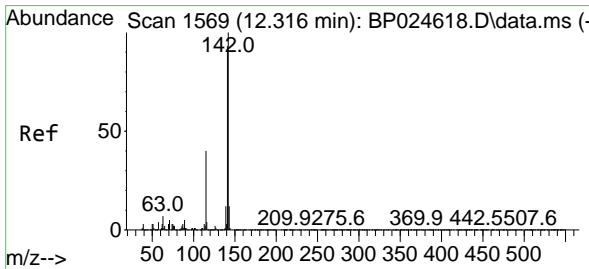
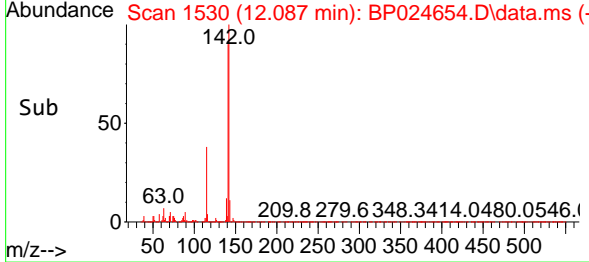
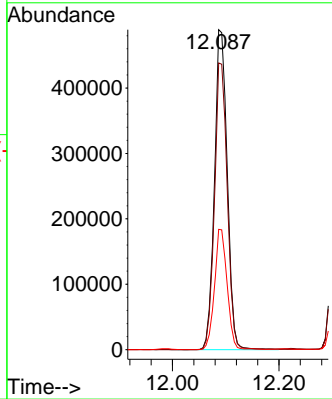
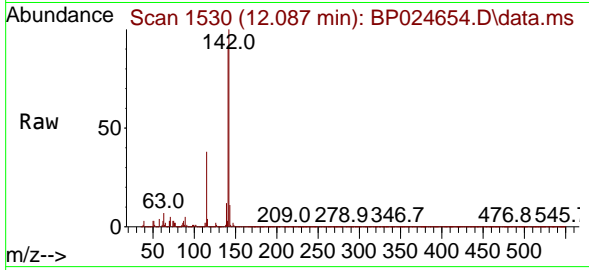


#37
 2-Methylnaphthalene
 Concen: 41.818 ng
 RT: 12.087 min Scan# 1530
 Delta R.T. -0.006 min
 Lab File: BP024654.D
 Acq: 16 May 2025 12:52

Instrument : BNA_P
 Client Sample Id : PB168019BSD

Tgt Ion:142 Resp: 813582

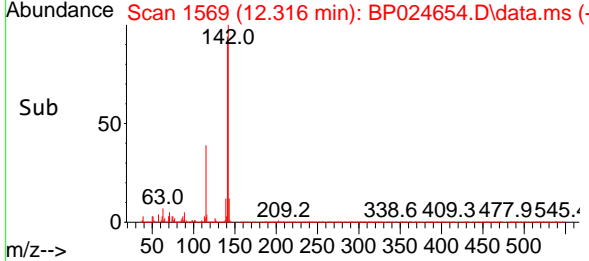
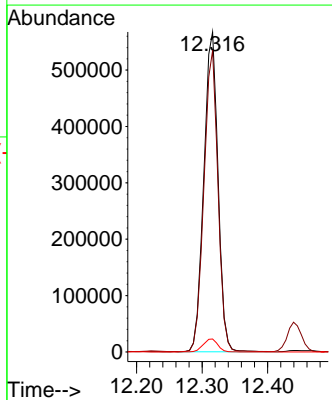
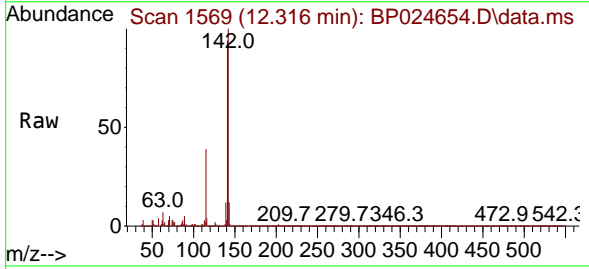
Ion	Ratio	Lower	Upper
142	100		
141	89.6	71.2	106.8
115	37.6	30.6	46.0

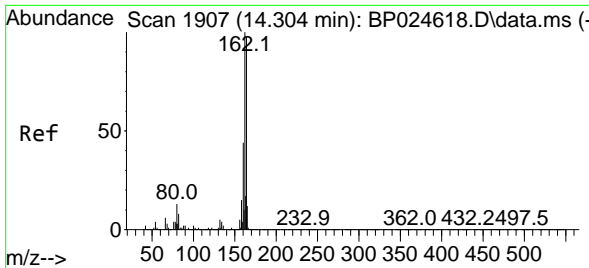


#38
 1-Methylnaphthalene
 Concen: 41.121 ng
 RT: 12.316 min Scan# 1569
 Delta R.T. -0.000 min
 Lab File: BP024654.D
 Acq: 16 May 2025 12:52

Tgt Ion:142 Resp: 855997

Ion	Ratio	Lower	Upper
142	100		
141	94.2	74.7	112.1
116	4.0	3.4	5.2



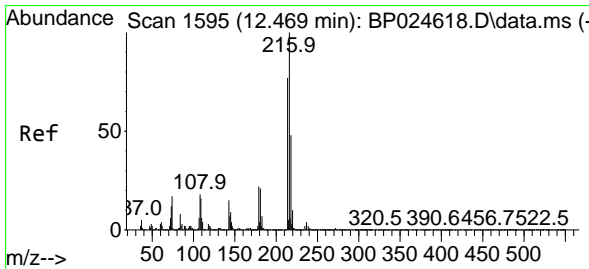
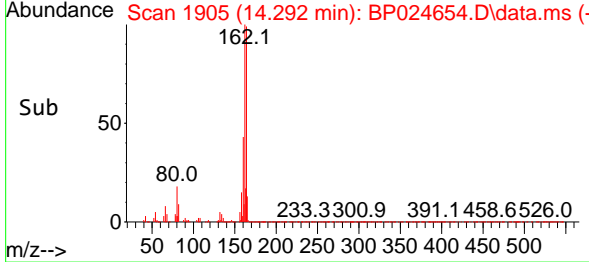
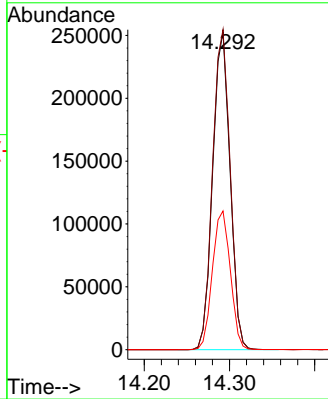
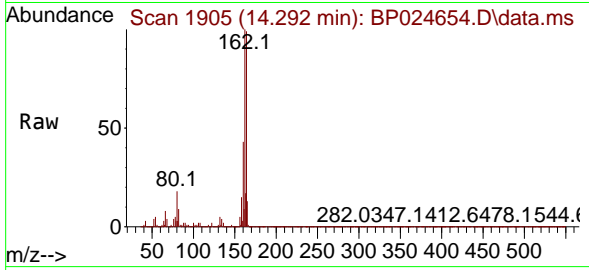


#39
 Acenaphthene-d10
 Concen: 20.000 ng
 RT: 14.292 min Scan# 1905
 Delta R.T. -0.012 min
 Lab File: BP024654.D
 Acq: 16 May 2025 12:52

Instrument :
 BNA_P
 ClientSampleId :
 PB168019BSD

Tgt Ion:164 Resp: 357092

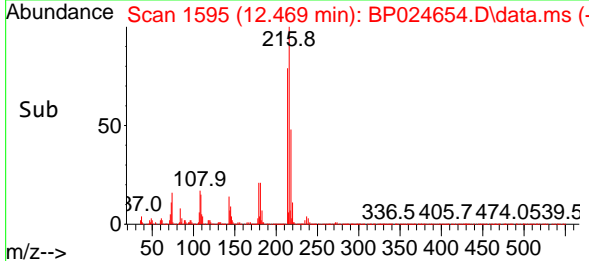
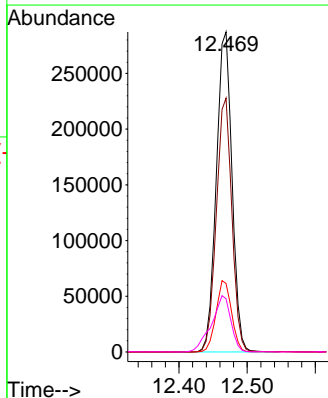
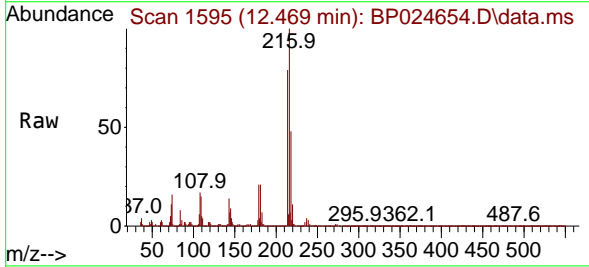
Ion	Ratio	Lower	Upper
164	100		
162	100.8	81.8	122.6
160	43.7	36.3	54.5

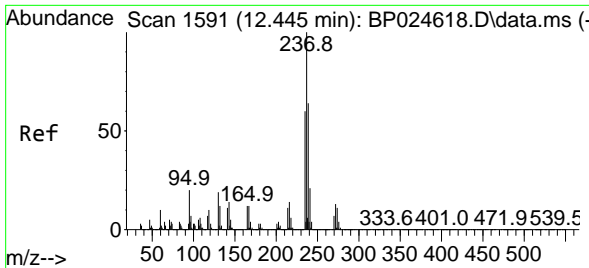


#40
 1,2,4,5-Tetrachlorobenzene
 Concen: 44.377 ng
 RT: 12.469 min Scan# 1595
 Delta R.T. -0.000 min
 Lab File: BP024654.D
 Acq: 16 May 2025 12:52

Tgt Ion:216 Resp: 460173

Ion	Ratio	Lower	Upper
216	100		
214	78.5	62.3	93.5
179	22.1	17.7	26.5
108	21.7	16.0	24.0



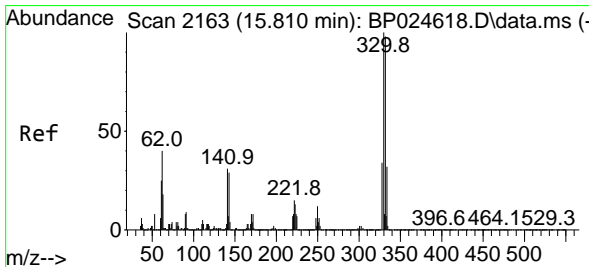
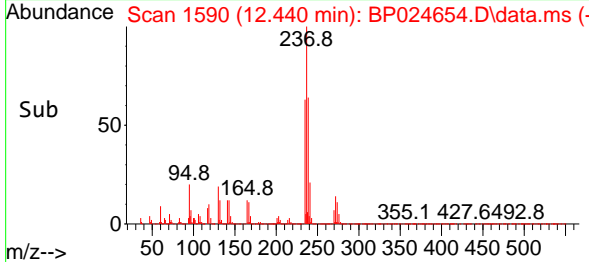
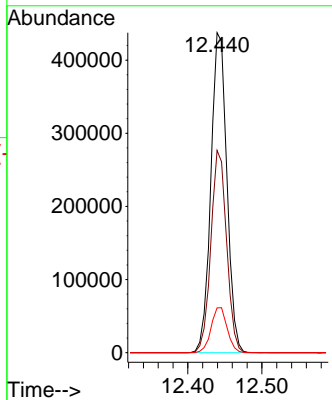
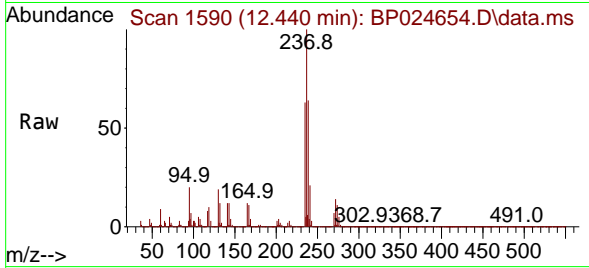


#41
 Hexachlorocyclopentadiene
 Concen: 104.153 ng
 RT: 12.440 min Scan# 111
 Delta R.T. -0.006 min
 Lab File: BP024654.D
 Acq: 16 May 2025 12:52

Instrument :
 BNA_P
 ClientSampleId :
 PB168019BSD

Tgt Ion: 237 Resp: 654888

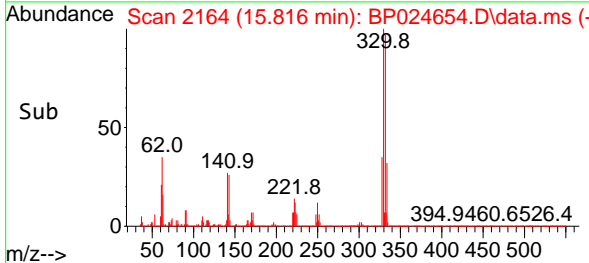
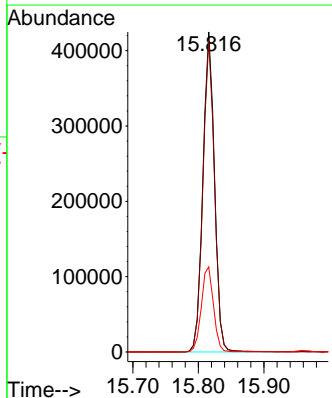
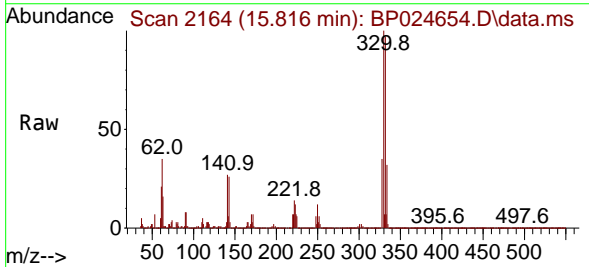
Ion	Ratio	Lower	Upper
237	100		
235	63.2	39.9	79.9
272	14.0	0.0	33.2

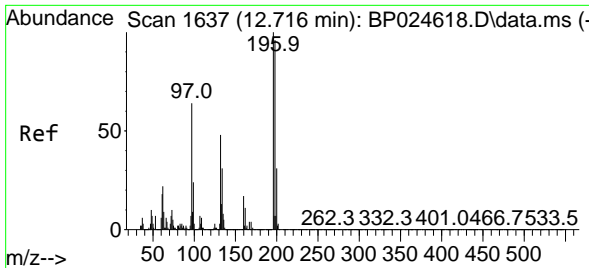


#42
 2,4,6-Tribromophenol
 Concen: 86.586 ng
 RT: 15.816 min Scan# 2164
 Delta R.T. 0.006 min
 Lab File: BP024654.D
 Acq: 16 May 2025 12:52

Tgt Ion: 330 Resp: 524171

Ion	Ratio	Lower	Upper
330	100		
332	97.0	78.2	117.4
141	27.8	24.3	36.5



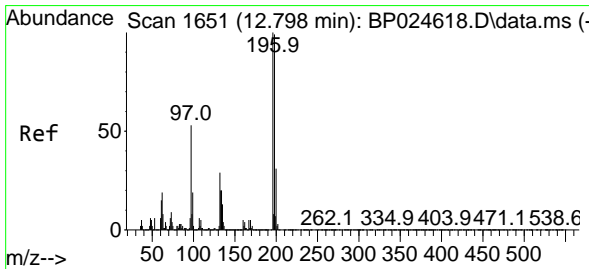
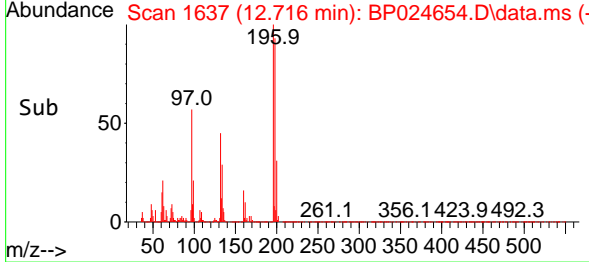
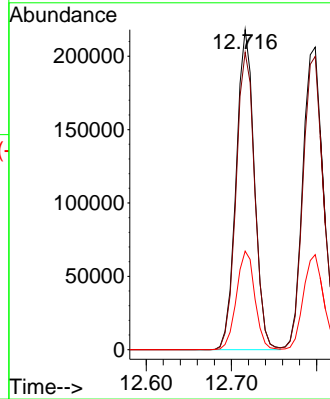
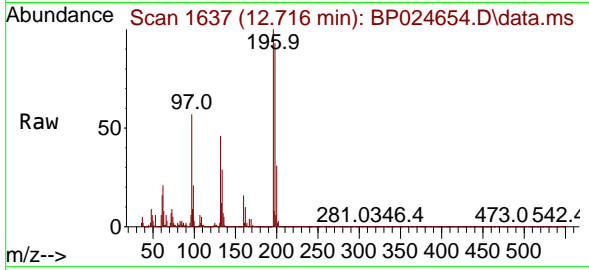


#43
 2,4,6-Trichlorophenol
 Concen: 48.260 ng
 RT: 12.716 min Scan# 1637
 Delta R.T. -0.000 min
 Lab File: BP024654.D
 Acq: 16 May 2025 12:52

Instrument : BNA_P
 ClientSampleId : PB168019BSD

Tgt Ion:196 Resp: 324138

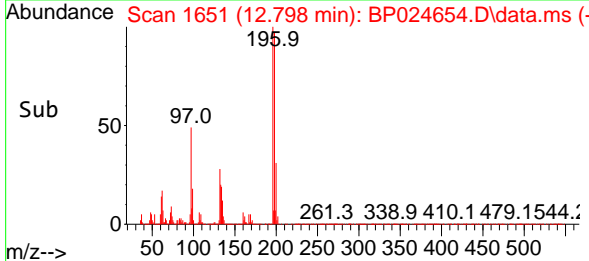
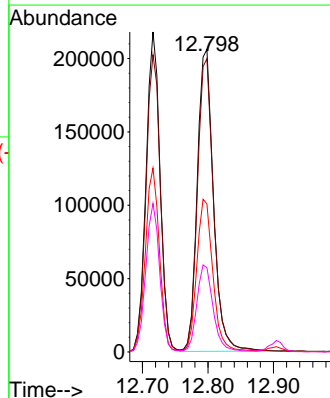
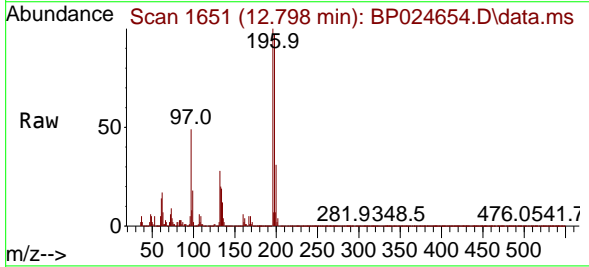
Ion	Ratio	Lower	Upper
196	100		
198	92.9	76.9	115.3
200	30.8	25.2	37.8

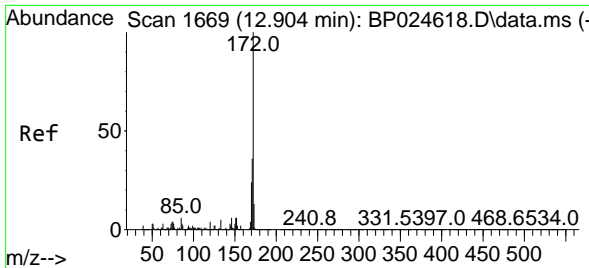


#44
 2,4,5-Trichlorophenol
 Concen: 47.461 ng
 RT: 12.798 min Scan# 1651
 Delta R.T. -0.000 min
 Lab File: BP024654.D
 Acq: 16 May 2025 12:52

Tgt Ion:196 Resp: 354828

Ion	Ratio	Lower	Upper
196	100		
198	96.9	79.2	118.8
97	48.9	42.3	63.5
132	27.9	23.3	34.9



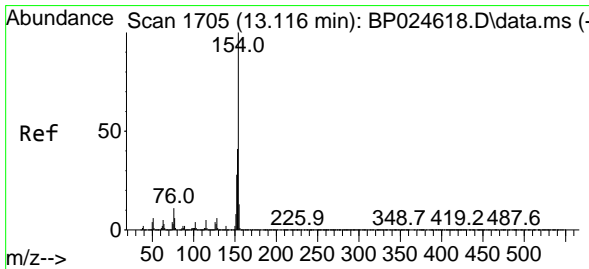
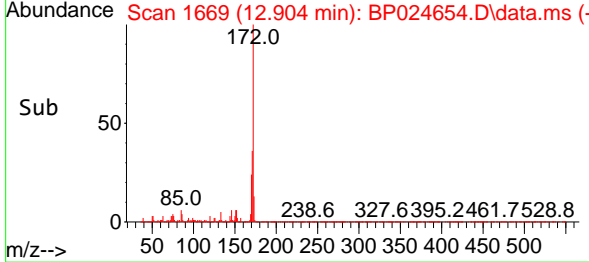
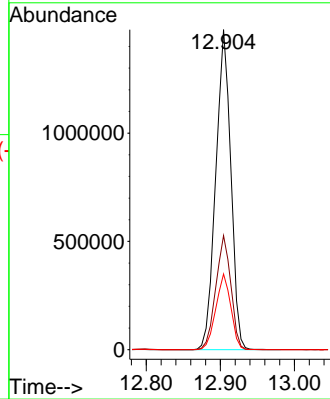
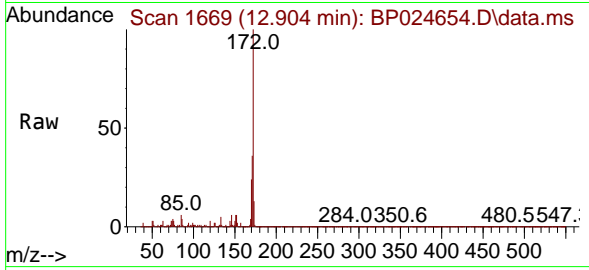


#45
 2-Fluorobiphenyl
 Concen: 76.580 ng
 RT: 12.904 min Scan# 1669
 Delta R.T. -0.000 min
 Lab File: BP024654.D
 Acq: 16 May 2025 12:52

Instrument : BNA_P
 Client Sample Id : PB168019BSD

Tgt Ion:172 Resp: 2087294

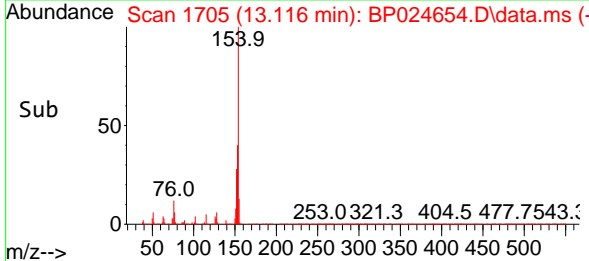
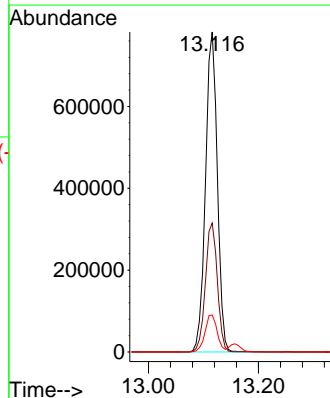
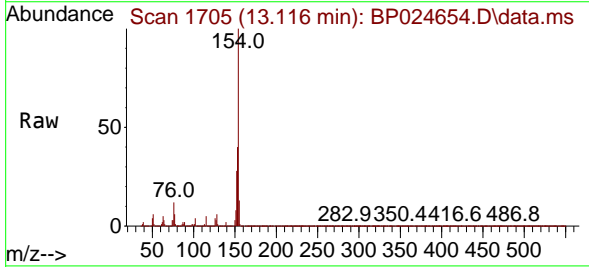
Ion	Ratio	Lower	Upper
172	100		
171	35.6	28.8	43.2
170	23.6	18.8	28.2

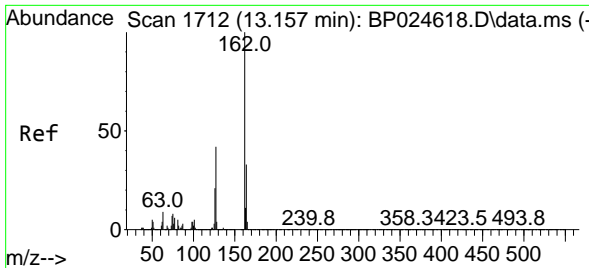


#46
 1,1'-Biphenyl
 Concen: 44.106 ng
 RT: 13.116 min Scan# 1705
 Delta R.T. -0.000 min
 Lab File: BP024654.D
 Acq: 16 May 2025 12:52

Tgt Ion:154 Resp: 1164104

Ion	Ratio	Lower	Upper
154	100		
153	40.3	21.0	61.0
76	11.5	0.0	31.5





#47
 2-Chloronaphthalene
 Concen: 44.214 ng
 RT: 13.157 min Scan# 1712
 Delta R.T. -0.000 min
 Lab File: BP024654.D
 Acq: 16 May 2025 12:52

Instrument :

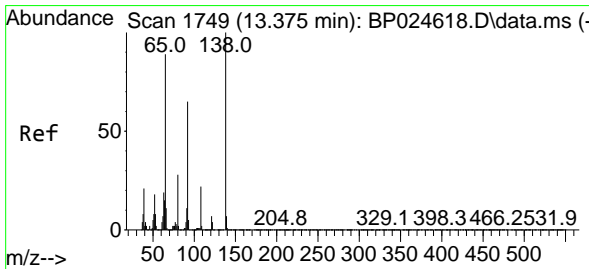
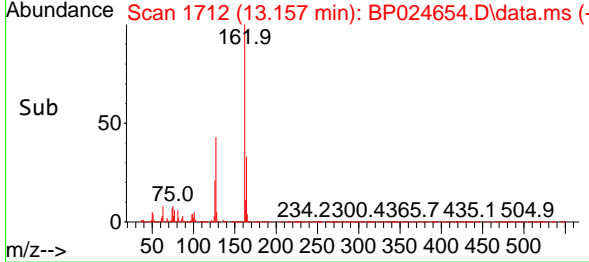
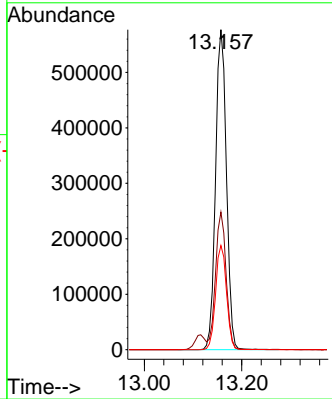
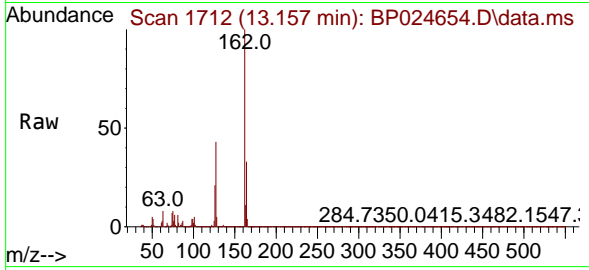
BNA_P

ClientSampleId :

PB168019BSD

Tgt Ion:162 Resp: 889761

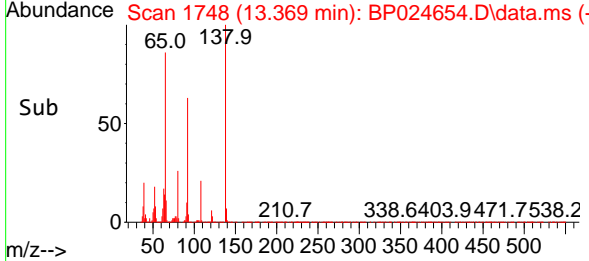
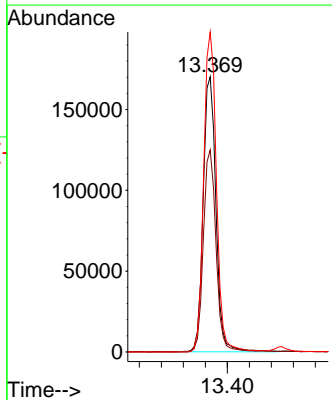
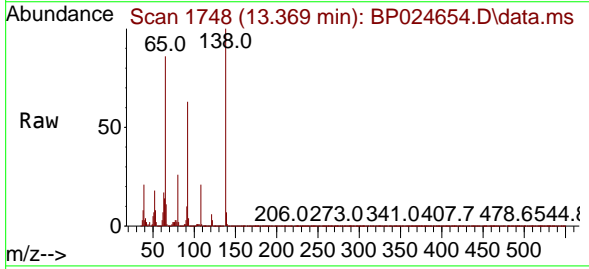
Ion	Ratio	Lower	Upper
162	100		
127	43.0	33.8	50.6
164	32.6	26.0	39.0

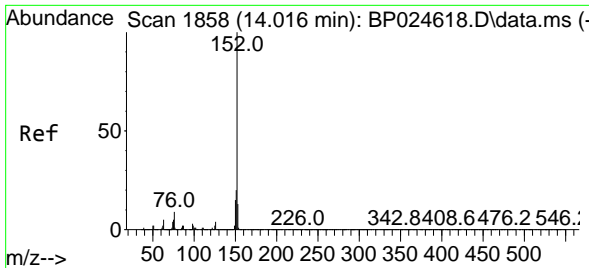


#48
 2-Nitroaniline
 Concen: 46.192 ng
 RT: 13.369 min Scan# 1748
 Delta R.T. -0.006 min
 Lab File: BP024654.D
 Acq: 16 May 2025 12:52

Tgt Ion: 65 Resp: 275207

Ion	Ratio	Lower	Upper
65	100		
92	73.4	58.7	88.1
138	116.3	90.2	135.2



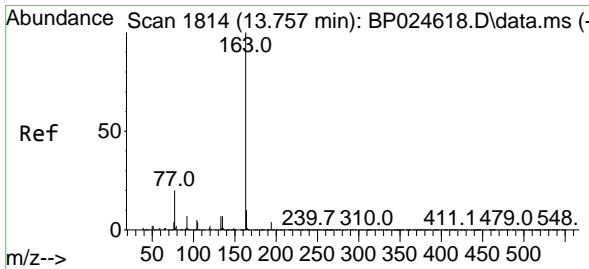
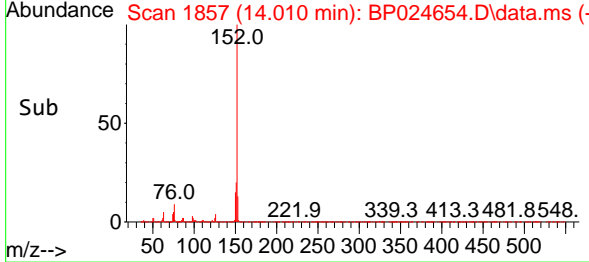
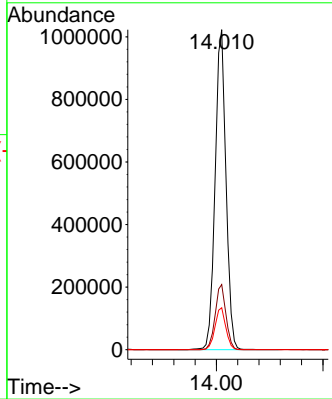
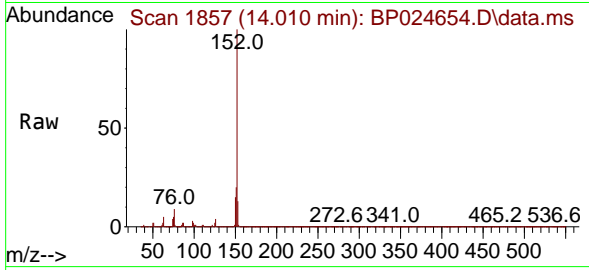


#49
 Acenaphthylene
 Concen: 42.965 ng
 RT: 14.010 min Scan# 1857
 Delta R.T. -0.006 min
 Lab File: BP024654.D
 Acq: 16 May 2025 12:52

Instrument : BNA_P
 Client Sample Id : PB168019BSD

Tgt Ion:152 Resp: 1446925

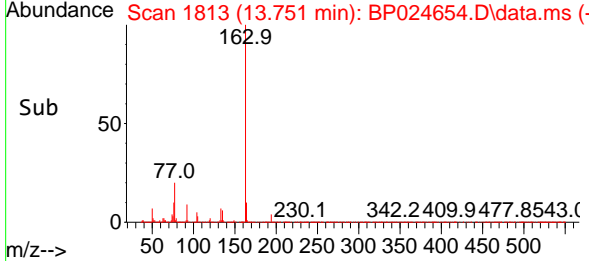
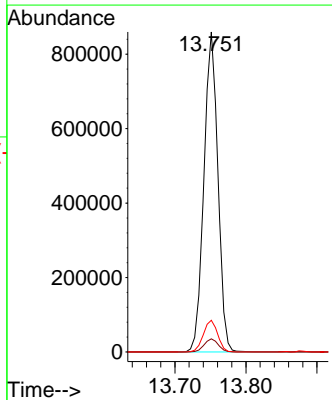
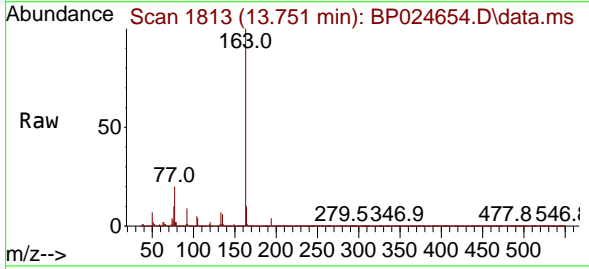
Ion	Ratio	Lower	Upper
152	100		
151	20.3	16.2	24.4
153	13.1	10.2	15.4

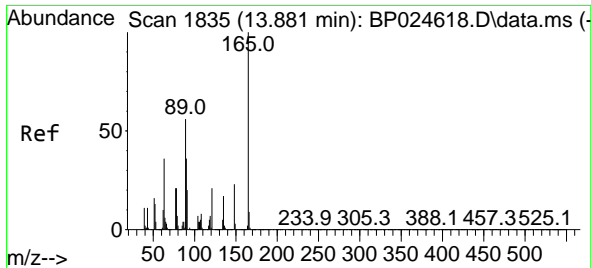


#50
 Dimethylphthalate
 Concen: 43.270 ng
 RT: 13.751 min Scan# 1813
 Delta R.T. -0.006 min
 Lab File: BP024654.D
 Acq: 16 May 2025 12:52

Tgt Ion:163 Resp: 1177714

Ion	Ratio	Lower	Upper
163	100		
194	4.1	3.4	5.0
164	9.9	8.1	12.1

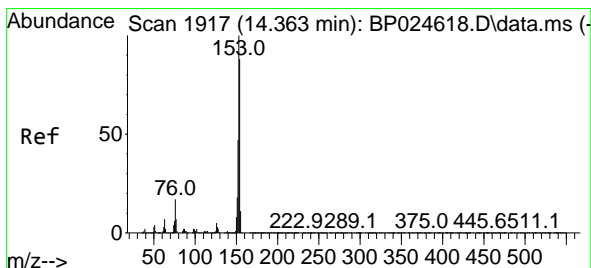
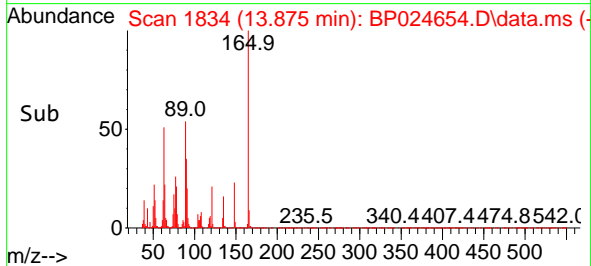
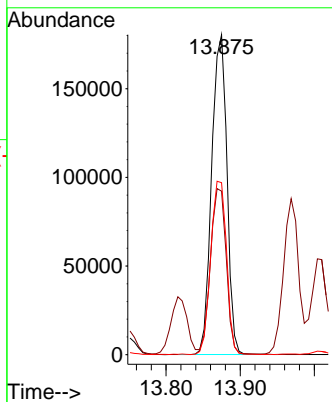
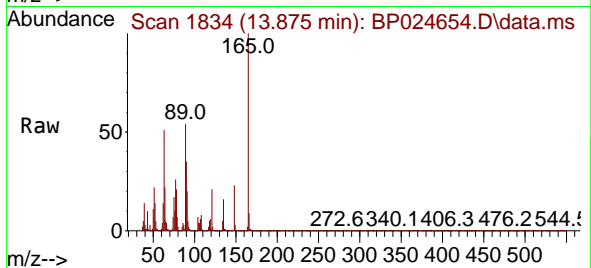




#51
 2,6-Dinitrotoluene
 Concen: 44.888 ng
 RT: 13.875 min Scan# 1834
 Delta R.T. -0.006 min
 Lab File: BP024654.D
 Acq: 16 May 2025 12:52

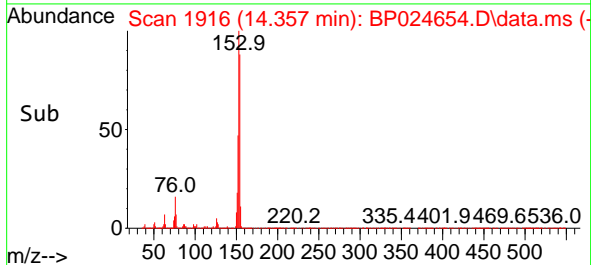
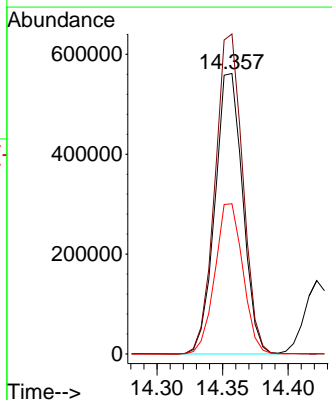
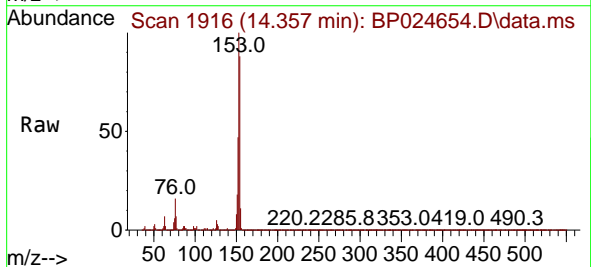
Instrument :
 BNA_P
 ClientSampleId :
 PB168019BSD

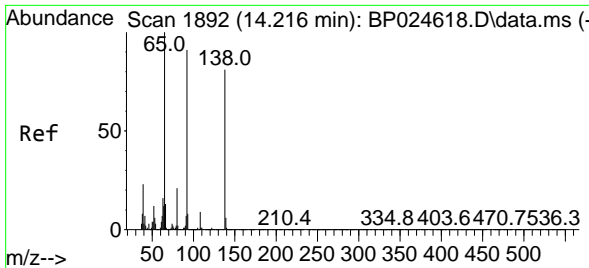
Tgt Ion	Resp	Lower	Upper
165	100		
63	51.1	42.4	63.6
89	53.7	44.8	67.2



#52
 Acenaphthene
 Concen: 42.700 ng
 RT: 14.357 min Scan# 1916
 Delta R.T. -0.006 min
 Lab File: BP024654.D
 Acq: 16 May 2025 12:52

Tgt Ion	Resp	Lower	Upper
154	100		
153	114.1	91.0	136.4
152	53.5	42.9	64.3



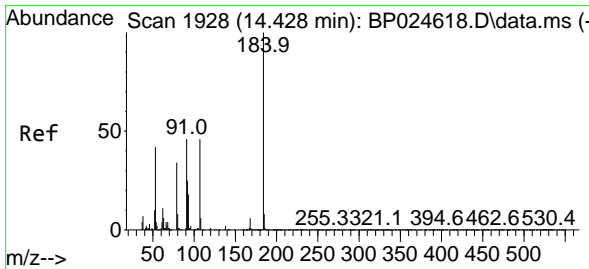
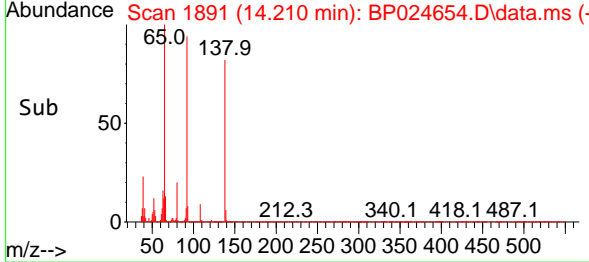
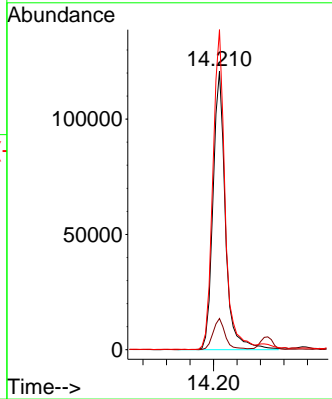
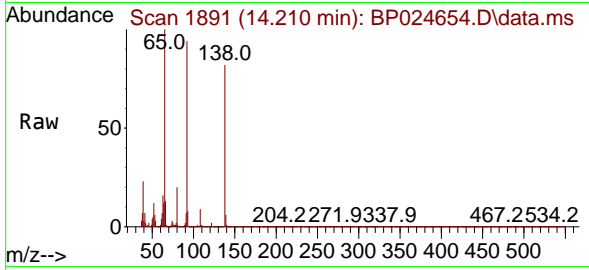


#53
 3-Nitroaniline
 Concen: 30.184 ng
 RT: 14.210 min Scan# 1892
 Delta R.T. -0.006 min
 Lab File: BP024654.D
 Acq: 16 May 2025 12:52

Instrument : BNA_P
 ClientSampleId : PB168019BSD

Tgt Ion:138 Resp: 177158

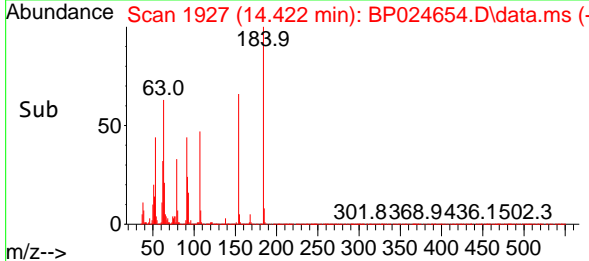
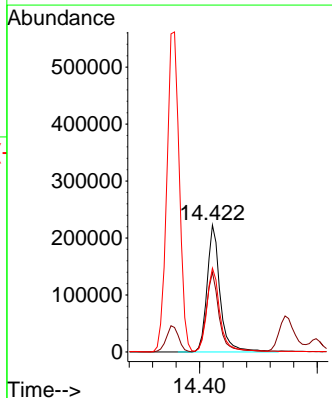
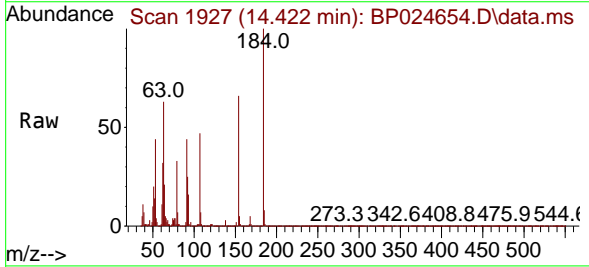
Ion	Ratio	Lower	Upper
138	100		
108	11.2	9.0	13.4
92	114.9	90.1	135.1

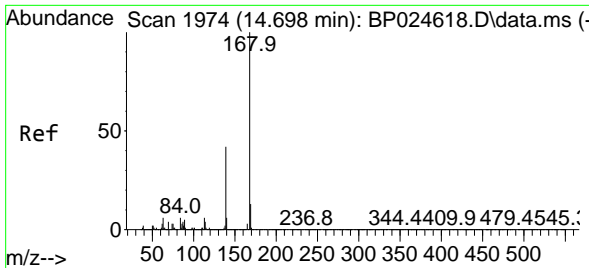


#54
 2,4-Dinitrophenol
 Concen: 93.349 ng
 RT: 14.422 min Scan# 1927
 Delta R.T. -0.006 min
 Lab File: BP024654.D
 Acq: 16 May 2025 12:52

Tgt Ion:184 Resp: 342573

Ion	Ratio	Lower	Upper
184	100		
63	62.8	51.3	76.9
154	66.0	53.5	80.3



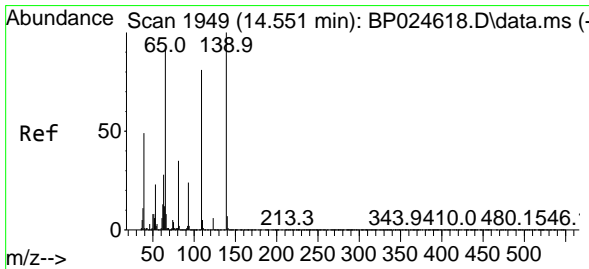
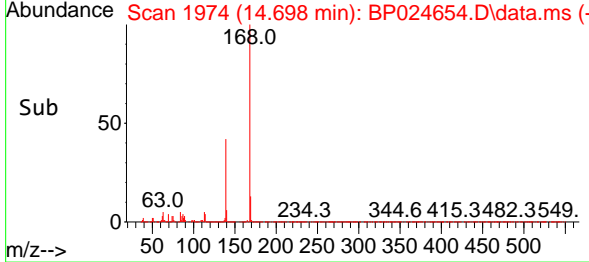
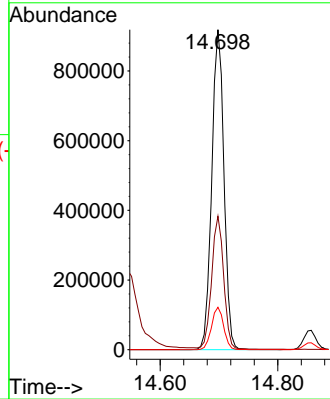
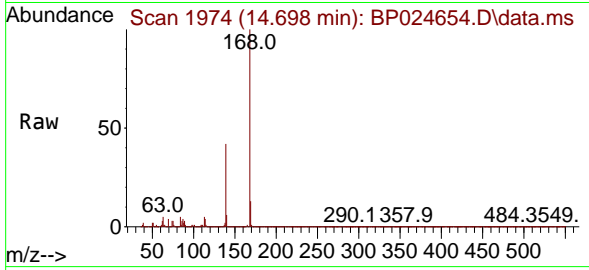


#55
 Dibenzofuran
 Concen: 42.869 ng
 RT: 14.698 min Scan# 1974
 Delta R.T. -0.000 min
 Lab File: BP024654.D
 Acq: 16 May 2025 12:52

Instrument :
 BNA_P
 ClientSampleId :
 PB168019BSD

Tgt Ion:168 Resp: 1323841

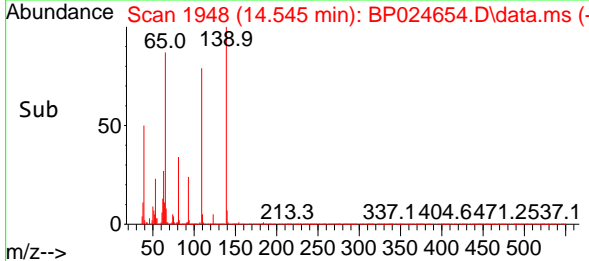
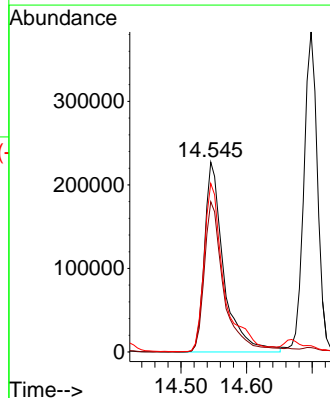
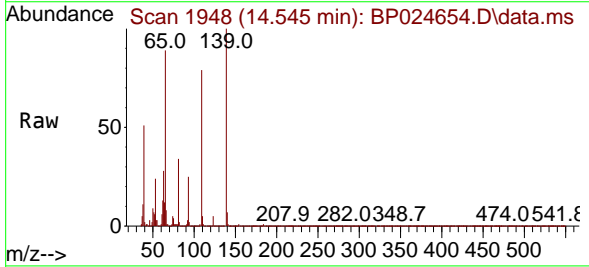
Ion	Ratio	Lower	Upper
168	100		
139	41.7	34.2	51.4
169	13.2	10.8	16.2

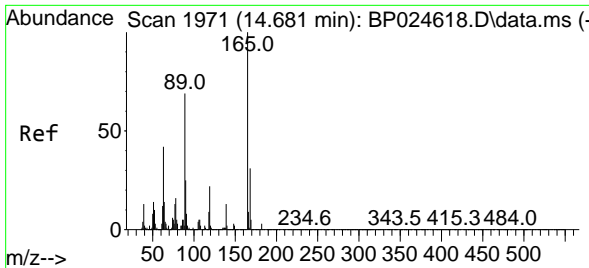


#56
 4-Nitrophenol
 Concen: 90.957 ng
 RT: 14.545 min Scan# 1948
 Delta R.T. -0.006 min
 Lab File: BP024654.D
 Acq: 16 May 2025 12:52

Tgt Ion:139 Resp: 465297

Ion	Ratio	Lower	Upper
139	100		
109	79.1	61.4	101.4
65	88.7	72.2	112.2

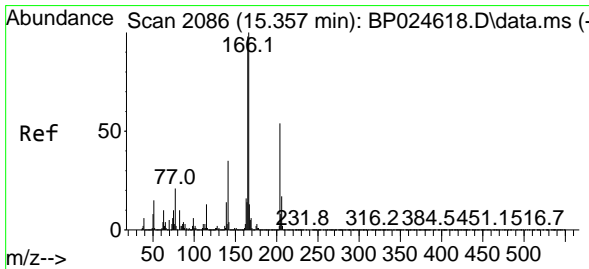
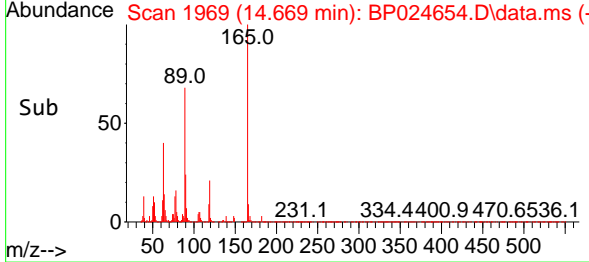
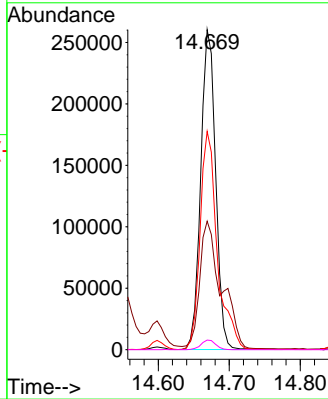
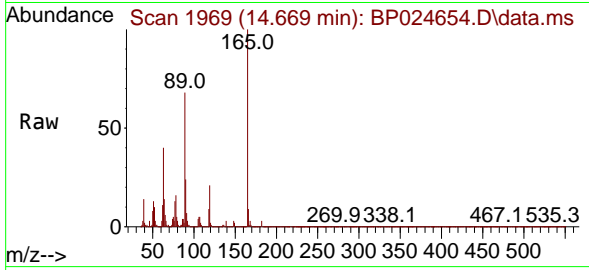




#57
 2,4-Dinitrotoluene
 Concen: 46.949 ng
 RT: 14.669 min Scan# 1971
 Delta R.T. -0.012 min
 Lab File: BP024654.D
 Acq: 16 May 2025 12:52

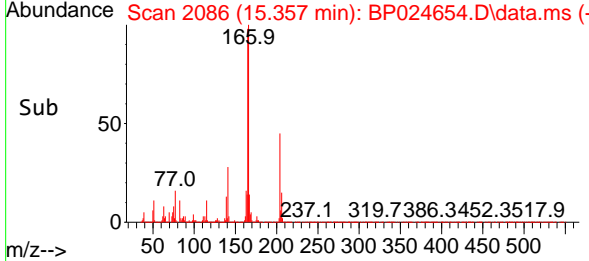
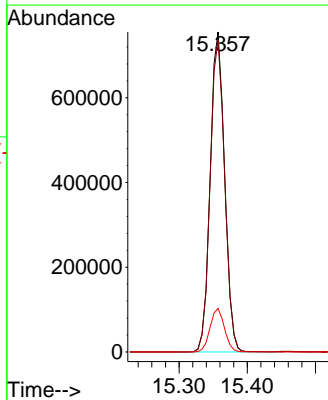
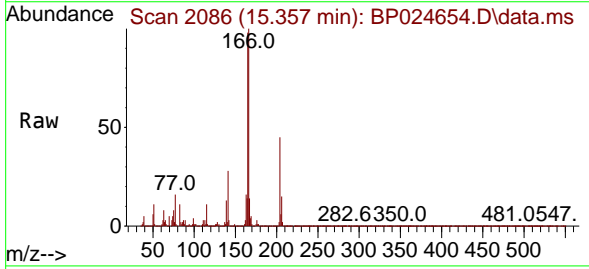
Instrument : BNA_P
 Client Sample Id : PB168019BSD

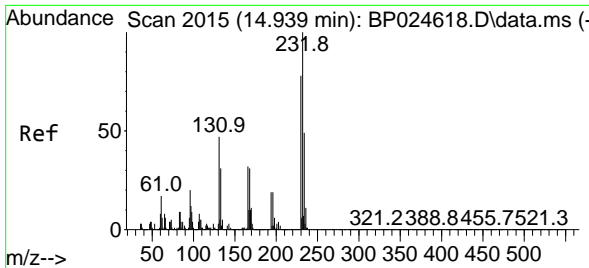
Tgt Ion	Resp	Lower	Upper
165	100		
63	40.2	33.8	50.6
89	68.2	55.6	83.4
182	3.0	2.4	3.6



#58
 Fluorene
 Concen: 44.140 ng
 RT: 15.357 min Scan# 2086
 Delta R.T. -0.000 min
 Lab File: BP024654.D
 Acq: 16 May 2025 12:52

Tgt Ion	Resp	Lower	Upper
166	100		
165	97.6	78.5	117.7
167	13.6	10.7	16.1

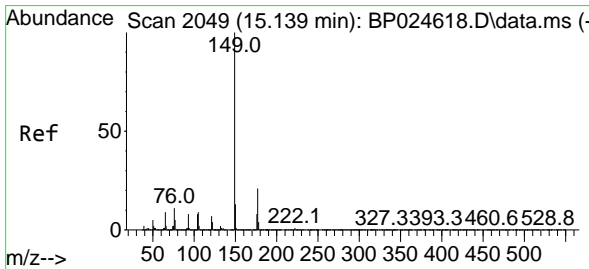
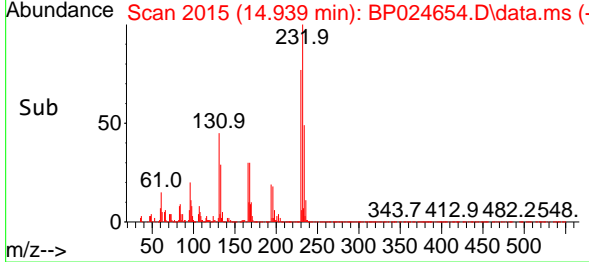
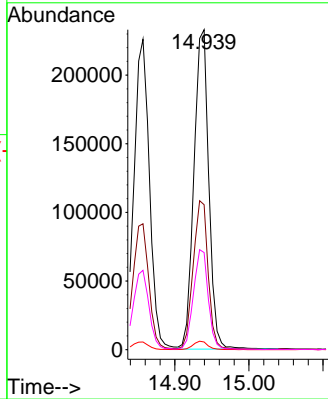
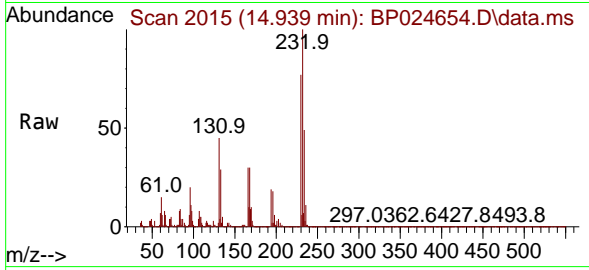




#59
 2,3,4,6-Tetrachlorophenol
 Concen: 46.605 ng
 RT: 14.939 min Scan# 2015
 Delta R.T. -0.000 min
 Lab File: BP024654.D
 Acq: 16 May 2025 12:52

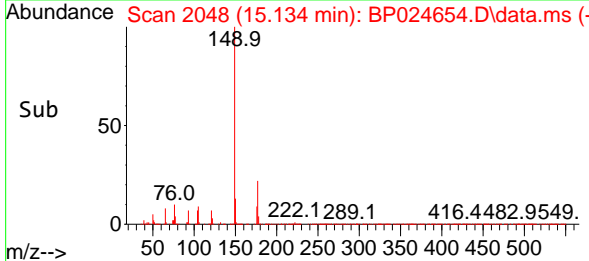
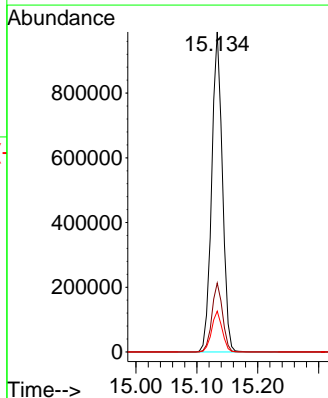
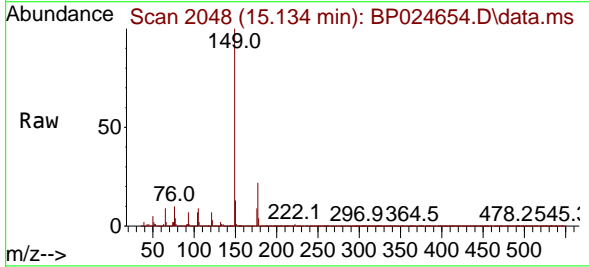
Instrument : BNA_P
 ClientSampleId : PB168019BSD

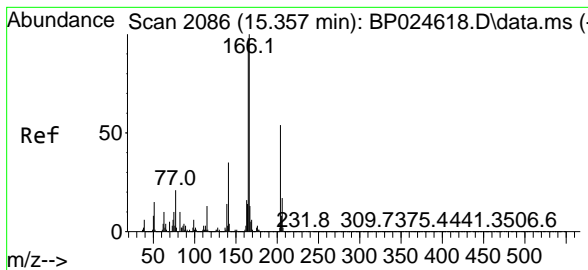
Tgt Ion	Resp	Lower	Upper
232	323226		
232	100		
131	47.0	39.5	59.3
130	2.7	2.2	3.4
166	31.3	25.7	38.5



#60
 Diethylphthalate
 Concen: 43.832 ng
 RT: 15.134 min Scan# 2048
 Delta R.T. -0.006 min
 Lab File: BP024654.D
 Acq: 16 May 2025 12:52

Tgt Ion	Resp	Lower	Upper
149	1205785		
149	100		
177	21.6	16.7	25.1
150	12.7	10.2	15.2



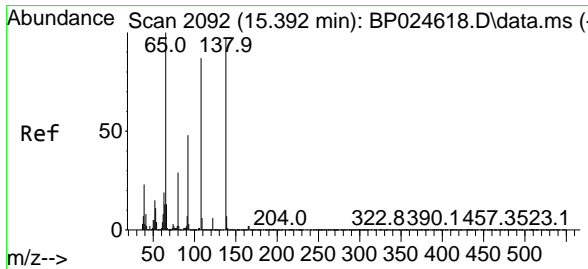
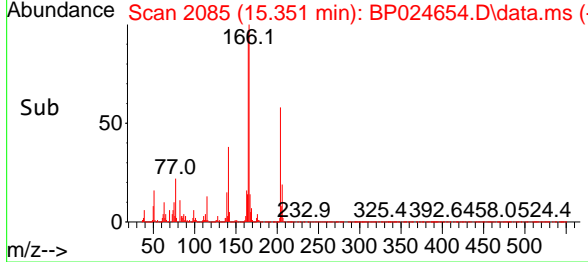
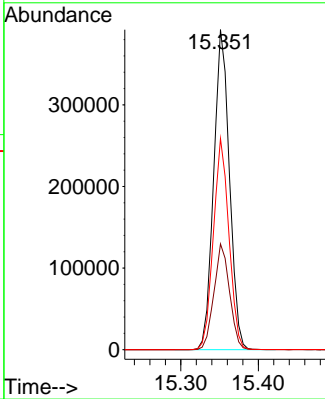
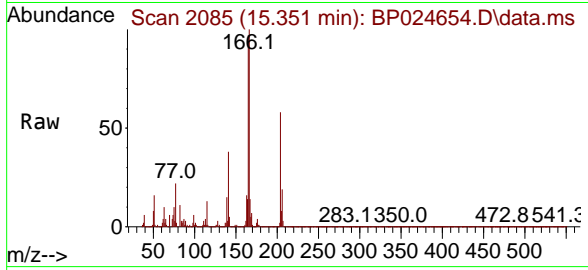


#61
 4-Chlorophenyl-phenylether
 Concen: 44.052 ng
 RT: 15.351 min Scan# 2085
 Delta R.T. -0.006 min
 Lab File: BP024654.D
 Acq: 16 May 2025 12:52

Instrument : BNA_P
 ClientSampleId : PB168019BSD

Tgt Ion: 204 Resp: 553179

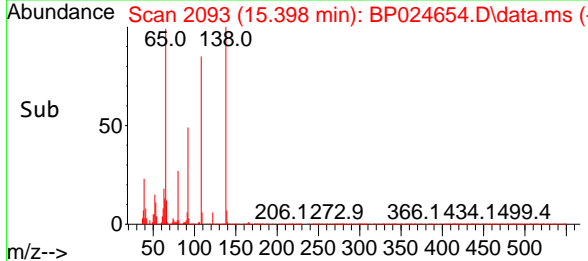
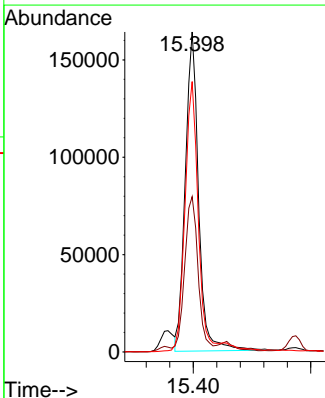
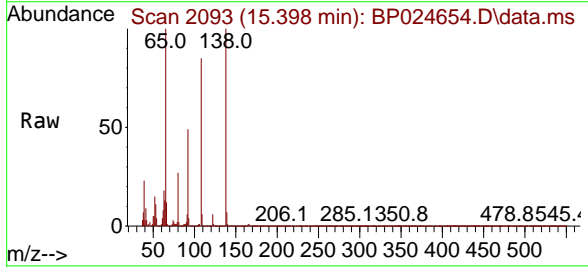
Ion	Ratio	Lower	Upper
204	100		
206	33.0	26.0	39.0
141	66.0	52.9	79.3

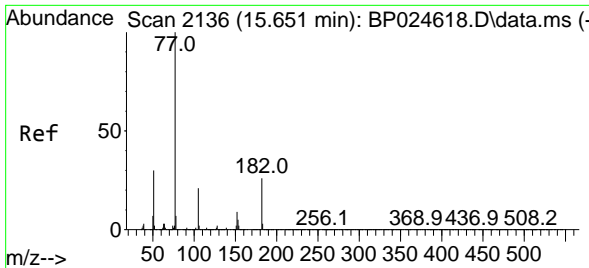


#62
 4-Nitroaniline
 Concen: 45.611 ng
 RT: 15.398 min Scan# 2093
 Delta R.T. 0.006 min
 Lab File: BP024654.D
 Acq: 16 May 2025 12:52

Tgt Ion: 138 Resp: 258489

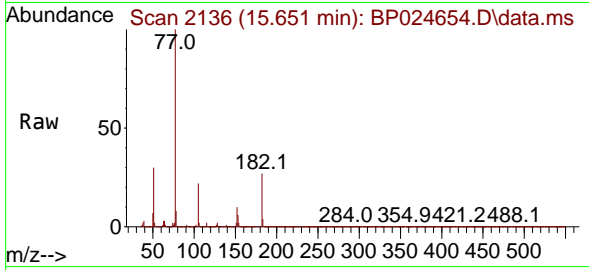
Ion	Ratio	Lower	Upper
138	100		
92	48.6	29.2	69.2
108	84.5	69.0	109.0





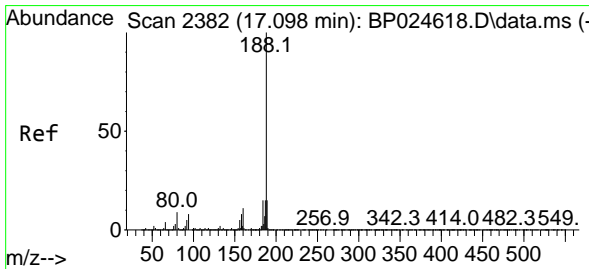
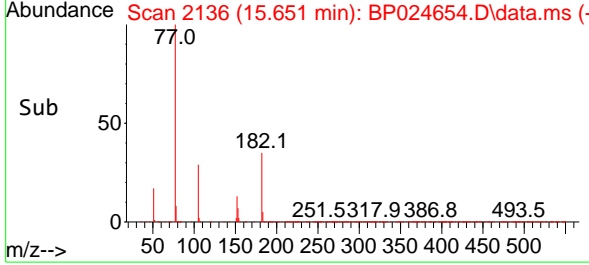
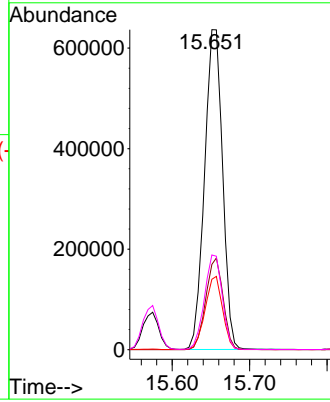
#63
 Azobenzene
 Concen: 43.700 ng
 RT: 15.651 min Scan# 2136
 Delta R.T. -0.000 min
 Lab File: BP024654.D
 Acq: 16 May 2025 12:52

Instrument :
 BNA_P
 ClientSampleId :
 PB168019BSD



Tgt Ion: 77 Resp: 1028400

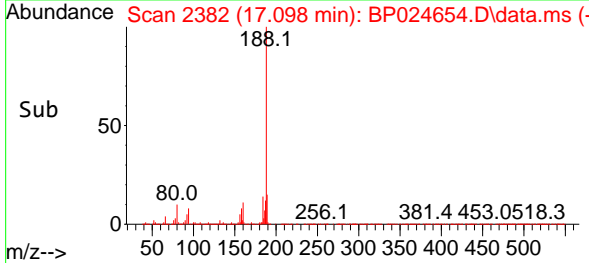
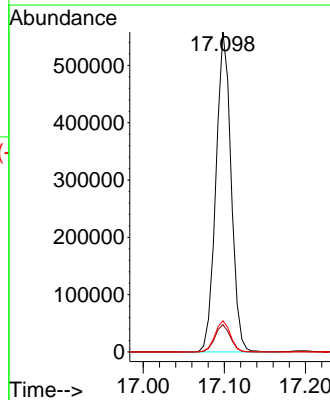
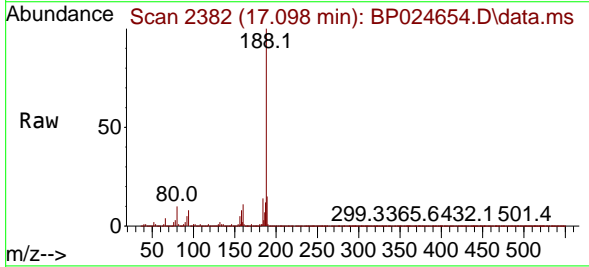
Ion	Ratio	Lower	Upper
77	100		
182	26.7	5.7	45.7
105	22.0	1.3	41.3
51	29.6	10.6	50.6

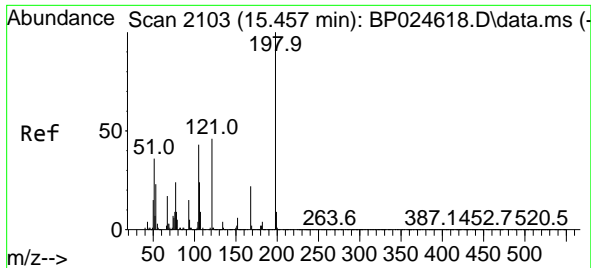


#64
 Phenanthrene-d10
 Concen: 20.000 ng
 RT: 17.098 min Scan# 2382
 Delta R.T. -0.000 min
 Lab File: BP024654.D
 Acq: 16 May 2025 12:52

Tgt Ion: 188 Resp: 726416

Ion	Ratio	Lower	Upper
188	100		
94	8.5	6.5	9.7
80	9.7	7.3	10.9



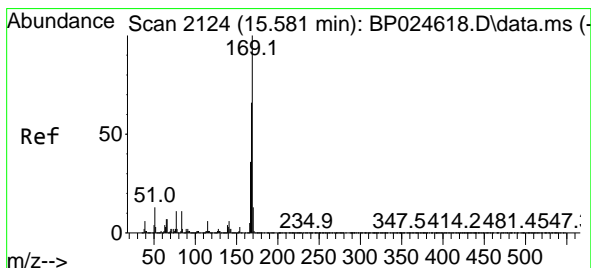
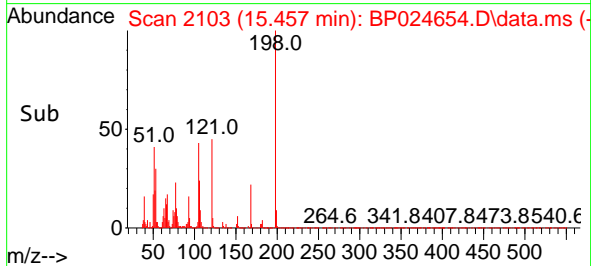
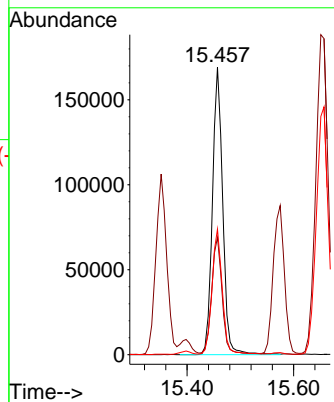
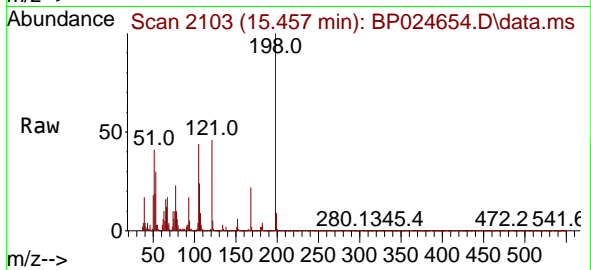


#65
 4,6-Dinitro-2-methylphenol
 Concen: 48.613 ng
 RT: 15.457 min Scan# 2103
 Delta R.T. 0.000 min
 Lab File: BP024654.D
 Acq: 16 May 2025 12:52

Instrument : BNA_P
 ClientSampleId : PB168019BSD

Tgt Ion:198 Resp: 228099

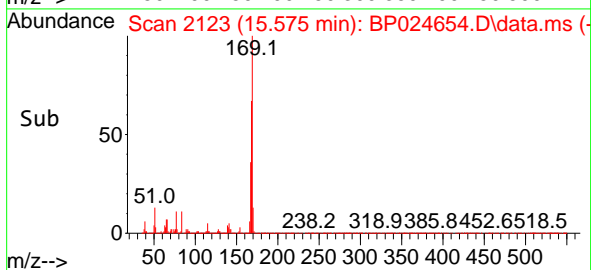
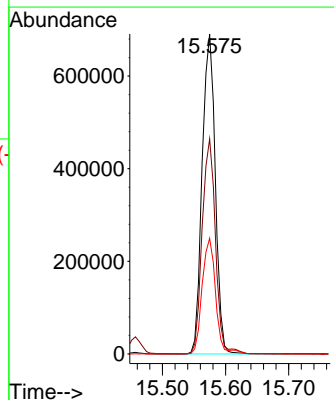
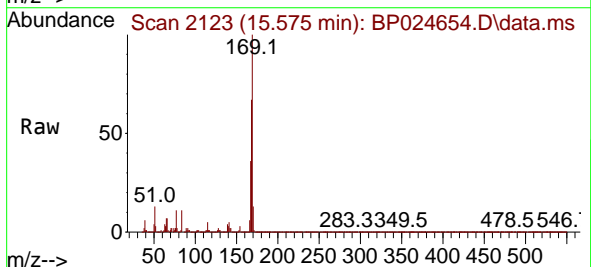
Ion	Ratio	Lower	Upper
198	100		
51	40.8	21.1	61.1
105	43.7	23.6	63.6

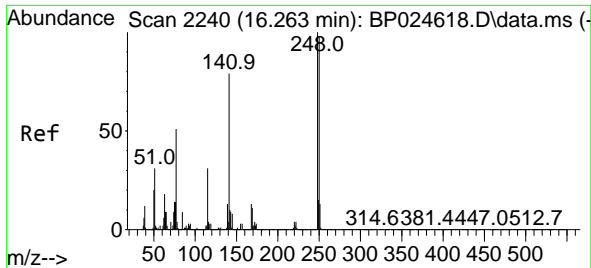


#66
 n-Nitrosodiphenylamine
 Concen: 44.562 ng
 RT: 15.575 min Scan# 2123
 Delta R.T. -0.006 min
 Lab File: BP024654.D
 Acq: 16 May 2025 12:52

Tgt Ion:169 Resp: 994292

Ion	Ratio	Lower	Upper
169	100		
168	67.2	53.2	79.8
167	36.2	28.6	43.0

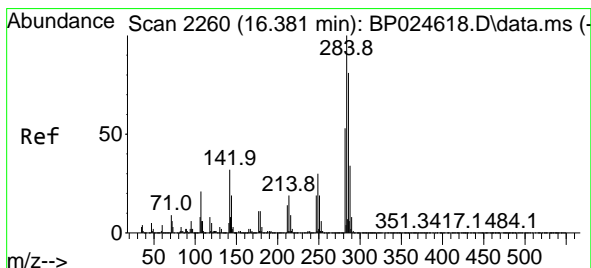
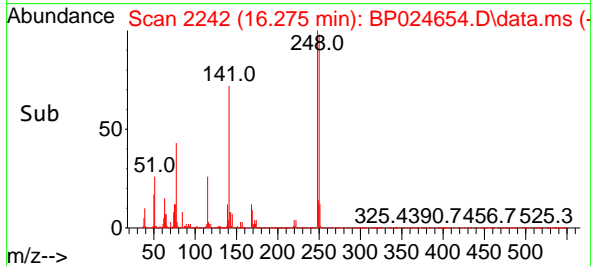
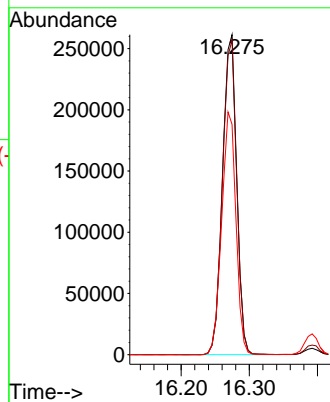
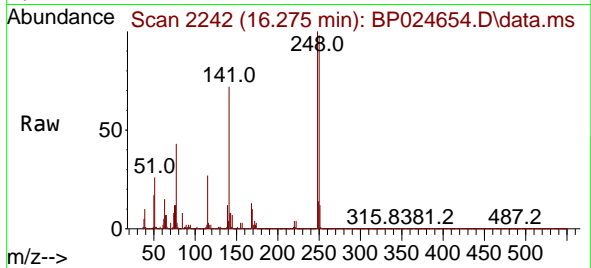




#67
 4-Bromophenyl-phenylether
 Concen: 44.286 ng
 RT: 16.275 min Scan# 21
 Delta R.T. 0.012 min
 Lab File: BP024654.D
 Acq: 16 May 2025 12:52

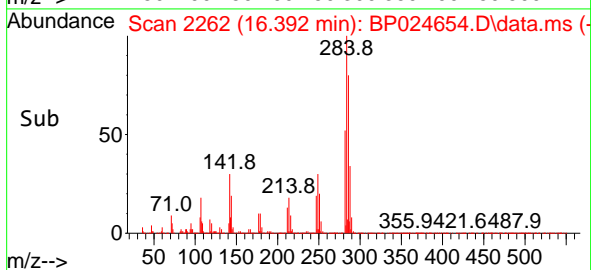
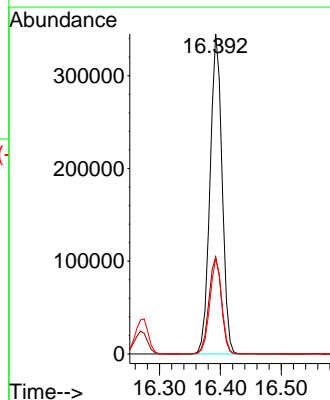
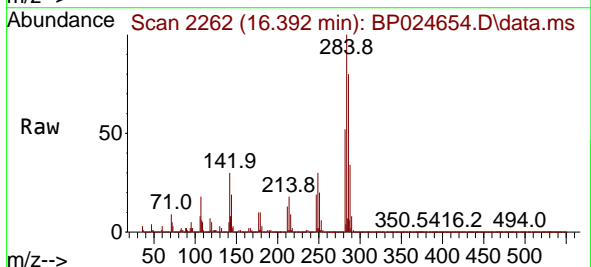
Instrument :
 BNA_P
 ClientSampleId :
 PB168019BSD

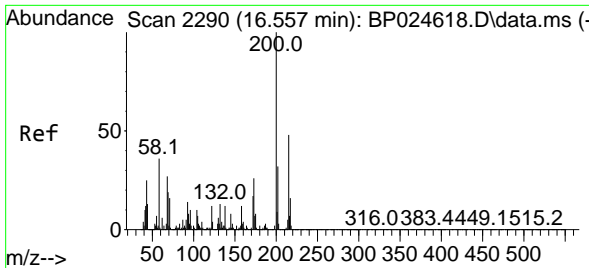
Tgt Ion	Resp	Lower	Upper
248	100		
250	98.3	78.2	117.4
141	72.0	63.0	94.6



#68
 Hexachlorobenzene
 Concen: 43.512 ng
 RT: 16.392 min Scan# 2262
 Delta R.T. 0.012 min
 Lab File: BP024654.D
 Acq: 16 May 2025 12:52

Tgt Ion	Resp	Lower	Upper
284	100		
142	30.4	25.9	38.9
249	29.8	24.1	36.1



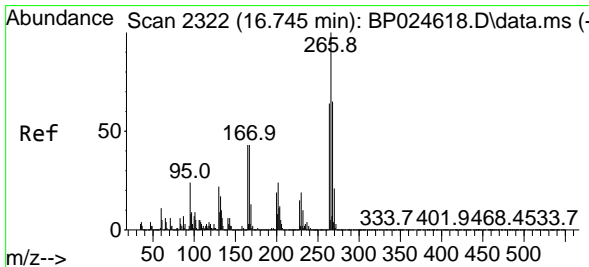
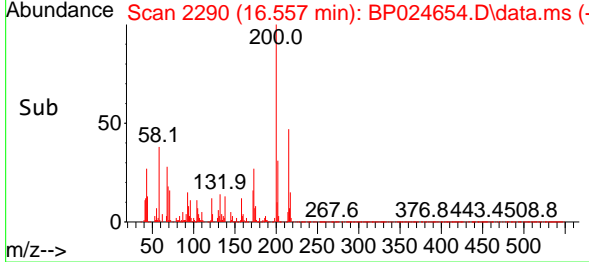
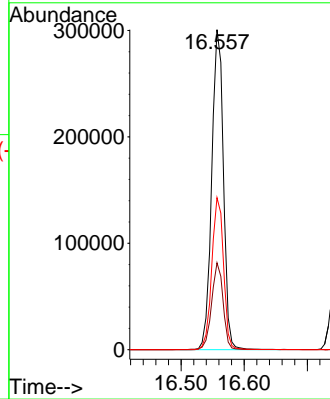
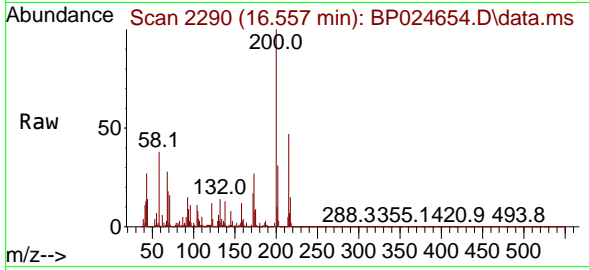


#69
 Atrazine
 Concen: 47.230 ng
 RT: 16.557 min Scan# 21
 Delta R.T. -0.000 min
 Lab File: BP024654.D
 Acq: 16 May 2025 12:52

Instrument :
 BNA_P
 ClientSampleId :
 PB168019BSD

Tgt Ion:200 Resp: 386199

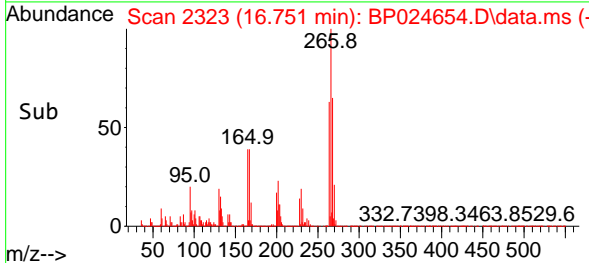
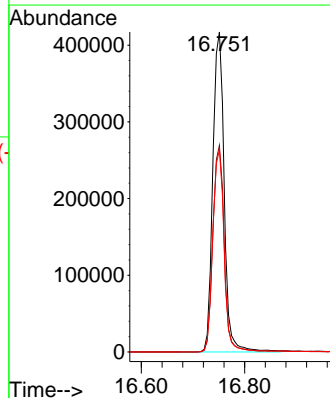
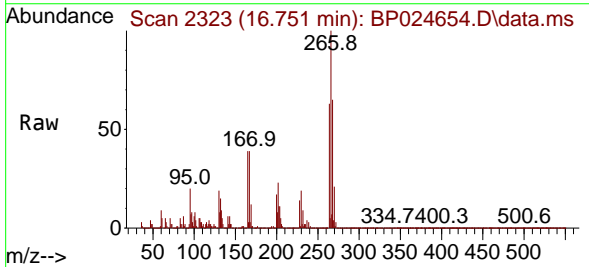
Ion	Ratio	Lower	Upper
200	100		
173	27.2	5.9	45.9
215	47.5	28.3	68.3

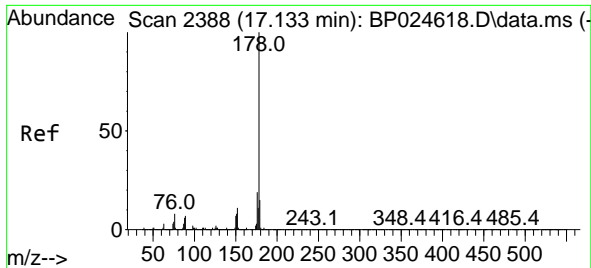


#70
 Pentachlorophenol
 Concen: 104.347 ng
 RT: 16.751 min Scan# 2323
 Delta R.T. 0.006 min
 Lab File: BP024654.D
 Acq: 16 May 2025 12:52

Tgt Ion:266 Resp: 637096

Ion	Ratio	Lower	Upper
266	100		
268	64.6	52.2	78.4
264	63.2	51.1	76.7

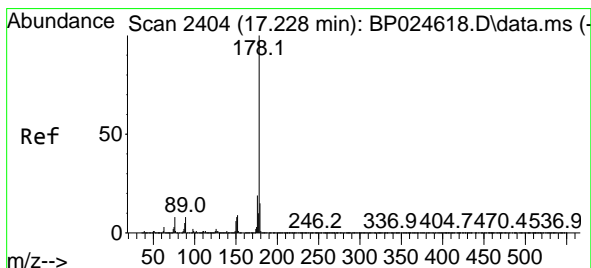
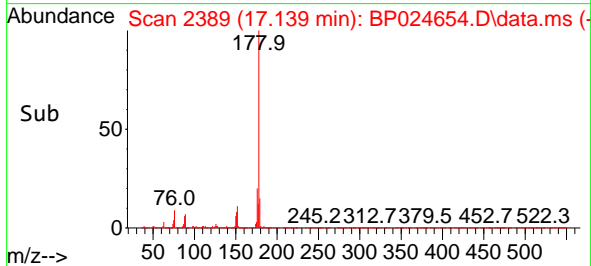
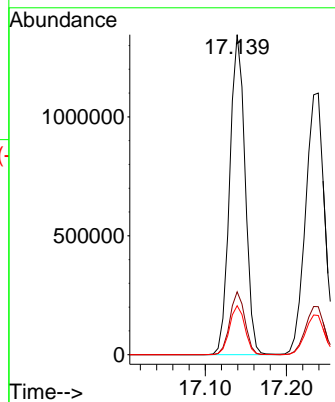
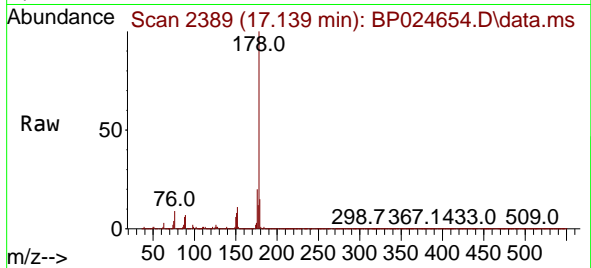




#71
 Phenanthrene
 Concen: 43.866 ng
 RT: 17.139 min Scan# 21
 Delta R.T. 0.006 min
 Lab File: BP024654.D
 Acq: 16 May 2025 12:52

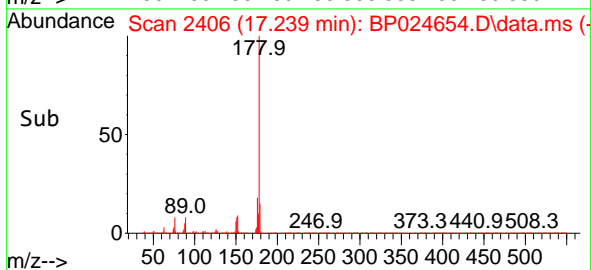
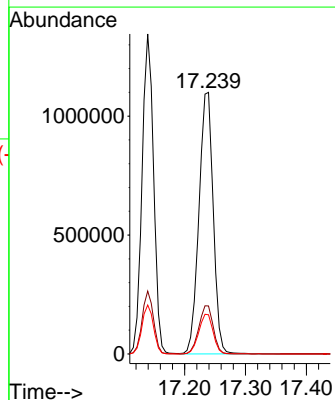
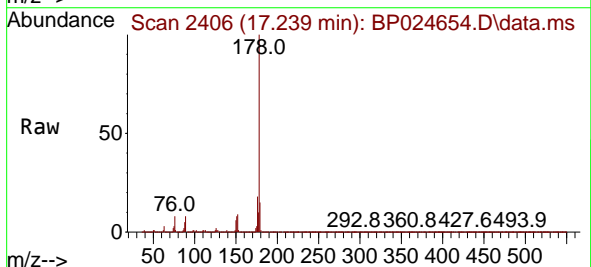
Instrument :
 BNA_P
 ClientSampleId :
 PB168019BSD

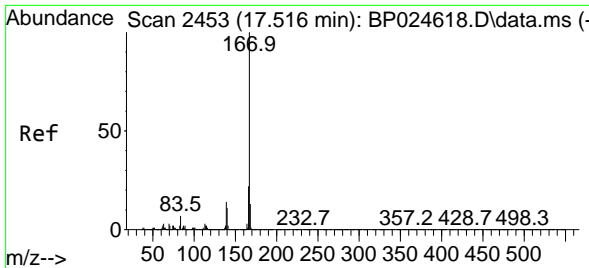
Tgt Ion:178 Resp: 1771396
 Ion Ratio Lower Upper
 178 100
 176 19.7 15.4 23.2
 179 15.3 12.2 18.4



#72
 Anthracene
 Concen: 44.148 ng
 RT: 17.239 min Scan# 2406
 Delta R.T. 0.012 min
 Lab File: BP024654.D
 Acq: 16 May 2025 12:52

Tgt Ion:178 Resp: 1793685
 Ion Ratio Lower Upper
 178 100
 176 18.3 15.0 22.4
 179 15.0 12.2 18.2



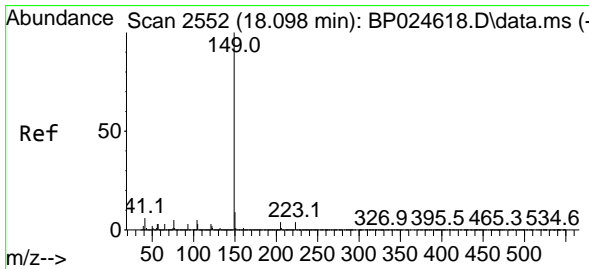
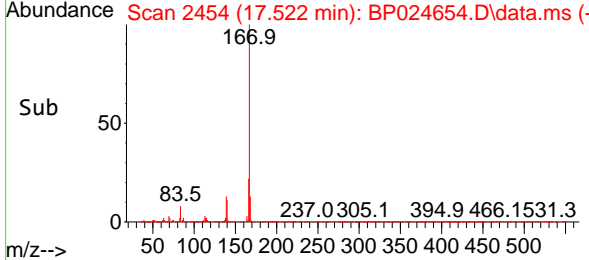
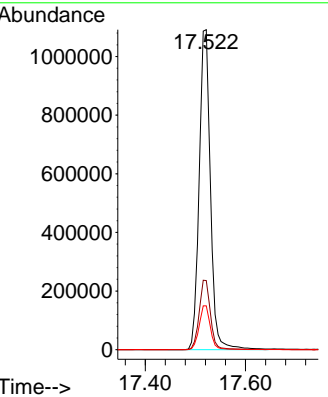
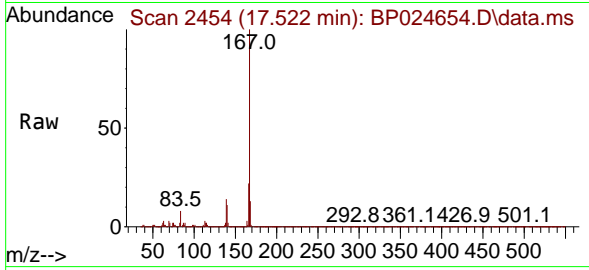


#73
 Carbazole
 Concen: 46.268 ng
 RT: 17.522 min Scan# 2453
 Delta R.T. 0.006 min
 Lab File: BP024654.D
 Acq: 16 May 2025 12:52

Instrument : BNA_P
 ClientSampleId : PB168019BSD

Tgt Ion:167 Resp: 1701427

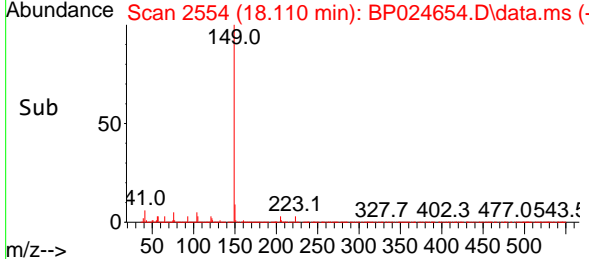
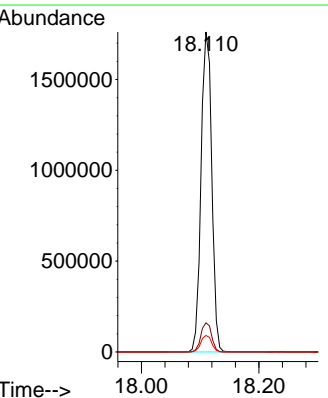
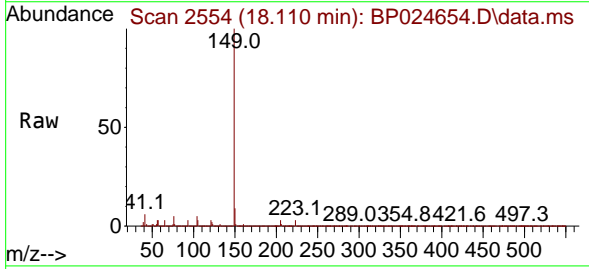
Ion	Ratio	Lower	Upper
167	100		
166	21.6	17.7	26.5
139	13.7	11.3	16.9

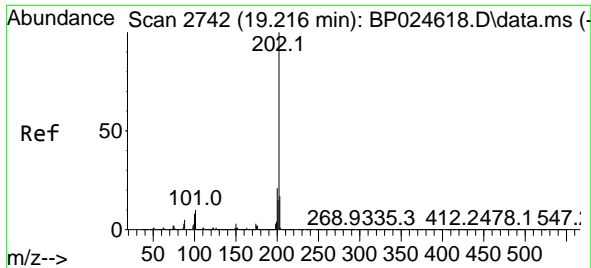


#74
 Di-n-butylphthalate
 Concen: 46.933 ng
 RT: 18.110 min Scan# 2554
 Delta R.T. 0.012 min
 Lab File: BP024654.D
 Acq: 16 May 2025 12:52

Tgt Ion:149 Resp: 2219654

Ion	Ratio	Lower	Upper
149	100		
150	9.1	7.2	10.8
104	5.1	4.3	6.5



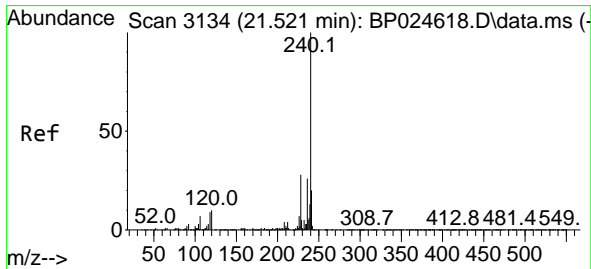
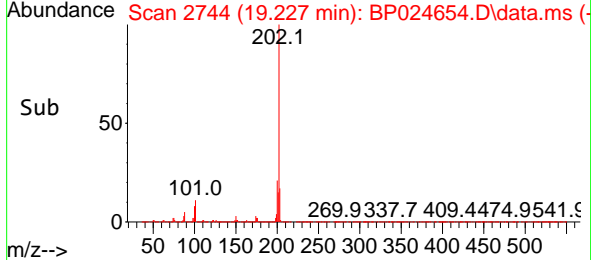
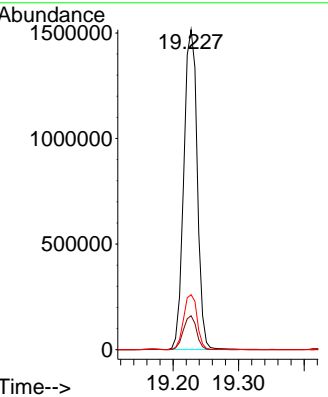
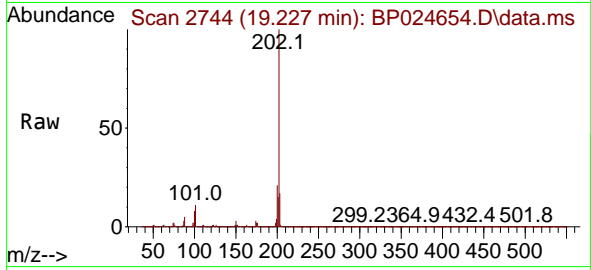


#75
 Fluoranthene
 Concen: 45.769 ng
 RT: 19.227 min Scan# 21
 Delta R.T. 0.012 min
 Lab File: BP024654.D
 Acq: 16 May 2025 12:52

Instrument : BNA_P
 ClientSampleId : PB168019BSD

Tgt Ion: 202 Resp: 2160499

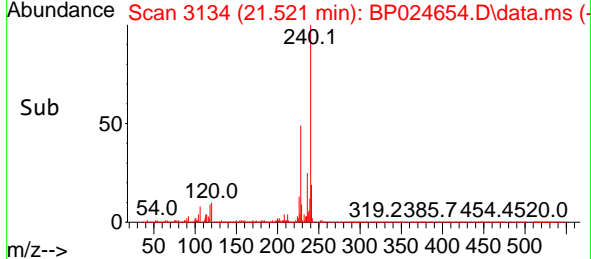
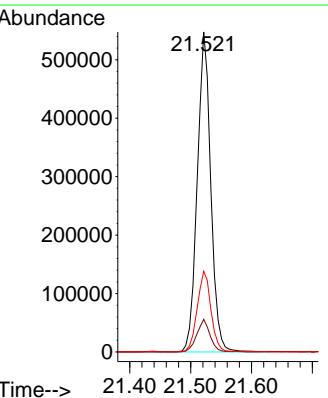
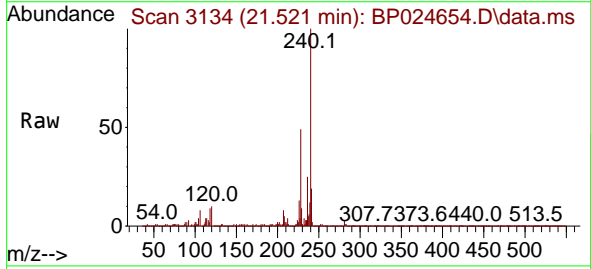
Ion	Ratio	Lower	Upper
202	100		
101	10.6	0.0	30.3
203	17.2	0.0	37.5

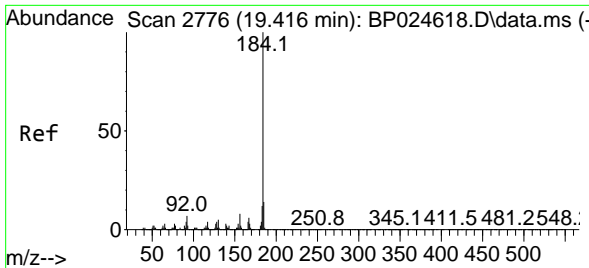


#76
 Chrysene-d12
 Concen: 20.000 ng
 RT: 21.521 min Scan# 3134
 Delta R.T. -0.000 min
 Lab File: BP024654.D
 Acq: 16 May 2025 12:52

Tgt Ion: 240 Resp: 844726

Ion	Ratio	Lower	Upper
240	100		
120	10.2	7.8	11.6
236	25.2	20.6	31.0



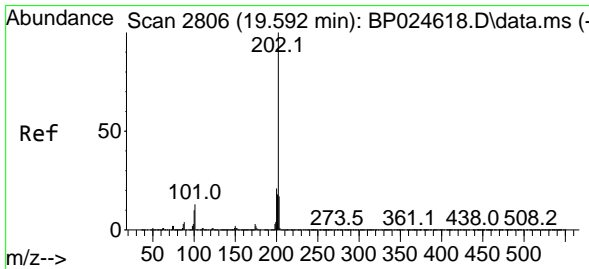
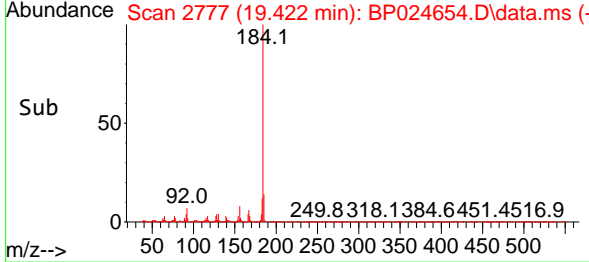
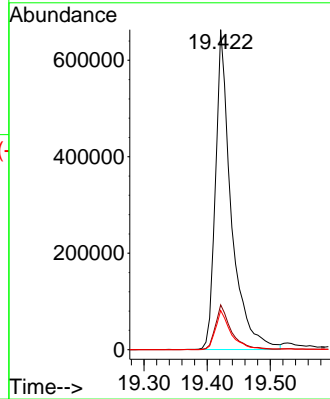
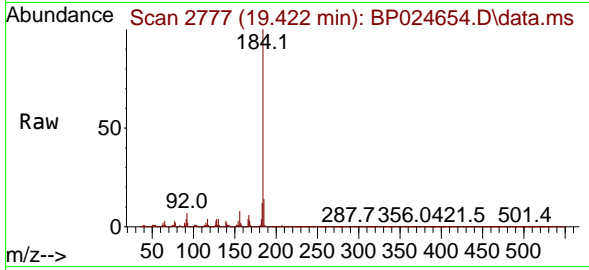


#77
 Benzidine
 Concen: 49.929 ng
 RT: 19.422 min Scan# 21
 Delta R.T. 0.006 min
 Lab File: BP024654.D
 Acq: 16 May 2025 12:52

Instrument :
 BNA_P
 ClientSampleId :
 PB168019BSD

Tgt Ion:184 Resp: 1148711

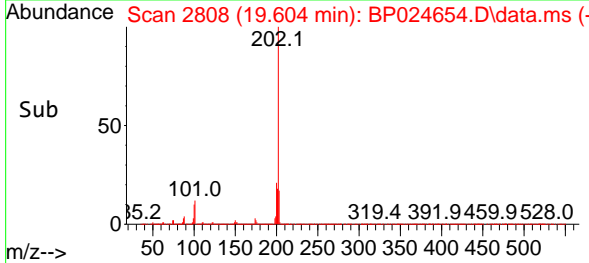
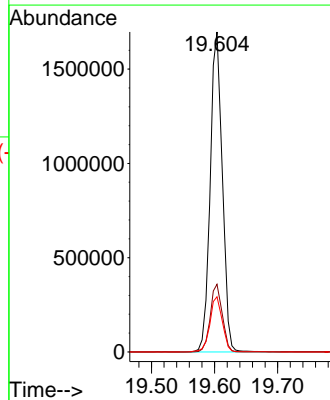
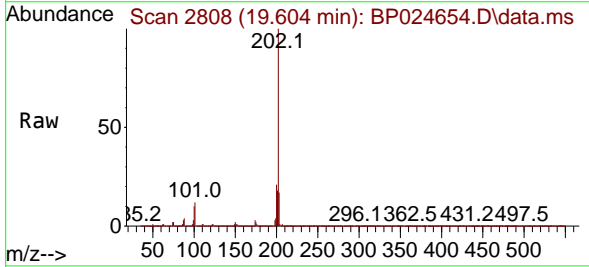
Ion	Ratio	Lower	Upper
184	100		
185	14.0	11.2	16.8
183	12.3	9.8	14.8

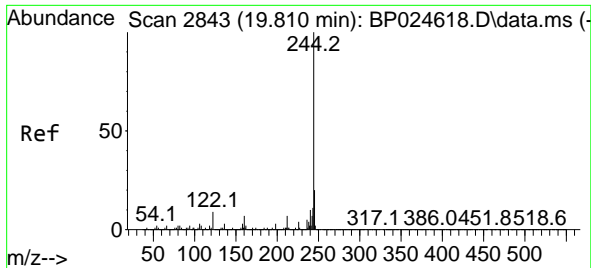


#78
 Pyrene
 Concen: 44.723 ng
 RT: 19.604 min Scan# 2808
 Delta R.T. 0.012 min
 Lab File: BP024654.D
 Acq: 16 May 2025 12:52

Tgt Ion:202 Resp: 2263607

Ion	Ratio	Lower	Upper
202	100		
200	21.1	16.9	25.3
203	17.2	13.9	20.9





#79
 Terphenyl-d14
 Concen: 78.352 ng
 RT: 19.822 min Scan# 2845
 Delta R.T. 0.012 min
 Lab File: BP024654.D
 Acq: 16 May 2025 12:52

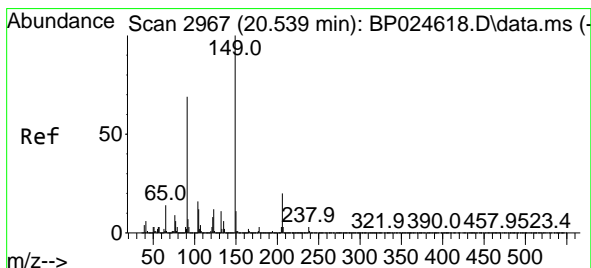
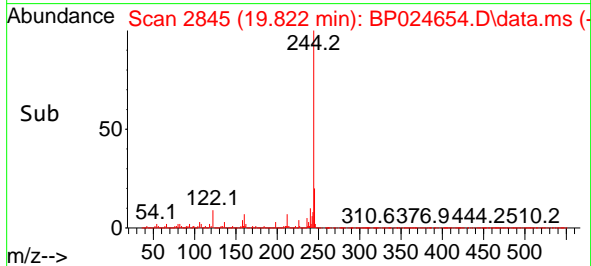
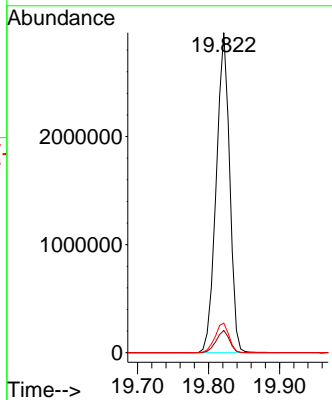
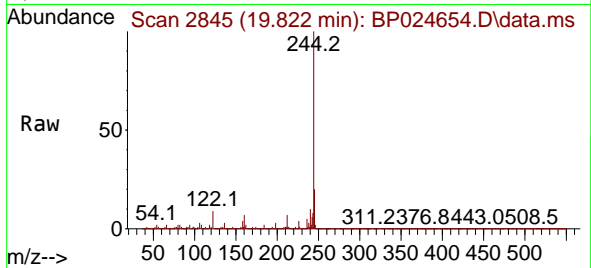
Instrument :

BNA_P

Client Sample Id :

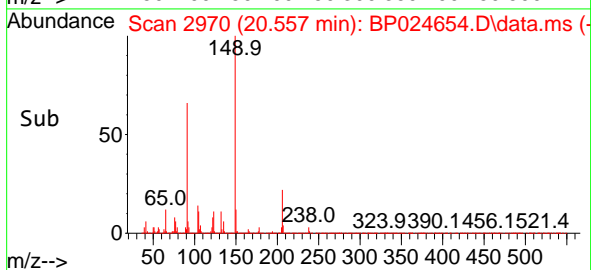
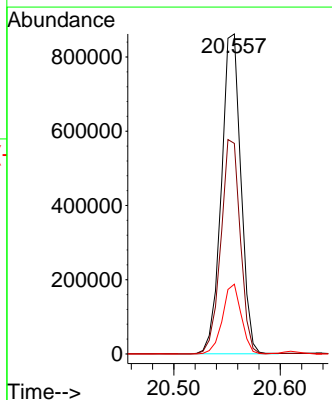
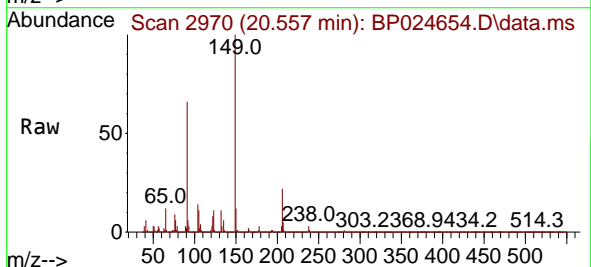
PB168019BSD

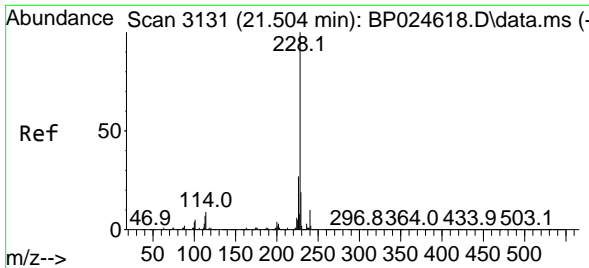
Tgt Ion:244 Resp: 3859931
 Ion Ratio Lower Upper
 244 100
 212 7.0 5.5 8.3
 122 9.3 7.4 11.0



#80
 Butylbenzylphthalate
 Concen: 48.519 ng
 RT: 20.557 min Scan# 2970
 Delta R.T. 0.018 min
 Lab File: BP024654.D
 Acq: 16 May 2025 12:52

Tgt Ion:149 Resp: 1092181
 Ion Ratio Lower Upper
 149 100
 91 65.8 55.4 83.0
 206 21.8 16.2 24.2



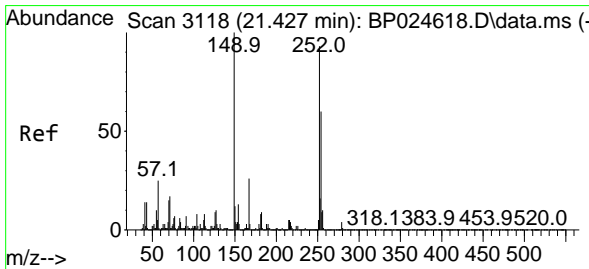
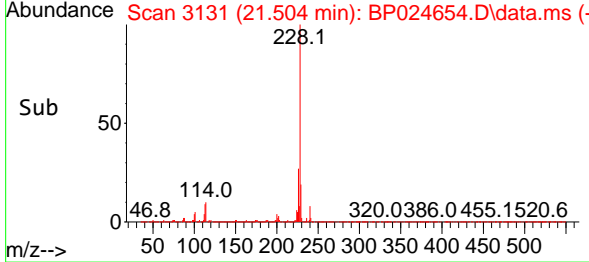
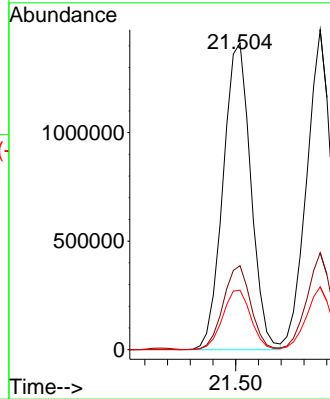
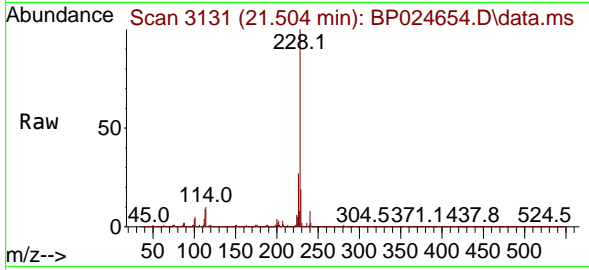


#81
 Benzo(a)anthracene
 Concen: 45.178 ng
 RT: 21.504 min Scan# 3119
 Delta R.T. -0.000 min
 Lab File: BP024654.D
 Acq: 16 May 2025 12:52

Instrument :
 BNA_P
 ClientSampleId :
 PB168019BSD

Tgt Ion:228 Resp: 2396325

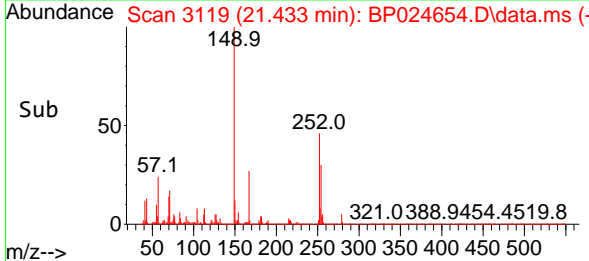
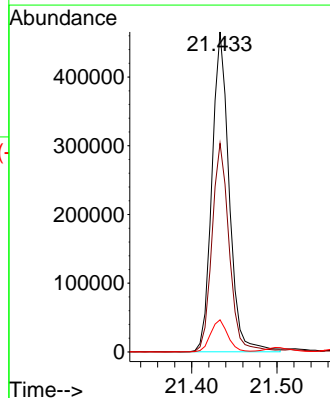
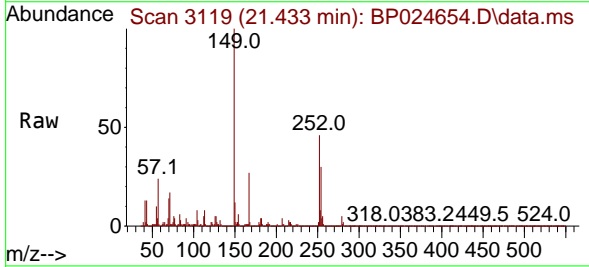
Ion	Ratio	Lower	Upper
228	100		
226	27.4	21.4	32.0
229	19.4	15.5	23.3

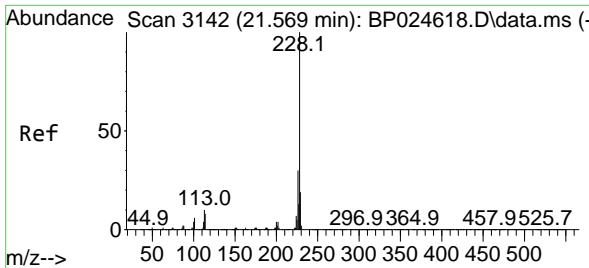


#82
 3,3'-Dichlorobenzidine
 Concen: 33.177 ng
 RT: 21.433 min Scan# 3119
 Delta R.T. 0.006 min
 Lab File: BP024654.D
 Acq: 16 May 2025 12:52

Tgt Ion:252 Resp: 653618

Ion	Ratio	Lower	Upper
252	100		
254	65.2	51.8	77.6
126	10.0	7.7	11.5



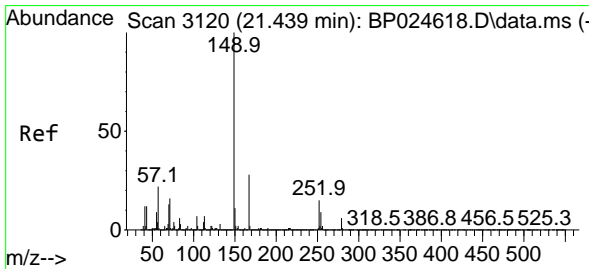
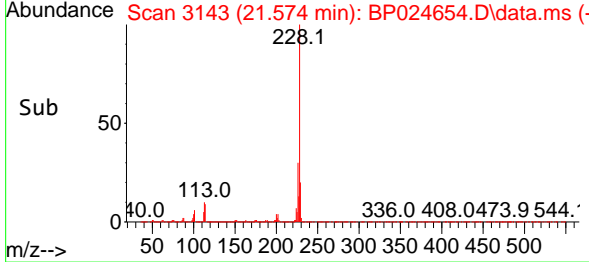
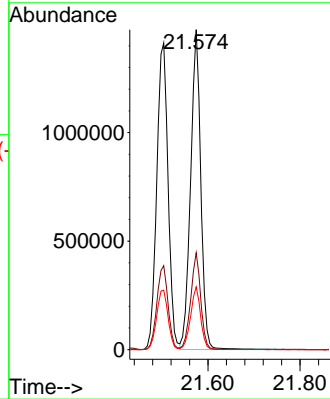
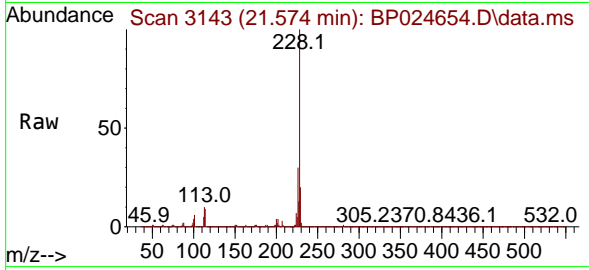


#83
 Chrysene
 Concen: 44.714 ng
 RT: 21.574 min Scan# 3143
 Delta R.T. 0.006 min
 Lab File: BP024654.D
 Acq: 16 May 2025 12:52

Instrument :
 BNA_P
 ClientSampleId :
 PB168019BSD

Tgt Ion:228 Resp: 2248251

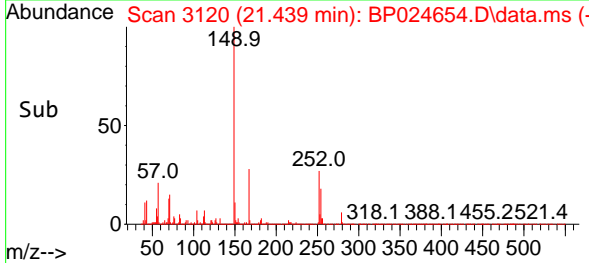
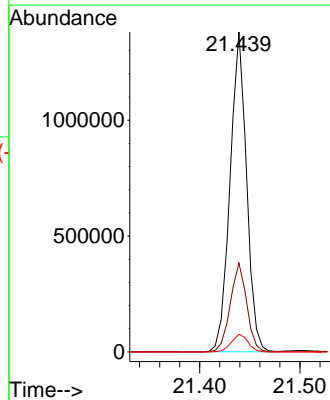
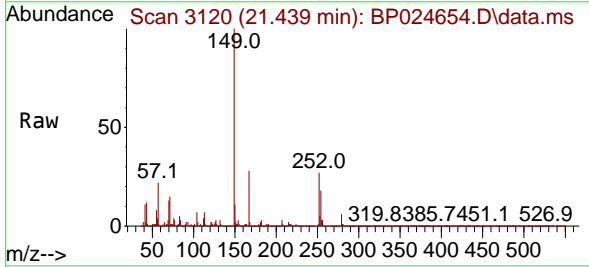
Ion	Ratio	Lower	Upper
228	100		
226	30.3	23.9	35.9
229	19.7	15.5	23.3

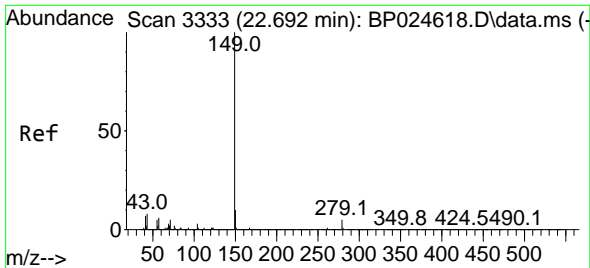


#84
 Bis(2-ethylhexyl)phthalate
 Concen: 47.561 ng
 RT: 21.439 min Scan# 3120
 Delta R.T. -0.000 min
 Lab File: BP024654.D
 Acq: 16 May 2025 12:52

Tgt Ion:149 Resp: 1573600

Ion	Ratio	Lower	Upper
149	100		
167	27.8	22.1	33.1
279	5.5	4.6	6.8



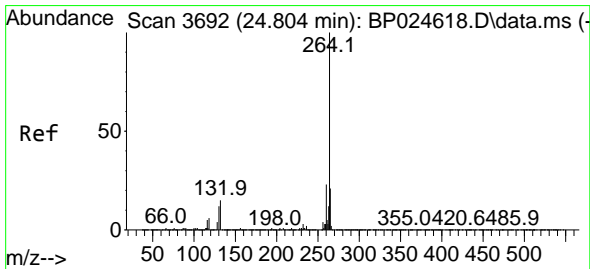
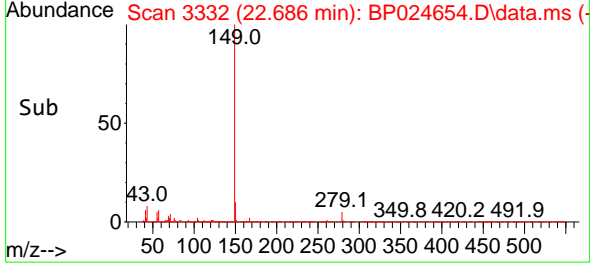
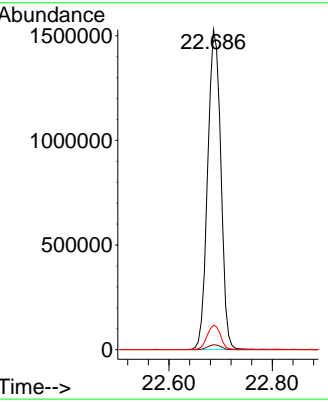
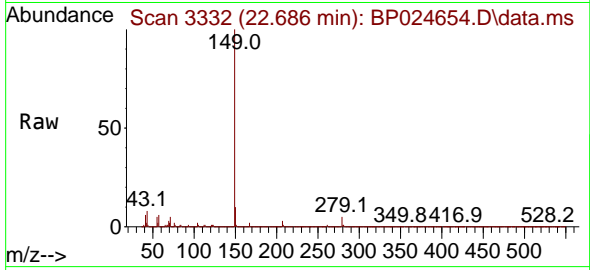


#85
 Di-n-octyl phthalate
 Concen: 49.947 ng
 RT: 22.686 min Scan# 31
 Delta R.T. -0.006 min
 Lab File: BP024654.D
 Acq: 16 May 2025 12:52

Instrument : BNA_P
 ClientSampleId : PB168019BSD

Tgt Ion:149 Resp: 2702361

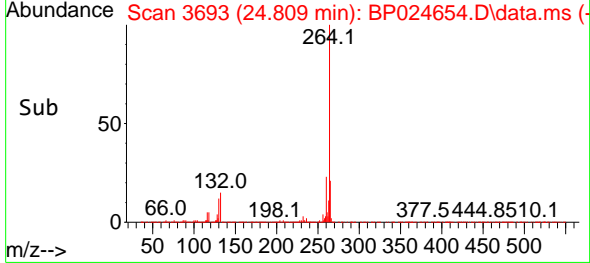
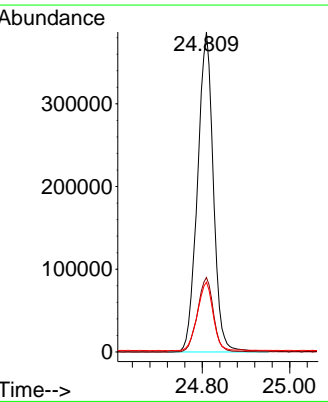
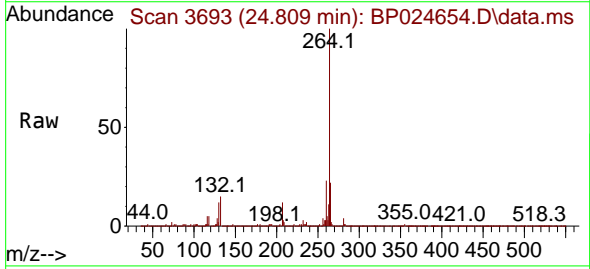
Ion	Ratio	Lower	Upper
149	100		
167	1.6	1.2	1.8
43	7.7	6.3	9.5

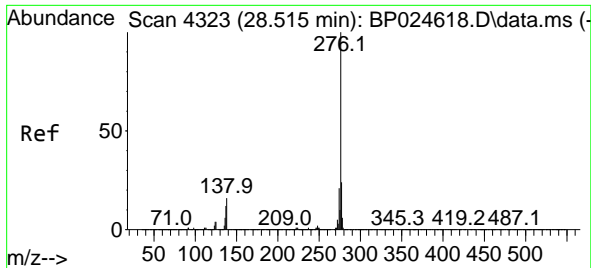


#86
 Perylene-d12
 Concen: 20.000 ng
 RT: 24.809 min Scan# 3693
 Delta R.T. 0.006 min
 Lab File: BP024654.D
 Acq: 16 May 2025 12:52

Tgt Ion:264 Resp: 972873

Ion	Ratio	Lower	Upper
264	100		
260	23.2	18.7	28.1
265	21.8	17.0	25.6





#87
 Indeno(1,2,3-cd)pyrene
 Concen: 45.947 ng
 RT: 28.521 min Scan# 41
 Delta R.T. 0.006 min
 Lab File: BP024654.D
 Acq: 16 May 2025 12:52

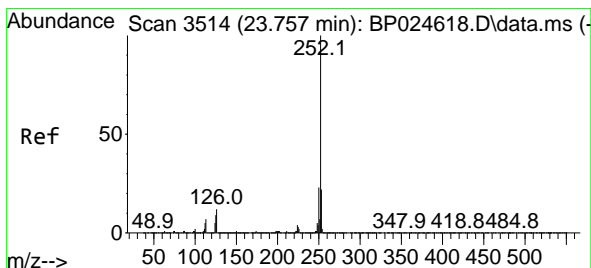
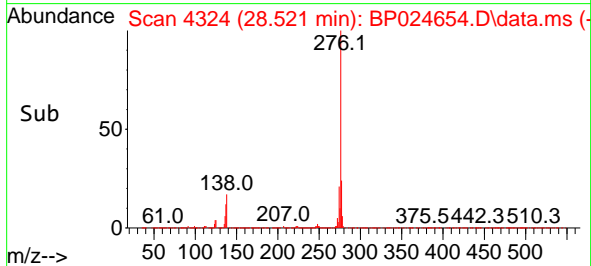
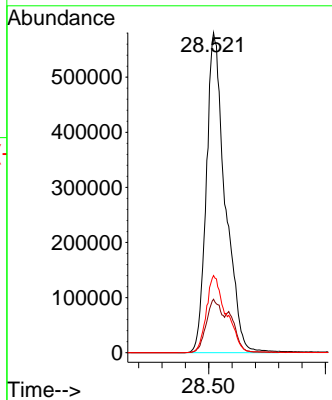
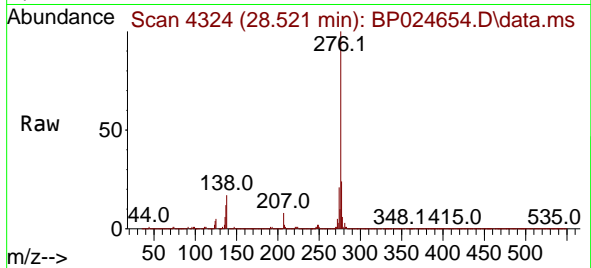
Instrument :

BNA_P

ClientSampleId :

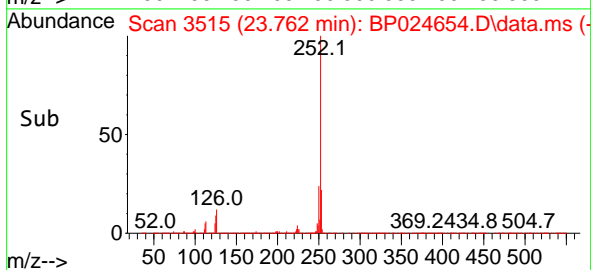
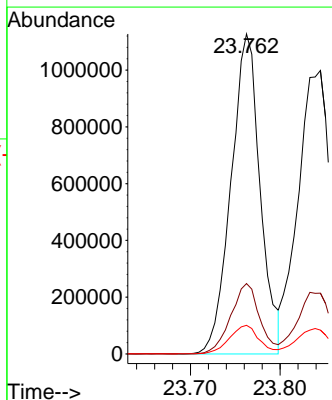
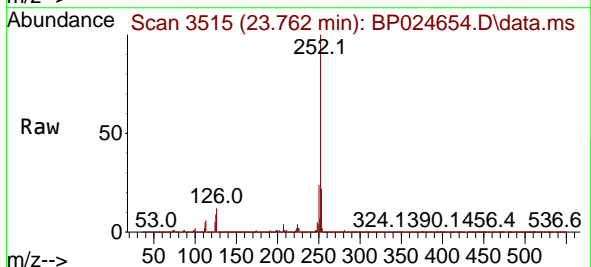
PB168019BSD

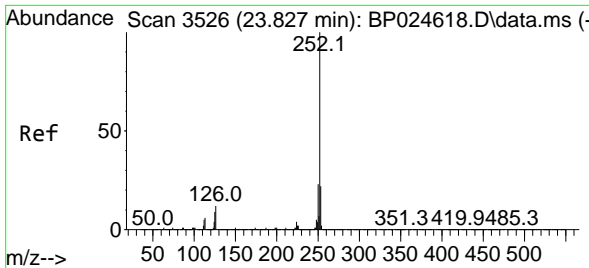
Tgt Ion: 276 Resp: 3263412
 Ion Ratio Lower Upper
 276 100
 138 13.9 11.2 16.8
 277 25.3 15.7 23.5#



#88
 Benzo(b)fluoranthene
 Concen: 45.639 ng
 RT: 23.762 min Scan# 3515
 Delta R.T. 0.006 min
 Lab File: BP024654.D
 Acq: 16 May 2025 12:52

Tgt Ion: 252 Resp: 2541459
 Ion Ratio Lower Upper
 252 100
 253 22.0 17.7 26.5
 125 8.9 7.5 11.3



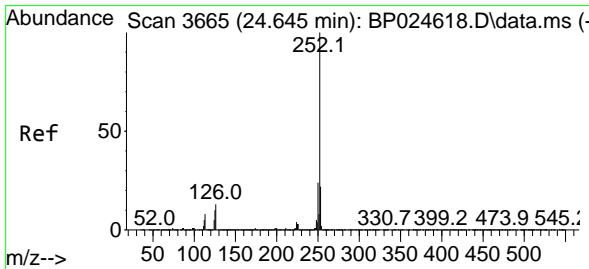
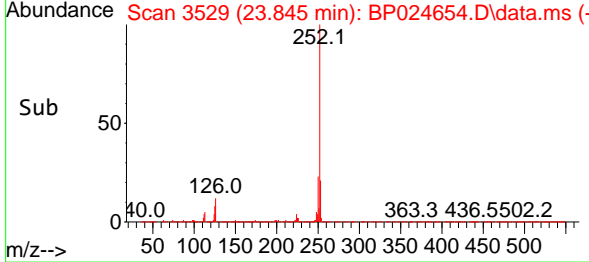
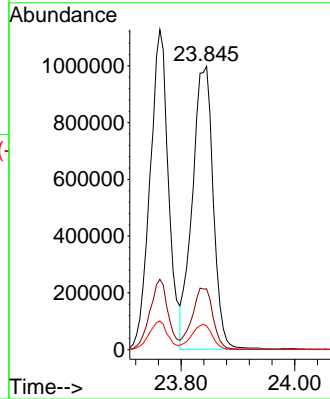
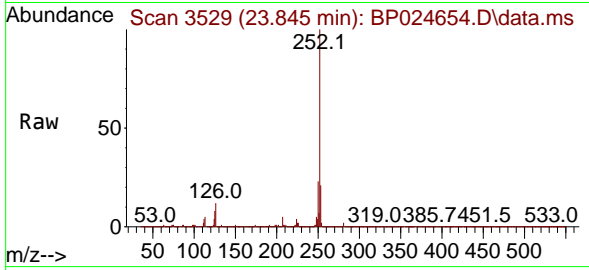


#89
 Benzo(k)fluoranthene
 Concen: 44.332 ng
 RT: 23.845 min Scan# 31
 Delta R.T. 0.018 min
 Lab File: BP024654.D
 Acq: 16 May 2025 12:52

Instrument :
 BNA_P
 ClientSampleId :
 PB168019BSD

Tgt Ion:252 Resp: 2543806

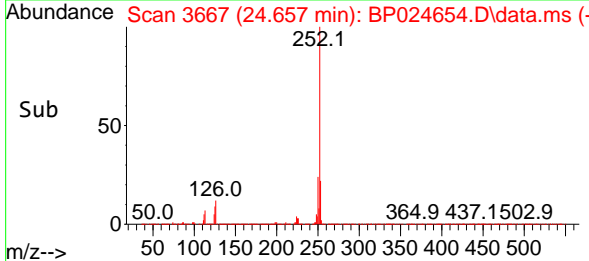
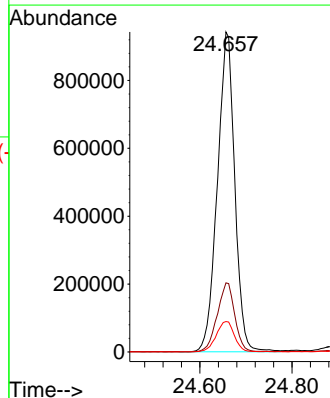
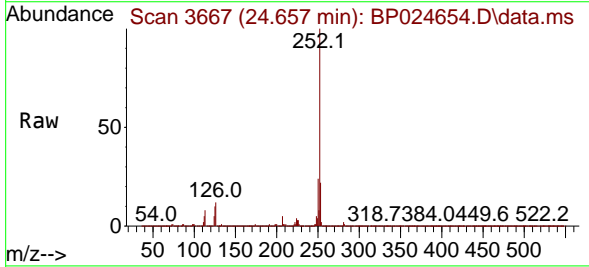
Ion	Ratio	Lower	Upper
252	100		
253	21.4	17.6	26.4
125	8.4	7.0	10.4

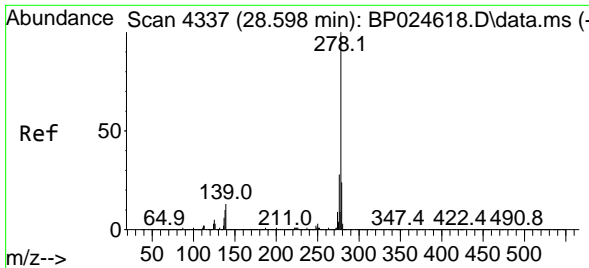


#90
 Benzo(a)pyrene
 Concen: 45.941 ng
 RT: 24.657 min Scan# 3667
 Delta R.T. 0.012 min
 Lab File: BP024654.D
 Acq: 16 May 2025 12:52

Tgt Ion:252 Resp: 2456998

Ion	Ratio	Lower	Upper
252	100		
253	21.6	17.7	26.5
125	9.5	8.1	12.1



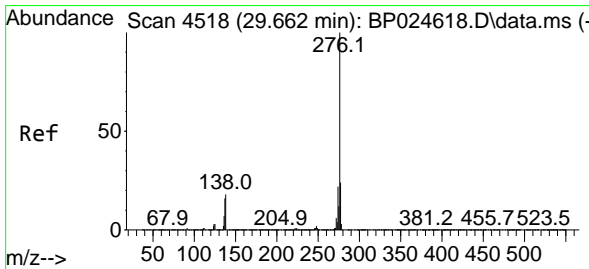
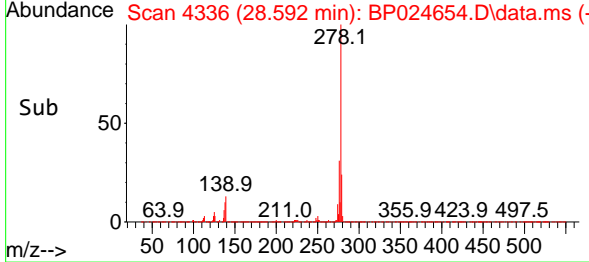
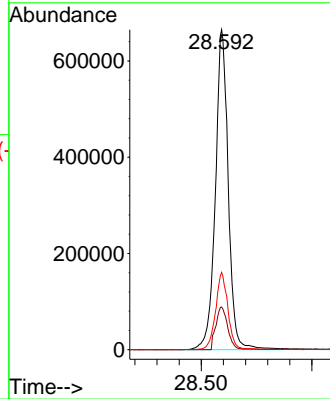
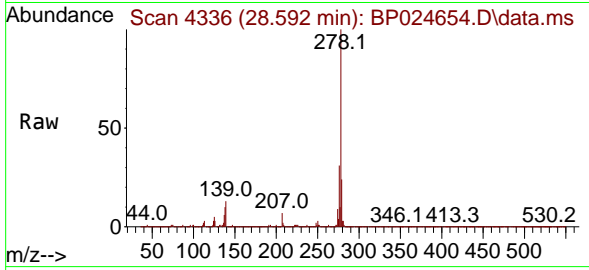


#91
 Dibenzo(a,h)anthracene
 Concen: 46.561 ng
 RT: 28.592 min Scan# 41
 Delta R.T. -0.006 min
 Lab File: BP024654.D
 Acq: 16 May 2025 12:52

Instrument :
 BNA_P
 ClientSampleId :
 PB168019BSD

Tgt Ion: 278 Resp: 2690369

Ion	Ratio	Lower	Upper
278	100		
139	13.3	10.2	15.4
279	24.2	19.0	28.4



#92
 Benzo(g,h,i)perylene
 Concen: 45.666 ng
 RT: 29.686 min Scan# 4522
 Delta R.T. 0.023 min
 Lab File: BP024654.D
 Acq: 16 May 2025 12:52

Tgt Ion: 276 Resp: 2624013

Ion	Ratio	Lower	Upper
276	100		
277	23.9	19.0	28.4
138	17.3	14.4	21.6

