

Data Path : Z:\svoasrv\HPCHEM1\BNA\_P\Data\BP052022\  
 Data File : BP010464.D  
 Acq On : 21 May 2022 08:08  
 Operator : CG/JU  
 Sample : N2918-14  
 Misc :  
 ALS Vial : 39 Sample Multiplier: 1

Instrument :  
 BNA\_P  
 ClientSampleId :  
 DBTH3

Quant Time: May 23 00:43:34 2022  
 Quant Method : Z:\svoasrv\HPCHEM1\BNA\_P\Methods\SFAM-EPA-BP051322.M  
 Quant Title : SVOA CALIBRATION  
 QLast Update : Fri May 13 15:04:31 2022  
 Response via : Initial Calibration

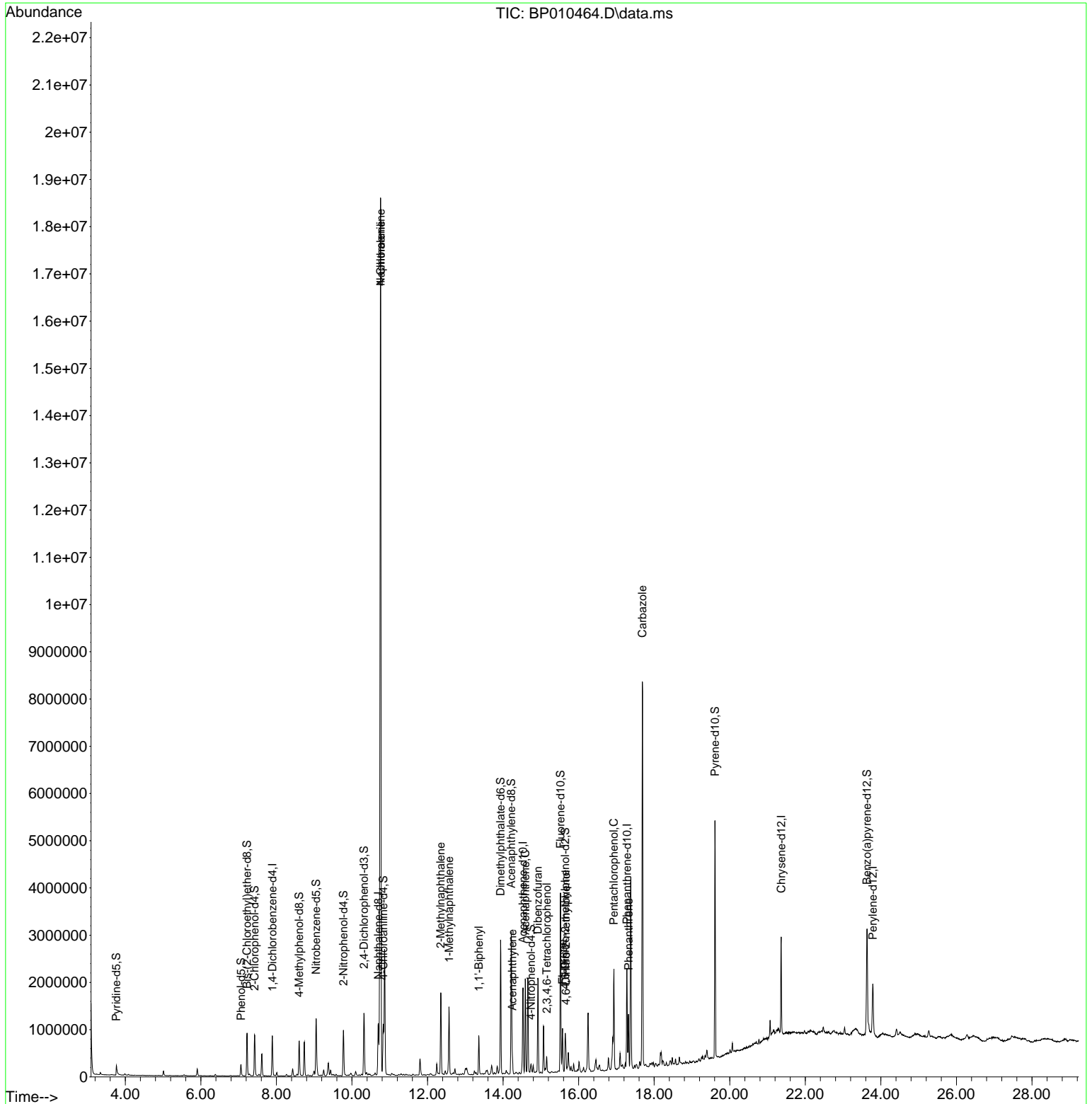
Compound	R.T.	QIon	Response	Conc	Units	Dev(Min)
-----						
Internal Standards						
1) 1,4-Dichlorobenzene-d4	7.893	152	222827	20.000	ng/ul	0.00
20) Naphthalene-d8	10.699	136	979999	20.000	ng/ul #	0.00
38) Acenaphthene-d10	14.528	164	634346	20.000	ng/ul	0.00
64) Phenanthrene-d10	17.281	188	1257734	20.000	ng/ul #	0.00
79) Chrysene-d12	21.363	240	983111	20.000	ng/ul #	0.00
88) Perylene-d12	23.786	264	791220	20.000	ng/ul	0.00
System Monitoring Compounds						
3) 1,4-Dioxane-d8	3.399	96	671	0.128	ng/uL	0.05
4) Pyridine-d5	3.764	84	121924	8.214	ng/ul	0.00
7) Phenol-d5	7.064	99	136492	7.298	ng/ul	0.00
9) Bis-(2-Chloroethyl)eth...	7.222	67	423169	33.677	ng/ul	0.00
11) 2-Chlorophenol-d4	7.422	132	389586	27.223	ng/ul	-0.01
15) 4-Methylphenol-d8	8.599	113	274217	17.253	ng/ul	-0.01
21) Nitrobenzene-d5	9.052	128	275295	36.297	ng/ul	0.00
24) 2-Nitrophenol-d4	9.775	143	286436	35.636	ng/ul	0.00
28) 2,4-Dichlorophenol-d3	10.316	165	470922	30.985	ng/ul	0.00
31) 4-Chloroaniline-d4	10.828	131	558172	24.700	ng/ul	-0.01
46) Dimethylphthalate-d6	13.934	166	1789776	38.295	ng/ul	0.00
49) Acenaphthylene-d8	14.216	160	1975648	36.648	ng/ul	0.00
54) 4-Nitrophenol-d4	14.740	143	52896	6.359	ng/ul	0.01
60) Fluorene-d10	15.522	176	1480337	36.408	ng/ul	0.00
65) 4,6-Dinitro-2-methylph...	15.645	200	180075	24.481	ng/ul	0.00
73) Anthracene-d10	17.534	188	9140	0.160	ng/ul	0.15
81) Pyrene-d10	19.610	212	2567743	49.181	ng/ul	0.00
92) Benzo(a)pyrene-d12	23.633	264	1676864	42.206	ng/ul	0.00
Target Compounds						
						Qvalue
30) Naphthalene	10.758	128	15527210	303.343	ng/ul	97
32) 4-Chloroaniline	10.758	127	2110105	94.088	ng/ul#	4
36) 2-Methylnaphthalene	12.352	142	783733	21.628	ng/ul	90
37) 1-Methylnaphthalene	12.569	142	578194	15.803	ng/ul#	96
43) 1,1'-Biphenyl	13.357	154	409856	8.803	ng/ul#	94
50) Acenaphthylene	14.246	152	166326	2.852	ng/ul	97
52) Acenaphthene	14.587	153	786765	20.680	ng/ul	96
56) Dibenzofuran	14.922	168	1238569	22.215	ng/ul	98
58) 2,3,4,6-Tetrachlorophenol	15.157	232	66390	5.730	ng/ul#	83
61) Fluorene	15.575	166	370183	8.119	ng/ul#	91
66) 4,6-Dinitro-2-methylph...	15.663	198	82151	11.199	ng/ul#	69
71) Pentachlorophenol	16.934	266	265913	28.444	ng/ul#	86
72) Phenanthrene	17.322	178	652948	9.728	ng/ul	99
77) Carbazole	17.687	167	5313947	89.795	ng/ul#	95

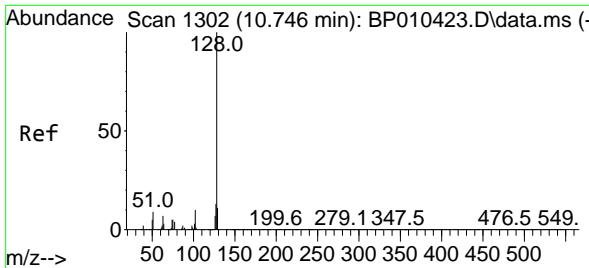
(#) = qualifier out of range (m) = manual integration (+) = signals summed

Data Path : Z:\svoasrv\HPCHEM1\BNA\_P\Data\BP052022\  
 Data File : BP010464.D  
 Acq On : 21 May 2022 08:08  
 Operator : CG/JU  
 Sample : N2918-14  
 Misc :  
 ALS Vial : 39 Sample Multiplier: 1

Instrument :  
 BNA\_P  
 ClientSampleId :  
 DBTH3

Quant Time: May 23 00:43:34 2022  
 Quant Method : Z:\svoasrv\HPCHEM1\BNA\_P\Methods\SFAM-EPA-BP051322.M  
 Quant Title : SVOA CALIBRATION  
 QLast Update : Fri May 13 15:04:31 2022  
 Response via : Initial Calibration

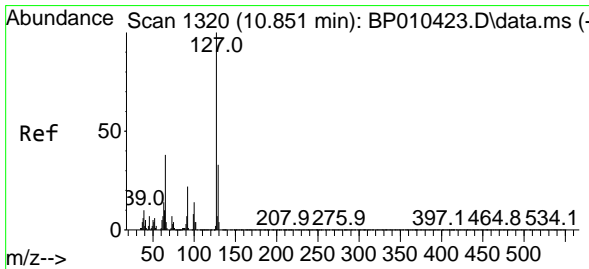
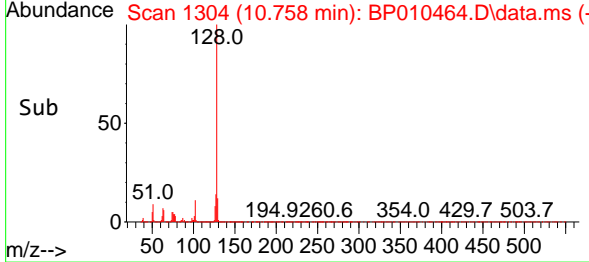
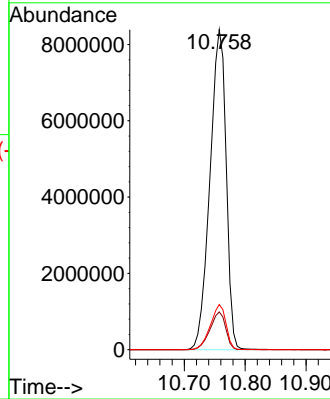
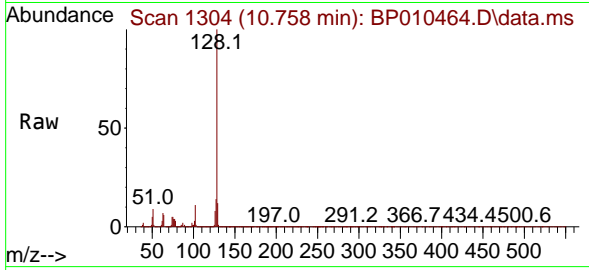




#30  
 Naphthalene  
 Concen: 303.343 ng/u1  
 RT: 10.758 min Scan# 11  
 Delta R.T. 0.006 min  
 Lab File: BP010464.D  
 Acq: 21 May 2022 08:08

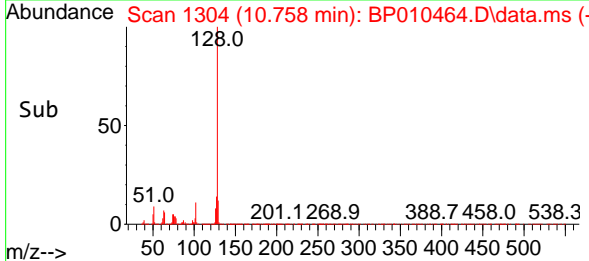
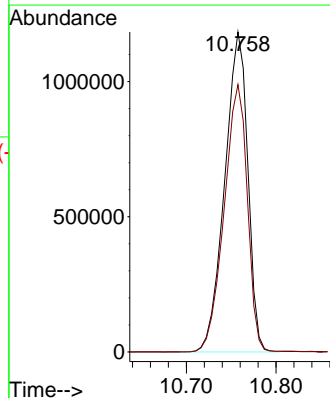
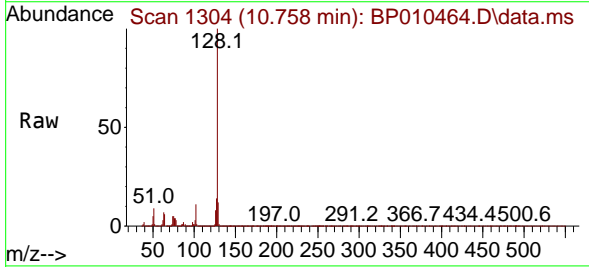
Instrument :  
 BNA\_P  
 ClientSampleId :  
 DBTH3

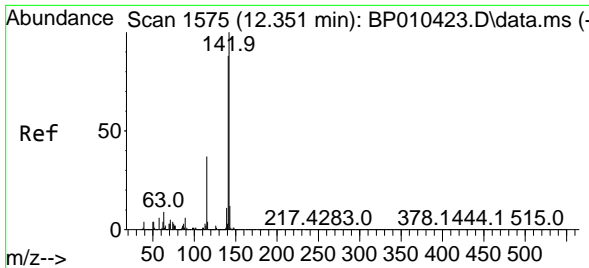
Tgt Ion:128 Resp:15527210  
 Ion Ratio Lower Upper  
 128 100  
 129 11.8 8.6 13.0  
 127 14.1 12.2 18.4



#32  
 4-Chloroaniline  
 Concen: 94.088 ng/u1  
 RT: 10.758 min Scan# 1304  
 Delta R.T. -0.106 min  
 Lab File: BP010464.D  
 Acq: 21 May 2022 08:08

Tgt Ion:127 Resp: 2110105  
 Ion Ratio Lower Upper  
 127 100  
 129 83.6 24.6 37.0#

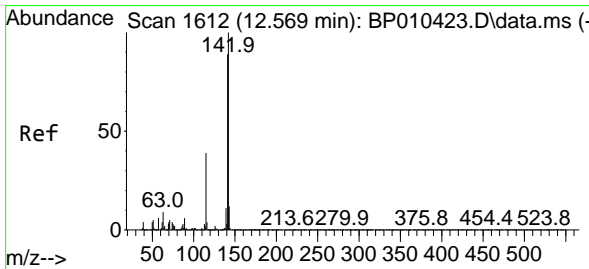
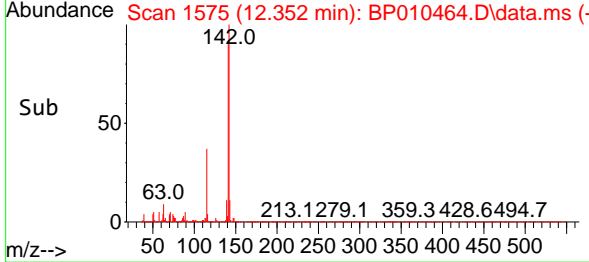
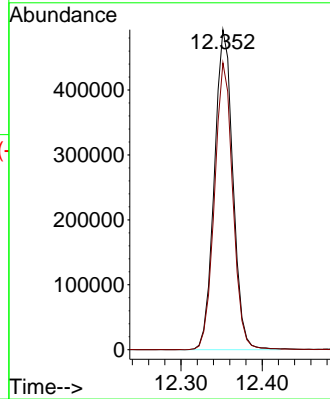
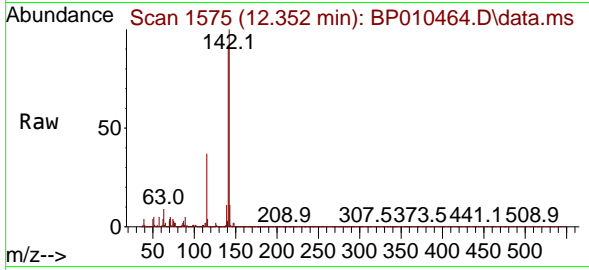




#36  
 2-Methylnaphthalene  
 Concen: 21.628 ng/ul  
 RT: 12.352 min Scan# 1575  
 Delta R.T. -0.011 min  
 Lab File: BP010464.D  
 Acq: 21 May 2022 08:08

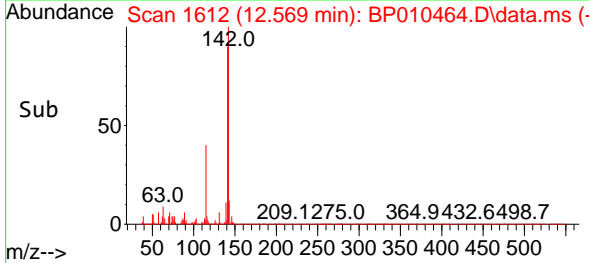
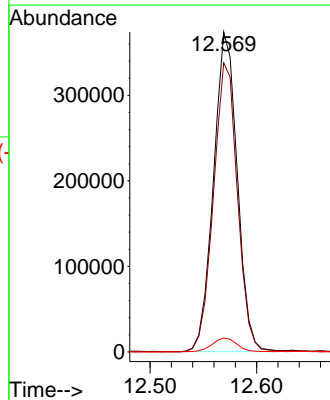
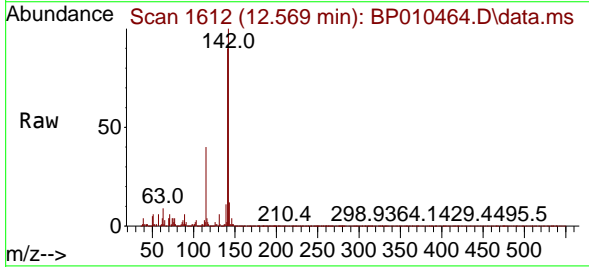
Instrument :  
 BNA\_P  
 ClientSampleId :  
 DBTH3

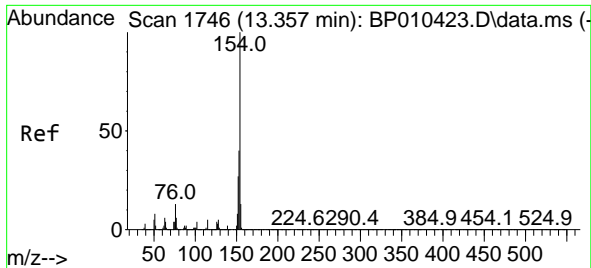
Tgt Ion:142 Resp: 783733  
 Ion Ratio Lower Upper  
 142 100  
 141 89.6 64.3 96.5



#37  
 1-Methylnaphthalene  
 Concen: 15.803 ng/ul  
 RT: 12.569 min Scan# 1612  
 Delta R.T. -0.012 min  
 Lab File: BP010464.D  
 Acq: 21 May 2022 08:08

Tgt Ion:142 Resp: 578194  
 Ion Ratio Lower Upper  
 142 100  
 141 90.3 69.8 104.8  
 116 4.3 5.6 8.4#

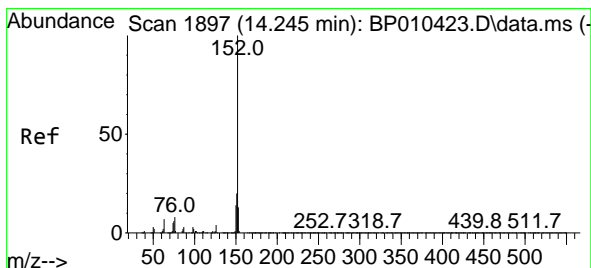
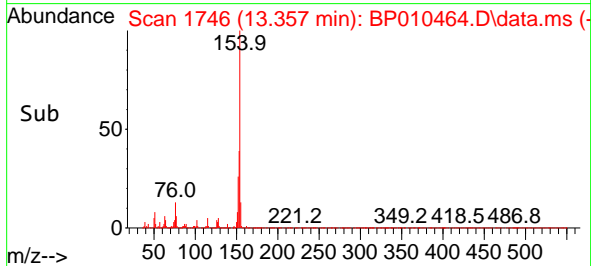
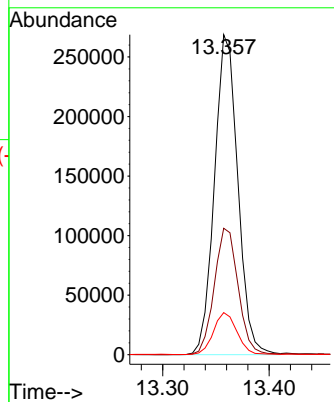
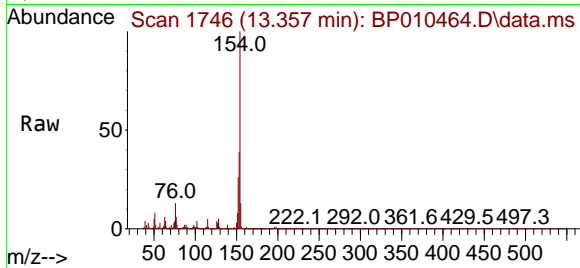




#43  
 1,1'-Biphenyl  
 Concen: 8.803 ng/u1  
 RT: 13.357 min Scan# 1746  
 Delta R.T. -0.012 min  
 Lab File: BP010464.D  
 Acq: 21 May 2022 08:08

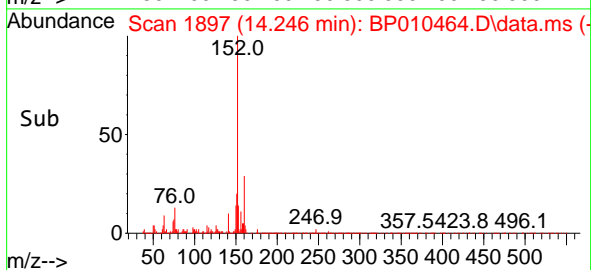
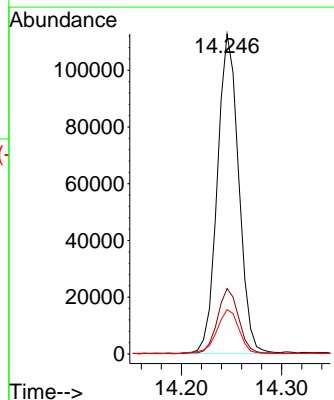
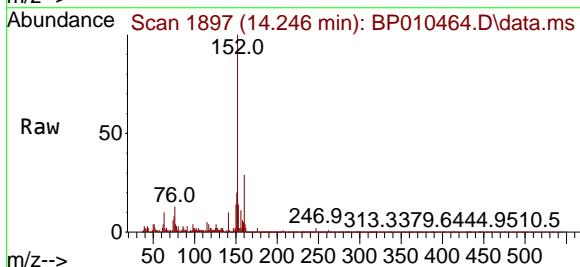
Instrument : BNA\_P  
 ClientSampleId : DBTH3

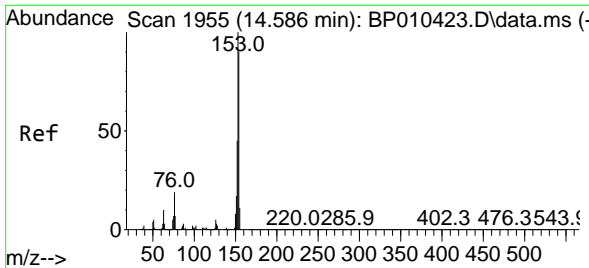
Tgt Ion	Resp	Lower	Upper
154	409856		
153	39.5	28.6	43.0
76	13.1	8.5	12.7#



#50  
 Acenaphthylene  
 Concen: 2.852 ng/u1  
 RT: 14.246 min Scan# 1897  
 Delta R.T. -0.006 min  
 Lab File: BP010464.D  
 Acq: 21 May 2022 08:08

Tgt Ion	Resp	Lower	Upper
152	166326		
151	20.4	18.3	27.5
153	13.9	11.0	16.6



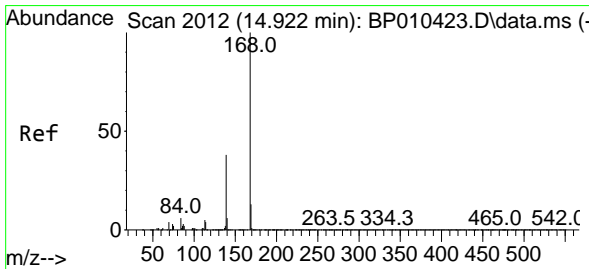
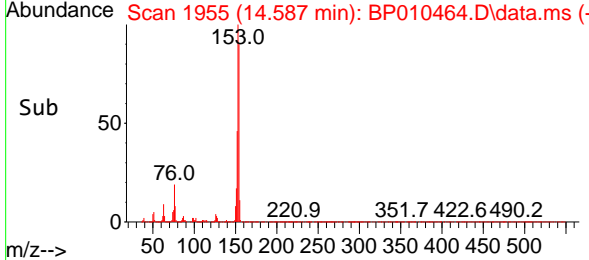
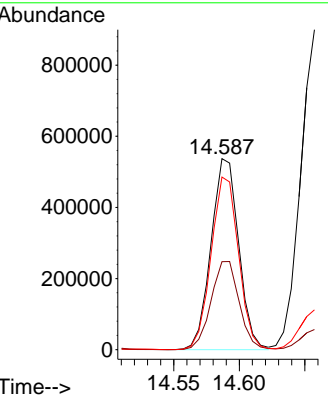
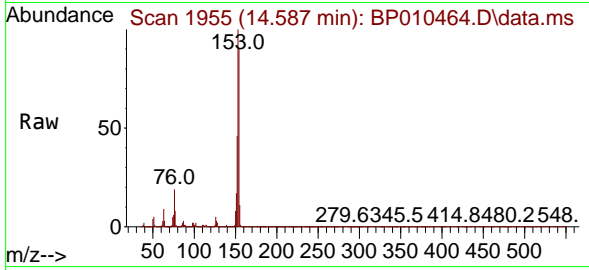


#52  
 Acenaphthene  
 Concen: 20.680 ng/u1  
 RT: 14.587 min Scan# 1955  
 Delta R.T. -0.012 min  
 Lab File: BP010464.D  
 Acq: 21 May 2022 08:08

Instrument : BNA\_P  
 ClientSampleId : DBTH3

Tgt Ion:153 Resp: 786765

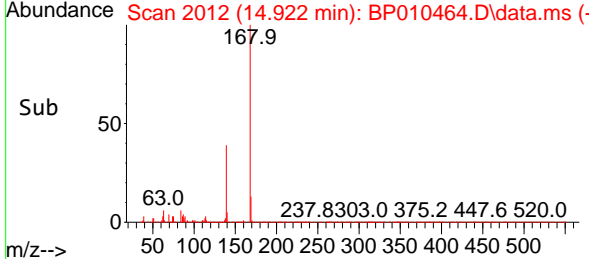
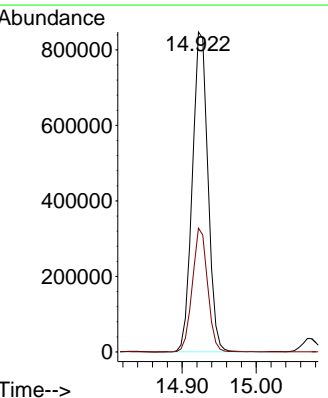
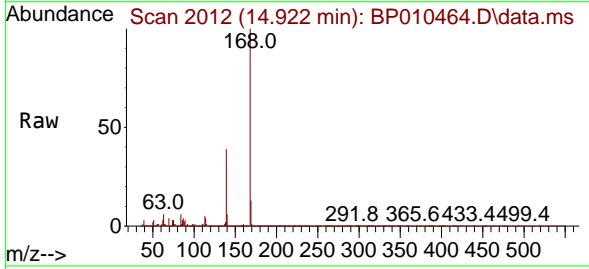
Ion	Ratio	Lower	Upper
153	100		
152	46.0	34.3	51.5
154	90.3	70.0	105.0

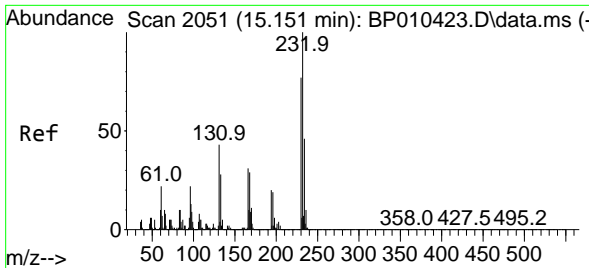


#56  
 Dibenzofuran  
 Concen: 22.215 ng/u1  
 RT: 14.922 min Scan# 2012  
 Delta R.T. -0.011 min  
 Lab File: BP010464.D  
 Acq: 21 May 2022 08:08

Tgt Ion:168 Resp: 1238569

Ion	Ratio	Lower	Upper
168	100		
139	38.7	30.1	45.1



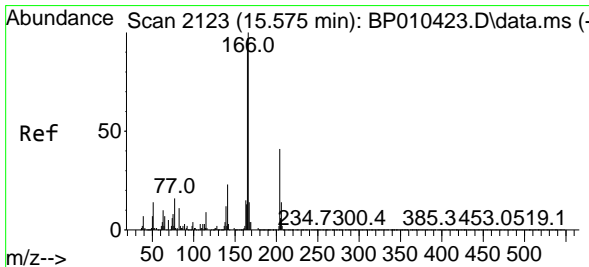
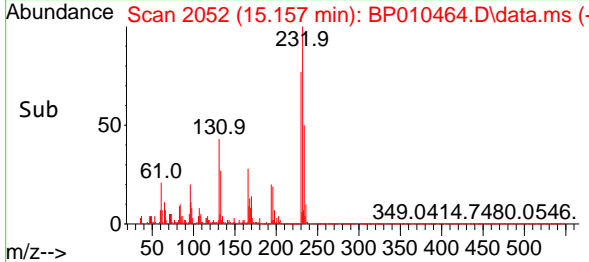
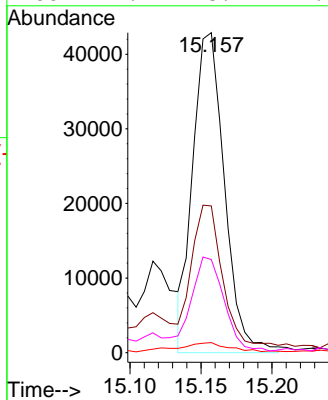
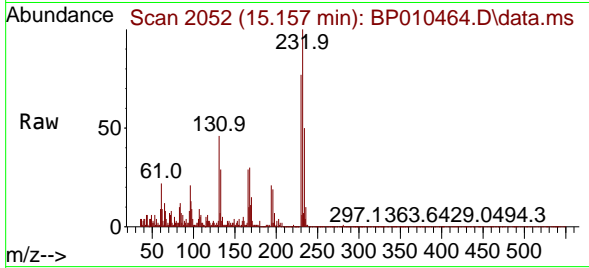


#58  
 2,3,4,6-Tetrachlorophenol  
 Concen: 5.730 ng/ul  
 RT: 15.157 min Scan# 2052  
 Delta R.T. 0.000 min  
 Lab File: BP010464.D  
 Acq: 21 May 2022 08:08

Instrument :  
 BNA\_P  
 ClientSampleId :  
 DBTH3

Tgt Ion: 232 Resp: 66390

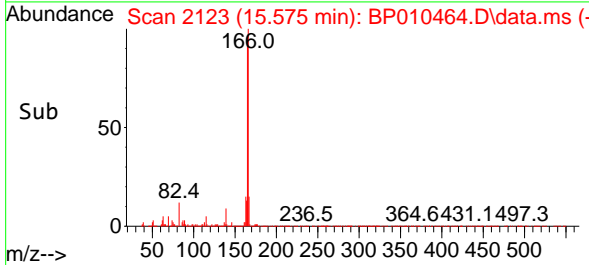
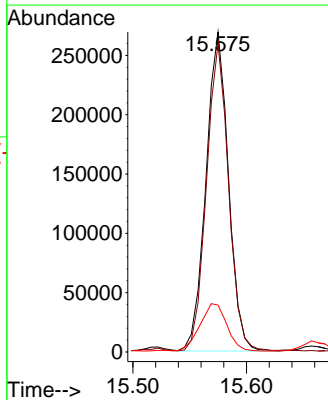
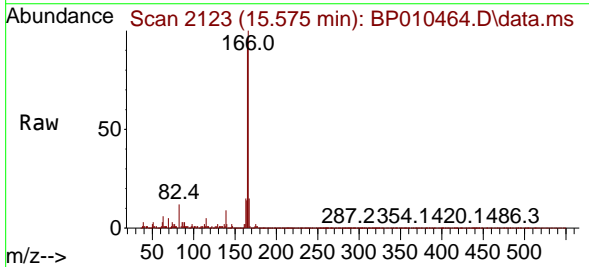
Ion	Ratio	Lower	Upper
232	100		
131	45.9	25.4	38.2#
130	3.2	4.2	6.2#
166	29.1	28.1	42.1

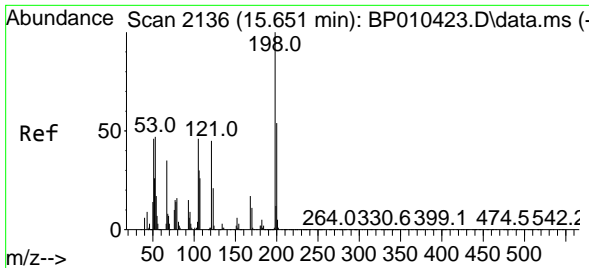


#61  
 Fluorene  
 Concen: 8.119 ng/ul  
 RT: 15.575 min Scan# 2123  
 Delta R.T. -0.006 min  
 Lab File: BP010464.D  
 Acq: 21 May 2022 08:08

Tgt Ion: 166 Resp: 370183

Ion	Ratio	Lower	Upper
166	100		
165	96.5	70.3	105.5
167	14.6	9.5	14.3#

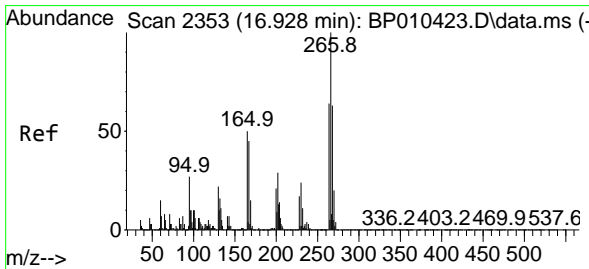
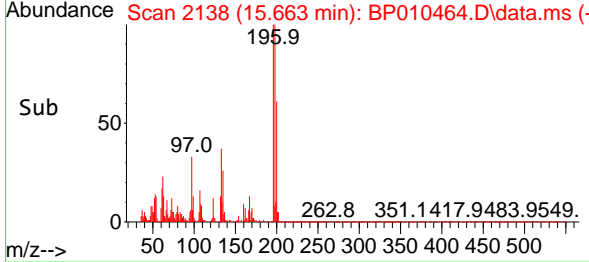
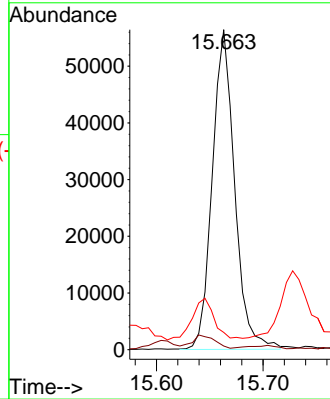
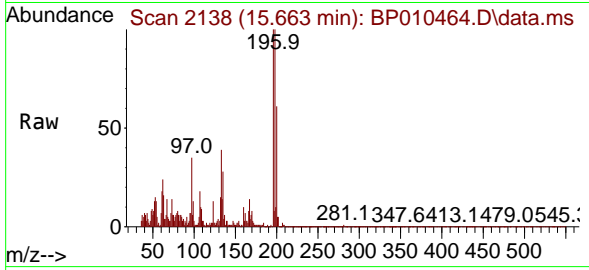




#66  
 4,6-Dinitro-2-methylphenol  
 Concen: 11.199 ng/ul  
 RT: 15.663 min Scan# 2138  
 Delta R.T. 0.000 min  
 Lab File: BP010464.D  
 Acq: 21 May 2022 08:08

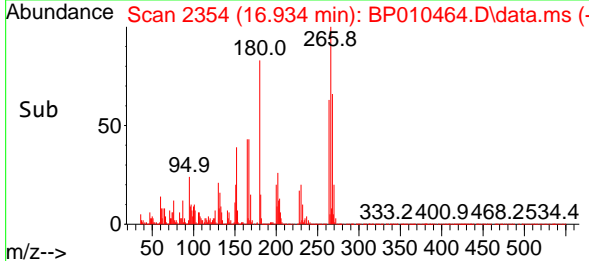
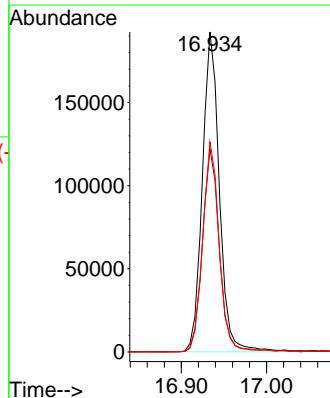
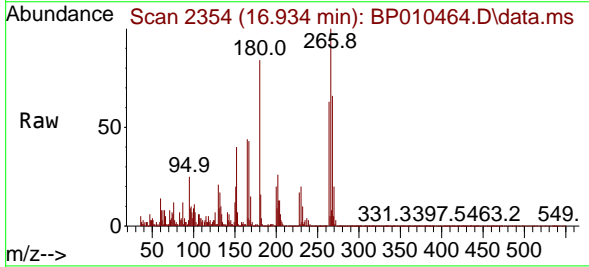
Instrument :  
 BNA\_P  
 ClientSampleId :  
 DBTH3

Tgt Ion	Resp	Lower	Upper
198	82151	100	
182	1.2	6.0	9.0#
77	5.4	17.7	26.5#

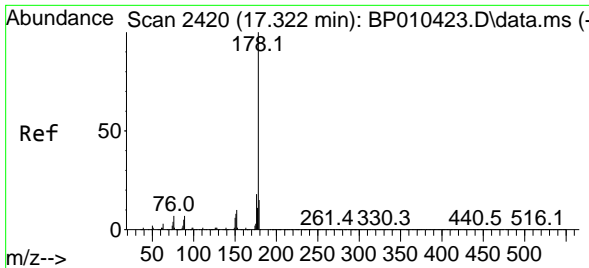


#71  
 Pentachlorophenol  
 Concen: 28.444 ng/ul  
 RT: 16.934 min Scan# 2354  
 Delta R.T. 0.000 min  
 Lab File: BP010464.D  
 Acq: 21 May 2022 08:08

Tgt Ion	Resp	Lower	Upper
266	265913	100	
264	63.5	57.3	85.9
268	65.6	65.7	98.5#





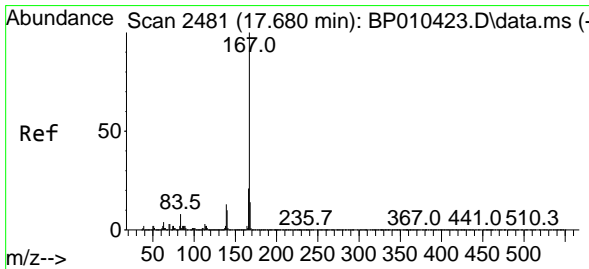
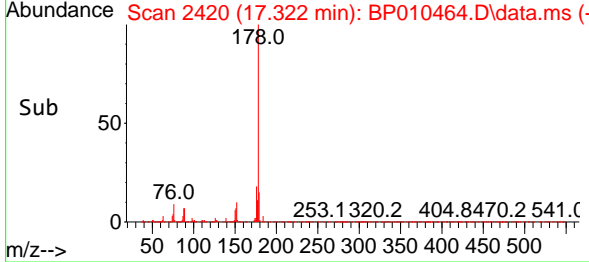
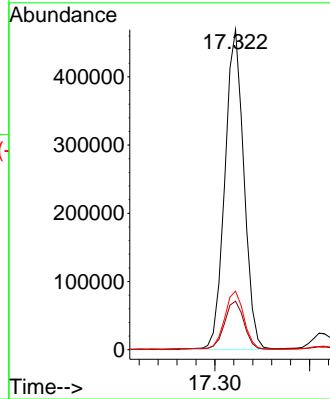
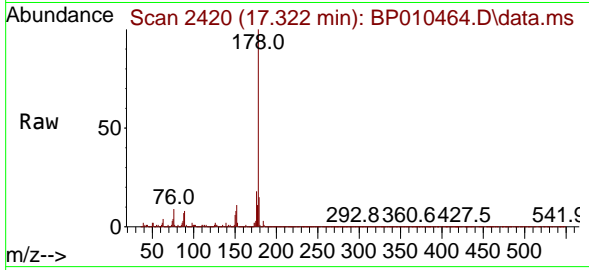


#72  
 Phenanthrene  
 Concen: 9.728 ng/u1  
 RT: 17.322 min Scan# 2420  
 Delta R.T. -0.006 min  
 Lab File: BP010464.D  
 Acq: 21 May 2022 08:08

Instrument :  
 BNA\_P  
 ClientSampleId :  
 DBTH3

Tgt Ion:178 Resp: 652948

Ion	Ratio	Lower	Upper
178	100		
179	15.2	11.7	17.5
176	18.3	14.5	21.7



#77  
 Carbazole  
 Concen: 89.795 ng/u1  
 RT: 17.687 min Scan# 2482  
 Delta R.T. 0.000 min  
 Lab File: BP010464.D  
 Acq: 21 May 2022 08:08

Tgt Ion:167 Resp: 5313947

Ion	Ratio	Lower	Upper
167	100		
166	21.7	15.8	23.8
139	13.2	8.3	12.5

