

Data Path : Z:\svoasrv\HPCHEM1\BNA_P\Data\BP052022\
 Data File : BP010455.D
 Acq On : 21 May 2022 02:30
 Operator : CG/JU
 Sample : N2843-17
 Misc :
 ALS Vial : 30 Sample Multiplier: 1

Instrument :
 BNA_P
 ClientSampleId :
 EW4J7

Integration Parameters: LSCINT.P

Integrator: RTE
 Smoothing : OFF Filtering: 5
 Sampling : 1 Min Area: 0.1 % of largest Peak
 Start Thrs: 0.2 Max Peaks: 100
 Stop Thrs : 0 Peak Location: TOP

If leading or trailing edge < 100 prefer < Baseline drop else tangent >
 Peak separation: 5

Method : Z:\svoasrv\HPCHEM1\BNA_P\Methods\SFAM-EPA-BP051322.M
 Title : SVOA CALIBRATION

Signal : TIC: BP010455.D\data.ms

peak #	R.T. min	first scan	max scan	last scan	PK TY	peak height	corr. area	corr. % max.	% of total
1	3.340	39	43	52	rVB2	31891	51550	1.27%	0.115%
2	3.628	89	92	103	rVB	12645	24838	0.61%	0.055%
3	3.758	111	114	139	rBV	314797	639495	15.81%	1.426%
4	4.081	166	169	175	rVB3	8634	10519	0.26%	0.023%
5	4.999	321	325	327	rBV3	9127	12744	0.32%	0.028%
6	7.058	666	675	689	rBV	582704	1011151	25.00%	2.255%
7	7.222	696	703	714	rBV	473122	799313	19.76%	1.782%
8	7.299	714	716	725	rVB2	13261	22322	0.55%	0.050%
9	7.422	730	737	751	rBV	618086	1018863	25.19%	2.272%
10	7.887	809	816	826	rBV	619811	1042534	25.78%	2.325%
11	7.963	826	829	835	rVB3	10549	16928	0.42%	0.038%
12	8.599	929	937	954	rBV	757462	1306971	32.31%	2.914%
13	9.046	1006	1013	1026	rBV	634957	1121325	27.72%	2.500%
14	9.181	1031	1036	1039	rVV6	6274	10605	0.26%	0.024%
15	9.216	1039	1042	1051	rVB10	5119	10826	0.27%	0.024%
16	9.493	1083	1089	1094	rBV	18861	28482	0.70%	0.064%
17	9.775	1129	1137	1149	rBV	505300	902431	22.31%	2.012%
18	10.310	1220	1228	1252	rBV	735477	1357750	33.57%	3.028%
19	10.457	1252	1253	1259	rVB6	3153	4703	0.12%	0.010%
20	10.693	1282	1293	1309	rBV	937063	1643802	40.64%	3.666%
21	10.828	1309	1316	1338	rBV	685773	1348602	33.34%	3.007%
22	11.740	1465	1471	1477	rBV10	3410	8520	0.21%	0.019%
23	12.122	1529	1536	1542	rVV2	11860	20176	0.50%	0.045%
24	12.287	1559	1564	1574	rVB3	12418	26531	0.66%	0.059%
25	12.751	1639	1643	1647	rBV7	3425	6416	0.16%	0.014%
26	12.793	1647	1650	1655	rVB6	3550	5114	0.13%	0.011%
27	12.934	1670	1674	1679	rVB5	5927	9560	0.24%	0.021%
28	13.022	1685	1689	1694	rBV7	3968	7126	0.18%	0.016%
29	13.069	1694	1697	1703	rVV5	7036	10819	0.27%	0.024%
30	13.140	1705	1709	1713	rVB7	3880	6462	0.16%	0.014%
31	13.263	1726	1730	1735	rBV8	3462	5488	0.14%	0.012%
32	13.357	1741	1746	1753	rBV	38241	56418	1.39%	0.126%
33	13.493	1765	1769	1771	rBV4	3781	5638	0.14%	0.013%
34	13.928	1837	1843	1855	rVV	1412007	2074817	51.30%	4.627%
35	14.010	1855	1857	1859	rVB3	5363	4856	0.12%	0.011%
36	14.216	1883	1892	1904	rBV	1595296	2502947	61.88%	5.581%

Data Path : Z:\svoasrv\HPCHEM1\BNA_P\Data\BP052022\
 Data File : BP010455.D
 Acq On : 21 May 2022 02:30
 Operator : CG/JU
 Sample : N2843-17
 Misc :
 ALS Vial : 30 Sample Multiplier: 1

Instrument :
 BNA_P
 ClientSampleId :
 EW4J7

Integration Parameters: LSCINT.P

Integrator: RTE
 Smoothing : OFF Filtering: 5
 Sampling : 1 Min Area: 0.1 % of largest Peak
 Start Thrs: 0.2 Max Peaks: 100
 Stop Thrs : 0 Peak Location: TOP

If leading or trailing edge < 100 prefer < Baseline drop else tangent >
 Peak separation: 5

Method : Z:\svoasrv\HPCHEM1\BNA_P\Methods\SFAM-EPA-BP051322.M
 Title : SVOA CALIBRATION

37	14.428	1924	1928	1935	rVB3	13964	19803	0.49%	0.044%
38	14.522	1935	1944	1955	rBV	1589080	2329916	57.60%	5.196%
39	14.722	1971	1978	1999	rBV	347561	807662	19.97%	1.801%
40	15.110	2042	2044	2049	rBV6	3373	5756	0.14%	0.013%
41	15.328	2075	2081	2085	rBV3	7400	11574	0.29%	0.026%
42	15.381	2086	2090	2095	rVB3	7910	12609	0.31%	0.028%
43	15.516	2106	2113	2126	rBV	2184327	3175911	78.52%	7.082%
44	15.634	2127	2133	2149	rVV	466181	725763	17.94%	1.618%
45	15.757	2149	2154	2160	rVB3	25542	40278	1.00%	0.090%
46	16.210	2226	2231	2232	rBV5	3946	5048	0.12%	0.011%
47	16.304	2243	2247	2253	rVB7	12006	21921	0.54%	0.049%
48	16.951	2351	2357	2361	rBV9	6688	13334	0.33%	0.030%
49	17.039	2369	2372	2374	rBV4	4934	5971	0.15%	0.013%
50	17.275	2404	2412	2422	rBV	1959361	2848011	70.41%	6.351%
51	17.375	2422	2429	2441	rVV	2337893	3395970	83.96%	7.573%
52	17.481	2443	2447	2450	rVB5	11543	18367	0.45%	0.041%
53	17.581	2462	2464	2468	rVB5	4999	5411	0.13%	0.012%
54	17.945	2521	2526	2531	rBV	73099	99042	2.45%	0.221%
55	18.045	2541	2543	2545	rBV3	3537	4113	0.10%	0.009%
56	18.104	2549	2553	2557	rBV6	9729	16069	0.40%	0.036%
57	18.157	2558	2562	2568	rBV4	78133	122718	3.03%	0.274%
58	18.445	2608	2611	2615	rBV5	11147	19555	0.48%	0.044%
59	19.180	2733	2736	2743	rBV4	30281	46204	1.14%	0.103%
60	19.251	2745	2748	2755	rBV	28096	51831	1.28%	0.116%
61	19.392	2768	2772	2779	rBV7	32742	62376	1.54%	0.139%
62	19.604	2802	2808	2827	rBV	2940055	4044695	100.00%	9.019%
63	20.127	2895	2897	2905	rVB3	25318	33743	0.83%	0.075%
64	20.616	2977	2980	2983	rBV2	33512	31696	0.78%	0.071%
65	21.063	3052	3056	3064	rBV	322850	540044	13.35%	1.204%
66	21.357	3101	3106	3118	rBV	2250661	2893342	71.53%	6.452%
67	21.974	3208	3211	3219	rVB3	72226	122589	3.03%	0.273%
68	23.033	3389	3391	3396	rVB2	117175	144253	3.57%	0.322%
69	23.621	3484	3491	3497	rBV2	1589445	3314710	81.95%	7.392%
70	23.780	3511	3518	3530	rVB2	1291640	2717327	67.18%	6.059%

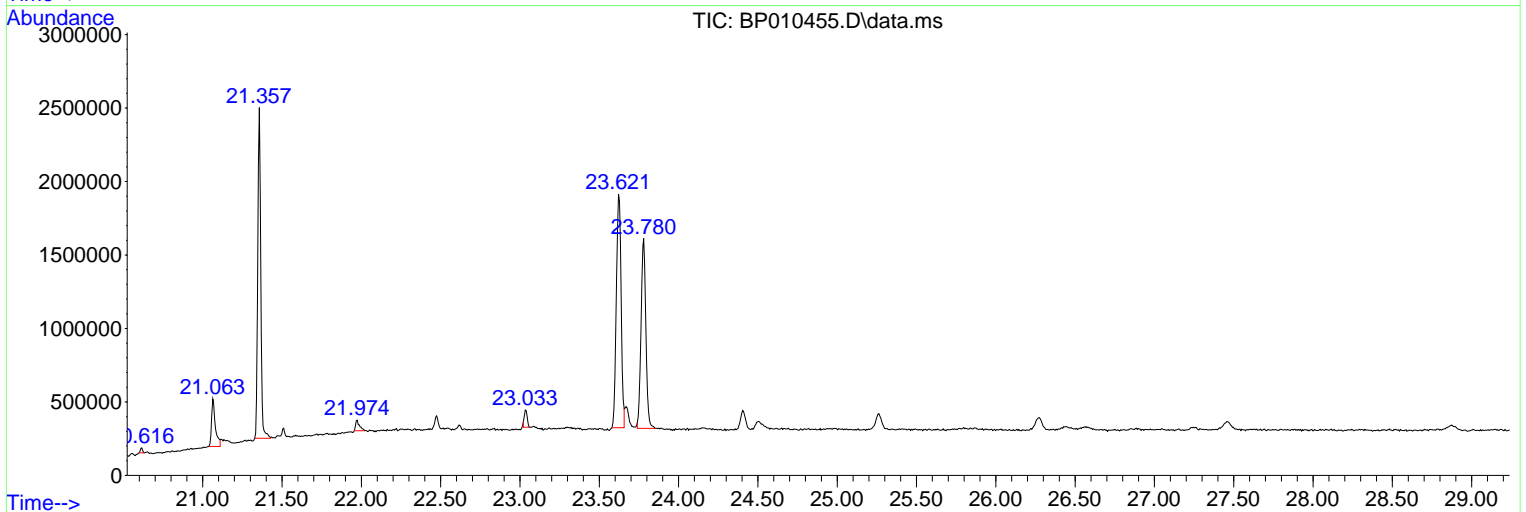
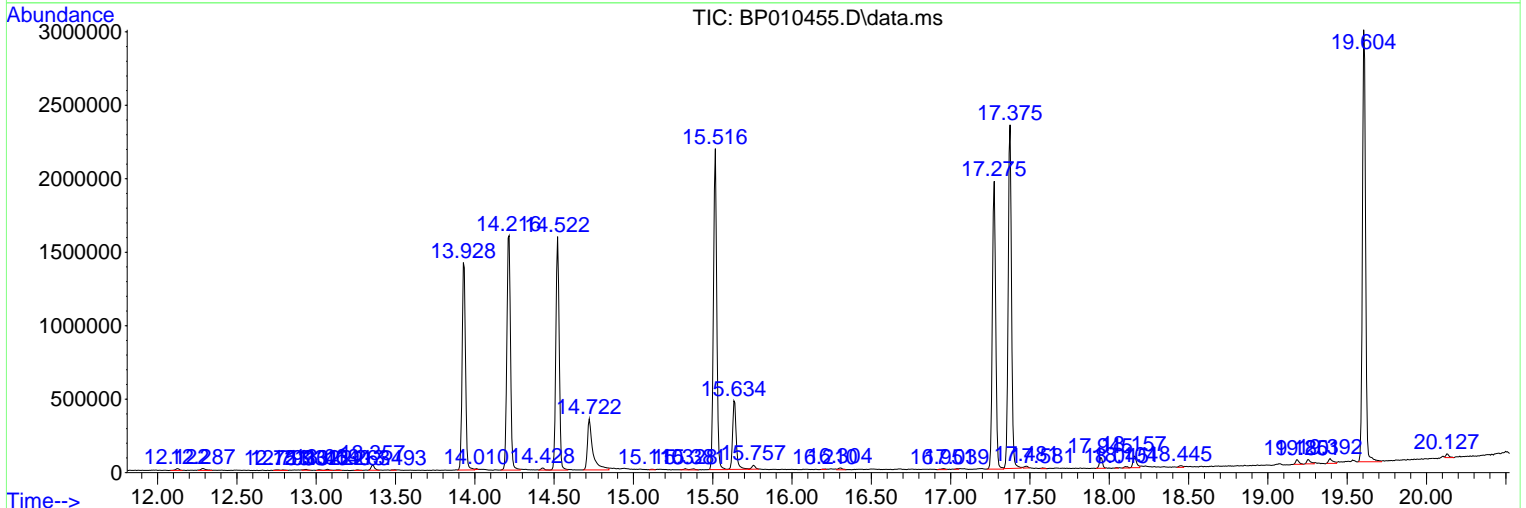
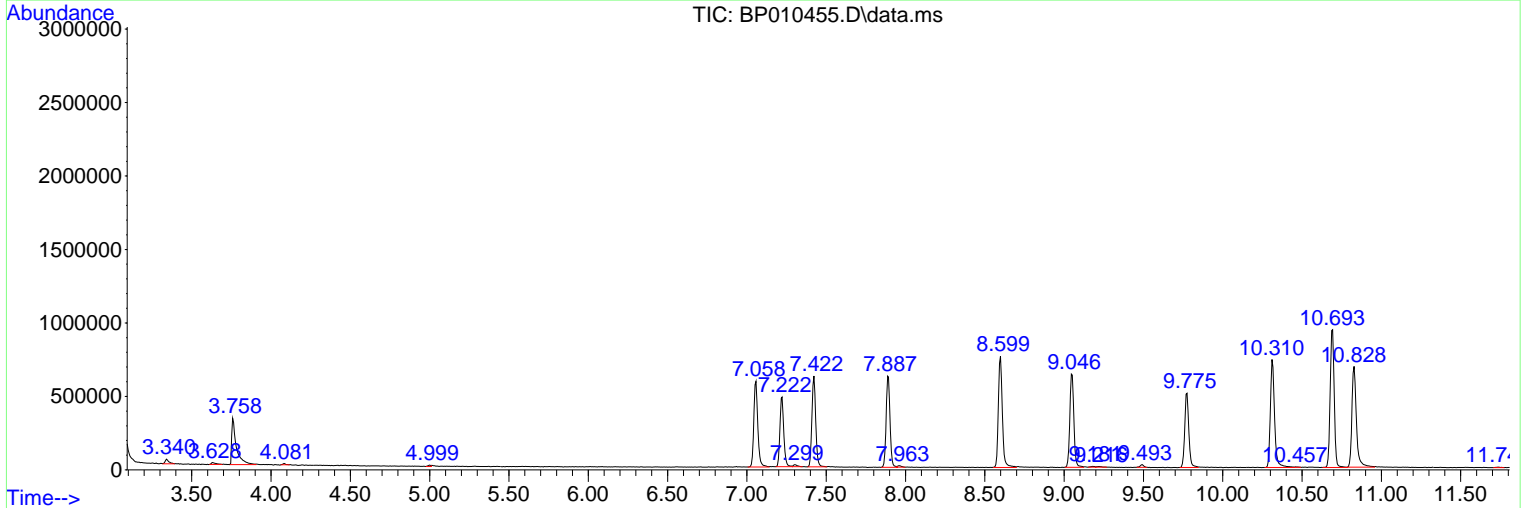
Sum of corrected areas: 44844254

Data Path : Z:\svoasrv\HPCHEM1\BNA_P\Data\BP052022\
 Data File : BP010455.D
 Acq On : 21 May 2022 02:30
 Operator : CG/JU
 Sample : N2843-17
 Misc :
 ALS Vial : 30 Sample Multiplier: 1

Instrument :
 BNA_P
 ClientSampleId :
 EW4J7

Quant Method : Z:\svoasrv\HPCHEM1\BNA_P\Methods\SFAM-EPA-BP051322.M
 Quant Title : SVOA CALIBRATION

TIC Library : C:\DATABASE\NIST20.L
 TIC Integration Parameters: LSCINT.P



Data Path : Z:\svoasrv\HPCHEM1\BNA_P\Data\BP052022\
 Data File : BP010455.D
 Acq On : 21 May 2022 02:30
 Operator : CG/JU
 Sample : N2843-17
 Misc :
 ALS Vial : 30 Sample Multiplier: 1

Instrument :
 BNA_P
 ClientSampleId :
 EW4J7

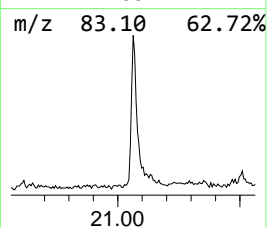
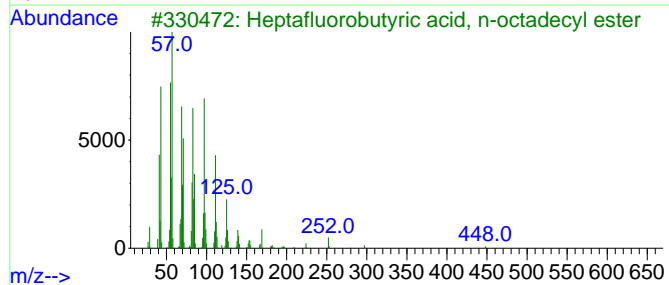
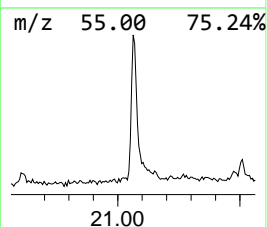
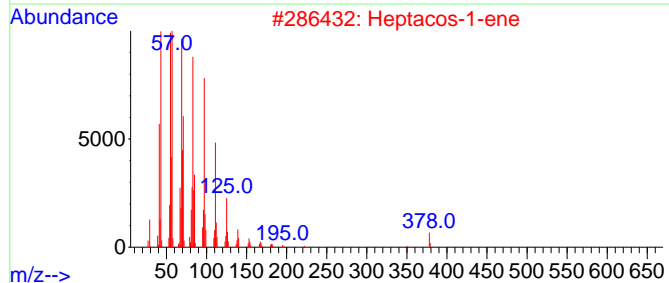
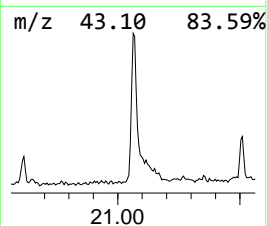
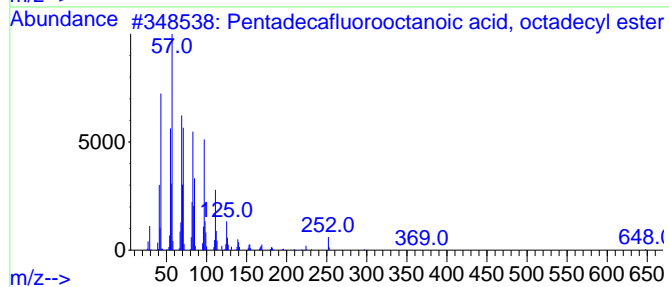
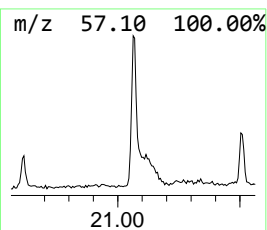
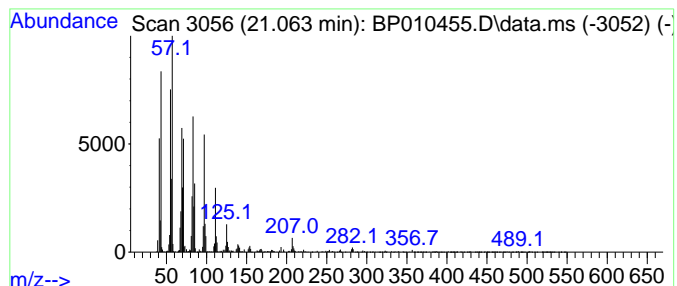
Quant Method : Z:\svoasrv\HPCHEM1\BNA_P\Methods\SFAM-EPA-BP051322.M
 Quant Title : SVOA CALIBRATION

TIC Library : C:\DATABASE\NIST20.L
 TIC Integration Parameters: LSCINT.P

 Peak Number 1 Pentadecafluorooctanoic aci... Concentration Rank 1

R.T.	EstConc	Area	Relative to ISTD	R.T.
21.063	3.73 ng/ul	540044	Chrysene-d12	21.357

Hit#	of 5	Tentative ID	MW	MolForm	CAS#	Qual
1		Pentadecafluorooctanoic acid, oc...	666	C26H37F15O2	1000406-04-8	94
2		Heptacos-1-ene	378	C27H54	015306-27-1	94
3		Heptafluorobutyric acid, n-octad...	466	C22H37F7O2	000400-57-7	91
4		Octadecyl trifluoroacetate	366	C20H37F3O2	079392-43-1	91
5		Nonadecyl heptafluorobutyrate	480	C23H39F7O2	1000351-83-9	91



Data Path : Z:\svoasrv\HPCHEM1\BNA_P\Data\BP052022\
Data File : BP010455.D
Acq On : 21 May 2022 02:30
Operator : CG/JU
Sample : N2843-17
Misc :
ALS Vial : 30 Sample Multiplier: 1

Instrument :
BNA_P
ClientSampleId :
EW4J7

Quant Method : Z:\svoasrv\HPCHEM1\BNA_P\Methods\SFAM-EPA-BP051322.M
Quant Title : SVOA CALIBRATION

TIC Library : C:\DATABASE\NIST0.L
TIC Integration Parameters: LSCINT.P

TIC Top Hit name	RT	EstConc	Units	Response	--Internal Standard--			
					#	RT	Resp	Conc
Pentadecafluoro...	21.063	3.7	ng/u1	540044	5	21.357	2893340	20.0