

Data Path : Z:\svoasrv\HPCHEM1\BNA\_P\Data\BP052323\  
 Data File : BP015234.D  
 Acq On : 23 May 2023 11:30  
 Operator : CG/JU  
 Sample : 02881-05  
 Misc :  
 ALS Vial : 5 Sample Multiplier: 1

Instrument :  
 BNA\_P  
 ClientSampleId :  
 SVOC-GPC-BLANK

Integration Parameters: LSCINT.P

Integrator: RTE  
 Smoothing : OFF Filtering: 5  
 Sampling : 1 Min Area: 0.1 % of largest Peak  
 Start Thrs: 0.2 Max Peaks: 100  
 Stop Thrs : 0 Peak Location: TOP

If leading or trailing edge < 100 prefer < Baseline drop else tangent >  
 Peak separation: 5

Method : Z:\svoasrv\HPCHEM1\BNA\_P\Methods\SFAM-EPA-BP051123.MA.M  
 Title : SVOA CALIBRATION

Signal : TIC: BP015234.D\data.ms

peak #	R.T. min	first scan	max scan	last scan	PK TY	peak height	corr. area	corr. % max.	% of total
1	3.905	120	122	126	rVB5	2865	4016	0.16%	0.034%
2	4.211	170	174	182	rVB4	9564	17046	0.68%	0.146%
3	4.675	251	253	255	rBV3	2441	2670	0.11%	0.023%
4	5.875	452	457	459	rBV6	2315	3706	0.15%	0.032%
5	7.434	717	722	725	rVB7	1731	3101	0.12%	0.027%
6	8.122	830	839	849	rBV	638561	1068979	42.83%	9.167%
7	9.481	1066	1070	1074	rBV7	2220	5024	0.20%	0.043%
8	9.699	1104	1107	1111	rVB6	2557	3785	0.15%	0.032%
9	10.951	1312	1320	1340	rBV	910321	1688923	67.67%	14.484%
10	13.645	1772	1778	1789	rBV3	16589	34574	1.39%	0.296%
11	14.757	1959	1967	1982	rBV	1545651	2329954	93.36%	19.981%
12	15.869	2152	2156	2160	rBV6	1695	3304	0.13%	0.028%
13	16.975	2342	2344	2347	rVB4	2580	2652	0.11%	0.023%
14	17.310	2397	2401	2404	rVB6	2447	2654	0.11%	0.023%
15	17.439	2421	2423	2428	rVB6	2774	4212	0.17%	0.036%
16	17.510	2428	2435	2449	rBV	1629360	2495711	100.00%	21.402%
17	21.586	3123	3128	3137	rBV	1412763	1983312	79.47%	17.008%
18	24.139	3556	3562	3573	rVB	932380	2007250	80.43%	17.214%

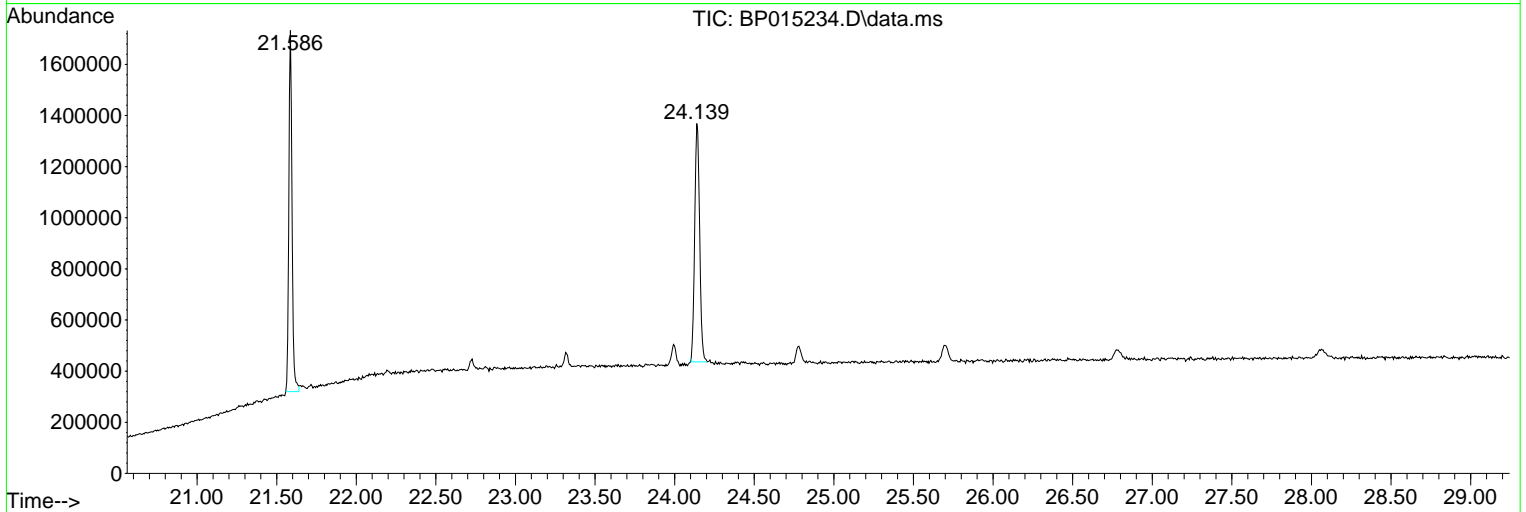
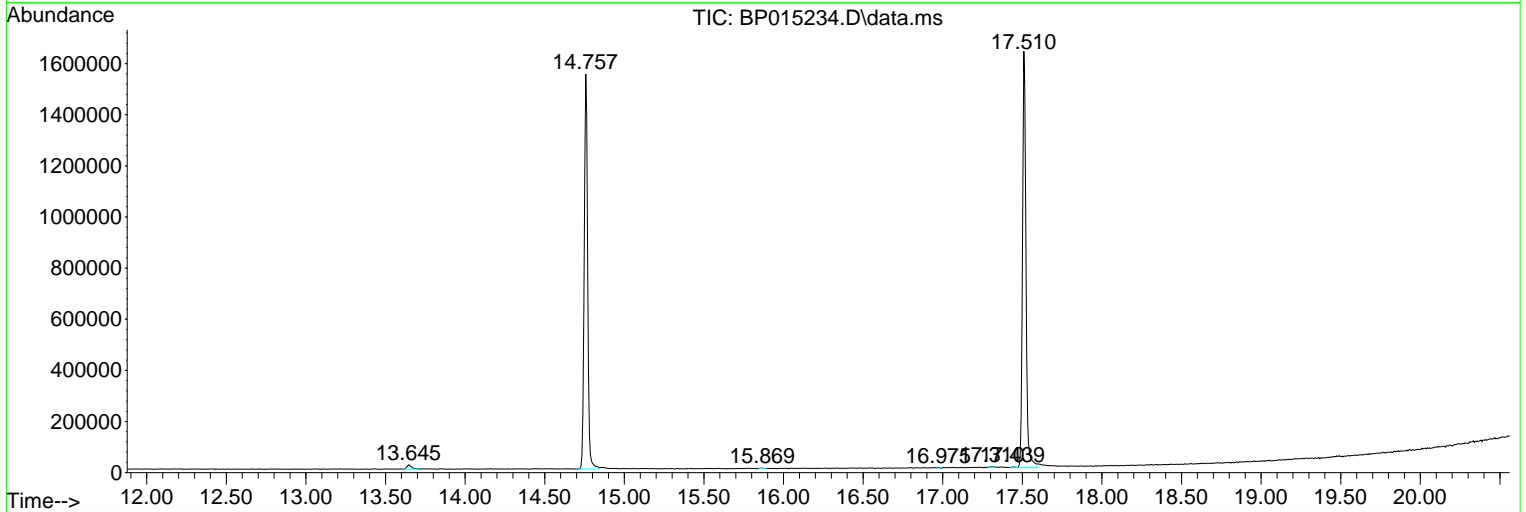
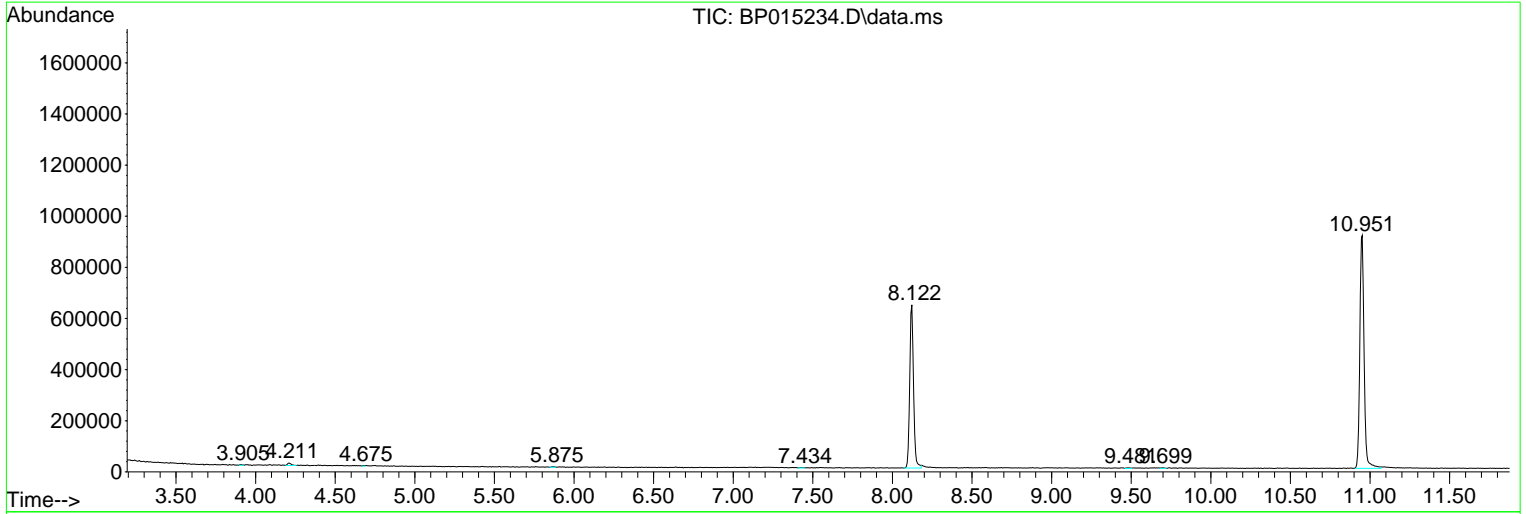
Sum of corrected areas: 11660873

Data Path : Z:\svoasrv\HPCHEM1\BNA\_P\Data\BP052323\  
 Data File : BP015234.D  
 Acq On : 23 May 2023 11:30  
 Operator : CG/JU  
 Sample : 02881-05  
 Misc :  
 ALS Vial : 5 Sample Multiplier: 1

Instrument :  
 BNA\_P  
 ClientSampleId :  
 SVOC-GPC-BLANK

Quant Method : Z:\svoasrv\HPCHEM1\BNA\_P\Methods\SFAM-EPA-BP051123.MA.M  
 Quant Title : SVOA CALIBRATION

TIC Library : C:\DATABASE\NIST20.L  
 TIC Integration Parameters: LSCINT.P



Library Search Compound Report

Data Path : Z:\svoasrv\HPCHEM1\BNA\_P\Data\BP052323\  
Data File : BP015234.D  
Acq On : 23 May 2023 11:30  
Operator : CG/JU  
Sample : 02881-05  
Misc :  
ALS Vial : 5 Sample Multiplier: 1

**Instrument :**  
BNA\_P  
**ClientSampleId :**  
SVOC-GPC-BLANK

Quant Method : Z:\svoasrv\HPCHEM1\BNA\_P\Methods\SFAM-EPA-BP051123.MA.M  
Quant Title : SVOA CALIBRATION

TIC Library : C:\DATABASE\NIST20.L  
TIC Integration Parameters: LSCINT.P

No Library Search Compounds Detected

\*\*\*\*\*

Data Path : Z:\svoasrv\HPCHEM1\BNA\_P\Data\BP052323\  
Data File : BP015234.D  
Acq On : 23 May 2023 11:30  
Operator : CG/JU  
Sample : 02881-05  
Misc :  
ALS Vial : 5 Sample Multiplier: 1

Instrument :  
BNA\_P  
ClientSampleId :  
SVOC-GPC-BLANK

Quant Method : Z:\svoasrv\HPCHEM1\BNA\_P\Methods\SFAM-EPA-BP051123.MA.M  
Quant Title : SVOA CALIBRATION

TIC Library : C:\DATABASE\NIST0.L  
TIC Integration Parameters: LSCINT.P

TIC Top Hit name	RT	EstConc	Units	Response	#	RT	Resp	Conc
------------------	----	---------	-------	----------	---	----	------	------

---