

Data Path : Z:\svoasrv\HPCHEM1\BNA_P\Data\BP052822\
 Data File : BP010587.D
 Acq On : 28 May 2022 00:05
 Operator : CG/JU
 Sample : SSTDICC080
 Misc :
 ALS Vial : 8 Sample Multiplier: 1

Instrument :
 BNA_P
 ClientSampleId :
 SSTDICC080

Quant Time: May 28 01:25:20 2022
 Quant Method : Z:\svoasrv\HPCHEM1\BNA_P\Methods\8270E-BP052822.M
 Quant Title : ASP BNA STANDARDS FOR 5 POINT CALIBRATION
 QLast Update : Sat May 28 01:22:11 2022
 Response via : Initial Calibration

Compound	R.T.	QIon	Response	Conc	Units	Dev(Min)	
Internal Standards							
1) 1,4-Dichlorobenzene-d4	7.869	152	162442	20.000	ng	0.00	
21) Naphthalene-d8	10.669	136	634775	20.000	ng	0.00	
39) Acenaphthene-d10	14.504	164	405548	20.000	ng	0.00	
64) Phenanthrene-d10	17.257	188	763227	20.000	ng	0.00	
76) Chrysene-d12	21.345	240	597319	20.000	ng	0.00	
86) Perylene-d12	23.757	264	573926	20.000	ng	0.00	
System Monitoring Compounds							
5) 2-Fluorophenol	5.446	112	1397464	150.200	ng	0.00	
7) Phenol-d6	7.046	99	2005137	159.361	ng	0.00	
23) Nitrobenzene-d5	9.034	82	2125302	177.921	ng	0.00	
42) 2,4,6-Tribromophenol	15.998	330	762817	113.985	ng	0.00	
45) 2-Fluorobiphenyl	13.134	172	4455255	152.295	ng	0.00	
79) Terphenyl-d14	19.816	244	5240577	157.475	ng	0.00	
Target Compounds							
2) 1,4-Dioxane	3.352	88	274346	74.446	ng	98	Qvalue
3) Pyridine	3.752	79	776153	78.200	ng	98	
4) n-Nitrosodimethylamine	3.664	42	482859	132.098	ng	95	
6) Aniline	7.205	93	1175926	82.001	ng	99	
8) 2-Chlorophenol	7.434	128	772055	72.771	ng	97	
9) Benzaldehyde	7.010	77	445410	66.787	ng	99	
10) Phenol	7.075	94	1029773	81.578	ng	96	
11) bis(2-Chloroethyl)ether	7.299	93	793431	79.421	ng	98	
12) 1,3-Dichlorobenzene	7.757	146	862193	72.004	ng	98	
13) 1,4-Dichlorobenzene	7.904	146	894031	73.024	ng	99	
14) 1,2-Dichlorobenzene	8.222	146	845197	71.425	ng	100	
15) Benzyl Alcohol	8.116	79	831698	82.906	ng	98	
16) 2,2'-oxybis(1-Chloropr...	8.404	45	1418022	130.943	ng	99	
17) 2-Methylphenol	8.316	107	695004	79.897	ng	99	
18) Hexachloroethane	8.946	117	337395	78.635	ng	99	
19) n-Nitroso-di-n-propyla...	8.687	70	723810	90.949	ng	98	
20) 3+4-Methylphenols	8.651	107	969490	81.055	ng	99	
22) Acetophenone	8.699	105	1313897	83.628	ng	98	#
24) Nitrobenzene	9.075	77	1067985	94.645	ng	97	
25) Isophorone	9.610	82	1849926	90.792	ng	98	
26) 2-Nitrophenol	9.787	139	460315	78.261	ng	98	
27) 2,4-Dimethylphenol	9.851	122	649487	78.255	ng	97	
28) bis(2-Chloroethoxy)met...	10.081	93	980357	73.896	ng	98	
29) 2,4-Dichlorophenol	10.322	162	793027	78.334	ng	98	
30) 1,2,4-Trichlorobenzene	10.534	180	864497	73.705	ng	98	
31) Naphthalene	10.722	128	2624039	80.253	ng	100	
32) Benzoic acid	10.051	122	571382	88.055	ng	99	
33) 4-Chloroaniline	10.834	127	1068652	80.094	ng	99	
34) Hexachlorobutadiene	11.010	225	567945	71.464	ng	98	
35) Caprolactam	11.651	113	249345	72.979	ng	92	
36) 4-Chloro-3-methylphenol	11.963	107	910416	83.689	ng	99	
37) 2-Methylnaphthalene	12.328	142	1866302	81.350	ng	99	
38) 1-Methylnaphthalene	12.551	142	1810855	81.026	ng	98	
40) 1,2,4,5-Tetrachloroben...	12.704	216	991147	73.660	ng	99	
41) Hexachlorocyclopentadiene	12.681	237	566085	119.408	ng	99	
43) 2,4,6-Trichlorophenol	12.945	196	671984	75.346	ng	98	

Data Path : Z:\svoasrv\HPCHEM1\BNA_P\Data\BP052822\
 Data File : BP010587.D
 Acq On : 28 May 2022 00:05
 Operator : CG/JU
 Sample : SSTDICC080
 Misc :
 ALS Vial : 8 Sample Multiplier: 1

Instrument :
 BNA_P
 ClientSampleId :
 SSTDICC080

Quant Time: May 28 01:25:20 2022
 Quant Method : Z:\svoasrv\HPCHEM1\BNA_P\Methods\8270E-BP052822.M
 Quant Title : ASP BNA STANDARDS FOR 5 POINT CALIBRATION
 QLast Update : Sat May 28 01:22:11 2022
 Response via : Initial Calibration

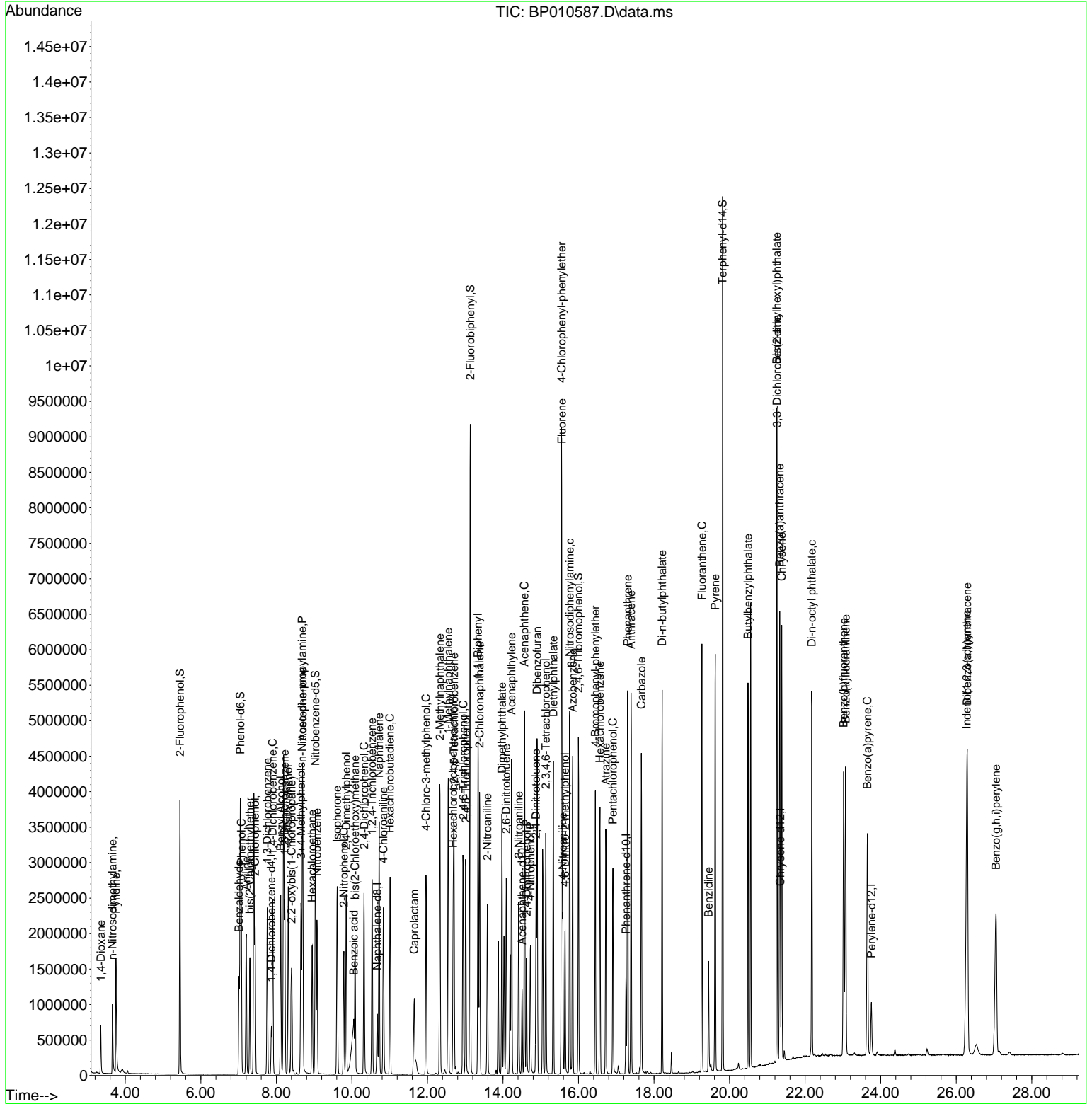
Compound	R.T.	QIon	Response	Conc	Units	Dev(Min)
44) 2,4,5-Trichlorophenol	13.016	196	736196	76.014	ng	99
46) 1,1'-Biphenyl	13.339	154	2359482	77.989	ng	99
47) 2-Chloronaphthalene	13.381	162	1850827	77.703	ng	100
48) 2-Nitroaniline	13.587	65	694859	107.109	ng	99
49) Acenaphthylene	14.228	152	2909451	79.125	ng	99
50) Dimethylphthalate	13.975	163	2297954	74.780	ng	99
51) 2,6-Dinitrotoluene	14.086	165	506106	78.606	ng	97
52) Acenaphthene	14.569	154	1766368	80.417	ng	99
53) 3-Nitroaniline	14.416	138	512976	75.431	ng	96
54) 2,4-Dinitrophenol	14.628	184	309087	87.398	ng	97
55) Dibenzofuran	14.904	168	2754421	74.643	ng	99
56) 4-Nitrophenol	14.728	139	399223	78.754	ng	94
57) 2,4-Dinitrotoluene	14.875	165	678527	76.644	ng	95
58) Fluorene	15.557	166	2278690	78.517	ng	99
59) 2,3,4,6-Tetrachlorophenol	15.134	232	629962	71.748	ng	99
60) Diethylphthalate	15.333	149	2267558	73.728	ng	100
61) 4-Chlorophenyl-phenyle...	15.551	204	1142998	71.496	ng	97
62) 4-Nitroaniline	15.586	138	517690	72.485	ng	95
63) Azobenzene	15.845	77	2392471	89.424	ng	98
65) 4,6-Dinitro-2-methylph...	15.645	198	399813	81.466	ng	95
66) n-Nitrosodiphenylamine	15.769	169	1885829	83.495	ng	99
67) 4-Bromophenyl-phenylether	16.445	248	676051	72.387	ng	100
68) Hexachlorobenzene	16.569	284	736452	68.516	ng	97
69) Atrazine	16.722	200	599808	75.533	ng	98
70) Pentachlorophenol	16.910	266	458605	79.816	ng	98
71) Phenanthrene	17.304	178	3282451	80.342	ng	100
72) Anthracene	17.392	178	3187476	79.020	ng	99
73) Carbazole	17.663	167	2707560	68.634	ng	100
74) Di-n-butylphthalate	18.216	149	3513370	76.001	ng	99
75) Fluoranthene	19.269	202	3426484	69.275	ng	98
77) Benzidine	19.445	184	892893	60.985	ng	98
78) Pyrene	19.622	202	3479657	88.404	ng	99
80) Butylbenzylphthalate	20.486	149	1423310	85.076	ng	99
81) Benzo(a)anthracene	21.327	228	3104006	79.096	ng	98
82) 3,3'-Dichlorobenzidine	21.257	252	876746	57.832	ng	99
83) Chrysene	21.380	228	3008839	80.970	ng	100
84) Bis(2-ethylhexyl)phtha...	21.251	149	1990922	85.377	ng	99
85) Di-n-octyl phthalate	22.174	149	3311328	82.383	ng	99
87) Indeno(1,2,3-cd)pyrene	26.280	276	3413197	78.388	ng	100
88) Benzo(b)fluoranthene	23.021	252	2919998	85.226	ng	99
89) Benzo(k)fluoranthene	23.074	252	2950558	87.956	ng	99
90) Benzo(a)pyrene	23.651	252	2463081	84.025	ng	100
91) Dibenzo(a,h)anthracene	26.292	278	2880743	79.382	ng	98
92) Benzo(g,h,i)perylene	27.051	276	2813626	78.813	ng	99

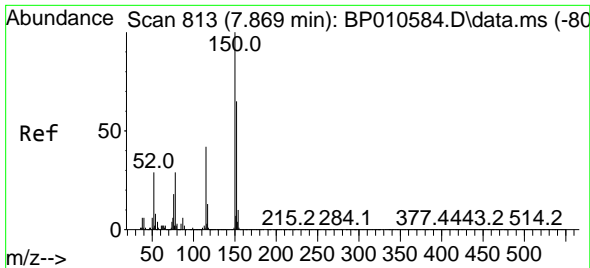
(#) = qualifier out of range (m) = manual integration (+) = signals summed

Data Path : Z:\svoasrv\HPCHEM1\BNA_P\Data\BP052822\
 Data File : BP010587.D
 Acq On : 28 May 2022 00:05
 Operator : CG/JU
 Sample : SSTDICC080
 Misc :
 ALS Vial : 8 Sample Multiplier: 1

Instrument :
 BNA_P
 ClientSampleId :
 SSTDICC080

Quant Time: May 28 01:25:20 2022
 Quant Method : Z:\svoasrv\HPCHEM1\BNA_P\Methods\8270E-BP052822.M
 Quant Title : ASP BNA STANDARDS FOR 5 POINT CALIBRATION
 QLast Update : Sat May 28 01:22:11 2022
 Response via : Initial Calibration

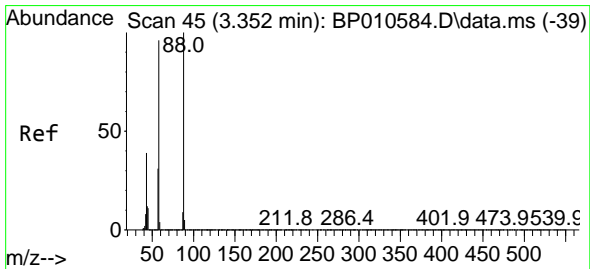
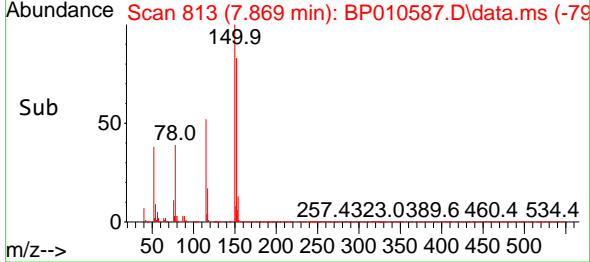
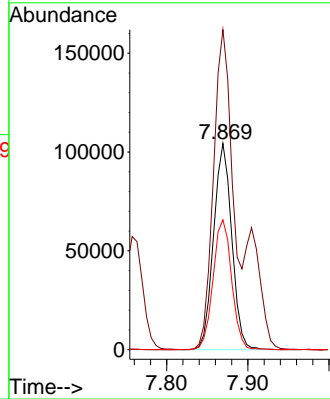
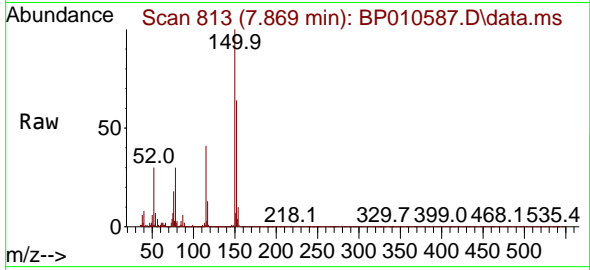




#1
 1,4-Dichlorobenzene-d4
 Concen: 20.000 ng
 RT: 7.869 min Scan# 81
 Delta R.T. 0.000 min
 Lab File: BP010587.D
 Acq: 28 May 2022 00:05

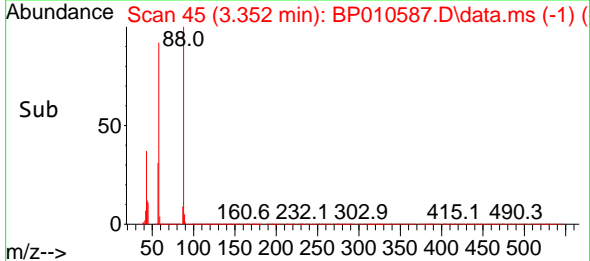
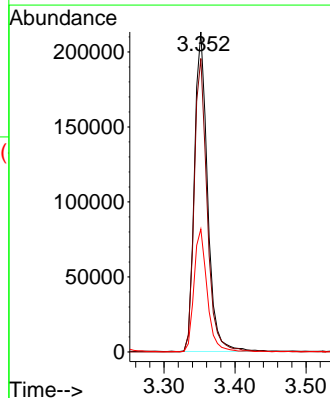
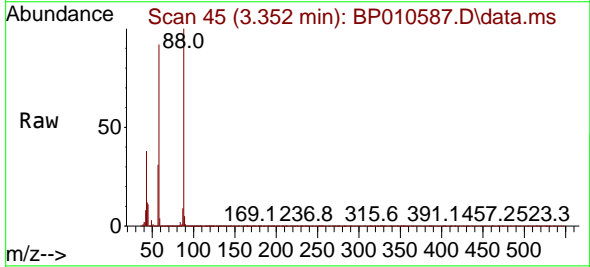
Instrument :
 BNA_P
 ClientSampleId :
 SSTDICC080

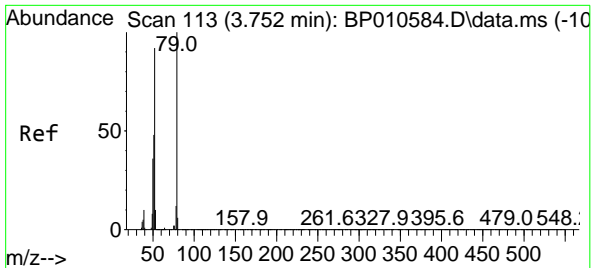
Tgt Ion:152 Resp: 162442
 Ion Ratio Lower Upper
 152 100
 150 155.2 123.4 185.2
 115 63.0 51.3 76.9



#2
 1,4-Dioxane
 Concen: 74.446 ng
 RT: 3.352 min Scan# 45
 Delta R.T. -0.000 min
 Lab File: BP010587.D
 Acq: 28 May 2022 00:05

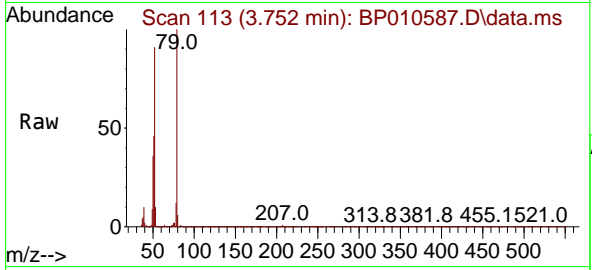
Tgt Ion: 88 Resp: 274346
 Ion Ratio Lower Upper
 88 100
 58 90.9 74.5 111.7
 43 38.6 31.5 47.3



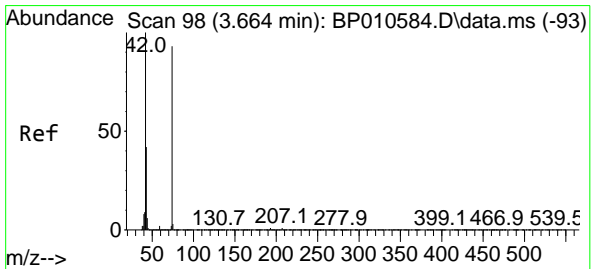
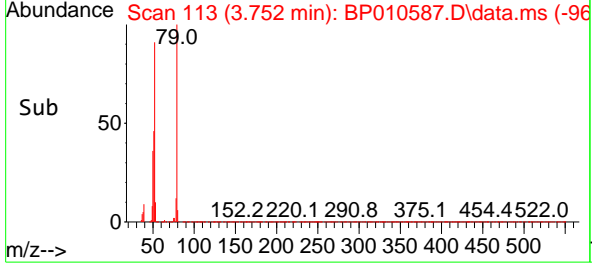
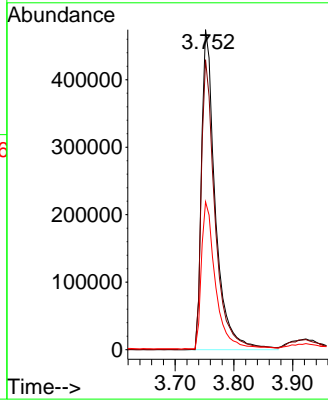


#3
 Pyridine
 Concen: 78.200 ng
 RT: 3.752 min Scan# 113
 Delta R.T. -0.000 min
 Lab File: BP010587.D
 Acq: 28 May 2022 00:05

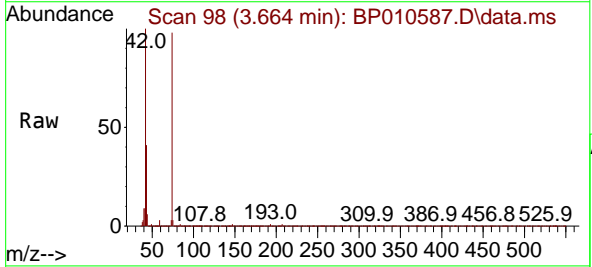
Instrument :
 BNA_P
 ClientSampleId :
 SSTDICC080



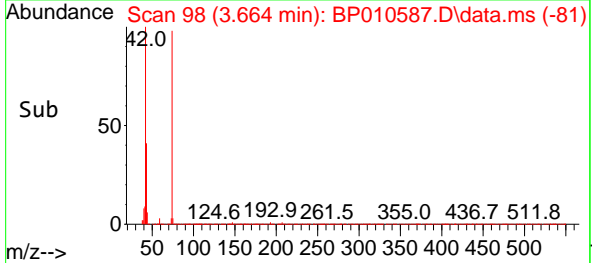
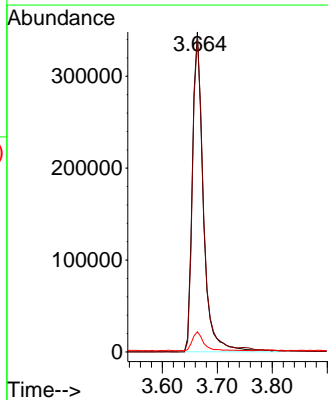
Tgt Ion: 79 Resp: 776153
 Ion Ratio Lower Upper
 79 100
 52 90.6 73.5 110.3
 51 46.2 38.6 57.8

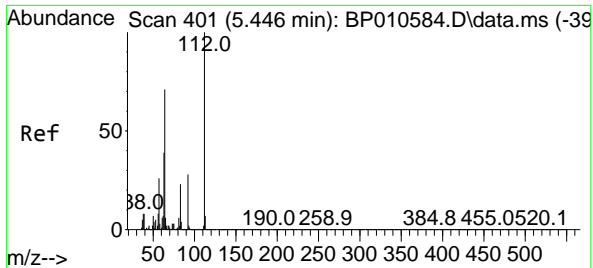


#4
 n-Nitrosodimethylamine
 Concen: 132.098 ng
 RT: 3.664 min Scan# 98
 Delta R.T. -0.000 min
 Lab File: BP010587.D
 Acq: 28 May 2022 00:05



Tgt Ion: 42 Resp: 482859
 Ion Ratio Lower Upper
 42 100
 74 98.3 74.4 111.6
 44 6.3 5.7 8.5



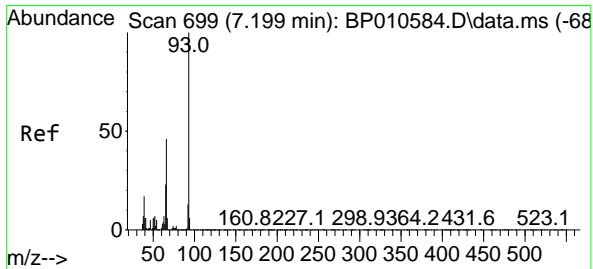
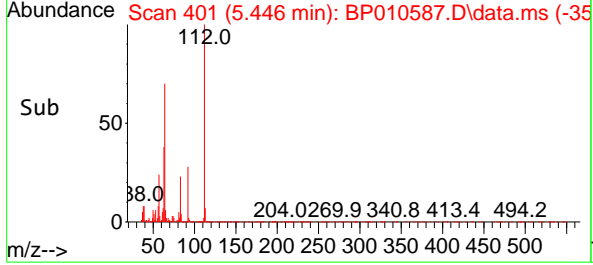
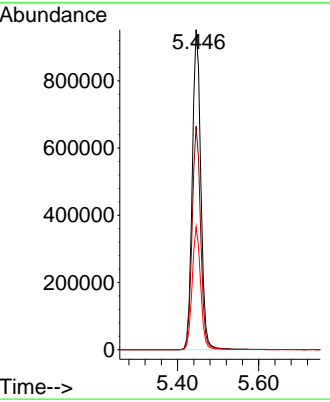
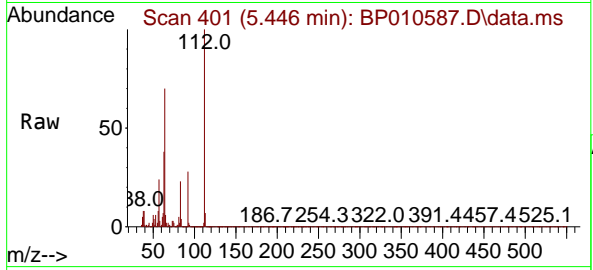


#5
 2-Fluorophenol
 Concen: 150.200 ng
 RT: 5.446 min Scan# 401
 Delta R.T. -0.000 min
 Lab File: BP010587.D
 Acq: 28 May 2022 00:05

Instrument : BNA_P
 Client Sample Id : SSTDICC080

Tgt Ion: 112 Resp: 1397464

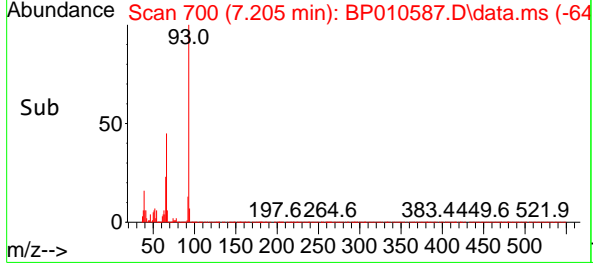
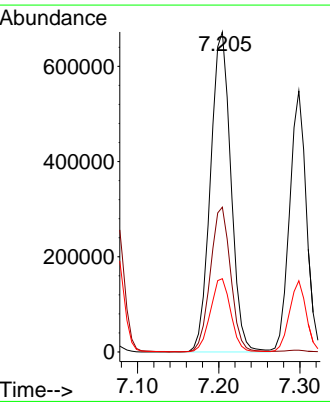
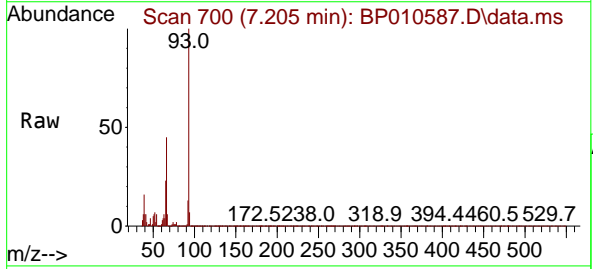
Ion	Ratio	Lower	Upper
112	100		
64	69.8	56.9	85.3
63	38.4	31.2	46.8

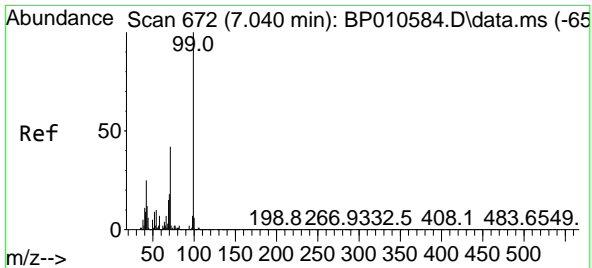


#6
 Aniline
 Concen: 82.001 ng
 RT: 7.205 min Scan# 700
 Delta R.T. 0.006 min
 Lab File: BP010587.D
 Acq: 28 May 2022 00:05

Tgt Ion: 93 Resp: 1175926

Ion	Ratio	Lower	Upper
93	100		
66	45.2	36.7	55.1
65	22.9	18.2	27.4



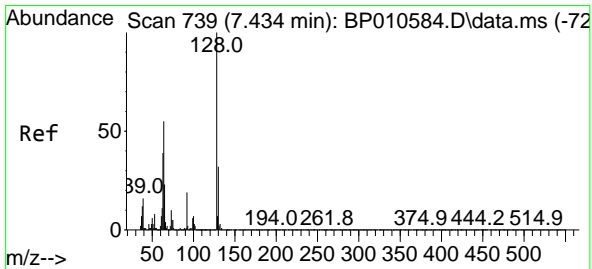
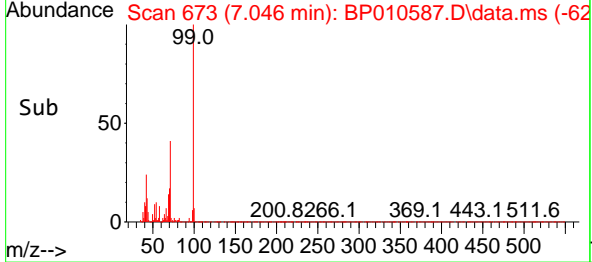
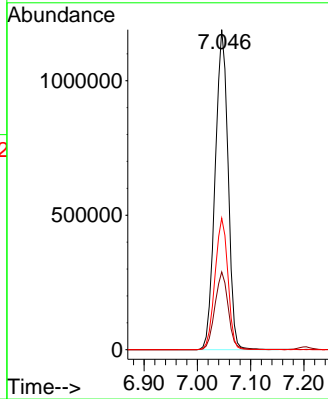
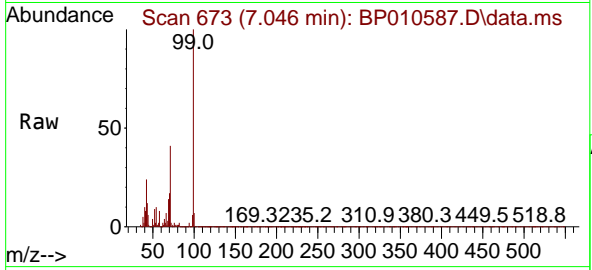


#7
 Phenol-d6
 Concen: 159.361 ng
 RT: 7.046 min Scan# 61
 Delta R.T. 0.006 min
 Lab File: BP010587.D
 Acq: 28 May 2022 00:05

Instrument :
 BNA_P
 ClientSampleId :
 SSTDICC080

Tgt Ion: 99 Resp: 2005137

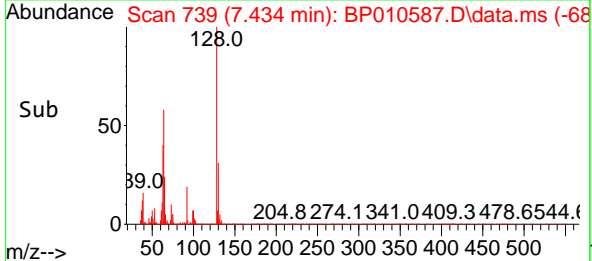
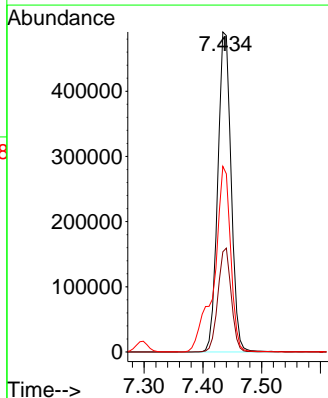
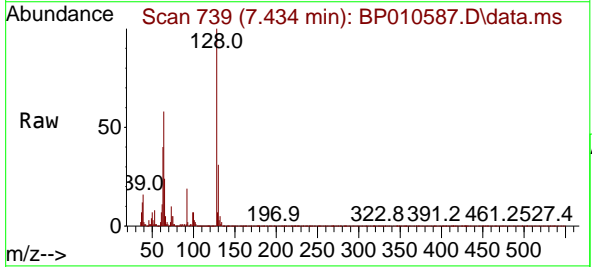
Ion	Ratio	Lower	Upper
99	100		
42	24.3	20.3	30.5
71	41.1	33.9	50.9

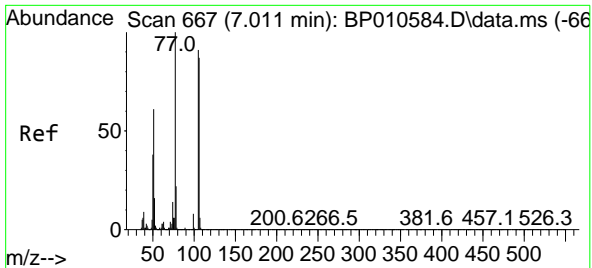


#8
 2-Chlorophenol
 Concen: 72.771 ng
 RT: 7.434 min Scan# 739
 Delta R.T. -0.000 min
 Lab File: BP010587.D
 Acq: 28 May 2022 00:05

Tgt Ion: 128 Resp: 772055

Ion	Ratio	Lower	Upper
128	100		
130	31.3	11.8	51.8
64	58.0	35.3	75.3



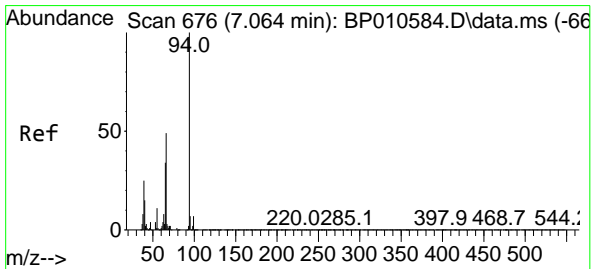
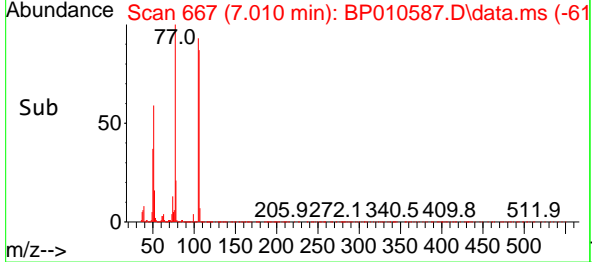
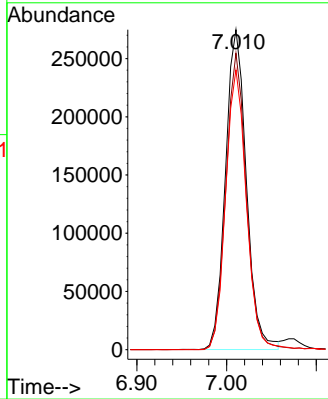
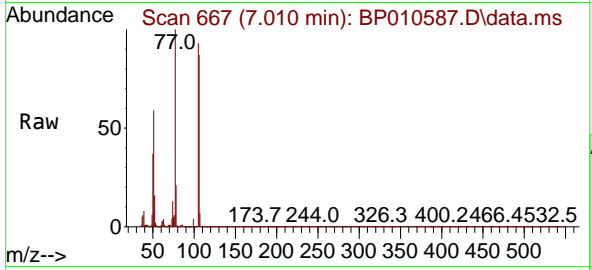


#9
Benzaldehyde
Concen: 66.787 ng
RT: 7.010 min Scan# 609
Delta R.T. -0.000 min
Lab File: BP010587.D
Acq: 28 May 2022 00:05

Instrument :
BNA_P
ClientSampleId :
SSTDICC080

Tgt Ion: 77 Resp: 445410

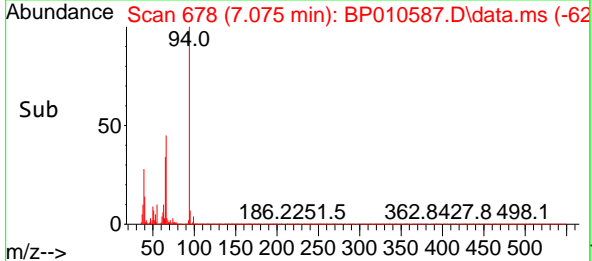
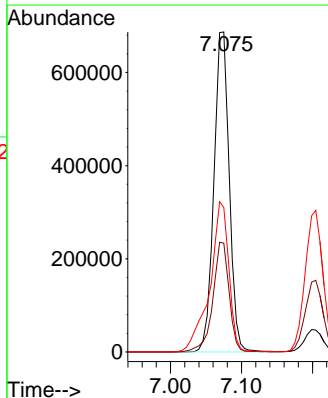
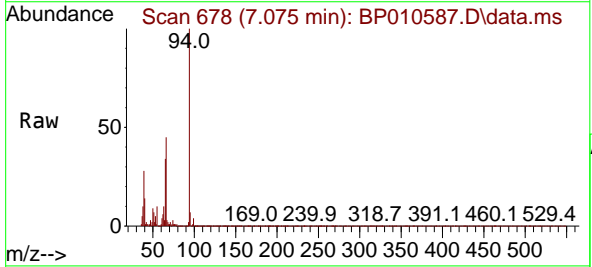
Ion	Ratio	Lower	Upper
77	100		
105	92.6	71.4	111.4
106	87.5	66.9	106.9

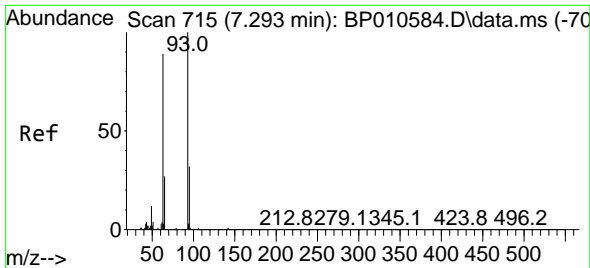


#10
Phenol
Concen: 81.578 ng
RT: 7.075 min Scan# 678
Delta R.T. 0.011 min
Lab File: BP010587.D
Acq: 28 May 2022 00:05

Tgt Ion: 94 Resp: 1029773

Ion	Ratio	Lower	Upper
94	100		
65	34.0	14.0	54.0
66	45.1	29.2	69.2



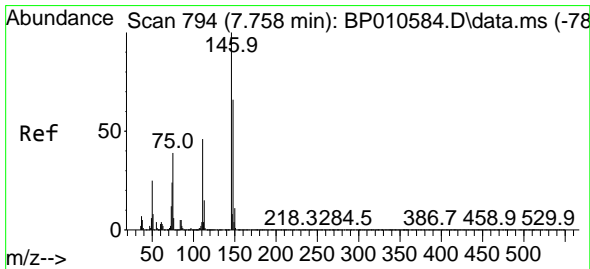
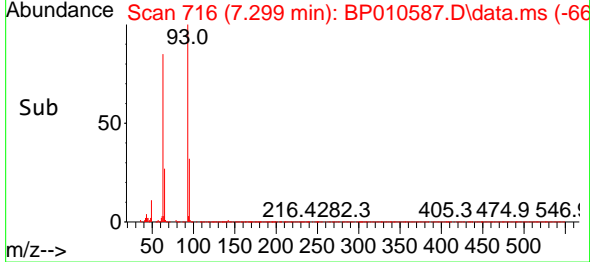
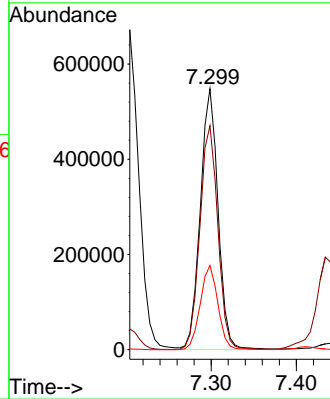
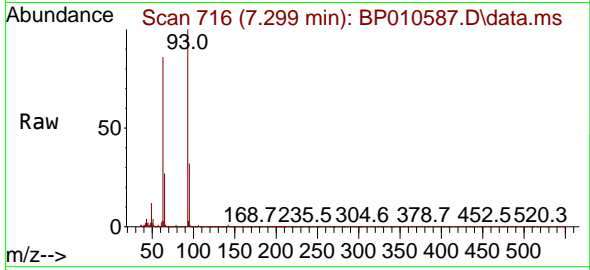


#11
 bis(2-Chloroethyl)ether
 Concen: 79.421 ng
 RT: 7.299 min Scan# 715
 Delta R.T. 0.006 min
 Lab File: BP010587.D
 Acq: 28 May 2022 00:05

Instrument :
 BNA_P
 ClientSampleId :
 SSTDICC080

Tgt Ion: 93 Resp: 793431

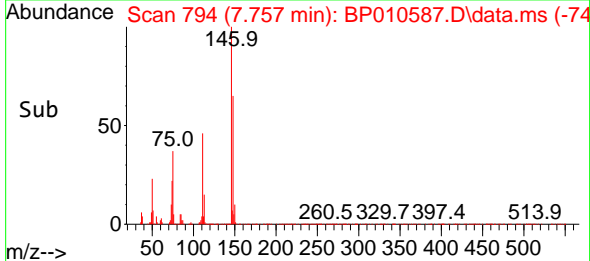
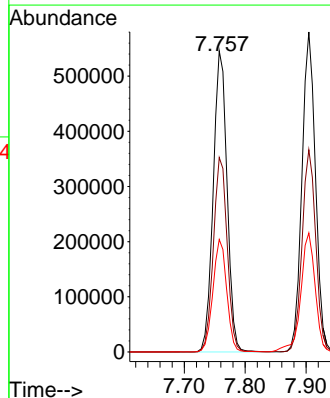
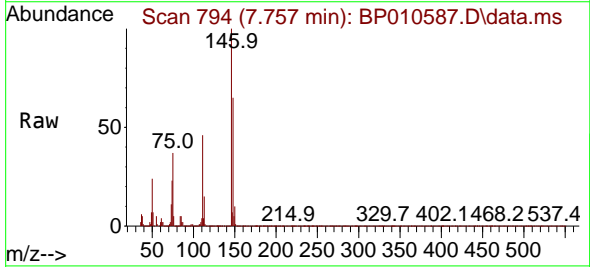
Ion	Ratio	Lower	Upper
93	100		
63	85.8	68.2	108.2
95	32.3	12.2	52.2

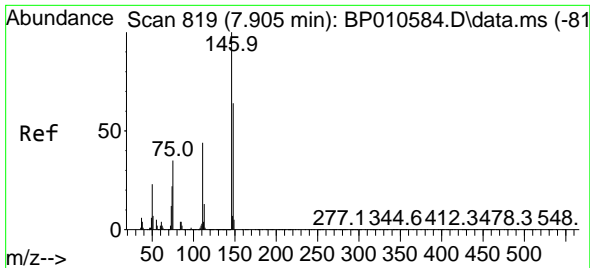


#12
 1,3-Dichlorobenzene
 Concen: 72.004 ng
 RT: 7.757 min Scan# 794
 Delta R.T. -0.000 min
 Lab File: BP010587.D
 Acq: 28 May 2022 00:05

Tgt Ion: 146 Resp: 862193

Ion	Ratio	Lower	Upper
146	100		
148	64.5	53.0	79.4
75	37.4	31.3	46.9





#13
 1,4-Dichlorobenzene
 Concen: 73.024 ng
 RT: 7.904 min Scan# 813
 Delta R.T. -0.000 min
 Lab File: BP010587.D
 Acq: 28 May 2022 00:05

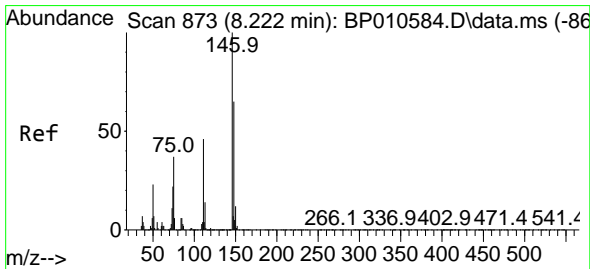
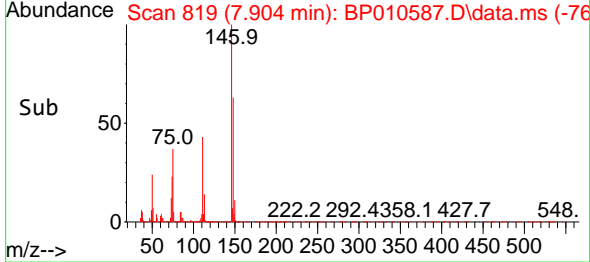
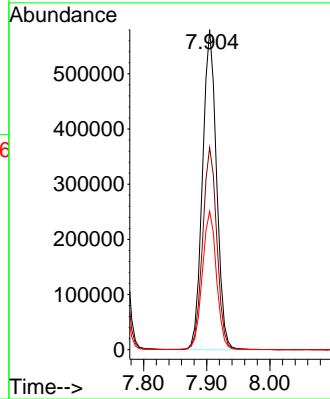
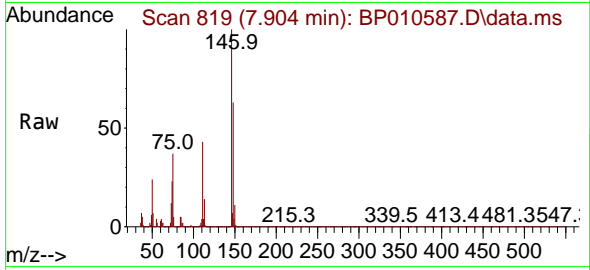
Instrument :

BNA_P

ClientSampleId :

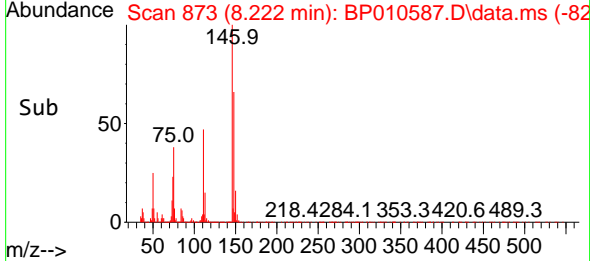
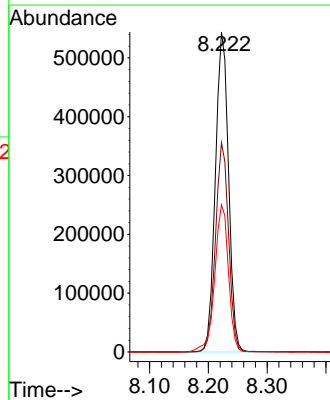
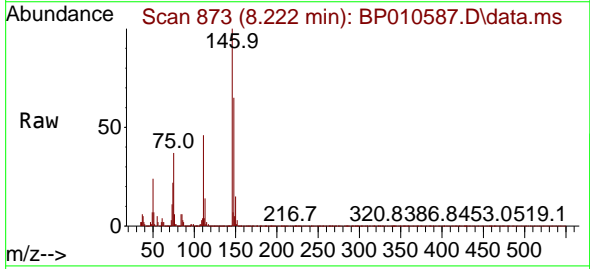
SSTDICC080

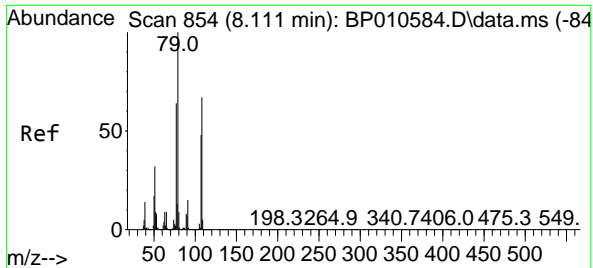
Tgt Ion	Resp	Lower	Upper
146	894031		
146	100		
148	63.2	51.6	77.4
111	43.2	35.2	52.8



#14
 1,2-Dichlorobenzene
 Concen: 71.425 ng
 RT: 8.222 min Scan# 873
 Delta R.T. -0.000 min
 Lab File: BP010587.D
 Acq: 28 May 2022 00:05

Tgt Ion	Resp	Lower	Upper
146	845197		
146	100		
148	65.4	52.2	78.2
111	46.0	36.6	55.0



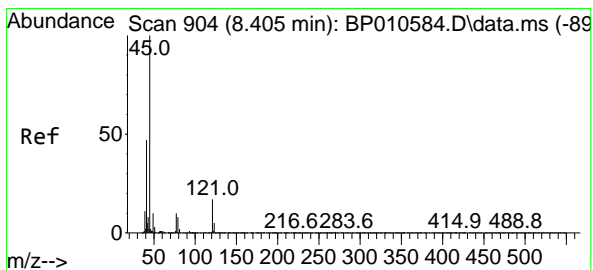
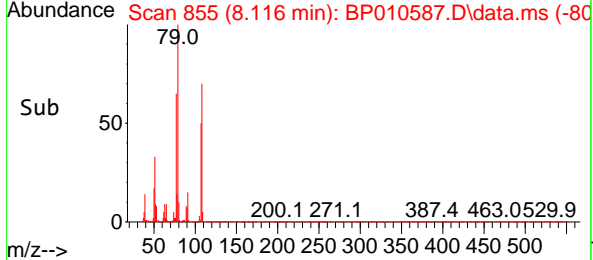
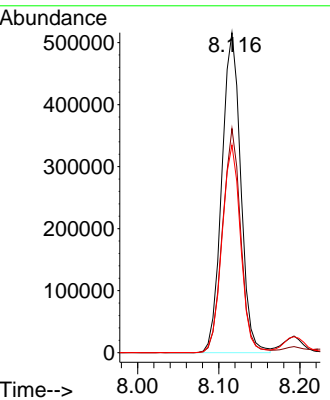
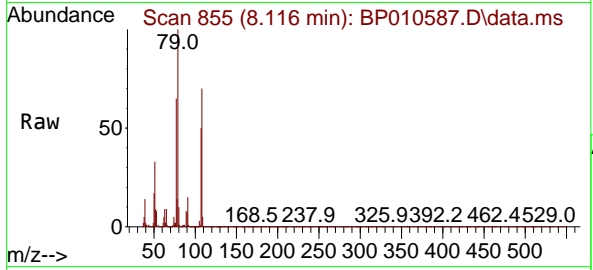


#15
 Benzyl Alcohol
 Concen: 82.906 ng
 RT: 8.116 min Scan# 81
 Delta R.T. 0.006 min
 Lab File: BP010587.D
 Acq: 28 May 2022 00:05

Instrument :
 BNA_P
 ClientSampleId :
 SSTDICC080

Tgt Ion: 79 Resp: 831698

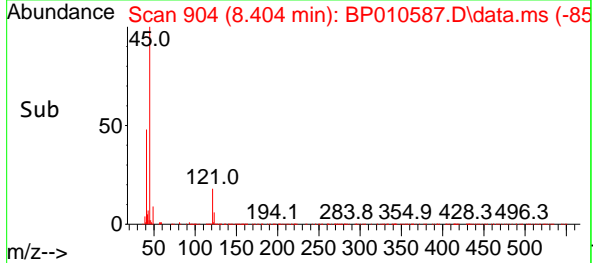
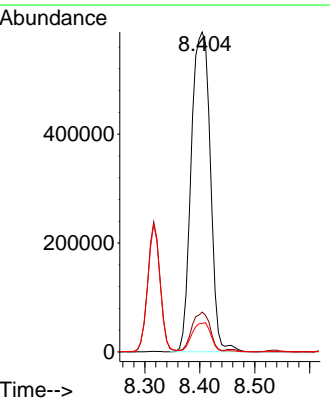
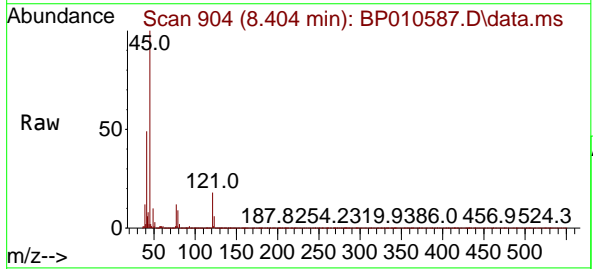
Ion	Ratio	Lower	Upper
79	100		
108	70.1	53.4	80.0
77	64.9	51.5	77.3

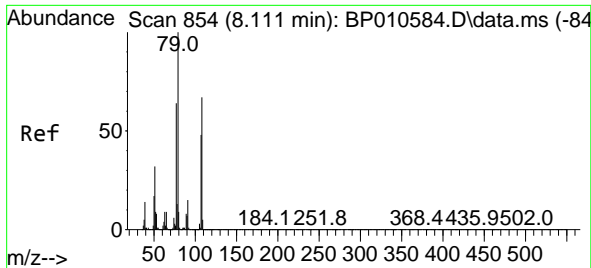


#16
 2,2'-oxybis(1-Chloropropane)
 Concen: 130.943 ng
 RT: 8.404 min Scan# 904
 Delta R.T. -0.000 min
 Lab File: BP010587.D
 Acq: 28 May 2022 00:05

Tgt Ion: 45 Resp: 1418022

Ion	Ratio	Lower	Upper
45	100		
77	12.4	0.0	31.8
79	8.9	0.0	28.8



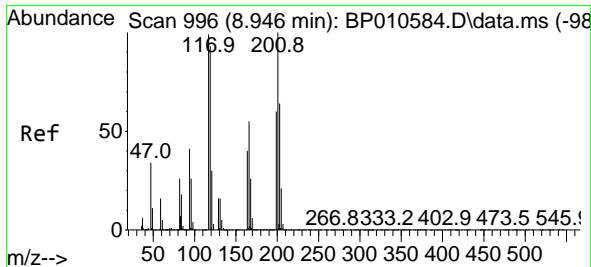
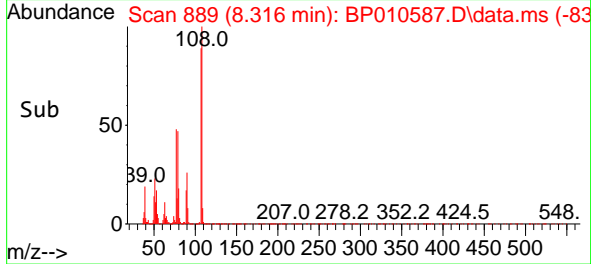
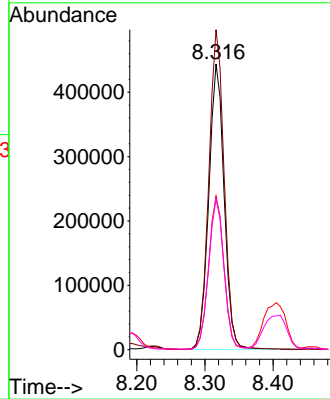
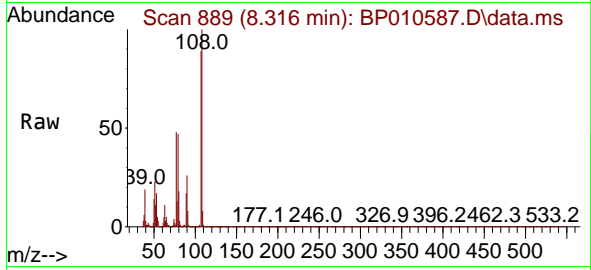


#17
 2-Methylphenol
 Concen: 79.897 ng
 RT: 8.316 min Scan# 811
 Delta R.T. -0.000 min
 Lab File: BP010587.D
 Acq: 28 May 2022 00:05

Instrument :
 BNA_P
 ClientSampleId :
 SSTDICC080

Tgt Ion:107 Resp: 695004

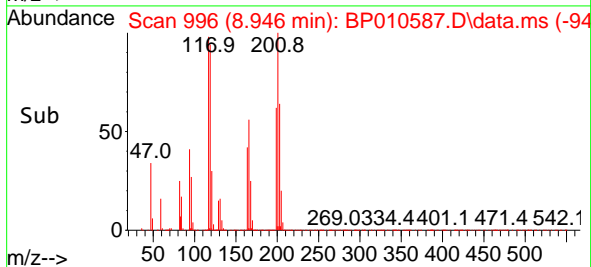
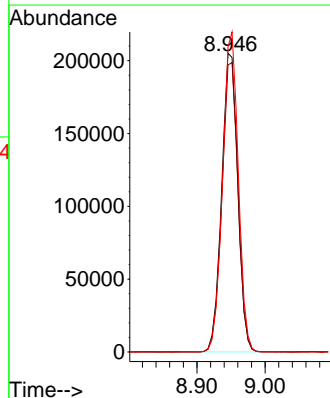
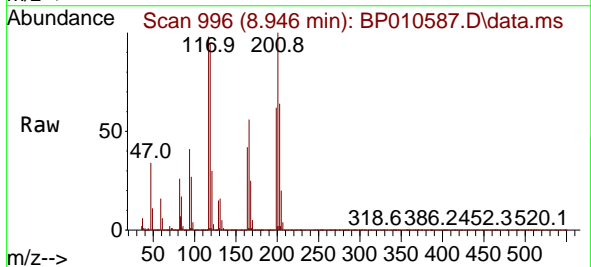
Ion	Ratio	Lower	Upper
107	100		
108	112.0	88.9	133.3
77	53.8	44.7	67.1
79	52.7	41.7	62.5

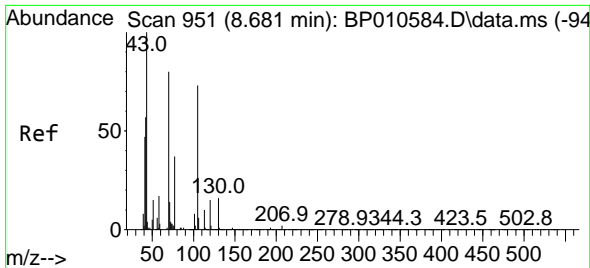


#18
 Hexachloroethane
 Concen: 78.635 ng
 RT: 8.946 min Scan# 996
 Delta R.T. -0.000 min
 Lab File: BP010587.D
 Acq: 28 May 2022 00:05

Tgt Ion:117 Resp: 337395

Ion	Ratio	Lower	Upper
117	100		
119	96.1	75.6	113.4
201	102.1	80.9	121.3

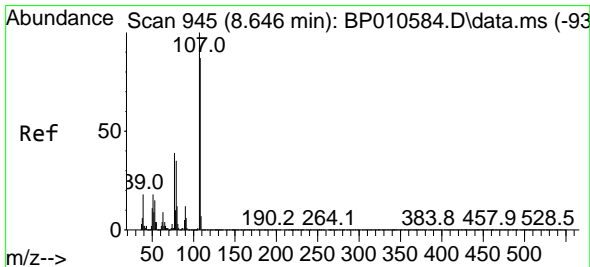
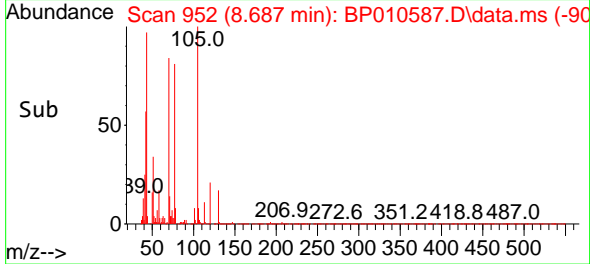
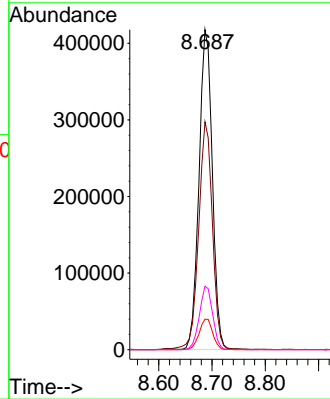
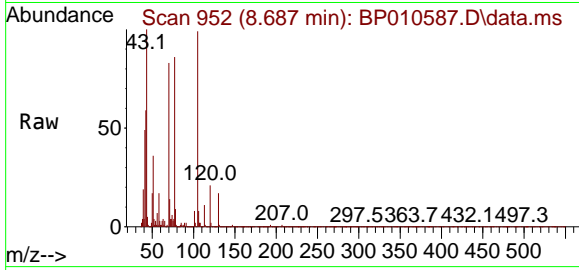




#19
 n-Nitroso-di-n-propylamine
 Concen: 90.949 ng
 RT: 8.687 min Scan# 91
 Delta R.T. 0.006 min
 Lab File: BP010587.D
 Acq: 28 May 2022 00:05

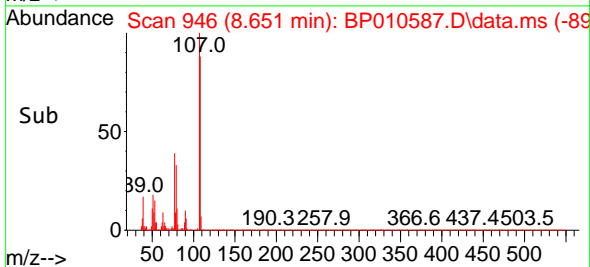
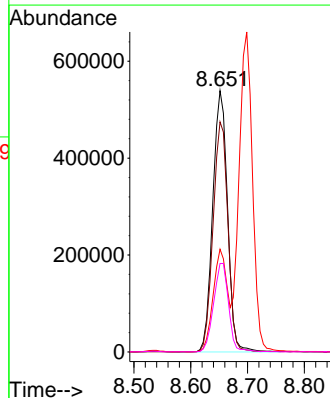
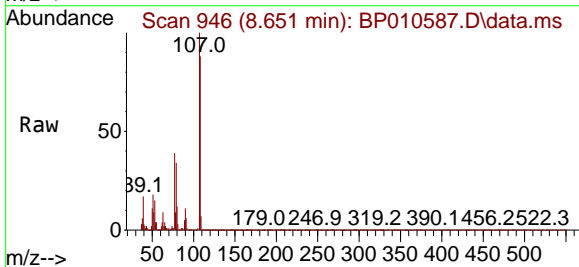
Instrument :
 BNA_P
 ClientSampleId :
 SSTDICC080

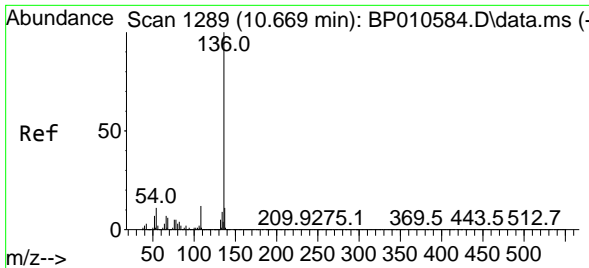
Tgt Ion: 70 Resp: 723810
 Ion Ratio Lower Upper
 70 100
 42 71.2 58.1 87.1
 101 9.5 8.4 12.6
 130 19.8 16.1 24.1



#20
 3+4-Methylphenols
 Concen: 81.055 ng
 RT: 8.651 min Scan# 946
 Delta R.T. 0.006 min
 Lab File: BP010587.D
 Acq: 28 May 2022 00:05

Tgt Ion: 107 Resp: 969490
 Ion Ratio Lower Upper
 107 100
 108 88.1 67.1 107.1
 77 39.3 19.2 59.2
 79 33.9 14.8 54.8



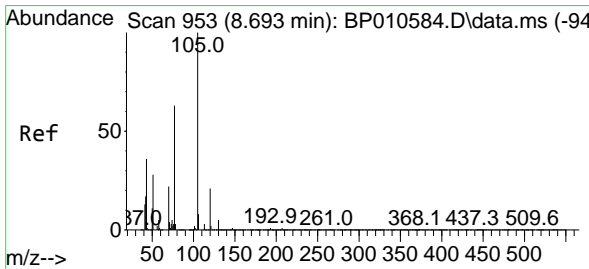
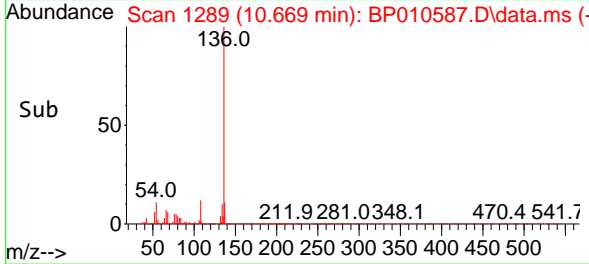
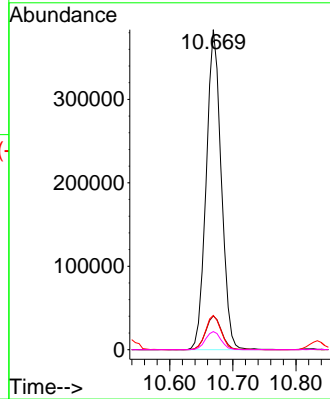
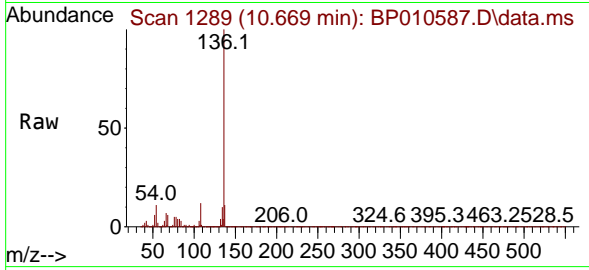


#21
 Naphthalene-d8
 Concen: 20.000 ng
 RT: 10.669 min Scan# 11
 Delta R.T. -0.000 min
 Lab File: BP010587.D
 Acq: 28 May 2022 00:05

Instrument :
 BNA_P
 ClientSampleId :
 SSTDICC080

Tgt Ion:136 Resp: 634775

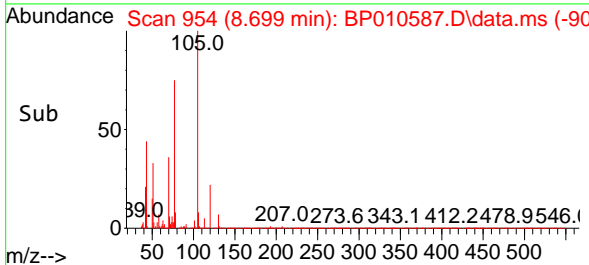
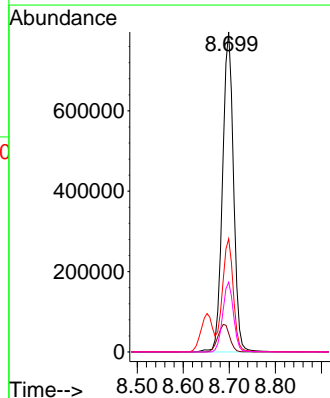
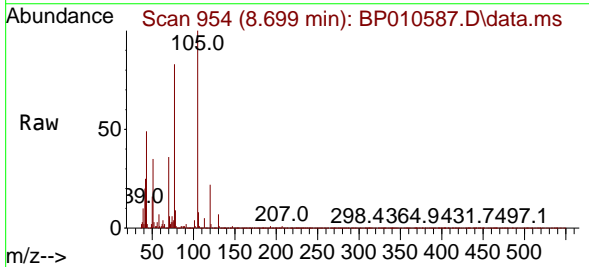
Ion	Ratio	Lower	Upper
136	100		
137	10.5	9.0	13.4
54	10.7	8.7	13.1
68	5.7	4.8	7.2

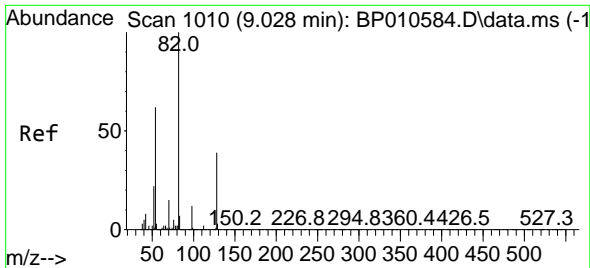


#22
 Acetophenone
 Concen: 83.628 ng
 RT: 8.699 min Scan# 954
 Delta R.T. 0.006 min
 Lab File: BP010587.D
 Acq: 28 May 2022 00:05

Tgt Ion:105 Resp: 1313897

Ion	Ratio	Lower	Upper
105	100		
71	5.8	3.4	5.0#
51	35.4	29.5	44.3
120	21.8	17.0	25.4



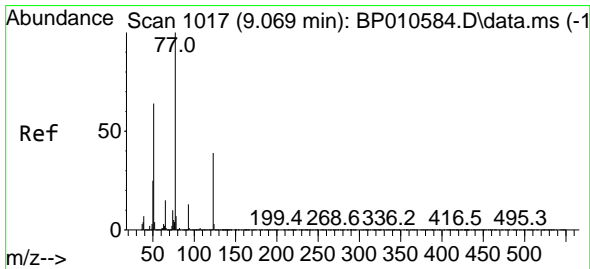
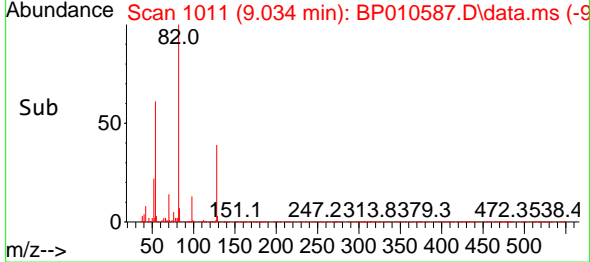
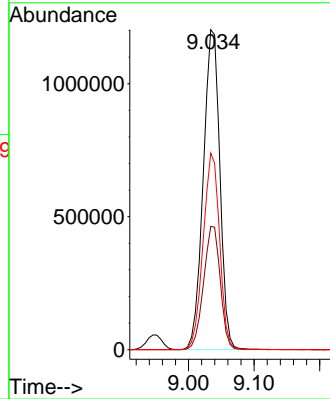
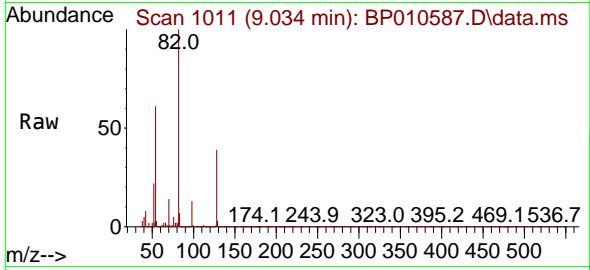


#23
 Nitrobenzene-d5
 Concen: 177.921 ng
 RT: 9.034 min Scan# 1010
 Delta R.T. 0.006 min
 Lab File: BP010587.D
 Acq: 28 May 2022 00:05

Instrument :
 BNA_P
 ClientSampleId :
 SSTDICC080

Tgt Ion: 82 Resp: 2125302

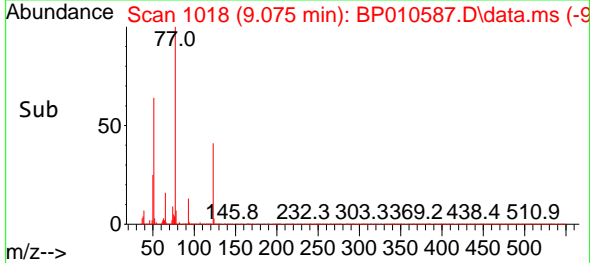
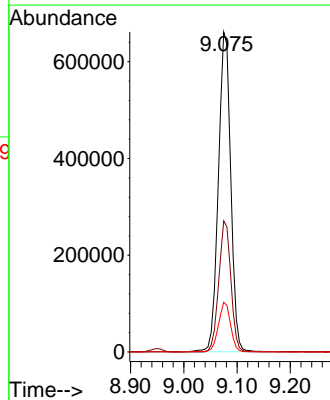
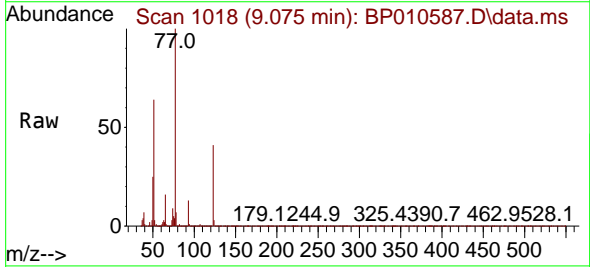
Ion	Ratio	Lower	Upper
82	100		
128	38.6	31.3	46.9
54	61.4	49.8	74.8

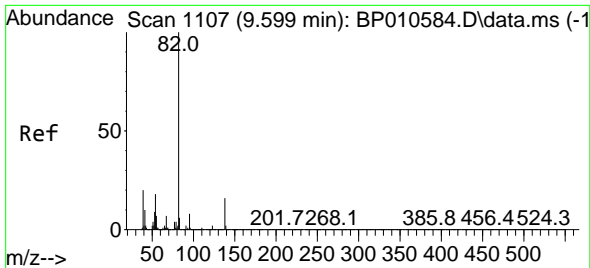


#24
 Nitrobenzene
 Concen: 94.645 ng
 RT: 9.075 min Scan# 1018
 Delta R.T. 0.006 min
 Lab File: BP010587.D
 Acq: 28 May 2022 00:05

Tgt Ion: 77 Resp: 1067985

Ion	Ratio	Lower	Upper
77	100		
123	40.9	31.1	46.7
65	15.5	12.1	18.1

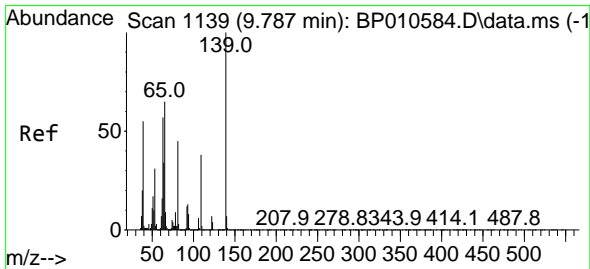
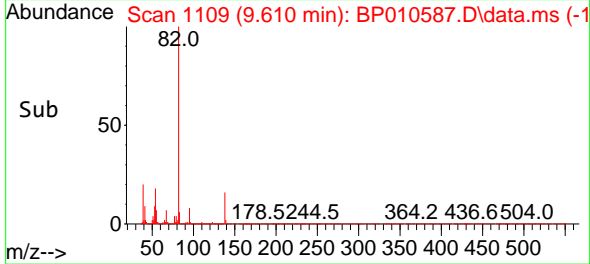
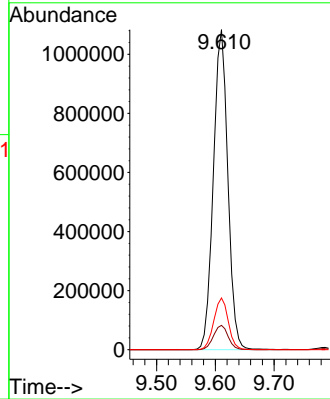
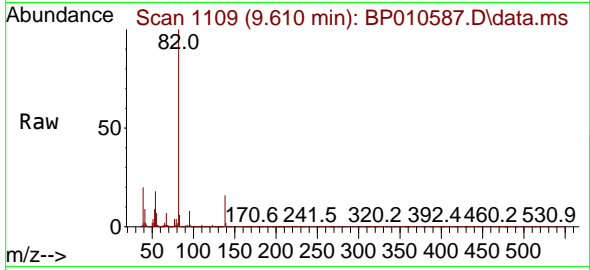




#25
 Isophorone
 Concen: 90.792 ng
 RT: 9.610 min Scan# 1109
 Delta R.T. 0.012 min
 Lab File: BP010587.D
 Acq: 28 May 2022 00:05

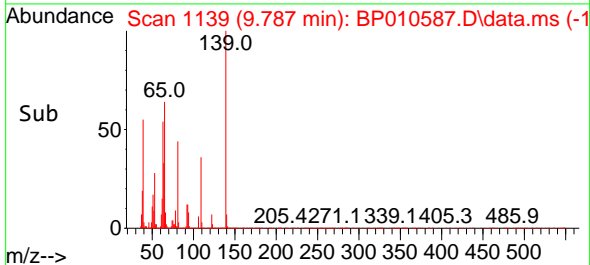
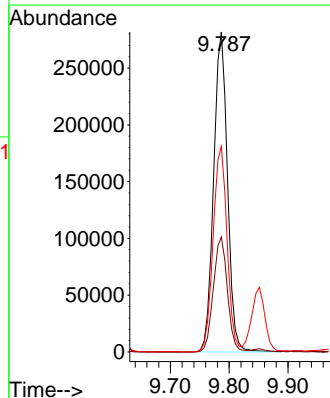
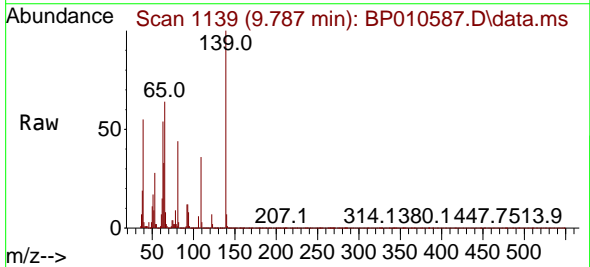
Instrument :
 BNA_P
 ClientSampleId :
 SSTDICC080

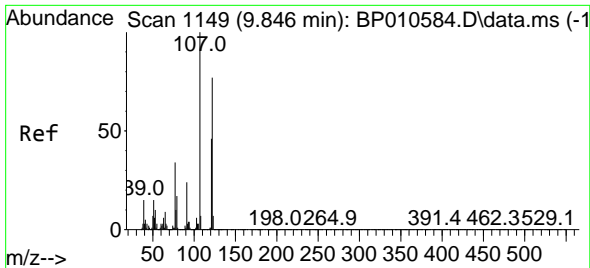
Tgt Ion: 82 Resp: 1849926
 Ion Ratio Lower Upper
 82 100
 95 7.6 6.5 9.7
 138 16.2 12.4 18.6



#26
 2-Nitrophenol
 Concen: 78.261 ng
 RT: 9.787 min Scan# 1139
 Delta R.T. -0.000 min
 Lab File: BP010587.D
 Acq: 28 May 2022 00:05

Tgt Ion: 139 Resp: 460315
 Ion Ratio Lower Upper
 139 100
 109 36.0 30.2 45.4
 65 64.2 52.2 78.2

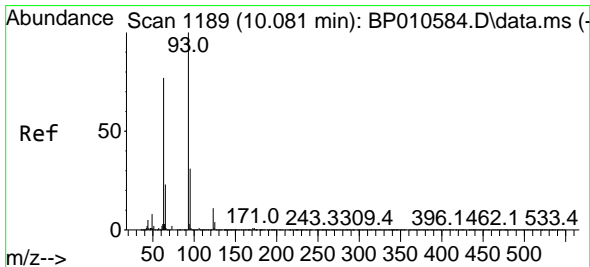
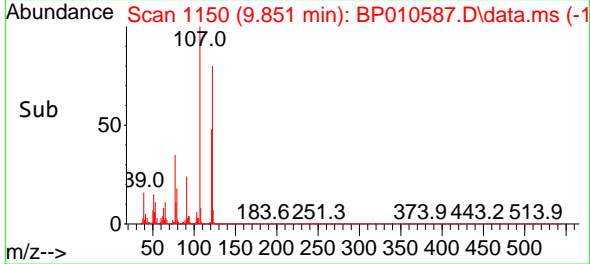
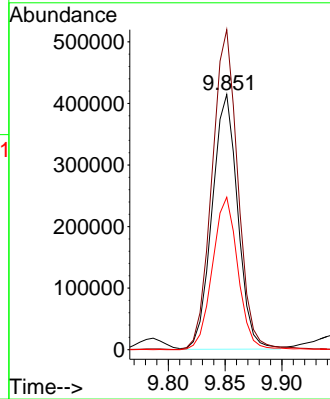
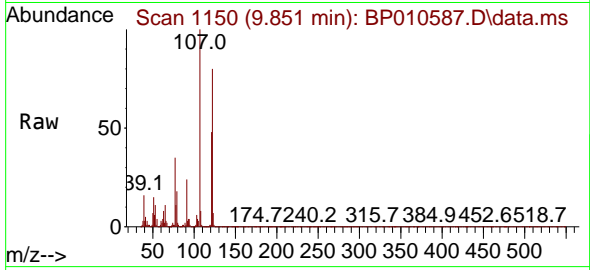




#27
 2,4-Dimethylphenol
 Concen: 78.255 ng
 RT: 9.851 min Scan# 1149
 Delta R.T. 0.006 min
 Lab File: BP010587.D
 Acq: 28 May 2022 00:05

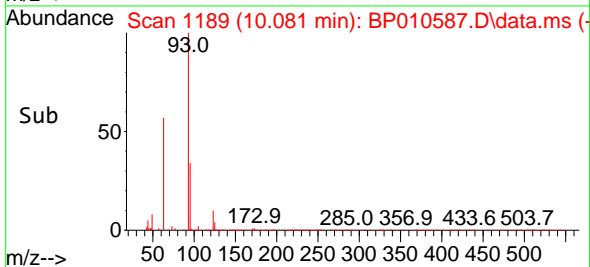
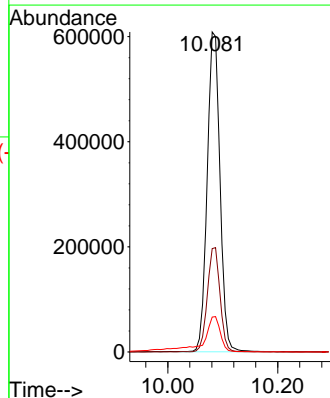
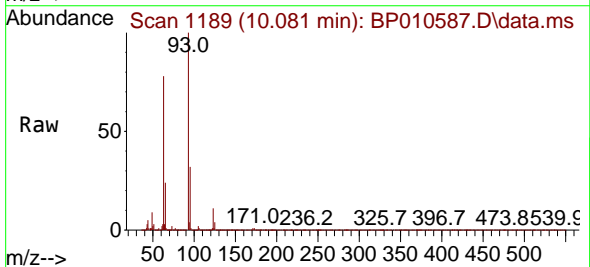
Instrument :
 BNA_P
 ClientSampleId :
 SSTDICC080

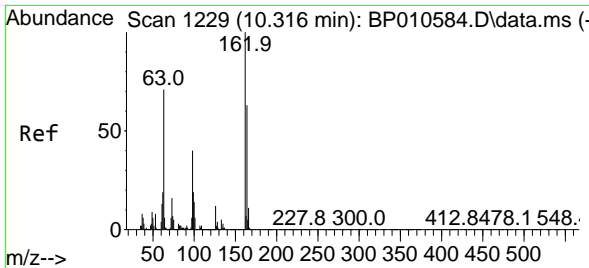
Tgt Ion:122 Resp: 649487
 Ion Ratio Lower Upper
 122 100
 107 125.4 103.5 155.3
 121 59.7 47.5 71.3



#28
 bis(2-Chloroethoxy)methane
 Concen: 73.896 ng
 RT: 10.081 min Scan# 1189
 Delta R.T. -0.000 min
 Lab File: BP010587.D
 Acq: 28 May 2022 00:05

Tgt Ion: 93 Resp: 980357
 Ion Ratio Lower Upper
 93 100
 95 32.3 25.0 37.6
 123 10.9 9.0 13.6



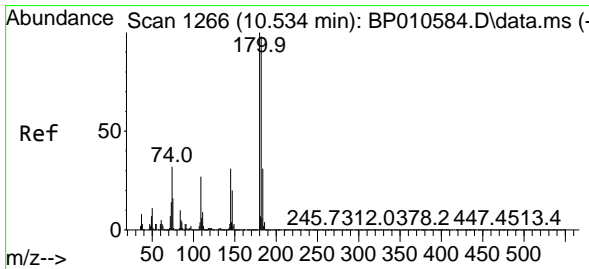
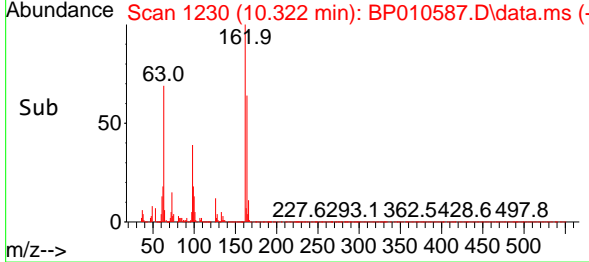
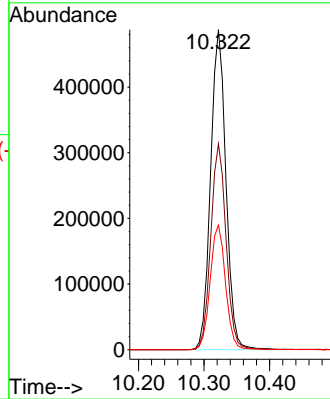
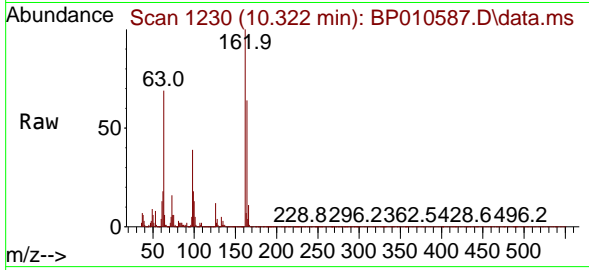


#29
 2,4-Dichlorophenol
 Concen: 78.334 ng
 RT: 10.322 min Scan# 11
 Delta R.T. 0.006 min
 Lab File: BP010587.D
 Acq: 28 May 2022 00:05

Instrument :
 BNA_P
 ClientSampleId :
 SSTDICC080

Tgt Ion:162 Resp: 793027

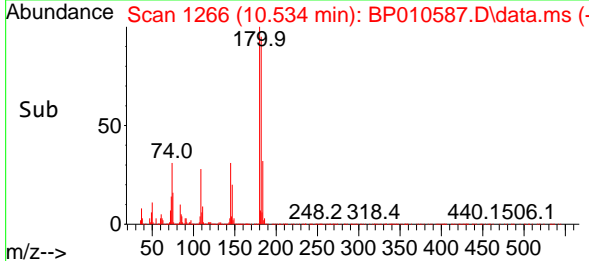
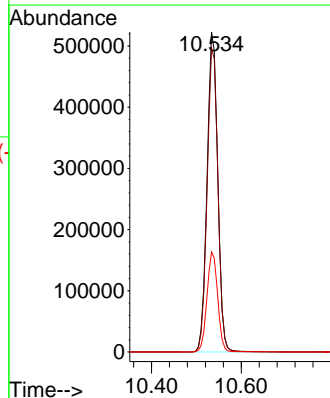
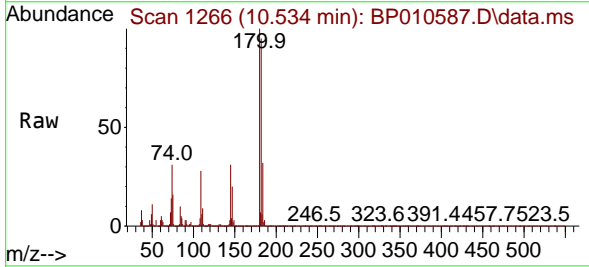
Ion	Ratio	Lower	Upper
162	100		
164	64.4	43.0	83.0
98	38.9	20.4	60.4

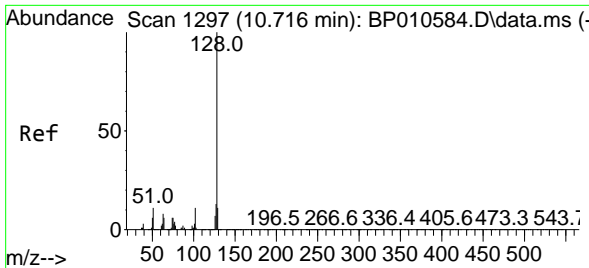


#30
 1,2,4-Trichlorobenzene
 Concen: 73.705 ng
 RT: 10.534 min Scan# 1266
 Delta R.T. -0.000 min
 Lab File: BP010587.D
 Acq: 28 May 2022 00:05

Tgt Ion:180 Resp: 864497

Ion	Ratio	Lower	Upper
180	100		
182	94.9	78.0	117.0
145	31.2	24.6	36.8



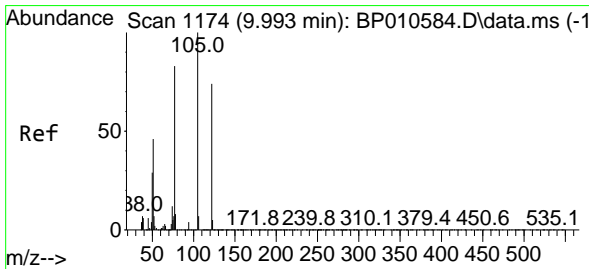
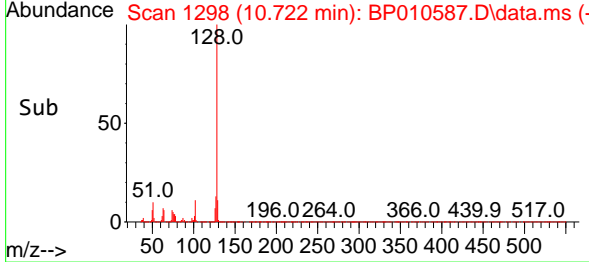
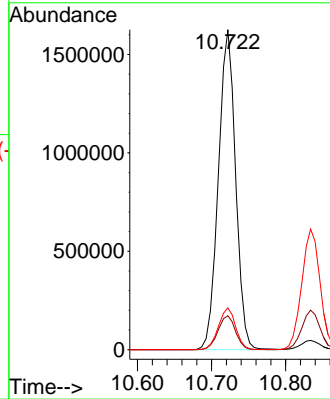
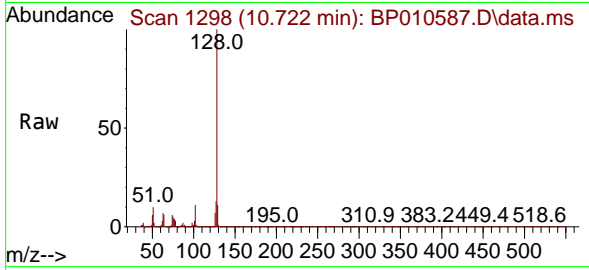


#31
 Naphthalene
 Concen: 80.253 ng
 RT: 10.722 min Scan# 1184
 Delta R.T. 0.006 min
 Lab File: BP010587.D
 Acq: 28 May 2022 00:05

Instrument :
 BNA_P
 ClientSampleId :
 SSTDICC080

Tgt Ion:128 Resp: 2624039

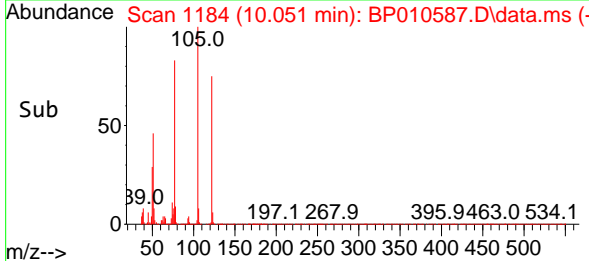
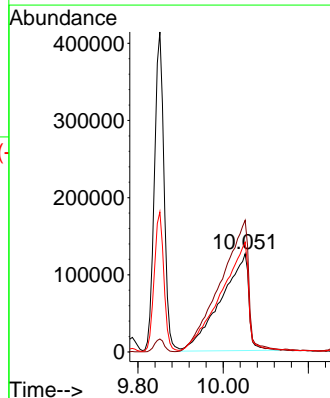
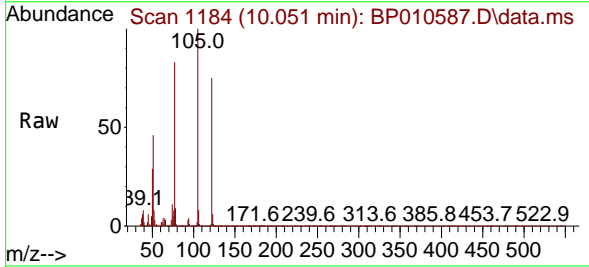
Ion	Ratio	Lower	Upper
128	100		
129	10.6	8.6	12.8
127	13.1	10.3	15.5

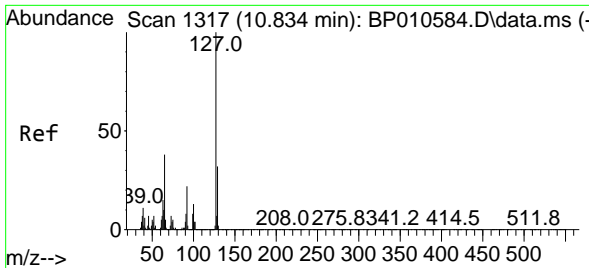


#32
 Benzoic acid
 Concen: 88.055 ng
 RT: 10.051 min Scan# 1184
 Delta R.T. 0.059 min
 Lab File: BP010587.D
 Acq: 28 May 2022 00:05

Tgt Ion:122 Resp: 571382

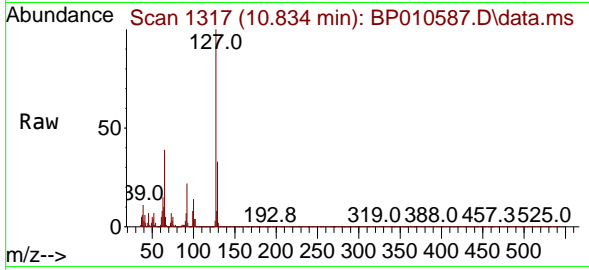
Ion	Ratio	Lower	Upper
122	100		
105	134.0	112.6	152.6
77	111.7	90.2	130.2





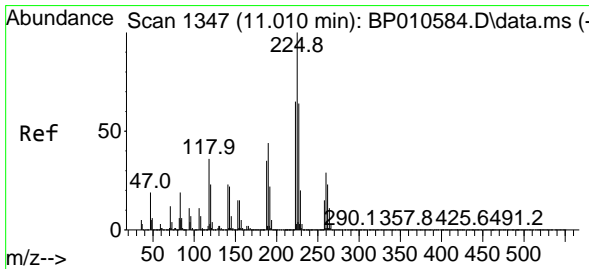
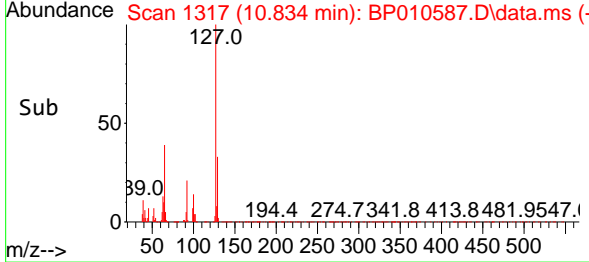
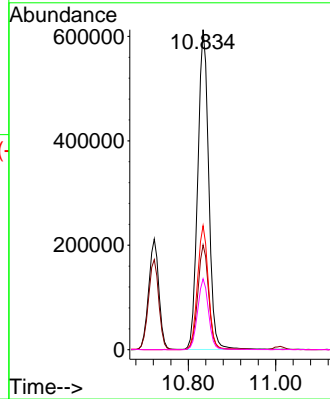
#33
 4-Chloroaniline
 Concen: 80.094 ng
 RT: 10.834 min Scan# 1317
 Delta R.T. -0.000 min
 Lab File: BP010587.D
 Acq: 28 May 2022 00:05

Instrument : BNA_P
 Client Sample Id : SSTDICC080



Tgt Ion: 127 Resp: 1068652

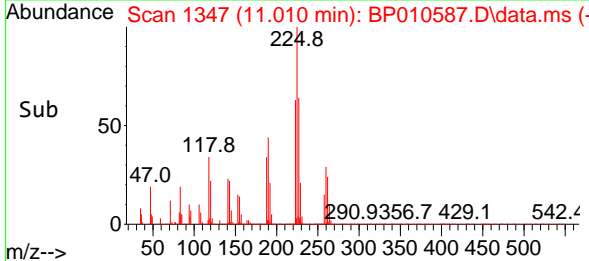
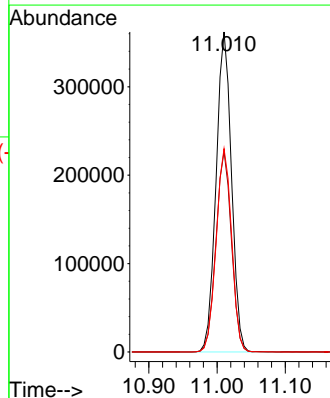
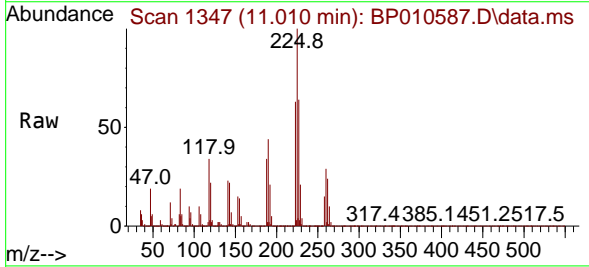
Ion	Ratio	Lower	Upper
127	100		
129	32.7	25.4	38.2
65	38.8	30.4	45.6
92	22.2	17.9	26.9

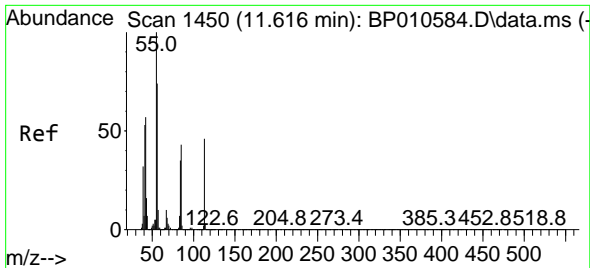


#34
 Hexachlorobutadiene
 Concen: 71.464 ng
 RT: 11.010 min Scan# 1347
 Delta R.T. -0.000 min
 Lab File: BP010587.D
 Acq: 28 May 2022 00:05

Tgt Ion: 225 Resp: 567945

Ion	Ratio	Lower	Upper
225	100		
223	62.6	52.2	78.4
227	63.6	50.8	76.2

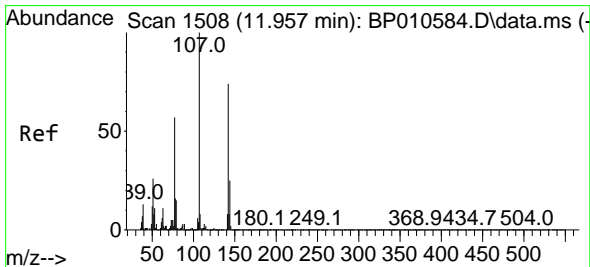
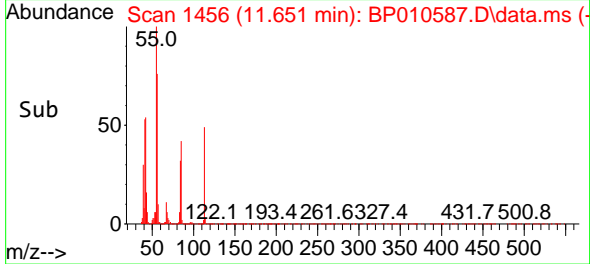
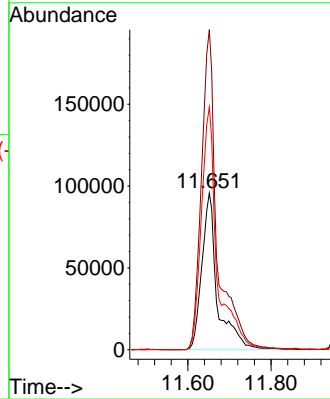
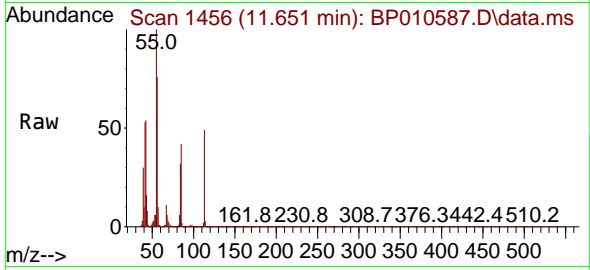




#35
 Caprolactam
 Concen: 72.979 ng
 RT: 11.651 min Scan# 1450
 Delta R.T. 0.035 min
 Lab File: BP010587.D
 Acq: 28 May 2022 00:05

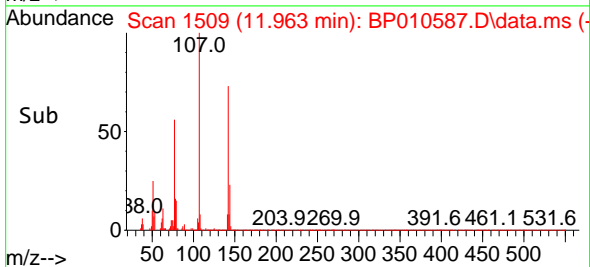
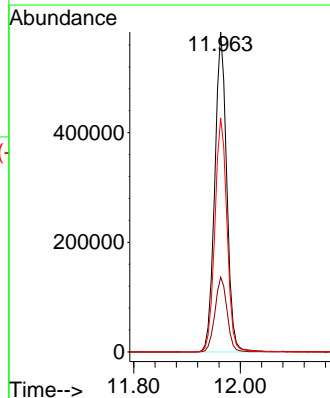
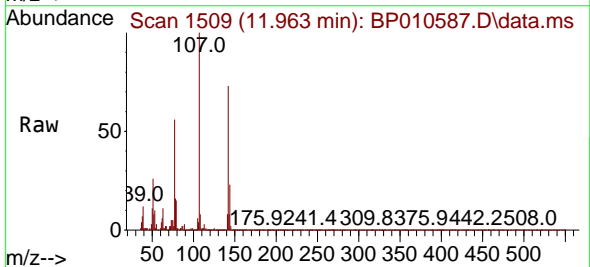
Instrument :
 BNA_P
 ClientSampleId :
 SSTDICC080

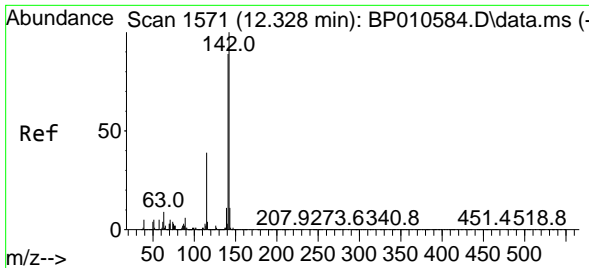
Tgt Ion:113 Resp: 249345
 Ion Ratio Lower Upper
 113 100
 55 204.3 198.6 238.6
 56 154.8 142.7 182.7



#36
 4-Chloro-3-methylphenol
 Concen: 83.689 ng
 RT: 11.963 min Scan# 1509
 Delta R.T. 0.006 min
 Lab File: BP010587.D
 Acq: 28 May 2022 00:05

Tgt Ion:107 Resp: 910416
 Ion Ratio Lower Upper
 107 100
 144 23.4 19.8 29.6
 142 73.1 59.0 88.4

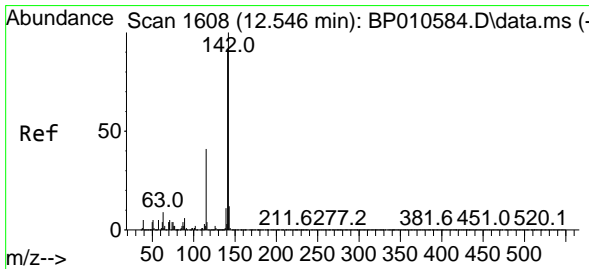
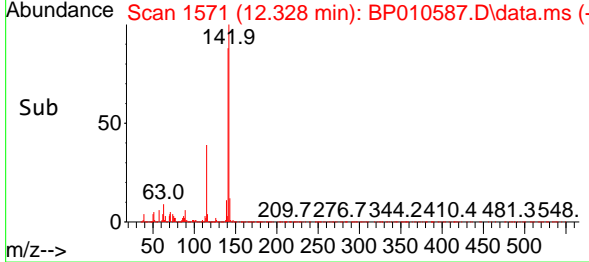
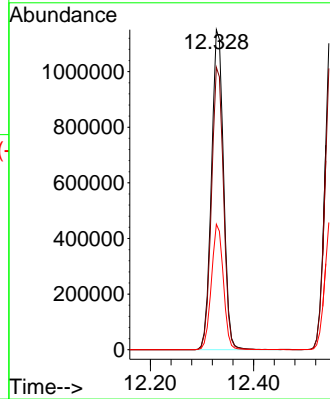
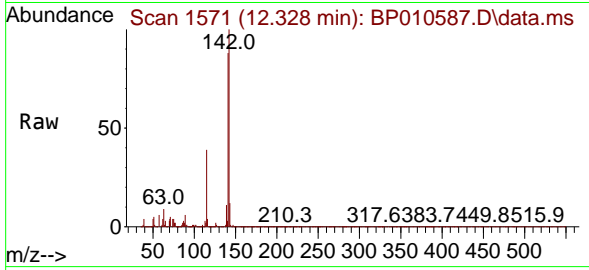




#37
 2-Methylnaphthalene
 Concen: 81.350 ng
 RT: 12.328 min Scan# 1571
 Delta R.T. -0.000 min
 Lab File: BP010587.D
 Acq: 28 May 2022 00:05

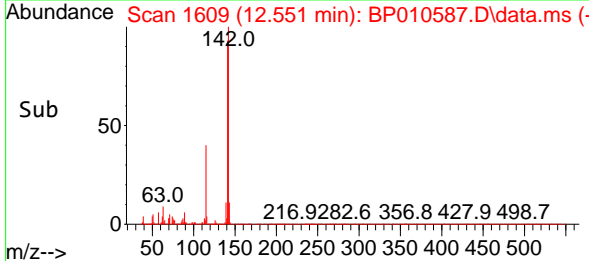
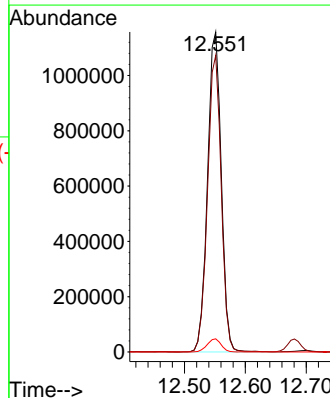
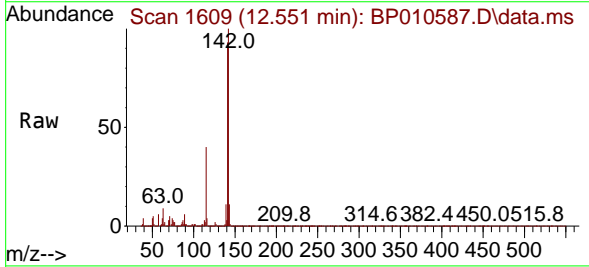
Instrument :
 BNA_P
 ClientSampleId :
 SSTDICC080

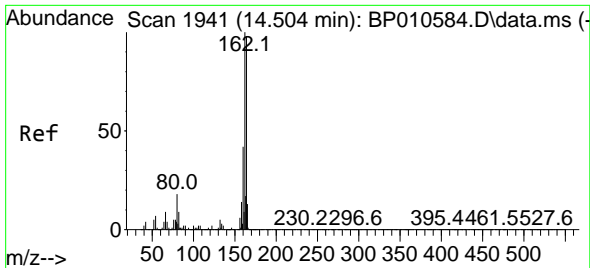
Tgt Ion:142 Resp: 1866302
 Ion Ratio Lower Upper
 142 100
 141 88.3 71.3 106.9
 115 39.2 31.4 47.2



#38
 1-Methylnaphthalene
 Concen: 81.026 ng
 RT: 12.551 min Scan# 1609
 Delta R.T. 0.006 min
 Lab File: BP010587.D
 Acq: 28 May 2022 00:05

Tgt Ion:142 Resp: 1810855
 Ion Ratio Lower Upper
 142 100
 141 92.7 72.6 108.8
 116 4.1 3.3 4.9



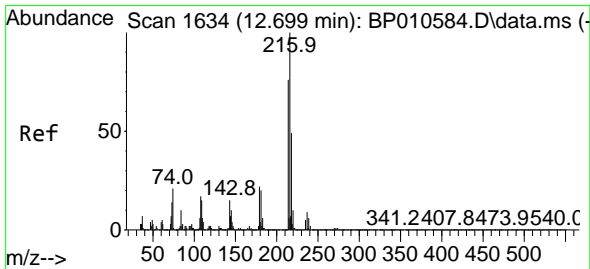
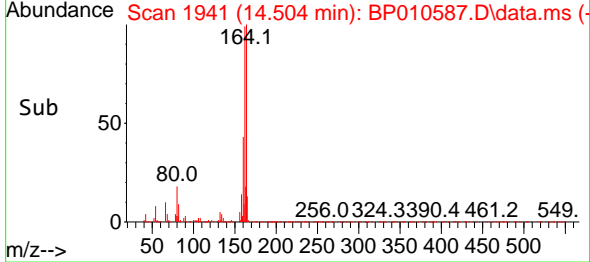
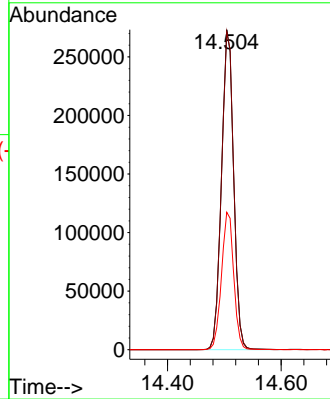
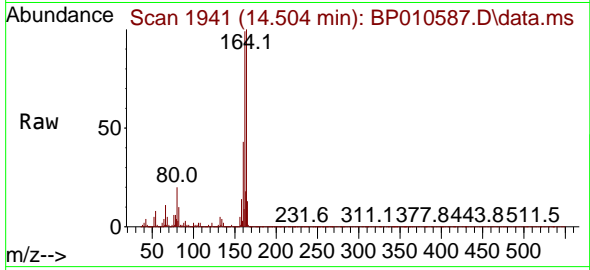


#39
 Acenaphthene-d10
 Concen: 20.000 ng
 RT: 14.504 min Scan# 1941
 Delta R.T. -0.000 min
 Lab File: BP010587.D
 Acq: 28 May 2022 00:05

Instrument : BNA_P
 Client Sample Id : SSTDICC080

Tgt Ion:164 Resp: 405548

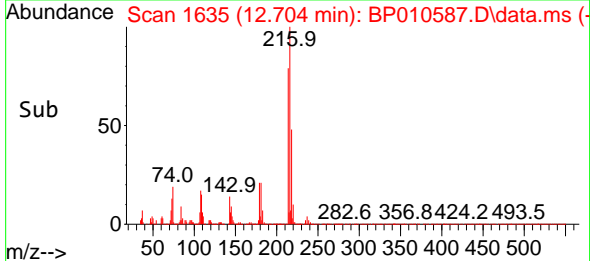
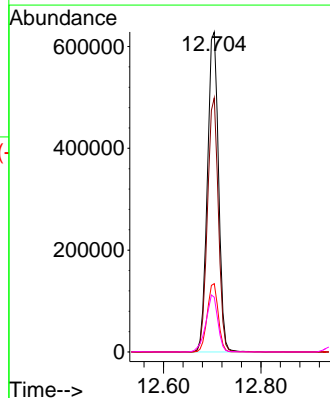
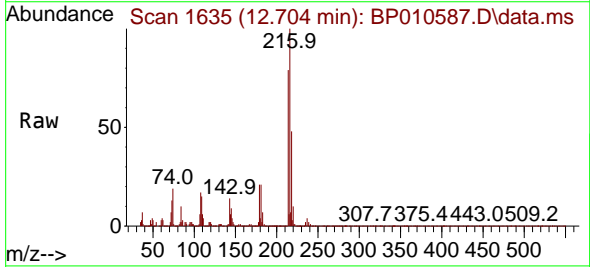
Ion	Ratio	Lower	Upper
164	100		
162	99.4	81.9	122.9
160	43.0	34.6	51.8

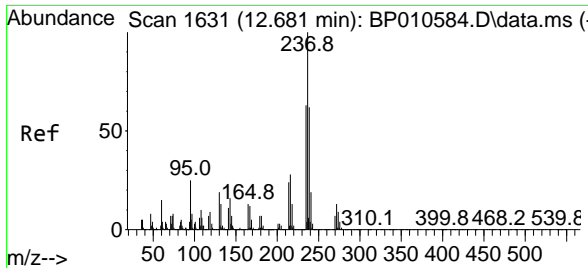


#40
 1,2,4,5-Tetrachlorobenzene
 Concen: 73.660 ng
 RT: 12.704 min Scan# 1635
 Delta R.T. 0.006 min
 Lab File: BP010587.D
 Acq: 28 May 2022 00:05

Tgt Ion:216 Resp: 991147

Ion	Ratio	Lower	Upper
216	100		
214	78.1	61.9	92.9
179	21.2	17.0	25.6
108	19.2	15.5	23.3



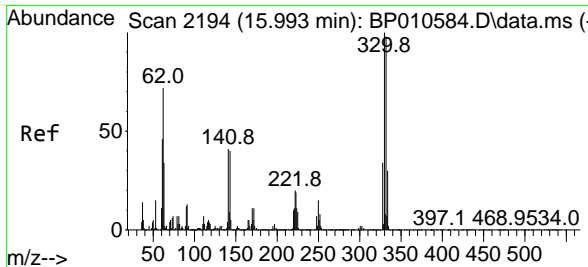
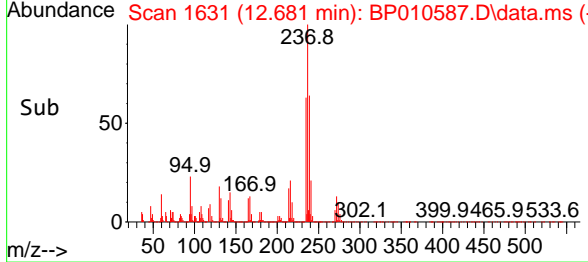
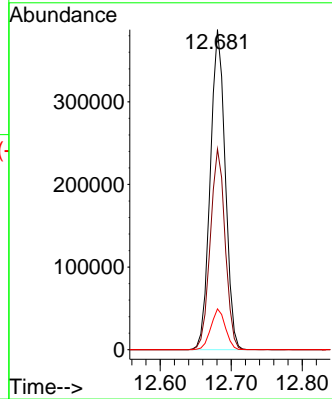
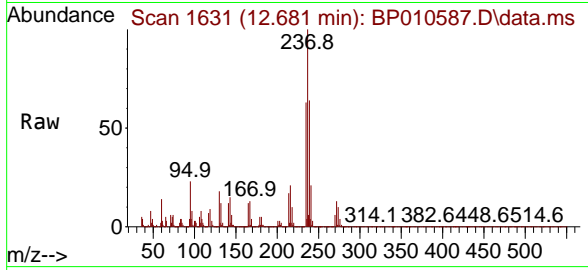


#41
 Hexachlorocyclopentadiene
 Concen: 119.408 ng
 RT: 12.681 min Scan# 10
 Delta R.T. -0.000 min
 Lab File: BP010587.D
 Acq: 28 May 2022 00:05

Instrument :
 BNA_P
 ClientSampleId :
 SSTDICC080

Tgt Ion:237 Resp: 566085

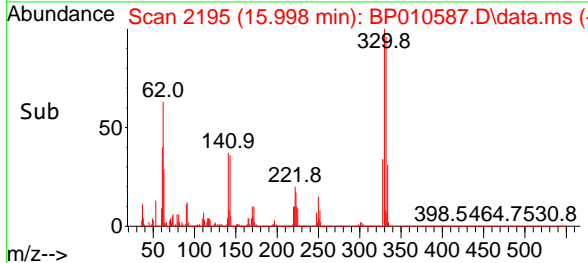
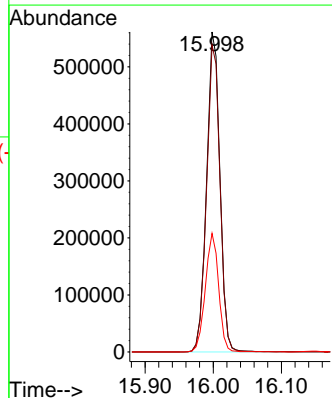
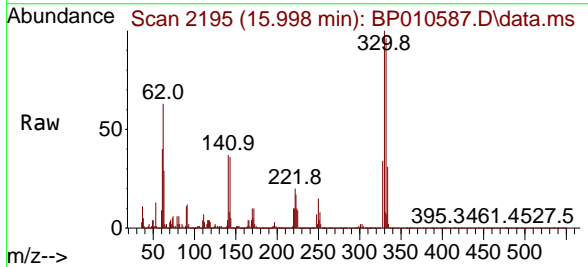
Ion	Ratio	Lower	Upper
237	100		
235	62.7	43.3	83.3
272	12.7	0.0	33.0

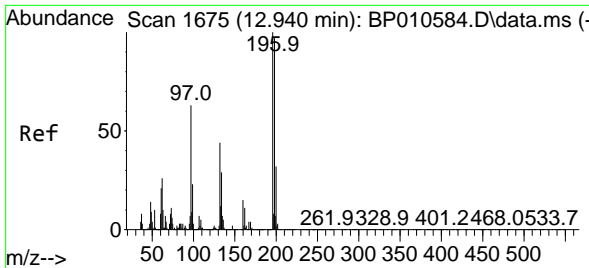


#42
 2,4,6-Tribromophenol
 Concen: 113.985 ng
 RT: 15.998 min Scan# 2195
 Delta R.T. 0.006 min
 Lab File: BP010587.D
 Acq: 28 May 2022 00:05

Tgt Ion:330 Resp: 762817

Ion	Ratio	Lower	Upper
330	100		
332	96.7	78.1	117.1
141	37.2	31.4	47.2

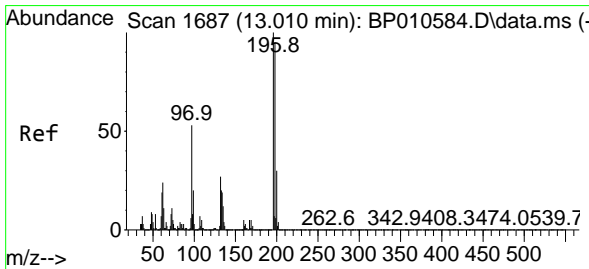
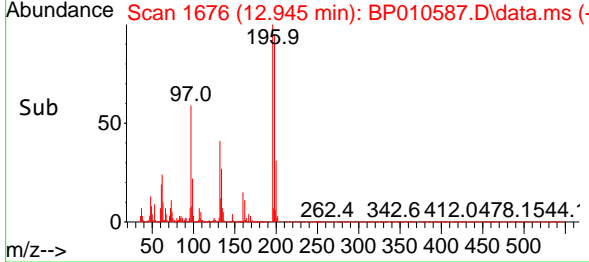
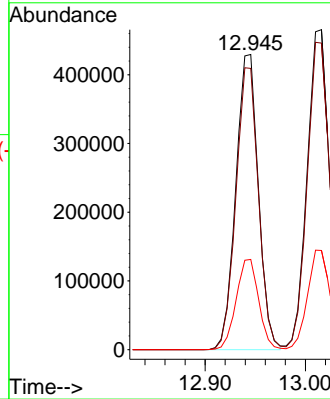
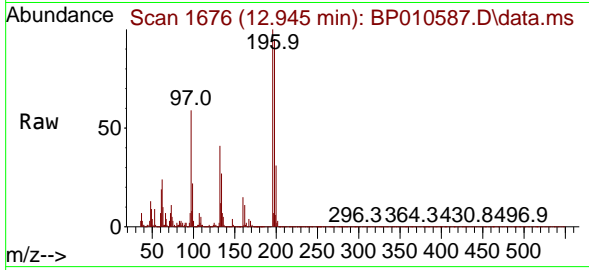




#43
 2,4,6-Trichlorophenol
 Concen: 75.346 ng
 RT: 12.945 min Scan# 1676
 Delta R.T. 0.006 min
 Lab File: BP010587.D
 Acq: 28 May 2022 00:05

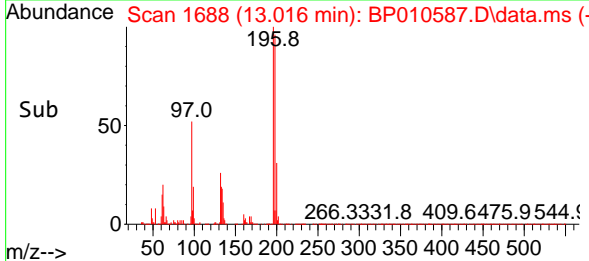
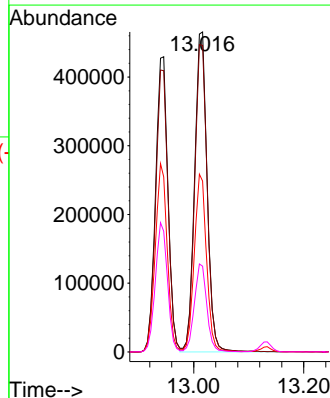
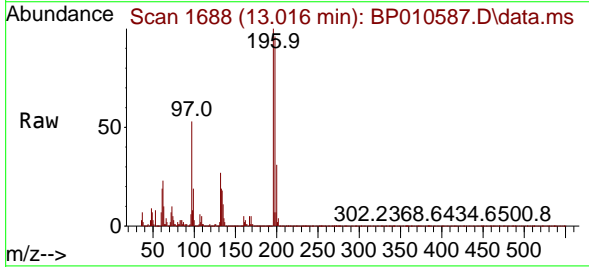
Instrument :
 BNA_P
 ClientSampleId :
 SSTDICC080

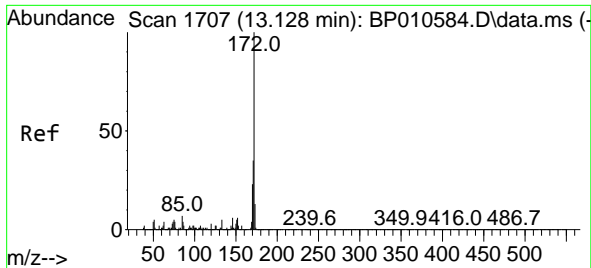
Tgt Ion	Resp	Lower	Upper
196	671984		
196	100		
198	95.3	77.7	116.5
200	30.6	25.5	38.3



#44
 2,4,5-Trichlorophenol
 Concen: 76.014 ng
 RT: 13.016 min Scan# 1688
 Delta R.T. 0.006 min
 Lab File: BP010587.D
 Acq: 28 May 2022 00:05

Tgt Ion	Resp	Lower	Upper
196	736196		
196	100		
198	95.8	75.7	113.5
97	53.4	42.4	63.6
132	26.8	21.5	32.3



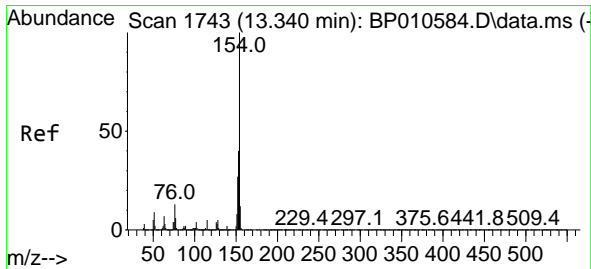
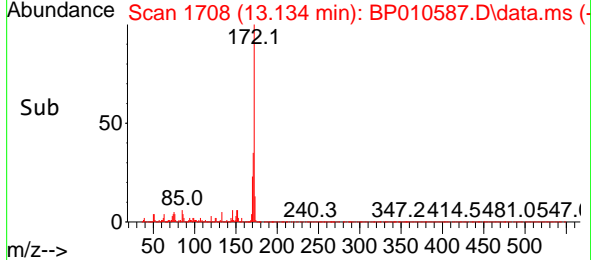
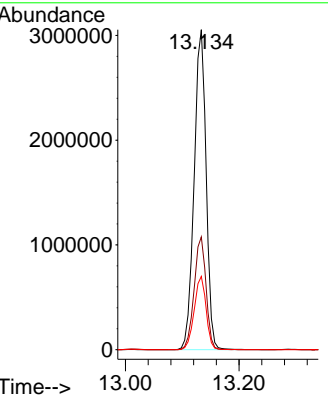
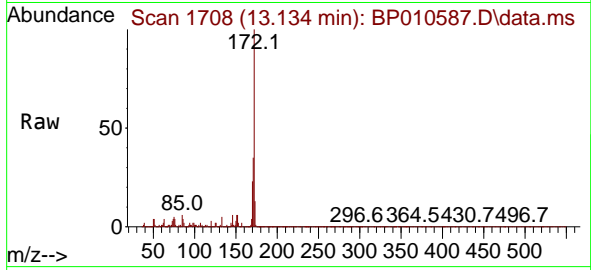


#45
 2-Fluorobiphenyl
 Concen: 152.295 ng
 RT: 13.134 min Scan# 1708
 Delta R.T. 0.006 min
 Lab File: BP010587.D
 Acq: 28 May 2022 00:05

Instrument :
 BNA_P
 ClientSampleId :
 SSTDICC080

Tgt Ion:172 Resp: 4455255

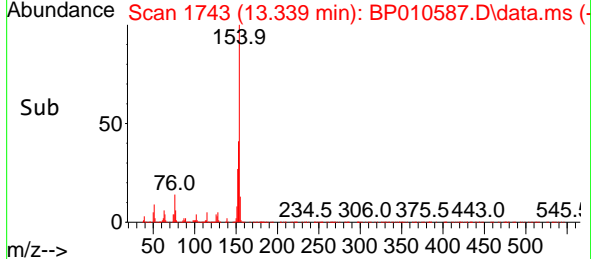
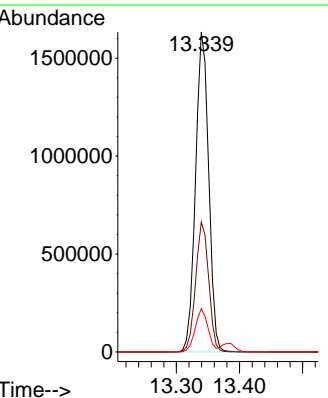
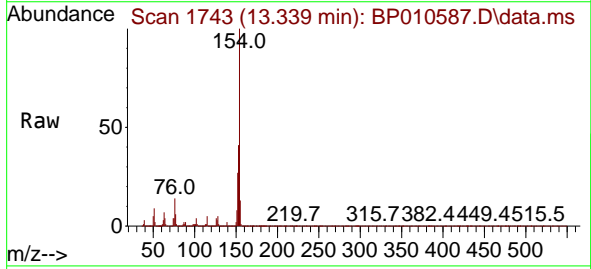
Ion	Ratio	Lower	Upper
172	100		
171	35.2	27.9	41.9
170	22.9	18.2	27.2

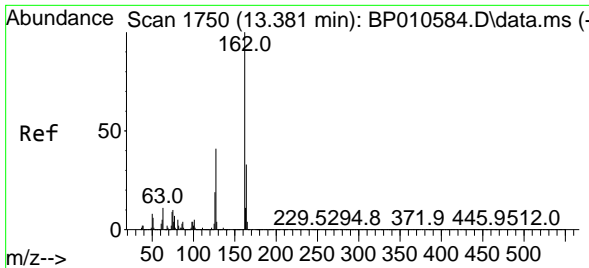


#46
 1,1'-Biphenyl
 Concen: 77.989 ng
 RT: 13.339 min Scan# 1743
 Delta R.T. -0.000 min
 Lab File: BP010587.D
 Acq: 28 May 2022 00:05

Tgt Ion:154 Resp: 2359482

Ion	Ratio	Lower	Upper
154	100		
153	40.6	20.1	60.1
76	13.6	0.0	33.2





#47
 2-Chloronaphthalene
 Concen: 77.703 ng
 RT: 13.381 min Scan# 1750
 Delta R.T. -0.000 min
 Lab File: BP010587.D
 Acq: 28 May 2022 00:05

Instrument :

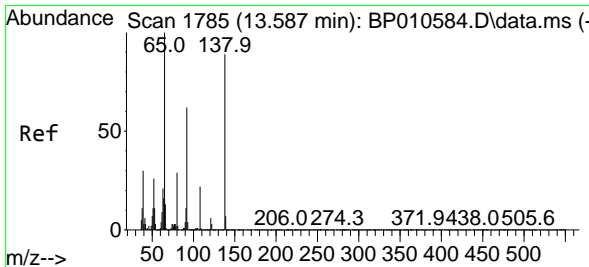
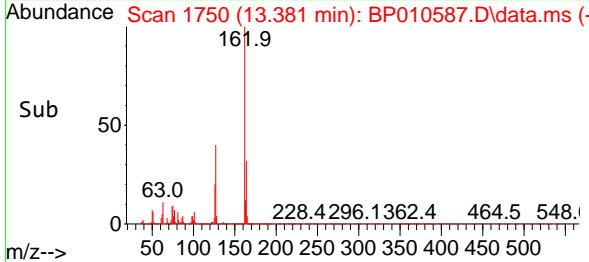
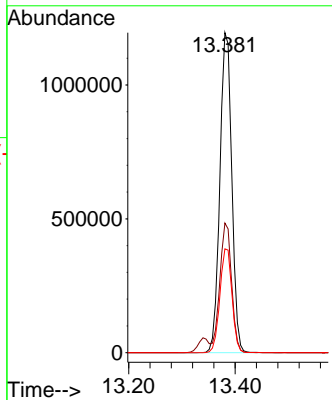
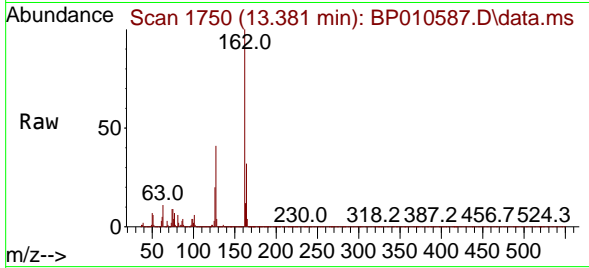
BNA_P

ClientSampleId :

SSTDIC080

Tgt Ion:162 Resp: 1850827

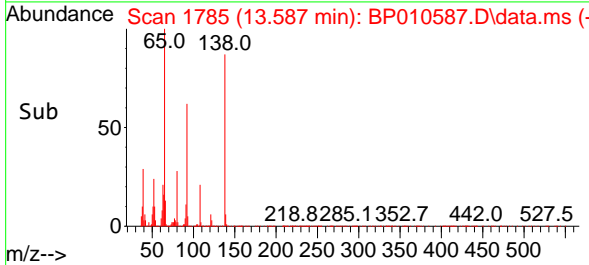
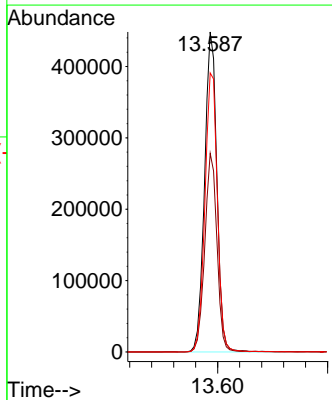
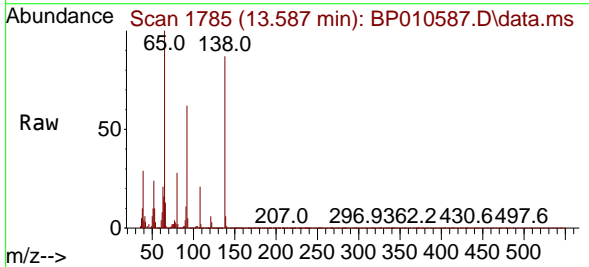
Ion	Ratio	Lower	Upper
162	100		
127	40.5	32.4	48.6
164	32.4	26.3	39.5

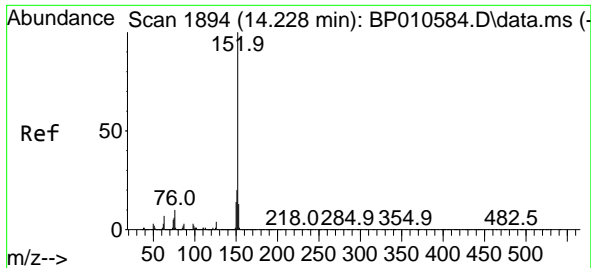


#48
 2-Nitroaniline
 Concen: 107.109 ng
 RT: 13.587 min Scan# 1785
 Delta R.T. -0.000 min
 Lab File: BP010587.D
 Acq: 28 May 2022 00:05

Tgt Ion: 65 Resp: 694859

Ion	Ratio	Lower	Upper
65	100		
92	62.0	50.0	75.0
138	87.2	71.2	106.8





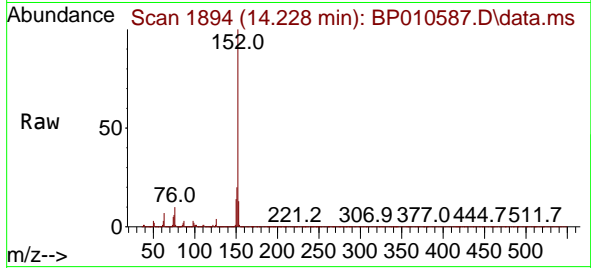
#49
 Acenaphthylene
 Concen: 79.125 ng
 RT: 14.228 min Scan# 1894
 Delta R.T. -0.000 min
 Lab File: BP010587.D
 Acq: 28 May 2022 00:05

Instrument :

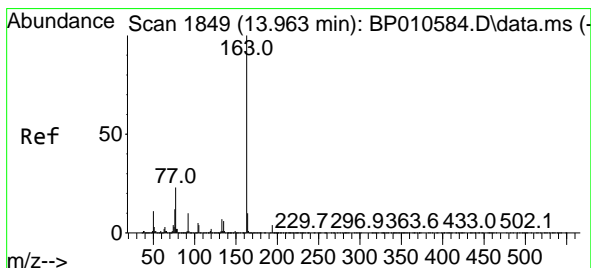
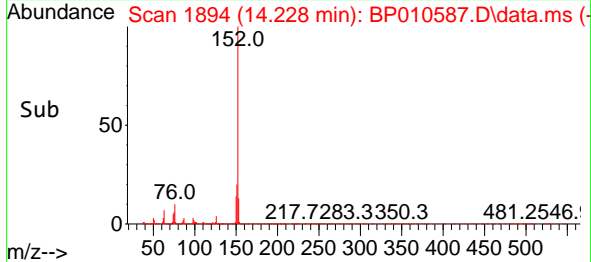
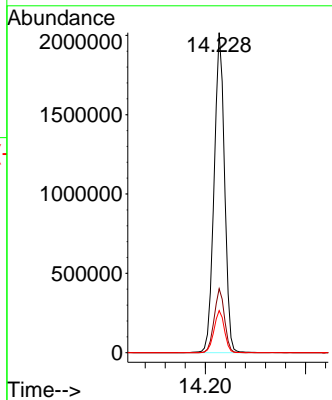
BNA_P

Client Sample Id :

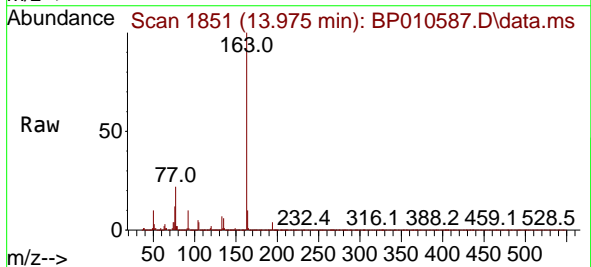
SSTDICC080



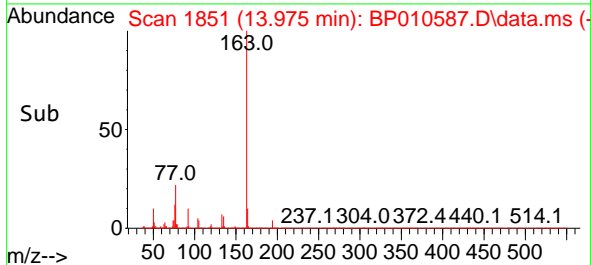
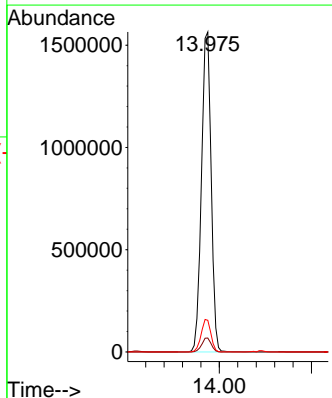
Tgt Ion:152 Resp: 2909451
 Ion Ratio Lower Upper
 152 100
 151 20.0 15.7 23.5
 153 13.2 10.4 15.6

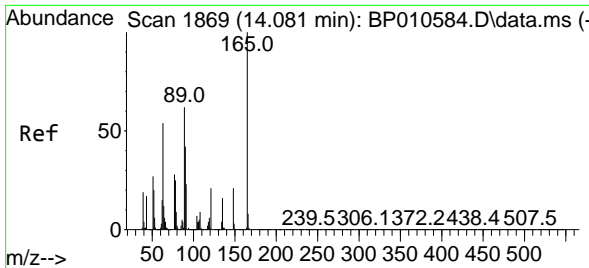


#50
 Dimethylphthalate
 Concen: 74.780 ng
 RT: 13.975 min Scan# 1851
 Delta R.T. 0.011 min
 Lab File: BP010587.D
 Acq: 28 May 2022 00:05



Tgt Ion:163 Resp: 2297954
 Ion Ratio Lower Upper
 163 100
 194 4.4 3.1 4.7
 164 9.9 8.2 12.4

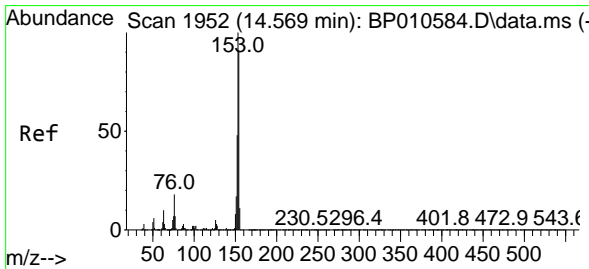
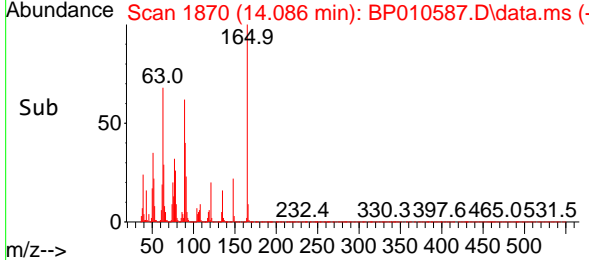
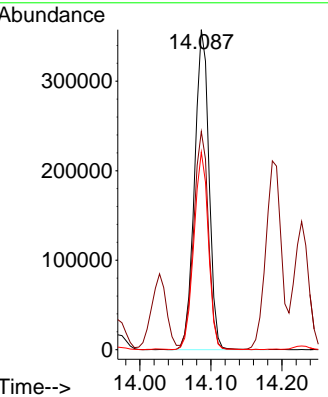
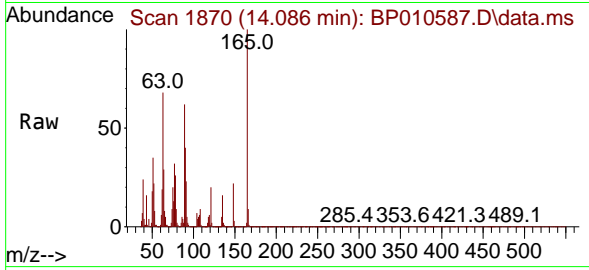




#51
 2,6-Dinitrotoluene
 Concen: 78.606 ng
 RT: 14.086 min Scan# 1869
 Delta R.T. 0.006 min
 Lab File: BP010587.D
 Acq: 28 May 2022 00:05

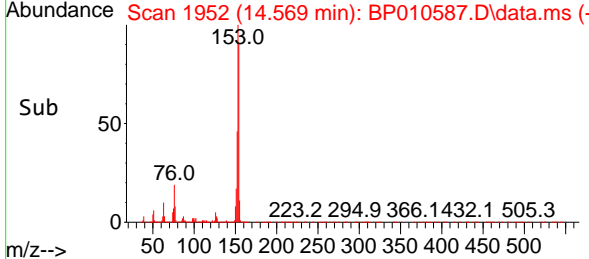
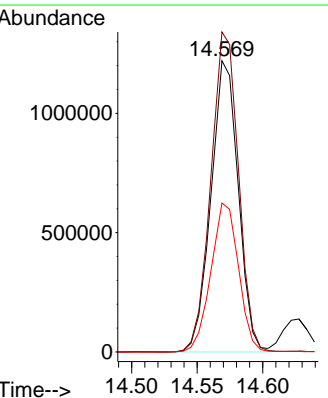
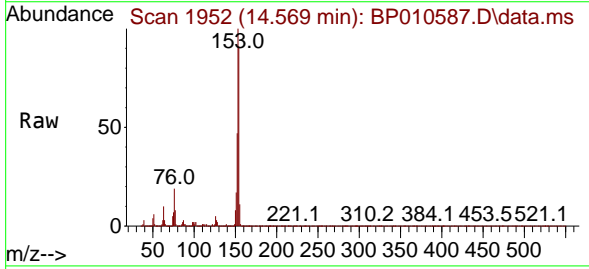
Instrument : BNA_P
 ClientSampleId : SSTDICC080

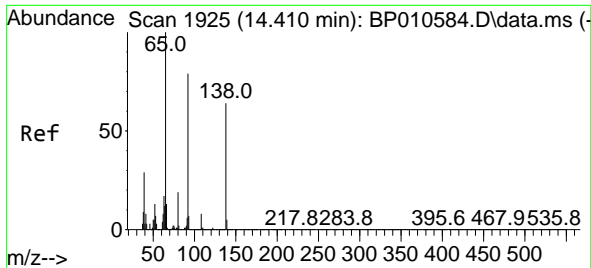
Tgt Ion	Resp	Lower	Upper
165	100		
63	68.2	57.3	85.9
89	61.7	50.2	75.2



#52
 Acenaphthene
 Concen: 80.417 ng
 RT: 14.569 min Scan# 1952
 Delta R.T. -0.000 min
 Lab File: BP010587.D
 Acq: 28 May 2022 00:05

Tgt Ion	Resp	Lower	Upper
154	100		
153	109.9	87.4	131.2
152	51.1	41.7	62.5

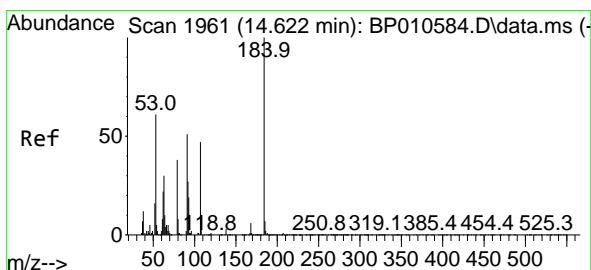
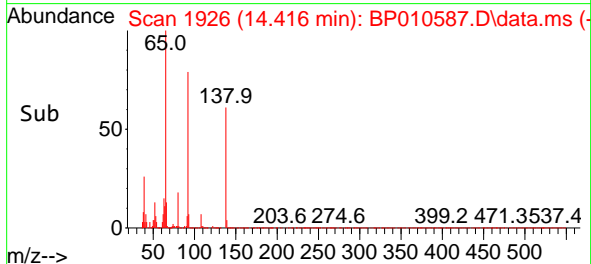
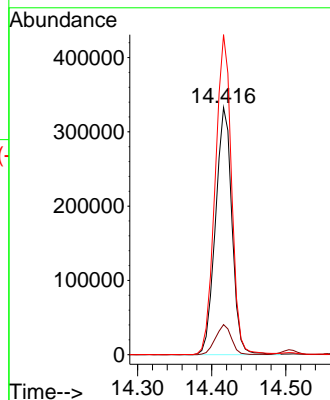
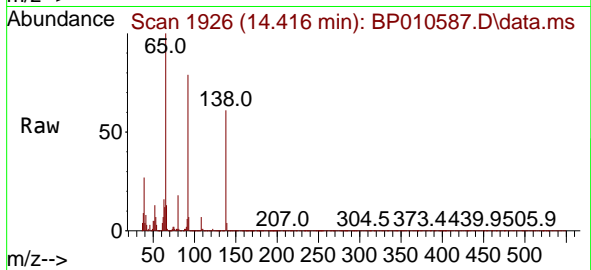




#53
 3-Nitroaniline
 Concen: 75.431 ng
 RT: 14.416 min Scan# 1925
 Delta R.T. 0.006 min
 Lab File: BP010587.D
 Acq: 28 May 2022 00:05

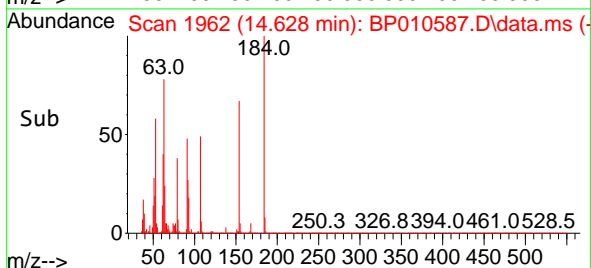
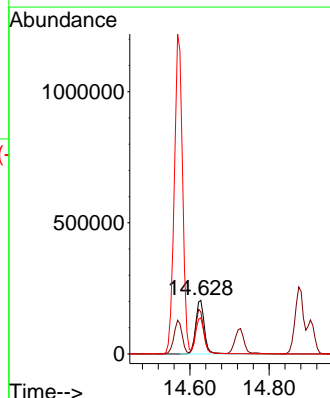
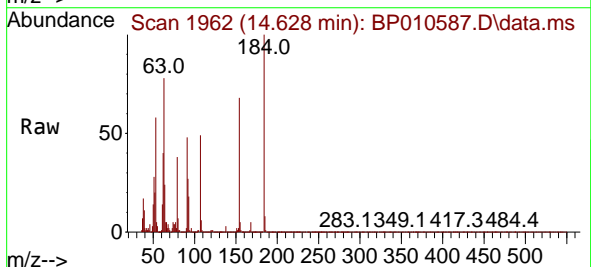
Instrument :
 BNA_P
 ClientSampleId :
 SSTDICC080

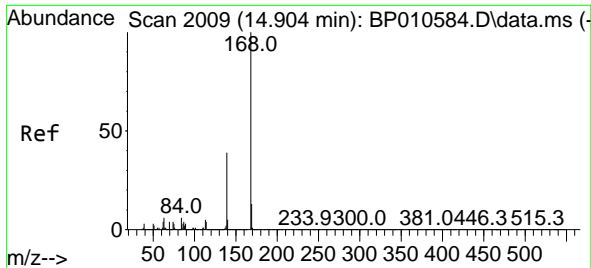
Tgt Ion:138 Resp: 512976
 Ion Ratio Lower Upper
 138 100
 108 12.2 9.5 14.3
 92 129.4 99.9 149.9



#54
 2,4-Dinitrophenol
 Concen: 87.398 ng
 RT: 14.628 min Scan# 1962
 Delta R.T. 0.006 min
 Lab File: BP010587.D
 Acq: 28 May 2022 00:05

Tgt Ion:184 Resp: 309087
 Ion Ratio Lower Upper
 184 100
 63 78.5 65.4 98.2
 154 67.5 55.4 83.2





#55
 Dibenzofuran
 Concen: 74.643 ng
 RT: 14.904 min Scan# 2009
 Delta R.T. -0.000 min
 Lab File: BP010587.D
 Acq: 28 May 2022 00:05

Instrument :

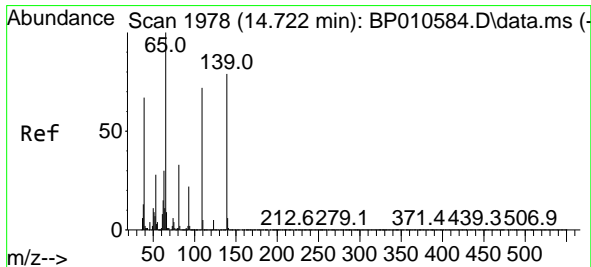
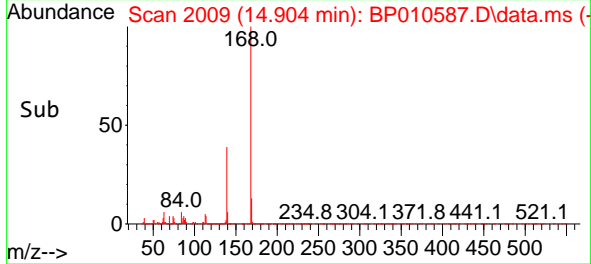
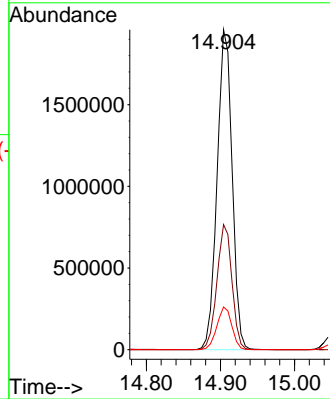
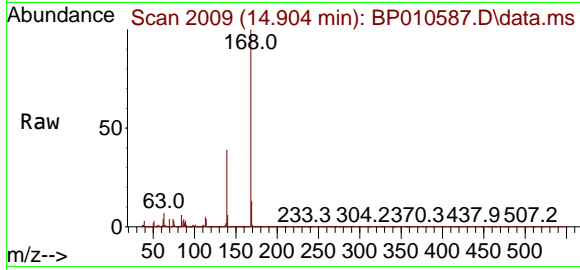
BNA_P

Client Sample Id :

SSTDICC080

Tgt Ion:168 Resp: 2754421

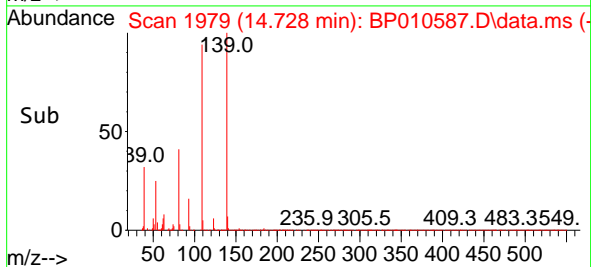
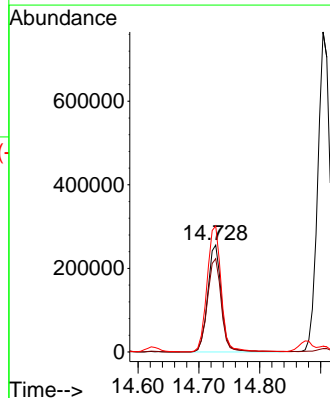
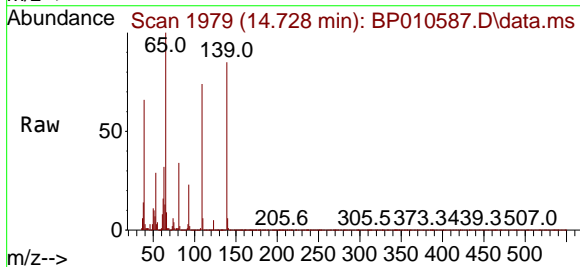
Ion	Ratio	Lower	Upper
168	100		
139	39.1	31.5	47.3
169	13.3	10.3	15.5

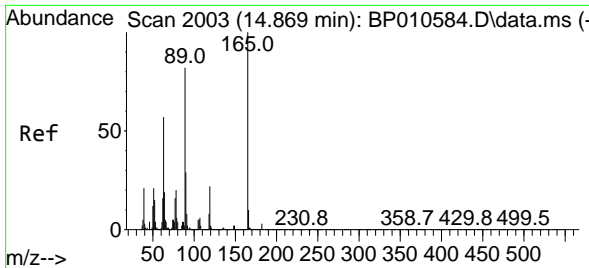


#56
 4-Nitrophenol
 Concen: 78.754 ng
 RT: 14.728 min Scan# 1979
 Delta R.T. 0.006 min
 Lab File: BP010587.D
 Acq: 28 May 2022 00:05

Tgt Ion:139 Resp: 399223

Ion	Ratio	Lower	Upper
139	100		
109	87.2	70.6	110.6
65	118.0	106.6	146.6



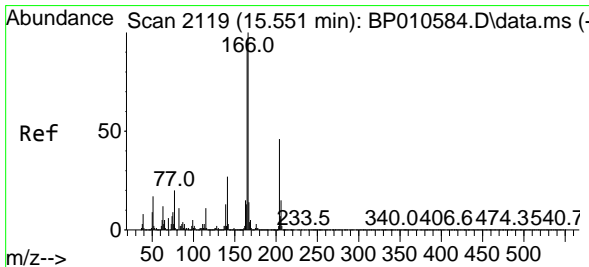
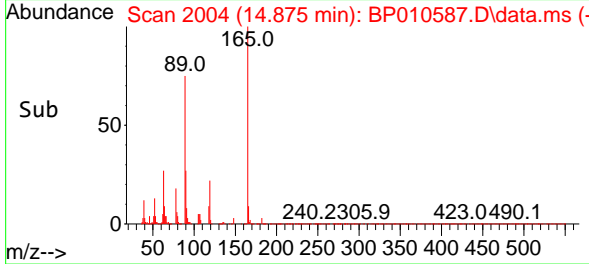
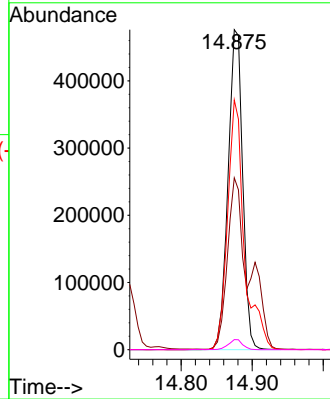
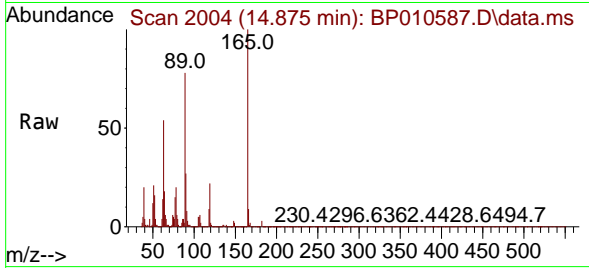


#57
 2,4-Dinitrotoluene
 Concen: 76.644 ng
 RT: 14.875 min Scan# 20
 Delta R.T. 0.006 min
 Lab File: BP010587.D
 Acq: 28 May 2022 00:05

Instrument :
 BNA_P
 ClientSampleId :
 SSTDICC080

Tgt Ion:165 Resp: 678527

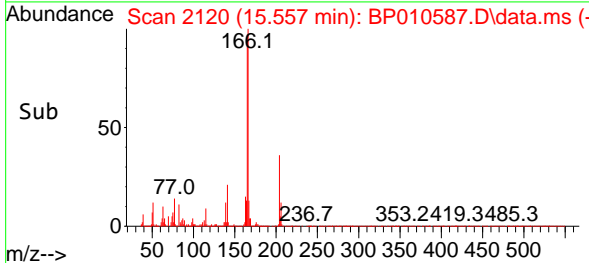
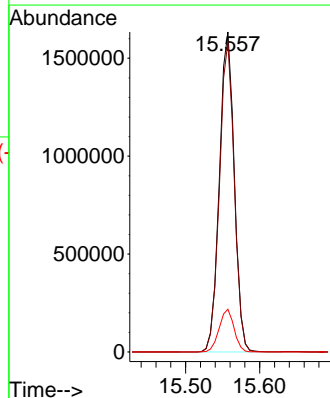
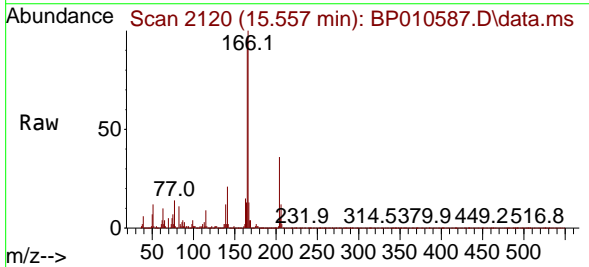
Ion	Ratio	Lower	Upper
165	100		
63	53.7	46.2	69.2
89	78.1	65.8	98.8
182	3.1	2.3	3.5

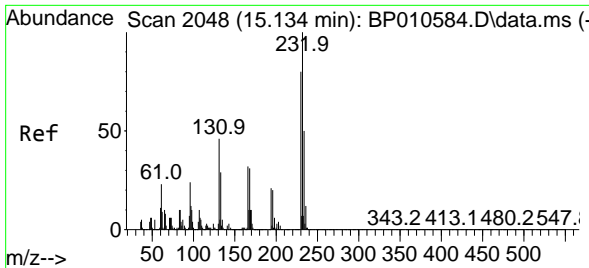


#58
 Fluorene
 Concen: 78.517 ng
 RT: 15.557 min Scan# 2120
 Delta R.T. 0.006 min
 Lab File: BP010587.D
 Acq: 28 May 2022 00:05

Tgt Ion:166 Resp: 2278690

Ion	Ratio	Lower	Upper
166	100		
165	96.8	77.0	115.4
167	13.4	10.9	16.3

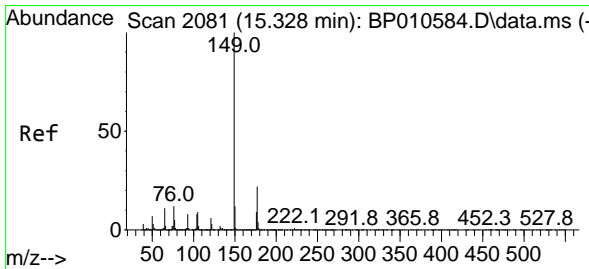
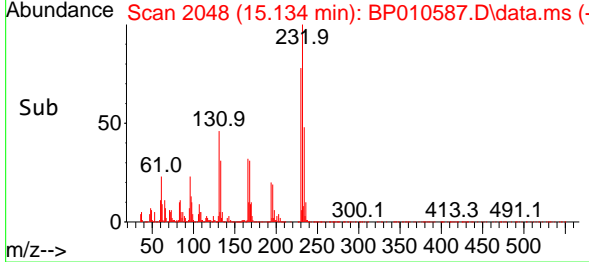
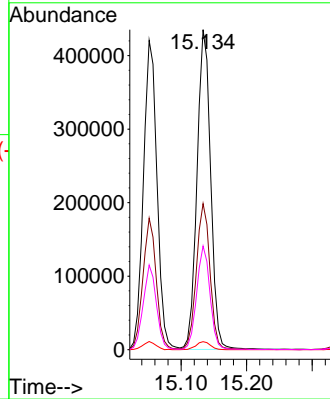
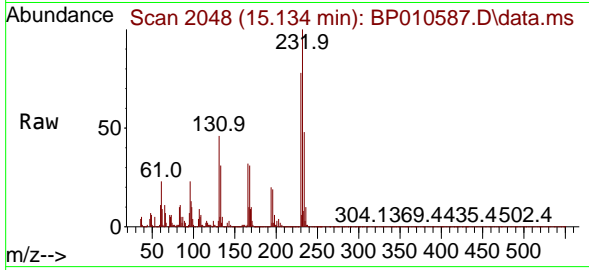




#59
 2,3,4,6-Tetrachlorophenol
 Concen: 71.748 ng
 RT: 15.134 min Scan# 2048
 Delta R.T. -0.000 min
 Lab File: BP010587.D
 Acq: 28 May 2022 00:05

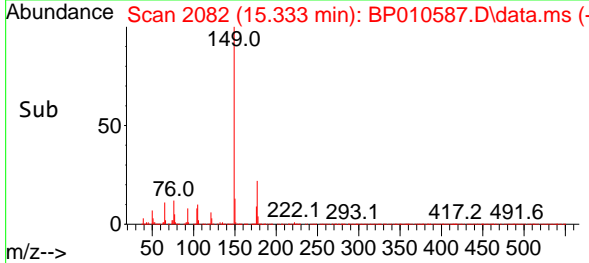
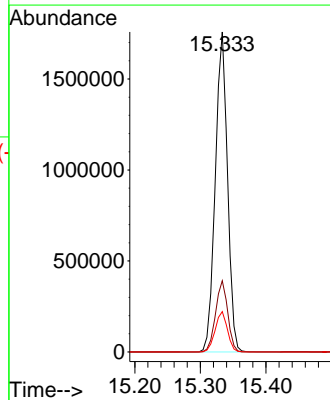
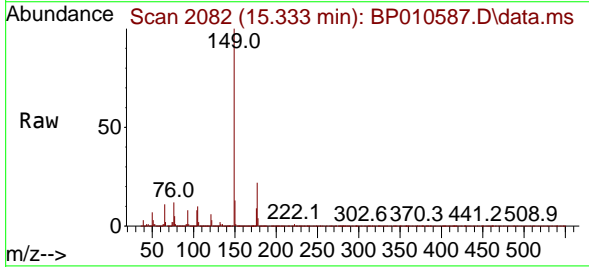
Instrument :
 BNA_P
 ClientSampleId :
 SSTDICC080

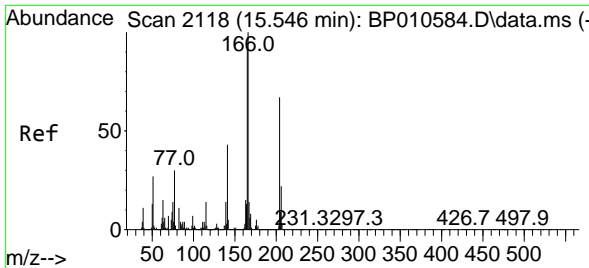
Tgt Ion	Resp	Lower	Upper
232	100		
131	45.7	37.0	55.6
130	2.6	2.2	3.2
166	31.7	25.4	38.2



#60
 Diethylphthalate
 Concen: 73.728 ng
 RT: 15.333 min Scan# 2082
 Delta R.T. 0.006 min
 Lab File: BP010587.D
 Acq: 28 May 2022 00:05

Tgt Ion	Resp	Lower	Upper
149	100		
177	22.2	17.8	26.8
150	12.6	9.9	14.9



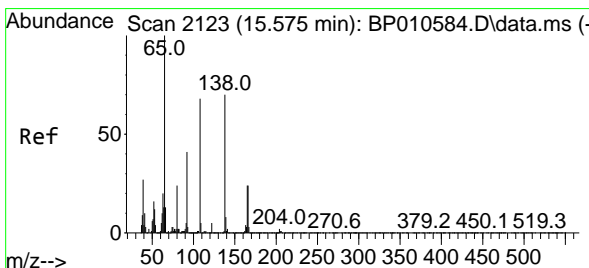
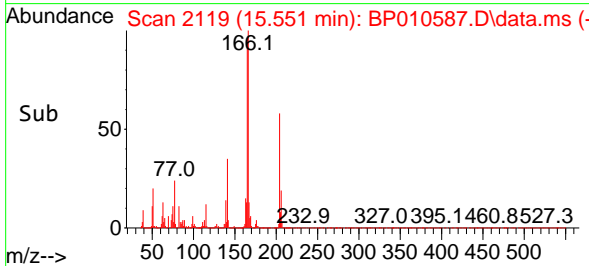
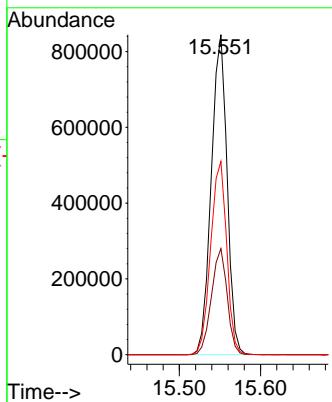
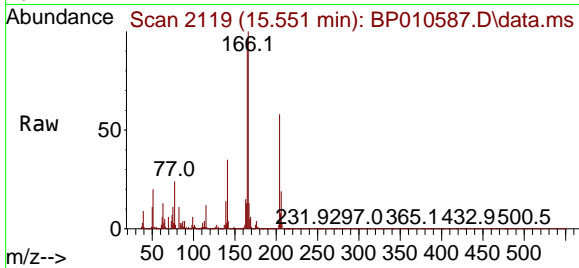


#61
 4-Chlorophenyl-phenylether
 Concen: 71.496 ng
 RT: 15.551 min Scan# 2118
 Delta R.T. 0.006 min
 Lab File: BP010587.D
 Acq: 28 May 2022 00:05

Instrument : BNA_P
 ClientSampleId : SSTDICC080

Tgt Ion: 204 Resp: 1142998

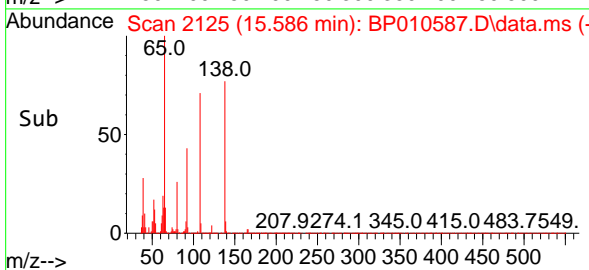
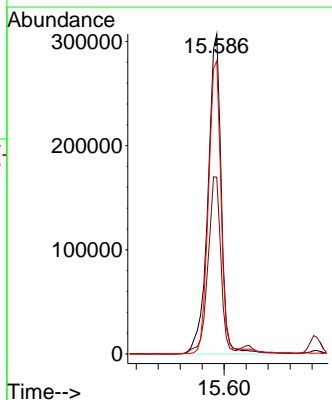
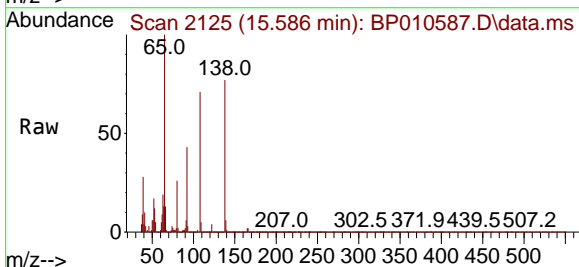
Ion	Ratio	Lower	Upper
204	100		
206	33.1	26.3	39.5
141	60.4	51.1	76.7

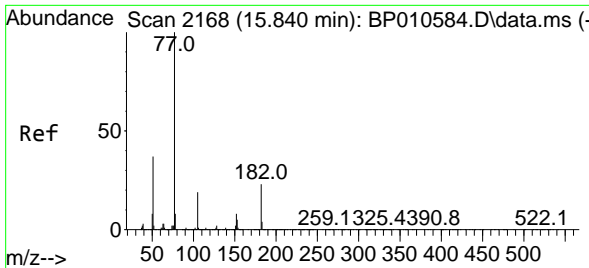


#62
 4-Nitroaniline
 Concen: 72.485 ng
 RT: 15.586 min Scan# 2125
 Delta R.T. 0.011 min
 Lab File: BP010587.D
 Acq: 28 May 2022 00:05

Tgt Ion: 138 Resp: 517690

Ion	Ratio	Lower	Upper
138	100		
92	55.3	38.0	78.0
108	91.6	77.6	117.6



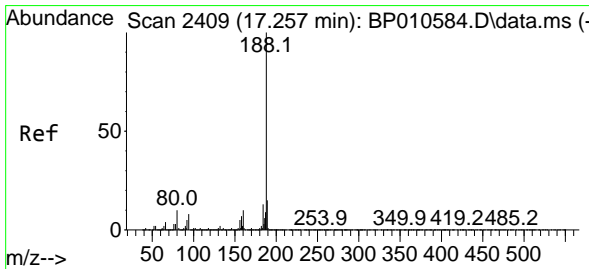
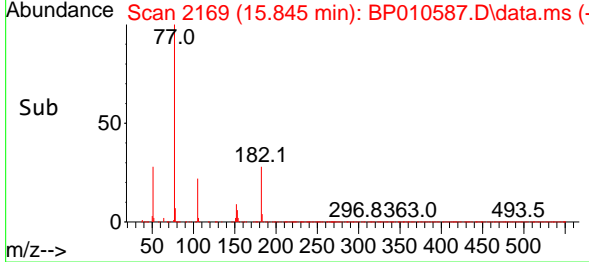
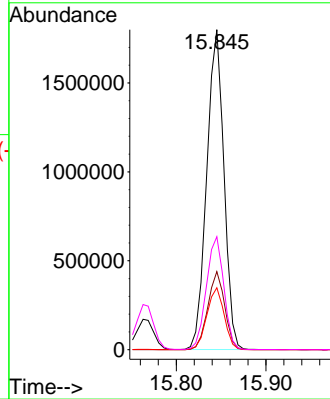
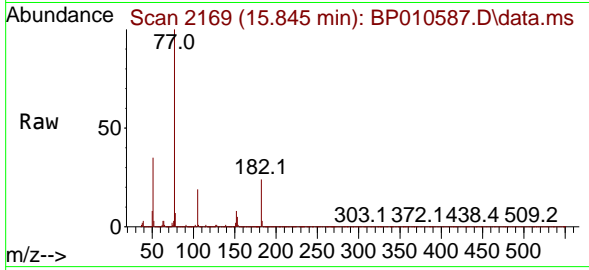


#63
 Azobenzene
 Concen: 89.424 ng
 RT: 15.845 min Scan# 2169
 Delta R.T. 0.006 min
 Lab File: BP010587.D
 Acq: 28 May 2022 00:05

Instrument : BNA_P
 ClientSampleId : SSTDICC080

Tgt Ion: 77 Resp: 2392471

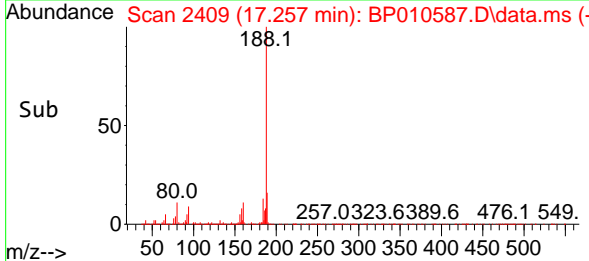
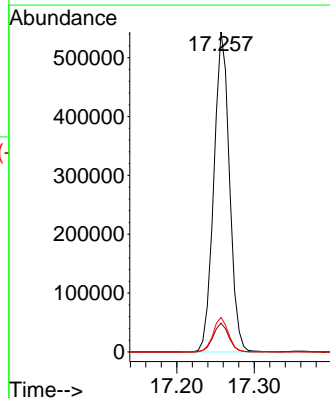
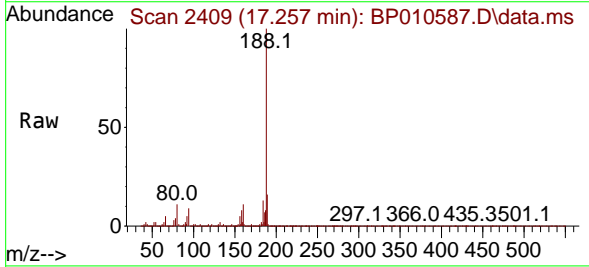
Ion	Ratio	Lower	Upper
77	100		
182	24.4	3.0	43.0
105	19.3	0.0	38.6
51	35.3	16.7	56.7

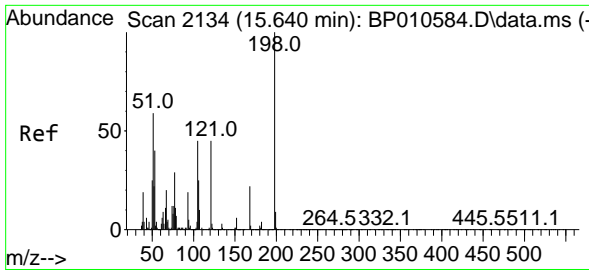


#64
 Phenanthrene-d10
 Concen: 20.000 ng
 RT: 17.257 min Scan# 2409
 Delta R.T. -0.000 min
 Lab File: BP010587.D
 Acq: 28 May 2022 00:05

Tgt Ion: 188 Resp: 763227

Ion	Ratio	Lower	Upper
188	100		
94	9.1	6.6	10.0
80	10.8	8.0	12.0

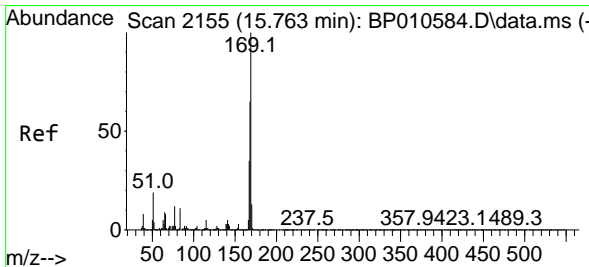
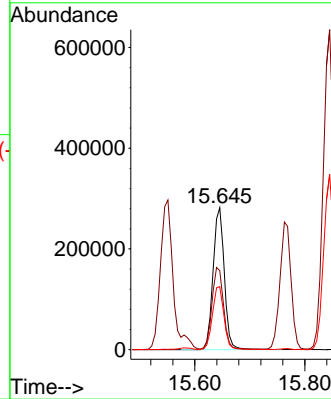
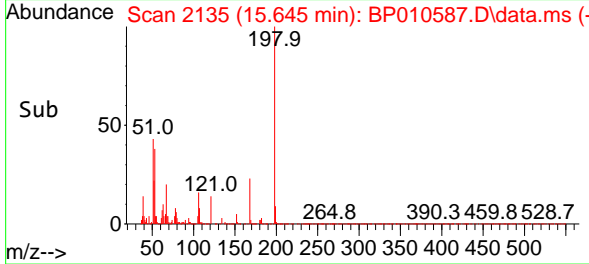
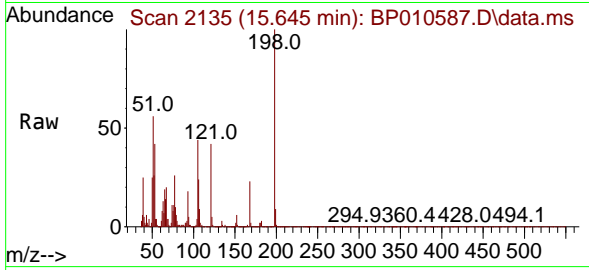




#65
 4,6-Dinitro-2-methylphenol
 Concen: 81.466 ng
 RT: 15.645 min Scan# 2134
 Delta R.T. 0.006 min
 Lab File: BP010587.D
 Acq: 28 May 2022 00:05

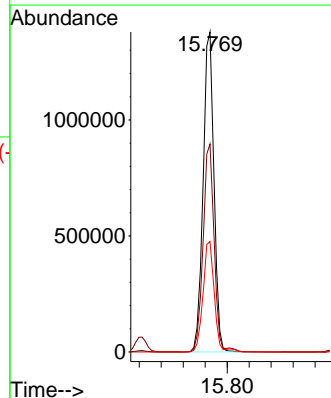
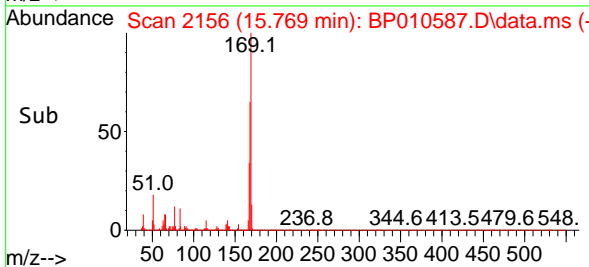
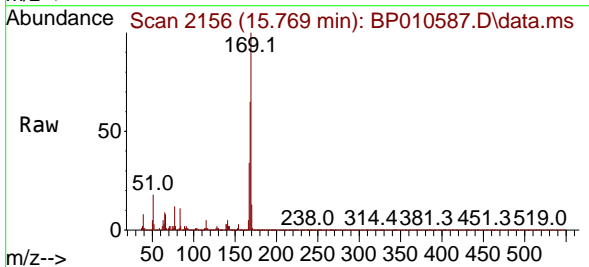
Instrument : BNA_P
 ClientSampleId : SSTDICC080

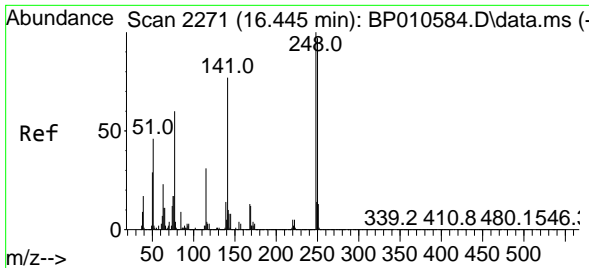
Tgt Ion	Resp	Ion Ratio	Lower	Upper
198	399813	100		
51		55.7	41.2	81.2
105		44.4	25.3	65.3



#66
 n-Nitrosodiphenylamine
 Concen: 83.495 ng
 RT: 15.769 min Scan# 2156
 Delta R.T. 0.006 min
 Lab File: BP010587.D
 Acq: 28 May 2022 00:05

Tgt Ion	Resp	Ion Ratio	Lower	Upper
169	1885829	100		
168		65.0	51.8	77.8
167		34.5	28.3	42.5

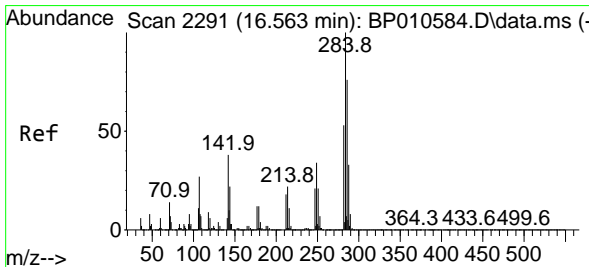
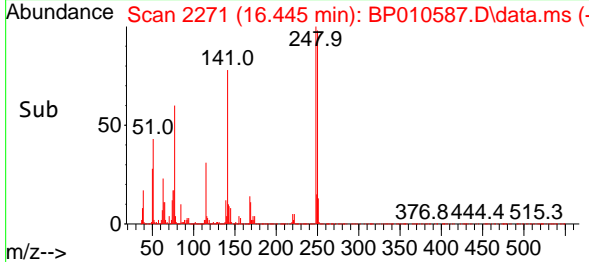
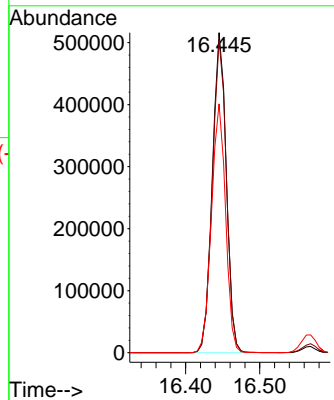
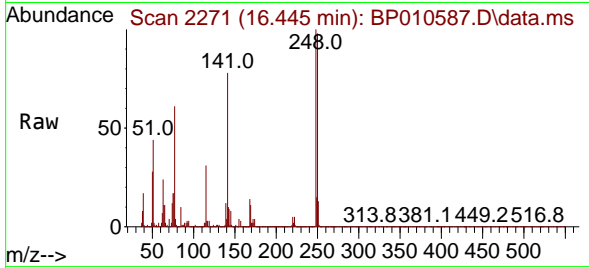




#67
 4-Bromophenyl-phenylether
 Concen: 72.387 ng
 RT: 16.445 min Scan# 2271
 Delta R.T. -0.000 min
 Lab File: BP010587.D
 Acq: 28 May 2022 00:05

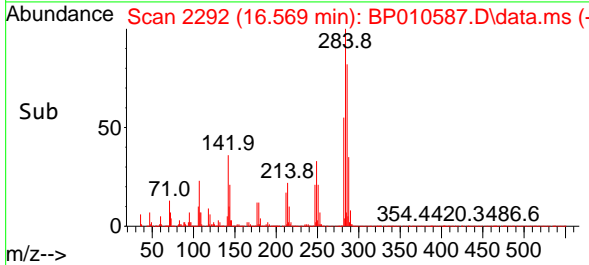
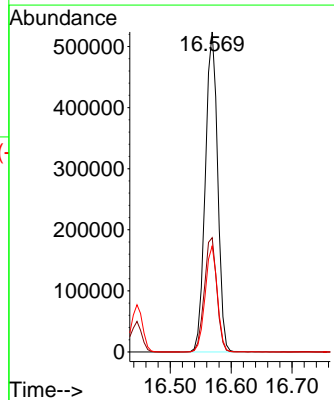
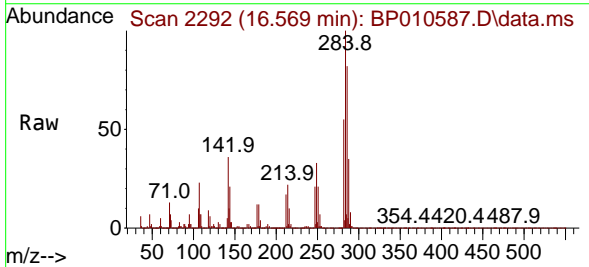
Instrument : BNA_P
 ClientSampleId : SSTDICC080

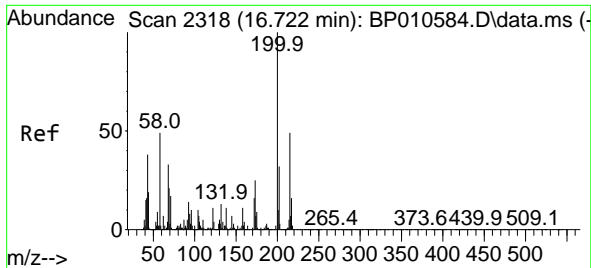
Tgt Ion	Resp	Lower	Upper
248	100		
250	97.7	77.7	116.5
141	77.8	62.0	93.0



#68
 Hexachlorobenzene
 Concen: 68.516 ng
 RT: 16.569 min Scan# 2292
 Delta R.T. 0.006 min
 Lab File: BP010587.D
 Acq: 28 May 2022 00:05

Tgt Ion	Resp	Lower	Upper
284	100		
142	35.7	30.8	46.2
249	33.2	26.8	40.2

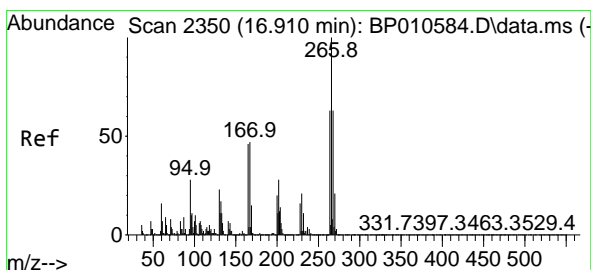
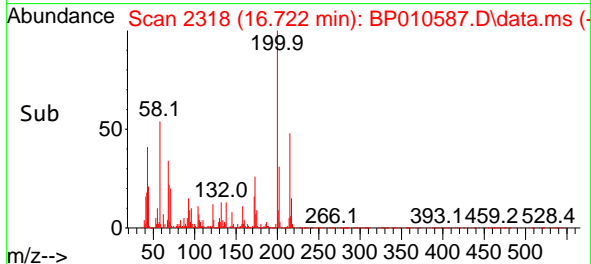
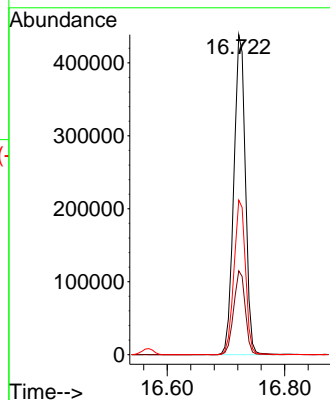
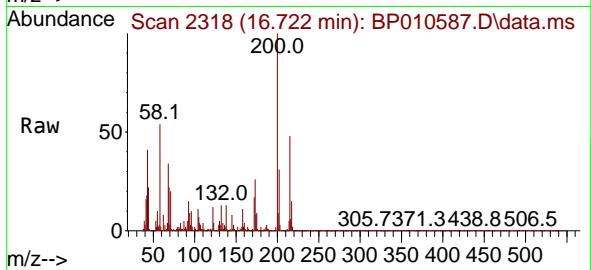




#69
 Atrazine
 Concen: 75.533 ng
 RT: 16.722 min Scan# 21
 Delta R.T. -0.000 min
 Lab File: BP010587.D
 Acq: 28 May 2022 00:05

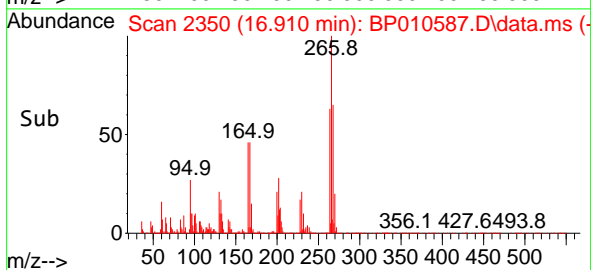
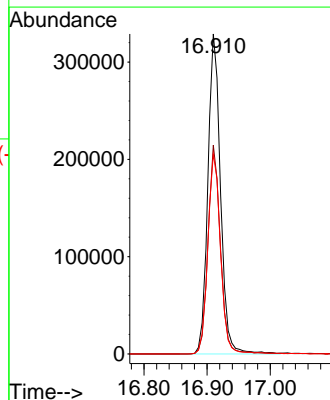
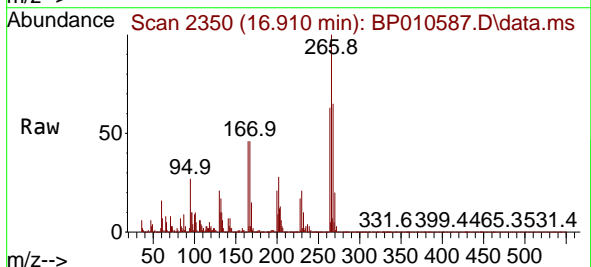
Instrument :
 BNA_P
 ClientSampleId :
 SSTDICC080

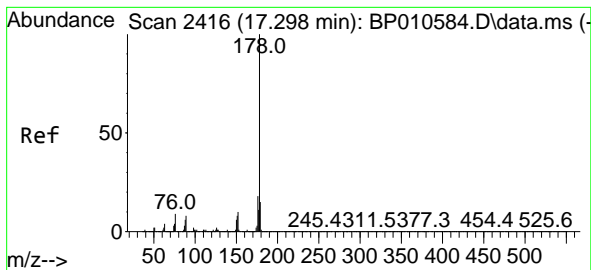
Tgt Ion:200 Resp: 599808
 Ion Ratio Lower Upper
 200 100
 173 26.2 5.3 45.3
 215 48.3 29.4 69.4



#70
 Pentachlorophenol
 Concen: 79.816 ng
 RT: 16.910 min Scan# 2350
 Delta R.T. -0.000 min
 Lab File: BP010587.D
 Acq: 28 May 2022 00:05

Tgt Ion:266 Resp: 458605
 Ion Ratio Lower Upper
 266 100
 268 65.2 50.5 75.7
 264 62.5 50.4 75.6



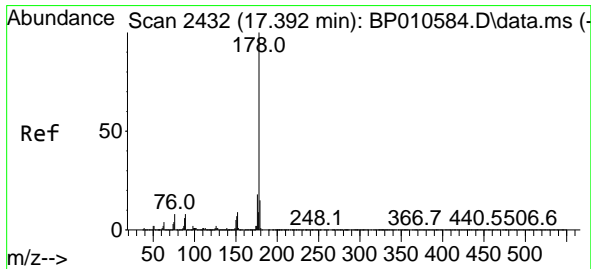
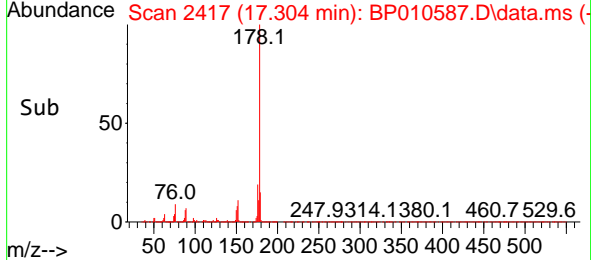
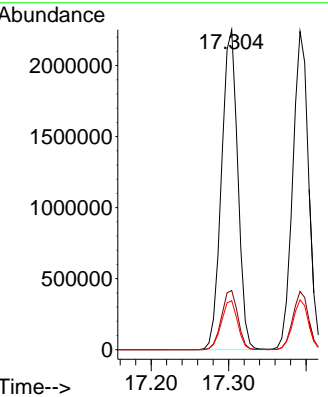
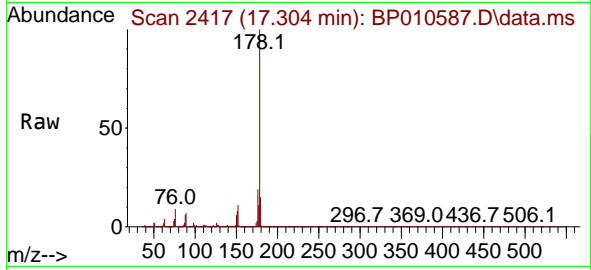


#71
 Phenanthrene
 Concen: 80.342 ng
 RT: 17.304 min Scan# 2416
 Delta R.T. 0.006 min
 Lab File: BP010587.D
 Acq: 28 May 2022 00:05

Instrument : BNA_P
 ClientSampleId : SSTDICC080

Tgt Ion:178 Resp: 3282451

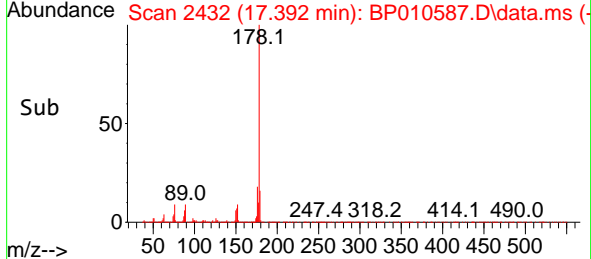
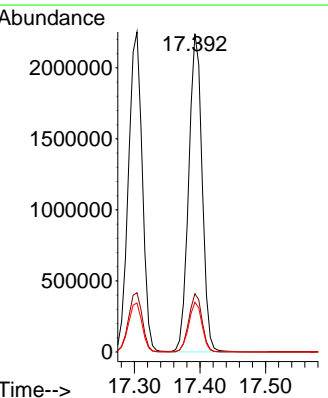
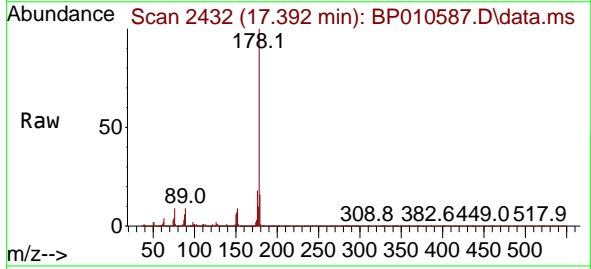
Ion	Ratio	Lower	Upper
178	100		
176	18.5	14.7	22.1
179	15.3	12.2	18.2

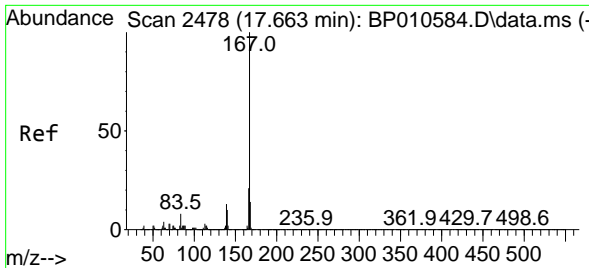


#72
 Anthracene
 Concen: 79.020 ng
 RT: 17.392 min Scan# 2432
 Delta R.T. -0.000 min
 Lab File: BP010587.D
 Acq: 28 May 2022 00:05

Tgt Ion:178 Resp: 3187476

Ion	Ratio	Lower	Upper
178	100		
176	18.3	14.5	21.7
179	15.7	12.2	18.4



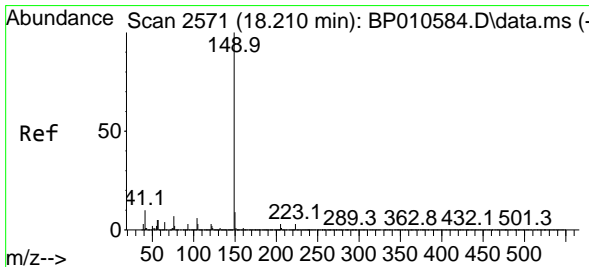
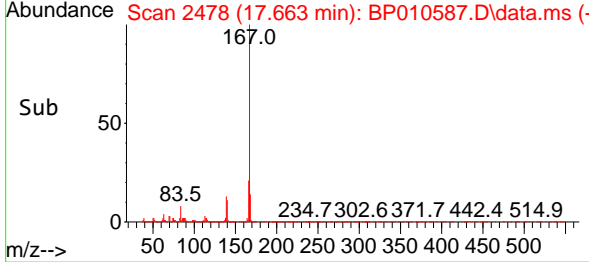
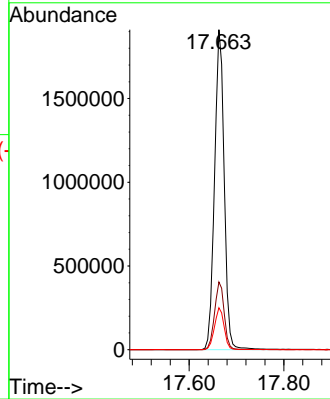
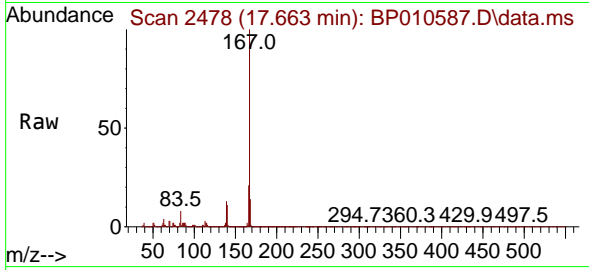


#73
 Carbazole
 Concen: 68.634 ng
 RT: 17.663 min Scan# 2478
 Delta R.T. -0.000 min
 Lab File: BP010587.D
 Acq: 28 May 2022 00:05

Instrument : BNA_P
 Client Sample Id : SSTDICC080

Tgt Ion:167 Resp: 2707560

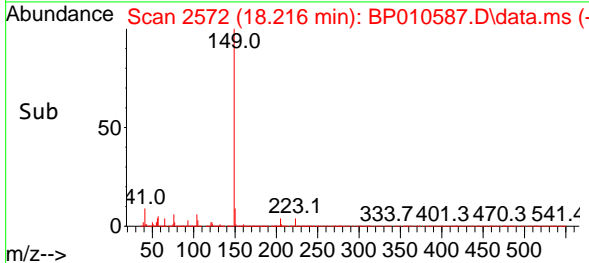
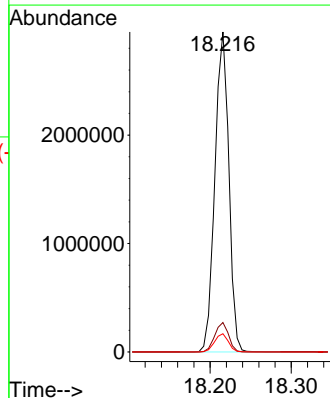
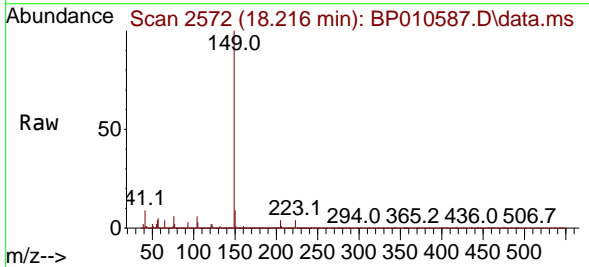
Ion	Ratio	Lower	Upper
167	100		
166	21.2	16.9	25.3
139	13.1	10.6	15.8

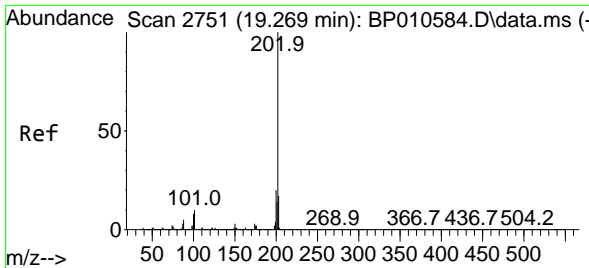


#74
 Di-n-butylphthalate
 Concen: 76.001 ng
 RT: 18.216 min Scan# 2572
 Delta R.T. 0.006 min
 Lab File: BP010587.D
 Acq: 28 May 2022 00:05

Tgt Ion:149 Resp: 3513370

Ion	Ratio	Lower	Upper
149	100		
150	9.2	7.5	11.3
104	5.7	4.8	7.2



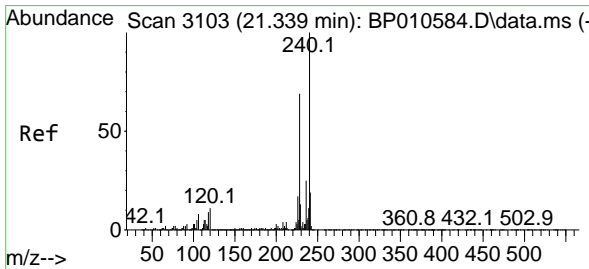
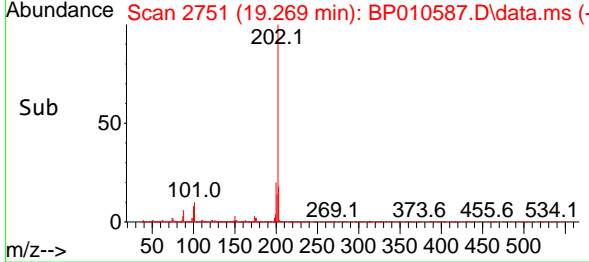
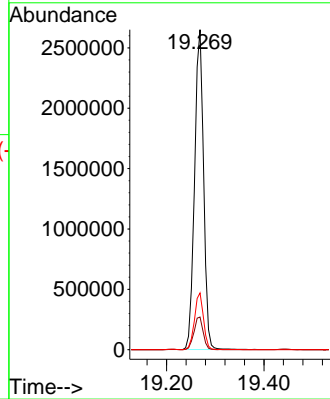
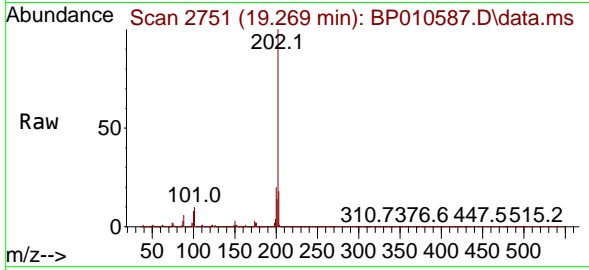


#75
 Fluoranthene
 Concen: 69.275 ng
 RT: 19.269 min Scan# 21
 Delta R.T. -0.000 min
 Lab File: BP010587.D
 Acq: 28 May 2022 00:05

Instrument :
 BNA_P
 ClientSampleId :
 SSTDICC080

Tgt Ion: 202 Resp: 3426484

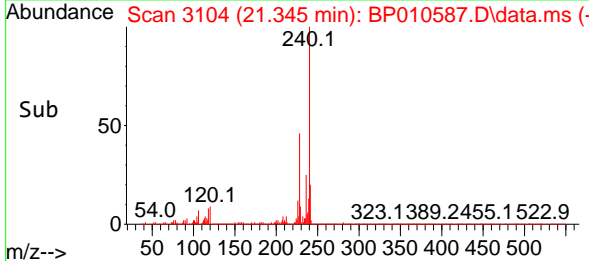
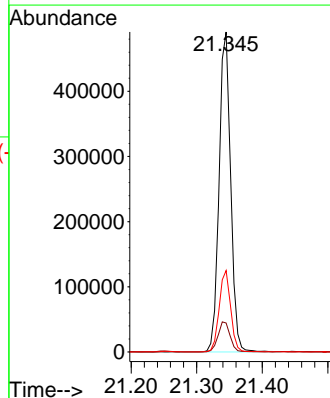
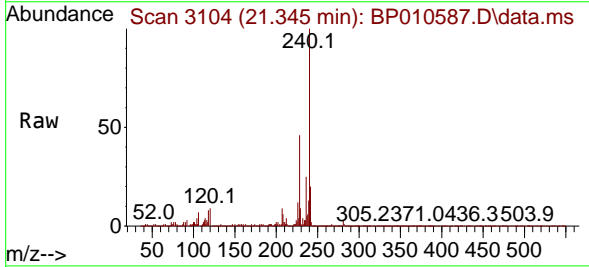
Ion	Ratio	Lower	Upper
202	100		
101	10.2	0.0	29.6
203	17.8	0.0	36.9

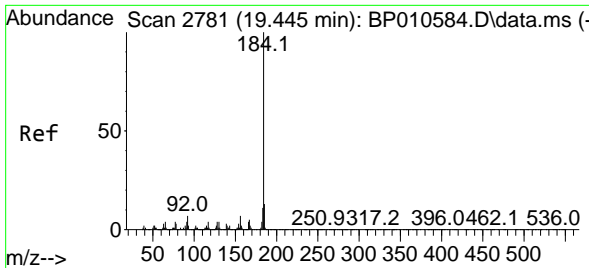


#76
 Chrysene-d12
 Concen: 20.000 ng
 RT: 21.345 min Scan# 3104
 Delta R.T. 0.006 min
 Lab File: BP010587.D
 Acq: 28 May 2022 00:05

Tgt Ion: 240 Resp: 597319

Ion	Ratio	Lower	Upper
240	100		
120	9.1	8.6	12.8
236	25.5	19.8	29.6

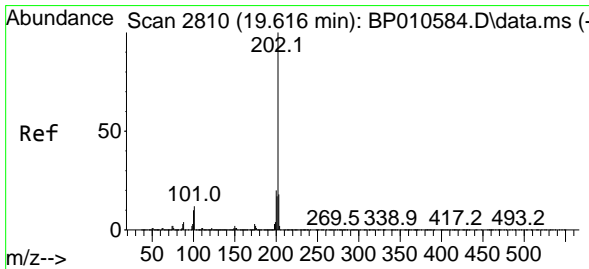
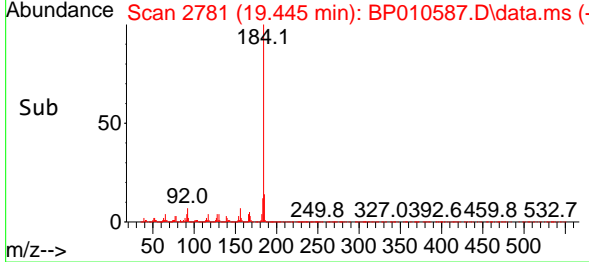
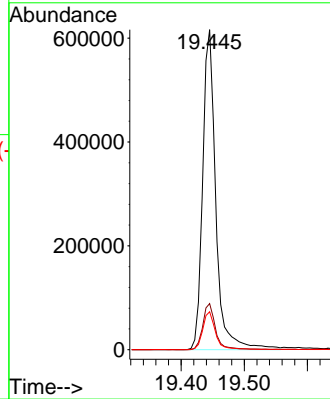
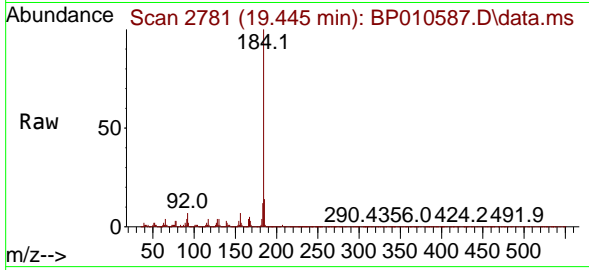




#77
 Benzidine
 Concen: 60.985 ng
 RT: 19.445 min Scan# 21
 Delta R.T. -0.000 min
 Lab File: BP010587.D
 Acq: 28 May 2022 00:05

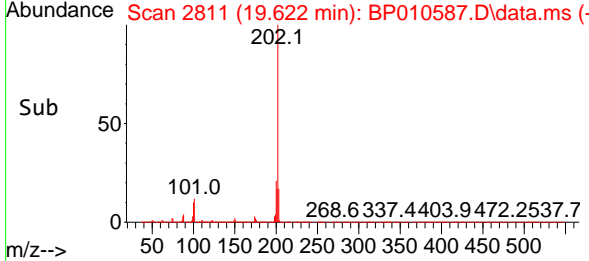
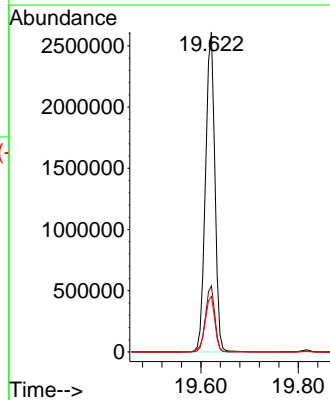
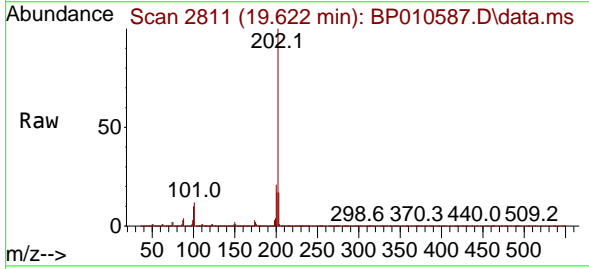
Instrument :
 BNA_P
 Client Sample Id :
 SSTDICC080

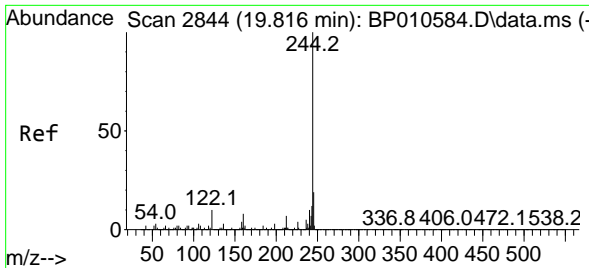
Tgt Ion	Resp	Ion Ratio	Lower	Upper
184	892893	100		
185	14.4	10.7	16.1	
183	11.8	9.0	13.6	



#78
 Pyrene
 Concen: 88.404 ng
 RT: 19.622 min Scan# 2811
 Delta R.T. 0.006 min
 Lab File: BP010587.D
 Acq: 28 May 2022 00:05

Tgt Ion	Resp	Ion Ratio	Lower	Upper
202	3479657	100		
200	20.7	16.3	24.5	
203	17.4	14.2	21.4	



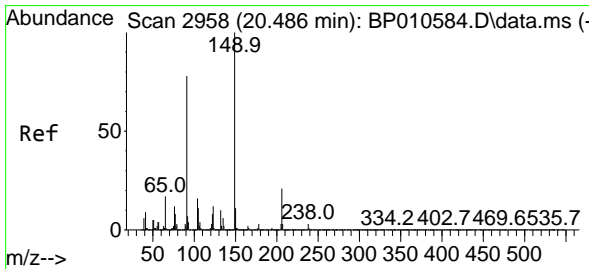
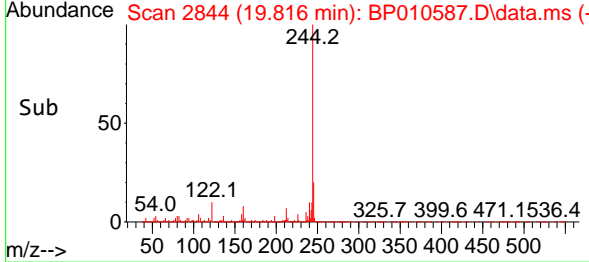
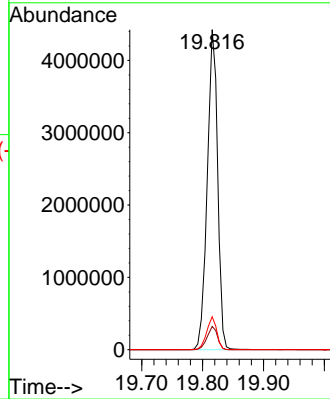
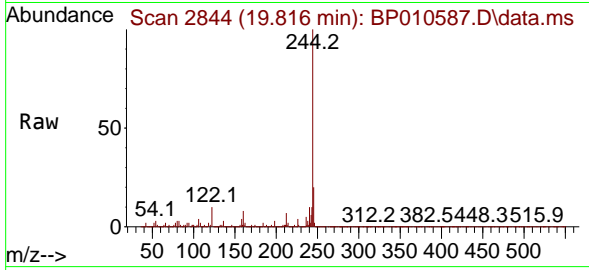


#79
 Terphenyl-d14
 Concen: 157.475 ng
 RT: 19.816 min Scan# 2844
 Delta R.T. -0.000 min
 Lab File: BP010587.D
 Acq: 28 May 2022 00:05

Instrument : BNA_P
 Client Sample Id : SSTDICC080

Tgt Ion: 244 Resp: 5240577

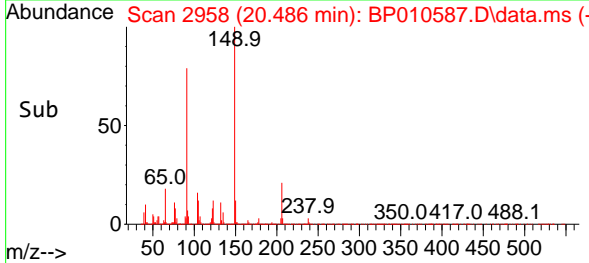
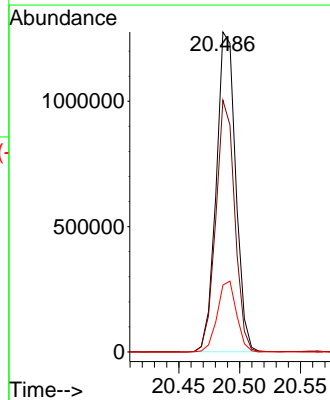
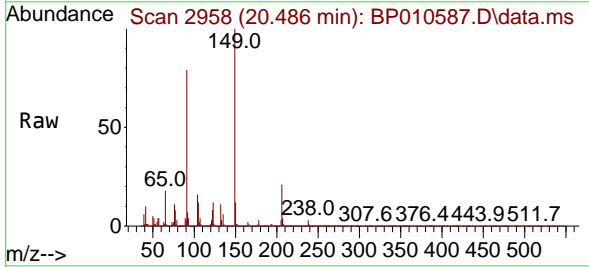
Ion	Ratio	Lower	Upper
244	100		
212	7.3	5.8	8.8
122	10.3	7.6	11.4

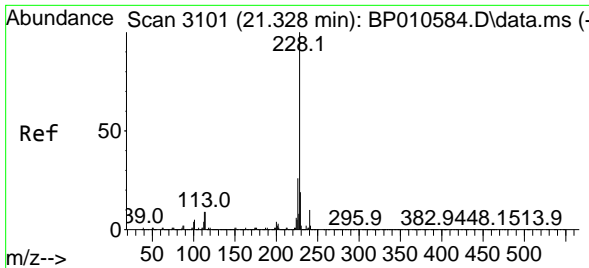


#80
 Butylbenzylphthalate
 Concen: 85.076 ng
 RT: 20.486 min Scan# 2958
 Delta R.T. -0.000 min
 Lab File: BP010587.D
 Acq: 28 May 2022 00:05

Tgt Ion: 149 Resp: 1423310

Ion	Ratio	Lower	Upper
149	100		
91	78.6	62.5	93.7
206	20.9	17.0	25.4



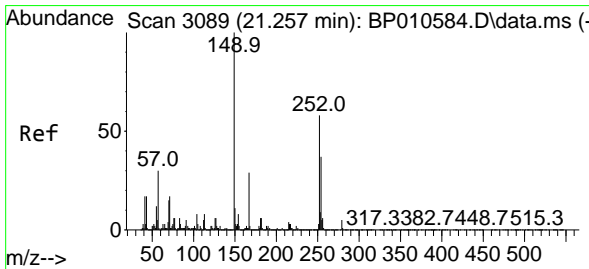
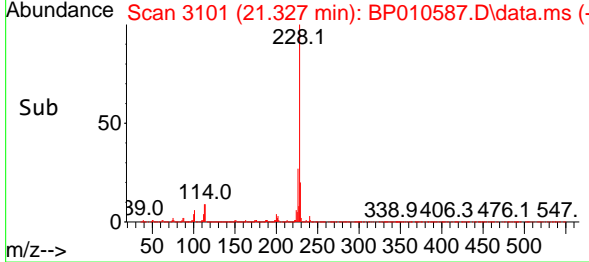
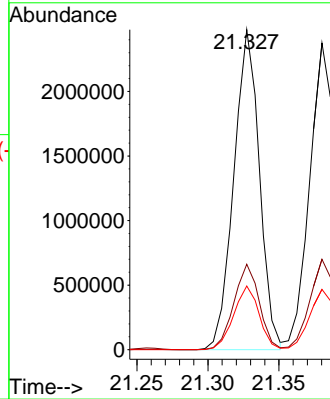
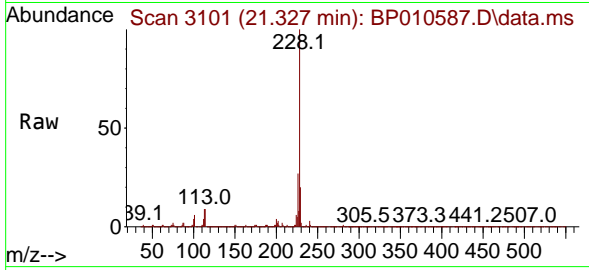


#81
 Benzo(a)anthracene
 Concen: 79.096 ng
 RT: 21.327 min Scan# 3101
 Delta R.T. -0.000 min
 Lab File: BP010587.D
 Acq: 28 May 2022 00:05

Instrument :
 BNA_P
 ClientSampleId :
 SSTDICC080

Tgt Ion:228 Resp: 3104006

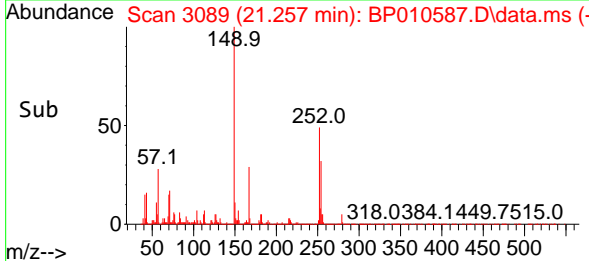
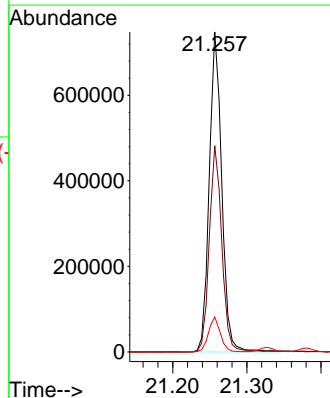
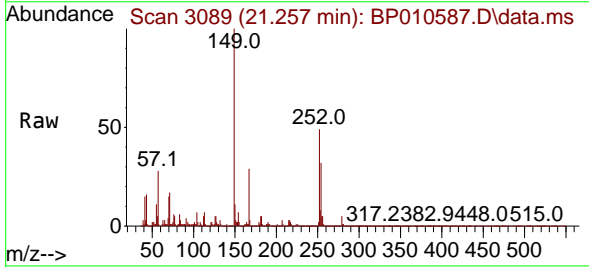
Ion	Ratio	Lower	Upper
228	100		
226	26.7	20.8	31.2
229	19.9	15.2	22.8

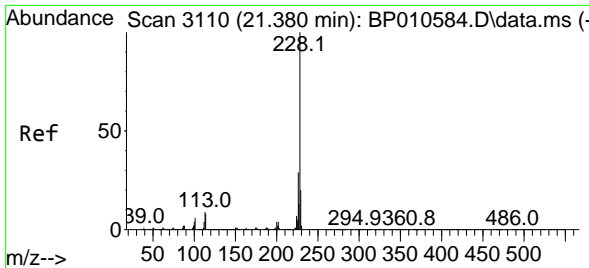


#82
 3,3'-Dichlorobenzidine
 Concen: 57.832 ng
 RT: 21.257 min Scan# 3089
 Delta R.T. -0.000 min
 Lab File: BP010587.D
 Acq: 28 May 2022 00:05

Tgt Ion:252 Resp: 876746

Ion	Ratio	Lower	Upper
252	100		
254	64.4	51.1	76.7
126	11.0	8.4	12.6



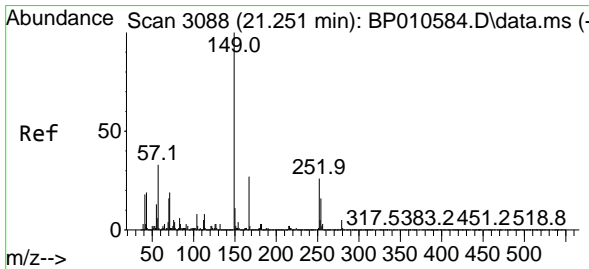
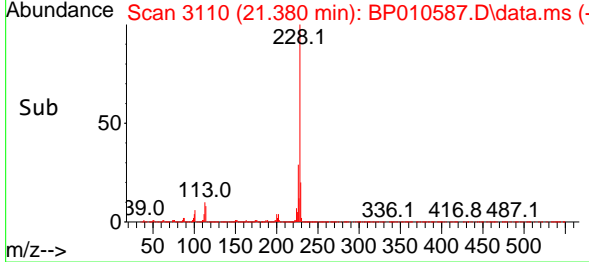
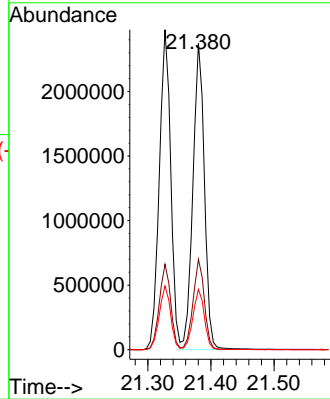
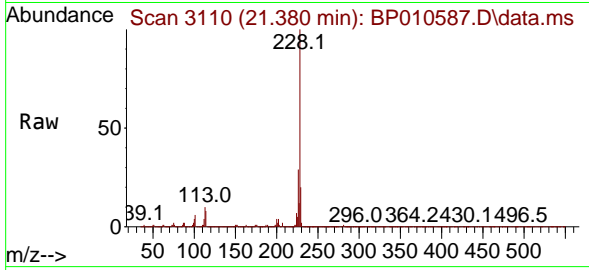


#83
 Chrysene
 Concen: 80.970 ng
 RT: 21.380 min Scan# 3110
 Delta R.T. -0.000 min
 Lab File: BP010587.D
 Acq: 28 May 2022 00:05

Instrument : BNA_P
 ClientSampleId : SSTDICC080

Tgt Ion:228 Resp: 3008839

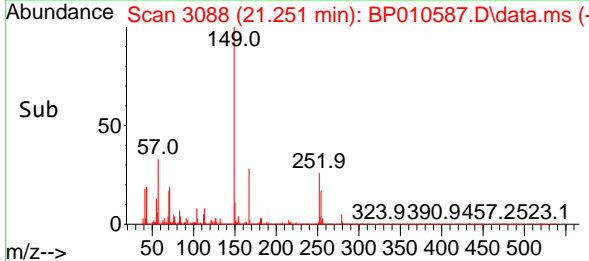
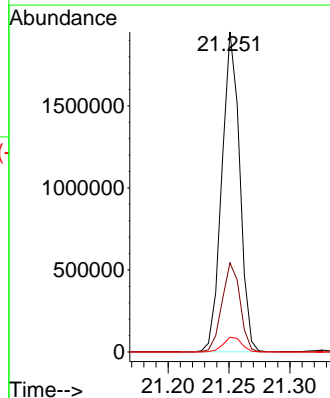
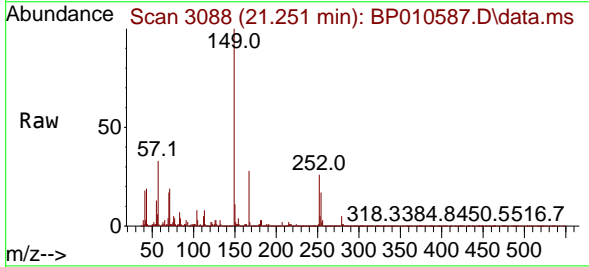
Ion	Ratio	Lower	Upper
228	100		
226	29.5	23.4	35.2
229	19.7	15.7	23.5

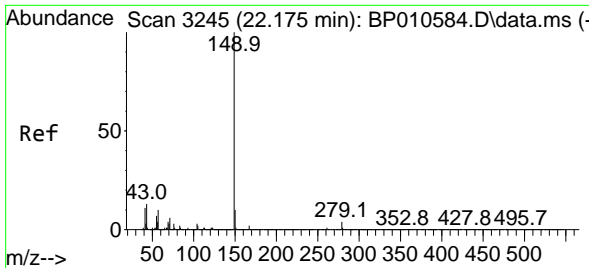


#84
 Bis(2-ethylhexyl)phthalate
 Concen: 85.377 ng
 RT: 21.251 min Scan# 3088
 Delta R.T. -0.000 min
 Lab File: BP010587.D
 Acq: 28 May 2022 00:05

Tgt Ion:149 Resp: 1990922

Ion	Ratio	Lower	Upper
149	100		
167	27.8	21.8	32.8
279	4.6	3.7	5.5



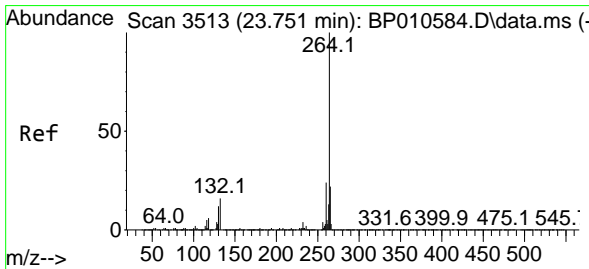
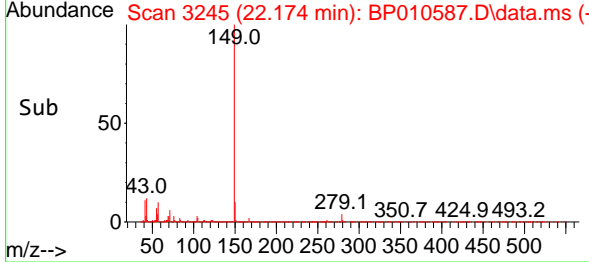
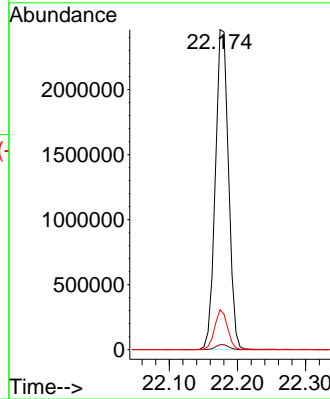
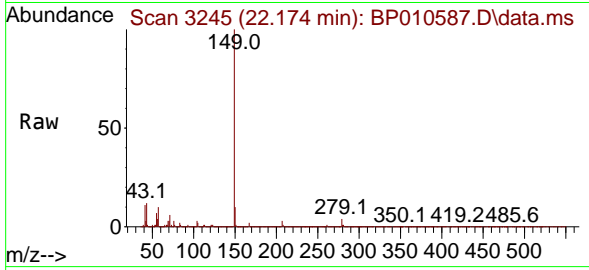


#85
 Di-n-octyl phthalate
 Concen: 82.383 ng
 RT: 22.174 min Scan# 31
 Delta R.T. -0.000 min
 Lab File: BP010587.D
 Acq: 28 May 2022 00:05

Instrument :
 BNA_P
 ClientSampleId :
 SSTDICC080

Tgt Ion:149 Resp: 3311328

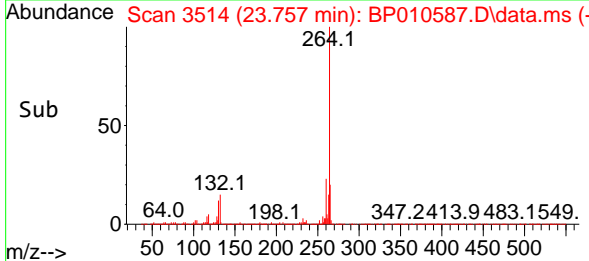
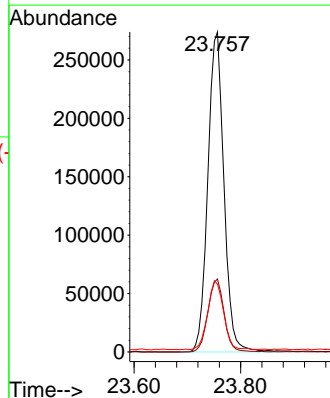
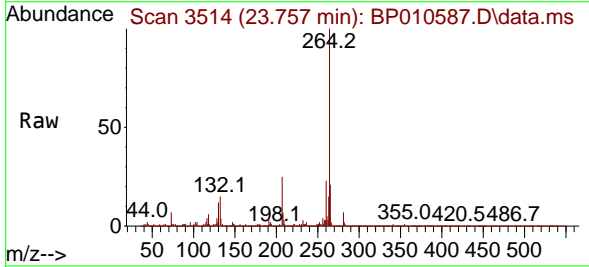
Ion	Ratio	Lower	Upper
149	100		
167	1.6	1.3	1.9
43	12.2	10.0	15.0

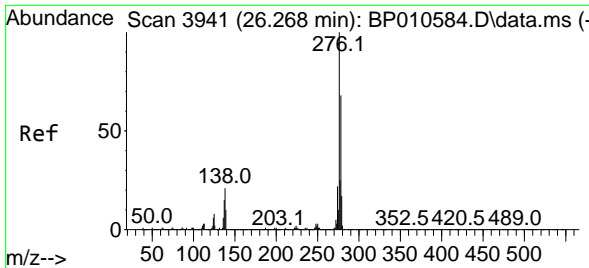


#86
 Perylene-d12
 Concen: 20.000 ng
 RT: 23.757 min Scan# 3514
 Delta R.T. 0.006 min
 Lab File: BP010587.D
 Acq: 28 May 2022 00:05

Tgt Ion:264 Resp: 573926

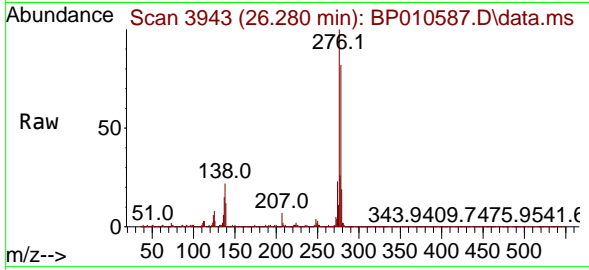
Ion	Ratio	Lower	Upper
264	100		
260	22.8	19.3	28.9
265	21.2	18.0	27.0





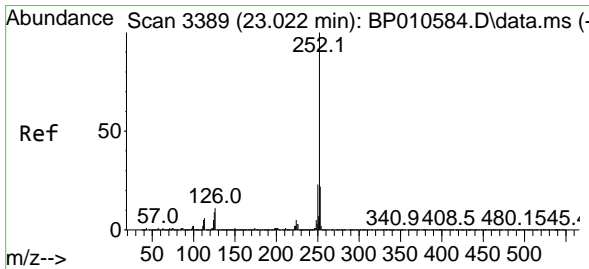
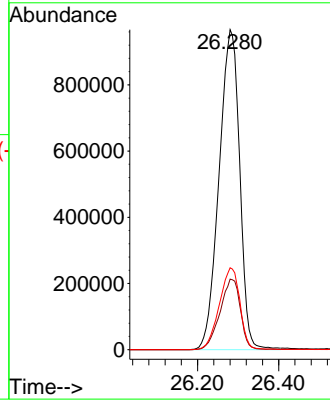
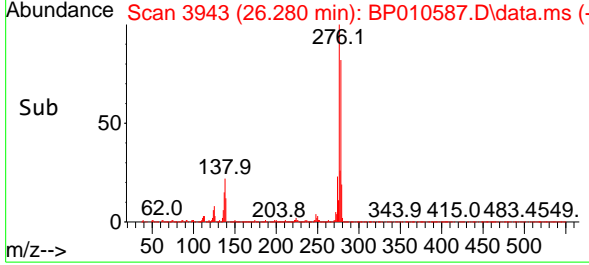
#87
 Indeno(1,2,3-cd)pyrene
 Concen: 78.388 ng
 RT: 26.280 min Scan# 3941
 Delta R.T. 0.012 min
 Lab File: BP010587.D
 Acq: 28 May 2022 00:05

Instrument : BNA_P
 ClientSampleId : SSTDICC080

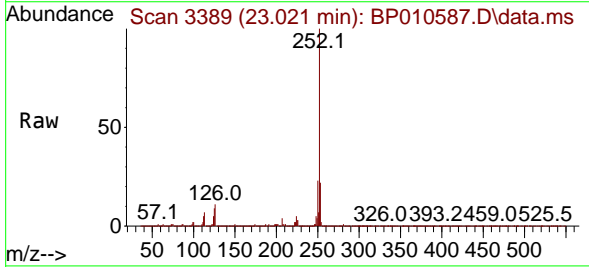


Tgt Ion: 276 Resp: 3413197

Ion	Ratio	Lower	Upper
276	100		
138	21.8	17.5	26.3
277	25.6	20.2	30.4

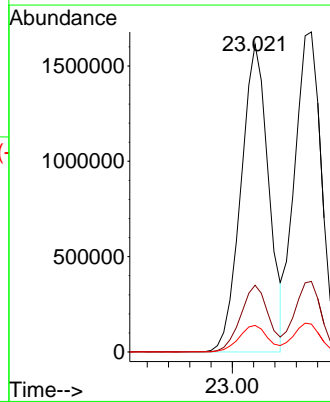
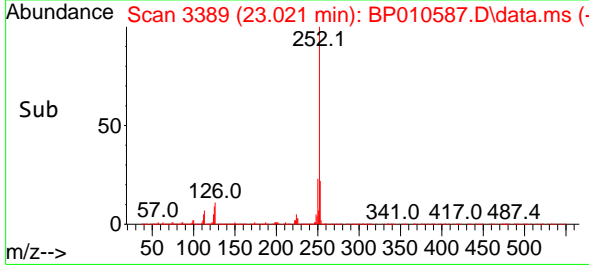


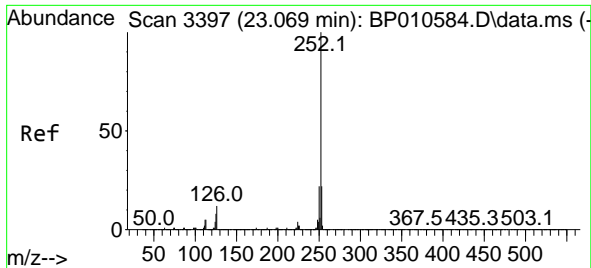
#88
 Benzo(b)fluoranthene
 Concen: 85.226 ng
 RT: 23.021 min Scan# 3389
 Delta R.T. -0.000 min
 Lab File: BP010587.D
 Acq: 28 May 2022 00:05



Tgt Ion: 252 Resp: 2919998

Ion	Ratio	Lower	Upper
252	100		
253	21.7	17.8	26.6
125	8.7	7.0	10.6



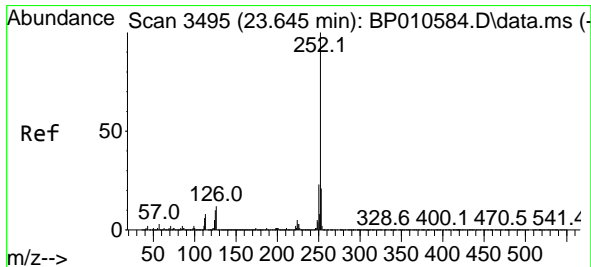
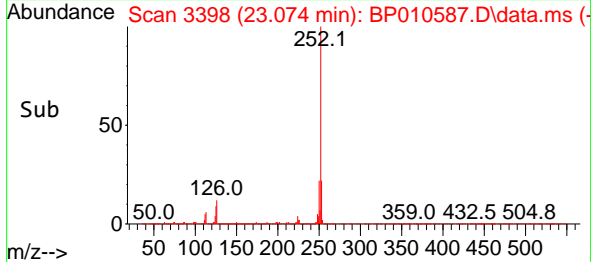
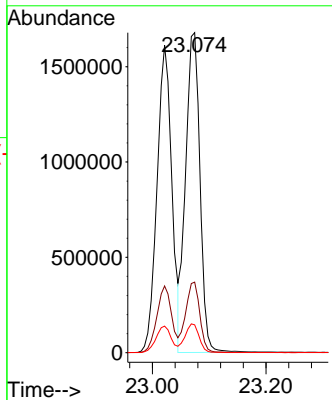
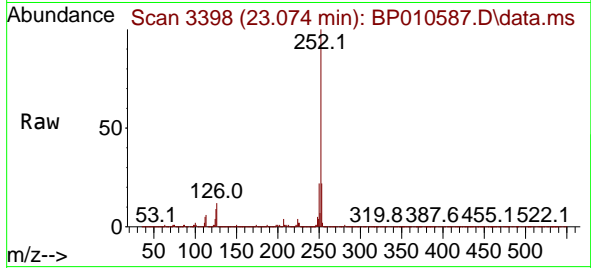


#89
 Benzo(k)fluoranthene
 Concen: 87.956 ng
 RT: 23.074 min Scan# 31
 Delta R.T. 0.006 min
 Lab File: BP010587.D
 Acq: 28 May 2022 00:05

Instrument : BNA_P
 ClientSampleId : SSTDICC080

Tgt Ion:252 Resp: 2950558

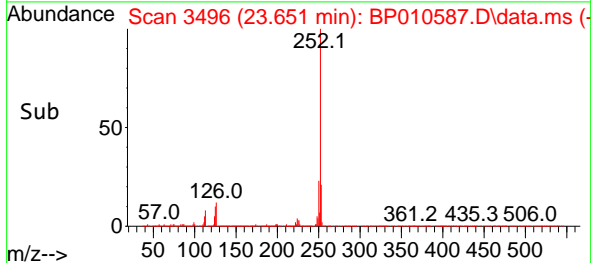
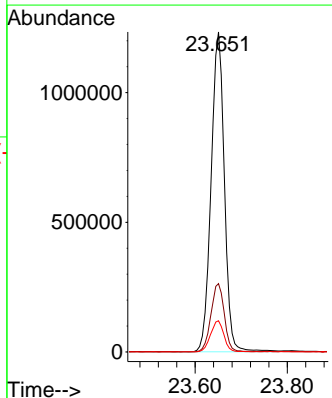
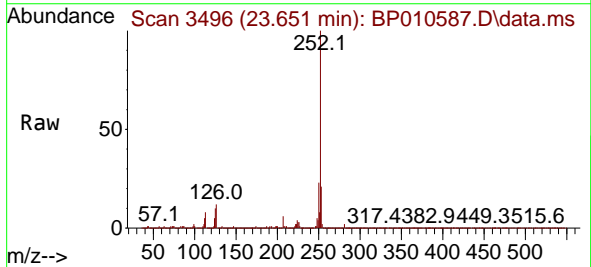
Ion	Ratio	Lower	Upper
252	100		
253	22.0	17.2	25.8
125	8.7	7.0	10.4

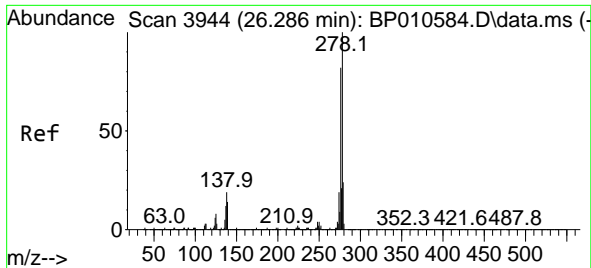


#90
 Benzo(a)pyrene
 Concen: 84.025 ng
 RT: 23.651 min Scan# 3496
 Delta R.T. 0.006 min
 Lab File: BP010587.D
 Acq: 28 May 2022 00:05

Tgt Ion:252 Resp: 2463081

Ion	Ratio	Lower	Upper
252	100		
253	21.4	17.0	25.6
125	9.7	7.9	11.9



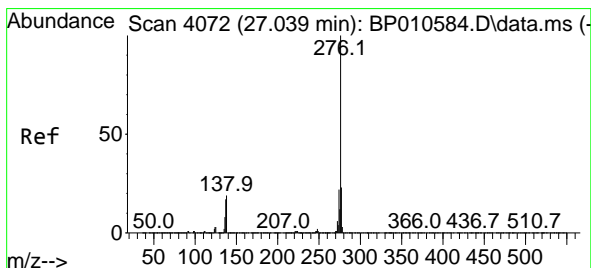
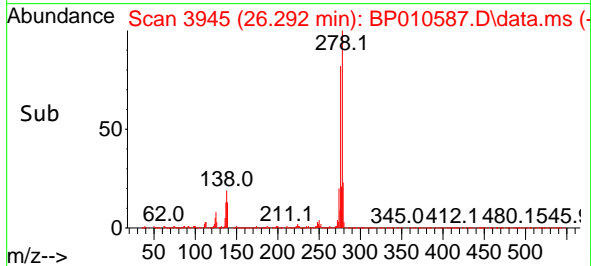
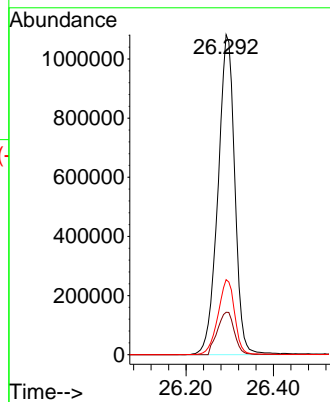
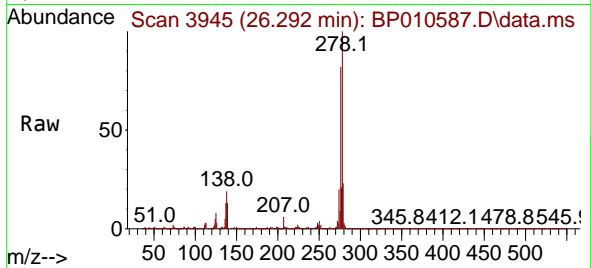


#91
 Dibenzo(a,h)anthracene
 Concen: 79.382 ng
 RT: 26.292 min Scan# 3945
 Delta R.T. 0.006 min
 Lab File: BP010587.D
 Acq: 28 May 2022 00:05

Instrument : BNA_P
 ClientSampleId : SSTDICC080

Tgt Ion: 278 Resp: 2880743

Ion	Ratio	Lower	Upper
278	100		
139	13.2	11.4	17.0
279	23.5	19.2	28.8



#92
 Benzo(g,h,i)perylene
 Concen: 78.813 ng
 RT: 27.051 min Scan# 4074
 Delta R.T. 0.012 min
 Lab File: BP010587.D
 Acq: 28 May 2022 00:05

Tgt Ion: 276 Resp: 2813626

Ion	Ratio	Lower	Upper
276	100		
277	24.0	18.7	28.1
138	18.3	15.2	22.8

