

Data Path : Z:\svoasrv\HPCHEM1\BNA_P\Data\BP060724\
 Data File : BP020569.D
 Acq On : 07 Jun 2024 21:27
 Operator : MA/JU
 Sample : P2763-01
 Misc :
 ALS Vial : 17 Sample Multiplier: 1

Instrument :
 BNA_P
 ClientSampleId :
 MH-SLUDGE

Quant Time: Jun 08 00:12:54 2024
 Quant Method : Z:\svoasrv\HPCHEM1\BNA_P\Methods\8270E-BP052924.M
 Quant Title : ASP BNA STANDARDS FOR 5 POINT CALIBRATION
 QLast Update : Thu May 30 03:41:03 2024
 Response via : Initial Calibration

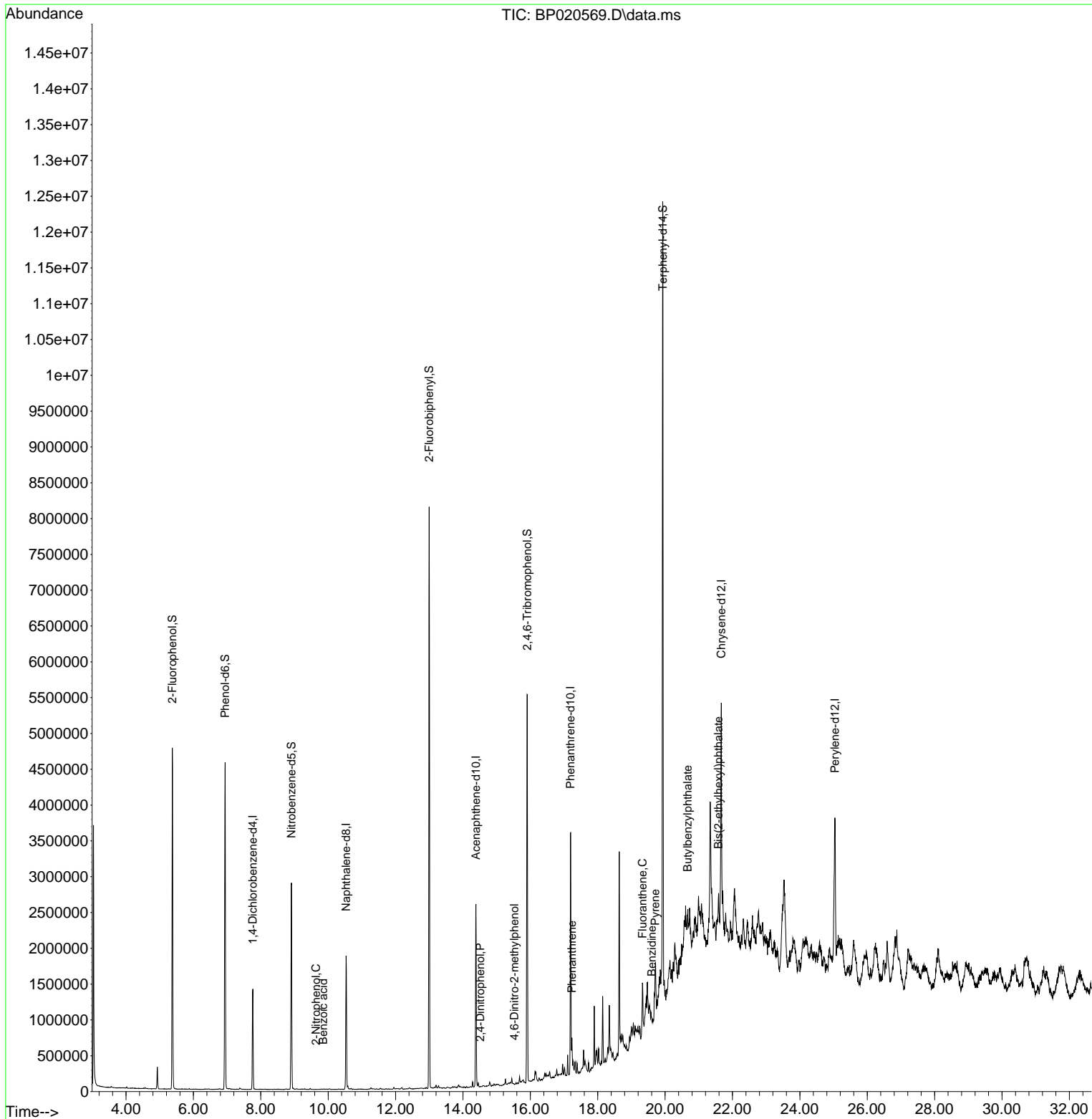
Compound	R.T.	QIon	Response	Conc	Units	Dev(Min)
Internal Standards						
1) 1,4-Dichlorobenzene-d4	7.763	152	387700	20.000	ng	0.00
21) Naphthalene-d8	10.534	136	1506925	20.000	ng	0.00
39) Acenaphthene-d10	14.386	164	967487	20.000	ng	0.00
64) Phenanthrene-d10	17.192	188	1940074	20.000	ng	-0.01
76) Chrysene-d12	21.668	240	1821523	20.000	ng	0.00
86) Perylene-d12	25.039	264	2335153	20.000	ng	0.02
System Monitoring Compounds						
5) 2-Fluorophenol	5.375	112	2158809	99.697	ng	0.00
7) Phenol-d6	6.940	99	2718479	89.022	ng	0.00
23) Nitrobenzene-d5	8.910	82	1697457	61.661	ng	-0.01
42) 2,4,6-Tribromophenol	15.910	330	1258567	125.347	ng	0.00
45) 2-Fluorobiphenyl	12.998	172	4066471	62.657	ng	0.00
79) Terphenyl-d14	19.933	244	6301445	57.590	ng	-0.01
Target Compounds						
26) 2-Nitrophenol	9.640	139	231	3.810	ng	# 60
32) Benzoic acid	9.851	122	46	6.851	ng	# 1
54) 2,4-Dinitrophenol	14.516	184	136	5.001	ng	# 1
65) 4,6-Dinitro-2-methylph...	15.528	198	39	7.657	ng	# 1
71) Phenanthrene	17.233	178	272560	2.858	ng	99
75) Fluoranthene	19.327	202	421578	3.737	ng	95
77) Benzidine	19.610	184	617	5.979	ng	# 1
78) Pyrene	19.710	202	385518	2.814	ng	96
80) Butylbenzylphthalate	20.669	149	18939	2.757	ng	# 1
84) Bis(2-ethylhexyl)phtha...	21.586	149	197473	2.532	ng	# 91

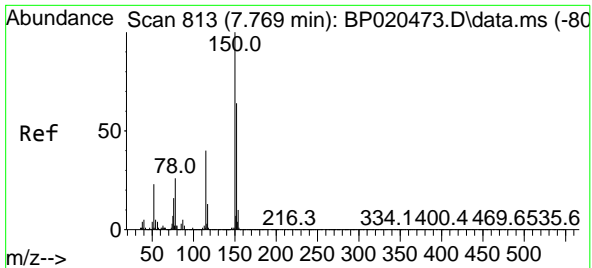
(#) = qualifier out of range (m) = manual integration (+) = signals summed

Data Path : Z:\svoasrv\HPCHEM1\BNA_P\Data\BP060724\
 Data File : BP020569.D
 Acq On : 07 Jun 2024 21:27
 Operator : MA/JU
 Sample : P2763-01
 Misc :
 ALS Vial : 17 Sample Multiplier: 1

Instrument :
 BNA_P
 ClientSampleId :
 MH-SLUDGE

Quant Time: Jun 08 00:12:54 2024
 Quant Method : Z:\svoasrv\HPCHEM1\BNA_P\Methods\8270E-BP052924.M
 Quant Title : ASP BNA STANDARDS FOR 5 POINT CALIBRATION
 QLast Update : Thu May 30 03:41:03 2024
 Response via : Initial Calibration





#1
 1,4-Dichlorobenzene-d4
 Concen: 20.000 ng
 RT: 7.763 min Scan# 813
 Delta R.T. -0.006 min
 Lab File: BP020569.D
 Acq: 07 Jun 2024 21:27

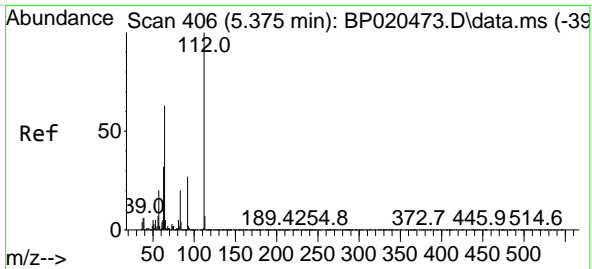
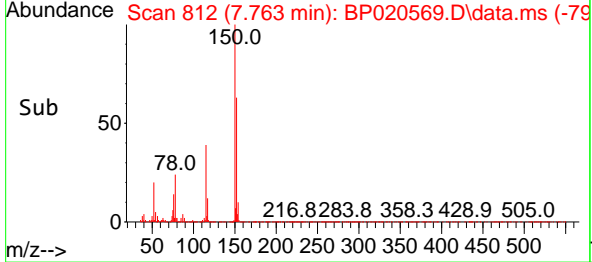
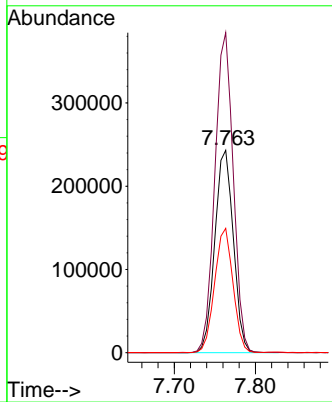
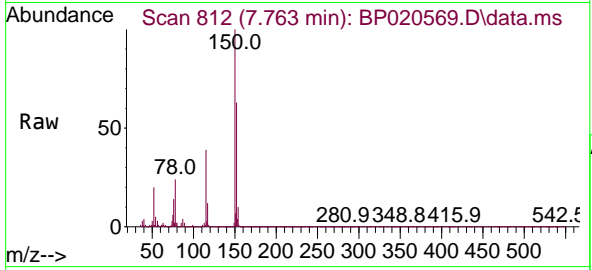
Instrument :

BNA_P

ClientSampleId :

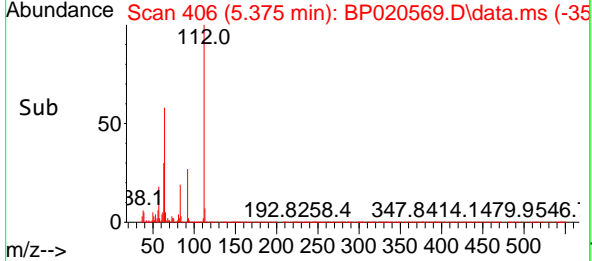
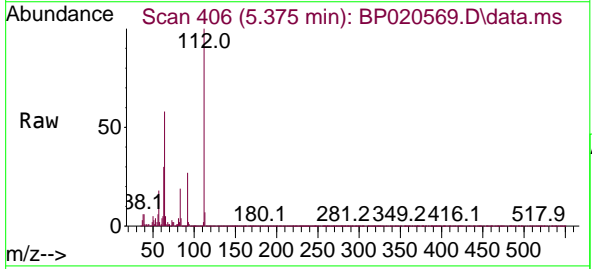
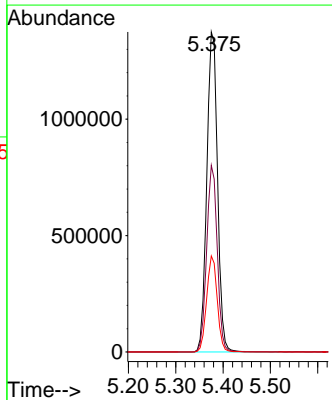
MH-SLUDGE

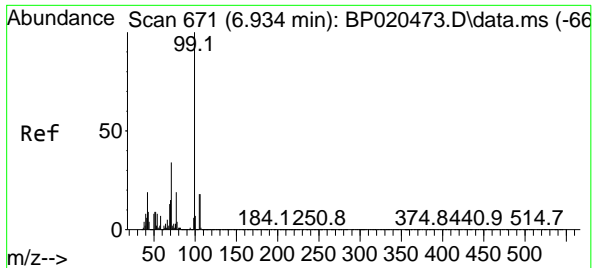
Tgt Ion:152 Resp: 387700
 Ion Ratio Lower Upper
 152 100
 150 158.0 124.2 186.2
 115 61.4 49.5 74.3



#5
 2-Fluorophenol
 Concen: 99.697 ng
 RT: 5.375 min Scan# 406
 Delta R.T. -0.000 min
 Lab File: BP020569.D
 Acq: 07 Jun 2024 21:27

Tgt Ion:112 Resp: 2158809
 Ion Ratio Lower Upper
 112 100
 64 58.3 50.1 75.1
 63 30.0 25.7 38.5



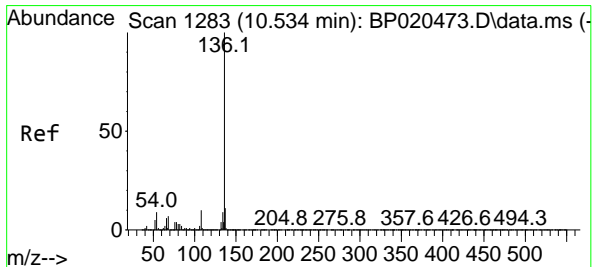
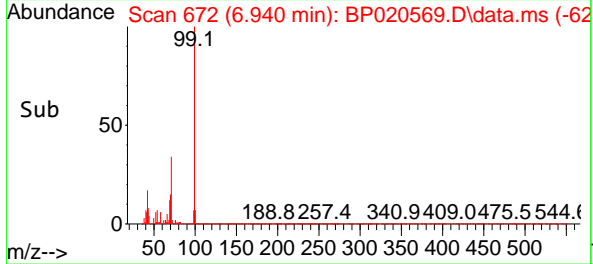
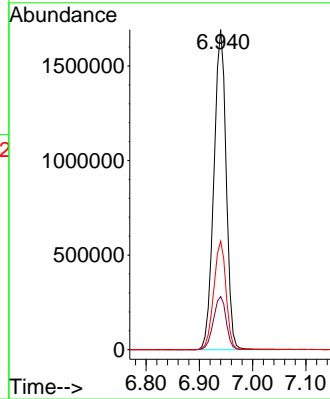
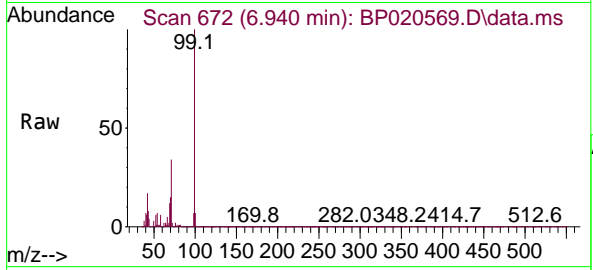


#7
Phenol-d6
Concen: 89.022 ng
RT: 6.940 min Scan# 61
Delta R.T. 0.006 min
Lab File: BP020569.D
Acq: 07 Jun 2024 21:27

Instrument :
BNA_P
ClientSampleId :
MH-SLUDGE

Tgt Ion: 99 Resp: 2718479

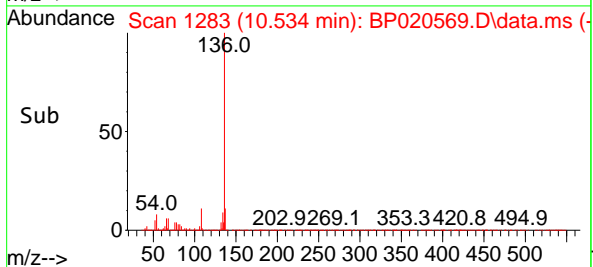
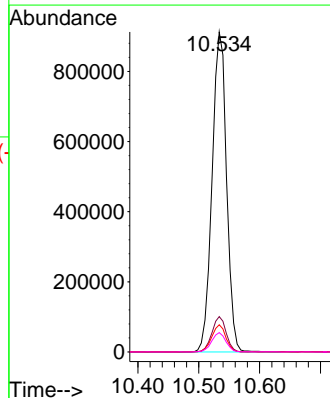
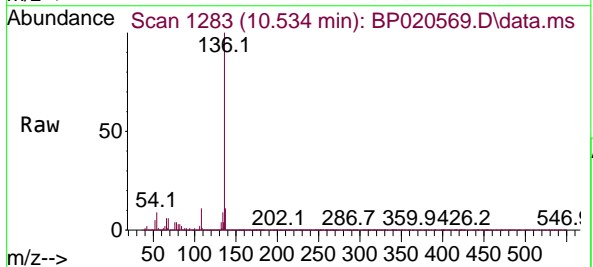
Ion	Ratio	Lower	Upper
99	100		
42	16.6	15.0	22.4
71	33.9	27.3	40.9

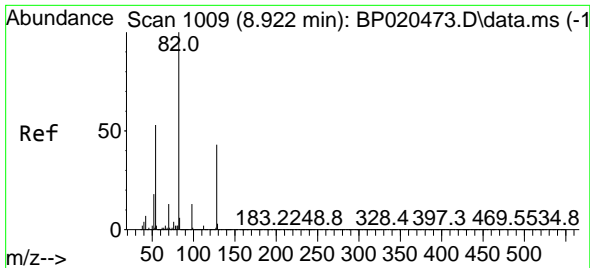


#21
Naphthalene-d8
Concen: 20.000 ng
RT: 10.534 min Scan# 1283
Delta R.T. -0.000 min
Lab File: BP020569.D
Acq: 07 Jun 2024 21:27

Tgt Ion: 136 Resp: 1506925

Ion	Ratio	Lower	Upper
136	100		
137	11.0	9.0	13.4
54	8.5	7.4	11.0
68	6.0	5.2	7.8



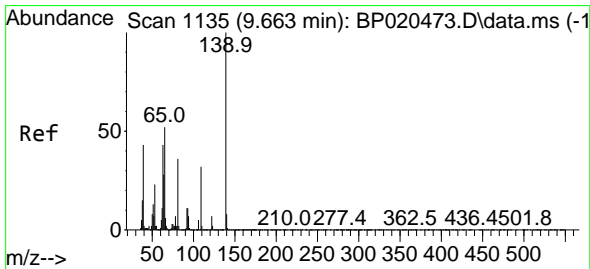
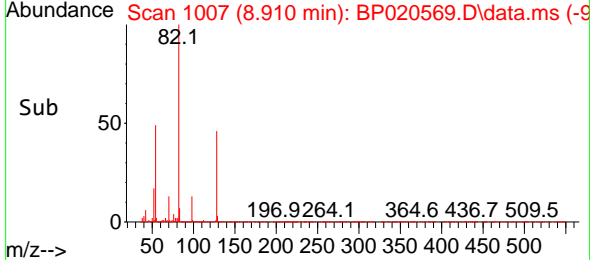
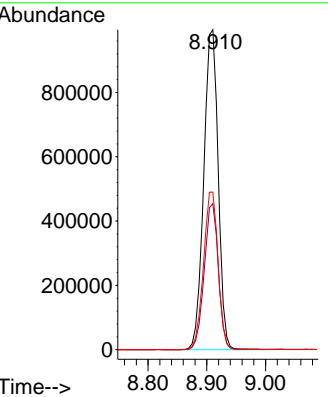
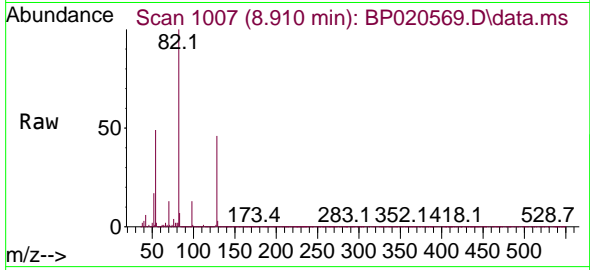


#23
 Nitrobenzene-d5
 Concen: 61.661 ng
 RT: 8.910 min Scan# 1009
 Delta R.T. -0.012 min
 Lab File: BP020569.D
 Acq: 07 Jun 2024 21:27

Instrument : BNA_P
 ClientSampleId : MH-SLUDGE

Tgt Ion: 82 Resp: 1697457

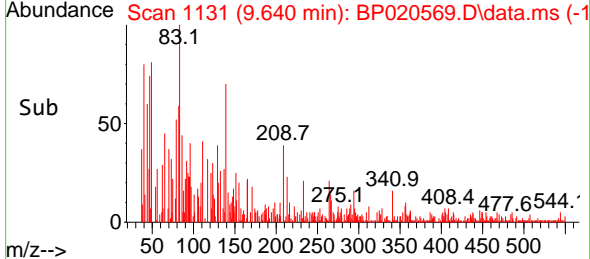
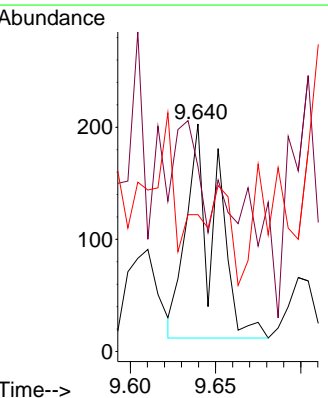
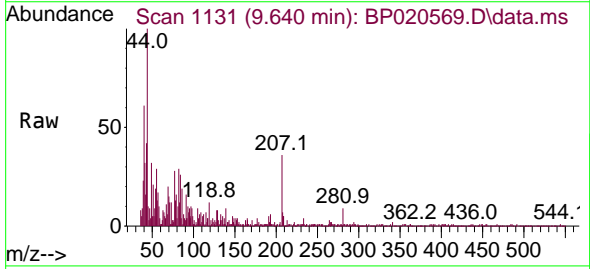
Ion	Ratio	Lower	Upper
82	100		
128	45.6	34.2	51.4
54	49.2	42.7	64.1

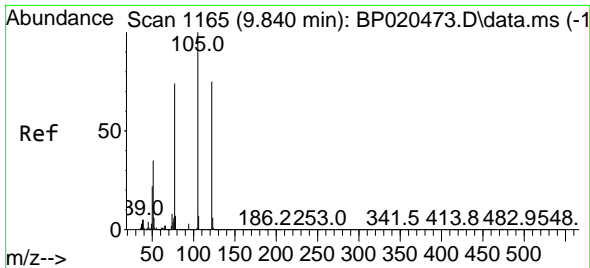


#26
 2-Nitrophenol
 Concen: 3.810 ng
 RT: 9.640 min Scan# 1131
 Delta R.T. -0.023 min
 Lab File: BP020569.D
 Acq: 07 Jun 2024 21:27

Tgt Ion: 139 Resp: 231

Ion	Ratio	Lower	Upper
139	100		
109	81.3	25.8	38.8
65	60.1	41.8	62.8

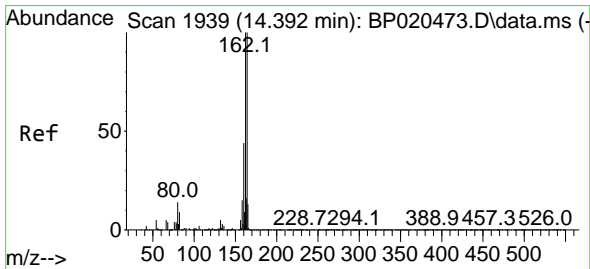
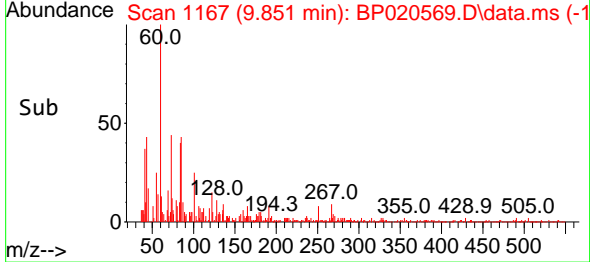
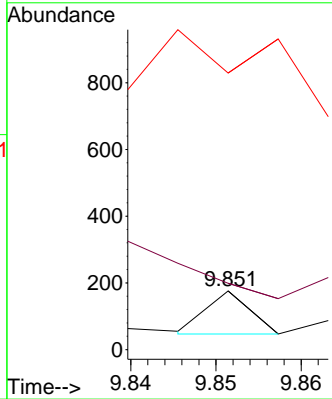
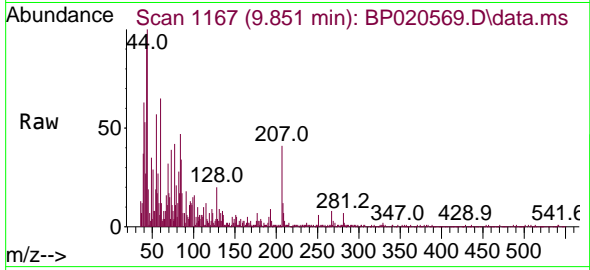




#32
 Benzoic acid
 Concen: 6.851 ng
 RT: 9.851 min Scan# 1165
 Delta R.T. 0.011 min
 Lab File: BP020569.D
 Acq: 07 Jun 2024 21:27

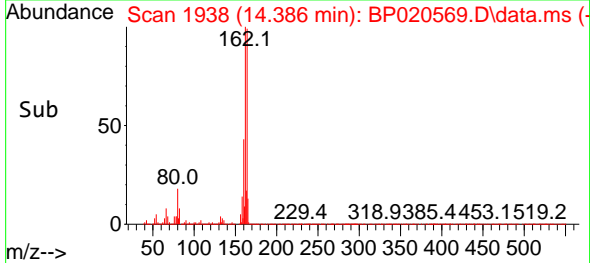
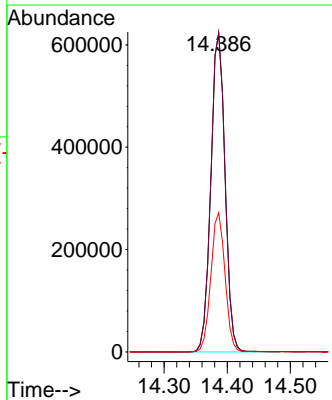
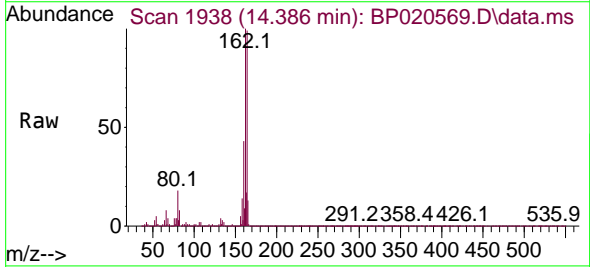
Instrument : BNA_P
 ClientSampleId : MH-SLUDGE

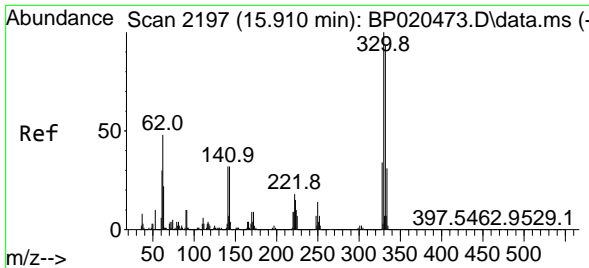
Tgt Ion	Resp	Lower	Upper
122	46		
105	113.1	107.5	147.5
77	471.0	76.1	116.1



#39
 Acenaphthene-d10
 Concen: 20.000 ng
 RT: 14.386 min Scan# 1938
 Delta R.T. -0.006 min
 Lab File: BP020569.D
 Acq: 07 Jun 2024 21:27

Tgt Ion	Resp	Lower	Upper
164	967487		
162	100.6	80.3	120.5
160	43.7	35.4	53.2





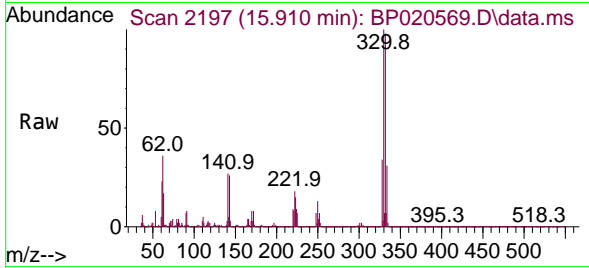
#42
 2,4,6-Tribromophenol
 Concen: 125.347 ng
 RT: 15.910 min Scan# 21
 Delta R.T. -0.000 min
 Lab File: BP020569.D
 Acq: 07 Jun 2024 21:27

Instrument :

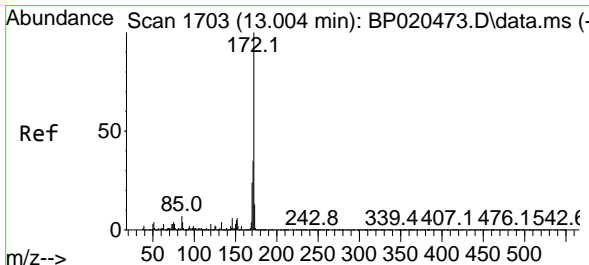
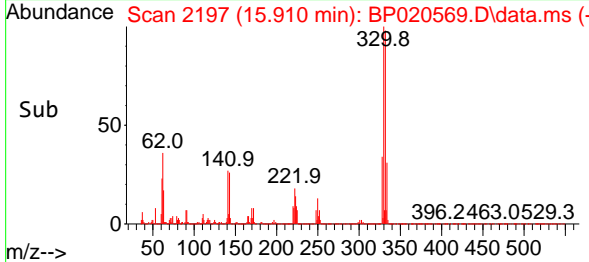
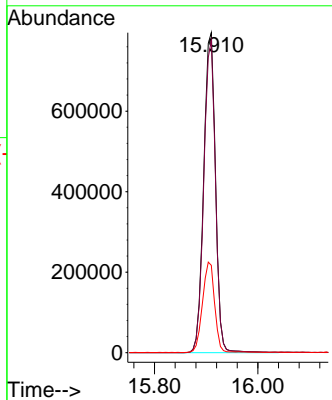
BNA_P

ClientSampleId :

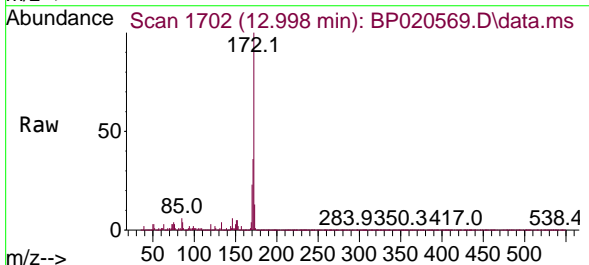
MH-SLUDGE



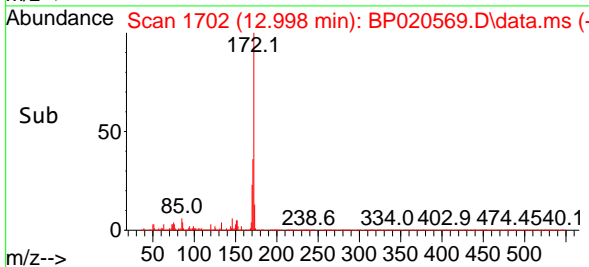
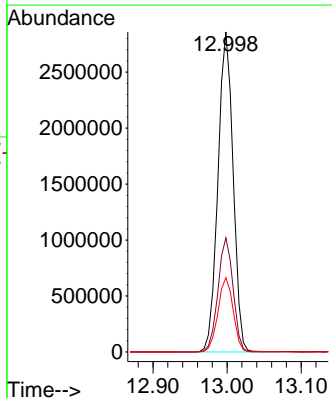
Tgt Ion:330 Resp: 1258567
 Ion Ratio Lower Upper
 330 100
 332 96.8 76.6 114.8
 141 29.1 27.1 40.7

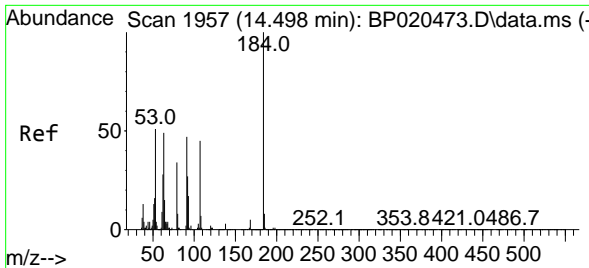


#45
 2-Fluorobiphenyl
 Concen: 62.657 ng
 RT: 12.998 min Scan# 1702
 Delta R.T. -0.006 min
 Lab File: BP020569.D
 Acq: 07 Jun 2024 21:27



Tgt Ion:172 Resp: 4066471
 Ion Ratio Lower Upper
 172 100
 171 35.7 28.4 42.6
 170 23.2 18.9 28.3



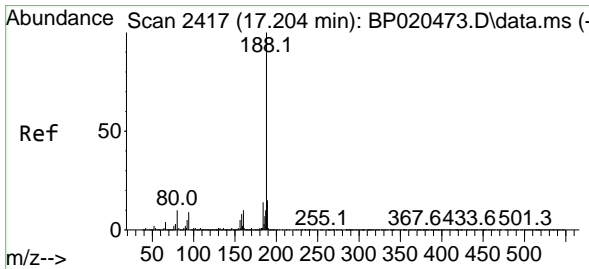
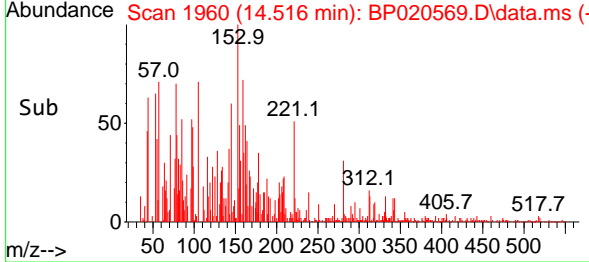
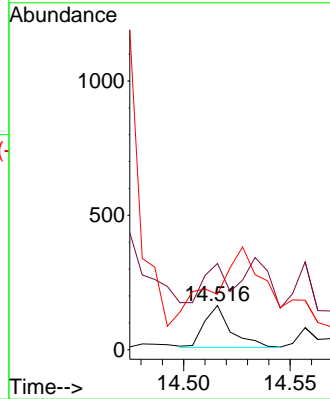
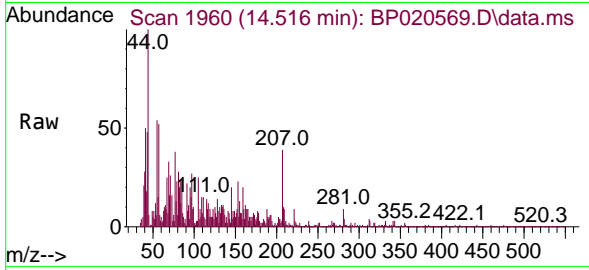


#54
 2,4-Dinitrophenol
 Concen: 5.001 ng
 RT: 14.516 min Scan# 145
 Delta R.T. 0.018 min
 Lab File: BP020569.D
 Acq: 07 Jun 2024 21:27

Instrument :
 BNA_P
 ClientSampleId :
 MH-SLUDGE

Tgt Ion:184 Resp: 136

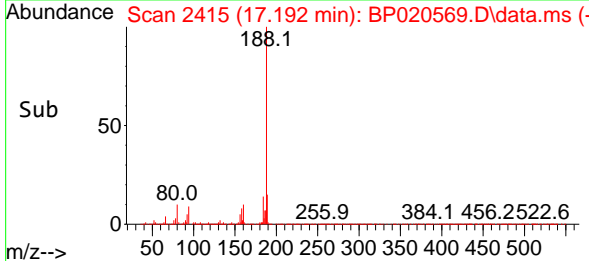
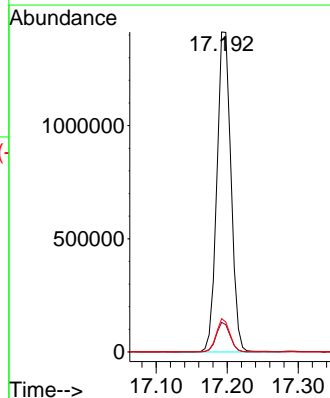
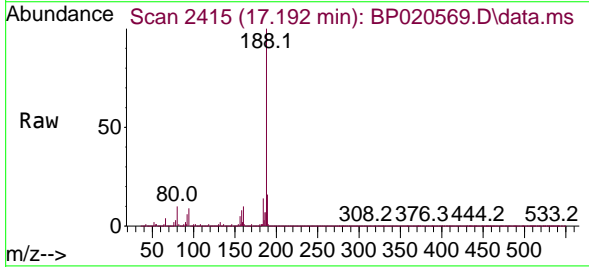
Ion	Ratio	Lower	Upper
184	100		
63	195.7	54.2	81.4#
154	125.6	51.0	76.6#

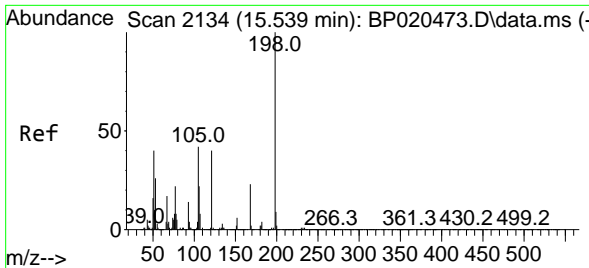


#64
 Phenanthrene-d10
 Concen: 20.000 ng
 RT: 17.192 min Scan# 2415
 Delta R.T. -0.012 min
 Lab File: BP020569.D
 Acq: 07 Jun 2024 21:27

Tgt Ion:188 Resp: 1940074

Ion	Ratio	Lower	Upper
188	100		
94	9.3	7.2	10.8
80	10.4	8.1	12.1

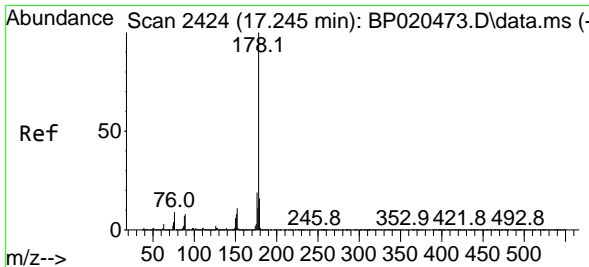
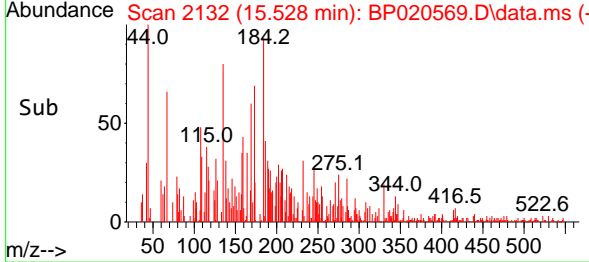
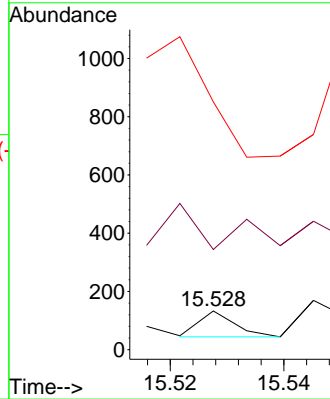
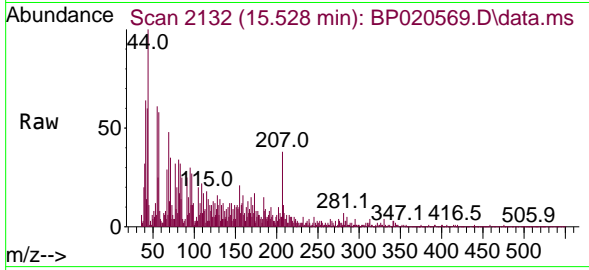




#65
 4,6-Dinitro-2-methylphenol
 Concen: 7.657 ng
 RT: 15.528 min Scan# 2132
 Delta R.T. -0.011 min
 Lab File: BP020569.D
 Acq: 07 Jun 2024 21:27

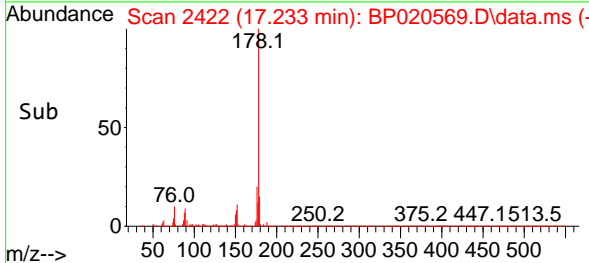
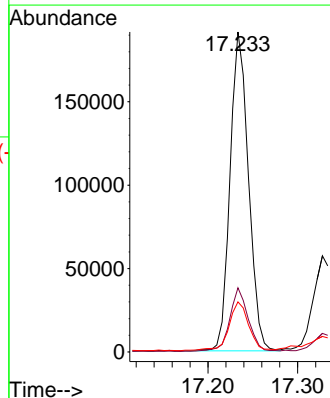
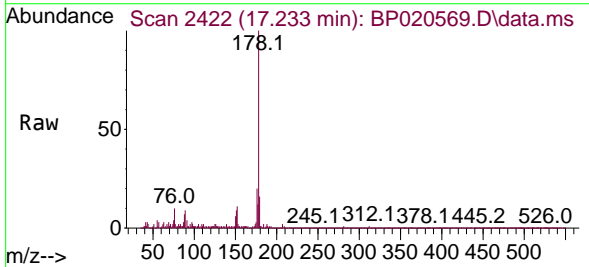
Instrument : BNA_P
 ClientSampleId : MH-SLUDGE

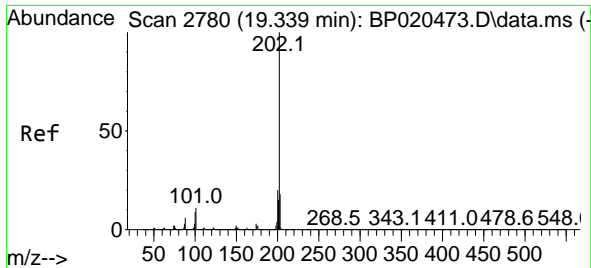
Tgt Ion	Resp	Lower	Upper
198	100		
51	258.6	24.8	64.8#
105	639.8	23.2	63.2#



#71
 Phenanthrene
 Concen: 2.858 ng
 RT: 17.233 min Scan# 2422
 Delta R.T. -0.012 min
 Lab File: BP020569.D
 Acq: 07 Jun 2024 21:27

Tgt Ion	Resp	Lower	Upper
178	100		
176	20.0	15.4	23.2
179	15.6	12.5	18.7





#75
 Fluoranthene
 Concen: 3.737 ng
 RT: 19.327 min Scan# 21
 Delta R.T. -0.012 min
 Lab File: BP020569.D
 Acq: 07 Jun 2024 21:27

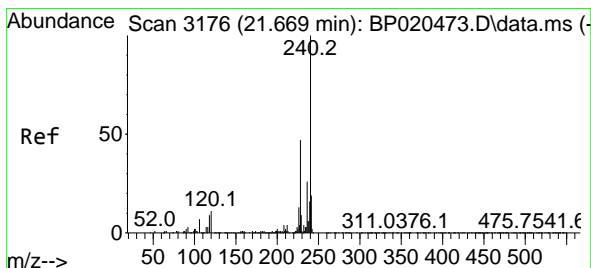
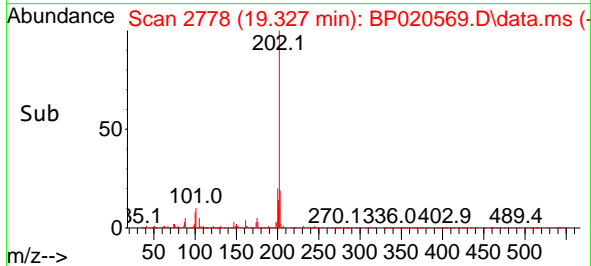
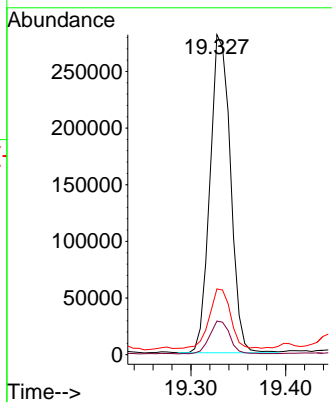
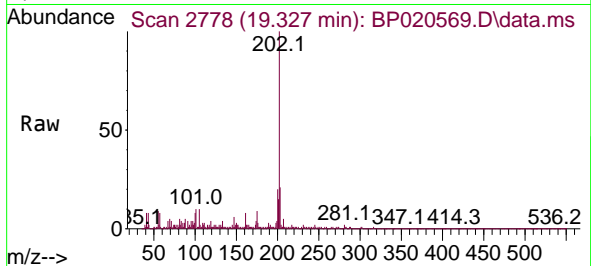
Instrument :

BNA_P

Client Sample Id :

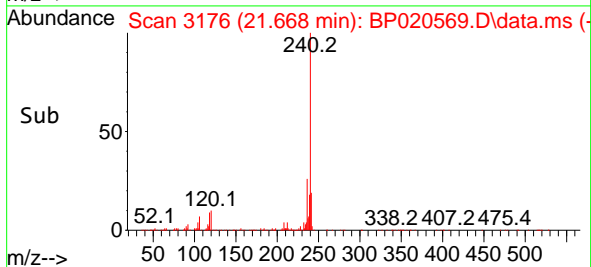
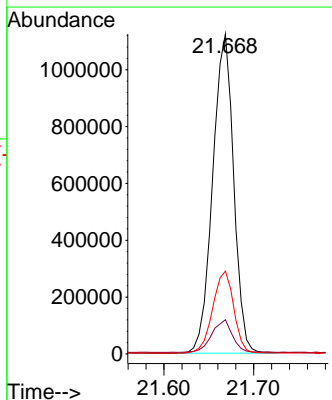
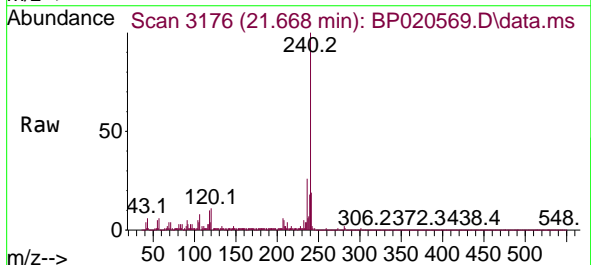
MH-SLUDGE

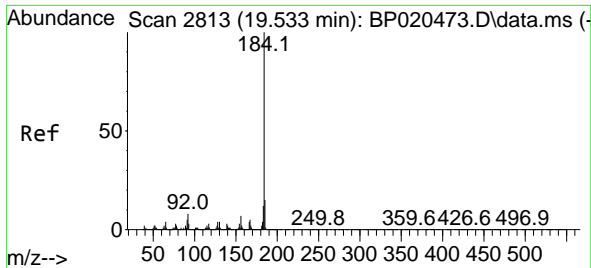
Tgt Ion	Resp	Lower	Upper
202	421578		
101	10.5	0.0	31.4
203	20.6	0.0	37.7



#76
 Chrysene-d12
 Concen: 20.000 ng
 RT: 21.668 min Scan# 3176
 Delta R.T. -0.000 min
 Lab File: BP020569.D
 Acq: 07 Jun 2024 21:27

Tgt Ion	Resp	Lower	Upper
240	1821523		
120	10.7	8.5	12.7
236	25.9	20.5	30.7

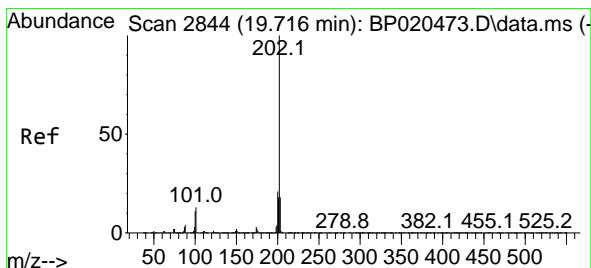
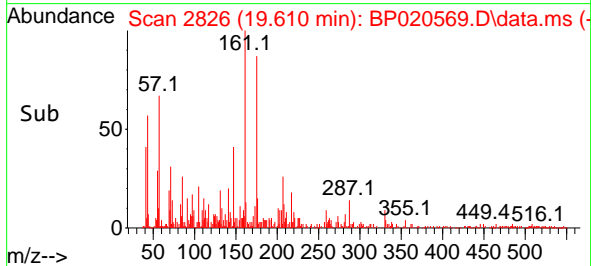
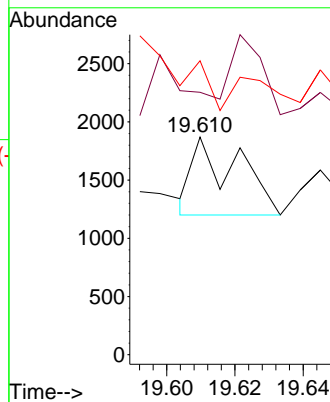
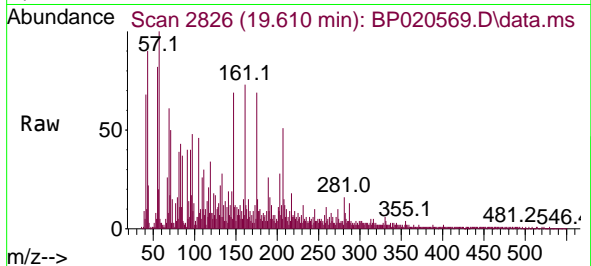




#77
 Benzidine
 Concen: 5.979 ng
 RT: 19.610 min Scan# 2813
 Delta R.T. 0.077 min
 Lab File: BP020569.D
 Acq: 07 Jun 2024 21:27

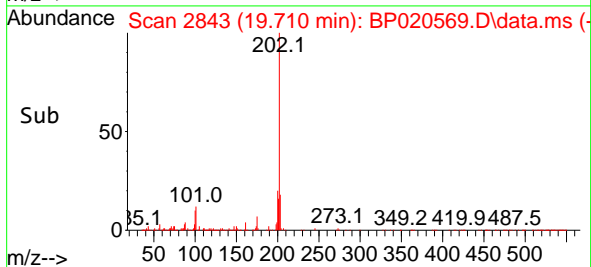
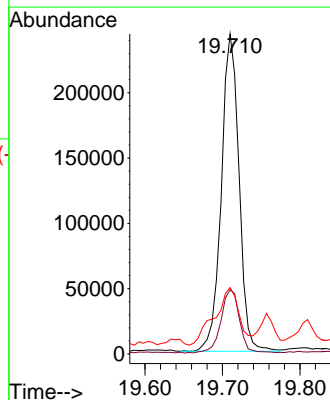
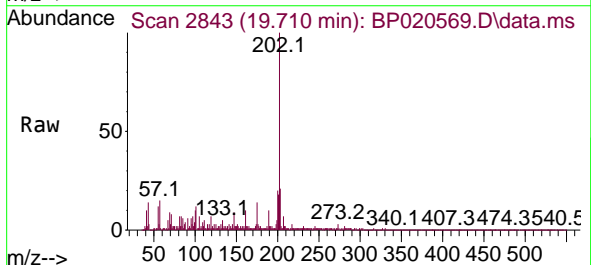
Instrument : BNA_P
 ClientSampleId : MH-SLUDGE

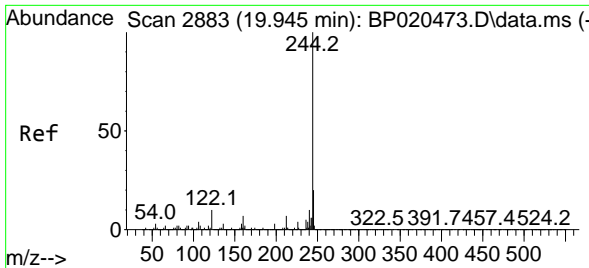
Tgt Ion	Resp	Lower	Upper
184	100		
185	120.5	12.0	18.0#
183	135.0	9.4	14.0#



#78
 Pyrene
 Concen: 2.814 ng
 RT: 19.710 min Scan# 2843
 Delta R.T. -0.006 min
 Lab File: BP020569.D
 Acq: 07 Jun 2024 21:27

Tgt Ion	Resp	Lower	Upper
202	100		
200	20.1	16.9	25.3
203	20.8	14.1	21.1



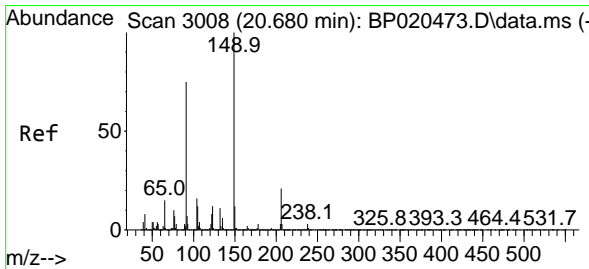
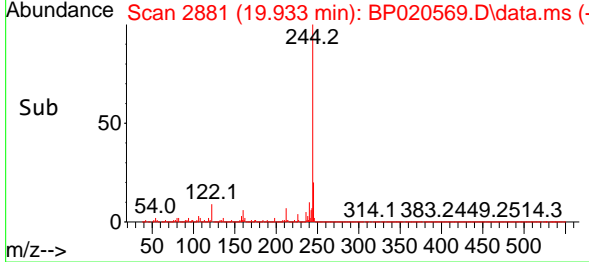
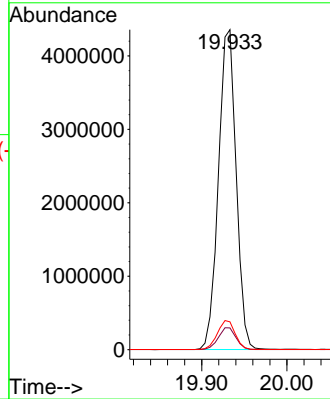
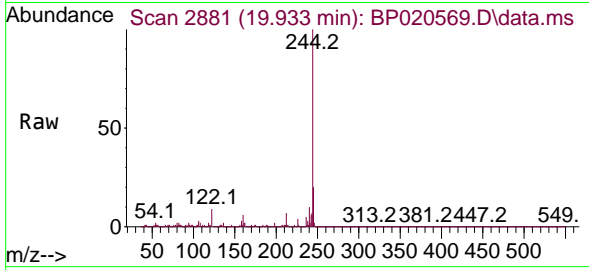


#79
 Terphenyl-d14
 Concen: 57.590 ng
 RT: 19.933 min Scan# 21
 Delta R.T. -0.012 min
 Lab File: BP020569.D
 Acq: 07 Jun 2024 21:27

Instrument :
 BNA_P
 ClientSampleId :
 MH-SLUDGE

Tgt Ion:244 Resp: 6301445

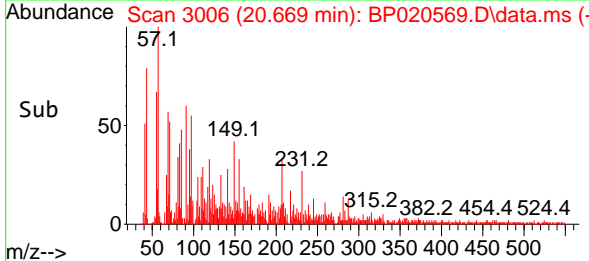
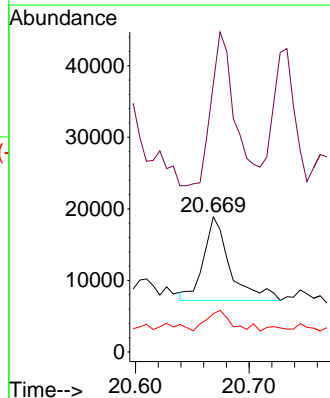
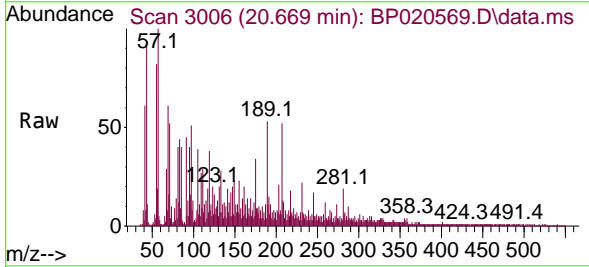
Ion	Ratio	Lower	Upper
244	100		
212	6.8	5.8	8.8
122	8.7	8.2	12.2

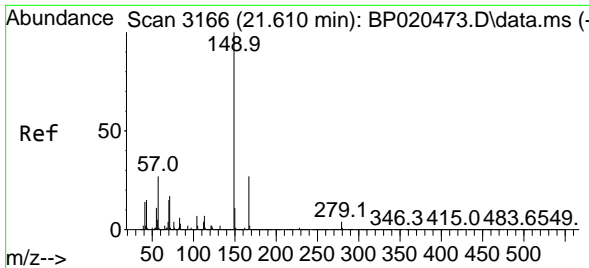


#80
 Butylbenzylphthalate
 Concen: 2.757 ng
 RT: 20.669 min Scan# 3006
 Delta R.T. -0.011 min
 Lab File: BP020569.D
 Acq: 07 Jun 2024 21:27

Tgt Ion:149 Resp: 18939

Ion	Ratio	Lower	Upper
149	100		
91	198.6	60.0	90.0#
206	28.3	16.6	25.0#



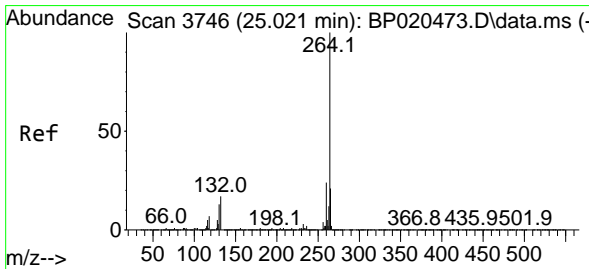
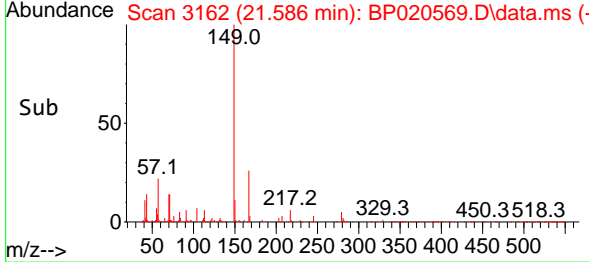
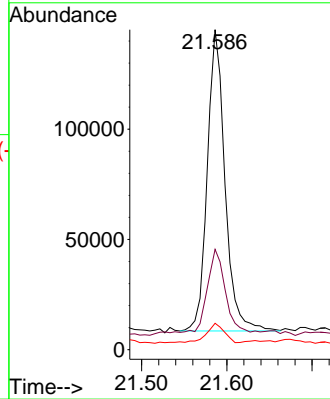
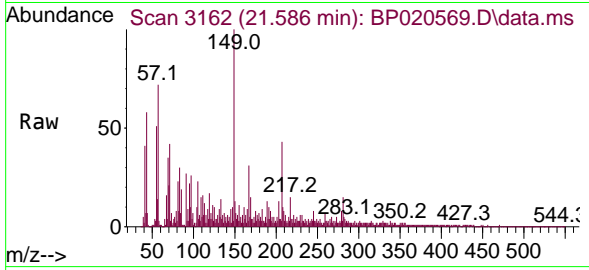


#84
 Bis(2-ethylhexyl)phthalate
 Concen: 2.532 ng
 RT: 21.586 min Scan# 3162
 Delta R.T. -0.024 min
 Lab File: BP020569.D
 Acq: 07 Jun 2024 21:27

Instrument : BNA_P
 ClientSampleId : MH-SLUDGE

Tgt Ion:149 Resp: 197473

Ion	Ratio	Lower	Upper
149	100		
167	31.4	21.8	32.6
279	8.3	3.4	5.0



#86
 Perylene-d12
 Concen: 20.000 ng
 RT: 25.039 min Scan# 3749
 Delta R.T. 0.018 min
 Lab File: BP020569.D
 Acq: 07 Jun 2024 21:27

Tgt Ion:264 Resp: 2335153

Ion	Ratio	Lower	Upper
264	100		
260	24.1	18.9	28.3
265	21.6	17.4	26.0

