

Data Path : Z:\svoasrv\HPCHEM1\BNA\_P\Data\BP061521\  
 Data File : BP005929.D  
 Acq On : 15 Jun 2021 14:20  
 Operator : CG/JU  
 Sample : M2673-04  
 Misc :  
 ALS Vial : 9 Sample Multiplier: 1

Instrument :  
 BNA\_P  
 ClientSampleId :  
 ND-1

Quant Time: Jun 15 15:16:25 2021  
 Quant Method : Z:\svoasrv\HPCHEM1\BNA\_P\Methods\8270E-BP060821.M  
 Quant Title : ASP BNA STANDARDS FOR 5 POINT CALIBRATION  
 QLast Update : Mon Jun 14 13:15:03 2021  
 Response via : Initial Calibration

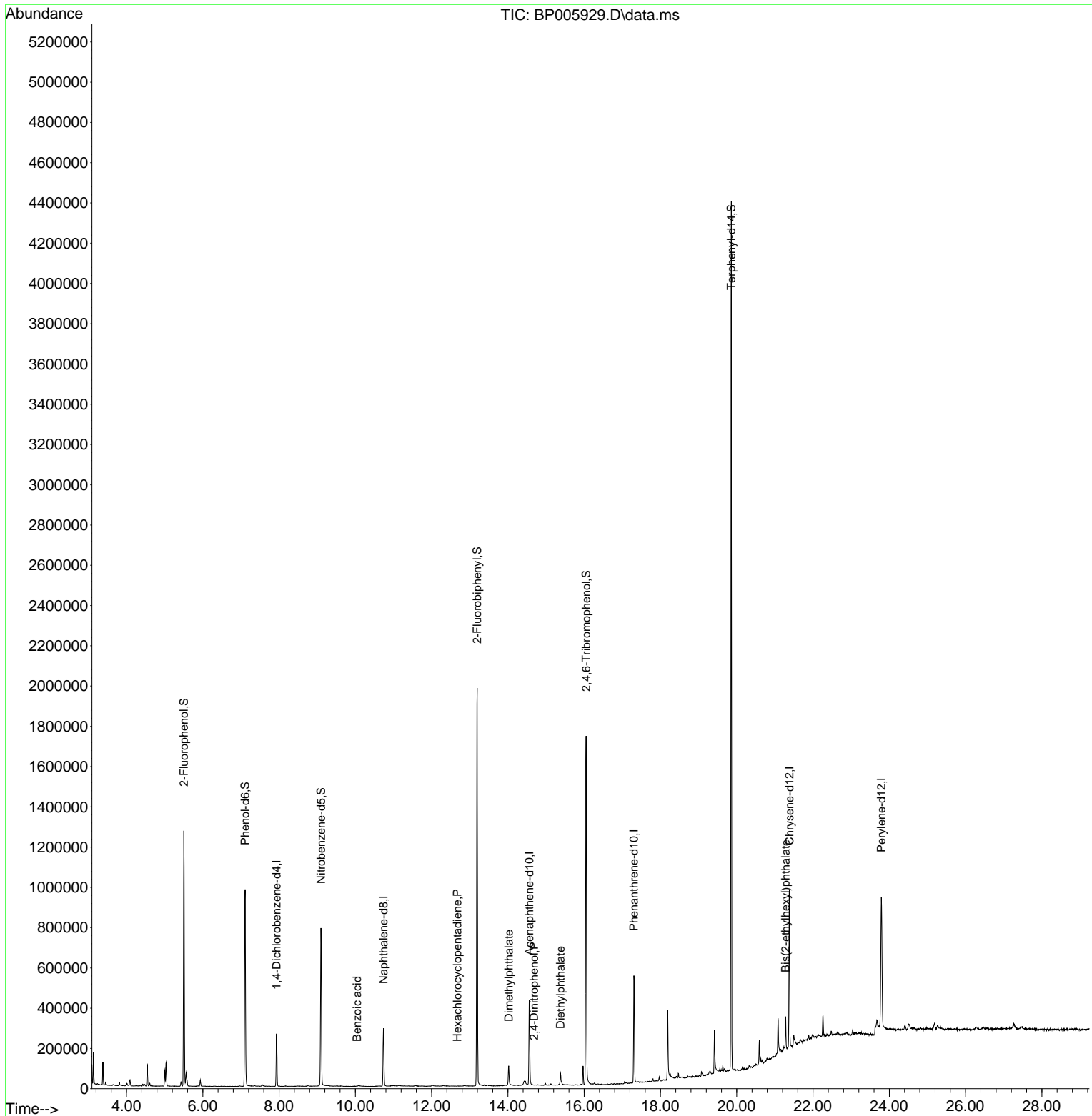
Compound	R.T.	QIon	Response	Conc	Units	Dev(Min)
Internal Standards						
1) 1,4-Dichlorobenzene-d4	7.934	152	70583	20.000	ng	0.00
21) Naphthalene-d8	10.739	136	253184	20.000	ng	0.00
39) Acenaphthene-d10	14.563	164	153871	20.000	ng	0.00
64) Phenanthrene-d10	17.304	188	326978	20.000	ng	0.00
76) Chrysene-d12	21.380	240	396618	20.000	ng	0.00
86) Perylene-d12	23.792	264	548248	20.000	ng	0.00
System Monitoring Compounds						
5) 2-Fluorophenol	5.504	112	552031	125.498	ng	0.00
7) Phenol-d6	7.110	99	569823	99.945	ng	0.00
23) Nitrobenzene-d5	9.098	82	459304	88.941	ng	0.00
42) 2,4,6-Tribromophenol	16.051	330	385129	145.852	ng	0.00
45) 2-Fluorobiphenyl	13.192	172	1036573	88.461	ng	0.00
79) Terphenyl-d14	19.857	244	1937675	91.480	ng	0.00
Target Compounds						
32) Benzoic acid	10.045	122	960	6.611	ng	# 83
41) Hexachlorocyclopentadiene	12.675	237	18	5.510	ng	83
50) Dimethylphthalate	14.022	163	68844	5.442	ng	# 97
54) 2,4-Dinitrophenol	14.686	184	34	4.868	ng	# 1
60) Diethylphthalate	15.380	149	48518	3.822	ng	98
84) Bis(2-ethylhexyl)phtha...	21.280	149	59627	3.569	ng	98

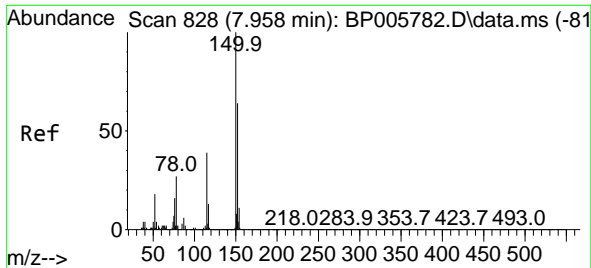
(#) = qualifier out of range (m) = manual integration (+) = signals summed

Data Path : Z:\svoasrv\HPCHEM1\BNA\_P\Data\BP061521\  
 Data File : BP005929.D  
 Acq On : 15 Jun 2021 14:20  
 Operator : CG/JU  
 Sample : M2673-04  
 Misc :  
 ALS Vial : 9 Sample Multiplier: 1

Instrument :  
 BNA\_P  
 ClientSampleId :  
 ND-1

Quant Time: Jun 15 15:16:25 2021  
 Quant Method : Z:\svoasrv\HPCHEM1\BNA\_P\Methods\8270E-BP060821.M  
 Quant Title : ASP BNA STANDARDS FOR 5 POINT CALIBRATION  
 QLast Update : Mon Jun 14 13:15:03 2021  
 Response via : Initial Calibration

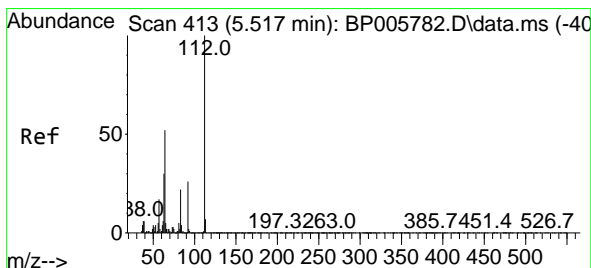
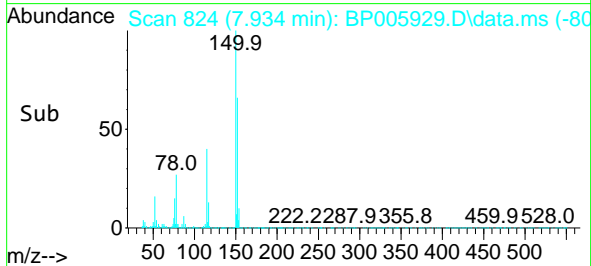
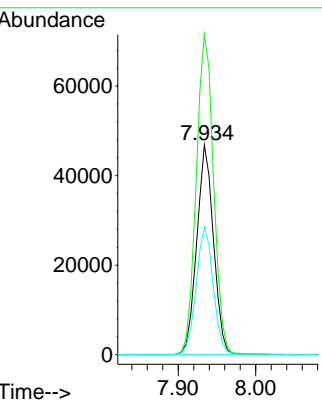
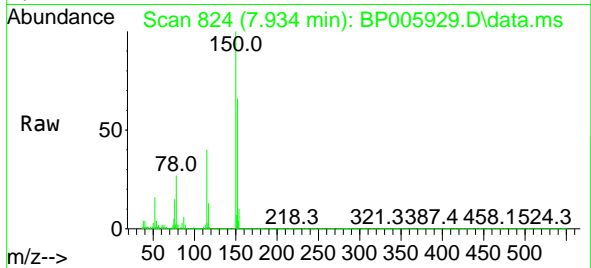




#1  
 1,4-Dichlorobenzene-d4  
 Concen: 20.000 ng  
 RT: 7.934 min Scan# 824  
 Delta R.T. -0.006 min  
 Lab File: BP005929.D  
 Acq: 15 Jun 2021 14:20

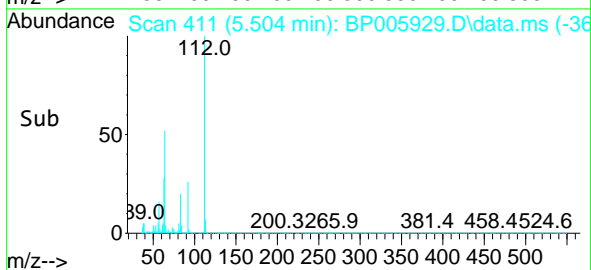
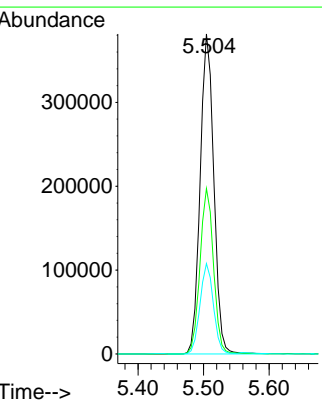
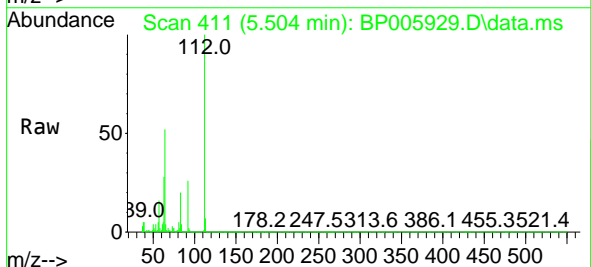
Instrument :  
 BNA\_P  
 ClientSampled :  
 ND-1

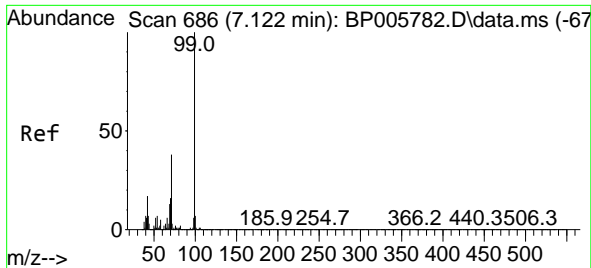
Tgt Ion	Resp	Lower	Upper
152	70583		
100			
150	152.5	125.6	188.4
115	60.9	48.5	72.7



#5  
 2-Fluorophenol  
 Concen: 125.498 ng  
 RT: 5.504 min Scan# 411  
 Delta R.T. -0.006 min  
 Lab File: BP005929.D  
 Acq: 15 Jun 2021 14:20

Tgt Ion	Resp	Lower	Upper
112	552031		
100			
64	51.7	41.4	62.2
63	28.2	23.8	35.8



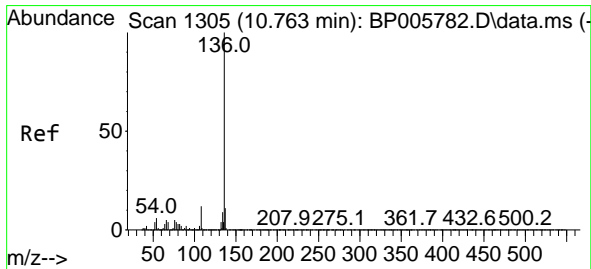
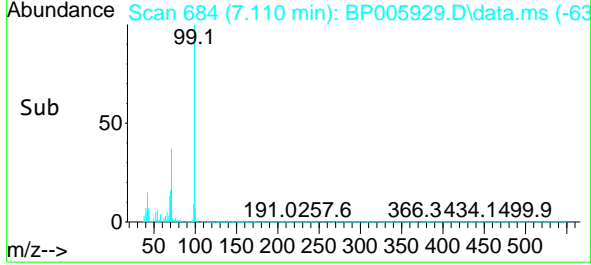
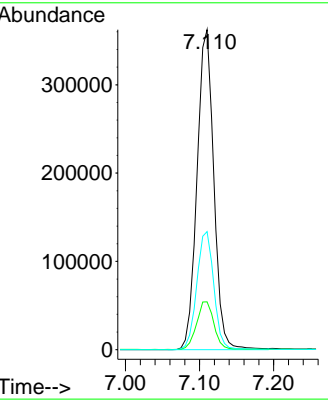
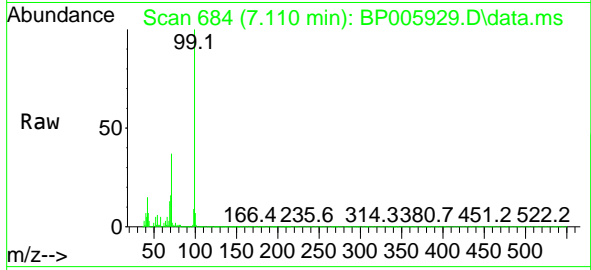


#7  
 Phenol-d6  
 Concen: 99.945 ng  
 RT: 7.110 min Scan# 684  
 Delta R.T. -0.006 min  
 Lab File: BP005929.D  
 Acq: 15 Jun 2021 14:20

Instrument :  
 BNA\_P  
 ClientSampled :  
 ND-1

Tgt Ion: 99 Resp: 569823

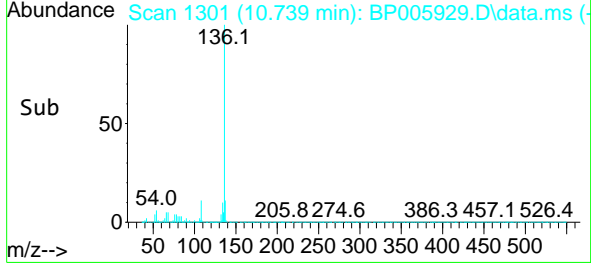
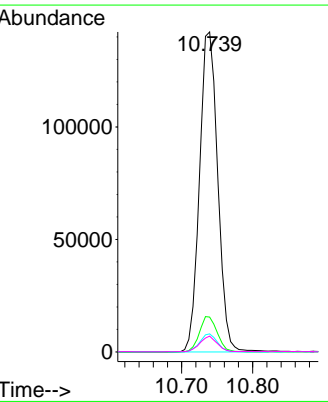
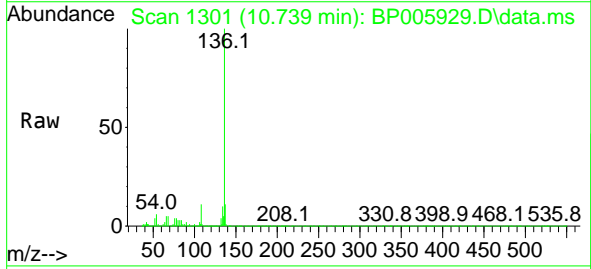
Ion	Ratio	Lower	Upper
99	100		
42	14.9	13.4	20.0
71	36.9	30.6	46.0

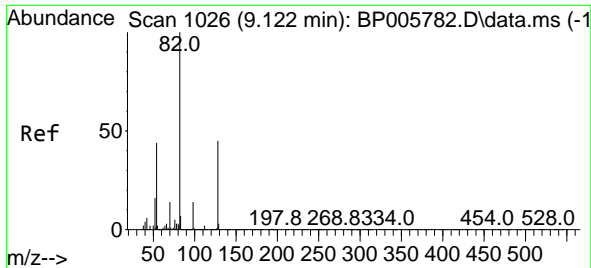


#21  
 Naphthalene-d8  
 Concen: 20.000 ng  
 RT: 10.739 min Scan# 1301  
 Delta R.T. -0.006 min  
 Lab File: BP005929.D  
 Acq: 15 Jun 2021 14:20

Tgt Ion: 136 Resp: 253184

Ion	Ratio	Lower	Upper
136	100		
137	10.9	8.6	12.8
54	5.7	4.6	6.8
68	4.9	3.6	5.4

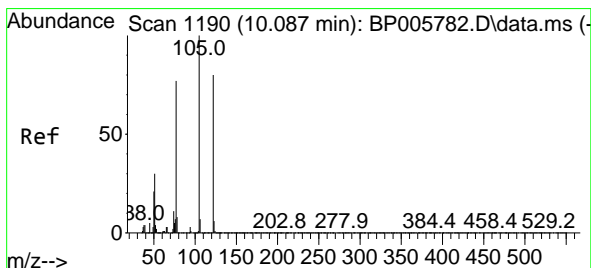
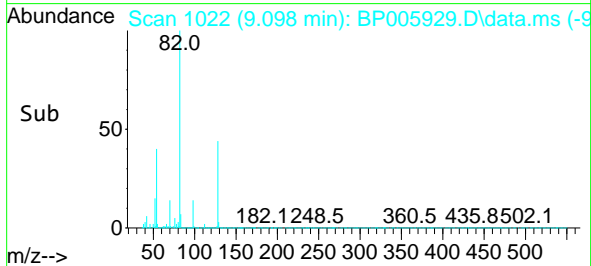
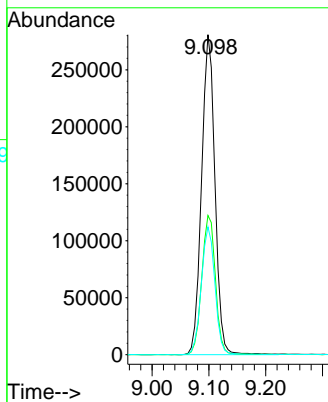
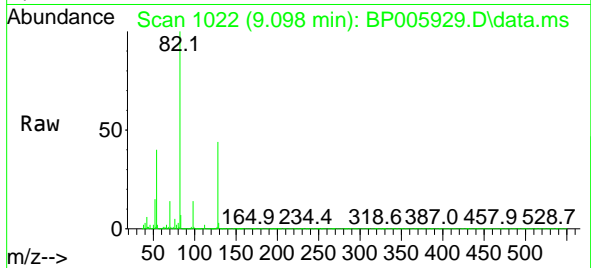




#23  
 Nitrobenzene-d5  
 Concen: 88.941 ng  
 RT: 9.098 min Scan# 1022  
 Delta R.T. -0.006 min  
 Lab File: BP005929.D  
 Acq: 15 Jun 2021 14:20

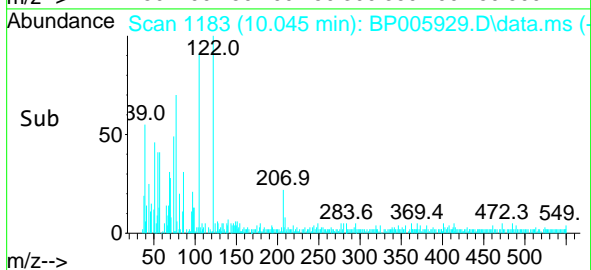
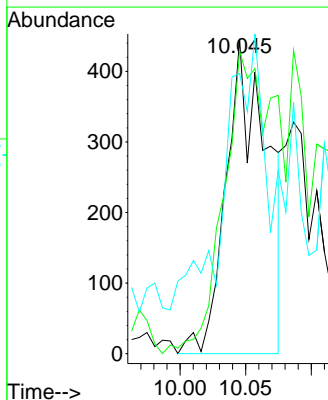
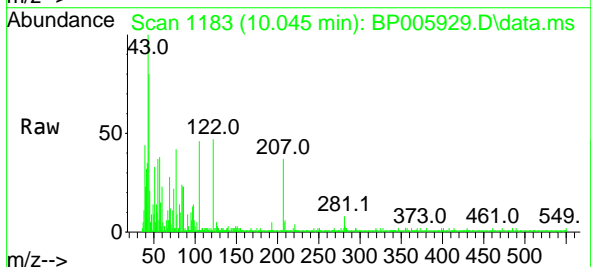
Instrument :  
 BNA\_P  
 ClientSampled :  
 ND-1

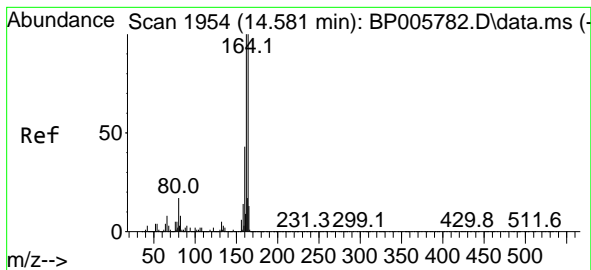
Tgt Ion	Resp	Lower	Upper
82	459304		
128	43.5	35.7	53.5
54	39.9	35.0	52.4



#32  
 Benzoic acid  
 Concen: 6.611 ng  
 RT: 10.045 min Scan# 1183  
 Delta R.T. -0.035 min  
 Lab File: BP005929.D  
 Acq: 15 Jun 2021 14:20

Tgt Ion	Resp	Lower	Upper
122	960		
105	96.2	103.2	143.2#
77	89.0	76.2	116.2

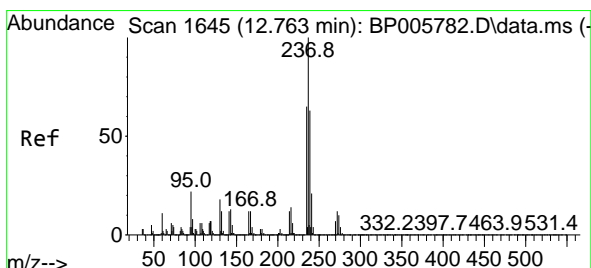
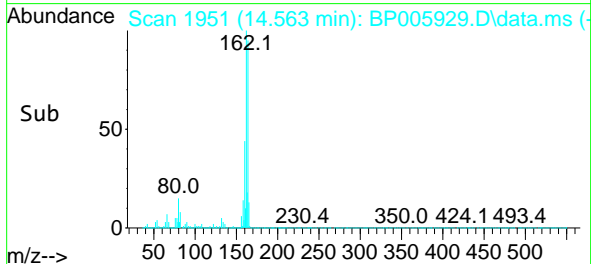
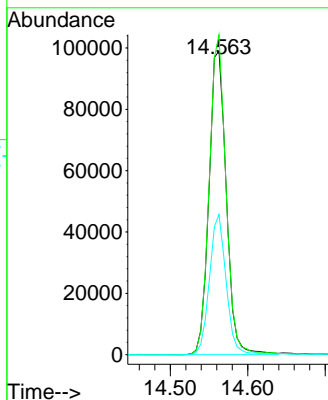
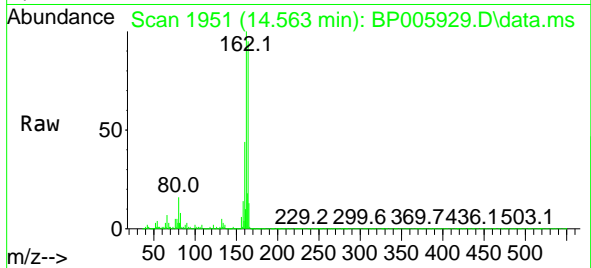




#39  
 Acenaphthene-d10  
 Concen: 20.000 ng  
 RT: 14.563 min Scan# 1951  
 Delta R.T. -0.000 min  
 Lab File: BP005929.D  
 Acq: 15 Jun 2021 14:20

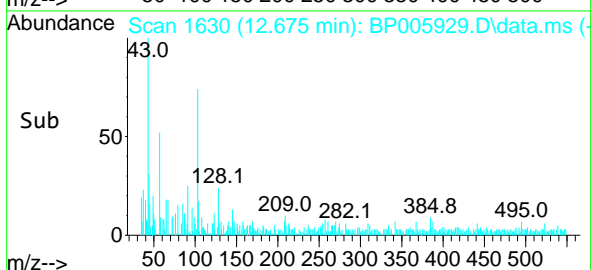
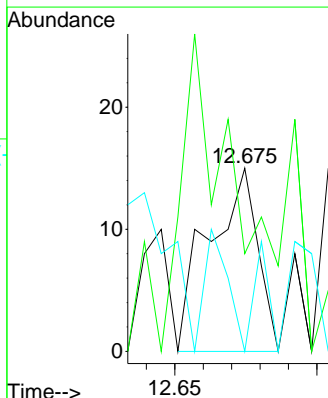
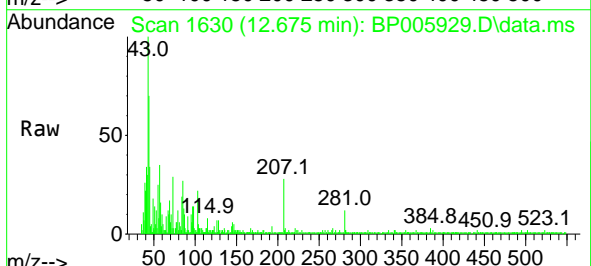
Instrument :  
 BNA\_P  
 ClientSampled :  
 ND-1

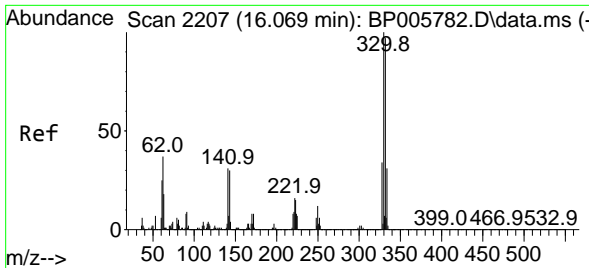
Tgt Ion	Resp	Lower	Upper
164	153871		
162	105.3	80.2	120.2
160	46.2	34.5	51.7



#41  
 Hexachlorocyclopentadiene  
 Concen: 5.510 ng  
 RT: 12.675 min Scan# 1630  
 Delta R.T. -0.071 min  
 Lab File: BP005929.D  
 Acq: 15 Jun 2021 14:20

Tgt Ion	Resp	Lower	Upper
237	18		
235	53.3	44.5	84.5
272	0.0	0.0	32.5



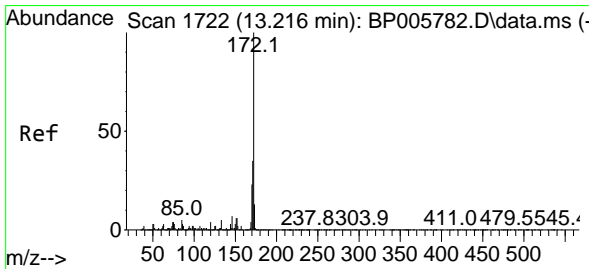
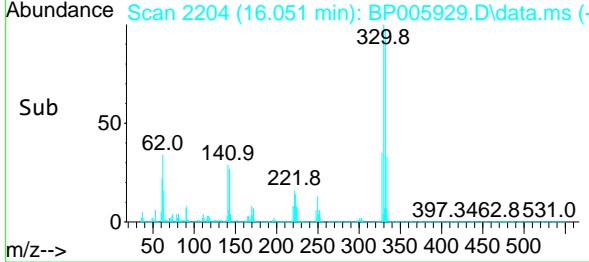
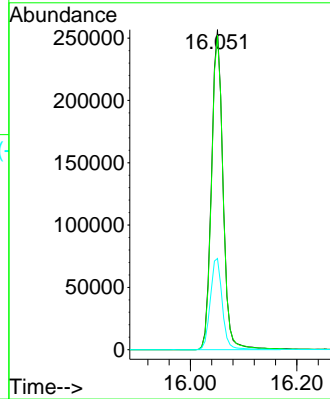
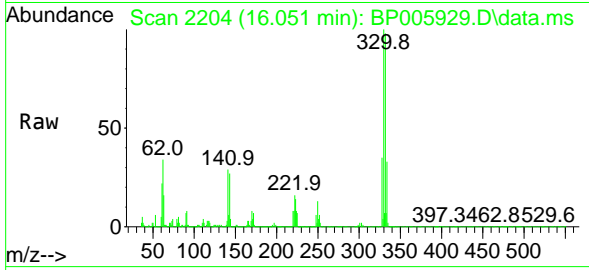


#42  
 2,4,6-Tribromophenol  
 Concen: 145.852 ng  
 RT: 16.051 min Scan# 2204  
 Delta R.T. -0.000 min  
 Lab File: BP005929.D  
 Acq: 15 Jun 2021 14:20

Instrument :  
 BNA\_P  
 ClientSampled :  
 ND-1

Tgt Ion:330 Resp: 385129

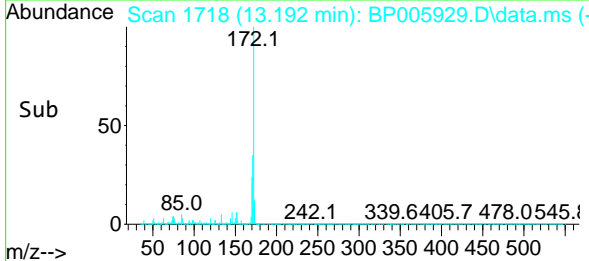
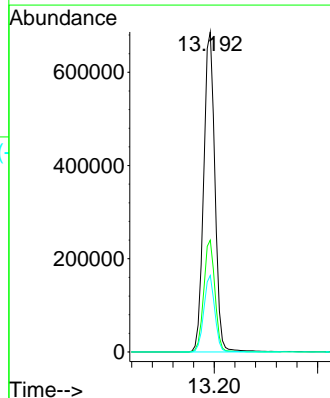
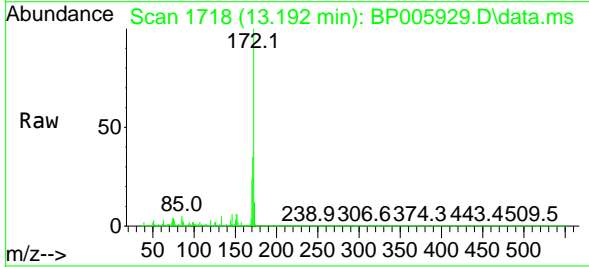
Ion	Ratio	Lower	Upper
330	100		
332	99.0	77.8	116.8
141	29.5	25.4	38.2

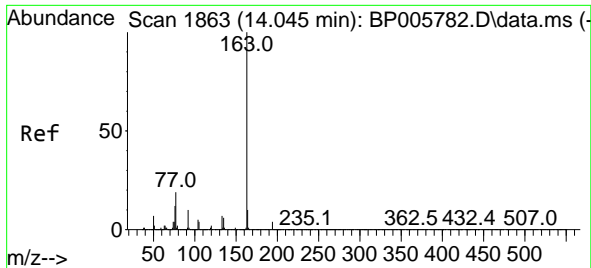


#45  
 2-Fluorobiphenyl  
 Concen: 88.461 ng  
 RT: 13.192 min Scan# 1718  
 Delta R.T. -0.000 min  
 Lab File: BP005929.D  
 Acq: 15 Jun 2021 14:20

Tgt Ion:172 Resp: 1036573

Ion	Ratio	Lower	Upper
172	100		
171	34.9	27.9	41.9
170	23.9	18.6	27.8

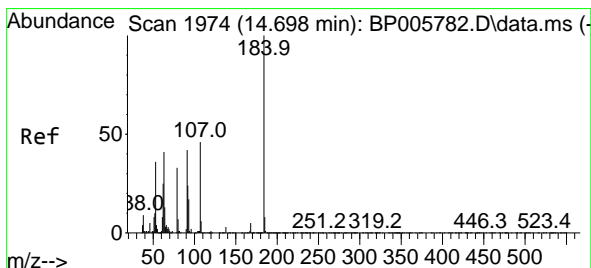
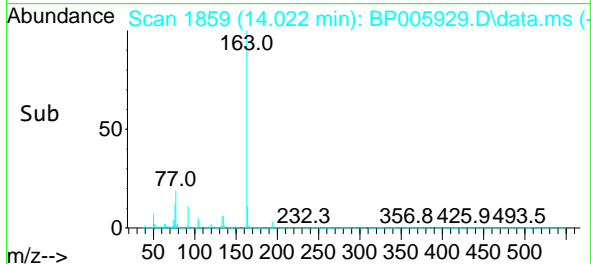
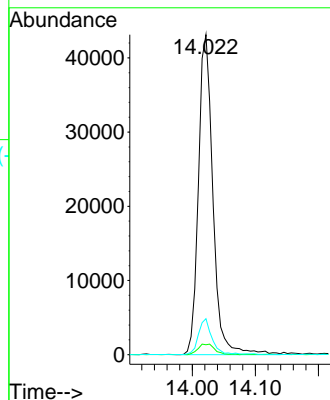
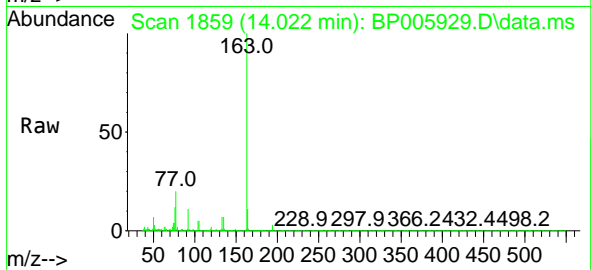




#50  
Dimethylphthalate  
Concen: 5.442 ng  
RT: 14.022 min Scan# 1859  
Delta R.T. -0.006 min  
Lab File: BP005929.D  
Acq: 15 Jun 2021 14:20

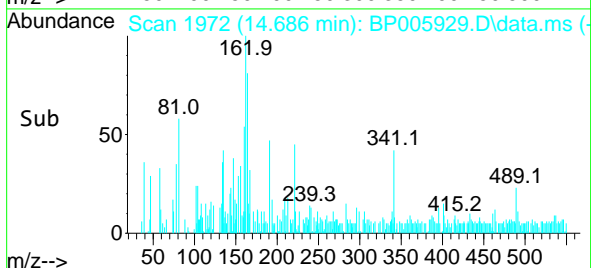
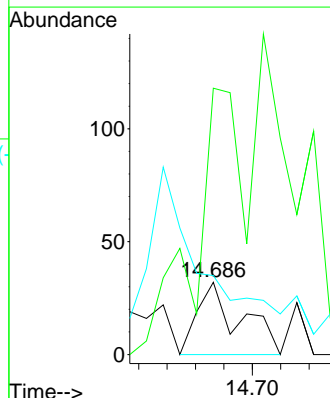
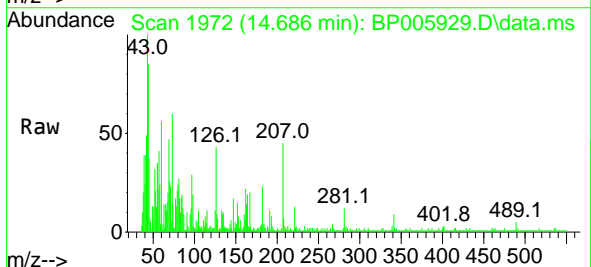
Instrument :  
BNA\_P  
ClientSampleId :  
ND-1

Tgt Ion:163 Resp: 68844  
Ion Ratio Lower Upper  
163 100  
194 3.1 3.4 5.2#  
164 11.3 8.2 12.2

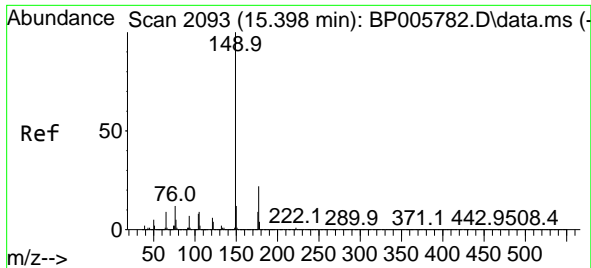


#54  
2,4-Dinitrophenol  
Concen: 4.868 ng  
RT: 14.686 min Scan# 1972  
Delta R.T. -0.000 min  
Lab File: BP005929.D  
Acq: 15 Jun 2021 14:20

Tgt Ion:184 Resp: 34  
Ion Ratio Lower Upper  
184 100  
63 368.8 47.0 70.6#  
154 109.4 52.3 78.5#



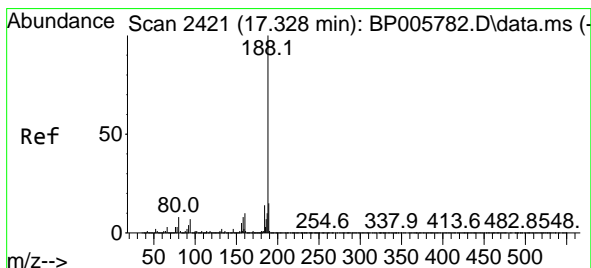
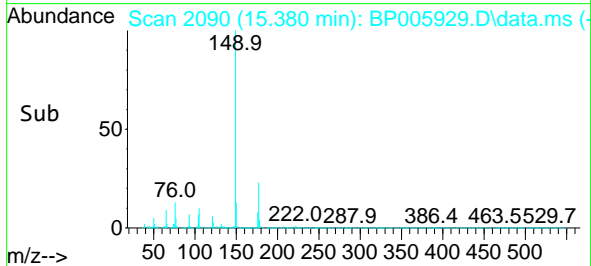
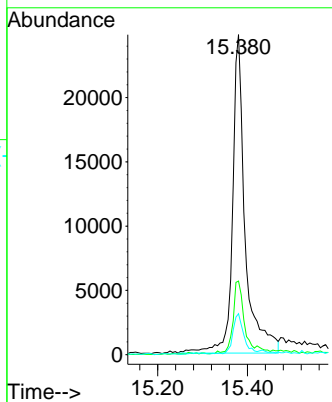
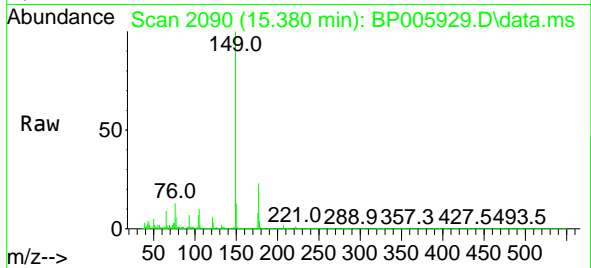




#60  
 Diethylphthalate  
 Concen: 3.822 ng  
 RT: 15.380 min Scan# 2090  
 Delta R.T. -0.006 min  
 Lab File: BP005929.D  
 Acq: 15 Jun 2021 14:20

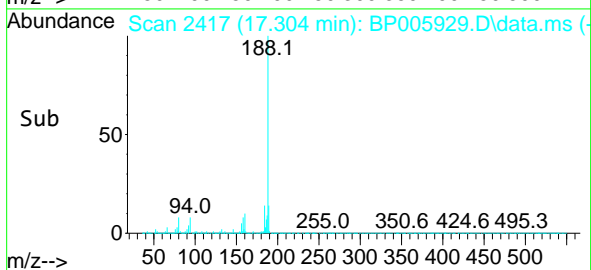
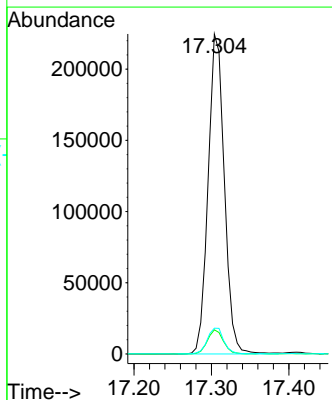
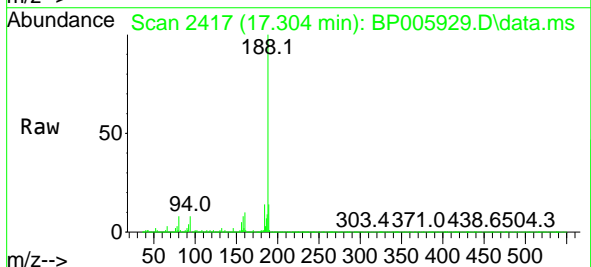
Instrument :  
 BNA\_P  
 ClientSampled :  
 ND-1

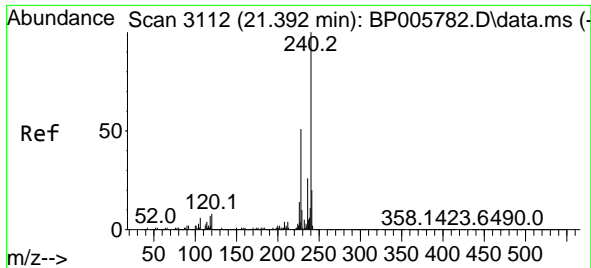
Tgt Ion	Resp	Lower	Upper
149	48518		
149	100		
177	23.0	17.5	26.3
150	12.8	9.9	14.9



#64  
 Phenanthrene-d10  
 Concen: 20.000 ng  
 RT: 17.304 min Scan# 2417  
 Delta R.T. -0.006 min  
 Lab File: BP005929.D  
 Acq: 15 Jun 2021 14:20

Tgt Ion	Resp	Lower	Upper
188	326978		
188	100		
94	7.5	5.6	8.4
80	8.1	6.3	9.5

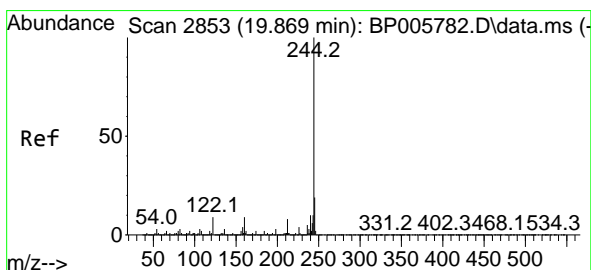
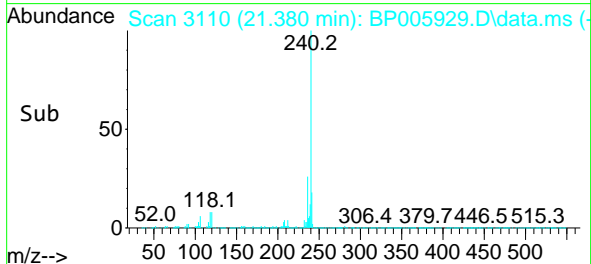
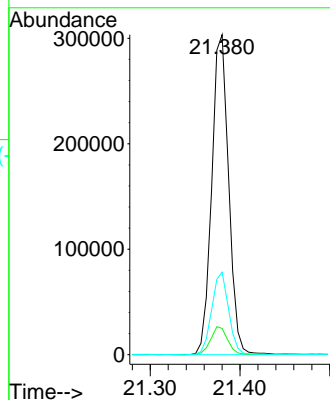
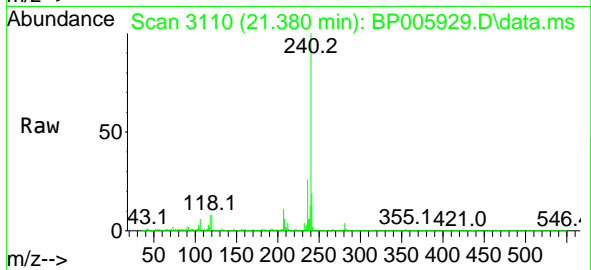




#76  
 Chrysene-d12  
 Concen: 20.000 ng  
 RT: 21.380 min Scan# 3110  
 Delta R.T. -0.000 min  
 Lab File: BP005929.D  
 Acq: 15 Jun 2021 14:20

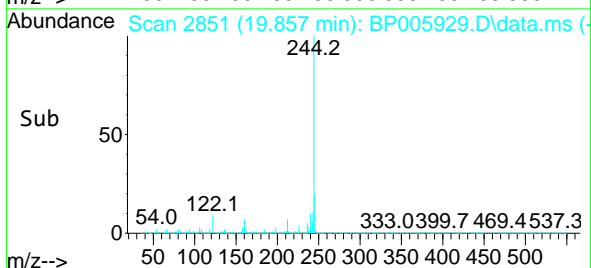
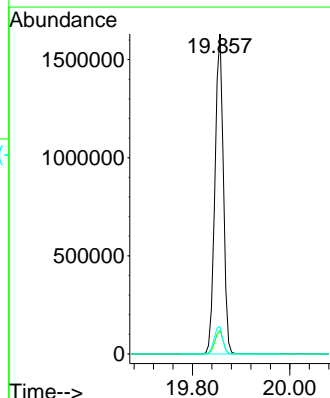
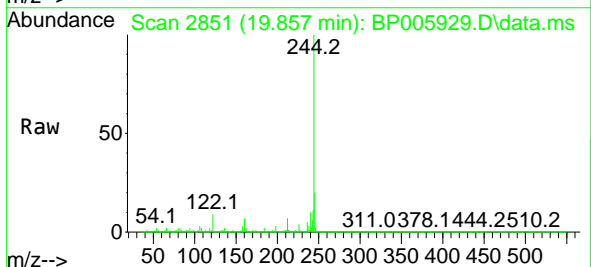
Instrument :  
 BNA\_P  
 ClientSampled :  
 ND-1

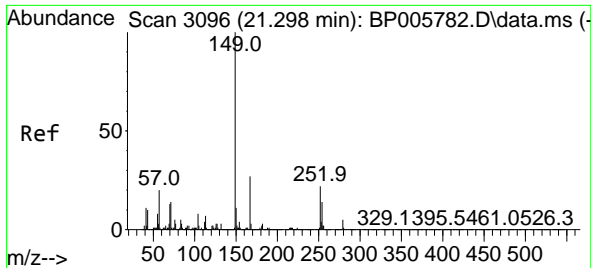
Tgt Ion	Resp	Lower	Upper
240	100		
120	8.2	6.5	9.7
236	25.8	20.6	31.0



#79  
 Terphenyl-d14  
 Concen: 91.480 ng  
 RT: 19.857 min Scan# 2851  
 Delta R.T. -0.000 min  
 Lab File: BP005929.D  
 Acq: 15 Jun 2021 14:20

Tgt Ion	Resp	Lower	Upper
244	100		
212	7.3	6.0	9.0
122	8.5	7.1	10.7

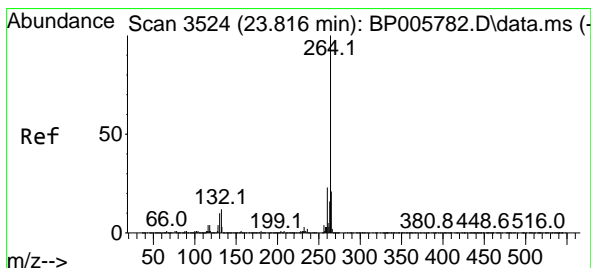
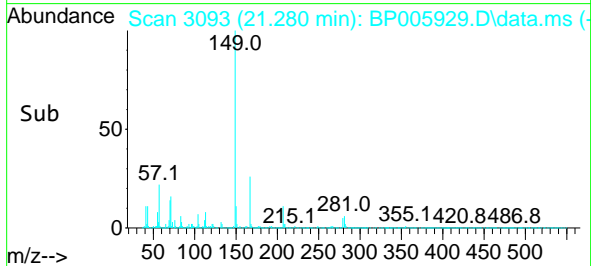
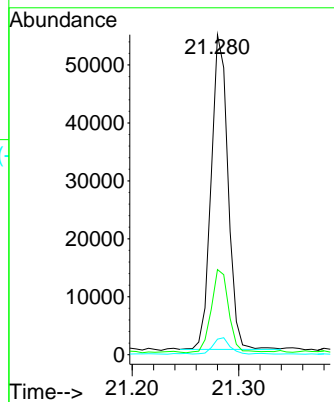
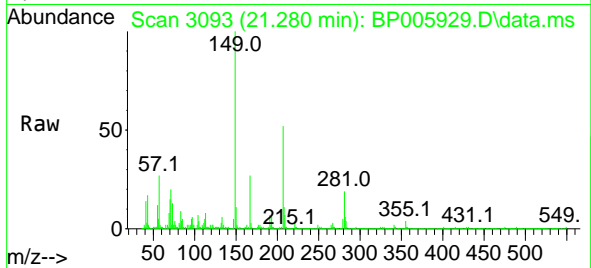




#84  
 Bis(2-ethylhexyl)phthalate  
 Concen: 3.569 ng  
 RT: 21.280 min Scan# 3093  
 Delta R.T. -0.006 min  
 Lab File: BP005929.D  
 Acq: 15 Jun 2021 14:20

**Instrument :**  
 BNA\_P  
**ClientSampled :**  
 ND-1

Tgt Ion	Resp	Lower	Upper
149	59627		
167	26.6	21.9	32.9
279	4.9	4.3	6.5



#86  
 Perylene-d12  
 Concen: 20.000 ng  
 RT: 23.792 min Scan# 3520  
 Delta R.T. -0.000 min  
 Lab File: BP005929.D  
 Acq: 15 Jun 2021 14:20

Tgt Ion	Resp	Lower	Upper
264	548248		
260	23.4	18.6	28.0
265	22.0	17.6	26.4

