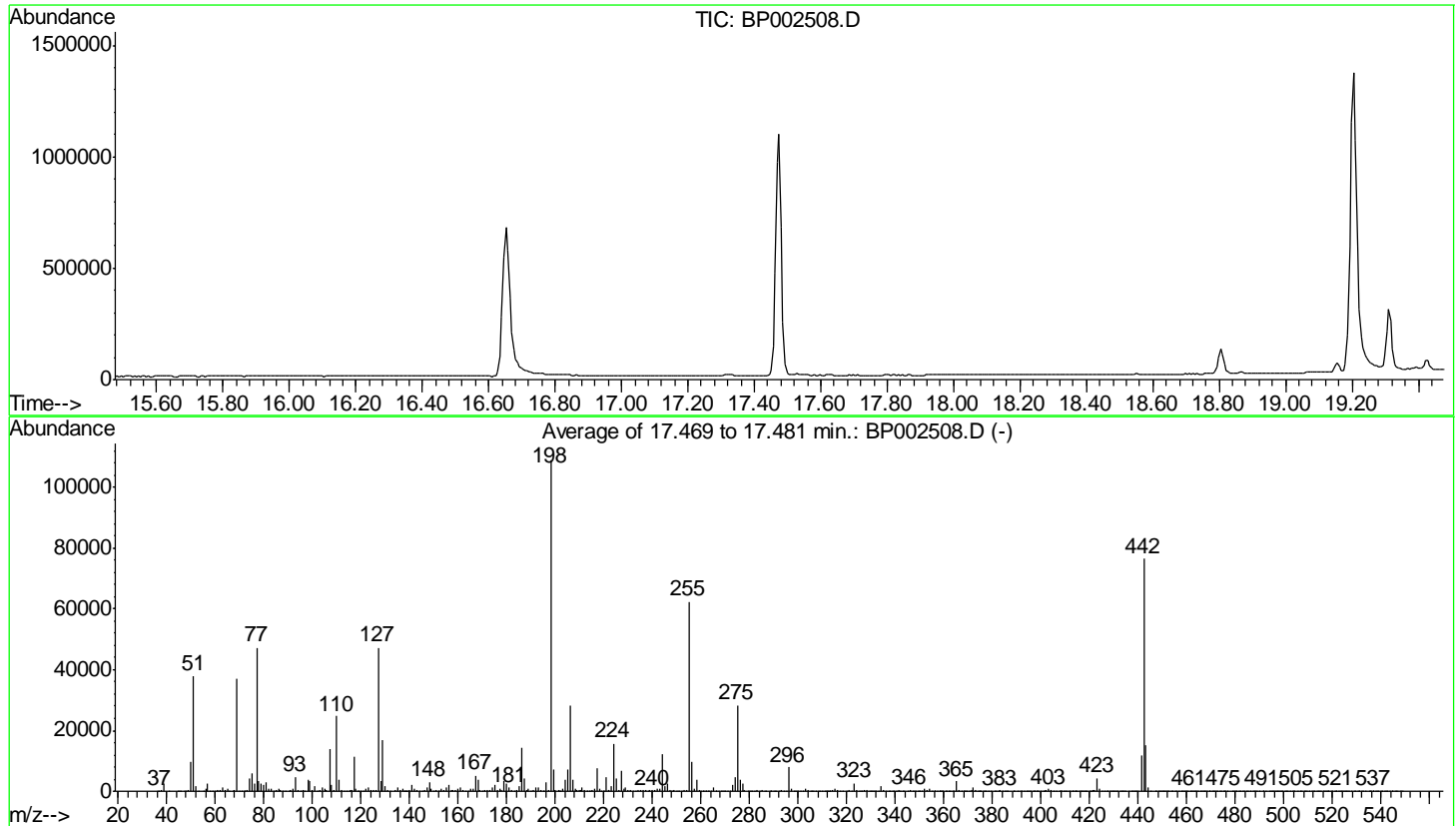


Data Path : Z:\SVOASRV\HPCHEM1\BNA P\DATA\BP062320\
 Data File : BP002508.D
 Acq On : 23 Jun 2020 18:40
 Operator : CG/JU
 Sample : DFTPP
 Misc :
 ALS Vial : 1 Sample Multiplier: 1

Instrument :
 BNA_P
 ClientSampleId :
 DFTPP

Integration File: rteint.p

Method : Z:\SVOASRV\HPCHEM1\BNA_P\METHODS\8270-BP060520.M
 Title : ASP BNA STANDARDS FOR 5 POINT CALIBRATION
 Last Update : Fri Jun 05 15:08:53 2020



AutoFind: Scans 2479, 2480, 2481; Background Corrected with Scan 2472

| Target Mass | Rel. to Mass | Lower Limit% | Upper Limit% | Rel. Abn% | Raw Abn | Result Pass/Fail |
|-------------|--------------|--------------|--------------|-----------|---------|------------------|
| 51 | 198 | 10 | 80 | 34.8 | 37977 | PASS |
| 68 | 69 | 0.00 | 2 | 1.7 | 631 | PASS |
| 69 | 198 | 0.00 | 100 | 34.1 | 37199 | PASS |
| 70 | 69 | 0.00 | 2 | 0.4 | 152 | PASS |
| 127 | 198 | 10 | 80 | 43.3 | 47221 | PASS |
| 197 | 198 | 0.00 | 2 | 0.4 | 486 | PASS |
| 198 | 198 | 100 | 100 | 100.0 | 109002 | PASS |
| 199 | 198 | 5 | 9 | 6.5 | 7106 | PASS |
| 275 | 198 | 10 | 60 | 25.9 | 28271 | PASS |
| 365 | 198 | 1 | 100 | 3.1 | 3332 | PASS |
| 441 | 198 | 0.01 | 100 | 10.8 | 11774 | PASS |
| 442 | 198 | 50 | 100 | 70.2 | 76517 | PASS |
| 443 | 442 | 15 | 24 | 19.6 | 15005 | PASS |