

Data Path : Z:\svoasrv\HPCHEM1\BNA\_P\Data\BP062722\  
 Data File : BP010872.D  
 Acq On : 27 Jun 2022 12:00  
 Operator : CG/JU  
 Sample : N3401-09  
 Misc :  
 ALS Vial : 5 Sample Multiplier: 1

Instrument :  
 BNA\_P  
 ClientSampleId :  
 COAE1

Integration Parameters: LSCINT.P

Integrator: RTE  
 Smoothing : OFF  
 Sampling : 1  
 Start Thrs: 0.2  
 Stop Thrs : 0

Filtering: 5  
 Min Area: 0.1 % of largest Peak  
 Max Peaks: 100  
 Peak Location: TOP

If leading or trailing edge < 100 prefer < Baseline drop else tangent >  
 Peak separation: 5

Method : Z:\svoasrv\HPCHEM1\BNA\_P\Methods\SFAM-EPA-BP062322.M  
 Title : SVOA CALIBRATION

Signal : TIC: BP010872.D\data.ms

peak #	R.T. min	first scan	max scan	last scan	PK TY	peak height	corr. area	corr. % max.	% of total
1	3.205	16	20	25	rVB	73975	84621	0.88%	0.087%
2	3.611	86	89	103	rBV	815956	1129013	11.74%	1.167%
3	3.840	122	128	132	rBV	55810	85949	0.89%	0.089%
4	3.893	134	137	139	rVV4	11861	12529	0.13%	0.013%
5	3.928	139	143	149	rVB	46896	59414	0.62%	0.061%
6	4.481	231	237	244	rVB5	9984	17539	0.18%	0.018%
7	4.717	273	277	281	rBV5	10435	16208	0.17%	0.017%
8	4.834	292	297	303	rBV2	26824	52773	0.55%	0.055%
9	4.881	303	305	309	rVB	9043	10954	0.11%	0.011%
10	5.434	394	399	404	rBV	11993	17489	0.18%	0.018%
11	6.887	637	646	657	rBV	507170	759001	7.89%	0.784%
12	7.052	665	674	682	rBV	1963793	2955727	30.74%	3.055%
13	7.128	682	687	697	rVB	53534	83626	0.87%	0.086%
14	7.246	700	707	718	rVV	1854732	2838724	29.52%	2.934%
15	7.334	718	722	730	rVB6	9820	19713	0.21%	0.020%
16	7.711	778	786	793	rBV	1914887	2944742	30.62%	3.043%
17	7.781	793	798	811	rVB	28937	51169	0.53%	0.053%
18	8.422	900	907	918	rBV	1392374	2149390	22.35%	2.221%
19	8.869	976	983	993	rBV	2105873	3311829	34.44%	3.423%
20	9.040	1010	1012	1018	rVB6	6806	9680	0.10%	0.010%
21	9.299	1051	1056	1062	rVB2	50351	79938	0.83%	0.083%
22	9.593	1096	1106	1119	rBV	1428413	2273001	23.64%	2.349%
23	10.128	1188	1197	1211	rBV	2280690	3571423	37.14%	3.691%
24	10.311	1226	1228	1235	rVB8	5550	10363	0.11%	0.011%
25	10.505	1254	1261	1269	rBV	2498308	4054196	42.16%	4.190%
26	10.652	1277	1286	1297	rBV	2220044	3749642	39.00%	3.875%
27	11.952	1500	1507	1510	rBV4	15672	25741	0.27%	0.027%
28	12.099	1525	1532	1538	rVV2	46632	81831	0.85%	0.085%
29	12.310	1563	1568	1573	rBV9	5163	10330	0.11%	0.011%
30	12.769	1643	1646	1652	rVB7	8713	12590	0.13%	0.013%
31	12.910	1665	1670	1675	rVB7	6830	9916	0.10%	0.010%
32	13.199	1713	1719	1726	rBV	36537	51884	0.54%	0.054%
33	13.334	1738	1742	1748	rVB7	7828	13188	0.14%	0.014%
34	13.787	1812	1819	1827	rBV	3703509	4915379	51.12%	5.080%
35	14.057	1855	1865	1879	rBV	4615156	6337432	65.91%	6.550%
36	14.275	1900	1902	1907	rVB4	10210	12934	0.13%	0.013%

Data Path : Z:\svoasrv\HPCHEM1\BNA\_P\Data\BP062722\  
 Data File : BP010872.D  
 Acq On : 27 Jun 2022 12:00  
 Operator : CG/JU  
 Sample : N3401-09  
 Misc :  
 ALS Vial : 5 Sample Multiplier: 1

Instrument :  
 BNA\_P  
 ClientSampleId :  
 C0AE1

Integration Parameters: LSCINT.P

Integrator: RTE  
 Smoothing : OFF Filtering: 5  
 Sampling : 1 Min Area: 0.1 % of largest Peak  
 Start Thrs: 0.2 Max Peaks: 100  
 Stop Thrs : 0 Peak Location: TOP

If leading or trailing edge < 100 prefer < Baseline drop else tangent >  
 Peak separation: 5

Method : Z:\svoasrv\HPCHEM1\BNA\_P\Methods\SFAM-EPA-BP062322.M  
 Title : SVOA CALIBRATION

37	14.369	1911	1918	1930	rVV	3090072	4508861	46.89%	4.660%
38	14.575	1948	1953	1963	rBV	257354	405316	4.22%	0.419%
39	14.799	1985	1991	1996	rVB8	13620	22331	0.23%	0.023%
40	14.881	2002	2005	2010	rVB6	7786	10841	0.11%	0.011%
41	15.122	2041	2046	2053	rVB	30979	47358	0.49%	0.049%
42	15.369	2081	2088	2101	rBV	5300529	7576424	78.79%	7.830%
43	15.481	2101	2107	2117	rBV	940185	1323095	13.76%	1.367%
44	15.604	2124	2128	2136	rVB	60556	93171	0.97%	0.096%
45	16.057	2201	2205	2208	rBV6	5809	9979	0.10%	0.010%
46	16.157	2216	2222	2228	rVB2	20749	32365	0.34%	0.033%
47	16.804	2328	2332	2338	rVB7	9868	16815	0.17%	0.017%
48	17.128	2381	2387	2397	rBV	3206685	4593095	47.77%	4.747%
49	17.228	2398	2404	2417	rVV2	5389541	7678126	79.85%	7.935%
50	17.334	2418	2422	2428	rVB6	35270	52360	0.54%	0.054%
51	17.828	2503	2506	2509	rVB5	8601	11868	0.12%	0.012%
52	19.057	2711	2715	2720	rBV2	63509	89197	0.93%	0.092%
53	19.122	2722	2726	2733	rVV	56998	86907	0.90%	0.090%
54	19.481	2781	2787	2795	rBV	6483721	8400135	87.36%	8.681%
55	20.975	3038	3041	3046	rBV3	88898	118288	1.23%	0.122%
56	21.239	3081	3086	3093	rBV	3992656	4878494	50.74%	5.042%
57	23.457	3456	3463	3474	rVB	5096955	9615544	100.00%	9.938%
58	23.610	3482	3489	3499	rVB2	2744979	5369403	55.84%	5.549%

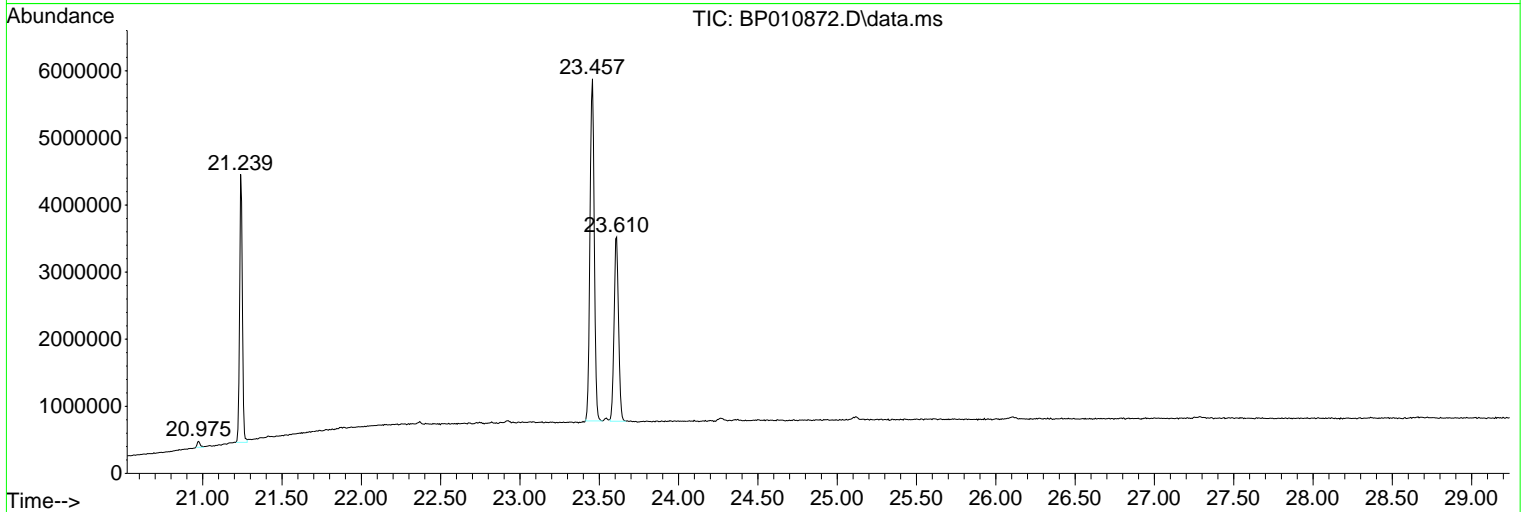
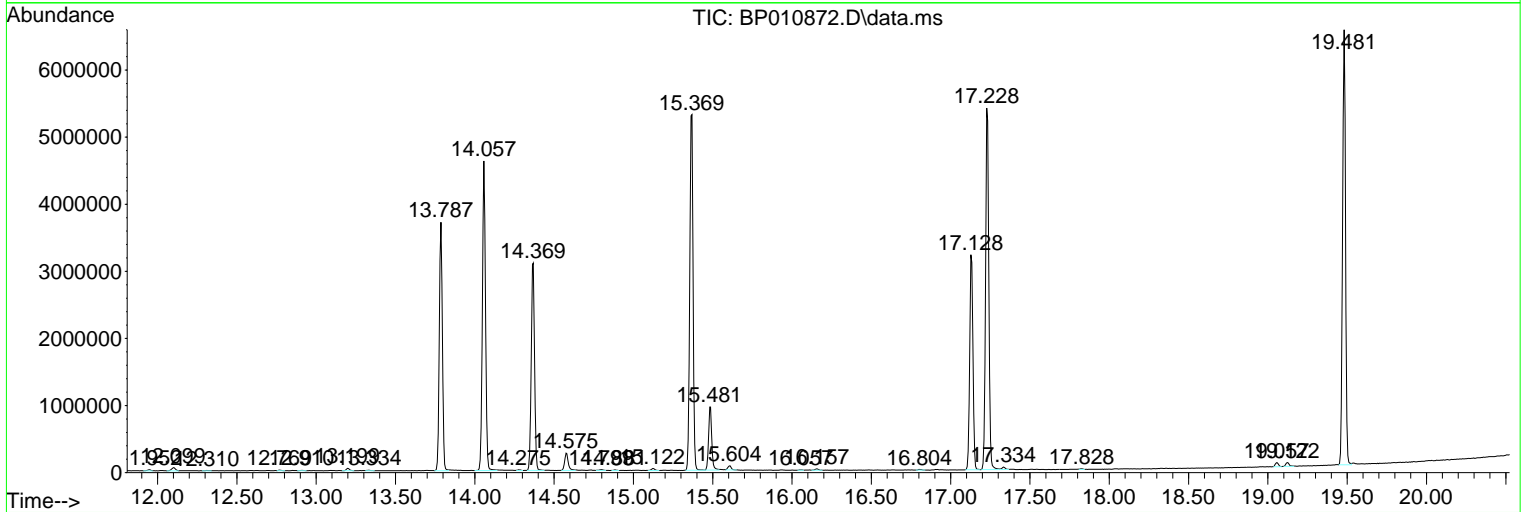
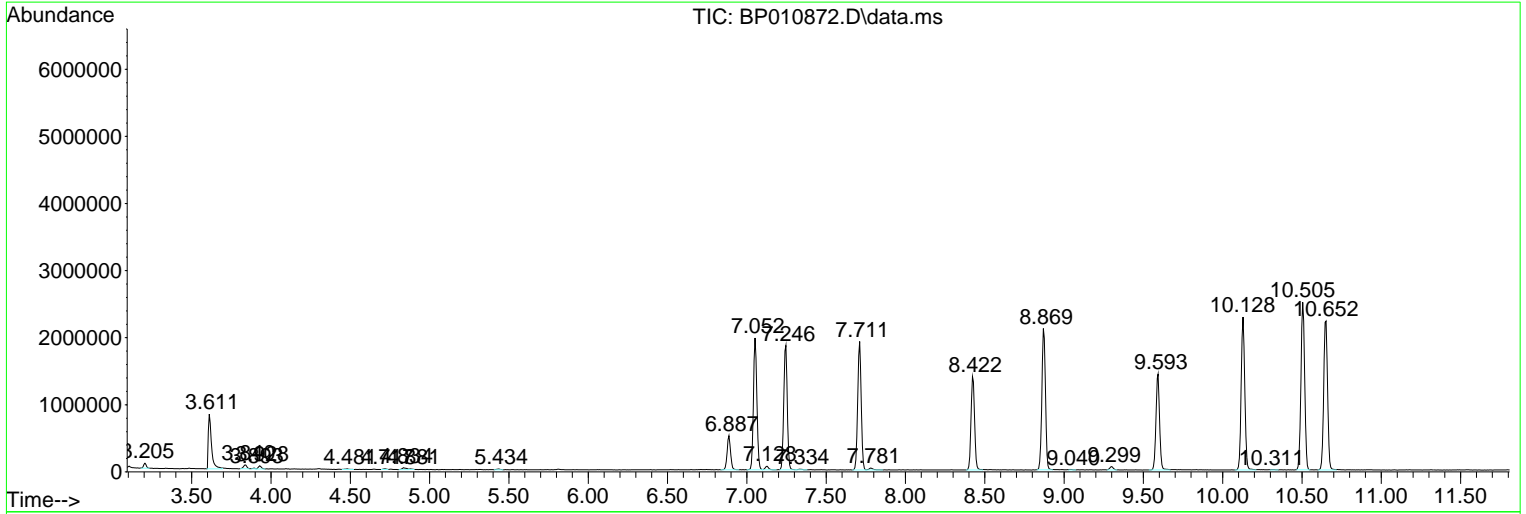
Sum of corrected areas: 96759851

Data Path : Z:\svoasrv\HPCHEM1\BNA\_P\Data\BP062722\  
 Data File : BP010872.D  
 Acq On : 27 Jun 2022 12:00  
 Operator : CG/JU  
 Sample : N3401-09  
 Misc :  
 ALS Vial : 5 Sample Multiplier: 1

Instrument :  
 BNA\_P  
 ClientSampleId :  
 C0AE1

Quant Method : Z:\svoasrv\HPCHEM1\BNA\_P\Methods\SFAM-EPA-BP062322.M  
 Quant Title : SVOA CALIBRATION

TIC Library : C:\DATABASE\NIST20.L  
 TIC Integration Parameters: LSCINT.P



Library Search Compound Report

Data Path : Z:\svoasrv\HPCHEM1\BNA\_P\Data\BP062722\  
Data File : BP010872.D  
Acq On : 27 Jun 2022 12:00  
Operator : CG/JU  
Sample : N3401-09  
Misc :  
ALS Vial : 5 Sample Multiplier: 1

Instrument :  
BNA\_P  
ClientSampleId :  
C0AE1

Quant Method : Z:\svoasrv\HPCHEM1\BNA\_P\Methods\SFAM-EPA-BP062322.M  
Quant Title : SVOA CALIBRATION

TIC Library : C:\DATABASE\NIST20.L  
TIC Integration Parameters: LSCINT.P

No Library Search Compounds Detected

\*\*\*\*\*

Data Path : Z:\svoasrv\HPCHEM1\BNA\_P\Data\BP062722\  
Data File : BP010872.D  
Acq On : 27 Jun 2022 12:00  
Operator : CG/JU  
Sample : N3401-09  
Misc :  
ALS Vial : 5 Sample Multiplier: 1

Instrument :  
BNA\_P  
ClientSampleId :  
C0AE1

Quant Method : Z:\svoasrv\HPCHEM1\BNA\_P\Methods\SFAM-EPA-BP062322.M  
Quant Title : SVOA CALIBRATION

TIC Library : C:\DATABASE\NIST20.L  
TIC Integration Parameters: LSCINT.P

TIC Top Hit name	RT	EstConc	Units	Response	--Internal Standard--			
					#	RT	Resp	Conc

---