

Data Path : Z:\SVOASRV\HPCHEM1\BNA P\DATA\BP070720\
 Data File : BP002666.D
 Acq On : 07 Jul 2020 19:47
 Operator : CG/JU
 Sample : L3217-05
 Misc :
 ALS Vial : 20 Sample Multiplier: 1

Instrument :
 BNA_P
 ClientSampleId :
 E3-41-BOILER-ROOM

Quant Time: Jul 08 00:53:56 2020
 Quant Method : Z:\SVOASRV\HPCHEM1\BNA P\METHODS\8270-BP062920.M
 Quant Title : ASP BNA STANDARDS FOR 5 POINT CALIBRATION
 QLast Update : Mon Jun 29 16:51:57 2020
 Response via : Initial Calibration

Internal Standards	R.T.	QIon	Response	Conc	Units	Dev(Min)
1) 1,4-Dichlorobenzene-d4	7.57	152	197733	20.00	ng	0.00
21) Naphthalene-d8	10.34	136	786475	20.00	ng	0.00
39) Acenaphthene-d10	14.22	164	444317	20.00	ng	0.00
64) Phenanthrene-d10	16.99	188	506613	20.00	ng	0.00
76) Chrysene-d12	21.09	240	727213	20.00	ng	0.00
86) Perylene-d12	23.29	264	914794	20.00	ng	0.00

System Monitoring Compounds

5) 2-Fluorophenol	5.19	112	941454	80.61	ng	0.00
7) Phenol-d6	6.76	99	1290375	79.16	ng	0.00
23) Nitrobenzene-d5	8.71	82	836232	54.79	ng	-0.01
42) 2,4,6-Tribromophenol	15.73	330	302755	56.02	ng	0.00
45) 2-Fluorobiphenyl	12.83	172	1848701	61.24	ng	0.00
79) Terphenyl-d14	19.57	244	1346699	39.97	ng	0.00

Target Compounds

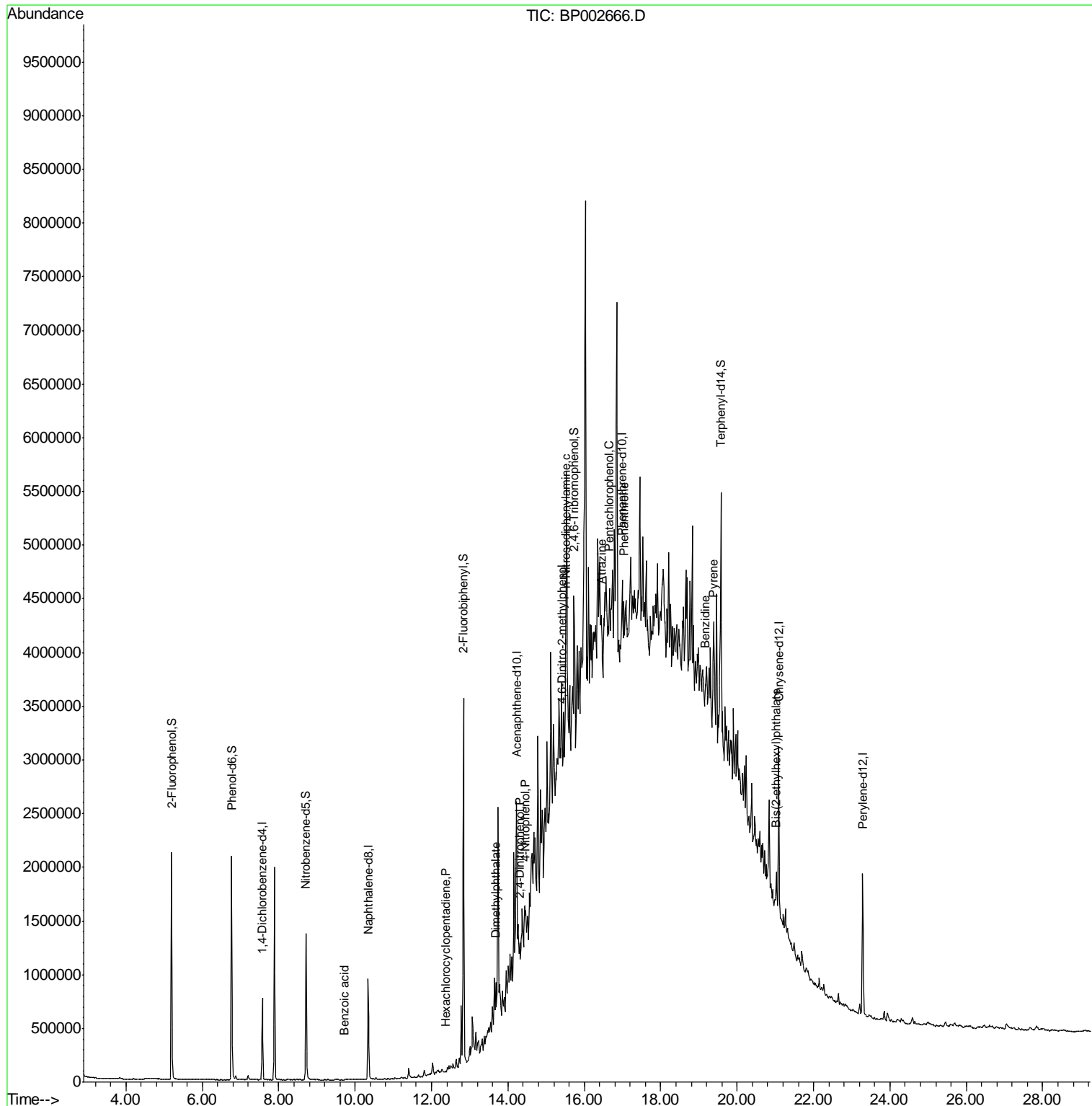
Target Compounds	R.T.	QIon	Response	Conc	Units	Qvalue
32) Benzoic acid	9.71	122	530	8.749	ng	# 74
41) Hexachlorocyclopentadiene	12.37	237	26	4.385	ng	94
50) Dimethylphthalate	13.68	163	226861	6.501	ng	99
54) 2,4-Dinitrophenol	14.31	184	195	6.047	ng	# 1
56) 4-Nitrophenol	14.44	139	11069	4.093	ng	# 1
65) 4,6-Dinitro-2-methylphenol	15.43	198	2956	3.565	ng	# 1
66) n-Nitrosodiphenylamine	15.51	169	334148	22.594	ng	# 35
69) Atrazine	16.46	200	15255	3.215	ng	# 35
70) Pentachlorophenol	16.65	266	758	2.872	ng	# 10
71) Phenanthrene	17.03	178	58601	2.150	ng	# 13
77) Benzidine	19.16	184	2937	3.843	ng	# 1
78) Pyrene	19.37	202	364199	7.358	ng	94
84) Bis(2-ethylhexyl)phthalate	21.02	149	111349	3.588	ng	96

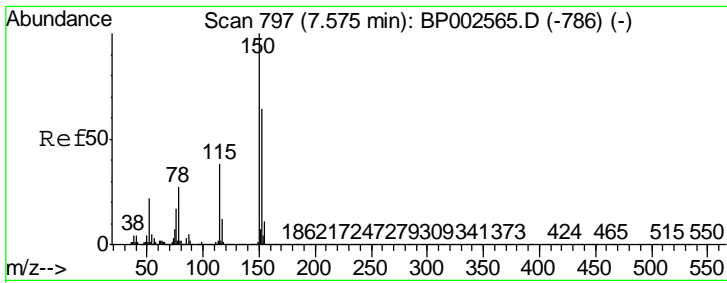
(#) = qualifier out of range (m) = manual integration (+) = signals summed

Data Path : Z:\SVOASRV\HPCHEM1\BNA P\DATA\BP070720\
 Data File : BP002666.D
 Acq On : 07 Jul 2020 19:47
 Operator : CG/JU
 Sample : L3217-05
 Misc :
 ALS Vial : 20 Sample Multiplier: 1

Instrument :
 BNA_P
ClientSampleId :
 E3-41-BOILER-ROOM

Quant Time: Jul 08 00:53:56 2020
 Quant Method : Z:\SVOASRV\HPCHEM1\BNA P\METHODS\8270-BP062920.M
 Quant Title : ASP BNA STANDARDS FOR 5 POINT CALIBRATION
 QLast Update : Mon Jun 29 16:51:57 2020
 Response via : Initial Calibration

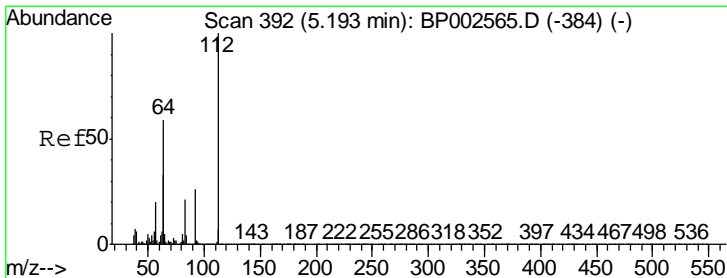
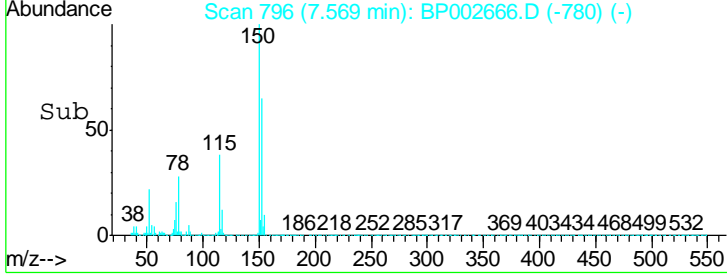
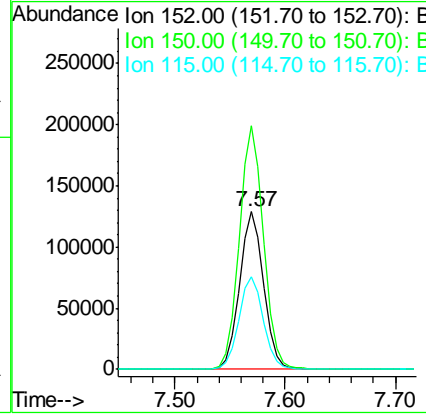
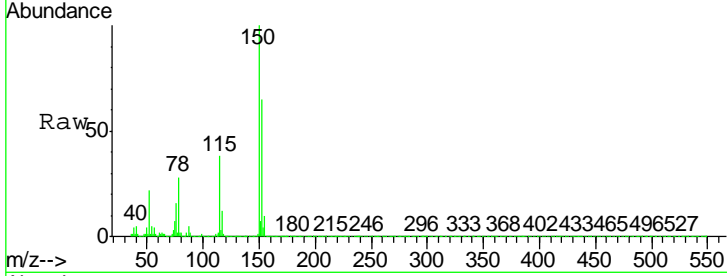




#1
 1,4-Dichlorobenzene-d4
 Concen: 20.000 ng
 RT: 7.57 min Scan# 796
 Delta R.T. -0.01 min
 Lab File: BP002666.D
 Acq: 07 Jul 2020 19:47

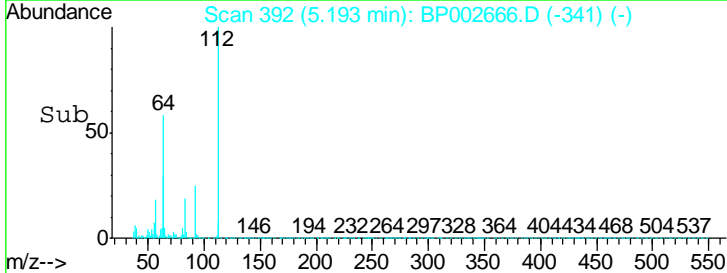
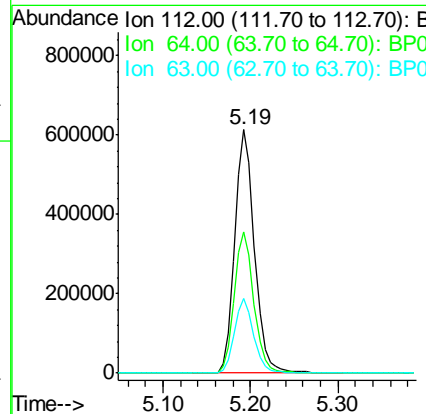
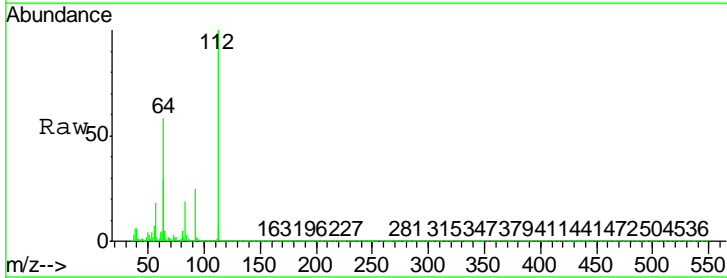
Instrument :
 BNA_P
ClientSampled :
 E3-41-BOILER-ROOM

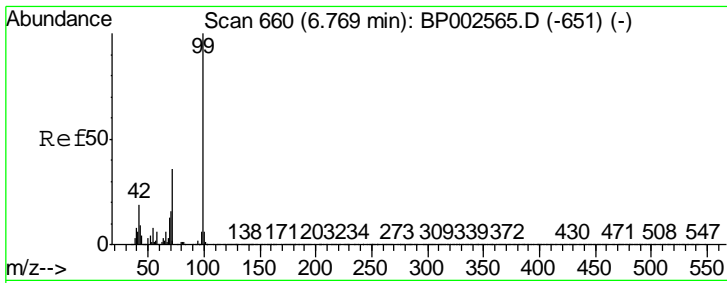
Tgt Ion	Resp	Lower	Upper
152	197733		
152	100		
150	154.6	124.2	186.2
115	58.9	47.1	70.7



#5
 2-Fluorophenol
 Concen: 80.613 ng
 RT: 5.19 min Scan# 392
 Delta R.T. -0.00 min
 Lab File: BP002666.D
 Acq: 07 Jul 2020 19:47

Tgt Ion	Resp	Lower	Upper
112	941454		
112	100		
64	58.0	47.0	70.6
63	30.4	26.1	39.1

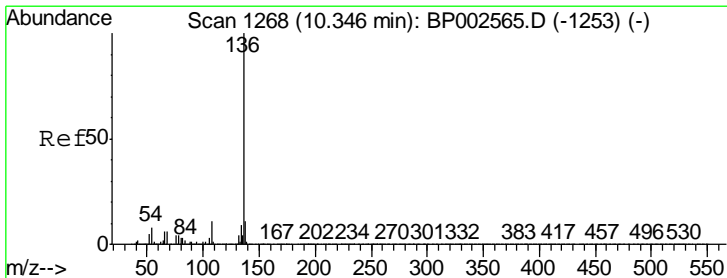
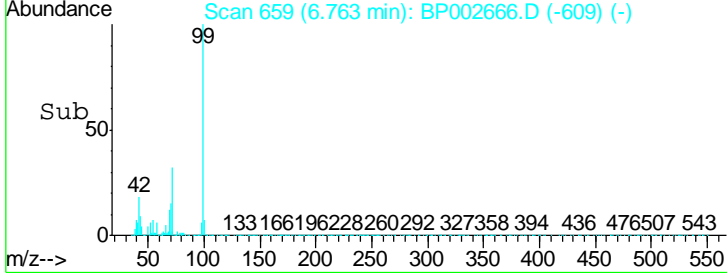
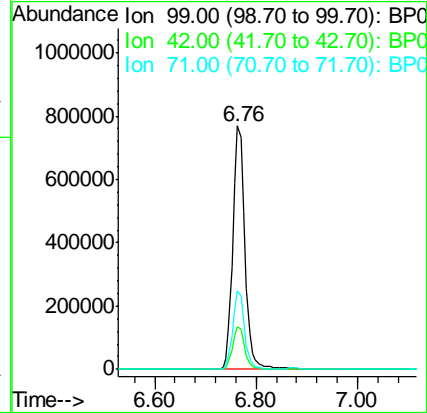
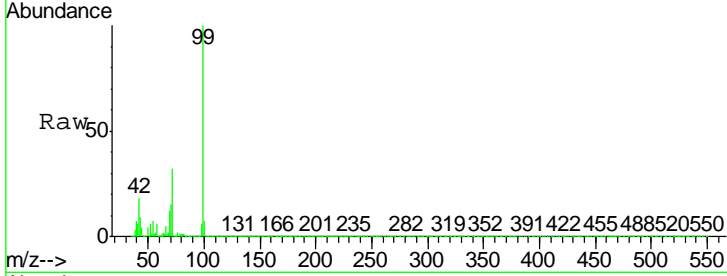




#7
 Phenol-d6
 Concen: 79.162 ng
 RT: 6.76 min Scan# 659
 Delta R.T. -0.01 min
 Lab File: BP002666.D
 Acq: 07 Jul 2020 19:47

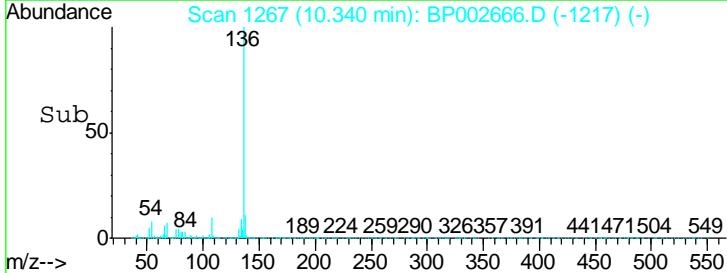
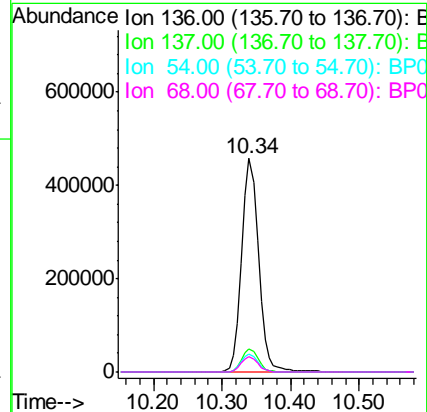
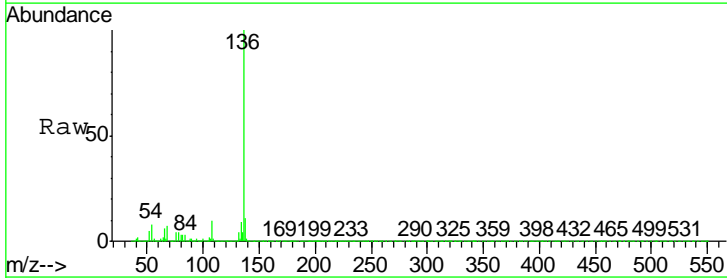
Instrument :
 BNA_P
 ClientSampleId :
 E3-41-BOILER-ROOM

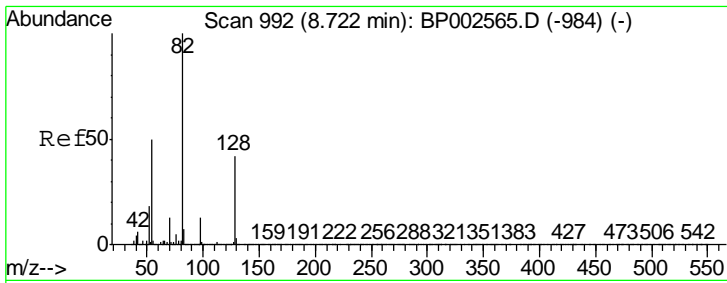
Tgt Ion	Resp	Lower	Upper
99	1290375		
42	17.6	15.5	23.3
71	32.5	28.9	43.3



#21
 Naphthalene-d8
 Concen: 20.000 ng
 RT: 10.34 min Scan# 1267
 Delta R.T. -0.01 min
 Lab File: BP002666.D
 Acq: 07 Jul 2020 19:47

Tgt Ion	Resp	Lower	Upper
136	786475		
137	10.6	8.8	13.2
54	8.5	6.4	9.6
68	7.1	5.1	7.7

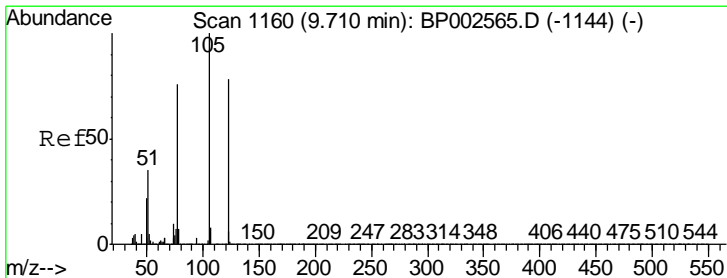
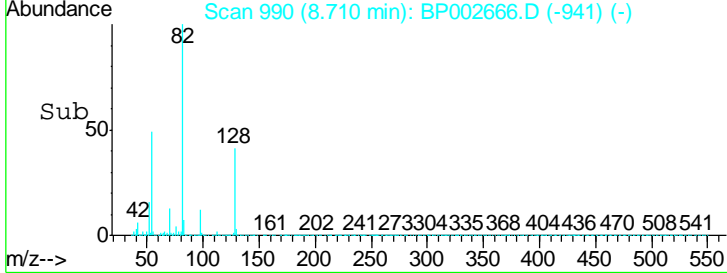
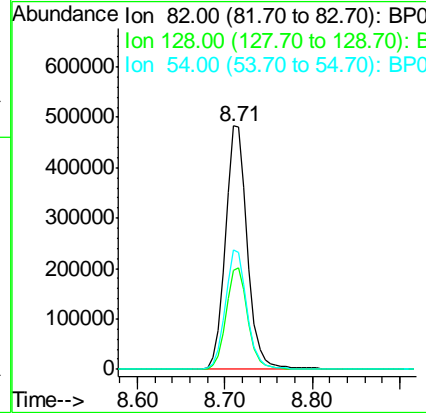
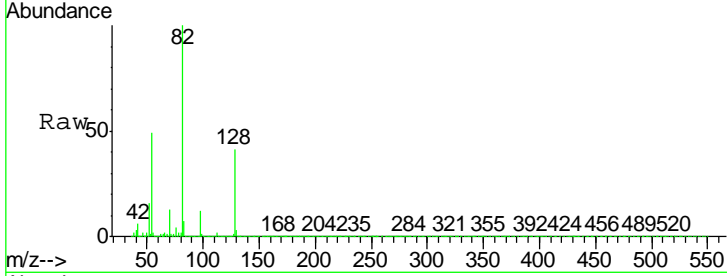




#23
 Nitrobenzene-d5
 Concen: 54.785 ng
 RT: 8.71 min Scan# 990
 Delta R.T. -0.01 min
 Lab File: BP002666.D
 Acq: 07 Jul 2020 19:47

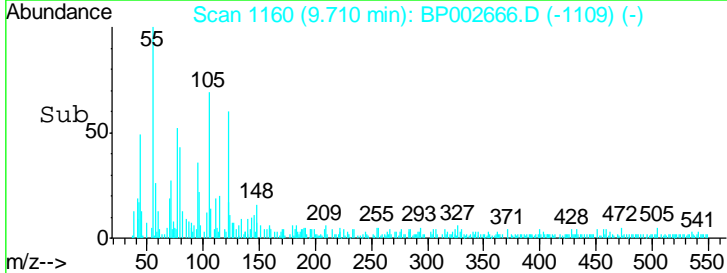
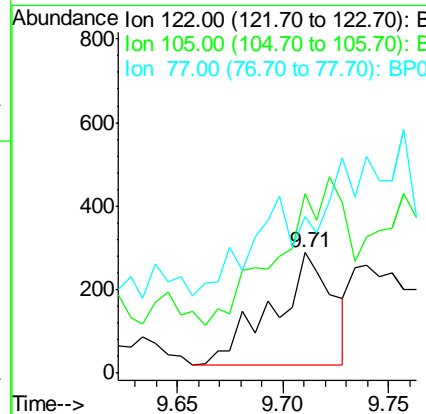
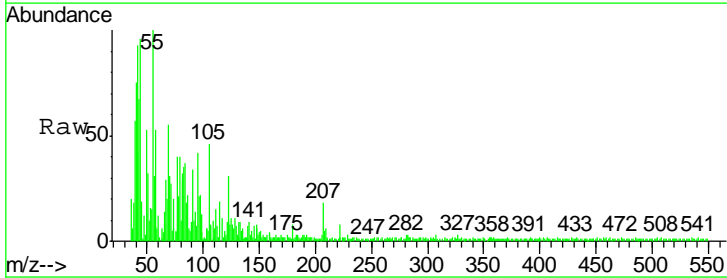
Instrument :
 BNA_P
ClientSampled :
 E3-41-BOILER-ROOM

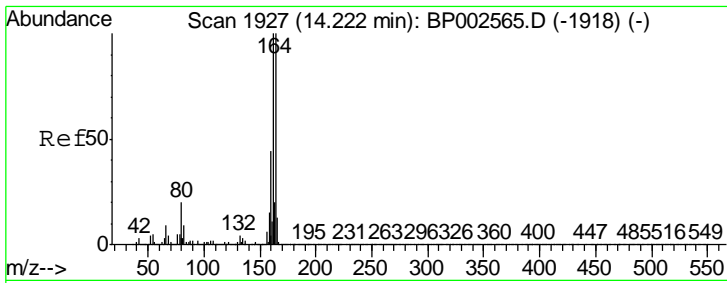
Tgt Ion	Resp	Lower	Upper
82	836232		
128	40.8	33.4	50.2
54	49.2	40.1	60.1



#32
 Benzoic acid
 Concen: 8.749 ng
 RT: 9.71 min Scan# 1160
 Delta R.T. 0.00 min
 Lab File: BP002666.D
 Acq: 07 Jul 2020 19:47

Tgt Ion	Resp	Lower	Upper
122	530		
105	149.7	106.6	146.6#
77	130.6	76.5	116.5#

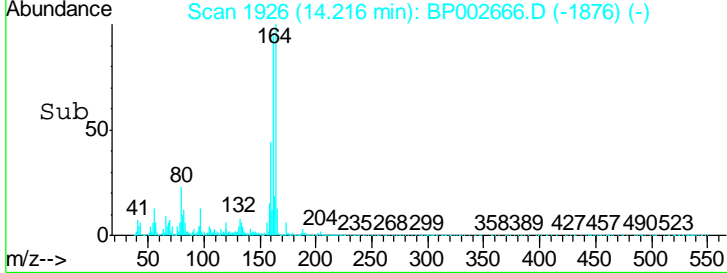
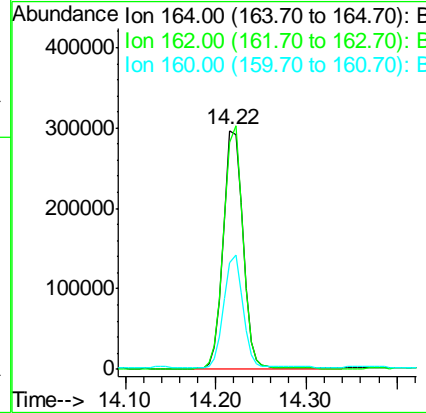
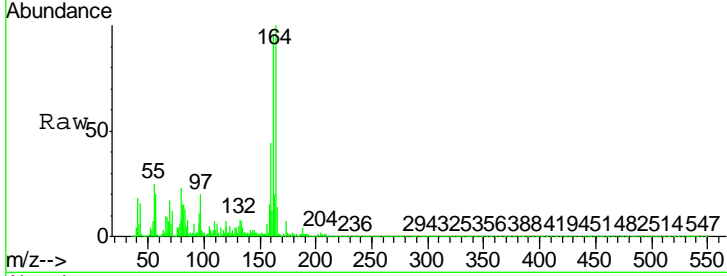




#39
 Acenaphthene-d10
 Concen: 20.000 ng
 RT: 14.22 min Scan# 1926
 Delta R.T. -0.01 min
 Lab File: BP002666.D
 Acq: 07 Jul 2020 19:47

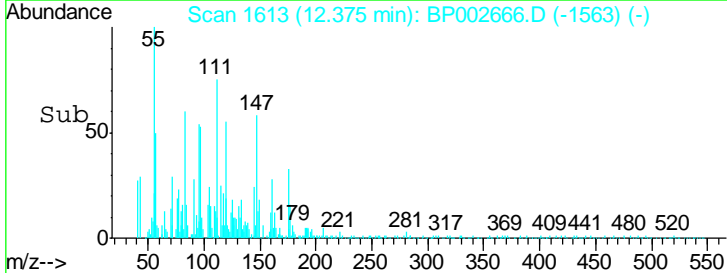
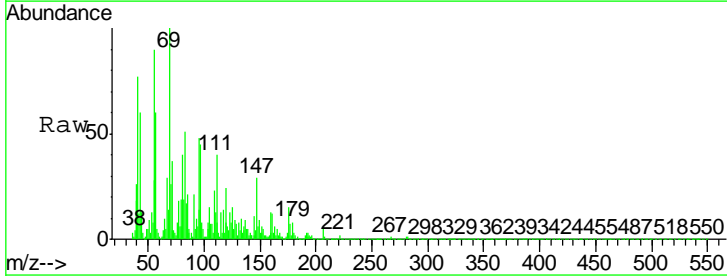
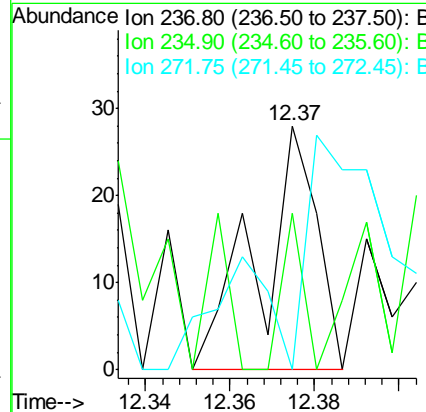
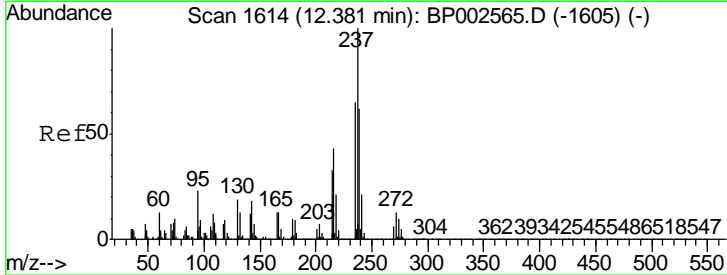
Instrument :
 BNA_P
 ClientSampled :
 E3-41-BOILER-ROOM

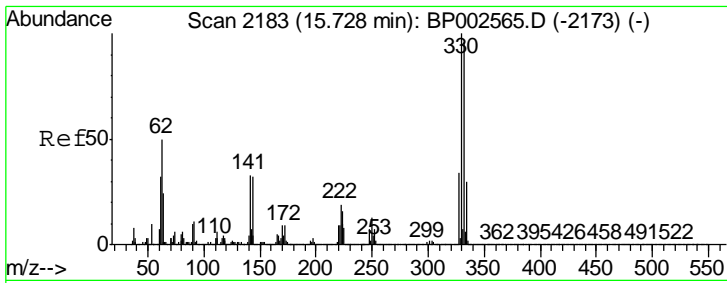
Tgt Ion	Resp	Lower	Upper
164	100		
162	95.0	80.3	120.5
160	44.4	35.0	52.6



#41
 Hexachlorocyclopentadiene
 Concen: 4.385 ng
 RT: 12.37 min Scan# 1613
 Delta R.T. -0.01 min
 Lab File: BP002666.D
 Acq: 07 Jul 2020 19:47

Tgt Ion	Resp	Lower	Upper
237	100		
235	64.3	45.4	85.4
272	0.0	0.0	32.6

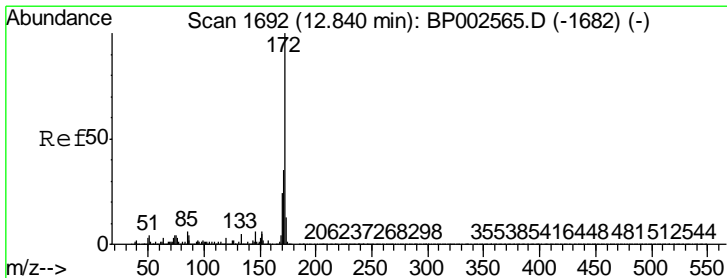
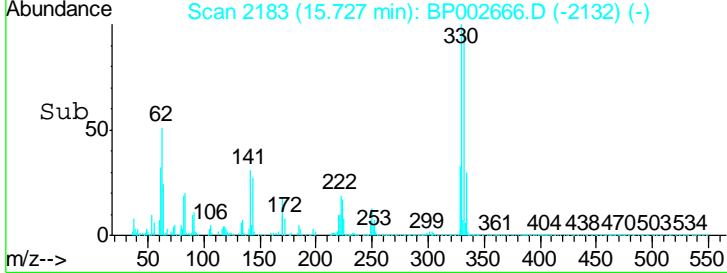
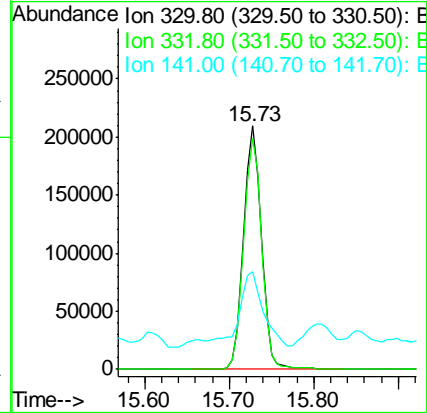
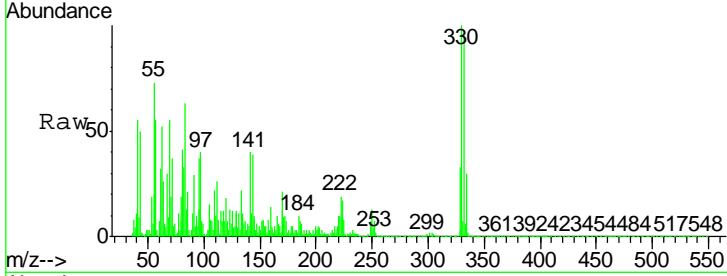




#42
 2,4,6-Tribromophenol
 Concen: 56.023 ng
 RT: 15.73 min Scan# 2183
 Delta R.T. -0.00 min
 Lab File: BP002666.D
 Acq: 07 Jul 2020 19:47

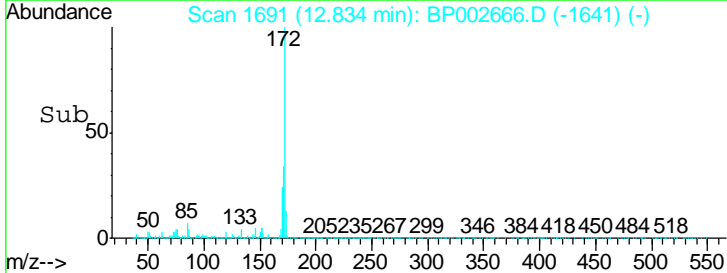
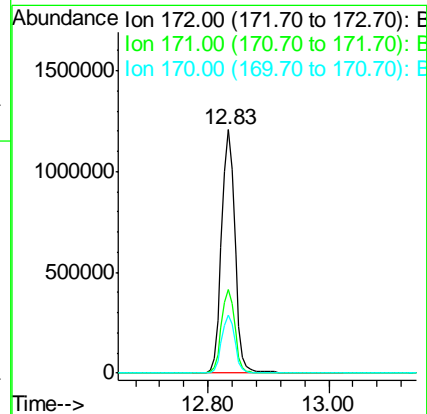
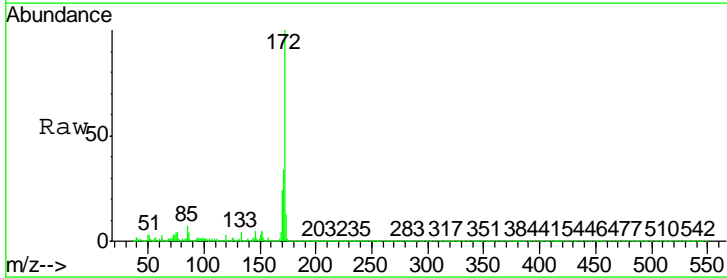
Instrument :
 BNA_P
 ClientSampleId :
 E3-41-BOILER-ROOM

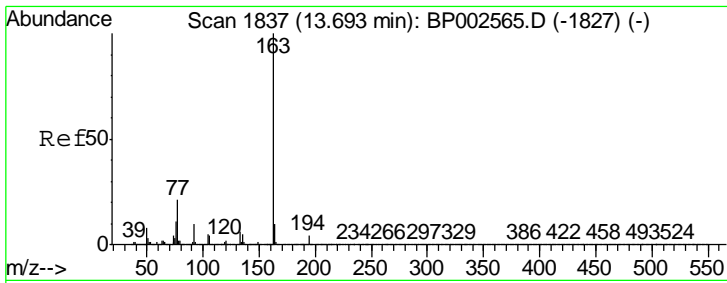
Tgt Ion	Resp	Lower	Upper
330	302755		
332	96.6	77.7	116.5
141	39.6	29.0	43.6



#45
 2-Fluorobiphenyl
 Concen: 61.240 ng
 RT: 12.83 min Scan# 1691
 Delta R.T. -0.01 min
 Lab File: BP002666.D
 Acq: 07 Jul 2020 19:47

Tgt Ion	Resp	Lower	Upper
172	1848701		
171	34.2	28.0	42.0
170	23.6	19.0	28.4

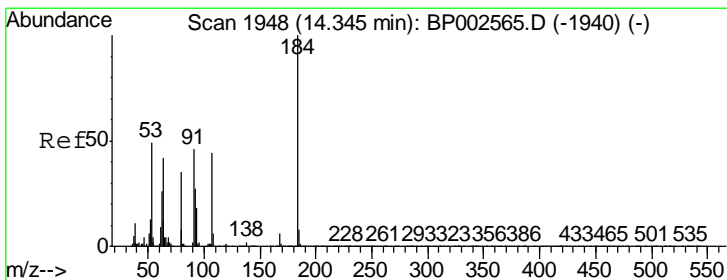
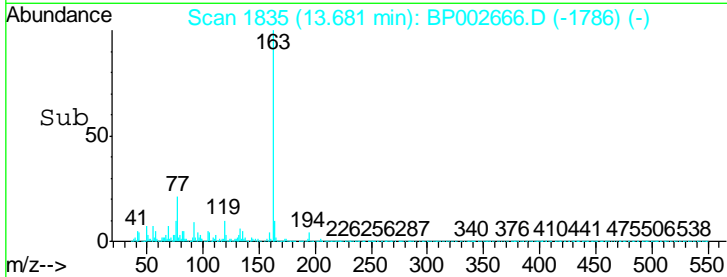
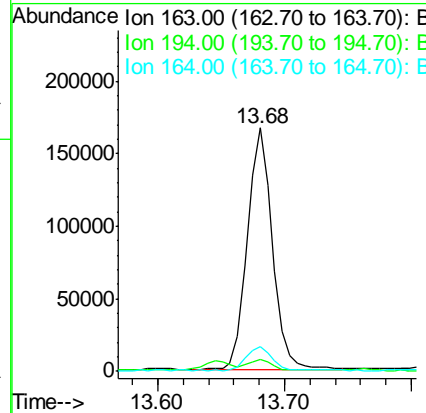
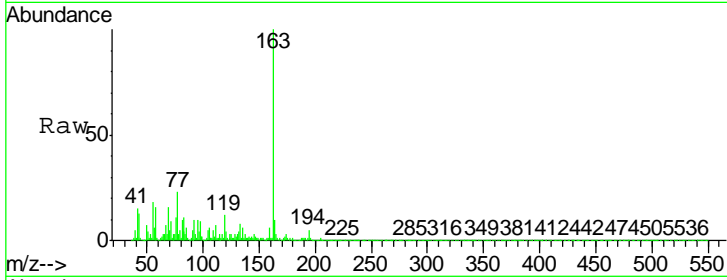




#50
 Dimethylphthalate
 Concen: 6.501 ng
 RT: 13.68 min Scan# 1835
 Delta R.T. -0.01 min
 Lab File: BP002666.D
 Acq: 07 Jul 2020 19:47

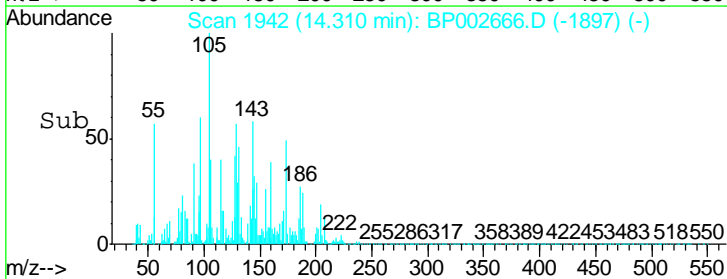
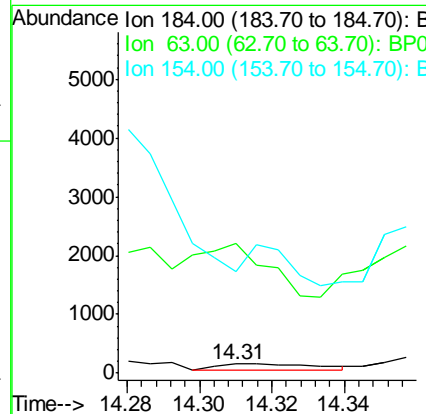
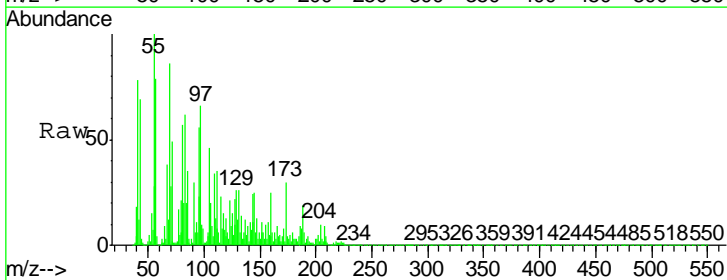
Instrument :
 BNA_P
ClientSampled :
 E3-41-BOILER-ROOM

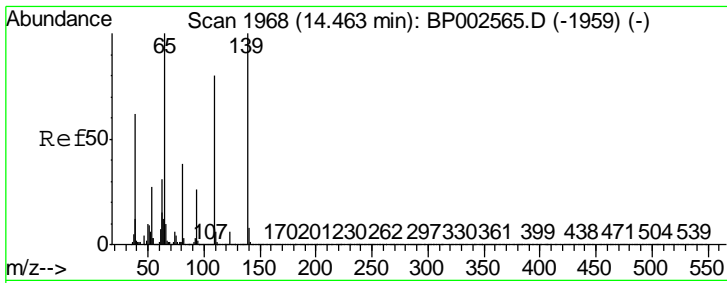
Tgt Ion	Resp	Lower	Upper
163	226861		
194	4.7	3.4	5.0
164	10.0	8.2	12.4



#54
 2,4-Dinitrophenol
 Concen: 6.047 ng
 RT: 14.31 min Scan# 1942
 Delta R.T. -0.04 min
 Lab File: BP002666.D
 Acq: 07 Jul 2020 19:47

Tgt Ion	Resp	Lower	Upper
184	195		
63	1435.7	56.2	84.2#
154	1120.8	50.9	76.3#

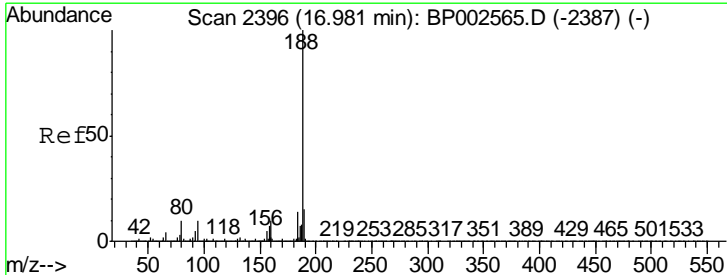
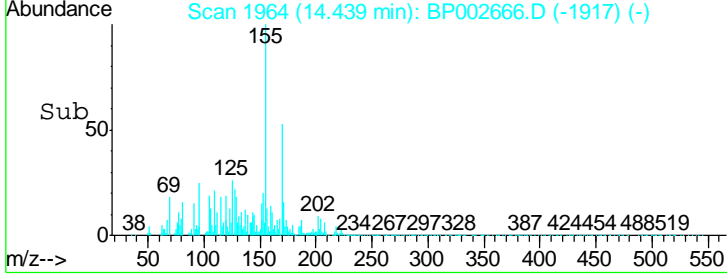
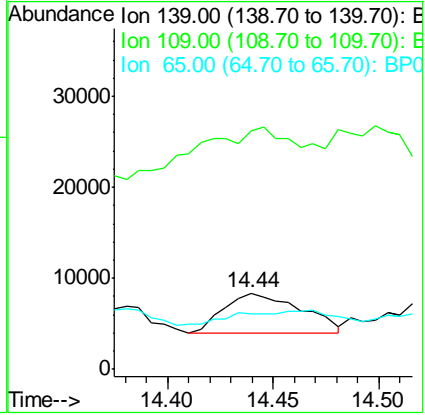
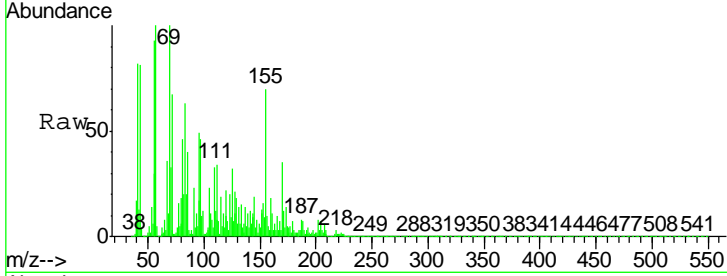




#56
 4-Nitrophenol
 Concen: 4.093 ng
 RT: 14.44 min Scan# 1964
 Delta R.T. -0.02 min
 Lab File: BP002666.D
 Acq: 07 Jul 2020 19:47

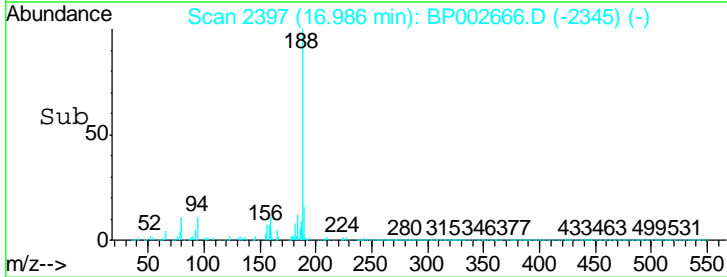
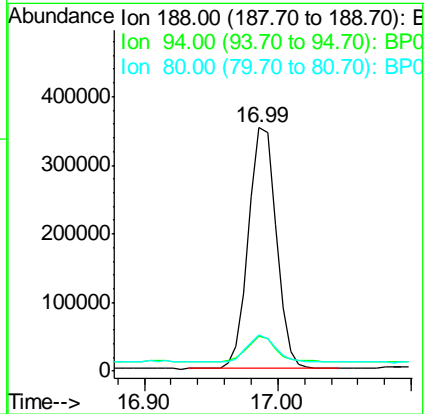
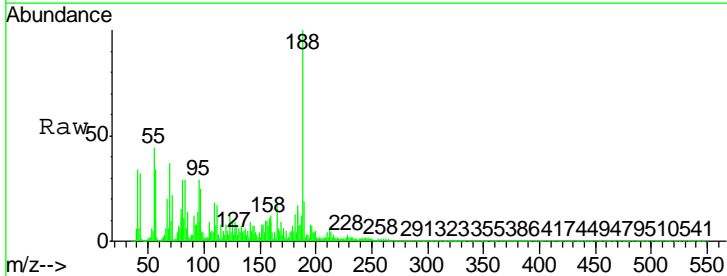
Instrument :
 BNA_P
ClientSampled :
 E3-41-BOILER-ROOM

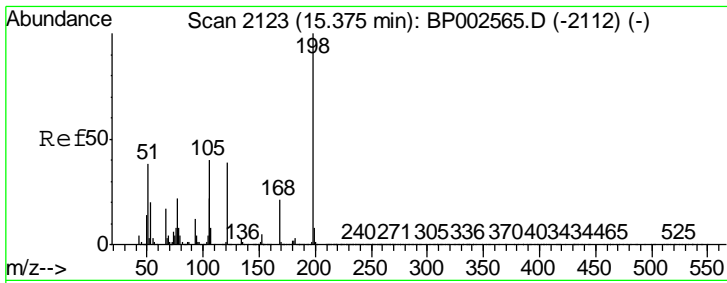
Tgt Ion	Resp	Lower	Upper
139	11069		
109	312.7	60.1	100.1#
65	72.1	80.3	120.3#



#64
 Phenanthrene-d10
 Concen: 20.000 ng
 RT: 16.99 min Scan# 2397
 Delta R.T. 0.01 min
 Lab File: BP002666.D
 Acq: 07 Jul 2020 19:47

Tgt Ion	Resp	Lower	Upper
188	506613		
94	14.2	7.8	11.6#
80	15.0	8.2	12.4#

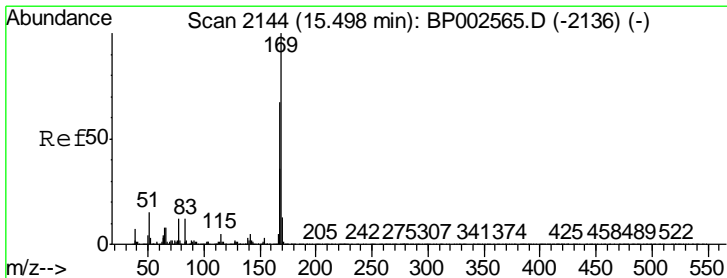
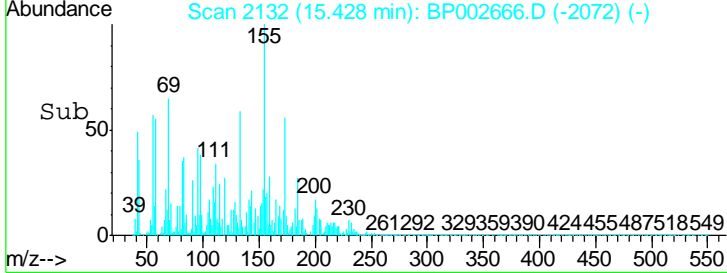
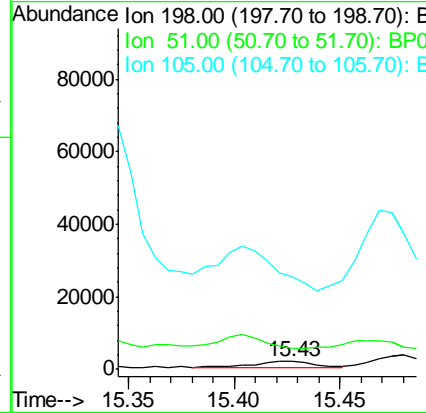
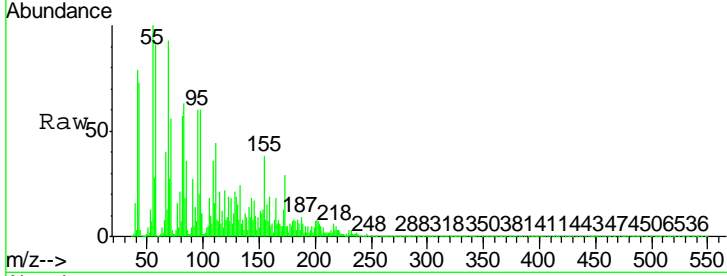




#65
 4,6-Dinitro-2-methylphenol
 Concen: 3.565 ng
 RT: 15.43 min Scan# 2132
 Delta R.T. 0.05 min
 Lab File: BP002666.D
 Acq: 07 Jul 2020 19:47

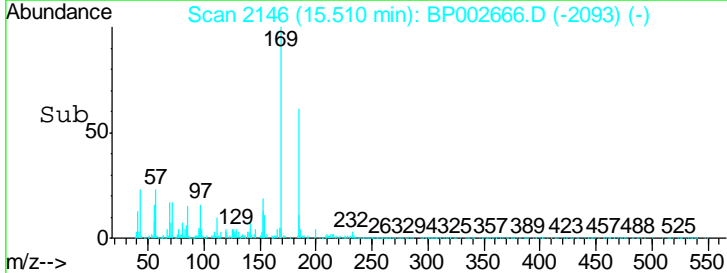
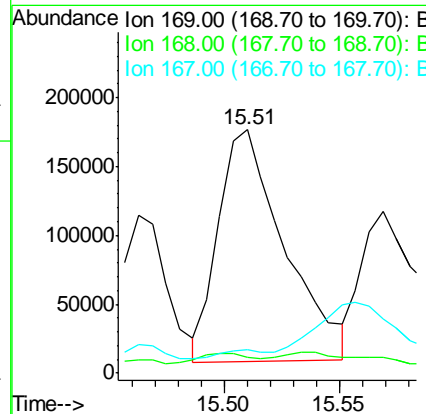
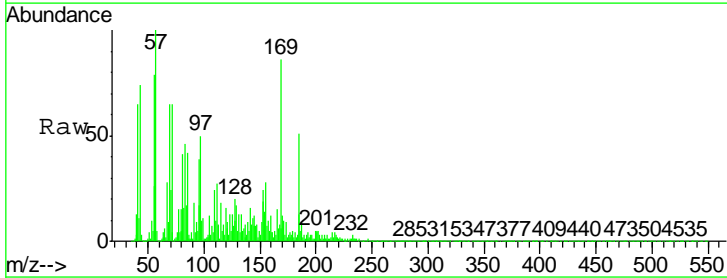
Instrument :
 BNA_P
 ClientSampled :
 E3-41-BOILER-ROOM

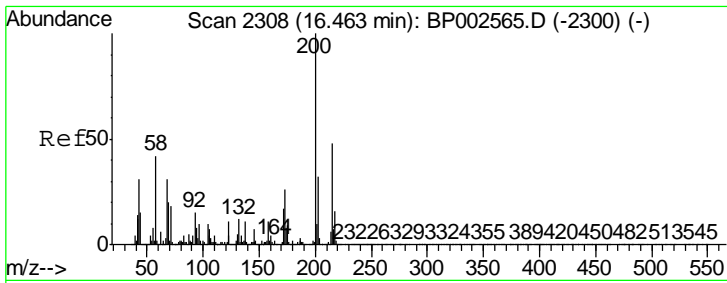
Tgt Ion: 198 Resp: 2956
 Ion Ratio Lower Upper
 198 100
 51 263.2 24.2 64.2#
 105 1154.4 20.7 60.7#



#66
 n-Nitrosodiphenylamine
 Concen: 22.594 ng
 RT: 15.51 min Scan# 2146
 Delta R.T. 0.01 min
 Lab File: BP002666.D
 Acq: 07 Jul 2020 19:47

Tgt Ion: 169 Resp: 334148
 Ion Ratio Lower Upper
 169 100
 168 6.7 53.5 80.3#
 167 9.4 29.1 43.7#

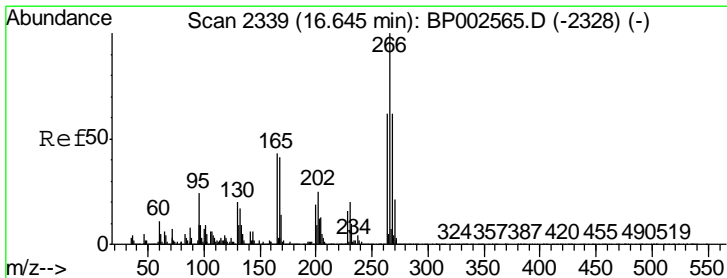
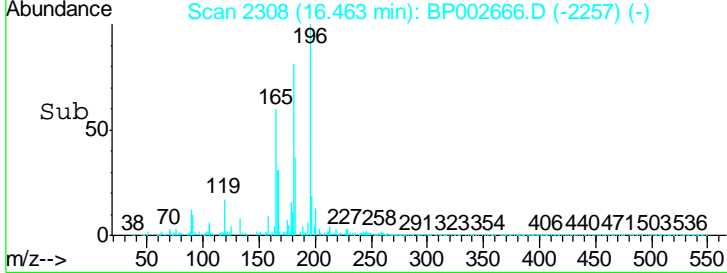
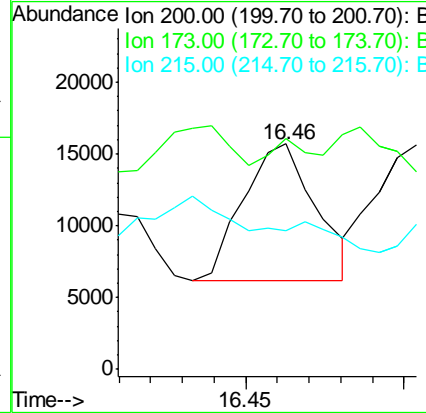
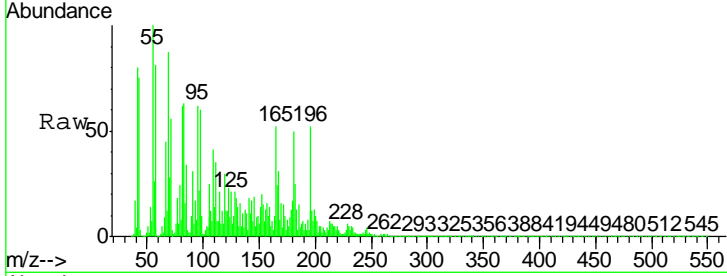




#69
 Atrazine
 Concen: 3.215 ng
 RT: 16.46 min Scan# 2308
 Delta R.T. -0.00 min
 Lab File: BP002666.D
 Acq: 07 Jul 2020 19:47

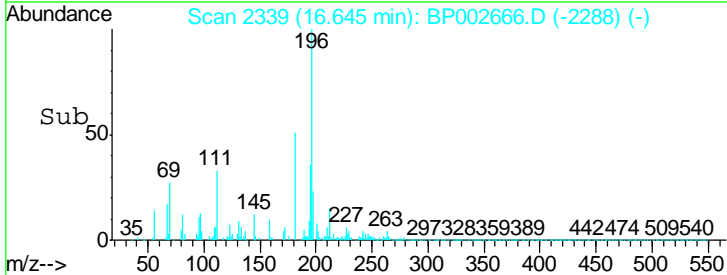
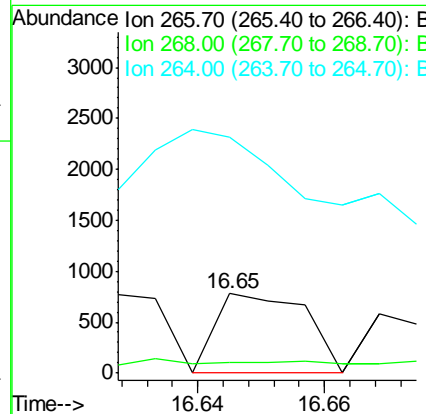
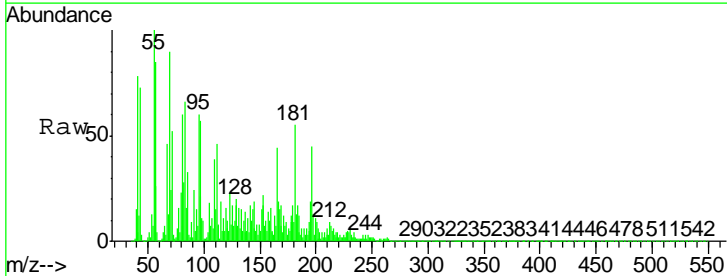
Instrument :
 BNA_P
 Client Sampled :
 E3-41-BOILER-ROOM

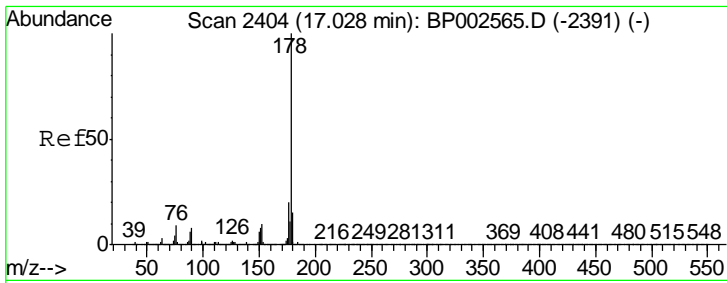
Tgt Ion	Resp	Lower	Upper
200	15255		
173	102.4	6.3	46.3#
215	61.7	28.3	68.3



#70
 Pentachlorophenol
 Concen: 2.872 ng
 RT: 16.65 min Scan# 2339
 Delta R.T. 0.00 min
 Lab File: BP002666.D
 Acq: 07 Jul 2020 19:47

Tgt Ion	Resp	Lower	Upper
266	758		
268	6.9	49.7	74.5#
264	145.4	49.3	73.9#

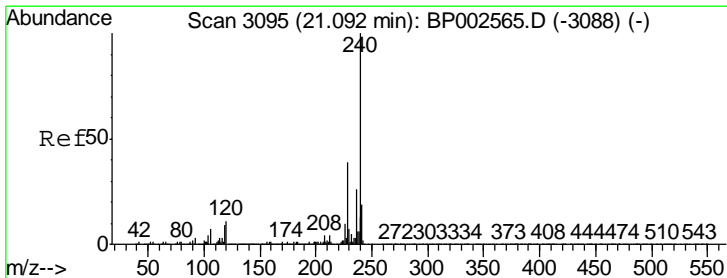
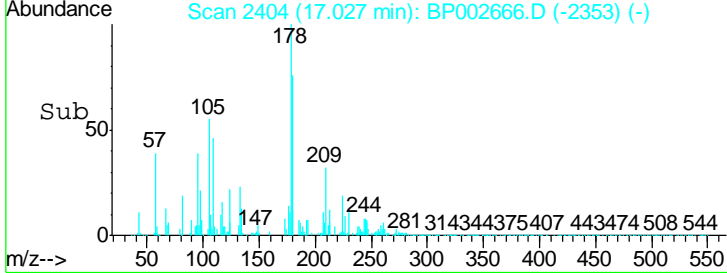
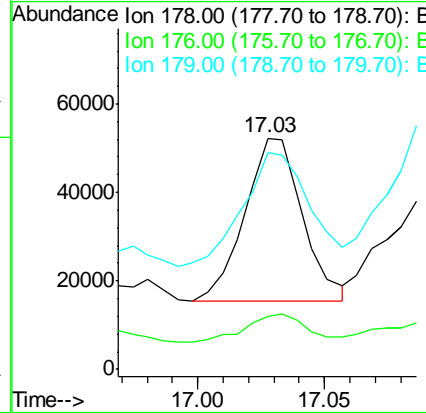
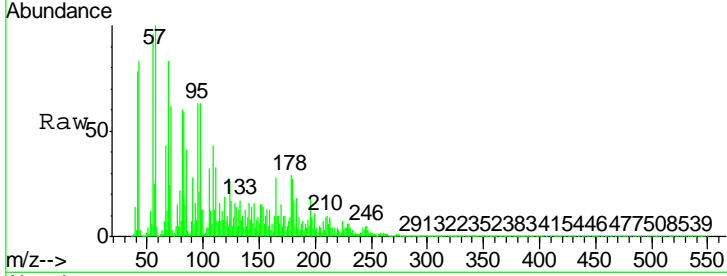




#71
 Phenanthrene
 Concen: 2.150 ng
 RT: 17.03 min Scan# 2404
 Delta R.T. -0.00 min
 Lab File: BP002666.D
 Acq: 07 Jul 2020 19:47

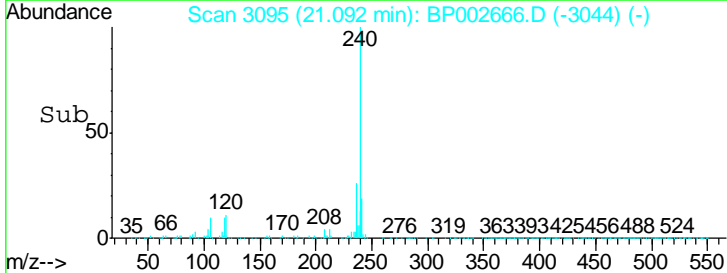
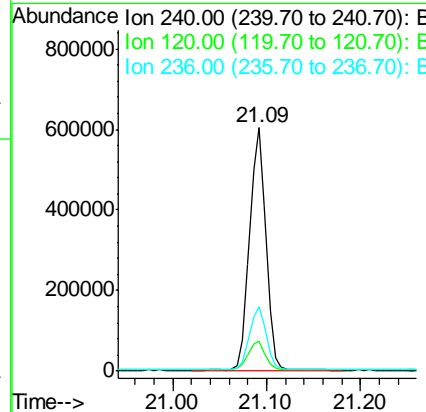
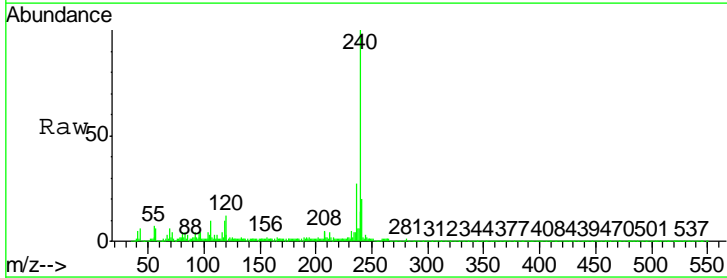
Instrument :
 BNA_P
 ClientSampled :
 E3-41-BOILER-ROOM

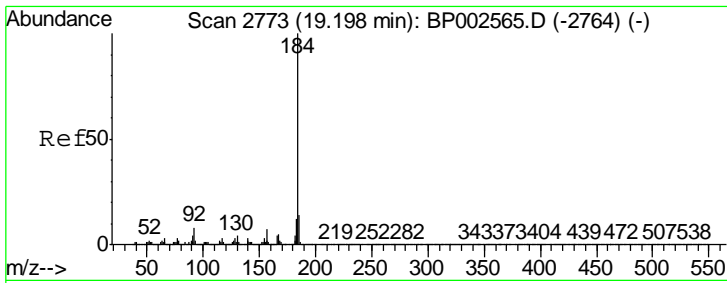
Tgt Ion	Resp	Lower	Upper
178	58601		
176	23.1	15.6	23.4
179	94.1	12.1	18.1#



#76
 Chrysene-d12
 Concen: 20.000 ng
 RT: 21.09 min Scan# 3095
 Delta R.T. -0.00 min
 Lab File: BP002666.D
 Acq: 07 Jul 2020 19:47

Tgt Ion	Resp	Lower	Upper
240	727213		
120	12.1	8.6	13.0
236	26.5	20.8	31.2

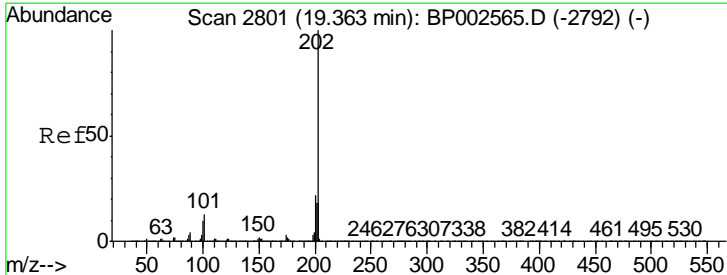
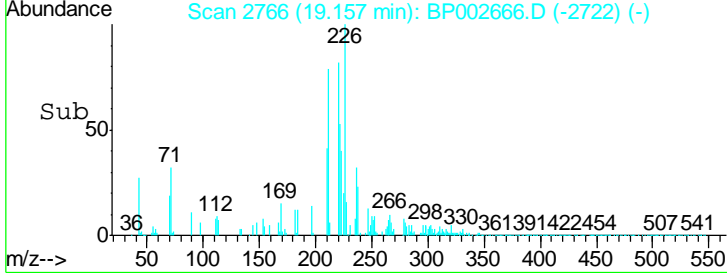
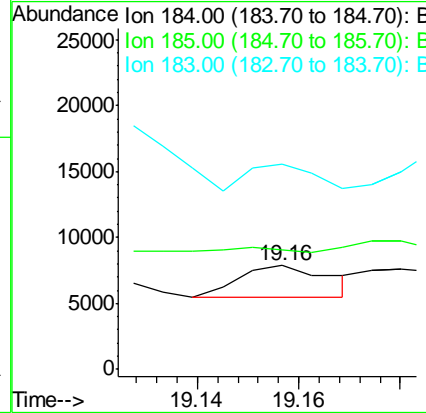
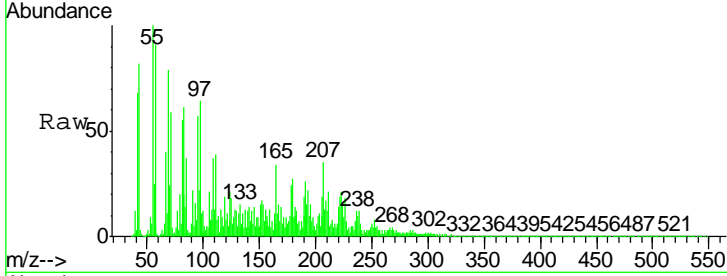




#77
 Benzidine
 Concen: 3.843 ng
 RT: 19.16 min Scan# 2766
 Delta R.T. -0.04 min
 Lab File: BP002666.D
 Acq: 07 Jul 2020 19:47

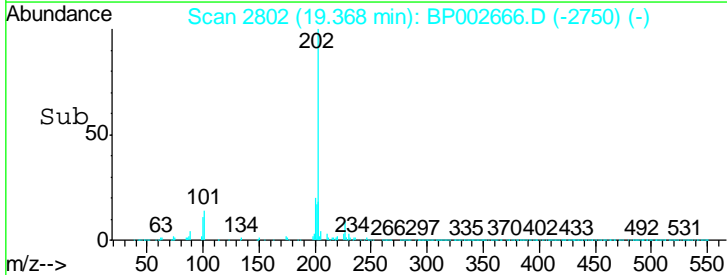
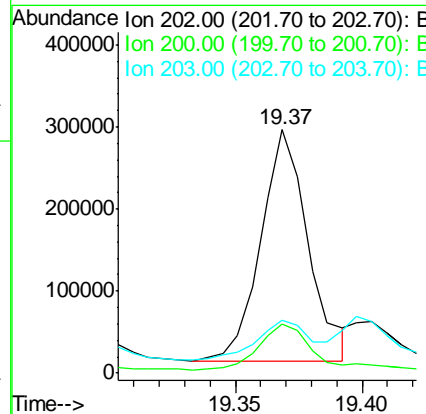
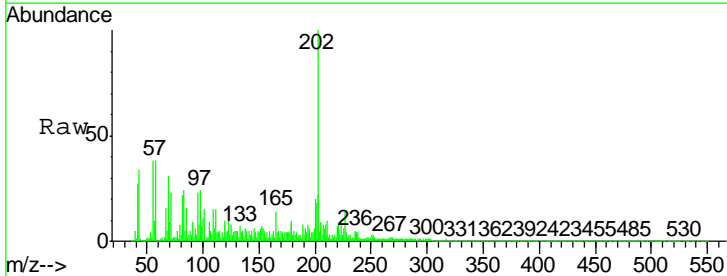
Instrument :
 BNA_P
 ClientSampleId :
 E3-41-BOILER-ROOM

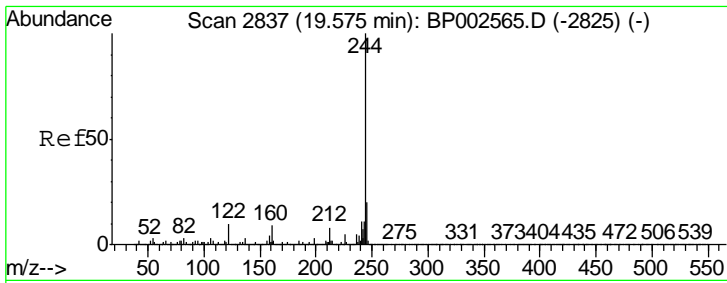
Tgt Ion	Resp	Lower	Upper
184	100		
185	115.3	11.4	17.2#
183	197.4	9.2	13.8#



#78
 Pyrene
 Concen: 7.358 ng
 RT: 19.37 min Scan# 2802
 Delta R.T. 0.01 min
 Lab File: BP002666.D
 Acq: 07 Jul 2020 19:47

Tgt Ion	Resp	Lower	Upper
202	100		
200	20.2	17.6	26.4
203	21.6	14.4	21.6

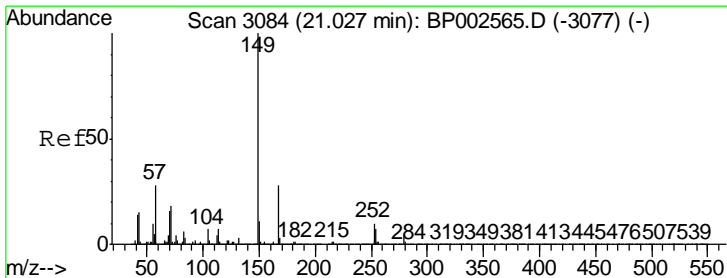
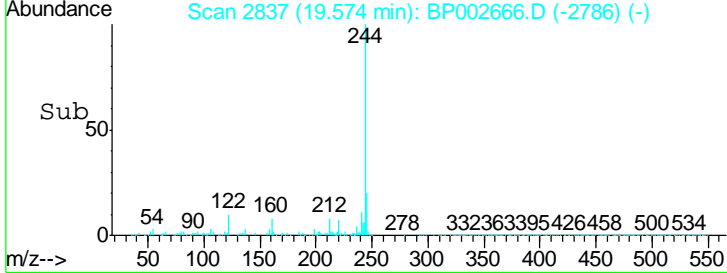
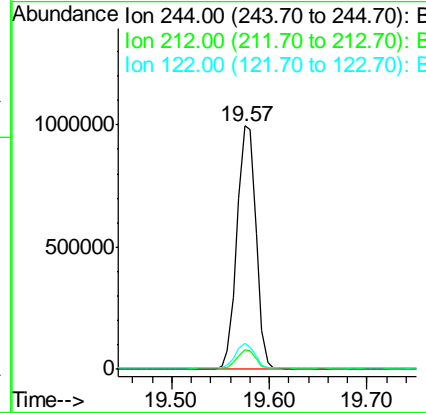
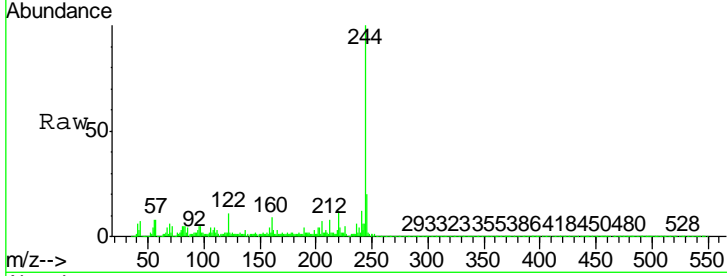




#79
 Terphenyl-d14
 Concen: 39.972 ng
 RT: 19.57 min Scan# 2837
 Delta R.T. -0.00 min
 Lab File: BP002666.D
 Acq: 07 Jul 2020 19:47

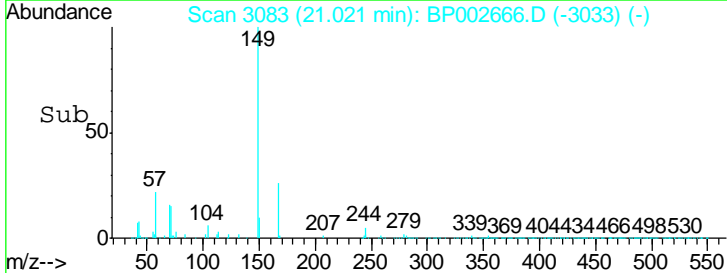
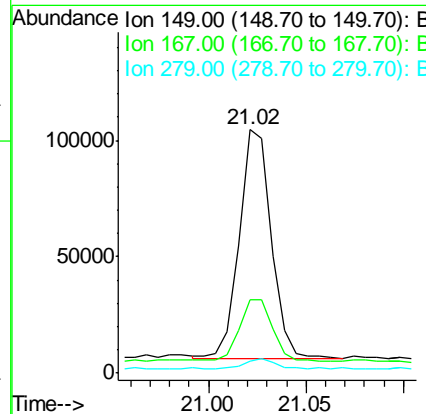
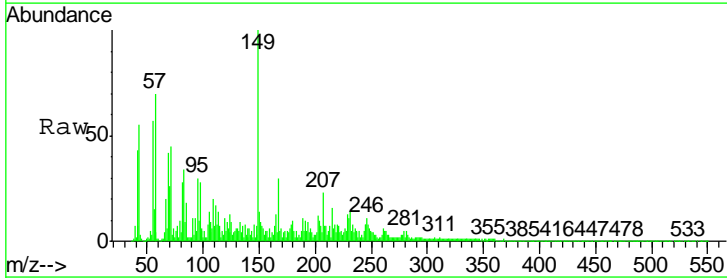
Instrument :
 BNA_P
 ClientSampleId :
 E3-41-BOILER-ROOM

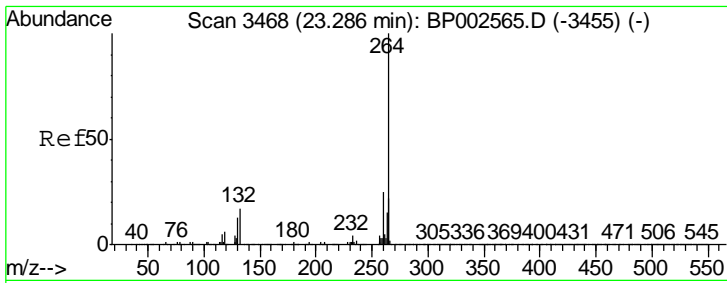
Tgt Ion	Resp	Lower	Upper
244	1346699		
212	8.1	6.5	9.7
122	10.6	7.9	11.9



#84
 Bis(2-ethylhexyl)phthalate
 Concen: 3.588 ng
 RT: 21.02 min Scan# 3083
 Delta R.T. -0.01 min
 Lab File: BP002666.D
 Acq: 07 Jul 2020 19:47

Tgt Ion	Resp	Lower	Upper
149	111349		
167	30.0	22.1	33.1
279	5.0	3.4	5.0





#86
 Perylene-d12
 Concen: 20.000 ng
 RT: 23.29 min Scan# 3468
 Delta R.T. -0.00 min
 Lab File: BP002666.D
 Acq: 07 Jul 2020 19:47

Instrument :
 BNA_P
 ClientSampled :
 E3-41-BOILER-ROOM

Tot Ion: 264 Resp: 914794

Ion	Ratio	Lower	Upper
264	100		
260	25.9	19.7	29.5
265	23.3	17.6	26.4

