

Data Path : Z:\svoasrv\HPCHEM1\BNA_P\Data\BP071024\
 Data File : BP020889.D
 Acq On : 10 Jul 2024 21:04
 Operator : MA/JU
 Sample : PB161825BS
 Misc :
 ALS Vial : 11 Sample Multiplier: 1

Instrument :
 BNA_P
 ClientSampleId :

Quant Time: Jul 11 00:12:31 2024
 Quant Method : Z:\svoasrv\HPCHEM1\BNA_P\Methods\SFAM-EPA-BP071024.MA.M
 Quant Title : SVOA CALIBRATION
 QLast Update : Wed Jul 10 18:38:19 2024
 Response via : Initial Calibration

Compound	R.T.	QIon	Response	Conc	Units	Dev(Min)
Internal Standards						
1) 1,4-Dichlorobenzene-d4	7.716	152	262227	20.000	ng/ul	0.00
20) Naphthalene-d8	10.498	136	1051942	20.000	ng/ul	0.00
38) Acenaphthene-d10	14.363	164	684024	20.000	ng/ul	0.00
64) Phenanthrene-d10	17.175	188	1346099	20.000	ng/ul	0.00
79) Chrysene-d12	21.627	240	1131280	20.000	ng/ul	0.00
88) Perylene-d12	24.986	264	1373777	20.000	ng/ul	0.00
System Monitoring Compounds						
3) 1,4-Dioxane-d8	3.252	96	35710	6.197	ng/uL	0.00
4) Pyridine-d5	3.669	84	393287	23.574	ng/ul	0.00
7) Phenol-d5	6.916	99	592124	27.697	ng/ul	0.00
9) Bis-(2-Chloroethyl)eth...	7.063	67	365700	28.226	ng/ul	0.00
11) 2-Chlorophenol-d4	7.269	132	485272	27.550	ng/ul	0.00
15) 4-Methylphenol-d8	8.434	113	479330	26.995	ng/ul	0.00
21) Nitrobenzene-d5	8.881	128	240119	29.388	ng/ul	0.01
24) 2-Nitrophenol-d4	9.587	143	281144	30.063	ng/ul	0.00
28) 2,4-Dichlorophenol-d3	10.128	165	496317	29.350	ng/ul	0.00
31) 4-Chloroaniline-d4	10.640	131	534859	23.876	ng/ul	0.00
46) Dimethylphthalate-d6	13.769	166	1421210	28.581	ng/ul	0.00
49) Acenaphthylene-d8	14.051	160	1592010	28.513	ng/ul	0.00
54) 4-Nitrophenol-d4	14.598	143	221737	31.342	ng/ul	-0.01
60) Fluorene-d10	15.369	176	1174546	28.792	ng/ul	0.00
65) 4,6-Dinitro-2-methylph...	15.516	200	249051	30.579	ng/ul	0.00
73) Anthracene-d10	17.275	188	1709106	28.587	ng/ul	0.00
81) Pyrene-d10	19.663	212	1929133	27.583	ng/ul	0.00
92) Benzo(a)pyrene-d12	24.751	264	1975209	29.152	ng/ul	0.00
Target Compounds						
2) 1,4-Dioxane	3.287	88	59514	9.390	ng/uL	95
5) Pyridine	3.687	79	434796	25.268	ng/ul	98
6) Benzaldehyde	6.887	77	286349	26.568	ng/ul	98
8) Phenol	6.946	94	607558	28.085	ng/ul	97
10) Bis(2-Chloroethyl)ether	7.157	93	489323	27.381	ng/ul	98
12) 2-Chlorophenol	7.299	128	492400	27.892	ng/ul	98
13) 2-Methylphenol	8.169	108	459250	27.450	ng/ul	98
14) 2,2'-oxybis(1-Chloropr...	8.246	45	716802	27.763	ng/ul	97
16) Acetophenone	8.546	105	746542	27.241	ng/ul	99
17) N-Nitroso-di-n-propyla...	8.528	70	382706	26.653	ng/ul	97
18) 4-Methylphenol	8.499	108	493421	27.529	ng/ul	99
19) Hexachloroethane	8.775	117	216347	27.271	ng/ul	95
22) Nitrobenzene	8.922	77	565320	28.883	ng/ul	100
23) Isophorone	9.440	82	1079890	27.753	ng/ul	99
25) 2-Nitrophenol	9.622	139	293415	30.084	ng/ul	98
26) 2,4-Dimethylphenol	9.687	107	441132	22.937	ng/ul	100
27) Bis(2-Chloroethoxy)met...	9.910	93	662736	28.021	ng/ul	99
29) 2,4-Dichlorophenol	10.151	162	491844	29.513	ng/ul	99
30) Naphthalene	10.546	128	1536064	27.760	ng/ul	100
32) 4-Chloroaniline	10.663	127	512938	23.978	ng/ul	98
33) Hexachlorobutadiene	10.810	225	352656	28.222	ng/ul	98
34) Caprolactam	11.469	113	88368	17.213	ng/ul	95
35) 4-Chloro-3-methylphenol	11.798	107	530588	29.290	ng/ul	99
36) 2-Methylnaphthalene	12.157	142	1078848	28.404	ng/ul	97

Data Path : Z:\svoasrv\HPCHEM1\BNA_P\Data\BP071024\
 Data File : BP020889.D
 Acq On : 10 Jul 2024 21:04
 Operator : MA/JU
 Sample : PB161825BS
 Misc :
 ALS Vial : 11 Sample Multiplier: 1

Instrument :
 BNA_P
 ClientSampleId :

Quant Time: Jul 11 00:12:31 2024
 Quant Method : Z:\svoasrv\HPCHEM1\BNA_P\Methods\SFAM-EPA-BP071024.MA.M
 Quant Title : SVOA CALIBRATION
 QLast Update : Wed Jul 10 18:38:19 2024
 Response via : Initial Calibration

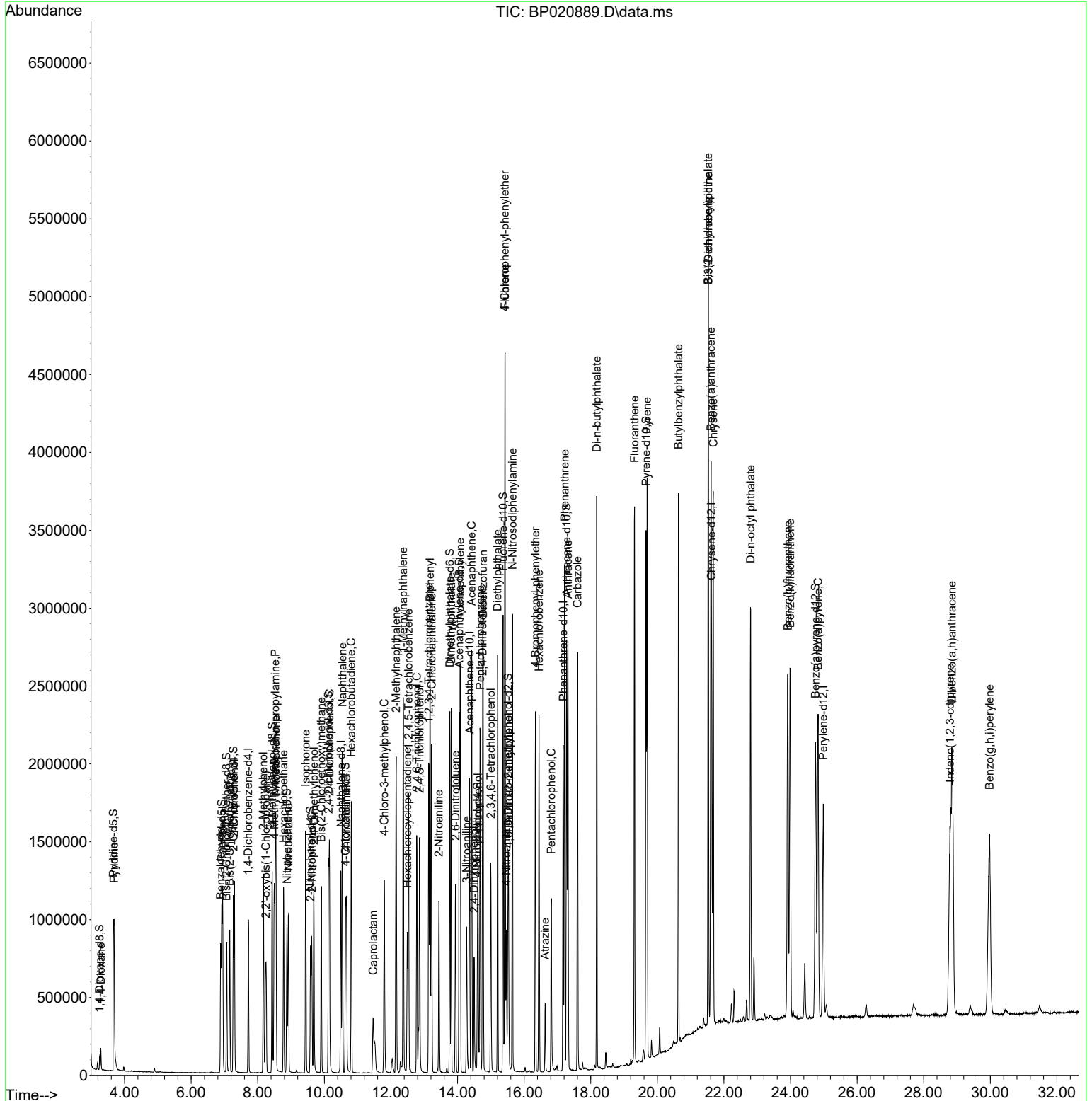
Compound	R.T.	QIon	Response	Conc	Units	Dev(Min)
37) 1-Methylnaphthalene	12.369	142	1069480	27.377	ng/ul	98
39) 1,2,4,5-Tetrachloroben...	12.528	216	648373	29.187	ng/ul	97
40) Hexachlorocyclopentadiene	12.493	237	264879	22.794	ng/ul	99
41) 2,4,6-Trichlorophenol	12.775	196	374486	26.679	ng/ul	98
42) 2,4,5-Trichlorophenol	12.863	196	415447	27.973	ng/ul	99
43) 1,1'-Biphenyl	13.175	154	1407477	28.155	ng/ul	99
44) 2-Chloronaphthalene	13.222	162	1108030	27.765	ng/ul	100
45) 2-Nitroaniline	13.440	65	330023	29.904	ng/ul	98
47) Dimethylphthalate	13.810	163	1391455	27.579	ng/ul	100
48) 2,6-Dinitrotoluene	13.939	165	293699	29.116	ng/ul	99
50) Acenaphthylene	14.081	152	1734663	27.440	ng/ul	99
51) 3-Nitroaniline	14.275	138	262015	29.849	ng/ul	97
52) Acenaphthene	14.422	153	1149369	27.393	ng/ul	98
53) 2,4-Dinitrophenol	14.498	184	161234	30.437	ng/ul	98
55) 4-Nitrophenol	14.616	109	177796	30.894	ng/ul	97
56) Dibenzofuran	14.769	168	1622334	28.235	ng/ul	98
57) 2,4-Dinitrotoluene	14.751	165	412875	29.817	ng/ul	96
58) 2,3,4,6-Tetrachlorophenol	14.998	232	314949	24.765	ng/ul	98
59) Diethylphthalate	15.204	149	1440120	28.561	ng/ul	100
61) Fluorene	15.428	166	1302772	27.785	ng/ul	99
62) 4-Chlorophenyl-phenyle...	15.422	204	698604	27.458	ng/ul	98
63) 4-Nitroaniline	15.469	138	250814	34.504	ng/ul	99
66) 4,6-Dinitro-2-methylph...	15.534	198	260631	30.176	ng/ul#	96
67) N-Nitrosodiphenylamine	15.651	169	1122084	28.626	ng/ul	99
68) 4-Bromophenyl-phenylether	16.339	248	444699	28.185	ng/ul	97
69) Hexachlorobenzene	16.445	284	523324	28.928	ng/ul	99
70) Atrazine	16.633	200	88725	6.211	ng/ul	98
71) Pentachlorophenol	16.816	266	233510	23.766	ng/ul	97
72) Phenanthrene	17.216	178	2001911	28.668	ng/ul	99
74) Anthracene	17.316	178	1987423	27.917	ng/ul	100
75) 1,2,3,4-Tetrachloroben...	13.140	216	630124	29.247	ng/uL	98
76) Pentachlorobenzene	14.681	250	606438	28.327	ng/uL	99
77) Carbazole	17.604	167	1722818	29.604	ng/ul	99
78) Di-n-butylphthalate	18.180	149	2377214	29.608	ng/ul	100
80) Fluoranthene	19.316	202	2251171	26.653	ng/ul	100
82) Pyrene	19.692	202	2333701	27.152	ng/ul	98
83) Butylbenzylphthalate	20.633	149	1008325	28.157	ng/ul	97
84) 3,3'-Dichlorobenzidine	21.533	252	722679	27.956	ng/ul	99
85) Benzo(a)anthracene	21.610	228	2262338	28.548	ng/ul	100
86) Bis(2-ethylhexyl)phtha...	21.527	149	1453996	28.214	ng/ul	100
87) Chrysene	21.680	228	2107471	28.620	ng/ul	100
89) Di-n-octyl phthalate	22.798	149	2556883	28.174	ng/ul	100
90) Benzo(b)fluoranthene	23.921	252	2332084	27.974	ng/ul	98
91) Benzo(k)fluoranthene	23.992	252	2345467	28.191	ng/ul	99
93) Benzo(a)pyrene	24.827	252	2078563	26.384	ng/ul	99
94) Indeno(1,2,3-cd)pyrene	28.786	276	1545555	15.225	ng/ul	99
95) Dibenzo(a,h)anthracene	28.845	278	943922	11.229	ng/ul	99
96) Benzo(g,h,i)perylene	29.974	276	2373153	28.704	ng/ul	99

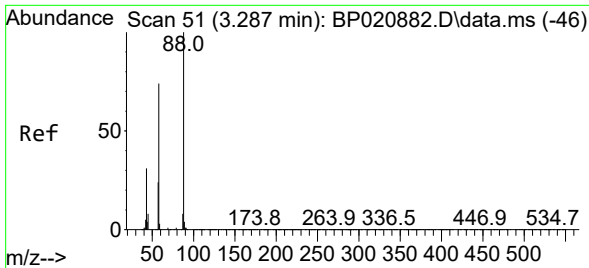
(#) = qualifier out of range (m) = manual integration (+) = signals summed

Data Path : Z:\svoasrv\HPCHEM1\BNA_P\Data\BP071024\
 Data File : BP020889.D
 Acq On : 10 Jul 2024 21:04
 Operator : MA/JU
 Sample : PB161825BS
 Misc :
 ALS Vial : 11 Sample Multiplier: 1

Instrument :
 BNA_P
 ClientSampleId :

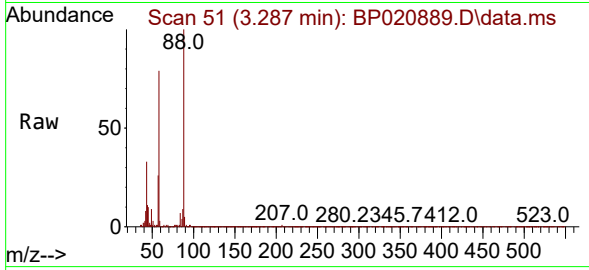
Quant Time: Jul 11 00:12:31 2024
 Quant Method : Z:\svoasrv\HPCHEM1\BNA_P\Methods\SFAM-EPA-BP071024.MA.M
 Quant Title : SVOA CALIBRATION
 QLast Update : Wed Jul 10 18:38:19 2024
 Response via : Initial Calibration



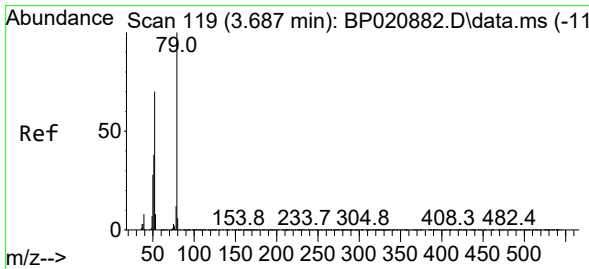
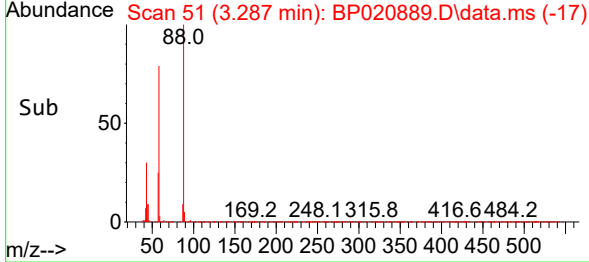
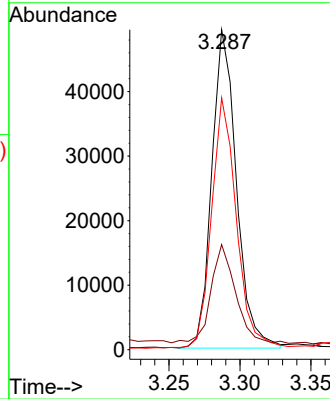


#2
 1,4-Dioxane
 Concen: 9.390 ng/uL
 RT: 3.287 min Scan# 51
 Delta R.T. -0.000 min
 Lab File: BP020889.D
 Acq: 10 Jul 2024 21:04

Instrument :
 BNA_P
 ClientSampleId :

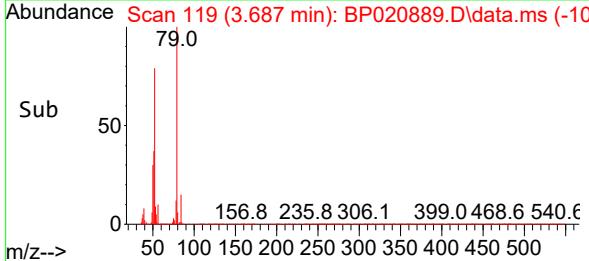
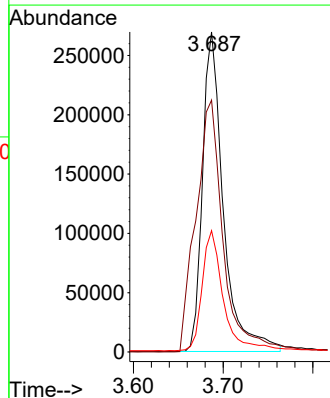
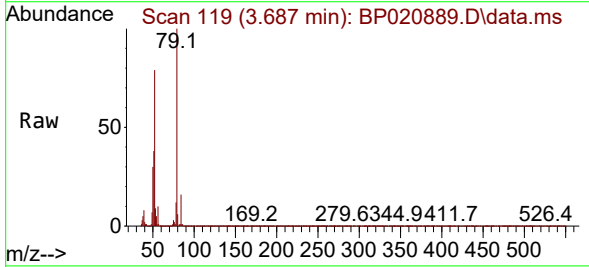


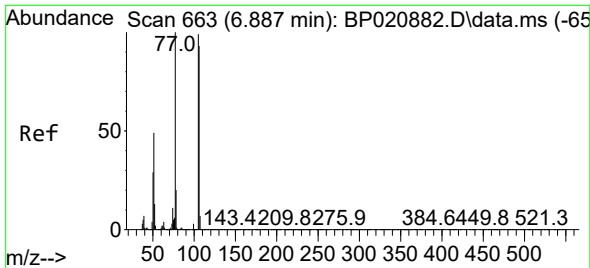
Tgt Ion: 88 Resp: 59514
 Ion Ratio Lower Upper
 88 100
 43 32.8 25.4 38.0
 58 78.7 59.2 88.8



#5
 Pyridine
 Concen: 25.268 ng/uL
 RT: 3.687 min Scan# 119
 Delta R.T. -0.000 min
 Lab File: BP020889.D
 Acq: 10 Jul 2024 21:04

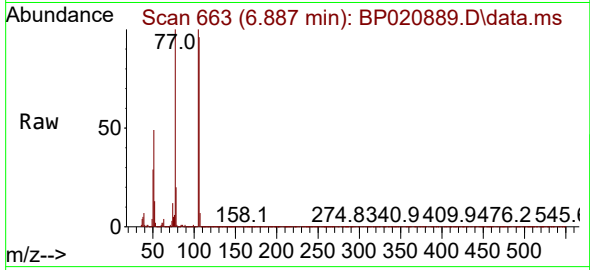
Tgt Ion: 79 Resp: 434796
 Ion Ratio Lower Upper
 79 100
 52 78.7 64.9 97.3
 51 37.9 30.5 45.7



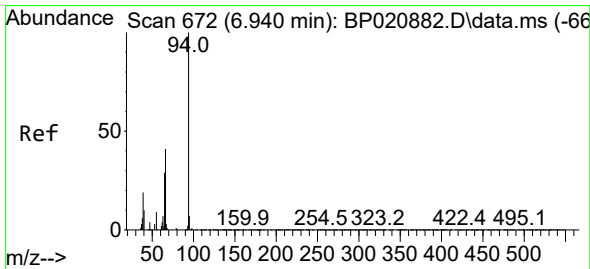
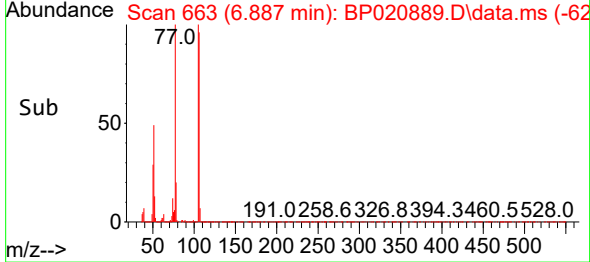
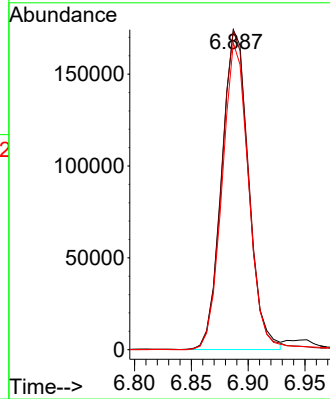


#6
Benzaldehyde
Concen: 26.568 ng/u1
RT: 6.887 min Scan# 60
Delta R.T. -0.000 min
Lab File: BP020889.D
Acq: 10 Jul 2024 21:04

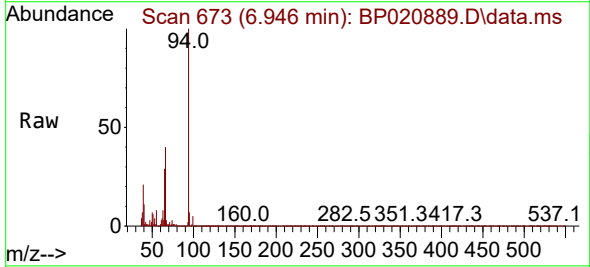
Instrument :
BNA_P
ClientSampleId :



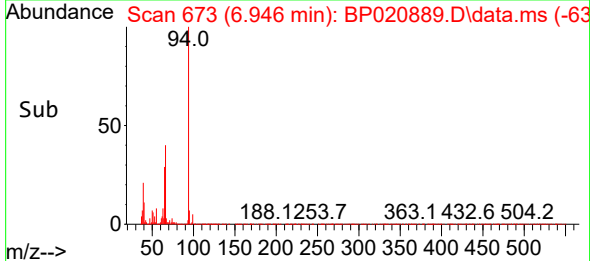
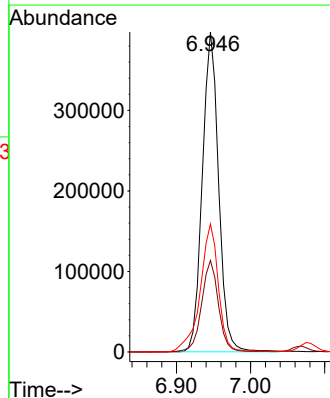
Tgt Ion: 77 Resp: 286349
Ion Ratio Lower Upper
77 100
105 99.8 79.3 118.9
106 95.8 74.6 112.0

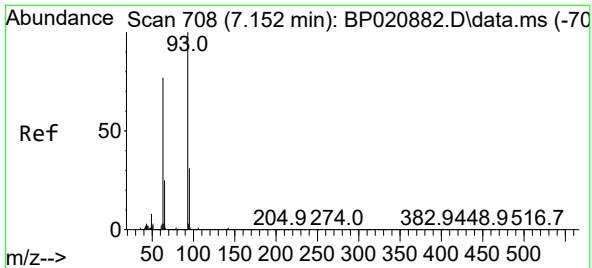


#8
Phenol
Concen: 28.085 ng/u1
RT: 6.946 min Scan# 673
Delta R.T. 0.006 min
Lab File: BP020889.D
Acq: 10 Jul 2024 21:04



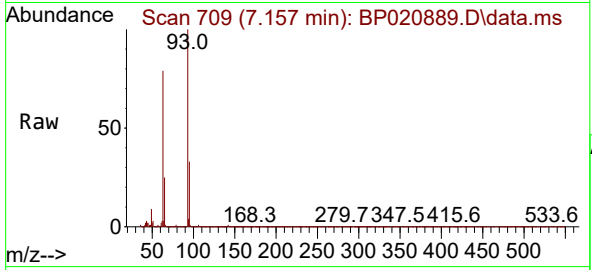
Tgt Ion: 94 Resp: 607558
Ion Ratio Lower Upper
94 100
65 28.6 23.4 35.0
66 40.0 33.9 50.9



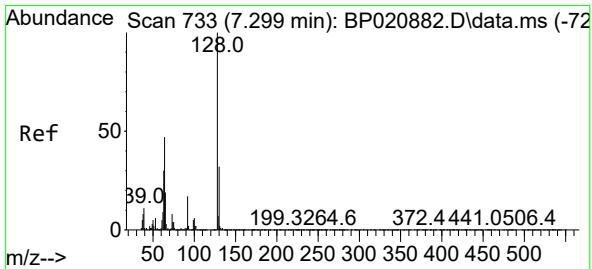
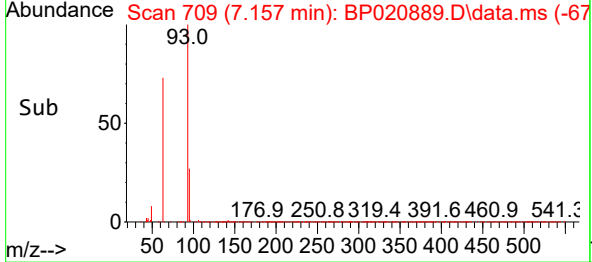
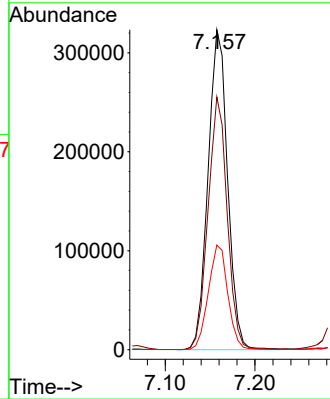


#10
 Bis(2-Chloroethyl)ether
 Concen: 27.381 ng/ul
 RT: 7.157 min Scan# 708
 Delta R.T. 0.006 min
 Lab File: BP020889.D
 Acq: 10 Jul 2024 21:04

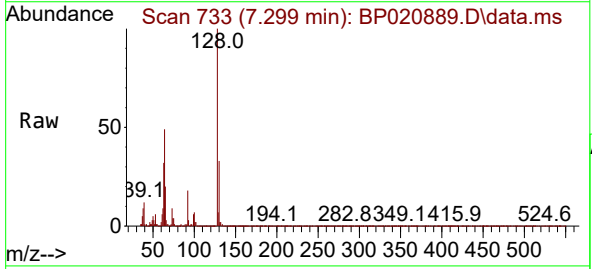
Instrument :
 BNA_P
 ClientSampleId :



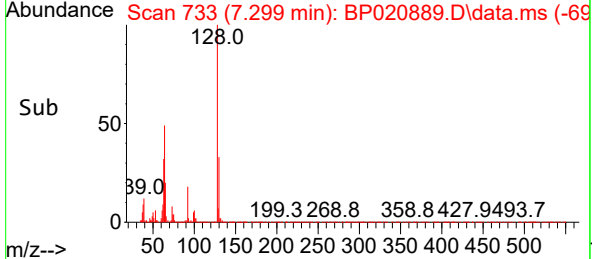
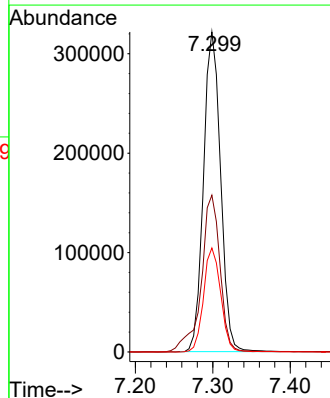
Tgt Ion: 93 Resp: 489323
 Ion Ratio Lower Upper
 93 100
 63 79.0 61.5 92.3
 95 32.7 25.1 37.7

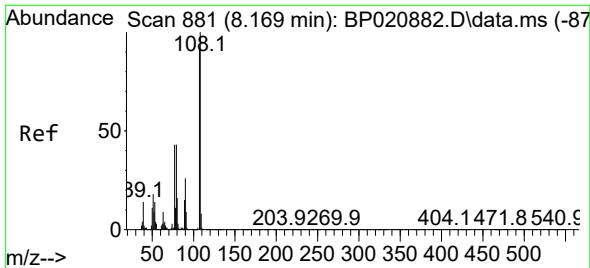


#12
 2-Chlorophenol
 Concen: 27.892 ng/ul
 RT: 7.299 min Scan# 733
 Delta R.T. -0.000 min
 Lab File: BP020889.D
 Acq: 10 Jul 2024 21:04



Tgt Ion: 128 Resp: 492400
 Ion Ratio Lower Upper
 128 100
 64 49.0 37.9 56.9
 130 32.5 25.6 38.4

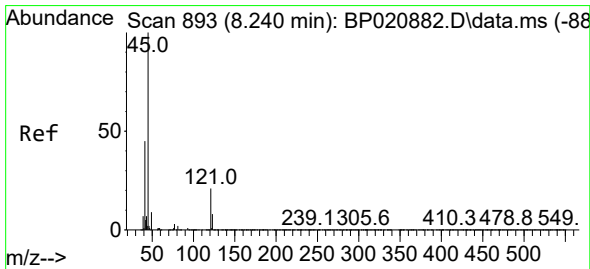
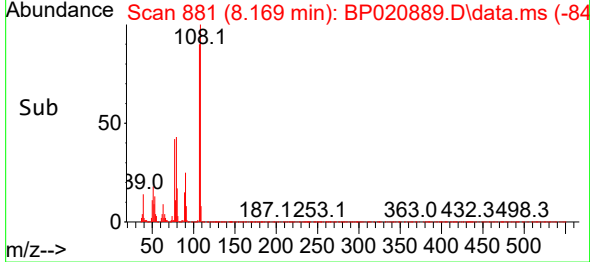
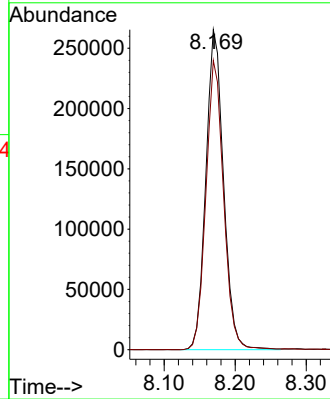
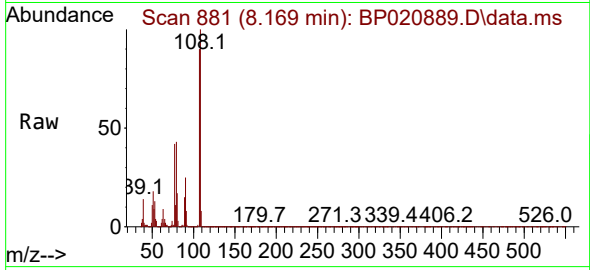




#13
 2-Methylphenol
 Concen: 27.450 ng/ul
 RT: 8.169 min Scan# 881
 Delta R.T. -0.000 min
 Lab File: BP020889.D
 Acq: 10 Jul 2024 21:04

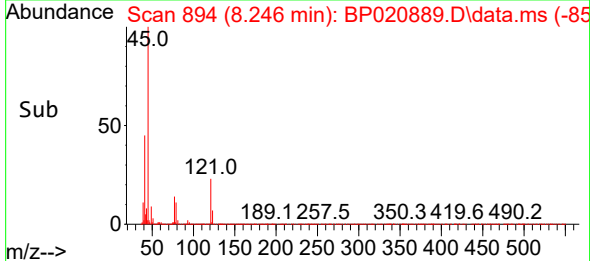
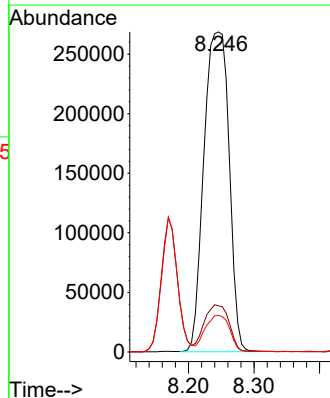
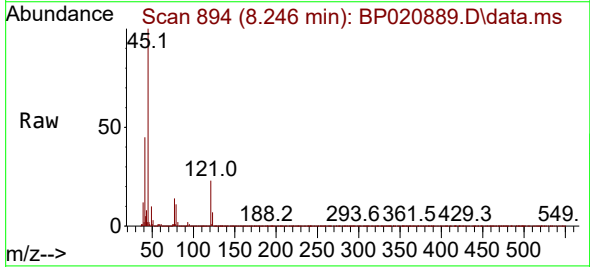
Instrument :
 BNA_P
 ClientSampleId :

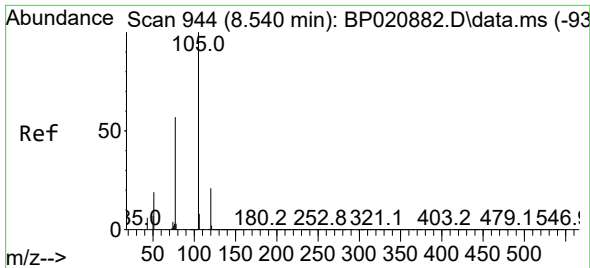
Tgt Ion:108 Resp: 459250
 Ion Ratio Lower Upper
 108 100
 107 90.4 73.8 110.8



#14
 2,2'-oxybis(1-Chloropropane)
 Concen: 27.763 ng/ul
 RT: 8.246 min Scan# 894
 Delta R.T. 0.006 min
 Lab File: BP020889.D
 Acq: 10 Jul 2024 21:04

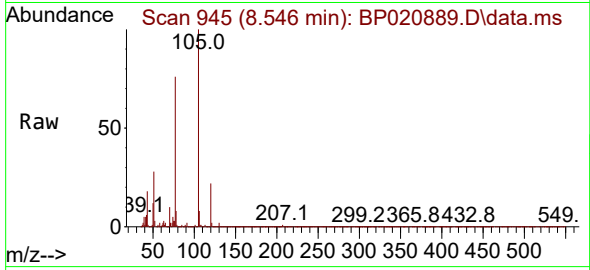
Tgt Ion: 45 Resp: 716802
 Ion Ratio Lower Upper
 45 100
 77 14.4 10.9 16.3
 79 11.4 8.1 12.1





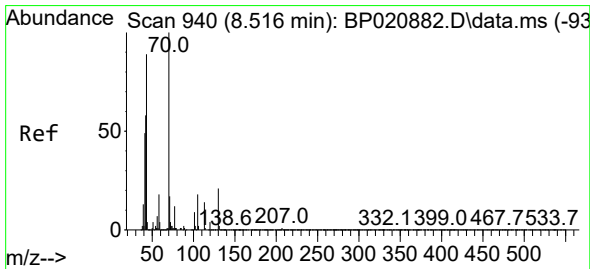
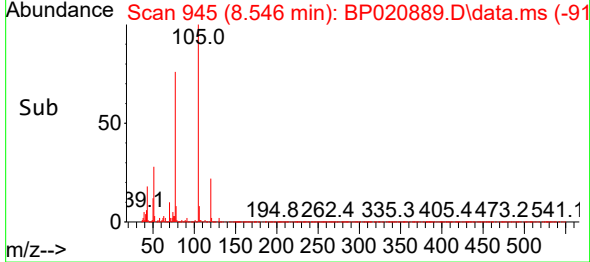
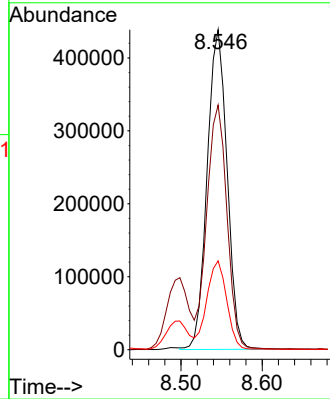
#16
 Acetophenone
 Concen: 27.241 ng/ul
 RT: 8.546 min Scan# 94
 Delta R.T. 0.006 min
 Lab File: BP020889.D
 Acq: 10 Jul 2024 21:04

Instrument :
 BNA_P
 ClientSampleId :



Tgt Ion: 105 Resp: 746542

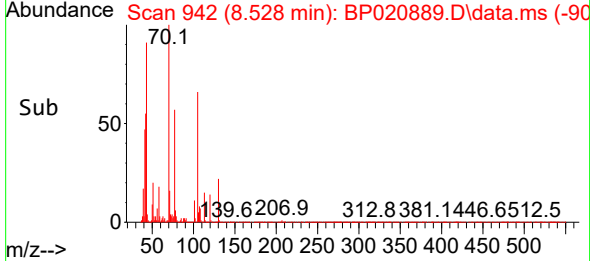
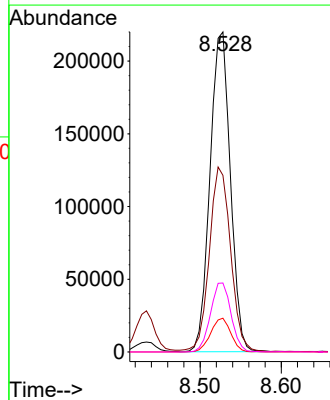
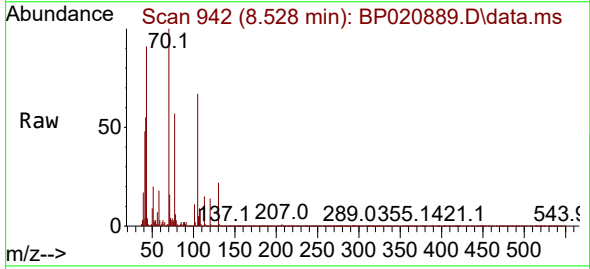
Ion	Ratio	Lower	Upper
105	100		
77	76.4	61.8	92.8
51	27.8	21.5	32.3

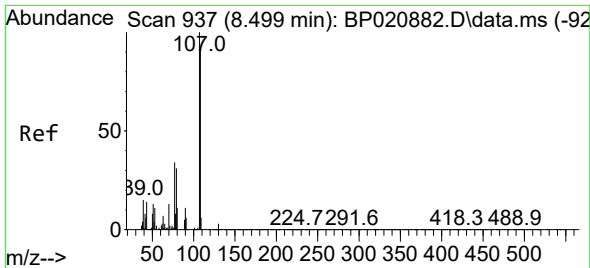


#17
 N-Nitroso-di-n-propylamine
 Concen: 26.653 ng/ul
 RT: 8.528 min Scan# 942
 Delta R.T. 0.012 min
 Lab File: BP020889.D
 Acq: 10 Jul 2024 21:04

Tgt Ion: 70 Resp: 382706

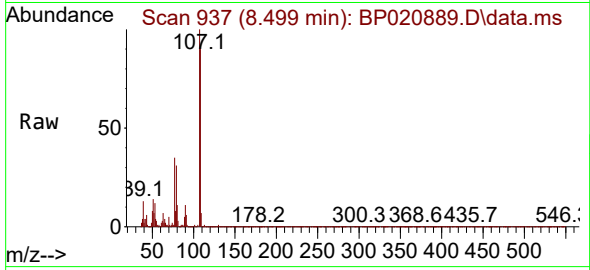
Ion	Ratio	Lower	Upper
70	100		
42	55.2	46.6	69.8
101	10.6	7.4	11.0
130	21.6	17.2	25.8



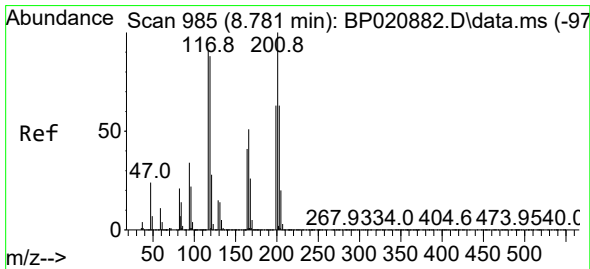
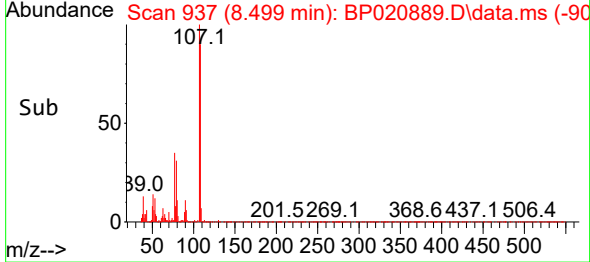
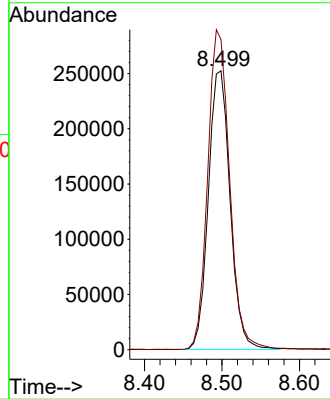


#18
 4-Methylphenol
 Concen: 27.529 ng/ul
 RT: 8.499 min Scan# 911
 Delta R.T. -0.000 min
 Lab File: BP020889.D
 Acq: 10 Jul 2024 21:04

Instrument :
 BNA_P
 ClientSampleId :

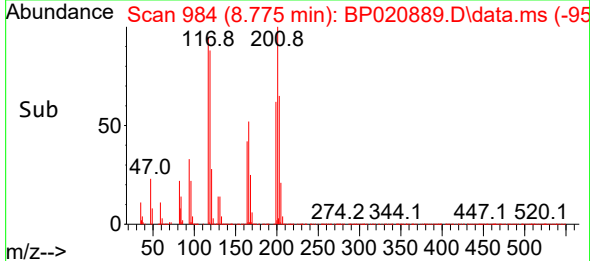
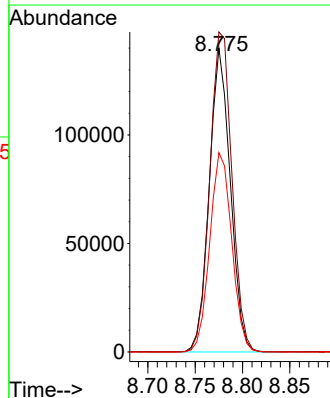
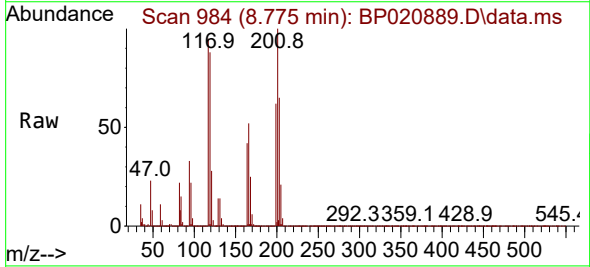


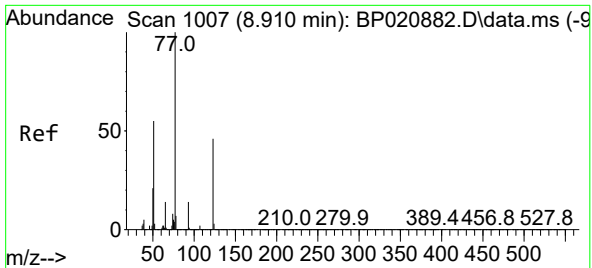
Tgt Ion:108 Resp: 493421
 Ion Ratio Lower Upper
 108 100
 107 111.2 87.8 131.8



#19
 Hexachloroethane
 Concen: 27.271 ng/ul
 RT: 8.775 min Scan# 984
 Delta R.T. -0.006 min
 Lab File: BP020889.D
 Acq: 10 Jul 2024 21:04

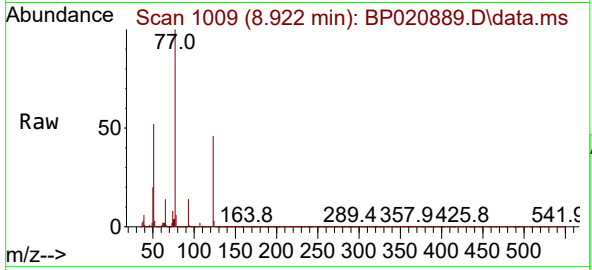
Tgt Ion:117 Resp: 216347
 Ion Ratio Lower Upper
 117 100
 201 105.3 88.2 132.2
 199 65.6 55.8 83.6



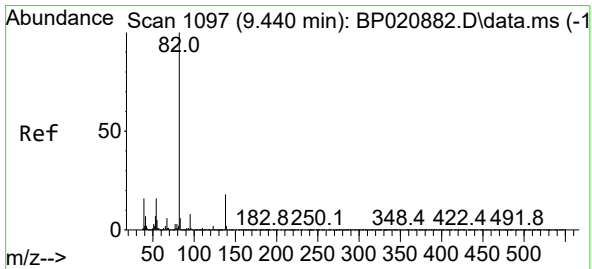
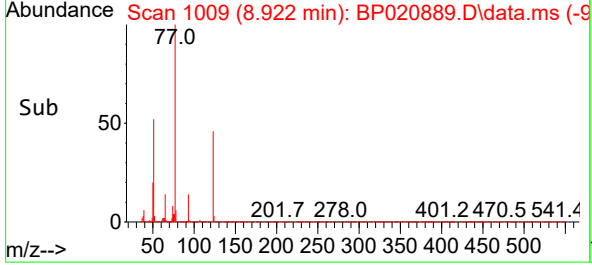
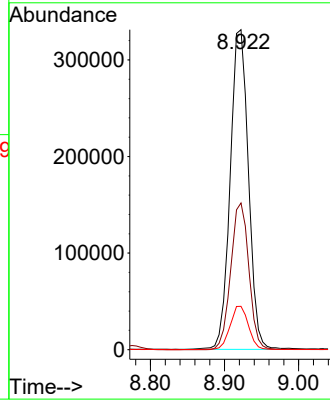


#22
 Nitrobenzene
 Concen: 28.883 ng/uI
 RT: 8.922 min Scan# 1009
 Delta R.T. 0.012 min
 Lab File: BP020889.D
 Acq: 10 Jul 2024 21:04

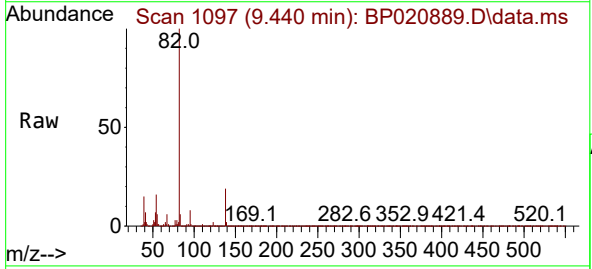
Instrument :
 BNA_P
 ClientSampleId :



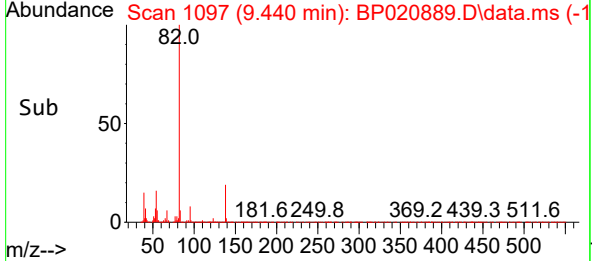
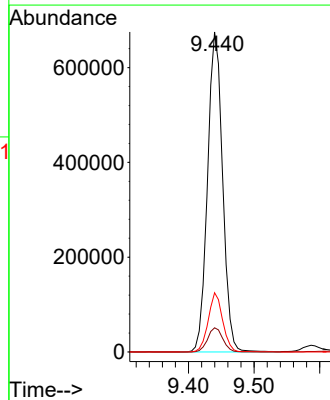
Tgt Ion: 77 Resp: 565320
 Ion Ratio Lower Upper
 77 100
 123 45.9 36.7 55.1
 65 13.6 11.1 16.7

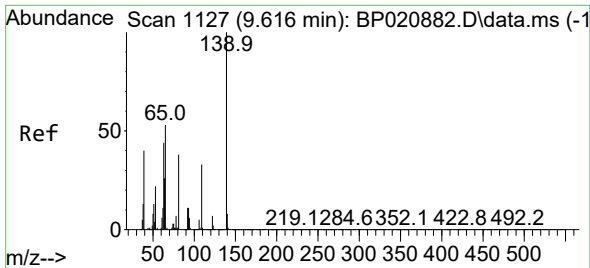


#23
 Isophorone
 Concen: 27.753 ng/uI
 RT: 9.440 min Scan# 1097
 Delta R.T. -0.000 min
 Lab File: BP020889.D
 Acq: 10 Jul 2024 21:04



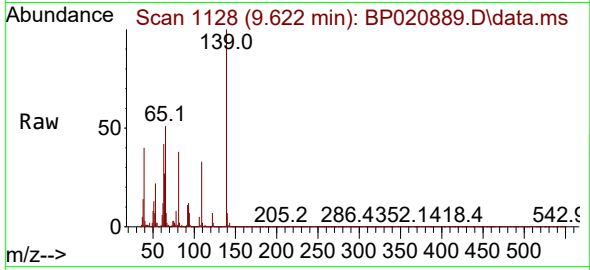
Tgt Ion: 82 Resp: 1079890
 Ion Ratio Lower Upper
 82 100
 95 7.6 6.1 9.1
 138 18.5 14.4 21.6



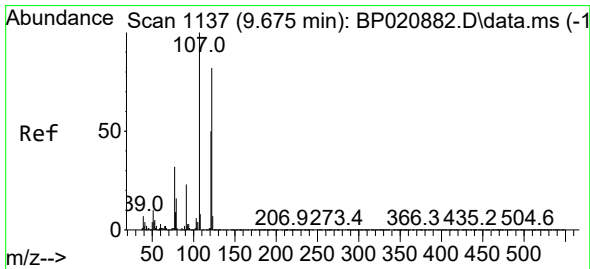
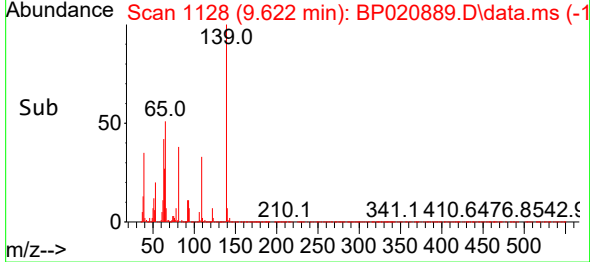
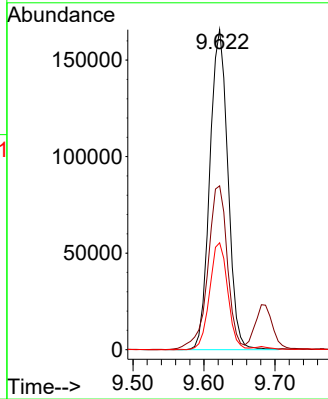


#25
 2-Nitrophenol
 Concen: 30.084 ng/ul
 RT: 9.622 min Scan# 1128
 Delta R.T. 0.006 min
 Lab File: BP020889.D
 Acq: 10 Jul 2024 21:04

Instrument :
 BNA_P
 ClientSampleId :

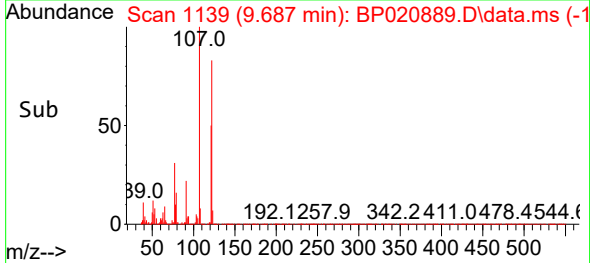
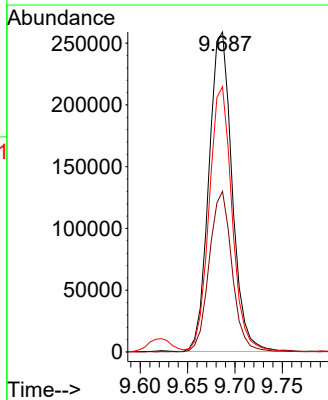
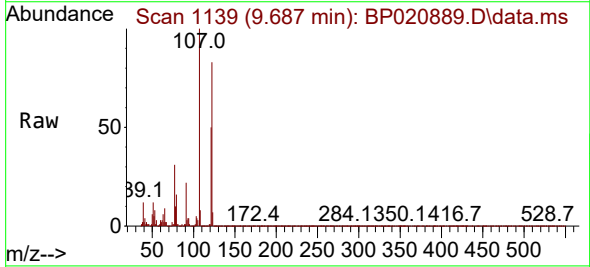


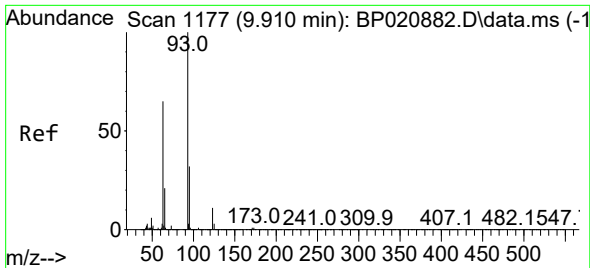
Tgt Ion:139 Resp: 293415
 Ion Ratio Lower Upper
 139 100
 65 51.2 42.9 64.3
 109 33.4 26.2 39.4



#26
 2,4-Dimethylphenol
 Concen: 22.937 ng/ul
 RT: 9.687 min Scan# 1139
 Delta R.T. 0.012 min
 Lab File: BP020889.D
 Acq: 10 Jul 2024 21:04

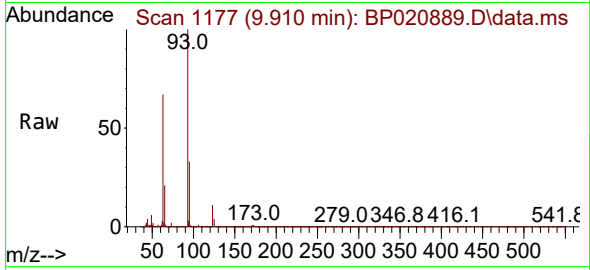
Tgt Ion:107 Resp: 441132
 Ion Ratio Lower Upper
 107 100
 121 50.2 39.6 59.4
 122 82.9 66.3 99.5





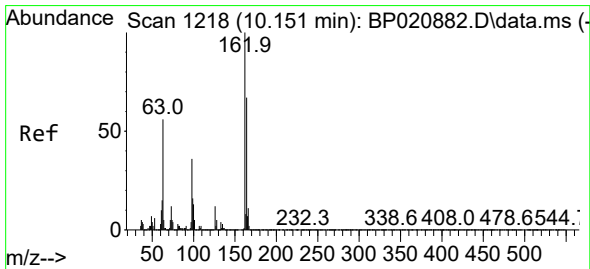
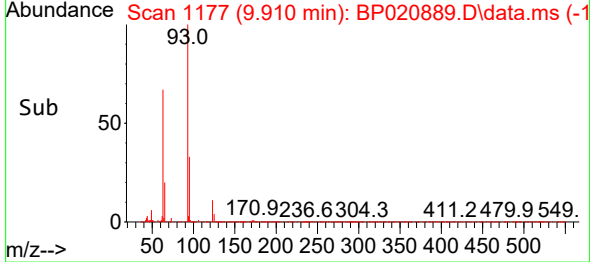
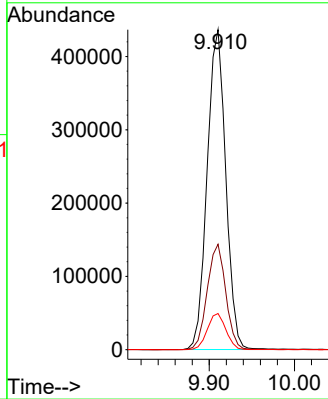
#27
 Bis(2-Chloroethoxy)methane
 Concen: 28.021 ng/ul
 RT: 9.910 min Scan# 1177
 Delta R.T. -0.000 min
 Lab File: BP020889.D
 Acq: 10 Jul 2024 21:04

Instrument :
 BNA_P
 ClientSampleId :



Tgt Ion: 93 Resp: 662736

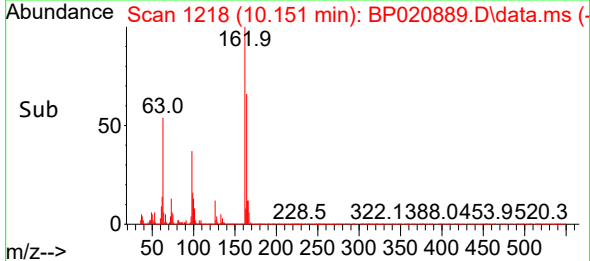
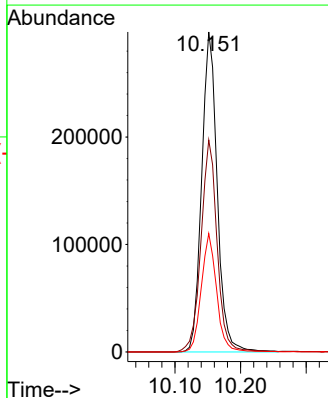
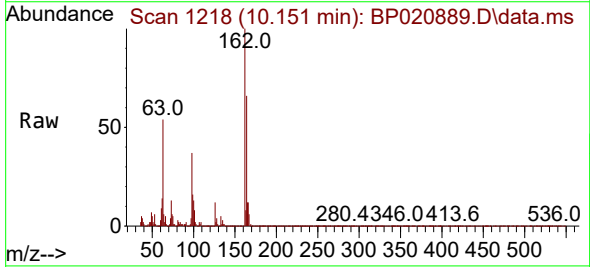
Ion	Ratio	Lower	Upper
93	100		
95	33.0	25.5	38.3
123	11.3	9.0	13.4

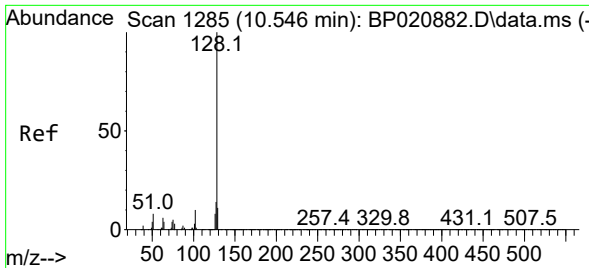


#29
 2,4-Dichlorophenol
 Concen: 29.513 ng/ul
 RT: 10.151 min Scan# 1218
 Delta R.T. -0.000 min
 Lab File: BP020889.D
 Acq: 10 Jul 2024 21:04

Tgt Ion: 162 Resp: 491844

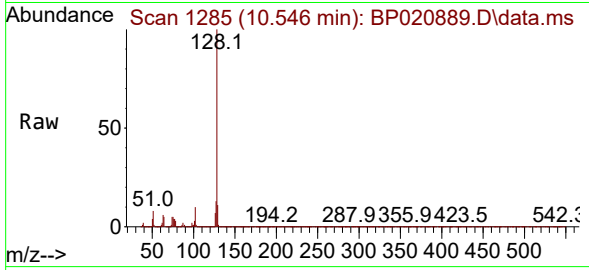
Ion	Ratio	Lower	Upper
162	100		
164	66.2	53.3	79.9
98	37.0	28.7	43.1



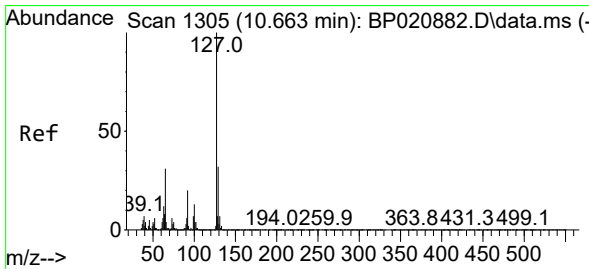
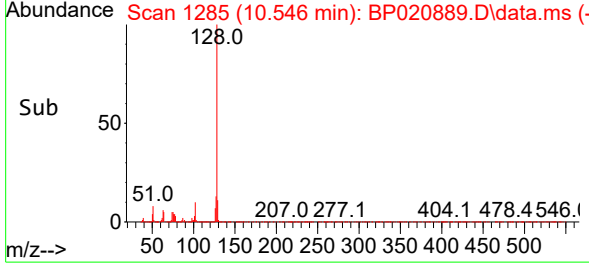
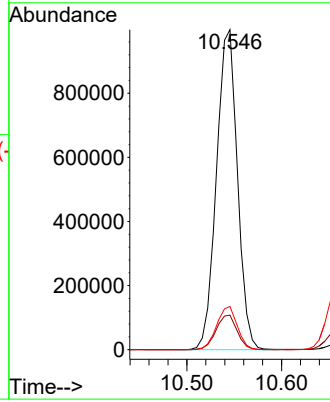


#30
 Naphthalene
 Concen: 27.760 ng/u1
 RT: 10.546 min Scan# 11
 Delta R.T. -0.000 min
 Lab File: BP020889.D
 Acq: 10 Jul 2024 21:04

Instrument :
 BNA_P
 ClientSampleId :

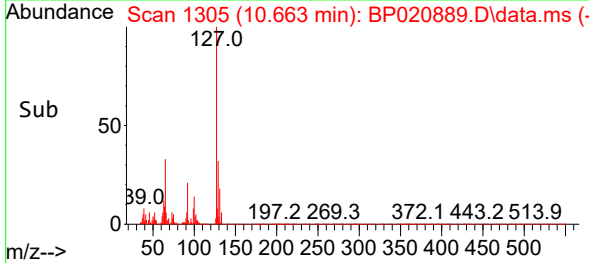
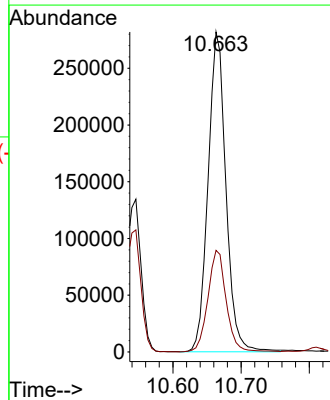
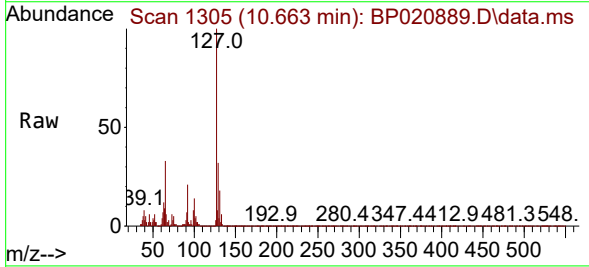


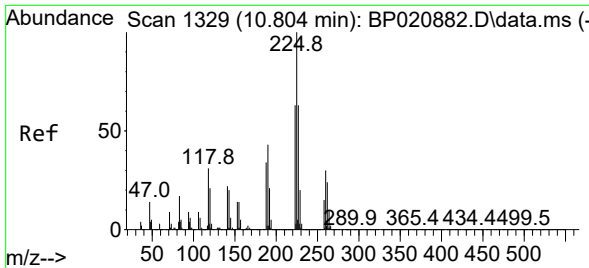
Tgt Ion:128 Resp: 1536064
 Ion Ratio Lower Upper
 128 100
 129 10.8 8.6 13.0
 127 13.5 10.8 16.2



#32
 4-Chloroaniline
 Concen: 23.978 ng/u1
 RT: 10.663 min Scan# 1305
 Delta R.T. -0.000 min
 Lab File: BP020889.D
 Acq: 10 Jul 2024 21:04

Tgt Ion:127 Resp: 512938
 Ion Ratio Lower Upper
 127 100
 129 31.7 26.1 39.1

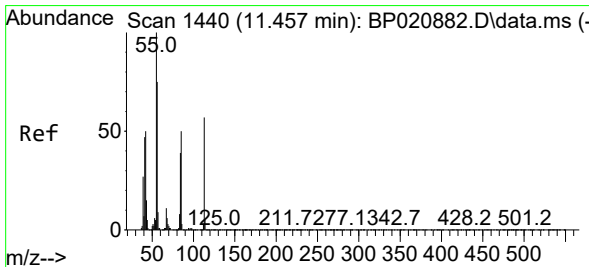
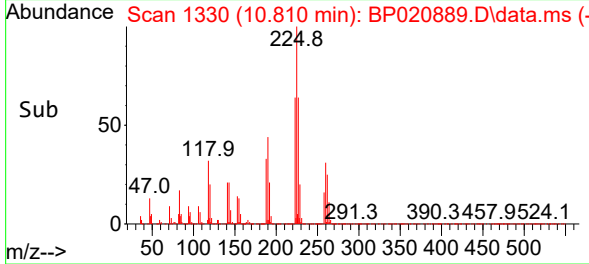
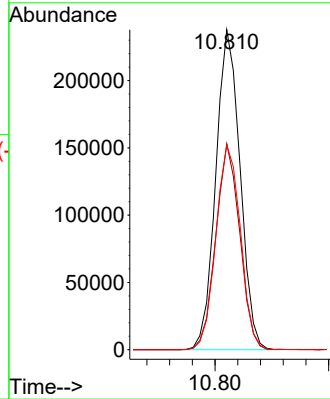
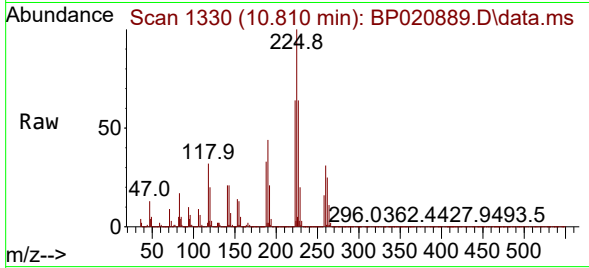




#33
 Hexachlorobutadiene
 Concen: 28.222 ng/uI
 RT: 10.810 min Scan# 11
 Delta R.T. 0.006 min
 Lab File: BP020889.D
 Acq: 10 Jul 2024 21:04

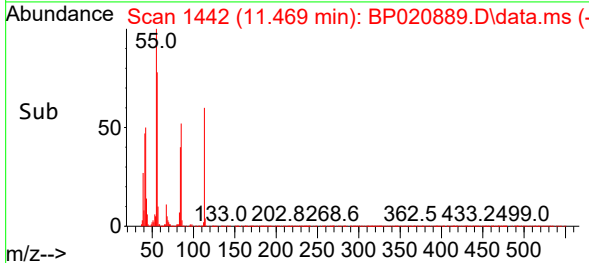
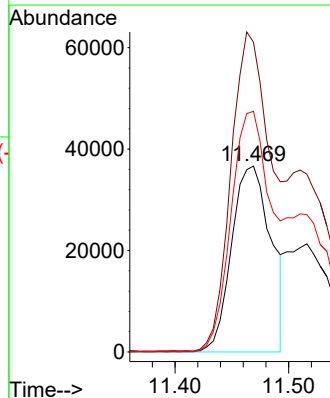
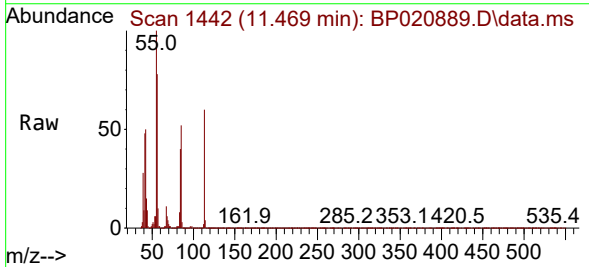
Instrument :
 BNA_P
 ClientSampleId :

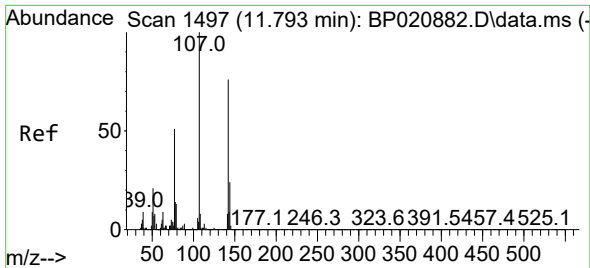
Tgt Ion	Resp	Lower	Upper
225	100		
223	64.3	50.2	75.2
227	63.9	50.6	75.8



#34
 Caprolactam
 Concen: 17.213 ng/uI
 RT: 11.469 min Scan# 1442
 Delta R.T. 0.012 min
 Lab File: BP020889.D
 Acq: 10 Jul 2024 21:04

Tgt Ion	Resp	Lower	Upper
113	100		
55	166.5	140.2	210.4
56	129.4	105.5	158.3

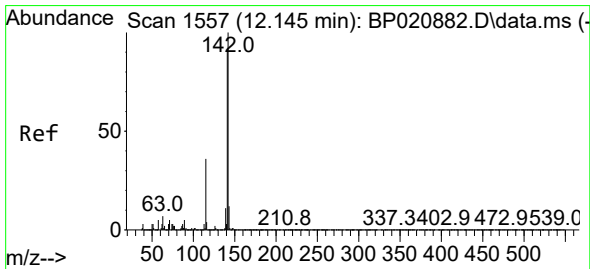
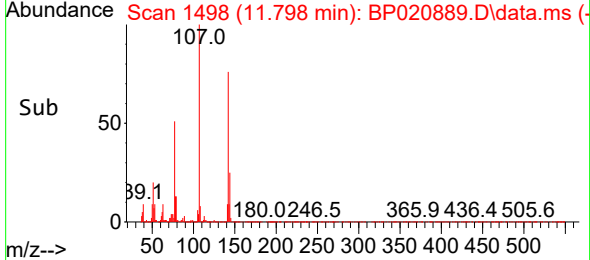
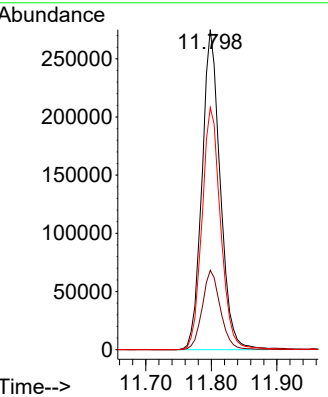
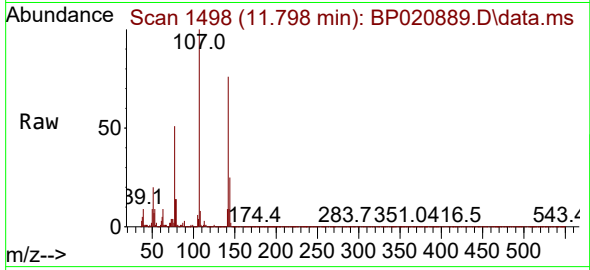




#35
 4-Chloro-3-methylphenol
 Concen: 29.290 ng/ul
 RT: 11.798 min Scan# 1497
 Delta R.T. 0.006 min
 Lab File: BP020889.D
 Acq: 10 Jul 2024 21:04

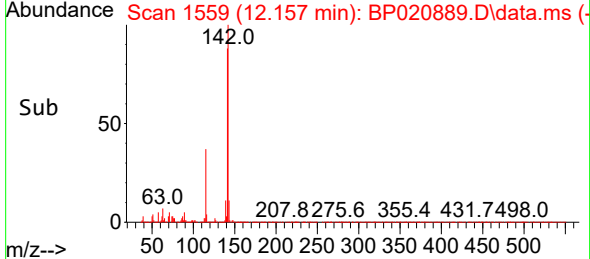
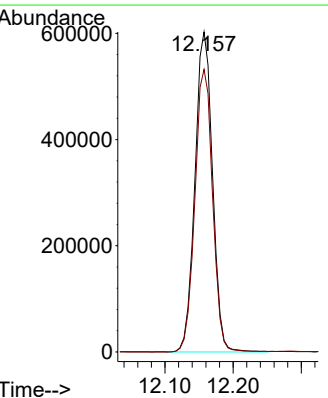
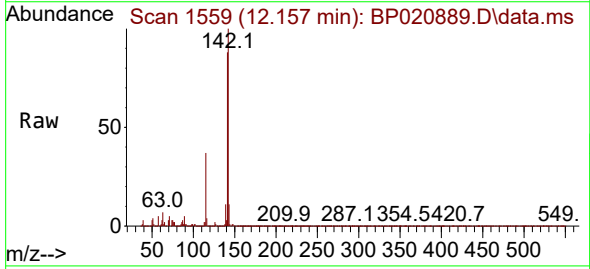
Instrument :
 BNA_P
 ClientSampleId :

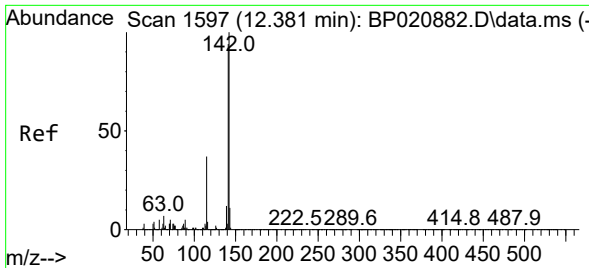
Tgt Ion	Resp	Lower	Upper
107	530588		
107	100		
144	24.8	19.3	28.9
142	75.6	60.7	91.1



#36
 2-Methylnaphthalene
 Concen: 28.404 ng/ul
 RT: 12.157 min Scan# 1559
 Delta R.T. 0.012 min
 Lab File: BP020889.D
 Acq: 10 Jul 2024 21:04

Tgt Ion	Resp	Lower	Upper
142	1078848		
142	100		
141	88.3	72.6	108.8



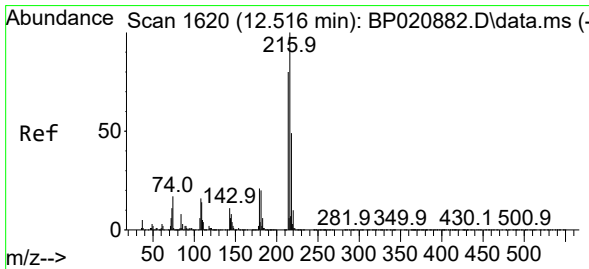
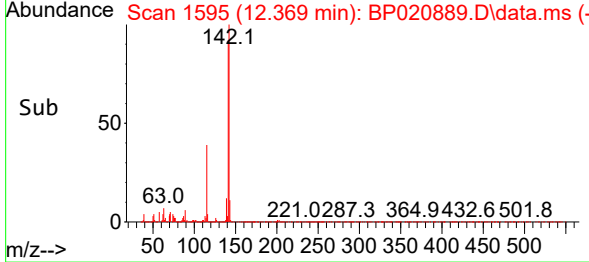
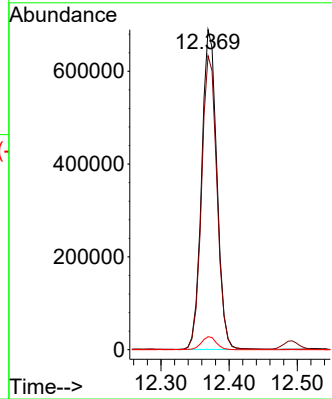
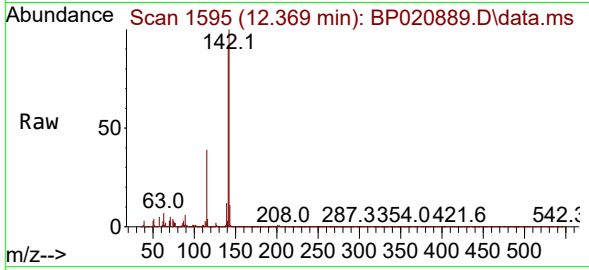


#37
 1-Methylnaphthalene
 Concen: 27.377 ng/ul
 RT: 12.369 min Scan# 1595
 Delta R.T. -0.012 min
 Lab File: BP020889.D
 Acq: 10 Jul 2024 21:04

Instrument : BNA_P
 ClientSampleId :

Tgt Ion:142 Resp: 1069480

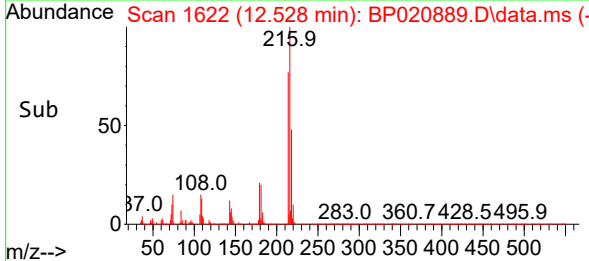
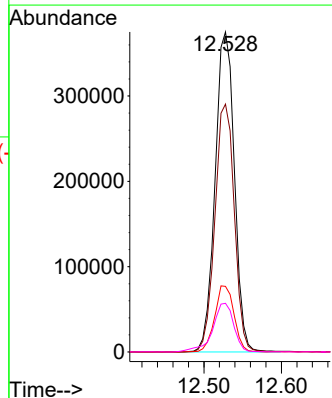
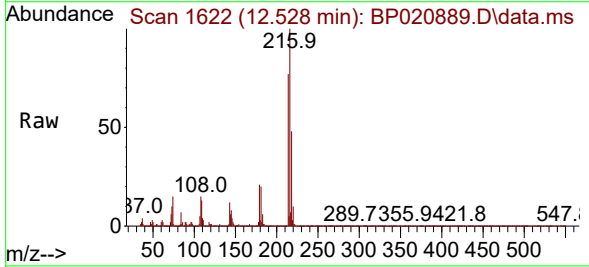
Ion	Ratio	Lower	Upper
142	100		
141	91.8	75.0	112.6
116	4.1	3.2	4.8

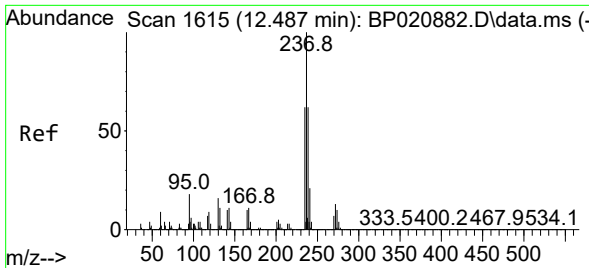


#39
 1,2,4,5-Tetrachlorobenzene
 Concen: 29.187 ng/ul
 RT: 12.528 min Scan# 1622
 Delta R.T. 0.012 min
 Lab File: BP020889.D
 Acq: 10 Jul 2024 21:04

Tgt Ion:216 Resp: 648373

Ion	Ratio	Lower	Upper
216	100		
214	77.5	64.2	96.4
179	20.5	16.6	24.8
108	15.2	13.4	20.2



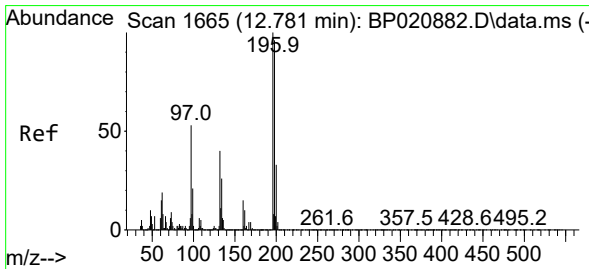
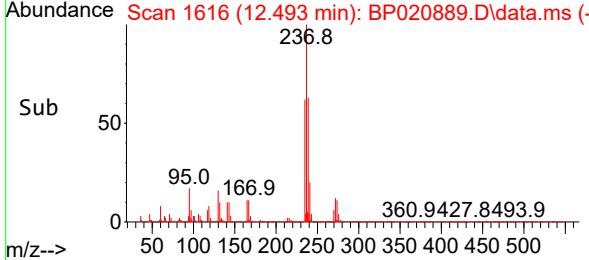
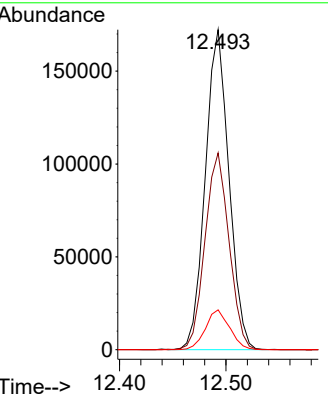
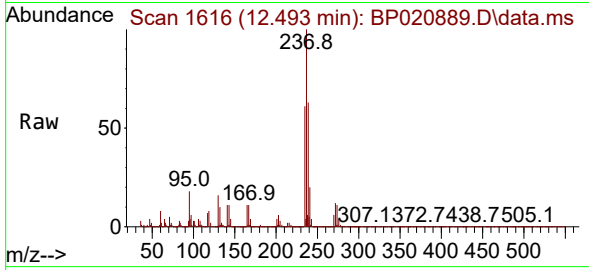


#40
 Hexachlorocyclopentadiene
 Concen: 22.794 ng/ul
 RT: 12.493 min Scan# 1615
 Delta R.T. 0.006 min
 Lab File: BP020889.D
 Acq: 10 Jul 2024 21:04

Instrument : BNA_P
 ClientSampleId :

Tgt Ion: 237 Resp: 264879

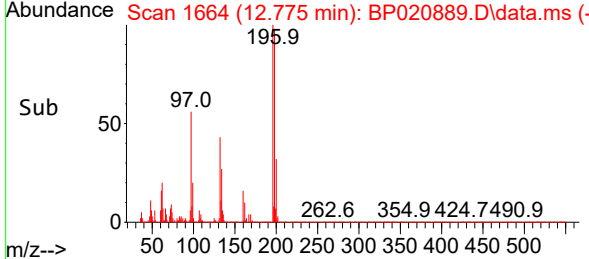
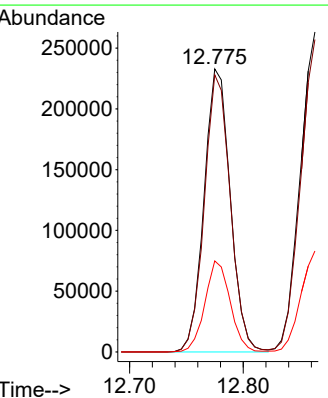
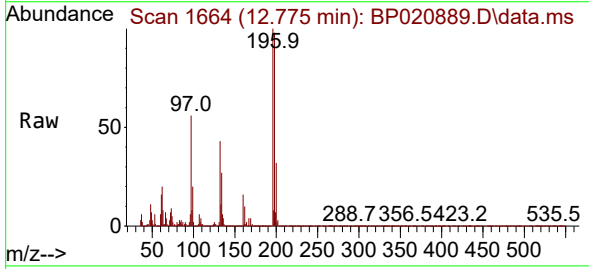
Ion	Ratio	Lower	Upper
237	100		
235	61.5	49.7	74.5
272	12.4	10.2	15.2

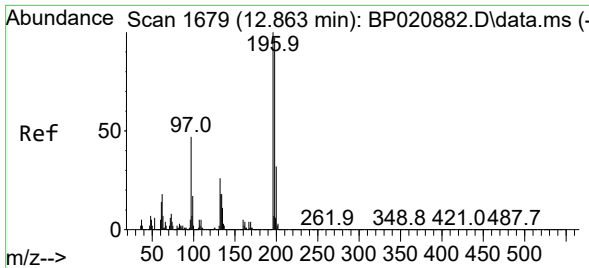


#41
 2,4,6-Trichlorophenol
 Concen: 26.679 ng/ul
 RT: 12.775 min Scan# 1664
 Delta R.T. -0.006 min
 Lab File: BP020889.D
 Acq: 10 Jul 2024 21:04

Tgt Ion: 196 Resp: 374486

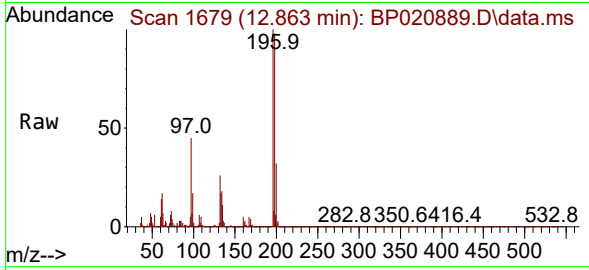
Ion	Ratio	Lower	Upper
196	100		
198	97.9	76.6	115.0
200	32.2	26.0	39.0



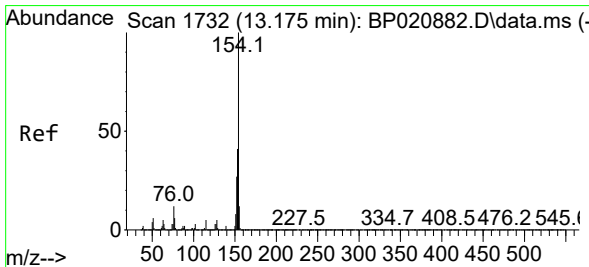
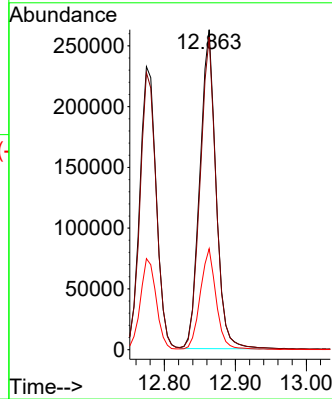
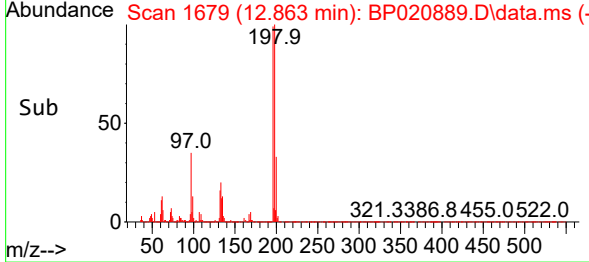


#42
 2,4,5-Trichlorophenol
 Concen: 27.973 ng/ul
 RT: 12.863 min Scan# 1679
 Delta R.T. -0.000 min
 Lab File: BP020889.D
 Acq: 10 Jul 2024 21:04

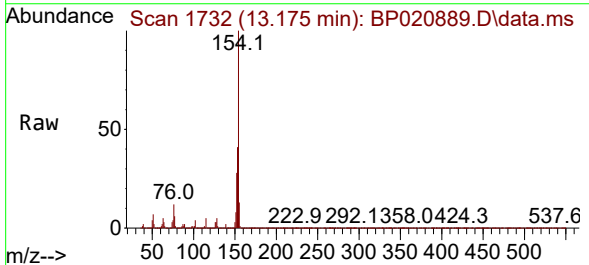
Instrument : BNA_P
 Client Sampled :



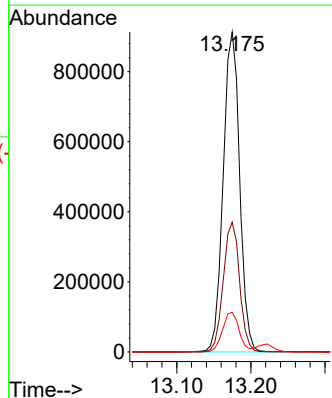
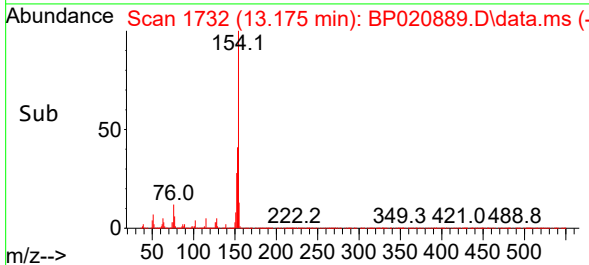
Tgt Ion:196 Resp: 415447
 Ion Ratio Lower Upper
 196 100
 198 97.6 77.1 115.7
 200 31.6 25.3 37.9

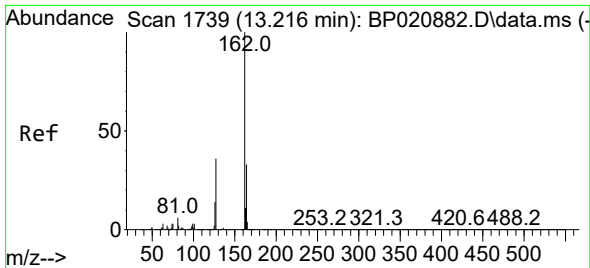


#43
 1,1'-Biphenyl
 Concen: 28.155 ng/ul
 RT: 13.175 min Scan# 1732
 Delta R.T. -0.000 min
 Lab File: BP020889.D
 Acq: 10 Jul 2024 21:04



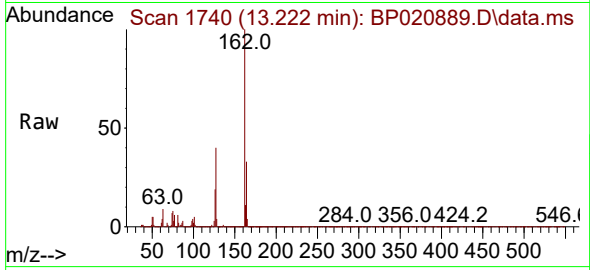
Tgt Ion:154 Resp: 1407477
 Ion Ratio Lower Upper
 154 100
 153 40.5 32.7 49.1
 76 12.4 9.4 14.2



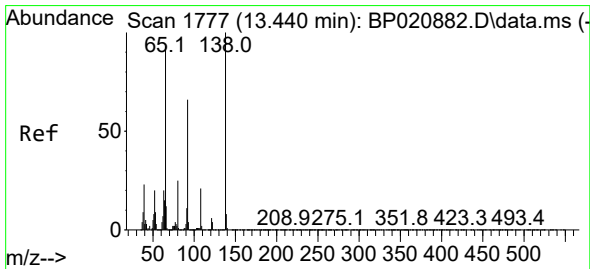
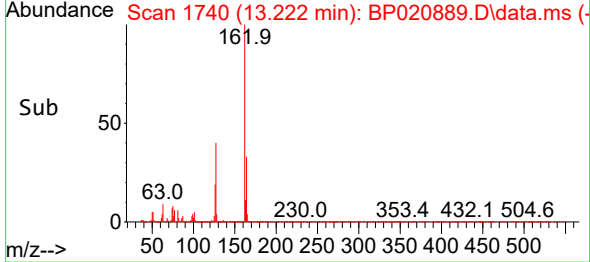
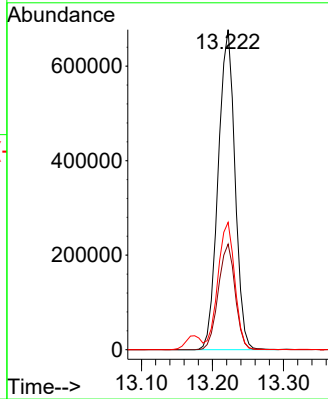


#44
 2-Chloronaphthalene
 Concen: 27.765 ng/ul
 RT: 13.222 min Scan# 1740
 Delta R.T. 0.006 min
 Lab File: BP020889.D
 Acq: 10 Jul 2024 21:04

Instrument :
 BNA_P
 ClientSampleId :

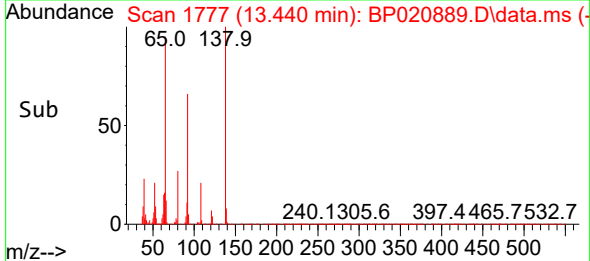
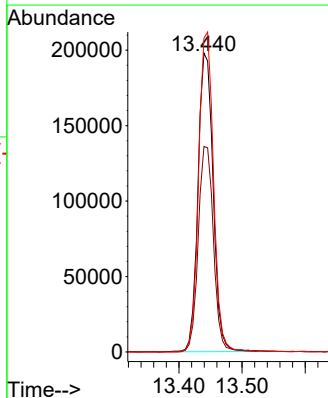
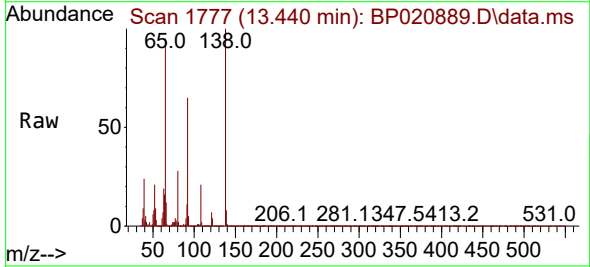


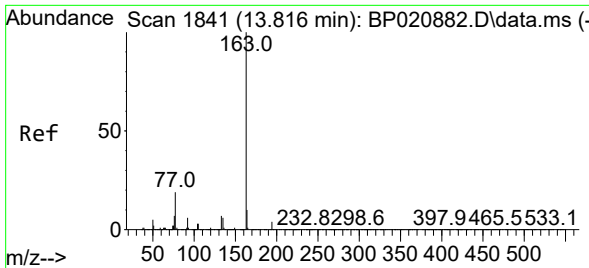
Tgt Ion:162 Resp: 1108030
 Ion Ratio Lower Upper
 162 100
 164 33.0 26.3 39.5
 127 39.8 31.8 47.8



#45
 2-Nitroaniline
 Concen: 29.904 ng/ul
 RT: 13.440 min Scan# 1777
 Delta R.T. -0.000 min
 Lab File: BP020889.D
 Acq: 10 Jul 2024 21:04

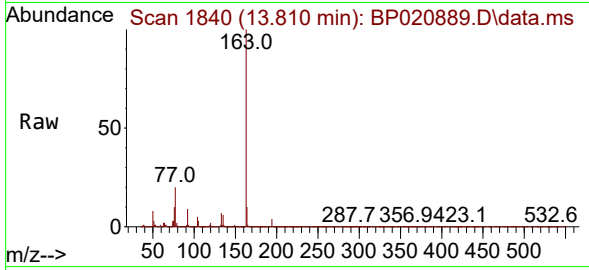
Tgt Ion: 65 Resp: 330023
 Ion Ratio Lower Upper
 65 100
 92 68.7 56.7 85.1
 138 105.0 85.6 128.4



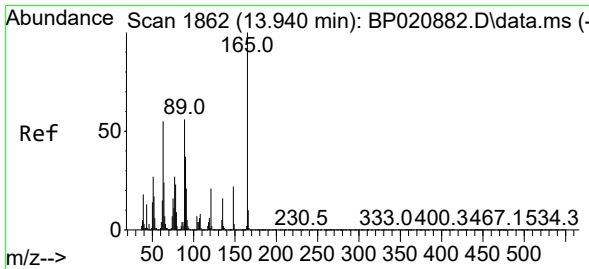
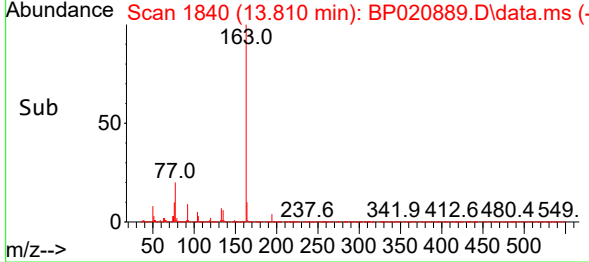
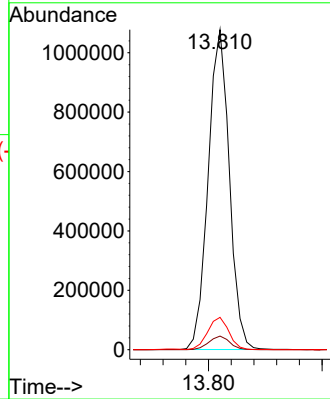


#47
 Dimethylphthalate
 Concen: 27.579 ng/ul
 RT: 13.810 min Scan# 1841
 Delta R.T. -0.006 min
 Lab File: BP020889.D
 Acq: 10 Jul 2024 21:04

Instrument : BNA_P
 ClientSampleId :

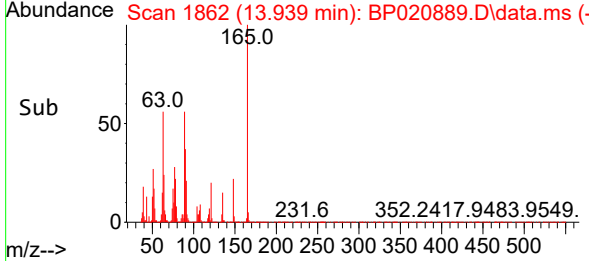
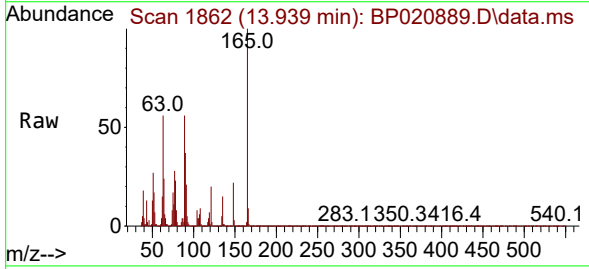
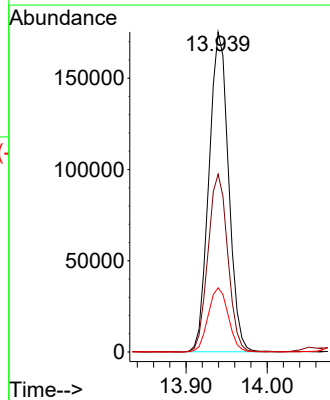


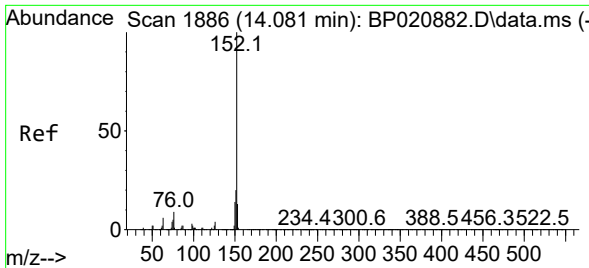
Tgt Ion:163 Resp: 1391455
 Ion Ratio Lower Upper
 163 100
 194 4.3 3.4 5.0
 164 10.1 8.1 12.1



#48
 2,6-Dinitrotoluene
 Concen: 29.116 ng/ul
 RT: 13.939 min Scan# 1862
 Delta R.T. -0.000 min
 Lab File: BP020889.D
 Acq: 10 Jul 2024 21:04

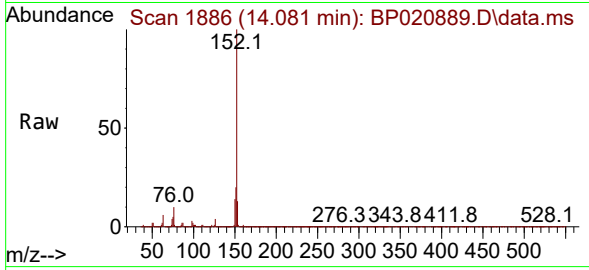
Tgt Ion:165 Resp: 293699
 Ion Ratio Lower Upper
 165 100
 89 55.6 44.7 67.1
 121 20.1 16.5 24.7



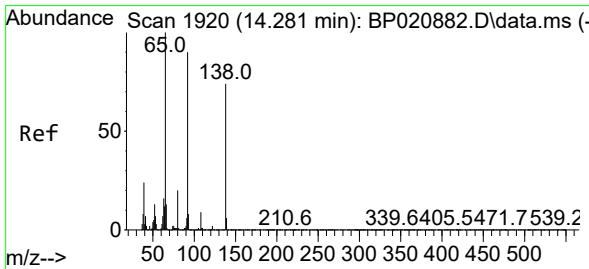
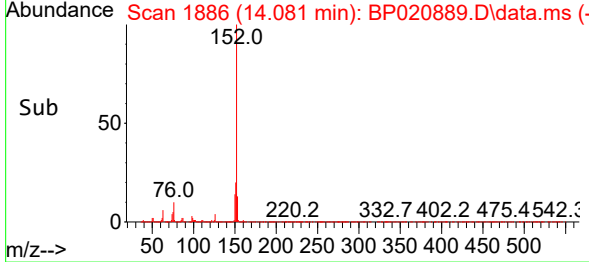
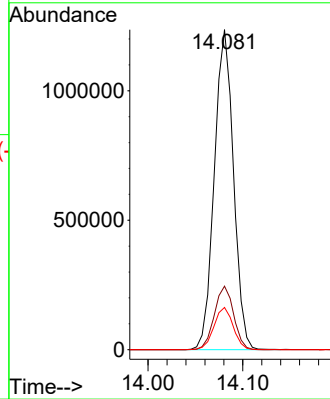


#50
 Acenaphthylene
 Concen: 27.440 ng/ul
 RT: 14.081 min Scan# 1886
 Delta R.T. -0.000 min
 Lab File: BP020889.D
 Acq: 10 Jul 2024 21:04

Instrument : BNA_P
 ClientSampleId :

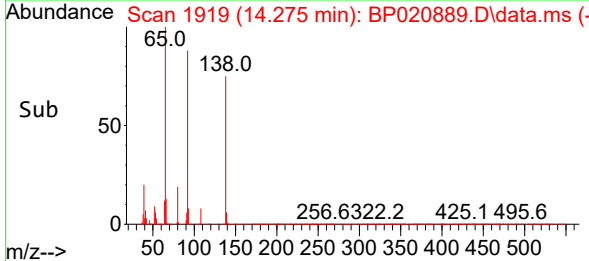
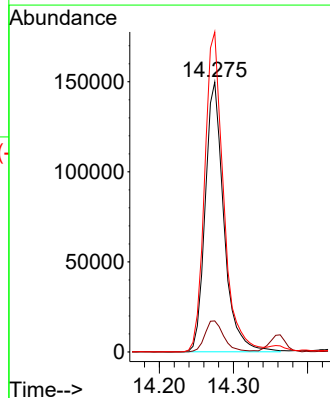
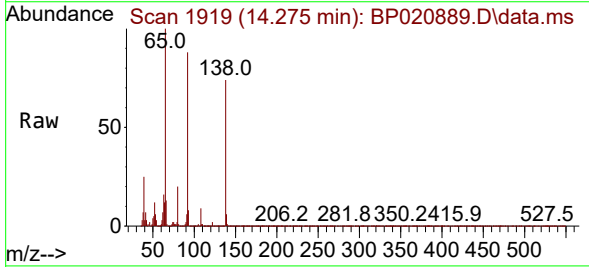


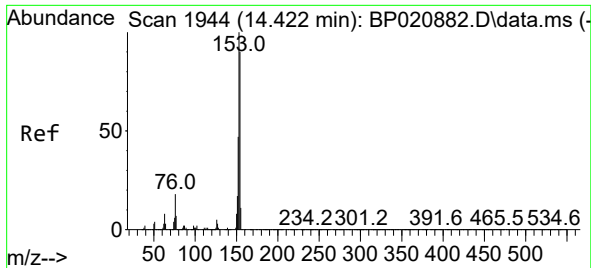
Tgt Ion:152 Resp: 1734663
 Ion Ratio Lower Upper
 152 100
 151 19.8 16.2 24.2
 153 13.2 10.3 15.5



#51
 3-Nitroaniline
 Concen: 29.849 ng/ul
 RT: 14.275 min Scan# 1919
 Delta R.T. -0.006 min
 Lab File: BP020889.D
 Acq: 10 Jul 2024 21:04

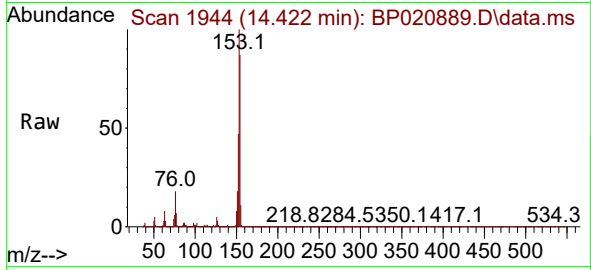
Tgt Ion:138 Resp: 262015
 Ion Ratio Lower Upper
 138 100
 108 11.5 9.8 14.8
 92 118.5 98.0 147.0



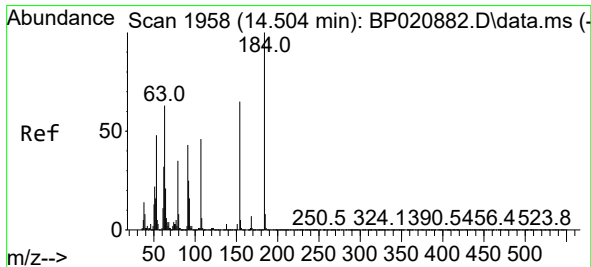
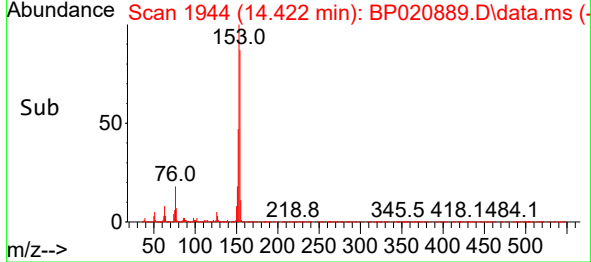
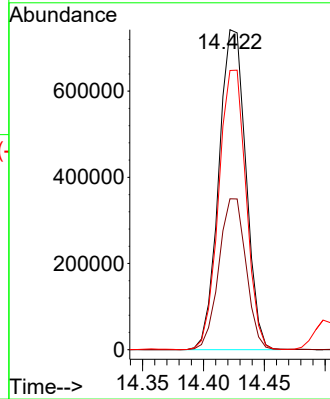


#52
 Acenaphthene
 Concen: 27.393 ng/ul
 RT: 14.422 min Scan# 1944
 Delta R.T. -0.000 min
 Lab File: BP020889.D
 Acq: 10 Jul 2024 21:04

Instrument :
 BNA_P
 ClientSampleId :

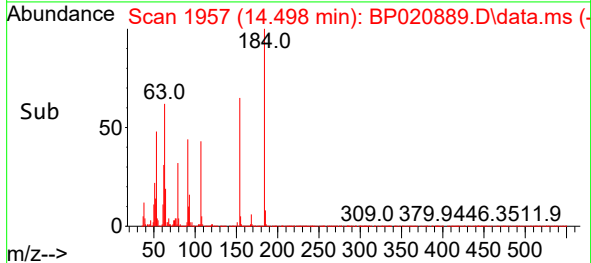
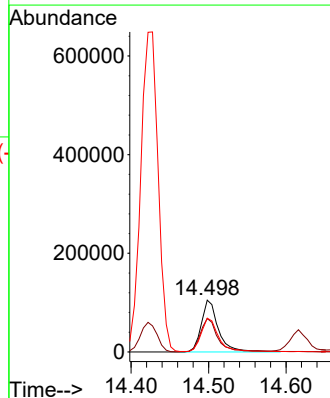
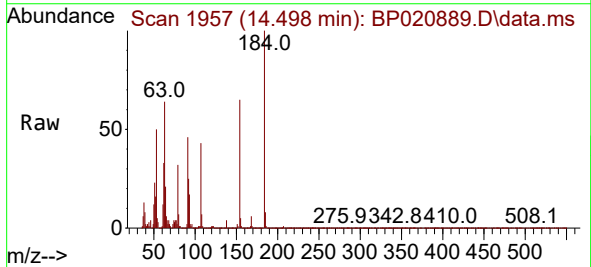


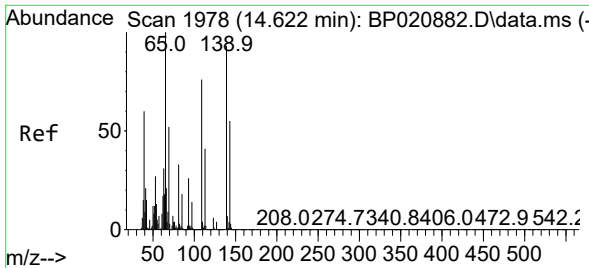
Tgt Ion:153 Resp: 1149369
 Ion Ratio Lower Upper
 153 100
 152 47.2 37.8 56.6
 154 87.3 71.8 107.6



#53
 2,4-Dinitrophenol
 Concen: 30.437 ng/ul
 RT: 14.498 min Scan# 1957
 Delta R.T. -0.006 min
 Lab File: BP020889.D
 Acq: 10 Jul 2024 21:04

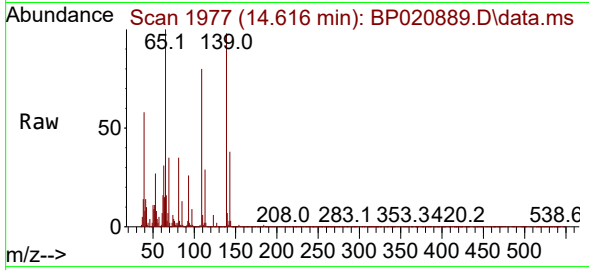
Tgt Ion:184 Resp: 161234
 Ion Ratio Lower Upper
 184 100
 63 64.4 50.3 75.5
 154 65.3 53.0 79.6



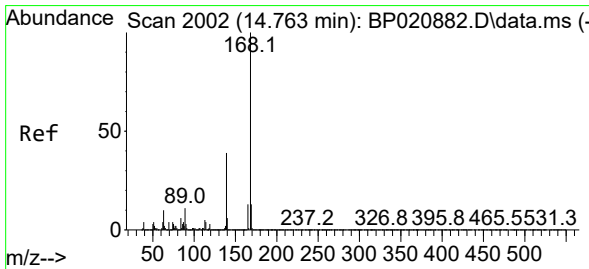
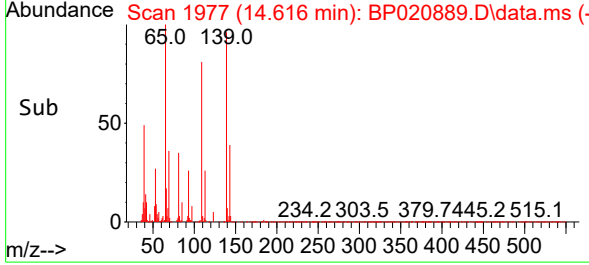
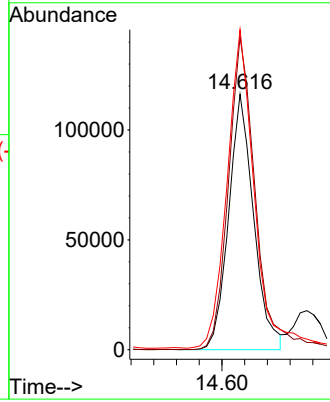


#55
 4-Nitrophenol
 Concen: 30.894 ng/ul
 RT: 14.616 min Scan# 1978
 Delta R.T. -0.006 min
 Lab File: BP020889.D
 Acq: 10 Jul 2024 21:04

Instrument :
 BNA_P
 ClientSampleId :

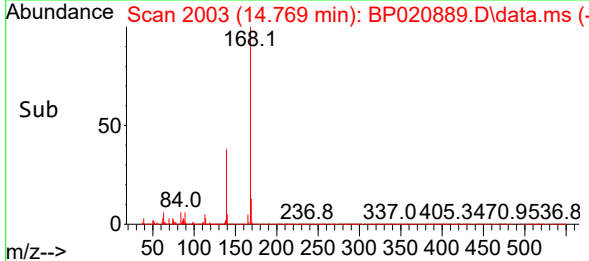
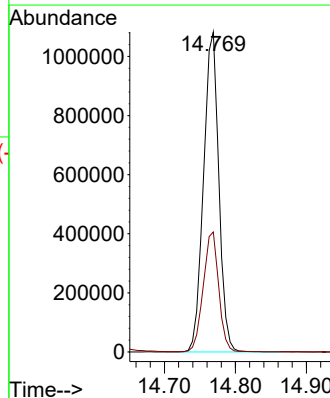
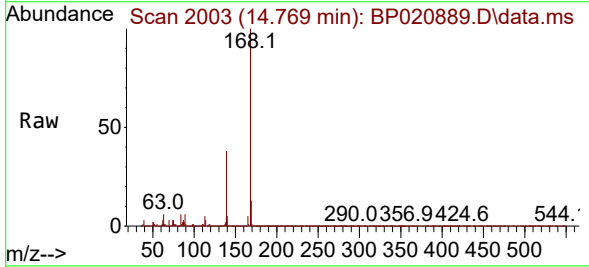


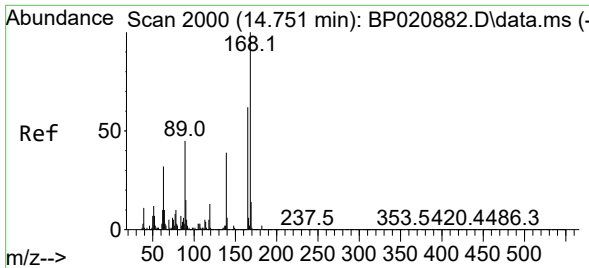
Tgt Ion:109 Resp: 177796
 Ion Ratio Lower Upper
 109 100
 139 122.5 98.0 147.0
 65 125.3 106.0 159.0



#56
 Dibenzofuran
 Concen: 28.235 ng/ul
 RT: 14.769 min Scan# 2003
 Delta R.T. 0.006 min
 Lab File: BP020889.D
 Acq: 10 Jul 2024 21:04

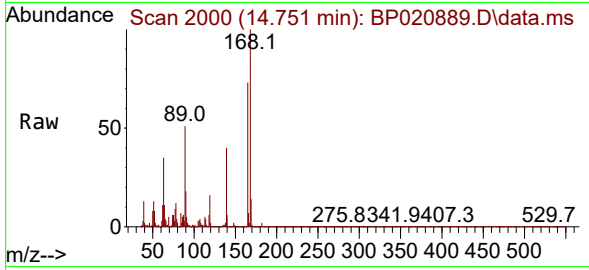
Tgt Ion:168 Resp: 1622334
 Ion Ratio Lower Upper
 168 100
 139 37.5 31.1 46.7



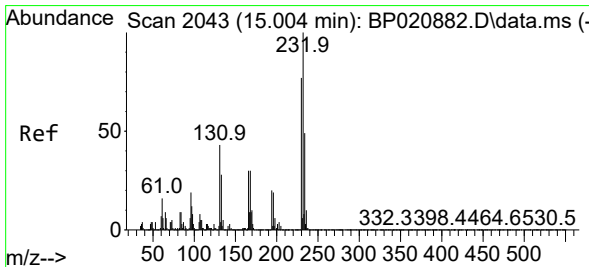
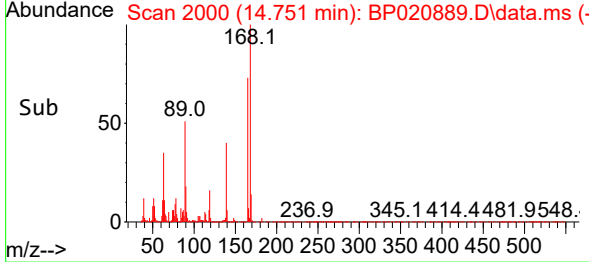
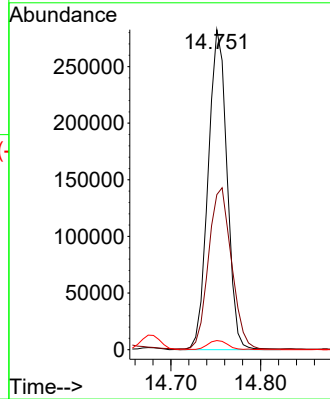


#57
 2,4-Dinitrotoluene
 Concen: 29.817 ng/ul
 RT: 14.751 min Scan# 2000
 Delta R.T. -0.000 min
 Lab File: BP020889.D
 Acq: 10 Jul 2024 21:04

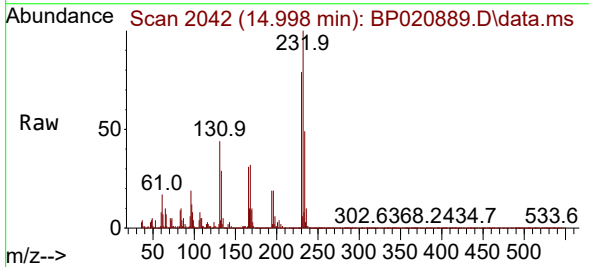
Instrument :
 BNA_P
 ClientSampleId :



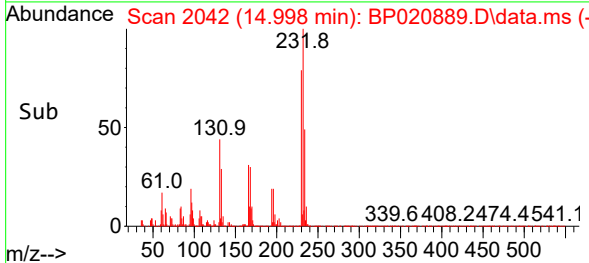
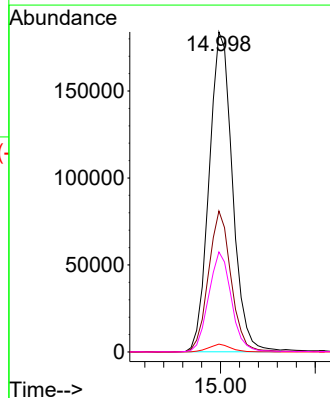
Tgt Ion:165 Resp: 412875
 Ion Ratio Lower Upper
 165 100
 63 48.4 41.0 61.4
 182 2.9 2.2 3.4

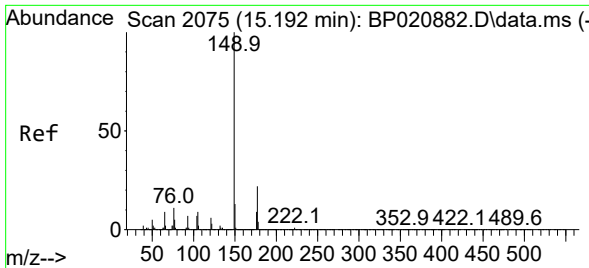


#58
 2,3,4,6-Tetrachlorophenol
 Concen: 24.765 ng/ul
 RT: 14.998 min Scan# 2042
 Delta R.T. -0.006 min
 Lab File: BP020889.D
 Acq: 10 Jul 2024 21:04



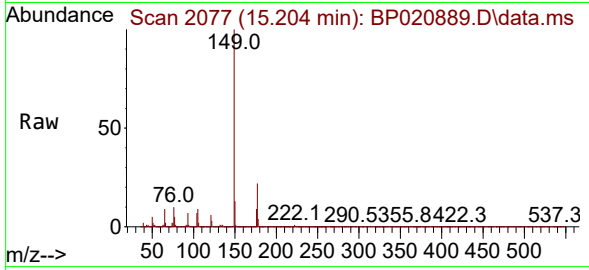
Tgt Ion:232 Resp: 314949
 Ion Ratio Lower Upper
 232 100
 131 44.1 34.4 51.6
 130 2.5 2.0 3.0
 166 31.3 24.4 36.6



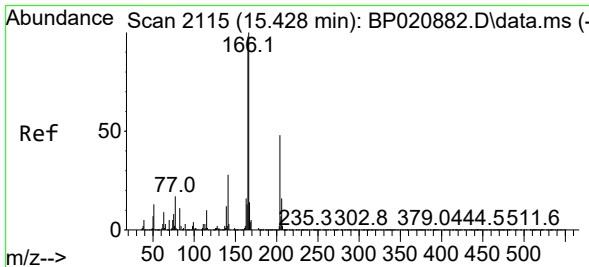
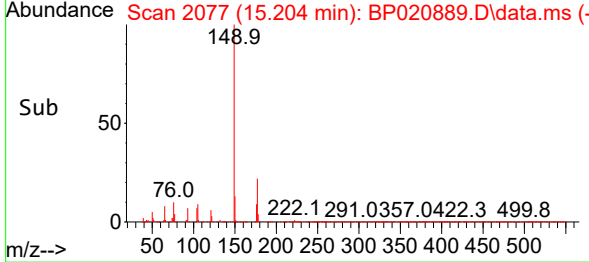
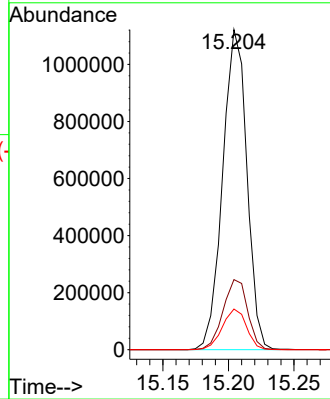


#59
 Diethylphthalate
 Concen: 28.561 ng/uI
 RT: 15.204 min Scan# 2077
 Delta R.T. 0.012 min
 Lab File: BP020889.D
 Acq: 10 Jul 2024 21:04

Instrument : BNA_P
 ClientSampleId :

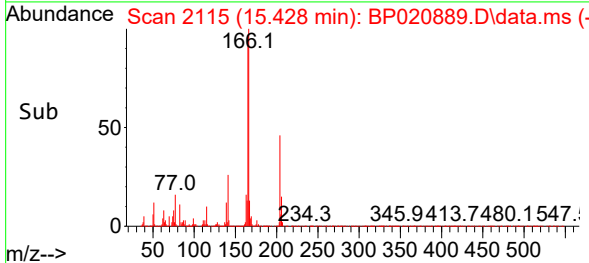
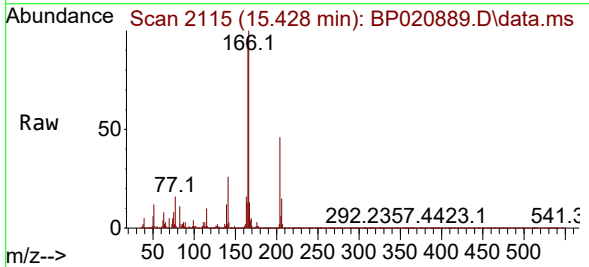
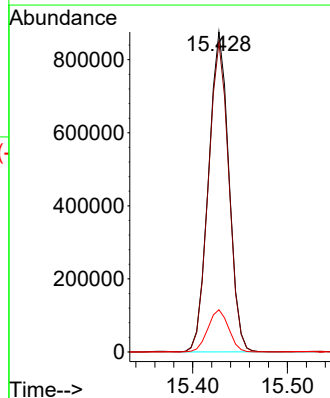


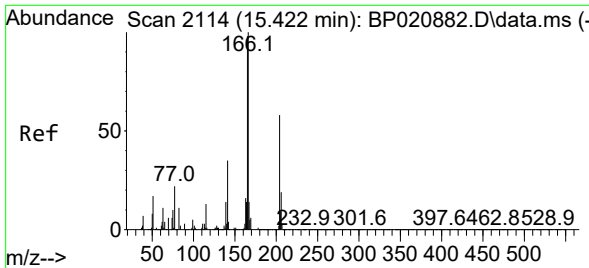
Tgt Ion:149 Resp: 1440120
 Ion Ratio Lower Upper
 149 100
 177 21.9 17.7 26.5
 150 12.7 10.2 15.2



#61
 Fluorene
 Concen: 27.785 ng/uI
 RT: 15.428 min Scan# 2115
 Delta R.T. -0.000 min
 Lab File: BP020889.D
 Acq: 10 Jul 2024 21:04

Tgt Ion:166 Resp: 1302772
 Ion Ratio Lower Upper
 166 100
 165 96.7 78.1 117.1
 167 13.2 10.9 16.3



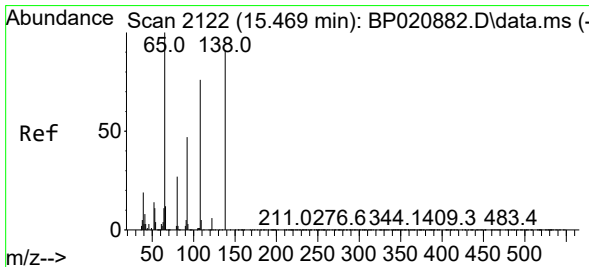
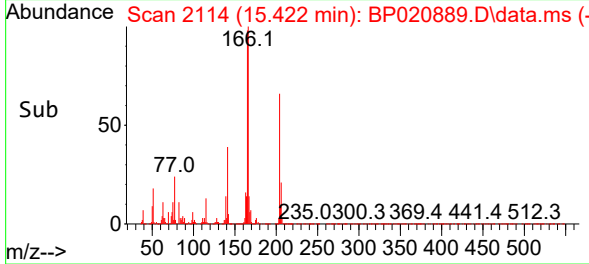
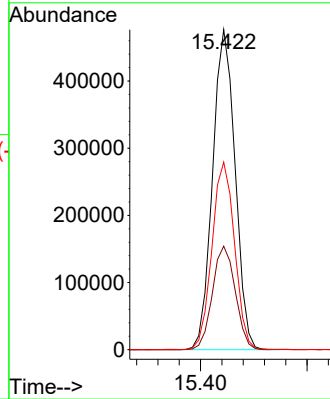
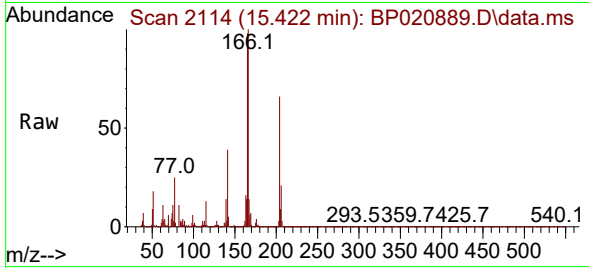


#62
 4-Chlorophenyl-phenylether
 Concen: 27.458 ng/ul
 RT: 15.422 min Scan# 2114
 Delta R.T. -0.000 min
 Lab File: BP020889.D
 Acq: 10 Jul 2024 21:04

Instrument : BNA_P
 ClientSampleId :

Tgt Ion:204 Resp: 698604

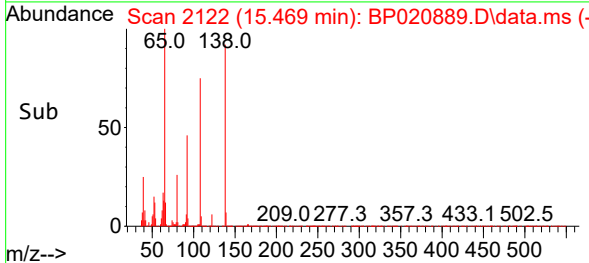
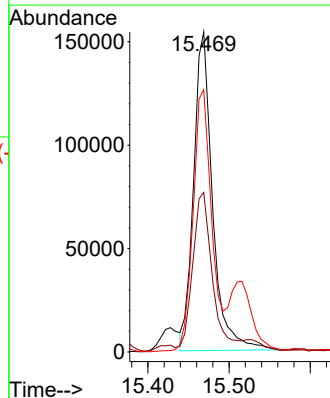
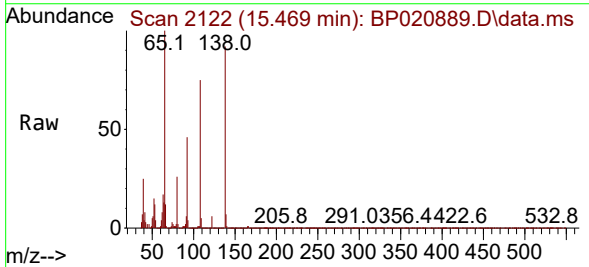
Ion	Ratio	Lower	Upper
204	100		
206	32.4	26.4	39.6
141	58.6	48.5	72.7

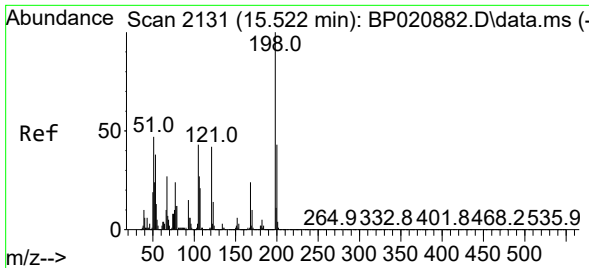


#63
 4-Nitroaniline
 Concen: 34.504 ng/ul
 RT: 15.469 min Scan# 2122
 Delta R.T. -0.000 min
 Lab File: BP020889.D
 Acq: 10 Jul 2024 21:04

Tgt Ion:138 Resp: 250814

Ion	Ratio	Lower	Upper
138	100		
92	49.9	40.9	61.3
108	81.9	64.7	97.1

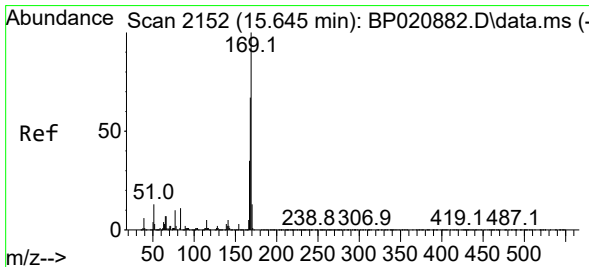
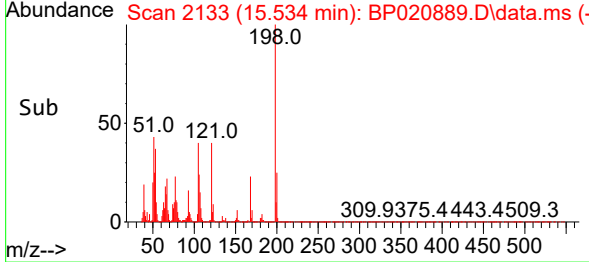
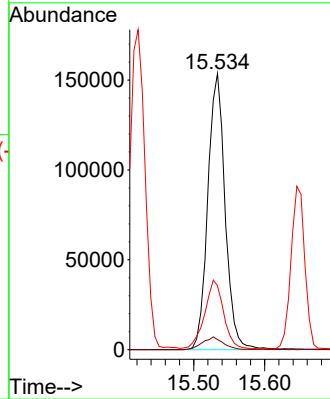
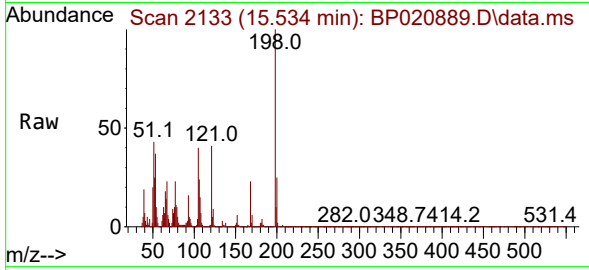




#66
 4,6-Dinitro-2-methylphenol
 Concen: 30.176 ng/ul
 RT: 15.534 min Scan# 2133
 Delta R.T. 0.012 min
 Lab File: BP020889.D
 Acq: 10 Jul 2024 21:04

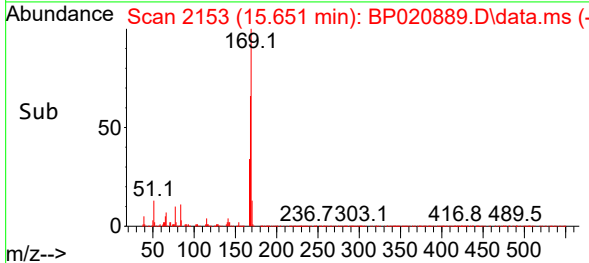
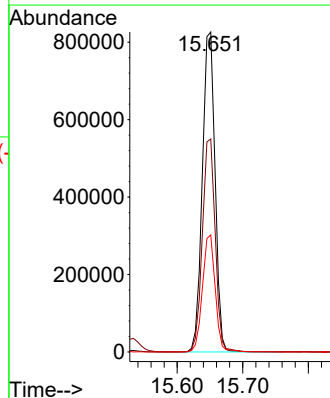
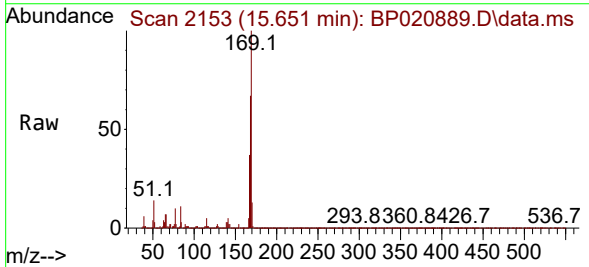
Instrument :
 BNA_P
 ClientSampleId :

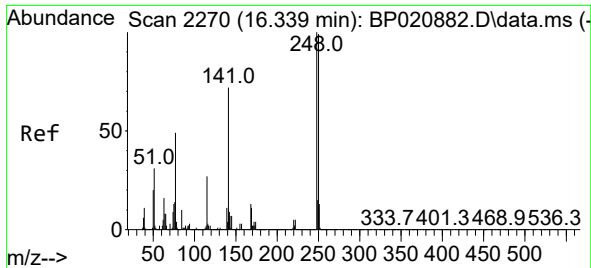
Tgt Ion:198 Resp: 260631
 Ion Ratio Lower Upper
 198 100
 182 3.6 3.8 5.6#
 77 23.2 20.0 30.0



#67
 N-Nitrosodiphenylamine
 Concen: 28.626 ng/ul
 RT: 15.651 min Scan# 2153
 Delta R.T. 0.006 min
 Lab File: BP020889.D
 Acq: 10 Jul 2024 21:04

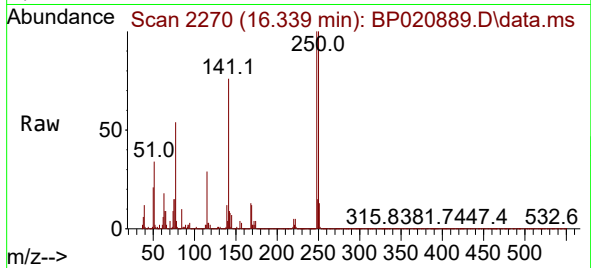
Tgt Ion:169 Resp: 1122084
 Ion Ratio Lower Upper
 169 100
 168 66.6 53.4 80.2
 167 36.6 28.4 42.6



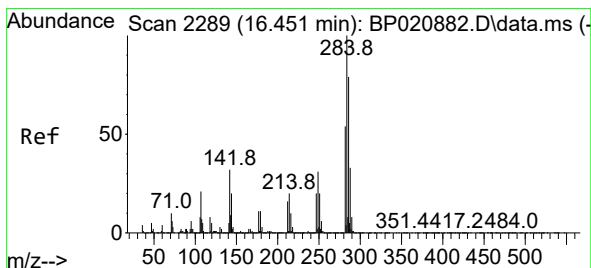
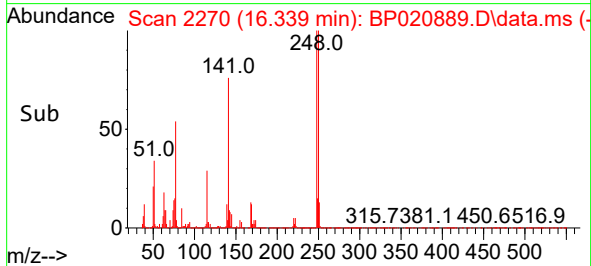
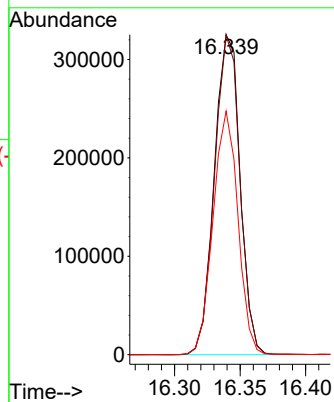


#68
 4-Bromophenyl-phenylether
 Concen: 28.185 ng/ul
 RT: 16.339 min Scan# 21
 Delta R.T. -0.000 min
 Lab File: BP020889.D
 Acq: 10 Jul 2024 21:04

Instrument :
 BNA_P
 ClientSampleId :

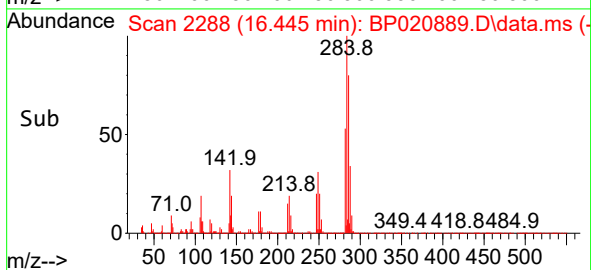
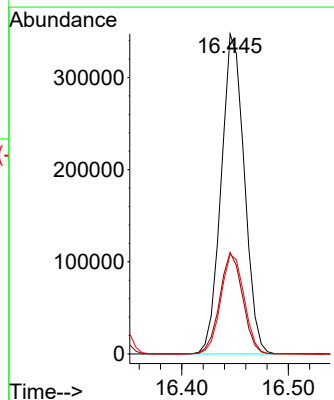
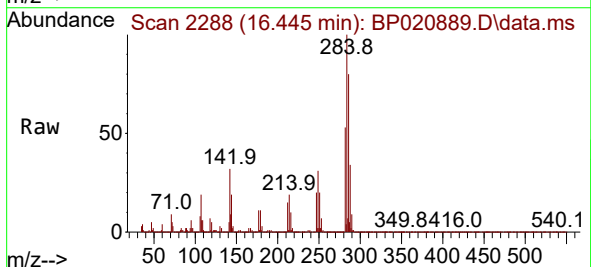


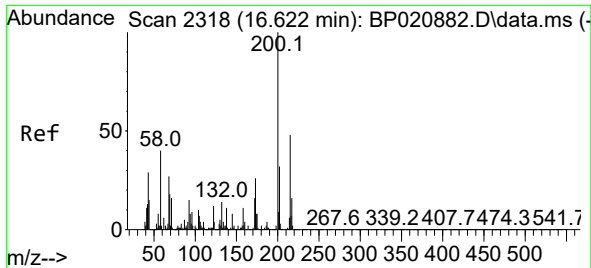
Tgt Ion:248 Resp: 444699
 Ion Ratio Lower Upper
 248 100
 250 99.9 79.3 118.9
 141 76.1 57.4 86.0



#69
 Hexachlorobenzene
 Concen: 28.928 ng/ul
 RT: 16.445 min Scan# 2288
 Delta R.T. -0.006 min
 Lab File: BP020889.D
 Acq: 10 Jul 2024 21:04

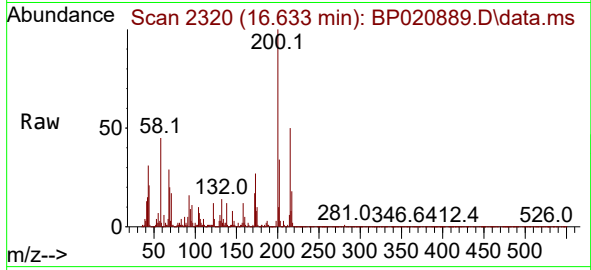
Tgt Ion:284 Resp: 523324
 Ion Ratio Lower Upper
 284 100
 142 31.7 25.8 38.8
 249 31.2 25.1 37.7



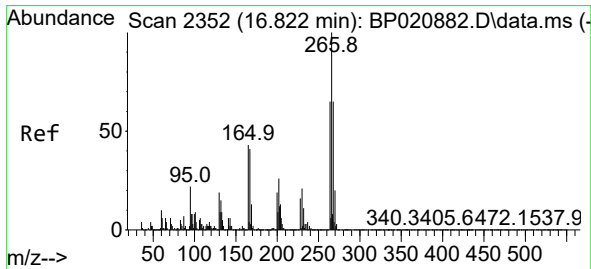
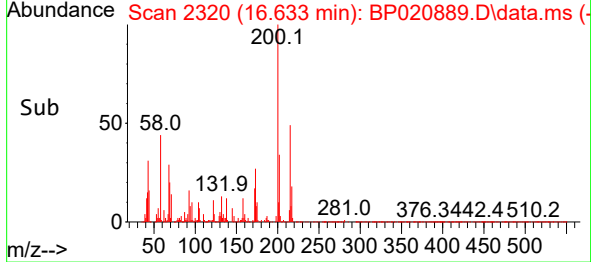
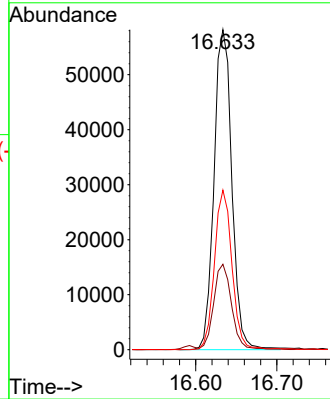


#70
 Atrazine
 Concen: 6.211 ng/ul
 RT: 16.633 min Scan# 21
 Delta R.T. 0.012 min
 Lab File: BP020889.D
 Acq: 10 Jul 2024 21:04

Instrument :
 BNA_P
 ClientSampleId :

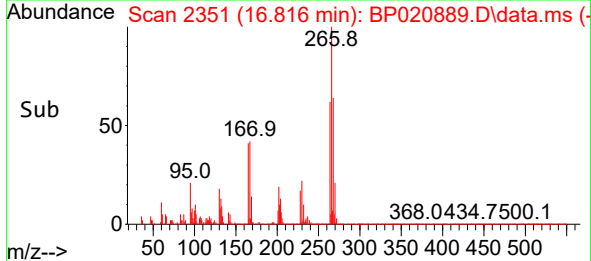
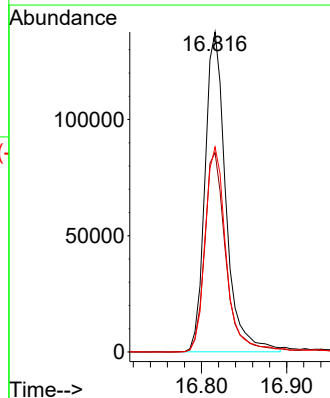
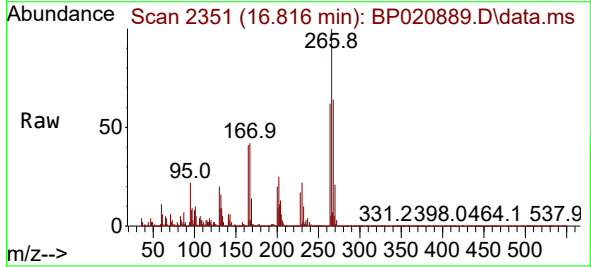


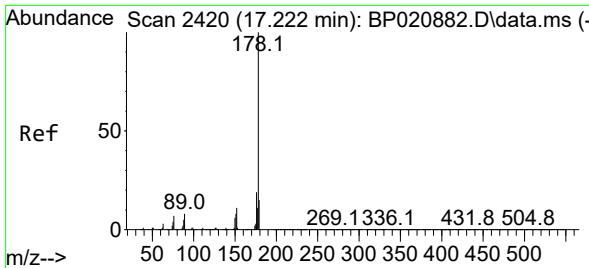
Tgt Ion:200 Resp: 88725
 Ion Ratio Lower Upper
 200 100
 173 26.7 20.8 31.2
 215 49.8 38.7 58.1



#71
 Pentachlorophenol
 Concen: 23.766 ng/ul
 RT: 16.816 min Scan# 2351
 Delta R.T. -0.006 min
 Lab File: BP020889.D
 Acq: 10 Jul 2024 21:04

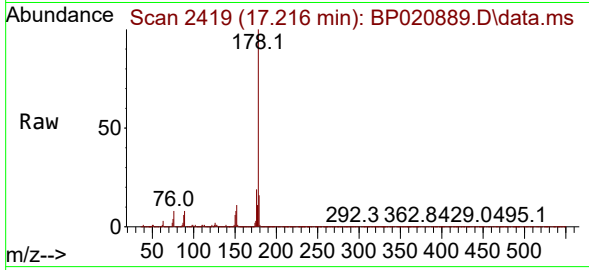
Tgt Ion:266 Resp: 233510
 Ion Ratio Lower Upper
 266 100
 264 62.3 52.3 78.5
 268 64.1 52.3 78.5



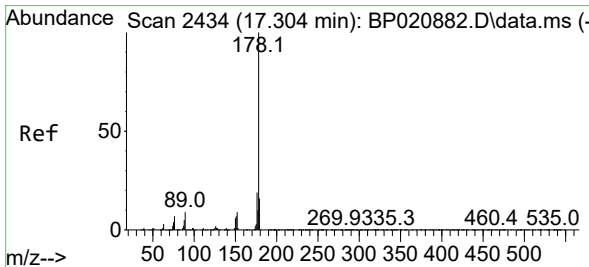
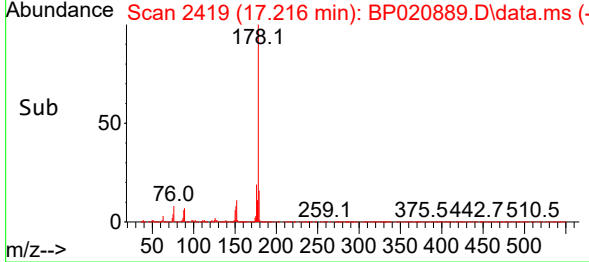
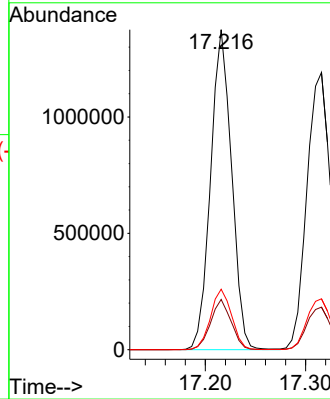


#72
 Phenanthrene
 Concen: 28.668 ng/ul
 RT: 17.216 min Scan# 2420
 Delta R.T. -0.006 min
 Lab File: BP020889.D
 Acq: 10 Jul 2024 21:04

Instrument :
 BNA_P
 ClientSampleId :

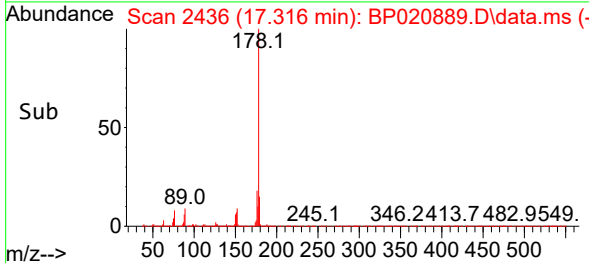
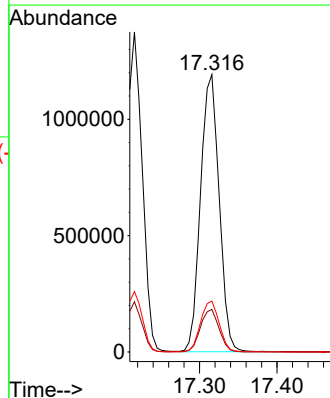
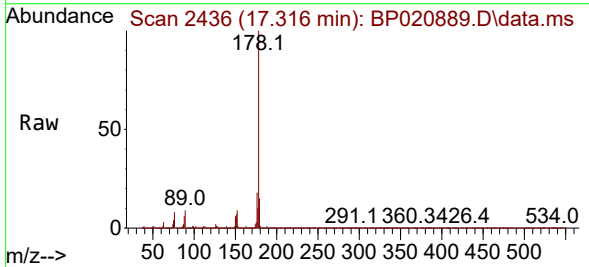


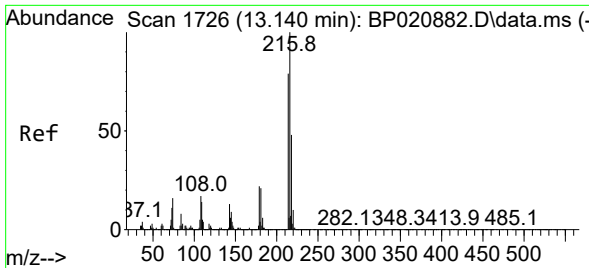
Tgt Ion:178 Resp: 2001911
 Ion Ratio Lower Upper
 178 100
 179 15.7 12.2 18.4
 176 18.9 15.0 22.4



#74
 Anthracene
 Concen: 27.917 ng/ul
 RT: 17.316 min Scan# 2436
 Delta R.T. 0.012 min
 Lab File: BP020889.D
 Acq: 10 Jul 2024 21:04

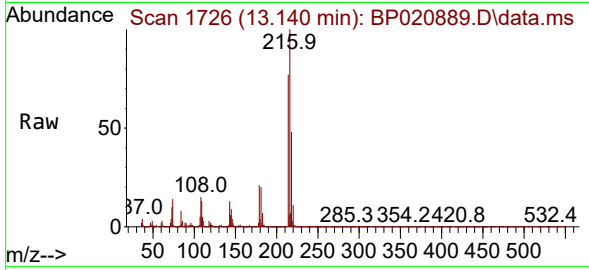
Tgt Ion:178 Resp: 1987423
 Ion Ratio Lower Upper
 178 100
 179 15.4 12.5 18.7
 176 18.3 14.8 22.2



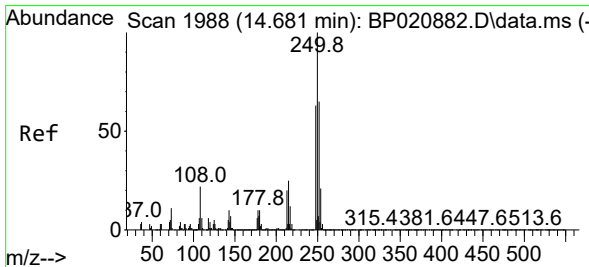
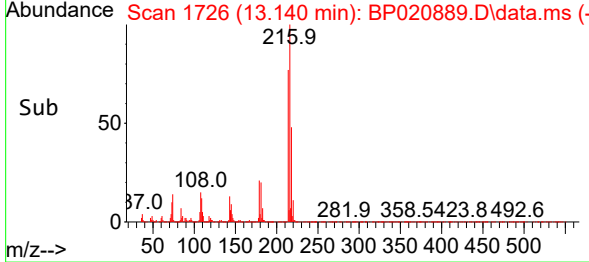
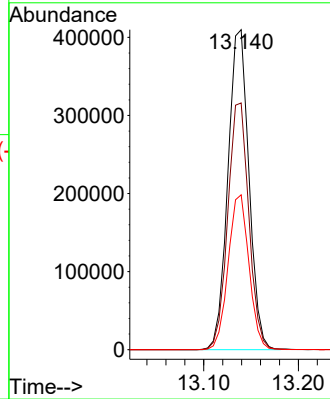


#75
 1,2,3,4-Tetrachlorobenzene
 Concen: 29.247 ng/uL
 RT: 13.140 min Scan# 111
 Delta R.T. -0.000 min
 Lab File: BP020889.D
 Acq: 10 Jul 2024 21:04

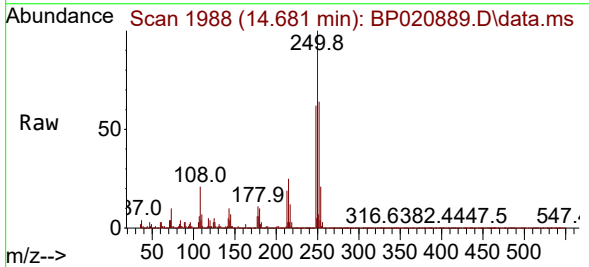
Instrument :
 BNA_P
 ClientSampleId :



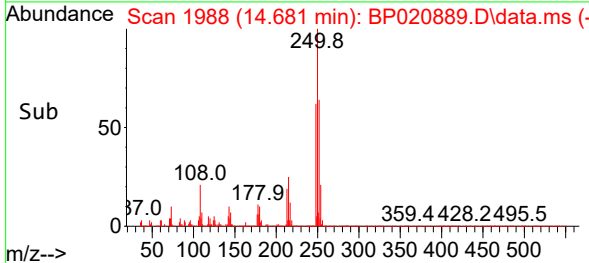
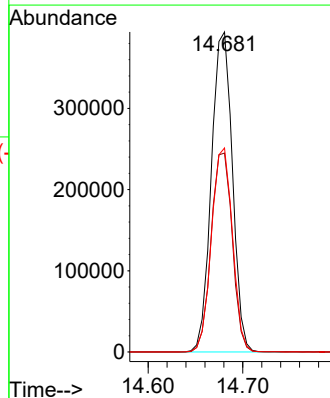
Tgt Ion:216 Resp: 630124
 Ion Ratio Lower Upper
 216 100
 214 77.1 63.2 94.8
 218 48.4 38.2 57.4

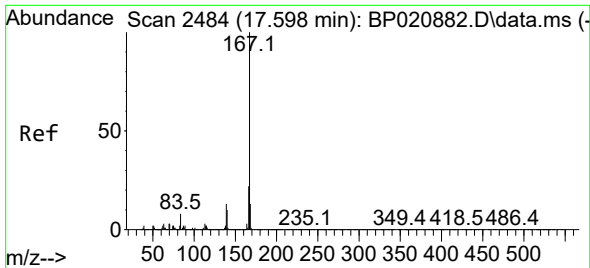


#76
 Pentachlorobenzene
 Concen: 28.327 ng/uL
 RT: 14.681 min Scan# 1988
 Delta R.T. -0.000 min
 Lab File: BP020889.D
 Acq: 10 Jul 2024 21:04



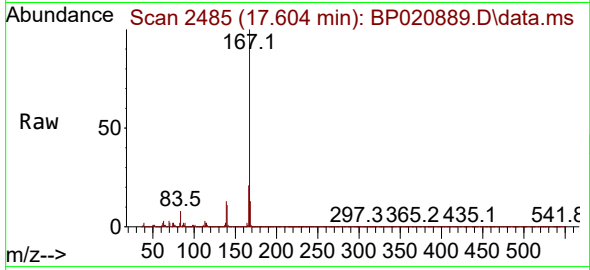
Tgt Ion:250 Resp: 606438
 Ion Ratio Lower Upper
 250 100
 248 62.1 50.8 76.2
 252 63.8 51.6 77.4



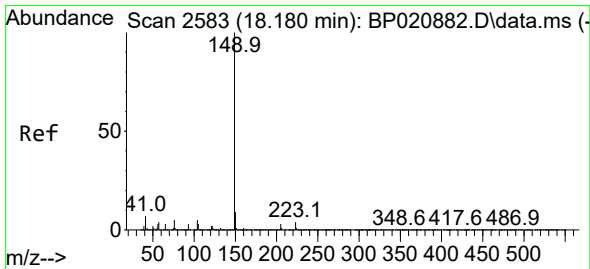
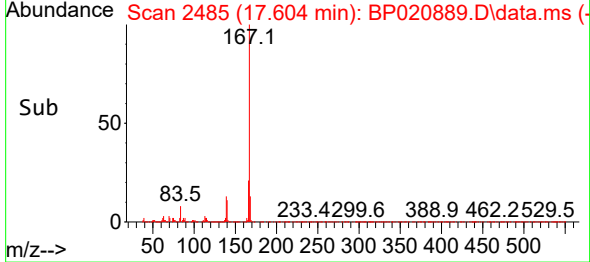
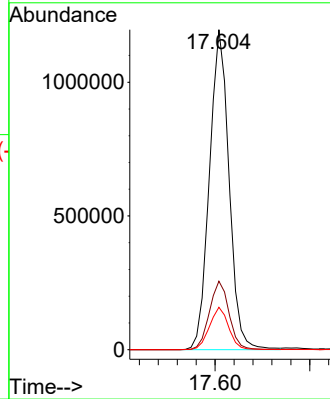


#77
 Carbazole
 Concen: 29.604 ng/ul
 RT: 17.604 min Scan# 2485
 Delta R.T. 0.006 min
 Lab File: BP020889.D
 Acq: 10 Jul 2024 21:04

Instrument :
 BNA_P
 ClientSampleId :

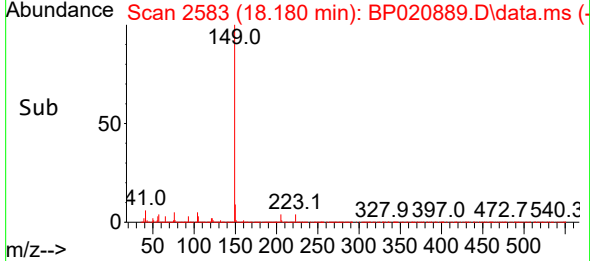
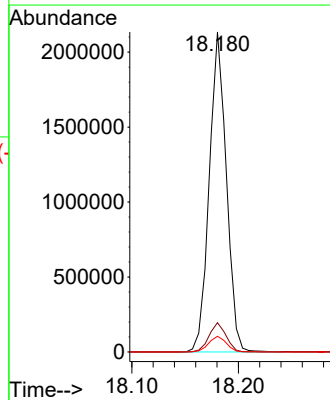
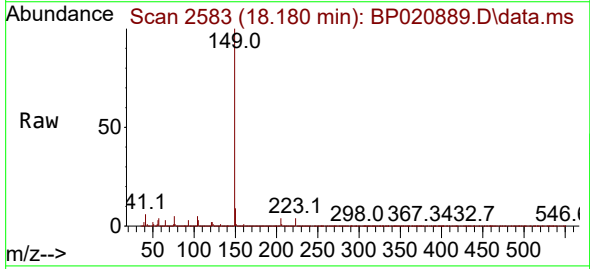


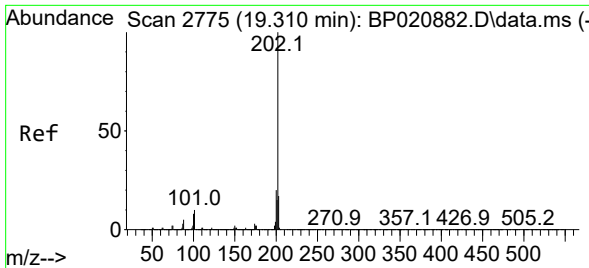
Tgt Ion:167 Resp: 1722818
 Ion Ratio Lower Upper
 167 100
 166 21.4 17.3 25.9
 139 13.3 10.2 15.2



#78
 Di-n-butylphthalate
 Concen: 29.608 ng/ul
 RT: 18.180 min Scan# 2583
 Delta R.T. -0.000 min
 Lab File: BP020889.D
 Acq: 10 Jul 2024 21:04

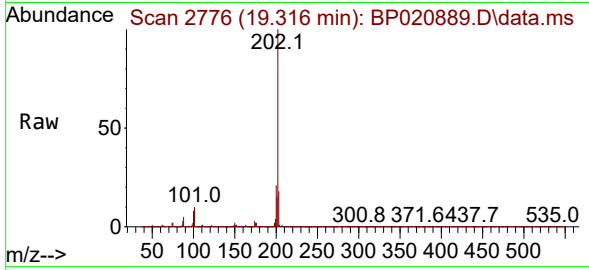
Tgt Ion:149 Resp: 2377214
 Ion Ratio Lower Upper
 149 100
 150 9.2 7.4 11.0
 104 4.9 3.9 5.9





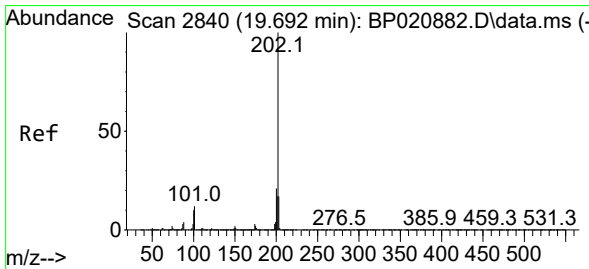
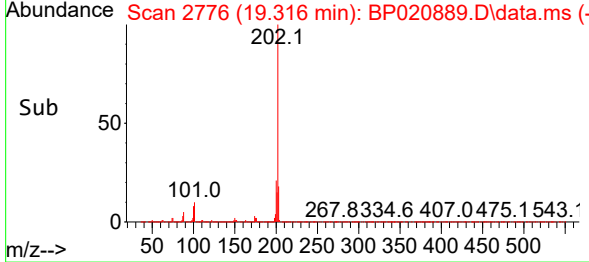
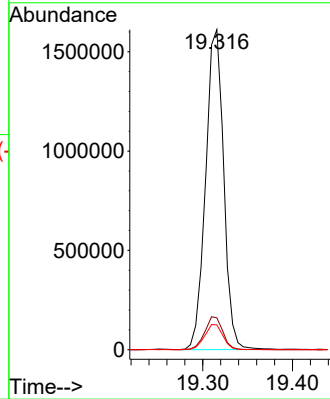
#80
 Fluoranthene
 Concen: 26.653 ng/uI
 RT: 19.316 min Scan# 2776
 Delta R.T. 0.006 min
 Lab File: BP020889.D
 Acq: 10 Jul 2024 21:04

Instrument :
 BNA_P
 ClientSampleId :



Tgt Ion:202 Resp: 2251171

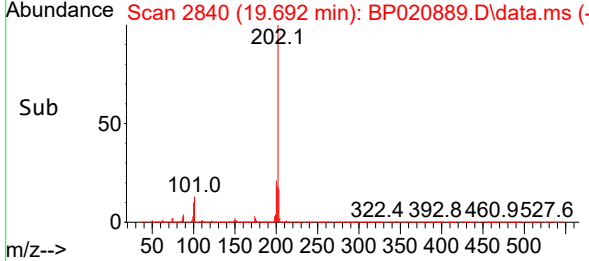
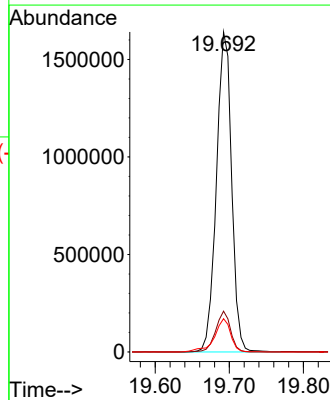
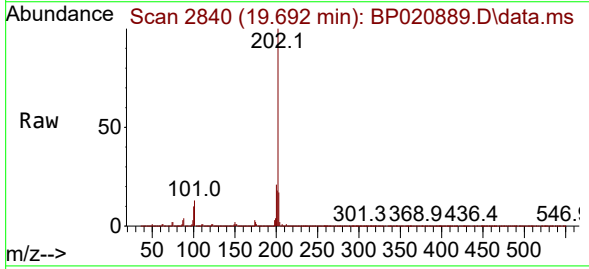
Ion	Ratio	Lower	Upper
202	100		
101	9.9	8.0	12.0
100	7.7	6.1	9.1

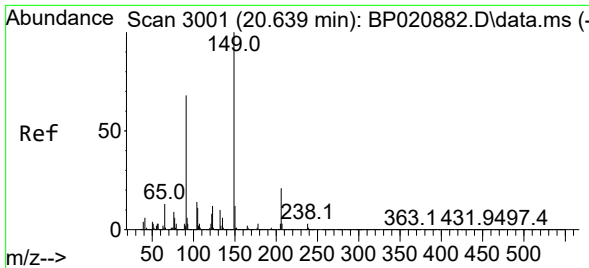


#82
 Pyrene
 Concen: 27.152 ng/uI
 RT: 19.692 min Scan# 2840
 Delta R.T. -0.000 min
 Lab File: BP020889.D
 Acq: 10 Jul 2024 21:04

Tgt Ion:202 Resp: 2333701

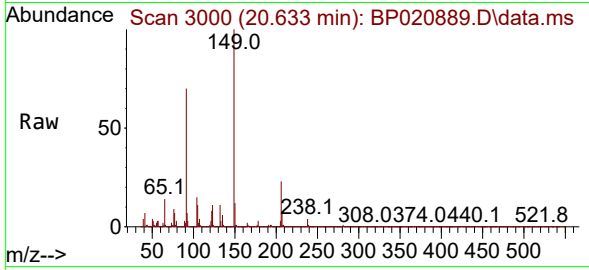
Ion	Ratio	Lower	Upper
202	100		
101	12.7	9.4	14.2
100	10.4	7.8	11.6



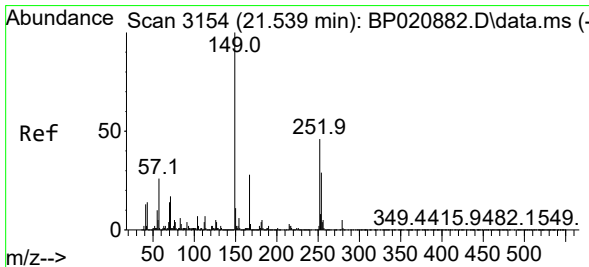
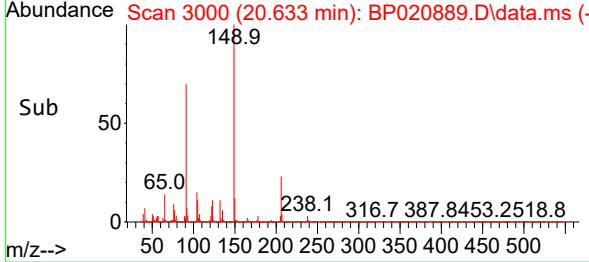
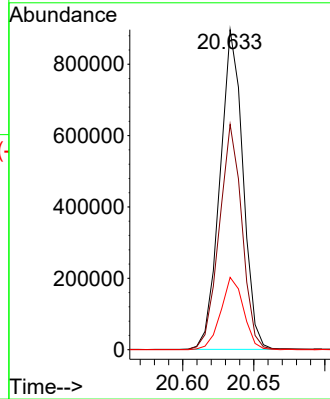


#83
 Butylbenzylphthalate
 Concen: 28.157 ng/ul
 RT: 20.633 min Scan# 3000
 Delta R.T. -0.006 min
 Lab File: BP020889.D
 Acq: 10 Jul 2024 21:04

Instrument :
 BNA_P
 ClientSampleId :

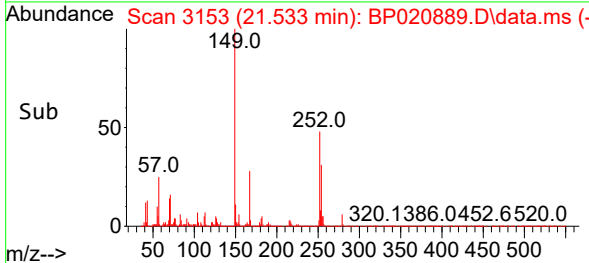
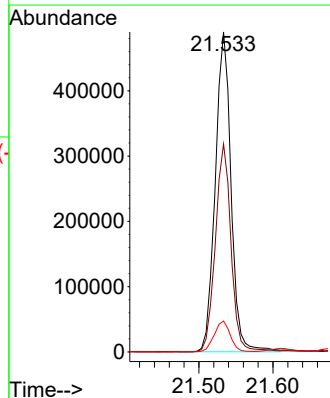
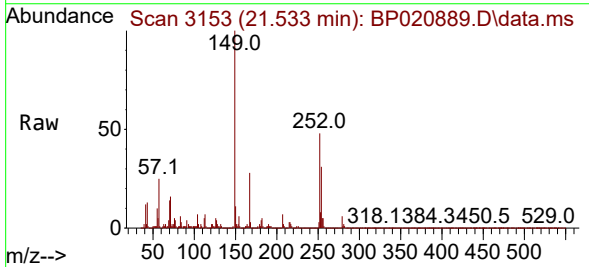


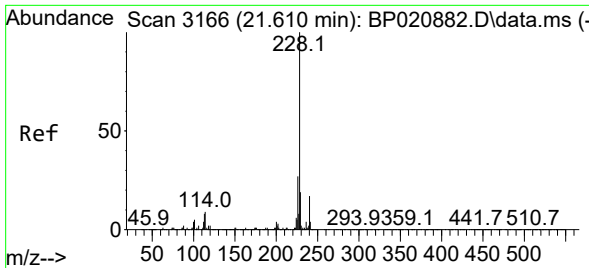
Tgt Ion:149 Resp: 1008325
 Ion Ratio Lower Upper
 149 100
 91 70.4 54.1 81.1
 206 22.6 17.0 25.6



#84
 3,3'-Dichlorobenzidine
 Concen: 27.956 ng/ul
 RT: 21.533 min Scan# 3153
 Delta R.T. -0.006 min
 Lab File: BP020889.D
 Acq: 10 Jul 2024 21:04

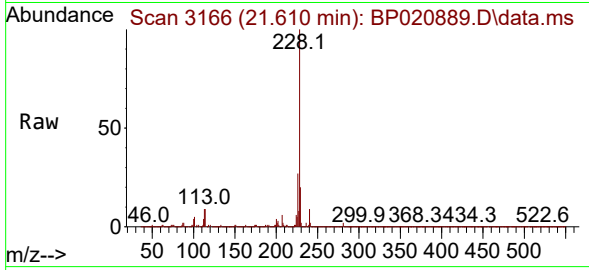
Tgt Ion:252 Resp: 722679
 Ion Ratio Lower Upper
 252 100
 254 65.0 51.5 77.3
 126 9.7 8.0 12.0



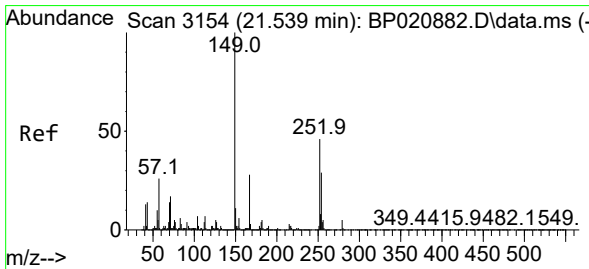
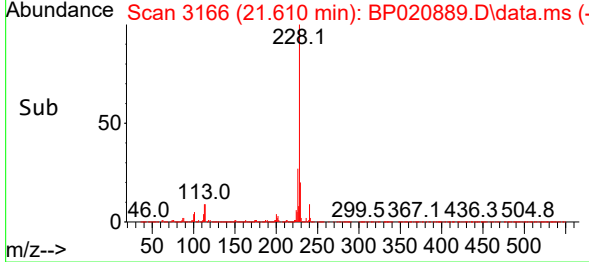
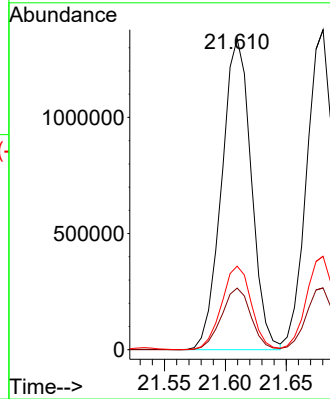


#85
 Benzo(a)anthracene
 Concen: 28.548 ng/ul
 RT: 21.610 min Scan# 3166
 Delta R.T. -0.000 min
 Lab File: BP020889.D
 Acq: 10 Jul 2024 21:04

Instrument :
 BNA_P
 ClientSampleId :

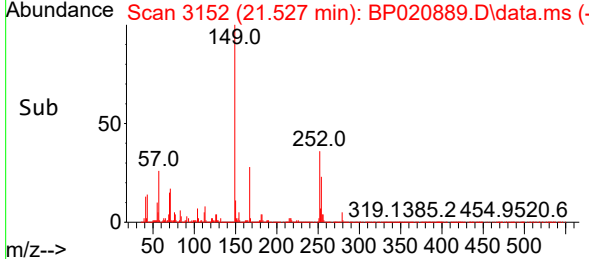
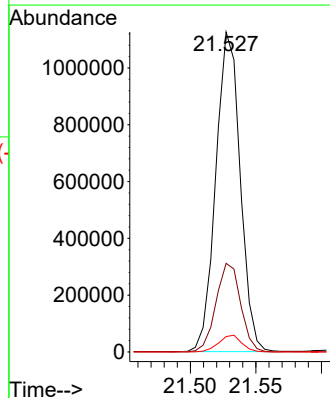
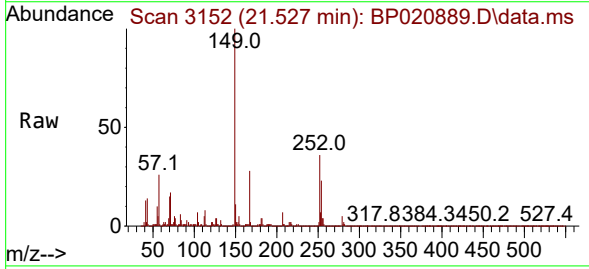


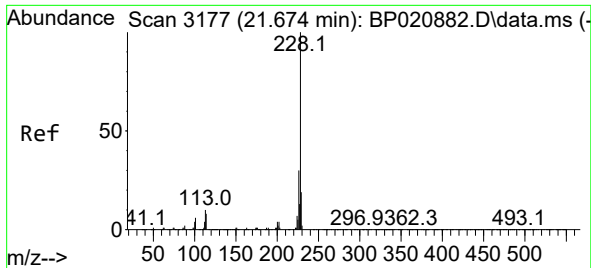
Tgt Ion:228 Resp: 2262338
 Ion Ratio Lower Upper
 228 100
 229 19.8 15.5 23.3
 226 26.8 21.4 32.2



#86
 Bis(2-ethylhexyl)phthalate
 Concen: 28.214 ng/ul
 RT: 21.527 min Scan# 3152
 Delta R.T. -0.012 min
 Lab File: BP020889.D
 Acq: 10 Jul 2024 21:04

Tgt Ion:149 Resp: 1453996
 Ion Ratio Lower Upper
 149 100
 167 27.7 22.1 33.1
 279 4.8 3.7 5.5



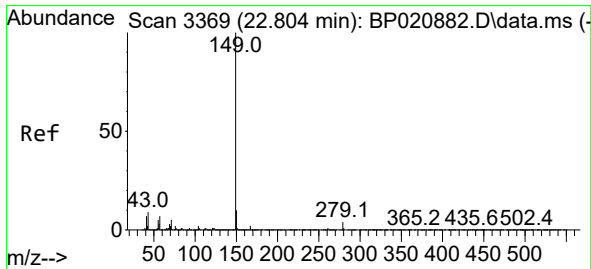
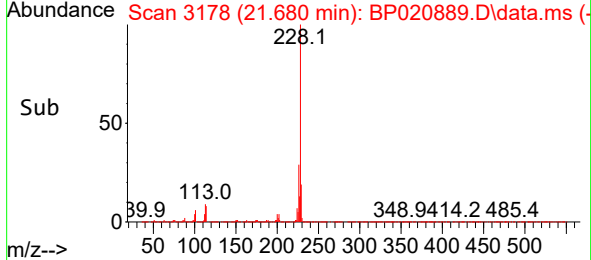
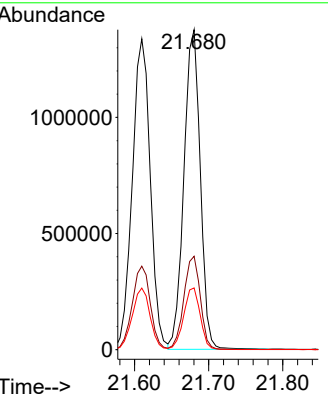
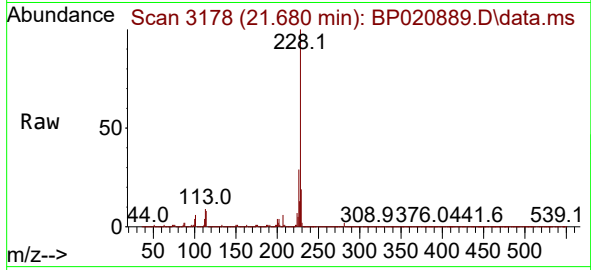


#87
 Chrysene
 Concen: 28.620 ng/ul
 RT: 21.680 min Scan# 3177
 Delta R.T. 0.006 min
 Lab File: BP020889.D
 Acq: 10 Jul 2024 21:04

Instrument : BNA_P
 ClientSampleId :

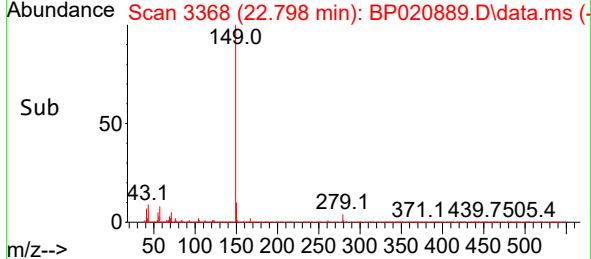
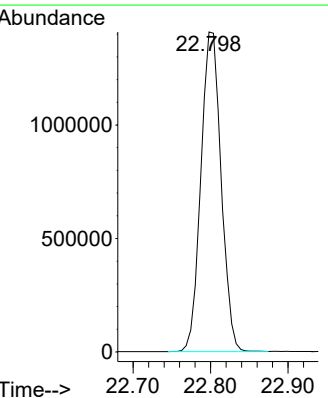
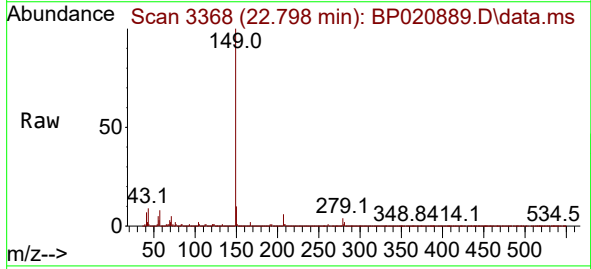
Tgt Ion:228 Resp: 2107471

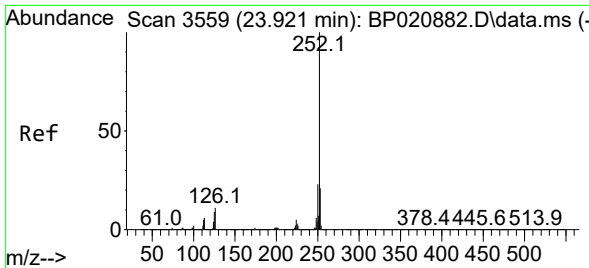
Ion	Ratio	Lower	Upper
228	100		
226	29.2	23.6	35.4
229	19.3	15.5	23.3



#89
 Di-n-octyl phthalate
 Concen: 28.174 ng/ul
 RT: 22.798 min Scan# 3368
 Delta R.T. -0.006 min
 Lab File: BP020889.D
 Acq: 10 Jul 2024 21:04

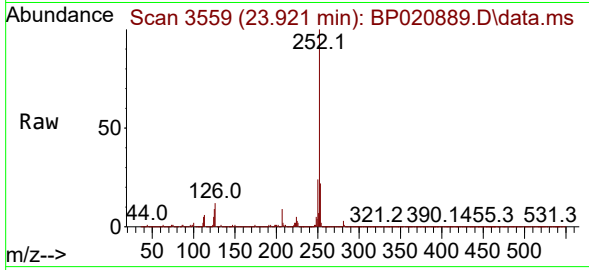
Tgt Ion:149 Resp: 2556883



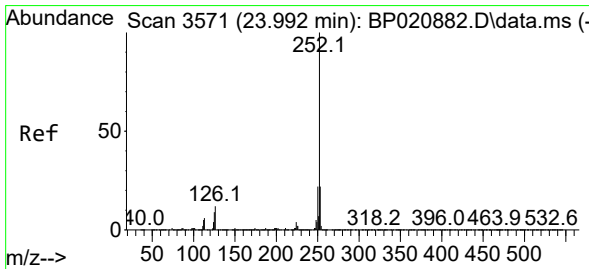
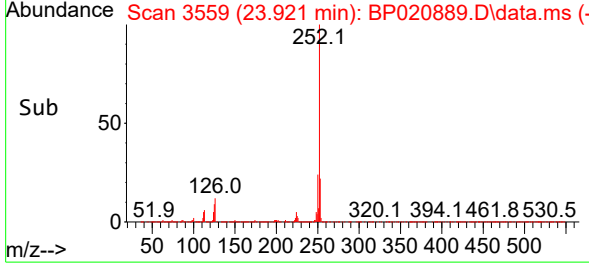
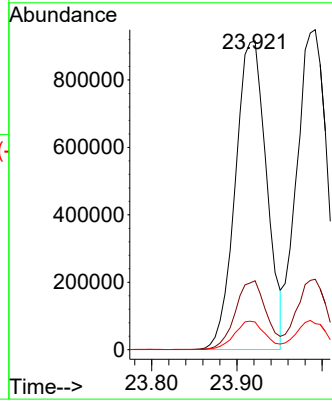


#90
 Benzo(b)fluoranthene
 Concen: 27.974 ng/ul
 RT: 23.921 min Scan# 3559
 Delta R.T. -0.000 min
 Lab File: BP020889.D
 Acq: 10 Jul 2024 21:04

Instrument : BNA_P
 ClientSampled :

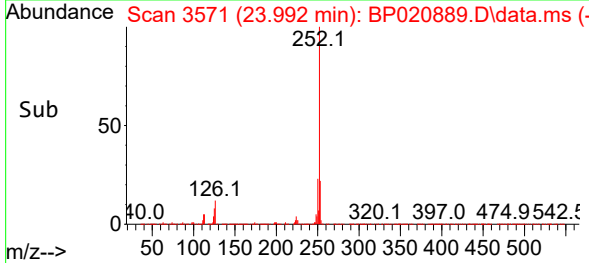
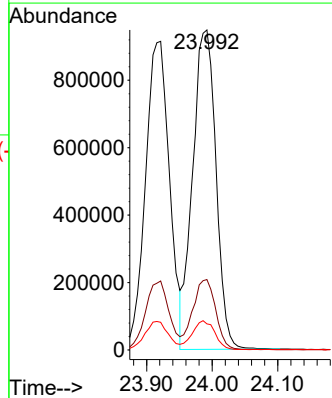
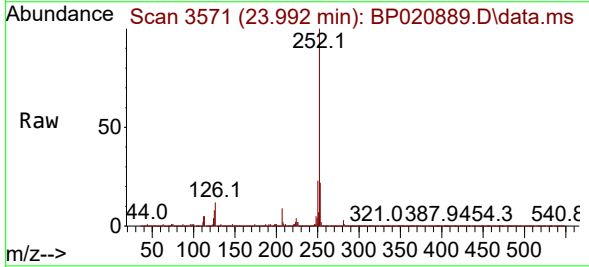


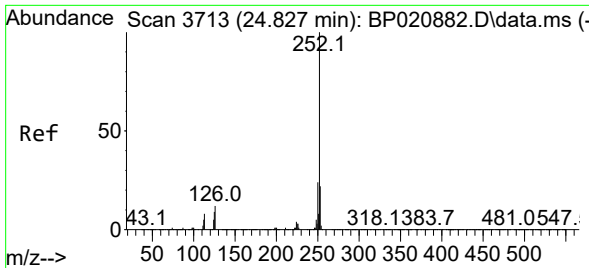
Tgt Ion:252 Resp: 2332084
 Ion Ratio Lower Upper
 252 100
 253 22.4 17.1 25.7
 125 9.0 7.0 10.4



#91
 Benzo(k)fluoranthene
 Concen: 28.191 ng/ul
 RT: 23.992 min Scan# 3571
 Delta R.T. -0.000 min
 Lab File: BP020889.D
 Acq: 10 Jul 2024 21:04

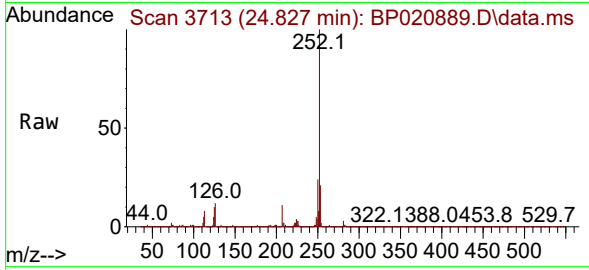
Tgt Ion:252 Resp: 2345467
 Ion Ratio Lower Upper
 252 100
 253 22.0 17.4 26.2
 125 8.1 7.4 11.0



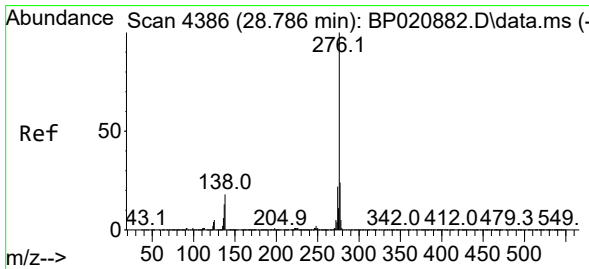
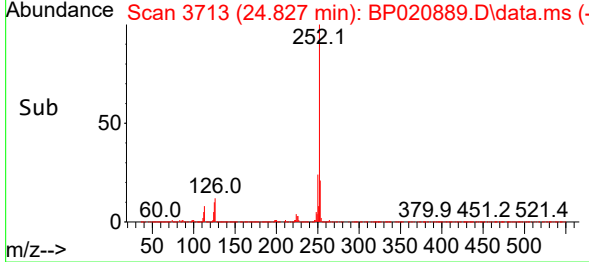
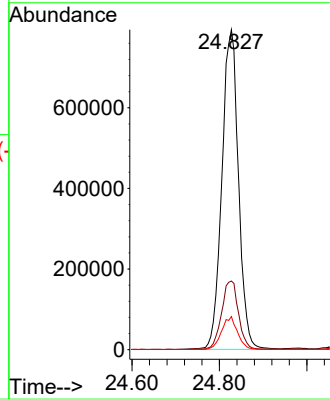


#93
 Benzo(a)pyrene
 Concen: 26.384 ng/u1
 RT: 24.827 min Scan# 31
 Delta R.T. -0.000 min
 Lab File: BP020889.D
 Acq: 10 Jul 2024 21:04

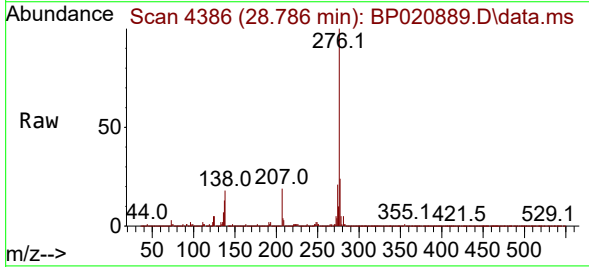
Instrument :
 BNA_P
 ClientSampleId :



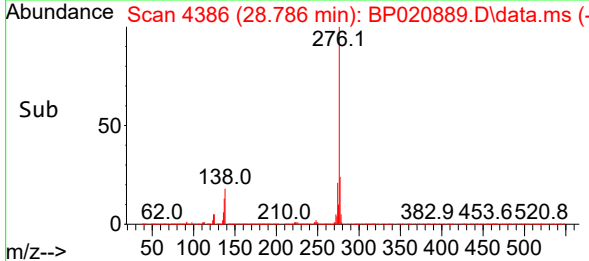
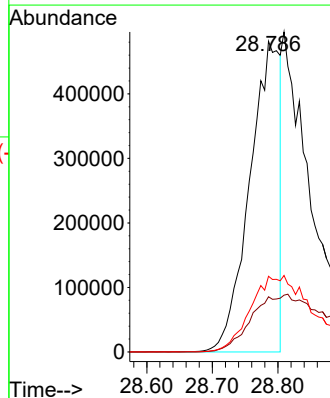
Tgt Ion:252 Resp: 2078563
 Ion Ratio Lower Upper
 252 100
 253 21.5 17.4 26.0
 125 10.4 7.7 11.5

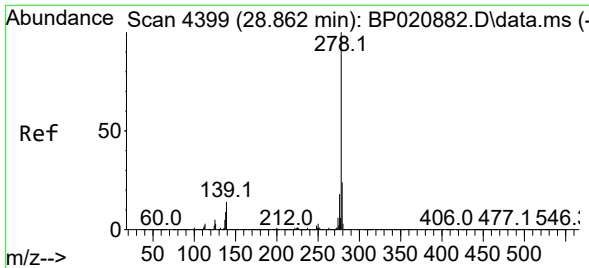


#94
 Indeno(1,2,3-cd)pyrene
 Concen: 15.225 ng/u1
 RT: 28.786 min Scan# 4386
 Delta R.T. -0.000 min
 Lab File: BP020889.D
 Acq: 10 Jul 2024 21:04



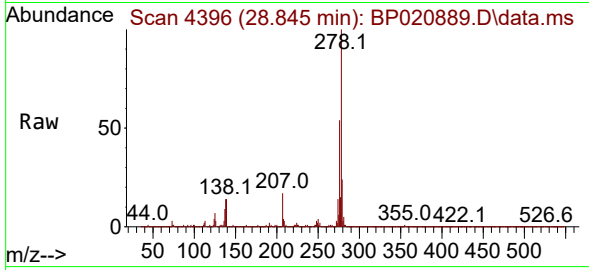
Tgt Ion:276 Resp: 1545555
 Ion Ratio Lower Upper
 276 100
 138 17.8 14.3 21.5
 277 24.4 19.2 28.8





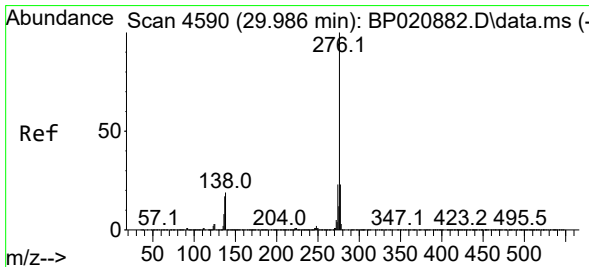
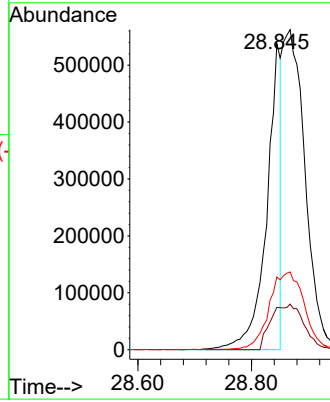
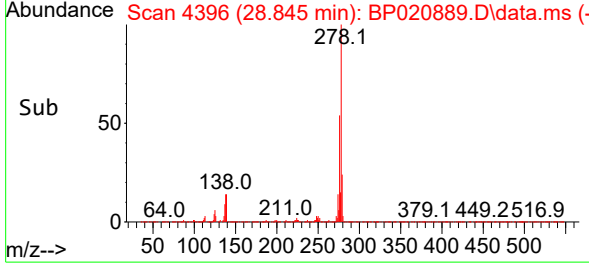
#95
 Dibenzo(a,h)anthracene
 Concen: 11.229 ng/ul
 RT: 28.845 min Scan# 41
 Delta R.T. -0.018 min
 Lab File: BP020889.D
 Acq: 10 Jul 2024 21:04

Instrument : BNA_P
 ClientSampleId :

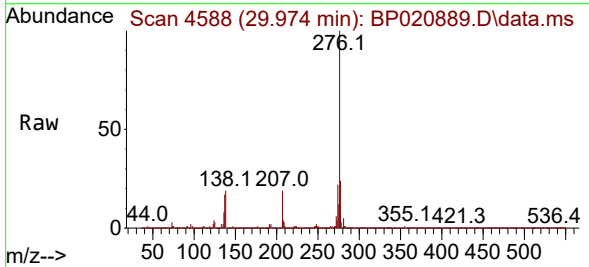


Tgt Ion: 278 Resp: 943922

Ion	Ratio	Lower	Upper
278	100		
139	13.8	10.9	16.3
279	23.8	19.4	29.0



#96
 Benzo(g,h,i)perylene
 Concen: 28.704 ng/ul
 RT: 29.974 min Scan# 4588
 Delta R.T. -0.012 min
 Lab File: BP020889.D
 Acq: 10 Jul 2024 21:04



Tgt Ion: 276 Resp: 2373153

Ion	Ratio	Lower	Upper
276	100		
138	18.9	15.3	22.9
277	23.6	18.2	27.2

