

Data Path : Z:\svoasrv\HPCHEM1\BNA\_P\Data\BP071025\  
 Data File : BP025088.D  
 Acq On : 10 Jul 2025 18:21  
 Operator : CG/JU  
 Sample : Q2529-10  
 Misc :  
 ALS Vial : 8 Sample Multiplier: 1

Instrument :  
 BNA\_P  
 ClientSampleId :  
 TP-30

Integration Parameters: rteint.p  
 Integrator: RTE  
 Smoothing : ON Filtering: 5  
 Sampling : 1 Min Area: 3 % of largest Peak  
 Start Thrs: 0.2 Max Peaks: 100  
 Stop Thrs : 0 Peak Location: TOP

If leading or trailing edge < 100 prefer < Baseline drop else tangent >  
 Peak separation: 5

Method : Z:\svoasrv\HPCHEM1\BNA\_P\Methods\8270E-BP070325.M  
 Title : ASP BNA STANDARDS FOR 5 POINT CALIBRATION

Signal : TIC: BP025088.D\data.ms

peak #	R.T. min	first scan	max scan	last scan	PK TY	peak height	corr. area	corr. % max.	% of total
1	4.655	286	292	300	rBV	484561	681733	2.88%	0.590%
2	5.102	359	368	382	rBV	5981864	8612312	36.42%	7.448%
3	6.631	617	628	639	rBV	5717939	9189105	38.86%	7.947%
4	7.437	758	765	774	rVB	2049670	2998443	12.68%	2.593%
5	8.566	947	957	972	rBV	3381575	5744388	24.29%	4.968%
6	10.178	1220	1231	1239	rBV	2369162	4158776	17.59%	3.597%
7	12.684	1649	1657	1668	rVB	9104667	14016687	59.28%	12.122%
8	14.084	1889	1895	1908	rVB	3453994	5533606	23.40%	4.786%
9	15.484	2127	2133	2147	rVB	1307676	1889711	7.99%	1.634%
10	15.613	2147	2155	2168	rBV	7793176	11533348	48.78%	9.974%
11	16.895	2367	2373	2384	rVB2	5055685	6721939	28.43%	5.813%
12	17.895	2538	2543	2551	rBV	798152	1181273	5.00%	1.022%
13	19.242	2768	2772	2783	rBV	194483	349137	1.48%	0.302%
14	19.678	2840	2846	2857	rVB	18370560	23644779	100.00%	20.448%
15	21.078	3080	3084	3097	rBV	651833	1193980	5.05%	1.033%
16	21.342	3122	3129	3139	rBV2	6194771	8776613	37.12%	7.590%
17	24.483	3653	3663	3675	rBV	3742541	9406829	39.78%	8.135%

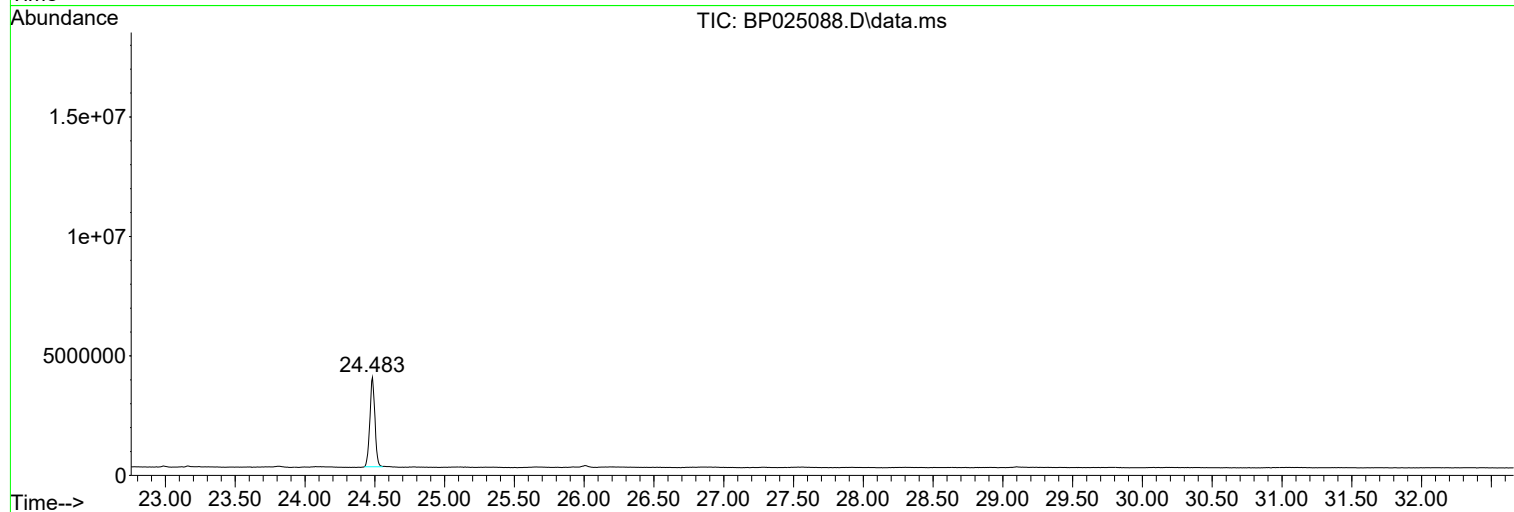
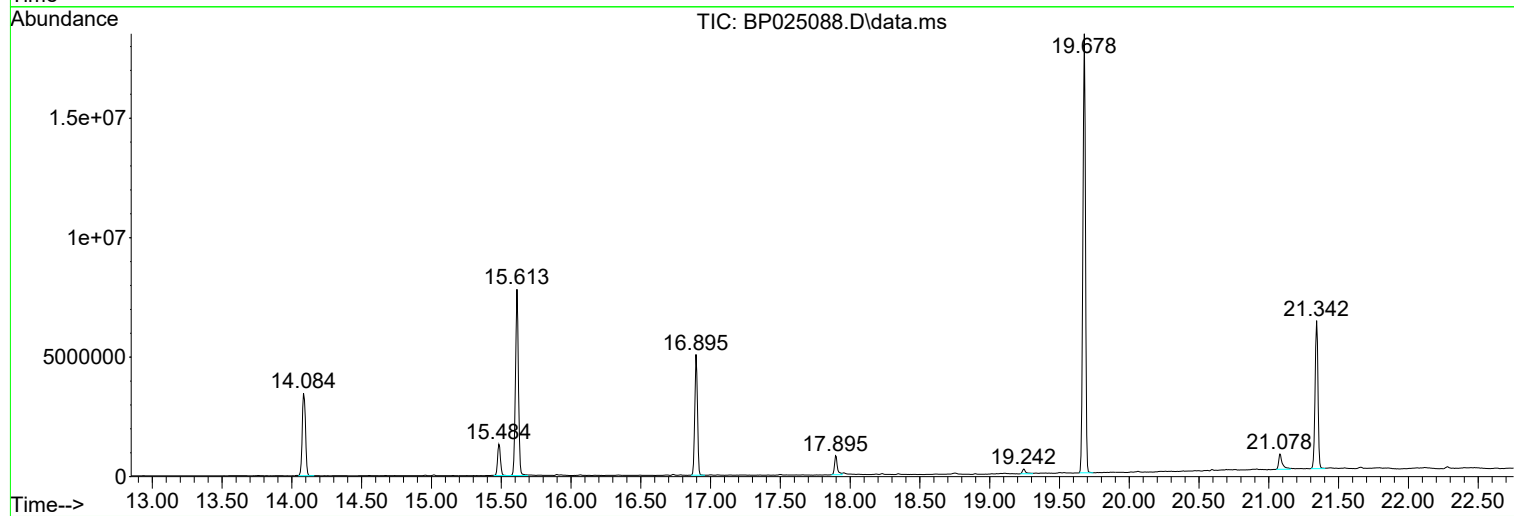
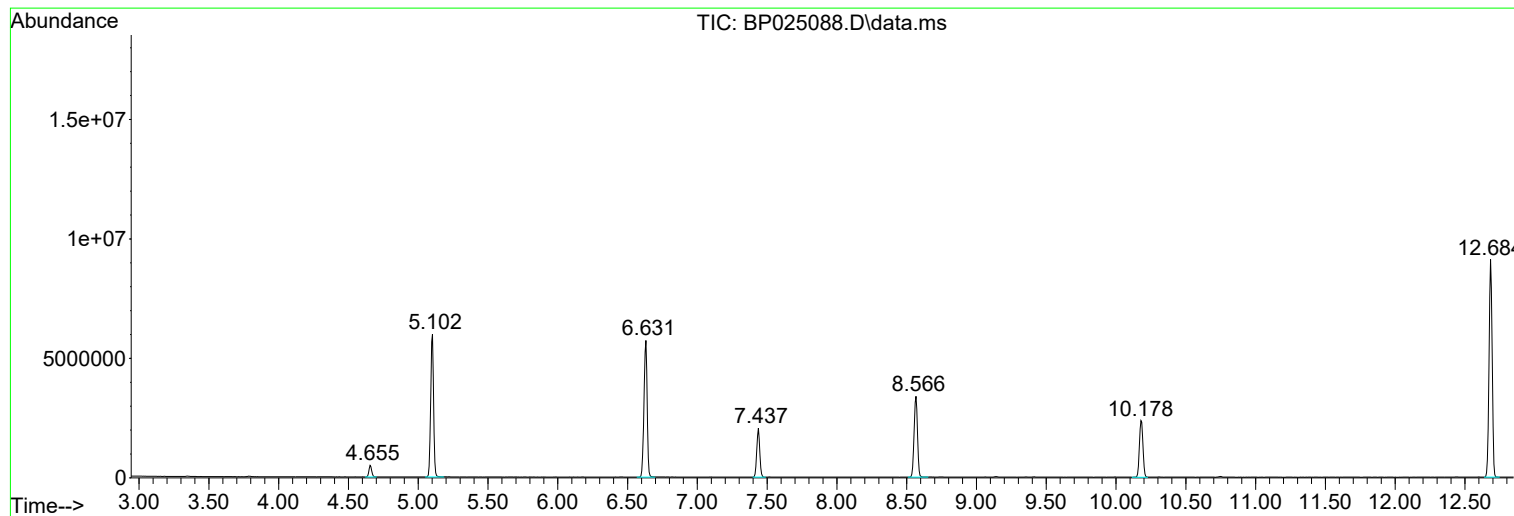
Sum of corrected areas: 115632659

Data Path : Z:\svoasrv\HPCHEM1\BNA\_P\Data\BP071025\  
Data File : BP025088.D  
Acq On : 10 Jul 2025 18:21  
Operator : CG/JU  
Sample : Q2529-10  
Misc :  
ALS Vial : 8 Sample Multiplier: 1

Instrument :  
BNA\_P  
ClientSampleId :  
TP-30

Quant Method : Z:\svoasrv\HPCHEM1\BNA\_P\Methods\8270E-BP070325.M  
Quant Title : ASP BNA STANDARDS FOR 5 POINT CALIBRATION

TIC Library : C:\Database\NIST20.L  
TIC Integration Parameters: LSCINT.P



Data Path : Z:\svoasrv\HPCHEM1\BNA\_P\Data\BP071025\  
 Data File : BP025088.D  
 Acq On : 10 Jul 2025 18:21  
 Operator : CG/JU  
 Sample : Q2529-10  
 Misc :  
 ALS Vial : 8 Sample Multiplier: 1

Instrument :  
 BNA\_P  
 ClientSampleId :  
 TP-30

Quant Method : Z:\svoasrv\HPCHEM1\BNA\_P\Methods\8270E-BP070325.M  
 Quant Title : ASP BNA STANDARDS FOR 5 POINT CALIBRATION

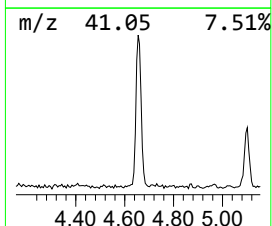
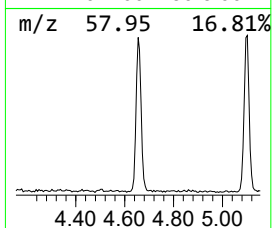
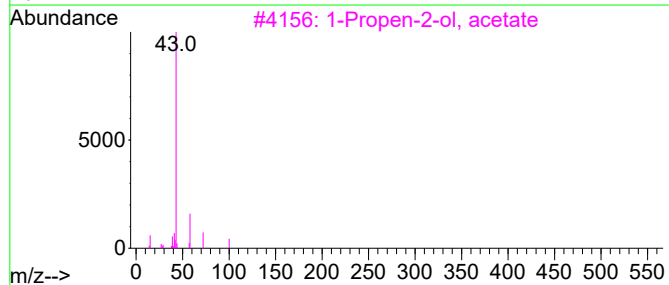
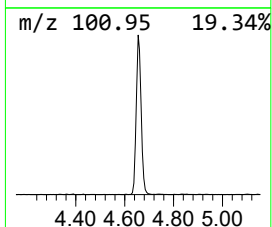
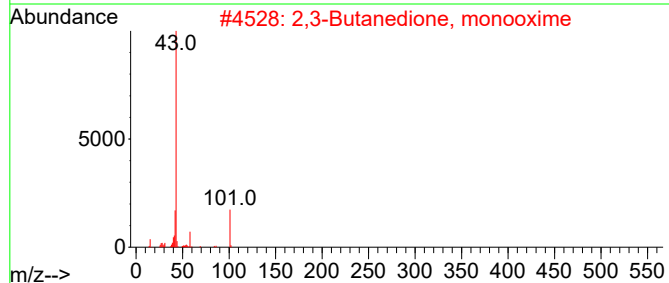
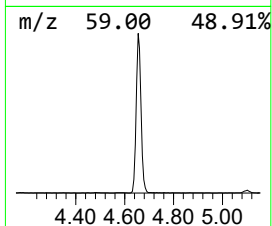
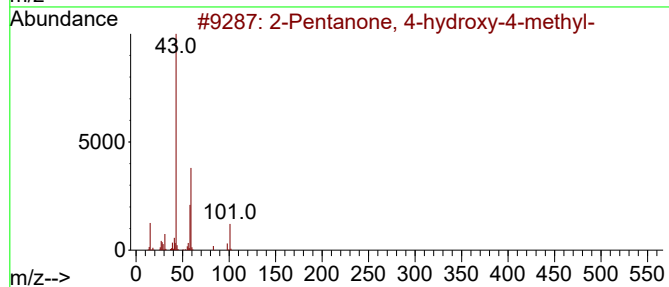
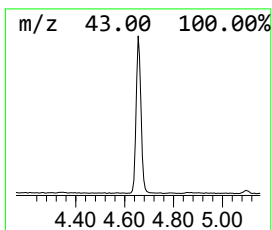
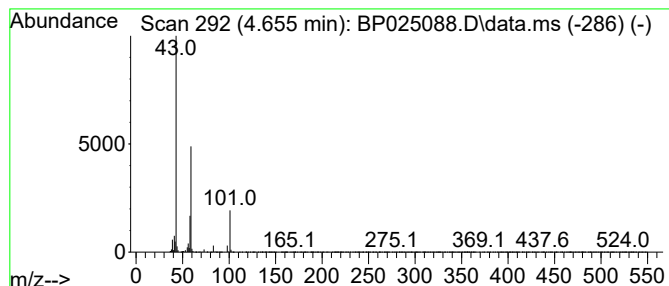
TIC Library : C:\Database\NIST20.L  
 TIC Integration Parameters: LSCINT.P

\*\*\*\*\*  
 Peak Number 1 2-Pentanone, 4-hydroxy-4-me... Concentration Rank 2

R.T.	EstConc	Area	Relative to ISTD	R.T.
4.655	4.55 ng	681733	1,4-Dichlorobenzene-d4	7.437

Hit#	of 5	Tentative ID	MW	MolForm	CAS#	Qual
1		2-Pentanone, 4-hydroxy-4-methyl-	116	C6H12O2	000123-42-2	50
2		2,3-Butanedione, monooxime	101	C4H7NO2	000057-71-6	25
3		1-Propen-2-ol, acetate	100	C5H8O2	000108-22-5	10
4		Formamide, N,N-diethyl-	101	C5H11NO	000617-84-5	9
5		Morpholine, 4-methyl-	101	C5H11NO	000109-02-4	9



Data Path : Z:\svoasrv\HPCHEM1\BNA\_P\Data\BP071025\  
 Data File : BP025088.D  
 Acq On : 10 Jul 2025 18:21  
 Operator : CG/JU  
 Sample : Q2529-10  
 Misc :  
 ALS Vial : 8 Sample Multiplier: 1

Instrument :  
 BNA\_P  
 ClientSampleId :  
 TP-30

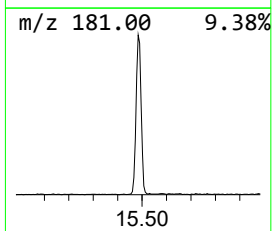
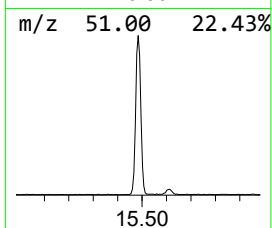
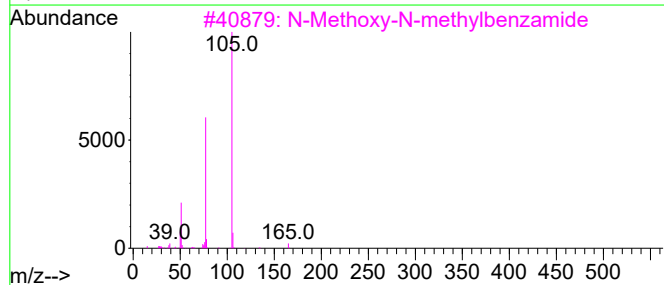
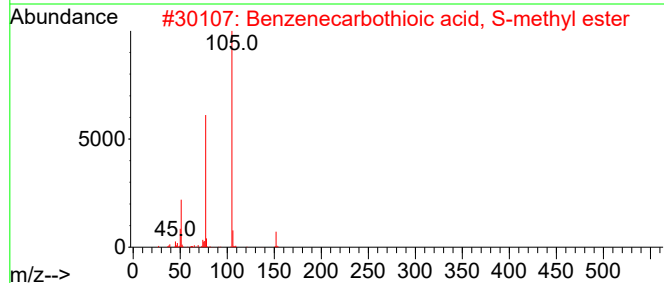
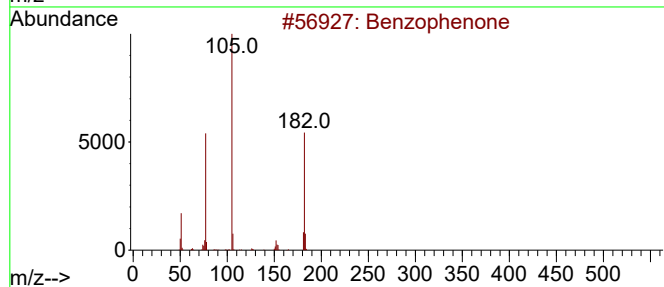
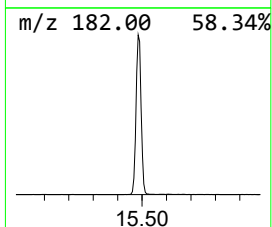
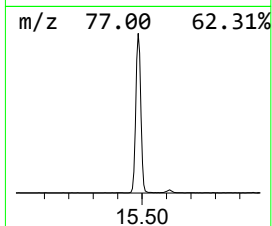
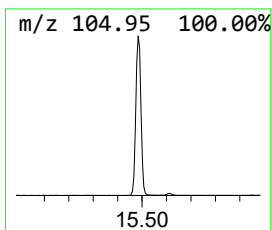
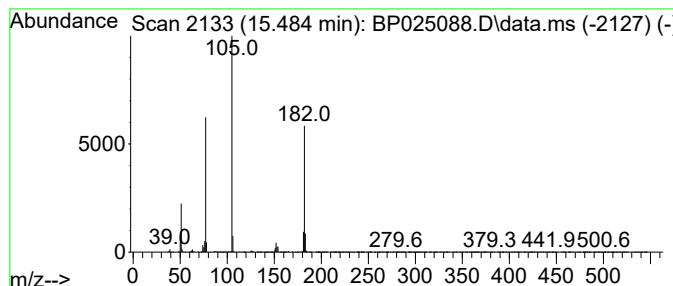
Quant Method : Z:\svoasrv\HPCHEM1\BNA\_P\Methods\8270E-BP070325.M  
 Quant Title : ASP BNA STANDARDS FOR 5 POINT CALIBRATION

TIC Library : C:\Database\NIST20.L  
 TIC Integration Parameters: LSCINT.P

\*\*\*\*\*  
 Peak Number 2 Benzophenone Concentration Rank 1

R.T.	EstConc	Area	Relative to ISTD	R.T.
15.484	6.83 ng	1889710	Acenaphthene-d10	14.084

Hit#	of 5	Tentative ID	MW	MolForm	CAS#	Qual
1		Benzophenone	182	C13H10O	000119-61-9	96
2		Benzenecarbothioic acid, S-methy...	152	C8H8OS	005925-68-8	47
3		N-Methoxy-N-methylbenzamide	165	C9H11NO2	006919-61-5	47
4		Methyl 2-benzoyl-4-cyanobutanoate	231	C13H13NO3	1010486-83-8	47
5		Benzenebutanoic acid, .gamma.-oxo-	178	C10H10O3	002051-95-8	47



Data Path : Z:\svoasrv\HPCHEM1\BNA\_P\Data\BP071025\  
 Data File : BP025088.D  
 Acq On : 10 Jul 2025 18:21  
 Operator : CG/JU  
 Sample : Q2529-10  
 Misc :  
 ALS Vial : 8 Sample Multiplier: 1

Instrument :  
 BNA\_P  
 ClientSampleId :  
 TP-30

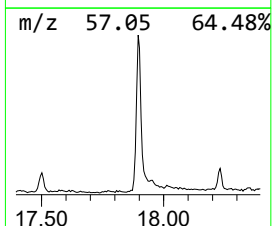
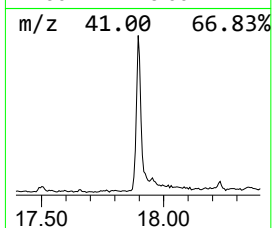
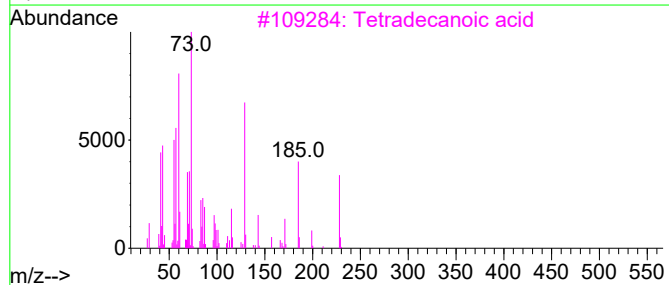
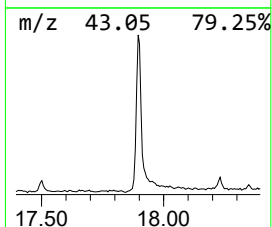
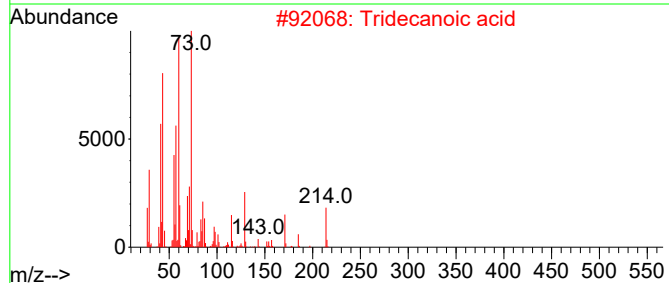
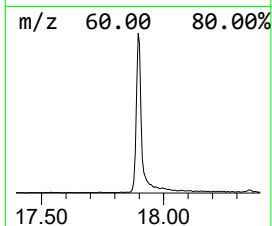
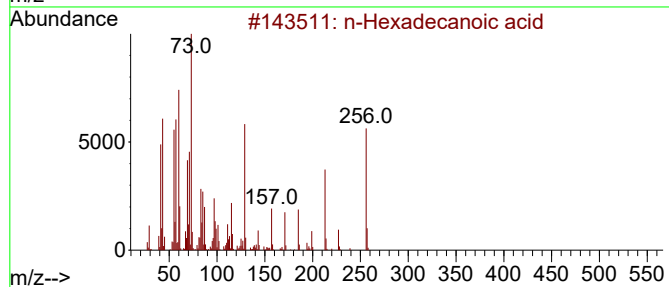
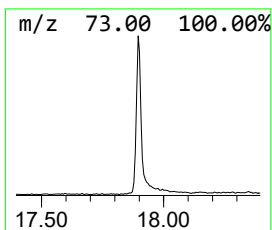
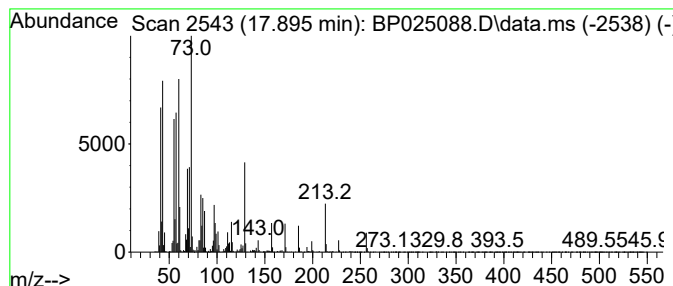
Quant Method : Z:\svoasrv\HPCHEM1\BNA\_P\Methods\8270E-BP070325.M  
 Quant Title : ASP BNA STANDARDS FOR 5 POINT CALIBRATION

TIC Library : C:\Database\NIST20.L  
 TIC Integration Parameters: LSCINT.P

\*\*\*\*\*  
 Peak Number 3 n-Hexadecanoic acid Concentration Rank 3

R.T.	EstConc	Area	Relative to ISTD	R.T.
17.895	3.51 ng	1181270	Phenanthrene-d10	16.895

Hit#	of	Tentative ID	MW	MolForm	CAS#	Qual
1	5	n-Hexadecanoic acid	256	C16H32O2	000057-10-3	99
2		Tridecanoic acid	214	C13H26O2	000638-53-9	93
3		Tetradecanoic acid	228	C14H28O2	000544-63-8	91
4		Pentadecanoic acid	242	C15H30O2	001002-84-2	90
5		n-Decanoic acid	172	C10H20O2	000334-48-5	76



Data Path : Z:\svoasrv\HPCHEM1\BNA\_P\Data\BP071025\  
 Data File : BP025088.D  
 Acq On : 10 Jul 2025 18:21  
 Operator : CG/JU  
 Sample : Q2529-10  
 Misc :  
 ALS Vial : 8 Sample Multiplier: 1

Instrument :  
 BNA\_P  
 ClientSampleId :  
 TP-30

Quant Method : Z:\svoasrv\HPCHEM1\BNA\_P\Methods\8270E-BP070325.M  
 Quant Title : ASP BNA STANDARDS FOR 5 POINT CALIBRATION

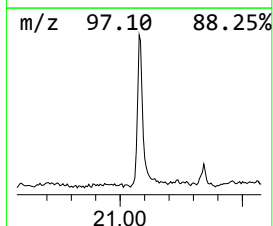
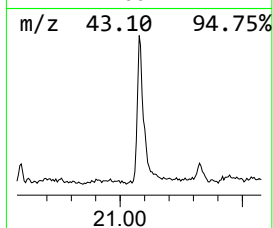
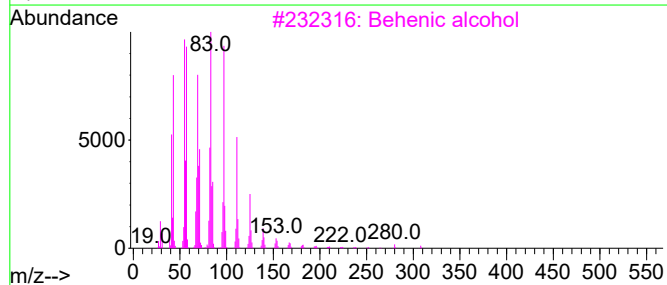
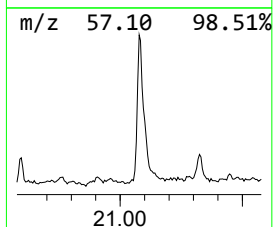
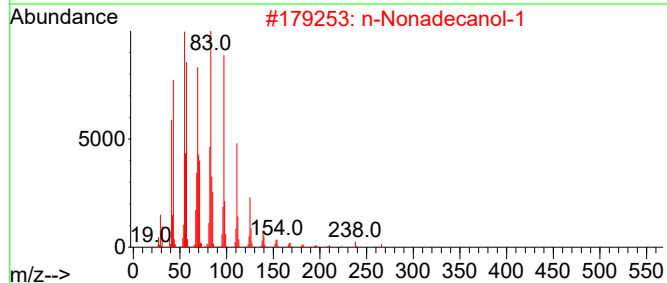
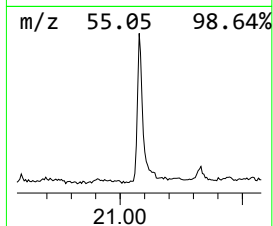
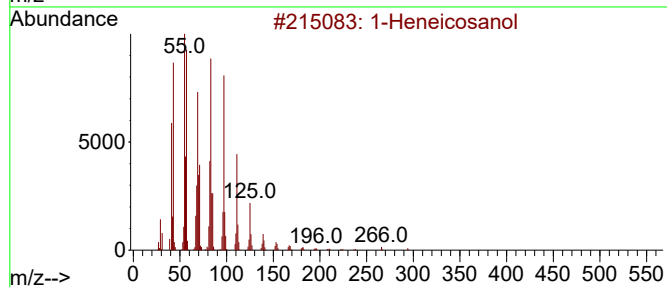
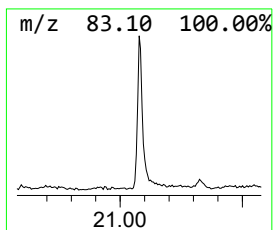
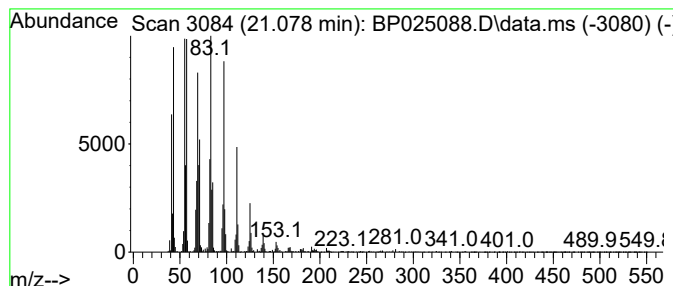
TIC Library : C:\Database\NIST20.L  
 TIC Integration Parameters: LSCINT.P

\*\*\*\*\*  
 Peak Number 4 1-Heneicosanol Concentration Rank 4

R.T.	EstConc	Area	Relative to ISTD	R.T.
21.078	2.72 ng	1193980	Chrysene-d12	21.342

Hit#	of 5	Tentative ID	MW	MolForm	CAS#	Qual
1		1-Heneicosanol	312	C21H44O	015594-90-8	95
2		n-Nonadecanol-1	284	C19H40O	001454-84-8	95
3		Behenic alcohol	326	C22H46O	000661-19-8	94
4		Heptafluorobutyric acid, pentade...	424	C19H31F7O2	959261-23-5	94
5		n-Tetracosanol-1	354	C24H50O	000506-51-4	94



Data Path : Z:\svoasrv\HPCHEM1\BNA\_P\Data\BP071025\  
Data File : BP025088.D  
Acq On : 10 Jul 2025 18:21  
Operator : CG/JU  
Sample : Q2529-10  
Misc :  
ALS Vial : 8 Sample Multiplier: 1

Instrument :  
BNA\_P  
ClientSampleId :  
TP-30

Quant Method : Z:\svoasrv\HPCHEM1\BNA\_P\Methods\8270E-BP070325.M  
Quant Title : ASP BNA STANDARDS FOR 5 POINT CALIBRATION

TIC Library : C:\Database\NIST0.L  
TIC Integration Parameters: LSCINT.P

TIC Top Hit name	RT	EstConc	Units	Response	--Internal Standard--			
					#	RT	Resp	Conc
2-Pentanone, 4-...	4.655	4.5	ng	681733	1	7.437	2998440	20.0
Benzophenone	15.484	6.8	ng	1889710	3	14.084	5533610	20.0
n-Hexadecanoic ...	17.895	3.5	ng	1181270	4	16.895	6721940	20.0
1-Heneicosanol	21.078	2.7	ng	1193980	5	21.342	8776610	20.0