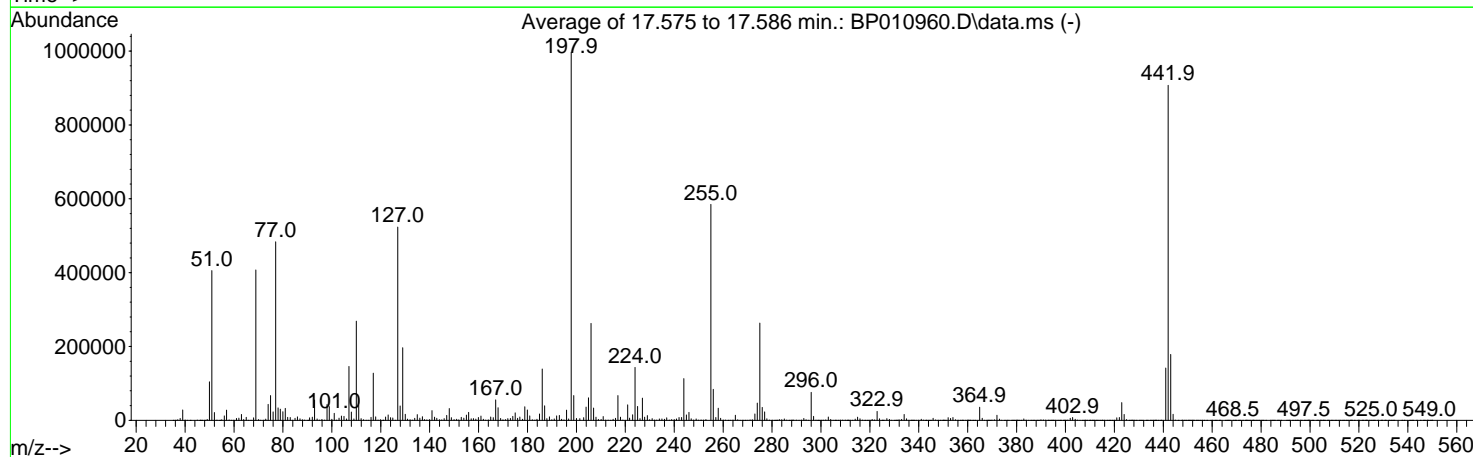
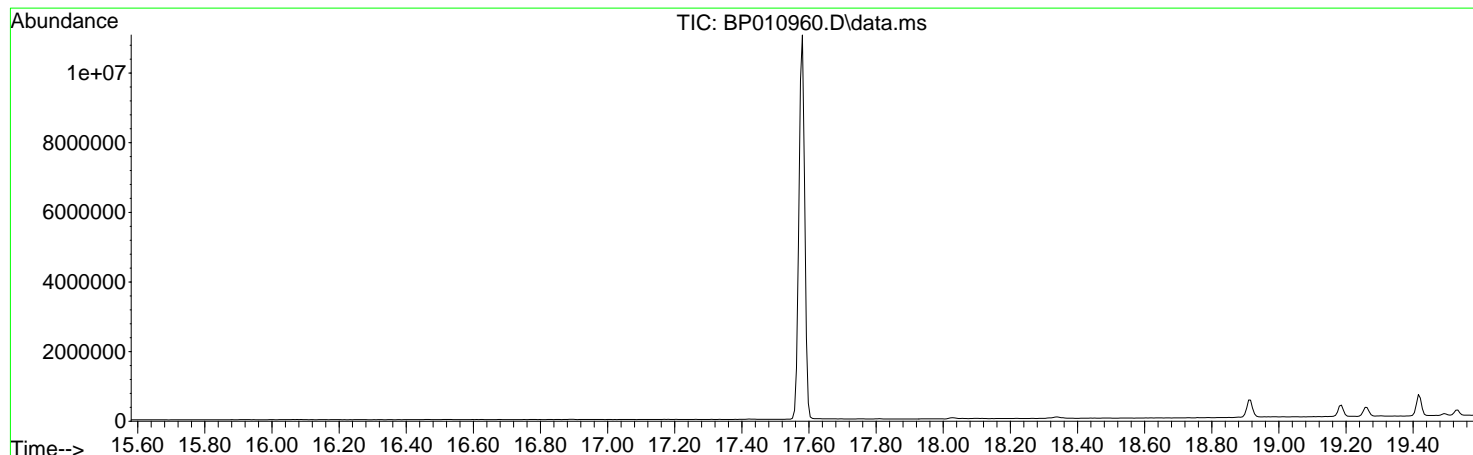


Data Path : Z:\svoasrv\HPCHEM1\BNA_P\Data\BP071322\
 Data File : BP010960.D
 Acq On : 13 Jul 2022 10:26
 Operator : CG/JU
 Sample : DFTPP669
 Misc :
 ALS Vial : 1 Sample Multiplier: 1

Instrument :
 BNA_P
 ClientSampleId :
 DFTPP669

Integration File: LSCINT.P

Method : Z:\svoasrv\HPCHEM1\BNA_P\Methods\SFAM-EPA-BP062322.M
 Title : SVOA CALIBRATION
 Last Update : Wed Jul 06 23:13:53 2022



AutoFind: Scans 2463, 2464, 2465; Background Corrected with Scan 2457

Target Mass	Rel. to Mass	Lower Limit%	Upper Limit%	Rel. Abn%	Raw Abn	Result Pass/Fail
51	198	10	80	40.7	405597	PASS
68	69	0.00	2	1.7	6850	PASS
69	198	0.00	100	40.9	407429	PASS
70	69	0.00	2	0.5	2230	PASS
127	198	10	80	52.5	523352	PASS
197	198	0.00	2	0.4	3860	PASS
198	198	100	100	100.0	996169	PASS
199	198	5	9	6.7	67072	PASS
275	198	10	60	26.5	263616	PASS
365	198	1	100	3.6	35371	PASS
441	198	0.01	100	14.2	141813	PASS
442	198	50	100	91.1	907443	PASS
443	442	15	24	19.7	178709	PASS

m/z	Abundance
35.90	272.0
37.00	124.0
38.00	190.0
39.00	567.0
40.00	2536.0
41.00	1097.0
42.00	380.0
43.00	1038.0
44.00	8085.0
45.00	375.0
46.20	11.0
46.90	224.0
47.90	101.0
49.00	963.0
49.90	236.0
50.90	483.0
52.00	232.0
52.90	207.0
53.80	164.0
55.00	592.0
56.10	328.0
56.90	281.0
57.10	264.0
58.00	159.0
58.80	122.0
59.90	163.0
61.10	160.0
61.90	62.0
63.10	193.0
63.80	47.0
64.20	41.0
64.80	249.0
65.90	110.0
66.90	407.0
68.00	203.0
68.90	592.0
70.10	182.0
70.90	195.0
72.10	118.0
73.00	2053.0
73.90	299.0
74.90	259.0
76.00	318.0
77.00	910.0
78.00	412.0
78.90	321.0
80.00	132.0
80.90	346.0
81.90	148.0
82.80	156.0
83.90	970.0
84.90	221.0
85.90	724.0
86.80	191.0
87.90	229.0
88.90	167.0
89.90	184.0
90.90	521.0
92.00	105.0
92.90	271.0
93.90	105.0
94.90	80.0
96.00	728.0
97.10	256.0
98.00	226.0
98.90	100.0
100.20	4.0
100.50	4.0
101.10	53.0
101.90	92.0
102.90	323.0
104.00	118.0
104.90	223.0
105.70	26.0
106.10	19.0
107.10	185.0
107.90	132.0
109.10	68.0
110.00	11.0
111.00	130.0
111.60	19.0
111.90	15.0
113.10	65.0
113.80	11.0
114.90	234.0
116.10	49.0
116.80	220.0
117.80	149.0
118.80	225.0
119.90	136.0
121.10	97.0
121.90	41.0

Instrument :
BNA_P
ClientSampleId :
DFTPP669

122.40	12.0
123.00	100.0
124.10	17.0
124.90	66.0
125.90	72.0
126.90	104.0
127.90	49.0
128.90	161.0
130.00	89.0
131.20	150.0
132.00	49.0
132.90	551.0
133.90	194.0
134.90	458.0
136.00	57.0
136.70	53.0
137.50	12.0
138.00	9.0
138.80	164.0
140.10	47.0
140.80	27.0
141.10	26.0
141.50	7.0
142.00	2.0
142.90	68.0
143.70	11.0
144.30	12.0
145.00	63.0
145.80	14.0
147.00	476.0
148.00	182.0
149.10	204.0
149.80	0.0
150.90	118.0
152.00	72.0
153.20	40.0
154.00	76.0
155.80	21.0
157.10	25.0
157.50	17.0
158.90	64.0
159.40	16.0
159.90	12.0
160.70	90.0
161.30	16.0
161.90	21.0
162.80	100.0
164.00	100.0
165.00	154.0
166.00	84.0
167.00	477.0
168.00	78.0
169.10	16.0
169.70	10.0
171.30	12.0
172.10	22.0
173.10	79.0
174.80	20.0
175.80	99.0
176.90	206.0
178.00	124.0
178.90	185.0
179.90	89.0
180.90	15.0
181.80	28.0
182.10	19.0
183.30	22.0
183.90	15.0
184.90	94.0
185.70	17.0
187.10	20.0
187.80	1.0
188.60	23.0
189.70	5.0
191.00	644.0
191.80	185.0
193.00	570.0
193.80	116.0
194.90	126.0
196.80	47.0
197.90	55.0
199.30	66.0
200.00	16.0
201.00	7.0
201.40	8.0
202.20	14.0
203.10	13.0
203.80	14.0
204.90	140.0
206.00	74.0
207.00	5361.0
208.00	1349.0
209.00	941.0
210.00	103.0
210.90	23.0
212.00	17.0

Instrument :
BNA_P
ClientSampleId :
DFTPP669

213.00	49.0
214.00	13.0
215.30	17.0
216.90	49.0
217.40	13.0
218.10	14.0
218.70	16.0
220.10	14.0
221.10	320.0
222.10	94.0
222.70	2.0
223.20	148.0
224.20	4.0
224.80	8.0
225.20	8.0
225.60	13.0
226.40	11.0
227.90	11.0
229.20	20.0
229.80	12.0
230.40	11.0
231.10	14.0
232.80	9.0
233.60	4.0
234.50	19.0
235.10	22.0
236.00	16.0
236.30	17.0
236.90	50.0
237.80	27.0
239.00	24.0
240.50	13.0
241.30	8.0
242.00	22.0
242.80	7.0
243.20	12.0
243.80	8.0
245.20	19.0
246.90	21.0
249.00	102.0
249.90	73.0
250.80	72.0
251.70	22.0
253.00	154.0
253.70	22.0
254.70	11.0
255.90	16.0
257.40	14.0
258.00	8.0
259.40	18.0
260.60	3.0
261.30	19.0
262.70	12.0
264.10	21.0
265.00	185.0
265.80	29.0
267.10	192.0
268.00	115.0
269.00	54.0
270.30	21.0
271.20	19.0
272.10	8.0
273.30	19.0
273.90	21.0
275.30	8.0
276.30	16.0
276.80	18.0
277.60	1.0
278.40	8.0
279.40	4.0
281.00	1384.0
281.80	237.0
283.10	210.0
283.70	71.0
284.60	9.0
285.60	23.0
286.20	22.0
287.50	10.0
287.80	9.0
289.60	16.0
290.70	18.0
292.60	8.0
294.10	9.0
294.90	21.0
295.40	27.0
297.30	8.0
298.70	12.0
300.30	16.0
302.00	7.0
303.60	9.0
304.40	13.0
305.00	10.0
306.10	2.0
307.00	17.0
308.50	15.0
309.80	9.0

Instrument :
BNA_P
ClientSampleId :
DFTPP669

310.90	14.0
311.50	17.0
312.90	16.0
313.60	2.0
314.60	11.0
316.20	9.0
317.20	0.0
317.80	7.0
319.30	9.0
321.00	16.0
322.40	10.0
322.90	6.0
323.80	20.0
324.90	55.0
325.80	28.0
327.10	119.0
327.70	22.0
328.70	9.0
330.30	12.0
331.00	16.0
331.80	25.0
332.50	1.0
333.20	13.0
334.50	8.0
335.00	15.0
335.90	8.0
336.70	10.0
338.40	14.0
339.70	13.0
340.90	106.0
341.20	103.0
341.90	15.0
342.80	22.0
343.70	75.0
344.60	8.0
345.50	11.0
346.30	7.0
347.60	6.0
349.20	9.0
350.10	2.0
350.80	12.0
352.30	12.0
353.80	16.0
355.10	188.0
355.90	20.0
357.20	44.0
357.70	20.0
358.30	12.0
359.00	23.0
359.60	15.0
360.20	9.0
361.70	9.0
362.30	3.0
363.30	9.0
364.90	8.0
365.40	17.0
366.20	17.0
367.90	15.0
369.10	12.0
369.70	8.0
370.70	21.0
371.30	14.0
372.70	19.0
374.20	20.0
375.00	11.0
376.10	11.0
377.70	11.0
379.10	8.0
380.60	9.0
382.30	8.0
383.40	8.0
383.80	9.0
385.50	8.0
386.50	6.0
386.90	21.0
388.40	11.0
390.00	11.0
391.80	14.0
393.10	19.0
394.80	9.0
396.40	8.0
398.00	5.0
398.40	7.0
398.80	9.0
399.60	9.0
400.00	12.0
400.50	7.0
401.00	48.0
401.80	59.0
402.80	29.0
404.20	10.0
404.90	18.0
405.80	10.0
407.40	9.0
408.90	8.0
410.10	6.0

Instrument :
BNA_P
ClientSampleId :
DFTPP669

410.50	9.0
412.30	14.0
412.80	12.0
413.70	9.0
415.10	62.0
415.60	13.0
416.10	8.0
416.80	13.0
417.20	15.0
418.50	9.0
419.70	20.0
421.60	9.0
423.10	10.0
424.00	10.0
424.70	9.0
426.30	9.0
427.70	13.0
428.10	13.0
428.90	19.0
429.50	12.0
430.40	3.0
431.00	8.0
432.00	8.0
432.60	9.0
434.20	9.0
435.70	10.0
437.40	13.0
438.80	7.0
440.40	10.0
441.80	13.0
443.60	8.0
445.20	9.0
446.80	12.0
448.10	10.0
449.50	20.0
451.50	7.0
453.10	9.0
454.60	9.0
456.00	10.0
457.10	5.0
457.80	15.0
458.90	15.0
459.70	8.0
460.80	69.0
462.20	10.0
462.80	9.0
464.00	7.0
465.00	8.0
465.70	9.0
467.40	15.0
468.10	8.0
468.80	11.0
470.30	9.0
471.90	9.0
473.10	20.0
475.00	63.0
475.90	8.0
477.10	18.0
478.20	9.0
479.90	7.0
481.30	11.0
482.20	4.0
483.00	9.0
484.60	8.0
486.20	11.0
487.70	11.0
488.50	0.0
489.20	37.0
489.90	20.0
490.80	11.0
492.40	9.0
493.70	11.0
494.10	7.0
495.60	10.0
497.10	11.0
498.60	7.0
500.20	8.0
501.90	16.0
503.00	11.0
503.70	33.0
504.90	8.0
506.60	10.0
508.20	11.0
509.70	9.0
511.30	10.0
512.80	10.0
514.50	9.0
515.90	25.0
517.50	9.0
518.10	5.0
518.80	14.0
519.30	7.0
520.80	8.0
522.20	17.0
524.00	10.0
525.50	14.0

Instrument :
BNA_P
ClientSampleId :
DFTPP669

527.10	10.0
528.10	4.0
528.50	8.0
530.10	11.0
531.80	13.0
532.70	17.0
533.40	9.0
535.10	22.0
536.00	9.0
536.50	14.0
538.00	10.0
539.20	10.0
539.60	10.0
541.10	15.0
542.90	13.0
544.30	10.0
544.90	13.0
545.90	22.0
547.40	16.0
549.20	25.0

Instrument :
BNA_P
ClientSampleId :
DFTPP669

m/z	Abundance
36.00	580.0
37.00	2173.0
38.00	6239.0
39.00	34968.0
40.00	3451.0
41.00	1439.0
42.10	363.0
43.00	1026.0
44.00	6826.0
44.90	1078.0
46.00	189.0
46.90	285.0
47.80	270.0
49.00	4233.0
50.00	127688.0
51.00	489664.0
52.00	26488.0
53.10	1181.0
54.10	185.0
55.00	3003.0
56.00	15043.0
57.00	32792.0
58.00	1656.0
59.00	490.0
59.90	698.0
61.00	5997.0
62.00	7436.0
63.00	19192.0
64.00	3021.0
65.00	9997.0
66.00	919.0
67.00	827.0
68.00	8040.0
68.90	483776.0
70.00	2809.0
70.90	363.0
71.90	429.0
73.00	6383.0
74.00	52328.0
75.00	78320.0
76.00	27488.0
77.00	574080.0
78.00	41560.0
79.00	35952.0
80.00	28768.0
81.00	38784.0
82.00	9990.0
83.00	8876.0
83.90	1895.0
85.00	7083.0
86.00	12931.0
87.00	5129.0
88.00	2326.0
88.90	755.0
90.10	320.0
90.90	8758.0
92.00	9905.0
93.00	65672.0
94.00	4659.0
95.00	1384.0
96.00	4060.0
97.10	1238.0
98.00	49568.0
99.00	45336.0
100.00	3833.0
101.00	22040.0
102.00	1449.0
103.00	7113.0
104.00	13262.0
105.00	12331.0
106.00	4458.0
107.00	166144.0
108.00	25680.0
109.00	4746.0
110.00	306624.0
111.00	46520.0
112.00	5483.0
112.90	1677.0
114.10	451.0
115.00	895.0
116.00	9583.0
117.00	147584.0
118.00	10941.0
119.00	1315.0
120.00	1775.0
121.00	963.0
122.00	10474.0
123.00	16944.0
124.00	8442.0
125.00	7796.0
127.00	593728.0
128.00	44720.0

Instrument :
BNA_P
ClientSampleId :
DFTPP669

129.00	220928.0
130.00	18800.0
130.90	3654.0
132.00	1736.0
133.00	1522.0
133.90	6334.0
135.00	18112.0
136.00	7260.0
137.00	11181.0
137.90	2540.0
138.90	1598.0
139.90	2480.0
141.00	29552.0
142.00	9648.0
142.90	5896.0
144.00	1608.0
144.90	1668.0
146.00	5893.0
147.00	14617.0
148.00	37360.0
148.90	8849.0
149.90	2354.0
151.10	3381.0
151.90	2385.0
153.00	9296.0
154.00	7039.0
155.00	14951.0
156.00	23120.0
157.00	4938.0
157.90	5438.0
159.00	3763.0
160.00	9061.0
161.00	12325.0
162.00	3709.0
163.00	1295.0
163.90	1885.0
165.00	10316.0
166.00	9250.0
167.00	61416.0
168.00	39880.0
169.00	5760.0
169.90	2170.0
171.10	2342.0
171.90	5823.0
173.00	5805.0
174.00	12394.0
175.00	22264.0
176.00	6171.0
176.90	9424.0
178.00	4118.0
178.90	38912.0
180.00	32320.0
181.00	12808.0
182.00	2051.0
182.90	1137.0
183.90	3700.0
185.00	19072.0
186.00	149312.0
187.00	43264.0
188.00	5035.0
189.00	10285.0
189.90	1802.0
191.00	4700.0
191.90	13171.0
193.00	15314.0
194.00	3445.0
195.00	1394.0
196.00	28552.0
197.90	1064960.0
198.90	73720.0
200.00	5651.0
201.40	4168.0
203.00	7341.0
204.00	37136.0
205.00	64240.0
206.00	275840.0
207.00	40344.0
208.00	10541.0
209.00	3575.0
210.10	4644.0
211.00	10057.0
212.00	2434.0
213.00	774.0
213.90	404.0
215.00	3239.0
216.00	6035.0
217.00	69504.0
218.00	8888.0
219.00	826.0
221.00	43184.0
223.00	15977.0
224.00	146880.0
225.00	37368.0
226.00	5307.0
227.00	62488.0
228.00	8988.0

Instrument :
BNA_P
ClientSampleId :
DFTFP669

229.00	13535.0
229.90	1890.0
231.00	5050.0
231.90	902.0
233.00	929.0
233.90	3798.0
234.90	4250.0
236.00	3390.0
237.00	8501.0
238.00	1164.0
238.90	2209.0
240.00	1990.0
241.00	3681.0
242.00	8542.0
243.00	7632.0
244.00	114992.0
245.00	15811.0
246.00	22160.0
247.00	4724.0
248.00	943.0
249.00	3961.0
250.00	968.0
250.90	999.0
251.90	1286.0
252.90	1991.0
255.00	586368.0
256.00	86064.0
257.00	8044.0
258.00	33216.0
259.00	5927.0
260.00	1125.0
261.00	788.0
261.90	93.0
263.00	337.0
264.00	1007.0
265.00	13411.0
266.00	1639.0
267.00	629.0
267.90	264.0
269.00	197.0
270.10	797.0
271.00	1524.0
271.90	1748.0
273.00	16472.0
274.00	46104.0
275.00	258048.0
276.00	35040.0
277.00	23296.0
277.90	4703.0
279.00	1063.0
279.90	62.0
281.00	1493.0
282.00	980.0
283.00	2458.0
283.90	1593.0
285.00	3949.0
286.00	776.0
287.00	110.0
288.00	276.0
289.00	916.0
290.00	877.0
291.10	552.0
292.00	1136.0
293.00	5396.0
293.90	1899.0
295.00	1876.0
296.00	71128.0
297.00	10472.0
298.00	1304.0
299.00	282.0
299.90	77.0
300.90	958.0
301.90	1145.0
303.00	8534.0
304.00	2461.0
304.90	533.0
306.20	142.0
306.90	156.0
308.00	1225.0
309.00	876.0
310.00	1269.0
310.60	149.0
311.10	82.0
311.90	306.0
312.90	670.0
314.00	3401.0
315.00	7762.0
316.00	4247.0
317.00	807.0
318.00	147.0
319.00	102.0
319.90	410.0
321.00	2821.0
322.00	1121.0
323.00	22176.0
324.00	3897.0

Instrument :
BNA_P
ClientSampleId :
DFTPP669

324.90	287.0
325.90	546.0
327.00	4317.0
328.00	2645.0
328.90	457.0
330.10	89.0
332.00	1898.0
333.00	2329.0
334.00	14945.0
335.00	4068.0
336.10	381.0
337.00	21.0
337.70	11.0
339.00	458.0
339.90	424.0
341.00	2583.0
342.00	969.0
342.80	201.0
343.90	114.0
344.80	153.0
345.90	4869.0
346.90	1499.0
347.80	123.0
349.00	1.0
349.80	332.0
352.00	7099.0
353.00	4949.0
354.00	6604.0
355.00	1704.0
356.00	222.0
357.00	136.0
357.70	63.0
359.10	506.0
359.70	234.0
360.70	172.0
362.00	92.0
362.90	186.0
364.90	31624.0
366.00	5413.0
366.90	363.0
368.00	17.0
368.40	15.0
369.00	5.0
370.00	697.0
370.90	1325.0
372.00	12540.0
373.00	2749.0
374.00	323.0
375.10	18.0
376.10	9.0
377.00	310.0
377.90	16.0
378.40	9.0
379.00	112.0
379.60	5.0
380.90	16.0
381.80	70.0
383.00	3207.0
383.90	901.0
385.00	509.0
385.70	100.0
387.10	29.0
388.20	14.0
388.90	89.0
389.90	1364.0
391.00	1398.0
392.00	723.0
393.00	84.0
394.80	67.0
395.90	86.0
396.80	112.0
398.00	110.0
398.50	17.0
399.40	23.0
401.00	814.0
402.00	4631.0
403.00	6393.0
404.00	3002.0
405.00	752.0
406.00	305.0
406.90	48.0
407.70	119.0
408.80	9.0
409.80	253.0
411.10	15.0
412.50	8.0
413.20	11.0
414.00	11.0
414.80	271.0
415.90	138.0
417.10	18.0
418.10	3.0
419.10	36.0
419.90	125.0
420.90	5945.0
422.00	6631.0

Instrument :
BNA_P
ClientSampleId :
DFTPP669

423.00	39376.0
424.00	14970.0
425.00	2259.0
426.00	232.0
426.70	94.0
427.40	2.0
428.10	17.0
429.00	82.0
430.70	26.0
431.40	8.0
432.50	16.0
433.00	23.0
434.60	16.0
435.90	13.0
436.70	15.0
437.80	129.0
439.00	212.0
441.00	114272.0
442.00	734144.0
443.00	148608.0
444.00	14301.0
444.90	726.0
446.10	59.0
446.90	10.0
447.50	15.0
448.60	10.0
450.40	8.0
451.40	17.0
451.90	8.0
453.40	9.0
454.00	2.0
454.90	17.0
455.70	10.0
456.60	16.0
457.90	16.0
459.30	11.0
460.10	9.0
461.10	56.0
462.00	17.0
462.80	18.0
464.00	10.0
466.10	9.0
467.60	9.0
469.20	8.0
470.70	8.0
472.40	10.0
473.80	9.0
474.90	53.0
475.60	5.0
476.40	20.0
476.90	15.0
478.50	18.0
480.20	10.0
481.90	7.0
483.70	13.0
484.90	9.0
486.60	7.0
487.20	4.0
488.00	9.0
489.20	24.0
490.10	8.0
491.10	8.0
492.80	8.0
494.30	18.0
495.90	9.0
497.50	10.0
498.90	8.0
499.40	3.0
500.70	12.0
502.10	8.0
502.80	6.0
503.00	7.0
503.70	9.0
504.10	12.0
505.10	6.0
505.40	5.0
506.10	0.0
507.00	10.0
508.50	10.0
509.10	10.0
510.10	9.0
511.60	14.0
513.20	8.0
514.70	8.0
516.30	13.0
518.00	9.0
519.00	20.0
519.50	8.0
521.20	13.0
522.60	7.0
522.90	7.0
524.20	8.0
525.00	13.0
525.80	8.0
527.60	14.0
529.00	10.0

Instrument :
BNA_P
ClientSampleId :
DFTPP669

530.50	8.0
532.20	10.0
533.70	14.0
534.30	22.0
535.00	23.0
536.80	9.0
538.40	8.0
539.80	19.0
541.50	9.0
543.40	11.0
544.70	9.0
546.30	13.0
547.80	21.0
548.90	15.0
549.60	19.0

Instrument :
BNA_P
ClientSampleId :
DFTPP669

m/z	Abundance
35.10	184.0
36.10	575.0
37.00	1918.0
38.00	6298.0
39.00	32296.0
40.00	3529.0
41.00	1737.0
42.00	755.0
43.00	1068.0
44.00	7018.0
45.00	1519.0
46.00	149.0
46.90	327.0
47.90	378.0
49.00	4246.0
50.00	120728.0
51.00	470272.0
52.00	24264.0
53.00	1460.0
53.80	210.0
55.00	2843.0
56.00	14383.0
57.00	33528.0
58.00	1624.0
59.00	624.0
60.00	718.0
61.00	6206.0
62.00	7505.0
63.00	19504.0
64.00	2191.0
65.00	9394.0
66.00	741.0
67.00	899.0
68.00	8226.0
68.90	478592.0
70.00	2880.0
71.00	623.0
71.90	342.0
73.00	5828.0
74.00	51552.0
75.00	80176.0
76.00	28056.0
77.00	567680.0
78.00	39640.0
79.00	37672.0
80.00	27536.0
81.00	38072.0
82.00	9790.0
83.00	9220.0
83.90	1708.0
85.00	6605.0
86.00	11741.0
87.00	5179.0
88.00	2087.0
89.00	1052.0
90.10	300.0
91.00	8249.0
92.00	11067.0
93.00	65008.0
94.00	4939.0
94.90	1042.0
96.00	3075.0
97.00	1630.0
98.00	51128.0
99.00	42536.0
100.00	3586.0
101.00	22392.0
102.00	1254.0
103.00	7398.0
103.90	13713.0
105.00	13767.0
106.00	4351.0
107.00	175104.0
108.00	27320.0
109.00	4315.0
110.00	320256.0
111.00	48400.0
112.00	5392.0
113.00	2286.0
114.00	480.0
114.90	876.0
116.00	10596.0
117.00	151232.0
118.00	10969.0
118.90	1646.0
119.90	2195.0
121.10	976.0
122.00	11634.0
123.00	17848.0
124.00	8878.0
125.00	7878.0
127.00	622208.0

Instrument :
BNA_P
ClientSampleId :
DFTPP669

128.00	45880.0
129.00	235328.0
130.00	19672.0
131.00	4213.0
132.00	2307.0
132.90	1376.0
133.90	7113.0
134.90	18680.0
136.00	7228.0
137.00	11801.0
137.90	2685.0
138.90	1443.0
140.00	2842.0
141.00	31720.0
142.00	10539.0
142.90	6496.0
144.00	2075.0
145.00	1829.0
145.90	5951.0
147.00	16880.0
148.00	37968.0
148.90	8633.0
149.90	2080.0
151.10	4115.0
152.90	9032.0
153.90	7034.0
155.00	17592.0
156.00	26256.0
157.00	4667.0
157.90	6125.0
158.90	4193.0
159.90	9308.0
161.00	14113.0
162.00	3544.0
163.00	1373.0
164.00	1610.0
164.90	10675.0
166.00	8375.0
167.00	64864.0
168.00	39848.0
169.00	6185.0
170.10	2078.0
170.90	2850.0
172.00	5364.0
173.00	6804.0
174.00	12492.0
175.00	24464.0
176.00	7254.0
177.00	11055.0
178.00	3620.0
179.00	44384.0
180.00	33488.0
181.00	14443.0
182.00	2208.0
183.00	1488.0
184.00	3968.0
185.00	20416.0
186.00	167808.0
187.00	46064.0
188.00	5830.0
188.90	10844.0
190.00	1670.0
190.90	5179.0
192.00	14979.0
193.00	16368.0
194.00	4089.0
195.00	1854.0
196.00	34976.0
197.00	7290.0
197.90	1195008.0
199.00	80080.0
200.00	6474.0
201.50	6201.0
203.00	8430.0
204.00	44032.0
205.00	73504.0
206.00	316608.0
207.00	44800.0
208.00	12191.0
209.00	4390.0
211.00	13143.0
213.00	1005.0
214.00	512.0
215.00	3797.0
216.00	6608.0
217.00	81784.0
218.00	10696.0
219.00	857.0
221.00	51552.0
221.80	11132.0
223.00	18176.0
224.00	172416.0
225.00	45896.0
226.00	5812.0
227.00	72976.0
228.00	10163.0

Instrument :
BNA_P
ClientSampleId :
DFTPP669

229.00	15791.0
230.00	2052.0
231.00	5759.0
232.00	1162.0
233.00	1307.0
233.90	4693.0
235.00	4659.0
236.00	3246.0
237.00	7824.0
238.00	1287.0
238.90	2586.0
240.00	2646.0
241.00	4729.0
242.00	9257.0
243.00	9746.0
244.00	134976.0
245.00	16928.0
246.00	25952.0
247.00	5112.0
247.90	1129.0
248.90	4367.0
250.00	977.0
251.10	1324.0
252.00	1298.0
253.00	3013.0
255.00	708416.0
256.00	101528.0
257.00	9516.0
258.00	40424.0
259.00	6827.0
260.00	1059.0
261.00	1216.0
262.00	388.0
263.00	402.0
264.00	1029.0
265.00	16592.0
266.00	2271.0
267.00	464.0
268.00	238.0
268.90	146.0
270.10	690.0
271.00	1776.0
271.90	1851.0
273.00	21896.0
274.00	56672.0
275.00	314752.0
276.00	41968.0
277.00	26680.0
277.90	5292.0
279.00	871.0
279.90	154.0
281.10	1318.0
282.10	954.0
283.00	2986.0
284.00	2022.0
285.00	4632.0
286.00	857.0
286.90	187.0
287.70	252.0
288.20	201.0
288.90	974.0
289.90	773.0
291.00	606.0
292.00	1089.0
293.00	5815.0
294.00	1925.0
296.00	92032.0
297.00	13432.0
298.00	1056.0
299.10	152.0
299.90	180.0
300.90	876.0
302.00	1558.0
303.00	11660.0
304.00	3277.0
305.00	557.0
306.00	311.0
307.00	139.0
307.90	1122.0
308.90	962.0
310.00	1154.0
310.90	368.0
312.00	417.0
313.00	770.0
314.00	4729.0
315.00	10778.0
316.00	5878.0
317.00	1157.0
318.00	214.0
319.00	150.0
320.00	324.0
320.90	2871.0
322.00	1655.0
323.00	29856.0
324.00	5315.0
325.20	429.0

Instrument :
BNA_P
ClientSampleId :
DFTPP669

326.00	611.0
327.00	5543.0
328.00	3433.0
328.90	486.0
330.00	187.0
331.10	161.0
332.00	2240.0
333.00	3047.0
334.00	20472.0
335.00	5328.0
336.00	613.0
336.80	19.0
337.50	9.0
339.00	388.0
340.00	317.0
341.00	3957.0
342.00	1035.0
343.00	258.0
344.00	103.0
345.90	6693.0
346.80	1850.0
347.70	184.0
348.70	6.0
350.00	252.0
352.00	8607.0
353.00	6053.0
354.00	9955.0
355.00	2141.0
355.90	179.0
356.90	176.0
357.90	173.0
359.00	905.0
360.00	104.0
361.00	263.0
362.10	91.0
362.80	290.0
365.00	42960.0
366.00	6141.0
366.90	576.0
367.90	6.0
368.40	20.0
369.20	133.0
369.90	791.0
370.90	2010.0
372.00	16528.0
373.00	3965.0
373.90	414.0
375.10	71.0
376.00	13.0
376.80	389.0
378.40	17.0
378.90	45.0
380.10	18.0
380.80	15.0
381.80	171.0
382.90	4775.0
383.90	1569.0
385.00	644.0
385.80	45.0
386.60	32.0
388.20	25.0
388.90	74.0
389.90	2129.0
390.90	1167.0
391.90	1111.0
393.10	233.0
393.80	11.0
394.30	25.0
395.10	190.0
395.70	103.0
396.80	172.0
397.50	14.0
398.10	64.0
399.10	24.0
400.00	72.0
400.90	1155.0
402.00	6966.0
403.00	10178.0
404.00	3959.0
404.90	838.0
406.00	364.0
406.90	42.0
408.00	40.0
409.00	15.0
410.00	201.0
411.20	7.0
413.00	23.0
413.60	8.0
415.00	496.0
415.70	164.0
416.90	89.0
417.70	21.0
418.20	14.0
419.00	75.0
419.90	272.0
421.00	8784.0

Instrument :
BNA_P
ClientSampleId :
DFTPP669

422.00	9990.0
423.00	60272.0
424.00	20680.0
425.00	2713.0
426.00	210.0
426.70	29.0
427.60	11.0
428.10	13.0
429.00	63.0
430.20	13.0
430.80	6.0
431.10	8.0
431.50	10.0
432.00	8.0
432.90	15.0
433.50	12.0
435.20	17.0
435.80	32.0
436.40	33.0
437.00	8.0
437.80	167.0
438.80	318.0
441.00	175680.0
442.00	1110016.0
443.00	217152.0
444.00	19352.0
445.00	1048.0
446.00	135.0
446.70	0.0
447.70	8.0
449.20	13.0
450.00	7.0
450.90	8.0
452.40	9.0
454.00	9.0
455.70	9.0
457.00	10.0
457.70	21.0
458.70	10.0
459.90	10.0
461.10	104.0
461.70	6.0
463.20	10.0
465.10	8.0
466.60	10.0
467.40	6.0
468.20	5.0
469.60	8.0
471.30	10.0
472.90	16.0
474.80	96.0
475.90	12.0
476.40	1.0
477.10	15.0
477.80	17.0
479.20	10.0
480.80	11.0
482.10	11.0
483.80	9.0
484.40	10.0
485.40	9.0
487.10	9.0
489.00	39.0
490.00	15.0
490.40	12.0
491.60	12.0
493.60	12.0
494.90	8.0
496.50	10.0
497.50	19.0
498.10	8.0
499.60	15.0
501.20	9.0
502.10	6.0
502.60	6.0
503.20	11.0
504.30	10.0
504.70	8.0
505.90	9.0
507.50	8.0
509.10	8.0
510.70	9.0
512.30	9.0
513.80	8.0
515.30	10.0
517.00	8.0
518.80	16.0
520.00	9.0
520.70	4.0
521.70	9.0
523.20	8.0
525.10	23.0
526.30	9.0
528.00	10.0
529.40	13.0
530.80	16.0

Instrument :
BNA_P
ClientSampleId :
DFTPP669

532.70	9.0
534.30	9.0
535.90	14.0
537.50	15.0
539.00	10.0
540.70	12.0
542.00	10.0
543.50	10.0
545.00	19.0
546.80	9.0
548.90	34.0
549.80	8.0

Instrument :
BNA_P
ClientSampleId :
DFTPP669

m/z	Abundance
36.00	389.0
37.00	1402.0
38.00	3157.0
39.00	18440.0
40.00	3535.0
41.00	1290.0
41.90	458.0
43.00	771.0
44.00	7452.0
45.00	1016.0
45.90	41.0
46.20	40.0
46.80	298.0
48.00	283.0
49.00	2762.0
50.00	66160.0
51.00	258304.0
52.00	13253.0
53.00	619.0
53.90	225.0
55.00	1590.0
55.90	8492.0
57.00	18656.0
58.00	1176.0
59.00	414.0
60.00	546.0
61.00	3525.0
62.00	3756.0
63.00	10443.0
63.90	1412.0
65.00	5012.0
66.10	557.0
67.00	501.0
68.00	4894.0
69.00	261696.0
70.00	1546.0
70.90	405.0
71.80	190.0
73.00	4042.0
74.00	26840.0
75.00	43520.0
76.00	14978.0
77.00	312192.0
78.00	21416.0
79.00	19088.0
80.00	14919.0
81.00	22024.0
82.00	4928.0
83.00	5265.0
84.00	1250.0
85.00	4241.0
86.00	6484.0
87.00	2905.0
87.90	1059.0
88.90	851.0
89.80	119.0
90.10	134.0
90.90	5716.0
91.90	5637.0
92.90	35672.0
94.00	3030.0
94.90	654.0
95.90	2562.0
97.10	782.0
98.00	28840.0
98.90	24808.0
100.00	2027.0
101.00	13171.0
102.00	683.0
102.90	4808.0
103.90	8141.0
105.00	7231.0
106.00	2656.0
107.00	97072.0
108.00	15140.0
109.00	2567.0
110.00	178752.0
111.00	26256.0
112.00	3704.0
113.00	1188.0
113.90	272.0
114.20	285.0
115.00	747.0
116.00	5363.0
117.00	85768.0
117.90	6692.0
118.90	734.0
119.90	1230.0
120.80	531.0
122.00	6042.0
123.00	10247.0
124.00	4844.0

Instrument :
BNA_P
ClientSampleId :
DFTPP669

125.00	4142.0
126.00	1721.0
127.00	354432.0
128.00	26040.0
129.00	134592.0
129.90	11586.0
131.00	2131.0
132.10	1265.0
133.00	1528.0
134.00	3728.0
135.00	11886.0
136.00	4475.0
137.00	6938.0
137.90	1478.0
138.90	1085.0
139.90	1882.0
141.00	18072.0
142.00	5818.0
142.90	4398.0
144.00	1043.0
144.90	1143.0
146.00	3099.0
147.00	10312.0
148.00	21576.0
149.00	5455.0
150.00	1541.0
151.00	2396.0
151.90	1639.0
153.00	5773.0
154.00	4517.0
155.00	10911.0
156.00	15611.0
157.00	3262.0
157.90	3259.0
158.90	2425.0
159.90	5375.0
161.00	8783.0
162.00	2123.0
162.90	842.0
164.00	1012.0
165.00	6757.0
166.00	5342.0
167.00	41208.0
168.00	23344.0
169.00	3229.0
170.00	1035.0
171.00	1479.0
171.90	3063.0
173.00	3743.0
174.00	7578.0
175.00	14358.0
176.00	4188.0
176.90	6838.0
177.90	2227.0
178.90	27472.0
180.00	18832.0
181.00	8728.0
181.90	1366.0
183.10	726.0
184.00	2103.0
185.00	13102.0
186.00	100752.0
187.00	29224.0
188.00	2959.0
189.00	6931.0
190.00	1152.0
191.00	3928.0
191.90	9301.0
193.00	10203.0
194.00	2220.0
194.80	1257.0
196.00	20104.0
196.80	4430.0
197.90	728704.0
198.90	47416.0
200.00	3914.0
201.50	3861.0
203.00	5801.0
204.00	27024.0
205.00	46496.0
206.00	195008.0
207.00	30560.0
208.00	7339.0
209.00	3208.0
210.20	3924.0
211.00	7792.0
212.90	485.0
214.00	260.0
215.00	2001.0
216.00	4076.0
217.00	50040.0
218.00	6498.0
219.00	590.0
221.00	32376.0
221.70	7627.0
223.00	11552.0

Instrument :
BNA_P
ClientSampleId :
DFTPP669

224.00	110904.0
225.00	29584.0
226.00	3011.0
227.00	45416.0
227.90	6701.0
228.90	9220.0
230.00	1452.0
231.00	3775.0
232.00	669.0
232.90	828.0
233.90	2819.0
235.00	3329.0
236.00	2255.0
237.00	5158.0
238.00	489.0
239.00	1844.0
240.00	1749.0
240.90	2881.0
242.00	6217.0
243.00	5924.0
244.00	88816.0
245.00	11588.0
246.00	17488.0
247.00	3953.0
248.00	817.0
249.00	3328.0
249.80	981.0
251.00	894.0
252.10	685.0
253.00	2447.0
255.00	460032.0
256.00	64952.0
257.00	5462.0
258.00	25640.0
259.00	4518.0
260.00	1039.0
261.00	954.0
261.90	99.0
262.90	248.0
264.00	571.0
265.00	12502.0
266.00	1428.0
266.80	620.0
267.80	286.0
269.00	196.0
270.10	408.0
270.90	1085.0
272.00	1365.0
273.00	13744.0
274.00	38136.0
275.00	218048.0
276.00	28560.0
277.00	18704.0
277.90	3452.0
278.90	855.0
281.00	1688.0
281.80	719.0
283.00	2057.0
284.00	1648.0
285.00	3106.0
286.00	647.0
286.80	81.0
287.90	284.0
288.80	719.0
290.00	589.0
291.00	375.0
292.00	879.0
293.00	4527.0
294.00	1512.0
296.00	65000.0
297.00	8594.0
297.90	516.0
298.70	75.0
299.20	72.0
300.00	79.0
300.90	745.0
302.00	1124.0
303.00	7632.0
304.00	2099.0
305.10	455.0
305.70	156.0
306.90	239.0
307.80	909.0
308.80	594.0
309.90	797.0
310.70	240.0
311.20	163.0
312.00	211.0
312.90	610.0
314.00	2967.0
315.00	6987.0
316.00	3588.0
317.00	637.0
317.90	119.0
318.80	130.0
320.10	291.0

Instrument :
BNA_P
ClientSampleId :
DFTPP669

321.00	2116.0
321.90	1216.0
323.00	21368.0
324.00	3833.0
325.00	504.0
325.80	373.0
326.90	4276.0
328.00	1928.0
329.00	561.0
330.10	130.0
330.70	49.0
331.90	1194.0
333.00	2130.0
334.00	12612.0
335.00	3366.0
336.00	442.0
337.10	15.0
338.00	7.0
339.00	483.0
339.90	352.0
341.00	2903.0
342.10	761.0
343.00	311.0
344.00	73.0
345.90	4857.0
347.00	911.0
347.90	184.0
349.60	75.0
350.20	83.0
350.90	308.0
352.00	6568.0
353.00	4636.0
354.00	7513.0
355.00	1447.0
356.00	197.0
356.90	194.0
357.90	118.0
359.10	521.0
359.70	11.0
360.20	63.0
360.70	97.0
362.10	94.0
363.00	87.0
365.00	31552.0
365.90	4804.0
367.00	357.0
367.70	9.0
368.00	11.0
368.60	6.0
369.90	733.0
371.00	2079.0
372.00	12660.0
373.00	3234.0
373.90	383.0
375.10	97.0
375.90	14.0
376.90	422.0
378.00	25.0
378.50	11.0
379.10	24.0
380.30	4.0
380.80	13.0
383.00	3680.0
384.00	795.0
385.00	253.0
385.80	19.0
386.60	27.0
387.20	13.0
388.20	25.0
388.90	93.0
390.00	1593.0
390.90	966.0
392.10	1152.0
392.80	207.0
394.70	71.0
395.80	177.0
396.80	228.0
397.60	20.0
398.20	20.0
399.00	9.0
399.40	11.0
401.00	475.0
402.00	5359.0
403.00	7047.0
403.90	2526.0
405.00	676.0
406.00	130.0
406.80	13.0
407.20	19.0
408.70	22.0
409.80	300.0
410.80	12.0
411.70	16.0
412.10	11.0
413.60	9.0
414.90	401.0

Instrument :
BNA_P
ClientSampleId :
DFTPP669

415.80	180.0
417.00	57.0
417.80	6.0
419.00	62.0
421.00	6510.0
422.00	7260.0
423.00	45352.0
424.00	12517.0
425.00	1774.0
426.00	116.0
427.10	50.0
428.00	11.0
428.80	56.0
429.50	9.0
430.10	35.0
430.80	37.0
431.50	0.0
432.50	11.0
434.20	19.0
435.00	8.0
435.90	19.0
436.40	53.0
436.80	20.0
437.90	173.0
439.10	193.0
441.00	135488.0
442.00	878208.0
443.00	170368.0
444.00	15449.0
445.00	880.0
446.10	79.0
446.70	11.0
448.20	8.0
448.50	10.0
449.10	4.0
450.00	9.0
451.50	9.0
453.10	10.0
454.60	7.0
456.00	20.0
457.70	24.0
459.30	8.0
460.50	0.0
461.00	70.0
462.00	11.0
462.80	13.0
464.00	9.0
465.40	17.0
467.10	9.0
468.50	23.0
470.40	9.0
471.90	9.0
473.50	9.0
474.20	9.0
474.70	58.0
475.40	10.0
475.80	9.0
476.60	9.0
478.10	16.0
479.70	10.0
481.40	9.0
482.90	9.0
484.60	9.0
486.10	8.0
487.60	9.0
488.10	8.0
489.10	46.0
490.10	3.0
490.80	11.0
492.30	10.0
493.80	11.0
494.50	9.0
495.60	7.0
497.00	11.0
499.10	19.0
500.30	9.0
501.90	7.0
503.10	16.0
503.60	16.0
504.40	11.0
506.60	8.0
508.20	16.0
509.70	10.0
511.20	9.0
512.80	9.0
514.40	9.0
516.00	8.0
516.70	2.0
517.50	8.0
518.10	8.0
519.20	9.0
520.80	9.0
521.60	1.0
522.30	9.0
523.80	7.0
525.40	10.0

Instrument :
BNA_P
ClientSampleId :
DFTPP669

527.00	9.0
528.50	10.0
530.10	8.0
531.60	7.0
533.00	12.0
534.90	15.0
535.70	11.0
536.60	11.0
538.00	11.0
539.60	9.0
541.20	9.0
542.90	11.0
544.30	9.0
545.10	1.0
545.90	11.0
547.40	9.0
548.10	4.0
549.00	39.0

Instrument :
BNA_P
ClientSampleId :
DFTPP669