

Data Path : Z:\svoasrv\HPCHEM1\BNA_P\Data\BP071825\
 Data File : BP025188.D
 Acq On : 18 Jul 2025 11:45
 Operator : CG/JU
 Sample : PB168899BL
 Misc :
 ALS Vial : 3 Sample Multiplier: 1

Instrument :
 BNA_P
 ClientSampleId :
 PB168899BL

Integration Parameters: rteint.p
 Integrator: RTE
 Smoothing : ON Filtering: 5
 Sampling : 1 Min Area: 3 % of largest Peak
 Start Thrs: 0.2 Max Peaks: 100
 Stop Thrs : 0 Peak Location: TOP

If leading or trailing edge < 100 prefer < Baseline drop else tangent >
 Peak separation: 5

Method : Z:\svoasrv\HPCHEM1\BNA_P\Methods\8270E-BP070325.M
 Title : ASP BNA STANDARDS FOR 5 POINT CALIBRATION

Signal : TIC: BP025188.D\data.ms

peak #	R.T. min	first scan	max scan	last scan	PK TY	peak height	corr. area	corr. % max.	% of total
1	4.661	288	293	303	rVB	785914	1050464	3.53%	0.809%
2	5.108	362	369	379	rBV	8858683	12821166	43.11%	9.880%
3	6.643	623	630	641	rBV	7366009	11273958	37.90%	8.688%
4	7.443	759	766	776	rVB	1916200	3010890	10.12%	2.320%
5	8.572	951	958	967	rBV	4788616	7494064	25.20%	5.775%
6	10.190	1224	1233	1248	rBV	2191460	4057289	13.64%	3.127%
7	12.690	1649	1658	1668	rBV	11951783	18824673	63.29%	14.507%
8	14.096	1888	1897	1906	rBV	3203567	5158158	17.34%	3.975%
9	15.625	2148	2157	2178	rBV	9797471	15334159	51.56%	11.817%
10	16.907	2368	2375	2387	rBV	4064433	5780477	19.43%	4.455%
11	19.689	2841	2848	2853	rBV	24527982	29742940	100.00%	22.920%
12	21.348	3125	3130	3142	rBV	5426259	8063393	27.11%	6.214%
13	24.495	3658	3665	3676	rVB	2997461	7155419	24.06%	5.514%

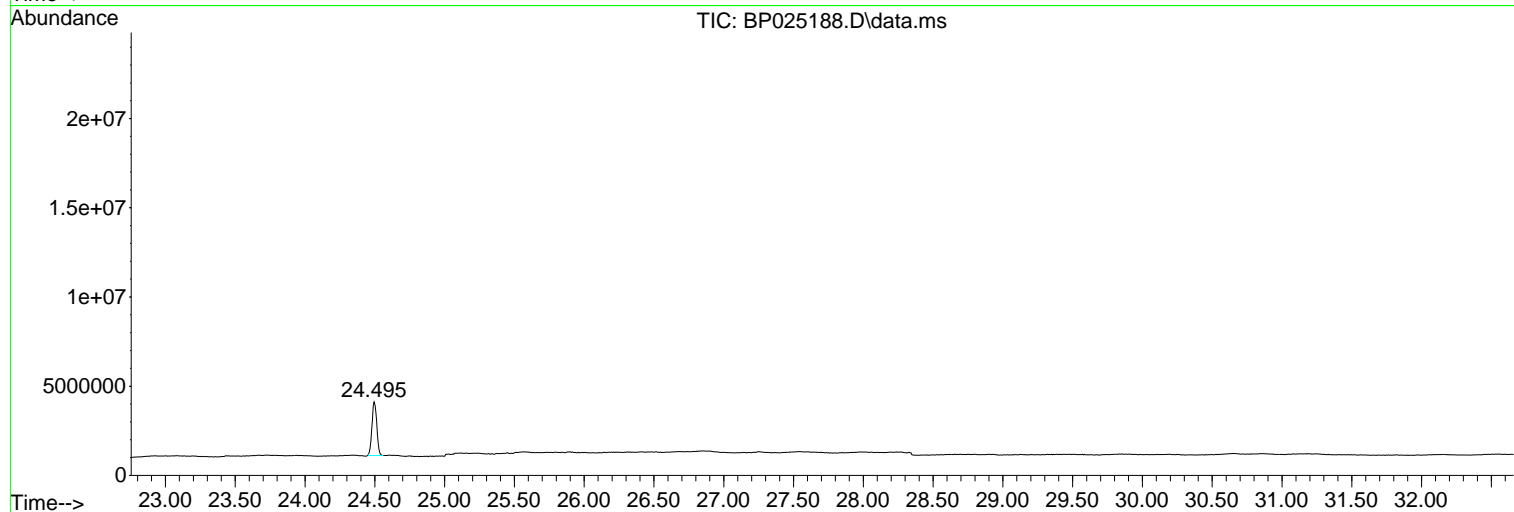
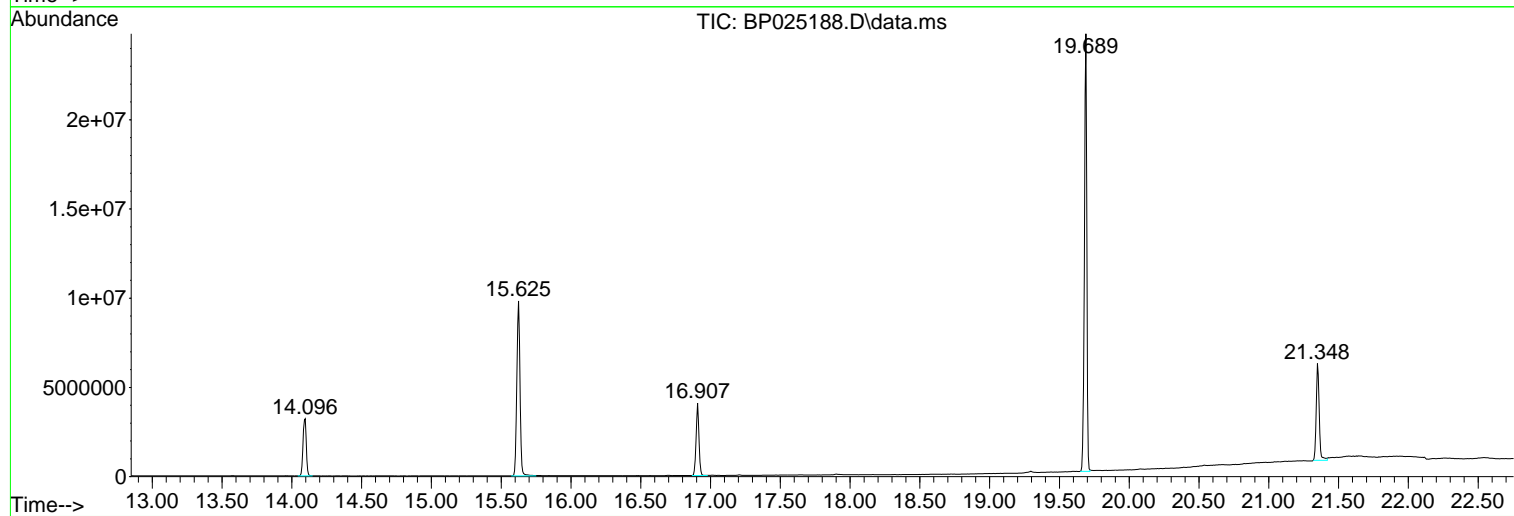
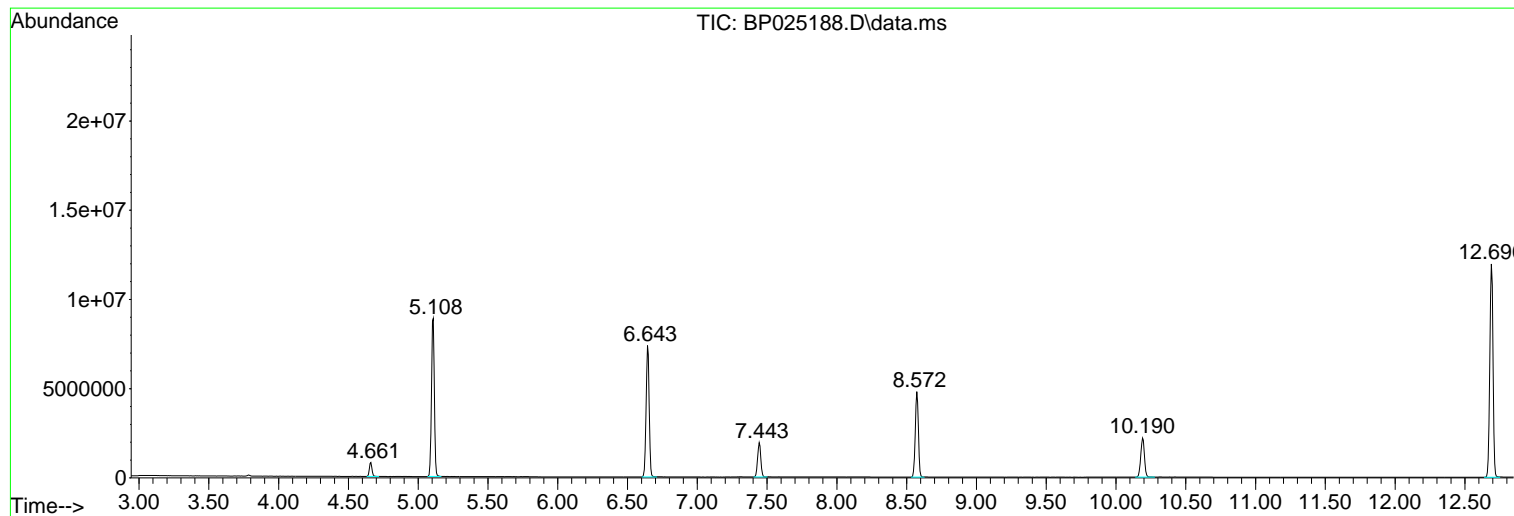
Sum of corrected areas: 129767050

Data Path : Z:\svoasrv\HPCHEM1\BNA_P\Data\BP071825\
Data File : BP025188.D
Acq On : 18 Jul 2025 11:45
Operator : CG/JU
Sample : PB168899BL
Misc :
ALS Vial : 3 Sample Multiplier: 1

Instrument :
BNA_P
ClientSampleId :
PB168899BL

Quant Method : Z:\svoasrv\HPCHEM1\BNA_P\Methods\8270E-BP070325.M
Quant Title : ASP BNA STANDARDS FOR 5 POINT CALIBRATION

TIC Library : C:\Database\NIST20.L
TIC Integration Parameters: LSCINT.P



Data Path : Z:\svoasrv\HPCHEM1\BNA_P\Data\BP071825\
 Data File : BP025188.D
 Acq On : 18 Jul 2025 11:45
 Operator : CG/JU
 Sample : PB168899BL
 Misc :
 ALS Vial : 3 Sample Multiplier: 1

Instrument :
 BNA_P
 ClientSampleId :
 PB168899BL

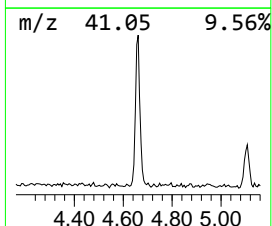
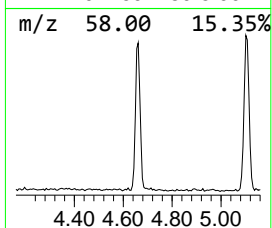
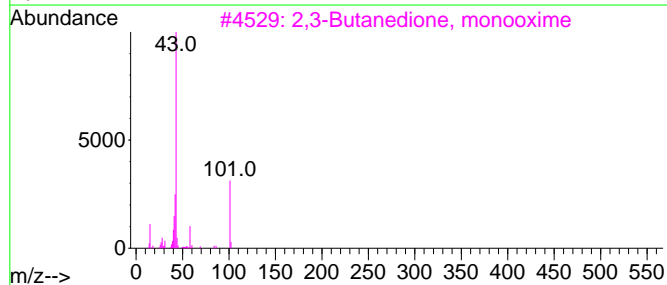
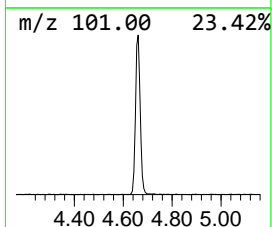
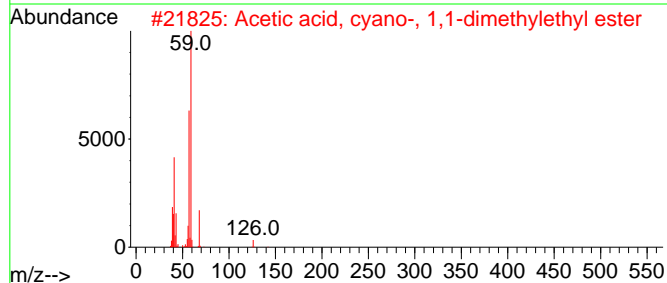
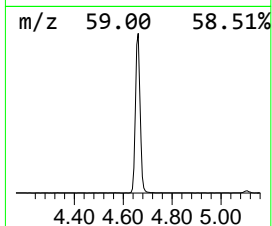
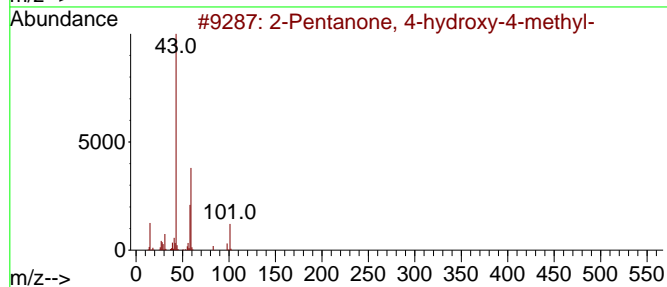
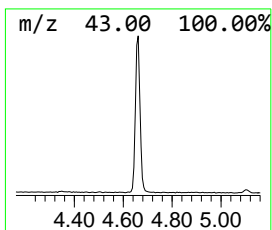
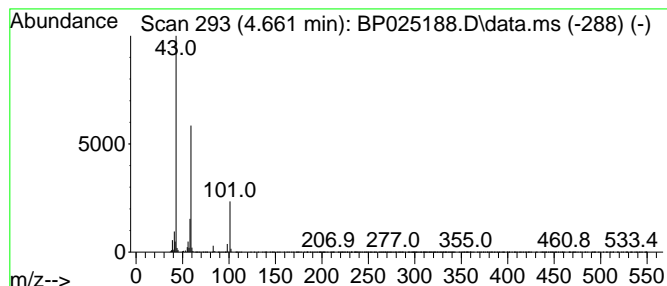
Quant Method : Z:\svoasrv\HPCHEM1\BNA_P\Methods\8270E-BP070325.M
 Quant Title : ASP BNA STANDARDS FOR 5 POINT CALIBRATION

TIC Library : C:\Database\NIST0.L
 TIC Integration Parameters: LSCINT.P

 Peak Number 1 2-Pentanone, 4-hydroxy-4-me... Concentration Rank 1

R.T.	EstConc	Area	Relative to ISTD	R.T.
4.661	6.98 ng	1050460	1,4-Dichlorobenzene-d4	7.443

Hit#	of 5	Tentative ID	MW	MolForm	CAS#	Qual
1		2-Pentanone, 4-hydroxy-4-methyl-	116	C6H12O2	000123-42-2	64
2		Acetic acid, cyano-, 1,1-dimethy...	141	C7H11NO2	001116-98-9	17
3		2,3-Butanedione, monooxime	101	C4H7NO2	000057-71-6	17
4		1-Propen-2-ol, acetate	100	C5H8O2	000108-22-5	10
5		Morpholine, 4-methyl-	101	C5H11NO	000109-02-4	9



Data Path : Z:\svoasrv\HPCHEM1\BNA_P\Data\BP071825\
Data File : BP025188.D
Acq On : 18 Jul 2025 11:45
Operator : CG/JU
Sample : PB168899BL
Misc :
ALS Vial : 3 Sample Multiplier: 1

Instrument :
BNA_P
ClientSampleId :
PB168899BL

Quant Method : Z:\svoasrv\HPCHEM1\BNA_P\Methods\8270E-BP070325.M
Quant Title : ASP BNA STANDARDS FOR 5 POINT CALIBRATION

TIC Library : C:\Database\NIST20.L
TIC Integration Parameters: LSCINT.P

TIC Top Hit name	RT	EstConc	Units	Response	--Internal Standard--			
					#	RT	Resp	Conc
2-Pentanone, 4-...	4.661	7.0	ng	1050460	1	7.443	3010890	20.0