

Data Path : Z:\svoasrv\HPCHEM1\BNA\_P\Data\BP072921\  
 Data File : BP006411.D  
 Acq On : 29 Jul 2021 09:38  
 Operator : CG/JU  
 Sample : PB137954BL  
 Misc :  
 ALS Vial : 3 Sample Multiplier: 1

Instrument :  
 BNA\_P  
 ClientSampleId :  
 SBLK954

Integration Parameters: LSCINT.P

Integrator: RTE  
 Smoothing : OFF Filtering: 5  
 Sampling : 1 Min Area: 0.1 % of largest Peak  
 Start Thrs: 0.2 Max Peaks: 100  
 Stop Thrs : 0 Peak Location: TOP

If leading or trailing edge < 100 prefer < Baseline drop else tangent >  
 Peak separation: 5

Method : Z:\SVOASRV\HPCHEM1\BNA\_P\METHODS\SFAM-EPA-BP072421.M  
 Title : SVOA CALIBRATION

Signal : TIC: BP006411.D

peak #	R.T. min	first scan	max scan	last scan	PK TY	peak height	corr. area	corr. % max.	% of total
1	3.299	32	36	46	rVB	96317	149348	1.79%	0.161%
2	3.699	100	104	132	rBV	1243934	2198360	26.36%	2.376%
3	4.017	154	158	163	rVB	18347	25875	0.31%	0.028%
4	5.011	324	327	334	rVB8	6847	10986	0.13%	0.012%
5	6.952	649	657	670	rBV	1707336	2627393	31.51%	2.839%
6	7.122	679	686	699	rVV	1324433	2089688	25.06%	2.258%
7	7.211	699	701	707	rVB5	5862	9111	0.11%	0.010%
8	7.311	711	718	730	rVB	1648287	2615532	31.37%	2.826%
9	7.781	790	798	806	rBV	1185848	1870409	22.43%	2.021%
10	8.222	868	873	877	rBV6	6289	9838	0.12%	0.011%
11	8.487	910	918	928	rBV	2113039	3268381	39.20%	3.532%
12	8.593	933	936	943	rVB5	12853	24480	0.29%	0.026%
13	8.934	986	994	1006	rBV	1634426	2592555	31.09%	2.801%
14	9.505	1085	1091	1097	rBV2	6304	11401	0.14%	0.012%
15	9.652	1107	1116	1127	rBV	1295569	2078706	24.93%	2.246%
16	9.746	1129	1132	1137	rVB3	11614	17082	0.20%	0.018%
17	9.987	1166	1173	1181	rVB5	7704	15481	0.19%	0.017%
18	10.187	1199	1207	1220	rBV	1901419	3127532	37.51%	3.380%
19	10.563	1263	1271	1278	rBV	1730321	2857962	34.27%	3.088%
20	10.616	1278	1280	1285	rVB4	10387	11798	0.14%	0.013%
21	10.704	1287	1295	1313	rBV	2051703	3419387	41.01%	3.695%
22	10.899	1324	1328	1332	rVB6	7140	10148	0.12%	0.011%
23	11.846	1486	1489	1496	rVB4	6334	10724	0.13%	0.012%
24	12.151	1534	1541	1546	rBV2	38608	63519	0.76%	0.069%
25	12.228	1548	1554	1561	rVB2	13047	23889	0.29%	0.026%
26	12.369	1571	1578	1582	rVV10	5681	9948	0.12%	0.011%
27	12.446	1585	1591	1598	rVB3	13467	22991	0.28%	0.025%
28	12.587	1607	1615	1620	rVB7	10173	20902	0.25%	0.023%
29	12.840	1655	1658	1662	rVB6	7369	10578	0.13%	0.011%
30	12.904	1664	1669	1675	rVB9	6171	10408	0.12%	0.011%
31	13.198	1713	1719	1723	rBV3	11533	19235	0.23%	0.021%
32	13.246	1723	1727	1729	rVV2	14562	20108	0.24%	0.022%
33	13.281	1729	1733	1737	rVB3	11341	16953	0.20%	0.018%
34	13.375	1743	1749	1757	rVB4	8729	15855	0.19%	0.017%
35	13.828	1818	1826	1832	rBV	3291736	4687312	56.21%	5.065%
36	13.987	1850	1853	1858	rVB6	6160	9186	0.11%	0.010%

Data Path : Z:\svoasrv\HPCHEM1\BNA\_P\Data\BP072921\  
 Data File : BP006411.D  
 Acq On : 29 Jul 2021 09:38  
 Operator : CG/JU  
 Sample : PB137954BL  
 Misc :  
 ALS Vial : 3 Sample Multiplier: 1

Instrument :  
 BNA\_P  
 ClientSampleId :  
 SBLK954

Integration Parameters: LSCINT.P

Integrator: RTE  
 Smoothing : OFF Filtering: 5  
 Sampling : 1 Min Area: 0.1 % of largest Peak  
 Start Thrs: 0.2 Max Peaks: 100  
 Stop Thrs : 0 Peak Location: TOP

If leading or trailing edge < 100 prefer < Baseline drop else tangent >  
 Peak separation: 5

Method : Z:\SVOASRV\HPCHEM1\BNA\_P\METHODS\SFAM-EPA-BP072421.M  
 Title : SVOA CALIBRATION

37	14.098	1865	1872	1888	rBV	3828541	5552605	66.59%	6.000%
38	14.410	1917	1925	1931	rVV	2550059	3716137	44.57%	4.016%
39	14.469	1931	1935	1940	rVB2	16945	26497	0.32%	0.029%
40	14.610	1952	1959	1975	rBV	1728775	2537980	30.44%	2.743%
41	14.722	1975	1978	1983	rVV4	15466	24857	0.30%	0.027%
42	14.775	1983	1987	1989	rVV5	9780	15638	0.19%	0.017%
43	14.810	1989	1993	1997	rVB	14304	19631	0.24%	0.021%
44	15.034	2026	2031	2040	rVB	6792	13898	0.17%	0.015%
45	15.245	2060	2067	2072	rVB2	13807	22192	0.27%	0.024%
46	15.404	2087	2094	2100	rBV	4784512	6697962	80.33%	7.238%
47	15.457	2100	2103	2108	rVV2	31534	43565	0.52%	0.047%
48	15.522	2108	2114	2125	rVV	1406592	1936252	23.22%	2.092%
49	15.645	2129	2135	2138	rBV	53147	79187	0.95%	0.086%
50	15.975	2186	2191	2196	rVB8	5501	10524	0.13%	0.011%
51	16.087	2205	2210	2218	rVB8	8320	18540	0.22%	0.020%
52	16.357	2251	2256	2261	rVB6	10756	17288	0.21%	0.019%
53	16.451	2268	2272	2277	rBV5	10260	15784	0.19%	0.017%
54	16.628	2298	2302	2306	rBV7	11017	14438	0.17%	0.016%
55	16.804	2328	2332	2335	rBV6	6131	8683	0.10%	0.009%
56	16.839	2335	2338	2343	rVB3	7737	10607	0.13%	0.011%
57	16.945	2347	2356	2365	rBV3	16150	33278	0.40%	0.036%
58	17.157	2386	2392	2399	rBV	2958439	4266677	51.17%	4.611%
59	17.263	2403	2410	2422	rVV	5145785	7385362	88.57%	7.981%
60	17.534	2453	2456	2459	rBV4	8658	12667	0.15%	0.014%
61	17.569	2459	2462	2466	rVV3	14570	20750	0.25%	0.022%
62	18.063	2542	2546	2554	rBV4	40114	66000	0.79%	0.071%
63	18.133	2554	2558	2562	rVB	14823	20475	0.25%	0.022%
64	19.081	2714	2719	2725	rBV2	66324	97299	1.17%	0.105%
65	19.145	2725	2730	2733	rBV	66449	90125	1.08%	0.097%
66	19.304	2753	2757	2762	rBV5	28746	38747	0.46%	0.042%
67	19.504	2785	2791	2801	rBV	6228494	8338554	100.00%	9.011%
68	21.257	3084	3089	3095	rBV	3682751	4623894	55.45%	4.997%
69	23.457	3455	3463	3471	rBV2	4279246	8209450	98.45%	8.871%
70	23.604	3481	3488	3498	rVB2	2365037	4573801	54.85%	4.942%

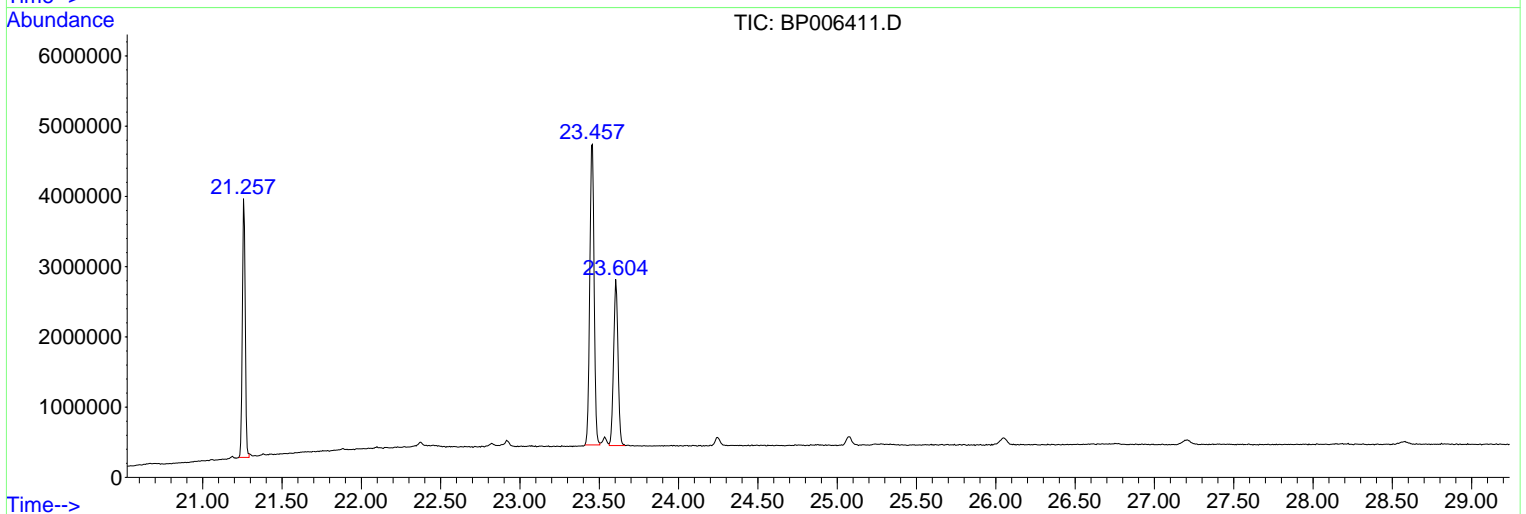
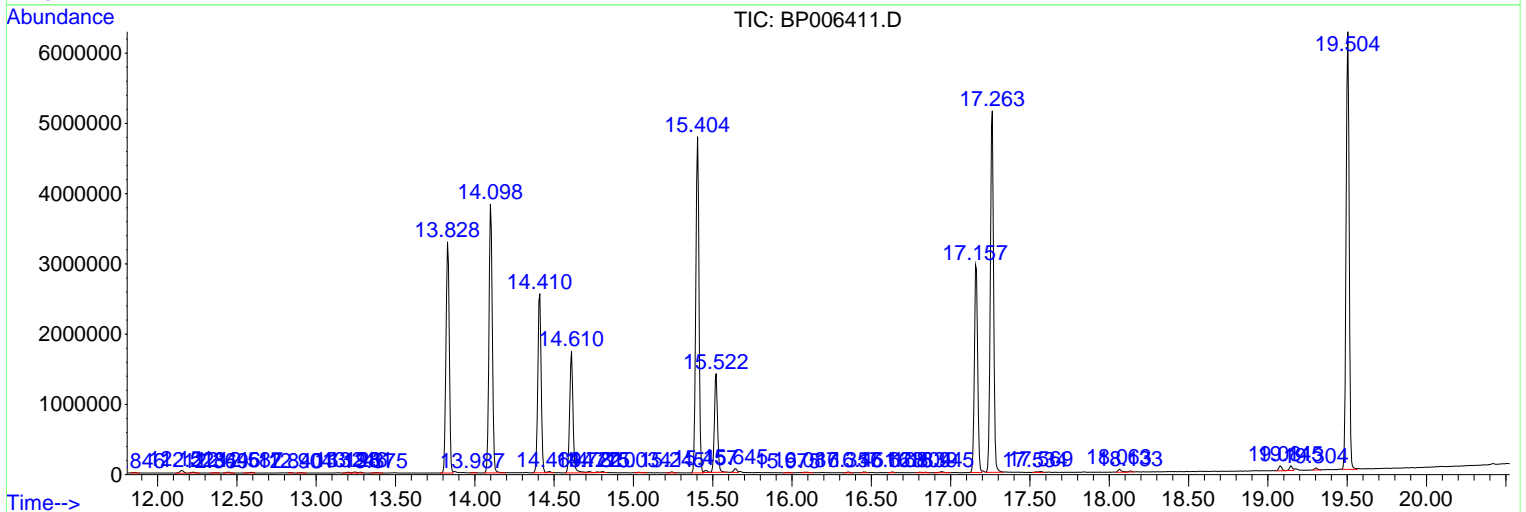
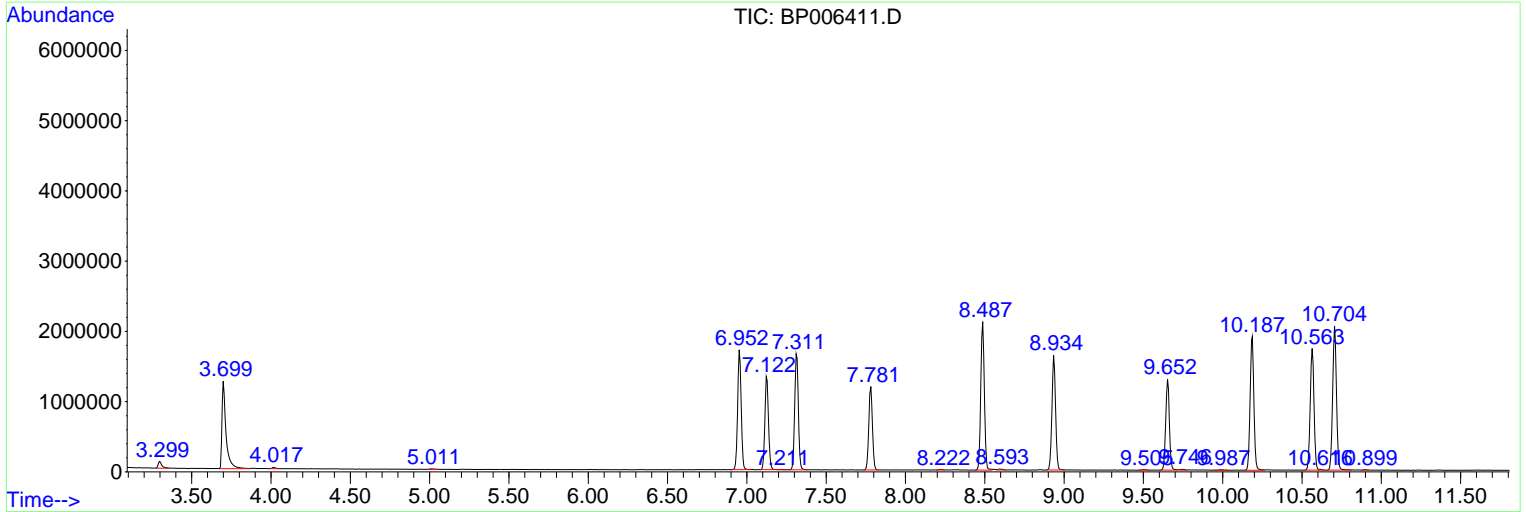
Sum of corrected areas: 92542405

Data Path : Z:\svoasrv\HPCHEM1\BNA\_P\Data\BP072921\  
 Data File : BP006411.D  
 Acq On : 29 Jul 2021 09:38  
 Operator : CG/JU  
 Sample : PB137954BL  
 Misc :  
 ALS Vial : 3 Sample Multiplier: 1

Instrument :  
 BNA\_P  
 ClientSampled :  
 SBLK954

Quant Method : Z:\SVOASRV\HPCHEM1\BNA\_P\METHODS\SFAM-EPA-BP072421.M  
 Quant Title : SVOA CALIBRATION

TIC Library : C:\DATABASE\NIST20.L  
 TIC Integration Parameters: LSCINT.P



Library Search Compound Report

Data Path : Z:\svoasrv\HPCHEM1\BNA\_P\Data\BP072921\  
Data File : BP006411.D  
Acq On : 29 Jul 2021 09:38  
Operator : CG/JU  
Sample : PB137954BL  
Misc :  
ALS Vial : 3 Sample Multiplier: 1

Instrument :  
BNA\_P  
ClientSampleId :  
SBLK954

Quant Method : Z:\SVOASRV\HPCHEM1\BNA\_P\METHODS\SFAM-EPA-BP072421.M  
Quant Title : SVOA CALIBRATION

TIC Library : C:\DATABASE\NIST20.L  
TIC Integration Parameters: LSCINT.P

No Library Search Compounds Detected

\*\*\*\*\*

Data Path : Z:\svoasrv\HPCHEM1\BNA\_P\Data\BP072921\  
Data File : BP006411.D  
Acq On : 29 Jul 2021 09:38  
Operator : CG/JU  
Sample : PB137954BL  
Misc :  
ALS Vial : 3 Sample Multiplier: 1

Instrument :  
BNA\_P  
ClientSampleId :  
SBLK954

Quant Method : Z:\SVOASRV\HPCHEM1\BNA\_P\METHODS\SFAM-EPA-BP072421.M  
Quant Title : SVOA CALIBRATION

TIC Library : C:\DATABASE\NIST20.L  
TIC Integration Parameters: LSCINT.P

TIC Top Hit name	RT	EstConc	Units	Response	--Internal Standard--			
					#	RT	Resp	Conc

---