

Data Path : Z:\svoasrv\HPCHEM1\BNA_P\Data\BP080725\
 Data File : BP025310.D
 Acq On : 07 Aug 2025 12:22
 Operator : CG/JU
 Sample : PB169138BL
 Misc :
 ALS Vial : 3 Sample Multiplier: 1

Instrument :
 BNA_P
 ClientSampleId :
 PB169138BL

Integration Parameters: rteint.p
 Integrator: RTE
 Smoothing : ON Filtering: 5
 Sampling : 1 Min Area: 3 % of largest Peak
 Start Thrs: 0.2 Max Peaks: 100
 Stop Thrs : 0 Peak Location: TOP

If leading or trailing edge < 100 prefer < Baseline drop else tangent >
 Peak separation: 5

Method : Z:\svoasrv\HPCHEM1\BNA_P\Methods\8270E-BP080525.M
 Title : ASP BNA STANDARDS FOR 5 POINT CALIBRATION

Signal : TIC: BP025310.D\data.ms

peak #	R.T. min	first scan	max scan	last scan	PK TY	peak height	corr. area	corr. % max.	% of total
1	4.949	335	342	352	rBV	281715	386079	3.24%	0.740%
2	5.408	413	420	435	rBV	3338173	4850870	40.75%	9.296%
3	6.961	675	684	696	rBV	3085124	5031429	42.27%	9.642%
4	7.802	817	827	836	rBV	719602	1206779	10.14%	2.313%
5	8.937	1012	1020	1032	rBV	1954261	3233884	27.17%	6.198%
6	10.572	1290	1298	1305	rBV	958692	1657503	13.93%	3.177%
7	13.025	1707	1715	1725	rBV	4553734	7462922	62.70%	14.302%
8	14.407	1943	1950	1957	rBV	1404606	2157838	18.13%	4.135%
9	15.919	2200	2207	2227	rBV	3582350	5083260	42.71%	9.742%
10	17.207	2419	2426	2433	rBV2	1669691	2642567	22.20%	5.064%
11	19.930	2883	2889	2899	rBV	8825322	11902872	100.00%	22.811%
12	21.660	3176	3183	3190	rBV	2040485	3184815	26.76%	6.104%
13	25.036	3746	3757	3773	rVB	1185434	3378958	28.39%	6.476%

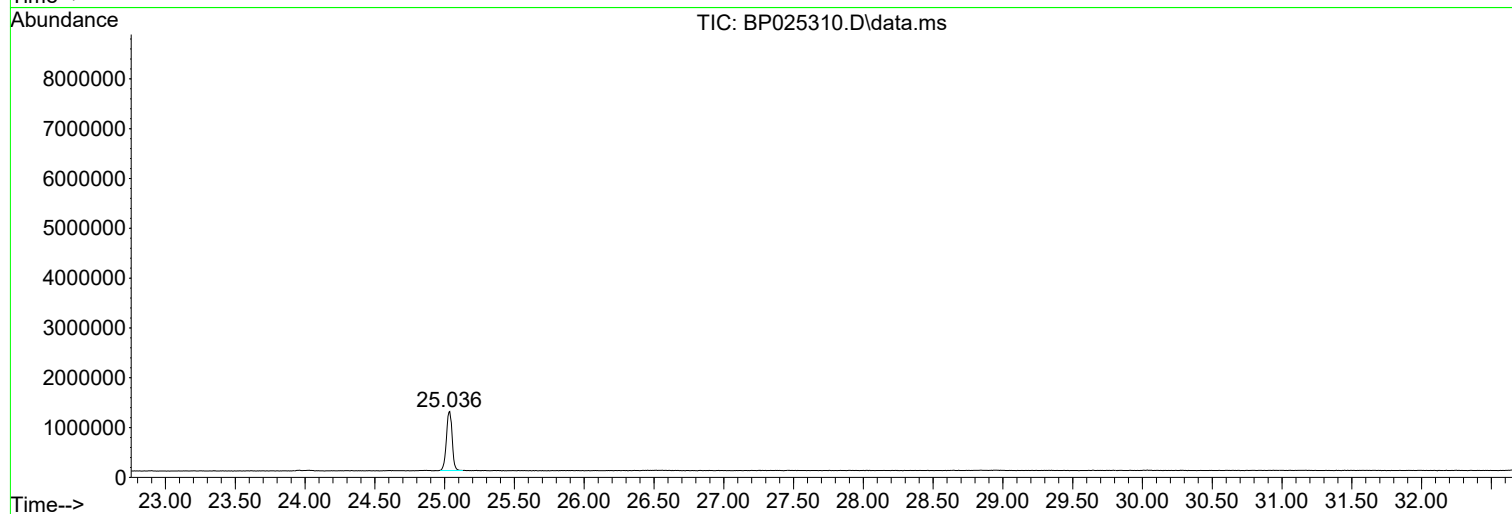
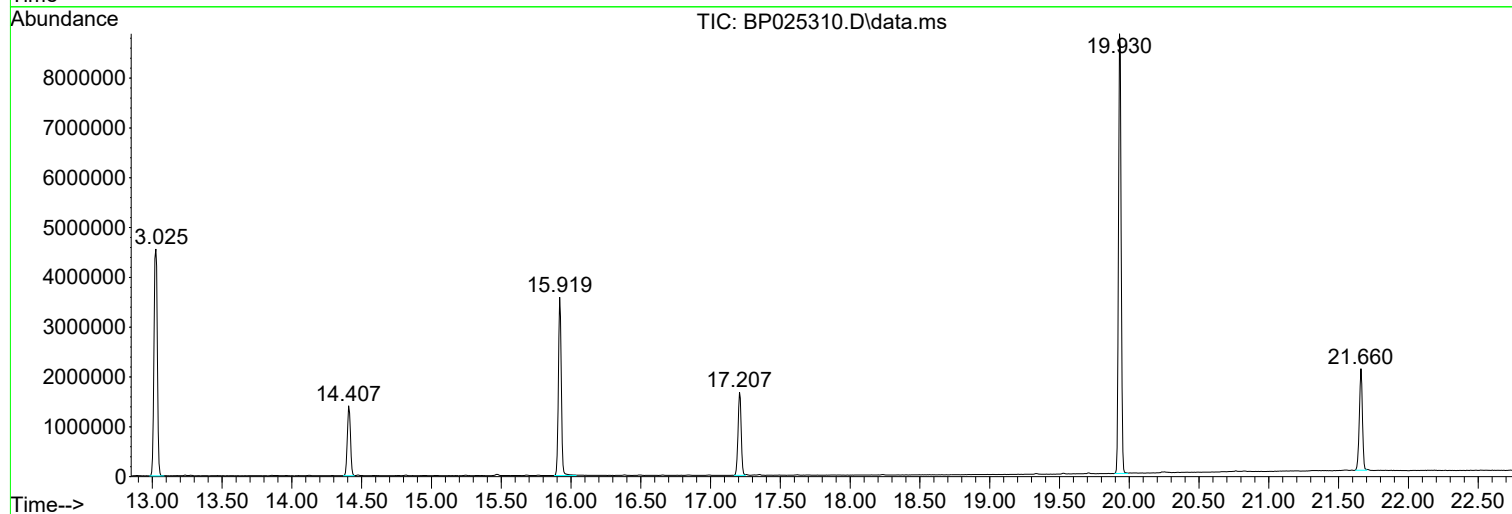
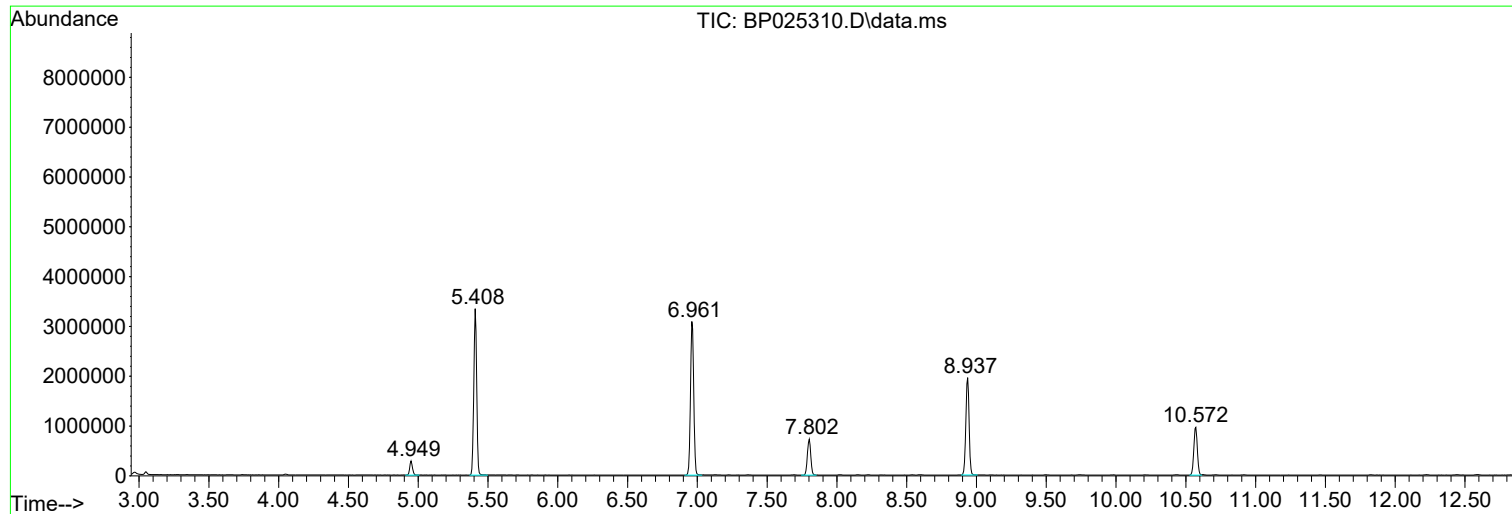
Sum of corrected areas: 52179776

Data Path : Z:\svoasrv\HPCHEM1\BNA_P\Data\BP080725\
Data File : BP025310.D
Acq On : 07 Aug 2025 12:22
Operator : CG/JU
Sample : PB169138BL
Misc :
ALS Vial : 3 Sample Multiplier: 1

Instrument :
BNA_P
ClientSampleId :
PB169138BL

Quant Method : Z:\svoasrv\HPCHEM1\BNA_P\Methods\8270E-BP080525.M
Quant Title : ASP BNA STANDARDS FOR 5 POINT CALIBRATION

TIC Library : C:\Database\NIST20.L
TIC Integration Parameters: LSCINT.P



Data Path : Z:\svoasrv\HPCHEM1\BNA_P\Data\BP080725\
 Data File : BP025310.D
 Acq On : 07 Aug 2025 12:22
 Operator : CG/JU
 Sample : PB169138BL
 Misc :
 ALS Vial : 3 Sample Multiplier: 1

Instrument :
 BNA_P
 ClientSampleId :
 PB169138BL

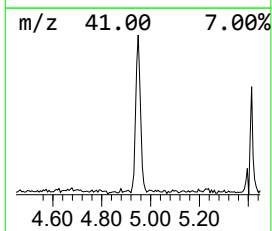
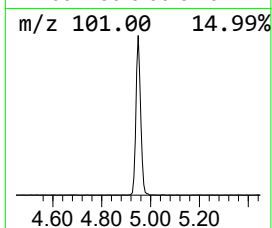
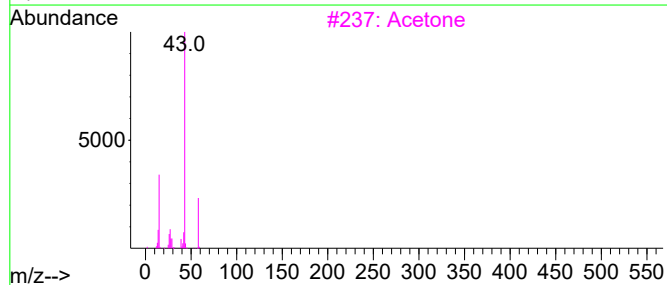
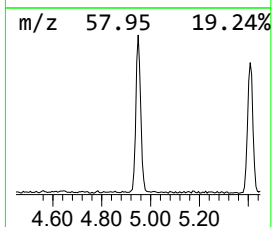
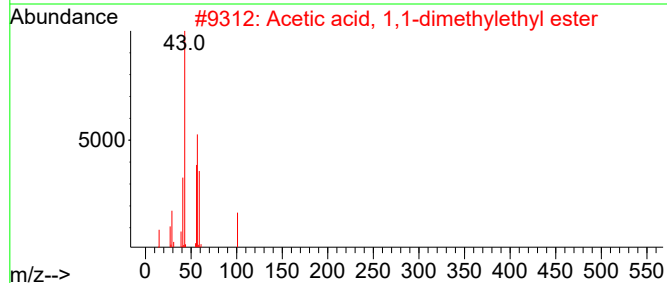
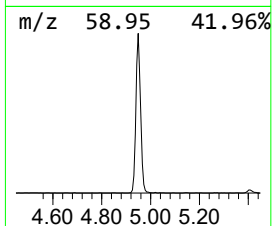
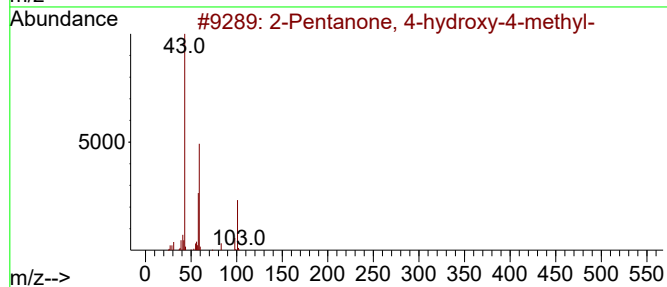
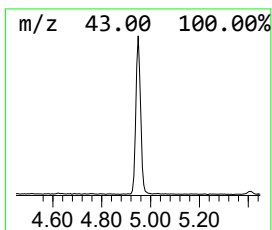
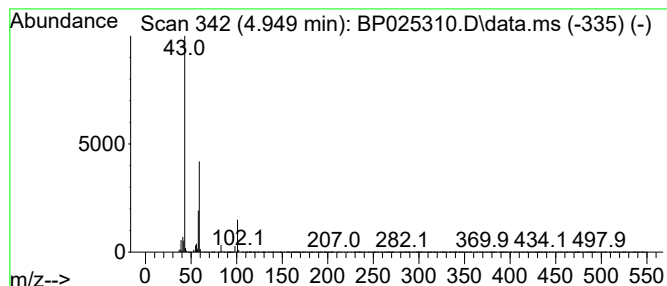
Quant Method : Z:\svoasrv\HPCHEM1\BNA_P\Methods\8270E-BP080525.M
 Quant Title : ASP BNA STANDARDS FOR 5 POINT CALIBRATION

TIC Library : C:\Database\NIST20.L
 TIC Integration Parameters: LSCINT.P

 Peak Number 1 2-Pentanone, 4-hydroxy-4-me... Concentration Rank 1

R.T.	EstConc	Area	Relative to ISTD	R.T.
4.949	6.40 ng	386079	1,4-Dichlorobenzene-d4	7.802

Hit#	of 5	Tentative ID	MW	MolForm	CAS#	Qual
1		2-Pentanone, 4-hydroxy-4-methyl-	116	C6H12O2	000123-42-2	83
2		Acetic acid, 1,1-dimethylethyl e...	116	C6H12O2	000540-88-5	36
3		Acetone	58	C3H6O	000067-64-1	16
4		2,3-Butanedione, monooxime	101	C4H7NO2	000057-71-6	10
5		Propanenitrile, 3-ethoxy-	99	C5H9NO	002141-62-0	9



Data Path : Z:\svoasrv\HPCHEM1\BNA_P\Data\BP080725\
Data File : BP025310.D
Acq On : 07 Aug 2025 12:22
Operator : CG/JU
Sample : PB169138BL
Misc :
ALS Vial : 3 Sample Multiplier: 1

Instrument :
BNA_P
ClientSampleId :
PB169138BL

Quant Method : Z:\svoasrv\HPCHEM1\BNA_P\Methods\8270E-BP080525.M
Quant Title : ASP BNA STANDARDS FOR 5 POINT CALIBRATION

TIC Library : C:\Database\NIST20.L
TIC Integration Parameters: LSCINT.P

TIC Top Hit name	RT	EstConc	Units	Response	--Internal Standard--			
					#	RT	Resp	Conc
2-Pentanone, 4-...	4.949	6.4	ng	386079	1	7.802	1206780	20.0