

Data Path : Z:\svoasrv\HPCHEM1\BNA\_P\Data\BP080725\  
 Data File : BP025316.D  
 Acq On : 07 Aug 2025 16:31  
 Operator : CG/JU  
 Sample : Q2786-04  
 Misc :  
 ALS Vial : 9 Sample Multiplier: 1

Instrument :  
 BNA\_P  
 ClientSampleId :  
 PL-03-08062025

Integration Parameters: rteint.p  
 Integrator: RTE  
 Smoothing : ON  
 Sampling : 1  
 Start Thrs : 0.2  
 Stop Thrs : 0  
 Filtering: 5  
 Min Area: 3 % of largest Peak  
 Max Peaks: 100  
 Peak Location: TOP

If leading or trailing edge < 100 prefer < Baseline drop else tangent >  
 Peak separation: 5

Method : Z:\svoasrv\HPCHEM1\BNA\_P\Methods\8270E-BP080525.M  
 Title : ASP BNA STANDARDS FOR 5 POINT CALIBRATION

Signal : TIC: BP025316.D\data.ms

peak #	R.T. min	first scan	max scan	last scan	PK TY	peak height	corr. area	corr. % max.	% of total
1	3.043	15	18	27	rVB	1659050	2103734	24.74%	1.036%
2	3.143	27	35	41	rBV	564254	1028290	12.09%	0.506%
3	3.549	97	104	106	rBV2	488733	720569	8.47%	0.355%
4	3.573	106	108	114	rVB	600736	791574	9.31%	0.390%
5	3.814	141	149	158	rBV2	949727	1643065	19.32%	0.809%
6	3.908	158	165	170	rBV	1411548	2131132	25.06%	1.050%
7	3.955	170	173	183	rVB2	1025657	2000771	23.53%	0.985%
8	4.055	183	190	201	rBV	1192001	2264847	26.64%	1.115%
9	4.167	201	209	213	rBV	693115	998620	11.74%	0.492%
10	4.231	213	220	223	rBV3	270065	527074	6.20%	0.260%
11	4.361	239	242	246	rBV3	410295	547066	6.43%	0.269%
12	4.396	246	248	259	rVB3	562519	1039510	12.23%	0.512%
13	4.596	278	282	288	rVB3	297651	586864	6.90%	0.289%
14	4.696	295	299	307	rVB2	386529	673031	7.92%	0.331%
15	4.802	307	317	322	rBV3	564790	1160427	13.65%	0.572%
16	4.890	328	332	337	rBV	910360	1455513	17.12%	0.717%
17	4.949	339	342	347	rVB2	352343	541478	6.37%	0.267%
18	5.114	365	370	378	rVB4	345167	684701	8.05%	0.337%
19	5.214	382	387	390	rBV	395518	621999	7.32%	0.306%
20	5.302	397	402	405	rBV	1143498	1792809	21.08%	0.883%
21	5.331	405	407	415	rVB2	1152300	1605671	18.88%	0.791%
22	5.408	415	420	423	rBV	2753306	4287070	50.42%	2.111%
23	5.508	429	437	452	rVB3	481774	1764911	20.76%	0.869%
24	5.649	452	461	467	rBV3	274669	746828	8.78%	0.368%
25	5.861	490	497	505	rVB4	791126	1592364	18.73%	0.784%
26	6.025	519	525	534	rVB5	205044	562298	6.61%	0.277%
27	6.114	534	540	553	rBV2	760831	1803362	21.21%	0.888%
28	6.237	553	561	570	rVB2	713534	1628289	19.15%	0.802%
29	6.325	570	576	584	rBV	1362854	2414581	28.40%	1.189%
30	6.396	584	588	593	rBV	858392	1237204	14.55%	0.609%
31	6.478	597	602	611	rVB3	598042	1313823	15.45%	0.647%
32	6.714	637	642	650	rBV3	710342	1671376	19.66%	0.823%
33	6.802	650	657	666	rVV2	2345978	6401610	75.29%	3.153%
34	6.878	666	670	674	rVV	1187635	1676664	19.72%	0.826%
35	6.925	674	678	680	rVV3	404965	609063	7.16%	0.300%
36	6.967	680	685	693	rVV2	3469108	7251142	85.28%	3.571%

Data Path : Z:\svoasrv\HPCHEM1\BNA\_P\Data\BP080725\  
 Data File : BP025316.D  
 Acq On : 07 Aug 2025 16:31  
 Operator : CG/JU  
 Sample : Q2786-04  
 Misc :  
 ALS Vial : 9 Sample Multiplier: 1

Instrument :  
 BNA\_P  
 ClientSampleId :  
 PL-03-08062025

Integration Parameters: rteint.p

Integrator: RTE  
 Smoothing : ON Filtering: 5  
 Sampling : 1 Min Area: 3 % of largest Peak  
 Start Thrs: 0.2 Max Peaks: 100  
 Stop Thrs : 0 Peak Location: TOP

If leading or trailing edge < 100 prefer < Baseline drop else tangent >  
 Peak separation: 5

Method : Z:\svoasrv\HPCHEM1\BNA\_P\Methods\8270E-BP080525.M  
 Title : ASP BNA STANDARDS FOR 5 POINT CALIBRATION

37	7.043	693	698	711	rVB	1123635	2155635	25.35%	1.062%
38	7.208	721	726	735	rVB	1110661	1752908	20.62%	0.863%
39	7.314	735	744	752	rBV6	223755	821522	9.66%	0.405%
40	7.461	762	769	775	rVB2	1575593	2867270	33.72%	1.412%
41	7.684	800	807	809	rVV2	421266	737323	8.67%	0.363%
42	7.714	809	812	822	rVB2	669397	1318696	15.51%	0.649%
43	7.802	822	827	832	rVB	1318283	2073110	24.38%	1.021%
44	7.919	844	847	858	rVB2	684967	1417879	16.68%	0.698%
45	8.008	858	862	865	rVB	473651	551977	6.49%	0.272%
46	8.055	865	870	876	rBV2	484681	1055963	12.42%	0.520%
47	8.178	885	891	897	rVB	1366673	2279583	26.81%	1.123%
48	8.296	906	911	916	rBV	1675520	2669036	31.39%	1.314%
49	8.349	916	920	925	rVB2	1082775	1830035	21.52%	0.901%
50	8.443	931	936	943	rBV3	3095559	5716939	67.23%	2.816%
51	8.578	951	959	961	rBV	760771	1284358	15.10%	0.633%
52	8.602	961	963	971	rVV	809845	1097623	12.91%	0.541%
53	8.755	984	989	993	rVV	675907	1042722	12.26%	0.514%
54	8.802	993	997	1003	rVB	402686	609234	7.16%	0.300%
55	8.908	1007	1015	1019	rBV	4821883	8502998	100.00%	4.188%
56	8.943	1019	1021	1024	rVV	1424217	1790823	21.06%	0.882%
57	8.984	1024	1028	1034	rVV2	1649118	2978672	35.03%	1.467%
58	9.149	1047	1056	1063	rBV3	903262	2164680	25.46%	1.066%
59	9.231	1063	1070	1074	rBV2	396003	843198	9.92%	0.415%
60	9.284	1074	1079	1088	rVB5	451826	1120210	13.17%	0.552%
61	9.425	1089	1103	1108	rBV	2512426	5129471	60.33%	2.526%
62	9.478	1108	1112	1124	rVB2	1163936	2059293	24.22%	1.014%
63	9.684	1140	1147	1151	rBV	1257167	2043794	24.04%	1.007%
64	9.731	1151	1155	1159	rVV2	524369	792804	9.32%	0.390%
65	9.790	1159	1165	1169	rVV3	869312	1977237	23.25%	0.974%
66	9.837	1169	1173	1176	rVV	1918903	3239827	38.10%	1.596%
67	9.872	1176	1179	1186	rVV4	1182812	1996250	23.48%	0.983%
68	9.949	1186	1192	1194	rVV	912970	1541324	18.13%	0.759%
69	9.990	1194	1199	1203	rVV2	3200463	6024716	70.85%	2.967%
70	10.031	1203	1206	1207	rVV2	714576	911095	10.71%	0.449%
71	10.060	1207	1211	1218	rVV2	1155279	2211372	26.01%	1.089%
72	10.137	1218	1224	1225	rVV	383445	627591	7.38%	0.309%
73	10.172	1226	1230	1235	rVV	911918	1631857	19.19%	0.804%
74	10.290	1241	1250	1256	rVB	1573682	3024884	35.57%	1.490%
75	10.502	1281	1286	1289	rVV2	578070	1162930	13.68%	0.573%
76	10.572	1289	1298	1303	rVV2	2537522	5718252	67.25%	2.816%

Data Path : Z:\svoasrv\HPCHEM1\BNA\_P\Data\BP080725\  
 Data File : BP025316.D  
 Acq On : 07 Aug 2025 16:31  
 Operator : CG/JU  
 Sample : Q2786-04  
 Misc :  
 ALS Vial : 9 Sample Multiplier: 1

Instrument :  
 BNA\_P  
 ClientSampleId :  
 PL-03-08062025

Integration Parameters: rteint.p  
 Integrator: RTE  
 Smoothing : ON Filtering: 5  
 Sampling : 1 Min Area: 3 % of largest Peak  
 Start Thrs: 0.2 Max Peaks: 100  
 Stop Thrs : 0 Peak Location: TOP

If leading or trailing edge < 100 prefer < Baseline drop else tangent >  
 Peak separation: 5

Method : Z:\svoasrv\HPCHEM1\BNA\_P\Methods\8270E-BP080525.M  
 Title : ASP BNA STANDARDS FOR 5 POINT CALIBRATION

77	10.631	1303	1308	1315	rVV3	2273786	4631078	54.46%	2.281%
78	10.696	1315	1319	1326	rVV	825716	1437642	16.91%	0.708%
79	10.796	1332	1336	1344	rVB	811202	1315768	15.47%	0.648%
80	11.002	1366	1371	1382	rVV4	311298	850412	10.00%	0.419%
81	11.237	1408	1411	1416	rVB	572960	790273	9.29%	0.389%
82	11.496	1449	1455	1462	rBV	822806	1585956	18.65%	0.781%
83	11.684	1483	1487	1495	rVV	487782	856394	10.07%	0.422%
84	12.231	1571	1580	1591	rVB	2137422	3484331	40.98%	1.716%
85	12.449	1611	1617	1623	rBV	1563232	2529351	29.75%	1.246%
86	13.031	1710	1716	1722	rBV	3259595	4816597	56.65%	2.372%
87	13.443	1778	1786	1796	rVB	252365	584606	6.88%	0.288%
88	13.572	1802	1808	1810	rBV	415313	661945	7.78%	0.326%
89	13.737	1829	1836	1840	rBV	650723	1118728	13.16%	0.551%
90	13.790	1840	1845	1853	rVB	441558	674603	7.93%	0.332%
91	14.419	1945	1952	1957	rVV	1995058	2774270	32.63%	1.366%
92	15.801	2181	2187	2193	rVB	708120	985615	11.59%	0.485%
93	15.919	2201	2207	2217	rVB	3322163	4674888	54.98%	2.302%
94	17.219	2422	2428	2433	rBV2	2092592	3220134	37.87%	1.586%
95	18.172	2585	2590	2598	rBV2	1050941	1570632	18.47%	0.774%
96	19.336	2784	2788	2796	rBV	439755	706903	8.31%	0.348%
97	19.948	2886	2892	2899	rVB	5517450	7371272	86.69%	3.630%
98	21.348	3126	3130	3138	rBV	553804	846085	9.95%	0.417%
99	21.666	3177	3184	3189	rBV2	1978141	3491059	41.06%	1.719%
100	25.054	3752	3760	3770	rVB2	1256174	3413874	40.15%	1.681%

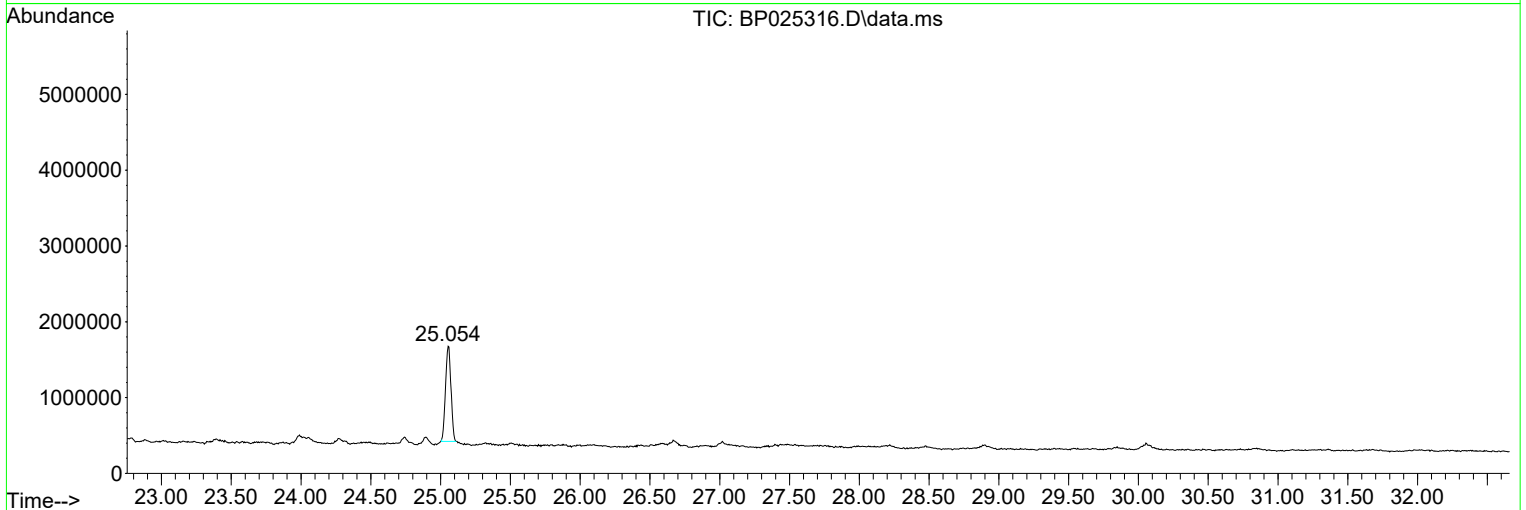
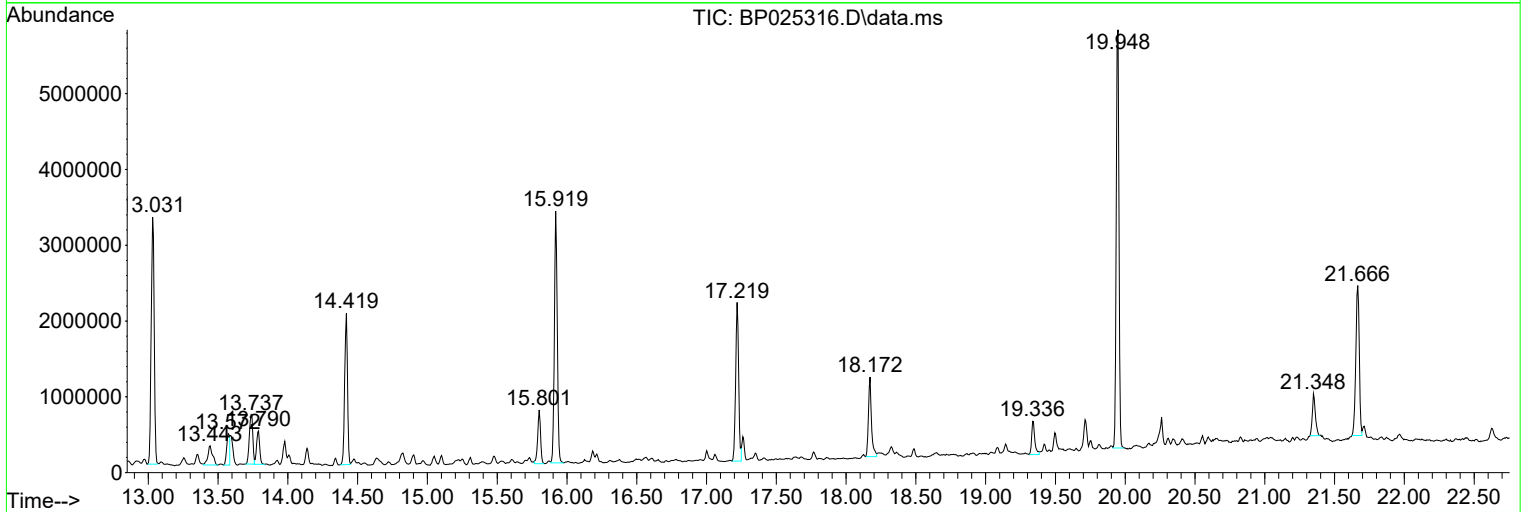
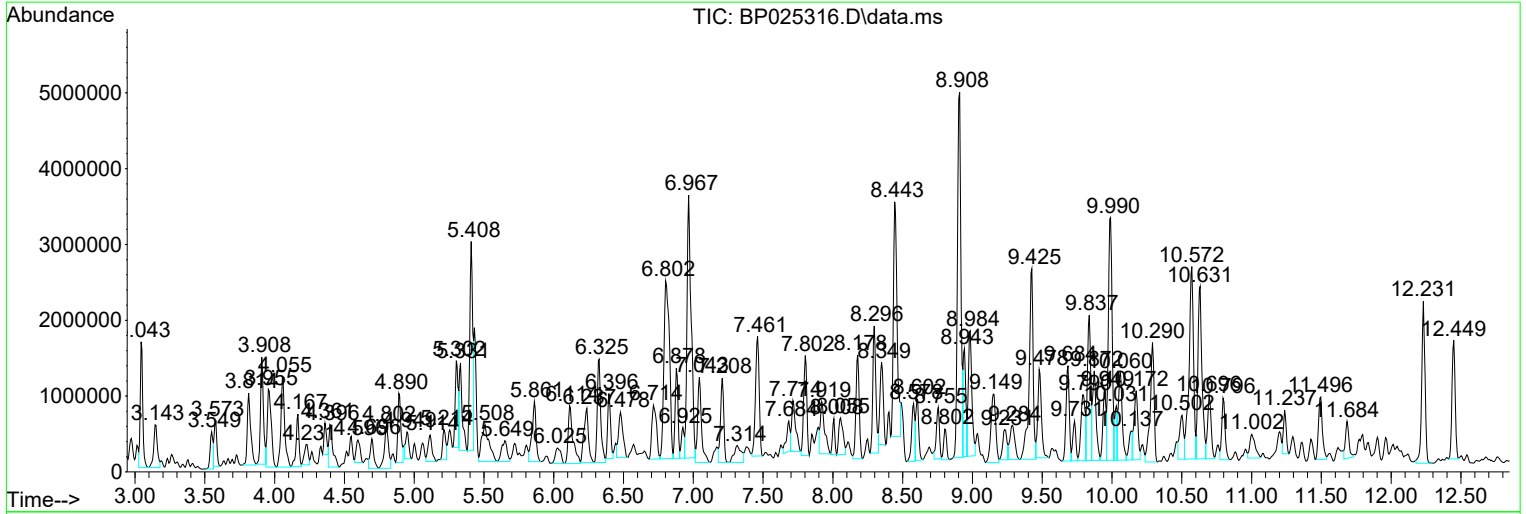
Sum of corrected areas: 203046837

Data Path : Z:\svoasrv\HPCHEM1\BNA\_P\Data\BP080725\  
 Data File : BP025316.D  
 Acq On : 07 Aug 2025 16:31  
 Operator : CG/JU  
 Sample : Q2786-04  
 Misc :  
 ALS Vial : 9 Sample Multiplier: 1

Instrument :  
 BNA\_P  
 ClientSampleId :  
 PL-03-08062025

Quant Method : Z:\svoasrv\HPCHEM1\BNA\_P\Methods\8270E-BP080525.M  
 Quant Title : ASP BNA STANDARDS FOR 5 POINT CALIBRATION

TIC Library : C:\Database\NIST20.L  
 TIC Integration Parameters: LSCINT.P



Data Path : Z:\svoasrv\HPCHEM1\BNA\_P\Data\BP080725\  
 Data File : BP025316.D  
 Acq On : 07 Aug 2025 16:31  
 Operator : CG/JU  
 Sample : Q2786-04  
 Misc :  
 ALS Vial : 9 Sample Multiplier: 1

Instrument :  
 BNA\_P  
 ClientSampleId :  
 PL-03-08062025

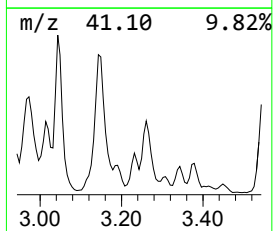
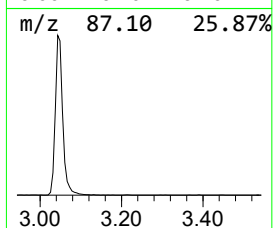
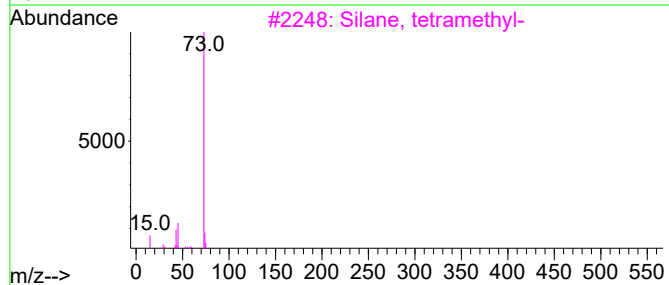
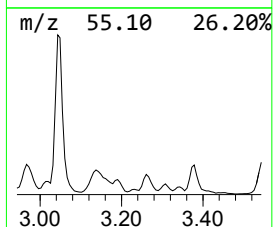
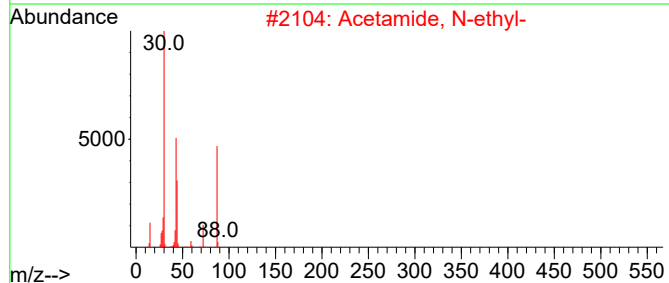
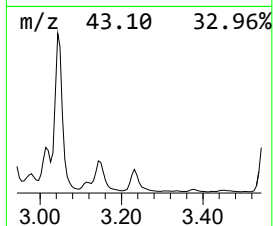
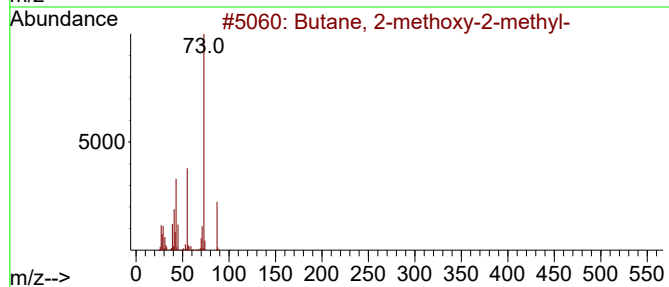
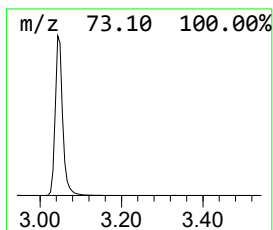
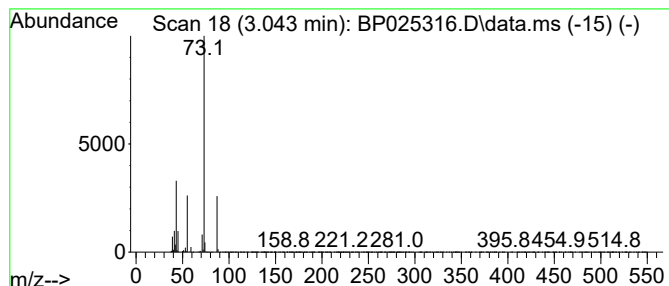
Quant Method : Z:\svoasrv\HPCHEM1\BNA\_P\Methods\8270E-BP080525.M  
 Quant Title : ASP BNA STANDARDS FOR 5 POINT CALIBRATION

TIC Library : C:\Database\NIST20.L  
 TIC Integration Parameters: LSCINT.P

\*\*\*\*\*  
 Peak Number 1 Butane, 2-methoxy-2-methyl- Concentration Rank 12

R.T.	EstConc	Area	Relative to ISTD	R.T.
3.043	20.30 ng	2103730	1,4-Dichlorobenzene-d4	7.808

Hit#	of 5	Tentative ID	MW	MolForm	CAS#	Qual
1		Butane, 2-methoxy-2-methyl-	102	C6H14O	000994-05-8	78
2		Acetamide, N-ethyl-	87	C4H9NO	000625-50-3	9
3		Silane, tetramethyl-	88	C4H12Si	000075-76-3	9
4		1,3-Dioxolane, 2-methyl-	88	C4H8O2	000497-26-7	9
5		N-Ethylformamide	73	C3H7NO	000627-45-2	9



Data Path : Z:\svoasrv\HPCHEM1\BNA\_P\Data\BP080725\  
 Data File : BP025316.D  
 Acq On : 07 Aug 2025 16:31  
 Operator : CG/JU  
 Sample : Q2786-04  
 Misc :  
 ALS Vial : 9 Sample Multiplier: 1

Instrument :  
 BNA\_P  
 ClientSampleId :  
 PL-03-08062025

Quant Method : Z:\svoasrv\HPCHEM1\BNA\_P\Methods\8270E-BP080525.M  
 Quant Title : ASP BNA STANDARDS FOR 5 POINT CALIBRATION

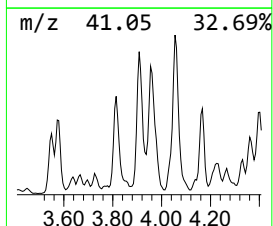
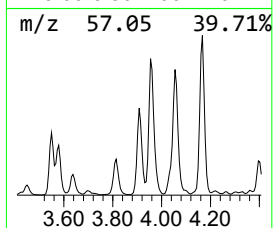
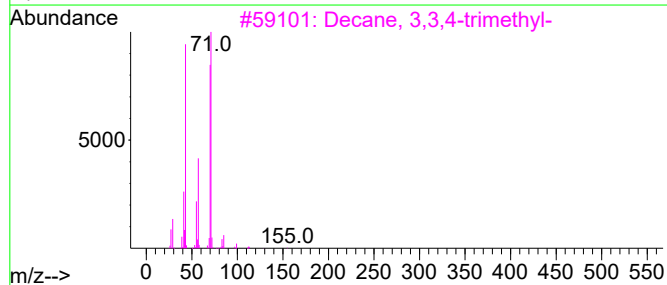
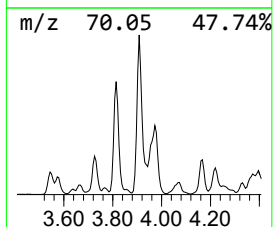
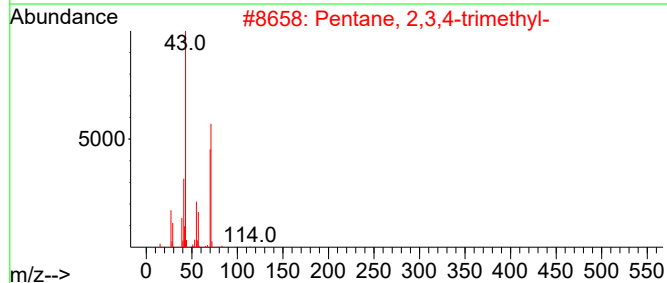
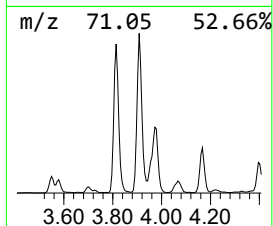
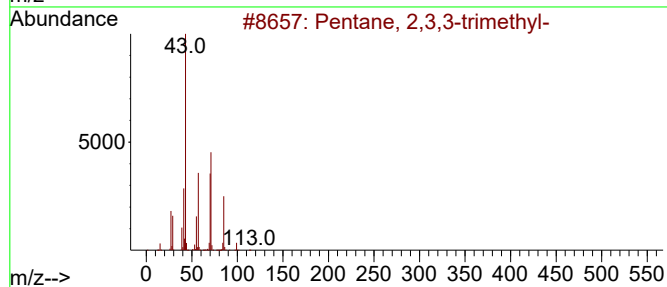
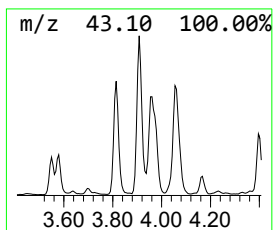
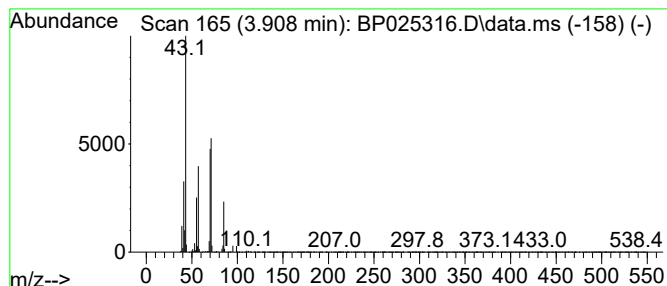
TIC Library : C:\Database\NIST20.L  
 TIC Integration Parameters: LSCINT.P

\*\*\*\*\*  
 Peak Number 2 Pentane, 2,3,3-trimethyl- Concentration Rank 11

R.T.	EstConc	Area	Relative to ISTD	R.T.
3.908	20.56 ng	2131130	1,4-Dichlorobenzene-d4	7.808

Hit#	of 5	Tentative ID	MW	MolForm	CAS#	Qual
1		Pentane, 2,3,3-trimethyl-	114	C8H18	000560-21-4	86
2		Pentane, 2,3,4-trimethyl-	114	C8H18	000565-75-3	81
3		Decane, 3,3,4-trimethyl-	184	C13H28	049622-18-6	64
4		Pentane, 3-ethyl-2-methyl-	114	C8H18	000609-26-7	59
5		Diisooamyl ether	158	C10H22O	000544-01-4	59



Data Path : Z:\svoasrv\HPCHEM1\BNA\_P\Data\BP080725\  
 Data File : BP025316.D  
 Acq On : 07 Aug 2025 16:31  
 Operator : CG/JU  
 Sample : Q2786-04  
 Misc :  
 ALS Vial : 9 Sample Multiplier: 1

Instrument :  
 BNA\_P  
 ClientSampleId :  
 PL-03-08062025

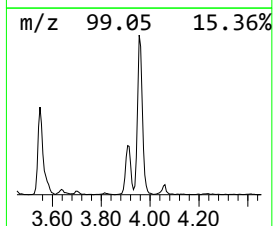
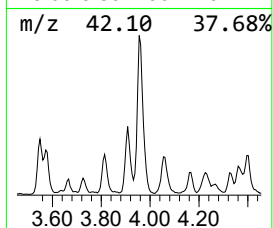
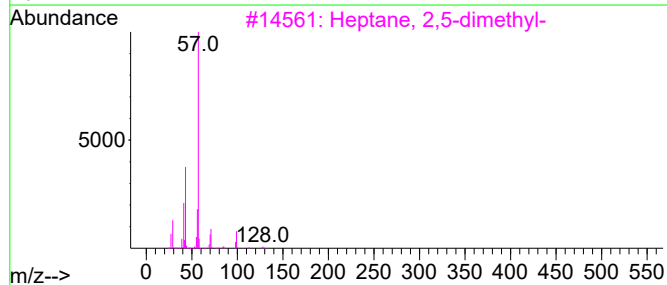
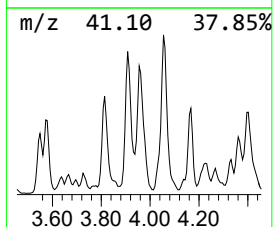
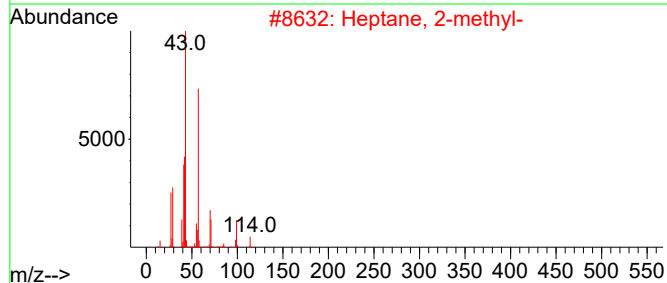
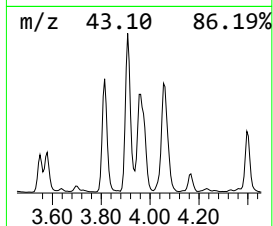
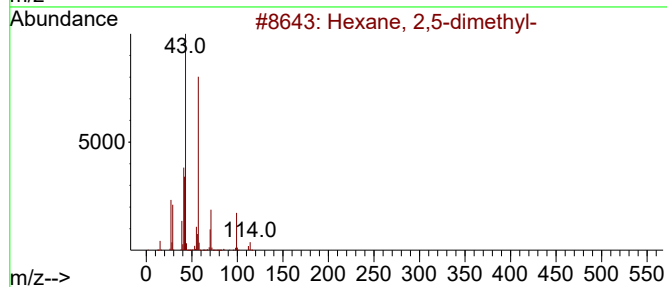
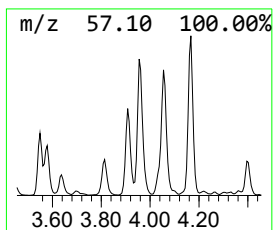
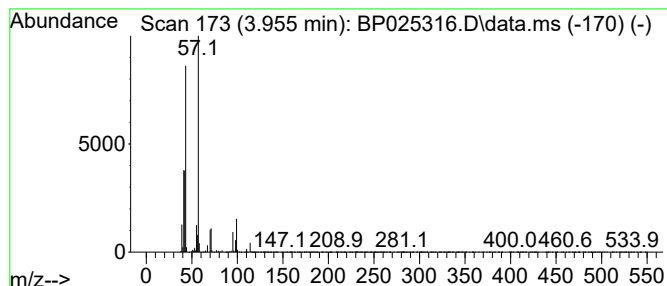
Quant Method : Z:\svoasrv\HPCHEM1\BNA\_P\Methods\8270E-BP080525.M  
 Quant Title : ASP BNA STANDARDS FOR 5 POINT CALIBRATION

TIC Library : C:\Database\NIST20.L  
 TIC Integration Parameters: LSCINT.P

\*\*\*\*\*  
 Peak Number 3 Hexane, 2,5-dimethyl- Concentration Rank 13

R.T.	EstConc	Area	Relative to ISTD	R.T.
3.955	19.30 ng	2000770	1,4-Dichlorobenzene-d4	7.808

Hit#	of	5	Tentative ID	MW	MolForm	CAS#	Qual
1			Hexane, 2,5-dimethyl-	114	C8H18	000592-13-2	64
2			Heptane, 2-methyl-	114	C8H18	000592-27-8	64
3			Heptane, 2,5-dimethyl-	128	C9H20	002216-30-0	50
4			Heptane, 3,5-dimethyl-	128	C9H20	000926-82-9	43
5			Sulfurous acid, 2-propyl heptyl ...	222	C10H22O3S	1000309-11-8	40



Data Path : Z:\svoasrv\HPCHEM1\BNA\_P\Data\BP080725\  
 Data File : BP025316.D  
 Acq On : 07 Aug 2025 16:31  
 Operator : CG/JU  
 Sample : Q2786-04  
 Misc :  
 ALS Vial : 9 Sample Multiplier: 1

Instrument :  
 BNA\_P  
 ClientSampleId :  
 PL-03-08062025

Quant Method : Z:\svoasrv\HPCHEM1\BNA\_P\Methods\8270E-BP080525.M  
 Quant Title : ASP BNA STANDARDS FOR 5 POINT CALIBRATION

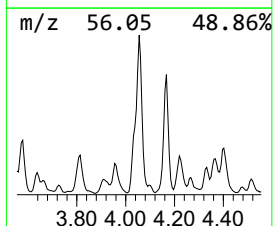
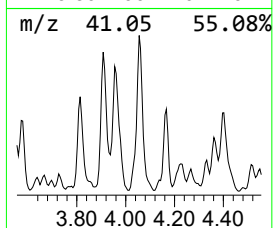
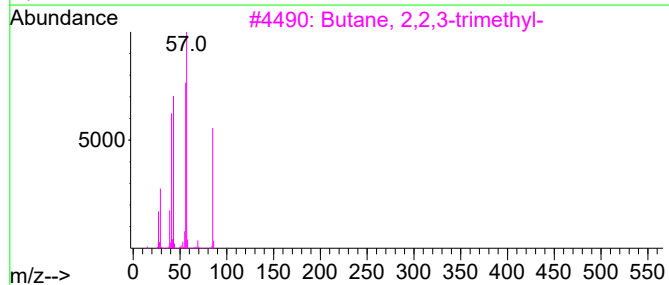
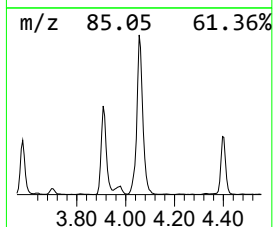
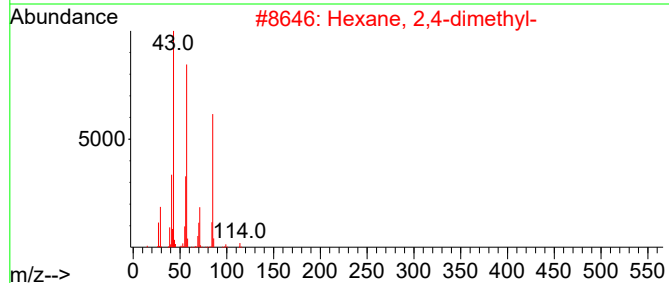
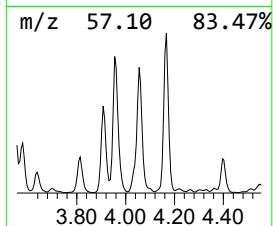
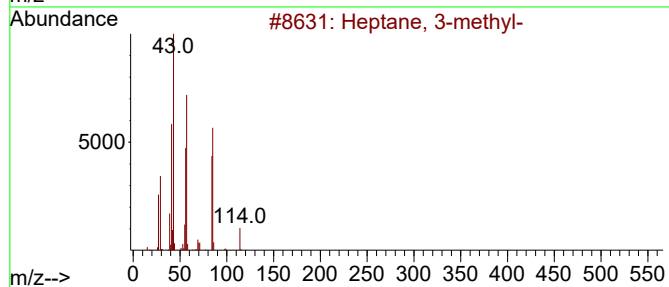
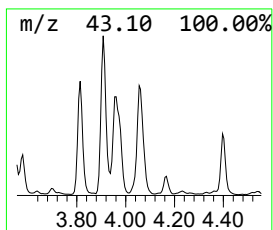
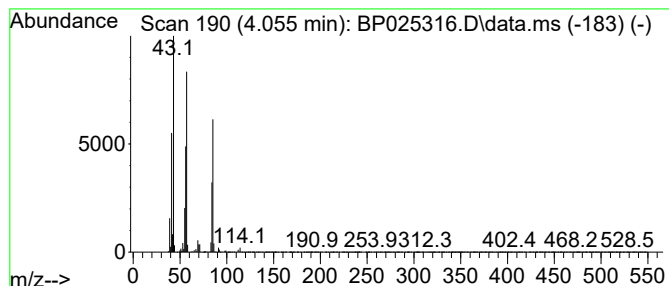
TIC Library : C:\Database\NIST20.L  
 TIC Integration Parameters: LSCINT.P

\*\*\*\*\*  
 Peak Number 4 Heptane, 3-methyl- Concentration Rank 7

R.T.	EstConc	Area	Relative to ISTD	R.T.
4.055	21.85 ng	2264850	1,4-Dichlorobenzene-d4	7.808

Hit#	of 5	Tentative ID	MW	MolForm	CAS#	Qual
1		Heptane, 3-methyl-	114	C8H18	000589-81-1	78
2		Hexane, 2,4-dimethyl-	114	C8H18	000589-43-5	64
3		Butane, 2,2,3-trimethyl-	100	C7H16	000464-06-2	53
4		Sulfurous acid, butyl hexyl ester	222	C10H22O3S	1000309-17-3	50
5		Pentane, 2,3,3,4-tetramethyl-	128	C9H20	016747-38-9	50





Data Path : Z:\svoasrv\HPCHEM1\BNA\_P\Data\BP080725\  
 Data File : BP025316.D  
 Acq On : 07 Aug 2025 16:31  
 Operator : CG/JU  
 Sample : Q2786-04  
 Misc :  
 ALS Vial : 9 Sample Multiplier: 1

Instrument :  
 BNA\_P  
 ClientSampleId :  
 PL-03-08062025

Quant Method : Z:\svoasrv\HPCHEM1\BNA\_P\Methods\8270E-BP080525.M  
 Quant Title : ASP BNA STANDARDS FOR 5 POINT CALIBRATION

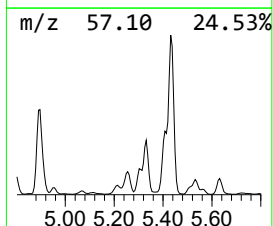
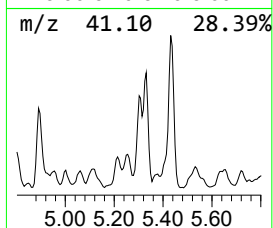
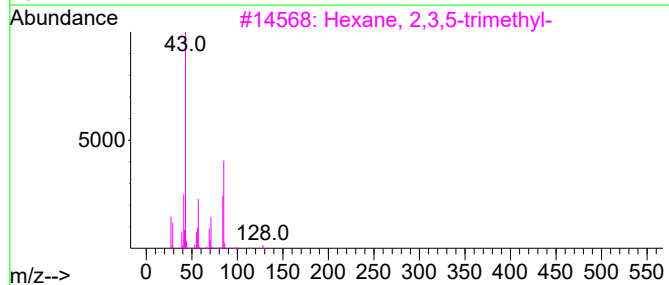
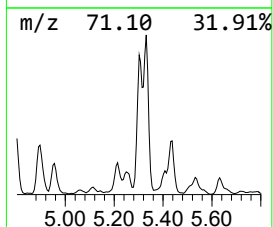
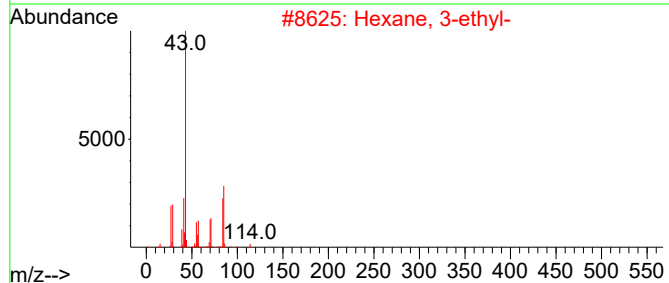
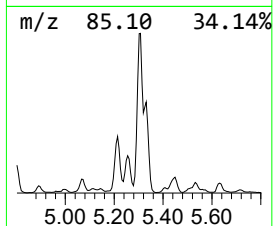
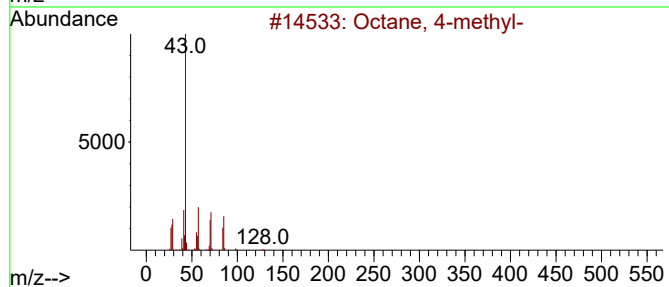
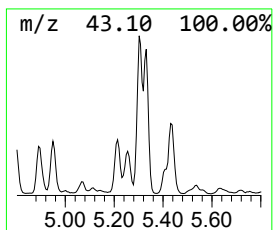
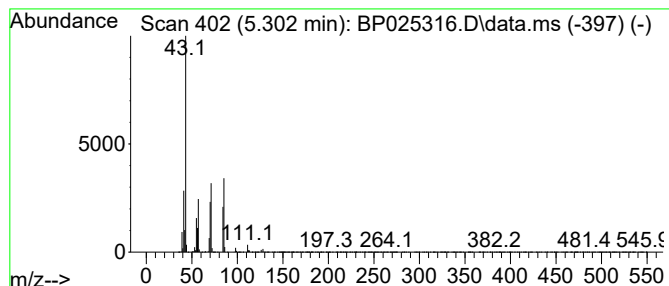
TIC Library : C:\Database\NIST20.L  
 TIC Integration Parameters: LSCINT.P

\*\*\*\*\*  
 Peak Number 5 Octane, 4-methyl- Concentration Rank 17

R.T.	EstConc	Area	Relative to ISTD	R.T.
5.302	17.30 ng	1792810	1,4-Dichlorobenzene-d4	7.808

Hit#	of	5	Tentative ID	MW	MolForm	CAS#	Qual
1			Octane, 4-methyl-	128	C9H20	002216-34-4	91
2			Hexane, 3-ethyl-	114	C8H18	000619-99-8	80
3			Hexane, 2,3,5-trimethyl-	128	C9H20	001069-53-0	62
4			Dodecane, 5-methyl-	184	C13H28	017453-93-9	59
5			Heptane, 4-ethyl-	128	C9H20	002216-32-2	58



Data Path : Z:\svoasrv\HPCHEM1\BNA\_P\Data\BP080725\  
 Data File : BP025316.D  
 Acq On : 07 Aug 2025 16:31  
 Operator : CG/JU  
 Sample : Q2786-04  
 Misc :  
 ALS Vial : 9 Sample Multiplier: 1

Instrument :  
 BNA\_P  
 ClientSampleId :  
 PL-03-08062025

Quant Method : Z:\svoasrv\HPCHEM1\BNA\_P\Methods\8270E-BP080525.M  
 Quant Title : ASP BNA STANDARDS FOR 5 POINT CALIBRATION

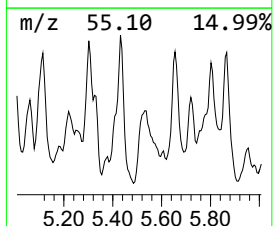
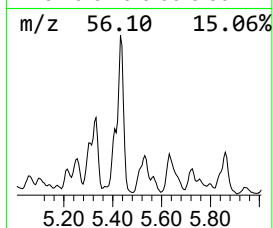
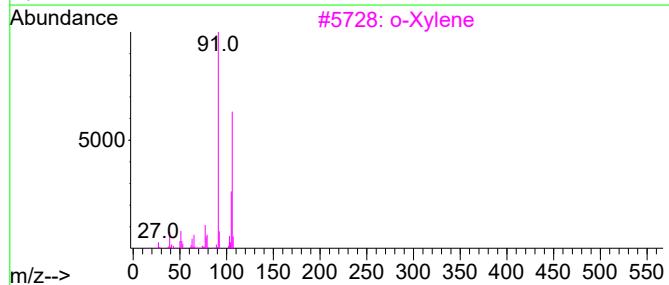
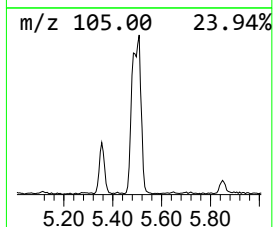
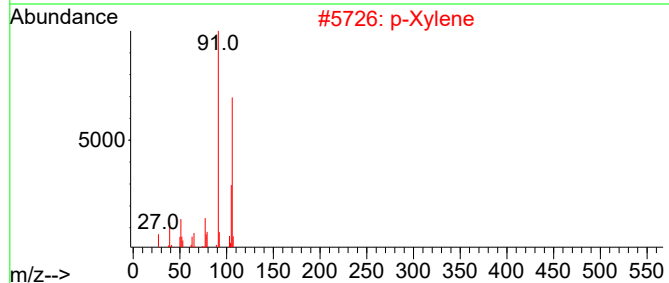
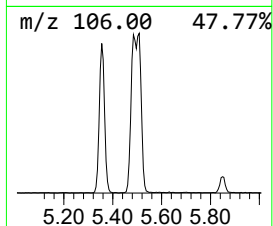
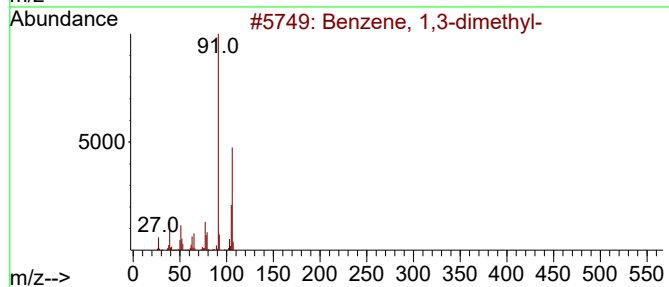
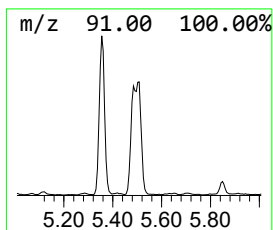
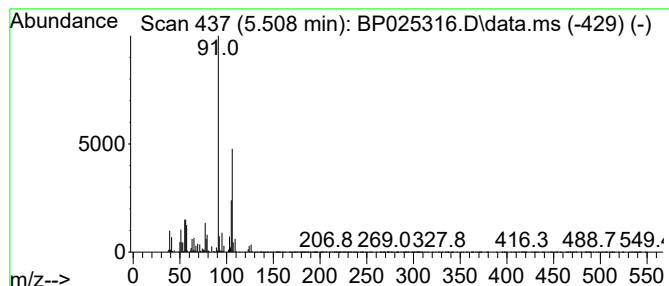
TIC Library : C:\Database\NIST20.L  
 TIC Integration Parameters: LSCINT.P

\*\*\*\*\*  
 Peak Number 6 Benzene, 1,3-dimethyl- Concentration Rank 18

R.T.	EstConc	Area	Relative to ISTD	R.T.
5.508	17.03 ng	1764910	1,4-Dichlorobenzene-d4	7.808

Hit#	of	5	Tentative ID	MW	MolForm	CAS#	Qual
1			Benzene, 1,3-dimethyl-	106	C8H10	000108-38-3	95
2			p-Xylene	106	C8H10	000106-42-3	95
3			o-Xylene	106	C8H10	000095-47-6	94
4			1,3-Cyclopentadiene, 5-(1-methyl...	106	C8H10	002175-91-9	83
5			Ethylbenzene	106	C8H10	000100-41-4	62



Data Path : Z:\svoasrv\HPCHEM1\BNA\_P\Data\BP080725\  
 Data File : BP025316.D  
 Acq On : 07 Aug 2025 16:31  
 Operator : CG/JU  
 Sample : Q2786-04  
 Misc :  
 ALS Vial : 9 Sample Multiplier: 1

Instrument :  
 BNA\_P  
 ClientSampleId :  
 PL-03-08062025

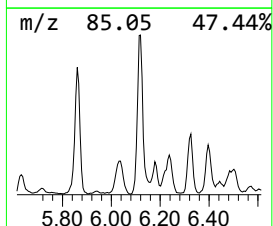
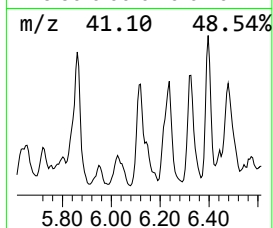
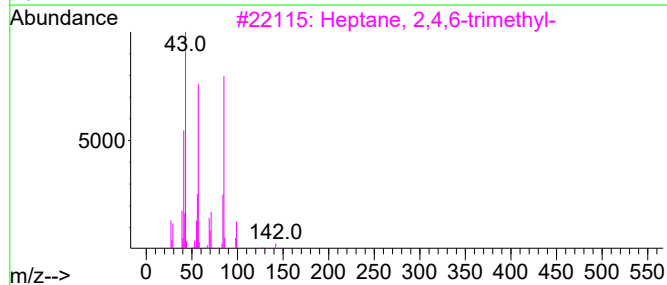
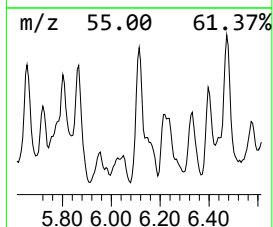
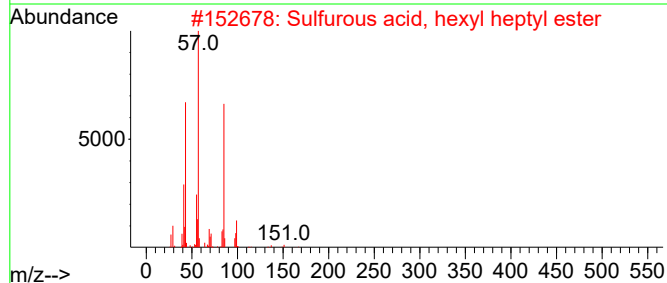
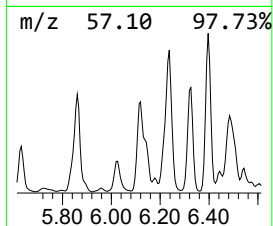
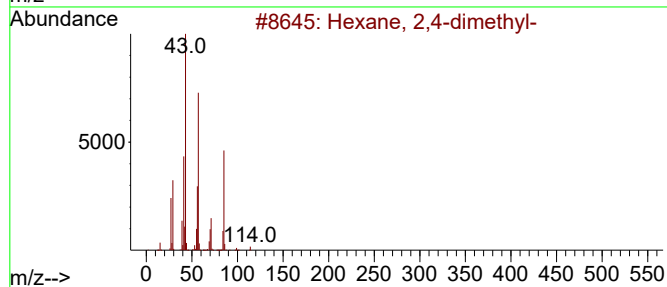
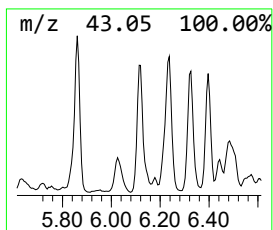
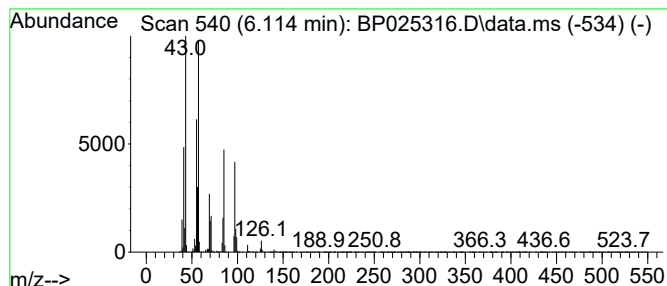
Quant Method : Z:\svoasrv\HPCHEM1\BNA\_P\Methods\8270E-BP080525.M  
 Quant Title : ASP BNA STANDARDS FOR 5 POINT CALIBRATION

TIC Library : C:\Database\NIST20.L  
 TIC Integration Parameters: LSCINT.P

\*\*\*\*\*  
 Peak Number 7 unknown6.114 Concentration Rank 16

R.T.	EstConc	Area	Relative to ISTD	R.T.
6.114	17.40 ng	1803360	1,4-Dichlorobenzene-d4	7.808

Hit#	of	5	Tentative ID	MW	MolForm	CAS#	Qual
1			Hexane, 2,4-dimethyl-	114	C8H18	000589-43-5	49
2			Sulfurous acid, hexyl heptyl ester	264	C13H28O3S	1000309-12-9	43
3			Heptane, 2,4,6-trimethyl-	142	C10H22	002613-61-8	43
4			Decane, 4-ethyl-	170	C12H26	001636-44-8	38
5			Oxalic acid, hexyl isohexyl ester	258	C14H26O4	1010309-33-0	35



Data Path : Z:\svoasrv\HPCHEM1\BNA\_P\Data\BP080725\  
 Data File : BP025316.D  
 Acq On : 07 Aug 2025 16:31  
 Operator : CG/JU  
 Sample : Q2786-04  
 Misc :  
 ALS Vial : 9 Sample Multiplier: 1

Instrument :  
 BNA\_P  
 ClientSampleId :  
 PL-03-08062025

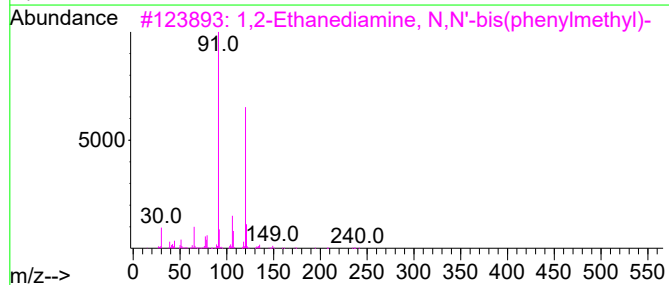
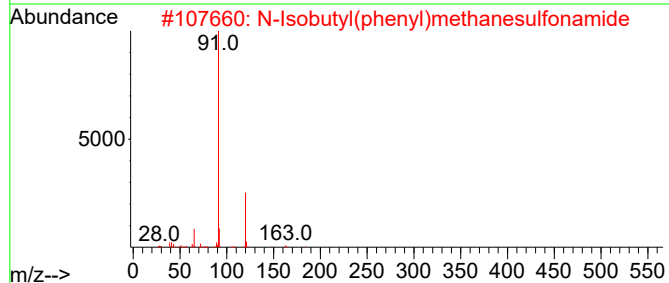
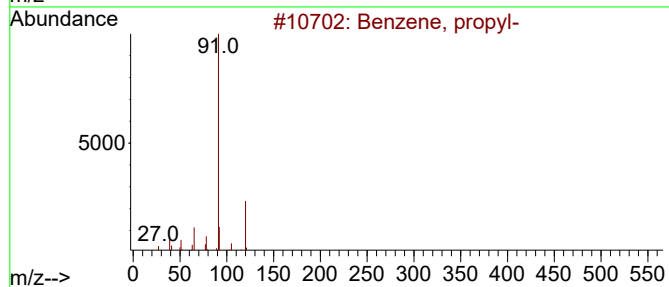
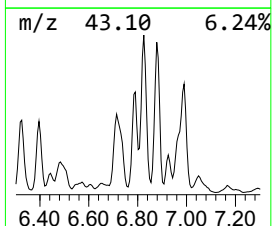
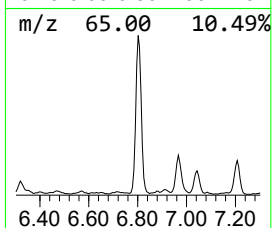
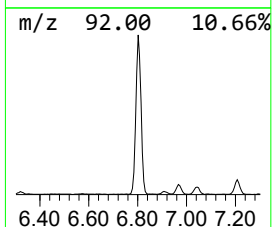
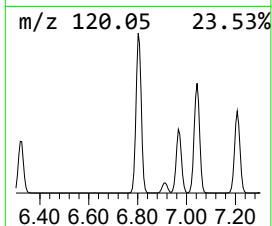
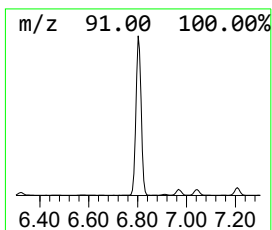
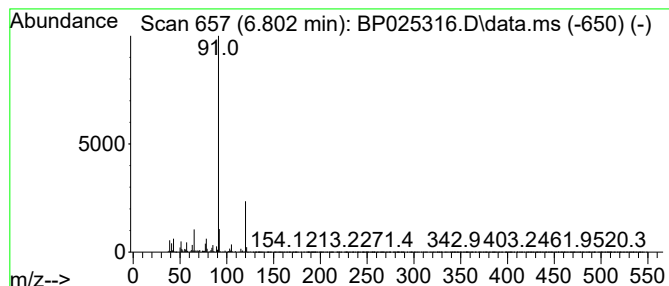
Quant Method : Z:\svoasrv\HPCHEM1\BNA\_P\Methods\8270E-BP080525.M  
 Quant Title : ASP BNA STANDARDS FOR 5 POINT CALIBRATION

TIC Library : C:\Database\NIST20.L  
 TIC Integration Parameters: LSCINT.P

\*\*\*\*\*  
 Peak Number 9 Benzene, propyl- Concentration Rank 1

R.T.	EstConc	Area	Relative to ISTD	R.T.
6.802	61.76 ng	6401610	1,4-Dichlorobenzene-d4	7.808

Hit#	of	5	Tentative ID	MW	MolForm	CAS#	Qual
1			Benzene, propyl-	120	C9H12	000103-65-1	93
2			N-Isobutyl(phenyl)methanesulfona...	227	C11H17NO2S	144615-94-1	72
3			1,2-Ethanediamine, N,N'-bis(phen...	240	C16H20N2	000140-28-3	72
4			Ethanol, 2-[(phenylmethyl)amino]-	151	C9H13NO	000104-63-2	64
5			Propanenitrile, 3-[(phenylmethyl)...	160	C10H12N2	000706-03-6	64



Data Path : Z:\svoasrv\HPCHEM1\BNA\_P\Data\BP080725\  
 Data File : BP025316.D  
 Acq On : 07 Aug 2025 16:31  
 Operator : CG/JU  
 Sample : Q2786-04  
 Misc :  
 ALS Vial : 9 Sample Multiplier: 1

Instrument :  
 BNA\_P  
 ClientSampleId :  
 PL-03-08062025

Quant Method : Z:\svoasrv\HPCHEM1\BNA\_P\Methods\8270E-BP080525.M  
 Quant Title : ASP BNA STANDARDS FOR 5 POINT CALIBRATION

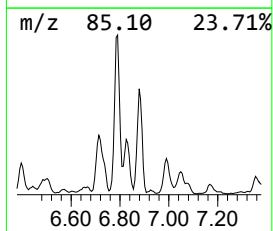
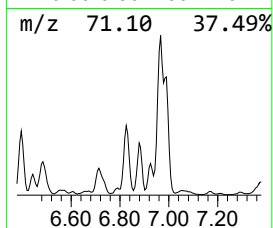
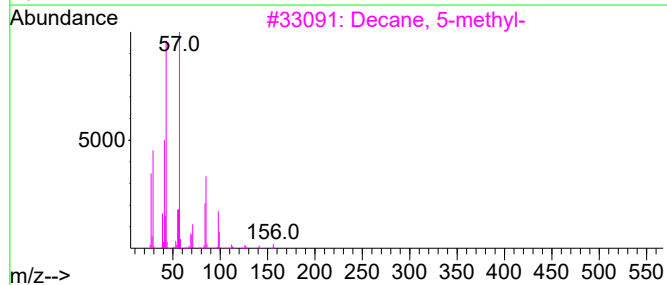
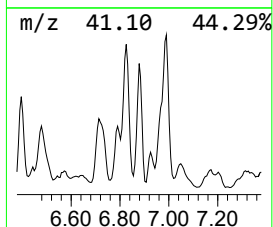
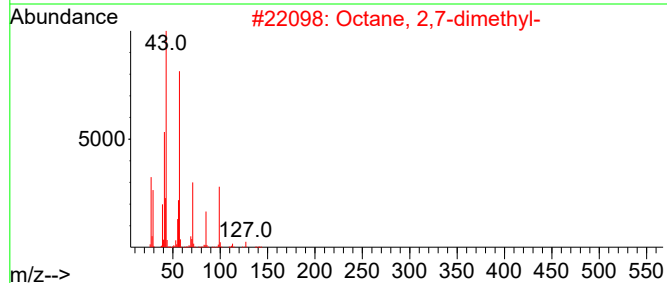
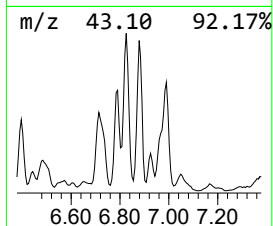
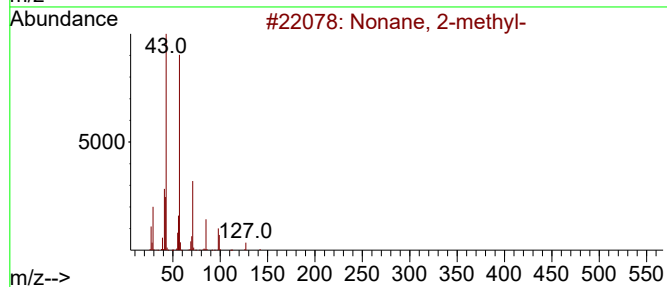
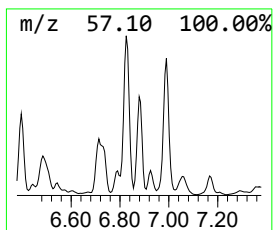
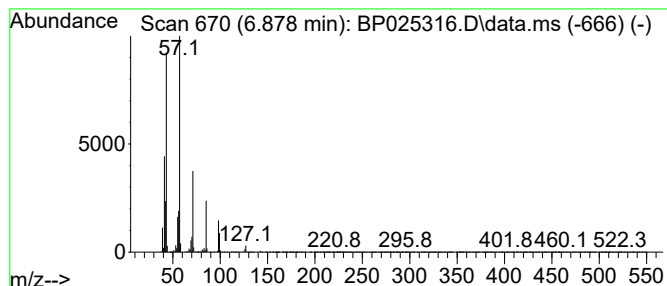
TIC Library : C:\Database\NIST20.L  
 TIC Integration Parameters: LSCINT.P

\*\*\*\*\*  
 Peak Number 10 Nonane, 2-methyl- Concentration Rank 20

R.T.	EstConc	Area	Relative to ISTD	R.T.
6.878	16.18 ng	1676660	1,4-Dichlorobenzene-d4	7.808

Hit#	of 5	Tentative ID	MW	MolForm	CAS#	Qual
1		Nonane, 2-methyl-	142	C10H22	000871-83-0	93
2		Octane, 2,7-dimethyl-	142	C10H22	001072-16-8	72
3		Decane, 5-methyl-	156	C11H24	013151-35-4	64
4		Decane, 2,6,7-trimethyl-	184	C13H28	062108-25-2	50
5		Undecane, 2,6-dimethyl-	184	C13H28	017301-23-4	47



Data Path : Z:\svoasrv\HPCHEM1\BNA\_P\Data\BP080725\  
 Data File : BP025316.D  
 Acq On : 07 Aug 2025 16:31  
 Operator : CG/JU  
 Sample : Q2786-04  
 Misc :  
 ALS Vial : 9 Sample Multiplier: 1

Instrument :  
 BNA\_P  
 ClientSampleId :  
 PL-03-08062025

Quant Method : Z:\svoasrv\HPCHEM1\BNA\_P\Methods\8270E-BP080525.M  
 Quant Title : ASP BNA STANDARDS FOR 5 POINT CALIBRATION

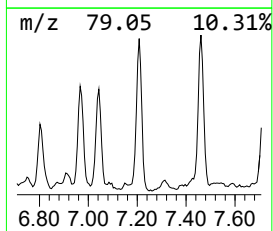
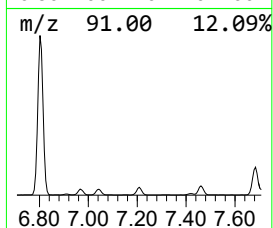
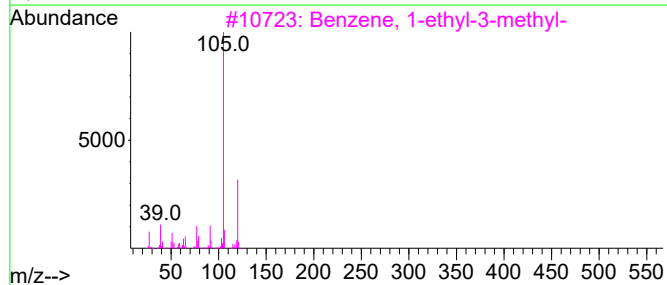
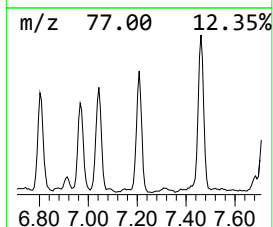
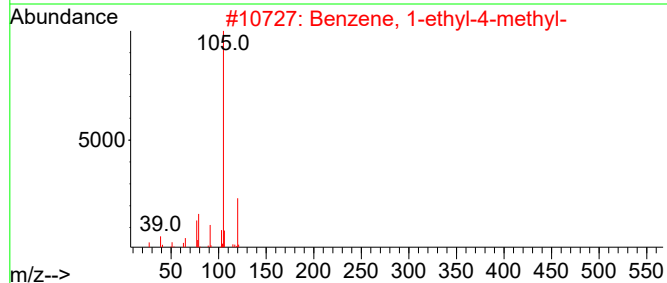
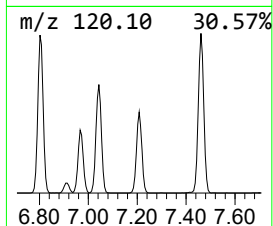
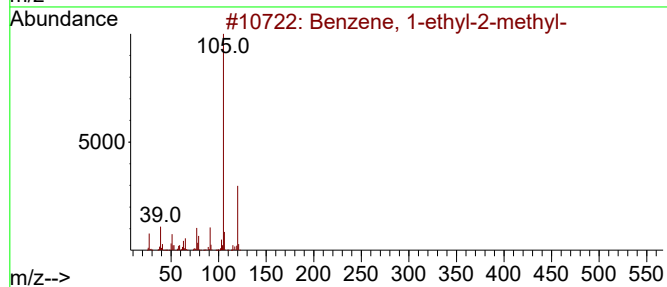
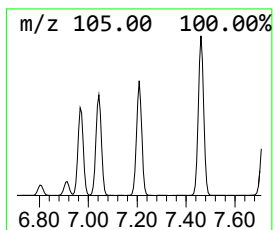
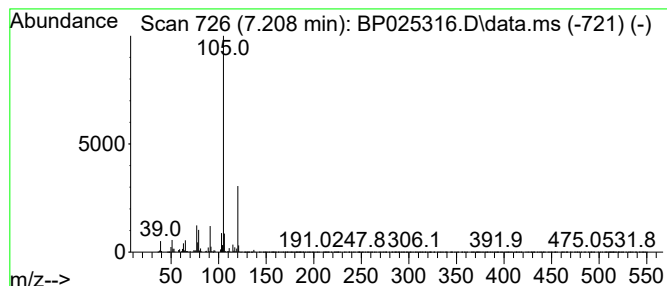
TIC Library : C:\Database\NIST20.L  
 TIC Integration Parameters: LSCINT.P

\*\*\*\*\*  
 Peak Number 12 Benzene, 1-ethyl-2-methyl- Concentration Rank 19

R.T.	EstConc	Area	Relative to ISTD	R.T.
7.208	16.91 ng	1752910	1,4-Dichlorobenzene-d4	7.808

Hit#	of	5	Tentative ID	MW	MolForm	CAS#	Qual
1			Benzene, 1-ethyl-2-methyl-	120	C9H12	000611-14-3	94
2			Benzene, 1-ethyl-4-methyl-	120	C9H12	000622-96-8	94
3			Benzene, 1-ethyl-3-methyl-	120	C9H12	000620-14-4	91
4			Mesitylene	120	C9H12	000108-67-8	91
5			Benzene, 1,2,3-trimethyl-	120	C9H12	000526-73-8	91



Data Path : Z:\svoasrv\HPCHEM1\BNA\_P\Data\BP080725\  
 Data File : BP025316.D  
 Acq On : 07 Aug 2025 16:31  
 Operator : CG/JU  
 Sample : Q2786-04  
 Misc :  
 ALS Vial : 9 Sample Multiplier: 1

Instrument :  
 BNA\_P  
 ClientSampleId :  
 PL-03-08062025

Quant Method : Z:\svoasrv\HPCHEM1\BNA\_P\Methods\8270E-BP080525.M  
 Quant Title : ASP BNA STANDARDS FOR 5 POINT CALIBRATION

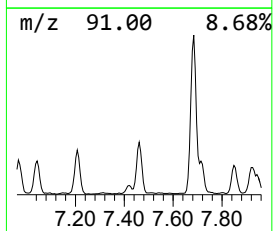
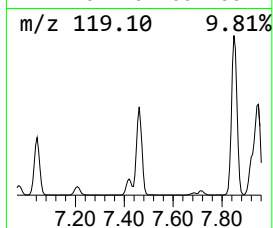
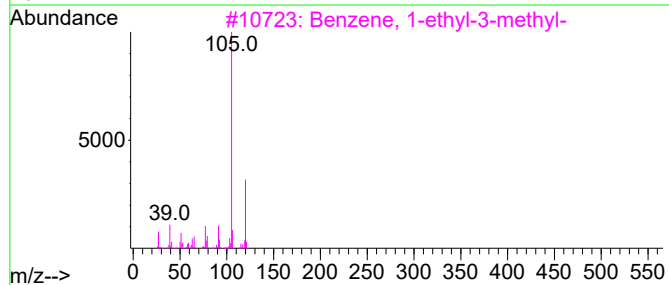
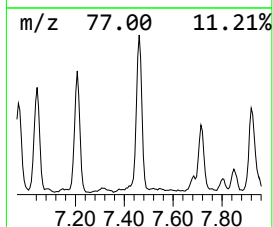
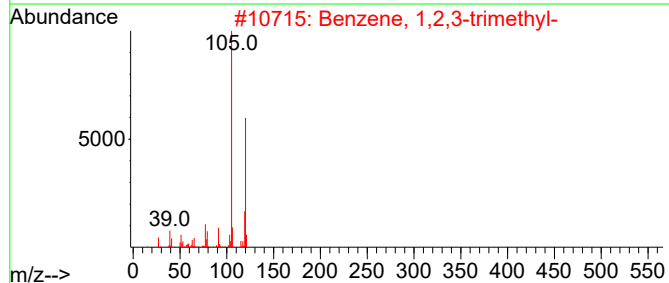
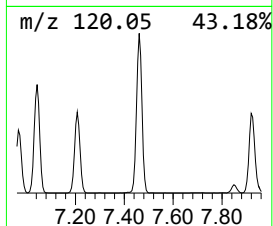
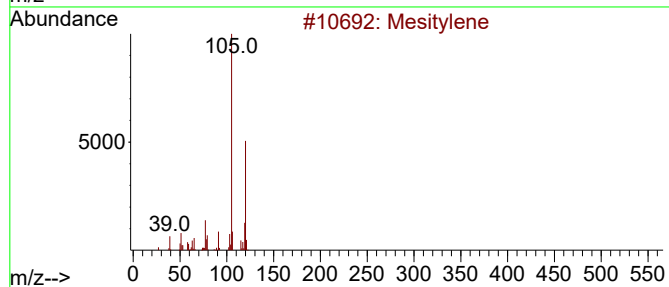
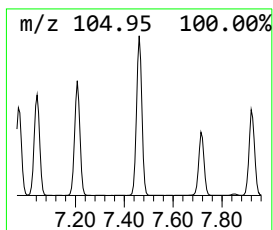
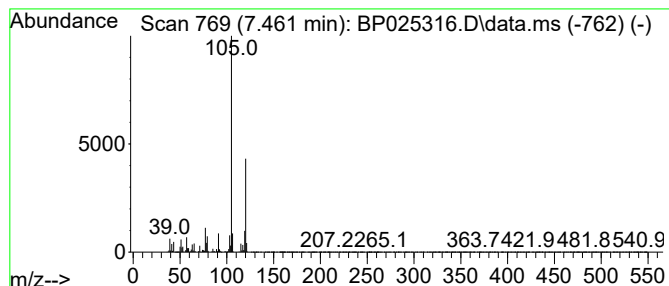
TIC Library : C:\Database\NIST20.L  
 TIC Integration Parameters: LSCINT.P

\*\*\*\*\*  
 Peak Number 13 Benzene, 1,2,3-trimethyl- Concentration Rank 3

R.T.	EstConc	Area	Relative to ISTD	R.T.
7.461	27.66 ng	2867270	1,4-Dichlorobenzene-d4	7.808

Hit#	of	5	Tentative ID	MW	MolForm	CAS#	Qual
1			Mesitylene	120	C9H12	000108-67-8	97
2			Benzene, 1,2,3-trimethyl-	120	C9H12	000526-73-8	95
3			Benzene, 1-ethyl-3-methyl-	120	C9H12	000620-14-4	91
4			Benzene, 1,2,4-trimethyl-	120	C9H12	000095-63-6	91
5			Benzene, 1-ethyl-4-methyl-	120	C9H12	000622-96-8	90



Data Path : Z:\svoasrv\HPCHEM1\BNA\_P\Data\BP080725\  
 Data File : BP025316.D  
 Acq On : 07 Aug 2025 16:31  
 Operator : CG/JU  
 Sample : Q2786-04  
 Misc :  
 ALS Vial : 9 Sample Multiplier: 1

Instrument :  
 BNA\_P  
 ClientSampleId :  
 PL-03-08062025

Quant Method : Z:\svoasrv\HPCHEM1\BNA\_P\Methods\8270E-BP080525.M  
 Quant Title : ASP BNA STANDARDS FOR 5 POINT CALIBRATION

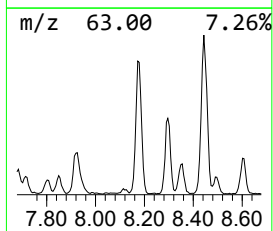
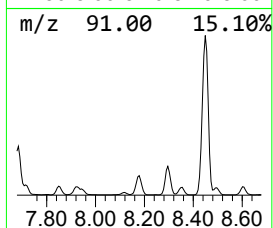
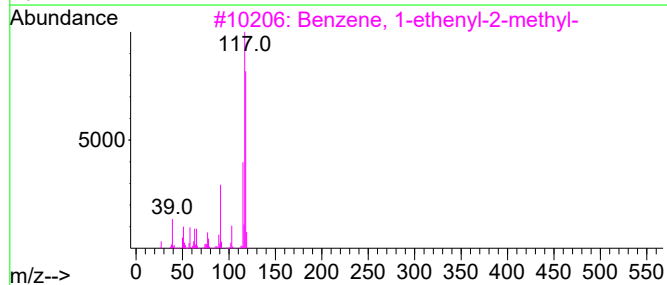
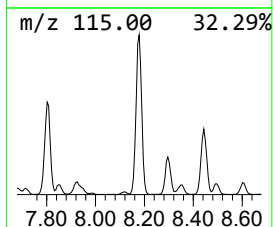
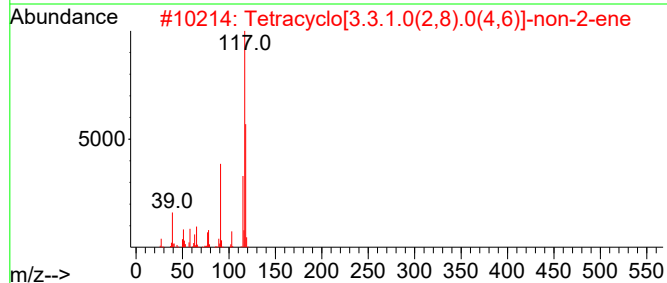
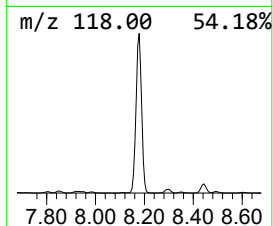
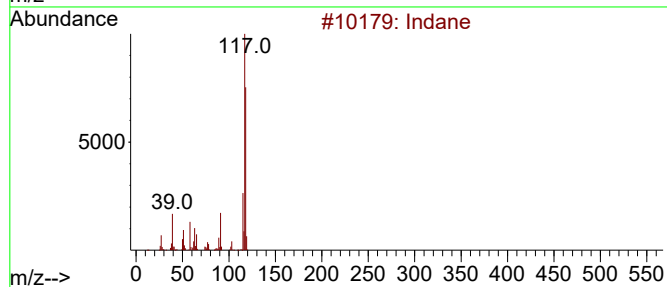
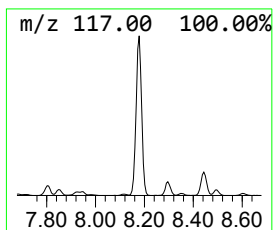
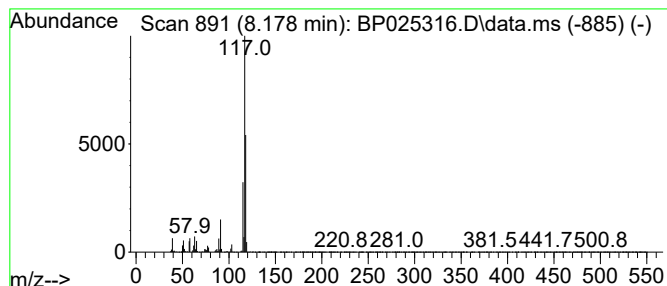
TIC Library : C:\Database\NIST20.L  
 TIC Integration Parameters: LSCINT.P

\*\*\*\*\*  
 Peak Number 14 Indane Concentration Rank 6

R.T.	EstConc	Area	Relative to ISTD	R.T.
8.178	21.99 ng	2279580	1,4-Dichlorobenzene-d4	7.808

Hit#	of 5	Tentative ID	MW	MolForm	CAS#	Qual
1		Indane	118	C9H10	000496-11-7	91
2		Tetracyclo[3.3.1.0(2,8).0(4,6)]-...	118	C9H10	1000191-13-7	64
3		Benzene, 1-ethenyl-2-methyl-	118	C9H10	000611-15-4	60
4		Benzeneethanol, .beta.-ethenyl-	148	C10H12O	006052-63-7	53
5		Benzene, 1-propenyl-	118	C9H10	000637-50-3	53





Data Path : Z:\svoasrv\HPCHEM1\BNA\_P\Data\BP080725\  
 Data File : BP025316.D  
 Acq On : 07 Aug 2025 16:31  
 Operator : CG/JU  
 Sample : Q2786-04  
 Misc :  
 ALS Vial : 9 Sample Multiplier: 1

Instrument :  
 BNA\_P  
 ClientSampleId :  
 PL-03-08062025

Quant Method : Z:\svoasrv\HPCHEM1\BNA\_P\Methods\8270E-BP080525.M  
 Quant Title : ASP BNA STANDARDS FOR 5 POINT CALIBRATION

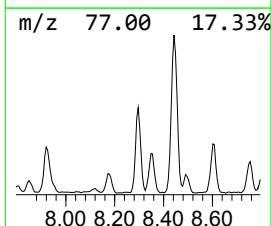
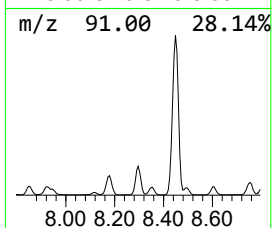
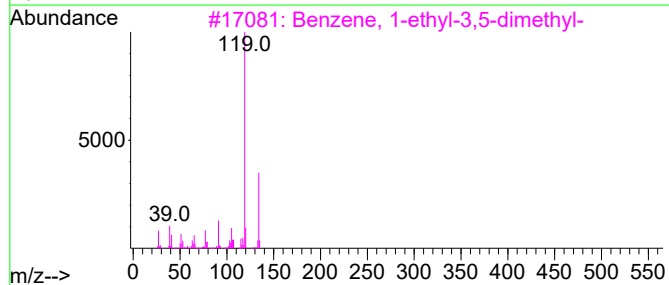
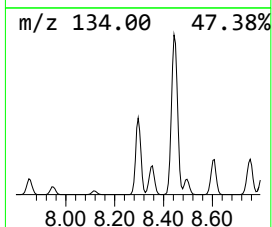
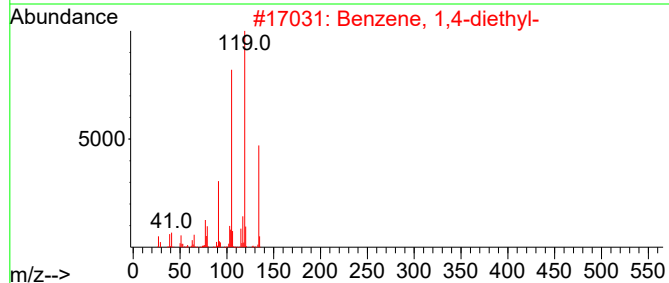
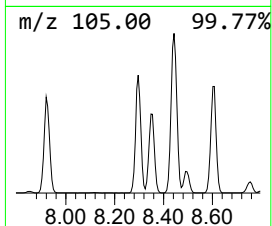
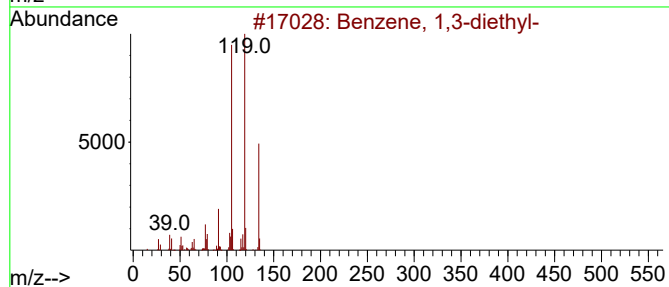
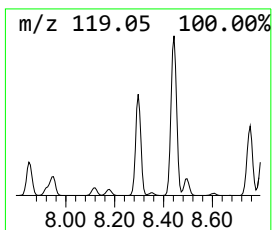
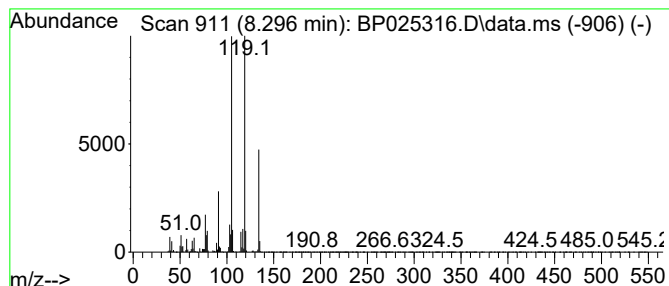
TIC Library : C:\Database\NIST20.L  
 TIC Integration Parameters: LSCINT.P

\*\*\*\*\*  
 Peak Number 15 Benzene, 1,3-diethyl- Concentration Rank 4

R.T.	EstConc	Area	Relative to ISTD	R.T.
8.296	25.75 ng	2669040	1,4-Dichlorobenzene-d4	7.808

Hit#	of	5	Tentative ID	MW	MolForm	CAS#	Qual
1			Benzene, 1,3-diethyl-	134	C10H14	000141-93-5	97
2			Benzene, 1,4-diethyl-	134	C10H14	000105-05-5	95
3			Benzene, 1-ethyl-3,5-dimethyl-	134	C10H14	000934-74-7	91
4			o-Cymene	134	C10H14	000527-84-4	81
5			Benzene, 1,2-diethyl-	134	C10H14	000135-01-3	76



Data Path : Z:\svoasrv\HPCHEM1\BNA\_P\Data\BP080725\  
 Data File : BP025316.D  
 Acq On : 07 Aug 2025 16:31  
 Operator : CG/JU  
 Sample : Q2786-04  
 Misc :  
 ALS Vial : 9 Sample Multiplier: 1

Instrument :  
 BNA\_P  
 ClientSampleId :  
 PL-03-08062025

Quant Method : Z:\svoasrv\HPCHEM1\BNA\_P\Methods\8270E-BP080525.M  
 Quant Title : ASP BNA STANDARDS FOR 5 POINT CALIBRATION

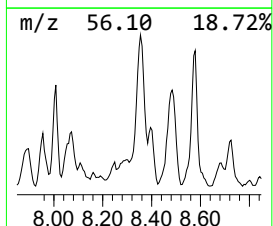
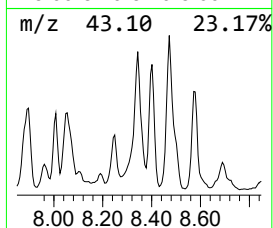
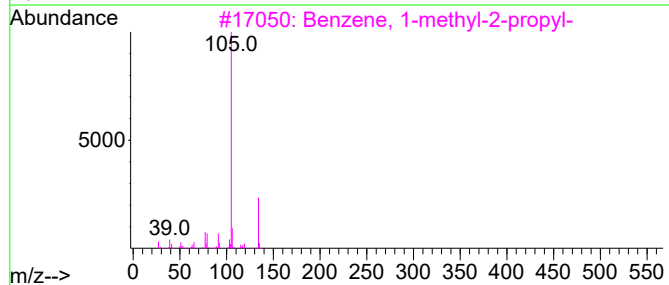
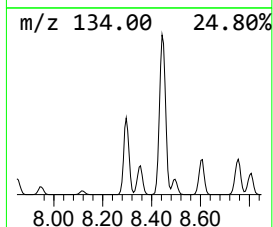
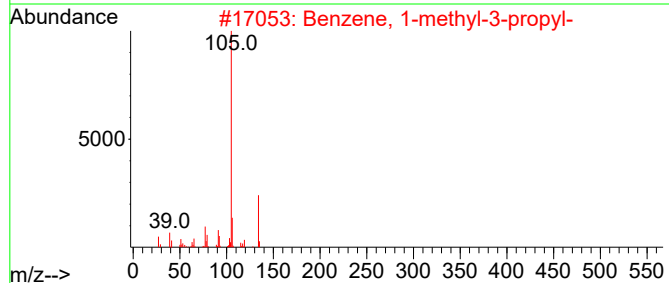
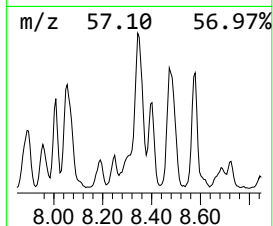
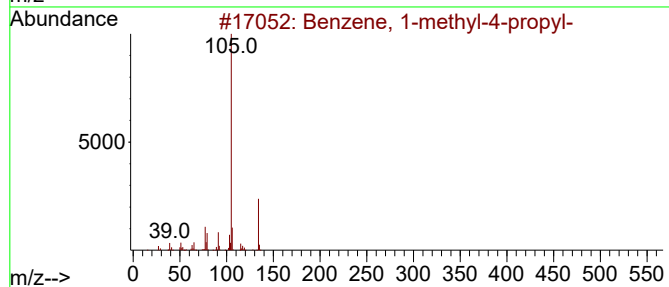
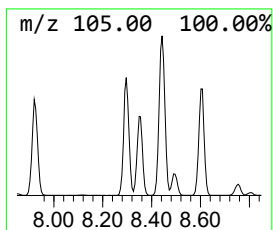
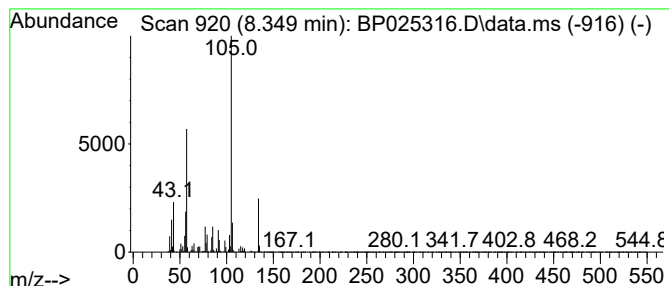
TIC Library : C:\Database\NIST20.L  
 TIC Integration Parameters: LSCINT.P

\*\*\*\*\*  
 Peak Number 16 Benzene, 1-methyl-4-propyl- Concentration Rank 15

R.T.	EstConc	Area	Relative to ISTD	R.T.
8.349	17.66 ng	1830040	1,4-Dichlorobenzene-d4	7.808

Hit#	of 5	Tentative ID	MW	MolForm	CAS#	Qual
1		Benzene, 1-methyl-4-propyl-	134	C10H14	001074-55-1	93
2		Benzene, 1-methyl-3-propyl-	134	C10H14	001074-43-7	90
3		Benzene, 1-methyl-2-propyl-	134	C10H14	001074-17-5	81
4		2-Tolyloxirane	134	C9H10O	002783-26-8	76
5		Benzene, (1-methylpropyl)-	134	C10H14	000135-98-8	76



Data Path : Z:\svoasrv\HPCHEM1\BNA\_P\Data\BP080725\  
 Data File : BP025316.D  
 Acq On : 07 Aug 2025 16:31  
 Operator : CG/JU  
 Sample : Q2786-04  
 Misc :  
 ALS Vial : 9 Sample Multiplier: 1

Instrument :  
 BNA\_P  
 ClientSampleId :  
 PL-03-08062025

Quant Method : Z:\svoasrv\HPCHEM1\BNA\_P\Methods\8270E-BP080525.M  
 Quant Title : ASP BNA STANDARDS FOR 5 POINT CALIBRATION

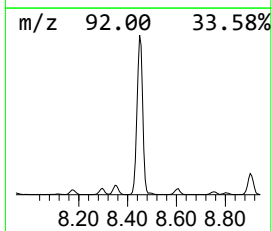
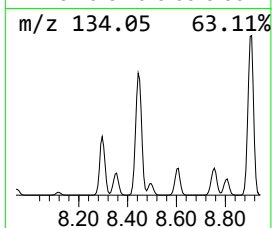
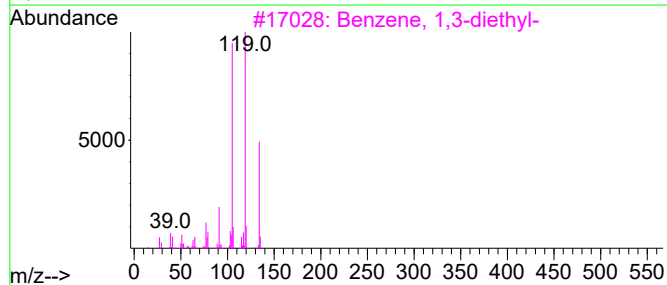
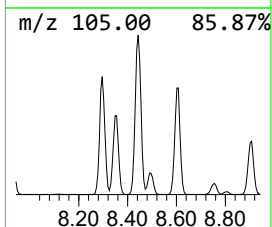
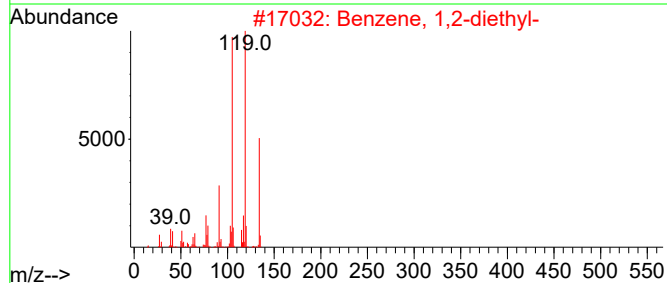
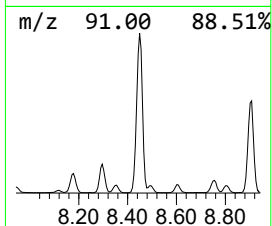
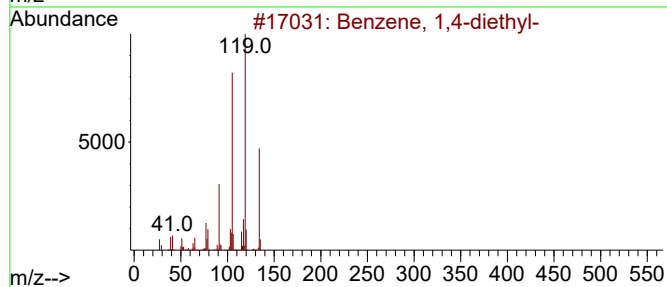
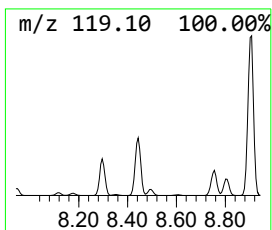
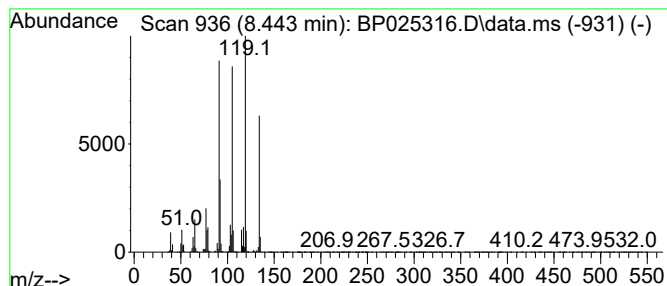
TIC Library : C:\Database\NIST20.L  
 TIC Integration Parameters: LSCINT.P

\*\*\*\*\*  
 Peak Number 17 Benzene, 1,4-diethyl- Concentration Rank 2

R.T.	EstConc	Area	Relative to ISTD	R.T.
8.443	55.15 ng	5716940	1,4-Dichlorobenzene-d4	7.808

Hit#	of 5	Tentative ID	MW	MolForm	CAS#	Qual
1		Benzene, 1,4-diethyl-	134	C10H14	000105-05-5	94
2		Benzene, 1,2-diethyl-	134	C10H14	000135-01-3	94
3		Benzene, 1,3-diethyl-	134	C10H14	000141-93-5	93
4		Benzene, 1-ethyl-3,5-dimethyl-	134	C10H14	000934-74-7	90
5		Benzene, 1-ethyl-2,3-dimethyl-	134	C10H14	000933-98-2	90



Data Path : Z:\svoasrv\HPCHEM1\BNA\_P\Data\BP080725\  
 Data File : BP025316.D  
 Acq On : 07 Aug 2025 16:31  
 Operator : CG/JU  
 Sample : Q2786-04  
 Misc :  
 ALS Vial : 9 Sample Multiplier: 1

Instrument :  
 BNA\_P  
 ClientSampleId :  
 PL-03-08062025

Quant Method : Z:\svoasrv\HPCHEM1\BNA\_P\Methods\8270E-BP080525.M  
 Quant Title : ASP BNA STANDARDS FOR 5 POINT CALIBRATION

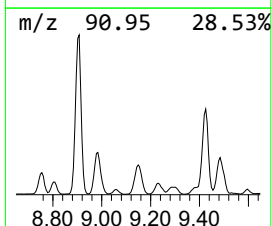
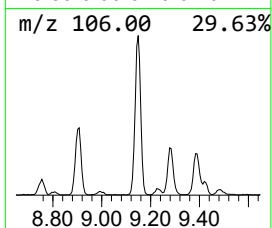
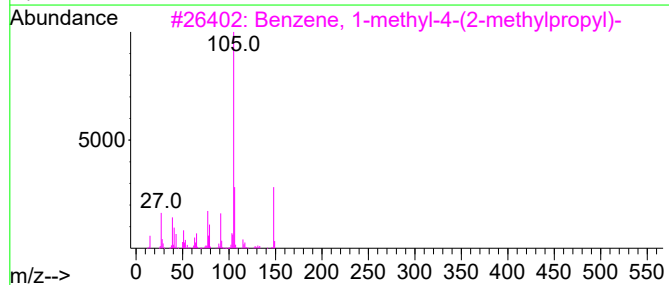
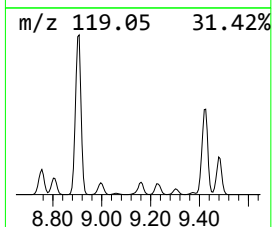
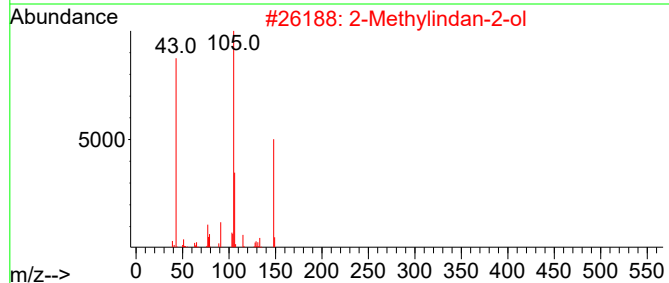
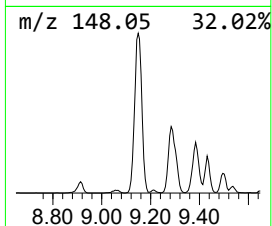
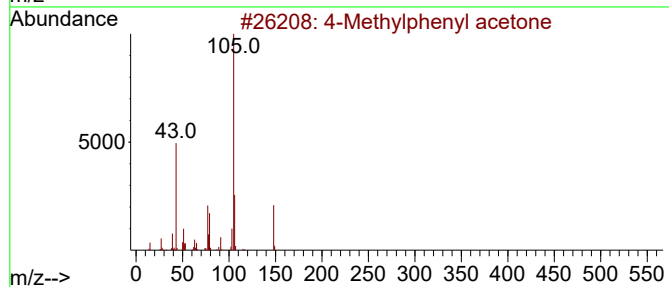
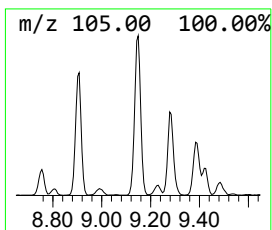
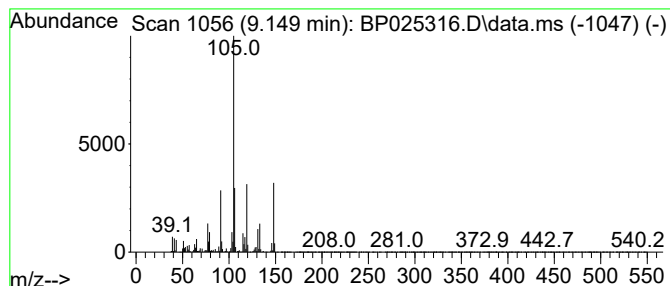
TIC Library : C:\Database\NIST20.L  
 TIC Integration Parameters: LSCINT.P

\*\*\*\*\*  
 Peak Number 18 4-Methylphenyl acetone Concentration Rank 9

R.T.	EstConc	Area	Relative to ISTD	R.T.
9.149	20.88 ng	2164680	1,4-Dichlorobenzene-d4	7.808

Hit#	of 5	Tentative ID	MW	MolForm	CAS#	Qual
1		4-Methylphenyl acetone	148	C10H12O	002096-86-8	60
2		2-Methylindan-2-ol	148	C10H12O	033223-84-6	53
3		Benzene, 1-methyl-4-(2-methylpro...	148	C11H16	005161-04-6	53
4		2-Butanone, 4-phenyl-	148	C10H12O	002550-26-7	45
5		Benzene, 1-methyl-4-butyl	148	C11H16	001595-05-7	41



Data Path : Z:\svoasrv\HPCHEM1\BNA\_P\Data\BP080725\  
 Data File : BP025316.D  
 Acq On : 07 Aug 2025 16:31  
 Operator : CG/JU  
 Sample : Q2786-04  
 Misc :  
 ALS Vial : 9 Sample Multiplier: 1

Instrument :  
 BNA\_P  
 ClientSampleId :  
 PL-03-08062025

Quant Method : Z:\svoasrv\HPCHEM1\BNA\_P\Methods\8270E-BP080525.M  
 Quant Title : ASP BNA STANDARDS FOR 5 POINT CALIBRATION

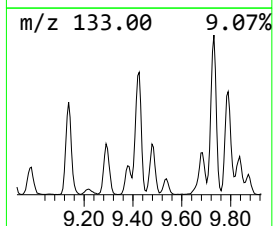
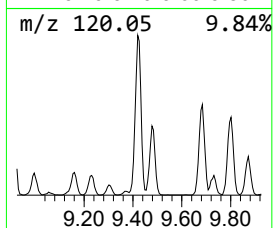
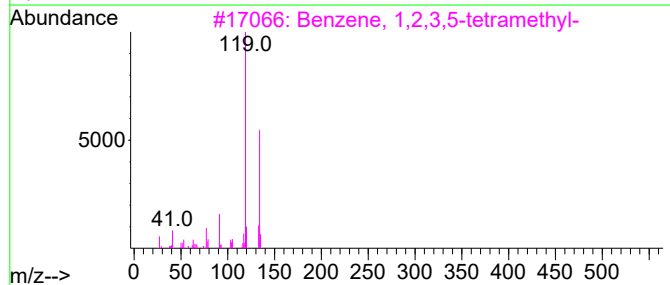
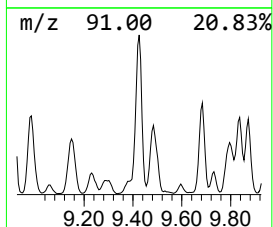
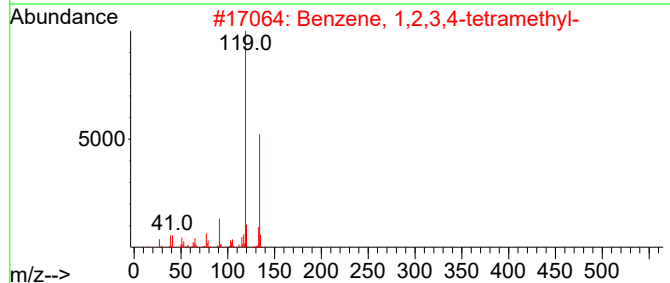
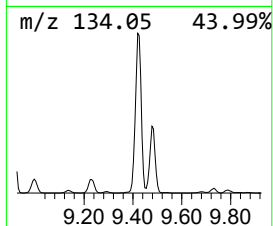
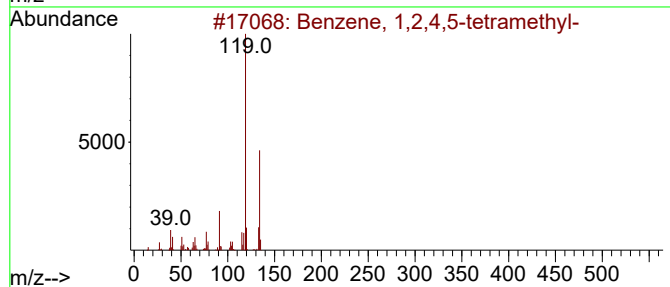
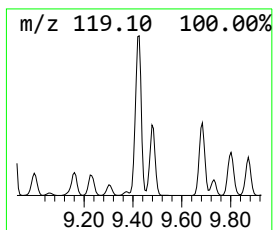
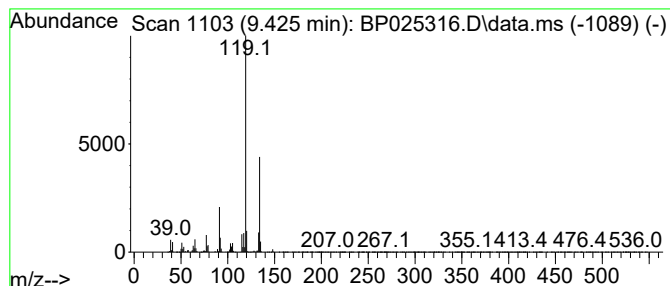
TIC Library : C:\Database\NIST20.L  
 TIC Integration Parameters: LSCINT.P

\*\*\*\*\*  
 Peak Number 19 Benzene, 1,2,4,5-tetramethyl- Concentration Rank 14

R.T.	EstConc	Area	Relative to ISTD	R.T.
9.425	17.94 ng	5129470	Naphthalene-d8	10.578

Hit#	of 5	Tentative ID	MW	MolForm	CAS#	Qual
1		Benzene, 1,2,4,5-tetramethyl-	134	C10H14	000095-93-2	97
2		Benzene, 1,2,3,4-tetramethyl-	134	C10H14	000488-23-3	94
3		Benzene, 1,2,3,5-tetramethyl-	134	C10H14	000527-53-7	94
4		Benzene, 1-ethyl-3,5-dimethyl-	134	C10H14	000934-74-7	94
5		Benzene, 1-ethyl-2,3-dimethyl-	134	C10H14	000933-98-2	91



Data Path : Z:\svoasrv\HPCHEM1\BNA\_P\Data\BP080725\  
 Data File : BP025316.D  
 Acq On : 07 Aug 2025 16:31  
 Operator : CG/JU  
 Sample : Q2786-04  
 Misc :  
 ALS Vial : 9 Sample Multiplier: 1

Instrument :  
 BNA\_P  
 ClientSampleId :  
 PL-03-08062025

Quant Method : Z:\svoasrv\HPCHEM1\BNA\_P\Methods\8270E-BP080525.M  
 Quant Title : ASP BNA STANDARDS FOR 5 POINT CALIBRATION

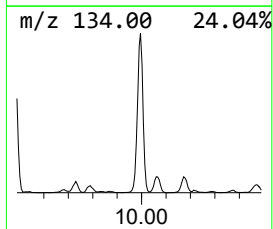
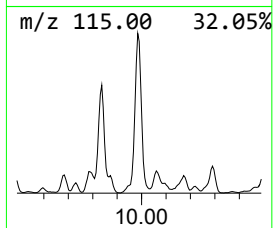
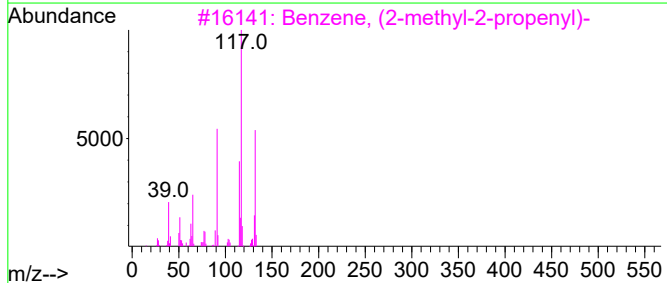
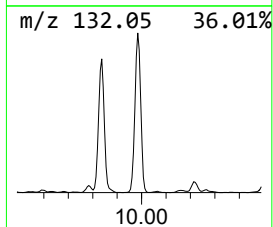
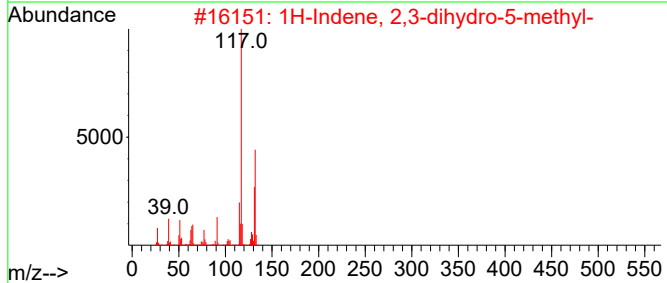
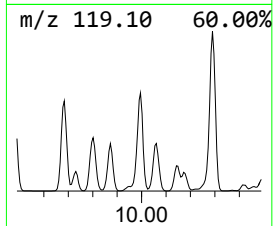
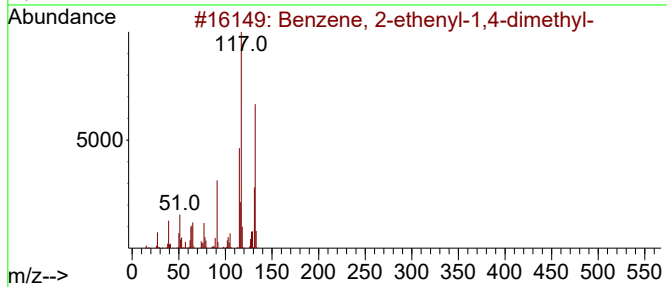
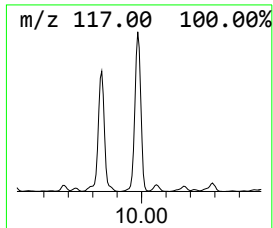
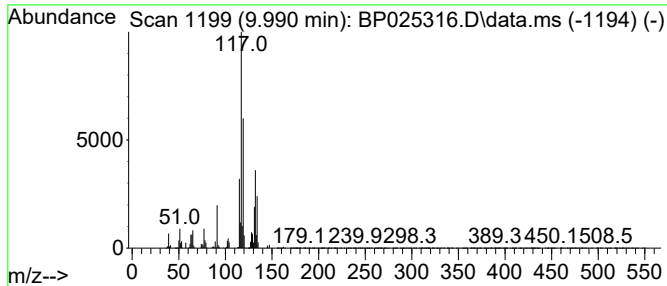
TIC Library : C:\Database\NIST20.L  
 TIC Integration Parameters: LSCINT.P

\*\*\*\*\*  
 Peak Number 20 Benzene, 2-ethenyl-1,4-dime... Concentration Rank 8

R.T.	EstConc	Area	Relative to ISTD	R.T.
9.990	21.07 ng	6024720	Naphthalene-d8	10.578

Hit#	of 5	Tentative ID	MW	MolForm	CAS#	Qual
1		Benzene, 2-ethenyl-1,4-dimethyl-	132	C10H12	002039-89-6	95
2		1H-Indene, 2,3-dihydro-5-methyl-	132	C10H12	000874-35-1	92
3		Benzene, (2-methyl-2-propenyl)-	132	C10H12	003290-53-7	70
4		1-Methyl-2-phenylcyclopropane	132	C10H12	003145-76-4	70
5		Benzene, 2-ethenyl-1,3-dimethyl-	132	C10H12	002039-90-9	70



Data Path : Z:\svoasrv\HPCHEM1\BNA\_P\Data\BP080725\  
 Data File : BP025316.D  
 Acq On : 07 Aug 2025 16:31  
 Operator : CG/JU  
 Sample : Q2786-04  
 Misc :  
 ALS Vial : 9 Sample Multiplier: 1

Instrument :  
 BNA\_P  
 ClientSampleId :  
 PL-03-08062025

Quant Method : Z:\svoasrv\HPCHEM1\BNA\_P\Methods\8270E-BP080525.M  
 Quant Title : ASP BNA STANDARDS FOR 5 POINT CALIBRATION

TIC Library : C:\Database\NIST20.L  
 TIC Integration Parameters: LSCINT.P

TIC Top Hit name	RT	EstConc	Units	Response	--Internal Standard--			
					#	RT	Resp	Conc
Butane, 2-metho...	3.043	20.3	ng	2103730	1	7.808	2073110	20.0
Pentane, 2,3,3-...	3.908	20.6	ng	2131130	1	7.808	2073110	20.0
Hexane, 2,5-dim...	3.955	19.3	ng	2000770	1	7.808	2073110	20.0
Heptane, 3-methyl-	4.055	21.9	ng	2264850	1	7.808	2073110	20.0
Octane, 4-methyl-	5.302	17.3	ng	1792810	1	7.808	2073110	20.0
Benzene, 1,3-di...	5.508	17.0	ng	1764910	1	7.808	2073110	20.0
unknown6.114	6.114	17.4	ng	1803360	1	7.808	2073110	20.0
Benzene, propyl-	6.802	61.8	ng	6401610	1	7.808	2073110	20.0
Nonane, 2-methyl-	6.878	16.2	ng	1676660	1	7.808	2073110	20.0
Benzene, 1-ethy...	7.208	16.9	ng	1752910	1	7.808	2073110	20.0
Benzene, 1,2,3-...	7.461	27.7	ng	2867270	1	7.808	2073110	20.0
Indane	8.178	22.0	ng	2279580	1	7.808	2073110	20.0
Benzene, 1,3-di...	8.296	25.8	ng	2669040	1	7.808	2073110	20.0
Benzene, 1-meth...	8.349	17.7	ng	1830040	1	7.808	2073110	20.0
Benzene, 1,4-di...	8.443	55.1	ng	5716940	1	7.808	2073110	20.0
4-Methylphenyl ...	9.149	20.9	ng	2164680	1	7.808	2073110	20.0
Benzene, 1,2,4,...	9.425	17.9	ng	5129470	2	10.578	5718250	20.0
Benzene, 2-ethe...	9.990	21.1	ng	6024720	2	10.578	5718250	20.0