

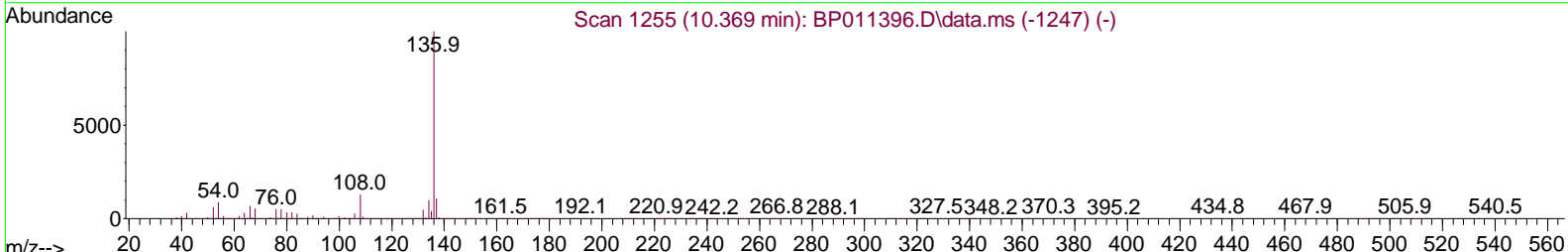
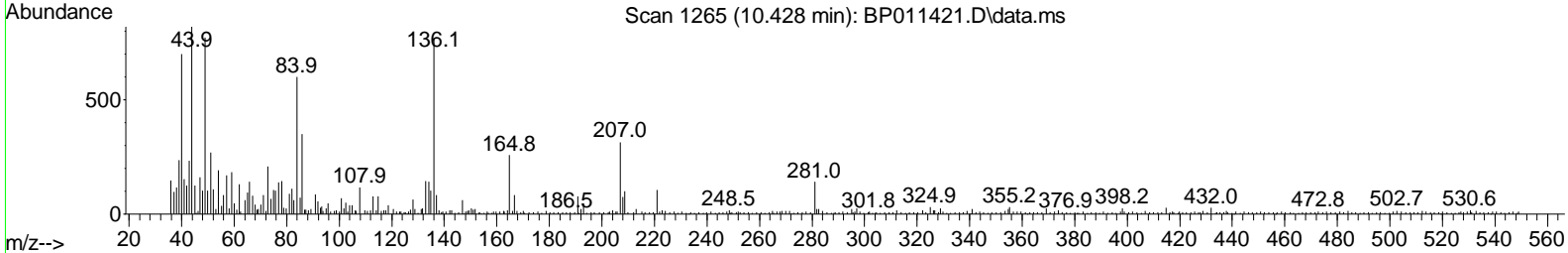
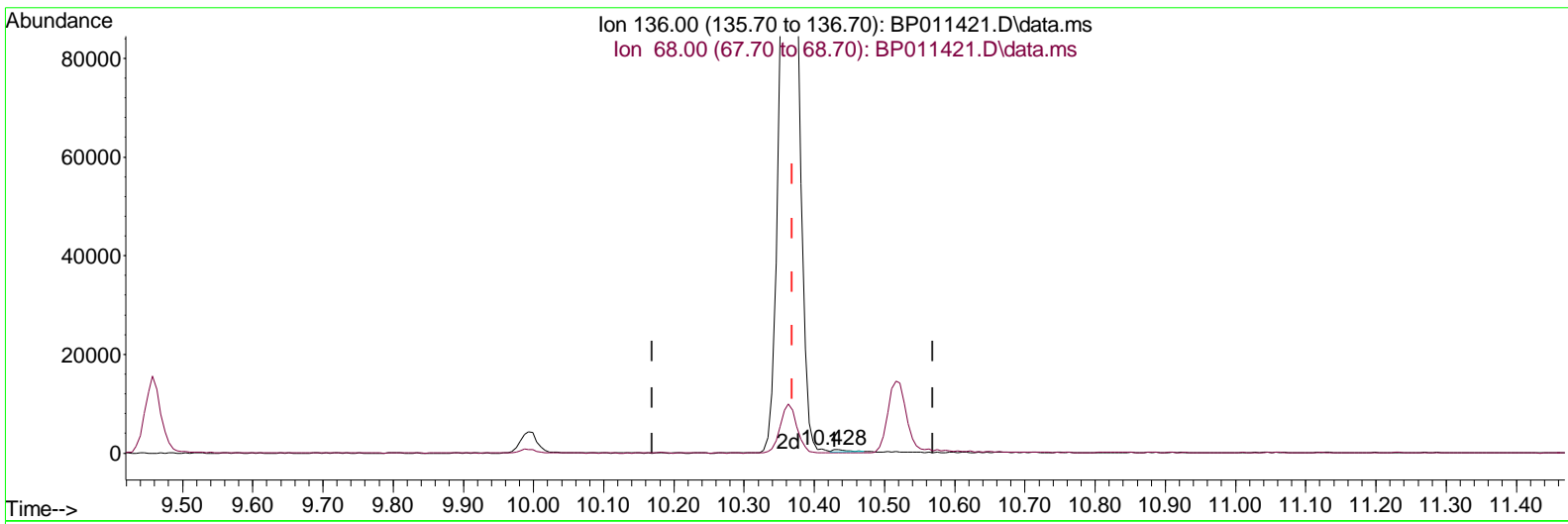
Data Path : Z:\svoasrv\HPCHEM1\BNA\_P\Data\BP081122\  
 Data File : BP011421.D  
 Acq On : 12 Aug 2022 12:56  
 Operator : CG/JU  
 Sample : N4129-09  
 Misc :  
 ALS Vial : 45 Sample Multiplier: 1

Instrument :  
 BNA\_P  
 ClientSampleId :  
 BGBW9

Manual Integrations APPROVED

Reviewed By : Jagrut Upadhyay 08/12/2022  
 Supervised By : Sohil Jodhani 08/13/2022

Quant Time: Aug 12 13:20:52 2022  
 Quant Method : Z:\svoasrv\HPCHEM1\BNA\_P\Methods\SFAM-EPA-BP080822.M  
 Quant Title : SVOA CALIBRATION  
 QLast Update : Thu Aug 11 23:05:53 2022  
 Response via : Initial Calibration



TIC: BP011421.D\data.ms

(20) Naphthalene-d8 (I)

10.428min (+ 0.059) 20.00 ng/ul

response 722

Ion	Exp%	Act%
136.00	100.00	100.00
68.00	6.70	7.80
0.00	0.00	0.00
0.00	0.00	0.00

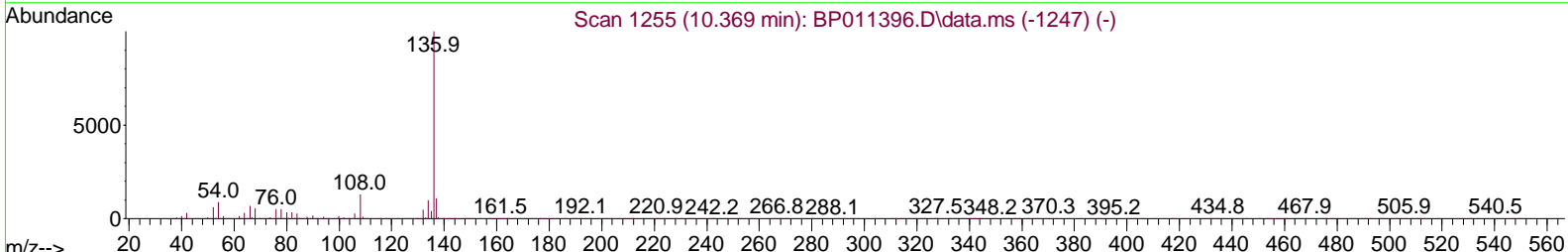
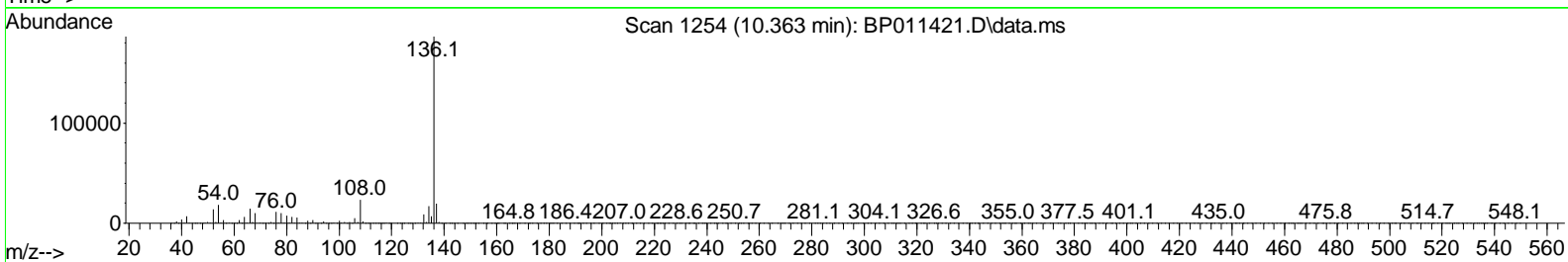
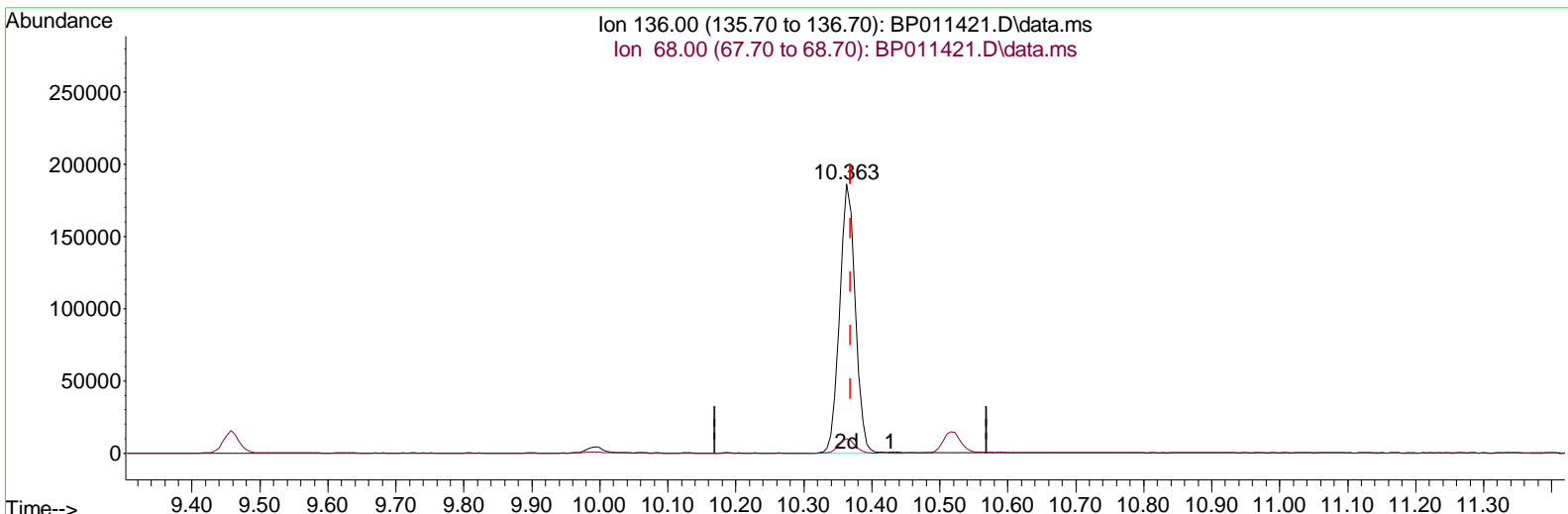
Data Path : Z:\svoasrv\HPCHEM1\BNA\_P\Data\BP081122\  
 Data File : BP011421.D  
 Acq On : 12 Aug 2022 12:56  
 Operator : CG/JU  
 Sample : N4129-09  
 Misc :  
 ALS Vial : 45 Sample Multiplier: 1

Instrument :  
 BNA\_P  
 ClientSampleId :  
 BGBW9

Manual Integrations APPROVED

Reviewed By : Jagrut Upadhyay 08/12/2022  
 Supervised By : Sohil Jodhani 08/13/2022

Quant Time: Aug 12 13:20:52 2022  
 Quant Method : Z:\svoasrv\HPCHEM1\BNA\_P\Methods\SFAM-EPA-BP080822.M  
 Quant Title : SVOA CALIBRATION  
 QLast Update : Thu Aug 11 23:05:53 2022  
 Response via : Initial Calibration



TIC: BP011421.D\data.ms

(20) Naphthalene-d8 (I)

10.363min (-0.006) 20.00 ng/ul m

response 296725

Ion	Exp%	Act%
136.00	100.00	100.00
68.00	6.70	5.32#
0.00	0.00	0.00
0.00	0.00	0.00

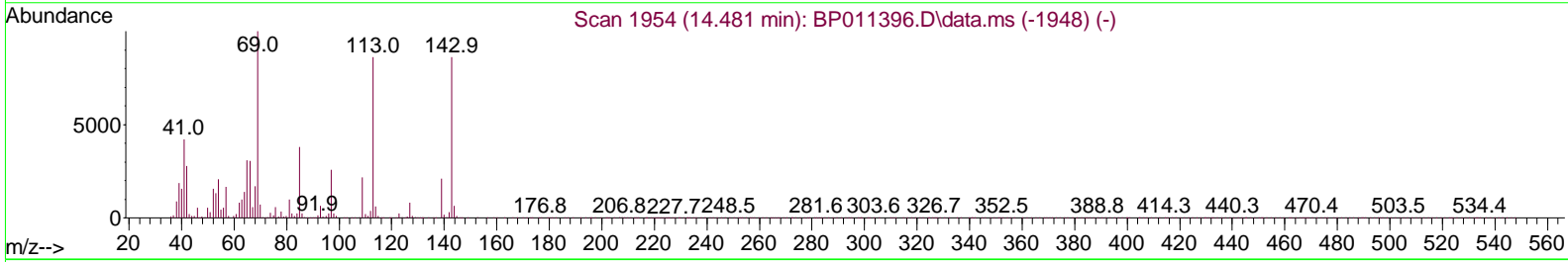
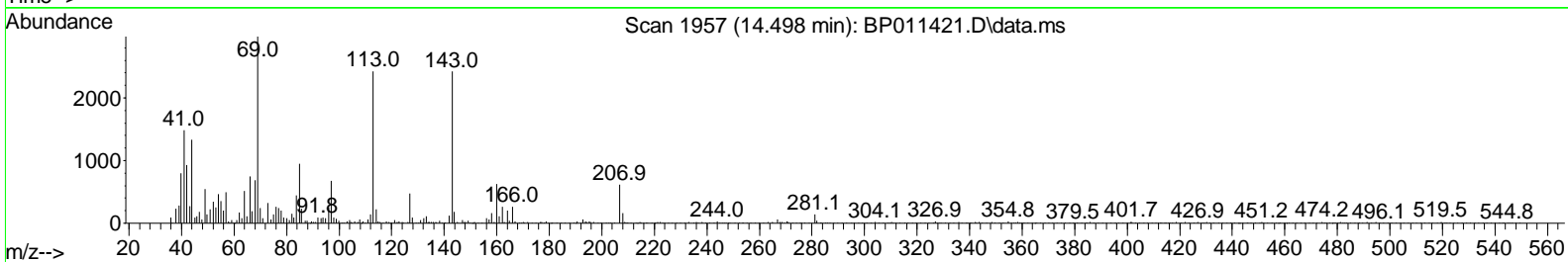
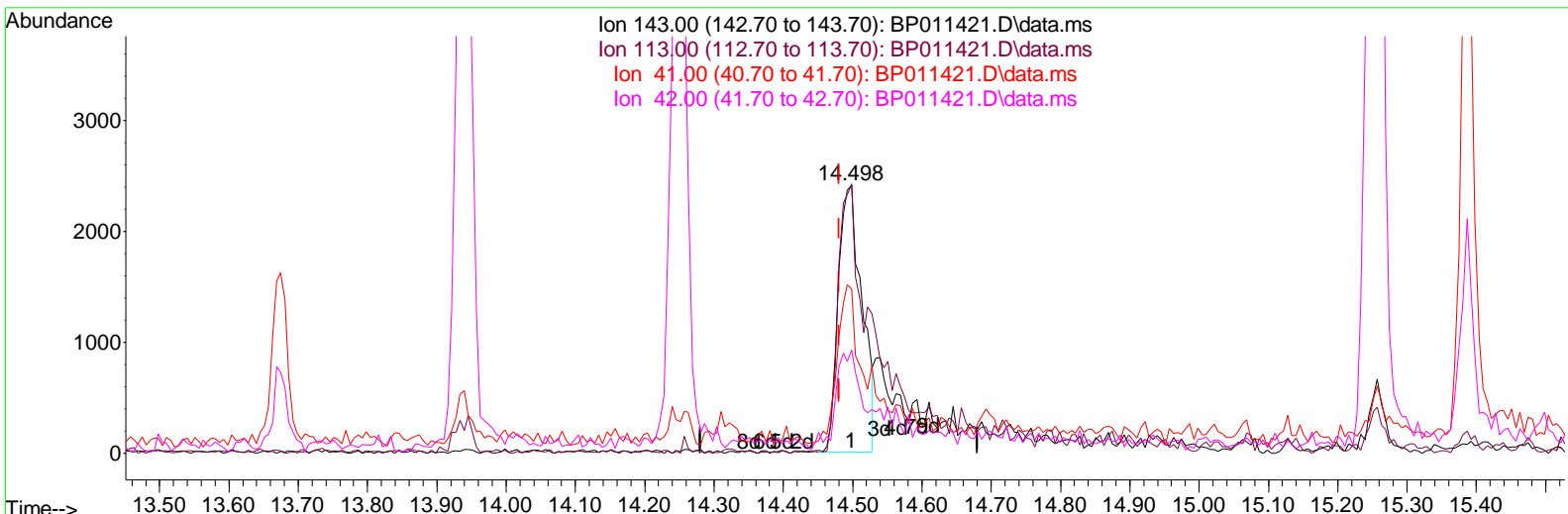
Data Path : Z:\svoasrv\HPCHEM1\BNA\_P\Data\BP081122\  
 Data File : BP011421.D  
 Acq On : 12 Aug 2022 12: 56  
 Operator : CG/JU  
 Sample : N4129-09  
 Misc :  
 ALS Vial : 45 Sample Multiplier: 1

Instrument :  
 BNA\_P  
 ClientSampleId :  
 BGBW9

Manual Integrations APPROVED

Reviewed By :Jagrut Upadhyay 08/12/2022  
 Supervised By :Sohil Jodhani 08/13/2022

Quant Time: Aug 12 13: 20: 52 2022  
 Quant Method : Z:\svoasrv\HPCHEM1\BNA\_P\Methods\SFAM-EPA-BP080822.M  
 Quant Title : SVOA CALIBRATION  
 QLast Update : Thu Aug 11 23: 05: 53 2022  
 Response via : Initial Calibration



TIC: BP011421.D\data.ms

(54) 4-Nitrophenol-d4 (S)

14.498min (+ 0.018) 2.66 ng/ul

response	5684	
Ion	Exp%	Act%
143.00	100.00	100.00
113.00	75.70	100.29#
41.00	54.40	61.16
42.00	35.50	38.43

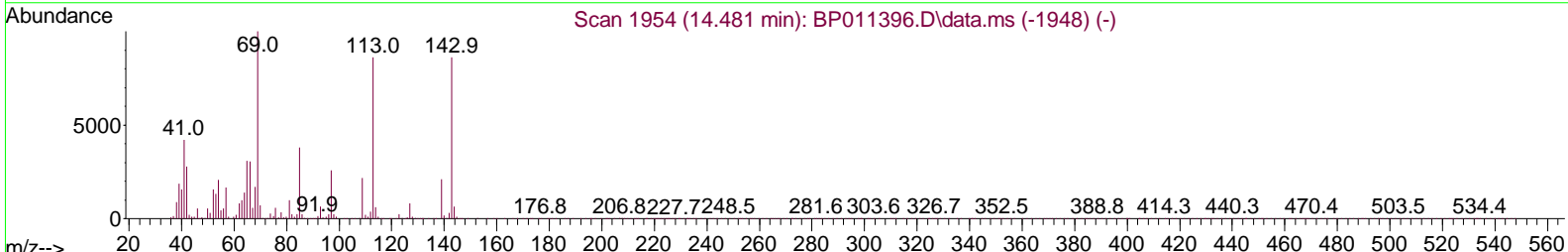
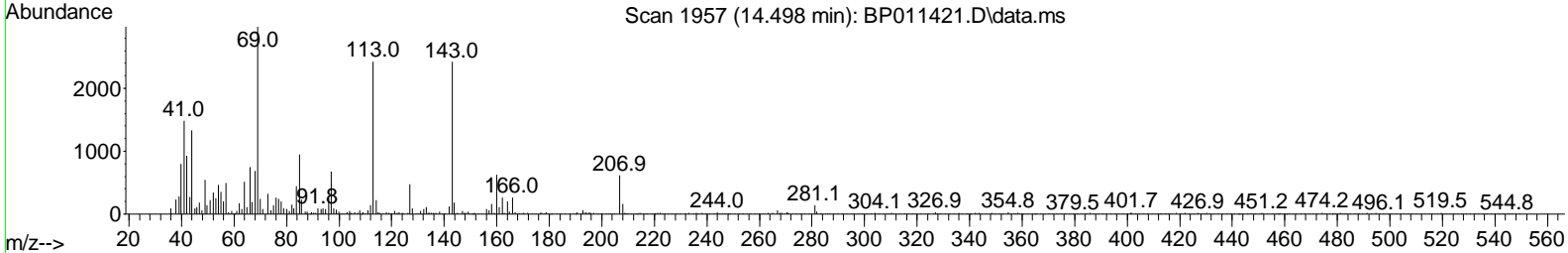
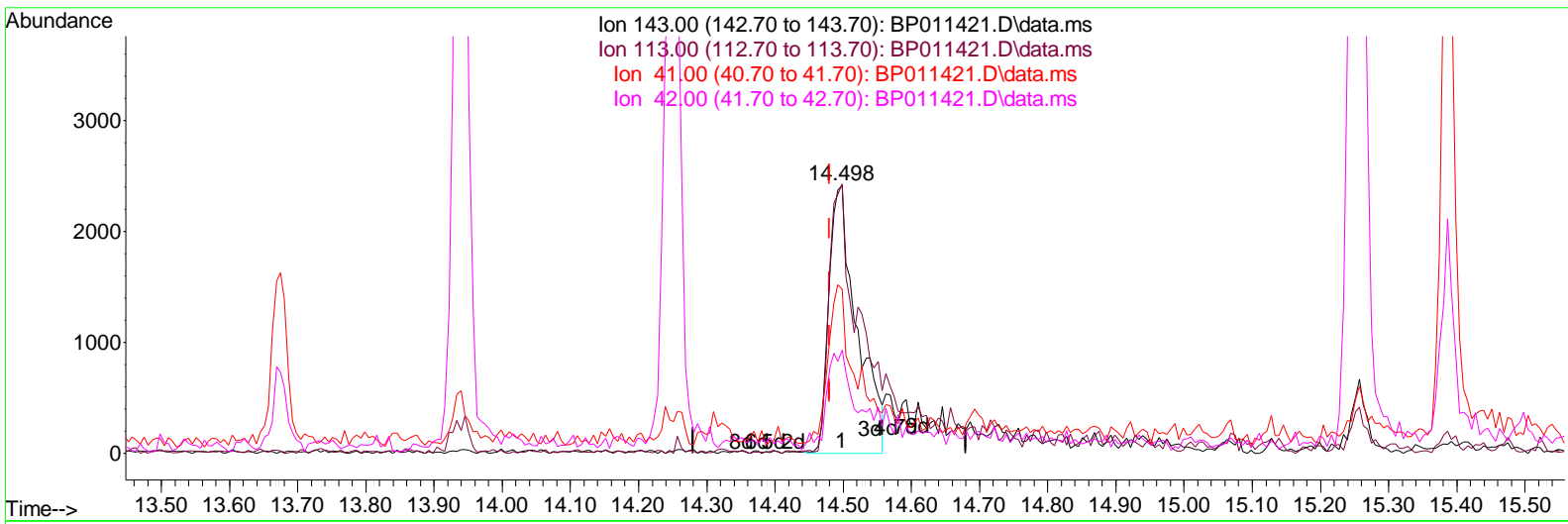
Data Path : Z:\svoasrv\HPCHEM1\BNA\_P\Data\BP081122\  
 Data File : BP011421.D  
 Acq On : 12 Aug 2022 12:56  
 Operator : CG/JU  
 Sample : N4129-09  
 Misc :  
 ALS Vial : 45 Sample Multiplier: 1

Instrument :  
 BNA\_P  
 ClientSampleId :  
 BGBW9

Manual Integrations APPROVED

Quant Time: Aug 12 13:20:52 2022  
 Quant Method : Z:\svoasrv\HPCHEM1\BNA\_P\Methods\SFAM-EPA-BP080822.M  
 Quant Title : SVOA CALIBRATION  
 QLast Update : Thu Aug 11 23:05:53 2022  
 Response via : Initial Calibration

Reviewed By :Jagrut Upadhyay 08/12/2022  
 Supervised By :Sohil Jodhani 08/13/2022



TIC: BP011421.D\data.ms

(54) 4-Nitrophenol-d4 (S)

14.498min (+ 0.018) 3.23 ng/ul m

response	6899
Ion	Exp% Act%
143.00	100.00 100.00
113.00	75.70 100.29#
41.00	54.40 61.16
42.00	35.50 38.43

Data Path : Z:\svoasrv\HPCHEM1\BNA\_P\Data\BP081122\  
 Data File : BP011421.D  
 Acq On : 12 Aug 2022 12:56  
 Operator : CG/JU  
 Sample : N4129-09  
 Misc :  
 ALS Vial : 45 Sample Multiplier: 1

**Instrument :**  
 BNA\_P  
**ClientSampleId :**  
 BGBW9

**Manual IntegrationsAPPROVED**

Reviewed By :Jagrut Upadhyay 08/12/2022  
 Supervised By :Sohil Jodhani 08/13/2022

Quant Time: Aug 12 13:20:52 2022  
 Quant Method : Z:\svoasrv\HPCHEM1\BNA\_P\Methods\SFAM-EPA-BP080822.M  
 Quant Title : SVOA CALIBRATION  
 QLast Update : Thu Aug 11 23:05:53 2022  
 Response via : Initial Calibration

Compound	R. T.	QI on	Response	Conc	Units	Dev(Min)
<b>Internal Standards</b>						
1) 1,4-Dichlorobenzene-d4	7.575	152	68988	20.000	ng/ul	0.00
20) Naphthalene-d8	10.363	136	296725m	20.000	ng/ul	0.00
38) Acenaphthene-d10	14.251	164	168351	20.000	ng/ul	0.00
64) Phenanthrene-d10	17.022	188	349399	20.000	ng/ul	0.00
79) Chrysene-d12	21.157	240	341660	20.000	ng/ul	# 0.00
88) Perylene-d12	23.457	264	363183	20.000	ng/ul	0.00
<b>System Monitoring Compounds</b>						
3) 1,4-Dioxane-d8	3.081	96	10676	4.744	ng/uL	0.00
4) Pyridine-d5	3.493	84	49837	8.779	ng/ul	0.00
7) Phenol-d5	6.757	99	38655	6.331	ng/ul	0.00
9) Bis-(2-Chloroethyl)eth...	6.922	67	134263	31.015	ng/ul	0.00
11) 2-Chlorophenol-d4	7.105	132	120913	25.241	ng/ul	0.00
15) 4-Methylphenol-d8	8.299	113	75265	15.701	ng/ul	0.00
21) Nitrobenzene-d5	8.740	128	76121	37.694	ng/ul	0.00
24) 2-Nitrophenol-d4	9.457	143	70358	38.054	ng/ul	0.00
28) 2,4-Dichlorophenol-d3	9.993	165	109539	29.338	ng/ul	0.00
31) 4-Chloroaniline-d4	10.516	131	159912	24.498	ng/ul	0.00
46) Dimethylphthalate-d6	13.675	166	476499	40.793	ng/ul	0.00
49) Acenaphthylene-d8	13.939	160	524507	37.302	ng/ul	0.00
54) 4-Nitrophenol-d4	14.498	143	6899m	3.234	ng/ul	0.02
60) Fluorene-d10	15.257	176	385452	38.585	ng/ul	0.00
65) 4,6-Dinitro-2-methylph...	15.386	200	54550	33.612	ng/ul	0.00
73) Anthracene-d10	17.122	188	672805	42.841	ng/ul	0.00
81) Pyrene-d10	19.386	212	782386	41.565	ng/ul	0.00
92) Benzo(a)pyrene-d12	23.310	264	766718	41.862	ng/ul	0.00

Target Compounds Qvalue

(#) = qualifier out of range (m) = manual integration (+) = signals summed

Data Path : Z:\svoasrv\HPCHEM1\BNA\_P\Data\BP081122\  
 Data File : BP011421.D  
 Acq On : 12 Aug 2022 12:56  
 Operator : CG/JU  
 Sample : N4129-09  
 Misc :  
 ALS Vial : 45 Sample Multiplier: 1

**Instrument :**  
 BNA\_P  
**ClientSampleId :**  
 BGBW9

**Manual IntegrationsAPPROVED**

Reviewed By :Jagrut Upadhyay 08/12/2022  
 Supervised By :Sohil Jodhani 08/13/2022

Quant Time: Aug 12 13:20:52 2022  
 Quant Method : Z:\svoasrv\HPCHEM1\BNA\_P\Methods\SFAM-EPA-BP080822.M  
 Quant Title : SVOA CALIBRATION  
 QLast Update : Thu Aug 11 23:05:53 2022  
 Response via : Initial Calibration

