

Data Path : Z:\svoasrv\HPCHEM1\BNA_P\Data\BP090424\
 Data File : BP021826.D
 Acq On : 04 Sep 2024 21:23
 Operator : RC/JU
 Sample : P3809-10MSD
 Misc :
 ALS Vial : 13 Sample Multiplier: 1

Instrument :
 BNA_P
 ClientSampleId :
 YE3E3MSD

Manual Integrations
 APPROVED

Reviewed By :Jagrut Upadhyay 09/05/2024
 Supervised By :mohammad ahmed 09/07/2024

Quant Time: Sep 05 05:52:55 2024
 Quant Method : Z:\svoasrv\HPCHEM1\BNA_P\Methods\SFAM-EPA-BP082324.MA.M
 Quant Title : SVOA CALIBRATION
 QLast Update : Thu Sep 05 05:03:57 2024
 Response via : Initial Calibration

Compound	R.T.	QIon	Response	Conc	Units	Dev(Min)
Internal Standards						
1) 1,4-Dichlorobenzene-d4	7.775	152	333143	20.000	ng/u1	0.01
20) Naphthalene-d8	10.557	136	1442790	20.000	ng/u1	0.01
38) Acenaphthene-d10	14.410	164	935178	20.000	ng/u1	0.00
64) Phenanthrene-d10	17.216	188	2003546	20.000	ng/u1	0.00
79) Chrysene-d12	21.675	240	1861320	20.000	ng/u1	0.00
88) Perylene-d12	25.068	264	2098153	20.000	ng/u1	-0.02
System Monitoring Compounds						
3) 1,4-Dioxane-d8	3.275	96	41396	4.125	ng/uL	0.01
4) Pyridine-d5	3.687	84	295274	10.173	ng/u1	0.01
7) Phenol-d5	6.946	99	270577	7.610	ng/u1	0.01
9) Bis-(2-Chloroethyl)eth...	7.105	67	560815	28.985	ng/u1	0.01
11) 2-Chlorophenol-d4	7.311	132	598378	26.069	ng/u1	0.00
15) 4-Methylphenol-d8	8.475	113	500987	18.236	ng/u1	0.01
21) Nitrobenzene-d5	8.922	128	347189	29.910	ng/u1	0.01
24) 2-Nitrophenol-d4	9.640	143	373233	31.677	ng/u1	0.01
28) 2,4-Dichlorophenol-d3	10.181	165	694602	29.915	ng/u1	0.01
31) 4-Chloroaniline-d4	10.687	131	866582	25.653	ng/u1	0.00
46) Dimethylphthalate-d6	13.822	166	2477463	34.622	ng/u1	0.01
49) Acenaphthylene-d8	14.104	160	2607293	32.453	ng/u1	0.01
54) 4-Nitrophenol-d4	14.616	143	123421	9.066	ng/u1	0.00
60) Fluorene-d10	15.422	176	2040947	33.926	ng/u1	0.01
65) 4,6-Dinitro-2-methylph...	15.545	200	404394	36.698	ng/u1	0.01
73) Anthracene-d10	17.316	188	3200157	33.655	ng/u1	0.00
81) Pyrene-d10	19.692	212	3905349	36.704	ng/u1	0.00
92) Benzo(a)pyrene-d12	24.839	264	4102695	36.670	ng/u1	-0.02
Target Compounds						
2) 1,4-Dioxane	3.305	88	141081	13.229	ng/uL	98
5) Pyridine	3.705	79	301930	10.410	ng/u1	98
6) Benzaldehyde	6.916	77	651596	35.832	ng/u1	98
8) Phenol	6.975	94	299642	8.083	ng/u1	99
10) Bis(2-Chloroethyl)ether	7.199	93	805460	27.952	ng/u1	99
12) 2-Chlorophenol	7.346	128	609115	25.283	ng/u1	99
13) 2-Methylphenol	8.211	108	548710	20.517	ng/u1	99
14) 2,2'-oxybis(1-Chloropr...	8.287	45	782897	28.148	ng/u1	98
16) Acetophenone	8.587	105	1289649	29.281	ng/u1	99
17) N-Nitroso-di-n-propyla...	8.575	70	608022	29.253	ng/u1	99
18) 4-Methylphenol	8.540	108	536025	18.308	ng/u1	98
19) Hexachloroethane	8.852	117	219081	20.338	ng/u1	96
22) Nitrobenzene	8.963	77	930580	28.750	ng/u1	99
23) Isophorone	9.493	82	1880342	28.950	ng/u1	100
25) 2-Nitrophenol	9.675	139	397566	30.454	ng/u1	96
26) 2,4-Dimethylphenol	9.734	107	741638	23.147	ng/u1	99
27) Bis(2-Chloroethoxy)met...	9.969	93	1154716	28.348	ng/u1	98
29) 2,4-Dichlorophenol	10.210	162	678674	29.088	ng/u1	99
30) Naphthalene	10.610	128	2107594	25.919	ng/u1	100
32) 4-Chloroaniline	10.716	127	858423	25.171	ng/u1	98
33) Hexachlorobutadiene	10.899	225	350568	22.393	ng/u1	98
34) Caprolactam	11.499	113	52536m	5.325	ng/u1	
35) 4-Chloro-3-methylphenol	11.840	107	951459	30.810	ng/u1	97
36) 2-Methylnaphthalene	12.222	142	1552261	28.222	ng/u1	100

Data Path : Z:\svoasrv\HPCHEM1\BNA_P\Data\BP090424\
 Data File : BP021826.D
 Acq On : 04 Sep 2024 21:23
 Operator : RC/JU
 Sample : P3809-10MSD
 Misc :
 ALS Vial : 13 Sample Multiplier: 1

Instrument :
 BNA_P
ClientSampleId :
 YE3E3MSD

Manual Integrations
APPROVED
 Reviewed By :Jagrut Upadhyay 09/05/2024
 Supervised By :mohammad ahmed 09/07/2024

Quant Time: Sep 05 05:52:55 2024
 Quant Method : Z:\svoasrv\HPCHEM1\BNA_P\Methods\SFAM-EPA-BP082324.MA.M
 Quant Title : SVOA CALIBRATION
 QLast Update : Thu Sep 05 05:03:57 2024
 Response via : Initial Calibration

Compound	R.T.	QIon	Response	Conc	Units	Dev(Min)
37) 1-Methylnaphthalene	12.440	142	1571492	28.407	ng/ul	98
39) 1,2,4,5-Tetrachloroben...	12.593	216	841450	28.548	ng/ul	99
40) Hexachlorocyclopentadiene	12.575	237	333210	19.702	ng/ul	99
41) 2,4,6-Trichlorophenol	12.834	196	635181	33.471	ng/ul	99
42) 2,4,5-Trichlorophenol	12.904	196	699722	34.147	ng/ul	99
43) 1,1'-Biphenyl	13.234	154	2142749	30.285	ng/ul	99
44) 2-Chloronaphthalene	13.275	162	1632666	29.430	ng/ul	100
45) 2-Nitroaniline	13.481	65	643923	37.052	ng/ul	97
47) Dimethylphthalate	13.869	163	2404015	33.552	ng/ul	99
48) 2,6-Dinitrotoluene	13.981	165	492941	37.303	ng/ul	99
50) Acenaphthylene	14.134	152	2713808	31.408	ng/ul	100
51) 3-Nitroaniline	14.310	138	508883	35.241	ng/ul	95
52) Acenaphthene	14.481	153	1907872	31.399	ng/ul	99
53) 2,4-Dinitrophenol	14.528	184	266649	33.706	ng/ul	97
55) 4-Nitrophenol	14.628	109	118069	9.472	ng/ul	94
56) Dibenzofuran	14.822	168	2725557	32.422	ng/ul	98
57) 2,4-Dinitrotoluene	14.781	165	728057	36.664	ng/ul	98
58) 2,3,4,6-Tetrachlorophenol	15.051	232	609434	34.520	ng/ul	97
59) Diethylphthalate	15.251	149	2463368	34.237	ng/ul	99
61) Fluorene	15.481	166	2221240	32.668	ng/ul	100
62) 4-Chlorophenyl-phenyle...	15.475	204	1097846	32.134	ng/ul	97
63) 4-Nitroaniline	15.498	138	547805	39.252	ng/ul	96
66) 4,6-Dinitro-2-methylph...	15.557	198	433936	35.203	ng/ul	95
67) N-Nitrosodiphenylamine	15.692	169	1879140	31.883	ng/ul	98
68) 4-Bromophenyl-phenylether	16.392	248	732596	33.122	ng/ul	97
69) Hexachlorobenzene	16.510	284	851108	32.413	ng/ul	98
70) Atrazine	16.675	200	754844	33.763	ng/ul	99
71) Pentachlorophenol	16.863	266	556779	33.132	ng/ul	99
72) Phenanthrene	17.263	178	3648677	33.171	ng/ul	99
74) Anthracene	17.357	178	3663957	32.880	ng/ul	100
75) 1,2,3,4-Tetrachloroben...	13.204	216	856601	28.757	ng/uL	98
76) Pentachlorobenzene	14.734	250	931688	30.177	ng/uL	100
77) Carbazole	17.634	167	3479859	34.720	ng/ul	100
78) Di-n-butylphthalate	18.228	149	4364017	35.772	ng/ul	99
80) Fluoranthene	19.351	202	4443794	35.790	ng/ul	99
82) Pyrene	19.728	202	4599681	34.978	ng/ul	99
83) Butylbenzylphthalate	20.669	149	2075716	38.553	ng/ul	100
84) 3,3'-Dichlorobenzidine	21.563	252	728295	15.526	ng/ul	99
85) Benzo(a)anthracene	21.651	228	4598024	34.727	ng/ul	100
86) Bis(2-ethylhexyl)phtha...	21.592	149	2934400	36.926	ng/ul	100
87) Chrysene	21.716	228	4173397	33.492	ng/ul	99
89) Di-n-octyl phthalate	22.892	149	5025153	37.837	ng/ul	100
90) Benzo(b)fluoranthene	23.998	252	4661802	35.509	ng/ul	99
91) Benzo(k)fluoranthene	24.069	252	4547181	35.380	ng/ul	99
93) Benzo(a)pyrene	24.904	252	4272897	35.328	ng/ul	99
94) Indeno(1,2,3-cd)pyrene	28.927	276	5370232m	34.435	ng/ul	
95) Dibenzo(a,h)anthracene	29.021	278	4340762m	34.638	ng/ul	
96) Benzo(g,h,i)perylene	30.115	276	4238398m	35.175	ng/ul	

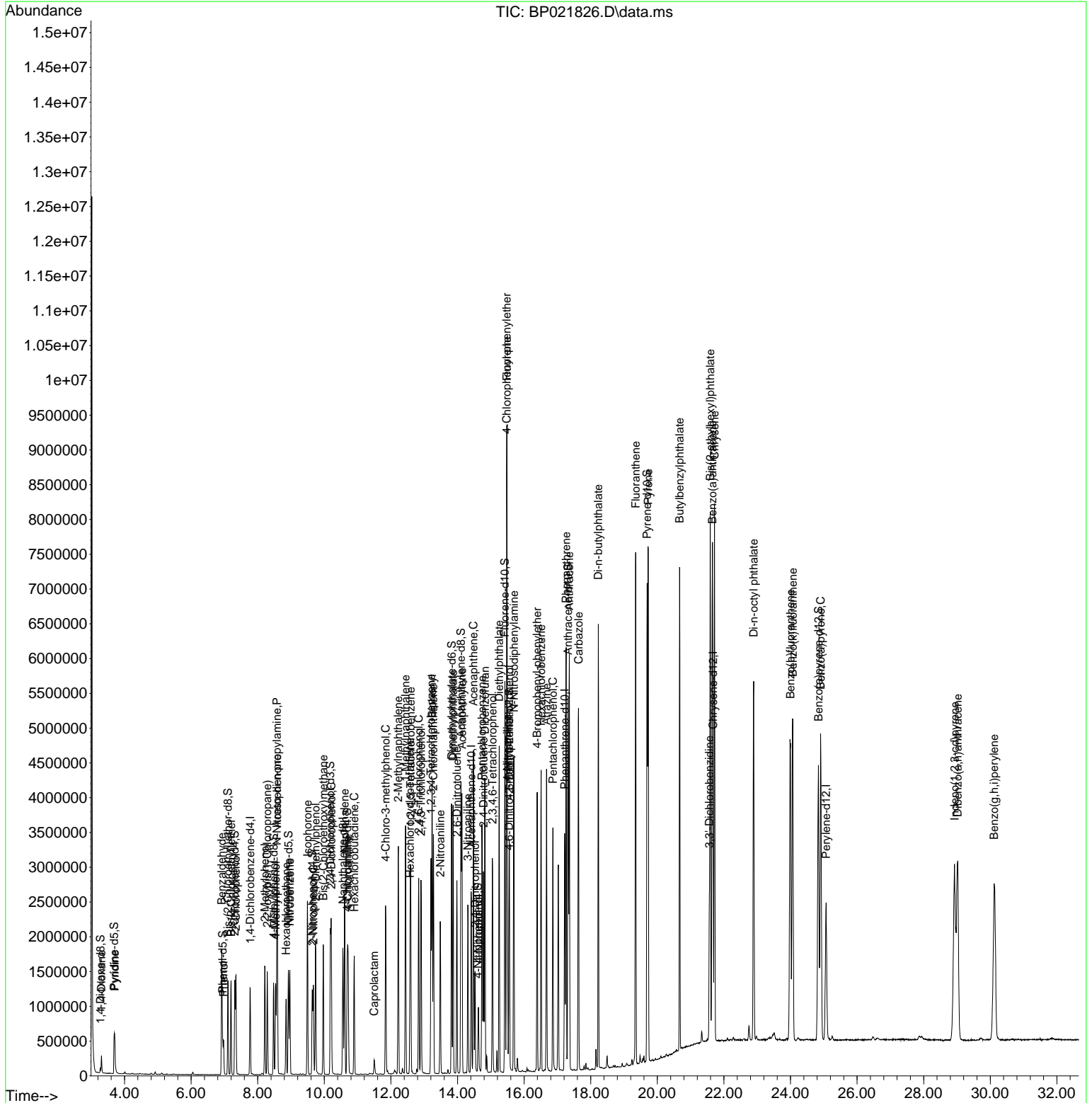
(#) = qualifier out of range (m) = manual integration (+) = signals summed

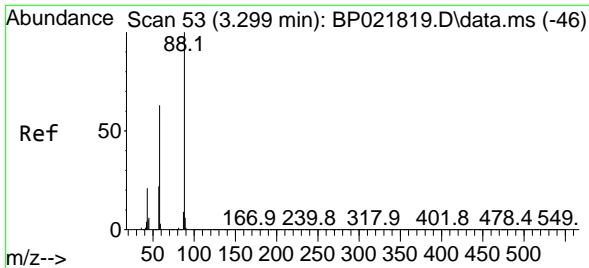
Data Path : Z:\svoasrv\HPCHEM1\BNA_P\Data\BP090424\
 Data File : BP021826.D
 Acq On : 04 Sep 2024 21:23
 Operator : RC/JU
 Sample : P3809-10MSD
 Misc :
 ALS Vial : 13 Sample Multiplier: 1

Instrument :
 BNA_P
ClientSampleId :
 YE3E3MSD

Quant Time: Sep 05 05:52:55 2024
 Quant Method : Z:\svoasrv\HPCHEM1\BNA_P\Methods\SFAM-EPA-BP082324.MA.M
 Quant Title : SVOA CALIBRATION
 QLast Update : Thu Sep 05 05:03:57 2024
 Response via : Initial Calibration

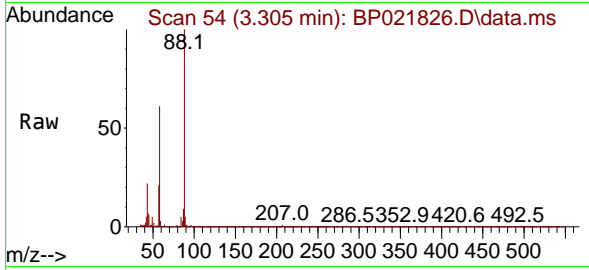
Manual Integrations
APPROVED
 Reviewed By :Jagrut Upadhyay 09/05/2024
 Supervised By :mohammad ahmed 09/07/2024





#2
 1,4-Dioxane
 Concen: 13.229 ng/uL
 RT: 3.305 min Scan# 54
 Delta R.T. 0.006 min
 Lab File: BP021826.D
 Acq: 04 Sep 2024 21:23

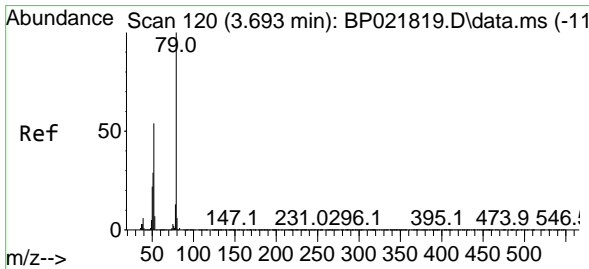
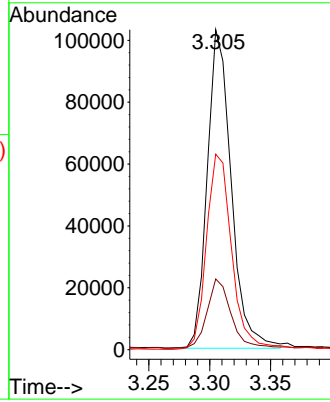
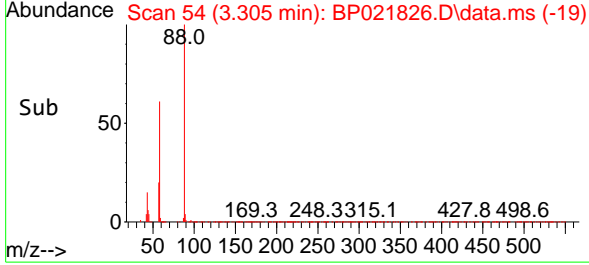
Instrument :
 BNA_P
 ClientSampleId :
 YE3E3MSD



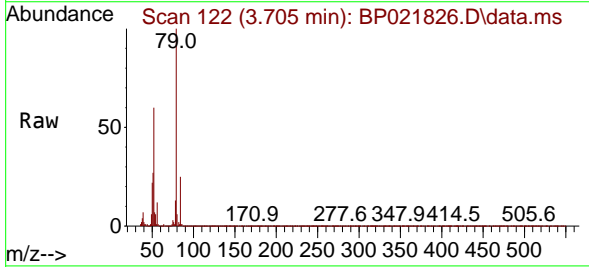
Tgt Ion: 88 Resp: 14108
 Ion Ratio Lower Upper
 88 100
 43 22.1 15.4 23.2
 58 61.1 48.2 72.2

Manual Integrations
 APPROVED

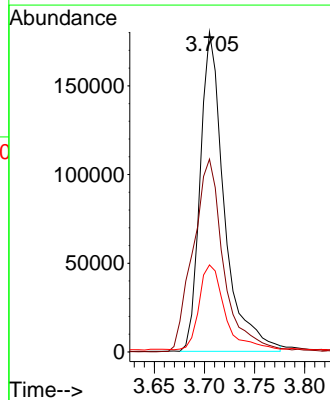
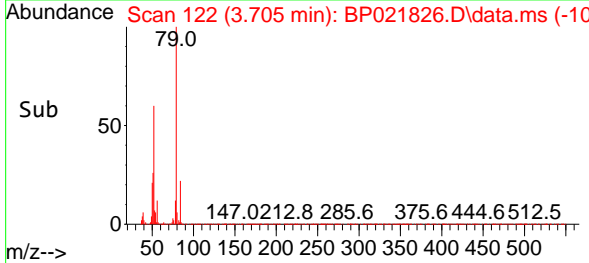
Reviewed By :Jagrut Upadhyay 09/05/2024
 Supervised By :mohammad ahmed 09/07/2024

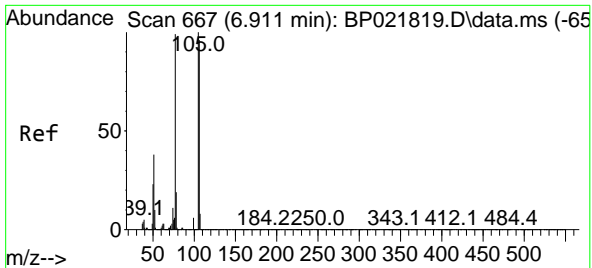


#5
 Pyridine
 Concen: 10.410 ng/uL
 RT: 3.705 min Scan# 122
 Delta R.T. 0.012 min
 Lab File: BP021826.D
 Acq: 04 Sep 2024 21:23



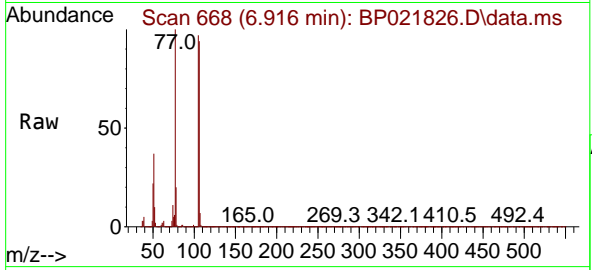
Tgt Ion: 79 Resp: 301930
 Ion Ratio Lower Upper
 79 100
 52 60.3 46.8 70.2
 51 27.2 21.7 32.5





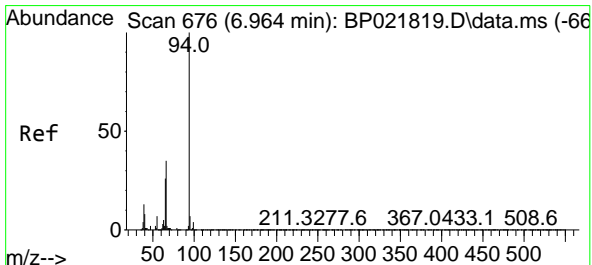
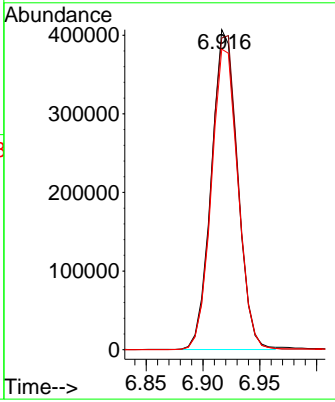
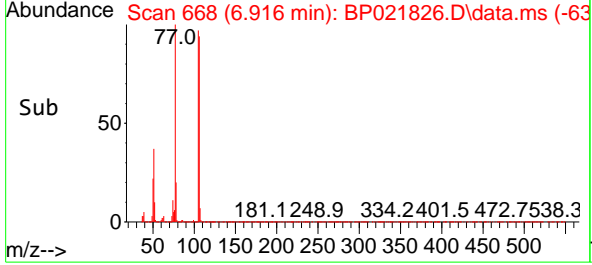
#6
 Benzaldehyde
 Concen: 35.832 ng/u1
 RT: 6.916 min Scan# 60
 Delta R.T. 0.006 min
 Lab File: BP021826.D
 Acq: 04 Sep 2024 21:23

Instrument : BNA_P
 Client Sample Id : YE3E3MSD

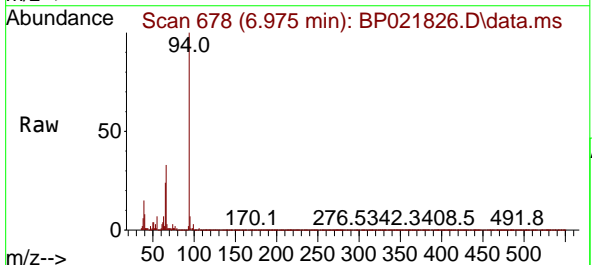


Tgt Ion: 77 Resp: 651590
 Ion Ratio Lower Upper
 77 100
 105 97.4 80.2 120.4
 106 93.9 76.2 114.4

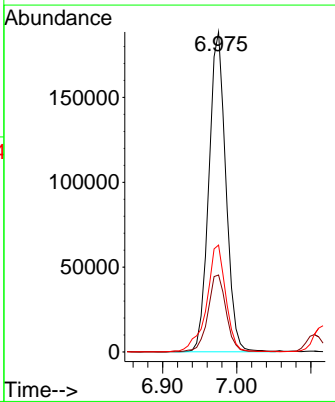
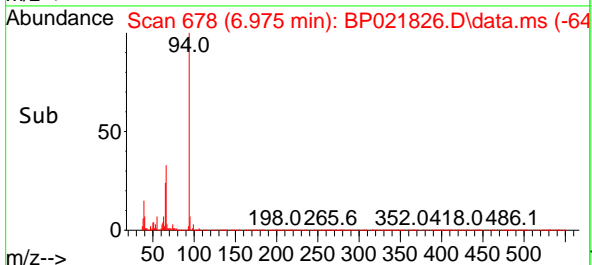
Manual Integrations
APPROVED
 Reviewed By :Jagrut Upadhyay 09/05/2024
 Supervised By :mohammad ahmed 09/07/2024

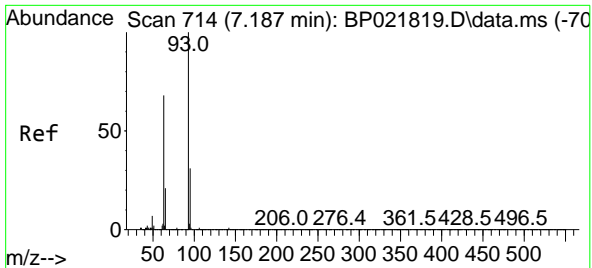


#8
 Phenol
 Concen: 8.083 ng/u1
 RT: 6.975 min Scan# 678
 Delta R.T. 0.012 min
 Lab File: BP021826.D
 Acq: 04 Sep 2024 21:23



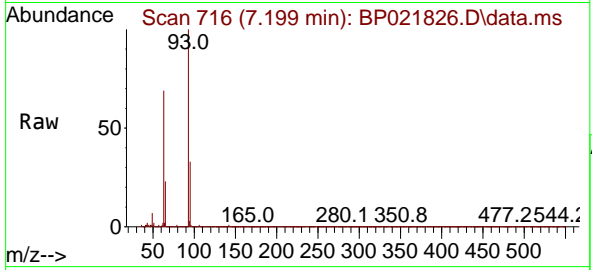
Tgt Ion: 94 Resp: 299642
 Ion Ratio Lower Upper
 94 100
 65 24.0 20.0 30.0
 66 33.4 27.0 40.4





#10
 Bis(2-Chloroethyl)ether
 Concen: 27.952 ng/ul
 RT: 7.199 min Scan# 716
 Delta R.T. 0.012 min
 Lab File: BP021826.D
 Acq: 04 Sep 2024 21:23

Instrument : BNA_P
 ClientSampleId : YE3E3MSD

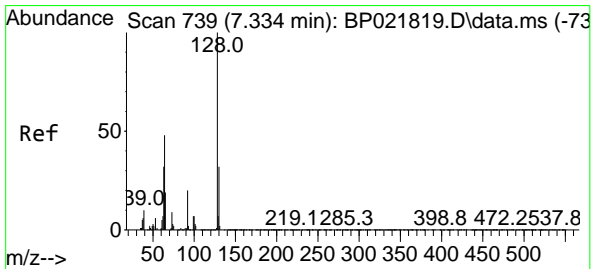
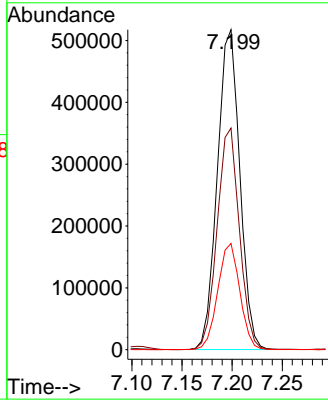
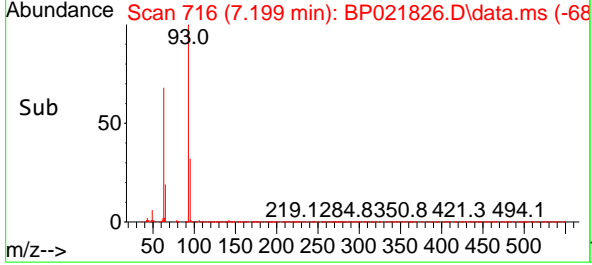


Tgt Ion: 93 Resp: 805460

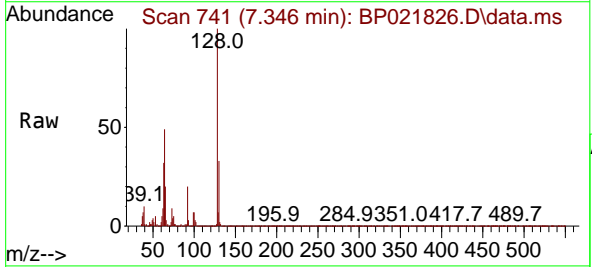
Ion	Ratio	Lower	Upper
93	100		
63	69.3	54.9	82.3
95	33.2	26.0	39.0

Manual Integrations
 APPROVED

Reviewed By :Jagrut Upadhyay 09/05/2024
 Supervised By :mohammad ahmed 09/07/2024

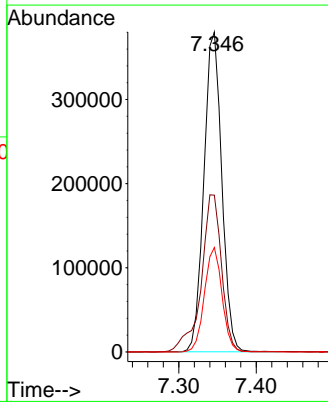
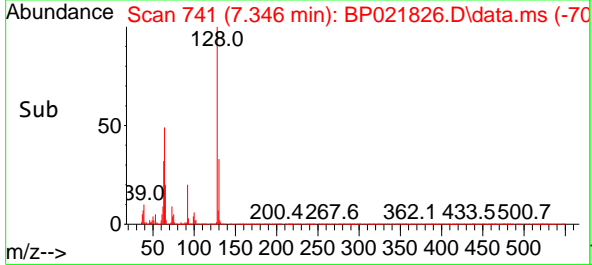


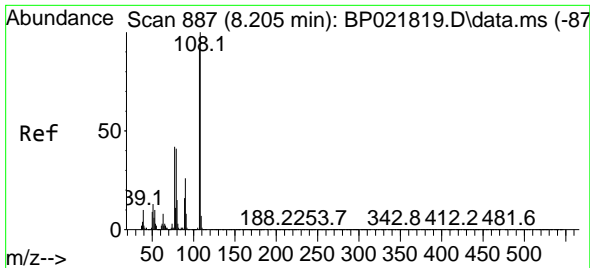
#12
 2-Chlorophenol
 Concen: 25.283 ng/ul
 RT: 7.346 min Scan# 741
 Delta R.T. 0.012 min
 Lab File: BP021826.D
 Acq: 04 Sep 2024 21:23



Tgt Ion:128 Resp: 609115

Ion	Ratio	Lower	Upper
128	100		
64	49.0	39.5	59.3
130	32.6	25.9	38.9





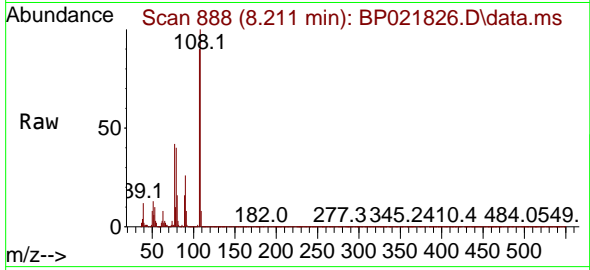
#13
 2-Methylphenol
 Concen: 20.517 ng/ul
 RT: 8.211 min Scan# 887
 Delta R.T. 0.006 min
 Lab File: BP021826.D
 Acq: 04 Sep 2024 21:23

Instrument :

BNA_P

Client Sample Id :

YE3E3MSD

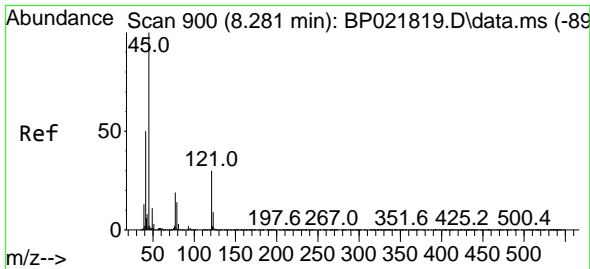
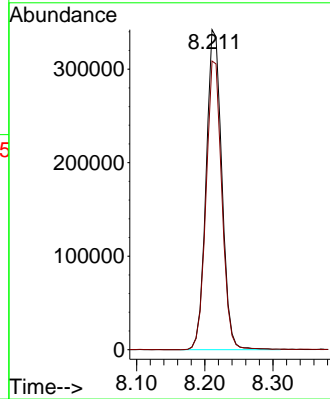
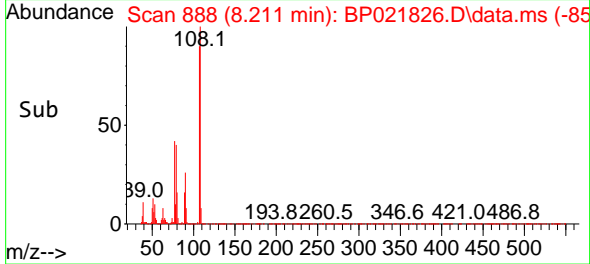


Tgt Ion: 108 Resp: 548710
 Ion Ratio Lower Upper
 108 100
 107 90.2 73.2 109.8

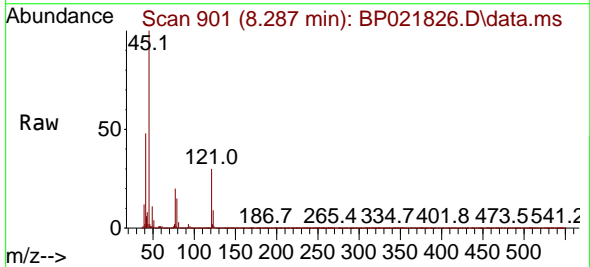
Manual Integrations

APPROVED

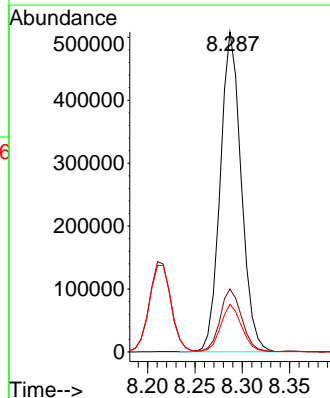
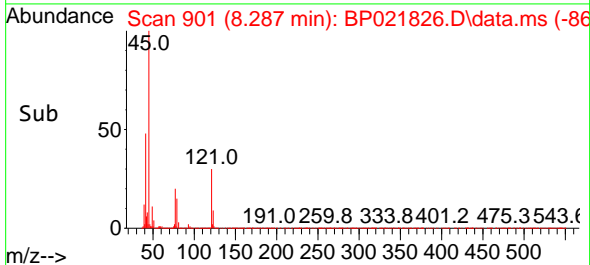
Reviewed By :Jagrut Upadhyay 09/05/2024
 Supervised By :mohammad ahmed 09/07/2024

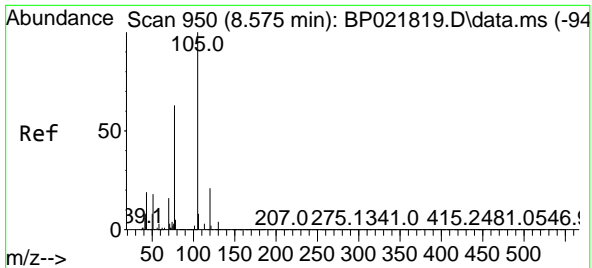


#14
 2,2'-oxybis(1-Chloropropane)
 Concen: 28.148 ng/ul
 RT: 8.287 min Scan# 901
 Delta R.T. 0.006 min
 Lab File: BP021826.D
 Acq: 04 Sep 2024 21:23



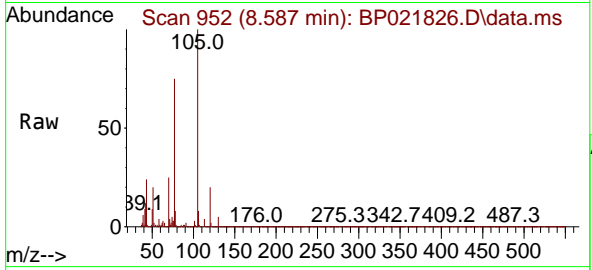
Tgt Ion: 45 Resp: 782897
 Ion Ratio Lower Upper
 45 100
 77 19.7 17.0 25.4
 79 14.8 12.0 18.0





#16
 Acetophenone
 Concen: 29.281 ng/ul
 RT: 8.587 min Scan# 911
 Delta R.T. 0.012 min
 Lab File: BP021826.D
 Acq: 04 Sep 2024 21:23

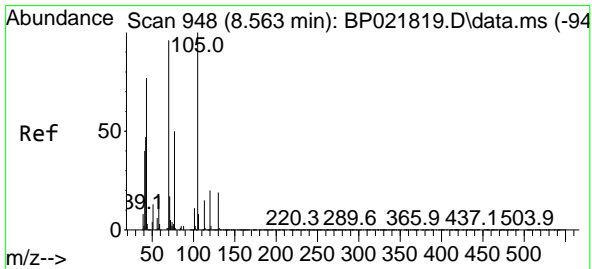
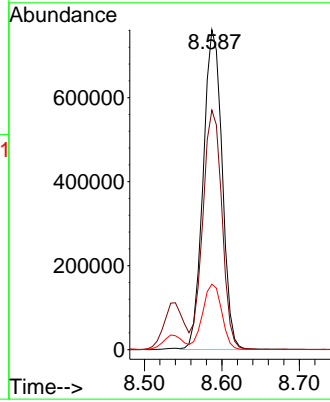
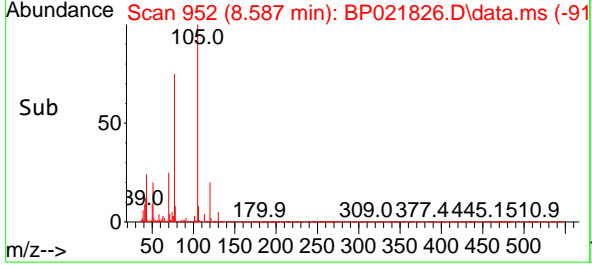
Instrument : BNA_P
 Client Sample Id : YE3E3MSD



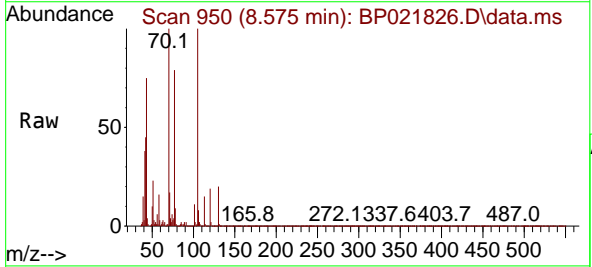
Tgt Ion: 105 Resp: 1289649
 Ion Ratio Lower Upper
 105 100
 77 74.8 59.4 89.2
 51 20.4 16.4 24.6

Manual Integrations
APPROVED

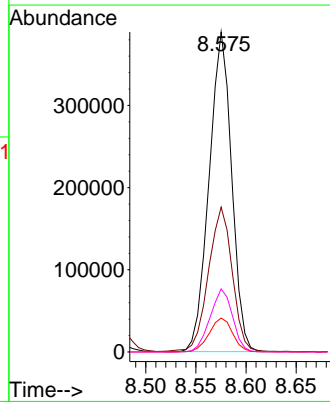
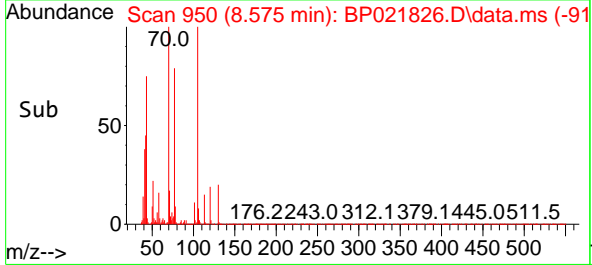
Reviewed By :Jagrut Upadhyay 09/05/2024
 Supervised By :mohammad ahmed 09/07/2024

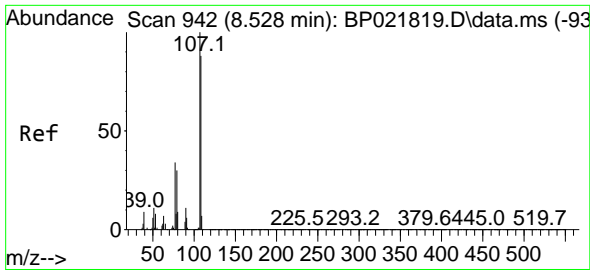


#17
 N-Nitroso-di-n-propylamine
 Concen: 29.253 ng/ul
 RT: 8.575 min Scan# 950
 Delta R.T. 0.012 min
 Lab File: BP021826.D
 Acq: 04 Sep 2024 21:23



Tgt Ion: 70 Resp: 608022
 Ion Ratio Lower Upper
 70 100
 42 45.2 35.8 53.6
 101 10.6 8.2 12.4
 130 19.7 15.1 22.7





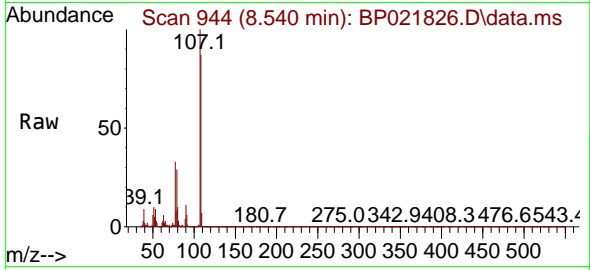
#18
 4-Methylphenol
 Concen: 18.308 ng/u1
 RT: 8.540 min Scan# 944
 Delta R.T. 0.012 min
 Lab File: BP021826.D
 Acq: 04 Sep 2024 21:23

Instrument :

BNA_P

Client Sample Id :

YE3E3MSD

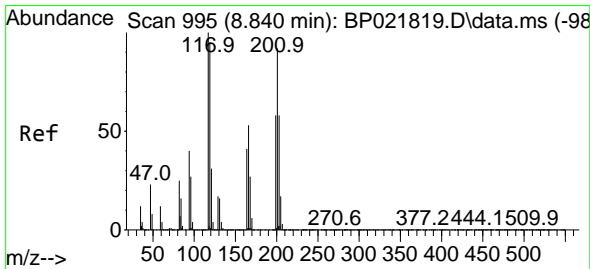
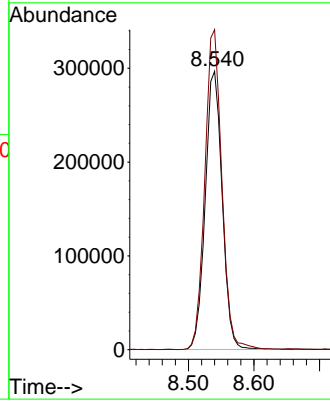
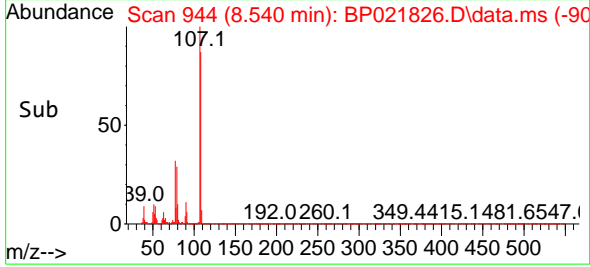


Tgt Ion:108 Resp: 53602
 Ion Ratio Lower Upper
 108 100
 107 114.9 90.1 135.1

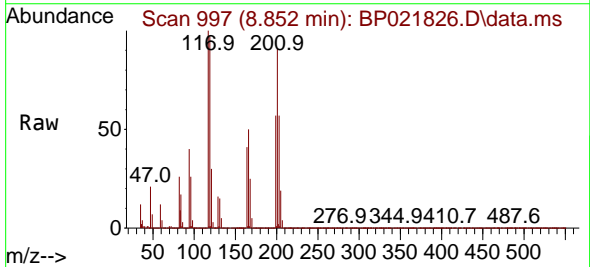
Manual Integrations

APPROVED

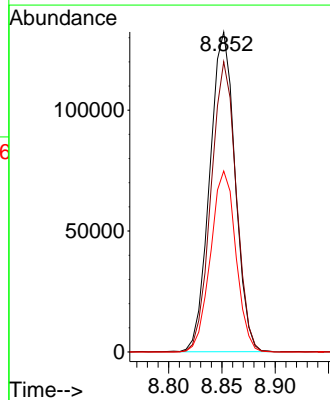
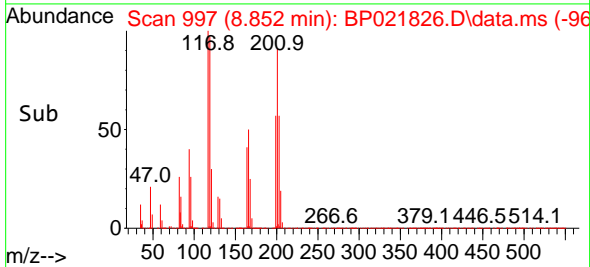
Reviewed By :Jagrut Upadhyay 09/05/2024
 Supervised By :mohammad ahmed 09/07/2024

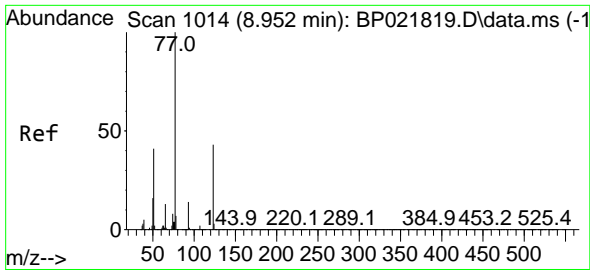


#19
 Hexachloroethane
 Concen: 20.338 ng/u1
 RT: 8.852 min Scan# 997
 Delta R.T. 0.012 min
 Lab File: BP021826.D
 Acq: 04 Sep 2024 21:23



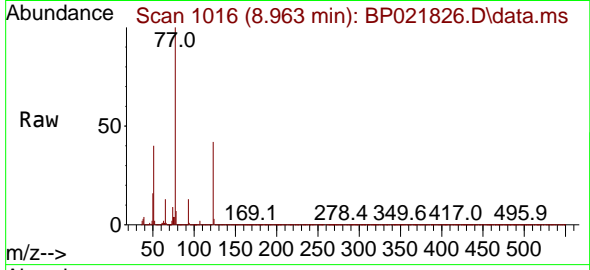
Tgt Ion:117 Resp: 219081
 Ion Ratio Lower Upper
 117 100
 201 90.7 75.3 112.9
 199 56.6 47.4 71.0





#22
 Nitrobenzene
 Concen: 28.750 ng/u1
 RT: 8.963 min Scan# 1106
 Delta R.T. 0.012 min
 Lab File: BP021826.D
 Acq: 04 Sep 2024 21:23

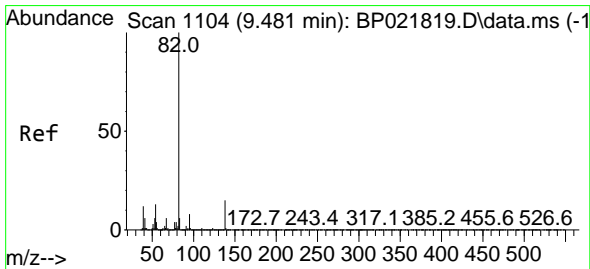
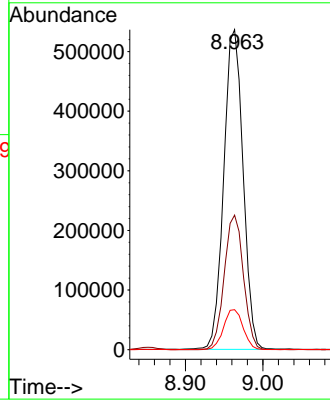
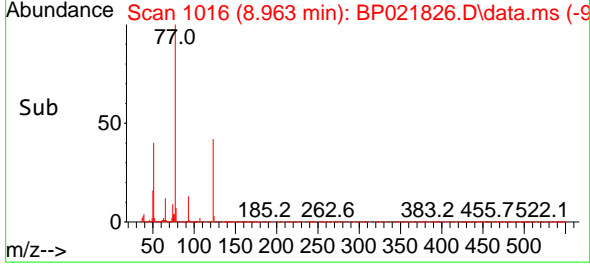
Instrument :
 BNA_P
 ClientSampleId :
 YE3E3MSD



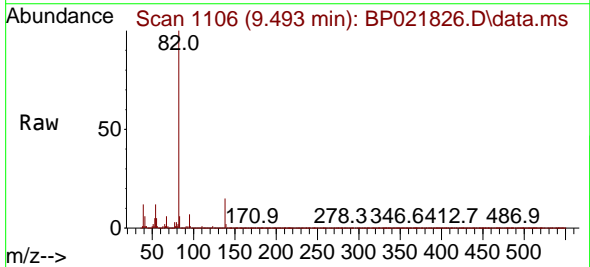
Tgt Ion: 77 Resp: 930580
 Ion Ratio Lower Upper
 77 100
 123 42.0 33.2 49.8
 65 12.5 9.8 14.6

Manual Integrations
 APPROVED

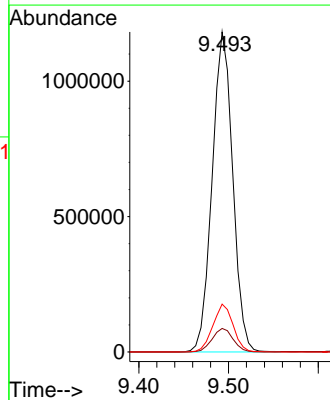
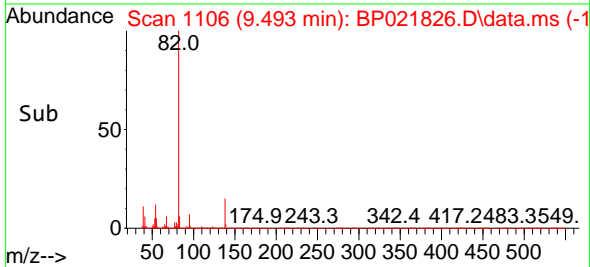
Reviewed By :Jagrut Upadhyay 09/05/2024
 Supervised By :mohammad ahmed 09/07/2024

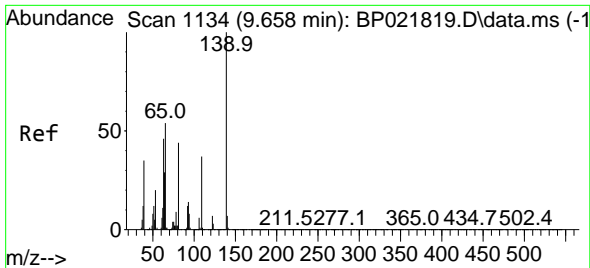


#23
 Isophorone
 Concen: 28.950 ng/u1
 RT: 9.493 min Scan# 1106
 Delta R.T. 0.012 min
 Lab File: BP021826.D
 Acq: 04 Sep 2024 21:23



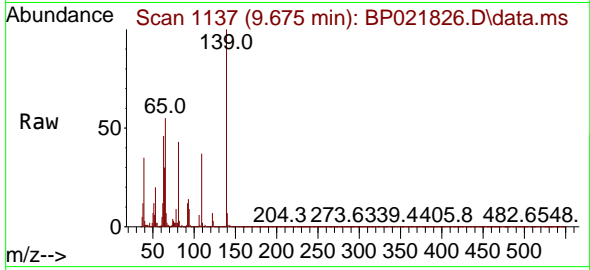
Tgt Ion: 82 Resp: 1880342
 Ion Ratio Lower Upper
 82 100
 95 7.4 5.8 8.8
 138 14.9 11.8 17.8





#25
 2-Nitrophenol
 Concen: 30.454 ng/ul
 RT: 9.675 min Scan# 1137
 Delta R.T. 0.018 min
 Lab File: BP021826.D
 Acq: 04 Sep 2024 21:23

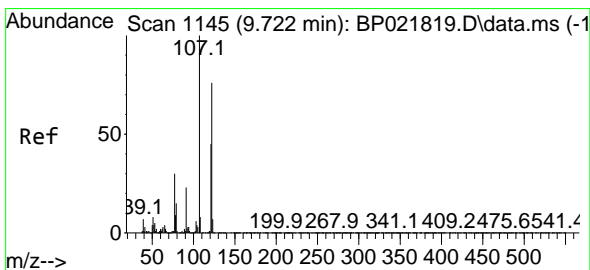
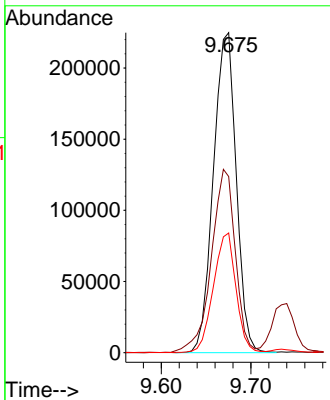
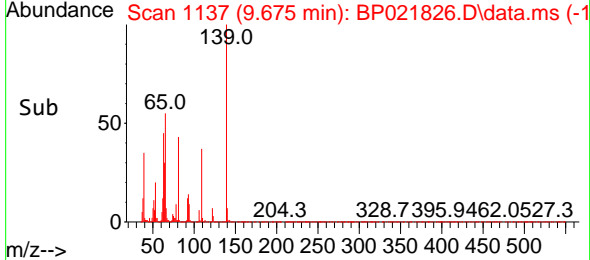
Instrument : BNA_P
 Client Sample Id : YE3E3MSD



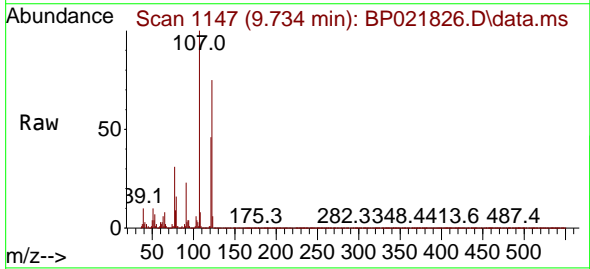
Tgt Ion:139 Resp: 397560
 Ion Ratio Lower Upper
 139 100
 65 55.0 46.2 69.2
 109 37.4 28.0 42.0

Manual Integrations
APPROVED

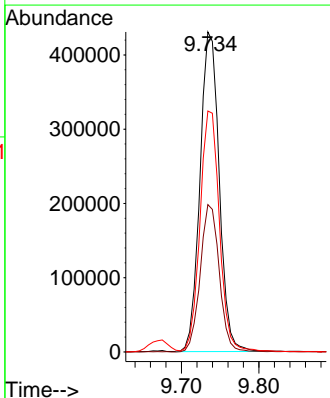
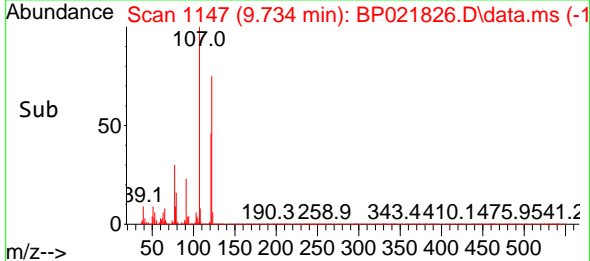
Reviewed By :Jagrut Upadhyay 09/05/2024
 Supervised By :mohammad ahmed 09/07/2024

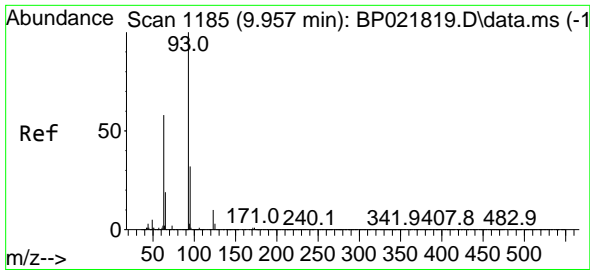


#26
 2,4-Dimethylphenol
 Concen: 23.147 ng/ul
 RT: 9.734 min Scan# 1147
 Delta R.T. 0.012 min
 Lab File: BP021826.D
 Acq: 04 Sep 2024 21:23



Tgt Ion:107 Resp: 741638
 Ion Ratio Lower Upper
 107 100
 121 46.0 36.9 55.3
 122 75.3 61.0 91.4





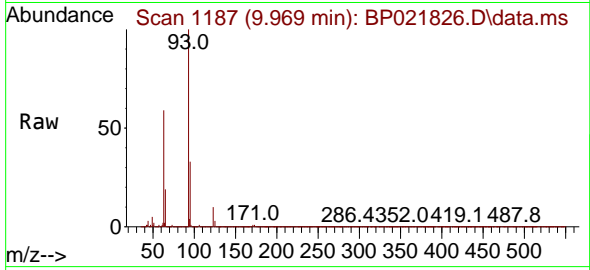
#27
 Bis(2-Chloroethoxy)methane
 Concen: 28.348 ng/ul
 RT: 9.969 min Scan# 1187
 Delta R.T. 0.012 min
 Lab File: BP021826.D
 Acq: 04 Sep 2024 21:23

Instrument :

BNA_P

Client Sample Id :

YE3E3MSD



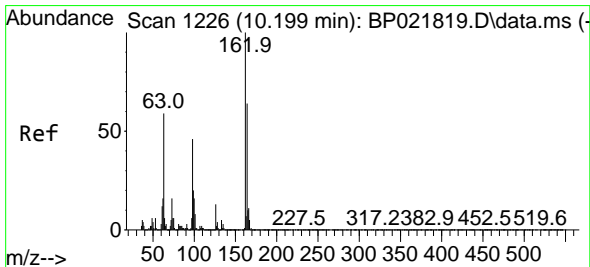
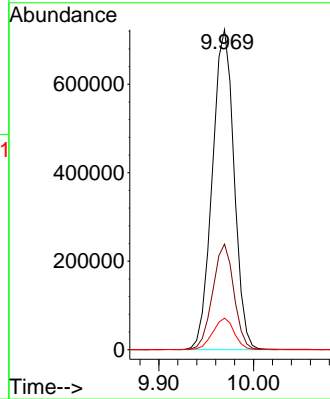
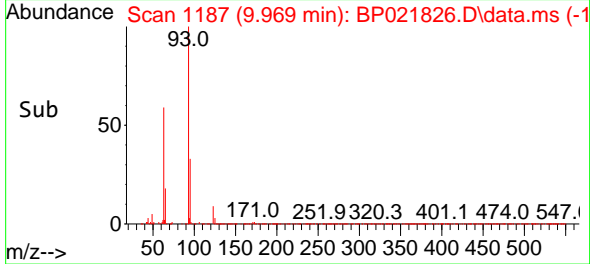
Tgt Ion: 93 Resp: 1154710
 Ion Ratio Lower Upper
 93 100
 95 33.0 25.3 37.9
 123 9.9 7.4 11.0

Manual Integrations

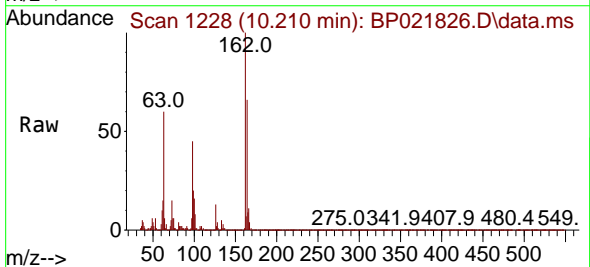
APPROVED

Reviewed By :Jagrut Upadhyay 09/05/2024

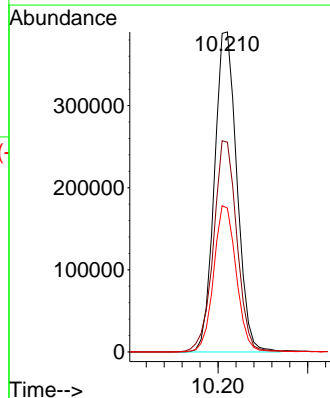
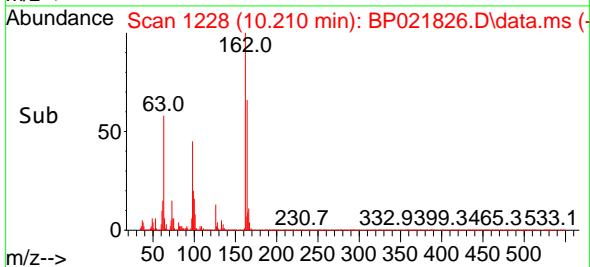
Supervised By :mohammad ahmed 09/07/2024

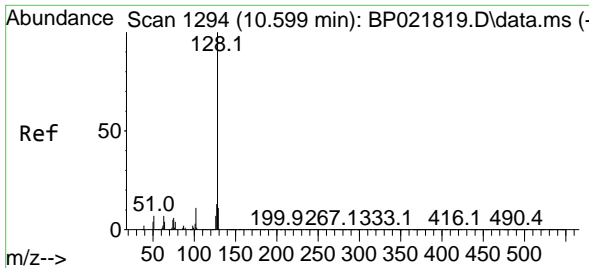


#29
 2,4-Dichlorophenol
 Concen: 29.088 ng/ul
 RT: 10.210 min Scan# 1228
 Delta R.T. 0.012 min
 Lab File: BP021826.D
 Acq: 04 Sep 2024 21:23



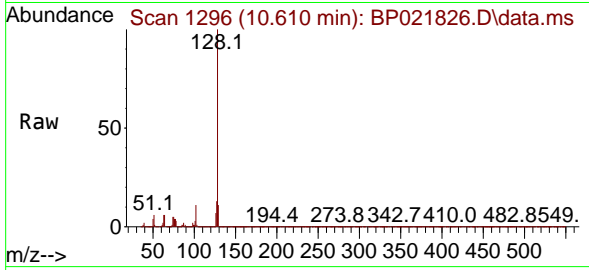
Tgt Ion:162 Resp: 678674
 Ion Ratio Lower Upper
 162 100
 164 65.5 52.3 78.5
 98 44.9 35.3 52.9





#30
 Naphthalene
 Concen: 25.919 ng/uI
 RT: 10.610 min Scan# 1296
 Delta R.T. 0.012 min
 Lab File: BP021826.D
 Acq: 04 Sep 2024 21:23

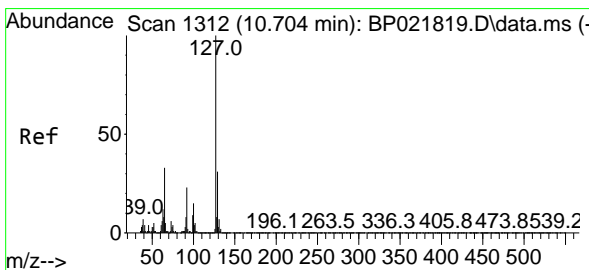
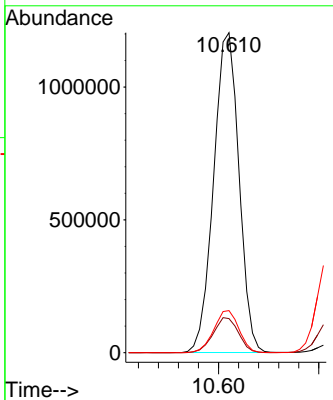
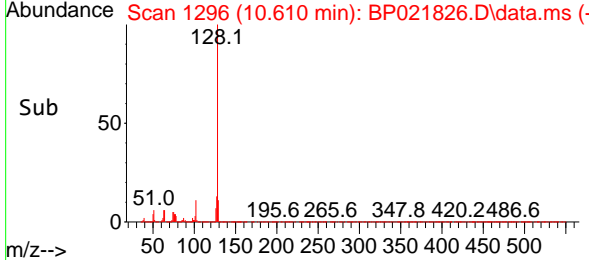
Instrument : BNA_P
 ClientSampleId : YE3E3MSD



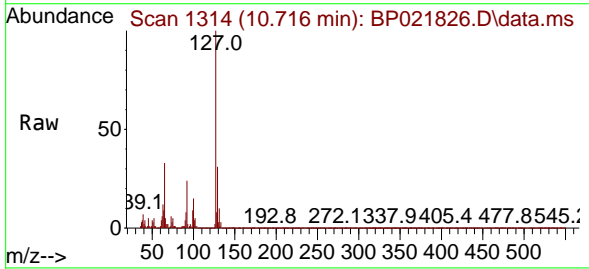
Tgt Ion:128 Resp: 2107594
 Ion Ratio Lower Upper
 128 100
 129 10.7 8.6 13.0
 127 13.2 10.5 15.7

Manual Integrations
 APPROVED

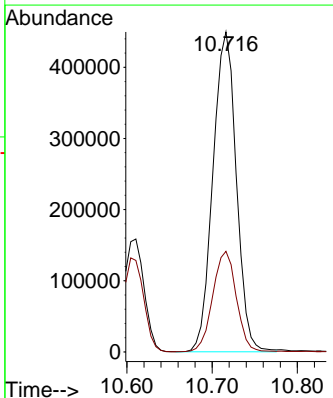
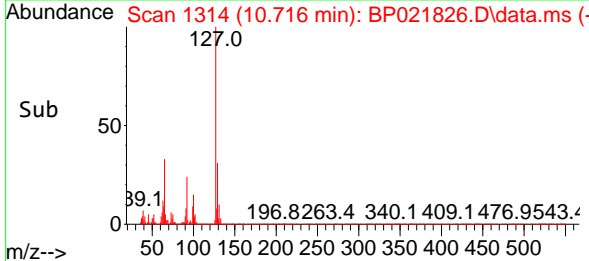
Reviewed By :Jagrut Upadhyay 09/05/2024
 Supervised By :mohammad ahmed 09/07/2024

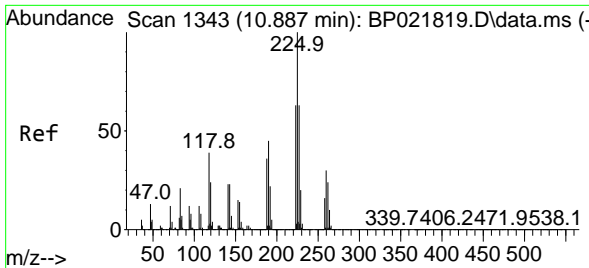


#32
 4-Chloroaniline
 Concen: 25.171 ng/uI
 RT: 10.716 min Scan# 1314
 Delta R.T. 0.012 min
 Lab File: BP021826.D
 Acq: 04 Sep 2024 21:23



Tgt Ion:127 Resp: 858423
 Ion Ratio Lower Upper
 127 100
 129 31.5 25.8 38.8





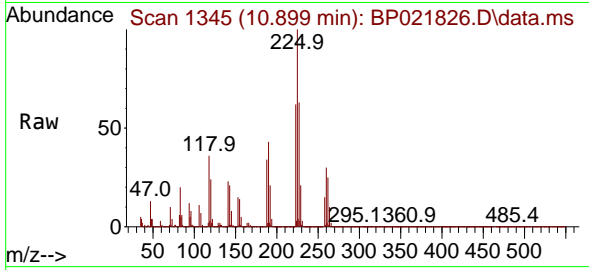
#33
 Hexachlorobutadiene
 Concen: 22.393 ng/u1
 RT: 10.899 min Scan# 11
 Delta R.T. 0.012 min
 Lab File: BP021826.D
 Acq: 04 Sep 2024 21:23

Instrument :

BNA_P

ClientSampleId :

YE3E3MSD

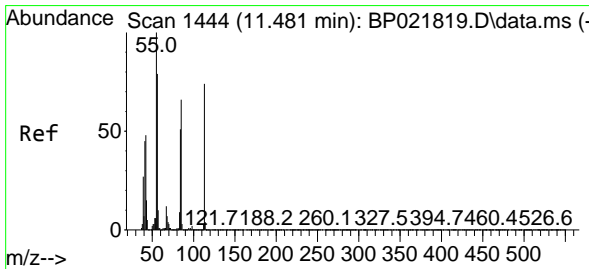
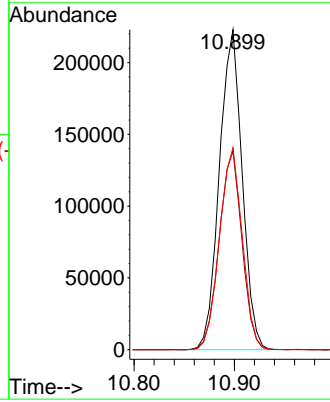
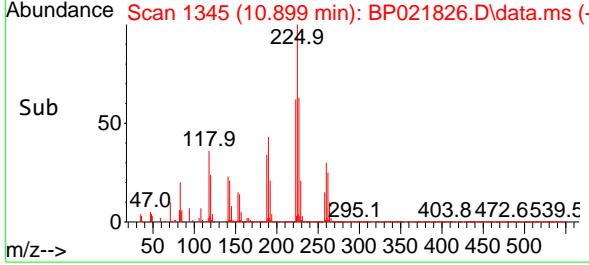


Tgt Ion:225 Resp: 35056
 Ion Ratio Lower Upper
 225 100
 223 62.0 51.5 77.3
 227 63.1 51.3 76.9

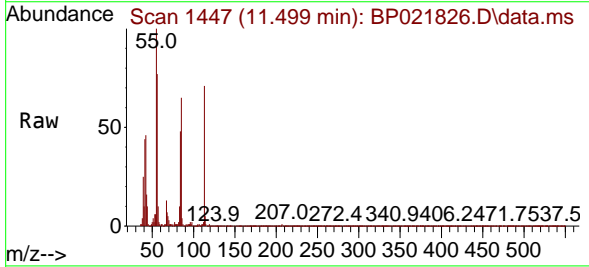
Manual Integrations

APPROVED

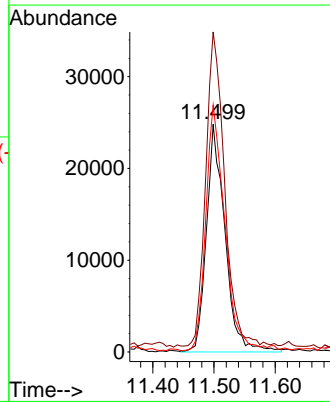
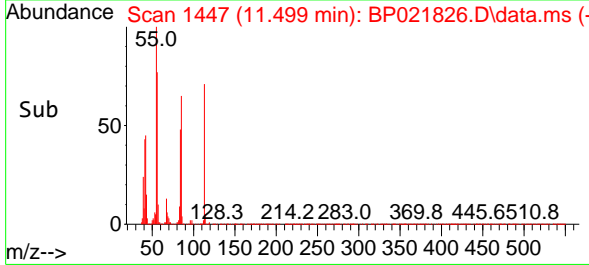
Reviewed By :Jagrut Upadhyay 09/05/2024
 Supervised By :mohammad ahmed 09/07/2024

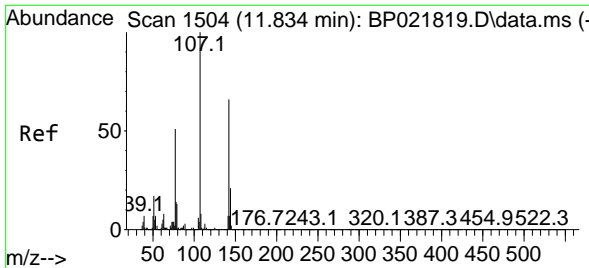


#34
 Caprolactam
 Concen: 5.325 ng/u1 m
 RT: 11.499 min Scan# 1447
 Delta R.T. 0.018 min
 Lab File: BP021826.D
 Acq: 04 Sep 2024 21:23



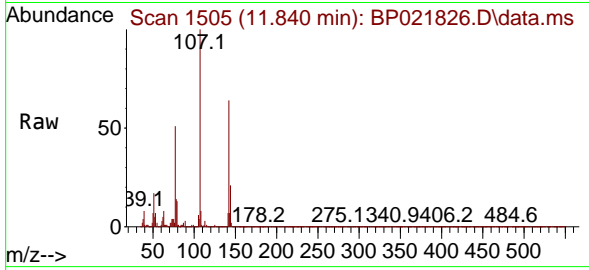
Tgt Ion:113 Resp: 52536
 Ion Ratio Lower Upper
 113 100
 55 140.5 110.2 165.2
 56 108.4 84.9 127.3





#35
 4-Chloro-3-methylphenol
 Concen: 30.810 ng/ul
 RT: 11.840 min Scan# 11570
 Delta R.T. 0.006 min
 Lab File: BP021826.D
 Acq: 04 Sep 2024 21:23

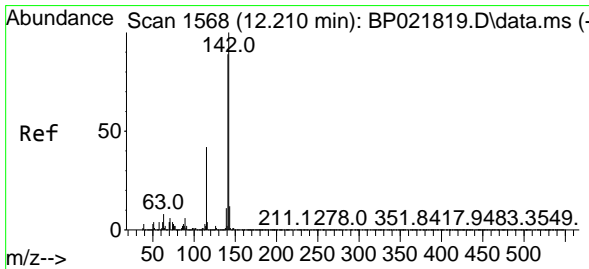
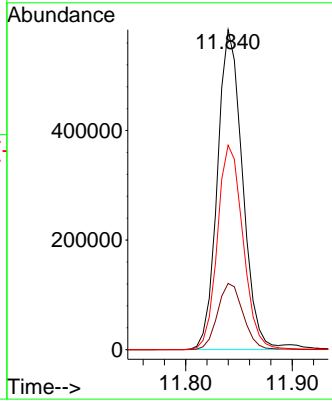
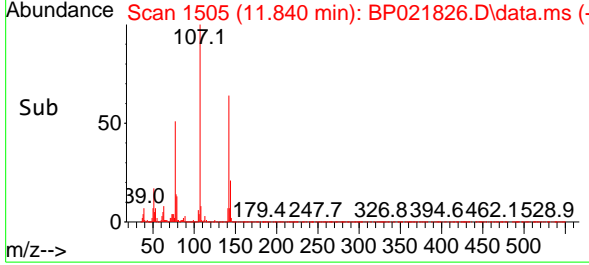
Instrument : BNA_P
 ClientSampleId : YE3E3MSD



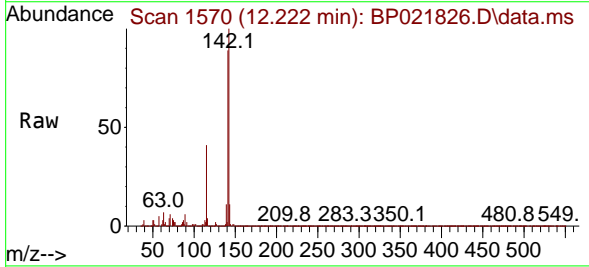
Tgt Ion:107 Resp: 951459

Ion	Ratio	Lower	Upper
107	100		
144	20.7	17.5	26.3
142	63.9	53.3	79.9

Manual Integrations
APPROVED
 Reviewed By :Jagrut Upadhyay 09/05/2024
 Supervised By :mohammad ahmed 09/07/2024

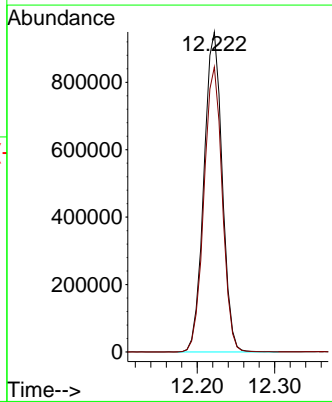
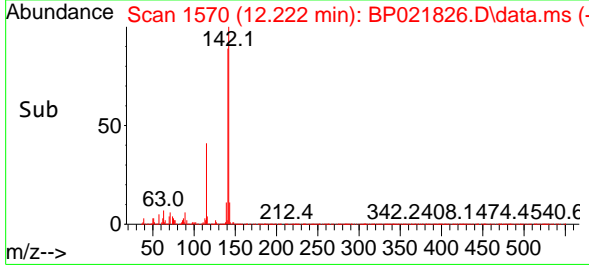


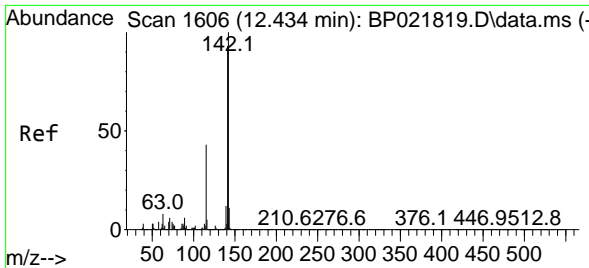
#36
 2-Methylnaphthalene
 Concen: 28.222 ng/ul
 RT: 12.222 min Scan# 1570
 Delta R.T. 0.012 min
 Lab File: BP021826.D
 Acq: 04 Sep 2024 21:23



Tgt Ion:142 Resp: 1552261

Ion	Ratio	Lower	Upper
142	100		
141	89.1	71.1	106.7





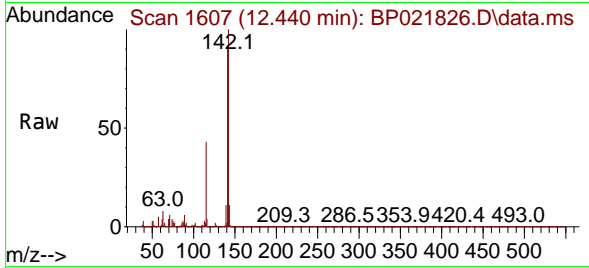
#37
 1-Methylnaphthalene
 Concen: 28.407 ng/ul
 RT: 12.440 min Scan# 1607
 Delta R.T. 0.006 min
 Lab File: BP021826.D
 Acq: 04 Sep 2024 21:23

Instrument :

BNA_P

ClientSampleId :

YE3E3MSD

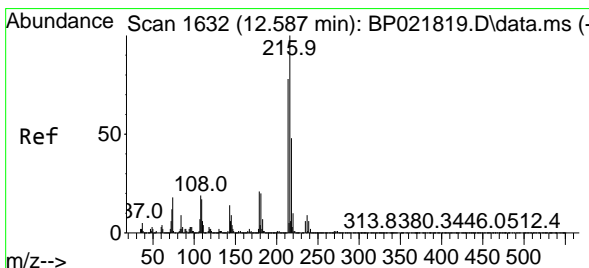
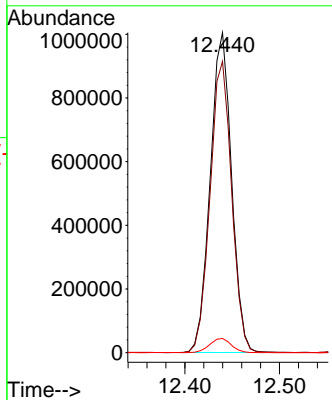
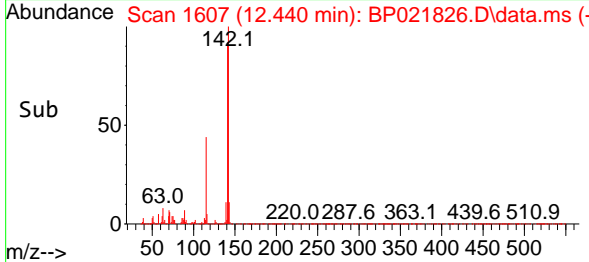


Tgt Ion:142 Resp: 157149
 Ion Ratio Lower Upper
 142 100
 141 91.1 74.6 111.8
 116 4.5 3.5 5.3

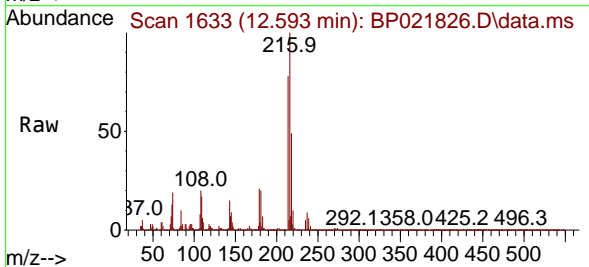
Manual Integrations

APPROVED

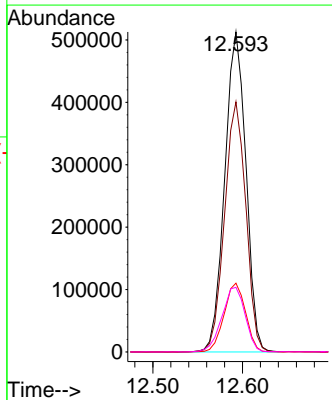
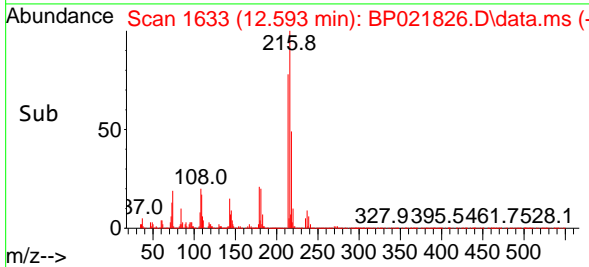
Reviewed By :Jagrut Upadhyay 09/05/2024
 Supervised By :mohammad ahmed 09/07/2024

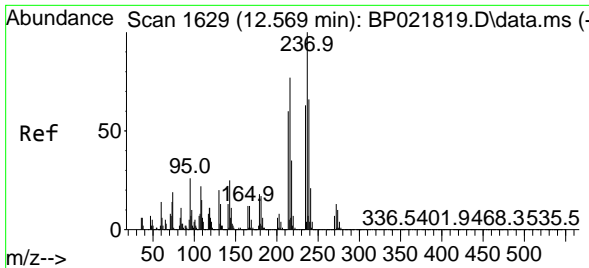


#39
 1,2,4,5-Tetrachlorobenzene
 Concen: 28.548 ng/ul
 RT: 12.593 min Scan# 1633
 Delta R.T. 0.006 min
 Lab File: BP021826.D
 Acq: 04 Sep 2024 21:23



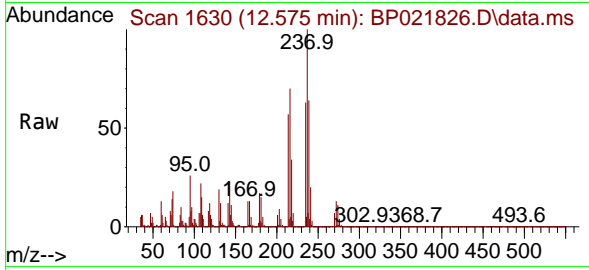
Tgt Ion:216 Resp: 841450
 Ion Ratio Lower Upper
 216 100
 214 78.2 63.2 94.8
 179 21.5 16.6 25.0
 108 20.2 16.2 24.4





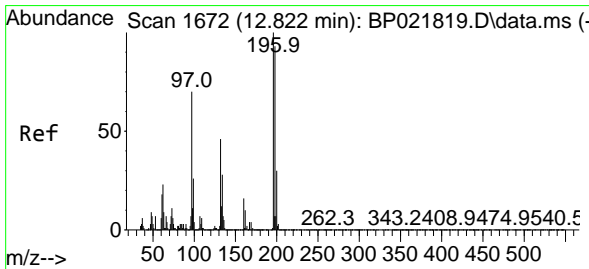
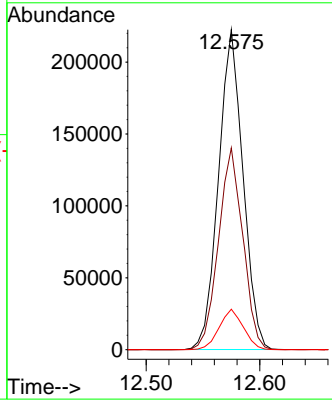
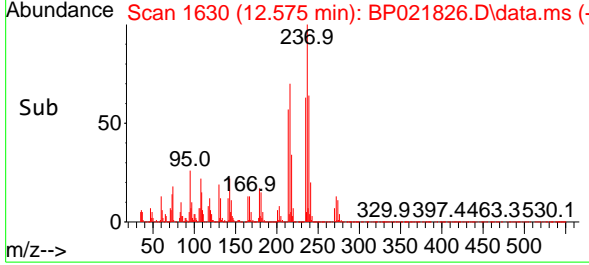
#40
 Hexachlorocyclopentadiene
 Concen: 19.702 ng/ul
 RT: 12.575 min Scan# 1630
 Delta R.T. 0.006 min
 Lab File: BP021826.D
 Acq: 04 Sep 2024 21:23

Instrument : BNA_P
 Client Sample Id : YE3E3MSD

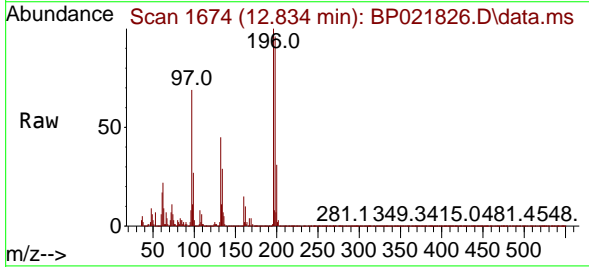


Tgt Ion: 237 Resp: 333210
 Ion Ratio Lower Upper
 237 100
 235 63.1 50.7 76.1
 272 12.7 11.0 16.6

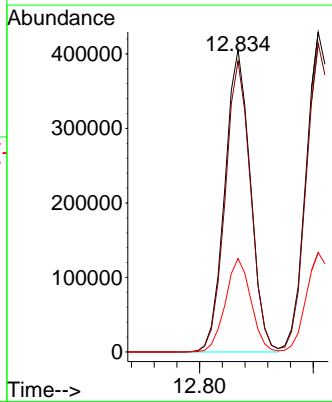
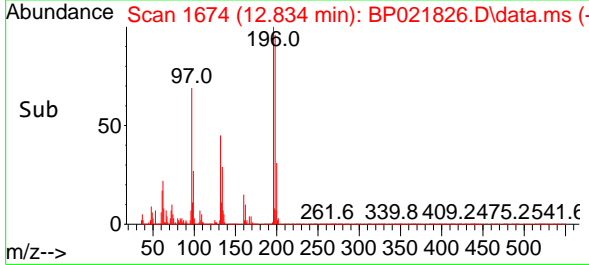
Manual Integrations
APPROVED
 Reviewed By :Jagrut Upadhyay 09/05/2024
 Supervised By :mohammad ahmed 09/07/2024

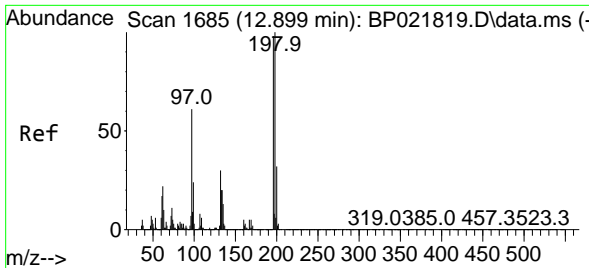


#41
 2,4,6-Trichlorophenol
 Concen: 33.471 ng/ul
 RT: 12.834 min Scan# 1674
 Delta R.T. 0.012 min
 Lab File: BP021826.D
 Acq: 04 Sep 2024 21:23



Tgt Ion: 196 Resp: 635181
 Ion Ratio Lower Upper
 196 100
 198 96.2 76.5 114.7
 200 30.9 25.3 37.9





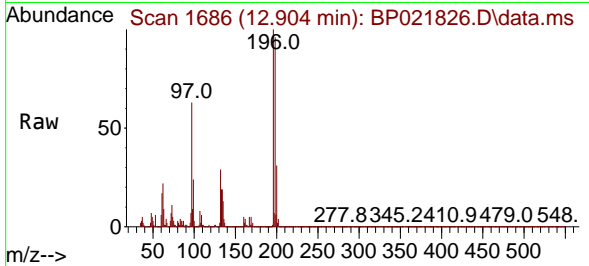
#42
 2,4,5-Trichlorophenol
 Concen: 34.147 ng/ul
 RT: 12.904 min Scan# 10
 Delta R.T. 0.006 min
 Lab File: BP021826.D
 Acq: 04 Sep 2024 21:23

Instrument :

BNA_P

ClientSampleId :

YE3E3MSD

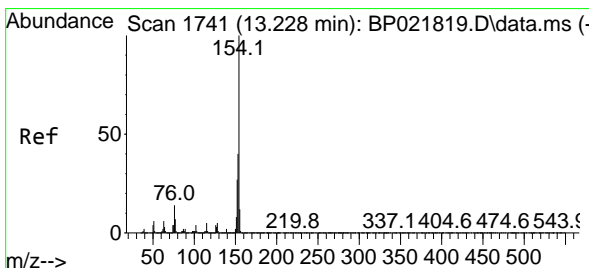
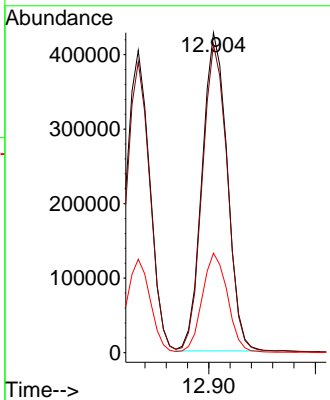
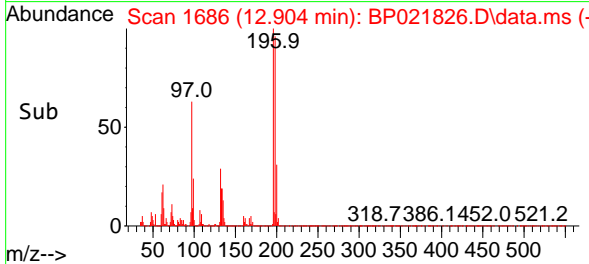


Tgt Ion:196 Resp: 69972
 Ion Ratio Lower Upper
 196 100
 198 96.4 78.0 117.0
 200 31.1 24.3 36.5

Manual Integrations

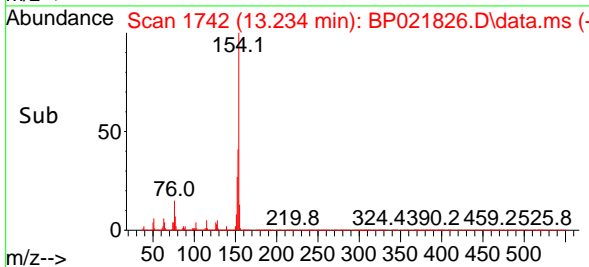
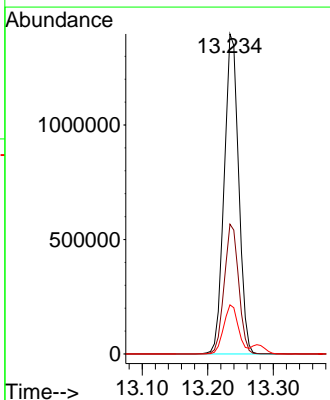
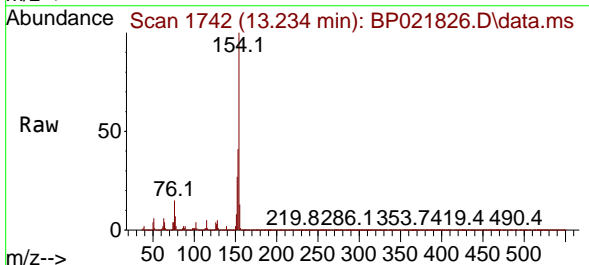
APPROVED

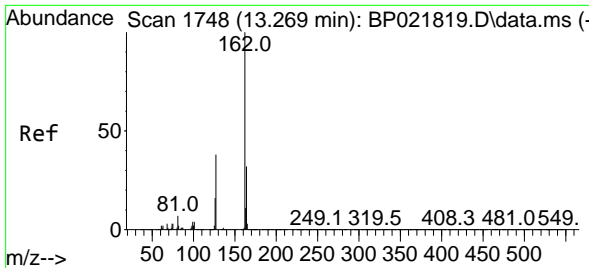
Reviewed By :Jagrut Upadhyay 09/05/2024
 Supervised By :mohammad ahmed 09/07/2024



#43
 1,1'-Biphenyl
 Concen: 30.285 ng/ul
 RT: 13.234 min Scan# 1742
 Delta R.T. 0.006 min
 Lab File: BP021826.D
 Acq: 04 Sep 2024 21:23

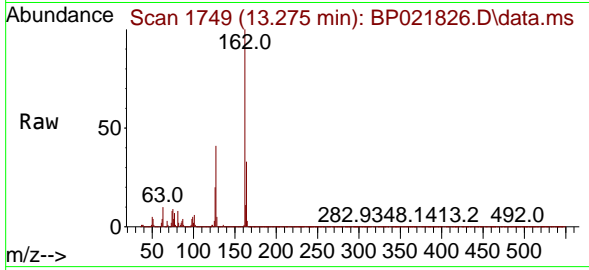
Tgt Ion:154 Resp: 2142749
 Ion Ratio Lower Upper
 154 100
 153 40.5 31.6 47.4
 76 15.3 12.6 18.8





#44
 2-Chloronaphthalene
 Concen: 29.430 ng/u1
 RT: 13.275 min Scan# 1749
 Delta R.T. 0.006 min
 Lab File: BP021826.D
 Acq: 04 Sep 2024 21:23

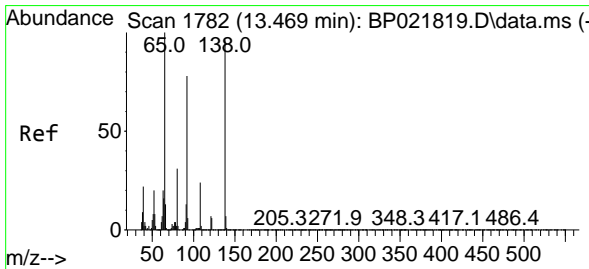
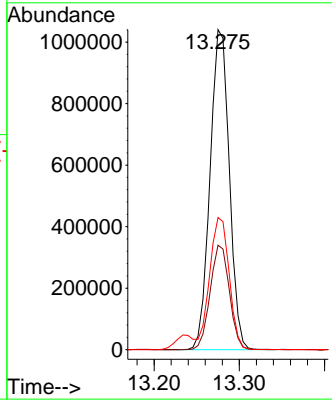
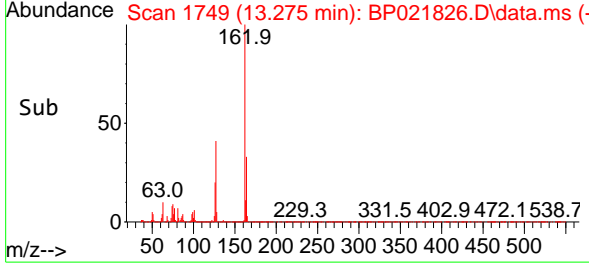
Instrument : BNA_P
 ClientSampleId : YE3E3MSD



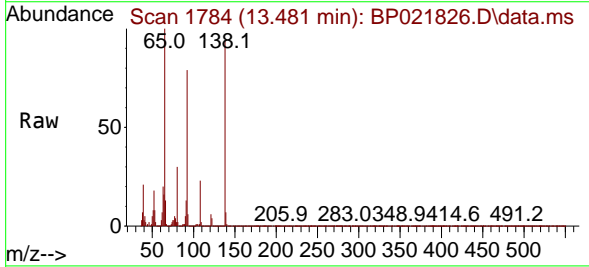
Tgt Ion:162 Resp: 163266

Ion	Ratio	Lower	Upper
162	100		
164	32.6	26.0	39.0
127	41.3	33.1	49.7

Manual Integrations
APPROVED
 Reviewed By :Jagrut Upadhyay 09/05/2024
 Supervised By :mohammad ahmed 09/07/2024

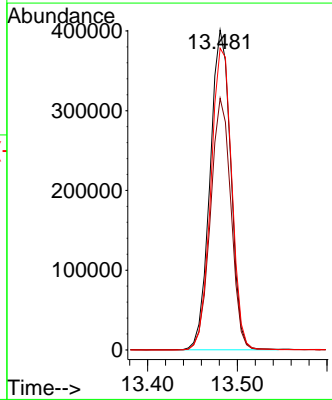
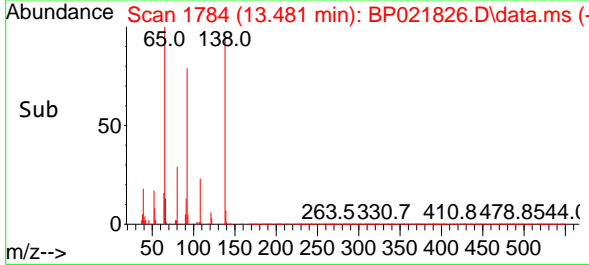


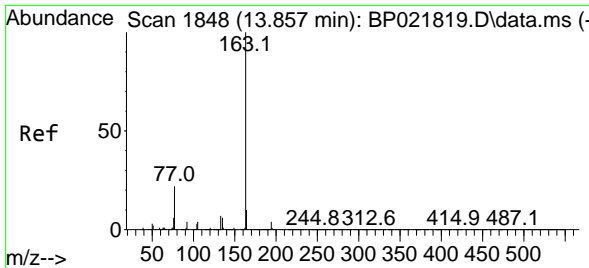
#45
 2-Nitroaniline
 Concen: 37.052 ng/u1
 RT: 13.481 min Scan# 1784
 Delta R.T. 0.012 min
 Lab File: BP021826.D
 Acq: 04 Sep 2024 21:23



Tgt Ion: 65 Resp: 643923

Ion	Ratio	Lower	Upper
65	100		
92	78.7	65.4	98.2
138	94.3	77.5	116.3





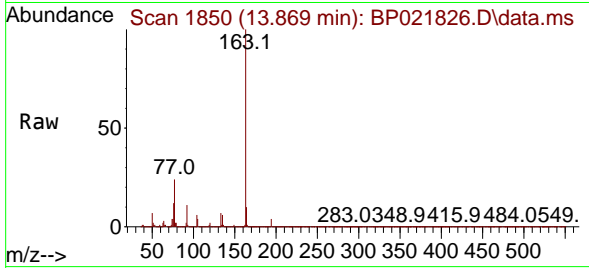
#47
 Dimethylphthalate
 Concen: 33.552 ng/ul
 RT: 13.869 min Scan# 1850
 Delta R.T. 0.012 min
 Lab File: BP021826.D
 Acq: 04 Sep 2024 21:23

Instrument :

BNA_P

Client Sample Id :

YE3E3MSD

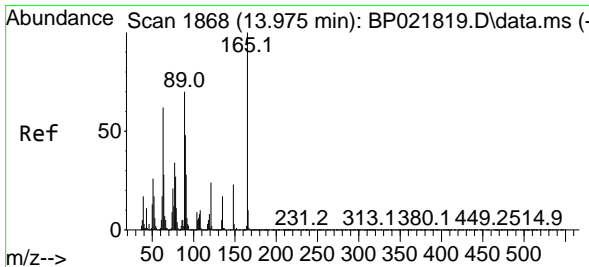
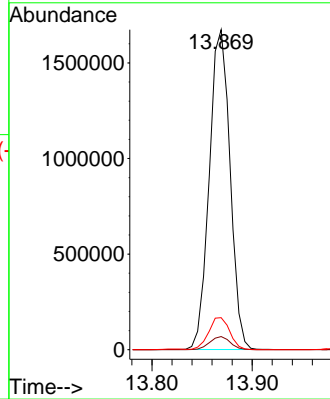
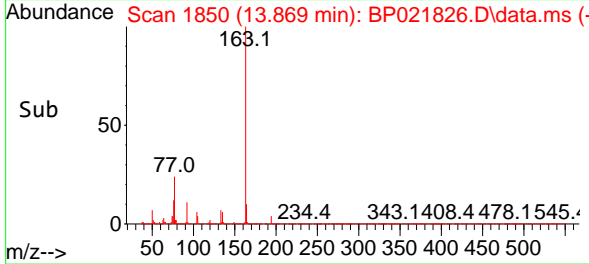


Tgt Ion:163 Resp: 240401
 Ion Ratio Lower Upper
 163 100
 194 4.1 3.5 5.3
 164 10.0 7.8 11.8

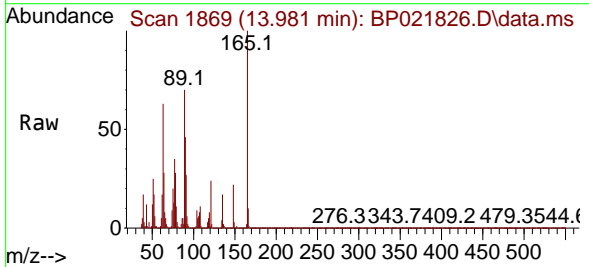
Manual Integrations

APPROVED

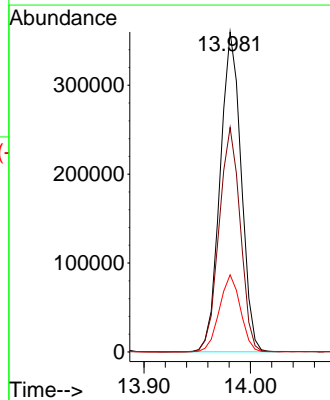
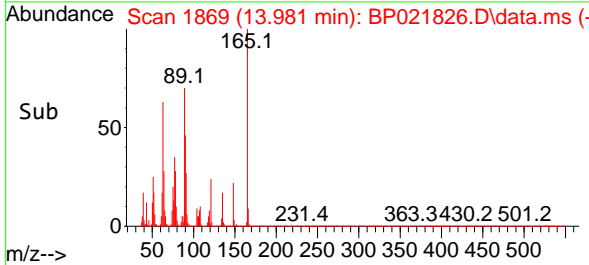
Reviewed By :Jagrut Upadhyay 09/05/2024
 Supervised By :mohammad ahmed 09/07/2024

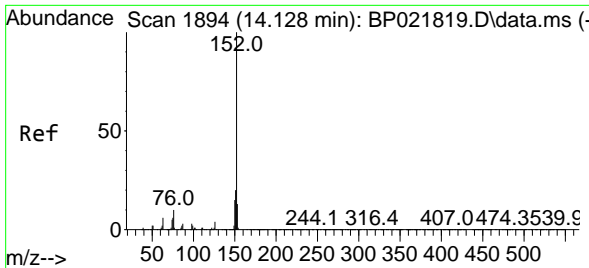


#48
 2,6-Dinitrotoluene
 Concen: 37.303 ng/ul
 RT: 13.981 min Scan# 1869
 Delta R.T. 0.006 min
 Lab File: BP021826.D
 Acq: 04 Sep 2024 21:23



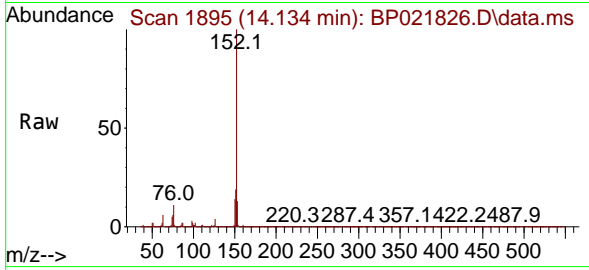
Tgt Ion:165 Resp: 492941
 Ion Ratio Lower Upper
 165 100
 89 70.2 55.7 83.5
 121 24.1 18.6 28.0





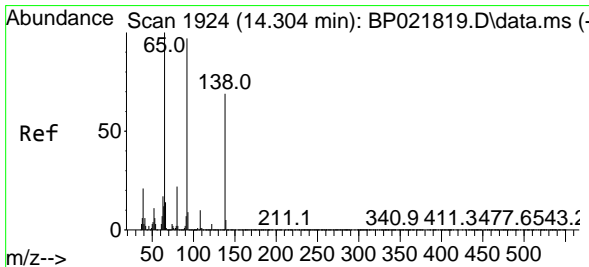
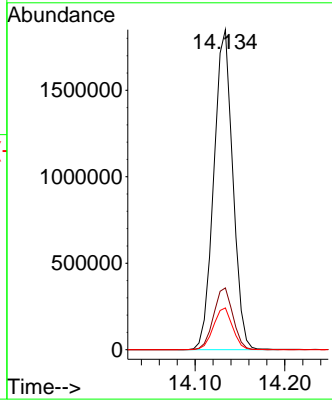
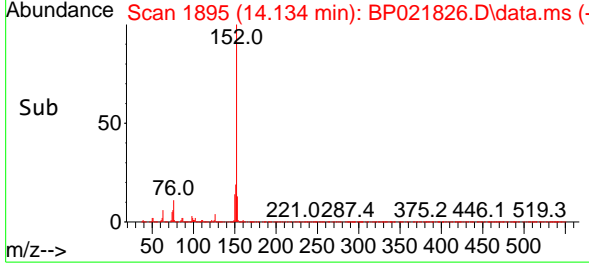
#50
 Acenaphthylene
 Concen: 31.408 ng/u1
 RT: 14.134 min Scan# 1895
 Delta R.T. 0.006 min
 Lab File: BP021826.D
 Acq: 04 Sep 2024 21:23

Instrument : BNA_P
 Client Sample Id : YE3E3MSD

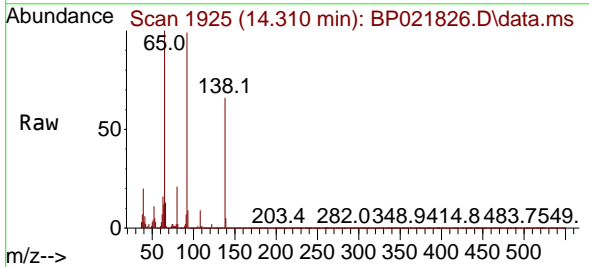


Tgt Ion:152 Resp: 2713808
 Ion Ratio Lower Upper
 152 100
 151 19.3 15.6 23.4
 153 13.1 10.2 15.4

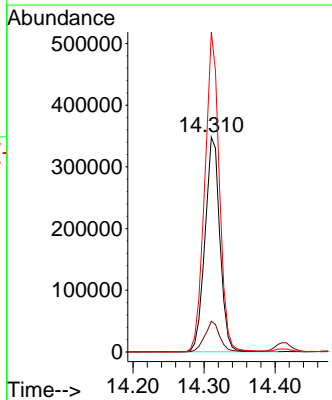
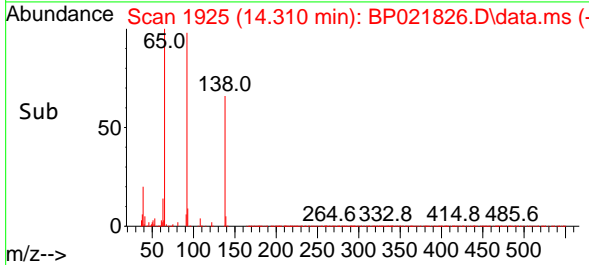
Manual Integrations
APPROVED
 Reviewed By :Jagrut Upadhyay 09/05/2024
 Supervised By :mohammad ahmed 09/07/2024

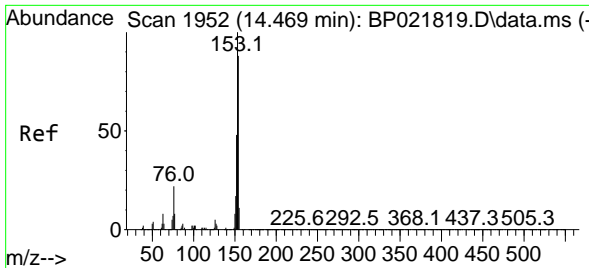


#51
 3-Nitroaniline
 Concen: 35.241 ng/u1
 RT: 14.310 min Scan# 1925
 Delta R.T. 0.006 min
 Lab File: BP021826.D
 Acq: 04 Sep 2024 21:23



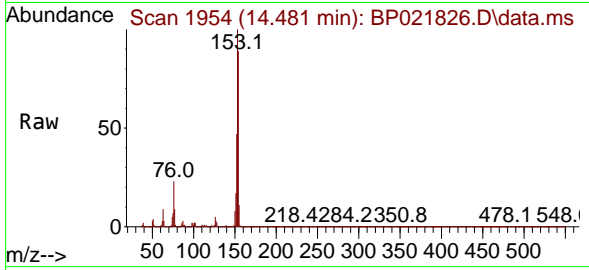
Tgt Ion:138 Resp: 508883
 Ion Ratio Lower Upper
 138 100
 108 14.3 12.0 18.0
 92 148.9 114.1 171.1





#52
 Acenaphthene
 Concen: 31.399 ng/uI
 RT: 14.481 min Scan# 1954
 Delta R.T. 0.012 min
 Lab File: BP021826.D
 Acq: 04 Sep 2024 21:23

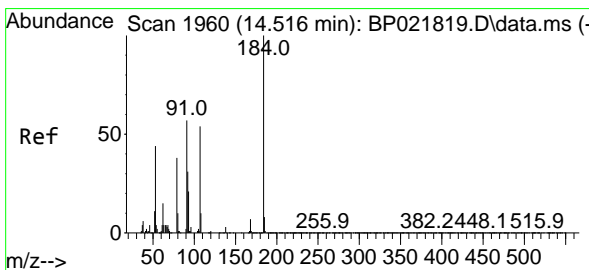
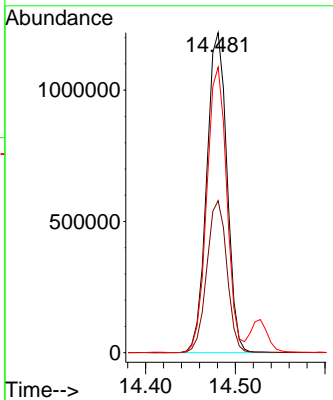
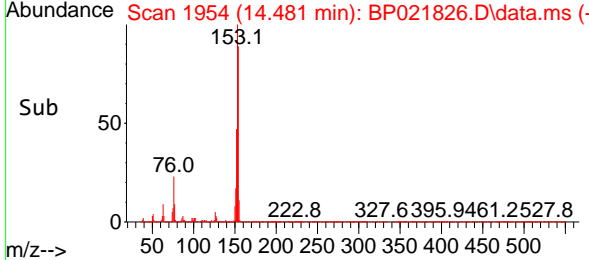
Instrument : BNA_P
 ClientSampleId : YE3E3MSD



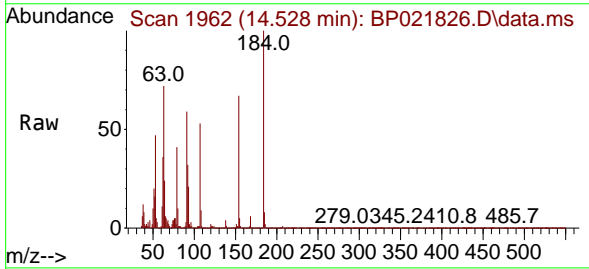
Tgt Ion:153 Resp: 190787

Ion	Ratio	Lower	Upper
153	100		
152	47.5	38.0	57.0
154	89.2	70.2	105.4

Manual Integrations
APPROVED
 Reviewed By :Jagrut Upadhyay 09/05/2024
 Supervised By :mohammad ahmed 09/07/2024

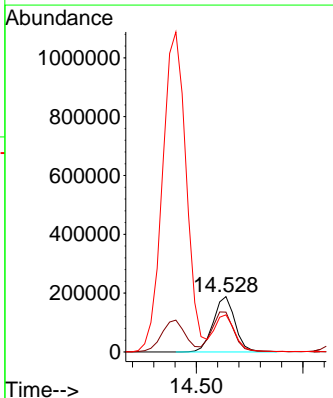
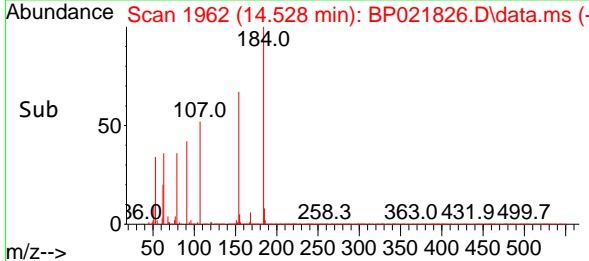


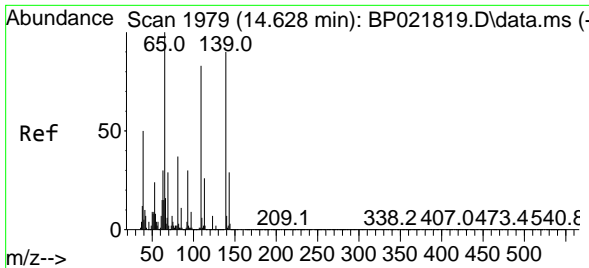
#53
 2,4-Dinitrophenol
 Concen: 33.706 ng/uI
 RT: 14.528 min Scan# 1962
 Delta R.T. 0.012 min
 Lab File: BP021826.D
 Acq: 04 Sep 2024 21:23



Tgt Ion:184 Resp: 266649

Ion	Ratio	Lower	Upper
184	100		
63	71.9	55.5	83.3
154	67.0	51.3	76.9





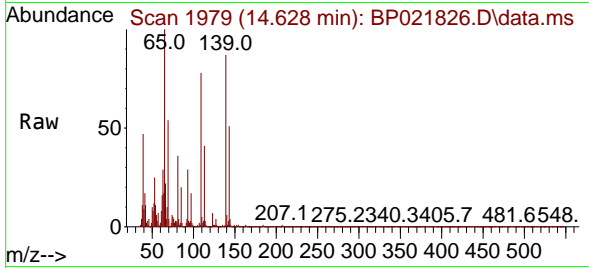
#55
 4-Nitrophenol
 Concen: 9.472 ng/uI
 RT: 14.628 min Scan# 1979
 Delta R.T. 0.000 min
 Lab File: BP021826.D
 Acq: 04 Sep 2024 21:23

Instrument :

BNA_P

ClientSampleId :

YE3E3MSD

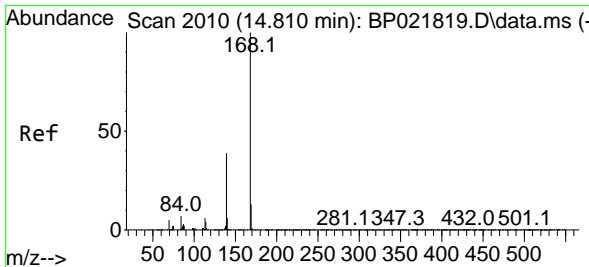
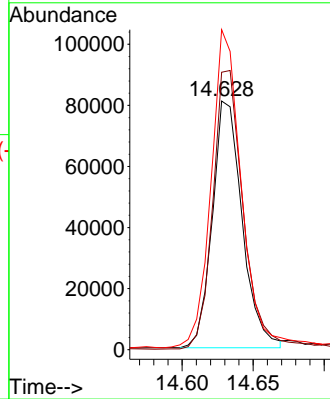
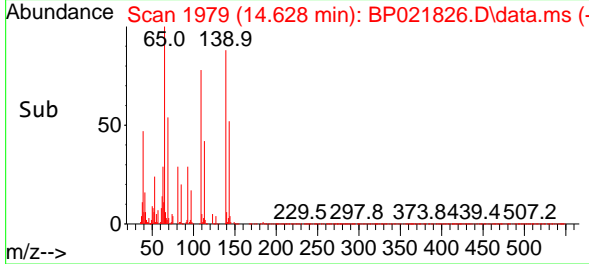


Tgt Ion:109 Resp: 118069
 Ion Ratio Lower Upper
 109 100
 139 111.6 96.2 144.2
 65 128.7 98.5 147.7

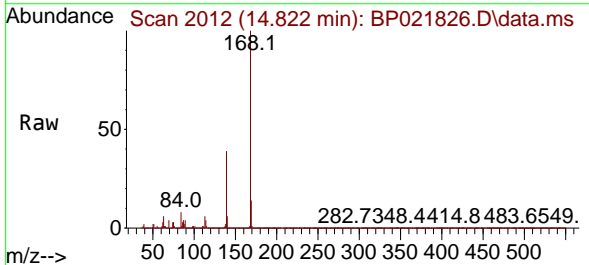
Manual Integrations

APPROVED

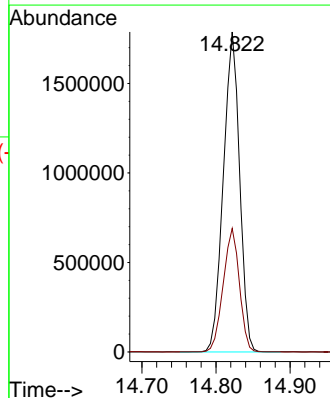
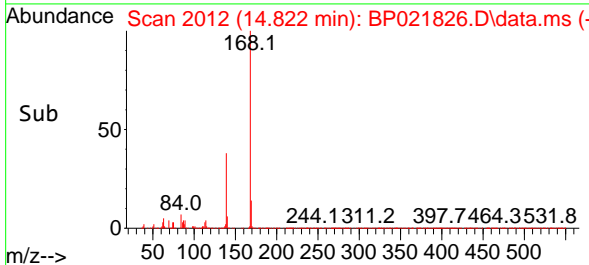
Reviewed By :Jagrut Upadhyay 09/05/2024
 Supervised By :mohammad ahmed 09/07/2024

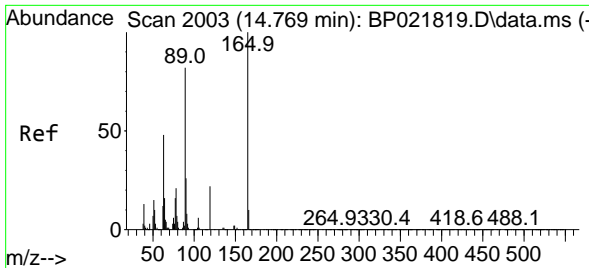


#56
 Dibenzofuran
 Concen: 32.422 ng/uI
 RT: 14.822 min Scan# 2012
 Delta R.T. 0.012 min
 Lab File: BP021826.D
 Acq: 04 Sep 2024 21:23



Tgt Ion:168 Resp: 2725557
 Ion Ratio Lower Upper
 168 100
 139 38.6 29.8 44.8





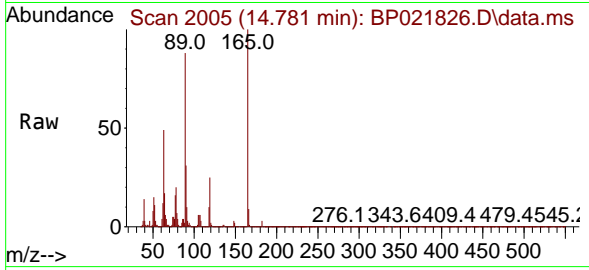
#57
 2,4-Dinitrotoluene
 Concen: 36.664 ng/ul
 RT: 14.781 min Scan# 2005
 Delta R.T. 0.012 min
 Lab File: BP021826.D
 Acq: 04 Sep 2024 21:23

Instrument :

BNA_P

Client SampleId :

YE3E3MSD

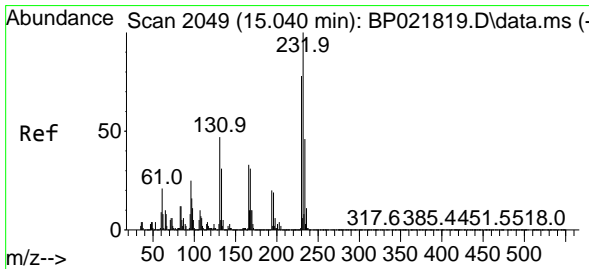
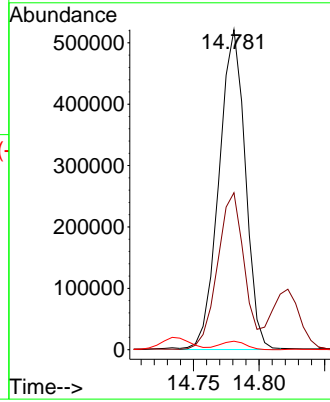
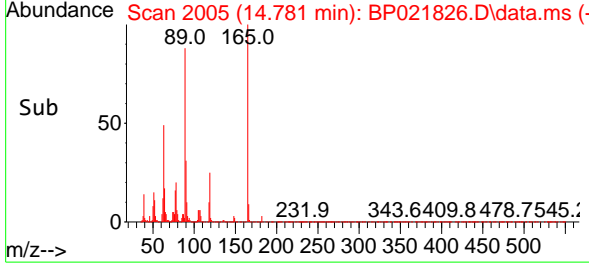


Tgt Ion:165 Resp: 72805
 Ion Ratio Lower Upper
 165 100
 63 49.0 37.8 56.8
 182 2.6 2.2 3.4

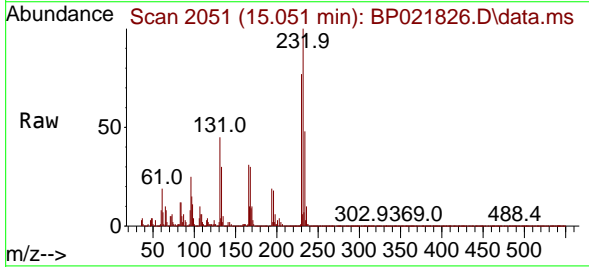
Manual Integrations

APPROVED

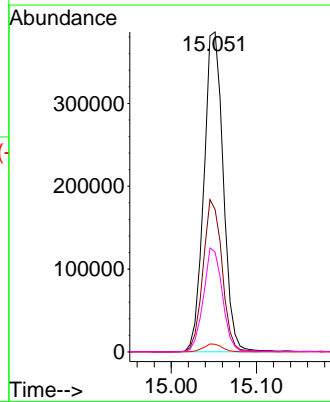
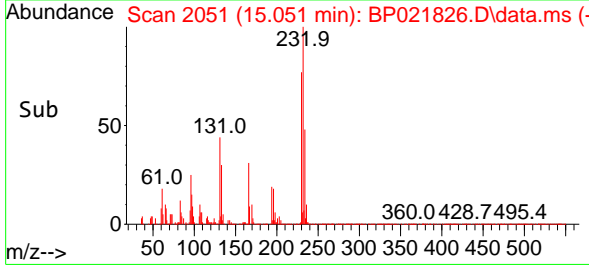
Reviewed By :Jagrut Upadhyay 09/05/2024
 Supervised By :mohammad ahmed 09/07/2024

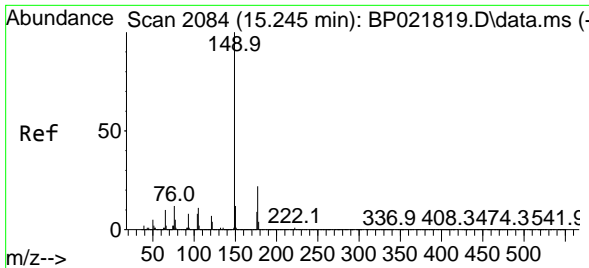


#58
 2,3,4,6-Tetrachlorophenol
 Concen: 34.520 ng/ul
 RT: 15.051 min Scan# 2051
 Delta R.T. 0.012 min
 Lab File: BP021826.D
 Acq: 04 Sep 2024 21:23



Tgt Ion:232 Resp: 609434
 Ion Ratio Lower Upper
 232 100
 131 44.6 33.9 50.9
 130 2.4 2.0 3.0
 166 31.2 24.3 36.5





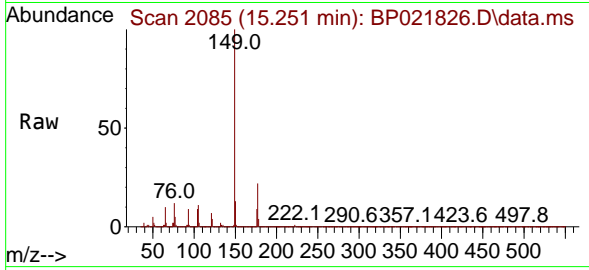
#59
 Diethylphthalate
 Concen: 34.237 ng/u1
 RT: 15.251 min Scan# 2085
 Delta R.T. 0.006 min
 Lab File: BP021826.D
 Acq: 04 Sep 2024 21:23

Instrument :

BNA_P

Client SampleId :

YE3E3MSD



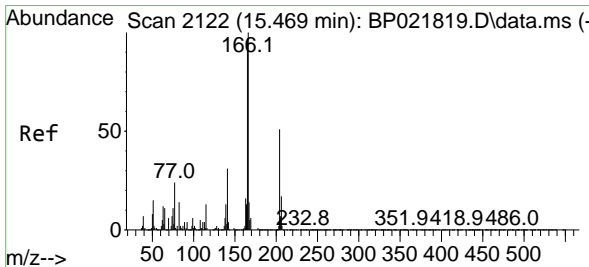
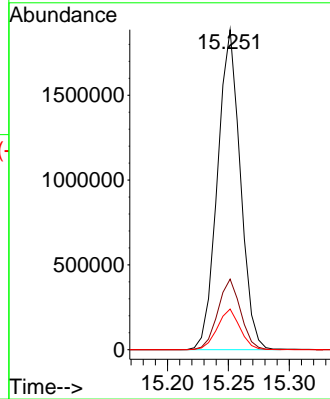
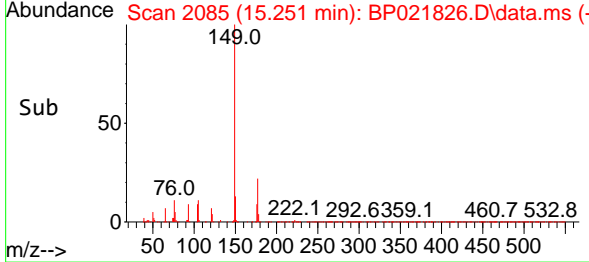
Tgt Ion:149 Resp: 246336
 Ion Ratio Lower Upper
 149 100
 177 22.0 18.0 27.0
 150 12.7 9.8 14.8

Manual Integrations

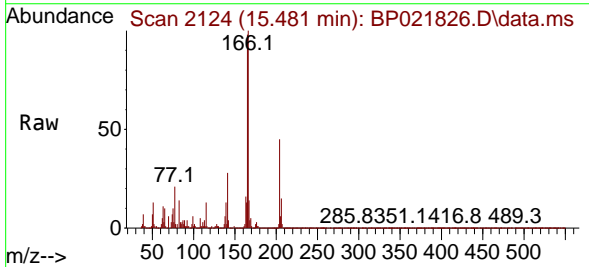
APPROVED

Reviewed By :Jagrut Upadhyay 09/05/2024

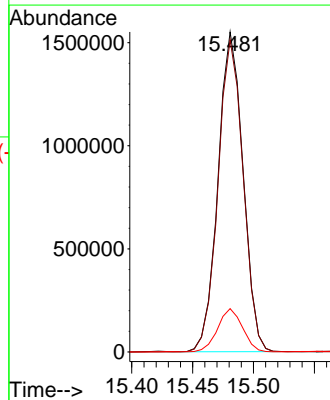
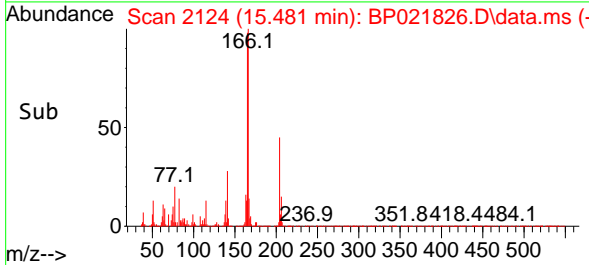
Supervised By :mohammad ahmed 09/07/2024

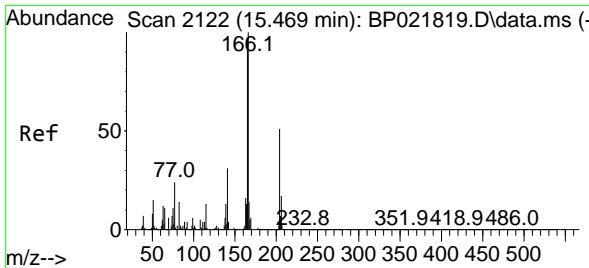


#61
 Fluorene
 Concen: 32.668 ng/u1
 RT: 15.481 min Scan# 2124
 Delta R.T. 0.012 min
 Lab File: BP021826.D
 Acq: 04 Sep 2024 21:23



Tgt Ion:166 Resp: 2221240
 Ion Ratio Lower Upper
 166 100
 165 97.6 78.2 117.2
 167 13.6 10.8 16.2





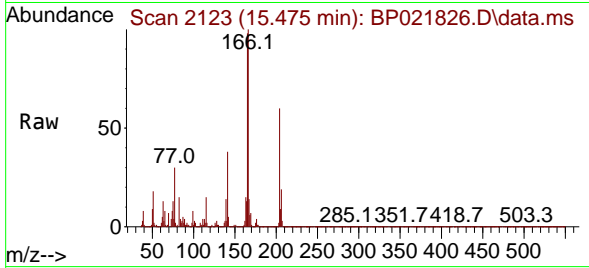
#62
 4-Chlorophenyl-phenylether
 Concen: 32.134 ng/ul
 RT: 15.475 min Scan# 2123
 Delta R.T. 0.006 min
 Lab File: BP021826.D
 Acq: 04 Sep 2024 21:23

Instrument :

BNA_P

Client Sample Id :

YE3E3MSD

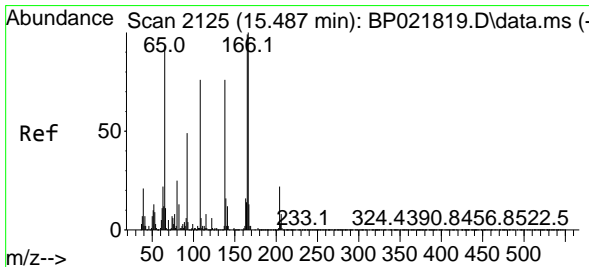
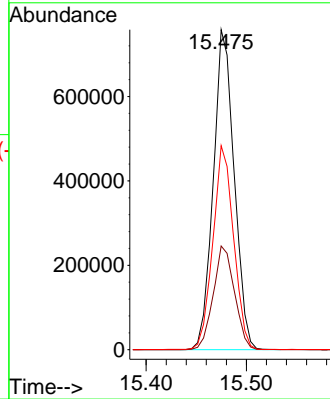
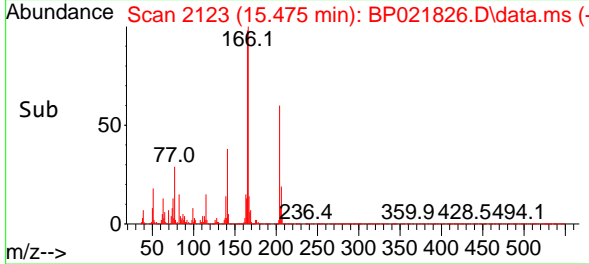


Tgt Ion: 204 Resp: 109784
 Ion Ratio Lower Upper
 204 100
 206 32.4 26.2 39.4
 141 63.8 48.6 73.0

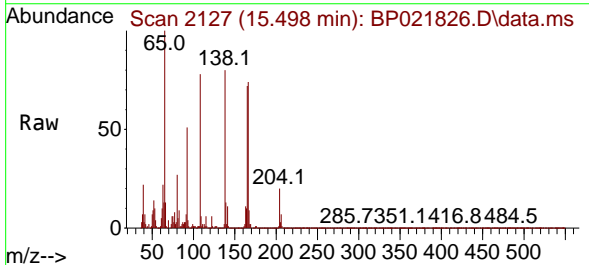
Manual Integrations

APPROVED

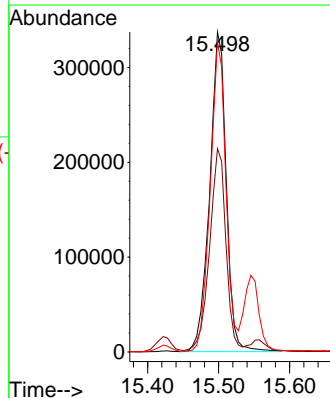
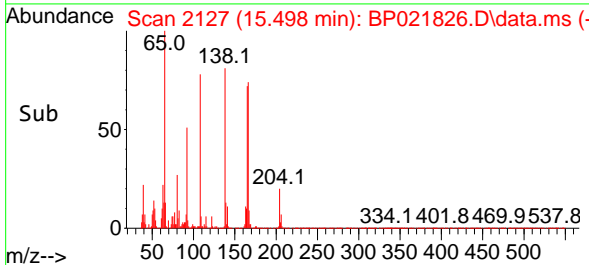
Reviewed By : Jagrut Upadhyay 09/05/2024
 Supervised By : mohammad ahmed 09/07/2024

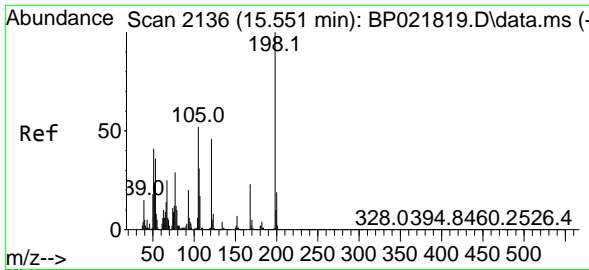


#63
 4-Nitroaniline
 Concen: 39.252 ng/ul
 RT: 15.498 min Scan# 2127
 Delta R.T. 0.012 min
 Lab File: BP021826.D
 Acq: 04 Sep 2024 21:23



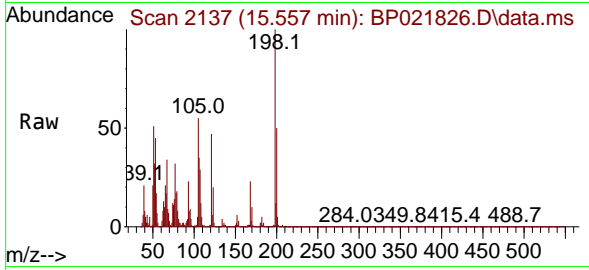
Tgt Ion: 138 Resp: 547805
 Ion Ratio Lower Upper
 138 100
 92 63.5 50.7 76.1
 108 96.9 72.2 108.2





#66
 4,6-Dinitro-2-methylphenol
 Concen: 35.203 ng/ul
 RT: 15.557 min Scan# 2136
 Delta R.T. 0.006 min
 Lab File: BP021826.D
 Acq: 04 Sep 2024 21:23

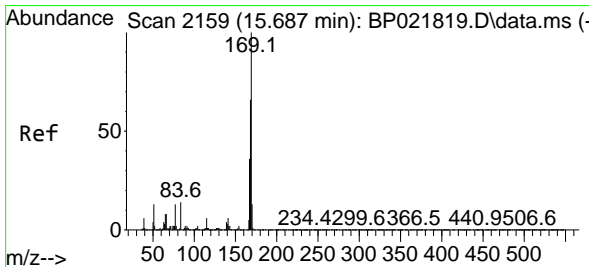
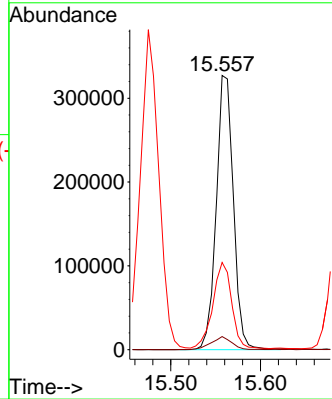
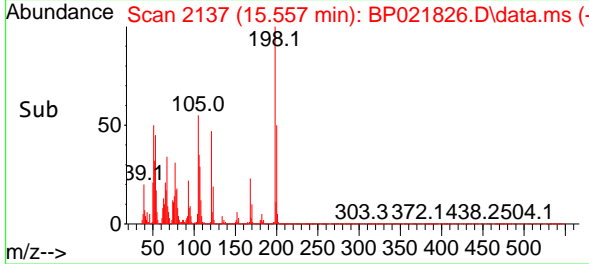
Instrument :
 BNA_P
 ClientSampleId :
 YE3E3MSD



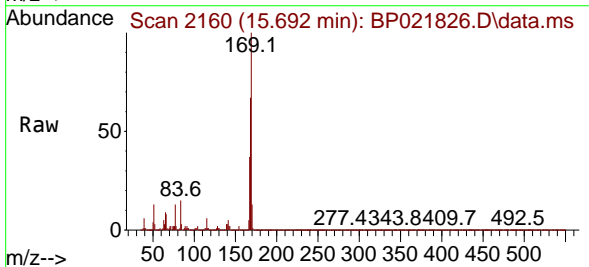
Tgt Ion:198 Resp: 433930
 Ion Ratio Lower Upper
 198 100
 182 4.8 3.3 4.9
 77 31.8 23.3 34.9

Manual Integrations
 APPROVED

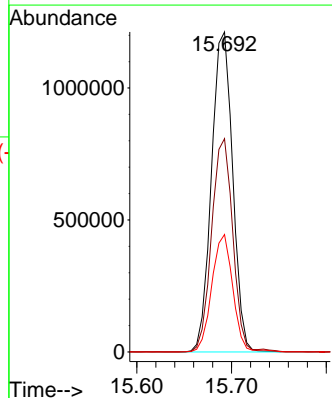
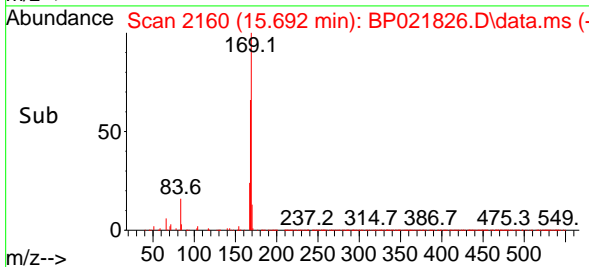
Reviewed By :Jagrut Upadhyay 09/05/2024
 Supervised By :mohammad ahmed 09/07/2024

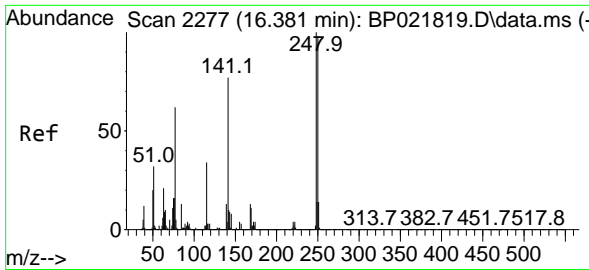


#67
 N-Nitrosodiphenylamine
 Concen: 31.883 ng/ul
 RT: 15.692 min Scan# 2160
 Delta R.T. 0.006 min
 Lab File: BP021826.D
 Acq: 04 Sep 2024 21:23



Tgt Ion:169 Resp: 1879140
 Ion Ratio Lower Upper
 169 100
 168 66.6 52.6 79.0
 167 36.7 28.2 42.4





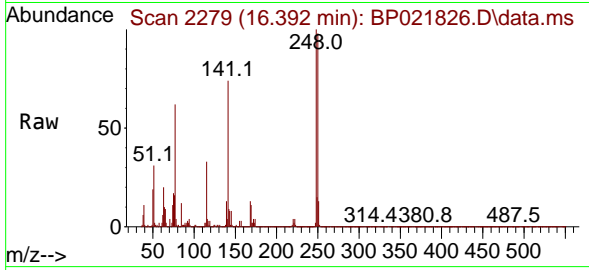
#68
 4-Bromophenyl-phenylether
 Concen: 33.122 ng/ul
 RT: 16.392 min Scan# 2277
 Delta R.T. 0.012 min
 Lab File: BP021826.D
 Acq: 04 Sep 2024 21:23

Instrument :

BNA_P

ClientSampleId :

YE3E3MSD

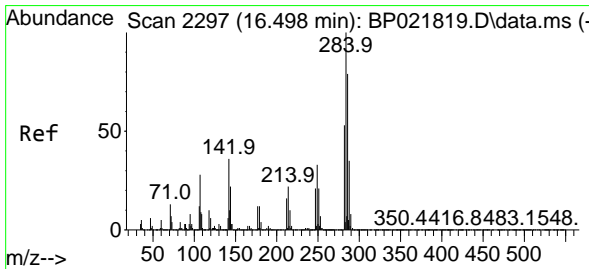
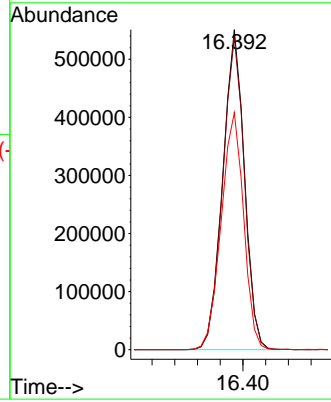
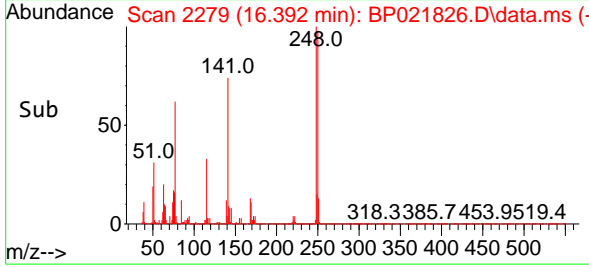


Tgt Ion:248 Resp: 732590
 Ion Ratio Lower Upper
 248 100
 250 97.7 79.6 119.4
 141 74.1 57.0 85.4

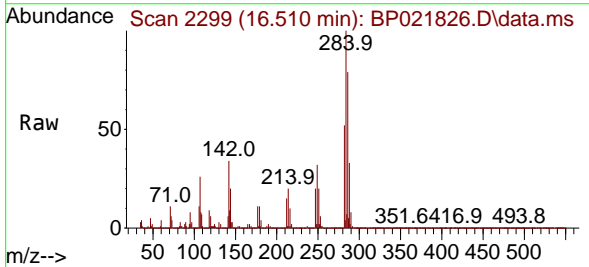
Manual Integrations

APPROVED

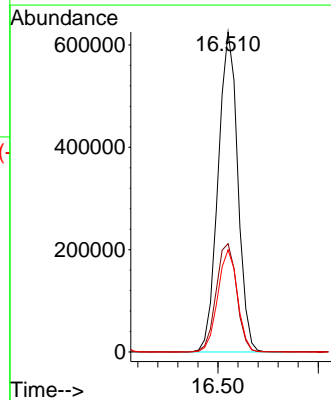
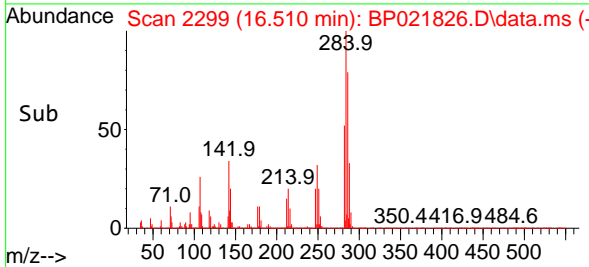
Reviewed By :Jagrut Upadhyay 09/05/2024
 Supervised By :mohammad ahmed 09/07/2024

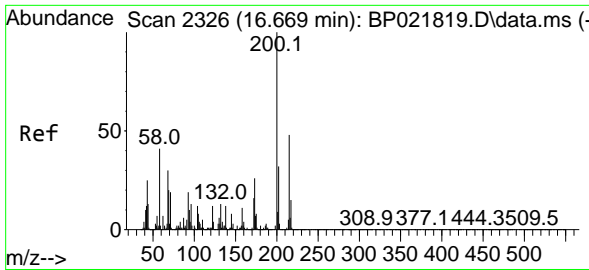


#69
 Hexachlorobenzene
 Concen: 32.413 ng/ul
 RT: 16.510 min Scan# 2299
 Delta R.T. 0.012 min
 Lab File: BP021826.D
 Acq: 04 Sep 2024 21:23



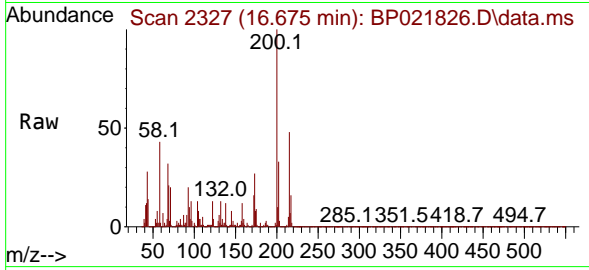
Tgt Ion:284 Resp: 851108
 Ion Ratio Lower Upper
 284 100
 142 33.9 26.5 39.7
 249 31.9 24.2 36.4





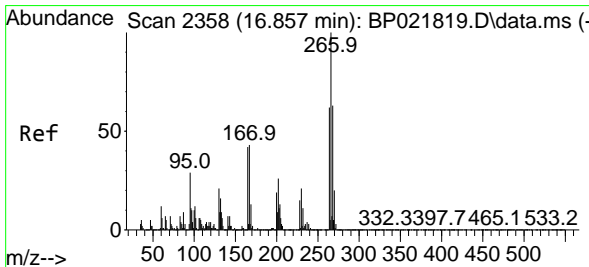
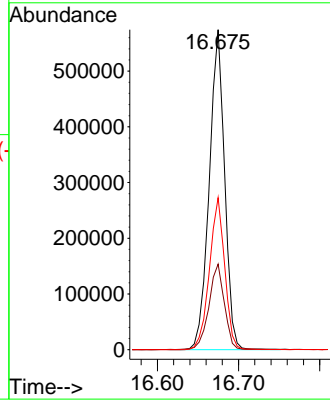
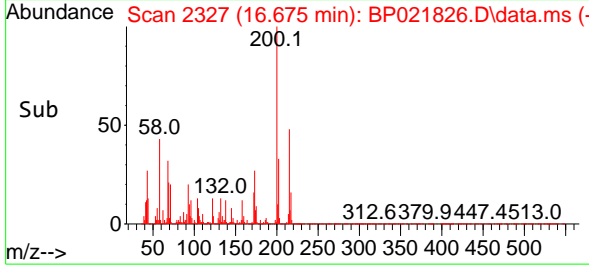
#70
 Atrazine
 Concen: 33.763 ng/uI
 RT: 16.675 min Scan# 21
 Delta R.T. 0.006 min
 Lab File: BP021826.D
 Acq: 04 Sep 2024 21:23

Instrument : BNA_P
 Client SampleId : YE3E3MSD

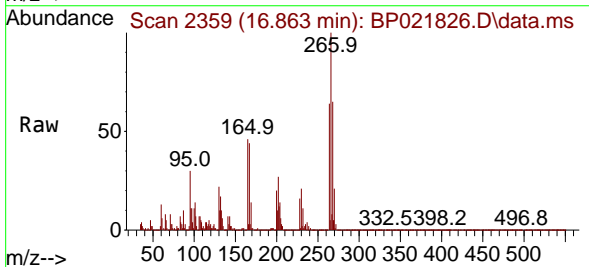


Tgt Ion:200 Resp: 75484
 Ion Ratio Lower Upper
 200 100
 173 26.8 21.4 32.0
 215 47.5 39.0 58.6

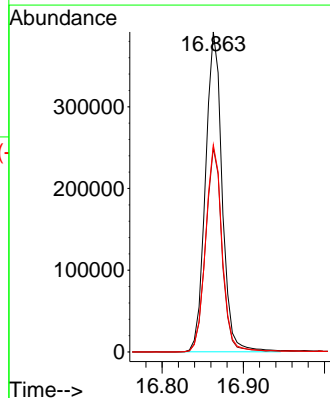
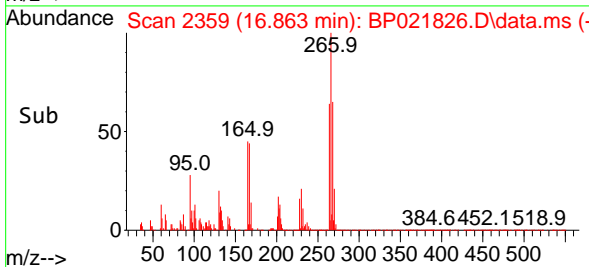
Manual Integrations
APPROVED
 Reviewed By :Jagrut Upadhyay 09/05/2024
 Supervised By :mohammad ahmed 09/07/2024

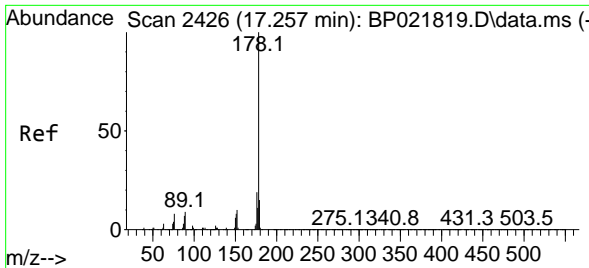


#71
 Pentachlorophenol
 Concen: 33.132 ng/uI
 RT: 16.863 min Scan# 2359
 Delta R.T. 0.006 min
 Lab File: BP021826.D
 Acq: 04 Sep 2024 21:23



Tgt Ion:266 Resp: 556779
 Ion Ratio Lower Upper
 266 100
 264 63.8 51.4 77.0
 268 64.7 50.6 75.8





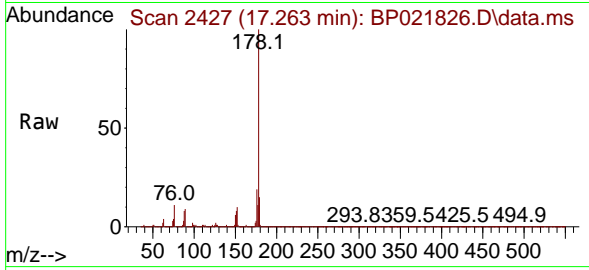
#72
 Phenanthrene
 Concen: 33.171 ng/u1
 RT: 17.263 min Scan# 2427
 Delta R.T. 0.006 min
 Lab File: BP021826.D
 Acq: 04 Sep 2024 21:23

Instrument :

BNA_P

Client SampleId :

YE3E3MSD

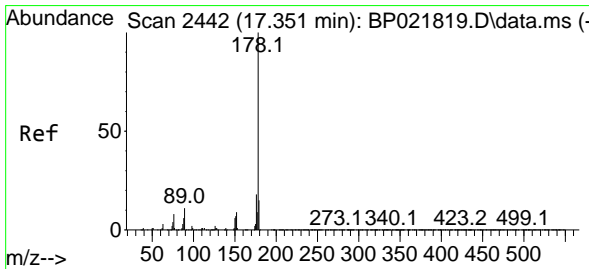
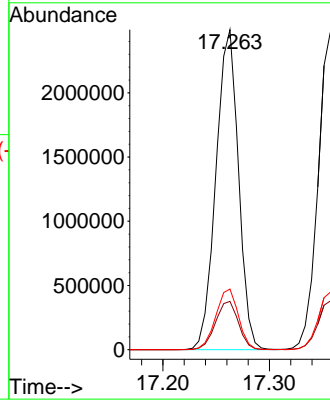
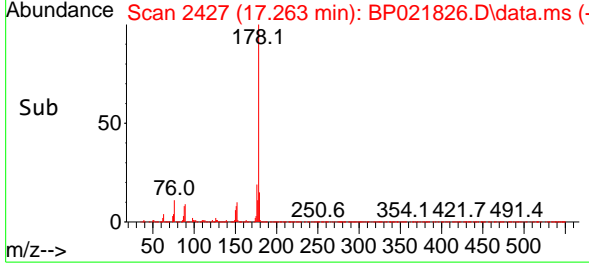


Tgt Ion:178 Resp: 364867
 Ion Ratio Lower Upper
 178 100
 179 15.1 12.0 18.0
 176 18.9 14.8 22.2

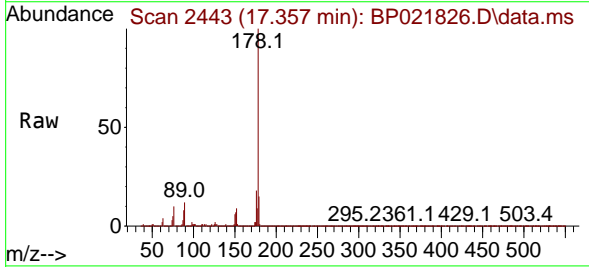
Manual Integrations

APPROVED

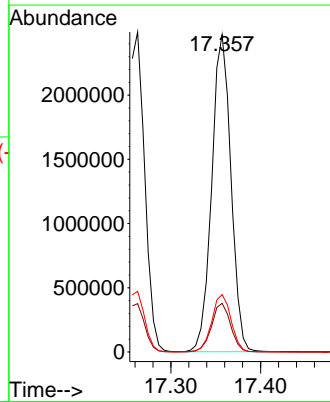
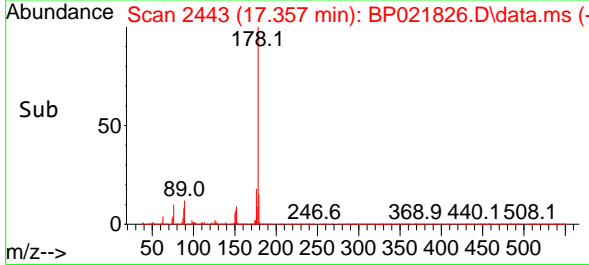
Reviewed By :Jagrut Upadhyay 09/05/2024
 Supervised By :mohammad ahmed 09/07/2024

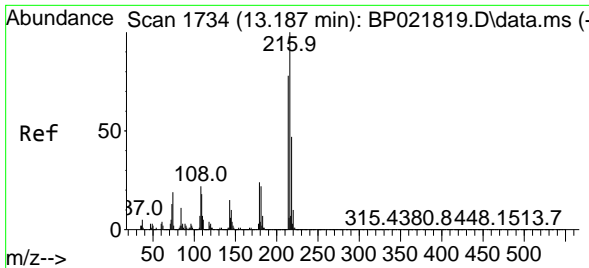


#74
 Anthracene
 Concen: 32.880 ng/u1
 RT: 17.357 min Scan# 2443
 Delta R.T. 0.006 min
 Lab File: BP021826.D
 Acq: 04 Sep 2024 21:23



Tgt Ion:178 Resp: 3663957
 Ion Ratio Lower Upper
 178 100
 179 15.4 12.3 18.5
 176 18.1 14.6 21.8





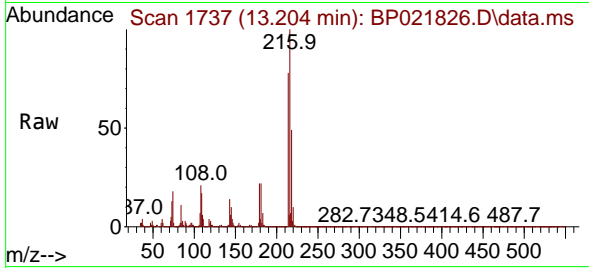
#75
 1,2,3,4-Tetrachlorobenzene
 Concen: 28.757 ng/uL
 RT: 13.204 min Scan# 1737
 Delta R.T. 0.018 min
 Lab File: BP021826.D
 Acq: 04 Sep 2024 21:23

Instrument :

BNA_P

Client Sample Id :

YE3E3MSD

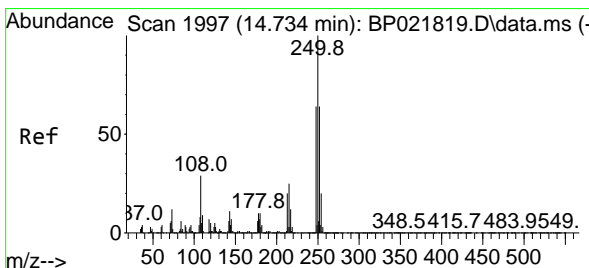
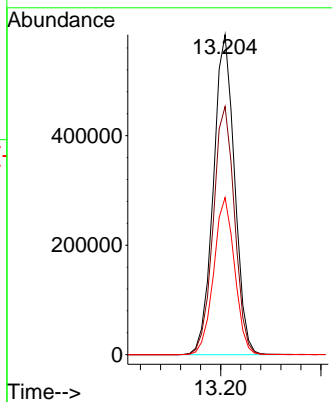
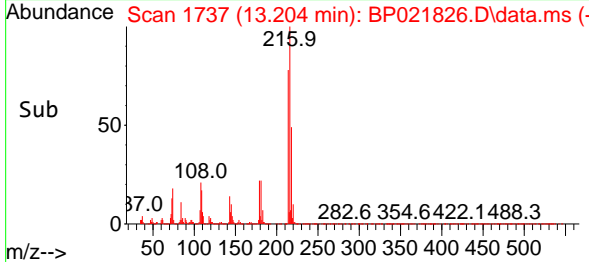


Tgt Ion: 216 Resp: 85660
 Ion Ratio Lower Upper
 216 100
 214 77.6 63.9 95.9
 218 49.1 39.5 59.3

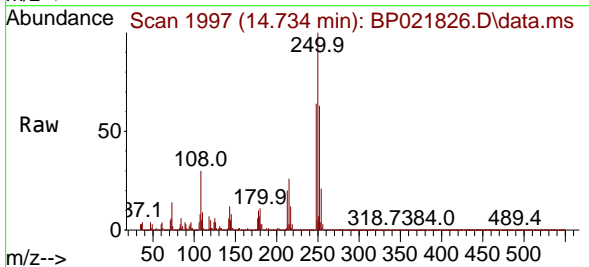
Manual Integrations

APPROVED

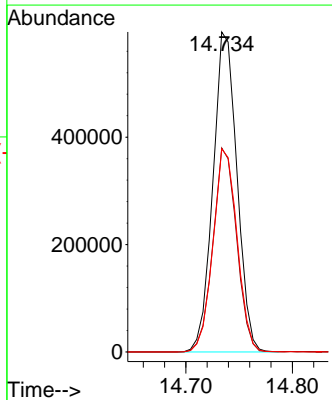
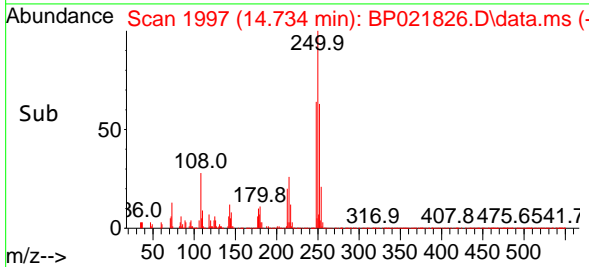
Reviewed By : Jagrut Upadhyay 09/05/2024
 Supervised By : mohammad ahmed 09/07/2024

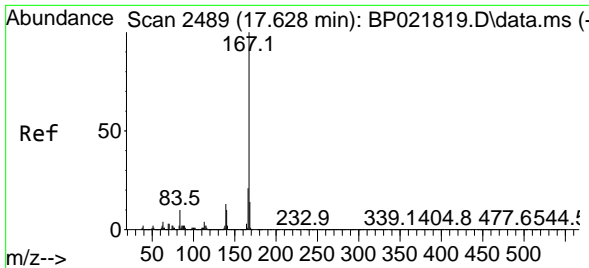


#76
 Pentachlorobenzene
 Concen: 30.177 ng/uL
 RT: 14.734 min Scan# 1997
 Delta R.T. 0.000 min
 Lab File: BP021826.D
 Acq: 04 Sep 2024 21:23



Tgt Ion: 250 Resp: 931688
 Ion Ratio Lower Upper
 250 100
 248 63.7 51.0 76.6
 252 63.5 51.4 77.0





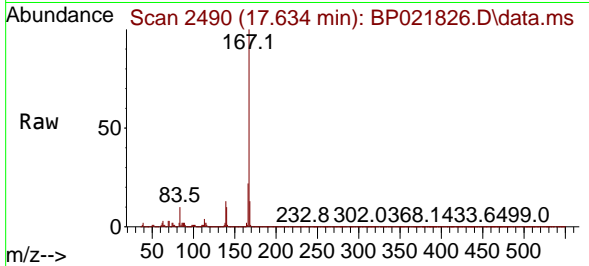
#77
 Carbazole
 Concen: 34.720 ng/uI
 RT: 17.634 min Scan# 2489
 Delta R.T. 0.006 min
 Lab File: BP021826.D
 Acq: 04 Sep 2024 21:23

Instrument :

BNA_P

Client SampleId :

YE3E3MSD

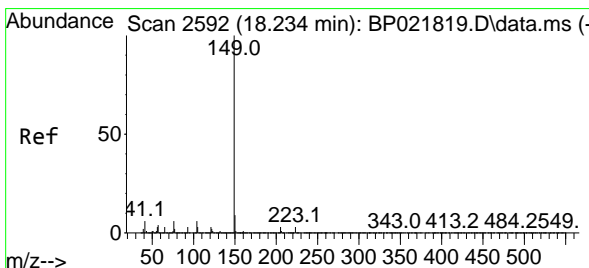
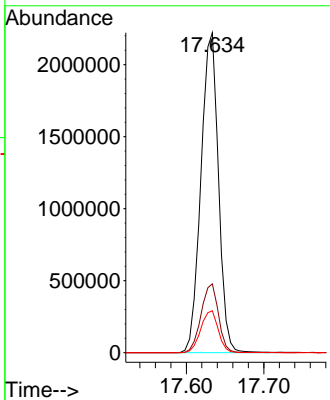
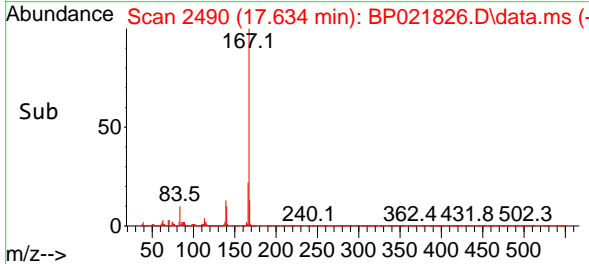


Tgt Ion:167 Resp: 347985
 Ion Ratio Lower Upper
 167 100
 166 21.5 17.1 25.7
 139 13.1 10.4 15.6

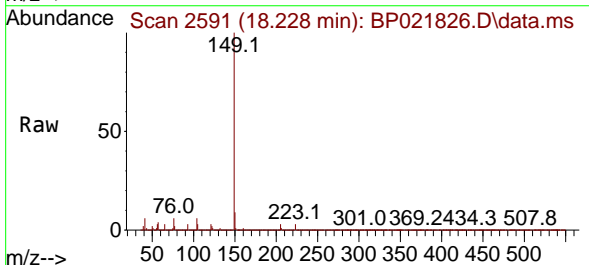
Manual Integrations

APPROVED

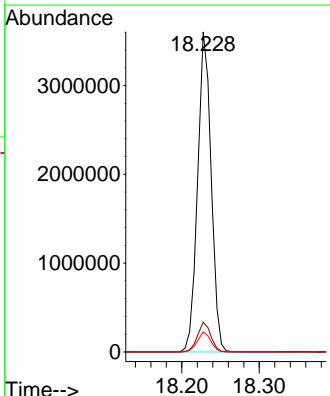
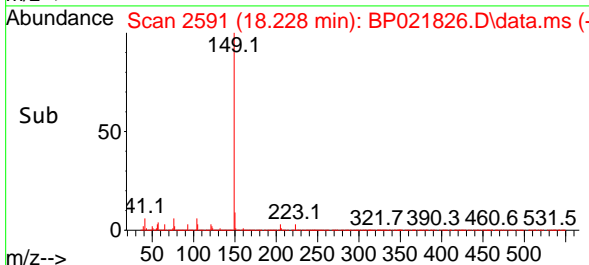
Reviewed By :Jagrut Upadhyay 09/05/2024
 Supervised By :mohammad ahmed 09/07/2024

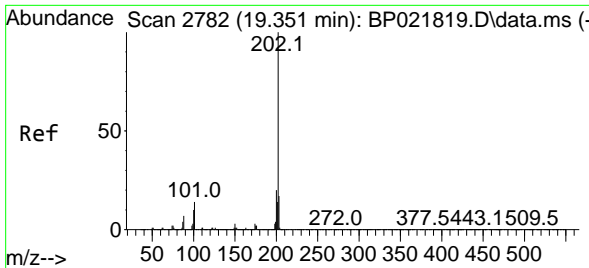


#78
 Di-n-butylphthalate
 Concen: 35.772 ng/uI
 RT: 18.228 min Scan# 2591
 Delta R.T. -0.006 min
 Lab File: BP021826.D
 Acq: 04 Sep 2024 21:23



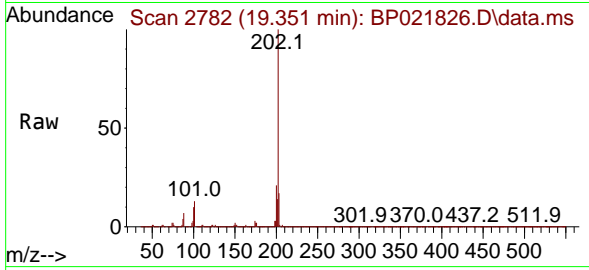
Tgt Ion:149 Resp: 4364017
 Ion Ratio Lower Upper
 149 100
 150 9.3 7.4 11.0
 104 6.2 4.8 7.2





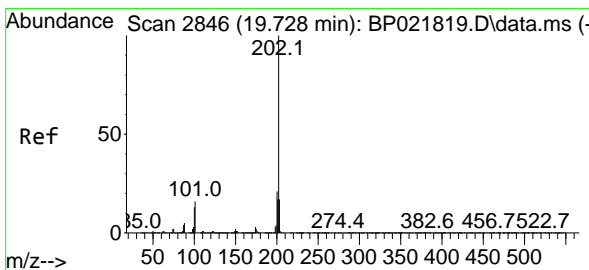
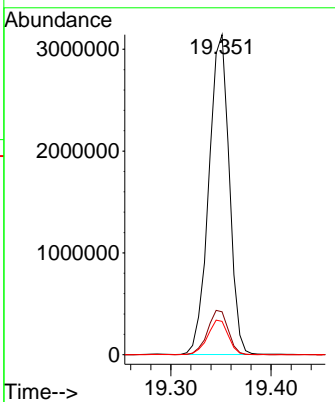
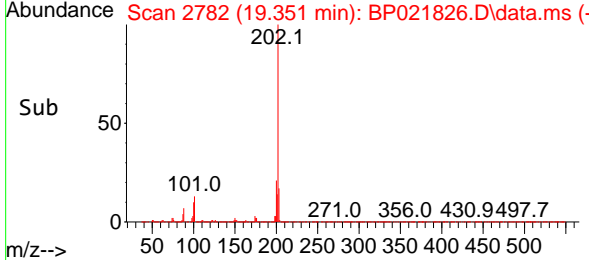
#80
 Fluoranthene
 Concen: 35.790 ng/u1
 RT: 19.351 min Scan# 2782
 Delta R.T. 0.000 min
 Lab File: BP021826.D
 Acq: 04 Sep 2024 21:23

Instrument : BNA_P
 Client Sample Id : YE3E3MSD

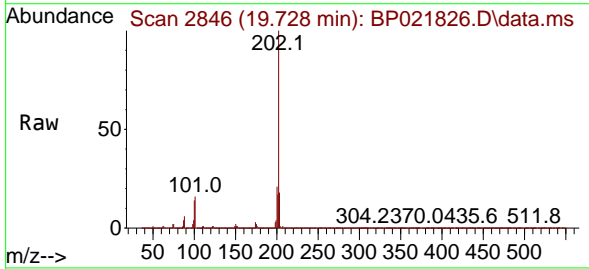


Tgt Ion: 202 Resp: 4443794
 Ion Ratio Lower Upper
 202 100
 101 13.4 11.2 16.8
 100 10.4 8.5 12.7

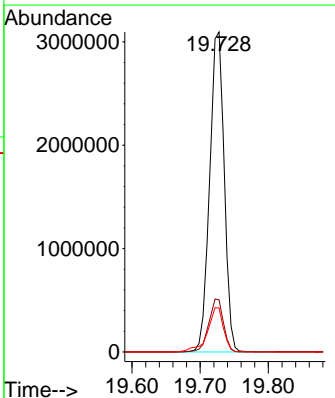
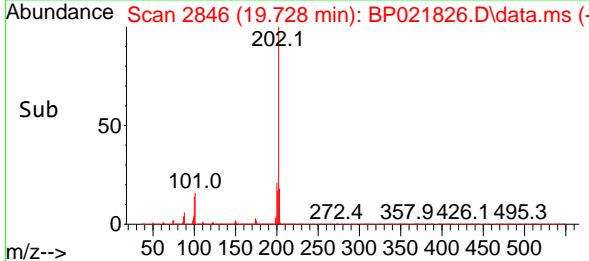
Manual Integrations
APPROVED
 Reviewed By :Jagrut Upadhyay 09/05/2024
 Supervised By :mohammad ahmed 09/07/2024

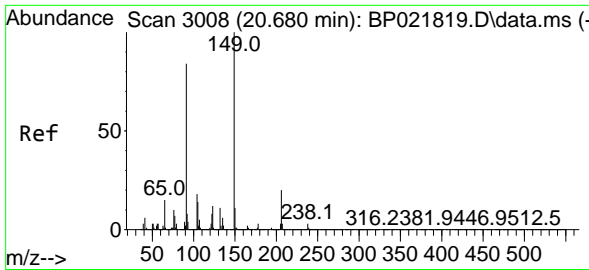


#82
 Pyrene
 Concen: 34.978 ng/u1
 RT: 19.728 min Scan# 2846
 Delta R.T. 0.000 min
 Lab File: BP021826.D
 Acq: 04 Sep 2024 21:23



Tgt Ion: 202 Resp: 4599681
 Ion Ratio Lower Upper
 202 100
 101 16.3 12.8 19.2
 100 13.7 10.8 16.2





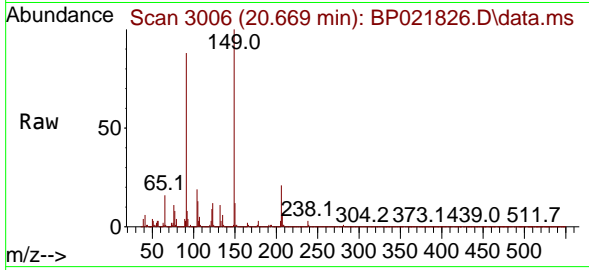
#83
 Butylbenzylphthalate
 Concen: 38.553 ng/ul
 RT: 20.669 min Scan# 3006
 Delta R.T. -0.012 min
 Lab File: BP021826.D
 Acq: 04 Sep 2024 21:23

Instrument :

BNA_P

Client Sample Id :

YE3E3MSD

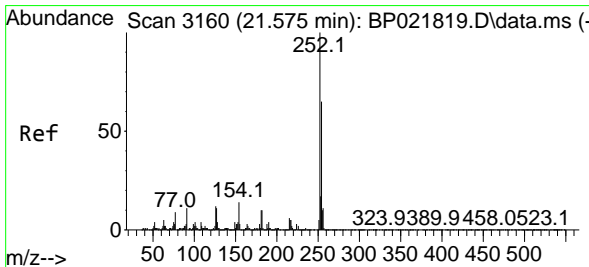
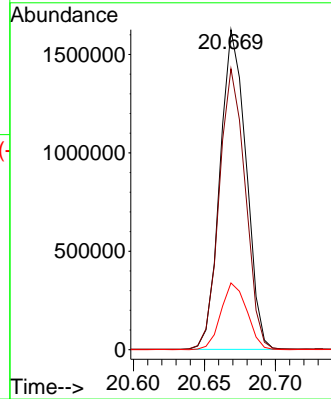
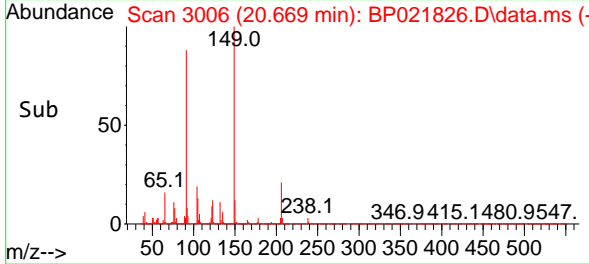


Tgt Ion:149 Resp: 2075710
 Ion Ratio Lower Upper
 149 100
 91 87.8 70.1 105.1
 206 20.9 16.8 25.2

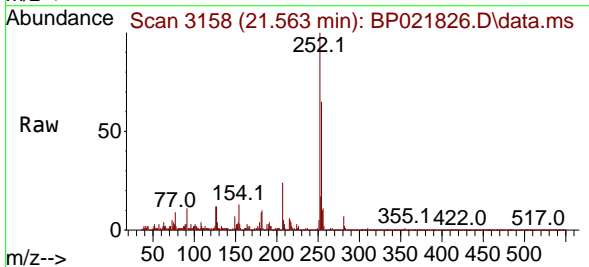
Manual Integrations

APPROVED

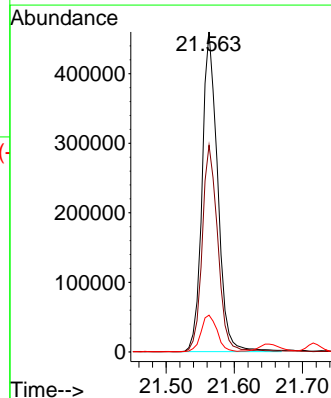
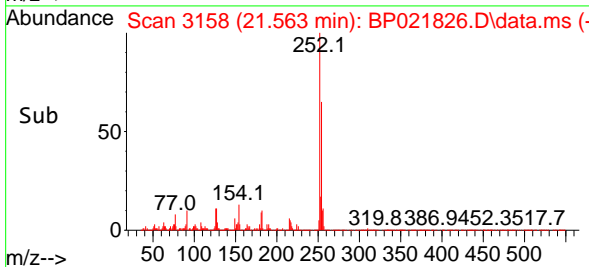
Reviewed By :Jagrut Upadhyay 09/05/2024
 Supervised By :mohammad ahmed 09/07/2024

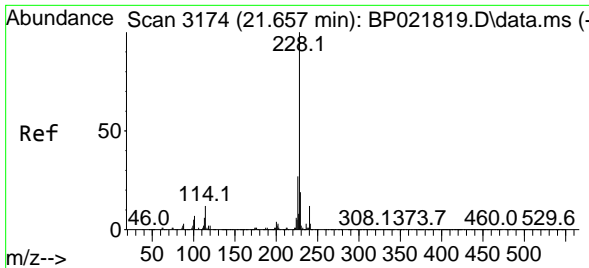


#84
 3,3'-Dichlorobenzidine
 Concen: 15.526 ng/ul
 RT: 21.563 min Scan# 3158
 Delta R.T. -0.012 min
 Lab File: BP021826.D
 Acq: 04 Sep 2024 21:23



Tgt Ion:252 Resp: 728295
 Ion Ratio Lower Upper
 252 100
 254 64.6 52.2 78.4
 126 11.5 8.9 13.3





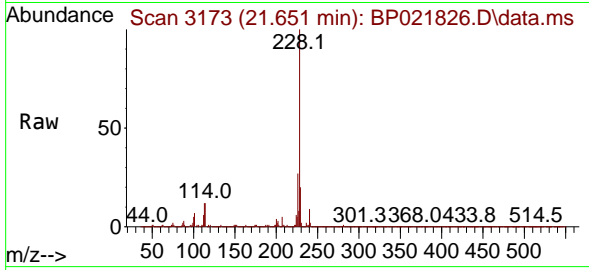
#85
 Benzo(a)anthracene
 Concen: 34.727 ng/uI
 RT: 21.651 min Scan# 3173
 Delta R.T. -0.006 min
 Lab File: BP021826.D
 Acq: 04 Sep 2024 21:23

Instrument :

BNA_P

ClientSampleId :

YE3E3MSD

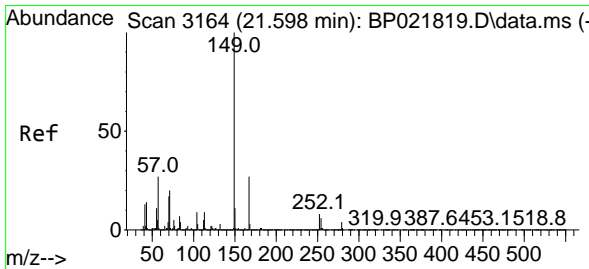
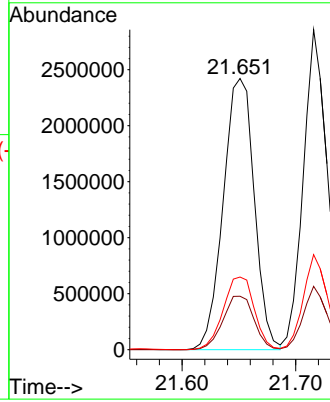
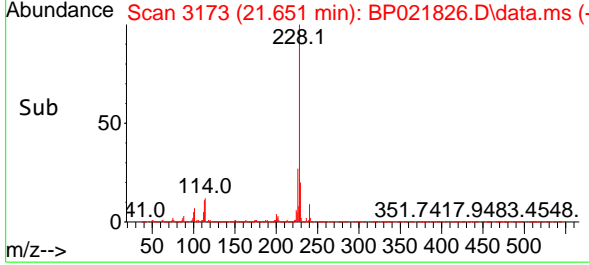


Tgt Ion:228 Resp: 4598024
 Ion Ratio Lower Upper
 228 100
 229 19.7 15.7 23.5
 226 26.8 21.7 32.5

Manual Integrations

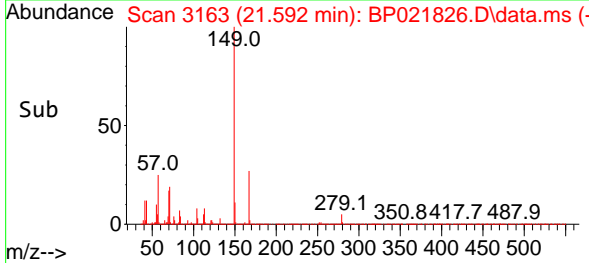
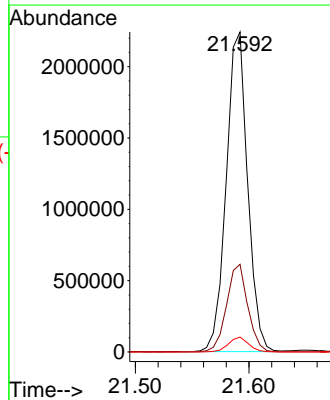
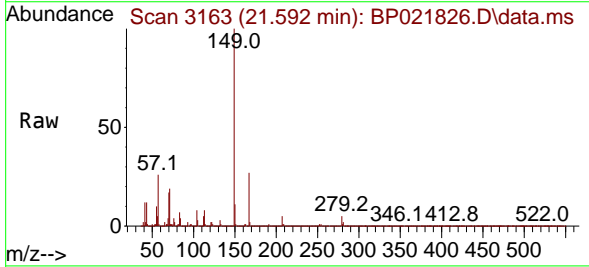
APPROVED

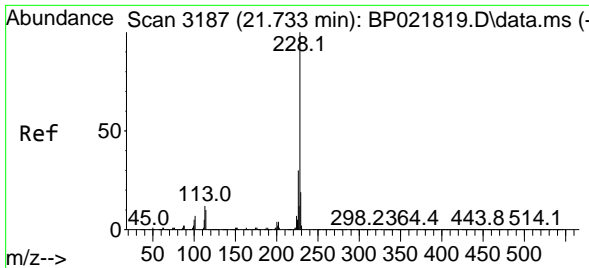
Reviewed By :Jagrut Upadhyay 09/05/2024
 Supervised By :mohammad ahmed 09/07/2024



#86
 Bis(2-ethylhexyl)phthalate
 Concen: 36.926 ng/uI
 RT: 21.592 min Scan# 3163
 Delta R.T. -0.006 min
 Lab File: BP021826.D
 Acq: 04 Sep 2024 21:23

Tgt Ion:149 Resp: 2934400
 Ion Ratio Lower Upper
 149 100
 167 27.4 21.8 32.6
 279 4.7 3.7 5.5





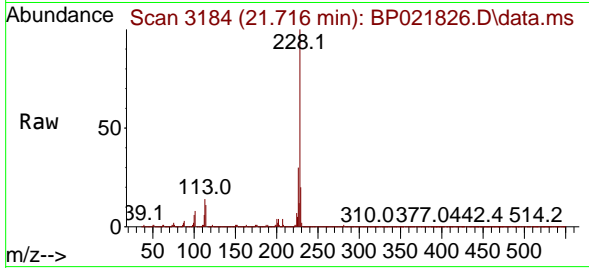
#87
 Chrysene
 Concen: 33.492 ng/u1
 RT: 21.716 min Scan# 3184
 Delta R.T. -0.018 min
 Lab File: BP021826.D
 Acq: 04 Sep 2024 21:23

Instrument :

BNA_P

ClientSampleId :

YE3E3MSD

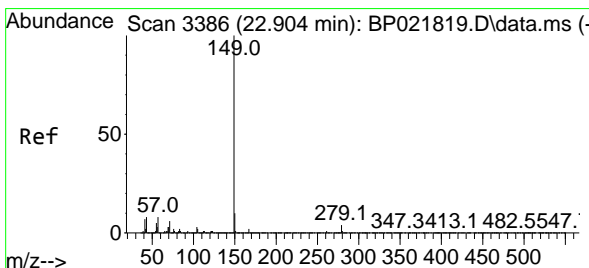
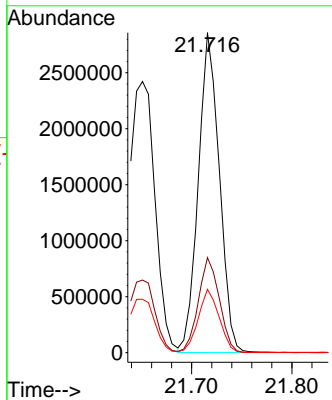
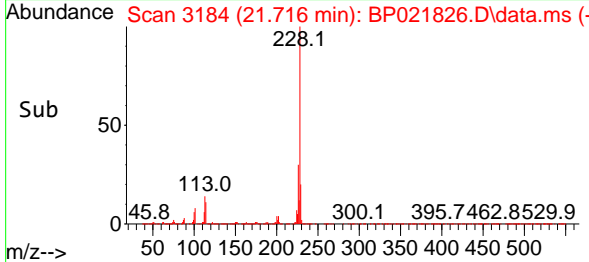


Tgt Ion:228 Resp: 417339
 Ion Ratio Lower Upper
 228 100
 226 29.7 23.5 35.3
 229 19.8 15.6 23.4

Manual Integrations

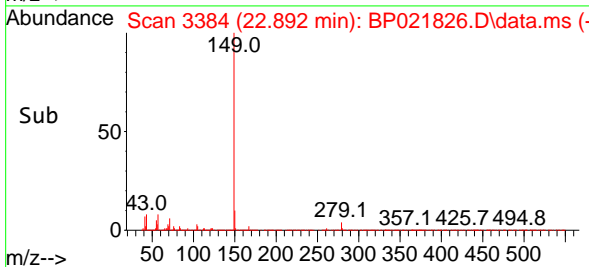
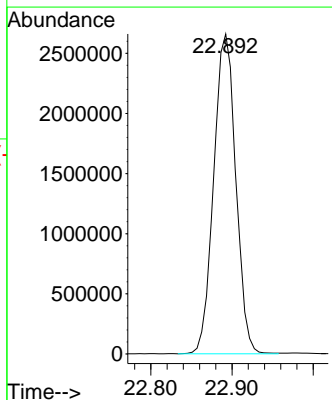
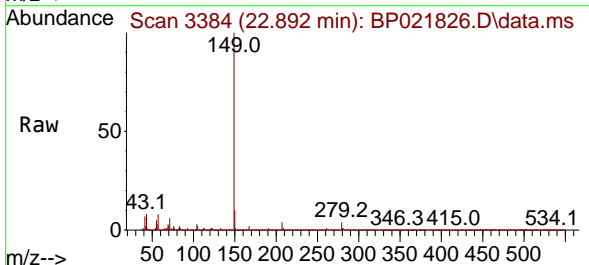
APPROVED

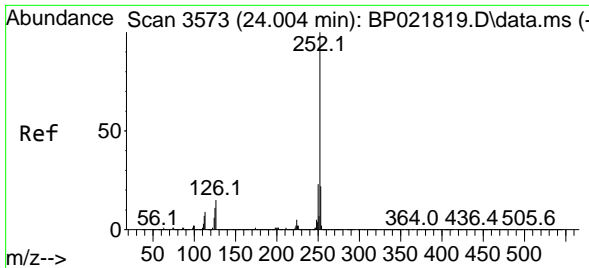
Reviewed By :Jagrut Upadhyay 09/05/2024
 Supervised By :mohammad ahmed 09/07/2024



#89
 Di-n-octyl phthalate
 Concen: 37.837 ng/u1
 RT: 22.892 min Scan# 3384
 Delta R.T. -0.012 min
 Lab File: BP021826.D
 Acq: 04 Sep 2024 21:23

Tgt Ion:149 Resp: 5025153





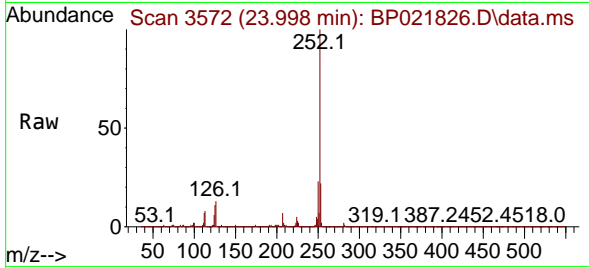
#90
 Benzo(b)fluoranthene
 Concen: 35.509 ng/ul
 RT: 23.998 min Scan# 31
 Delta R.T. -0.006 min
 Lab File: BP021826.D
 Acq: 04 Sep 2024 21:23

Instrument :

BNA_P

ClientSampleId :

YE3E3MSD

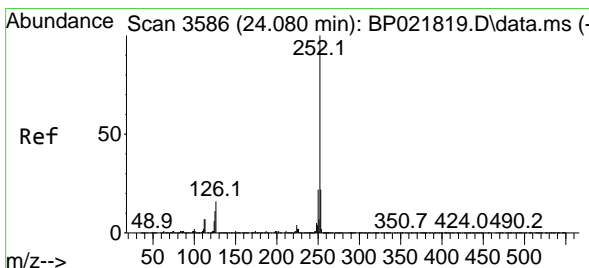
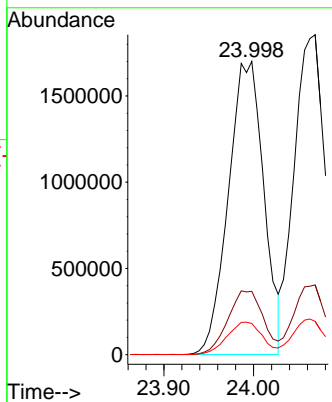
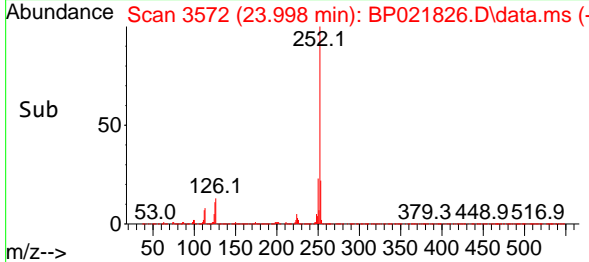


Tgt Ion:252 Resp: 466180
 Ion Ratio Lower Upper
 252 100
 253 21.6 18.1 27.1
 125 10.6 8.6 12.8

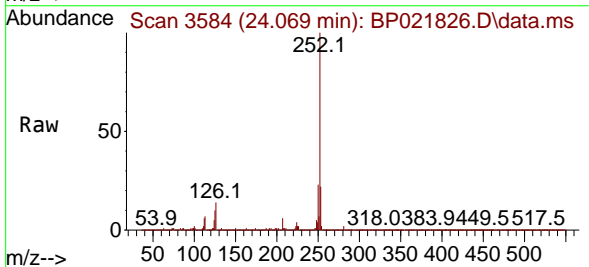
Manual Integrations

APPROVED

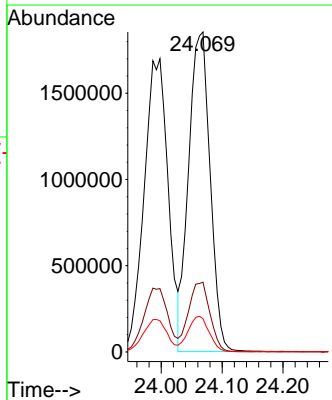
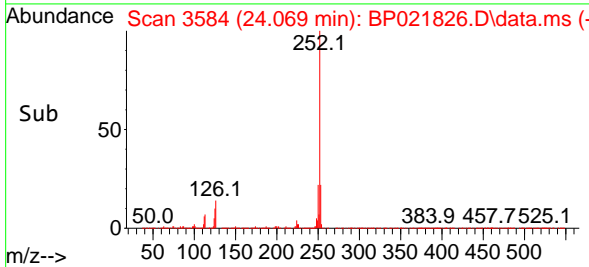
Reviewed By :Jagrut Upadhyay 09/05/2024
 Supervised By :mohammad ahmed 09/07/2024

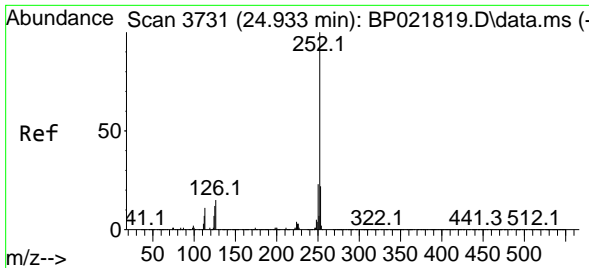


#91
 Benzo(k)fluoranthene
 Concen: 35.380 ng/ul
 RT: 24.069 min Scan# 3584
 Delta R.T. -0.012 min
 Lab File: BP021826.D
 Acq: 04 Sep 2024 21:23



Tgt Ion:252 Resp: 4547181
 Ion Ratio Lower Upper
 252 100
 253 21.8 17.8 26.8
 125 10.4 8.6 13.0





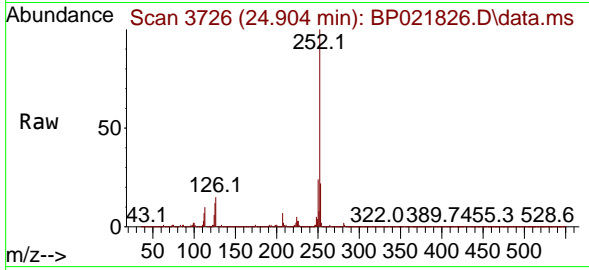
#93
 Benzo(a)pyrene
 Concen: 35.328 ng/u1
 RT: 24.904 min Scan# 31
 Delta R.T. -0.029 min
 Lab File: BP021826.D
 Acq: 04 Sep 2024 21:23

Instrument :

BNA_P

ClientSampleId :

YE3E3MSD

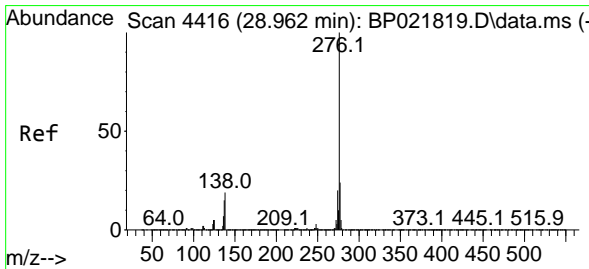
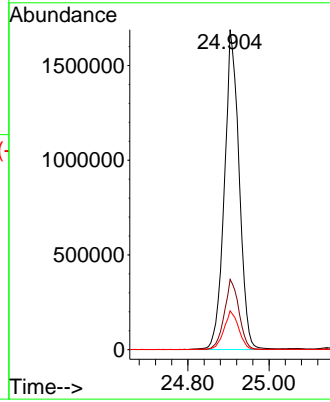
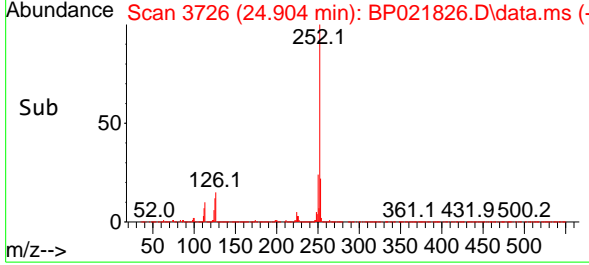


Tgt Ion:252 Resp: 427289
 Ion Ratio Lower Upper
 252 100
 253 22.0 17.4 26.0
 125 12.2 9.6 14.4

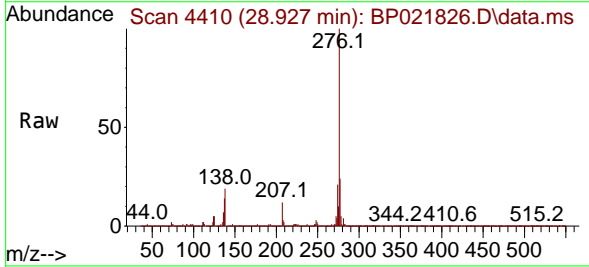
Manual Integrations

APPROVED

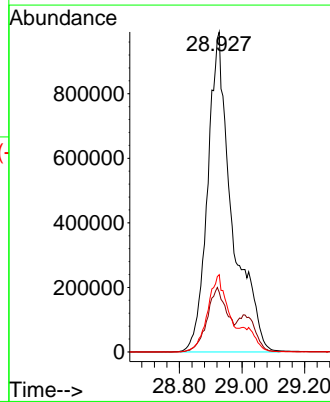
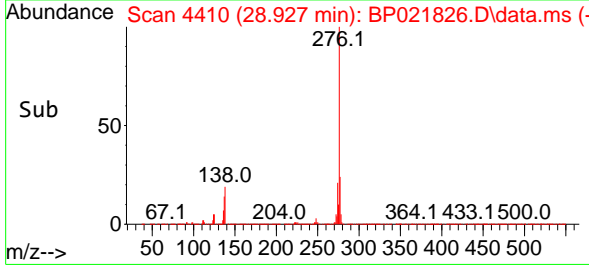
Reviewed By :Jagrut Upadhyay 09/05/2024
 Supervised By :mohammad ahmed 09/07/2024

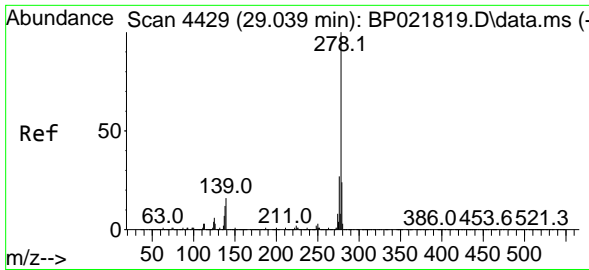


#94
 Indeno(1,2,3-cd)pyrene
 Concen: 34.435 ng/u1 m
 RT: 28.927 min Scan# 4410
 Delta R.T. -0.035 min
 Lab File: BP021826.D
 Acq: 04 Sep 2024 21:23



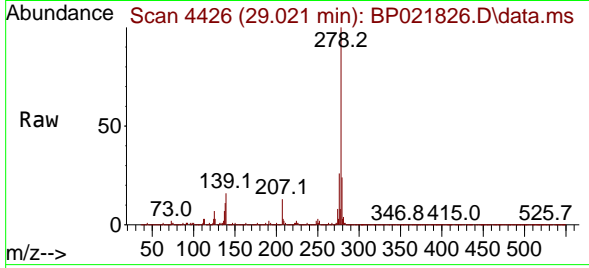
Tgt Ion:276 Resp: 5370232
 Ion Ratio Lower Upper
 276 100
 138 18.7 14.9 22.3
 277 24.2 19.0 28.6





#95
 Dibenzo(a,h)anthracene
 Concen: 34.638 ng/ul m
 RT: 29.021 min Scan# 4426
 Delta R.T. -0.018 min
 Lab File: BP021826.D
 Acq: 04 Sep 2024 21:23

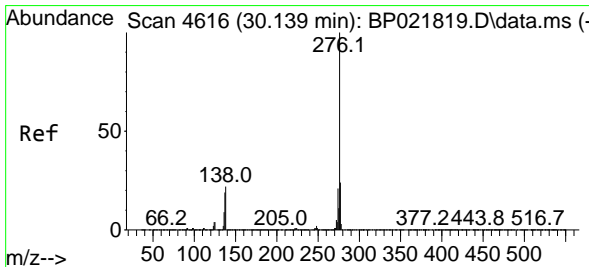
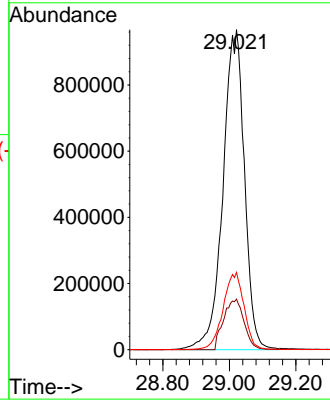
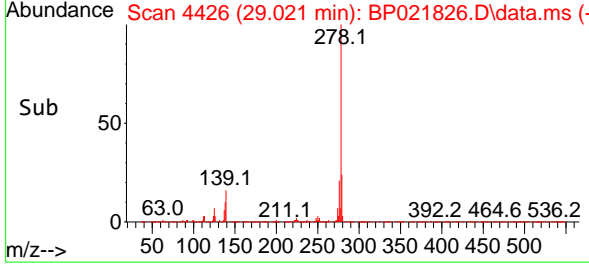
Instrument :
 BNA_P
 ClientSampleId :
 YE3E3MSD



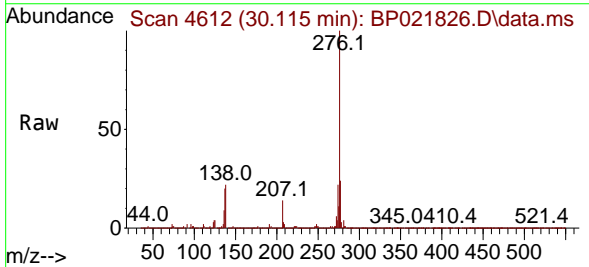
Tgt Ion: 278 Resp: 434076
 Ion Ratio Lower Upper
 278 100
 139 15.8 12.7 19.1
 279 24.1 18.9 28.3

Manual Integrations
APPROVED

Reviewed By :Jagrut Upadhyay 09/05/2024
 Supervised By :mohammad ahmed 09/07/2024



#96
 Benzo(g,h,i)perylene
 Concen: 35.175 ng/ul m
 RT: 30.115 min Scan# 4612
 Delta R.T. -0.024 min
 Lab File: BP021826.D
 Acq: 04 Sep 2024 21:23



Tgt Ion: 276 Resp: 4238398
 Ion Ratio Lower Upper
 276 100
 138 21.7 17.3 25.9
 277 23.6 19.4 29.0

