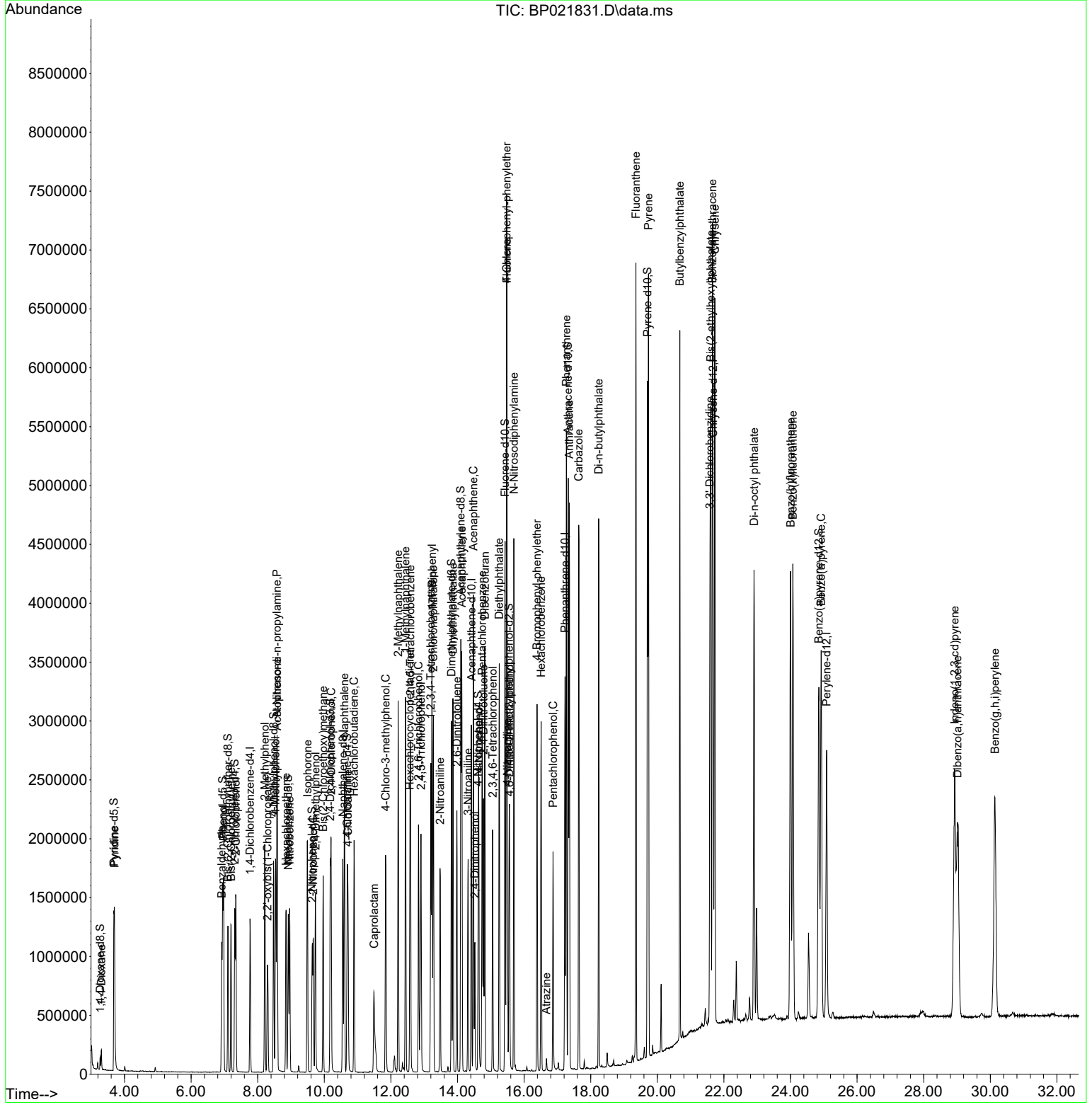


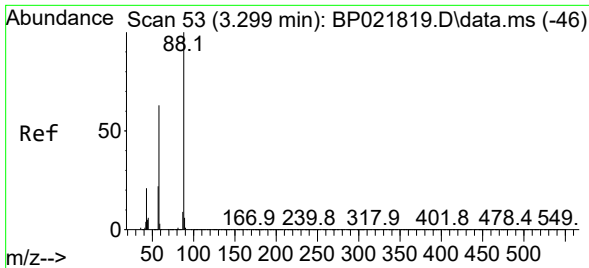
Data Path : Z:\svoasrv\HPCHEM1\BNA\_P\Data\BP090424\  
 Data File : BP021831.D  
 Acq On : 05 Sep 2024 00:56  
 Operator : RC/JU  
 Sample : PB163092BS  
 Misc :  
 ALS Vial : 18 Sample Multiplier: 1

**Instrument :**  
 BNA\_P  
**ClientSampleId :**  
 SLCS092

Quant Time: Sep 05 06:13:38 2024  
 Quant Method : Z:\svoasrv\HPCHEM1\BNA\_P\Methods\SFAM-EPA-BP082324.MA.M  
 Quant Title : SVOA CALIBRATION  
 QLast Update : Thu Sep 05 05:03:57 2024  
 Response via : Initial Calibration

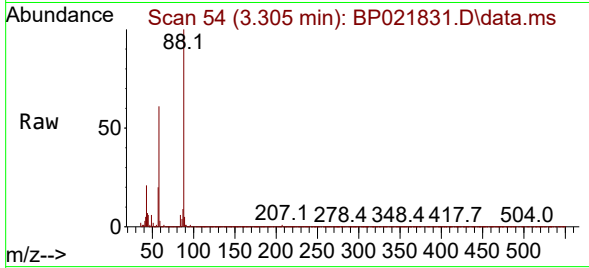
**Manual Integrations**  
**APPROVED**  
 Reviewed By :Jagrut Upadhyay 09/05/2024  
 Supervised By :mohammad ahmed 09/07/2024





#2  
 1,4-Dioxane  
 Concen: 9.249 ng/uL  
 RT: 3.305 min Scan# 54  
 Delta R.T. 0.006 min  
 Lab File: BP021831.D  
 Acq: 05 Sep 2024 00:56

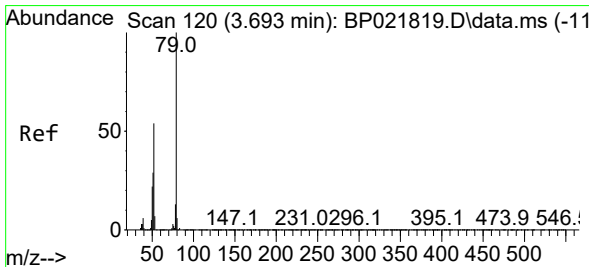
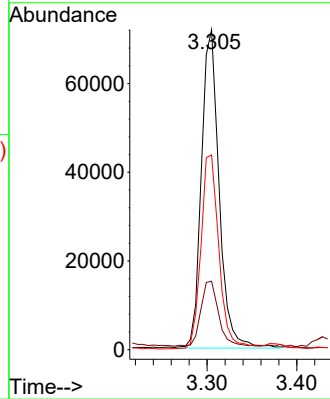
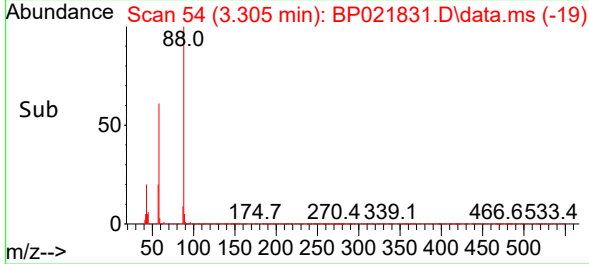
Instrument :  
 BNA\_P  
 ClientSampleId :  
 SLCS092



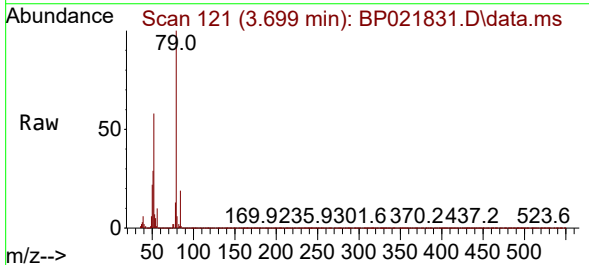
Tgt Ion: 88 Resp: 9839  
 Ion Ratio Lower Upper  
 88 100  
 43 21.4 15.4 23.2  
 58 60.8 48.2 72.2

Manual Integrations  
 APPROVED

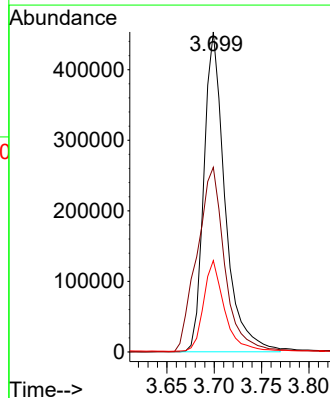
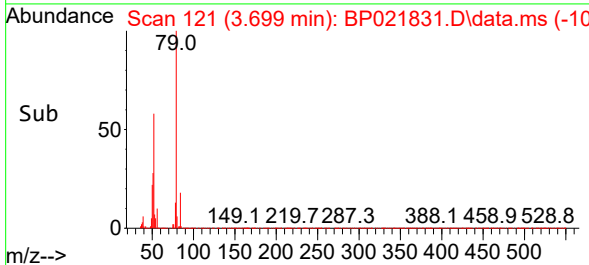
Reviewed By :Jagrut Upadhyay 09/05/2024  
 Supervised By :mohammad ahmed 09/07/2024

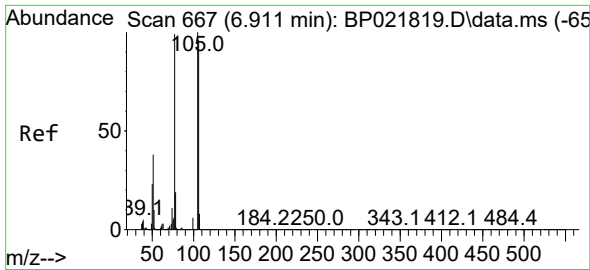


#5  
 Pyridine  
 Concen: 24.308 ng/uL  
 RT: 3.699 min Scan# 121  
 Delta R.T. 0.006 min  
 Lab File: BP021831.D  
 Acq: 05 Sep 2024 00:56



Tgt Ion: 79 Resp: 703235  
 Ion Ratio Lower Upper  
 79 100  
 52 57.7 46.8 70.2  
 51 28.5 21.7 32.5





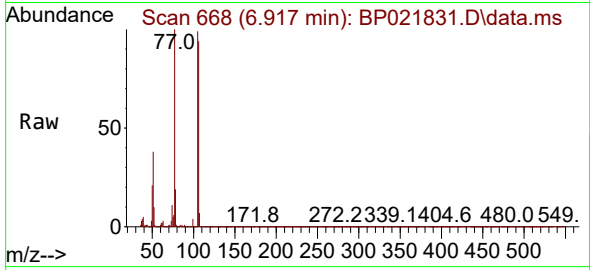
#6  
Benzaldehyde  
Concen: 21.189 ng/u1  
RT: 6.917 min Scan# 667  
Delta R.T. 0.006 min  
Lab File: BP021831.D  
Acq: 05 Sep 2024 00:56

Instrument :

BNA\_P

ClientSampleId :

SLCS092



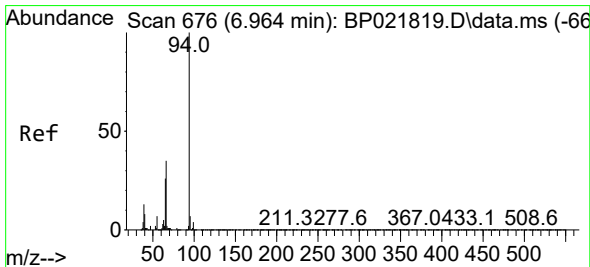
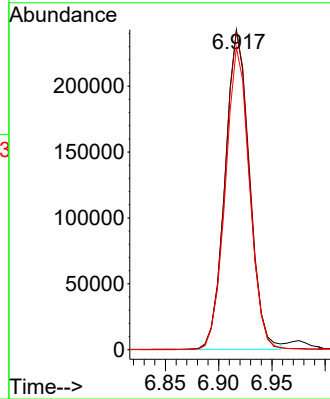
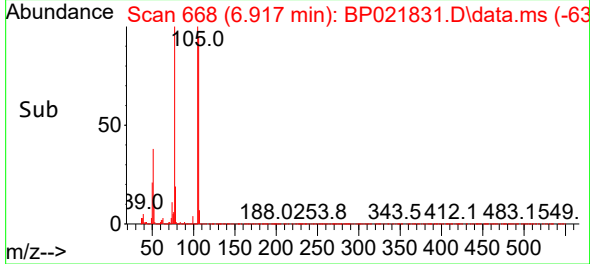
Tgt Ion: 77 Resp: 38434  
Ion Ratio Lower Upper  
77 100  
105 99.5 80.2 120.4  
106 94.4 76.2 114.4

Manual Integrations

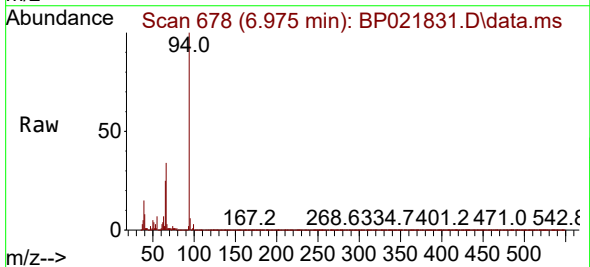
APPROVED

Reviewed By :Jagrut Upadhyay 09/05/2024

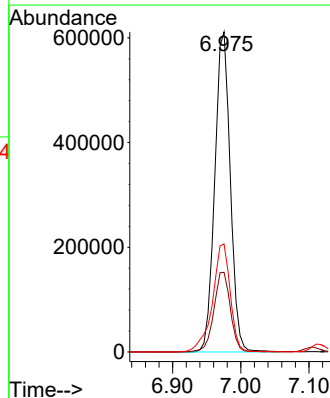
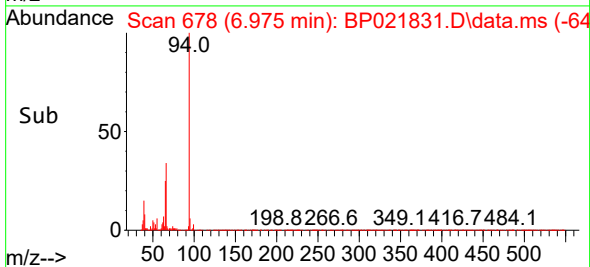
Supervised By :mohammad ahmed 09/07/2024

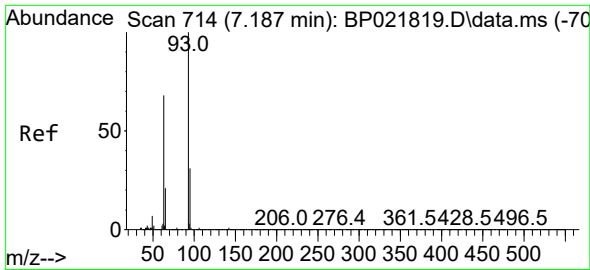


#8  
Phenol  
Concen: 26.208 ng/u1  
RT: 6.975 min Scan# 678  
Delta R.T. 0.012 min  
Lab File: BP021831.D  
Acq: 05 Sep 2024 00:56



Tgt Ion: 94 Resp: 969129  
Ion Ratio Lower Upper  
94 100  
65 24.9 20.0 30.0  
66 33.8 27.0 40.4





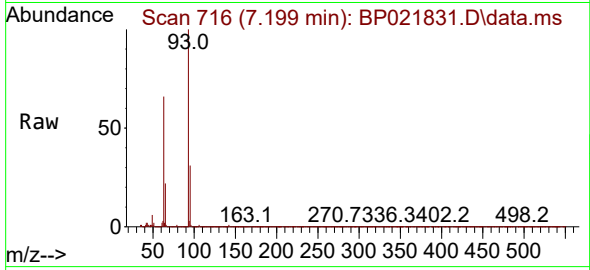
#10  
 Bis(2-Chloroethyl)ether  
 Concen: 25.903 ng/ul  
 RT: 7.199 min Scan# 716  
 Delta R.T. 0.012 min  
 Lab File: BP021831.D  
 Acq: 05 Sep 2024 00:56

Instrument :

BNA\_P

Client SampleId :

SLCS092

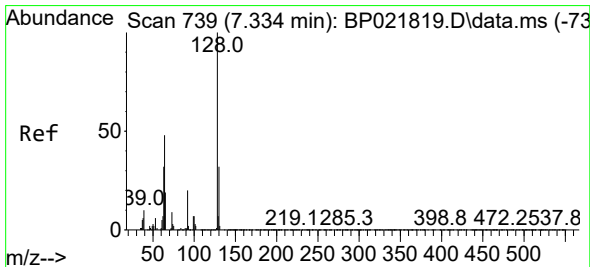
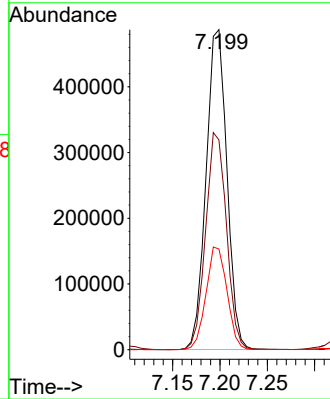
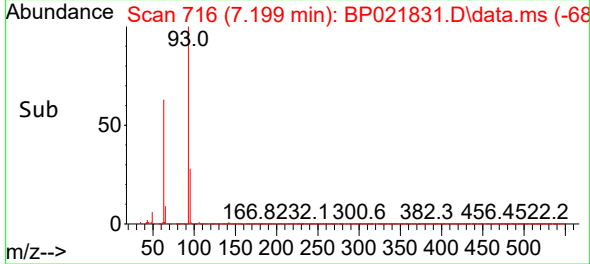


Tgt Ion: 93 Resp: 744550  
 Ion Ratio Lower Upper  
 93 100  
 63 65.5 54.9 82.3  
 95 31.5 26.0 39.0

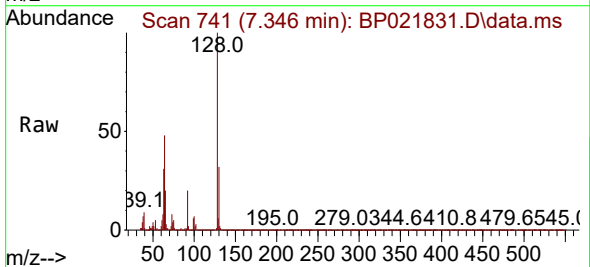
Manual Integrations

APPROVED

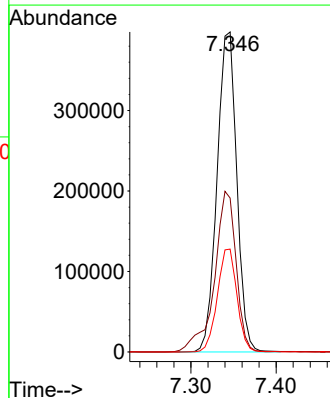
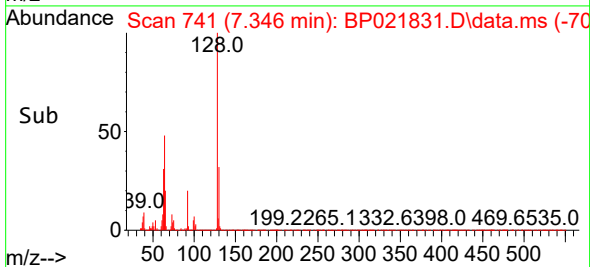
Reviewed By :Jagrut Upadhyay 09/05/2024  
 Supervised By :mohammad ahmed 09/07/2024

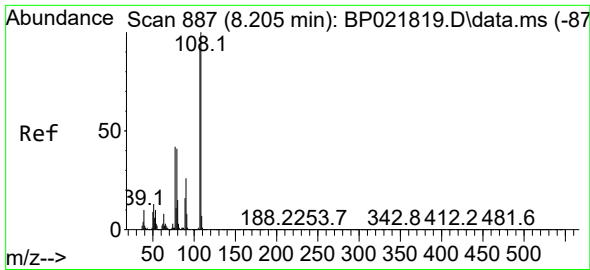


#12  
 2-Chlorophenol  
 Concen: 26.576 ng/ul  
 RT: 7.346 min Scan# 741  
 Delta R.T. 0.012 min  
 Lab File: BP021831.D  
 Acq: 05 Sep 2024 00:56



Tgt Ion:128 Resp: 638650  
 Ion Ratio Lower Upper  
 128 100  
 64 48.1 39.5 59.3  
 130 32.2 25.9 38.9





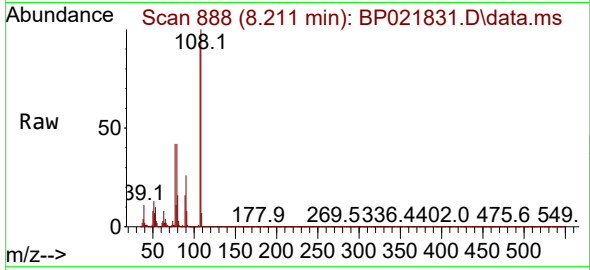
#13  
 2-Methylphenol  
 Concen: 25.603 ng/uI  
 RT: 8.211 min Scan# 887  
 Delta R.T. 0.006 min  
 Lab File: BP021831.D  
 Acq: 05 Sep 2024 00:56

Instrument :

BNA\_P

ClientSampleId :

SLCS092

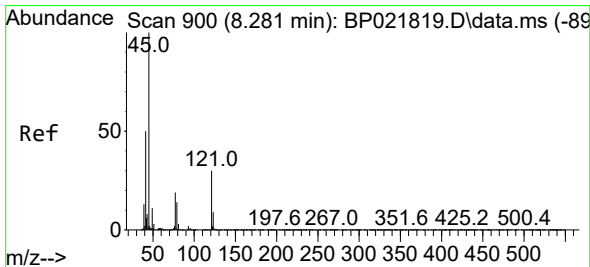
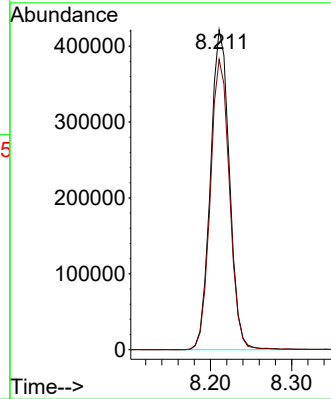
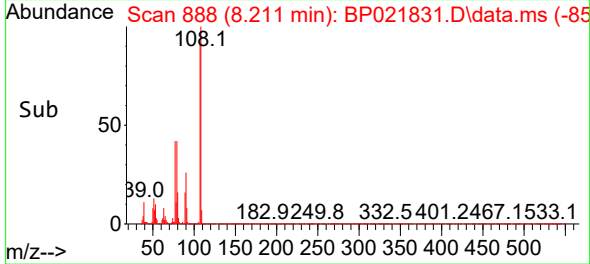


Tgt Ion:108 Resp: 682998  
 Ion Ratio Lower Upper  
 108 100  
 107 90.7 73.2 109.8

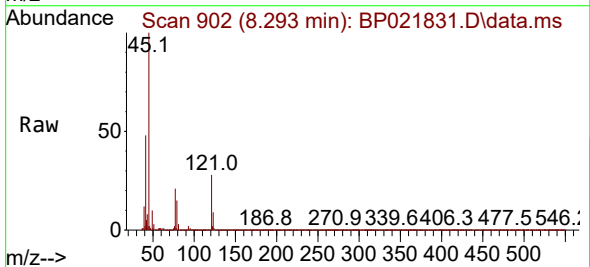
Manual Integrations

APPROVED

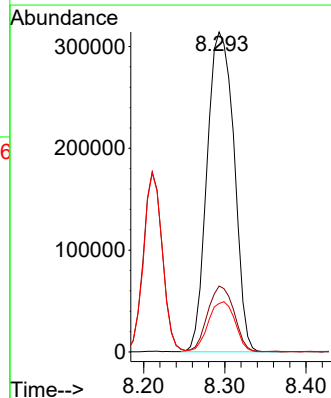
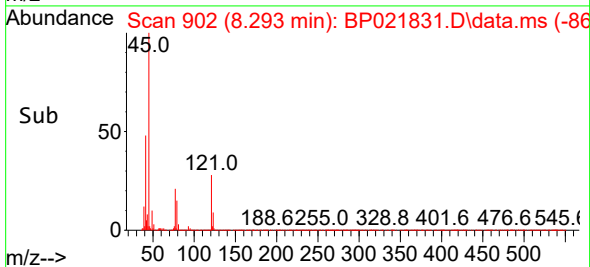
Reviewed By :Jagrut Upadhyay 09/05/2024  
 Supervised By :mohammad ahmed 09/07/2024

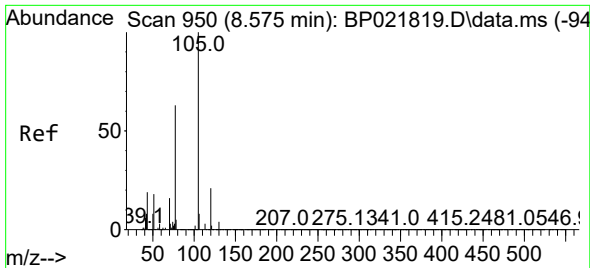


#14  
 2,2'-oxybis(1-Chloropropane)  
 Concen: 26.095 ng/uI  
 RT: 8.293 min Scan# 902  
 Delta R.T. 0.012 min  
 Lab File: BP021831.D  
 Acq: 05 Sep 2024 00:56



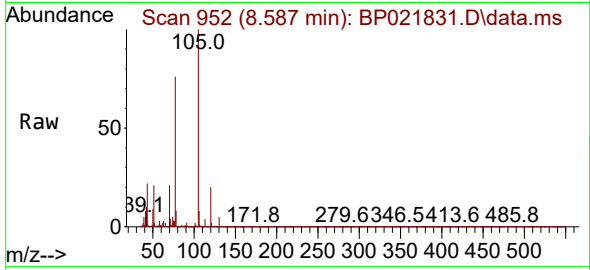
Tgt Ion: 45 Resp: 723969  
 Ion Ratio Lower Upper  
 45 100  
 77 20.6 17.0 25.4  
 79 15.1 12.0 18.0





#16  
 Acetophenone  
 Concen: 25.900 ng/uI  
 RT: 8.587 min Scan# 911  
 Delta R.T. 0.012 min  
 Lab File: BP021831.D  
 Acq: 05 Sep 2024 00:56

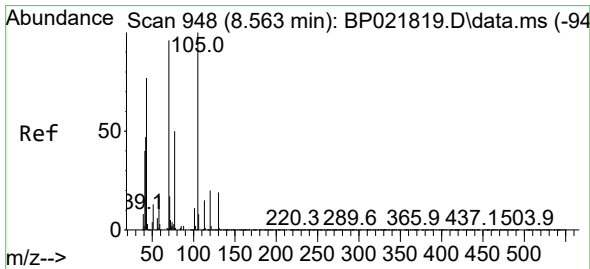
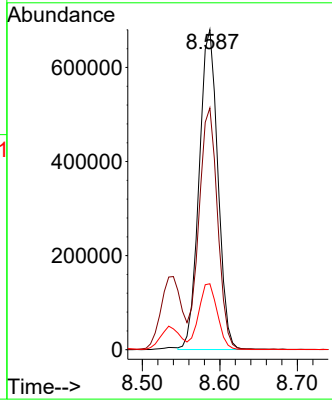
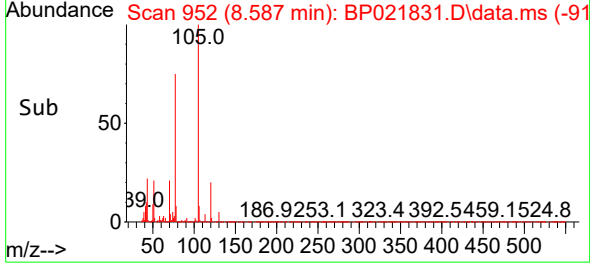
Instrument : BNA\_P  
 ClientSampleId : SLCS092



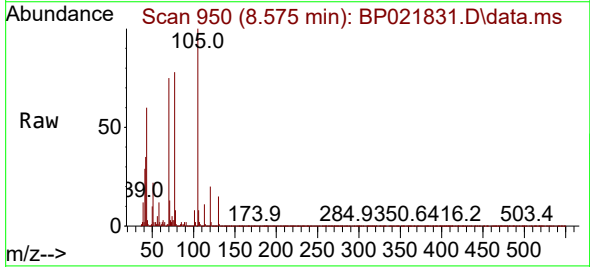
Tgt Ion: 105 Resp: 113788  
 Ion Ratio Lower Upper  
 105 100  
 77 75.5 59.4 89.2  
 51 20.6 16.4 24.6

Manual Integrations  
 APPROVED

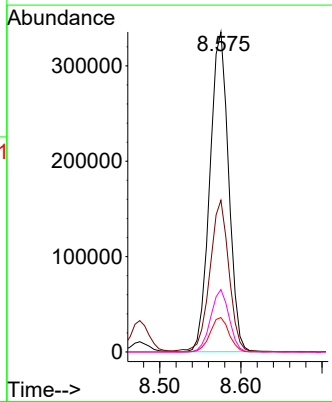
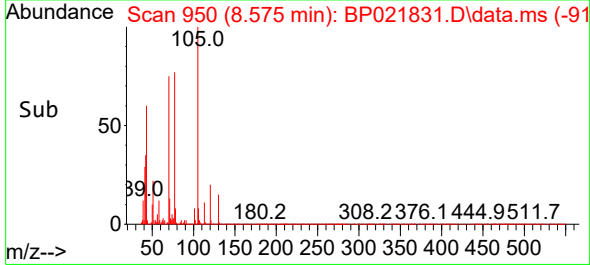
Reviewed By :Jagrut Upadhyay 09/05/2024  
 Supervised By :mohammad ahmed 09/07/2024

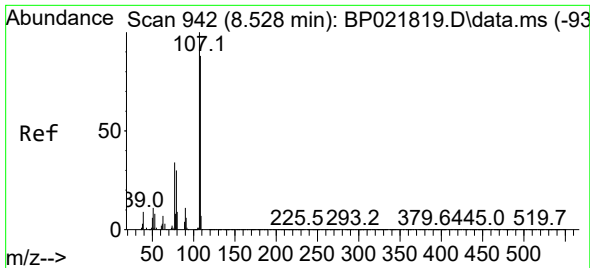


#17  
 N-Nitroso-di-n-propylamine  
 Concen: 25.944 ng/uI  
 RT: 8.575 min Scan# 950  
 Delta R.T. 0.012 min  
 Lab File: BP021831.D  
 Acq: 05 Sep 2024 00:56



Tgt Ion: 70 Resp: 537898  
 Ion Ratio Lower Upper  
 70 100  
 42 47.4 35.8 53.6  
 101 10.8 8.2 12.4  
 130 19.5 15.1 22.7





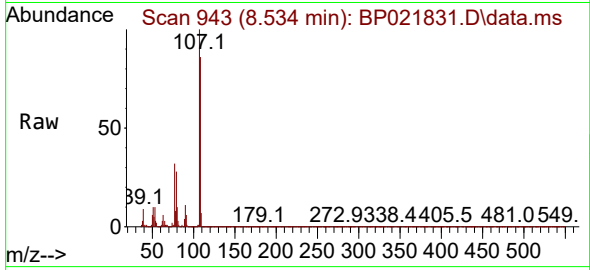
#18  
 4-Methylphenol  
 Concen: 26.155 ng/u1  
 RT: 8.534 min Scan# 942  
 Delta R.T. 0.006 min  
 Lab File: BP021831.D  
 Acq: 05 Sep 2024 00:56

Instrument :

BNA\_P

ClientSampleId :

SLCS092

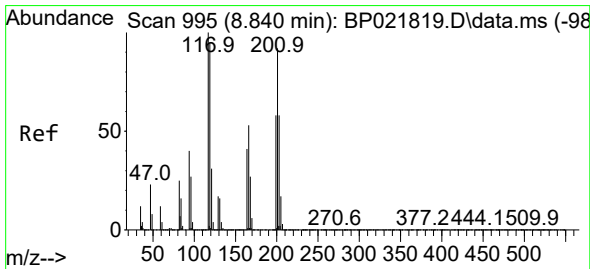
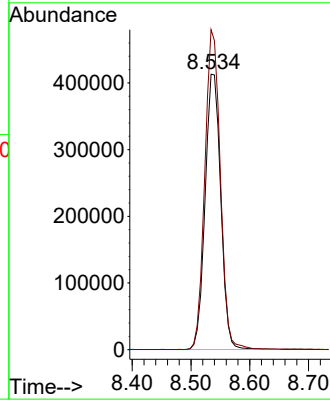
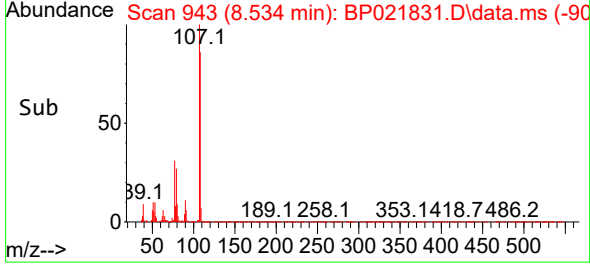


Tgt Ion:108 Resp: 76385  
 Ion Ratio Lower Upper  
 108 100  
 107 116.2 90.1 135.1

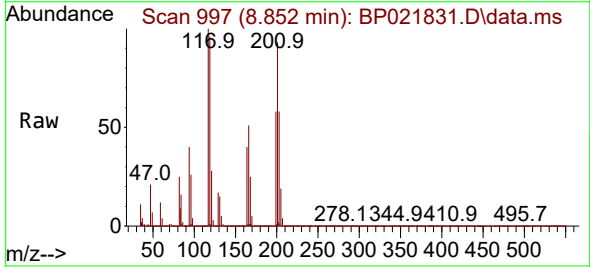
Manual Integrations

APPROVED

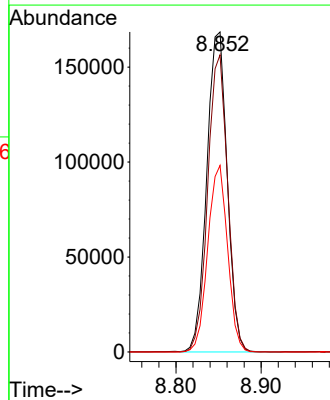
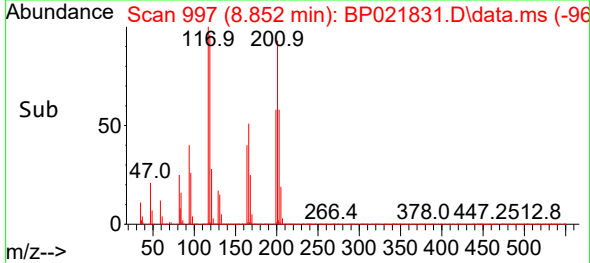
Reviewed By :Jagrut Upadhyay 09/05/2024  
 Supervised By :mohammad ahmed 09/07/2024

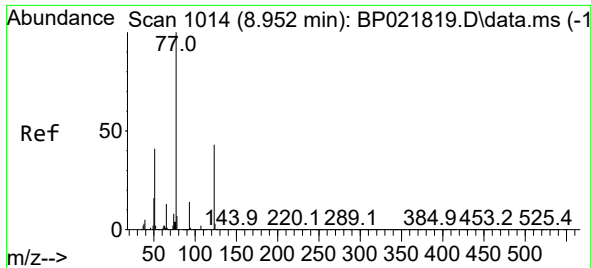


#19  
 Hexachloroethane  
 Concen: 26.075 ng/u1  
 RT: 8.852 min Scan# 997  
 Delta R.T. 0.012 min  
 Lab File: BP021831.D  
 Acq: 05 Sep 2024 00:56



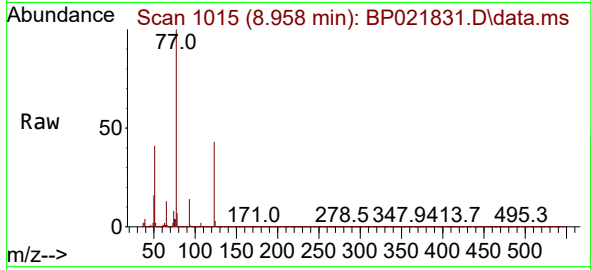
Tgt Ion:117 Resp: 280182  
 Ion Ratio Lower Upper  
 117 100  
 201 92.9 75.3 112.9  
 199 58.3 47.4 71.0





#22  
 Nitrobenzene  
 Concen: 26.101 ng/uI  
 RT: 8.958 min Scan# 1106  
 Delta R.T. 0.006 min  
 Lab File: BP021831.D  
 Acq: 05 Sep 2024 00:56

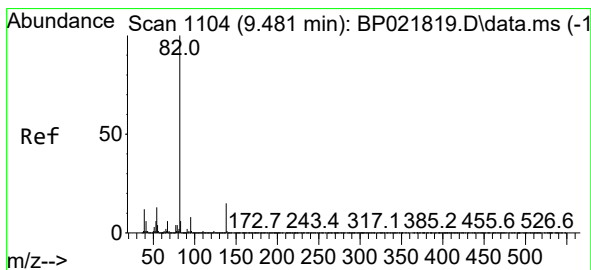
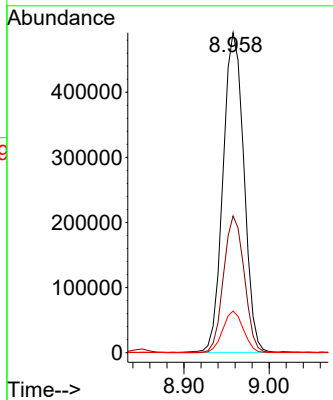
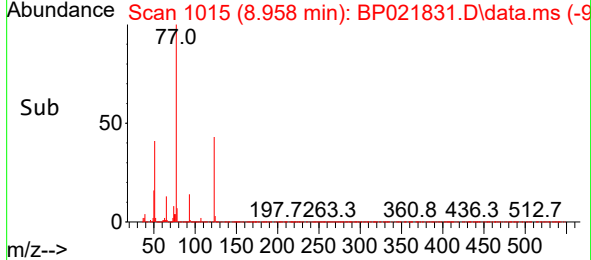
Instrument : BNA\_P  
 Client SampleID : SLCS092



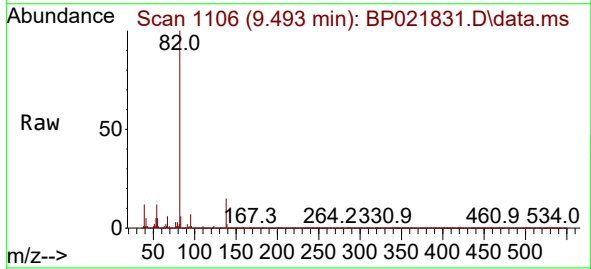
Tgt Ion: 77 Resp: 837294  
 Ion Ratio Lower Upper  
 77 100  
 123 42.8 33.2 49.8  
 65 13.0 9.8 14.6

Manual Integrations  
 APPROVED

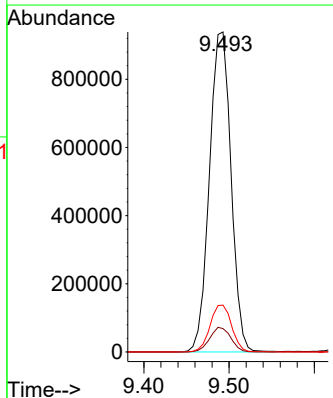
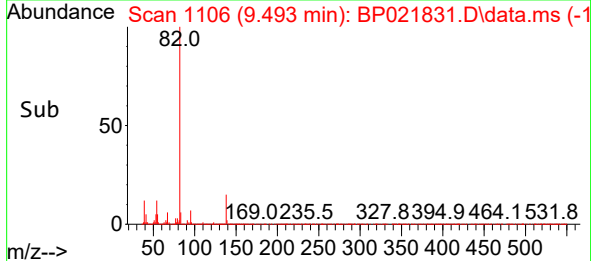
Reviewed By :Jagrut Upadhyay 09/05/2024  
 Supervised By :mohammad ahmed 09/07/2024



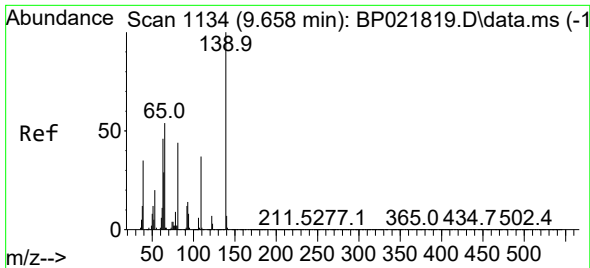
#23  
 Isophorone  
 Concen: 25.666 ng/uI  
 RT: 9.493 min Scan# 1106  
 Delta R.T. 0.012 min  
 Lab File: BP021831.D  
 Acq: 05 Sep 2024 00:56



Tgt Ion: 82 Resp: 1652158  
 Ion Ratio Lower Upper  
 82 100  
 95 7.3 5.8 8.8  
 138 14.7 11.8 17.8







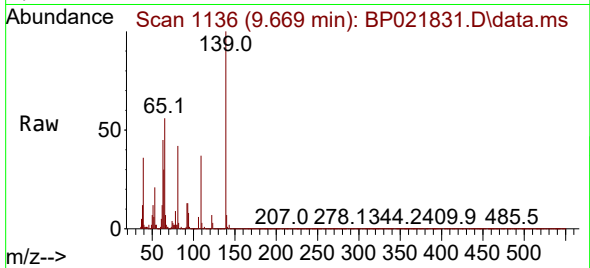
#25  
 2-Nitrophenol  
 Concen: 27.480 ng/u1  
 RT: 9.669 min Scan# 1136  
 Delta R.T. 0.012 min  
 Lab File: BP021831.D  
 Acq: 05 Sep 2024 00:56

Instrument :

BNA\_P

ClientSampleId :

SLCS092

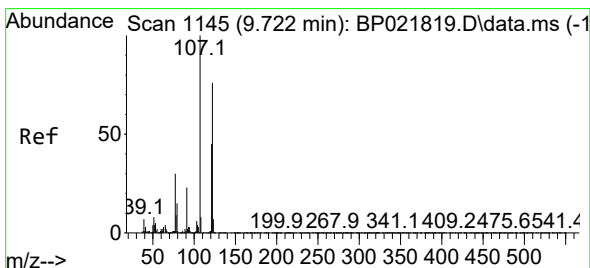
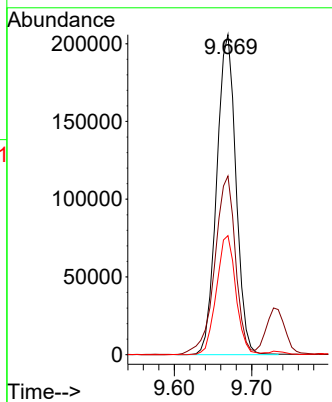
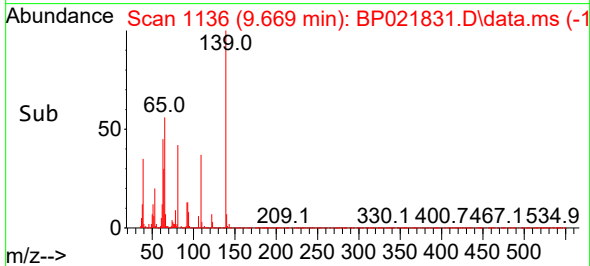


Tgt Ion:139 Resp: 355540  
 Ion Ratio Lower Upper  
 139 100  
 65 55.8 46.2 69.2  
 109 37.2 28.0 42.0

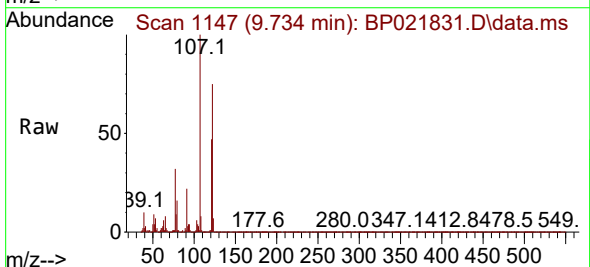
Manual Integrations

APPROVED

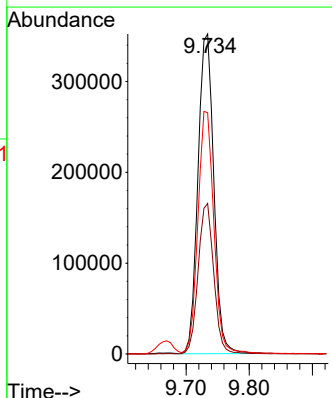
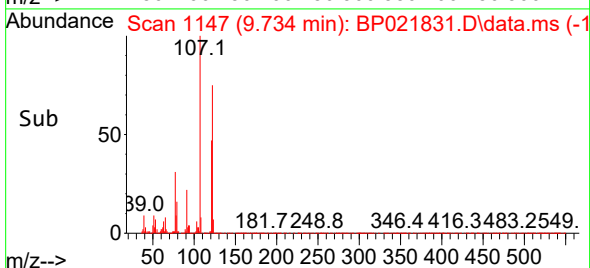
Reviewed By :Jagrut Upadhyay 09/05/2024  
 Supervised By :mohammad ahmed 09/07/2024

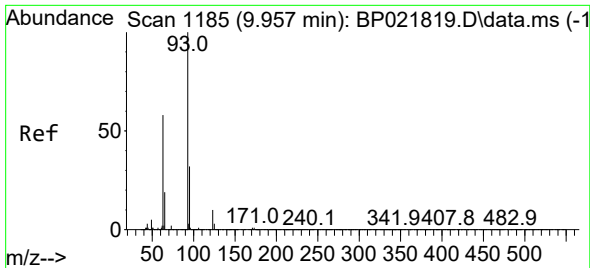


#26  
 2,4-Dimethylphenol  
 Concen: 19.409 ng/u1  
 RT: 9.734 min Scan# 1147  
 Delta R.T. 0.012 min  
 Lab File: BP021831.D  
 Acq: 05 Sep 2024 00:56



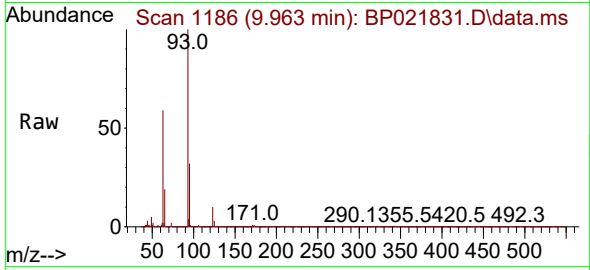
Tgt Ion:107 Resp: 616321  
 Ion Ratio Lower Upper  
 107 100  
 121 47.1 36.9 55.3  
 122 75.4 61.0 91.4





#27  
 Bis(2-Chloroethoxy)methane  
 Concen: 25.685 ng/ul  
 RT: 9.963 min Scan# 1186  
 Delta R.T. 0.006 min  
 Lab File: BP021831.D  
 Acq: 05 Sep 2024 00:56

Instrument : BNA\_P  
 ClientSampleId : SLCS092

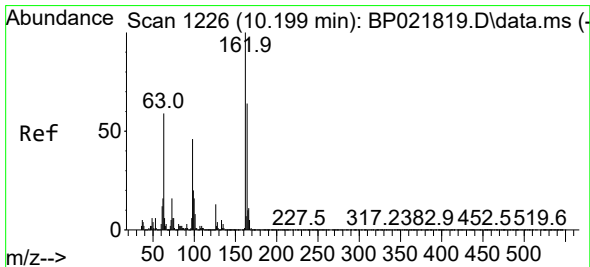
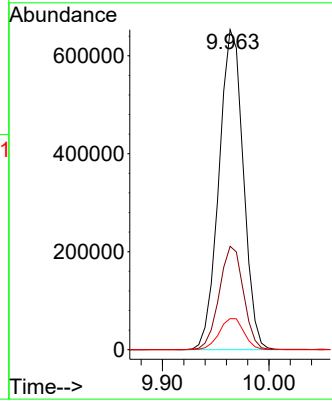
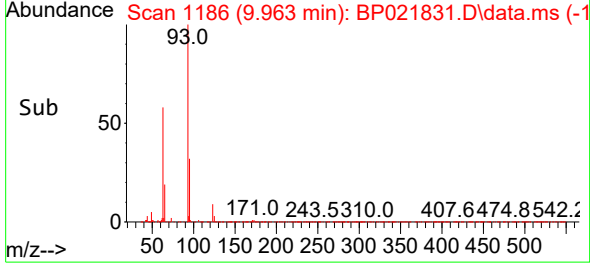


Tgt Ion: 93 Resp: 103690

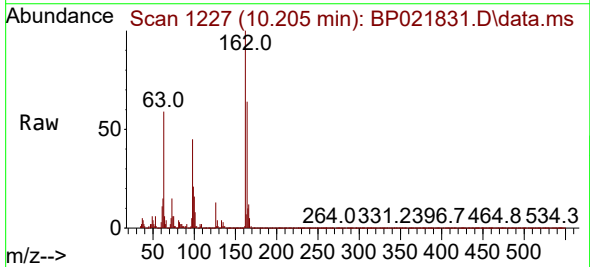
Ion	Ratio	Lower	Upper
93	100		
95	32.3	25.3	37.9
123	9.7	7.4	11.0

Manual Integrations  
 APPROVED

Reviewed By :Jagrut Upadhyay 09/05/2024  
 Supervised By :mohammad ahmed 09/07/2024

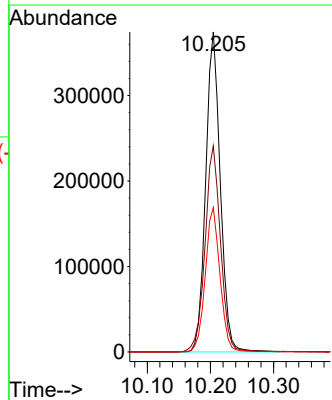
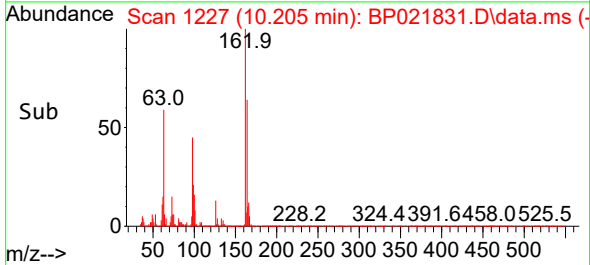


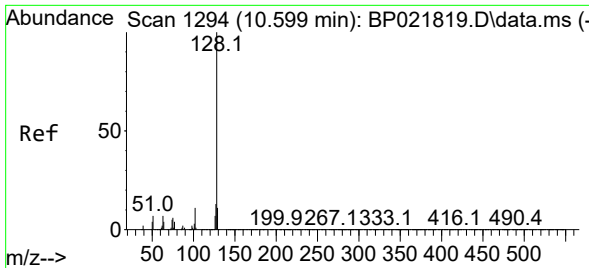
#29  
 2,4-Dichlorophenol  
 Concen: 26.046 ng/ul  
 RT: 10.205 min Scan# 1227  
 Delta R.T. 0.006 min  
 Lab File: BP021831.D  
 Acq: 05 Sep 2024 00:56



Tgt Ion:162 Resp: 602285

Ion	Ratio	Lower	Upper
162	100		
164	64.4	52.3	78.5
98	45.1	35.3	52.9





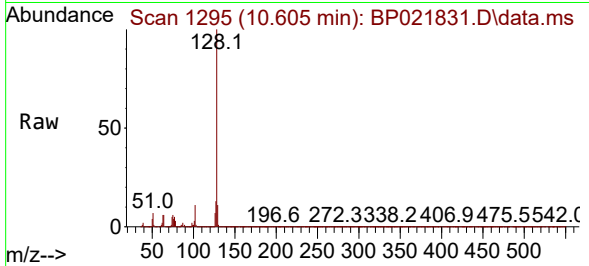
#30  
 Naphthalene  
 Concen: 25.375 ng/uI  
 RT: 10.605 min Scan# 1295  
 Delta R.T. 0.006 min  
 Lab File: BP021831.D  
 Acq: 05 Sep 2024 00:56

Instrument :

BNA\_P

ClientSampleId :

SLCS092

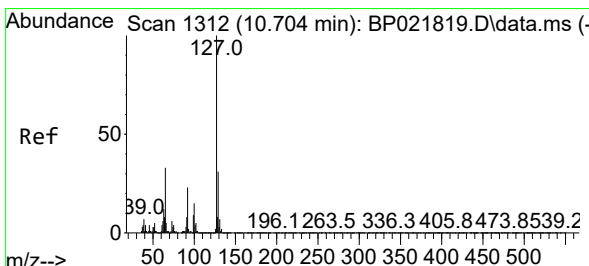
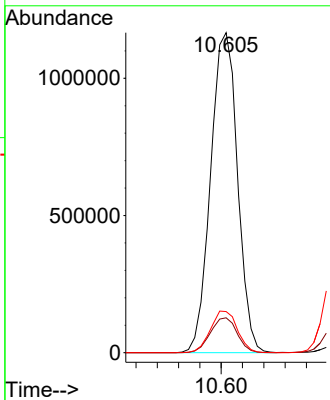
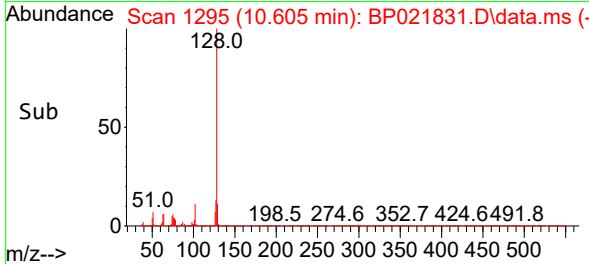


Tgt Ion:128 Resp: 2044940  
 Ion Ratio Lower Upper  
 128 100  
 129 10.9 8.6 13.0  
 127 12.8 10.5 15.7

Manual Integrations

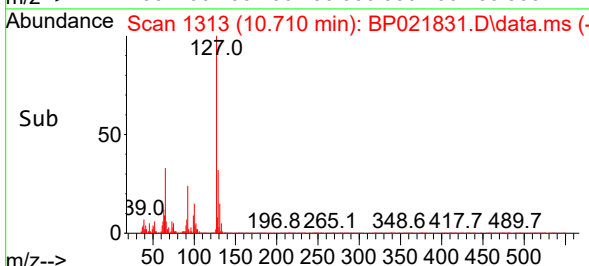
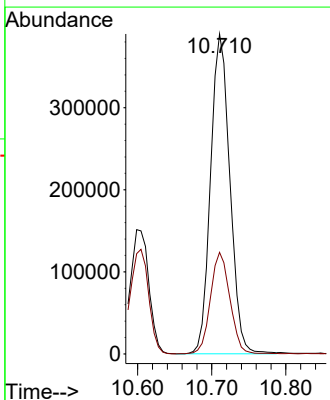
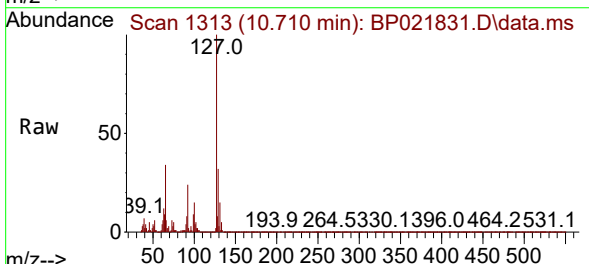
APPROVED

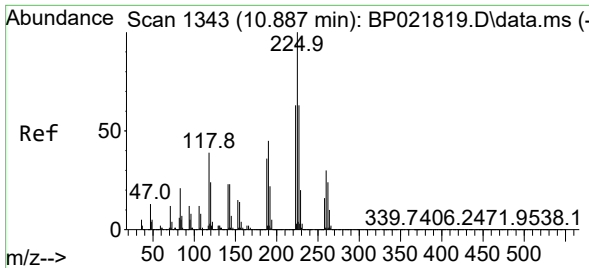
Reviewed By :Jagrut Upadhyay 09/05/2024  
 Supervised By :mohammad ahmed 09/07/2024



#32  
 4-Chloroaniline  
 Concen: 20.884 ng/uI  
 RT: 10.710 min Scan# 1313  
 Delta R.T. 0.006 min  
 Lab File: BP021831.D  
 Acq: 05 Sep 2024 00:56

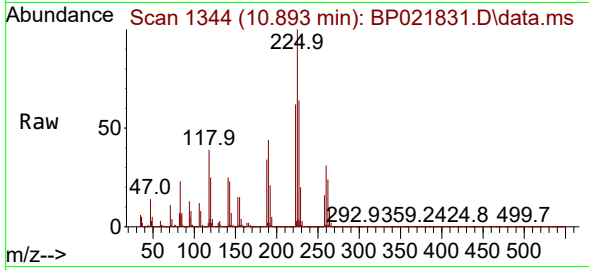
Tgt Ion:127 Resp: 705862  
 Ion Ratio Lower Upper  
 127 100  
 129 31.7 25.8 38.8





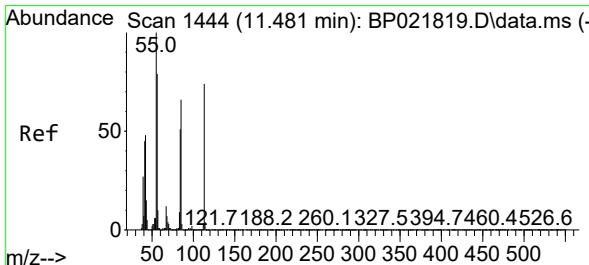
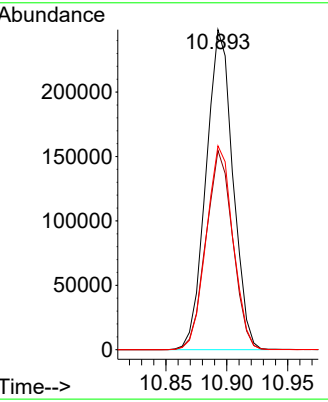
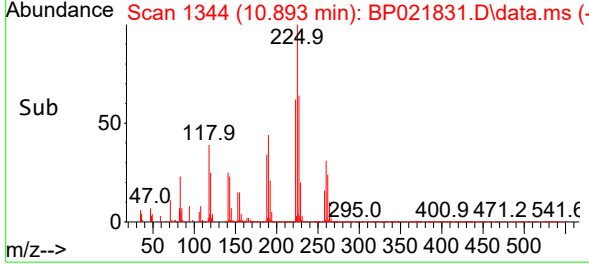
#33  
 Hexachlorobutadiene  
 Concen: 24.604 ng/uI  
 RT: 10.893 min Scan# 11  
 Delta R.T. 0.006 min  
 Lab File: BP021831.D  
 Acq: 05 Sep 2024 00:56

Instrument : BNA\_P  
 ClientSampleId : SLCS092

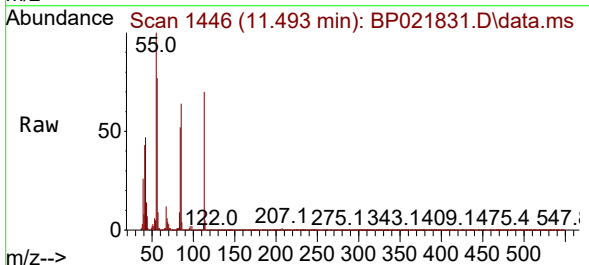


Tgt Ion:225 Resp: 38173  
 Ion Ratio Lower Upper  
 225 100  
 223 62.3 51.5 77.3  
 227 63.7 51.3 76.9

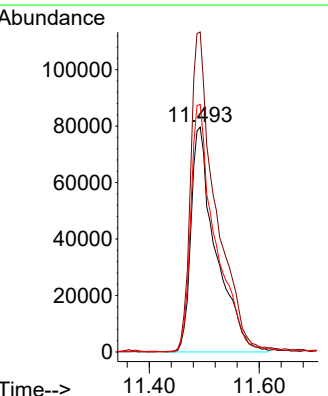
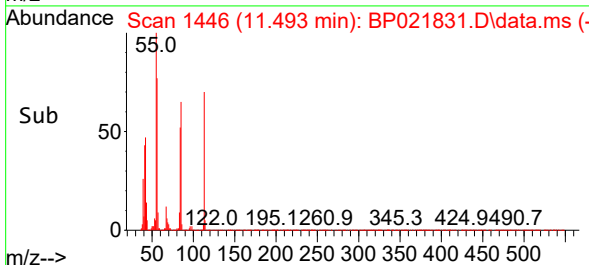
Manual Integrations  
**APPROVED**  
 Reviewed By :Jagrut Upadhyay 09/05/2024  
 Supervised By :mohammad ahmed 09/07/2024

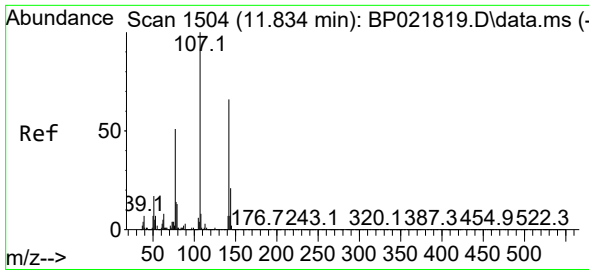


#34  
 Caprolactam  
 Concen: 25.380 ng/uI  
 RT: 11.493 min Scan# 1446  
 Delta R.T. 0.012 min  
 Lab File: BP021831.D  
 Acq: 05 Sep 2024 00:56



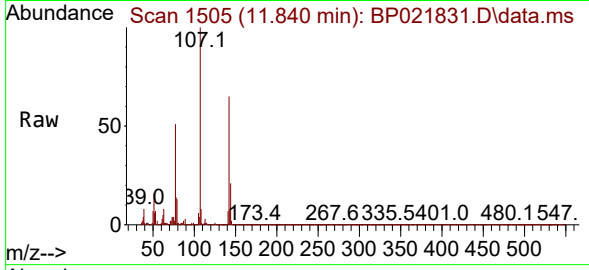
Tgt Ion:113 Resp: 248175  
 Ion Ratio Lower Upper  
 113 100  
 55 142.4 110.2 165.2  
 56 110.1 84.9 127.3





#35  
 4-Chloro-3-methylphenol  
 Concen: 27.373 ng/ul  
 RT: 11.840 min Scan# 11  
 Delta R.T. 0.006 min  
 Lab File: BP021831.D  
 Acq: 05 Sep 2024 00:56

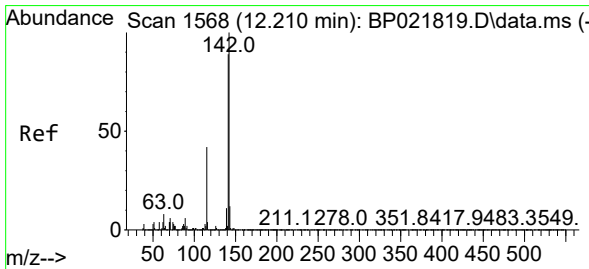
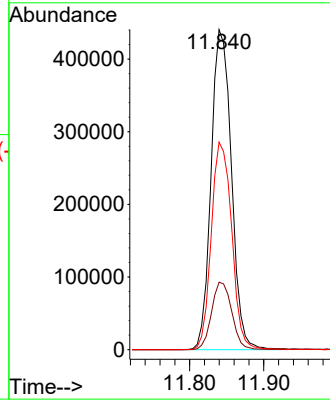
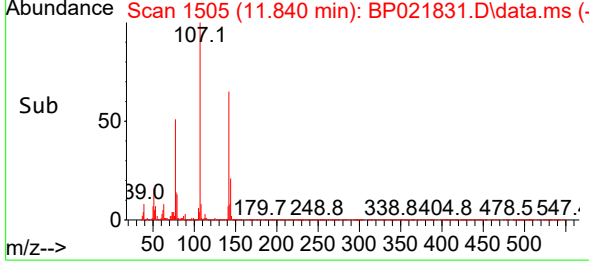
Instrument : BNA\_P  
 ClientSampleId : SLCS092



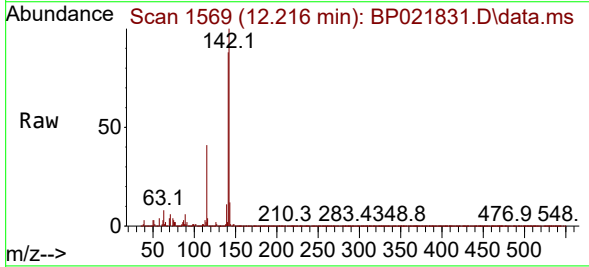
Tgt Ion:107 Resp: 83775  
 Ion Ratio Lower Upper  
 107 100  
 144 21.1 17.5 26.3  
 142 64.9 53.3 79.9

Manual Integrations  
**APPROVED**

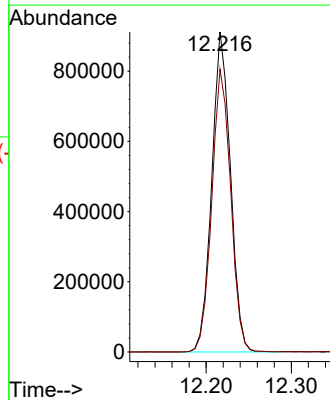
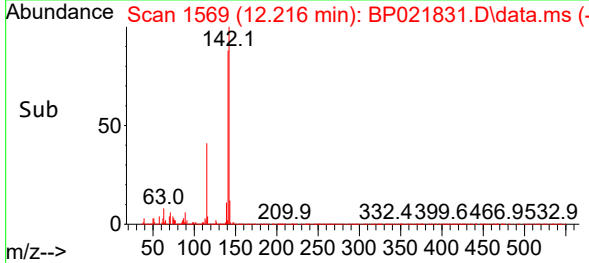
Reviewed By :Jagrut Upadhyay 09/05/2024  
 Supervised By :mohammad ahmed 09/07/2024

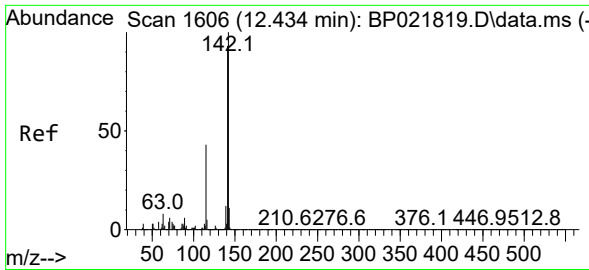


#36  
 2-Methylnaphthalene  
 Concen: 25.448 ng/ul  
 RT: 12.216 min Scan# 1569  
 Delta R.T. 0.006 min  
 Lab File: BP021831.D  
 Acq: 05 Sep 2024 00:56



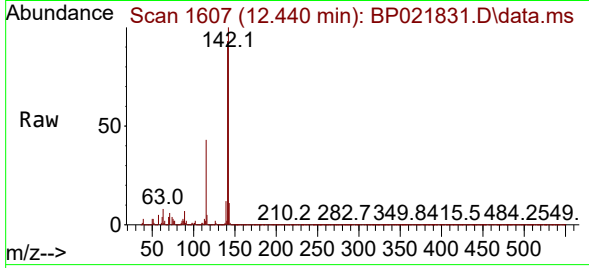
Tgt Ion:142 Resp: 1387183  
 Ion Ratio Lower Upper  
 142 100  
 141 88.3 71.1 106.7





#37  
 1-Methylnaphthalene  
 Concen: 25.653 ng/ul  
 RT: 12.440 min Scan# 1607  
 Delta R.T. 0.006 min  
 Lab File: BP021831.D  
 Acq: 05 Sep 2024 00:56

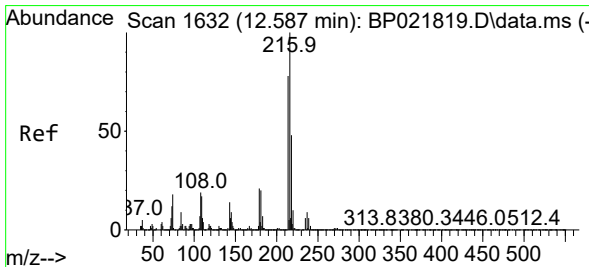
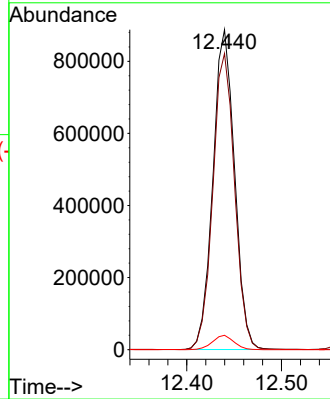
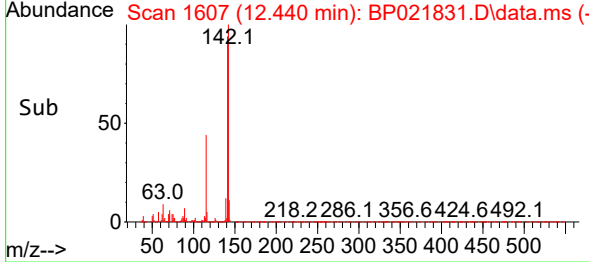
Instrument :  
 BNA\_P  
 ClientSampleId :  
 SLCS092



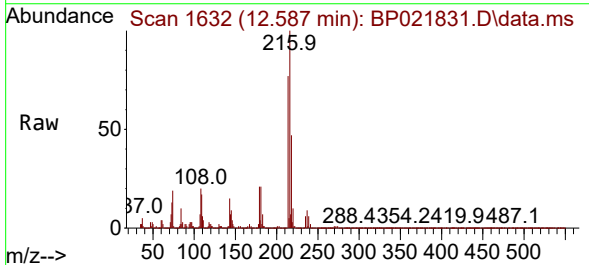
Tgt Ion:142 Resp: 140649  
 Ion Ratio Lower Upper  
 142 100  
 141 92.6 74.6 111.8  
 116 4.5 3.5 5.3

Manual Integrations  
**APPROVED**

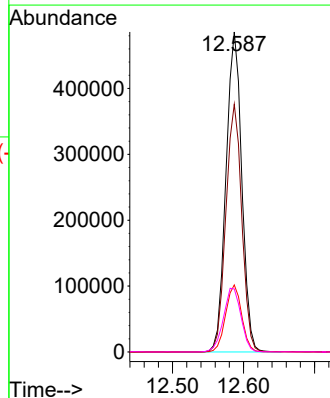
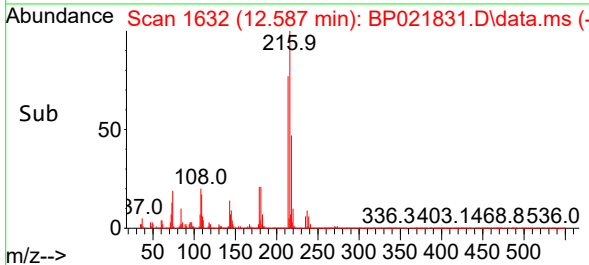
Reviewed By :Jagrut Upadhyay 09/05/2024  
 Supervised By :mohammad ahmed 09/07/2024

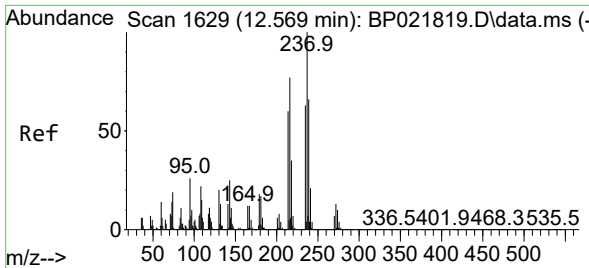


#39  
 1,2,4,5-Tetrachlorobenzene  
 Concen: 24.920 ng/ul  
 RT: 12.587 min Scan# 1632  
 Delta R.T. 0.000 min  
 Lab File: BP021831.D  
 Acq: 05 Sep 2024 00:56



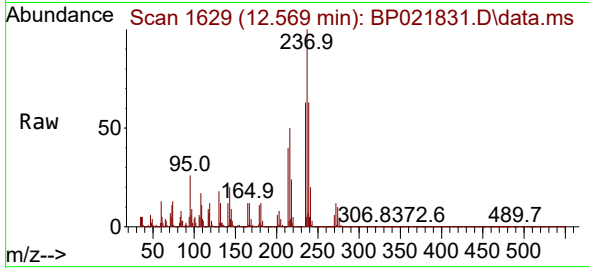
Tgt Ion:216 Resp: 747753  
 Ion Ratio Lower Upper  
 216 100  
 214 77.4 63.2 94.8  
 179 21.0 16.6 25.0  
 108 19.7 16.2 24.4





#40  
 Hexachlorocyclopentadiene  
 Concen: 19.117 ng/ul  
 RT: 12.569 min Scan# 1629  
 Delta R.T. 0.000 min  
 Lab File: BP021831.D  
 Acq: 05 Sep 2024 00:56

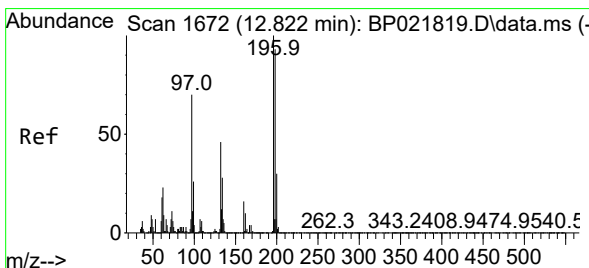
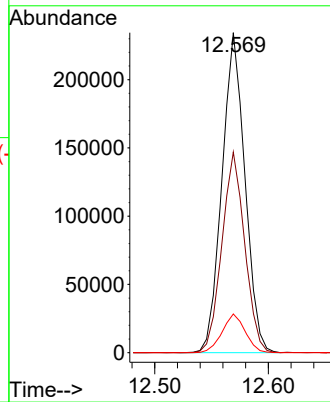
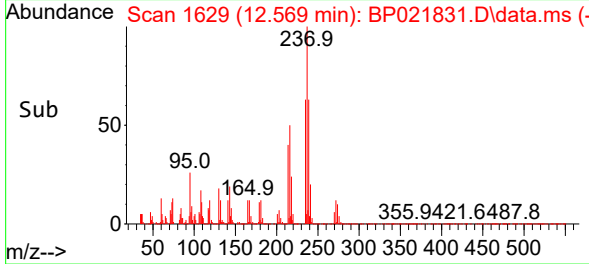
Instrument : BNA\_P  
 ClientSampleId : SLCS092



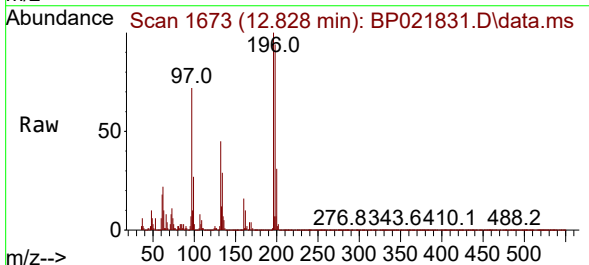
Tgt Ion: 237 Resp: 329150  
 Ion Ratio Lower Upper  
 237 100  
 235 62.7 50.7 76.1  
 272 12.1 11.0 16.6

Manual Integrations  
 APPROVED

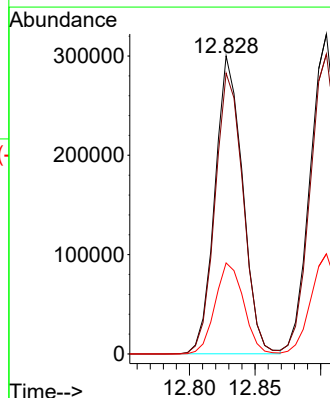
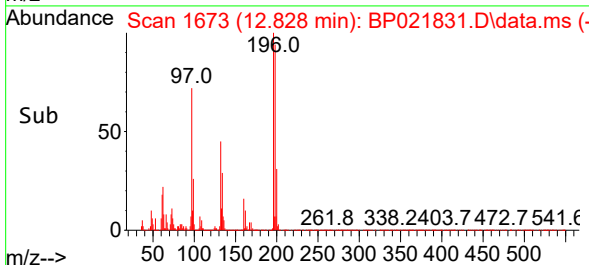
Reviewed By :Jagrut Upadhyay 09/05/2024  
 Supervised By :mohammad ahmed 09/07/2024

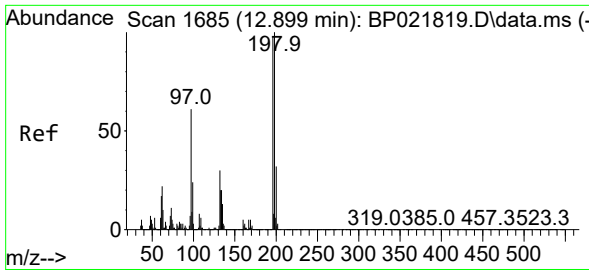


#41  
 2,4,6-Trichlorophenol  
 Concen: 22.766 ng/ul  
 RT: 12.828 min Scan# 1673  
 Delta R.T. 0.006 min  
 Lab File: BP021831.D  
 Acq: 05 Sep 2024 00:56



Tgt Ion: 196 Resp: 439836  
 Ion Ratio Lower Upper  
 196 100  
 198 94.2 76.5 114.7  
 200 30.6 25.3 37.9





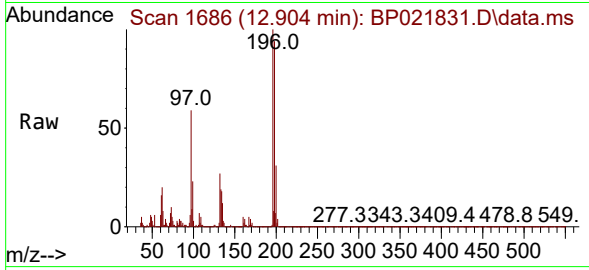
#42  
 2,4,5-Trichlorophenol  
 Concen: 24.360 ng/ul  
 RT: 12.904 min Scan# 10  
 Delta R.T. 0.006 min  
 Lab File: BP021831.D  
 Acq: 05 Sep 2024 00:56

Instrument :

BNA\_P

ClientSampleId :

SLCS092

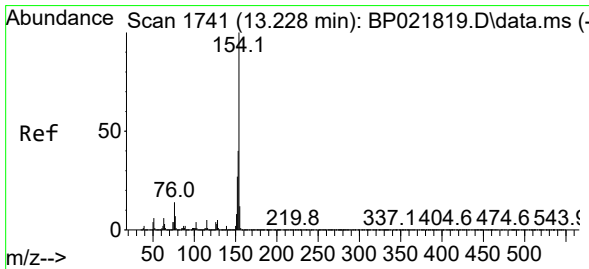
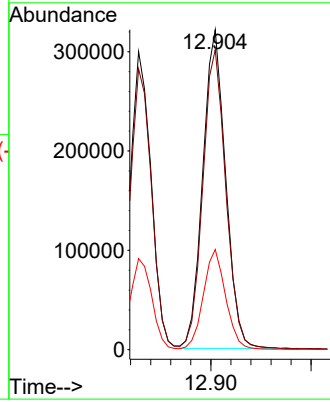
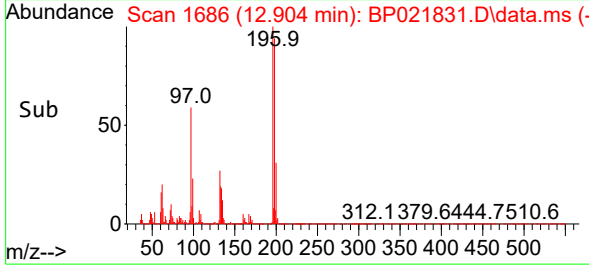


Tgt Ion:196 Resp: 50818  
 Ion Ratio Lower Upper  
 196 100  
 198 93.8 78.0 117.0  
 200 31.3 24.3 36.5

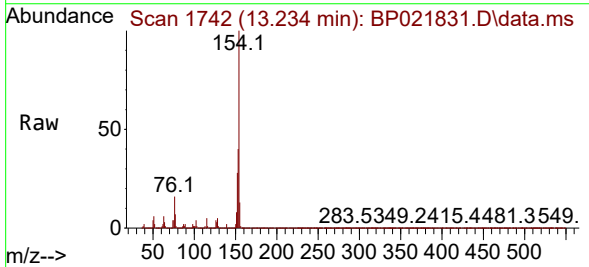
Manual Integrations

APPROVED

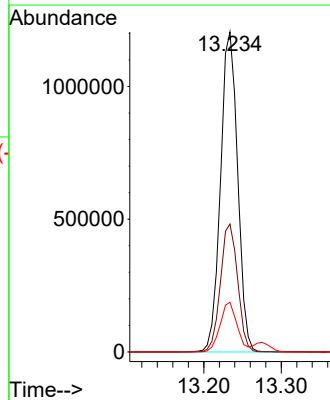
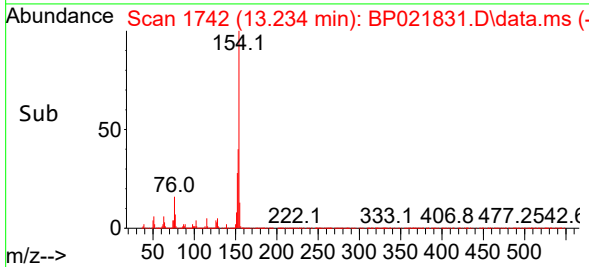
Reviewed By :Jagrut Upadhyay 09/05/2024  
 Supervised By :mohammad ahmed 09/07/2024



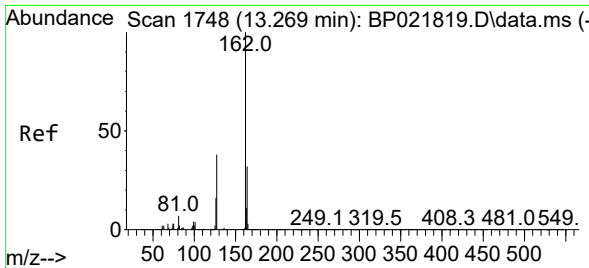
#43  
 1,1'-Biphenyl  
 Concen: 25.769 ng/ul  
 RT: 13.234 min Scan# 1742  
 Delta R.T. 0.006 min  
 Lab File: BP021831.D  
 Acq: 05 Sep 2024 00:56



Tgt Ion:154 Resp: 1856139  
 Ion Ratio Lower Upper  
 154 100  
 153 40.0 31.6 47.4  
 76 15.6 12.6 18.8







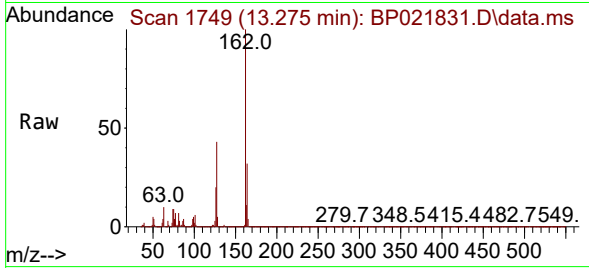
#44  
 2-Chloronaphthalene  
 Concen: 25.640 ng/uI  
 RT: 13.275 min Scan# 1748  
 Delta R.T. 0.006 min  
 Lab File: BP021831.D  
 Acq: 05 Sep 2024 00:56

Instrument :

BNA\_P

ClientSampleId :

SLCS092

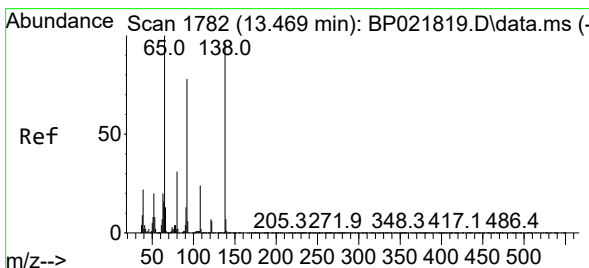
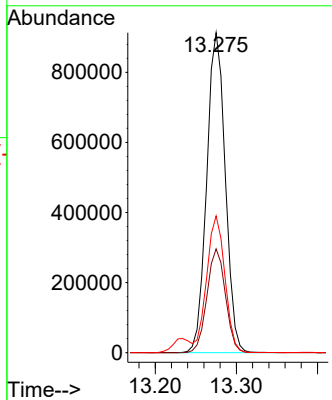
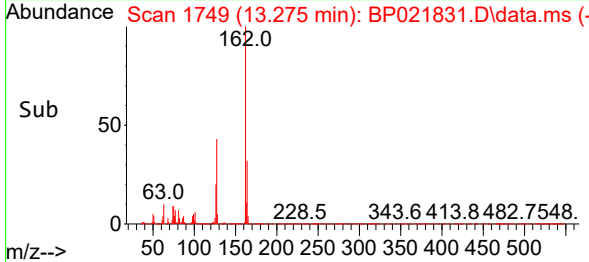


Tgt Ion:162 Resp: 144805  
 Ion Ratio Lower Upper  
 162 100  
 164 32.5 26.0 39.0  
 127 42.8 33.1 49.7

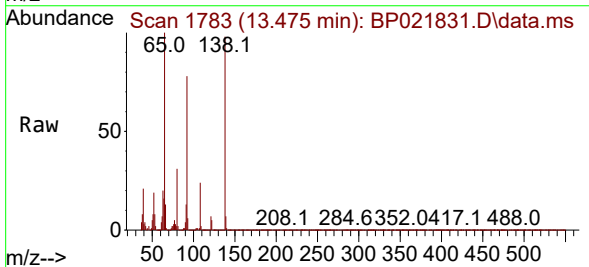
Manual Integrations

APPROVED

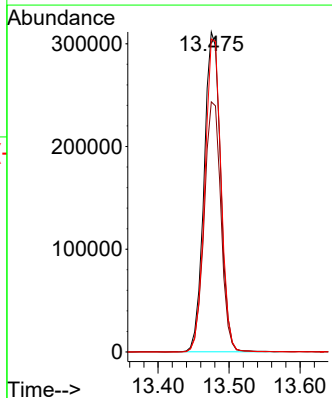
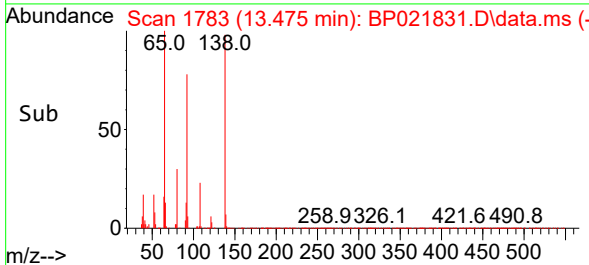
Reviewed By :Jagrut Upadhyay 09/05/2024  
 Supervised By :mohammad ahmed 09/07/2024

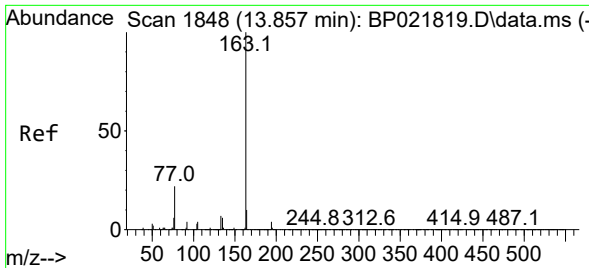


#45  
 2-Nitroaniline  
 Concen: 28.497 ng/uI  
 RT: 13.475 min Scan# 1783  
 Delta R.T. 0.006 min  
 Lab File: BP021831.D  
 Acq: 05 Sep 2024 00:56



Tgt Ion: 65 Resp: 504189  
 Ion Ratio Lower Upper  
 65 100  
 92 78.2 65.4 98.2  
 138 97.8 77.5 116.3





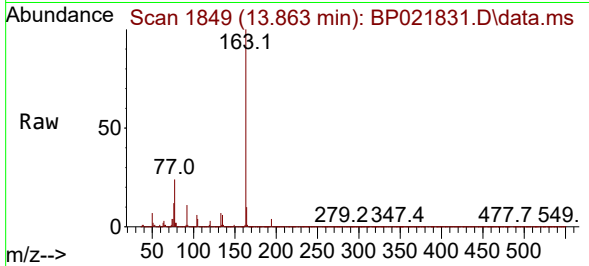
#47  
 Dimethylphthalate  
 Concen: 26.197 ng/ul  
 RT: 13.863 min Scan# 1849  
 Delta R.T. 0.006 min  
 Lab File: BP021831.D  
 Acq: 05 Sep 2024 00:56

Instrument :

BNA\_P

ClientSampleId :

SLCS092

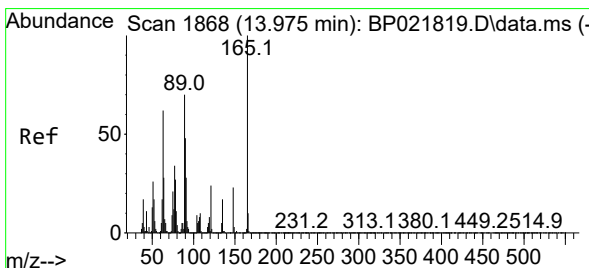
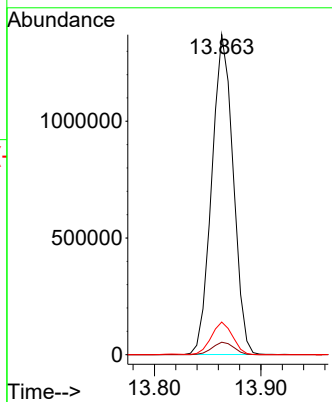
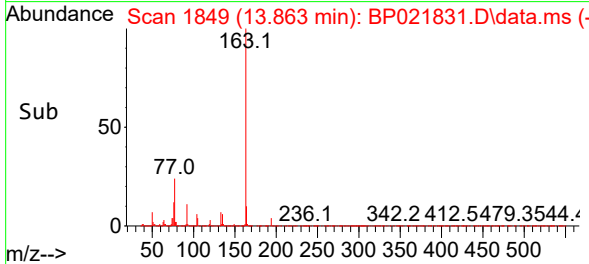


Tgt Ion:163 Resp: 1910889  
 Ion Ratio Lower Upper  
 163 100  
 194 3.9 3.5 5.3  
 164 10.2 7.8 11.8

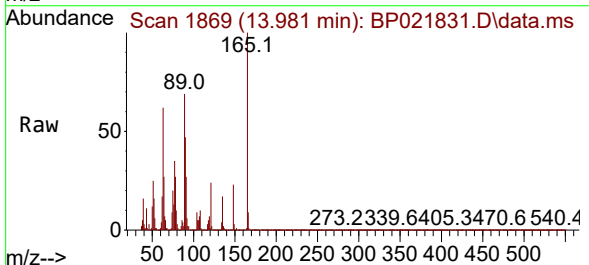
Manual Integrations

APPROVED

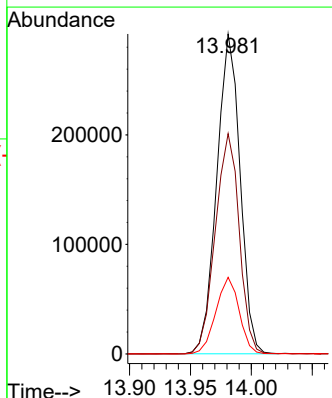
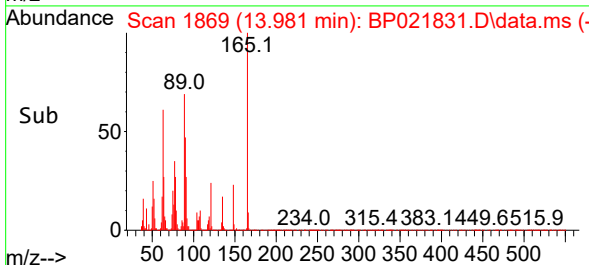
Reviewed By :Jagrut Upadhyay 09/05/2024  
 Supervised By :mohammad ahmed 09/07/2024

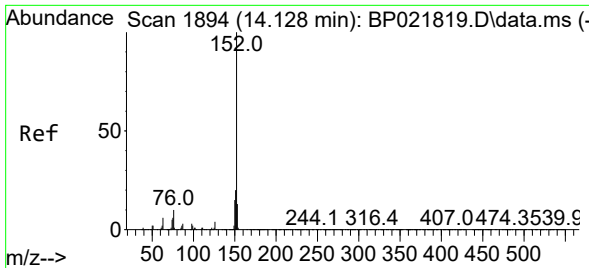


#48  
 2,6-Dinitrotoluene  
 Concen: 28.969 ng/ul  
 RT: 13.981 min Scan# 1869  
 Delta R.T. 0.006 min  
 Lab File: BP021831.D  
 Acq: 05 Sep 2024 00:56



Tgt Ion:165 Resp: 389713  
 Ion Ratio Lower Upper  
 165 100  
 89 68.8 55.7 83.5  
 121 23.9 18.6 28.0





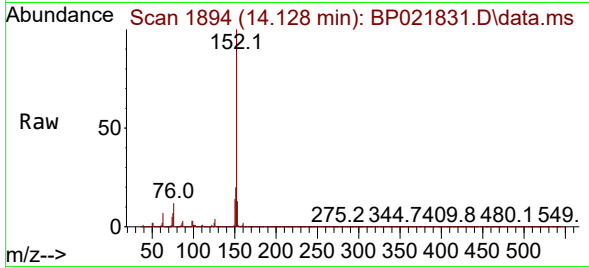
#50  
 Acenaphthylene  
 Concen: 27.040 ng/ul  
 RT: 14.128 min Scan# 1894  
 Delta R.T. 0.000 min  
 Lab File: BP021831.D  
 Acq: 05 Sep 2024 00:56

Instrument :

BNA\_P

Client Sample Id :

SLCS092

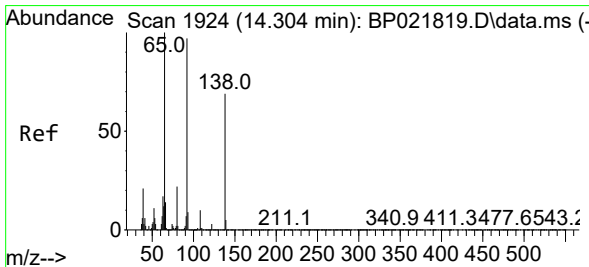
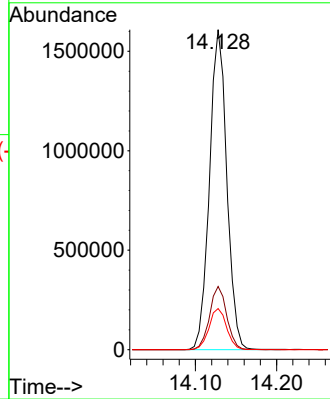
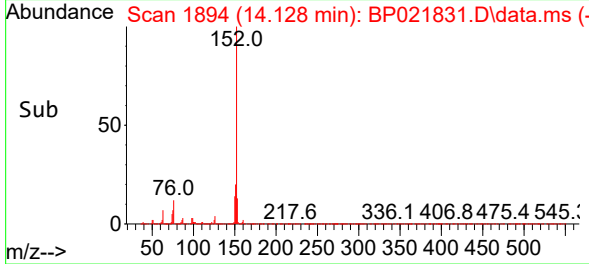


Tgt Ion:152 Resp: 237854  
 Ion Ratio Lower Upper  
 152 100  
 151 19.8 15.6 23.4  
 153 12.9 10.2 15.4

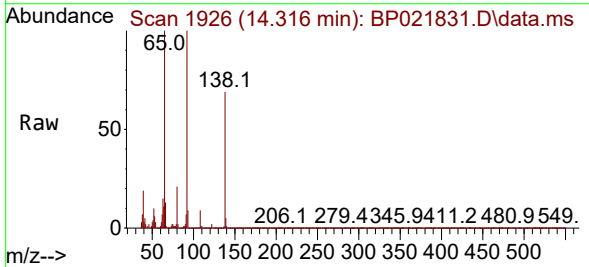
Manual Integrations

APPROVED

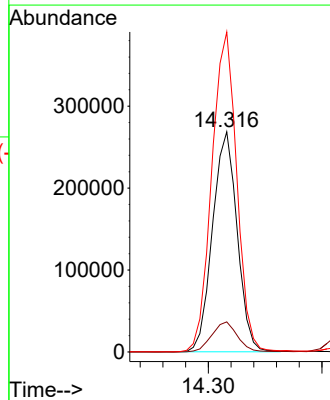
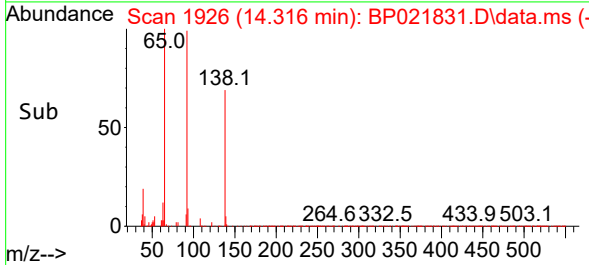
Reviewed By :Jagrut Upadhyay 09/05/2024  
 Supervised By :mohammad ahmed 09/07/2024

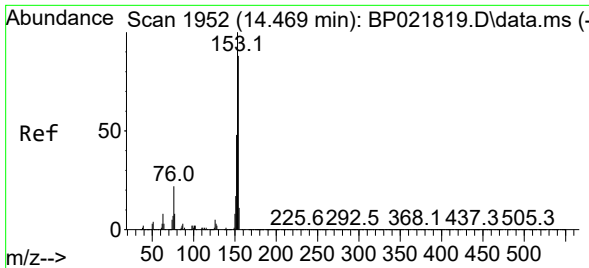


#51  
 3-Nitroaniline  
 Concen: 27.481 ng/ul  
 RT: 14.316 min Scan# 1926  
 Delta R.T. 0.012 min  
 Lab File: BP021831.D  
 Acq: 05 Sep 2024 00:56



Tgt Ion:138 Resp: 403986  
 Ion Ratio Lower Upper  
 138 100  
 108 13.7 12.0 18.0  
 92 145.4 114.1 171.1





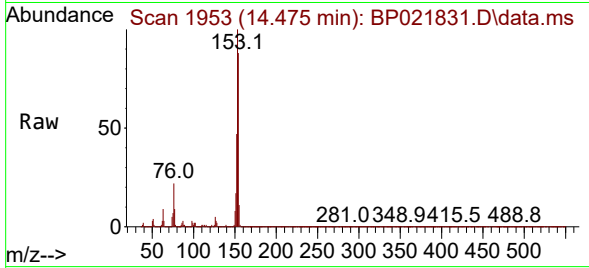
#52  
 Acenaphthene  
 Concen: 25.304 ng/uI  
 RT: 14.475 min Scan# 1953  
 Delta R.T. 0.006 min  
 Lab File: BP021831.D  
 Acq: 05 Sep 2024 00:56

Instrument :

BNA\_P

Client SampleId :

SLCS092

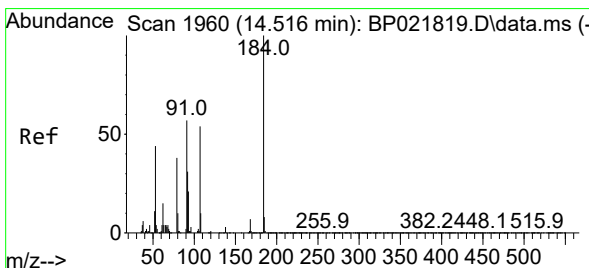
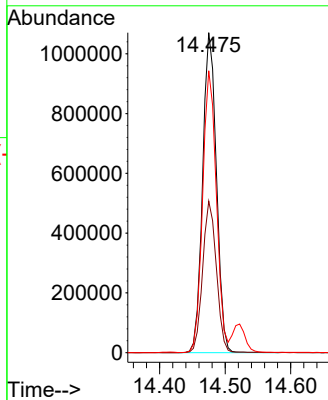
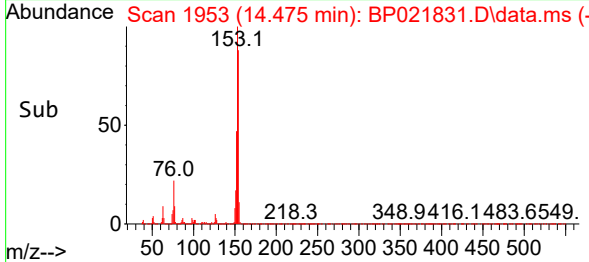


Tgt Ion:153 Resp: 156526  
 Ion Ratio Lower Upper  
 153 100  
 152 47.3 38.0 57.0  
 154 88.1 70.2 105.4

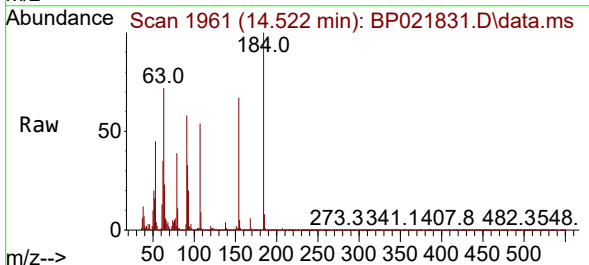
Manual Integrations

APPROVED

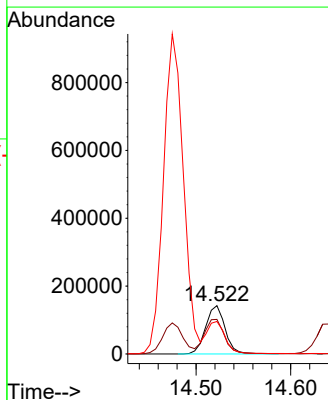
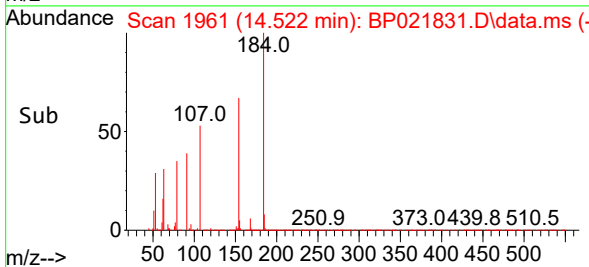
Reviewed By :Jagrut Upadhyay 09/05/2024  
 Supervised By :mohammad ahmed 09/07/2024

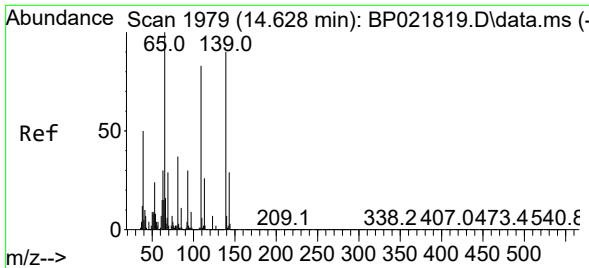


#53  
 2,4-Dinitrophenol  
 Concen: 25.276 ng/uI  
 RT: 14.522 min Scan# 1961  
 Delta R.T. 0.006 min  
 Lab File: BP021831.D  
 Acq: 05 Sep 2024 00:56



Tgt Ion:184 Resp: 203568  
 Ion Ratio Lower Upper  
 184 100  
 63 71.5 55.5 83.3  
 154 67.3 51.3 76.9





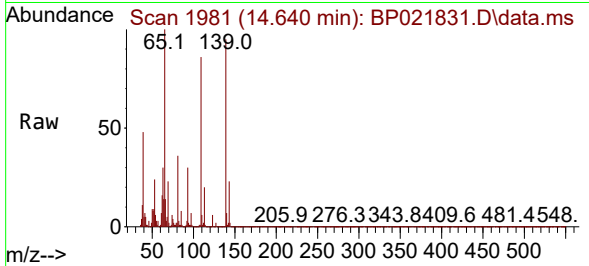
#55  
 4-Nitrophenol  
 Concen: 28.048 ng/uI  
 RT: 14.640 min Scan# 1979  
 Delta R.T. 0.012 min  
 Lab File: BP021831.D  
 Acq: 05 Sep 2024 00:56

Instrument :

BNA\_P

ClientSampleId :

SLCS092

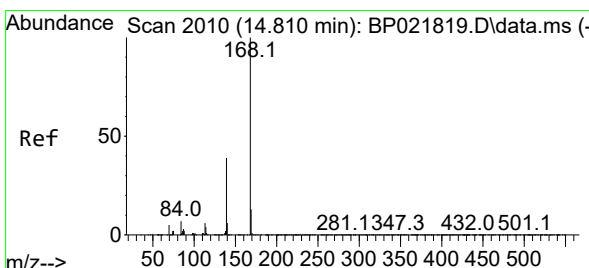
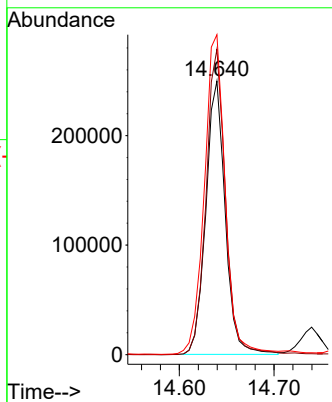
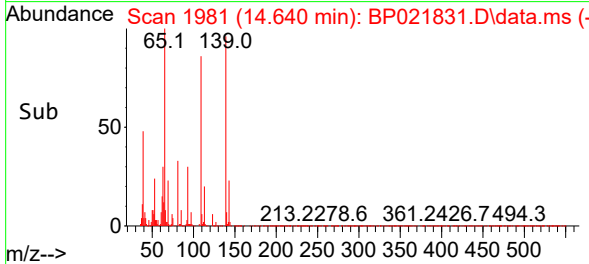


Tgt Ion:109 Resp: 355930  
 Ion Ratio Lower Upper  
 109 100  
 139 111.6 96.2 144.2  
 65 116.9 98.5 147.7

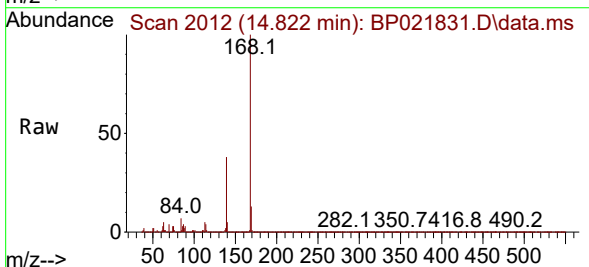
Manual Integrations

APPROVED

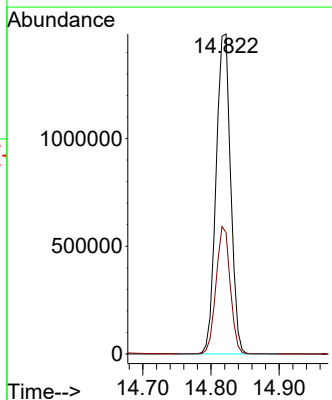
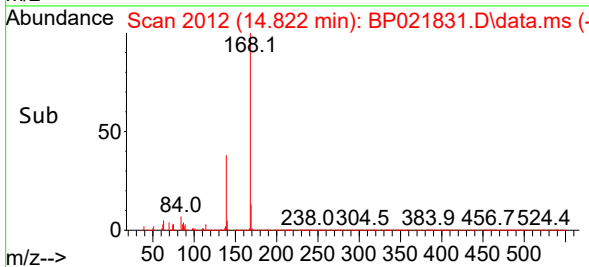
Reviewed By :Jagrut Upadhyay 09/05/2024  
 Supervised By :mohammad ahmed 09/07/2024

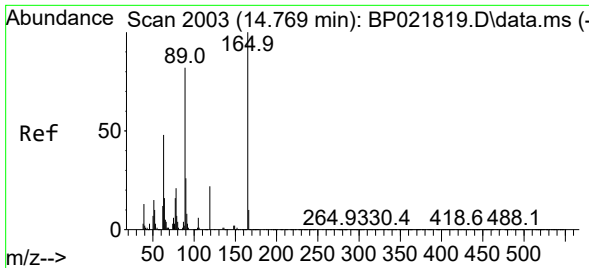


#56  
 Dibenzofuran  
 Concen: 25.785 ng/uI  
 RT: 14.822 min Scan# 2012  
 Delta R.T. 0.012 min  
 Lab File: BP021831.D  
 Acq: 05 Sep 2024 00:56



Tgt Ion:168 Resp: 2206685  
 Ion Ratio Lower Upper  
 168 100  
 139 38.0 29.8 44.8





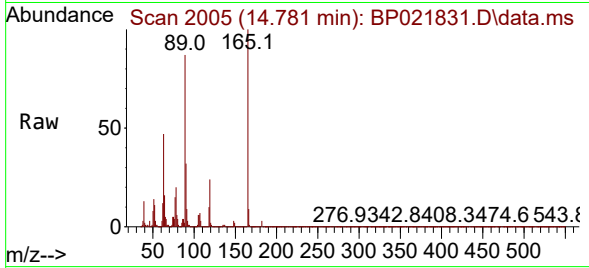
#57  
 2,4-Dinitrotoluene  
 Concen: 28.905 ng/ul  
 RT: 14.781 min Scan# 2005  
 Delta R.T. 0.012 min  
 Lab File: BP021831.D  
 Acq: 05 Sep 2024 00:56

Instrument :

BNA\_P

ClientSampleId :

SLCS092

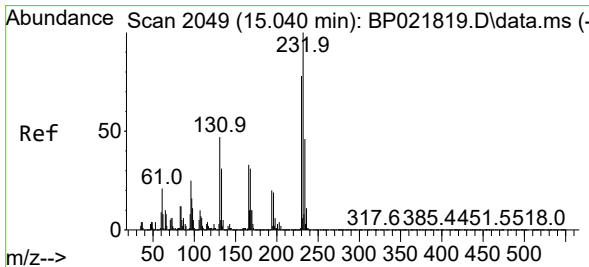
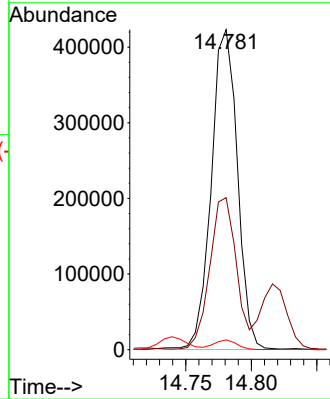
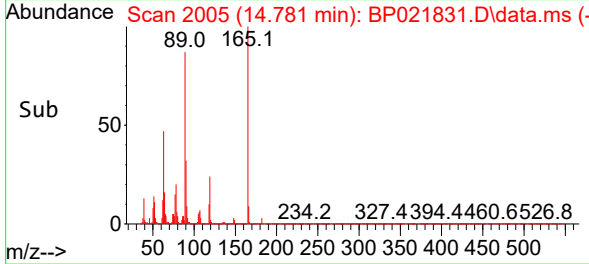


Tgt Ion:165 Resp: 584319  
 Ion Ratio Lower Upper  
 165 100  
 63 47.5 37.8 56.8  
 182 3.1 2.2 3.4

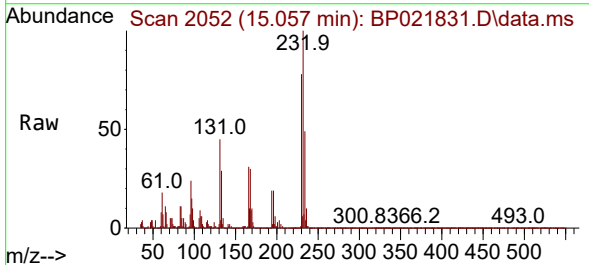
Manual Integrations

APPROVED

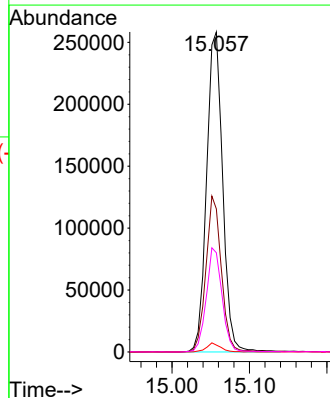
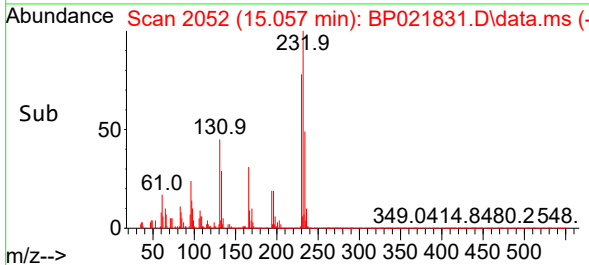
Reviewed By :Jagrut Upadhyay 09/05/2024  
 Supervised By :mohammad ahmed 09/07/2024

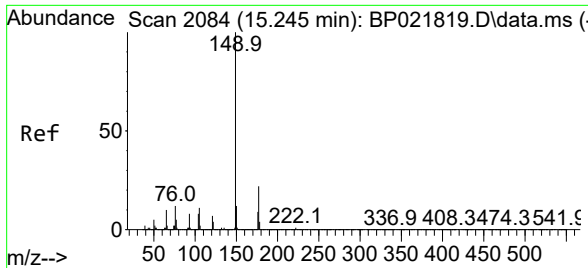


#58  
 2,3,4,6-Tetrachlorophenol  
 Concen: 20.658 ng/ul  
 RT: 15.057 min Scan# 2052  
 Delta R.T. 0.018 min  
 Lab File: BP021831.D  
 Acq: 05 Sep 2024 00:56



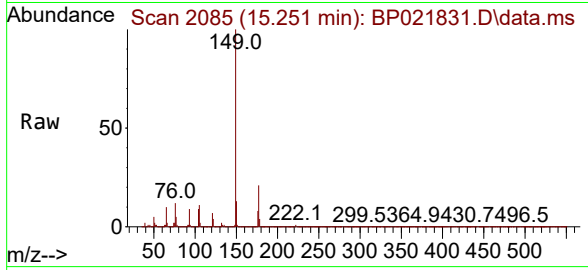
Tgt Ion:232 Resp: 371285  
 Ion Ratio Lower Upper  
 232 100  
 131 44.7 33.9 50.9  
 130 2.1 2.0 3.0  
 166 31.0 24.3 36.5





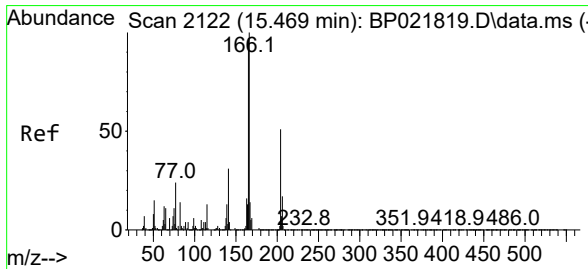
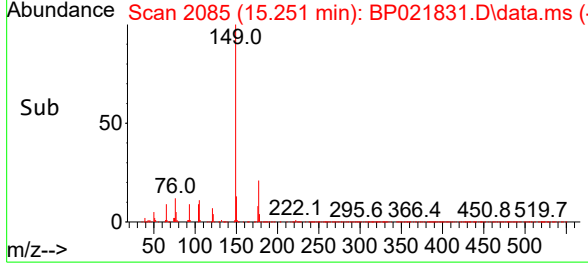
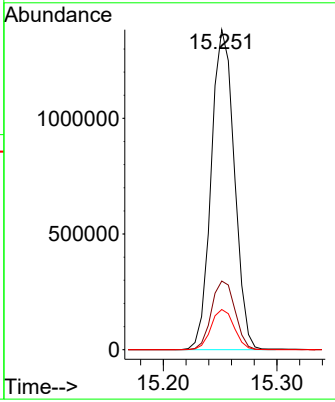
#59  
 Diethylphthalate  
 Concen: 26.751 ng/uI  
 RT: 15.251 min Scan# 2085  
 Delta R.T. 0.006 min  
 Lab File: BP021831.D  
 Acq: 05 Sep 2024 00:56

Instrument : BNA\_P  
 ClientSampleId : SLCS092



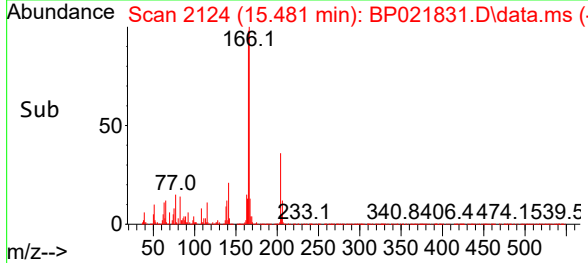
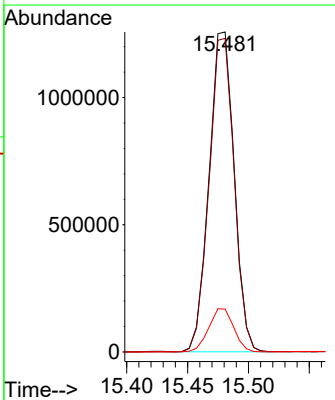
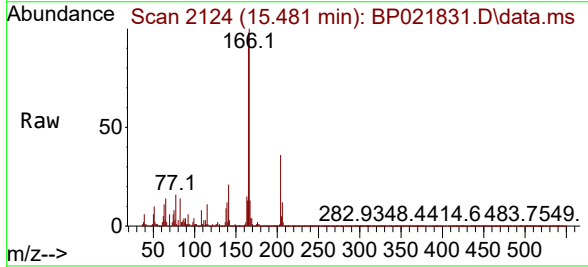
Tgt Ion:149 Resp: 195950  
 Ion Ratio Lower Upper  
 149 100  
 177 21.5 18.0 27.0  
 150 12.5 9.8 14.8

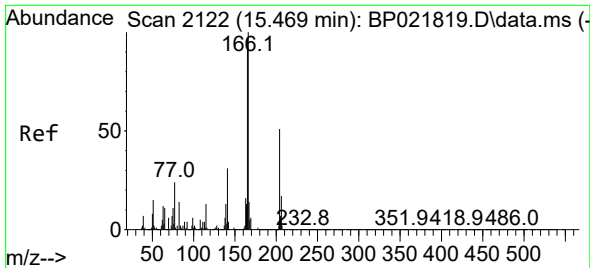
Manual Integrations  
**APPROVED**  
 Reviewed By :Jagrut Upadhyay 09/05/2024  
 Supervised By :mohammad ahmed 09/07/2024



#61  
 Fluorene  
 Concen: 26.105 ng/uI  
 RT: 15.481 min Scan# 2124  
 Delta R.T. 0.012 min  
 Lab File: BP021831.D  
 Acq: 05 Sep 2024 00:56

Tgt Ion:166 Resp: 1806992  
 Ion Ratio Lower Upper  
 166 100  
 165 98.0 78.2 117.2  
 167 13.4 10.8 16.2





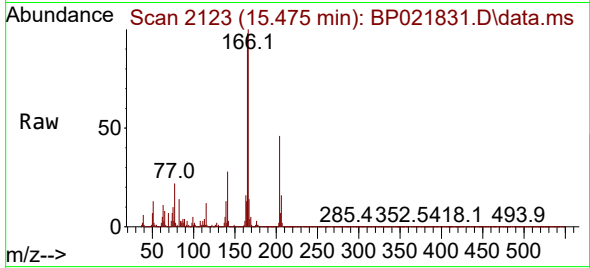
#62  
4-Chlorophenyl-phenylether  
Concen: 25.726 ng/ul  
RT: 15.475 min Scan# 2122  
Delta R.T. 0.006 min  
Lab File: BP021831.D  
Acq: 05 Sep 2024 00:56

Instrument :

BNA\_P

Client SampleId :

SLCS092

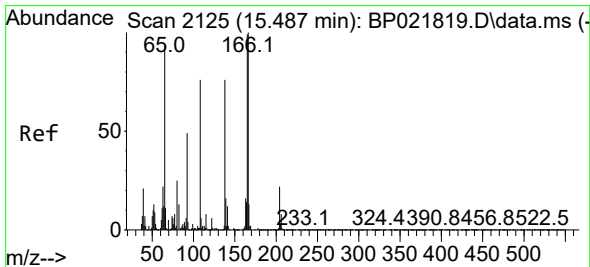
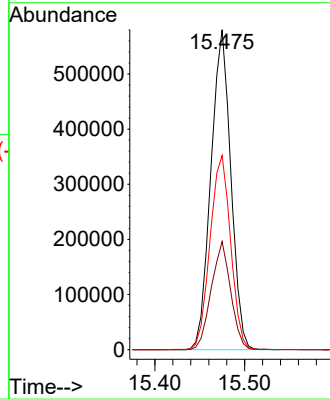
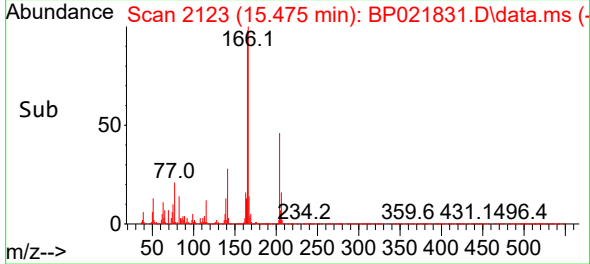


Tgt Ion:204 Resp: 89477  
Ion Ratio Lower Upper  
204 100  
206 33.8 26.2 39.4  
141 60.7 48.6 73.0

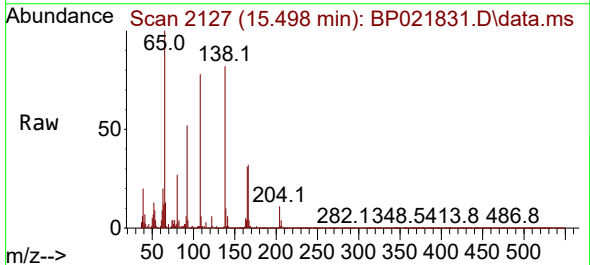
Manual Integrations

APPROVED

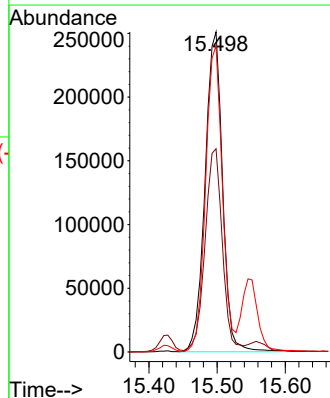
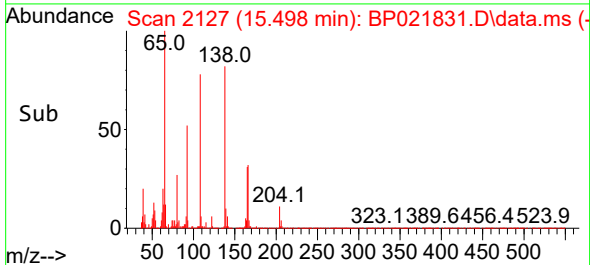
Reviewed By :Jagrut Upadhyay 09/05/2024  
Supervised By :mohammad ahmed 09/07/2024



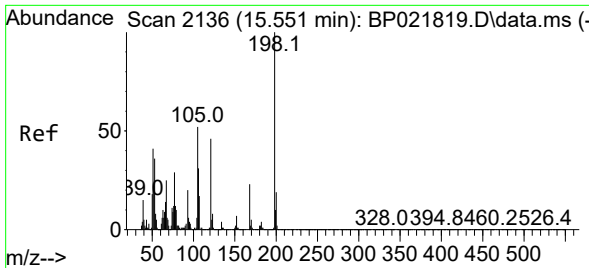
#63  
4-Nitroaniline  
Concen: 31.582 ng/ul  
RT: 15.498 min Scan# 2127  
Delta R.T. 0.012 min  
Lab File: BP021831.D  
Acq: 05 Sep 2024 00:56



Tgt Ion:138 Resp: 448707  
Ion Ratio Lower Upper  
138 100  
92 63.5 50.7 76.1  
108 95.7 72.2 108.2







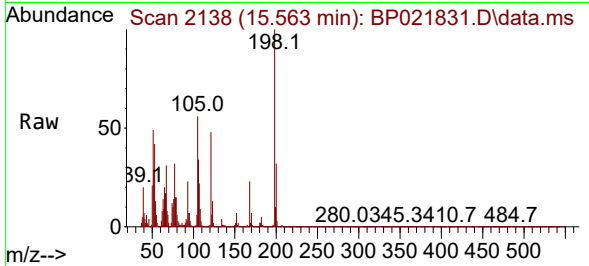
#66  
 4,6-Dinitro-2-methylphenol  
 Concen: 25.987 ng/ul  
 RT: 15.563 min Scan# 2110  
 Delta R.T. 0.012 min  
 Lab File: BP021831.D  
 Acq: 05 Sep 2024 00:56

Instrument :

BNA\_P

ClientSampleId :

SLCS092

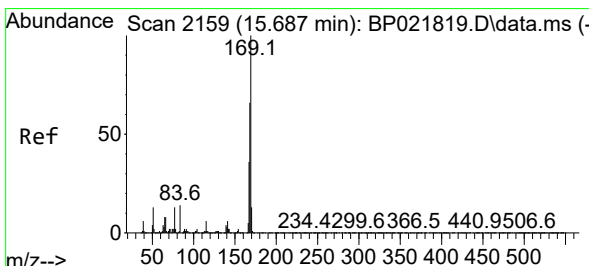
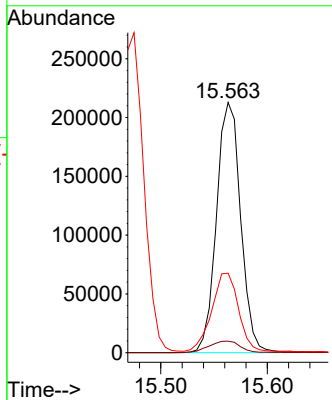
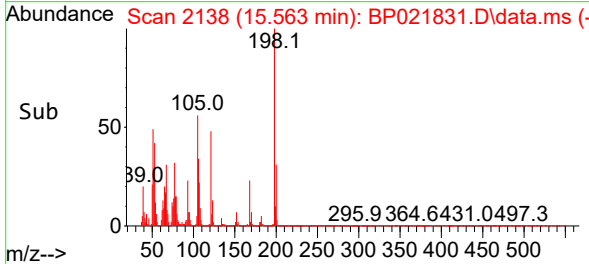


Tgt Ion:198 Resp: 335300  
 Ion Ratio Lower Upper  
 198 100  
 182 4.6 3.3 4.9  
 77 31.8 23.3 34.9

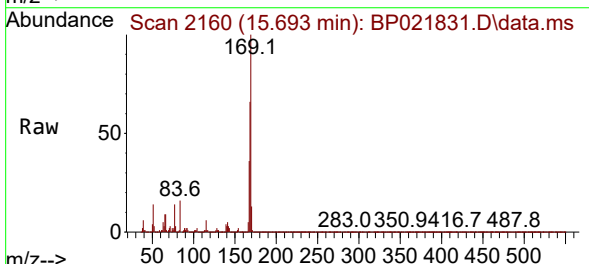
Manual Integrations

APPROVED

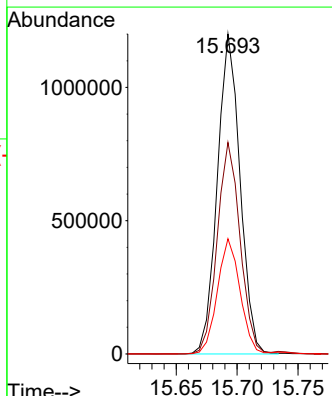
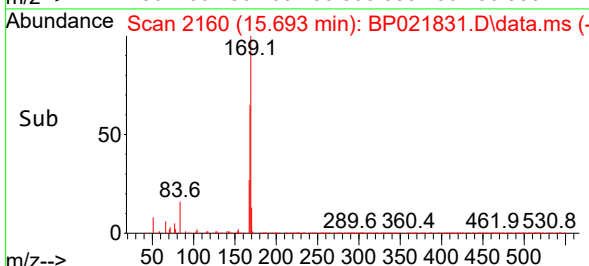
Reviewed By :Jagrut Upadhyay 09/05/2024  
 Supervised By :mohammad ahmed 09/07/2024

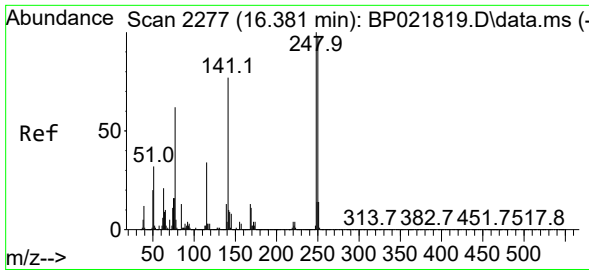


#67  
 N-Nitrosodiphenylamine  
 Concen: 25.263 ng/ul  
 RT: 15.693 min Scan# 2160  
 Delta R.T. 0.006 min  
 Lab File: BP021831.D  
 Acq: 05 Sep 2024 00:56



Tgt Ion:169 Resp: 1558627  
 Ion Ratio Lower Upper  
 169 100  
 168 66.1 52.6 79.0  
 167 36.0 28.2 42.4





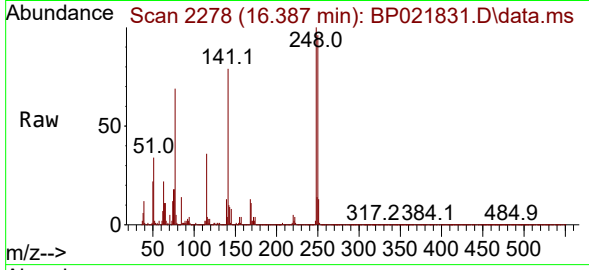
#68  
 4-Bromophenyl-phenylether  
 Concen: 24.733 ng/ul  
 RT: 16.387 min Scan# 2277  
 Delta R.T. 0.006 min  
 Lab File: BP021831.D  
 Acq: 05 Sep 2024 00:56

Instrument :

BNA\_P

ClientSampleId :

SLCS092

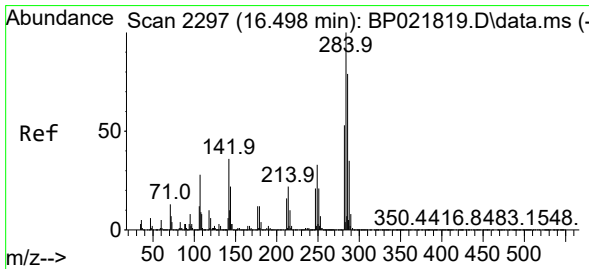
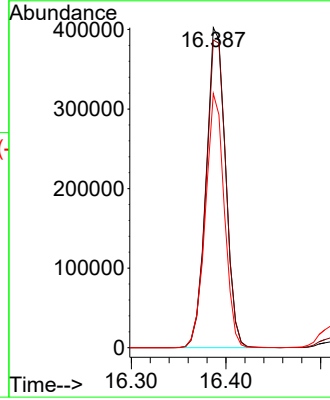
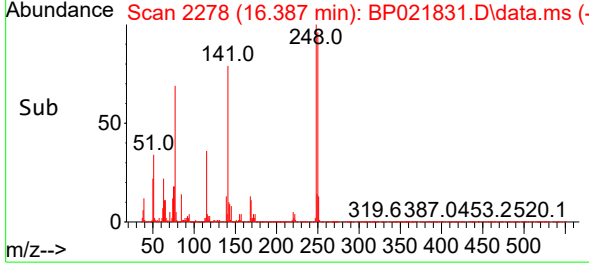


Tgt Ion:248 Resp: 572618  
 Ion Ratio Lower Upper  
 248 100  
 250 96.1 79.6 119.4  
 141 79.4 57.0 85.4

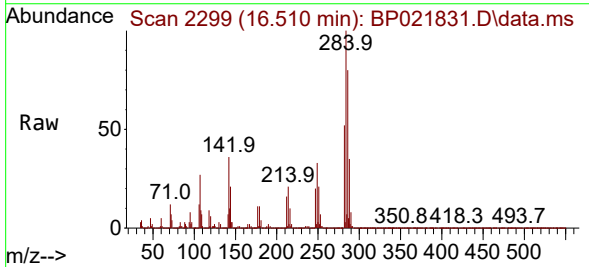
Manual Integrations

APPROVED

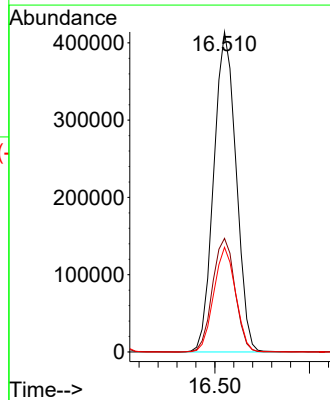
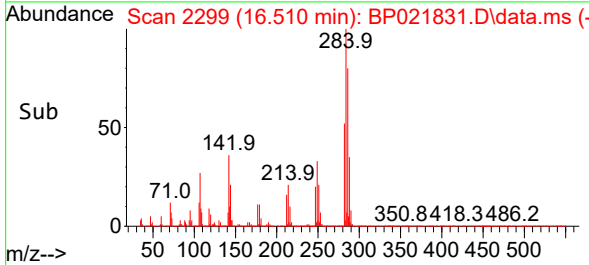
Reviewed By :Jagrut Upadhyay 09/05/2024  
 Supervised By :mohammad ahmed 09/07/2024

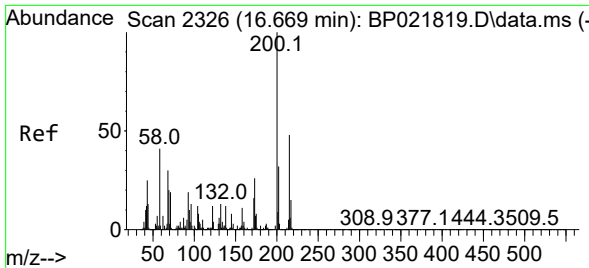


#69  
 Hexachlorobenzene  
 Concen: 24.729 ng/ul  
 RT: 16.510 min Scan# 2299  
 Delta R.T. 0.012 min  
 Lab File: BP021831.D  
 Acq: 05 Sep 2024 00:56



Tgt Ion:284 Resp: 679688  
 Ion Ratio Lower Upper  
 284 100  
 142 35.5 26.5 39.7  
 249 32.7 24.2 36.4





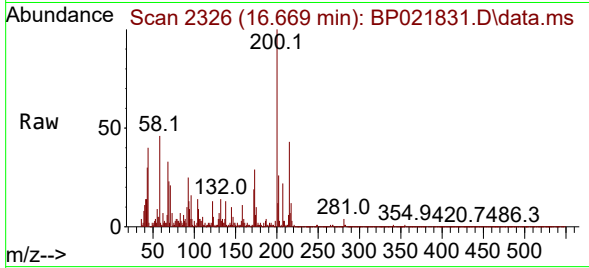
#70  
 Atrazine  
 Concen: 0.775 ng/uI  
 RT: 16.669 min Scan# 21  
 Delta R.T. 0.000 min  
 Lab File: BP021831.D  
 Acq: 05 Sep 2024 00:56

Instrument :

BNA\_P

ClientSampleId :

SLCS092

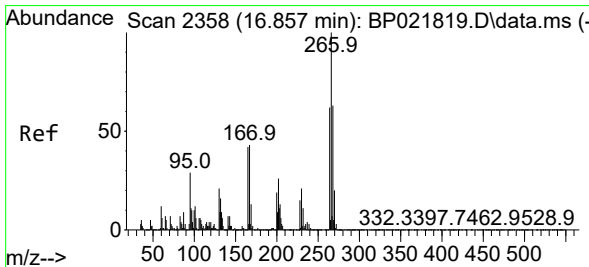
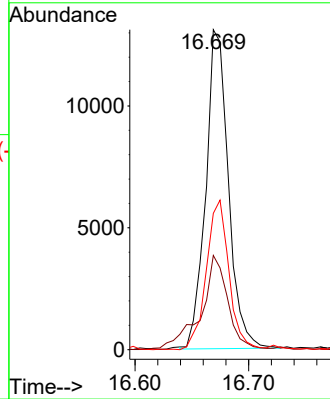
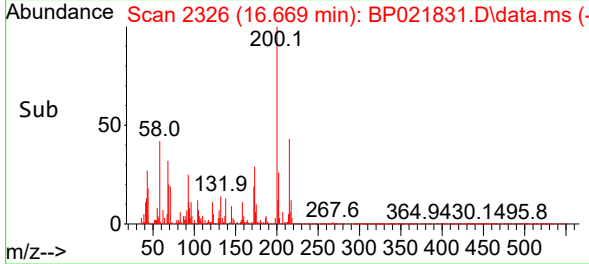


Tgt Ion:200 Resp: 1814  
 Ion Ratio Lower Upper  
 200 100  
 173 29.4 21.4 32.0  
 215 42.6 39.0 58.6

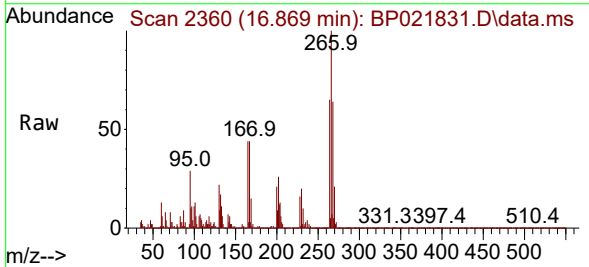
Manual Integrations

APPROVED

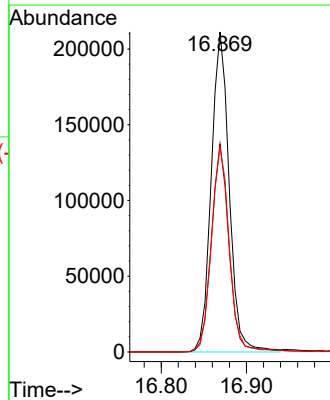
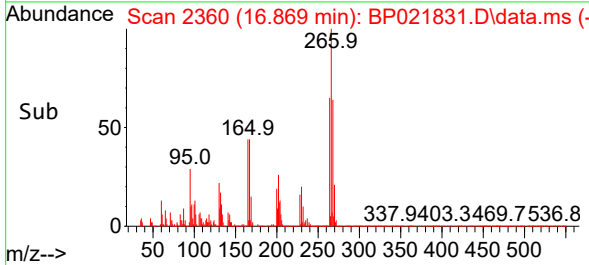
Reviewed By :Jagrut Upadhyay 09/05/2024  
 Supervised By :mohammad ahmed 09/07/2024

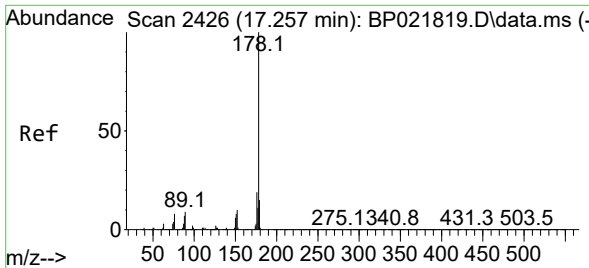


#71  
 Pentachlorophenol  
 Concen: 17.564 ng/uI  
 RT: 16.869 min Scan# 2360  
 Delta R.T. 0.012 min  
 Lab File: BP021831.D  
 Acq: 05 Sep 2024 00:56



Tgt Ion:266 Resp: 308972  
 Ion Ratio Lower Upper  
 266 100  
 264 65.1 51.4 77.0  
 268 64.0 50.6 75.8





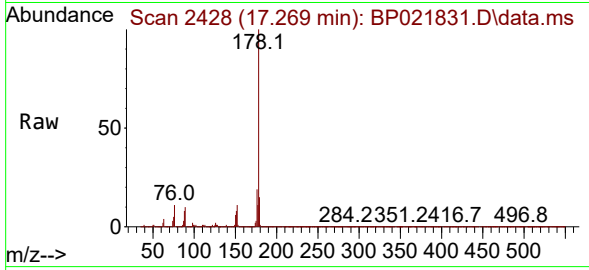
#72  
 Phenanthrene  
 Concen: 26.209 ng/u1  
 RT: 17.269 min Scan# 2426  
 Delta R.T. 0.012 min  
 Lab File: BP021831.D  
 Acq: 05 Sep 2024 00:56

Instrument :

BNA\_P

Client SampleId :

SLCS092

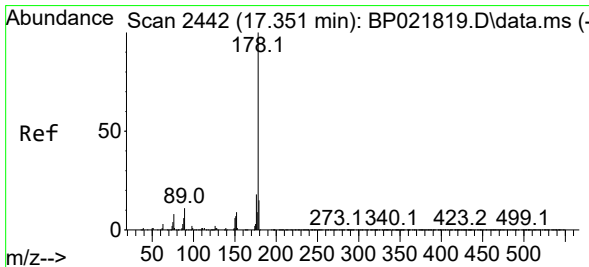
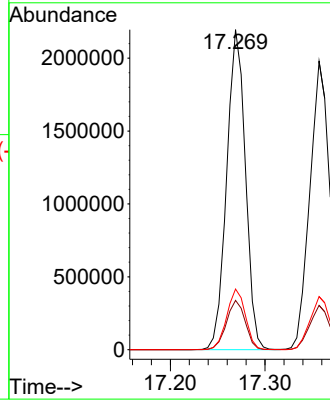
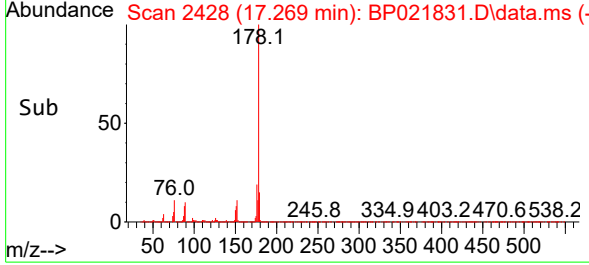


Tgt Ion:178 Resp: 301764  
 Ion Ratio Lower Upper  
 178 100  
 179 15.4 12.0 18.0  
 176 19.0 14.8 22.2

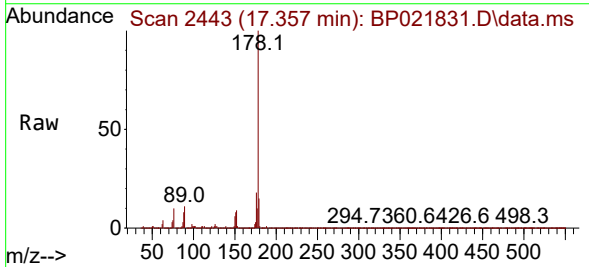
Manual Integrations

APPROVED

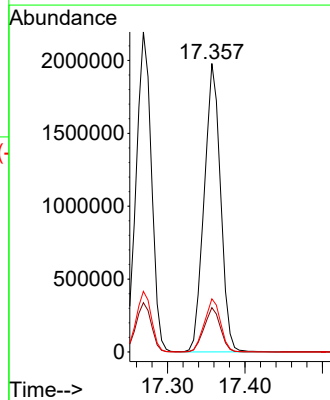
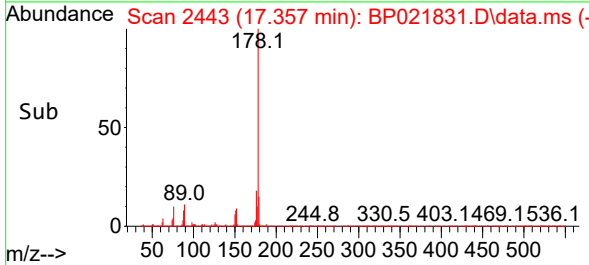
Reviewed By :Jagrut Upadhyay 09/05/2024  
 Supervised By :mohammad ahmed 09/07/2024

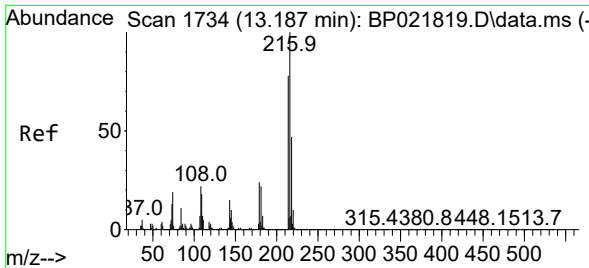


#74  
 Anthracene  
 Concen: 24.830 ng/u1  
 RT: 17.357 min Scan# 2443  
 Delta R.T. 0.006 min  
 Lab File: BP021831.D  
 Acq: 05 Sep 2024 00:56



Tgt Ion:178 Resp: 2896285  
 Ion Ratio Lower Upper  
 178 100  
 179 15.4 12.3 18.5  
 176 18.4 14.6 21.8





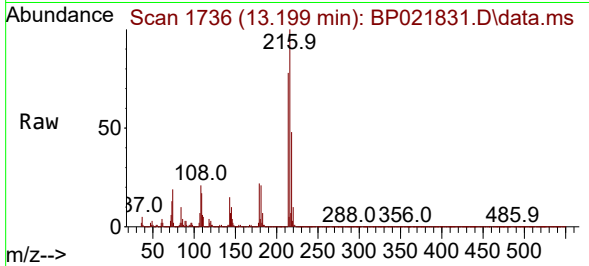
#75  
 1,2,3,4-Tetrachlorobenzene  
 Concen: 24.019 ng/uL  
 RT: 13.199 min Scan# 1736  
 Delta R.T. 0.012 min  
 Lab File: BP021831.D  
 Acq: 05 Sep 2024 00:56

Instrument :

BNA\_P

ClientSampleId :

SLCS092

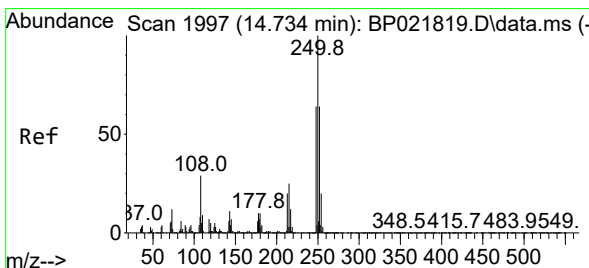
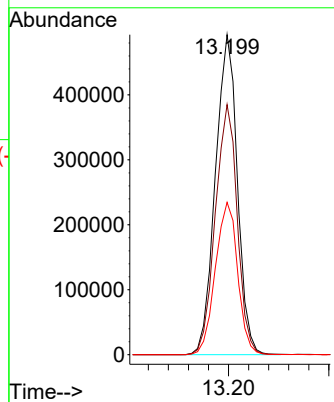
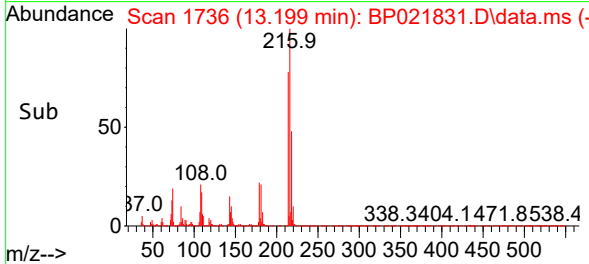


Tgt Ion:216 Resp: 74891  
 Ion Ratio Lower Upper  
 216 100  
 214 78.2 63.9 95.9  
 218 47.6 39.5 59.3

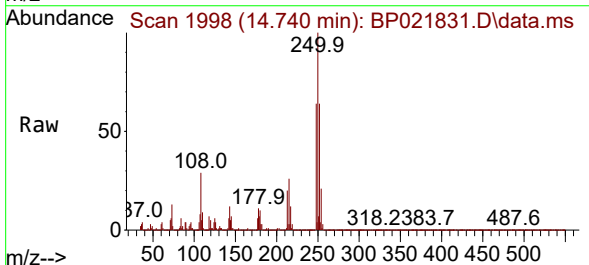
Manual Integrations

APPROVED

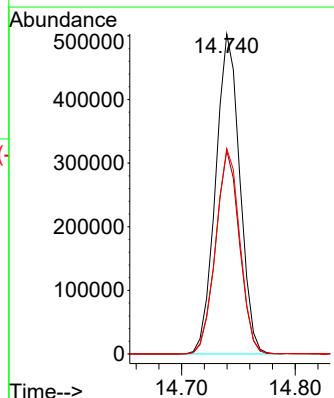
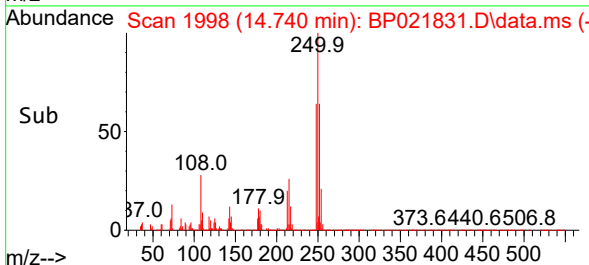
Reviewed By :Jagrut Upadhyay 09/05/2024  
 Supervised By :mohammad ahmed 09/07/2024

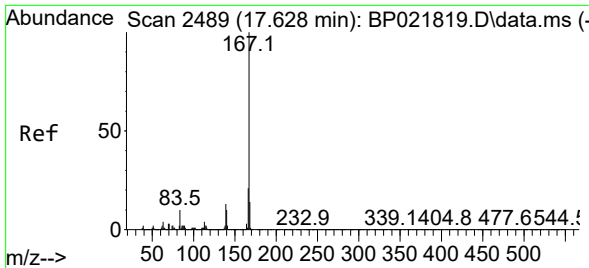


#76  
 Pentachlorobenzene  
 Concen: 22.986 ng/uL  
 RT: 14.740 min Scan# 1998  
 Delta R.T. 0.006 min  
 Lab File: BP021831.D  
 Acq: 05 Sep 2024 00:56



Tgt Ion:250 Resp: 742877  
 Ion Ratio Lower Upper  
 250 100  
 248 63.6 51.0 76.6  
 252 64.2 51.4 77.0





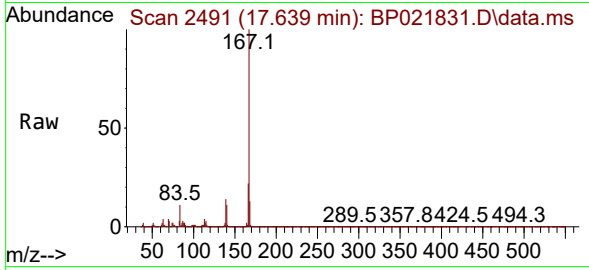
#77  
 Carbazole  
 Concen: 26.653 ng/uI  
 RT: 17.639 min Scan# 2491  
 Delta R.T. 0.012 min  
 Lab File: BP021831.D  
 Acq: 05 Sep 2024 00:56

Instrument :

BNA\_P

ClientSampleId :

SLCS092

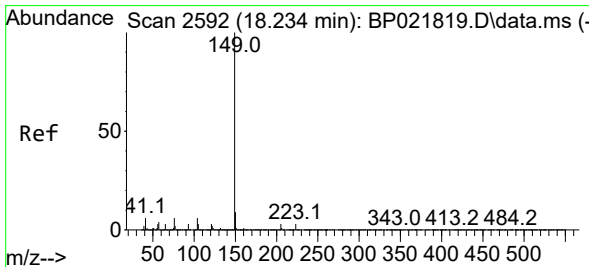
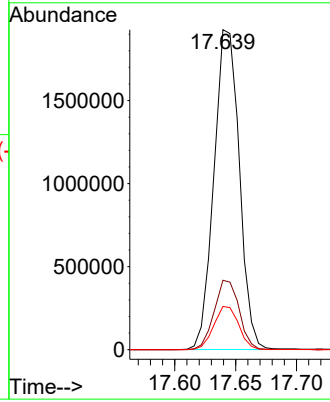
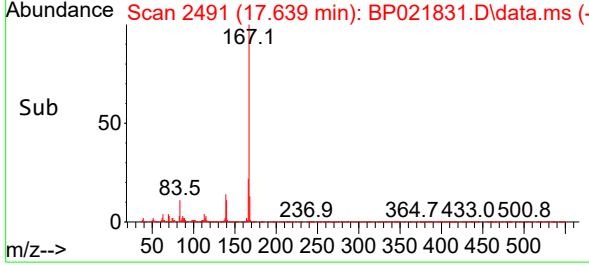


Tgt Ion:167 Resp: 279621  
 Ion Ratio Lower Upper  
 167 100  
 166 21.7 17.1 25.7  
 139 13.5 10.4 15.6

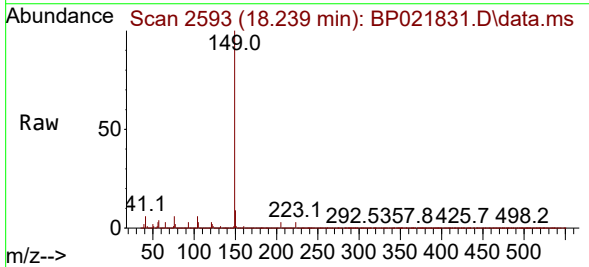
Manual Integrations

APPROVED

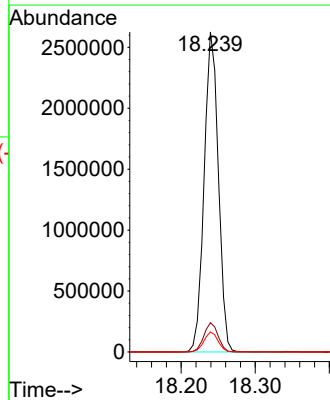
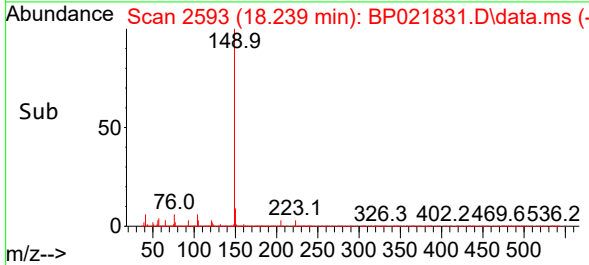
Reviewed By :Jagrut Upadhyay 09/05/2024  
 Supervised By :mohammad ahmed 09/07/2024

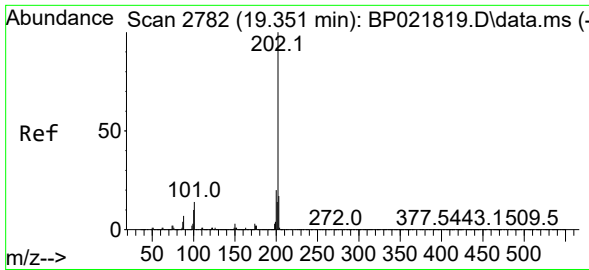


#78  
 Di-n-butylphthalate  
 Concen: 27.446 ng/uI  
 RT: 18.239 min Scan# 2593  
 Delta R.T. 0.006 min  
 Lab File: BP021831.D  
 Acq: 05 Sep 2024 00:56



Tgt Ion:149 Resp: 3504955  
 Ion Ratio Lower Upper  
 149 100  
 150 9.2 7.4 11.0  
 104 6.3 4.8 7.2





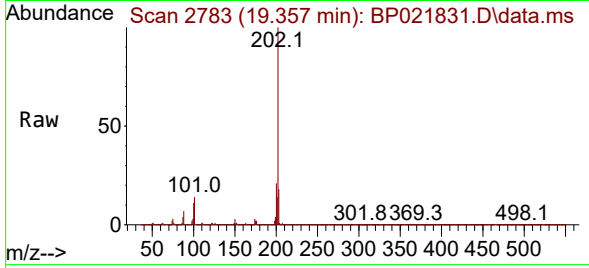
#80  
 Fluoranthene  
 Concen: 27.549 ng/u1  
 RT: 19.357 min Scan# 21  
 Delta R.T. 0.006 min  
 Lab File: BP021831.D  
 Acq: 05 Sep 2024 00:56

Instrument :

BNA\_P

ClientSampleId :

SLCS092

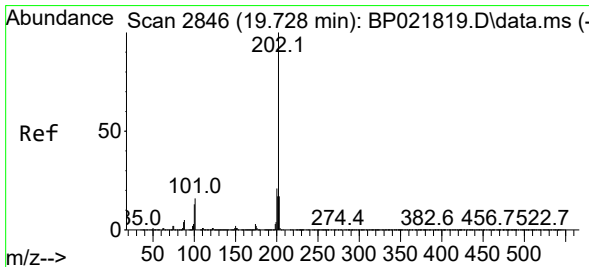
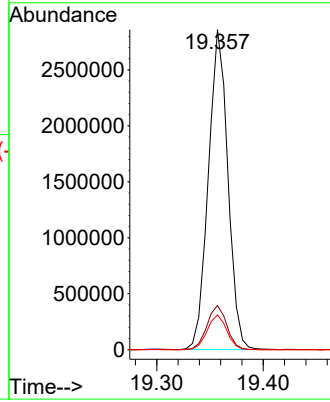
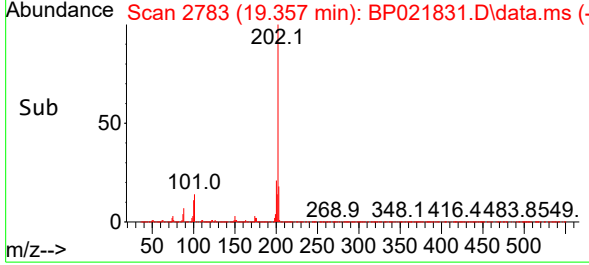


Tgt Ion:202 Resp: 3638610  
 Ion Ratio Lower Upper  
 202 100  
 101 13.8 11.2 16.8  
 100 10.8 8.5 12.7

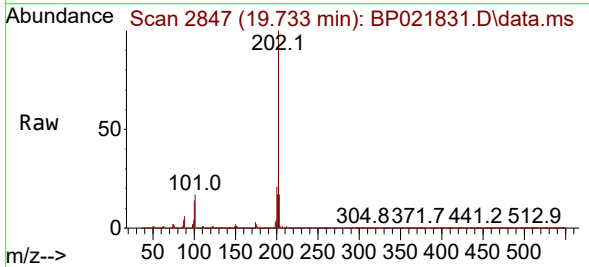
Manual Integrations

APPROVED

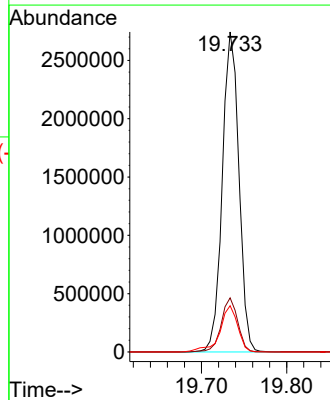
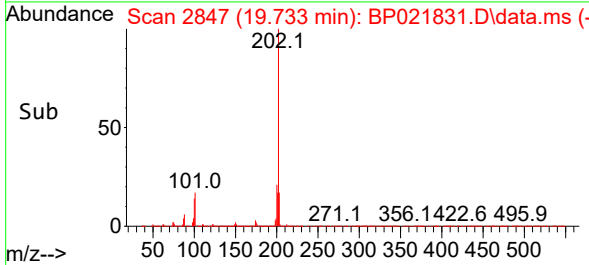
Reviewed By :Jagrut Upadhyay 09/05/2024  
 Supervised By :mohammad ahmed 09/07/2024

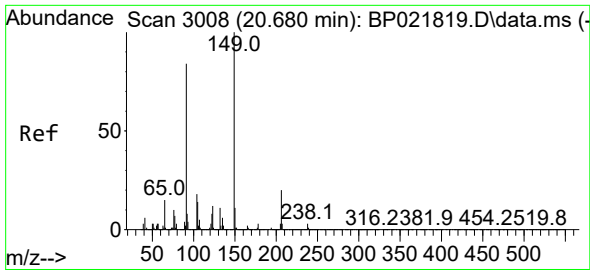


#82  
 Pyrene  
 Concen: 26.556 ng/u1  
 RT: 19.733 min Scan# 2847  
 Delta R.T. 0.006 min  
 Lab File: BP021831.D  
 Acq: 05 Sep 2024 00:56



Tgt Ion:202 Resp: 3714717  
 Ion Ratio Lower Upper  
 202 100  
 101 16.9 12.8 19.2  
 100 14.4 10.8 16.2





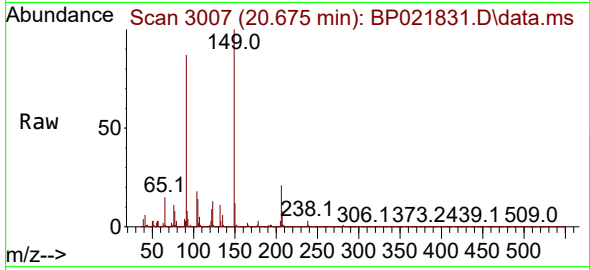
#83  
 Butylbenzylphthalate  
 Concen: 28.366 ng/uI  
 RT: 20.675 min Scan# 3007  
 Delta R.T. -0.006 min  
 Lab File: BP021831.D  
 Acq: 05 Sep 2024 00:56

Instrument :

BNA\_P

Client SampleId :

SLCS092

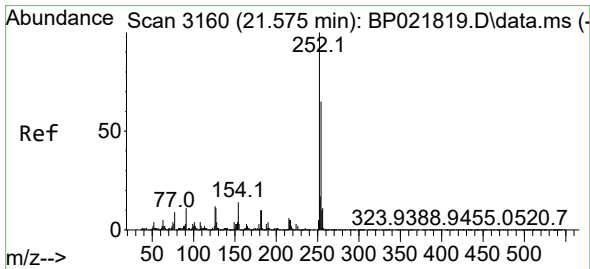
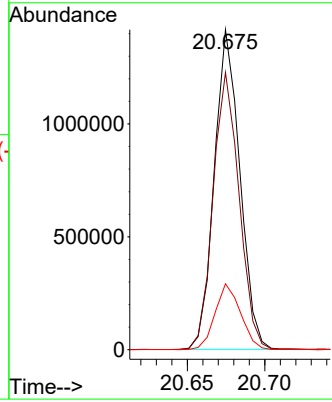
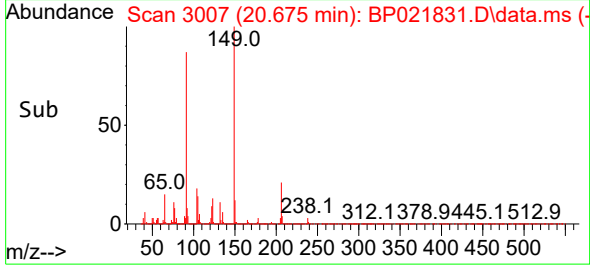


Tgt Ion:149 Resp: 162463  
 Ion Ratio Lower Upper  
 149 100  
 91 86.7 70.1 105.1  
 206 20.6 16.8 25.2

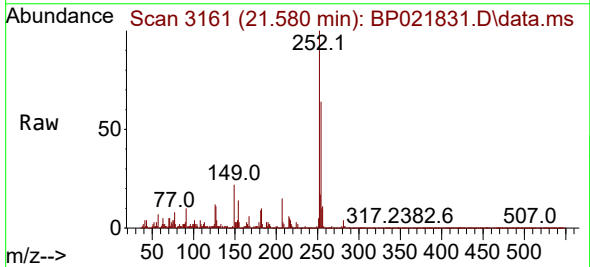
Manual Integrations

APPROVED

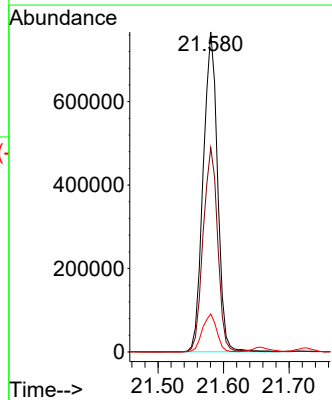
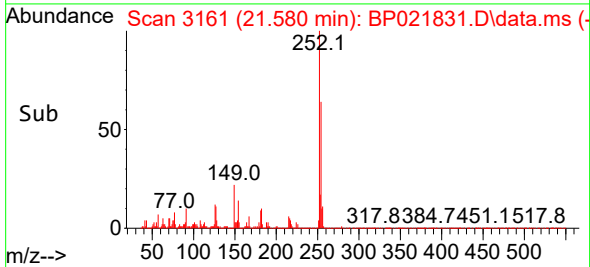
Reviewed By :Jagrut Upadhyay 09/05/2024  
 Supervised By :mohammad ahmed 09/07/2024



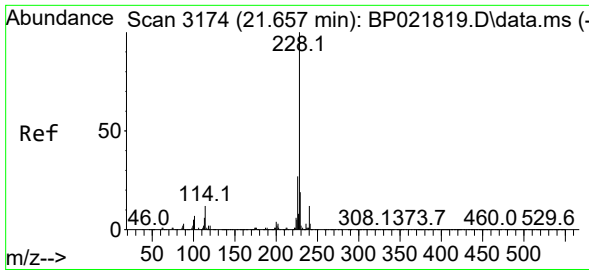
#84  
 3,3'-Dichlorobenzidine  
 Concen: 23.451 ng/uI  
 RT: 21.580 min Scan# 3161  
 Delta R.T. 0.006 min  
 Lab File: BP021831.D  
 Acq: 05 Sep 2024 00:56



Tgt Ion:252 Resp: 1170112  
 Ion Ratio Lower Upper  
 252 100  
 254 63.8 52.2 78.4  
 126 11.9 8.9 13.3







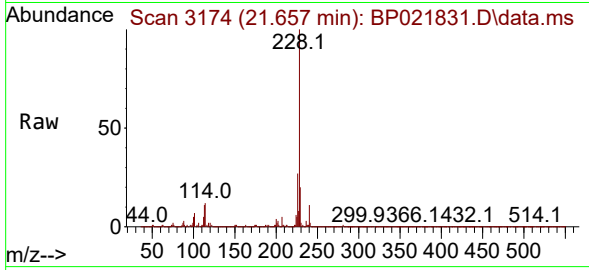
#85  
 Benzo(a)anthracene  
 Concen: 26.163 ng/uI  
 RT: 21.657 min Scan# 3174  
 Delta R.T. 0.000 min  
 Lab File: BP021831.D  
 Acq: 05 Sep 2024 00:56

Instrument :

BNA\_P

ClientSampleId :

SLCS092

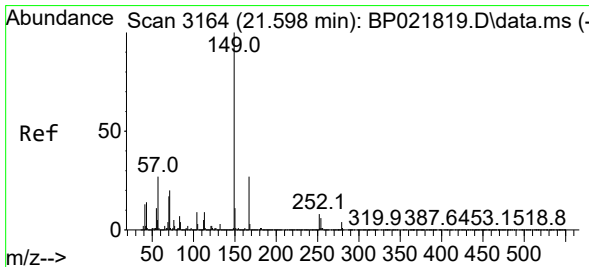
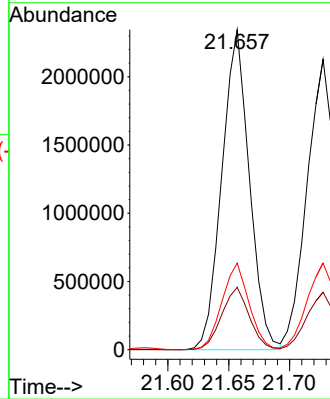
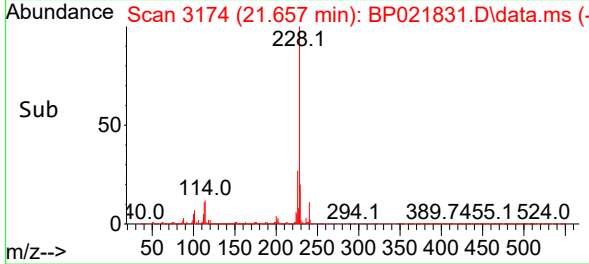


Tgt Ion:228 Resp: 3684900  
 Ion Ratio Lower Upper  
 228 100  
 229 19.5 15.7 23.5  
 226 27.0 21.7 32.5

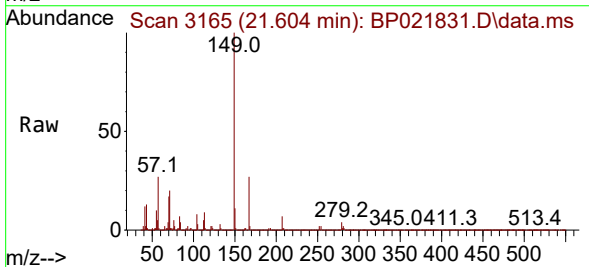
Manual Integrations

APPROVED

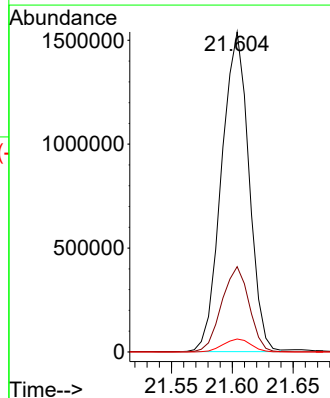
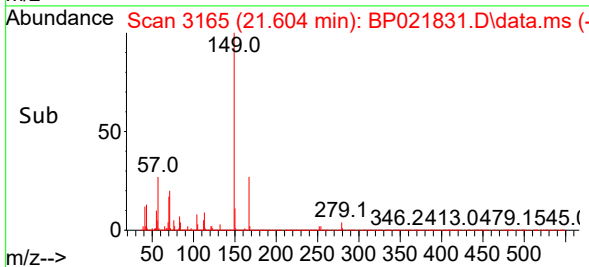
Reviewed By :Jagrut Upadhyay 09/05/2024  
 Supervised By :mohammad ahmed 09/07/2024

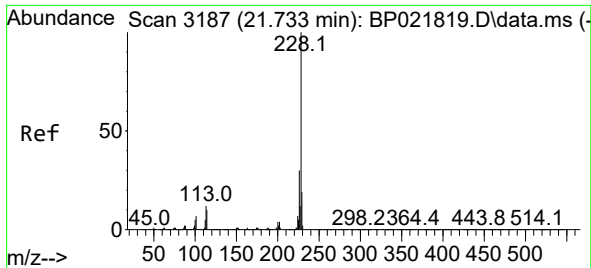


#86  
 Bis(2-ethylhexyl)phthalate  
 Concen: 28.469 ng/uI  
 RT: 21.604 min Scan# 3165  
 Delta R.T. 0.006 min  
 Lab File: BP021831.D  
 Acq: 05 Sep 2024 00:56



Tgt Ion:149 Resp: 2406548  
 Ion Ratio Lower Upper  
 149 100  
 167 26.7 21.8 32.6  
 279 4.1 3.7 5.5





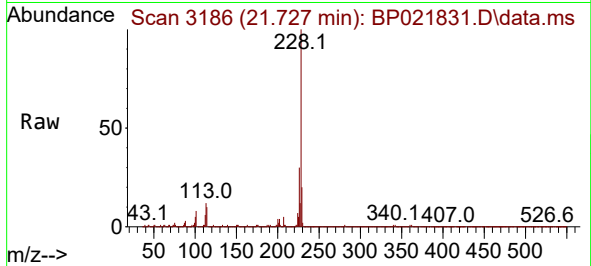
#87  
 Chrysene  
 Concen: 26.230 ng/u1  
 RT: 21.727 min Scan# 3187  
 Delta R.T. -0.006 min  
 Lab File: BP021831.D  
 Acq: 05 Sep 2024 00:56

Instrument :

BNA\_P

ClientSampleId :

SLCS092

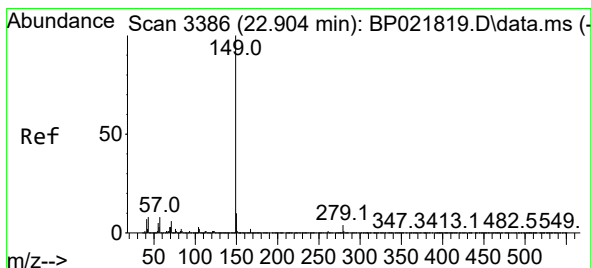
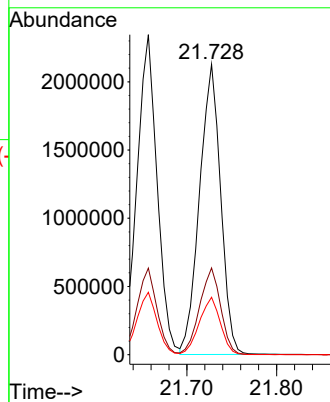
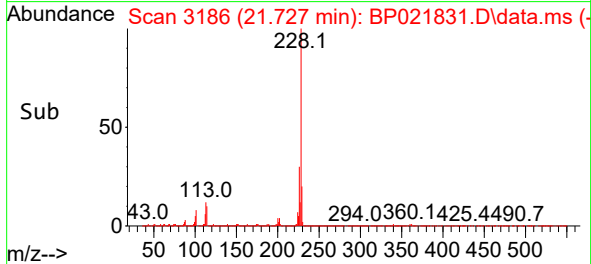


Tgt Ion:228 Resp: 3476839  
 Ion Ratio Lower Upper  
 228 100  
 226 29.8 23.5 35.3  
 229 19.8 15.6 23.4

Manual Integrations

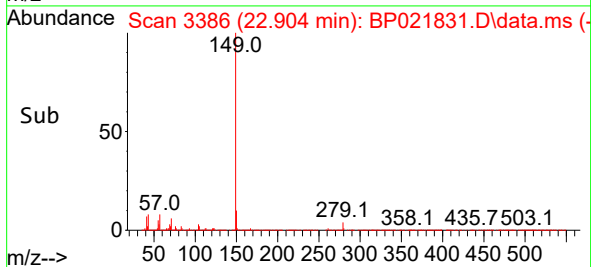
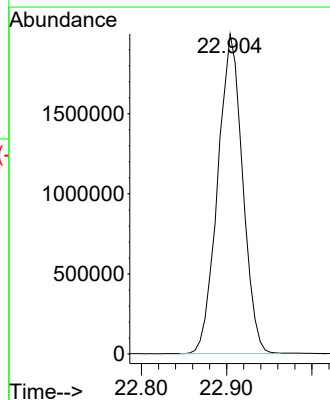
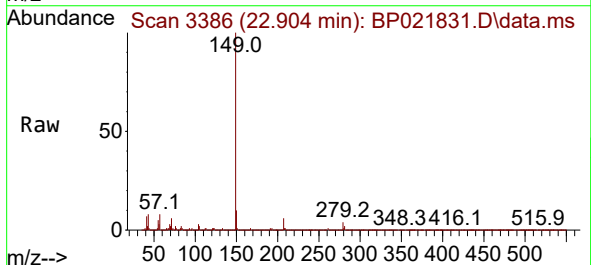
APPROVED

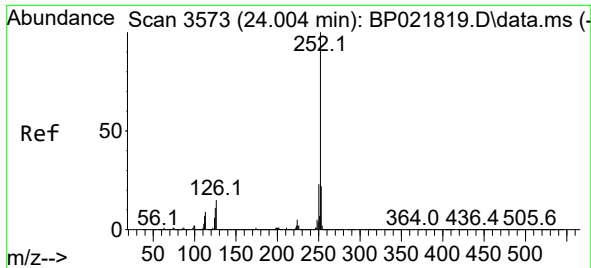
Reviewed By :Jagrut Upadhyay 09/05/2024  
 Supervised By :mohammad ahmed 09/07/2024



#89  
 Di-n-octyl phthalate  
 Concen: 29.538 ng/u1  
 RT: 22.904 min Scan# 3386  
 Delta R.T. 0.000 min  
 Lab File: BP021831.D  
 Acq: 05 Sep 2024 00:56

Tgt Ion:149 Resp: 4048282





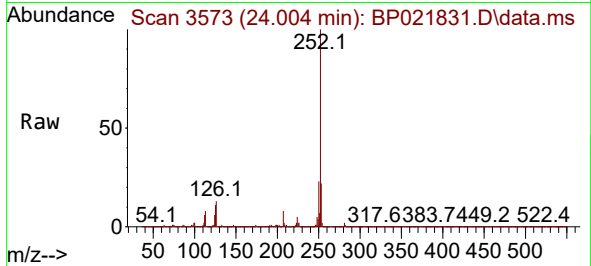
#90  
 Benzo(b)fluoranthene  
 Concen: 27.817 ng/ul  
 RT: 24.004 min Scan# 31  
 Delta R.T. 0.000 min  
 Lab File: BP021831.D  
 Acq: 05 Sep 2024 00:56

Instrument :

BNA\_P

ClientSampleId :

SLCS092

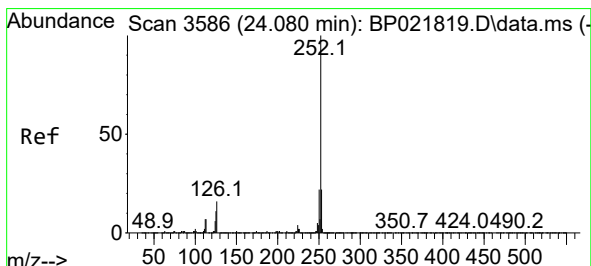
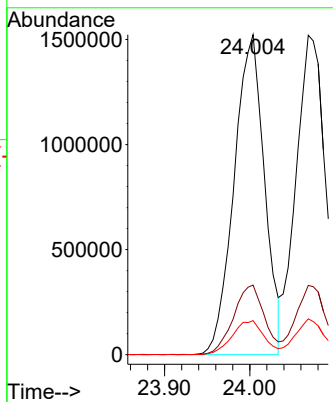
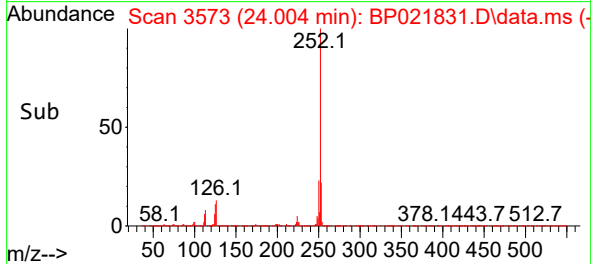


Tgt Ion:252 Resp: 3768574  
 Ion Ratio Lower Upper  
 252 100  
 253 21.8 18.1 27.1  
 125 10.7 8.6 12.8

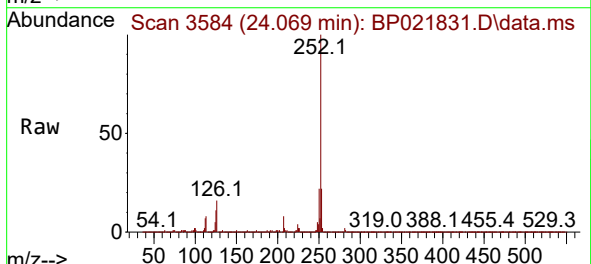
Manual Integrations

APPROVED

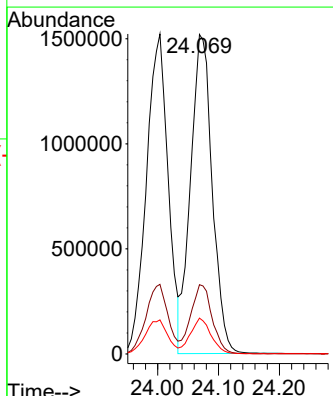
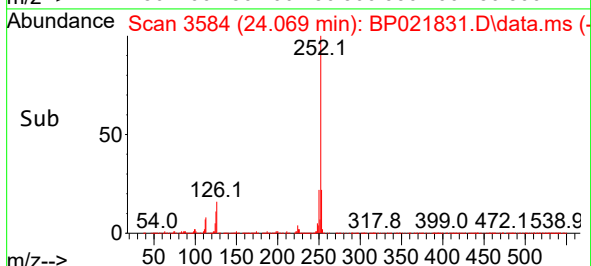
Reviewed By :Jagrut Upadhyay 09/05/2024  
 Supervised By :mohammad ahmed 09/07/2024

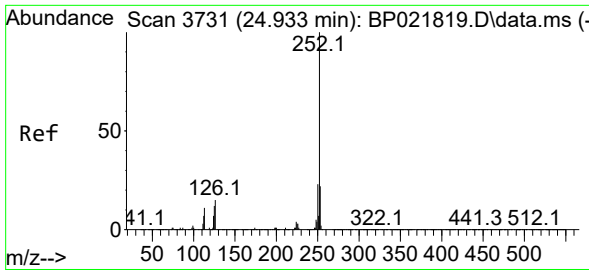


#91  
 Benzo(k)fluoranthene  
 Concen: 28.290 ng/ul  
 RT: 24.069 min Scan# 3584  
 Delta R.T. -0.012 min  
 Lab File: BP021831.D  
 Acq: 05 Sep 2024 00:56



Tgt Ion:252 Resp: 3752012  
 Ion Ratio Lower Upper  
 252 100  
 253 21.7 17.8 26.8  
 125 11.2 8.6 13.0





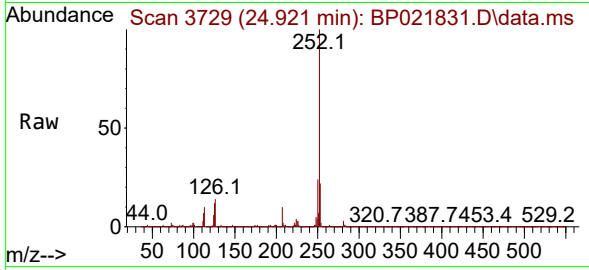
#93  
 Benzo(a)pyrene  
 Concen: 26.570 ng/u1  
 RT: 24.921 min Scan# 31  
 Delta R.T. -0.012 min  
 Lab File: BP021831.D  
 Acq: 05 Sep 2024 00:56

Instrument :

BNA\_P

ClientSampleId :

SLCS092

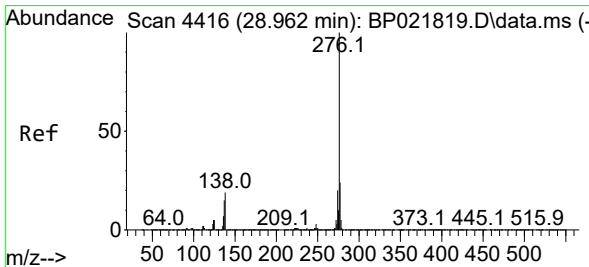
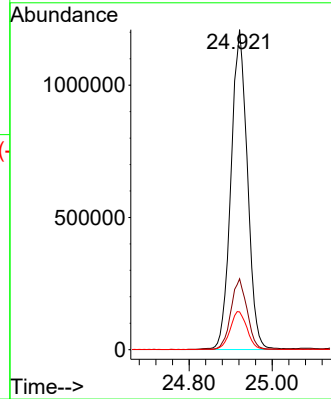
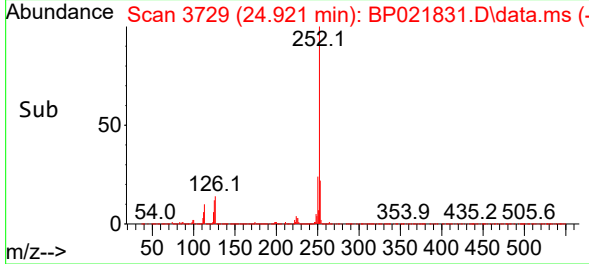


Tgt Ion:252 Resp: 331629  
 Ion Ratio Lower Upper  
 252 100  
 253 22.2 17.4 26.0  
 125 11.8 9.6 14.4

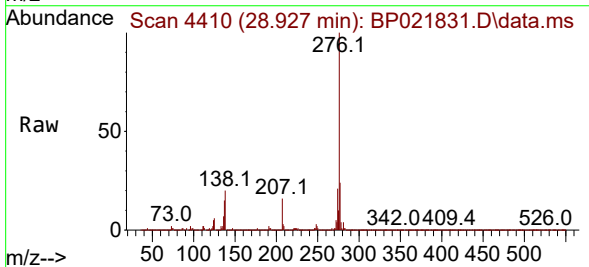
Manual Integrations

APPROVED

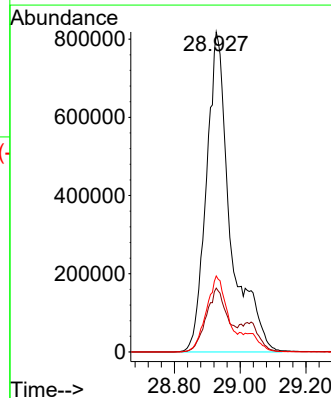
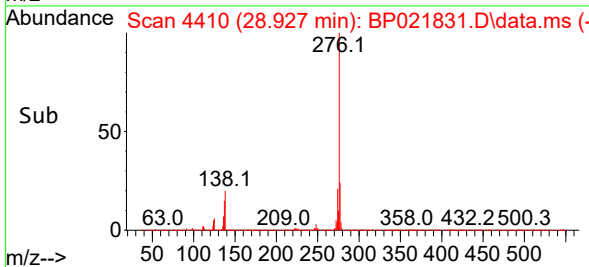
Reviewed By :Jagrut Upadhyay 09/05/2024  
 Supervised By :mohammad ahmed 09/07/2024

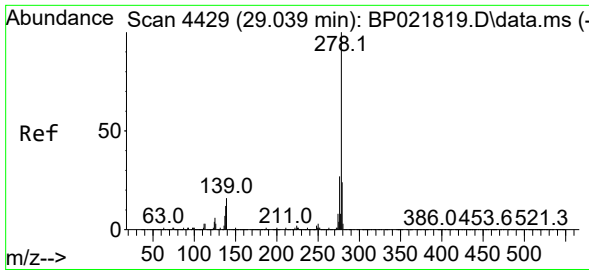


#94  
 Indeno(1,2,3-cd)pyrene  
 Concen: 25.901 ng/u1 m  
 RT: 28.927 min Scan# 4410  
 Delta R.T. -0.035 min  
 Lab File: BP021831.D  
 Acq: 05 Sep 2024 00:56



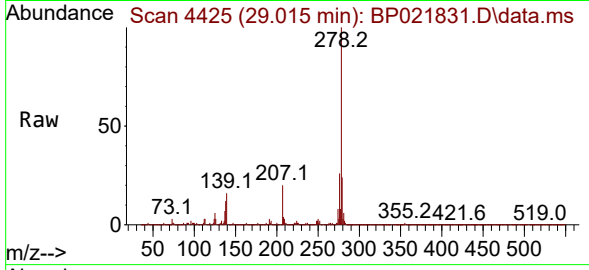
Tgt Ion:276 Resp: 4168230  
 Ion Ratio Lower Upper  
 276 100  
 138 19.9 14.9 22.3  
 277 23.8 19.0 28.6





#95  
 Dibenzo(a,h)anthracene  
 Concen: 26.384 ng/ul m  
 RT: 29.015 min Scan# 4425  
 Delta R.T. -0.023 min  
 Lab File: BP021831.D  
 Acq: 05 Sep 2024 00:56

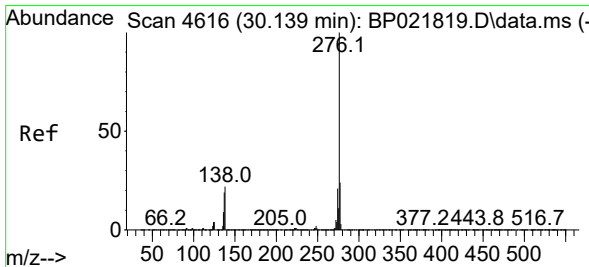
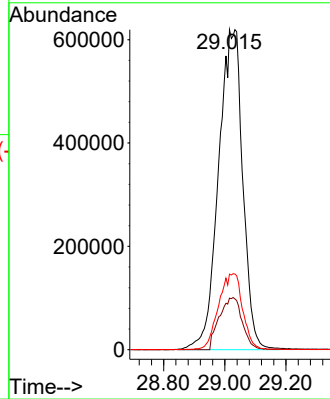
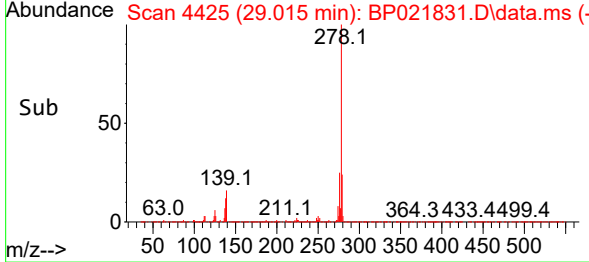
Instrument :  
 BNA\_P  
 ClientSampleId :  
 SLCS092



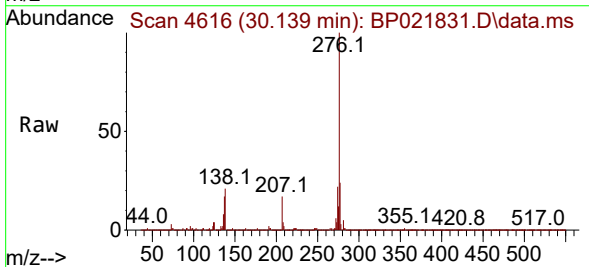
Tgt Ion: 278 Resp: 341189  
 Ion Ratio Lower Upper  
 278 100  
 139 16.1 12.7 19.1  
 279 23.6 18.9 28.3

Manual Integrations  
 APPROVED

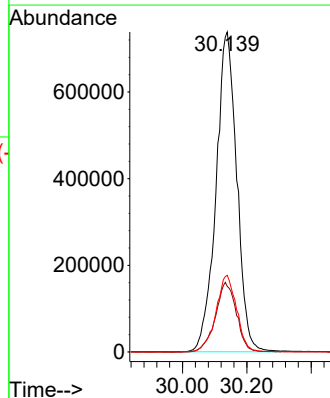
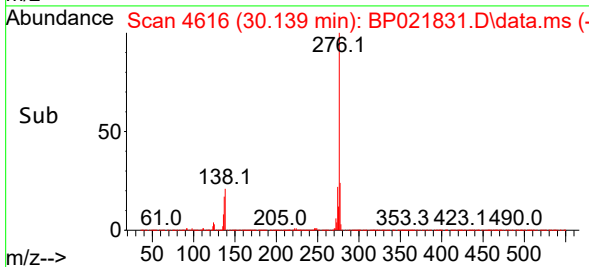
Reviewed By :Jagrut Upadhyay 09/05/2024  
 Supervised By :mohammad ahmed 09/07/2024



#96  
 Benzo(g,h,i)perylene  
 Concen: 26.653 ng/ul  
 RT: 30.139 min Scan# 4616  
 Delta R.T. 0.000 min  
 Lab File: BP021831.D  
 Acq: 05 Sep 2024 00:56



Tgt Ion: 276 Resp: 3314162  
 Ion Ratio Lower Upper  
 276 100  
 138 20.5 17.3 25.9  
 277 23.9 19.4 29.0



Data Path : Z:\svoasrv\HPCHEM1\BNA\_P\Data\BP090424\  
 Data File : BP021831.D  
 Acq On : 05 Sep 2024 00:56  
 Operator : RC/JU  
 Sample : PB163092BS  
 Misc :  
 ALS Vial : 18 Sample Multiplier: 1

Instrument :  
 BNA\_P  
 ClientSampleId :  
 SLCS092

Manual Integrations  
 APPROVED

Reviewed By :Jagrut Upadhyay 09/05/2024  
 Supervised By :mohammad ahmed 09/07/2024

Quant Time: Sep 05 06:13:38 2024  
 Quant Method : Z:\svoasrv\HPCHEM1\BNA\_P\Methods\SFAM-EPA-BP082324.MA.M  
 Quant Title : SVOA CALIBRATION  
 QLast Update : Thu Sep 05 05:03:57 2024  
 Response via : Initial Calibration

Compound	R.T.	QIon	Response	Conc	Units	Dev(Min)
Internal Standards						
1) 1,4-Dichlorobenzene-d4	7.769	152	332308	20.000	ng/ul	0.00
20) Naphthalene-d8	10.557	136	1429912	20.000	ng/ul	0.01
38) Acenaphthene-d10	14.416	164	952042	20.000	ng/ul	0.00
64) Phenanthrene-d10	17.228	188	2097237	20.000	ng/ul	0.02
79) Chrysene-d12	21.675	240	1979962	20.000	ng/ul	0.00
88) Perylene-d12	25.086	264	2165146	20.000	ng/ul	0.00
System Monitoring Compounds						
3) 1,4-Dioxane-d8	3.270	96	54163	5.411	ng/uL	0.00
4) Pyridine-d5	3.681	84	700007	24.179	ng/ul	0.00
7) Phenol-d5	6.946	99	941454	26.547	ng/ul	0.01
9) Bis-(2-Chloroethyl)eth...	7.105	67	497965	25.802	ng/ul	0.01
11) 2-Chlorophenol-d4	7.311	132	600546	26.229	ng/ul	0.00
15) 4-Methylphenol-d8	8.475	113	711511	25.964	ng/ul	0.01
21) Nitrobenzene-d5	8.916	128	309561	26.908	ng/ul	0.00
24) 2-Nitrophenol-d4	9.634	143	323823	27.731	ng/ul	0.00
28) 2,4-Dichlorophenol-d3	10.175	165	605291	26.303	ng/ul	0.00
31) 4-Chloroaniline-d4	10.687	131	754430	22.535	ng/ul	0.00
46) Dimethylphthalate-d6	13.816	166	1923809	26.409	ng/ul	0.00
49) Acenaphthylene-d8	14.098	160	2124191	25.972	ng/ul	0.00
54) 4-Nitrophenol-d4	14.622	143	378533	27.312	ng/ul	0.01
60) Fluorene-d10	15.428	176	1609990	26.288	ng/ul	0.02
65) 4,6-Dinitro-2-methylph...	15.551	200	316323	27.423	ng/ul	0.02
73) Anthracene-d10	17.322	188	2444857	24.563	ng/ul	0.00
81) Pyrene-d10	19.704	212	3086706	27.272	ng/ul	0.00
92) Benzo(a)pyrene-d12	24.851	264	3102421	26.872	ng/ul	0.00
Target Compounds						
2) 1,4-Dioxane	3.305	88	98391	9.249	ng/uL	98
5) Pyridine	3.699	79	703235	24.308	ng/ul	98
6) Benzaldehyde	6.917	77	384348	21.189	ng/ul	99
8) Phenol	6.975	94	969129	26.208	ng/ul	100
10) Bis(2-Chloroethyl)ether	7.199	93	744556	25.903	ng/ul	97
12) 2-Chlorophenol	7.346	128	638650	26.576	ng/ul	99
13) 2-Methylphenol	8.211	108	682998	25.603	ng/ul	99
14) 2,2'-oxybis(1-Chloropr...	8.293	45	723969	26.095	ng/ul	99
16) Acetophenone	8.587	105	1137882	25.900	ng/ul	99
17) N-Nitroso-di-n-propyla...	8.575	70	537898	25.944	ng/ul	97
18) 4-Methylphenol	8.534	108	763853	26.155	ng/ul	97
19) Hexachloroethane	8.852	117	280182	26.075	ng/ul	99
22) Nitrobenzene	8.958	77	837294	26.101	ng/ul	98
23) Isophorone	9.493	82	1652158	25.666	ng/ul	100
25) 2-Nitrophenol	9.669	139	355540	27.480	ng/ul	97
26) 2,4-Dimethylphenol	9.734	107	616321	19.409	ng/ul	99
27) Bis(2-Chloroethoxy)met...	9.963	93	1036902	25.685	ng/ul	99
29) 2,4-Dichlorophenol	10.205	162	602285	26.046	ng/ul	99
30) Naphthalene	10.605	128	2044940	25.375	ng/ul	100
32) 4-Chloroaniline	10.710	127	705862	20.884	ng/ul	99
33) Hexachlorobutadiene	10.893	225	381732	24.604	ng/ul	98
34) Caprolactam	11.493	113	248175	25.380	ng/ul	96
35) 4-Chloro-3-methylphenol	11.840	107	837752	27.373	ng/ul	98
36) 2-Methylnaphthalene	12.216	142	1387183	25.448	ng/ul	99

Data Path : Z:\svoasrv\HPCHEM1\BNA\_P\Data\BP090424\  
 Data File : BP021831.D  
 Acq On : 05 Sep 2024 00:56  
 Operator : RC/JU  
 Sample : PB163092BS  
 Misc :  
 ALS Vial : 18 Sample Multiplier: 1

**Instrument :**  
 BNA\_P  
**ClientSampleId :**  
 SLCS092

**Manual Integrations**  
**APPROVED**  
 Reviewed By :Jagrut Upadhyay 09/05/2024  
 Supervised By :mohammad ahmed 09/07/2024

Quant Time: Sep 05 06:13:38 2024  
 Quant Method : Z:\svoasrv\HPCHEM1\BNA\_P\Methods\SFAM-EPA-BP082324.MA.M  
 Quant Title : SVOA CALIBRATION  
 QLast Update : Thu Sep 05 05:03:57 2024  
 Response via : Initial Calibration

Compound	R.T.	QIon	Response	Conc	Units	Dev(Min)
37) 1-Methylnaphthalene	12.440	142	1406491	25.653	ng/ul	99
39) 1,2,4,5-Tetrachloroben...	12.587	216	747753	24.920	ng/ul	99
40) Hexachlorocyclopentadiene	12.569	237	329156	19.117	ng/ul	98
41) 2,4,6-Trichlorophenol	12.828	196	439836	22.766	ng/ul	98
42) 2,4,5-Trichlorophenol	12.904	196	508185	24.360	ng/ul	97
43) 1,1'-Biphenyl	13.234	154	1856139	25.769	ng/ul	99
44) 2-Chloronaphthalene	13.275	162	1448058	25.640	ng/ul	99
45) 2-Nitroaniline	13.475	65	504189	28.497	ng/ul	98
47) Dimethylphthalate	13.863	163	1910889	26.197	ng/ul	99
48) 2,6-Dinitrotoluene	13.981	165	389713	28.969	ng/ul	99
50) Acenaphthylene	14.128	152	2378541	27.040	ng/ul	100
51) 3-Nitroaniline	14.316	138	403986	27.481	ng/ul	98
52) Acenaphthene	14.475	153	1565265	25.304	ng/ul	100
53) 2,4-Dinitrophenol	14.522	184	203568	25.276	ng/ul	97
55) 4-Nitrophenol	14.640	109	355930	28.048	ng/ul	93
56) Dibenzofuran	14.822	168	2206685	25.785	ng/ul	99
57) 2,4-Dinitrotoluene	14.781	165	584319	28.905	ng/ul	100
58) 2,3,4,6-Tetrachlorophenol	15.057	232	371285	20.658	ng/ul	97
59) Diethylphthalate	15.251	149	1959507	26.751	ng/ul	98
61) Fluorene	15.481	166	1806992	26.105	ng/ul	100
62) 4-Chlorophenyl-phenyle...	15.475	204	894777	25.726	ng/ul	99
63) 4-Nitroaniline	15.498	138	448707	31.582	ng/ul	97
66) 4,6-Dinitro-2-methylph...	15.563	198	335306	25.987	ng/ul	95
67) N-Nitrosodiphenylamine	15.693	169	1558627	25.263	ng/ul	99
68) 4-Bromophenyl-phenylether	16.387	248	572618	24.733	ng/ul	94
69) Hexachlorobenzene	16.510	284	679688	24.729	ng/ul	96
70) Atrazine	16.669	200	18148	0.775	ng/ul	92
71) Pentachlorophenol	16.869	266	308972	17.564	ng/ul	99
72) Phenanthrene	17.269	178	3017647	26.209	ng/ul	99
74) Anthracene	17.357	178	2896285	24.830	ng/ul	100
75) 1,2,3,4-Tetrachloroben...	13.199	216	748917	24.019	ng/uL	98
76) Pentachlorobenzene	14.740	250	742877	22.986	ng/uL	100
77) Carbazole	17.639	167	2796211	26.653	ng/ul	99
78) Di-n-butylphthalate	18.239	149	3504955	27.446	ng/ul	100
80) Fluoranthene	19.357	202	3638610	27.549	ng/ul	99
82) Pyrene	19.733	202	3714717	26.556	ng/ul	98
83) Butylbenzylphthalate	20.675	149	1624632	28.366	ng/ul	99
84) 3,3'-Dichlorobenzidine	21.580	252	1170112	23.451	ng/ul	98
85) Benzo(a)anthracene	21.657	228	3684906	26.163	ng/ul	100
86) Bis(2-ethylhexyl)phtha...	21.604	149	2406548	28.469	ng/ul	99
87) Chrysene	21.727	228	3476839	26.230	ng/ul	99
89) Di-n-octyl phthalate	22.904	149	4048282	29.538	ng/ul	100
90) Benzo(b)fluoranthene	24.004	252	3768574	27.817	ng/ul	99
91) Benzo(k)fluoranthene	24.069	252	3752012	28.290	ng/ul	99
93) Benzo(a)pyrene	24.921	252	3316292	26.570	ng/ul	99
94) Indeno(1,2,3-cd)pyrene	28.927	276	4168230m	25.901	ng/ul	
95) Dibenzo(a,h)anthracene	29.015	278	3411893m	26.384	ng/ul	
96) Benzo(g,h,i)perylene	30.139	276	3314162	26.653	ng/ul	99

(#) = qualifier out of range (m) = manual integration (+) = signals summed