

Data Path : Z:\svoasrv\HPCHEM1\BNA\_P\Data\BP090425\  
 Data File : BP025665.D  
 Acq On : 04 Sep 2025 18:15  
 Operator : CG/JU  
 Sample : Q2893-07  
 Misc : LOD-MDL-WATER 4PPM  
 ALS Vial : 12 Sample Multiplier: 1

Instrument :  
 BNA\_P  
 ClientSampleId :  
 LOD-MDL-WATER-01-QT3-2025

Quant Time: Sep 05 01:10:35 2025  
 Quant Method : Z:\svoasrv\HPCHEM1\BNA\_P\Methods\8270E-BP081425.M  
 Quant Title : ASP BNA STANDARDS FOR 5 POINT CALIBRATION  
 QLast Update : Thu Aug 14 18:14:31 2025  
 Response via : Initial Calibration

Compound	R.T.	QIon	Response	Conc	Units	Dev(Min)	
Internal Standards							
1) 1,4-Dichlorobenzene-d4	7.766	152	131536	20.000	ng	-0.03	
21) Naphthalene-d8	10.543	136	539250	20.000	ng	-0.02	
39) Acenaphthene-d10	14.384	164	357614	20.000	ng	-0.02	
64) Phenanthrene-d10	17.189	188	733023	20.000	ng	-0.01	
76) Chrysene-d12	21.648	240	827215	20.000	ng	0.00	
86) Perylene-d12	25.030	264	924965	20.000	ng	0.00	
System Monitoring Compounds							
5) 2-Fluorophenol	5.390	112	925012	116.787	ng	-0.02	
7) Phenol-d6	6.955	99	1195627	117.740	ng	-0.01	
23) Nitrobenzene-d5	8.913	82	843164	79.095	ng	-0.02	
42) 2,4,6-Tribromophenol	15.901	330	590615	122.699	ng	-0.01	
45) 2-Fluorobiphenyl	12.996	172	1926121	73.610	ng	-0.02	
79) Terphenyl-d14	19.913	244	3384712	74.861	ng	0.00	
Target Compounds							
2) 1,4-Dioxane	3.314	88	11953	3.853	ng	#	88
3) Pyridine	3.720	79	30212	3.558	ng	#	94
4) n-Nitrosodimethylamine	3.626	42	15130	4.322	ng	#	83
6) Aniline	7.102	93	48794	3.566	ng		95
8) 2-Chlorophenol	7.343	128	33320	3.728	ng		88
9) Benzaldehyde	6.919	77	30265	4.254	ng		88
10) Phenol	6.978	94	40041	3.758	ng		78
11) bis(2-Chloroethyl)ether	7.196	93	31147	3.750	ng		95
12) 1,3-Dichlorobenzene	7.802	146	37542	3.809	ng		95
13) 1,4-Dichlorobenzene	7.802	146	37542	3.727	ng		95
14) 1,2-Dichlorobenzene	8.114	146	37033	3.798	ng		96
15) Benzyl Alcohol	8.014	79	27445	3.401	ng		95
16) 2,2'-oxybis(1-Chloropr...	8.284	45	43521	3.912	ng		97
17) 2-Methylphenol	8.219	107	25614	3.461	ng		99
18) Hexachloroethane	8.837	117	13851	3.740	ng		95
19) n-Nitroso-di-n-propyla...	8.561	70	23571	3.504	ng		98
20) 3+4-Methylphenols	8.549	107	30075	2.932	ng		97
22) Acetophenone	8.584	105	51545	3.812	ng	#	91
24) Nitrobenzene	8.955	77	36180	3.798	ng		90
25) Isophorone	9.484	82	67074	3.555	ng		96
26) 2-Nitrophenol	9.660	139	14799	3.027	ng	#	87
27) 2,4-Dimethylphenol	9.743	122	26107	3.105	ng		92
28) bis(2-Chloroethoxy)met...	9.955	93	38684	3.392	ng		95
29) 2,4-Dichlorophenol	10.225	162	23858	2.856	ng		96
30) 1,2,4-Trichlorobenzene	10.402	180	32633	3.564	ng		92
31) Naphthalene	10.590	128	103485	3.692	ng		99
33) 4-Chloroaniline	10.713	127	37182	3.003	ng		99
34) Hexachlorobutadiene	10.872	225	22152	3.885	ng		98
35) Caprolactam	11.496	113	9404	3.070	ng		94
36) 4-Chloro-3-methylphenol	11.849	107	31542	3.291	ng		93
37) 2-Methylnaphthalene	12.419	142	69109	3.789	ng		95
38) 1-Methylnaphthalene	12.419	142	70226	3.620	ng		99
40) 1,2,4,5-Tetrachloroben...	12.572	216	37400	3.621	ng		99
43) 2,4,6-Trichlorophenol	12.825	196	21752	3.120	ng		91
44) 2,4,5-Trichlorophenol	12.913	196	19995	2.616	ng		96
46) 1,1'-Biphenyl	13.213	154	95585	3.680	ng		99

Data Path : Z:\svoasrv\HPCHEM1\BNA\_P\Data\BP090425\  
 Data File : BP025665.D  
 Acq On : 04 Sep 2025 18:15  
 Operator : CG/JU  
 Sample : Q2893-07  
 Misc : LOD-MDL-WATER 4PPM  
 ALS Vial : 12 Sample Multiplier: 1

Instrument :  
 BNA\_P  
 ClientSampleId :  
 LOD-MDL-WATER-01-QT3-2025

Quant Time: Sep 05 01:10:35 2025  
 Quant Method : Z:\svoasrv\HPCHEM1\BNA\_P\Methods\8270E-BP081425.M  
 Quant Title : ASP BNA STANDARDS FOR 5 POINT CALIBRATION  
 QLast Update : Thu Aug 14 18:14:31 2025  
 Response via : Initial Calibration

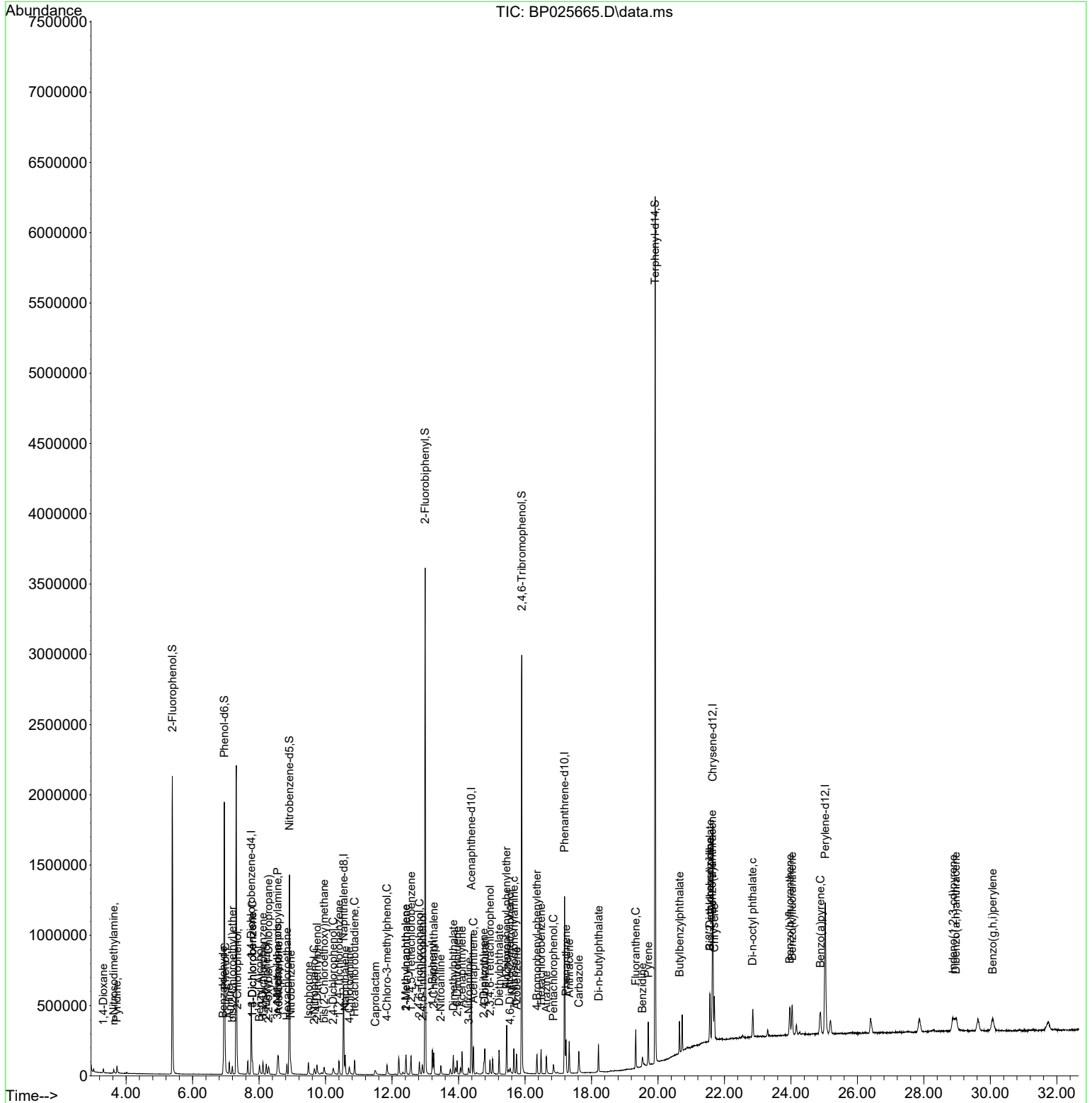
Compound	R.T.	QIon	Response	Conc	Units	Dev(Min)
47) 2-Chloronaphthalene	13.254	162	73365	3.629	ng	100
48) 2-Nitroaniline	13.466	65	19219	3.262	ng	89
49) Acenaphthylene	14.101	152	120954	3.615	ng	98
50) Dimethylphthalate	13.843	163	97666	3.729	ng	99
51) 2,6-Dinitrotoluene	13.954	165	19034	3.448	ng	88
52) Acenaphthene	14.448	154	71567	3.644	ng	97
53) 3-Nitroaniline	14.307	138	15716	2.531	ng	92
55) Dibenzofuran	14.790	168	116210	3.743	ng	100
57) 2,4-Dinitrotoluene	14.760	165	24188	3.071	ng	# 75
58) Fluorene	15.454	166	93056	3.798	ng	99
59) 2,3,4,6-Tetrachlorophenol	14.943	232	21954	3.254	ng	96
60) Diethylphthalate	15.219	149	99288	3.731	ng	99
61) 4-Chlorophenyl-phenyle...	15.443	204	45483	3.733	ng	97
63) Azobenzene	15.743	77	84618	3.714	ng	95
65) 4,6-Dinitro-2-methylph...	15.548	198	10830	2.370	ng	79
66) n-Nitrosodiphenylamine	15.666	169	78373	3.506	ng	97
67) 4-Bromophenyl-phenylether	16.360	248	28732	3.564	ng	95
68) Hexachlorobenzene	16.484	284	34691	3.712	ng	100
69) Atrazine	16.642	200	28019	3.347	ng	98
70) Pentachlorophenol	16.854	266	16457	2.790	ng	89
71) Phenanthrene	17.237	178	151782	3.769	ng	98
72) Anthracene	17.331	178	145891	3.548	ng	99
73) Carbazole	17.619	167	128953	3.329	ng	99
74) Di-n-butylphthalate	18.213	149	160278	3.363	ng	99
75) Fluoranthene	19.331	202	179204	3.731	ng	99
77) Benzidine	19.531	184	79765	2.825	ng	98
78) Pyrene	19.707	202	185915	3.458	ng	99
80) Butylbenzylphthalate	20.648	149	76544	3.141	ng	99
81) Benzo(a)anthracene	21.630	228	198098	3.631	ng	97
82) 3,3'-Dichlorobenzidine	21.560	252	64573	3.140	ng	98
83) Chrysene	21.695	228	190442	3.728	ng	99
84) Bis(2-ethylhexyl)phtha...	21.566	149	112677	3.141	ng	97
85) Di-n-octyl phthalate	22.848	149	191750	3.108	ng	96
87) Indeno(1,2,3-cd)pyrene	28.871	276	235089	3.466	ng	# 82
88) Benzo(b)fluoranthene	23.966	252	195687	3.588	ng	100
89) Benzo(k)fluoranthene	24.036	252	197540	3.619	ng	98
90) Benzo(a)pyrene	24.889	252	185969	3.503	ng	99
91) Dibenzo(a,h)anthracene	28.965	278	190264	3.432	ng	96
92) Benzo(g,h,i)perylene	30.071	276	187280	3.437	ng	98

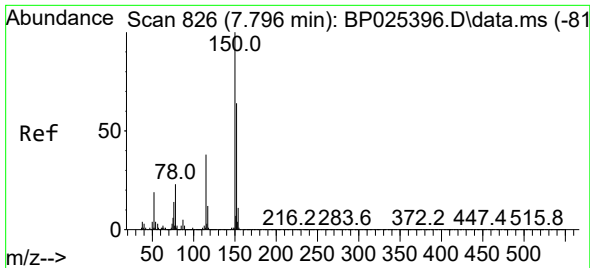
(#) = qualifier out of range (m) = manual integration (+) = signals summed

Data Path : Z:\svoasrv\HPCHEM1\BNA\_P\Data\BP090425\  
 Data File : BP025665.D  
 Acq On : 04 Sep 2025 18:15  
 Operator : CG/JU  
 Sample : Q2893-07  
 Misc : LOD-MDL-WATER 4PPM  
 ALS Vial : 12 Sample Multiplier: 1

**Instrument :**  
 BNA\_P  
**ClientSampleId :**  
 LOD-MDL-WATER-01-QT3-2025

Quant Time: Sep 05 01:10:35 2025  
 Quant Method : Z:\svoasrv\HPCHEM1\BNA\_P\Methods\8270E-BP081425.M  
 Quant Title : ASP BNA STANDARDS FOR 5 POINT CALIBRATION  
 QLast Update : Thu Aug 14 18:14:31 2025  
 Response via : Initial Calibration

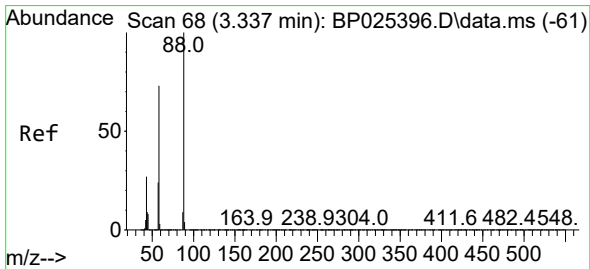
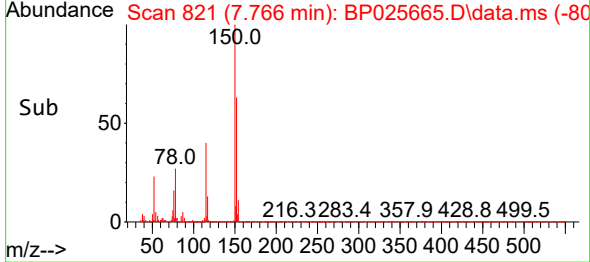
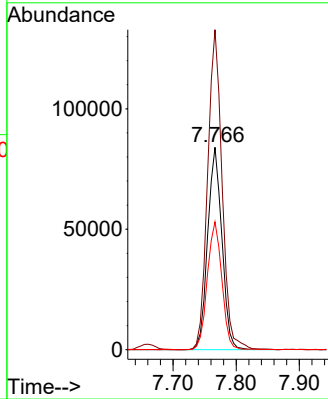
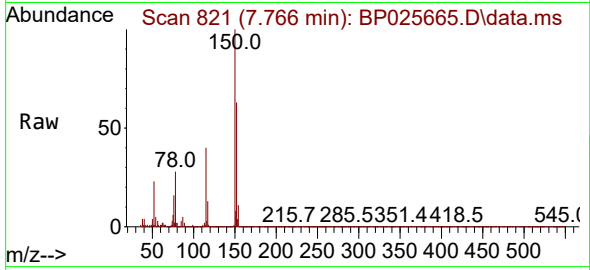




#1  
 1,4-Dichlorobenzene-d4  
 Concen: 20.000 ng  
 RT: 7.766 min Scan# 81  
 Delta R.T. -0.030 min  
 Lab File: BP025665.D  
 Acq: 04 Sep 2025 18:15

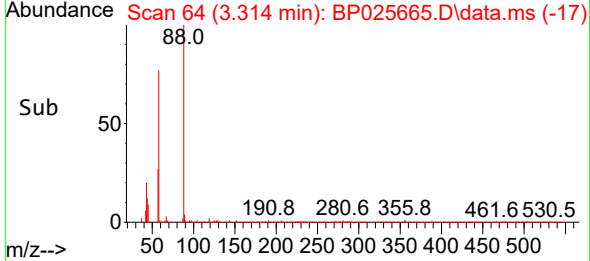
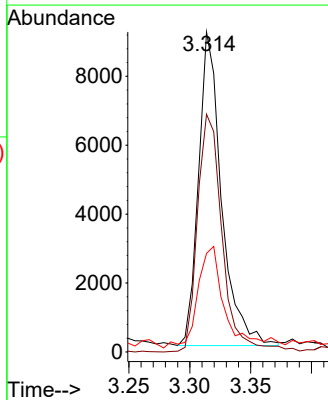
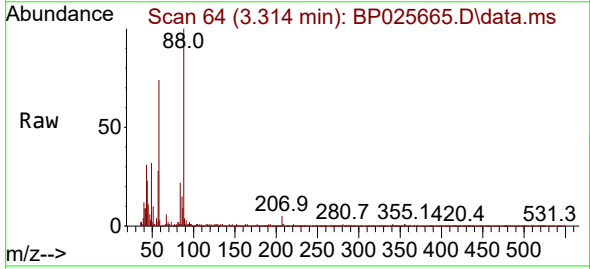
Instrument :  
 BNA\_P  
 ClientSampleId :  
 LOD-MDL-WATER-01-QT3-2025

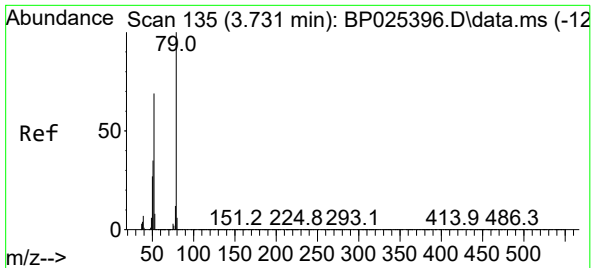
Tgt Ion:	Resp:	Lower	Upper
152	131536		
150	158.2	125.9	188.9
115	63.2	48.5	72.7



#2  
 1,4-Dioxane  
 Concen: 3.853 ng  
 RT: 3.314 min Scan# 64  
 Delta R.T. -0.023 min  
 Lab File: BP025665.D  
 Acq: 04 Sep 2025 18:15

Tgt Ion:	Resp:	Lower	Upper
88	11953		
58	81.6	59.2	88.8
43	38.5	21.7	32.5



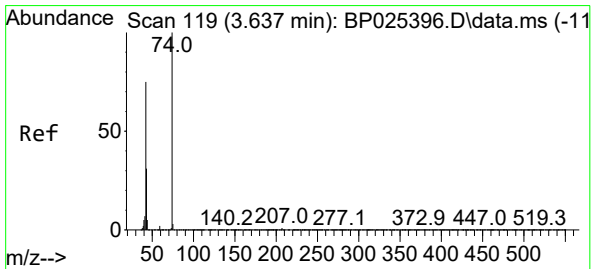
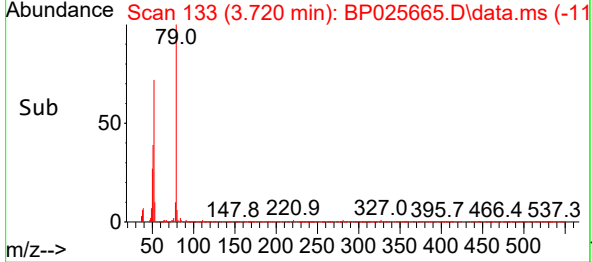
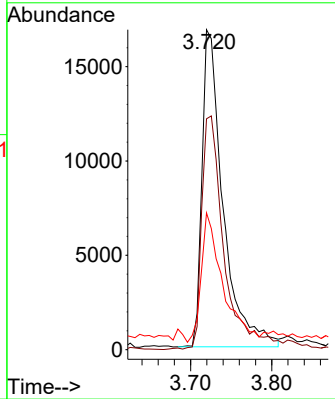
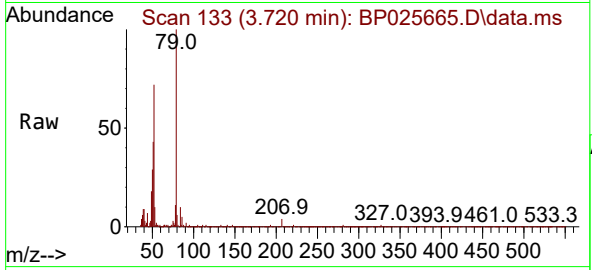


#3  
 Pyridine  
 Concen: 3.558 ng  
 RT: 3.720 min Scan# 111  
 Delta R.T. -0.012 min  
 Lab File: BP025665.D  
 Acq: 04 Sep 2025 18:15

Instrument : BNA\_P  
 ClientSampleId : LOD-MDL-WATER-01-QT3-2025

Tgt Ion: 79 Resp: 30212

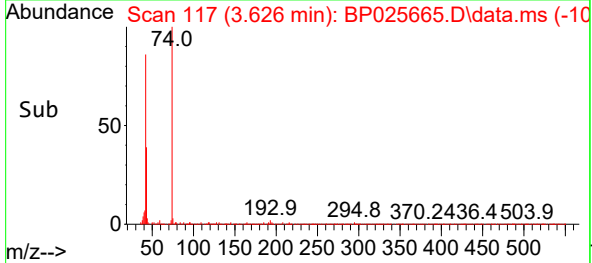
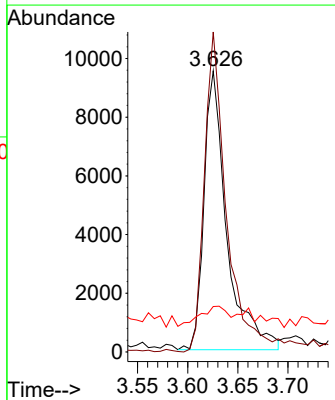
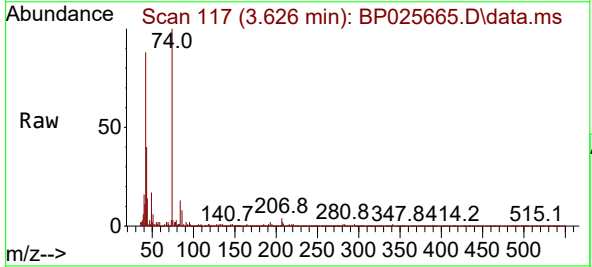
Ion	Ratio	Lower	Upper
79	100		
52	72.2	55.5	83.3
51	42.8	28.3	42.5

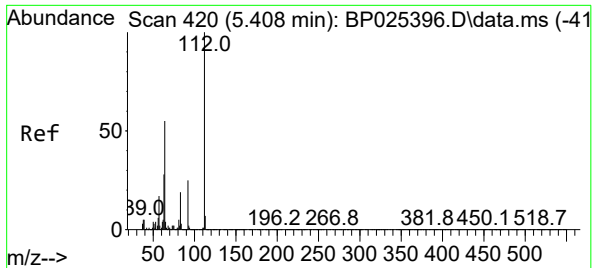


#4  
 n-Nitrosodimethylamine  
 Concen: 4.322 ng  
 RT: 3.626 min Scan# 117  
 Delta R.T. -0.012 min  
 Lab File: BP025665.D  
 Acq: 04 Sep 2025 18:15

Tgt Ion: 42 Resp: 15130

Ion	Ratio	Lower	Upper
42	100		
74	113.8	107.0	160.4
44	16.2	6.2	9.4



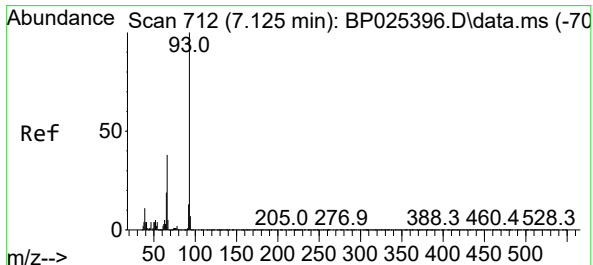
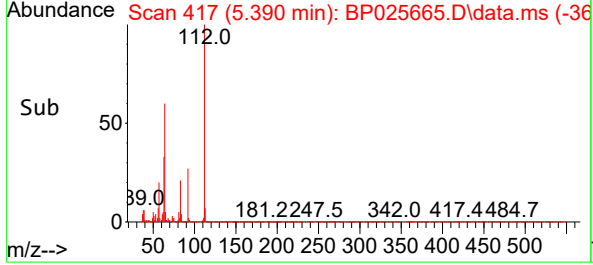
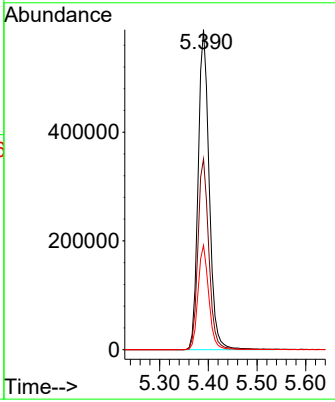
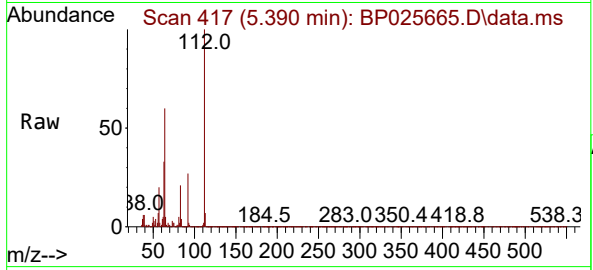


#5  
 2-Fluorophenol  
 Concen: 116.787 ng  
 RT: 5.390 min Scan# 411  
 Delta R.T. -0.017 min  
 Lab File: BP025665.D  
 Acq: 04 Sep 2025 18:15

Instrument : BNA\_P  
 ClientSampleId : LOD-MDL-WATER-01-QT3-2025

Tgt Ion: 112 Resp: 925012

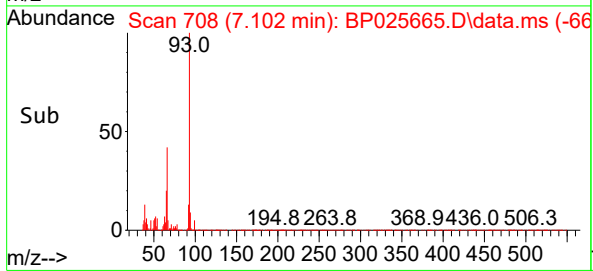
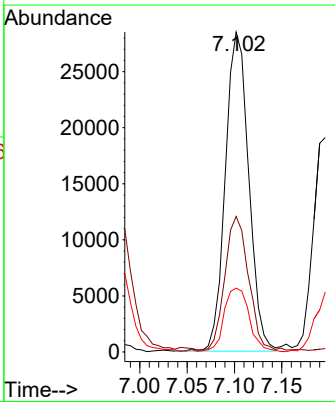
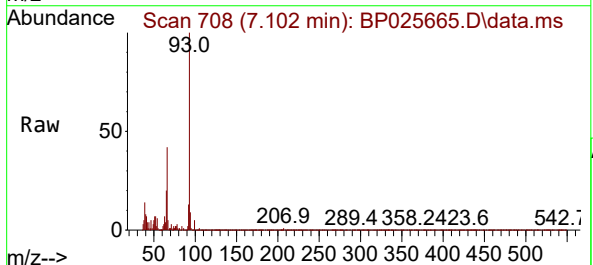
Ion	Ratio	Lower	Upper
112	100		
64	59.6	43.8	65.8
63	32.6	22.7	34.1

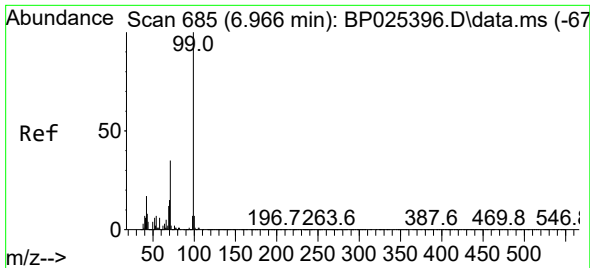


#6  
 Aniline  
 Concen: 3.566 ng  
 RT: 7.102 min Scan# 708  
 Delta R.T. -0.023 min  
 Lab File: BP025665.D  
 Acq: 04 Sep 2025 18:15

Tgt Ion: 93 Resp: 48794

Ion	Ratio	Lower	Upper
93	100		
66	42.4	30.4	45.6
65	20.0	15.3	22.9

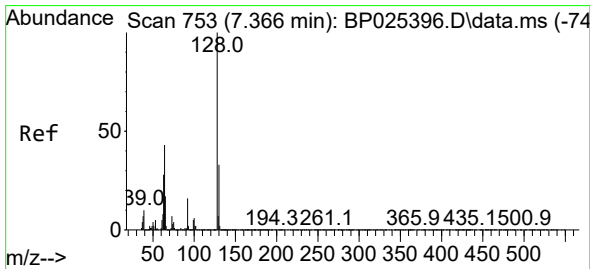
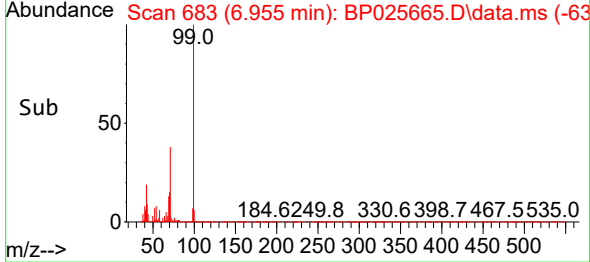
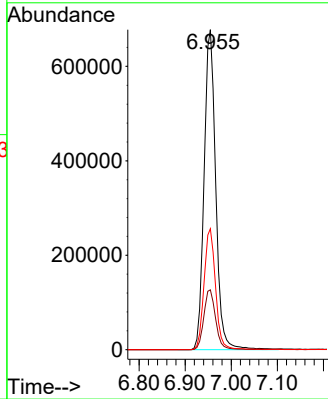
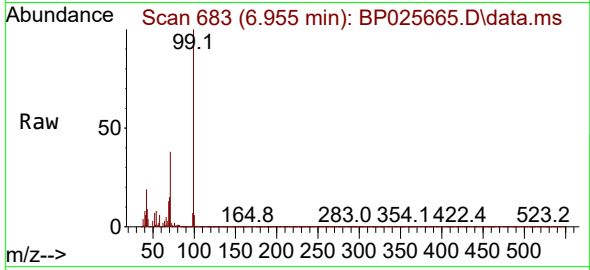




#7  
 Phenol-d6  
 Concen: 117.740 ng  
 RT: 6.955 min Scan# 681  
 Delta R.T. -0.012 min  
 Lab File: BP025665.D  
 Acq: 04 Sep 2025 18:15

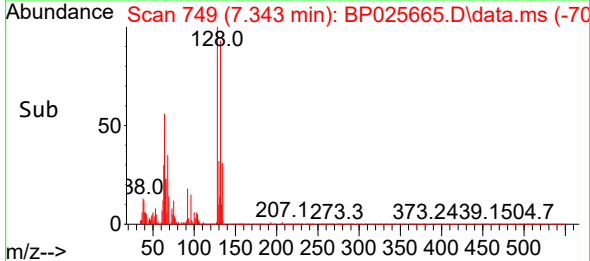
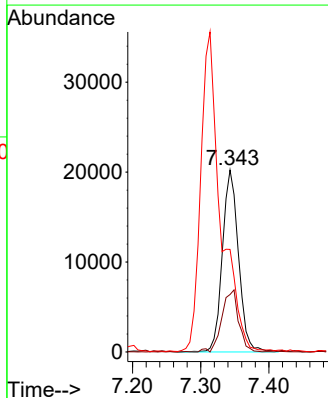
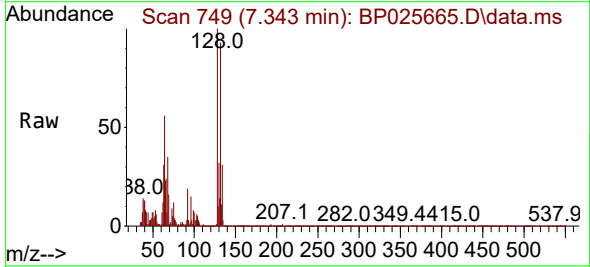
Instrument :  
 BNA\_P  
 ClientSampleId :  
 LOD-MDL-WATER-01-QT3-2025

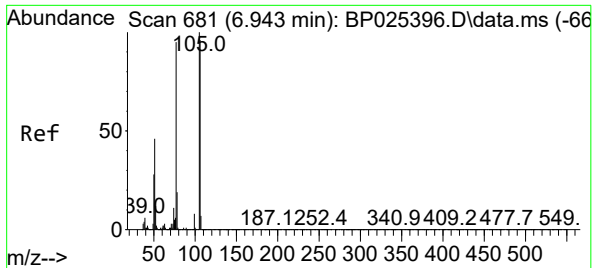
Tgt Ion: 99 Resp: 1195627  
 Ion Ratio Lower Upper  
 99 100  
 42 18.7 13.7 20.5  
 71 37.8 28.2 42.4



#8  
 2-Chlorophenol  
 Concen: 3.728 ng  
 RT: 7.343 min Scan# 749  
 Delta R.T. -0.023 min  
 Lab File: BP025665.D  
 Acq: 04 Sep 2025 18:15

Tgt Ion:128 Resp: 33320  
 Ion Ratio Lower Upper  
 128 100  
 130 31.6 12.6 52.6  
 64 56.4 23.4 63.4



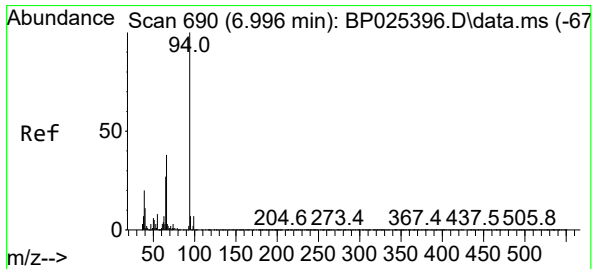
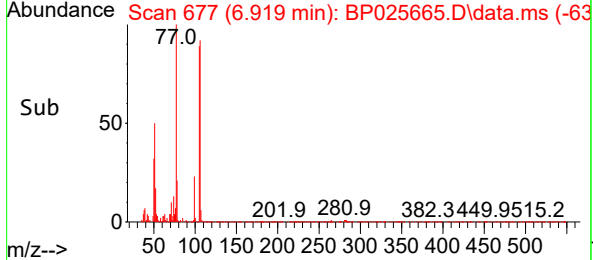
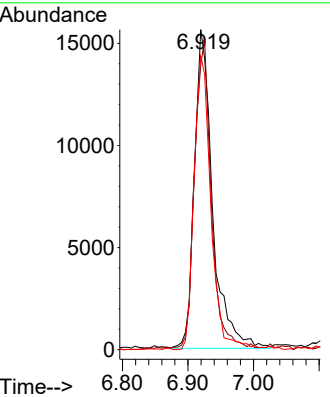
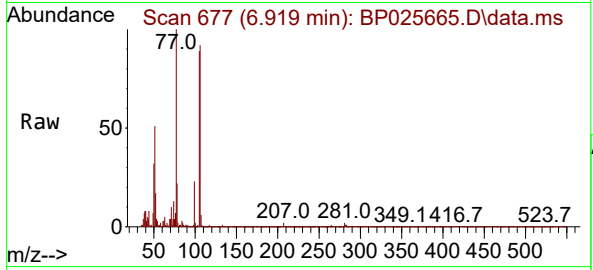


#9  
Benzaldehyde  
Concen: 4.254 ng  
RT: 6.919 min Scan# 61  
Delta R.T. -0.023 min  
Lab File: BP025665.D  
Acq: 04 Sep 2025 18:15

Instrument : BNA\_P  
ClientSampleId : LOD-MDL-WATER-01-QT3-2025

Tgt Ion: 77 Resp: 30265

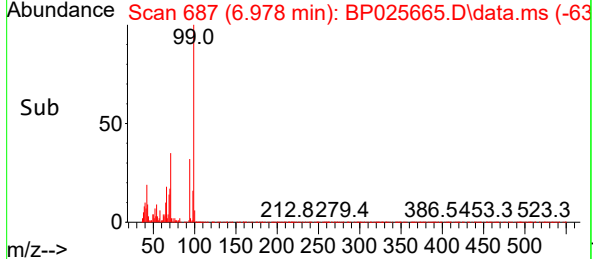
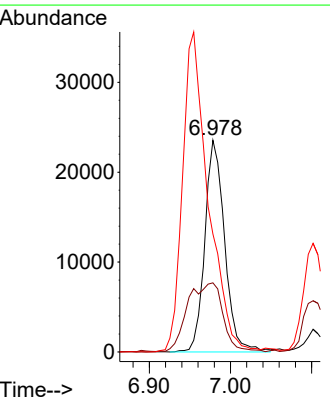
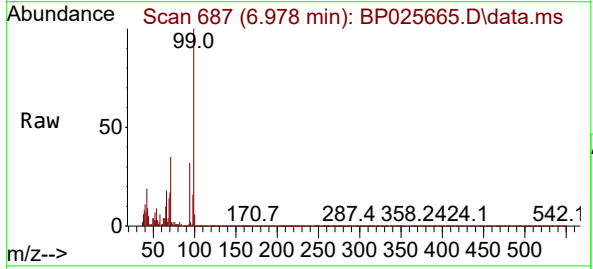
Ion	Ratio	Lower	Upper
77	100		
105	89.1	84.8	124.8
106	91.8	80.5	120.5



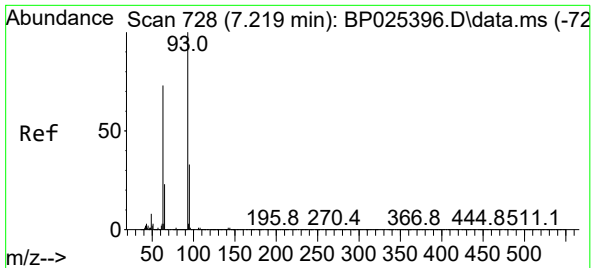
#10  
Phenol  
Concen: 3.758 ng  
RT: 6.978 min Scan# 687  
Delta R.T. -0.017 min  
Lab File: BP025665.D  
Acq: 04 Sep 2025 18:15

Tgt Ion: 94 Resp: 40041

Ion	Ratio	Lower	Upper
94	100		
65	32.6	6.8	46.8
66	55.7	18.2	58.2





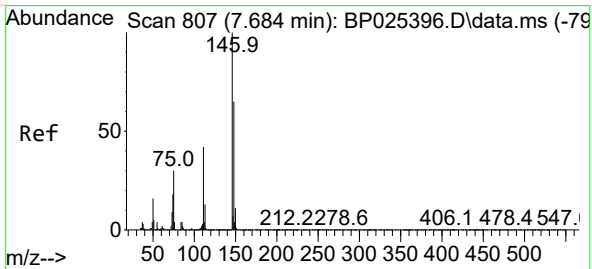
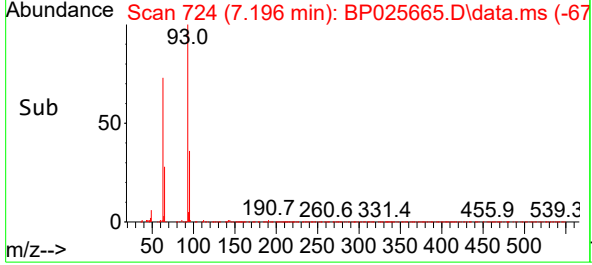
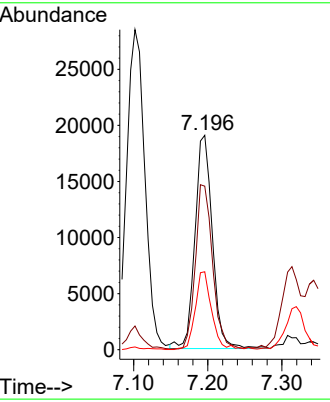
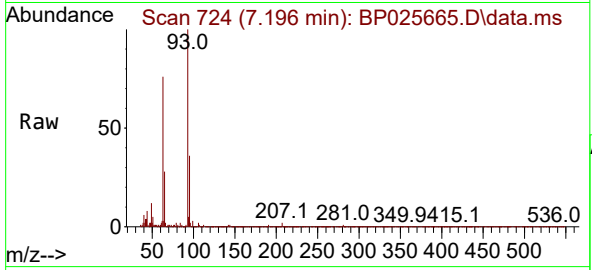


#11  
 bis(2-Chloroethyl)ether  
 Concen: 3.750 ng  
 RT: 7.196 min Scan# 724  
 Delta R.T. -0.023 min  
 Lab File: BP025665.D  
 Acq: 04 Sep 2025 18:15

Instrument : BNA\_P  
 ClientSampleId : LOD-MDL-WATER-01-QT3-2025

Tgt Ion: 93 Resp: 31147

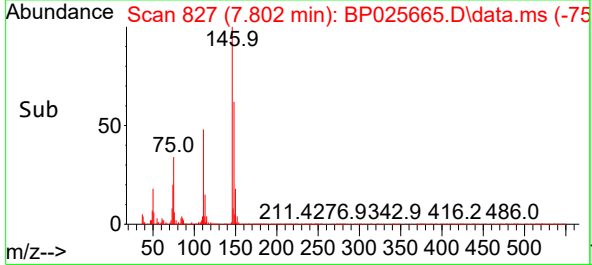
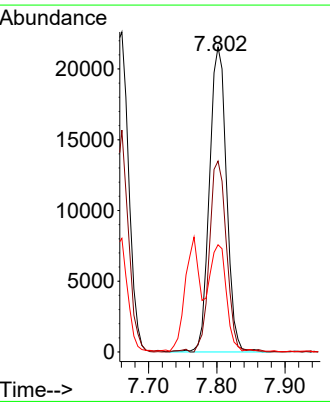
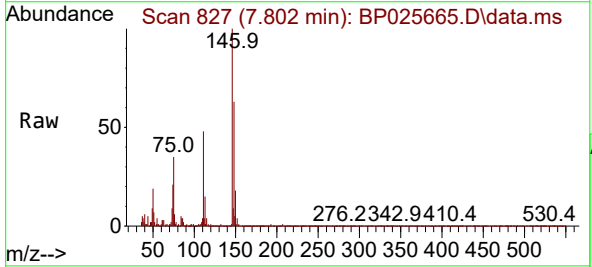
Ion	Ratio	Lower	Upper
93	100		
63	76.2	52.6	92.6
95	36.3	12.7	52.7

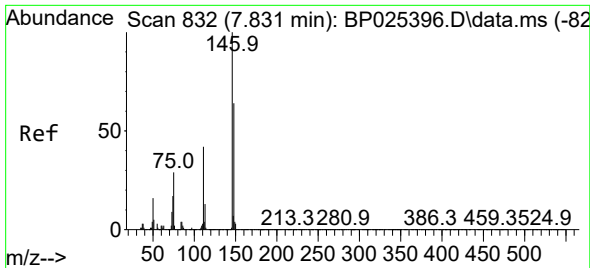


#12  
 1,3-Dichlorobenzene  
 Concen: 3.809 ng  
 RT: 7.802 min Scan# 827  
 Delta R.T. 0.118 min  
 Lab File: BP025665.D  
 Acq: 04 Sep 2025 18:15

Tgt Ion: 146 Resp: 37542

Ion	Ratio	Lower	Upper
146	100		
148	62.6	51.9	77.9
75	35.2	23.7	35.5



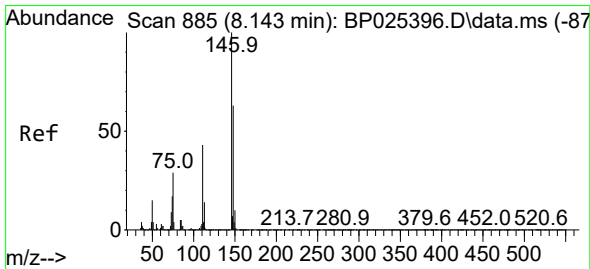
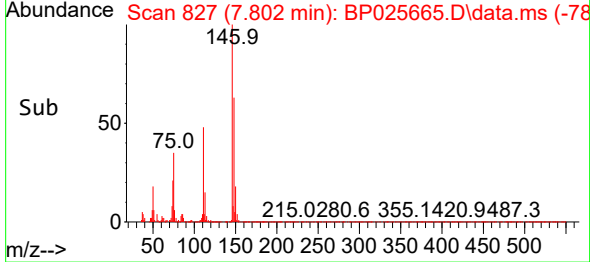
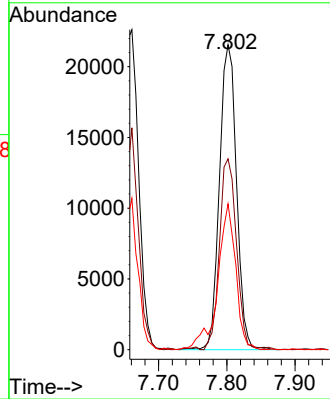
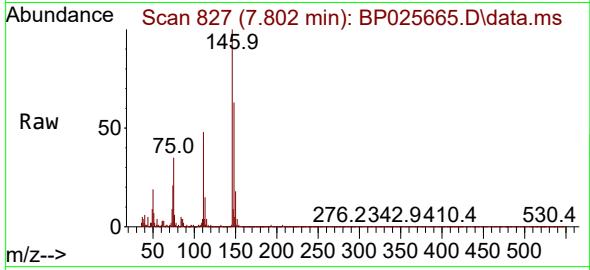


#13  
 1,4-Dichlorobenzene  
 Concen: 3.727 ng  
 RT: 7.802 min Scan# 81  
 Delta R.T. -0.029 min  
 Lab File: BP025665.D  
 Acq: 04 Sep 2025 18:15

Instrument :  
 BNA\_P  
 ClientSampleId :  
 LOD-MDL-WATER-01-QT3-2025

Tgt Ion:146 Resp: 37542

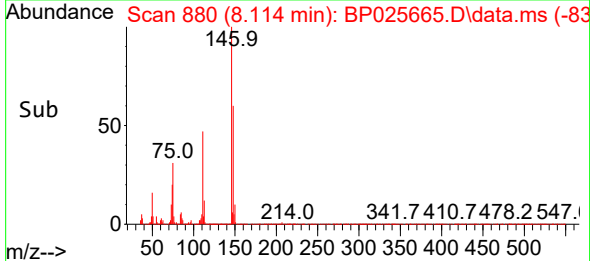
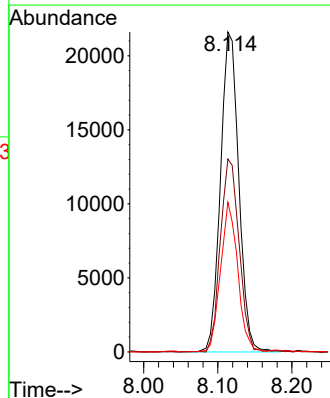
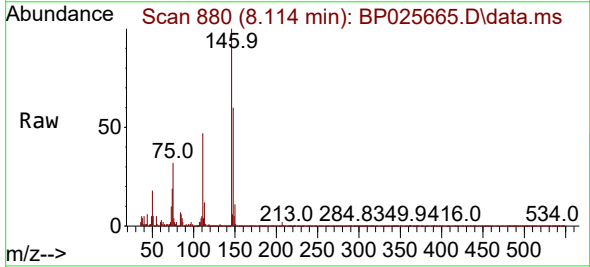
Ion	Ratio	Lower	Upper
146	100		
148	62.6	51.6	77.4
111	47.8	33.4	50.0

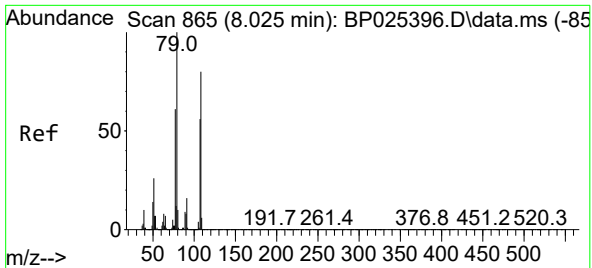


#14  
 1,2-Dichlorobenzene  
 Concen: 3.798 ng  
 RT: 8.114 min Scan# 880  
 Delta R.T. -0.029 min  
 Lab File: BP025665.D  
 Acq: 04 Sep 2025 18:15

Tgt Ion:146 Resp: 37033

Ion	Ratio	Lower	Upper
146	100		
148	60.3	50.4	75.6
111	46.8	34.5	51.7



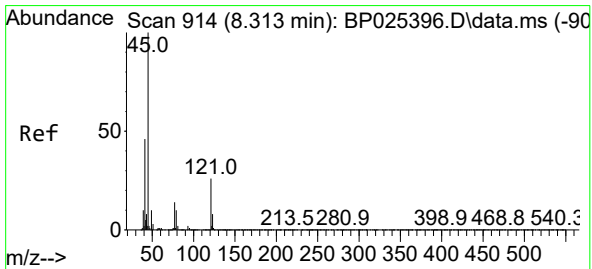
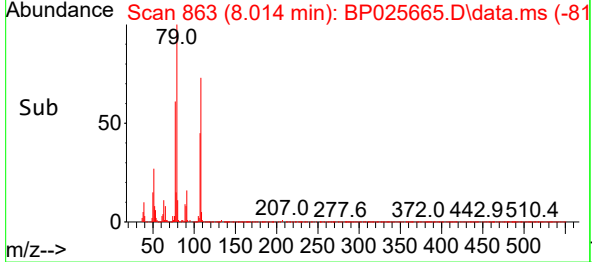
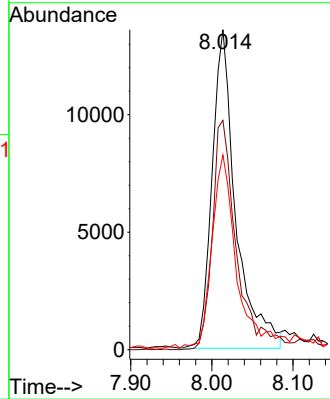
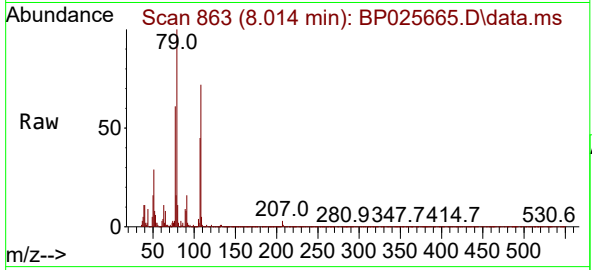


#15  
Benzyl Alcohol  
Concen: 3.401 ng  
RT: 8.014 min Scan# 801  
Delta R.T. -0.012 min  
Lab File: BP025665.D  
Acq: 04 Sep 2025 18:15

Instrument : BNA\_P  
ClientSampleId : LOD-MDL-WATER-01-QT3-2025

Tgt Ion: 79 Resp: 27445

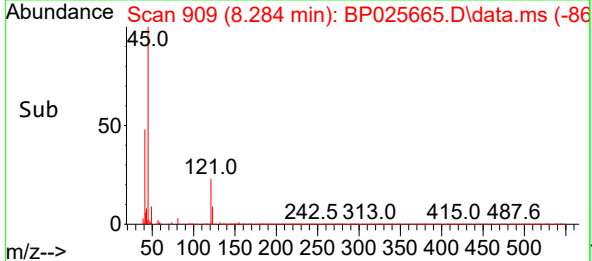
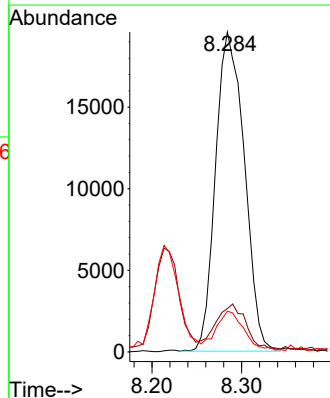
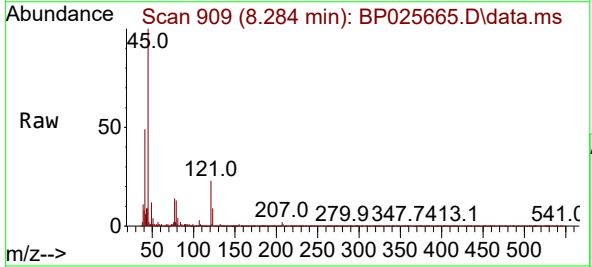
Ion	Ratio	Lower	Upper
79	100		
108	71.6	63.8	95.6
77	60.9	49.0	73.4

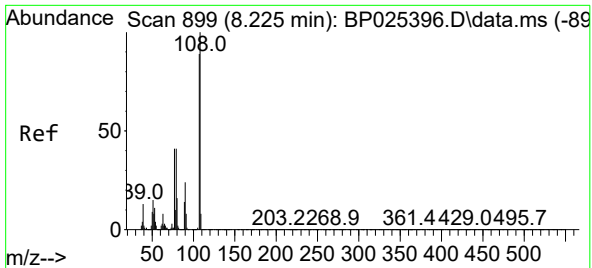


#16  
2,2'-oxybis(1-Chloropropane)  
Concen: 3.912 ng  
RT: 8.284 min Scan# 909  
Delta R.T. -0.029 min  
Lab File: BP025665.D  
Acq: 04 Sep 2025 18:15

Tgt Ion: 45 Resp: 43521

Ion	Ratio	Lower	Upper
45	100		
77	13.6	0.0	35.3
79	12.7	0.0	31.8

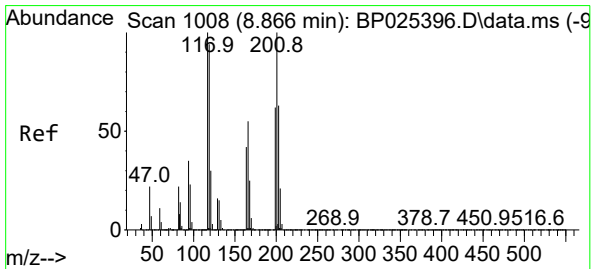
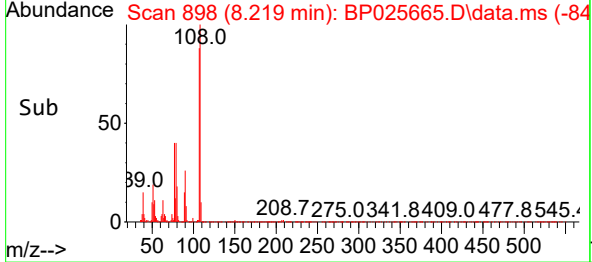
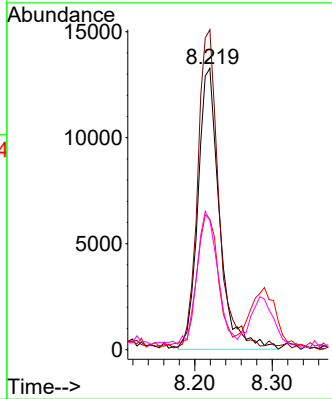
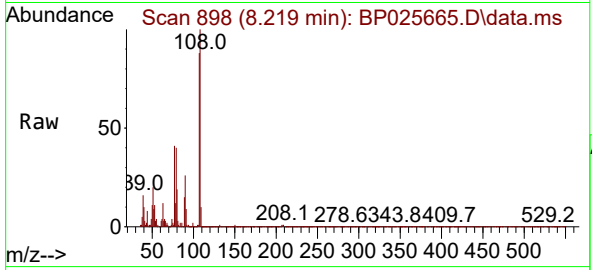




#17  
 2-Methylphenol  
 Concen: 3.461 ng  
 RT: 8.219 min Scan# 899  
 Delta R.T. -0.006 min  
 Lab File: BP025665.D  
 Acq: 04 Sep 2025 18:15

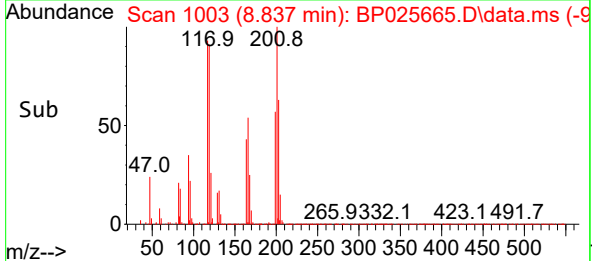
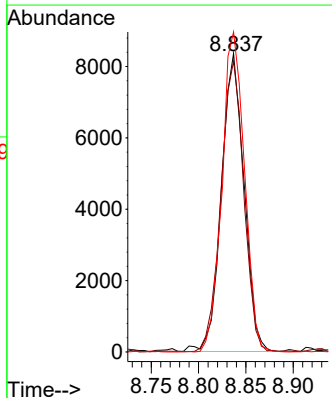
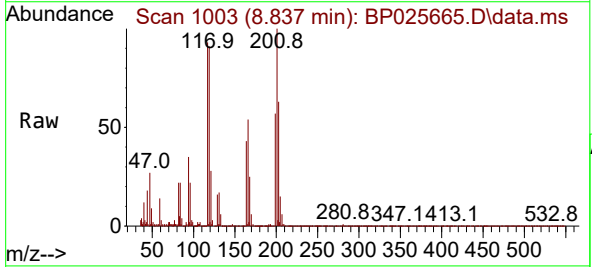
Instrument : BNA\_P  
 ClientSampleId : LOD-MDL-WATER-01-QT3-2025

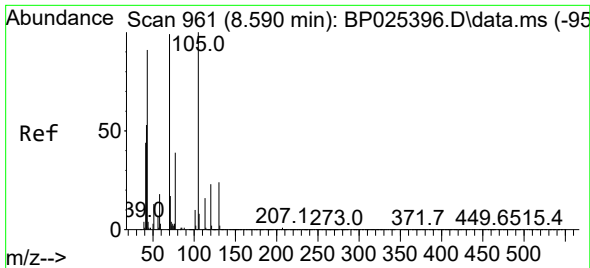
Tgt Ion	Resp	Lower	Upper
107	100		
108	113.8	89.4	134.0
77	46.3	36.3	54.5
79	46.0	36.6	54.8



#18  
 Hexachloroethane  
 Concen: 3.740 ng  
 RT: 8.837 min Scan# 1003  
 Delta R.T. -0.029 min  
 Lab File: BP025665.D  
 Acq: 04 Sep 2025 18:15

Tgt Ion	Resp	Lower	Upper
117	100		
119	97.4	75.1	112.7
201	107.2	80.1	120.1



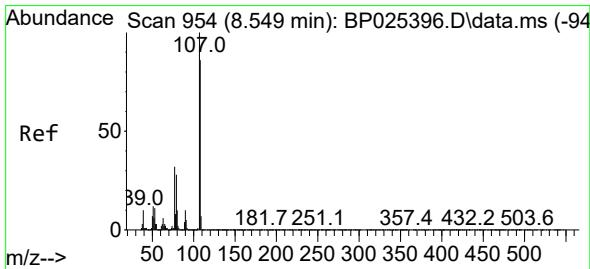
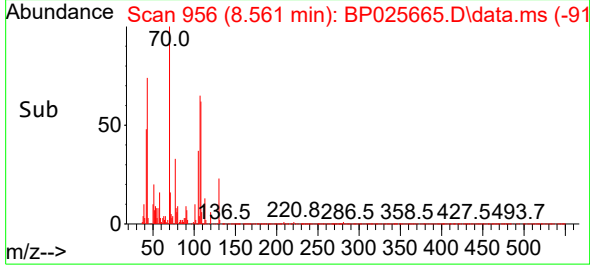
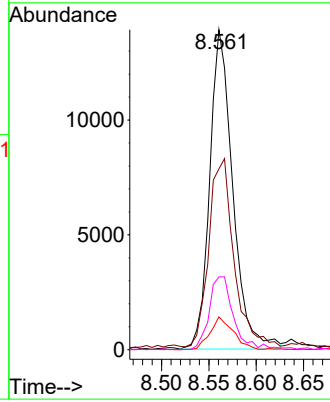
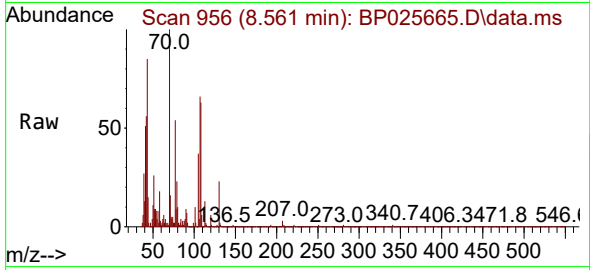


#19  
 n-Nitroso-di-n-propylamine  
 Concen: 3.504 ng  
 RT: 8.561 min Scan# 91  
 Delta R.T. -0.029 min  
 Lab File: BP025665.D  
 Acq: 04 Sep 2025 18:15

Instrument :  
 BNA\_P  
 ClientSampleId :  
 LOD-MDL-WATER-01-QT3-2025

Tgt Ion: 70 Resp: 23571

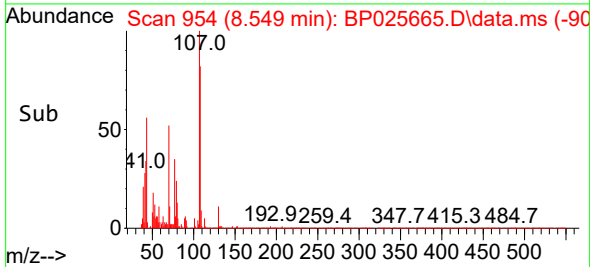
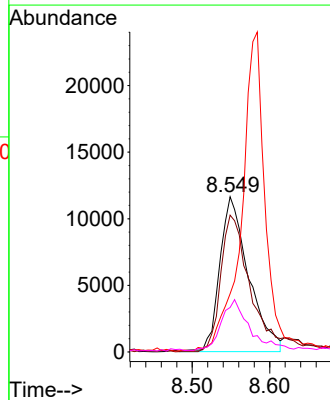
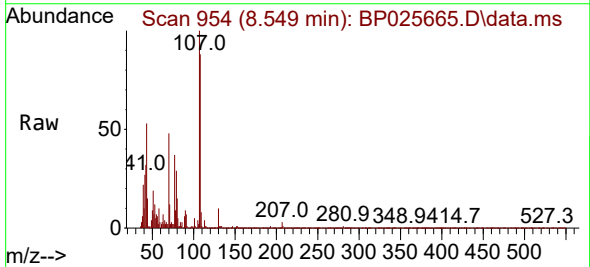
Ion	Ratio	Lower	Upper
70	100		
42	56.5	43.8	65.6
101	10.2	8.5	12.7
130	22.7	19.4	29.0

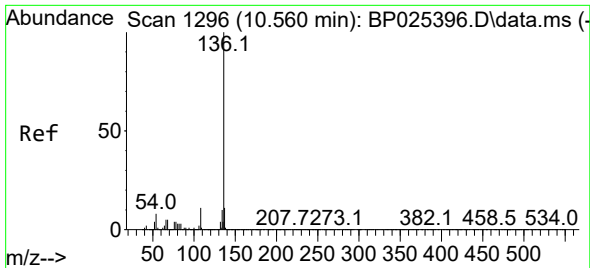


#20  
 3+4-Methylphenols  
 Concen: 2.932 ng  
 RT: 8.549 min Scan# 954  
 Delta R.T. 0.000 min  
 Lab File: BP025665.D  
 Acq: 04 Sep 2025 18:15

Tgt Ion: 107 Resp: 30075

Ion	Ratio	Lower	Upper
107	100		
108	88.1	66.3	106.3
77	37.5	12.3	52.3
79	28.6	7.8	47.8

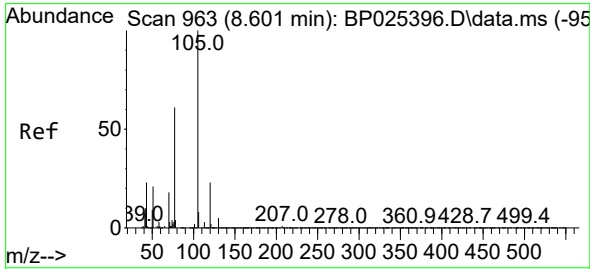
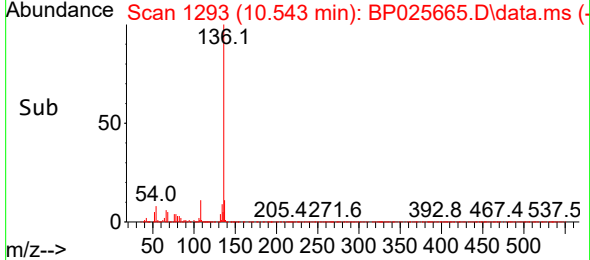
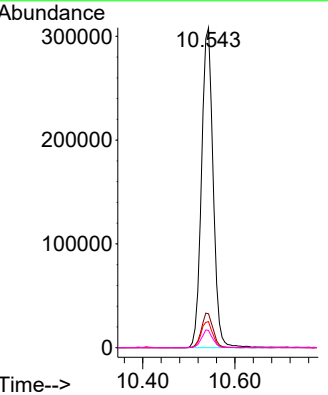
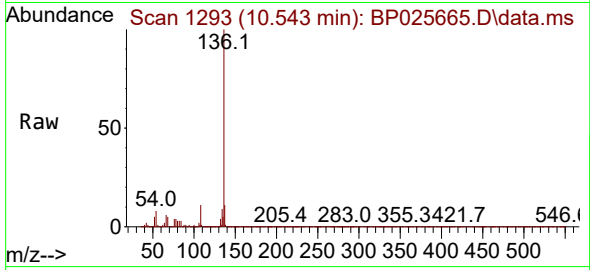




#21  
 Naphthalene-d8  
 Concen: 20.000 ng  
 RT: 10.543 min Scan# 11  
 Delta R.T. -0.017 min  
 Lab File: BP025665.D  
 Acq: 04 Sep 2025 18:15

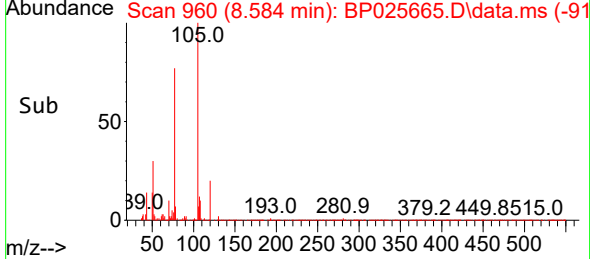
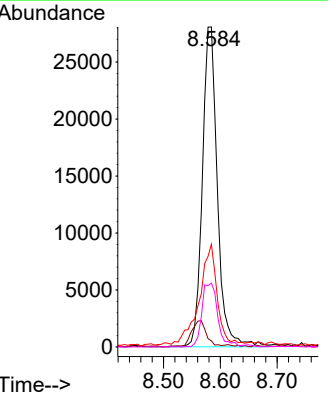
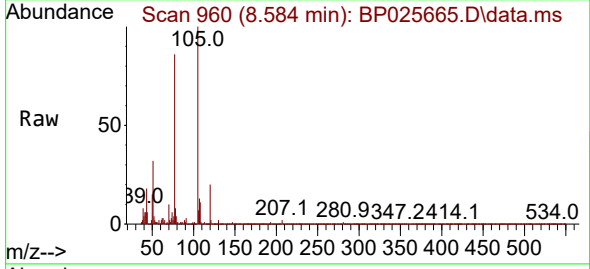
Instrument : BNA\_P  
 ClientSampleId : LOD-MDL-WATER-01-QT3-2025

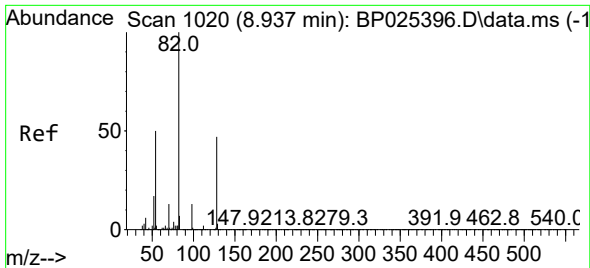
Tgt Ion	Resp	Ion Ratio	Lower	Upper
136	539250	100		
137		10.6	9.2	13.8
54		8.1	6.0	9.0
68		5.4	4.3	6.5



#22  
 Acetophenone  
 Concen: 3.812 ng  
 RT: 8.584 min Scan# 960  
 Delta R.T. -0.017 min  
 Lab File: BP025665.D  
 Acq: 04 Sep 2025 18:15

Tgt Ion	Resp	Ion Ratio	Lower	Upper
105	51545	100		
71		1.9	2.6	4.0#
51		32.1	20.6	30.8#
120		19.9	18.6	27.8

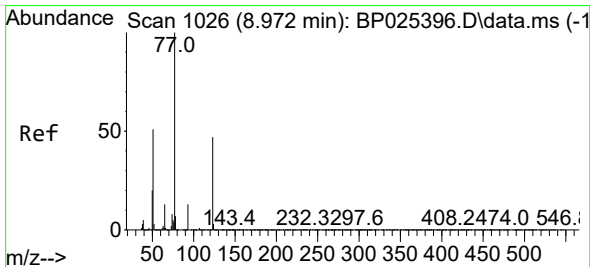
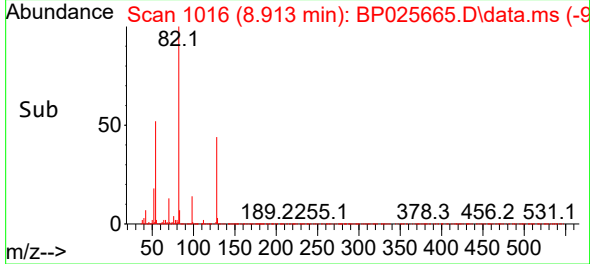
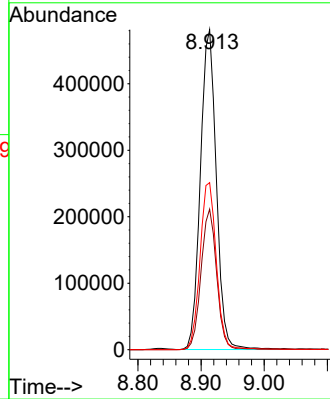
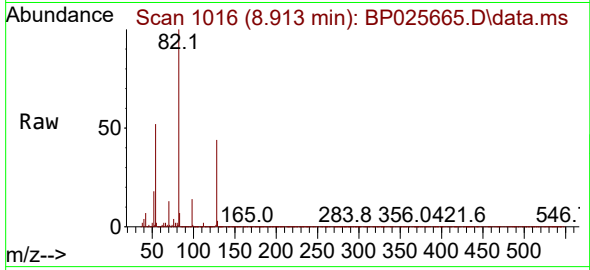




#23  
 Nitrobenzene-d5  
 Concen: 79.095 ng  
 RT: 8.913 min Scan# 1016  
 Delta R.T. -0.023 min  
 Lab File: BP025665.D  
 Acq: 04 Sep 2025 18:15

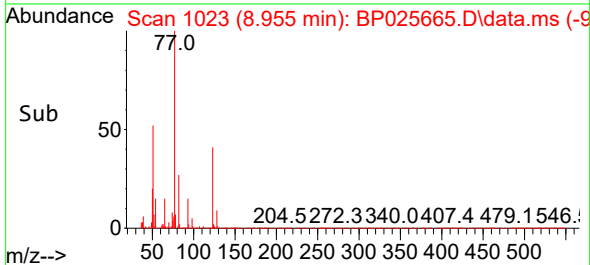
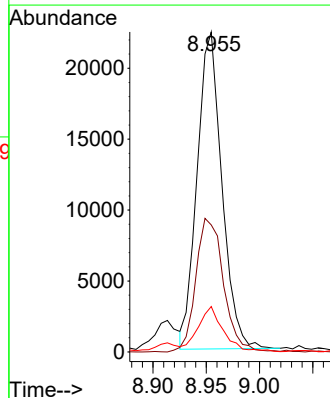
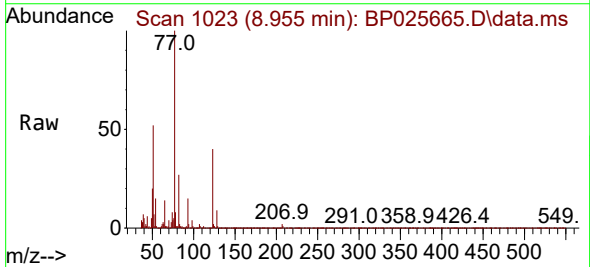
Instrument :  
 BNA\_P  
 ClientSampleId :  
 LOD-MDL-WATER-01-QT3-2025

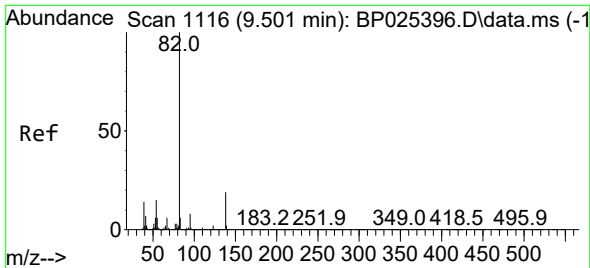
Tgt Ion: 82 Resp: 843164  
 Ion Ratio Lower Upper  
 82 100  
 128 43.9 37.7 56.5  
 54 52.2 39.8 59.6



#24  
 Nitrobenzene  
 Concen: 3.798 ng  
 RT: 8.955 min Scan# 1023  
 Delta R.T. -0.017 min  
 Lab File: BP025665.D  
 Acq: 04 Sep 2025 18:15

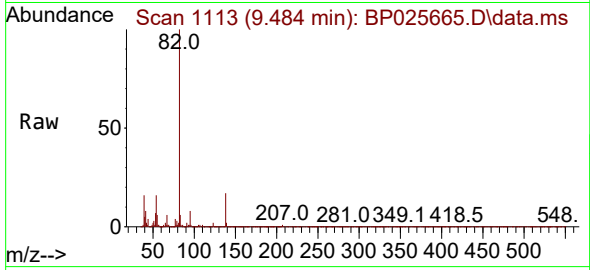
Tgt Ion: 77 Resp: 36180  
 Ion Ratio Lower Upper  
 77 100  
 123 39.7 38.6 58.0  
 65 14.2 10.6 15.8



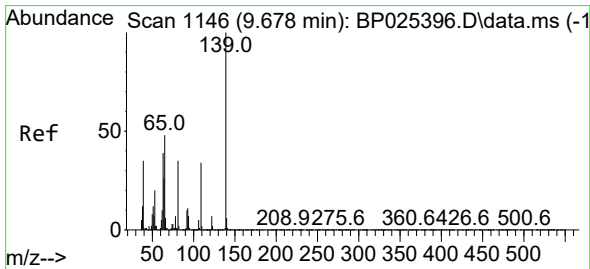
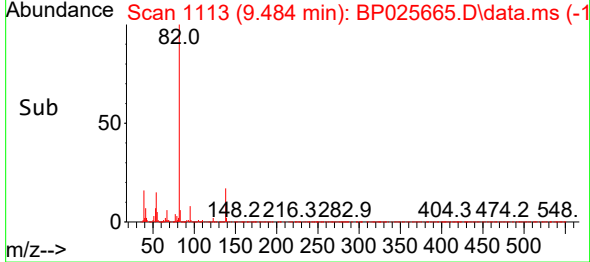
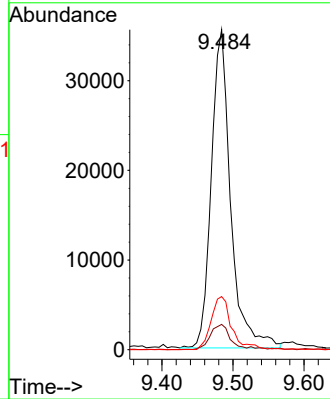


#25  
 Isophorone  
 Concen: 3.555 ng  
 RT: 9.484 min Scan# 1113  
 Delta R.T. -0.017 min  
 Lab File: BP025665.D  
 Acq: 04 Sep 2025 18:15

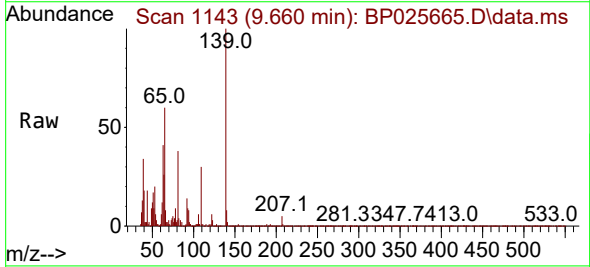
Instrument : BNA\_P  
 ClientSampleId : LOD-MDL-WATER-01-QT3-2025



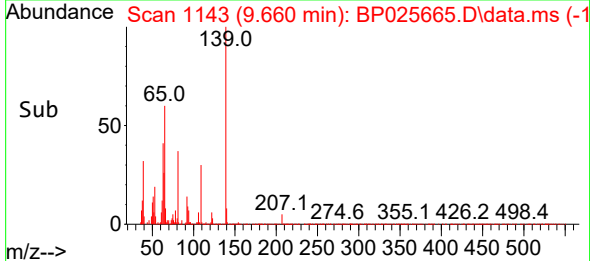
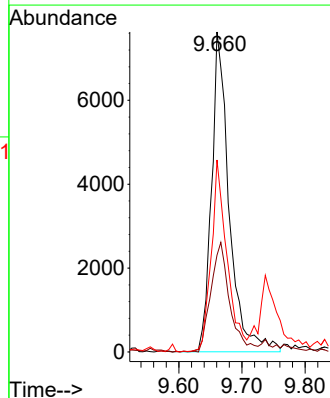
Tgt Ion: 82 Resp: 67074  
 Ion Ratio Lower Upper  
 82 100  
 95 7.9 6.4 9.6  
 138 16.6 15.4 23.0



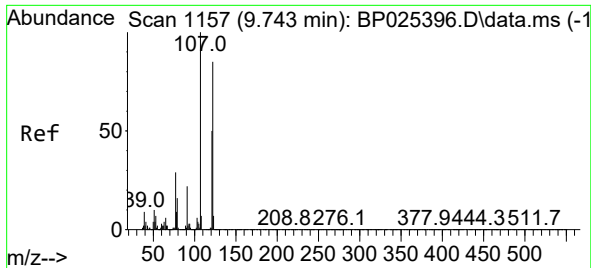
#26  
 2-Nitrophenol  
 Concen: 3.027 ng  
 RT: 9.660 min Scan# 1143  
 Delta R.T. -0.017 min  
 Lab File: BP025665.D  
 Acq: 04 Sep 2025 18:15



Tgt Ion: 139 Resp: 14799  
 Ion Ratio Lower Upper  
 139 100  
 109 30.3 26.9 40.3  
 65 60.0 38.3 57.5#





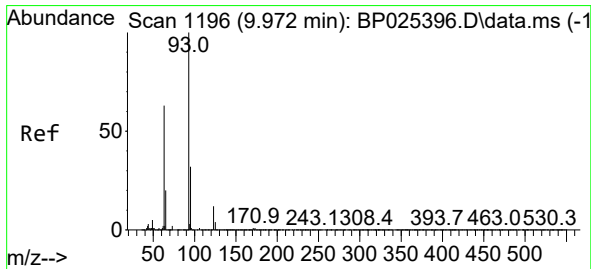
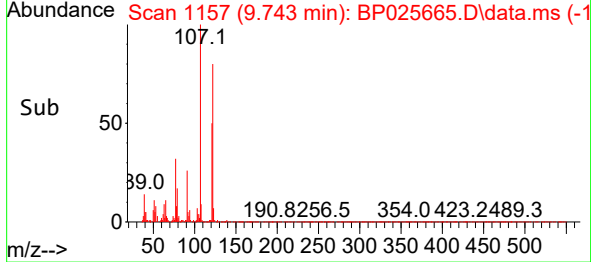
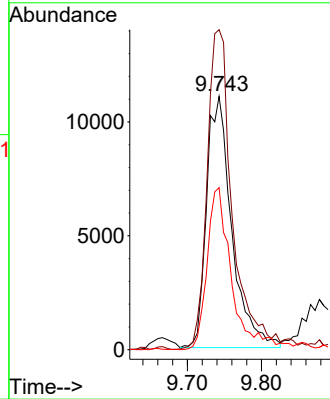
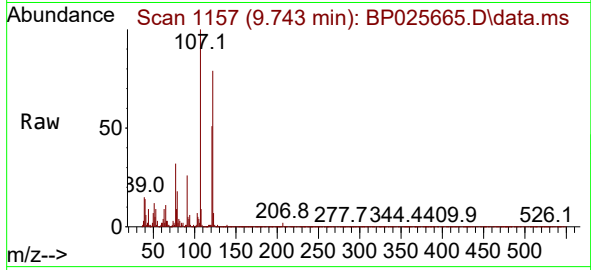


#27  
 2,4-Dimethylphenol  
 Concen: 3.105 ng  
 RT: 9.743 min Scan# 1157  
 Delta R.T. 0.000 min  
 Lab File: BP025665.D  
 Acq: 04 Sep 2025 18:15

Instrument : BNA\_P  
 ClientSampleId : LOD-MDL-WATER-01-QT3-2025

Tgt Ion:122 Resp: 26107

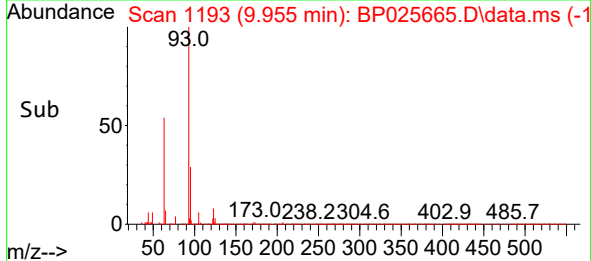
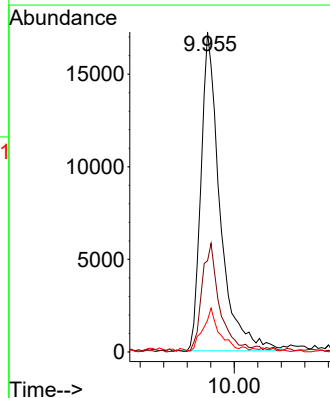
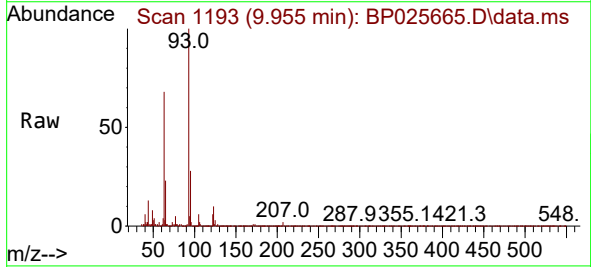
Ion	Ratio	Lower	Upper
122	100		
107	126.3	93.7	140.5
121	64.0	46.6	69.8

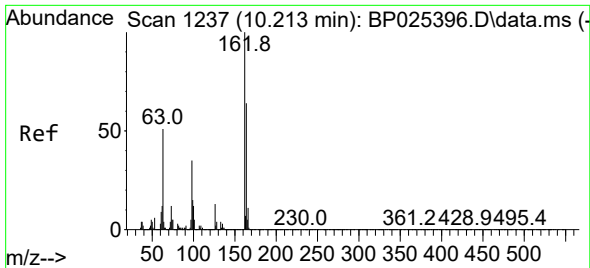


#28  
 bis(2-Chloroethoxy)methane  
 Concen: 3.392 ng  
 RT: 9.955 min Scan# 1193  
 Delta R.T. -0.017 min  
 Lab File: BP025665.D  
 Acq: 04 Sep 2025 18:15

Tgt Ion: 93 Resp: 38684

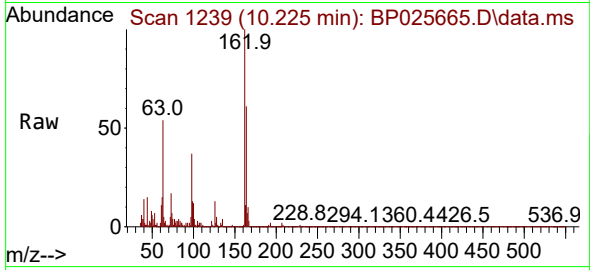
Ion	Ratio	Lower	Upper
93	100		
95	28.5	25.4	38.0
123	9.9	9.4	14.0





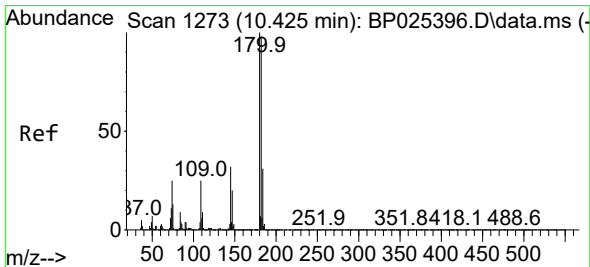
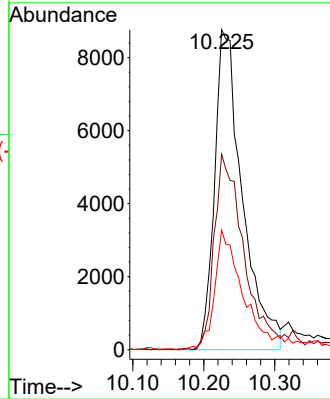
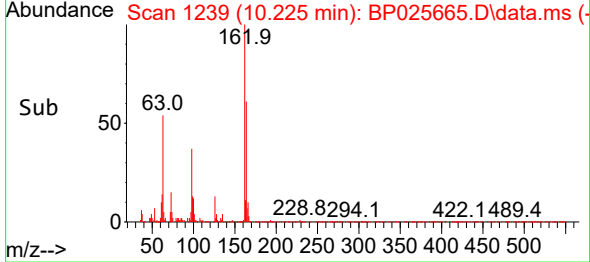
#29  
 2,4-Dichlorophenol  
 Concen: 2.856 ng  
 RT: 10.225 min Scan# 1239  
 Delta R.T. 0.012 min  
 Lab File: BP025665.D  
 Acq: 04 Sep 2025 18:15

Instrument : BNA\_P  
 ClientSampleId : LOD-MDL-WATER-01-QT3-2025

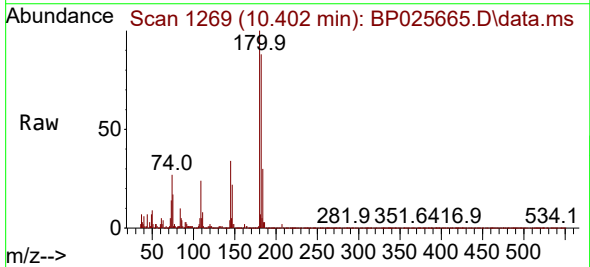


Tgt Ion:162 Resp: 23858

Ion	Ratio	Lower	Upper
162	100		
164	61.1	44.4	84.4
98	37.4	14.9	54.9

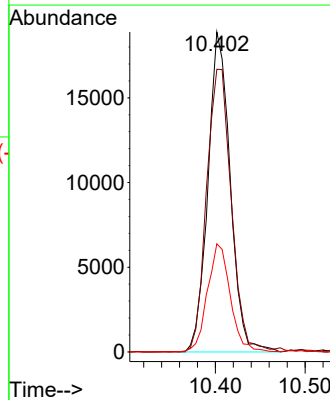
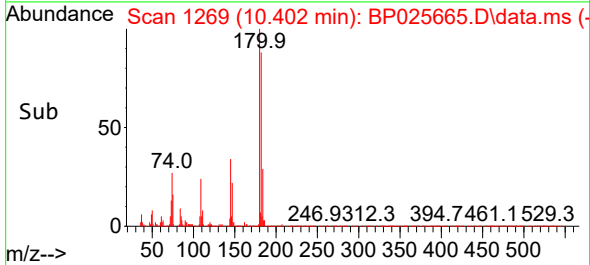


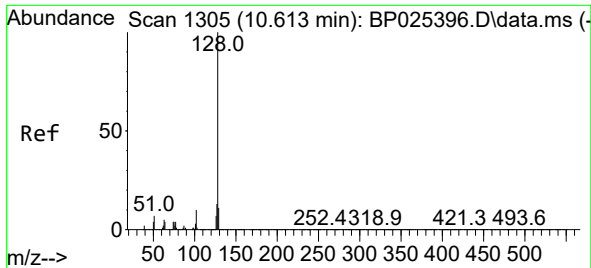
#30  
 1,2,4-Trichlorobenzene  
 Concen: 3.564 ng  
 RT: 10.402 min Scan# 1269  
 Delta R.T. -0.023 min  
 Lab File: BP025665.D  
 Acq: 04 Sep 2025 18:15



Tgt Ion:180 Resp: 32633

Ion	Ratio	Lower	Upper
180	100		
182	88.4	78.0	117.0
145	33.8	25.9	38.9



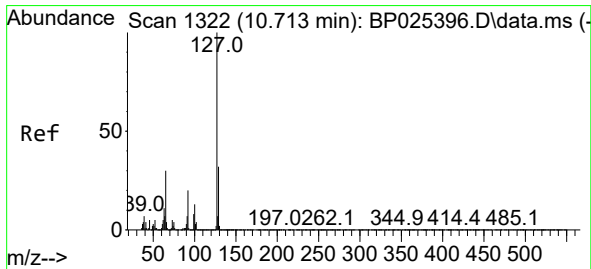
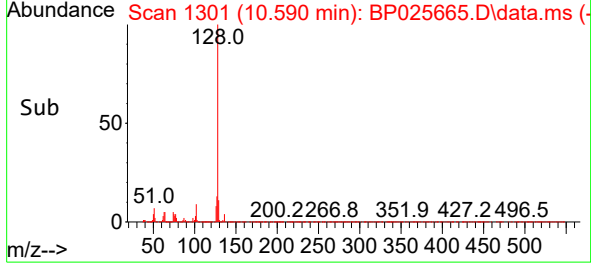
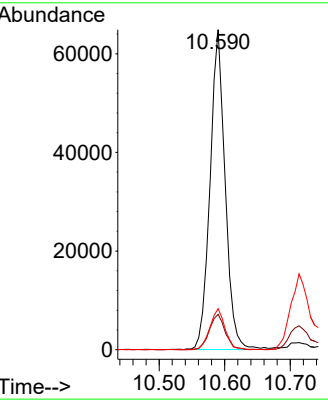
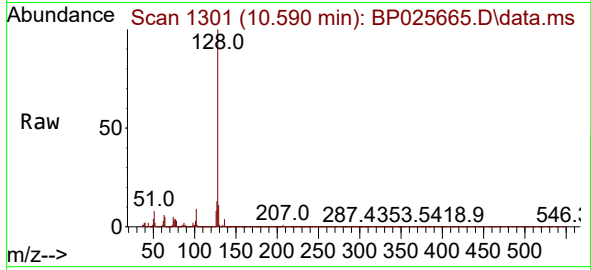


#31  
 Naphthalene  
 Concen: 3.692 ng  
 RT: 10.590 min Scan# 111  
 Delta R.T. -0.023 min  
 Lab File: BP025665.D  
 Acq: 04 Sep 2025 18:15

Instrument : BNA\_P  
 ClientSampleId : LOD-MDL-WATER-01-QT3-2025

Tgt Ion:128 Resp: 103485

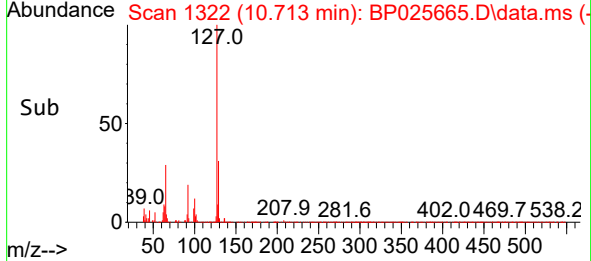
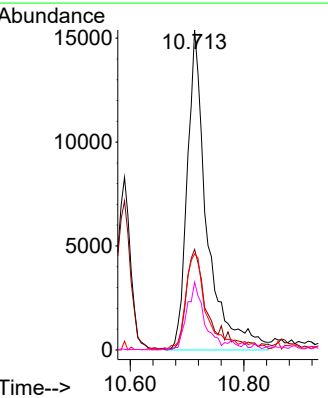
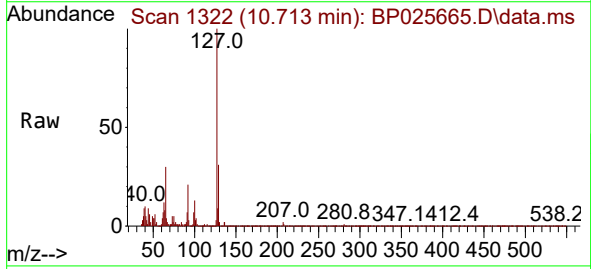
Ion	Ratio	Lower	Upper
128	100		
129	11.0	8.6	13.0
127	12.8	10.7	16.1

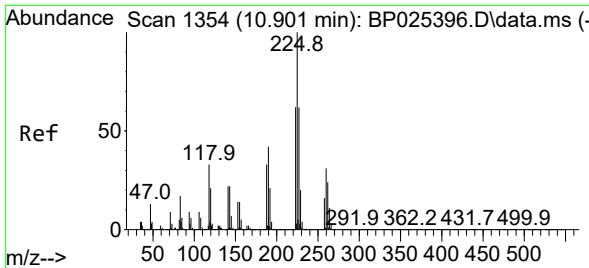


#33  
 4-Chloroaniline  
 Concen: 3.003 ng  
 RT: 10.713 min Scan# 1322  
 Delta R.T. 0.000 min  
 Lab File: BP025665.D  
 Acq: 04 Sep 2025 18:15

Tgt Ion:127 Resp: 37182

Ion	Ratio	Lower	Upper
127	100		
129	31.4	25.4	38.2
65	30.0	23.8	35.6
92	21.2	15.8	23.8

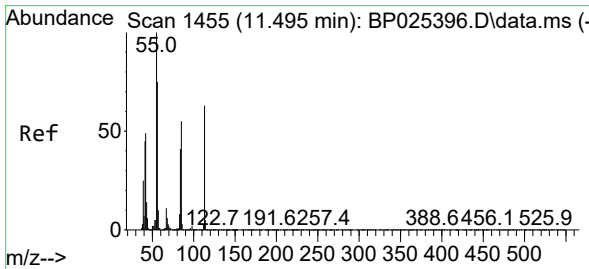
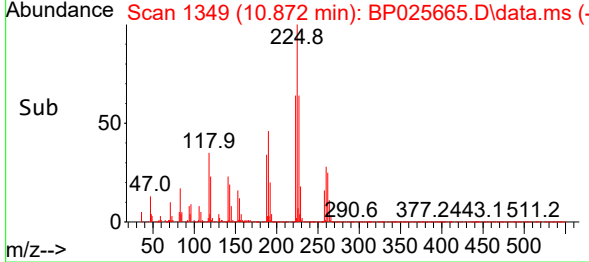
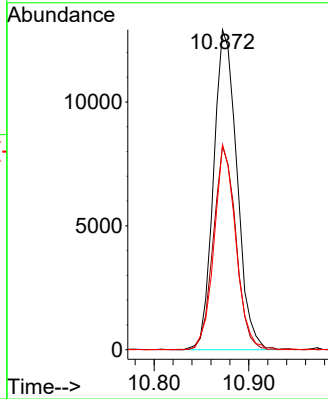
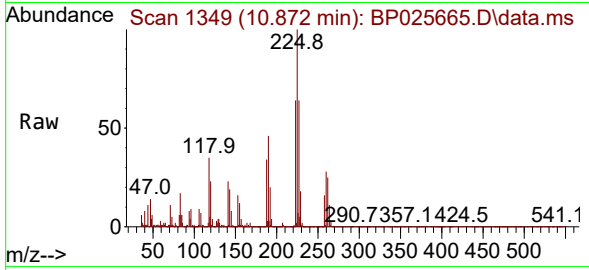




#34  
 Hexachlorobutadiene  
 Concen: 3.885 ng  
 RT: 10.872 min Scan# 11  
 Delta R.T. -0.029 min  
 Lab File: BP025665.D  
 Acq: 04 Sep 2025 18:15

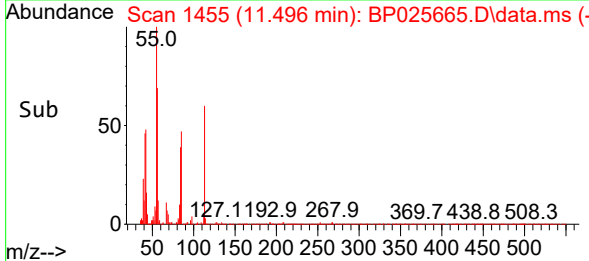
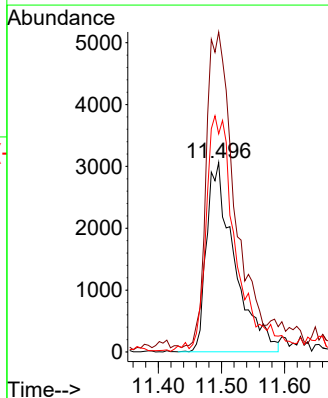
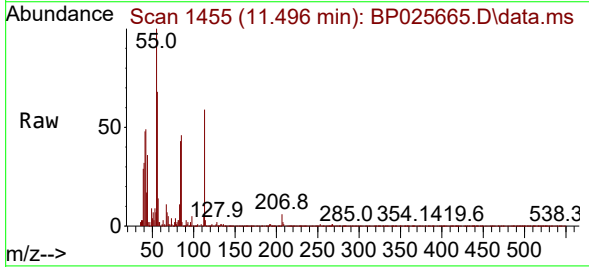
Instrument : BNA\_P  
 ClientSampleId : LOD-MDL-WATER-01-QT3-2025

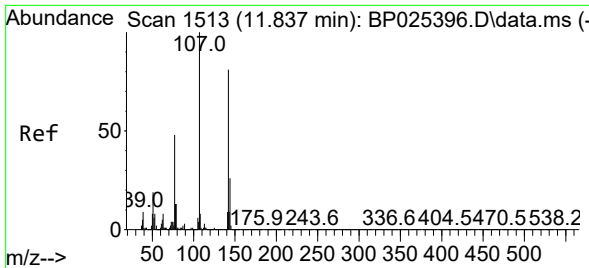
Tgt Ion	Resp	Lower	Upper
225	100		
223	63.7	50.0	75.0
227	64.1	49.7	74.5



#35  
 Caprolactam  
 Concen: 3.070 ng  
 RT: 11.496 min Scan# 1455  
 Delta R.T. 0.000 min  
 Lab File: BP025665.D  
 Acq: 04 Sep 2025 18:15

Tgt Ion	Resp	Lower	Upper
113	100		
55	168.9	140.0	180.0
56	115.1	100.0	140.0

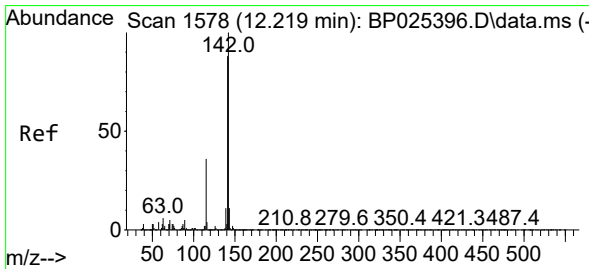
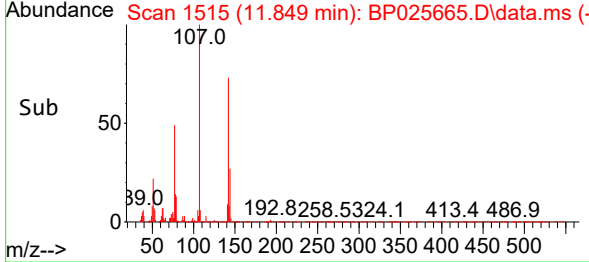
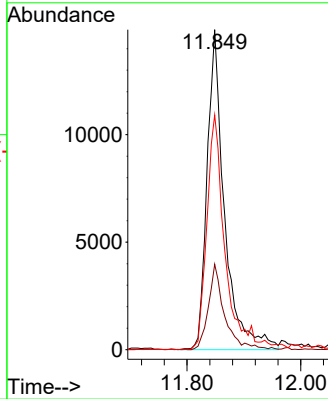
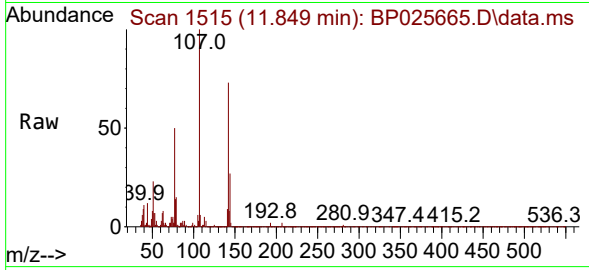




#36  
 4-Chloro-3-methylphenol  
 Concen: 3.291 ng  
 RT: 11.849 min Scan# 1111  
 Delta R.T. 0.012 min  
 Lab File: BP025665.D  
 Acq: 04 Sep 2025 18:15

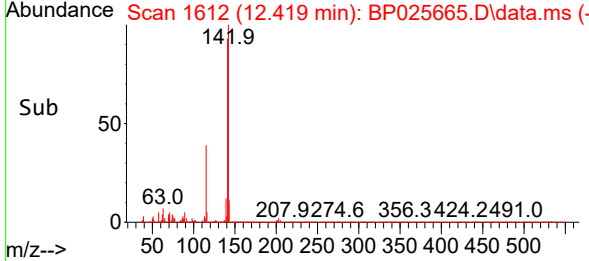
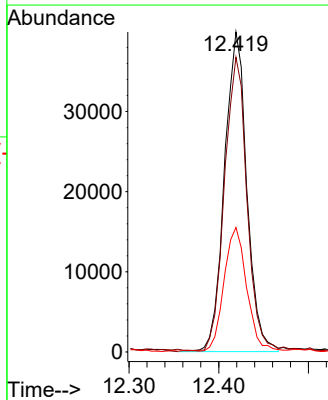
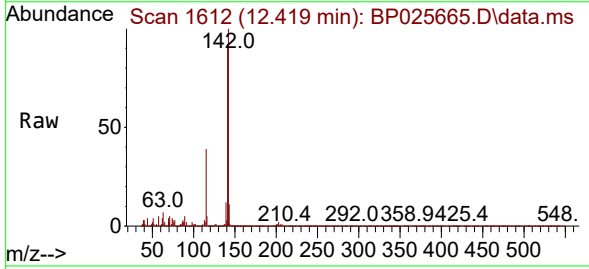
Instrument : BNA\_P  
 ClientSampleId : LOD-MDL-WATER-01-QT3-2025

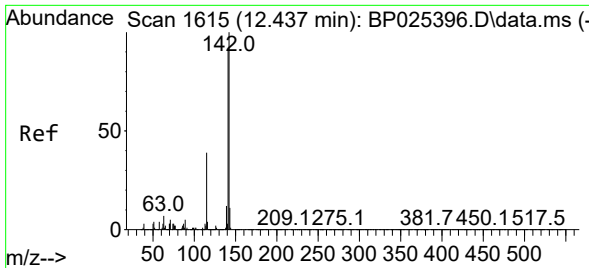
Tgt Ion	Resp	Lower	Upper
107	31542	100	100
144	26.7	21.0	31.4
142	73.3	64.6	97.0



#37  
 2-Methylnaphthalene  
 Concen: 3.789 ng  
 RT: 12.419 min Scan# 1612  
 Delta R.T. 0.200 min  
 Lab File: BP025665.D  
 Acq: 04 Sep 2025 18:15

Tgt Ion	Resp	Lower	Upper
142	69109	100	100
141	92.1	70.3	105.5
115	38.9	28.9	43.3



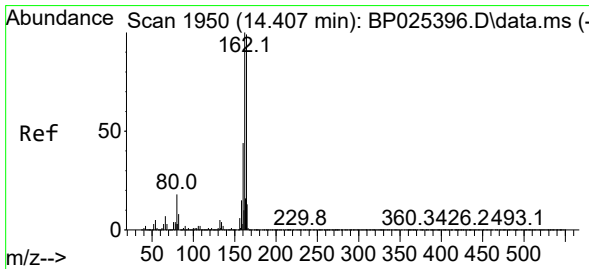
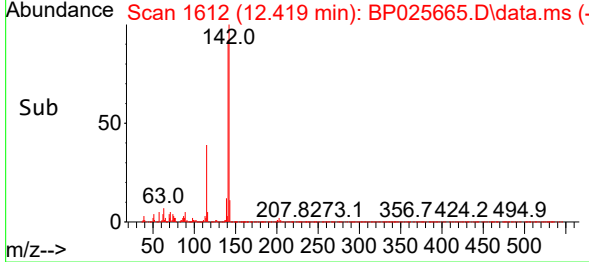
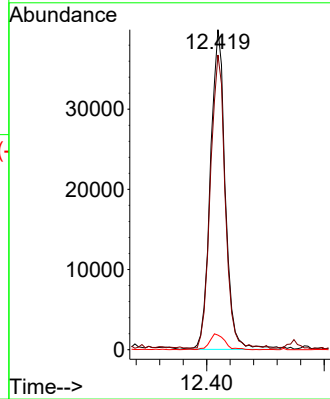
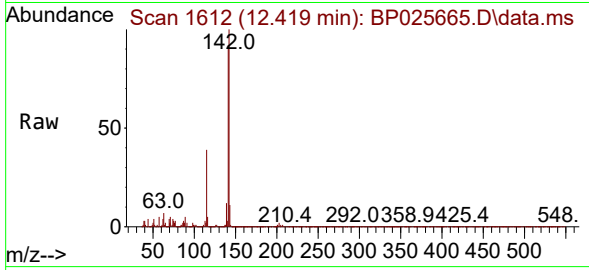


#38  
 1-Methylnaphthalene  
 Concen: 3.620 ng  
 RT: 12.419 min Scan# 10  
 Delta R.T. -0.017 min  
 Lab File: BP025665.D  
 Acq: 04 Sep 2025 18:15

Instrument : BNA\_P  
 ClientSampleId : LOD-MDL-WATER-01-QT3-2025

Tgt Ion:142 Resp: 70226

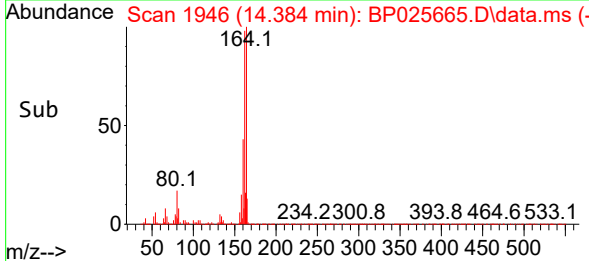
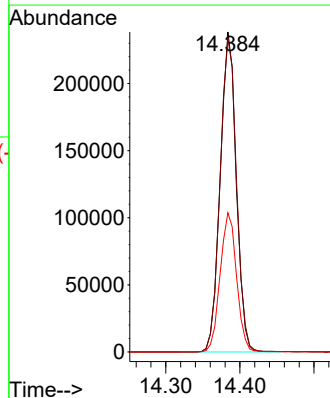
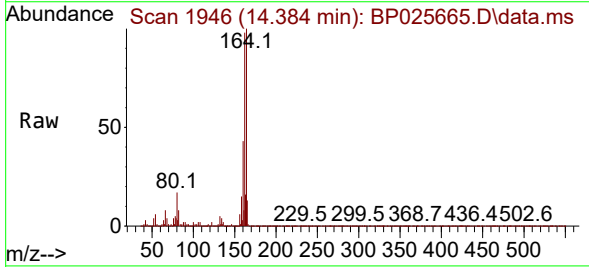
Ion	Ratio	Lower	Upper
142	100		
141	92.1	73.1	109.7
116	4.6	3.2	4.8

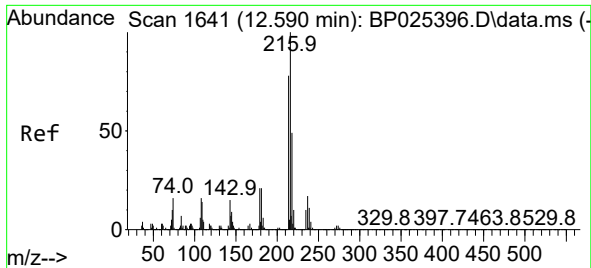


#39  
 Acenaphthene-d10  
 Concen: 20.000 ng  
 RT: 14.384 min Scan# 1946  
 Delta R.T. -0.023 min  
 Lab File: BP025665.D  
 Acq: 04 Sep 2025 18:15

Tgt Ion:164 Resp: 357614

Ion	Ratio	Lower	Upper
164	100		
162	97.8	81.0	121.6
160	43.5	35.4	53.2



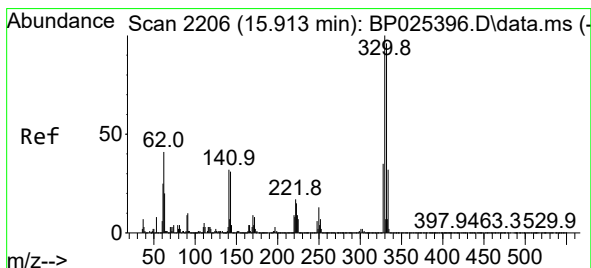
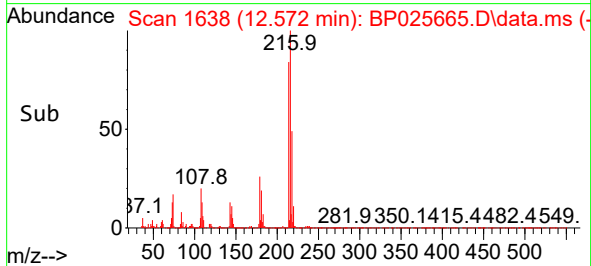
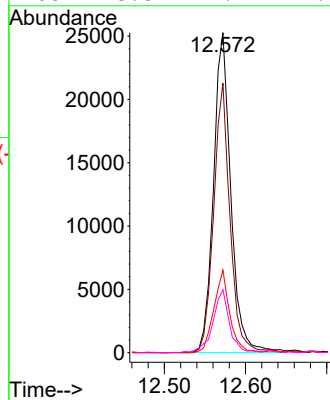
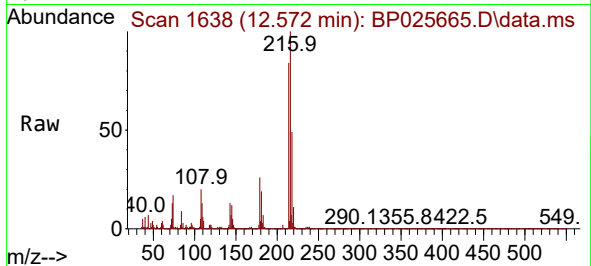


#40  
 1,2,4,5-Tetrachlorobenzene  
 Concen: 3.621 ng  
 RT: 12.572 min Scan# 10  
 Delta R.T. -0.017 min  
 Lab File: BP025665.D  
 Acq: 04 Sep 2025 18:15

Instrument :  
 BNA\_P  
 ClientSampleId :  
 LOD-MDL-WATER-01-QT3-2025

Tgt Ion: 216 Resp: 37400

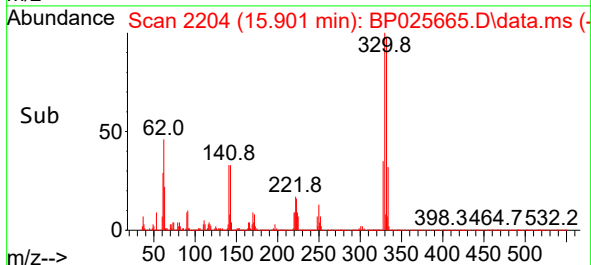
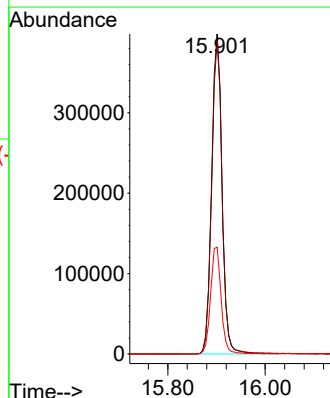
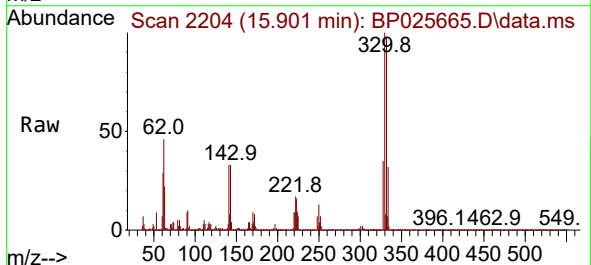
Ion	Ratio	Lower	Upper
216	100		
214	79.1	63.0	94.4
179	23.6	17.1	25.7
108	18.8	14.9	22.3

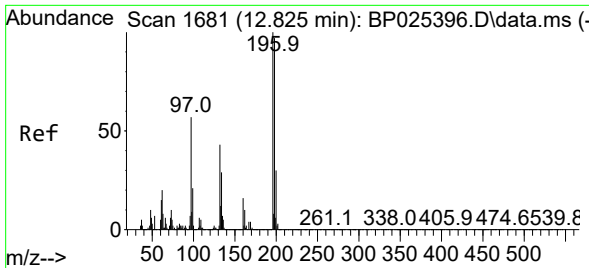


#42  
 2,4,6-Tribromophenol  
 Concen: 122.699 ng  
 RT: 15.901 min Scan# 2204  
 Delta R.T. -0.012 min  
 Lab File: BP025665.D  
 Acq: 04 Sep 2025 18:15

Tgt Ion: 330 Resp: 590615

Ion	Ratio	Lower	Upper
330	100		
332	97.5	77.3	115.9
141	33.8	26.6	39.8

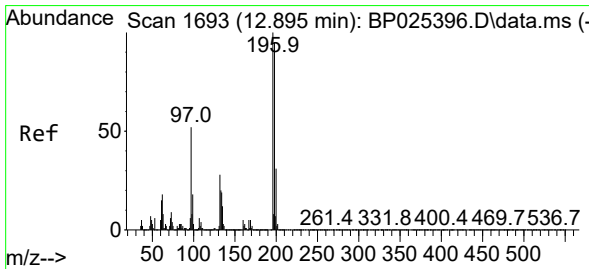
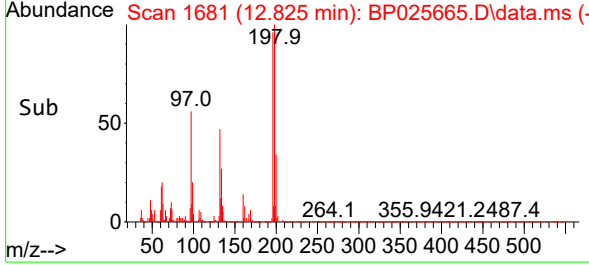
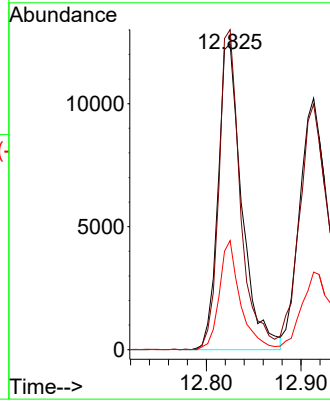
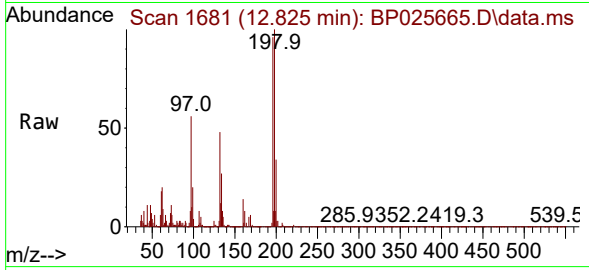




#43  
 2,4,6-Trichlorophenol  
 Concen: 3.120 ng  
 RT: 12.825 min Scan# 1681  
 Delta R.T. 0.000 min  
 Lab File: BP025665.D  
 Acq: 04 Sep 2025 18:15

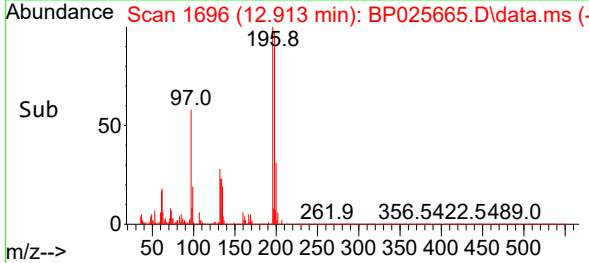
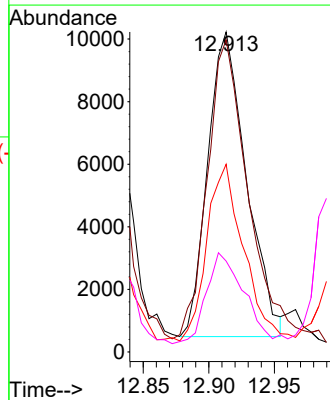
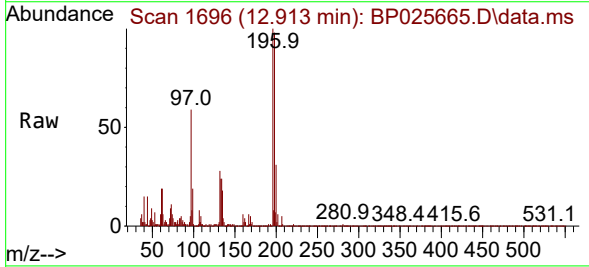
Instrument : BNA\_P  
 ClientSampleId : LOD-MDL-WATER-01-QT3-2025

Tgt Ion	Resp	Ion Ratio	Lower	Upper
196	21752	100		
198		104.6	77.2	115.8
200		35.6	23.9	35.9

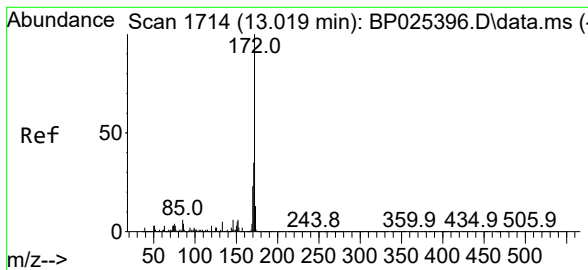


#44  
 2,4,5-Trichlorophenol  
 Concen: 2.616 ng  
 RT: 12.913 min Scan# 1696  
 Delta R.T. 0.018 min  
 Lab File: BP025665.D  
 Acq: 04 Sep 2025 18:15

Tgt Ion	Resp	Ion Ratio	Lower	Upper
196	19995	100		
198		97.5	76.2	114.2
97		58.6	41.2	61.8
132		28.4	22.6	34.0





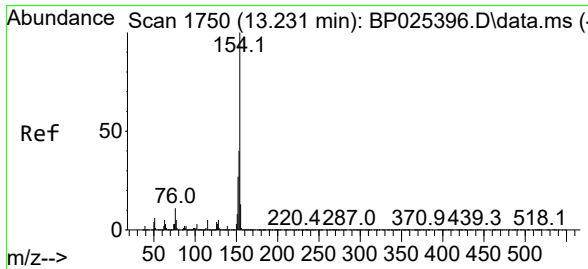
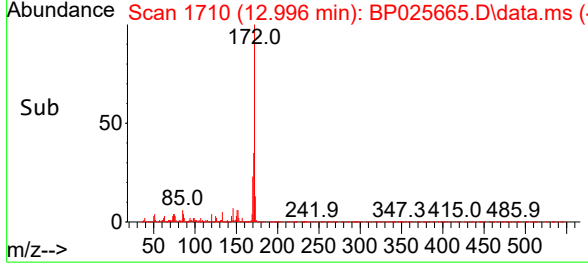
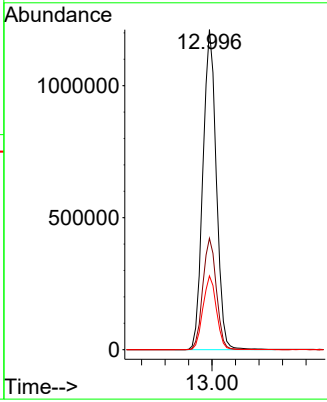
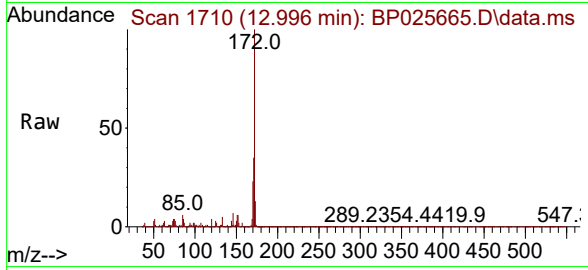


#45  
 2-Fluorobiphenyl  
 Concen: 73.610 ng  
 RT: 12.996 min Scan# 11  
 Delta R.T. -0.023 min  
 Lab File: BP025665.D  
 Acq: 04 Sep 2025 18:15

Instrument : BNA\_P  
 ClientSampleId : LOD-MDL-WATER-01-QT3-2025

Tgt Ion:172 Resp: 1926121

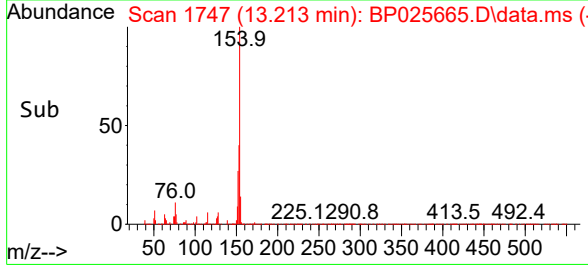
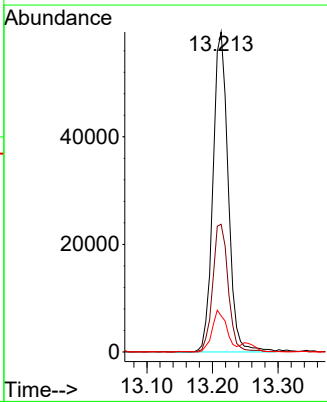
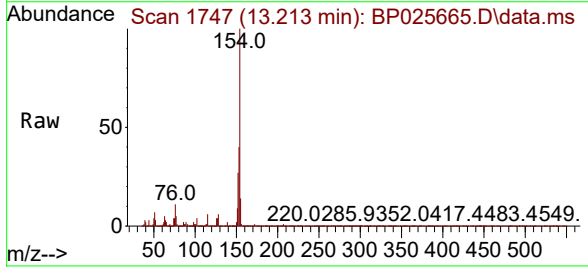
Ion	Ratio	Lower	Upper
172	100		
171	34.8	28.1	42.1
170	23.1	18.6	28.0

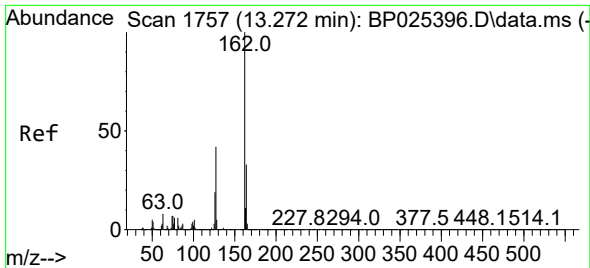


#46  
 1,1'-Biphenyl  
 Concen: 3.680 ng  
 RT: 13.213 min Scan# 1747  
 Delta R.T. -0.017 min  
 Lab File: BP025665.D  
 Acq: 04 Sep 2025 18:15

Tgt Ion:154 Resp: 95585

Ion	Ratio	Lower	Upper
154	100		
153	39.9	19.5	59.5
76	11.3	0.0	31.1

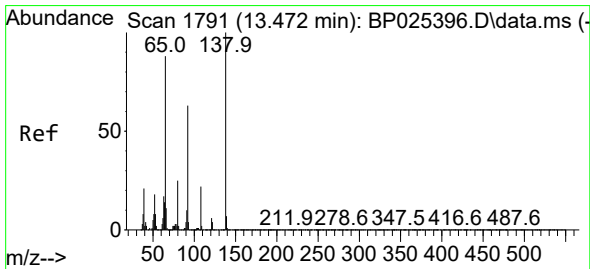
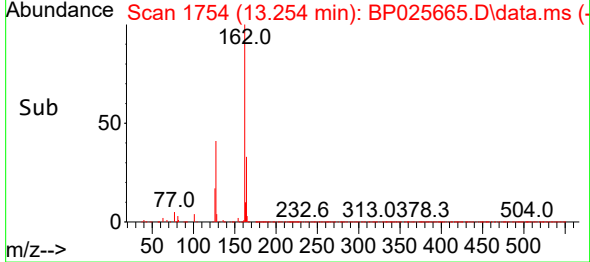
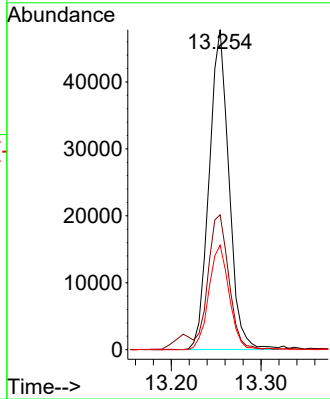
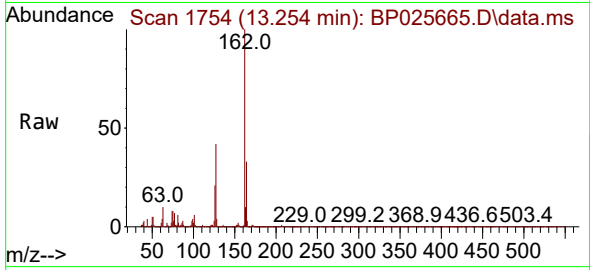




#47  
 2-Chloronaphthalene  
 Concen: 3.629 ng  
 RT: 13.254 min Scan# 1754  
 Delta R.T. -0.017 min  
 Lab File: BP025665.D  
 Acq: 04 Sep 2025 18:15

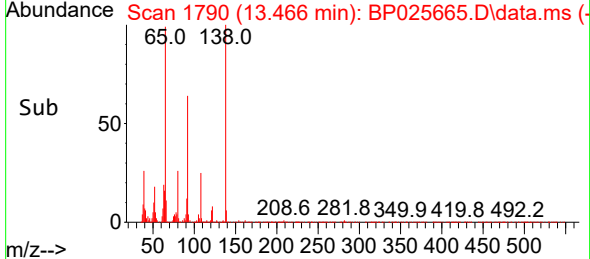
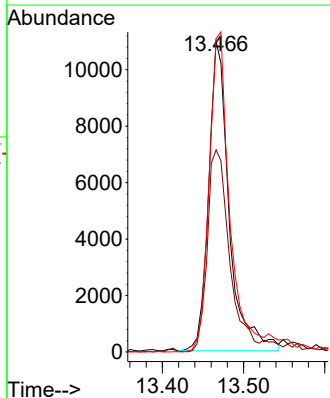
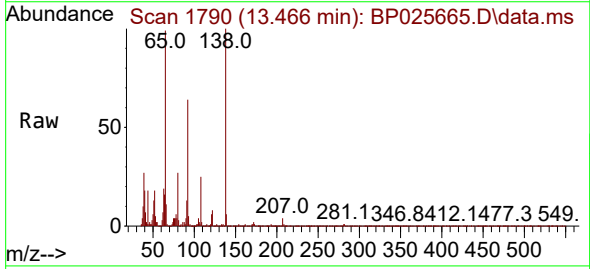
Instrument : BNA\_P  
 ClientSampleId : LOD-MDL-WATER-01-QT3-2025

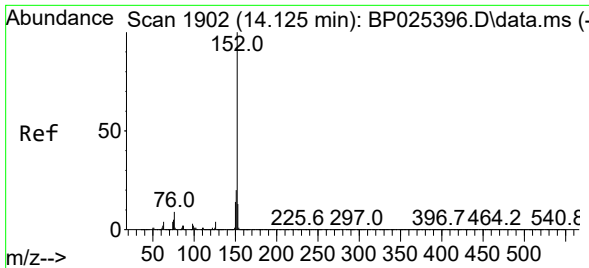
Tgt Ion	Resp	Lower	Upper
162	73365		
127	42.2	33.4	50.2
164	32.7	26.2	39.2



#48  
 2-Nitroaniline  
 Concen: 3.262 ng  
 RT: 13.466 min Scan# 1790  
 Delta R.T. -0.006 min  
 Lab File: BP025665.D  
 Acq: 04 Sep 2025 18:15

Tgt Ion	Resp	Lower	Upper
65	19219		
92	65.1	57.6	86.4
138	101.0	91.0	136.6



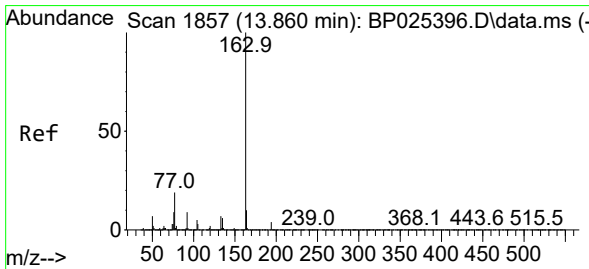
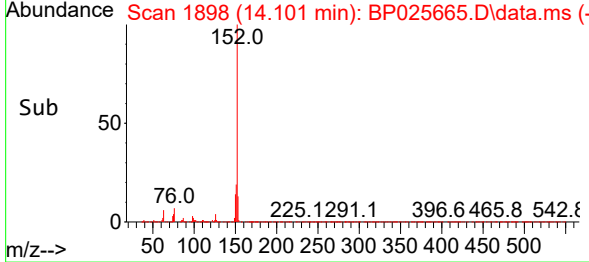
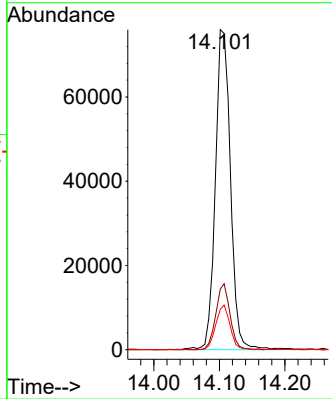
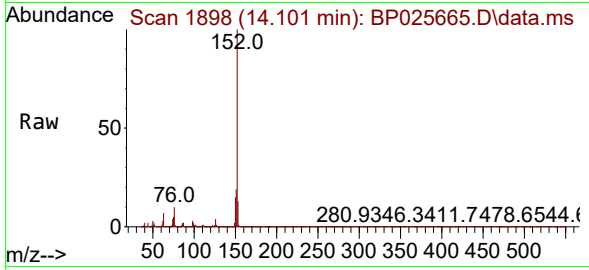


#49  
 Acenaphthylene  
 Concen: 3.615 ng  
 RT: 14.101 min Scan# 1898  
 Delta R.T. -0.023 min  
 Lab File: BP025665.D  
 Acq: 04 Sep 2025 18:15

Instrument : BNA\_P  
 ClientSampleId : LOD-MDL-WATER-01-QT3-2025

Tgt Ion: 152 Resp: 120954

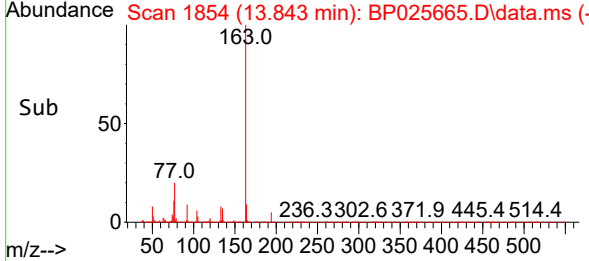
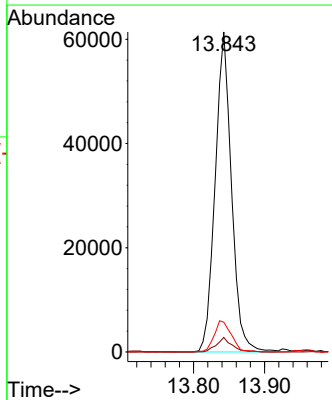
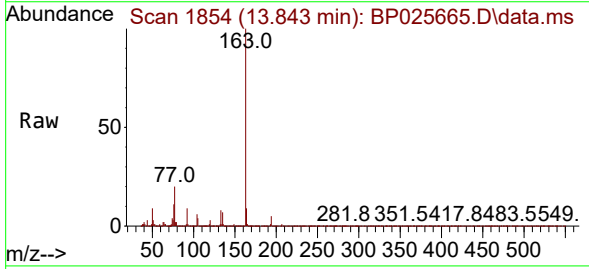
Ion	Ratio	Lower	Upper
152	100		
151	18.9	16.0	24.0
153	12.6	10.6	15.8

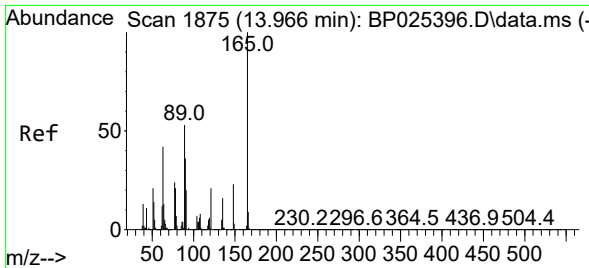


#50  
 Dimethylphthalate  
 Concen: 3.729 ng  
 RT: 13.843 min Scan# 1854  
 Delta R.T. -0.017 min  
 Lab File: BP025665.D  
 Acq: 04 Sep 2025 18:15

Tgt Ion: 163 Resp: 97666

Ion	Ratio	Lower	Upper
163	100		
194	4.6	3.4	5.0
164	9.3	7.9	11.9

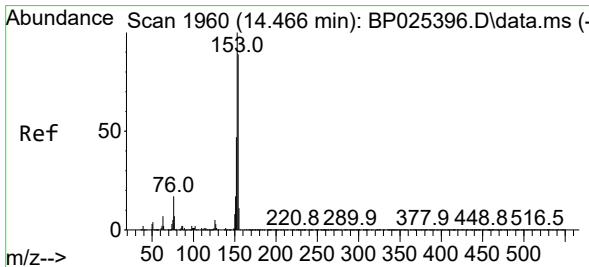
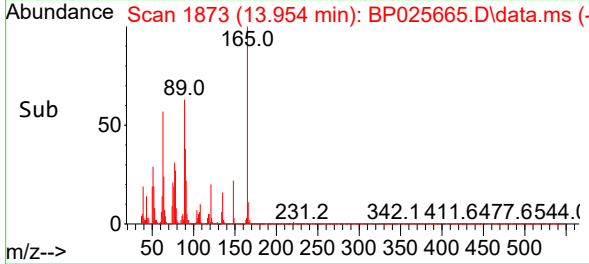
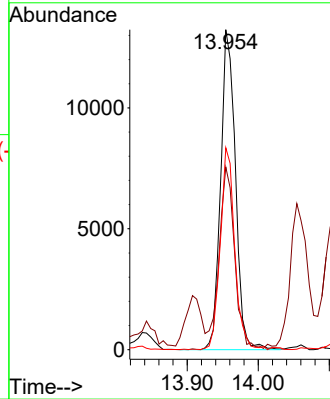
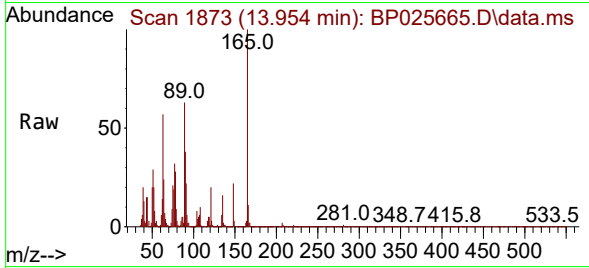




#51  
 2,6-Dinitrotoluene  
 Concen: 3.448 ng  
 RT: 13.954 min Scan# 11  
 Delta R.T. -0.012 min  
 Lab File: BP025665.D  
 Acq: 04 Sep 2025 18:15

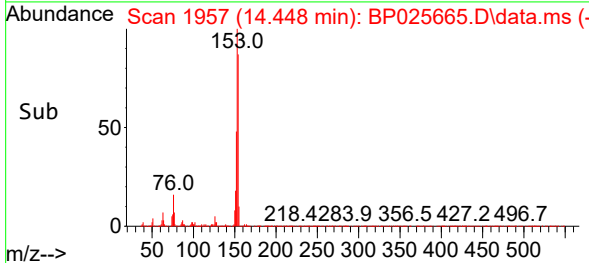
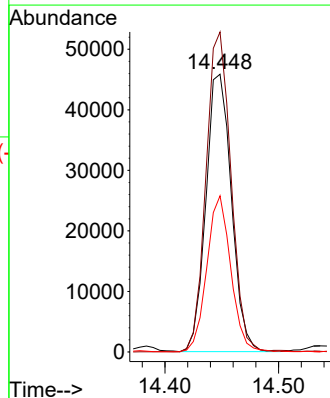
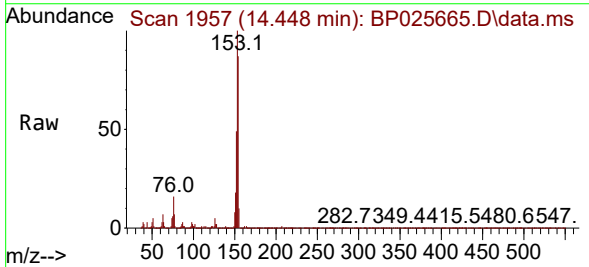
Instrument : BNA\_P  
 ClientSampleId : LOD-MDL-WATER-01-QT3-2025

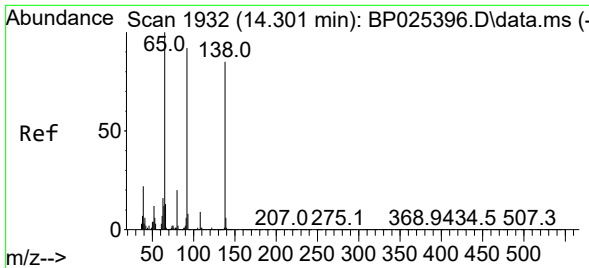
Tgt Ion	Resp	Ion Ratio	Lower	Upper
165	19034	100		
63		57.0	40.9	61.3
89		63.1	42.1	63.1



#52  
 Acenaphthene  
 Concen: 3.644 ng  
 RT: 14.448 min Scan# 1957  
 Delta R.T. -0.017 min  
 Lab File: BP025665.D  
 Acq: 04 Sep 2025 18:15

Tgt Ion	Resp	Ion Ratio	Lower	Upper
154	71567	100		
153		115.2	90.2	135.2
152		56.2	42.1	63.1



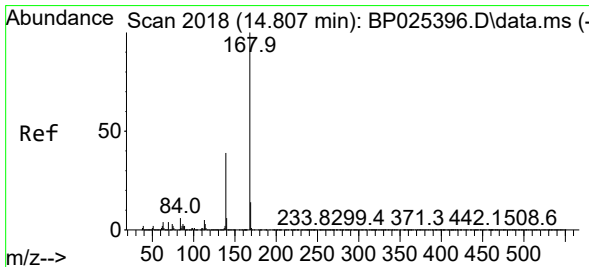
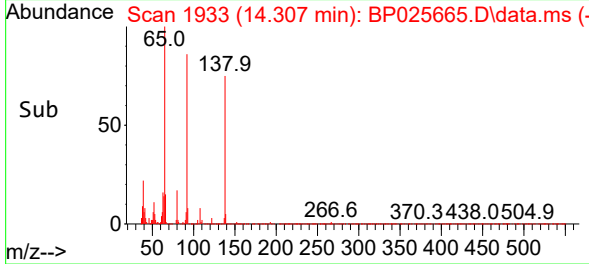
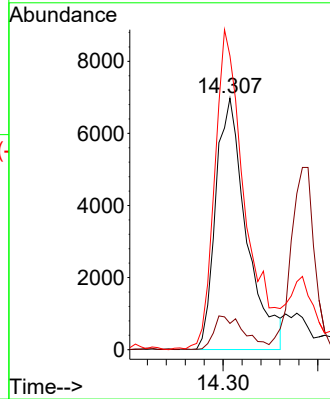
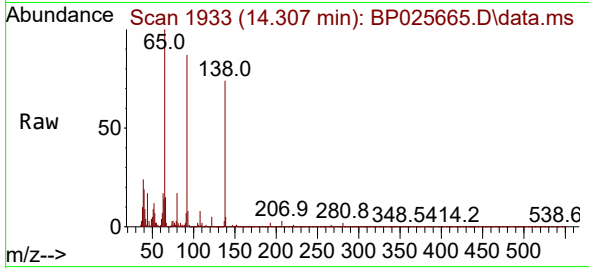


#53  
 3-Nitroaniline  
 Concen: 2.531 ng  
 RT: 14.307 min Scan# 1932  
 Delta R.T. 0.006 min  
 Lab File: BP025665.D  
 Acq: 04 Sep 2025 18:15

Instrument :  
 BNA\_P  
 ClientSampleId :  
 LOD-MDL-WATER-01-QT3-2025

Tgt Ion:138 Resp: 15716

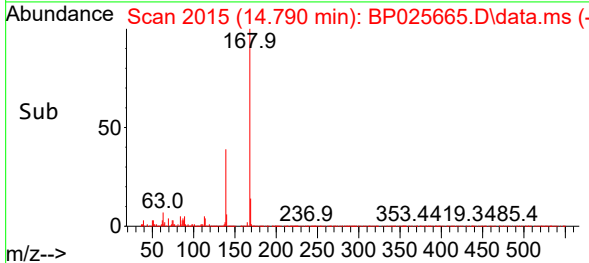
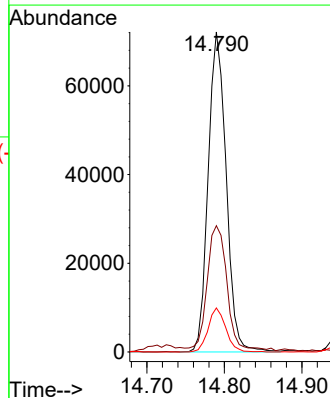
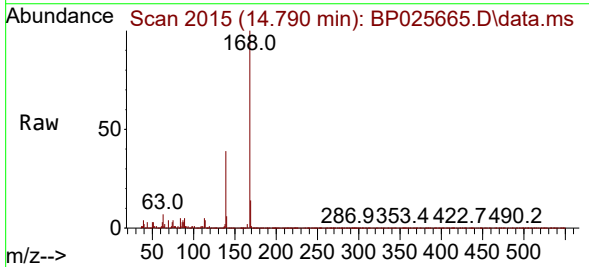
Ion	Ratio	Lower	Upper
138	100		
108	10.5	8.3	12.5
92	116.8	86.2	129.2

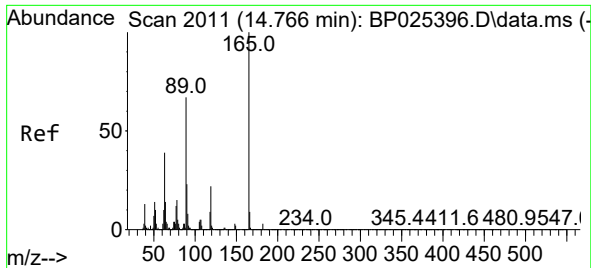


#55  
 Dibenzofuran  
 Concen: 3.743 ng  
 RT: 14.790 min Scan# 2015  
 Delta R.T. -0.017 min  
 Lab File: BP025665.D  
 Acq: 04 Sep 2025 18:15

Tgt Ion:168 Resp: 116210

Ion	Ratio	Lower	Upper
168	100		
139	39.4	31.5	47.3
169	13.8	10.9	16.3

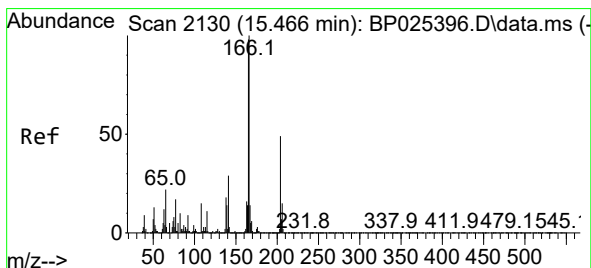
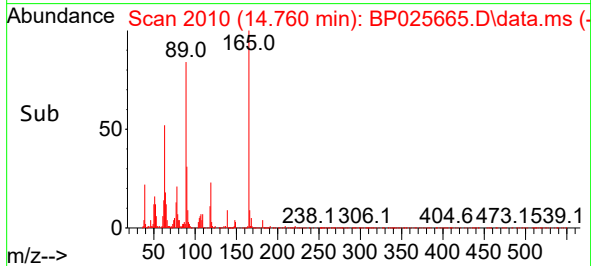
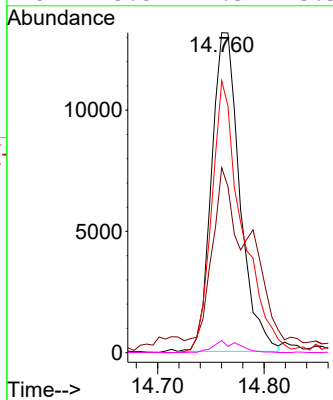
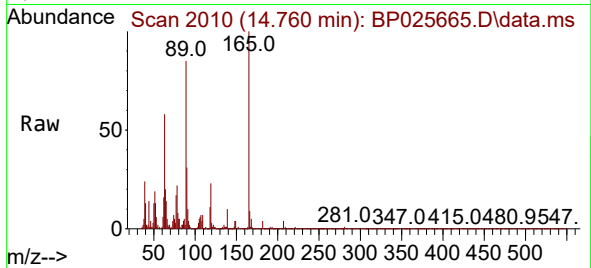




#57  
 2,4-Dinitrotoluene  
 Concen: 3.071 ng  
 RT: 14.760 min Scan# 2011  
 Delta R.T. -0.006 min  
 Lab File: BP025665.D  
 Acq: 04 Sep 2025 18:15

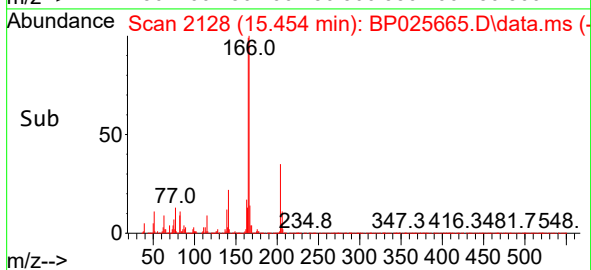
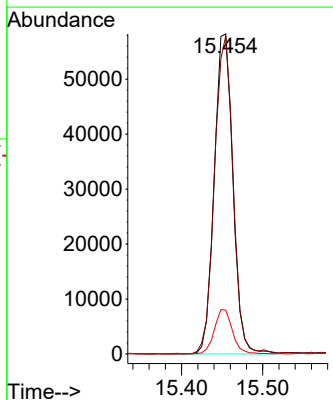
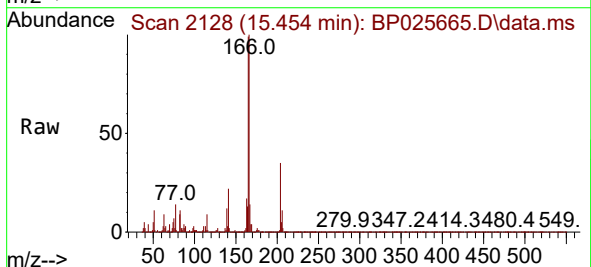
Instrument : BNA\_P  
 ClientSampleId : LOD-MDL-WATER-01-QT3-2025

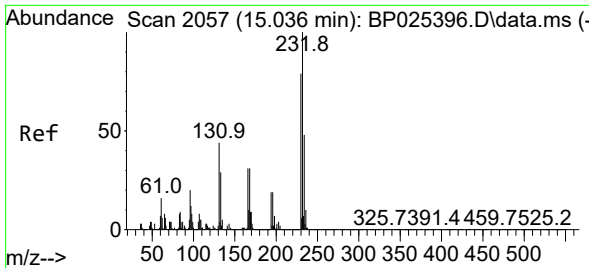
Tgt Ion	Resp	Lower	Upper
165	24188		
100	100		
63	57.8	31.4	47.2#
89	85.0	53.3	79.9#
182	3.8	2.3	3.5#



#58  
 Fluorene  
 Concen: 3.798 ng  
 RT: 15.454 min Scan# 2128  
 Delta R.T. -0.012 min  
 Lab File: BP025665.D  
 Acq: 04 Sep 2025 18:15

Tgt Ion	Resp	Lower	Upper
166	93056		
100	100		
165	99.3	78.8	118.2
167	13.7	11.0	16.4



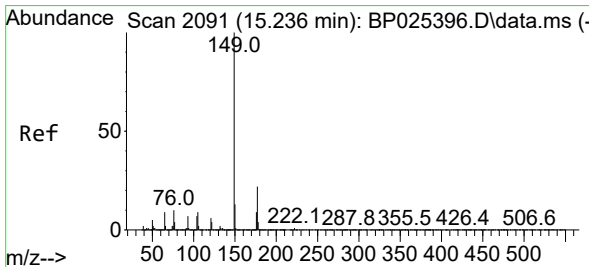
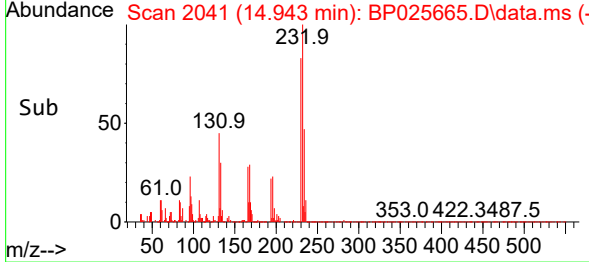
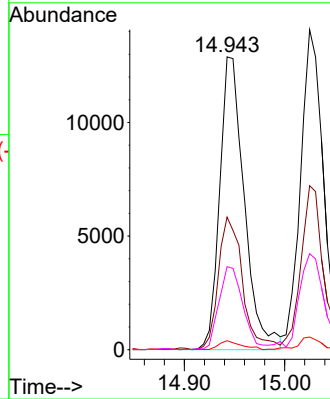
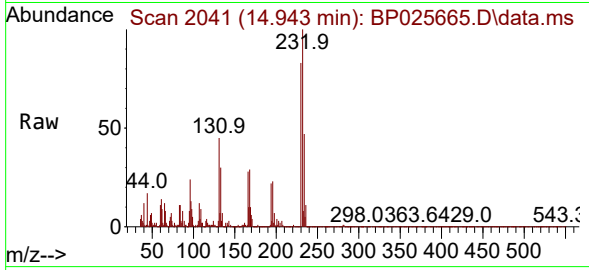


#59  
 2,3,4,6-Tetrachlorophenol  
 Concen: 3.254 ng  
 RT: 14.943 min Scan# 2088  
 Delta R.T. -0.094 min  
 Lab File: BP025665.D  
 Acq: 04 Sep 2025 18:15

Instrument : BNA\_P  
 ClientSampleId : LOD-MDL-WATER-01-QT3-2025

Tgt Ion:232 Resp: 21954

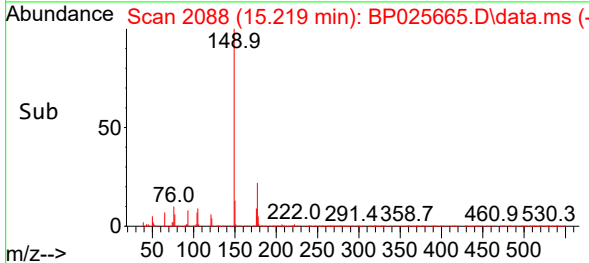
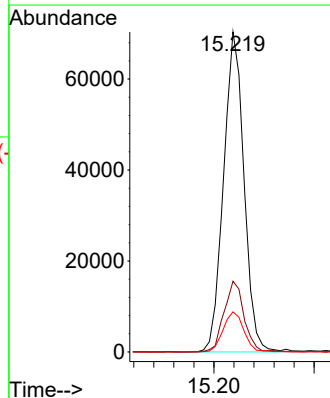
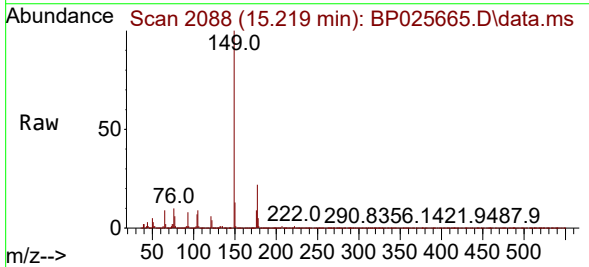
Ion	Ratio	Lower	Upper
232	100		
131	44.7	37.0	55.6
130	2.8	1.9	2.9
166	27.7	25.4	38.0

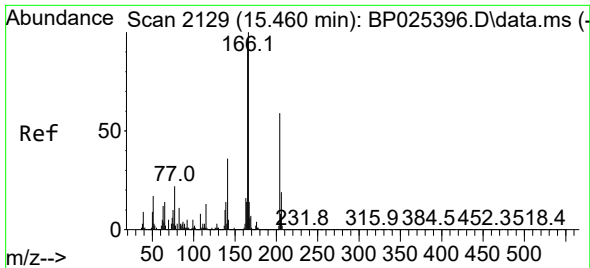


#60  
 Diethylphthalate  
 Concen: 3.731 ng  
 RT: 15.219 min Scan# 2088  
 Delta R.T. -0.017 min  
 Lab File: BP025665.D  
 Acq: 04 Sep 2025 18:15

Tgt Ion:149 Resp: 99288

Ion	Ratio	Lower	Upper
149	100		
177	22.1	17.3	25.9
150	12.5	10.3	15.5

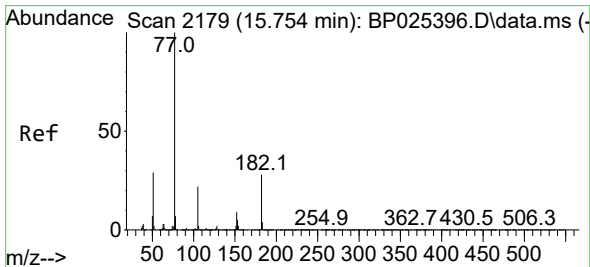
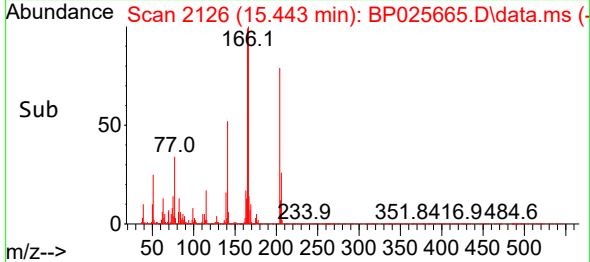
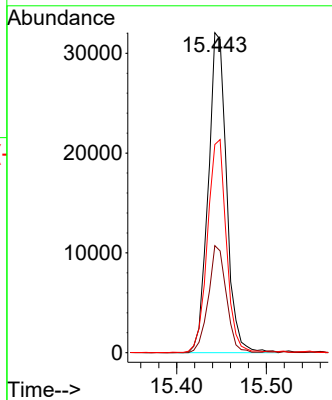
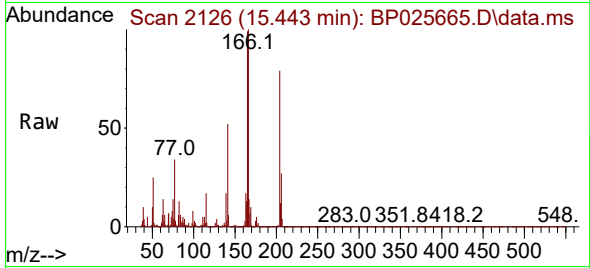




#61  
4-Chlorophenyl-phenylether  
Concen: 3.733 ng  
RT: 15.443 min Scan# 2126  
Delta R.T. -0.017 min  
Lab File: BP025665.D  
Acq: 04 Sep 2025 18:15

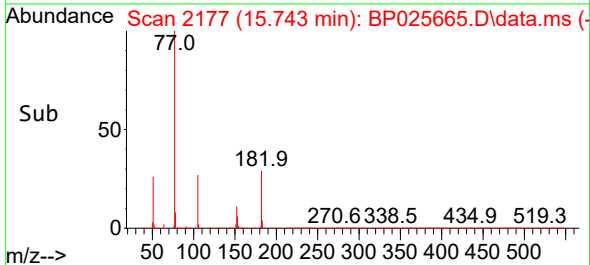
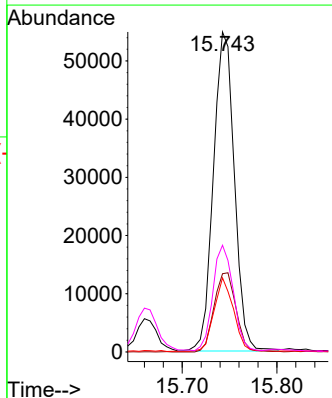
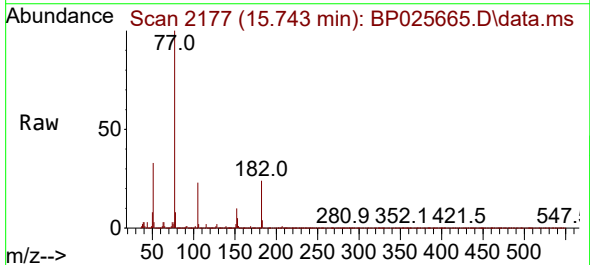
Instrument :  
BNA\_P  
ClientSampleId :  
LOD-MDL-WATER-01-QT3-2025

Tgt Ion: 204 Resp: 45483  
Ion Ratio Lower Upper  
204 100  
206 33.5 25.8 38.8  
141 65.0 49.4 74.2

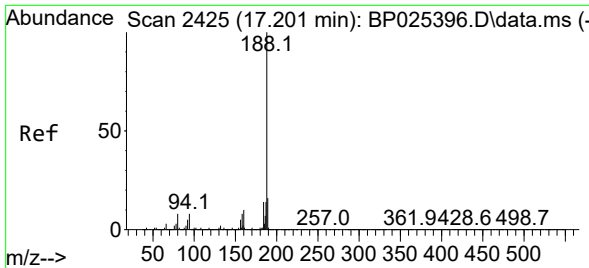


#63  
Azobenzene  
Concen: 3.714 ng  
RT: 15.743 min Scan# 2177  
Delta R.T. -0.012 min  
Lab File: BP025665.D  
Acq: 04 Sep 2025 18:15

Tgt Ion: 77 Resp: 84618  
Ion Ratio Lower Upper  
77 100  
182 24.4 7.5 47.5  
105 23.1 2.1 42.1  
51 33.4 9.6 49.6





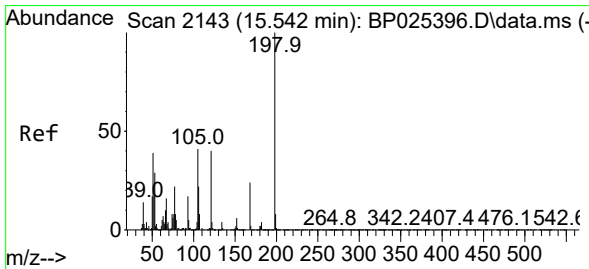
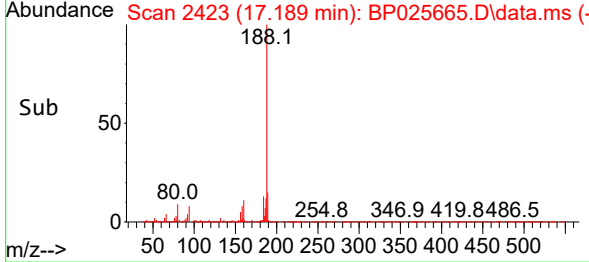
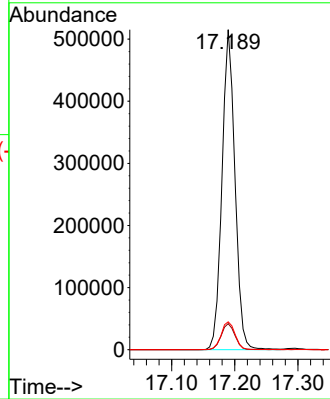
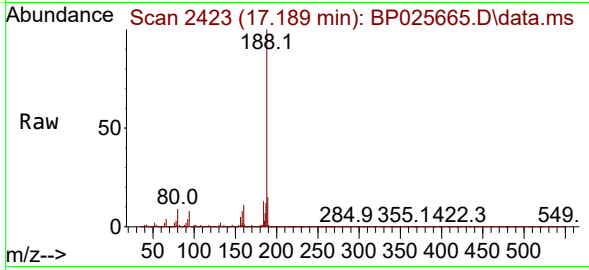


#64  
 Phenanthrene-d10  
 Concen: 20.000 ng  
 RT: 17.189 min Scan# 2425  
 Delta R.T. -0.012 min  
 Lab File: BP025665.D  
 Acq: 04 Sep 2025 18:15

**Instrument :**  
 BNA\_P  
**ClientSampleId :**  
 LOD-MDL-WATER-01-QT3-2025

Tgt Ion:188 Resp: 733023

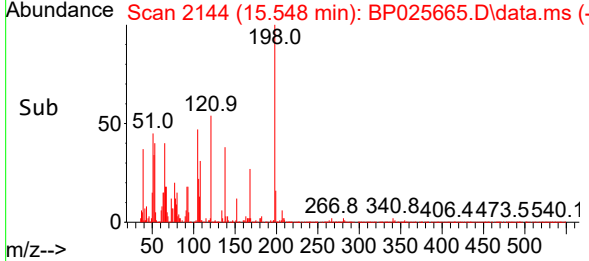
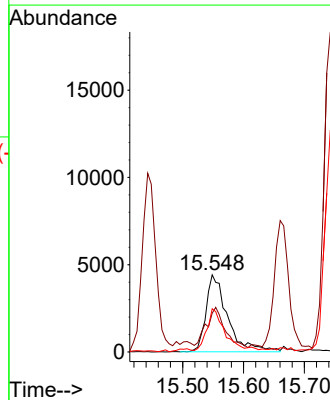
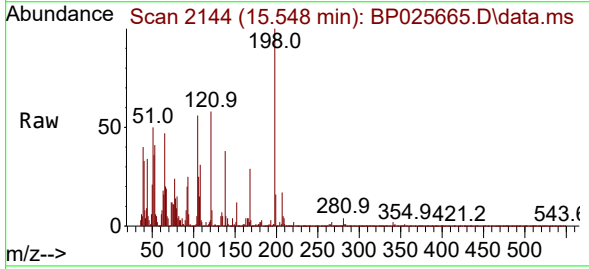
Ion	Ratio	Lower	Upper
188	100		
94	8.2	6.6	10.0
80	8.7	6.7	10.1

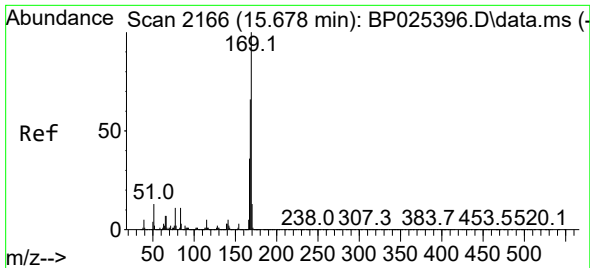


#65  
 4,6-Dinitro-2-methylphenol  
 Concen: 2.370 ng  
 RT: 15.548 min Scan# 2144  
 Delta R.T. 0.006 min  
 Lab File: BP025665.D  
 Acq: 04 Sep 2025 18:15

Tgt Ion:198 Resp: 10830

Ion	Ratio	Lower	Upper
198	100		
51	50.3	19.6	59.6
105	56.1	20.9	60.9

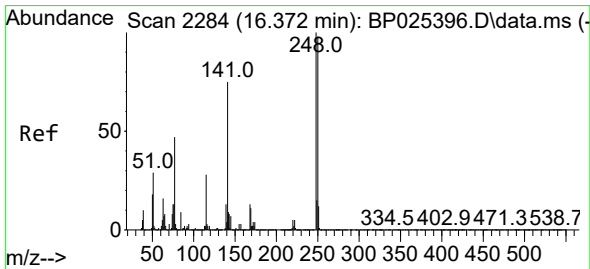
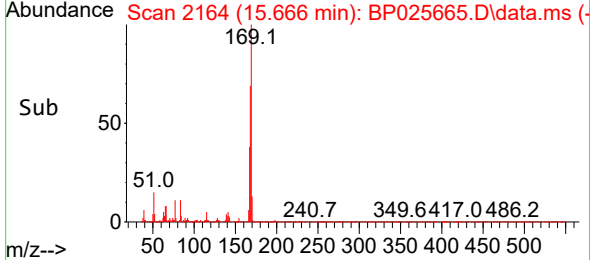
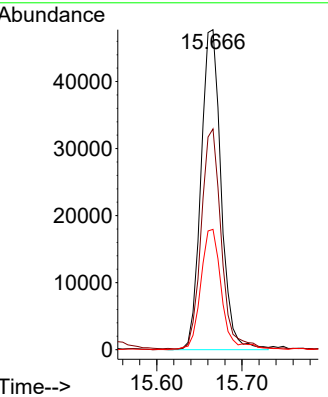
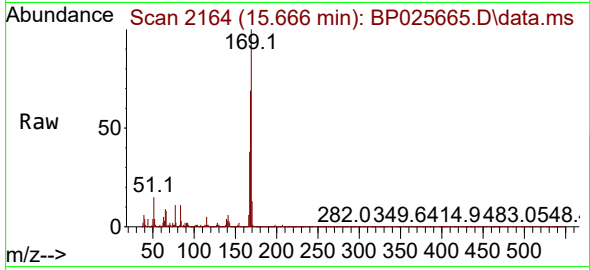




#66  
 n-Nitrosodiphenylamine  
 Concen: 3.506 ng  
 RT: 15.666 min Scan# 2164  
 Delta R.T. -0.012 min  
 Lab File: BP025665.D  
 Acq: 04 Sep 2025 18:15

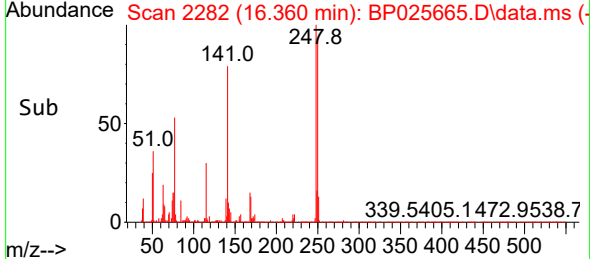
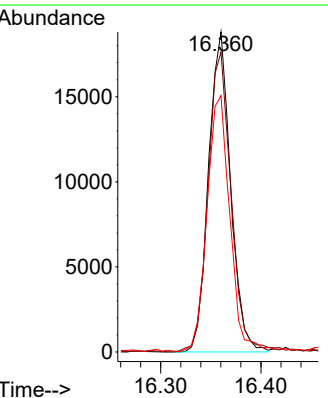
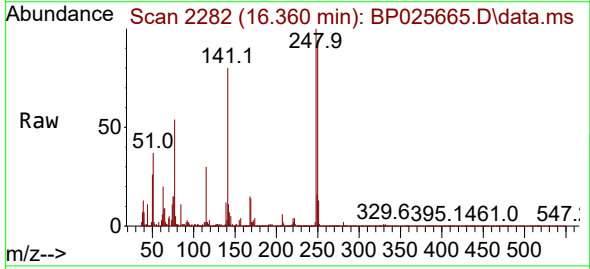
Instrument : BNA\_P  
 ClientSampleId : LOD-MDL-WATER-01-QT3-2025

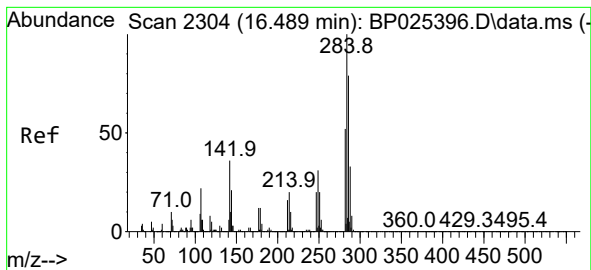
Tgt Ion	Resp	Lower	Upper
169	78373		
168	69.0	53.2	79.8
167	37.6	28.7	43.1



#67  
 4-Bromophenyl-phenylether  
 Concen: 3.564 ng  
 RT: 16.360 min Scan# 2282  
 Delta R.T. -0.012 min  
 Lab File: BP025665.D  
 Acq: 04 Sep 2025 18:15

Tgt Ion	Resp	Lower	Upper
248	28732		
250	93.7	78.2	117.2
141	80.1	59.6	89.4



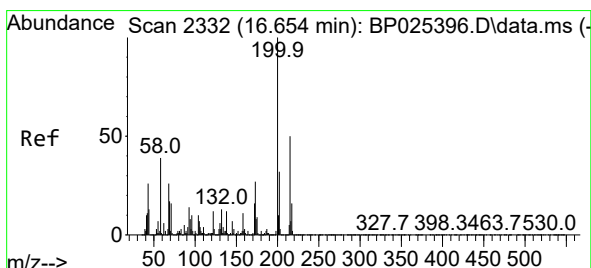
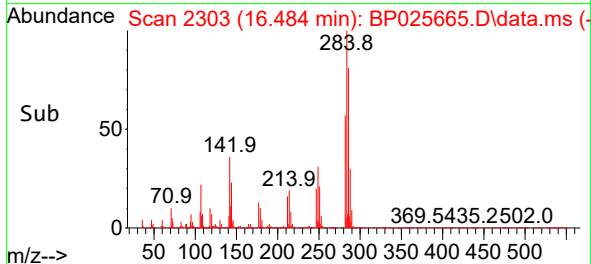
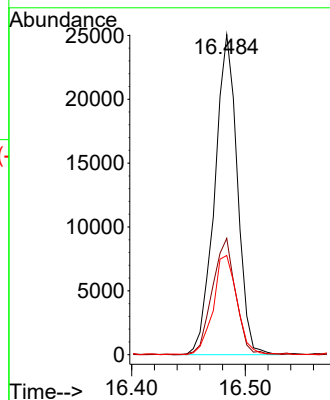
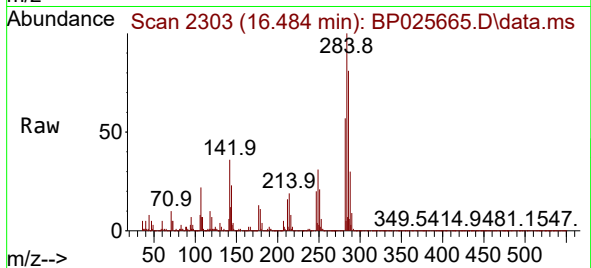


#68  
 Hexachlorobenzene  
 Concen: 3.712 ng  
 RT: 16.484 min Scan# 21  
 Delta R.T. -0.006 min  
 Lab File: BP025665.D  
 Acq: 04 Sep 2025 18:15

Instrument :  
 BNA\_P  
 ClientSampleId :  
 LOD-MDL-WATER-01-QT3-2025

Tgt Ion:284 Resp: 34691

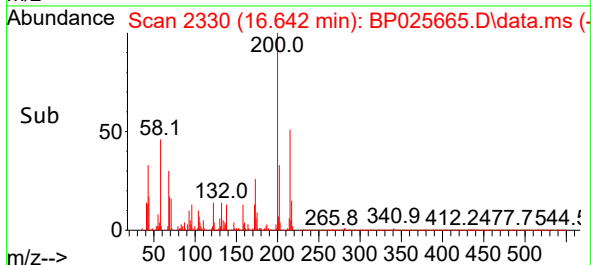
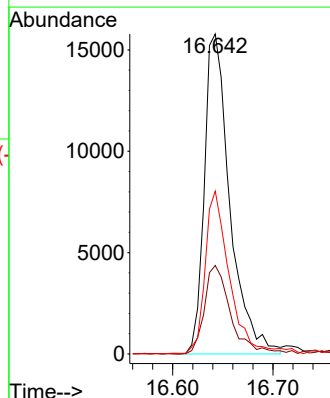
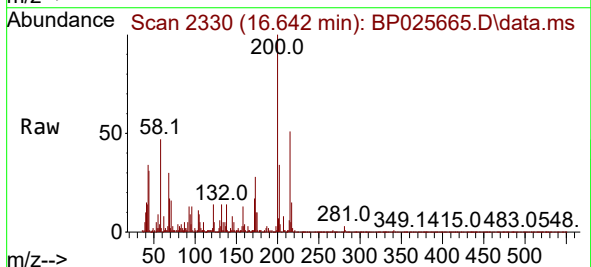
Ion	Ratio	Lower	Upper
284	100		
142	36.4	29.1	43.7
249	31.0	25.0	37.4

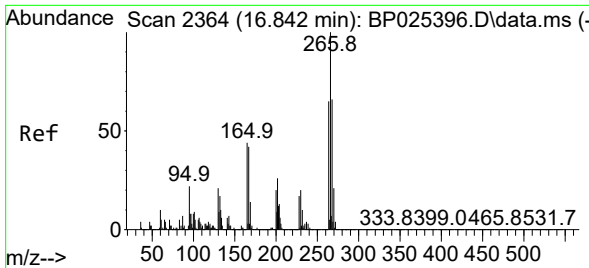


#69  
 Atrazine  
 Concen: 3.347 ng  
 RT: 16.642 min Scan# 2330  
 Delta R.T. -0.012 min  
 Lab File: BP025665.D  
 Acq: 04 Sep 2025 18:15

Tgt Ion:200 Resp: 28019

Ion	Ratio	Lower	Upper
200	100		
173	27.7	6.7	46.7
215	50.9	29.7	69.7



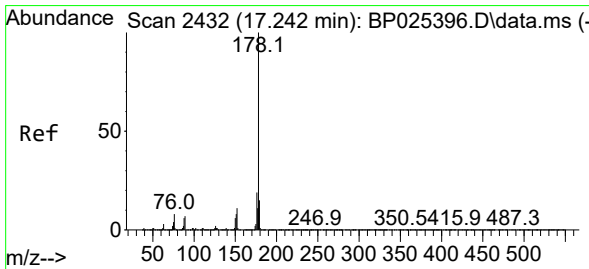
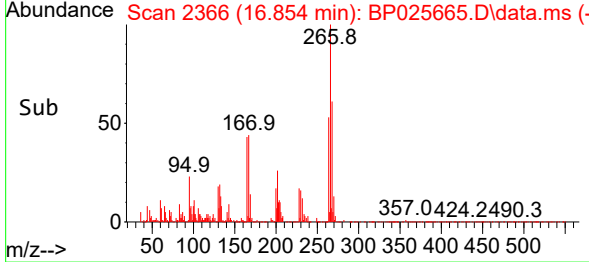
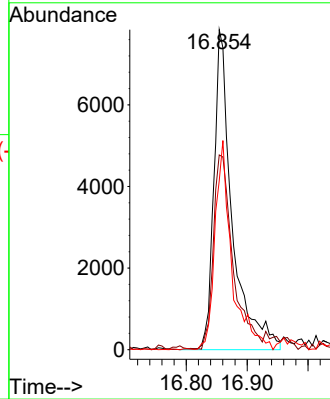
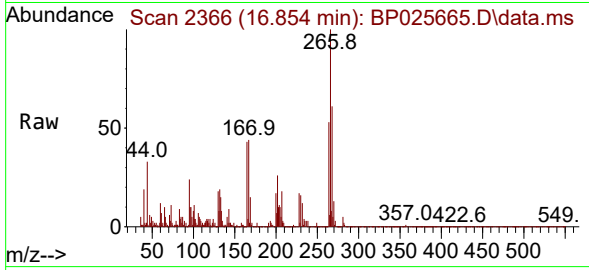


#70  
 Pentachlorophenol  
 Concen: 2.790 ng  
 RT: 16.854 min Scan# 21  
 Delta R.T. 0.012 min  
 Lab File: BP025665.D  
 Acq: 04 Sep 2025 18:15

Instrument :  
 BNA\_P  
 ClientSampleId :  
 LOD-MDL-WATER-01-QT3-2025

Tgt Ion:266 Resp: 16457

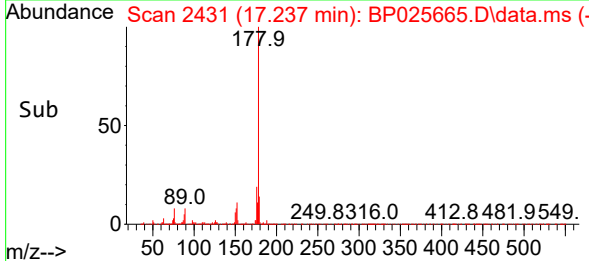
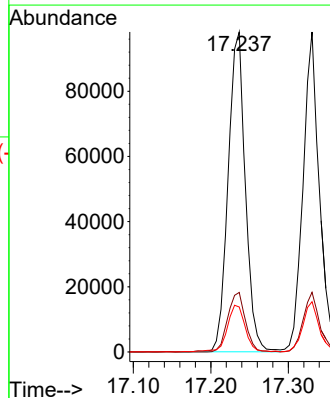
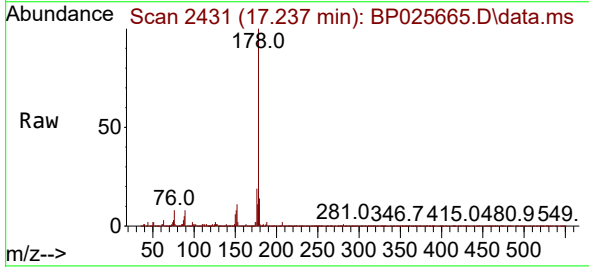
Ion	Ratio	Lower	Upper
266	100		
268	60.8	52.6	79.0
264	52.8	52.0	78.0

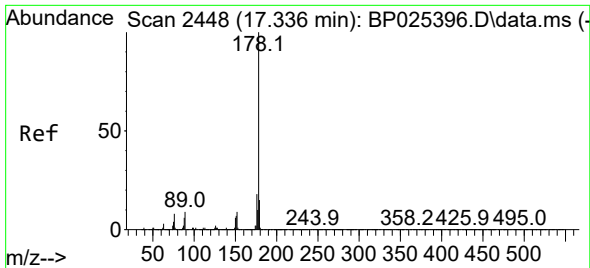


#71  
 Phenanthrene  
 Concen: 3.769 ng  
 RT: 17.237 min Scan# 2431  
 Delta R.T. -0.006 min  
 Lab File: BP025665.D  
 Acq: 04 Sep 2025 18:15

Tgt Ion:178 Resp: 151782

Ion	Ratio	Lower	Upper
178	100		
176	18.6	15.5	23.3
179	14.1	12.2	18.4



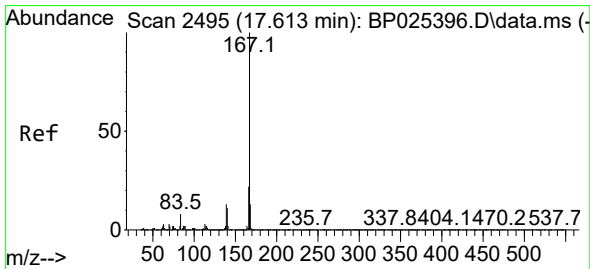
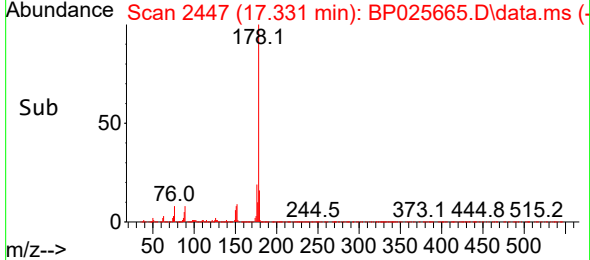
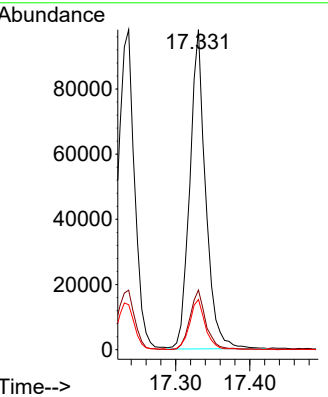
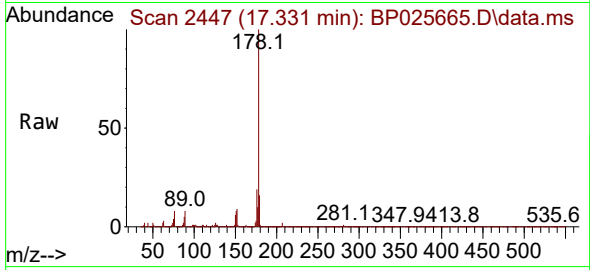


#72  
 Anthracene  
 Concen: 3.548 ng  
 RT: 17.331 min Scan# 2448  
 Delta R.T. -0.006 min  
 Lab File: BP025665.D  
 Acq: 04 Sep 2025 18:15

Instrument : BNA\_P  
 ClientSampleId : LOD-MDL-WATER-01-QT3-2025

Tgt Ion:178 Resp: 145891

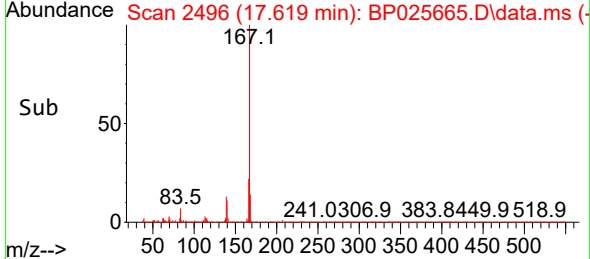
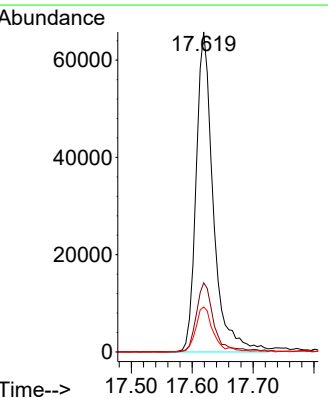
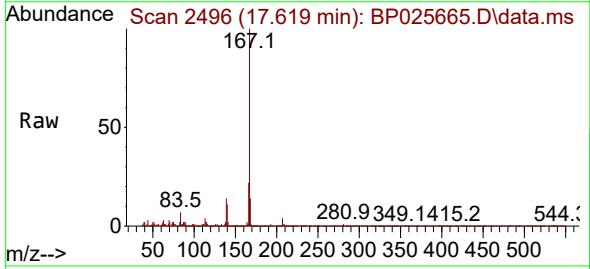
Ion	Ratio	Lower	Upper
178	100		
176	18.7	14.7	22.1
179	15.7	12.2	18.2

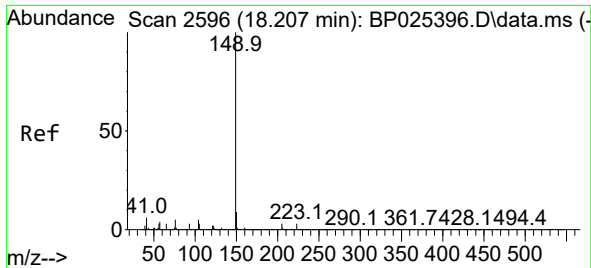


#73  
 Carbazole  
 Concen: 3.329 ng  
 RT: 17.619 min Scan# 2496  
 Delta R.T. 0.006 min  
 Lab File: BP025665.D  
 Acq: 04 Sep 2025 18:15

Tgt Ion:167 Resp: 128953

Ion	Ratio	Lower	Upper
167	100		
166	21.6	17.5	26.3
139	14.0	10.6	16.0



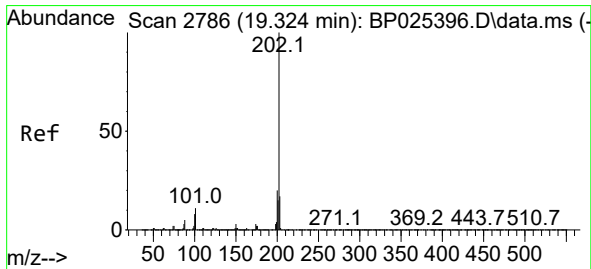
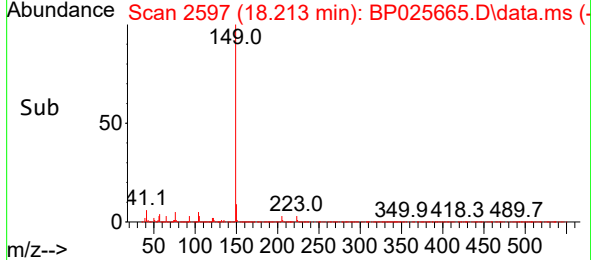
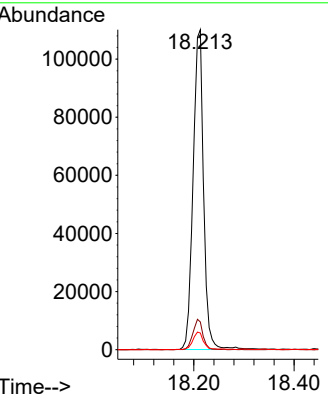
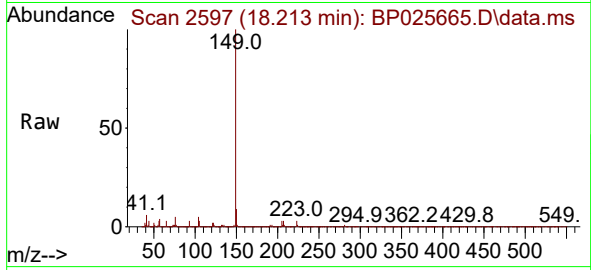


#74  
 Di-n-butylphthalate  
 Concen: 3.363 ng  
 RT: 18.213 min Scan# 21  
 Delta R.T. 0.006 min  
 Lab File: BP025665.D  
 Acq: 04 Sep 2025 18:15

Instrument : BNA\_P  
 ClientSampleId : LOD-MDL-WATER-01-QT3-2025

Tgt Ion:149 Resp: 160278

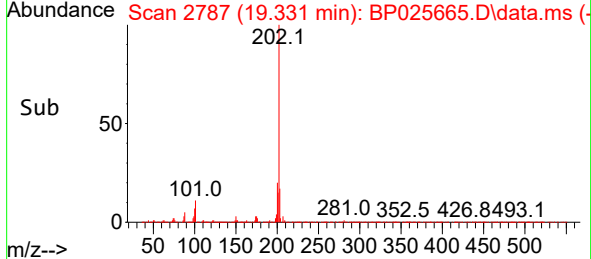
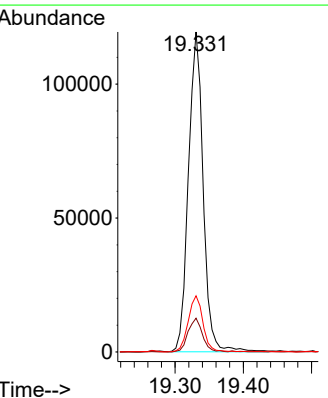
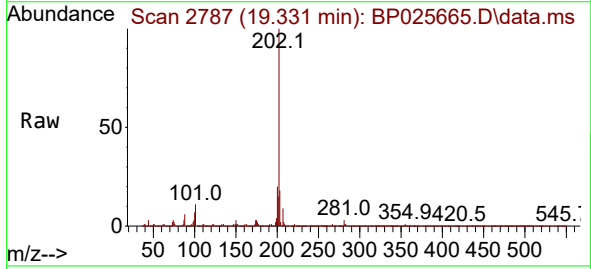
Ion	Ratio	Lower	Upper
149	100		
150	8.7	7.4	11.0
104	5.2	4.2	6.2

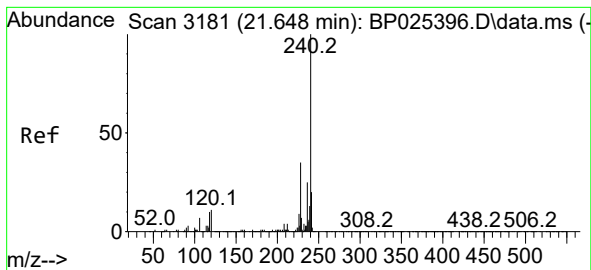


#75  
 Fluoranthene  
 Concen: 3.731 ng  
 RT: 19.331 min Scan# 2787  
 Delta R.T. 0.006 min  
 Lab File: BP025665.D  
 Acq: 04 Sep 2025 18:15

Tgt Ion:202 Resp: 179204

Ion	Ratio	Lower	Upper
202	100		
101	10.6	0.0	31.1
203	17.5	0.0	37.3



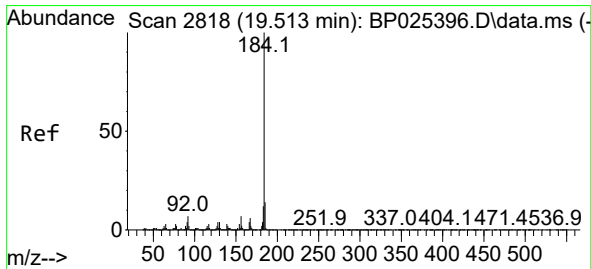
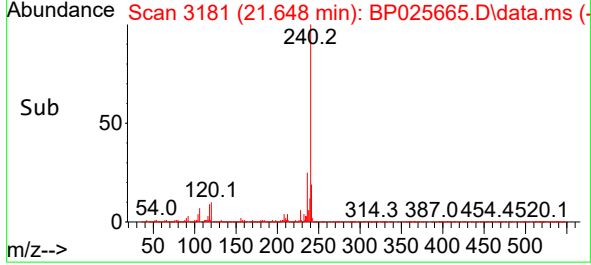
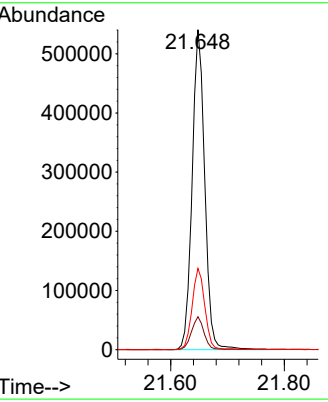
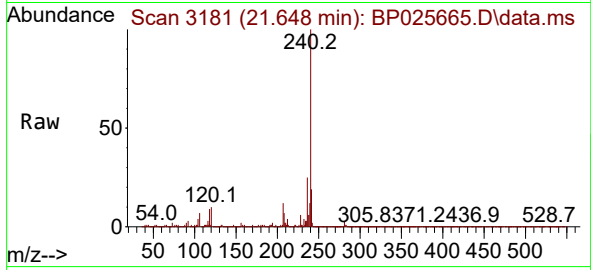


#76  
 Chrysene-d12  
 Concen: 20.000 ng  
 RT: 21.648 min Scan# 3181  
 Delta R.T. 0.000 min  
 Lab File: BP025665.D  
 Acq: 04 Sep 2025 18:15

Instrument :  
 BNA\_P  
 ClientSampleId :  
 LOD-MDL-WATER-01-QT3-2025

Tgt Ion:240 Resp: 827215

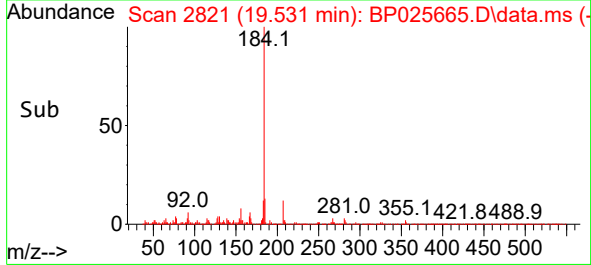
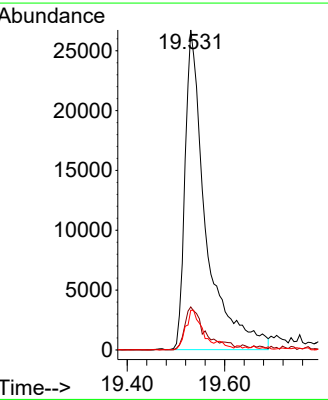
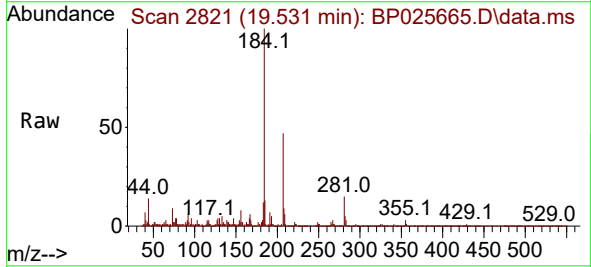
Ion	Ratio	Lower	Upper
240	100		
120	10.3	8.9	13.3
236	25.4	19.8	29.8

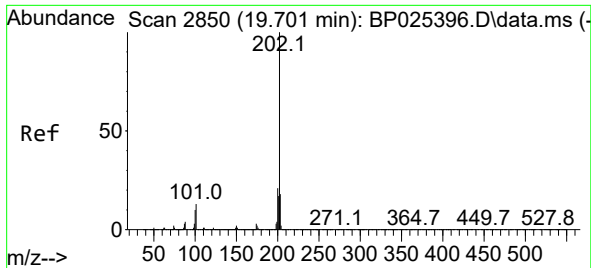


#77  
 Benzidine  
 Concen: 2.825 ng  
 RT: 19.531 min Scan# 2821  
 Delta R.T. 0.018 min  
 Lab File: BP025665.D  
 Acq: 04 Sep 2025 18:15

Tgt Ion:184 Resp: 79765

Ion	Ratio	Lower	Upper
184	100		
185	13.4	11.5	17.3
183	12.4	9.4	14.2



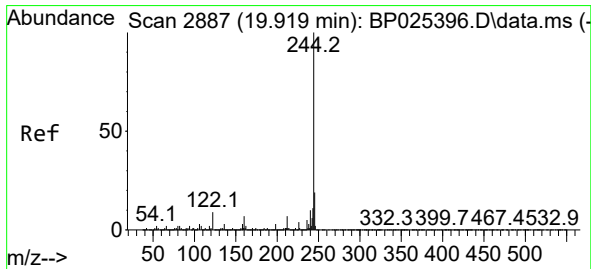
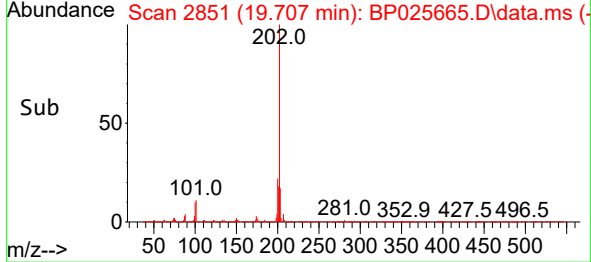
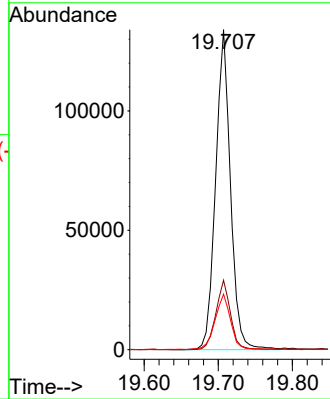
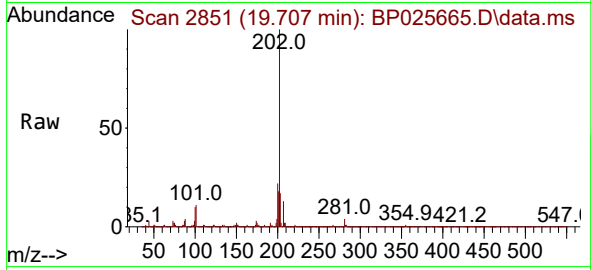


#78  
 Pyrene  
 Concen: 3.458 ng  
 RT: 19.707 min Scan# 2851  
 Delta R.T. 0.006 min  
 Lab File: BP025665.D  
 Acq: 04 Sep 2025 18:15

Instrument : BNA\_P  
 ClientSampleId : LOD-MDL-WATER-01-QT3-2025

Tgt Ion: 202 Resp: 185915

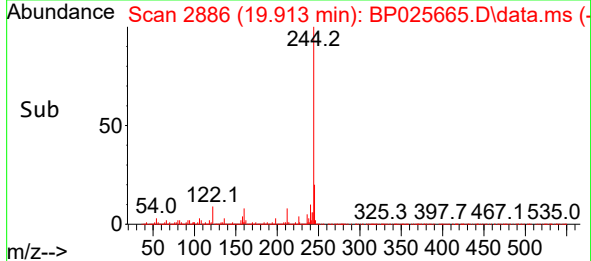
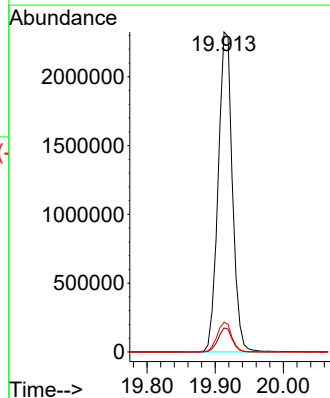
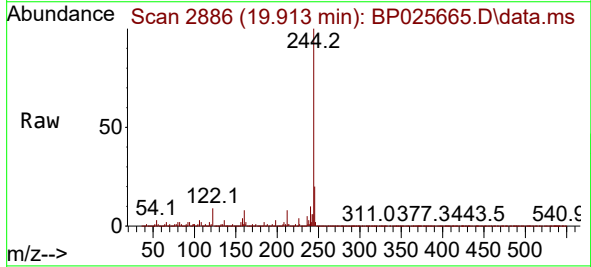
Ion	Ratio	Lower	Upper
202	100		
200	21.7	16.9	25.3
203	17.3	14.2	21.2



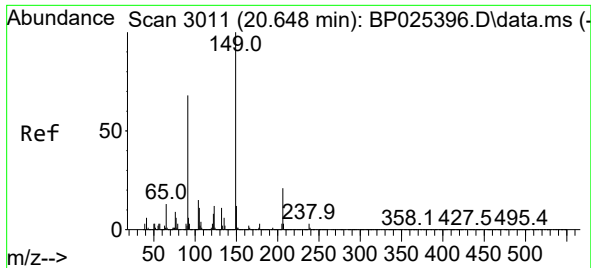
#79  
 Terphenyl-d14  
 Concen: 74.861 ng  
 RT: 19.913 min Scan# 2886  
 Delta R.T. -0.006 min  
 Lab File: BP025665.D  
 Acq: 04 Sep 2025 18:15

Tgt Ion: 244 Resp: 3384712

Ion	Ratio	Lower	Upper
244	100		
212	7.5	5.8	8.6
122	9.3	7.4	11.2





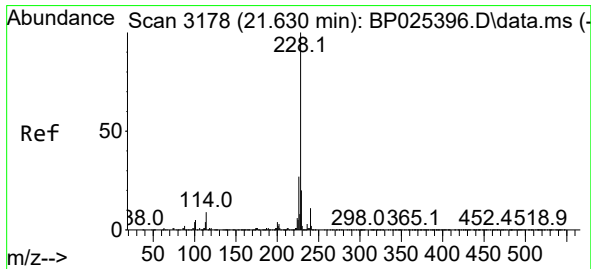
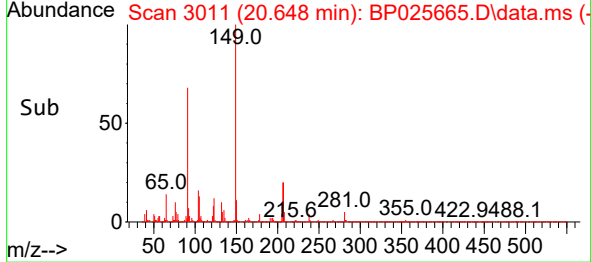
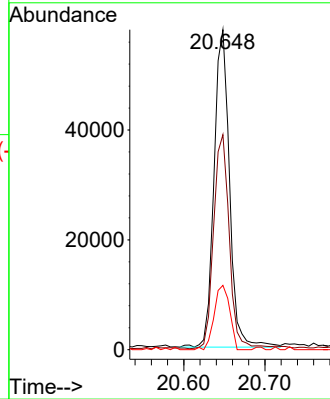
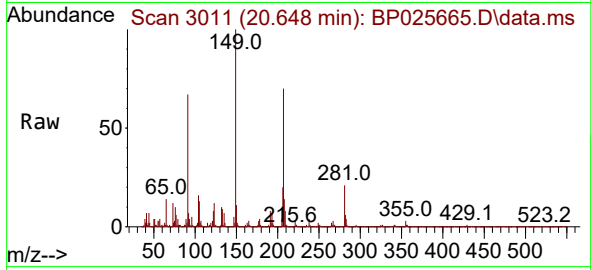


#80  
 Butylbenzylphthalate  
 Concen: 3.141 ng  
 RT: 20.648 min Scan# 3011  
 Delta R.T. 0.000 min  
 Lab File: BP025665.D  
 Acq: 04 Sep 2025 18:15

Instrument : BNA\_P  
 ClientSampleId : LOD-MDL-WATER-01-QT3-2025

Tgt Ion:149 Resp: 76544

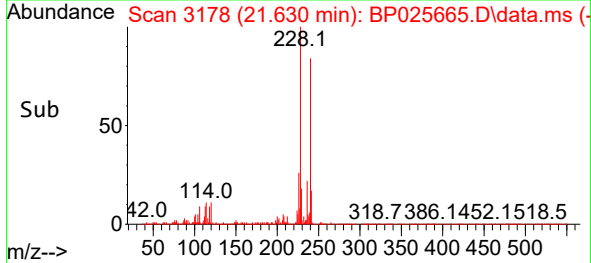
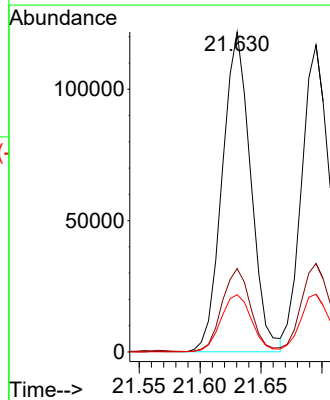
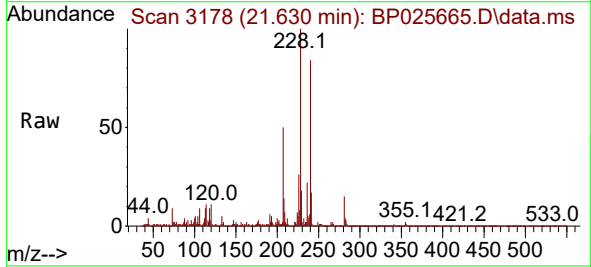
Ion	Ratio	Lower	Upper
149	100		
91	67.2	54.2	81.2
206	20.1	16.6	24.8

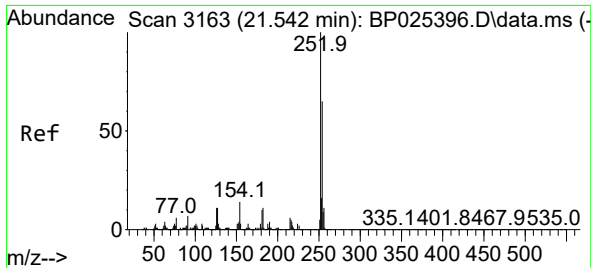


#81  
 Benzo(a)anthracene  
 Concen: 3.631 ng  
 RT: 21.630 min Scan# 3178  
 Delta R.T. 0.000 min  
 Lab File: BP025665.D  
 Acq: 04 Sep 2025 18:15

Tgt Ion:228 Resp: 198098

Ion	Ratio	Lower	Upper
228	100		
226	26.1	21.7	32.5
229	17.9	15.6	23.4

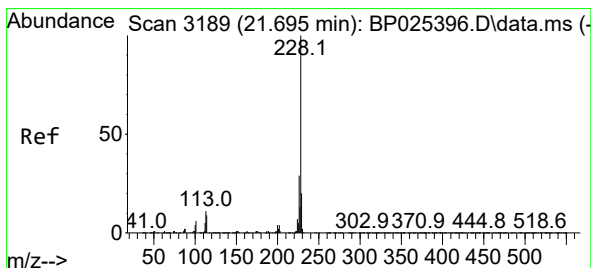
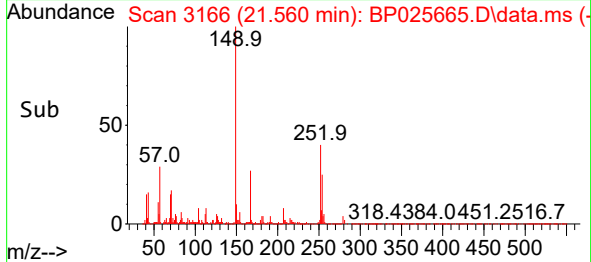
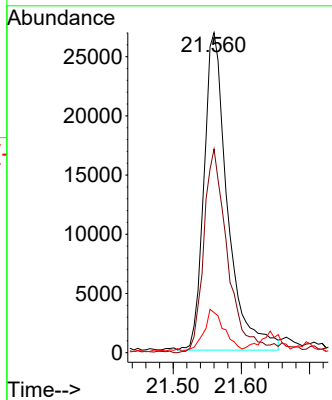
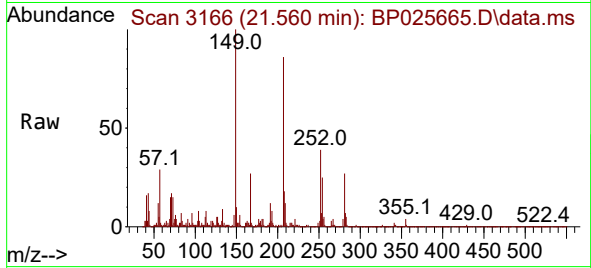




#82  
 3,3'-Dichlorobenzidine  
 Concen: 3.140 ng  
 RT: 21.560 min Scan# 3166  
 Delta R.T. 0.018 min  
 Lab File: BP025665.D  
 Acq: 04 Sep 2025 18:15

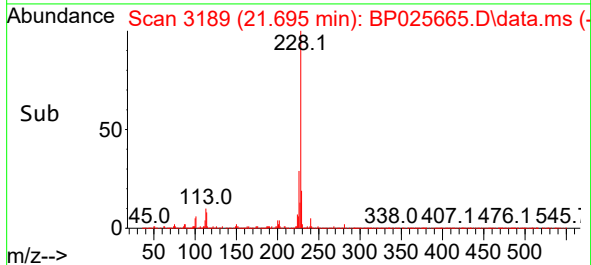
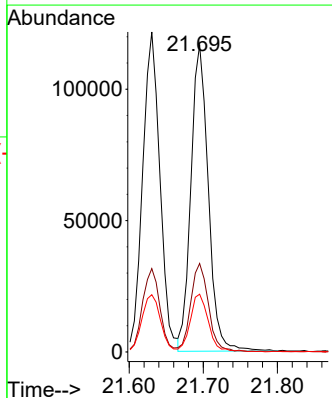
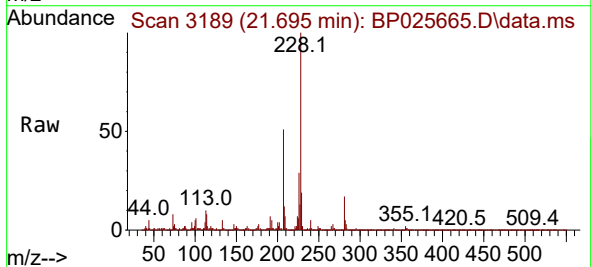
Instrument : BNA\_P  
 ClientSampleId : LOD-MDL-WATER-01-QT3-2025

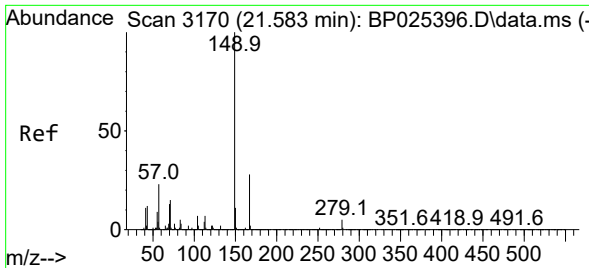
Tgt Ion:252 Resp: 64573  
 Ion Ratio Lower Upper  
 252 100  
 254 63.6 51.8 77.6  
 126 12.5 9.1 13.7



#83  
 Chrysene  
 Concen: 3.728 ng  
 RT: 21.695 min Scan# 3189  
 Delta R.T. 0.000 min  
 Lab File: BP025665.D  
 Acq: 04 Sep 2025 18:15

Tgt Ion:228 Resp: 190442  
 Ion Ratio Lower Upper  
 228 100  
 226 28.8 23.2 34.8  
 229 18.8 15.6 23.4



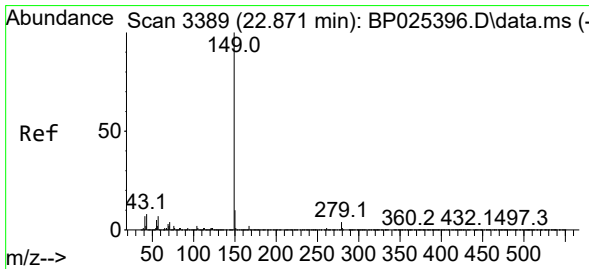
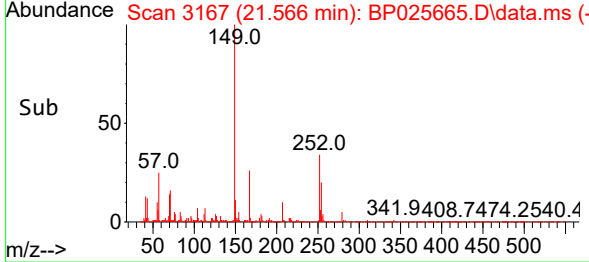
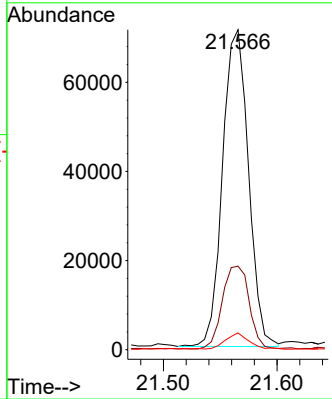
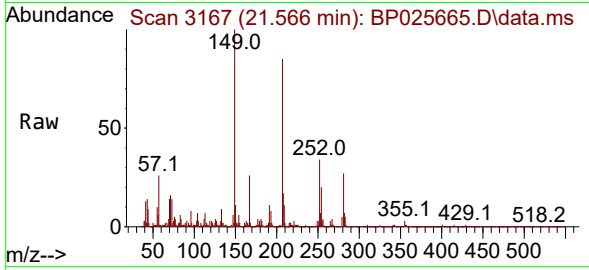


#84  
 Bis(2-ethylhexyl)phthalate  
 Concen: 3.141 ng  
 RT: 21.566 min Scan# 3170  
 Delta R.T. -0.017 min  
 Lab File: BP025665.D  
 Acq: 04 Sep 2025 18:15

Instrument : BNA\_P  
 ClientSampleId : LOD-MDL-WATER-01-QT3-2025

Tgt Ion:149 Resp: 112677

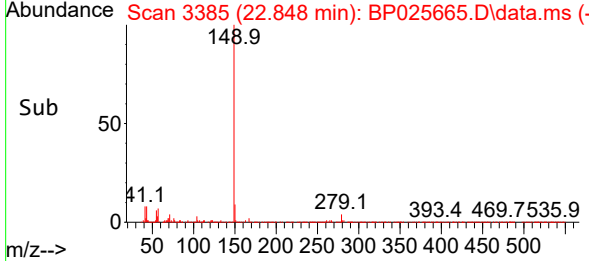
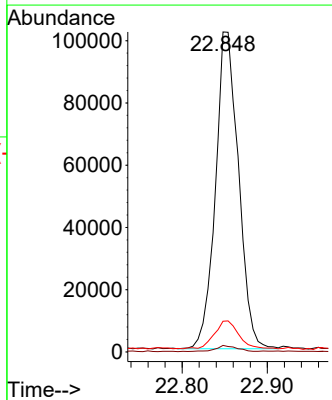
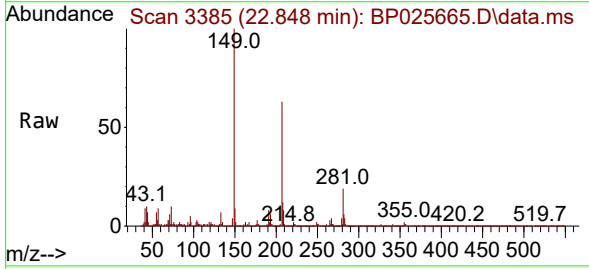
Ion	Ratio	Lower	Upper
149	100		
167	26.1	22.1	33.1
279	5.2	3.8	5.6

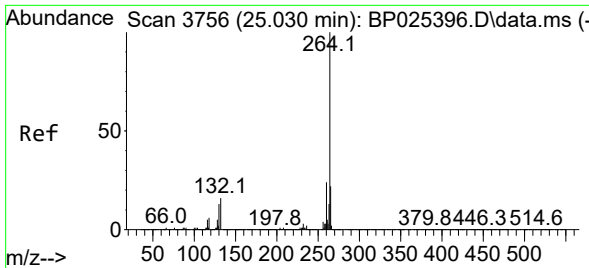


#85  
 Di-n-octyl phthalate  
 Concen: 3.108 ng  
 RT: 22.848 min Scan# 3385  
 Delta R.T. -0.023 min  
 Lab File: BP025665.D  
 Acq: 04 Sep 2025 18:15

Tgt Ion:149 Resp: 191750

Ion	Ratio	Lower	Upper
149	100		
167	1.7	1.3	1.9
43	9.5	6.3	9.5



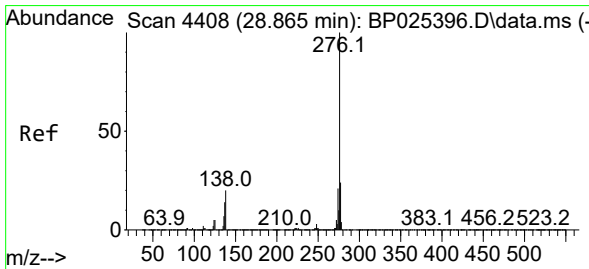
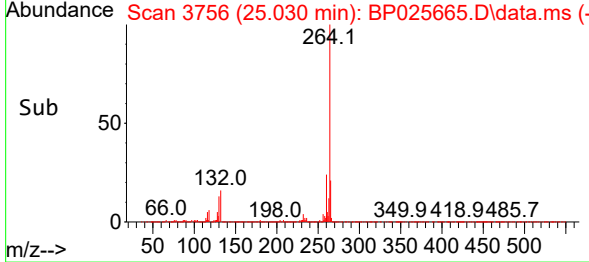
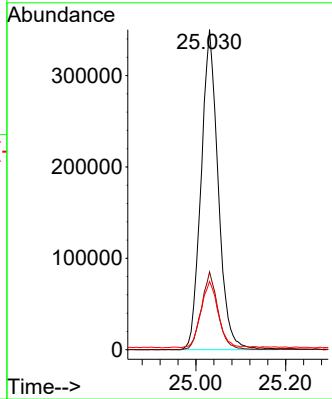
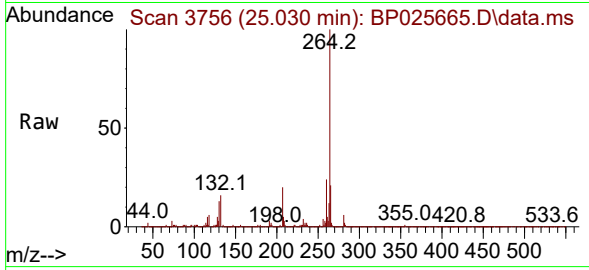


#86  
 Perylene-d12  
 Concen: 20.000 ng  
 RT: 25.030 min Scan# 31  
 Delta R.T. 0.000 min  
 Lab File: BP025665.D  
 Acq: 04 Sep 2025 18:15

**Instrument :**  
 BNA\_P  
**ClientSampleId :**  
 LOD-MDL-WATER-01-QT3-2025

Tgt Ion: 264 Resp: 924965

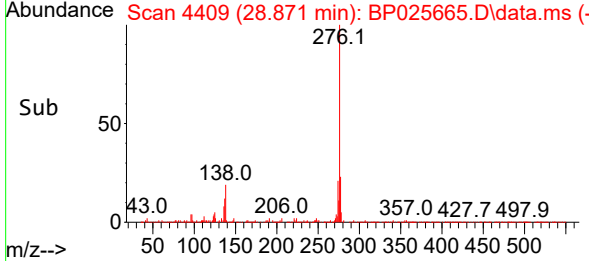
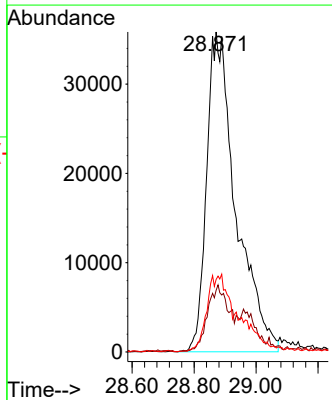
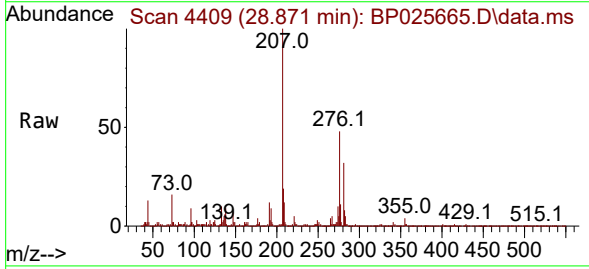
Ion	Ratio	Lower	Upper
264	100		
260	24.3	19.3	28.9
265	21.3	17.4	26.0

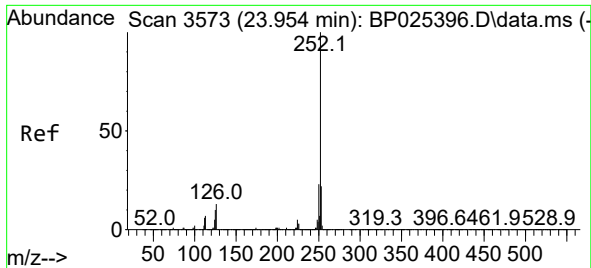


#87  
 Indeno(1,2,3-cd)pyrene  
 Concen: 3.466 ng  
 RT: 28.871 min Scan# 4409  
 Delta R.T. 0.006 min  
 Lab File: BP025665.D  
 Acq: 04 Sep 2025 18:15

Tgt Ion: 276 Resp: 235089

Ion	Ratio	Lower	Upper
276	100		
138	15.1	12.9	19.3
277	7.2	17.0	25.6#



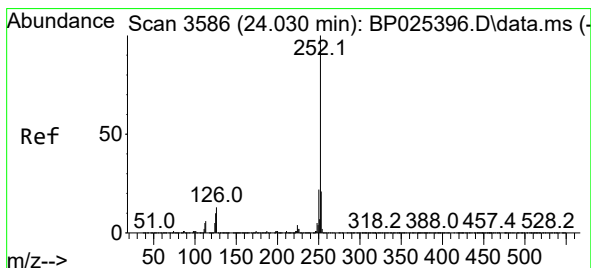
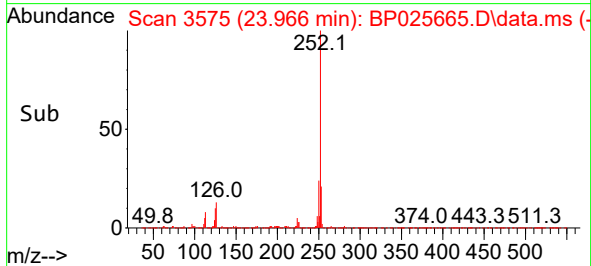
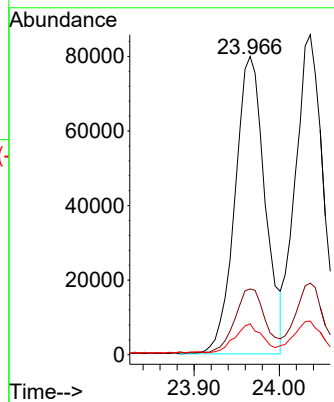
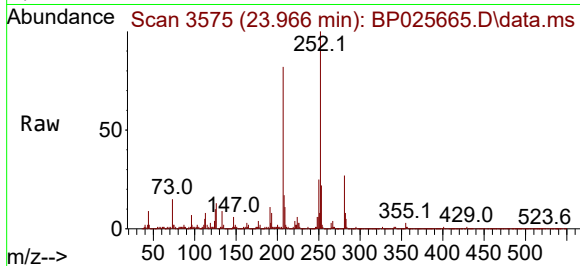


#88  
 Benzo(b)fluoranthene  
 Concen: 3.588 ng  
 RT: 23.966 min Scan# 31  
 Delta R.T. 0.012 min  
 Lab File: BP025665.D  
 Acq: 04 Sep 2025 18:15

Instrument : BNA\_P  
 ClientSampleId : LOD-MDL-WATER-01-QT3-2025

Tgt Ion:252 Resp: 195687

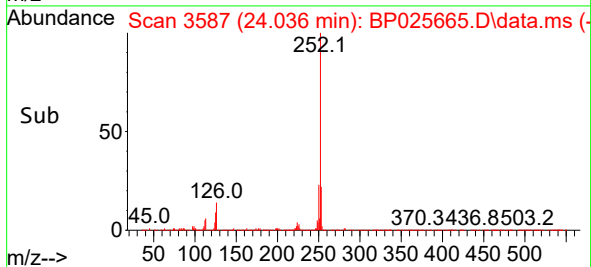
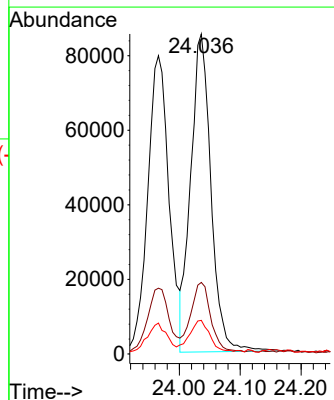
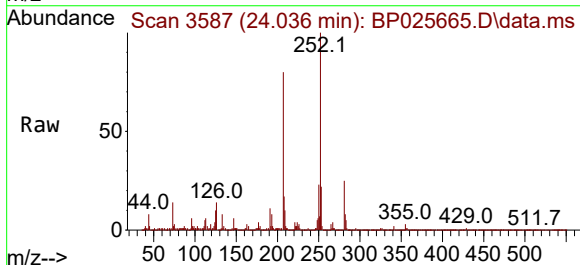
Ion	Ratio	Lower	Upper
252	100		
253	22.1	17.7	26.5
125	10.3	7.9	11.9

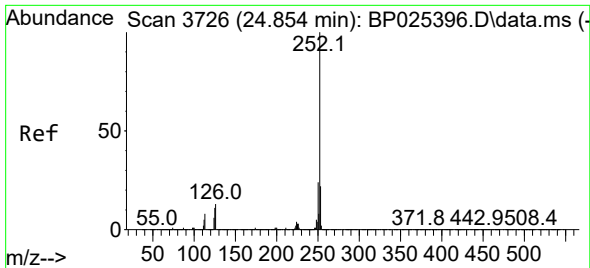


#89  
 Benzo(k)fluoranthene  
 Concen: 3.619 ng  
 RT: 24.036 min Scan# 3587  
 Delta R.T. 0.006 min  
 Lab File: BP025665.D  
 Acq: 04 Sep 2025 18:15

Tgt Ion:252 Resp: 197540

Ion	Ratio	Lower	Upper
252	100		
253	22.4	17.1	25.7
125	10.5	7.8	11.6



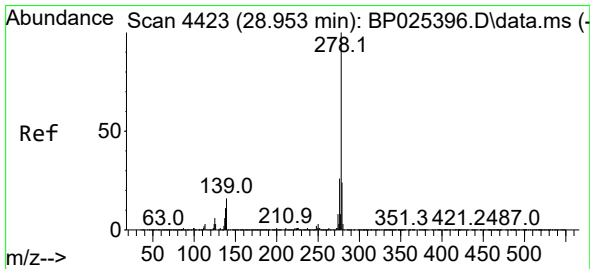
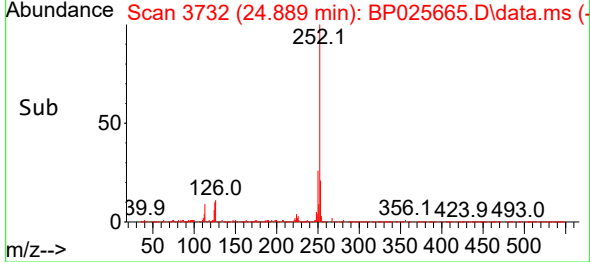
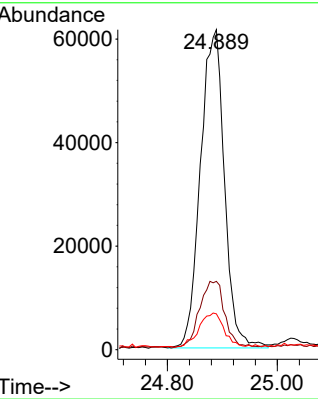
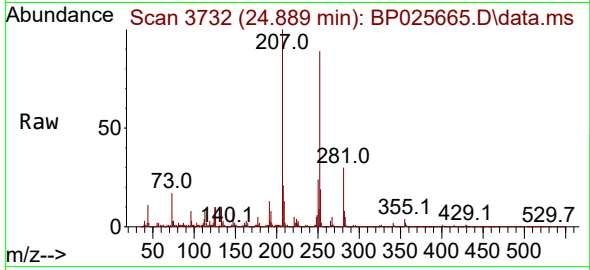


#90  
 Benzo(a)pyrene  
 Concen: 3.503 ng  
 RT: 24.889 min Scan# 31  
 Delta R.T. 0.035 min  
 Lab File: BP025665.D  
 Acq: 04 Sep 2025 18:15

Instrument :  
 BNA\_P  
 ClientSampleId :  
 LOD-MDL-WATER-01-QT3-2025

Tgt Ion:252 Resp: 185969

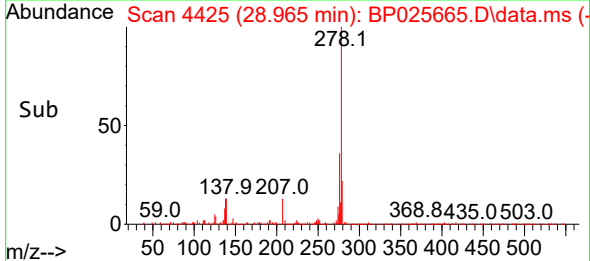
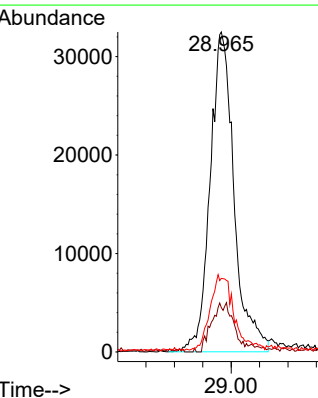
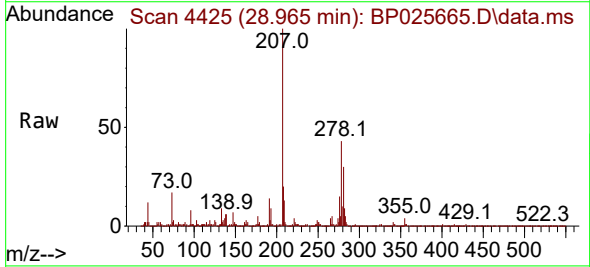
Ion	Ratio	Lower	Upper
252	100		
253	21.3	17.5	26.3
125	11.2	8.7	13.1

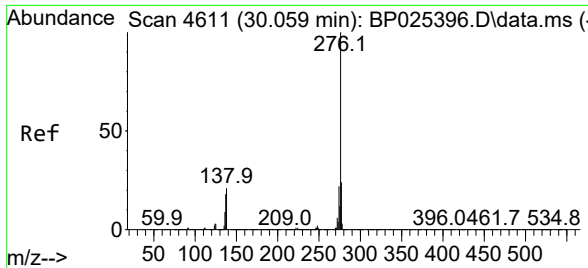


#91  
 Dibenzo(a,h)anthracene  
 Concen: 3.432 ng  
 RT: 28.965 min Scan# 4425  
 Delta R.T. 0.012 min  
 Lab File: BP025665.D  
 Acq: 04 Sep 2025 18:15

Tgt Ion:278 Resp: 190264

Ion	Ratio	Lower	Upper
278	100		
139	13.8	13.0	19.4
279	23.0	19.4	29.2





#92  
 Benzo(g,h,i)perylene  
 Concen: 3.437 ng  
 RT: 30.071 min Scan# 40  
 Delta R.T. 0.012 min  
 Lab File: BP025665.D  
 Acq: 04 Sep 2025 18:15

Instrument : BNA\_P  
 ClientSampleId : LOD-MDL-WATER-01-QT3-2025

Tgt Ion: 276 Resp: 187280

Ion	Ratio	Lower	Upper
276	100		
277	25.4	19.4	29.0
138	21.3	16.7	25.1

