

Data Path : Z:\svoasrv\HPCHEM1\BNA_P\Data\BP090425\
 Data File : BP025667.D
 Acq On : 04 Sep 2025 19:37
 Operator : CG/JU
 Sample : PB169499BL
 Misc :
 ALS Vial : 14 Sample Multiplier: 1

Instrument :
 BNA_P
 ClientSampleId :
 PB169499BL

Quant Time: Sep 05 01:12:15 2025
 Quant Method : Z:\svoasrv\HPCHEM1\BNA_P\Methods\8270E-BP081425.M
 Quant Title : ASP BNA STANDARDS FOR 5 POINT CALIBRATION
 QLast Update : Thu Aug 14 18:14:31 2025
 Response via : Initial Calibration

Compound	R.T.	QIon	Response	Conc Units	Dev(Min)
Internal Standards					
1) 1,4-Dichlorobenzene-d4	7.766	152	124793	20.000 ng	-0.03
21) Naphthalene-d8	10.543	136	474218	20.000 ng	-0.02
39) Acenaphthene-d10	14.401	164	299167	20.000 ng	0.00
64) Phenanthrene-d10	17.195	188	642298	20.000 ng	0.00
76) Chrysene-d12	21.642	240	760979	20.000 ng	0.00
86) Perylene-d12	25.012	264	816888	20.000 ng	-0.02
System Monitoring Compounds					
5) 2-Fluorophenol	5.390	112	1093485	145.517 ng	-0.02
7) Phenol-d6	6.960	99	1325675	137.601 ng	0.00
23) Nitrobenzene-d5	8.913	82	875028	93.340 ng	-0.02
42) 2,4,6-Tribromophenol	15.913	330	639072	158.704 ng	0.00
45) 2-Fluorobiphenyl	13.007	172	1971589	90.068 ng	-0.01
79) Terphenyl-d14	19.924	244	3733830	89.770 ng	0.00

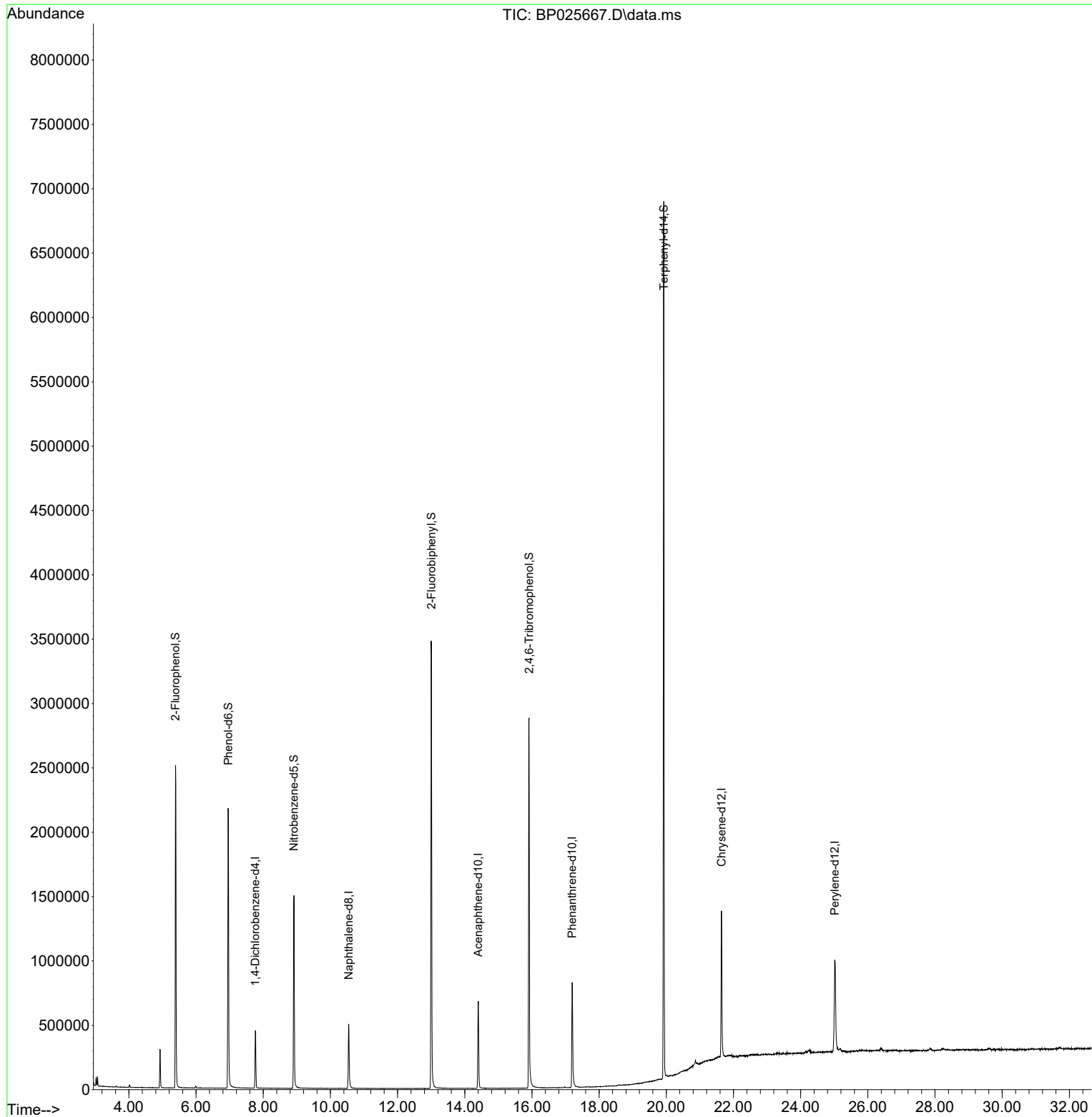
Target Compounds Qvalue

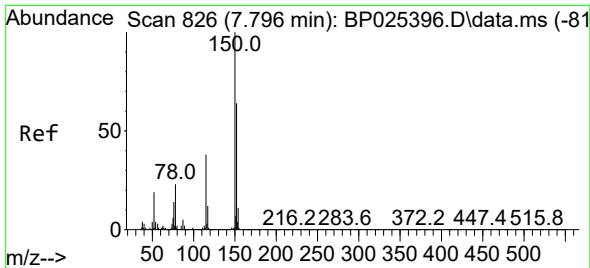
(#) = qualifier out of range (m) = manual integration (+) = signals summed

Data Path : Z:\svoasrv\HPCHEM1\BNA_P\Data\BP090425\
Data File : BP025667.D
Acq On : 04 Sep 2025 19:37
Operator : CG/JU
Sample : PB169499BL
Misc :
ALS Vial : 14 Sample Multiplier: 1

Instrument :
BNA_P
ClientSampleId :
PB169499BL

Quant Time: Sep 05 01:12:15 2025
Quant Method : Z:\svoasrv\HPCHEM1\BNA_P\Methods\8270E-BP081425.M
Quant Title : ASP BNA STANDARDS FOR 5 POINT CALIBRATION
QLast Update : Thu Aug 14 18:14:31 2025
Response via : Initial Calibration

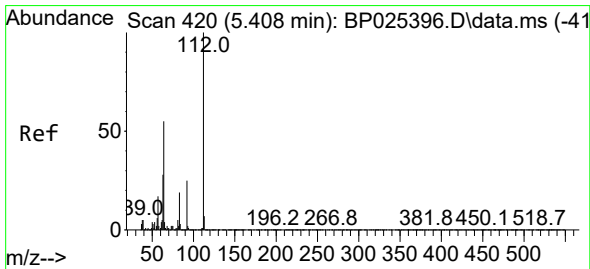
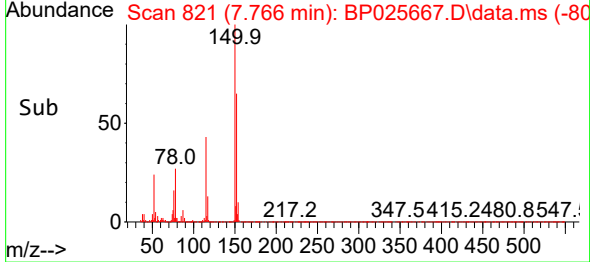
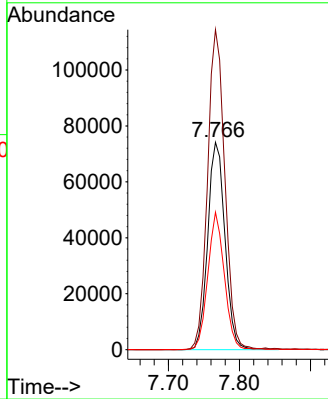
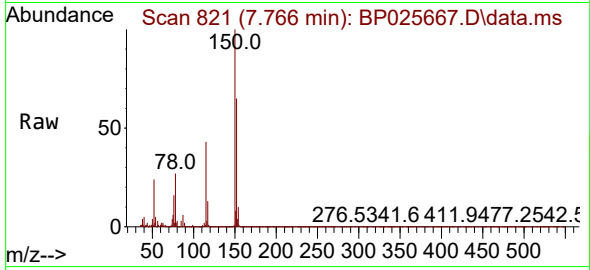




#1
 1,4-Dichlorobenzene-d4
 Concen: 20.000 ng
 RT: 7.766 min Scan# 81
 Delta R.T. -0.030 min
 Lab File: BP025667.D
 Acq: 04 Sep 2025 19:37

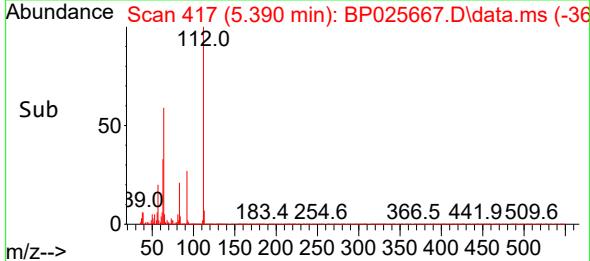
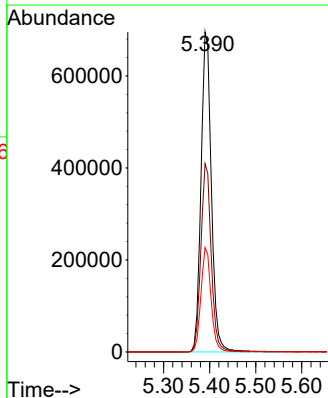
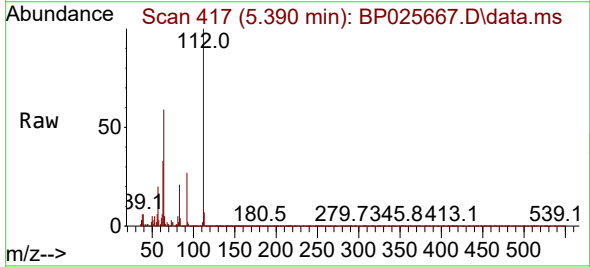
Instrument :
 BNA_P
 ClientSampleId :
 PB169499BL

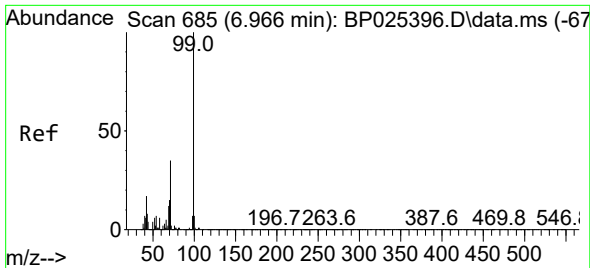
Tgt Ion:152 Resp: 124793
 Ion Ratio Lower Upper
 152 100
 150 154.3 125.9 188.9
 115 66.3 48.5 72.7



#5
 2-Fluorophenol
 Concen: 145.517 ng
 RT: 5.390 min Scan# 417
 Delta R.T. -0.018 min
 Lab File: BP025667.D
 Acq: 04 Sep 2025 19:37

Tgt Ion:112 Resp: 1093485
 Ion Ratio Lower Upper
 112 100
 64 58.9 43.8 65.8
 63 32.6 22.7 34.1

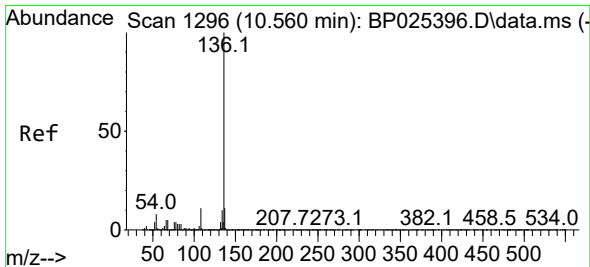
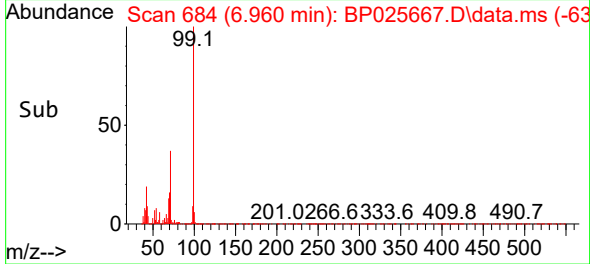
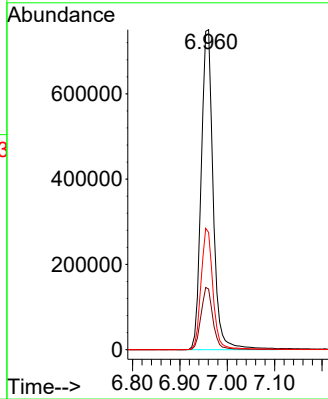
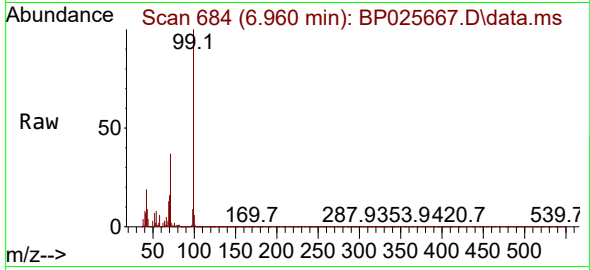




#7
 Phenol-d6
 Concen: 137.601 ng
 RT: 6.960 min Scan# 685
 Delta R.T. -0.006 min
 Lab File: BP025667.D
 Acq: 04 Sep 2025 19:37

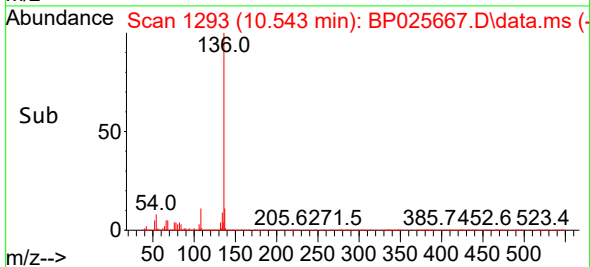
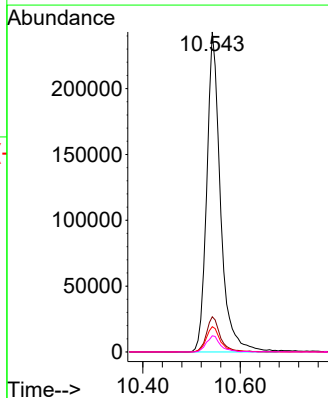
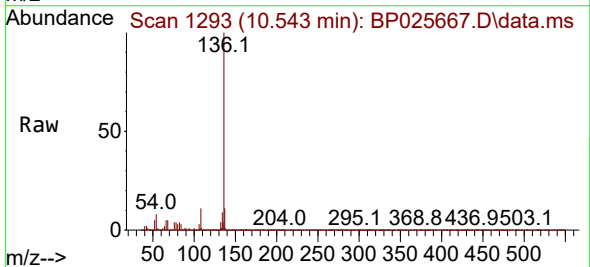
Instrument :
 BNA_P
 ClientSampleId :
 PB169499BL

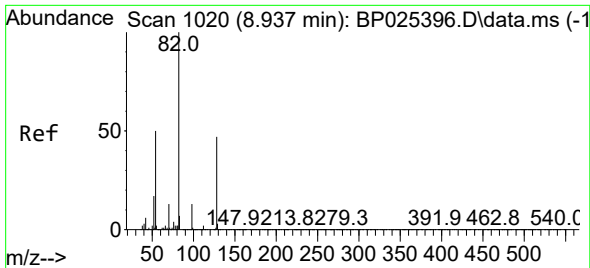
Tgt Ion: 99 Resp: 1325675
 Ion Ratio Lower Upper
 99 100
 42 18.9 13.7 20.5
 71 36.6 28.2 42.4



#21
 Naphthalene-d8
 Concen: 20.000 ng
 RT: 10.543 min Scan# 1293
 Delta R.T. -0.018 min
 Lab File: BP025667.D
 Acq: 04 Sep 2025 19:37

Tgt Ion: 136 Resp: 474218
 Ion Ratio Lower Upper
 136 100
 137 11.0 9.2 13.8
 54 7.9 6.0 9.0
 68 5.0 4.3 6.5



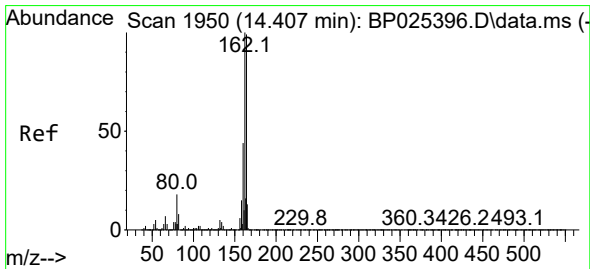
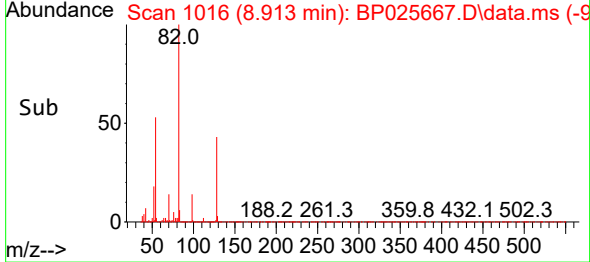
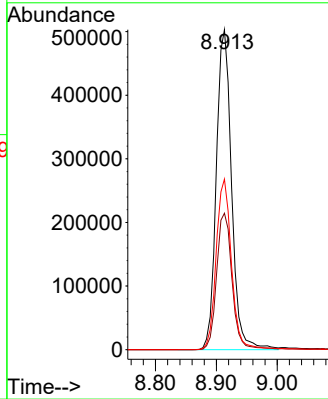
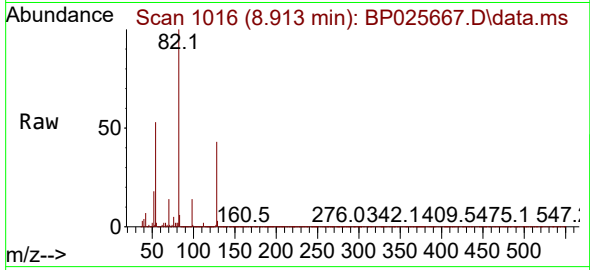


#23
 Nitrobenzene-d5
 Concen: 93.340 ng
 RT: 8.913 min Scan# 1016
 Delta R.T. -0.024 min
 Lab File: BP025667.D
 Acq: 04 Sep 2025 19:37

Instrument : BNA_P
 Client Sample Id : PB169499BL

Tgt Ion: 82 Resp: 875028

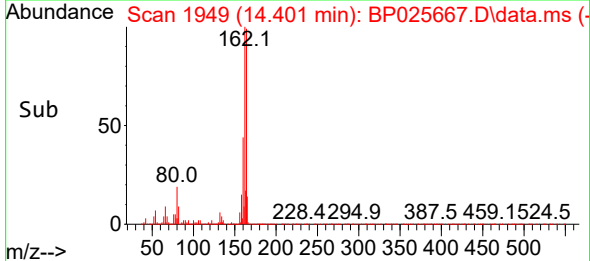
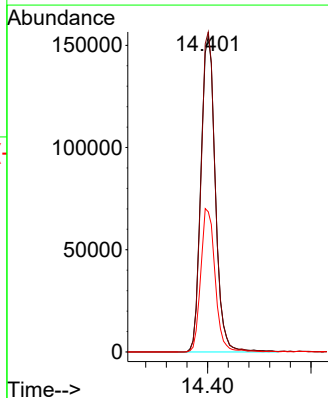
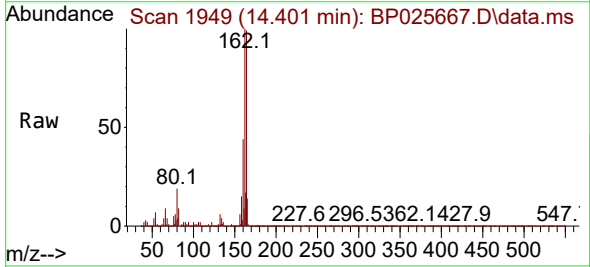
Ion	Ratio	Lower	Upper
82	100		
128	42.7	37.7	56.5
54	53.3	39.8	59.6

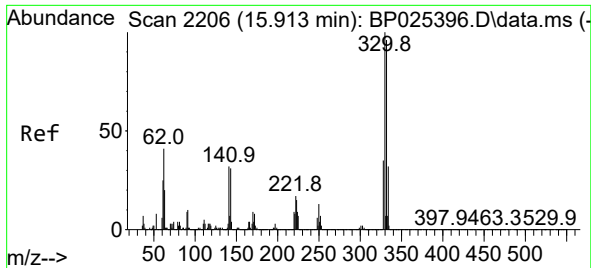


#39
 Acenaphthene-d10
 Concen: 20.000 ng
 RT: 14.401 min Scan# 1949
 Delta R.T. -0.006 min
 Lab File: BP025667.D
 Acq: 04 Sep 2025 19:37

Tgt Ion: 164 Resp: 299167

Ion	Ratio	Lower	Upper
164	100		
162	101.3	81.0	121.6
160	44.4	35.4	53.2

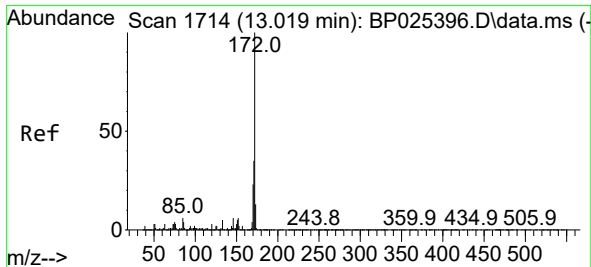
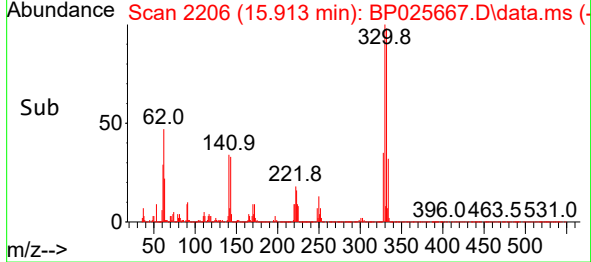
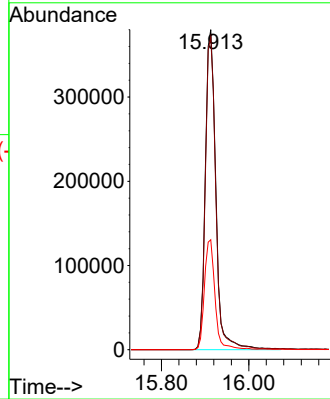
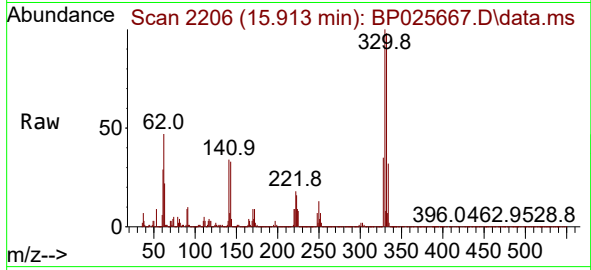




#42
 2,4,6-Tribromophenol
 Concen: 158.704 ng
 RT: 15.913 min Scan# 21
 Delta R.T. 0.000 min
 Lab File: BP025667.D
 Acq: 04 Sep 2025 19:37

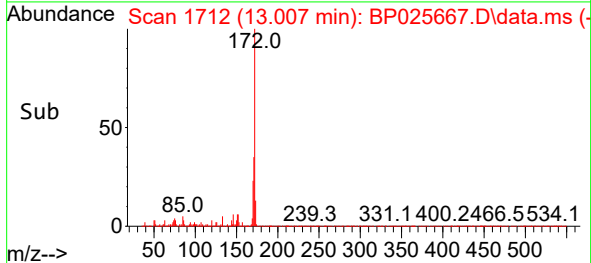
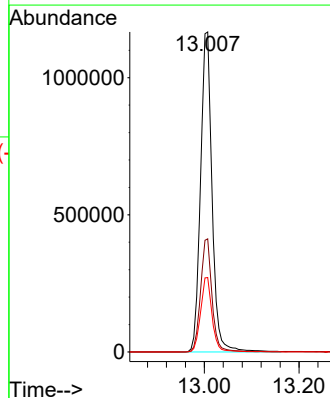
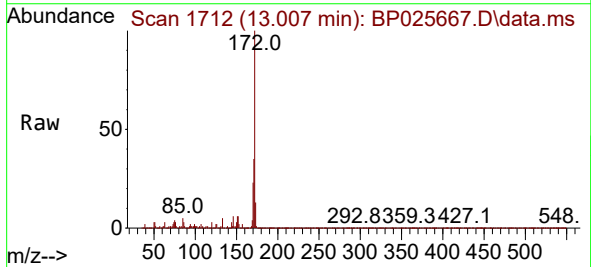
Instrument :
 BNA_P
 ClientSampleId :
 PB169499BL

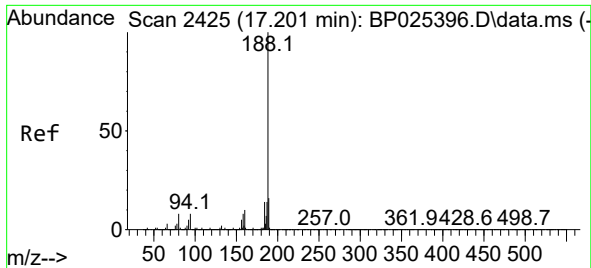
Tgt Ion	Resp	Lower	Upper
330	100		
332	97.8	77.3	115.9
141	34.6	26.6	39.8



#45
 2-Fluorobiphenyl
 Concen: 90.068 ng
 RT: 13.007 min Scan# 1712
 Delta R.T. -0.012 min
 Lab File: BP025667.D
 Acq: 04 Sep 2025 19:37

Tgt Ion	Resp	Lower	Upper
172	100		
171	35.3	28.1	42.1
170	23.2	18.6	28.0



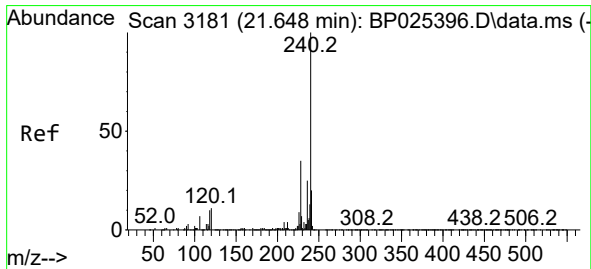
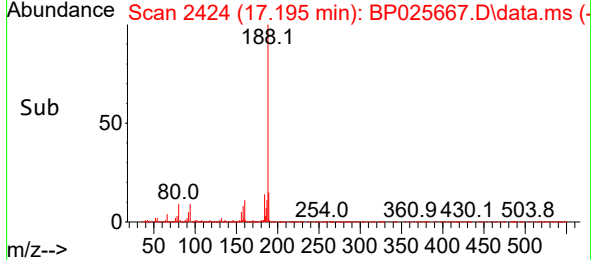
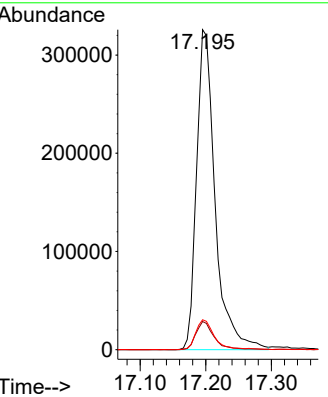
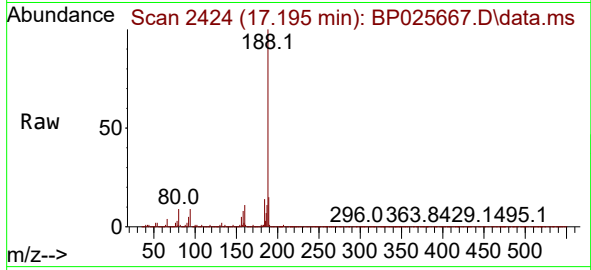


#64
 Phenanthrene-d10
 Concen: 20.000 ng
 RT: 17.195 min Scan# 2424
 Delta R.T. -0.006 min
 Lab File: BP025667.D
 Acq: 04 Sep 2025 19:37

Instrument :
 BNA_P
 ClientSampleId :
 PB169499BL

Tgt Ion:188 Resp: 642298

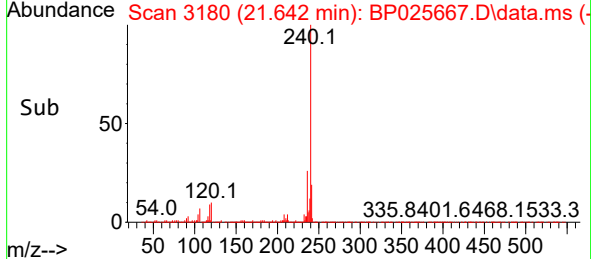
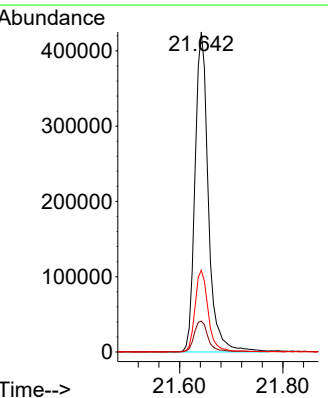
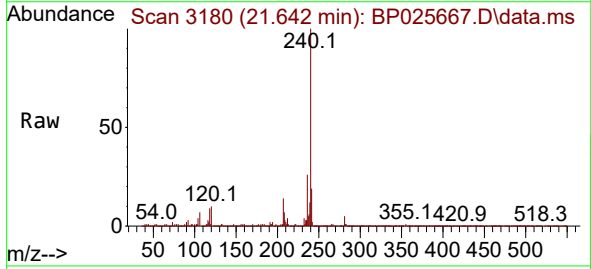
Ion	Ratio	Lower	Upper
188	100		
94	8.8	6.6	10.0
80	9.3	6.7	10.1

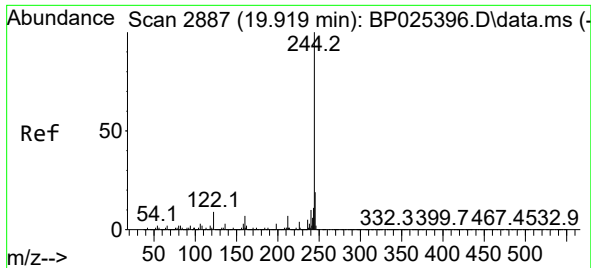


#76
 Chrysene-d12
 Concen: 20.000 ng
 RT: 21.642 min Scan# 3180
 Delta R.T. -0.006 min
 Lab File: BP025667.D
 Acq: 04 Sep 2025 19:37

Tgt Ion:240 Resp: 760979

Ion	Ratio	Lower	Upper
240	100		
120	9.7	8.9	13.3
236	25.5	19.8	29.8





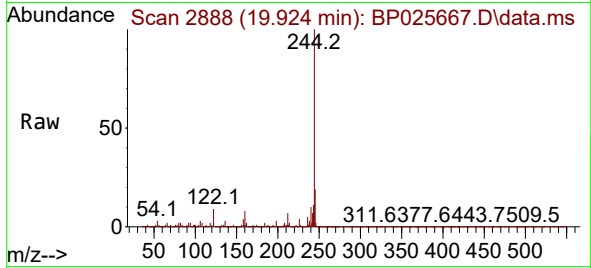
#79
 Terphenyl-d14
 Concen: 89.770 ng
 RT: 19.924 min Scan# 21
 Delta R.T. 0.006 min
 Lab File: BP025667.D
 Acq: 04 Sep 2025 19:37

Instrument :

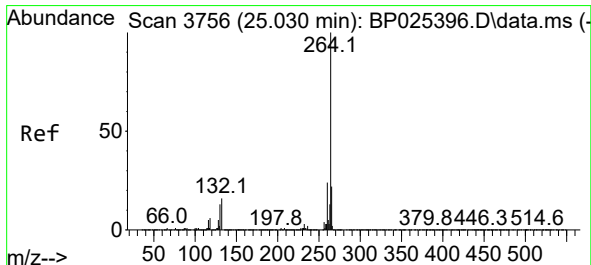
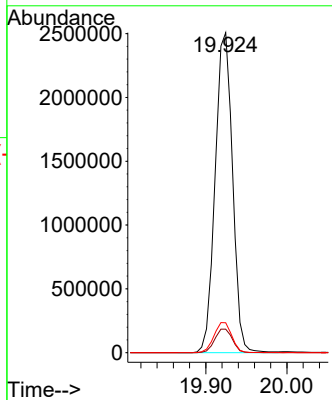
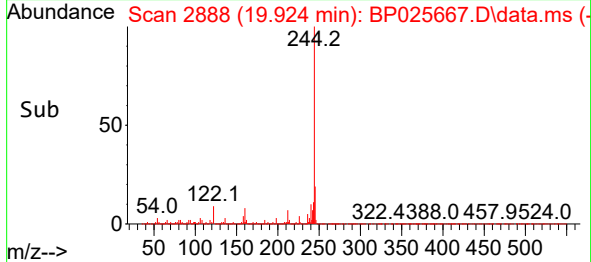
BNA_P

Client Sample Id :

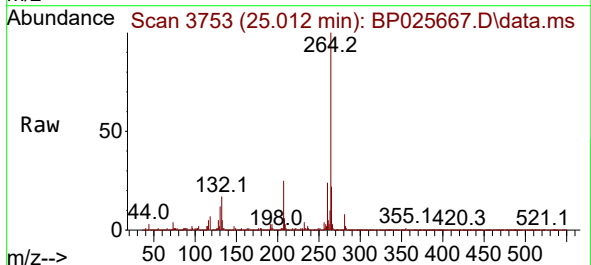
PB169499BL



Tgt Ion:244 Resp: 3733830
 Ion Ratio Lower Upper
 244 100
 212 7.3 5.8 8.6
 122 9.3 7.4 11.2



#86
 Perylene-d12
 Concen: 20.000 ng
 RT: 25.012 min Scan# 3753
 Delta R.T. -0.018 min
 Lab File: BP025667.D
 Acq: 04 Sep 2025 19:37



Tgt Ion:264 Resp: 816888
 Ion Ratio Lower Upper
 264 100
 260 23.8 19.3 28.9
 265 22.1 17.4 26.0

