

Data Path : Z:\svoasrv\HPCHEM1\BNA\_P\Data\BP090624\  
 Data File : BP021857.D  
 Acq On : 06 Sep 2024 19:01  
 Operator : RC/JU  
 Sample : PB163076BL  
 Misc :  
 ALS Vial : 13 Sample Multiplier: 1

Instrument :  
 BNA\_P  
 ClientSampleId :  
 PB163076BL

Quant Time: Sep 07 00:00:50 2024  
 Quant Method : Z:\svoasrv\HPCHEM1\BNA\_P\Methods\8270E-BP090624.M  
 Quant Title : ASP BNA STANDARDS FOR 5 POINT CALIBRATION  
 QLast Update : Fri Sep 06 23:52:54 2024  
 Response via : Initial Calibration

Compound	R.T.	QIon	Response	Conc	Units	Dev(Min)
Internal Standards						
1) 1,4-Dichlorobenzene-d4	7.757	152	178109	20.000	ng	0.00
21) Naphthalene-d8	10.534	136	844112	20.000	ng	0.00
39) Acenaphthene-d10	14.381	164	515526	20.000	ng	0.00
64) Phenanthrene-d10	17.163	188	1124021	20.000	ng	-0.01
76) Chrysene-d12	21.610	240	1104919	20.000	ng	0.00
86) Perylene-d12	24.939	264	937288	20.000	ng	-0.01
System Monitoring Compounds						
5) 2-Fluorophenol	5.375	112	2388060	188.669	ng	0.00
7) Phenol-d6	6.940	99	2335334	138.593	ng	0.00
23) Nitrobenzene-d5	8.904	82	1863979	102.796	ng	0.00
42) 2,4,6-Tribromophenol	15.881	330	945346	154.724	ng	-0.01
45) 2-Fluorobiphenyl	12.993	172	3322236	103.260	ng	0.00
79) Terphenyl-d14	19.892	244	5675127	105.441	ng	0.00

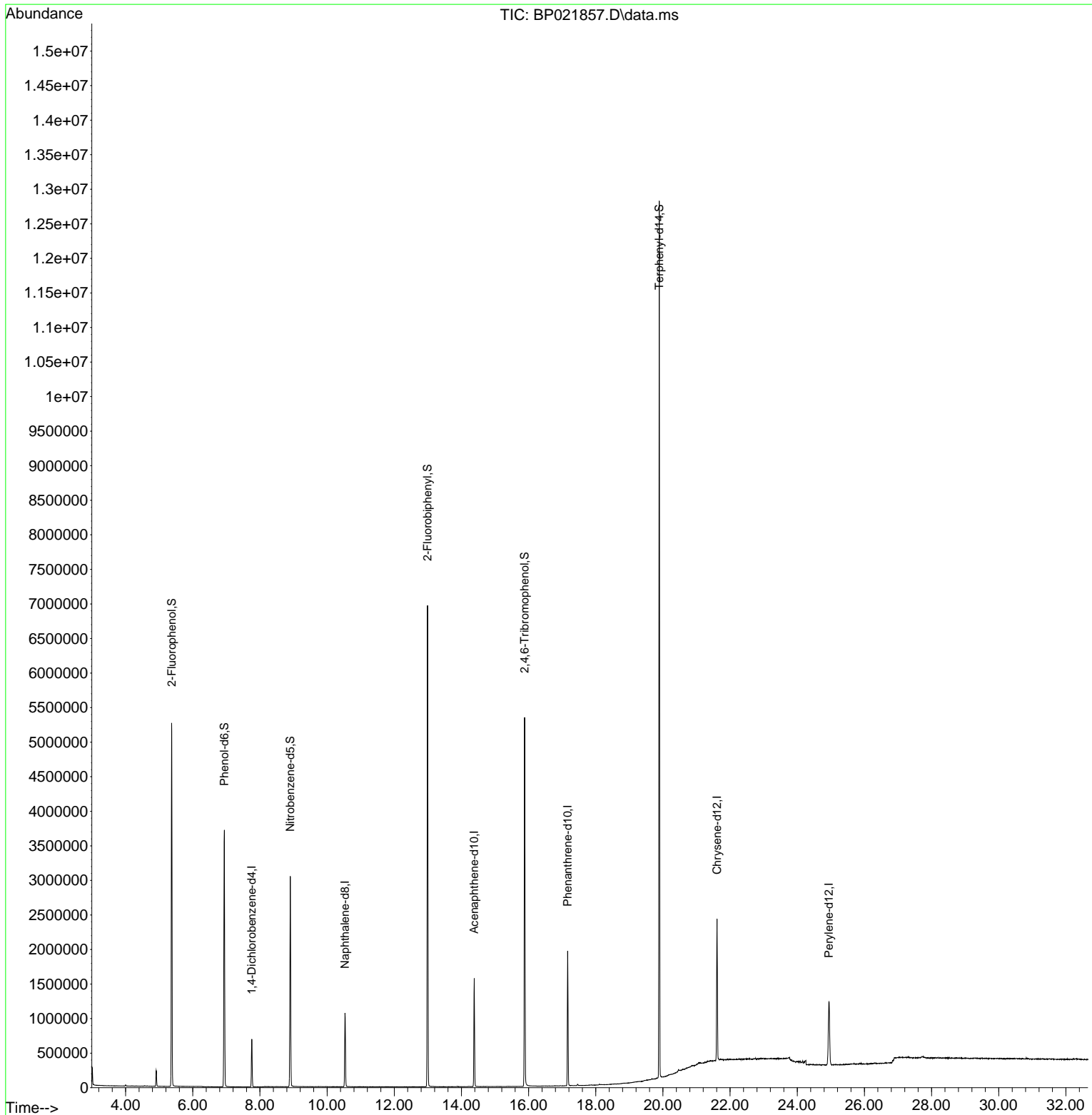
Target Compounds Qvalue

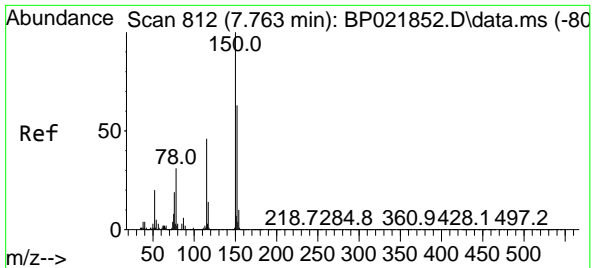
(#) = qualifier out of range (m) = manual integration (+) = signals summed

Data Path : Z:\svoasrv\HPCHEM1\BNA\_P\Data\BP090624\  
 Data File : BP021857.D  
 Acq On : 06 Sep 2024 19:01  
 Operator : RC/JU  
 Sample : PB163076BL  
 Misc :  
 ALS Vial : 13 Sample Multiplier: 1

Instrument :  
 BNA\_P  
 ClientSampleId :  
 PB163076BL

Quant Time: Sep 07 00:00:50 2024  
 Quant Method : Z:\svoasrv\HPCHEM1\BNA\_P\Methods\8270E-BP090624.M  
 Quant Title : ASP BNA STANDARDS FOR 5 POINT CALIBRATION  
 QLast Update : Fri Sep 06 23:52:54 2024  
 Response via : Initial Calibration



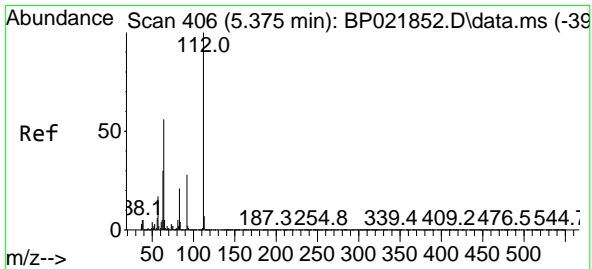
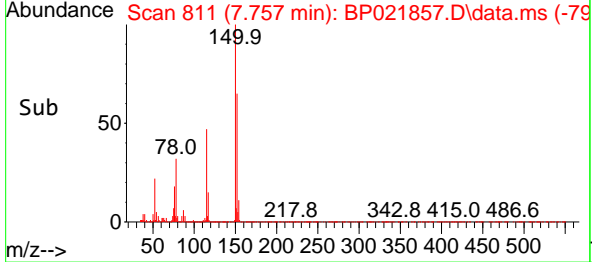
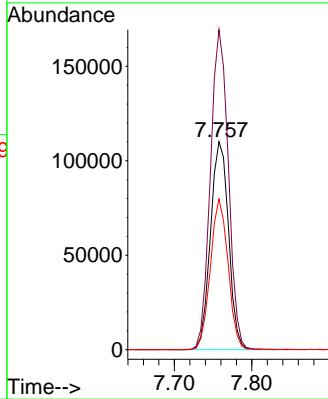
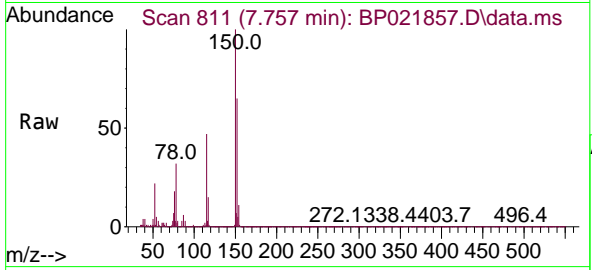


#1  
 1,4-Dichlorobenzene-d4  
 Concen: 20.000 ng  
 RT: 7.757 min Scan# 811  
 Delta R.T. -0.006 min  
 Lab File: BP021857.D  
 Acq: 06 Sep 2024 19:01

Instrument :  
 BNA\_P  
 ClientSampleId :  
 PB163076BL

Tgt Ion:152 Resp: 178109

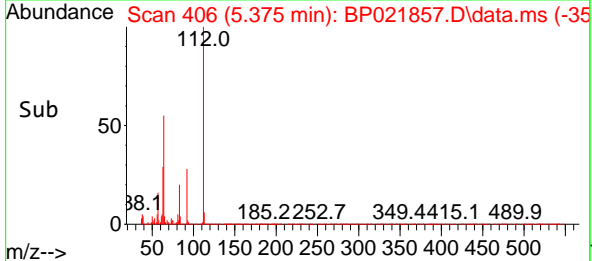
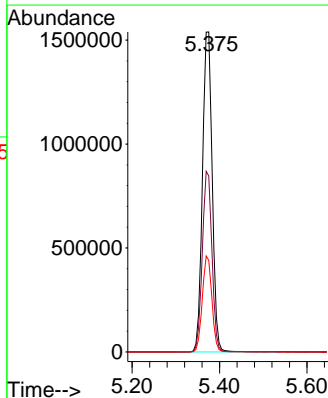
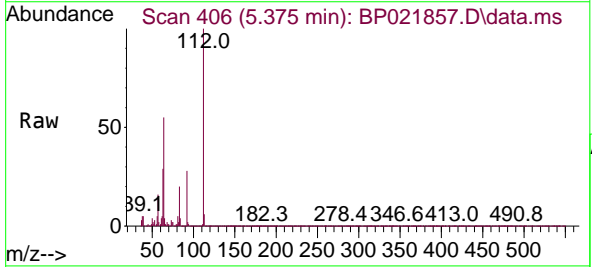
Ion	Ratio	Lower	Upper
152	100		
150	153.9	126.6	189.8
115	72.4	57.7	86.5

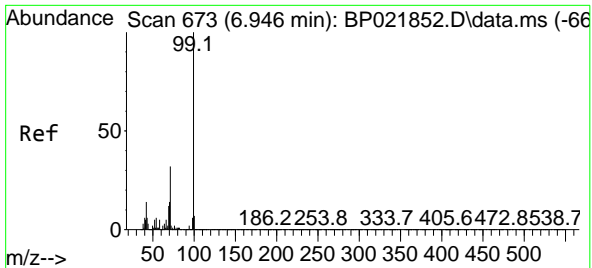


#5  
 2-Fluorophenol  
 Concen: 188.669 ng  
 RT: 5.375 min Scan# 406  
 Delta R.T. -0.000 min  
 Lab File: BP021857.D  
 Acq: 06 Sep 2024 19:01

Tgt Ion:112 Resp: 2388060

Ion	Ratio	Lower	Upper
112	100		
64	55.0	44.5	66.7
63	28.7	24.1	36.1



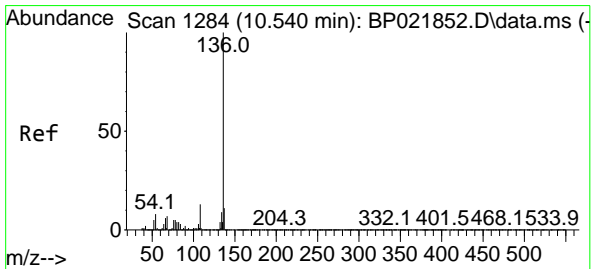
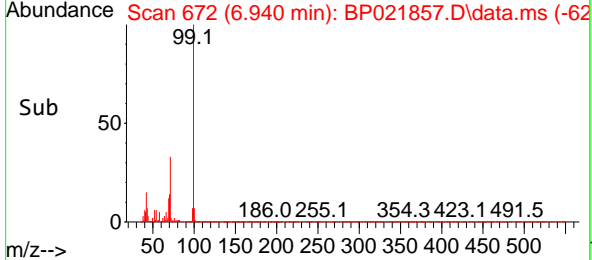
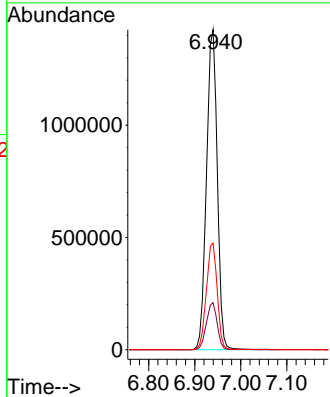
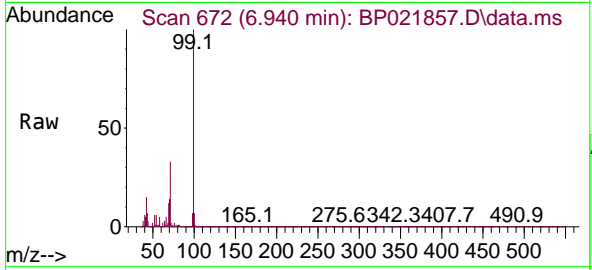


#7  
 Phenol-d6  
 Concen: 138.593 ng  
 RT: 6.940 min Scan# 61  
 Delta R.T. -0.006 min  
 Lab File: BP021857.D  
 Acq: 06 Sep 2024 19:01

Instrument : BNA\_P  
 ClientSampleId : PB163076BL

Tgt Ion: 99 Resp: 2335334

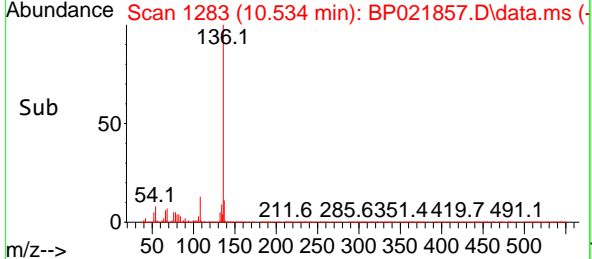
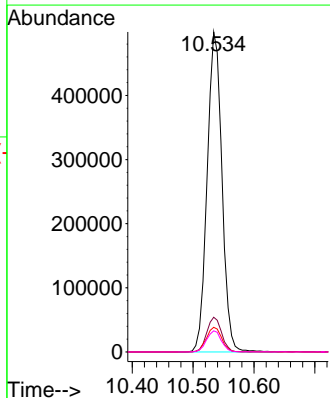
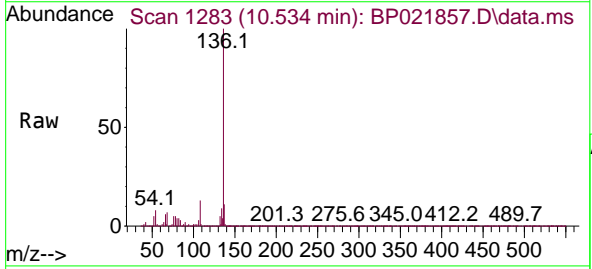
Ion	Ratio	Lower	Upper
99	100		
42	14.7	11.0	16.4
71	33.3	25.7	38.5

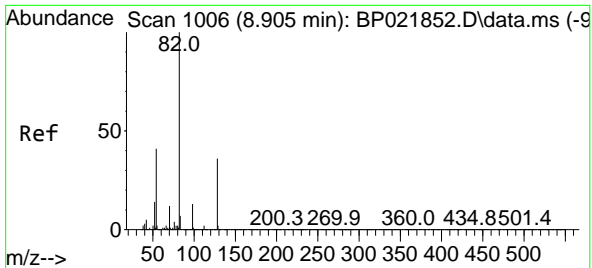


#21  
 Naphthalene-d8  
 Concen: 20.000 ng  
 RT: 10.534 min Scan# 1283  
 Delta R.T. -0.006 min  
 Lab File: BP021857.D  
 Acq: 06 Sep 2024 19:01

Tgt Ion: 136 Resp: 844112

Ion	Ratio	Lower	Upper
136	100		
137	10.8	8.6	13.0
54	7.7	6.5	9.7
68	6.6	5.4	8.2



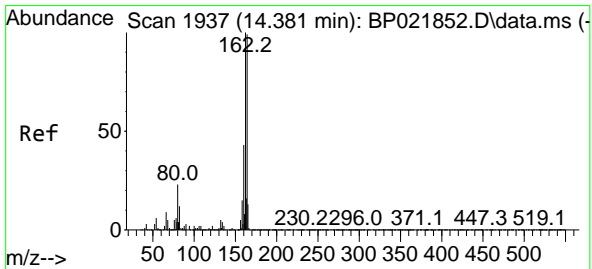
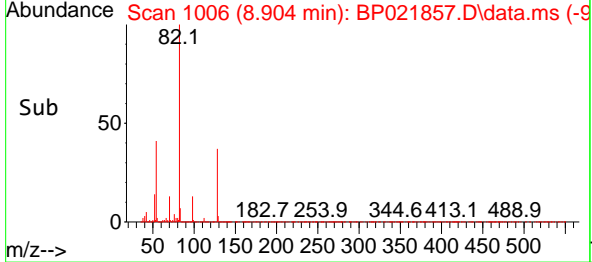
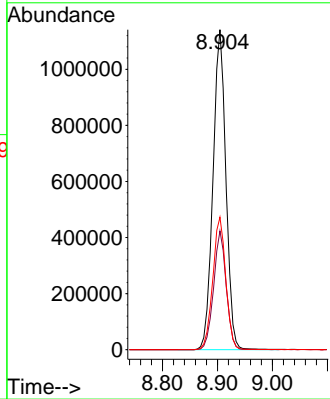
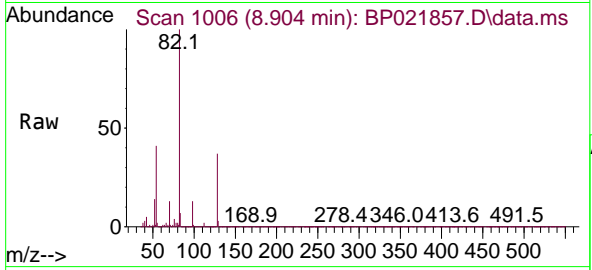


#23  
 Nitrobenzene-d5  
 Concen: 102.796 ng  
 RT: 8.904 min Scan# 1006  
 Delta R.T. -0.000 min  
 Lab File: BP021857.D  
 Acq: 06 Sep 2024 19:01

Instrument : BNA\_P  
 Client Sample Id : PB163076BL

Tgt Ion: 82 Resp: 1863979

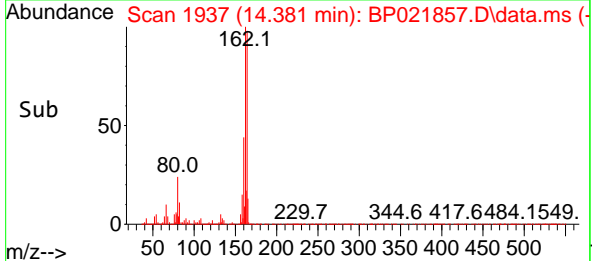
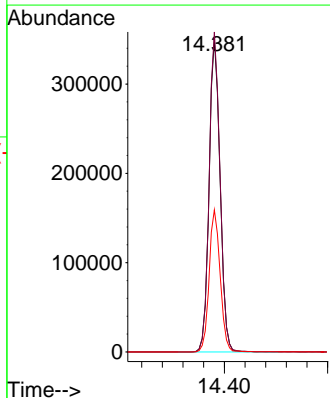
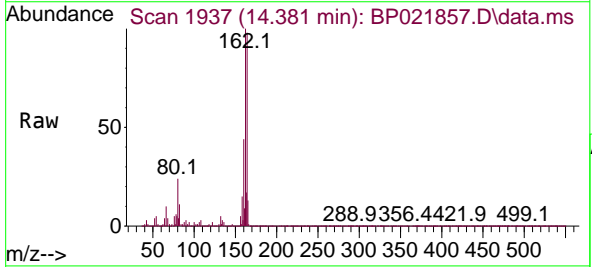
Ion	Ratio	Lower	Upper
82	100		
128	37.1	28.6	43.0
54	41.4	32.7	49.1

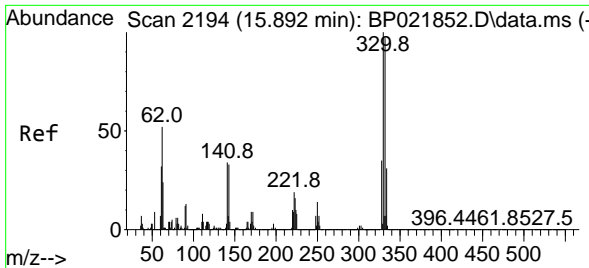


#39  
 Acenaphthene-d10  
 Concen: 20.000 ng  
 RT: 14.381 min Scan# 1937  
 Delta R.T. -0.000 min  
 Lab File: BP021857.D  
 Acq: 06 Sep 2024 19:01

Tgt Ion: 164 Resp: 515526

Ion	Ratio	Lower	Upper
164	100		
162	102.3	81.1	121.7
160	45.4	35.1	52.7



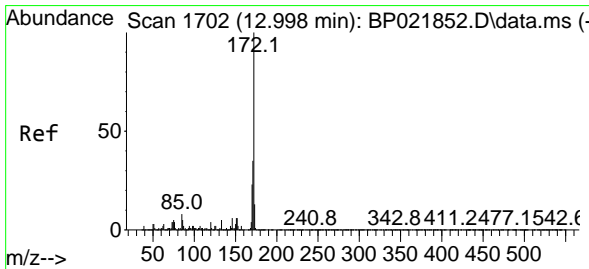
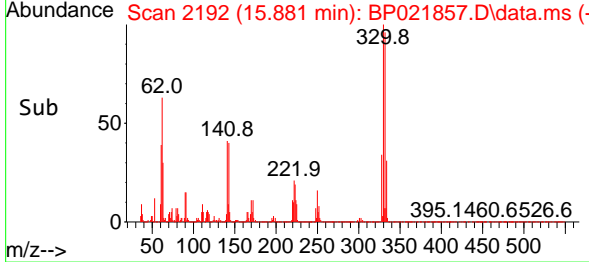
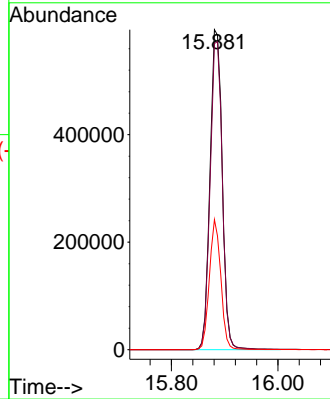
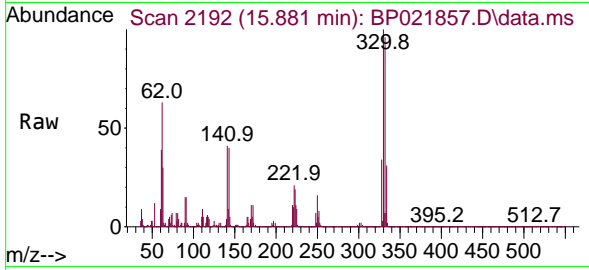


#42  
 2,4,6-Tribromophenol  
 Concen: 154.724 ng  
 RT: 15.881 min Scan# 2192  
 Delta R.T. -0.012 min  
 Lab File: BP021857.D  
 Acq: 06 Sep 2024 19:01

Instrument :  
 BNA\_P  
 ClientSampleId :  
 PB163076BL

Tgt Ion: 330 Resp: 945346

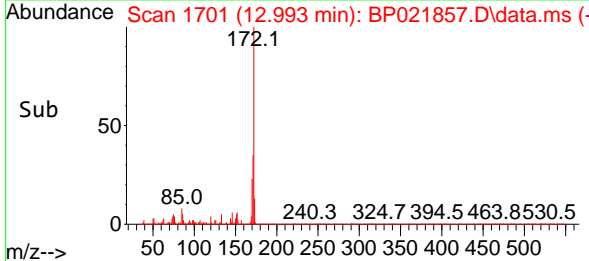
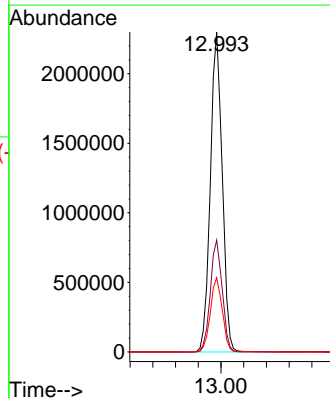
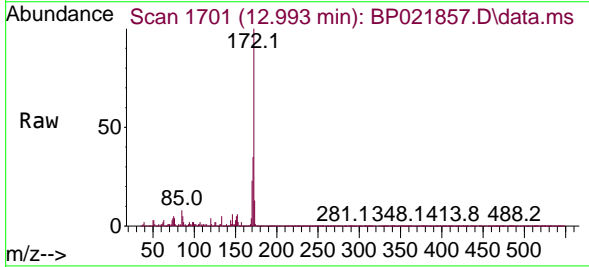
Ion	Ratio	Lower	Upper
330	100		
332	96.4	77.4	116.0
141	38.1	29.4	44.0

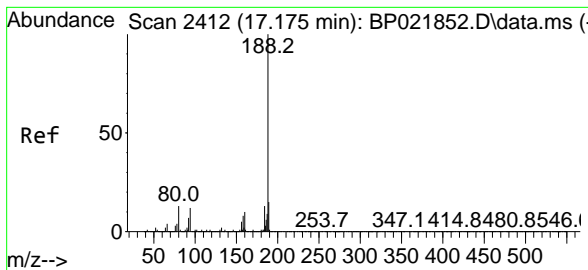


#45  
 2-Fluorobiphenyl  
 Concen: 103.260 ng  
 RT: 12.993 min Scan# 1701  
 Delta R.T. -0.006 min  
 Lab File: BP021857.D  
 Acq: 06 Sep 2024 19:01

Tgt Ion: 172 Resp: 3322236

Ion	Ratio	Lower	Upper
172	100		
171	34.9	28.3	42.5
170	23.2	18.7	28.1



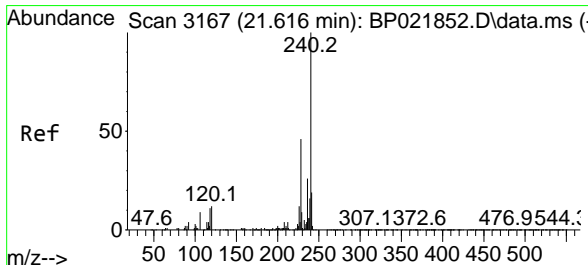
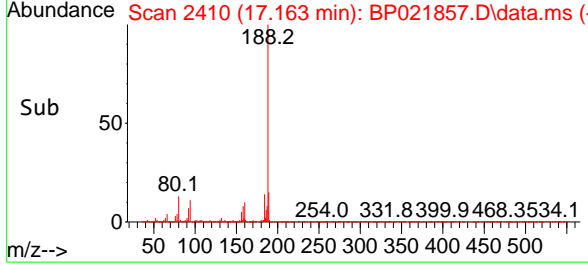
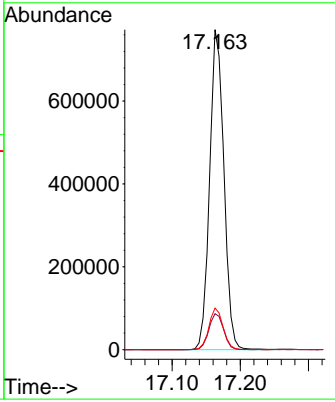
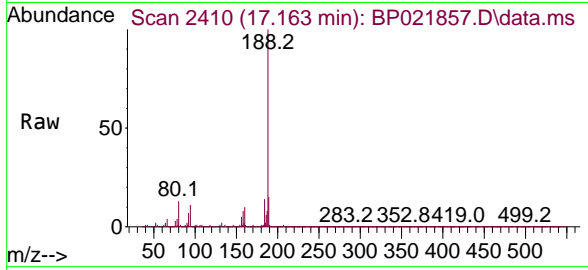


#64  
 Phenanthrene-d10  
 Concen: 20.000 ng  
 RT: 17.163 min Scan# 2412  
 Delta R.T. -0.012 min  
 Lab File: BP021857.D  
 Acq: 06 Sep 2024 19:01

Instrument :  
 BNA\_P  
 ClientSampleId :  
 PB163076BL

Tgt Ion:188 Resp: 1124021

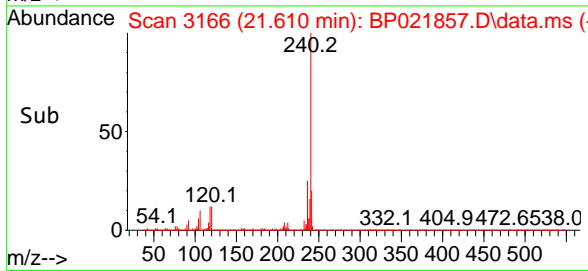
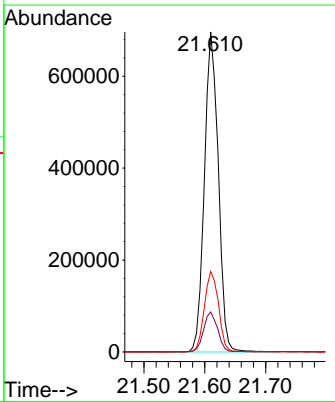
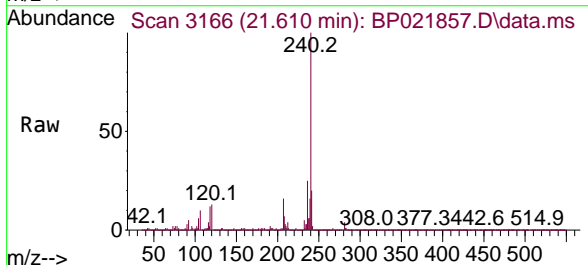
Ion	Ratio	Lower	Upper
188	100		
94	11.2	9.4	14.0
80	13.0	10.3	15.5

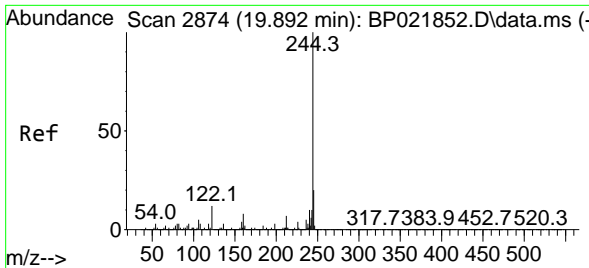


#76  
 Chrysene-d12  
 Concen: 20.000 ng  
 RT: 21.610 min Scan# 3166  
 Delta R.T. -0.006 min  
 Lab File: BP021857.D  
 Acq: 06 Sep 2024 19:01

Tgt Ion:240 Resp: 1104919

Ion	Ratio	Lower	Upper
240	100		
120	12.5	10.2	15.2
236	25.2	20.8	31.2



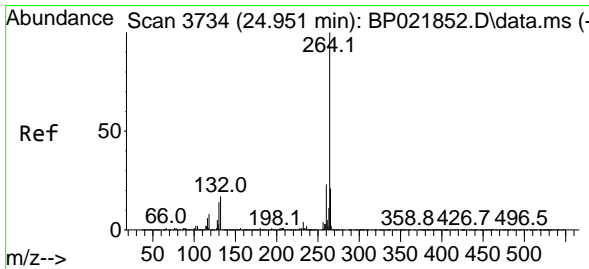
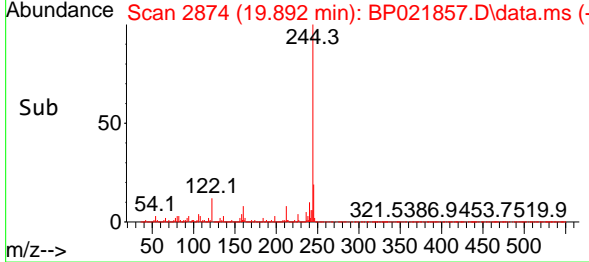
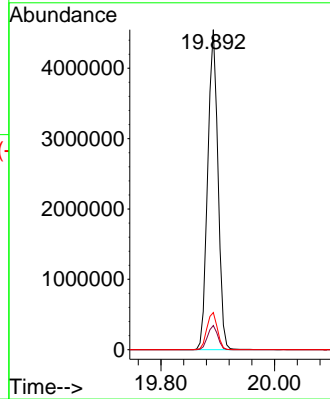
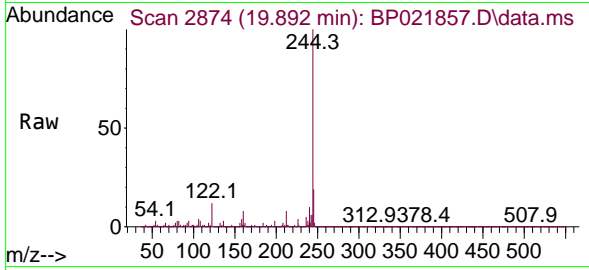


#79  
 Terphenyl-d14  
 Concen: 105.441 ng  
 RT: 19.892 min Scan# 21  
 Delta R.T. -0.000 min  
 Lab File: BP021857.D  
 Acq: 06 Sep 2024 19:01

Instrument :  
 BNA\_P  
 ClientSampleId :  
 PB163076BL

Tgt Ion:244 Resp: 5675127

Ion	Ratio	Lower	Upper
244	100		
212	7.5	5.9	8.9
122	11.6	9.4	14.0



#86  
 Perylene-d12  
 Concen: 20.000 ng  
 RT: 24.939 min Scan# 3732  
 Delta R.T. -0.012 min  
 Lab File: BP021857.D  
 Acq: 06 Sep 2024 19:01

Tgt Ion:264 Resp: 937288

Ion	Ratio	Lower	Upper
264	100		
260	24.0	18.7	28.1
265	22.2	17.3	25.9

