

Data Path : Z:\svoasrv\HPCHEM1\BNA_P\Data\BP090825\
 Data File : BP025689.D
 Acq On : 08 Sep 2025 18:07
 Operator : CG/JU
 Sample : SSTD16015
 Misc :
 ALS Vial : 7 Sample Multiplier: 1

Instrument :

BNA_P

Client Sample Id :

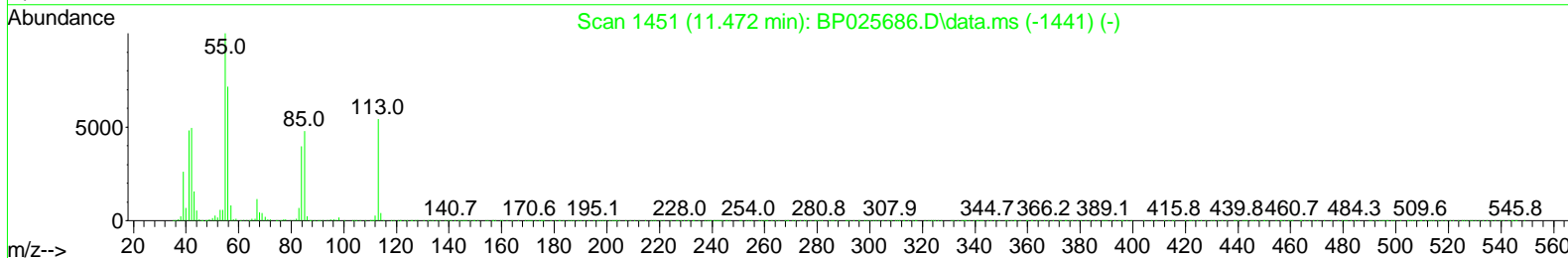
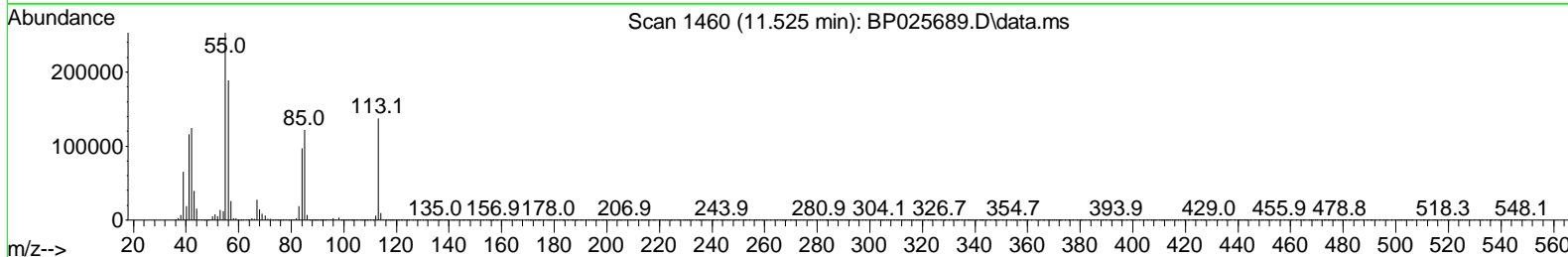
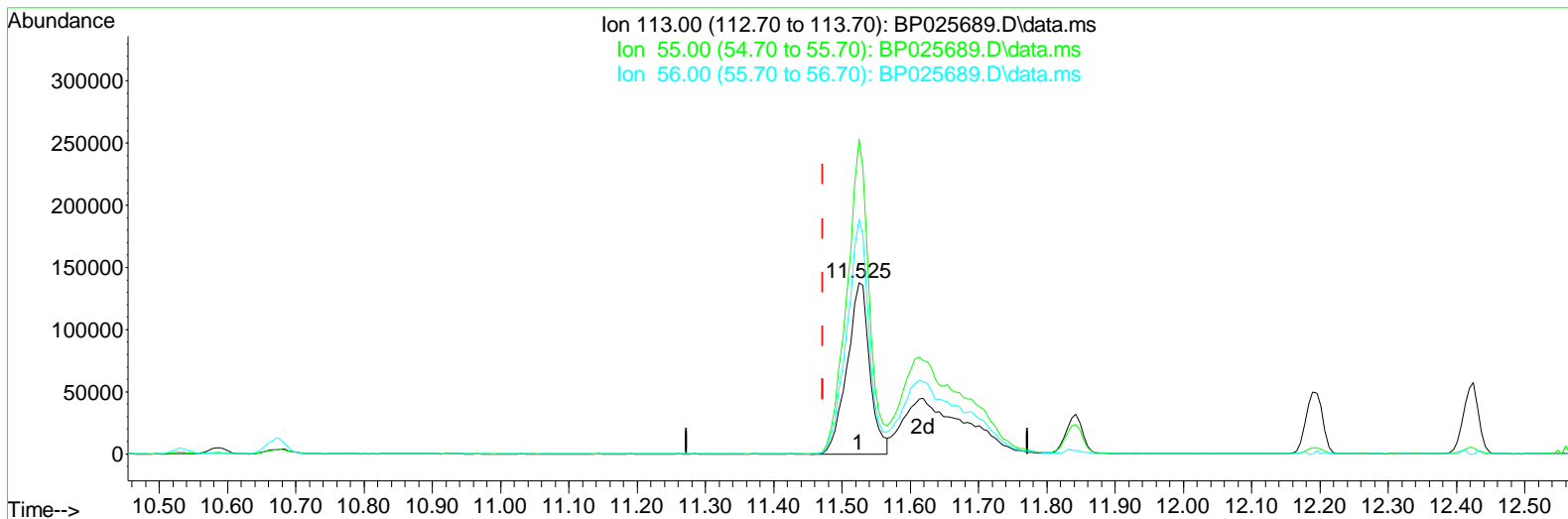
SSTD160644

Manual Integrations APPROVED

Quant Time: Sep 09 09:15:47 2025
 Quant Method : Z:\svoasrv\HPCHEM1\BNA_P\Methods\SFAM-EPA-BP090825.MA.M
 Quant Title : SVOA CALIBRATION
 QLast Update : Mon Sep 08 16:53:59 2025
 Response via : Initial Calibration

Reviewed By :Rahul Chavli 09/09/2025

Supervised By :Jagrut Upadhyay 09/09/2025



TIC: BP025689.D\data.ms

(34) Caprolactam

11.525min (+ 0.053) 94.44 ng/ul

response 319980

Ion	Exp%	Act%
113.00	100.00	100.00
55.00	185.00	184.00
56.00	131.80	137.21
0.00	0.00	0.00

Data Path : Z:\svoasrv\HPCHEM1\BNA_P\Data\BP090825\
 Data File : BP025689.D
 Acq On : 08 Sep 2025 18:07
 Operator : CG/JU
 Sample : SSTD16015
 Misc :
 ALS Vial : 7 Sample Multiplier: 1

Instrument :

BNA_P

ClientSampleId :

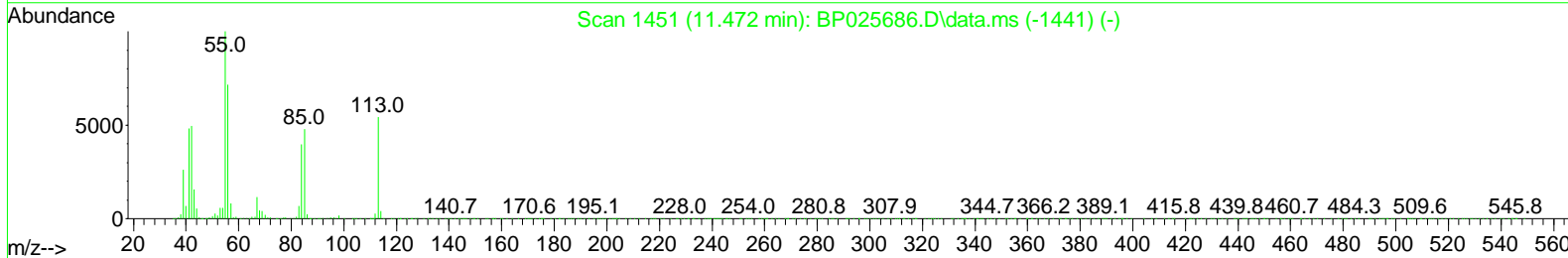
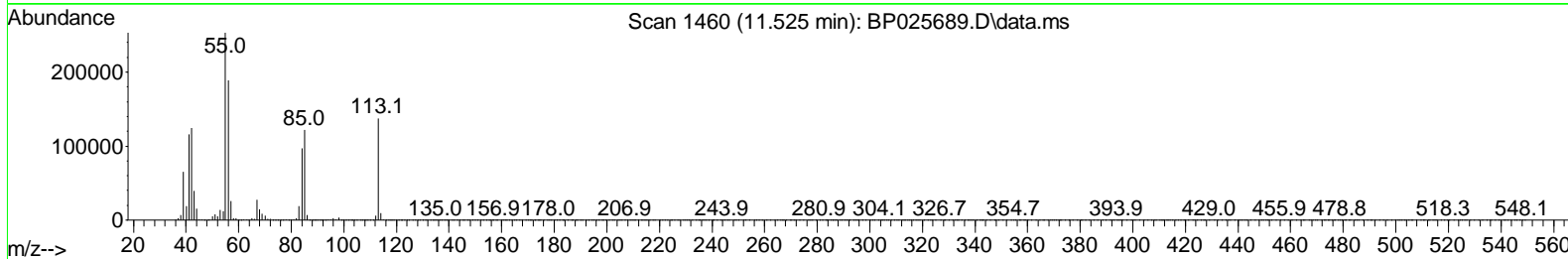
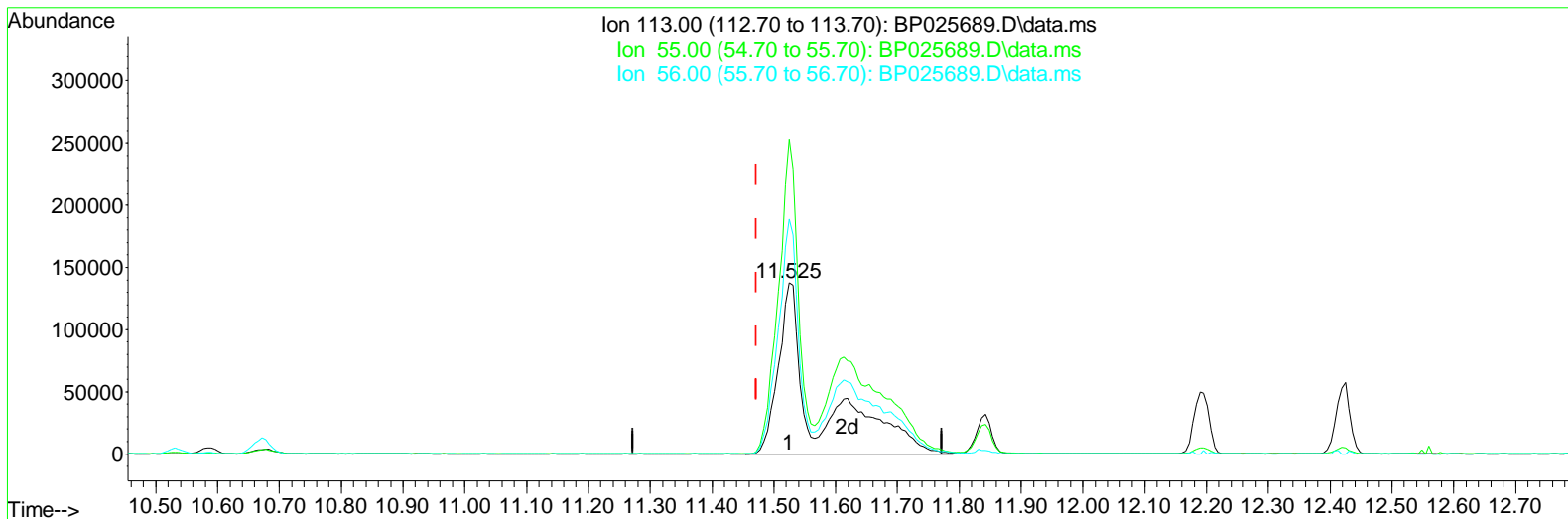
SSTD160644

Manual IntegrationsAPPROVED

Reviewed By :Rahul Chavli 09/09/2025

Supervised By :Jagrut Upadhyay 09/09/2025

Quant Time: Sep 09 09:15:47 2025
 Quant Method : Z:\svoasrv\HPCHEM1\BNA_P\Methods\SFAM-EPA-BP090825.MA.M
 Quant Title : SVOA CALIBRATION
 QLast Update : Mon Sep 08 16:53:59 2025
 Response via : Initial Calibration



TIC: BP025689.D\data.ms

(34) Caprolactam

11.525min (+ 0.053) 177.12 ng/ul m

response 600086

Ion	Exp%	Act%
113.00	100.00	100.00
55.00	185.00	184.00
56.00	131.80	137.21
0.00	0.00	0.00

Data Path : Z:\svoasrv\HPCHEM1\BNA_P\Data\BP090825\
 Data File : BP025689.D
 Acq On : 08 Sep 2025 18:07
 Operator : CG/JU
 Sample : SSTD16015
 Misc :
 ALS Vial : 7 Sample Multiplier: 1

Instrument :
 BNA_P
ClientSampleId :
 SSTD160644

Manual IntegrationsAPPROVED

Reviewed By :Rahul Chavli 09/09/2025
 Supervised By :Jagrut Upadhyay 09/09/2025

Quant Time: Sep 09 09:18:49 2025
 Quant Method : Z:\svoasrv\HPCHEM1\BNA_P\Methods\SFAM-EPA-BP090825.MA.M
 Quant Title : SVOA CALIBRATION
 QLast Update : Mon Sep 08 16:53:59 2025
 Response via : Initial Calibration

Compound	R.T.	QI on	Response	Conc	Units	Dev(Min)	
Internal Standards							
1) 1,4-Dichlorobenzene-d4	7.766	152	153853	20.00	ng/ul	0.00	
20) Naphthalene-d8	10.531	136	617891	20.00	ng/ul	0.00	
38) Acenaphthene-d10	14.384	164	419433	20.00	ng/ul	0.00	
64) Phenanthrene-d10	17.183	188	867123	20.00	ng/ul	0.00	
79) Chrysene-d12	21.636	240	828356	20.00	ng/ul	0.02	
88) Perylene-d12	24.989	264	969459	20.00	ng/ul	0.02	
System Monitoring Compounds							
3) 1,4-Dioxane-d8	0.000	96	Od	0.00	ng/uL		
4) Pyridine-d5	3.690	84	1661421	166.77	ng/ul	0.00	
7) Phenol-d5	6.960	99	1983883	165.78	ng/ul	0.01	
9) Bis-(2-Chloroethyl)eth...	7.107	67	1152290	164.48	ng/ul	0.01	
11) 2-Chlorophenol-d4	0.000	132	Od	0.00	ng/ul		
15) 4-Methylphenol-d8	8.484	113	1583593	161.65	ng/ul	0.02	
21) Nitrobenzene-d5	0.000	128	Od	0.00	ng/ul		
24) 2-Nitrophenol-d4	0.000	143	Od	0.00	ng/ul		
28) 2,4-Dichlorophenol-d3	0.000	165	Od	0.00	ng/ul		
31) 4-Chloroaniline-d4	10.672	131	2137583	152.17	ng/ul	0.01	
46) Dimethylphthalate-d6	0.000	166	Od	0.00	ng/ul		
49) Acenaphthylene-d8	0.000	160	Od	0.00	ng/ul		
54) 4-Nitrophenol-d4	14.631	143	882084	157.68	ng/ul	0.03	
60) Fluorene-d10	0.000	176	Od	0.00	ng/ul		
65) 4,6-Dinitro-2-methylph...	15.542	200	963353	223.02	ng/ul	0.02	
73) Anthracene-d10	0.000	188	Od	0.00	ng/ul		
81) Pyrene-d10	0.000	212	Od	0.00	ng/ul		
92) Benzo(a)pyrene-d12	0.000	264	Od	0.00	ng/ul		
Target Compounds							
5) Pyridine	3.713	79	1730387	168.85	ng/ul	99	
6) Benzaldehyde	6.919	77	453938	78.24	ng/ul	99	
8) Phenol	6.990	94	2004917	162.70	ng/ul	97	
10) Bis(2-Chloroethyl)ether	7.202	93	1523911	159.49	ng/ul	98	
13) 2-Methylphenol	8.213	108	1507600	160.04	ng/ul	98	
14) 2,2'-oxybis(1-Chloropr...	8.284	45	2369206	173.59	ng/ul	99	
16) Acetophenone	8.584	105	2306301	150.85	ng/ul	99	
18) 4-Methylphenol	8.549	108	1617746	158.50	ng/ul	97	
32) 4-Chloroaniline	10.701	127	2101733	152.71	ng/ul	99	
34) Caprolactam	11.525	113	600086m	177.12	ng/ul		
40) Hexachlorocyclopentadiene	12.537	237	1192159	195.00	ng/ul	96	
51) 3-Nitroaniline	14.301	138	785762	141.96	ng/ul	96	
53) 2,4-Dinitrophenol	14.513	184	728165	272.87	ng/ul	97	
55) 4-Nitrophenol	14.642	109	729344	180.29	ng/ul	98	
63) 4-Nitroaniline	15.495	138	676350	125.79	ng/ul	98	
66) 4,6-Dinitro-2-methylph...	15.554	198	947787	206.86	ng/ul #	97	
70) Atrazine	16.660	200	1499333	154.84	ng/ul	98	
71) Pentachlorophenol	16.836	266	1090822	157.72	ng/ul	99	
77) Carbazole	17.607	167	6017094	140.00	ng/ul	98	
84) 3,3'-Dichlorobenzidine	21.524	252	2386621	150.20	ng/ul	100	
89) Di-n-octyl phthalate	22.818	149	9779858	186.45	ng/ul	100	

Data Path : Z:\svoasrv\HPCHEM1\BNA_P\Data\BP090825\
 Data File : BP025689.D
 Acq On : 08 Sep 2025 18:07
 Operator : CG/JU
 Sample : SSTD16015
 Misc :
 ALS Vial : 7 Sample Multiplier: 1

Instrument :
 BNA_P
ClientSampleId :
 SSTD160644

Quant Time: Sep 09 09:18:49 2025
 Quant Method : Z:\svoasrv\HPCHEM1\BNA_P\Methods\SFAM-EPA-BP090825.MA.M
 Quant Title : SVOA CALIBRATION
 QLast Update : Mon Sep 08 16:53:59 2025
 Response via : Initial Calibration

Manual IntegrationsAPPROVED

Reviewed By :Rahul Chavli 09/09/2025
 Supervised By :Jagrut Upadhyay 09/09/2025

Compound	R.T.	QI on	Response	Conc	Units	Dev(Min)

(#) = qualifier out of range (m) = manual integration (+) = signals summed						

Data Path : Z:\svoasrv\HPCHEM1\BNA_P\Data\BP090825\
 Data File : BP025689.D
 Acq On : 08 Sep 2025 18:07
 Operator : CG/JU
 Sample : SSTD16015
 Misc :
 ALS Vial : 7 Sample Multiplier: 1

Instrument :

BNA_P

Client Sample Id :

SSTD160644

Manual Integrations APPROVED

Quant Time: Sep 09 09:18:49 2025
 Quant Method : Z:\svoasrv\HPCHEM1\BNA_P\Methods\SFAM-EPA-BP090825.MA.M
 Quant Title : SVOA CALIBRATION
 QLast Update : Mon Sep 08 16:53:59 2025
 Response via : Initial Calibration

Reviewed By :Rahul Chavli 09/09/2025

Supervised By :Jagrut Upadhyay 09/09/2025

