

Data Path : Z:\svoasrv\HPCHEM1\BNA\_P\Data\BP091625\  
 Data File : BP025757.D  
 Acq On : 16 Sep 2025 14:13  
 Operator : CG/JU  
 Sample : PB169701BL  
 Misc :  
 ALS Vial : 3 Sample Multiplier: 1

Instrument :  
 BNA\_P  
 ClientSampleId :  
 PB169701BL

Quant Time: Sep 16 14:35:28 2025  
 Quant Method : Z:\svoasrv\HPCHEM1\BNA\_P\Methods\8270E-BP091225.M  
 Quant Title : ASP BNA STANDARDS FOR 5 POINT CALIBRATION  
 QLast Update : Thu Sep 11 16:45:04 2025  
 Response via : Initial Calibration

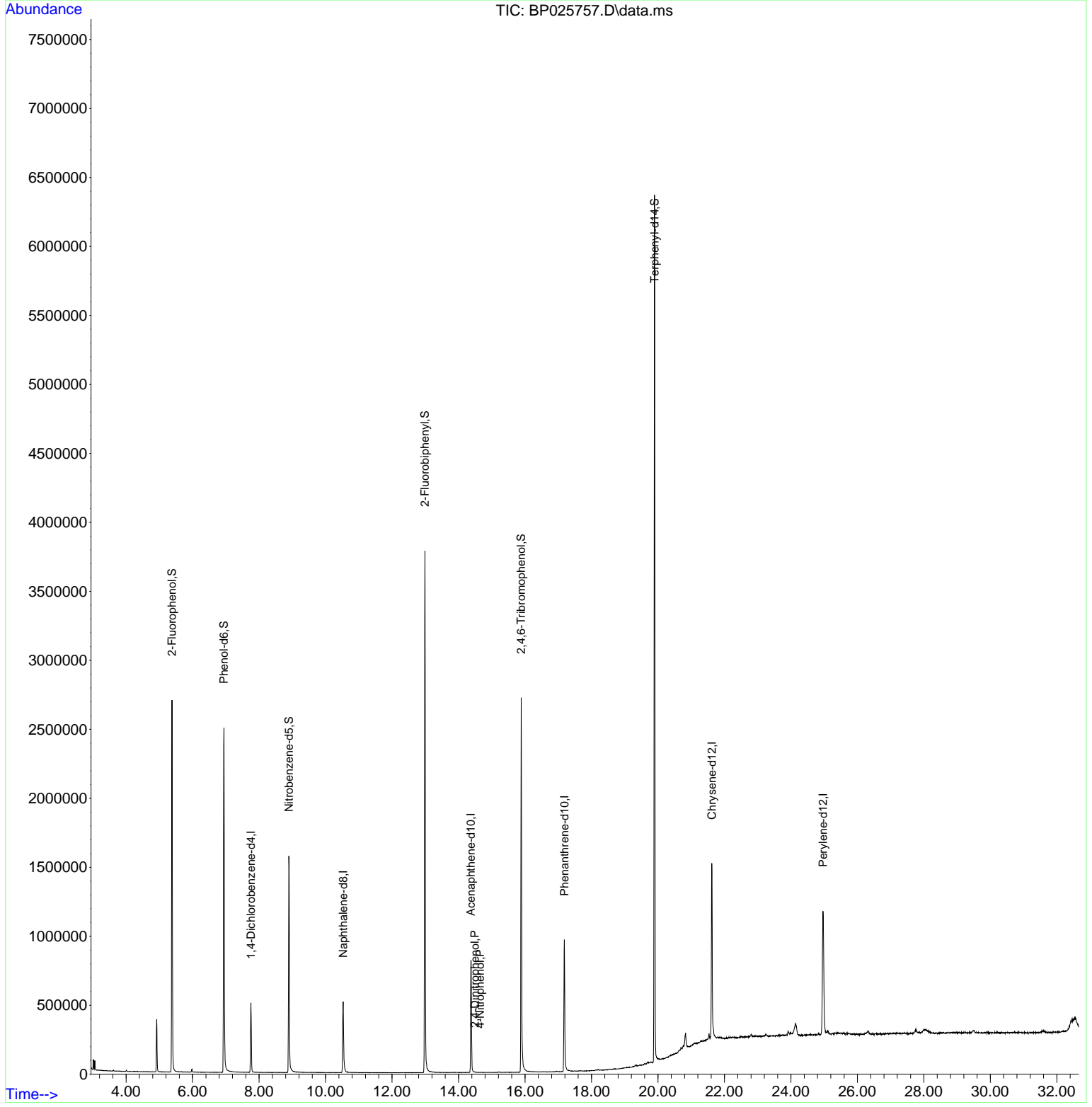
Compound	R.T.	QIon	Response	Conc	Units	Dev(Min)
Internal Standards						
1) 1,4-Dichlorobenzene-d4	7.755	152	140325	20.000	ng	0.00
21) Naphthalene-d8	10.531	136	534479	20.000	ng	0.00
39) Acenaphthene-d10	14.372	164	339297	20.000	ng	0.00
64) Phenanthrene-d10	17.184	188	727669	20.000	ng	0.00
76) Chrysene-d12	21.619	240	850923	20.000	ng	-0.02
86) Perylene-d12	24.966	264	1003174	20.000	ng	-0.04
System Monitoring Compounds						
5) 2-Fluorophenol	5.378	112	1147912	131.994	ng	0.00
7) Phenol-d6	6.943	99	1427955	123.531	ng	0.00
23) Nitrobenzene-d5	8.896	82	957783	79.047	ng	0.00
42) 2,4,6-Tribromophenol	15.884	330	521006	123.109	ng	-0.02
45) 2-Fluorobiphenyl	12.990	172	2041491	80.114	ng	0.00
79) Terphenyl-d14	19.895	244	3536094	74.759	ng	-0.02
Target Compounds						
54) 2,4-Dinitrophenol	14.490	184	10	4.827	ng	# 17
56) 4-Nitrophenol	14.643	139	28	4.488	ng	# 9

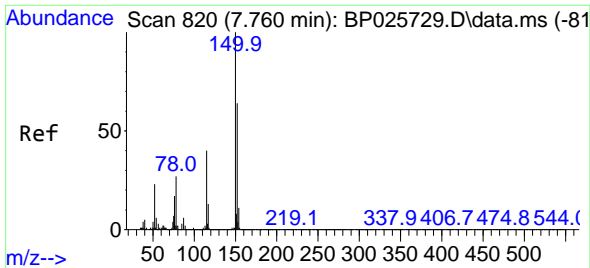
(#) = qualifier out of range (m) = manual integration (+) = signals summed

Data Path : Z:\svoasrv\HPCHEM1\BNA\_P\Data\BP091625\  
 Data File : BP025757.D  
 Acq On : 16 Sep 2025 14:13  
 Operator : CG/JU  
 Sample : PB169701BL  
 Misc :  
 ALS Vial : 3 Sample Multiplier: 1

Instrument :  
 BNA\_P  
 ClientSampleId :  
 PB169701BL

Quant Time: Sep 16 14:35:28 2025  
 Quant Method : Z:\svoasrv\HPCHEM1\BNA\_P\Methods\8270E-BP091225.M  
 Quant Title : ASP BNA STANDARDS FOR 5 POINT CALIBRATION  
 QLast Update : Thu Sep 11 16:45:04 2025  
 Response via : Initial Calibration

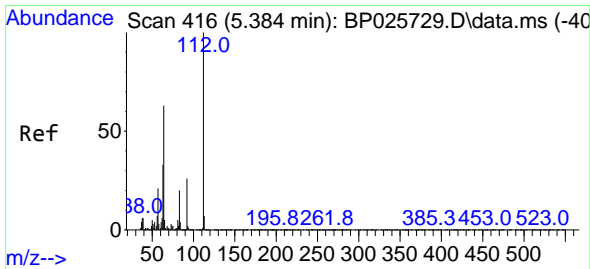
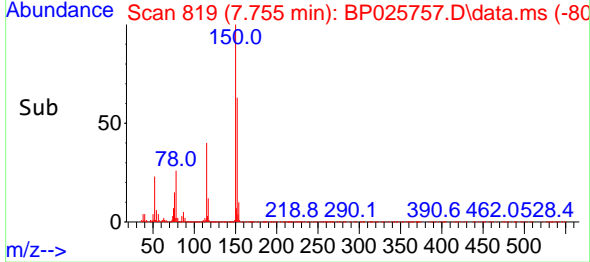
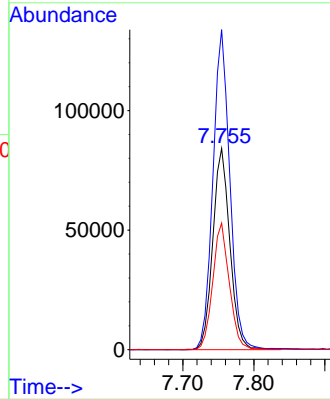
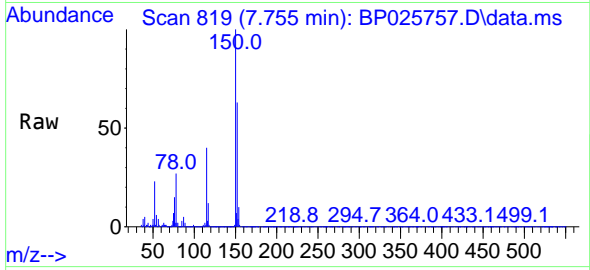




#1  
 1,4-Dichlorobenzene-d4  
 Concen: 20.000 ng  
 RT: 7.755 min Scan# 81  
 Delta R.T. -0.005 min  
 Lab File: BP025757.D  
 Acq: 16 Sep 2025 14:13

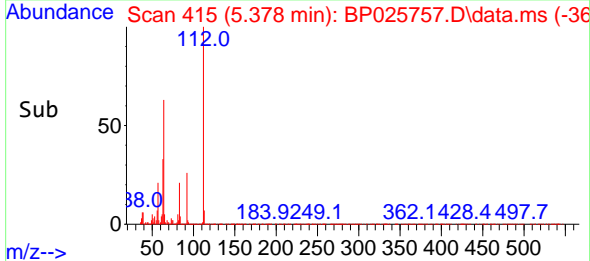
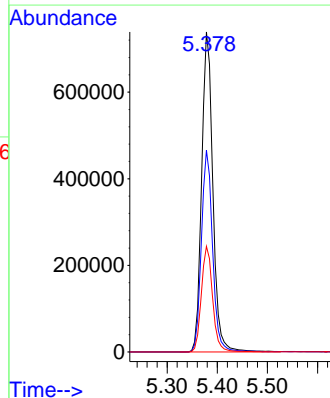
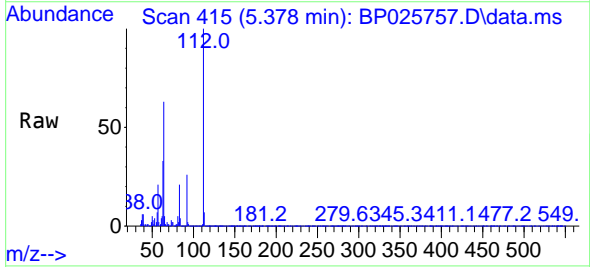
Instrument :  
 BNA\_P  
 ClientSampleId :  
 PB169701BL

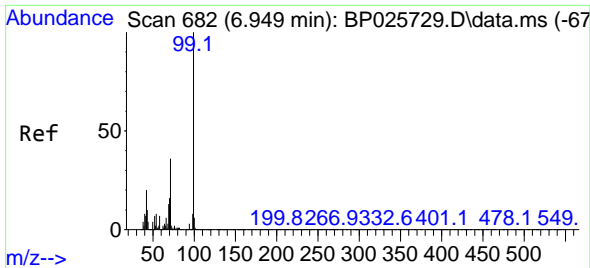
Tgt Ion:152 Resp: 140325  
 Ion Ratio Lower Upper  
 152 100  
 150 159.0 124.3 186.5  
 115 62.9 50.3 75.5



#5  
 2-Fluorophenol  
 Concen: 131.994 ng  
 RT: 5.378 min Scan# 415  
 Delta R.T. -0.006 min  
 Lab File: BP025757.D  
 Acq: 16 Sep 2025 14:13

Tgt Ion:112 Resp: 1147912  
 Ion Ratio Lower Upper  
 112 100  
 64 63.1 50.2 75.4  
 63 33.0 26.7 40.1

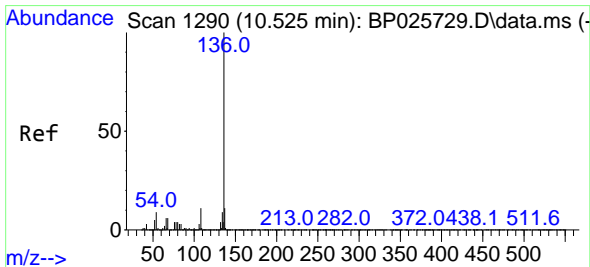
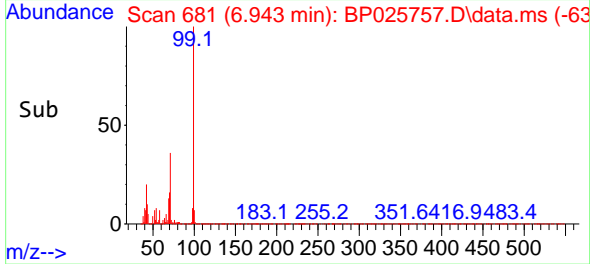
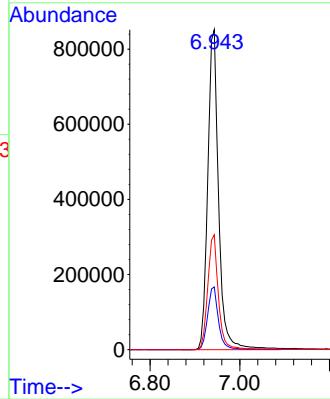
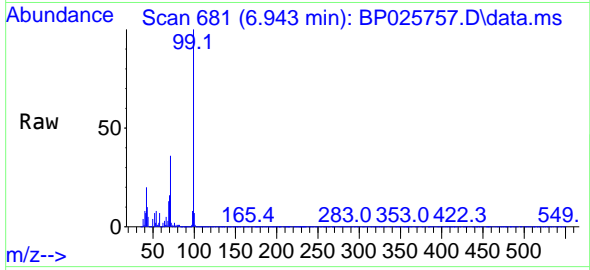




#7  
Phenol-d6  
Concen: 123.531 ng  
RT: 6.943 min Scan# 61  
Delta R.T. -0.006 min  
Lab File: BP025757.D  
Acq: 16 Sep 2025 14:13

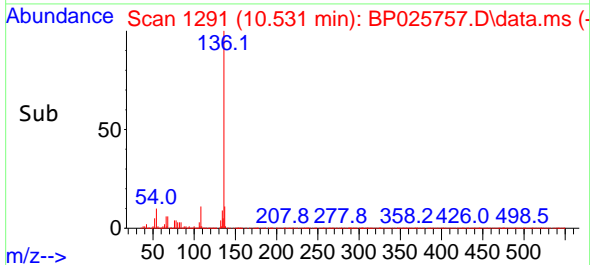
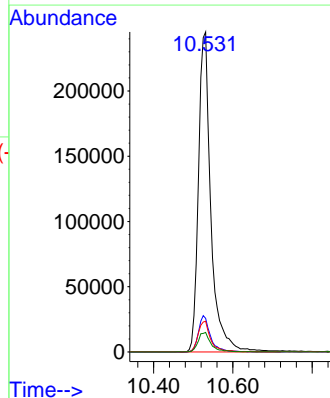
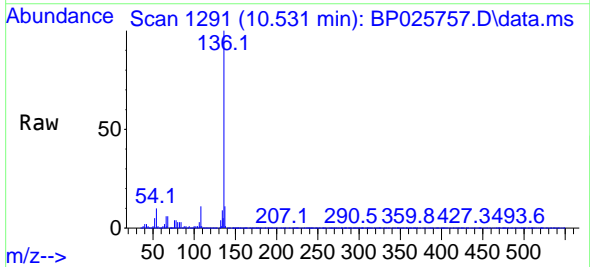
Instrument :  
BNA\_P  
ClientSampleId :  
PB169701BL

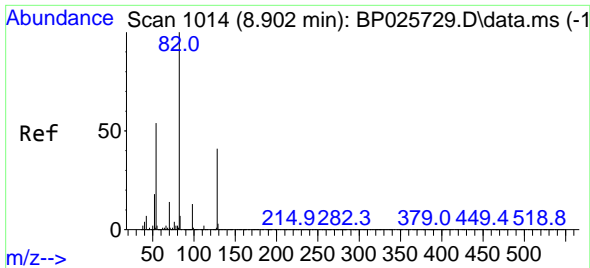
Tgt Ion: 99 Resp: 1427955  
Ion Ratio Lower Upper  
99 100  
42 19.6 15.6 23.4  
71 35.9 28.6 43.0



#21  
Naphthalene-d8  
Concen: 20.000 ng  
RT: 10.531 min Scan# 1291  
Delta R.T. 0.006 min  
Lab File: BP025757.D  
Acq: 16 Sep 2025 14:13

Tgt Ion:136 Resp: 534479  
Ion Ratio Lower Upper  
136 100  
137 10.5 8.7 13.1  
54 9.6 7.5 11.3  
68 6.1 5.0 7.6

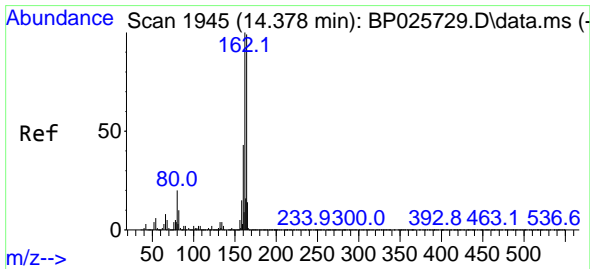
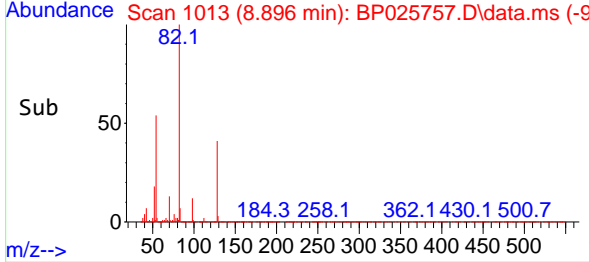
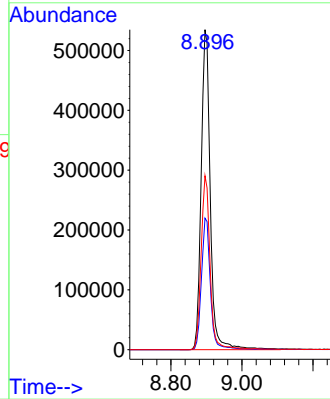
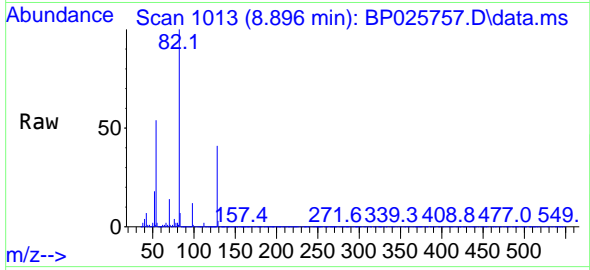




#23  
 Nitrobenzene-d5  
 Concen: 79.047 ng  
 RT: 8.896 min Scan# 10  
 Delta R.T. -0.006 min  
 Lab File: BP025757.D  
 Acq: 16 Sep 2025 14:13

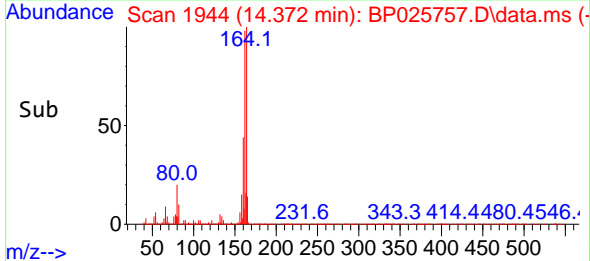
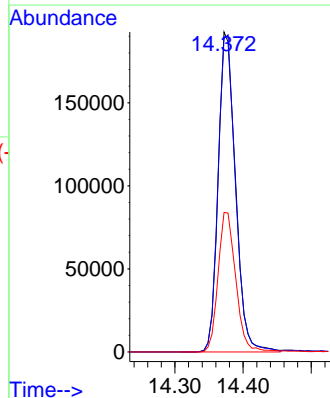
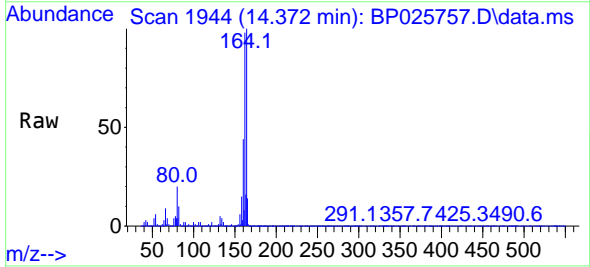
Instrument :  
 BNA\_P  
 ClientSampleId :  
 PB169701BL

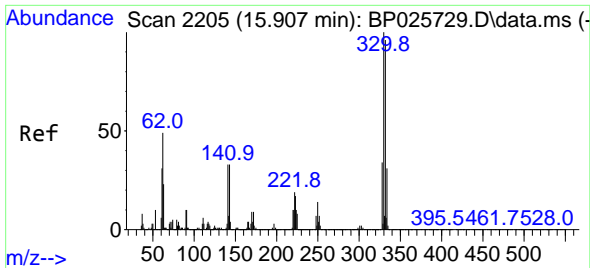
Tgt Ion: 82 Resp: 957783  
 Ion Ratio Lower Upper  
 82 100  
 128 41.1 32.9 49.3  
 54 54.4 43.4 65.2



#39  
 Acenaphthene-d10  
 Concen: 20.000 ng  
 RT: 14.372 min Scan# 1944  
 Delta R.T. -0.006 min  
 Lab File: BP025757.D  
 Acq: 16 Sep 2025 14:13

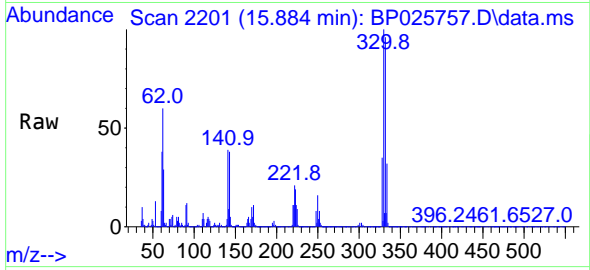
Tgt Ion: 164 Resp: 339297  
 Ion Ratio Lower Upper  
 164 100  
 162 97.9 80.6 120.8  
 160 43.6 35.0 52.6



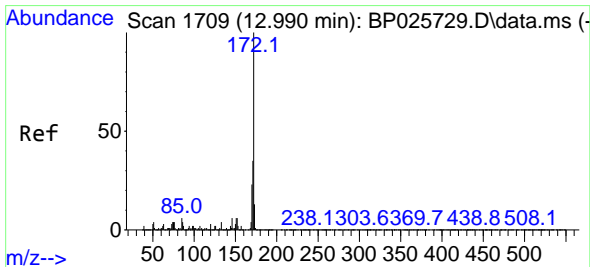
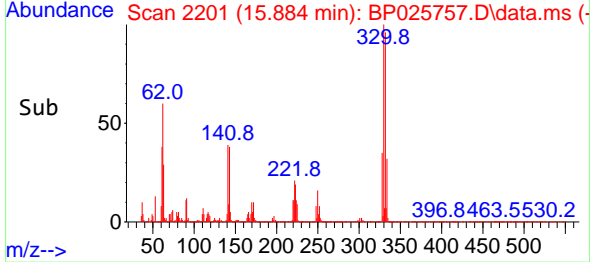
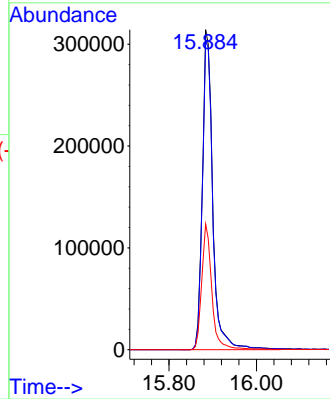


#42  
 2,4,6-Tribromophenol  
 Concen: 123.109 ng  
 RT: 15.884 min Scan# 21  
 Delta R.T. -0.023 min  
 Lab File: BP025757.D  
 Acq: 16 Sep 2025 14:13

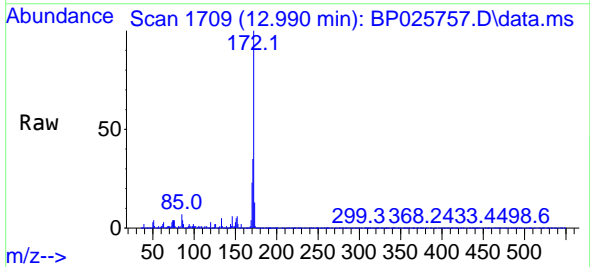
Instrument :  
 BNA\_P  
 ClientSampleId :  
 PB169701BL



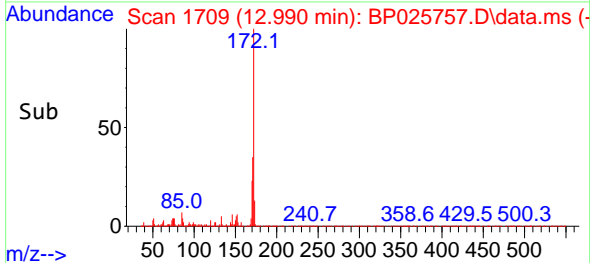
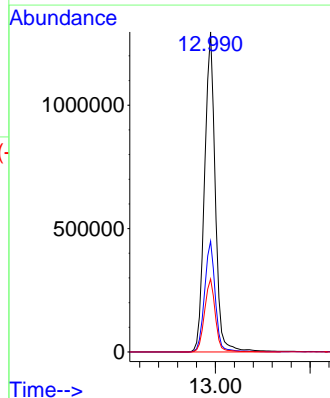
Tgt Ion:330 Resp: 521006  
 Ion Ratio Lower Upper  
 330 100  
 332 97.5 76.9 115.3  
 141 38.2 31.0 46.4

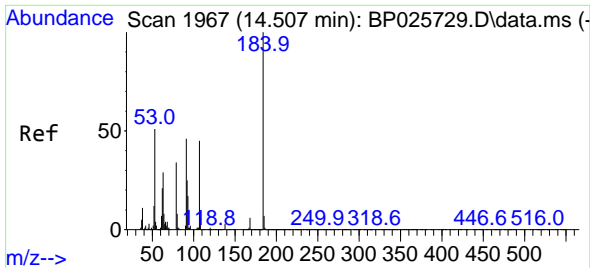


#45  
 2-Fluorobiphenyl  
 Concen: 80.114 ng  
 RT: 12.990 min Scan# 1709  
 Delta R.T. 0.000 min  
 Lab File: BP025757.D  
 Acq: 16 Sep 2025 14:13



Tgt Ion:172 Resp: 2041491  
 Ion Ratio Lower Upper  
 172 100  
 171 34.6 27.8 41.6  
 170 22.8 18.6 27.8



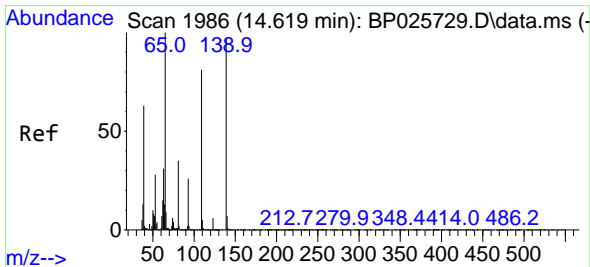
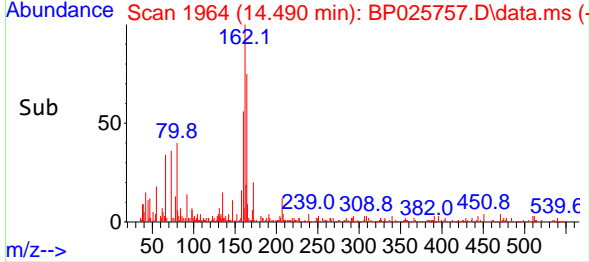
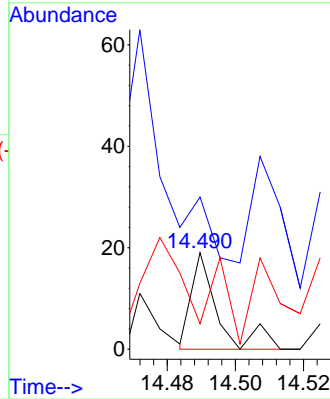
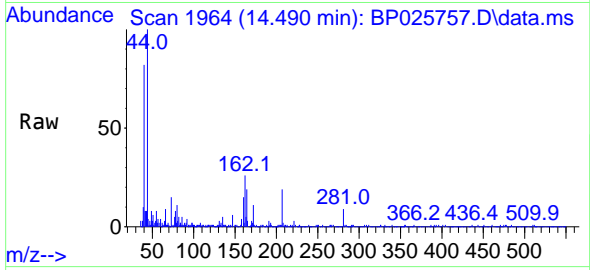


#54  
 2,4-Dinitrophenol  
 Concen: 4.827 ng  
 RT: 14.490 min Scan# 1964  
 Delta R.T. -0.017 min  
 Lab File: BP025757.D  
 Acq: 16 Sep 2025 14:13

Instrument :  
 BNA\_P  
 ClientSampleId :  
 PB169701BL

Tgt Ion:184 Resp: 10

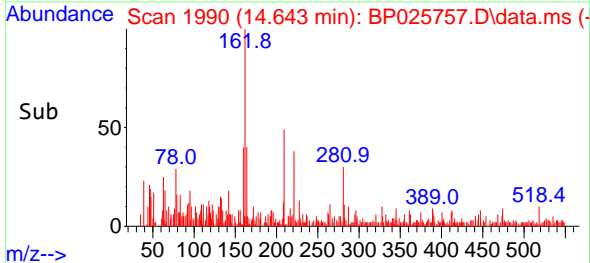
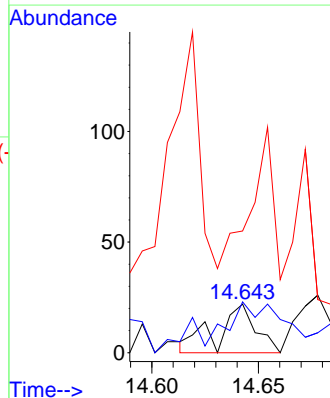
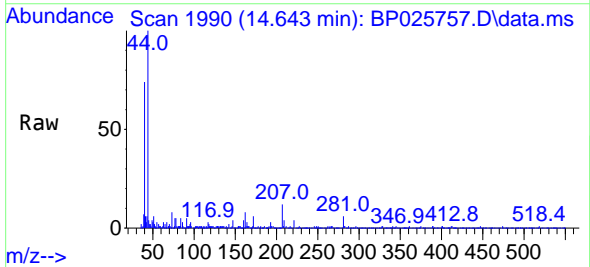
Ion	Ratio	Lower	Upper
184	100		
63	157.9	52.5	78.7#
154	26.3	51.5	77.3#

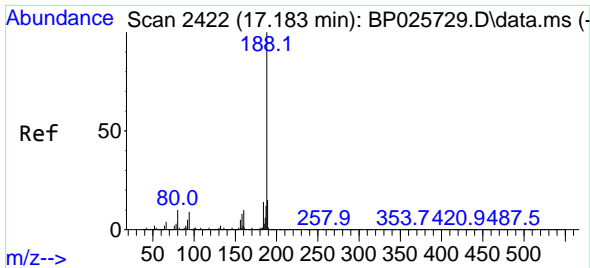


#56  
 4-Nitrophenol  
 Concen: 4.488 ng  
 RT: 14.643 min Scan# 1990  
 Delta R.T. 0.024 min  
 Lab File: BP025757.D  
 Acq: 16 Sep 2025 14:13

Tgt Ion:139 Resp: 28

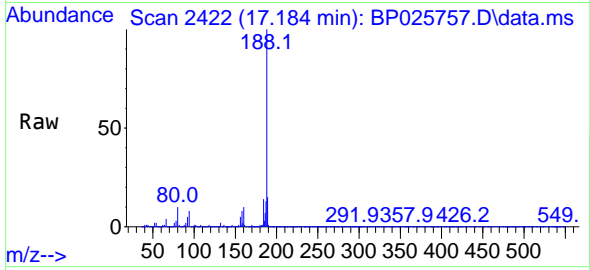
Ion	Ratio	Lower	Upper
139	100		
109	104.5	62.9	102.9#
65	250.0	83.4	123.4#



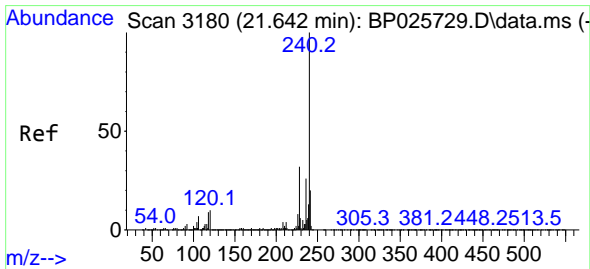
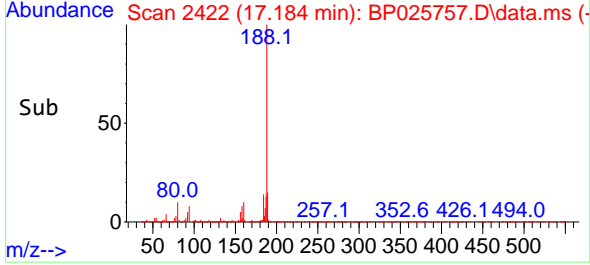
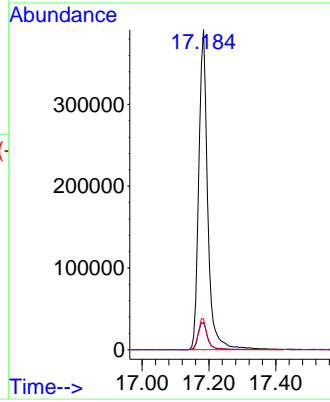


#64  
 Phenanthrene-d10  
 Concen: 20.000 ng  
 RT: 17.184 min Scan# 24  
 Delta R.T. 0.000 min  
 Lab File: BP025757.D  
 Acq: 16 Sep 2025 14:13

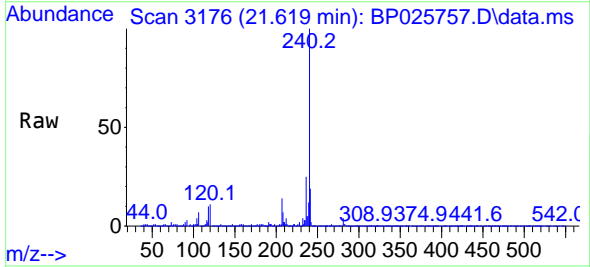
Instrument :  
 BNA\_P  
 ClientSampleId :  
 PB169701BL



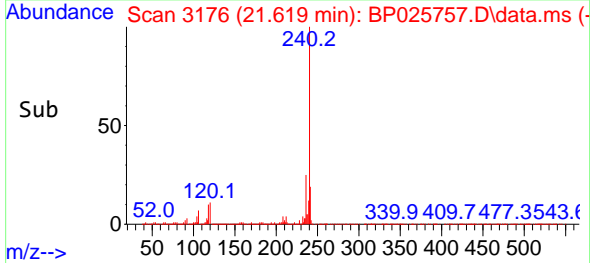
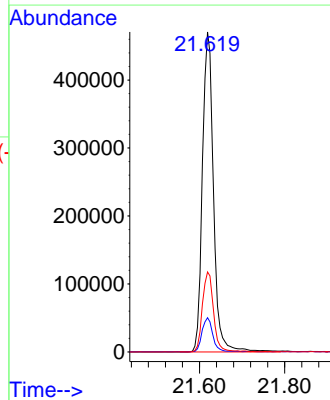
Tgt Ion:188 Resp: 727669  
 Ion Ratio Lower Upper  
 188 100  
 94 8.4 7.4 11.0  
 80 9.5 7.7 11.5



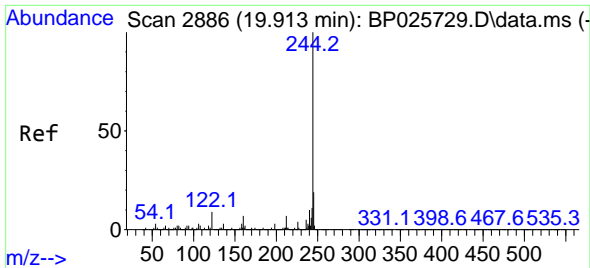
#76  
 Chrysene-d12  
 Concen: 20.000 ng  
 RT: 21.619 min Scan# 3176  
 Delta R.T. -0.023 min  
 Lab File: BP025757.D  
 Acq: 16 Sep 2025 14:13



Tgt Ion:240 Resp: 850923  
 Ion Ratio Lower Upper  
 240 100  
 120 10.7 8.0 12.0  
 236 25.0 20.7 31.1





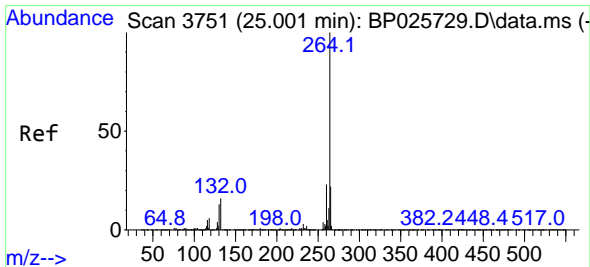
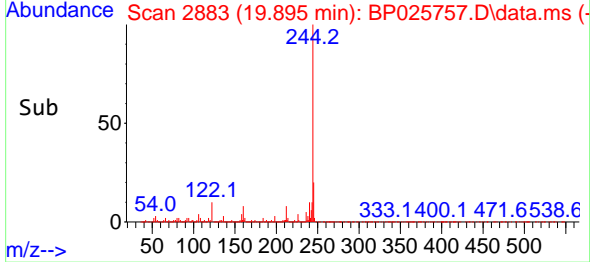
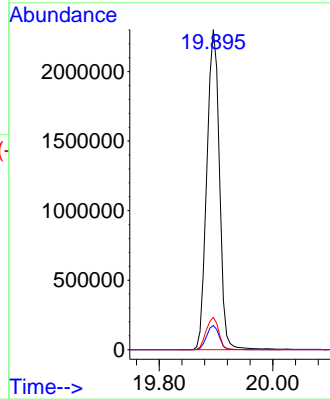
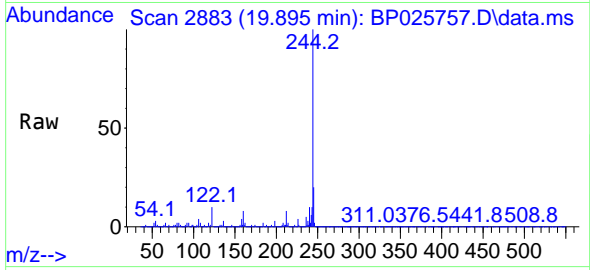


#79  
 Terphenyl-d14  
 Concen: 74.759 ng  
 RT: 19.895 min Scan# 21  
 Delta R.T. -0.018 min  
 Lab File: BP025757.D  
 Acq: 16 Sep 2025 14:13

Instrument :  
 BNA\_P  
 ClientSampleId :  
 PB169701BL

Tgt Ion:244 Resp: 3536094

Ion	Ratio	Lower	Upper
244	100		
212	7.5	5.9	8.9
122	10.1	7.1	10.7



#86  
 Perylene-d12  
 Concen: 20.000 ng  
 RT: 24.966 min Scan# 3745  
 Delta R.T. -0.035 min  
 Lab File: BP025757.D  
 Acq: 16 Sep 2025 14:13

Tgt Ion:264 Resp: 1003174

Ion	Ratio	Lower	Upper
264	100		
260	23.0	18.3	27.5
265	21.5	17.3	25.9

