

Data Path : Z:\svoasrv\HPCHEM1\BNA_P\Data\BP091625\
 Data File : BP025763.D
 Acq On : 16 Sep 2025 18:34
 Operator : CG/JU
 Sample : Q3091-01
 Misc :
 ALS Vial : 9 Sample Multiplier: 1

Instrument :
 BNA_P
 ClientSampleId :
 12/9C-COMP

Quant Time: Sep 16 19:00:21 2025
 Quant Method : Z:\svoasrv\HPCHEM1\BNA_P\Methods\8270E-BP091225.M
 Quant Title : ASP BNA STANDARDS FOR 5 POINT CALIBRATION
 QLast Update : Thu Sep 11 16:45:04 2025
 Response via : Initial Calibration

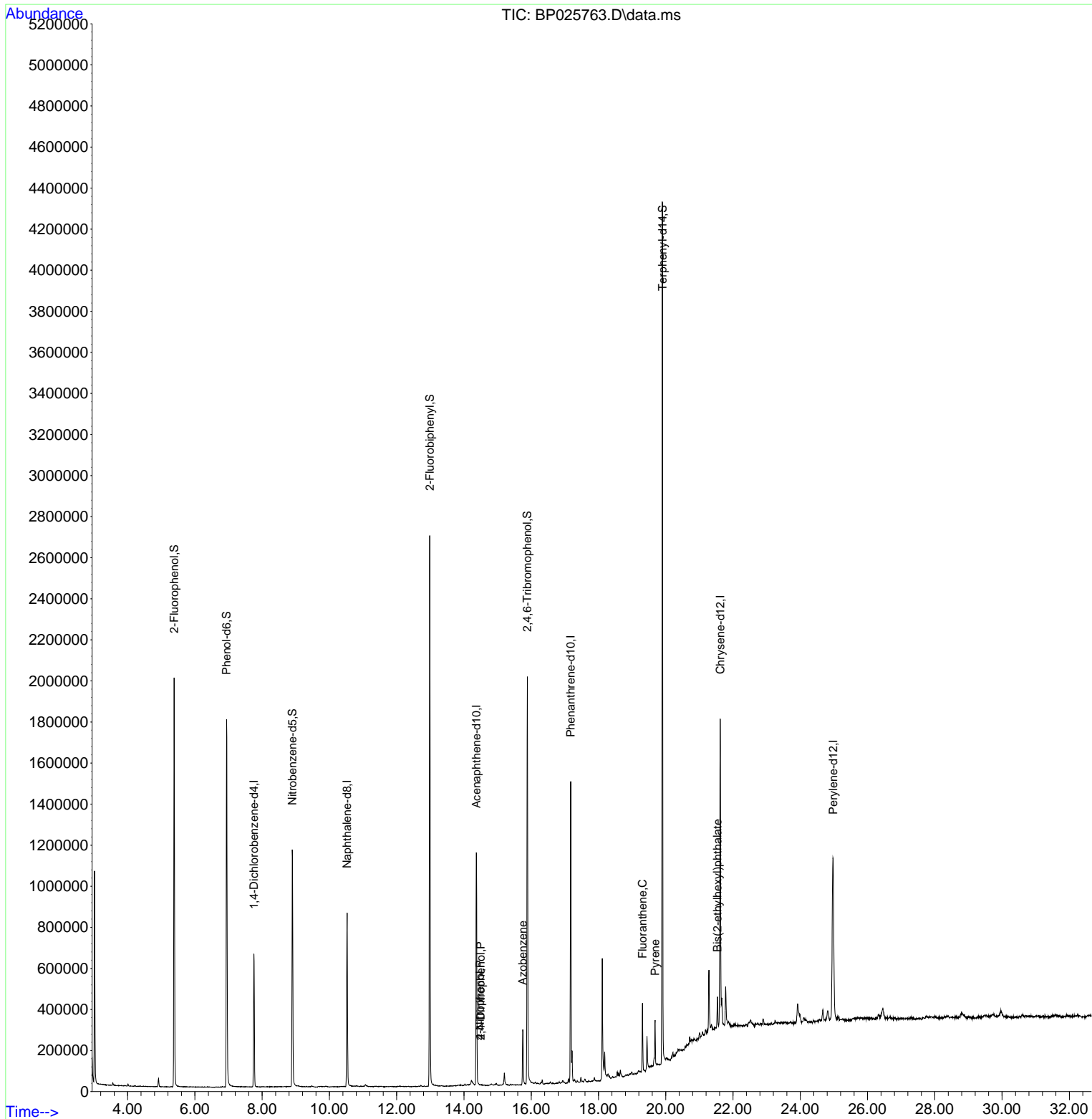
Compound	R.T.	QIon	Response	Conc	Units	Dev(Min)
Internal Standards						
1) 1,4-Dichlorobenzene-d4	7.755	152	182643	20.000	ng	0.00
21) Naphthalene-d8	10.525	136	707336	20.000	ng	0.00
39) Acenaphthene-d10	14.372	164	453691	20.000	ng	0.00
64) Phenanthrene-d10	17.172	188	878487	20.000	ng	-0.01
76) Chrysene-d12	21.619	240	878116	20.000	ng	-0.02
86) Perylene-d12	24.977	264	958203	20.000	ng	-0.02
System Monitoring Compounds						
5) 2-Fluorophenol	5.384	112	838682	74.093	ng	0.00
7) Phenol-d6	6.943	99	1069371	71.076	ng	0.00
23) Nitrobenzene-d5	8.896	82	687458	42.871	ng	0.00
42) 2,4,6-Tribromophenol	15.884	330	384377	67.924	ng	-0.02
45) 2-Fluorobiphenyl	12.984	172	1460096	42.851	ng	0.00
79) Terphenyl-d14	19.901	244	2180565	44.673	ng	-0.01
Target Compounds						
54) 2,4-Dinitrophenol	14.495	184	8	4.826	ng	# 1
56) 4-Nitrophenol	14.478	139	90	4.495	ng	96
63) Azobenzene	15.748	77	86226	2.538	ng	# 1
75) Fluoranthene	19.307	202	181829	3.042	ng	100
78) Pyrene	19.683	202	135641	2.315	ng	100
84) Bis(2-ethylhexyl)phtha...	21.536	149	75783	2.016	ng	97

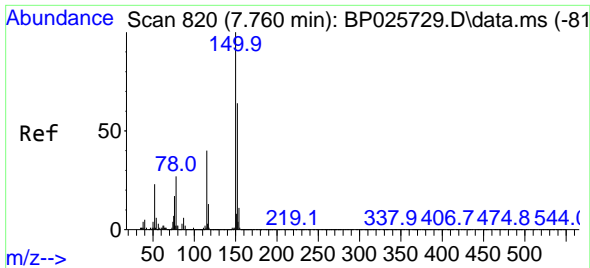
(#) = qualifier out of range (m) = manual integration (+) = signals summed

Data Path : Z:\svoasrv\HPCHEM1\BNA_P\Data\BP091625\
 Data File : BP025763.D
 Acq On : 16 Sep 2025 18:34
 Operator : CG/JU
 Sample : Q3091-01
 Misc :
 ALS Vial : 9 Sample Multiplier: 1

Instrument :
 BNA_P
 ClientSampleId :
 12/9C-COMP

Quant Time: Sep 16 19:00:21 2025
 Quant Method : Z:\svoasrv\HPCHEM1\BNA_P\Methods\8270E-BP091225.M
 Quant Title : ASP BNA STANDARDS FOR 5 POINT CALIBRATION
 QLast Update : Thu Sep 11 16:45:04 2025
 Response via : Initial Calibration

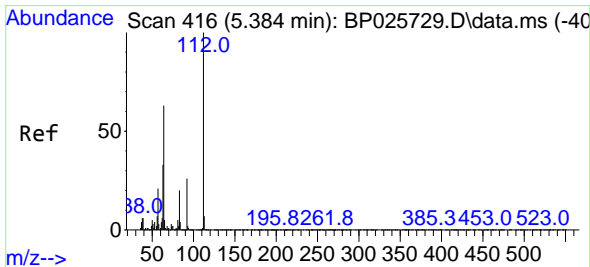
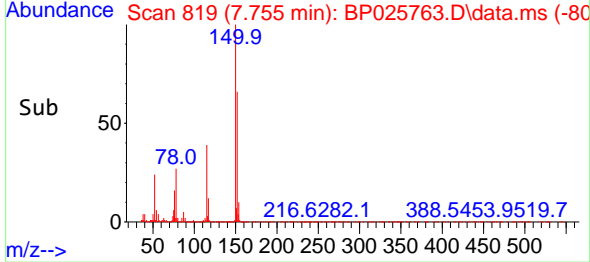
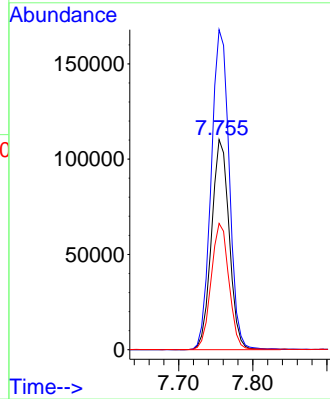
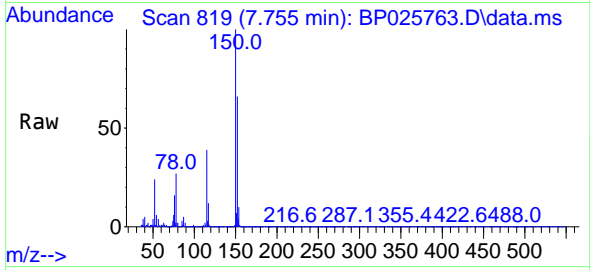




#1
 1,4-Dichlorobenzene-d4
 Concen: 20.000 ng
 RT: 7.755 min Scan# 819
 Delta R.T. -0.005 min
 Lab File: BP025763.D
 Acq: 16 Sep 2025 18:34

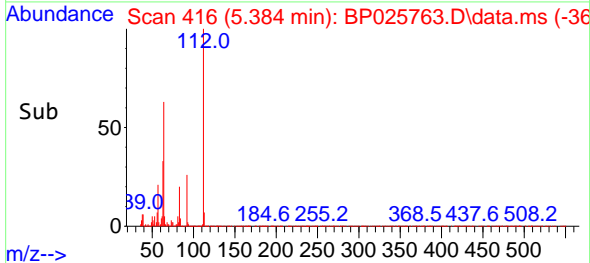
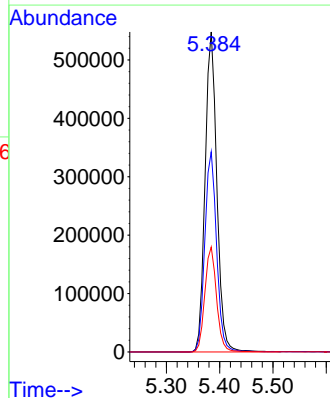
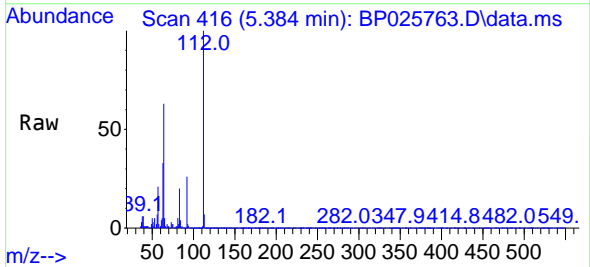
Instrument :
 BNA_P
 ClientSampleId :
 12/9C-COMP

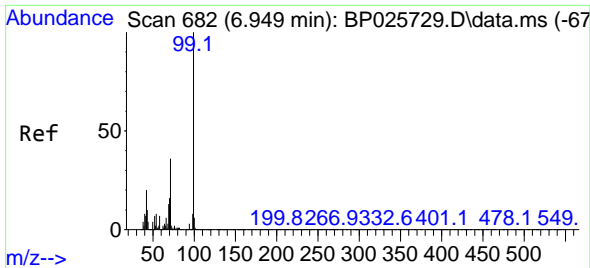
Tgt Ion:152 Resp: 182643
 Ion Ratio Lower Upper
 152 100
 150 152.4 124.3 186.5
 115 60.1 50.3 75.5



#5
 2-Fluorophenol
 Concen: 74.093 ng
 RT: 5.384 min Scan# 416
 Delta R.T. -0.000 min
 Lab File: BP025763.D
 Acq: 16 Sep 2025 18:34

Tgt Ion:112 Resp: 838682
 Ion Ratio Lower Upper
 112 100
 64 62.5 50.2 75.4
 63 32.8 26.7 40.1

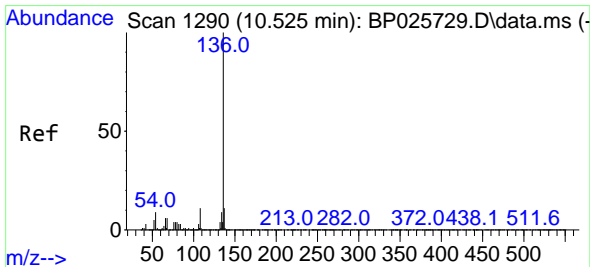
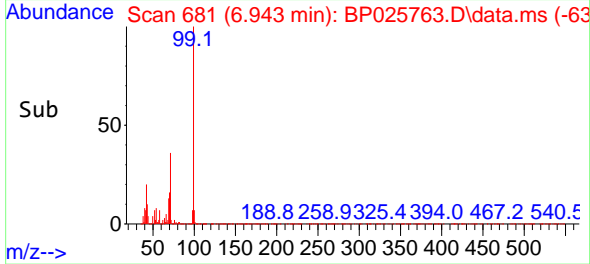
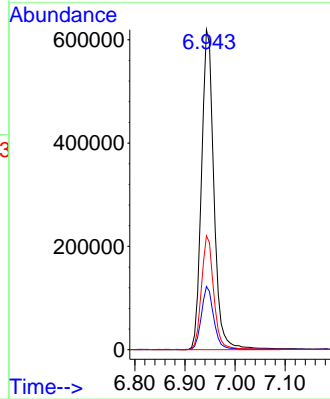
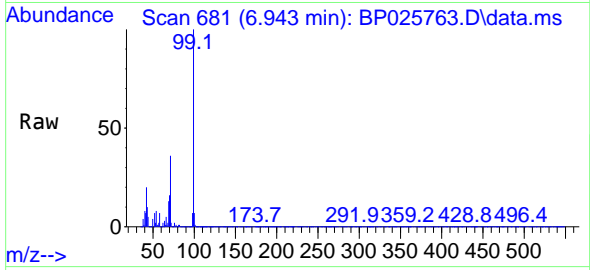




#7
Phenol-d6
Concen: 71.076 ng
RT: 6.943 min Scan# 682
Delta R.T. -0.006 min
Lab File: BP025763.D
Acq: 16 Sep 2025 18:34

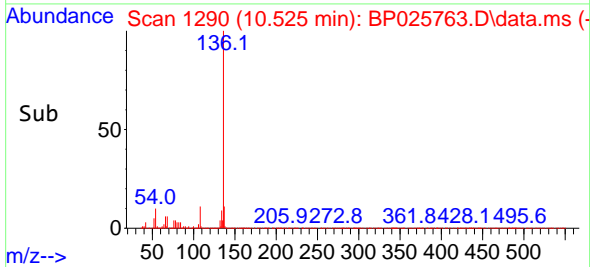
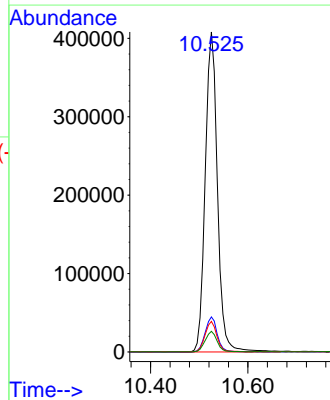
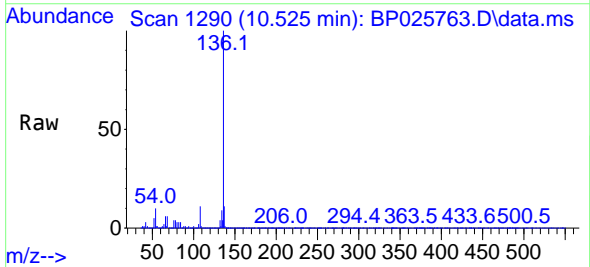
Instrument :
BNA_P
ClientSampleId :
12/9C-COMP

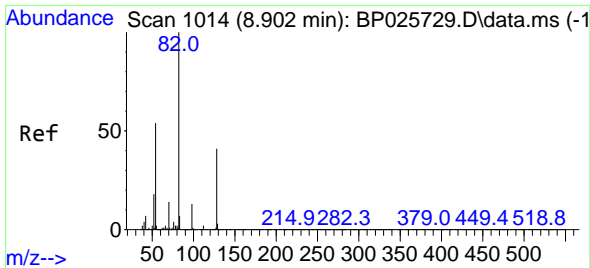
Tgt Ion: 99 Resp: 1069371
Ion Ratio Lower Upper
99 100
42 19.7 15.6 23.4
71 35.6 28.6 43.0



#21
Naphthalene-d8
Concen: 20.000 ng
RT: 10.525 min Scan# 1290
Delta R.T. -0.000 min
Lab File: BP025763.D
Acq: 16 Sep 2025 18:34

Tgt Ion:136 Resp: 707336
Ion Ratio Lower Upper
136 100
137 10.9 8.7 13.1
54 9.5 7.5 11.3
68 6.4 5.0 7.6

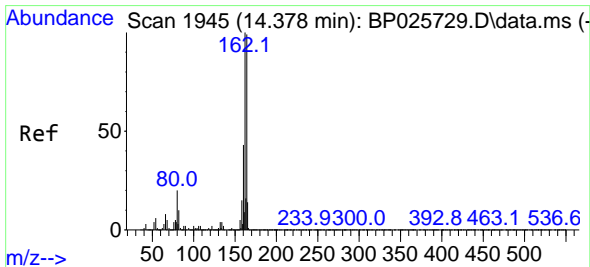
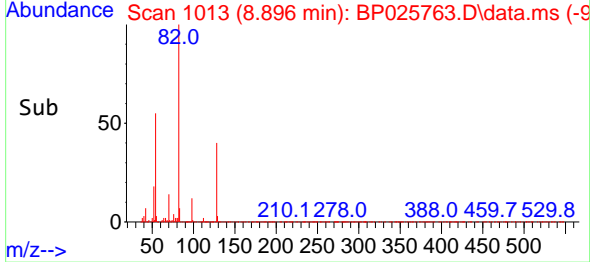
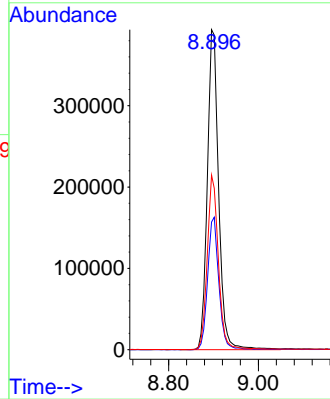
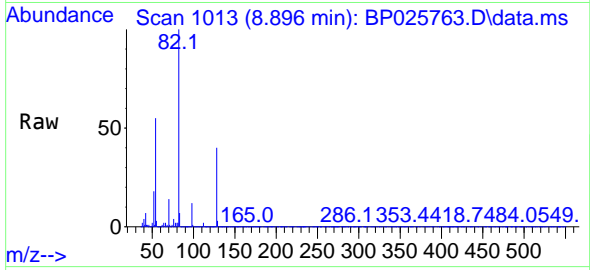




#23
 Nitrobenzene-d5
 Concen: 42.871 ng
 RT: 8.896 min Scan# 1014
 Delta R.T. -0.006 min
 Lab File: BP025763.D
 Acq: 16 Sep 2025 18:34

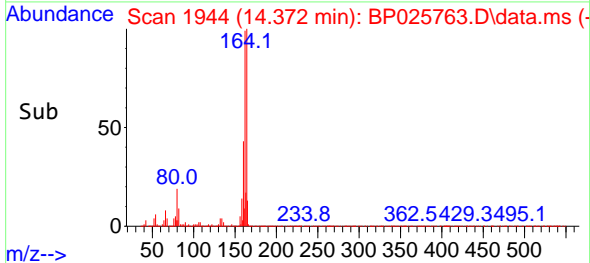
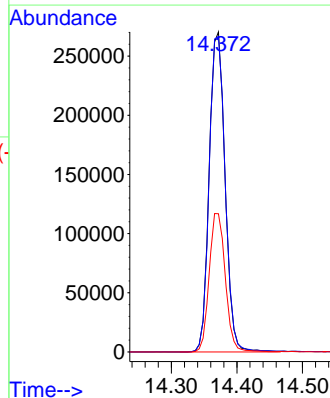
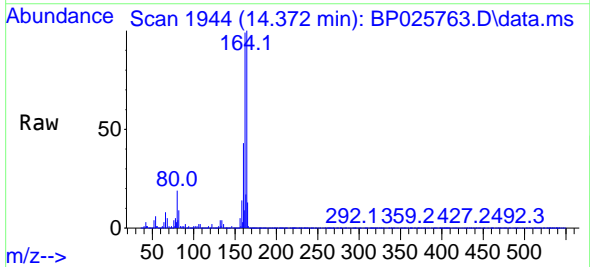
Instrument :
 BNA_P
 ClientSampleId :
 12/9C-COMP

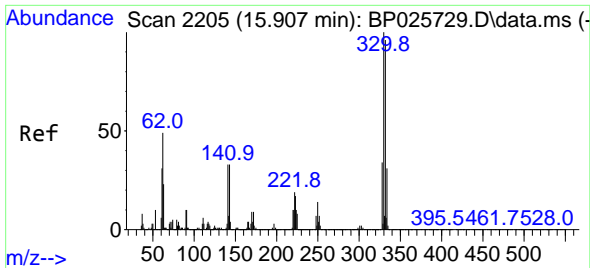
Tgt Ion: 82 Resp: 687458
 Ion Ratio Lower Upper
 82 100
 128 39.9 32.9 49.3
 54 54.6 43.4 65.2



#39
 Acenaphthene-d10
 Concen: 20.000 ng
 RT: 14.372 min Scan# 1944
 Delta R.T. -0.006 min
 Lab File: BP025763.D
 Acq: 16 Sep 2025 18:34

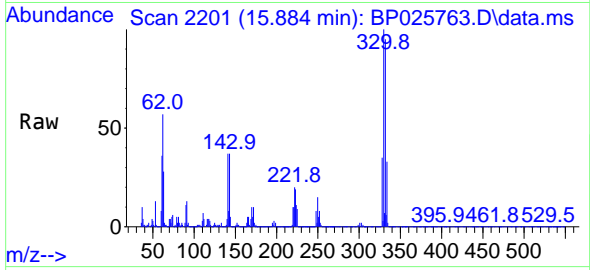
Tgt Ion: 164 Resp: 453691
 Ion Ratio Lower Upper
 164 100
 162 98.6 80.6 120.8
 160 43.2 35.0 52.6



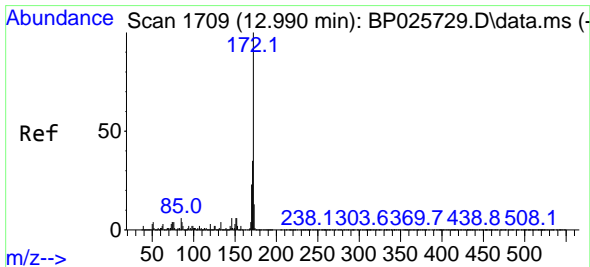
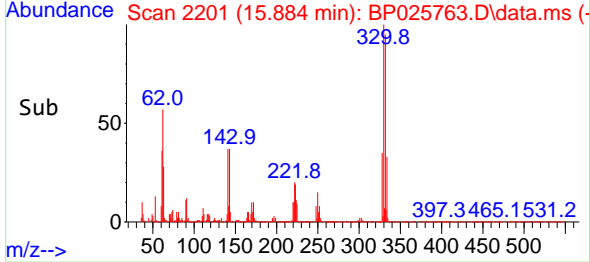
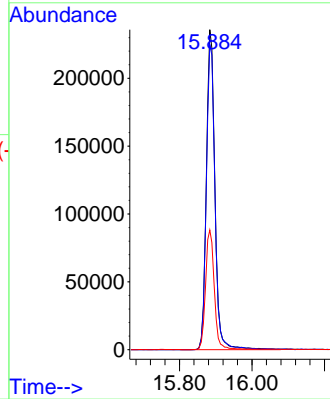


#42
 2,4,6-Tribromophenol
 Concen: 67.924 ng
 RT: 15.884 min Scan# 21
 Delta R.T. -0.024 min
 Lab File: BP025763.D
 Acq: 16 Sep 2025 18:34

Instrument :
 BNA_P
 ClientSampleId :
 12/9C-COMP

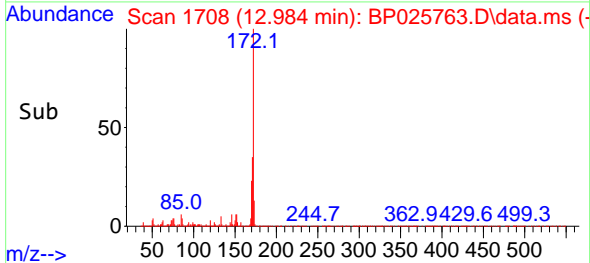
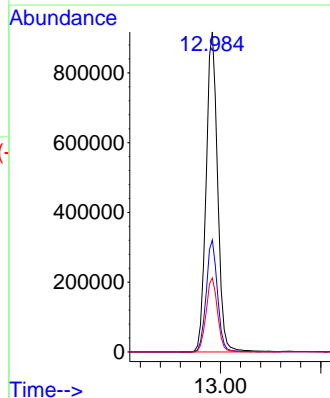
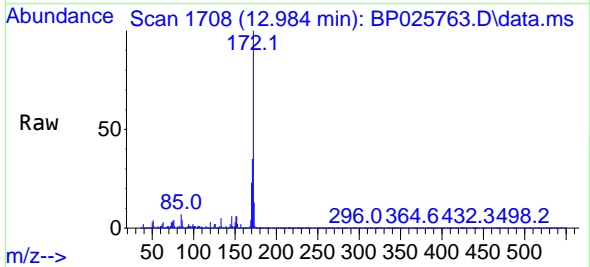


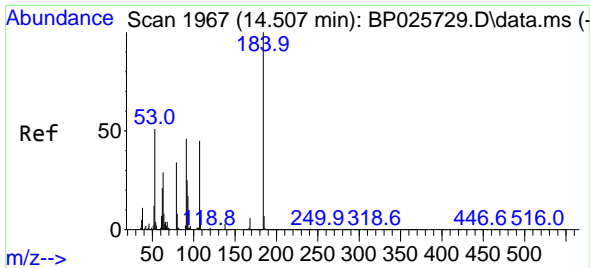
Tgt Ion:330 Resp: 384377
 Ion Ratio Lower Upper
 330 100
 332 96.3 76.9 115.3
 141 38.4 31.0 46.4



#45
 2-Fluorobiphenyl
 Concen: 42.851 ng
 RT: 12.984 min Scan# 1708
 Delta R.T. -0.006 min
 Lab File: BP025763.D
 Acq: 16 Sep 2025 18:34

Tgt Ion:172 Resp: 1460096
 Ion Ratio Lower Upper
 172 100
 171 35.0 27.8 41.6
 170 23.2 18.6 27.8



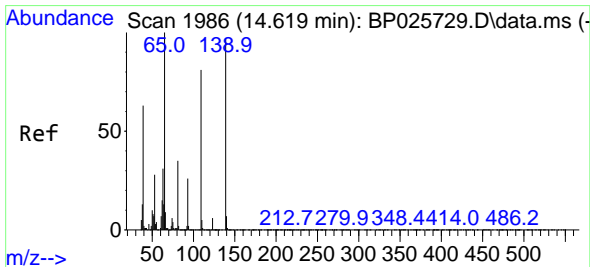
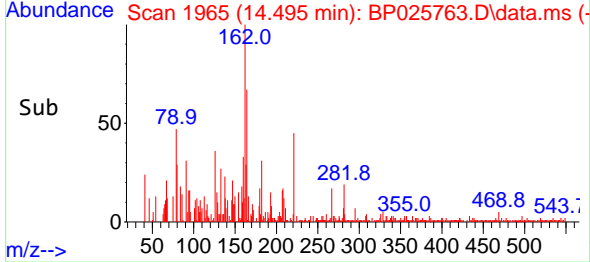
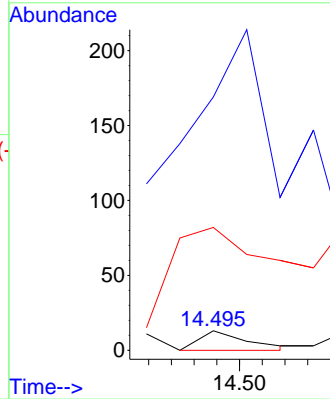
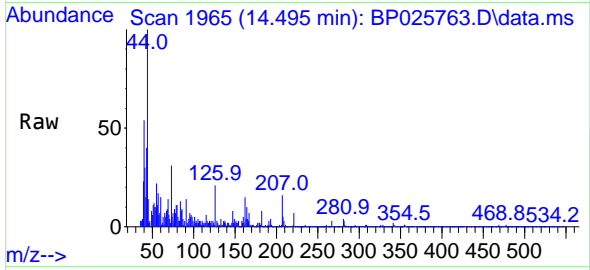


#54
 2,4-Dinitrophenol
 Concen: 4.826 ng
 RT: 14.495 min Scan# 1965
 Delta R.T. -0.012 min
 Lab File: BP025763.D
 Acq: 16 Sep 2025 18:34

Instrument :
 BNA_P
 ClientSampleId :
 12/9C-COMP

Tgt Ion:184 Resp: 8

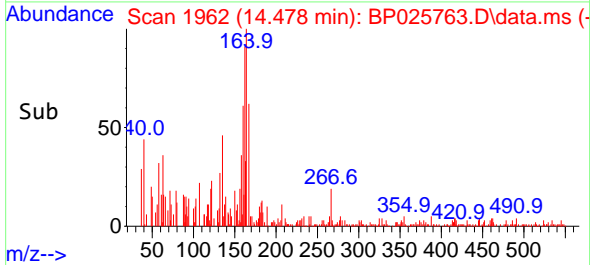
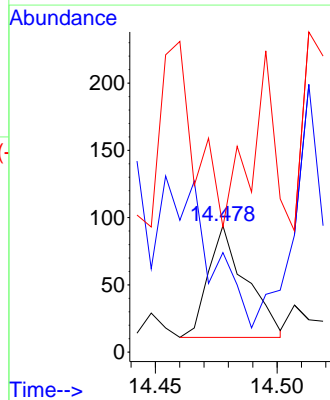
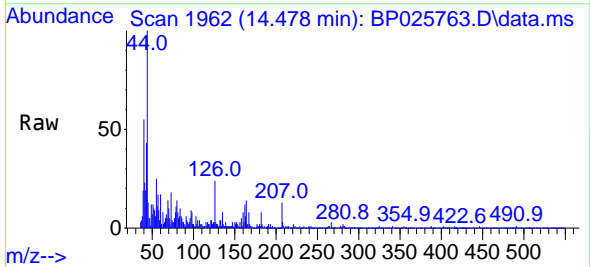
Ion	Ratio	Lower	Upper
184	100		
63	1300.0	52.5	78.7#
154	630.8	51.5	77.3#

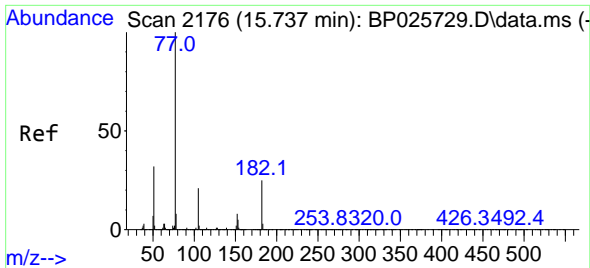


#56
 4-Nitrophenol
 Concen: 4.495 ng
 RT: 14.478 min Scan# 1962
 Delta R.T. -0.141 min
 Lab File: BP025763.D
 Acq: 16 Sep 2025 18:34

Tgt Ion:139 Resp: 90

Ion	Ratio	Lower	Upper
139	100		
109	78.7	62.9	102.9
65	98.9	83.4	123.4



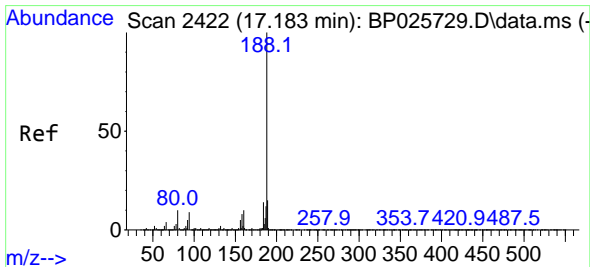
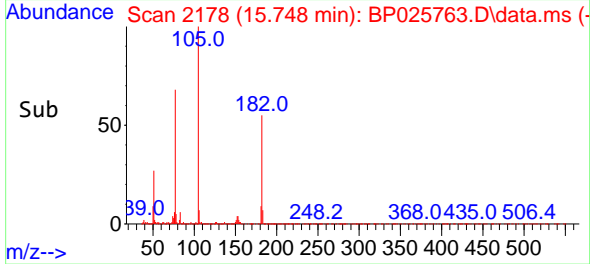
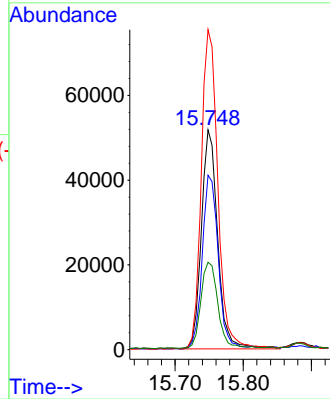
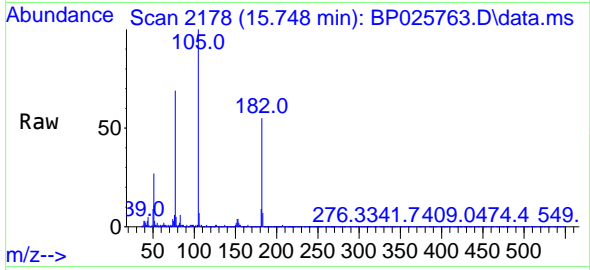


#63
 Azobenzene
 Concen: 2.538 ng
 RT: 15.748 min Scan# 2176
 Delta R.T. 0.012 min
 Lab File: BP025763.D
 Acq: 16 Sep 2025 18:34

Instrument :
 BNA_P
 ClientSampleId :
 12/9C-COMP

Tgt Ion: 77 Resp: 86226

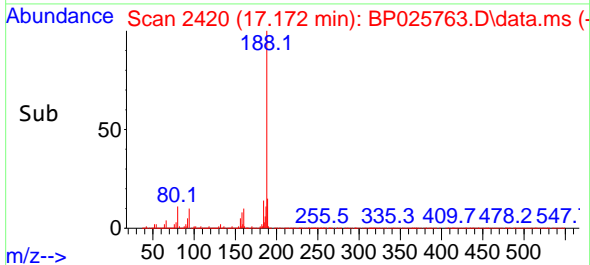
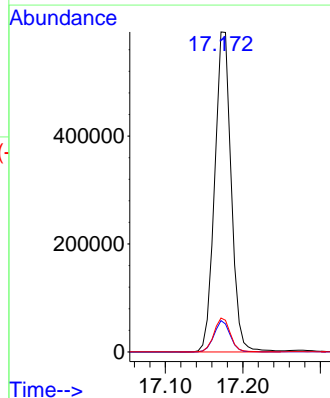
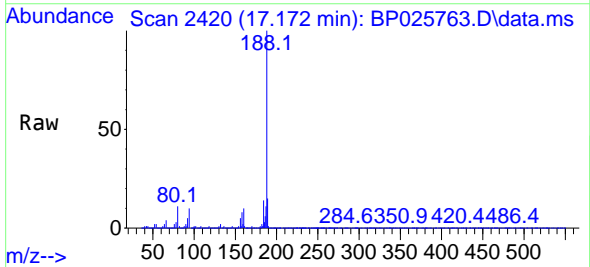
Ion	Ratio	Lower	Upper
77	100		
182	79.4	5.2	45.2#
105	145.6	1.1	41.1#
51	39.8	11.6	51.6

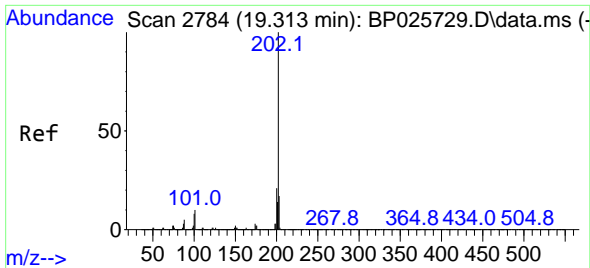


#64
 Phenanthrene-d10
 Concen: 20.000 ng
 RT: 17.172 min Scan# 2420
 Delta R.T. -0.012 min
 Lab File: BP025763.D
 Acq: 16 Sep 2025 18:34

Tgt Ion: 188 Resp: 878487

Ion	Ratio	Lower	Upper
188	100		
94	9.8	7.4	11.0
80	10.6	7.7	11.5



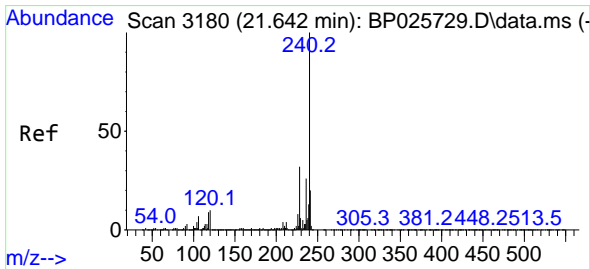
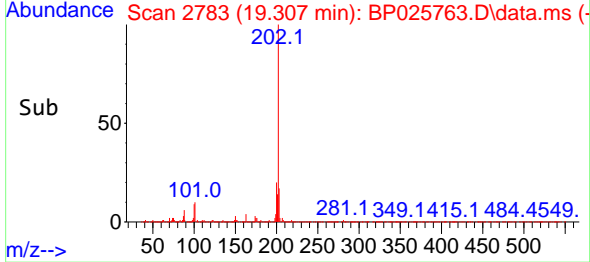
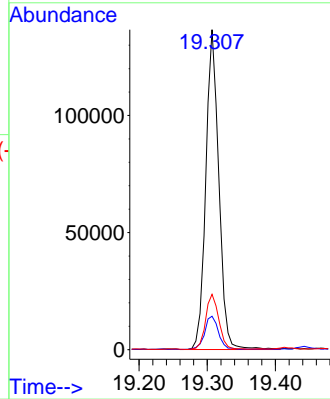
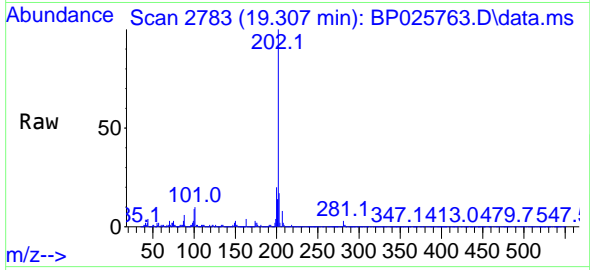


#75
 Fluoranthene
 Concen: 3.042 ng
 RT: 19.307 min Scan# 21
 Delta R.T. -0.006 min
 Lab File: BP025763.D
 Acq: 16 Sep 2025 18:34

Instrument :
 BNA_P
 ClientSampleId :
 12/9C-COMP

Tgt Ion:202 Resp: 181829

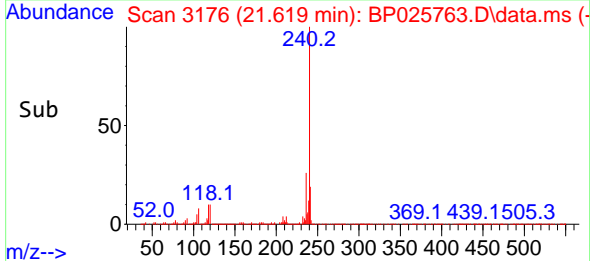
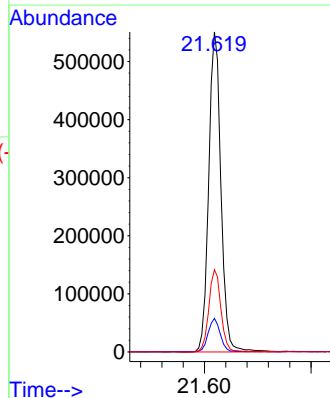
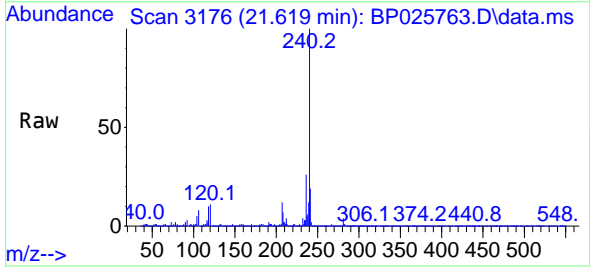
Ion	Ratio	Lower	Upper
202	100		
101	10.5	0.0	30.4
203	17.3	0.0	37.4

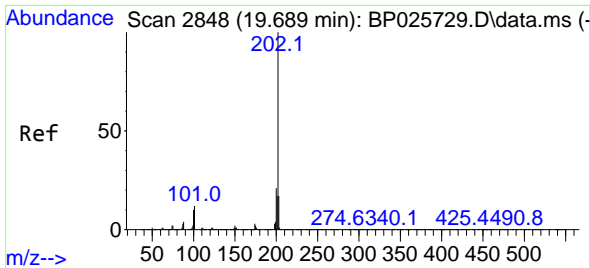


#76
 Chrysene-d12
 Concen: 20.000 ng
 RT: 21.619 min Scan# 3176
 Delta R.T. -0.024 min
 Lab File: BP025763.D
 Acq: 16 Sep 2025 18:34

Tgt Ion:240 Resp: 878116

Ion	Ratio	Lower	Upper
240	100		
120	10.5	8.0	12.0
236	25.7	20.7	31.1



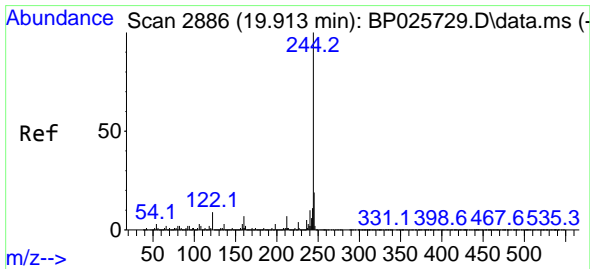
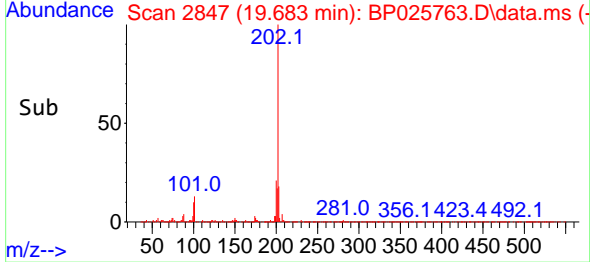
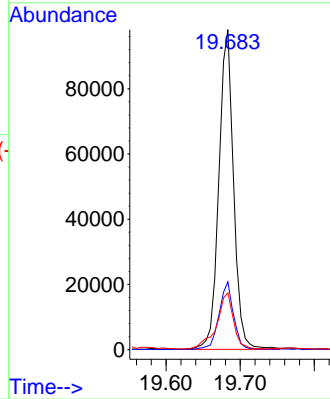
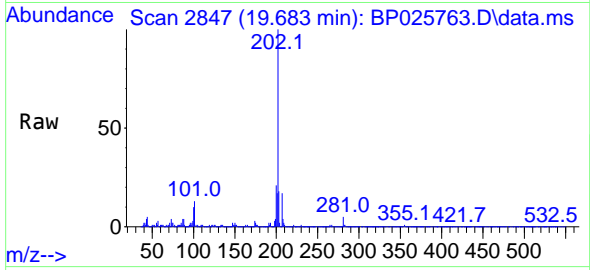


#78
 Pyrene
 Concen: 2.315 ng
 RT: 19.683 min Scan# 2847
 Delta R.T. -0.006 min
 Lab File: BP025763.D
 Acq: 16 Sep 2025 18:34

Instrument :
 BNA_P
 ClientSampleId :
 12/9C-COMP

Tgt Ion:202 Resp: 135641

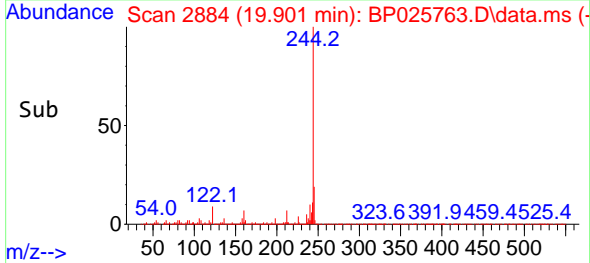
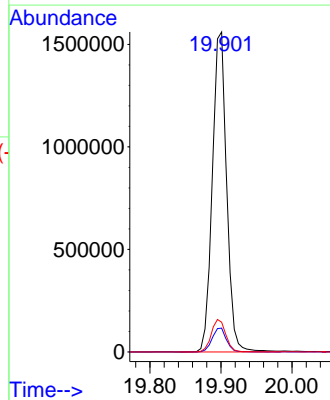
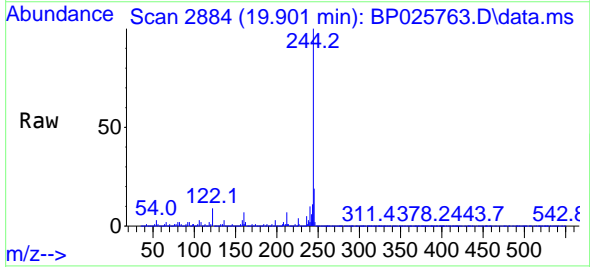
Ion	Ratio	Lower	Upper
202	100		
200	21.2	17.0	25.6
203	17.7	13.9	20.9

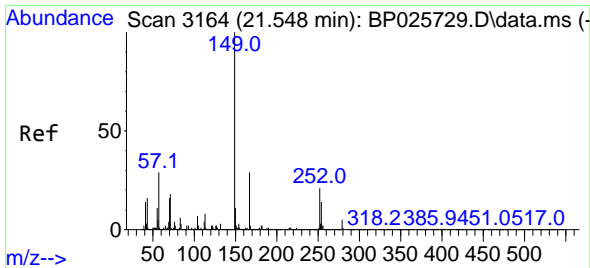


#79
 Terphenyl-d14
 Concen: 44.673 ng
 RT: 19.901 min Scan# 2884
 Delta R.T. -0.012 min
 Lab File: BP025763.D
 Acq: 16 Sep 2025 18:34

Tgt Ion:244 Resp: 2180565

Ion	Ratio	Lower	Upper
244	100		
212	7.5	5.9	8.9
122	9.3	7.1	10.7



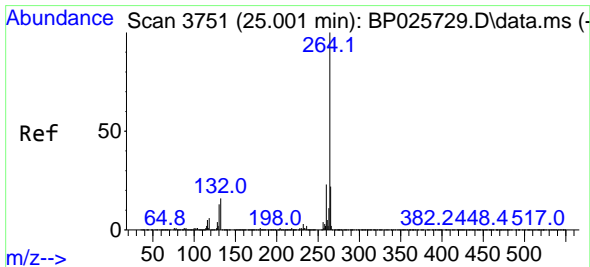
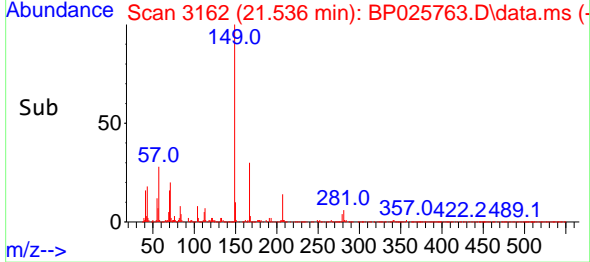
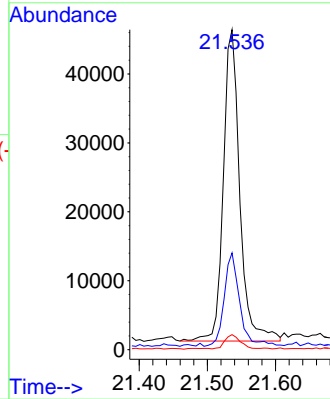
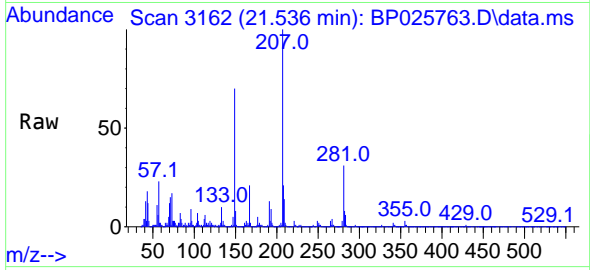


#84
 Bis(2-ethylhexyl)phthalate
 Concen: 2.016 ng
 RT: 21.536 min Scan# 3162
 Delta R.T. -0.012 min
 Lab File: BP025763.D
 Acq: 16 Sep 2025 18:34

Instrument :
 BNA_P
 ClientSampleId :
 12/9C-COMP

Tgt Ion:149 Resp: 75783

Ion	Ratio	Lower	Upper
149	100		
167	30.3	22.9	34.3
279	4.7	3.8	5.8



#86
 Perylene-d12
 Concen: 20.000 ng
 RT: 24.977 min Scan# 3747
 Delta R.T. -0.024 min
 Lab File: BP025763.D
 Acq: 16 Sep 2025 18:34

Tgt Ion:264 Resp: 958203

Ion	Ratio	Lower	Upper
264	100		
260	23.4	18.3	27.5
265	22.3	17.3	25.9

