

Data Path : Z:\svoasrv\HPCHEM1\BNA_P\Data\BP091820\
 Data File : BP003331.D
 Acq On : 18 Sep 2020 20:31
 Operator : CG/JU
 Sample : L4038-07
 Misc :
 ALS Vial : 14 Sample Multiplier: 1

Instrument :
 BNA_P
 ClientSampleId :
 PAV-091620-DP

Manual Integrations
 APPROVED

mohammad
 9/21/2020 10:35:58 AM

Quant Time: Sep 19 06:20:05 2020
 Quant Method : Z:\SVOASRV\HPCHEM1\BNA_P\METHODS\8270-BP091520.M
 Quant Title : ASP BNA STANDARDS FOR 5 POINT CALIBRATION
 QLast Update : Fri Sep 18 14:13:41 2020
 Response via : Initial Calibration

Compound	R.T.	QIon	Response	Conc Units	Dev(Min)	

Internal Standards						
1) 1,4-Dichlorobenzene-d4	7.599	152	196293	20.00 ng	0.00	
21) Naphthalene-d8	10.381	136	785253	20.00 ng	# 0.00	
39) Acenaphthene-d10	14.251	164	450924	20.00 ng	0.00	
64) Phenanthrene-d10	17.004	188	815991	20.00 ng	0.00	
76) Chrysene-d12	21.104	240	626088	20.00 ng	0.00	
86) Perylene-d12	23.322	264	647422	20.00 ng	0.00	
System Monitoring Compounds						
5) 2-Fluorophenol	5.217	112	1159170	103.11 ng	0.00	
7) Phenol-d6	6.805	99	1466010	97.84 ng	0.01	
23) Nitrobenzene-d5	8.752	82	979306	73.27 ng	0.00	
42) 2,4,6-Tribromophenol	15.751	330	529170	76.94 ng	0.00	
45) 2-Fluorobiphenyl	12.869	172	2199970	71.35 ng	0.00	
79) Terphenyl-d14	19.586	244	2105472	70.07 ng	0.00	
Target Compounds						
31) Naphthalene	10.428	128	135158	3.26 ng		Qvalue 99
50) Dimethylphthalate	13.710	163	222856	6.19 ng		99
52) Acenaphthene	14.310	154	119026	4.60 ng		100
55) Dibenzofuran	14.651	168	113362	2.74 ng		96
58) Fluorene	15.304	166	134391	4.12 ng		96
71) Phenanthrene	17.045	178	1241206	27.96 ng		99
72) Anthracene	17.140	178	379668	8.68 ng		99
73) Carbazole	17.410	167	113025	2.72 ng		99
75) Fluoranthene	19.034	202	1711731	30.66 ng		99
78) Pyrene	19.381	202	1575132	40.34 ng		99
81) Benzo(a)anthracene	21.092	228	723057	17.87 ng		98
83) Chrysene	21.139	228	647244	16.65 ng		97
87) Indeno(1,2,3-cd)pyrene	25.580	276	520036	10.60 ng	#	95
88) Benzo(b)fluoranthene	22.663	252	898997m	21.99 ng		
89) Benzo(k)fluoranthene	22.698	252	298006m	7.61 ng		
90) Benzo(a)pyrene	23.227	252	739209	19.17 ng		97
91) Dibenzo(a,h)anthracene	25.574	278	127307	3.14 ng	#	79
92) Benzo(g,h,i)perylene	26.268	276	544400	13.47 ng		97

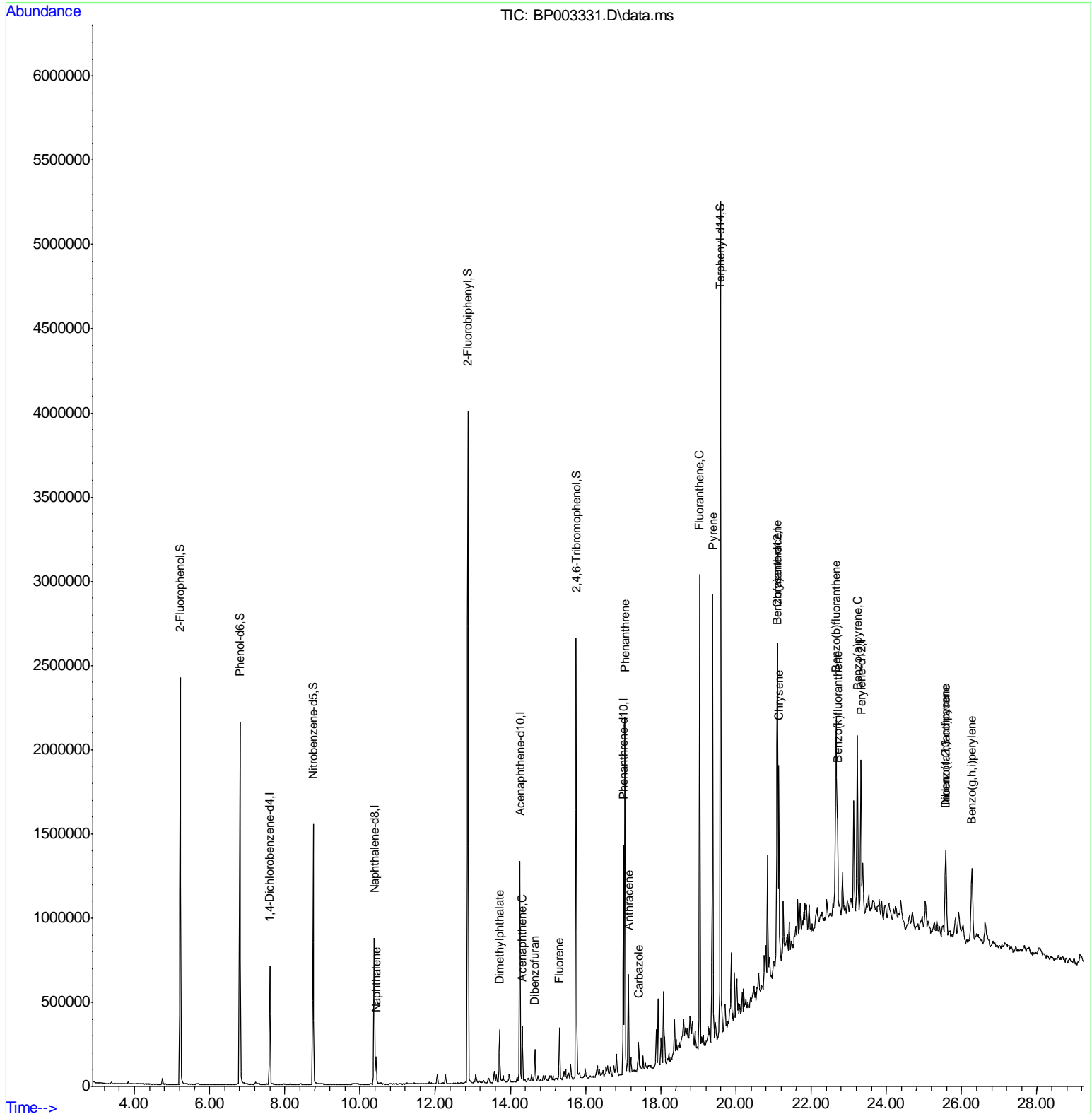
(#) = qualifier out of range (m) = manual integration (+) = signals summed

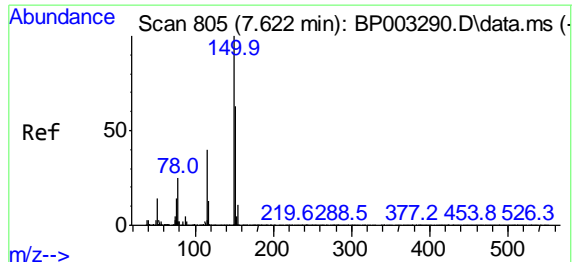
Data Path : Z:\svoasrv\HPCHEM1\BNA_P\Data\BP091820\
 Data File : BP003331.D
 Acq On : 18 Sep 2020 20:31
 Operator : CG/JU
 Sample : L4038-07
 Misc :
 ALS Vial : 14 Sample Multiplier: 1

Instrument :
 BNA_P
 Client Sampled :
 PAV-091620-DP

Manual Integrations
APPROVED
 mohammad
 9/21/2020 10:35:58 AM

Quant Time: Sep 19 06:20:05 2020
 Quant Method : Z:\SVOASRV\HPCHEM1\BNA_P\METHODS\8270-BP091520.M
 Quant Title : ASP BNA STANDARDS FOR 5 POINT CALIBRATION
 QLast Update : Fri Sep 18 14:13:41 2020
 Response via : Initial Calibration





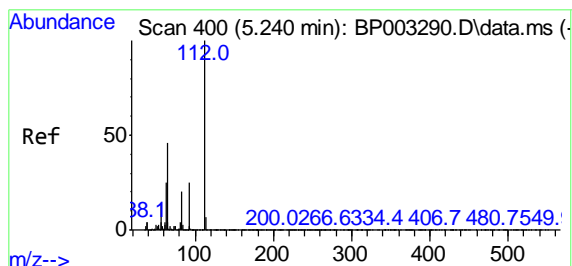
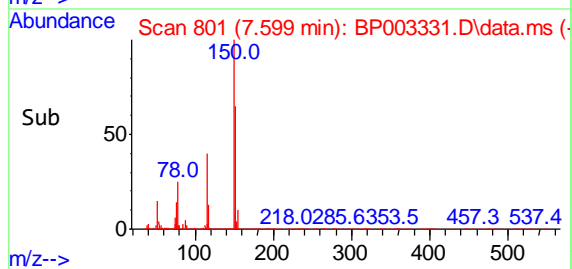
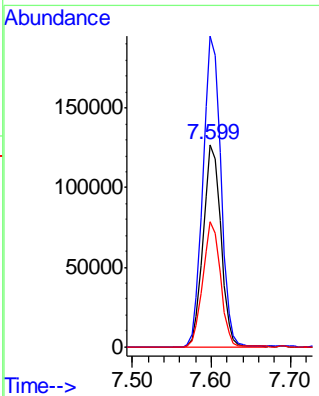
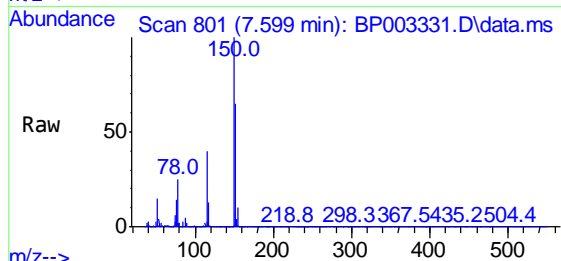
#1
 1,4-Dichlorobenzene-d4
 Concen: 20.00 ng
 RT: 7.599 min Scan# 801
 Delta R.T. -0.000 min
 Lab File: BP003331.D
 Acq: 18 Sep 2020 20:31

Instrument :
 BNA_P
ClientSampled :
 PAV-091620-DP

Tgt Ion:152 Resp: 196293

Ion	Ratio	Lower	Upper
152	100		
150	153.4	123.8	185.6
115	61.5	43.8	65.6

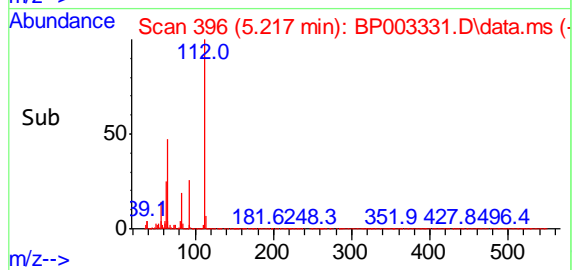
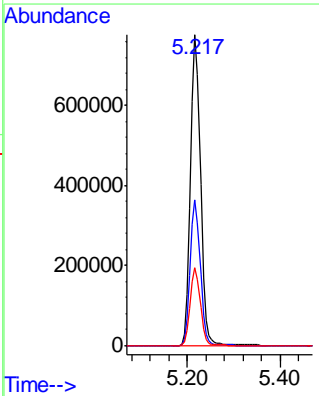
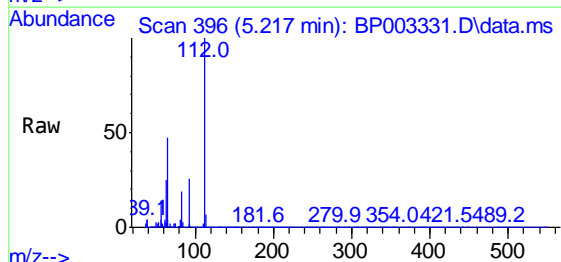
Manual Integrations
APPROVED
 mohammad
 9/21/2020 10:35:58 AM

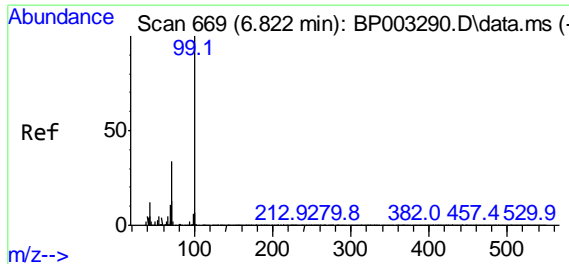


#5
 2-Fluorophenol
 Concen: 103.11 ng
 RT: 5.217 min Scan# 396
 Delta R.T. 0.006 min
 Lab File: BP003331.D
 Acq: 18 Sep 2020 20:31

Tgt Ion:112 Resp: 1159170

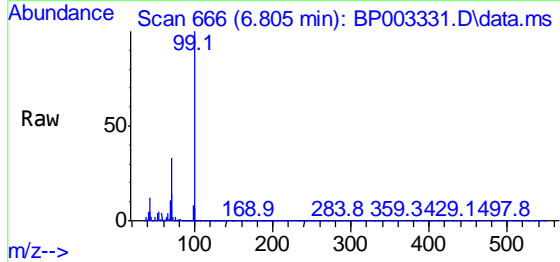
Ion	Ratio	Lower	Upper
112	100		
64	47.0	32.8	49.2
63	25.2	17.0	25.4





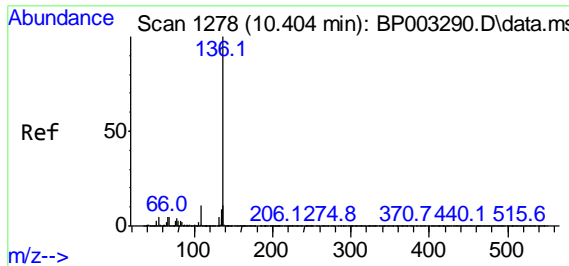
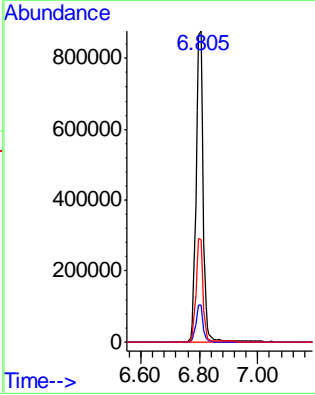
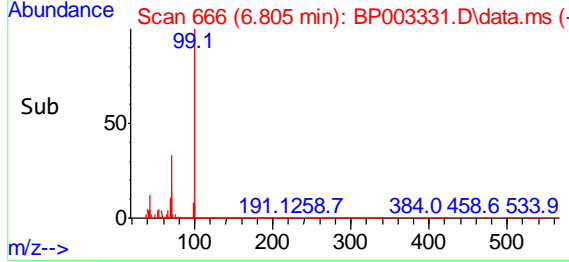
#7
 Phenol-d6
 Concen: 97.84 ng
 RT: 6.805 min Scan# 666
 Delta R.T. 0.012 min
 Lab File: BP003331.D
 Acq: 18 Sep 2020 20:31

Instrument :
 BNA_P
ClientSampled :
 PAV-091620-DP

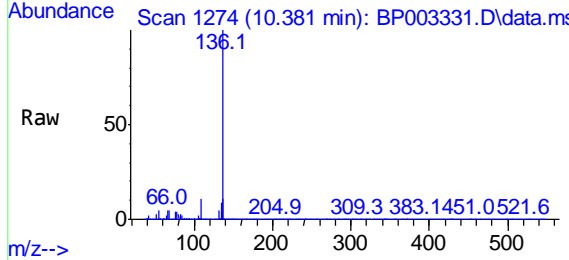


Tgt Ion: 99 Resp: 1466010
 Ion Ratio Lower Upper
 99 100
 42 11.8 8.6 13.0
 71 32.8 23.4 35.2

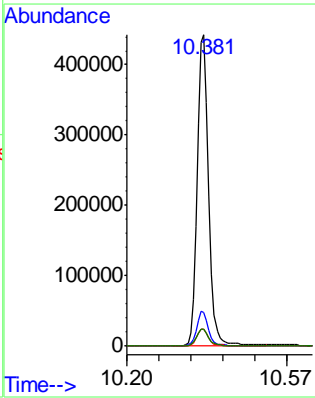
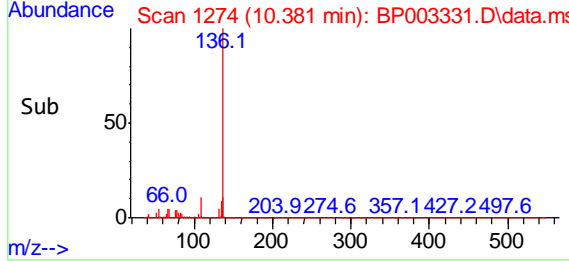
Manual Integrations
APPROVED
 mohammad
 9/21/2020 10:35:58 AM

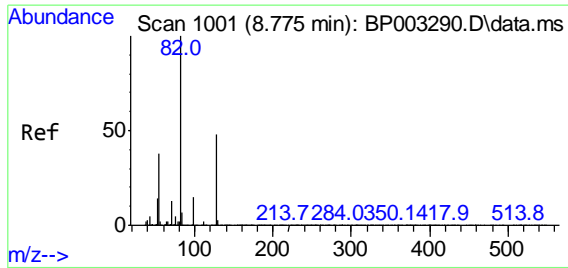


#21
 Naphthalene-d8
 Concen: 20.00 ng
 RT: 10.381 min Scan# 1274
 Delta R.T. 0.006 min
 Lab File: BP003331.D
 Acq: 18 Sep 2020 20:31



Tgt Ion: 136 Resp: 785253
 Ion Ratio Lower Upper
 136 100
 137 10.5 8.6 13.0
 54 5.1 3.6 5.4
 68 5.3 3.3 4.9#





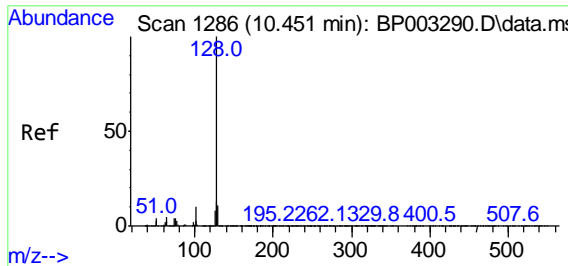
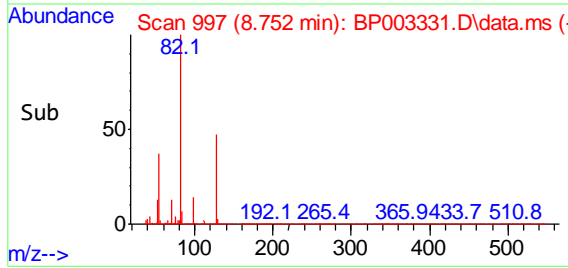
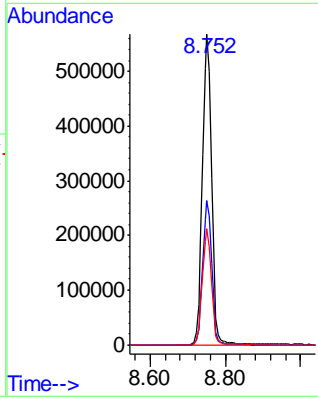
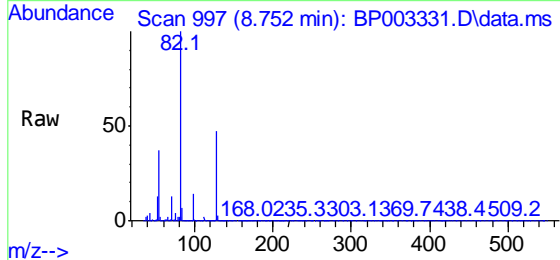
#23
 Nitrobenzene-d5
 Concen: 73.27 ng
 RT: 8.752 min Scan# 997
 Delta R.T. -0.000 min
 Lab File: BP003331.D
 Acq: 18 Sep 2020 20:31

Instrument :
 BNA_P
ClientSampled :
 PAV-091620-DP

Manual Integrations
APPROVED
 mohammad
 9/21/2020 10:35:58 AM

Tgt Ion: 82 Resp: 979306

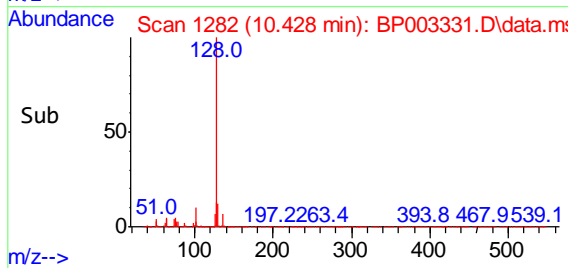
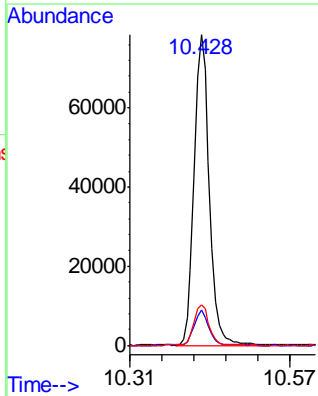
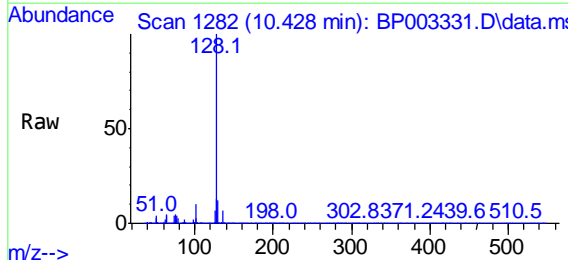
Ion	Ratio	Lower	Upper
82	100		
128	46.6	45.6	68.4
54	37.2	30.1	45.1

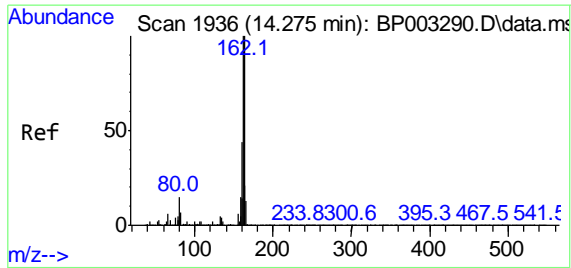


#31
 Naphthalene
 Concen: 3.26 ng
 RT: 10.428 min Scan# 1282
 Delta R.T. -0.000 min
 Lab File: BP003331.D
 Acq: 18 Sep 2020 20:31

Tgt Ion: 128 Resp: 135158

Ion	Ratio	Lower	Upper
128	100		
129	11.5	8.8	13.2
127	13.1	10.6	15.8

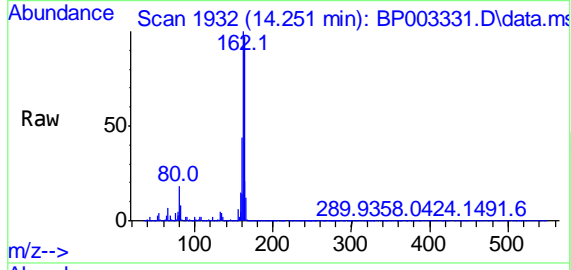




#39
 Acenaphthene-d10
 Concen: 20.00 ng
 RT: 14.251 min Scan# 1932
 Delta R.T. 0.006 min
 Lab File: BP003331.D
 Acq: 18 Sep 2020 20:31

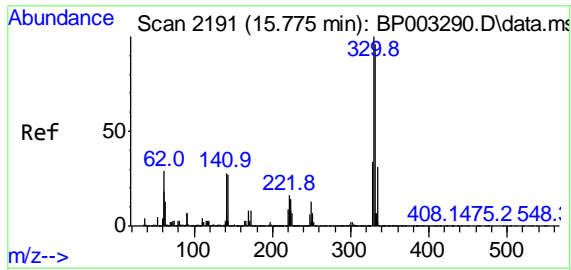
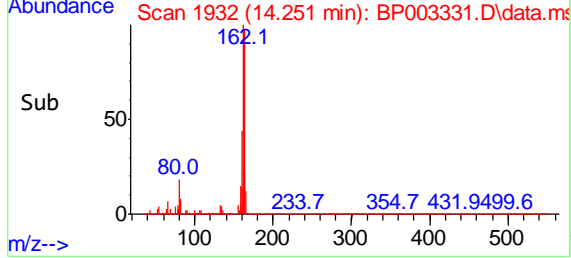
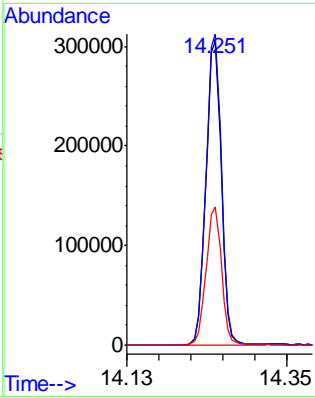
Instrument :
 BNA_P
ClientSampled :
 PAV-091620-DP

Manual Integrations
APPROVED
 mohammad
 9/21/2020 10:35:58 AM



Tgt Ion:164 Resp: 450924

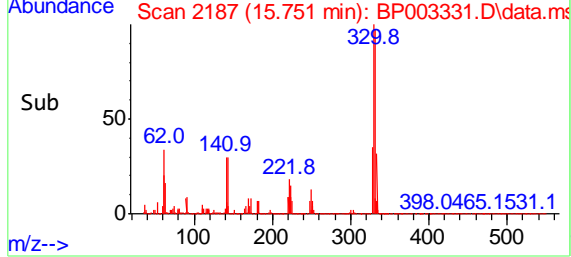
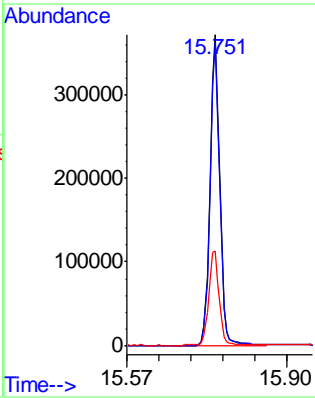
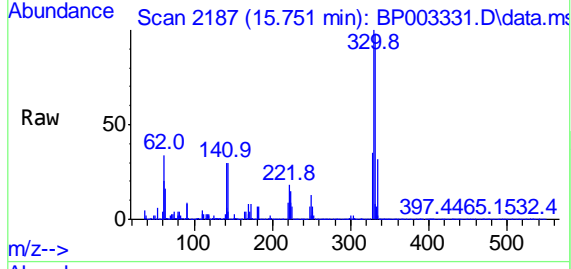
Ion	Ratio	Lower	Upper
164	100		
162	102.7	79.4	119.2
160	45.7	36.1	54.1

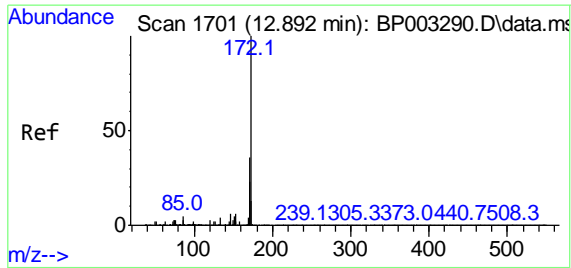


#42
 2,4,6-Tribromophenol
 Concen: 76.94 ng
 RT: 15.751 min Scan# 2187
 Delta R.T. 0.006 min
 Lab File: BP003331.D
 Acq: 18 Sep 2020 20:31

Tgt Ion:330 Resp: 529170

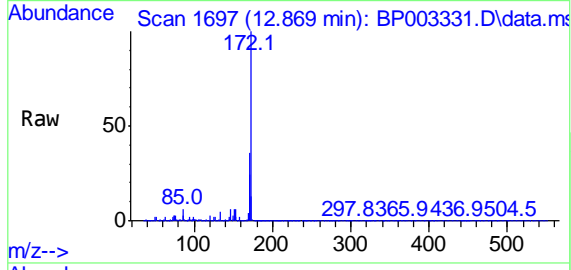
Ion	Ratio	Lower	Upper
330	100		
332	97.4	77.1	115.7
141	32.9	23.4	35.2





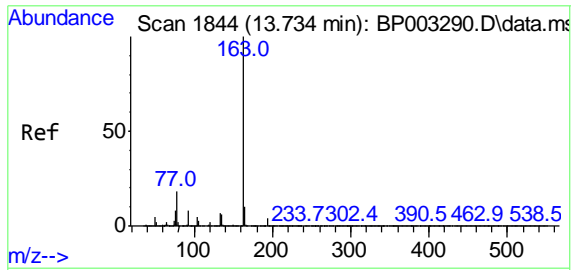
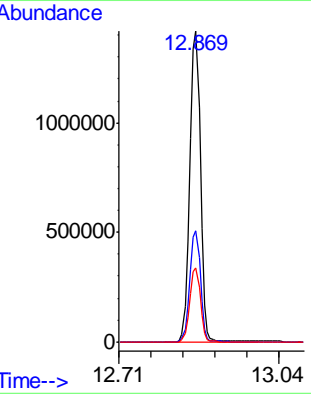
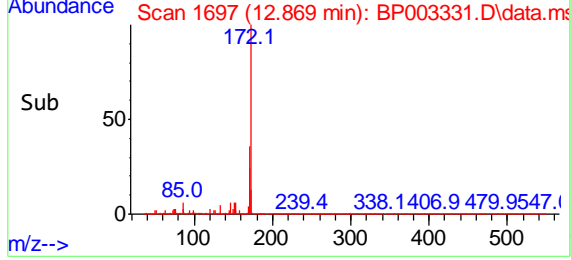
#45
 2-Fluorobiphenyl
 Concen: 71.35 ng
 RT: 12.869 min Scan# 1697
 Delta R.T. 0.006 min
 Lab File: BP003331.D
 Acq: 18 Sep 2020 20:31

Instrument :
 BNA_P
ClientSampled :
 PAV-091620-DP

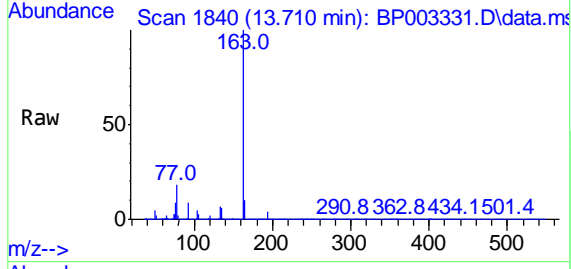


Tgt Ion:172 Resp: 2199970
 Ion Ratio Lower Upper
 172 100
 171 35.9 28.5 42.7
 170 23.8 19.2 28.8

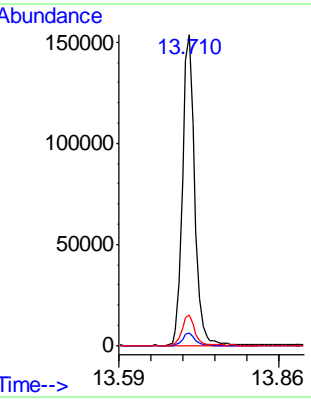
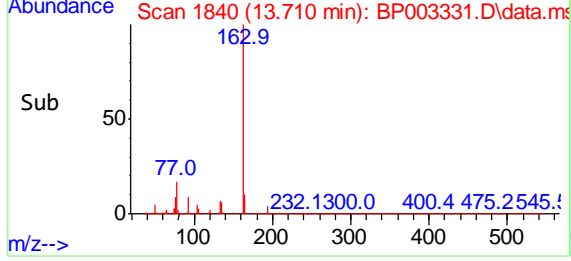
Manual Integrations
APPROVED
 mohammad
 9/21/2020 10:35:58 AM

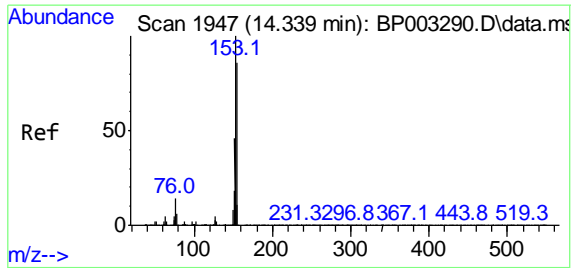


#50
 Dimethylphthalate
 Concen: 6.19 ng
 RT: 13.710 min Scan# 1840
 Delta R.T. -0.000 min
 Lab File: BP003331.D
 Acq: 18 Sep 2020 20:31



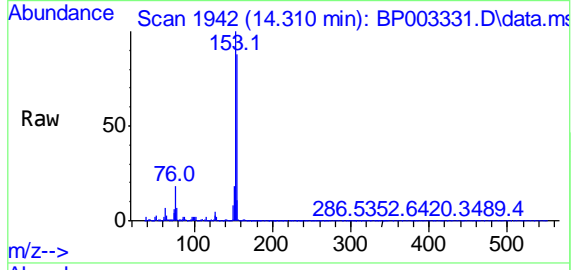
Tgt Ion:163 Resp: 222856
 Ion Ratio Lower Upper
 163 100
 194 3.9 3.3 4.9
 164 9.9 8.2 12.2





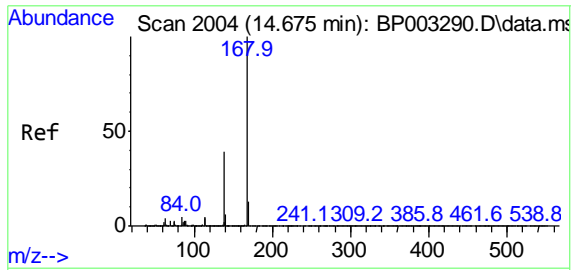
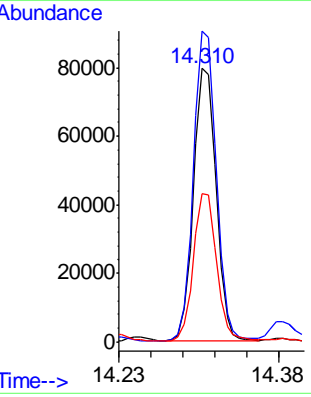
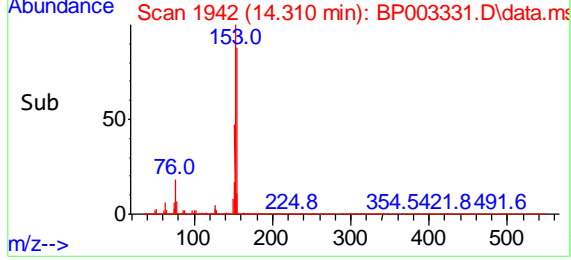
#52
 Acenaphthene
 Concen: 4.60 ng
 RT: 14.310 min Scan# 1942
 Delta R.T. -0.000 min
 Lab File: BP003331.D
 Acq: 18 Sep 2020 20:31

Instrument :
 BNA_P
ClientSampled :
 PAV-091620-DP

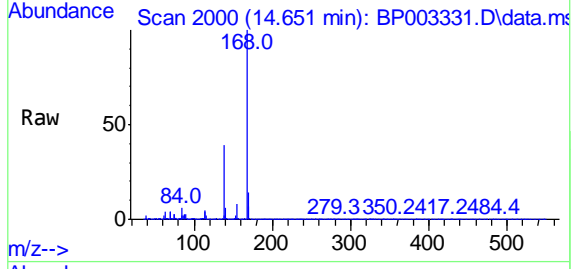


Tgt Ion:154 Resp: 119026
 Ion Ratio Lower Upper
 154 100
 153 113.7 91.0 136.6
 152 54.1 43.0 64.6

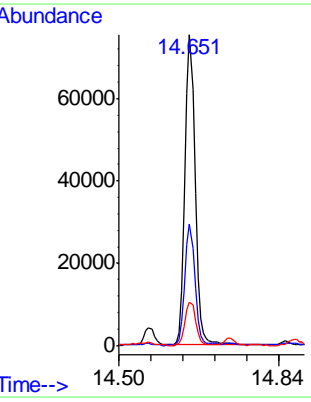
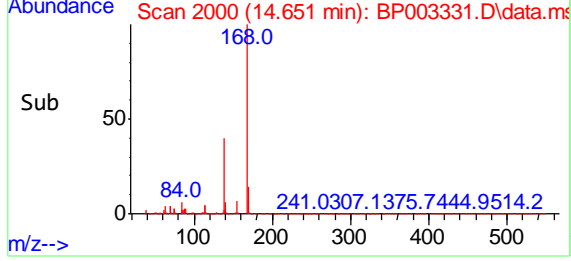
Manual Integrations
APPROVED
 mohammad
 9/21/2020 10:35:58 AM

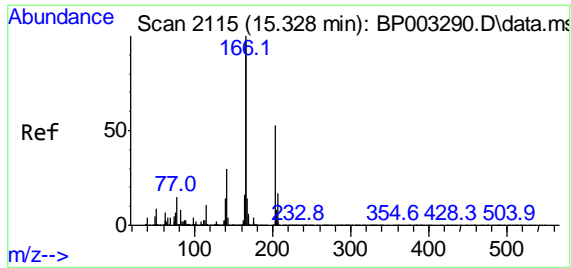


#55
 Dibenzofuran
 Concen: 2.74 ng
 RT: 14.651 min Scan# 2000
 Delta R.T. -0.000 min
 Lab File: BP003331.D
 Acq: 18 Sep 2020 20:31



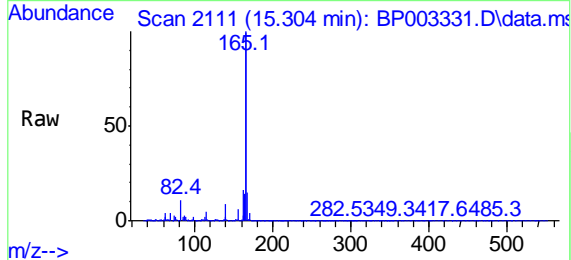
Tgt Ion:168 Resp: 113362
 Ion Ratio Lower Upper
 168 100
 139 38.9 29.1 43.7
 169 13.9 10.4 15.6





#58
 Fluorene
 Concen: 4.12 ng
 RT: 15.304 min Scan# 2111
 Delta R.T. -0.000 min
 Lab File: BP003331.D
 Acq: 18 Sep 2020 20:31

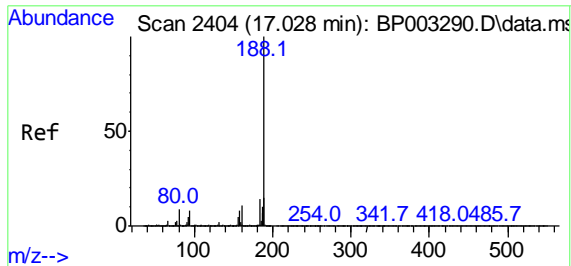
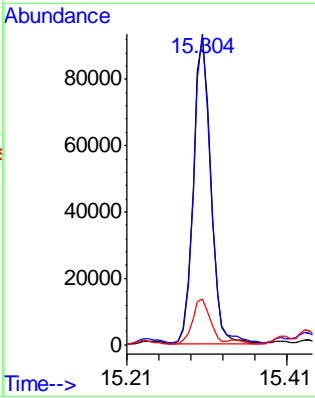
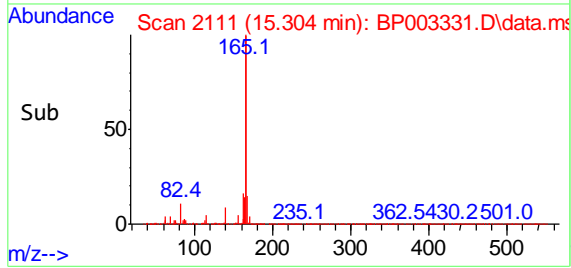
Instrument :
 BNA_P
ClientSampled :
 PAV-091620-DP



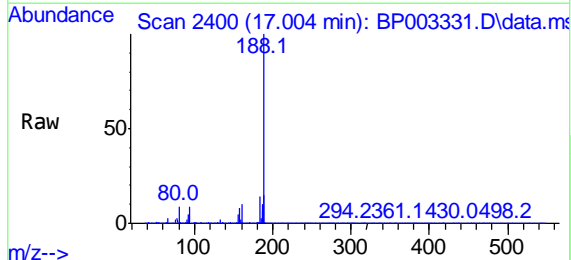
Tgt Ion:166 Resp: 134391

Ion	Ratio	Lower	Upper
166	100		
165	101.2	77.8	116.8
167	15.1	11.0	16.4

Manual Integrations
APPROVED
 mohammad
 9/21/2020 10:35:58 AM

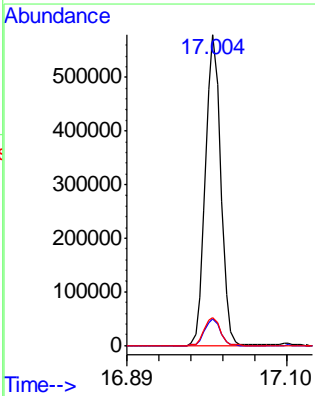
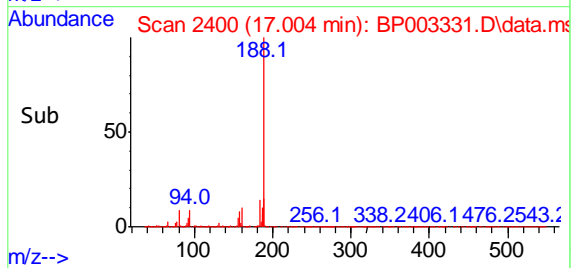


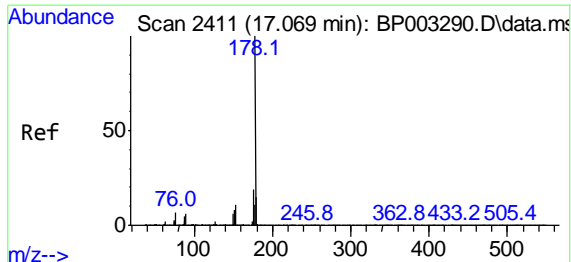
#64
 Phenanthrene-d10
 Concen: 20.00 ng
 RT: 17.004 min Scan# 2400
 Delta R.T. -0.000 min
 Lab File: BP003331.D
 Acq: 18 Sep 2020 20:31



Tgt Ion:188 Resp: 815991

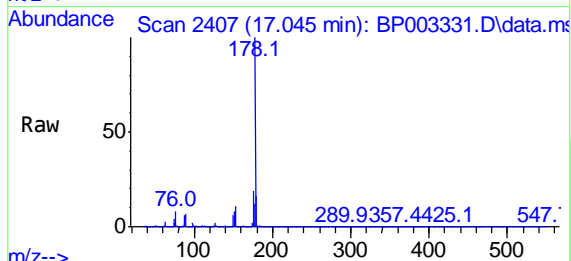
Ion	Ratio	Lower	Upper
188	100		
94	8.7	6.2	9.2
80	9.1	6.2	9.2





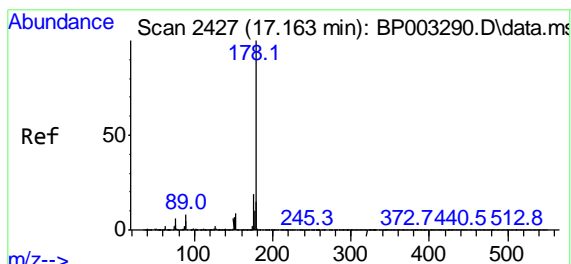
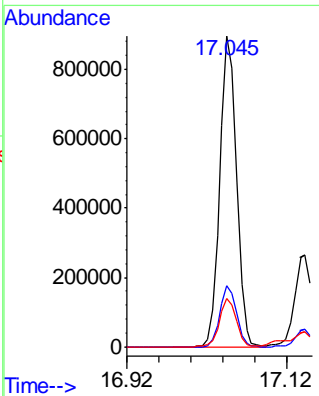
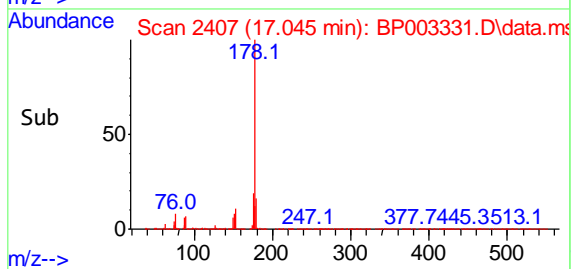
#71
 Phenanthrene
 Concen: 27.96 ng
 RT: 17.045 min Scan# 2407
 Delta R.T. -0.000 min
 Lab File: BP003331.D
 Acq: 18 Sep 2020 20:31

Instrument :
 BNA_P
ClientSampled :
 PAV-091620-DP

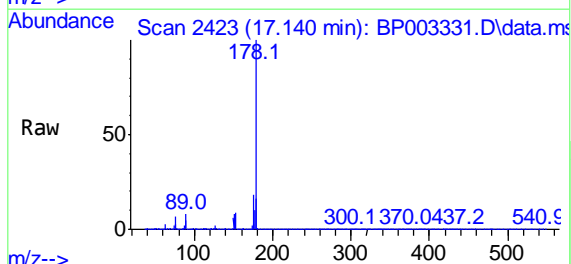


Tgt Ion:178 Resp: 1241206
 Ion Ratio Lower Upper
 178 100
 176 19.5 15.3 22.9
 179 15.6 12.5 18.7

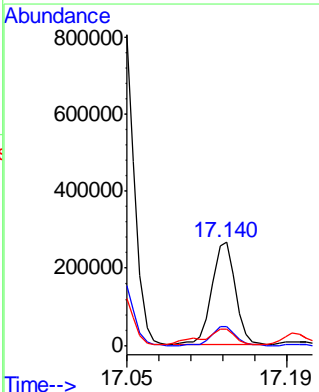
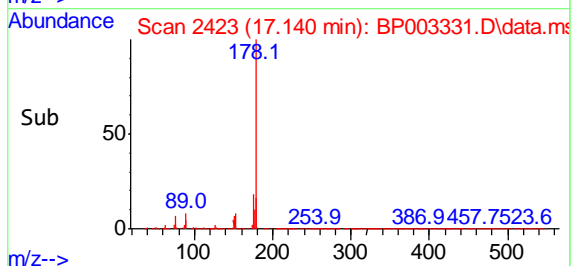
Manual Integrations
APPROVED
 mohammad
 9/21/2020 10:35:58 AM

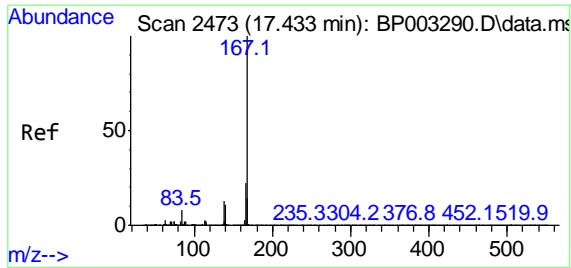


#72
 Anthracene
 Concen: 8.68 ng
 RT: 17.140 min Scan# 2423
 Delta R.T. 0.006 min
 Lab File: BP003331.D
 Acq: 18 Sep 2020 20:31



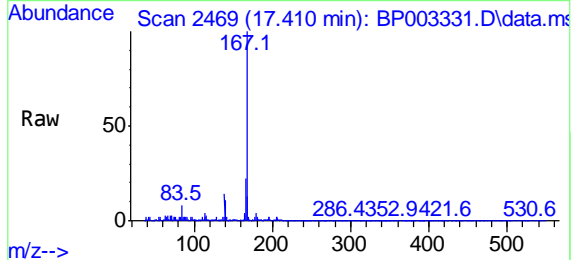
Tgt Ion:178 Resp: 379668
 Ion Ratio Lower Upper
 178 100
 176 18.4 15.0 22.4
 179 15.9 12.5 18.7





#73
 Carbazole
 Concen: 2.72 ng
 RT: 17.410 min Scan# 2469
 Delta R.T. -0.000 min
 Lab File: BP003331.D
 Acq: 18 Sep 2020 20:31

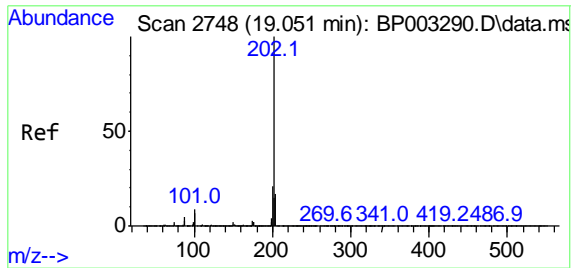
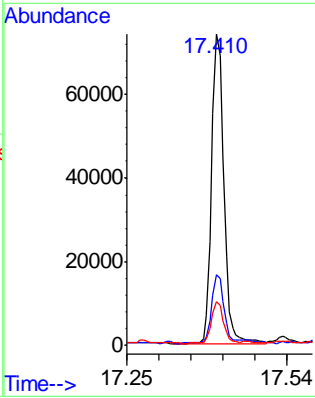
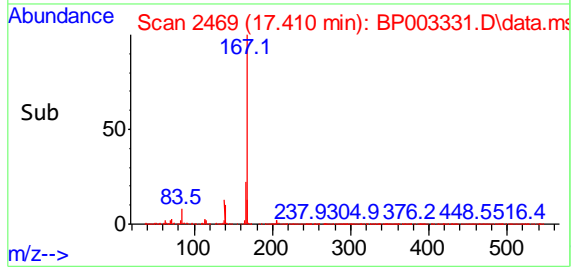
Instrument :
 BNA_P
ClientSampled :
 PAV-091620-DP



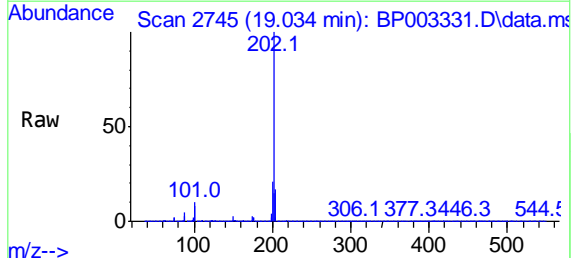
Tgt Ion:167 Resp: 113025

Ion	Ratio	Lower	Upper
167	100		
166	22.5	17.6	26.4
139	13.7	10.2	15.4

Manual Integrations
APPROVED
 mohammad
 9/21/2020 10:35:58 AM

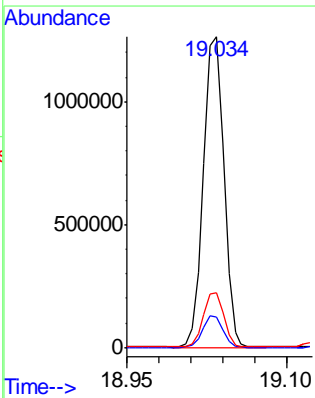
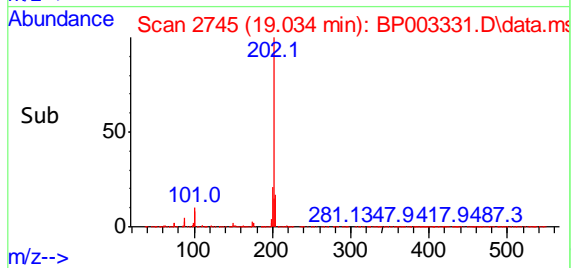


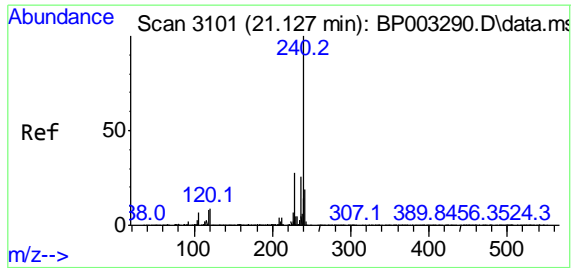
#75
 Fluoranthene
 Concen: 30.66 ng
 RT: 19.034 min Scan# 2745
 Delta R.T. 0.006 min
 Lab File: BP003331.D
 Acq: 18 Sep 2020 20:31



Tgt Ion:202 Resp: 1711731

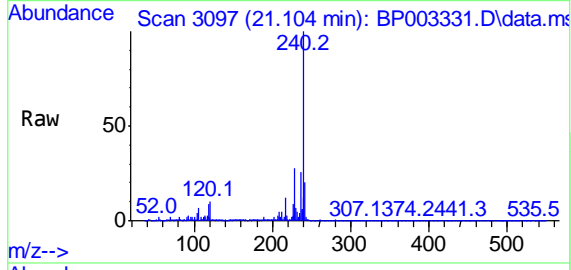
Ion	Ratio	Lower	Upper
202	100		
101	9.8	0.0	29.4
203	17.5	0.0	37.8





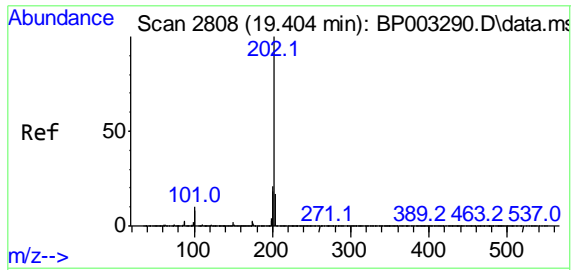
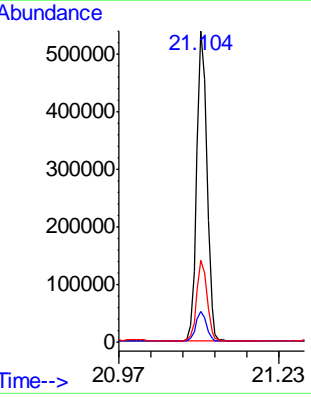
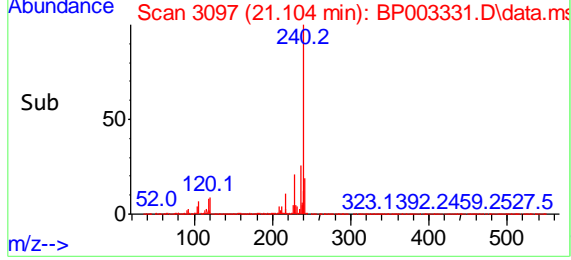
#76
 Chrysene-d12
 Concen: 20.00 ng
 RT: 21.104 min Scan# 3097
 Delta R.T. -0.000 min
 Lab File: BP003331.D
 Acq: 18 Sep 2020 20:31

Instrument :
 BNA_P
ClientSampled :
 PAV-091620-DP

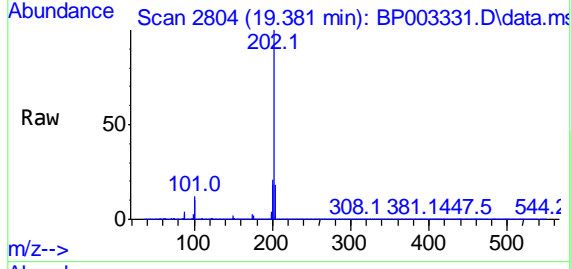


Tgt Ion:240 Resp: 626088
 Ion Ratio Lower Upper
 240 100
 120 9.7 7.8 11.6
 236 26.4 20.8 31.2

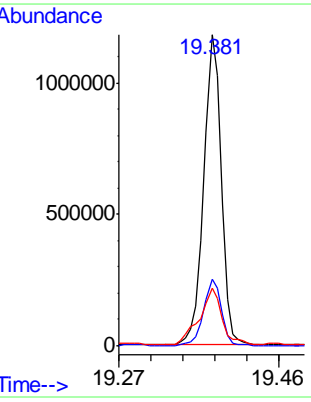
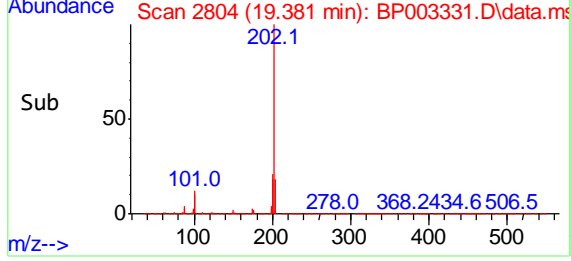
Manual Integrations
APPROVED
 mohammad
 9/21/2020 10:35:58 AM

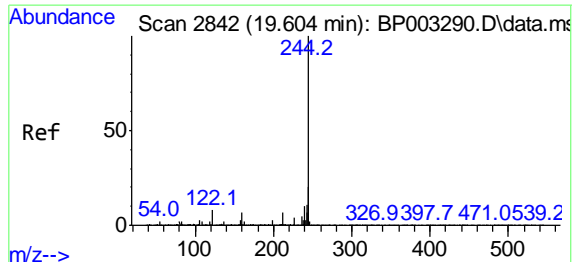


#78
 Pyrene
 Concen: 40.34 ng
 RT: 19.381 min Scan# 2804
 Delta R.T. -0.000 min
 Lab File: BP003331.D
 Acq: 18 Sep 2020 20:31



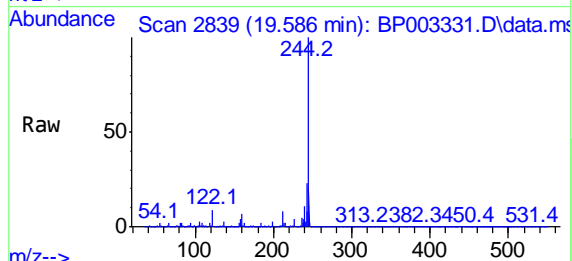
Tgt Ion:202 Resp: 1575132
 Ion Ratio Lower Upper
 202 100
 200 21.4 17.1 25.7
 203 18.5 14.2 21.2





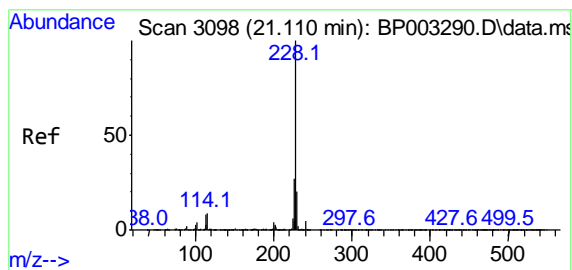
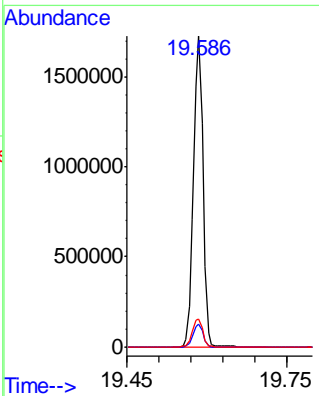
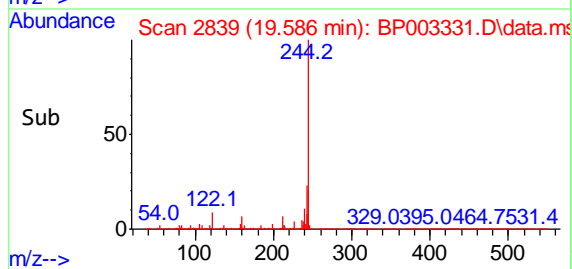
#79
 Terphenyl-d14
 Concen: 70.07 ng
 RT: 19.586 min Scan# 2839
 Delta R.T. 0.006 min
 Lab File: BP003331.D
 Acq: 18 Sep 2020 20:31

Instrument :
 BNA_P
Client Sampled :
 PAV-091620-DP

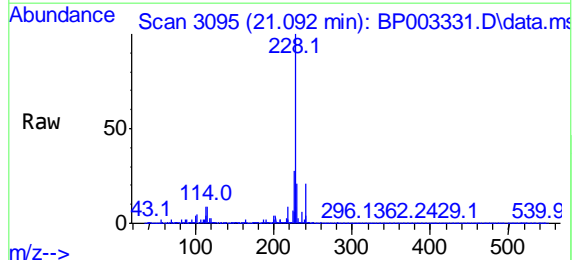


Tgt Ion:244 Resp: 2105472
 Ion Ratio Lower Upper
 244 100
 212 7.5 5.8 8.6
 122 8.9 7.8 11.8

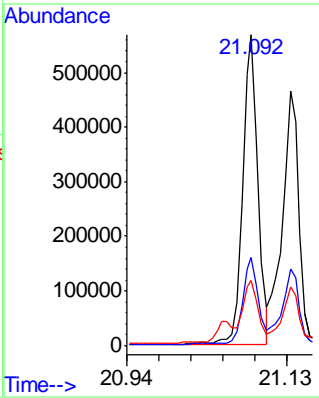
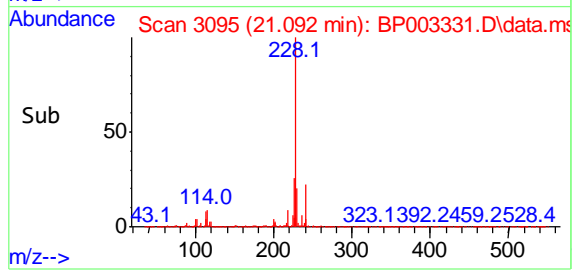
Manual Integrations
APPROVED
 mohammad
 9/21/2020 10:35:58 AM

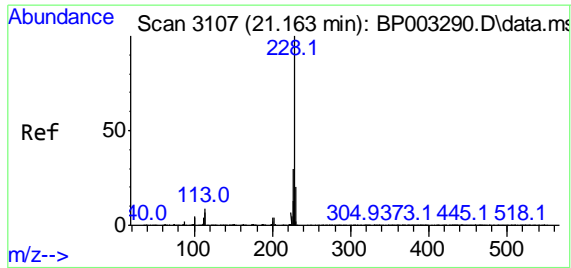


#81
 Benzo(a)anthracene
 Concen: 17.87 ng
 RT: 21.092 min Scan# 3095
 Delta R.T. 0.006 min
 Lab File: BP003331.D
 Acq: 18 Sep 2020 20:31



Tgt Ion:228 Resp: 723057
 Ion Ratio Lower Upper
 228 100
 226 28.2 22.1 33.1
 229 20.9 15.9 23.9





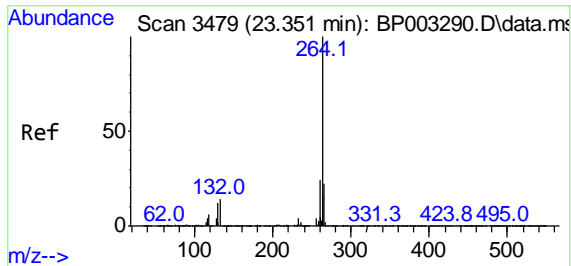
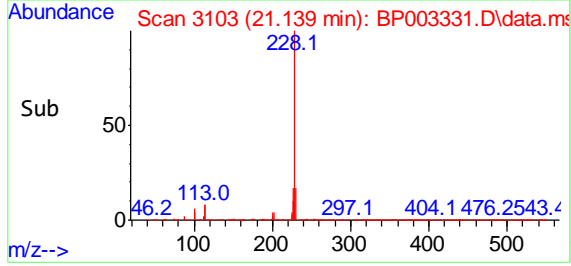
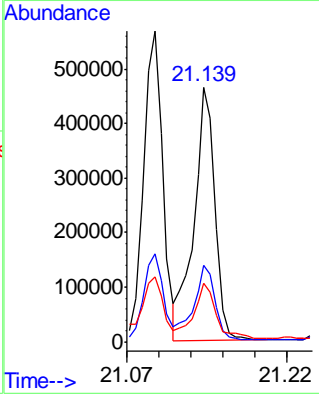
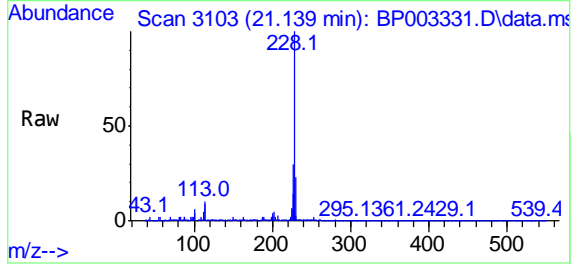
#83
 Chrysene
 Concen: 16.65 ng
 RT: 21.139 min Scan# 3103
 Delta R.T. -0.000 min
 Lab File: BP003331.D
 Acq: 18 Sep 2020 20:31

Instrument :
 BNA_P
Client Sampled :
 PAV-091620-DP

Tgt Ion: 228 Resp: 647244

Ion	Ratio	Lower	Upper
228	100		
226	30.2	24.4	36.6
229	23.2	15.8	23.6

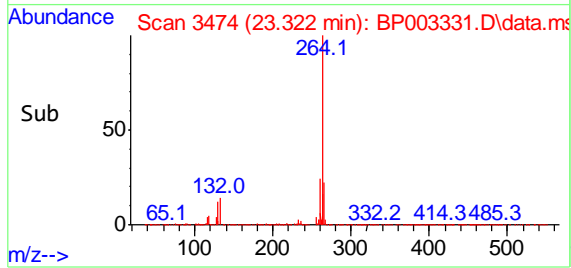
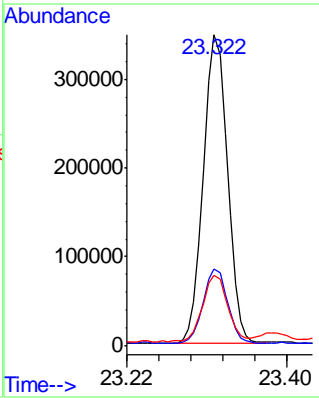
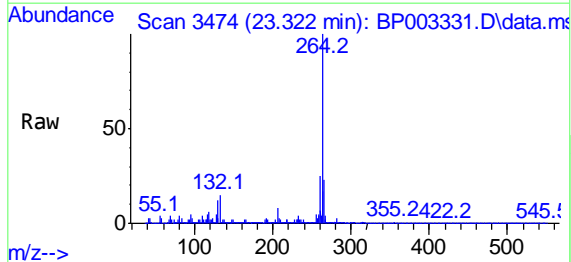
Manual Integrations
APPROVED
 mohammad
 9/21/2020 10:35:58 AM

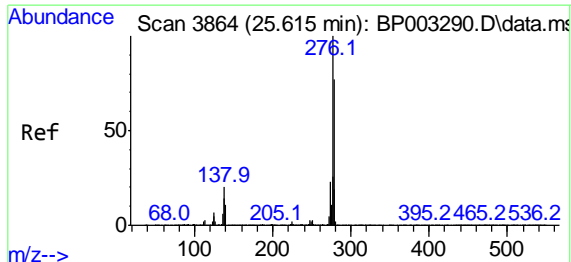


#86
 Perylene-d12
 Concen: 20.00 ng
 RT: 23.322 min Scan# 3474
 Delta R.T. 0.006 min
 Lab File: BP003331.D
 Acq: 18 Sep 2020 20:31

Tgt Ion: 264 Resp: 647422

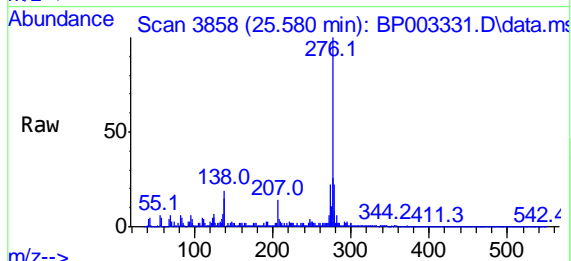
Ion	Ratio	Lower	Upper
264	100		
260	24.7	18.8	28.2
265	22.6	17.4	26.2





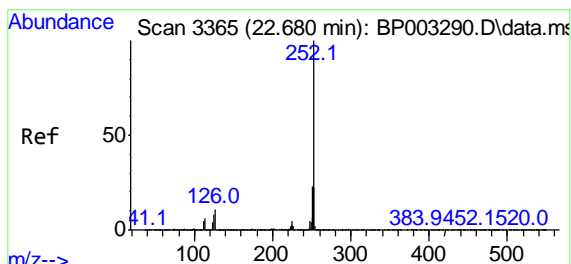
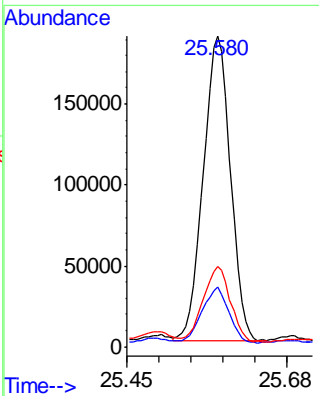
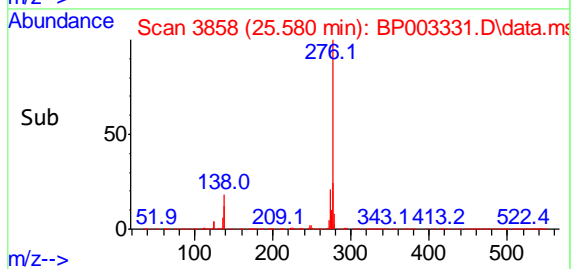
#87
 Indeno(1,2,3-cd)pyrene
 Concen: 10.60 ng
 RT: 25.580 min Scan# 3858
 Delta R.T. 0.012 min
 Lab File: BP003331.D
 Acq: 18 Sep 2020 20:31

Instrument :
 BNA_P
ClientSampled :
 PAV-091620-DP

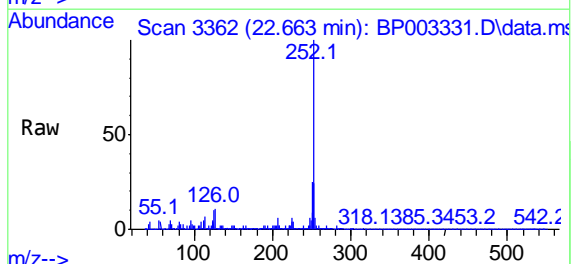


Tgt Ion:276 Resp: 520036
 Ion Ratio Lower Upper
 276 100
 138 18.1 18.7 28.1#
 277 25.2 20.4 30.6

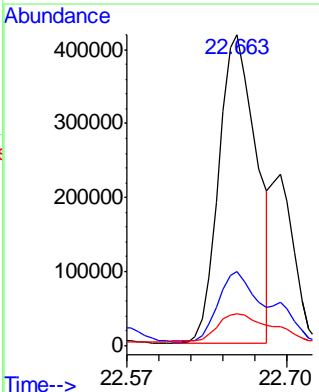
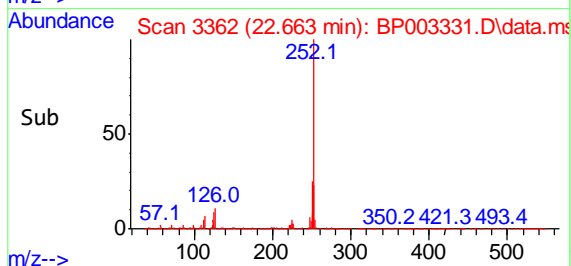
Manual Integrations
APPROVED
 mohammad
 9/21/2020 10:35:58 AM

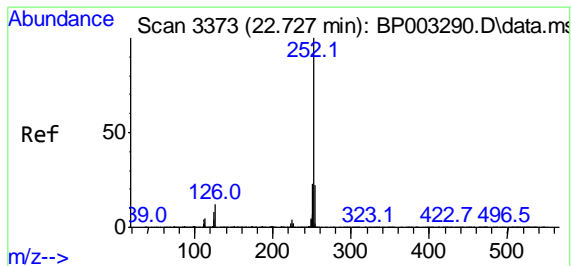


#88
 Benzo(b)fluoranthene
 Concen: 21.99 ng m
 RT: 22.663 min Scan# 3362
 Delta R.T. 0.012 min
 Lab File: BP003331.D
 Acq: 18 Sep 2020 20:31



Tgt Ion:252 Resp: 898997
 Ion Ratio Lower Upper
 252 100
 253 24.0 17.6 26.4
 125 10.2 7.3 10.9





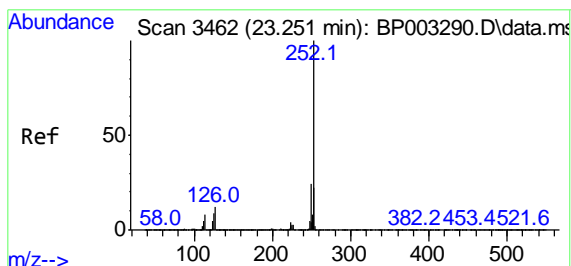
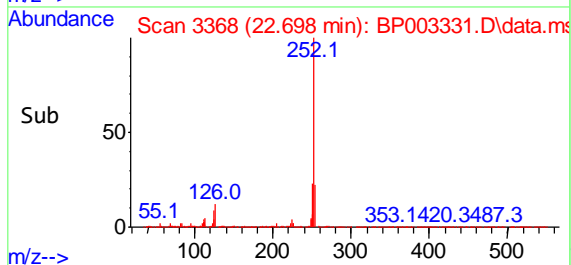
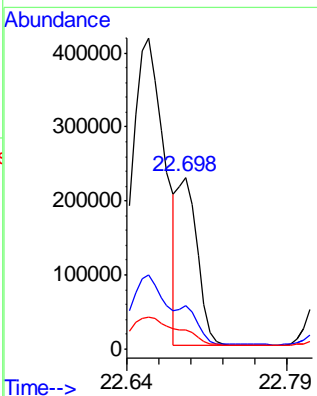
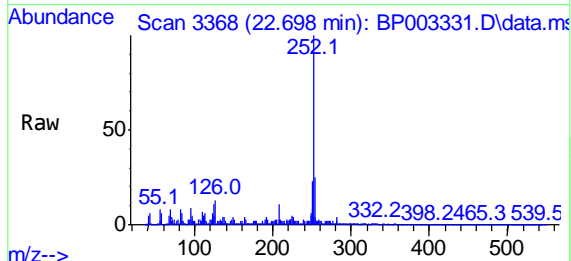
#89
 Benzo(k)fluoranthene
 Concen: 7.61 ng m
 RT: 22.698 min Scan# 3368
 Delta R.T. 0.006 min
 Lab File: BP003331.D
 Acq: 18 Sep 2020 20:31

Instrument :
 BNA_P
ClientSampled :
 PAV-091620-DP

Tgt Ion:252 Resp: 298006

Ion	Ratio	Lower	Upper
252	100		
253	24.9	17.8	26.8
125	11.2	7.4	11.2#

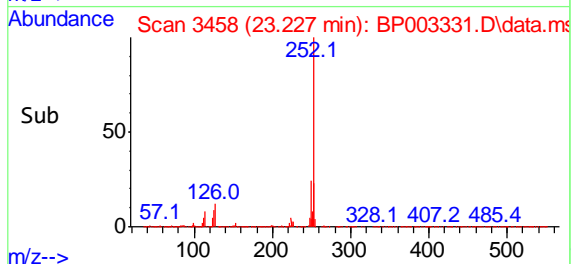
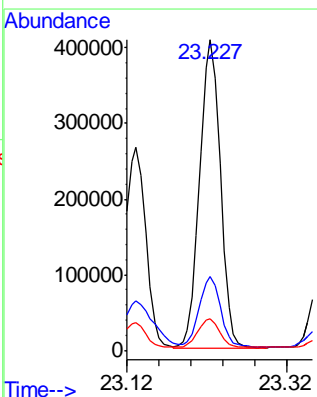
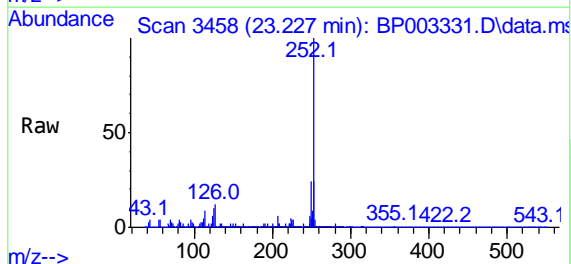
Manual Integrations
APPROVED
 mohammad
 9/21/2020 10:35:58 AM

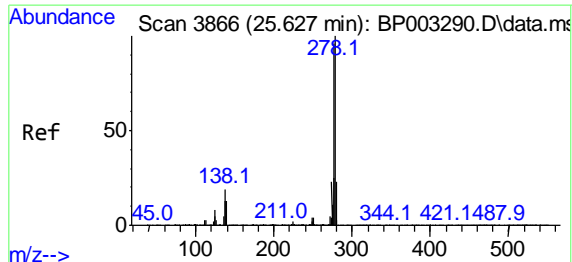


#90
 Benzo(a)pyrene
 Concen: 19.17 ng
 RT: 23.227 min Scan# 3458
 Delta R.T. 0.006 min
 Lab File: BP003331.D
 Acq: 18 Sep 2020 20:31

Tgt Ion:252 Resp: 739209

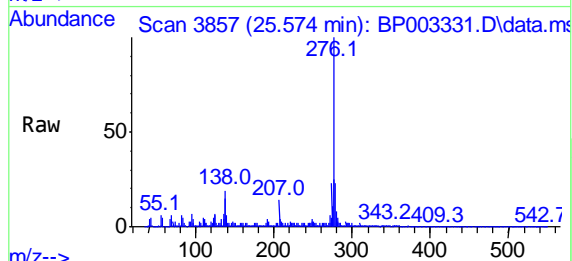
Ion	Ratio	Lower	Upper
252	100		
253	23.8	17.4	26.0
125	10.1	8.2	12.4





#91
 Dibenzo(a,h)anthracene
 Concen: 3.14 ng
 RT: 25.574 min Scan# 3857
 Delta R.T. -0.000 min
 Lab File: BP003331.D
 Acq: 18 Sep 2020 20:31

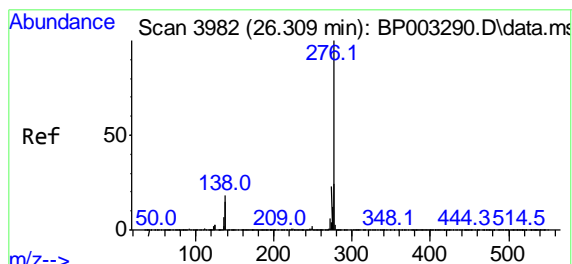
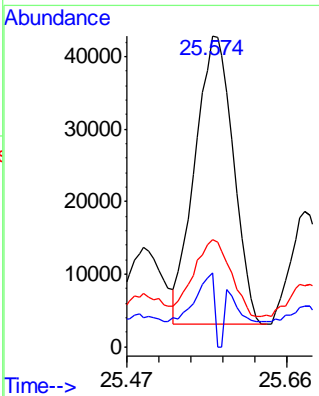
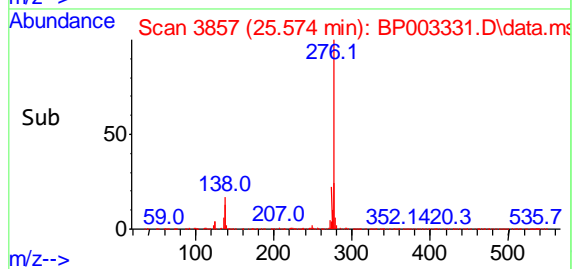
Instrument :
 BNA_P
ClientSampled :
 PAV-091620-DP



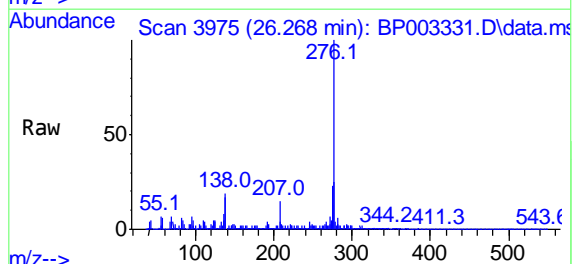
Tgt Ion: 278 Resp: 127307

Ion	Ratio	Lower	Upper
278	100		
139	23.9	12.4	18.6#
279	34.4	19.0	28.6#

Manual Integrations
APPROVED
 mohammad
 9/21/2020 10:35:58 AM



#92
 Benzo(g,h,i)perylene
 Concen: 13.47 ng
 RT: 26.268 min Scan# 3975
 Delta R.T. 0.012 min
 Lab File: BP003331.D
 Acq: 18 Sep 2020 20:31



Tgt Ion: 276 Resp: 544400

Ion	Ratio	Lower	Upper
276	100		
277	24.8	19.0	28.6
138	19.3	16.6	24.8

