

Data Path : Z:\svoasrv\HPCHEM1\BNA_P\Data\BP091820\
 Data File : BP003331.D
 Acq On : 18 Sep 2020 20:31
 Operator : CG/JU
 Sample : L4038-07
 Misc :
 ALS Vial : 14 Sample Multiplier: 1

Instrument :
 BNA_P
 ClientSampleId :
 PAV-091620-DP

Integration Parameters: rteint.p

Integrator: RTE
 Smoothing : ON
 Sampling : 1
 Start Thrs: 0.2
 Stop Thrs : 0

Filtering: 5
 Min Area: 3 % of largest Peak
 Max Peaks: 100
 Peak Location: TOP

If leading or trailing edge < 100 prefer < Baseline drop else tangent >
 Peak separation: 5

Method : Z:\SVOASRV\HPCHEM1\BNA_P\METHODS\8270-BP091520.M
 Title : ASP BNA STANDARDS FOR 5 POINT CALIBRATION

Signal : TIC: BP003331.D\data.ms

peak #	R.T. min	first scan	max scan	last scan	PK TY	peak height	corr. area	corr. % max.	% of total
1	5.217	389	396	413	rBV	2419118	3597599	57.28%	5.401%
2	6.805	658	666	679	rBV	2153081	3652526	58.15%	5.484%
3	7.599	794	801	811	rBV	699935	1085938	17.29%	1.630%
4	8.752	983	997	1011	rBV	1549692	2669364	42.50%	4.008%
5	10.381	1265	1274	1279	rBV	868538	1539203	24.51%	2.311%
6	10.428	1279	1282	1291	rVB	159469	258803	4.12%	0.389%
7	12.052	1550	1558	1567	rBV	59747	108815	1.73%	0.163%
8	12.275	1590	1596	1602	rBV	52094	81575	1.30%	0.122%
9	12.869	1689	1697	1715	rBV	3988227	6209633	98.87%	9.323%
10	13.081	1727	1733	1742	rVB2	47780	91021	1.45%	0.137%
11	13.410	1784	1789	1800	rBV2	30352	80916	1.29%	0.121%
12	13.569	1810	1816	1821	rBV2	67220	120387	1.92%	0.181%
13	13.628	1821	1826	1833	rVB	42823	70171	1.12%	0.105%
14	13.710	1834	1840	1847	rBV	313830	461195	7.34%	0.692%
15	13.969	1879	1884	1893	rVB2	49845	85548	1.36%	0.128%
16	14.251	1924	1932	1938	rBV	1310080	1989907	31.68%	2.988%
17	14.310	1938	1942	1951	rVB	325533	493974	7.86%	0.742%
18	14.651	1995	2000	2008	rVB	184633	291018	4.63%	0.437%
19	15.304	2105	2111	2116	rBV	310933	473055	7.53%	0.710%
20	15.469	2135	2139	2143	rVB3	54726	73363	1.17%	0.110%
21	15.604	2157	2162	2171	rVB	95127	161117	2.57%	0.242%
22	15.751	2180	2187	2196	rBV	2612884	3859488	61.45%	5.794%
23	15.993	2223	2228	2232	rBV5	47732	70659	1.13%	0.106%
24	16.316	2273	2283	2288	rBV3	62737	160770	2.56%	0.241%
25	16.663	2338	2342	2349	rVB2	58627	103913	1.65%	0.156%
26	16.745	2351	2356	2361	rBV4	63084	139485	2.22%	0.209%
27	16.822	2366	2369	2379	rVB	132820	222306	3.54%	0.334%
28	17.004	2394	2400	2403	rBV	1366397	1923745	30.63%	2.888%
29	17.045	2403	2407	2413	rVV	2120280	2917504	46.45%	4.380%
30	17.140	2414	2423	2429	rVB	587189	929251	14.80%	1.395%
31	17.198	2429	2433	2440	rBV	93456	149844	2.39%	0.225%
32	17.410	2461	2469	2474	rBV2	171874	318902	5.08%	0.479%
33	17.528	2486	2489	2496	rVB3	82575	111624	1.78%	0.168%
34	17.881	2544	2549	2553	rBV	213796	292381	4.66%	0.439%
35	17.928	2553	2557	2564	rVV	394482	515926	8.21%	0.775%
36	18.004	2566	2570	2576	rVV	160999	237827	3.79%	0.357%
37	18.069	2576	2581	2585	rVV2	431731	731546	11.65%	1.098%

Data Path : Z:\svoasrv\HPCHEM1\BNA_P\Data\BP091820\
 Data File : BP003331.D
 Acq On : 18 Sep 2020 20:31
 Operator : CG/JU
 Sample : L4038-07
 Misc :
 ALS Vial : 14 Sample Multiplier: 1

Instrument :
 BNA_P
 ClientSampleId :
 PAV-091620-DP

Integration Parameters: rteint.p

Integrator: RTE
 Smoothing : ON Filtering: 5
 Sampling : 1 Min Area: 3 % of largest Peak
 Start Thrs: 0.2 Max Peaks: 100
 Stop Thrs : 0 Peak Location: TOP

If leading or trailing edge < 100 prefer < Baseline drop else tangent >
 Peak separation: 5

Method : Z:\SVOASRV\HPCHEM1\BNA_P\METHODS\8270-BP091520.M
 Title : ASP BNA STANDARDS FOR 5 POINT CALIBRATION

38	18.104	2585	2587	2594	rVB	163096	198744	3.16%	0.298%
39	18.216	2603	2606	2611	rVB3	51970	65911	1.05%	0.099%
40	18.369	2629	2632	2636	rVB	187350	200253	3.19%	0.301%
41	18.410	2636	2639	2642	rBV	68454	80567	1.28%	0.121%
42	18.610	2671	2673	2678	rVB2	103529	109345	1.74%	0.164%
43	18.775	2697	2701	2707	rBV	125655	212839	3.39%	0.320%
44	18.910	2721	2724	2732	rVB3	101669	176527	2.81%	0.265%
45	19.034	2739	2745	2751	rBV	2819367	3878316	61.75%	5.823%
46	19.381	2795	2804	2813	rBV	2658981	4260065	67.83%	6.396%
47	19.457	2813	2817	2824	rVB3	109098	217372	3.46%	0.326%
48	19.586	2831	2839	2843	rBV	4930387	6280798	100.00%	9.430%
49	19.710	2854	2860	2865	rBV2	145467	350385	5.58%	0.526%
50	19.869	2883	2887	2891	rVB	391223	491599	7.83%	0.738%
51	19.963	2900	2903	2907	rBV	270451	320264	5.10%	0.481%
52	20.022	2909	2913	2917	rVB2	192814	301429	4.80%	0.453%
53	20.204	2941	2944	2948	rVB2	108963	141703	2.26%	0.213%
54	20.798	3042	3045	3047	rVB	163154	165367	2.63%	0.248%
55	20.833	3047	3051	3057	rBV2	701999	970358	15.45%	1.457%
56	21.098	3091	3096	3100	rVB3	1841016	3453739	54.99%	5.185%
57	21.139	3100	3103	3113	rVB	1159145	1499039	23.87%	2.251%
58	21.257	3120	3123	3129	rBV2	300830	431934	6.88%	0.648%
59	22.663	3357	3362	3366	rBV	951175	1879220	29.92%	2.821%
60	23.133	3438	3442	3450	rVB	654749	1210047	19.27%	1.817%
61	23.227	3453	3458	3466	rVB	1041294	1919298	30.56%	2.882%
62	23.322	3469	3474	3479	rBV2	829350	1511355	24.06%	2.269%

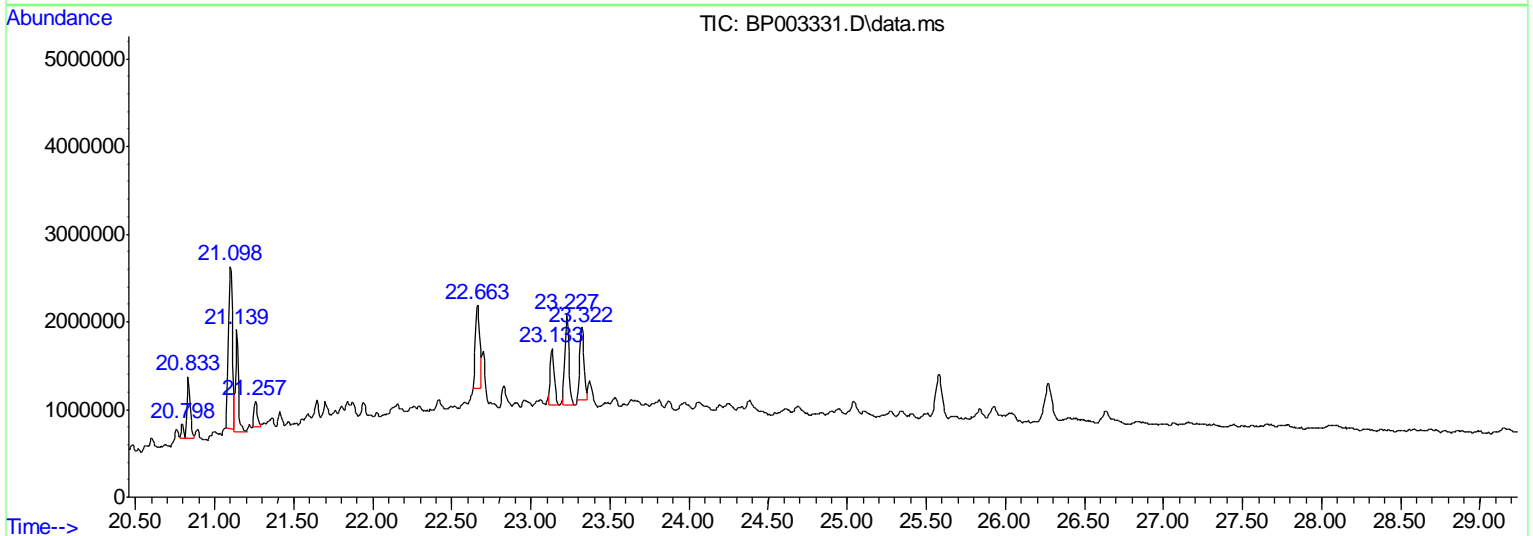
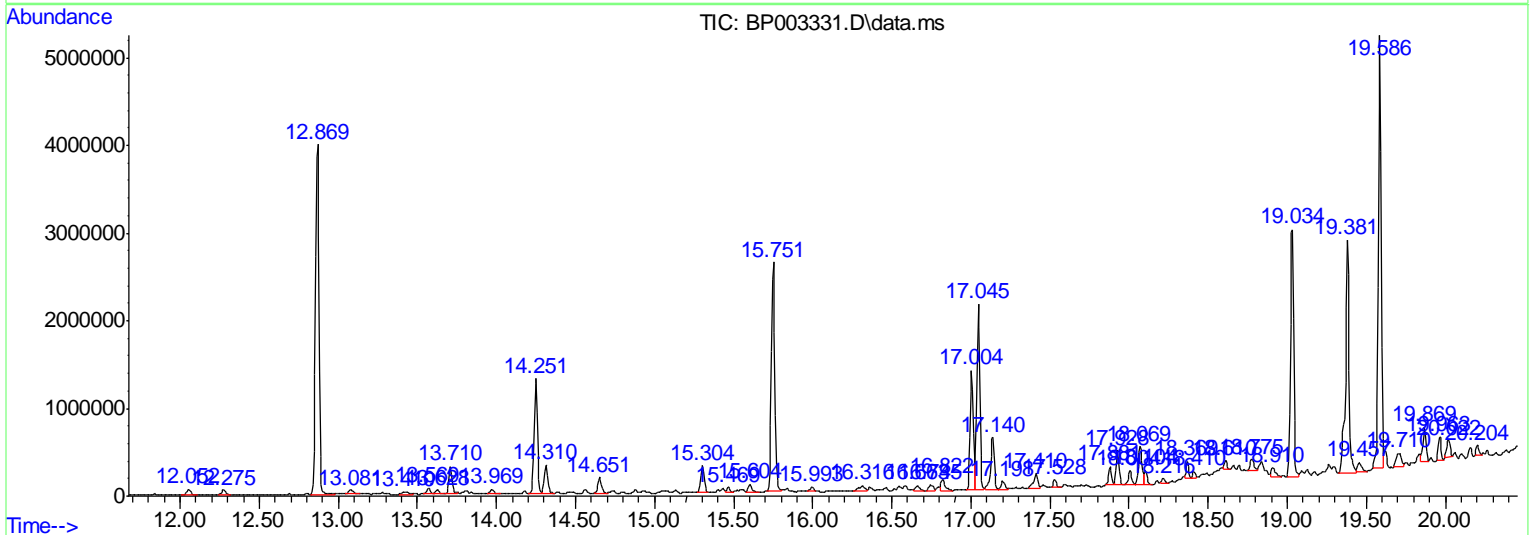
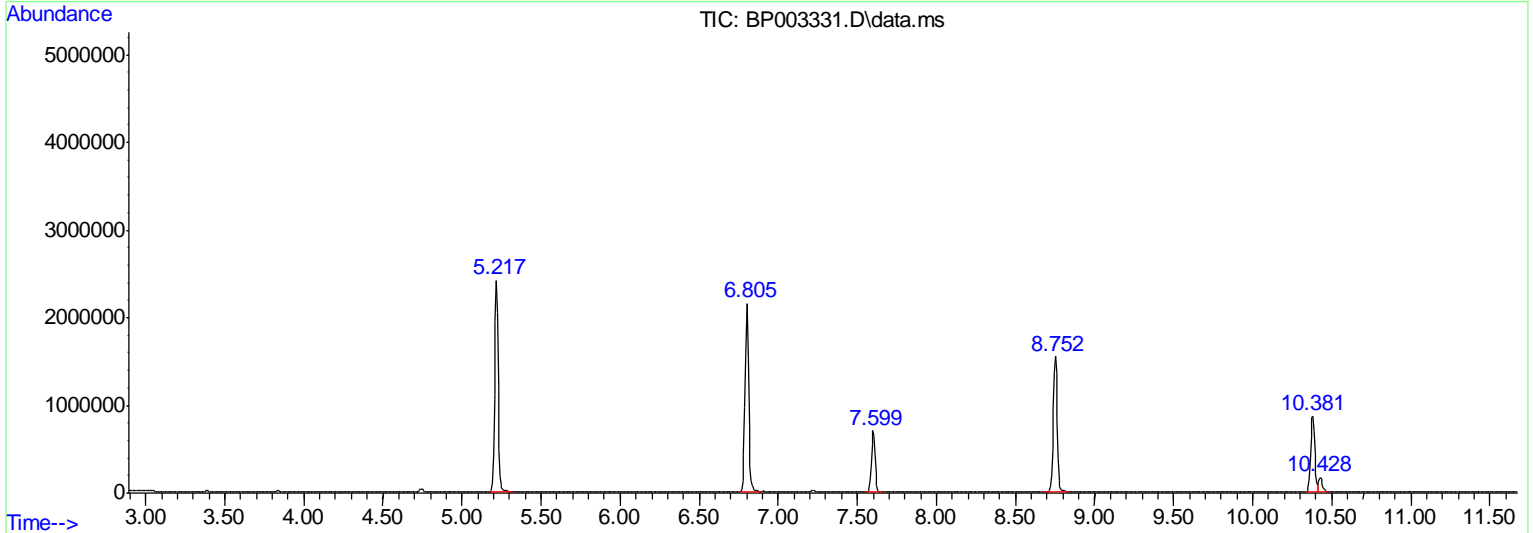
Sum of corrected areas: 66606773

Data Path : Z:\svoasrv\HPCHEM1\BNA_P\Data\BP091820\
 Data File : BP003331.D
 Acq On : 18 Sep 2020 20:31
 Operator : CG/JU
 Sample : L4038-07
 Misc :
 ALS Vial : 14 Sample Multiplier: 1

Instrument :
 BNA_P
ClientSampleId :
 PAV-091620-DP

Quant Method : Z:\SVOASRV\HPCHEM1\BNA_P\METHODS\8270-BP091520.M
 Quant Title : ASP BNA STANDARDS FOR 5 POINT CALIBRATION

TIC Library : C:\DATABASE\NIST11.L
 TIC Integration Parameters: LSCINT.P



Data Path : Z:\svoasrv\HPCHEM1\BNA_P\Data\BP091820\
 Data File : BP003331.D
 Acq On : 18 Sep 2020 20:31
 Operator : CG/JU
 Sample : L4038-07
 Misc :
 ALS Vial : 14 Sample Multiplier: 1

Instrument :
 BNA_P
 ClientSampleID :
 PAV-091620-DP

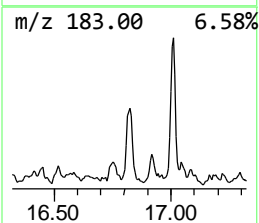
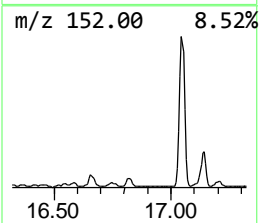
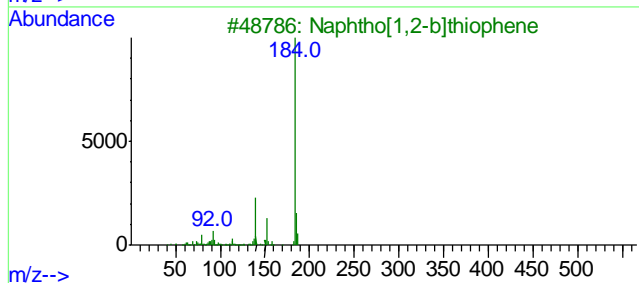
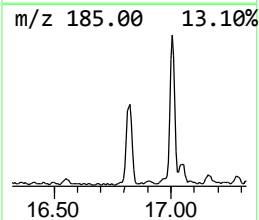
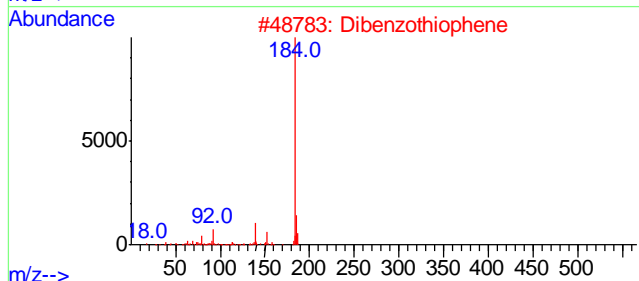
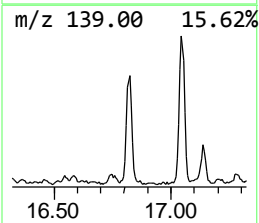
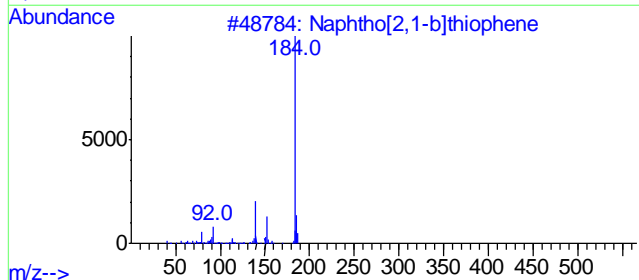
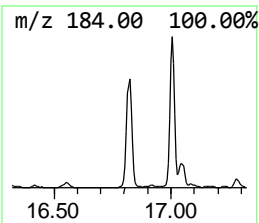
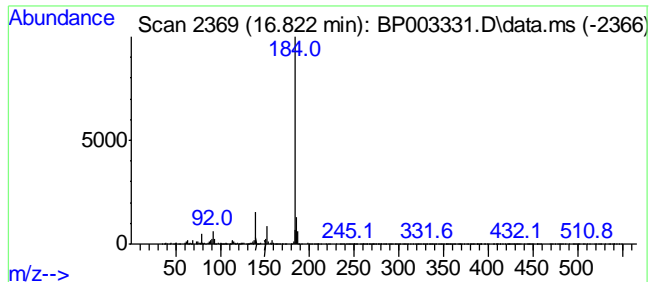
Quant Method : Z:\SVOASRV\HPCHEM1\BNA_P\METHODS\8270-BP091520.M
 Quant Title : ASP BNA STANDARDS FOR 5 POINT CALIBRATION

TIC Library : C:\DATABASE\NIST11.L
 TIC Integration Parameters: LSCINT.P

 Peak Number 1 Naphtho[2,1-b]thiophene Concentration Rank 9

R.T.	EstConc	Area	Relative to ISTD	R.T.
16.822	2.31 ng	222306	Phenanthrene-d10	17.004

Hit# of 5	Tentative ID	MW	MolForm	CAS#	Qual
1	Naphtho[2,1-b]thiophene	184	C12H8S	000233-02-3	97
2	Dibenzothiophene	184	C12H8S	000132-65-0	96
3	Naphtho[1,2-b]thiophene	184	C12H8S	000234-41-3	95
4	Azuleno(2,1-b)thiophene	184	C12H8S	000248-13-5	90
5	Naphtho[2,3-b]thiophene	184	C12H8S	000268-77-9	90



Data Path : Z:\svoasrv\HPCHEM1\BNA_P\Data\BP091820\
 Data File : BP003331.D
 Acq On : 18 Sep 2020 20:31
 Operator : CG/JU
 Sample : L4038-07
 Misc :
 ALS Vial : 14 Sample Multiplier: 1

Instrument :
 BNA_P
 ClientSampleId :
 PAV-091620-DP

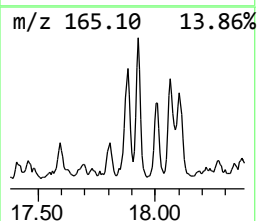
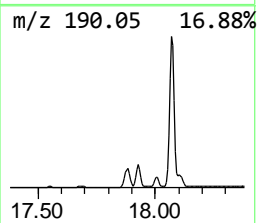
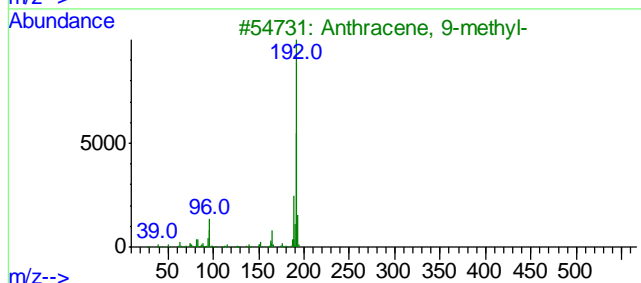
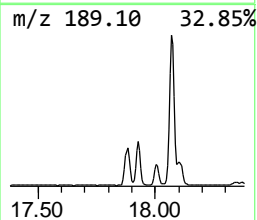
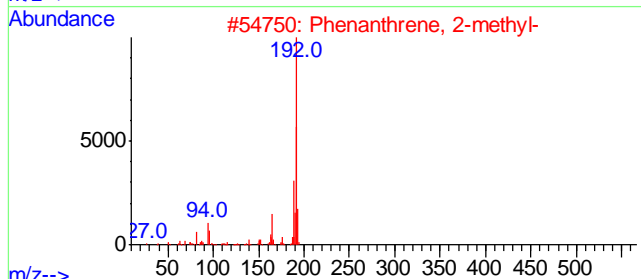
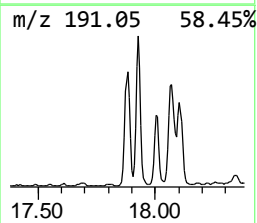
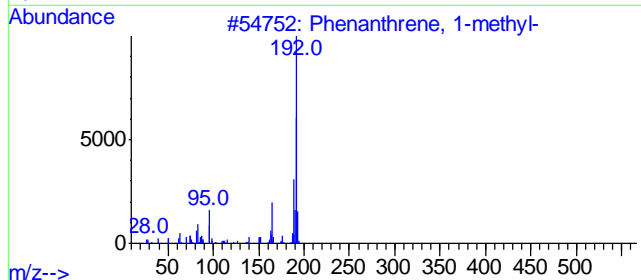
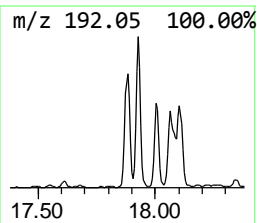
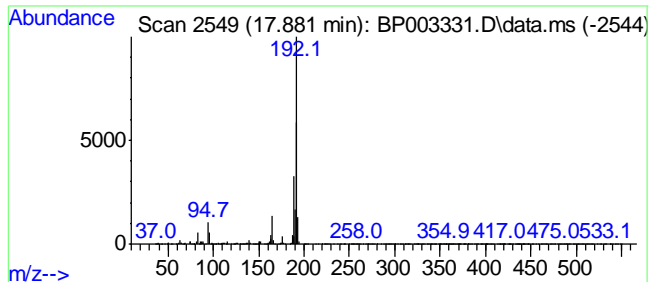
Quant Method : Z:\SVOASRV\HPCHEM1\BNA_P\METHODS\8270-BP091520.M
 Quant Title : ASP BNA STANDARDS FOR 5 POINT CALIBRATION

TIC Library : C:\DATABASE\NIST11.L
 TIC Integration Parameters: LSCINT.P

 Peak Number 2 Phenanthrene, 1-methyl- Concentration Rank 5

R.T.	EstConc	Area	Relative to ISTD	R.T.
17.881	3.04 ng	292381	Phenanthrene-d10	17.004

Hit# of 5	Tentative ID	MW	MolForm	CAS#	Qual
1	Phenanthrene, 1-methyl-	192	C15H12	000832-69-9	94
2	Phenanthrene, 2-methyl-	192	C15H12	002531-84-2	93
3	Anthracene, 9-methyl-	192	C15H12	000779-02-2	91
4	1H-Cyclopropa[1]phenanthrene,1a,...	192	C15H12	000949-41-7	91
5	Anthracene, 2-methyl-	192	C15H12	000613-12-7	89



Data Path : Z:\svoasrv\HPCHEM1\BNA_P\Data\BP091820\
 Data File : BP003331.D
 Acq On : 18 Sep 2020 20:31
 Operator : CG/JU
 Sample : L4038-07
 Misc :
 ALS Vial : 14 Sample Multiplier: 1

Instrument :
 BNA_P
 ClientSampleId :
 PAV-091620-DP

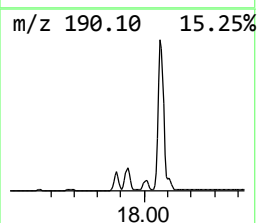
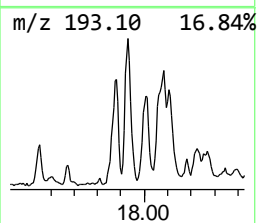
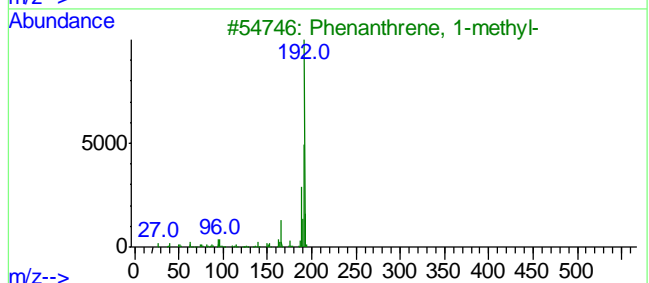
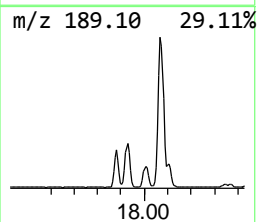
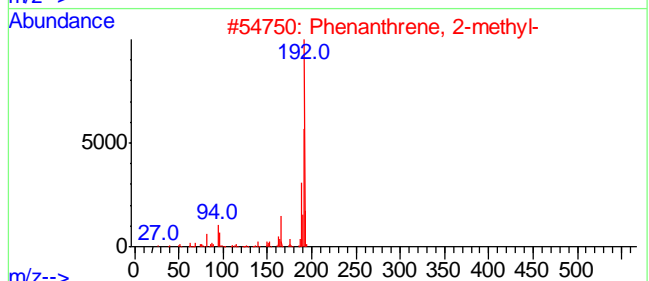
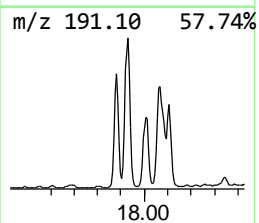
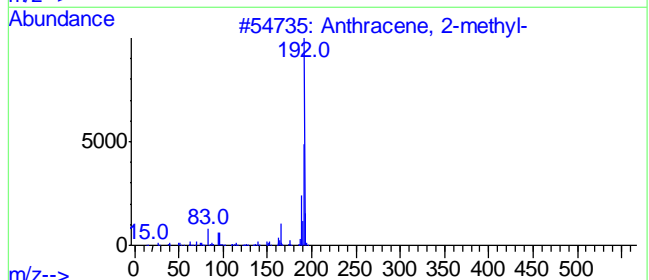
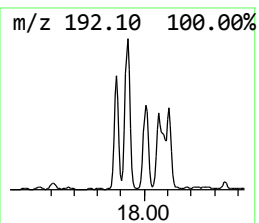
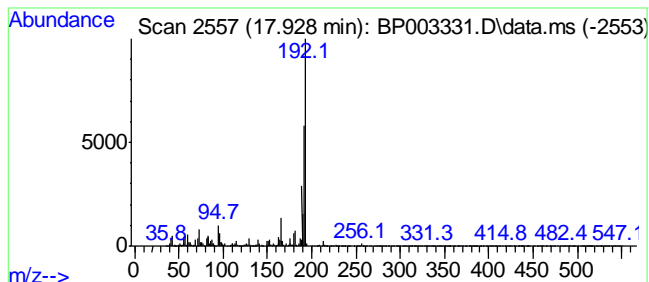
Quant Method : Z:\SVOASRV\HPCHEM1\BNA_P\METHODS\8270-BP091520.M
 Quant Title : ASP BNA STANDARDS FOR 5 POINT CALIBRATION

TIC Library : C:\DATABASE\NIST11.L
 TIC Integration Parameters: LSCINT.P

 Peak Number 3 Anthracene, 2-methyl- Concentration Rank 4

R.T.	EstConc	Area	Relative to ISTD	R.T.
17.928	5.36 ng	515926	Phenanthrene-d10	17.004

Hit# of 5	Tentative ID	MW	MolForm	CAS#	Qual
1	Anthracene, 2-methyl-	192	C15H12	000613-12-7	97
2	Phenanthrene, 2-methyl-	192	C15H12	002531-84-2	97
3	Phenanthrene, 1-methyl-	192	C15H12	000832-69-9	96
4	1H-Cyclopropa[1]phenanthrene,1a,...	192	C15H12	000949-41-7	94
5	Anthracene, 1-methyl-	192	C15H12	000610-48-0	93



Data Path : Z:\svoasrv\HPCHEM1\BNA_P\Data\BP091820\
 Data File : BP003331.D
 Acq On : 18 Sep 2020 20:31
 Operator : CG/JU
 Sample : L4038-07
 Misc :
 ALS Vial : 14 Sample Multiplier: 1

Instrument :
 BNA_P
 ClientSampleId :
 PAV-091620-DP

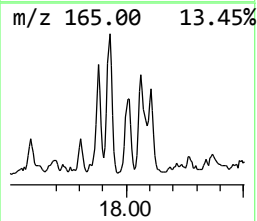
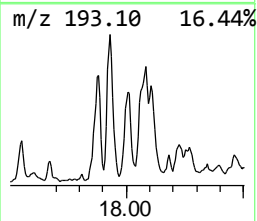
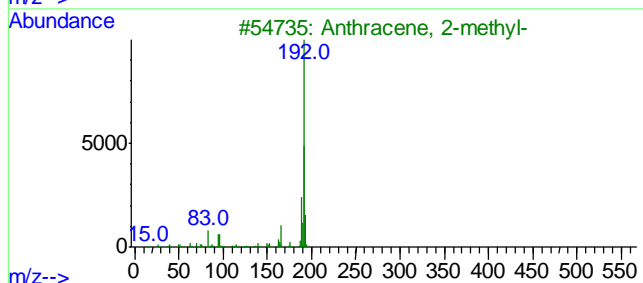
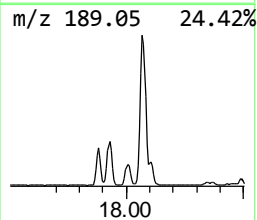
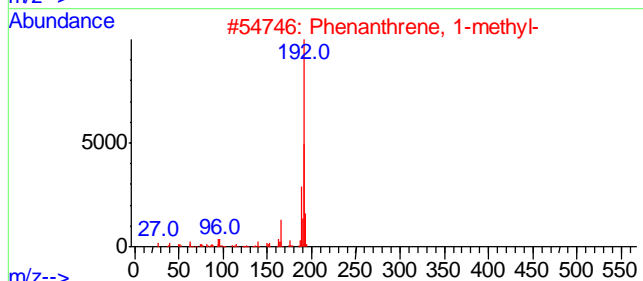
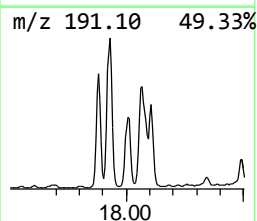
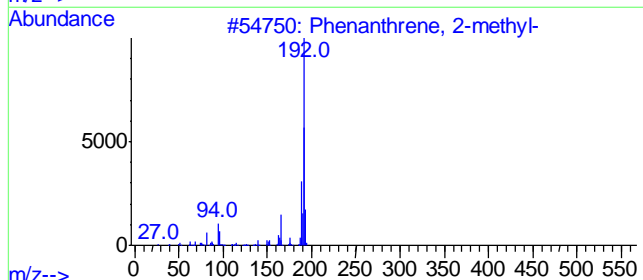
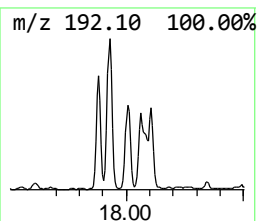
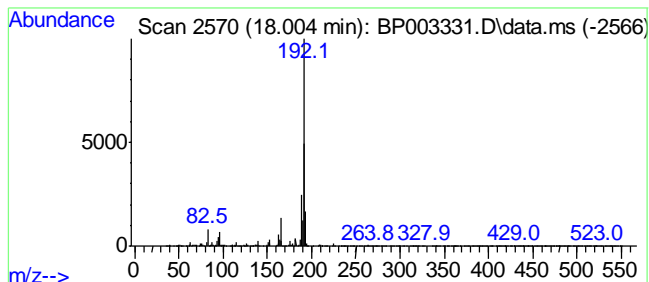
Quant Method : Z:\SVOASRV\HPCHEM1\BNA_P\METHODS\8270-BP091520.M
 Quant Title : ASP BNA STANDARDS FOR 5 POINT CALIBRATION

TIC Library : C:\DATABASE\NIST11.L
 TIC Integration Parameters: LSCINT.P

 Peak Number 4 Phenanthrene, 2-methyl- Concentration Rank 8

R.T.	EstConc	Area	Relative to ISTD	R.T.
18.004	2.47 ng	237827	Phenanthrene-d10	17.004

Hit# of 5	Tentative ID	MW	MolForm	CAS#	Qual
1	Phenanthrene, 2-methyl-	192	C15H12	002531-84-2	97
2	Phenanthrene, 1-methyl-	192	C15H12	000832-69-9	96
3	Anthracene, 2-methyl-	192	C15H12	000613-12-7	95
4	Phenanthrene, 3-methyl-	192	C15H12	000832-71-3	95
5	1H-Indene, 2-phenyl-	192	C15H12	004505-48-0	94



Data Path : Z:\svoasrv\HPCHEM1\BNA_P\Data\BP091820\
 Data File : BP003331.D
 Acq On : 18 Sep 2020 20:31
 Operator : CG/JU
 Sample : L4038-07
 Misc :
 ALS Vial : 14 Sample Multiplier: 1

Instrument :
 BNA_P
 ClientSampleId :
 PAV-091620-DP

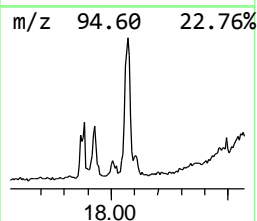
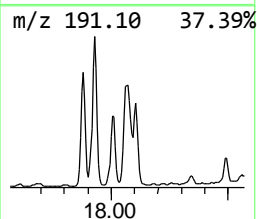
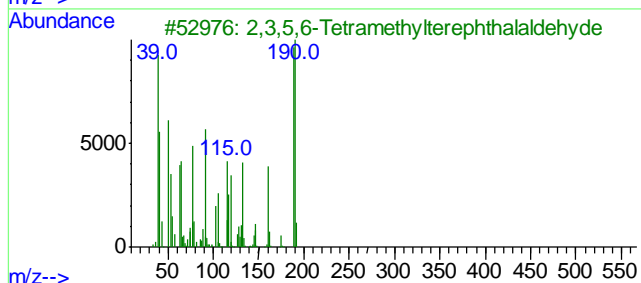
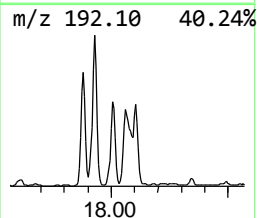
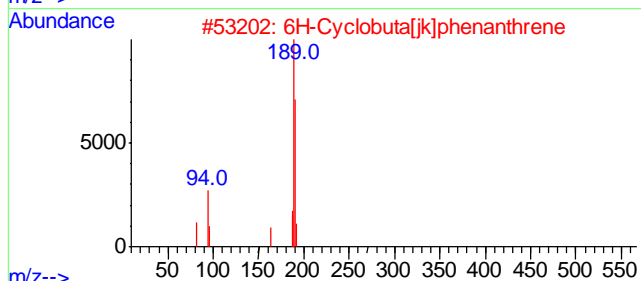
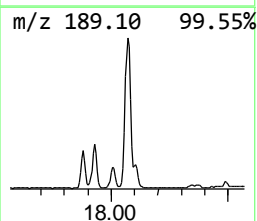
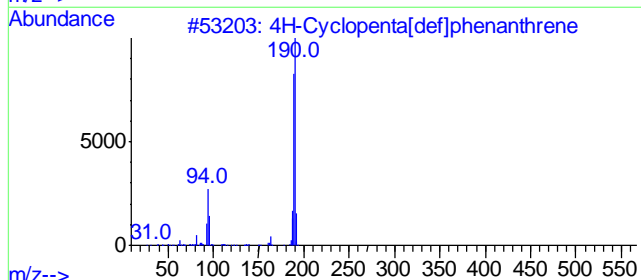
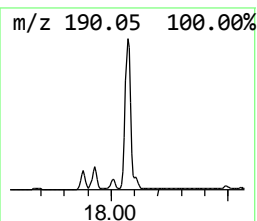
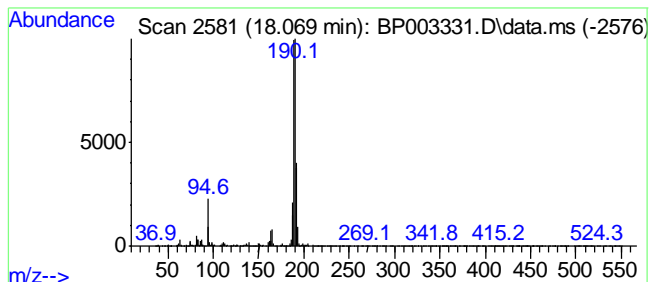
Quant Method : Z:\SVOASRV\HPCHEM1\BNA_P\METHODS\8270-BP091520.M
 Quant Title : ASP BNA STANDARDS FOR 5 POINT CALIBRATION

TIC Library : C:\DATABASE\NIST11.L
 TIC Integration Parameters: LSCINT.P

 Peak Number 5 4H-Cyclopenta[def]phenanthrene Concentration Rank 2

R.T.	EstConc	Area	Relative to ISTD	R.T.
18.069	7.61 ng	731546	Phenanthrene-d10	17.004

Hit# of 5	Tentative ID	MW	MolForm	CAS#	Qual
1	4H-Cyclopenta[def]phenanthrene	190	C15H10	000203-64-5	93
2	6H-Cyclobuta[jk]phenanthrene	190	C15H10	083469-43-6	59
3	2,3,5,6-Tetramethylterephthalald...	190	C12H14O2	007072-01-7	47
4	Methyl diselenide	190	C2H6Se2	007101-31-7	45
5	2,2'-Bis(4,5-dimethylimidazole)	190	C10H14N4	069286-06-2	40



Data Path : Z:\svoasrv\HPCHEM1\BNA_P\Data\BP091820\
 Data File : BP003331.D
 Acq On : 18 Sep 2020 20:31
 Operator : CG/JU
 Sample : L4038-07
 Misc :
 ALS Vial : 14 Sample Multiplier: 1

Instrument :
 BNA_P
 ClientSampleId :
 PAV-091620-DP

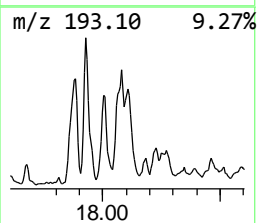
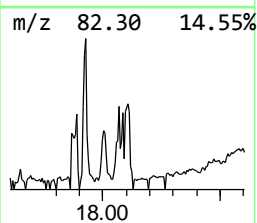
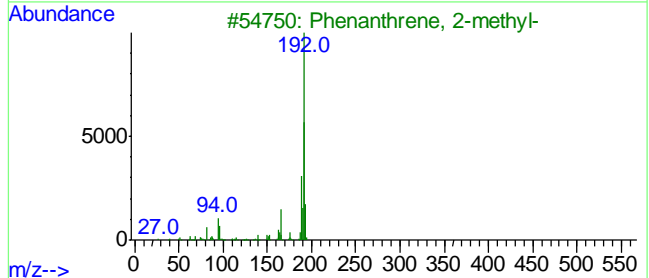
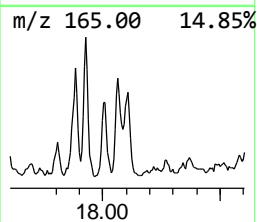
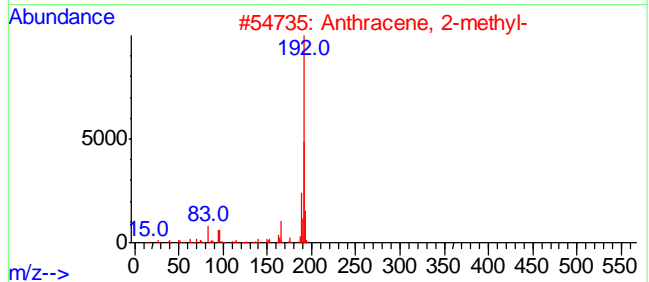
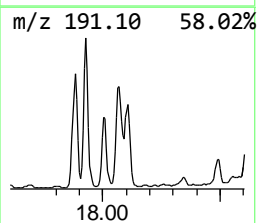
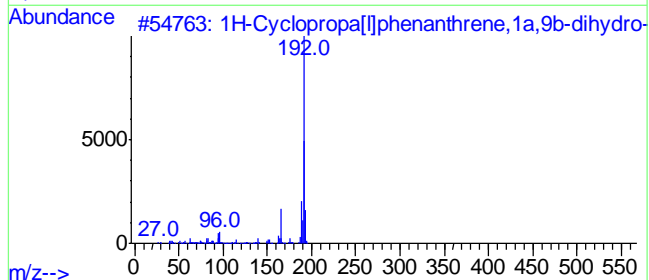
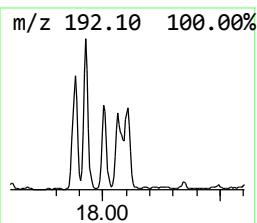
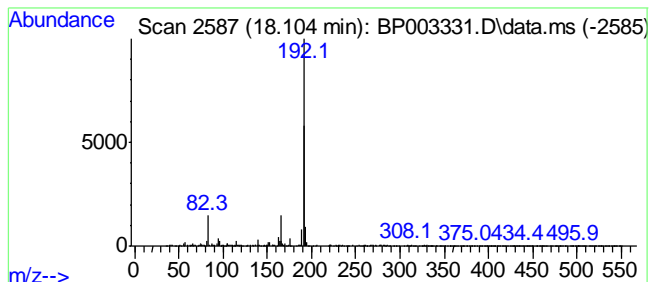
Quant Method : Z:\SVOASRV\HPCHEM1\BNA_P\METHODS\8270-BP091520.M
 Quant Title : ASP BNA STANDARDS FOR 5 POINT CALIBRATION

TIC Library : C:\DATABASE\NIST11.L
 TIC Integration Parameters: LSCINT.P

 Peak Number 6 1H-Cyclopropa[l]phenanthren... Concentration Rank 12

R.T.	EstConc	Area	Relative to ISTD	R.T.
18.104	2.07 ng	198744	Phenanthrene-d10	17.004

Hit# of 5	Tentative ID	MW	MolForm	CAS#	Qual
1	1H-Cyclopropa[l]phenanthrene,1a,...	192	C15H12	000949-41-7	87
2	Anthracene, 2-methyl-	192	C15H12	000613-12-7	87
3	Phenanthrene, 2-methyl-	192	C15H12	002531-84-2	83
4	Phenanthrene, 1-methyl-	192	C15H12	000832-69-9	83
5	Anthracene, 1-methyl-	192	C15H12	000610-48-0	80



Data Path : Z:\svoasrv\HPCHEM1\BNA_P\Data\BP091820\
 Data File : BP003331.D
 Acq On : 18 Sep 2020 20:31
 Operator : CG/JU
 Sample : L4038-07
 Misc :
 ALS Vial : 14 Sample Multiplier: 1

Instrument :
 BNA_P
 ClientSampleId :
 PAV-091620-DP

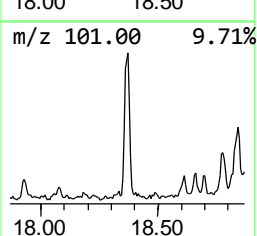
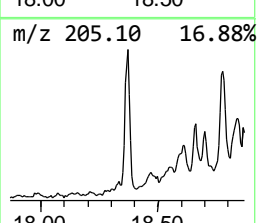
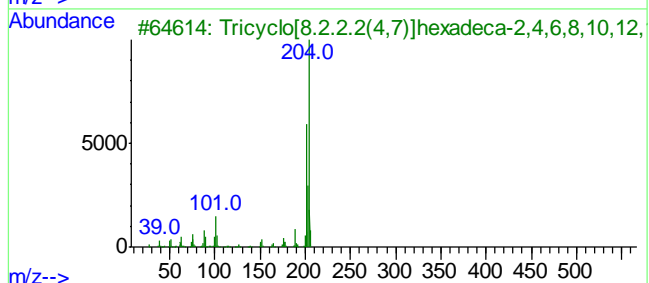
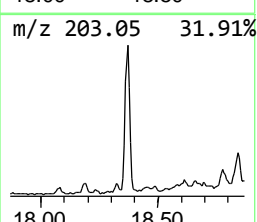
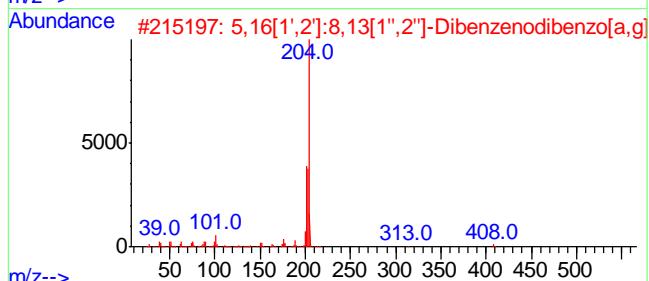
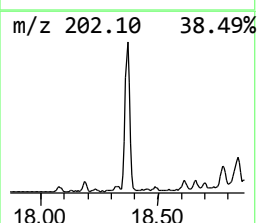
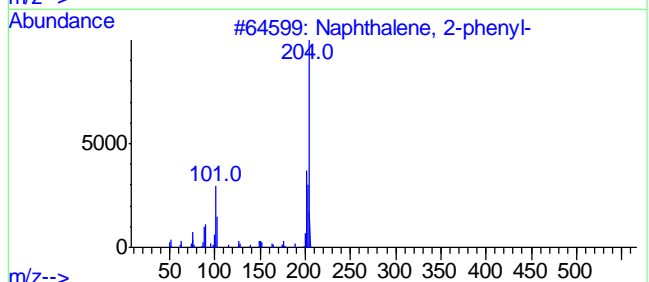
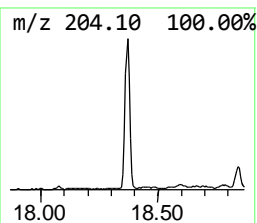
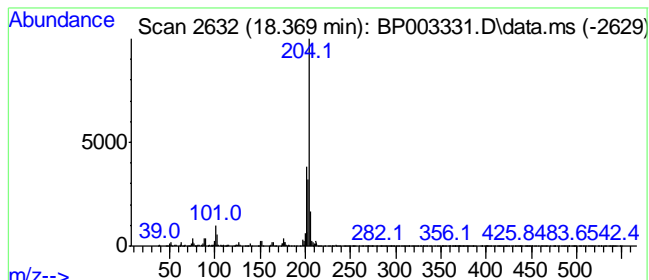
Quant Method : Z:\SVOASRV\HPCHEM1\BNA_P\METHODS\8270-BP091520.M
 Quant Title : ASP BNA STANDARDS FOR 5 POINT CALIBRATION

TIC Library : C:\DATABASE\NIST11.L
 TIC Integration Parameters: LSCINT.P

 Peak Number 7 Naphthalene, 2-phenyl- Concentration Rank 11

R.T.	EstConc	Area	Relative to ISTD	R.T.
18.369	2.08 ng	200253	Phenanthrene-d10	17.004

Hit#	of	Tentative ID	MW	MolForm	CAS#	Qual
1	5	Naphthalene, 2-phenyl-	204	C16H12	000612-94-2	93
2		5,16[1',2']:8,13[1'',2'']-Dibenz...	408	C32H24	005672-97-9	91
3		Tricyclo[8.2.2.2(4,7)]hexadeca-2...	204	C16H12	006572-60-7	62
4		9,10-Bis(bromomethyl)anthracene	362	C16H12Br2	034373-96-1	53
5		6-Phenylbenzocyclohepten-7-one	232	C17H12O	093327-56-1	53



Data Path : Z:\svoasrv\HPCHEM1\BNA_P\Data\BP091820\
 Data File : BP003331.D
 Acq On : 18 Sep 2020 20:31
 Operator : CG/JU
 Sample : L4038-07
 Misc :
 ALS Vial : 14 Sample Multiplier: 1

Instrument :
 BNA_P
 ClientSampleId :
 PAV-091620-DP

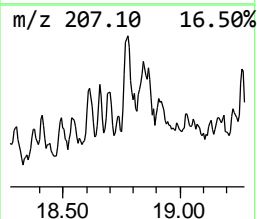
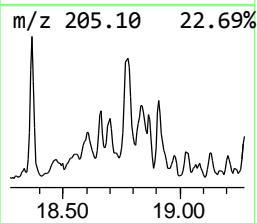
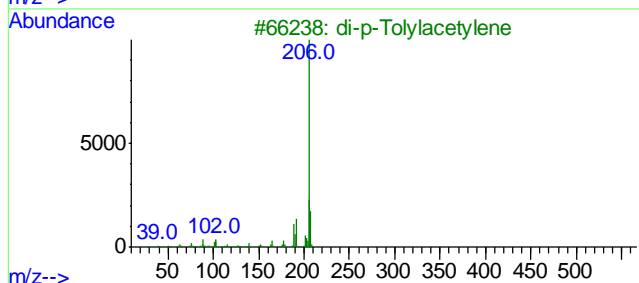
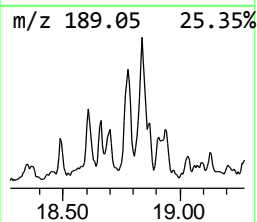
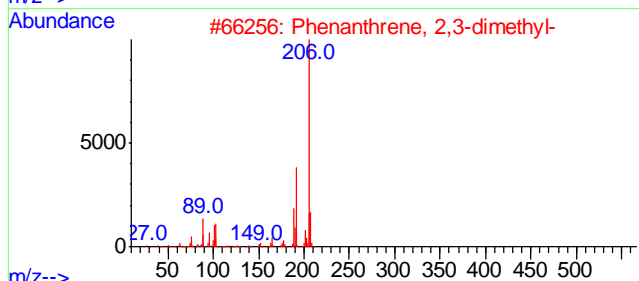
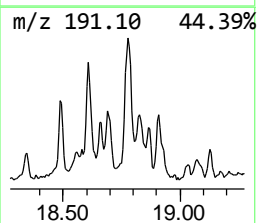
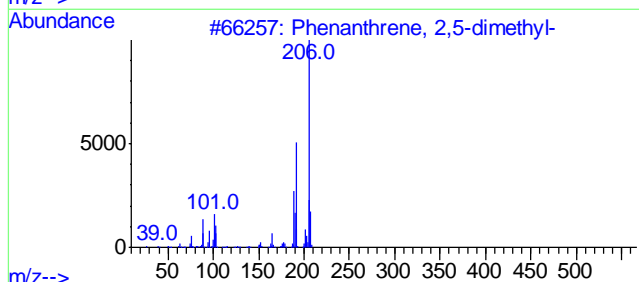
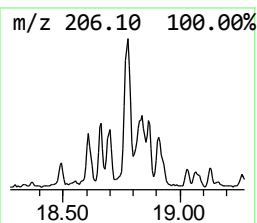
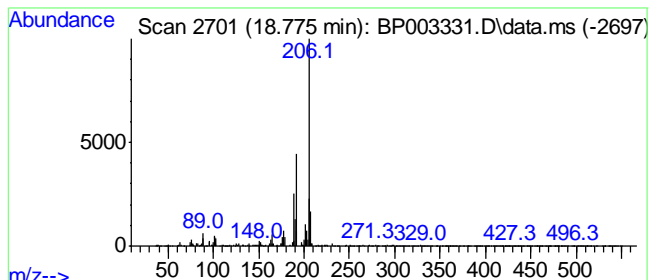
Quant Method : Z:\SVOASRV\HPCHEM1\BNA_P\METHODS\8270-BP091520.M
 Quant Title : ASP BNA STANDARDS FOR 5 POINT CALIBRATION

TIC Library : C:\DATABASE\NIST11.L
 TIC Integration Parameters: LSCINT.P

 Peak Number 8 Phenanthrene, 2,5-dimethyl- Concentration Rank 10

R.T.	EstConc	Area	Relative to ISTD	R.T.
18.775	2.21 ng	212839	Phenanthrene-d10	17.004

Hit# of 5	Tentative ID	MW	MolForm	CAS#	Qual
1	Phenanthrene, 2,5-dimethyl-	206	C16H14	003674-66-6	96
2	Phenanthrene, 2,3-dimethyl-	206	C16H14	003674-65-5	93
3	di-p-Tolylacetylene	206	C16H14	002789-88-0	91
4	Phenanthrene, 2,7-dimethyl-	206	C16H14	001576-69-8	90
5	9,10-Dimethylanthracene	206	C16H14	000781-43-1	87



Data Path : Z:\svoasrv\HPCHEM1\BNA_P\Data\BP091820\
 Data File : BP003331.D
 Acq On : 18 Sep 2020 20:31
 Operator : CG/JU
 Sample : L4038-07
 Misc :
 ALS Vial : 14 Sample Multiplier: 1

Instrument :
 BNA_P
 ClientSampleId :
 PAV-091620-DP

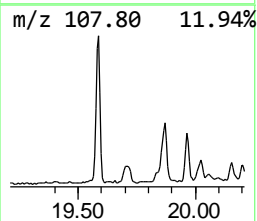
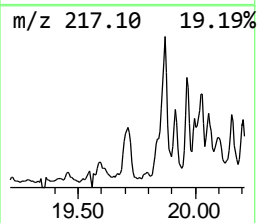
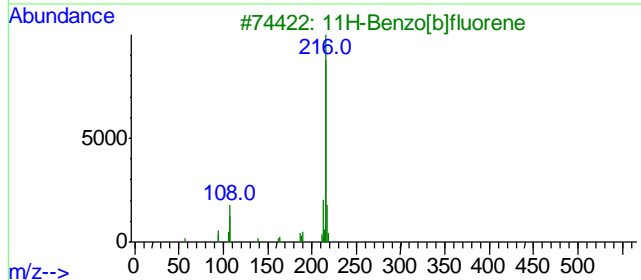
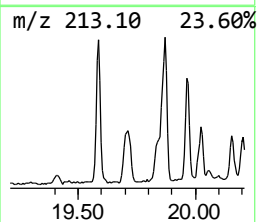
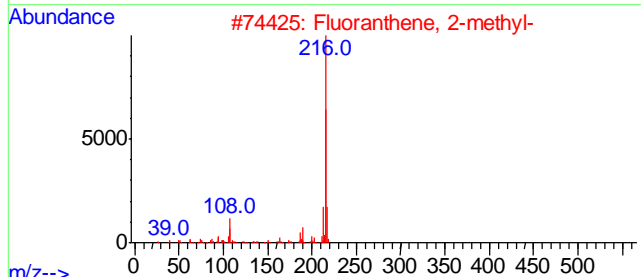
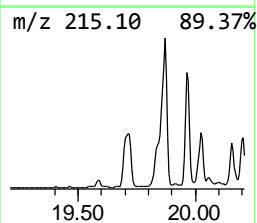
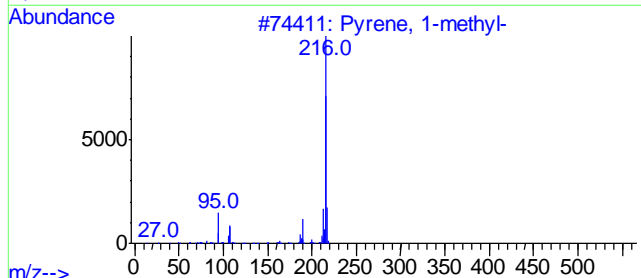
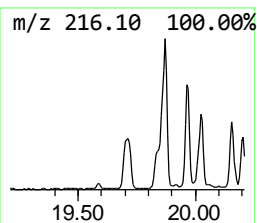
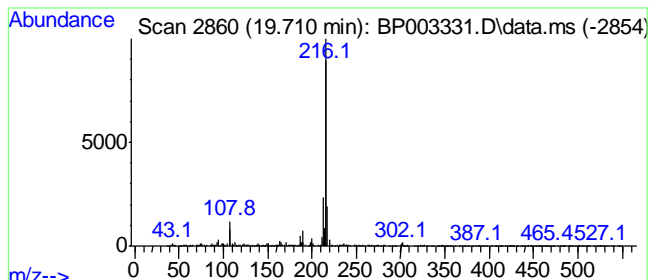
Quant Method : Z:\SVOASRV\HPCHEM1\BNA_P\METHODS\8270-BP091520.M
 Quant Title : ASP BNA STANDARDS FOR 5 POINT CALIBRATION

TIC Library : C:\DATABASE\NIST11.L
 TIC Integration Parameters: LSCINT.P

 Peak Number 9 Pyrene, 1-methyl- Concentration Rank 13

R.T.	EstConc	Area	Relative to ISTD	R.T.
19.710	2.03 ng	350385	Chrysene-d12	21.104

Hit# of 5	Tentative ID	MW	MolForm	CAS#	Qual
1	Pyrene, 1-methyl-	216	C17H12	002381-21-7	94
2	Fluoranthene, 2-methyl-	216	C17H12	033543-31-6	91
3	11H-Benzo[b]fluorene	216	C17H12	000243-17-4	87
4	11H-Benzo[a]fluorene	216	C17H12	000238-84-6	83
5	7H-Benzo[c]fluorene	216	C17H12	000205-12-9	72



Data Path : Z:\svoasrv\HPCHEM1\BNA_P\Data\BP091820\
 Data File : BP003331.D
 Acq On : 18 Sep 2020 20:31
 Operator : CG/JU
 Sample : L4038-07
 Misc :
 ALS Vial : 14 Sample Multiplier: 1

Instrument :
 BNA_P
 ClientSampleId :
 PAV-091620-DP

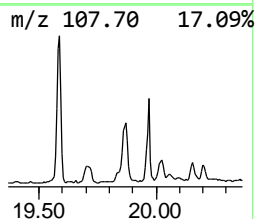
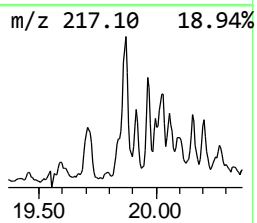
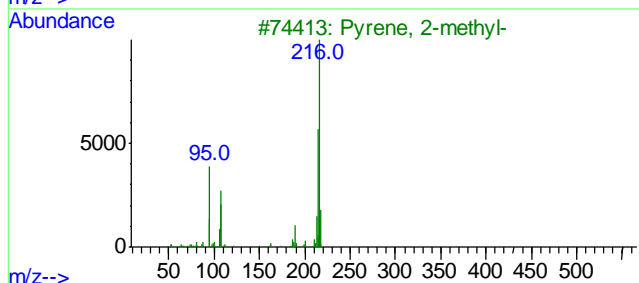
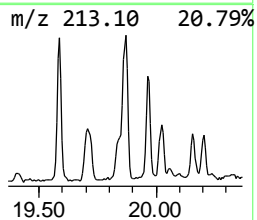
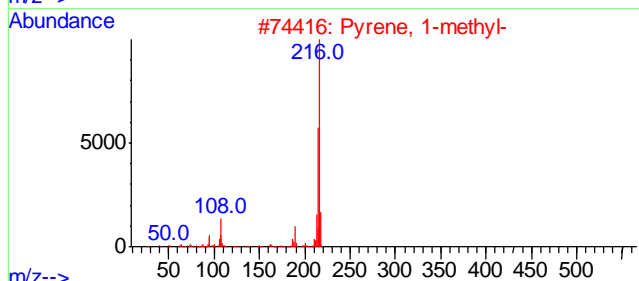
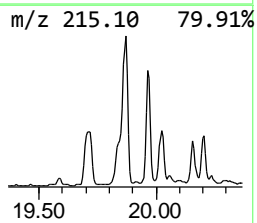
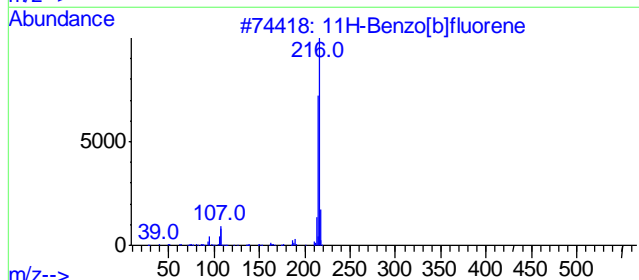
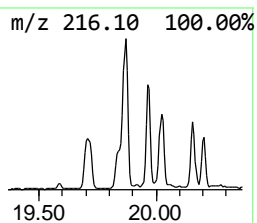
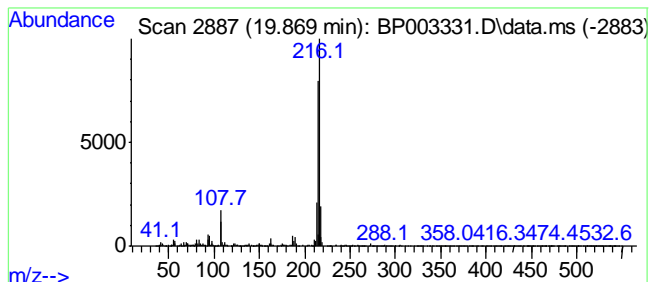
Quant Method : Z:\SVOASRV\HPCHEM1\BNA_P\METHODS\8270-BP091520.M
 Quant Title : ASP BNA STANDARDS FOR 5 POINT CALIBRATION

TIC Library : C:\DATABASE\NIST11.L
 TIC Integration Parameters: LSCINT.P

 Peak Number 10 11H-Benzo[b]fluorene Concentration Rank 6

R.T.	EstConc	Area	Relative to ISTD	R.T.
19.869	2.85 ng	491599	Chrysene-d12	21.104

Hit# of 5	Tentative ID	MW	MolForm	CAS#	Qual
1	11H-Benzo[b]fluorene	216	C17H12	000243-17-4	96
2	Pyrene, 1-methyl-	216	C17H12	002381-21-7	91
3	Pyrene, 2-methyl-	216	C17H12	003442-78-2	91
4	11H-Benzo[a]fluorene	216	C17H12	000238-84-6	90
5	Fluoranthene, 2-methyl-	216	C17H12	033543-31-6	87



Data Path : Z:\svoasrv\HPCHEM1\BNA_P\Data\BP091820\
 Data File : BP003331.D
 Acq On : 18 Sep 2020 20:31
 Operator : CG/JU
 Sample : L4038-07
 Misc :
 ALS Vial : 14 Sample Multiplier: 1

Instrument :
 BNA_P
 ClientSampleId :
 PAV-091620-DP

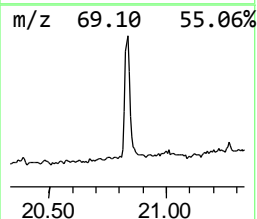
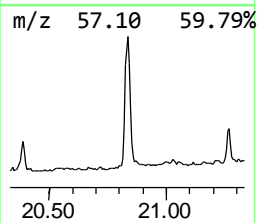
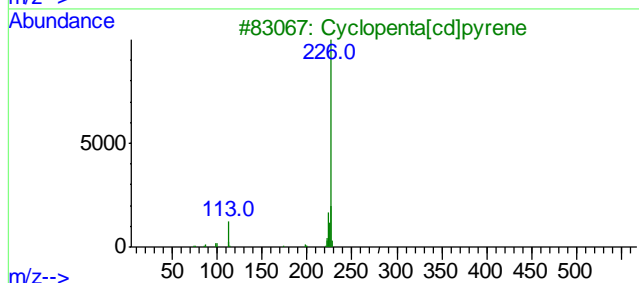
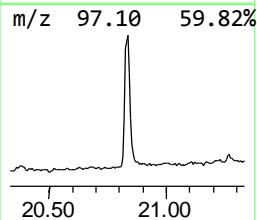
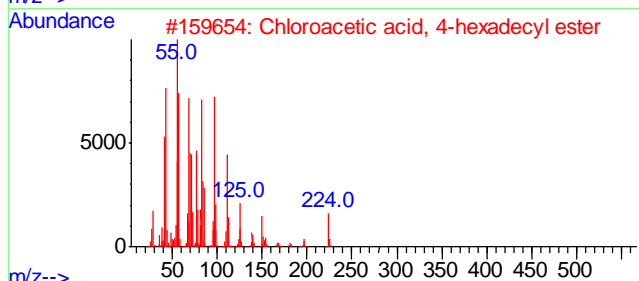
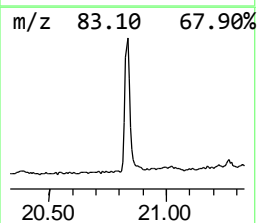
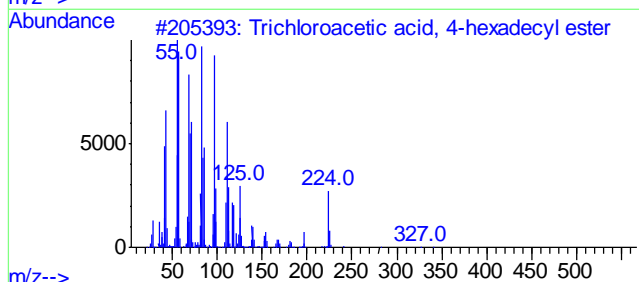
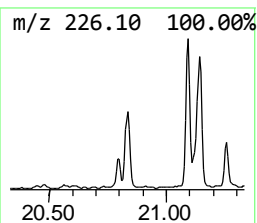
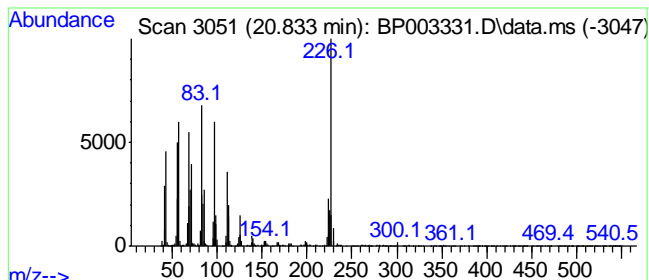
Quant Method : Z:\SVOASRV\HPCHEM1\BNA_P\METHODS\8270-BP091520.M
 Quant Title : ASP BNA STANDARDS FOR 5 POINT CALIBRATION

TIC Library : C:\DATABASE\NIST11.L
 TIC Integration Parameters: LSCINT.P

 Peak Number 11 unknown20.833 Concentration Rank 3

R.T.	EstConc	Area	Relative to ISTD	R.T.
20.833	5.62 ng	970358	Chrysene-d12	21.104

Hit# of 5	Tentative ID	MW	MolForm	CAS#	Qual
1	Trichloroacetic acid, 4-hexadecy...	386	C18H33Cl3O2	1000282-92-4	45
2	Chloroacetic acid, 4-hexadecyl e...	318	C18H35ClO2	1000282-93-2	37
3	Cyclopenta[cd]pyrene	226	C18H10	027208-37-3	35
4	Hexadecanoic acid, 2-hydroxy-, m...	286	C17H34O3	016742-51-1	32
5	Pentafluoropropionic acid, hexad...	388	C19H33F5O2	006222-07-7	30



Data Path : Z:\svoasrv\HPCHEM1\BNA_P\Data\BP091820\
 Data File : BP003331.D
 Acq On : 18 Sep 2020 20:31
 Operator : CG/JU
 Sample : L4038-07
 Misc :
 ALS Vial : 14 Sample Multiplier: 1

Instrument :
 BNA_P
 ClientSampleId :
 PAV-091620-DP

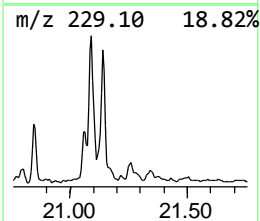
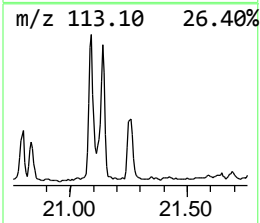
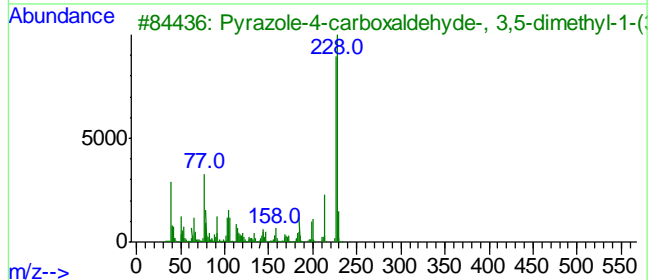
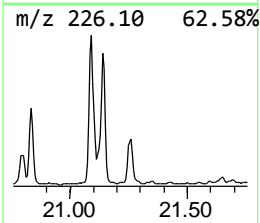
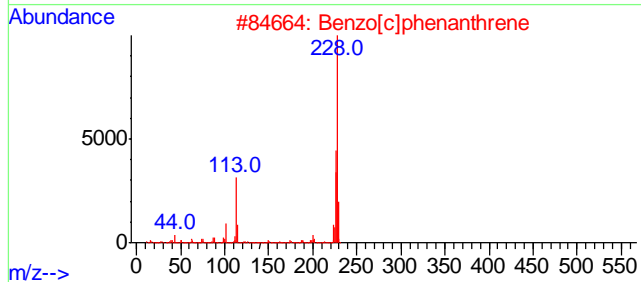
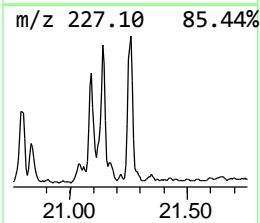
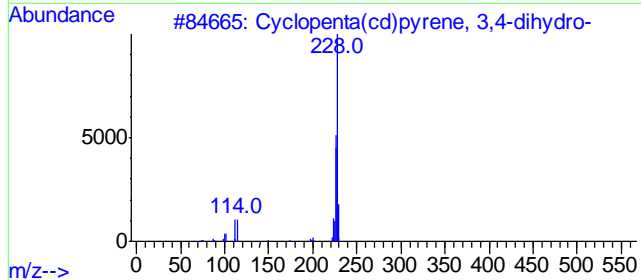
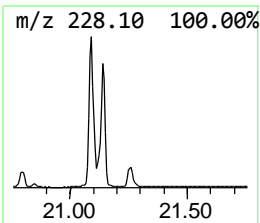
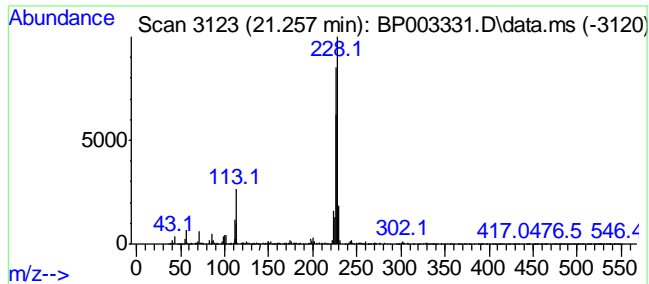
Quant Method : Z:\SVOASRV\HPCHEM1\BNA_P\METHODS\8270-BP091520.M
 Quant Title : ASP BNA STANDARDS FOR 5 POINT CALIBRATION

TIC Library : C:\DATABASE\NIST11.L
 TIC Integration Parameters: LSCINT.P

 Peak Number 12 Cyclopenta(cd)pyrene, 3,4-d... Concentration Rank 7

R.T.	EstConc	Area	Relative to ISTD	R.T.
21.257	2.50 ng	431934	Chrysene-d12	21.104

Hit#	of	Tentative ID	MW	MolForm	CAS#	Qual
1	5	Cyclopenta(cd)pyrene, 3,4-dihydro-	228	C18H12	025732-74-5	91
2		Benzo[c]phenanthrene	228	C18H12	000195-19-7	55
3		Pyrazole-4-carboxaldehyde-, 3,5-...	228	C14H16N2O	1000272-54-8	50
4		Diphenylvinylphosphine oxide	228	C14H13OP	002096-78-8	49
5		4H-3,1-Benzoxazin-2-imine, 1,4,4...	228	C14H16N2O	1000139-29-1	49



Data Path : Z:\svoasrv\HPCHEM1\BNA_P\Data\BP091820\
 Data File : BP003331.D
 Acq On : 18 Sep 2020 20:31
 Operator : CG/JU
 Sample : L4038-07
 Misc :
 ALS Vial : 14 Sample Multiplier: 1

Instrument :
 BNA_P
 ClientSampleId :
 PAV-091620-DP

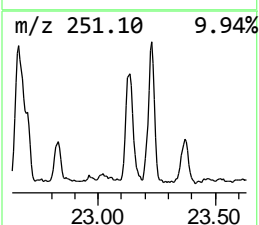
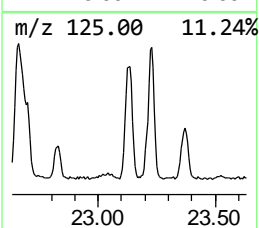
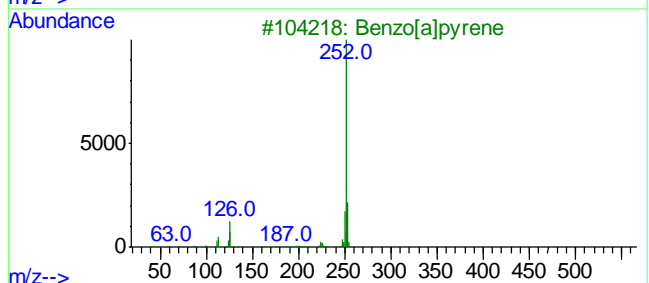
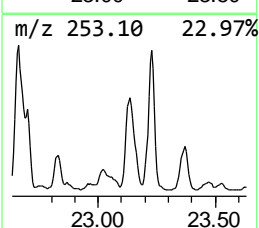
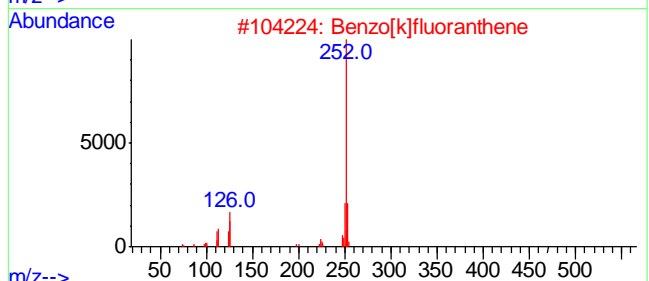
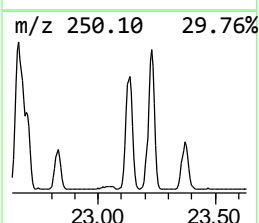
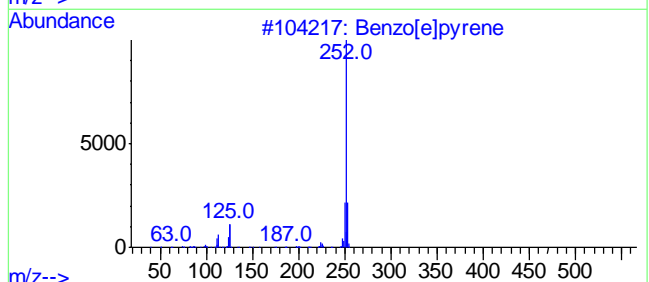
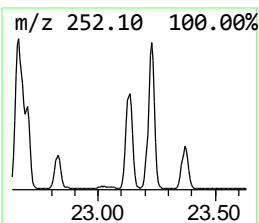
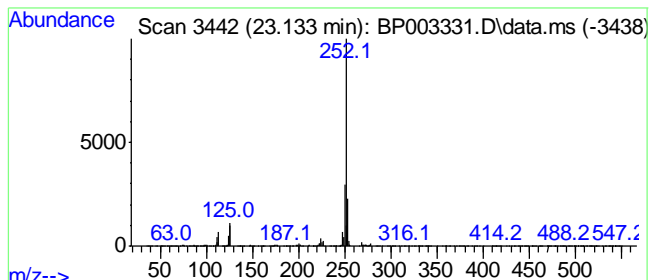
Quant Method : Z:\SVOASRV\HPCHEM1\BNA_P\METHODS\8270-BP091520.M
 Quant Title : ASP BNA STANDARDS FOR 5 POINT CALIBRATION

TIC Library : C:\DATABASE\NIST11.L
 TIC Integration Parameters: LSCINT.P

 Peak Number 13 Benzo[e]pyrene Concentration Rank 1

R.T.	EstConc	Area	Relative to ISTD	R.T.
23.133	16.01 ng	1210050	Perylene-d12	23.322

Hit# of 5	Tentative ID	MW	MolForm	CAS#	Qual
1	Benzo[e]pyrene	252	C20H12	000192-97-2	98
2	Benzo[k]fluoranthene	252	C20H12	000207-08-9	96
3	Benzo[a]pyrene	252	C20H12	000050-32-8	96
4	Benz[e]acephenanthrylene	252	C20H12	000205-99-2	93
5	Benzo[j]fluoranthene	252	C20H12	000205-82-3	89



Data Path : Z:\svoasrv\HPCHEM1\BNA_P\Data\BP091820\
 Data File : BP003331.D
 Acq On : 18 Sep 2020 20:31
 Operator : CG/JU
 Sample : L4038-07
 Misc :
 ALS Vial : 14 Sample Multiplier: 1

Instrument :
 BNA_P
 ClientSampleId :
 PAV-091620-DP

Quant Method : Z:\SVOASRV\HPCHEM1\BNA_P\METHODS\8270-BP091520.M
 Quant Title : ASP BNA STANDARDS FOR 5 POINT CALIBRATION

TIC Library : C:\DATABASE\NIST11.L
 TIC Integration Parameters: LSCINT.P

TIC Top Hit name	RT	EstConc	Units	Response	--Internal Standard--			
					#	RT	Resp	Conc
Naphtho[2,1-b]t...	16.822	2.3	ng	222306	4	17.004	1923750	20.0
Phenanthrene, 1...	17.881	3.0	ng	292381	4	17.004	1923750	20.0
Anthracene, 2-m...	17.928	5.4	ng	515926	4	17.004	1923750	20.0
Phenanthrene, 2...	18.004	2.5	ng	237827	4	17.004	1923750	20.0
4H-Cyclopenta[d...	18.069	7.6	ng	731546	4	17.004	1923750	20.0
1H-Cyclopropa[1...	18.104	2.1	ng	198744	4	17.004	1923750	20.0
Naphthalene, 2-...	18.369	2.1	ng	200253	4	17.004	1923750	20.0
Phenanthrene, 2...	18.775	2.2	ng	212839	4	17.004	1923750	20.0
Pyrene, 1-methyl-	19.710	2.0	ng	350385	5	21.104	3453740	20.0
11H-Benzo[b]flu...	19.869	2.9	ng	491599	5	21.104	3453740	20.0
unknown20.833	20.833	5.6	ng	970358	5	21.104	3453740	20.0
Cyclopenta(cd)p...	21.257	2.5	ng	431934	5	21.104	3453740	20.0
Benzo[e]pyrene	23.133	16.0	ng	1210050	6	23.322	1511360	20.0