

Data Path : Z:\svoasrv\HPCHEM1\BNA_P\Data\BP092225\
 Data File : BP025815.D
 Acq On : 22 Sep 2025 16:27
 Operator : CG/JU
 Sample : Q3133-01
 Misc :
 ALS Vial : 7 Sample Multiplier: 1

Instrument :
 BNA_P
 ClientSampleId :

Quant Time: Sep 22 16:53:48 2025
 Quant Method : Z:\svoasrv\HPCHEM1\BNA_P\Methods\8270E-BP091225.M
 Quant Title : ASP BNA STANDARDS FOR 5 POINT CALIBRATION
 QLast Update : Thu Sep 11 16:45:04 2025
 Response via : Initial Calibration

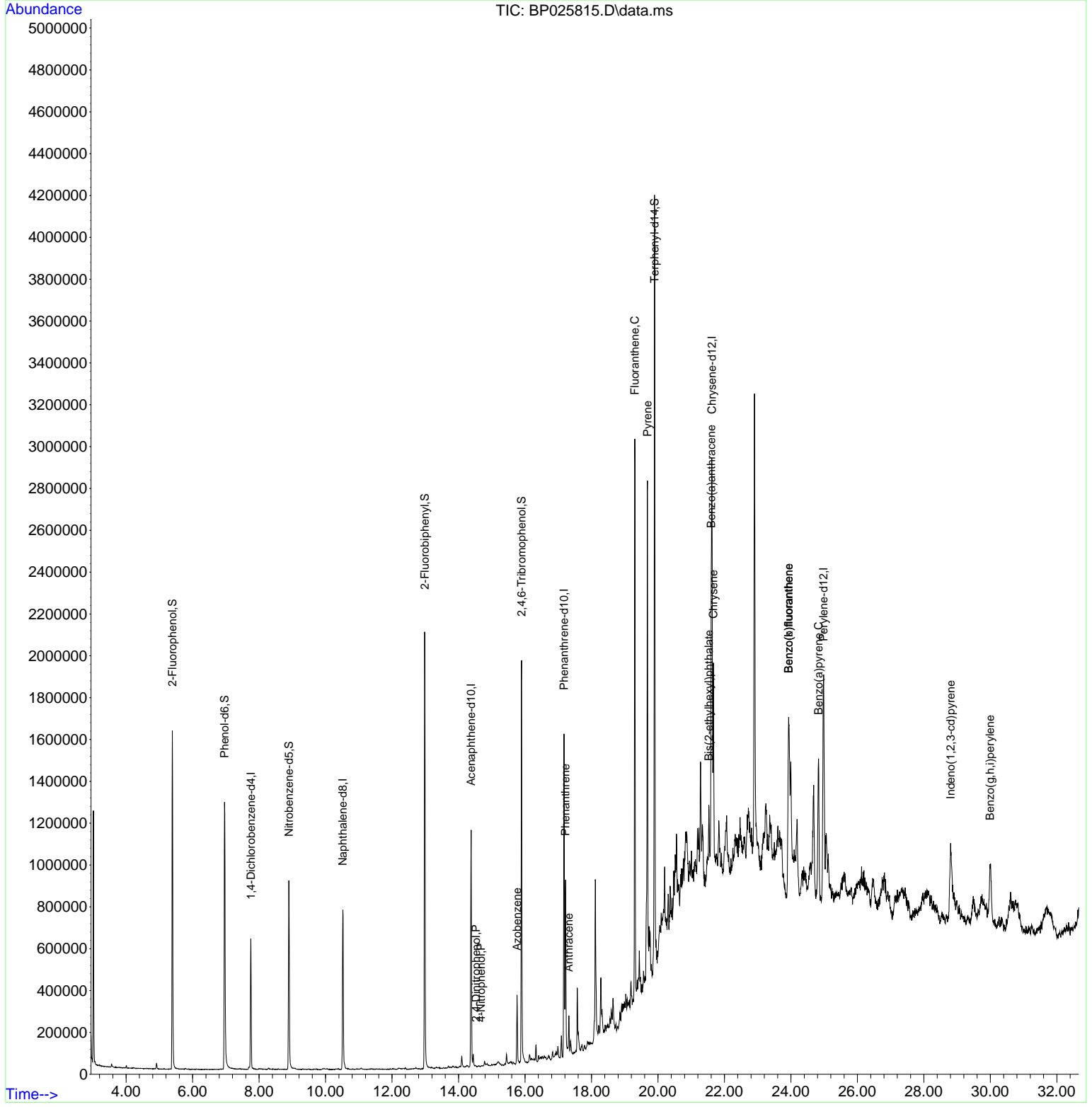
| Compound | R.T. | QIon | Response | Conc | Units | Dev(Min) |
|-------------------------------|--------|------|----------|--------|-------|----------|
| Internal Standards | | | | | | |
| 1) 1,4-Dichlorobenzene-d4 | 7.755 | 152 | 173732 | 20.000 | ng | 0.00 |
| 21) Naphthalene-d8 | 10.519 | 136 | 666080 | 20.000 | ng | 0.00 |
| 39) Acenaphthene-d10 | 14.378 | 164 | 433760 | 20.000 | ng | 0.00 |
| 64) Phenanthrene-d10 | 17.172 | 188 | 896071 | 20.000 | ng | -0.01 |
| 76) Chrysene-d12 | 21.619 | 240 | 931321 | 20.000 | ng | -0.02 |
| 86) Perylene-d12 | 24.977 | 264 | 1096690 | 20.000 | ng | -0.02 |
| System Monitoring Compounds | | | | | | |
| 5) 2-Fluorophenol | 5.390 | 112 | 697123 | 64.746 | ng | 0.00 |
| 7) Phenol-d6 | 6.961 | 99 | 878551 | 61.388 | ng | 0.01 |
| 23) Nitrobenzene-d5 | 8.896 | 82 | 562374 | 37.243 | ng | 0.00 |
| 42) 2,4,6-Tribromophenol | 15.895 | 330 | 355587 | 65.724 | ng | -0.01 |
| 45) 2-Fluorobiphenyl | 12.984 | 172 | 1252820 | 38.458 | ng | 0.00 |
| 79) Terphenyl-d14 | 19.895 | 244 | 1965600 | 37.969 | ng | -0.02 |
| Target Compounds | | | | | | |
| 54) 2,4-Dinitrophenol | 14.525 | 184 | 21 | 4.829 | ng | # 1 |
| 56) 4-Nitrophenol | 14.678 | 139 | 387 | 4.540 | ng | # 80 |
| 63) Azobenzene | 15.760 | 77 | 100038 | 3.080 | ng | # 1 |
| 71) Phenanthrene | 17.219 | 178 | 572714 | 11.267 | ng | 99 |
| 72) Anthracene | 17.319 | 178 | 122772 | 2.381 | ng | 99 |
| 75) Fluoranthene | 19.301 | 202 | 1617961 | 26.541 | ng | 99 |
| 78) Pyrene | 19.683 | 202 | 1415641 | 22.781 | ng | 99 |
| 81) Benzo(a)anthracene | 21.601 | 228 | 682003 | 10.696 | ng | 99 |
| 83) Chrysene | 21.666 | 228 | 731977 | 12.043 | ng | 99 |
| 84) Bis(2-ethylhexyl)phtha... | 21.530 | 149 | 108450 | 2.721 | ng | 99 |
| 87) Indeno(1,2,3-cd)pyrene | 28.806 | 276 | 531059 | 6.659 | ng | # 84 |
| 88) Benzo(b)fluoranthene | 23.930 | 252 | 982424 | 14.649 | ng | # 98 |
| 89) Benzo(k)fluoranthene | 23.930 | 252 | 982424 | 14.356 | ng | 97 |
| 90) Benzo(a)pyrene | 24.830 | 252 | 711045 | 10.826 | ng | # 95 |
| 92) Benzo(g,h,i)perylene | 29.989 | 276 | 515095 | 8.025 | ng | 97 |

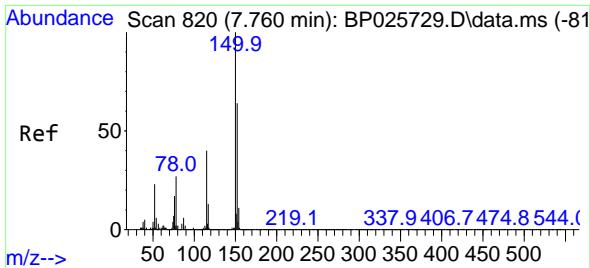
(#) = qualifier out of range (m) = manual integration (+) = signals summed

Data Path : Z:\svoasrv\HPCHEM1\BNA_P\Data\BP092225\
 Data File : BP025815.D
 Acq On : 22 Sep 2025 16:27
 Operator : CG/JU
 Sample : Q3133-01
 Misc :
 ALS Vial : 7 Sample Multiplier: 1

Instrument :
 BNA_P
 ClientSampleId :

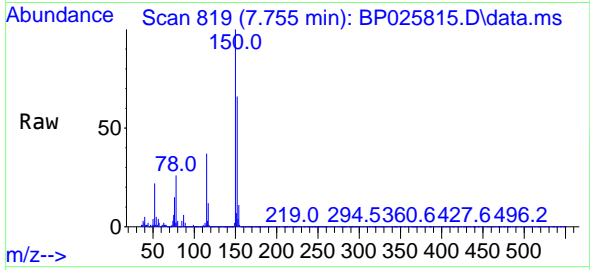
Quant Time: Sep 22 16:53:48 2025
 Quant Method : Z:\svoasrv\HPCHEM1\BNA_P\Methods\8270E-BP091225.M
 Quant Title : ASP BNA STANDARDS FOR 5 POINT CALIBRATION
 QLast Update : Thu Sep 11 16:45:04 2025
 Response via : Initial Calibration



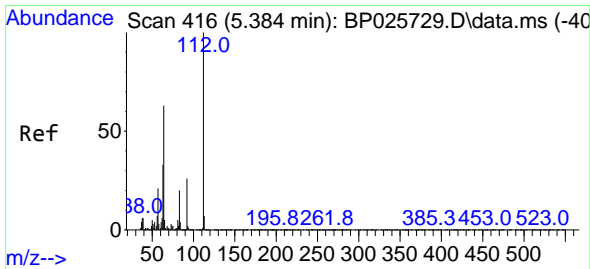
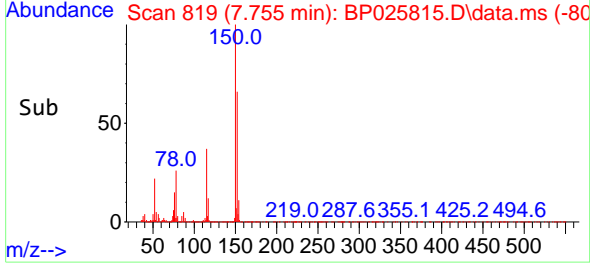
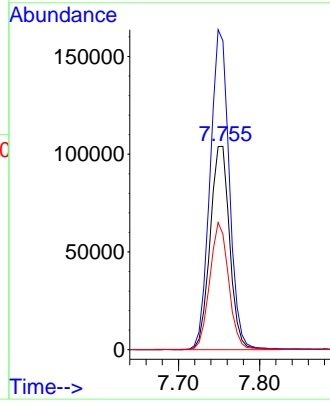


#1
 1,4-Dichlorobenzene-d4
 Concen: 20.000 ng
 RT: 7.755 min Scan# 81
 Delta R.T. -0.005 min
 Lab File: BP025815.D
 Acq: 22 Sep 2025 16:27

Instrument :
 BNA_P
 ClientSampleId :

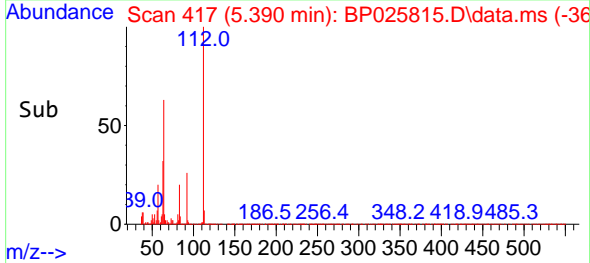
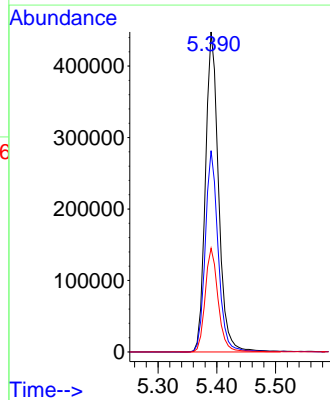
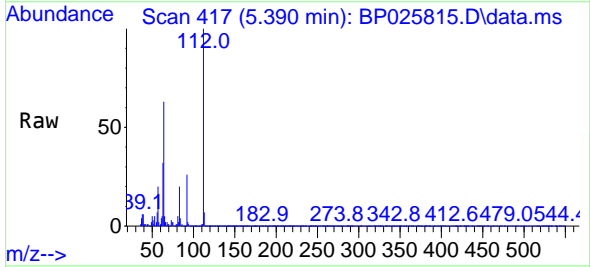


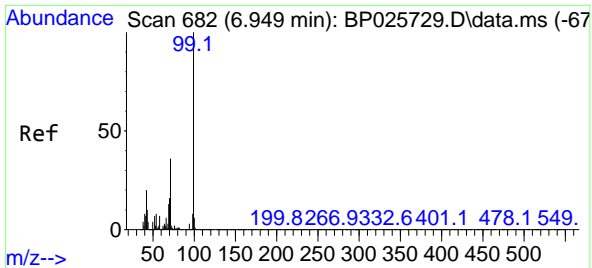
Tgt Ion:152 Resp: 173732
 Ion Ratio Lower Upper
 152 100
 150 151.8 124.3 186.5
 115 56.8 50.3 75.5



#5
 2-Fluorophenol
 Concen: 64.746 ng
 RT: 5.390 min Scan# 417
 Delta R.T. 0.006 min
 Lab File: BP025815.D
 Acq: 22 Sep 2025 16:27

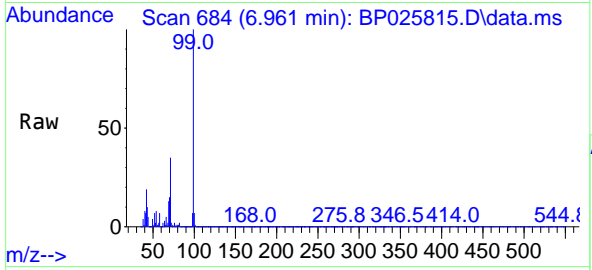
Tgt Ion:112 Resp: 697123
 Ion Ratio Lower Upper
 112 100
 64 62.9 50.2 75.4
 63 32.4 26.7 40.1





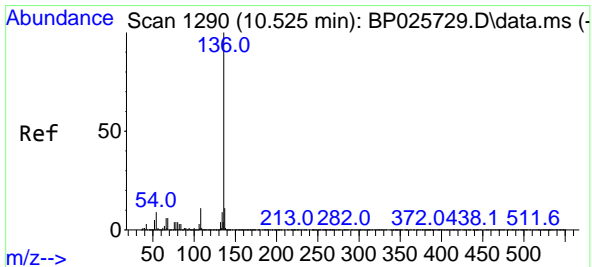
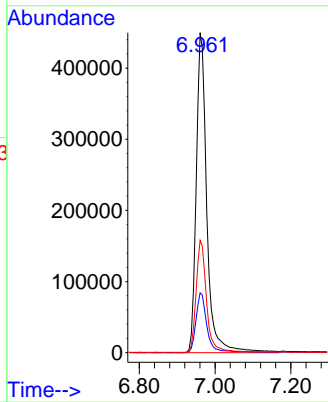
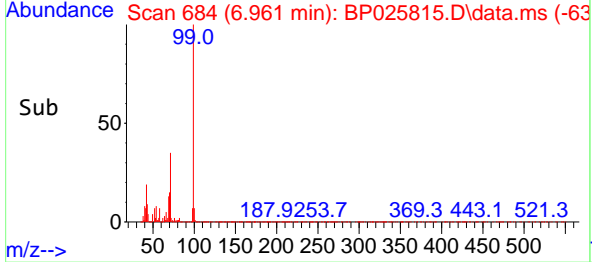
#7
 Phenol-d6
 Concen: 61.388 ng
 RT: 6.961 min Scan# 61
 Delta R.T. 0.012 min
 Lab File: BP025815.D
 Acq: 22 Sep 2025 16:27

Instrument :
 BNA_P
 ClientSampleId :

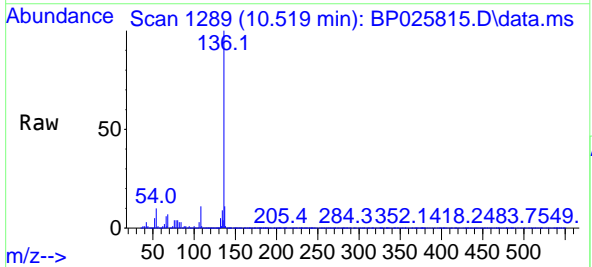


Tgt Ion: 99 Resp: 878551

| Ion | Ratio | Lower | Upper |
|-----|-------|-------|-------|
| 99 | 100 | | |
| 42 | 18.7 | 15.6 | 23.4 |
| 71 | 35.1 | 28.6 | 43.0 |

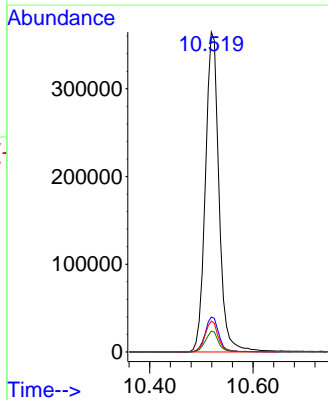
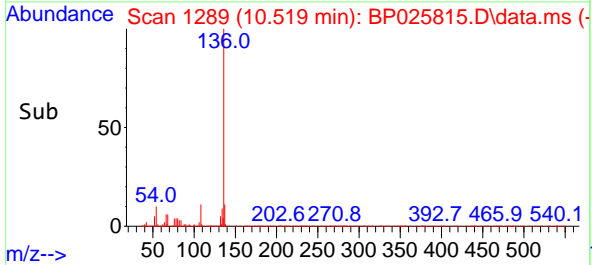


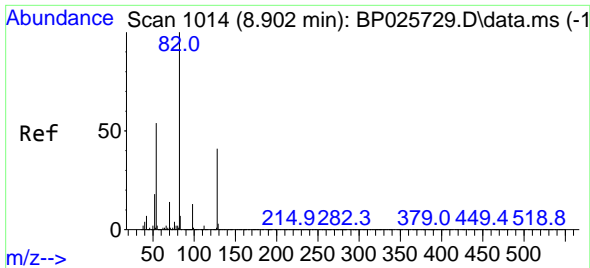
#21
 Naphthalene-d8
 Concen: 20.000 ng
 RT: 10.519 min Scan# 1289
 Delta R.T. -0.006 min
 Lab File: BP025815.D
 Acq: 22 Sep 2025 16:27



Tgt Ion: 136 Resp: 666080

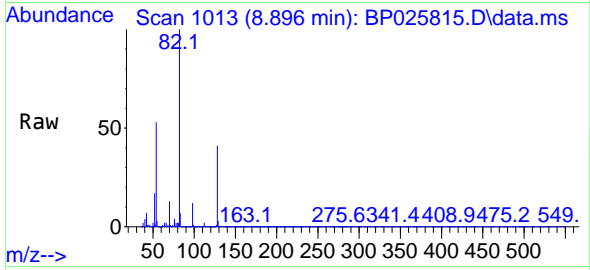
| Ion | Ratio | Lower | Upper |
|-----|-------|-------|-------|
| 136 | 100 | | |
| 137 | 10.9 | 8.7 | 13.1 |
| 54 | 9.6 | 7.5 | 11.3 |
| 68 | 6.5 | 5.0 | 7.6 |



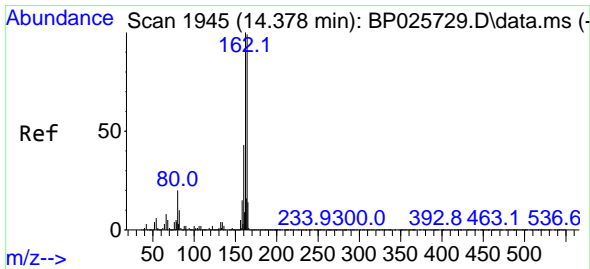
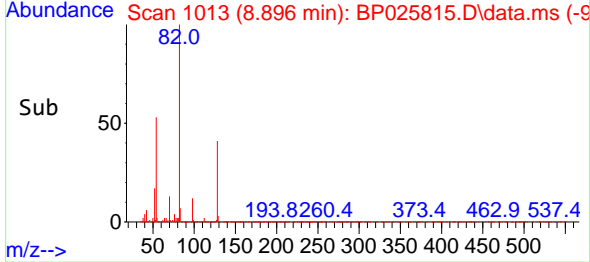
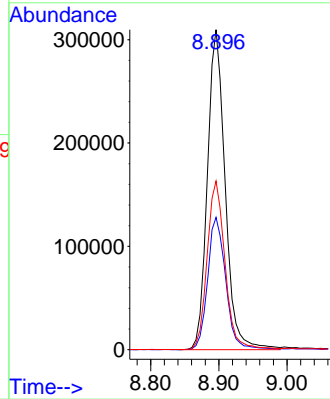


#23
 Nitrobenzene-d5
 Concen: 37.243 ng
 RT: 8.896 min Scan# 1014
 Delta R.T. -0.006 min
 Lab File: BP025815.D
 Acq: 22 Sep 2025 16:27

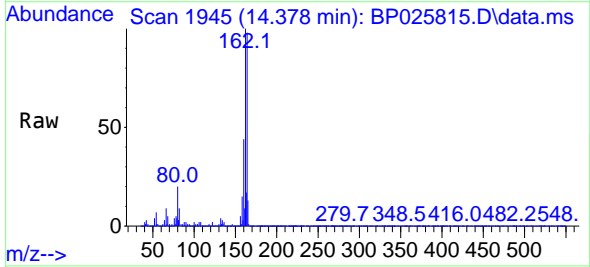
Instrument :
 BNA_P
 ClientSampleId :



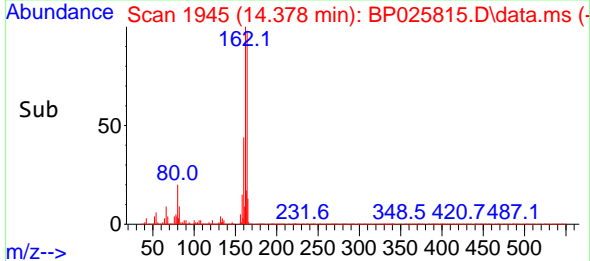
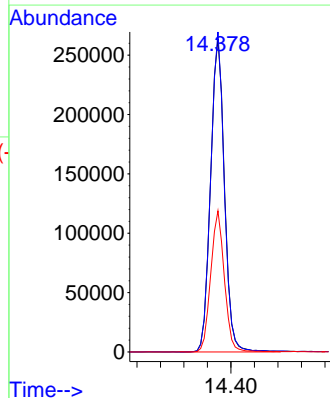
Tgt Ion: 82 Resp: 562374
 Ion Ratio Lower Upper
 82 100
 128 41.3 32.9 49.3
 54 52.7 43.4 65.2

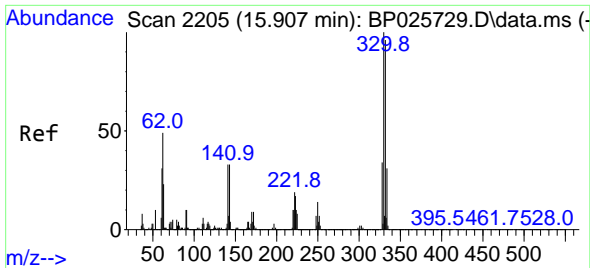


#39
 Acenaphthene-d10
 Concen: 20.000 ng
 RT: 14.378 min Scan# 1945
 Delta R.T. 0.000 min
 Lab File: BP025815.D
 Acq: 22 Sep 2025 16:27



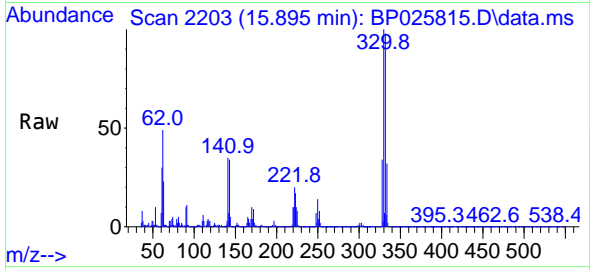
Tgt Ion: 164 Resp: 433760
 Ion Ratio Lower Upper
 164 100
 162 102.3 80.6 120.8
 160 45.1 35.0 52.6



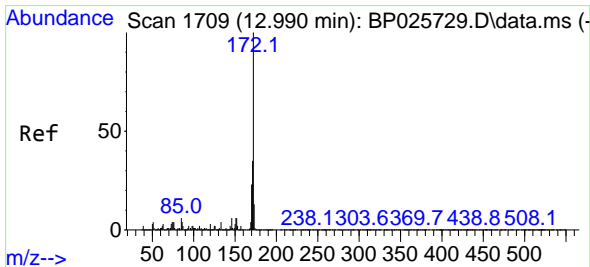
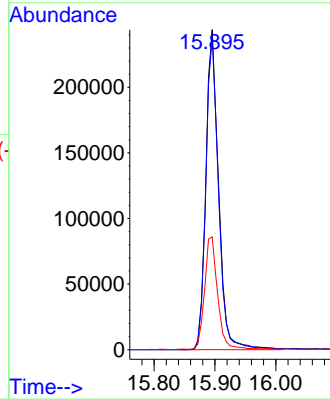
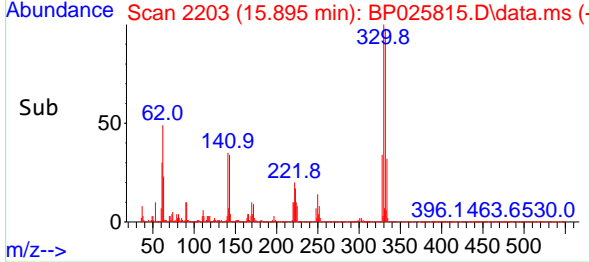


#42
 2,4,6-Tribromophenol
 Concen: 65.724 ng
 RT: 15.895 min Scan# 21
 Delta R.T. -0.012 min
 Lab File: BP025815.D
 Acq: 22 Sep 2025 16:27

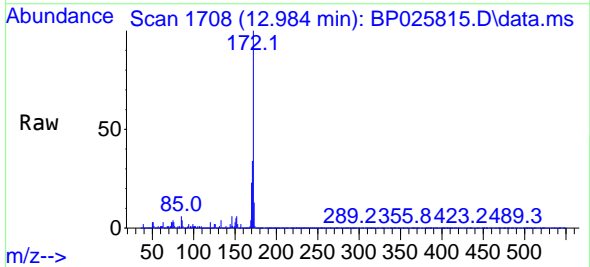
Instrument :
 BNA_P
 ClientSampleId :



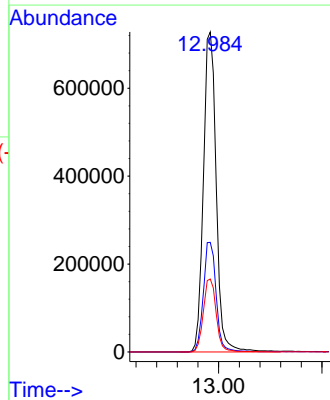
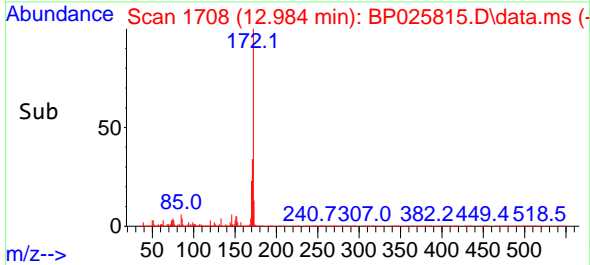
Tgt Ion:330 Resp: 355587
 Ion Ratio Lower Upper
 330 100
 332 97.1 76.9 115.3
 141 36.3 31.0 46.4

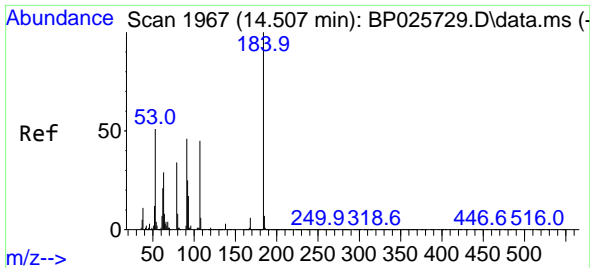


#45
 2-Fluorobiphenyl
 Concen: 38.458 ng
 RT: 12.984 min Scan# 1708
 Delta R.T. -0.006 min
 Lab File: BP025815.D
 Acq: 22 Sep 2025 16:27



Tgt Ion:172 Resp: 1252820
 Ion Ratio Lower Upper
 172 100
 171 34.3 27.8 41.6
 170 22.8 18.6 27.8



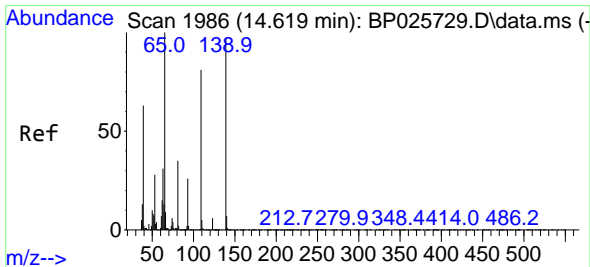
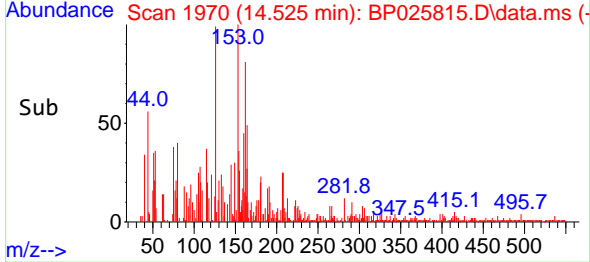
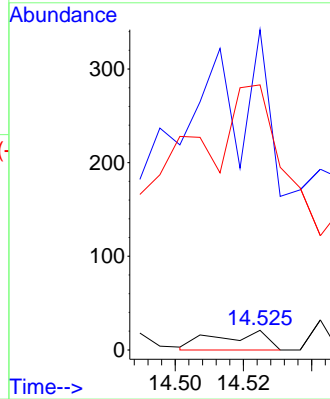
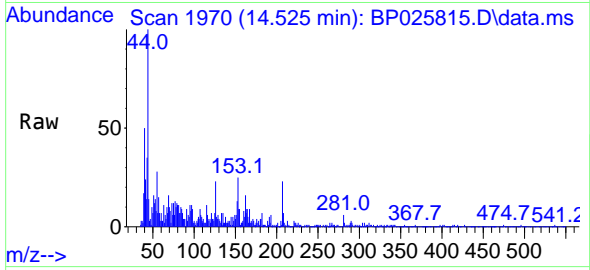


#54
 2,4-Dinitrophenol
 Concen: 4.829 ng
 RT: 14.525 min Scan# 1967
 Delta R.T. 0.018 min
 Lab File: BP025815.D
 Acq: 22 Sep 2025 16:27

Instrument :
 BNA_P
 ClientSampleId :

Tgt Ion:184 Resp: 21

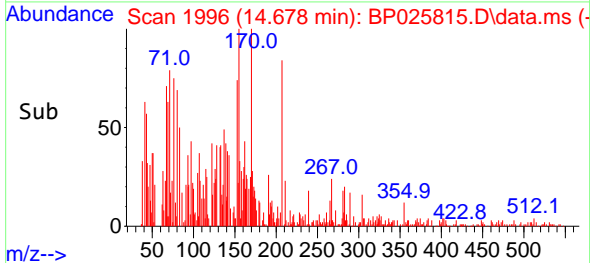
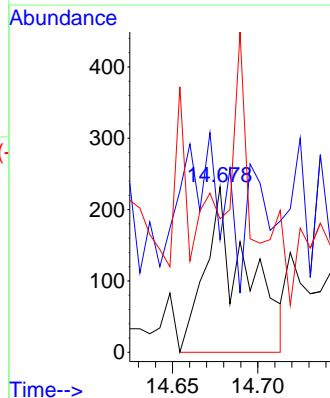
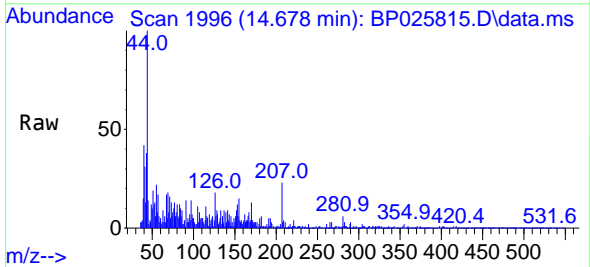
| Ion | Ratio | Lower | Upper |
|-----|--------|-------|-------|
| 184 | 100 | | |
| 63 | 1628.6 | 52.5 | 78.7# |
| 154 | 1347.6 | 51.5 | 77.3# |

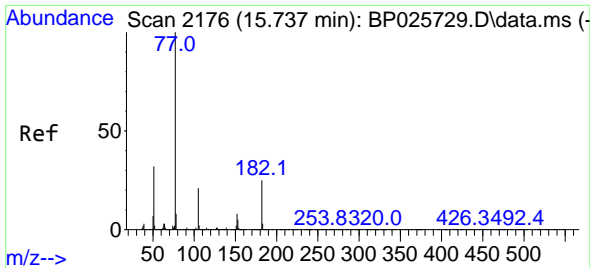


#56
 4-Nitrophenol
 Concen: 4.540 ng
 RT: 14.678 min Scan# 1996
 Delta R.T. 0.059 min
 Lab File: BP025815.D
 Acq: 22 Sep 2025 16:27

Tgt Ion:139 Resp: 387

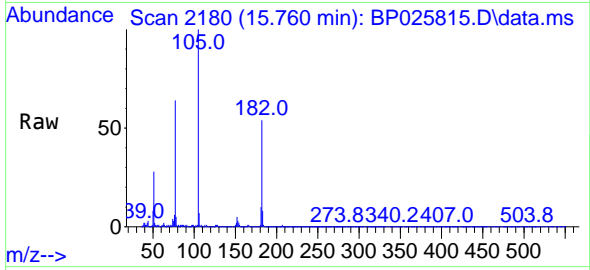
| Ion | Ratio | Lower | Upper |
|-----|-------|-------|--------|
| 139 | 100 | | |
| 109 | 68.1 | 62.9 | 102.9 |
| 65 | 80.6 | 83.4 | 123.4# |



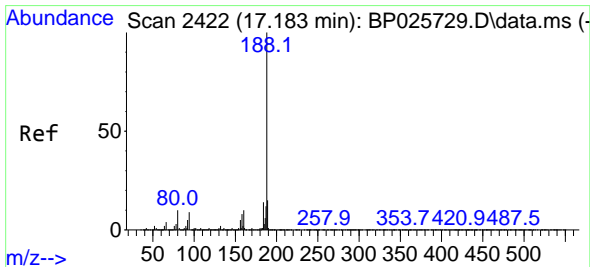
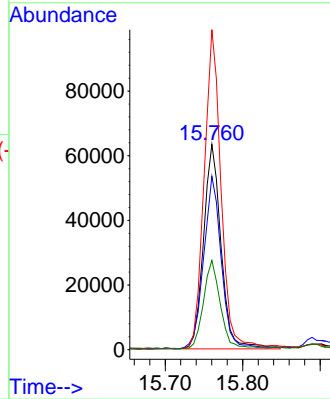
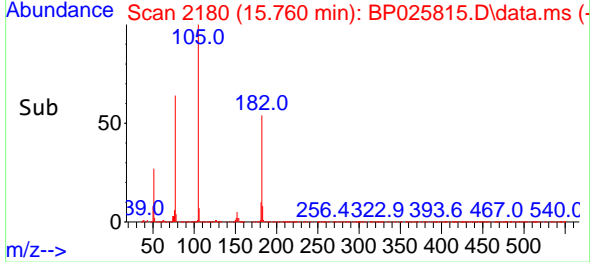


#63
 Azobenzene
 Concen: 3.080 ng
 RT: 15.760 min Scan# 2176
 Delta R.T. 0.024 min
 Lab File: BP025815.D
 Acq: 22 Sep 2025 16:27

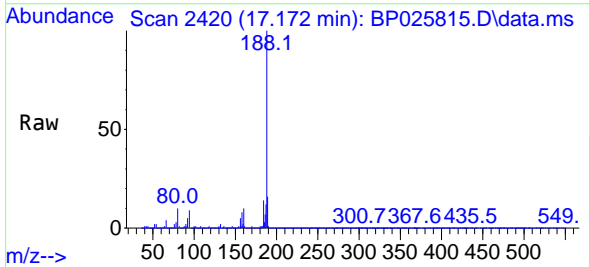
Instrument : BNA_P
 ClientSampleId :



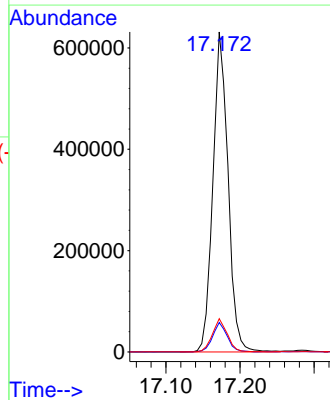
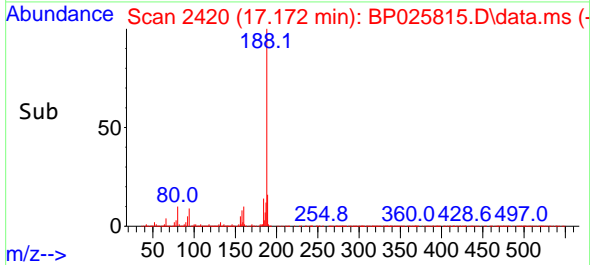
Tgt Ion: 77 Resp: 100038
 Ion Ratio Lower Upper
 77 100
 182 84.4 5.2 45.2#
 105 155.9 1.1 41.1#
 51 43.5 11.6 51.6

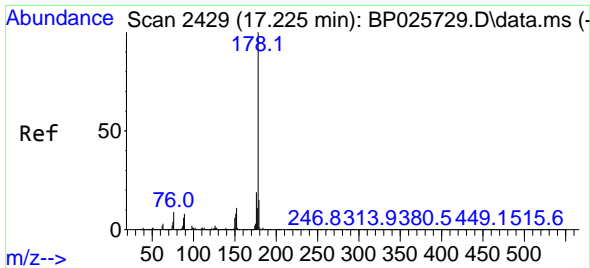


#64
 Phenanthrene-d10
 Concen: 20.000 ng
 RT: 17.172 min Scan# 2420
 Delta R.T. -0.012 min
 Lab File: BP025815.D
 Acq: 22 Sep 2025 16:27



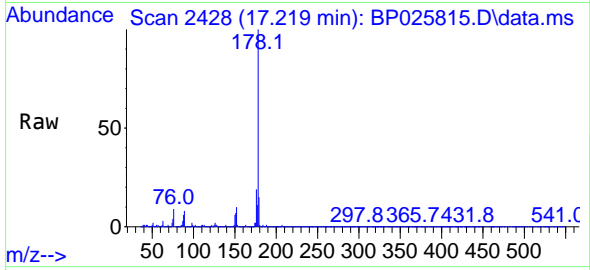
Tgt Ion: 188 Resp: 896071
 Ion Ratio Lower Upper
 188 100
 94 9.2 7.4 11.0
 80 10.4 7.7 11.5



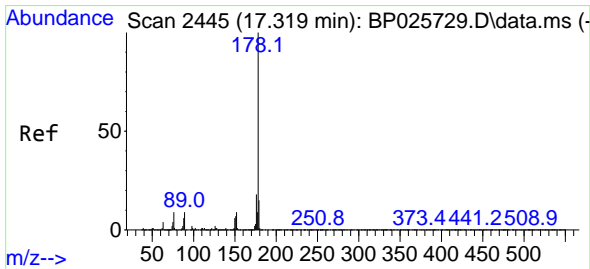
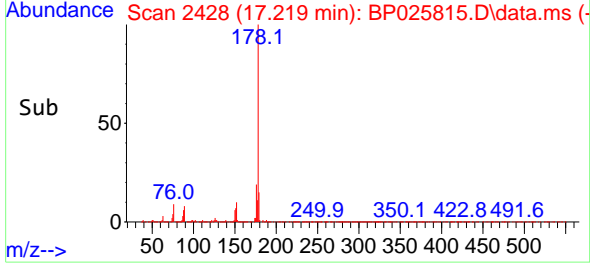
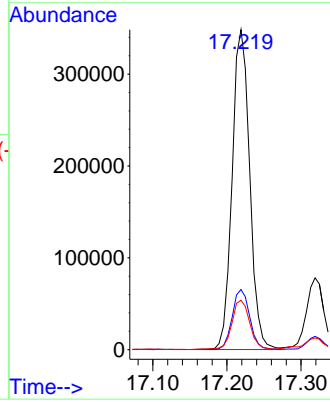


#71
 Phenanthrene
 Concen: 11.267 ng
 RT: 17.219 min Scan# 2429
 Delta R.T. -0.006 min
 Lab File: BP025815.D
 Acq: 22 Sep 2025 16:27

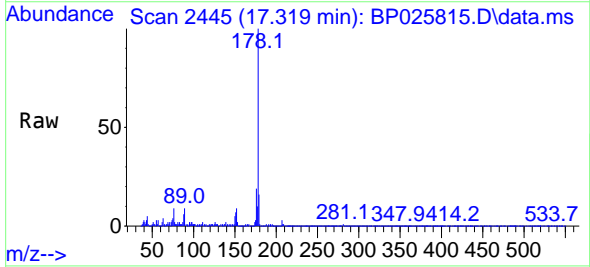
Instrument :
 BNA_P
 ClientSampleId :



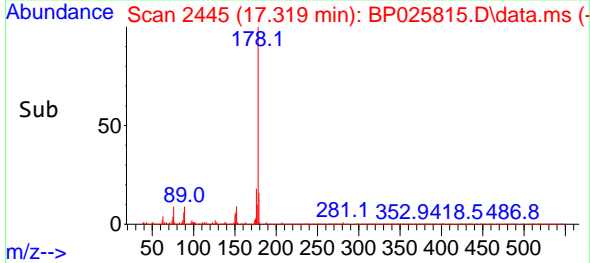
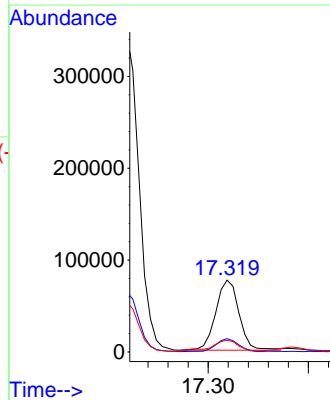
Tgt Ion:178 Resp: 572714
 Ion Ratio Lower Upper
 178 100
 176 18.8 15.4 23.2
 179 15.4 12.2 18.4

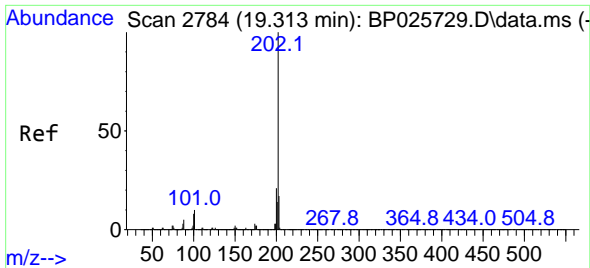


#72
 Anthracene
 Concen: 2.381 ng
 RT: 17.319 min Scan# 2445
 Delta R.T. 0.000 min
 Lab File: BP025815.D
 Acq: 22 Sep 2025 16:27



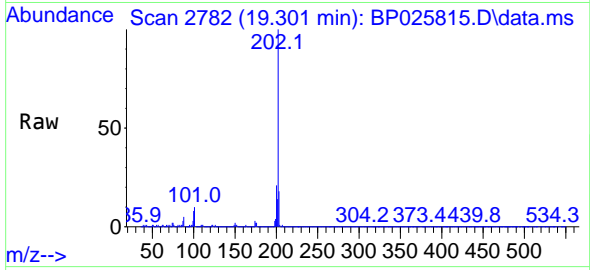
Tgt Ion:178 Resp: 122772
 Ion Ratio Lower Upper
 178 100
 176 18.6 14.8 22.2
 179 16.3 12.2 18.4



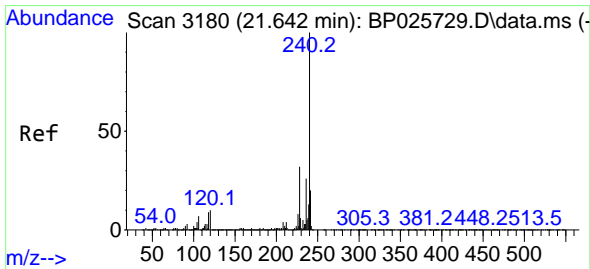
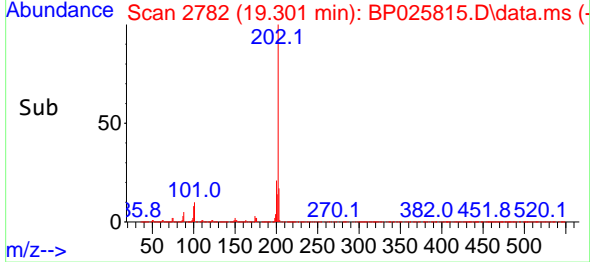
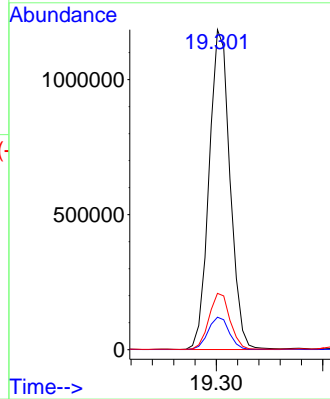


#75
 Fluoranthene
 Concen: 26.541 ng
 RT: 19.301 min Scan# 21
 Delta R.T. -0.012 min
 Lab File: BP025815.D
 Acq: 22 Sep 2025 16:27

Instrument :
 BNA_P
 ClientSampleId :

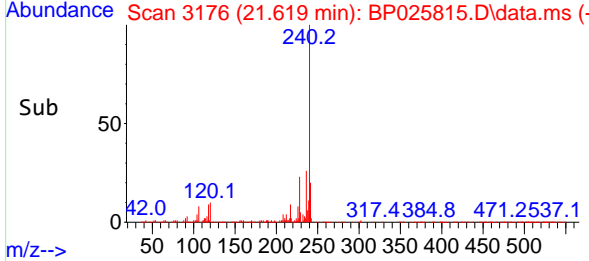
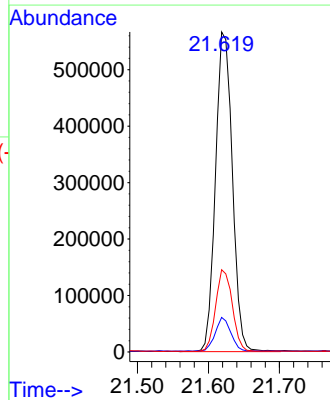
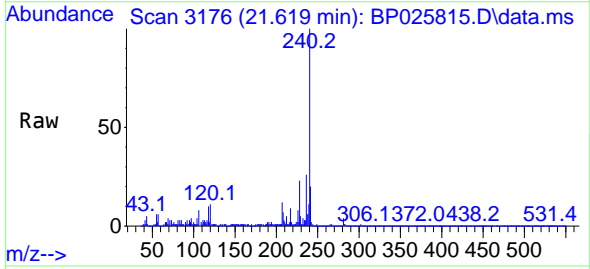


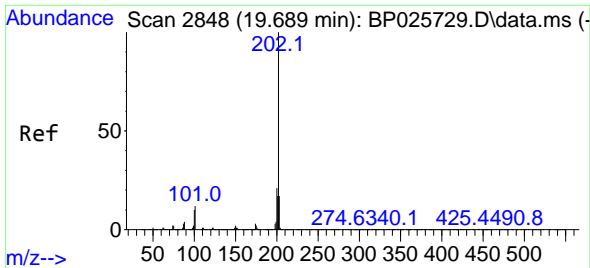
Tgt Ion:202 Resp: 1617961
 Ion Ratio Lower Upper
 202 100
 101 10.1 0.0 30.4
 203 17.6 0.0 37.4



#76
 Chrysene-d12
 Concen: 20.000 ng
 RT: 21.619 min Scan# 3176
 Delta R.T. -0.023 min
 Lab File: BP025815.D
 Acq: 22 Sep 2025 16:27

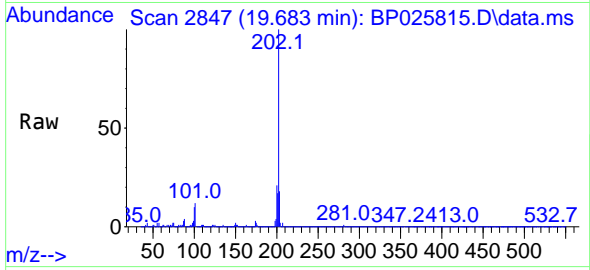
Tgt Ion:240 Resp: 931321
 Ion Ratio Lower Upper
 240 100
 120 10.8 8.0 12.0
 236 25.7 20.7 31.1



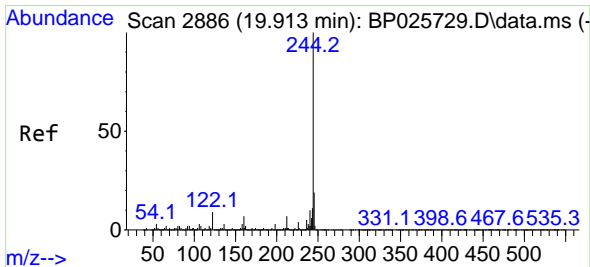
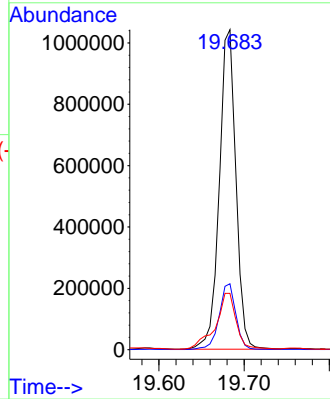
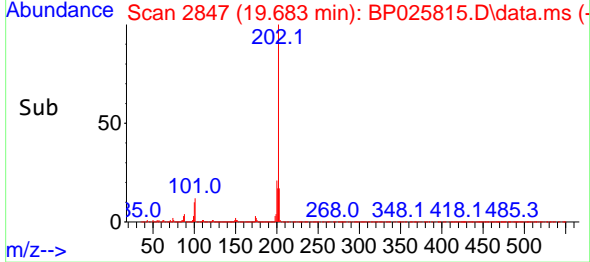


#78
 Pyrene
 Concen: 22.781 ng
 RT: 19.683 min Scan# 2848
 Delta R.T. -0.006 min
 Lab File: BP025815.D
 Acq: 22 Sep 2025 16:27

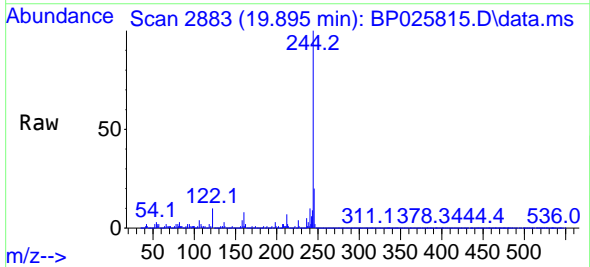
Instrument :
 BNA_P
 ClientSampleId :



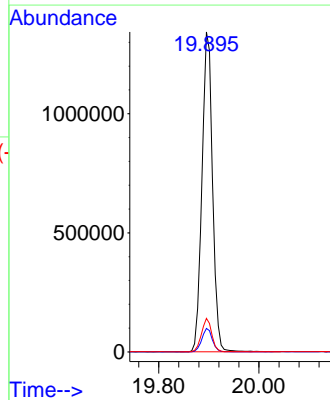
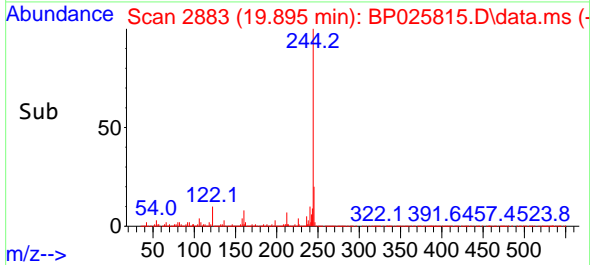
Tgt Ion:202 Resp: 1415641
 Ion Ratio Lower Upper
 202 100
 200 20.6 17.0 25.6
 203 17.6 13.9 20.9

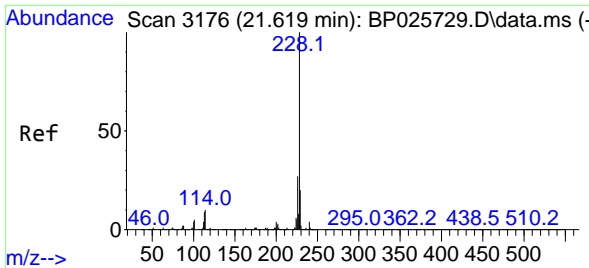


#79
 Terphenyl-d14
 Concen: 37.969 ng
 RT: 19.895 min Scan# 2883
 Delta R.T. -0.018 min
 Lab File: BP025815.D
 Acq: 22 Sep 2025 16:27



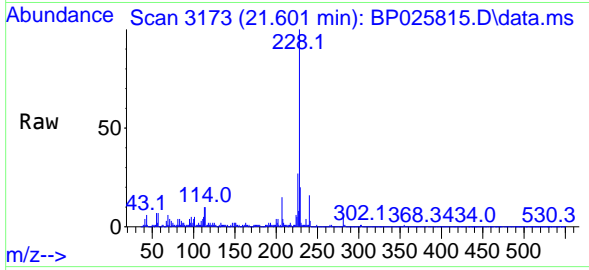
Tgt Ion:244 Resp: 1965600
 Ion Ratio Lower Upper
 244 100
 212 7.3 5.9 8.9
 122 10.5 7.1 10.7



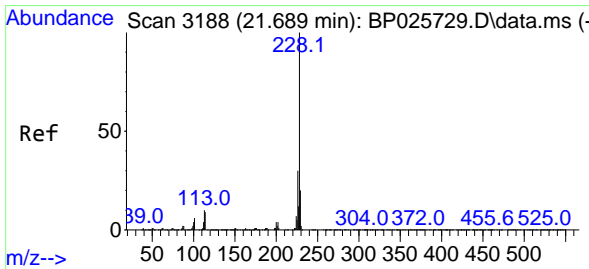
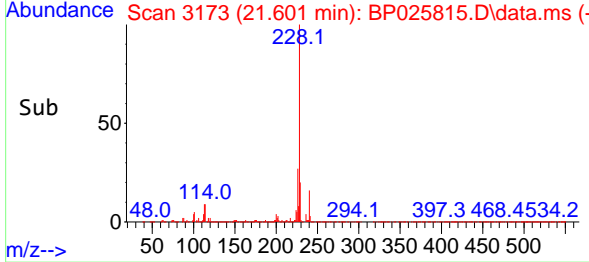
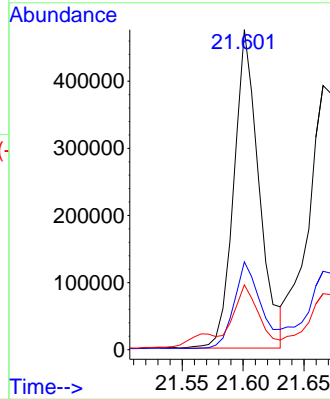


#81
 Benzo(a)anthracene
 Concen: 10.696 ng
 RT: 21.601 min Scan# 3176
 Delta R.T. -0.018 min
 Lab File: BP025815.D
 Acq: 22 Sep 2025 16:27

Instrument :
 BNA_P
 ClientSampleId :

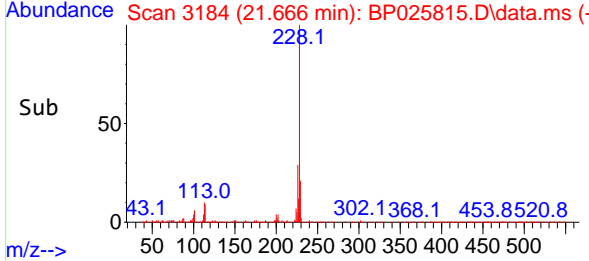
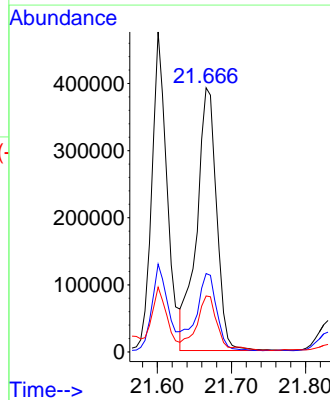
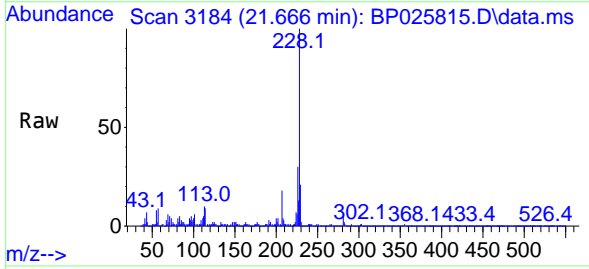


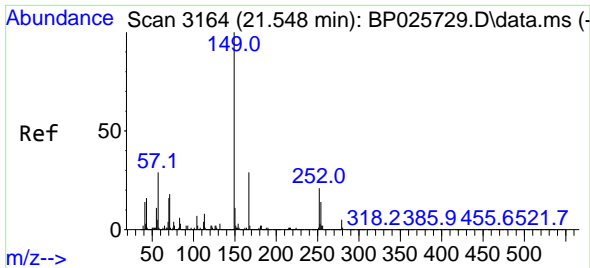
Tgt Ion:228 Resp: 682003
 Ion Ratio Lower Upper
 228 100
 226 27.4 21.6 32.4
 229 20.3 15.7 23.5



#83
 Chrysene
 Concen: 12.043 ng
 RT: 21.666 min Scan# 3184
 Delta R.T. -0.023 min
 Lab File: BP025815.D
 Acq: 22 Sep 2025 16:27

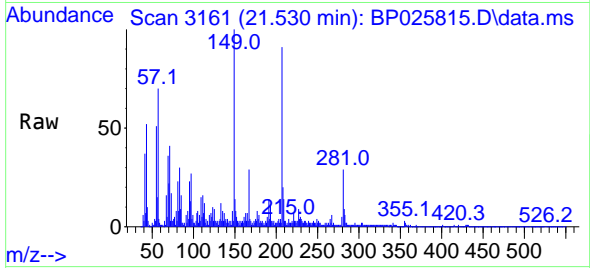
Tgt Ion:228 Resp: 731977
 Ion Ratio Lower Upper
 228 100
 226 29.7 23.8 35.6
 229 21.2 15.6 23.4



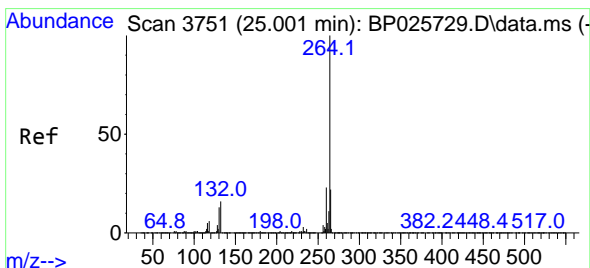
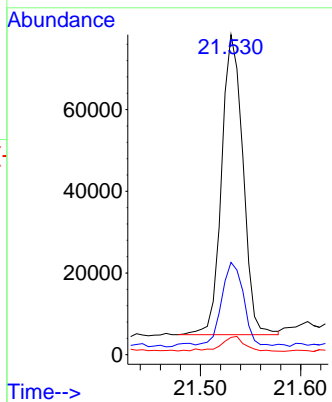
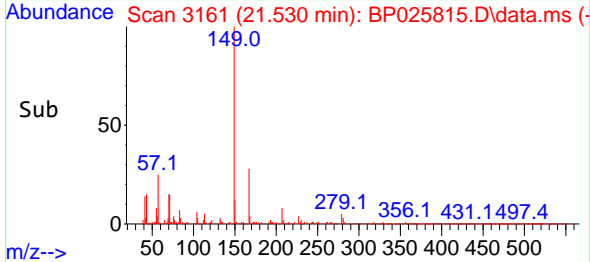


#84
 Bis(2-ethylhexyl)phthalate
 Concen: 2.721 ng
 RT: 21.530 min Scan# 3161
 Delta R.T. -0.018 min
 Lab File: BP025815.D
 Acq: 22 Sep 2025 16:27

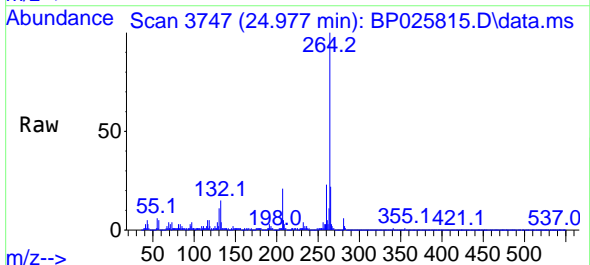
Instrument :
 BNA_P
 ClientSampleId :



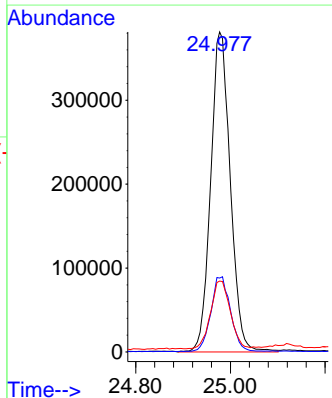
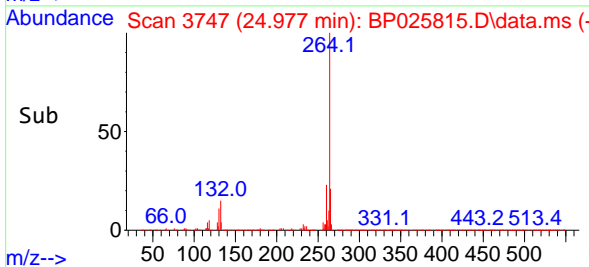
Tgt Ion:149 Resp: 108450
 Ion Ratio Lower Upper
 149 100
 167 28.8 22.9 34.3
 279 5.4 3.8 5.8

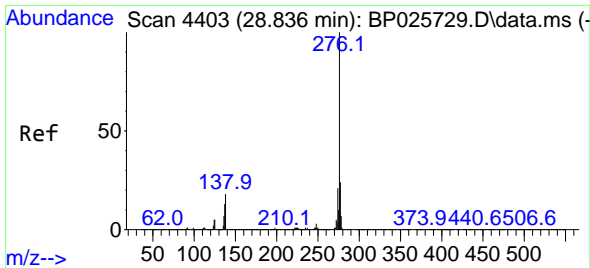


#86
 Perylene-d12
 Concen: 20.000 ng
 RT: 24.977 min Scan# 3747
 Delta R.T. -0.023 min
 Lab File: BP025815.D
 Acq: 22 Sep 2025 16:27



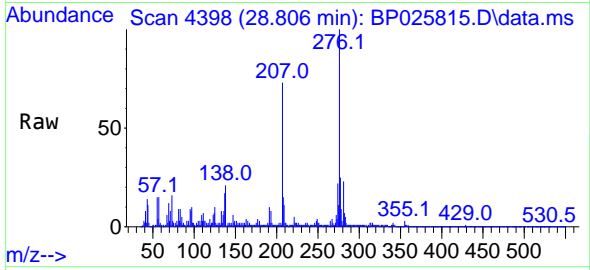
Tgt Ion:264 Resp: 1096690
 Ion Ratio Lower Upper
 264 100
 260 23.1 18.3 27.5
 265 22.1 17.3 25.9



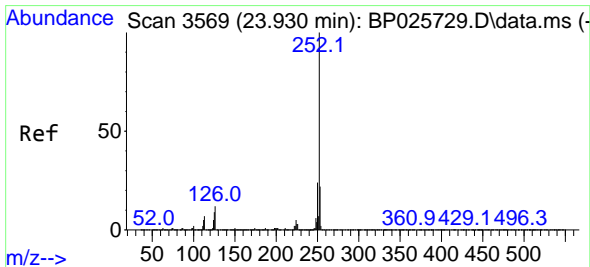
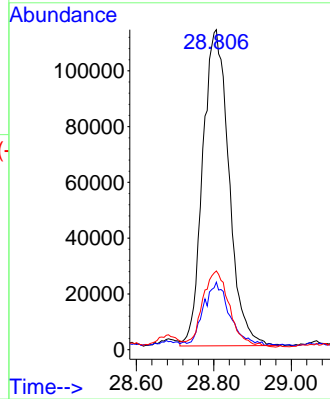
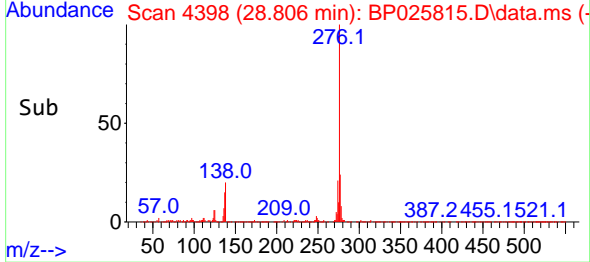


#87
 Indeno(1,2,3-cd)pyrene
 Concen: 6.659 ng
 RT: 28.806 min Scan# 41
 Delta R.T. -0.029 min
 Lab File: BP025815.D
 Acq: 22 Sep 2025 16:27

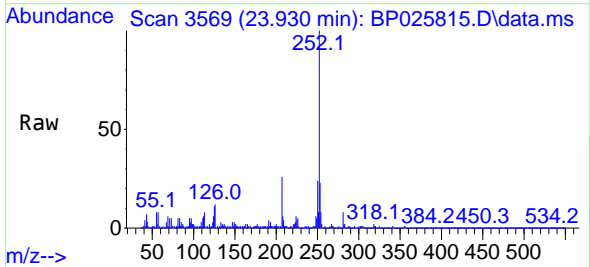
Instrument :
 BNA_P
 ClientSampleId :



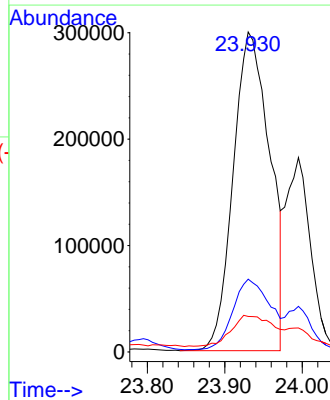
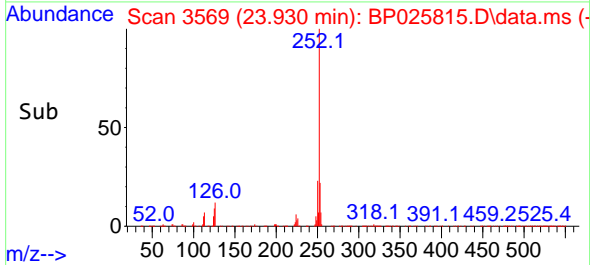
Tgt Ion:276 Resp: 531059
 Ion Ratio Lower Upper
 276 100
 138 19.5 13.4 20.2
 277 22.9 9.1 13.7#

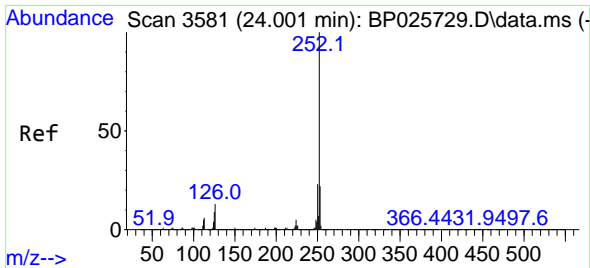


#88
 Benzo(b)fluoranthene
 Concen: 14.649 ng
 RT: 23.930 min Scan# 3569
 Delta R.T. 0.000 min
 Lab File: BP025815.D
 Acq: 22 Sep 2025 16:27



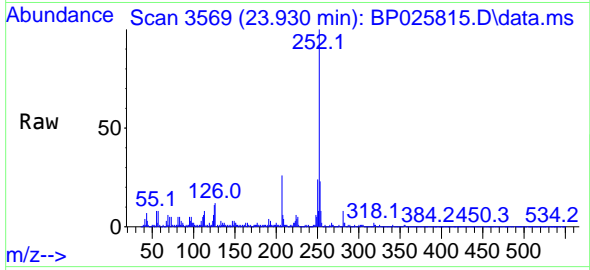
Tgt Ion:252 Resp: 982424
 Ion Ratio Lower Upper
 252 100
 253 22.8 17.9 26.9
 125 11.1 7.3 10.9#



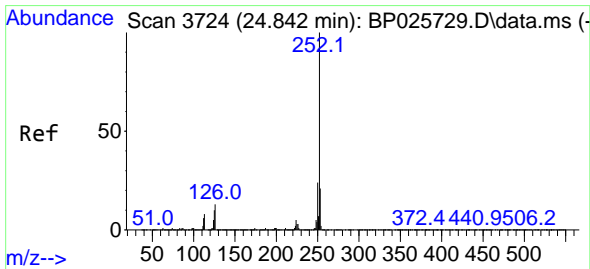
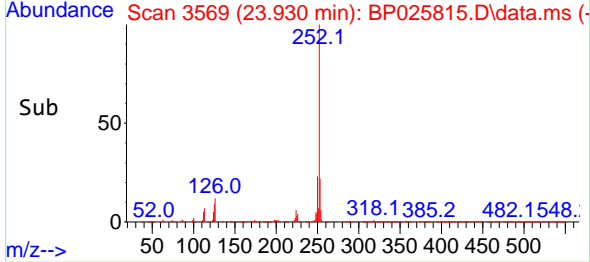
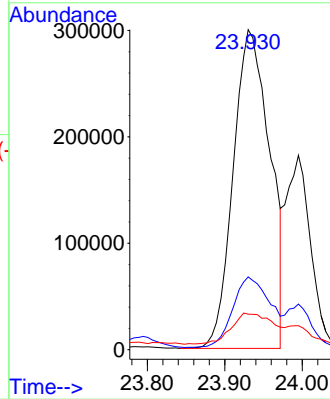


#89
 Benzo(k)fluoranthene
 Concen: 14.356 ng
 RT: 23.930 min Scan# 31
 Delta R.T. -0.071 min
 Lab File: BP025815.D
 Acq: 22 Sep 2025 16:27

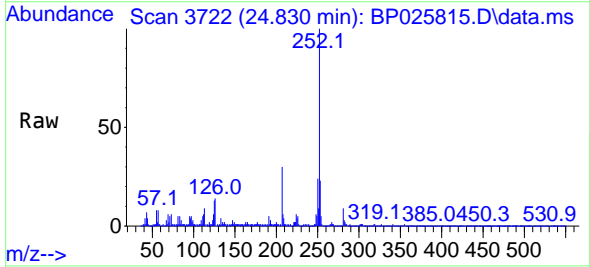
Instrument :
 BNA_P
 ClientSampleId :



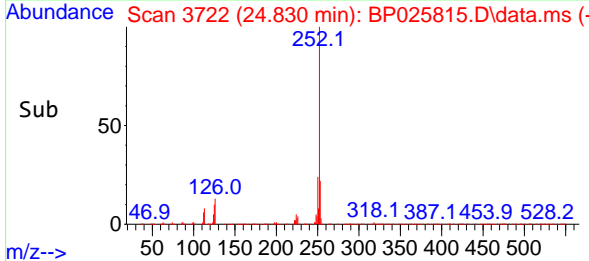
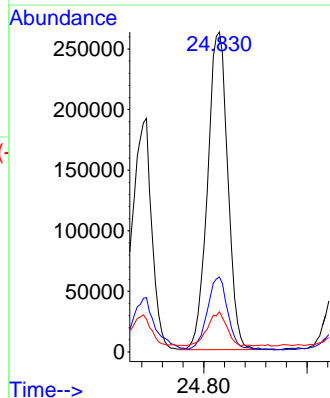
Tgt Ion:252 Resp: 982424
 Ion Ratio Lower Upper
 252 100
 253 22.8 17.5 26.3
 125 11.1 7.5 11.3

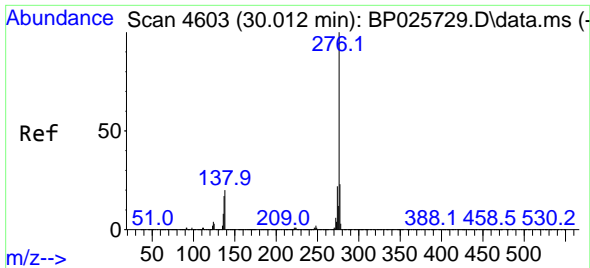


#90
 Benzo(a)pyrene
 Concen: 10.826 ng
 RT: 24.830 min Scan# 3722
 Delta R.T. -0.012 min
 Lab File: BP025815.D
 Acq: 22 Sep 2025 16:27



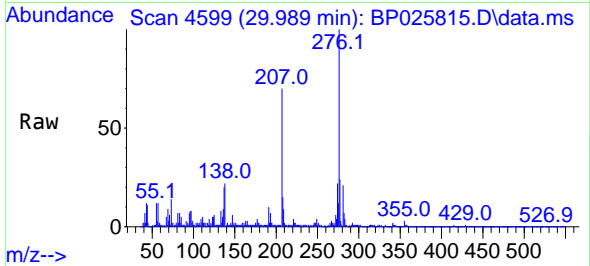
Tgt Ion:252 Resp: 711045
 Ion Ratio Lower Upper
 252 100
 253 23.4 17.2 25.8
 125 12.5 8.3 12.5#





#92
 Benzo(g,h,i)perylene
 Concen: 8.025 ng
 RT: 29.989 min Scan# 41
 Delta R.T. -0.023 min
 Lab File: BP025815.D
 Acq: 22 Sep 2025 16:27

Instrument :
 BNA_P
 ClientSampleId :



Tgt Ion: 276 Resp: 515095

| Ion | Ratio | Lower | Upper |
|-----|-------|-------|-------|
| 276 | 100 | | |
| 277 | 24.4 | 18.7 | 28.1 |
| 138 | 21.8 | 16.0 | 24.0 |

