

Data Path : Z:\svoasrv\HPCHEM1\BNA_P\Data\BP092225\
 Data File : BP025818.D
 Acq On : 22 Sep 2025 18:31
 Operator : CG/JU
 Sample : Q3138-04
 Misc :
 ALS Vial : 10 Sample Multiplier: 1

Instrument :
 BNA_P
 ClientSampleId :

Quant Time: Sep 22 19:04:52 2025
 Quant Method : Z:\svoasrv\HPCHEM1\BNA_P\Methods\8270E-BP091225.M
 Quant Title : ASP BNA STANDARDS FOR 5 POINT CALIBRATION
 QLast Update : Thu Sep 11 16:45:04 2025
 Response via : Initial Calibration

Compound	R.T.	QIon	Response	Conc	Units	Dev(Min)

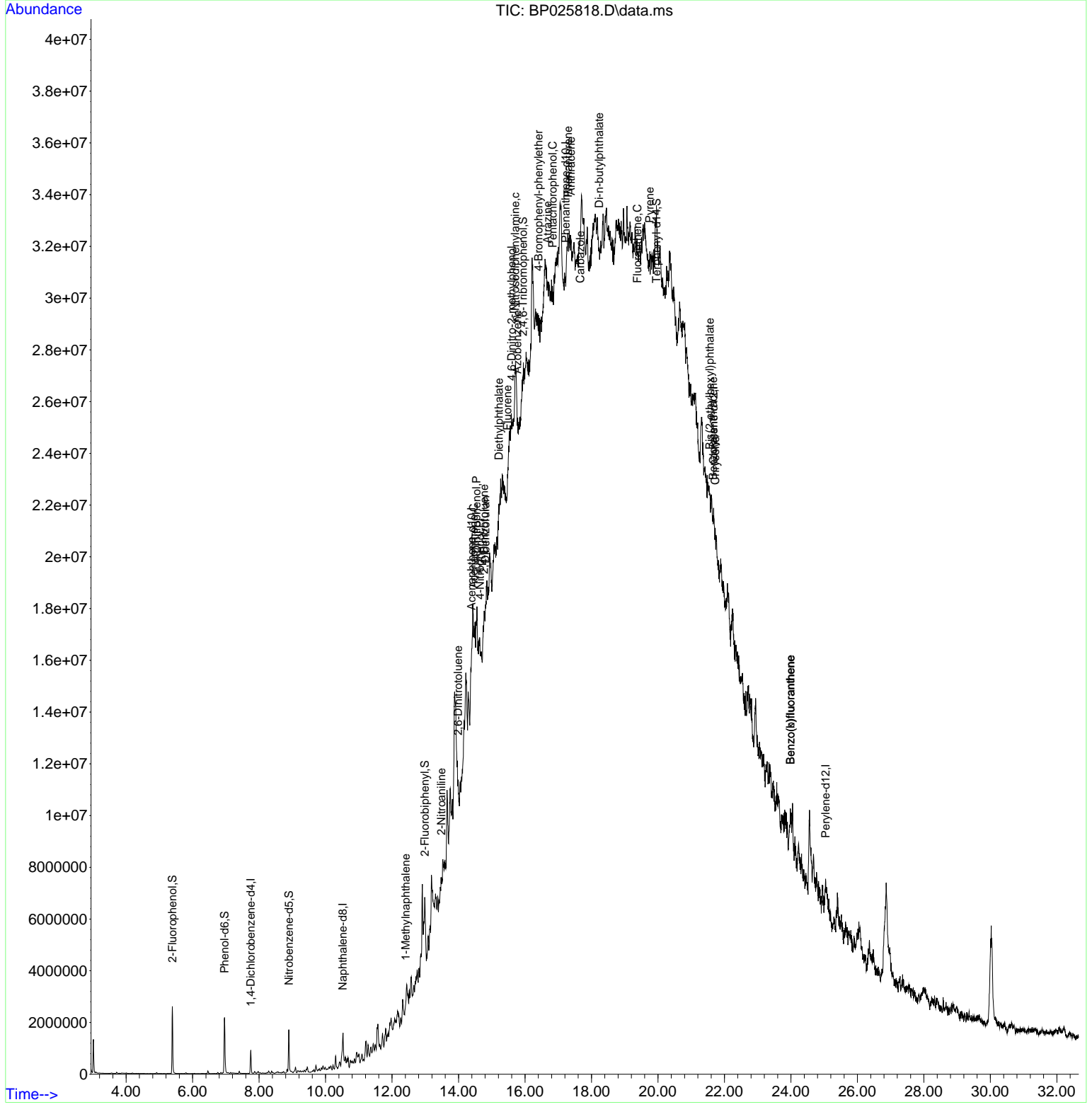
Internal Standards						
1) 1,4-Dichlorobenzene-d4	7.749	152	251617	20.000	ng	-0.01
21) Naphthalene-d8	10.519	136	946581	20.000	ng	0.00
39) Acenaphthene-d10	14.390	164	408188	20.000	ng	# 0.01
64) Phenanthrene-d10	17.225	188	228638	20.000	ng	# 0.04
76) Chrysene-d12	21.672	240	765453	20.000	ng	# 0.03
86) Perylene-d12	25.048	264	997317	20.000	ng	0.05
System Monitoring Compounds						
5) 2-Fluorophenol	5.390	112	1136391	72.874	ng	0.00
7) Phenol-d6	6.961	99	1477769	71.296	ng	0.01
23) Nitrobenzene-d5	8.896	82	989869	46.128	ng	0.00
42) 2,4,6-Tribromophenol	15.942	330	400465	78.656	ng	0.04
45) 2-Fluorobiphenyl	12.990	172	1736973	56.660	ng	0.00
79) Terphenyl-d14	19.954	244	1576351	37.048	ng	0.04
Target Compounds						
						Qvalue
38) 1-Methylnaphthalene	12.407	142	82141	2.350	ng	# 90
48) 2-Nitroaniline	13.484	65	46736	5.943	ng	# 1
51) 2,6-Dinitrotoluene	13.990	165	26438	4.004	ng	# 46
52) Acenaphthene	14.454	154	118865	5.273	ng	# 53
54) 2,4-Dinitrophenol	14.543	184	1385	5.128	ng	# 1
55) Dibenzofuran	14.807	168	294494	8.016	ng	# 41
56) 4-Nitrophenol	14.643	139	3697	5.066	ng	# 1
57) 2,4-Dinitrotoluene	14.766	165	46787	4.979	ng	# 44
58) Fluorene	15.472	166	94933	3.250	ng	# 14
60) Diethylphthalate	15.213	149	116564	3.687	ng	# 32
63) Azobenzene	15.772	77	217099	7.103	ng	# 24
65) 4,6-Dinitro-2-methylph...	15.601	198	15045	9.895	ng	# 1
66) n-Nitrosodiphenylamine	15.707	169	190771	27.265	ng	# 74
67) 4-Bromophenyl-phenylether	16.407	248	20639	8.217	ng	# 1
69) Atrazine	16.678	200	54341	20.318	ng	# 1
70) Pentachlorophenol	16.831	266	5249	2.839	ng	# 1
71) Phenanthrene	17.295	178	858553	66.197	ng	# 28
72) Anthracene	17.378	178	53547	4.069	ng	# 1
73) Carbazole	17.666	167	87502	7.152	ng	# 1
74) Di-n-butylphthalate	18.231	149	345353	23.003	ng	# 43
75) Fluoranthene	19.378	202	991793	63.761	ng	77
78) Pyrene	19.748	202	774140	15.157	ng	# 78
81) Benzo(a)anthracene	21.660	228	197202	3.763	ng	# 58
83) Chrysene	21.724	228	278846	5.582	ng	# 69
84) Bis(2-ethylhexyl)phtha...	21.560	149	103489	3.159	ng	# 44
88) Benzo(b)fluoranthene	23.983	252	421797	6.916	ng	# 1
89) Benzo(k)fluoranthene	23.983	252	421797	6.778	ng	# 1

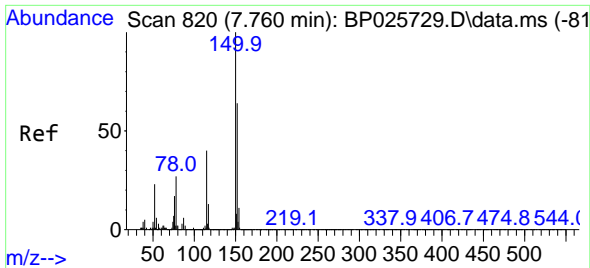
(#) = qualifier out of range (m) = manual integration (+) = signals summed

Data Path : Z:\svoasrv\HPCHEM1\BNA_P\Data\BP092225\
 Data File : BP025818.D
 Acq On : 22 Sep 2025 18:31
 Operator : CG/JU
 Sample : Q3138-04
 Misc :
 ALS Vial : 10 Sample Multiplier: 1

Instrument :
 BNA_P
 ClientSampleId :

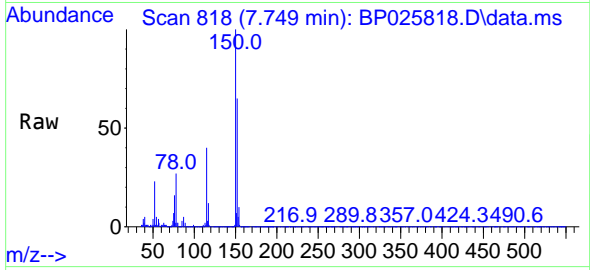
Quant Time: Sep 22 19:04:52 2025
 Quant Method : Z:\svoasrv\HPCHEM1\BNA_P\Methods\8270E-BP091225.M
 Quant Title : ASP BNA STANDARDS FOR 5 POINT CALIBRATION
 QLast Update : Thu Sep 11 16:45:04 2025
 Response via : Initial Calibration



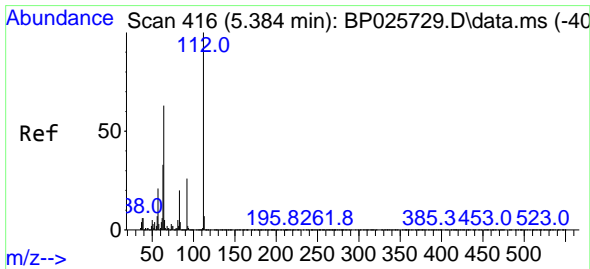
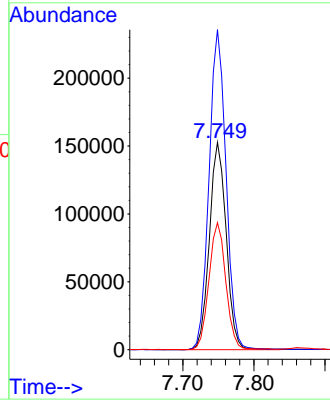
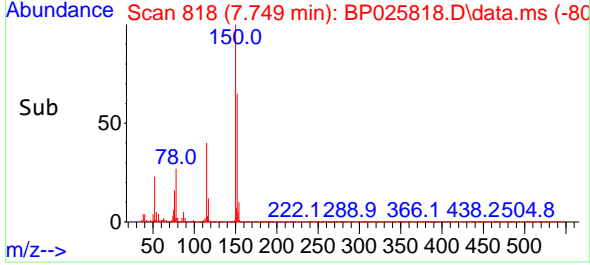


#1
 1,4-Dichlorobenzene-d4
 Concen: 20.000 ng
 RT: 7.749 min Scan# 81
 Delta R.T. -0.011 min
 Lab File: BP025818.D
 Acq: 22 Sep 2025 18:31

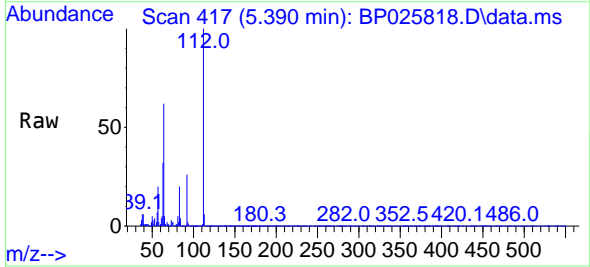
Instrument :
 BNA_P
 ClientSampleId :



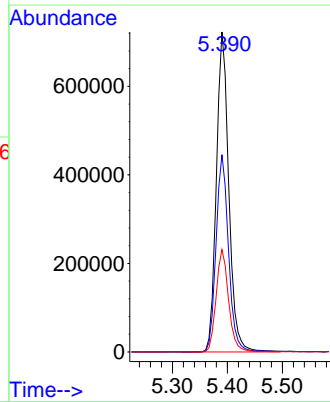
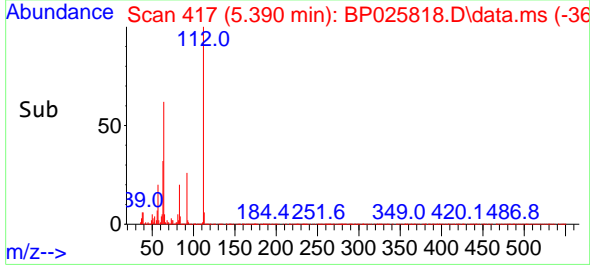
Tgt Ion:152 Resp: 251617
 Ion Ratio Lower Upper
 152 100
 150 154.4 124.3 186.5
 115 61.3 50.3 75.5

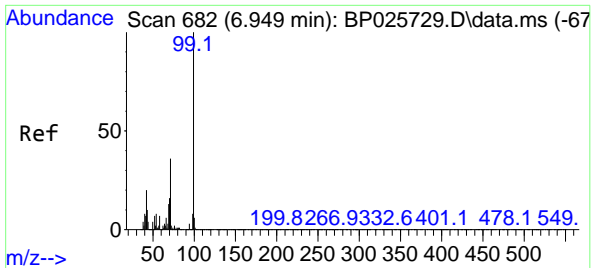


#5
 2-Fluorophenol
 Concen: 72.874 ng
 RT: 5.390 min Scan# 417
 Delta R.T. 0.006 min
 Lab File: BP025818.D
 Acq: 22 Sep 2025 18:31



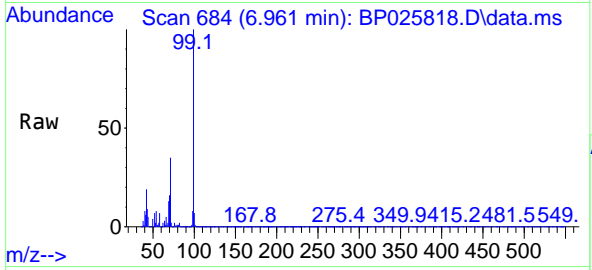
Tgt Ion:112 Resp: 1136391
 Ion Ratio Lower Upper
 112 100
 64 61.7 50.2 75.4
 63 32.0 26.7 40.1





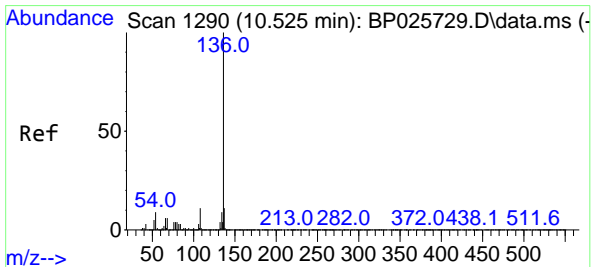
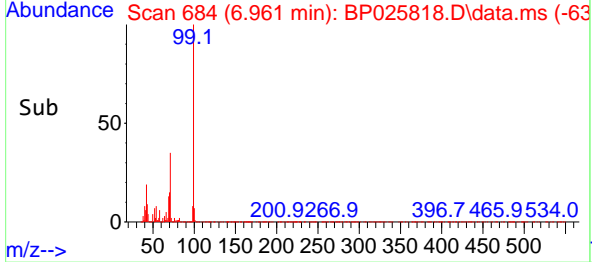
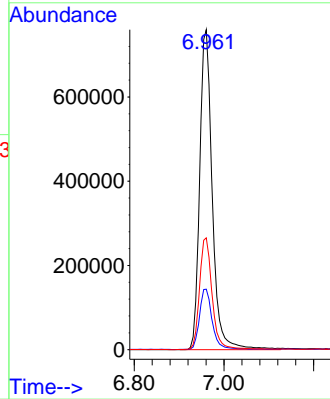
#7
 Phenol-d6
 Concen: 71.296 ng
 RT: 6.961 min Scan# 61
 Delta R.T. 0.012 min
 Lab File: BP025818.D
 Acq: 22 Sep 2025 18:31

Instrument :
 BNA_P
 ClientSampleId :

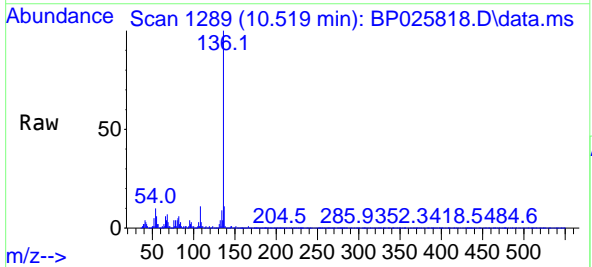


Tgt Ion: 99 Resp: 1477769

Ion	Ratio	Lower	Upper
99	100		
42	18.9	15.6	23.4
71	35.0	28.6	43.0

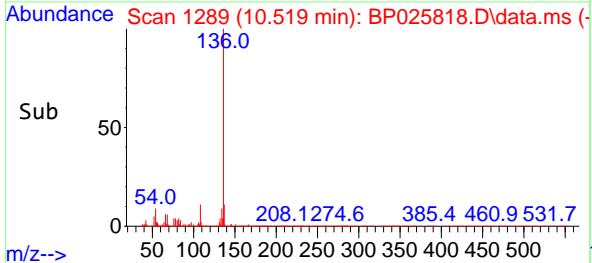
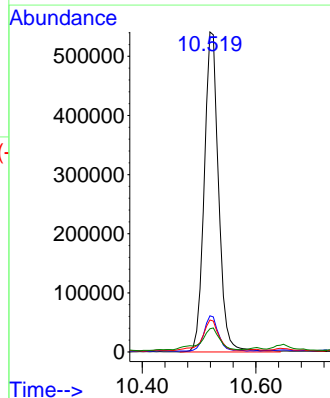


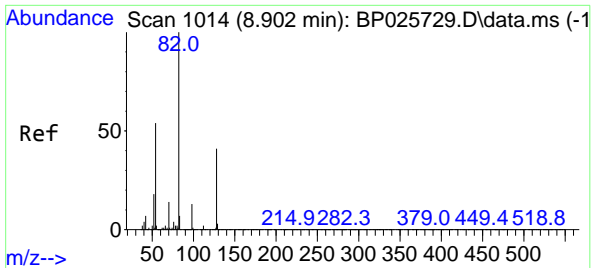
#21
 Naphthalene-d8
 Concen: 20.000 ng
 RT: 10.519 min Scan# 1289
 Delta R.T. -0.006 min
 Lab File: BP025818.D
 Acq: 22 Sep 2025 18:31



Tgt Ion: 136 Resp: 946581

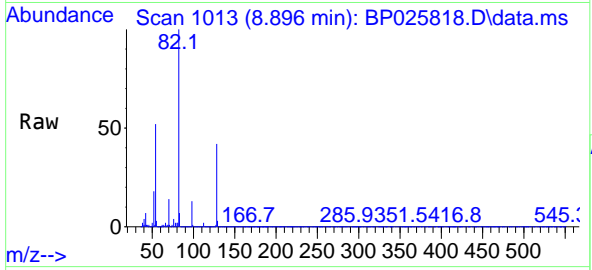
Ion	Ratio	Lower	Upper
136	100		
137	11.3	8.7	13.1
54	10.0	7.5	11.3
68	7.2	5.0	7.6



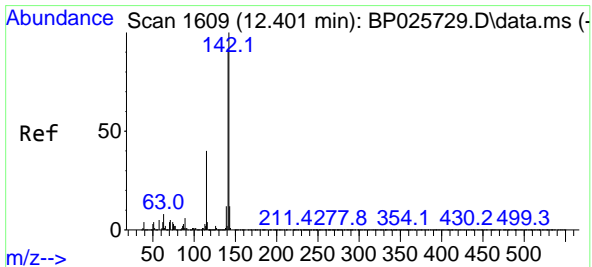
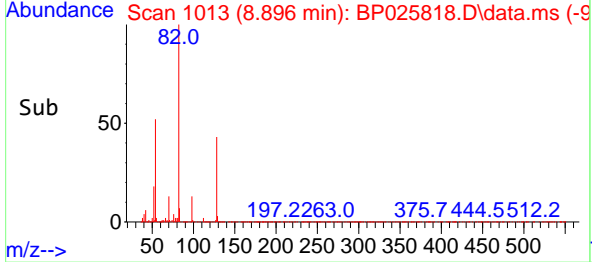
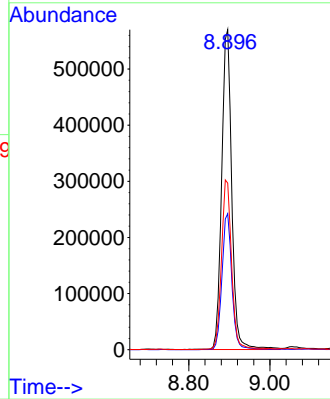


#23
 Nitrobenzene-d5
 Concen: 46.128 ng
 RT: 8.896 min Scan# 1014
 Delta R.T. -0.006 min
 Lab File: BP025818.D
 Acq: 22 Sep 2025 18:31

Instrument :
 BNA_P
 ClientSampleId :

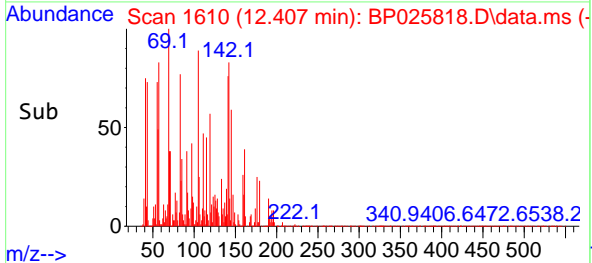
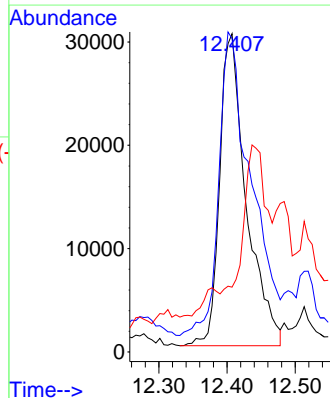
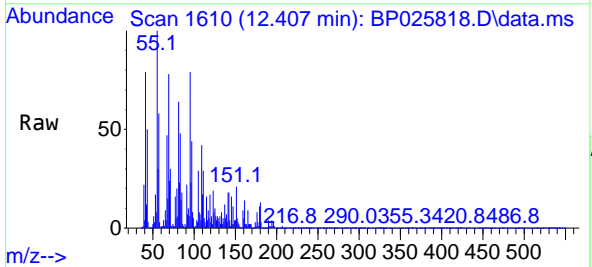


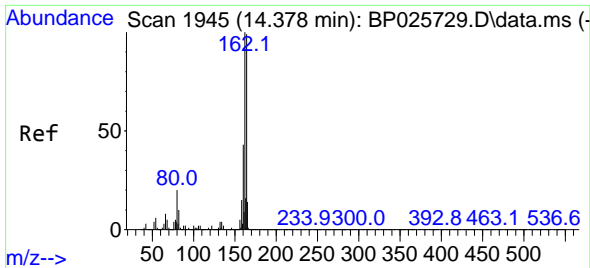
Tgt Ion: 82 Resp: 989869
 Ion Ratio Lower Upper
 82 100
 128 42.5 32.9 49.3
 54 52.0 43.4 65.2



#38
 1-Methylnaphthalene
 Concen: 2.350 ng
 RT: 12.407 min Scan# 1610
 Delta R.T. 0.006 min
 Lab File: BP025818.D
 Acq: 22 Sep 2025 18:31

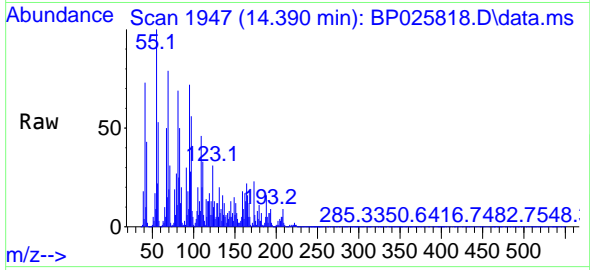
Tgt Ion: 142 Resp: 82141
 Ion Ratio Lower Upper
 142 100
 141 98.4 72.7 109.1
 116 20.4 3.5 5.3#



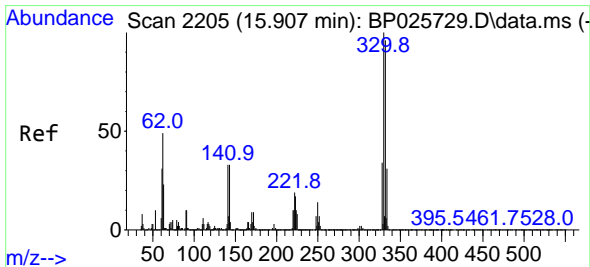
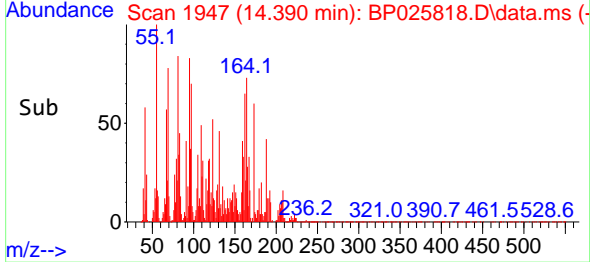
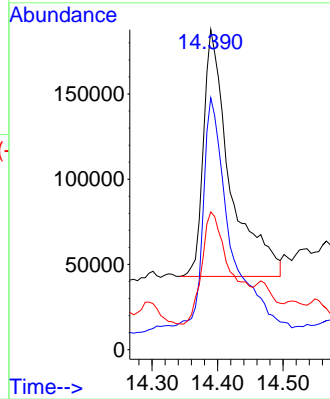


#39
 Acenaphthene-d10
 Concen: 20.000 ng
 RT: 14.390 min Scan# 1945
 Delta R.T. 0.012 min
 Lab File: BP025818.D
 Acq: 22 Sep 2025 18:31

Instrument :
 BNA_P
 ClientSampleId :

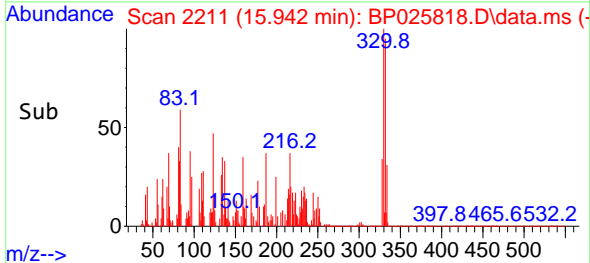
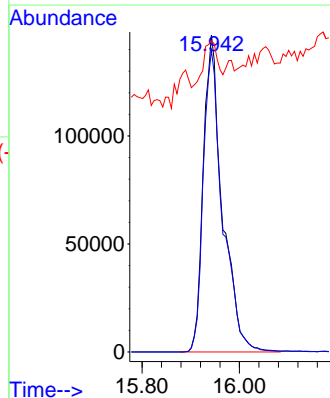
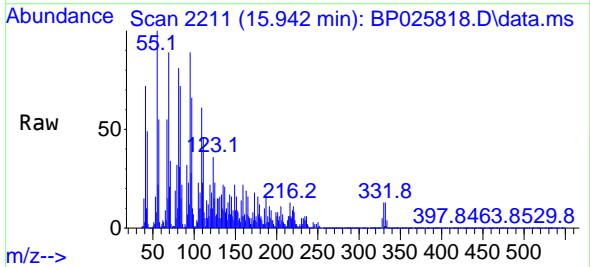


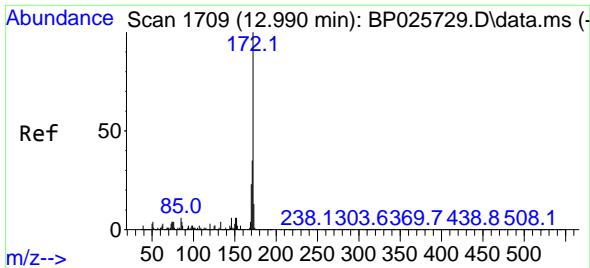
Tgt Ion:164 Resp: 408188
 Ion Ratio Lower Upper
 164 100
 162 78.7 80.6 120.8#
 160 43.1 35.0 52.6



#42
 2,4,6-Tribromophenol
 Concen: 78.656 ng
 RT: 15.942 min Scan# 2211
 Delta R.T. 0.035 min
 Lab File: BP025818.D
 Acq: 22 Sep 2025 18:31

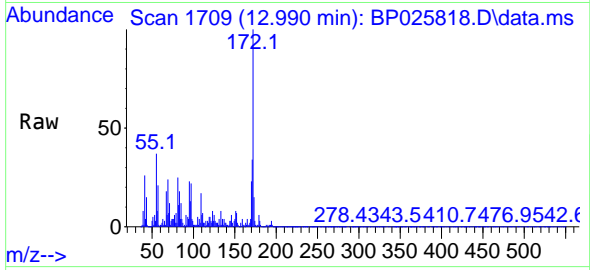
Tgt Ion:330 Resp: 400465
 Ion Ratio Lower Upper
 330 100
 332 96.5 76.9 115.3
 141 11.1 31.0 46.4#



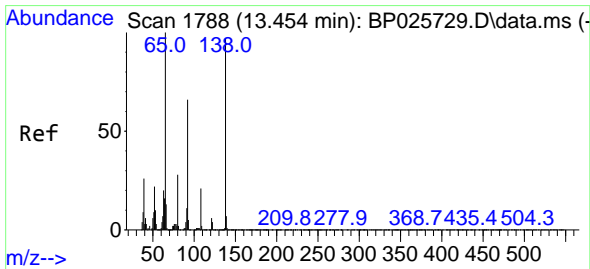
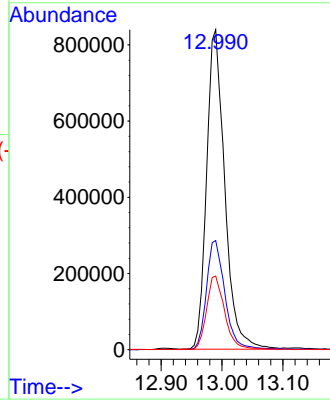
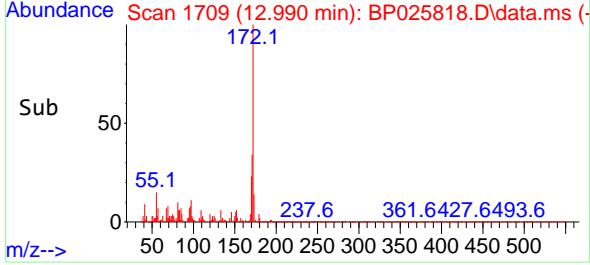


#45
 2-Fluorobiphenyl
 Concen: 56.660 ng
 RT: 12.990 min Scan# 11
 Delta R.T. 0.000 min
 Lab File: BP025818.D
 Acq: 22 Sep 2025 18:31

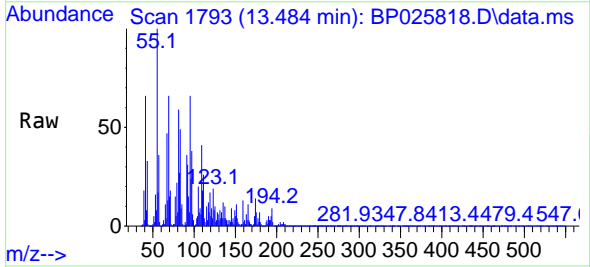
Instrument :
 BNA_P
 ClientSampleId :



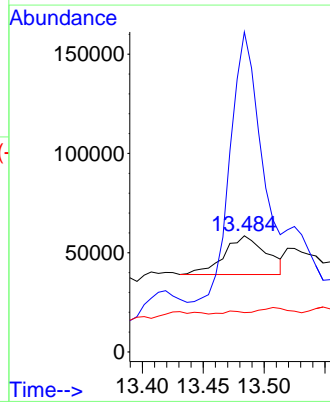
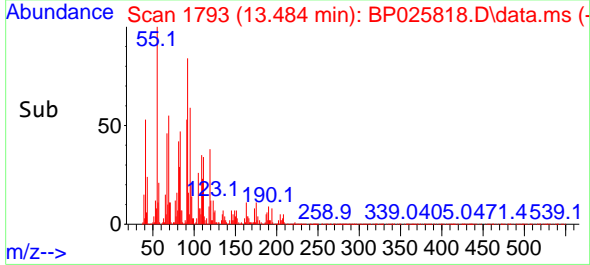
Tgt Ion:172 Resp: 1736973
 Ion Ratio Lower Upper
 172 100
 171 34.1 27.8 41.6
 170 23.0 18.6 27.8

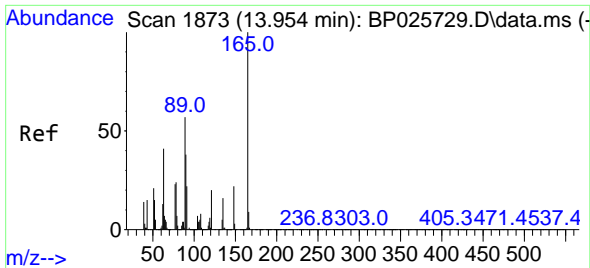


#48
 2-Nitroaniline
 Concen: 5.943 ng
 RT: 13.484 min Scan# 1793
 Delta R.T. 0.029 min
 Lab File: BP025818.D
 Acq: 22 Sep 2025 18:31



Tgt Ion: 65 Resp: 46736
 Ion Ratio Lower Upper
 65 100
 92 275.5 53.1 79.7#
 138 33.9 77.8 116.8#

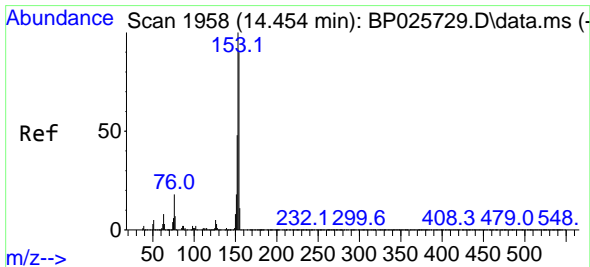
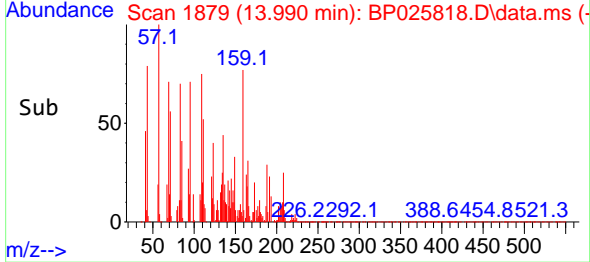
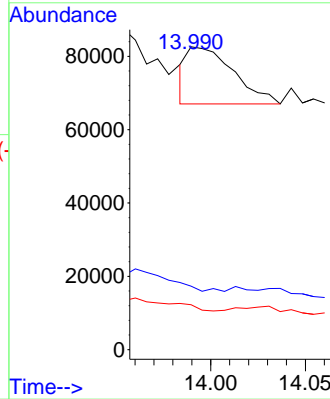
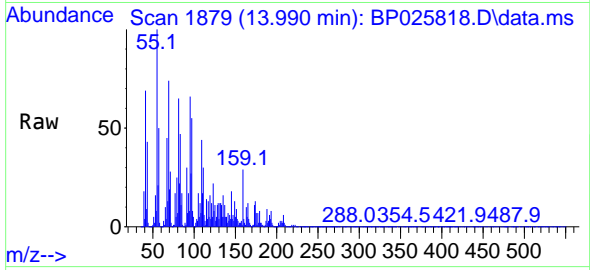




#51
 2,6-Dinitrotoluene
 Concen: 4.004 ng
 RT: 13.990 min Scan# 11
 Delta R.T. 0.035 min
 Lab File: BP025818.D
 Acq: 22 Sep 2025 18:31

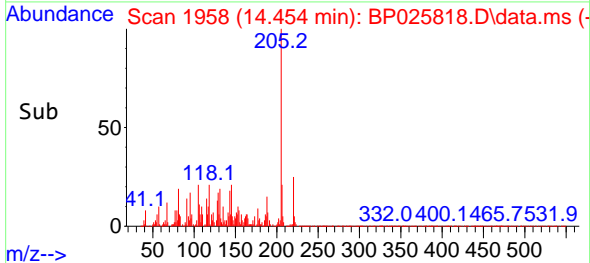
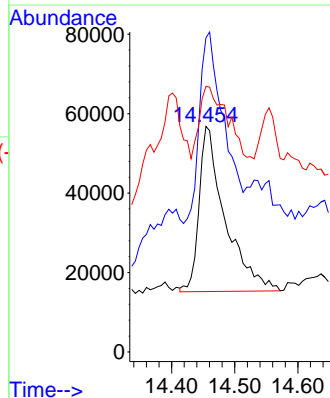
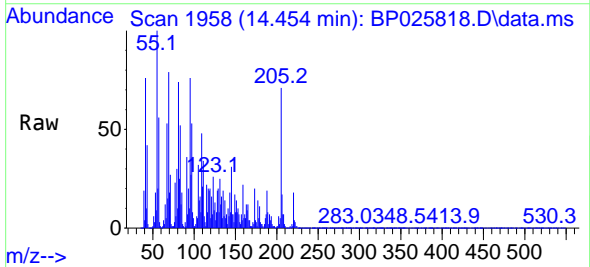
Instrument :
 BNA_P
 ClientSampleId :

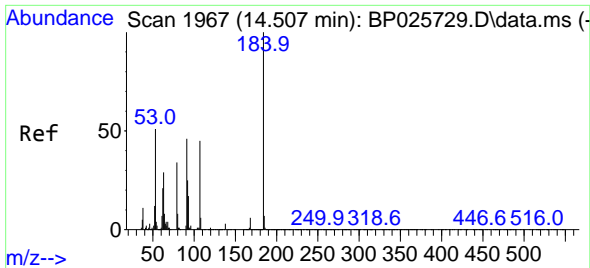
Tgt Ion:165 Resp: 26438
 Ion Ratio Lower Upper
 165 100
 63 21.0 48.1 72.1#
 89 14.9 45.4 68.0#



#52
 Acenaphthene
 Concen: 5.273 ng
 RT: 14.454 min Scan# 1958
 Delta R.T. 0.000 min
 Lab File: BP025818.D
 Acq: 22 Sep 2025 18:31

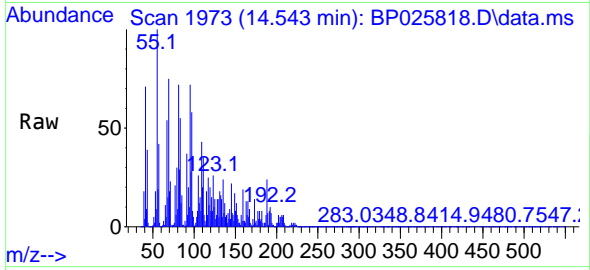
Tgt Ion:154 Resp: 118865
 Ion Ratio Lower Upper
 154 100
 153 139.3 89.4 134.0#
 152 117.7 42.5 63.7#



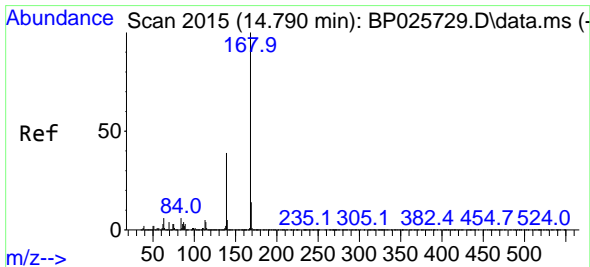
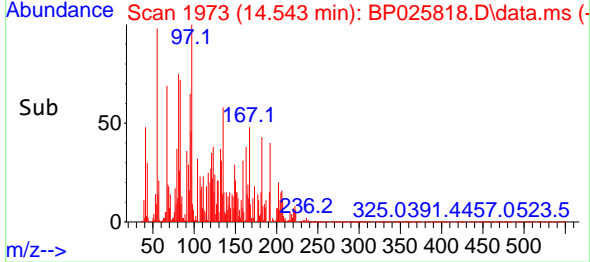
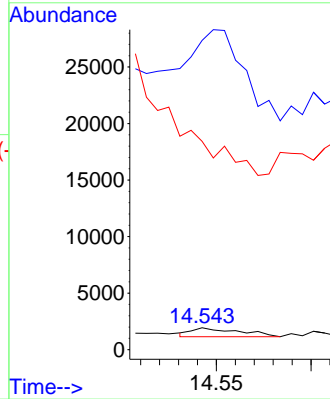


#54
 2,4-Dinitrophenol
 Concen: 5.128 ng
 RT: 14.543 min Scan# 1967
 Delta R.T. 0.036 min
 Lab File: BP025818.D
 Acq: 22 Sep 2025 18:31

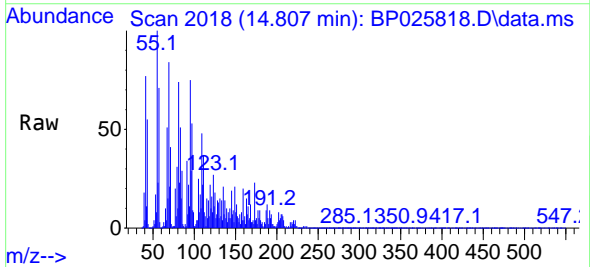
Instrument :
 BNA_P
 ClientSampleId :



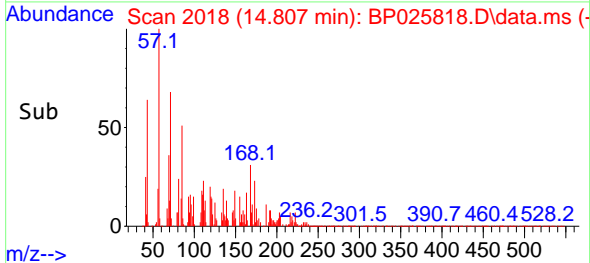
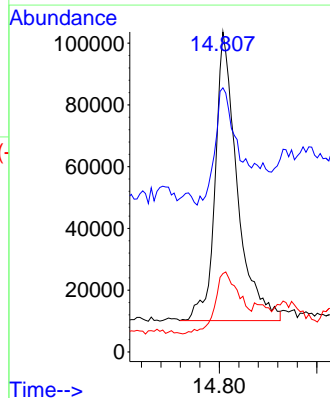
Tgt Ion:184 Resp: 1385
 Ion Ratio Lower Upper
 184 100
 63 1413.2 52.5 78.7#
 154 952.1 51.5 77.3#

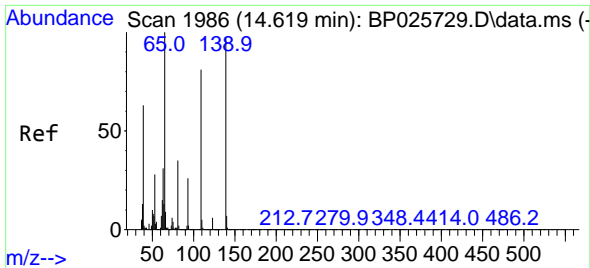


#55
 Dibenzofuran
 Concen: 8.016 ng
 RT: 14.807 min Scan# 2018
 Delta R.T. 0.018 min
 Lab File: BP025818.D
 Acq: 22 Sep 2025 18:31



Tgt Ion:168 Resp: 294494
 Ion Ratio Lower Upper
 168 100
 139 82.6 31.7 47.5#
 169 24.5 10.8 16.2#

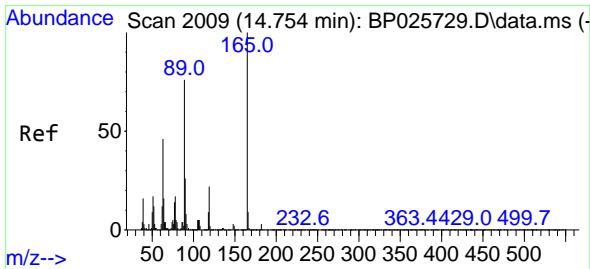
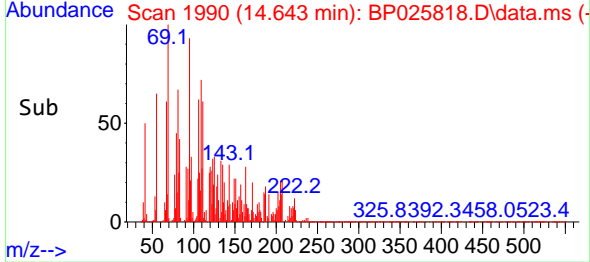
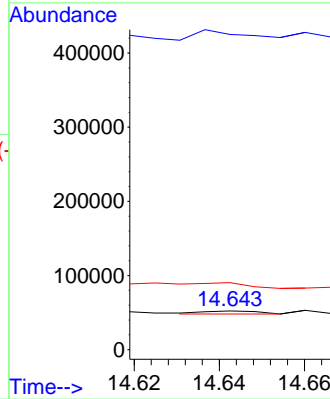
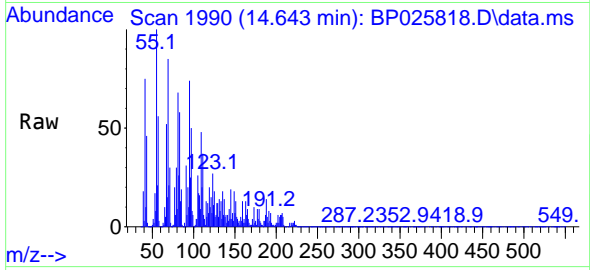




#56
 4-Nitrophenol
 Concen: 5.066 ng
 RT: 14.643 min Scan# 10
 Delta R.T. 0.024 min
 Lab File: BP025818.D
 Acq: 22 Sep 2025 18:31

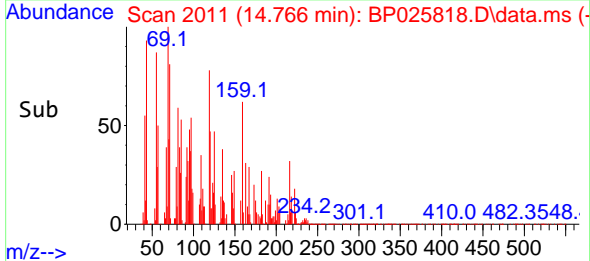
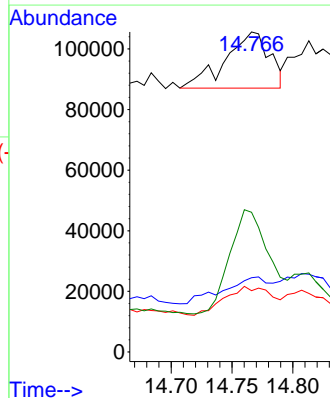
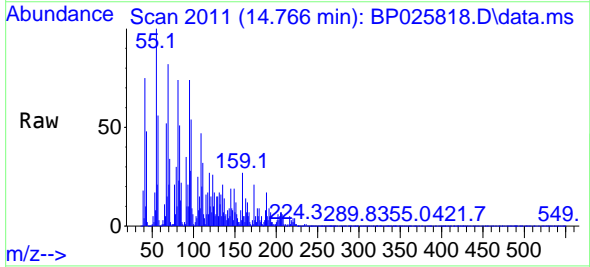
Instrument :
 BNA_P
 ClientSampleId :

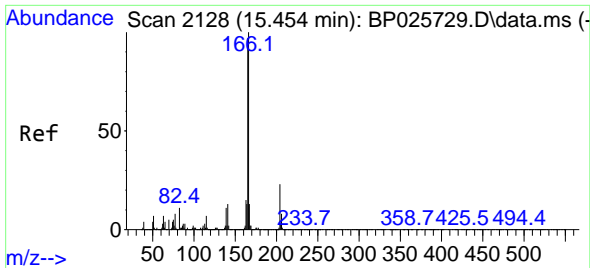
Tgt Ion:139 Resp: 3697
 Ion Ratio Lower Upper
 139 100
 109 814.3 62.9 102.9#
 65 173.1 83.4 123.4#



#57
 2,4-Dinitrotoluene
 Concen: 4.979 ng
 RT: 14.766 min Scan# 2011
 Delta R.T. 0.012 min
 Lab File: BP025818.D
 Acq: 22 Sep 2025 18:31

Tgt Ion:165 Resp: 46787
 Ion Ratio Lower Upper
 165 100
 63 23.2 37.7 56.5#
 89 19.1 61.0 91.6#
 182 43.6 2.4 3.6#

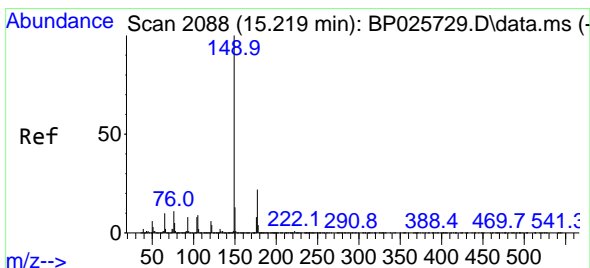
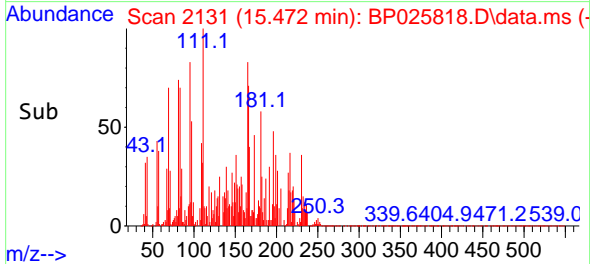
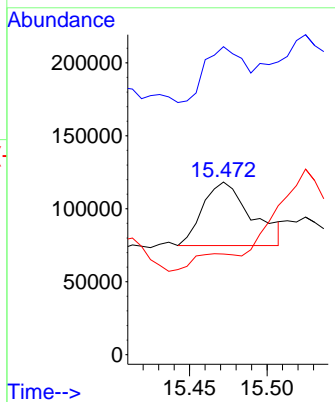
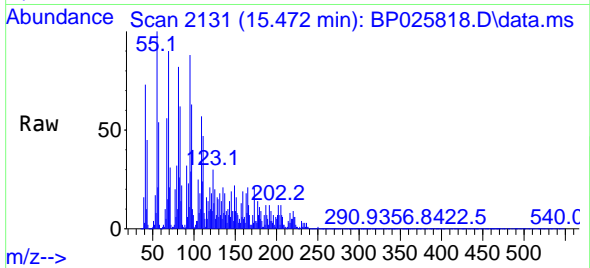




#58
 Fluorene
 Concen: 3.250 ng
 RT: 15.472 min Scan# 2128
 Delta R.T. 0.018 min
 Lab File: BP025818.D
 Acq: 22 Sep 2025 18:31

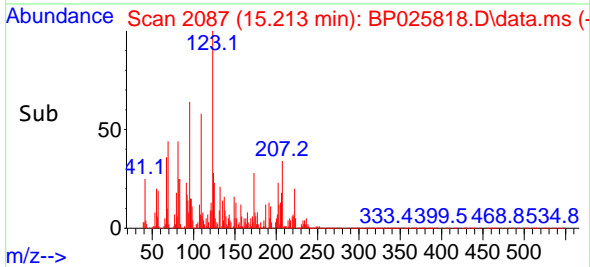
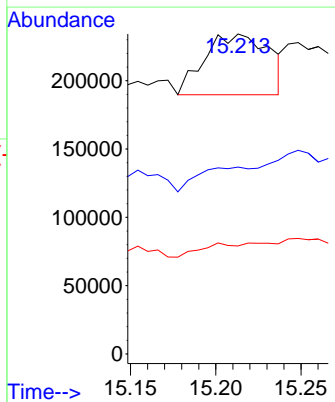
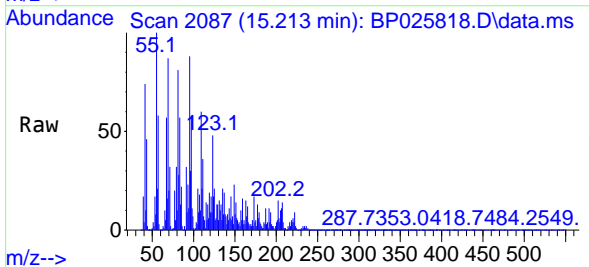
Instrument :
 BNA_P
 ClientSampleId :

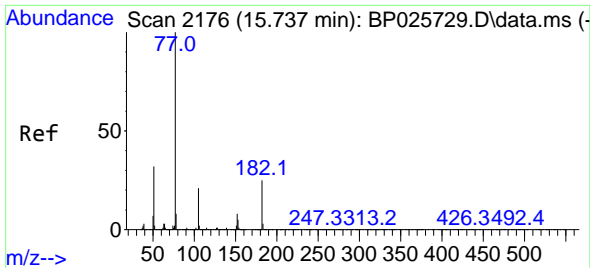
Tgt Ion:166 Resp: 94933
 Ion Ratio Lower Upper
 166 100
 165 178.3 77.7 116.5#
 167 58.3 10.6 16.0#



#60
 Diethylphthalate
 Concen: 3.687 ng
 RT: 15.213 min Scan# 2087
 Delta R.T. -0.006 min
 Lab File: BP025818.D
 Acq: 22 Sep 2025 18:31

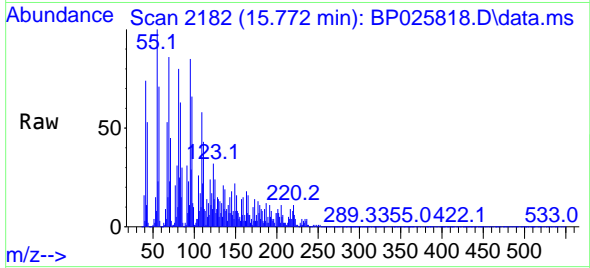
Tgt Ion:149 Resp: 116564
 Ion Ratio Lower Upper
 149 100
 177 58.4 17.7 26.5#
 150 33.8 10.0 15.0#



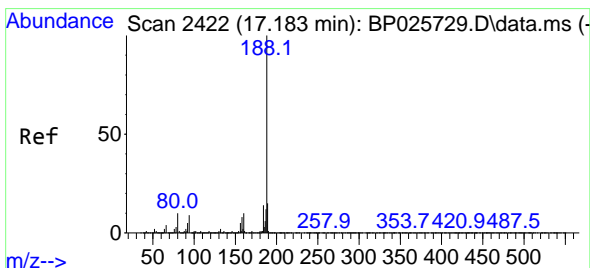
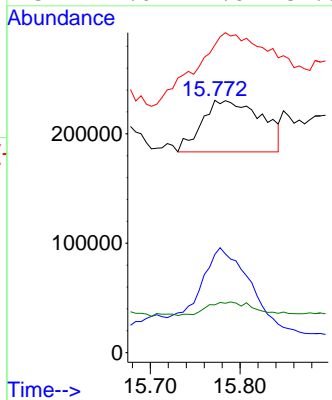
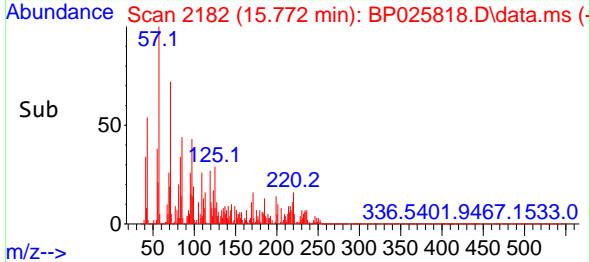


#63
 Azobenzene
 Concen: 7.103 ng
 RT: 15.772 min Scan# 2170
 Delta R.T. 0.035 min
 Lab File: BP025818.D
 Acq: 22 Sep 2025 18:31

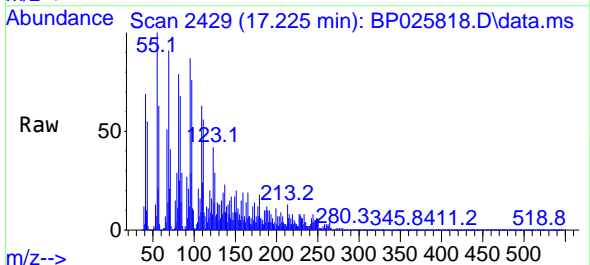
Instrument :
 BNA_P
 ClientSampleId :



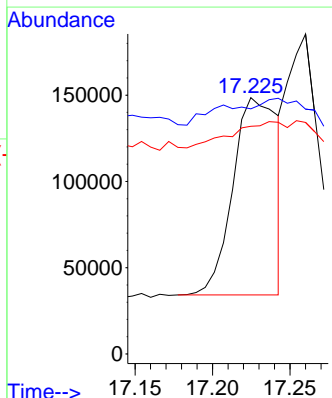
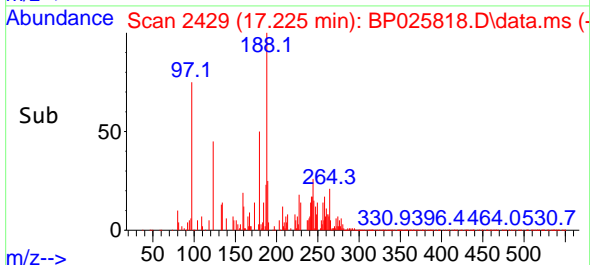
Tgt Ion: 77 Resp: 217099
 Ion Ratio Lower Upper
 77 100
 182 38.9 5.2 45.2
 105 122.0 1.1 41.1#
 51 19.0 11.6 51.6

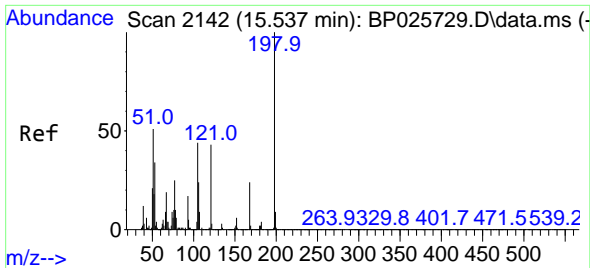


#64
 Phenanthrene-d10
 Concen: 20.000 ng
 RT: 17.225 min Scan# 2429
 Delta R.T. 0.041 min
 Lab File: BP025818.D
 Acq: 22 Sep 2025 18:31



Tgt Ion: 188 Resp: 228638
 Ion Ratio Lower Upper
 188 100
 94 95.6 7.4 11.0#
 80 88.8 7.7 11.5#

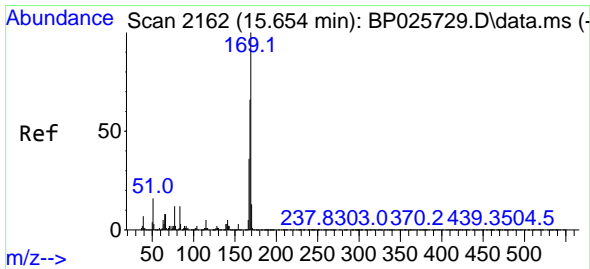
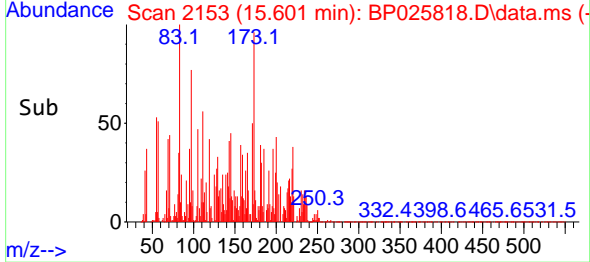
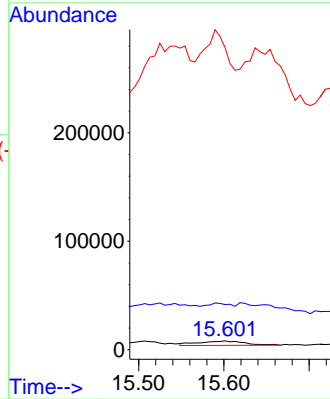
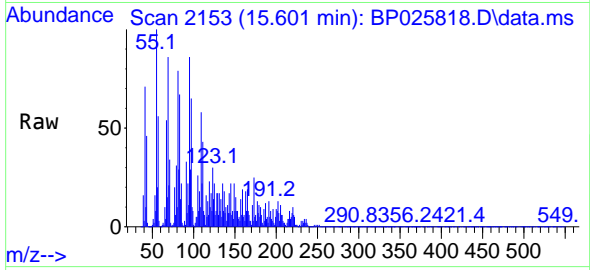




#65
 4,6-Dinitro-2-methylphenol
 Concen: 9.895 ng
 RT: 15.601 min Scan# 2142
 Delta R.T. 0.065 min
 Lab File: BP025818.D
 Acq: 22 Sep 2025 18:31

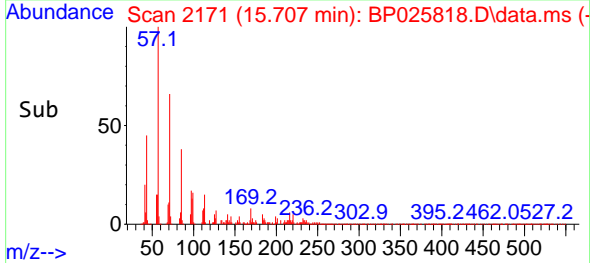
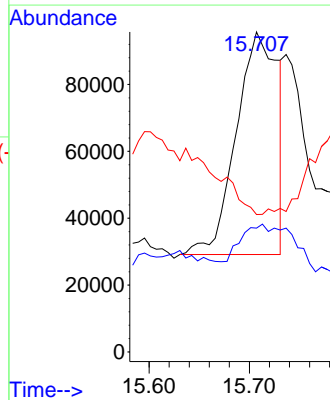
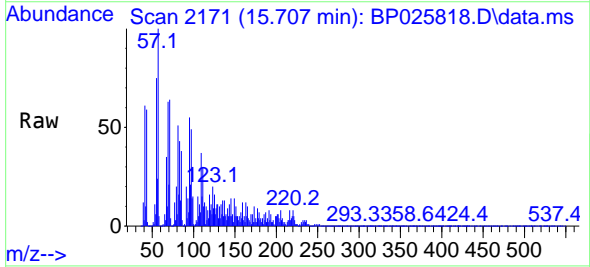
Instrument :
 BNA_P
 ClientSampleId :

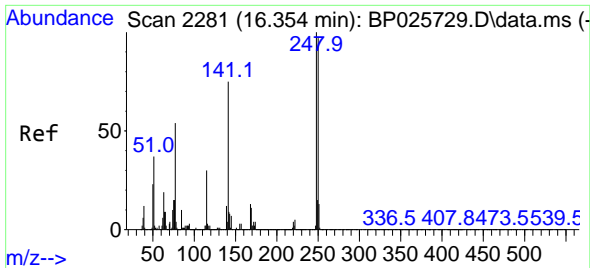
Tgt Ion:198 Resp: 15045
 Ion Ratio Lower Upper
 198 100
 51 511.3 33.4 73.4#
 105 3424.5 24.3 64.3#



#66
 n-Nitrosodiphenylamine
 Concen: 27.265 ng
 RT: 15.707 min Scan# 2171
 Delta R.T. 0.053 min
 Lab File: BP025818.D
 Acq: 22 Sep 2025 18:31

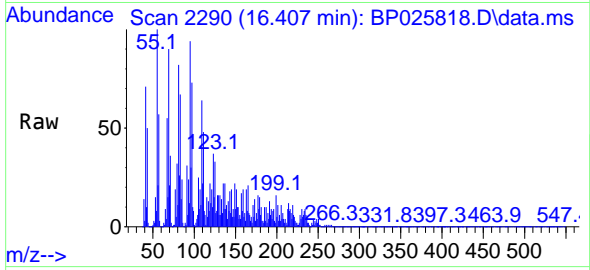
Tgt Ion:169 Resp: 190771
 Ion Ratio Lower Upper
 169 100
 168 38.7 52.6 78.8#
 167 43.0 28.5 42.7#



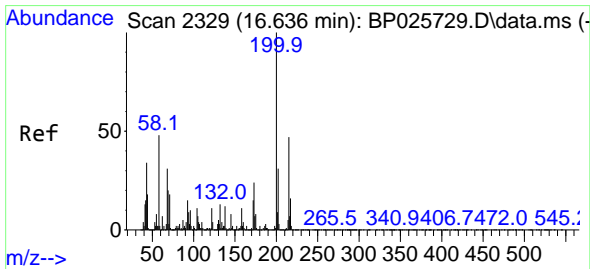
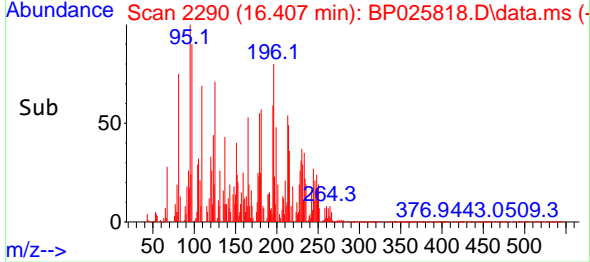
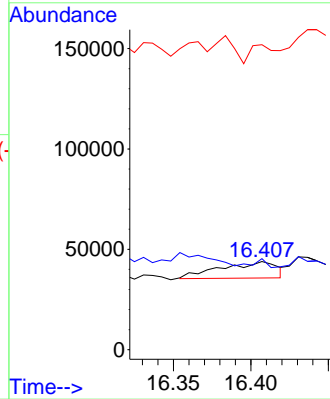


#67
 4-Bromophenyl-phenylether
 Concen: 8.217 ng
 RT: 16.407 min Scan# 21
 Delta R.T. 0.053 min
 Lab File: BP025818.D
 Acq: 22 Sep 2025 18:31

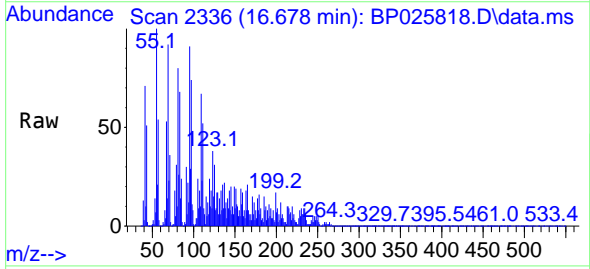
Instrument :
 BNA_P
 ClientSampleId :



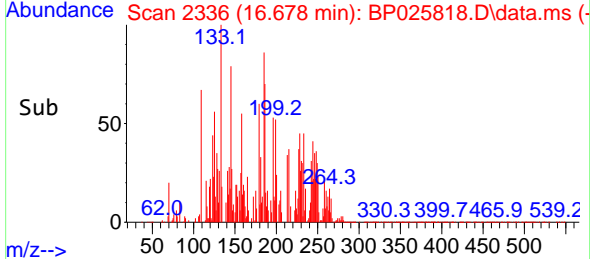
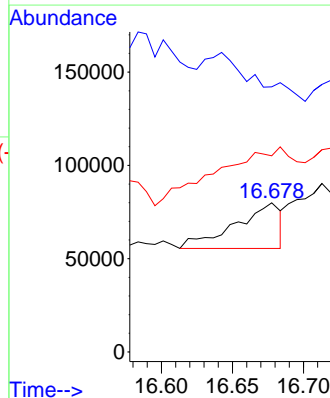
Tgt Ion:248 Resp: 20639
 Ion Ratio Lower Upper
 248 100
 250 103.1 77.5 116.3
 141 345.6 60.2 90.4#

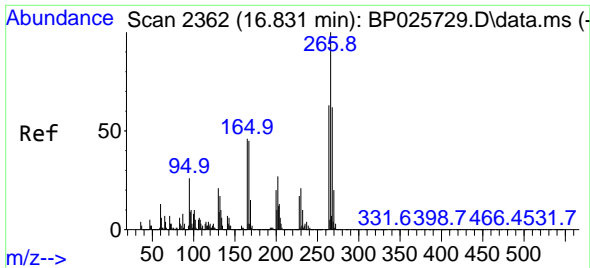


#69
 Atrazine
 Concen: 20.318 ng
 RT: 16.678 min Scan# 2336
 Delta R.T. 0.041 min
 Lab File: BP025818.D
 Acq: 22 Sep 2025 18:31



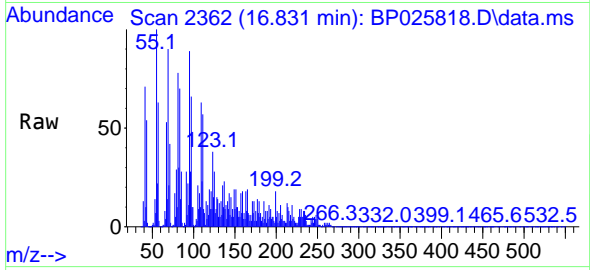
Tgt Ion:200 Resp: 54341
 Ion Ratio Lower Upper
 200 100
 173 177.8 4.2 44.2#
 215 131.6 27.3 67.3#



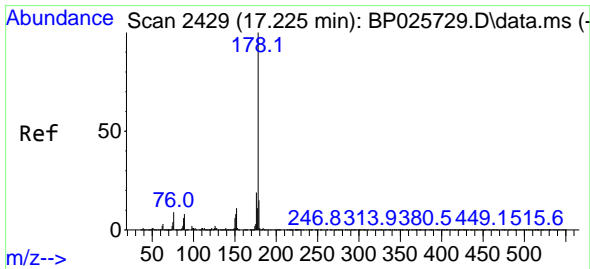
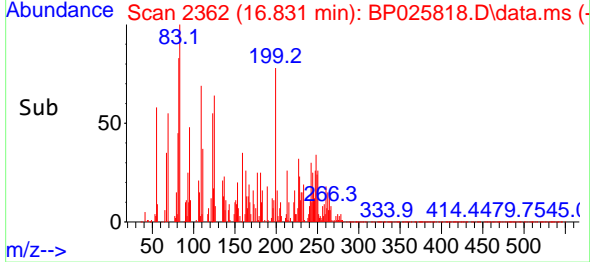
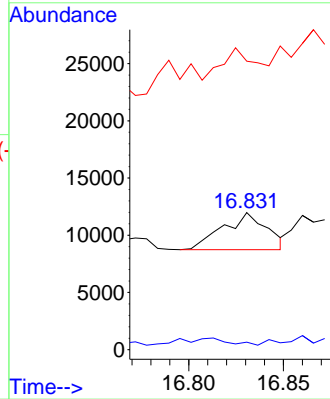


#70
 Pentachlorophenol
 Concen: 2.839 ng
 RT: 16.831 min Scan# 21
 Delta R.T. 0.000 min
 Lab File: BP025818.D
 Acq: 22 Sep 2025 18:31

Instrument :
 BNA_P
 ClientSampleId :

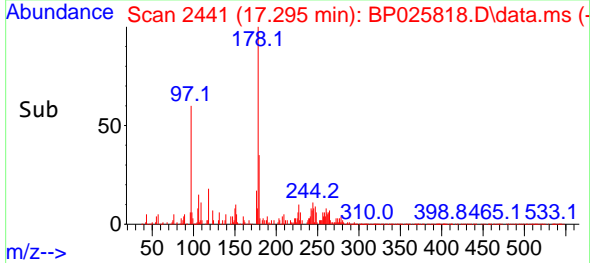
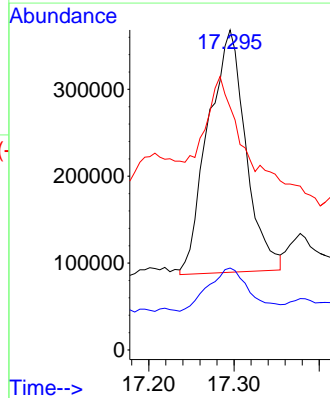
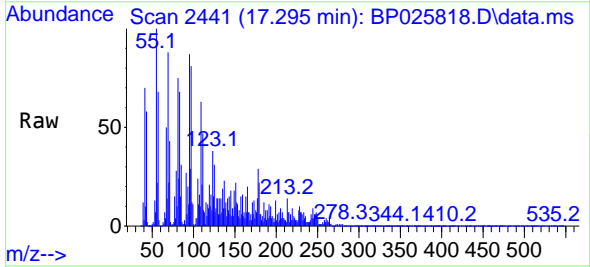


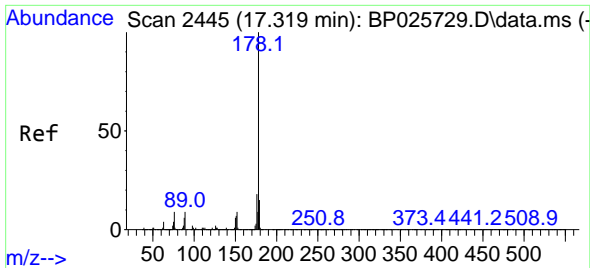
Tgt Ion: 266 Resp: 5249
 Ion Ratio Lower Upper
 266 100
 268 5.5 49.8 74.8#
 264 210.4 50.2 75.2#



#71
 Phenanthrene
 Concen: 66.197 ng
 RT: 17.295 min Scan# 2441
 Delta R.T. 0.071 min
 Lab File: BP025818.D
 Acq: 22 Sep 2025 18:31

Tgt Ion: 178 Resp: 858553
 Ion Ratio Lower Upper
 178 100
 176 25.6 15.4 23.2#
 179 75.8 12.2 18.4#

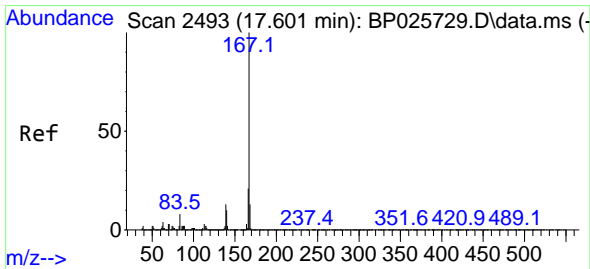
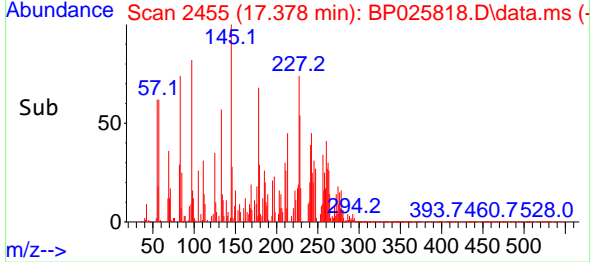
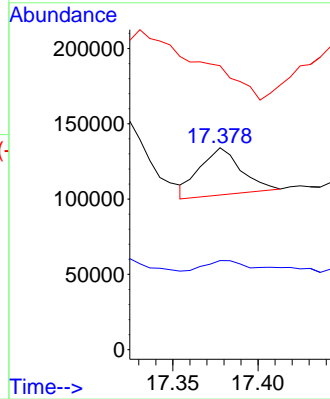
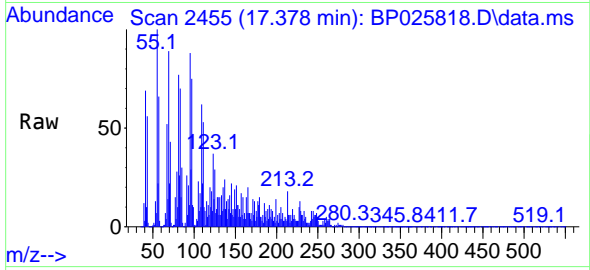




#72
 Anthracene
 Concen: 4.069 ng
 RT: 17.378 min Scan# 24
 Delta R.T. 0.059 min
 Lab File: BP025818.D
 Acq: 22 Sep 2025 18:31

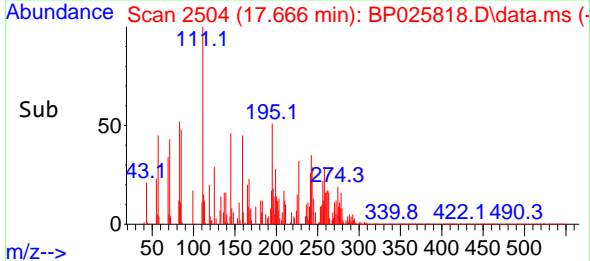
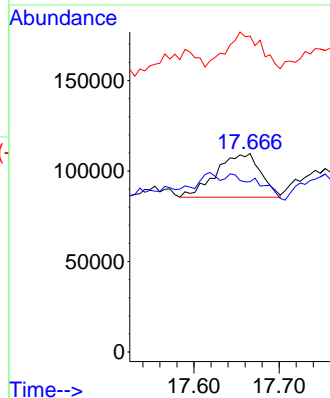
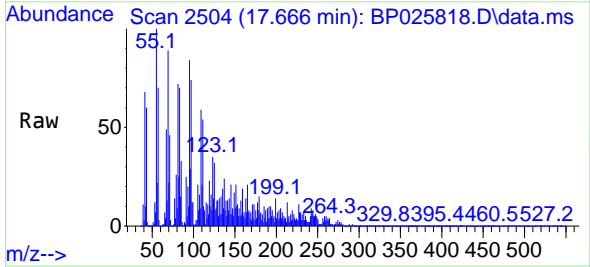
Instrument :
 BNA_P
 ClientSampleId :

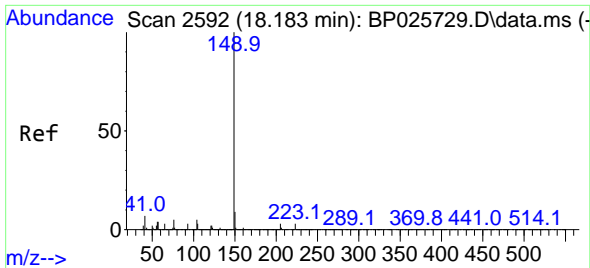
Tgt Ion:178 Resp: 53547
 Ion Ratio Lower Upper
 178 100
 176 44.1 14.8 22.2#
 179 140.6 12.2 18.4#



#73
 Carbazole
 Concen: 7.152 ng
 RT: 17.666 min Scan# 2504
 Delta R.T. 0.065 min
 Lab File: BP025818.D
 Acq: 22 Sep 2025 18:31

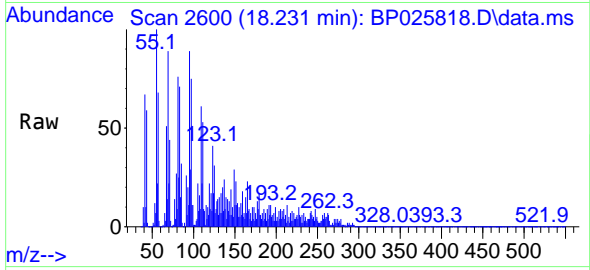
Tgt Ion:167 Resp: 87502
 Ion Ratio Lower Upper
 167 100
 166 85.8 17.0 25.4#
 139 159.2 10.6 16.0#



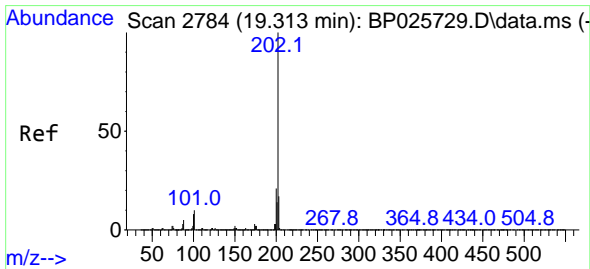
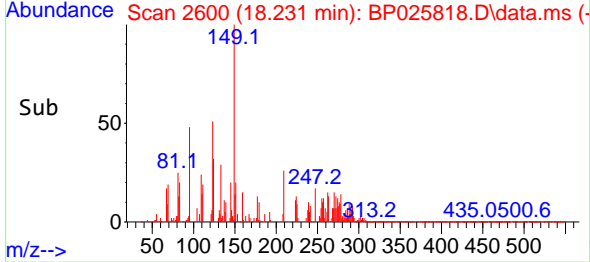
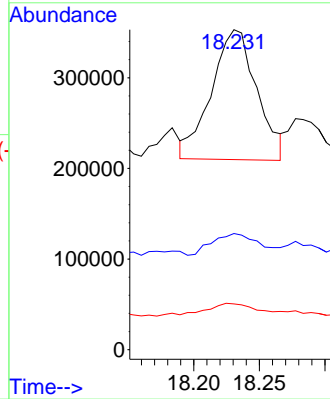


#74
 Di-n-butylphthalate
 Concen: 23.003 ng
 RT: 18.231 min Scan# 20
 Delta R.T. 0.047 min
 Lab File: BP025818.D
 Acq: 22 Sep 2025 18:31

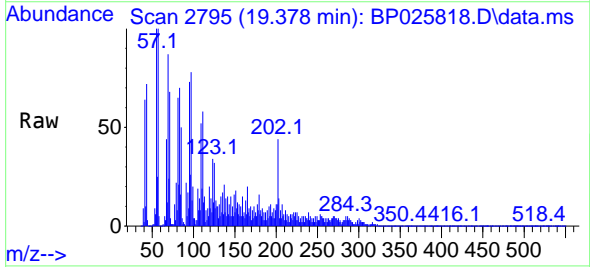
Instrument :
 BNA_P
 ClientSampleId :



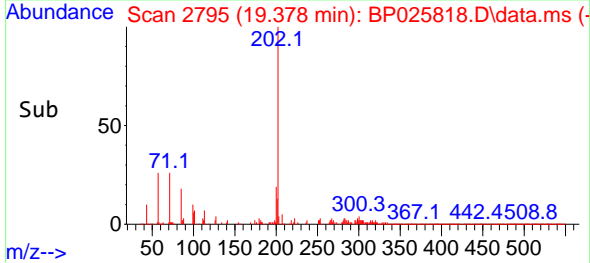
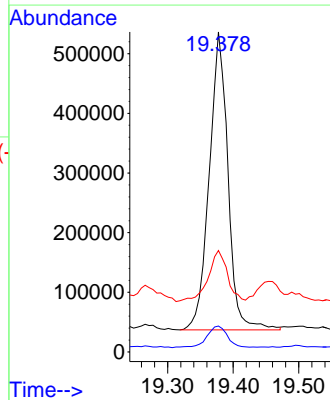
Tgt Ion:149 Resp: 345353
 Ion Ratio Lower Upper
 149 100
 150 36.3 7.4 11.0#
 104 14.3 4.3 6.5#

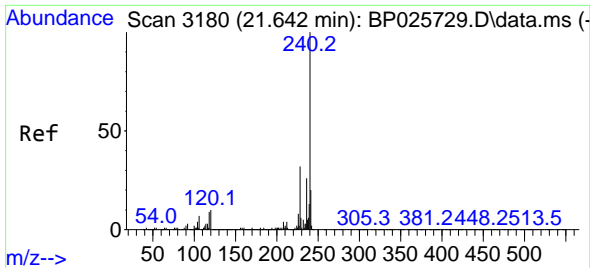


#75
 Fluoranthene
 Concen: 63.761 ng
 RT: 19.378 min Scan# 2795
 Delta R.T. 0.065 min
 Lab File: BP025818.D
 Acq: 22 Sep 2025 18:31



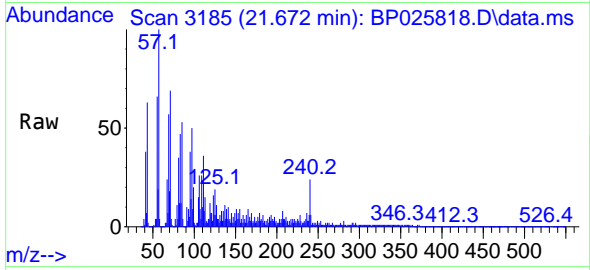
Tgt Ion:202 Resp: 991793
 Ion Ratio Lower Upper
 202 100
 101 8.1 0.0 30.4
 203 31.7 0.0 37.4



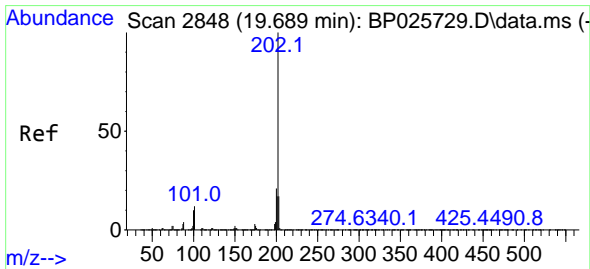
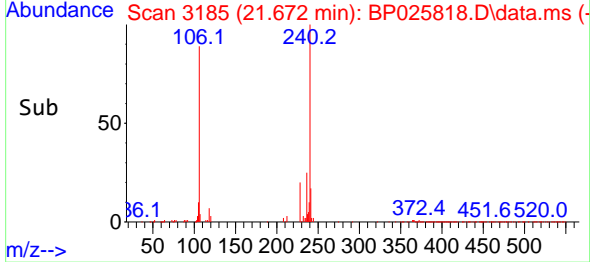
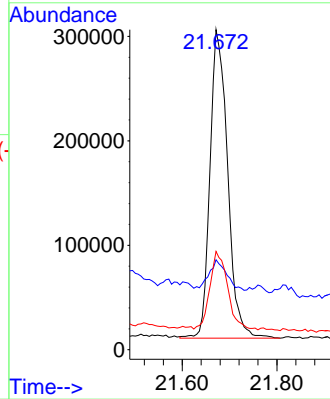


#76
 Chrysene-d12
 Concen: 20.000 ng
 RT: 21.672 min Scan# 3185
 Delta R.T. 0.029 min
 Lab File: BP025818.D
 Acq: 22 Sep 2025 18:31

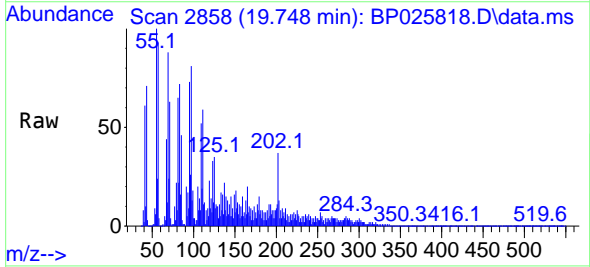
Instrument :
 BNA_P
 ClientSampleId :



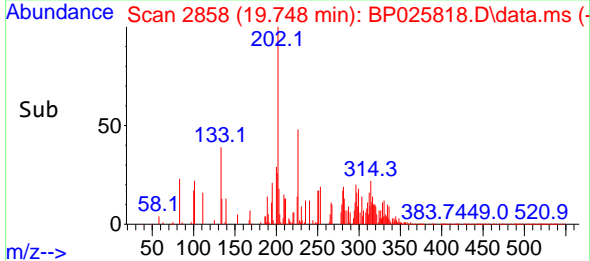
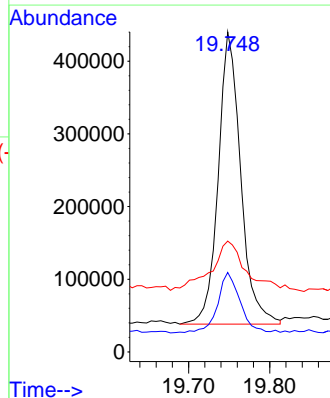
Tgt Ion:240 Resp: 765453
 Ion Ratio Lower Upper
 240 100
 120 28.1 8.0 12.0#
 236 30.7 20.7 31.1

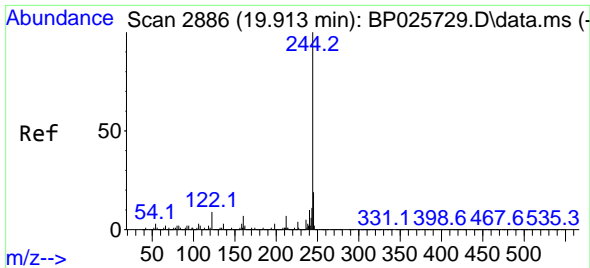


#78
 Pyrene
 Concen: 15.157 ng
 RT: 19.748 min Scan# 2858
 Delta R.T. 0.059 min
 Lab File: BP025818.D
 Acq: 22 Sep 2025 18:31



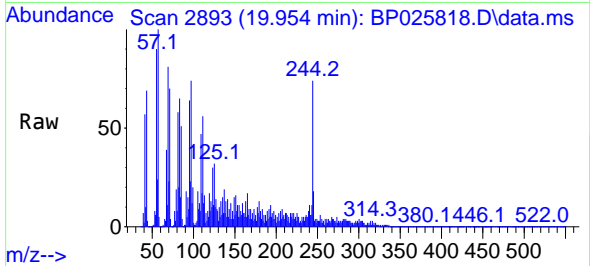
Tgt Ion:202 Resp: 774140
 Ion Ratio Lower Upper
 202 100
 200 24.9 17.0 25.6
 203 34.7 13.9 20.9#



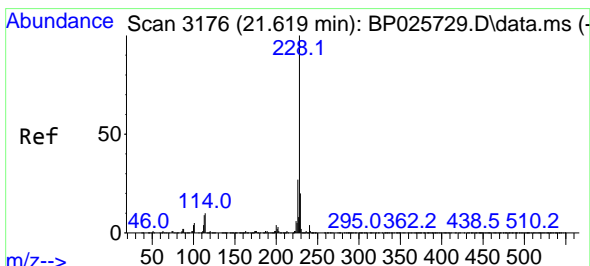
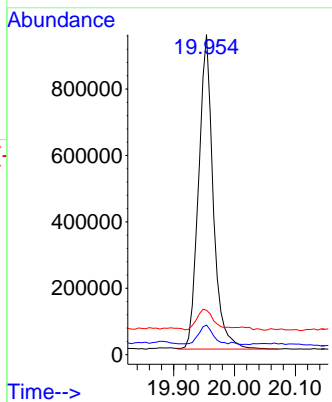
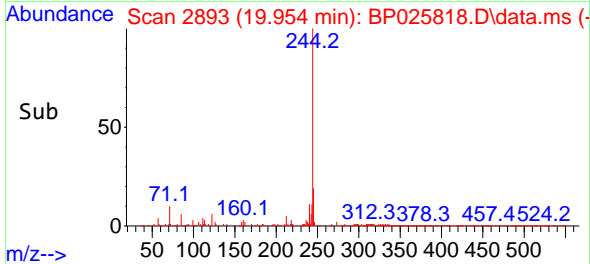


#79
 Terphenyl-d14
 Concen: 37.048 ng
 RT: 19.954 min Scan# 21
 Delta R.T. 0.041 min
 Lab File: BP025818.D
 Acq: 22 Sep 2025 18:31

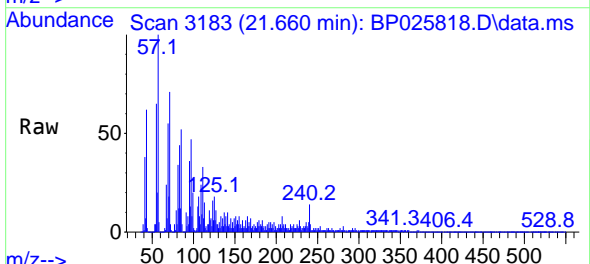
Instrument :
 BNA_P
 ClientSampleId :



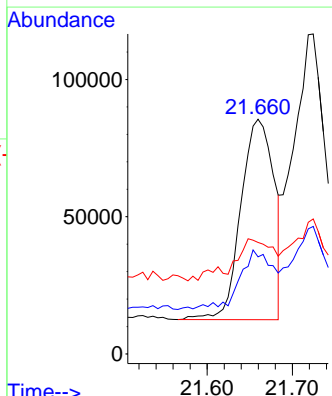
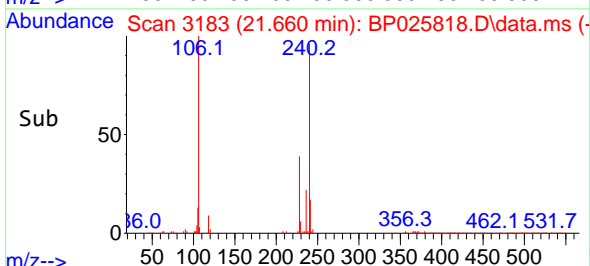
Tgt Ion:244 Resp: 1576351
 Ion Ratio Lower Upper
 244 100
 212 9.3 5.9 8.9#
 122 13.9 7.1 10.7#

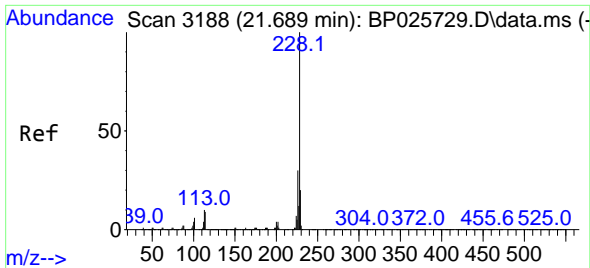


#81
 Benzo(a)anthracene
 Concen: 3.763 ng
 RT: 21.660 min Scan# 3183
 Delta R.T. 0.041 min
 Lab File: BP025818.D
 Acq: 22 Sep 2025 18:31



Tgt Ion:228 Resp: 197202
 Ion Ratio Lower Upper
 228 100
 226 41.4 21.6 32.4#
 229 47.5 15.7 23.5#



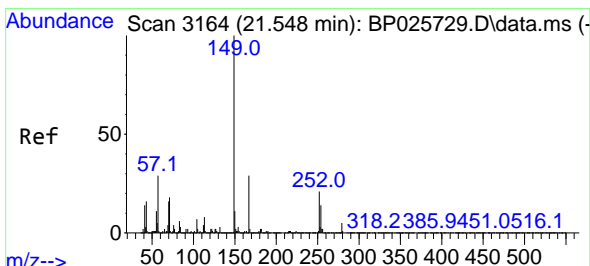
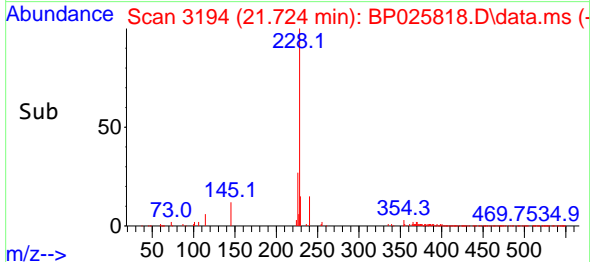
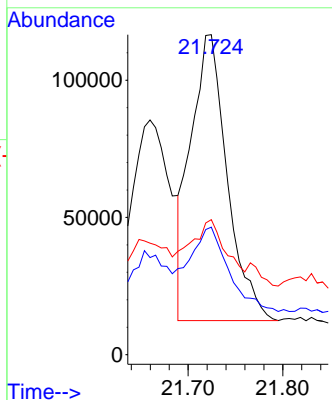
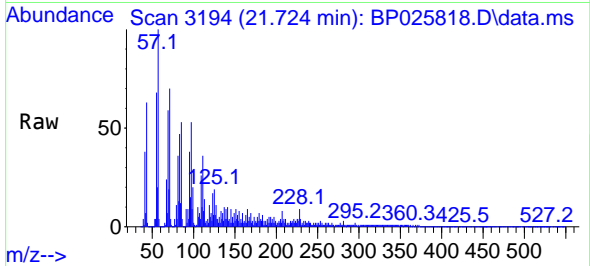


#83
 Chrysene
 Concen: 5.582 ng
 RT: 21.724 min Scan# 3188
 Delta R.T. 0.035 min
 Lab File: BP025818.D
 Acq: 22 Sep 2025 18:31

Instrument :
 BNA_P
 ClientSampleId :

Tgt Ion:228 Resp: 278846

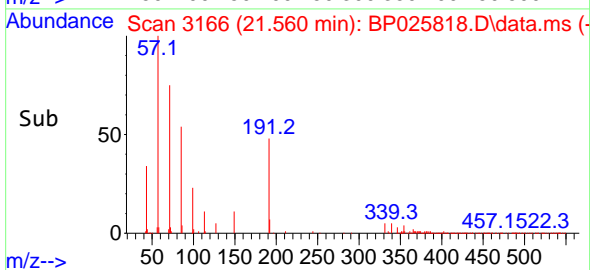
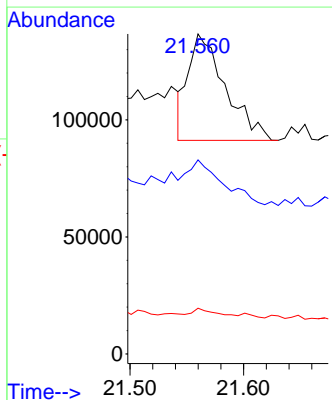
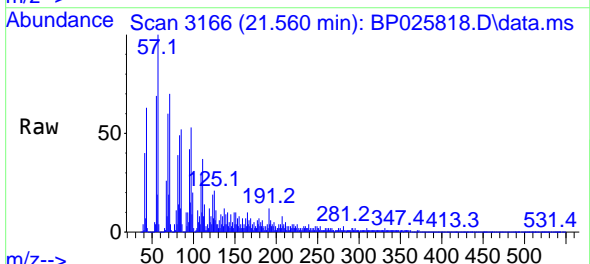
Ion	Ratio	Lower	Upper
228	100		
226	39.9	23.8	35.6#
229	42.2	15.6	23.4#

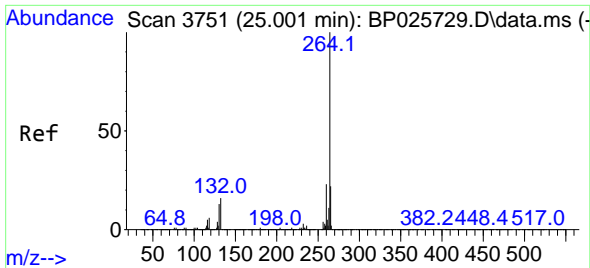


#84
 Bis(2-ethylhexyl)phthalate
 Concen: 3.159 ng
 RT: 21.560 min Scan# 3166
 Delta R.T. 0.012 min
 Lab File: BP025818.D
 Acq: 22 Sep 2025 18:31

Tgt Ion:149 Resp: 103489

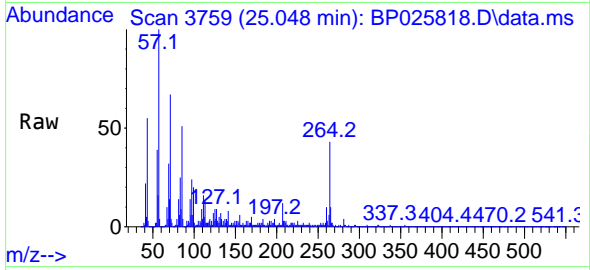
Ion	Ratio	Lower	Upper
149	100		
167	60.7	22.9	34.3#
279	14.3	3.8	5.8#



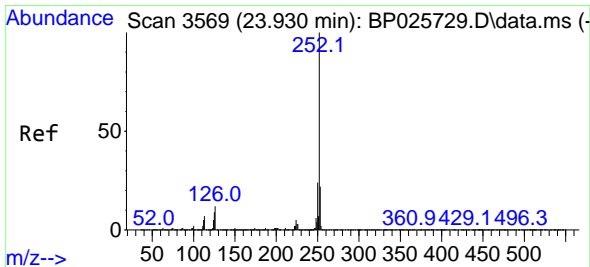
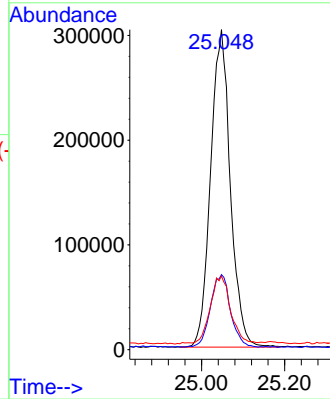
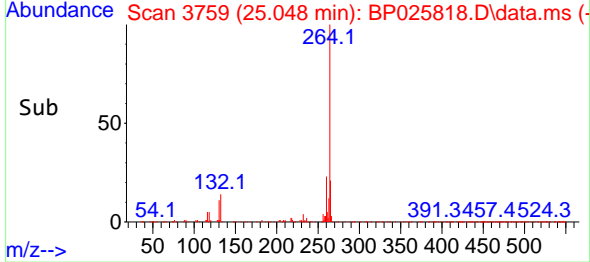


#86
 Perylene-d12
 Concen: 20.000 ng
 RT: 25.048 min Scan# 31
 Delta R.T. 0.047 min
 Lab File: BP025818.D
 Acq: 22 Sep 2025 18:31

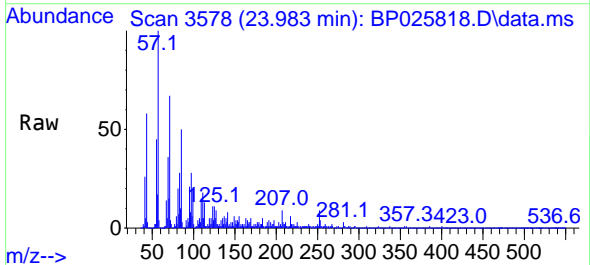
Instrument :
 BNA_P
 ClientSampleId :



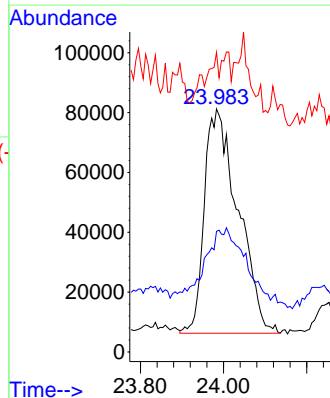
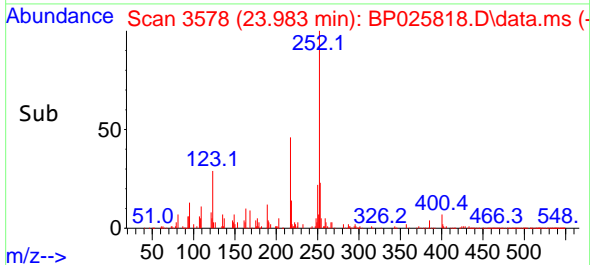
Tgt Ion:264 Resp: 997317
 Ion Ratio Lower Upper
 264 100
 260 23.4 18.3 27.5
 265 23.0 17.3 25.9

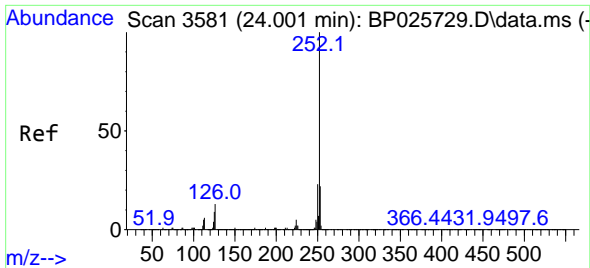


#88
 Benzo(b)fluoranthene
 Concen: 6.916 ng
 RT: 23.983 min Scan# 3578
 Delta R.T. 0.053 min
 Lab File: BP025818.D
 Acq: 22 Sep 2025 18:31



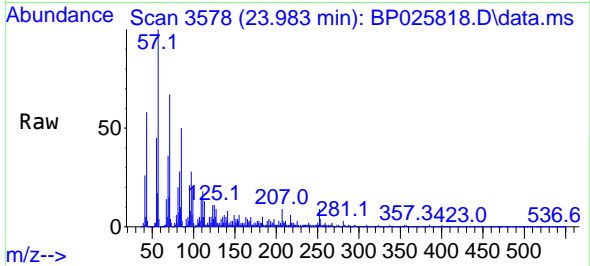
Tgt Ion:252 Resp: 421797
 Ion Ratio Lower Upper
 252 100
 253 49.7 17.9 26.9#
 125 123.3 7.3 10.9#





#89
 Benzo(k)fluoranthene
 Concen: 6.778 ng
 RT: 23.983 min Scan# 31
 Delta R.T. -0.018 min
 Lab File: BP025818.D
 Acq: 22 Sep 2025 18:31

Instrument :
 BNA_P
 ClientSampleId :



Tgt Ion:252 Resp: 421797
 Ion Ratio Lower Upper
 252 100
 253 49.7 17.5 26.3#
 125 123.3 7.5 11.3#

