

Data Path : Z:\svoasrv\HPCHEM1\BNA\_P\Data\BP092225\  
 Data File : BP025822.D  
 Acq On : 22 Sep 2025 21:16  
 Operator : CG/JU  
 Sample : Q3152-01 5X  
 Misc :  
 ALS Vial : 15 Sample Multiplier: 1

Instrument :  
 BNA\_P  
 ClientSampleId :

Quant Time: Sep 23 01:06:01 2025  
 Quant Method : Z:\svoasrv\HPCHEM1\BNA\_P\Methods\8270E-BP091225.M  
 Quant Title : ASP BNA STANDARDS FOR 5 POINT CALIBRATION  
 QLast Update : Thu Sep 11 16:45:04 2025  
 Response via : Initial Calibration

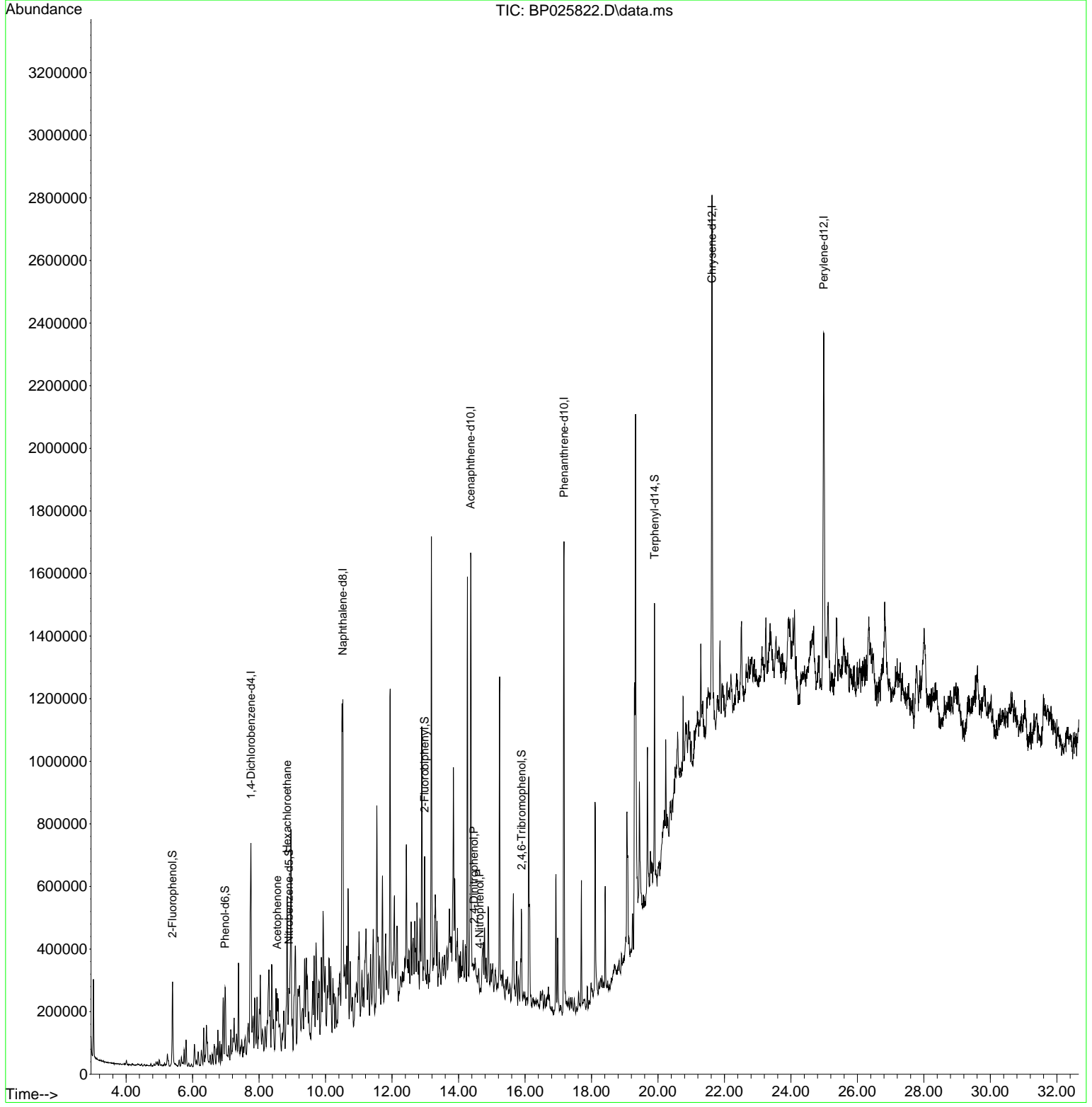
Compound	R.T.	QIon	Response	Conc	Units	Dev(Min)
Internal Standards						
1) 1,4-Dichlorobenzene-d4	7.755	152	189840	20.000	ng	0.00
21) Naphthalene-d8	10.519	136	734177	20.000	ng	0.00
39) Acenaphthene-d10	14.366	164	479850	20.000	ng	-0.01
64) Phenanthrene-d10	17.172	188	985273	20.000	ng	-0.01
76) Chrysene-d12	21.625	240	1013174	20.000	ng	-0.02
86) Perylene-d12	24.989	264	1134201	20.000	ng	-0.01
System Monitoring Compounds						
5) 2-Fluorophenol	5.396	112	129887	11.040	ng	0.01
7) Phenol-d6	6.972	99	152587	9.757	ng	0.02
23) Nitrobenzene-d5	8.896	82	101143	6.077	ng	0.00
42) 2,4,6-Tribromophenol	15.895	330	67807	11.329	ng	-0.01
45) 2-Fluorobiphenyl	12.978	172	247384	6.865	ng	-0.01
79) Terphenyl-d14	19.895	244	414811	7.365	ng	-0.02
Target Compounds						
18) Hexachloroethane	8.843	117	22468	3.931	ng	# 1
22) Acetophenone	8.543	105	98428	5.017	ng	# 56
54) 2,4-Dinitrophenol	14.460	184	288	4.878	ng	# 1
56) 4-Nitrophenol	14.631	139	264	4.518	ng	# 1

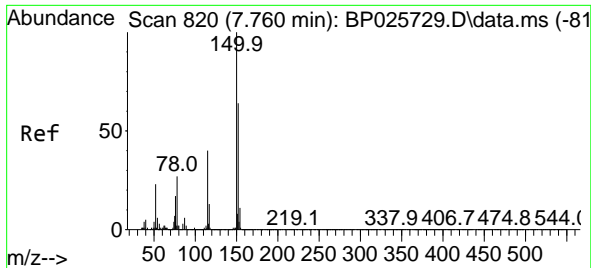
(#) = qualifier out of range (m) = manual integration (+) = signals summed

Data Path : Z:\svoasrv\HPCHEM1\BNA\_P\Data\BP092225\  
Data File : BP025822.D  
Acq On : 22 Sep 2025 21:16  
Operator : CG/JU  
Sample : Q3152-01 5X  
Misc :  
ALS Vial : 15 Sample Multiplier: 1

Instrument :  
BNA\_P  
ClientSampleId :

Quant Time: Sep 23 01:06:01 2025  
Quant Method : Z:\svoasrv\HPCHEM1\BNA\_P\Methods\8270E-BP091225.M  
Quant Title : ASP BNA STANDARDS FOR 5 POINT CALIBRATION  
QLast Update : Thu Sep 11 16:45:04 2025  
Response via : Initial Calibration

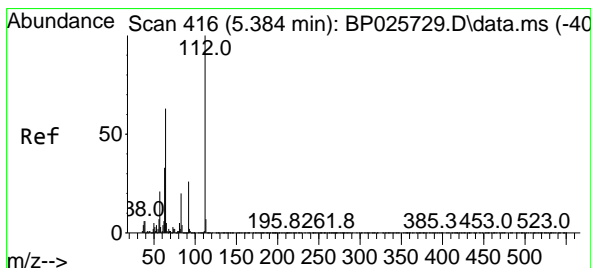
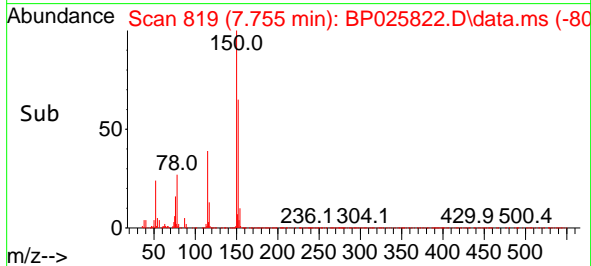
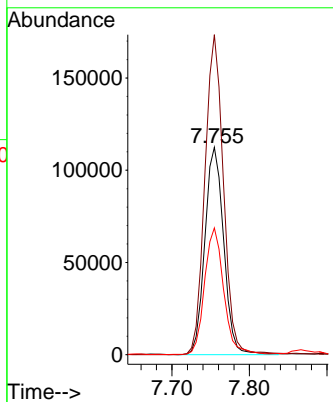
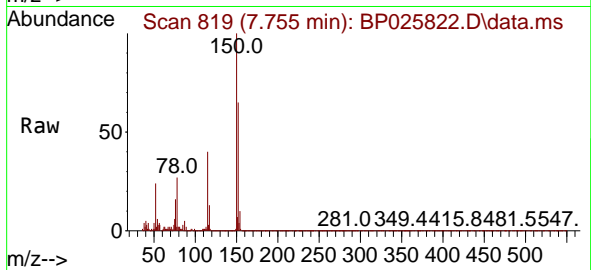




#1  
 1,4-Dichlorobenzene-d4  
 Concen: 20.000 ng  
 RT: 7.755 min Scan# 81  
 Delta R.T. -0.005 min  
 Lab File: BP025822.D  
 Acq: 22 Sep 2025 21:16

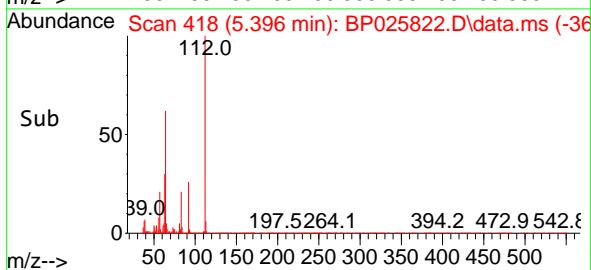
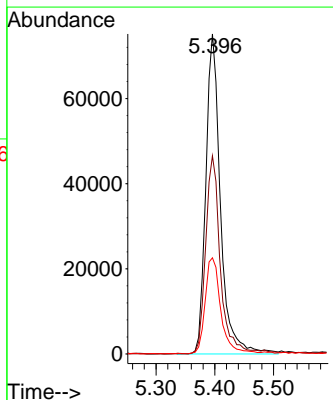
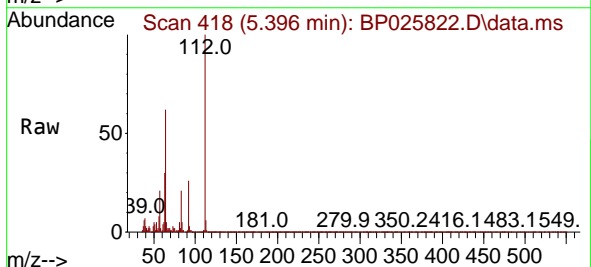
Instrument :  
 BNA\_P  
 ClientSampleId :

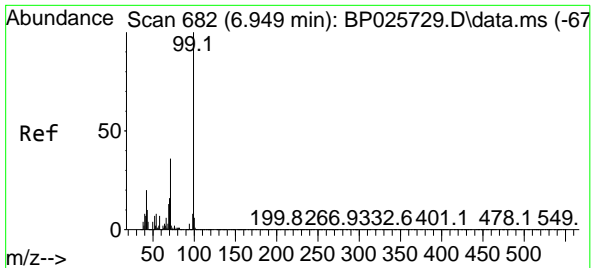
Tgt Ion:152 Resp: 189840  
 Ion Ratio Lower Upper  
 152 100  
 150 154.4 124.3 186.5  
 115 61.1 50.3 75.5



#5  
 2-Fluorophenol  
 Concen: 11.040 ng  
 RT: 5.396 min Scan# 418  
 Delta R.T. 0.012 min  
 Lab File: BP025822.D  
 Acq: 22 Sep 2025 21:16

Tgt Ion:112 Resp: 129887  
 Ion Ratio Lower Upper  
 112 100  
 64 61.9 50.2 75.4  
 63 30.1 26.7 40.1



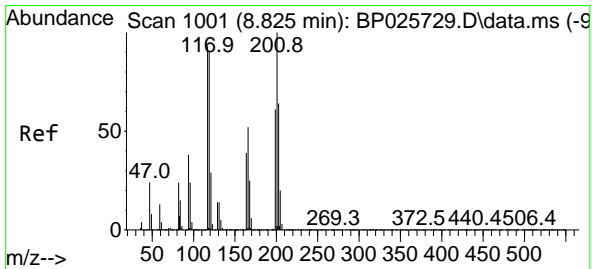
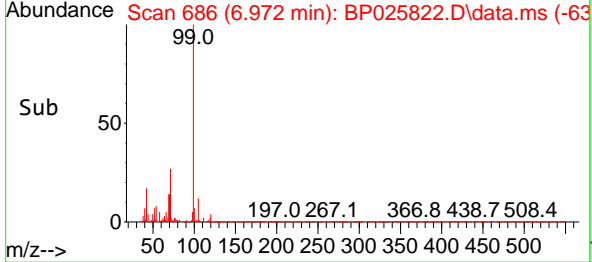
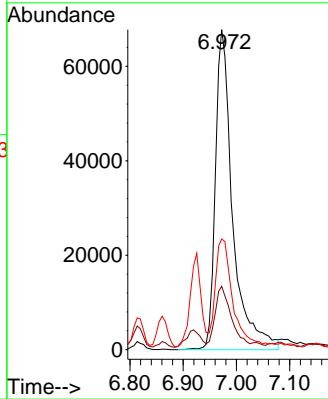
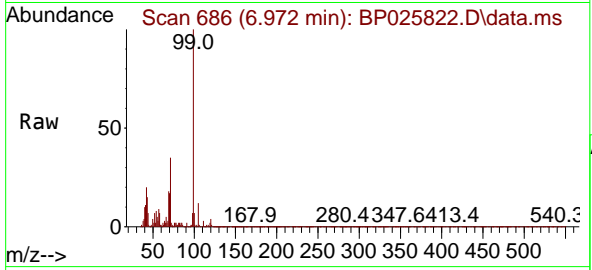


#7  
 Phenol-d6  
 Concen: 9.757 ng  
 RT: 6.972 min Scan# 61  
 Delta R.T. 0.024 min  
 Lab File: BP025822.D  
 Acq: 22 Sep 2025 21:16

Instrument :  
 BNA\_P  
 ClientSampleId :

Tgt Ion: 99 Resp: 152587

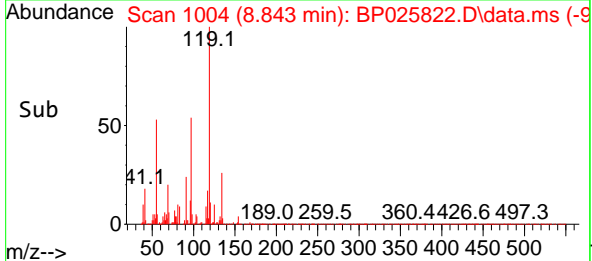
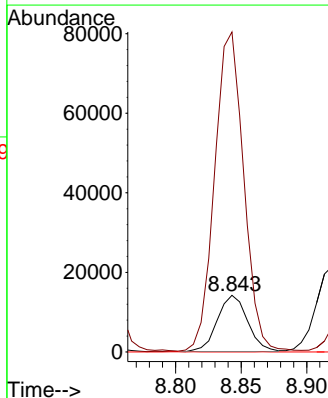
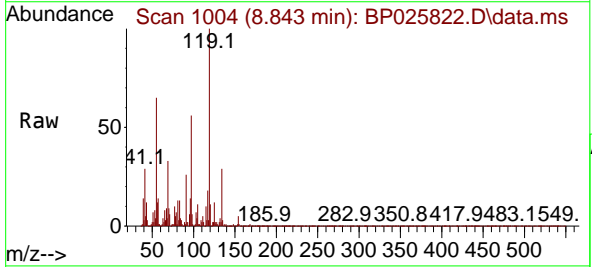
Ion	Ratio	Lower	Upper
99	100		
42	19.8	15.6	23.4
71	34.6	28.6	43.0

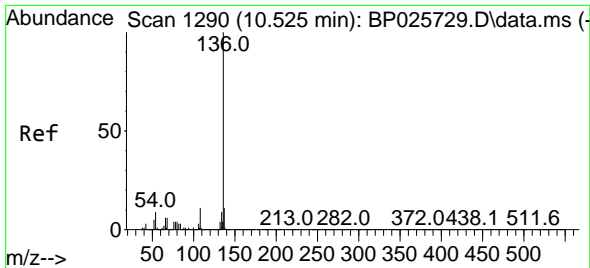


#18  
 Hexachloroethane  
 Concen: 3.931 ng  
 RT: 8.843 min Scan# 1004  
 Delta R.T. 0.018 min  
 Lab File: BP025822.D  
 Acq: 22 Sep 2025 21:16

Tgt Ion: 117 Resp: 22468

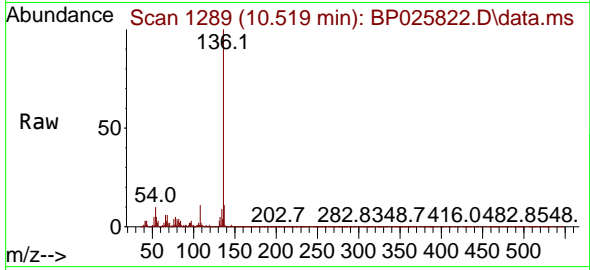
Ion	Ratio	Lower	Upper
117	100		
119	565.6	77.1	115.7#
201	0.2	85.6	128.4#



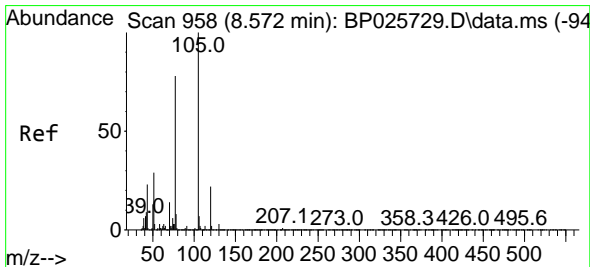
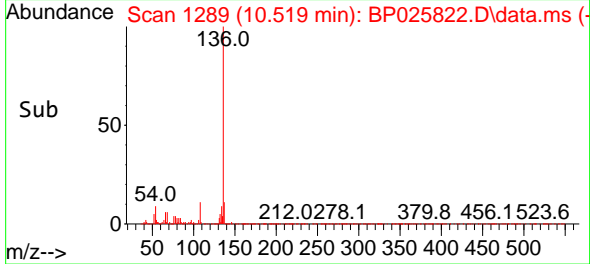
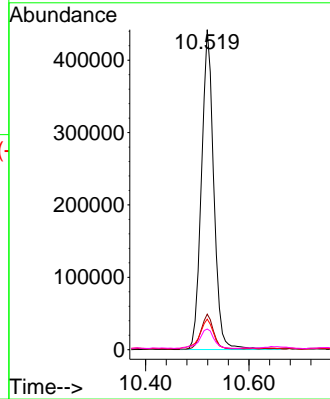


#21  
 Naphthalene-d8  
 Concen: 20.000 ng  
 RT: 10.519 min Scan# 11  
 Delta R.T. -0.006 min  
 Lab File: BP025822.D  
 Acq: 22 Sep 2025 21:16

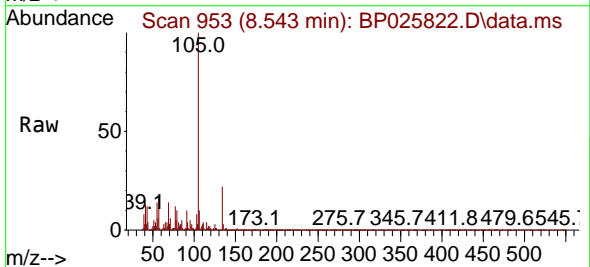
Instrument :  
 BNA\_P  
 ClientSampleId :



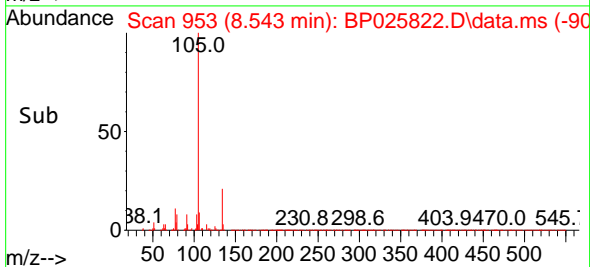
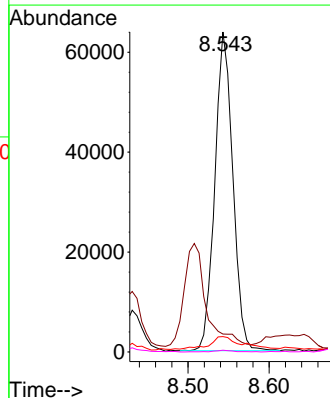
Tgt Ion:136 Resp: 734177  
 Ion Ratio Lower Upper  
 136 100  
 137 11.1 8.7 13.1  
 54 9.6 7.5 11.3  
 68 6.4 5.0 7.6

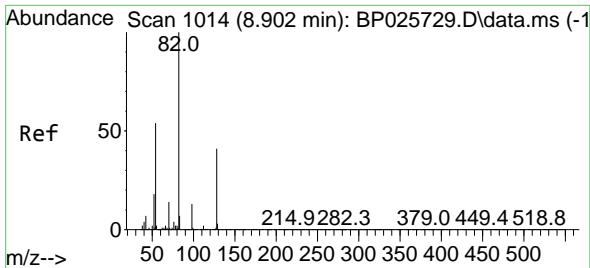


#22  
 Acetophenone  
 Concen: 5.017 ng  
 RT: 8.543 min Scan# 953  
 Delta R.T. -0.029 min  
 Lab File: BP025822.D  
 Acq: 22 Sep 2025 21:16



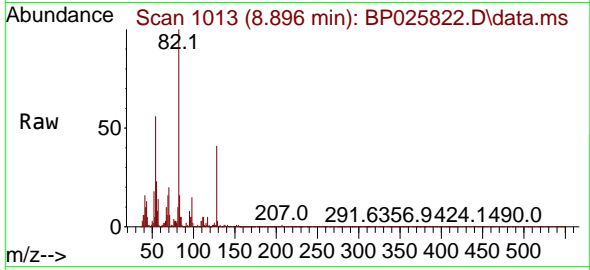
Tgt Ion:105 Resp: 98428  
 Ion Ratio Lower Upper  
 105 100  
 71 5.6 1.8 2.8#  
 51 4.8 23.5 35.3#  
 120 0.6 17.7 26.5#



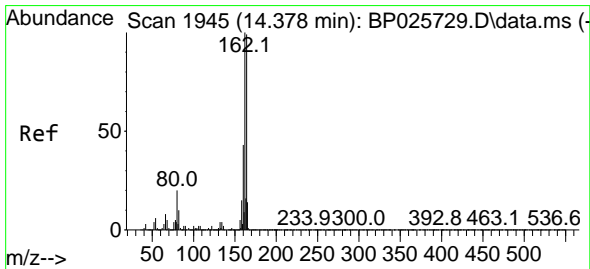
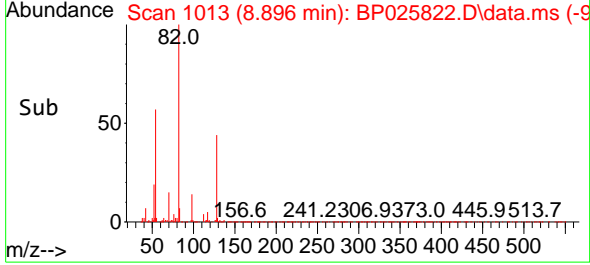
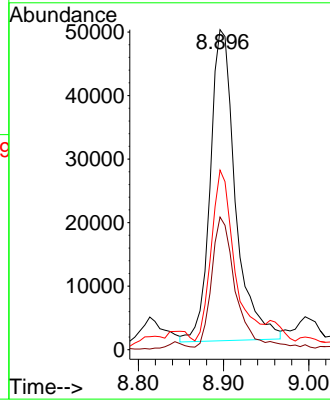


#23  
 Nitrobenzene-d5  
 Concen: 6.077 ng  
 RT: 8.896 min Scan# 1013  
 Delta R.T. -0.006 min  
 Lab File: BP025822.D  
 Acq: 22 Sep 2025 21:16

Instrument :  
 BNA\_P  
 ClientSampleId :

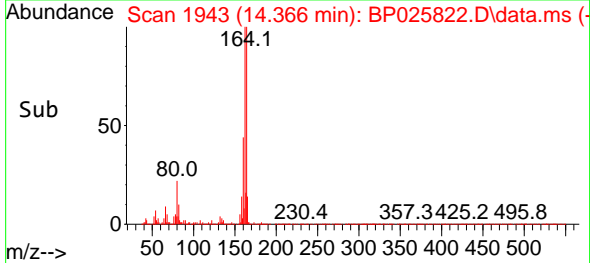
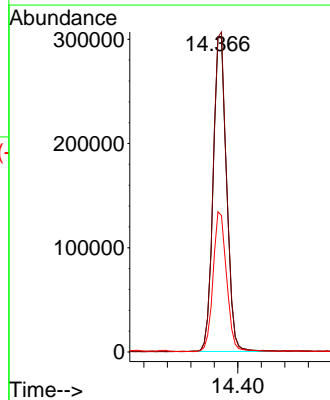
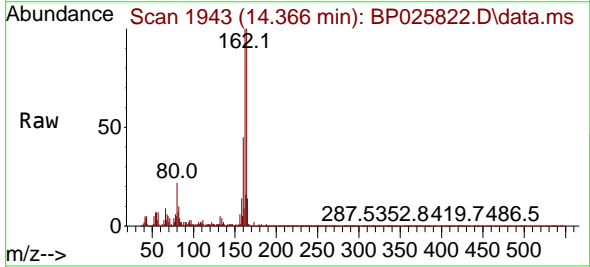


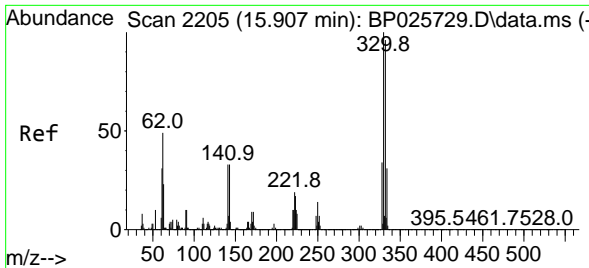
Tgt Ion: 82 Resp: 101143  
 Ion Ratio Lower Upper  
 82 100  
 128 41.4 32.9 49.3  
 54 56.1 43.4 65.2



#39  
 Acenaphthene-d10  
 Concen: 20.000 ng  
 RT: 14.366 min Scan# 1943  
 Delta R.T. -0.012 min  
 Lab File: BP025822.D  
 Acq: 22 Sep 2025 21:16

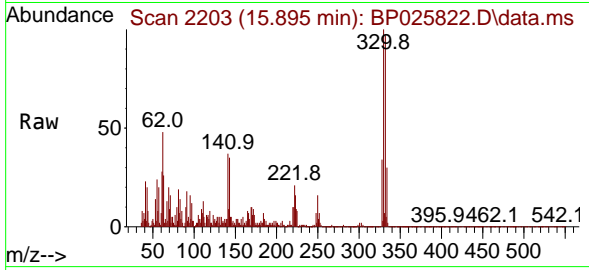
Tgt Ion: 164 Resp: 479850  
 Ion Ratio Lower Upper  
 164 100  
 162 99.9 80.6 120.8  
 160 44.5 35.0 52.6



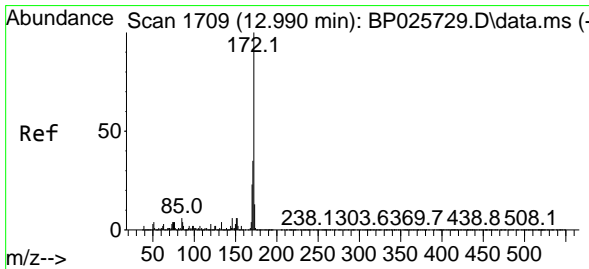
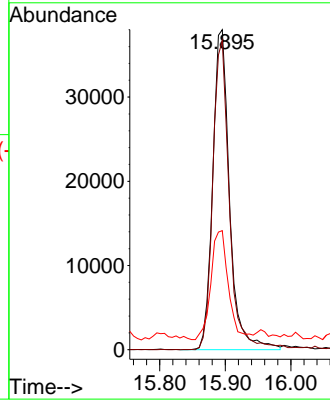
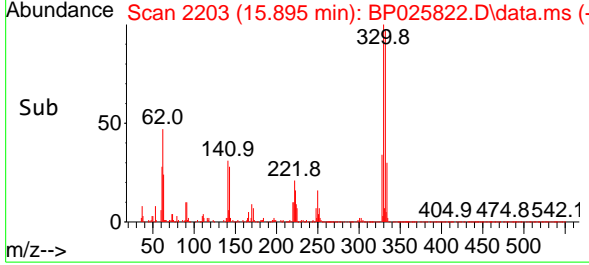


#42  
 2,4,6-Tribromophenol  
 Concen: 11.329 ng  
 RT: 15.895 min Scan# 21  
 Delta R.T. -0.012 min  
 Lab File: BP025822.D  
 Acq: 22 Sep 2025 21:16

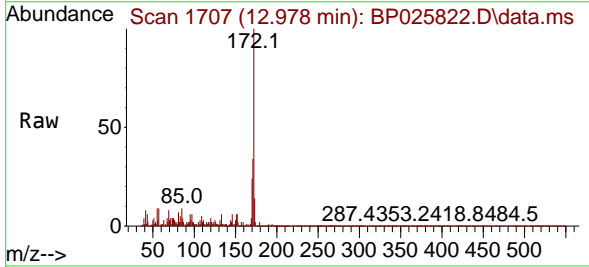
Instrument :  
 BNA\_P  
 ClientSampleId :



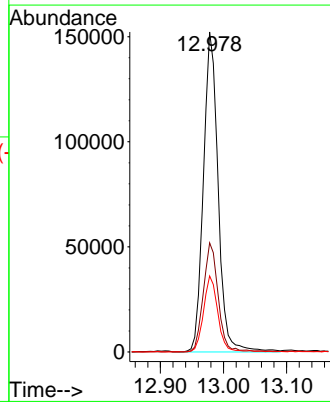
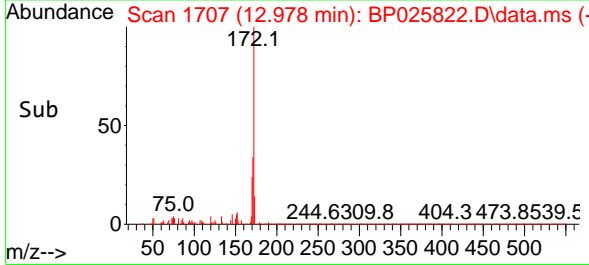
Tgt Ion:330 Resp: 67807  
 Ion Ratio Lower Upper  
 330 100  
 332 95.4 76.9 115.3  
 141 35.7 31.0 46.4

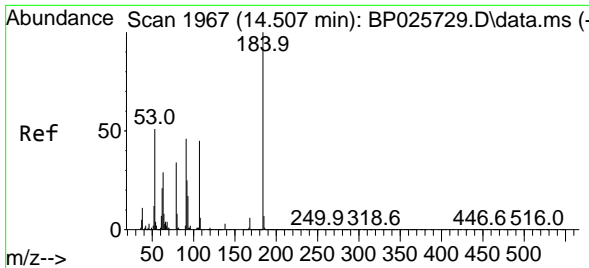


#45  
 2-Fluorobiphenyl  
 Concen: 6.865 ng  
 RT: 12.978 min Scan# 1707  
 Delta R.T. -0.012 min  
 Lab File: BP025822.D  
 Acq: 22 Sep 2025 21:16



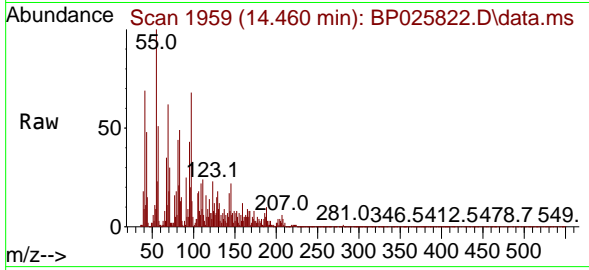
Tgt Ion:172 Resp: 247384  
 Ion Ratio Lower Upper  
 172 100  
 171 34.1 27.8 41.6  
 170 23.8 18.6 27.8



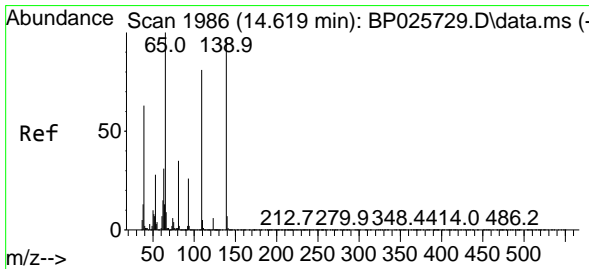
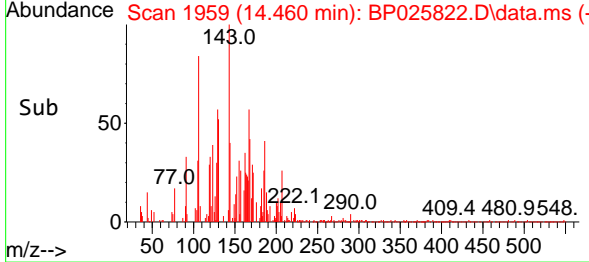
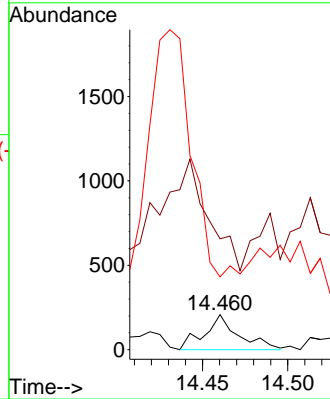


#54  
 2,4-Dinitrophenol  
 Concen: 4.878 ng  
 RT: 14.460 min Scan# 1959  
 Delta R.T. -0.047 min  
 Lab File: BP025822.D  
 Acq: 22 Sep 2025 21:16

Instrument : BNA\_P  
 ClientSampleId :

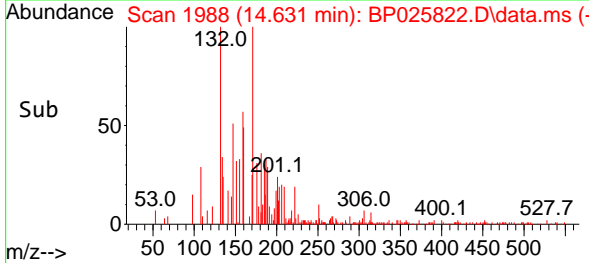
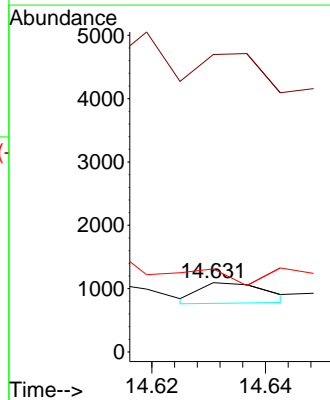
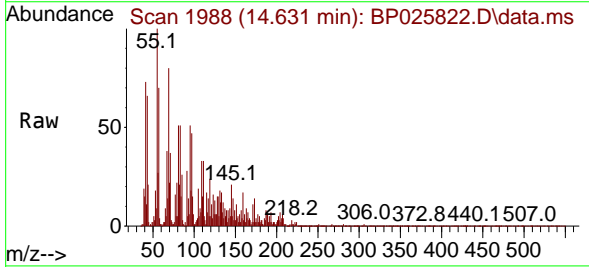


Tgt Ion	Resp	Lower	Upper
184	100		
63	315.9	52.5	78.7#
154	207.2	51.5	77.3#

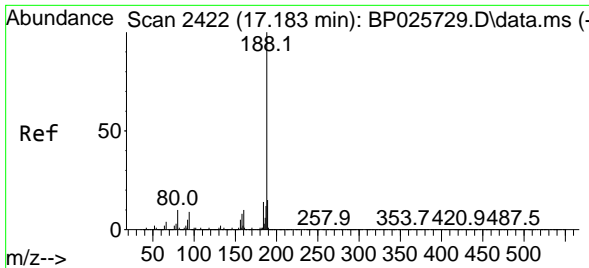


#56  
 4-Nitrophenol  
 Concen: 4.518 ng  
 RT: 14.631 min Scan# 1988  
 Delta R.T. 0.012 min  
 Lab File: BP025822.D  
 Acq: 22 Sep 2025 21:16

Tgt Ion	Resp	Lower	Upper
139	100		
109	429.6	62.9	102.9#
65	120.0	83.4	123.4

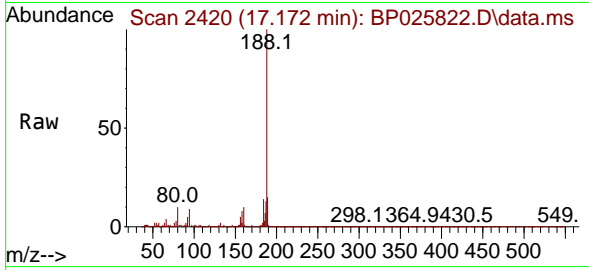






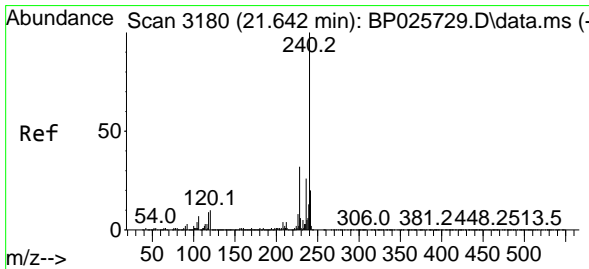
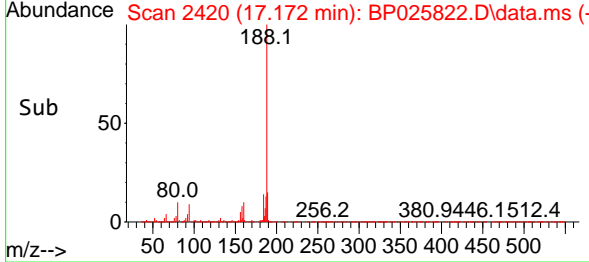
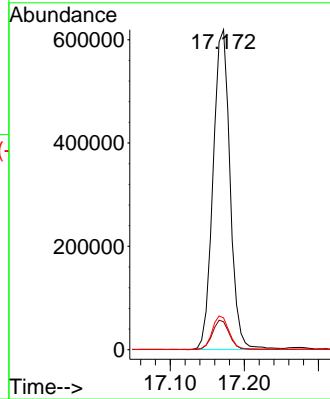
#64  
 Phenanthrene-d10  
 Concen: 20.000 ng  
 RT: 17.172 min Scan# 24  
 Delta R.T. -0.012 min  
 Lab File: BP025822.D  
 Acq: 22 Sep 2025 21:16

Instrument :  
 BNA\_P  
 ClientSampleId :



Tgt Ion:188 Resp: 985273

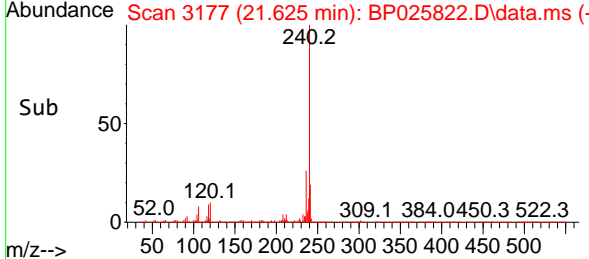
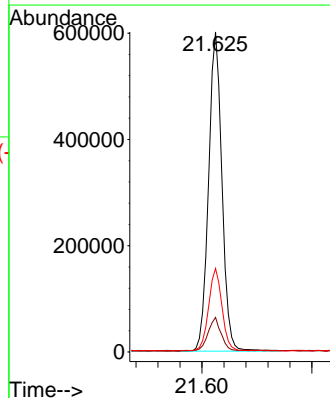
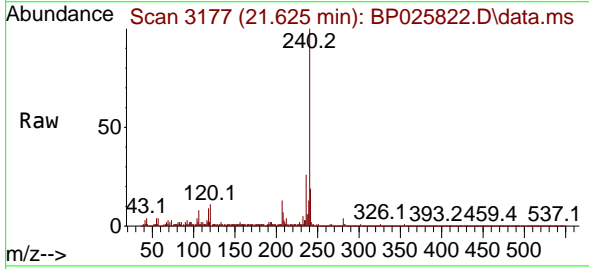
Ion	Ratio	Lower	Upper
188	100		
94	8.7	7.4	11.0
80	9.9	7.7	11.5

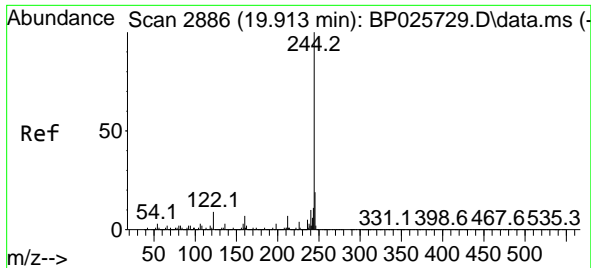


#76  
 Chrysene-d12  
 Concen: 20.000 ng  
 RT: 21.625 min Scan# 3177  
 Delta R.T. -0.018 min  
 Lab File: BP025822.D  
 Acq: 22 Sep 2025 21:16

Tgt Ion:240 Resp: 1013174

Ion	Ratio	Lower	Upper
240	100		
120	10.8	8.0	12.0
236	26.1	20.7	31.1



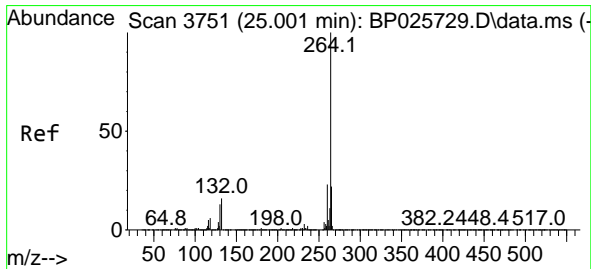
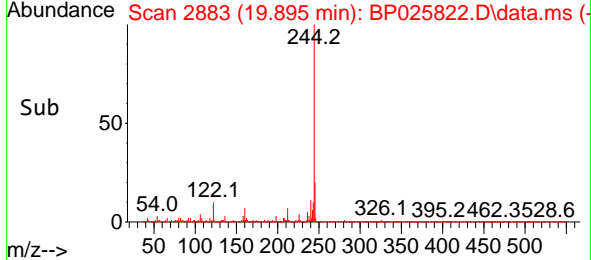
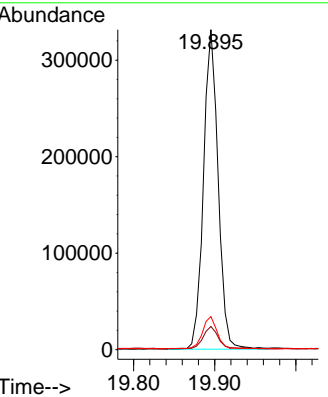
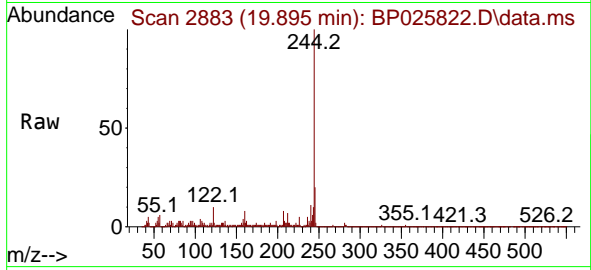


#79  
 Terphenyl-d14  
 Concen: 7.365 ng  
 RT: 19.895 min Scan# 21  
 Delta R.T. -0.018 min  
 Lab File: BP025822.D  
 Acq: 22 Sep 2025 21:16

Instrument : BNA\_P  
 ClientSampleId :

Tgt Ion:244 Resp: 414811

Ion	Ratio	Lower	Upper
244	100		
212	7.3	5.9	8.9
122	10.4	7.1	10.7



#86  
 Perylene-d12  
 Concen: 20.000 ng  
 RT: 24.989 min Scan# 3749  
 Delta R.T. -0.012 min  
 Lab File: BP025822.D  
 Acq: 22 Sep 2025 21:16

Tgt Ion:264 Resp: 1134201

Ion	Ratio	Lower	Upper
264	100		
260	24.0	18.3	27.5
265	23.0	17.3	25.9

