

Data Path : Z:\svoasrv\HPCHEM1\BNA\_P\Data\BP092320\  
 Data File : BP003363.D  
 Acq On : 23 Sep 2020 18:21  
 Operator : CG/JU  
 Sample : L3863-05 5X  
 Misc :  
 ALS Vial : 12 Sample Multiplier: 1

Instrument :  
 BNA\_P  
 ClientSampleId :  
 HD-01-092220

Quant Time: Sep 23 19:04:50 2020  
 Quant Method : Z:\SVOASRV\HPCHEM1\BNA\_P\METHODS\8270-BP091520.M  
 Quant Title : ASP BNA STANDARDS FOR 5 POINT CALIBRATION  
 QLast Update : Tue Sep 22 12:48:08 2020  
 Response via : Initial Calibration

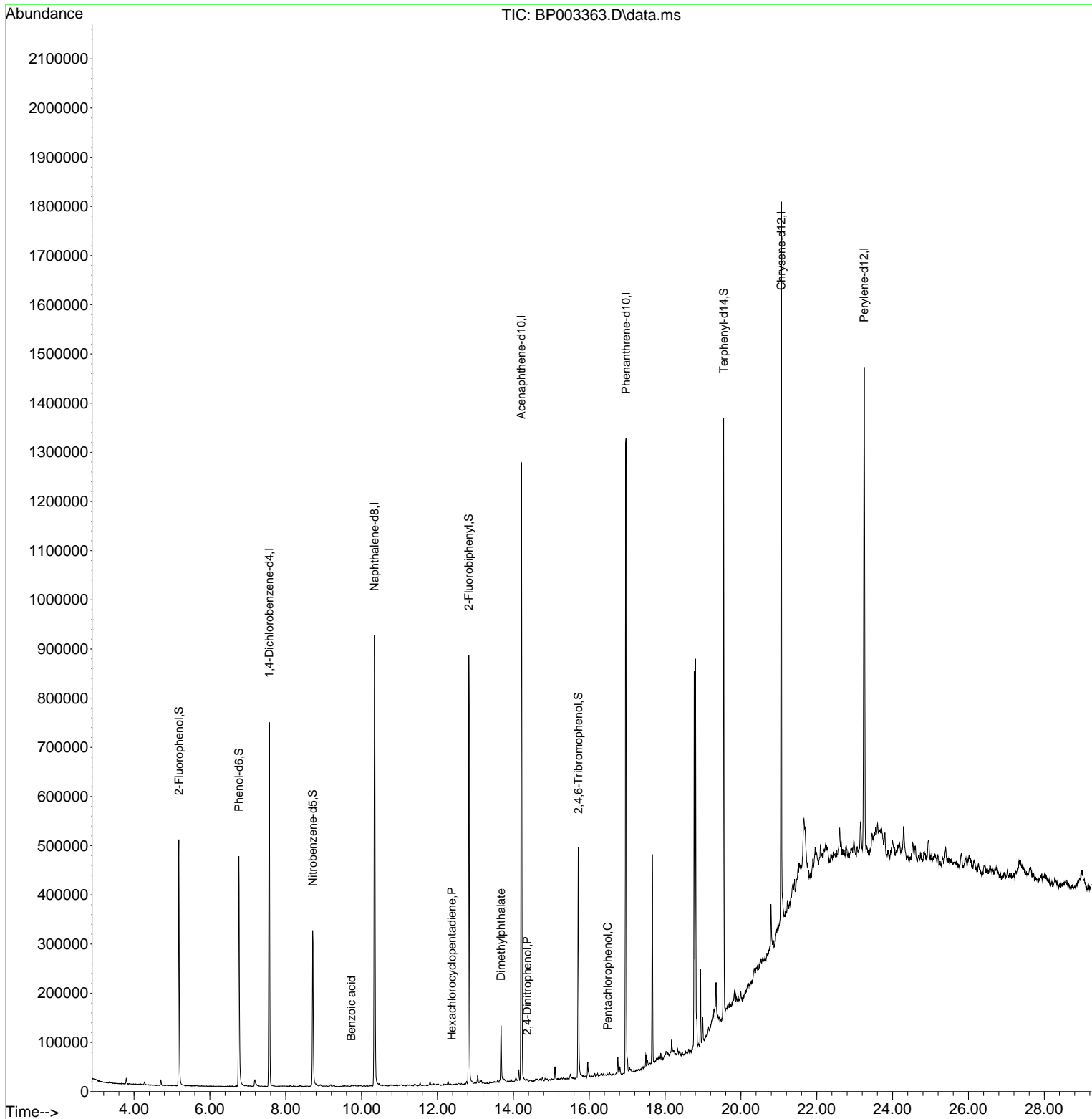
Compound	R.T.	QIon	Response	Conc	Units	Dev(Min)
-----						
Internal Standards						
1) 1,4-Dichlorobenzene-d4	7.563	152	204180	20.00	ng	0.00
21) Naphthalene-d8	10.340	136	800048	20.00	ng	# 0.00
39) Acenaphthene-d10	14.210	164	448460	20.00	ng	-0.01
64) Phenanthrene-d10	16.969	188	810787	20.00	ng	0.00
76) Chrysene-d12	21.063	240	645811	20.00	ng	0.00
86) Perylene-d12	23.251	264	686074	20.00	ng	-0.01
System Monitoring Compounds						
5) 2-Fluorophenol	5.181	112	247084	21.13	ng	0.00
7) Phenol-d6	6.763	99	319493	20.50	ng	0.00
23) Nitrobenzene-d5	8.710	82	206957	15.20	ng	-0.01
42) 2,4,6-Tribromophenol	15.716	330	99924	14.61	ng	0.00
45) 2-Fluorobiphenyl	12.828	172	477923	15.59	ng	-0.01
79) Terphenyl-d14	19.545	244	508993	16.42	ng	0.00
Target Compounds						
						Qvalue
32) Benzoic acid	9.728	122	5	9.15	ng	# 1
41) Hexachlorocyclopentadiene	12.381	237	26	6.84	ng	# 21
50) Dimethylphthalate	13.675	163	82109	2.29	ng	99
54) 2,4-Dinitrophenol	14.369	184	47	7.26	ng	# 1
70) Pentachlorophenol	16.486	266	44	6.78	ng	91
-----						

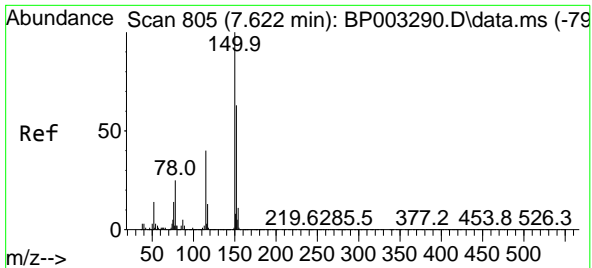
(#) = qualifier out of range (m) = manual integration (+) = signals summed

Data Path : Z:\svoasrv\HPCHEM1\BNA\_P\Data\BP092320\  
 Data File : BP003363.D  
 Acq On : 23 Sep 2020 18:21  
 Operator : CG/JU  
 Sample : L3863-05 5X  
 Misc :  
 ALS Vial : 12 Sample Multiplier: 1

Instrument :  
 BNA\_P  
 ClientSampleId :  
 HD-01-092220

Quant Time: Sep 23 19:04:50 2020  
 Quant Method : Z:\SVOASRV\HPCHEM1\BNA\_P\METHODS\8270-BP091520.M  
 Quant Title : ASP BNA STANDARDS FOR 5 POINT CALIBRATION  
 QLast Update : Tue Sep 22 12:48:08 2020  
 Response via : Initial Calibration

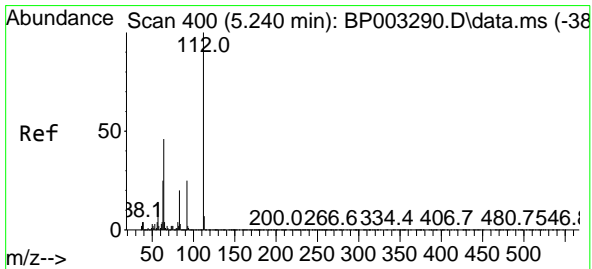
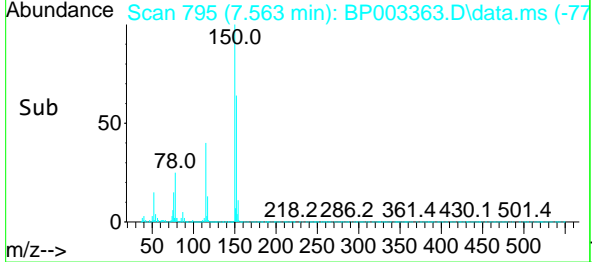
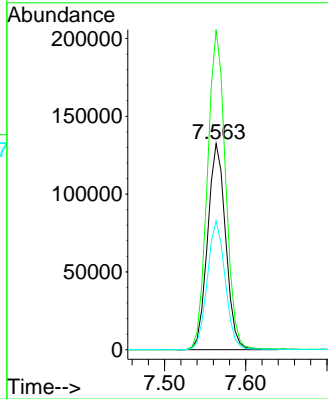
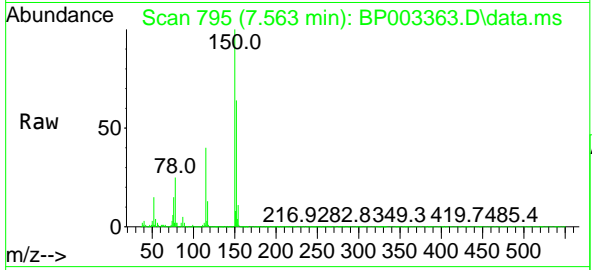




#1  
 1,4-Dichlorobenzene-d4  
 Concen: 20.00 ng  
 RT: 7.563 min Scan# 795  
 Delta R.T. -0.006 min  
 Lab File: BP003363.D  
 Acq: 23 Sep 2020 18:21

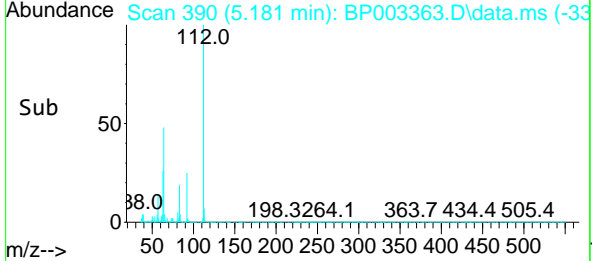
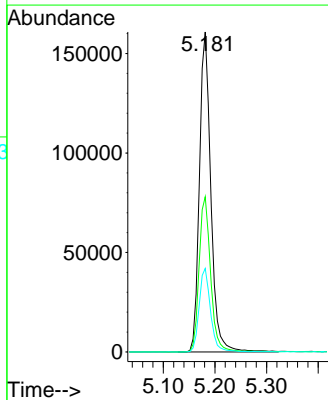
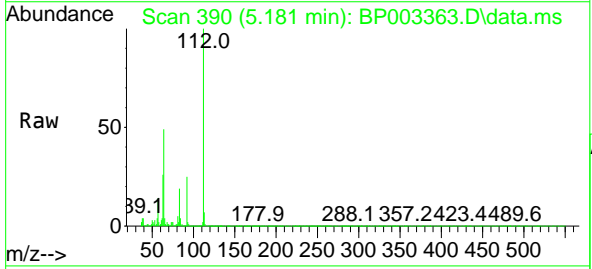
Instrument :  
 BNA\_P  
 ClientSampleId :  
 HD-01-092220

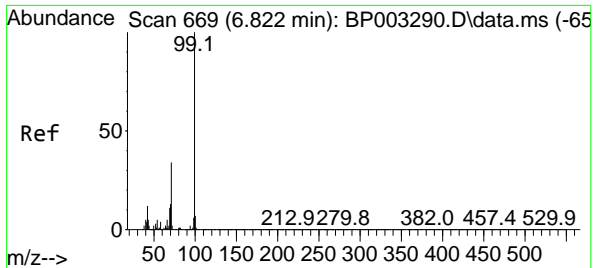
Tgt Ion	Resp	Lower	Upper
152	100		
150	155.3	123.8	185.6
115	62.5	43.8	65.6



#5  
 2-Fluorophenol  
 Concen: 21.13 ng  
 RT: 5.181 min Scan# 390  
 Delta R.T. 0.000 min  
 Lab File: BP003363.D  
 Acq: 23 Sep 2020 18:21

Tgt Ion	Resp	Lower	Upper
112	100		
64	48.5	32.8	49.2
63	26.1	17.0	25.4#

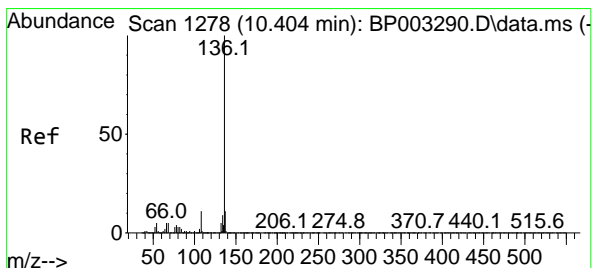
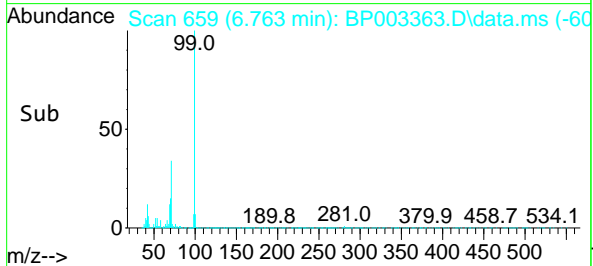
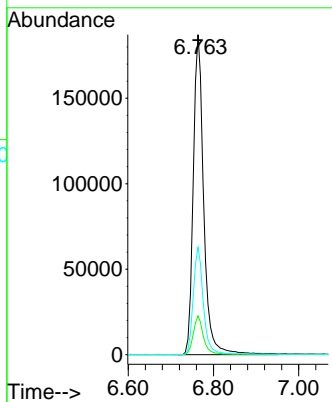
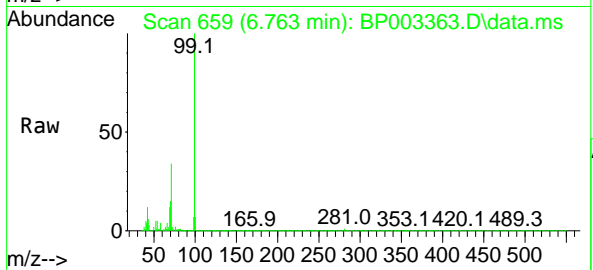




#7  
 Phenol-d6  
 Concen: 20.50 ng  
 RT: 6.763 min Scan# 659  
 Delta R.T. -0.006 min  
 Lab File: BP003363.D  
 Acq: 23 Sep 2020 18:21

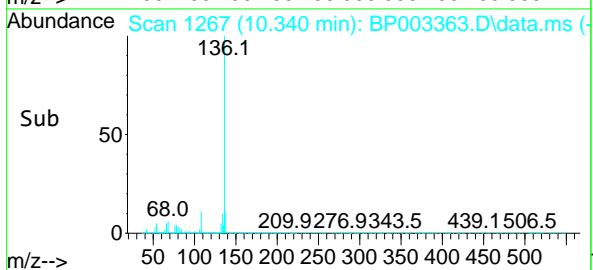
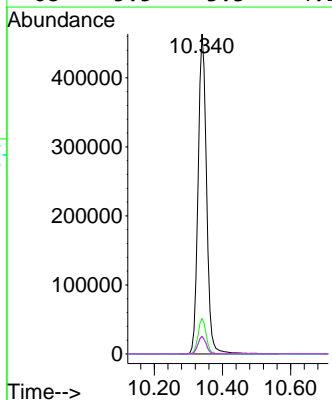
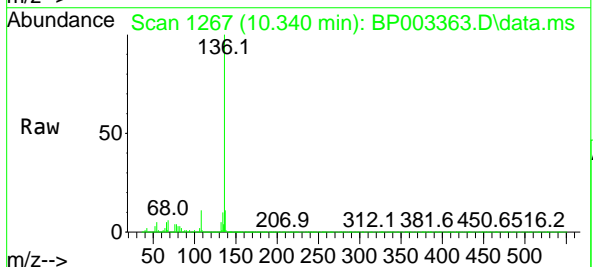
Instrument :  
 BNA\_P  
 ClientSampleId :  
 HD-01-092220

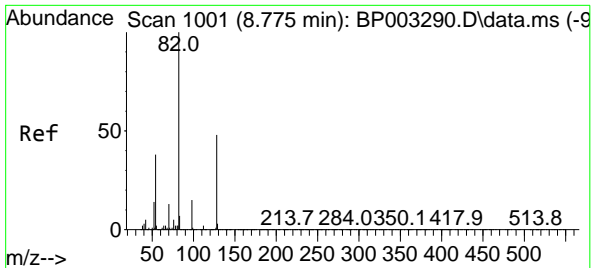
Tgt Ion	Resp	Lower	Upper
99	319493		
99	100		
42	12.1	8.6	13.0
71	33.6	23.4	35.2



#21  
 Naphthalene-d8  
 Concen: 20.00 ng  
 RT: 10.340 min Scan# 1267  
 Delta R.T. -0.006 min  
 Lab File: BP003363.D  
 Acq: 23 Sep 2020 18:21

Tgt Ion	Resp	Lower	Upper
136	800048		
136	100		
137	11.1	8.6	13.0
54	5.4	3.6	5.4
68	5.5	3.3	4.9



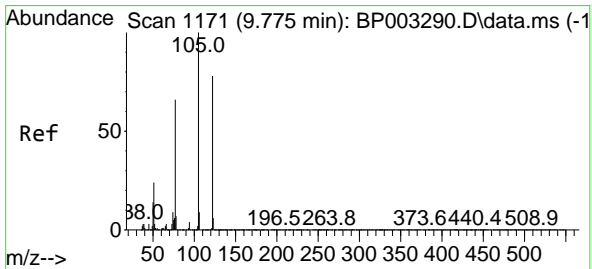
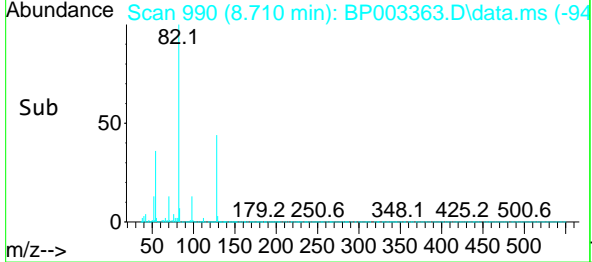
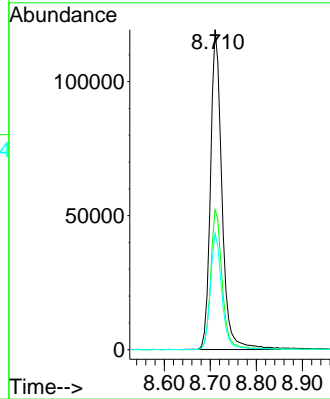
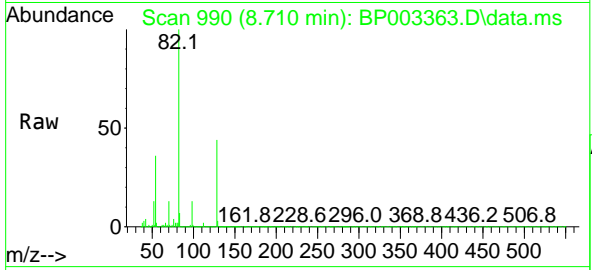


#23  
 Nitrobenzene-d5  
 Concen: 15.20 ng  
 RT: 8.710 min Scan# 990  
 Delta R.T. -0.012 min  
 Lab File: BP003363.D  
 Acq: 23 Sep 2020 18:21

Instrument :  
 BNA\_P  
 ClientSampleId :  
 HD-01-092220

Tgt Ion: 82 Resp: 206957

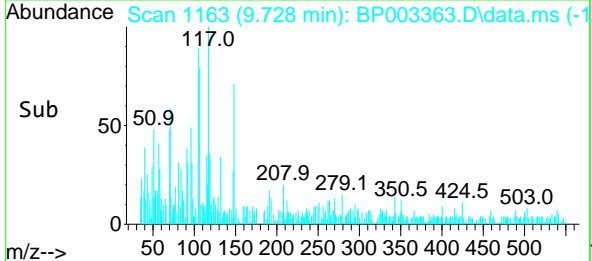
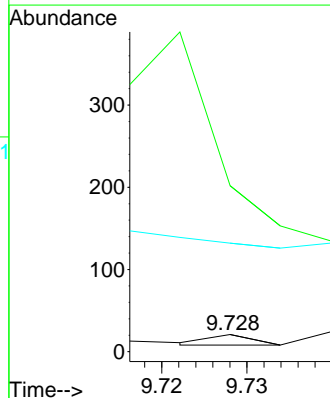
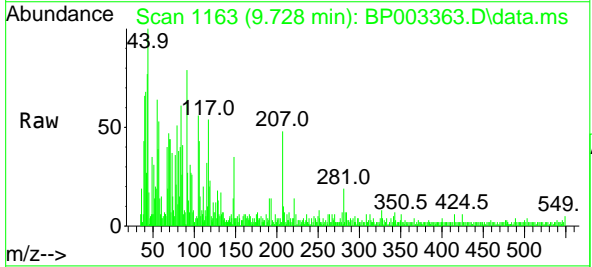
Ion	Ratio	Lower	Upper
82	100		
128	43.7	45.6	68.4#
54	36.3	30.1	45.1

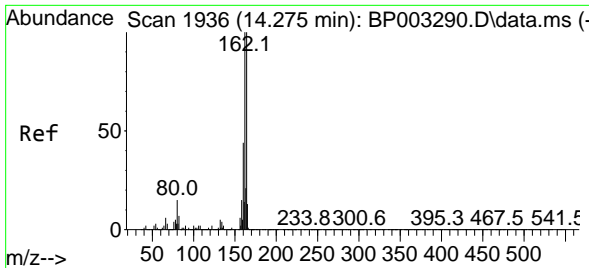


#32  
 Benzoic acid  
 Concen: 9.15 ng  
 RT: 9.728 min Scan# 1163  
 Delta R.T. 0.006 min  
 Lab File: BP003363.D  
 Acq: 23 Sep 2020 18:21

Tgt Ion: 122 Resp: 5

Ion	Ratio	Lower	Upper
122	100		
105	961.9	94.1	134.1#
77	628.6	50.1	90.1#

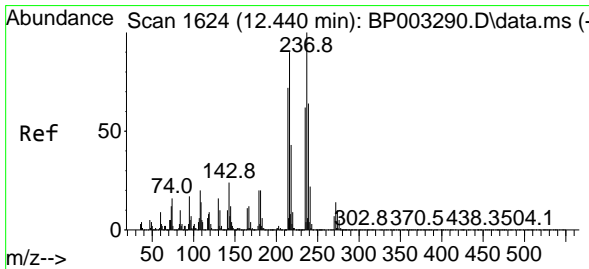
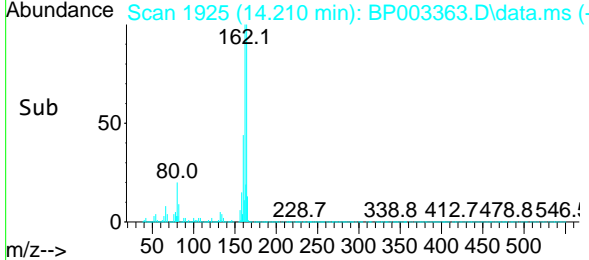
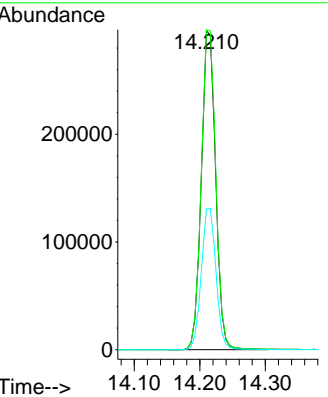
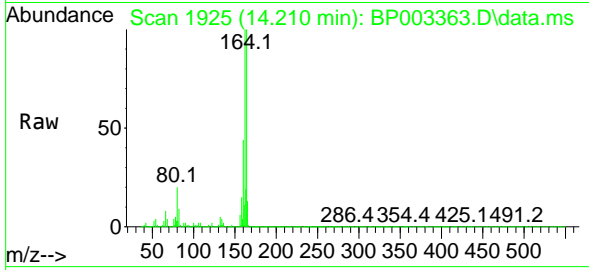




#39  
 Acenaphthene-d10  
 Concen: 20.00 ng  
 RT: 14.210 min Scan# 1925  
 Delta R.T. -0.012 min  
 Lab File: BP003363.D  
 Acq: 23 Sep 2020 18:21

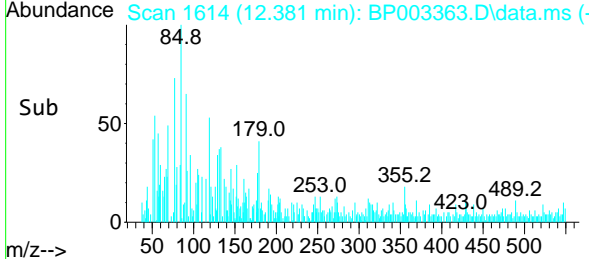
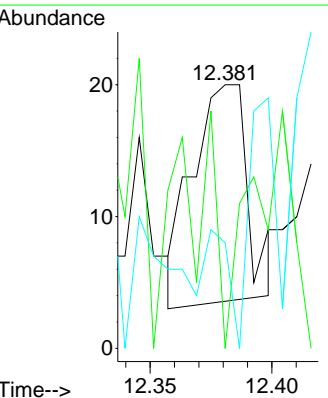
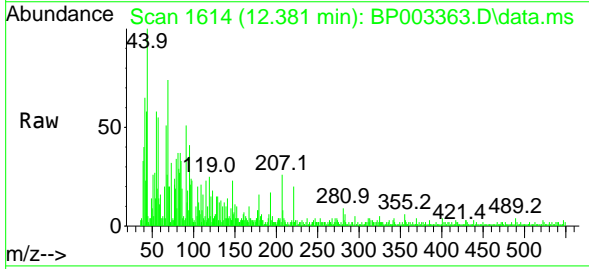
Instrument :  
 BNA\_P  
 ClientSampleId :  
 HD-01-092220

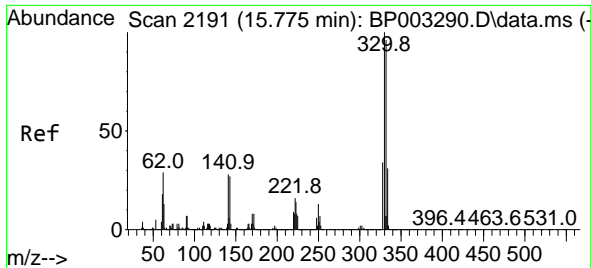
Tgt Ion	Resp	Lower	Upper
164	100		
162	100.3	79.4	119.2
160	44.1	36.1	54.1



#41  
 Hexachlorocyclopentadiene  
 Concen: 6.84 ng  
 RT: 12.381 min Scan# 1614  
 Delta R.T. 0.000 min  
 Lab File: BP003363.D  
 Acq: 23 Sep 2020 18:21

Tgt Ion	Resp	Lower	Upper
237	100		
235	0.0	43.2	83.2#
272	40.0	0.0	33.3#

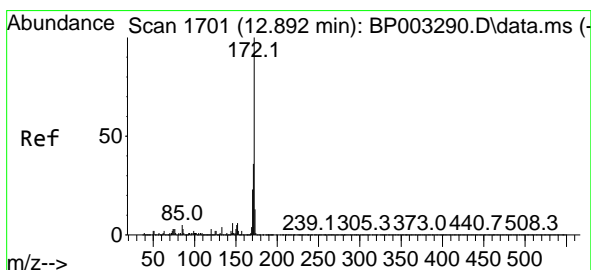
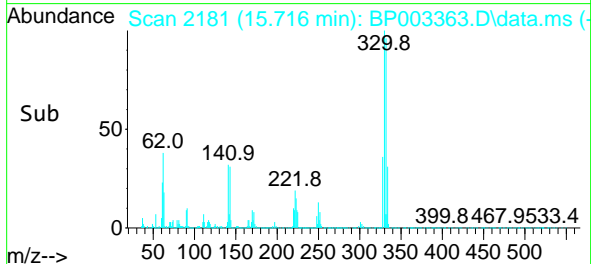
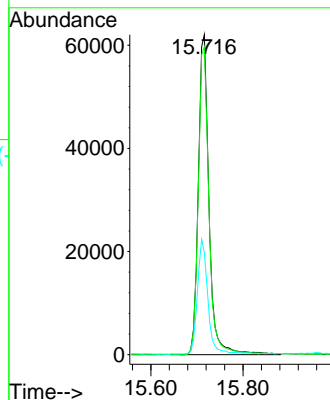
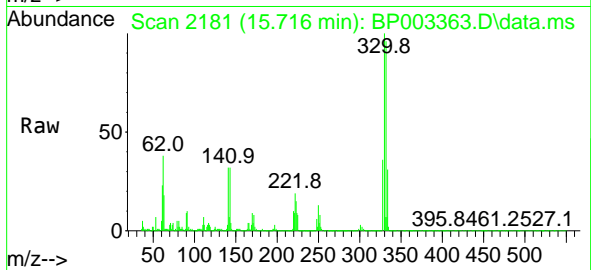




#42  
 2,4,6-Tribromophenol  
 Concen: 14.61 ng  
 RT: 15.716 min Scan# 2181  
 Delta R.T. -0.006 min  
 Lab File: BP003363.D  
 Acq: 23 Sep 2020 18:21

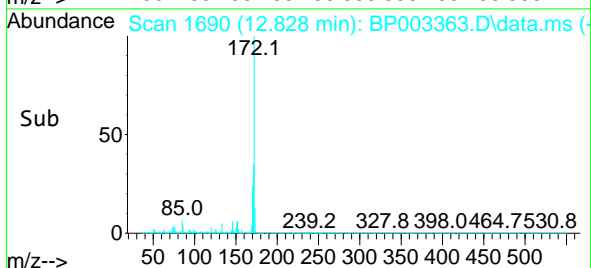
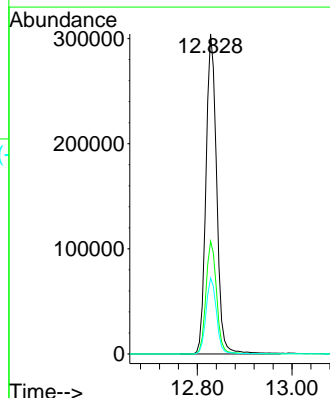
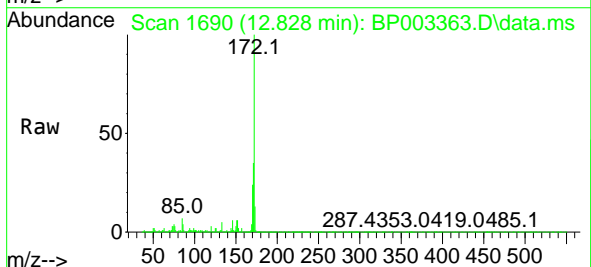
Instrument :  
 BNA\_P  
 ClientSampleId :  
 HD-01-092220

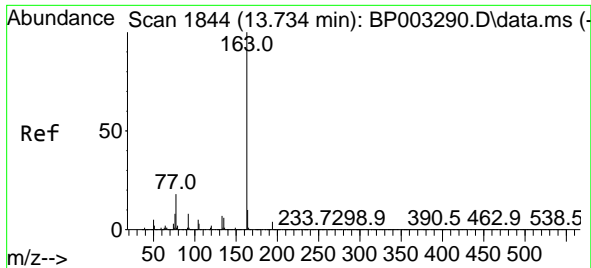
Tgt Ion:330 Resp: 99924  
 Ion Ratio Lower Upper  
 330 100  
 332 96.0 77.1 115.7  
 141 34.8 23.4 35.2



#45  
 2-Fluorobiphenyl  
 Concen: 15.59 ng  
 RT: 12.828 min Scan# 1690  
 Delta R.T. -0.012 min  
 Lab File: BP003363.D  
 Acq: 23 Sep 2020 18:21

Tgt Ion:172 Resp: 477923  
 Ion Ratio Lower Upper  
 172 100  
 171 35.2 28.5 42.7  
 170 23.7 19.2 28.8

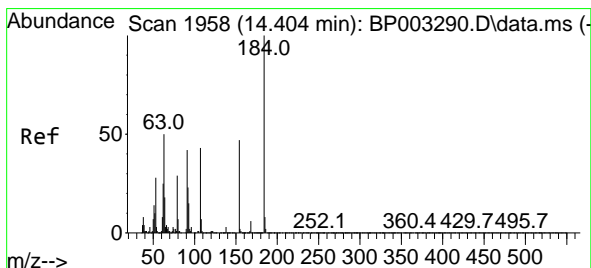
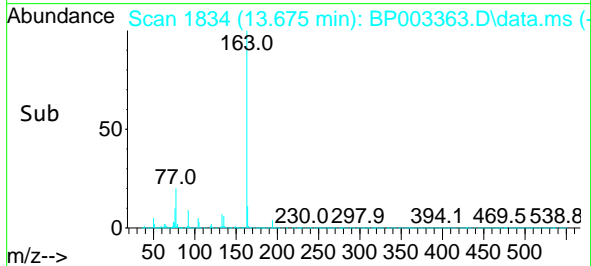
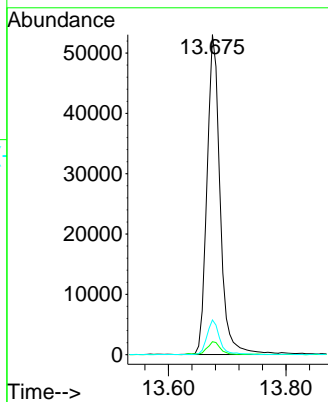
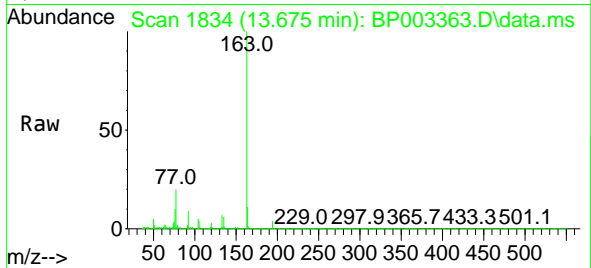




#50  
 Dimethylphthalate  
 Concen: 2.29 ng  
 RT: 13.675 min Scan# 1834  
 Delta R.T. -0.012 min  
 Lab File: BP003363.D  
 Acq: 23 Sep 2020 18:21

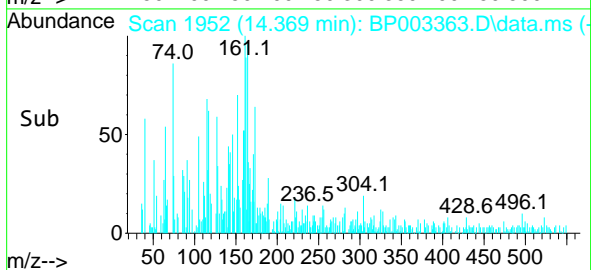
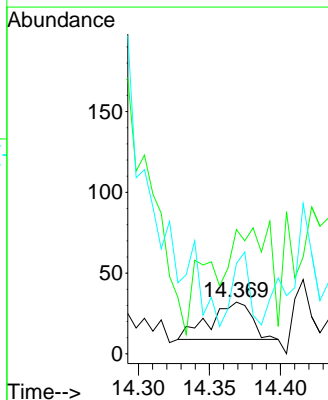
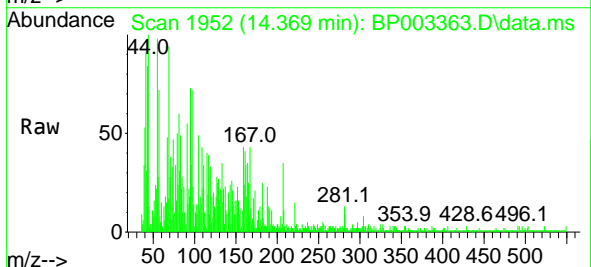
Instrument :  
 BNA\_P  
 ClientSampled :  
 HD-01-092220

Tgt Ion	Resp	Lower	Upper
163	100		
194	4.0	3.3	4.9
164	10.8	8.2	12.2

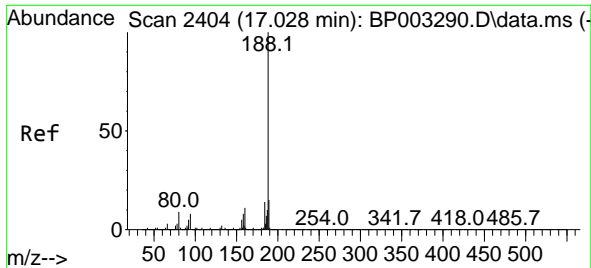


#54  
 2,4-Dinitrophenol  
 Concen: 7.26 ng  
 RT: 14.369 min Scan# 1952  
 Delta R.T. 0.012 min  
 Lab File: BP003363.D  
 Acq: 23 Sep 2020 18:21

Tgt Ion	Resp	Lower	Upper
184	100		
63	240.6	32.3	48.5#
154	175.0	49.1	73.7#





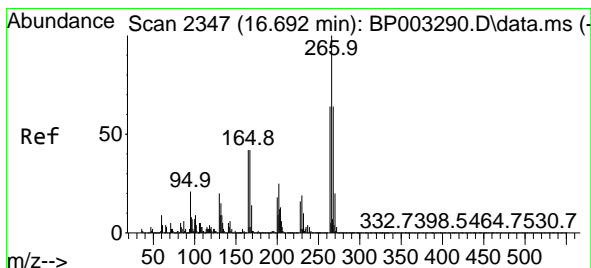
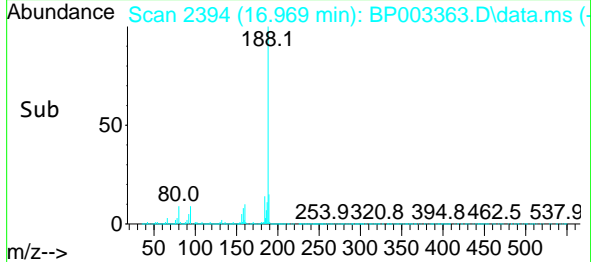
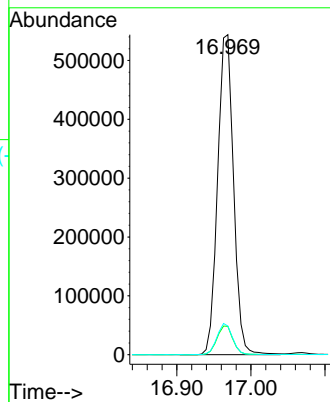
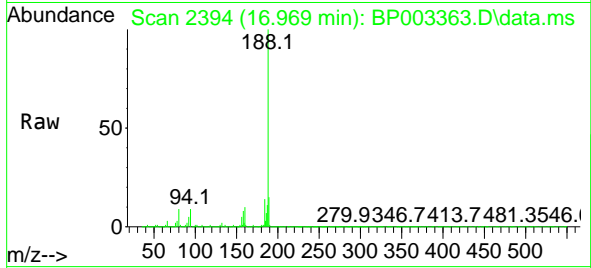


#64  
 Phenanthrene-d10  
 Concen: 20.00 ng  
 RT: 16.969 min Scan# 2394  
 Delta R.T. -0.006 min  
 Lab File: BP003363.D  
 Acq: 23 Sep 2020 18:21

Instrument :  
 BNA\_P  
 ClientSampleId :  
 HD-01-092220

Tgt Ion:188 Resp: 810787

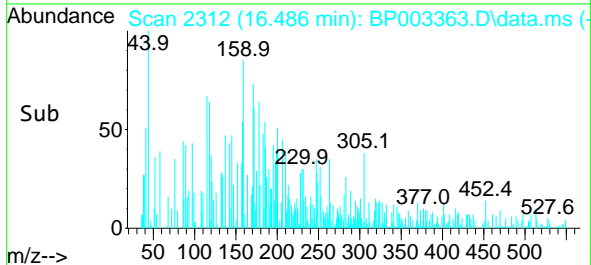
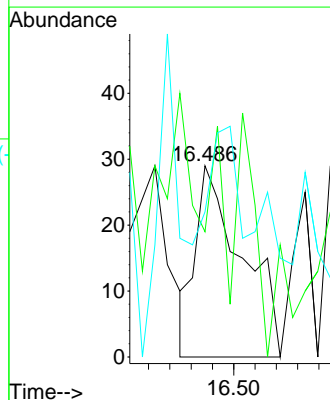
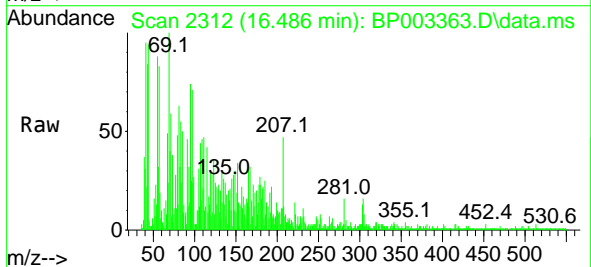
Ion	Ratio	Lower	Upper
188	100		
94	8.8	6.2	9.2
80	8.9	6.2	9.2

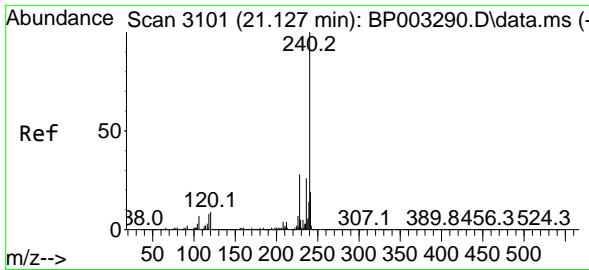


#70  
 Pentachlorophenol  
 Concen: 6.78 ng  
 RT: 16.486 min Scan# 2312  
 Delta R.T. -0.153 min  
 Lab File: BP003363.D  
 Acq: 23 Sep 2020 18:21

Tgt Ion:266 Resp: 44

Ion	Ratio	Lower	Upper
266	100		
268	65.5	51.1	76.7
264	75.9	50.6	76.0

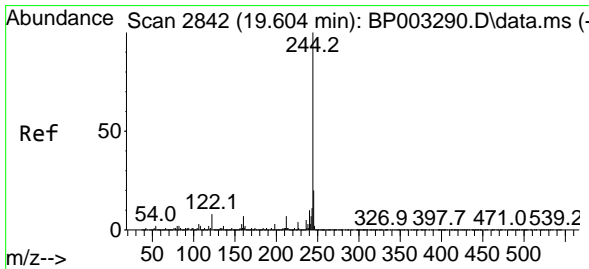
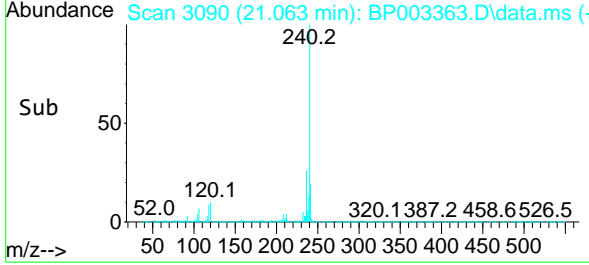
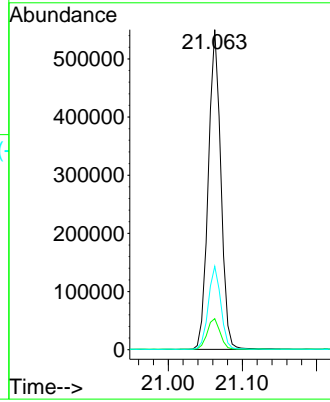
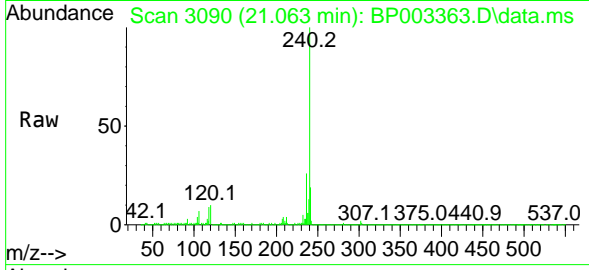




#76  
 Chrysene-d12  
 Concen: 20.00 ng  
 RT: 21.063 min Scan# 3090  
 Delta R.T. -0.006 min  
 Lab File: BP003363.D  
 Acq: 23 Sep 2020 18:21

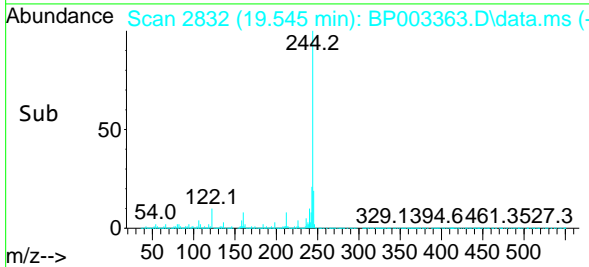
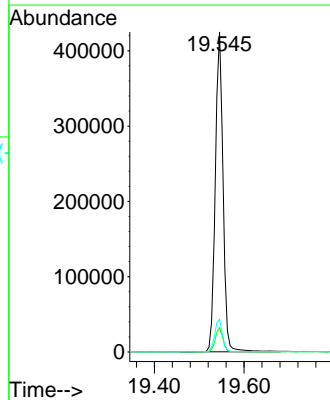
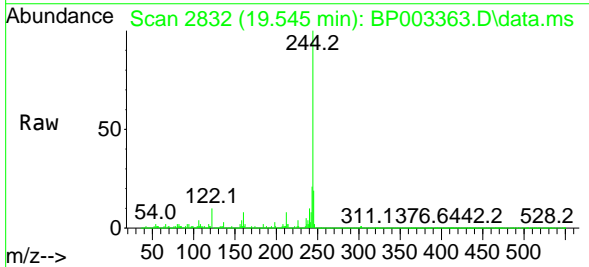
Instrument :  
 BNA\_P  
 ClientSampleId :  
 HD-01-092220

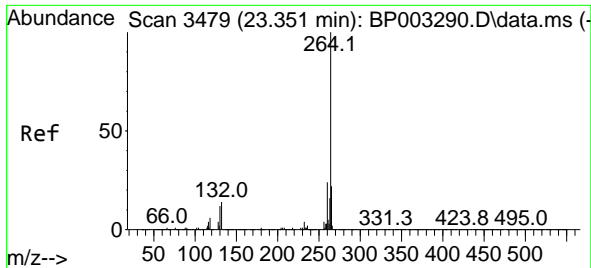
Tgt Ion:240 Resp: 645811  
 Ion Ratio Lower Upper  
 240 100  
 120 9.7 7.8 11.6  
 236 26.1 20.8 31.2



#79  
 Terphenyl-d14  
 Concen: 16.42 ng  
 RT: 19.545 min Scan# 2832  
 Delta R.T. -0.006 min  
 Lab File: BP003363.D  
 Acq: 23 Sep 2020 18:21

Tgt Ion:244 Resp: 508993  
 Ion Ratio Lower Upper  
 244 100  
 212 7.6 5.8 8.6  
 122 10.2 7.8 11.8





#86  
 Perylene-d12  
 Concen: 20.00 ng  
 RT: 23.251 min Scan# 3462  
 Delta R.T. -0.012 min  
 Lab File: BP003363.D  
 Acq: 23 Sep 2020 18:21

Instrument :  
 BNA\_P  
 ClientSampled :  
 HD-01-092220

Tgt Ion:264 Resp: 686074

Ion	Ratio	Lower	Upper
264	100		
260	24.4	18.8	28.2
265	21.7	17.4	26.2

