

Data Path : Z:\svoasrv\HPCHEM1\BNA_P\Data\BP092321\
 Data File : BP007117.D
 Acq On : 23 Sep 2021 09:46
 Operator : CG/JU
 Sample : SSTDCCC040
 Misc :
 ALS Vial : 2 Sample Multiplier: 1

Instrument :
 BNA_P
 ClientSampleId :
 SSTDCCC040

Quant Time: Sep 23 11:13:50 2021
 Quant Method : Z:\svoasrv\HPCHEM1\BNA_P\Methods\8270E-BP092121.M
 Quant Title : ASP BNA STANDARDS FOR 5 POINT CALIBRATION
 QLast Update : Tue Sep 21 16:50:24 2021
 Response via : Initial Calibration

Compound	R.T.	QIon	Response	Conc	Units	Dev(Min)
Internal Standards						
1) 1,4-Dichlorobenzene-d4	7.893	152	251316	20.000	ng	-0.01
21) Naphthalene-d8	10.693	136	957315	20.000	ng	#-0.01
39) Acenaphthene-d10	14.528	164	620448	20.000	ng	0.00
64) Phenanthrene-d10	17.275	188	1346396	20.000	ng	# 0.00
76) Chrysene-d12	21.357	240	1367430	20.000	ng	# 0.00
86) Perylene-d12	23.769	264	1476865	20.000	ng	-0.01
System Monitoring Compounds						
5) 2-Fluorophenol	5.464	112	1160647	77.307	ng	-0.01
7) Phenol-d6	7.064	99	1569792	76.502	ng	0.00
23) Nitrobenzene-d5	9.058	82	1291286	78.553	ng	-0.01
42) 2,4,6-Tribromophenol	16.016	330	684147	85.053	ng	0.00
45) 2-Fluorobiphenyl	13.151	172	3339170	77.102	ng	-0.01
79) Terphenyl-d14	19.833	244	5486925	76.891	ng	0.00
Target Compounds						
2) 1,4-Dioxane	3.358	88	232424	38.282	ng	# 87
3) Pyridine	3.770	79	648658	39.043	ng	# 87
4) n-Nitrosodimethylamine	3.675	42	218951	38.442	ng	# 75
6) Aniline	7.222	93	860905	38.062	ng	99
8) 2-Chlorophenol	7.458	128	629144	38.558	ng	98
9) Benzaldehyde	7.034	77	443282	38.350	ng	94
10) Phenol	7.087	94	754100	38.118	ng	91
11) bis(2-Chloroethyl)ether	7.322	93	583125	37.341	ng	97
12) 1,3-Dichlorobenzene	7.781	146	704942	38.301	ng	97
13) 1,4-Dichlorobenzene	7.928	146	715924	38.155	ng	98
14) 1,2-Dichlorobenzene	8.246	146	693470	38.139	ng	99
15) Benzyl Alcohol	8.134	79	504999	38.425	ng	94
16) 2,2'-oxybis(1-Chloropr...	8.422	45	654117	36.582	ng	89
17) 2-Methylphenol	8.340	107	514168	38.553	ng	94
18) Hexachloroethane	8.975	117	242417	38.481	ng	95
19) n-Nitroso-di-n-propyla...	8.705	70	418260	37.477	ng	98
20) 3+4-Methylphenols	8.669	107	706681	38.322	ng	95
22) Acetophenone	8.722	105	892190	38.678	ng	99
24) Nitrobenzene	9.099	77	614720	39.222	ng	97
25) Isophorone	9.628	82	1127741	39.343	ng	97
26) 2-Nitrophenol	9.810	139	337468	41.293	ng	# 87
27) 2,4-Dimethylphenol	9.869	122	509417	39.589	ng	97
28) bis(2-Chloroethoxy)met...	10.110	93	763693	37.764	ng	99
29) 2,4-Dichlorophenol	10.346	162	602125	40.114	ng	99
30) 1,2,4-Trichlorobenzene	10.557	180	666666	38.986	ng	98
31) Naphthalene	10.746	128	1891939	38.723	ng	99
32) Benzoic acid	10.005	122	430671	43.547	ng	95
33) 4-Chloroaniline	10.857	127	801916	39.728	ng	98
34) Hexachlorobutadiene	11.034	225	411854	40.225	ng	98
35) Caprolactam	11.646	113	195518	42.340	ng	# 79
36) 4-Chloro-3-methylphenol	11.981	107	610101	39.987	ng	96
37) 2-Methylnaphthalene	12.351	142	1322476	38.657	ng	96
38) 1-Methylnaphthalene	12.575	142	1294360	38.722	ng	99
40) 1,2,4,5-Tetrachloroben...	12.722	216	741174	39.009	ng	98
41) Hexachlorocyclopentadiene	12.699	237	399042	37.894	ng	100
43) 2,4,6-Trichlorophenol	12.963	196	520053	40.113	ng	99

Data Path : Z:\svoasrv\HPCHEM1\BNA_P\Data\BP092321\
 Data File : BP007117.D
 Acq On : 23 Sep 2021 09:46
 Operator : CG/JU
 Sample : SSTDCCC040
 Misc :
 ALS Vial : 2 Sample Multiplier: 1

Instrument :
 BNA_P
 ClientSampleId :
 SSTDCCC040

Quant Time: Sep 23 11:13:50 2021
 Quant Method : Z:\svoasrv\HPCHEM1\BNA_P\Methods\8270E-BP092121.M
 Quant Title : ASP BNA STANDARDS FOR 5 POINT CALIBRATION
 QLast Update : Tue Sep 21 16:50:24 2021
 Response via : Initial Calibration

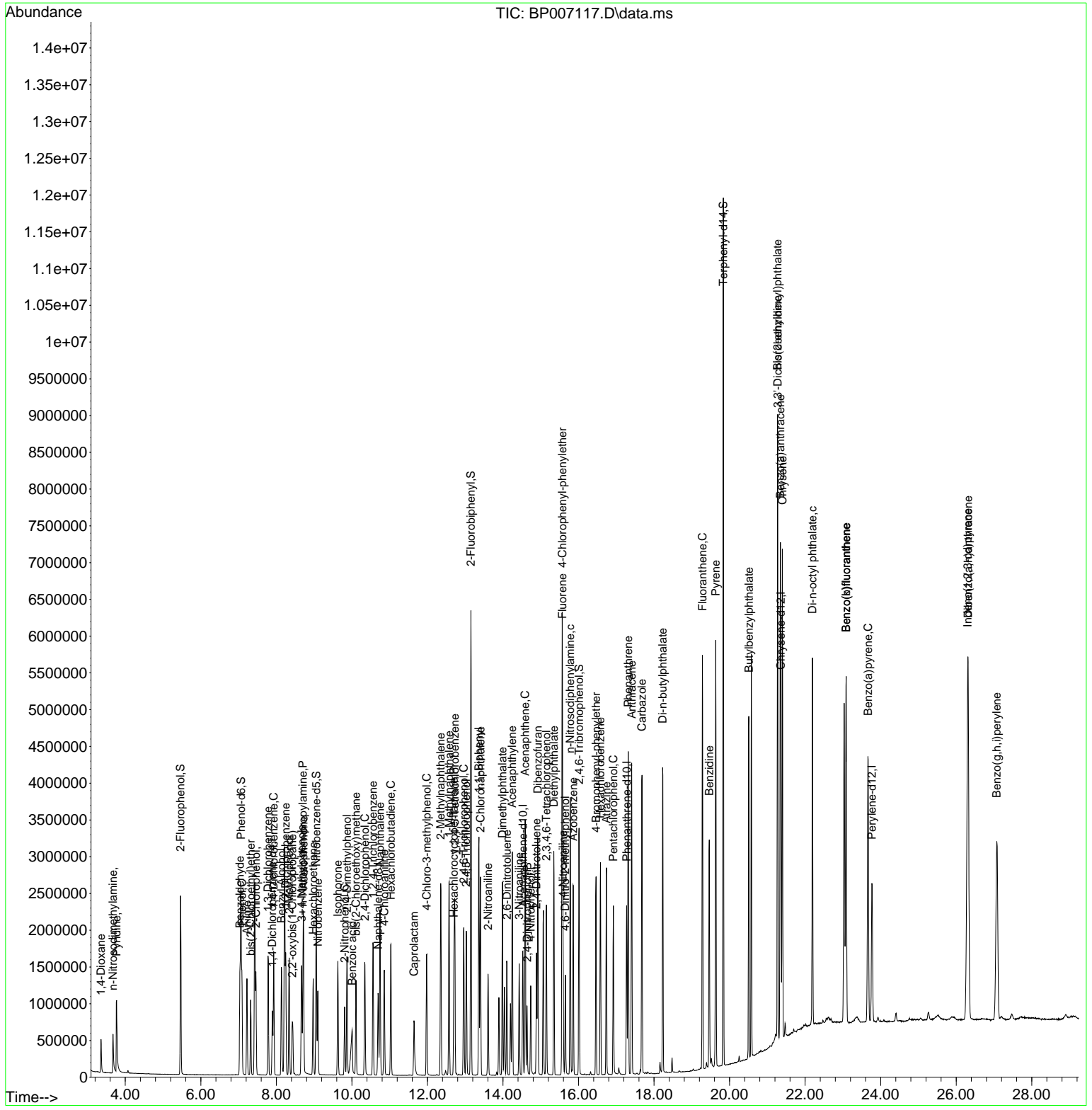
Compound	R.T.	QIon	Response	Conc	Units	Dev(Min)
44) 2,4,5-Trichlorophenol	13.028	196	556713	39.876	ng	97
46) 1,1'-Biphenyl	13.363	154	1762161	38.183	ng	100
47) 2-Chloronaphthalene	13.404	162	1376468	38.503	ng	97
48) 2-Nitroaniline	13.604	65	357508	41.017	ng	93
49) Acenaphthylene	14.246	152	2176812	39.534	ng	100
50) Dimethylphthalate	13.987	163	1762203	39.490	ng	100
51) 2,6-Dinitrotoluene	14.104	165	375418	41.185	ng	88
52) Acenaphthene	14.587	154	1286187	38.555	ng	100
53) 3-Nitroaniline	14.428	138	409988	41.598	ng	98
54) 2,4-Dinitrophenol	14.640	184	233545	44.477	ng	89
55) Dibenzofuran	14.922	168	2165753	38.911	ng	95
56) 4-Nitrophenol	14.734	139	351782	43.965	ng	# 82
57) 2,4-Dinitrotoluene	14.887	165	512656	42.619	ng	92
58) Fluorene	15.575	166	1689261	39.286	ng	99
59) 2,3,4,6-Tetrachlorophenol	15.151	232	499719	40.762	ng	96
60) Diethylphthalate	15.345	149	1744572	40.346	ng	98
61) 4-Chlorophenyl-phenyle...	15.569	204	888824	39.117	ng	93
62) 4-Nitroaniline	15.592	138	433481	43.732	ng	# 81
63) Azobenzene	15.857	77	1473102	39.314	ng	94
65) 4,6-Dinitro-2-methylph...	15.651	198	339816	42.058	ng	99
66) n-Nitrosodiphenylamine	15.781	169	1514939	37.816	ng	99
67) 4-Bromophenyl-phenylether	16.463	248	561592	38.057	ng	95
68) Hexachlorobenzene	16.581	284	626795	38.434	ng	96
69) Atrazine	16.739	200	564829	39.999	ng	98
70) Pentachlorophenol	16.922	266	418355	41.307	ng	99
71) Phenanthrene	17.316	178	2750040	38.093	ng	99
72) Anthracene	17.410	178	2730822	38.668	ng	100
73) Carbazole	17.681	167	2728381	39.425	ng	99
74) Di-n-butylphthalate	18.228	149	3097351	40.386	ng	99
75) Fluoranthene	19.281	202	3334898	40.095	ng	97
77) Benzidine	19.463	184	1903183	45.289	ng	99
78) Pyrene	19.633	202	3424682	38.173	ng	99
80) Butylbenzylphthalate	20.510	149	1479861	41.189	ng	93
81) Benzo(a)anthracene	21.345	228	3438586	38.741	ng	99
82) 3,3'-Dichlorobenzidine	21.275	252	1247869	40.937	ng	100
83) Chrysene	21.398	228	3313742	39.063	ng	99
84) Bis(2-ethylhexyl)phtha...	21.269	149	2114380	40.933	ng	98
85) Di-n-octyl phthalate	22.192	149	3675153	41.790	ng	99
87) Indeno(1,2,3-cd)pyrene	26.304	276	4199367	39.566	ng	# 95
88) Benzo(b)fluoranthene	23.086	252	3459072	39.192	ng	98
89) Benzo(k)fluoranthene	23.086	252	3459072	38.709	ng	# 98
90) Benzo(a)pyrene	23.669	252	2897908	38.647	ng	# 97
91) Dibenzo(a,h)anthracene	26.315	278	3500861	39.360	ng	# 96
92) Benzo(g,h,i)perylene	27.074	276	3420869	39.411	ng	# 95

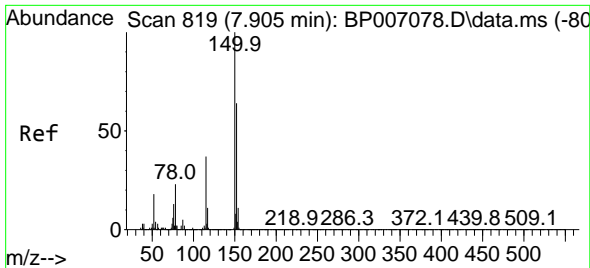
(#) = qualifier out of range (m) = manual integration (+) = signals summed

Data Path : Z:\svoasrv\HPCHEM1\BNA_P\Data\BP092321\
 Data File : BP007117.D
 Acq On : 23 Sep 2021 09:46
 Operator : CG/JU
 Sample : SSTDCCC040
 Misc :
 ALS Vial : 2 Sample Multiplier: 1

Instrument :
 BNA_P
 Client Sampled :
 SSTDCCC040

Quant Time: Sep 23 11:13:50 2021
 Quant Method : Z:\svoasrv\HPCHEM1\BNA_P\Methods\8270E-BP092121.M
 Quant Title : ASP BNA STANDARDS FOR 5 POINT CALIBRATION
 QLast Update : Tue Sep 21 16:50:24 2021
 Response via : Initial Calibration

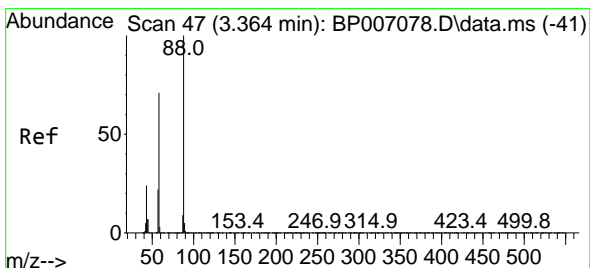
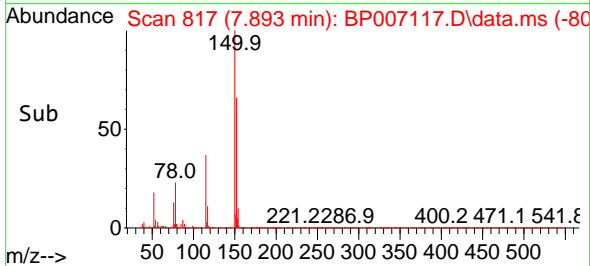
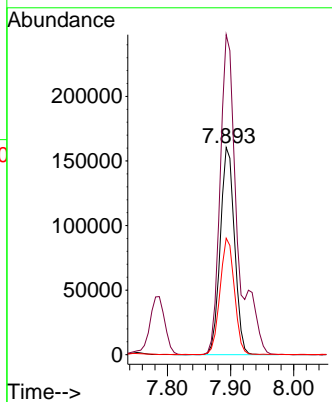
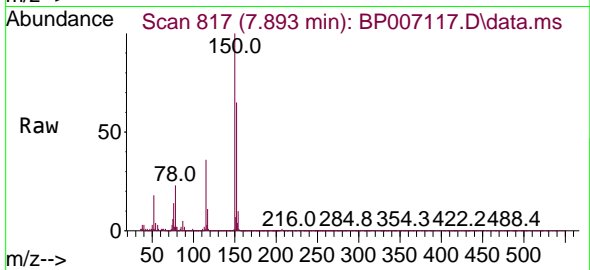




#1
 1,4-Dichlorobenzene-d4
 Concen: 20.000 ng
 RT: 7.893 min Scan# 817
 Delta R.T. -0.012 min
 Lab File: BP007117.D
 Acq: 23 Sep 2021 09:46

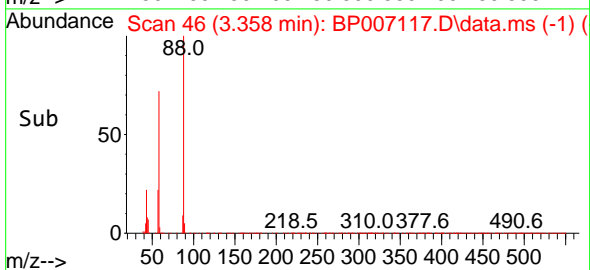
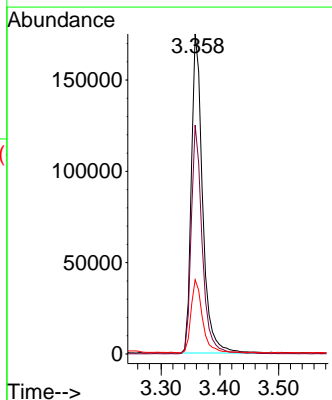
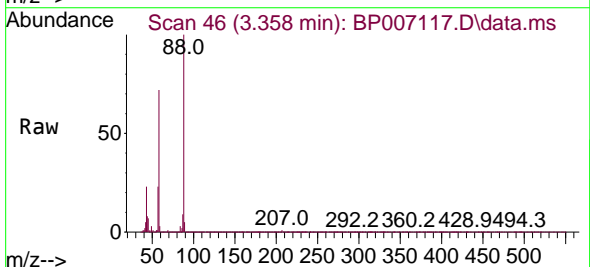
Instrument :
 BNA_P
 ClientSampled :
 SSTDCCC040

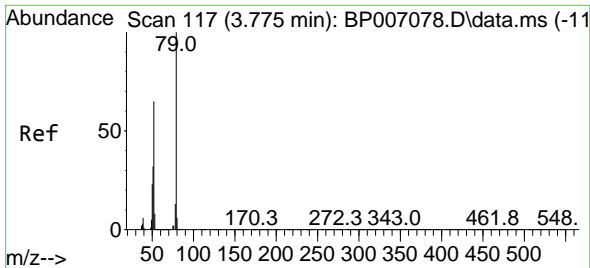
Tgt Ion:152 Resp: 251316
 Ion Ratio Lower Upper
 152 100
 150 154.4 125.6 188.4
 115 56.2 48.5 72.7



#2
 1,4-Dioxane
 Concen: 38.282 ng
 RT: 3.358 min Scan# 46
 Delta R.T. -0.006 min
 Lab File: BP007117.D
 Acq: 23 Sep 2021 09:46

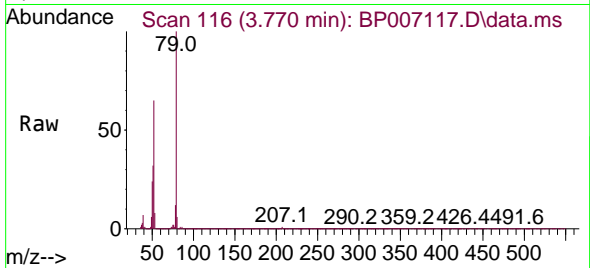
Tgt Ion: 88 Resp: 232424
 Ion Ratio Lower Upper
 88 100
 58 70.3 46.7 70.1#
 43 23.1 20.3 30.5



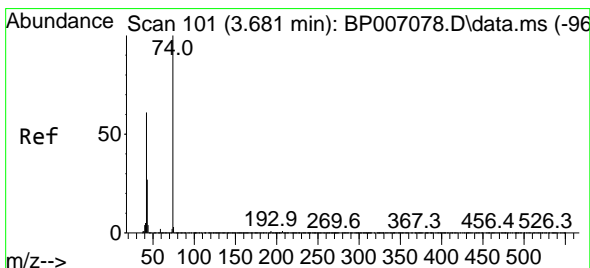
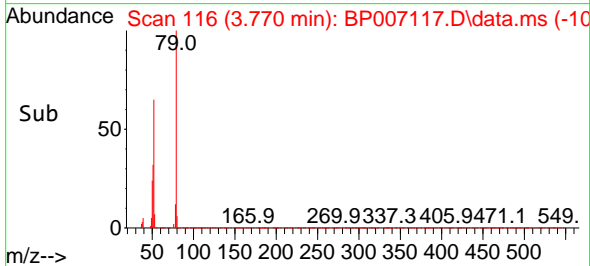
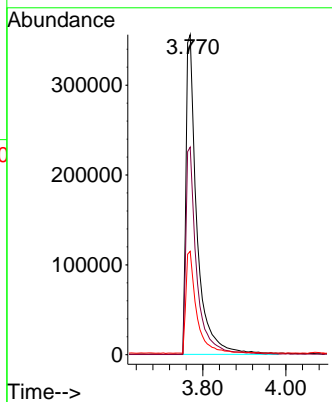


#3
 Pyridine
 Concen: 39.043 ng
 RT: 3.770 min Scan# 116
 Delta R.T. -0.006 min
 Lab File: BP007117.D
 Acq: 23 Sep 2021 09:46

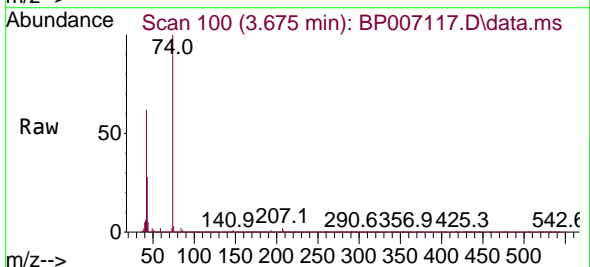
Instrument :
 BNA_P
 ClientSampleId :
 SSTDCCC040



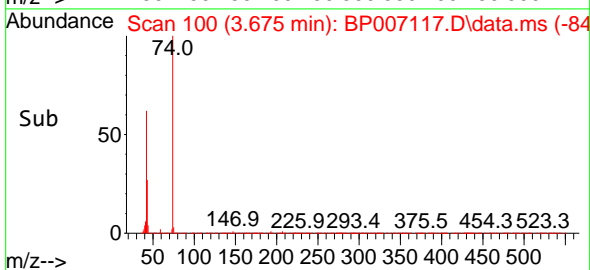
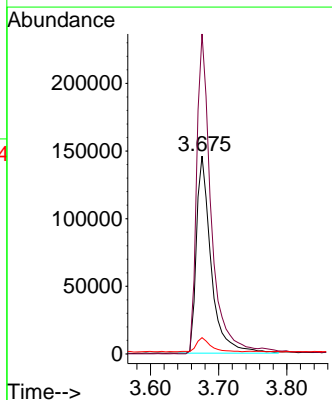
Tgt Ion: 79 Resp: 648658
 Ion Ratio Lower Upper
 79 100
 52 64.9 41.7 62.5#
 51 32.3 24.1 36.1

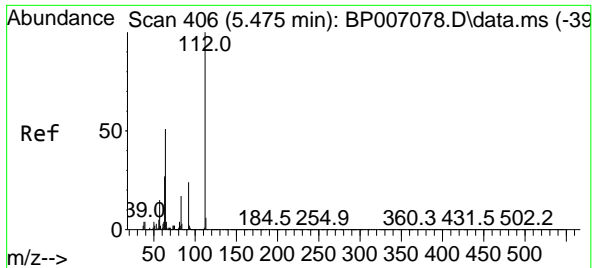


#4
 n-Nitrosodimethylamine
 Concen: 38.442 ng
 RT: 3.675 min Scan# 100
 Delta R.T. -0.006 min
 Lab File: BP007117.D
 Acq: 23 Sep 2021 09:46



Tgt Ion: 42 Resp: 218951
 Ion Ratio Lower Upper
 42 100
 74 161.7 105.4 158.0#
 44 8.2 4.2 6.4#



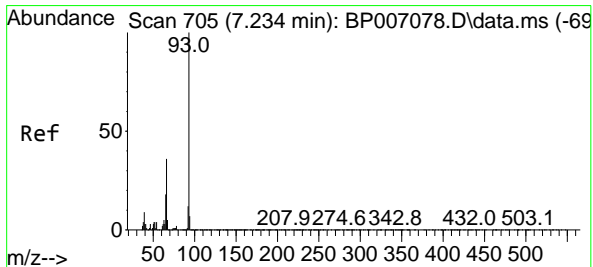
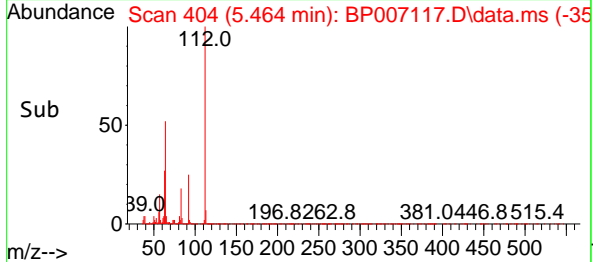
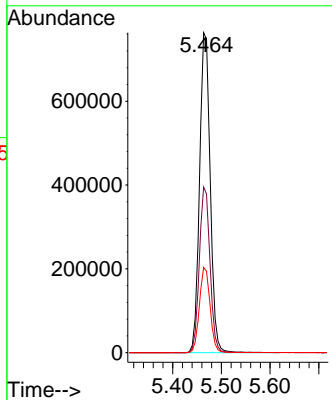
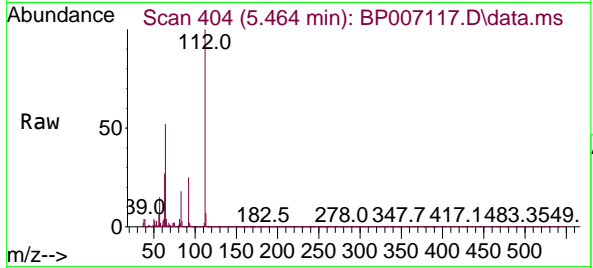


#5
 2-Fluorophenol
 Concen: 77.307 ng
 RT: 5.464 min Scan# 404
 Delta R.T. -0.011 min
 Lab File: BP007117.D
 Acq: 23 Sep 2021 09:46

Instrument :
 BNA_P
 ClientSampleId :
 SSTDCCC040

Tgt Ion:112 Resp: 1160647

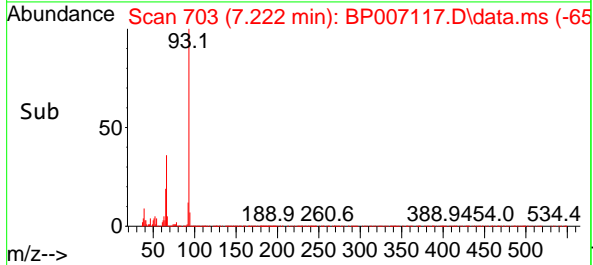
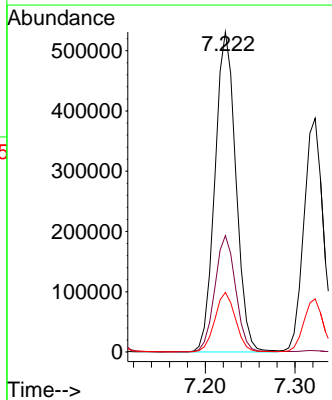
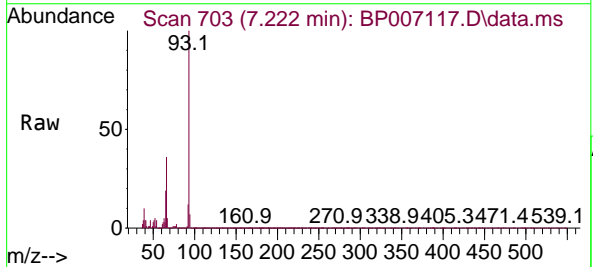
Ion	Ratio	Lower	Upper
112	100		
64	51.8	41.4	62.2
63	26.6	23.8	35.8

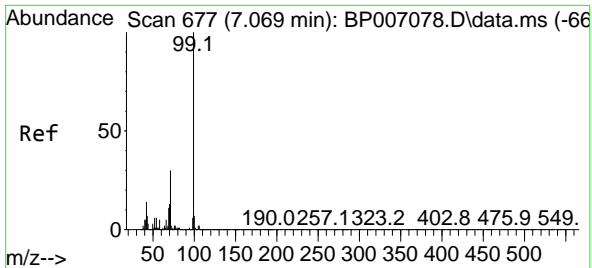


#6
 Aniline
 Concen: 38.062 ng
 RT: 7.222 min Scan# 703
 Delta R.T. -0.012 min
 Lab File: BP007117.D
 Acq: 23 Sep 2021 09:46

Tgt Ion: 93 Resp: 860905

Ion	Ratio	Lower	Upper
93	100		
66	36.4	29.7	44.5
65	18.6	15.3	22.9

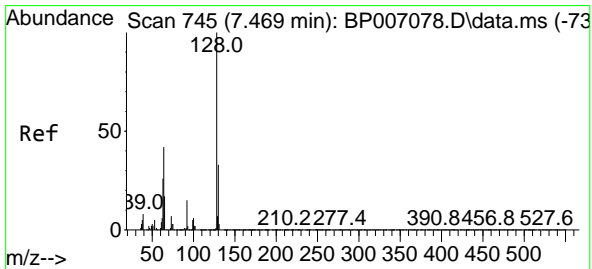
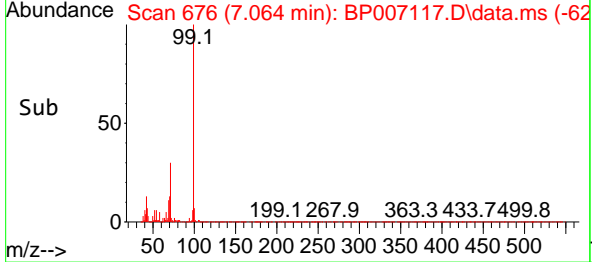
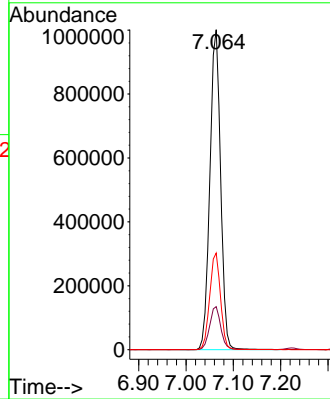
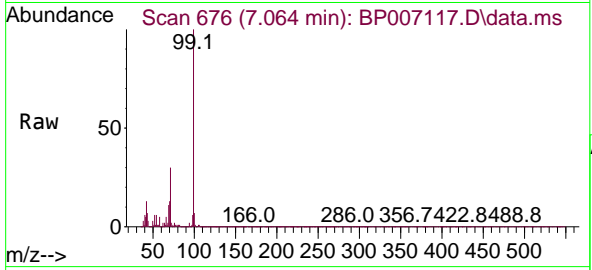




#7
 Phenol-d6
 Concen: 76.502 ng
 RT: 7.064 min Scan# 676
 Delta R.T. -0.005 min
 Lab File: BP007117.D
 Acq: 23 Sep 2021 09:46

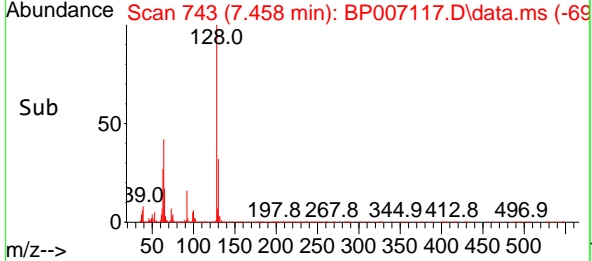
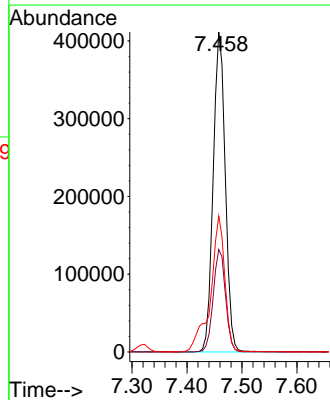
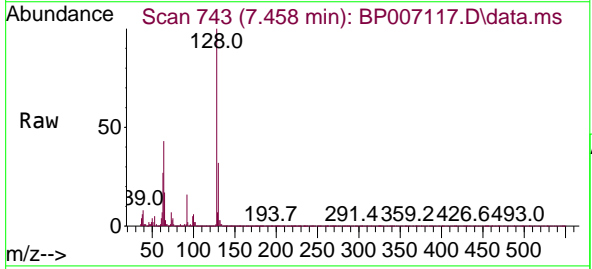
Instrument :
 BNA_P
 ClientSampled :
 SSTDCCC040

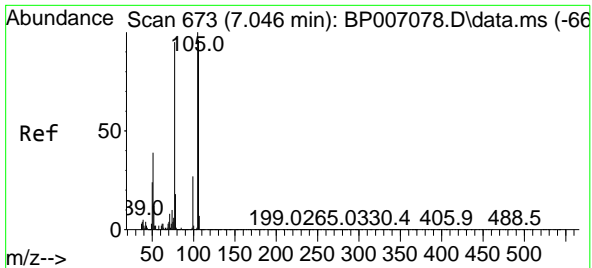
Tgt Ion	Resp	Lower	Upper
99	1569792		
99	100		
42	13.5	13.4	20.0
71	30.2	30.6	46.0



#8
 2-Chlorophenol
 Concen: 38.558 ng
 RT: 7.458 min Scan# 743
 Delta R.T. -0.012 min
 Lab File: BP007117.D
 Acq: 23 Sep 2021 09:46

Tgt Ion	Resp	Lower	Upper
128	629144		
128	100		
130	32.0	12.4	52.4
64	42.5	20.3	60.3

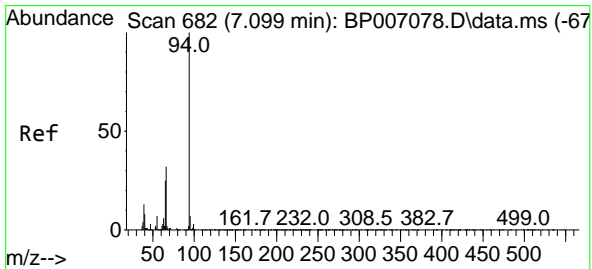
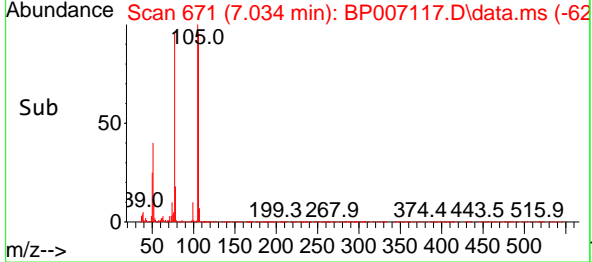
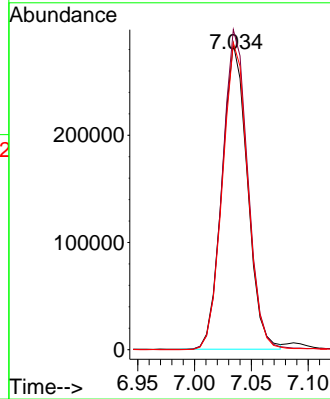
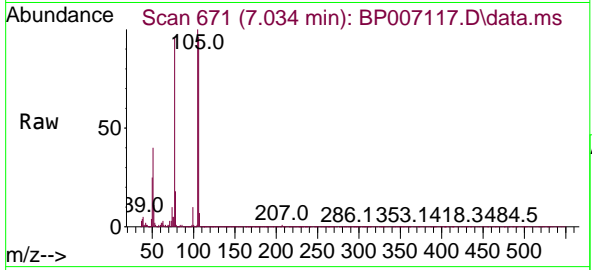




#9
 Benzaldehyde
 Concen: 38.350 ng
 RT: 7.034 min Scan# 671
 Delta R.T. -0.012 min
 Lab File: BP007117.D
 Acq: 23 Sep 2021 09:46

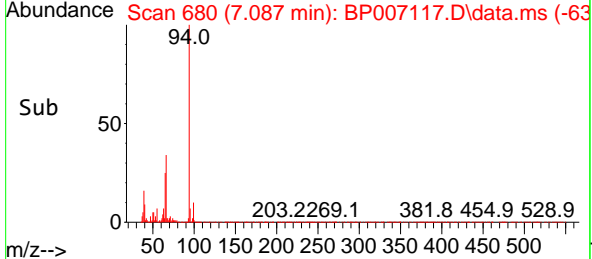
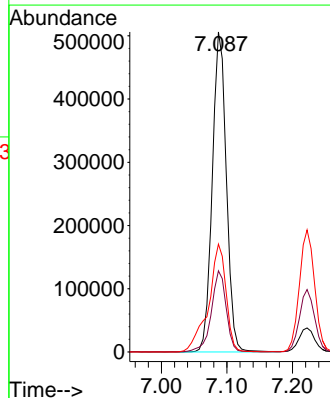
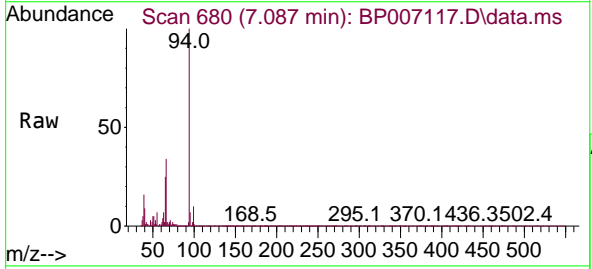
Instrument :
 BNA_P
 ClientSampleId :
 SSTDCCC040

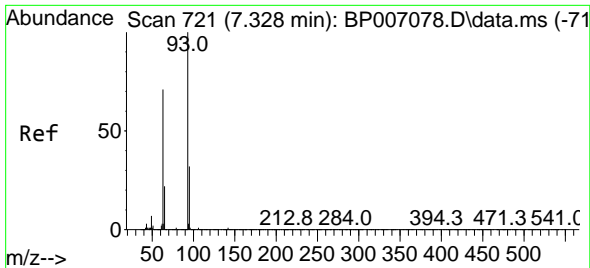
Tgt Ion	Resp	Lower	Upper
77	443282		
77	100		
105	104.6	76.7	116.7
106	100.3	76.2	116.2



#10
 Phenol
 Concen: 38.118 ng
 RT: 7.087 min Scan# 680
 Delta R.T. -0.012 min
 Lab File: BP007117.D
 Acq: 23 Sep 2021 09:46

Tgt Ion	Resp	Lower	Upper
94	754100		
94	100		
65	25.4	8.8	48.8
66	33.7	20.7	60.7

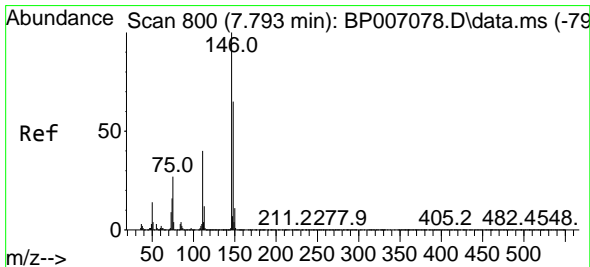
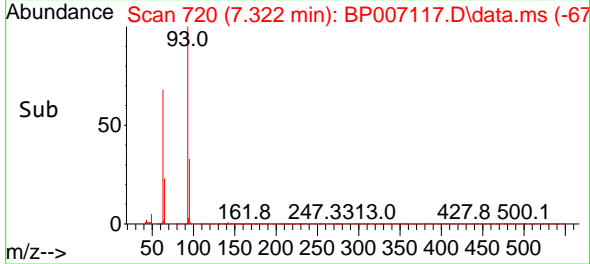
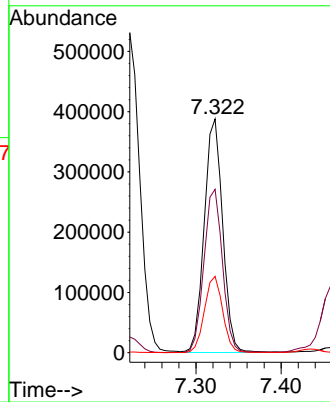
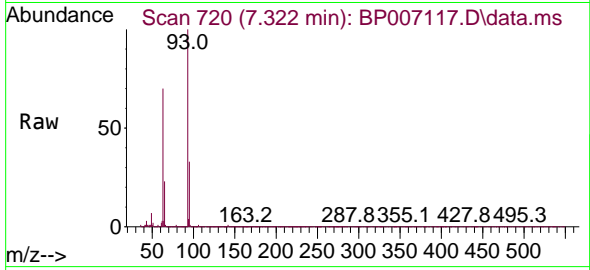




#11
 bis(2-Chloroethyl)ether
 Concen: 37.341 ng
 RT: 7.322 min Scan# 720
 Delta R.T. -0.006 min
 Lab File: BP007117.D
 Acq: 23 Sep 2021 09:46

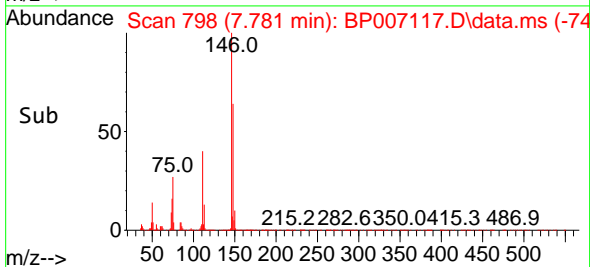
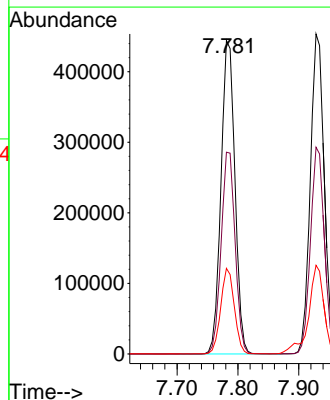
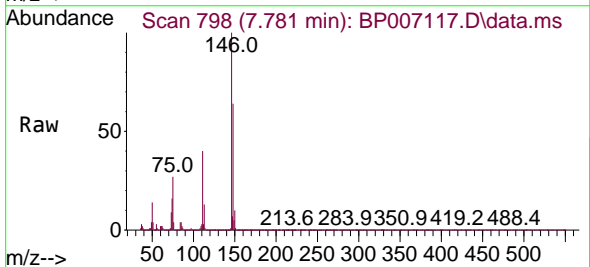
Instrument :
 BNA_P
 ClientSampleId :
 SSTDCCC040

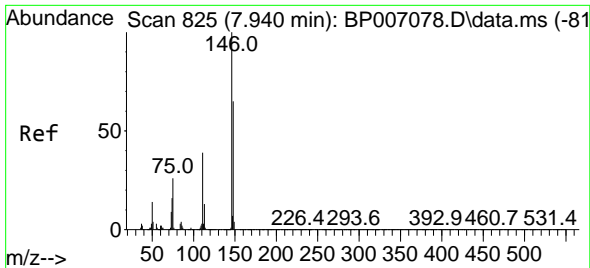
Tgt Ion: 93 Resp: 583125
 Ion Ratio Lower Upper
 93 100
 63 69.8 46.2 86.2
 95 32.6 12.2 52.2



#12
 1,3-Dichlorobenzene
 Concen: 38.301 ng
 RT: 7.781 min Scan# 798
 Delta R.T. -0.012 min
 Lab File: BP007117.D
 Acq: 23 Sep 2021 09:46

Tgt Ion: 146 Resp: 704942
 Ion Ratio Lower Upper
 146 100
 148 64.4 51.5 77.3
 75 27.3 25.7 38.5

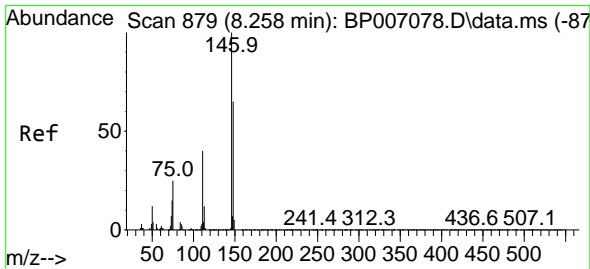
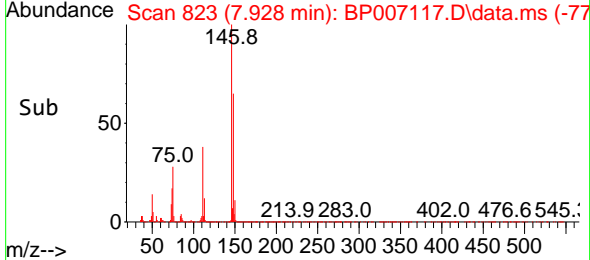
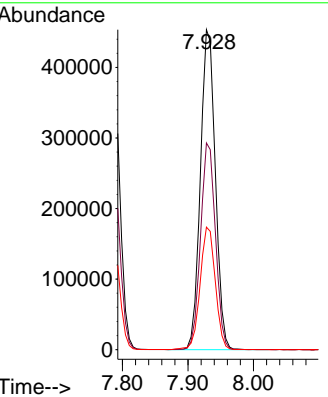
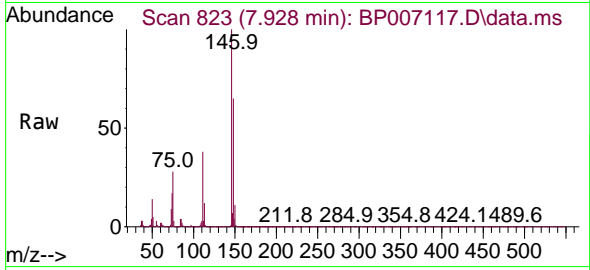




#13
 1,4-Dichlorobenzene
 Concen: 38.155 ng
 RT: 7.928 min Scan# 823
 Delta R.T. -0.012 min
 Lab File: BP007117.D
 Acq: 23 Sep 2021 09:46

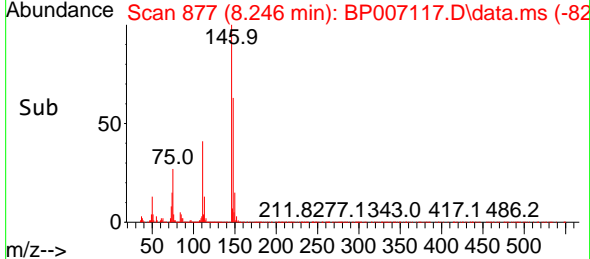
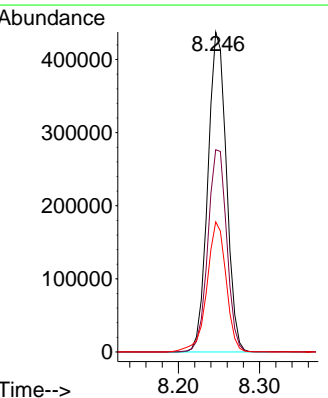
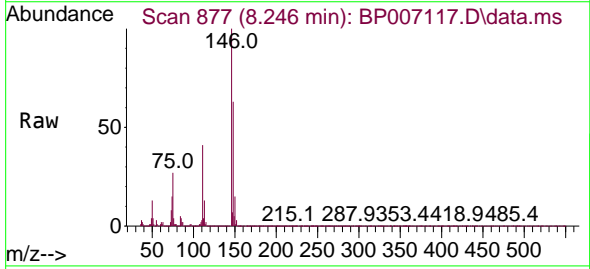
Instrument :
 BNA_P
 ClientSampled :
 SSTDCCC040

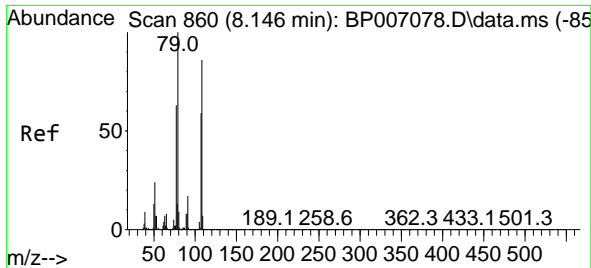
Tgt Ion	Ratio	Lower	Upper
146	100		
148	64.6	51.3	76.9
111	38.3	33.0	49.6



#14
 1,2-Dichlorobenzene
 Concen: 38.139 ng
 RT: 8.246 min Scan# 877
 Delta R.T. -0.012 min
 Lab File: BP007117.D
 Acq: 23 Sep 2021 09:46

Tgt Ion	Ratio	Lower	Upper
146	100		
148	63.2	50.3	75.5
111	40.7	33.7	50.5

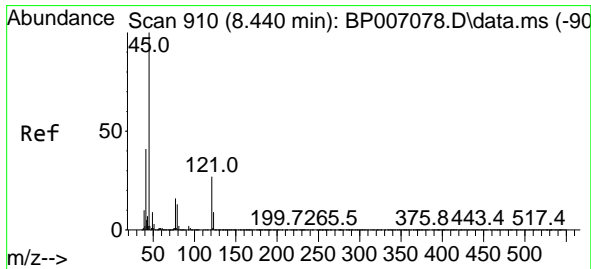
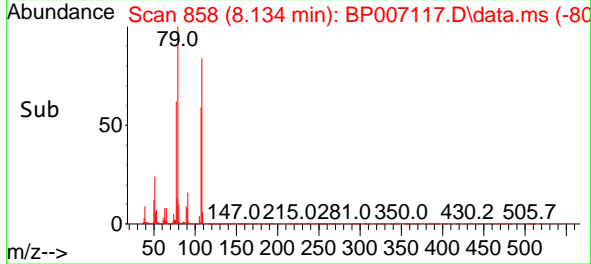
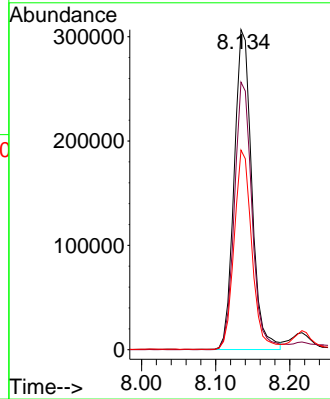
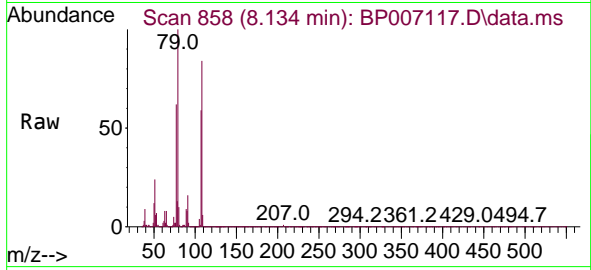




#15
Benzyl Alcohol
Concen: 38.425 ng
RT: 8.134 min Scan# 858
Delta R.T. -0.012 min
Lab File: BP007117.D
Acq: 23 Sep 2021 09:46

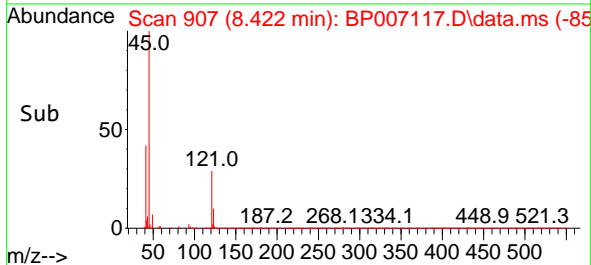
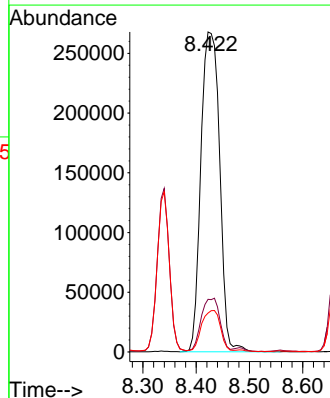
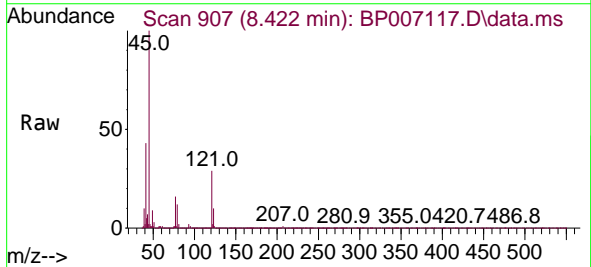
Instrument :
BNA_P
ClientSampleId :
SSTDCCC040

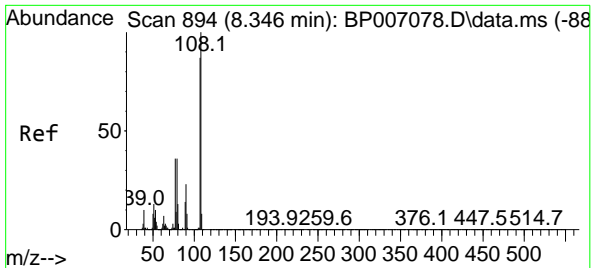
Tgt Ion: 79 Resp: 504999
Ion Ratio Lower Upper
79 100
108 83.6 62.5 93.7
77 62.3 52.9 79.3



#16
2,2'-oxybis(1-Chloropropane)
Concen: 36.582 ng
RT: 8.422 min Scan# 907
Delta R.T. -0.018 min
Lab File: BP007117.D
Acq: 23 Sep 2021 09:46

Tgt Ion: 45 Resp: 654117
Ion Ratio Lower Upper
45 100
77 16.5 2.0 42.0
79 12.2 0.0 36.7



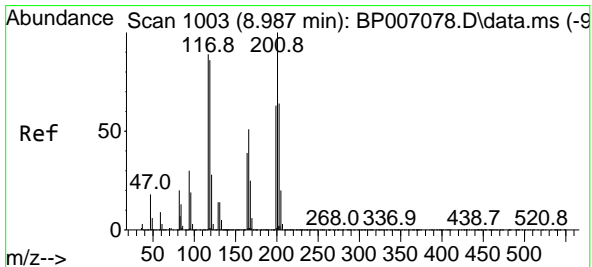
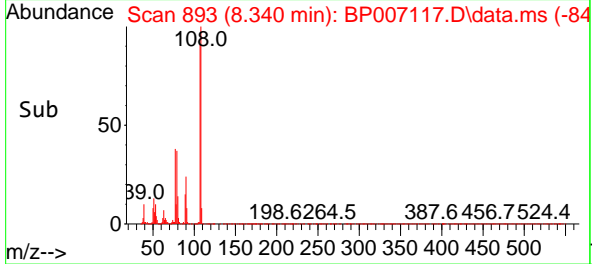
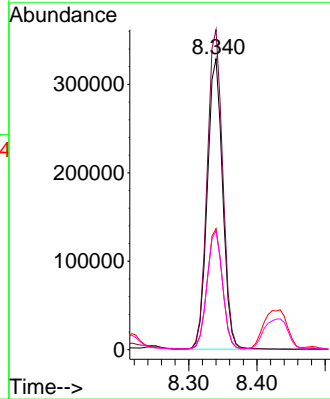
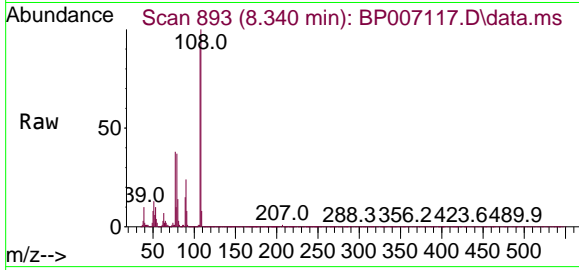


#17
 2-Methylphenol
 Concen: 38.553 ng
 RT: 8.340 min Scan# 893
 Delta R.T. -0.006 min
 Lab File: BP007117.D
 Acq: 23 Sep 2021 09:46

Instrument :
 BNA_P
 ClientSampleId :
 SSTDCCC040

Tgt Ion:107 Resp: 514168

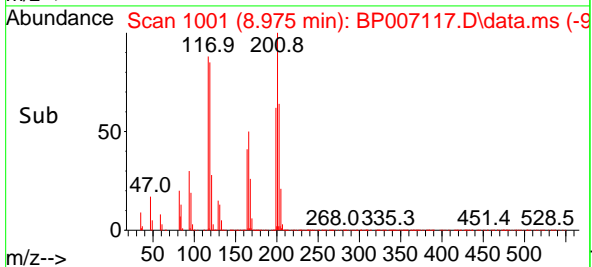
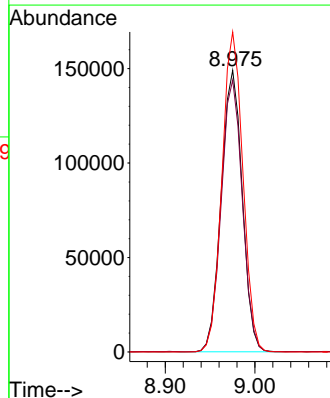
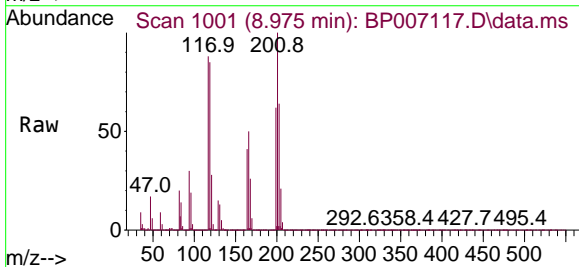
Ion	Ratio	Lower	Upper
107	100		
108	110.0	87.7	131.5
77	41.6	40.2	60.2
79	40.8	39.0	58.4

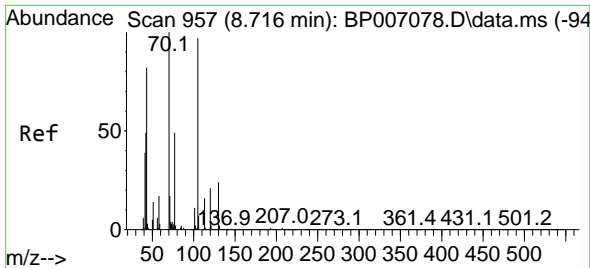


#18
 Hexachloroethane
 Concen: 38.481 ng
 RT: 8.975 min Scan# 1001
 Delta R.T. -0.012 min
 Lab File: BP007117.D
 Acq: 23 Sep 2021 09:46

Tgt Ion:117 Resp: 242417

Ion	Ratio	Lower	Upper
117	100		
119	96.6	76.2	114.2
201	113.7	83.4	125.0



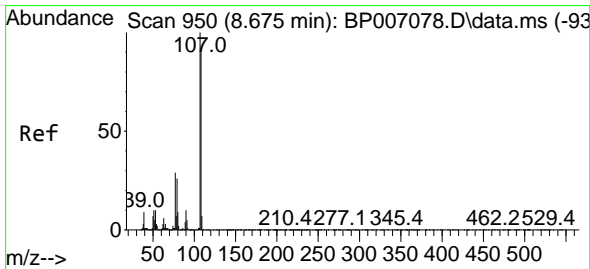
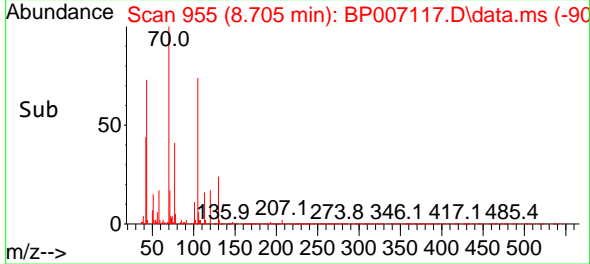
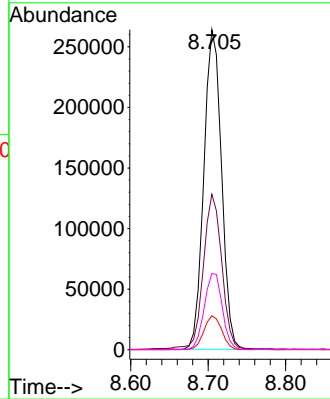
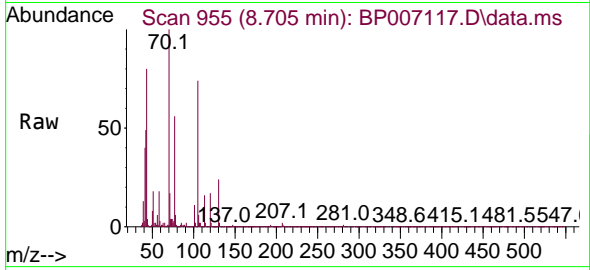


#19
 n-Nitroso-di-n-propylamine
 Concen: 37.477 ng
 RT: 8.705 min Scan# 955
 Delta R.T. -0.012 min
 Lab File: BP007117.D
 Acq: 23 Sep 2021 09:46

Instrument :
 BNA_P
 ClientSampleId :
 SSTDCCC040

Tgt Ion: 70 Resp: 418260

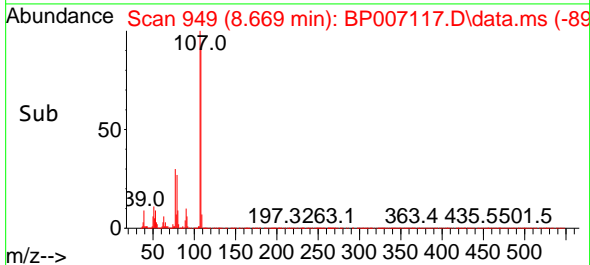
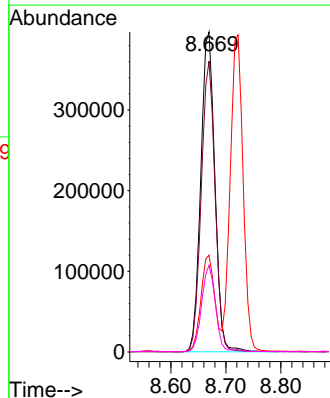
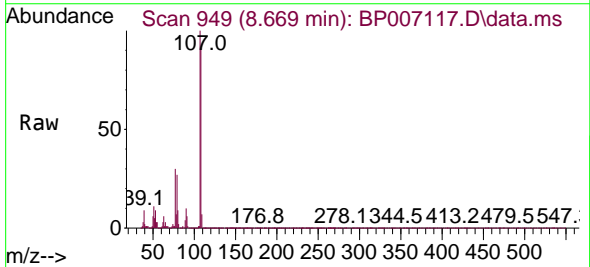
Ion	Ratio	Lower	Upper
70	100		
42	48.5	40.8	61.2
101	10.6	8.8	13.2
130	23.8	18.9	28.3

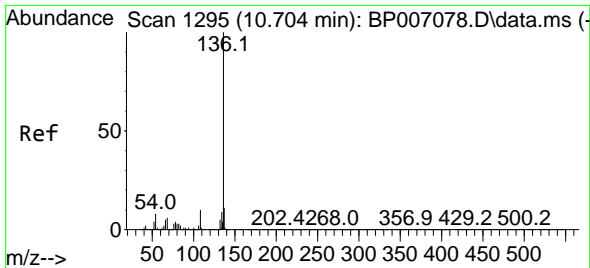


#20
 3+4-Methylphenols
 Concen: 38.322 ng
 RT: 8.669 min Scan# 949
 Delta R.T. -0.006 min
 Lab File: BP007117.D
 Acq: 23 Sep 2021 09:46

Tgt Ion: 107 Resp: 706681

Ion	Ratio	Lower	Upper
107	100		
108	90.9	71.0	111.0
77	30.2	16.6	56.6
79	27.1	12.7	52.7

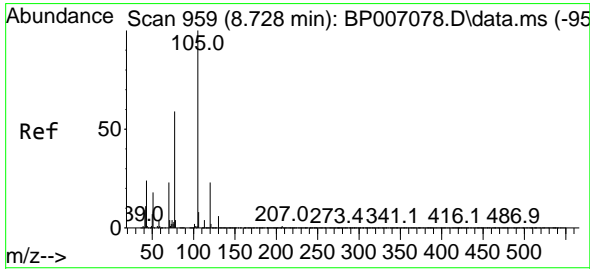
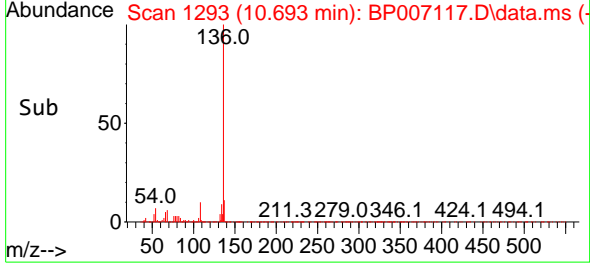
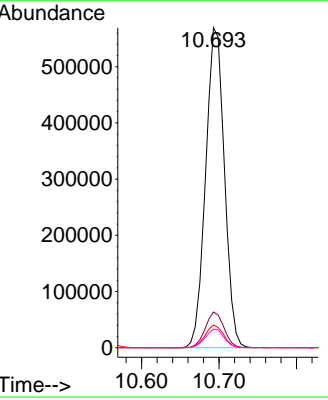
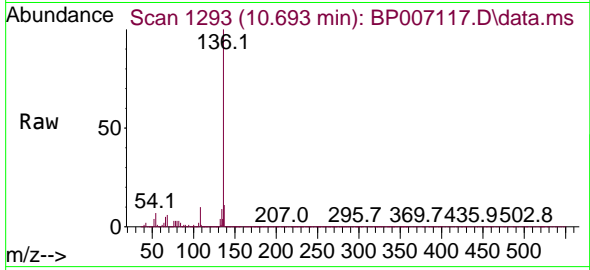




#21
 Naphthalene-d8
 Concen: 20.000 ng
 RT: 10.693 min Scan# 1293
 Delta R.T. -0.012 min
 Lab File: BP007117.D
 Acq: 23 Sep 2021 09:46

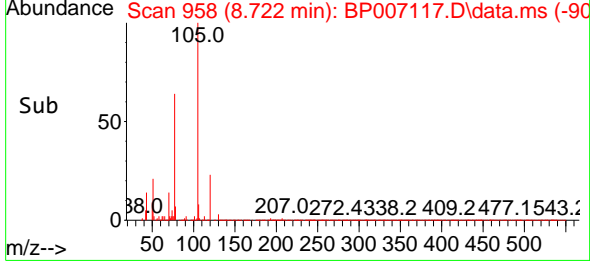
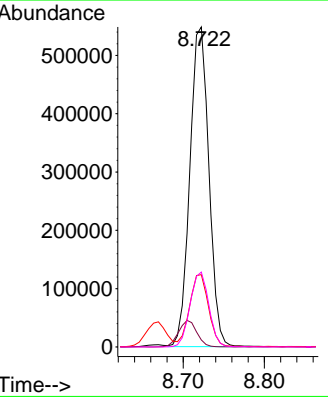
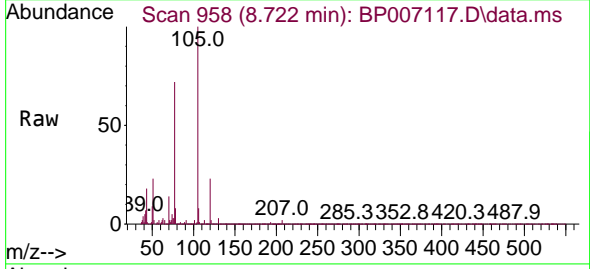
Instrument :
 BNA_P
 ClientSampleId :
 SSTDCCC040

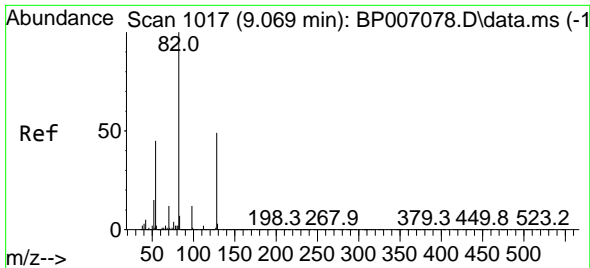
Tgt Ion	Resp	Lower	Upper
136	100		
137	11.2	8.6	12.8
54	7.1	4.6	6.8#
68	5.7	3.6	5.4#



#22
 Acetophenone
 Concen: 38.678 ng
 RT: 8.722 min Scan# 958
 Delta R.T. -0.006 min
 Lab File: BP007117.D
 Acq: 23 Sep 2021 09:46

Tgt Ion	Resp	Lower	Upper
105	100		
71	2.2	1.9	2.9
51	22.6	18.4	27.6
120	23.4	17.9	26.9

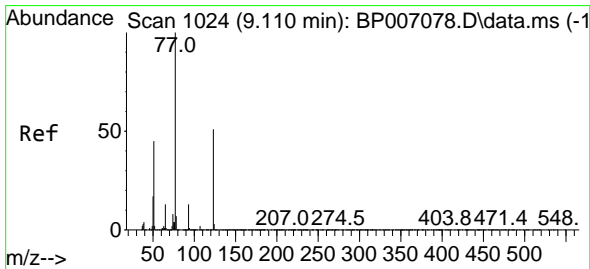
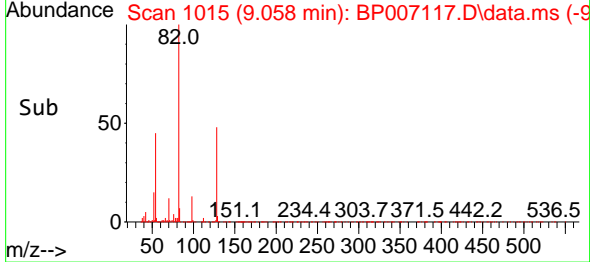
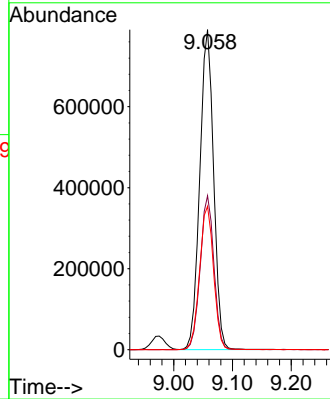
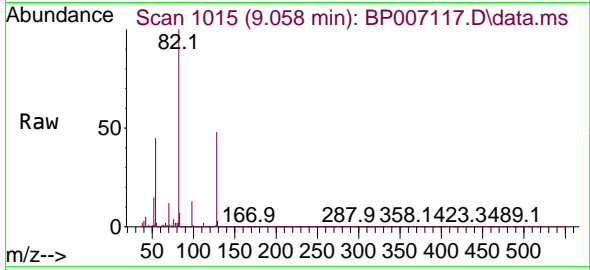




#23
 Nitrobenzene-d5
 Concen: 78.553 ng
 RT: 9.058 min Scan# 1015
 Delta R.T. -0.011 min
 Lab File: BP007117.D
 Acq: 23 Sep 2021 09:46

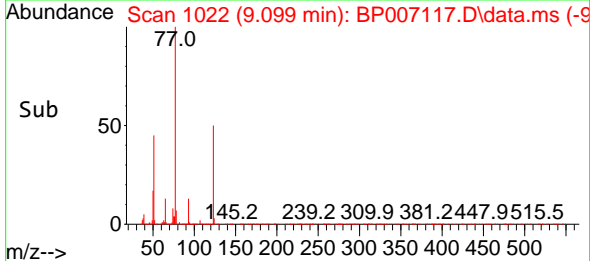
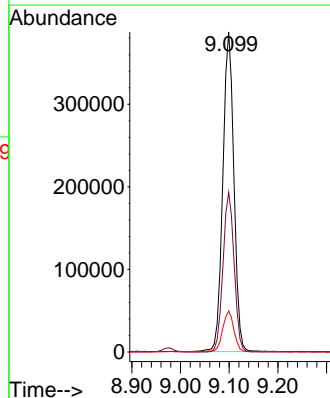
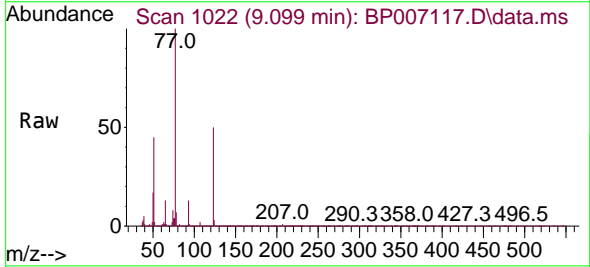
Instrument :
 BNA_P
 ClientSampled :
 SSTDCCC040

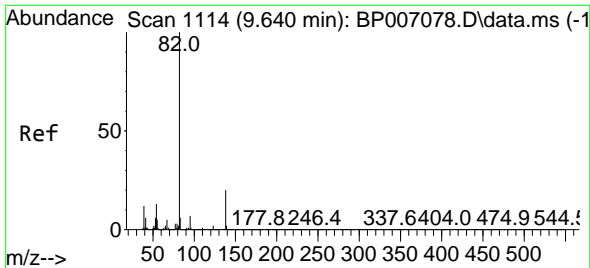
Tgt Ion	Resp	Lower	Upper
82	1291286		
128	48.1	35.7	53.5
54	44.8	35.0	52.4



#24
 Nitrobenzene
 Concen: 39.222 ng
 RT: 9.099 min Scan# 1022
 Delta R.T. -0.012 min
 Lab File: BP007117.D
 Acq: 23 Sep 2021 09:46

Tgt Ion	Resp	Lower	Upper
77	614720		
123	49.9	38.2	57.2
65	12.9	11.4	17.2



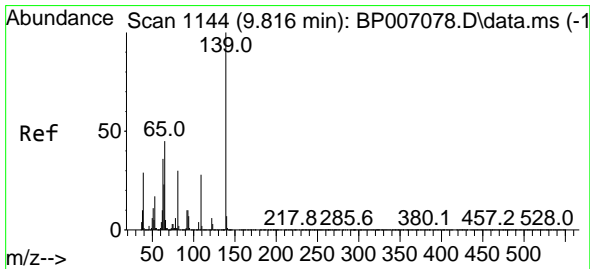
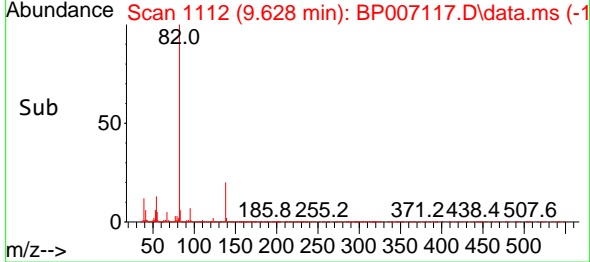
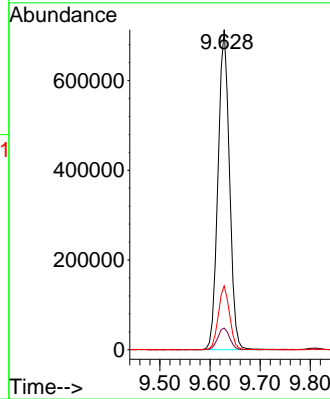
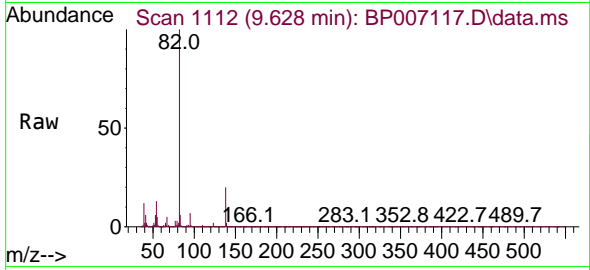


#25
 Isophorone
 Concen: 39.343 ng
 RT: 9.628 min Scan# 1112
 Delta R.T. -0.012 min
 Lab File: BP007117.D
 Acq: 23 Sep 2021 09:46

Instrument :
 BNA_P
 ClientSampled :
 SSTDCCC040

Tgt Ion: 82 Resp: 1127741

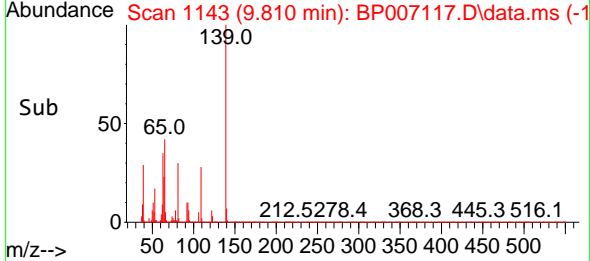
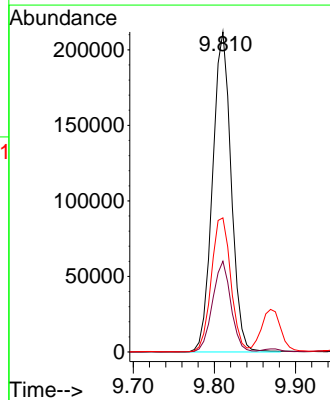
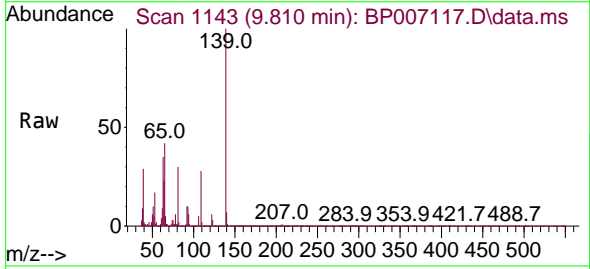
Ion	Ratio	Lower	Upper
82	100		
95	6.7	6.5	9.7
138	19.9	15.0	22.4

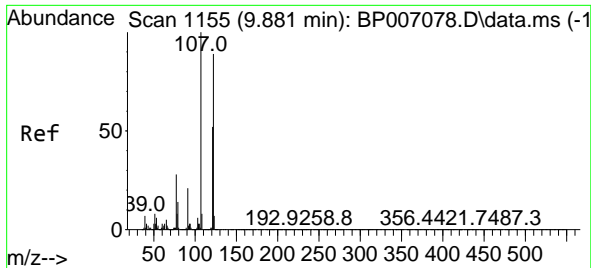


#26
 2-Nitrophenol
 Concen: 41.293 ng
 RT: 9.810 min Scan# 1143
 Delta R.T. -0.006 min
 Lab File: BP007117.D
 Acq: 23 Sep 2021 09:46

Tgt Ion: 139 Resp: 337468

Ion	Ratio	Lower	Upper
139	100		
109	28.3	28.8	43.2#
65	41.9	41.0	61.6

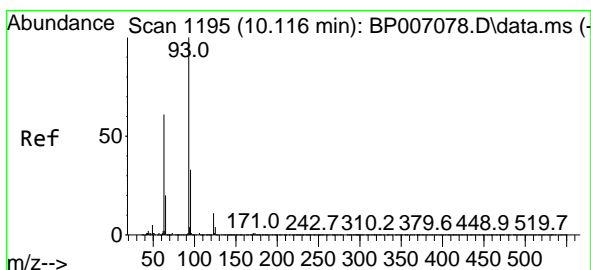
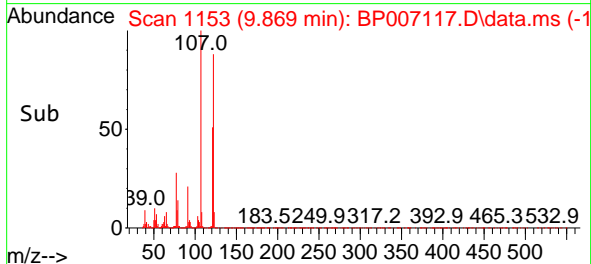
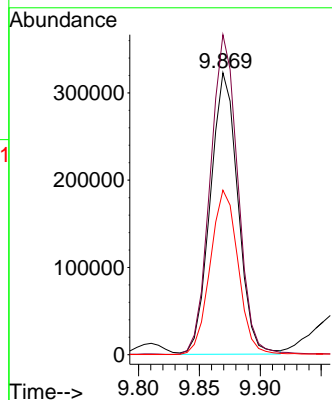
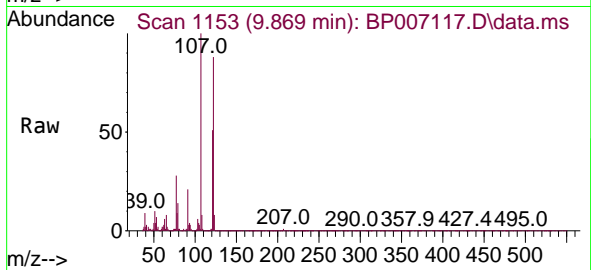




#27
 2,4-Dimethylphenol
 Concen: 39.589 ng
 RT: 9.869 min Scan# 1153
 Delta R.T. -0.012 min
 Lab File: BP007117.D
 Acq: 23 Sep 2021 09:46

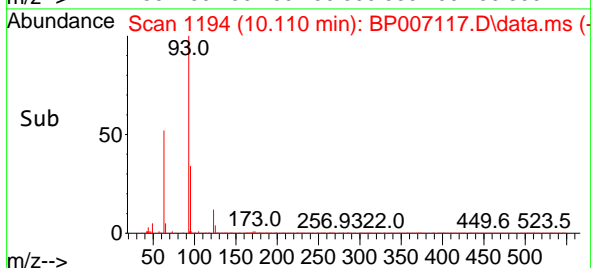
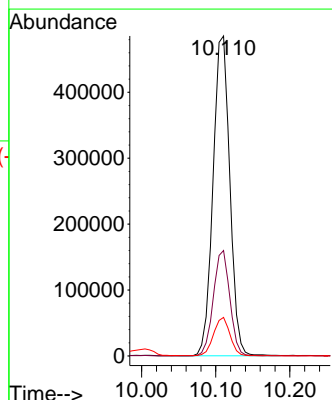
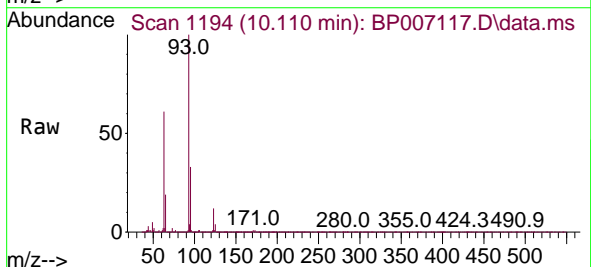
Instrument :
 BNA_P
 ClientSampleId :
 SSTDCCC040

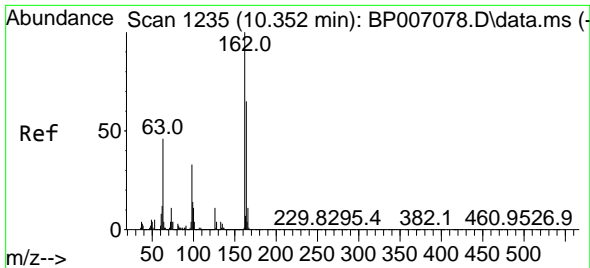
Tgt Ion:122 Resp: 509417
 Ion Ratio Lower Upper
 122 100
 107 113.5 94.5 141.7
 121 58.4 47.4 71.2



#28
 bis(2-Chloroethoxy)methane
 Concen: 37.764 ng
 RT: 10.110 min Scan# 1194
 Delta R.T. -0.006 min
 Lab File: BP007117.D
 Acq: 23 Sep 2021 09:46

Tgt Ion: 93 Resp: 763693
 Ion Ratio Lower Upper
 93 100
 95 33.0 25.9 38.9
 123 12.1 10.2 15.2

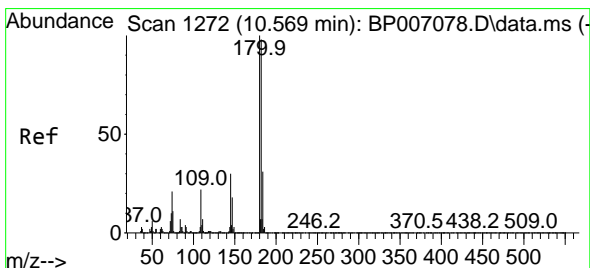
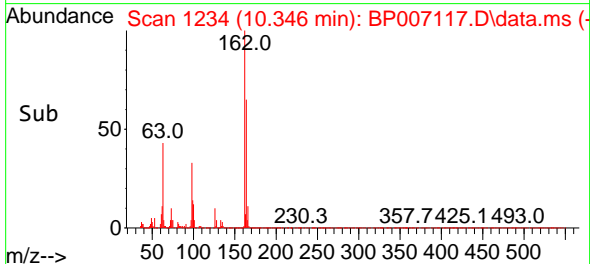
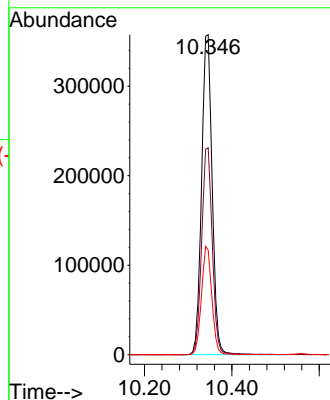
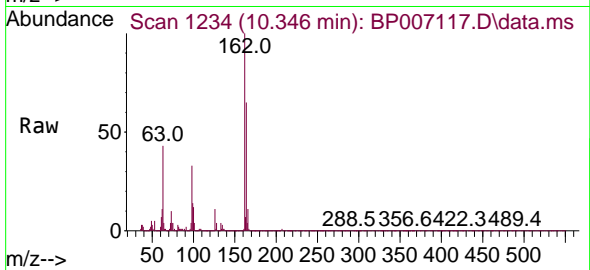




#29
 2,4-Dichlorophenol
 Concen: 40.114 ng
 RT: 10.346 min Scan# 1234
 Delta R.T. -0.006 min
 Lab File: BP007117.D
 Acq: 23 Sep 2021 09:46

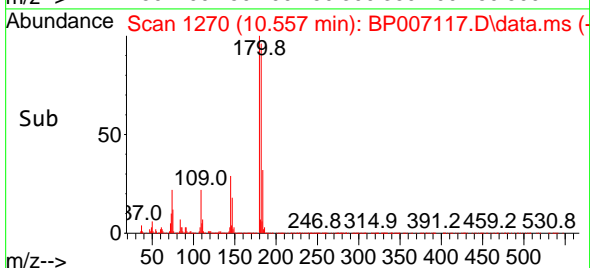
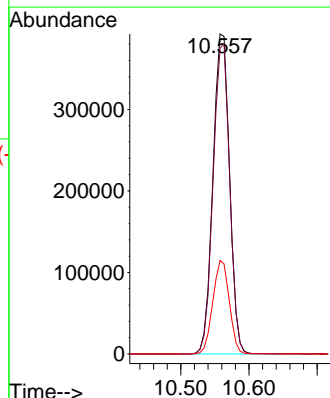
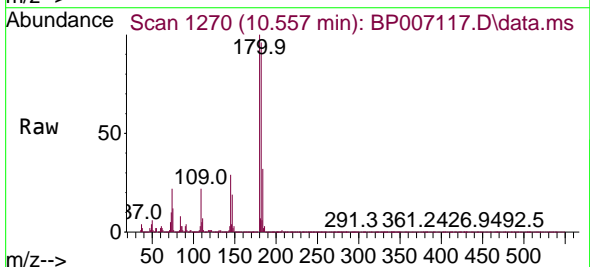
Instrument :
 BNA_P
 ClientSampleId :
 SSTDCCC040

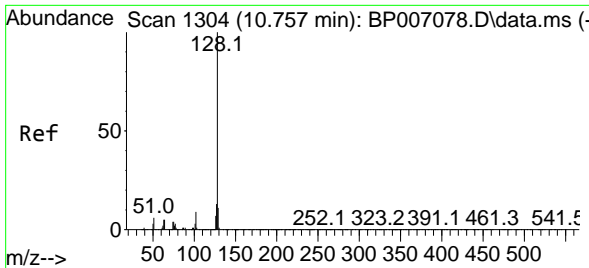
Tgt Ion	Resp	Lower	Upper
162	100		
164	64.7	44.9	84.9
98	32.6	14.3	54.3



#30
 1,2,4-Trichlorobenzene
 Concen: 38.986 ng
 RT: 10.557 min Scan# 1270
 Delta R.T. -0.012 min
 Lab File: BP007117.D
 Acq: 23 Sep 2021 09:46

Tgt Ion	Resp	Lower	Upper
180	100		
182	95.5	77.9	116.9
145	29.2	24.7	37.1



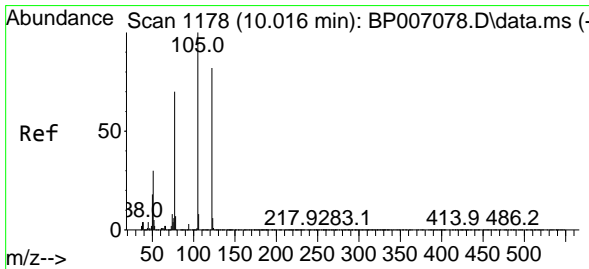
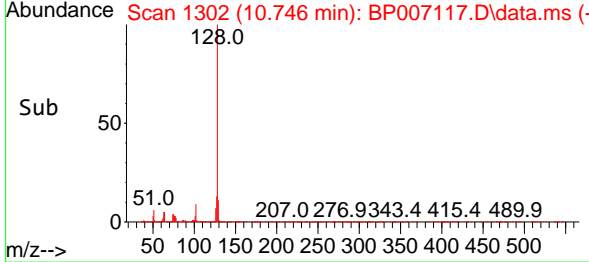
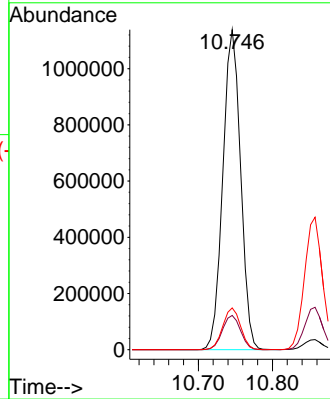
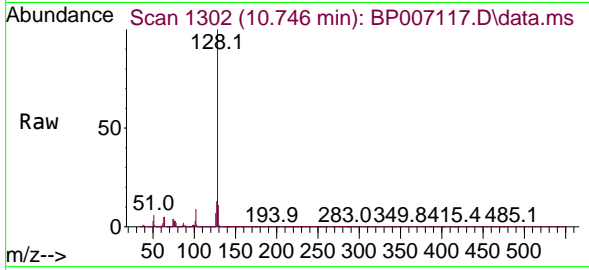


#31
 Naphthalene
 Concen: 38.723 ng
 RT: 10.746 min Scan# 1302
 Delta R.T. -0.012 min
 Lab File: BP007117.D
 Acq: 23 Sep 2021 09:46

Instrument :
 BNA_P
 ClientSampled :
 SSTDCCC040

Tgt Ion:128 Resp: 1891939

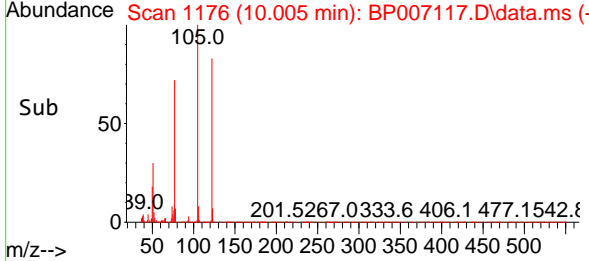
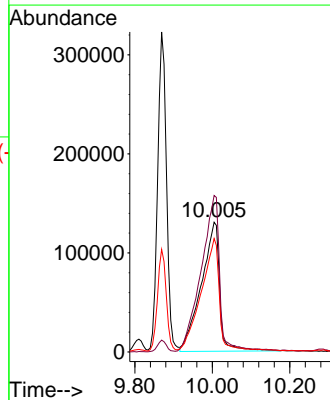
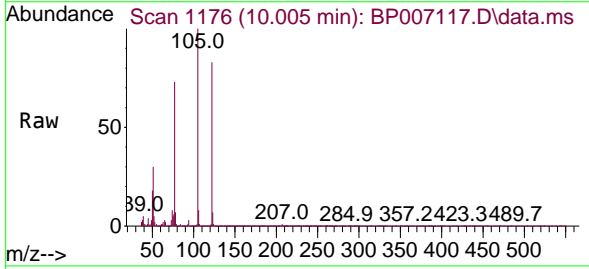
Ion	Ratio	Lower	Upper
128	100		
129	10.7	9.0	13.6
127	13.1	10.7	16.1

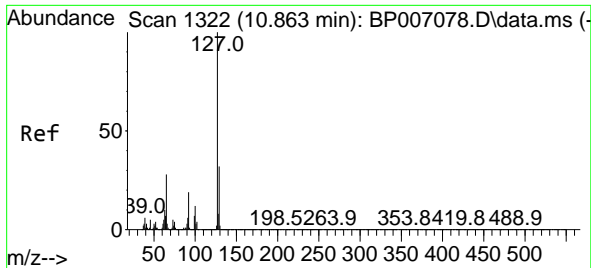


#32
 Benzoic acid
 Concen: 43.547 ng
 RT: 10.005 min Scan# 1176
 Delta R.T. -0.011 min
 Lab File: BP007117.D
 Acq: 23 Sep 2021 09:46

Tgt Ion:122 Resp: 430671

Ion	Ratio	Lower	Upper
122	100		
105	120.6	103.2	143.2
77	87.4	76.2	116.2

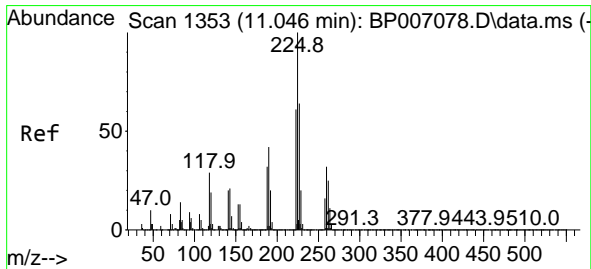
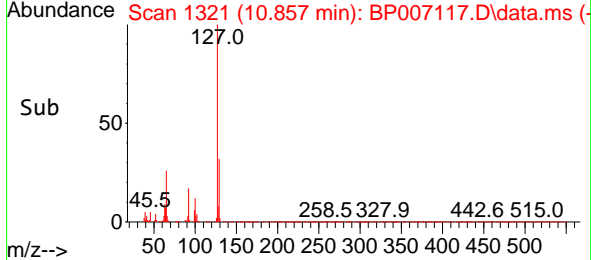
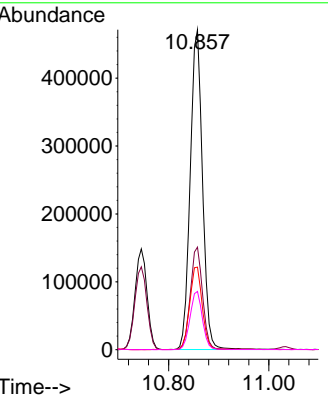
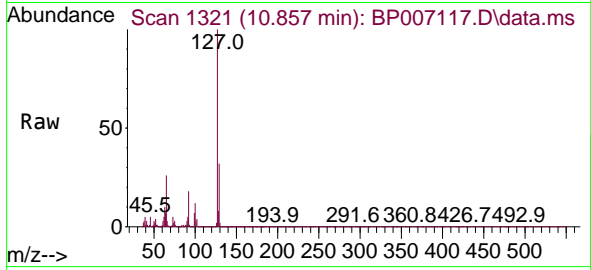




#33
 4-Chloroaniline
 Concen: 39.728 ng
 RT: 10.857 min Scan# 1321
 Delta R.T. -0.006 min
 Lab File: BP007117.D
 Acq: 23 Sep 2021 09:46

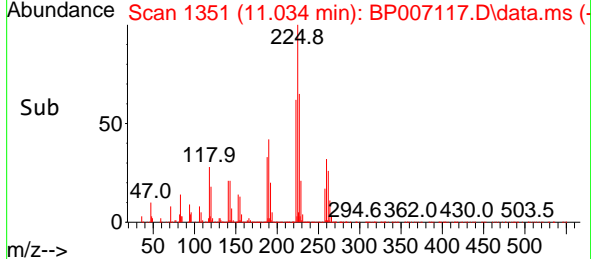
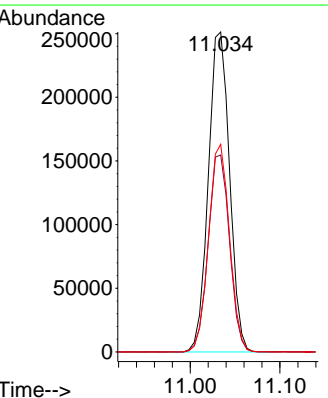
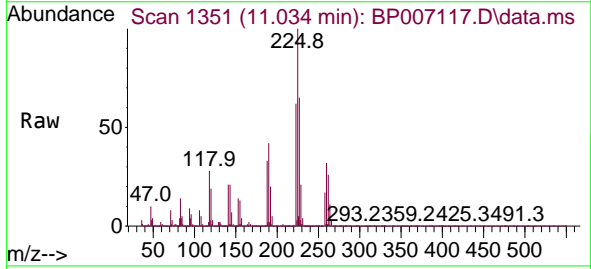
Instrument :
 BNA_P
ClientSampled :
 SSTDCCC040

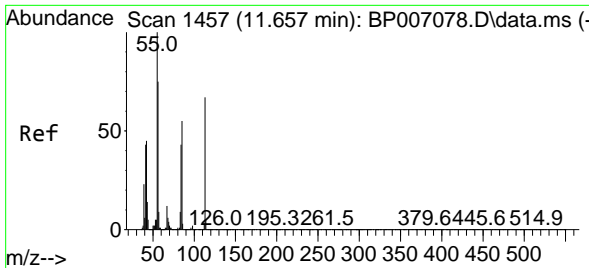
Tgt Ion	Resp	Lower	Upper
127	100		
129	32.1	26.1	39.1
65	25.8	22.5	33.7
92	18.2	15.0	22.6



#34
 Hexachlorobutadiene
 Concen: 40.225 ng
 RT: 11.034 min Scan# 1351
 Delta R.T. -0.012 min
 Lab File: BP007117.D
 Acq: 23 Sep 2021 09:46

Tgt Ion	Resp	Lower	Upper
225	100		
223	61.5	51.0	76.6
227	64.9	51.4	77.2

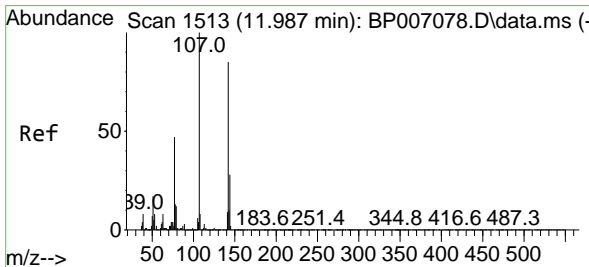
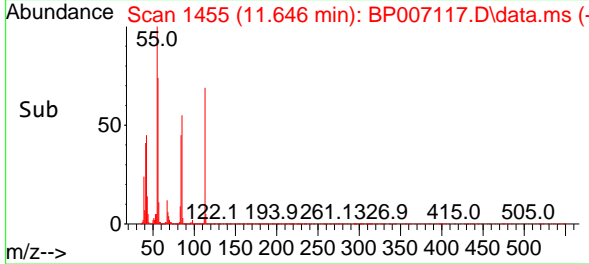
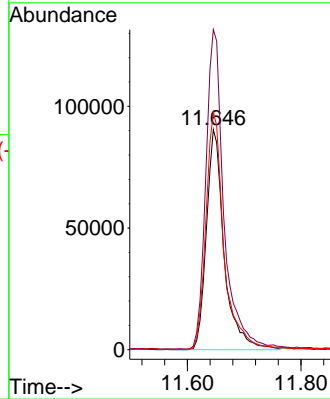
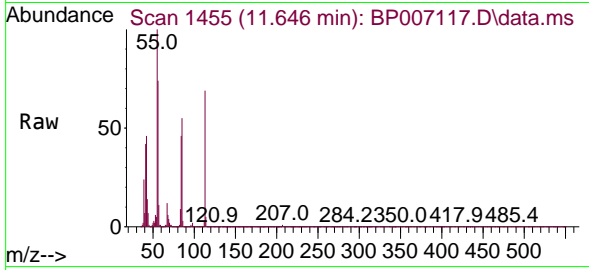




#35
 Caprolactam
 Concen: 42.340 ng
 RT: 11.646 min Scan# 1455
 Delta R.T. -0.012 min
 Lab File: BP007117.D
 Acq: 23 Sep 2021 09:46

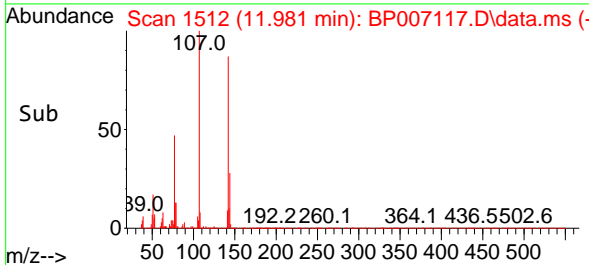
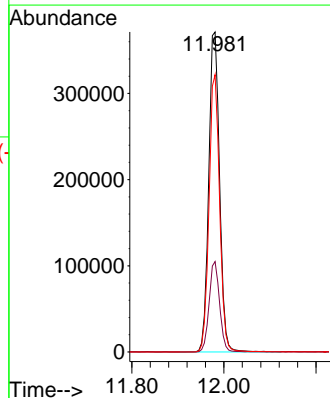
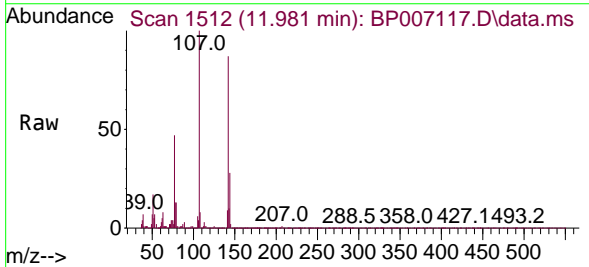
Instrument :
 BNA_P
 ClientSampleId :
 SSTDCCC040

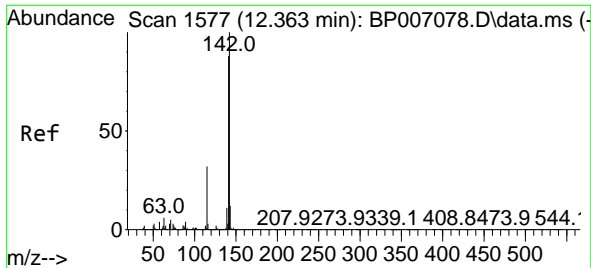
Tgt Ion:113 Resp: 195518
 Ion Ratio Lower Upper
 113 100
 55 145.4 98.9 138.9#
 56 108.0 71.7 111.7



#36
 4-Chloro-3-methylphenol
 Concen: 39.987 ng
 RT: 11.981 min Scan# 1512
 Delta R.T. -0.006 min
 Lab File: BP007117.D
 Acq: 23 Sep 2021 09:46

Tgt Ion:107 Resp: 610101
 Ion Ratio Lower Upper
 107 100
 144 28.3 21.1 31.7
 142 86.6 66.0 99.0



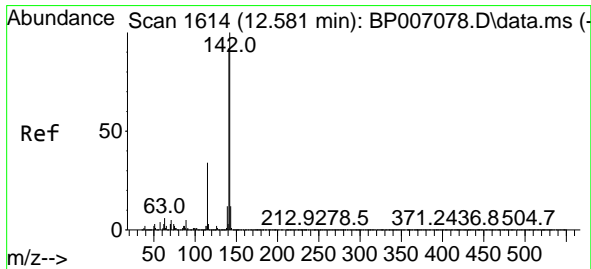
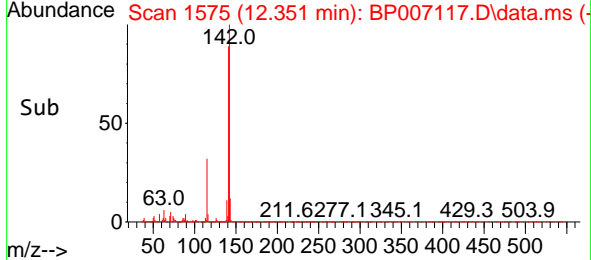
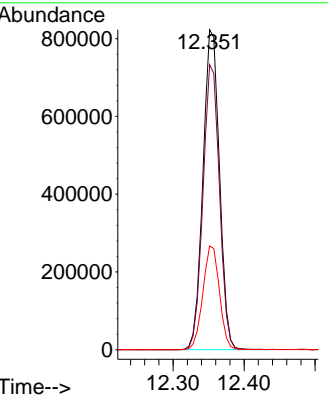
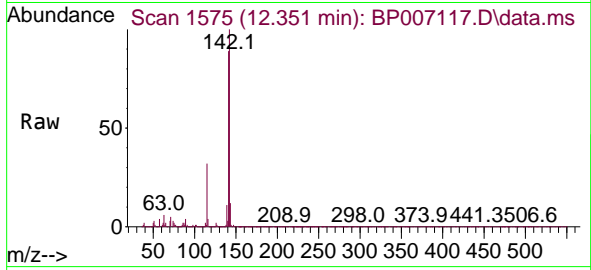


#37
 2-Methylnaphthalene
 Concen: 38.657 ng
 RT: 12.351 min Scan# 1575
 Delta R.T. -0.012 min
 Lab File: BP007117.D
 Acq: 23 Sep 2021 09:46

Instrument :
 BNA_P
 ClientSampleId :
 SSTDCCC040

Tgt Ion:142 Resp: 1322476

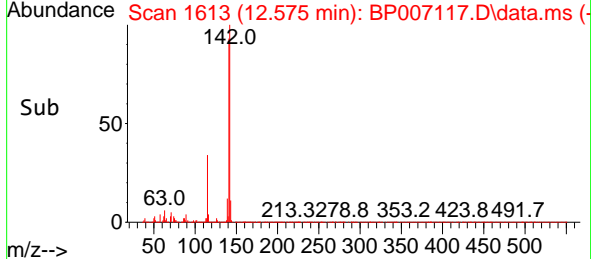
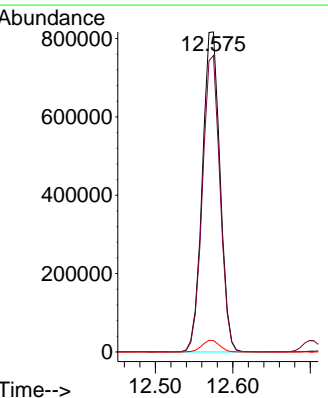
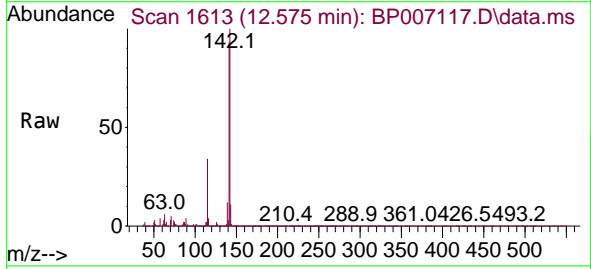
Ion	Ratio	Lower	Upper
142	100		
141	89.1	71.8	107.6
115	32.4	31.6	47.4

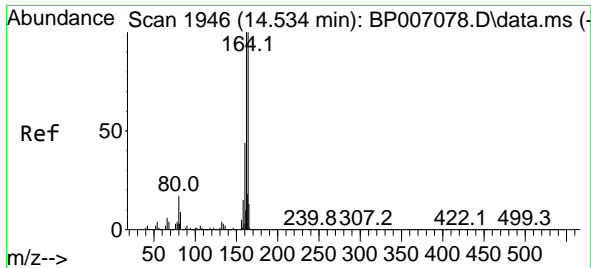


#38
 1-Methylnaphthalene
 Concen: 38.722 ng
 RT: 12.575 min Scan# 1613
 Delta R.T. -0.006 min
 Lab File: BP007117.D
 Acq: 23 Sep 2021 09:46

Tgt Ion:142 Resp: 1294360

Ion	Ratio	Lower	Upper
142	100		
141	92.7	73.3	109.9
116	3.6	3.5	5.3

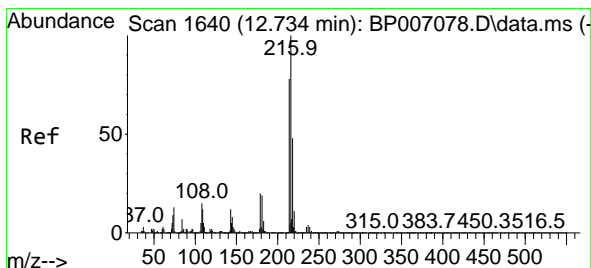
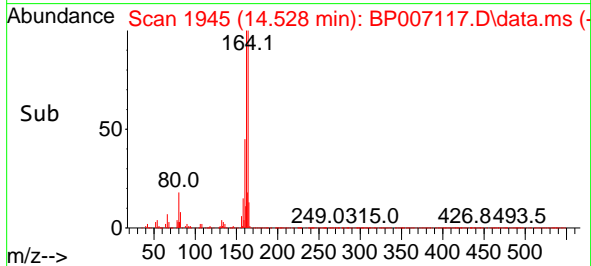
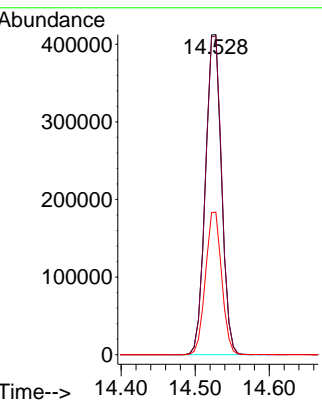
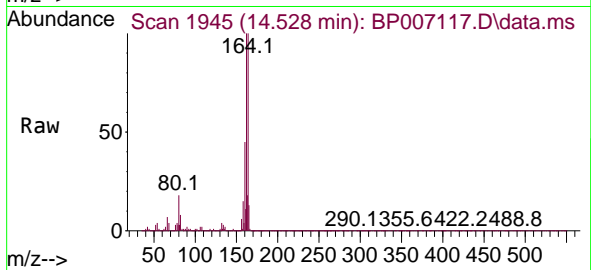




#39
 Acenaphthene-d10
 Concen: 20.000 ng
 RT: 14.528 min Scan# 1945
 Delta R.T. -0.006 min
 Lab File: BP007117.D
 Acq: 23 Sep 2021 09:46

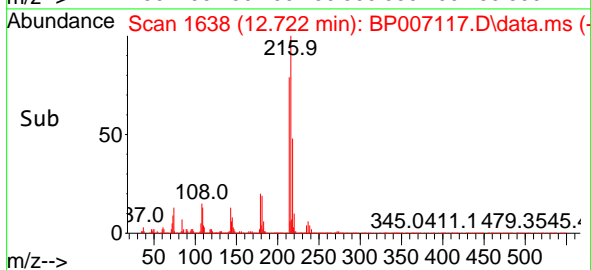
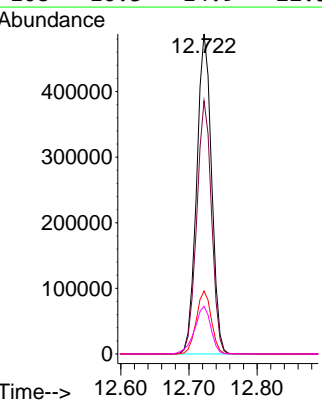
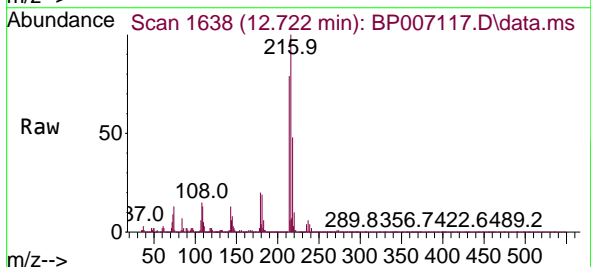
Instrument :
 BNA_P
ClientSampled :
 SSTDCCC040

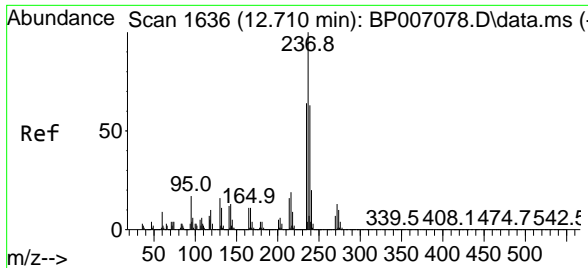
Tgt Ion	Resp	Lower	Upper
164	100		
162	99.6	80.2	120.2
160	44.6	34.5	51.7



#40
 1,2,4,5-Tetrachlorobenzene
 Concen: 39.009 ng
 RT: 12.722 min Scan# 1638
 Delta R.T. -0.012 min
 Lab File: BP007117.D
 Acq: 23 Sep 2021 09:46

Tgt Ion	Resp	Lower	Upper
216	100		
214	78.5	61.9	92.9
179	19.7	16.8	25.2
108	16.3	14.9	22.3



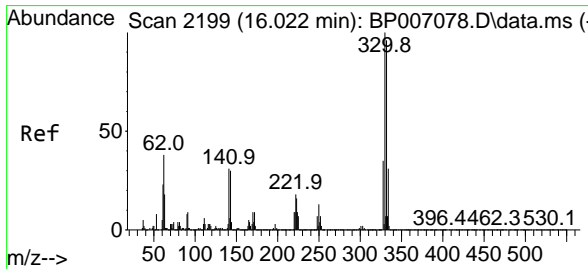
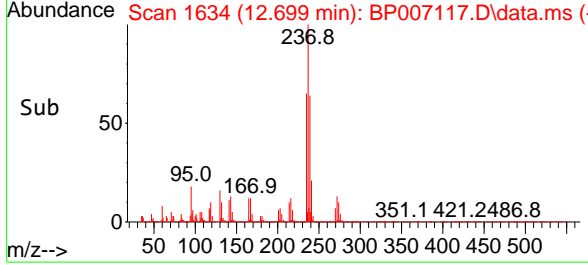
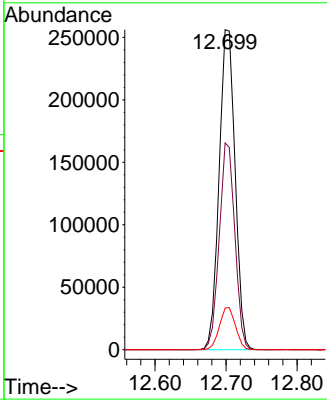
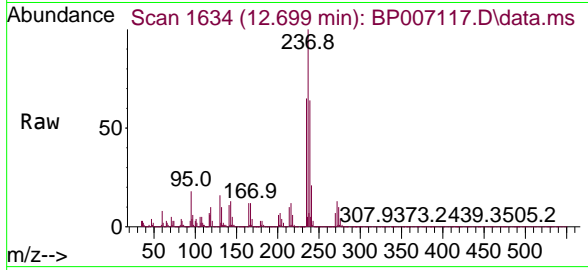


#41
 Hexachlorocyclopentadiene
 Concen: 37.894 ng
 RT: 12.699 min Scan# 1634
 Delta R.T. -0.012 min
 Lab File: BP007117.D
 Acq: 23 Sep 2021 09:46

Instrument :
 BNA_P
 ClientSampled :
 SSTDCCC040

Tgt Ion:237 Resp: 399042

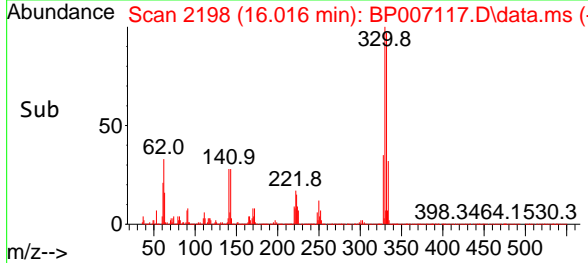
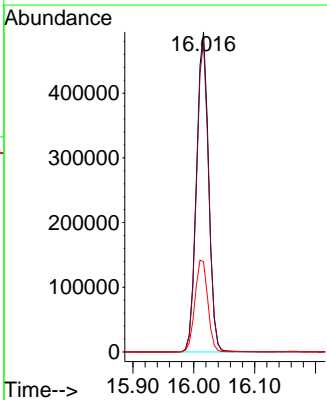
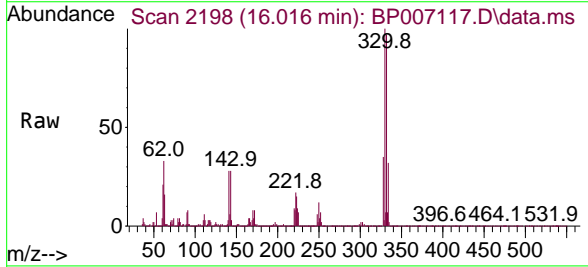
Ion	Ratio	Lower	Upper
237	100		
235	64.6	44.5	84.5
272	13.0	0.0	32.5

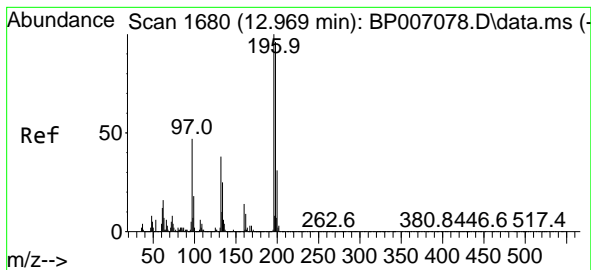


#42
 2,4,6-Tribromophenol
 Concen: 85.053 ng
 RT: 16.016 min Scan# 2198
 Delta R.T. -0.006 min
 Lab File: BP007117.D
 Acq: 23 Sep 2021 09:46

Tgt Ion:330 Resp: 684147

Ion	Ratio	Lower	Upper
330	100		
332	96.7	77.8	116.8
141	30.4	25.4	38.2

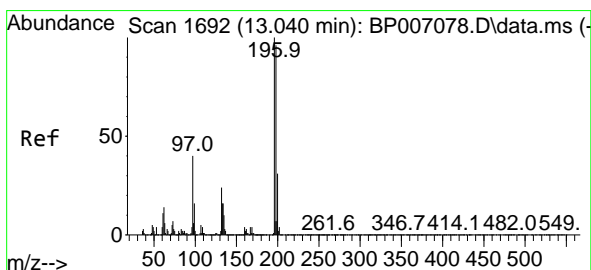
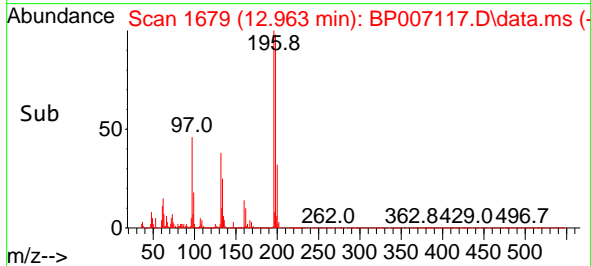
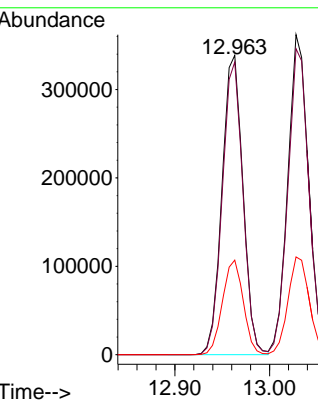
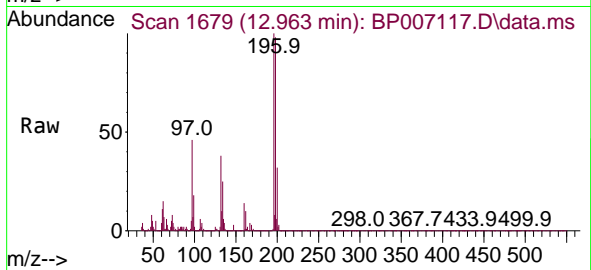




#43
 2,4,6-Trichlorophenol
 Concen: 40.113 ng
 RT: 12.963 min Scan# 1679
 Delta R.T. -0.006 min
 Lab File: BP007117.D
 Acq: 23 Sep 2021 09:46

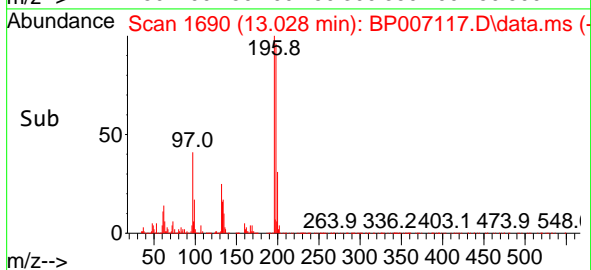
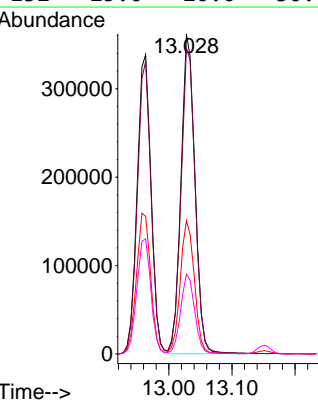
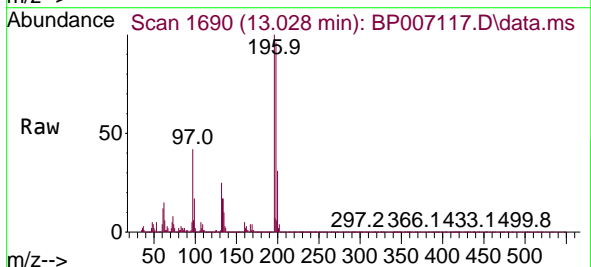
Instrument :
 BNA_P
 ClientSampled :
 SSTDCCC040

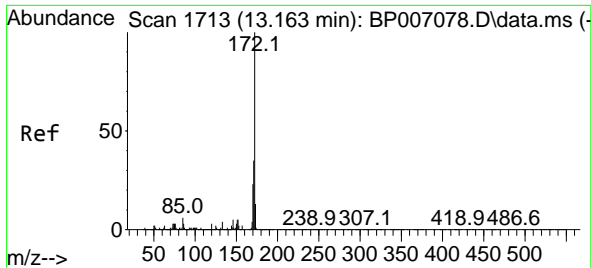
Tgt Ion	Resp	Lower	Upper
196	520053		
196	100		
198	97.8	79.5	119.3
200	31.6	25.0	37.6



#44
 2,4,5-Trichlorophenol
 Concen: 39.876 ng
 RT: 13.028 min Scan# 1690
 Delta R.T. -0.012 min
 Lab File: BP007117.D
 Acq: 23 Sep 2021 09:46

Tgt Ion	Resp	Lower	Upper
196	556713		
196	100		
198	95.6	74.7	112.1
97	41.7	37.4	56.0
132	25.0	20.0	30.0



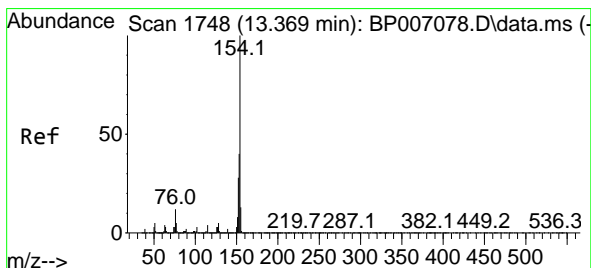
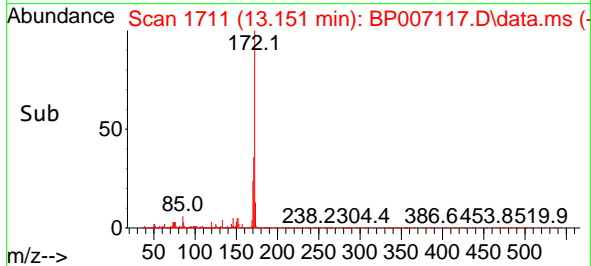
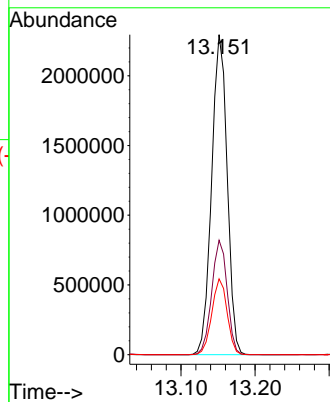
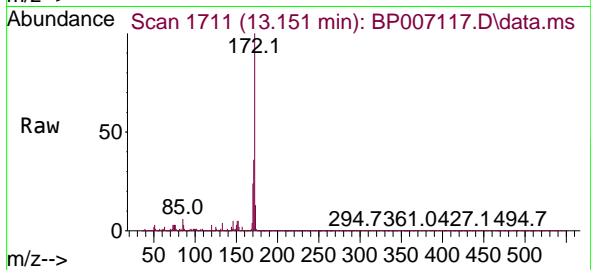


#45
 2-Fluorobiphenyl
 Concen: 77.102 ng
 RT: 13.151 min Scan# 1711
 Delta R.T. -0.012 min
 Lab File: BP007117.D
 Acq: 23 Sep 2021 09:46

Instrument :
 BNA_P
 ClientSampleId :
 SSTDCCC040

Tgt Ion:172 Resp: 3339170

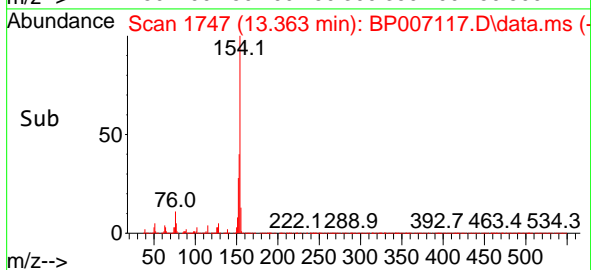
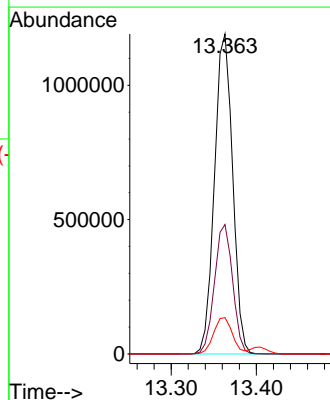
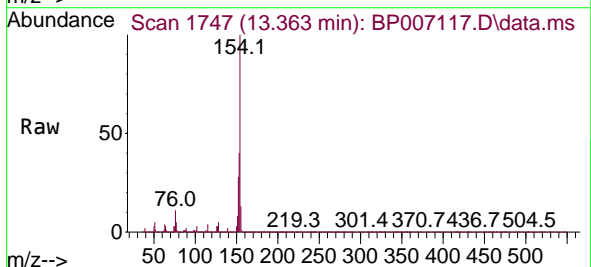
Ion	Ratio	Lower	Upper
172	100		
171	35.8	27.9	41.9
170	23.7	18.6	27.8

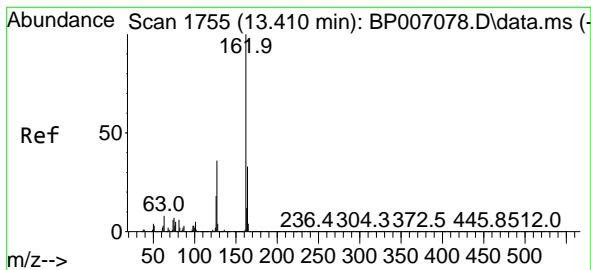


#46
 1,1'-Biphenyl
 Concen: 38.183 ng
 RT: 13.363 min Scan# 1747
 Delta R.T. -0.006 min
 Lab File: BP007117.D
 Acq: 23 Sep 2021 09:46

Tgt Ion:154 Resp: 1762161

Ion	Ratio	Lower	Upper
154	100		
153	40.5	20.4	60.4
76	11.4	0.0	30.8



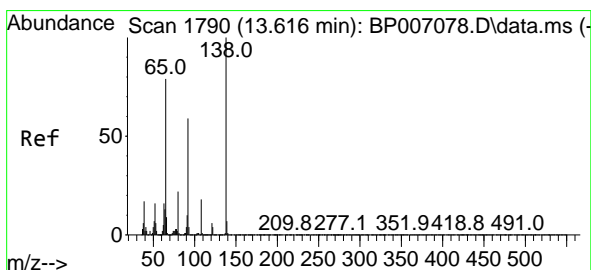
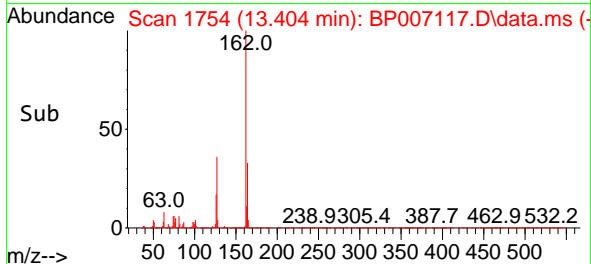
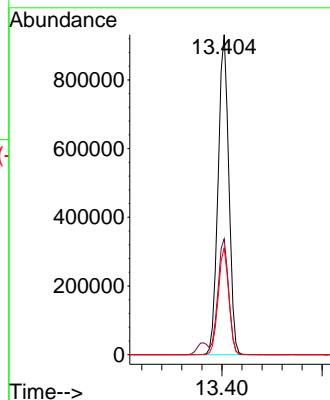
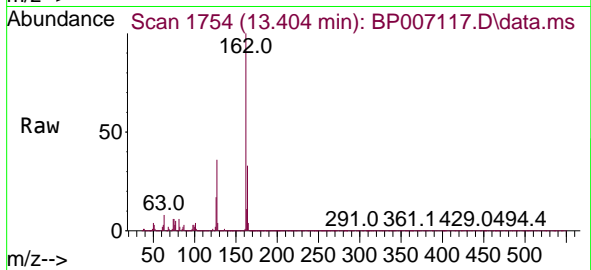


#47
 2-Chloronaphthalene
 Concen: 38.503 ng
 RT: 13.404 min Scan# 1754
 Delta R.T. -0.006 min
 Lab File: BP007117.D
 Acq: 23 Sep 2021 09:46

Instrument :
 BNA_P
 ClientSampled :
 SSTDCCC040

Tgt Ion:162 Resp: 1376468

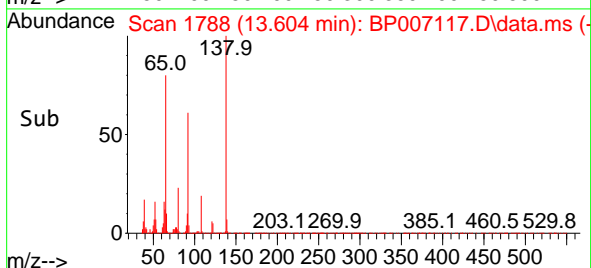
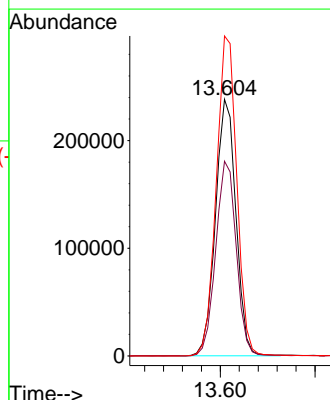
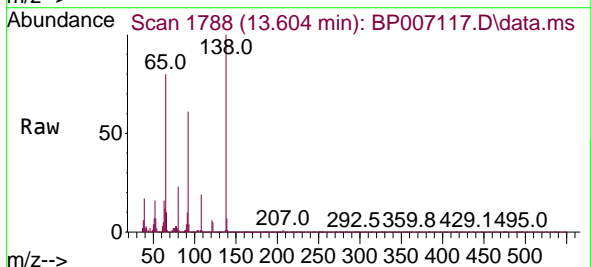
Ion	Ratio	Lower	Upper
162	100		
127	36.2	31.4	47.0
164	33.3	26.6	39.8

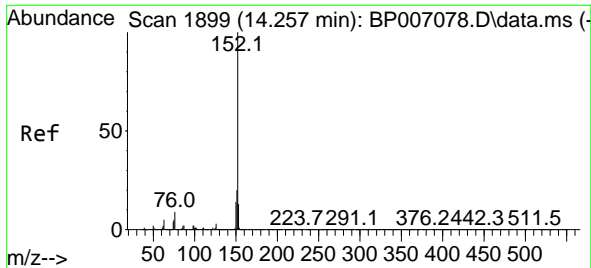


#48
 2-Nitroaniline
 Concen: 41.017 ng
 RT: 13.604 min Scan# 1788
 Delta R.T. -0.012 min
 Lab File: BP007117.D
 Acq: 23 Sep 2021 09:46

Tgt Ion: 65 Resp: 357508

Ion	Ratio	Lower	Upper
65	100		
92	75.9	57.7	86.5
138	124.7	92.1	138.1



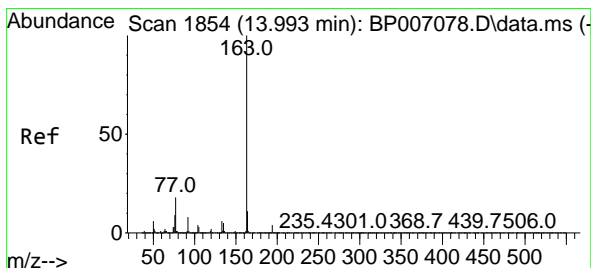
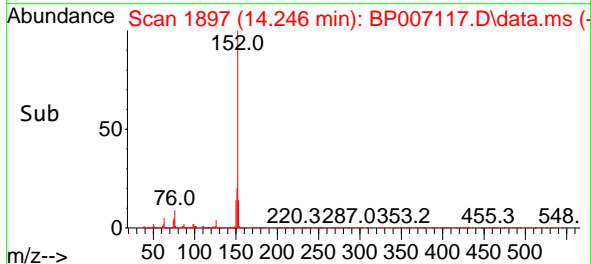
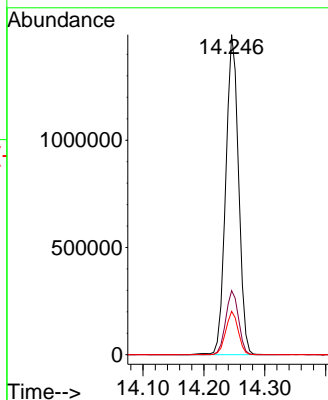
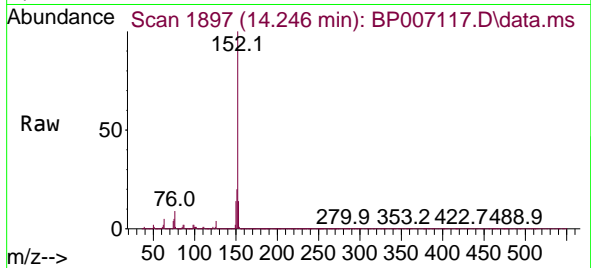


#49
 Acenaphthylene
 Concen: 39.534 ng
 RT: 14.246 min Scan# 1897
 Delta R.T. -0.012 min
 Lab File: BP007117.D
 Acq: 23 Sep 2021 09:46

Instrument :
 BNA_P
 ClientSampleId :
 SSTDCCC040

Tgt Ion:152 Resp: 2176812

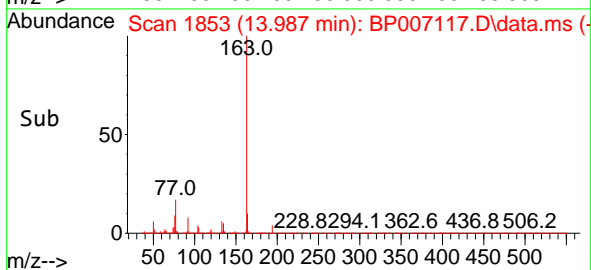
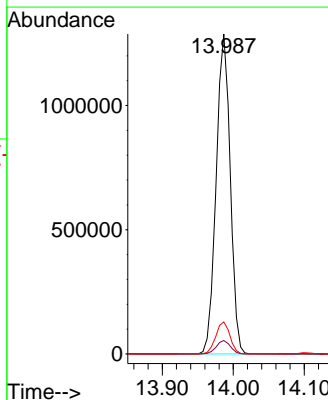
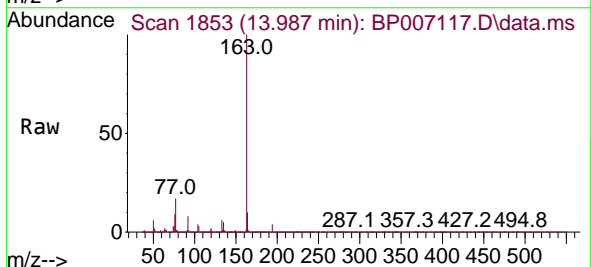
Ion	Ratio	Lower	Upper
152	100		
151	20.0	16.2	24.2
153	13.5	10.6	16.0

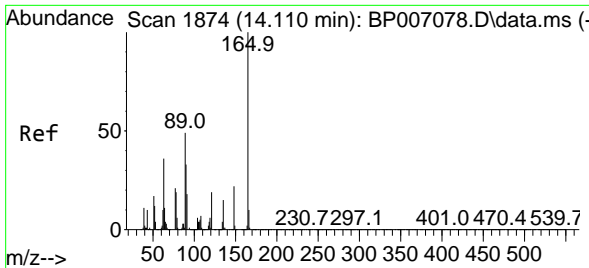


#50
 Dimethylphthalate
 Concen: 39.490 ng
 RT: 13.987 min Scan# 1853
 Delta R.T. -0.006 min
 Lab File: BP007117.D
 Acq: 23 Sep 2021 09:46

Tgt Ion:163 Resp: 1762203

Ion	Ratio	Lower	Upper
163	100		
194	4.2	3.4	5.2
164	10.0	8.2	12.2

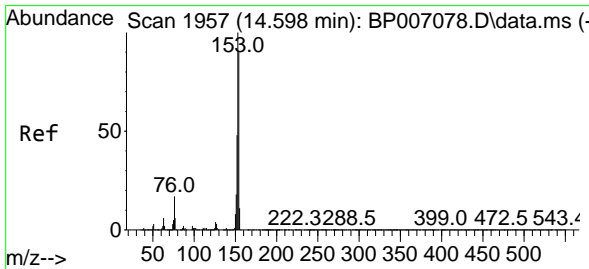
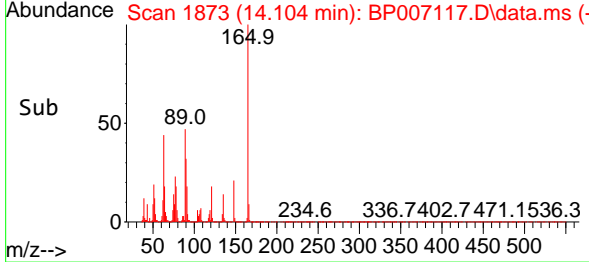
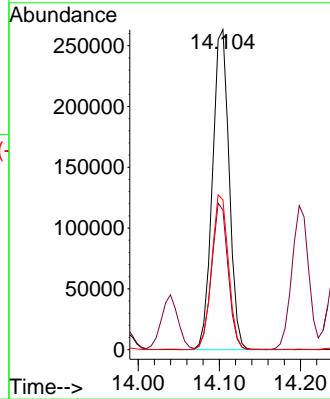
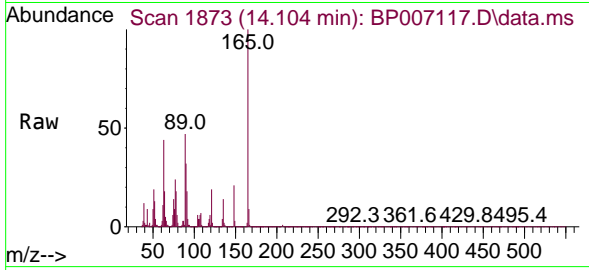




#51
 2,6-Dinitrotoluene
 Concen: 41.185 ng
 RT: 14.104 min Scan# 1873
 Delta R.T. -0.006 min
 Lab File: BP007117.D
 Acq: 23 Sep 2021 09:46

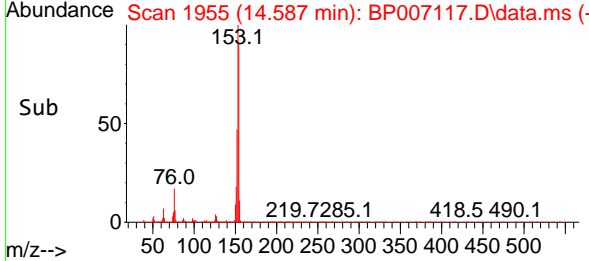
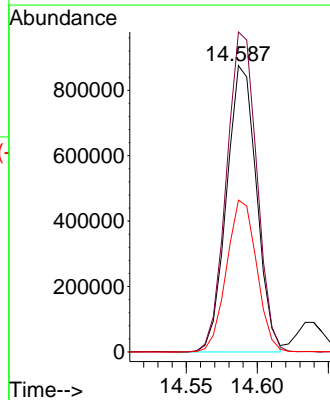
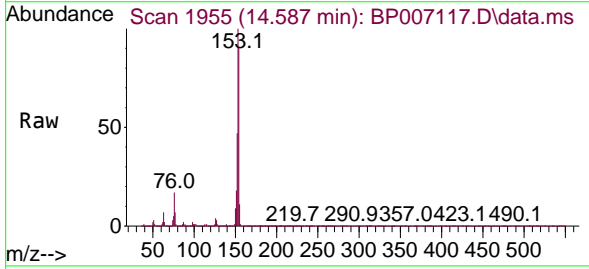
Instrument :
 BNA_P
 ClientSampled :
 SSTDCCC040

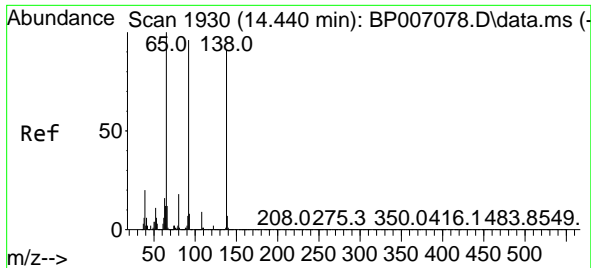
Tgt Ion	Resp	Lower	Upper
165	100		
63	43.7	41.3	61.9
89	46.9	44.8	67.2



#52
 Acenaphthene
 Concen: 38.555 ng
 RT: 14.587 min Scan# 1955
 Delta R.T. -0.012 min
 Lab File: BP007117.D
 Acq: 23 Sep 2021 09:46

Tgt Ion	Resp	Lower	Upper
154	100		
153	111.7	89.4	134.2
152	53.0	43.0	64.4



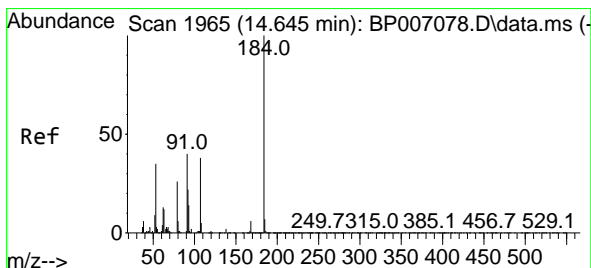
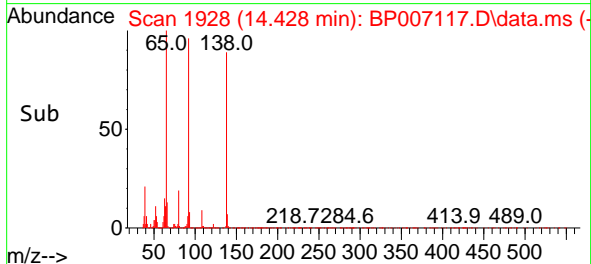
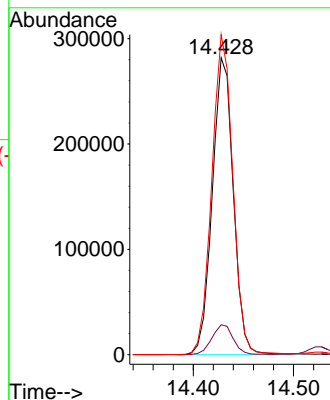
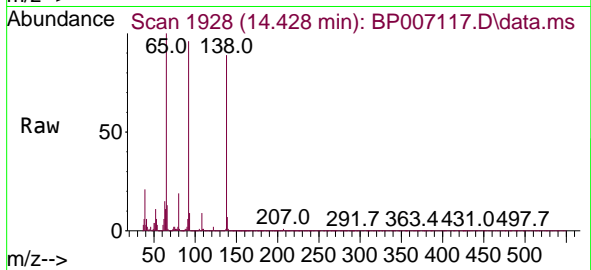


#53
 3-Nitroaniline
 Concen: 41.598 ng
 RT: 14.428 min Scan# 1928
 Delta R.T. -0.012 min
 Lab File: BP007117.D
 Acq: 23 Sep 2021 09:46

Instrument :
 BNA_P
 ClientSampleId :
 SSTDCCC040

Tgt Ion:138 Resp: 409988

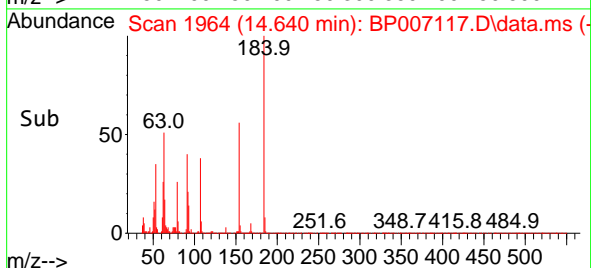
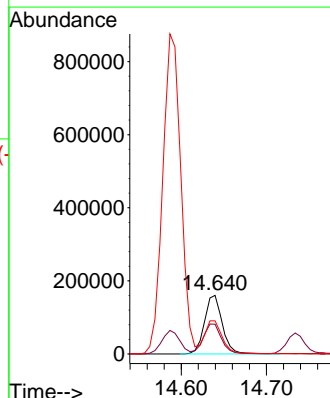
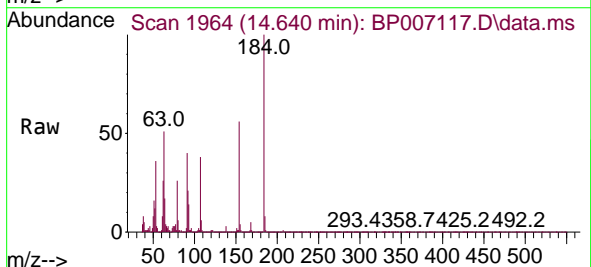
Ion	Ratio	Lower	Upper
138	100		
108	10.1	8.4	12.6
92	107.8	87.8	131.8

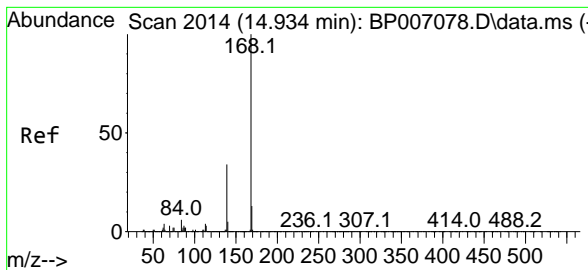


#54
 2,4-Dinitrophenol
 Concen: 44.477 ng
 RT: 14.640 min Scan# 1964
 Delta R.T. -0.006 min
 Lab File: BP007117.D
 Acq: 23 Sep 2021 09:46

Tgt Ion:184 Resp: 233545

Ion	Ratio	Lower	Upper
184	100		
63	50.8	47.0	70.6
154	56.4	52.3	78.5



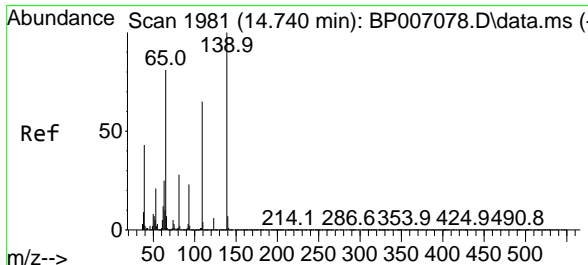
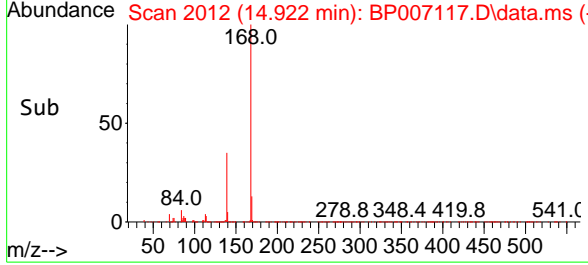
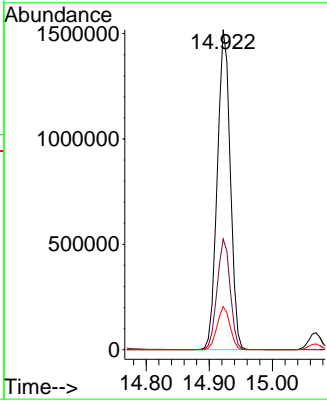
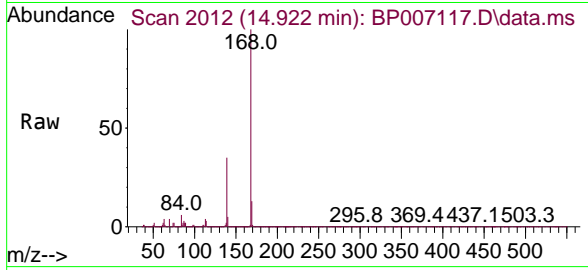


#55
 Dibenzofuran
 Concen: 38.911 ng
 RT: 14.922 min Scan# 2012
 Delta R.T. -0.012 min
 Lab File: BP007117.D
 Acq: 23 Sep 2021 09:46

Instrument :
 BNA_P
ClientSampled :
 SSTDCCC040

Tgt Ion:168 Resp: 2165753

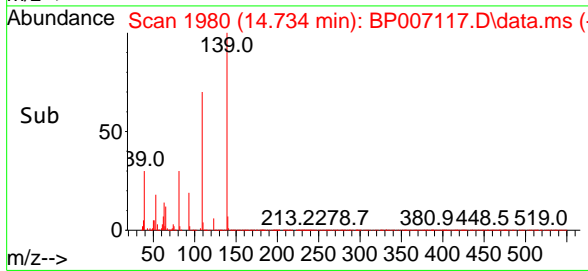
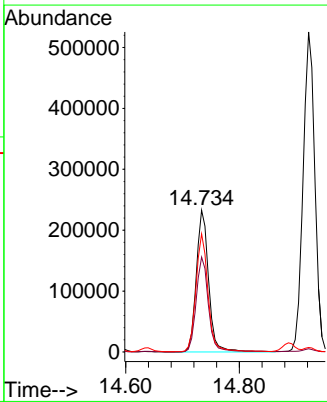
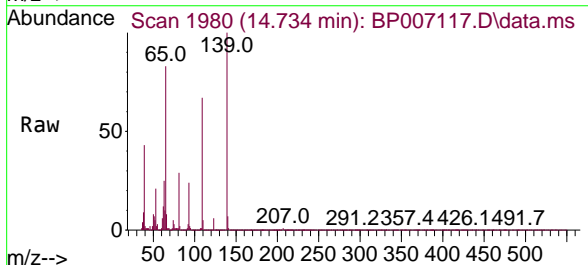
Ion	Ratio	Lower	Upper
168	100		
139	34.6	31.0	46.6
169	13.5	10.8	16.2

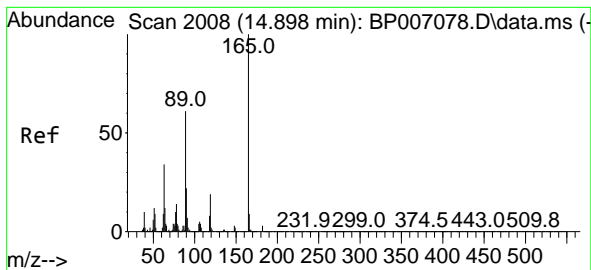


#56
 4-Nitrophenol
 Concen: 43.965 ng
 RT: 14.734 min Scan# 1980
 Delta R.T. -0.006 min
 Lab File: BP007117.D
 Acq: 23 Sep 2021 09:46

Tgt Ion:139 Resp: 351782

Ion	Ratio	Lower	Upper
139	100		
109	66.9	72.3	112.3#
65	83.2	72.5	112.5

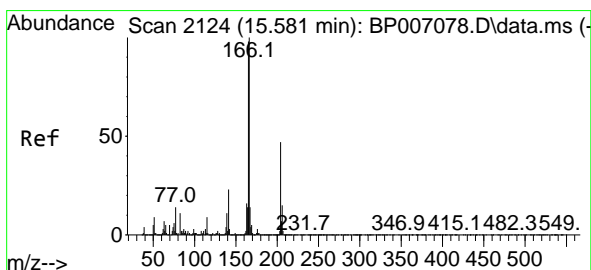
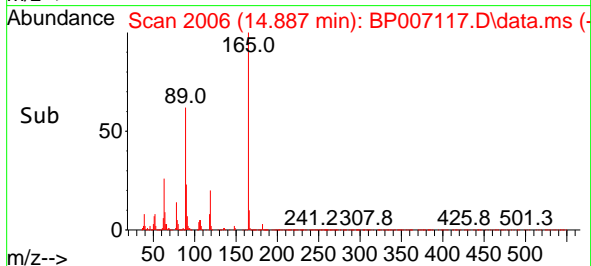
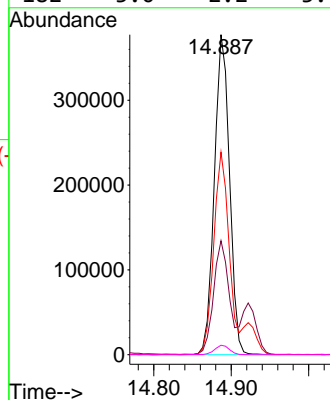
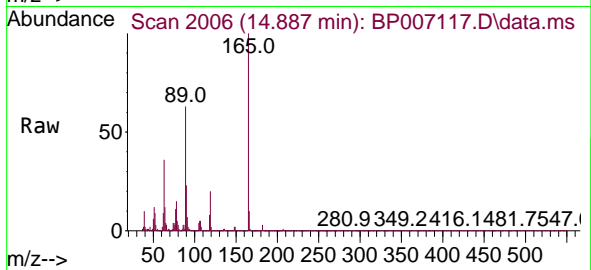




#57
 2,4-Dinitrotoluene
 Concen: 42.619 ng
 RT: 14.887 min Scan# 2006
 Delta R.T. -0.012 min
 Lab File: BP007117.D
 Acq: 23 Sep 2021 09:46

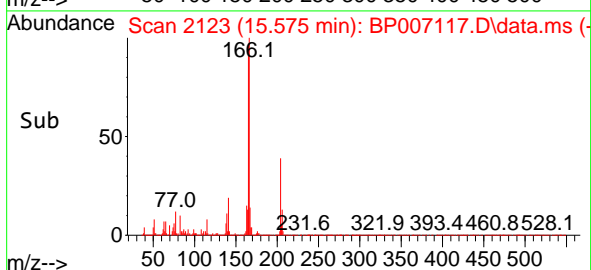
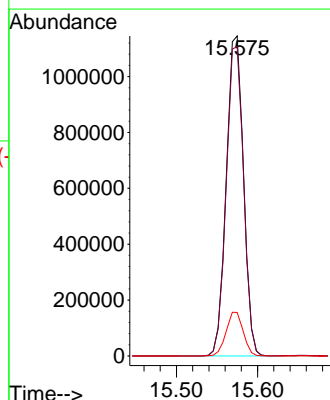
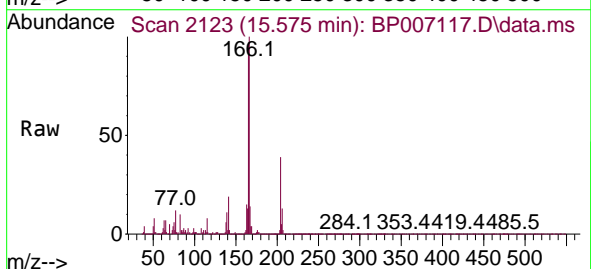
Instrument :
 BNA_P
 ClientSampleId :
 SSTDCCC040

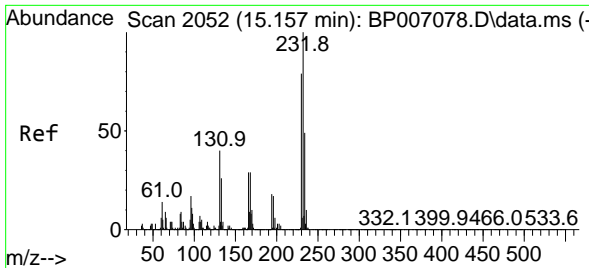
Tgt Ion	Resp	Lower	Upper
165	512656		
100			
63	35.6	32.3	48.5
89	63.3	55.9	83.9
182	3.0	2.2	3.4



#58
 Fluorene
 Concen: 39.286 ng
 RT: 15.575 min Scan# 2123
 Delta R.T. -0.006 min
 Lab File: BP007117.D
 Acq: 23 Sep 2021 09:46

Tgt Ion	Resp	Lower	Upper
166	1689261		
100			
165	96.6	78.0	117.0
167	13.6	10.5	15.7



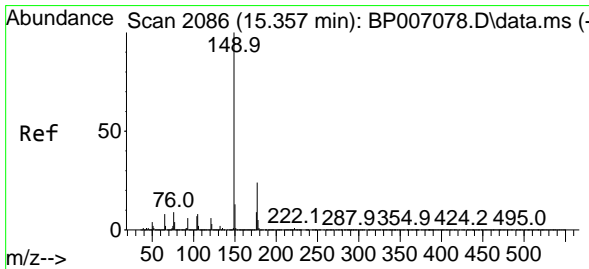
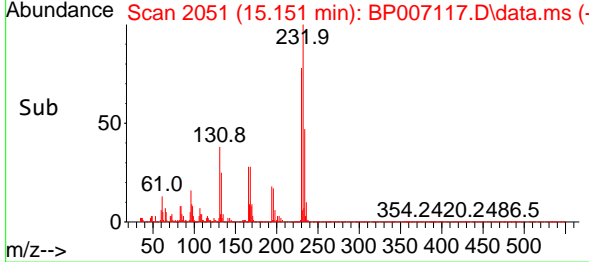
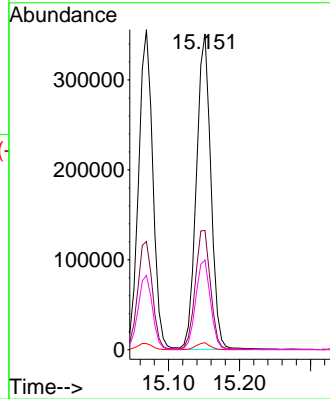
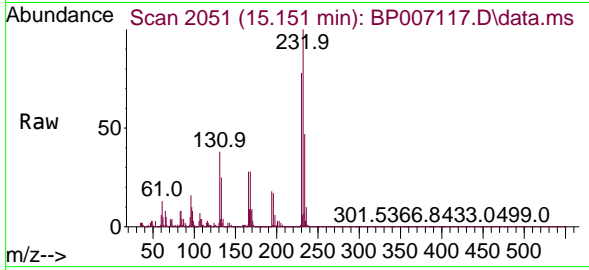


#59
 2,3,4,6-Tetrachlorophenol
 Concen: 40.762 ng
 RT: 15.151 min Scan# 2051
 Delta R.T. -0.006 min
 Lab File: BP007117.D
 Acq: 23 Sep 2021 09:46

Instrument :
 BNA_P
ClientSampled :
 SSTDCCC040

Tgt Ion:232 Resp: 499719

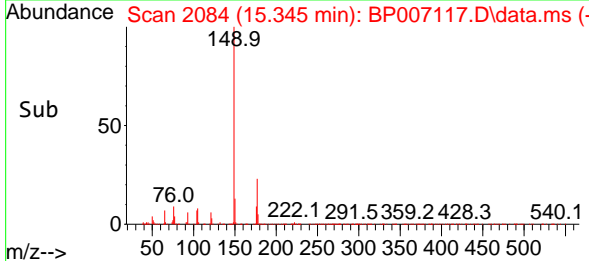
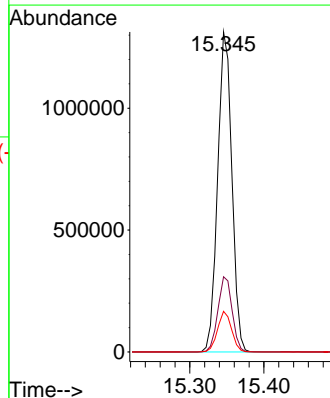
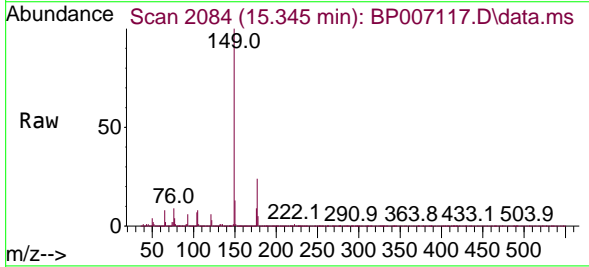
Ion	Ratio	Lower	Upper
232	100		
131	39.6	32.2	48.4
130	2.1	2.0	3.0
166	29.0	19.4	29.2

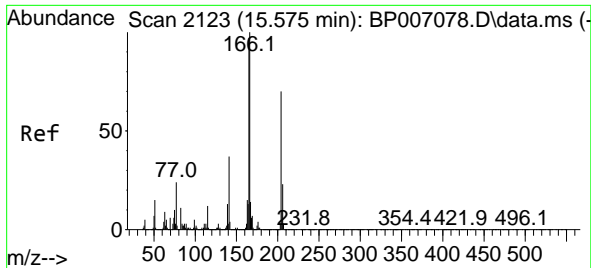


#60
 Diethylphthalate
 Concen: 40.346 ng
 RT: 15.345 min Scan# 2084
 Delta R.T. -0.012 min
 Lab File: BP007117.D
 Acq: 23 Sep 2021 09:46

Tgt Ion:149 Resp: 1744572

Ion	Ratio	Lower	Upper
149	100		
177	23.5	17.5	26.3
150	12.7	9.9	14.9

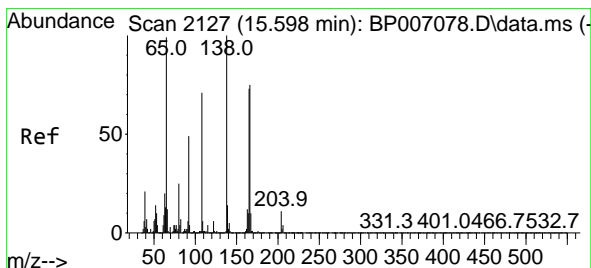
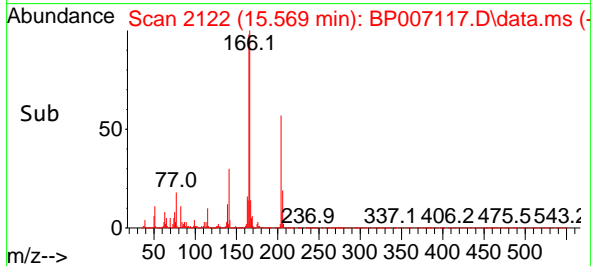
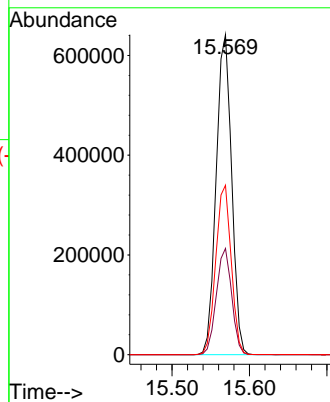
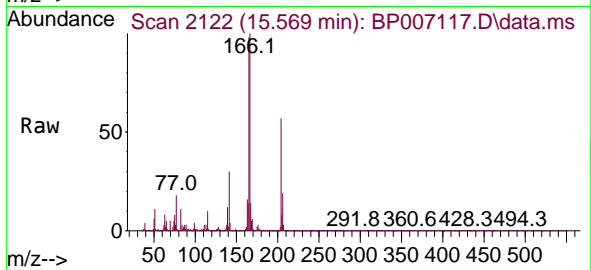




#61
 4-Chlorophenyl-phenylether
 Concen: 39.117 ng
 RT: 15.569 min Scan# 2122
 Delta R.T. -0.006 min
 Lab File: BP007117.D
 Acq: 23 Sep 2021 09:46

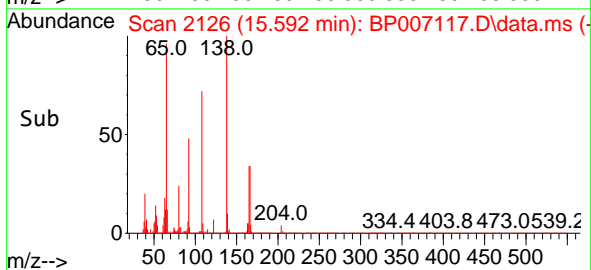
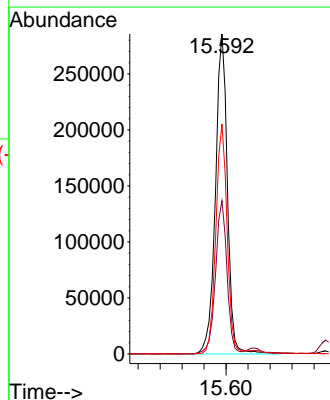
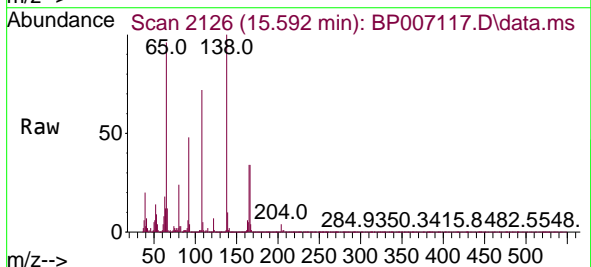
Instrument :
 BNA_P
 ClientSampleId :
 SSTDCCC040

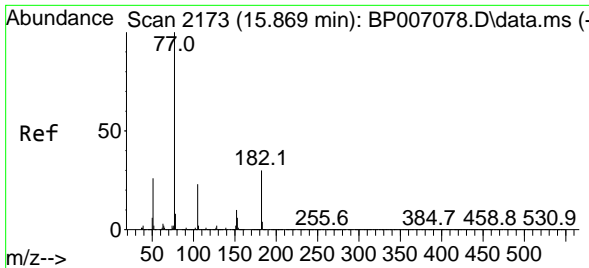
Tgt Ion	Resp	Lower	Upper
204	100		
206	33.2	26.6	40.0
141	52.9	48.6	73.0



#62
 4-Nitroaniline
 Concen: 43.732 ng
 RT: 15.592 min Scan# 2126
 Delta R.T. -0.006 min
 Lab File: BP007117.D
 Acq: 23 Sep 2021 09:46

Tgt Ion	Resp	Lower	Upper
138	100		
92	47.9	31.2	71.2
108	71.8	78.6	118.6#



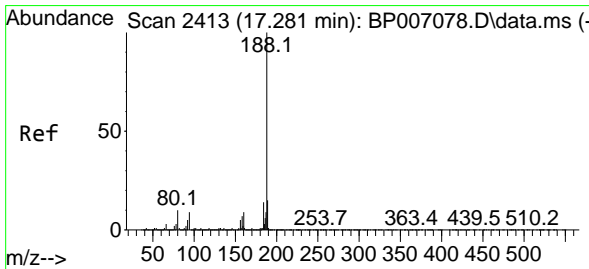
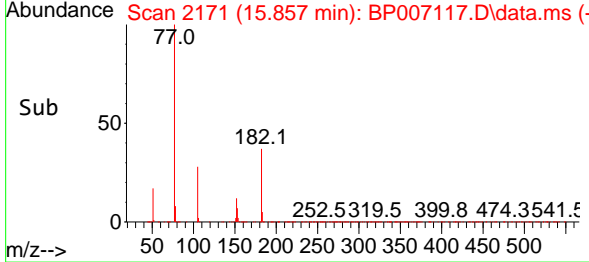
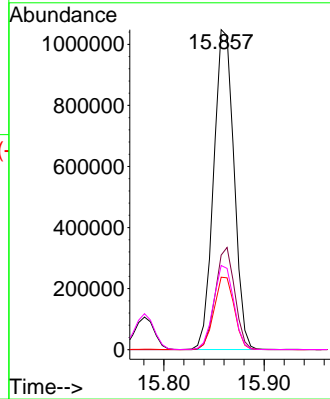
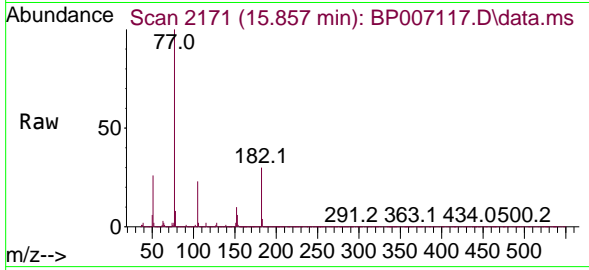


#63
 Azobenzene
 Concen: 39.314 ng
 RT: 15.857 min Scan# 2171
 Delta R.T. -0.012 min
 Lab File: BP007117.D
 Acq: 23 Sep 2021 09:46

Instrument :
 BNA_P
 ClientSampled :
 SSTDCCC040

Tgt Ion: 77 Resp: 1473102

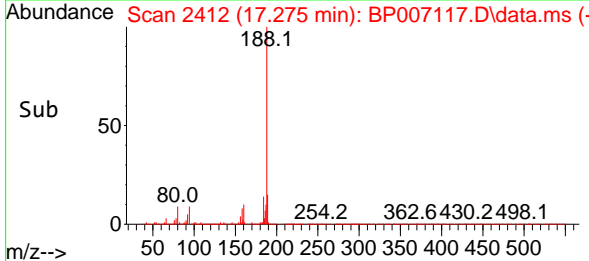
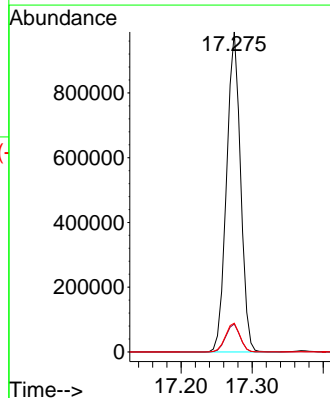
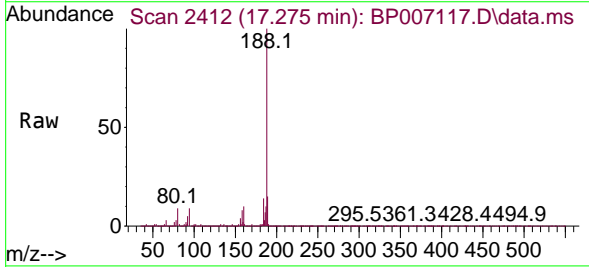
Ion	Ratio	Lower	Upper
77	100		
182	29.5	6.0	46.0
105	22.7	0.0	38.8
51	26.3	8.8	48.8

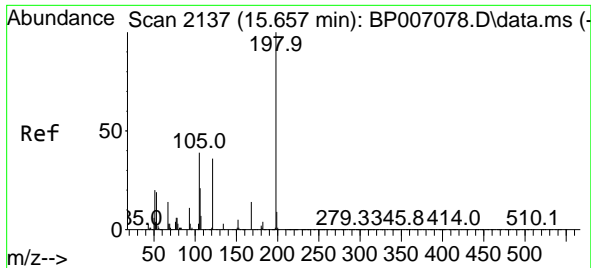


#64
 Phenanthrene-d10
 Concen: 20.000 ng
 RT: 17.275 min Scan# 2412
 Delta R.T. -0.006 min
 Lab File: BP007117.D
 Acq: 23 Sep 2021 09:46

Tgt Ion: 188 Resp: 1346396

Ion	Ratio	Lower	Upper
188	100		
94	8.8	5.6	8.4
80	9.0	6.3	9.5

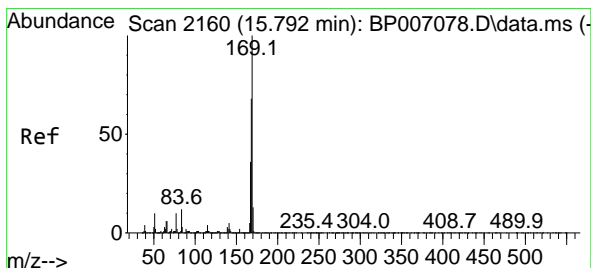
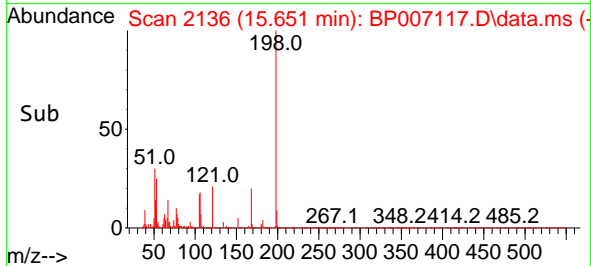
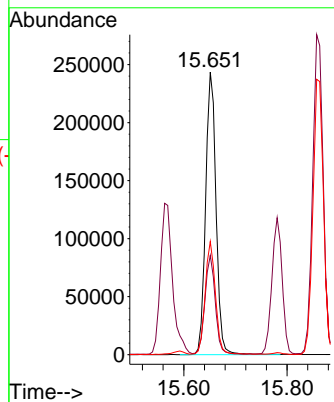
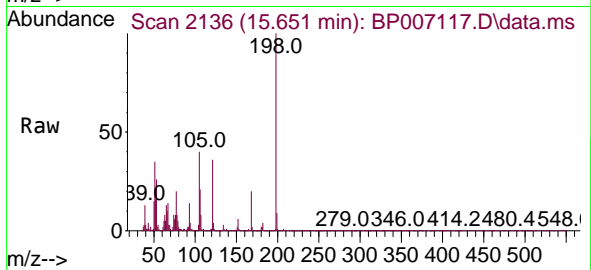




#65
 4,6-Dinitro-2-methylphenol
 Concen: 42.058 ng
 RT: 15.651 min Scan# 2136
 Delta R.T. -0.006 min
 Lab File: BP007117.D
 Acq: 23 Sep 2021 09:46

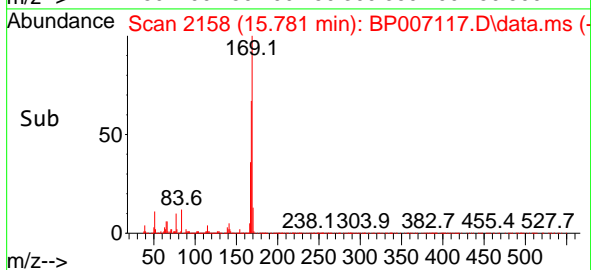
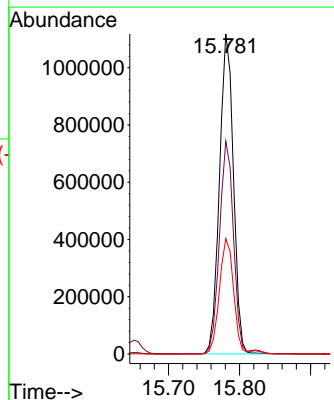
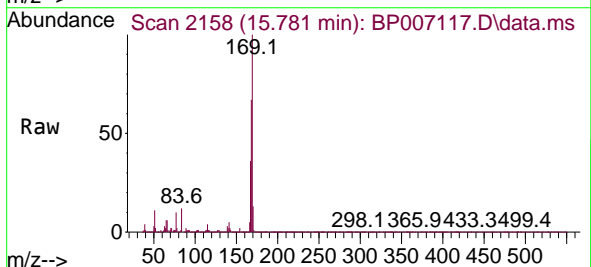
Instrument :
 BNA_P
 ClientSampled :
 SSTDCCC040

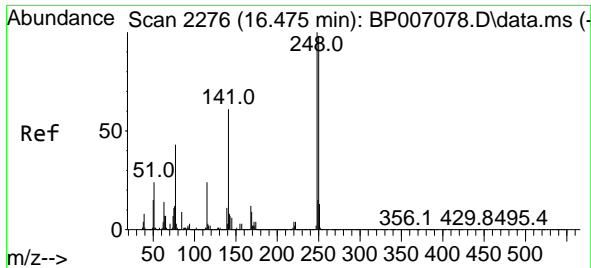
Tgt Ion:198 Resp: 339816
 Ion Ratio Lower Upper
 198 100
 51 35.1 14.0 54.0
 105 40.0 19.5 59.5



#66
 n-Nitrosodiphenylamine
 Concen: 37.816 ng
 RT: 15.781 min Scan# 2158
 Delta R.T. -0.012 min
 Lab File: BP007117.D
 Acq: 23 Sep 2021 09:46

Tgt Ion:169 Resp: 1514939
 Ion Ratio Lower Upper
 169 100
 168 66.5 54.4 81.6
 167 36.1 29.0 43.6

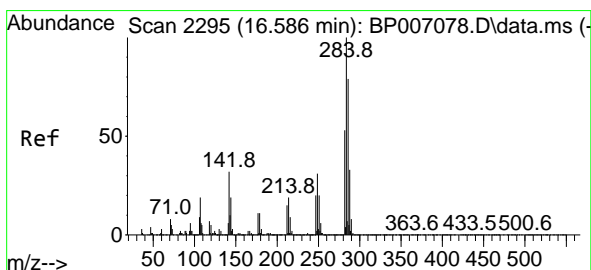
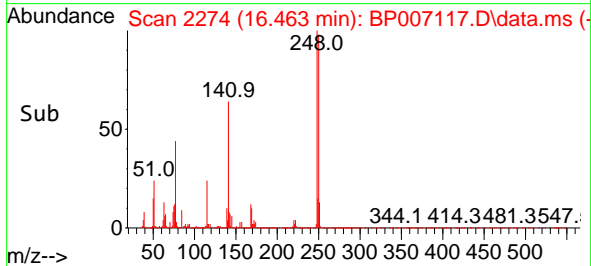
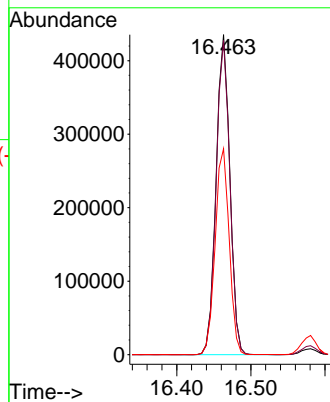
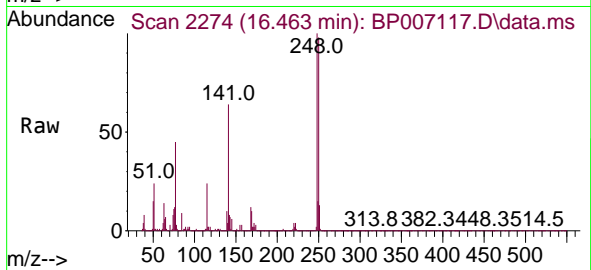




#67
 4-Bromophenyl-phenylether
 Concen: 38.057 ng
 RT: 16.463 min Scan# 2274
 Delta R.T. -0.012 min
 Lab File: BP007117.D
 Acq: 23 Sep 2021 09:46

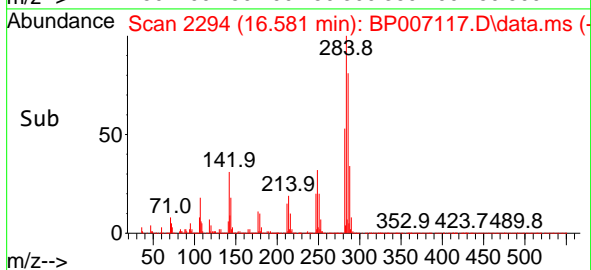
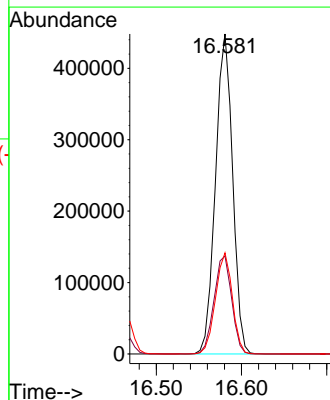
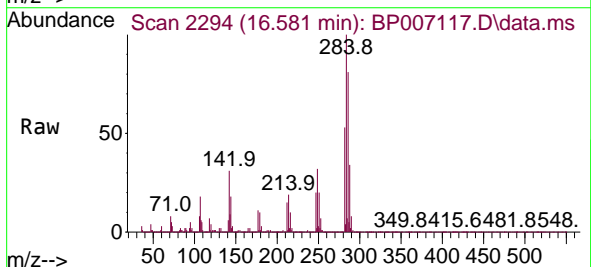
Instrument :
 BNA_P
 ClientSampleId :
 SSTDCCC040

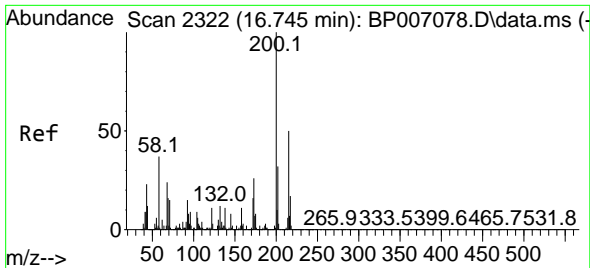
Tgt Ion:248 Resp: 561592
 Ion Ratio Lower Upper
 248 100
 250 98.1 79.8 119.8
 141 64.4 57.8 86.6



#68
 Hexachlorobenzene
 Concen: 38.434 ng
 RT: 16.581 min Scan# 2294
 Delta R.T. -0.006 min
 Lab File: BP007117.D
 Acq: 23 Sep 2021 09:46

Tgt Ion:284 Resp: 626795
 Ion Ratio Lower Upper
 284 100
 142 30.6 26.9 40.3
 249 31.6 24.5 36.7

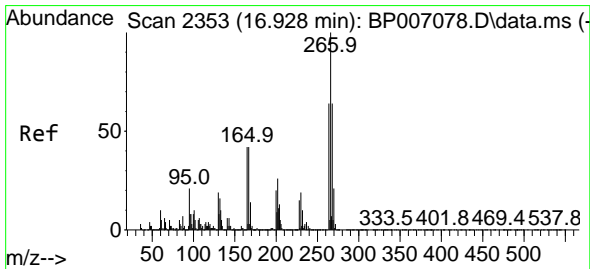
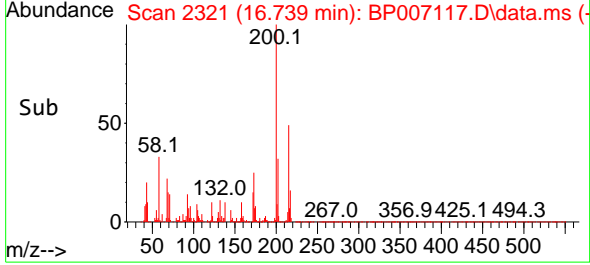
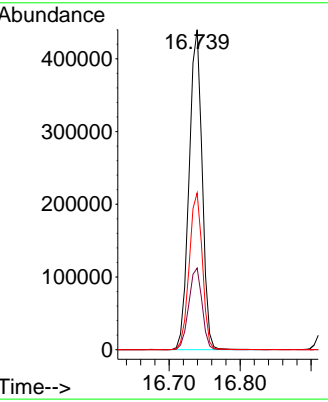
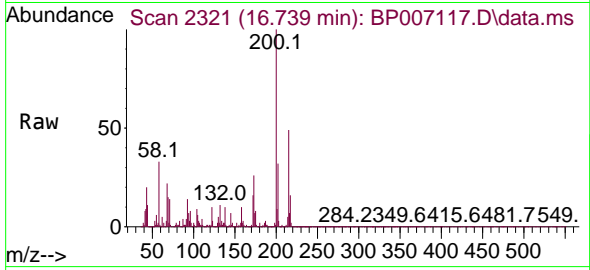




#69
 Atrazine
 Concen: 39.999 ng
 RT: 16.739 min Scan# 2321
 Delta R.T. -0.006 min
 Lab File: BP007117.D
 Acq: 23 Sep 2021 09:46

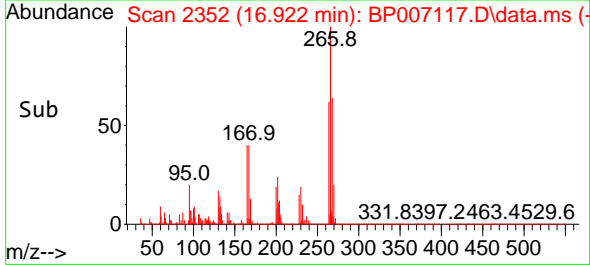
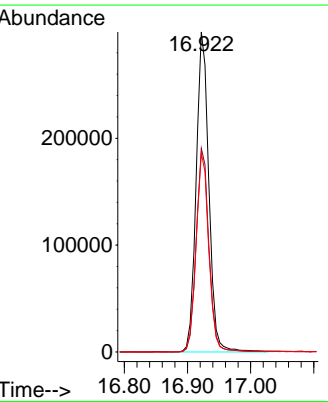
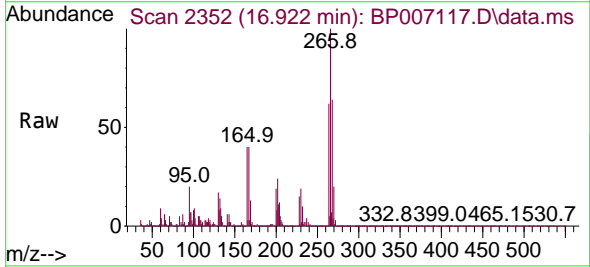
Instrument :
 BNA_P
 ClientSampleId :
 SSTDCCC040

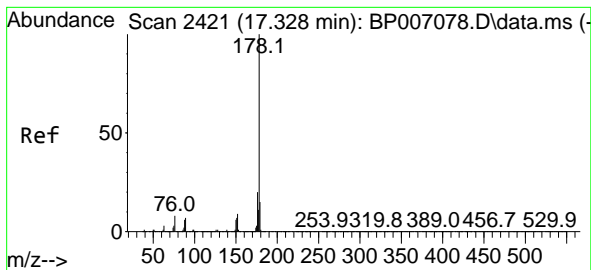
Tgt Ion:200 Resp: 564829
 Ion Ratio Lower Upper
 200 100
 173 25.5 4.1 44.1
 215 49.0 27.7 67.7



#70
 Pentachlorophenol
 Concen: 41.307 ng
 RT: 16.922 min Scan# 2352
 Delta R.T. -0.006 min
 Lab File: BP007117.D
 Acq: 23 Sep 2021 09:46

Tgt Ion:266 Resp: 418355
 Ion Ratio Lower Upper
 266 100
 268 63.7 51.6 77.4
 264 62.1 50.3 75.5



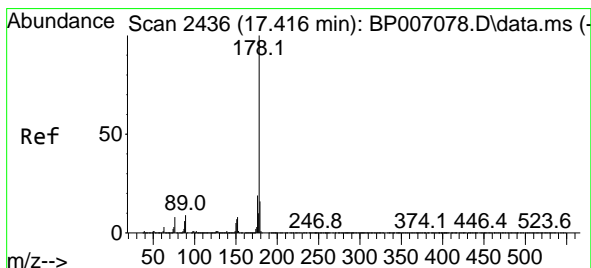
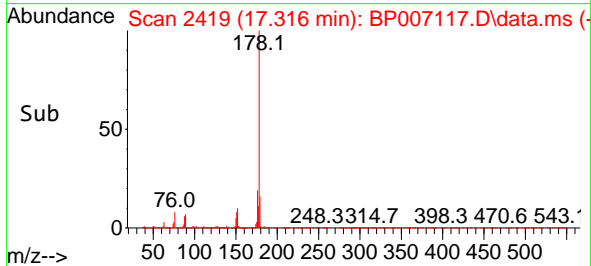
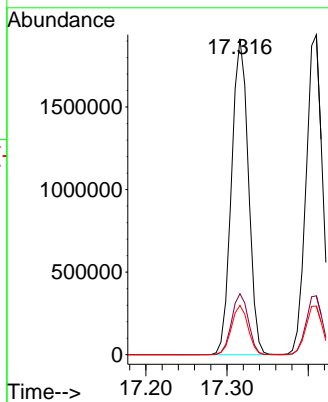
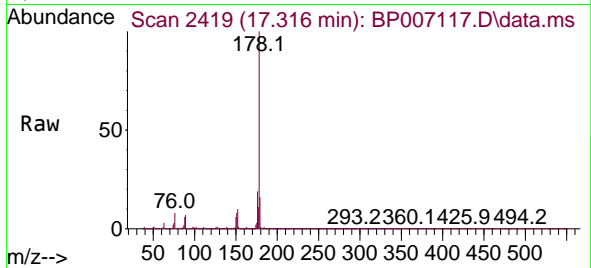


#71
 Phenanthrene
 Concen: 38.093 ng
 RT: 17.316 min Scan# 2419
 Delta R.T. -0.012 min
 Lab File: BP007117.D
 Acq: 23 Sep 2021 09:46

Instrument :
 BNA_P
 ClientSampleId :
 SSTDCCC040

Tgt Ion:178 Resp: 2750040

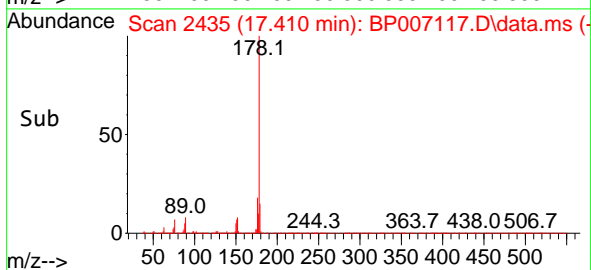
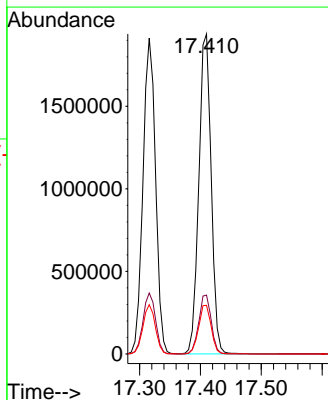
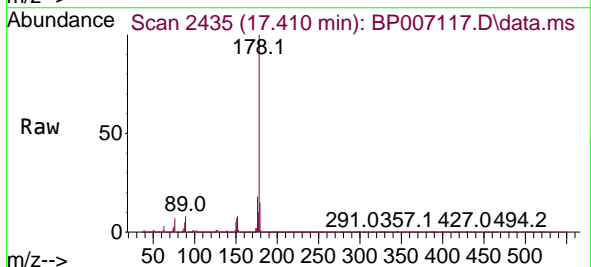
Ion	Ratio	Lower	Upper
178	100		
176	19.3	15.1	22.7
179	15.6	12.4	18.6

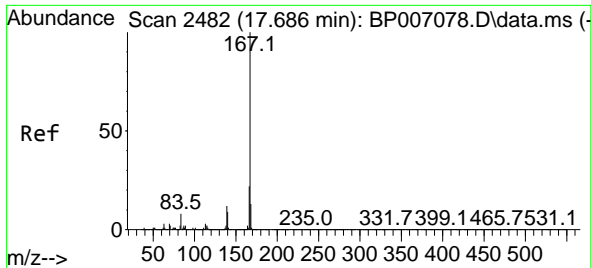


#72
 Anthracene
 Concen: 38.668 ng
 RT: 17.410 min Scan# 2435
 Delta R.T. -0.006 min
 Lab File: BP007117.D
 Acq: 23 Sep 2021 09:46

Tgt Ion:178 Resp: 2730822

Ion	Ratio	Lower	Upper
178	100		
176	18.4	14.9	22.3
179	15.2	12.2	18.2



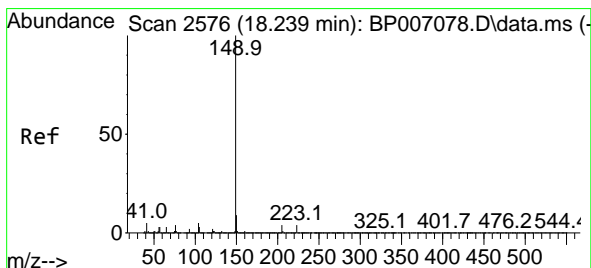
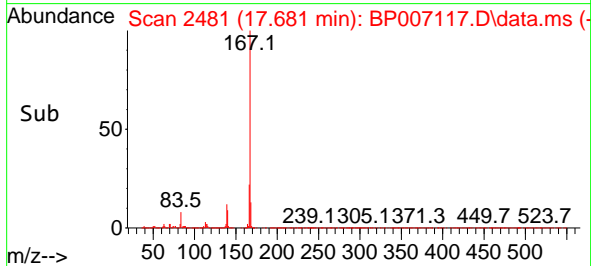
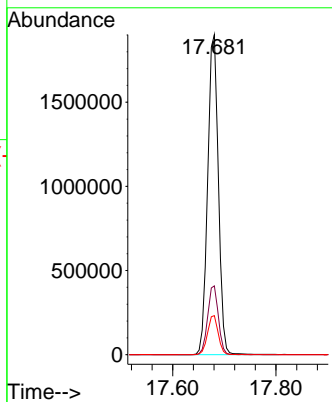
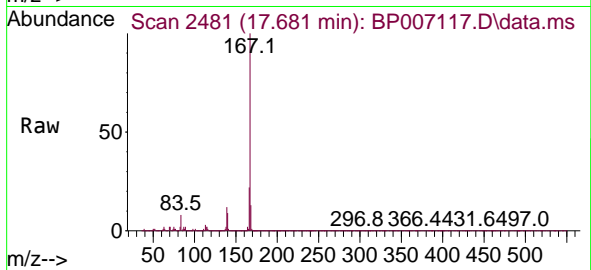


#73
 Carbazole
 Concen: 39.425 ng
 RT: 17.681 min Scan# 2481
 Delta R.T. -0.006 min
 Lab File: BP007117.D
 Acq: 23 Sep 2021 09:46

Instrument :
 BNA_P
 ClientSampled :
 SSTDCCC040

Tgt Ion:167 Resp: 2728381

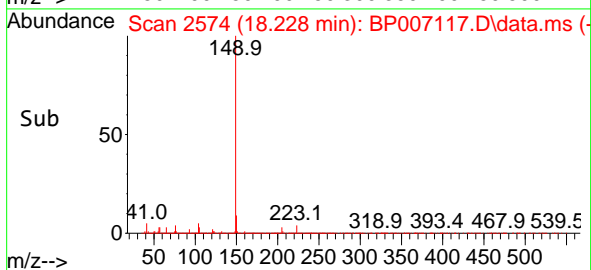
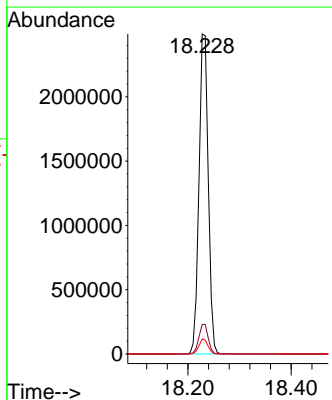
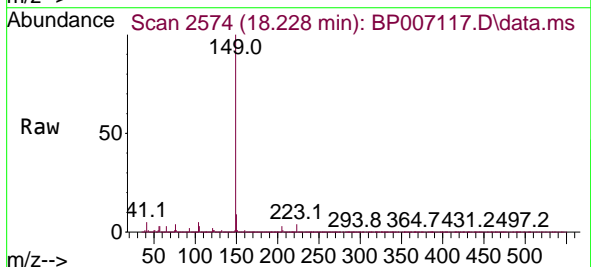
Ion	Ratio	Lower	Upper
167	100		
166	21.5	17.1	25.7
139	12.2	10.7	16.1

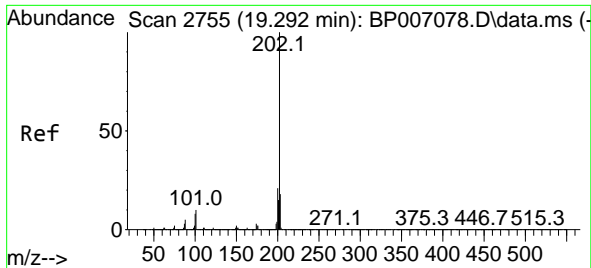


#74
 Di-n-butylphthalate
 Concen: 40.386 ng
 RT: 18.228 min Scan# 2574
 Delta R.T. -0.012 min
 Lab File: BP007117.D
 Acq: 23 Sep 2021 09:46

Tgt Ion:149 Resp: 3097351

Ion	Ratio	Lower	Upper
149	100		
150	9.3	7.3	10.9
104	4.7	4.5	6.7

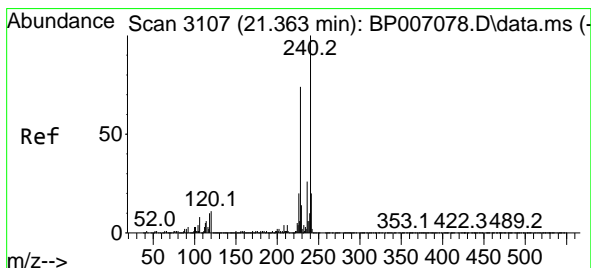
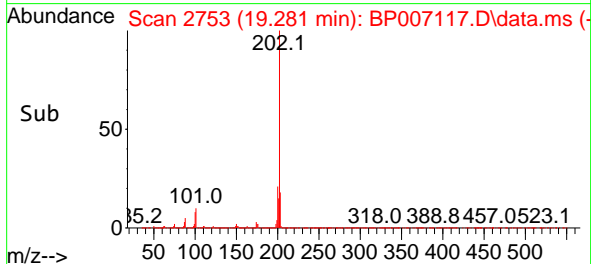
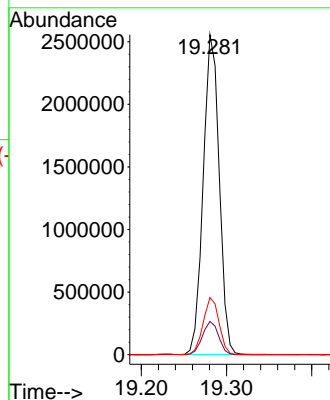
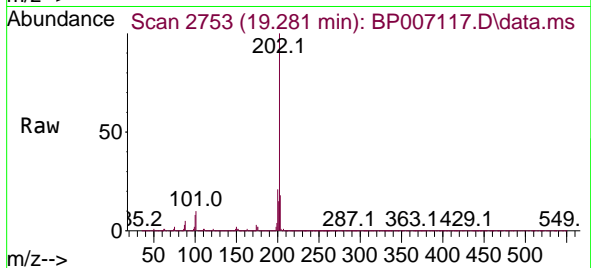




#75
 Fluoranthene
 Concen: 40.095 ng
 RT: 19.281 min Scan# 2753
 Delta R.T. -0.012 min
 Lab File: BP007117.D
 Acq: 23 Sep 2021 09:46

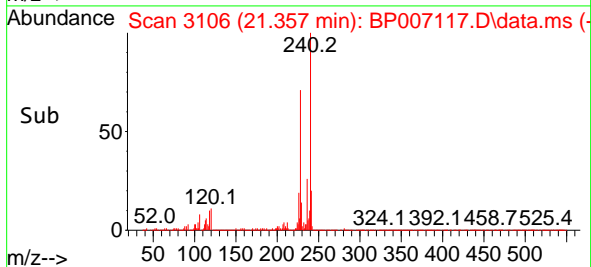
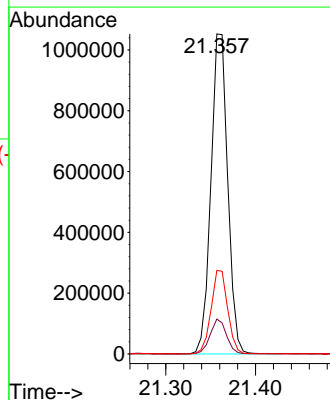
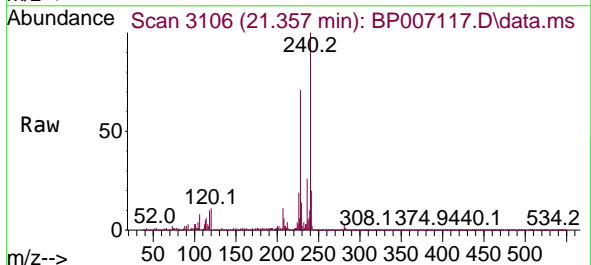
Instrument :
 BNA_P
 ClientSampled :
 SSTDCCC040

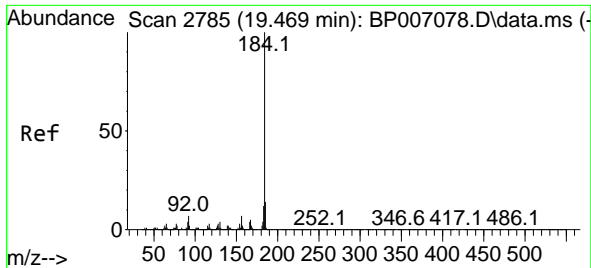
Tgt Ion	Resp	Lower	Upper
202	100		
101	10.4	0.0	27.6
203	17.9	0.0	37.8



#76
 Chrysene-d12
 Concen: 20.000 ng
 RT: 21.357 min Scan# 3106
 Delta R.T. -0.006 min
 Lab File: BP007117.D
 Acq: 23 Sep 2021 09:46

Tgt Ion	Resp	Lower	Upper
240	100		
120	10.9	6.5	9.7#
236	26.1	20.6	31.0

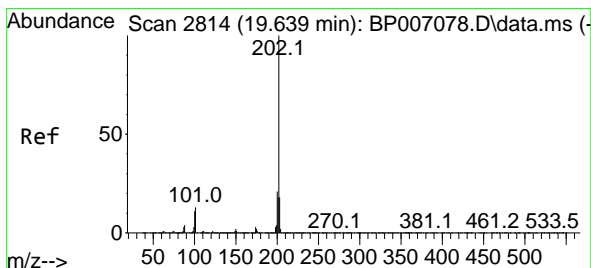
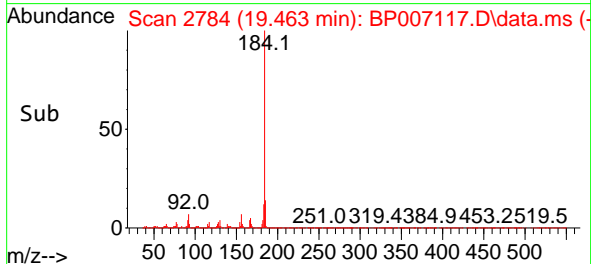
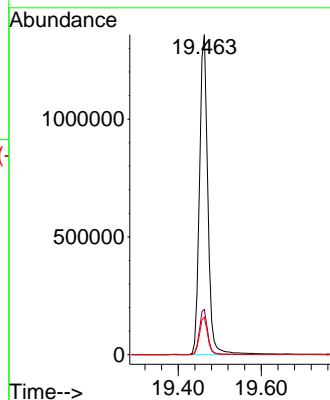
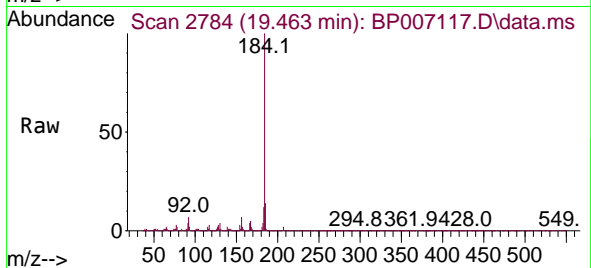




#77
Benzidine
Concen: 45.289 ng
RT: 19.463 min Scan# 2784
Delta R.T. -0.006 min
Lab File: BP007117.D
Acq: 23 Sep 2021 09:46

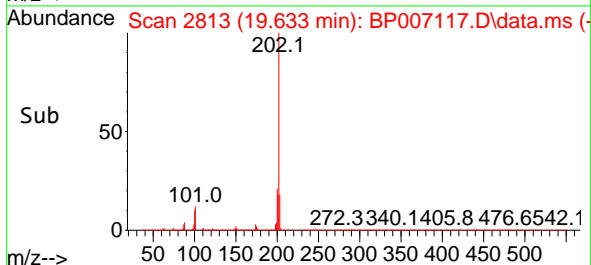
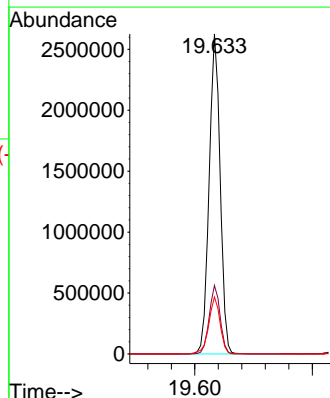
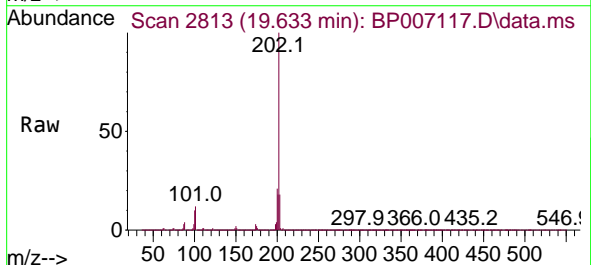
Instrument :
BNA_P
ClientSampleId :
SSTDCCC040

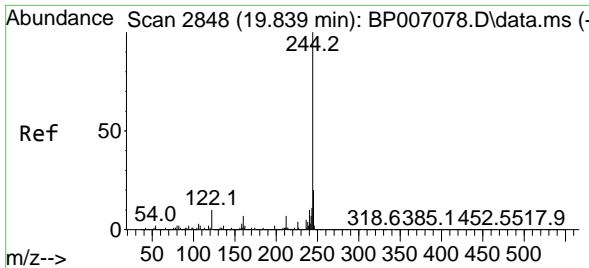
Tgt Ion:184 Resp: 1903183
Ion Ratio Lower Upper
184 100
185 14.1 11.0 16.4
183 11.7 9.5 14.3



#78
Pyrene
Concen: 38.173 ng
RT: 19.633 min Scan# 2813
Delta R.T. -0.006 min
Lab File: BP007117.D
Acq: 23 Sep 2021 09:46

Tgt Ion:202 Resp: 3424682
Ion Ratio Lower Upper
202 100
200 21.4 16.3 24.5
203 17.8 14.2 21.2



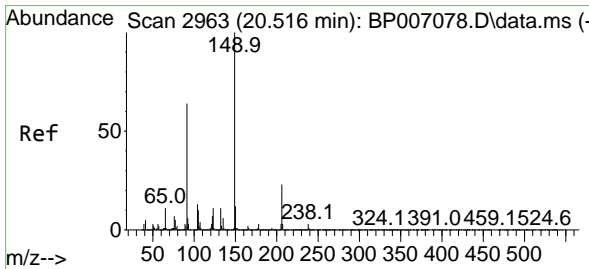
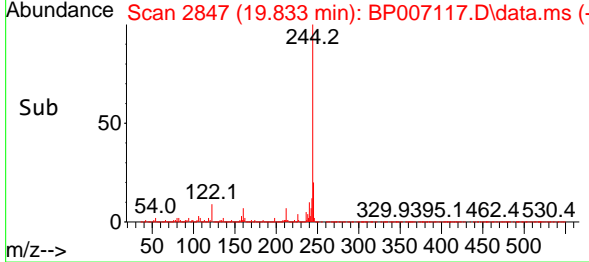
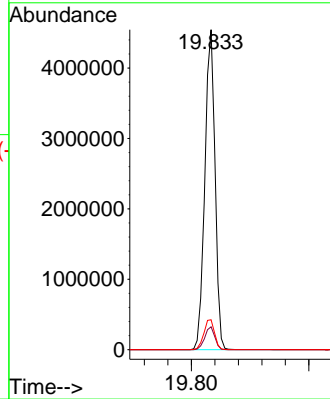
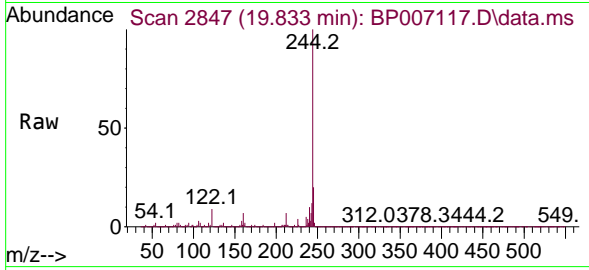


#79
 Terphenyl-d14
 Concen: 76.891 ng
 RT: 19.833 min Scan# 2847
 Delta R.T. -0.006 min
 Lab File: BP007117.D
 Acq: 23 Sep 2021 09:46

Instrument :
 BNA_P
 ClientSampled :
 SSTDCCC040

Tgt Ion:244 Resp: 5486925

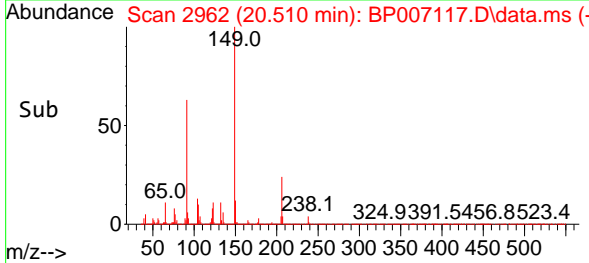
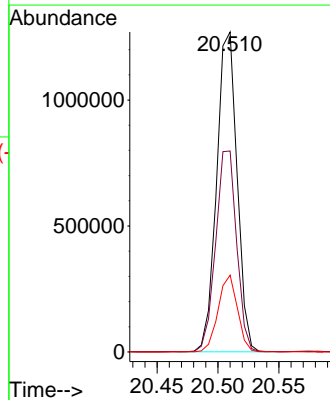
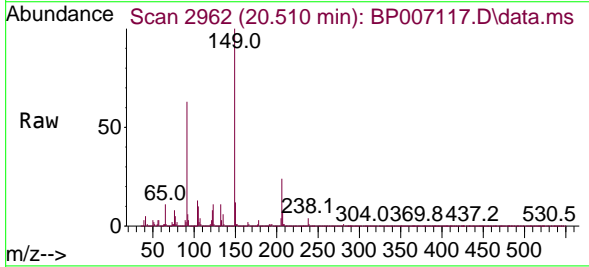
Ion	Ratio	Lower	Upper
244	100		
212	7.2	6.0	9.0
122	9.4	7.1	10.7

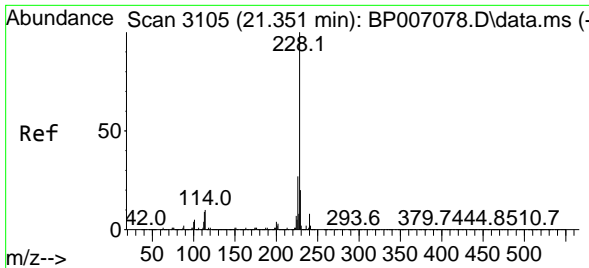


#80
 Butylbenzylphthalate
 Concen: 41.189 ng
 RT: 20.510 min Scan# 2962
 Delta R.T. -0.006 min
 Lab File: BP007117.D
 Acq: 23 Sep 2021 09:46

Tgt Ion:149 Resp: 1479861

Ion	Ratio	Lower	Upper
149	100		
91	62.8	54.6	81.8
206	24.0	16.7	25.1

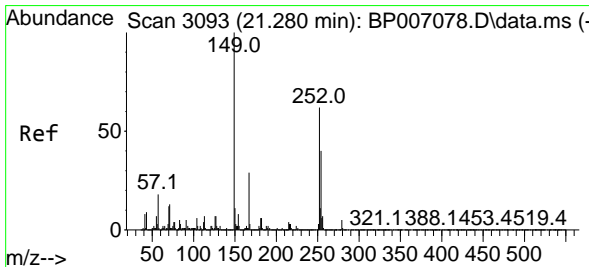
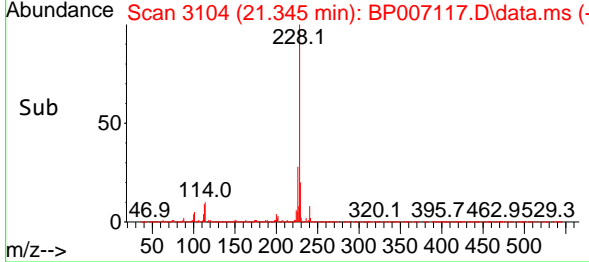
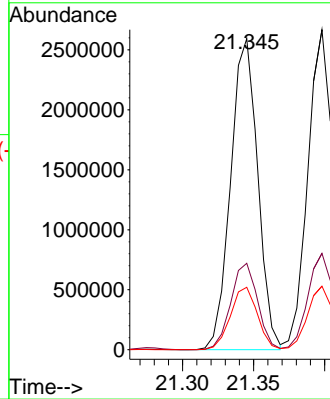
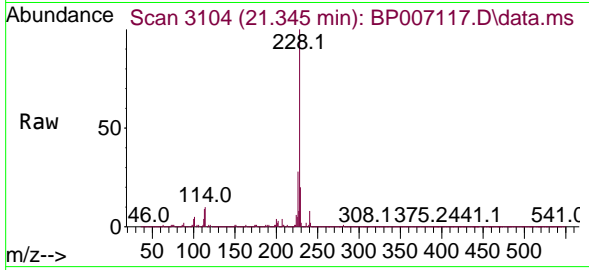




#81
 Benzo(a)anthracene
 Concen: 38.741 ng
 RT: 21.345 min Scan# 3104
 Delta R.T. -0.006 min
 Lab File: BP007117.D
 Acq: 23 Sep 2021 09:46

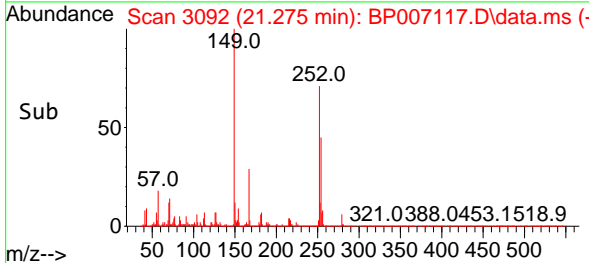
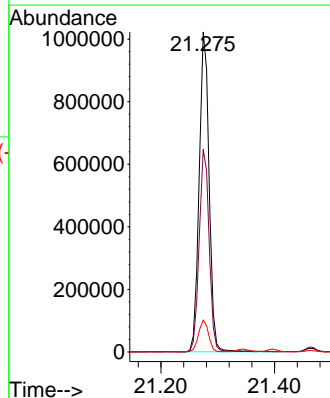
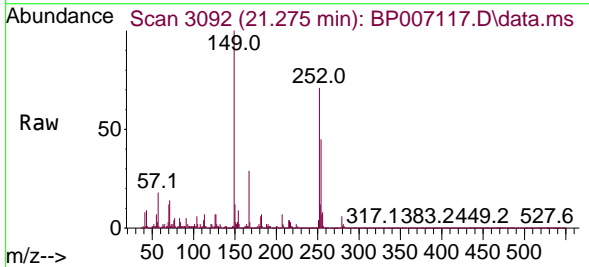
Instrument :
 BNA_P
 ClientSampled :
 SSTDCCC040

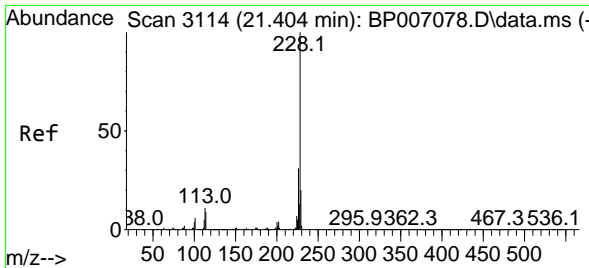
Tgt Ion	Resp	Lower	Upper
228	100		
226	27.8	21.6	32.4
229	20.0	15.8	23.6



#82
 3,3'-Dichlorobenzidine
 Concen: 40.937 ng
 RT: 21.275 min Scan# 3092
 Delta R.T. -0.006 min
 Lab File: BP007117.D
 Acq: 23 Sep 2021 09:46

Tgt Ion	Resp	Lower	Upper
252	100		
254	63.3	50.6	76.0
126	10.0	7.0	10.6



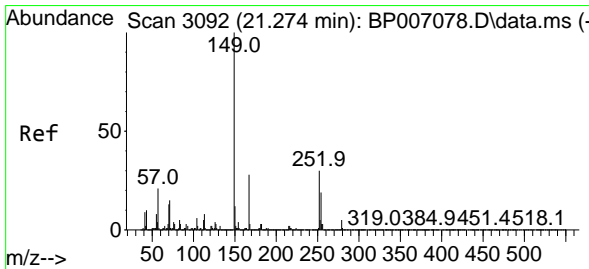
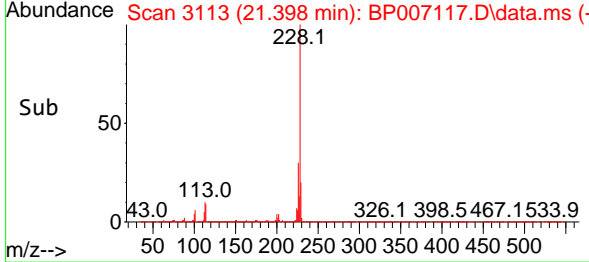
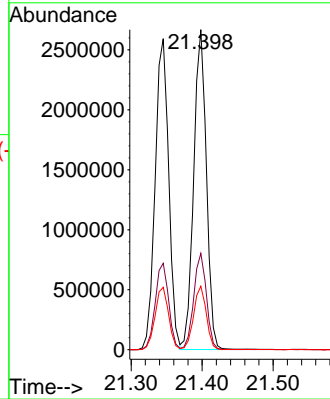
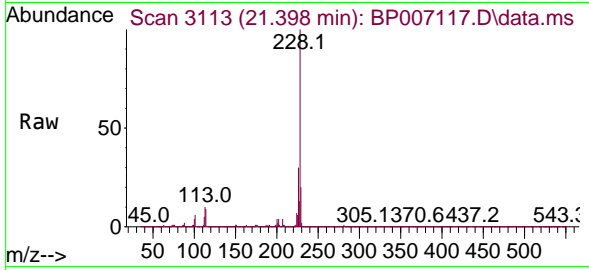


#83
 Chrysene
 Concen: 39.063 ng
 RT: 21.398 min Scan# 3113
 Delta R.T. -0.006 min
 Lab File: BP007117.D
 Acq: 23 Sep 2021 09:46

Instrument :
 BNA_P
ClientSampled :
 SSTDCCC040

Tgt Ion:228 Resp: 3313742

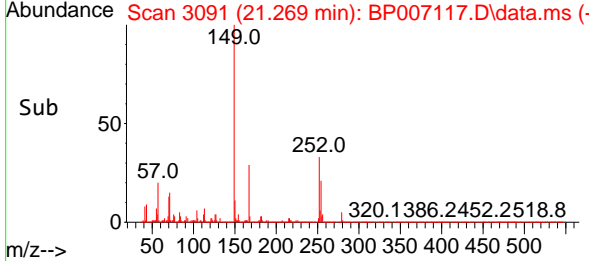
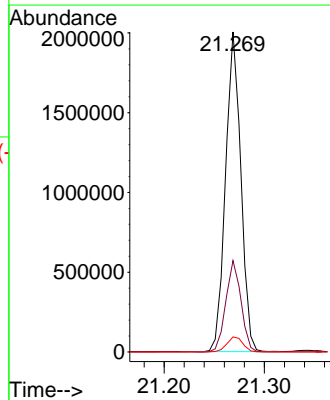
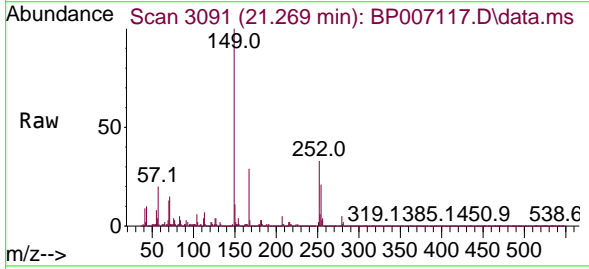
Ion	Ratio	Lower	Upper
228	100		
226	30.1	23.8	35.6
229	19.9	15.4	23.2

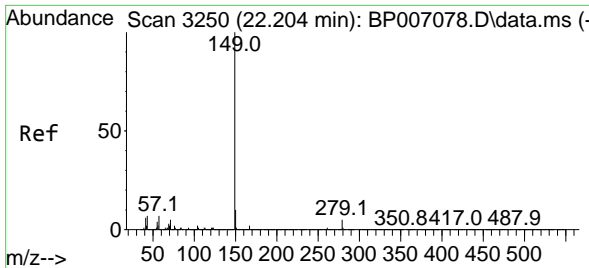


#84
 Bis(2-ethylhexyl)phthalate
 Concen: 40.933 ng
 RT: 21.269 min Scan# 3091
 Delta R.T. -0.006 min
 Lab File: BP007117.D
 Acq: 23 Sep 2021 09:46

Tgt Ion:149 Resp: 2114380

Ion	Ratio	Lower	Upper
149	100		
167	28.5	21.9	32.9
279	4.7	4.3	6.5



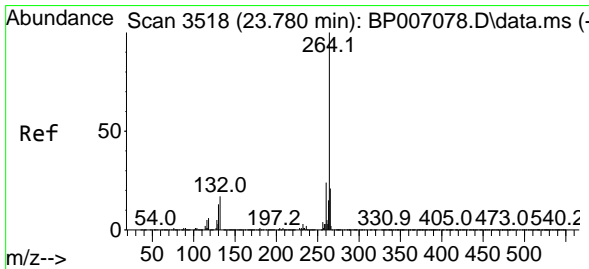
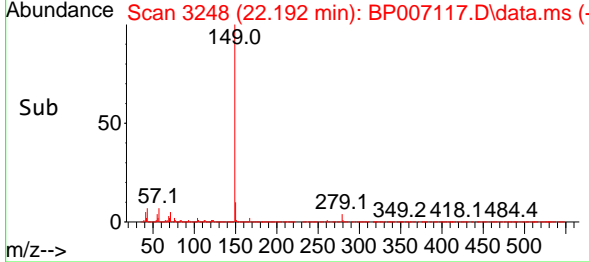
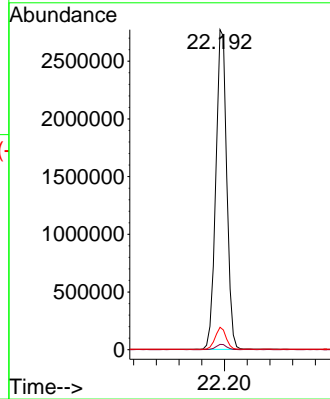
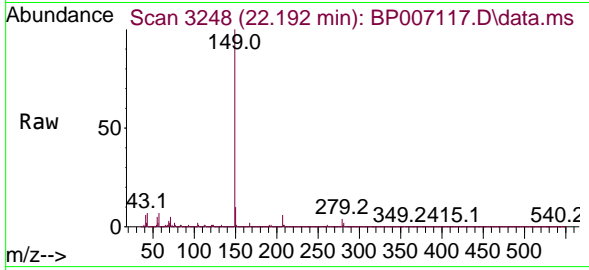


#85
 Di-n-octyl phthalate
 Concen: 41.790 ng
 RT: 22.192 min Scan# 3248
 Delta R.T. -0.012 min
 Lab File: BP007117.D
 Acq: 23 Sep 2021 09:46

Instrument :
 BNA_P
 ClientSampled :
 SSTDCCC040

Tgt Ion:149 Resp: 3675153

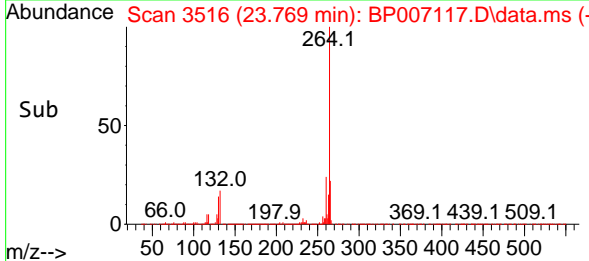
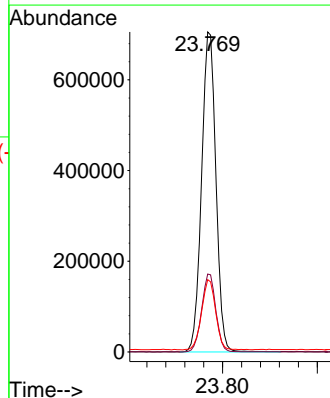
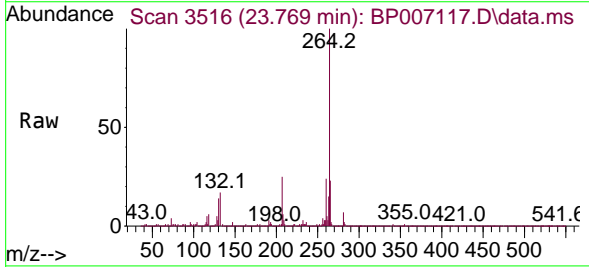
Ion	Ratio	Lower	Upper
149	100		
167	1.6	1.4	2.0
43	6.8	5.6	8.4

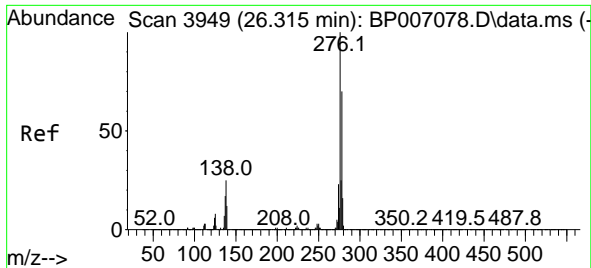


#86
 Perylene-d12
 Concen: 20.000 ng
 RT: 23.769 min Scan# 3516
 Delta R.T. -0.012 min
 Lab File: BP007117.D
 Acq: 23 Sep 2021 09:46

Tgt Ion:264 Resp: 1476865

Ion	Ratio	Lower	Upper
264	100		
260	24.4	18.6	28.0
265	22.6	17.6	26.4



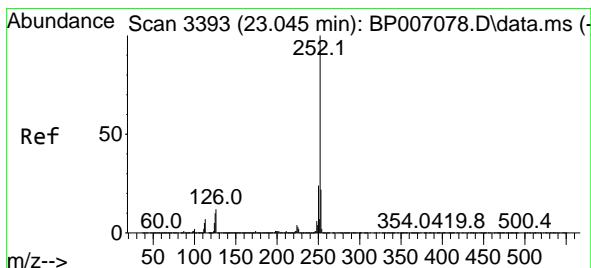
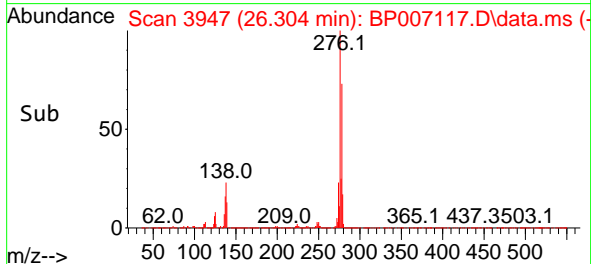
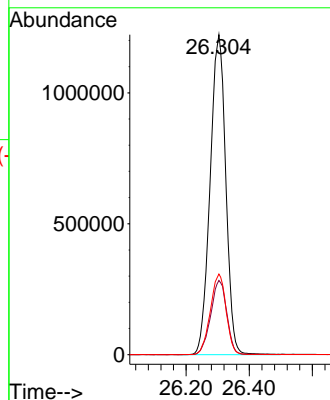
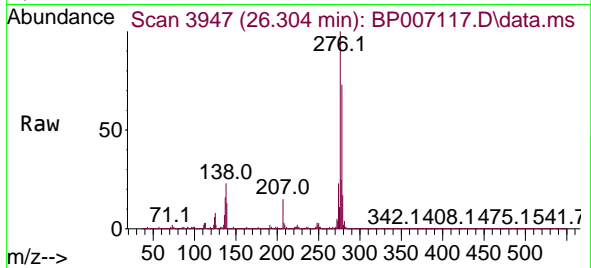


#87
 Indeno(1,2,3-cd)pyrene
 Concen: 39.566 ng
 RT: 26.304 min Scan# 3947
 Delta R.T. -0.012 min
 Lab File: BP007117.D
 Acq: 23 Sep 2021 09:46

Instrument :
 BNA_P
 ClientSampled :
 SSTDCCC040

Tgt Ion: 276 Resp: 4199367

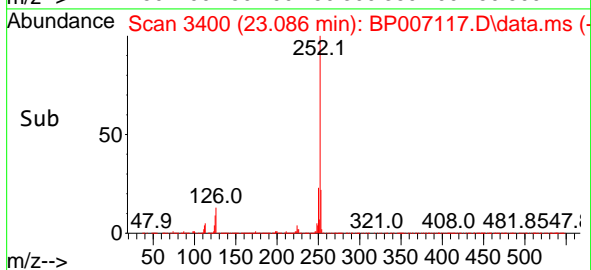
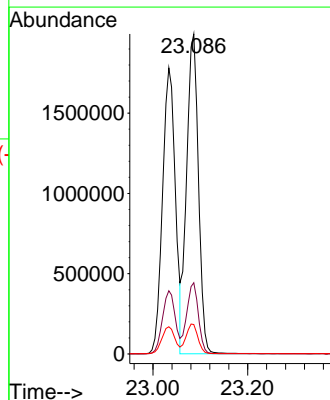
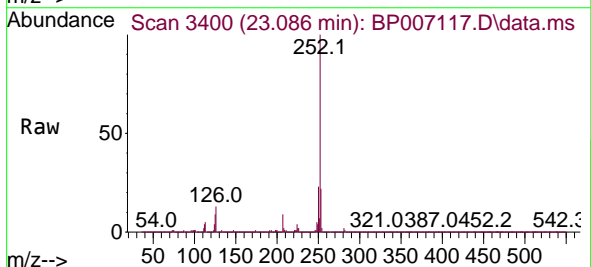
Ion	Ratio	Lower	Upper
276	100		
138	23.8	15.3	22.9#
277	25.4	20.4	30.6

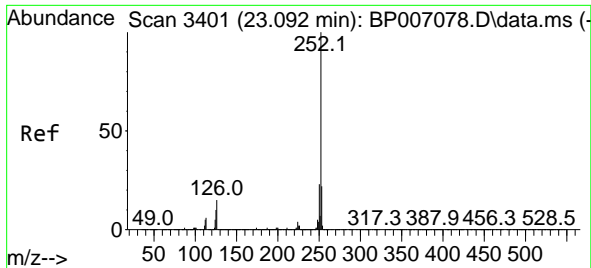


#88
 Benzo(b)fluoranthene
 Concen: 39.192 ng
 RT: 23.086 min Scan# 3400
 Delta R.T. 0.041 min
 Lab File: BP007117.D
 Acq: 23 Sep 2021 09:46

Tgt Ion: 252 Resp: 3459072

Ion	Ratio	Lower	Upper
252	100		
253	22.3	17.5	26.3
125	9.2	6.2	9.4



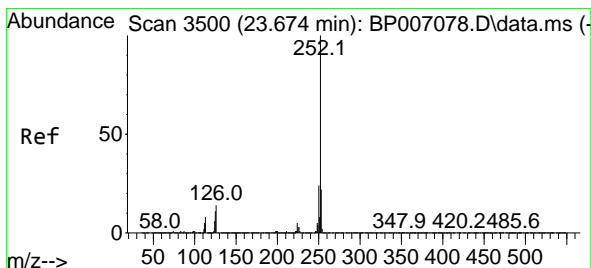
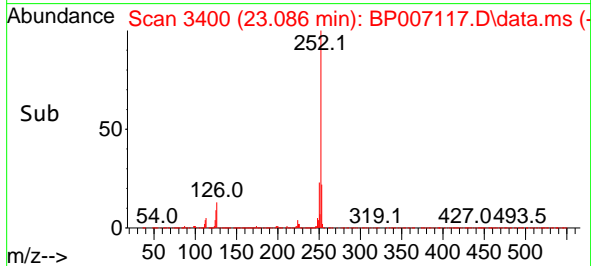
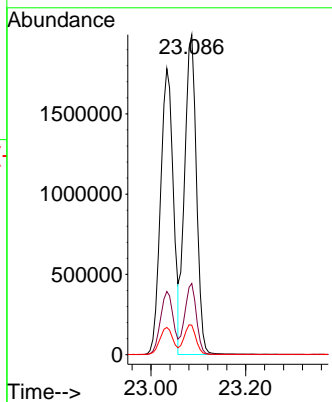
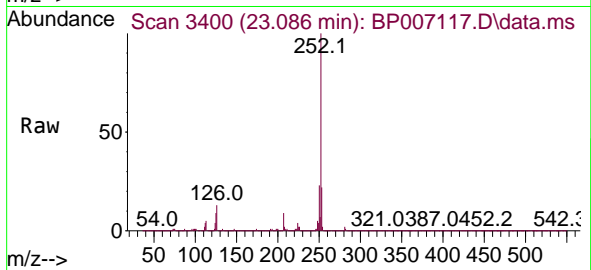


#89
 Benzo(k)fluoranthene
 Concen: 38.709 ng
 RT: 23.086 min Scan# 3400
 Delta R.T. -0.006 min
 Lab File: BP007117.D
 Acq: 23 Sep 2021 09:46

Instrument :
 BNA_P
 ClientSampleId :
 SSTDCCC040

Tgt Ion:252 Resp: 3459072

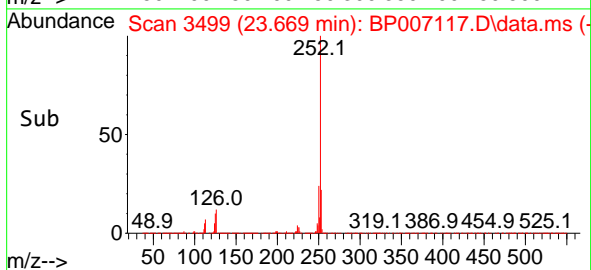
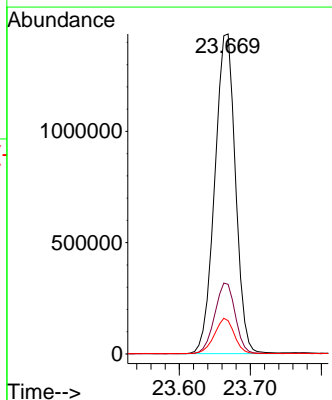
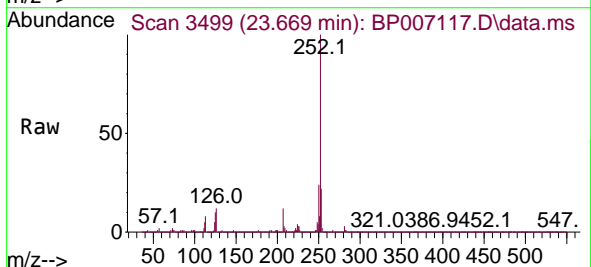
Ion	Ratio	Lower	Upper
252	100		
253	22.3	17.6	26.4
125	9.2	6.0	9.0#

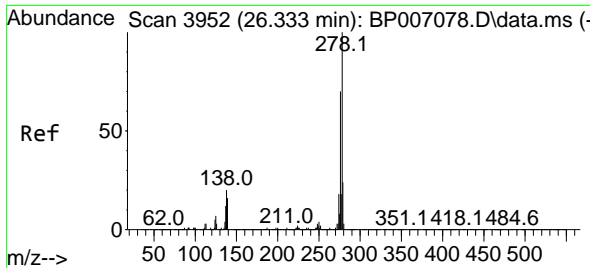


#90
 Benzo(a)pyrene
 Concen: 38.647 ng
 RT: 23.669 min Scan# 3499
 Delta R.T. -0.006 min
 Lab File: BP007117.D
 Acq: 23 Sep 2021 09:46

Tgt Ion:252 Resp: 2897908

Ion	Ratio	Lower	Upper
252	100		
253	21.7	17.9	26.9
125	10.4	6.5	9.7#



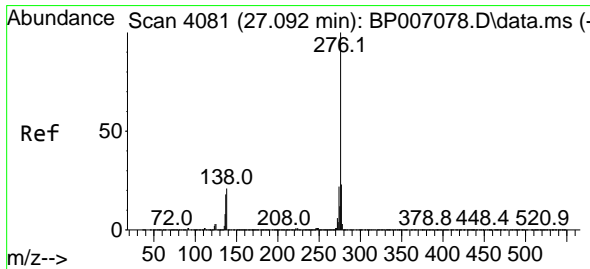
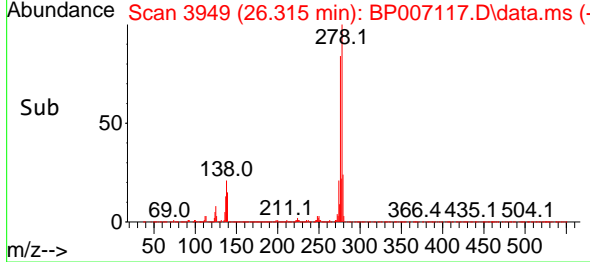
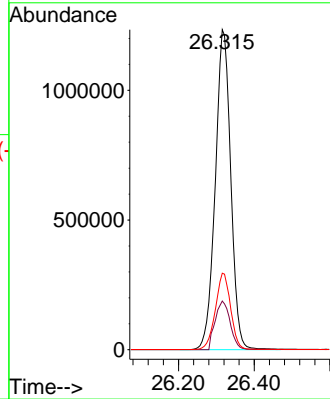
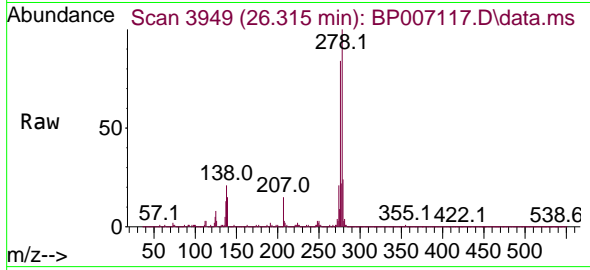


#91
 Dibenzo(a,h)anthracene
 Concen: 39.360 ng
 RT: 26.315 min Scan# 3949
 Delta R.T. -0.018 min
 Lab File: BP007117.D
 Acq: 23 Sep 2021 09:46

Instrument :
 BNA_P
 ClientSampled :
 SSTDCCC040

Tgt Ion:278 Resp: 3500861

Ion	Ratio	Lower	Upper
278	100		
139	15.2	9.3	13.9#
279	23.9	18.8	28.2



#92
 Benzo(g,h,i)perylene
 Concen: 39.411 ng
 RT: 27.074 min Scan# 4078
 Delta R.T. -0.018 min
 Lab File: BP007117.D
 Acq: 23 Sep 2021 09:46

Tgt Ion:276 Resp: 3420869

Ion	Ratio	Lower	Upper
276	100		
277	23.5	18.9	28.3
138	21.0	12.6	18.8#

