

Data Path : Z:\svoasrv\HPCHEM1\BNA_P\Data\BP092420\
 Data File : BP003367.D
 Acq On : 24 Sep 2020 12:10
 Operator : CG/JU
 Sample : SSTDCCC040
 Misc :
 ALS Vial : 2 Sample Multiplier: 1

Instrument :
 BNA_P
 ClientSampleId :
 SSTDCCC040

Quant Time: Sep 24 12:38:25 2020
 Quant Method : Z:\SVOASRV\HPCHEM1\BNA_P\METHODS\8270-BP091520.M
 Quant Title : ASP BNA STANDARDS FOR 5 POINT CALIBRATION
 QLast Update : Tue Sep 22 12:48:08 2020
 Response via : Initial Calibration

Compound	R.T.	QIon	Response	Conc Units	Dev(Min)	
Internal Standards						
1) 1,4-Dichlorobenzene-d4	7.563	152	115096	20.00 ng	-0.05	
21) Naphthalene-d8	10.340	136	418492	20.00 ng	#-0.06	
39) Acenaphthene-d10	14.216	164	241432	20.00 ng	-0.05	
64) Phenanthrene-d10	16.969	188	504991	20.00 ng	#-0.05	
76) Chrysene-d12	21.069	240	529183	20.00 ng	-0.04	
86) Perylene-d12	23.257	264	592278	20.00 ng	-0.07	
System Monitoring Compounds						
5) 2-Fluorophenol	5.175	112	545168	82.71 ng	-0.05	
7) Phenol-d6	6.763	99	705747	80.33 ng	-0.05	
23) Nitrobenzene-d5	8.716	82	588912	82.67 ng	-0.05	
42) 2,4,6-Tribromophenol	15.716	330	233853	63.51 ng	-0.05	
45) 2-Fluorobiphenyl	12.834	172	1283394	77.74 ng	-0.05	
79) Terphenyl-d14	19.545	244	1907839	75.12 ng	-0.05	
Target Compounds						Qvalue
2) 1,4-Dioxane	3.087	88	116970	43.18 ng		100
3) Pyridine	3.475	79	307937	42.70 ng		93
4) n-Nitrosodimethylamine	3.393	42	87165	40.40 ng		99
6) Aniline	6.893	93	400709	39.72 ng		95
8) 2-Chlorophenol	7.134	128	280496	38.21 ng		89
9) Benzaldehyde	6.710	77	185412	37.84 ng		86
10) Phenol	6.787	94	338319	40.31 ng		92
11) bis(2-Chloroethyl)ether	6.999	93	269178	40.48 ng		97
12) 1,3-Dichlorobenzene	7.452	146	339010	38.62 ng	#	94
13) 1,4-Dichlorobenzene	7.599	146	341751	38.49 ng		96
14) 1,2-Dichlorobenzene	7.910	146	317478	37.25 ng		96
15) Benzyl Alcohol	7.810	79	232650	39.85 ng		93
16) 2,2'-oxybis(1-Chloropr...	8.099	45	209427	43.31 ng		92
17) 2-Methylphenol	8.028	107	230454	37.98 ng		95
18) Hexachloroethane	8.634	117	129562	39.16 ng		96
19) n-Nitroso-di-n-propyla...	8.369	70	181855	38.64 ng	#	94
20) 3+4-Methylphenols	8.352	107	304377	37.69 ng		95
22) Acetophenone	8.381	105	402197	39.13 ng	#	95
24) Nitrobenzene	8.757	77	295658	41.48 ng		88
25) Isophorone	9.281	82	514924	39.44 ng	#	91
26) 2-Nitrophenol	9.463	139	147877	37.99 ng	#	84
27) 2,4-Dimethylphenol	9.546	122	210277	38.19 ng		94
28) bis(2-Chloroethoxy)met...	9.763	93	351721	40.48 ng		98
29) 2,4-Dichlorophenol	10.010	162	251674	36.58 ng		95
30) 1,2,4-Trichlorobenzene	10.210	180	298517	36.57 ng		99
31) Naphthalene	10.393	128	839022	37.95 ng		99
32) Benzoic acid	9.722	122	105349	30.79 ng	#	84
33) 4-Chloroaniline	10.504	127	351442	37.42 ng	#	94
34) Hexachlorobutadiene	10.687	225	195271	35.05 ng		99
35) Caprolactam	11.275	113	80436	35.04 ng		89
36) 4-Chloro-3-methylphenol	11.663	107	264541	35.67 ng		89
37) 2-Methylnaphthalene	12.016	142	579329	36.17 ng		97
38) 1-Methylnaphthalene	12.240	142	543610	35.75 ng		99
40) 1,2,4,5-Tetrachloroben...	12.398	216	301283	38.12 ng		99
41) Hexachlorocyclopentadiene	12.375	237	77017	38.69 ng		99
43) 2,4,6-Trichlorophenol	12.651	196	190837	37.34 ng		98

Data Path : Z:\svoasrv\HPCHEM1\BNA_P\Data\BP092420\
 Data File : BP003367.D
 Acq On : 24 Sep 2020 12:10
 Operator : CG/JU
 Sample : SSTDCCC040
 Misc :
 ALS Vial : 2 Sample Multiplier: 1

Instrument :
 BNA_P
 ClientSampleId :
 SSTDCCC040

Quant Time: Sep 24 12:38:25 2020
 Quant Method : Z:\SVOASRV\HPCHEM1\BNA_P\METHODS\8270-BP091520.M
 Quant Title : ASP BNA STANDARDS FOR 5 POINT CALIBRATION
 QLast Update : Tue Sep 22 12:48:08 2020
 Response via : Initial Calibration

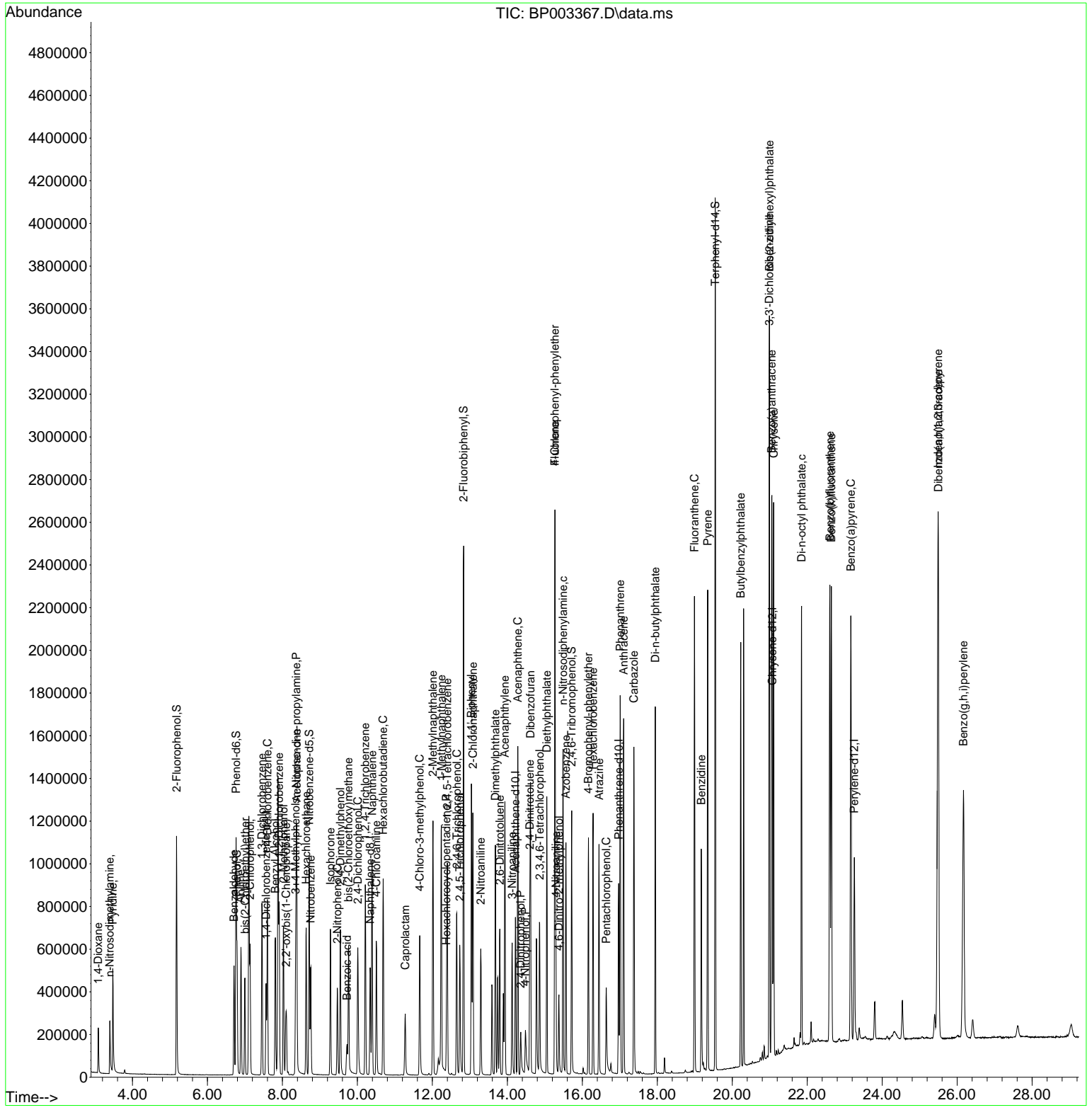
Compound	R.T.	QIon	Response	Conc	Units	Dev(Min)	
44) 2,4,5-Trichlorophenol	12.728	196	193348	36.78	ng	#	94
46) 1,1'-Biphenyl	13.040	154	716171	39.77	ng		98
47) 2-Chloronaphthalene	13.081	162	585644	39.28	ng		97
48) 2-Nitroaniline	13.292	65	160354	42.49	ng	#	77
49) Acenaphthylene	13.934	152	884273	38.81	ng		100
50) Dimethylphthalate	13.681	163	709814	36.82	ng		100
51) 2,6-Dinitrotoluene	13.798	165	154579	37.41	ng	#	83
52) Acenaphthene	14.281	154	531005	38.30	ng		99
53) 3-Nitroaniline	14.128	138	175612	39.21	ng	#	80
54) 2,4-Dinitrophenol	14.357	184	68193	38.96	ng	#	92
55) Dibenzofuran	14.616	168	822064	37.15	ng		95
56) 4-Nitrophenol	14.481	139	96267	35.17	ng	#	69
57) 2,4-Dinitrotoluene	14.598	165	211794	36.95	ng	#	76
58) Fluorene	15.269	166	649711	37.17	ng		99
59) 2,3,4,6-Tetrachlorophenol	14.863	232	170390	34.47	ng		96
60) Diethylphthalate	15.051	149	723419	36.79	ng		99
61) 4-Chlorophenyl-phenyle...	15.269	204	341856	35.83	ng		98
62) 4-Nitroaniline	15.298	138	186553	39.25	ng		79
63) Azobenzene	15.563	77	615125	41.03	ng		92
65) 4,6-Dinitro-2-methylph...	15.375	198	99674	37.40	ng		94
66) n-Nitrosodiphenylamine	15.486	169	576390	38.86	ng		99
67) 4-Bromophenyl-phenylether	16.163	248	224402	36.76	ng		94
68) Hexachlorobenzene	16.286	284	255093	35.18	ng		94
69) Atrazine	16.445	200	211737	36.39	ng		99
70) Pentachlorophenol	16.639	266	94686	34.61	ng		100
71) Phenanthrene	17.010	178	1048415	38.16	ng		99
72) Anthracene	17.104	178	1024656	37.84	ng		100
73) Carbazole	17.375	167	971241	37.76	ng		99
74) Di-n-butylphthalate	17.945	149	1245618	37.88	ng	#	99
75) Fluoranthene	18.992	202	1261963	36.53	ng		98
77) Benzidine	19.175	184	623579	38.00	ng		99
78) Pyrene	19.345	202	1298313	39.34	ng		100
80) Butylbenzylphthalate	20.227	149	612081	40.54	ng		89
81) Benzo(a)anthracene	21.051	228	1309570	38.28	ng		100
82) 3,3'-Dichlorobenzidine	20.986	252	502072	37.97	ng		99
83) Chrysene	21.104	228	1241073	37.76	ng		99
84) Bis(2-ethylhexyl)phtha...	20.992	149	841347	39.58	ng		99
85) Di-n-octyl phthalate	21.851	149	1525642	39.28	ng	#	98
87) Indeno(1,2,3-cd)pyrene	25.492	276	1712283	38.14	ng		99
88) Benzo(b)fluoranthene	22.604	252	1397258	37.36	ng		100
89) Benzo(k)fluoranthene	22.645	252	1379866	38.49	ng		99
90) Benzo(a)pyrene	23.163	252	1340446	38.01	ng		100
91) Dibenzo(a,h)anthracene	25.498	278	1408298	38.02	ng		99
92) Benzo(g,h,i)perylene	26.168	276	1412687	38.20	ng		98

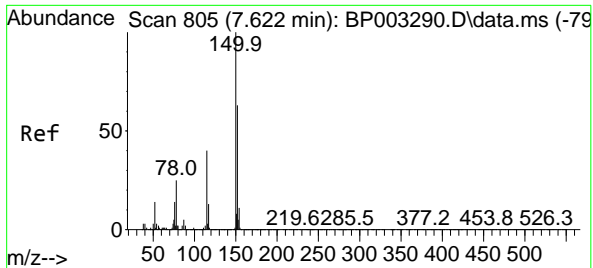
(#) = qualifier out of range (m) = manual integration (+) = signals summed

Data Path : Z:\svoasrv\HPCHEM1\BNA_P\Data\BP092420\
 Data File : BP003367.D
 Acq On : 24 Sep 2020 12:10
 Operator : CG/JU
 Sample : SSTDCCC040
 Misc :
 ALS Vial : 2 Sample Multiplier: 1

Instrument :
 BNA_P
 Client Sampled :
 SSTDCCC040

Quant Time: Sep 24 12:38:25 2020
 Quant Method : Z:\SVOASRV\HPCHEM1\BNA_P\METHODS\8270-BP091520.M
 Quant Title : ASP BNA STANDARDS FOR 5 POINT CALIBRATION
 QLast Update : Tue Sep 22 12:48:08 2020
 Response via : Initial Calibration

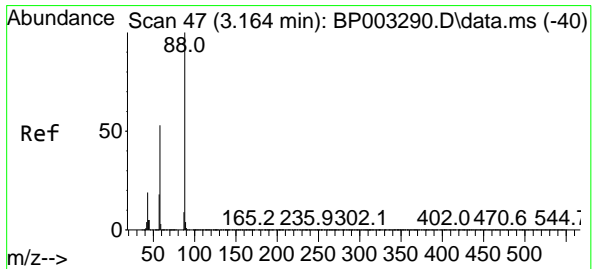
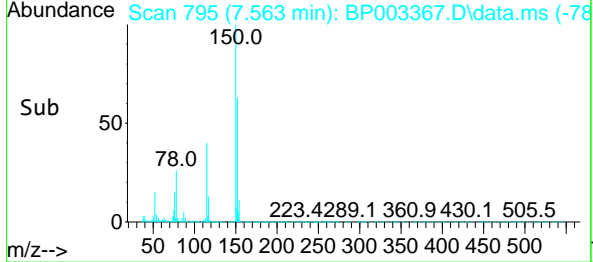
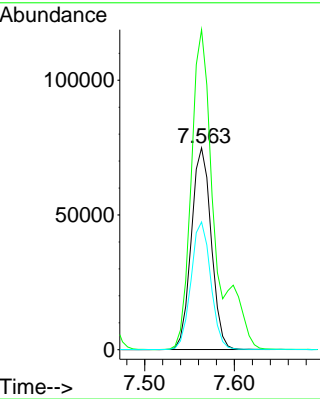
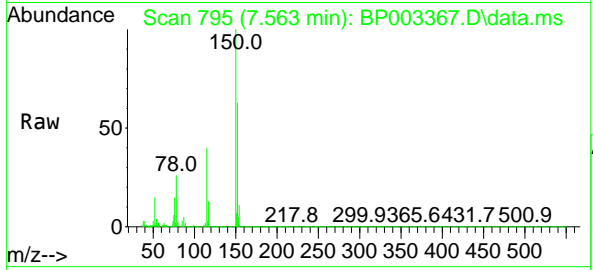




#1
 1,4-Dichlorobenzene-d4
 Concen: 20.00 ng
 RT: 7.563 min Scan# 795
 Delta R.T. -0.053 min
 Lab File: BP003367.D
 Acq: 24 Sep 2020 12:10

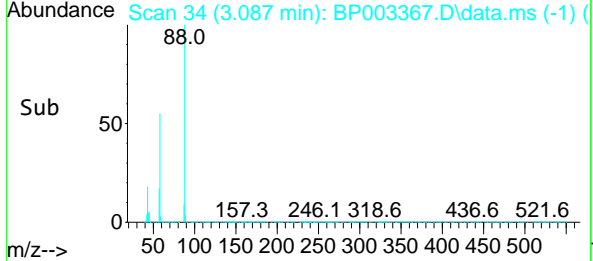
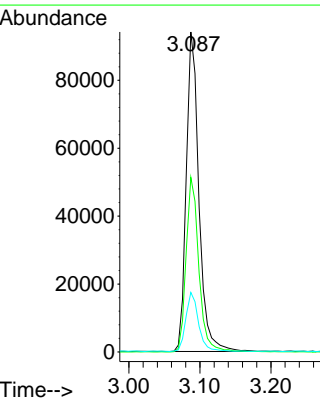
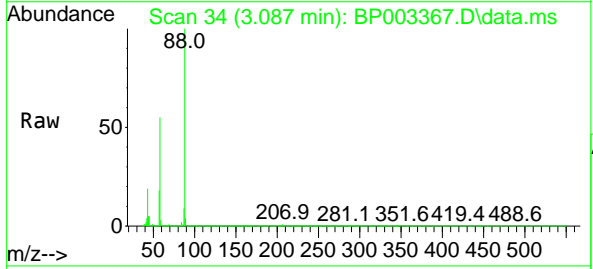
Instrument :
 BNA_P
 ClientSampled :
 SSTDCCC040

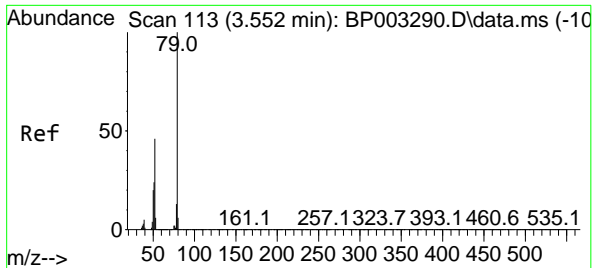
Tgt Ion	Resp	Lower	Upper
152	115096		
100	100		
150	158.6	123.8	185.6
115	63.3	43.8	65.6



#2
 1,4-Dioxane
 Concen: 43.18 ng
 RT: 3.087 min Scan# 34
 Delta R.T. -0.065 min
 Lab File: BP003367.D
 Acq: 24 Sep 2020 12:10

Tgt Ion	Resp	Lower	Upper
88	116970		
100	100		
58	55.0	44.2	66.4
43	18.7	15.2	22.8



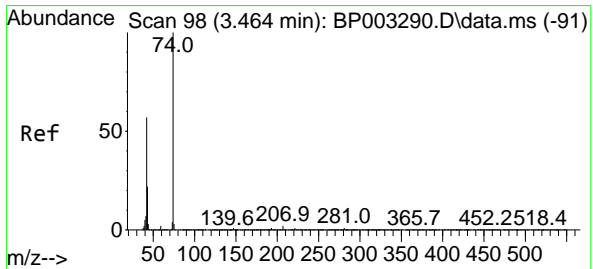
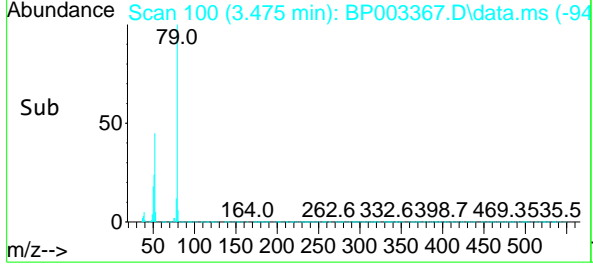
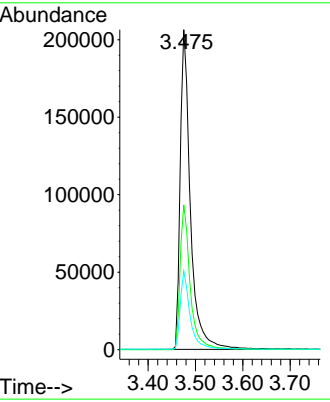
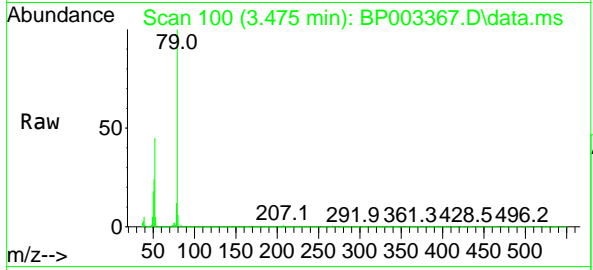


#3
 Pyridine
 Concen: 42.70 ng
 RT: 3.475 min Scan# 100
 Delta R.T. -0.065 min
 Lab File: BP003367.D
 Acq: 24 Sep 2020 12:10

Instrument :
 BNA_P
 ClientSampleId :
 SSTDCCC040

Tgt Ion: 79 Resp: 307937

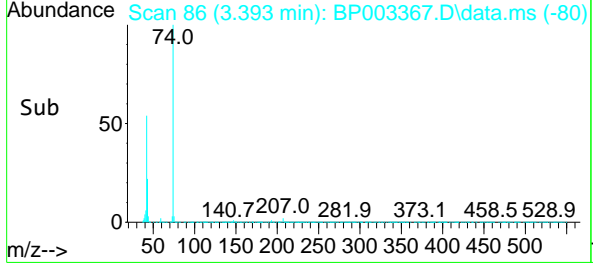
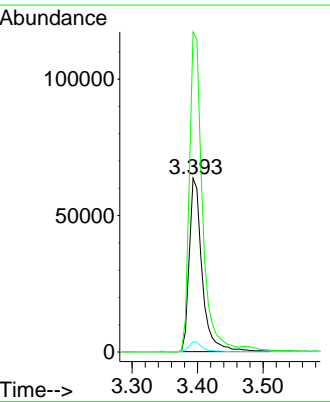
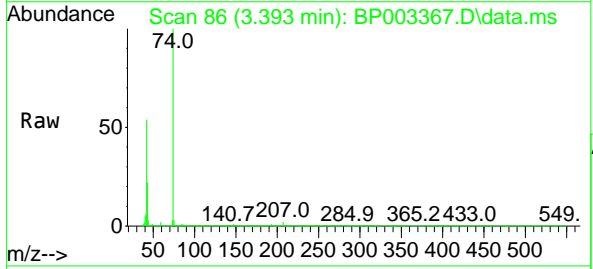
Ion	Ratio	Lower	Upper
79	100		
52	45.3	41.3	61.9
51	24.5	21.2	31.8

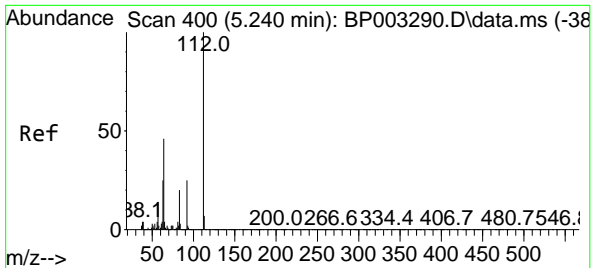


#4
 n-Nitrosodimethylamine
 Concen: 40.40 ng
 RT: 3.393 min Scan# 86
 Delta R.T. -0.065 min
 Lab File: BP003367.D
 Acq: 24 Sep 2020 12:10

Tgt Ion: 42 Resp: 87165

Ion	Ratio	Lower	Upper
42	100		
74	184.3	148.6	223.0
44	5.8	5.3	7.9

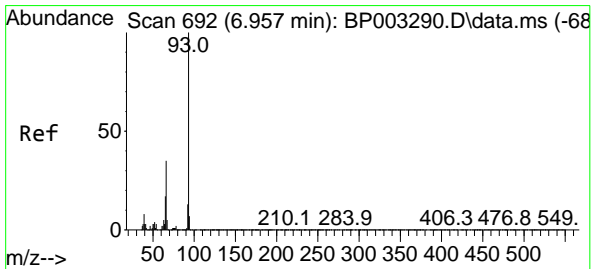
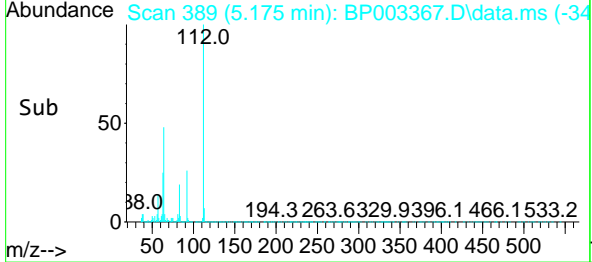
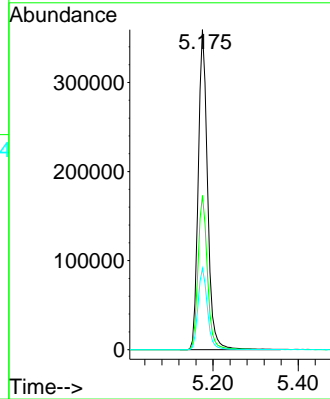
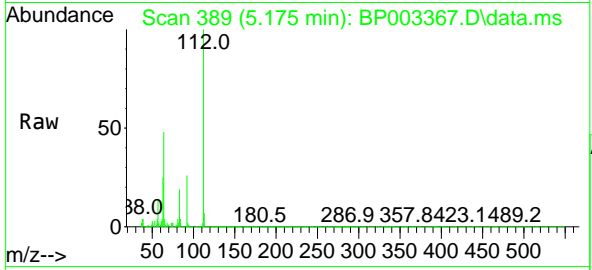




#5
 2-Fluorophenol
 Concen: 82.71 ng
 RT: 5.175 min Scan# 389
 Delta R.T. -0.053 min
 Lab File: BP003367.D
 Acq: 24 Sep 2020 12:10

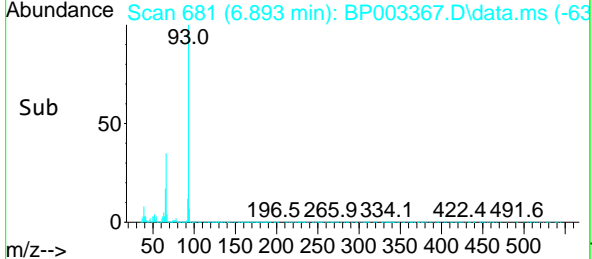
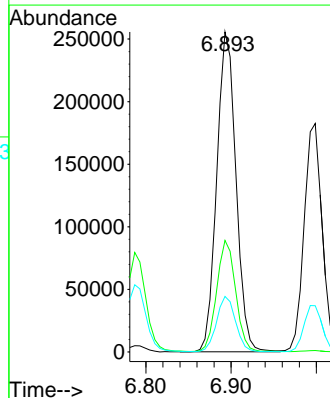
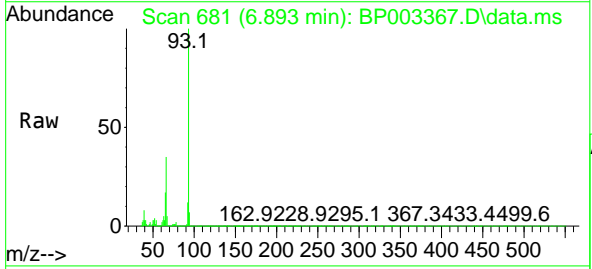
Instrument :
 BNA_P
 ClientSampleId :
 SSTDCCC040

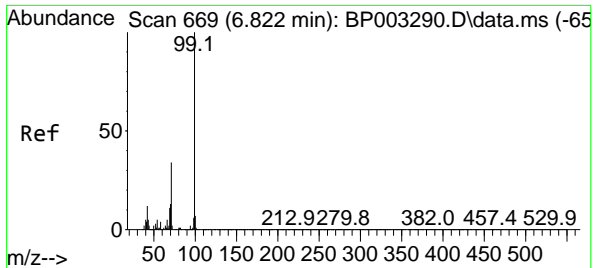
Tgt Ion	Resp	Lower	Upper
112	100		
64	48.1	32.8	49.2
63	25.4	17.0	25.4



#6
 Aniline
 Concen: 39.72 ng
 RT: 6.893 min Scan# 681
 Delta R.T. -0.053 min
 Lab File: BP003367.D
 Acq: 24 Sep 2020 12:10

Tgt Ion	Resp	Lower	Upper
93	100		
66	34.9	25.4	38.0
65	17.4	12.5	18.7

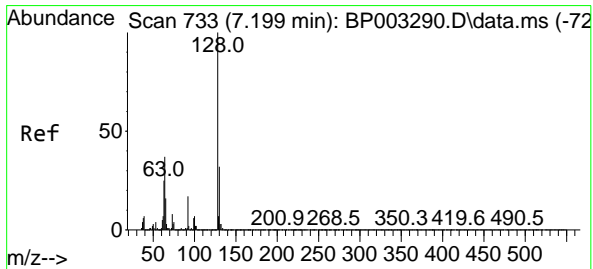
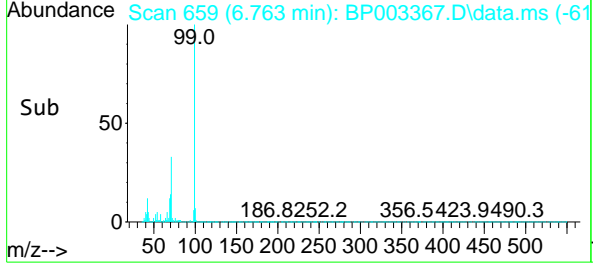
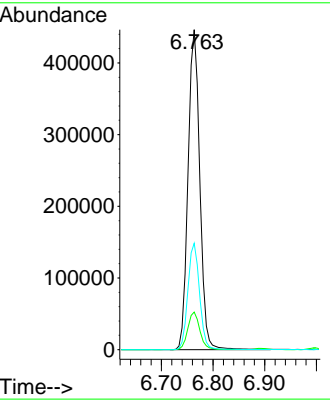
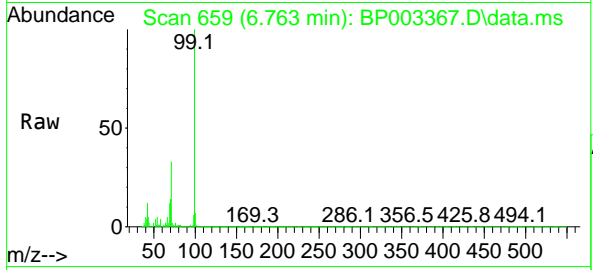




#7
 Phenol-d6
 Concen: 80.33 ng
 RT: 6.763 min Scan# 659
 Delta R.T. -0.047 min
 Lab File: BP003367.D
 Acq: 24 Sep 2020 12:10

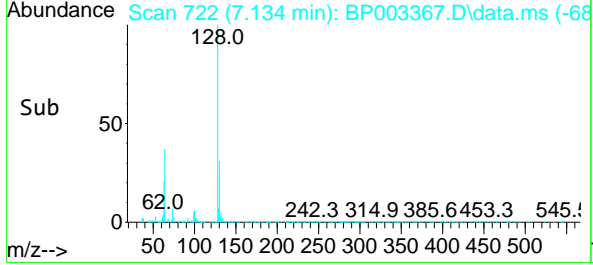
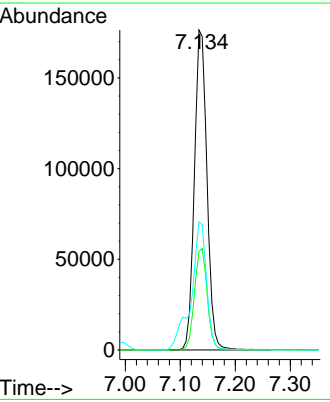
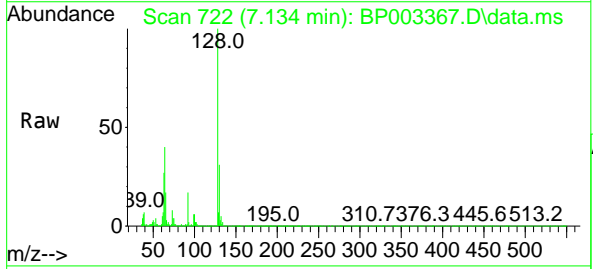
Instrument :
 BNA_P
 ClientSampleId :
 SSTDCCC040

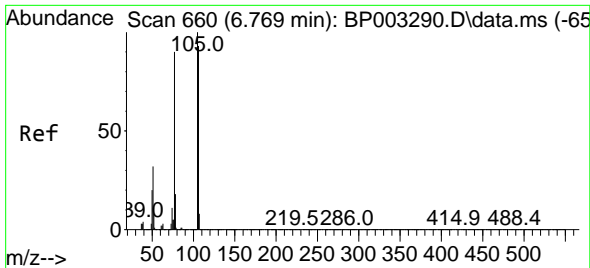
Tgt Ion	Resp	Lower	Upper
99	705747		
99	100		
42	11.7	8.6	13.0
71	33.2	23.4	35.2



#8
 2-Chlorophenol
 Concen: 38.21 ng
 RT: 7.134 min Scan# 722
 Delta R.T. -0.053 min
 Lab File: BP003367.D
 Acq: 24 Sep 2020 12:10

Tgt Ion	Resp	Lower	Upper
128	280496		
128	100		
130	30.8	13.0	53.0
64	40.0	10.4	50.4

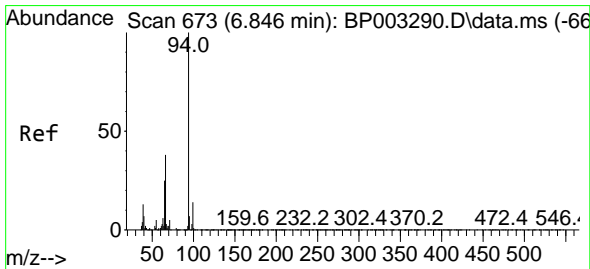
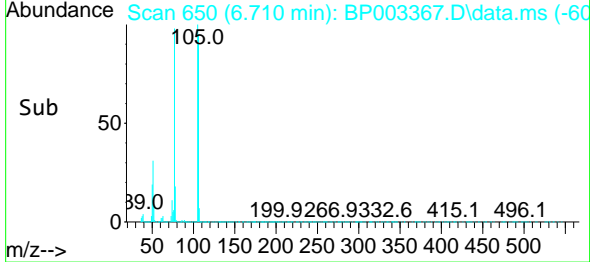
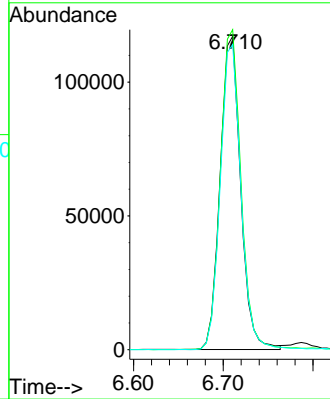
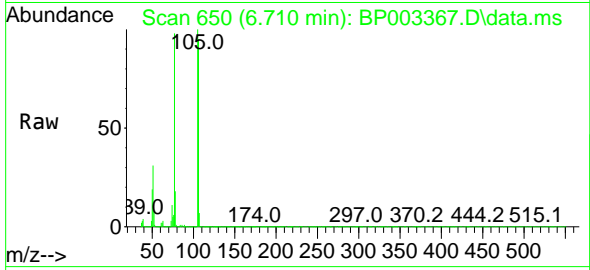




#9
 Benzaldehyde
 Concen: 37.84 ng
 RT: 6.710 min Scan# 650
 Delta R.T. -0.053 min
 Lab File: BP003367.D
 Acq: 24 Sep 2020 12:10

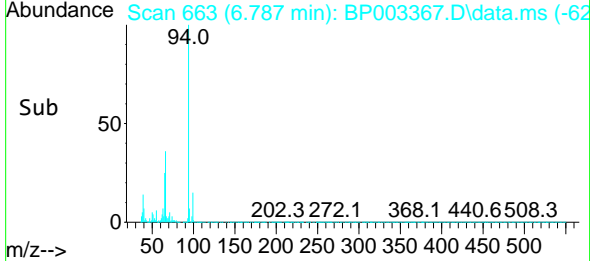
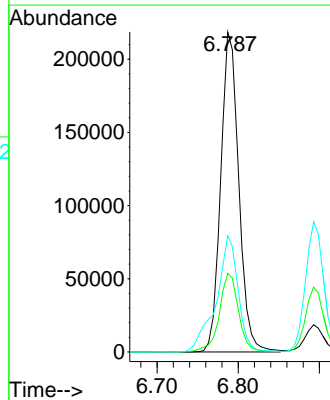
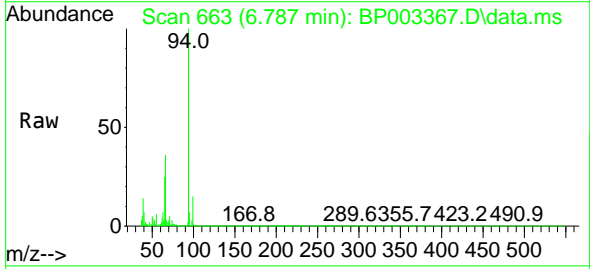
Instrument :
 BNA_P
ClientSampleId :
 SSTDCCC040

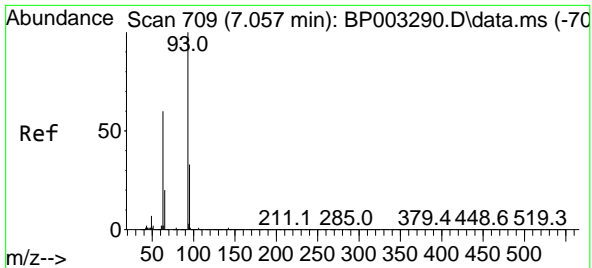
Tgt Ion	Resp	Lower	Upper
77	185412		
77	100		
105	102.1	97.1	137.1
106	97.4	93.7	133.7



#10
 Phenol
 Concen: 40.31 ng
 RT: 6.787 min Scan# 663
 Delta R.T. -0.047 min
 Lab File: BP003367.D
 Acq: 24 Sep 2020 12:10

Tgt Ion	Resp	Lower	Upper
94	338319		
94	100		
65	24.5	2.3	42.3
66	36.4	10.9	50.9



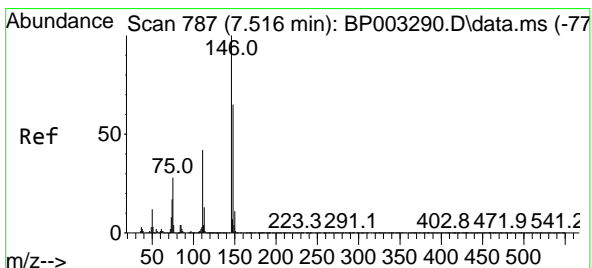
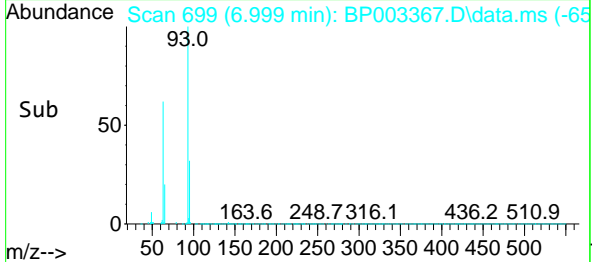
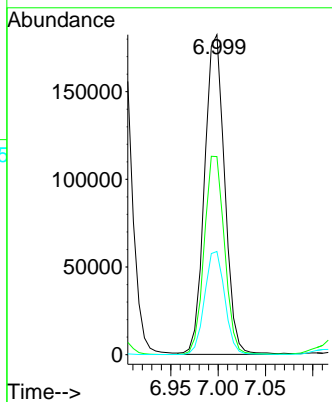
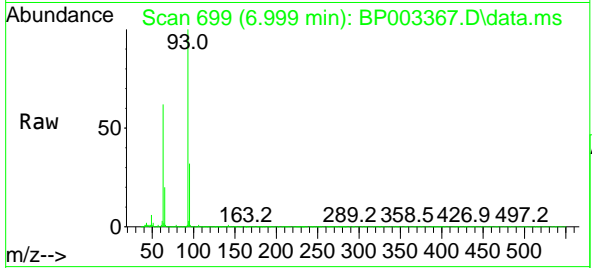


#11
 bis(2-Chloroethyl)ether
 Concen: 40.48 ng
 RT: 6.999 min Scan# 699
 Delta R.T. -0.047 min
 Lab File: BP003367.D
 Acq: 24 Sep 2020 12:10

Instrument :
 BNA_P
 ClientSampleId :
 SSTDCCC040

Tgt Ion: 93 Resp: 269178

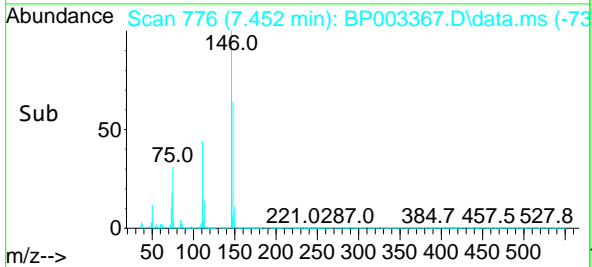
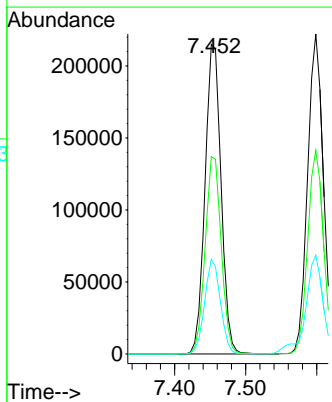
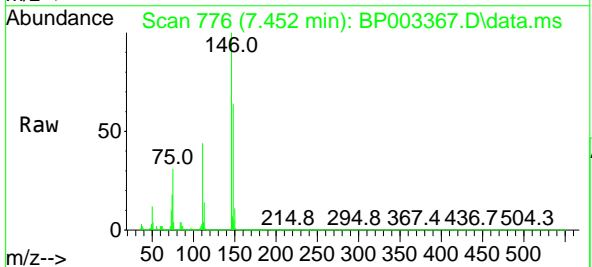
Ion	Ratio	Lower	Upper
93	100		
63	61.9	39.0	79.0
95	32.3	12.8	52.8

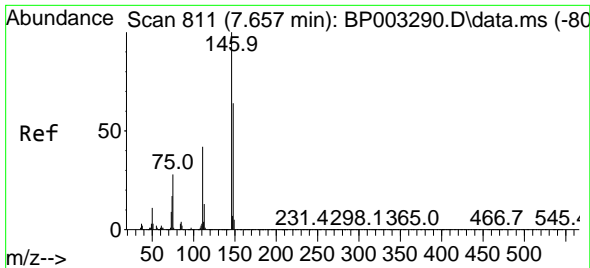


#12
 1,3-Dichlorobenzene
 Concen: 38.62 ng
 RT: 7.452 min Scan# 776
 Delta R.T. -0.059 min
 Lab File: BP003367.D
 Acq: 24 Sep 2020 12:10

Tgt Ion: 146 Resp: 339010

Ion	Ratio	Lower	Upper
146	100		
148	63.7	52.5	78.7
75	30.6	18.1	27.1



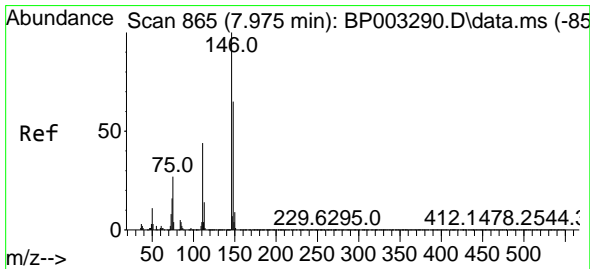
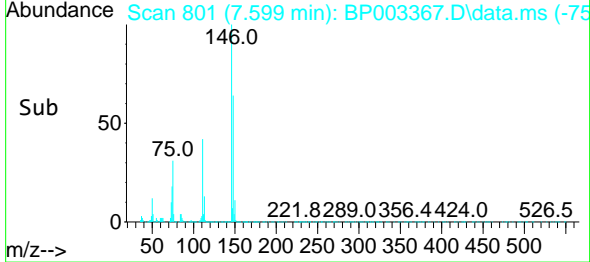
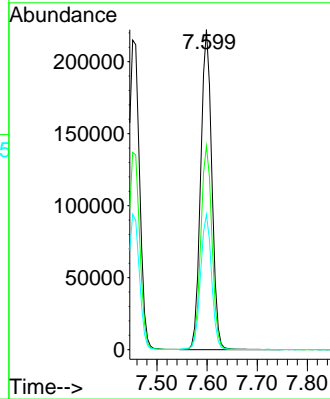
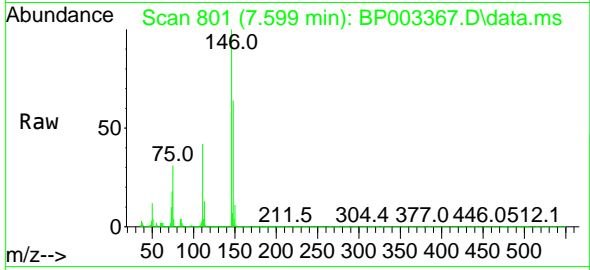


#13
 1,4-Dichlorobenzene
 Concen: 38.49 ng
 RT: 7.599 min Scan# 801
 Delta R.T. -0.053 min
 Lab File: BP003367.D
 Acq: 24 Sep 2020 12:10

Instrument :
 BNA_P
 ClientSampleId :
 SSTDCCC040

Tgt Ion:146 Resp: 341751

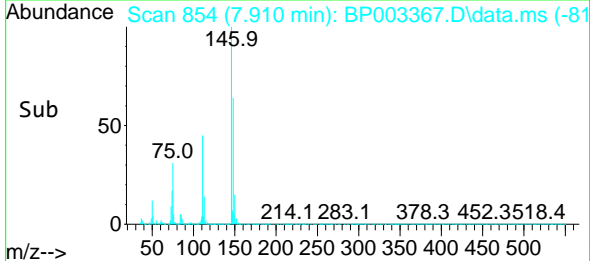
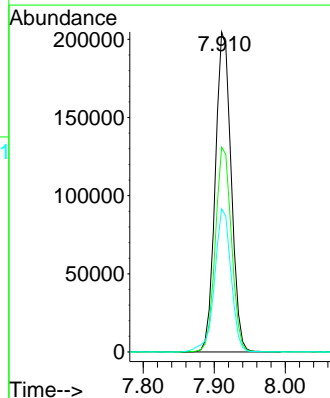
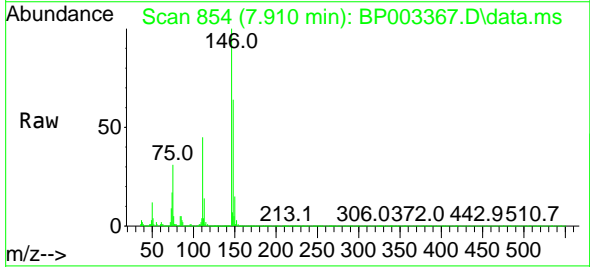
Ion	Ratio	Lower	Upper
146	100		
148	63.7	51.3	76.9
111	42.3	28.9	43.3

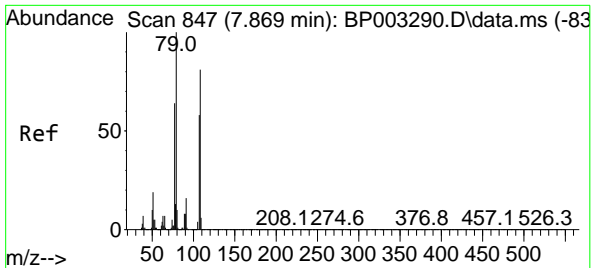


#14
 1,2-Dichlorobenzene
 Concen: 37.25 ng
 RT: 7.910 min Scan# 854
 Delta R.T. -0.059 min
 Lab File: BP003367.D
 Acq: 24 Sep 2020 12:10

Tgt Ion:146 Resp: 317478

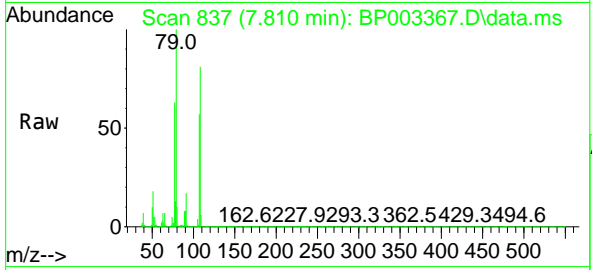
Ion	Ratio	Lower	Upper
146	100		
148	64.0	51.6	77.4
111	44.7	31.0	46.6



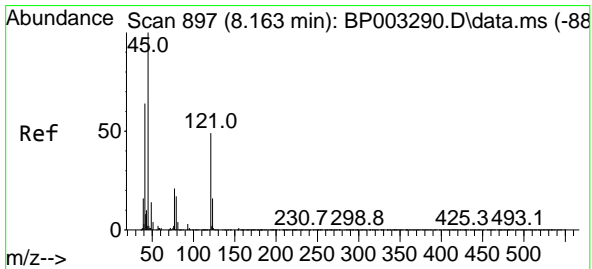
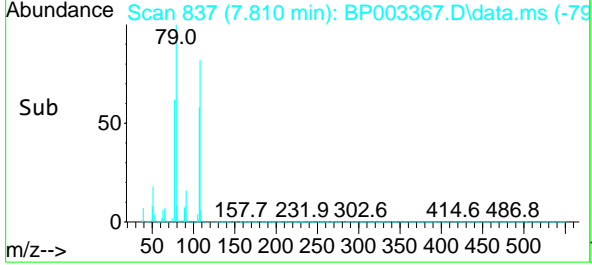
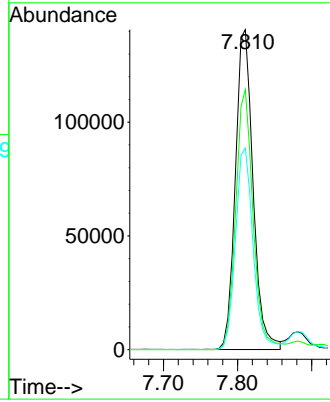


#15
 Benzyl Alcohol
 Concen: 39.85 ng
 RT: 7.810 min Scan# 837
 Delta R.T. -0.047 min
 Lab File: BP003367.D
 Acq: 24 Sep 2020 12:10

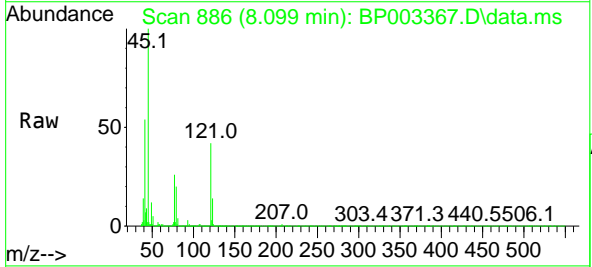
Instrument :
 BNA_P
 ClientSampled :
 SSTDCCC040



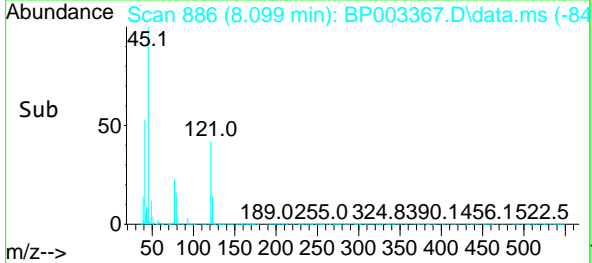
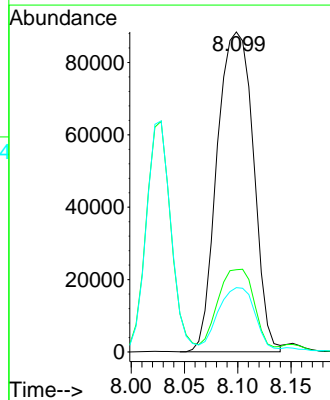
Tgt Ion: 79 Resp: 232650
 Ion Ratio Lower Upper
 79 100
 108 81.2 73.5 110.3
 77 63.0 50.3 75.5

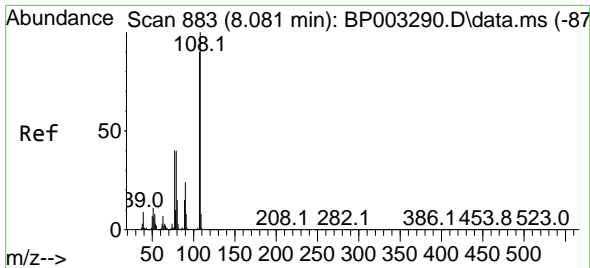


#16
 2,2'-oxybis(1-Chloropropane)
 Concen: 43.31 ng
 RT: 8.099 min Scan# 886
 Delta R.T. -0.053 min
 Lab File: BP003367.D
 Acq: 24 Sep 2020 12:10



Tgt Ion: 45 Resp: 209427
 Ion Ratio Lower Upper
 45 100
 77 25.7 2.3 42.3
 79 20.1 0.0 36.6



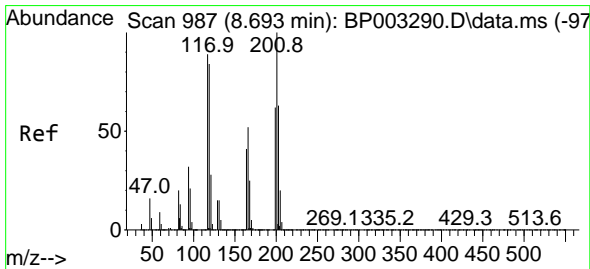
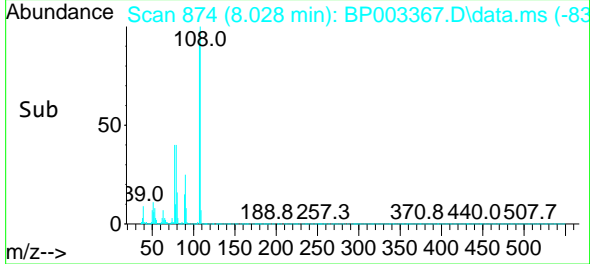
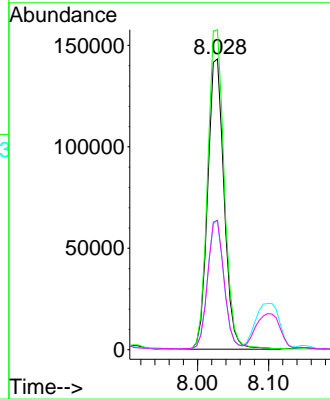
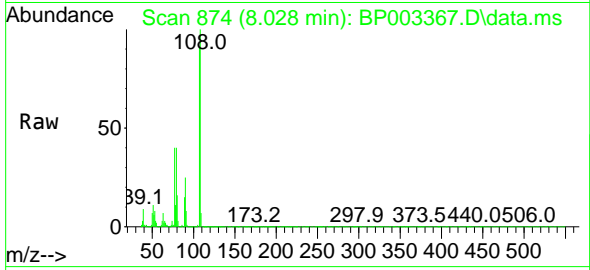


#17
 2-Methylphenol
 Concen: 37.98 ng
 RT: 8.028 min Scan# 874
 Delta R.T. -0.047 min
 Lab File: BP003367.D
 Acq: 24 Sep 2020 12:10

Instrument :
 BNA_P
 ClientSampled :
 SSTDCCC040

Tgt Ion:107 Resp: 230454

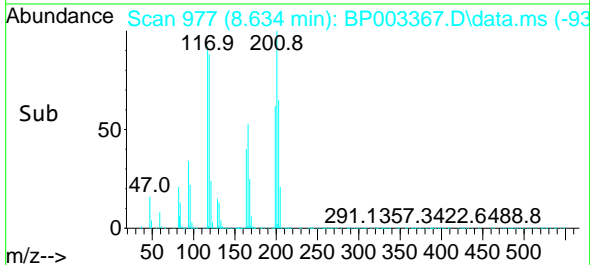
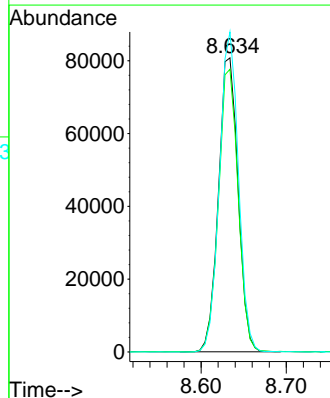
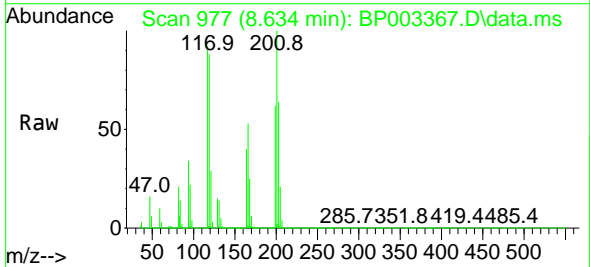
Ion	Ratio	Lower	Upper
107	100		
108	110.0	89.6	134.4
77	44.5	31.8	47.6
79	44.5	31.1	46.7

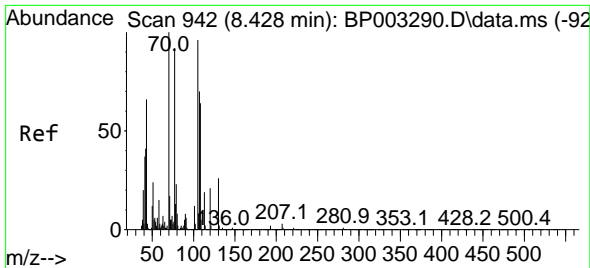


#18
 Hexachloroethane
 Concen: 39.16 ng
 RT: 8.634 min Scan# 977
 Delta R.T. -0.053 min
 Lab File: BP003367.D
 Acq: 24 Sep 2020 12:10

Tgt Ion:117 Resp: 129562

Ion	Ratio	Lower	Upper
117	100		
119	96.1	78.8	118.2
201	108.8	92.3	138.5



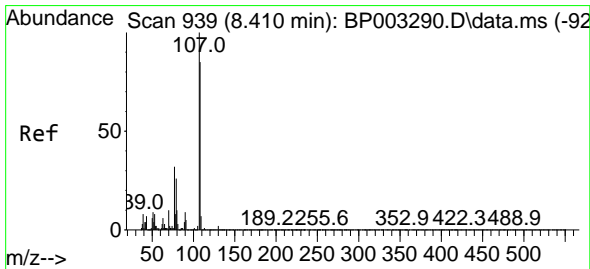
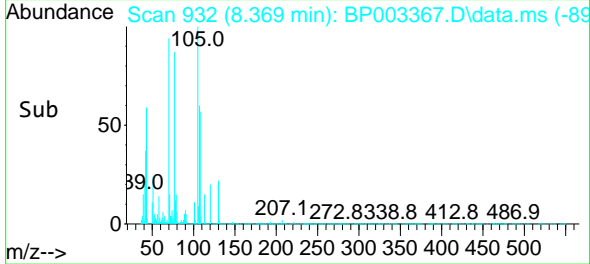
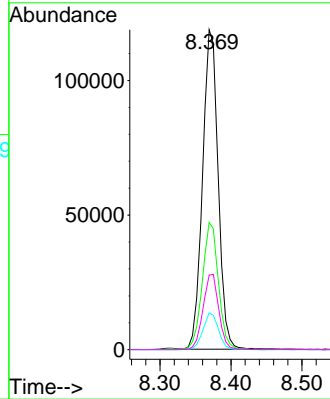
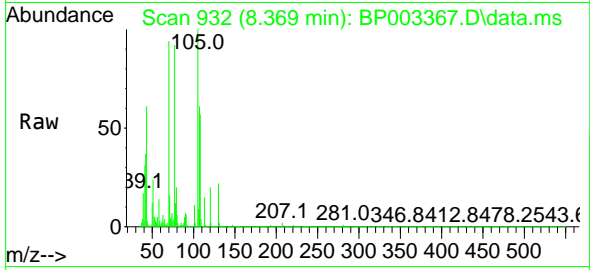


#19
 n-Nitroso-di-n-propylamine
 Concen: 38.64 ng
 RT: 8.369 min Scan# 932
 Delta R.T. -0.053 min
 Lab File: BP003367.D
 Acq: 24 Sep 2020 12:10

Instrument :
 BNA_P
 ClientSampleId :
 SSTDCCC040

Tgt Ion: 70 Resp: 181855

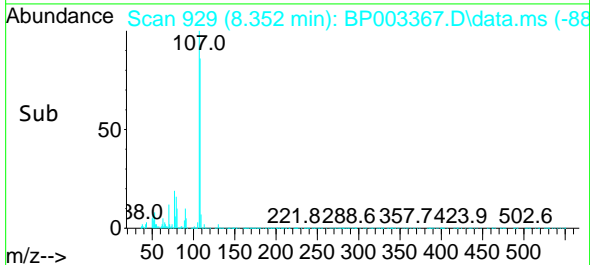
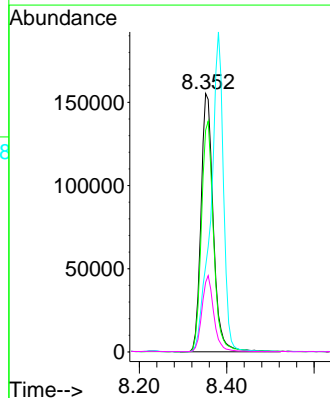
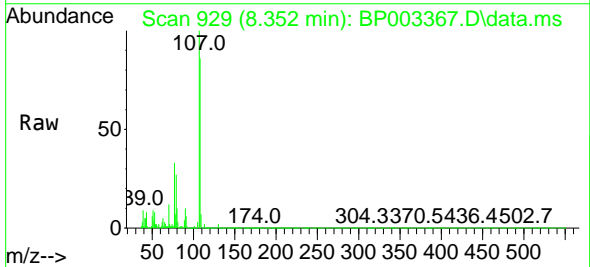
Ion	Ratio	Lower	Upper
70	100		
42	39.8	32.8	49.2
101	11.5	9.6	14.4
130	23.3	24.3	36.5#

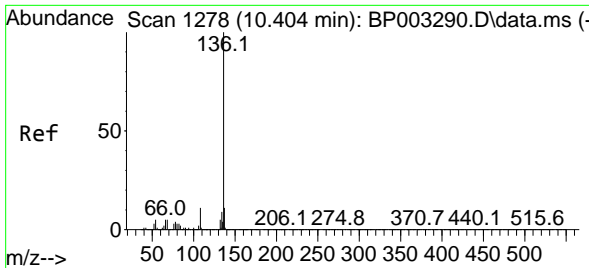


#20
 3+4-Methylphenols
 Concen: 37.69 ng
 RT: 8.352 min Scan# 929
 Delta R.T. -0.053 min
 Lab File: BP003367.D
 Acq: 24 Sep 2020 12:10

Tgt Ion: 107 Resp: 304377

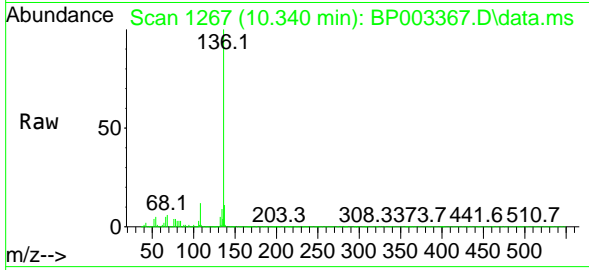
Ion	Ratio	Lower	Upper
107	100		
108	85.8	69.0	109.0
77	33.2	8.5	48.5
79	27.0	4.8	44.8





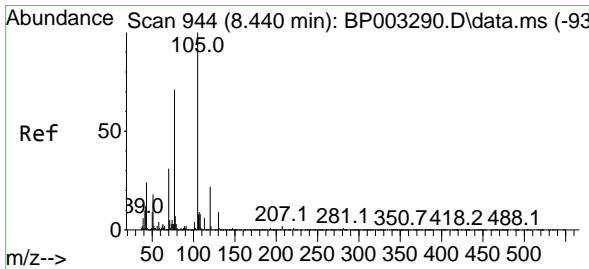
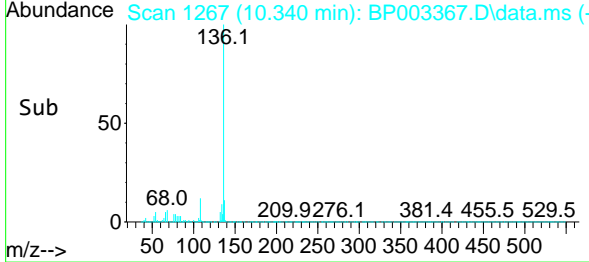
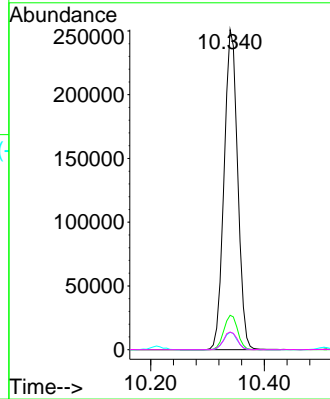
#21
 Naphthalene-d8
 Concen: 20.00 ng
 RT: 10.340 min Scan# 1267
 Delta R.T. -0.059 min
 Lab File: BP003367.D
 Acq: 24 Sep 2020 12:10

Instrument :
 BNA_P
 ClientSampleId :
 SSTDCCC040

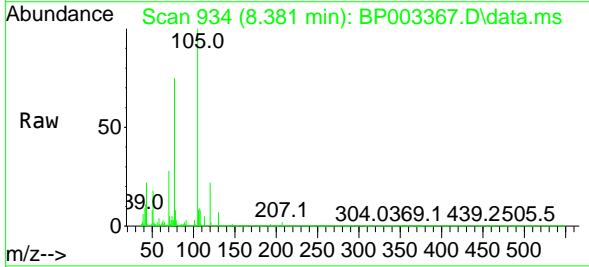


Tgt Ion:136 Resp: 418492

Ion	Ratio	Lower	Upper
136	100		
137	10.8	8.6	13.0
54	5.5	3.6	5.4#
68	5.5	3.3	4.9#

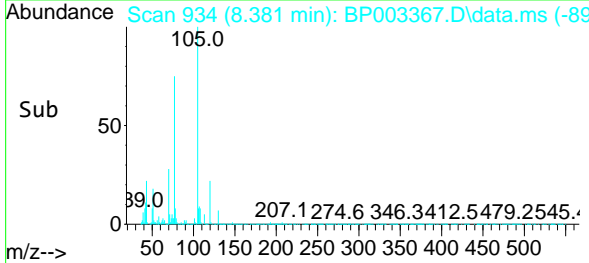
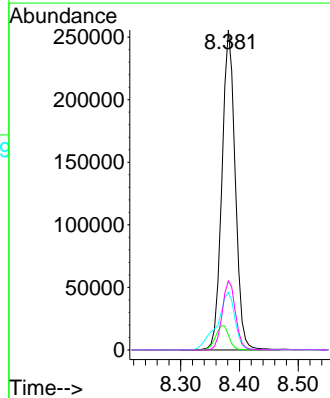


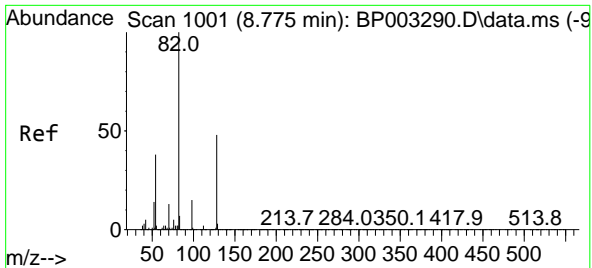
#22
 Acetophenone
 Concen: 39.13 ng
 RT: 8.381 min Scan# 934
 Delta R.T. -0.053 min
 Lab File: BP003367.D
 Acq: 24 Sep 2020 12:10



Tgt Ion:105 Resp: 402197

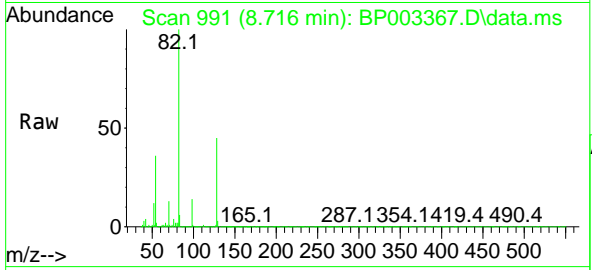
Ion	Ratio	Lower	Upper
105	100		
71	4.7	2.6	3.8#
51	18.0	13.5	20.3
120	21.6	19.6	29.4



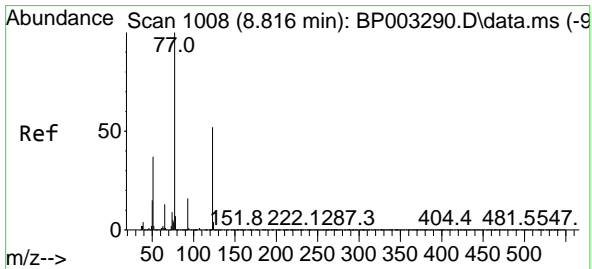
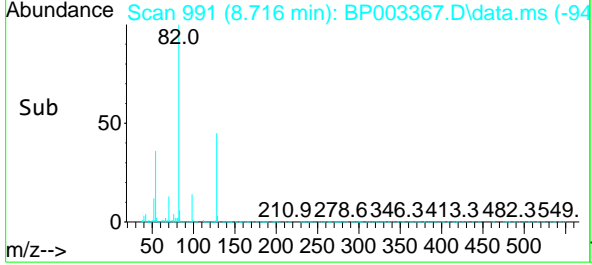
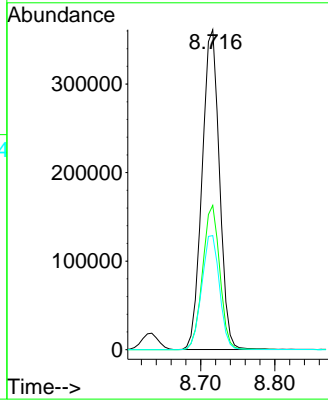


#23
 Nitrobenzene-d5
 Concen: 82.67 ng
 RT: 8.716 min Scan# 991
 Delta R.T. -0.053 min
 Lab File: BP003367.D
 Acq: 24 Sep 2020 12:10

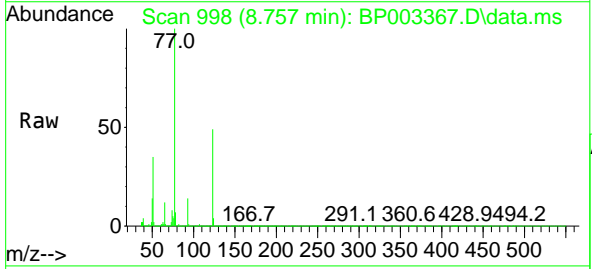
Instrument :
 BNA_P
 ClientSampled :
 SSTDCCC040



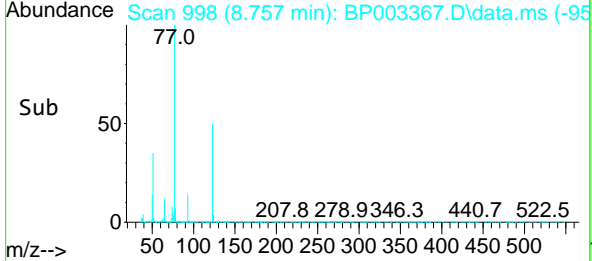
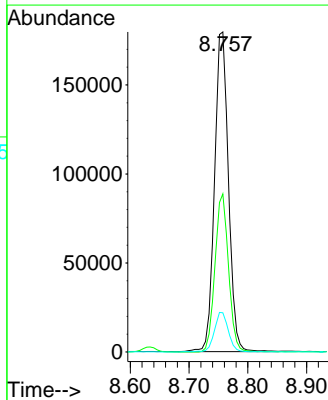
Tgt Ion: 82 Resp: 588912
 Ion Ratio Lower Upper
 82 100
 128 45.1 45.6 68.4#
 54 35.7 30.1 45.1

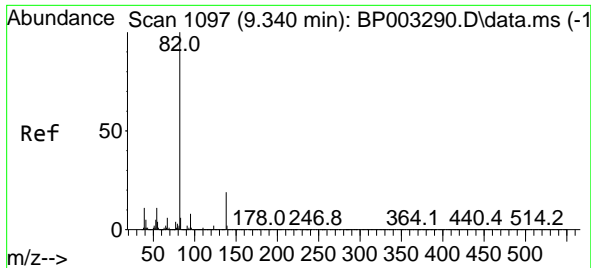


#24
 Nitrobenzene
 Concen: 41.48 ng
 RT: 8.757 min Scan# 998
 Delta R.T. -0.053 min
 Lab File: BP003367.D
 Acq: 24 Sep 2020 12:10



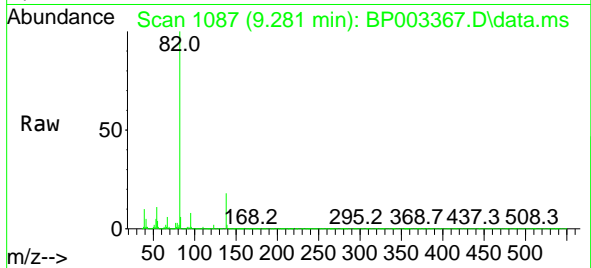
Tgt Ion: 77 Resp: 295658
 Ion Ratio Lower Upper
 77 100
 123 49.4 48.6 72.8
 65 12.2 10.0 15.0



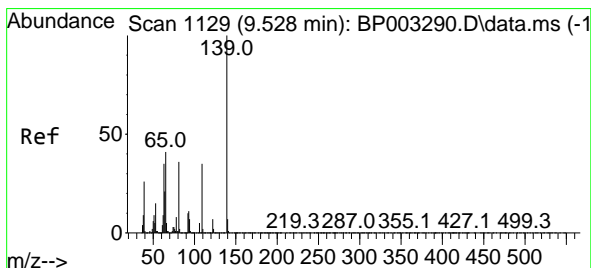
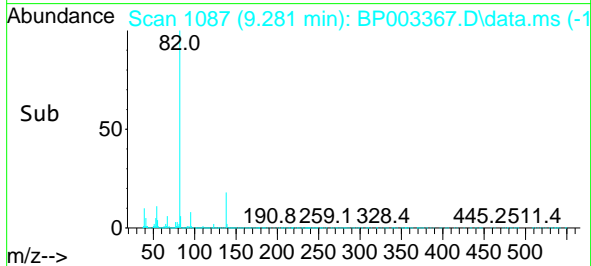
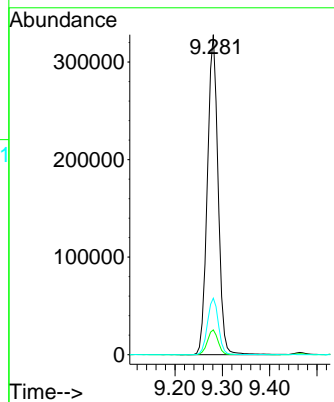


#25
 Isophorone
 Concen: 39.44 ng
 RT: 9.281 min Scan# 1087
 Delta R.T. -0.053 min
 Lab File: BP003367.D
 Acq: 24 Sep 2020 12:10

Instrument :
 BNA_P
 ClientSampled :
 SSTDCCC040

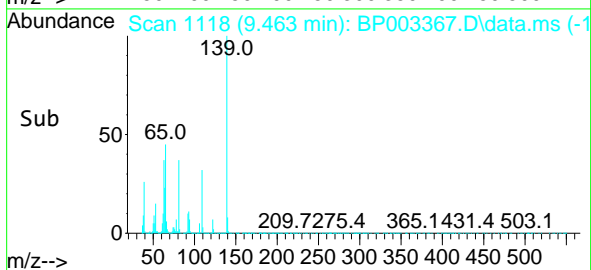
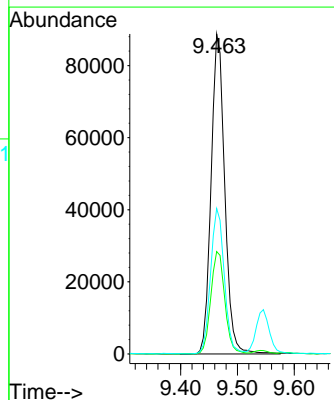
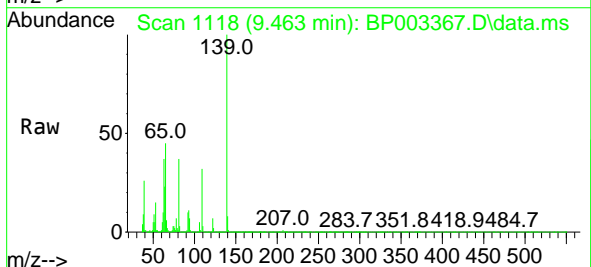


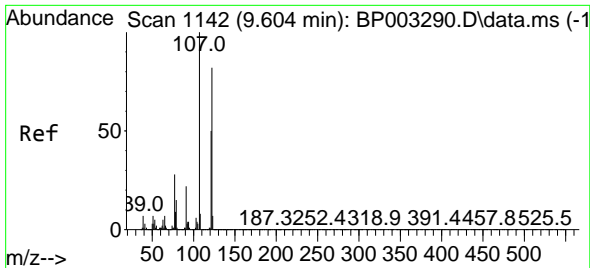
Tgt Ion: 82 Resp: 514924
 Ion Ratio Lower Upper
 82 100
 95 7.8 6.4 9.6
 138 17.7 18.7 28.1#



#26
 2-Nitrophenol
 Concen: 37.99 ng
 RT: 9.463 min Scan# 1118
 Delta R.T. -0.053 min
 Lab File: BP003367.D
 Acq: 24 Sep 2020 12:10

Tgt Ion: 139 Resp: 147877
 Ion Ratio Lower Upper
 139 100
 109 32.0 22.1 33.1
 65 45.5 26.5 39.7#

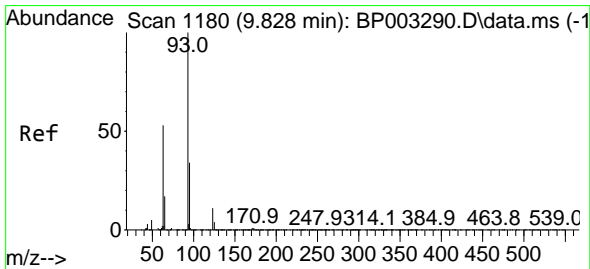
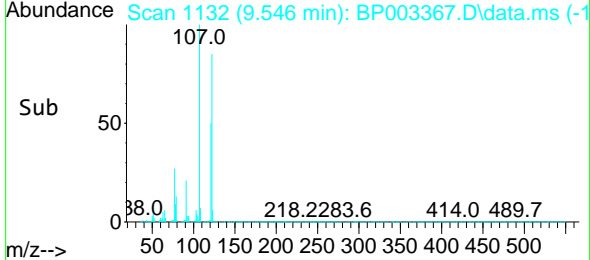
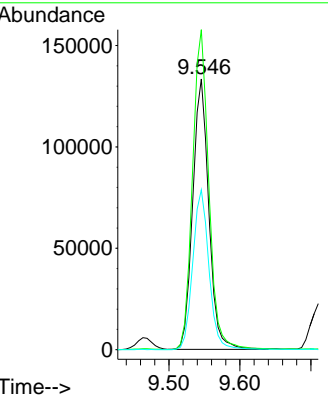
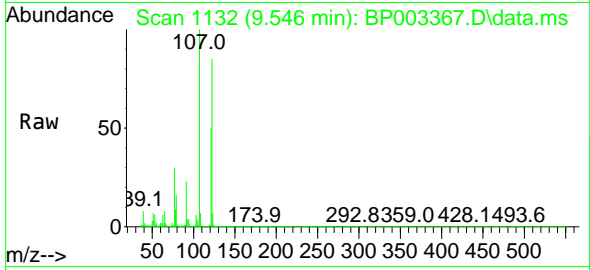




#27
 2,4-Dimethylphenol
 Concen: 38.19 ng
 RT: 9.546 min Scan# 1132
 Delta R.T. -0.047 min
 Lab File: BP003367.D
 Acq: 24 Sep 2020 12:10

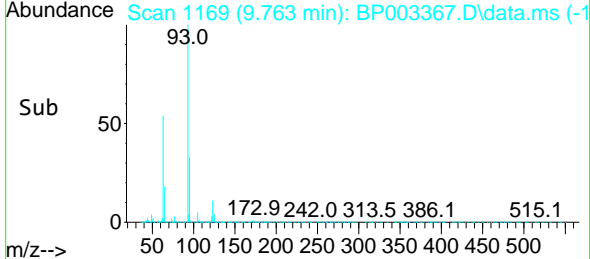
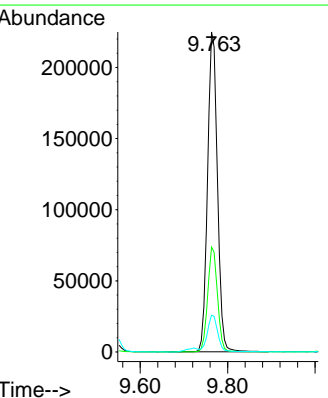
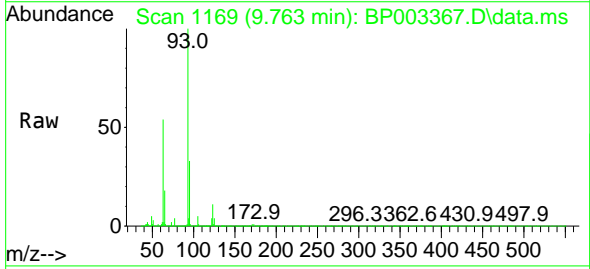
Instrument :
 BNA_P
 ClientSampleId :
 SSTDCCC040

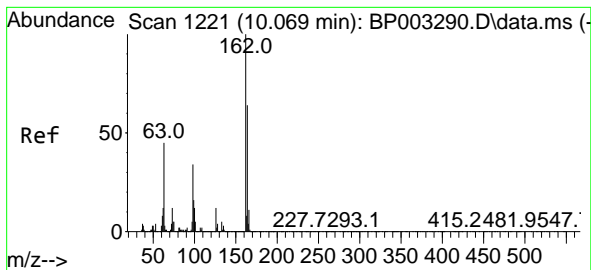
Tgt Ion	Resp	Lower	Upper
122	210277		
122	100		
107	118.2	87.3	130.9
121	59.0	47.3	70.9



#28
 bis(2-Chloroethoxy)methane
 Concen: 40.48 ng
 RT: 9.763 min Scan# 1169
 Delta R.T. -0.053 min
 Lab File: BP003367.D
 Acq: 24 Sep 2020 12:10

Tgt Ion	Resp	Lower	Upper
93	351721		
93	100		
95	32.7	26.7	40.1
123	11.5	10.5	15.7



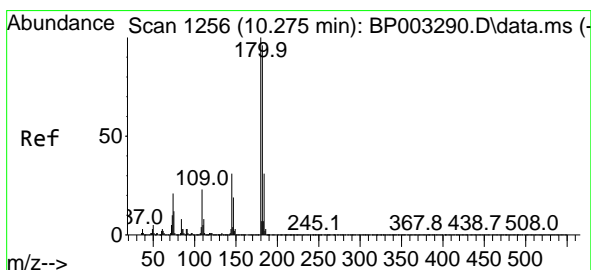
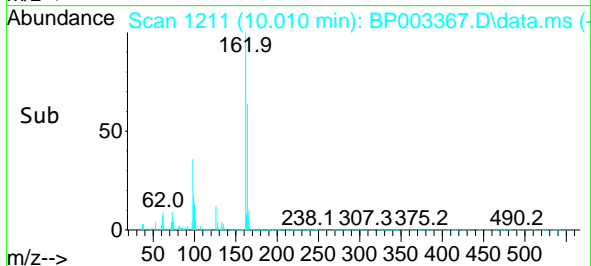
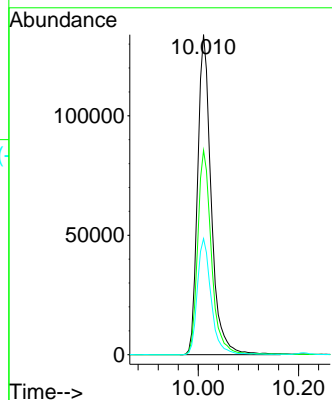
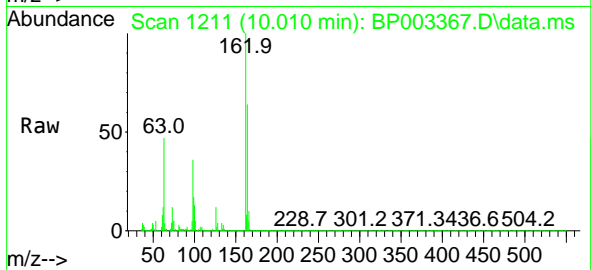


#29
 2,4-Dichlorophenol
 Concen: 36.58 ng
 RT: 10.010 min Scan# 1211
 Delta R.T. -0.053 min
 Lab File: BP003367.D
 Acq: 24 Sep 2020 12:10

Instrument :
 BNA_P
 ClientSampleId :
 SSTDCCC040

Tgt Ion:162 Resp: 251674

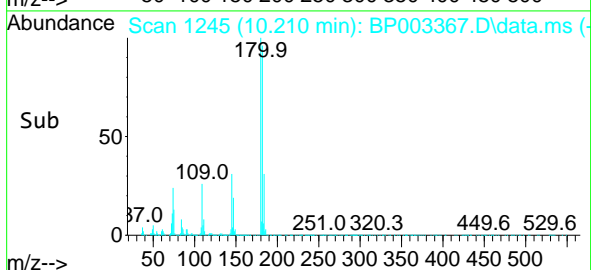
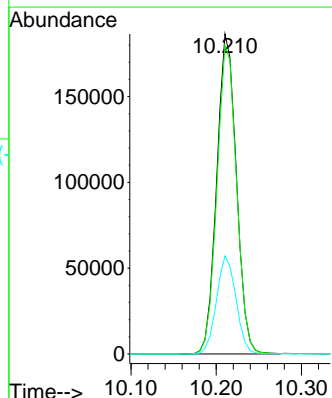
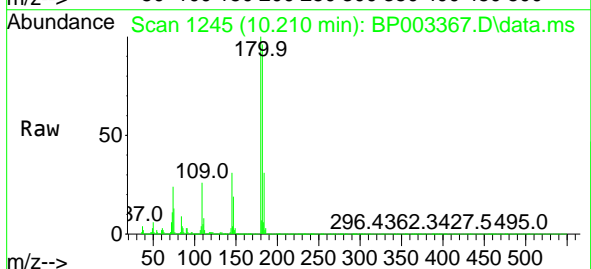
Ion	Ratio	Lower	Upper
162	100		
164	63.9	45.8	85.8
98	36.3	10.2	50.2

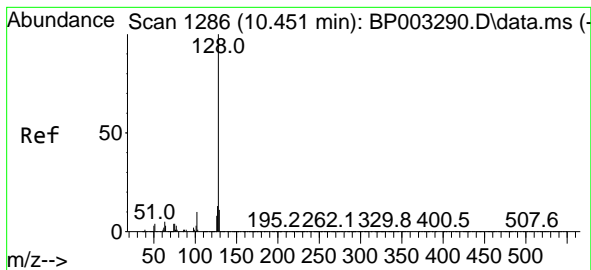


#30
 1,2,4-Trichlorobenzene
 Concen: 36.57 ng
 RT: 10.210 min Scan# 1245
 Delta R.T. -0.053 min
 Lab File: BP003367.D
 Acq: 24 Sep 2020 12:10

Tgt Ion:180 Resp: 298517

Ion	Ratio	Lower	Upper
180	100		
182	96.4	76.2	114.2
145	30.6	23.8	35.8

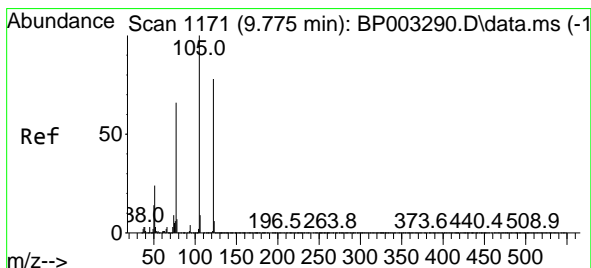
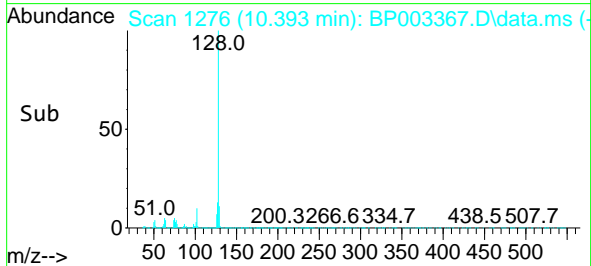
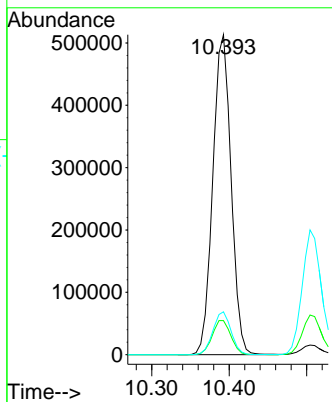
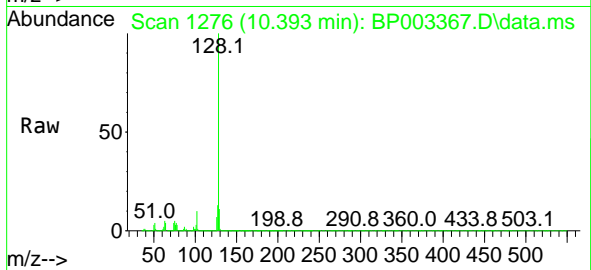




#31
 Naphthalene
 Concen: 37.95 ng
 RT: 10.393 min Scan# 1276
 Delta R.T. -0.053 min
 Lab File: BP003367.D
 Acq: 24 Sep 2020 12:10

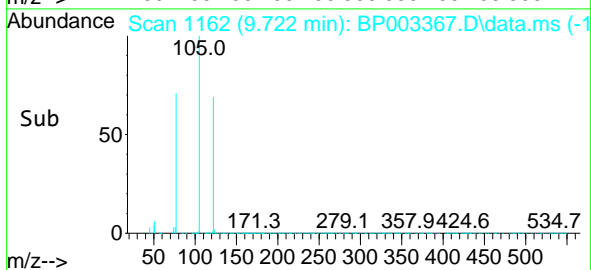
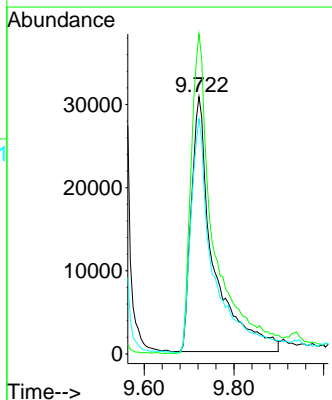
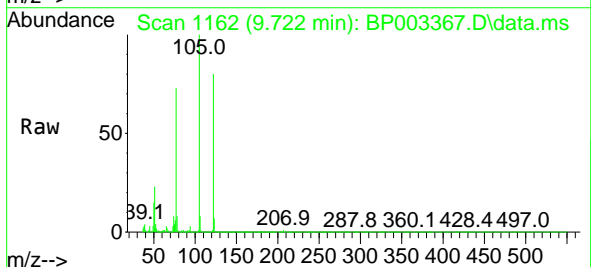
Instrument :
 BNA_P
 ClientSampled :
 SSTDCCC040

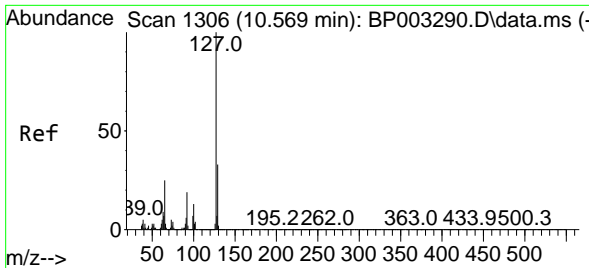
Tgt Ion	Resp	Lower	Upper
128	100		
129	10.7	8.8	13.2
127	13.4	10.6	15.8



#32
 Benzoic acid
 Concen: 30.79 ng
 RT: 9.722 min Scan# 1162
 Delta R.T. -0.035 min
 Lab File: BP003367.D
 Acq: 24 Sep 2020 12:10

Tgt Ion	Resp	Lower	Upper
122	100		
105	124.4	94.1	134.1
77	91.4	50.1	90.1



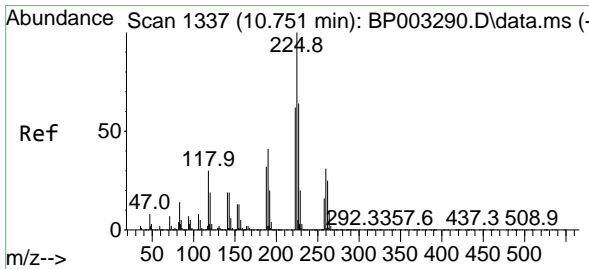
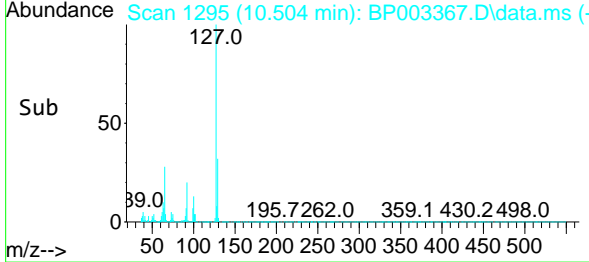
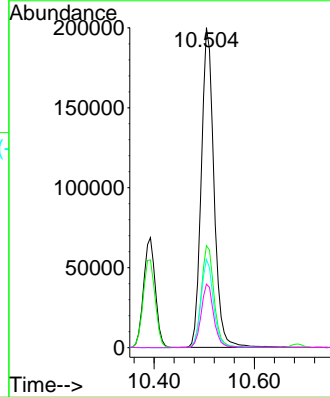
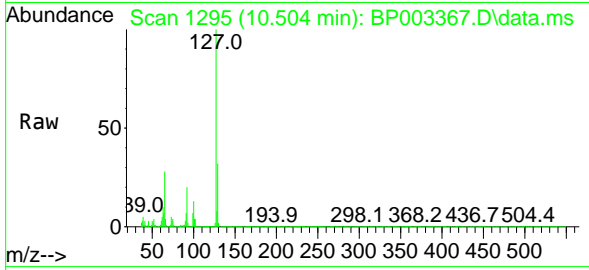


#33
 4-Chloroaniline
 Concen: 37.42 ng
 RT: 10.504 min Scan# 1295
 Delta R.T. -0.059 min
 Lab File: BP003367.D
 Acq: 24 Sep 2020 12:10

Instrument :
 BNA_P
 ClientSampleId :
 SSTDCCC040

Tgt Ion:127 Resp: 351442

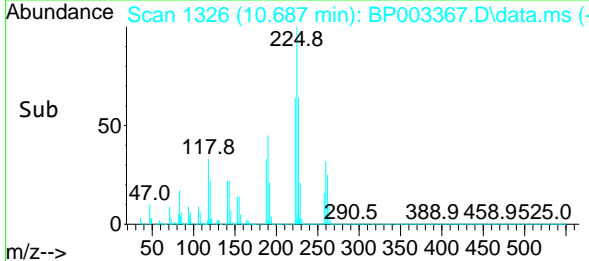
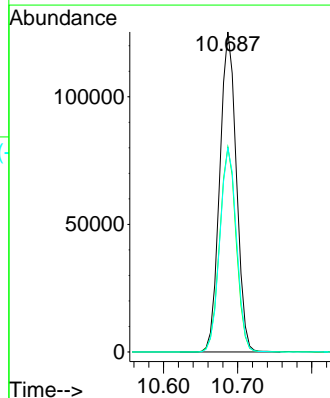
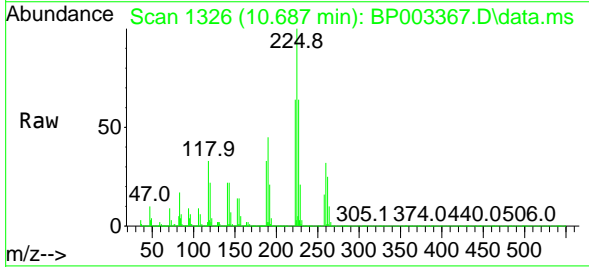
Ion	Ratio	Lower	Upper
127	100		
129	31.9	25.7	38.5
65	27.6	17.3	25.9#
92	19.9	12.9	19.3#

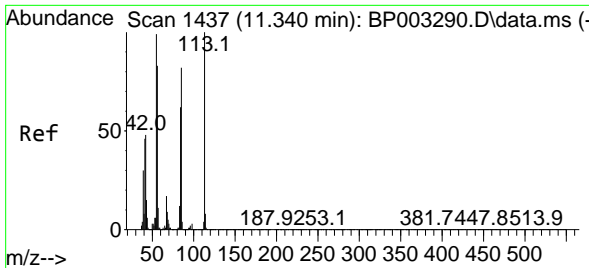


#34
 Hexachlorobutadiene
 Concen: 35.05 ng
 RT: 10.687 min Scan# 1326
 Delta R.T. -0.059 min
 Lab File: BP003367.D
 Acq: 24 Sep 2020 12:10

Tgt Ion:225 Resp: 195271

Ion	Ratio	Lower	Upper
225	100		
223	64.0	50.1	75.1
227	63.8	51.4	77.2

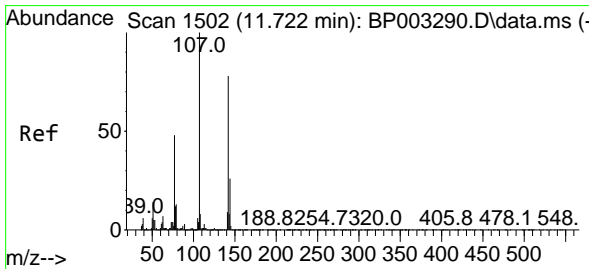
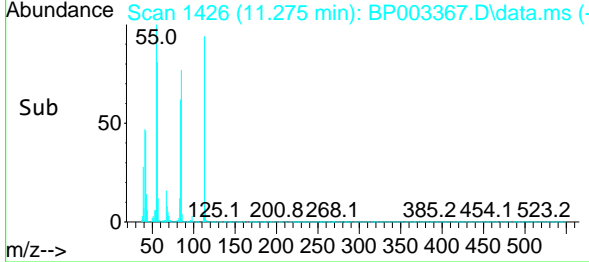
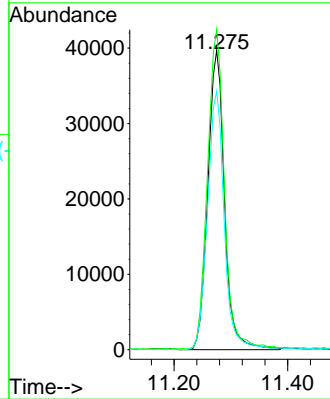
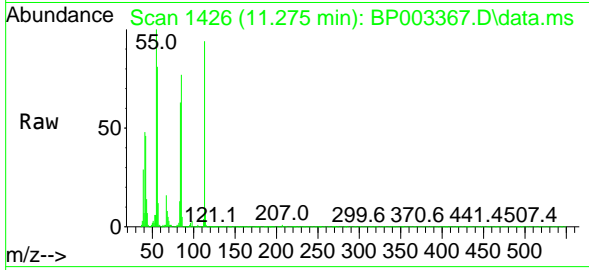




#35
 Caprolactam
 Concen: 35.04 ng
 RT: 11.275 min Scan# 1426
 Delta R.T. -0.047 min
 Lab File: BP003367.D
 Acq: 24 Sep 2020 12:10

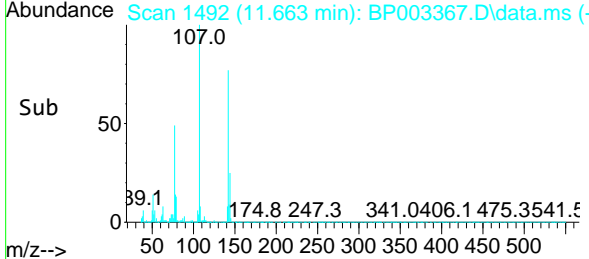
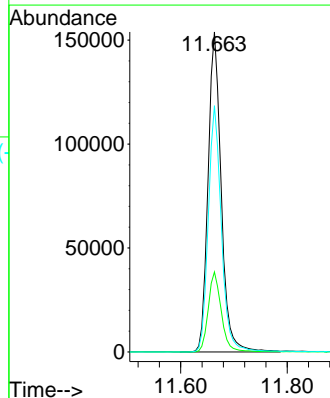
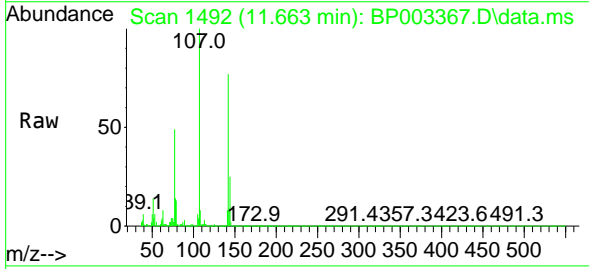
Instrument :
 BNA_P
ClientSampled :
 SSTDCCC040

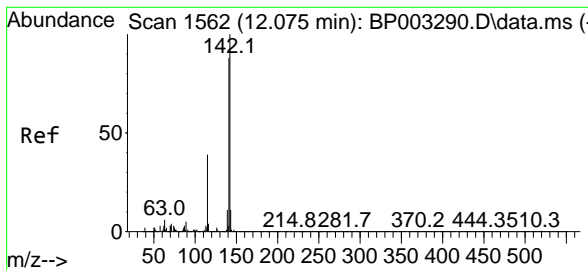
Tgt Ion	Resp	Lower	Upper
113	100		
55	106.9	77.3	117.3
56	86.4	55.9	95.9



#36
 4-Chloro-3-methylphenol
 Concen: 35.67 ng
 RT: 11.663 min Scan# 1492
 Delta R.T. -0.047 min
 Lab File: BP003367.D
 Acq: 24 Sep 2020 12:10

Tgt Ion	Resp	Lower	Upper
107	100		
144	25.0	22.7	34.1
142	77.0	70.7	106.1

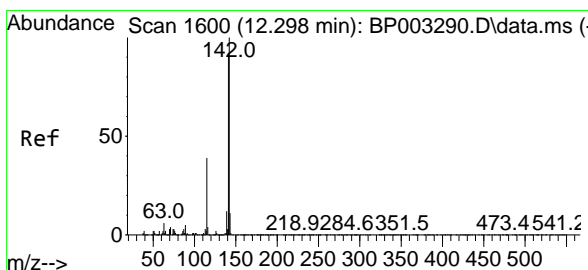
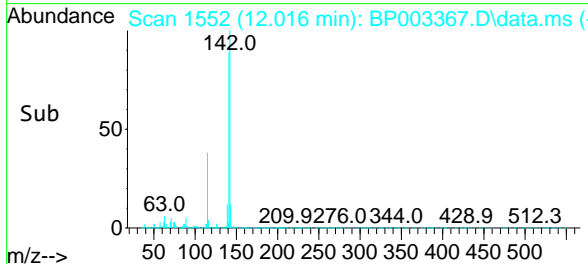
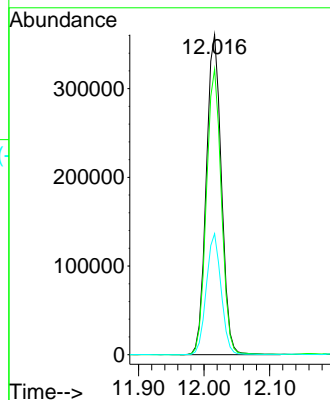
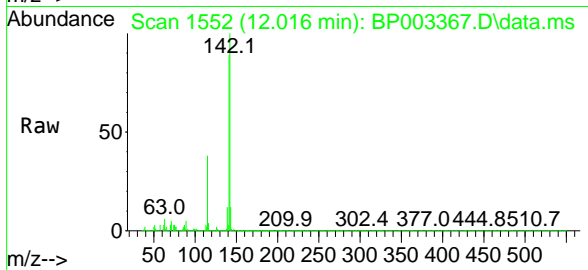




#37
 2-Methylnaphthalene
 Concen: 36.17 ng
 RT: 12.016 min Scan# 1552
 Delta R.T. -0.053 min
 Lab File: BP003367.D
 Acq: 24 Sep 2020 12:10

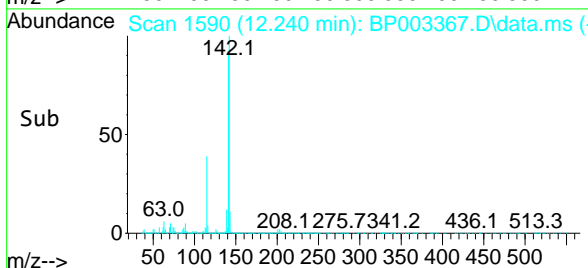
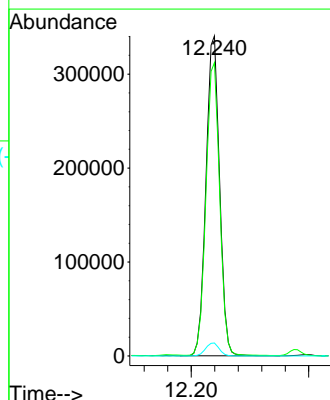
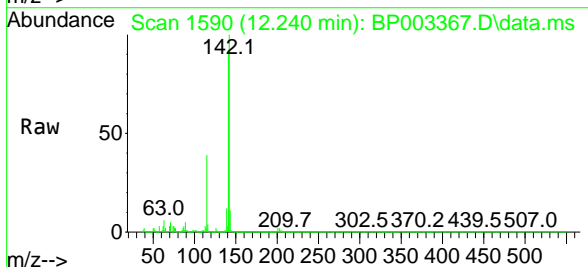
Instrument :
 BNA_P
 ClientSampleId :
 SSTDCCC040

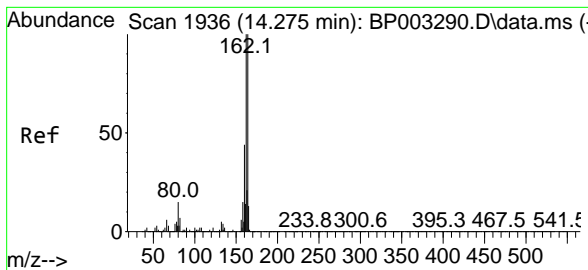
Tgt Ion	Resp	Lower	Upper
142	100		
141	89.2	71.4	107.2
115	37.8	25.8	38.6



#38
 1-Methylnaphthalene
 Concen: 35.75 ng
 RT: 12.240 min Scan# 1590
 Delta R.T. -0.053 min
 Lab File: BP003367.D
 Acq: 24 Sep 2020 12:10

Tgt Ion	Resp	Lower	Upper
142	100		
141	91.6	74.4	111.6
116	4.1	2.9	4.3

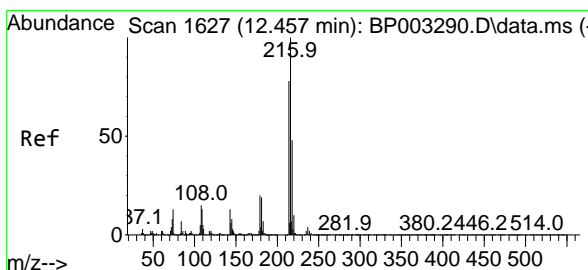
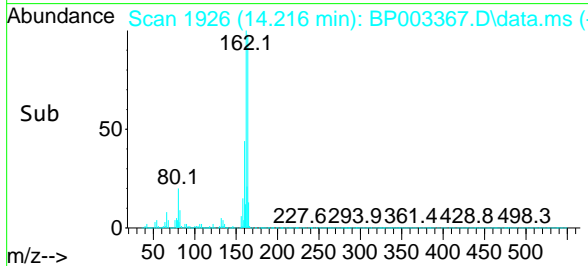
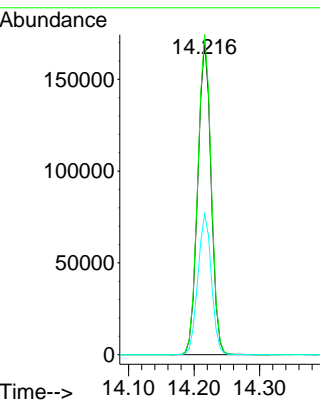
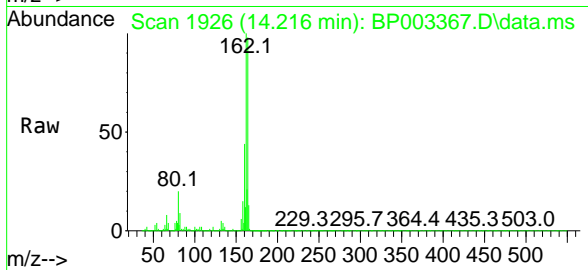




#39
 Acenaphthene-d10
 Concen: 20.00 ng
 RT: 14.216 min Scan# 1926
 Delta R.T. -0.047 min
 Lab File: BP003367.D
 Acq: 24 Sep 2020 12:10

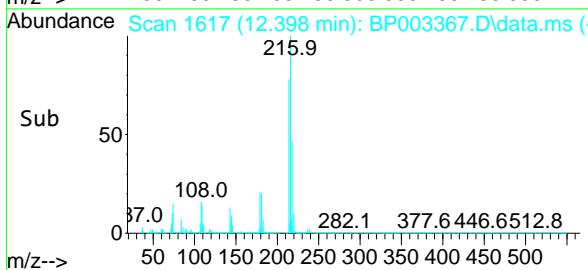
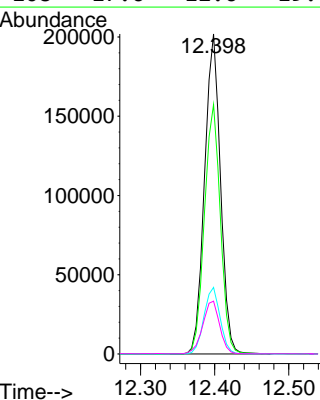
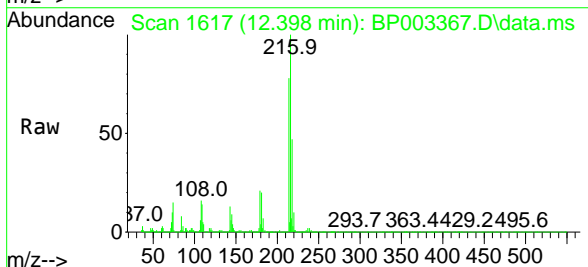
Instrument :
 BNA_P
 ClientSampleId :
 SSTDCCC040

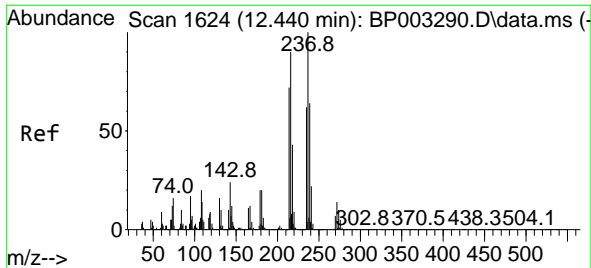
Tgt Ion	Resp	Lower	Upper
164	241432		
162	101.9	79.4	119.2
160	44.8	36.1	54.1



#40
 1,2,4,5-Tetrachlorobenzene
 Concen: 38.12 ng
 RT: 12.398 min Scan# 1617
 Delta R.T. -0.047 min
 Lab File: BP003367.D
 Acq: 24 Sep 2020 12:10

Tgt Ion	Resp	Lower	Upper
216	301283		
214	78.1	63.0	94.6
179	21.1	16.9	25.3
108	17.6	12.6	19.0

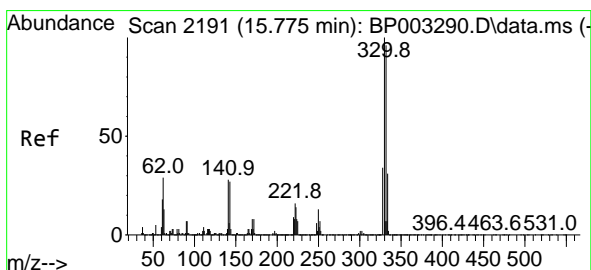
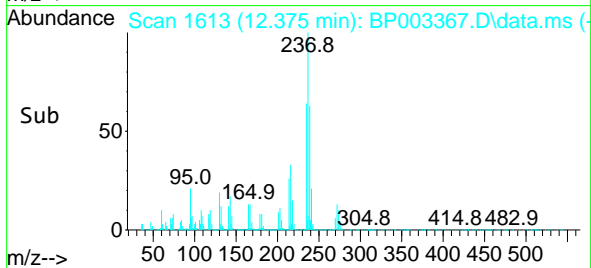
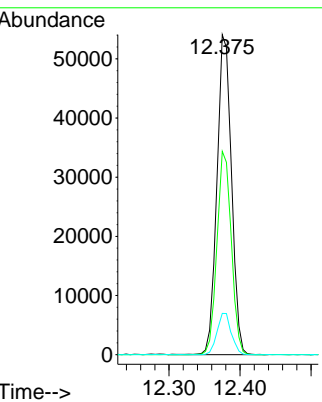
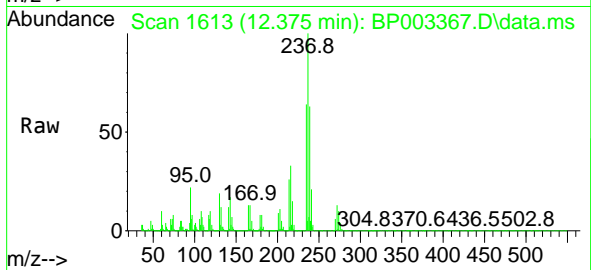




#41
 Hexachlorocyclopentadiene
 Concen: 38.69 ng
 RT: 12.375 min Scan# 1613
 Delta R.T. -0.053 min
 Lab File: BP003367.D
 Acq: 24 Sep 2020 12:10

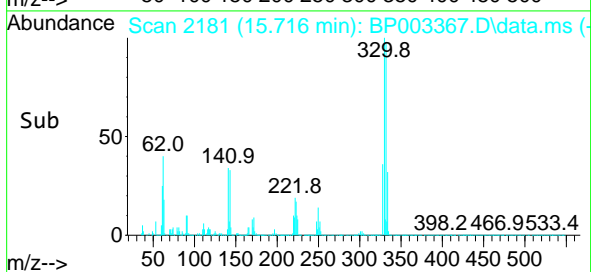
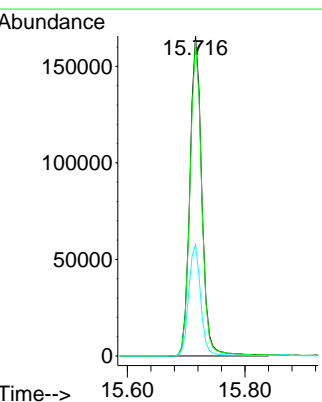
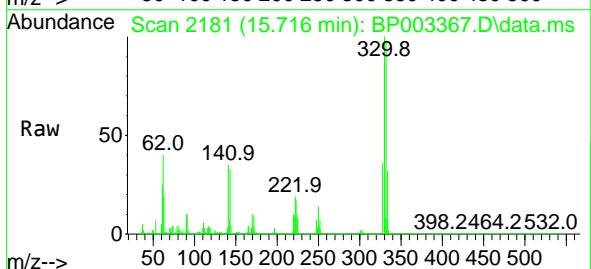
Instrument :
 BNA_P
ClientSampled :
 SSTDCCC040

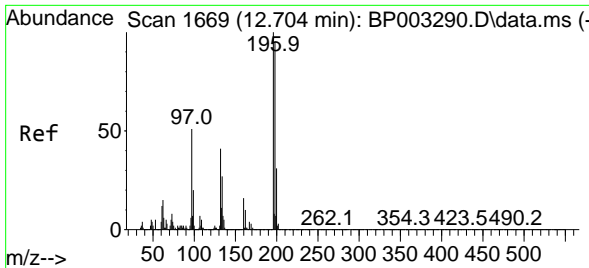
Tgt Ion	Resp	Lower	Upper
237	100		
235	63.6	43.2	83.2
272	12.9	0.0	33.3



#42
 2,4,6-Tribromophenol
 Concen: 63.51 ng
 RT: 15.716 min Scan# 2181
 Delta R.T. -0.047 min
 Lab File: BP003367.D
 Acq: 24 Sep 2020 12:10

Tgt Ion	Resp	Lower	Upper
330	100		
332	96.7	77.1	115.7
141	35.4	23.4	35.2#

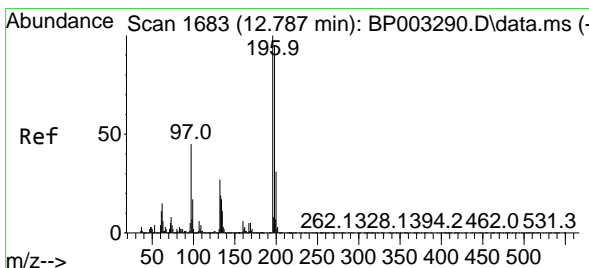
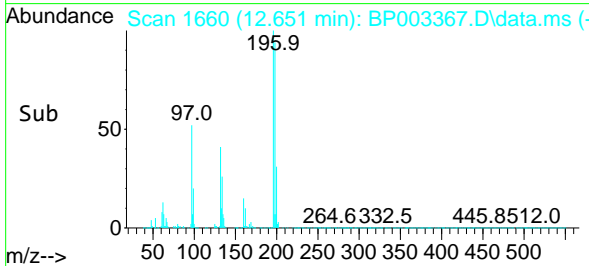
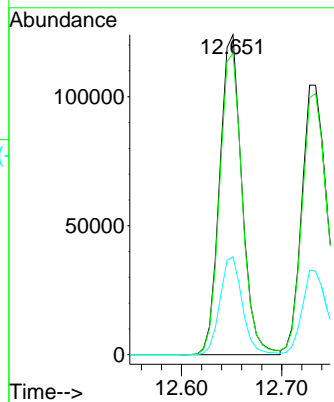
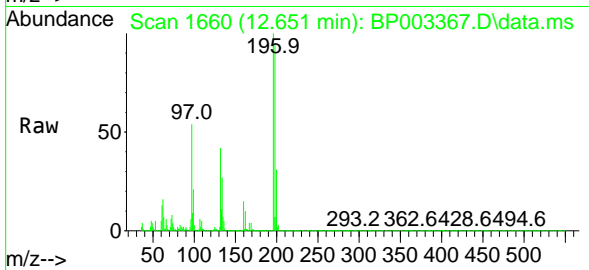




#43
 2,4,6-Trichlorophenol
 Concen: 37.34 ng
 RT: 12.651 min Scan# 1660
 Delta R.T. -0.047 min
 Lab File: BP003367.D
 Acq: 24 Sep 2020 12:10

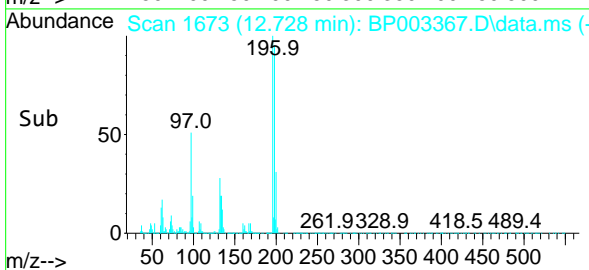
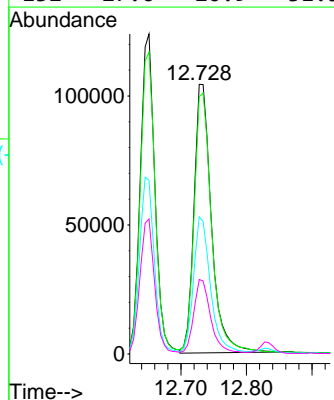
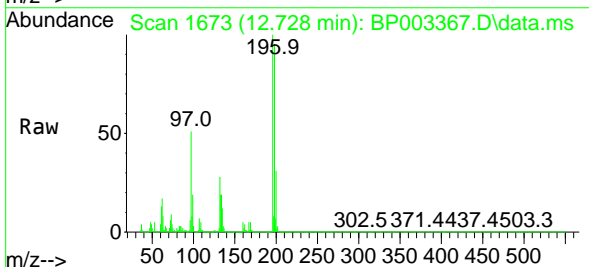
Instrument :
 BNA_P
 ClientSampled :
 SSTDCCC040

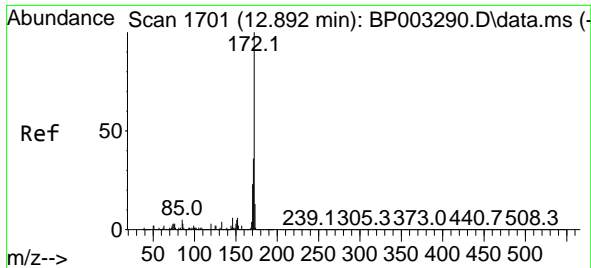
Tgt Ion	Resp	Lower	Upper
196	100		
198	94.3	77.0	115.6
200	30.6	25.1	37.7



#44
 2,4,5-Trichlorophenol
 Concen: 36.78 ng
 RT: 12.728 min Scan# 1673
 Delta R.T. -0.053 min
 Lab File: BP003367.D
 Acq: 24 Sep 2020 12:10

Tgt Ion	Resp	Lower	Upper
196	100		
198	95.4	77.3	115.9
97	50.9	31.0	46.4#
132	27.6	20.9	31.3

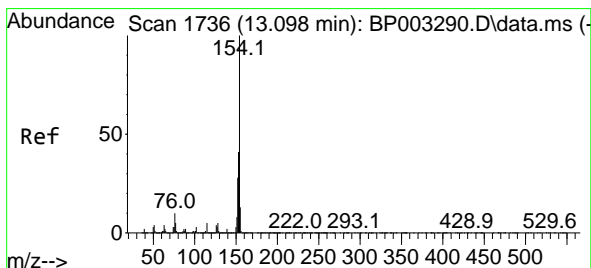
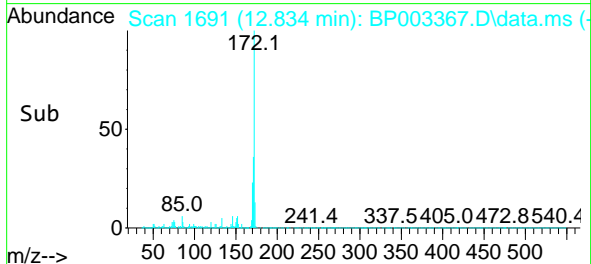
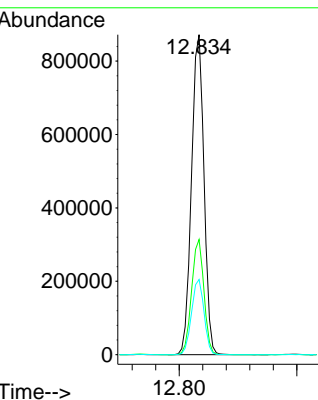
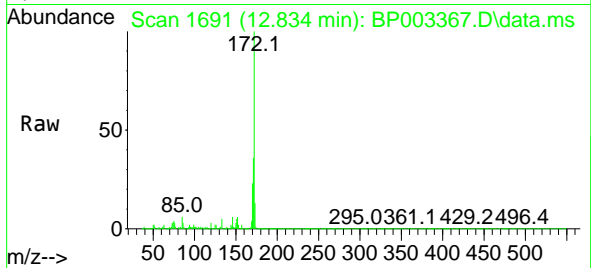




#45
 2-Fluorobiphenyl
 Concen: 77.74 ng
 RT: 12.834 min Scan# 1691
 Delta R.T. -0.047 min
 Lab File: BP003367.D
 Acq: 24 Sep 2020 12:10

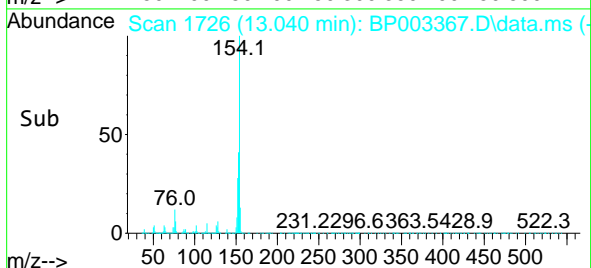
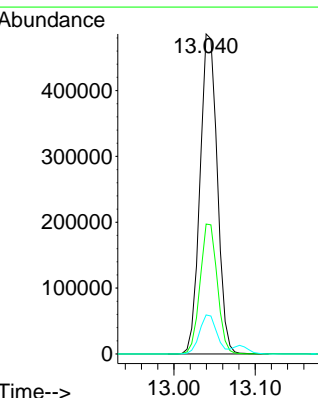
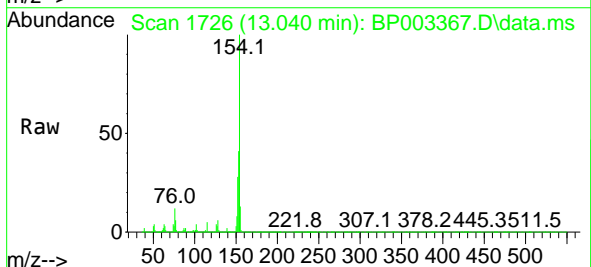
Instrument :
 BNA_P
 ClientSampled :
 SSTDCCC040

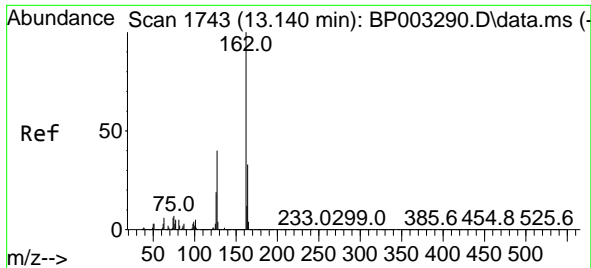
Tgt Ion	Resp	Lower	Upper
172	1283394		
171	36.0	28.5	42.7
170	23.5	19.2	28.8



#46
 1,1'-Biphenyl
 Concen: 39.77 ng
 RT: 13.040 min Scan# 1726
 Delta R.T. -0.053 min
 Lab File: BP003367.D
 Acq: 24 Sep 2020 12:10

Tgt Ion	Resp	Lower	Upper
154	716171		
153	40.6	20.4	60.4
76	12.2	0.0	29.3

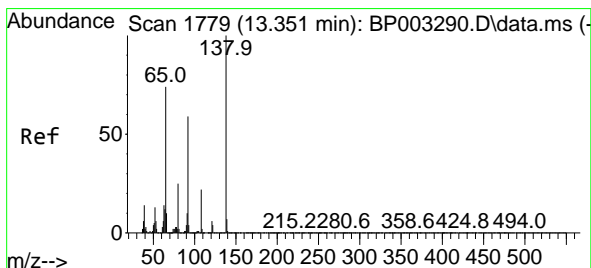
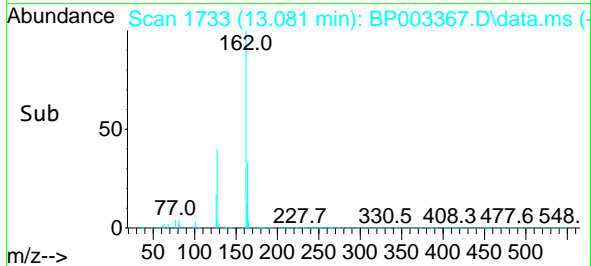
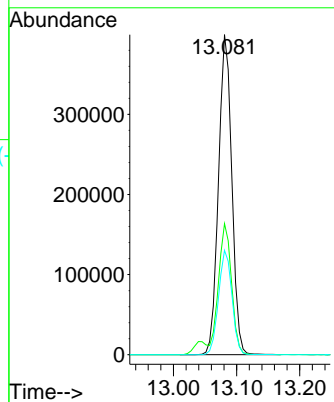
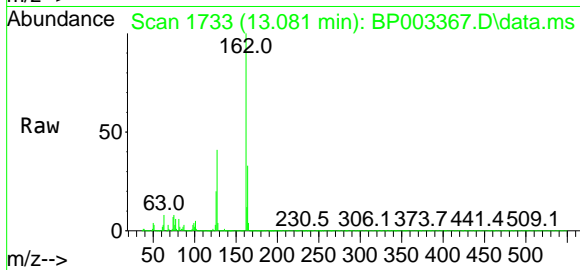




#47
 2-Chloronaphthalene
 Concen: 39.28 ng
 RT: 13.081 min Scan# 1733
 Delta R.T. -0.053 min
 Lab File: BP003367.D
 Acq: 24 Sep 2020 12:10

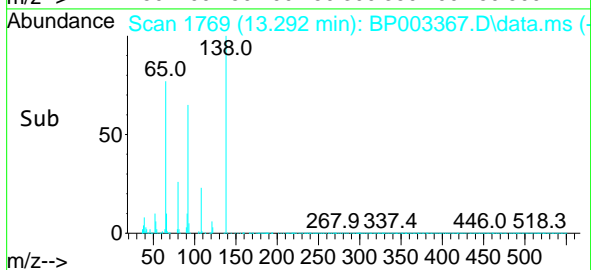
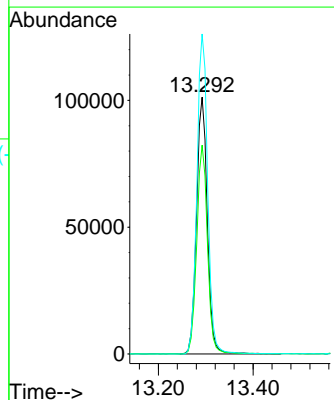
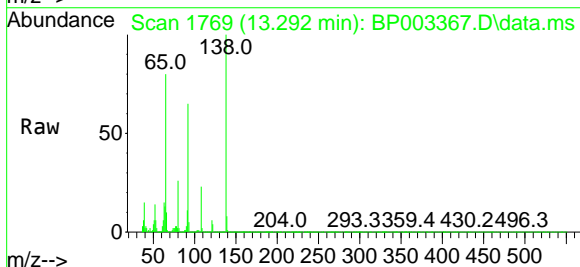
Instrument :
 BNA_P
 ClientSampled :
 SSTDCCC040

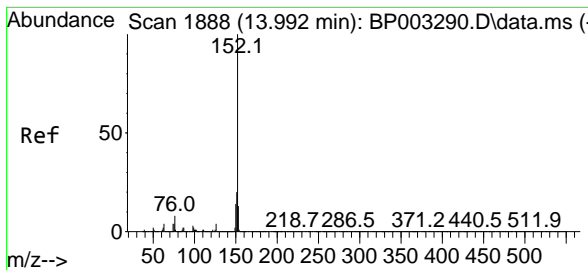
Tgt Ion	Resp	Lower	Upper
162	585644		
127	41.0	29.9	44.9
164	32.6	26.1	39.1



#48
 2-Nitroaniline
 Concen: 42.49 ng
 RT: 13.292 min Scan# 1769
 Delta R.T. -0.047 min
 Lab File: BP003367.D
 Acq: 24 Sep 2020 12:10

Tgt Ion	Resp	Lower	Upper
65	160354		
92	81.3	70.6	106.0
138	124.6	133.6	200.4#

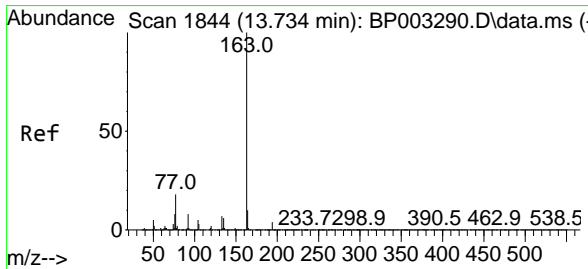
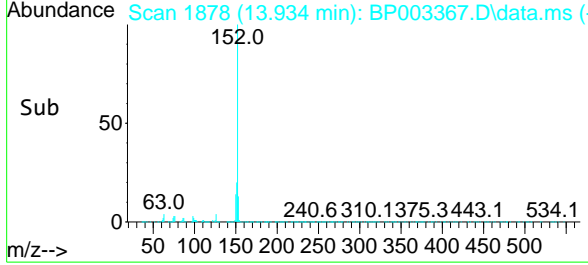
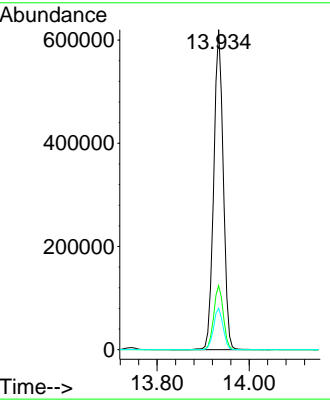
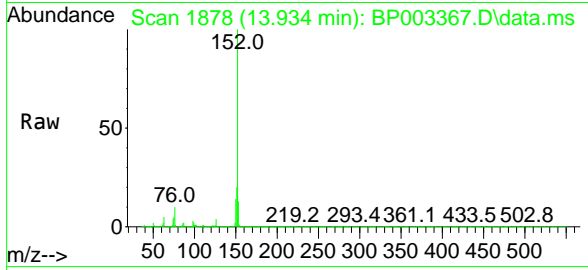




#49
 Acenaphthylene
 Concen: 38.81 ng
 RT: 13.934 min Scan# 1878
 Delta R.T. -0.053 min
 Lab File: BP003367.D
 Acq: 24 Sep 2020 12:10

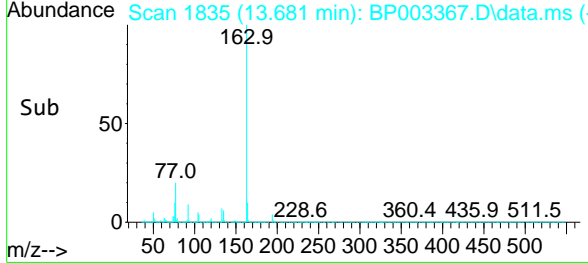
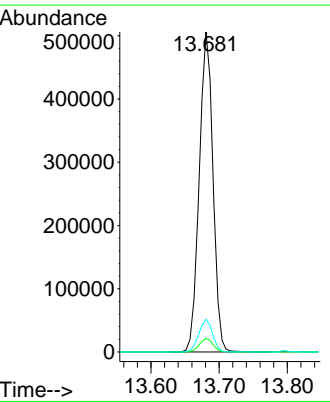
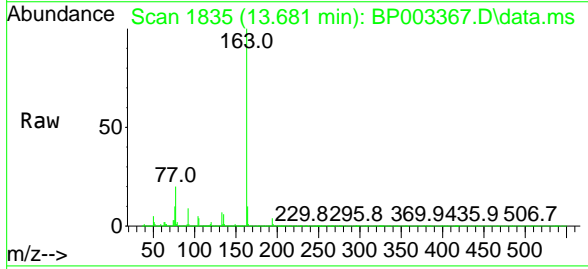
Instrument :
 BNA_P
ClientSampled :
 SSTDCCC040

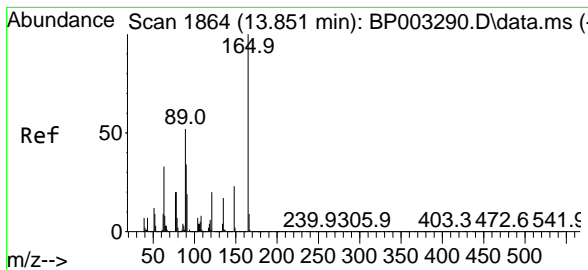
Tgt Ion	Resp	Lower	Upper
152	884273		
151	20.0	15.9	23.9
153	13.0	10.5	15.7



#50
 Dimethylphthalate
 Concen: 36.82 ng
 RT: 13.681 min Scan# 1835
 Delta R.T. -0.047 min
 Lab File: BP003367.D
 Acq: 24 Sep 2020 12:10

Tgt Ion	Resp	Lower	Upper
163	709814		
194	4.2	3.3	4.9
164	10.2	8.2	12.2

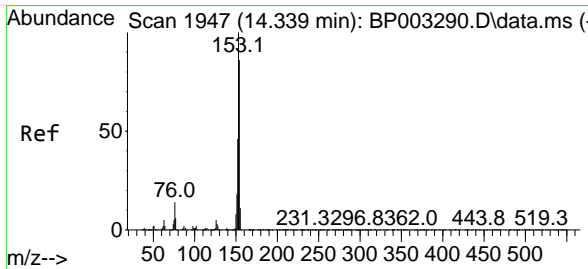
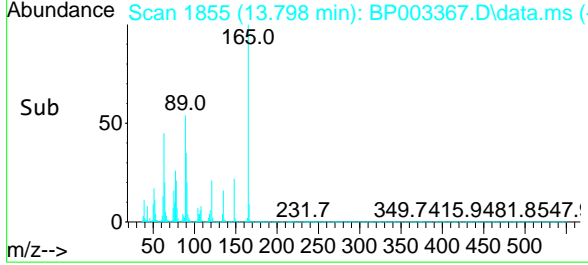
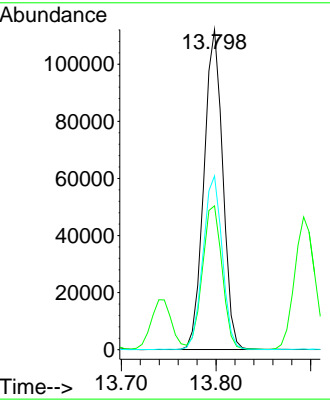
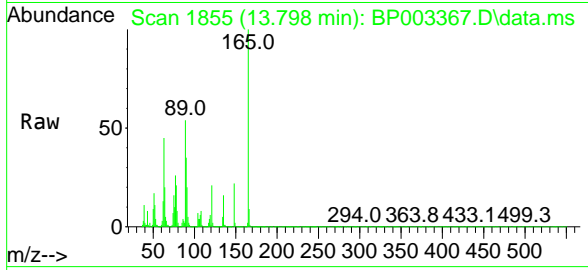




#51
 2,6-Dinitrotoluene
 Concen: 37.41 ng
 RT: 13.798 min Scan# 1855
 Delta R.T. -0.047 min
 Lab File: BP003367.D
 Acq: 24 Sep 2020 12:10

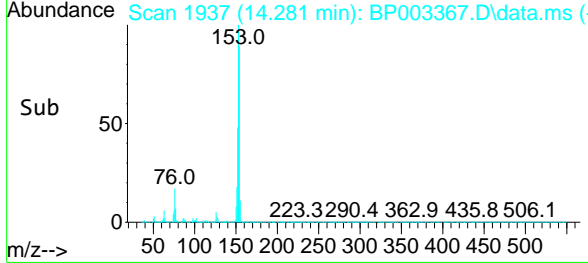
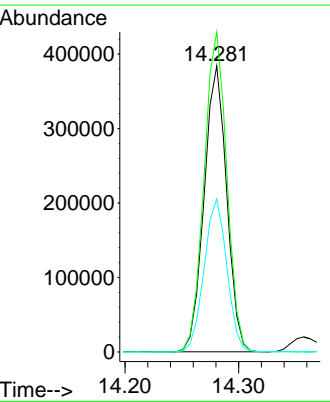
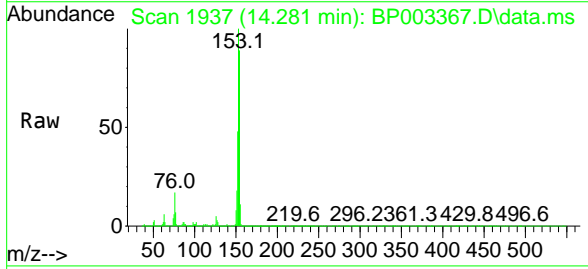
Instrument :
 BNA_P
 ClientSampled :
 SSTDCCC040

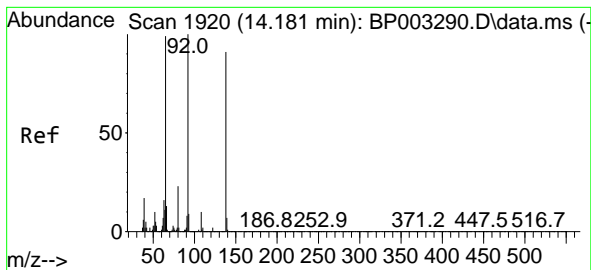
Tgt Ion	Resp	Lower	Upper
165	100		
63	45.0	27.8	41.6#
89	54.3	34.6	52.0#



#52
 Acenaphthene
 Concen: 38.30 ng
 RT: 14.281 min Scan# 1937
 Delta R.T. -0.047 min
 Lab File: BP003367.D
 Acq: 24 Sep 2020 12:10

Tgt Ion	Resp	Lower	Upper
154	100		
153	111.8	91.0	136.6
152	53.5	43.0	64.6

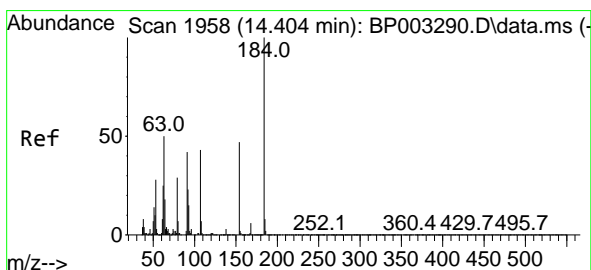
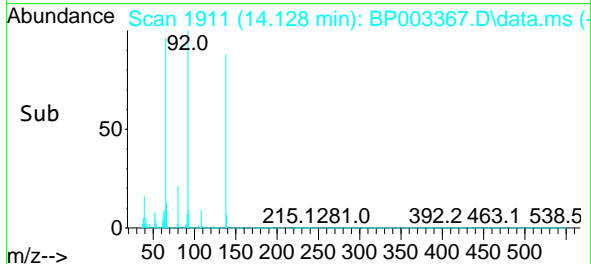
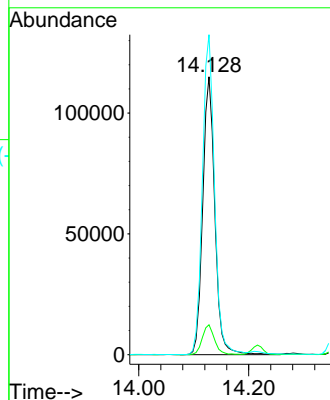
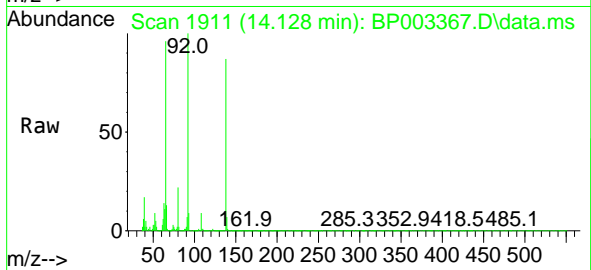




#53
 3-Nitroaniline
 Concen: 39.21 ng
 RT: 14.128 min Scan# 1911
 Delta R.T. -0.047 min
 Lab File: BP003367.D
 Acq: 24 Sep 2020 12:10

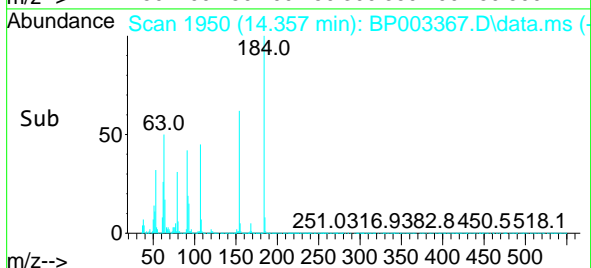
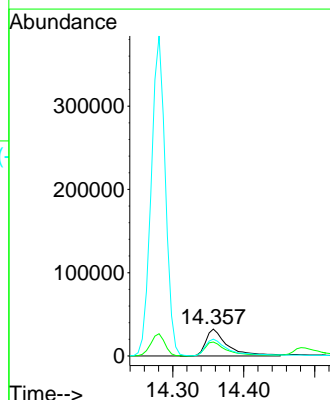
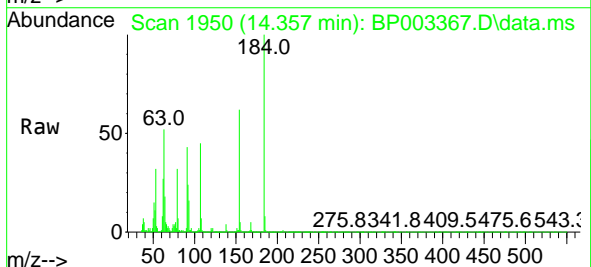
Instrument :
 BNA_P
 ClientSampleId :
 SSTDCCC040

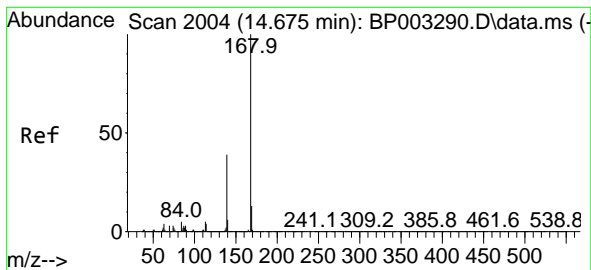
Tgt Ion	Resp	Lower	Upper
138	175612		
108	10.7	7.5	11.3
92	115.2	75.0	112.6#



#54
 2,4-Dinitrophenol
 Concen: 38.96 ng
 RT: 14.357 min Scan# 1950
 Delta R.T. -0.041 min
 Lab File: BP003367.D
 Acq: 24 Sep 2020 12:10

Tgt Ion	Resp	Lower	Upper
184	68193		
63	51.6	32.3	48.5#
154	62.4	49.1	73.7

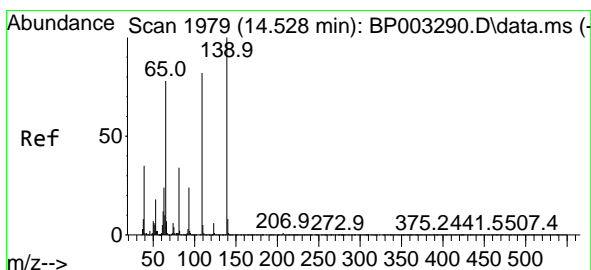
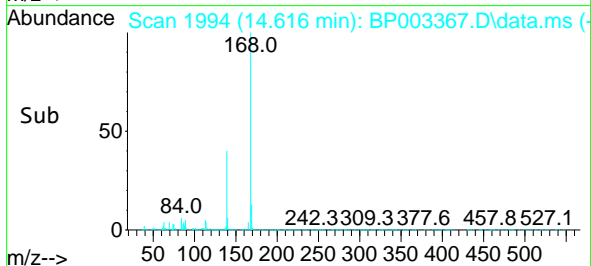
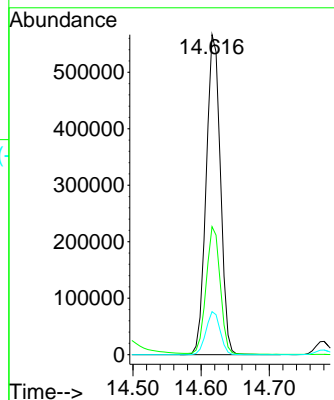
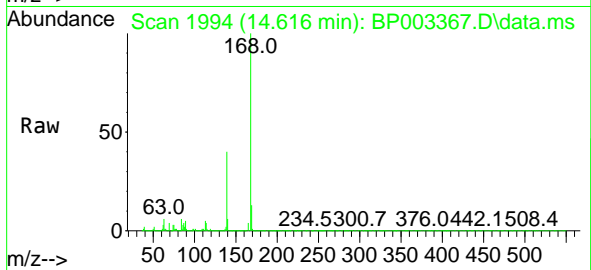




#55
 Dibenzofuran
 Concen: 37.15 ng
 RT: 14.616 min Scan# 1994
 Delta R.T. -0.053 min
 Lab File: BP003367.D
 Acq: 24 Sep 2020 12:10

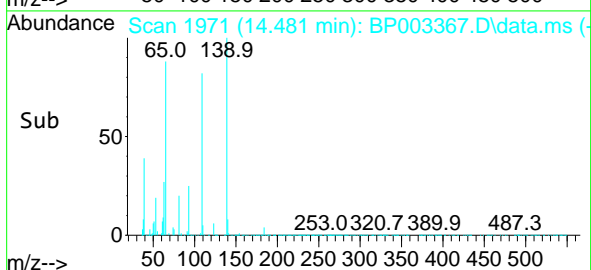
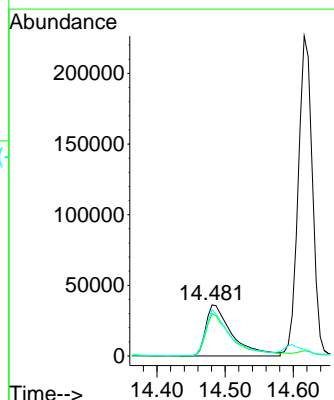
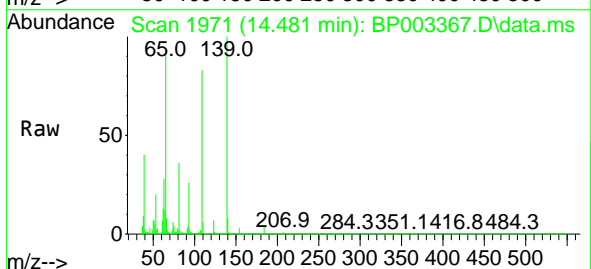
Instrument :
 BNA_P
ClientSampled :
 SSTDCCC040

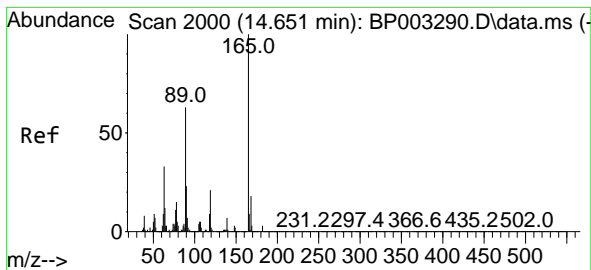
Tgt Ion	Resp	Lower	Upper
168	100		
139	40.0	29.1	43.7
169	13.5	10.4	15.6



#56
 4-Nitrophenol
 Concen: 35.17 ng
 RT: 14.481 min Scan# 1971
 Delta R.T. -0.035 min
 Lab File: BP003367.D
 Acq: 24 Sep 2020 12:10

Tgt Ion	Resp	Lower	Upper
139	100		
109	83.1	44.6	84.6
65	90.6	41.6	81.6#



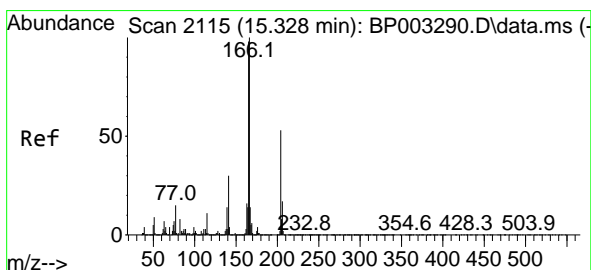
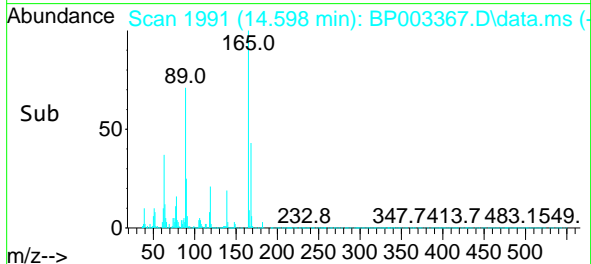
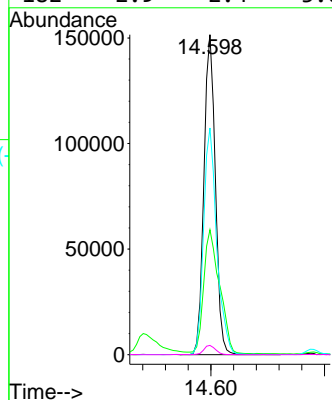
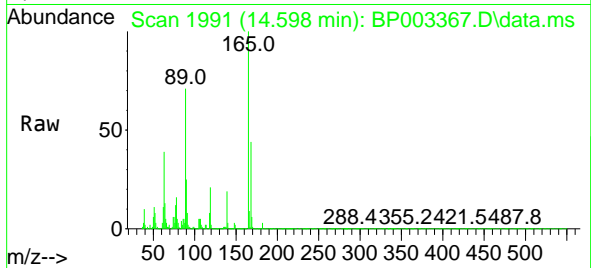


#57
 2,4-Dinitrotoluene
 Concen: 36.95 ng
 RT: 14.598 min Scan# 1991
 Delta R.T. -0.041 min
 Lab File: BP003367.D
 Acq: 24 Sep 2020 12:10

Instrument :
 BNA_P
 ClientSampled :
 SSTDCCC040

Tgt Ion:165 Resp: 211794

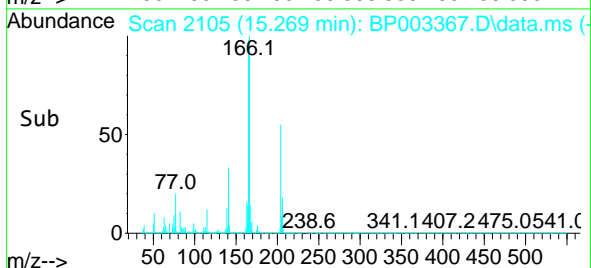
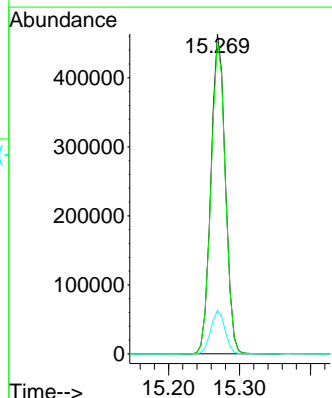
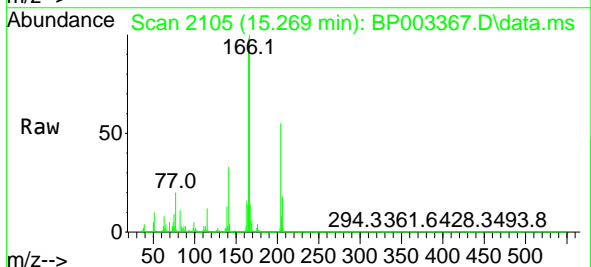
Ion	Ratio	Lower	Upper
165	100		
63	39.0	20.6	31.0#
89	70.8	42.6	63.8#
182	2.9	2.4	3.6

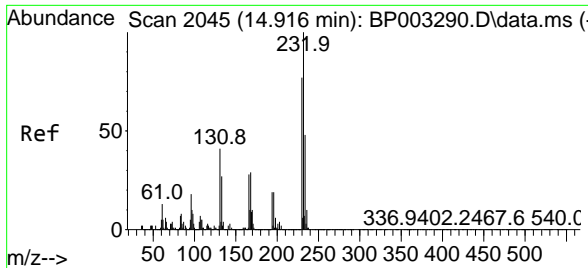


#58
 Fluorene
 Concen: 37.17 ng
 RT: 15.269 min Scan# 2105
 Delta R.T. -0.047 min
 Lab File: BP003367.D
 Acq: 24 Sep 2020 12:10

Tgt Ion:166 Resp: 649711

Ion	Ratio	Lower	Upper
166	100		
165	98.0	77.8	116.8
167	13.6	11.0	16.4



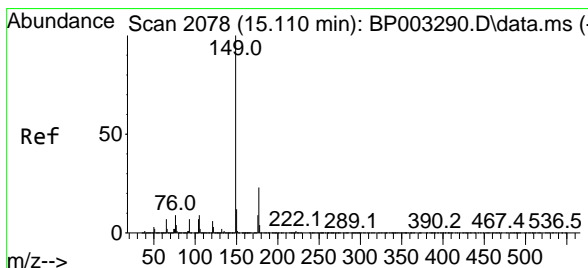
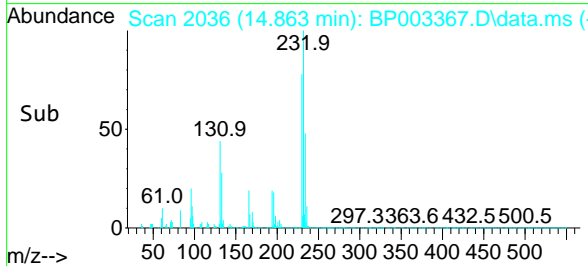
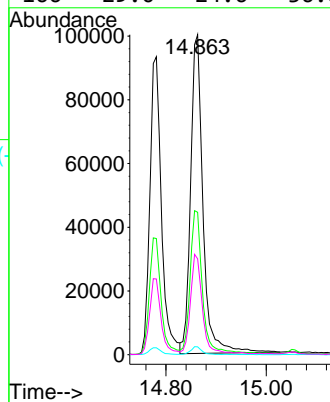
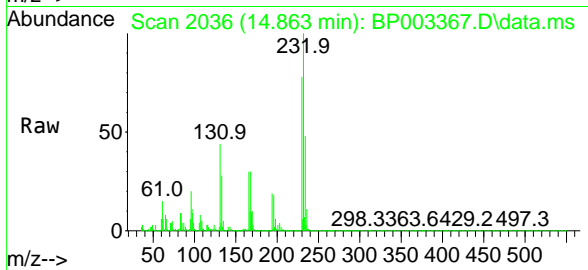


#59
 2,3,4,6-Tetrachlorophenol
 Concen: 34.47 ng
 RT: 14.863 min Scan# 2036
 Delta R.T. -0.041 min
 Lab File: BP003367.D
 Acq: 24 Sep 2020 12:10

Instrument :
 BNA_P
 ClientSampled :
 SSTDCCC040

Tgt Ion:232 Resp: 170390

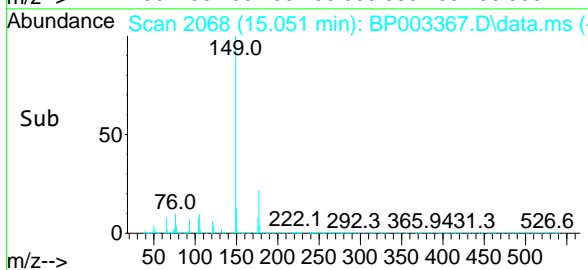
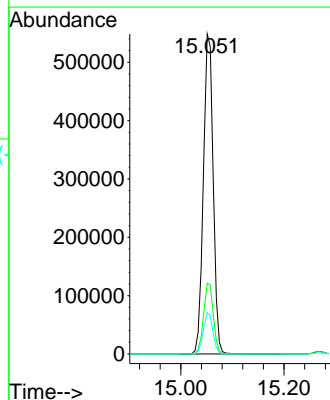
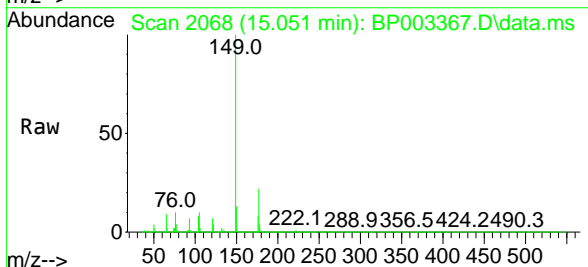
Ion	Ratio	Lower	Upper
232	100		
131	45.9	34.1	51.1
130	2.2	1.8	2.8
166	29.0	24.6	36.8

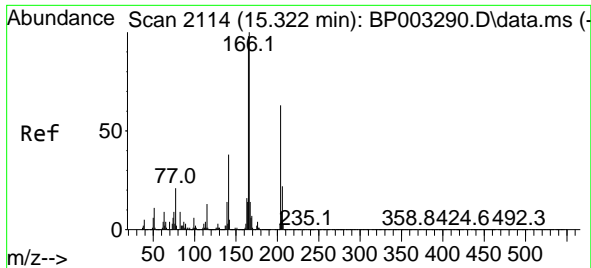


#60
 Diethylphthalate
 Concen: 36.79 ng
 RT: 15.051 min Scan# 2068
 Delta R.T. -0.053 min
 Lab File: BP003367.D
 Acq: 24 Sep 2020 12:10

Tgt Ion:149 Resp: 723419

Ion	Ratio	Lower	Upper
149	100		
177	22.2	18.0	27.0
150	13.0	10.0	15.0

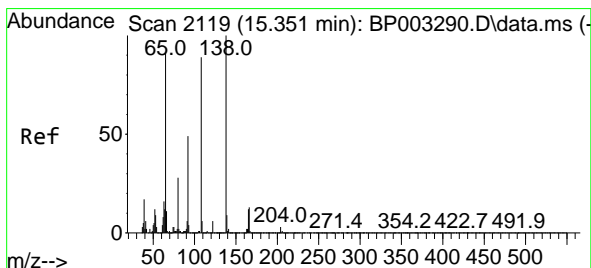
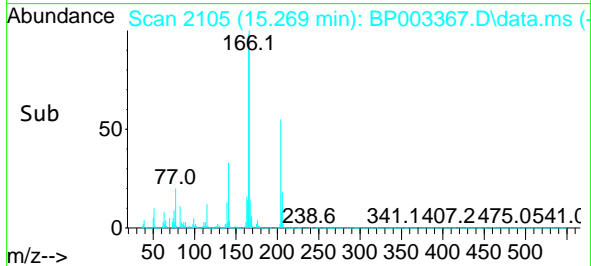
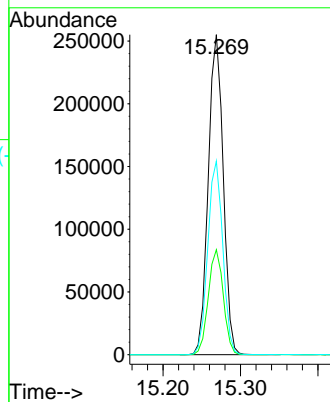
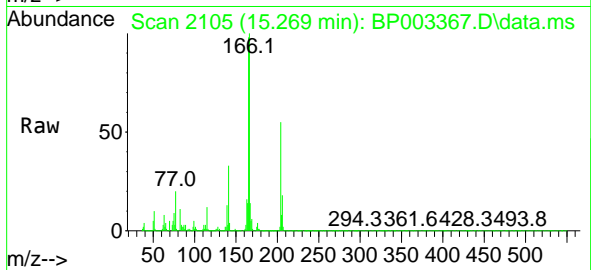




#61
 4-Chlorophenyl-phenylether
 Concen: 35.83 ng
 RT: 15.269 min Scan# 2105
 Delta R.T. -0.047 min
 Lab File: BP003367.D
 Acq: 24 Sep 2020 12:10

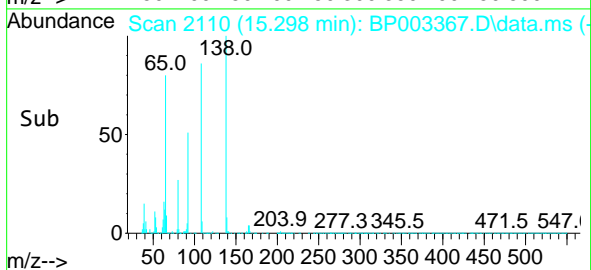
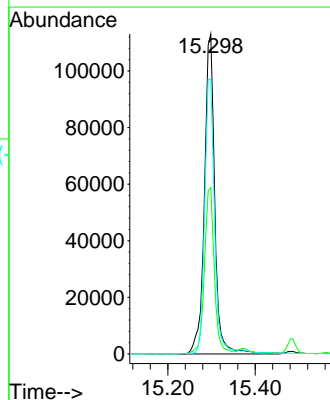
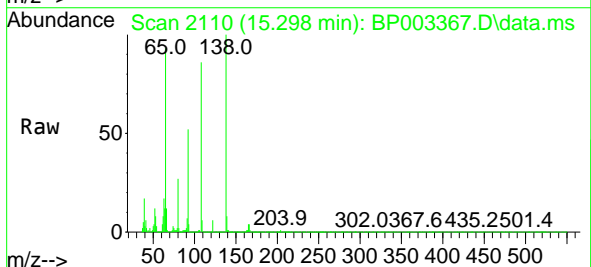
Instrument :
 BNA_P
 ClientSampled :
 SSTDCCC040

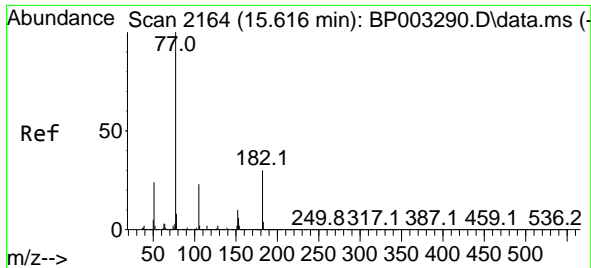
Tgt Ion:204 Resp: 341856
 Ion Ratio Lower Upper
 204 100
 206 32.8 25.9 38.9
 141 60.5 46.5 69.7



#62
 4-Nitroaniline
 Concen: 39.25 ng
 RT: 15.298 min Scan# 2110
 Delta R.T. -0.041 min
 Lab File: BP003367.D
 Acq: 24 Sep 2020 12:10

Tgt Ion:138 Resp: 186553
 Ion Ratio Lower Upper
 138 100
 92 52.0 20.7 60.7
 108 85.8 47.8 87.8

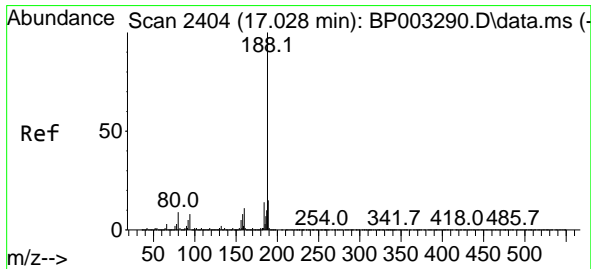
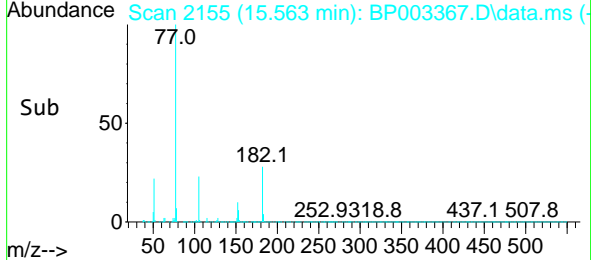
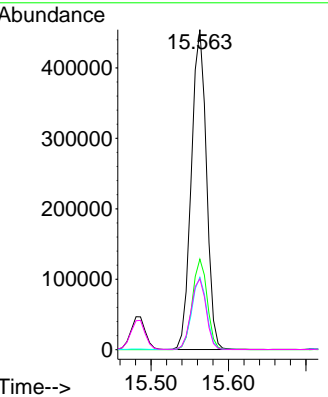
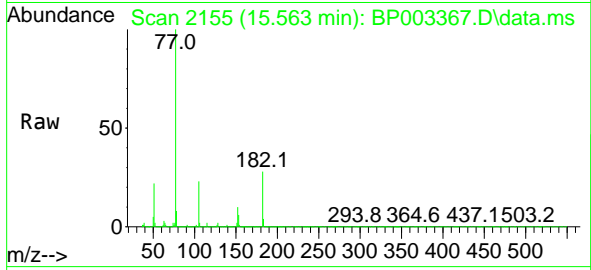




#63
 Azobenzene
 Concen: 41.03 ng
 RT: 15.563 min Scan# 2155
 Delta R.T. -0.047 min
 Lab File: BP003367.D
 Acq: 24 Sep 2020 12:10

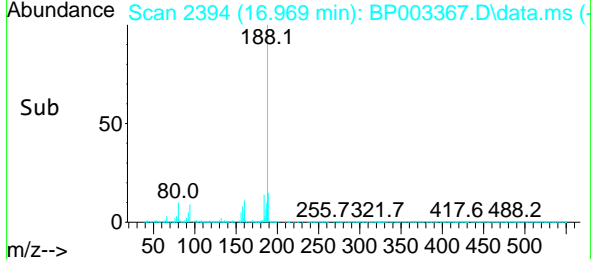
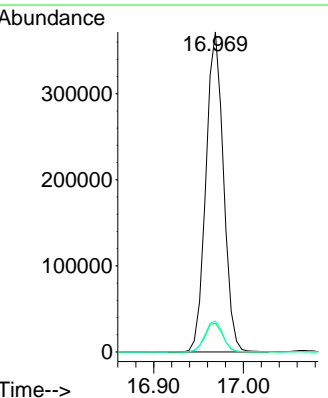
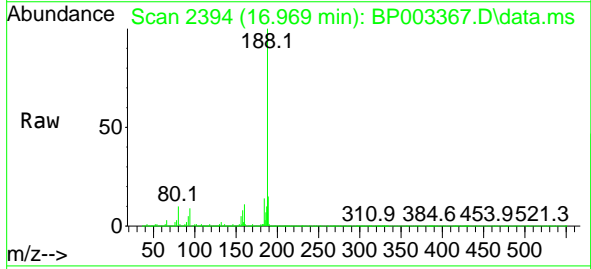
Instrument :
 BNA_P
ClientSampled :
 SSTDCCC040

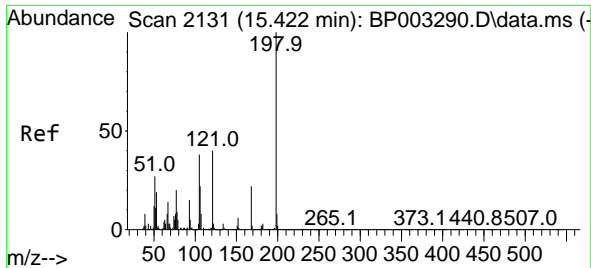
Tgt Ion	Resp	Lower	Upper
77	100		
182	28.3	16.9	56.9
105	22.7	5.6	45.6
51	22.2	2.9	42.9



#64
 Phenanthrene-d10
 Concen: 20.00 ng
 RT: 16.969 min Scan# 2394
 Delta R.T. -0.047 min
 Lab File: BP003367.D
 Acq: 24 Sep 2020 12:10

Tgt Ion	Resp	Lower	Upper
188	100		
94	9.0	6.2	9.2
80	9.6	6.2	9.2#

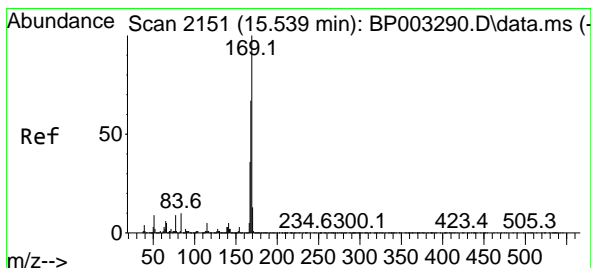
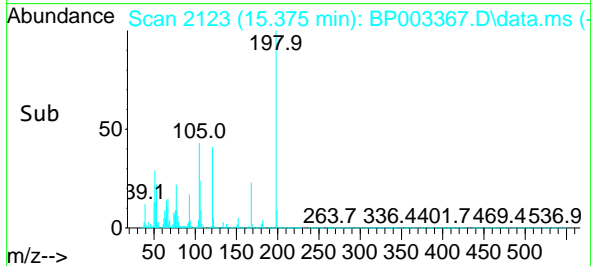
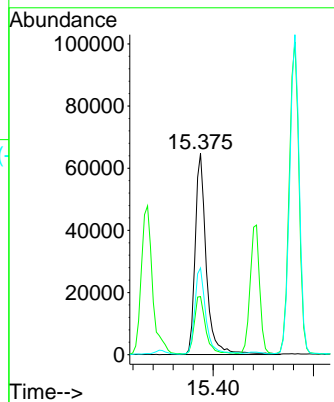
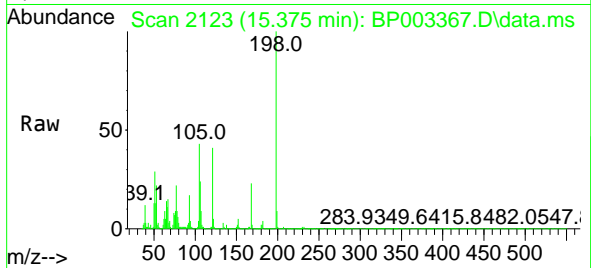




#65
 4,6-Dinitro-2-methylphenol
 Concen: 37.40 ng
 RT: 15.375 min Scan# 2123
 Delta R.T. -0.041 min
 Lab File: BP003367.D
 Acq: 24 Sep 2020 12:10

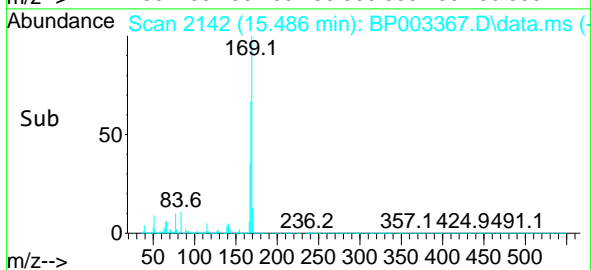
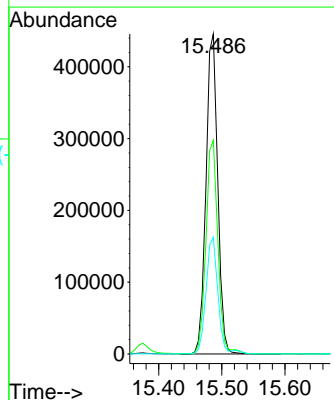
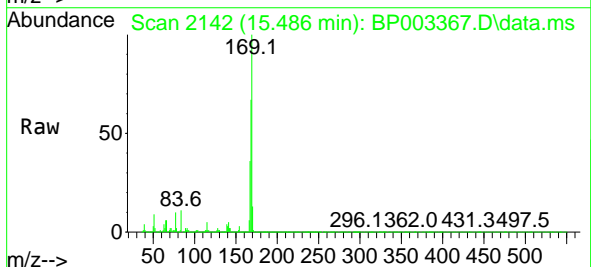
Instrument :
 BNA_P
 ClientSampled :
 SSTDCCC040

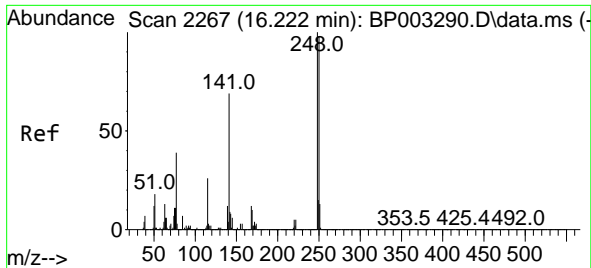
Tgt Ion	Resp	Lower	Upper
198	100		
51	28.8	6.4	46.4
105	43.1	18.9	58.9



#66
 n-Nitrosodiphenylamine
 Concen: 38.86 ng
 RT: 15.486 min Scan# 2142
 Delta R.T. -0.047 min
 Lab File: BP003367.D
 Acq: 24 Sep 2020 12:10

Tgt Ion	Resp	Lower	Upper
169	100		
168	66.8	53.8	80.6
167	36.5	28.9	43.3

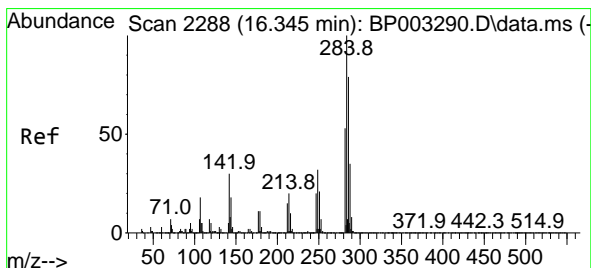
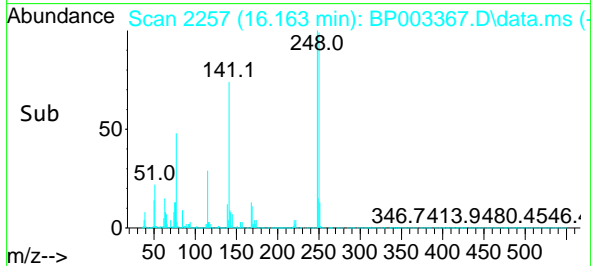
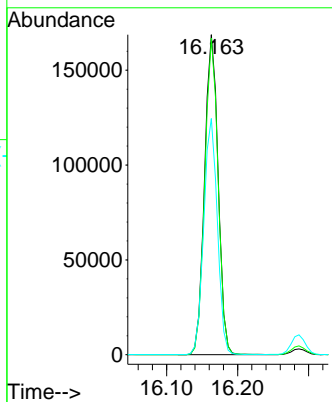
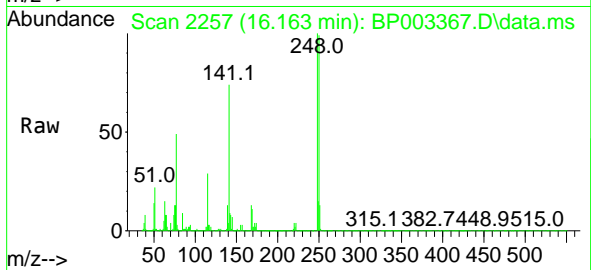




#67
 4-Bromophenyl-phenylether
 Concen: 36.76 ng
 RT: 16.163 min Scan# 2257
 Delta R.T. -0.047 min
 Lab File: BP003367.D
 Acq: 24 Sep 2020 12:10

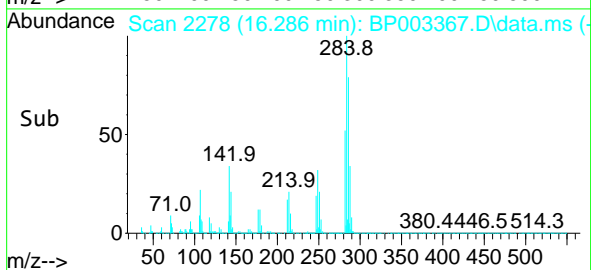
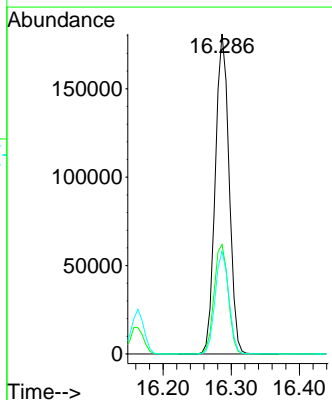
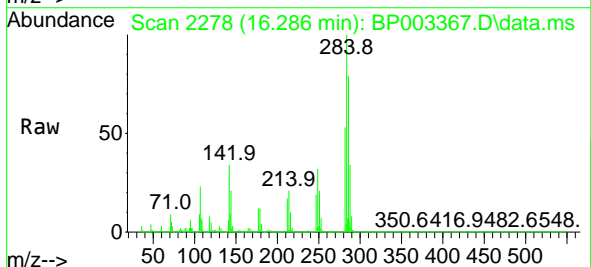
Instrument :
 BNA_P
ClientSampleId :
 SSTDCCC040

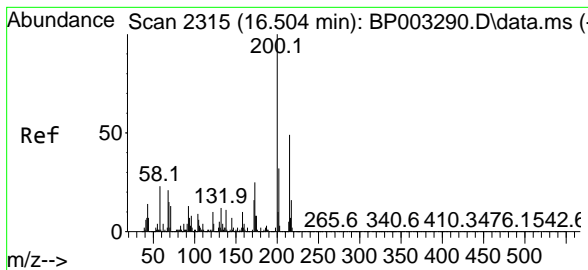
Tgt Ion	Resp	Lower	Upper
248	100		
250	98.9	76.7	115.1
141	73.8	53.0	79.6



#68
 Hexachlorobenzene
 Concen: 35.18 ng
 RT: 16.286 min Scan# 2278
 Delta R.T. -0.047 min
 Lab File: BP003367.D
 Acq: 24 Sep 2020 12:10

Tgt Ion	Resp	Lower	Upper
284	100		
142	34.2	24.2	36.4
249	32.1	23.8	35.8



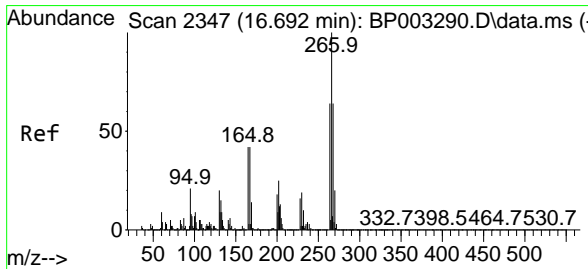
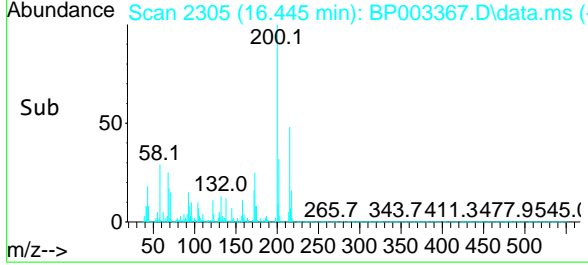
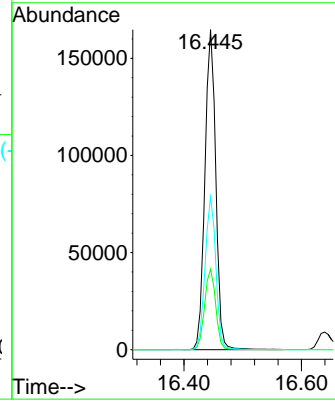
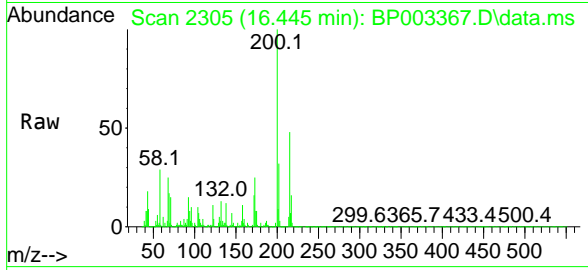


#69
 Atrazine
 Concen: 36.39 ng
 RT: 16.445 min Scan# 2305
 Delta R.T. -0.047 min
 Lab File: BP003367.D
 Acq: 24 Sep 2020 12:10

Instrument :
 BNA_P
 ClientSampleId :
 SSTDCCC040

Tgt Ion:200 Resp: 211737

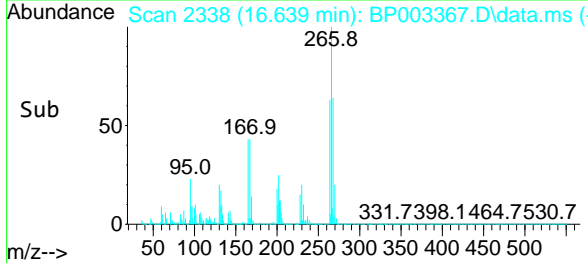
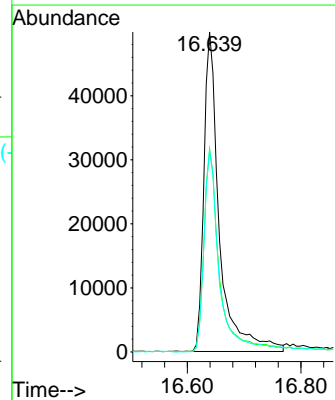
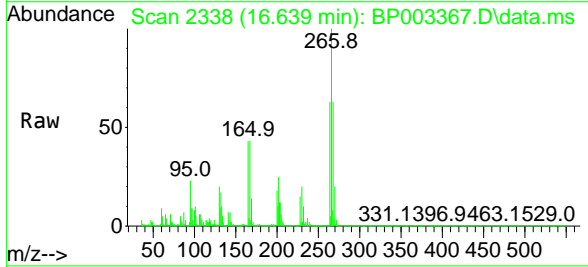
Ion	Ratio	Lower	Upper
200	100		
173	25.2	5.9	45.9
215	47.7	28.4	68.4

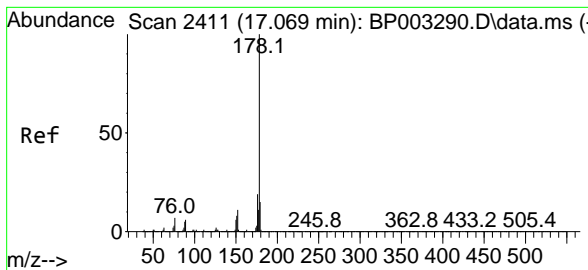


#70
 Pentachlorophenol
 Concen: 34.61 ng
 RT: 16.639 min Scan# 2338
 Delta R.T. -0.047 min
 Lab File: BP003367.D
 Acq: 24 Sep 2020 12:10

Tgt Ion:266 Resp: 94686

Ion	Ratio	Lower	Upper
266	100		
268	63.5	51.1	76.7
264	63.1	50.6	76.0

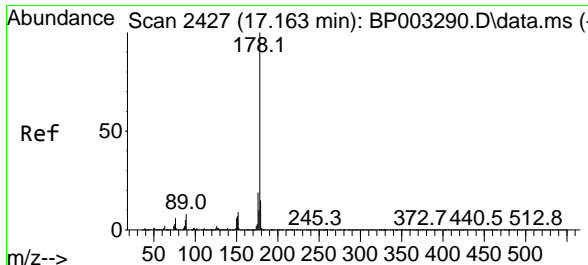
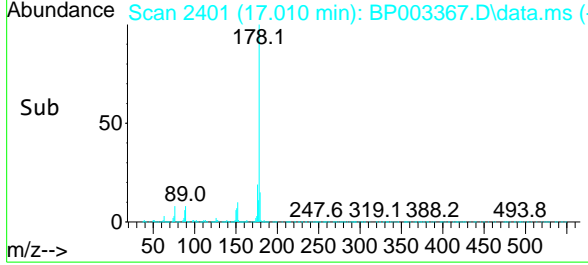
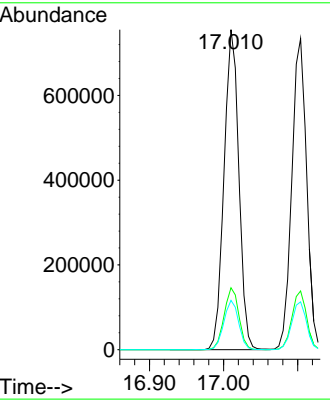
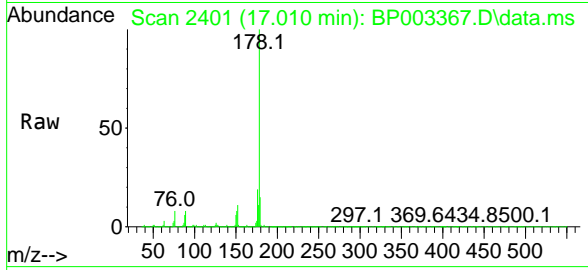




#71
 Phenanthrene
 Concen: 38.16 ng
 RT: 17.010 min Scan# 2401
 Delta R.T. -0.053 min
 Lab File: BP003367.D
 Acq: 24 Sep 2020 12:10

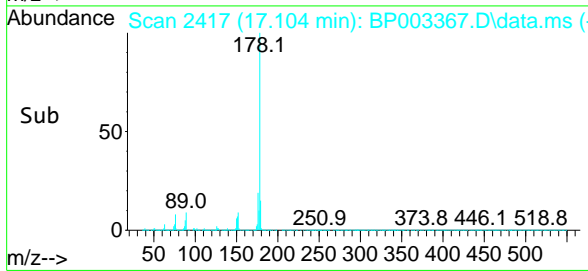
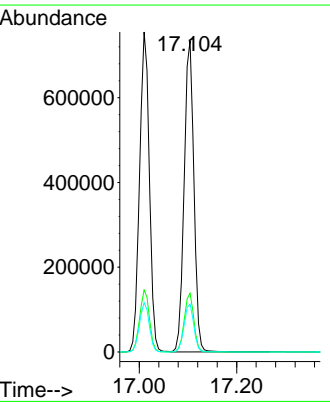
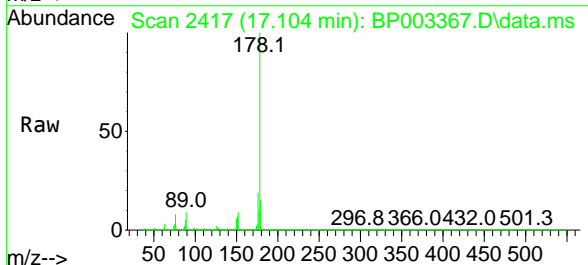
Instrument :
 BNA_P
ClientSampled :
 SSTDCCC040

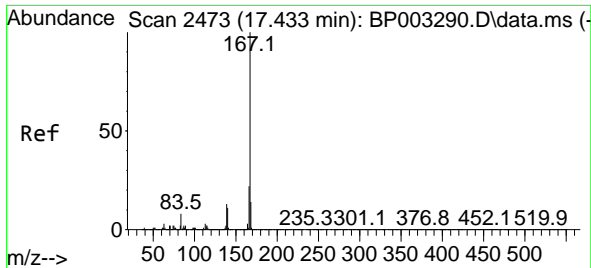
Tgt Ion	Resp	Lower	Upper
178	1048415		
176	19.4	15.3	22.9
179	15.4	12.5	18.7



#72
 Anthracene
 Concen: 37.84 ng
 RT: 17.104 min Scan# 2417
 Delta R.T. -0.047 min
 Lab File: BP003367.D
 Acq: 24 Sep 2020 12:10

Tgt Ion	Resp	Lower	Upper
178	1024656		
176	18.9	15.0	22.4
179	15.4	12.5	18.7

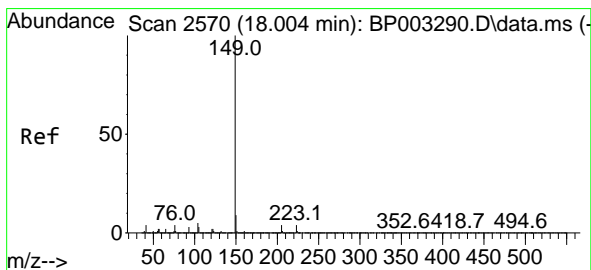
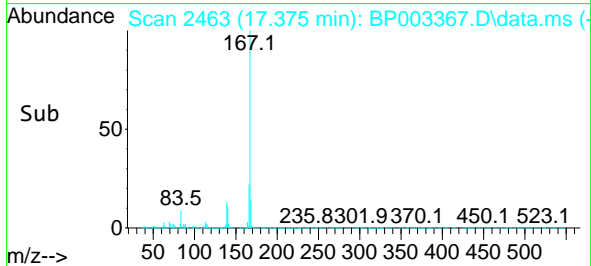
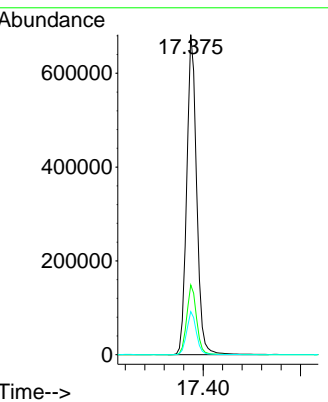
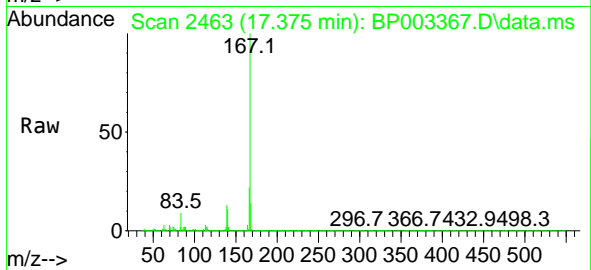




#73
 Carbazole
 Concen: 37.76 ng
 RT: 17.375 min Scan# 2463
 Delta R.T. -0.053 min
 Lab File: BP003367.D
 Acq: 24 Sep 2020 12:10

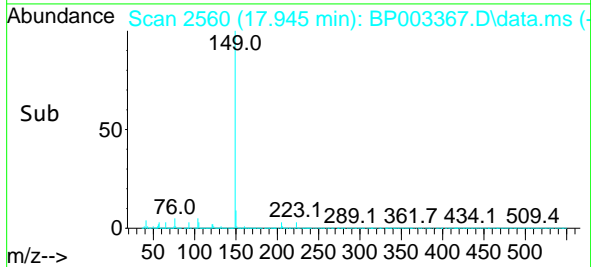
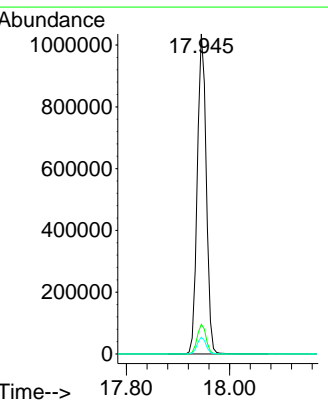
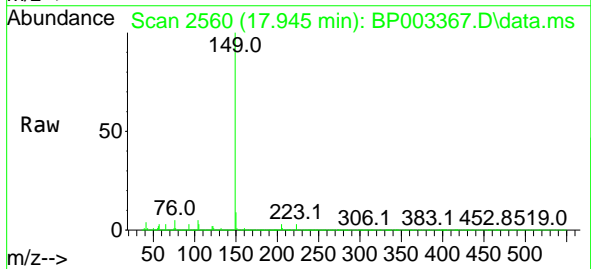
Instrument :
 BNA_P
ClientSampleId :
 SSTDCCC040

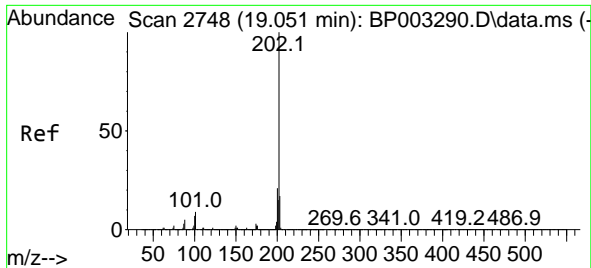
Tgt Ion	Resp	Lower	Upper
167	100		
166	21.8	17.6	26.4
139	13.5	10.2	15.4



#74
 Di-n-butylphthalate
 Concen: 37.88 ng
 RT: 17.945 min Scan# 2560
 Delta R.T. -0.047 min
 Lab File: BP003367.D
 Acq: 24 Sep 2020 12:10

Tgt Ion	Resp	Lower	Upper
149	100		
150	9.3	7.3	10.9
104	5.3	3.4	5.0#

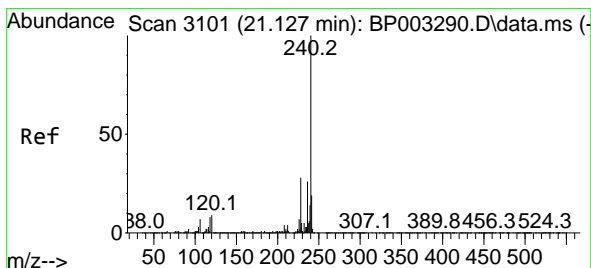
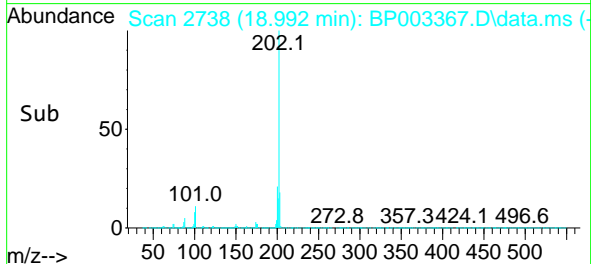
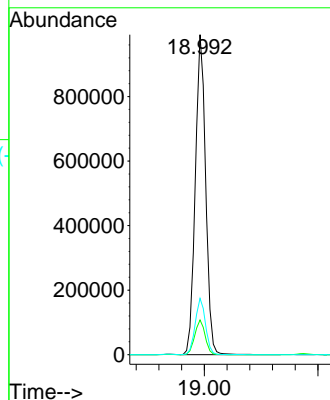
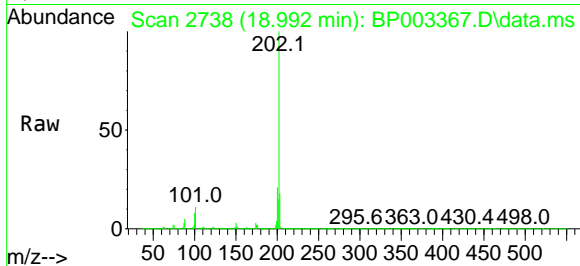




#75
 Fluoranthene
 Concen: 36.53 ng
 RT: 18.992 min Scan# 2738
 Delta R.T. -0.047 min
 Lab File: BP003367.D
 Acq: 24 Sep 2020 12:10

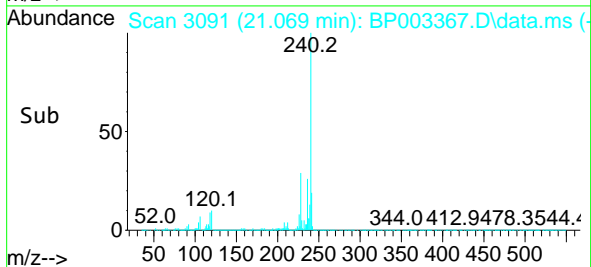
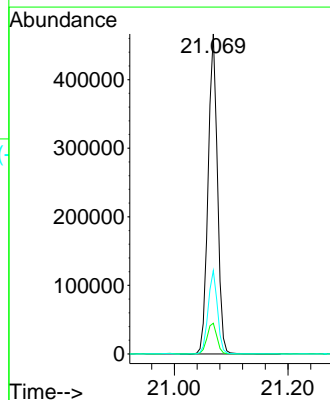
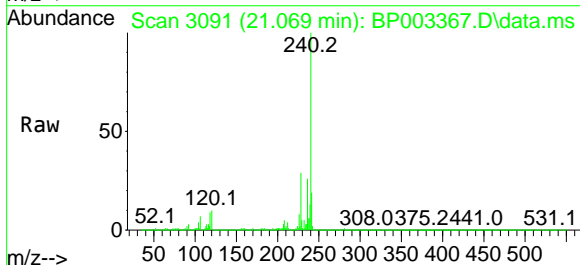
Instrument :
 BNA_P
 ClientSampled :
 SSTDCCC040

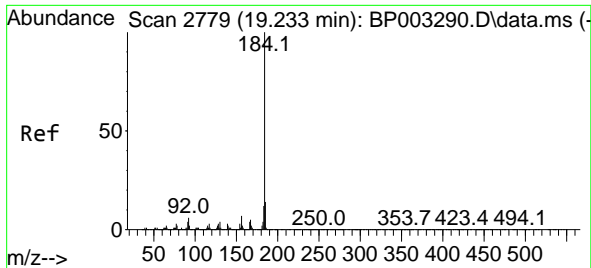
Tgt Ion	Resp	Lower	Upper
202	1261963		
101	10.9	0.0	29.4
203	17.6	0.0	37.8



#76
 Chrysene-d12
 Concen: 20.00 ng
 RT: 21.069 min Scan# 3091
 Delta R.T. -0.041 min
 Lab File: BP003367.D
 Acq: 24 Sep 2020 12:10

Tgt Ion	Resp	Lower	Upper
240	529183		
120	9.6	7.8	11.6
236	26.1	20.8	31.2

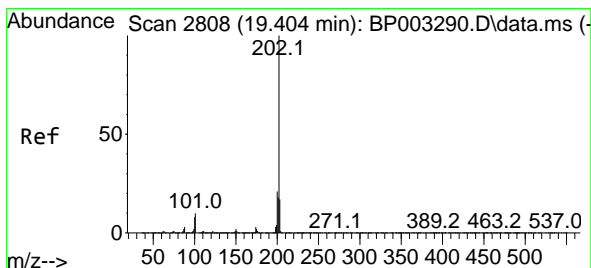
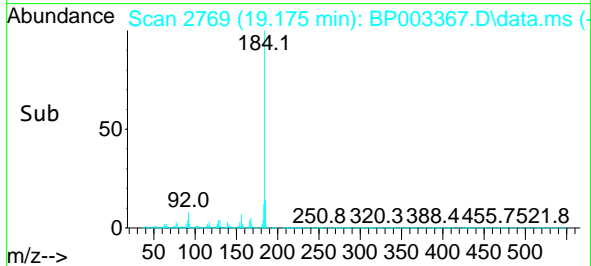
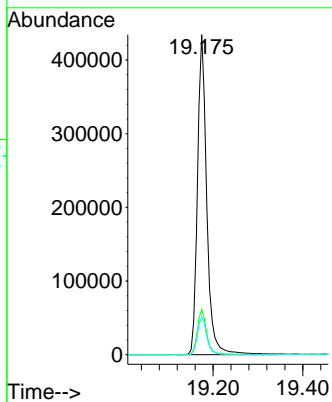
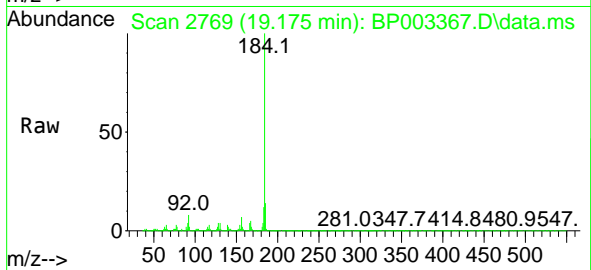




#77
 Benzidine
 Concen: 38.00 ng
 RT: 19.175 min Scan# 2769
 Delta R.T. -0.047 min
 Lab File: BP003367.D
 Acq: 24 Sep 2020 12:10

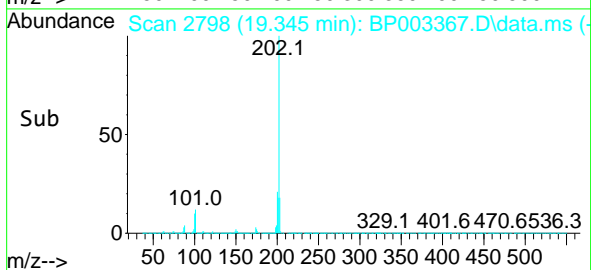
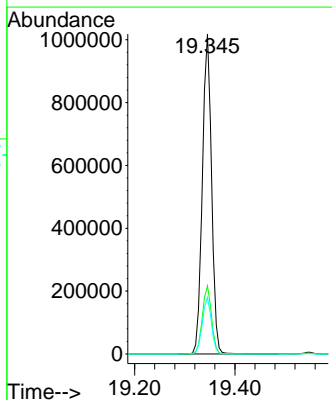
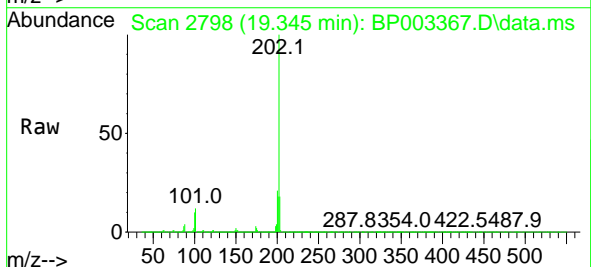
Instrument :
 BNA_P
ClientSampled :
 SSTDCCC040

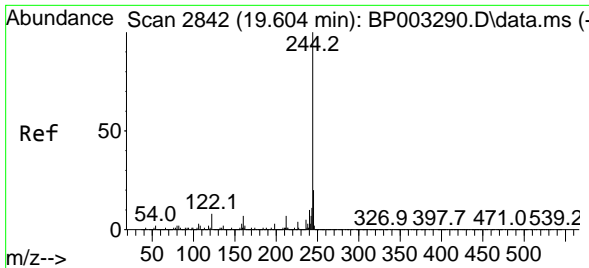
Tgt Ion	Resp	Lower	Upper
184	623579		
185	14.1	11.5	17.3
183	11.8	9.6	14.4



#78
 Pyrene
 Concen: 39.34 ng
 RT: 19.345 min Scan# 2798
 Delta R.T. -0.047 min
 Lab File: BP003367.D
 Acq: 24 Sep 2020 12:10

Tgt Ion	Resp	Lower	Upper
202	1298313		
200	21.3	17.1	25.7
203	17.7	14.2	21.2



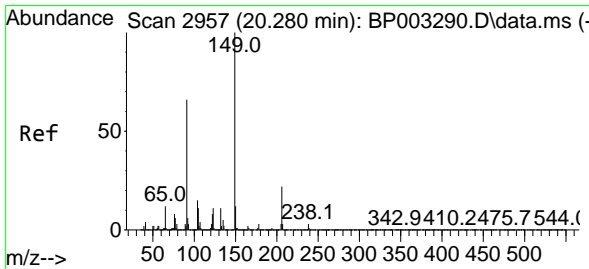
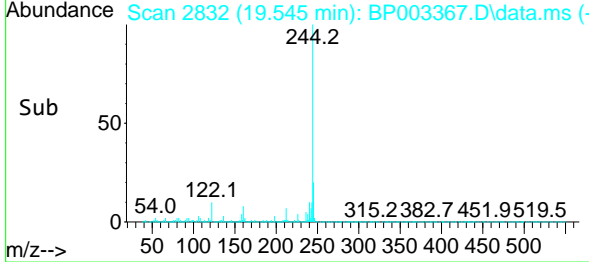
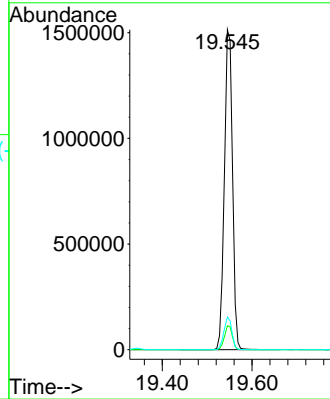
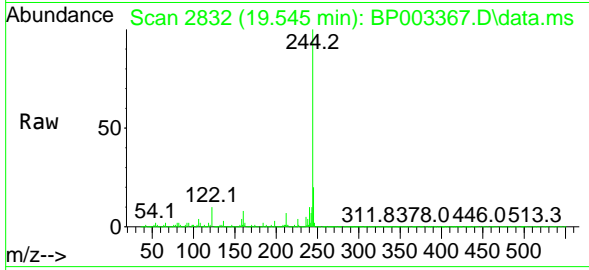


#79
 Terphenyl-d14
 Concen: 75.12 ng
 RT: 19.545 min Scan# 2832
 Delta R.T. -0.047 min
 Lab File: BP003367.D
 Acq: 24 Sep 2020 12:10

Instrument :
 BNA_P
 ClientSampled :
 SSTDCCC040

Tgt Ion:244 Resp: 1907839

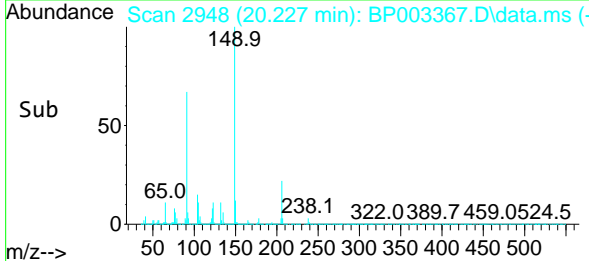
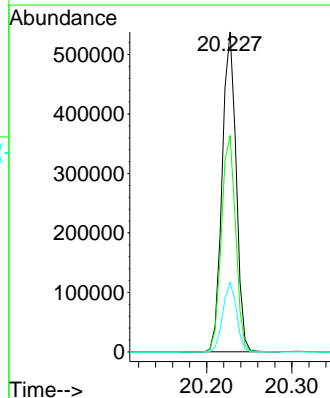
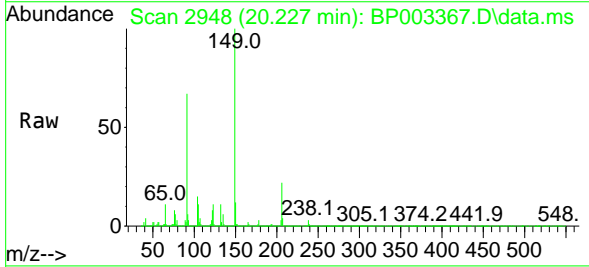
Ion	Ratio	Lower	Upper
244	100		
212	7.4	5.8	8.6
122	10.2	7.8	11.8

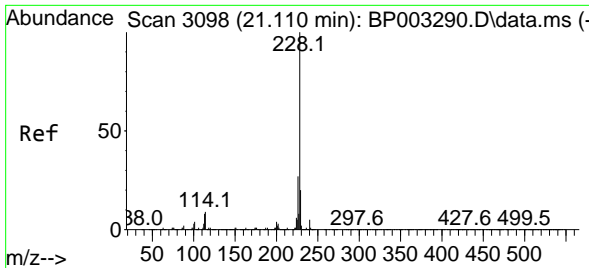


#80
 Butylbenzylphthalate
 Concen: 40.54 ng
 RT: 20.227 min Scan# 2948
 Delta R.T. -0.047 min
 Lab File: BP003367.D
 Acq: 24 Sep 2020 12:10

Tgt Ion:149 Resp: 612081

Ion	Ratio	Lower	Upper
149	100		
91	67.4	45.4	68.0
206	21.7	17.1	25.7



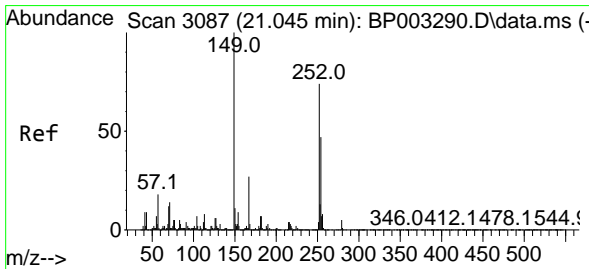
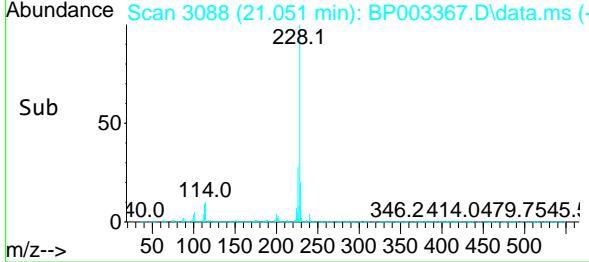
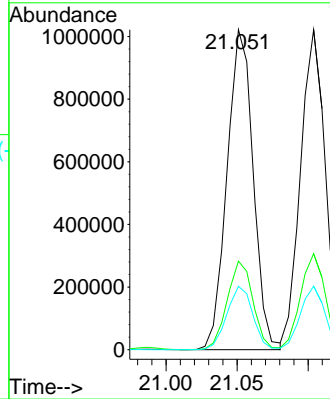
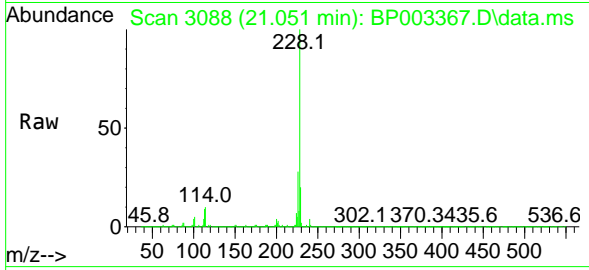


#81
 Benzo(a)anthracene
 Concen: 38.28 ng
 RT: 21.051 min Scan# 3088
 Delta R.T. -0.047 min
 Lab File: BP003367.D
 Acq: 24 Sep 2020 12:10

Instrument :
 BNA_P
 ClientSampled :
 SSTDCCC040

Tgt Ion:228 Resp: 1309570

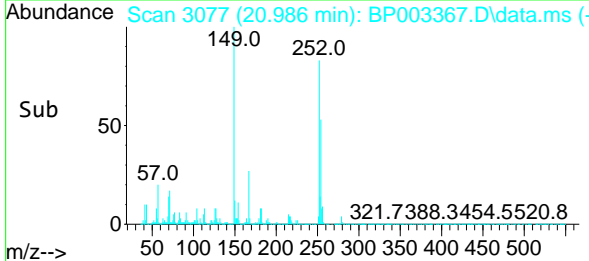
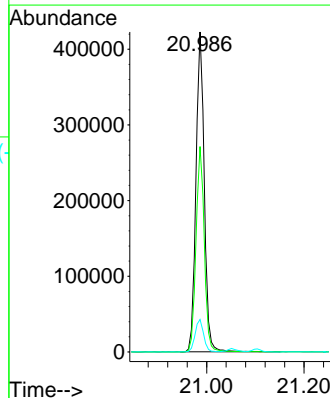
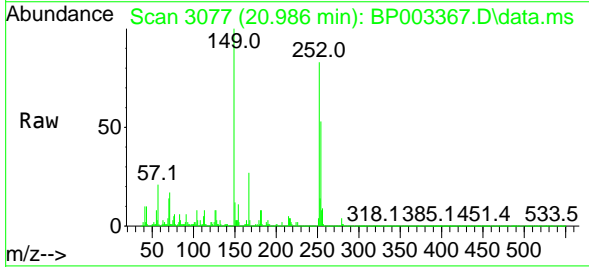
Ion	Ratio	Lower	Upper
228	100		
226	27.6	22.1	33.1
229	19.8	15.9	23.9

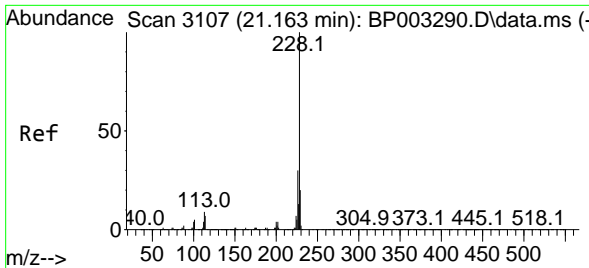


#82
 3,3'-Dichlorobenzidine
 Concen: 37.97 ng
 RT: 20.986 min Scan# 3077
 Delta R.T. -0.047 min
 Lab File: BP003367.D
 Acq: 24 Sep 2020 12:10

Tgt Ion:252 Resp: 502072

Ion	Ratio	Lower	Upper
252	100		
254	64.2	51.0	76.4
126	10.1	7.9	11.9



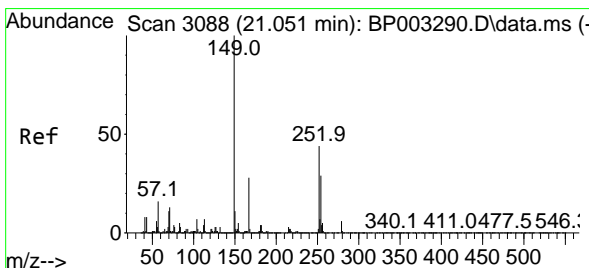
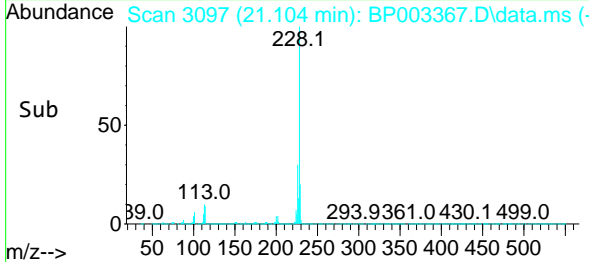
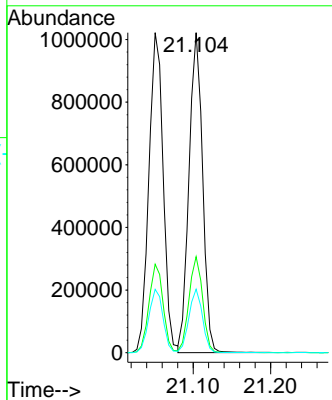
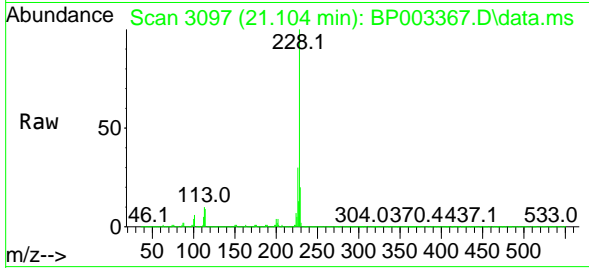


#83
 Chrysene
 Concen: 37.76 ng
 RT: 21.104 min Scan# 3097
 Delta R.T. -0.047 min
 Lab File: BP003367.D
 Acq: 24 Sep 2020 12:10

Instrument :
 BNA_P
ClientSampled :
 SSTDCCC040

Tgt Ion:228 Resp: 1241073

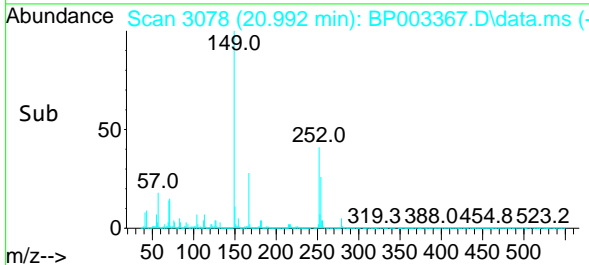
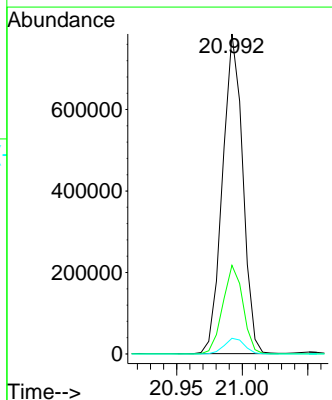
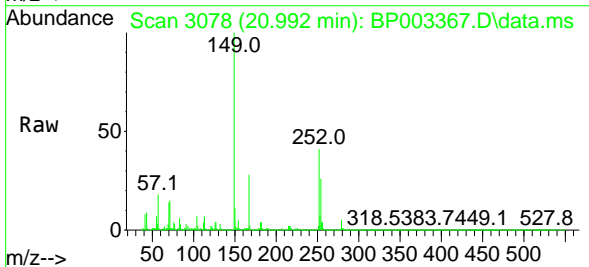
Ion	Ratio	Lower	Upper
228	100		
226	30.0	24.4	36.6
229	19.8	15.8	23.6

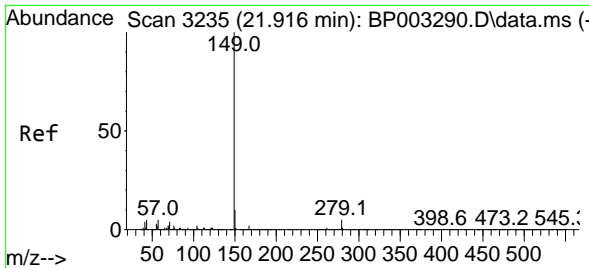


#84
 Bis(2-ethylhexyl)phthalate
 Concen: 39.58 ng
 RT: 20.992 min Scan# 3078
 Delta R.T. -0.047 min
 Lab File: BP003367.D
 Acq: 24 Sep 2020 12:10

Tgt Ion:149 Resp: 841347

Ion	Ratio	Lower	Upper
149	100		
167	27.7	22.6	34.0
279	4.9	4.2	6.2



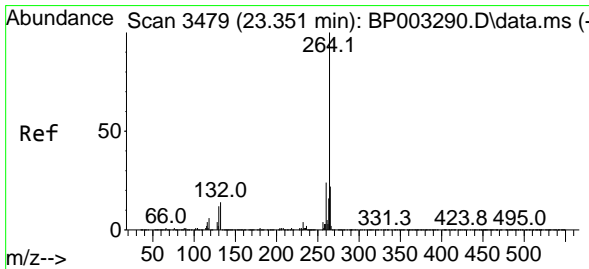
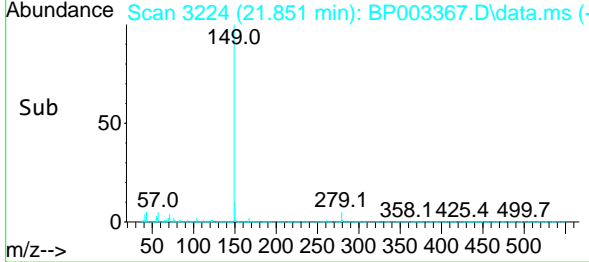
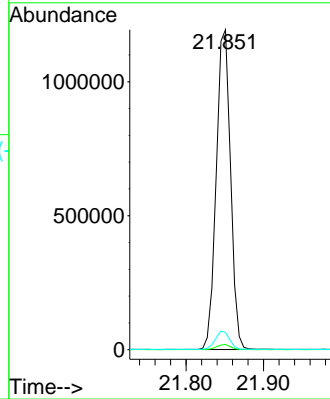
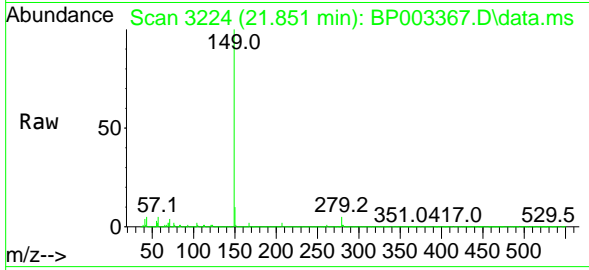


#85
 Di-n-octyl phthalate
 Concen: 39.28 ng
 RT: 21.851 min Scan# 3224
 Delta R.T. -0.047 min
 Lab File: BP003367.D
 Acq: 24 Sep 2020 12:10

Instrument :
 BNA_P
ClientSampleId :
 SSTDCCC040

Tgt Ion:149 Resp: 1525642

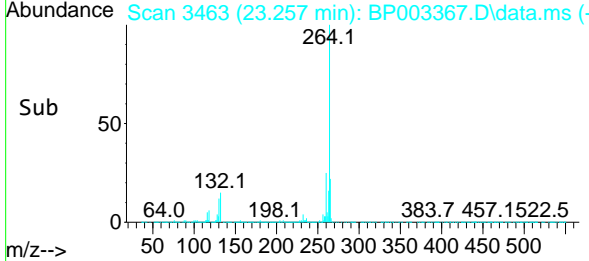
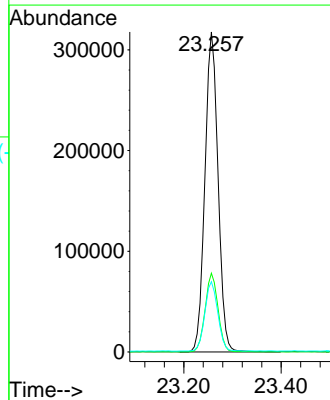
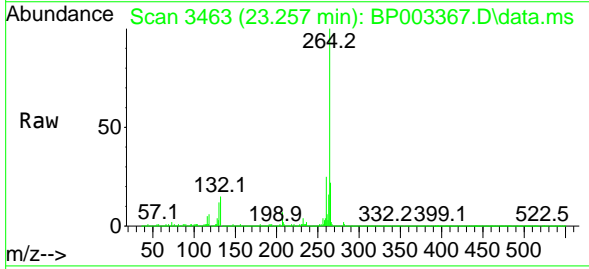
Ion	Ratio	Lower	Upper
149	100		
167	1.6	1.3	1.9
43	5.7	3.7	5.5#

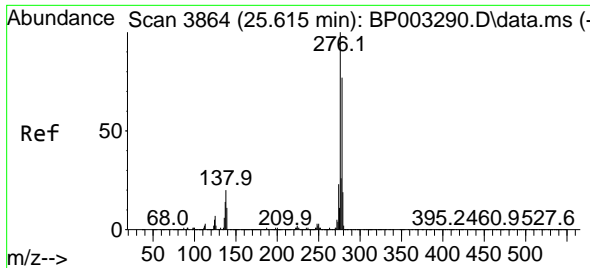


#86
 Perylene-d12
 Concen: 20.00 ng
 RT: 23.257 min Scan# 3463
 Delta R.T. -0.070 min
 Lab File: BP003367.D
 Acq: 24 Sep 2020 12:10

Tgt Ion:264 Resp: 592278

Ion	Ratio	Lower	Upper
264	100		
260	24.6	18.8	28.2
265	22.0	17.4	26.2

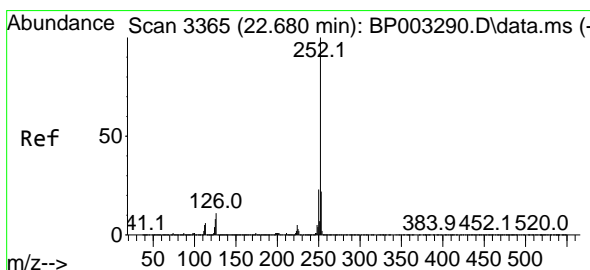
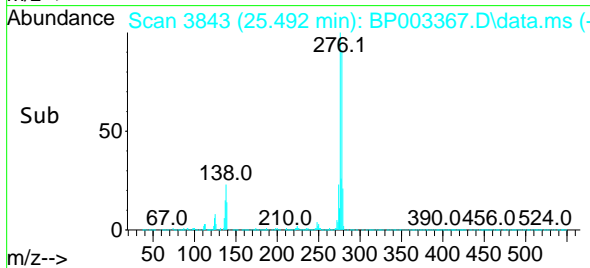
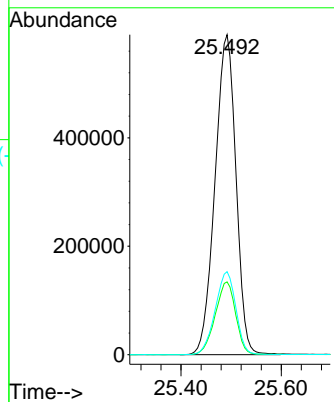
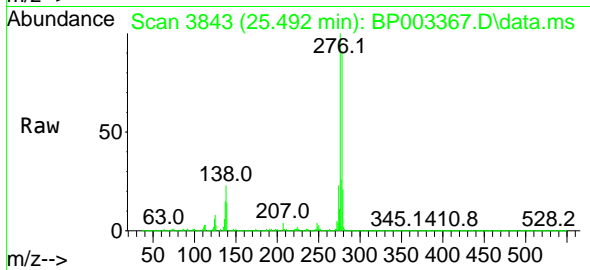




#87
 Indeno(1,2,3-cd)pyrene
 Concen: 38.14 ng
 RT: 25.492 min Scan# 3843
 Delta R.T. -0.094 min
 Lab File: BP003367.D
 Acq: 24 Sep 2020 12:10

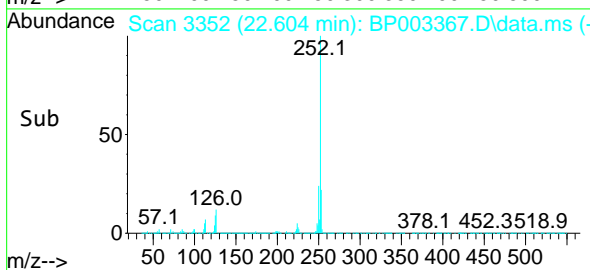
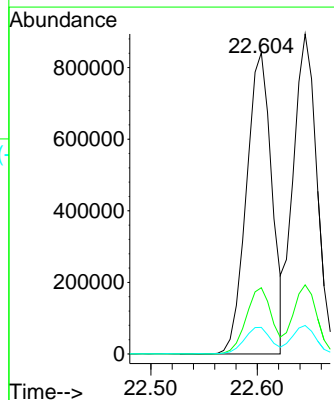
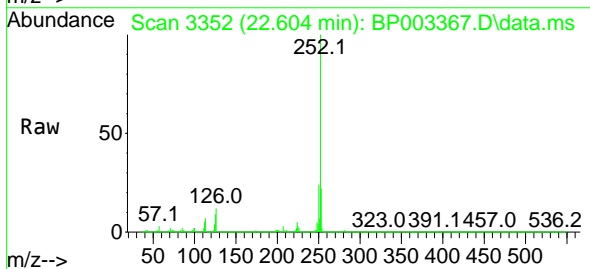
Instrument :
 BNA_P
 ClientSampled :
 SSTDCCC040

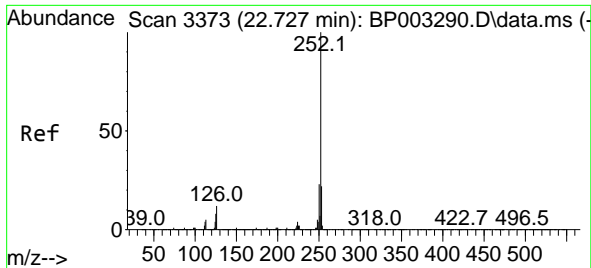
Tgt Ion: 276 Resp: 1712283
 Ion Ratio Lower Upper
 276 100
 138 22.4 18.7 28.1
 277 25.6 20.4 30.6



#88
 Benzo(b)fluoranthene
 Concen: 37.36 ng
 RT: 22.604 min Scan# 3352
 Delta R.T. -0.059 min
 Lab File: BP003367.D
 Acq: 24 Sep 2020 12:10

Tgt Ion: 252 Resp: 1397258
 Ion Ratio Lower Upper
 252 100
 253 22.0 17.6 26.4
 125 8.8 7.3 10.9

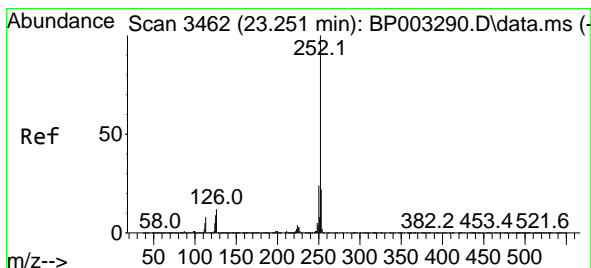
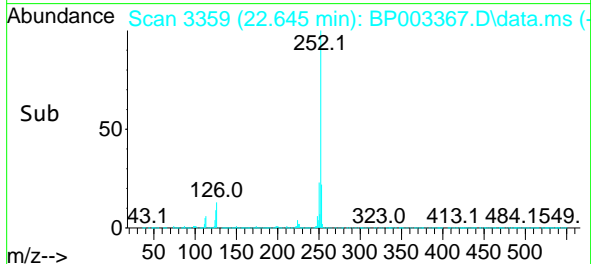
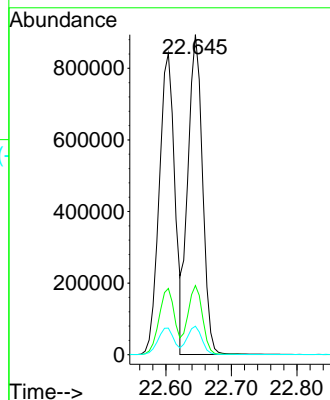
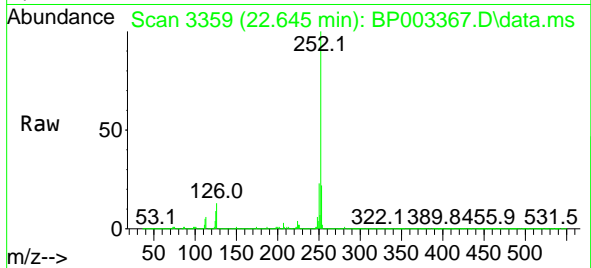




#89
 Benzo(k)fluoranthene
 Concen: 38.49 ng
 RT: 22.645 min Scan# 3359
 Delta R.T. -0.059 min
 Lab File: BP003367.D
 Acq: 24 Sep 2020 12:10

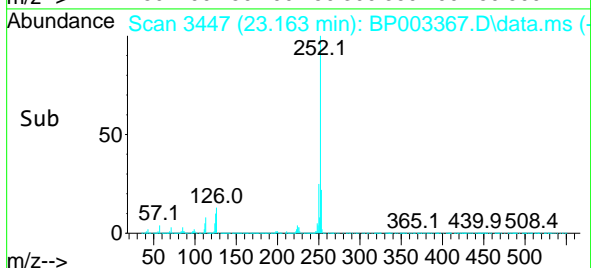
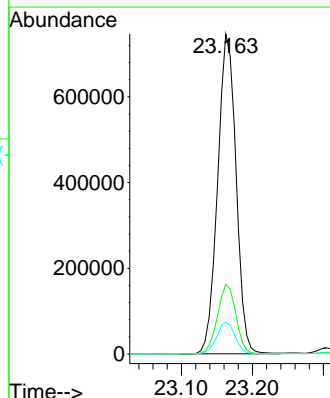
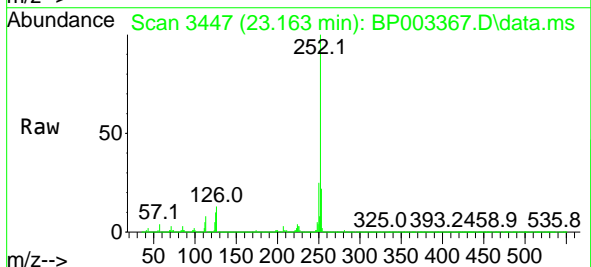
Instrument :
 BNA_P
 ClientSampleId :
 SSTDCCC040

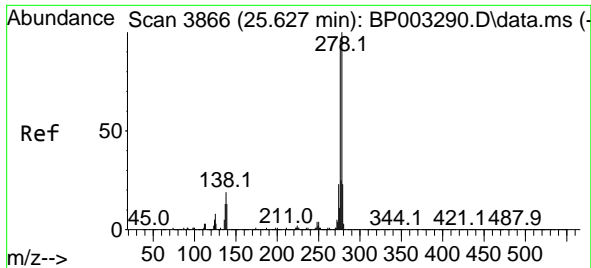
Tgt Ion	Resp	Lower	Upper
252	1379866		
253	21.6	17.8	26.8
125	8.9	7.4	11.2



#90
 Benzo(a)pyrene
 Concen: 38.01 ng
 RT: 23.163 min Scan# 3447
 Delta R.T. -0.070 min
 Lab File: BP003367.D
 Acq: 24 Sep 2020 12:10

Tgt Ion	Resp	Lower	Upper
252	1340446		
253	21.7	17.4	26.0
125	9.9	8.2	12.4

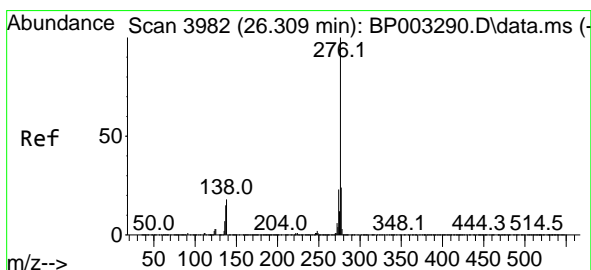
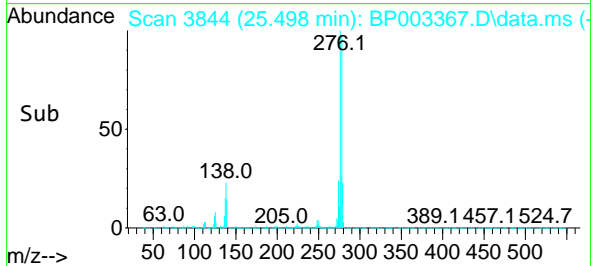
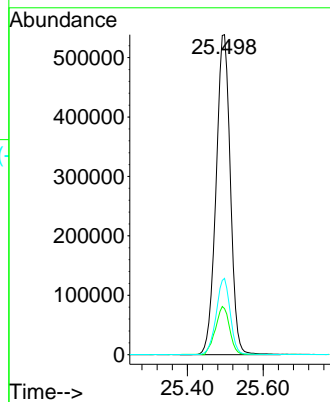
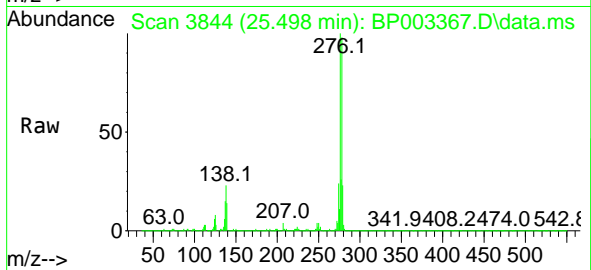




#91
 Dibenzo(a,h)anthracene
 Concen: 38.02 ng
 RT: 25.498 min Scan# 3844
 Delta R.T. -0.100 min
 Lab File: BP003367.D
 Acq: 24 Sep 2020 12:10

Instrument :
 BNA_P
 ClientSampled :
 SSTDCCC040

Tgt Ion:278 Resp: 1408298
 Ion Ratio Lower Upper
 278 100
 139 14.4 12.4 18.6
 279 23.9 19.0 28.6



#92
 Benzo(g,h,i)perylene
 Concen: 38.20 ng
 RT: 26.168 min Scan# 3958
 Delta R.T. -0.106 min
 Lab File: BP003367.D
 Acq: 24 Sep 2020 12:10

Tgt Ion:276 Resp: 1412687
 Ion Ratio Lower Upper
 276 100
 277 23.8 19.0 28.6
 138 19.1 16.6 24.8

