

Data Path : Z:\svoasrv\HPCHEM1\BNA\_P\Data\BP101122\  
 Data File : BP012050.D  
 Acq On : 11 Oct 2022 20:51  
 Operator : CG/JU  
 Sample : N4991-06  
 Misc :  
 ALS Vial : 18 Sample Multiplier: 1

Instrument :  
 BNA\_P  
 ClientSampleId :  
 COBF7

Quant Time: Oct 12 00:24:23 2022  
 Quant Method : Z:\svoasrv\HPCHEM1\BNA\_P\Methods\SFAM-EPA-BP101122.M  
 Quant Title : SVOA CALIBRATION  
 QLast Update : Tue Oct 11 23:54:43 2022  
 Response via : Initial Calibration

Compound	R.T.	QIon	Response	Conc	Units	Dev(Min)
Internal Standards						
1) 1,4-Dichlorobenzene-d4	7.858	152	216135	20.000	ng/ul	0.00
20) Naphthalene-d8	10.663	136	851255	20.000	ng/ul	0.00
38) Acenaphthene-d10	14.504	164	485246	20.000	ng/ul	0.00
64) Phenanthrene-d10	17.263	188	1075108	20.000	ng/ul	0.00
79) Chrysene-d12	21.351	240	1185418	20.000	ng/ul	0.00
88) Perylene-d12	23.774	264	1313586	20.000	ng/ul	0.00
System Monitoring Compounds						
3) 1,4-Dioxane-d8	3.275	96	24177	4.410	ng/uL	0.00
4) Pyridine-d5	3.717	84	64516	4.425	ng/ul	0.01
7) Phenol-d5	7.022	99	450594	25.922	ng/ul	0.00
9) Bis-(2-Chloroethyl)eth...	7.187	67	253276	25.670	ng/ul	0.00
11) 2-Chlorophenol-d4	7.387	132	369629	26.788	ng/ul	0.00
15) 4-Methylphenol-d8	8.569	113	286059	21.425	ng/ul	0.00
21) Nitrobenzene-d5	9.022	128	163158	27.139	ng/ul	0.00
24) 2-Nitrophenol-d4	9.746	143	172473	28.293	ng/ul	0.00
28) 2,4-Dichlorophenol-d3	10.287	165	323745	27.403	ng/ul	0.00
31) 4-Chloroaniline-d4	10.810	131	279049	16.028	ng/ul	0.00
46) Dimethylphthalate-d6	13.916	166	889859	28.956	ng/ul	0.00
49) Acenaphthylene-d8	14.198	160	1075264	28.295	ng/ul	0.00
54) 4-Nitrophenol-d4	14.716	143	144992	24.032	ng/ul	0.00
60) Fluorene-d10	15.498	176	850147	30.576	ng/ul	0.00
65) 4,6-Dinitro-2-methylph...	15.628	200	93483	16.467	ng/ul	0.00
73) Anthracene-d10	17.363	188	1378713	29.532	ng/ul	0.00
81) Pyrene-d10	19.598	212	1768687	29.124	ng/ul	0.00
92) Benzo(a)pyrene-d12	23.616	264	1928734	30.204	ng/ul	0.00
Target Compounds						
16) Acetophenone	8.687	105	71621	3.479	ng/ul	98
30) Naphthalene	10.716	128	344714	7.663	ng/ul	99
36) 2-Methylnaphthalene	12.328	142	274072	9.462	ng/ul	99
37) 1-Methylnaphthalene	12.546	142	214428	7.392	ng/ul	99
43) 1,1'-Biphenyl	13.340	154	44362	1.211	ng/ul	98
50) Acenaphthylene	14.228	152	56123	1.305	ng/ul#	92
52) Acenaphthene	14.569	153	33084	1.081	ng/ul	98
56) Dibenzofuran	14.904	168	123214	2.978	ng/ul	95
61) Fluorene	15.557	166	40496	1.247	ng/ul#	98
72) Phenanthrene	17.304	178	932451	15.948	ng/ul	99
74) Anthracene	17.398	178	176524	3.051	ng/ul	99
77) Carbazole	17.669	167	88910	1.723	ng/ul	99
80) Fluoranthene	19.275	202	1690925	22.723	ng/ul	99
82) Pyrene	19.627	202	1573929	19.986	ng/ul	98
85) Benzo(a)anthracene	21.333	228	1043143	13.980	ng/ul	97
86) Bis(2-ethylhexyl)phtha...	21.257	149	36233	1.077	ng/ul	97
87) Chrysene	21.386	228	1101062	15.330	ng/ul	97
90) Benzo(b)fluoranthene	23.033	252	1486231	17.875	ng/ul#	97
91) Benzo(k)fluoranthene	23.033	252	1486231	18.172	ng/ul	97
93) Benzo(a)pyrene	23.663	252	1167243	15.735	ng/ul	96
94) Indeno(1,2,3-cd)pyrene	26.286	276	821345	8.757	ng/ul	100
95) Dibenzo(a,h)anthracene	26.298	278	220769	2.624	ng/ul#	88
96) Benzo(g,h,i)perylene	27.062	276	753663	8.912	ng/ul#	95

Data Path : Z:\svoasrv\HPCHEM1\BNA\_P\Data\BP101122\  
Data File : BP012050.D  
Acq On : 11 Oct 2022 20:51  
Operator : CG/JU  
Sample : N4991-06  
Misc :  
ALS Vial : 18 Sample Multiplier: 1

Instrument :  
BNA\_P  
ClientSampleId :  
C0BF7

Quant Time: Oct 12 00:24:23 2022  
Quant Method : Z:\svoasrv\HPCHEM1\BNA\_P\Methods\SFAM-EPA-BP101122.M  
Quant Title : SVOA CALIBRATION  
QLast Update : Tue Oct 11 23:54:43 2022  
Response via : Initial Calibration

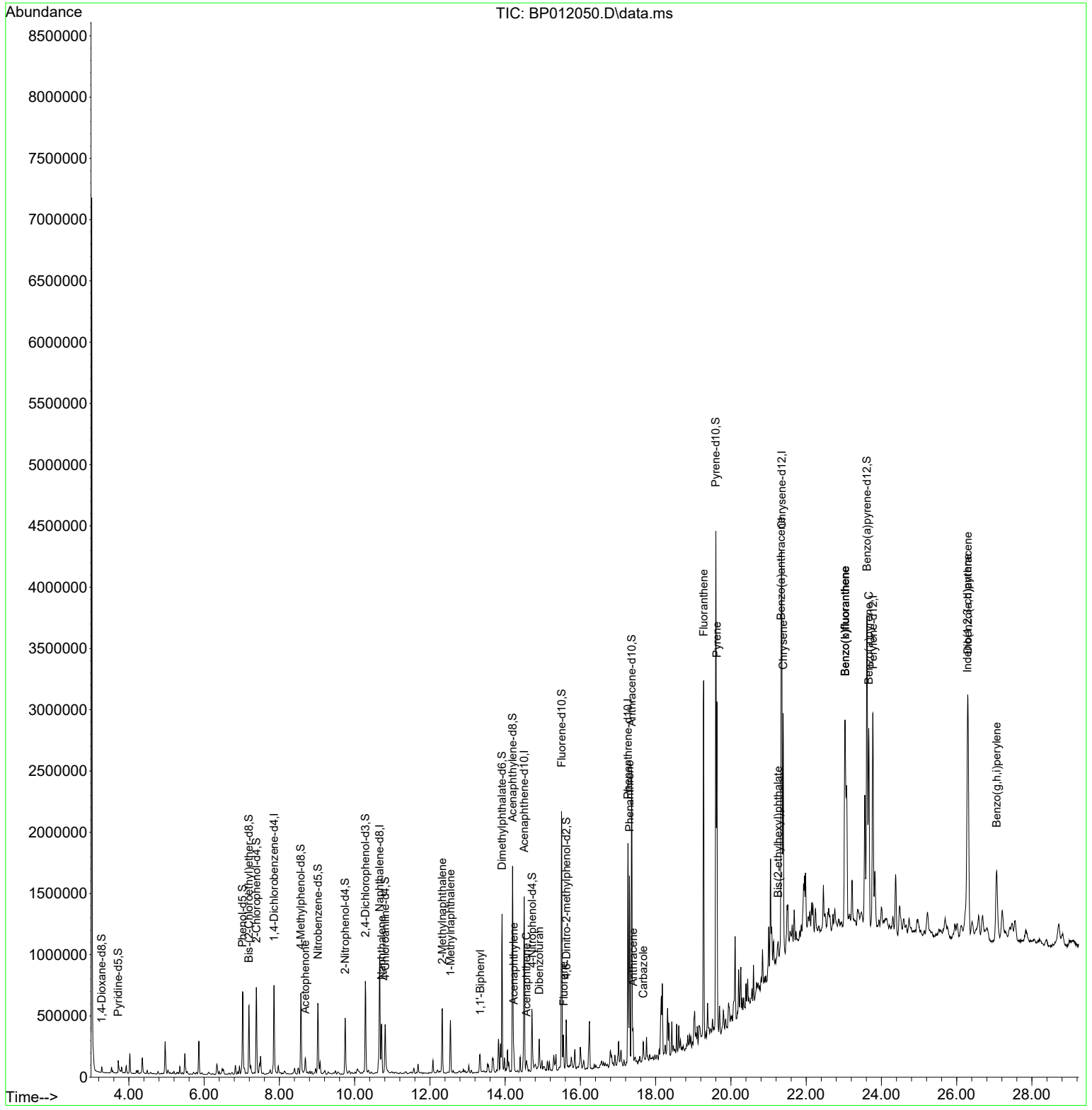
Compound	R.T.	QIon	Response	Conc	Units	Dev(Min)
----------	------	------	----------	------	-------	----------

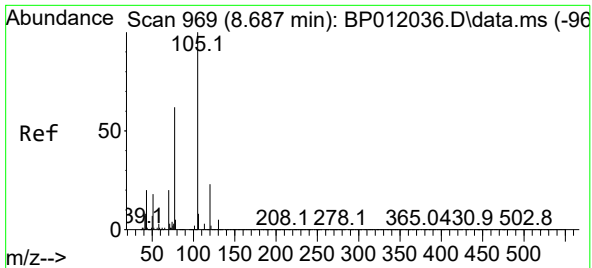
-----  
(#) = qualifier out of range (m) = manual integration (+) = signals summed

Data Path : Z:\svoasrv\HPCHEM1\BNA\_P\Data\BP101122\  
 Data File : BP012050.D  
 Acq On : 11 Oct 2022 20:51  
 Operator : CG/JU  
 Sample : N4991-06  
 Misc :  
 ALS Vial : 18 Sample Multiplier: 1

**Instrument :**  
 BNA\_P  
**ClientSampleId :**  
 C0BF7

Quant Time: Oct 12 00:24:23 2022  
 Quant Method : Z:\svoasrv\HPCHEM1\BNA\_P\Methods\SFAM-EPA-BP101122.M  
 Quant Title : SVOA CALIBRATION  
 QLast Update : Tue Oct 11 23:54:43 2022  
 Response via : Initial Calibration

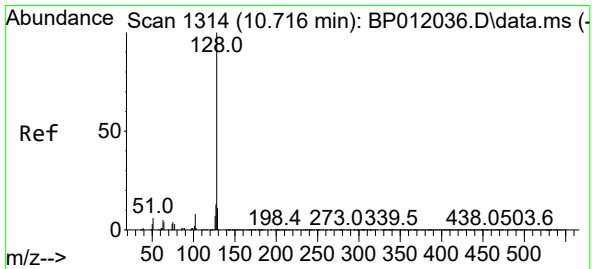
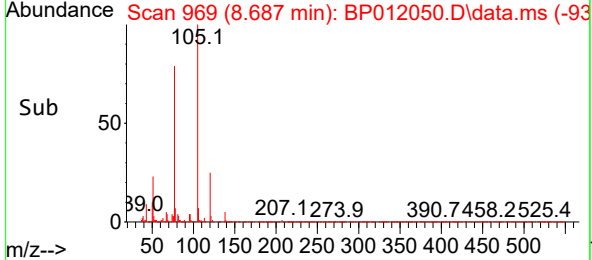
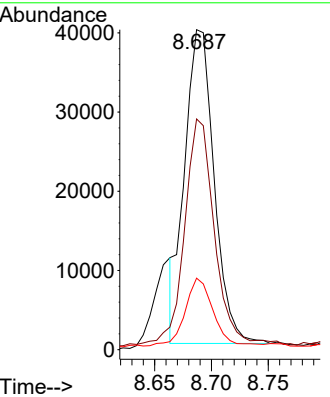
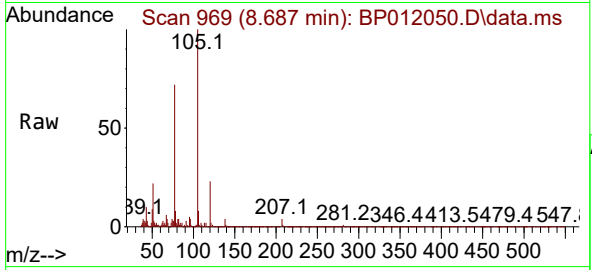




#16  
 Acetophenone  
 Concen: 3.479 ng/u1  
 RT: 8.687 min Scan# 969  
 Delta R.T. -0.000 min  
 Lab File: BP012050.D  
 Acq: 11 Oct 2022 20:51

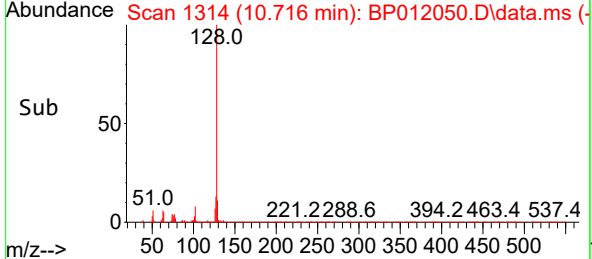
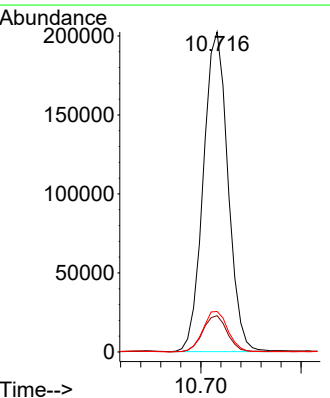
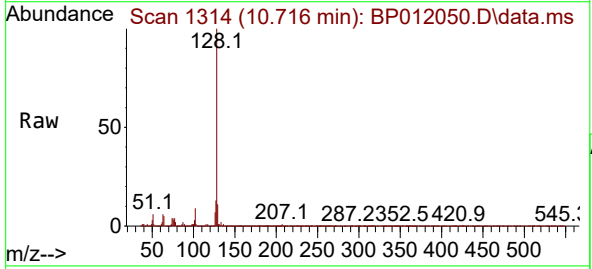
Instrument : BNA\_P  
 Client SampleId : C0BF7

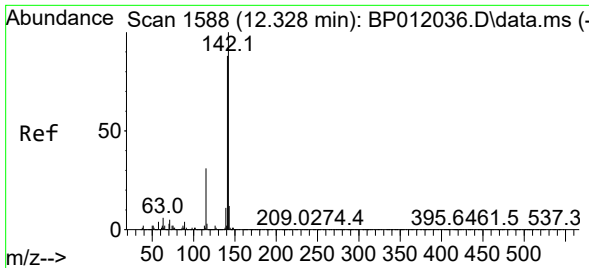
Tgt Ion	Resp	Lower	Upper
105	100		
77	72.1	57.0	85.4
51	22.4	16.4	24.6



#30  
 Naphthalene  
 Concen: 7.663 ng/u1  
 RT: 10.716 min Scan# 1314  
 Delta R.T. -0.000 min  
 Lab File: BP012050.D  
 Acq: 11 Oct 2022 20:51

Tgt Ion	Resp	Lower	Upper
128	100		
129	11.3	8.9	13.3
127	12.6	10.2	15.4

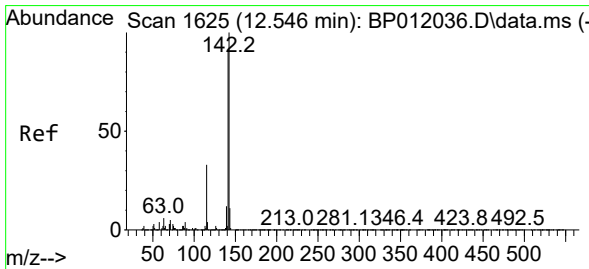
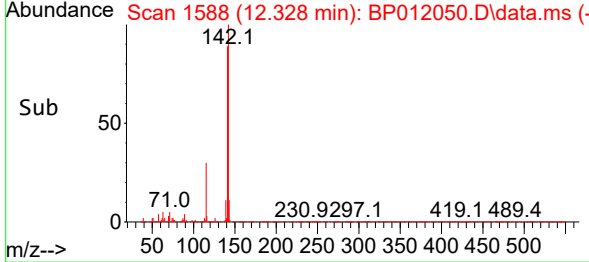
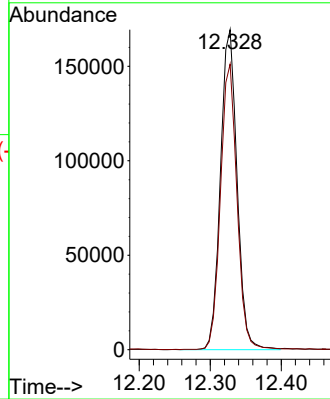
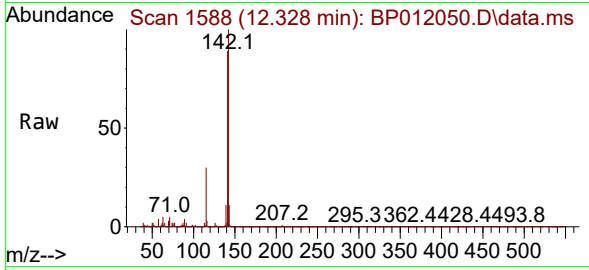




#36  
 2-Methylnaphthalene  
 Concen: 9.462 ng/ul  
 RT: 12.328 min Scan# 1588  
 Delta R.T. -0.000 min  
 Lab File: BP012050.D  
 Acq: 11 Oct 2022 20:51

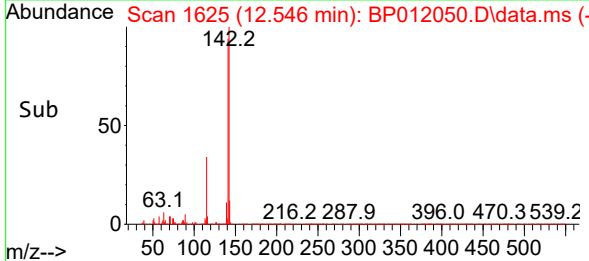
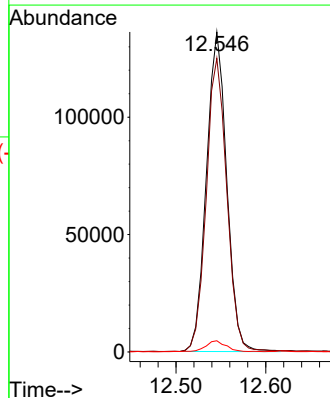
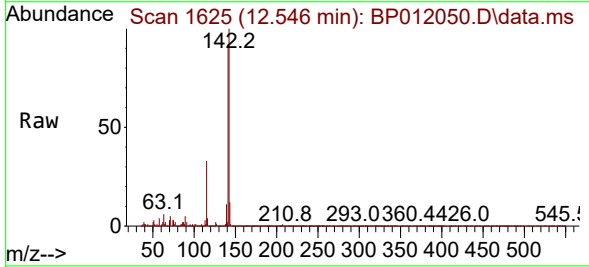
Instrument :  
 BNA\_P  
 ClientSampleId :  
 C0BF7

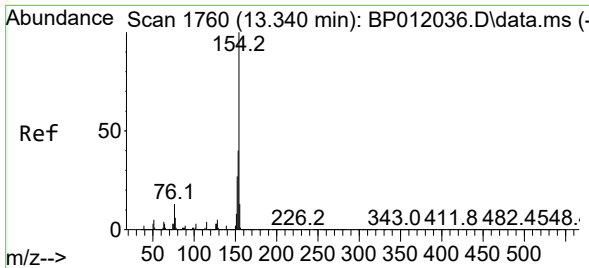
Tgt Ion:142 Resp: 274072  
 Ion Ratio Lower Upper  
 142 100  
 141 89.3 70.7 106.1



#37  
 1-Methylnaphthalene  
 Concen: 7.392 ng/ul  
 RT: 12.546 min Scan# 1625  
 Delta R.T. -0.000 min  
 Lab File: BP012050.D  
 Acq: 11 Oct 2022 20:51

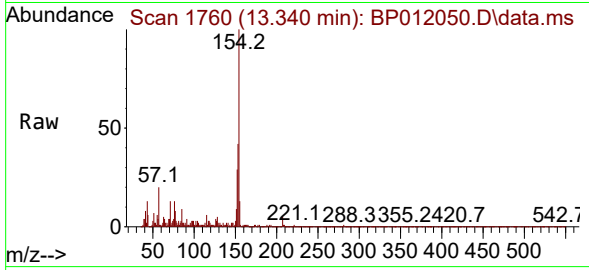
Tgt Ion:142 Resp: 214428  
 Ion Ratio Lower Upper  
 142 100  
 141 91.8 72.9 109.3  
 116 3.5 2.8 4.2





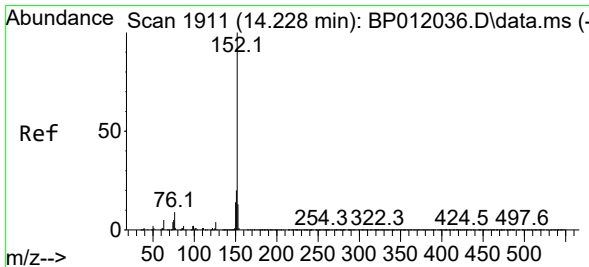
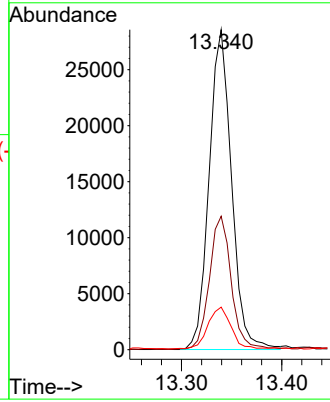
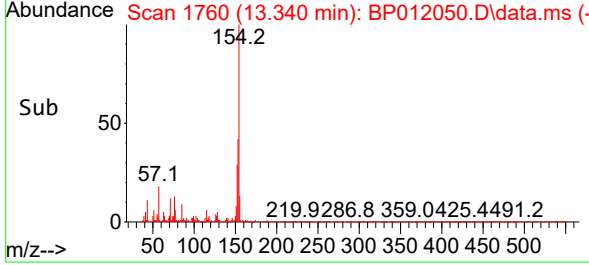
#43  
 1,1'-Biphenyl  
 Concen: 1.211 ng/ul  
 RT: 13.340 min Scan# 1760  
 Delta R.T. -0.000 min  
 Lab File: BP012050.D  
 Acq: 11 Oct 2022 20:51

Instrument :  
 BNA\_P  
 ClientSampleId :  
 C0BF7

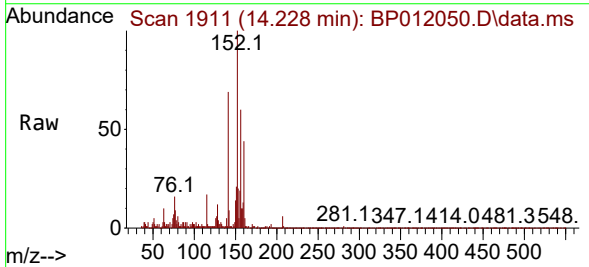


Tgt Ion:154 Resp: 44362

Ion	Ratio	Lower	Upper
154	100		
153	41.7	32.2	48.2
76	13.3	10.3	15.5

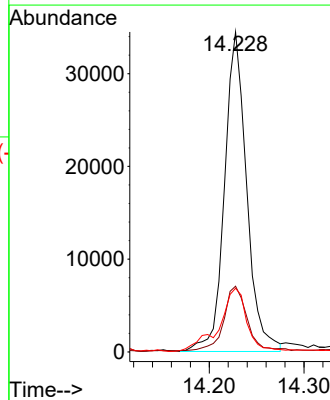
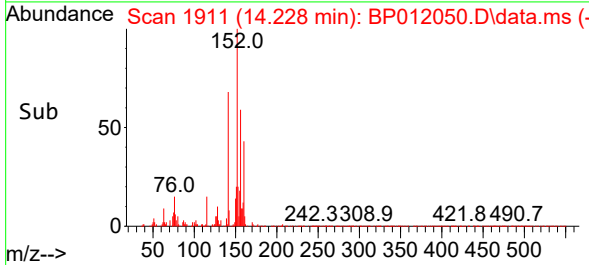


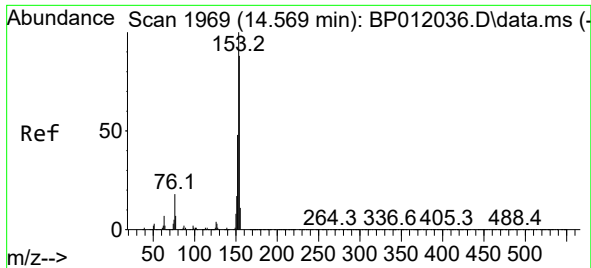
#50  
 Acenaphthylene  
 Concen: 1.305 ng/ul  
 RT: 14.228 min Scan# 1911  
 Delta R.T. -0.000 min  
 Lab File: BP012050.D  
 Acq: 11 Oct 2022 20:51



Tgt Ion:152 Resp: 56123

Ion	Ratio	Lower	Upper
152	100		
151	20.6	15.7	23.5
153	19.9	10.4	15.6



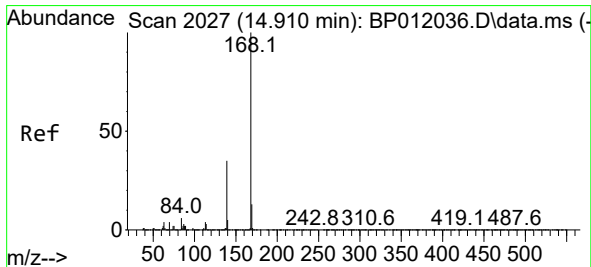
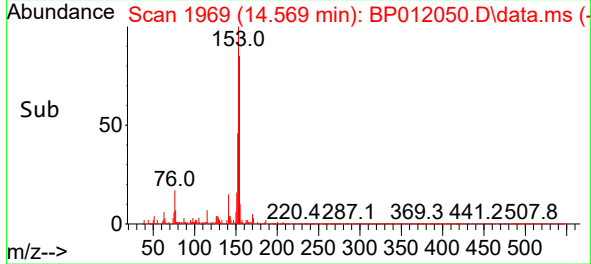
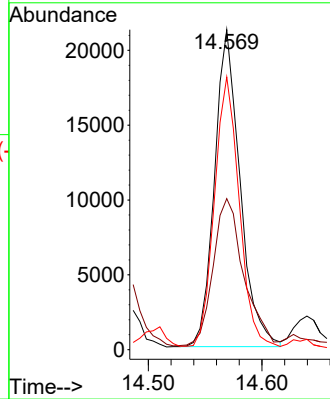
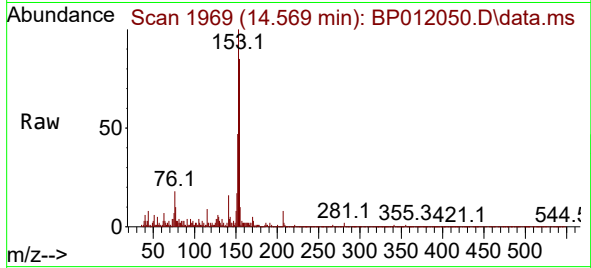


#52  
 Acenaphthene  
 Concen: 1.081 ng/ul  
 RT: 14.569 min Scan# 1969  
 Delta R.T. -0.000 min  
 Lab File: BP012050.D  
 Acq: 11 Oct 2022 20:51

Instrument :  
 BNA\_P  
 ClientSampleId :  
 C0BF7

Tgt Ion:153 Resp: 33084

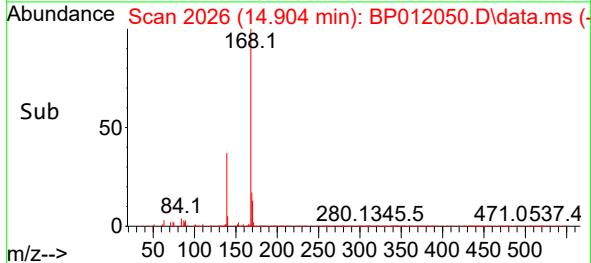
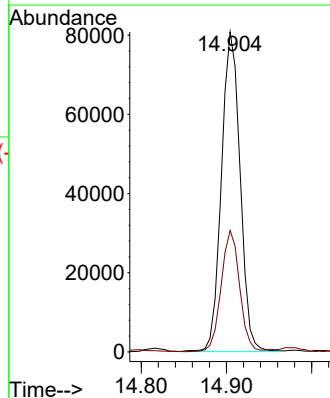
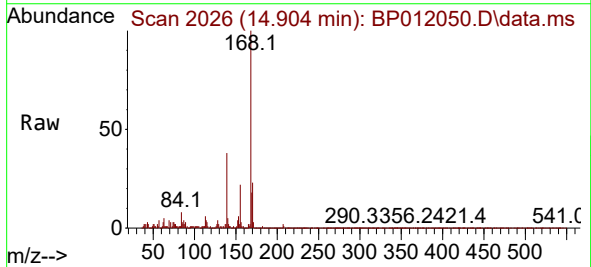
Ion	Ratio	Lower	Upper
153	100		
152	47.2	38.2	57.2
154	85.2	70.6	105.8

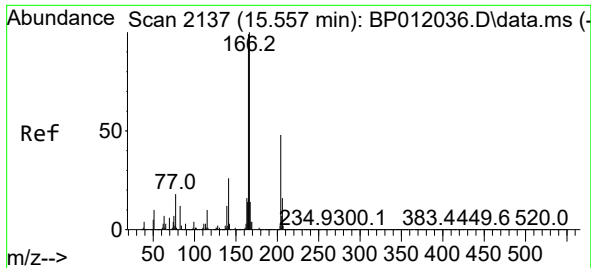


#56  
 Dibenzofuran  
 Concen: 2.978 ng/ul  
 RT: 14.904 min Scan# 2026  
 Delta R.T. -0.006 min  
 Lab File: BP012050.D  
 Acq: 11 Oct 2022 20:51

Tgt Ion:168 Resp: 123214

Ion	Ratio	Lower	Upper
168	100		
139	38.0	28.2	42.4



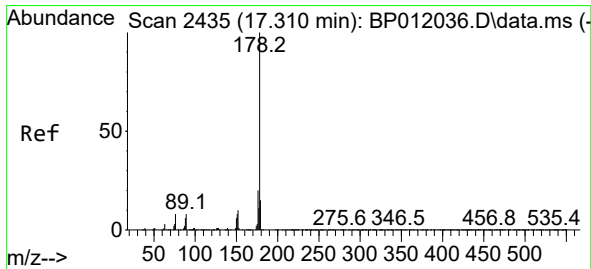
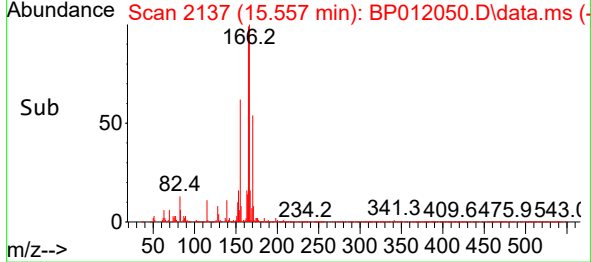
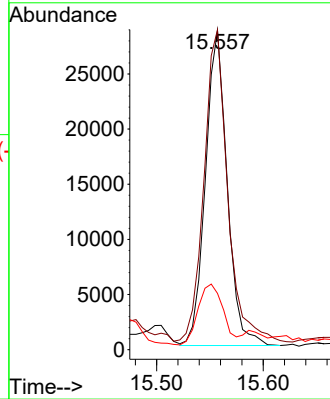
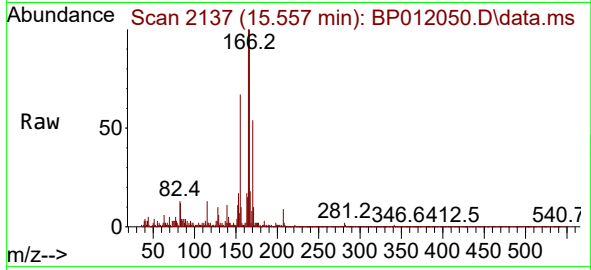


#61  
 Fluorene  
 Concen: 1.247 ng/ul  
 RT: 15.557 min Scan# 2137  
 Delta R.T. -0.000 min  
 Lab File: BP012050.D  
 Acq: 11 Oct 2022 20:51

Instrument :  
 BNA\_P  
 Client Sample Id :  
 C0BF7

Tgt Ion:166 Resp: 40496

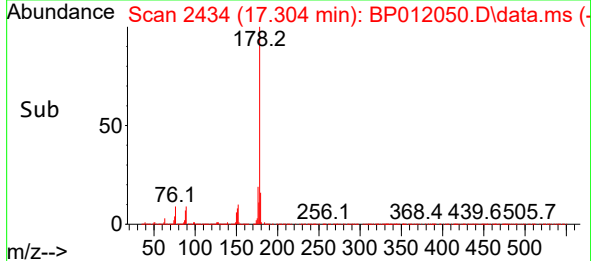
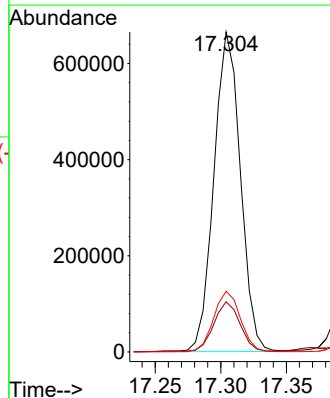
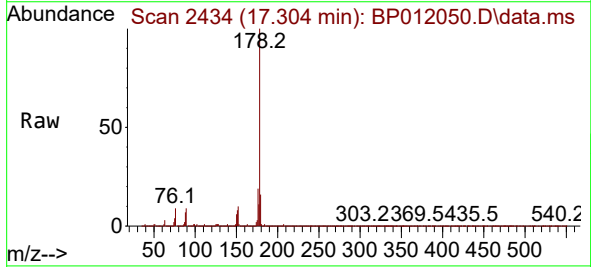
Ion	Ratio	Lower	Upper
166	100		
165	100.2	79.5	119.3
167	17.7	10.9	16.3#



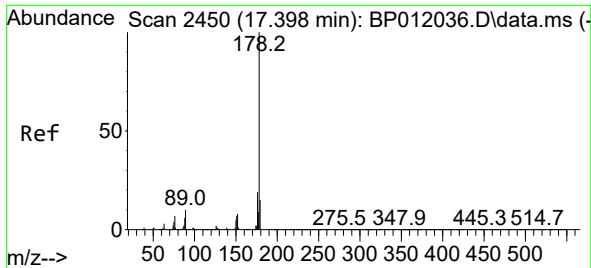
#72  
 Phenanthrene  
 Concen: 15.948 ng/ul  
 RT: 17.304 min Scan# 2434  
 Delta R.T. -0.006 min  
 Lab File: BP012050.D  
 Acq: 11 Oct 2022 20:51

Tgt Ion:178 Resp: 932451

Ion	Ratio	Lower	Upper
178	100		
179	15.7	12.2	18.4
176	18.9	15.8	23.6

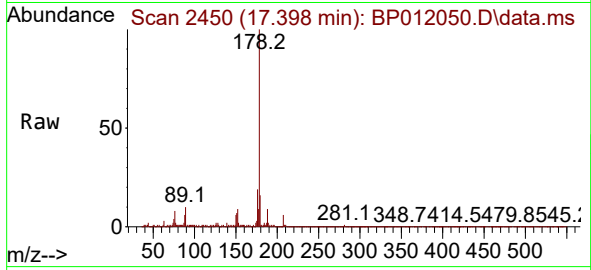






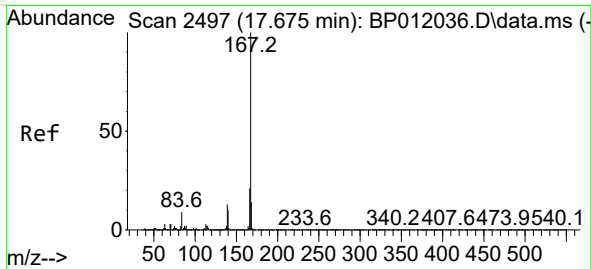
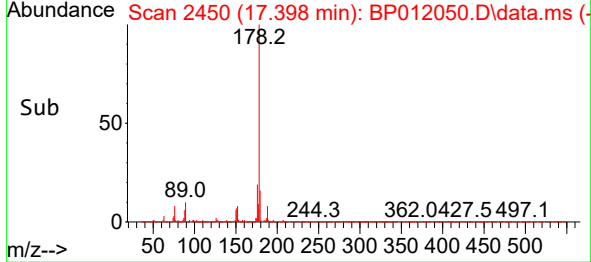
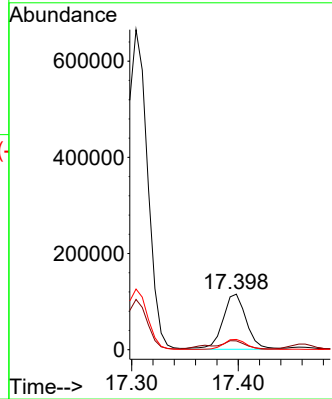
#74  
 Anthracene  
 Concen: 3.051 ng/uI  
 RT: 17.398 min Scan# 2450  
 Delta R.T. -0.000 min  
 Lab File: BP012050.D  
 Acq: 11 Oct 2022 20:51

Instrument : BNA\_P  
 ClientSampleId : COBF7



Tgt Ion:178 Resp: 176524

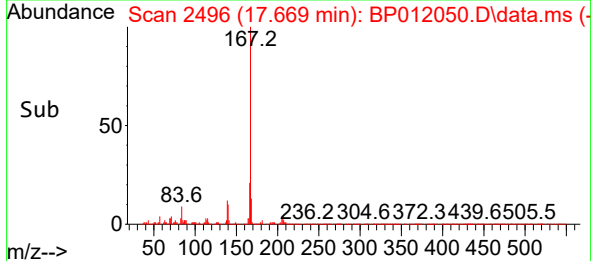
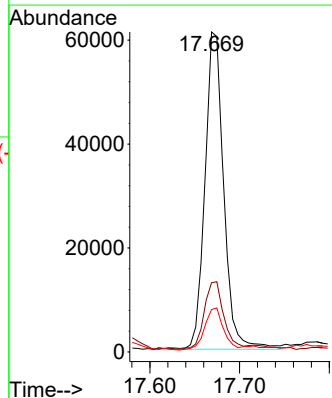
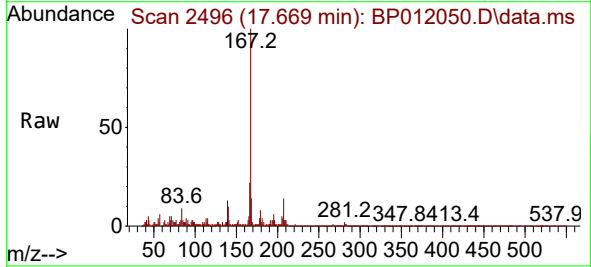
Ion	Ratio	Lower	Upper
178	100		
179	15.9	12.2	18.4
176	18.6	14.8	22.2

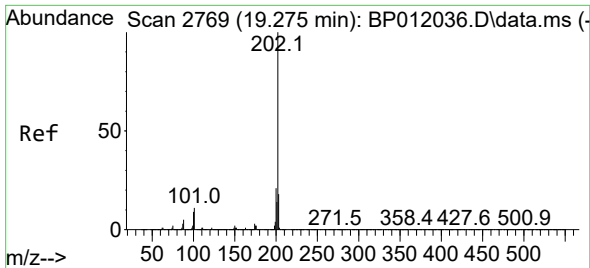


#77  
 Carbazole  
 Concen: 1.723 ng/uI  
 RT: 17.669 min Scan# 2496  
 Delta R.T. -0.006 min  
 Lab File: BP012050.D  
 Acq: 11 Oct 2022 20:51

Tgt Ion:167 Resp: 88910

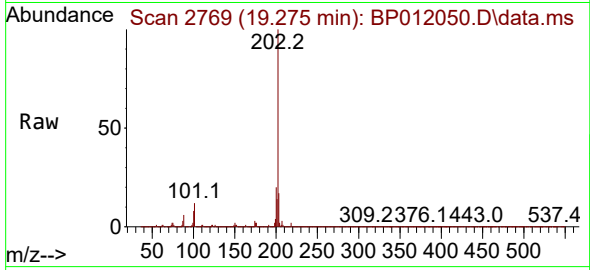
Ion	Ratio	Lower	Upper
167	100		
166	21.7	17.0	25.6
139	13.3	10.1	15.1





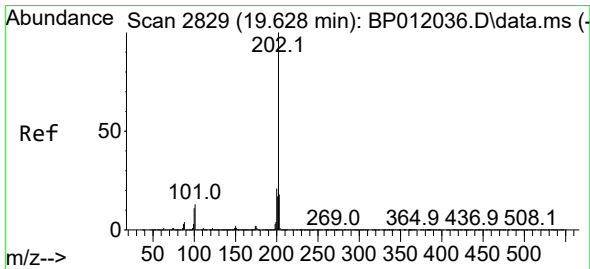
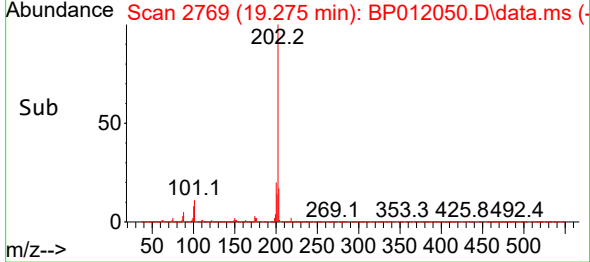
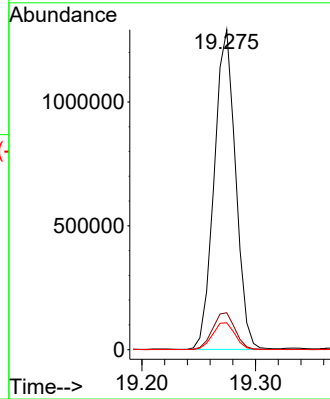
#80  
 Fluoranthene  
 Concen: 22.723 ng/u1  
 RT: 19.275 min Scan# 2769  
 Delta R.T. -0.000 min  
 Lab File: BP012050.D  
 Acq: 11 Oct 2022 20:51

Instrument :  
 BNA\_P  
 ClientSampleId :  
 C0BF7



Tgt Ion:202 Resp: 1690925

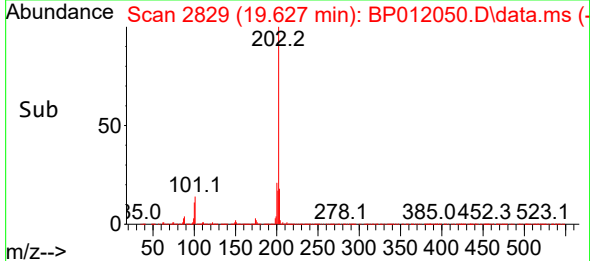
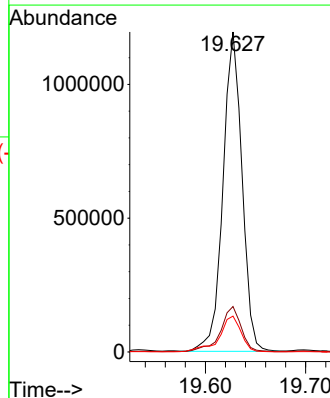
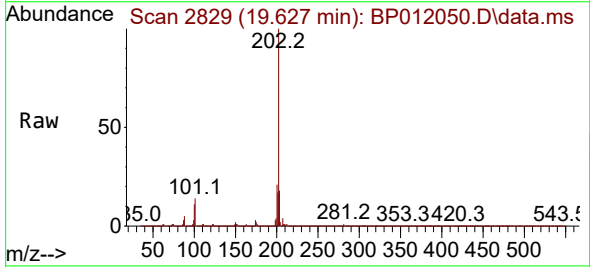
Ion	Ratio	Lower	Upper
202	100		
101	11.6	9.0	13.6
100	8.4	7.0	10.6

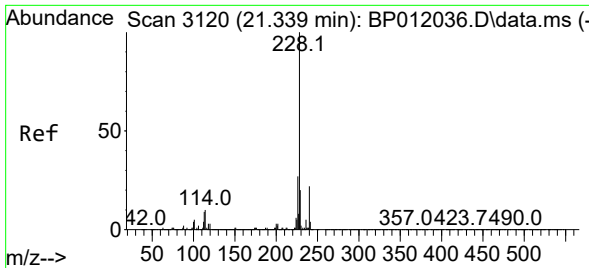


#82  
 Pyrene  
 Concen: 19.986 ng/u1  
 RT: 19.627 min Scan# 2829  
 Delta R.T. -0.000 min  
 Lab File: BP012050.D  
 Acq: 11 Oct 2022 20:51

Tgt Ion:202 Resp: 1573929

Ion	Ratio	Lower	Upper
202	100		
101	14.2	10.4	15.6
100	11.2	8.5	12.7



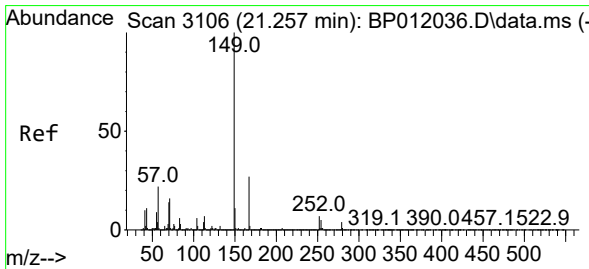
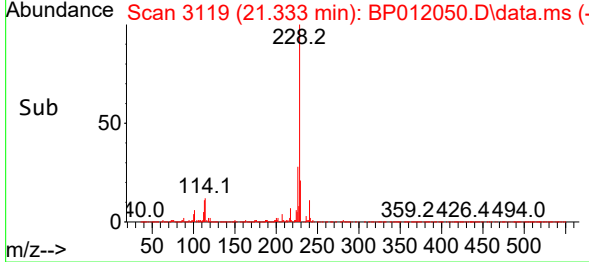
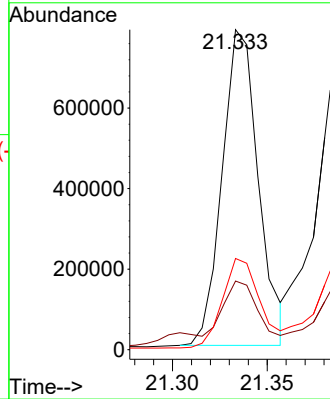
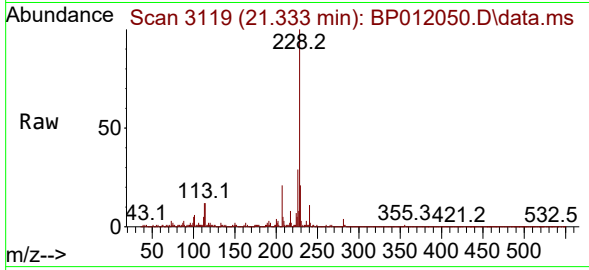


#85  
 Benzo(a)anthracene  
 Concen: 13.980 ng/ul  
 RT: 21.333 min Scan# 3119  
 Delta R.T. -0.006 min  
 Lab File: BP012050.D  
 Acq: 11 Oct 2022 20:51

Instrument :  
 BNA\_P  
 ClientSampleId :  
 C0BF7

Tgt Ion:228 Resp: 1043143

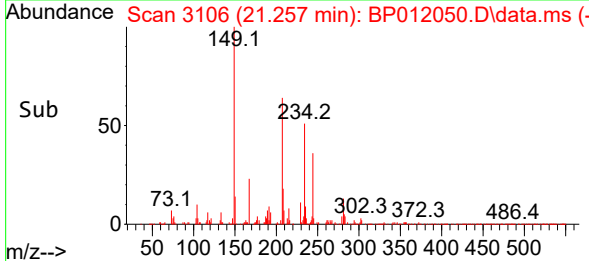
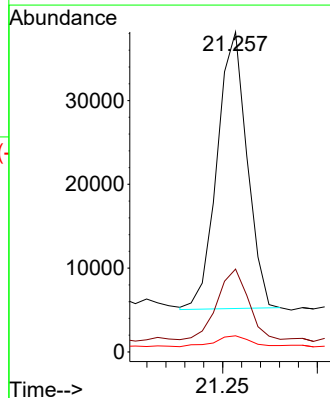
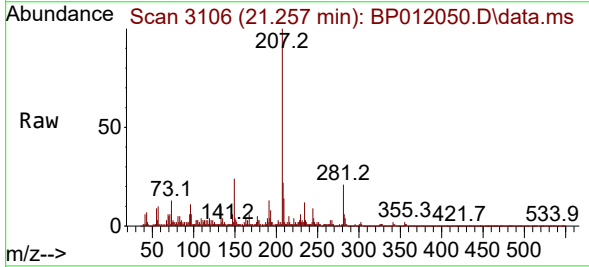
Ion	Ratio	Lower	Upper
228	100		
229	21.5	15.7	23.5
226	28.5	21.9	32.9

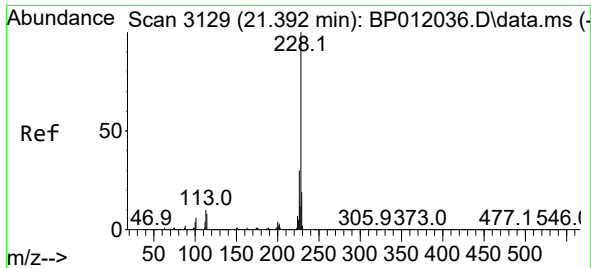


#86  
 Bis(2-ethylhexyl)phthalate  
 Concen: 1.077 ng/ul  
 RT: 21.257 min Scan# 3106  
 Delta R.T. -0.000 min  
 Lab File: BP012050.D  
 Acq: 11 Oct 2022 20:51

Tgt Ion:149 Resp: 36233

Ion	Ratio	Lower	Upper
149	100		
167	25.9	21.9	32.9
279	5.0	3.4	5.2



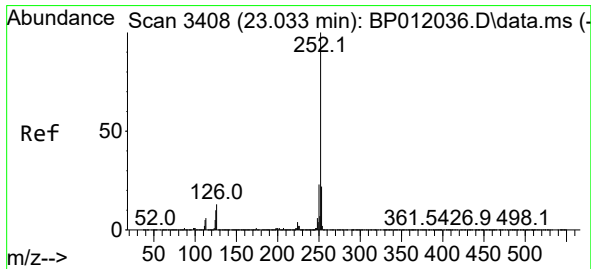
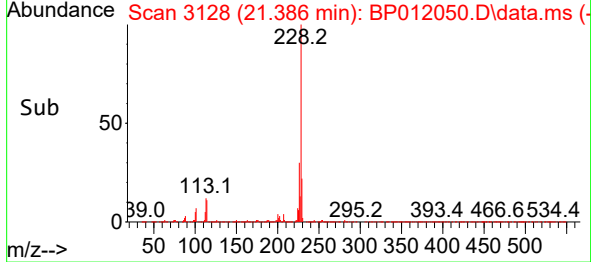
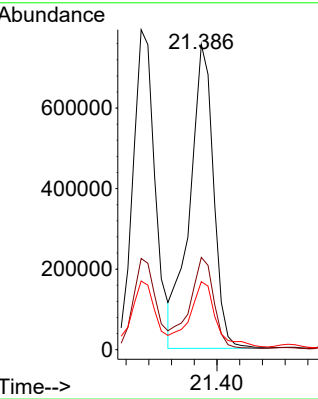
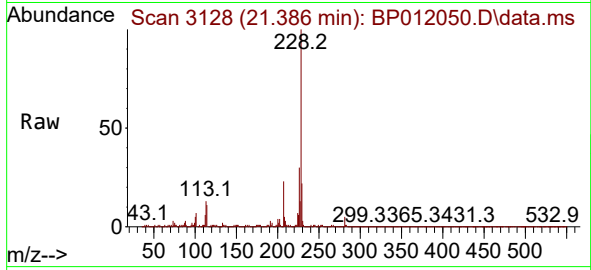


#87  
 Chrysene  
 Concen: 15.330 ng/ul  
 RT: 21.386 min Scan# 3128  
 Delta R.T. -0.006 min  
 Lab File: BP012050.D  
 Acq: 11 Oct 2022 20:51

Instrument :  
 BNA\_P  
 ClientSampleId :  
 C0BF7

Tgt Ion:228 Resp: 1101062

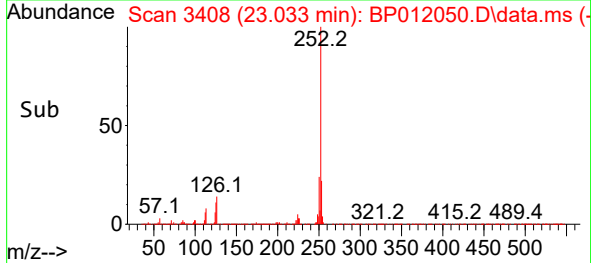
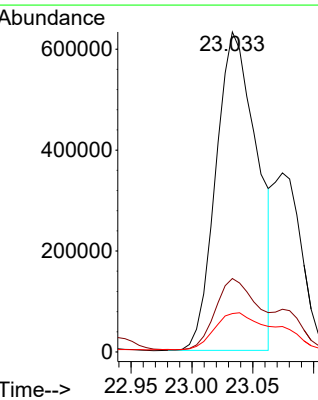
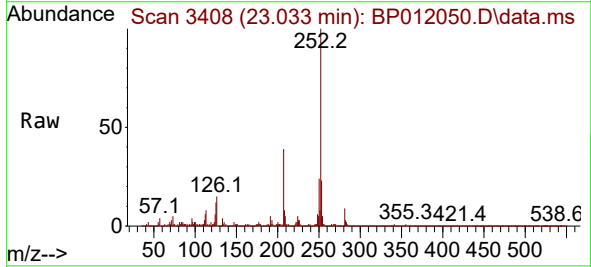
Ion	Ratio	Lower	Upper
228	100		
226	30.2	24.0	36.0
229	22.2	15.5	23.3

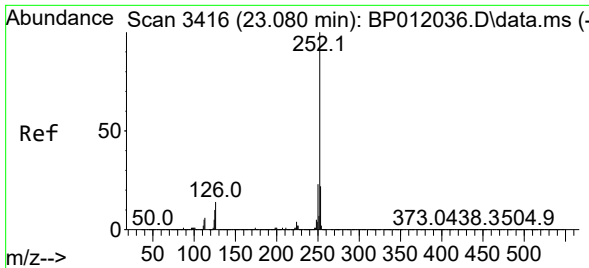


#90  
 Benzo(b)fluoranthene  
 Concen: 17.875 ng/ul  
 RT: 23.033 min Scan# 3408  
 Delta R.T. -0.000 min  
 Lab File: BP012050.D  
 Acq: 11 Oct 2022 20:51

Tgt Ion:252 Resp: 1486231

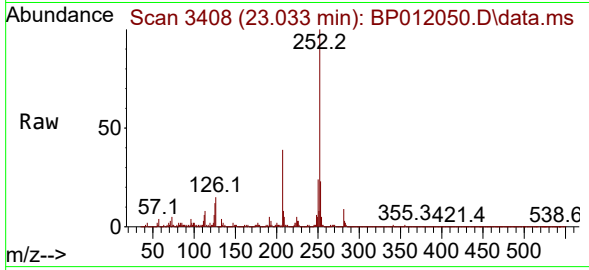
Ion	Ratio	Lower	Upper
252	100		
253	23.0	17.6	26.4
125	12.0	7.8	11.8



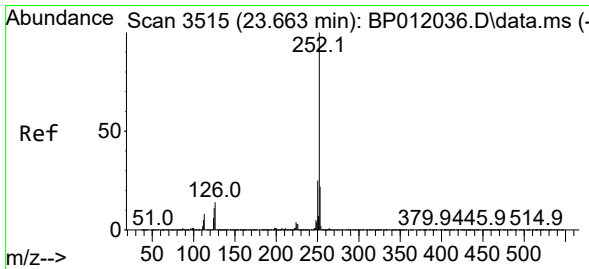
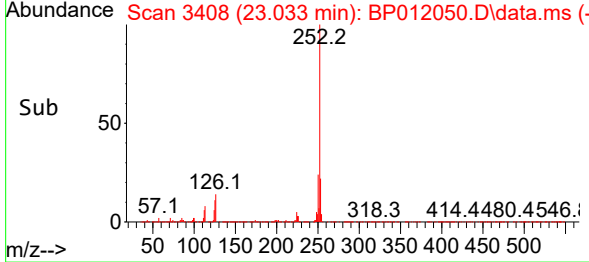
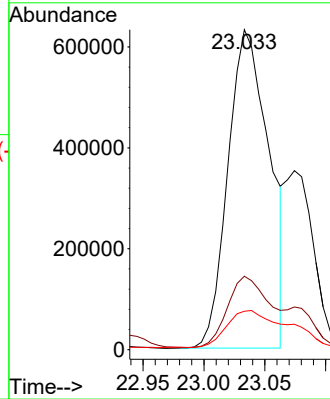


#91  
 Benzo(k)fluoranthene  
 Concen: 18.172 ng/u1  
 RT: 23.033 min Scan# 3416  
 Delta R.T. -0.047 min  
 Lab File: BP012050.D  
 Acq: 11 Oct 2022 20:51

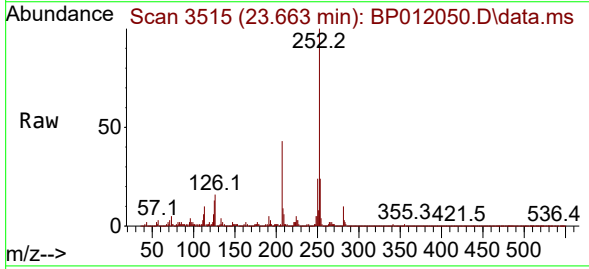
Instrument :  
 BNA\_P  
 ClientSampleId :  
 COBF7



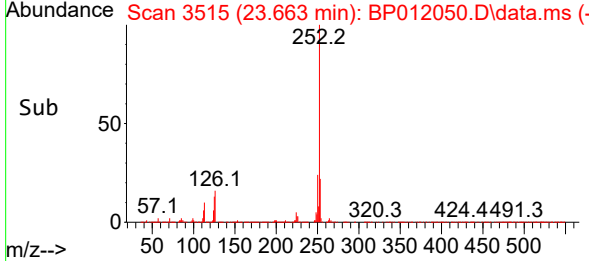
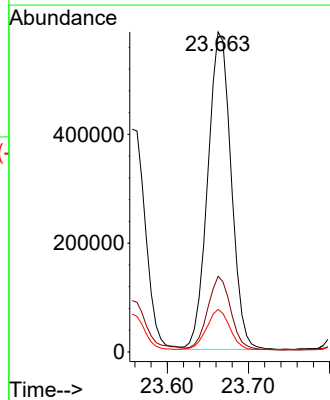
Tgt Ion:252 Resp: 1486231  
 Ion Ratio Lower Upper  
 252 100  
 253 23.0 17.6 26.4  
 125 12.0 8.2 12.2

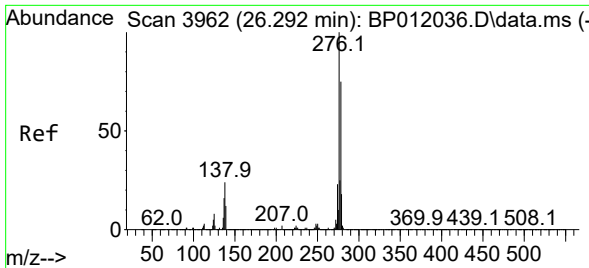


#93  
 Benzo(a)pyrene  
 Concen: 15.735 ng/u1  
 RT: 23.663 min Scan# 3515  
 Delta R.T. -0.000 min  
 Lab File: BP012050.D  
 Acq: 11 Oct 2022 20:51



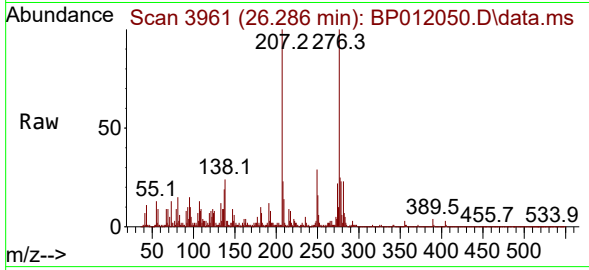
Tgt Ion:252 Resp: 1167243  
 Ion Ratio Lower Upper  
 252 100  
 253 23.7 17.6 26.4  
 125 13.3 8.9 13.3





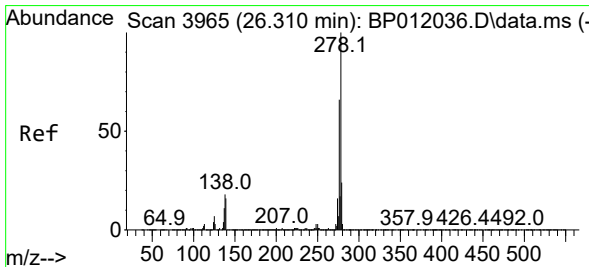
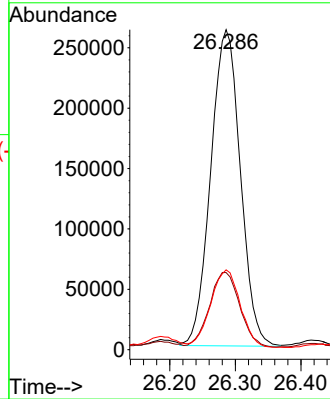
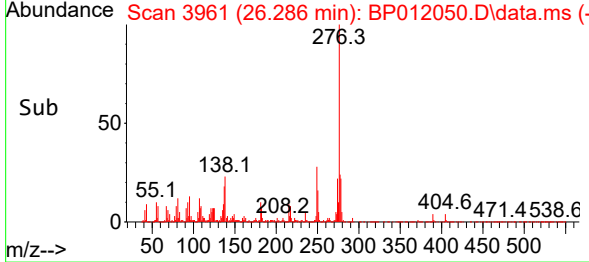
#94  
 Indeno(1,2,3-cd)pyrene  
 Concen: 8.757 ng/ul  
 RT: 26.286 min Scan# 3963  
 Delta R.T. -0.006 min  
 Lab File: BP012050.D  
 Acq: 11 Oct 2022 20:51

Instrument :  
 BNA\_P  
 ClientSampleId :  
 C0BF7

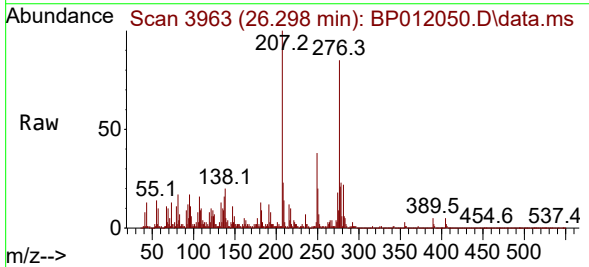


Tgt Ion: 276 Resp: 821345

Ion	Ratio	Lower	Upper
276	100		
138	24.1	19.1	28.7
277	25.0	19.9	29.9

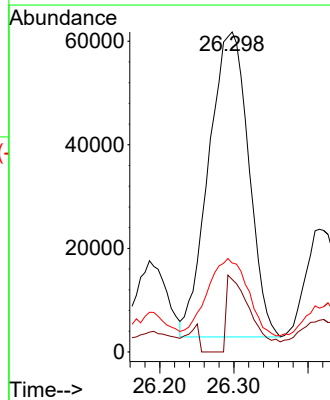
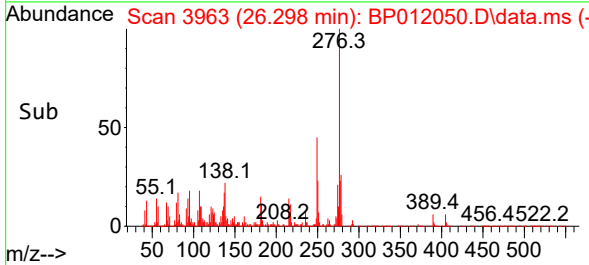


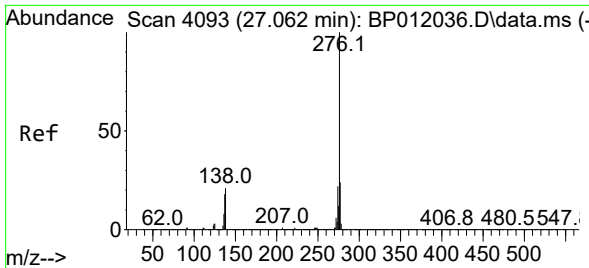
#95  
 Dibenzo(a,h)anthracene  
 Concen: 2.624 ng/ul  
 RT: 26.298 min Scan# 3963  
 Delta R.T. -0.012 min  
 Lab File: BP012050.D  
 Acq: 11 Oct 2022 20:51



Tgt Ion: 278 Resp: 220769

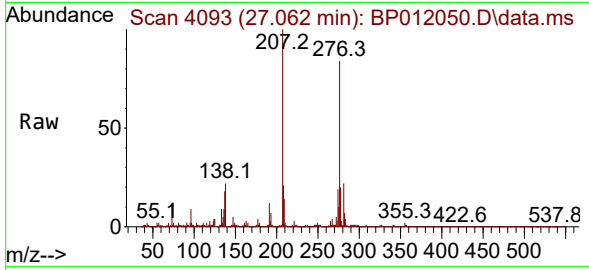
Ion	Ratio	Lower	Upper
278	100		
139	22.7	12.5	18.7#
279	27.8	19.0	28.4





#96  
 Benzo(g,h,i)perylene  
 Concen: 8.912 ng/ul  
 RT: 27.062 min Scan# 4093  
 Delta R.T. -0.000 min  
 Lab File: BP012050.D  
 Acq: 11 Oct 2022 20:51

Instrument :  
 BNA\_P  
 ClientSampleId :  
 C0BF7



Tgt Ion: 276 Resp: 753663

Ion	Ratio	Lower	Upper
276	100		
138	25.5	16.5	24.7#
277	24.2	19.0	28.4

