

Data Path : Z:\svoasrv\HPCHEM1\BNA_P\Data\BP102124\
 Data File : BP022528.D
 Acq On : 22 Oct 2024 07:01
 Operator : RC/JU
 Sample : P4429-22
 Misc :
 ALS Vial : 29 Sample Multiplier: 1

Instrument :
 BNA_P
 ClientSampleId :
 A4F74

Integration Parameters: LSCINT.P

Integrator: RTE
 Smoothing : OFF Filtering: 5
 Sampling : 1 Min Area: 0.1 % of largest Peak
 Start Thrs: 0.2 Max Peaks: 100
 Stop Thrs : 0 Peak Location: TOP

If leading or trailing edge < 100 prefer < Baseline drop else tangent >
 Peak separation: 5

Method : Z:\svoasrv\HPCHEM1\BNA_P\Methods\SFAM-EPA-BP100724.MA.M
 Title : SVOA CALIBRATION

Signal : TIC: BP022528.D\data.ms

peak #	R.T. min	first scan	max scan	last scan	PK TY	peak height	corr. area	corr. % max.	% of total
1	3.134	23	25	30	rVB6	2195	2984	0.10%	0.010%
2	3.199	33	36	46	rVB	19503	30259	1.05%	0.099%
3	3.611	102	106	117	rBV	212885	318300	11.09%	1.045%
4	3.928	156	160	165	rVB	6925	9513	0.33%	0.031%
5	4.469	247	252	256	rBV8	3291	6065	0.21%	0.020%
6	4.828	306	313	316	rBV9	2139	3892	0.14%	0.013%
7	5.005	340	343	349	rVB8	1553	3061	0.11%	0.010%
8	5.764	468	472	476	rBV7	1672	2985	0.10%	0.010%
9	6.858	646	658	673	rBV	317696	572726	19.96%	1.881%
10	7.011	677	684	694	rVB	242400	388456	13.54%	1.276%
11	7.211	711	718	726	rBV	335278	529414	18.45%	1.738%
12	7.281	726	730	739	rVB2	11297	22704	0.79%	0.075%
13	7.663	785	795	803	rBV	405057	660136	23.01%	2.168%
14	7.734	803	807	814	rVB5	7510	13083	0.46%	0.043%
15	8.369	907	915	932	rBV	409906	720208	25.10%	2.365%
16	8.728	972	976	982	rBV4	6967	11470	0.40%	0.038%
17	8.799	982	988	1004	rVV	292266	534518	18.63%	1.755%
18	8.963	1012	1016	1022	rVB8	4375	7203	0.25%	0.024%
19	9.216	1051	1059	1066	rBV2	8119	14044	0.49%	0.046%
20	9.357	1078	1083	1089	rBV2	32900	56155	1.96%	0.184%
21	9.510	1101	1109	1117	rBV	266214	465305	16.22%	1.528%
22	9.769	1149	1153	1158	rBV8	2132	4645	0.16%	0.015%
23	10.052	1194	1201	1218	rBV	462569	795812	27.74%	2.613%
24	10.422	1255	1264	1272	rBV	521443	911926	31.78%	2.995%
25	10.557	1276	1287	1302	rBV	318488	680137	23.71%	2.233%
26	10.957	1351	1355	1364	rBV10	6898	17346	0.60%	0.057%
27	11.228	1396	1401	1407	rVB10	2171	4248	0.15%	0.014%
28	11.687	1472	1479	1483	rBV7	3259	6572	0.23%	0.022%
29	11.828	1499	1503	1510	rBV9	2935	5923	0.21%	0.019%
30	11.999	1526	1532	1538	rBV4	6560	13019	0.45%	0.043%
31	13.040	1705	1709	1714	rBV8	2011	3087	0.11%	0.010%
32	13.093	1714	1718	1726	rVB9	4246	5308	0.19%	0.017%
33	13.228	1735	1741	1747	rBV3	31968	40663	1.42%	0.134%
34	13.587	1797	1802	1808	rBV9	5851	9673	0.34%	0.032%
35	13.669	1808	1816	1827	rBV	841235	1212741	42.27%	3.982%
36	13.916	1854	1858	1860	rBV4	11093	14024	0.49%	0.046%

Data Path : Z:\svoasrv\HPCHEM1\BNA_P\Data\BP102124\
 Data File : BP022528.D
 Acq On : 22 Oct 2024 07:01
 Operator : RC/JU
 Sample : P4429-22
 Misc :
 ALS Vial : 29 Sample Multiplier: 1

Instrument :
 BNA_P
 ClientSampleId :
 A4F74

Integration Parameters: LSCINT.P

Integrator: RTE
 Smoothing : OFF Filtering: 5
 Sampling : 1 Min Area: 0.1 % of largest Peak
 Start Thrs: 0.2 Max Peaks: 100
 Stop Thrs : 0 Peak Location: TOP

If leading or trailing edge < 100 prefer < Baseline drop else tangent >
 Peak separation: 5

Method : Z:\svoasrv\HPCHEM1\BNA_P\Methods\SFAM-EPA-BP100724.MA.M
 Title : SVOA CALIBRATION

37	13.963	1860	1866	1877	rVV2	982918	1430946	49.87%	4.699%
38	14.093	1886	1888	1891	rBV3	3000	4275	0.15%	0.014%
39	14.275	1907	1919	1927	rBV3	983060	1542166	53.75%	5.064%
40	14.516	1952	1960	1979	rBV	271180	503594	17.55%	1.654%
41	14.698	1989	1991	1998	rVB7	9200	11596	0.40%	0.038%
42	14.963	2029	2036	2041	rVB7	5587	11362	0.40%	0.037%
43	15.287	2084	2091	2098	rBV	1296623	1907206	66.47%	6.263%
44	15.410	2106	2112	2123	rBV	120418	232312	8.10%	0.763%
45	15.528	2128	2132	2139	rVB7	6202	10791	0.38%	0.035%
46	15.651	2146	2153	2160	rBV	404731	457669	15.95%	1.503%
47	15.863	2184	2189	2196	rVB10	6826	12660	0.44%	0.042%
48	16.022	2213	2216	2220	rBV6	5367	6829	0.24%	0.022%
49	16.075	2220	2225	2233	rVV2	30481	48507	1.69%	0.159%
50	16.145	2233	2237	2244	rVB9	5036	9590	0.33%	0.031%
51	16.234	2247	2252	2257	rBV	21431	31801	1.11%	0.104%
52	16.469	2288	2292	2297	rVB7	10666	15743	0.55%	0.052%
53	16.716	2332	2334	2336	rBV3	3631	3626	0.13%	0.012%
54	17.069	2388	2394	2399	rBV	1269905	1875361	65.36%	6.158%
55	17.110	2399	2401	2406	rVV	87904	129239	4.50%	0.424%
56	17.169	2406	2411	2422	rVB	1523430	2247450	78.33%	7.380%
57	17.263	2423	2427	2431	rBV7	8189	13755	0.48%	0.045%
58	17.310	2431	2435	2441	rVB	32026	48033	1.67%	0.158%
59	17.369	2441	2445	2449	rBV5	8134	14517	0.51%	0.048%
60	17.451	2455	2459	2462	rBV5	21226	31215	1.09%	0.103%
61	17.651	2489	2493	2496	rBV3	7228	13205	0.46%	0.043%
62	17.869	2526	2530	2539	rVB3	12336	25866	0.90%	0.085%
63	18.004	2548	2553	2562	rBV2	203867	291527	10.16%	0.957%
64	18.169	2578	2581	2586	rBV3	25338	37747	1.32%	0.124%
65	18.751	2676	2680	2684	rBV	27618	34549	1.20%	0.113%
66	18.875	2697	2701	2704	rBV3	29126	42080	1.47%	0.138%
67	19.210	2748	2758	2763	rBV	217173	363475	12.67%	1.194%
68	19.339	2777	2780	2789	rBV3	78387	118392	4.13%	0.389%
69	19.551	2810	2816	2822	rBV	1952856	2869133	100.00%	9.421%
70	19.610	2822	2826	2837	rVB	650620	1160428	40.45%	3.811%
71	21.498	3140	3147	3152	rBV	1315309	2140971	74.62%	7.030%
72	24.545	3656	3665	3674	rBV	1034254	2535650	88.38%	8.326%
73	24.763	3694	3702	3713	rVB	887417	2122299	73.97%	6.969%

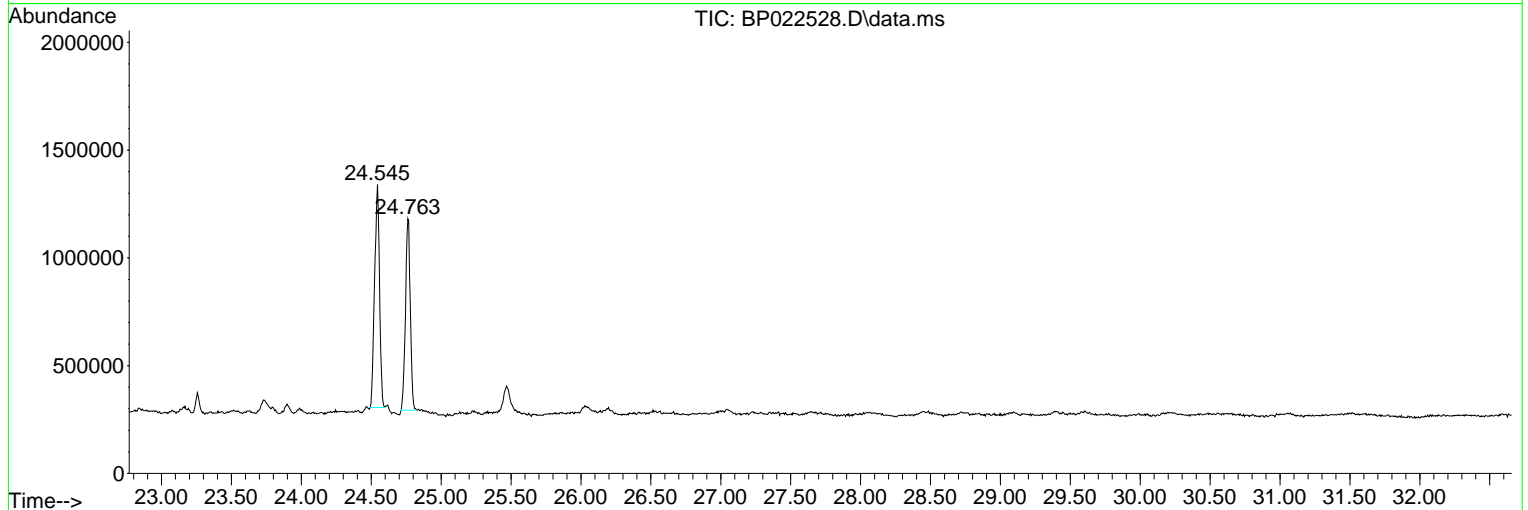
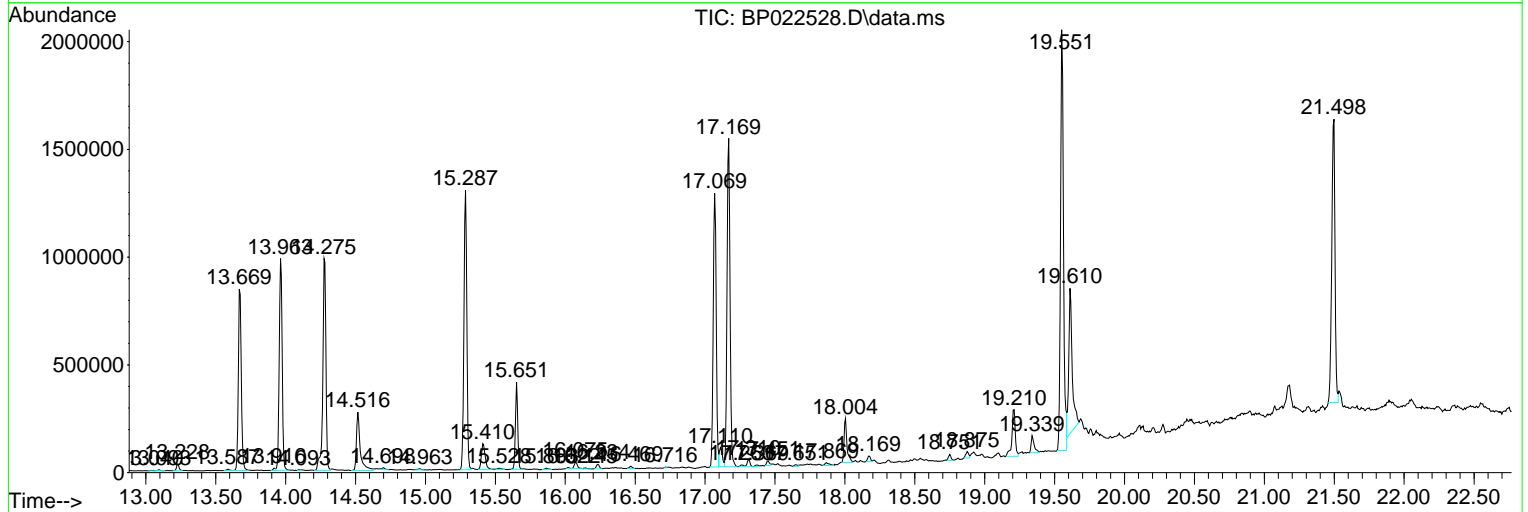
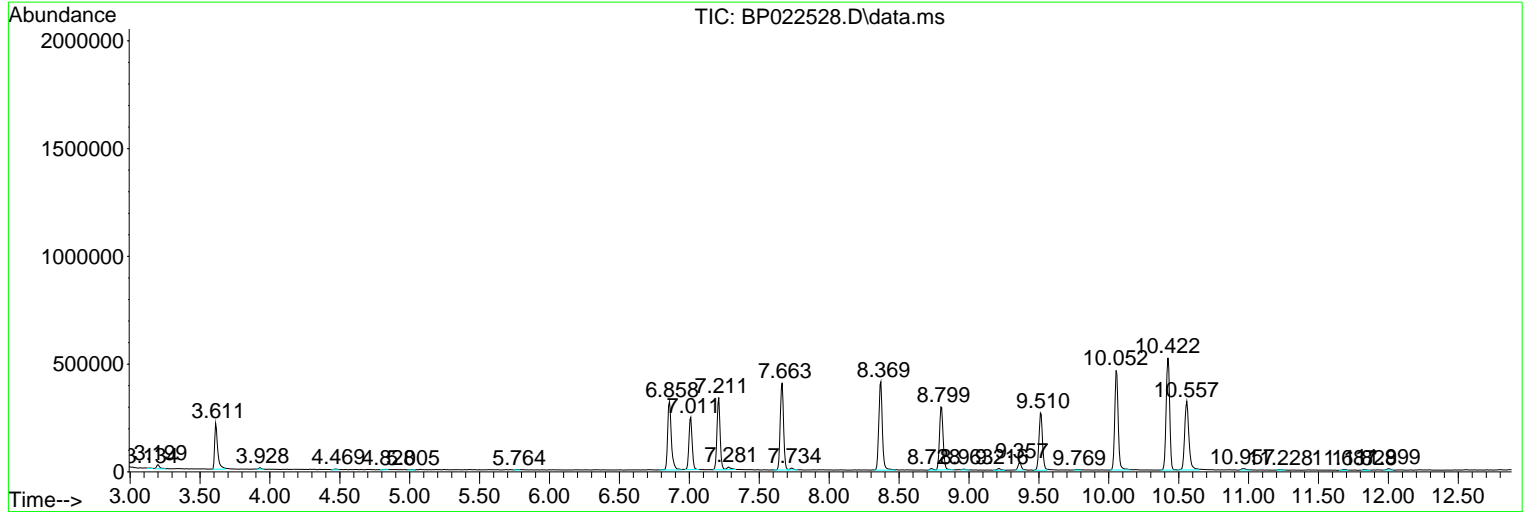
Sum of corrected areas: 30453170

Data Path : Z:\svoasrv\HPCHEM1\BNA_P\Data\BP102124\
 Data File : BP022528.D
 Acq On : 22 Oct 2024 07:01
 Operator : RC/JU
 Sample : P4429-22
 Misc :
 ALS Vial : 29 Sample Multiplier: 1

Instrument :
 BNA_P
 ClientSampleId :
 A4F74

Quant Method : Z:\svoasrv\HPCHEM1\BNA_P\Methods\SFAM-EPA-BP100724.MA.M
 Quant Title : SVOA CALIBRATION

TIC Library : C:\DATABASE\NIST20.L
 TIC Integration Parameters: LSCINT.P



Data Path : Z:\svoasrv\HPCHEM1\BNA_P\Data\BP102124\
 Data File : BP022528.D
 Acq On : 22 Oct 2024 07:01
 Operator : RC/JU
 Sample : P4429-22
 Misc :
 ALS Vial : 29 Sample Multiplier: 1

Instrument :
 BNA_P
 ClientSampleId :
 A4F74

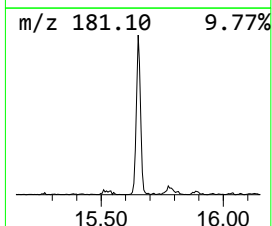
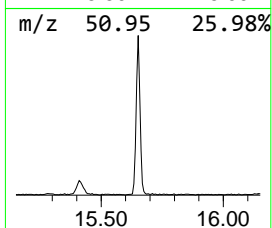
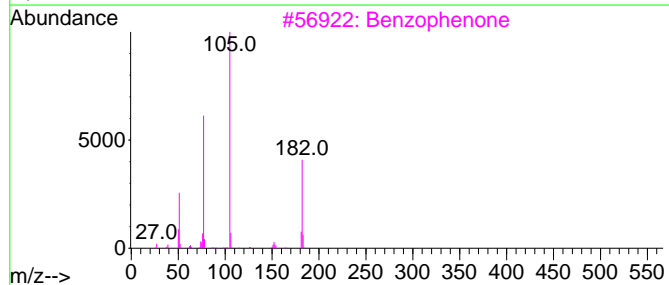
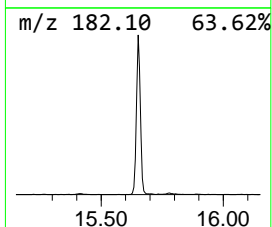
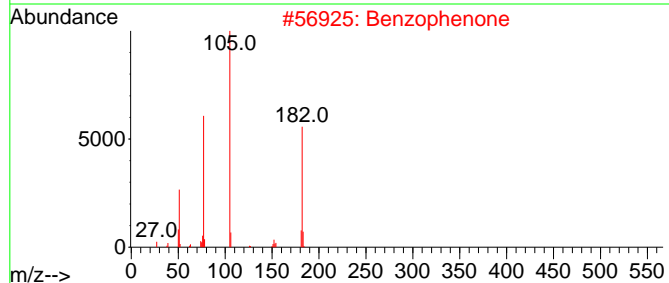
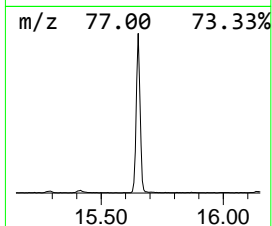
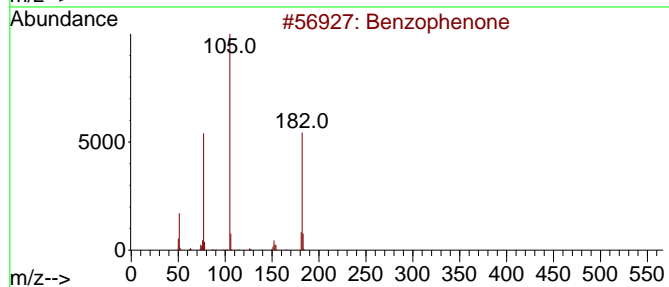
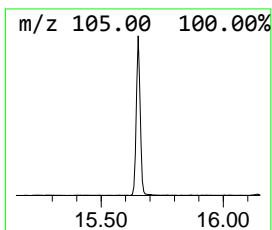
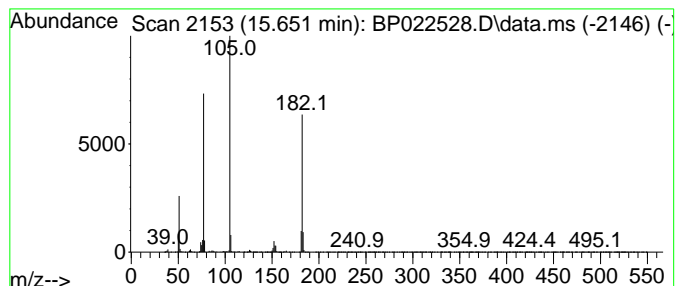
Quant Method : Z:\svoasrv\HPCHEM1\BNA_P\Methods\SFAM-EPA-BP100724.MA.M
 Quant Title : SVOA CALIBRATION

TIC Library : C:\DATABASE\NIST20.L
 TIC Integration Parameters: LSCINT.P

 Peak Number 1 Benzophenone Concentration Rank 1

R.T.	EstConc	Area	Relative to ISTD	R.T.
15.651	5.94 ng/ul	457669	Acenaphthene-d10	14.275

Hit#	of	5	Tentative ID	MW	MolForm	CAS#	Qual
1			Benzophenone	182	C13H10O	000119-61-9	97
2			Benzophenone	182	C13H10O	000119-61-9	96
3			Benzophenone	182	C13H10O	000119-61-9	95
4			Benzophenone	182	C13H10O	000119-61-9	87
5			Benzophenone	182	C13H10O	000119-61-9	76



Data Path : Z:\svoasrv\HPCHEM1\BNA_P\Data\BP102124\
 Data File : BP022528.D
 Acq On : 22 Oct 2024 07:01
 Operator : RC/JU
 Sample : P4429-22
 Misc :
 ALS Vial : 29 Sample Multiplier: 1

Instrument :
 BNA_P
 ClientSampleId :
 A4F74

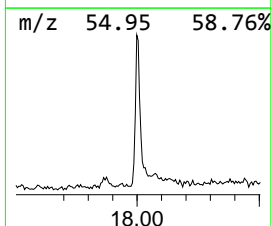
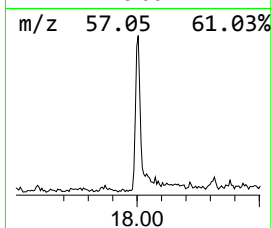
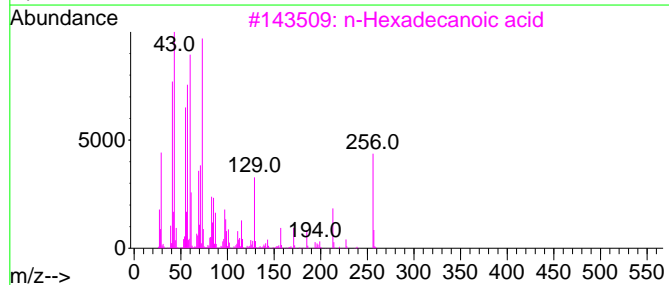
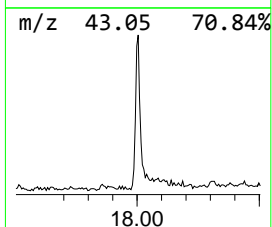
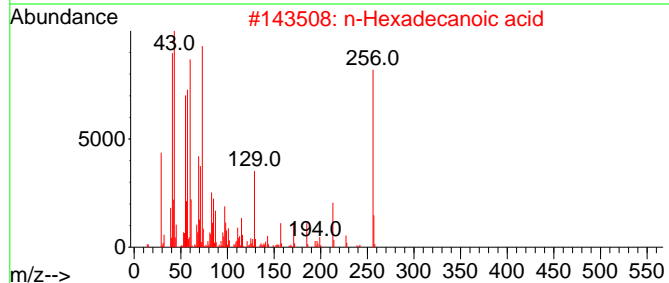
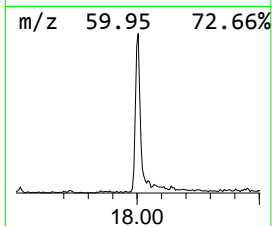
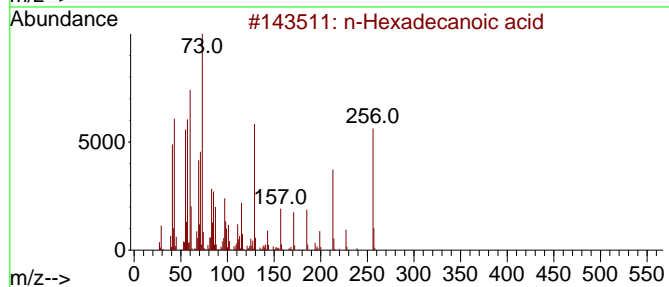
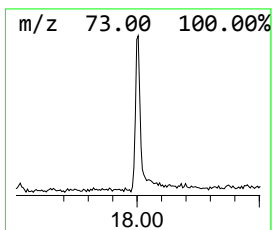
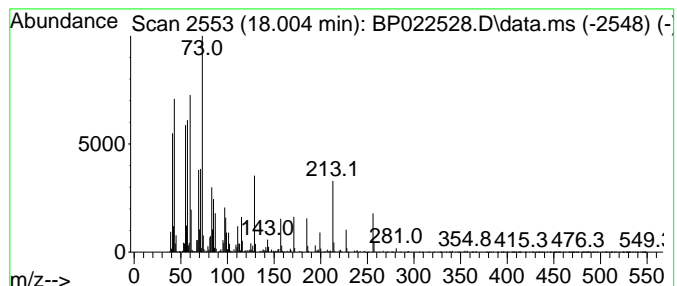
Quant Method : Z:\svoasrv\HPCHEM1\BNA_P\Methods\SFAM-EPA-BP100724.MA.M
 Quant Title : SVOA CALIBRATION

TIC Library : C:\DATABASE\NIST20.L
 TIC Integration Parameters: LSCINT.P

 Peak Number 2 n-Hexadecanoic acid Concentration Rank 2

R.T.	EstConc	Area	Relative to ISTD	R.T.
18.004	3.11 ng/ul	291527	Phenanthrene-d10	17.069

Hit#	of	5	Tentative ID	MW	MolForm	CAS#	Qual
1			n-Hexadecanoic acid	256	C16H32O2	000057-10-3	99
2			n-Hexadecanoic acid	256	C16H32O2	000057-10-3	97
3			n-Hexadecanoic acid	256	C16H32O2	000057-10-3	97
4			n-Hexadecanoic acid	256	C16H32O2	000057-10-3	96
5			Tetradecanoic acid	228	C14H28O2	000544-63-8	93



Data Path : Z:\svoasrv\HPCHEM1\BNA_P\Data\BP102124\
Data File : BP022528.D
Acq On : 22 Oct 2024 07:01
Operator : RC/JU
Sample : P4429-22
Misc :
ALS Vial : 29 Sample Multiplier: 1

Instrument :
BNA_P
ClientSampleId :
A4F74

Quant Method : Z:\svoasrv\HPCHEM1\BNA_P\Methods\SFAM-EPA-BP100724.MA.M
Quant Title : SVOA CALIBRATION

TIC Library : C:\DATABASE\NIST20.L
TIC Integration Parameters: LSCINT.P

TIC Top Hit name	RT	EstConc	Units	Response	--Internal Standard--			
					#	RT	Resp	Conc
Benzophenone	15.651	5.9	ng/u1	457669	3	14.275	1542170	20.0
n-Hexadecanoic ...	18.004	3.1	ng/u1	291527	4	17.069	1875360	20.0