

Data Path : Z:\svoasrv\HPCHEM1\BNA\_P\Data\BP102220\  
 Data File : BP003696.D  
 Acq On : 22 Oct 2020 13:15  
 Operator : CG/JU  
 Sample : PB132200BL  
 Misc :  
 ALS Vial : 3 Sample Multiplier: 1

Instrument :  
 BNA\_P  
 ClientSampleId :  
 PB132200BL

Quant Time: Oct 22 13:41:16 2020  
 Quant Method : Z:\SVOASRV\HPCHEM1\BNA\_P\METHODS\8270-BP101920.M  
 Quant Title : ASP BNA STANDARDS FOR 5 POINT CALIBRATION  
 QLast Update : Mon Oct 19 14:54:24 2020  
 Response via : Initial Calibration

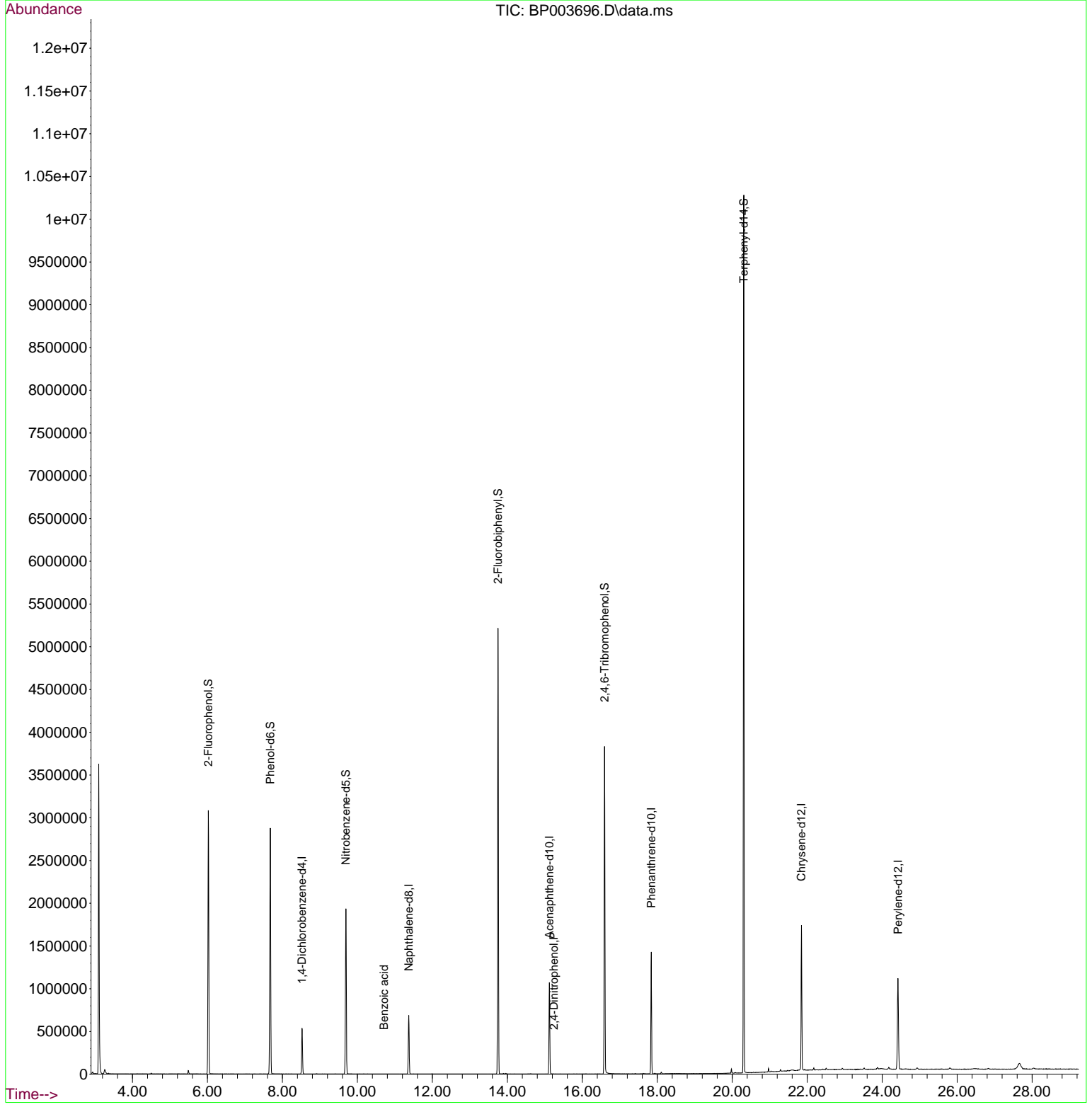
Compound	R.T.	QIon	Response	Conc	Units	Dev(Min)
Internal Standards						
1) 1,4-Dichlorobenzene-d4	8.522	152	141897	20.00	ng	0.00
21) Naphthalene-d8	11.369	136	527032	20.00	ng	# 0.00
39) Acenaphthene-d10	15.122	164	347787	20.00	ng	0.00
64) Phenanthrene-d10	17.839	188	808460	20.00	ng	0.00
76) Chrysene-d12	21.845	240	892469	20.00	ng	# 0.00
86) Perylene-d12	24.421	264	879637	20.00	ng	0.00
System Monitoring Compounds						
5) 2-Fluorophenol	6.022	112	1254732	147.86	ng	0.00
7) Phenol-d6	7.675	99	1643395	137.07	ng	0.00
23) Nitrobenzene-d5	9.693	82	1143242	91.76	ng	0.00
42) 2,4,6-Tribromophenol	16.592	330	726062	133.81	ng	0.00
45) 2-Fluorobiphenyl	13.751	172	2611369	97.07	ng	0.00
79) Terphenyl-d14	20.310	244	4524096	89.15	ng	0.00
Target Compounds						
9) Benzaldehyde	7.675	77	3512	Below Cal	#	1
32) Benzoic acid	10.710	122	16	5.04	ng	91
54) 2,4-Dinitrophenol	15.245	184	20	4.83	ng	98

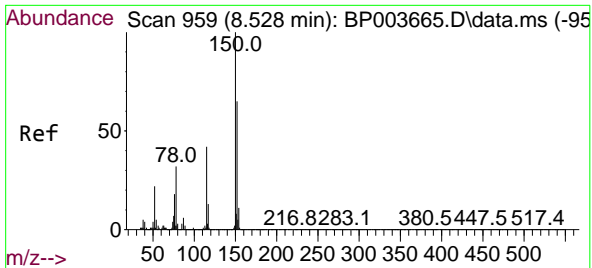
(#) = qualifier out of range (m) = manual integration (+) = signals summed

Data Path : Z:\svoasrv\HPCHEM1\BNA\_P\Data\BP102220\  
 Data File : BP003696.D  
 Acq On : 22 Oct 2020 13:15  
 Operator : CG/JU  
 Sample : PB132200BL  
 Misc :  
 ALS Vial : 3 Sample Multiplier: 1

**Instrument :**  
 BNA\_P  
**ClientSampleId :**  
 PB132200BL

Quant Time: Oct 22 13:41:16 2020  
 Quant Method : Z:\SVOASRV\HPCHEM1\BNA\_P\METHODS\8270-BP101920.M  
 Quant Title : ASP BNA STANDARDS FOR 5 POINT CALIBRATION  
 QLast Update : Mon Oct 19 14:54:24 2020  
 Response via : Initial Calibration



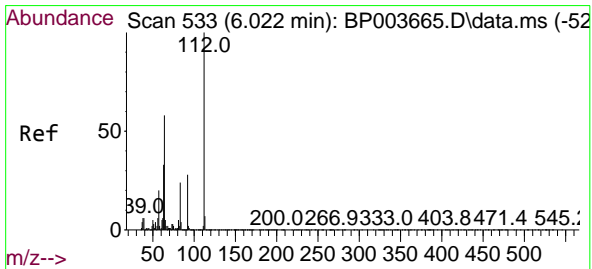
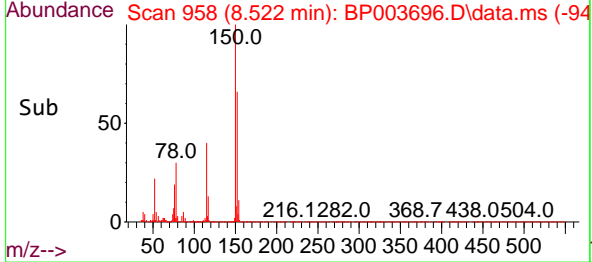
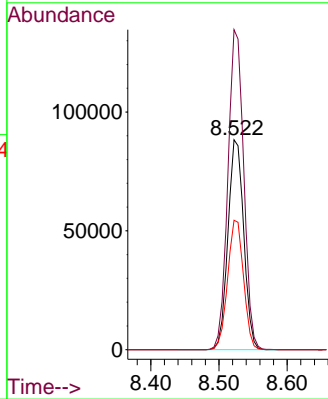
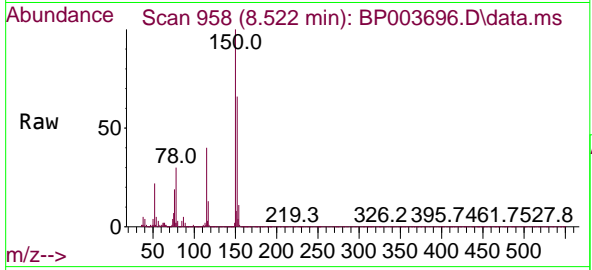


#1  
 1,4-Dichlorobenzene-d4  
 Concen: 20.00 ng  
 RT: 8.522 min Scan# 958  
 Delta R.T. -0.006 min  
 Lab File: BP003696.D  
 Acq: 22 Oct 2020 13:15

Instrument :  
 BNA\_P  
 ClientSampleId :  
 PB132200BL

Tgt Ion:152 Resp: 141897

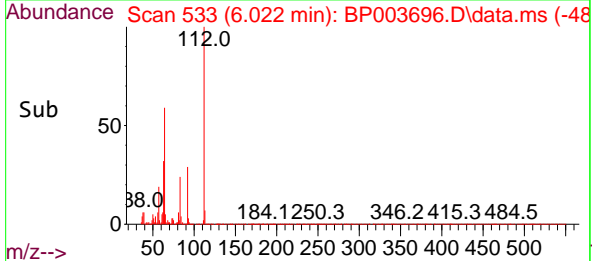
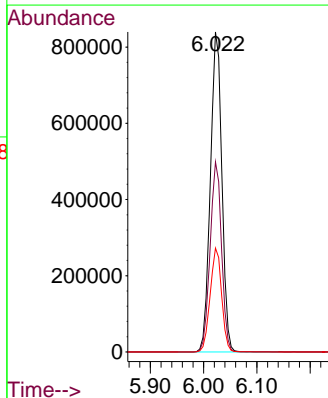
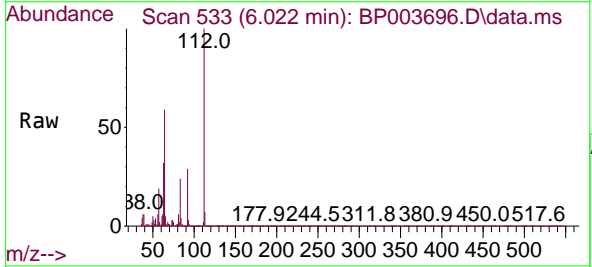
Ion	Ratio	Lower	Upper
152	100		
150	152.4	123.8	185.6
115	61.7	43.8	65.6

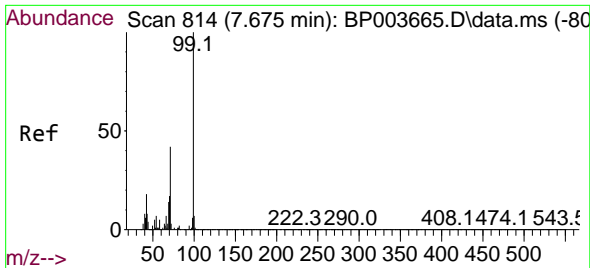


#5  
 2-Fluorophenol  
 Concen: 147.86 ng  
 RT: 6.022 min Scan# 533  
 Delta R.T. 0.000 min  
 Lab File: BP003696.D  
 Acq: 22 Oct 2020 13:15

Tgt Ion:112 Resp: 1254732

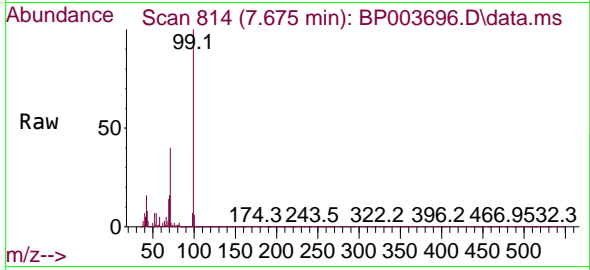
Ion	Ratio	Lower	Upper
112	100		
64	59.4	32.8	49.2#
63	32.5	17.0	25.4#



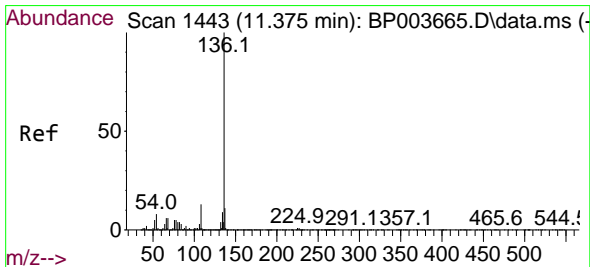
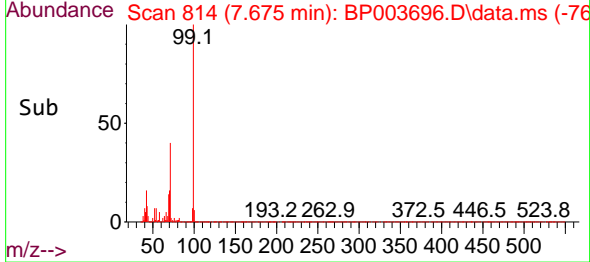
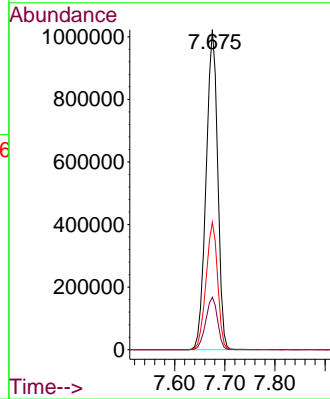


#7  
 Phenol-d6  
 Concen: 137.07 ng  
 RT: 7.675 min Scan# 814  
 Delta R.T. 0.000 min  
 Lab File: BP003696.D  
 Acq: 22 Oct 2020 13:15

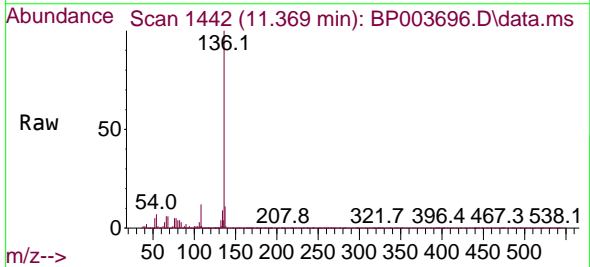
Instrument :  
 BNA\_P  
 ClientSampled :  
 PB132200BL



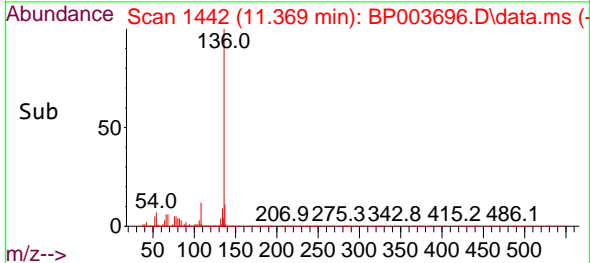
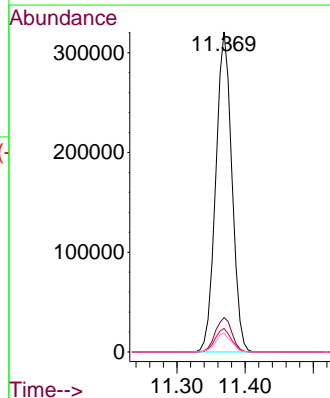
Tgt Ion: 99 Resp: 1643395  
 Ion Ratio Lower Upper  
 99 100  
 42 16.4 8.6 13.0#  
 71 39.9 23.4 35.2#

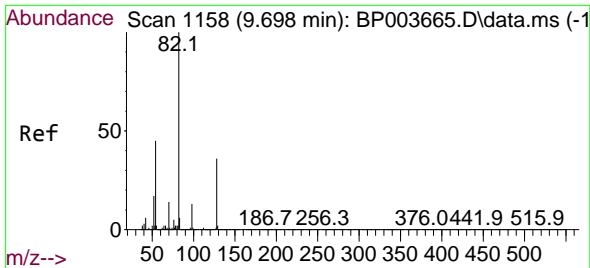


#21  
 Naphthalene-d8  
 Concen: 20.00 ng  
 RT: 11.369 min Scan# 1442  
 Delta R.T. -0.006 min  
 Lab File: BP003696.D  
 Acq: 22 Oct 2020 13:15



Tgt Ion: 136 Resp: 527032  
 Ion Ratio Lower Upper  
 136 100  
 137 10.8 8.6 13.0  
 54 7.4 3.6 5.4#  
 68 5.9 3.3 4.9#



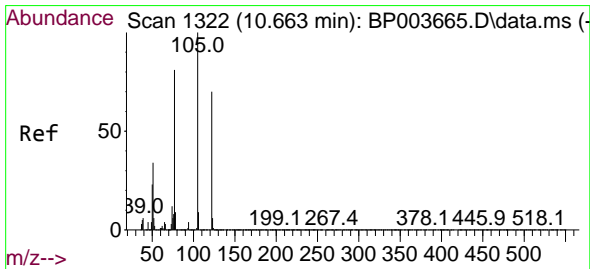
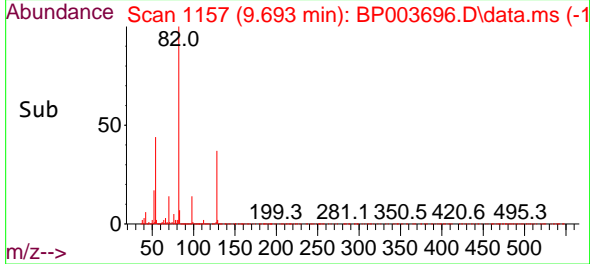
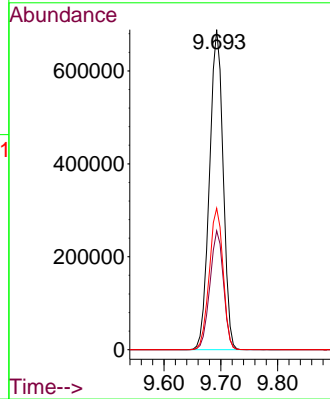
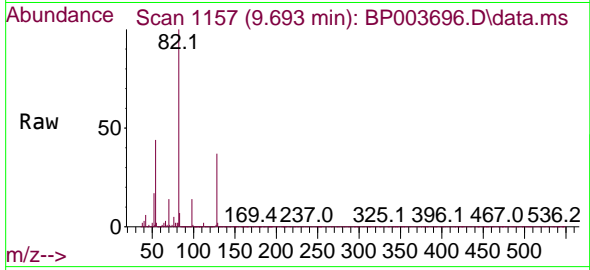


#23  
 Nitrobenzene-d5  
 Concen: 91.76 ng  
 RT: 9.693 min Scan# 1157  
 Delta R.T. -0.006 min  
 Lab File: BP003696.D  
 Acq: 22 Oct 2020 13:15

Instrument :  
 BNA\_P  
 ClientSampled :  
 PB132200BL

Tgt Ion: 82 Resp: 1143242

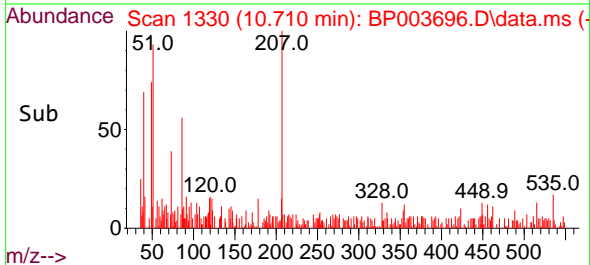
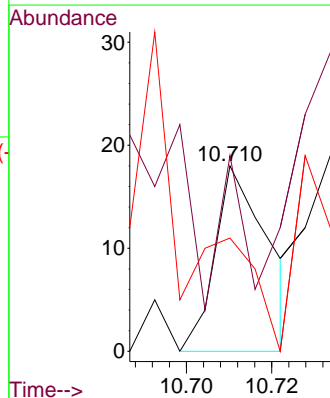
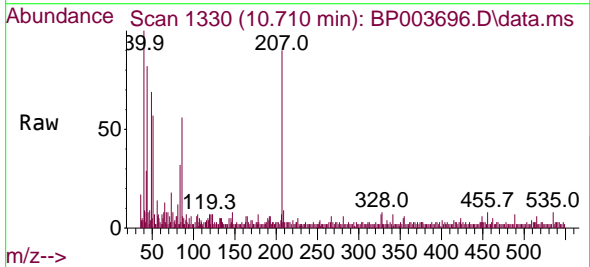
Ion	Ratio	Lower	Upper
82	100		
128	37.2	45.6	68.4#
54	44.2	30.1	45.1

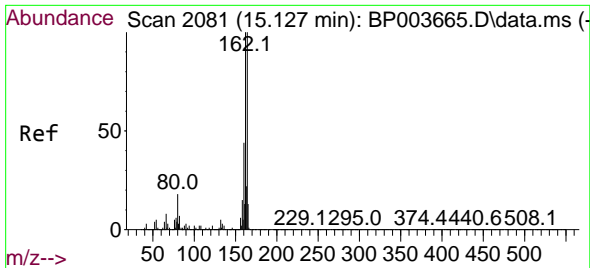


#32  
 Benzoic acid  
 Concen: 5.04 ng  
 RT: 10.710 min Scan# 1330  
 Delta R.T. 0.047 min  
 Lab File: BP003696.D  
 Acq: 22 Oct 2020 13:15

Tgt Ion: 122 Resp: 16

Ion	Ratio	Lower	Upper
122	100		
105	105.6	94.1	134.1
77	61.1	50.1	90.1

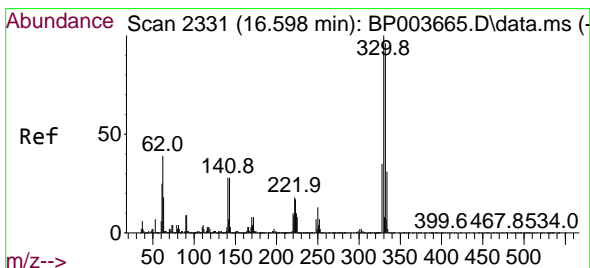
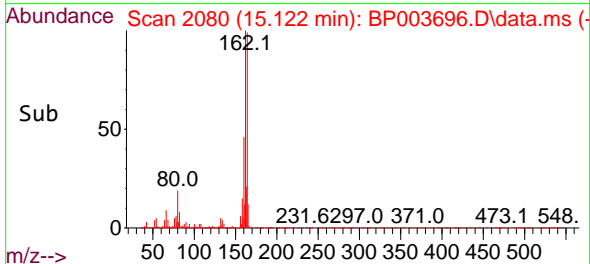
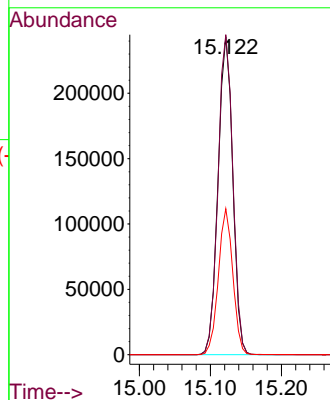
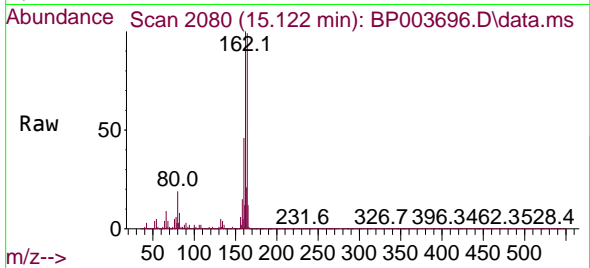




#39  
Acenaphthene-d10  
Concen: 20.00 ng  
RT: 15.122 min Scan# 2080  
Delta R.T. -0.005 min  
Lab File: BP003696.D  
Acq: 22 Oct 2020 13:15

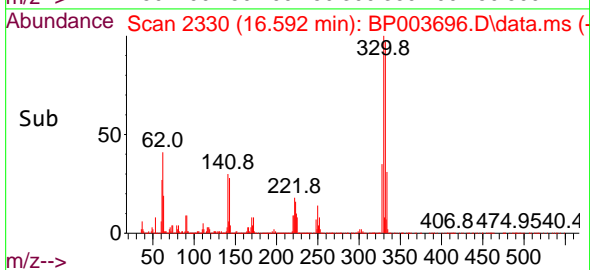
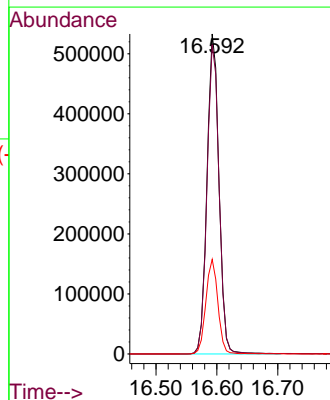
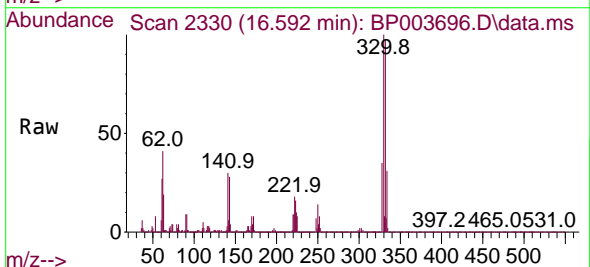
Instrument :  
BNA\_P  
ClientSampleId :  
PB132200BL

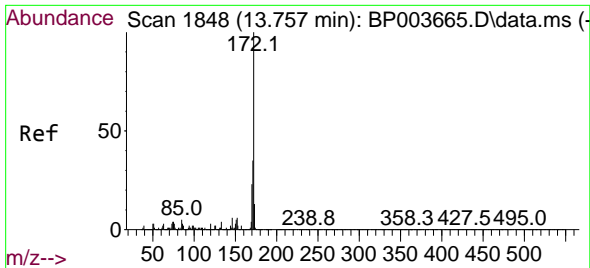
Tgt Ion:164 Resp: 347787  
Ion Ratio Lower Upper  
164 100  
162 100.6 79.4 119.2  
160 45.9 36.1 54.1



#42  
2,4,6-Tribromophenol  
Concen: 133.81 ng  
RT: 16.592 min Scan# 2330  
Delta R.T. -0.006 min  
Lab File: BP003696.D  
Acq: 22 Oct 2020 13:15

Tgt Ion:330 Resp: 726062  
Ion Ratio Lower Upper  
330 100  
332 97.7 77.1 115.7  
141 29.8 23.4 35.2



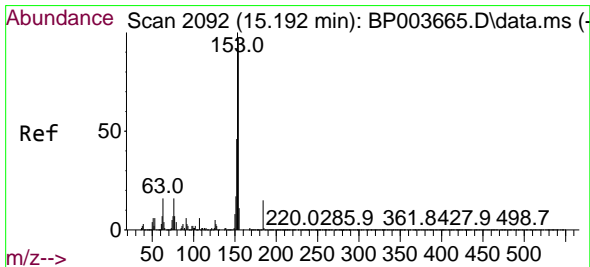
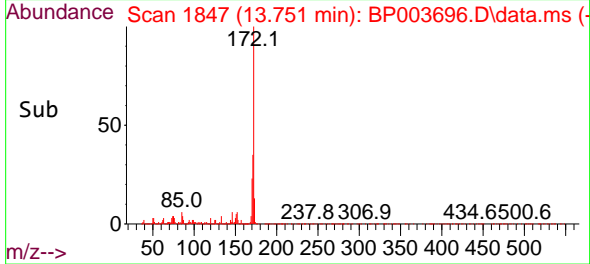
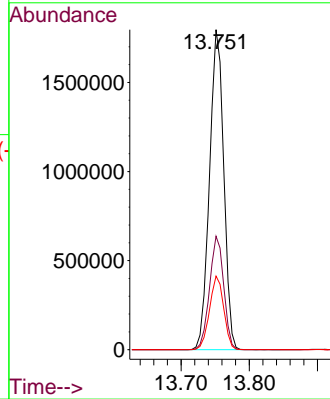
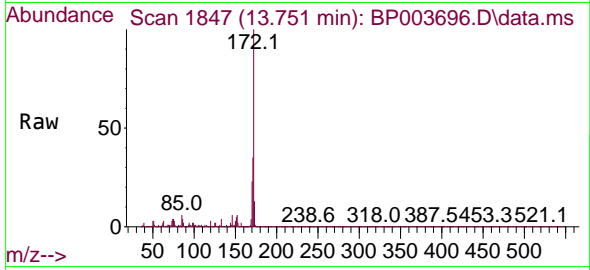


#45  
 2-Fluorobiphenyl  
 Concen: 97.07 ng  
 RT: 13.751 min Scan# 1847  
 Delta R.T. -0.006 min  
 Lab File: BP003696.D  
 Acq: 22 Oct 2020 13:15

Instrument :  
 BNA\_P  
 ClientSampled :  
 PB132200BL

Tgt Ion:172 Resp: 2611369

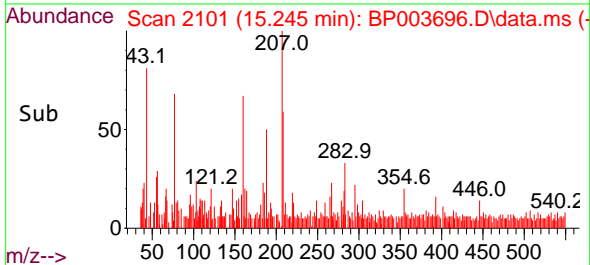
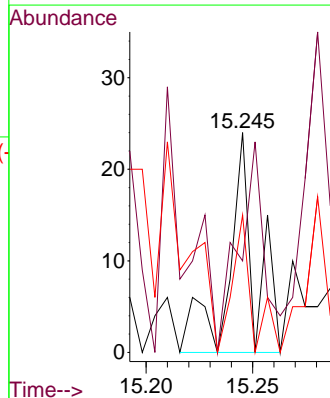
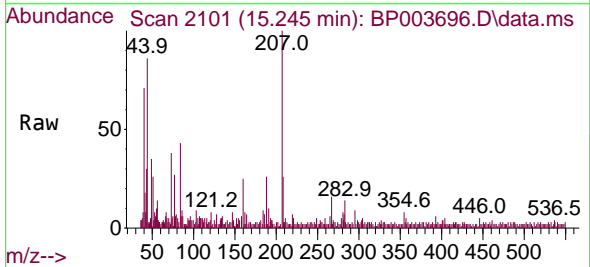
Ion	Ratio	Lower	Upper
172	100		
171	35.5	28.5	42.7
170	23.0	19.2	28.8

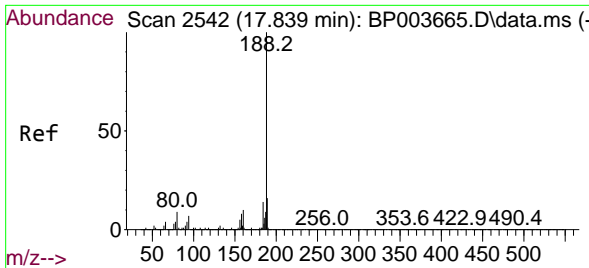


#54  
 2,4-Dinitrophenol  
 Concen: 4.83 ng  
 RT: 15.245 min Scan# 2101  
 Delta R.T. 0.053 min  
 Lab File: BP003696.D  
 Acq: 22 Oct 2020 13:15

Tgt Ion:184 Resp: 20

Ion	Ratio	Lower	Upper
184	100		
63	41.7	32.3	48.5
154	62.5	49.1	73.7



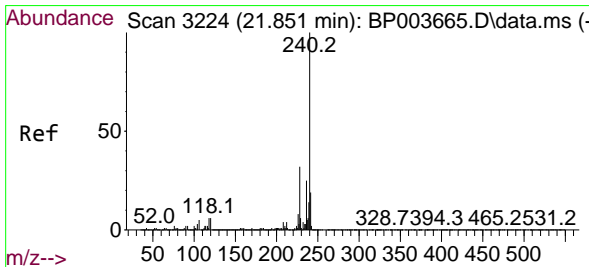
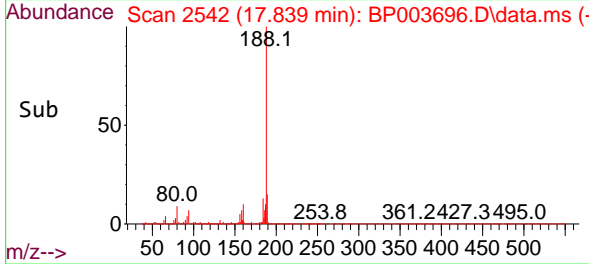
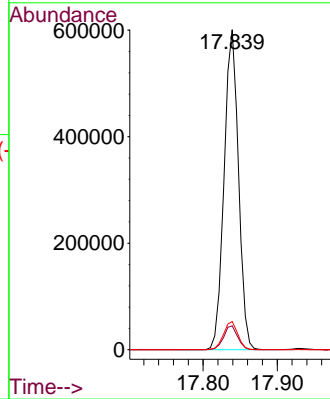
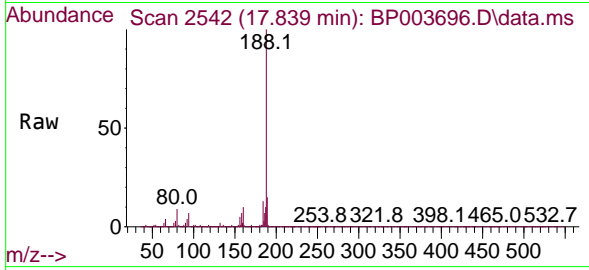


#64  
 Phenanthrene-d10  
 Concen: 20.00 ng  
 RT: 17.839 min Scan# 2542  
 Delta R.T. 0.000 min  
 Lab File: BP003696.D  
 Acq: 22 Oct 2020 13:15

Instrument :  
 BNA\_P  
 ClientSampled :  
 PB132200BL

Tgt Ion:188 Resp: 808460

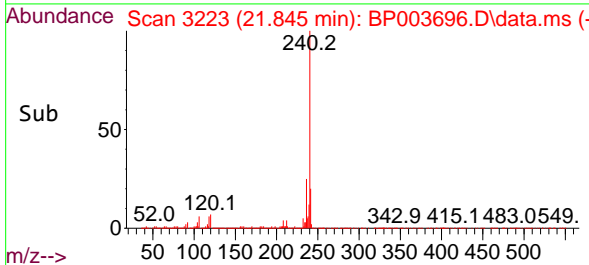
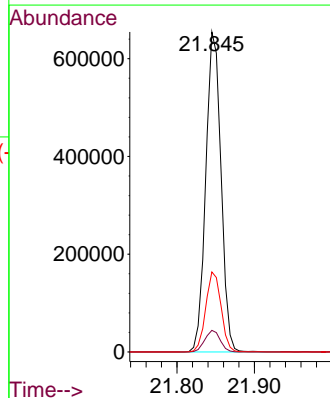
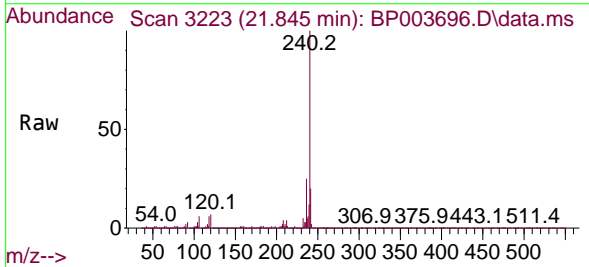
Ion	Ratio	Lower	Upper
188	100		
94	7.5	6.2	9.2
80	8.8	6.2	9.2



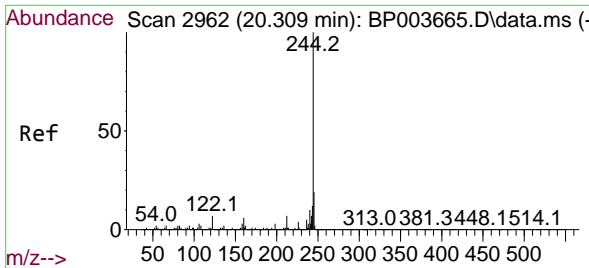
#76  
 Chrysene-d12  
 Concen: 20.00 ng  
 RT: 21.845 min Scan# 3223  
 Delta R.T. -0.006 min  
 Lab File: BP003696.D  
 Acq: 22 Oct 2020 13:15

Tgt Ion:240 Resp: 892469

Ion	Ratio	Lower	Upper
240	100		
120	6.8	7.8	11.6#
236	25.0	20.8	31.2





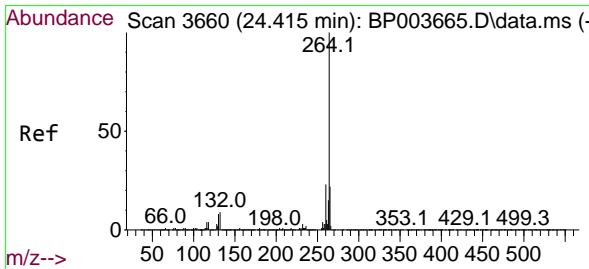
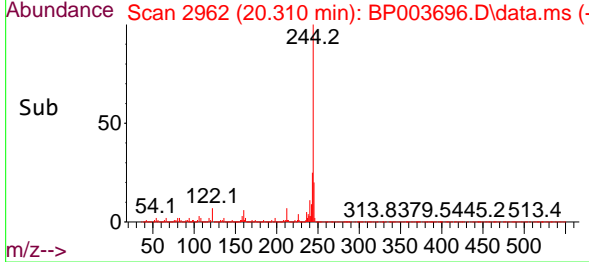
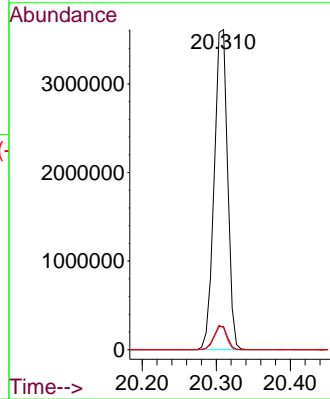
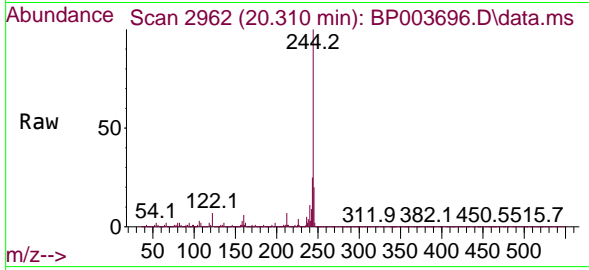


#79  
 Terphenyl-d14  
 Concen: 89.15 ng  
 RT: 20.310 min Scan# 2962  
 Delta R.T. 0.000 min  
 Lab File: BP003696.D  
 Acq: 22 Oct 2020 13:15

Instrument :  
 BNA\_P  
 ClientSampled :  
 PB132200BL

Tgt Ion:244 Resp: 4524096

Ion	Ratio	Lower	Upper
244	100		
212	7.3	5.8	8.6
122	6.8	7.8	11.8#



#86  
 Perylene-d12  
 Concen: 20.00 ng  
 RT: 24.421 min Scan# 3661  
 Delta R.T. 0.006 min  
 Lab File: BP003696.D  
 Acq: 22 Oct 2020 13:15

Tgt Ion:264 Resp: 879637

Ion	Ratio	Lower	Upper
264	100		
260	23.0	18.8	28.2
265	21.5	17.4	26.2

