

Data Path : Z:\svoasrv\HPCHEM1\BNA\_P\Data\BP102524\  
 Data File : BP022614.D  
 Acq On : 25 Oct 2024 16:37  
 Operator : RC/JU  
 Sample : P4436-09  
 Misc :  
 ALS Vial : 13 Sample Multiplier: 1

Instrument :  
 BNA\_P  
 ClientSampleId :  
 A4F53

Quant Time: Oct 25 17:47:07 2024  
 Quant Method : Z:\svoasrv\HPCHEM1\BNA\_P\Methods\SFAM-EPA-BP100724.MA.M  
 Quant Title : SVOA CALIBRATION  
 QLast Update : Tue Oct 22 05:59:59 2024  
 Response via : Initial Calibration

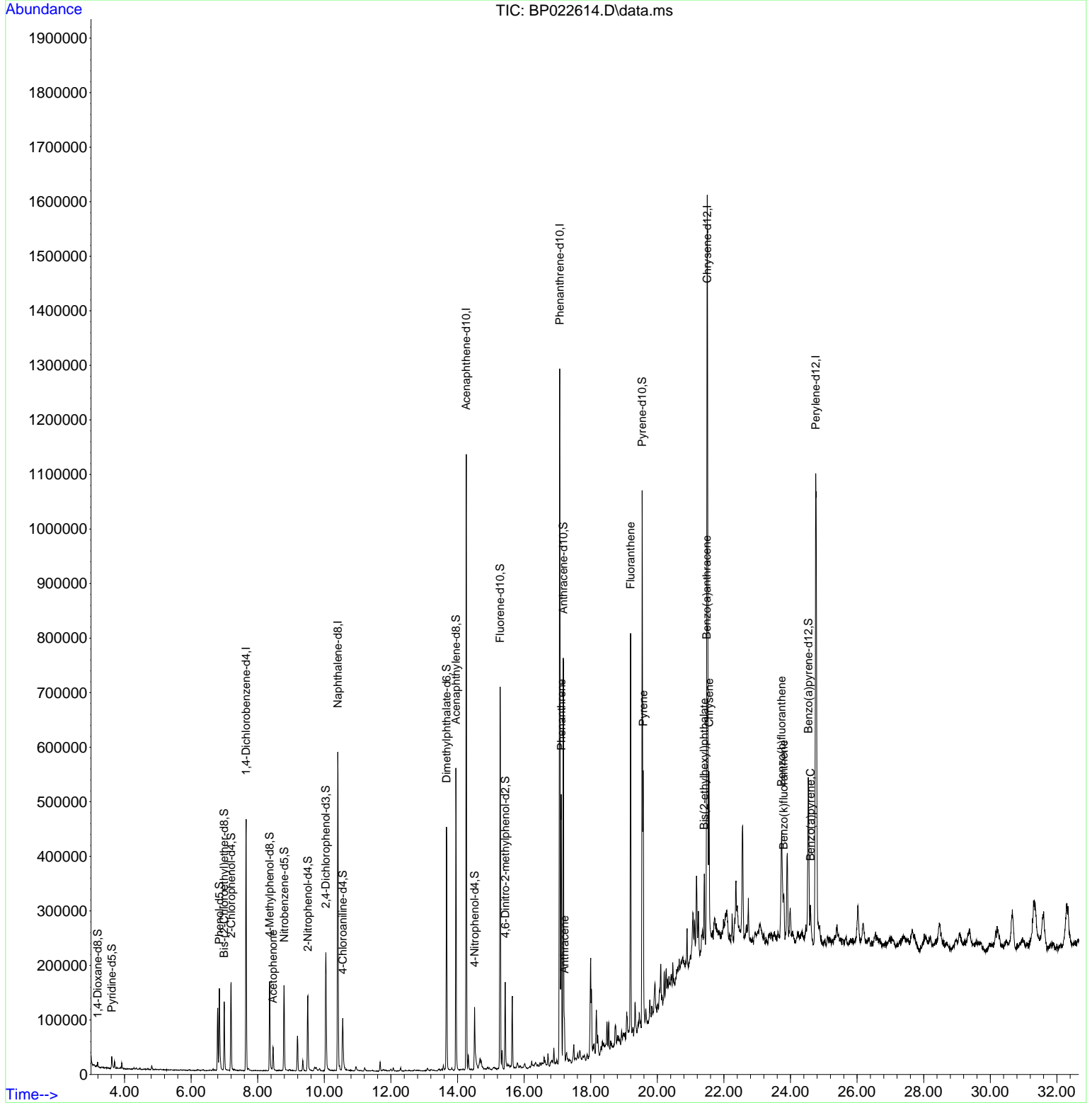
Compound	R.T.	QIon	Response	Conc	Units	Dev(Min)
-----						
Internal Standards						
1) 1,4-Dichlorobenzene-d4	7.652	152	119386	20.000	ng/ul	0.00
20) Naphthalene-d8	10.404	136	460520	20.000	ng/ul	-0.01
38) Acenaphthene-d10	14.263	164	362589	20.000	ng/ul	-0.01
64) Phenanthrene-d10	17.069	188	876088	20.000	ng/ul	-0.01
79) Chrysene-d12	21.498	240	876563	20.000	ng/ul	0.00
88) Perylene-d12	24.757	264	1029419	20.000	ng/ul	0.00
System Monitoring Compounds						
3) 1,4-Dioxane-d8	3.193	96	4387	1.428	ng/uL	0.00
4) Pyridine-d5	3.617	84	12662	1.501	ng/ul	0.00
7) Phenol-d5	6.846	99	87832	8.740	ng/ul	0.00
9) Bis-(2-Chloroethyl)eth...	6.993	67	55038	9.318	ng/ul	-0.01
11) 2-Chlorophenol-d4	7.199	132	70281	9.856	ng/ul	0.00
15) 4-Methylphenol-d8	8.358	113	59195	7.381	ng/ul	0.00
21) Nitrobenzene-d5	8.793	128	35789	10.107	ng/ul	0.00
24) 2-Nitrophenol-d4	9.505	143	42515	10.371	ng/ul	0.00
28) 2,4-Dichlorophenol-d3	10.046	165	85890	9.858	ng/ul	0.00
31) 4-Chloroaniline-d4	10.552	131	57190	5.555	ng/ul	0.00
46) Dimethylphthalate-d6	13.669	166	313655	10.888	ng/ul	-0.01
49) Acenaphthylene-d8	13.951	160	325134	10.626	ng/ul	-0.01
54) 4-Nitrophenol-d4	14.516	143	30513	6.313	ng/ul	0.01
60) Fluorene-d10	15.281	176	287855	11.520	ng/ul	-0.01
65) 4,6-Dinitro-2-methylph...	15.434	200	41878	7.268	ng/ul	0.02
73) Anthracene-d10	17.175	188	450901	10.941	ng/ul	0.00
81) Pyrene-d10	19.545	212	463065	9.990	ng/ul	-0.01
92) Benzo(a)pyrene-d12	24.533	264	335077	6.095	ng/ul	0.00
Target Compounds						
						Qvalue
16) Acetophenone	8.458	105	23447	1.771	ng/ul	95
72) Phenanthrene	17.116	178	329939	7.039	ng/ul	100
74) Anthracene	17.210	178	49883	1.066	ng/ul	99
80) Fluoranthene	19.198	202	482779	9.060	ng/ul	98
82) Pyrene	19.575	202	292927	5.129	ng/ul	99
85) Benzo(a)anthracene	21.480	228	196760	3.202	ng/ul	99
86) Bis(2-ethylhexyl)phtha...	21.410	149	54312	1.903	ng/ul	99
87) Chrysene	21.551	228	216938	3.807	ng/ul	98
90) Benzo(b)fluoranthene	23.733	252	235476	3.634	ng/ul	97
91) Benzo(k)fluoranthene	23.798	252	90240	1.422	ng/ul	94
93) Benzo(a)pyrene	24.598	252	69387	1.163	ng/ul#	99

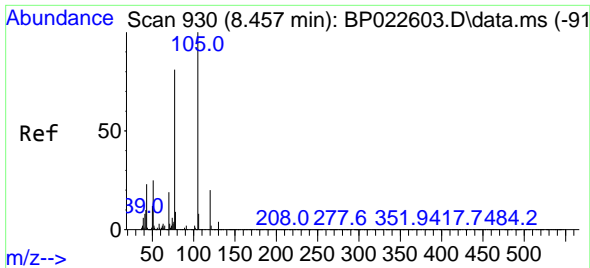
(#) = qualifier out of range (m) = manual integration (+) = signals summed

Data Path : Z:\svoasrv\HPCHEM1\BNA\_P\Data\BP102524\  
 Data File : BP022614.D  
 Acq On : 25 Oct 2024 16:37  
 Operator : RC/JU  
 Sample : P4436-09  
 Misc :  
 ALS Vial : 13 Sample Multiplier: 1

Instrument :  
 BNA\_P  
 ClientSampleId :  
 A4F53

Quant Time: Oct 25 17:47:07 2024  
 Quant Method : Z:\svoasrv\HPCHEM1\BNA\_P\Methods\SFAM-EPA-BP100724.MA.M  
 Quant Title : SVOA CALIBRATION  
 QLast Update : Tue Oct 22 05:59:59 2024  
 Response via : Initial Calibration



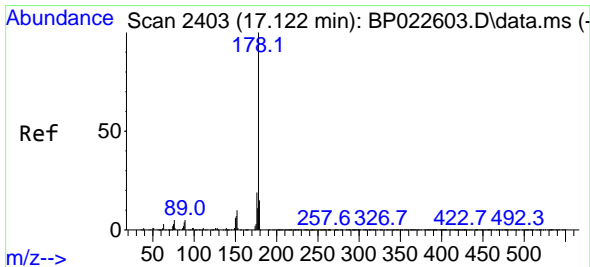
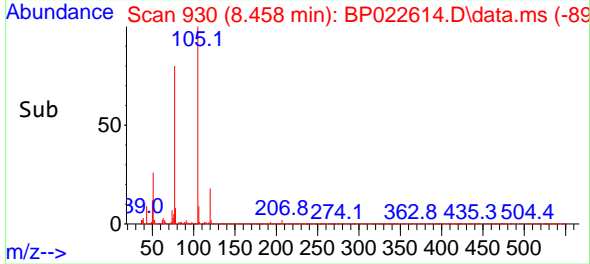
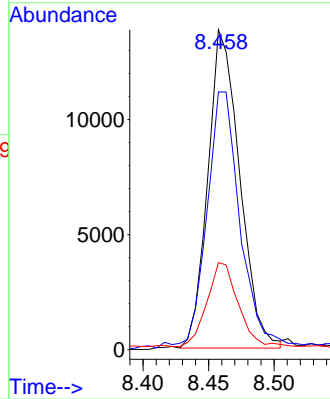
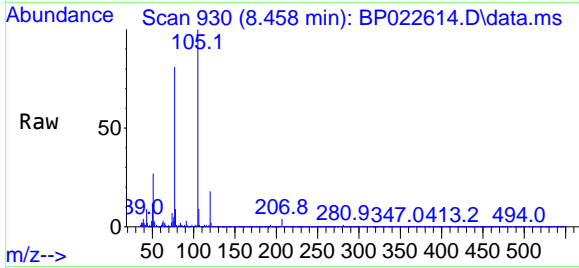


#16  
 Acetophenone  
 Concen: 1.771 ng/u1  
 RT: 8.458 min Scan# 91  
 Delta R.T. -0.011 min  
 Lab File: BP022614.D  
 Acq: 25 Oct 2024 16:37

Instrument :  
 BNA\_P  
 ClientSampleId :  
 A4F53

Tgt Ion:105 Resp: 23447

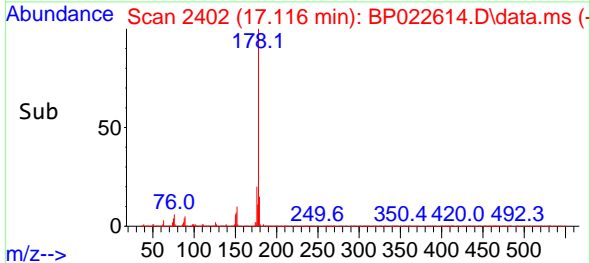
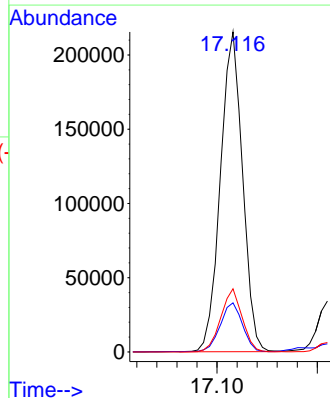
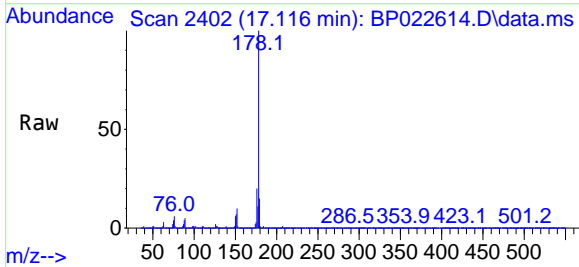
Ion	Ratio	Lower	Upper
105	100		
77	80.6	69.0	103.4
51	27.2	22.6	33.8

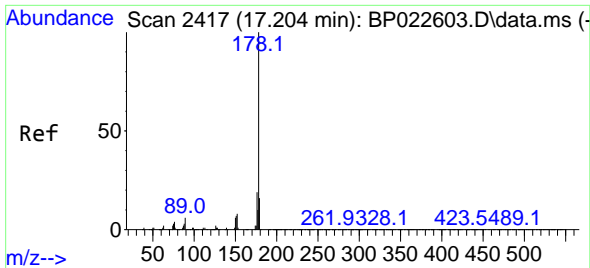


#72  
 Phenanthrene  
 Concen: 7.039 ng/u1  
 RT: 17.116 min Scan# 2402  
 Delta R.T. 0.000 min  
 Lab File: BP022614.D  
 Acq: 25 Oct 2024 16:37

Tgt Ion:178 Resp: 329939

Ion	Ratio	Lower	Upper
178	100		
179	15.4	12.2	18.4
176	19.8	15.7	23.5



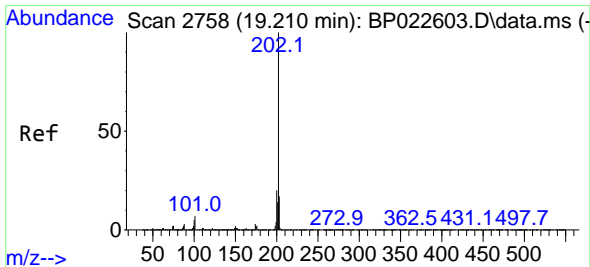
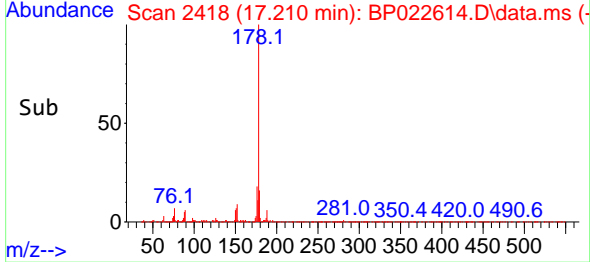
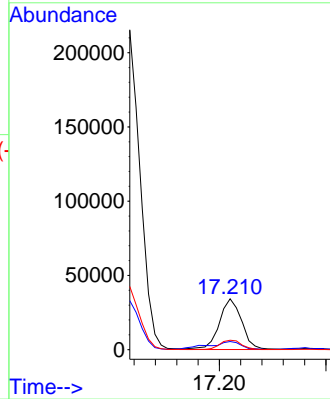
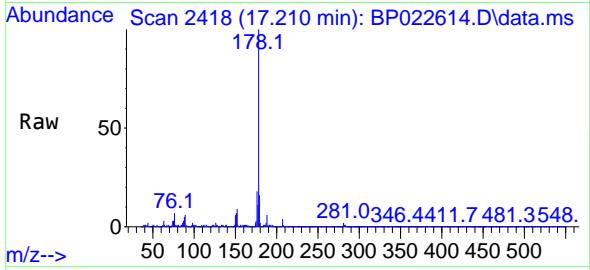


#74  
 Anthracene  
 Concen: 1.066 ng/u1  
 RT: 17.210 min Scan# 2417  
 Delta R.T. 0.006 min  
 Lab File: BP022614.D  
 Acq: 25 Oct 2024 16:37

Instrument :  
 BNA\_P  
 ClientSampleId :  
 A4F53

Tgt Ion:178 Resp: 49883

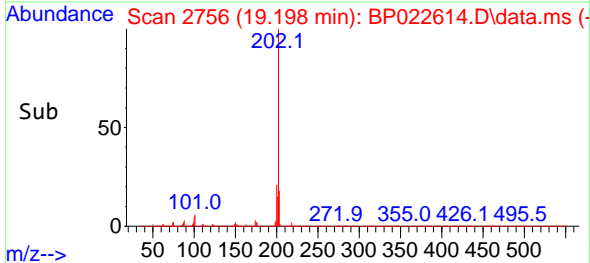
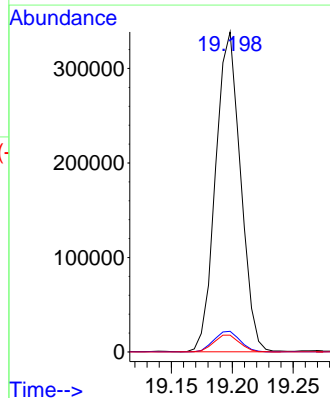
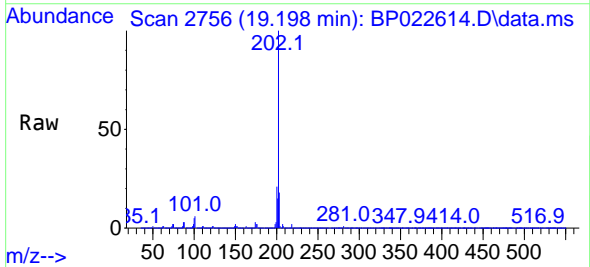
Ion	Ratio	Lower	Upper
178	100		
179	15.9	12.0	18.0
176	18.5	15.0	22.4

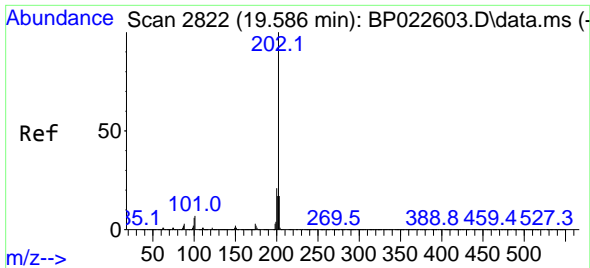


#80  
 Fluoranthene  
 Concen: 9.060 ng/u1  
 RT: 19.198 min Scan# 2756  
 Delta R.T. -0.011 min  
 Lab File: BP022614.D  
 Acq: 25 Oct 2024 16:37

Tgt Ion:202 Resp: 482779

Ion	Ratio	Lower	Upper
202	100		
101	6.5	5.8	8.8
100	5.3	4.5	6.7



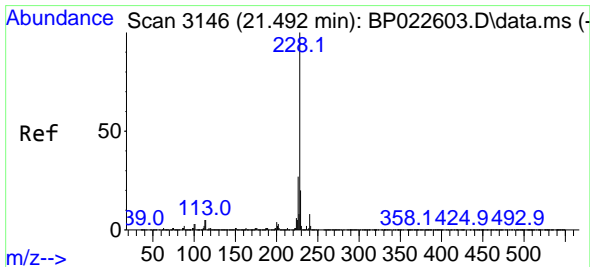
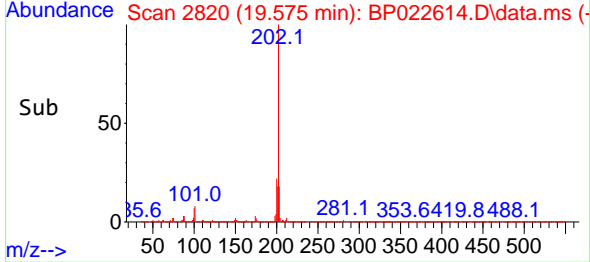
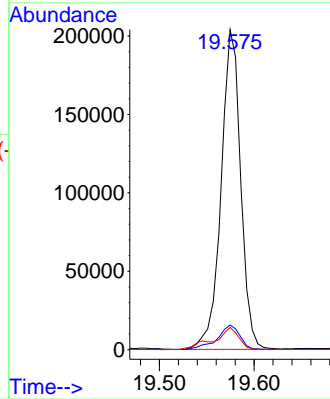
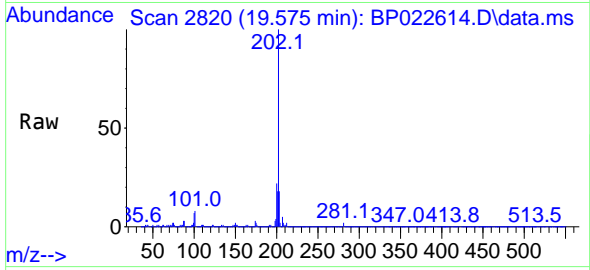


#82  
 Pyrene  
 Concen: 5.129 ng/u1  
 RT: 19.575 min Scan# 21  
 Delta R.T. -0.011 min  
 Lab File: BP022614.D  
 Acq: 25 Oct 2024 16:37

Instrument :  
 BNA\_P  
 ClientSampleId :  
 A4F53

Tgt Ion:202 Resp: 292927

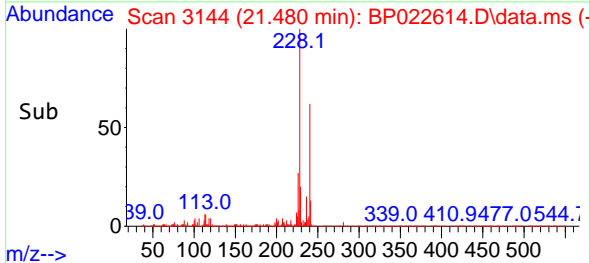
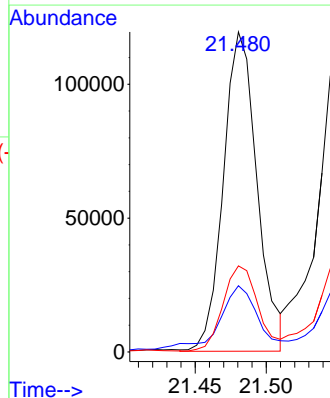
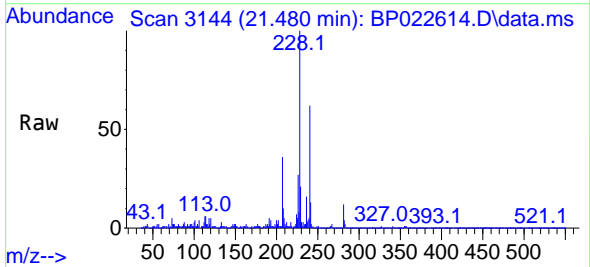
Ion	Ratio	Lower	Upper
202	100		
101	7.7	6.7	10.1
100	6.9	5.8	8.6

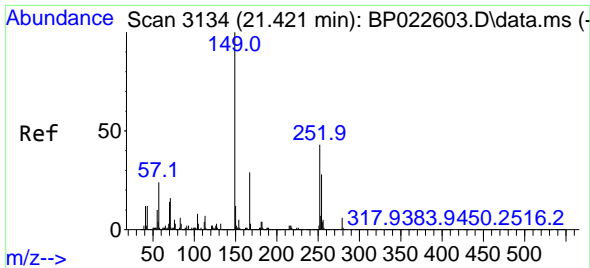


#85  
 Benzo(a)anthracene  
 Concen: 3.202 ng/u1  
 RT: 21.480 min Scan# 3144  
 Delta R.T. 0.000 min  
 Lab File: BP022614.D  
 Acq: 25 Oct 2024 16:37

Tgt Ion:228 Resp: 196760

Ion	Ratio	Lower	Upper
228	100		
229	20.7	15.4	23.0
226	26.9	21.5	32.3



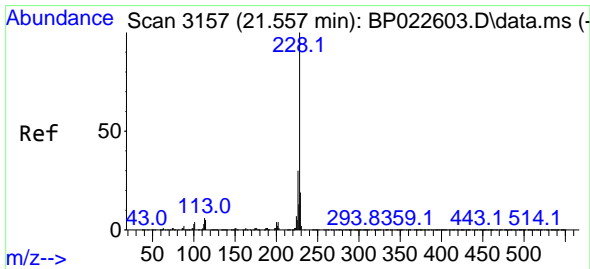
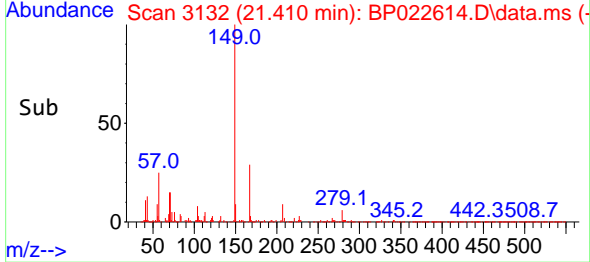
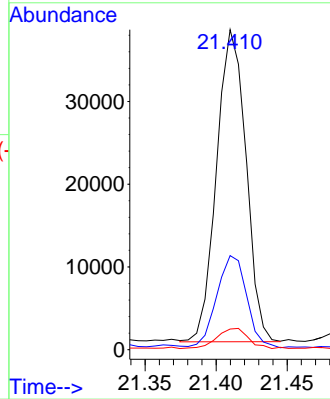
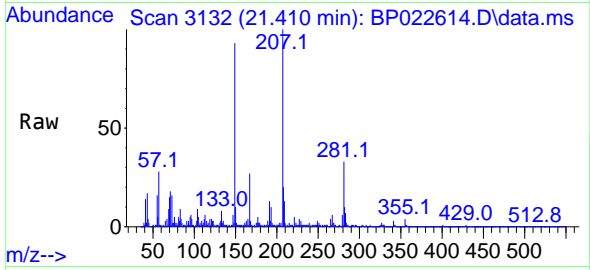


#86  
 Bis(2-ethylhexyl)phthalate  
 Concen: 1.903 ng/uI  
 RT: 21.410 min Scan# 3134  
 Delta R.T. -0.006 min  
 Lab File: BP022614.D  
 Acq: 25 Oct 2024 16:37

Instrument :  
 BNA\_P  
 ClientSampleId :  
 A4F53

Tgt Ion:149 Resp: 54312

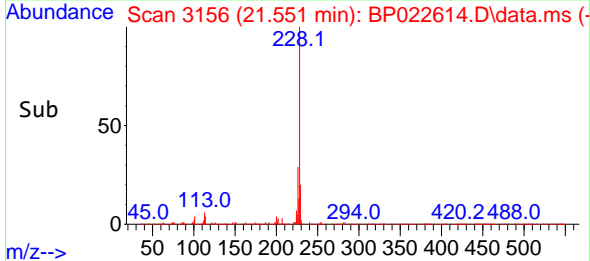
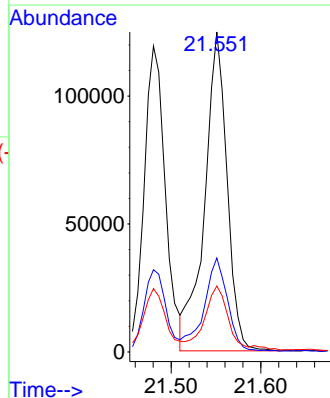
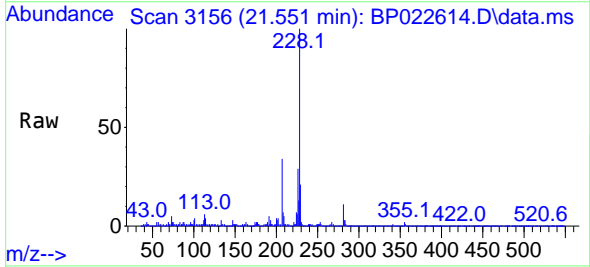
Ion	Ratio	Lower	Upper
149	100		
167	29.4	23.0	34.4
279	6.5	4.8	7.2

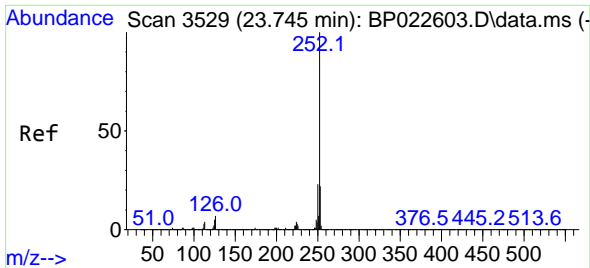


#87  
 Chrysene  
 Concen: 3.807 ng/uI  
 RT: 21.551 min Scan# 3156  
 Delta R.T. 0.006 min  
 Lab File: BP022614.D  
 Acq: 25 Oct 2024 16:37

Tgt Ion:228 Resp: 216938

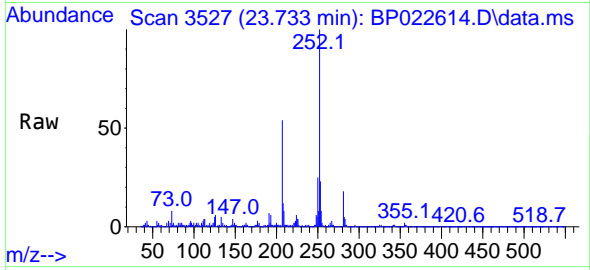
Ion	Ratio	Lower	Upper
228	100		
226	29.3	23.8	35.8
229	20.6	15.5	23.3



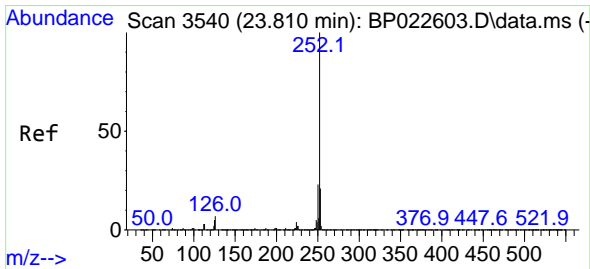
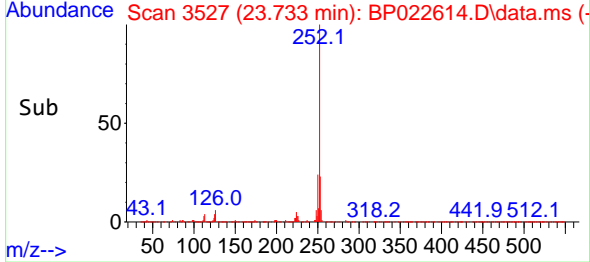
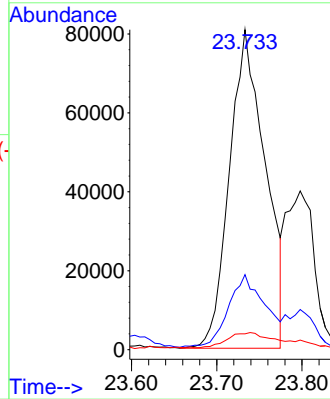


#90  
 Benzo(b)fluoranthene  
 Concen: 3.634 ng/u1  
 RT: 23.733 min Scan# 31  
 Delta R.T. 0.012 min  
 Lab File: BP022614.D  
 Acq: 25 Oct 2024 16:37

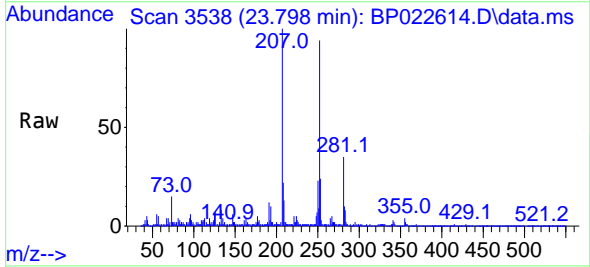
Instrument :  
 BNA\_P  
 ClientSampleId :  
 A4F53



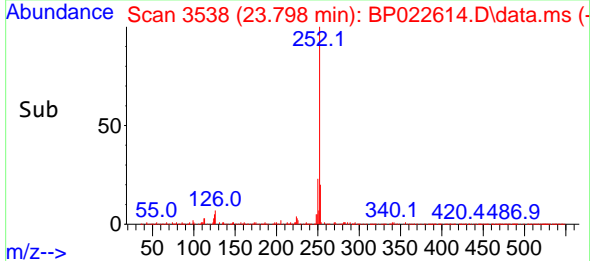
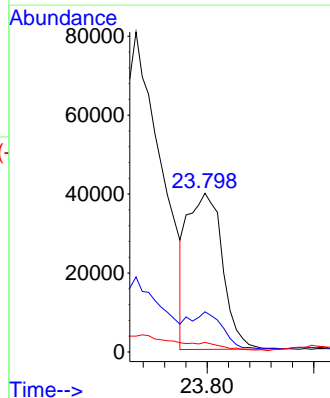
Tgt Ion:252 Resp: 235476  
 Ion Ratio Lower Upper  
 252 100  
 253 23.4 17.8 26.8  
 125 5.0 5.0 7.4

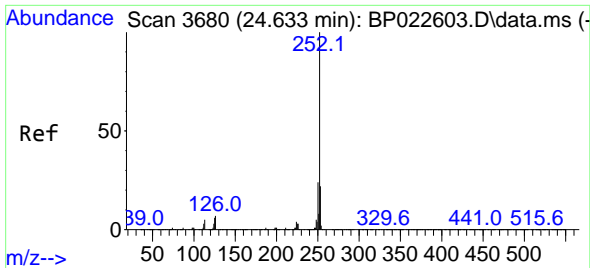


#91  
 Benzo(k)fluoranthene  
 Concen: 1.422 ng/u1  
 RT: 23.798 min Scan# 3538  
 Delta R.T. 0.006 min  
 Lab File: BP022614.D  
 Acq: 25 Oct 2024 16:37



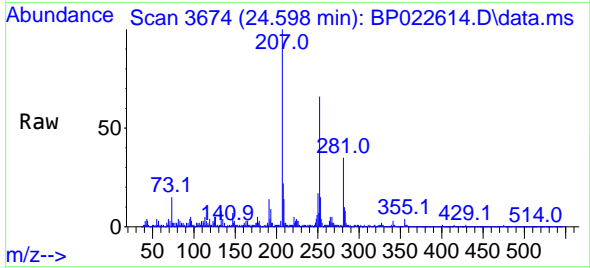
Tgt Ion:252 Resp: 90240  
 Ion Ratio Lower Upper  
 252 100  
 253 25.3 17.4 26.0  
 125 6.0 4.6 6.8





#93  
 Benzo(a)pyrene  
 Concen: 1.163 ng/ul  
 RT: 24.598 min Scan# 30  
 Delta R.T. -0.005 min  
 Lab File: BP022614.D  
 Acq: 25 Oct 2024 16:37

Instrument :  
 BNA\_P  
 ClientSampleId :  
 A4F53



Tgt Ion:252 Resp: 69387

Ion	Ratio	Lower	Upper
252	100		
253	21.9	17.7	26.5
125	7.9	4.9	7.3#

