

Data Path : Z:\svoasrv\HPCHEM1\BNA_P\Data\BP103024\
 Data File : BP022794.D
 Acq On : 01 Nov 2024 07:56
 Operator : RC/JU
 Sample : PB164547BS
 Misc :
 ALS Vial : 29 Sample Multiplier: 1

Instrument :
 BNA_P
 ClientSampleId :
 SLCS547

Manual Integrations
 APPROVED

Reviewed By :Yogesh Patel 11/04/2024
 Supervised By :mohammad ahmed 11/05/2024

Quant Time: Nov 01 07:26:22 2024
 Quant Method : Z:\svoasrv\HPCHEM1\BNA_P\Methods\SFAM-EPA-BP100724.MA.M
 Quant Title : SVOA CALIBRATION
 QLast Update : Wed Oct 30 10:56:39 2024
 Response via : Initial Calibration

| Compound | R.T. | QIon | Response | Conc | Units | Dev(Min) |
|-------------------------------|--------|------|----------|--------|-------|----------|
| Internal Standards | | | | | | |
| 1) 1,4-Dichlorobenzene-d4 | 7.634 | 152 | 91161 | 20.000 | ng/ul | 0.00 |
| 20) Naphthalene-d8 | 10.393 | 136 | 343143 | 20.000 | ng/ul | 0.00 |
| 38) Acenaphthene-d10 | 14.269 | 164 | 288512 | 20.000 | ng/ul | 0.00 |
| 64) Phenanthrene-d10 | 17.075 | 188 | 746369 | 20.000 | ng/ul | 0.01 |
| 79) Chrysene-d12 | 21.504 | 240 | 863146 | 20.000 | ng/ul | 0.00 |
| 88) Perylene-d12 | 24.774 | 264 | 1018692m | 20.000 | ng/ul | 0.02 |
| System Monitoring Compounds | | | | | | |
| 3) 1,4-Dioxane-d8 | 3.175 | 96 | 11693 | 4.984 | ng/uL | 0.00 |
| 4) Pyridine-d5 | 3.587 | 84 | 171218 | 26.587 | ng/ul | 0.00 |
| 7) Phenol-d5 | 6.828 | 99 | 215280 | 28.054 | ng/ul | 0.00 |
| 9) Bis-(2-Chloroethyl)eth... | 6.975 | 67 | 117400 | 26.030 | ng/ul | 0.00 |
| 11) 2-Chlorophenol-d4 | 7.175 | 132 | 161734 | 29.703 | ng/ul | 0.00 |
| 15) 4-Methylphenol-d8 | 8.340 | 113 | 169571 | 27.690 | ng/ul | 0.00 |
| 21) Nitrobenzene-d5 | 8.775 | 128 | 76655 | 29.053 | ng/ul | 0.00 |
| 24) 2-Nitrophenol-d4 | 9.487 | 143 | 95892 | 31.392 | ng/ul | -0.01 |
| 28) 2,4-Dichlorophenol-d3 | 10.028 | 165 | 203864 | 31.401 | ng/ul | 0.00 |
| 31) 4-Chloroaniline-d4 | 10.534 | 131 | 197376 | 25.729 | ng/ul | 0.00 |
| 46) Dimethylphthalate-d6 | 13.663 | 166 | 638567 | 27.857 | ng/ul | 0.00 |
| 49) Acenaphthylene-d8 | 13.957 | 160 | 702090 | 28.837 | ng/ul | 0.00 |
| 54) 4-Nitrophenol-d4 | 14.516 | 143 | 104468 | 27.166 | ng/ul | 0.00 |
| 60) Fluorene-d10 | 15.281 | 176 | 600465 | 30.201 | ng/ul | 0.00 |
| 65) 4,6-Dinitro-2-methylph... | 15.416 | 200 | 130205 | 26.525 | ng/ul | 0.01 |
| 73) Anthracene-d10 | 17.175 | 188 | 1059882 | 30.187 | ng/ul | 0.00 |
| 81) Pyrene-d10 | 19.551 | 212 | 1359159 | 29.777 | ng/ul | 0.00 |
| 92) Benzo(a)pyrene-d12 | 24.551 | 264 | 1648591 | 30.303 | ng/ul | 0.03 |
| Target Compounds | | | | | | |
| 2) 1,4-Dioxane | 3.211 | 88 | 24377 | 9.664 | ng/uL | 96 |
| 5) Pyridine | 3.605 | 79 | 169579 | 25.681 | ng/ul | 93 |
| 6) Benzaldehyde | 6.799 | 77 | 24835 | 5.989 | ng/ul | 98 |
| 8) Phenol | 6.858 | 94 | 214153 | 26.824 | ng/ul | 97 |
| 10) Bis(2-Chloroethyl)ether | 7.069 | 93 | 153179 | 25.636 | ng/ul | 95 |
| 12) 2-Chlorophenol | 7.210 | 128 | 160403 | 28.488 | ng/ul | 98 |
| 13) 2-Methylphenol | 8.081 | 108 | 156276 | 26.972 | ng/ul | 99 |
| 14) 2,2'-oxybis(1-Chloropr... | 8.140 | 45 | 173371 | 24.966 | ng/ul | 96 |
| 16) Acetophenone | 8.446 | 105 | 261732 | 25.888 | ng/ul | 99 |
| 17) N-Nitroso-di-n-propyla... | 8.428 | 70 | 134469 | 26.252 | ng/ul | 98 |
| 18) 4-Methylphenol | 8.399 | 108 | 173533 | 26.998 | ng/ul | 99 |
| 19) Hexachloroethane | 8.687 | 117 | 71514 | 27.272 | ng/ul | 96 |
| 22) Nitrobenzene | 8.816 | 77 | 216314 | 27.466 | ng/ul | 98 |
| 23) Isophorone | 9.334 | 82 | 369891 | 26.195 | ng/ul | 99 |
| 25) 2-Nitrophenol | 9.516 | 139 | 96249 | 29.237 | ng/ul | 96 |
| 26) 2,4-Dimethylphenol | 9.581 | 107 | 189554 | 26.491 | ng/ul | 95 |
| 27) Bis(2-Chloroethoxy)met... | 9.810 | 93 | 206042 | 25.698 | ng/ul | 99 |
| 29) 2,4-Dichlorophenol | 10.052 | 162 | 194668 | 30.449 | ng/ul | 100 |
| 30) Naphthalene | 10.440 | 128 | 517498 | 28.314 | ng/ul | 99 |
| 32) 4-Chloroaniline | 10.557 | 127 | 124544 | 16.447 | ng/ul | 95 |
| 33) Hexachlorobutadiene | 10.716 | 225 | 163663 | 30.373 | ng/ul | 100 |
| 34) Caprolactam | 11.346 | 113 | 52259m | 25.354 | ng/ul | |
| 35) 4-Chloro-3-methylphenol | 11.698 | 107 | 208977 | 29.959 | ng/ul | 99 |
| 36) 2-Methylnaphthalene | 12.057 | 142 | 389230 | 29.012 | ng/ul | 98 |

Data Path : Z:\svoasrv\HPCHEM1\BNA_P\Data\BP103024\
 Data File : BP022794.D
 Acq On : 01 Nov 2024 07:56
 Operator : RC/JU
 Sample : PB164547BS
 Misc :
 ALS Vial : 29 Sample Multiplier: 1

Instrument :
 BNA_P
ClientSampleId :
 SLCS547

Quant Time: Nov 01 07:26:22 2024
 Quant Method : Z:\svoasrv\HPCHEM1\BNA_P\Methods\SFAM-EPA-BP100724.MA.M
 Quant Title : SVOA CALIBRATION
 QLast Update : Wed Oct 30 10:56:39 2024
 Response via : Initial Calibration

Manual Integrations
APPROVED
 Reviewed By :Yogesh Patel 11/04/2024
 Supervised By :mohammad ahmed 11/05/2024

| Compound | R.T. | QIon | Response | Conc | Units | Dev(Min) |
|-------------------------------|--------|------|----------|--------|--------|----------|
| 37) 1-Methylnaphthalene | 12.269 | 142 | 378884 | 27.669 | ng/ul | 98 |
| 39) 1,2,4,5-Tetrachloroben... | 12.434 | 216 | 298780 | 28.007 | ng/ul | 97 |
| 40) Hexachlorocyclopentadiene | 12.404 | 237 | 94596 | 14.554 | ng/ul | 99 |
| 41) 2,4,6-Trichlorophenol | 12.681 | 196 | 195139 | 29.080 | ng/ul | 96 |
| 42) 2,4,5-Trichlorophenol | 12.763 | 196 | 216502 | 30.301 | ng/ul | 96 |
| 43) 1,1'-Biphenyl | 13.081 | 154 | 565767 | 27.206 | ng/ul | 99 |
| 44) 2-Chloronaphthalene | 13.128 | 162 | 470908 | 27.662 | ng/ul | 99 |
| 45) 2-Nitroaniline | 13.334 | 65 | 142300 | 27.994 | ng/ul | 97 |
| 47) Dimethylphthalate | 13.716 | 163 | 614775 | 26.915 | ng/ul | 99 |
| 48) 2,6-Dinitrotoluene | 13.851 | 165 | 129984 | 30.086 | ng/ul | 99 |
| 50) Acenaphthylene | 13.981 | 152 | 692372 | 27.401 | ng/ul | 99 |
| 51) 3-Nitroaniline | 14.187 | 138 | 113889 | 28.066 | ng/ul | 97 |
| 52) Acenaphthene | 14.328 | 153 | 493667 | 27.629 | ng/ul | 98 |
| 53) 2,4-Dinitrophenol | 14.398 | 184 | 75899 | 23.877 | ng/ul | 92 |
| 55) 4-Nitrophenol | 14.528 | 109 | 128859 | 30.191 | ng/ul | 89 |
| 56) Dibenzofuran | 14.663 | 168 | 764465 | 28.483 | ng/ul | 98 |
| 57) 2,4-Dinitrotoluene | 14.651 | 165 | 206136 | 30.704 | ng/ul | 90 |
| 58) 2,3,4,6-Tetrachlorophenol | 14.916 | 232 | 209544 | 31.420 | ng/ul# | 95 |
| 59) Diethylphthalate | 15.110 | 149 | 617685 | 28.187 | ng/ul | 99 |
| 61) Fluorene | 15.334 | 166 | 640141 | 29.272 | ng/ul | 98 |
| 62) 4-Chlorophenyl-phenyle... | 15.334 | 204 | 376611 | 30.115 | ng/ul | 100 |
| 63) 4-Nitroaniline | 15.363 | 138 | 133312 | 32.649 | ng/ul | 90 |
| 66) 4,6-Dinitro-2-methylph... | 15.434 | 198 | 132897 | 25.135 | ng/ul | 99 |
| 67) N-Nitrosodiphenylamine | 15.563 | 169 | 543604 | 27.198 | ng/ul | 100 |
| 68) 4-Bromophenyl-phenylether | 16.245 | 248 | 270834 | 30.091 | ng/ul | 97 |
| 69) Hexachlorobenzene | 16.369 | 284 | 335841 | 30.314 | ng/ul | 97 |
| 70) Atrazine | 16.539 | 200 | 245155 | 29.508 | ng/ul | 95 |
| 71) Pentachlorophenol | 16.728 | 266 | 219335 | 30.790 | ng/ul | 96 |
| 72) Phenanthrene | 17.116 | 178 | 1123940 | 28.147 | ng/ul | 99 |
| 74) Anthracene | 17.210 | 178 | 1122530 | 28.169 | ng/ul | 99 |
| 75) 1,2,3,4-Tetrachloroben... | 13.045 | 216 | 303351 | 26.693 | ng/uL | 97 |
| 76) Pentachlorobenzene | 14.598 | 250 | 338395 | 26.936 | ng/uL | 99 |
| 77) Carbazole | 17.492 | 167 | 1000145 | 28.365 | ng/ul | 99 |
| 78) Di-n-butylphthalate | 18.086 | 149 | 1141195 | 29.250 | ng/ul | 100 |
| 80) Fluoranthene | 19.210 | 202 | 1544670 | 29.437 | ng/ul# | 96 |
| 82) Pyrene | 19.580 | 202 | 1601053 | 28.467 | ng/ul | 97 |
| 83) Butylbenzylphthalate | 20.533 | 149 | 558263 | 28.510 | ng/ul | 99 |
| 84) 3,3'-Dichlorobenzidine | 21.410 | 252 | 563210 | 27.373 | ng/ul | 97 |
| 85) Benzo(a)anthracene | 21.486 | 228 | 1677524 | 27.723 | ng/ul | 99 |
| 86) Bis(2-ethylhexyl)phtha... | 21.416 | 149 | 806018 | 28.677 | ng/ul | 98 |
| 87) Chrysene | 21.557 | 228 | 1569529 | 27.974 | ng/ul | 99 |
| 89) Di-n-octyl phthalate | 22.663 | 149 | 1341782 | 27.691 | ng/ul | 100 |
| 90) Benzo(b)fluoranthene | 23.745 | 252 | 1841048 | 28.711 | ng/ul | 98 |
| 91) Benzo(k)fluoranthene | 23.816 | 252 | 1803067m | 28.720 | ng/ul | |
| 93) Benzo(a)pyrene | 24.615 | 252 | 1651053 | 27.977 | ng/ul# | 99 |
| 94) Indeno(1,2,3-cd)pyrene | 28.498 | 276 | 2203886 | 27.985 | ng/ul# | 96 |
| 95) Dibenzo(a,h)anthracene | 28.556 | 278 | 1759999 | 27.598 | ng/ul# | 98 |
| 96) Benzo(g,h,i)perylene | 29.639 | 276 | 1684203 | 27.494 | ng/ul | 98 |

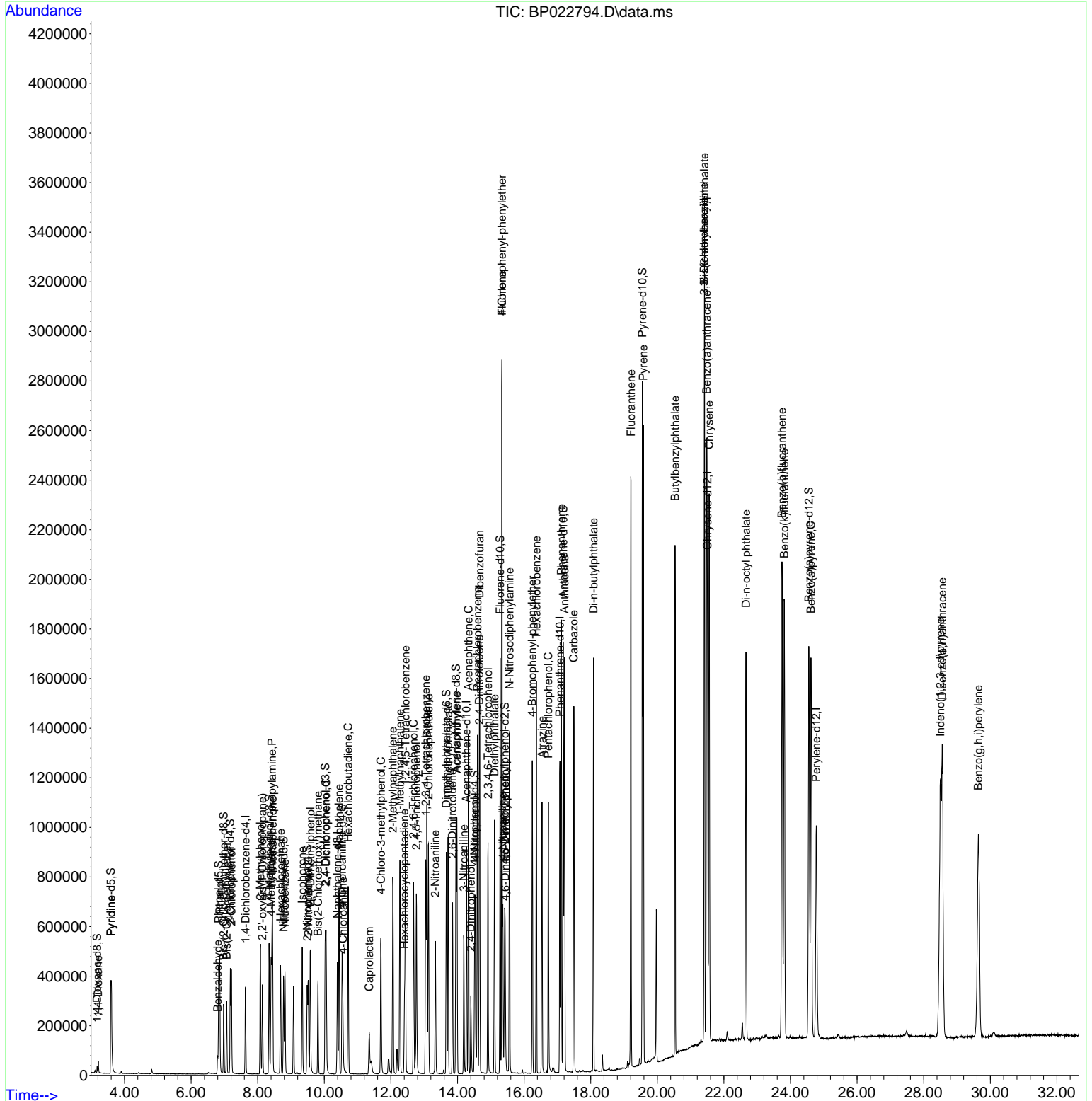
(#) = qualifier out of range (m) = manual integration (+) = signals summed

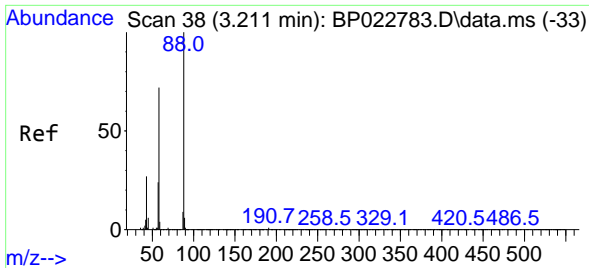
Data Path : Z:\svoasrv\HPCHEM1\BNA_P\Data\BP103024\
 Data File : BP022794.D
 Acq On : 01 Nov 2024 07:56
 Operator : RC/JU
 Sample : PB164547BS
 Misc :
 ALS Vial : 29 Sample Multiplier: 1

Instrument :
 BNA_P
ClientSampleId :
 SLCS547

Quant Time: Nov 01 07:26:22 2024
 Quant Method : Z:\svoasrv\HPCHEM1\BNA_P\Methods\SFAM-EPA-BP100724.MA.M
 Quant Title : SVOA CALIBRATION
 QLast Update : Wed Oct 30 10:56:39 2024
 Response via : Initial Calibration

Manual Integrations
APPROVED
 Reviewed By :Yogesh Patel 11/04/2024
 Supervised By :mohammad ahmed 11/05/2024





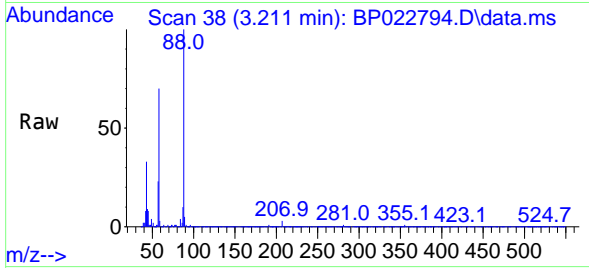
#2
 1,4-Dioxane
 Concen: 9.664 ng/uL
 RT: 3.211 min Scan# 38
 Delta R.T. -0.006 min
 Lab File: BP022794.D
 Acq: 01 Nov 2024 07:56

Instrument :

BNA_P

ClientSampleId :

SLCS547



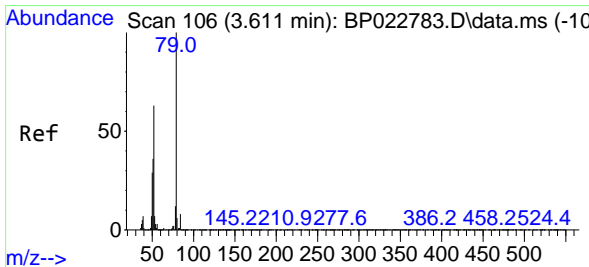
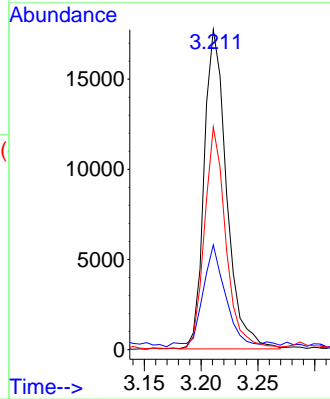
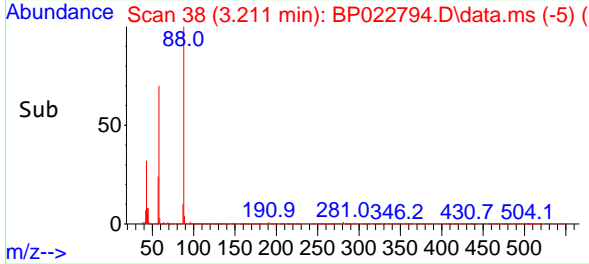
Tgt Ion: 88 Resp: 2437
 Ion Ratio Lower Upper
 88 100
 43 32.7 22.3 33.5
 58 69.6 54.7 82.1

Manual Integrations

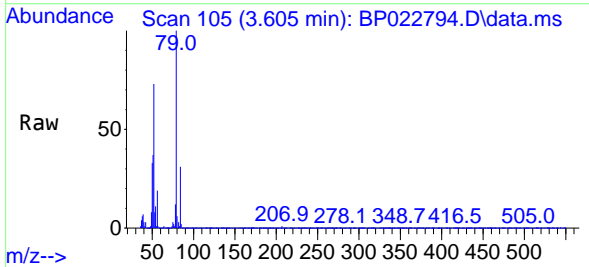
APPROVED

Reviewed By :Yogesh Patel 11/04/2024

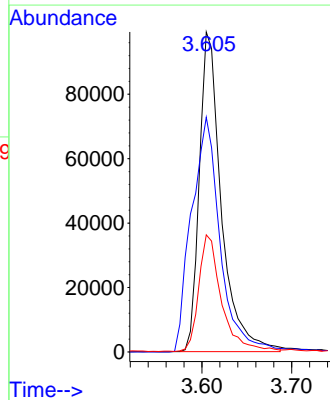
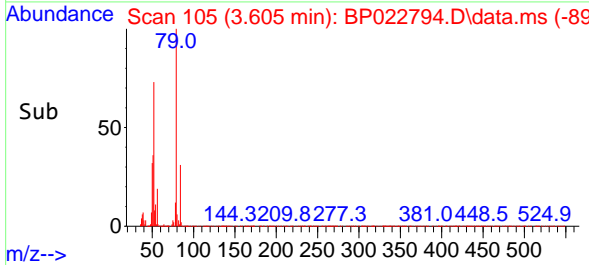
Supervised By :mohammad ahmed 11/05/2024

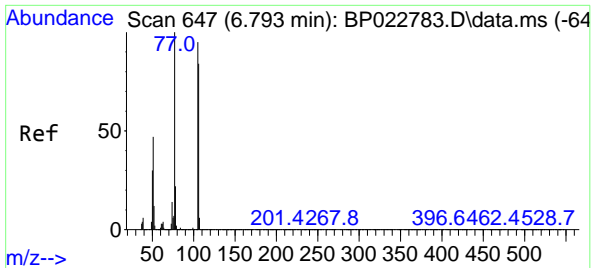


#5
 Pyridine
 Concen: 25.681 ng/uL
 RT: 3.605 min Scan# 105
 Delta R.T. -0.006 min
 Lab File: BP022794.D
 Acq: 01 Nov 2024 07:56



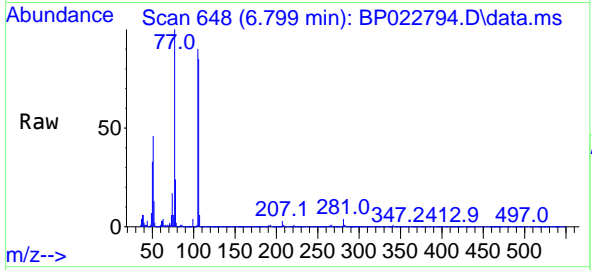
Tgt Ion: 79 Resp: 169579
 Ion Ratio Lower Upper
 79 100
 52 73.4 53.9 80.9
 51 36.6 26.3 39.5





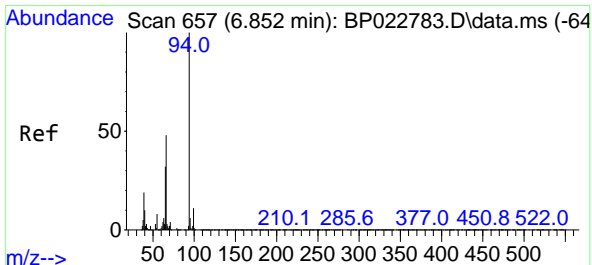
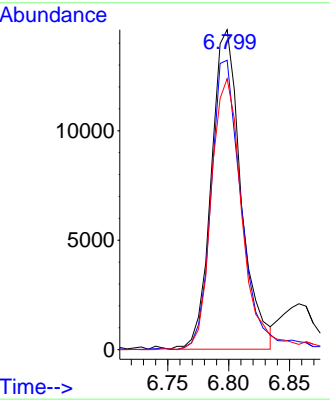
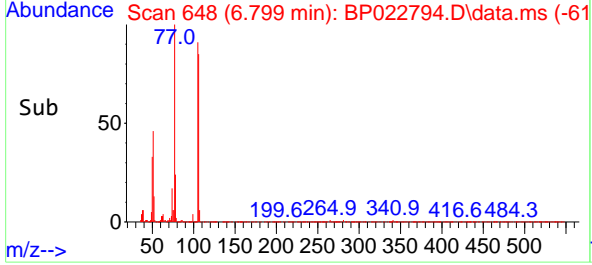
#6
Benzaldehyde
Concen: 5.989 ng/u1
RT: 6.799 min Scan# 647
Delta R.T. 0.000 min
Lab File: BP022794.D
Acq: 01 Nov 2024 07:56

Instrument : BNA_P
Client SampleId : SLCS547

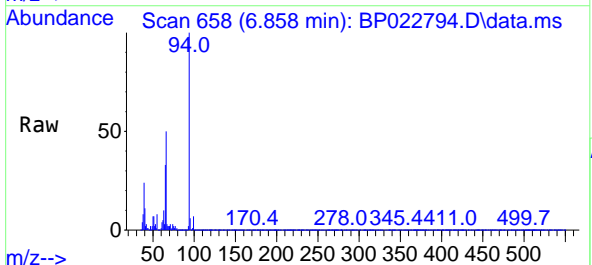


Tgt Ion: 77 Resp: 2483
Ion Ratio Lower Upper
77 100
105 90.4 72.6 108.8
106 84.7 70.6 106.0

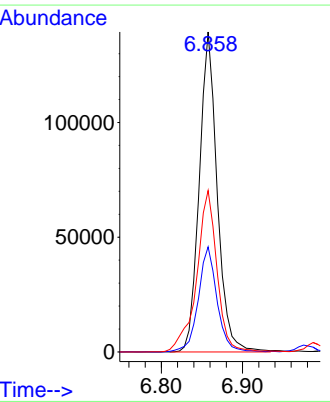
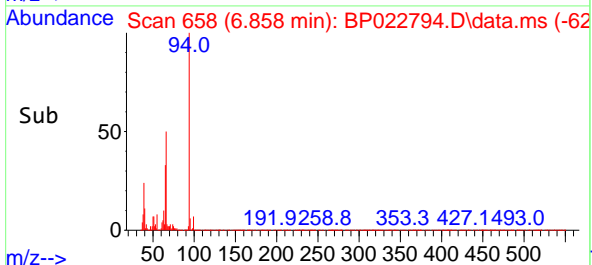
Manual Integrations
APPROVED
Reviewed By :Yogesh Patel 11/04/2024
Supervised By :mohammad ahmed 11/05/2024

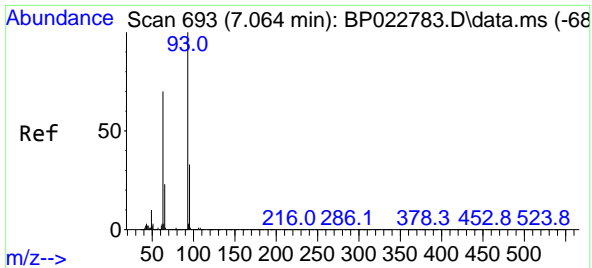


#8
Phenol
Concen: 26.824 ng/u1
RT: 6.858 min Scan# 658
Delta R.T. 0.000 min
Lab File: BP022794.D
Acq: 01 Nov 2024 07:56



Tgt Ion: 94 Resp: 214153
Ion Ratio Lower Upper
94 100
65 32.9 25.9 38.9
66 50.5 37.6 56.4





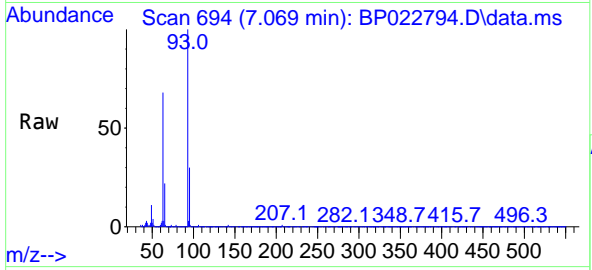
#10
 Bis(2-Chloroethyl)ether
 Concen: 25.636 ng/u1
 RT: 7.069 min Scan# 693
 Delta R.T. -0.006 min
 Lab File: BP022794.D
 Acq: 01 Nov 2024 07:56

Instrument :

BNA_P

ClientSampleId :

SLCS547



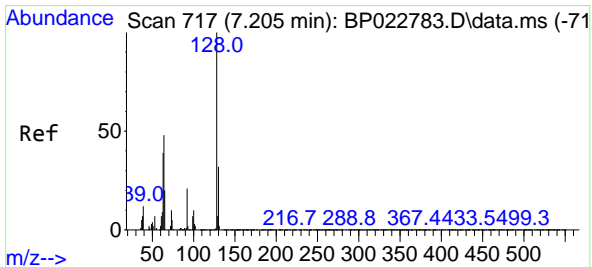
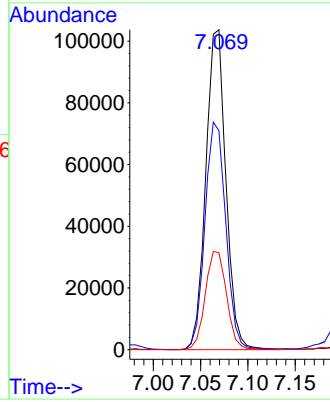
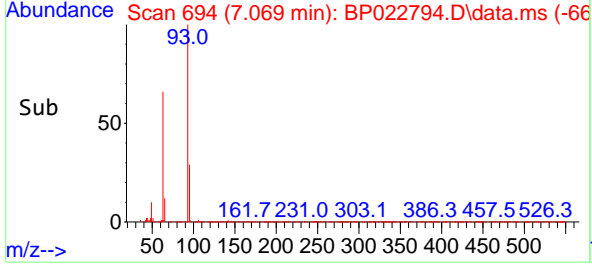
Tgt Ion: 93 Resp: 153179
 Ion Ratio Lower Upper
 93 100
 63 68.5 59.0 88.6
 95 30.3 25.6 38.4

Manual Integrations

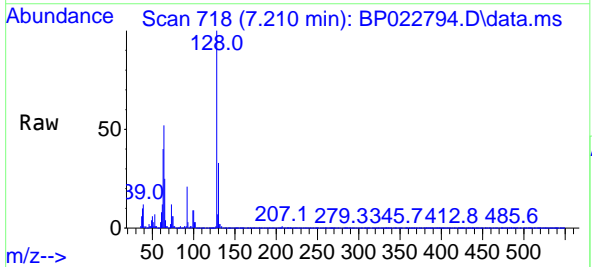
APPROVED

Reviewed By :Yogesh Patel 11/04/2024

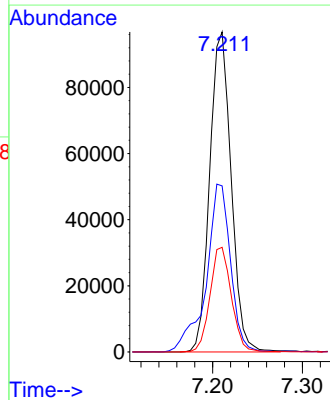
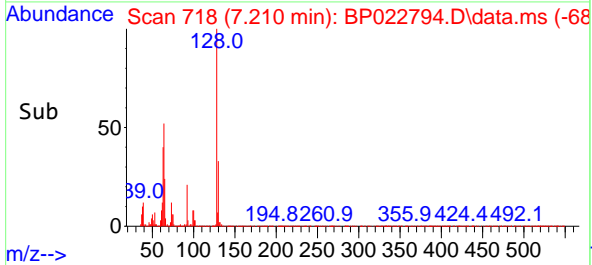
Supervised By :mohammad ahmed 11/05/2024

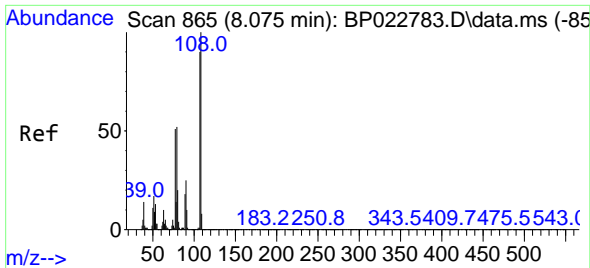


#12
 2-Chlorophenol
 Concen: 28.488 ng/u1
 RT: 7.210 min Scan# 718
 Delta R.T. -0.006 min
 Lab File: BP022794.D
 Acq: 01 Nov 2024 07:56



Tgt Ion:128 Resp: 160403
 Ion Ratio Lower Upper
 128 100
 64 51.9 42.4 63.6
 130 32.7 24.8 37.2





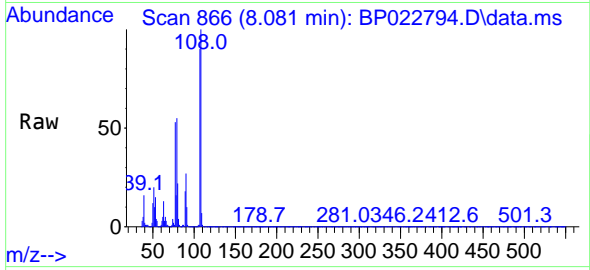
#13
 2-Methylphenol
 Concen: 26.972 ng/ul
 RT: 8.081 min Scan# 80
 Delta R.T. -0.006 min
 Lab File: BP022794.D
 Acq: 01 Nov 2024 07:56

Instrument :

BNA_P

ClientSampleId :

SLCS547



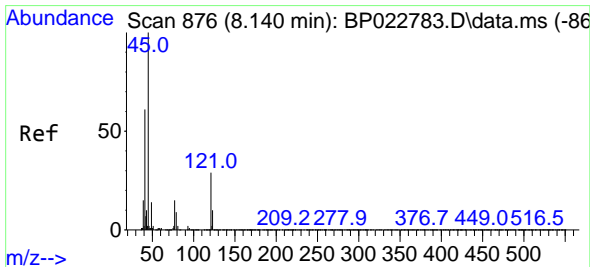
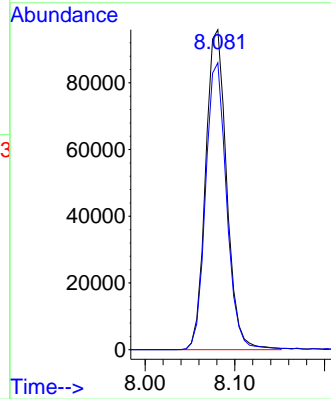
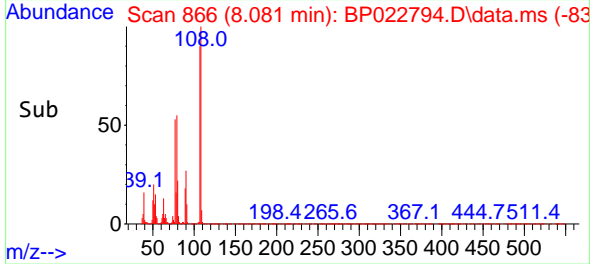
Tgt Ion:108 Resp: 156270
 Ion Ratio Lower Upper
 108 100
 107 89.7 72.5 108.7

Manual Integrations

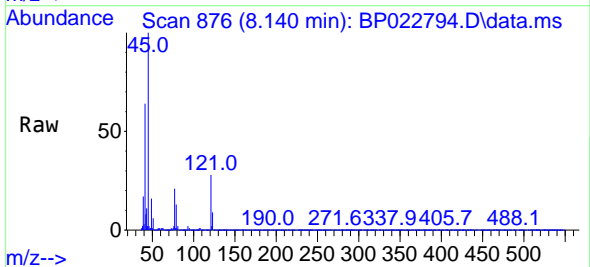
APPROVED

Reviewed By :Yogesh Patel 11/04/2024

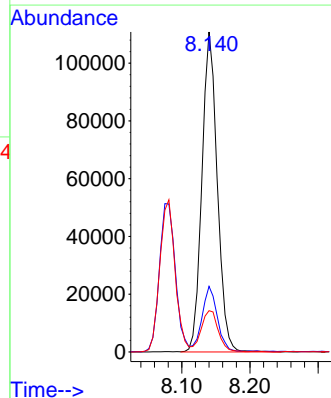
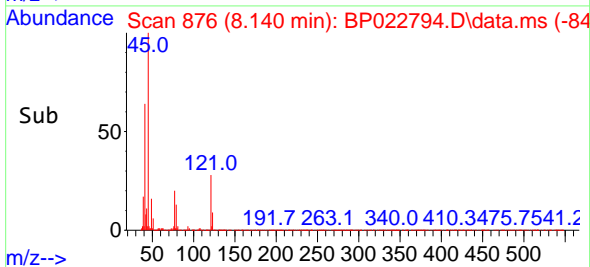
Supervised By :mohammad ahmed 11/05/2024

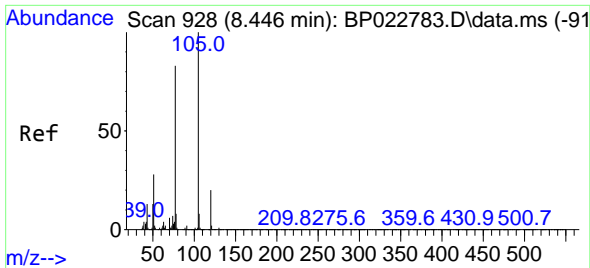


#14
 2,2'-oxybis(1-Chloropropane)
 Concen: 24.966 ng/ul
 RT: 8.140 min Scan# 876
 Delta R.T. -0.012 min
 Lab File: BP022794.D
 Acq: 01 Nov 2024 07:56



Tgt Ion: 45 Resp: 173371
 Ion Ratio Lower Upper
 45 100
 77 20.5 14.5 21.7
 79 12.9 11.0 16.4





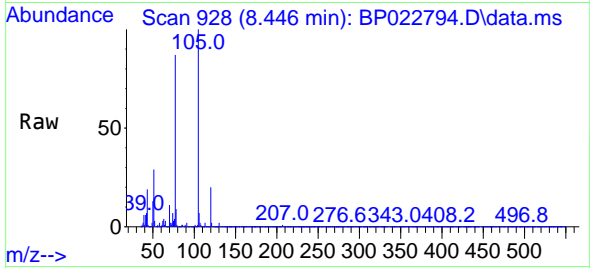
#16
 Acetophenone
 Concen: 25.888 ng/u1
 RT: 8.446 min Scan# 91
 Delta R.T. -0.006 min
 Lab File: BP022794.D
 Acq: 01 Nov 2024 07:56

Instrument :

BNA_P

ClientSampleId :

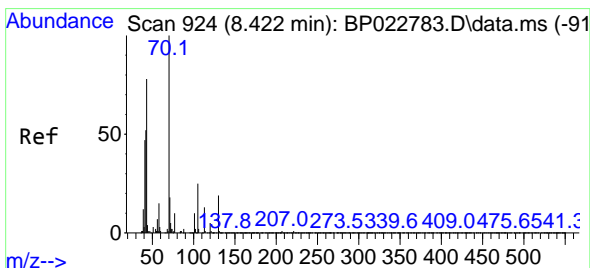
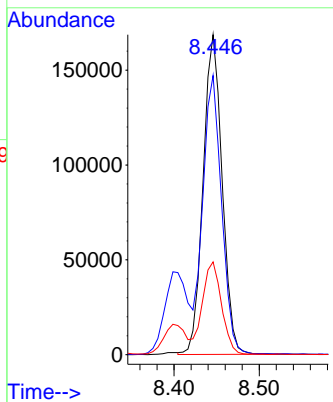
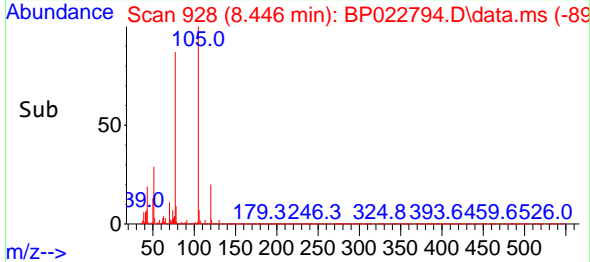
SLCS547



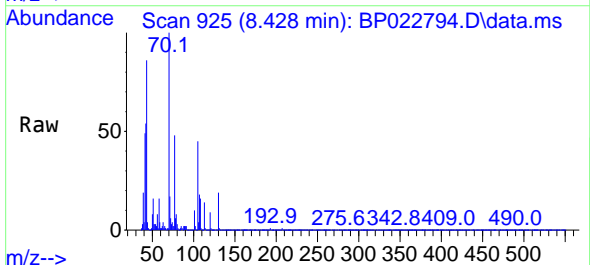
Tgt Ion:105 Resp: 26173
 Ion Ratio Lower Upper
 105 100
 77 87.3 69.0 103.4
 51 29.0 22.6 33.8

Manual Integrations
 APPROVED

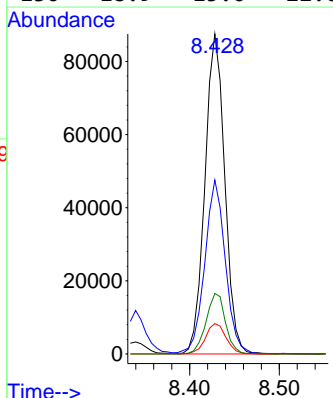
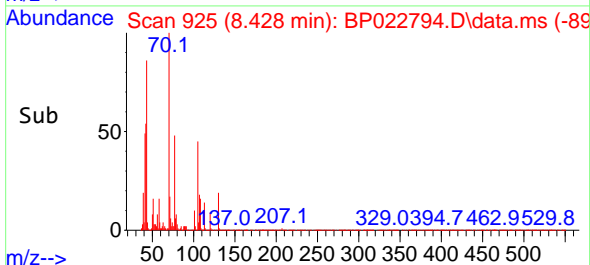
Reviewed By :Yogesh Patel 11/04/2024
 Supervised By :mohammad ahmed 11/05/2024

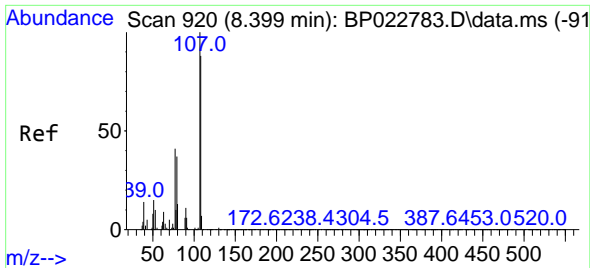


#17
 N-Nitroso-di-n-propylamine
 Concen: 26.252 ng/u1
 RT: 8.428 min Scan# 925
 Delta R.T. -0.006 min
 Lab File: BP022794.D
 Acq: 01 Nov 2024 07:56



Tgt Ion: 70 Resp: 134469
 Ion Ratio Lower Upper
 70 100
 42 54.4 42.0 63.0
 101 9.5 7.8 11.6
 130 18.9 15.0 22.6





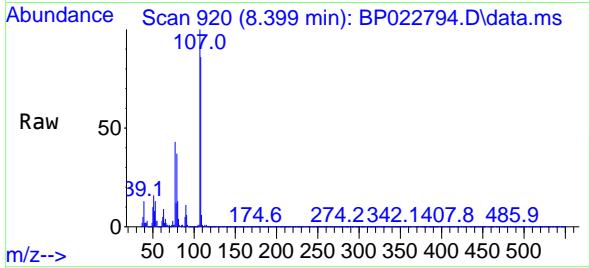
#18
 4-Methylphenol
 Concen: 26.998 ng/u1
 RT: 8.399 min Scan# 911
 Delta R.T. -0.012 min
 Lab File: BP022794.D
 Acq: 01 Nov 2024 07:56

Instrument :

BNA_P

ClientSampleId :

SLCS547



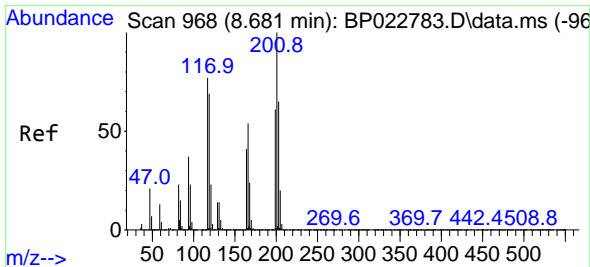
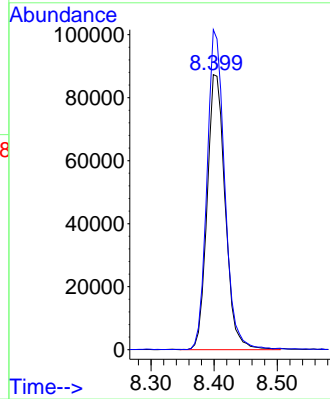
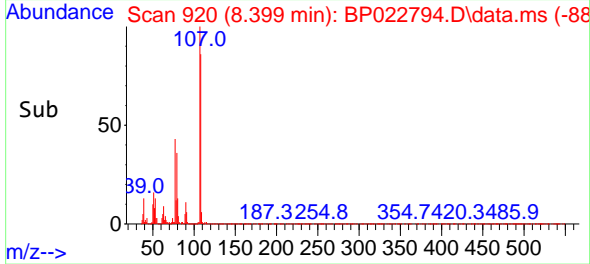
Tgt Ion:108 Resp: 17353
 Ion Ratio Lower Upper
 108 100
 107 116.4 94.4 141.6

Manual Integrations

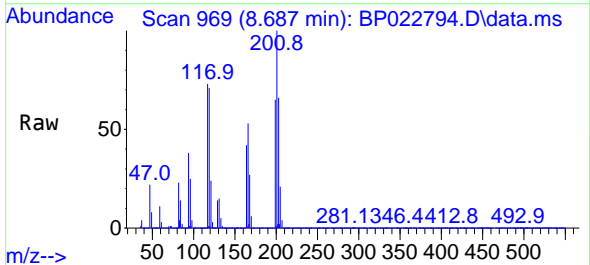
APPROVED

Reviewed By :Yogesh Patel 11/04/2024

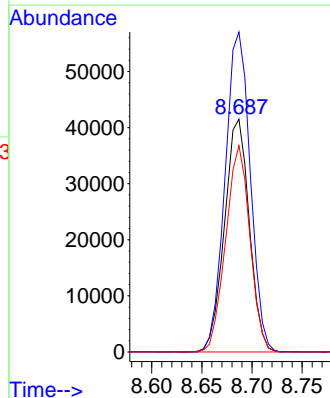
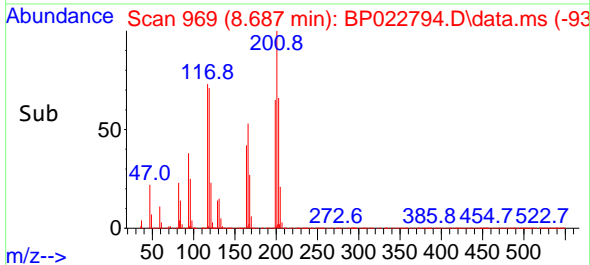
Supervised By :mohammad ahmed 11/05/2024

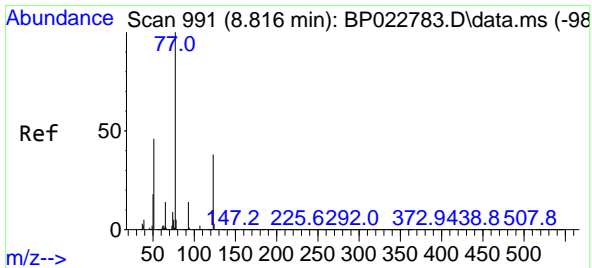


#19
 Hexachloroethane
 Concen: 27.272 ng/u1
 RT: 8.687 min Scan# 969
 Delta R.T. -0.012 min
 Lab File: BP022794.D
 Acq: 01 Nov 2024 07:56



Tgt Ion:117 Resp: 71514
 Ion Ratio Lower Upper
 117 100
 201 137.4 106.6 160.0
 199 88.6 66.9 100.3





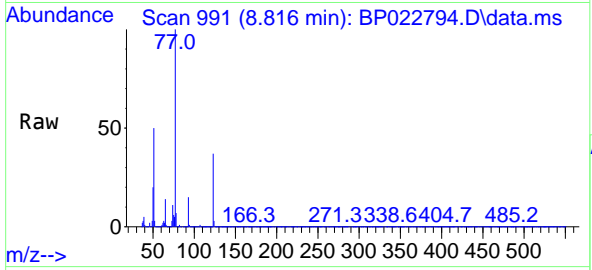
#22
 Nitrobenzene
 Concen: 27.466 ng/u1
 RT: 8.816 min Scan# 991
 Delta R.T. -0.006 min
 Lab File: BP022794.D
 Acq: 01 Nov 2024 07:56

Instrument :

BNA_P

ClientSampleId :

SLCS547



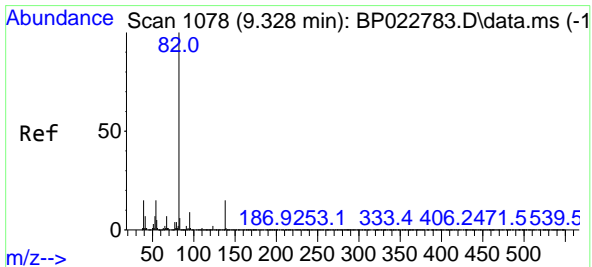
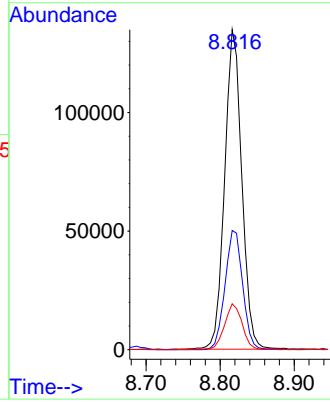
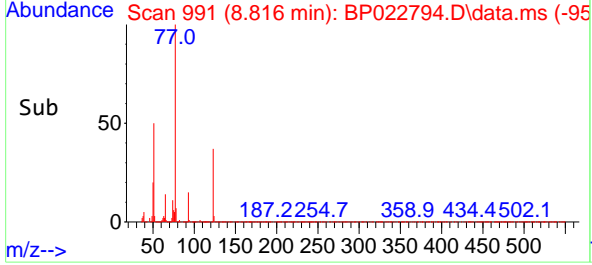
Tgt Ion: 77 Resp: 216314
 Ion Ratio Lower Upper
 77 100
 123 37.2 30.8 46.2
 65 14.4 11.4 17.2

Manual Integrations

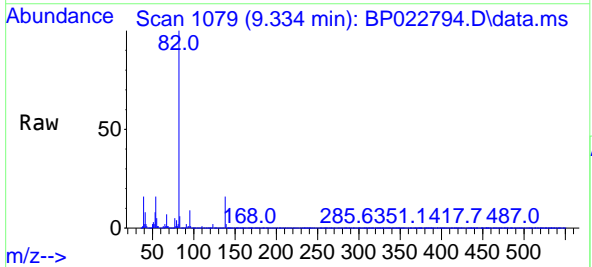
APPROVED

Reviewed By :Yogesh Patel 11/04/2024

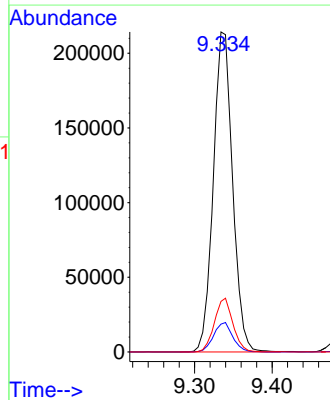
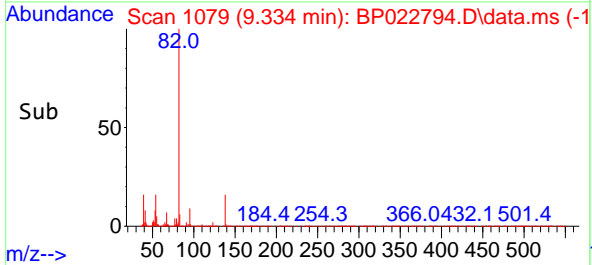
Supervised By :mohammad ahmed 11/05/2024

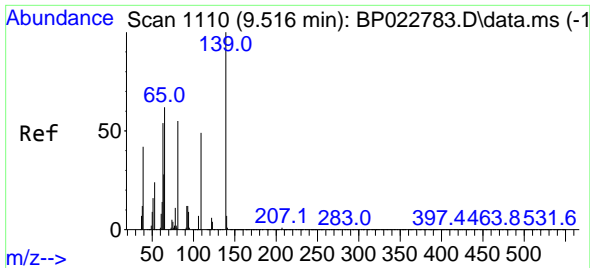


#23
 Isophorone
 Concen: 26.195 ng/u1
 RT: 9.334 min Scan# 1079
 Delta R.T. -0.012 min
 Lab File: BP022794.D
 Acq: 01 Nov 2024 07:56



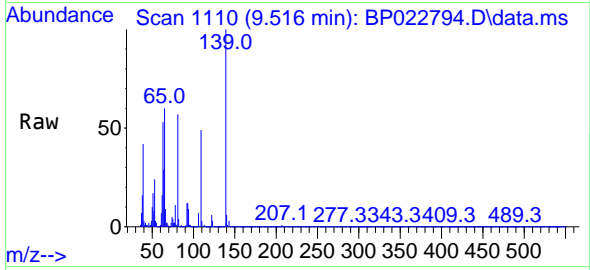
Tgt Ion: 82 Resp: 369891
 Ion Ratio Lower Upper
 82 100
 95 8.7 6.7 10.1
 138 15.8 12.3 18.5





#25
 2-Nitrophenol
 Concen: 29.237 ng/ul
 RT: 9.516 min Scan# 1110
 Delta R.T. -0.012 min
 Lab File: BP022794.D
 Acq: 01 Nov 2024 07:56

Instrument : BNA_P
 ClientSampleId : SLCS547

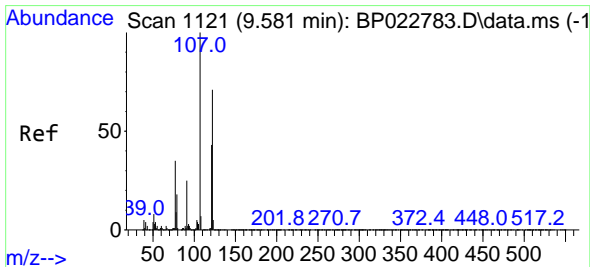
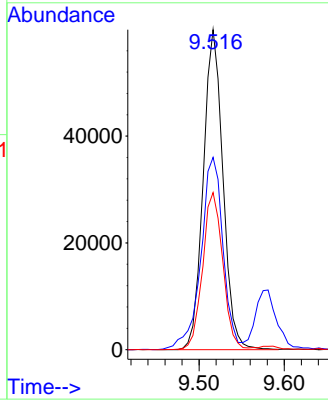
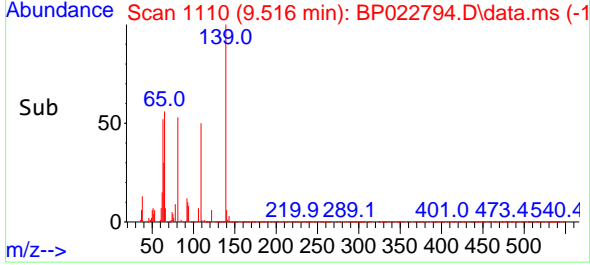


Tgt Ion:139 Resp: 96249

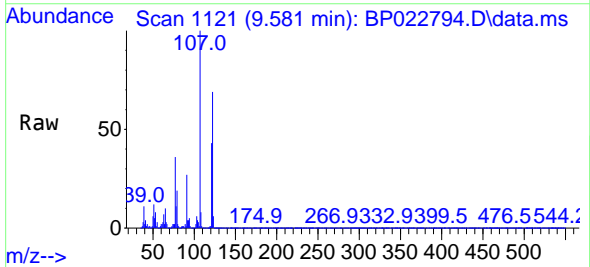
| Ion | Ratio | Lower | Upper |
|-----|-------|-------|-------|
| 139 | 100 | | |
| 65 | 60.1 | 48.5 | 72.7 |
| 109 | 49.1 | 35.0 | 52.4 |

Manual Integrations
APPROVED

Reviewed By :Yogesh Patel 11/04/2024
 Supervised By :mohammad ahmed 11/05/2024

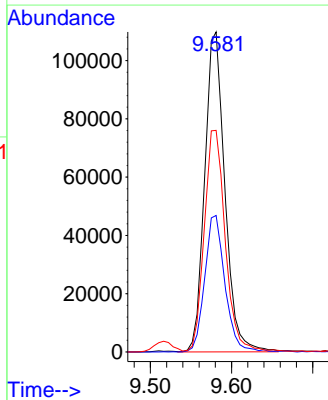
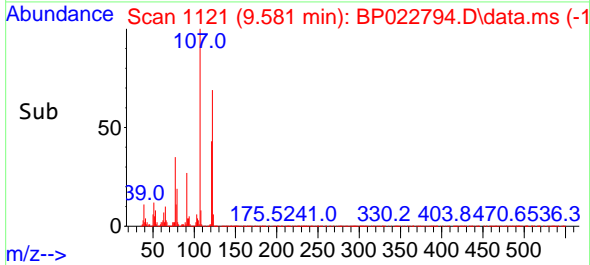


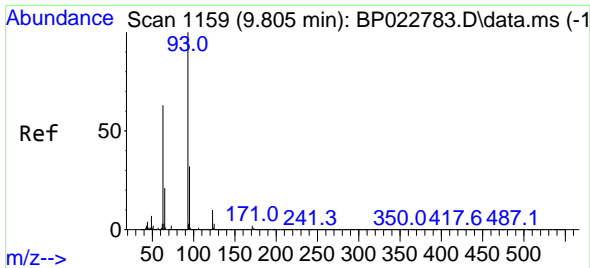
#26
 2,4-Dimethylphenol
 Concen: 26.491 ng/ul
 RT: 9.581 min Scan# 1121
 Delta R.T. -0.012 min
 Lab File: BP022794.D
 Acq: 01 Nov 2024 07:56



Tgt Ion:107 Resp: 189554

| Ion | Ratio | Lower | Upper |
|-----|-------|-------|-------|
| 107 | 100 | | |
| 121 | 42.7 | 34.3 | 51.5 |
| 122 | 69.2 | 60.1 | 90.1 |





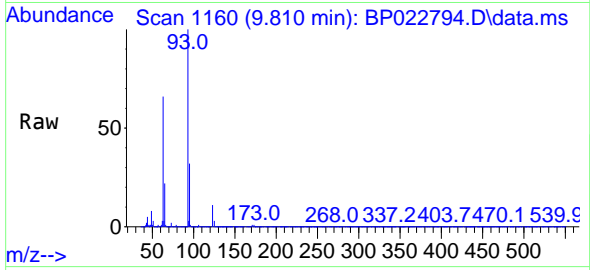
#27
 Bis(2-Chloroethoxy)methane
 Concen: 25.698 ng/ul
 RT: 9.810 min Scan# 1159
 Delta R.T. -0.006 min
 Lab File: BP022794.D
 Acq: 01 Nov 2024 07:56

Instrument :

BNA_P

ClientSampleId :

SLCS547



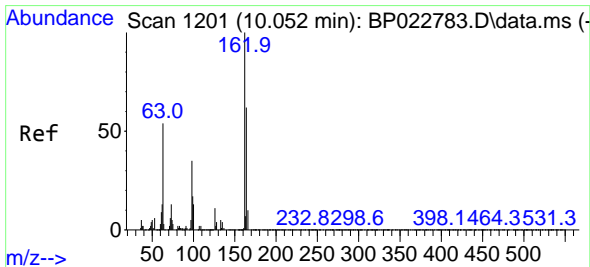
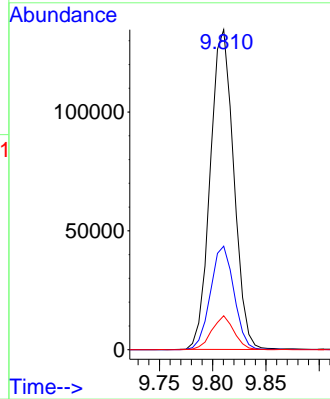
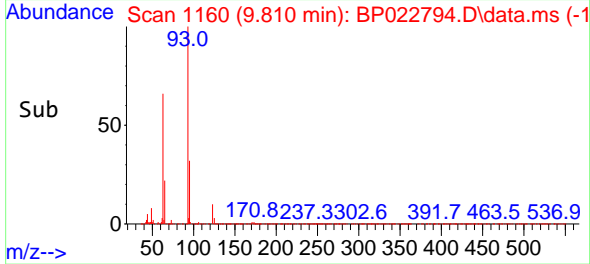
Tgt Ion: 93 Resp: 20604
 Ion Ratio Lower Upper
 93 100
 95 32.3 25.4 38.0
 123 10.6 7.8 11.8

Manual Integrations

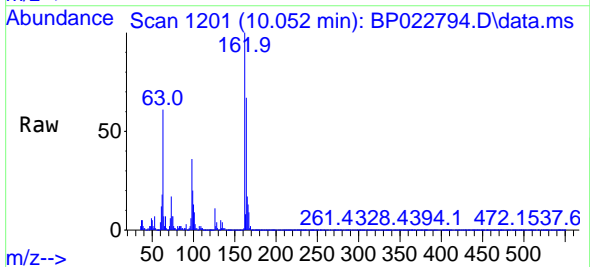
APPROVED

Reviewed By :Yogesh Patel 11/04/2024

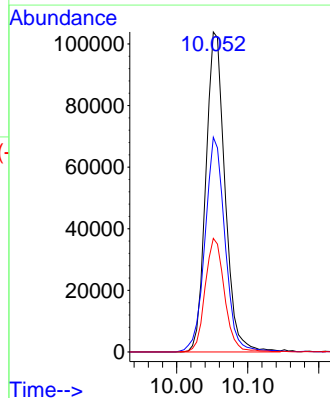
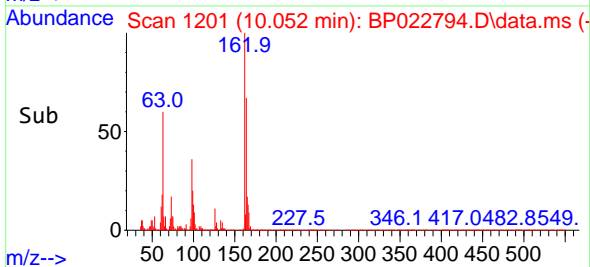
Supervised By :mohammad ahmed 11/05/2024

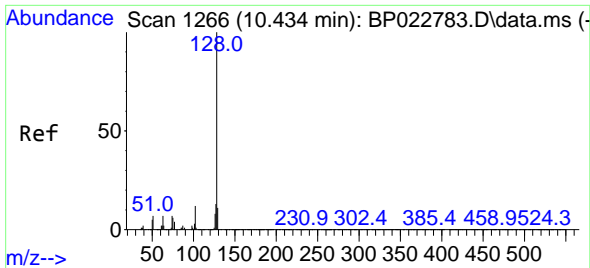


#29
 2,4-Dichlorophenol
 Concen: 30.449 ng/ul
 RT: 10.052 min Scan# 1201
 Delta R.T. -0.012 min
 Lab File: BP022794.D
 Acq: 01 Nov 2024 07:56



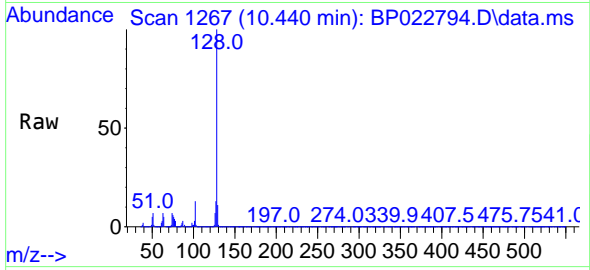
Tgt Ion:162 Resp: 194668
 Ion Ratio Lower Upper
 162 100
 164 67.1 53.5 80.3
 98 35.5 28.6 42.8





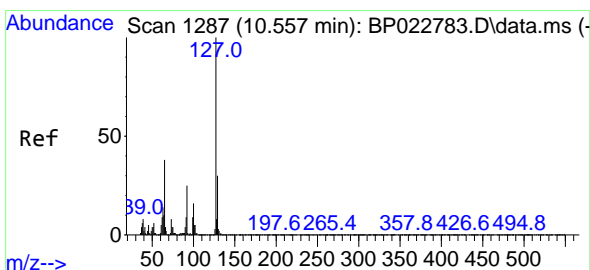
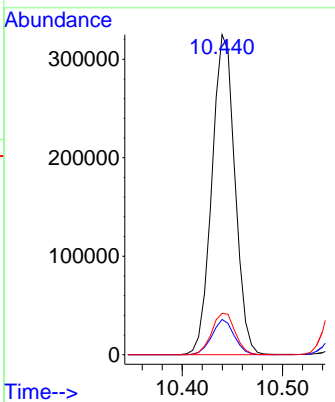
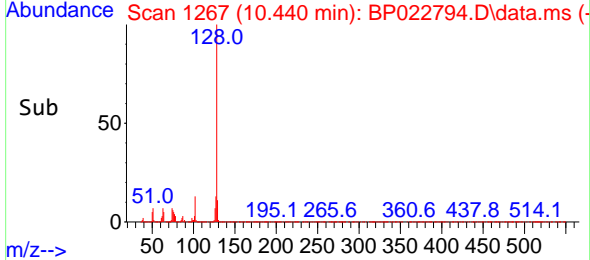
#30
 Naphthalene
 Concen: 28.314 ng/uI
 RT: 10.440 min Scan# 1266
 Delta R.T. -0.006 min
 Lab File: BP022794.D
 Acq: 01 Nov 2024 07:56

Instrument : BNA_P
 Client SampleId : SLCS547



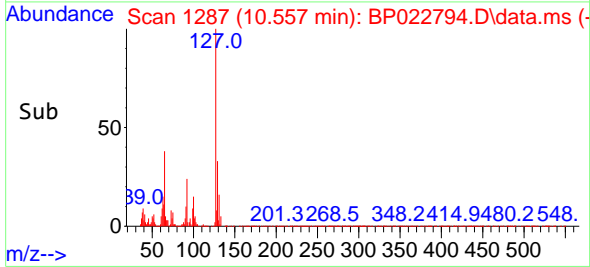
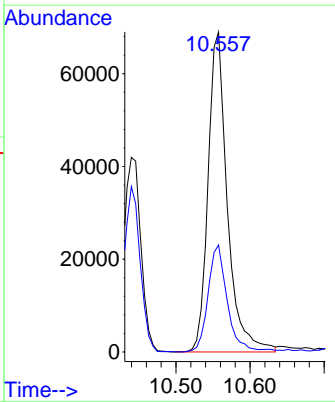
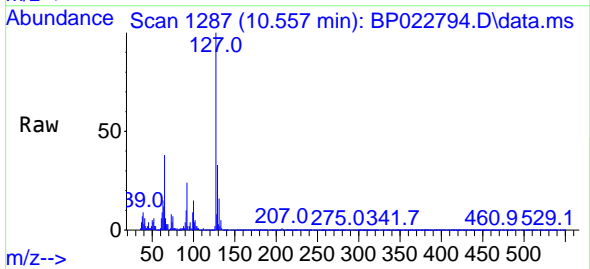
Tgt Ion:128 Resp: 517498
 Ion Ratio Lower Upper
 128 100
 129 11.0 8.6 12.8
 127 12.9 9.9 14.9

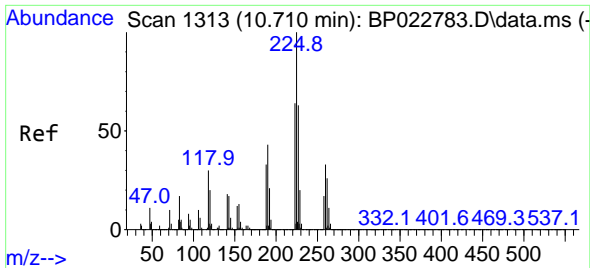
Manual Integrations
APPROVED
 Reviewed By :Yogesh Patel 11/04/2024
 Supervised By :mohammad ahmed 11/05/2024



#32
 4-Chloroaniline
 Concen: 16.447 ng/uI
 RT: 10.557 min Scan# 1287
 Delta R.T. -0.006 min
 Lab File: BP022794.D
 Acq: 01 Nov 2024 07:56

Tgt Ion:127 Resp: 124544
 Ion Ratio Lower Upper
 127 100
 129 33.4 24.6 36.8





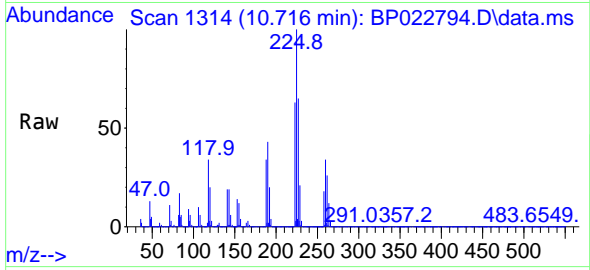
#33
 Hexachlorobutadiene
 Concen: 30.373 ng/u1
 RT: 10.716 min Scan# 11
 Delta R.T. -0.006 min
 Lab File: BP022794.D
 Acq: 01 Nov 2024 07:56

Instrument :

BNA_P

ClientSampleId :

SLCS547



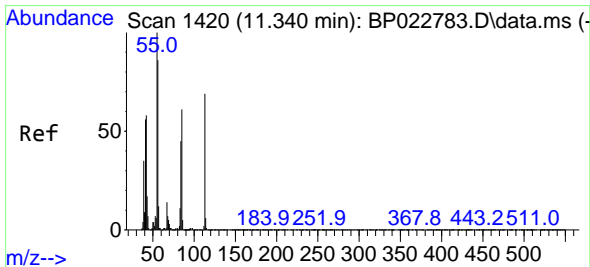
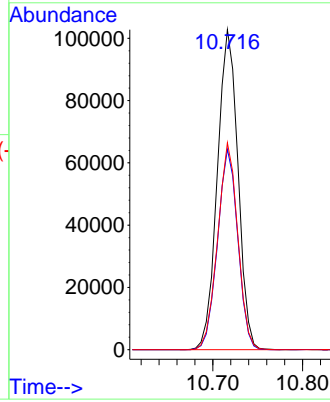
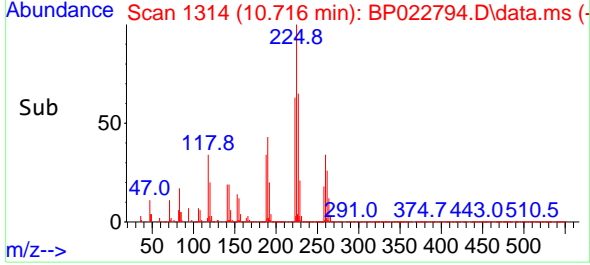
Tgt Ion:225 Resp: 16366
 Ion Ratio Lower Upper
 225 100
 223 62.7 50.2 75.4
 227 64.7 51.7 77.5

Manual Integrations

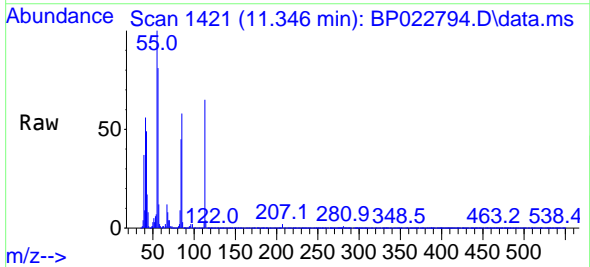
APPROVED

Reviewed By :Yogesh Patel 11/04/2024

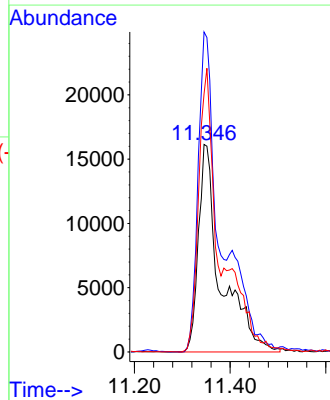
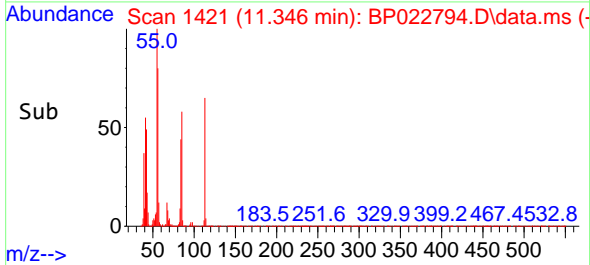
Supervised By :mohammad ahmed 11/05/2024

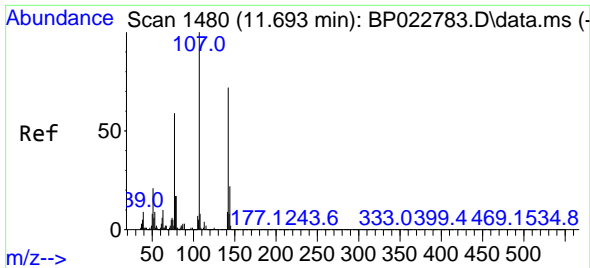


#34
 Caprolactam
 Concen: 25.354 ng/u1 m
 RT: 11.346 min Scan# 1421
 Delta R.T. 0.000 min
 Lab File: BP022794.D
 Acq: 01 Nov 2024 07:56



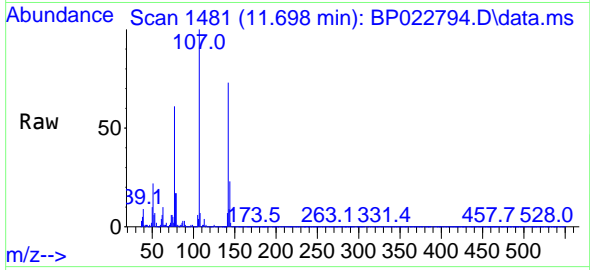
Tgt Ion:113 Resp: 52259
 Ion Ratio Lower Upper
 113 100
 55 154.2 130.2 195.2
 56 124.3 104.0 156.0





#35
 4-Chloro-3-methylphenol
 Concen: 29.959 ng/u1
 RT: 11.698 min Scan# 1480
 Delta R.T. 0.000 min
 Lab File: BP022794.D
 Acq: 01 Nov 2024 07:56

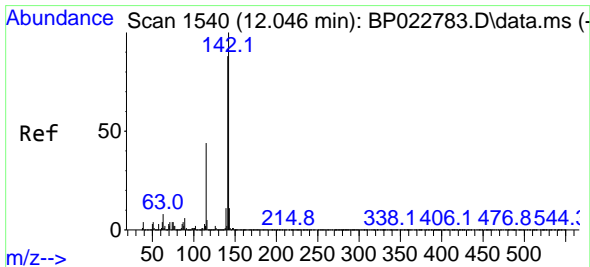
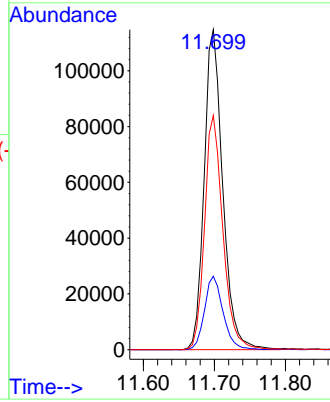
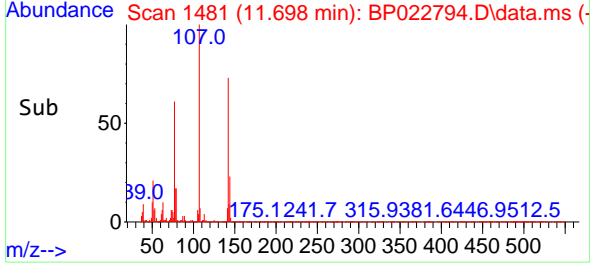
Instrument :
 BNA_P
 ClientSampleId :
 SLCS547



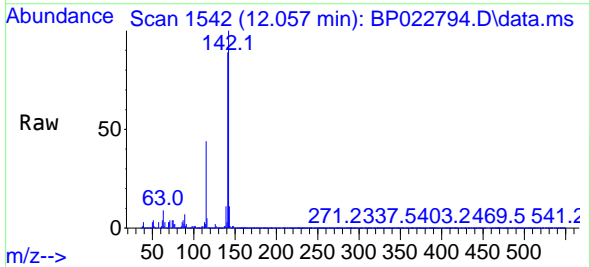
Tgt Ion:107 Resp: 20897
 Ion Ratio Lower Upper
 107 100
 144 23.0 18.5 27.7
 142 73.2 57.6 86.4

Manual Integrations
 APPROVED

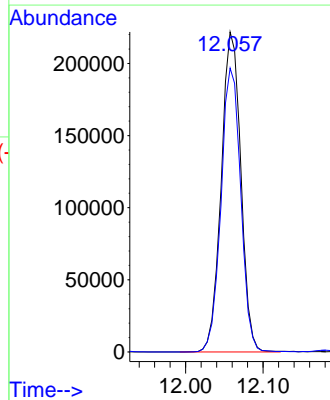
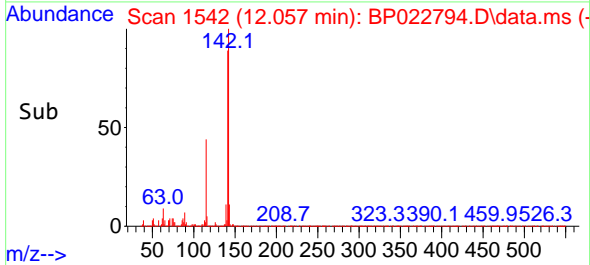
Reviewed By :Yogesh Patel 11/04/2024
 Supervised By :mohammad ahmed 11/05/2024

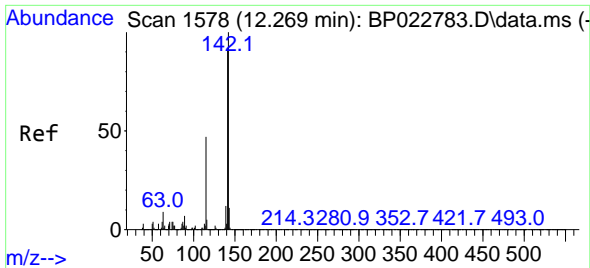


#36
 2-Methylnaphthalene
 Concen: 29.012 ng/u1
 RT: 12.057 min Scan# 1542
 Delta R.T. 0.000 min
 Lab File: BP022794.D
 Acq: 01 Nov 2024 07:56



Tgt Ion:142 Resp: 389230
 Ion Ratio Lower Upper
 142 100
 141 88.7 69.8 104.6





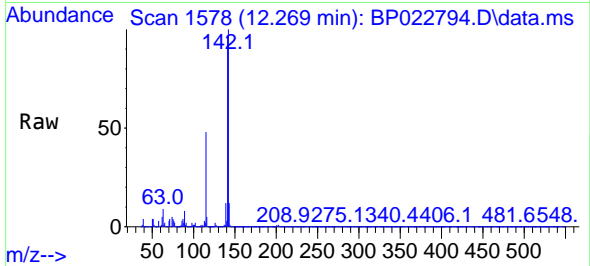
#37
 1-Methylnaphthalene
 Concen: 27.669 ng/uI
 RT: 12.269 min Scan# 11
 Delta R.T. -0.012 min
 Lab File: BP022794.D
 Acq: 01 Nov 2024 07:56

Instrument :

BNA_P

ClientSampleId :

SLCS547



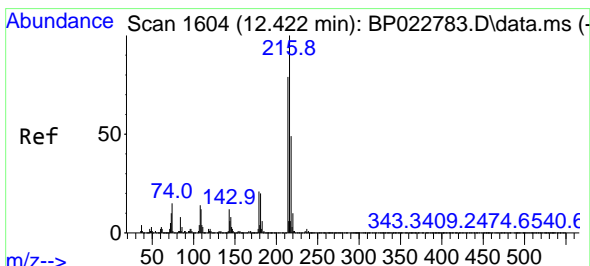
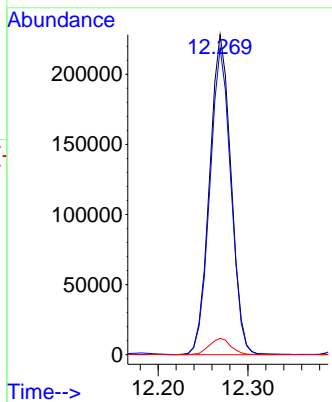
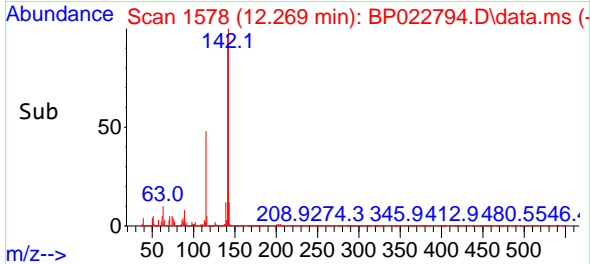
Tgt Ion:142 Resp: 378884
 Ion Ratio Lower Upper
 142 100
 141 95.9 74.8 112.2
 116 5.1 4.1 6.1

Manual Integrations

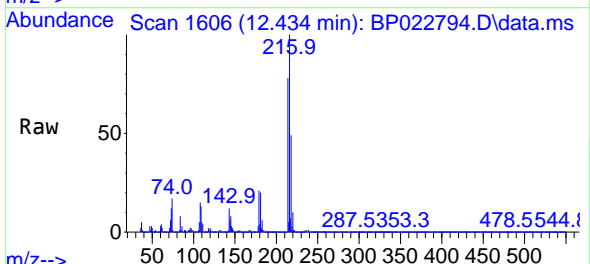
APPROVED

Reviewed By :Yogesh Patel 11/04/2024

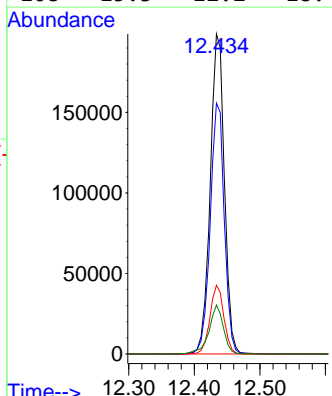
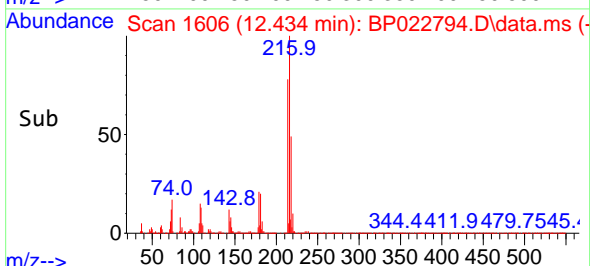
Supervised By :mohammad ahmed 11/05/2024

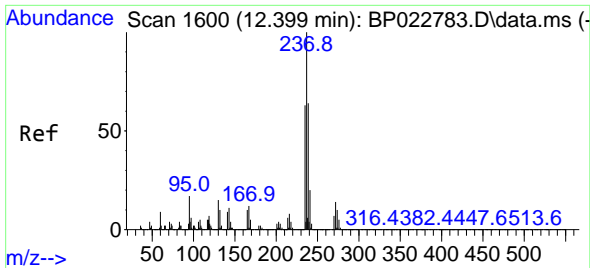


#39
 1,2,4,5-Tetrachlorobenzene
 Concen: 28.007 ng/uI
 RT: 12.434 min Scan# 1606
 Delta R.T. 0.000 min
 Lab File: BP022794.D
 Acq: 01 Nov 2024 07:56



Tgt Ion:216 Resp: 298780
 Ion Ratio Lower Upper
 216 100
 214 78.4 65.9 98.9
 179 21.4 17.8 26.6
 108 15.3 12.2 18.4





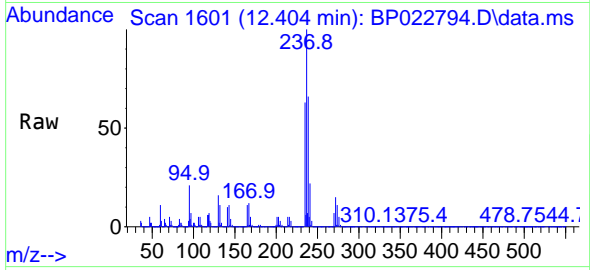
#40
 Hexachlorocyclopentadiene
 Concen: 14.554 ng/u1
 RT: 12.404 min Scan# 1601
 Delta R.T. 0.000 min
 Lab File: BP022794.D
 Acq: 01 Nov 2024 07:56

Instrument :

BNA_P

ClientSampleId :

SLCS547



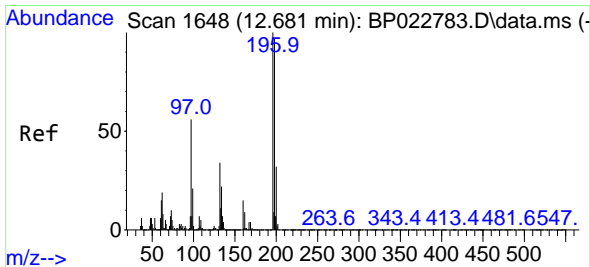
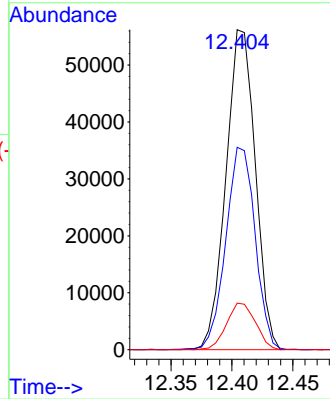
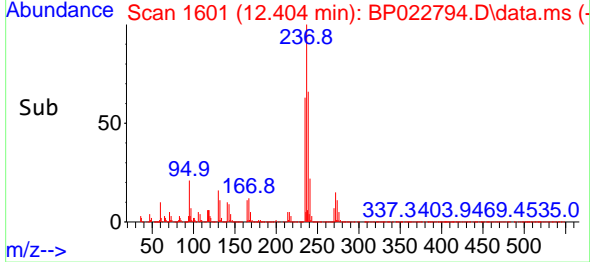
Tgt Ion:237 Resp: 94590
 Ion Ratio Lower Upper
 237 100
 235 63.2 49.8 74.6
 272 14.6 11.4 17.0

Manual Integrations

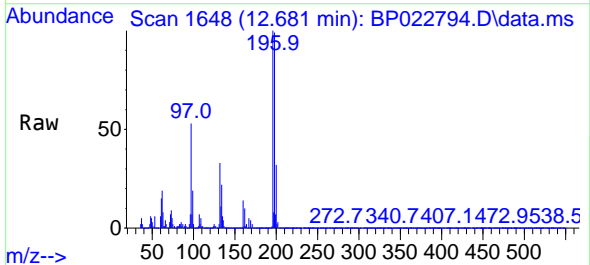
APPROVED

Reviewed By :Yogesh Patel 11/04/2024

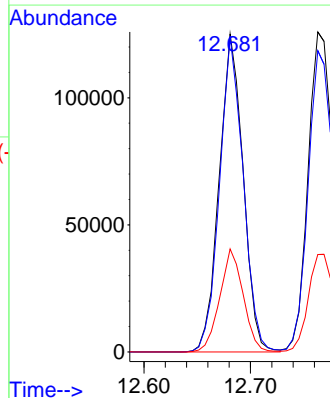
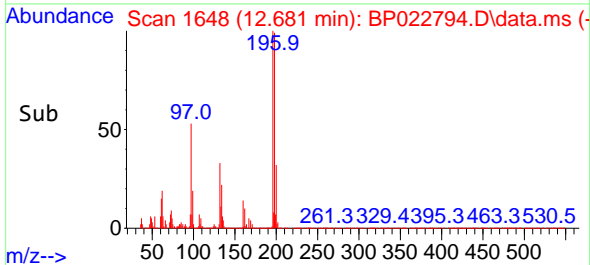
Supervised By :mohammad ahmed 11/05/2024

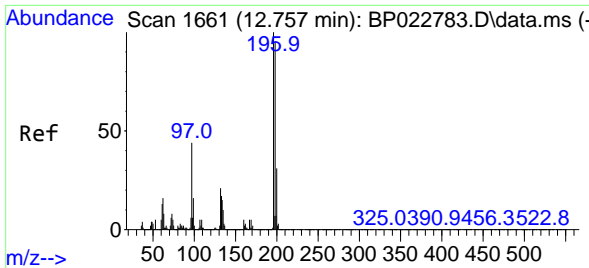


#41
 2,4,6-Trichlorophenol
 Concen: 29.080 ng/u1
 RT: 12.681 min Scan# 1648
 Delta R.T. 0.000 min
 Lab File: BP022794.D
 Acq: 01 Nov 2024 07:56



Tgt Ion:196 Resp: 195139
 Ion Ratio Lower Upper
 196 100
 198 99.2 75.8 113.8
 200 32.4 25.6 38.4





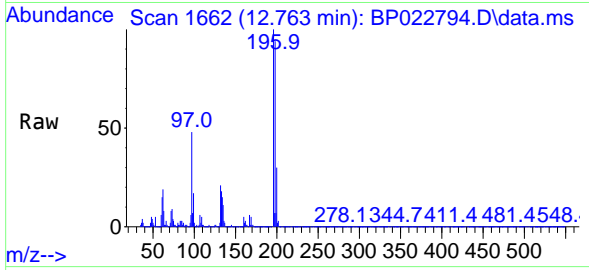
#42
 2,4,5-Trichlorophenol
 Concen: 30.301 ng/u1
 RT: 12.763 min Scan# 10
 Delta R.T. -0.006 min
 Lab File: BP022794.D
 Acq: 01 Nov 2024 07:56

Instrument :

BNA_P

ClientSampleId :

SLCS547



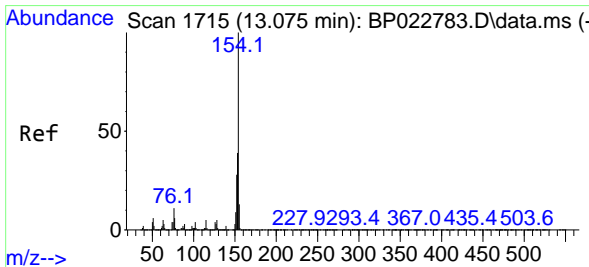
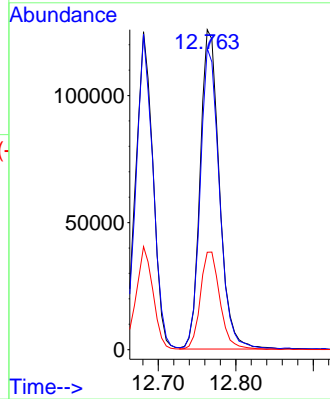
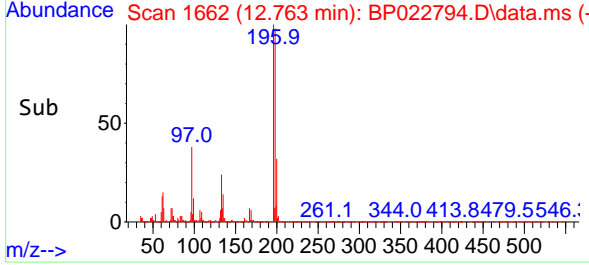
Tgt Ion:196 Resp: 21650
 Ion Ratio Lower Upper
 196 100
 198 94.1 78.0 117.0
 200 30.5 27.0 40.4

Manual Integrations

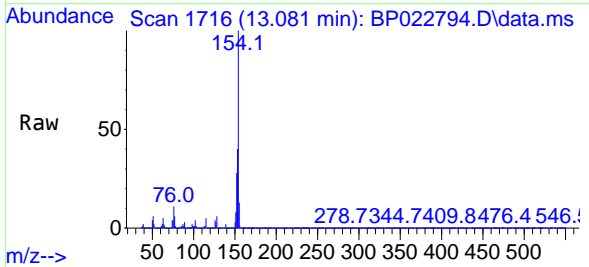
APPROVED

Reviewed By :Yogesh Patel 11/04/2024

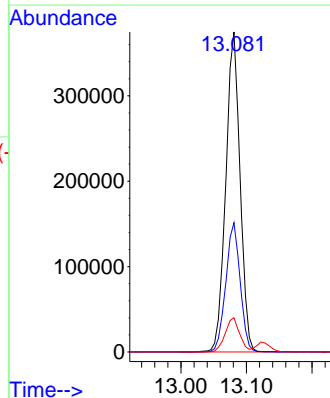
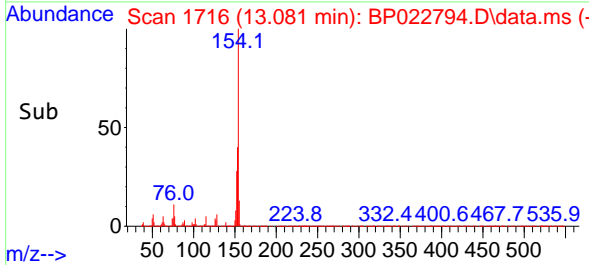
Supervised By :mohammad ahmed 11/05/2024

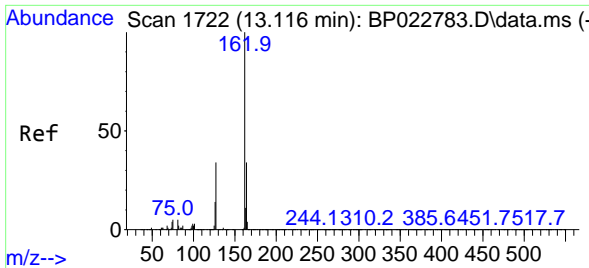


#43
 1,1'-Biphenyl
 Concen: 27.206 ng/u1
 RT: 13.081 min Scan# 1716
 Delta R.T. 0.000 min
 Lab File: BP022794.D
 Acq: 01 Nov 2024 07:56



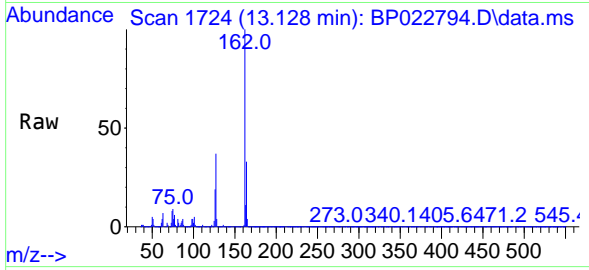
Tgt Ion:154 Resp: 565767
 Ion Ratio Lower Upper
 154 100
 153 40.4 32.5 48.7
 76 10.7 9.0 13.6





#44
 2-Chloronaphthalene
 Concen: 27.662 ng/u1
 RT: 13.128 min Scan# 1759
 Delta R.T. 0.000 min
 Lab File: BP022794.D
 Acq: 01 Nov 2024 07:56

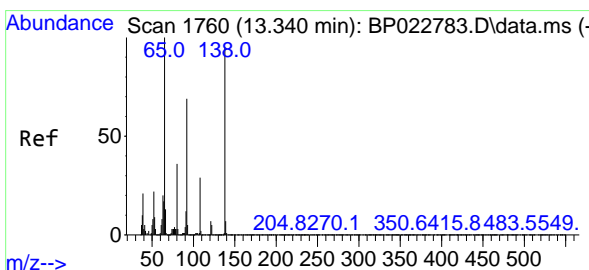
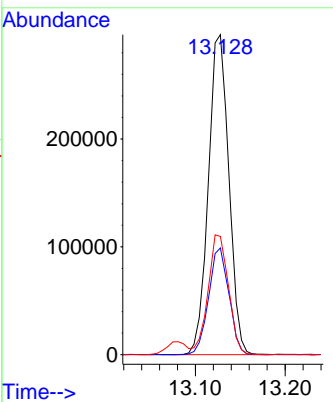
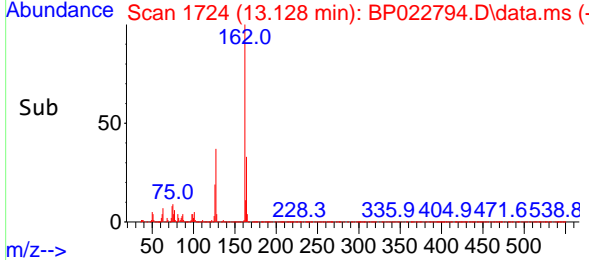
Instrument : BNA_P
 ClientSampleId : SLCS547



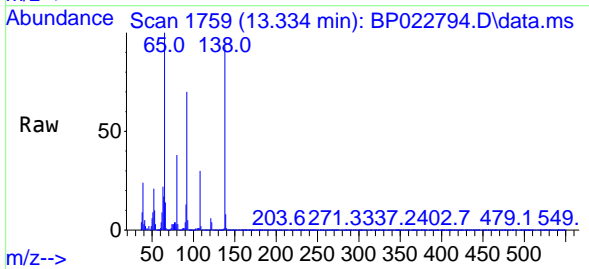
Tgt Ion:162 Resp: 470908

| Ion | Ratio | Lower | Upper |
|-----|-------|-------|-------|
| 162 | 100 | | |
| 164 | 33.3 | 26.2 | 39.4 |
| 127 | 36.9 | 28.8 | 43.2 |

Manual Integrations
APPROVED
 Reviewed By :Yogesh Patel 11/04/2024
 Supervised By :mohammad ahmed 11/05/2024

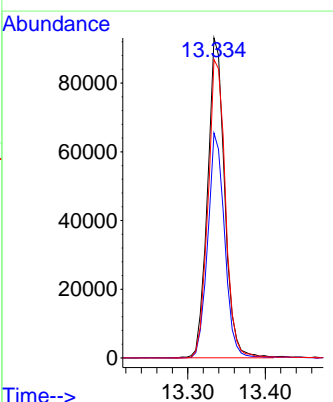
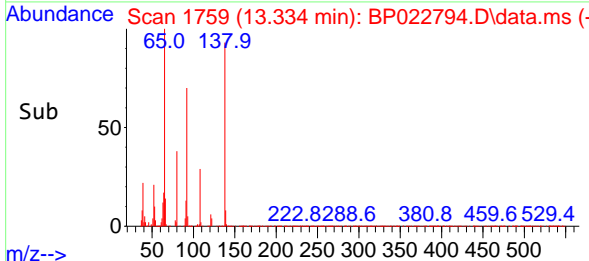


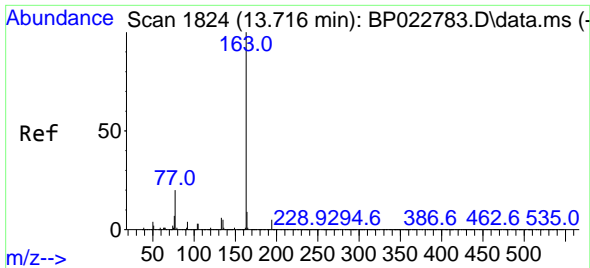
#45
 2-Nitroaniline
 Concen: 27.994 ng/u1
 RT: 13.334 min Scan# 1759
 Delta R.T. -0.006 min
 Lab File: BP022794.D
 Acq: 01 Nov 2024 07:56



Tgt Ion: 65 Resp: 142300

| Ion | Ratio | Lower | Upper |
|-----|-------|-------|-------|
| 65 | 100 | | |
| 92 | 70.3 | 55.4 | 83.2 |
| 138 | 93.2 | 71.4 | 107.0 |





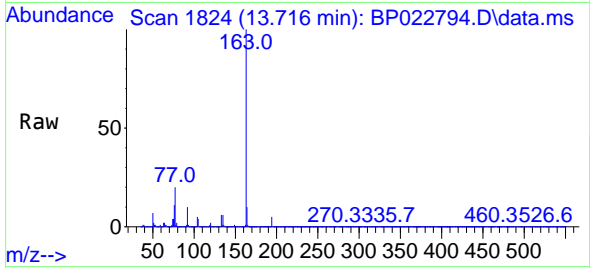
#47
 Dimethylphthalate
 Concen: 26.915 ng/uI
 RT: 13.716 min Scan# 1824
 Delta R.T. 0.006 min
 Lab File: BP022794.D
 Acq: 01 Nov 2024 07:56

Instrument :

BNA_P

ClientSampleId :

SLCS547



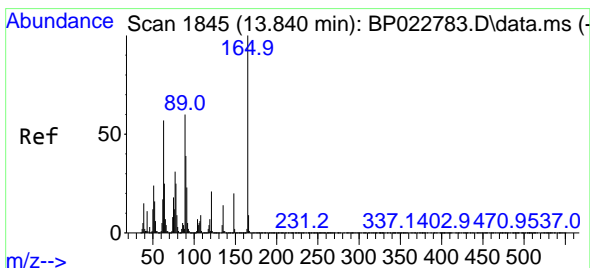
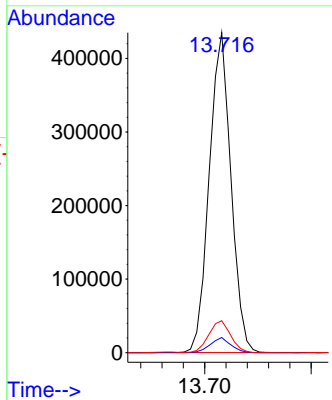
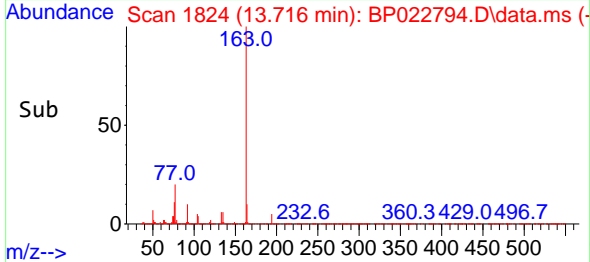
Tgt Ion:163 Resp: 61477
 Ion Ratio Lower Upper
 163 100
 194 4.7 3.5 5.3
 164 10.0 8.2 12.4

Manual Integrations

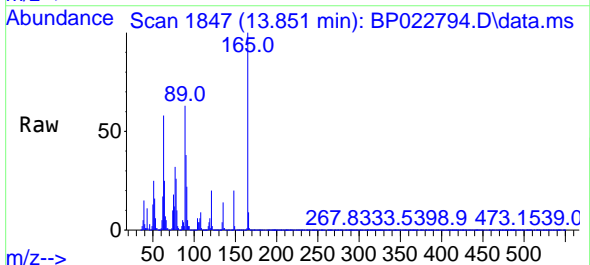
APPROVED

Reviewed By :Yogesh Patel 11/04/2024

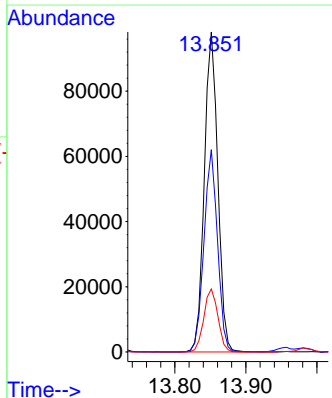
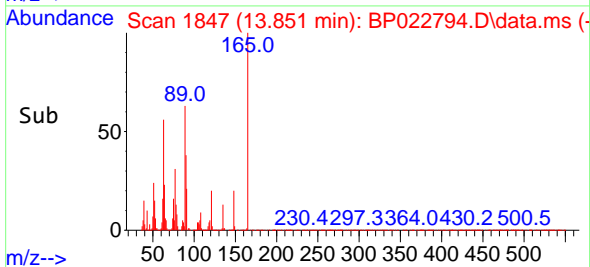
Supervised By :mohammad ahmed 11/05/2024

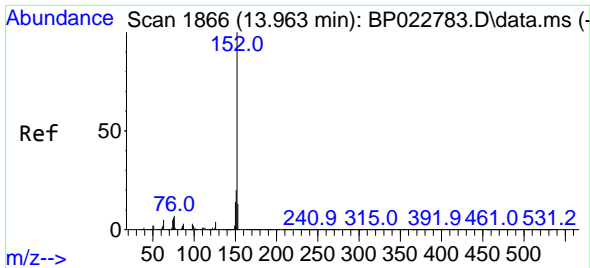


#48
 2,6-Dinitrotoluene
 Concen: 30.086 ng/uI
 RT: 13.851 min Scan# 1847
 Delta R.T. 0.006 min
 Lab File: BP022794.D
 Acq: 01 Nov 2024 07:56



Tgt Ion:165 Resp: 129984
 Ion Ratio Lower Upper
 165 100
 89 63.2 50.2 75.4
 121 19.7 17.1 25.7





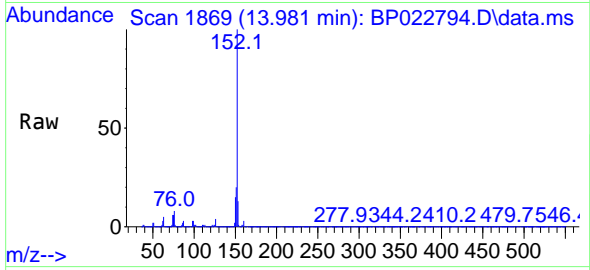
#50
 Acenaphthylene
 Concen: 27.401 ng/u1
 RT: 13.981 min Scan# 1869
 Delta R.T. 0.000 min
 Lab File: BP022794.D
 Acq: 01 Nov 2024 07:56

Instrument :

BNA_P

ClientSampleId :

SLCS547



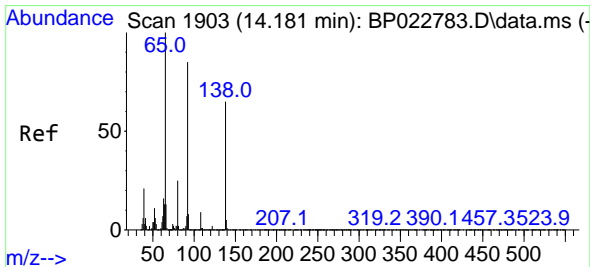
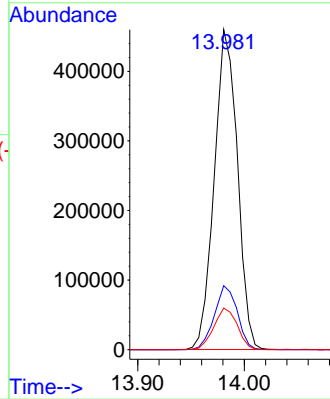
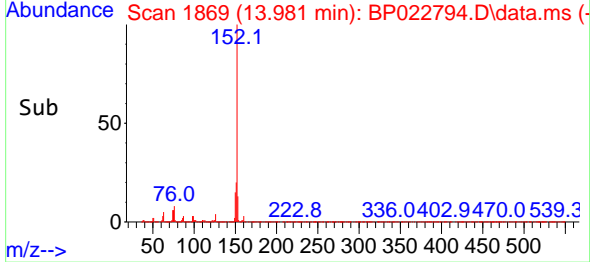
Tgt Ion:152 Resp: 69237
 Ion Ratio Lower Upper
 152 100
 151 20.0 15.8 23.6
 153 13.0 10.3 15.5

Manual Integrations

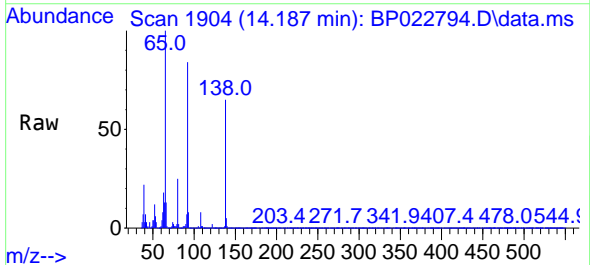
APPROVED

Reviewed By :Yogesh Patel 11/04/2024

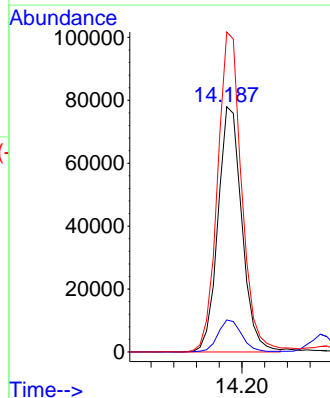
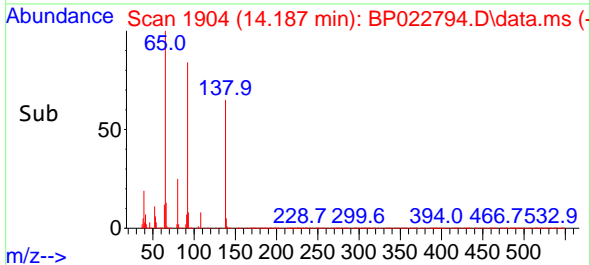
Supervised By :mohammad ahmed 11/05/2024

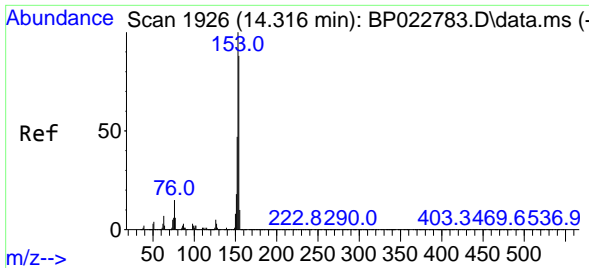


#51
 3-Nitroaniline
 Concen: 28.066 ng/u1
 RT: 14.187 min Scan# 1904
 Delta R.T. 0.000 min
 Lab File: BP022794.D
 Acq: 01 Nov 2024 07:56



Tgt Ion:138 Resp: 113889
 Ion Ratio Lower Upper
 138 100
 108 13.1 9.7 14.5
 92 130.4 106.7 160.1





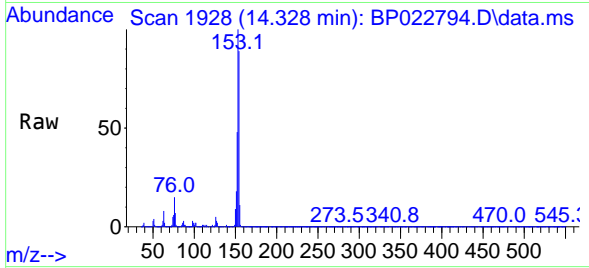
#52
 Acenaphthene
 Concen: 27.629 ng/u1
 RT: 14.328 min Scan# 1928
 Delta R.T. 0.000 min
 Lab File: BP022794.D
 Acq: 01 Nov 2024 07:56

Instrument :

BNA_P

ClientSampleId :

SLCS547



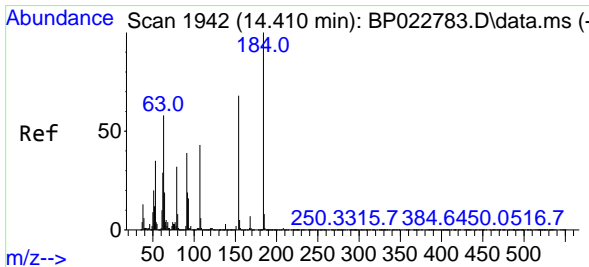
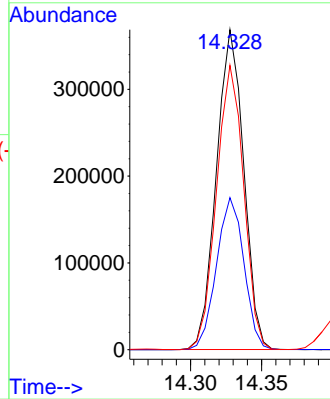
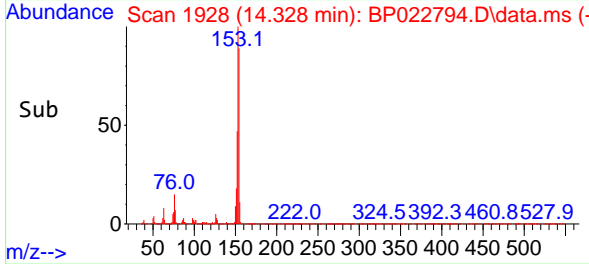
Tgt Ion:153 Resp: 49366
 Ion Ratio Lower Upper
 153 100
 152 47.5 37.8 56.6
 154 88.8 69.5 104.3

Manual Integrations

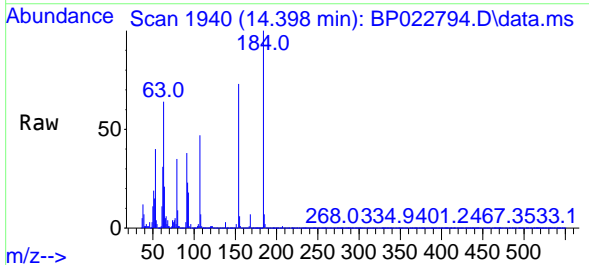
APPROVED

Reviewed By :Yogesh Patel 11/04/2024

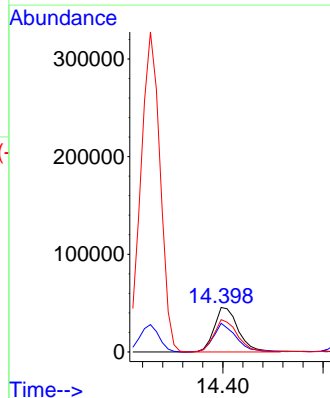
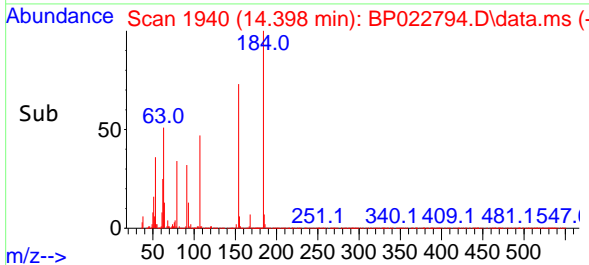
Supervised By :mohammad ahmed 11/05/2024

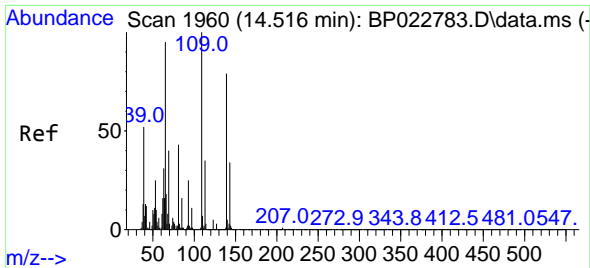


#53
 2,4-Dinitrophenol
 Concen: 23.877 ng/u1
 RT: 14.398 min Scan# 1940
 Delta R.T. -0.006 min
 Lab File: BP022794.D
 Acq: 01 Nov 2024 07:56



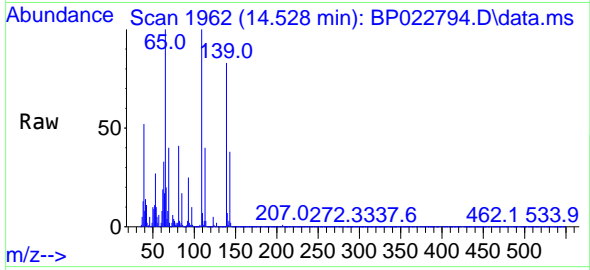
Tgt Ion:184 Resp: 75899
 Ion Ratio Lower Upper
 184 100
 63 64.2 46.5 69.7
 154 72.7 53.3 79.9





#55
 4-Nitrophenol
 Concen: 30.191 ng/u1
 RT: 14.528 min Scan# 1962
 Delta R.T. 0.000 min
 Lab File: BP022794.D
 Acq: 01 Nov 2024 07:56

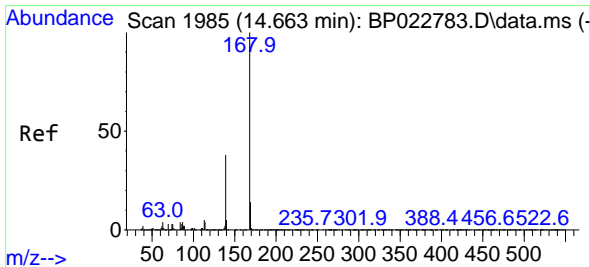
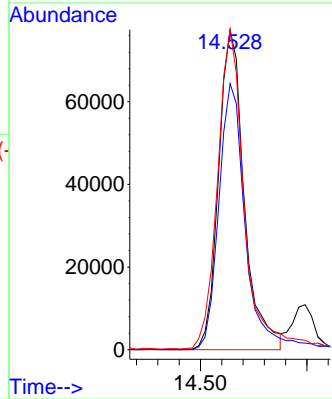
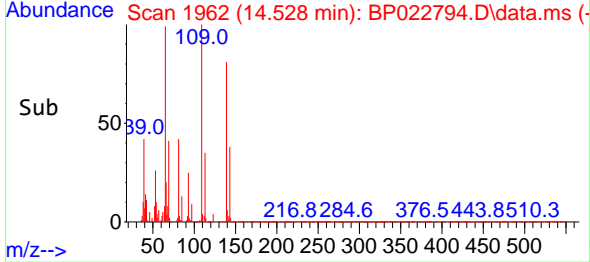
Instrument :
 BNA_P
 ClientSampleId :
 SLCS547



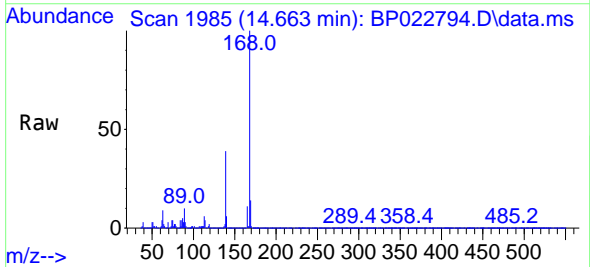
Tgt Ion:109 Resp: 12885
 Ion Ratio Lower Upper
 109 100
 139 83.2 76.4 114.6
 65 100.0 87.4 131.0

Manual Integrations
 APPROVED

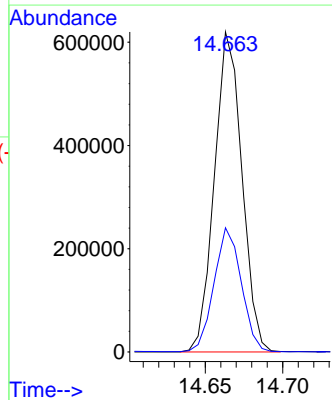
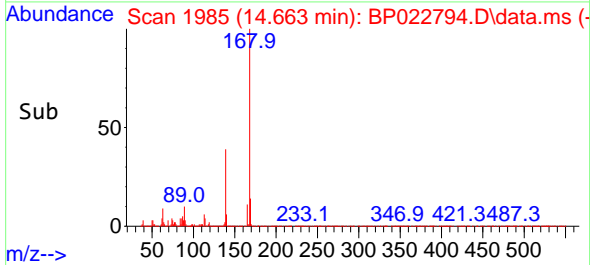
Reviewed By :Yogesh Patel 11/04/2024
 Supervised By :mohammad ahmed 11/05/2024

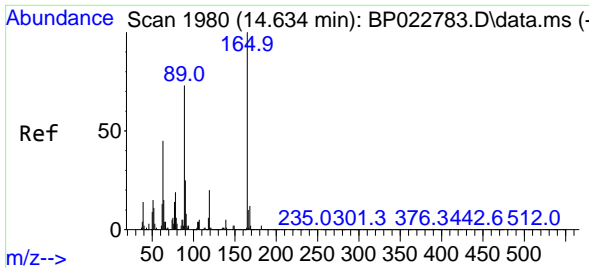


#56
 Dibenzofuran
 Concen: 28.483 ng/u1
 RT: 14.663 min Scan# 1985
 Delta R.T. -0.006 min
 Lab File: BP022794.D
 Acq: 01 Nov 2024 07:56



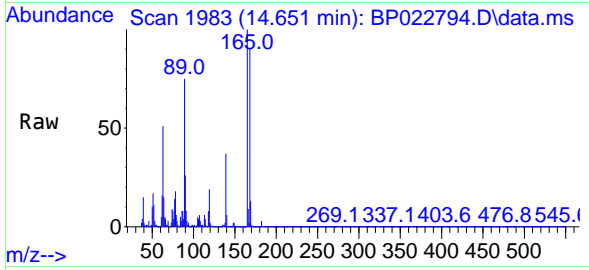
Tgt Ion:168 Resp: 764465
 Ion Ratio Lower Upper
 168 100
 139 38.8 30.2 45.2





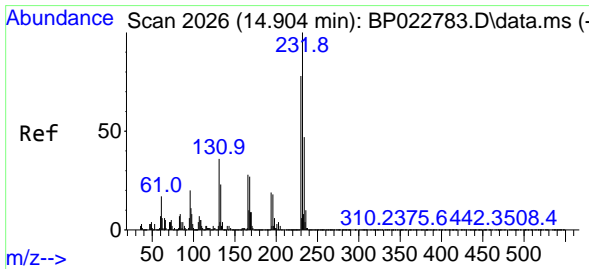
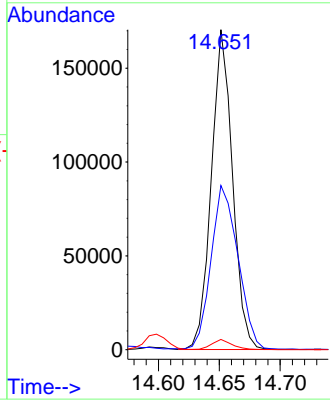
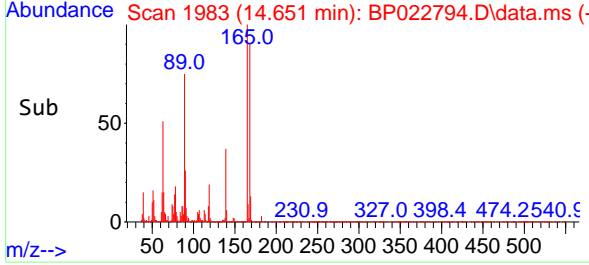
#57
 2,4-Dinitrotoluene
 Concen: 30.704 ng/ul
 RT: 14.651 min Scan# 1983
 Delta R.T. 0.006 min
 Lab File: BP022794.D
 Acq: 01 Nov 2024 07:56

Instrument : BNA_P
 ClientSampleId : SLCS547

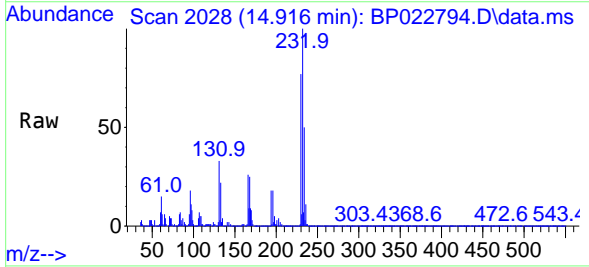


Tgt Ion:165 Resp: 206130
 Ion Ratio Lower Upper
 165 100
 63 51.3 35.3 52.9
 182 3.2 2.6 4.0

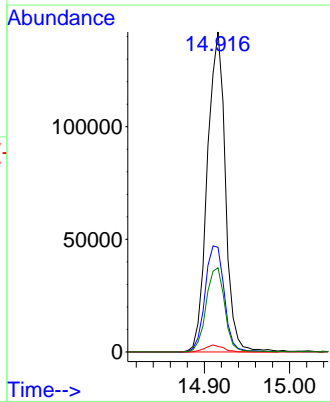
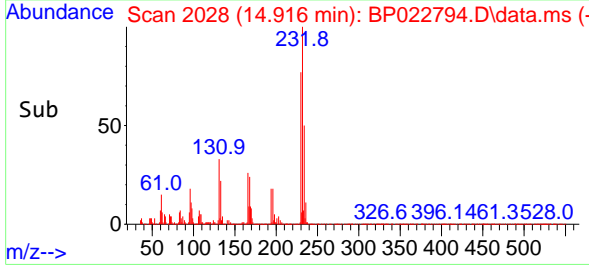
Manual Integrations
APPROVED
 Reviewed By :Yogesh Patel 11/04/2024
 Supervised By :mohammad ahmed 11/05/2024

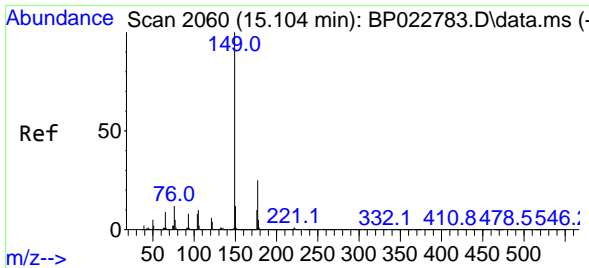


#58
 2,3,4,6-Tetrachlorophenol
 Concen: 31.420 ng/ul
 RT: 14.916 min Scan# 2028
 Delta R.T. 0.000 min
 Lab File: BP022794.D
 Acq: 01 Nov 2024 07:56



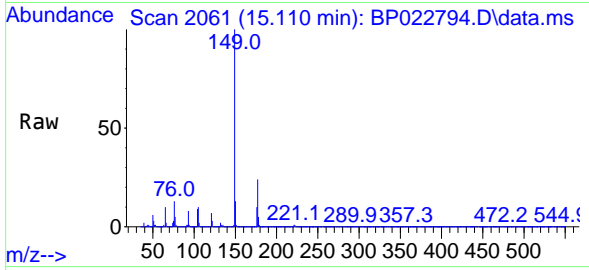
Tgt Ion:232 Resp: 209544
 Ion Ratio Lower Upper
 232 100
 131 32.7 29.0 43.4
 130 1.7 1.9 2.9#
 166 26.3 22.6 34.0





#59
 Diethylphthalate
 Concen: 28.187 ng/u1
 RT: 15.110 min Scan# 2061
 Delta R.T. 0.012 min
 Lab File: BP022794.D
 Acq: 01 Nov 2024 07:56

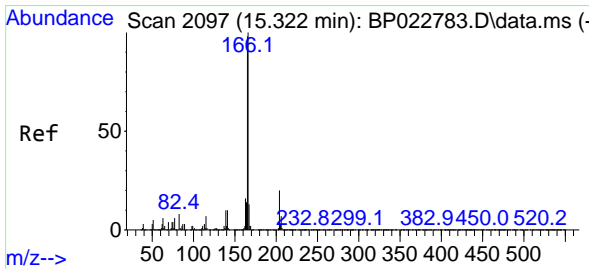
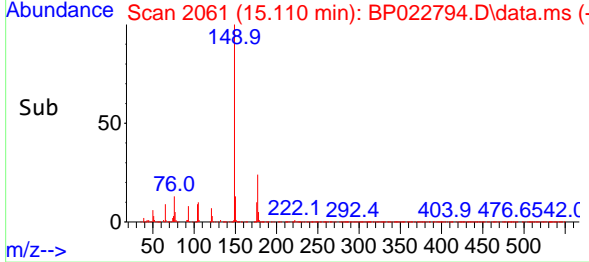
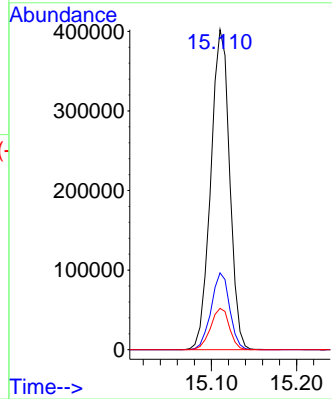
Instrument : BNA_P
 ClientSampleId : SLCS547



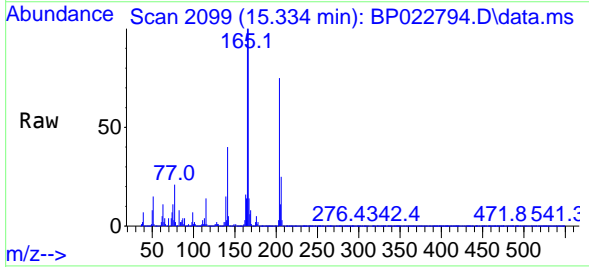
Tgt Ion:149 Resp: 61768
 Ion Ratio Lower Upper
 149 100
 177 24.0 19.9 29.9
 150 12.9 10.2 15.4

Manual Integrations
 APPROVED

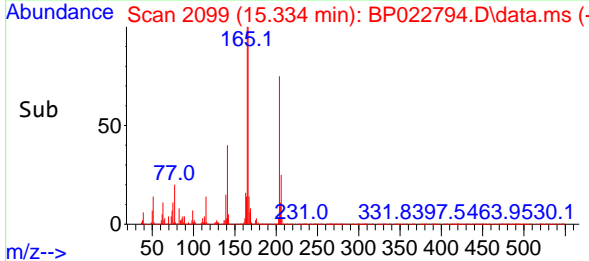
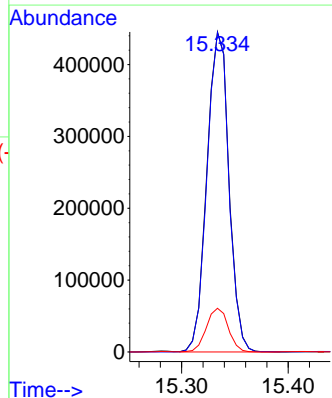
Reviewed By :Yogesh Patel 11/04/2024
 Supervised By :mohammad ahmed 11/05/2024

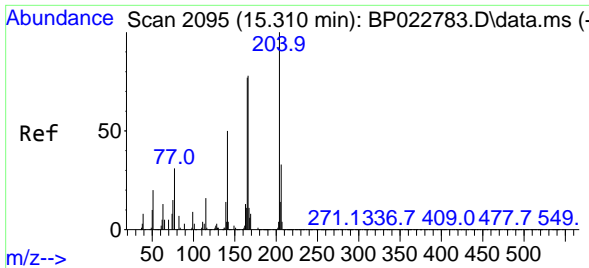


#61
 Fluorene
 Concen: 29.272 ng/u1
 RT: 15.334 min Scan# 2099
 Delta R.T. 0.006 min
 Lab File: BP022794.D
 Acq: 01 Nov 2024 07:56



Tgt Ion:166 Resp: 640141
 Ion Ratio Lower Upper
 166 100
 165 99.8 77.8 116.6
 167 13.6 11.1 16.7





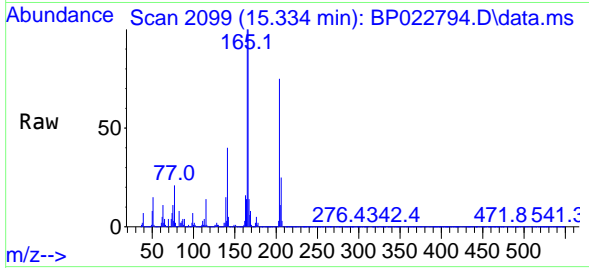
#62
 4-Chlorophenyl-phenylether
 Concen: 30.115 ng/ul
 RT: 15.334 min Scan# 2099
 Delta R.T. 0.006 min
 Lab File: BP022794.D
 Acq: 01 Nov 2024 07:56

Instrument :

BNA_P

ClientSampleId :

SLCS547



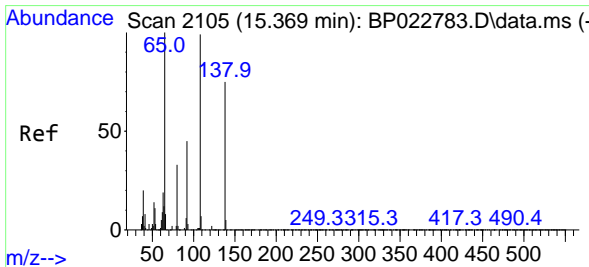
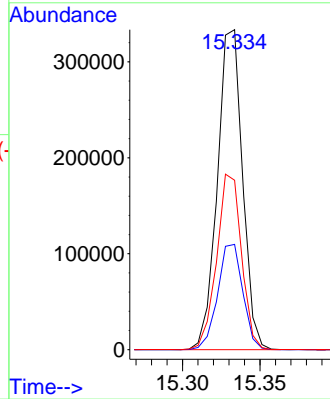
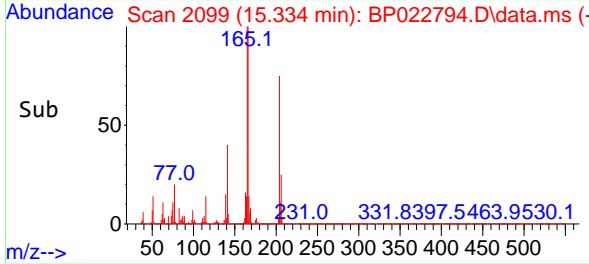
Tgt Ion:204 Resp: 37661
 Ion Ratio Lower Upper
 204 100
 206 32.9 26.4 39.6
 141 53.0 42.6 63.8

Manual Integrations

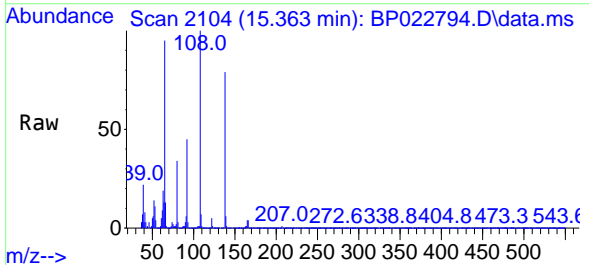
APPROVED

Reviewed By :Yogesh Patel 11/04/2024

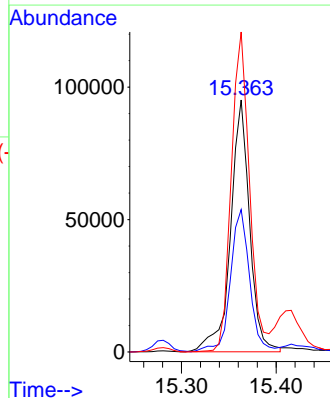
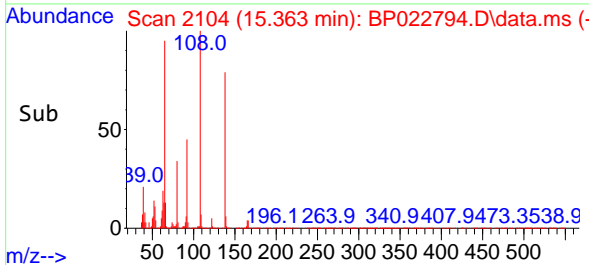
Supervised By :mohammad ahmed 11/05/2024

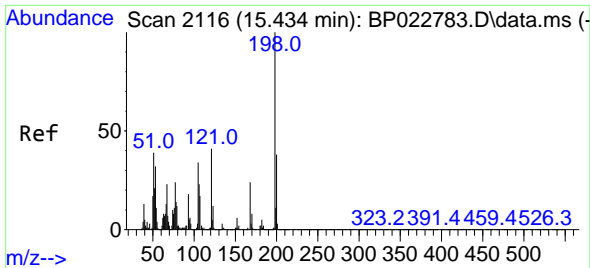


#63
 4-Nitroaniline
 Concen: 32.649 ng/ul
 RT: 15.363 min Scan# 2104
 Delta R.T. 0.006 min
 Lab File: BP022794.D
 Acq: 01 Nov 2024 07:56



Tgt Ion:138 Resp: 133312
 Ion Ratio Lower Upper
 138 100
 92 56.5 49.1 73.7
 108 127.0 90.6 136.0





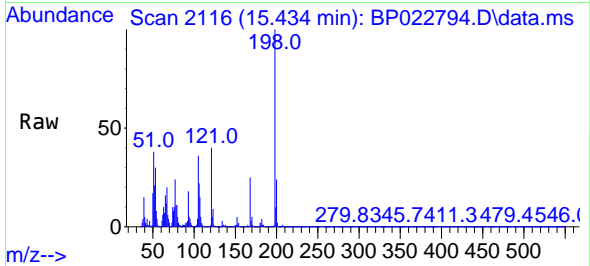
#66
 4,6-Dinitro-2-methylphenol
 Concen: 25.135 ng/ul
 RT: 15.434 min Scan# 2116
 Delta R.T. 0.012 min
 Lab File: BP022794.D
 Acq: 01 Nov 2024 07:56

Instrument :

BNA_P

ClientSampleId :

SLCS547



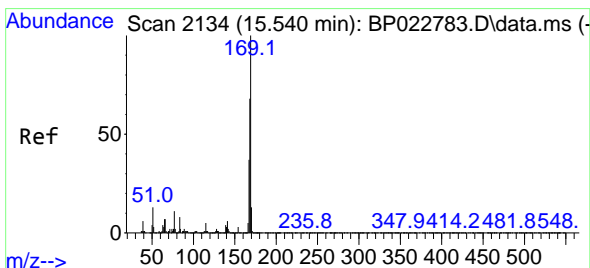
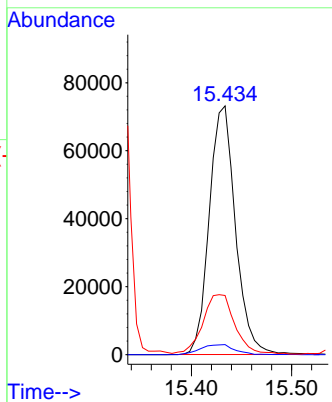
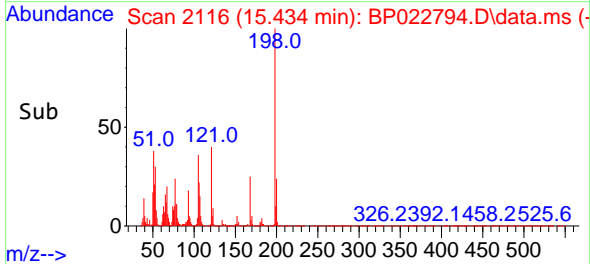
Tgt Ion:198 Resp: 13289
 Ion Ratio Lower Upper
 198 100
 182 4.0 3.4 5.2
 77 23.8 19.4 29.0

Manual Integrations

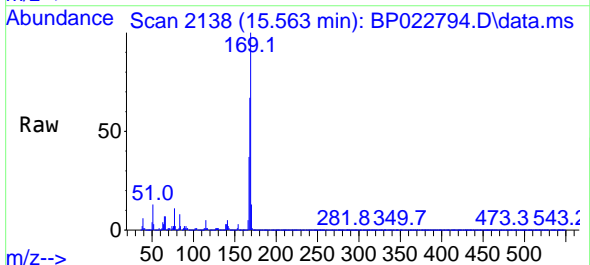
APPROVED

Reviewed By :Yogesh Patel 11/04/2024

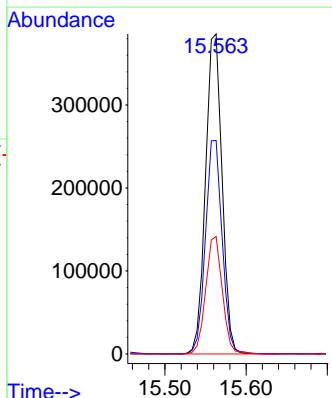
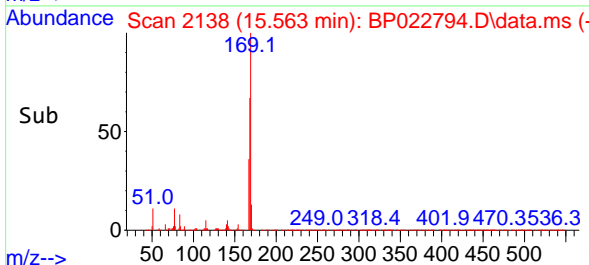
Supervised By :mohammad ahmed 11/05/2024

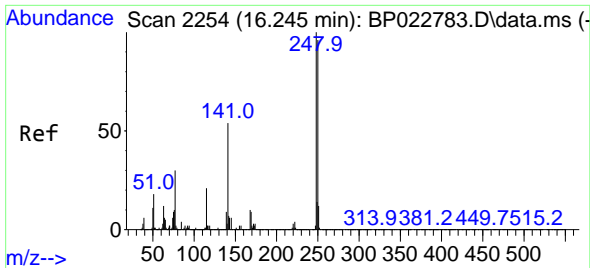


#67
 N-Nitrosodiphenylamine
 Concen: 27.198 ng/ul
 RT: 15.563 min Scan# 2138
 Delta R.T. 0.006 min
 Lab File: BP022794.D
 Acq: 01 Nov 2024 07:56



Tgt Ion:169 Resp: 543604
 Ion Ratio Lower Upper
 169 100
 168 66.7 53.4 80.0
 167 36.7 29.0 43.6





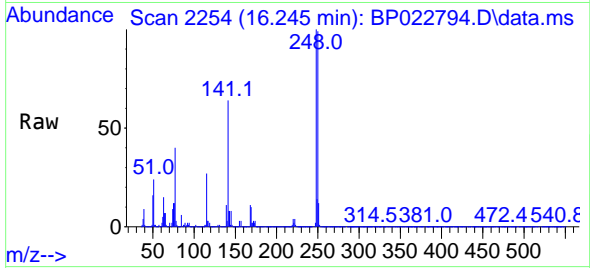
#68
 4-Bromophenyl-phenylether
 Concen: 30.091 ng/ul
 RT: 16.245 min Scan# 21
 Delta R.T. 0.000 min
 Lab File: BP022794.D
 Acq: 01 Nov 2024 07:56

Instrument :

BNA_P

ClientSampleId :

SLCS547



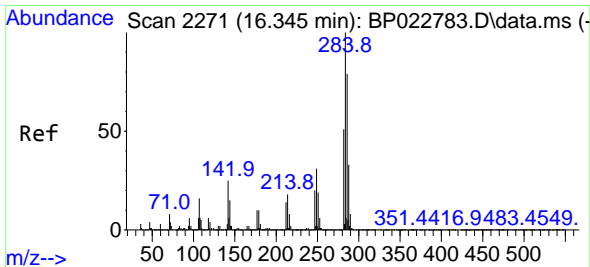
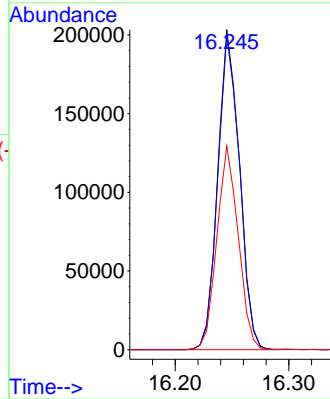
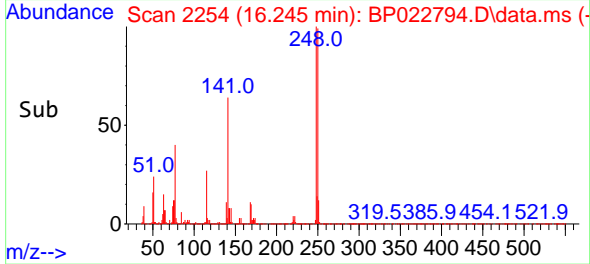
Tgt Ion:248 Resp: 270834
 Ion Ratio Lower Upper
 248 100
 250 98.5 76.0 114.0
 141 63.7 49.0 73.6

Manual Integrations

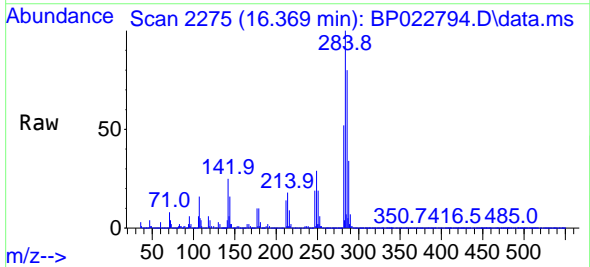
APPROVED

Reviewed By :Yogesh Patel 11/04/2024

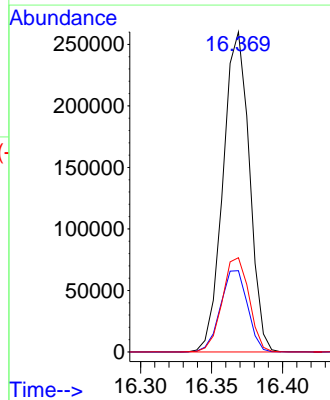
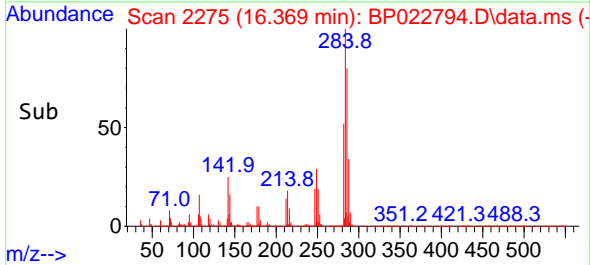
Supervised By :mohammad ahmed 11/05/2024

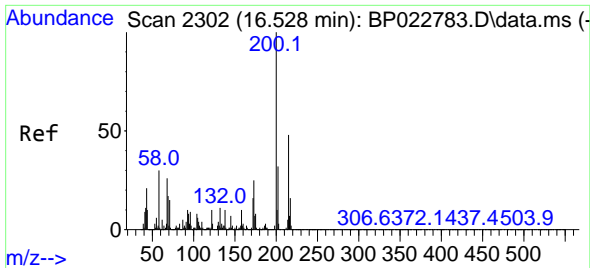


#69
 Hexachlorobenzene
 Concen: 30.314 ng/ul
 RT: 16.369 min Scan# 2275
 Delta R.T. 0.006 min
 Lab File: BP022794.D
 Acq: 01 Nov 2024 07:56



Tgt Ion:284 Resp: 335841
 Ion Ratio Lower Upper
 284 100
 142 25.4 21.8 32.8
 249 29.5 24.8 37.2





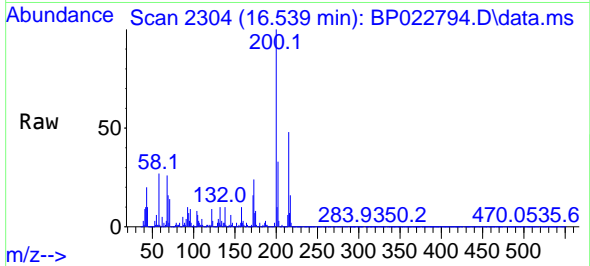
#70
 Atrazine
 Concen: 29.508 ng/u1
 RT: 16.539 min Scan# 21
 Delta R.T. 0.006 min
 Lab File: BP022794.D
 Acq: 01 Nov 2024 07:56

Instrument :

BNA_P

ClientSampleId :

SLCS547



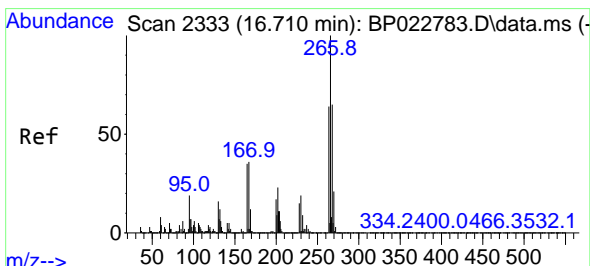
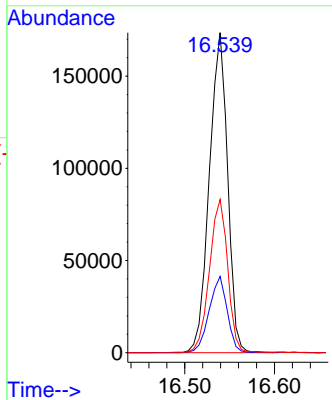
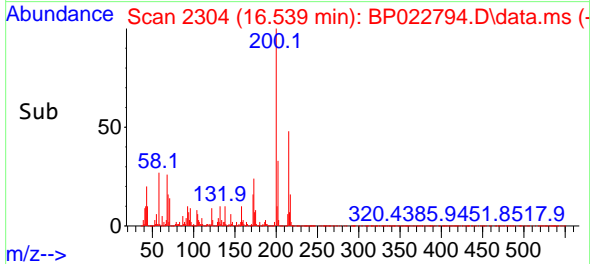
Tgt Ion:200 Resp: 24515
 Ion Ratio Lower Upper
 200 100
 173 23.9 18.0 27.0
 215 47.9 35.0 52.4

Manual Integrations

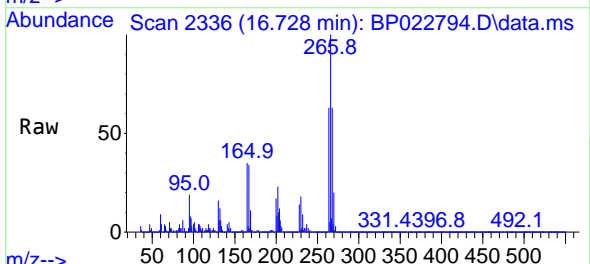
APPROVED

Reviewed By :Yogesh Patel 11/04/2024

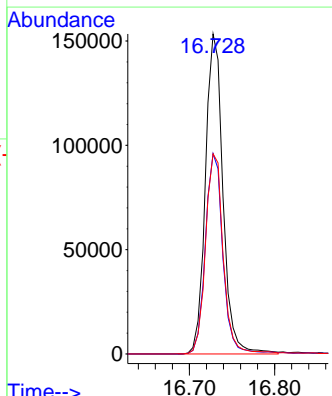
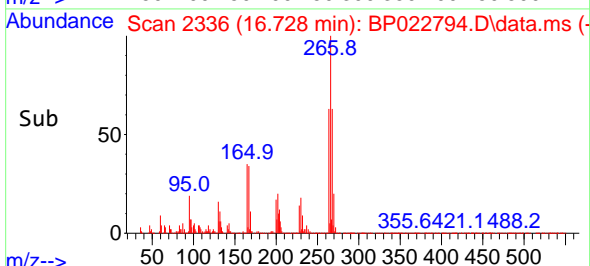
Supervised By :mohammad ahmed 11/05/2024

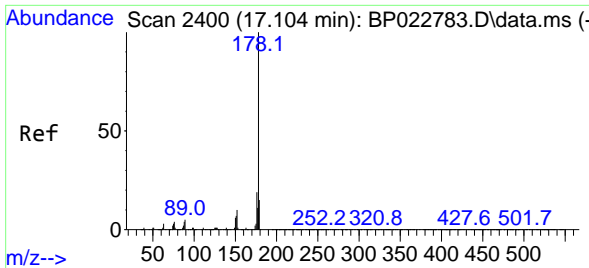


#71
 Pentachlorophenol
 Concen: 30.790 ng/u1
 RT: 16.728 min Scan# 2336
 Delta R.T. 0.012 min
 Lab File: BP022794.D
 Acq: 01 Nov 2024 07:56



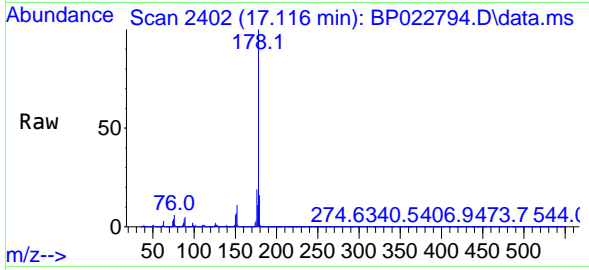
Tgt Ion:266 Resp: 219335
 Ion Ratio Lower Upper
 266 100
 264 62.6 52.4 78.6
 268 62.6 53.0 79.4





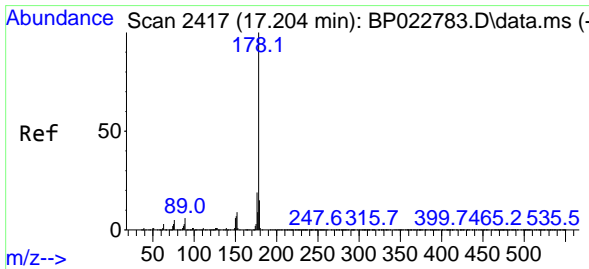
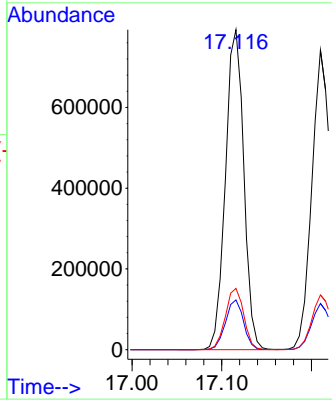
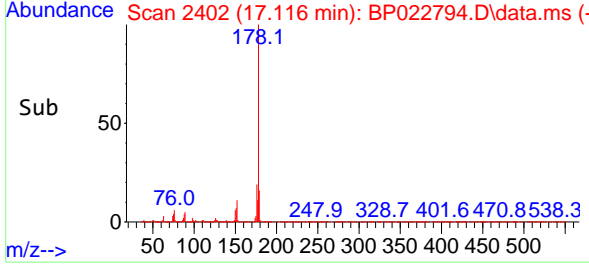
#72
 Phenanthrene
 Concen: 28.147 ng/u1
 RT: 17.116 min Scan# 2402
 Delta R.T. 0.012 min
 Lab File: BP022794.D
 Acq: 01 Nov 2024 07:56

Instrument :
 BNA_P
ClientSampleId :
 SLCS547

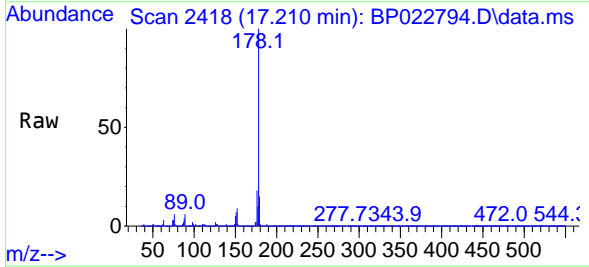


Tgt Ion:178 Resp: 1123940
 Ion Ratio Lower Upper
 178 100
 179 15.5 12.2 18.4
 176 19.2 15.7 23.5

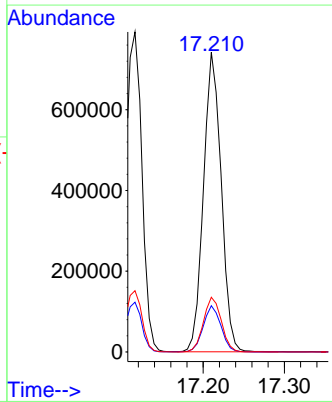
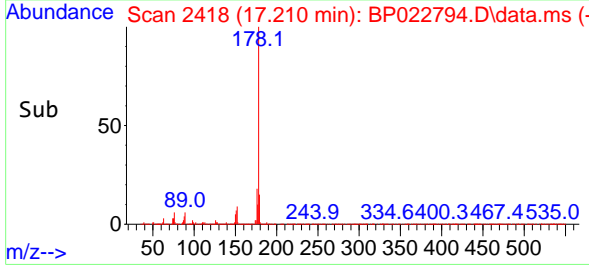
Manual Integrations
APPROVED
 Reviewed By :Yogesh Patel 11/04/2024
 Supervised By :mohammad ahmed 11/05/2024

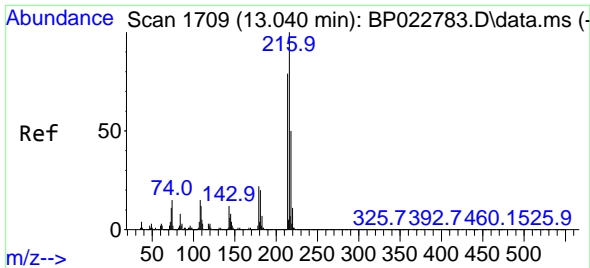


#74
 Anthracene
 Concen: 28.169 ng/u1
 RT: 17.210 min Scan# 2418
 Delta R.T. 0.006 min
 Lab File: BP022794.D
 Acq: 01 Nov 2024 07:56



Tgt Ion:178 Resp: 1122530
 Ion Ratio Lower Upper
 178 100
 179 15.5 12.0 18.0
 176 18.2 15.0 22.4





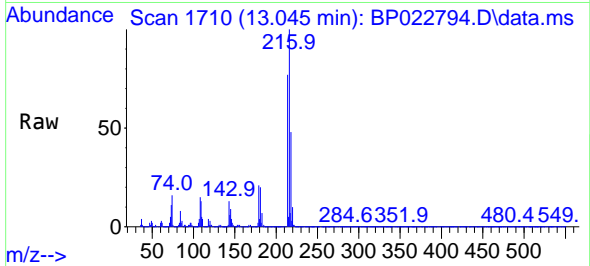
#75
 1,2,3,4-Tetrachlorobenzene
 Concen: 26.693 ng/uL
 RT: 13.045 min Scan# 1710
 Delta R.T. 0.000 min
 Lab File: BP022794.D
 Acq: 01 Nov 2024 07:56

Instrument :

BNA_P

ClientSampleId :

SLCS547

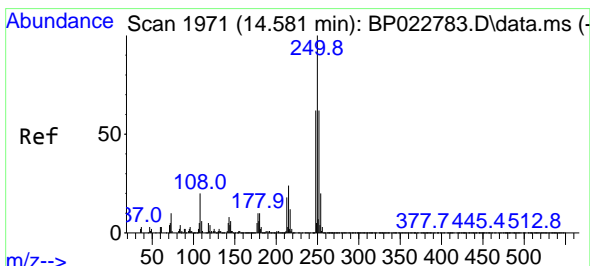
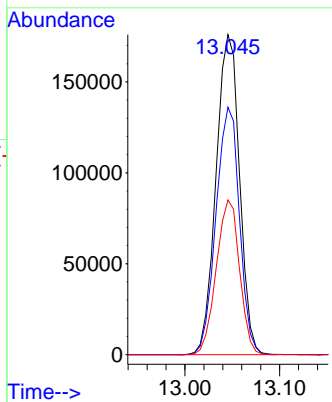
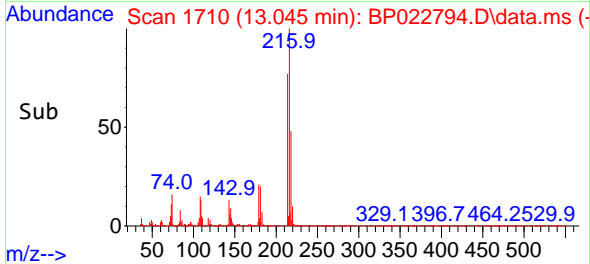


Tgt Ion:216 Resp: 30335
 Ion Ratio Lower Upper
 216 100
 214 77.3 64.4 96.6
 218 48.4 37.6 56.4

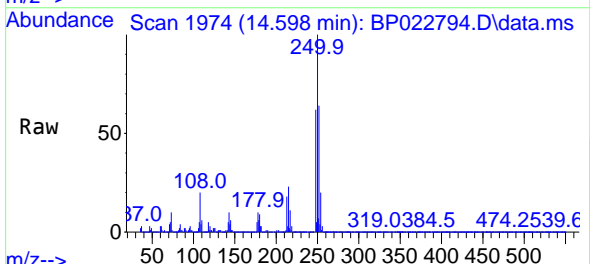
Manual Integrations

APPROVED

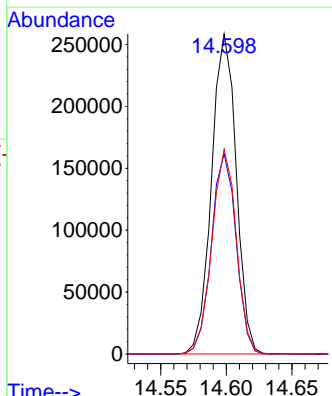
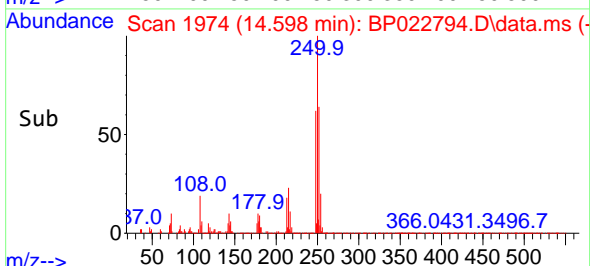
Reviewed By :Yogesh Patel 11/04/2024
 Supervised By :mohammad ahmed 11/05/2024

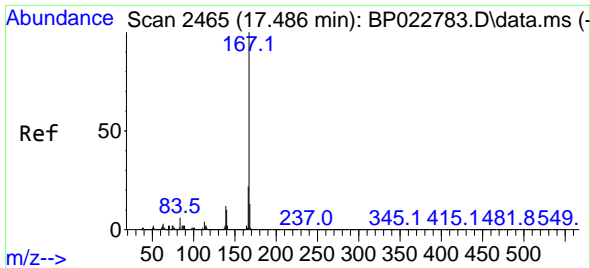


#76
 Pentachlorobenzene
 Concen: 26.936 ng/uL
 RT: 14.598 min Scan# 1974
 Delta R.T. 0.000 min
 Lab File: BP022794.D
 Acq: 01 Nov 2024 07:56



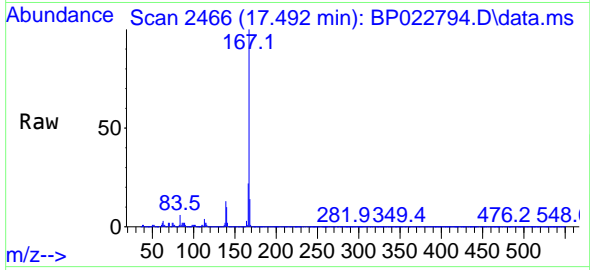
Tgt Ion:250 Resp: 338395
 Ion Ratio Lower Upper
 250 100
 248 62.5 51.1 76.7
 252 64.0 51.7 77.5





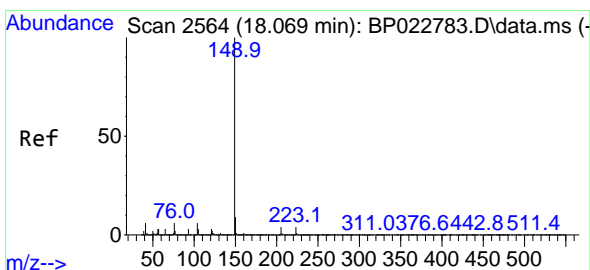
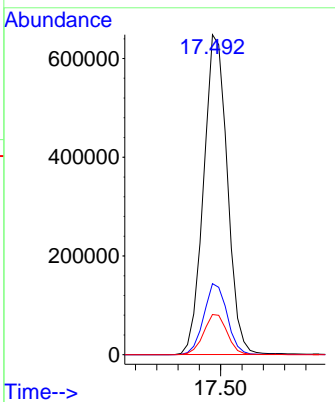
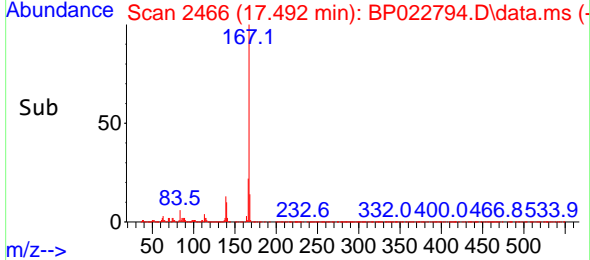
#77
 Carbazole
 Concen: 28.365 ng/u1
 RT: 17.492 min Scan# 2466
 Delta R.T. 0.012 min
 Lab File: BP022794.D
 Acq: 01 Nov 2024 07:56

Instrument : BNA_P
 Client SampleId : SLCS547

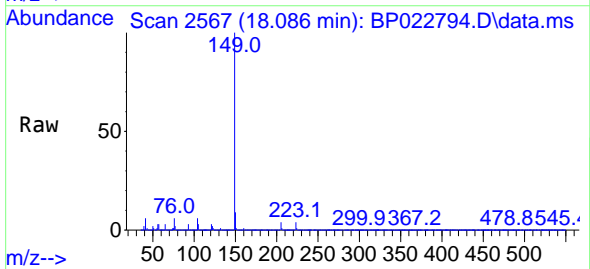


Tgt Ion:167 Resp: 100014
 Ion Ratio Lower Upper
 167 100
 166 22.2 17.0 25.6
 139 12.6 10.3 15.5

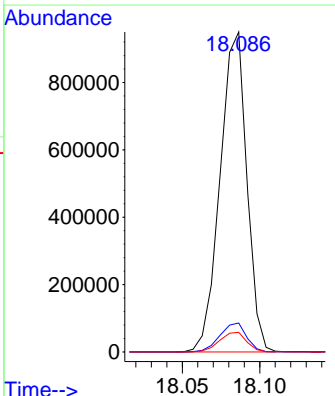
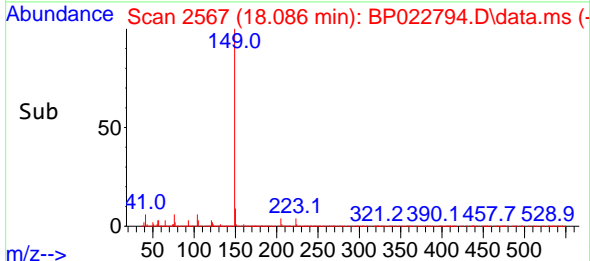
Manual Integrations
APPROVED
 Reviewed By :Yogesh Patel 11/04/2024
 Supervised By :mohammad ahmed 11/05/2024

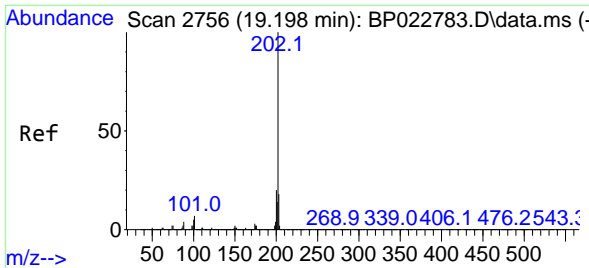


#78
 Di-n-butylphthalate
 Concen: 29.250 ng/u1
 RT: 18.086 min Scan# 2567
 Delta R.T. 0.018 min
 Lab File: BP022794.D
 Acq: 01 Nov 2024 07:56



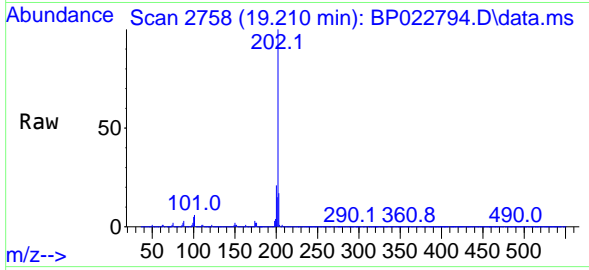
Tgt Ion:149 Resp: 1141195
 Ion Ratio Lower Upper
 149 100
 150 9.0 7.3 10.9
 104 6.1 4.8 7.2





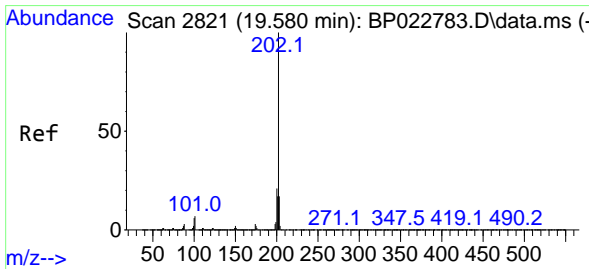
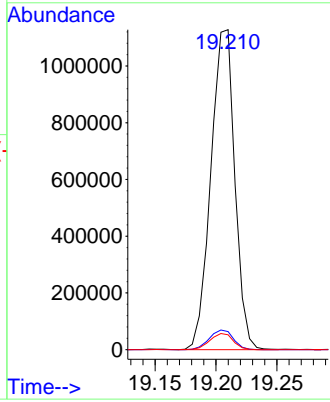
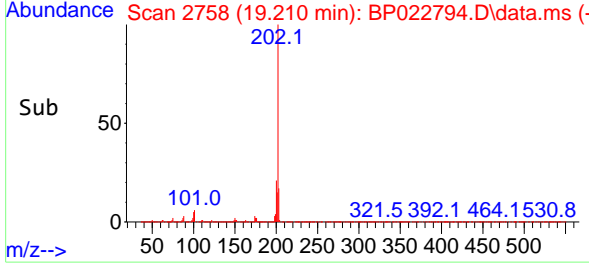
#80
 Fluoranthene
 Concen: 29.437 ng/u1
 RT: 19.210 min Scan# 21
 Delta R.T. 0.018 min
 Lab File: BP022794.D
 Acq: 01 Nov 2024 07:56

Instrument :
 BNA_P
 ClientSampleId :
 SLCS547

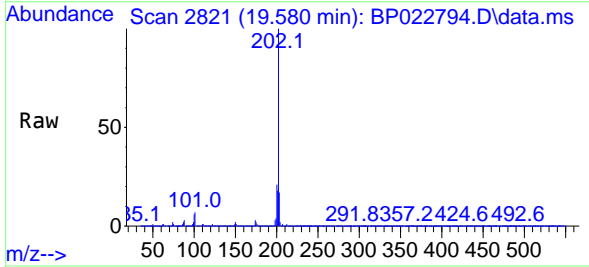


Tgt Ion:202 Resp: 1544670
 Ion Ratio Lower Upper
 202 100
 101 5.6 5.8 8.8
 100 4.6 4.5 6.7

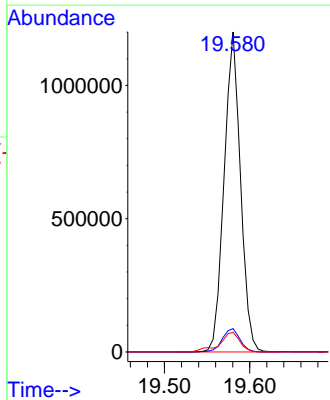
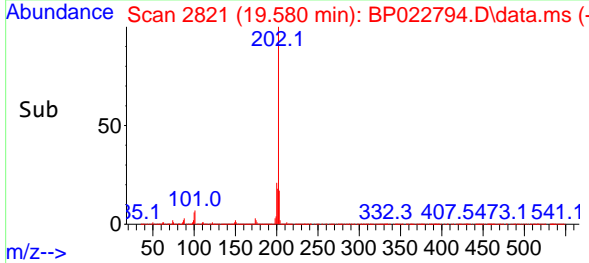
Manual Integrations
APPROVED
 Reviewed By :Yogesh Patel 11/04/2024
 Supervised By :mohammad ahmed 11/05/2024

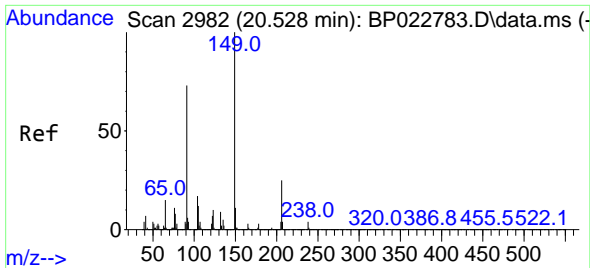


#82
 Pyrene
 Concen: 28.467 ng/u1
 RT: 19.580 min Scan# 2821
 Delta R.T. 0.006 min
 Lab File: BP022794.D
 Acq: 01 Nov 2024 07:56



Tgt Ion:202 Resp: 1601053
 Ion Ratio Lower Upper
 202 100
 101 7.3 6.7 10.1
 100 6.2 5.8 8.6





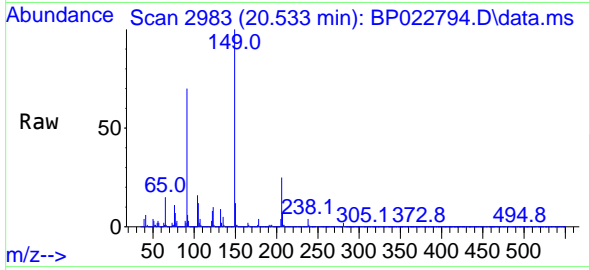
#83
 Butylbenzylphthalate
 Concen: 28.510 ng/u1
 RT: 20.533 min Scan# 2982
 Delta R.T. 0.006 min
 Lab File: BP022794.D
 Acq: 01 Nov 2024 07:56

Instrument :

BNA_P

ClientSampleId :

SLCS547



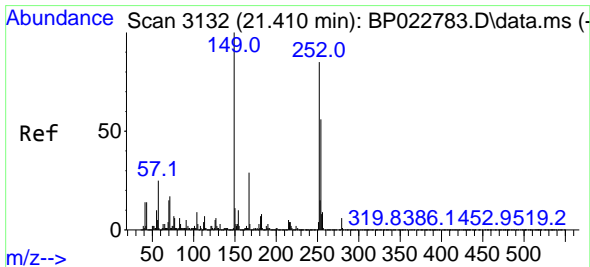
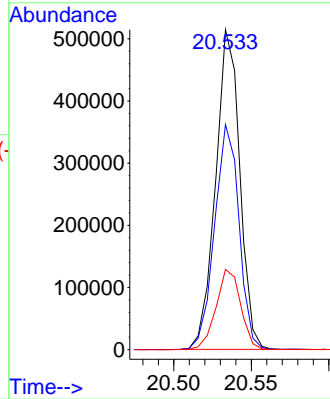
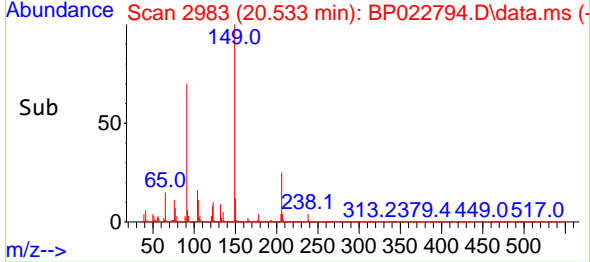
Tgt Ion:149 Resp: 55826
 Ion Ratio Lower Upper
 149 100
 91 70.4 56.6 84.8
 206 25.1 18.6 27.8

Manual Integrations

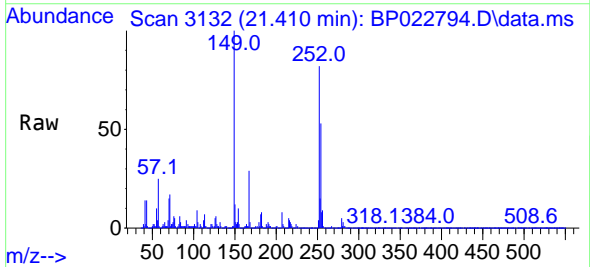
APPROVED

Reviewed By :Yogesh Patel 11/04/2024

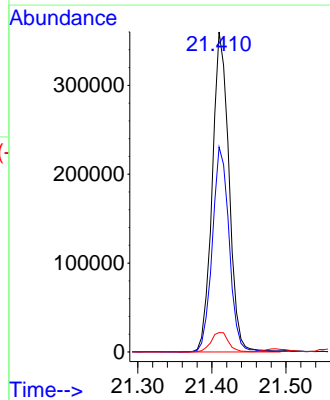
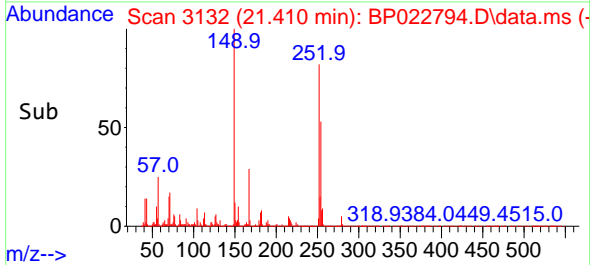
Supervised By :mohammad ahmed 11/05/2024

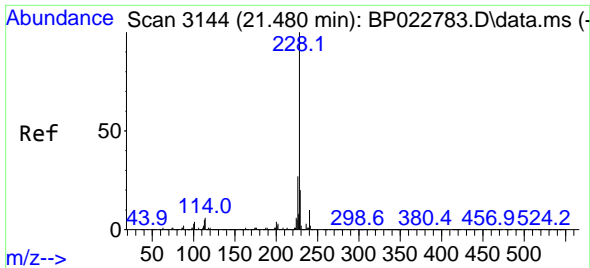


#84
 3,3'-Dichlorobenzidine
 Concen: 27.373 ng/u1
 RT: 21.410 min Scan# 3132
 Delta R.T. 0.006 min
 Lab File: BP022794.D
 Acq: 01 Nov 2024 07:56



Tgt Ion:252 Resp: 563210
 Ion Ratio Lower Upper
 252 100
 254 64.0 53.0 79.4
 126 6.0 5.8 8.6





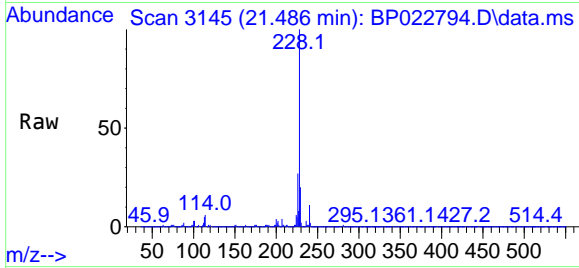
#85
 Benzo(a)anthracene
 Concen: 27.723 ng/uI
 RT: 21.486 min Scan# 3144
 Delta R.T. 0.012 min
 Lab File: BP022794.D
 Acq: 01 Nov 2024 07:56

Instrument :

BNA_P

ClientSampleId :

SLCS547



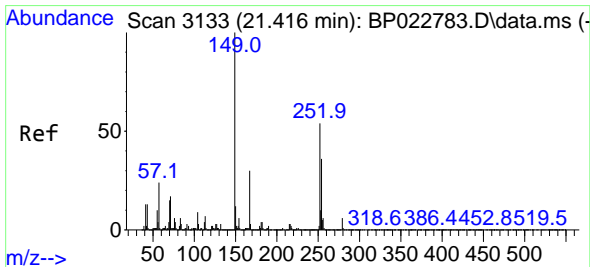
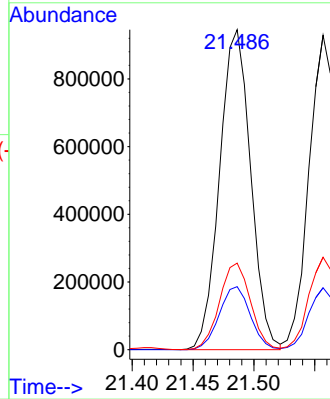
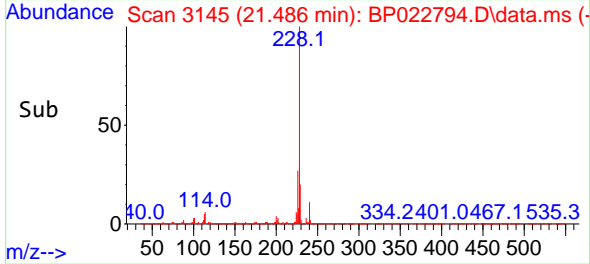
Tgt Ion:228 Resp: 1677524
 Ion Ratio Lower Upper
 228 100
 229 19.7 15.4 23.0
 226 27.1 21.5 32.3

Manual Integrations

APPROVED

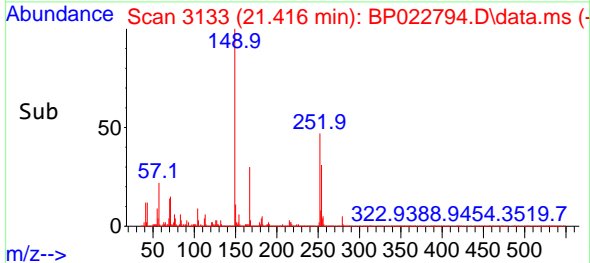
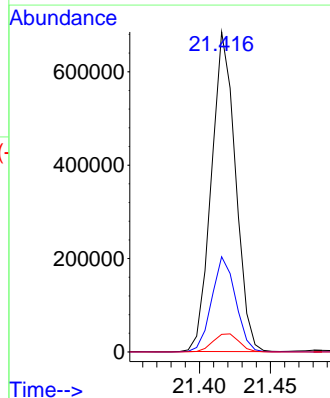
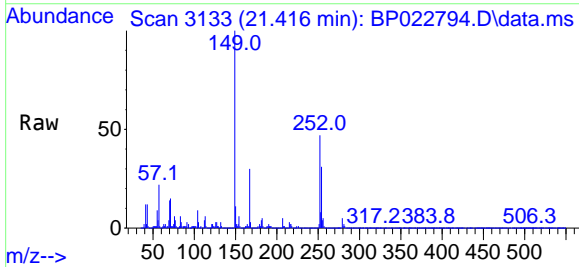
Reviewed By :Yogesh Patel 11/04/2024

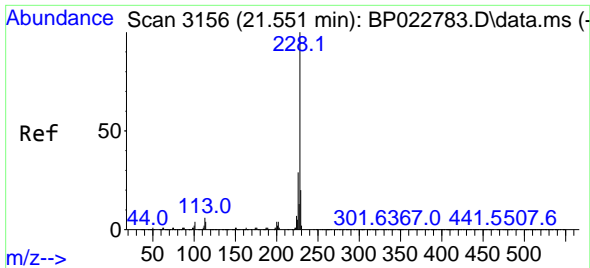
Supervised By :mohammad ahmed 11/05/2024



#86
 Bis(2-ethylhexyl)phthalate
 Concen: 28.677 ng/uI
 RT: 21.416 min Scan# 3133
 Delta R.T. 0.006 min
 Lab File: BP022794.D
 Acq: 01 Nov 2024 07:56

Tgt Ion:149 Resp: 806018
 Ion Ratio Lower Upper
 149 100
 167 29.8 23.0 34.4
 279 5.5 4.8 7.2





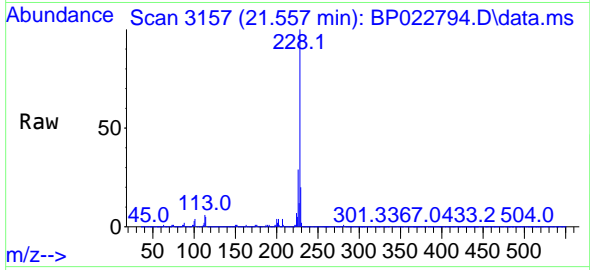
#87
 Chrysene
 Concen: 27.974 ng/u1
 RT: 21.557 min Scan# 3157
 Delta R.T. 0.006 min
 Lab File: BP022794.D
 Acq: 01 Nov 2024 07:56

Instrument :

BNA_P

ClientSampleId :

SLCS547



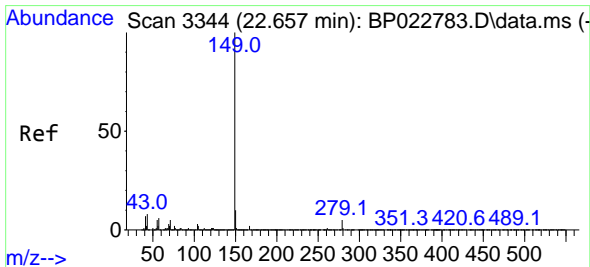
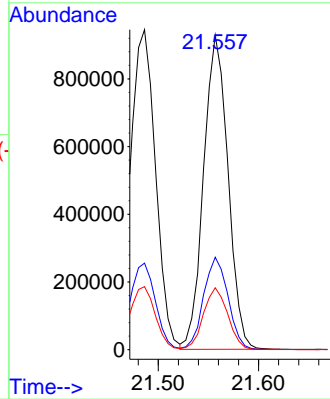
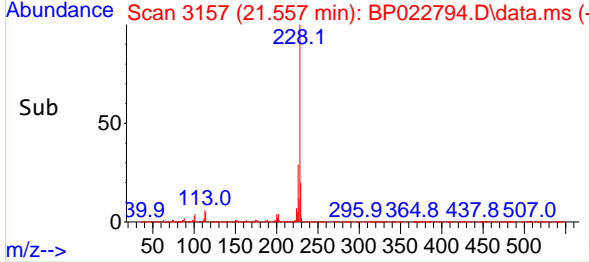
Tgt Ion:228 Resp: 1569529
 Ion Ratio Lower Upper
 228 100
 226 29.4 23.8 35.8
 229 19.7 15.5 23.3

Manual Integrations

APPROVED

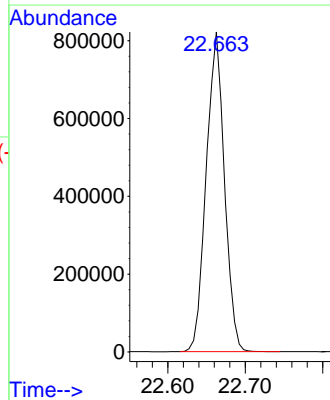
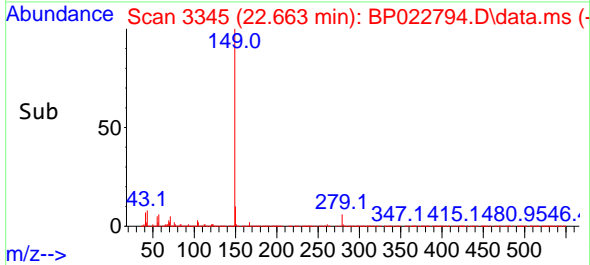
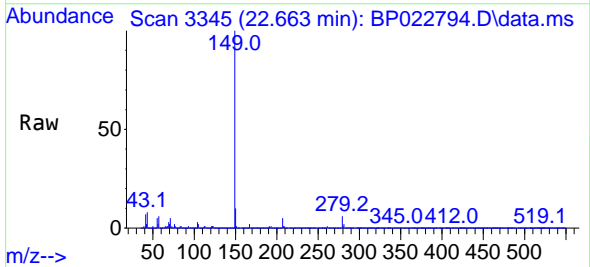
Reviewed By :Yogesh Patel 11/04/2024

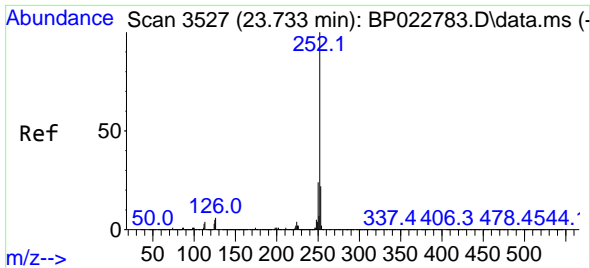
Supervised By :mohammad ahmed 11/05/2024



#89
 Di-n-octyl phthalate
 Concen: 27.691 ng/u1
 RT: 22.663 min Scan# 3345
 Delta R.T. 0.018 min
 Lab File: BP022794.D
 Acq: 01 Nov 2024 07:56

Tgt Ion:149 Resp: 1341782





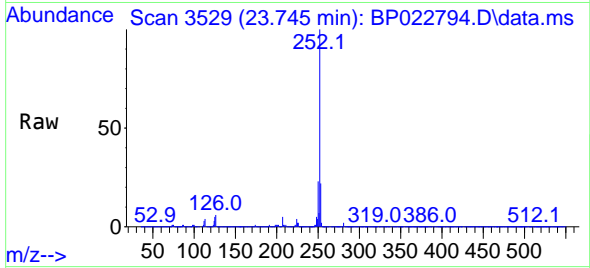
#90
 Benzo(b)fluoranthene
 Concen: 28.711 ng/ul
 RT: 23.745 min Scan# 3529
 Delta R.T. 0.024 min
 Lab File: BP022794.D
 Acq: 01 Nov 2024 07:56

Instrument :

BNA_P

ClientSampleId :

SLCS547

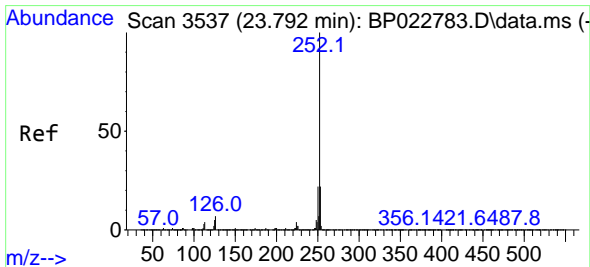
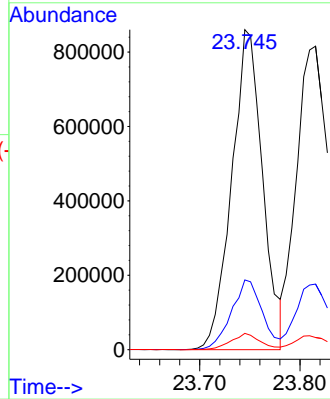
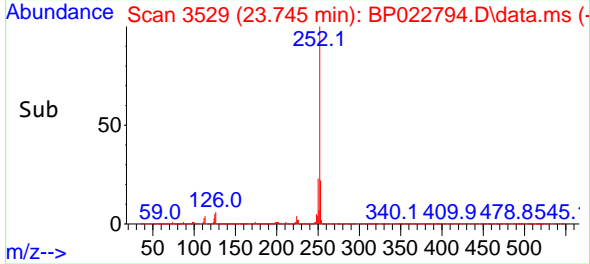


Tgt Ion:252 Resp: 184104
 Ion Ratio Lower Upper
 252 100
 253 21.8 17.8 26.8
 125 5.1 5.0 7.4

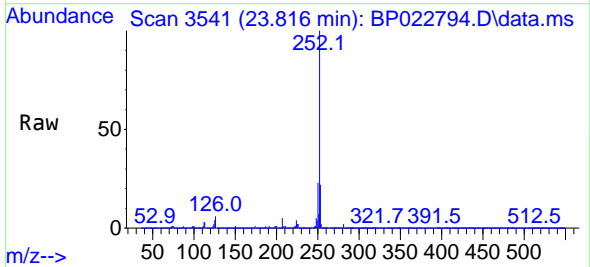
Manual Integrations

APPROVED

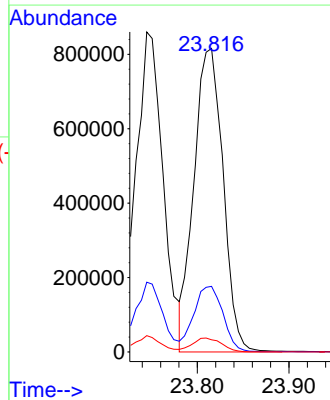
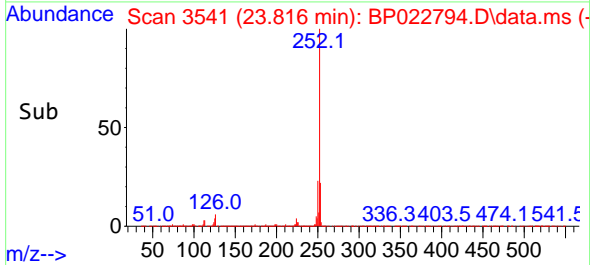
Reviewed By :Yogesh Patel 11/04/2024
 Supervised By :mohammad ahmed 11/05/2024

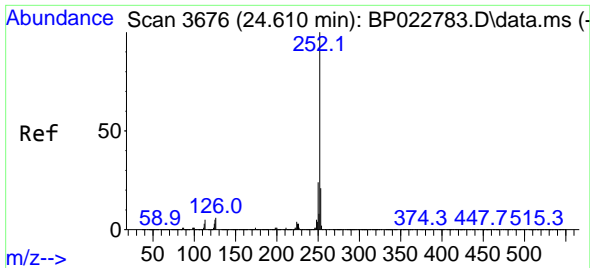


#91
 Benzo(k)fluoranthene
 Concen: 28.720 ng/ul m
 RT: 23.816 min Scan# 3541
 Delta R.T. 0.024 min
 Lab File: BP022794.D
 Acq: 01 Nov 2024 07:56



Tgt Ion:252 Resp: 1803067
 Ion Ratio Lower Upper
 252 100
 253 21.6 17.4 26.0
 125 4.0 4.6 6.8#





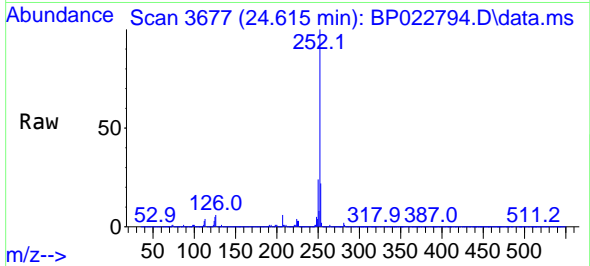
#93
 Benzo(a)pyrene
 Concen: 27.977 ng/u1
 RT: 24.615 min Scan# 30
 Delta R.T. 0.018 min
 Lab File: BP022794.D
 Acq: 01 Nov 2024 07:56

Instrument :

BNA_P

ClientSampleId :

SLCS547



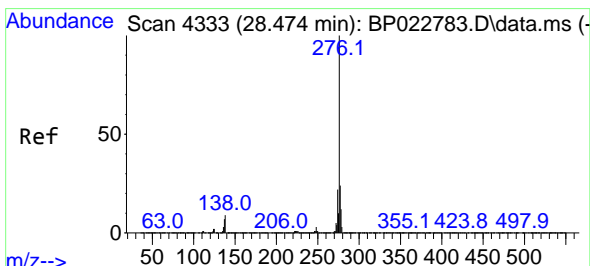
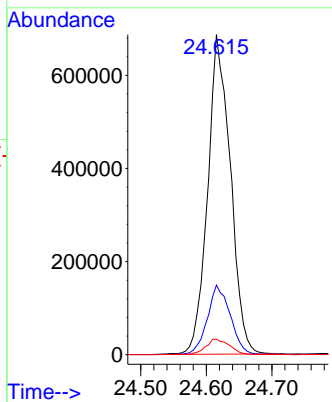
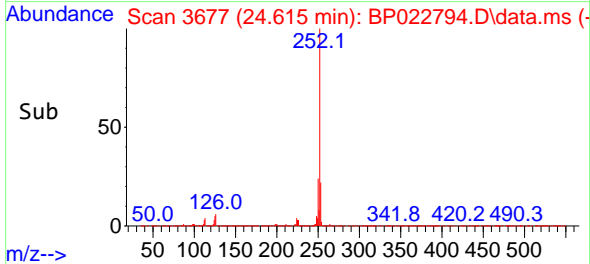
Tgt Ion:252 Resp: 165105
 Ion Ratio Lower Upper
 252 100
 253 21.8 17.7 26.5
 125 4.9 4.9 7.3

Manual Integrations

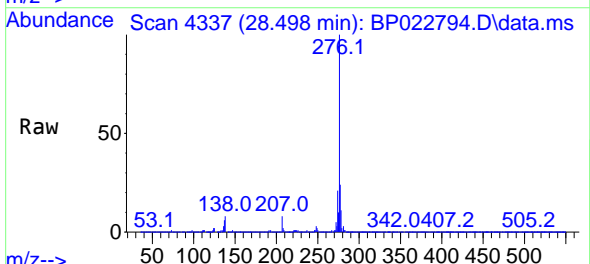
APPROVED

Reviewed By :Yogesh Patel 11/04/2024

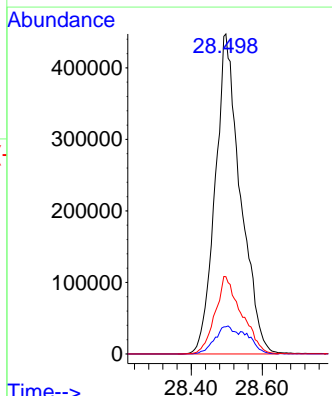
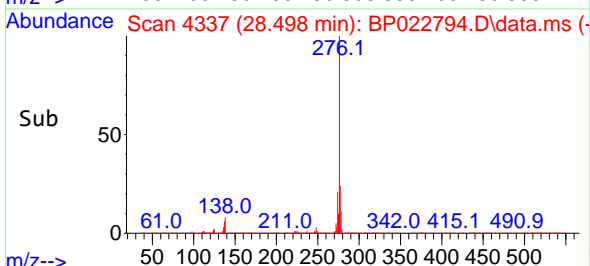
Supervised By :mohammad ahmed 11/05/2024

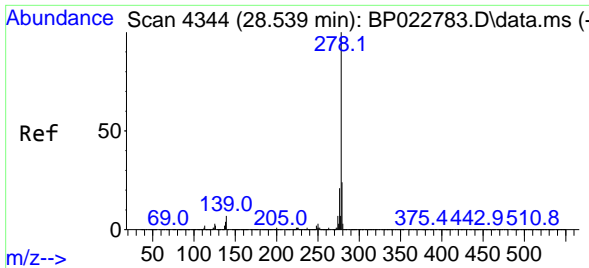


#94
 Indeno(1,2,3-cd)pyrene
 Concen: 27.985 ng/u1
 RT: 28.498 min Scan# 4337
 Delta R.T. 0.059 min
 Lab File: BP022794.D
 Acq: 01 Nov 2024 07:56



Tgt Ion:276 Resp: 2203886
 Ion Ratio Lower Upper
 276 100
 138 8.5 9.1 13.7#
 277 24.1 18.6 27.8





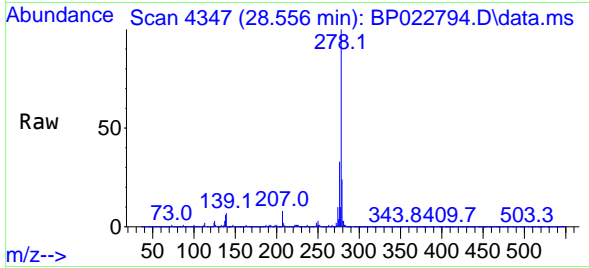
#95
 Dibenzo(a,h)anthracene
 Concen: 27.598 ng/ul
 RT: 28.556 min Scan# 41
 Delta R.T. 0.047 min
 Lab File: BP022794.D
 Acq: 01 Nov 2024 07:56

Instrument :

BNA_P

Client Sample Id :

SLCS547



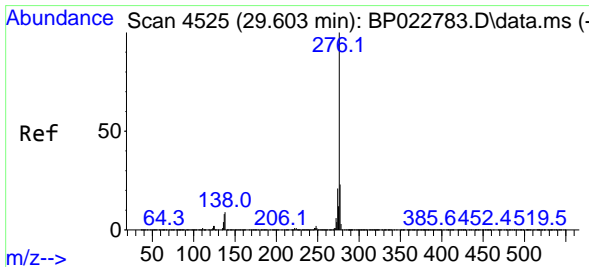
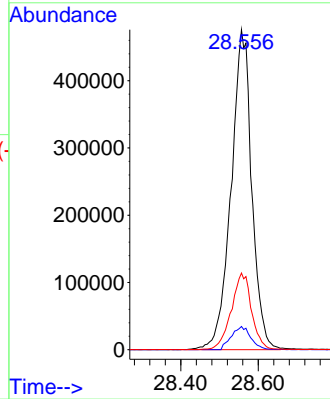
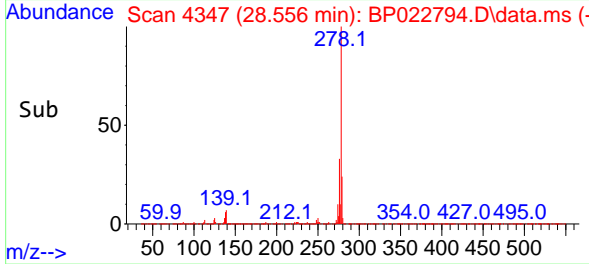
Tgt Ion: 278 Resp: 175999
 Ion Ratio Lower Upper
 278 100
 139 7.3 7.3 10.9
 279 23.9 19.0 28.4

Manual Integrations

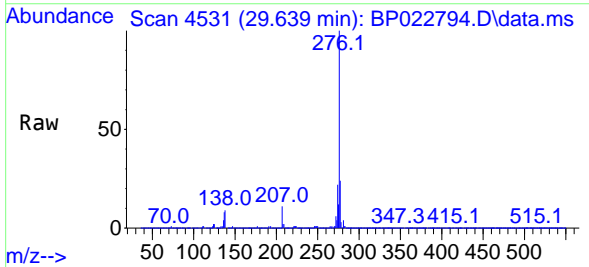
APPROVED

Reviewed By : Yogesh Patel 11/04/2024

Supervised By : mohammad ahmed 11/05/2024



#96
 Benzo(g,h,i)perylene
 Concen: 27.494 ng/ul
 RT: 29.639 min Scan# 4531
 Delta R.T. 0.065 min
 Lab File: BP022794.D
 Acq: 01 Nov 2024 07:56



Tgt Ion: 276 Resp: 1684203
 Ion Ratio Lower Upper
 276 100
 138 9.0 8.5 12.7
 277 23.5 19.0 28.4

