

Data Path : Z:\svoasrv\HPCHEM1\BNA_P\Data\BP111021\
 Data File : BP007931.D
 Acq On : 10 Nov 2021 21:39
 Operator : CG/JU
 Sample : M4605-08
 Misc :
 ALS Vial : 12 Sample Multiplier: 1

Instrument :
 BNA_P
 ClientSampleId :
 VWE-B19-110821-GW

Quant Time: Nov 11 10:18:32 2021
 Quant Method : Z:\svoasrv\HPCHEM1\BNA_P\Methods\8270E-BP110221.M
 Quant Title : ASP BNA STANDARDS FOR 5 POINT CALIBRATION
 QLast Update : Tue Nov 09 10:45:24 2021
 Response via : Initial Calibration

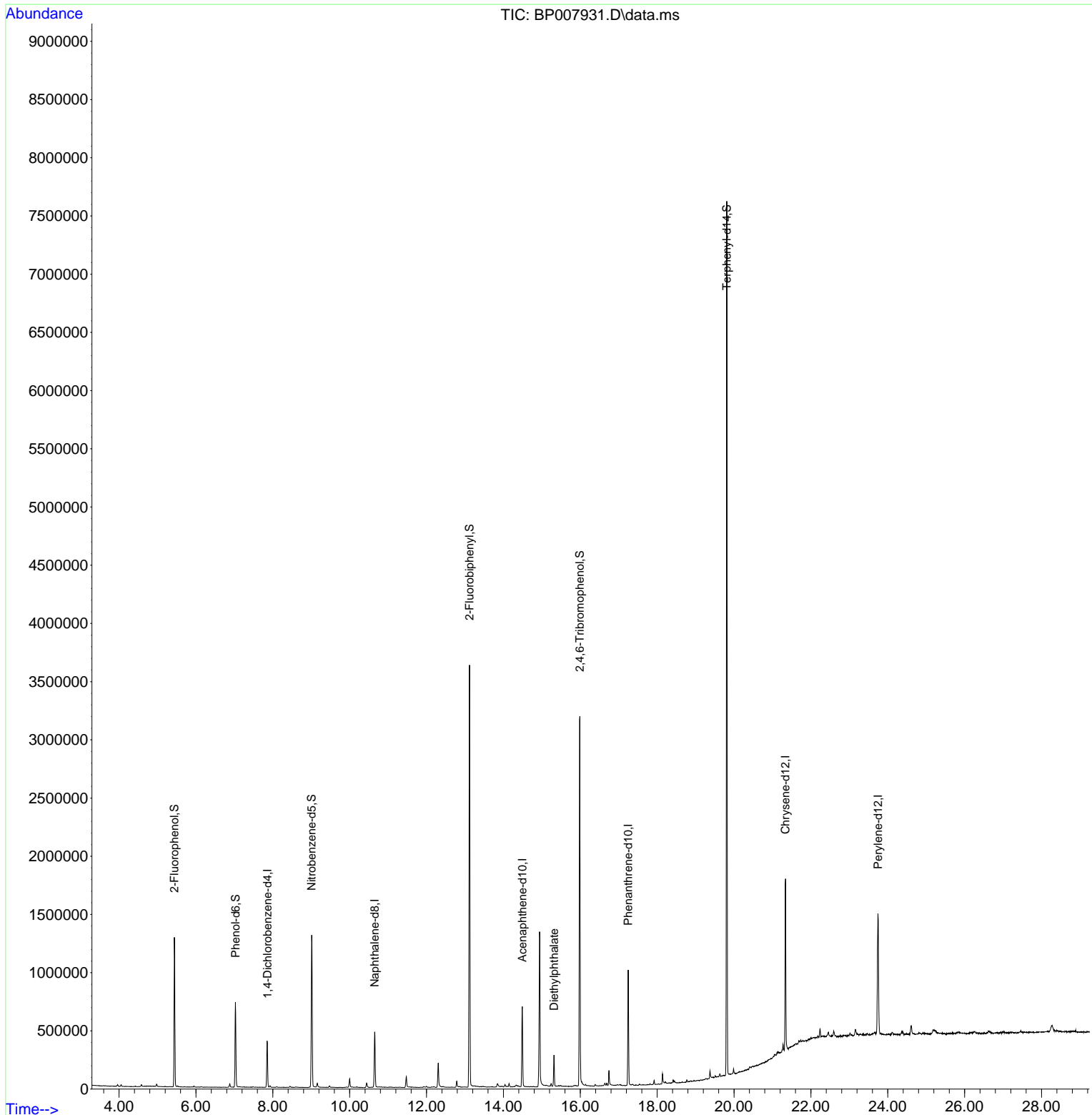
Compound	R.T.	QIon	Response	Conc	Units	Dev(Min)
Internal Standards						
1) 1,4-Dichlorobenzene-d4	7.858	152	110666	20.000	ng	0.00
21) Naphthalene-d8	10.652	136	382684	20.000	ng	-0.01
39) Acenaphthene-d10	14.493	164	252901	20.000	ng	-0.01
64) Phenanthrene-d10	17.245	188	591965	20.000	ng	#-0.01
76) Chrysene-d12	21.339	240	735430	20.000	ng	#-0.01
86) Perylene-d12	23.745	264	829968	20.000	ng	-0.02
System Monitoring Compounds						
5) 2-Fluorophenol	5.440	112	536007	82.142	ng	0.00
7) Phenol-d6	7.028	99	401773	42.539	ng	-0.01
23) Nitrobenzene-d5	9.010	82	758894	106.526	ng	-0.02
42) 2,4,6-Tribromophenol	15.987	330	667370	184.905	ng	-0.01
45) 2-Fluorobiphenyl	13.116	172	1862680	107.258	ng	-0.01
79) Terphenyl-d14	19.810	244	3309488	91.634	ng	-0.01
Target Compounds						Qvalue
60) Diethylphthalate	15.316	149	141198	7.451	ng	98

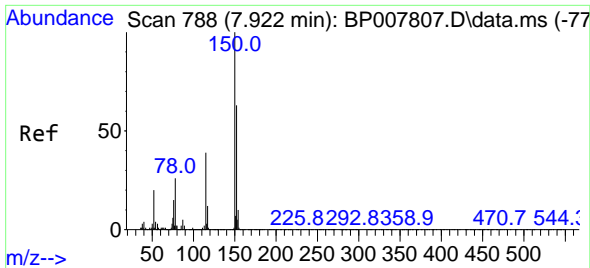
(#) = qualifier out of range (m) = manual integration (+) = signals summed

Data Path : Z:\svoasrv\HPCHEM1\BNA_P\Data\BP111021\
 Data File : BP007931.D
 Acq On : 10 Nov 2021 21:39
 Operator : CG/JU
 Sample : M4605-08
 Misc :
 ALS Vial : 12 Sample Multiplier: 1

Instrument :
 BNA_P
 ClientSampleId :
 VWE-B19-110821-GW

Quant Time: Nov 11 10:18:32 2021
 Quant Method : Z:\svoasrv\HPCHEM1\BNA_P\Methods\8270E-BP110221.M
 Quant Title : ASP BNA STANDARDS FOR 5 POINT CALIBRATION
 QLast Update : Tue Nov 09 10:45:24 2021
 Response via : Initial Calibration

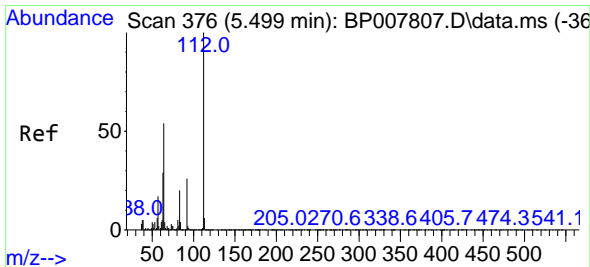
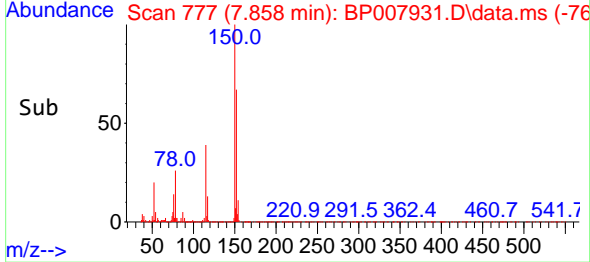
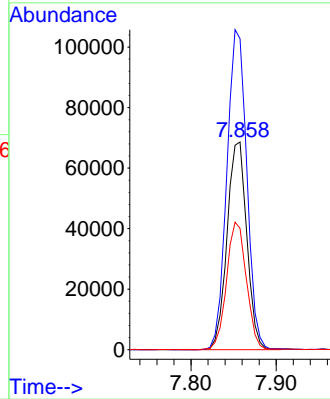
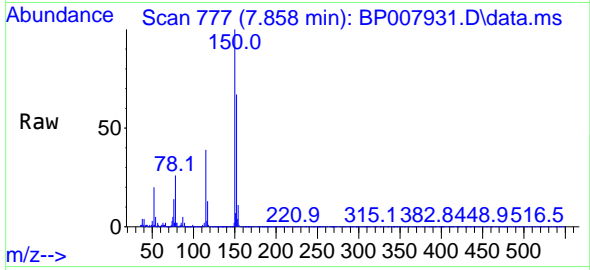




#1
 1,4-Dichlorobenzene-d4
 Concen: 20.000 ng
 RT: 7.858 min Scan# 71
 Delta R.T. -0.006 min
 Lab File: BP007931.D
 Acq: 10 Nov 2021 21:39

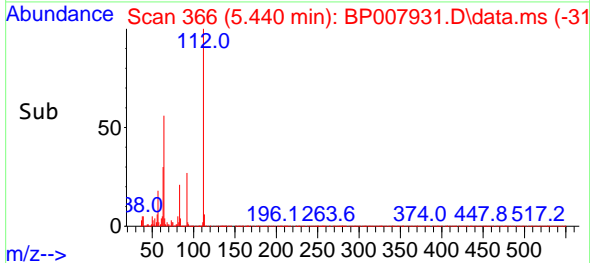
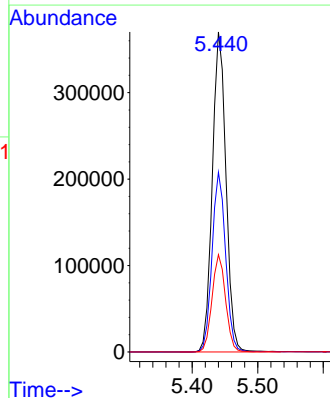
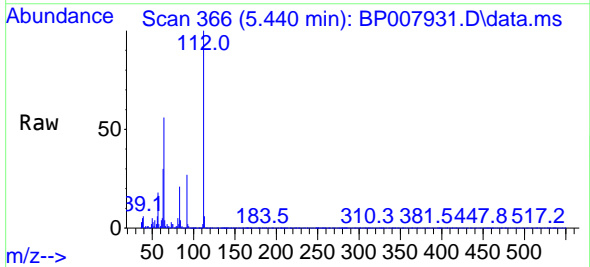
Instrument :
 BNA_P
 ClientSampleId :
 VWE-B19-110821-GW

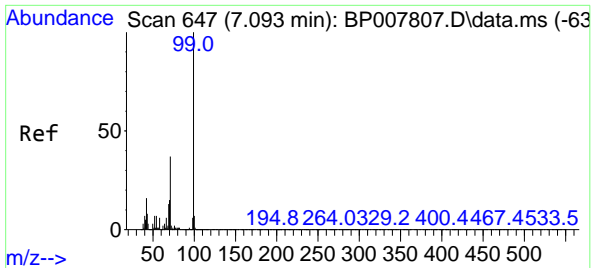
Tgt Ion:152 Resp: 110666
 Ion Ratio Lower Upper
 152 100
 150 149.8 124.1 186.1
 115 58.4 48.1 72.1



#5
 2-Fluorophenol
 Concen: 82.142 ng
 RT: 5.440 min Scan# 366
 Delta R.T. -0.006 min
 Lab File: BP007931.D
 Acq: 10 Nov 2021 21:39

Tgt Ion:112 Resp: 536007
 Ion Ratio Lower Upper
 112 100
 64 56.2 46.6 70.0
 63 30.4 25.0 37.6



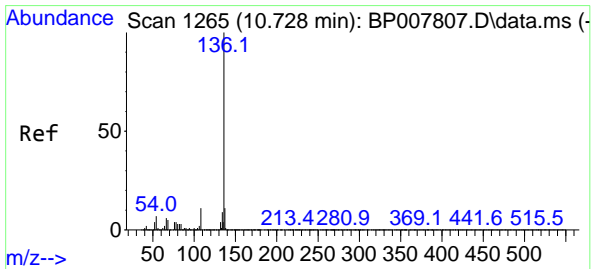
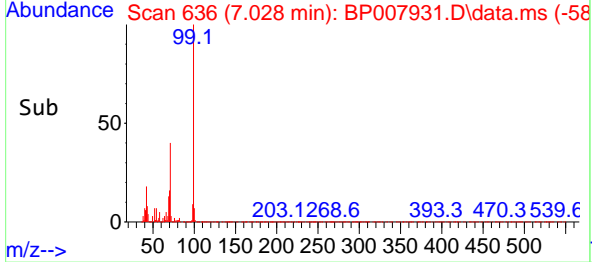
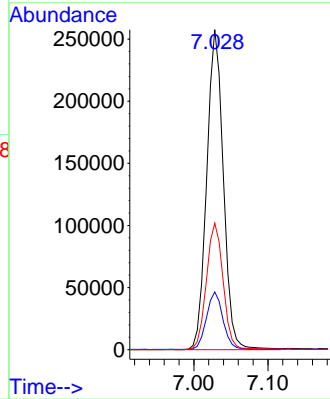
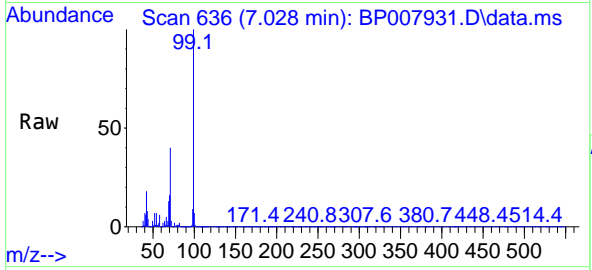


#7
Phenol-d6
Concen: 42.539 ng
RT: 7.028 min Scan# 61
Delta R.T. -0.012 min
Lab File: BP007931.D
Acq: 10 Nov 2021 21:39

Instrument :
BNA_P
ClientSampleId :
VWE-B19-110821-GW

Tgt Ion: 99 Resp: 401773

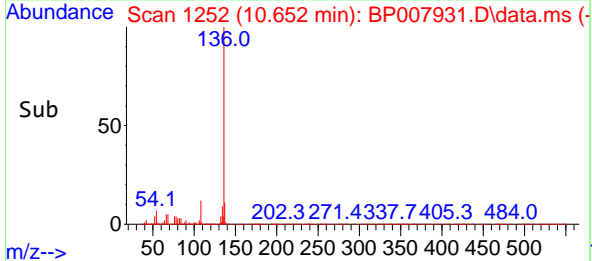
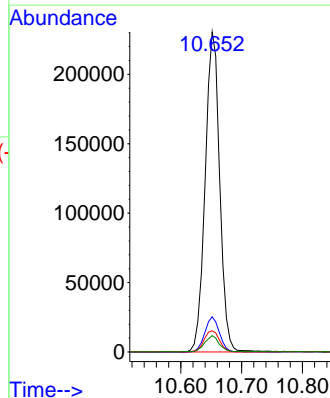
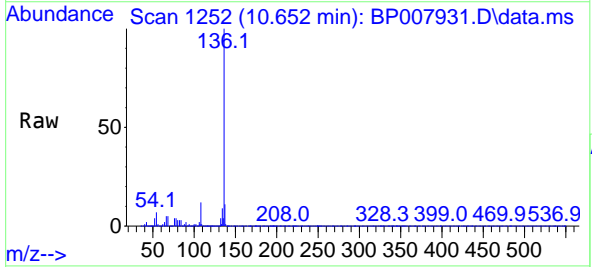
Ion	Ratio	Lower	Upper
99	100		
42	18.0	14.9	22.3
71	39.6	29.2	43.8

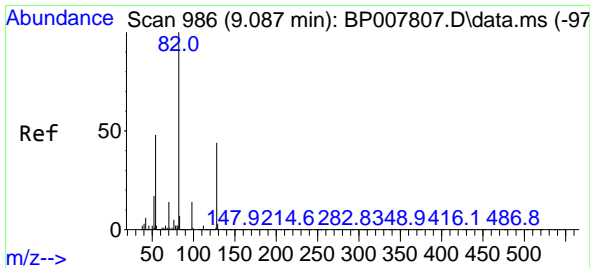


#21
Naphthalene-d8
Concen: 20.000 ng
RT: 10.652 min Scan# 1252
Delta R.T. -0.012 min
Lab File: BP007931.D
Acq: 10 Nov 2021 21:39

Tgt Ion: 136 Resp: 382684

Ion	Ratio	Lower	Upper
136	100		
137	11.0	8.6	13.0
54	6.6	6.2	9.4
68	5.1	4.7	7.1



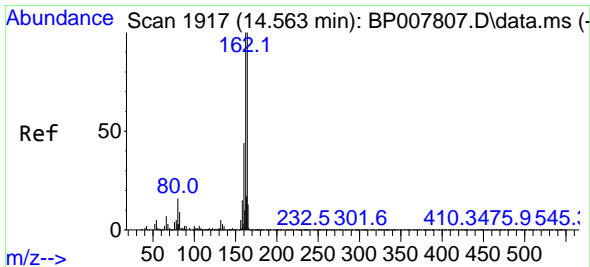
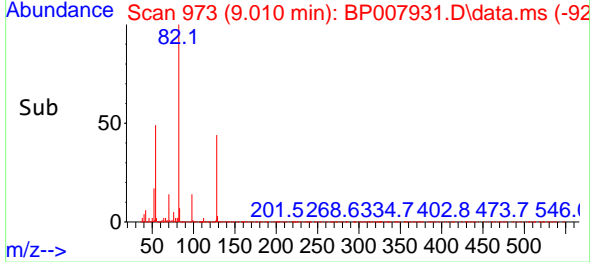
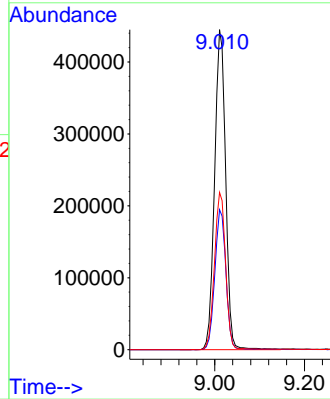
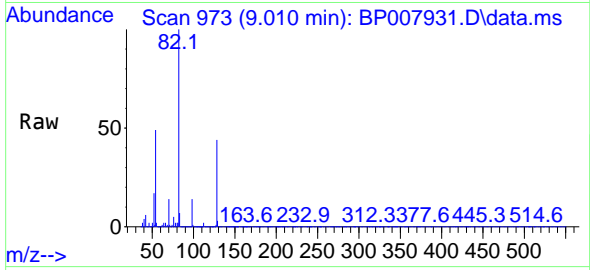


#23
 Nitrobenzene-d5
 Concen: 106.526 ng
 RT: 9.010 min Scan# 91
 Delta R.T. -0.018 min
 Lab File: BP007931.D
 Acq: 10 Nov 2021 21:39

Instrument :
 BNA_P
 ClientSampleId :
 VWE-B19-110821-GW

Tgt Ion: 82 Resp: 758894

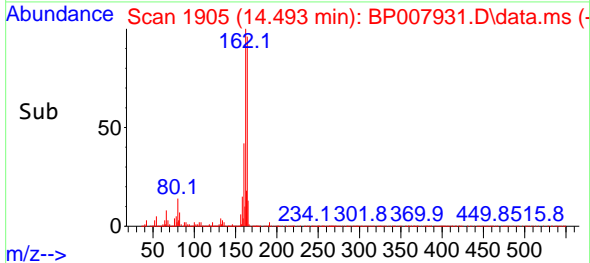
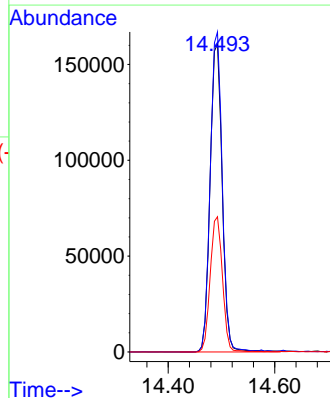
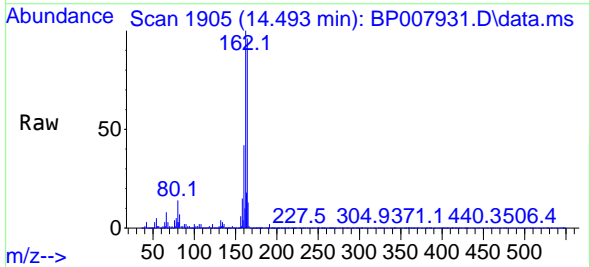
Ion	Ratio	Lower	Upper
82	100		
128	43.8	32.6	48.8
54	49.1	40.4	60.6

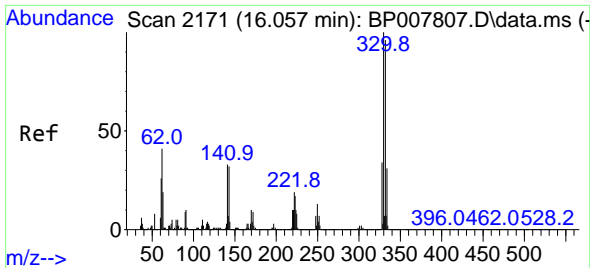


#39
 Acenaphthene-d10
 Concen: 20.000 ng
 RT: 14.493 min Scan# 1905
 Delta R.T. -0.012 min
 Lab File: BP007931.D
 Acq: 10 Nov 2021 21:39

Tgt Ion: 164 Resp: 252901

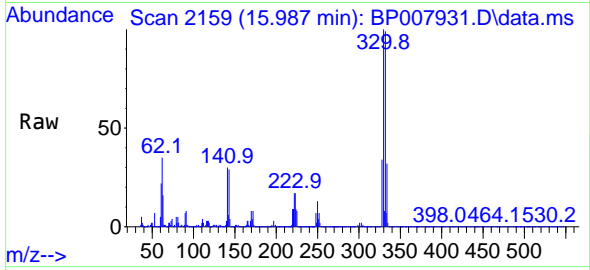
Ion	Ratio	Lower	Upper
164	100		
162	103.9	81.1	121.7
160	43.9	36.0	54.0



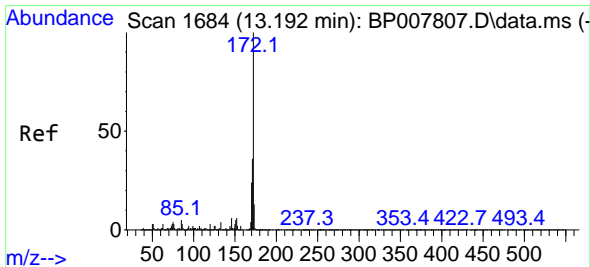
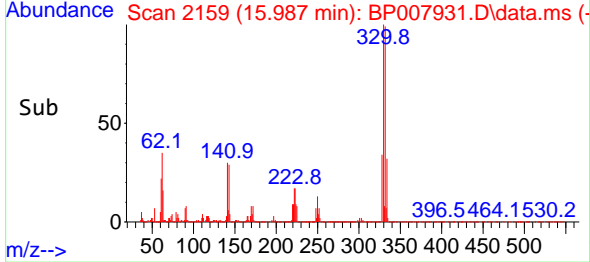
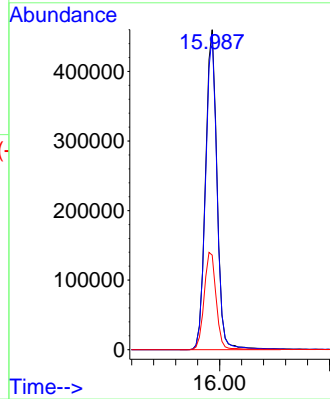


#42
 2,4,6-Tribromophenol
 Concen: 184.905 ng
 RT: 15.987 min Scan# 2171
 Delta R.T. -0.012 min
 Lab File: BP007931.D
 Acq: 10 Nov 2021 21:39

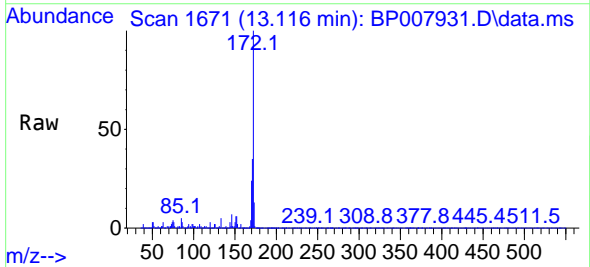
Instrument :
 BNA_P
 ClientSampleId :
 VWE-B19-110821-GW



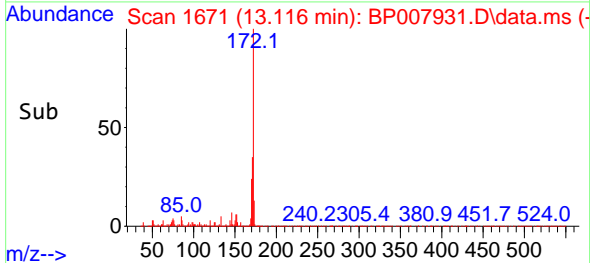
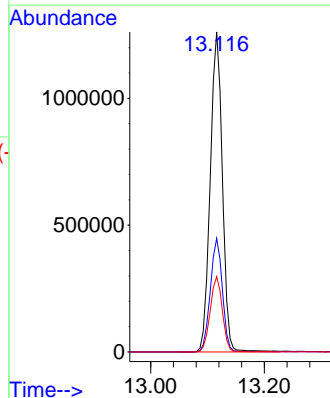
Tgt Ion:330 Resp: 667370
 Ion Ratio Lower Upper
 330 100
 332 97.9 78.9 118.3
 141 31.9 30.7 46.1

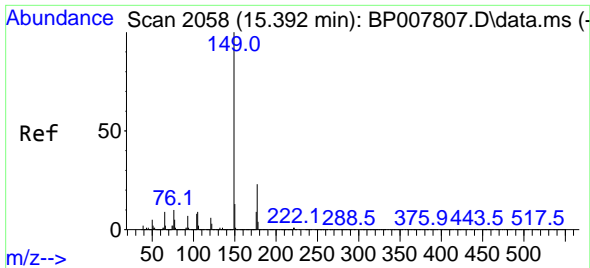


#45
 2-Fluorobiphenyl
 Concen: 107.258 ng
 RT: 13.116 min Scan# 1671
 Delta R.T. -0.012 min
 Lab File: BP007931.D
 Acq: 10 Nov 2021 21:39



Tgt Ion:172 Resp: 1862680
 Ion Ratio Lower Upper
 172 100
 171 35.5 28.2 42.2
 170 23.6 19.0 28.4



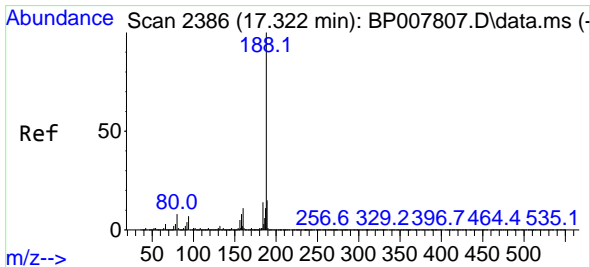
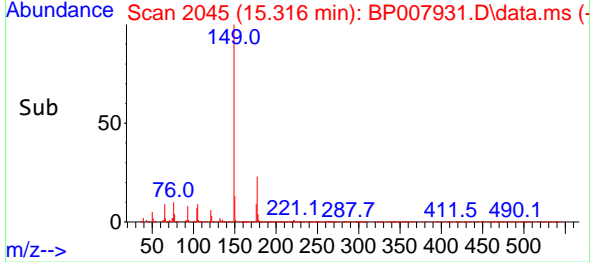
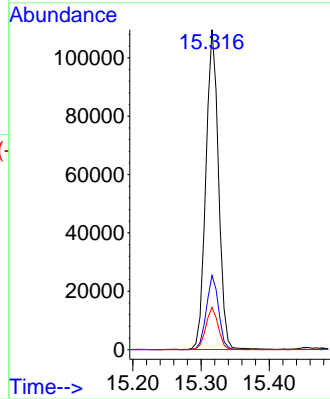
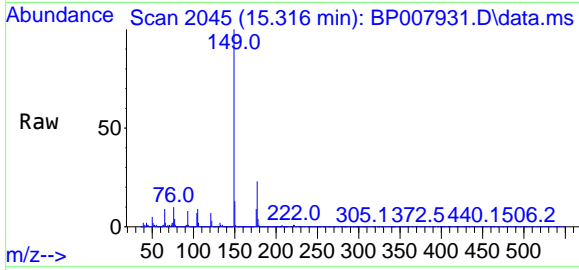


#60
 Diethylphthalate
 Concen: 7.451 ng
 RT: 15.316 min Scan# 2058
 Delta R.T. -0.018 min
 Lab File: BP007931.D
 Acq: 10 Nov 2021 21:39

Instrument :
 BNA_P
 ClientSampleId :
 VWE-B19-110821-GW

Tgt Ion:149 Resp: 141198

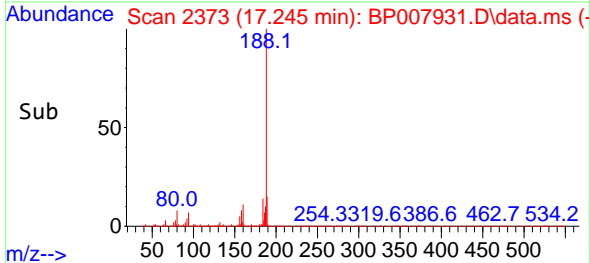
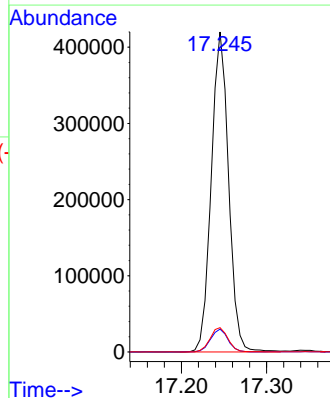
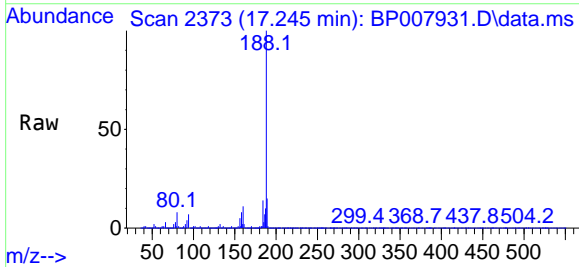
Ion	Ratio	Lower	Upper
149	100		
177	23.2	17.8	26.8
150	13.2	10.2	15.2

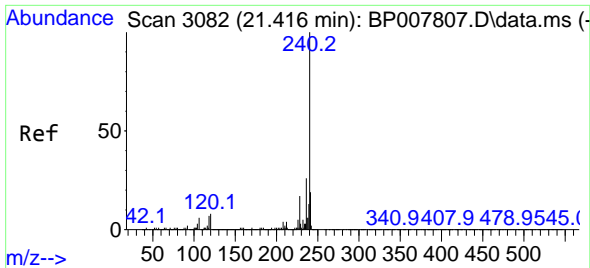


#64
 Phenanthrene-d10
 Concen: 20.000 ng
 RT: 17.245 min Scan# 2373
 Delta R.T. -0.012 min
 Lab File: BP007931.D
 Acq: 10 Nov 2021 21:39

Tgt Ion:188 Resp: 591965

Ion	Ratio	Lower	Upper
188	100		
94	7.1	7.1	10.7
80	7.6	7.8	11.6#



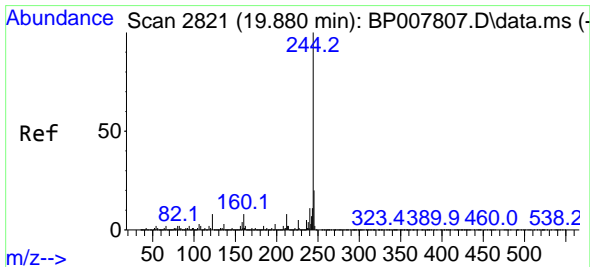
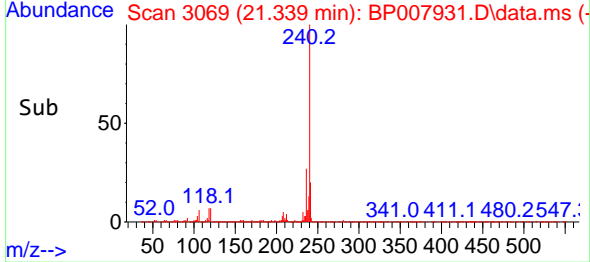
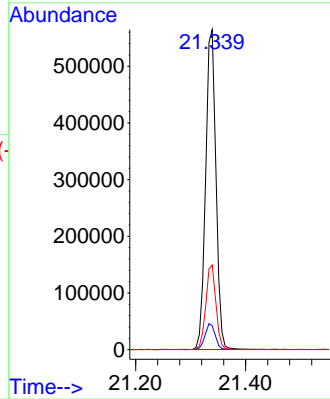
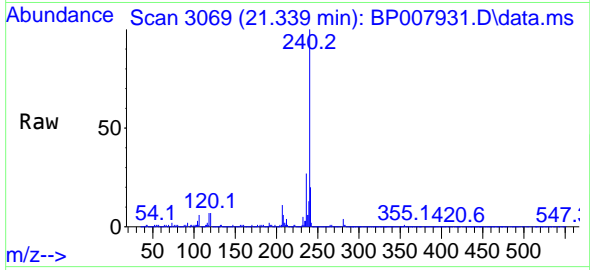


#76
 Chrysene-d12
 Concen: 20.000 ng
 RT: 21.339 min Scan# 30
 Delta R.T. -0.012 min
 Lab File: BP007931.D
 Acq: 10 Nov 2021 21:39

Instrument :
 BNA_P
 ClientSampleId :
 VWE-B19-110821-GW

Tgt Ion:240 Resp: 735430

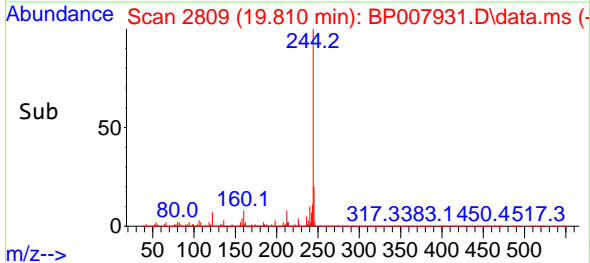
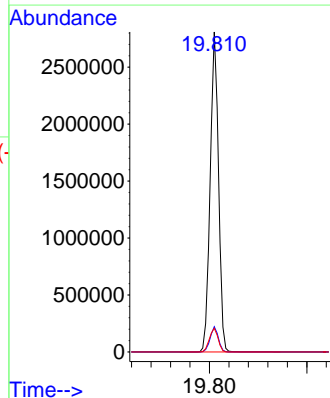
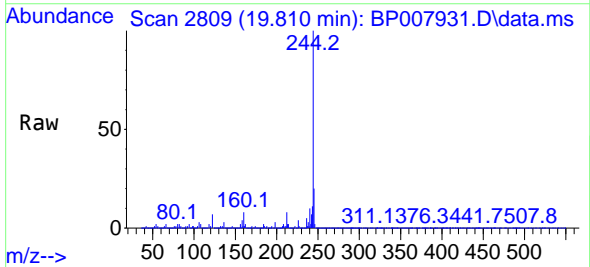
Ion	Ratio	Lower	Upper
240	100		
120	7.4	7.8	11.8#
236	26.5	20.6	30.8

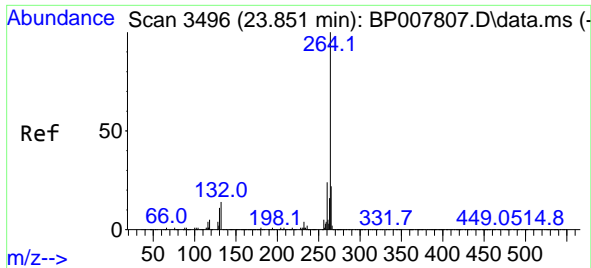


#79
 Terphenyl-d14
 Concen: 91.634 ng
 RT: 19.810 min Scan# 2809
 Delta R.T. -0.012 min
 Lab File: BP007931.D
 Acq: 10 Nov 2021 21:39

Tgt Ion:244 Resp: 3309488

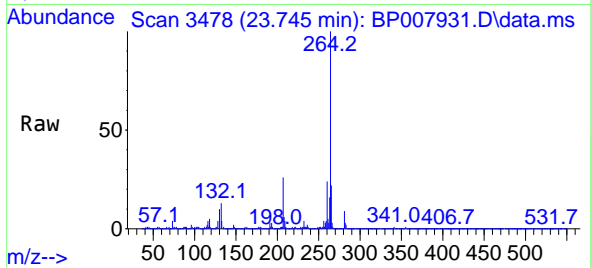
Ion	Ratio	Lower	Upper
244	100		
212	7.9	6.2	9.2
122	7.4	7.8	11.8#





#86
 Perylene-d12
 Concen: 20.000 ng
 RT: 23.745 min Scan# 34
 Delta R.T. -0.024 min
 Lab File: BP007931.D
 Acq: 10 Nov 2021 21:39

Instrument :
 BNA_P
 ClientSampleId :
 VWE-B19-110821-GW



Tgt Ion:264 Resp: 829968
 Ion Ratio Lower Upper
 264 100
 260 24.2 19.1 28.7
 265 21.8 16.7 25.1

