

Data Path : Z:\svoasrv\HPCHEM1\BNA_P\Data\BP112222\
 Data File : BP012693.D
 Acq On : 22 Nov 2022 10:02
 Operator : CG/JU
 Sample : SSTDICC005
 Misc :
 ALS Vial : 3 Sample Multiplier: 1

Instrument :
 BNA_P
 ClientSampleId :
 SSTDICC005

Quant Time: Nov 22 23:36:04 2022
 Quant Method : Z:\svoasrv\HPCHEM1\BNA_P\Methods\8270E-BP112222.M
 Quant Title : ASP BNA STANDARDS FOR 5 POINT CALIBRATION
 QLast Update : Tue Nov 22 23:34:02 2022
 Response via : Initial Calibration

Compound	R.T.	QIon	Response	Conc	Units	Dev(Min)
Internal Standards						
1) 1,4-Dichlorobenzene-d4	8.040	152	302691	20.000	ng	0.00
21) Naphthalene-d8	10.851	136	1336317	20.000	ng	0.00
39) Acenaphthene-d10	14.669	164	928656	20.000	ng	0.00
64) Phenanthrene-d10	17.421	188	2091948	20.000	ng	0.00
76) Chrysene-d12	21.509	240	2184411	20.000	ng	0.00
86) Perylene-d12	24.033	264	2118754	20.000	ng	0.00
System Monitoring Compounds						
5) 2-Fluorophenol	5.575	112	129630	8.675	ng	0.00
7) Phenol-d6	7.175	99	180788	8.720	ng	0.00
23) Nitrobenzene-d5	9.198	82	224695	9.423	ng	0.00
42) 2,4,6-Tribromophenol	16.157	330	63157	6.178	ng	0.00
45) 2-Fluorobiphenyl	13.298	172	635960	9.664	ng	0.00
79) Terphenyl-d14	19.968	244	1036957	9.989	ng	0.00
Target Compounds						
2) 1,4-Dioxane	3.446	88	32456	5.284	ng	96
3) Pyridine	3.852	79	92775	4.837	ng	95
4) n-Nitrosodimethylamine	3.763	42	42728	5.101	ng	# 73
6) Aniline	7.351	93	116389	4.446	ng	99
8) 2-Chlorophenol	7.593	128	82342	4.361	ng	98
9) Benzaldehyde	7.163	77	85010	6.656	ng	98
10) Phenol	7.204	94	103753	4.412	ng	98
11) bis(2-Chloroethyl)ether	7.451	93	103276	5.093	ng	96
12) 1,3-Dichlorobenzene	7.922	146	116415	5.072	ng	98
13) 1,4-Dichlorobenzene	8.075	146	121375	5.133	ng	96
14) 1,2-Dichlorobenzene	8.392	146	116655	5.092	ng	99
15) Benzyl Alcohol	8.269	79	56300	3.871	ng	93
16) 2,2'-oxybis(1-Chloropr...	8.569	45	156633	5.248	ng	100
17) 2-Methylphenol	8.469	107	66069	4.068	ng	95
18) Hexachloroethane	9.128	117	45592	5.313	ng	97
19) n-Nitroso-di-n-propyla...	8.839	70	64036	4.484	ng	# 95
20) 3+4-Methylphenols	8.792	107	80790	3.680	ng	96
22) Acetophenone	8.857	105	161322	4.892	ng	# 97
24) Nitrobenzene	9.239	77	114945	4.663	ng	97
25) Isophorone	9.769	82	205746	4.464	ng	97
26) 2-Nitrophenol	9.957	139	20320	2.527	ng	93
27) 2,4-Dimethylphenol	10.010	122	57367	3.623	ng	98
28) bis(2-Chloroethoxy)met...	10.257	93	120277	4.601	ng	99
29) 2,4-Dichlorophenol	10.492	162	68389	3.402	ng	98
30) 1,2,4-Trichlorobenzene	10.716	180	115010	4.651	ng	99
31) Naphthalene	10.904	128	360541	4.831	ng	98
32) Benzoic acid	10.057	122	15961	1.841	ng	98
33) 4-Chloroaniline	11.010	127	104377	3.971	ng	100
34) Hexachlorobutadiene	11.192	225	72394	4.676	ng	98
35) Caprolactam	11.751	113	13793	2.319	ng	# 89
36) 4-Chloro-3-methylphenol	12.116	107	77118	3.662	ng	97
37) 2-Methylnaphthalene	12.504	142	243246	4.594	ng	99
38) 1-Methylnaphthalene	12.722	142	245326	4.668	ng	98
40) 1,2,4,5-Tetrachloroben...	12.869	216	134364	4.543	ng	99
41) Hexachlorocyclopentadiene	12.851	237	58713	4.243	ng	96
43) 2,4,6-Trichlorophenol	13.104	196	54001	2.996	ng	96

Data Path : Z:\svoasrv\HPCHEM1\BNA_P\Data\BP112222\
 Data File : BP012693.D
 Acq On : 22 Nov 2022 10:02
 Operator : CG/JU
 Sample : SSTDICC005
 Misc :
 ALS Vial : 3 Sample Multiplier: 1

Instrument :
 BNA_P
 ClientSampleId :
 SSTDICC005

Quant Time: Nov 22 23:36:04 2022
 Quant Method : Z:\svoasrv\HPCHEM1\BNA_P\Methods\8270E-BP112222.M
 Quant Title : ASP BNA STANDARDS FOR 5 POINT CALIBRATION
 QLast Update : Tue Nov 22 23:34:02 2022
 Response via : Initial Calibration

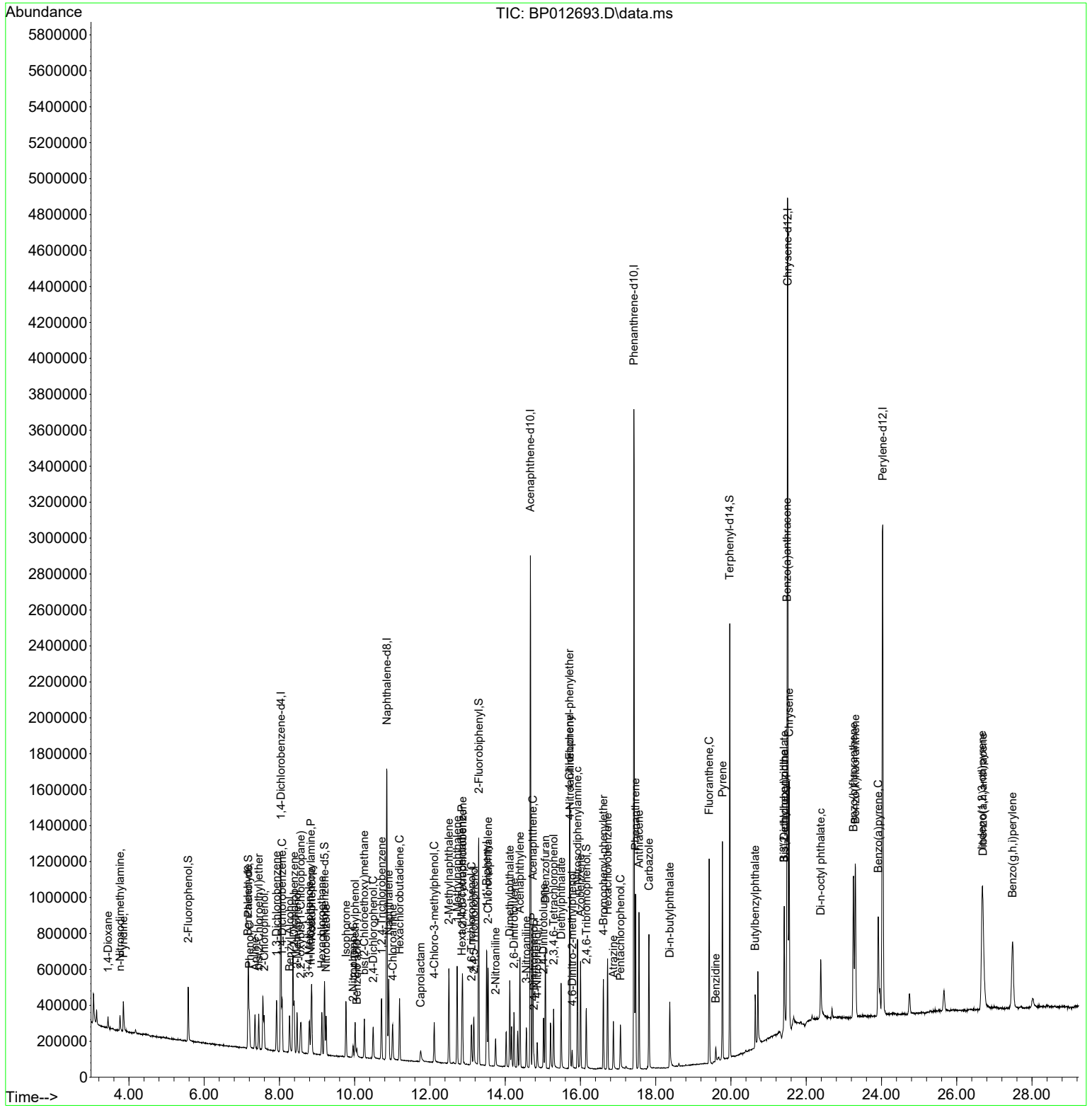
Compound	R.T.	QIon	Response	Conc	Units	Dev(Min)
44) 2,4,5-Trichlorophenol	13.169	196	75709	3.619	ng	97
46) 1,1'-Biphenyl	13.510	154	337004	4.752	ng	97
47) 2-Chloronaphthalene	13.545	162	263998	4.635	ng	100
48) 2-Nitroaniline	13.745	65	35730	2.965	ng	94
49) Acenaphthylene	14.392	152	410291	4.503	ng	99
50) Dimethylphthalate	14.122	163	298305	4.163	ng	100
51) 2,6-Dinitrotoluene	14.233	165	56020	3.872	ng	# 83
52) Acenaphthene	14.733	154	262677	4.538	ng	97
53) 3-Nitroaniline	14.563	138	48634	3.271	ng	82
54) 2,4-Dinitrophenol	14.763	184	14185	2.406	ng	# 88
55) Dibenzofuran	15.069	168	419209	4.680	ng	100
56) 4-Nitrophenol	14.851	139	32527	2.537	ng	88
57) 2,4-Dinitrotoluene	15.022	165	65358	3.400	ng	90
58) Fluorene	15.716	166	352880	4.818	ng	100
59) 2,3,4,6-Tetrachlorophenol	15.286	232	70427	3.661	ng	99
60) Diethylphthalate	15.486	149	258387	3.763	ng	98
61) 4-Chlorophenyl-phenylether	15.710	204	169405	4.688	ng	99
62) 4-Nitroaniline	15.722	138	37345	2.702	ng	95
63) Azobenzene	16.004	77	325711	4.645	ng	99
65) 4,6-Dinitro-2-methylphthalate	15.780	198	21260	2.399	ng	96
66) n-Nitrosodiphenylamine	15.921	169	258886	4.284	ng	100
67) 4-Bromophenyl-phenylether	16.610	248	94572	4.442	ng	99
68) Hexachlorobenzene	16.721	284	123086	4.561	ng	96
69) Atrazine	16.874	200	48161	3.289	ng	96
70) Pentachlorophenol	17.063	266	48180	2.993	ng	96
71) Phenanthrene	17.463	178	575016	4.713	ng	100
72) Anthracene	17.557	178	520877	4.484	ng	100
73) Carbazole	17.821	167	458516	4.402	ng	99
74) Di-n-butylphthalate	18.374	149	252038	2.543	ng	# 96
75) Fluoranthene	19.421	202	633281	4.375	ng	99
77) Benzidine	19.598	184	50358	3.780	ng	99
78) Pyrene	19.774	202	658410	4.425	ng	99
80) Butylbenzylphthalate	20.645	149	55637	3.361	ng	100
81) Benzo(a)anthracene	21.492	228	677309	4.441	ng	97
82) 3,3'-Dichlorobenzidine	21.415	252	68447	2.253	ng	97
83) Chrysene	21.545	228	671393	4.590	ng	98
84) Bis(2-ethylhexyl)phthalate	21.415	149	88848	2.788	ng	96
85) Di-n-octyl phthalate	22.386	149	162783	2.194	ng	# 89
87) Indeno(1,2,3-cd)pyrene	26.674	276	633643	4.040	ng	99
88) Benzo(b)fluoranthene	23.256	252	587919	4.073	ng	99
89) Benzo(k)fluoranthene	23.309	252	637157	4.319	ng	99
90) Benzo(a)pyrene	23.915	252	455135	3.908	ng	98
91) Dibenzo(a,h)anthracene	26.697	278	541878	4.096	ng	97
92) Benzo(g,h,i)perylene	27.486	276	503216	4.105	ng	98

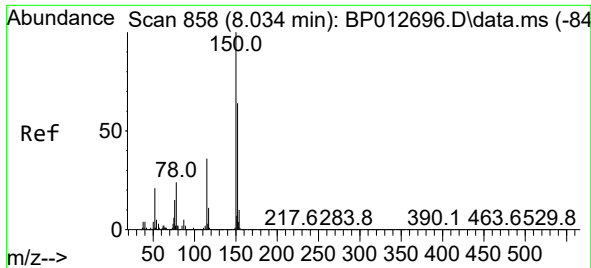
(#) = qualifier out of range (m) = manual integration (+) = signals summed

Data Path : Z:\svoasrv\HPCHEM1\BNA_P\Data\BP112222\
 Data File : BP012693.D
 Acq On : 22 Nov 2022 10:02
 Operator : CG/JU
 Sample : SSTDICC005
 Misc :
 ALS Vial : 3 Sample Multiplier: 1

Instrument :
 BNA_P
 ClientSampleId :
 SSTDICC005

Quant Time: Nov 22 23:36:04 2022
 Quant Method : Z:\svoasrv\HPCHEM1\BNA_P\Methods\8270E-BP112222.M
 Quant Title : ASP BNA STANDARDS FOR 5 POINT CALIBRATION
 QLast Update : Tue Nov 22 23:34:02 2022
 Response via : Initial Calibration

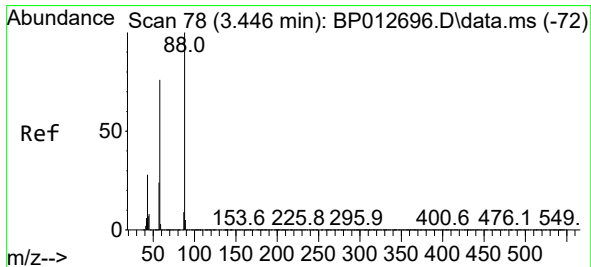
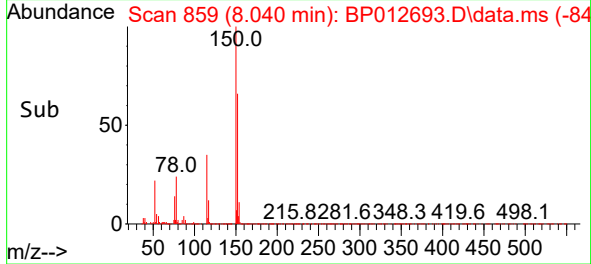
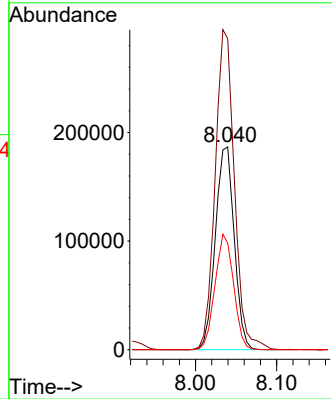
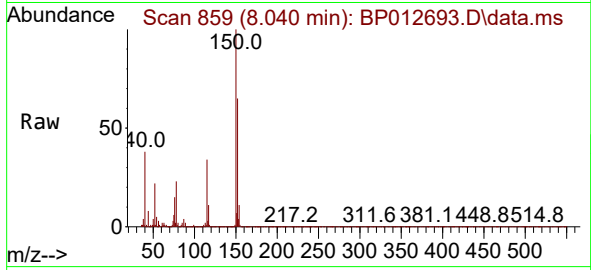




#1
 1,4-Dichlorobenzene-d4
 Concen: 20.000 ng
 RT: 8.040 min Scan# 81
 Delta R.T. 0.006 min
 Lab File: BP012693.D
 Acq: 22 Nov 2022 10:02

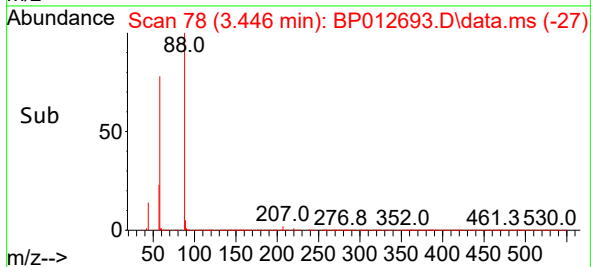
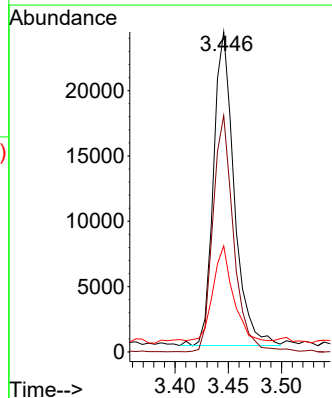
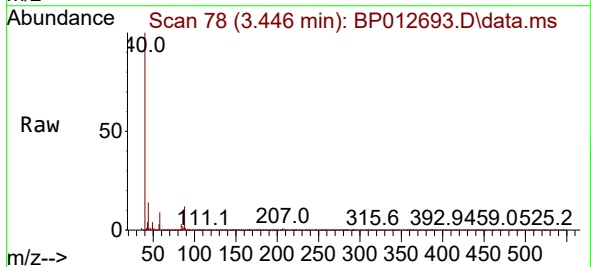
Instrument :
 BNA_P
 ClientSampleId :
 SSTDICC005

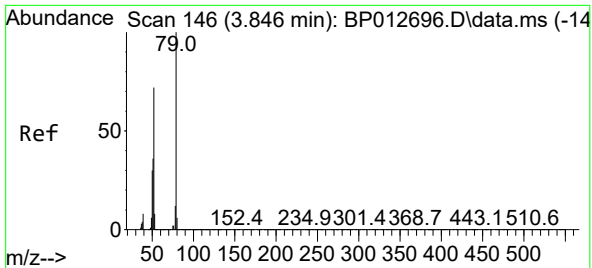
Tgt Ion:152 Resp: 302691
 Ion Ratio Lower Upper
 152 100
 150 153.4 126.0 189.0
 115 52.5 44.9 67.3



#2
 1,4-Dioxane
 Concen: 5.284 ng
 RT: 3.446 min Scan# 78
 Delta R.T. -0.000 min
 Lab File: BP012693.D
 Acq: 22 Nov 2022 10:02

Tgt Ion: 88 Resp: 32456
 Ion Ratio Lower Upper
 88 100
 58 75.7 59.0 88.4
 43 32.8 23.0 34.4



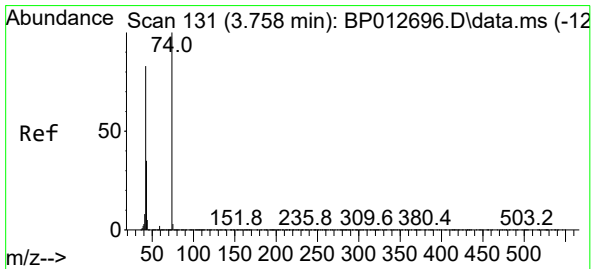
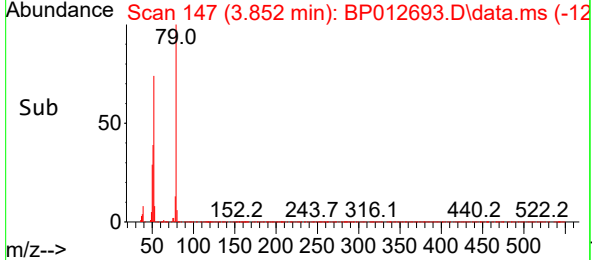
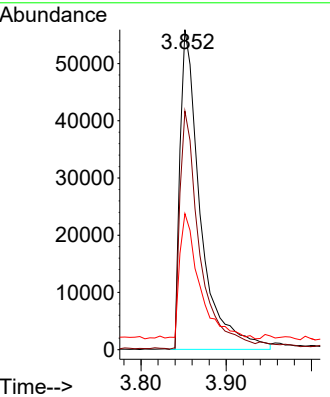
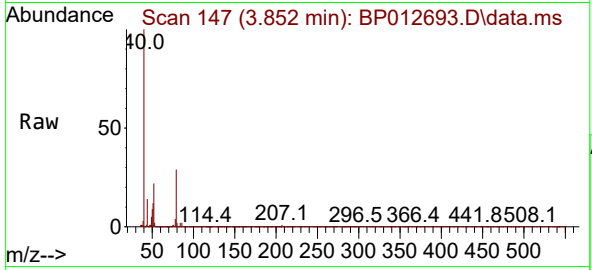


#3
 Pyridine
 Concen: 4.837 ng
 RT: 3.852 min Scan# 14
 Delta R.T. 0.006 min
 Lab File: BP012693.D
 Acq: 22 Nov 2022 10:02

Instrument :
 BNA_P
 ClientSampleId :
 SSTDICC005

Tgt Ion: 79 Resp: 92775

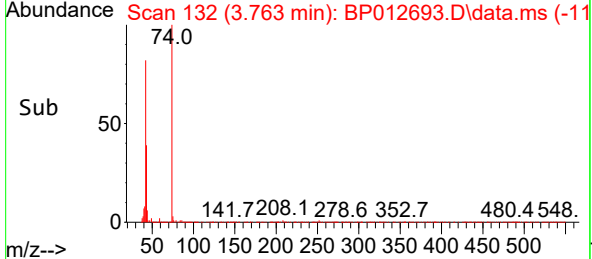
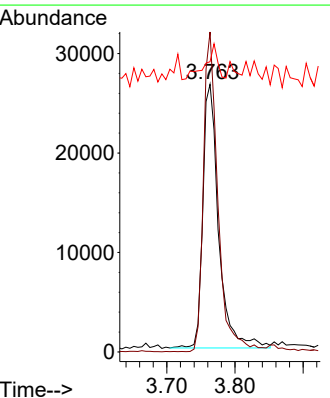
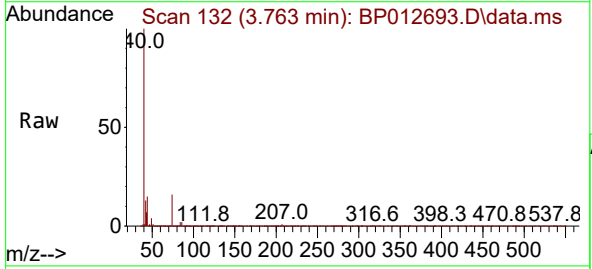
Ion	Ratio	Lower	Upper
79	100		
52	74.5	57.7	86.5
51	42.5	29.4	44.0

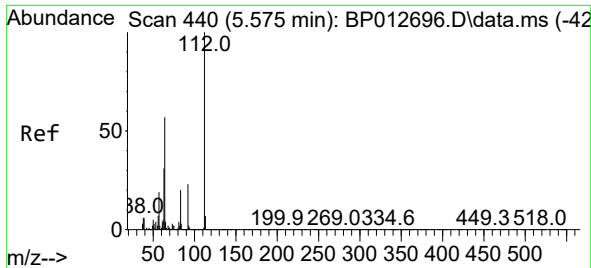


#4
 n-Nitrosodimethylamine
 Concen: 5.101 ng
 RT: 3.763 min Scan# 132
 Delta R.T. 0.006 min
 Lab File: BP012693.D
 Acq: 22 Nov 2022 10:02

Tgt Ion: 42 Resp: 42728

Ion	Ratio	Lower	Upper
42	100		
74	119.6	96.6	144.8
44	108.4	13.8	20.6



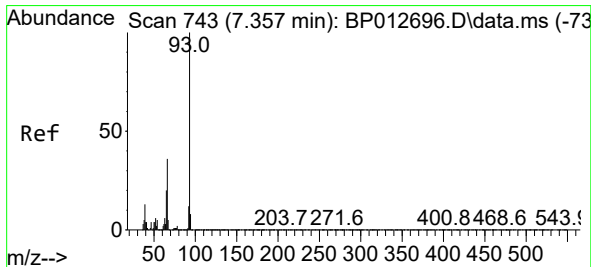
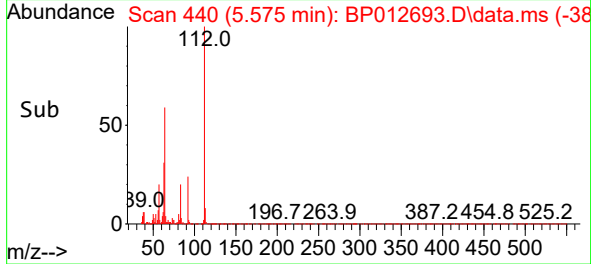
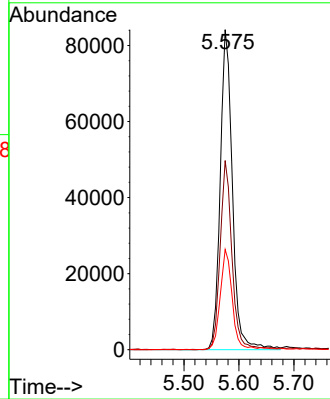
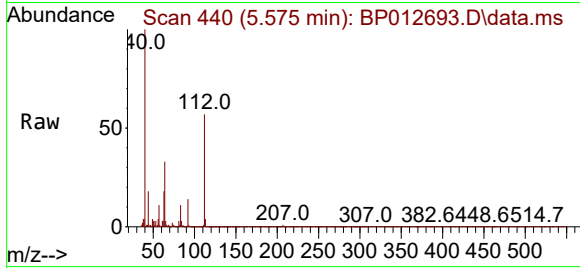


#5
 2-Fluorophenol
 Concen: 8.675 ng
 RT: 5.575 min Scan# 440
 Delta R.T. -0.000 min
 Lab File: BP012693.D
 Acq: 22 Nov 2022 10:02

Instrument :
 BNA_P
 ClientSampleId :
 SSTDICC005

Tgt Ion: 112 Resp: 129630

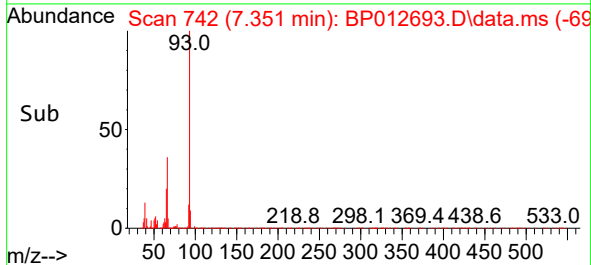
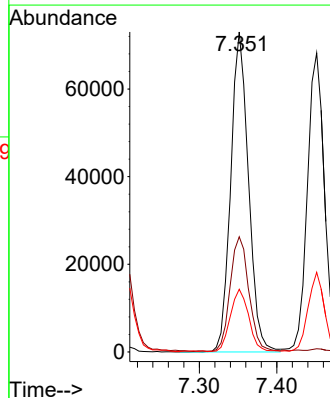
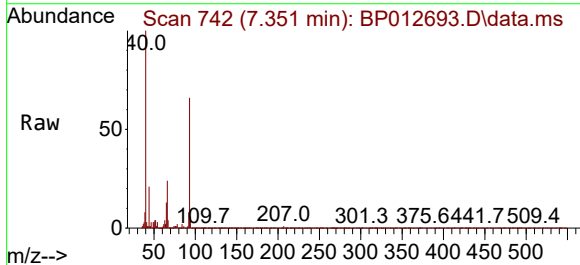
Ion	Ratio	Lower	Upper
112	100		
64	59.1	45.4	68.0
63	31.3	24.6	37.0

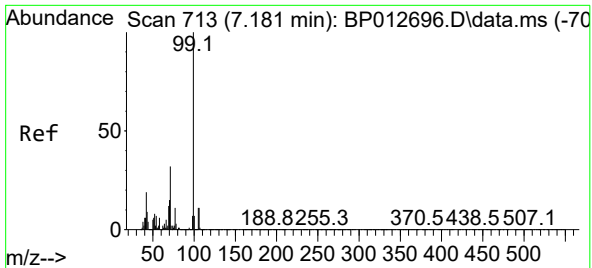


#6
 Aniline
 Concen: 4.446 ng
 RT: 7.351 min Scan# 742
 Delta R.T. -0.006 min
 Lab File: BP012693.D
 Acq: 22 Nov 2022 10:02

Tgt Ion: 93 Resp: 116389

Ion	Ratio	Lower	Upper
93	100		
66	36.0	29.3	43.9
65	19.6	15.8	23.6



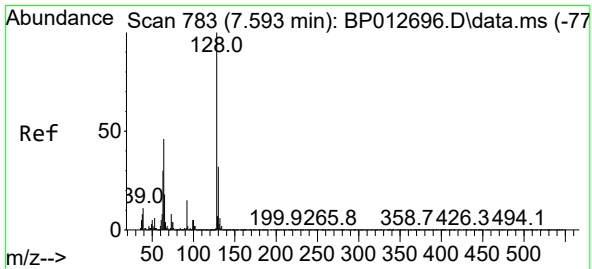
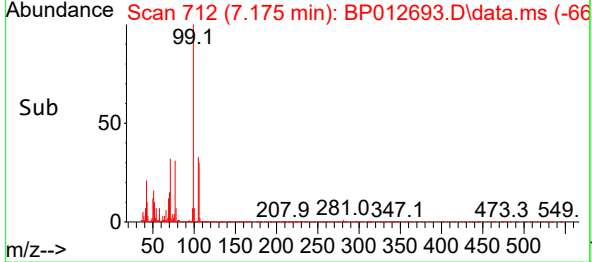
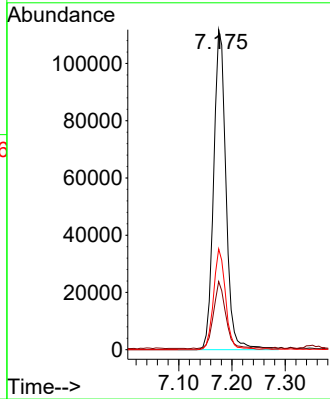
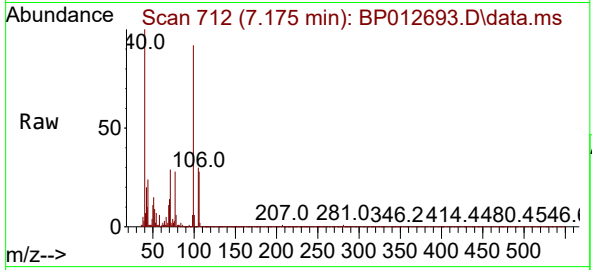


#7
 Phenol-d6
 Concen: 8.720 ng
 RT: 7.175 min Scan# 712
 Delta R.T. -0.006 min
 Lab File: BP012693.D
 Acq: 22 Nov 2022 10:02

Instrument : BNA_P
 ClientSampleId : SSTDICC005

Tgt Ion: 99 Resp: 180788

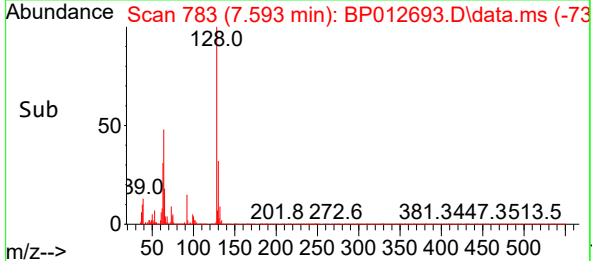
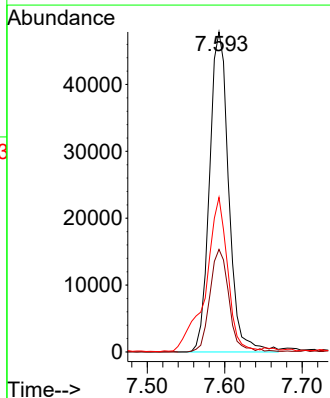
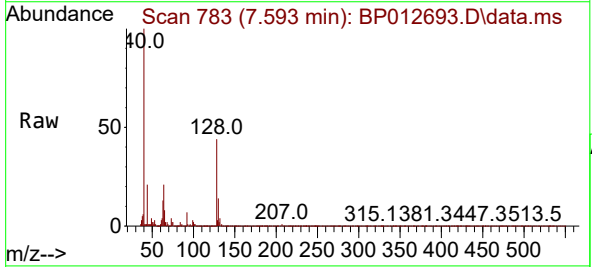
Ion	Ratio	Lower	Upper
99	100		
42	21.3	15.0	22.6
71	31.5	25.3	37.9

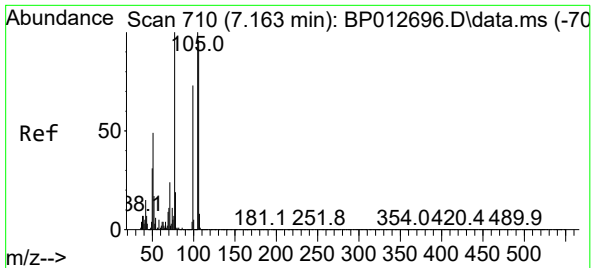


#8
 2-Chlorophenol
 Concen: 4.361 ng
 RT: 7.593 min Scan# 783
 Delta R.T. -0.000 min
 Lab File: BP012693.D
 Acq: 22 Nov 2022 10:02

Tgt Ion: 128 Resp: 82342

Ion	Ratio	Lower	Upper
128	100		
130	32.1	12.1	52.1
64	48.3	25.9	65.9





#9
Benzaldehyde
Concen: 6.656 ng
RT: 7.163 min Scan# 710
Delta R.T. -0.000 min
Lab File: BP012693.D
Acq: 22 Nov 2022 10:02

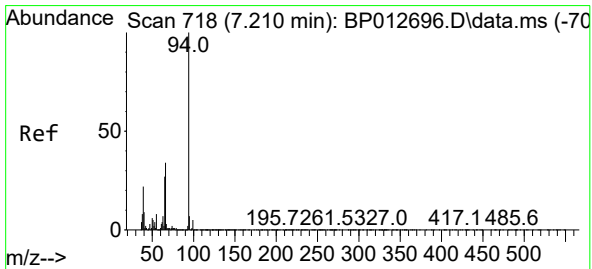
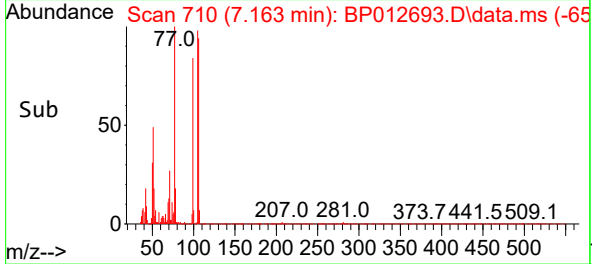
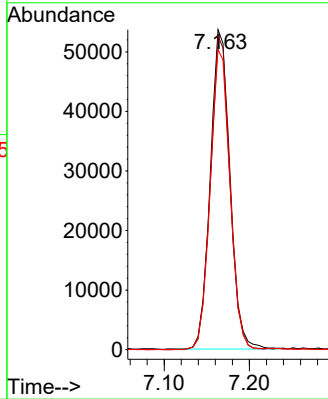
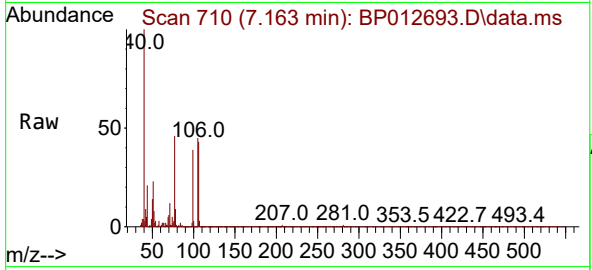
Instrument :

BNA_P

ClientSampleId :

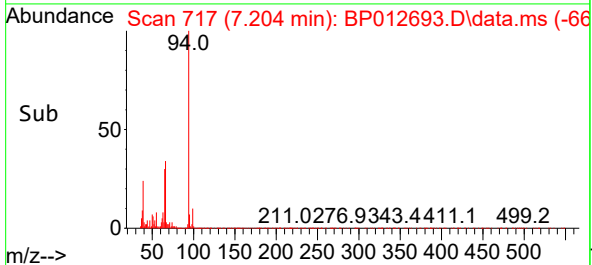
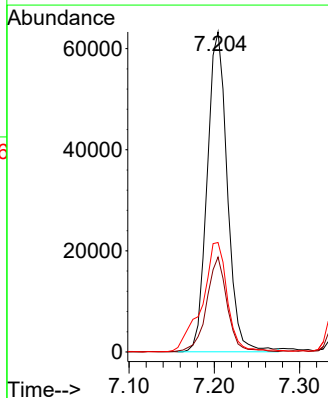
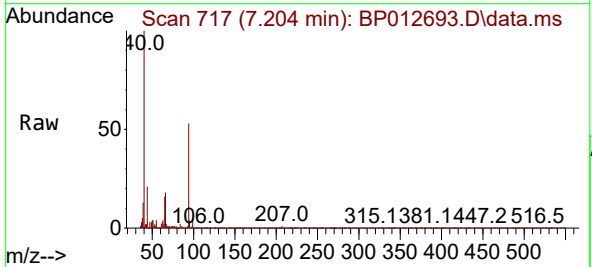
SSTDICC005

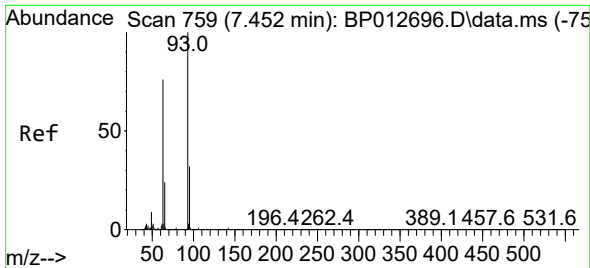
Tgt Ion: 77 Resp: 85010
Ion Ratio Lower Upper
77 100
105 98.1 80.0 120.0
106 93.8 75.6 115.6



#10
Phenol
Concen: 4.412 ng
RT: 7.204 min Scan# 717
Delta R.T. -0.006 min
Lab File: BP012693.D
Acq: 22 Nov 2022 10:02

Tgt Ion: 94 Resp: 103753
Ion Ratio Lower Upper
94 100
65 29.7 7.4 47.4
66 34.2 14.0 54.0



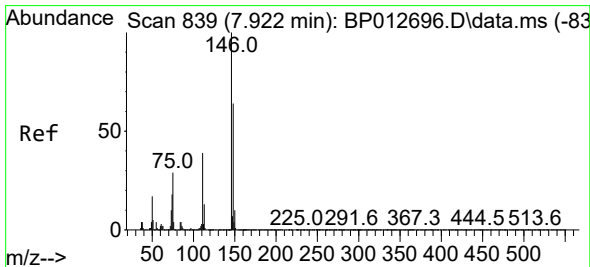
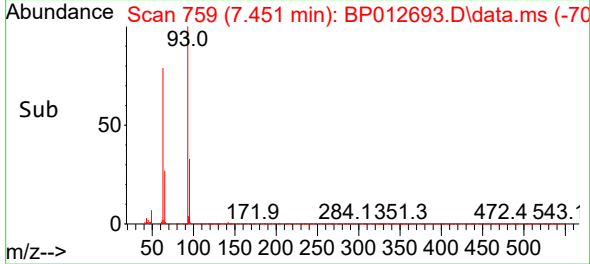
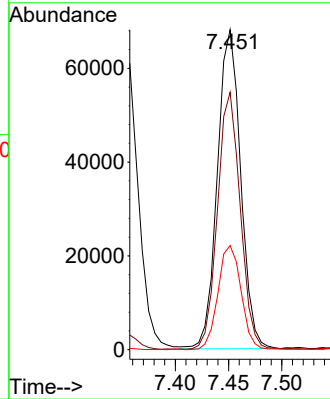
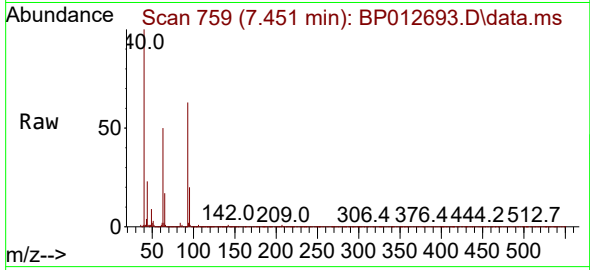


#11
 bis(2-Chloroethyl)ether
 Concen: 5.093 ng
 RT: 7.451 min Scan# 71
 Delta R.T. -0.000 min
 Lab File: BP012693.D
 Acq: 22 Nov 2022 10:02

Instrument :
 BNA_P
 ClientSampleId :
 SSTDICC005

Tgt Ion: 93 Resp: 103276

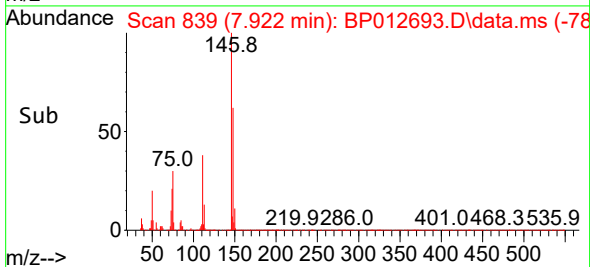
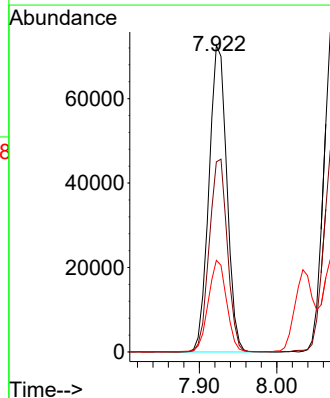
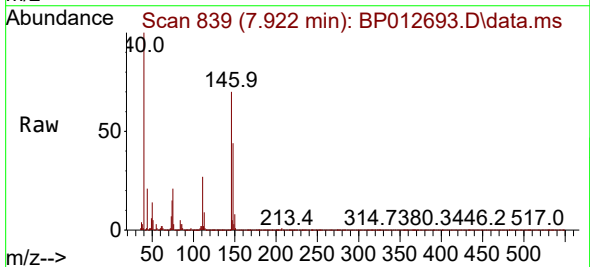
Ion	Ratio	Lower	Upper
93	100		
63	80.5	56.2	96.2
95	32.6	12.1	52.1

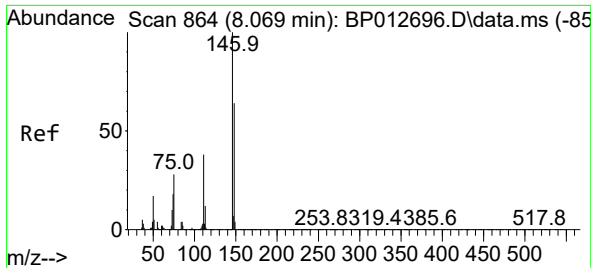


#12
 1,3-Dichlorobenzene
 Concen: 5.072 ng
 RT: 7.922 min Scan# 839
 Delta R.T. -0.000 min
 Lab File: BP012693.D
 Acq: 22 Nov 2022 10:02

Tgt Ion: 146 Resp: 116415

Ion	Ratio	Lower	Upper
146	100		
148	62.0	51.3	76.9
75	29.9	23.6	35.4

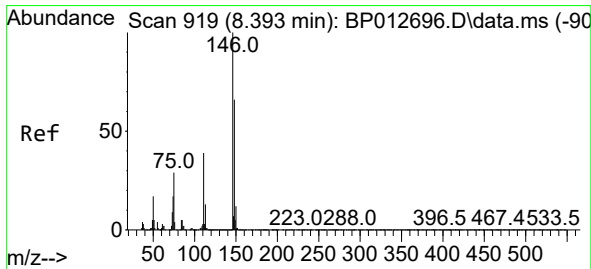
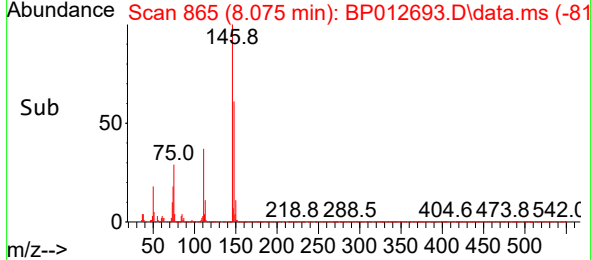
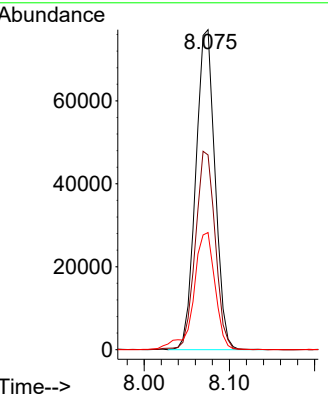
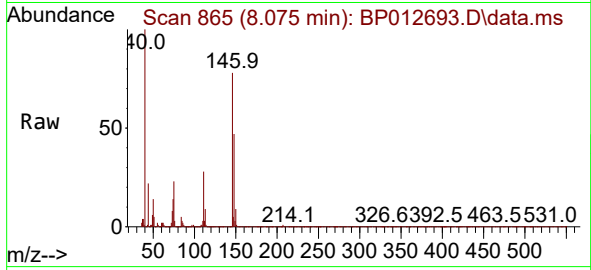




#13
 1,4-Dichlorobenzene
 Concen: 5.133 ng
 RT: 8.075 min Scan# 80
 Delta R.T. 0.006 min
 Lab File: BP012693.D
 Acq: 22 Nov 2022 10:02

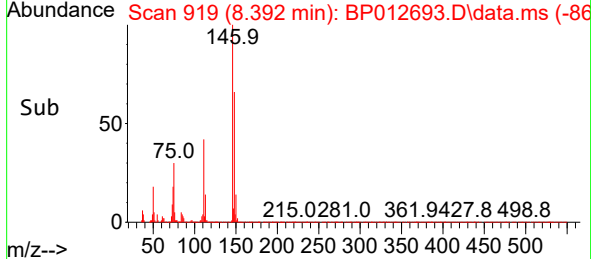
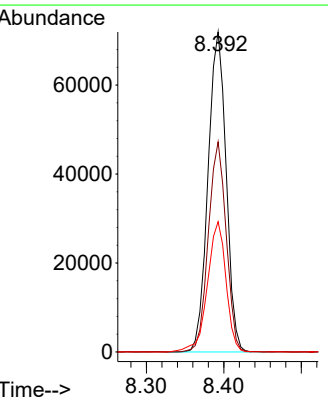
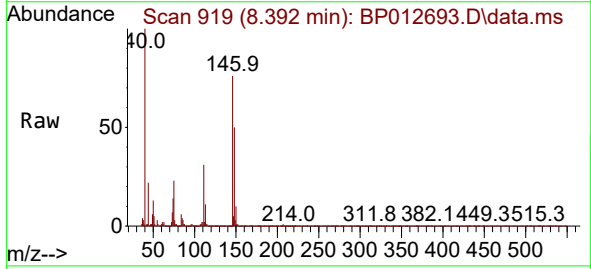
Instrument : BNA_P
 ClientSampleId : SSTDICC005

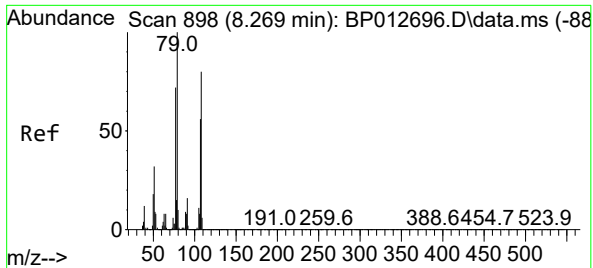
Tgt Ion	Resp	Lower	Upper
146	121375		
146	100		
148	60.9	51.6	77.4
111	36.6	30.9	46.3



#14
 1,2-Dichlorobenzene
 Concen: 5.092 ng
 RT: 8.392 min Scan# 919
 Delta R.T. -0.000 min
 Lab File: BP012693.D
 Acq: 22 Nov 2022 10:02

Tgt Ion	Resp	Lower	Upper
146	116655		
146	100		
148	65.7	52.6	78.8
111	40.7	31.5	47.3



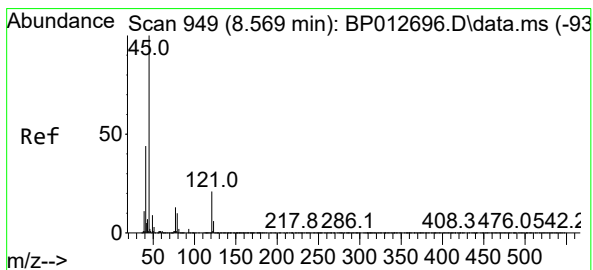
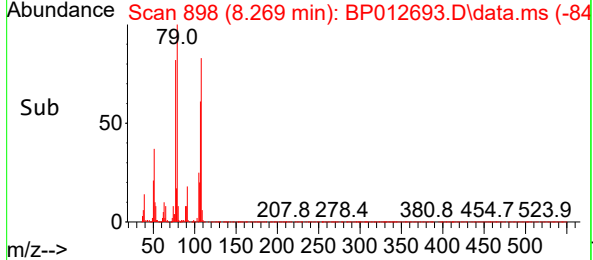
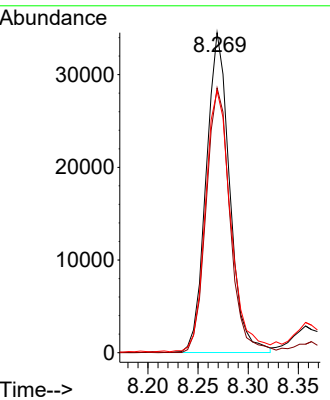
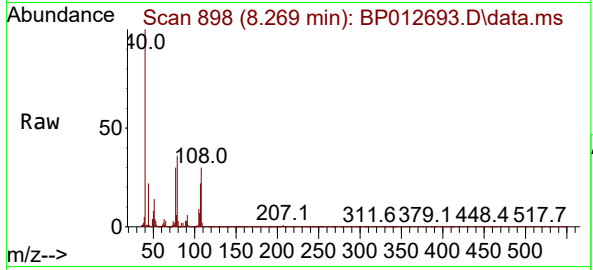


#15
 Benzyl Alcohol
 Concen: 3.871 ng
 RT: 8.269 min Scan# 898
 Delta R.T. -0.000 min
 Lab File: BP012693.D
 Acq: 22 Nov 2022 10:02

Instrument : BNA_P
 Client Sample Id : SSTDICC005

Tgt Ion: 79 Resp: 56300

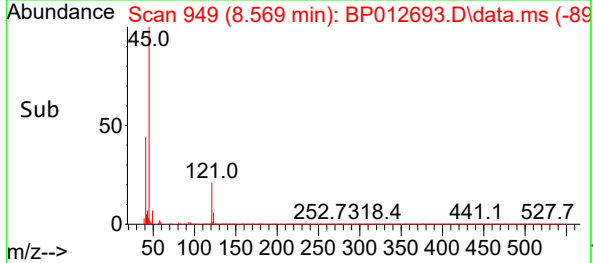
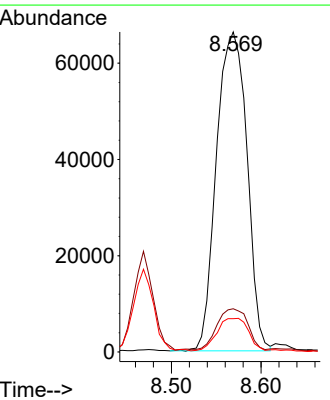
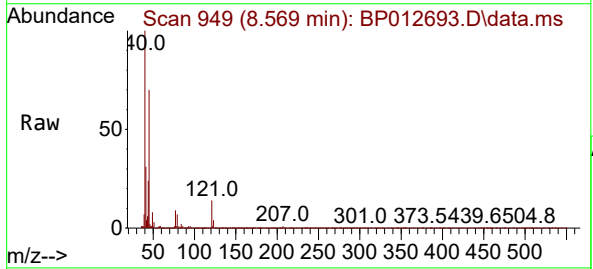
Ion	Ratio	Lower	Upper
79	100		
108	82.7	63.8	95.8
77	81.8	57.6	86.4

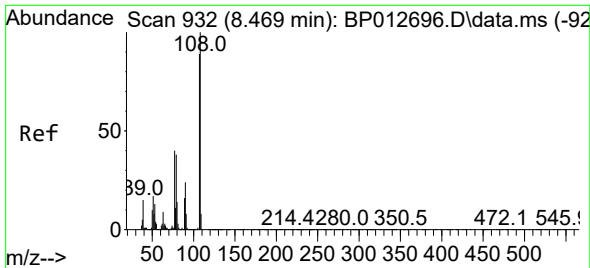


#16
 2,2'-oxybis(1-Chloropropane)
 Concen: 5.248 ng
 RT: 8.569 min Scan# 949
 Delta R.T. -0.000 min
 Lab File: BP012693.D
 Acq: 22 Nov 2022 10:02

Tgt Ion: 45 Resp: 156633

Ion	Ratio	Lower	Upper
45	100		
77	13.5	0.0	33.5
79	10.4	0.0	30.5

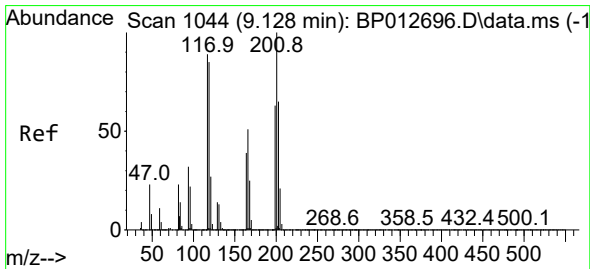
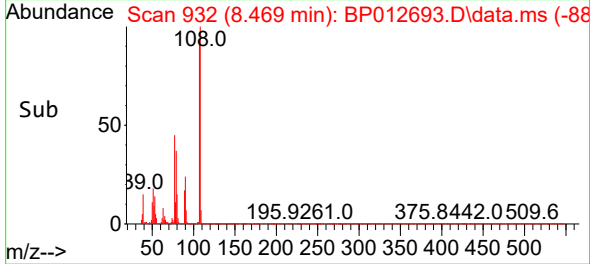
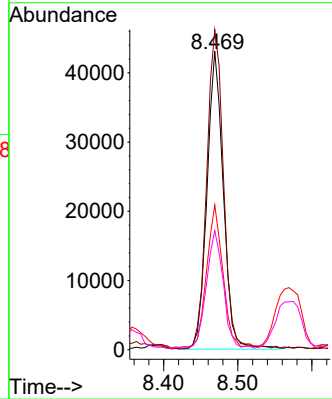
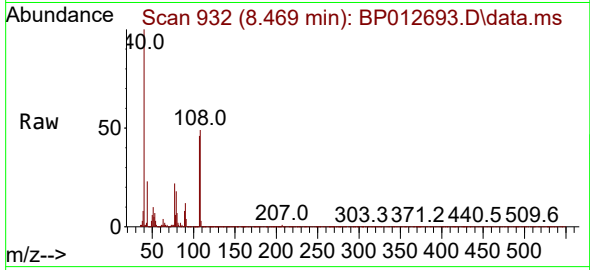




#17
 2-Methylphenol
 Concen: 4.068 ng
 RT: 8.469 min Scan# 91
 Delta R.T. -0.000 min
 Lab File: BP012693.D
 Acq: 22 Nov 2022 10:02

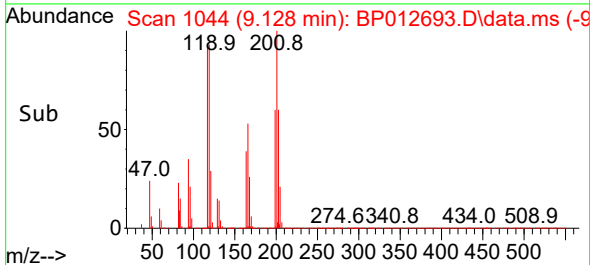
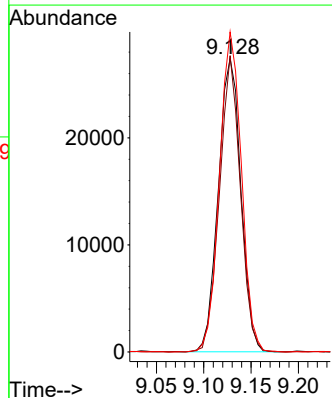
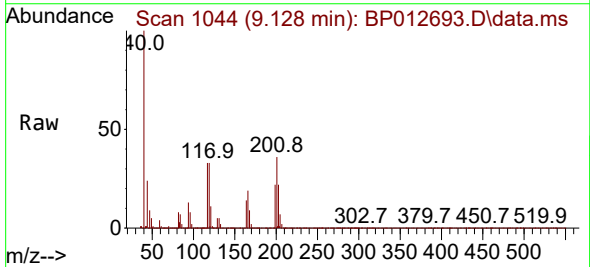
Instrument :
 BNA_P
 ClientSampleId :
 SSTDICC005

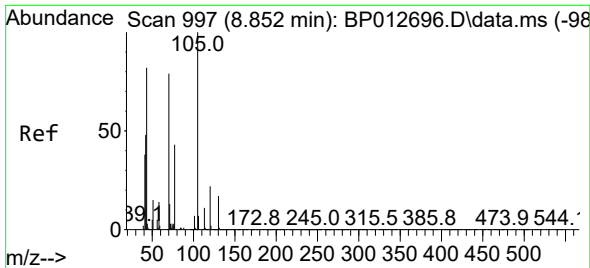
Tgt Ion	Resp	Lower	Upper
107	100		
108	107.2	89.8	134.8
77	48.5	35.9	53.9
79	39.9	34.6	52.0



#18
 Hexachloroethane
 Concen: 5.313 ng
 RT: 9.128 min Scan# 1044
 Delta R.T. -0.000 min
 Lab File: BP012693.D
 Acq: 22 Nov 2022 10:02

Tgt Ion	Resp	Lower	Upper
117	100		
119	101.0	76.4	114.6
201	112.1	89.8	134.6



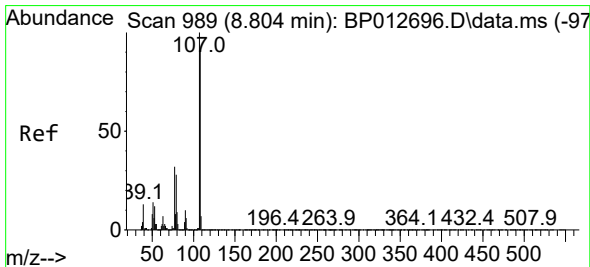
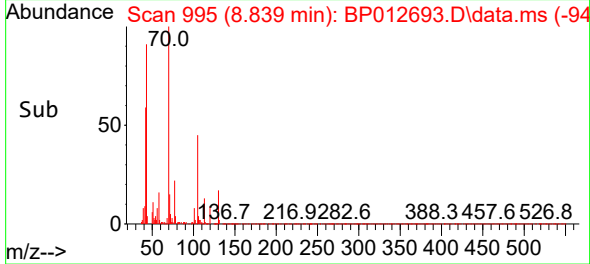
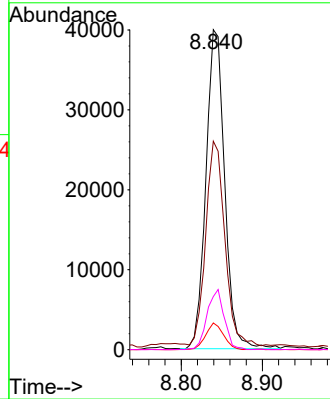
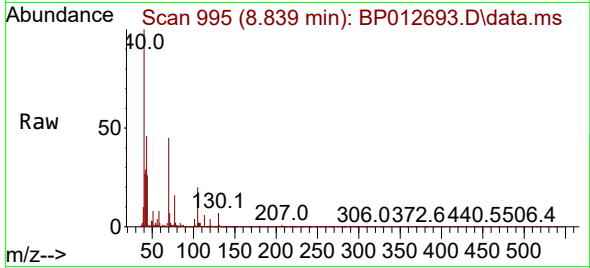


#19
 n-Nitroso-di-n-propylamine
 Concen: 4.484 ng
 RT: 8.839 min Scan# 997
 Delta R.T. -0.012 min
 Lab File: BP012693.D
 Acq: 22 Nov 2022 10:02

Instrument : BNA_P
 ClientSampleId : SSTDICC005

Tgt Ion: 70 Resp: 64036

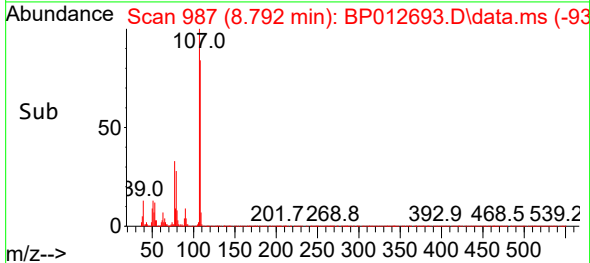
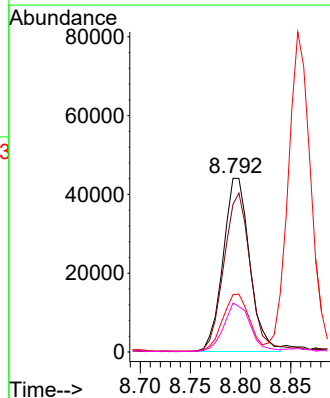
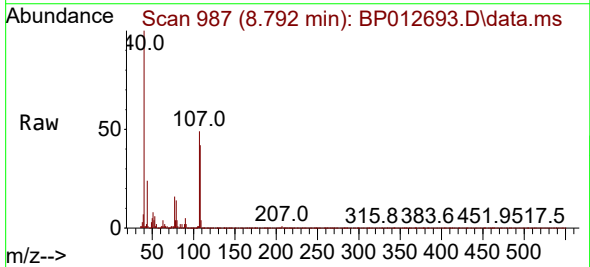
Ion	Ratio	Lower	Upper
70	100		
42	65.1	49.4	74.0
101	8.4	7.4	11.2
130	16.6	16.8	25.2

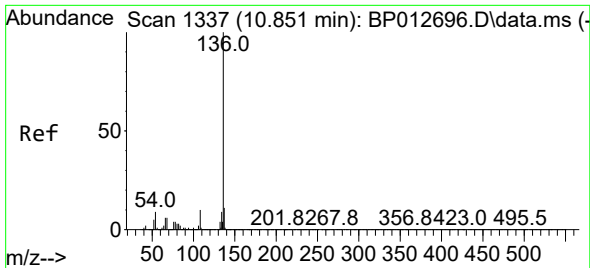


#20
 3+4-Methylphenols
 Concen: 3.680 ng
 RT: 8.792 min Scan# 987
 Delta R.T. -0.012 min
 Lab File: BP012693.D
 Acq: 22 Nov 2022 10:02

Tgt Ion: 107 Resp: 80790

Ion	Ratio	Lower	Upper
107	100		
108	85.0	71.1	111.1
77	33.0	12.2	52.2
79	28.2	8.0	48.0



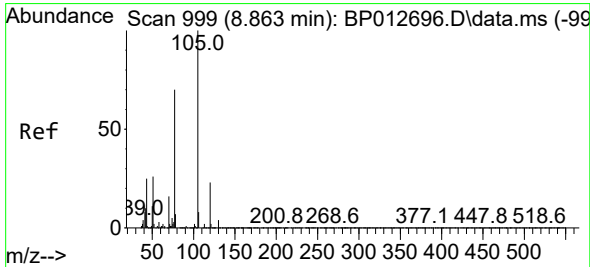
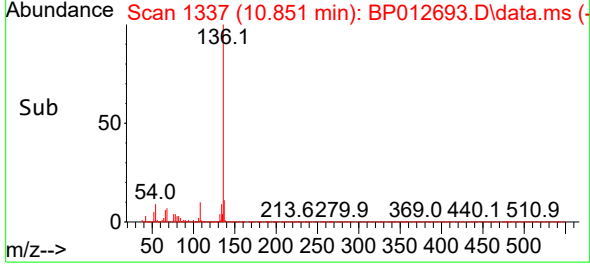
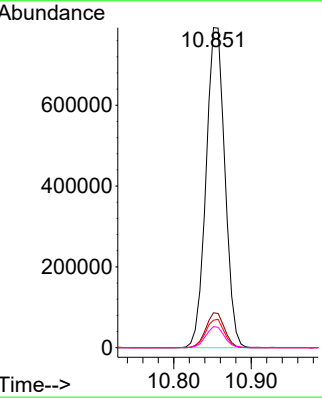
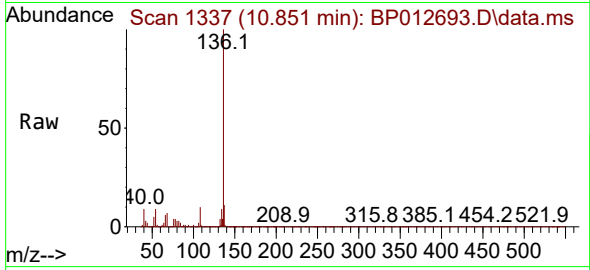


#21
 Naphthalene-d8
 Concen: 20.000 ng
 RT: 10.851 min Scan# 11
 Delta R.T. -0.000 min
 Lab File: BP012693.D
 Acq: 22 Nov 2022 10:02

Instrument :
 BNA_P
 ClientSampleId :
 SSTDICC005

Tgt Ion:136 Resp: 1336317

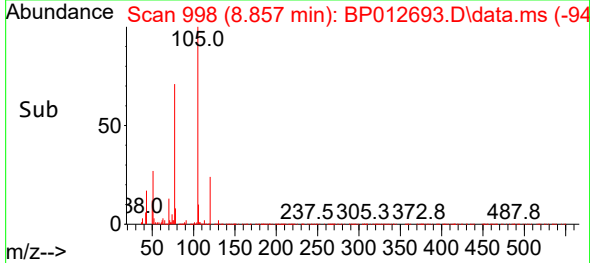
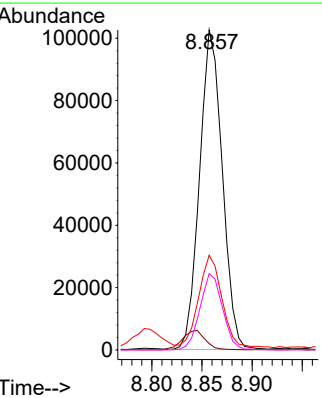
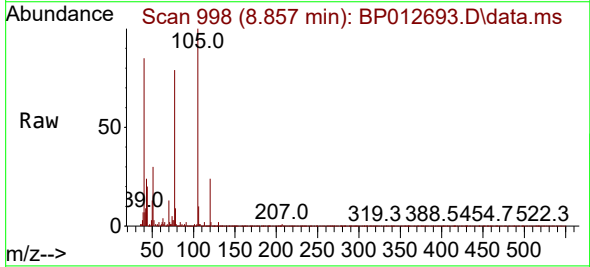
Ion	Ratio	Lower	Upper
136	100		
137	10.9	9.1	13.7
54	8.6	6.9	10.3
68	6.6	5.0	7.6

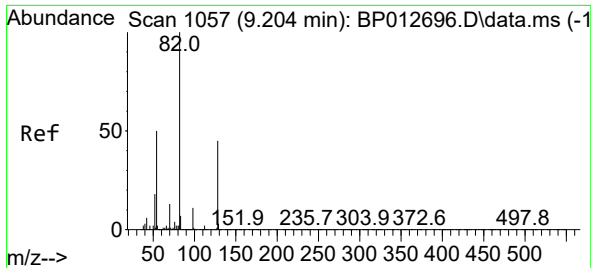


#22
 Acetophenone
 Concen: 4.892 ng
 RT: 8.857 min Scan# 998
 Delta R.T. -0.006 min
 Lab File: BP012693.D
 Acq: 22 Nov 2022 10:02

Tgt Ion:105 Resp: 161322

Ion	Ratio	Lower	Upper
105	100		
71	2.0	2.2	3.2#
51	29.6	22.1	33.1
120	23.9	18.1	27.1



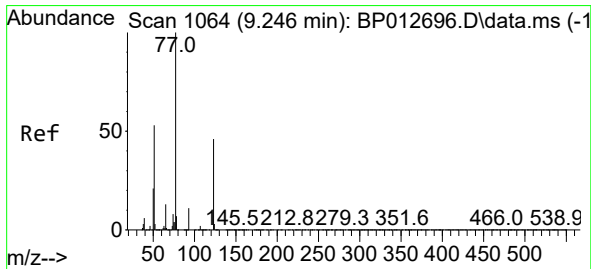
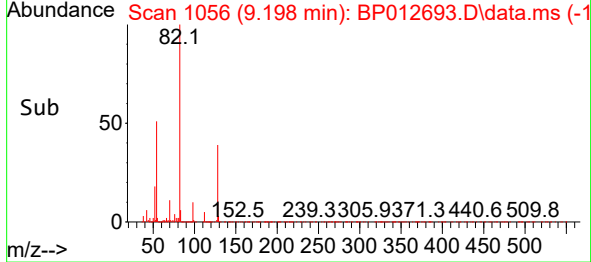
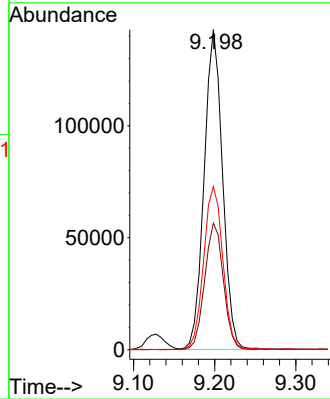
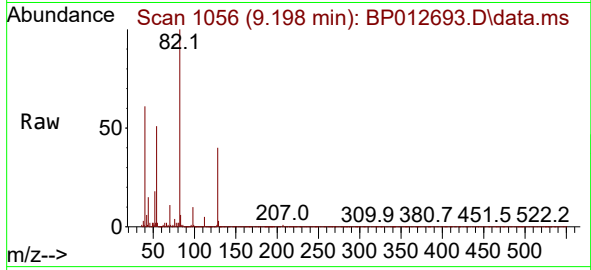


#23
 Nitrobenzene-d5
 Concen: 9.423 ng
 RT: 9.198 min Scan# 1056
 Delta R.T. -0.006 min
 Lab File: BP012693.D
 Acq: 22 Nov 2022 10:02

Instrument : BNA_P
 ClientSampleId : SSTDICC005

Tgt Ion: 82 Resp: 224695

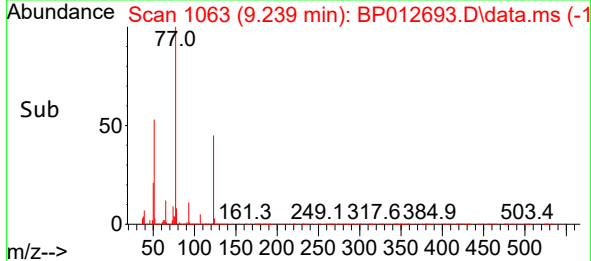
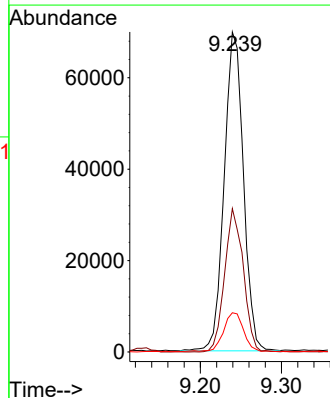
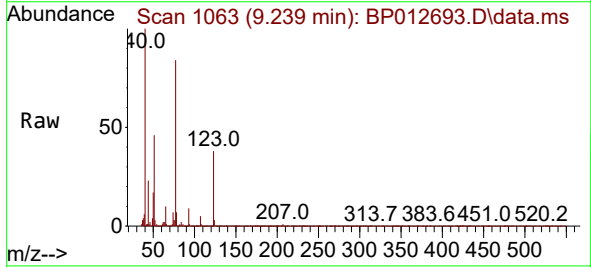
Ion	Ratio	Lower	Upper
82	100		
128	39.5	35.6	53.4
54	50.9	40.3	60.5

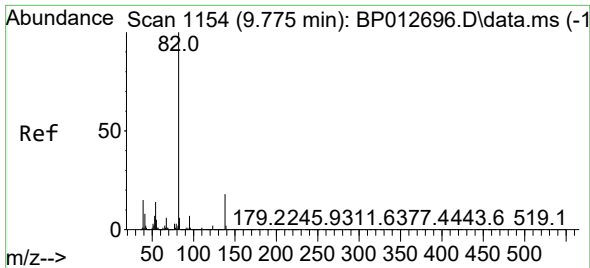


#24
 Nitrobenzene
 Concen: 4.663 ng
 RT: 9.239 min Scan# 1063
 Delta R.T. -0.006 min
 Lab File: BP012693.D
 Acq: 22 Nov 2022 10:02

Tgt Ion: 77 Resp: 114945

Ion	Ratio	Lower	Upper
77	100		
123	44.8	37.3	55.9
65	12.2	10.4	15.6



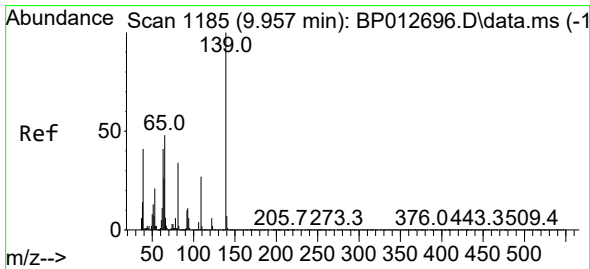
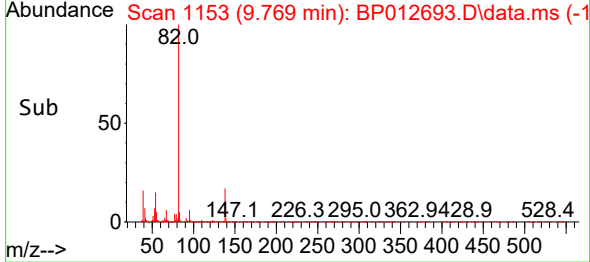
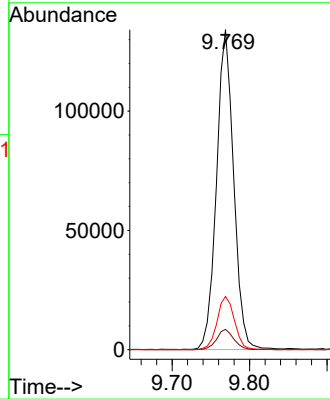
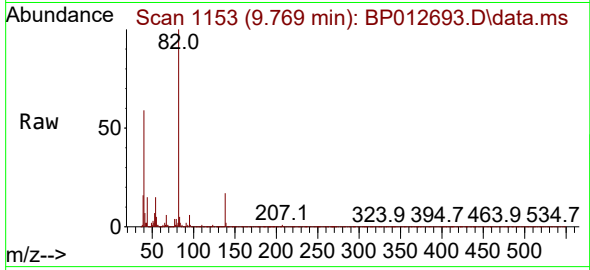


#25
 Isophorone
 Concen: 4.464 ng
 RT: 9.769 min Scan# 1153
 Delta R.T. -0.006 min
 Lab File: BP012693.D
 Acq: 22 Nov 2022 10:02

Instrument : BNA_P
 ClientSampleId : SSTDICC005

Tgt Ion: 82 Resp: 205746

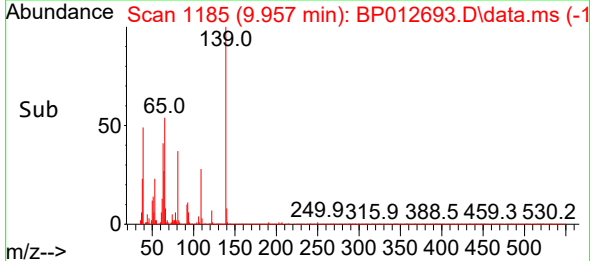
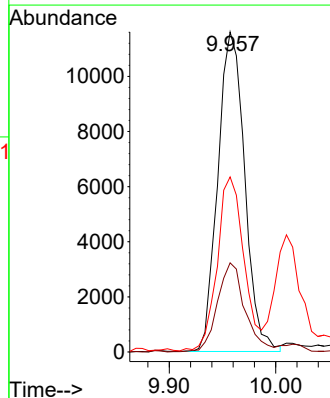
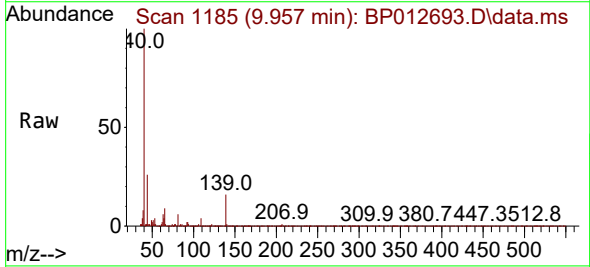
Ion	Ratio	Lower	Upper
82	100		
95	6.4	5.4	8.2
138	16.7	14.7	22.1

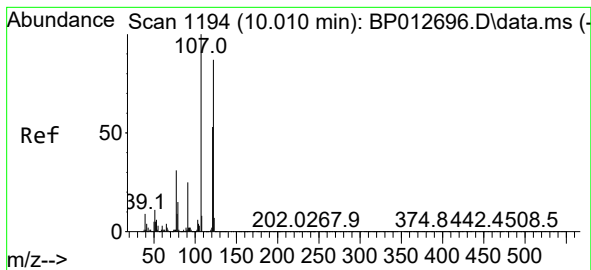


#26
 2-Nitrophenol
 Concen: 2.527 ng
 RT: 9.957 min Scan# 1185
 Delta R.T. -0.000 min
 Lab File: BP012693.D
 Acq: 22 Nov 2022 10:02

Tgt Ion: 139 Resp: 20320

Ion	Ratio	Lower	Upper
139	100		
109	27.8	21.5	32.3
65	54.7	38.3	57.5



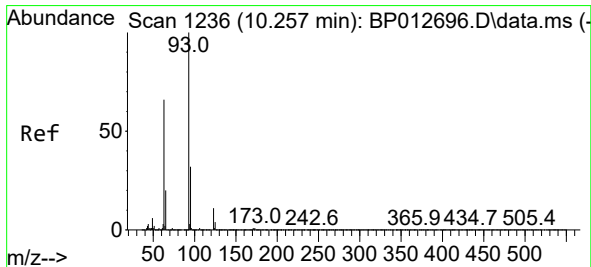
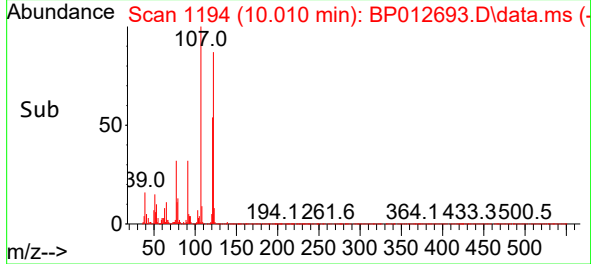
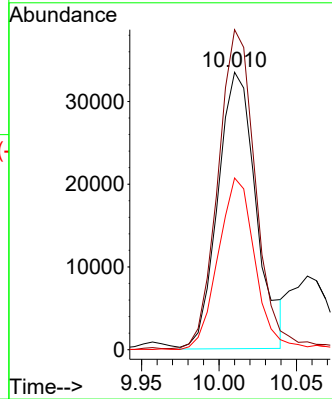
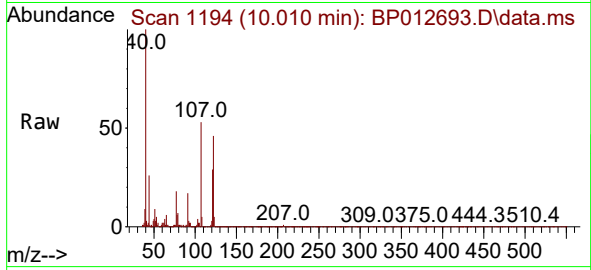


#27
 2,4-Dimethylphenol
 Concen: 3.623 ng
 RT: 10.010 min Scan# 1194
 Delta R.T. -0.000 min
 Lab File: BP012693.D
 Acq: 22 Nov 2022 10:02

Instrument :
 BNA_P
 ClientSampleId :
 SSTDICC005

Tgt Ion:122 Resp: 57367

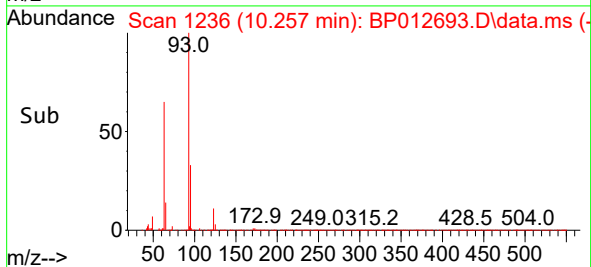
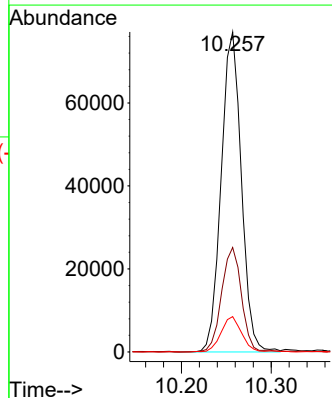
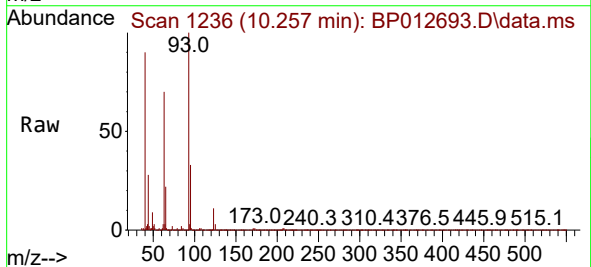
Ion	Ratio	Lower	Upper
122	100		
107	115.4	90.9	136.3
121	61.9	47.8	71.6

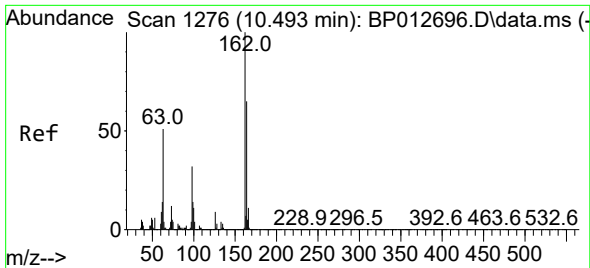


#28
 bis(2-Chloroethoxy)methane
 Concen: 4.601 ng
 RT: 10.257 min Scan# 1236
 Delta R.T. -0.000 min
 Lab File: BP012693.D
 Acq: 22 Nov 2022 10:02

Tgt Ion: 93 Resp: 120277

Ion	Ratio	Lower	Upper
93	100		
95	32.6	25.4	38.2
123	11.1	9.0	13.4



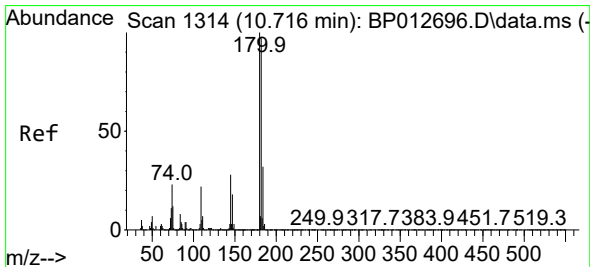
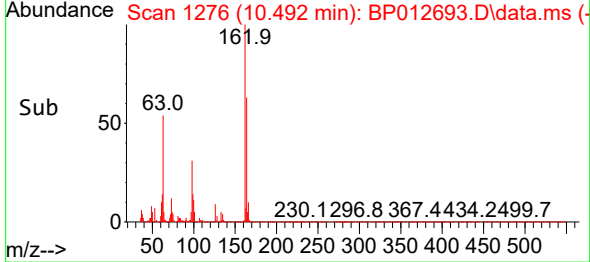
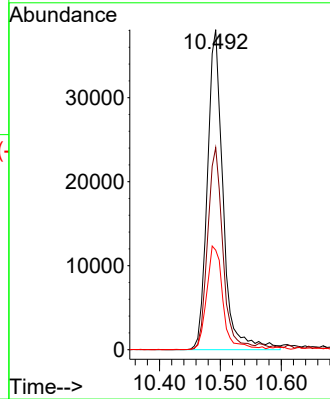
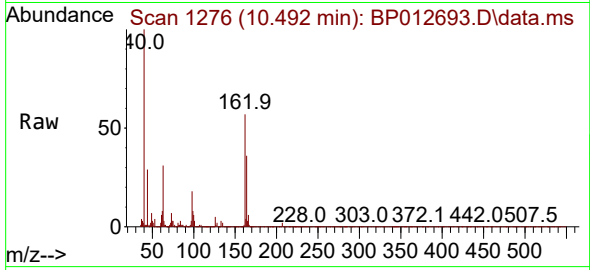


#29
 2,4-Dichlorophenol
 Concen: 3.402 ng
 RT: 10.492 min Scan# 11
 Delta R.T. -0.000 min
 Lab File: BP012693.D
 Acq: 22 Nov 2022 10:02

Instrument :
 BNA_P
 ClientSampleId :
 SSTDICC005

Tgt Ion:162 Resp: 68389

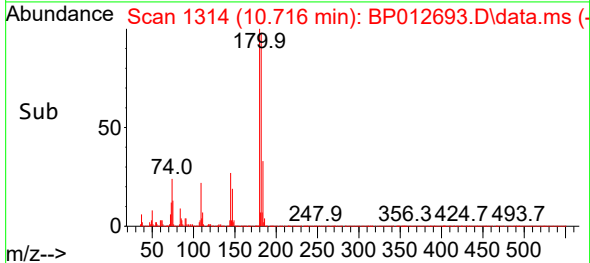
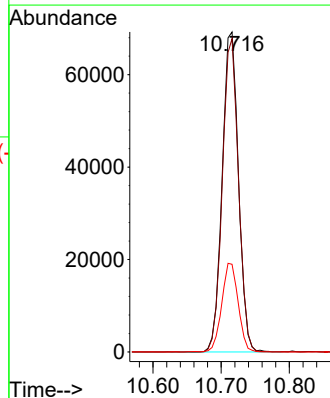
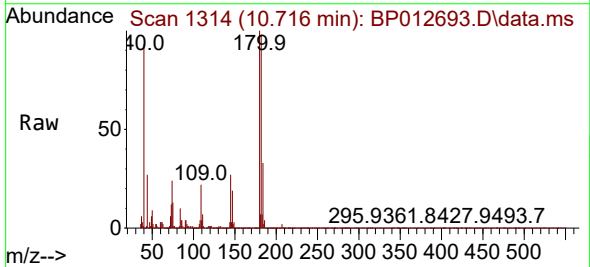
Ion	Ratio	Lower	Upper
162	100		
164	63.2	44.9	84.9
98	31.1	12.5	52.5

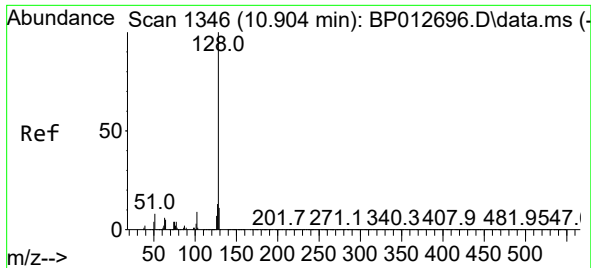


#30
 1,2,4-Trichlorobenzene
 Concen: 4.651 ng
 RT: 10.716 min Scan# 1314
 Delta R.T. -0.000 min
 Lab File: BP012693.D
 Acq: 22 Nov 2022 10:02

Tgt Ion:180 Resp: 115010

Ion	Ratio	Lower	Upper
180	100		
182	97.9	77.4	116.2
145	27.4	22.2	33.2

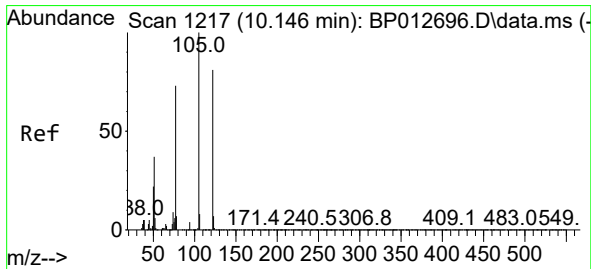
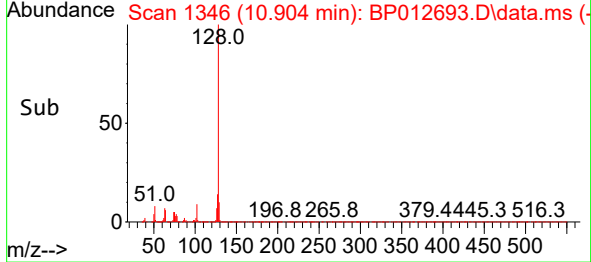
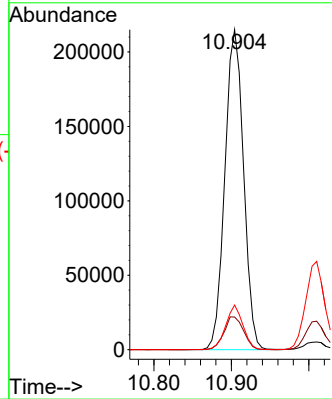
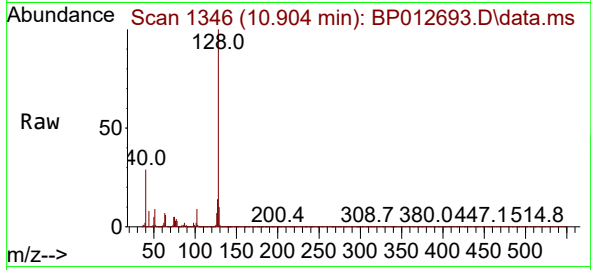




#31
 Naphthalene
 Concen: 4.831 ng
 RT: 10.904 min Scan# 11
 Delta R.T. -0.000 min
 Lab File: BP012693.D
 Acq: 22 Nov 2022 10:02

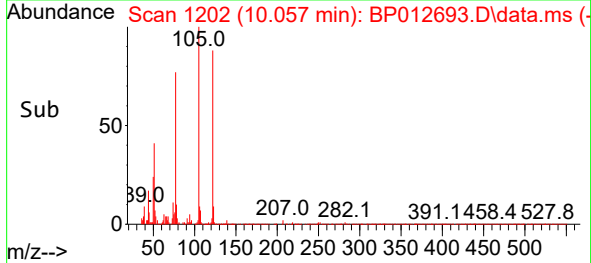
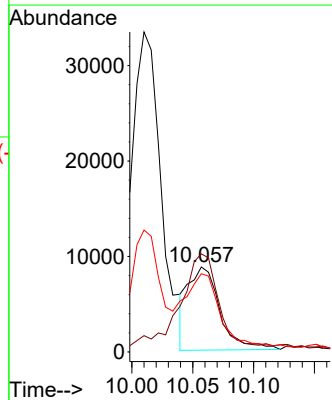
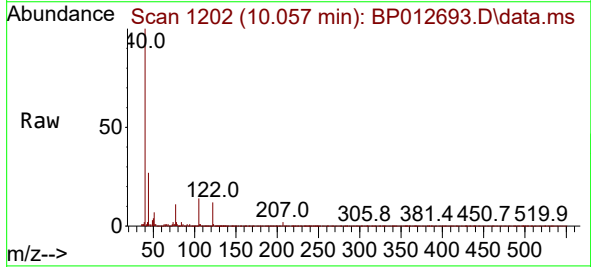
Instrument :
 BNA_P
 ClientSampleId :
 SSTDICC005

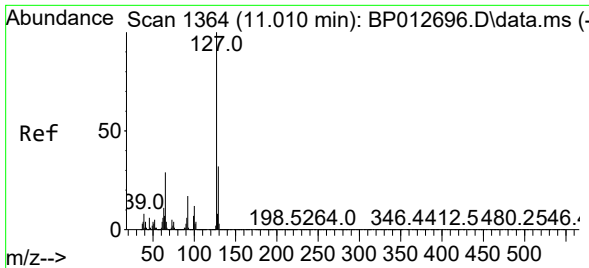
Tgt Ion:128 Resp: 360541
 Ion Ratio Lower Upper
 128 100
 129 10.2 8.9 13.3
 127 14.0 10.5 15.7



#32
 Benzoic acid
 Concen: 1.841 ng
 RT: 10.057 min Scan# 1202
 Delta R.T. -0.088 min
 Lab File: BP012693.D
 Acq: 22 Nov 2022 10:02

Tgt Ion:122 Resp: 15961
 Ion Ratio Lower Upper
 122 100
 105 115.4 98.3 138.3
 77 92.1 70.6 110.6



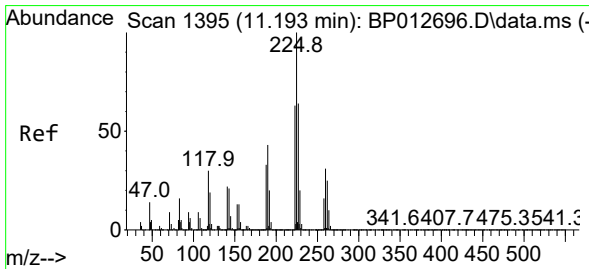
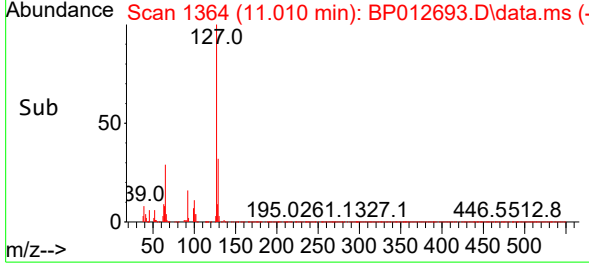
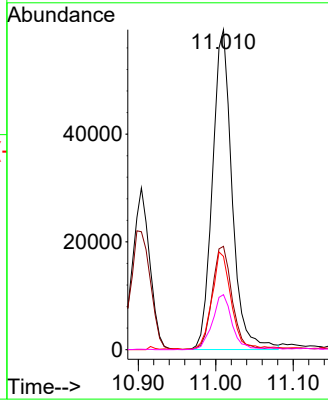
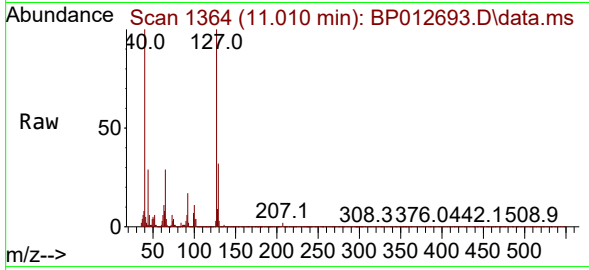


#33
 4-Chloroaniline
 Concen: 3.971 ng
 RT: 11.010 min Scan# 11
 Delta R.T. -0.000 min
 Lab File: BP012693.D
 Acq: 22 Nov 2022 10:02

Instrument : BNA_P
 ClientSampleId : SSTDICC005

Tgt Ion:127 Resp: 104377

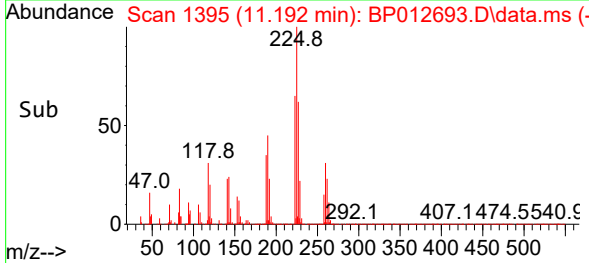
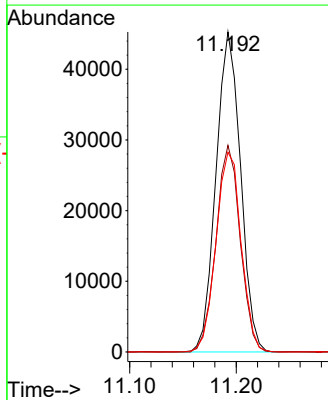
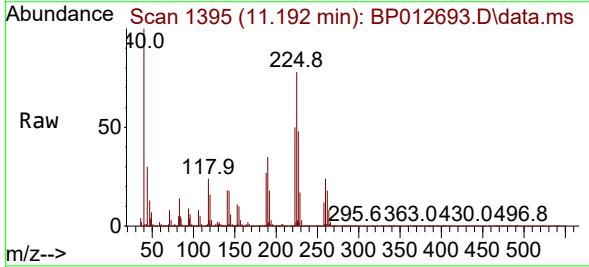
Ion	Ratio	Lower	Upper
127	100		
129	32.3	25.8	38.8
65	29.2	23.6	35.4
92	17.2	13.9	20.9

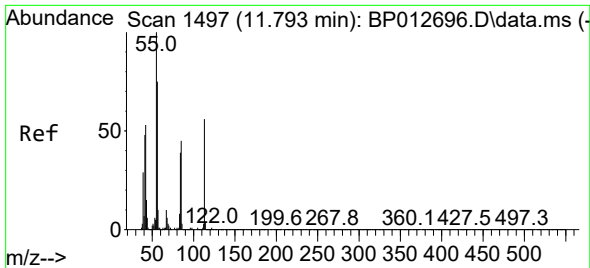


#34
 Hexachlorobutadiene
 Concen: 4.676 ng
 RT: 11.192 min Scan# 1395
 Delta R.T. -0.000 min
 Lab File: BP012693.D
 Acq: 22 Nov 2022 10:02

Tgt Ion:225 Resp: 72394

Ion	Ratio	Lower	Upper
225	100		
223	64.6	50.6	76.0
227	62.4	51.0	76.6

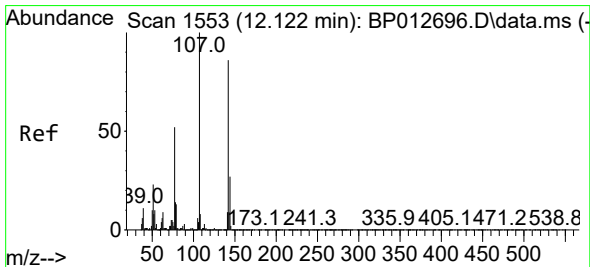
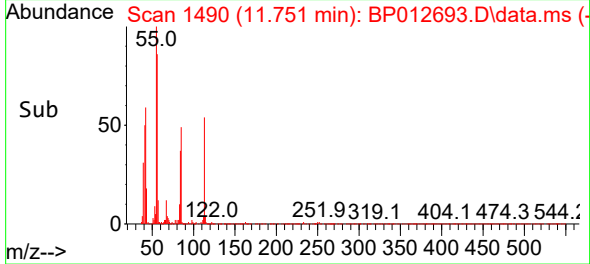
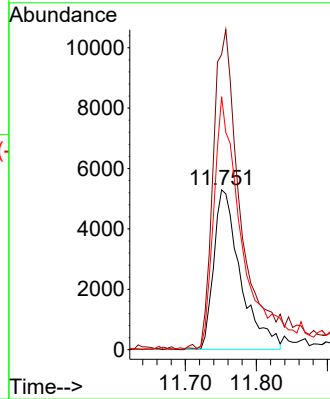
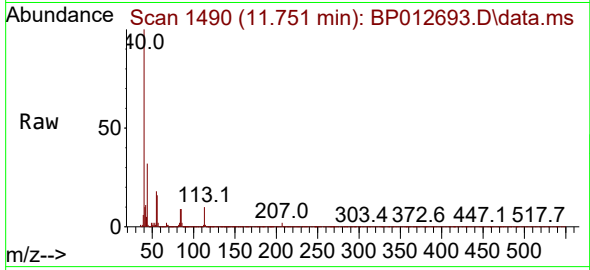




#35
 Caprolactam
 Concen: 2.319 ng
 RT: 11.751 min Scan# 1490
 Delta R.T. -0.041 min
 Lab File: BP012693.D
 Acq: 22 Nov 2022 10:02

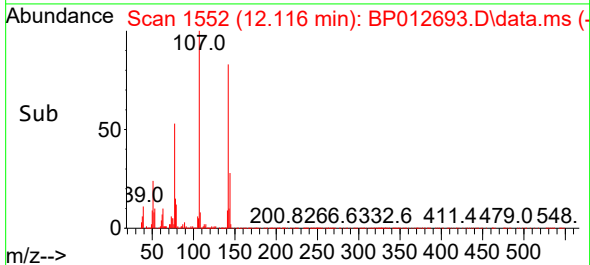
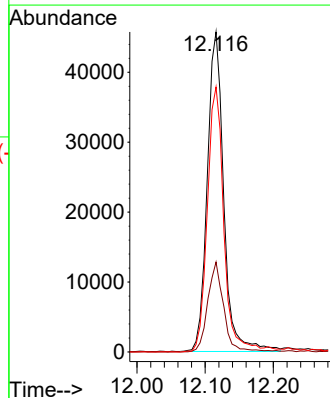
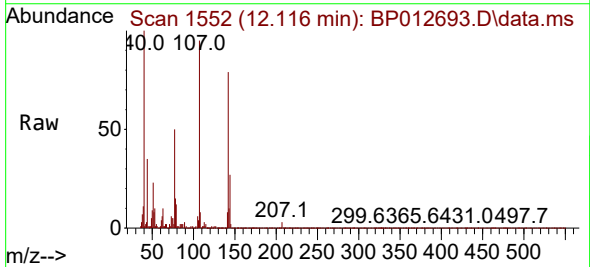
Instrument : BNA_P
 ClientSampleId : SSTDICC005

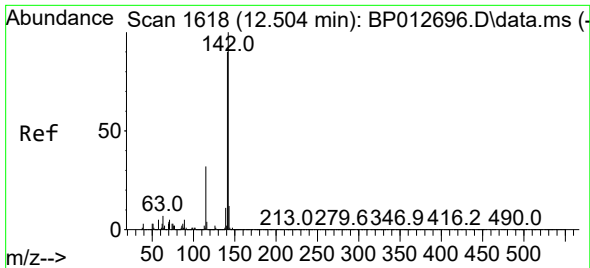
Tgt Ion:113 Resp: 13793
 Ion Ratio Lower Upper
 113 100
 55 184.8 158.0 198.0
 56 158.3 114.1 154.1#



#36
 4-Chloro-3-methylphenol
 Concen: 3.662 ng
 RT: 12.116 min Scan# 1552
 Delta R.T. -0.006 min
 Lab File: BP012693.D
 Acq: 22 Nov 2022 10:02

Tgt Ion:107 Resp: 77118
 Ion Ratio Lower Upper
 107 100
 144 28.1 22.0 33.0
 142 82.8 69.1 103.7

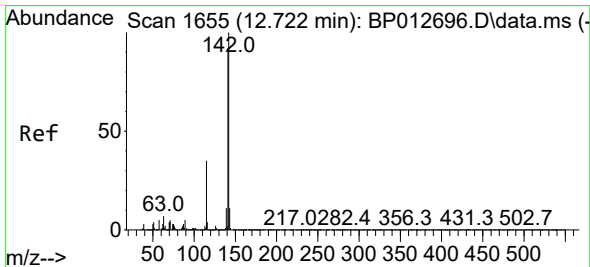
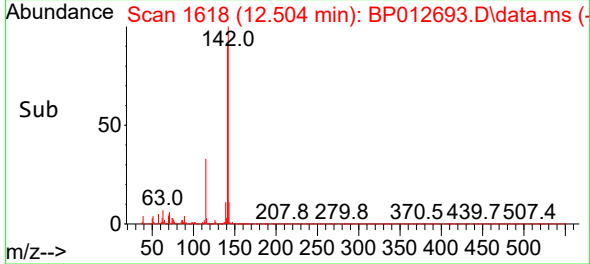
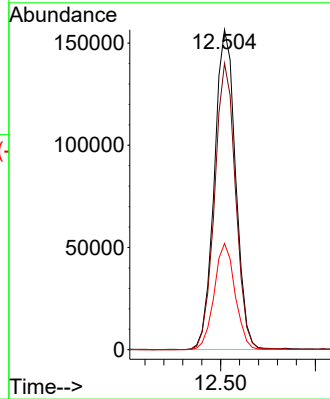
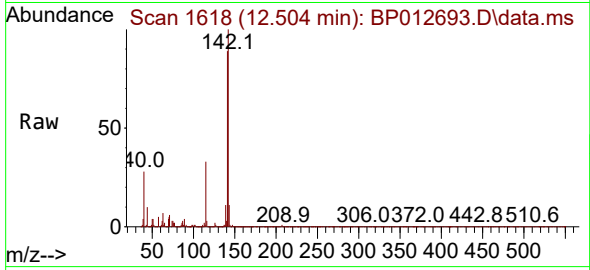




#37
 2-Methylnaphthalene
 Concen: 4.594 ng
 RT: 12.504 min Scan# 1618
 Delta R.T. -0.000 min
 Lab File: BP012693.D
 Acq: 22 Nov 2022 10:02

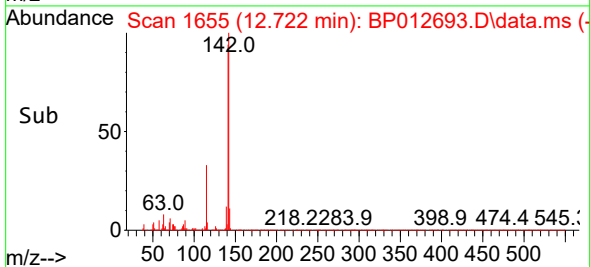
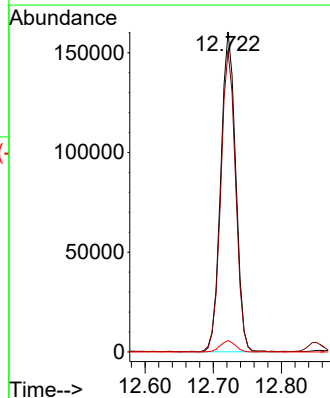
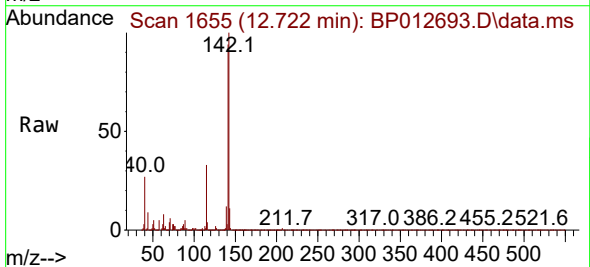
Instrument :
 BNA_P
 ClientSampleId :
 SSTDICC005

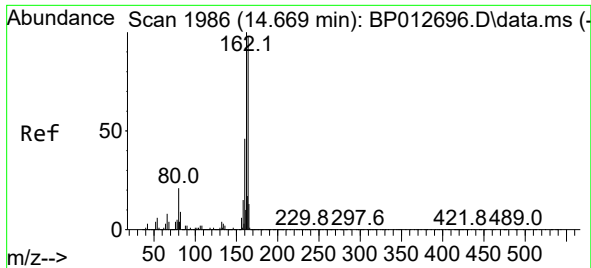
Tgt Ion:142 Resp: 243246
 Ion Ratio Lower Upper
 142 100
 141 89.5 71.9 107.9
 115 33.2 26.0 39.0



#38
 1-Methylnaphthalene
 Concen: 4.668 ng
 RT: 12.722 min Scan# 1655
 Delta R.T. -0.000 min
 Lab File: BP012693.D
 Acq: 22 Nov 2022 10:02

Tgt Ion:142 Resp: 245326
 Ion Ratio Lower Upper
 142 100
 141 94.1 73.7 110.5
 116 3.5 2.9 4.3

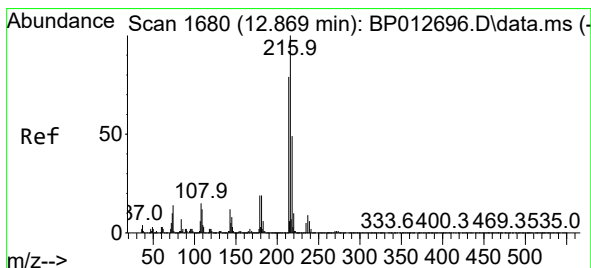
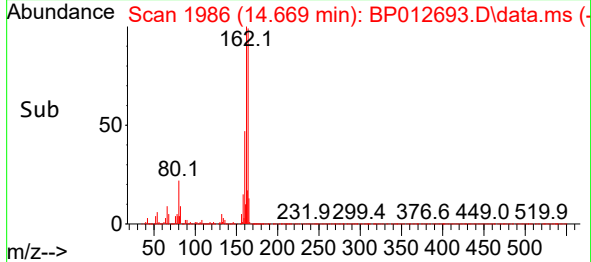
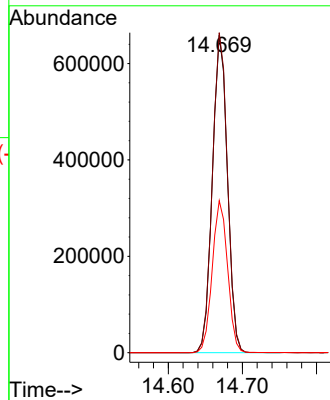
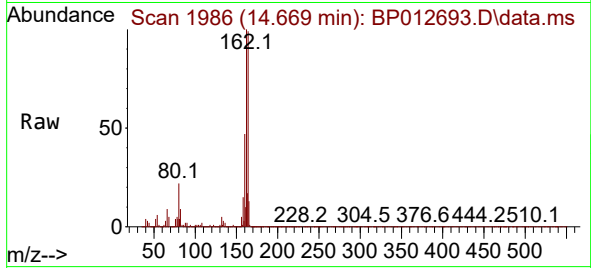




#39
 Acenaphthene-d10
 Concen: 20.000 ng
 RT: 14.669 min Scan# 1986
 Delta R.T. -0.000 min
 Lab File: BP012693.D
 Acq: 22 Nov 2022 10:02

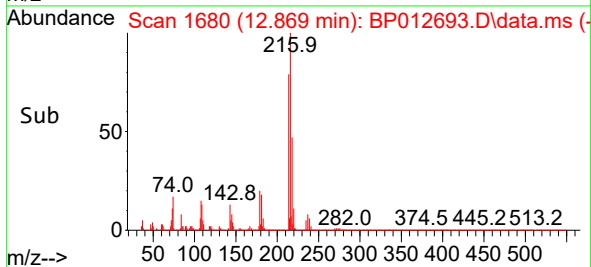
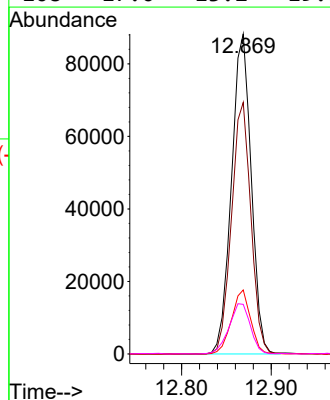
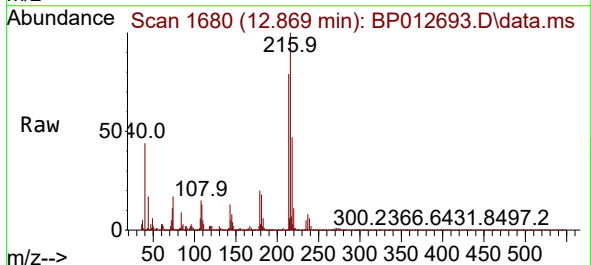
Instrument :
 BNA_P
 ClientSampleId :
 SSTDICC005

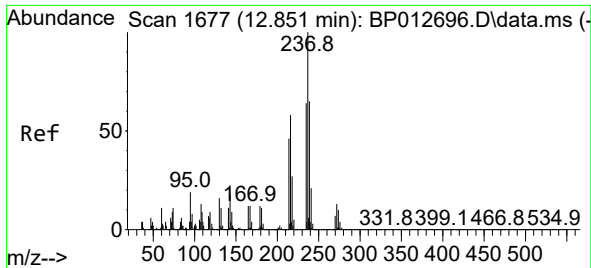
Tgt Ion:164 Resp: 928656
 Ion Ratio Lower Upper
 164 100
 162 100.8 81.3 121.9
 160 47.9 37.6 56.4



#40
 1,2,4,5-Tetrachlorobenzene
 Concen: 4.543 ng
 RT: 12.869 min Scan# 1680
 Delta R.T. -0.000 min
 Lab File: BP012693.D
 Acq: 22 Nov 2022 10:02

Tgt Ion:216 Resp: 134364
 Ion Ratio Lower Upper
 216 100
 214 77.5 62.8 94.2
 179 19.4 15.3 22.9
 108 17.0 13.2 19.8

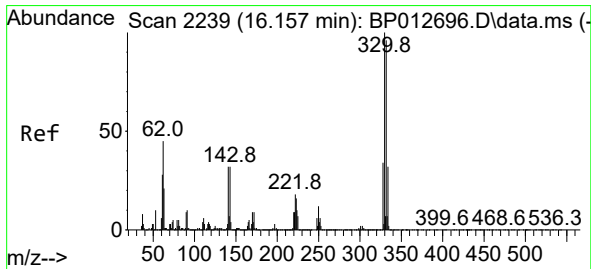
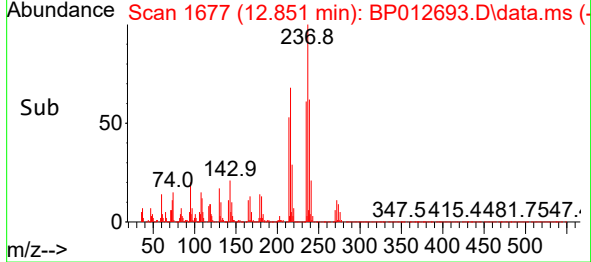
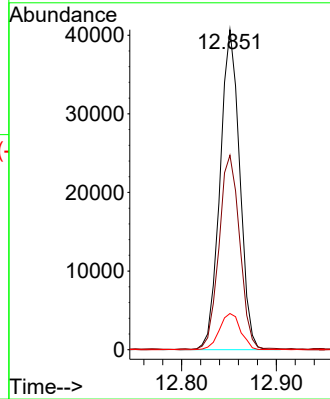
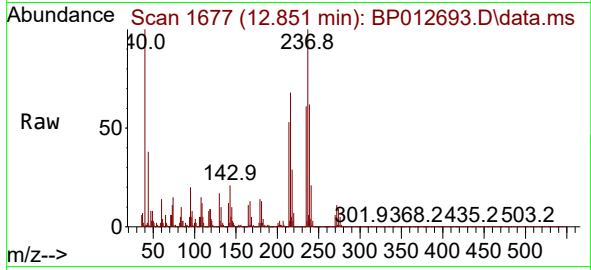




#41
 Hexachlorocyclopentadiene
 Concen: 4.243 ng
 RT: 12.851 min Scan# 1677
 Delta R.T. -0.000 min
 Lab File: BP012693.D
 Acq: 22 Nov 2022 10:02

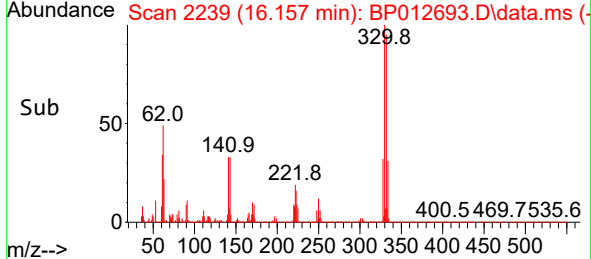
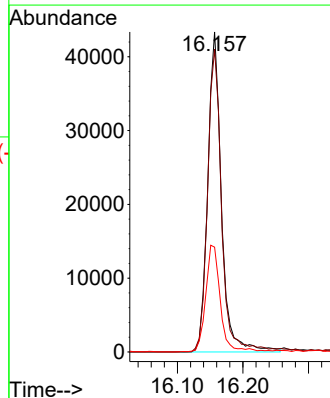
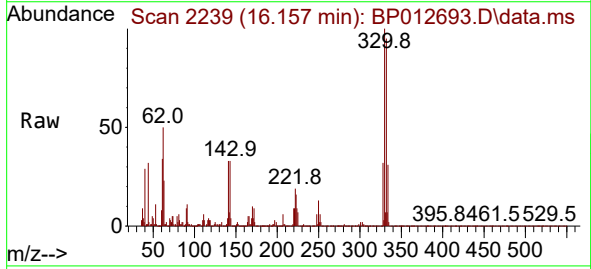
Instrument : BNA_P
 ClientSampleId : SSTDICC005

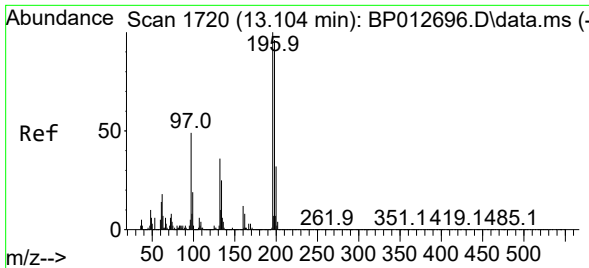
Tgt Ion	Resp	Lower	Upper
237	100		
235	60.7	44.4	84.4
272	11.3	0.0	32.6



#42
 2,4,6-Tribromophenol
 Concen: 6.178 ng
 RT: 16.157 min Scan# 2239
 Delta R.T. -0.000 min
 Lab File: BP012693.D
 Acq: 22 Nov 2022 10:02

Tgt Ion	Resp	Lower	Upper
330	100		
332	96.7	77.0	115.4
141	35.7	25.2	37.8

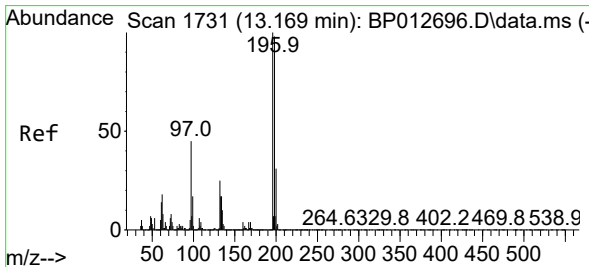
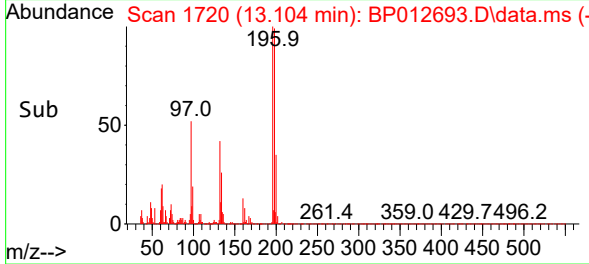
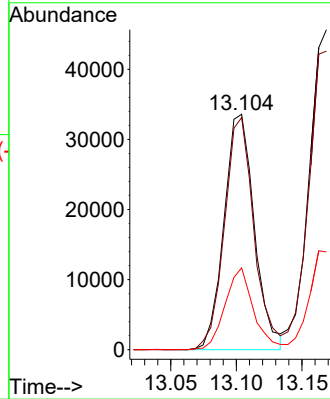
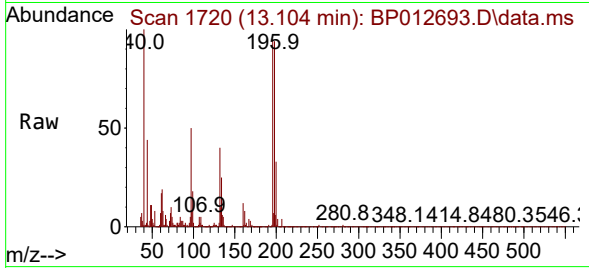




#43
 2,4,6-Trichlorophenol
 Concen: 2.996 ng
 RT: 13.104 min Scan# 1720
 Delta R.T. -0.000 min
 Lab File: BP012693.D
 Acq: 22 Nov 2022 10:02

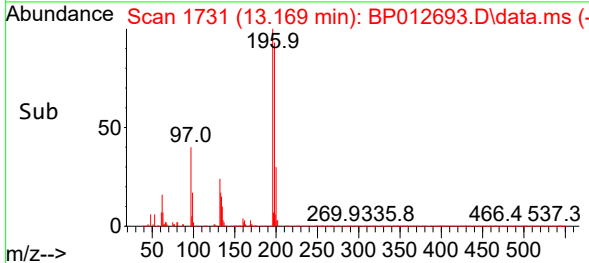
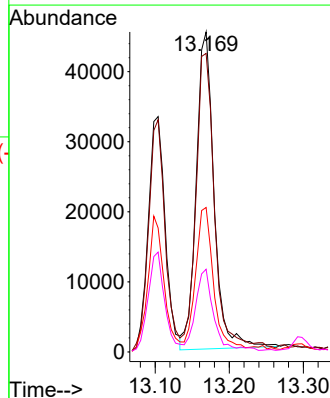
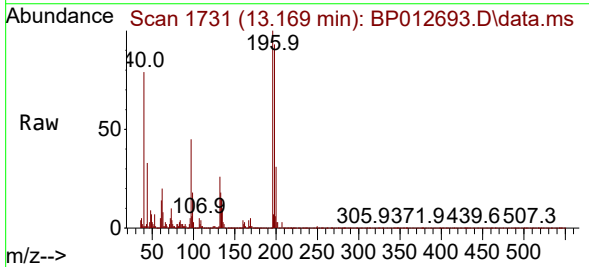
Instrument : BNA_P
 ClientSampleId : SSTDICC005

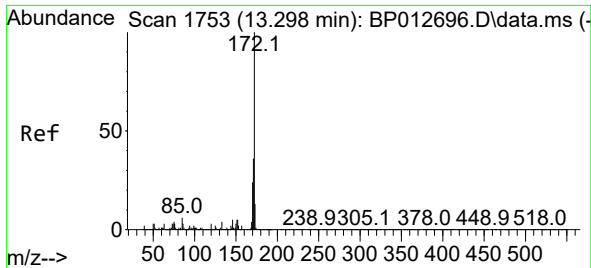
Tgt Ion	Resp	Lower	Upper
196	54001		
196	100		
198	98.7	76.6	115.0
200	34.7	25.2	37.8



#44
 2,4,5-Trichlorophenol
 Concen: 3.619 ng
 RT: 13.169 min Scan# 1731
 Delta R.T. -0.000 min
 Lab File: BP012693.D
 Acq: 22 Nov 2022 10:02

Tgt Ion	Resp	Lower	Upper
196	75709		
196	100		
198	93.3	78.6	117.8
97	45.1	35.8	53.8
132	25.9	19.9	29.9

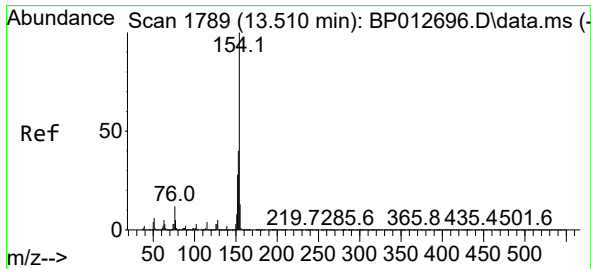
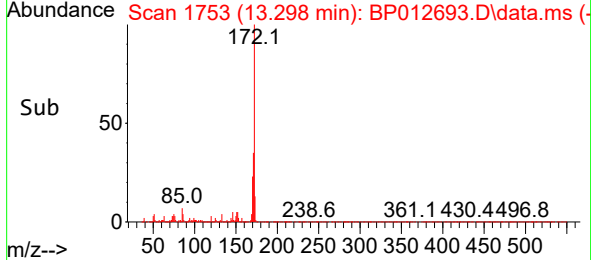
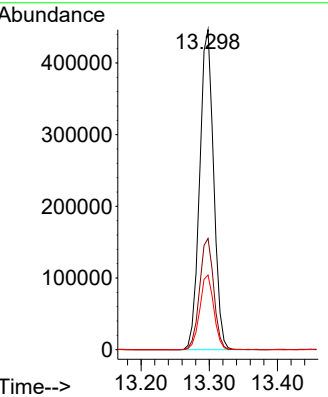
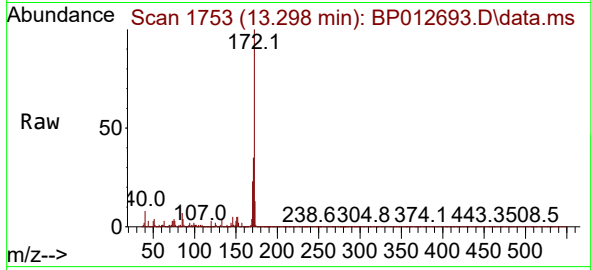




#45
 2-Fluorobiphenyl
 Concen: 9.664 ng
 RT: 13.298 min Scan# 1753
 Delta R.T. -0.000 min
 Lab File: BP012693.D
 Acq: 22 Nov 2022 10:02

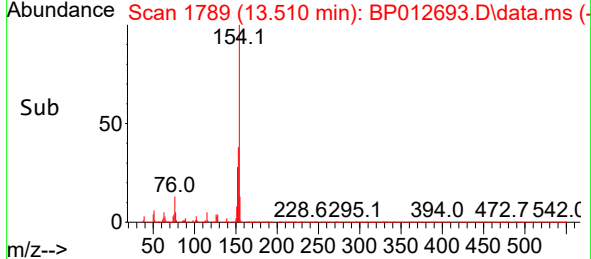
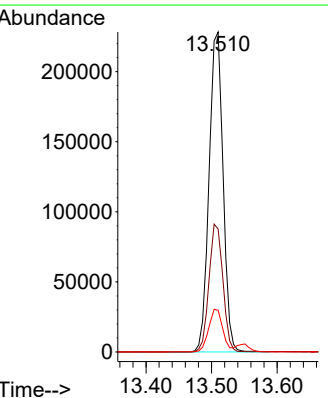
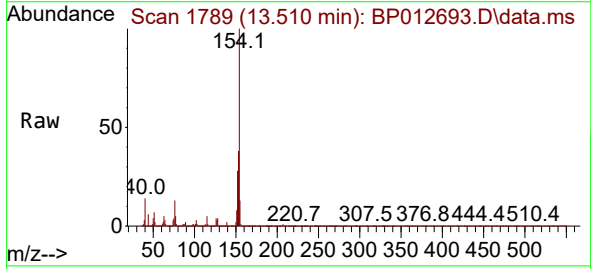
Instrument : BNA_P
 ClientSampleId : SSTDICC005

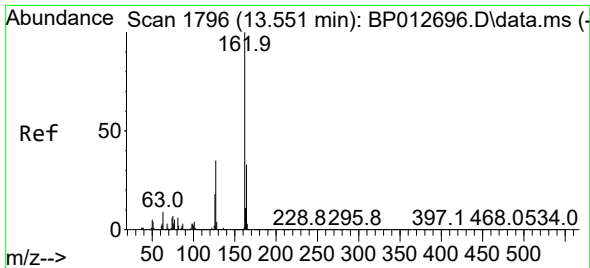
Tgt Ion	Resp	Lower	Upper
172	635960		
171	34.7	28.4	42.6
170	23.4	19.1	28.7



#46
 1,1'-Biphenyl
 Concen: 4.752 ng
 RT: 13.510 min Scan# 1789
 Delta R.T. -0.000 min
 Lab File: BP012693.D
 Acq: 22 Nov 2022 10:02

Tgt Ion	Resp	Lower	Upper
154	337004		
153	38.4	20.4	60.4
76	13.1	0.0	32.5



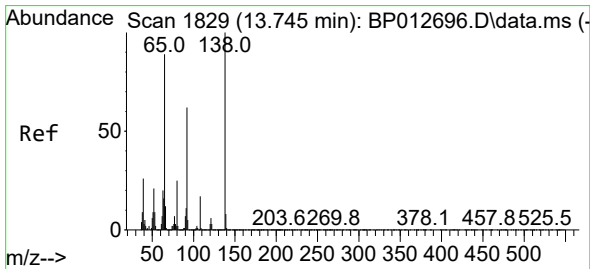
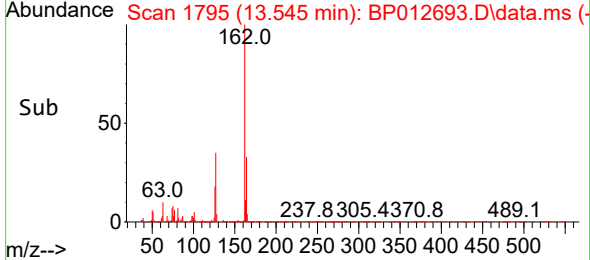
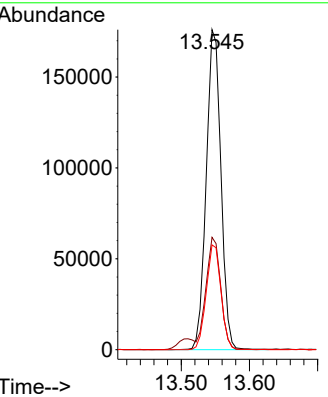
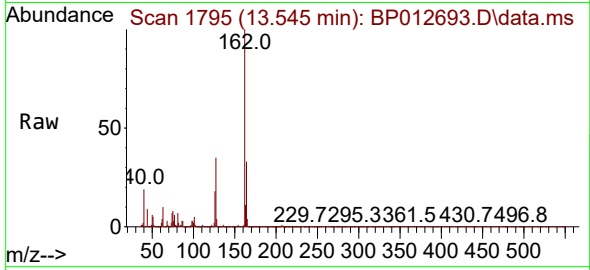


#47
 2-Chloronaphthalene
 Concen: 4.635 ng
 RT: 13.545 min Scan# 1795
 Delta R.T. -0.006 min
 Lab File: BP012693.D
 Acq: 22 Nov 2022 10:02

Instrument : BNA_P
 Client Sample Id : SSTDICC005

Tgt Ion: 162 Resp: 263998

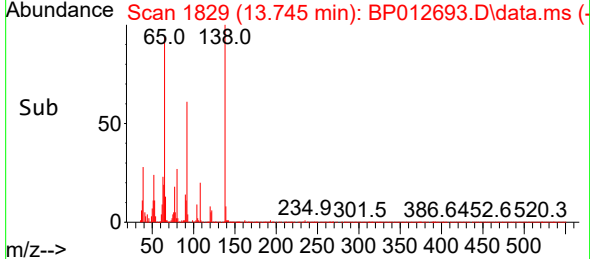
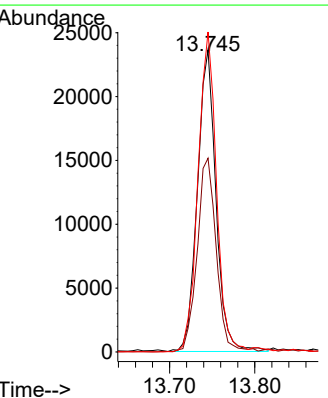
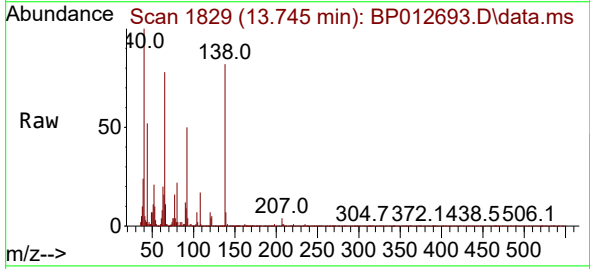
Ion	Ratio	Lower	Upper
162	100		
127	35.1	28.2	42.2
164	32.8	26.2	39.2

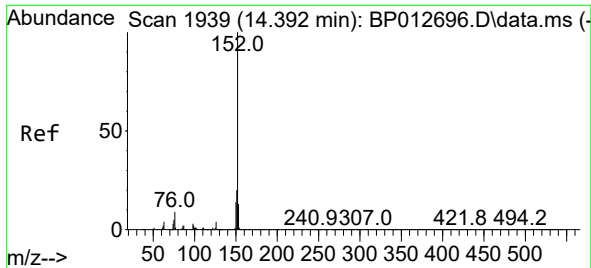


#48
 2-Nitroaniline
 Concen: 2.965 ng
 RT: 13.745 min Scan# 1829
 Delta R.T. -0.000 min
 Lab File: BP012693.D
 Acq: 22 Nov 2022 10:02

Tgt Ion: 65 Resp: 35730

Ion	Ratio	Lower	Upper
65	100		
92	64.2	55.4	83.2
138	106.0	89.5	134.3



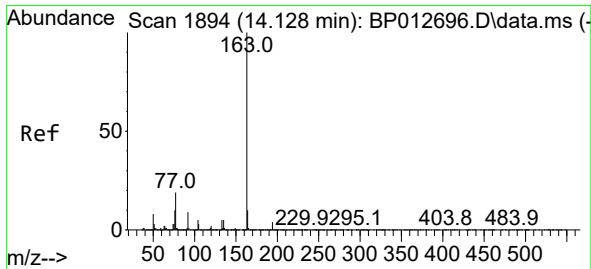
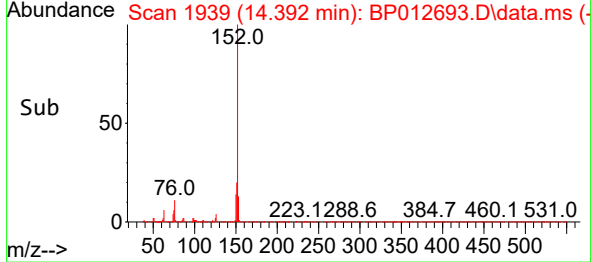
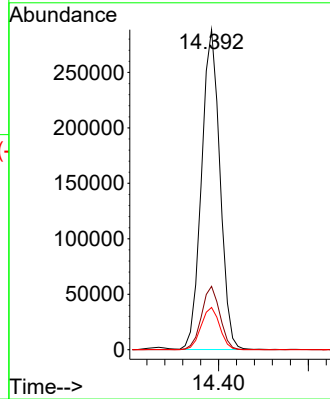
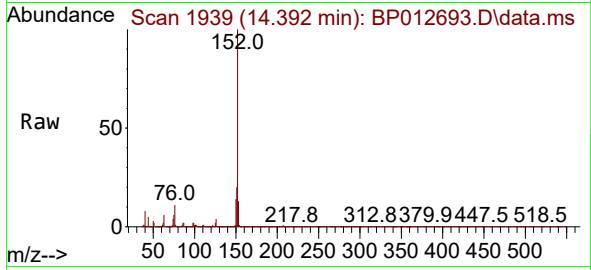


#49
 Acenaphthylene
 Concen: 4.503 ng
 RT: 14.392 min Scan# 1939
 Delta R.T. -0.000 min
 Lab File: BP012693.D
 Acq: 22 Nov 2022 10:02

Instrument :
 BNA_P
 ClientSampleId :
 SSTDICC005

Tgt Ion:152 Resp: 410291

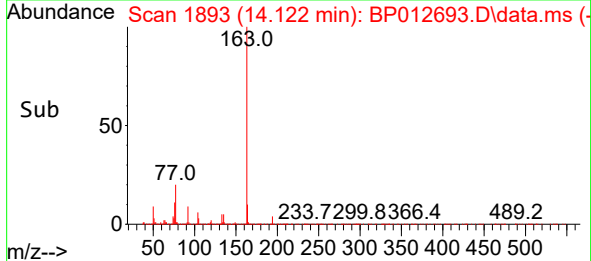
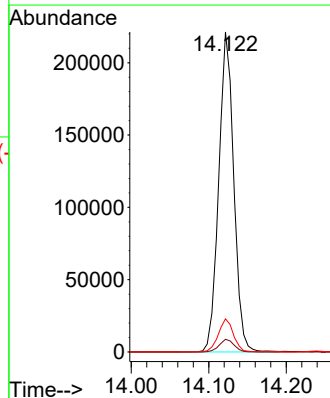
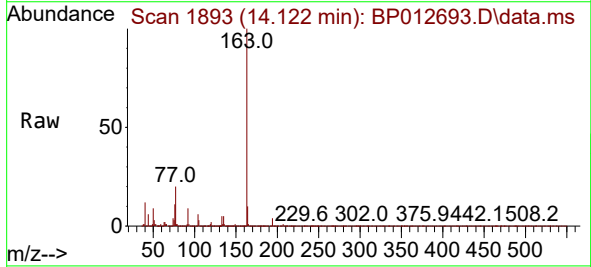
Ion	Ratio	Lower	Upper
152	100		
151	19.8	16.1	24.1
153	13.2	10.7	16.1

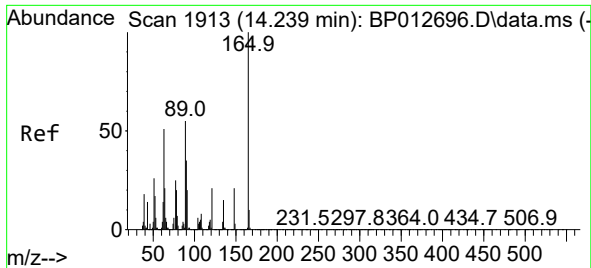


#50
 Dimethylphthalate
 Concen: 4.163 ng
 RT: 14.122 min Scan# 1893
 Delta R.T. -0.006 min
 Lab File: BP012693.D
 Acq: 22 Nov 2022 10:02

Tgt Ion:163 Resp: 298305

Ion	Ratio	Lower	Upper
163	100		
194	4.0	3.2	4.8
164	10.3	8.3	12.5

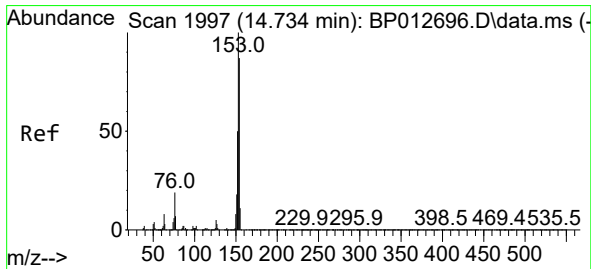
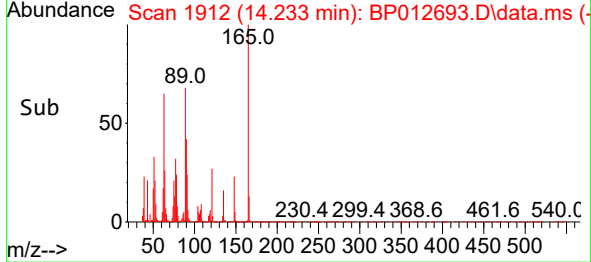
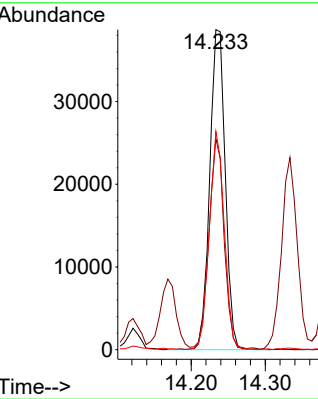
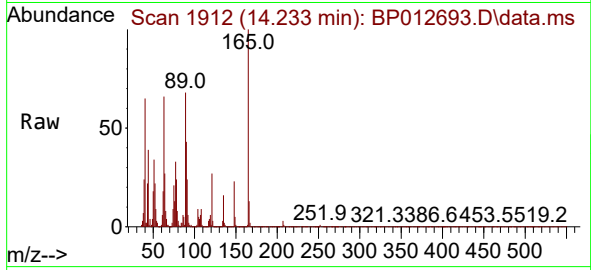




#51
 2,6-Dinitrotoluene
 Concen: 3.872 ng
 RT: 14.233 min Scan# 1913
 Delta R.T. -0.006 min
 Lab File: BP012693.D
 Acq: 22 Nov 2022 10:02

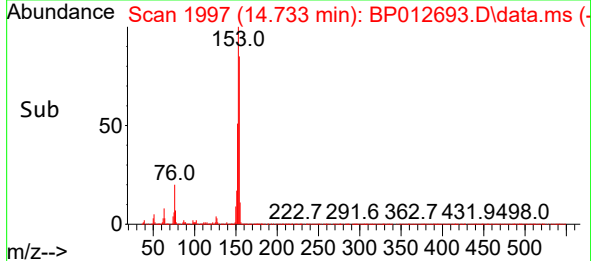
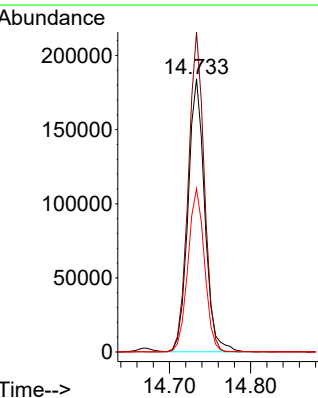
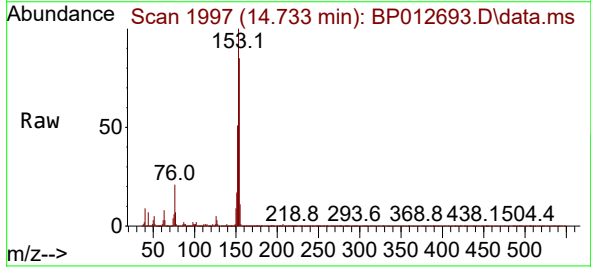
Instrument : BNA_P
 ClientSampleId : SSTDICC005

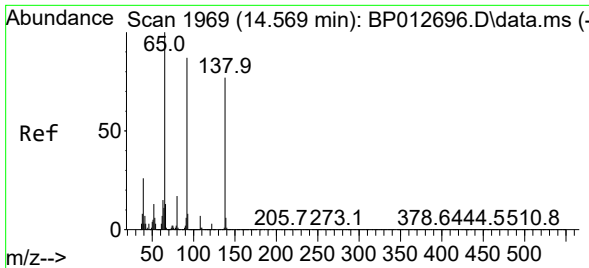
Tgt Ion	Resp	Lower	Upper
165	100		
63	65.9	43.0	64.4#
89	68.2	44.4	66.6#



#52
 Acenaphthene
 Concen: 4.538 ng
 RT: 14.733 min Scan# 1997
 Delta R.T. -0.000 min
 Lab File: BP012693.D
 Acq: 22 Nov 2022 10:02

Tgt Ion	Resp	Lower	Upper
154	100		
153	117.2	91.7	137.5
152	59.8	45.7	68.5

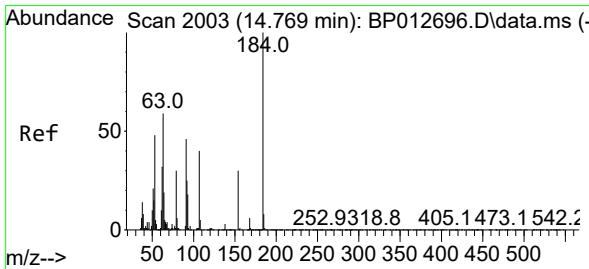
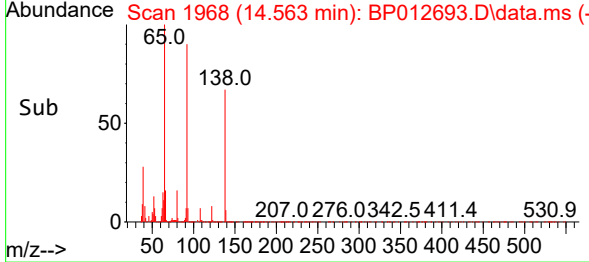
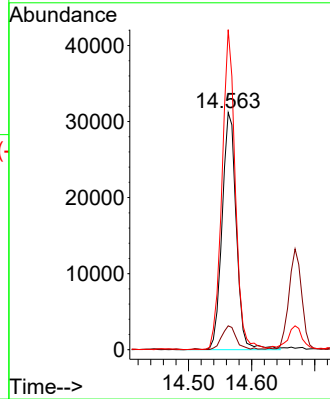
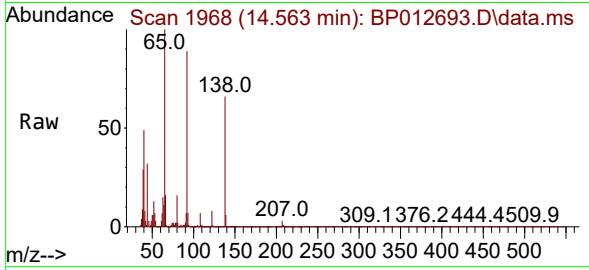




#53
 3-Nitroaniline
 Concen: 3.271 ng
 RT: 14.563 min Scan# 1968
 Delta R.T. -0.006 min
 Lab File: BP012693.D
 Acq: 22 Nov 2022 10:02

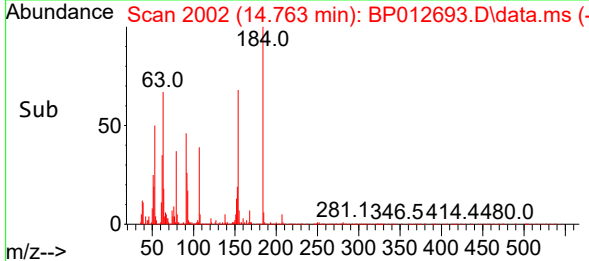
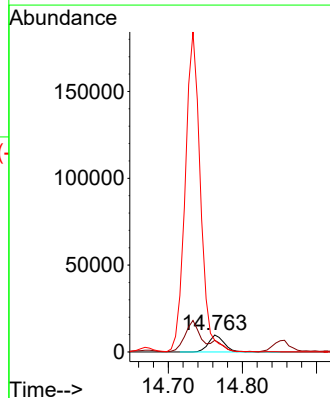
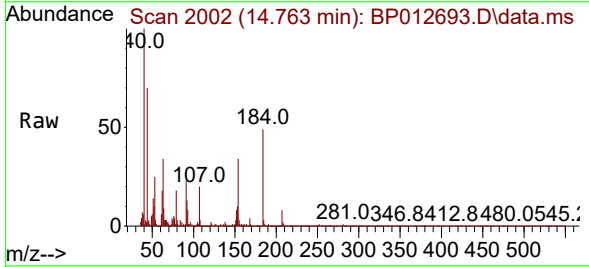
Instrument : BNA_P
 ClientSampleId : SSTDICC005

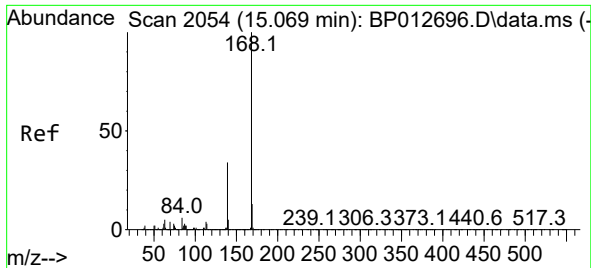
Tgt Ion	Resp	Lower	Upper
138	48634		
108	10.1	7.4	11.2
92	134.9	91.3	136.9



#54
 2,4-Dinitrophenol
 Concen: 2.406 ng
 RT: 14.763 min Scan# 2002
 Delta R.T. -0.006 min
 Lab File: BP012693.D
 Acq: 22 Nov 2022 10:02

Tgt Ion	Resp	Lower	Upper
184	14185		
63	69.1	50.0	75.0
154	68.7	45.5	68.3#

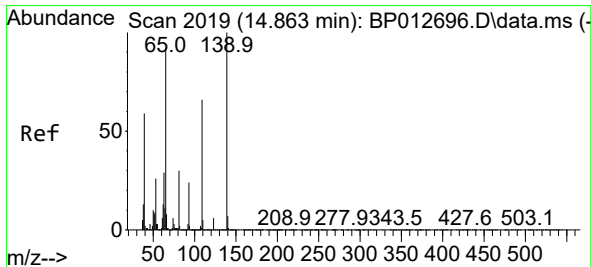
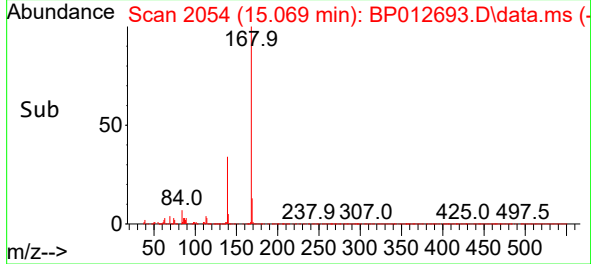
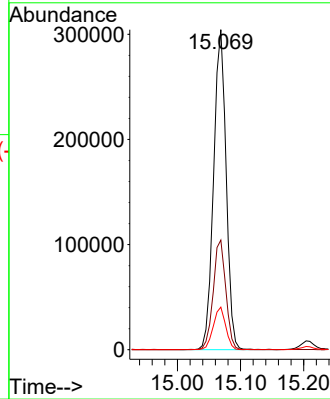
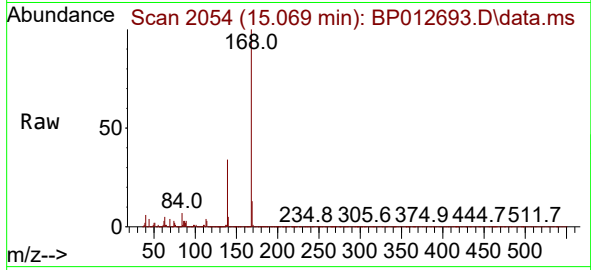




#55
 Dibenzofuran
 Concen: 4.680 ng
 RT: 15.069 min Scan# 2054
 Delta R.T. -0.000 min
 Lab File: BP012693.D
 Acq: 22 Nov 2022 10:02

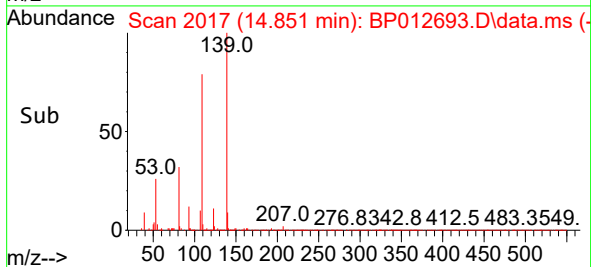
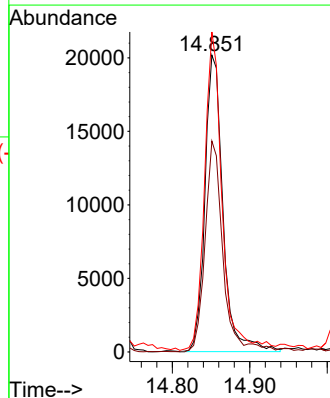
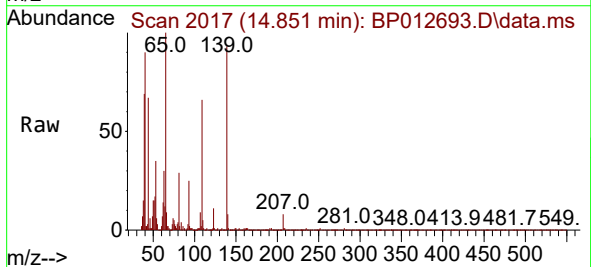
Instrument : BNA_P
 ClientSampleId : SSTDICC005

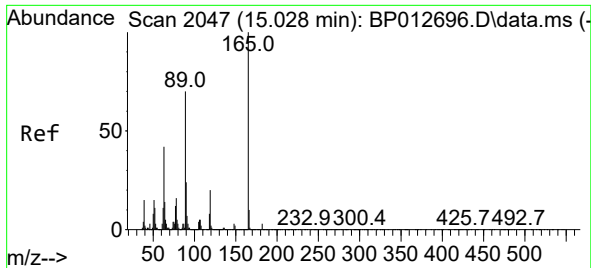
Tgt Ion:168 Resp: 419209
 Ion Ratio Lower Upper
 168 100
 139 34.2 27.5 41.3
 169 13.3 10.7 16.1



#56
 4-Nitrophenol
 Concen: 2.537 ng
 RT: 14.851 min Scan# 2017
 Delta R.T. -0.012 min
 Lab File: BP012693.D
 Acq: 22 Nov 2022 10:02

Tgt Ion:139 Resp: 32527
 Ion Ratio Lower Upper
 139 100
 109 71.1 46.1 86.1
 65 107.8 72.5 112.5



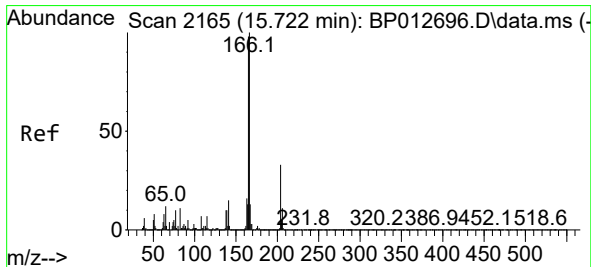
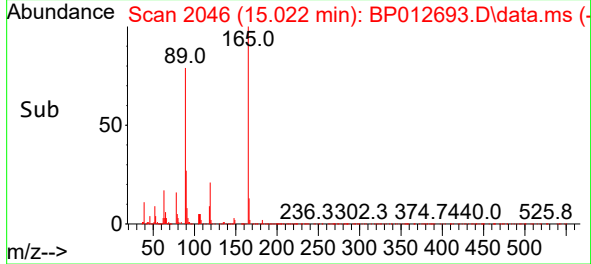
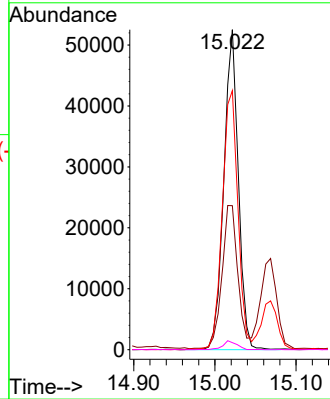
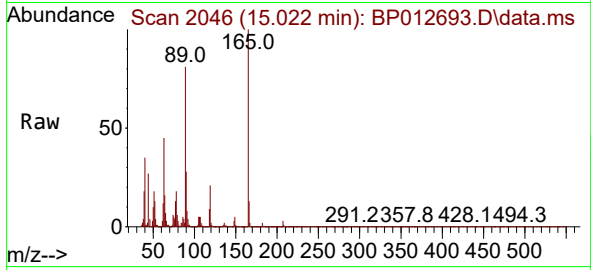


#57
 2,4-Dinitrotoluene
 Concen: 3.400 ng
 RT: 15.022 min Scan# 2046
 Delta R.T. -0.006 min
 Lab File: BP012693.D
 Acq: 22 Nov 2022 10:02

Instrument : BNA_P
 Client Sample Id : SSTDICC005

Tgt Ion:165 Resp: 65358

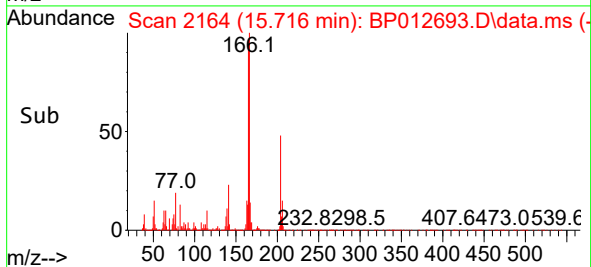
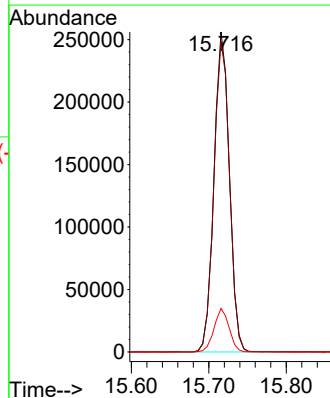
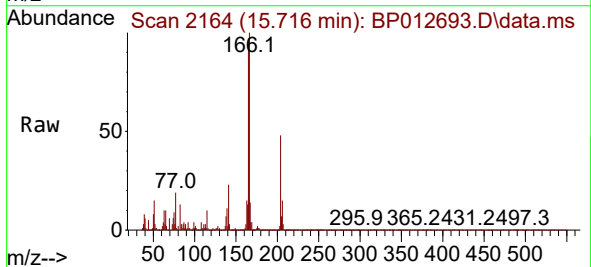
Ion	Ratio	Lower	Upper
165	100		
63	45.0	33.7	50.5
89	80.9	56.3	84.5
182	2.2	2.1	3.1

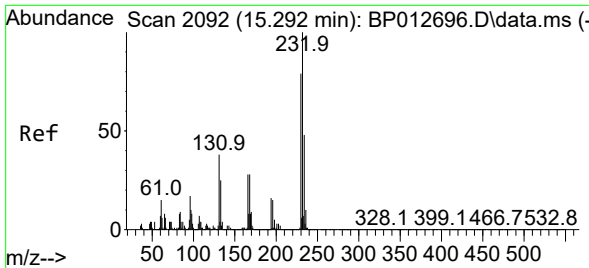


#58
 Fluorene
 Concen: 4.818 ng
 RT: 15.716 min Scan# 2164
 Delta R.T. -0.006 min
 Lab File: BP012693.D
 Acq: 22 Nov 2022 10:02

Tgt Ion:166 Resp: 352880

Ion	Ratio	Lower	Upper
166	100		
165	97.1	78.0	117.0
167	13.6	10.8	16.2



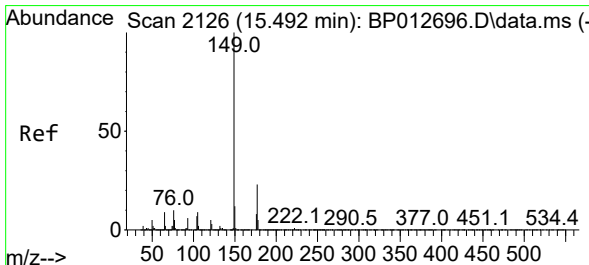
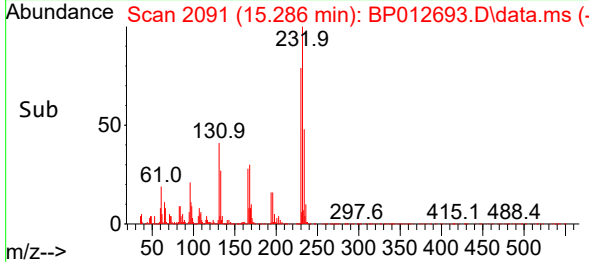
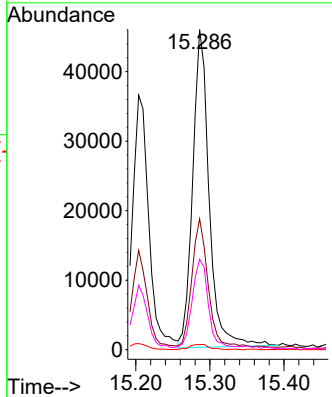
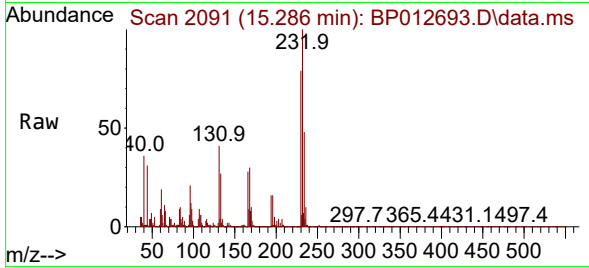


#59
 2,3,4,6-Tetrachlorophenol
 Concen: 3.661 ng
 RT: 15.286 min Scan# 2091
 Delta R.T. -0.006 min
 Lab File: BP012693.D
 Acq: 22 Nov 2022 10:02

Instrument : BNA_P
 ClientSampleId : SSTDICC005

Tgt Ion:232 Resp: 70427

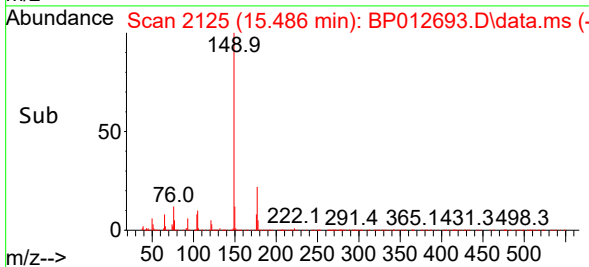
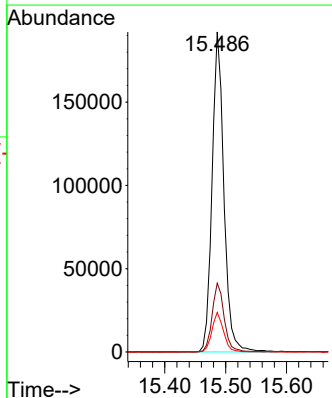
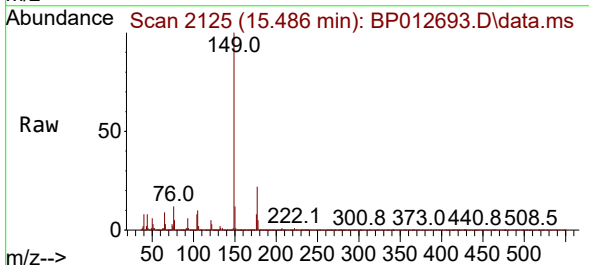
Ion	Ratio	Lower	Upper
232	100		
131	39.7	32.0	48.0
130	2.1	1.7	2.5
166	27.1	22.2	33.2

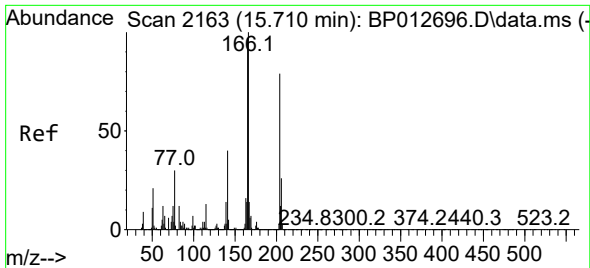


#60
 Diethylphthalate
 Concen: 3.763 ng
 RT: 15.486 min Scan# 2125
 Delta R.T. -0.006 min
 Lab File: BP012693.D
 Acq: 22 Nov 2022 10:02

Tgt Ion:149 Resp: 258387

Ion	Ratio	Lower	Upper
149	100		
177	21.5	18.5	27.7
150	12.4	9.9	14.9

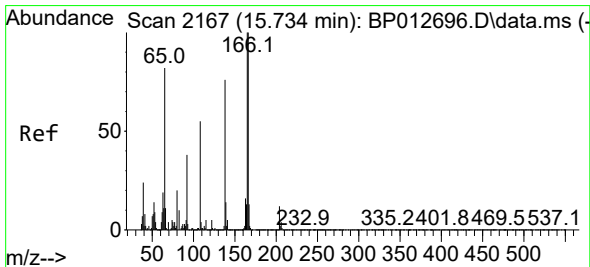
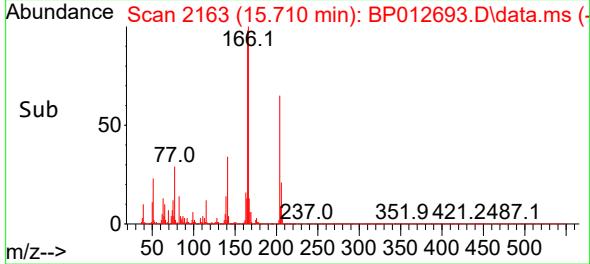
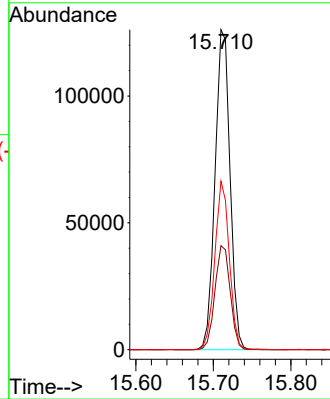
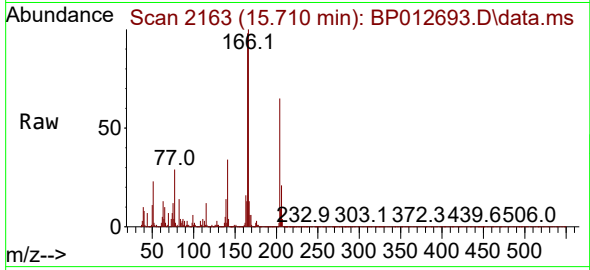




#61
 4-Chlorophenyl-phenylether
 Concen: 4.688 ng
 RT: 15.710 min Scan# 2163
 Delta R.T. -0.000 min
 Lab File: BP012693.D
 Acq: 22 Nov 2022 10:02

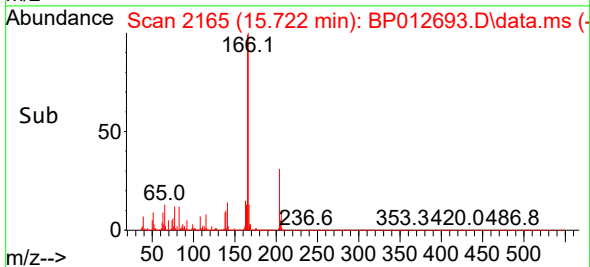
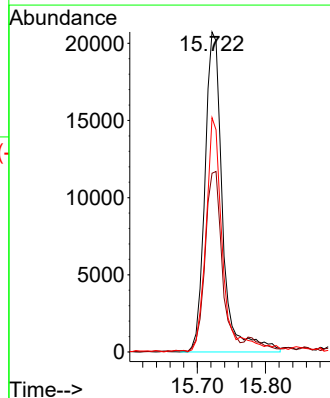
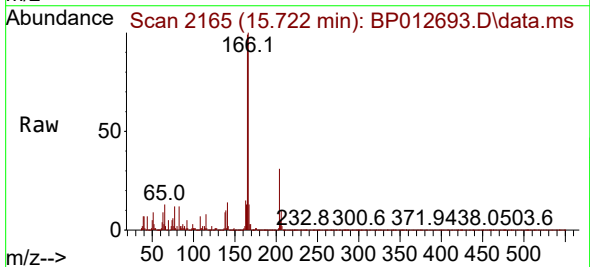
Instrument : BNA_P
 ClientSampleId : SSTDICC005

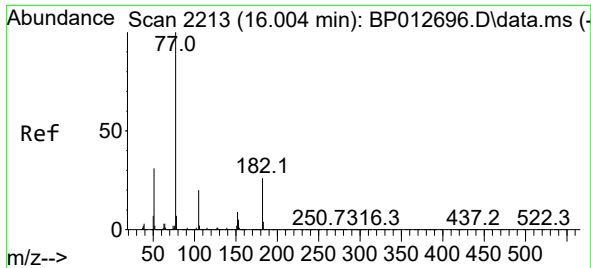
Tgt Ion:204 Resp: 169405
 Ion Ratio Lower Upper
 204 100
 206 32.5 26.2 39.2
 141 52.7 41.1 61.7



#62
 4-Nitroaniline
 Concen: 2.702 ng
 RT: 15.722 min Scan# 2165
 Delta R.T. -0.012 min
 Lab File: BP012693.D
 Acq: 22 Nov 2022 10:02

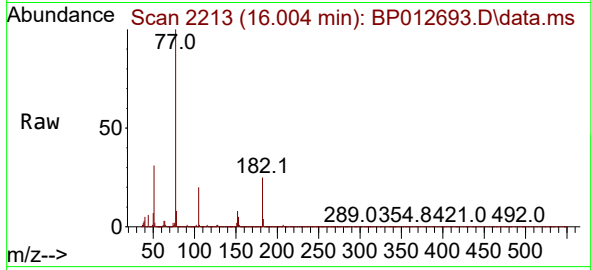
Tgt Ion:138 Resp: 37345
 Ion Ratio Lower Upper
 138 100
 92 55.8 29.6 69.6
 108 73.2 51.4 91.4





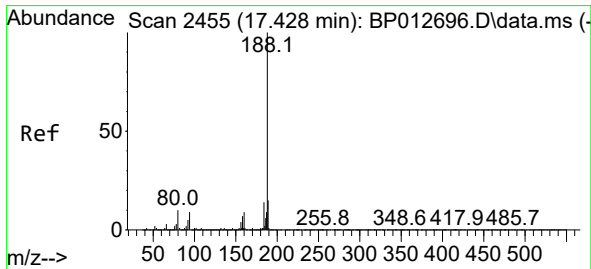
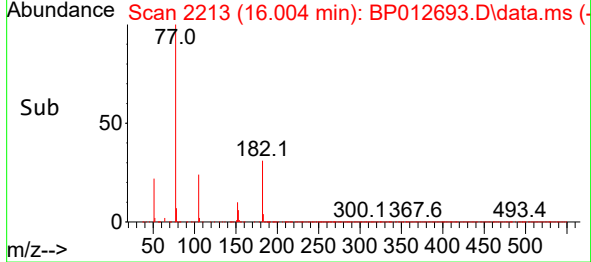
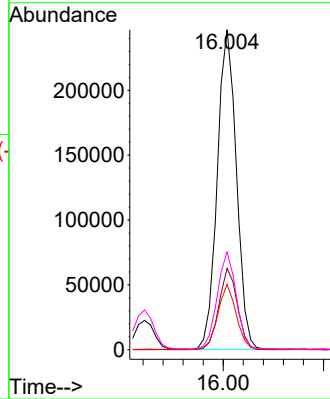
#63
 Azobenzene
 Concen: 4.645 ng
 RT: 16.004 min Scan# 21
 Delta R.T. -0.000 min
 Lab File: BP012693.D
 Acq: 22 Nov 2022 10:02

Instrument :
 BNA_P
 ClientSampleId :
 SSTDICC005



Tgt Ion: 77 Resp: 325711

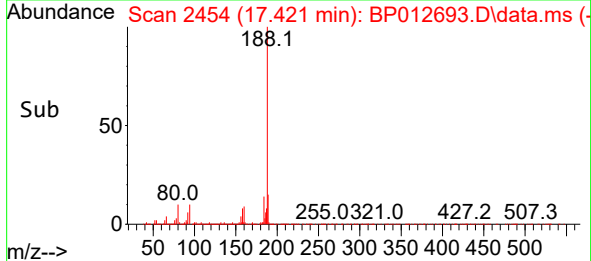
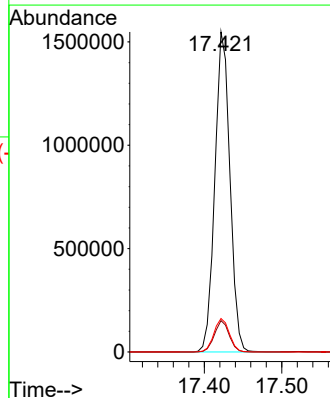
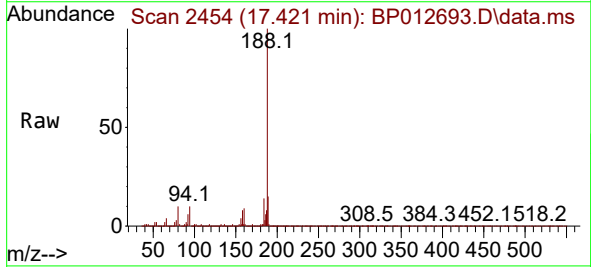
Ion	Ratio	Lower	Upper
77	100		
182	25.4	6.1	46.1
105	20.4	0.4	40.4
51	30.5	10.6	50.6

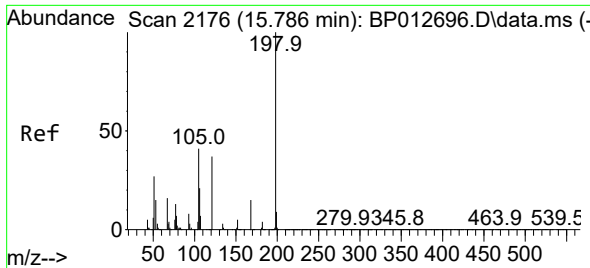


#64
 Phenanthrene-d10
 Concen: 20.000 ng
 RT: 17.421 min Scan# 2454
 Delta R.T. -0.006 min
 Lab File: BP012693.D
 Acq: 22 Nov 2022 10:02

Tgt Ion: 188 Resp: 2091948

Ion	Ratio	Lower	Upper
188	100		
94	9.8	7.0	10.6
80	10.4	7.8	11.6





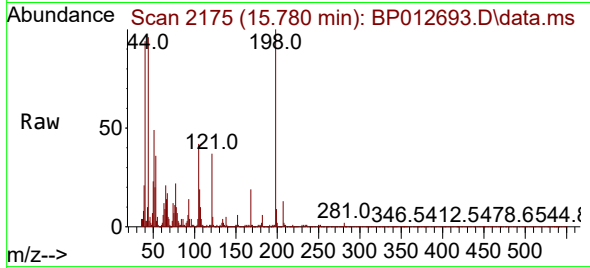
#65
 4,6-Dinitro-2-methylphenol
 Concen: 2.399 ng
 RT: 15.780 min Scan# 2176
 Delta R.T. -0.006 min
 Lab File: BP012693.D
 Acq: 22 Nov 2022 10:02

Instrument :

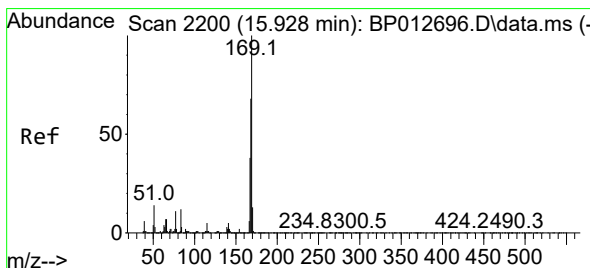
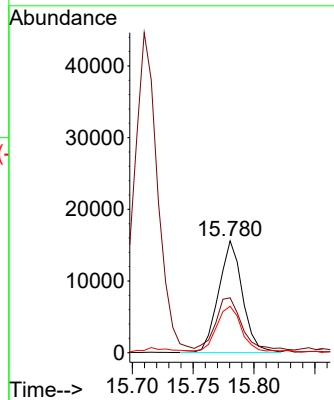
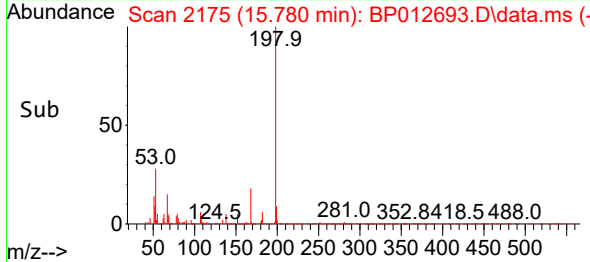
BNA_P

ClientSampleId :

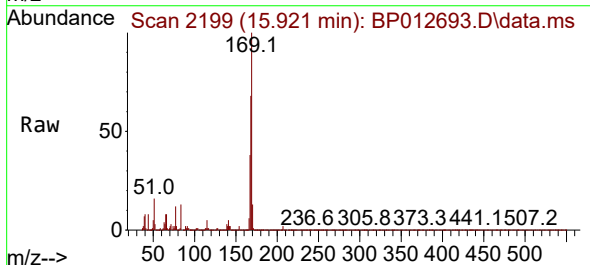
SSTDIC005



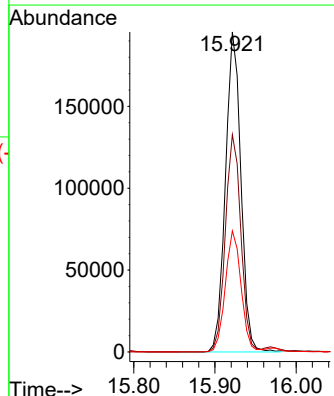
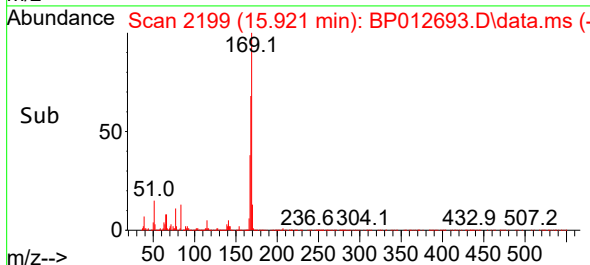
Tgt Ion:198 Resp: 21260
 Ion Ratio Lower Upper
 198 100
 51 49.1 25.7 65.7
 105 41.5 22.8 62.8

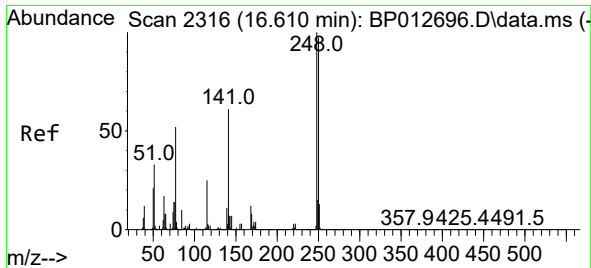


#66
 n-Nitrosodiphenylamine
 Concen: 4.284 ng
 RT: 15.921 min Scan# 2199
 Delta R.T. -0.006 min
 Lab File: BP012693.D
 Acq: 22 Nov 2022 10:02



Tgt Ion:169 Resp: 258886
 Ion Ratio Lower Upper
 169 100
 168 67.9 54.2 81.2
 167 37.9 30.4 45.6





#67
 4-Bromophenyl-phenylether
 Concen: 4.442 ng
 RT: 16.610 min Scan# 21
 Delta R.T. -0.000 min
 Lab File: BP012693.D
 Acq: 22 Nov 2022 10:02

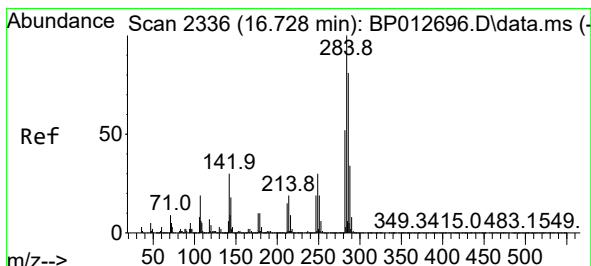
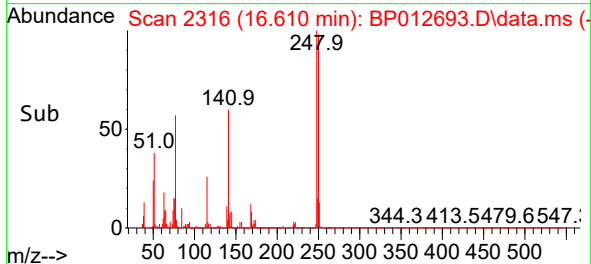
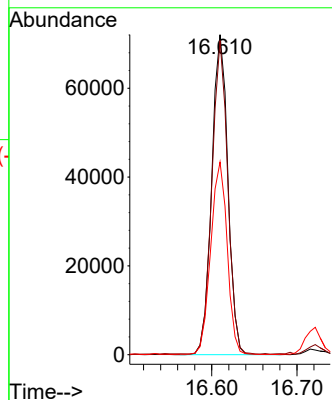
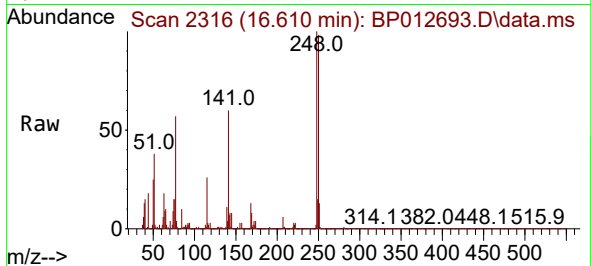
Instrument :

BNA_P

ClientSampleId :

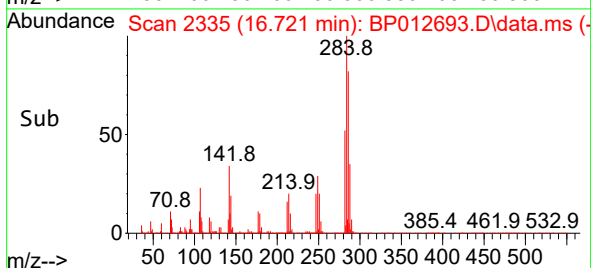
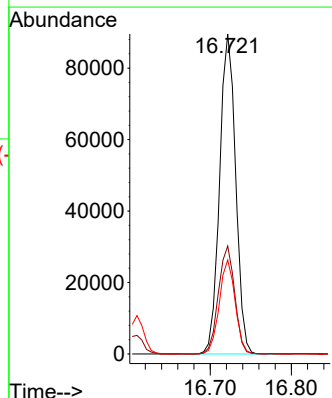
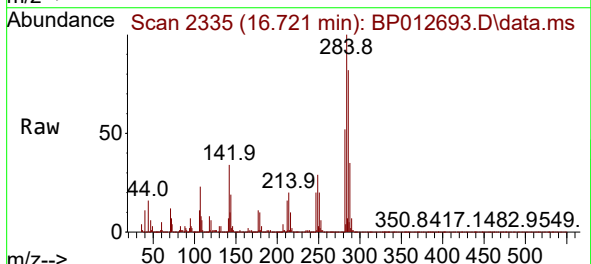
SSTDICC005

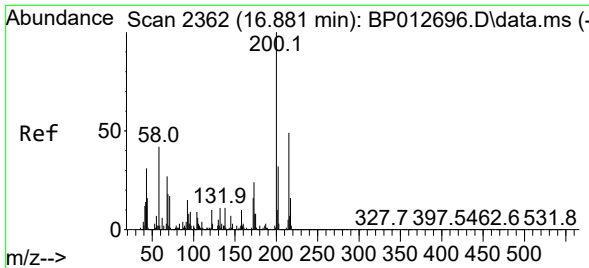
Tgt Ion:248 Resp: 94572
 Ion Ratio Lower Upper
 248 100
 250 98.2 77.6 116.4
 141 60.2 48.6 72.8



#68
 Hexachlorobenzene
 Concen: 4.561 ng
 RT: 16.721 min Scan# 2335
 Delta R.T. -0.006 min
 Lab File: BP012693.D
 Acq: 22 Nov 2022 10:02

Tgt Ion:284 Resp: 123086
 Ion Ratio Lower Upper
 284 100
 142 33.7 24.0 36.0
 249 29.4 24.3 36.5

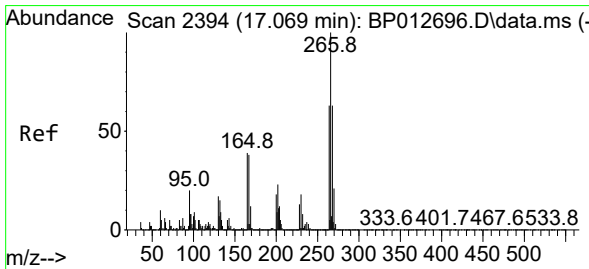
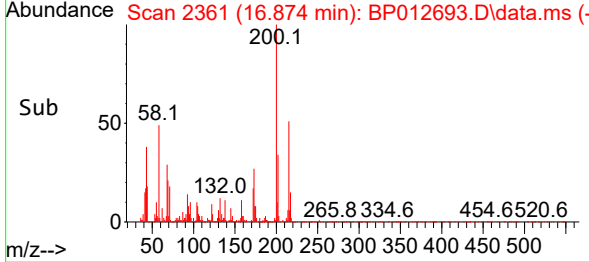
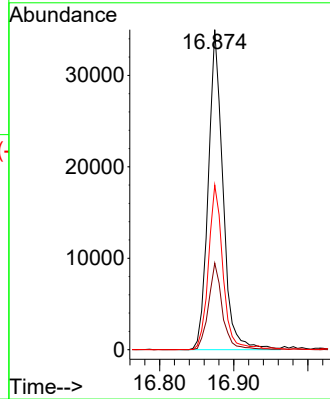
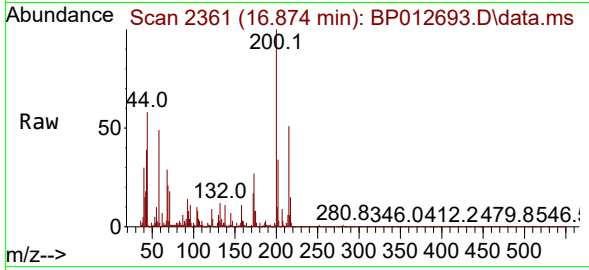




#69
 Atrazine
 Concen: 3.289 ng
 RT: 16.874 min Scan# 21
 Delta R.T. -0.006 min
 Lab File: BP012693.D
 Acq: 22 Nov 2022 10:02

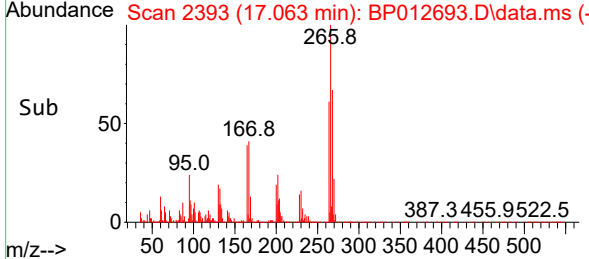
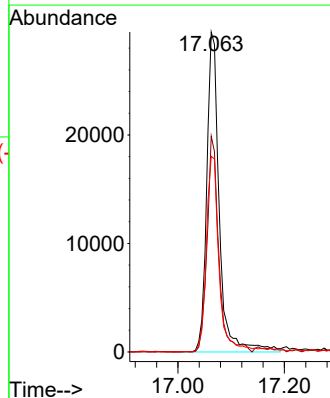
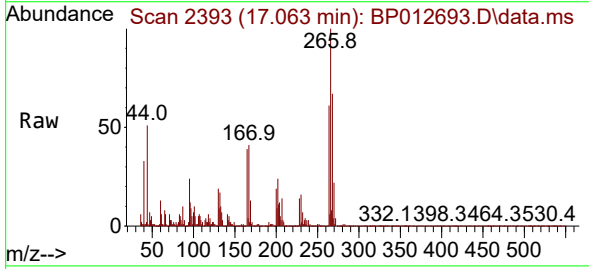
Instrument :
 BNA_P
 ClientSampleId :
 SSTDICC005

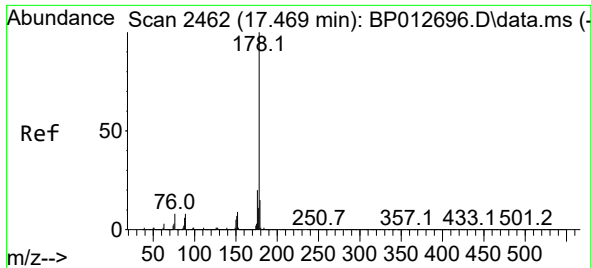
Tgt Ion	Resp	Lower	Upper
200	48161	100	100
173	27.0	4.3	44.3
215	51.4	29.5	69.5



#70
 Pentachlorophenol
 Concen: 2.993 ng
 RT: 17.063 min Scan# 2393
 Delta R.T. -0.006 min
 Lab File: BP012693.D
 Acq: 22 Nov 2022 10:02

Tgt Ion	Resp	Lower	Upper
266	48180	100	100
268	67.4	50.5	75.7
264	61.2	50.2	75.2

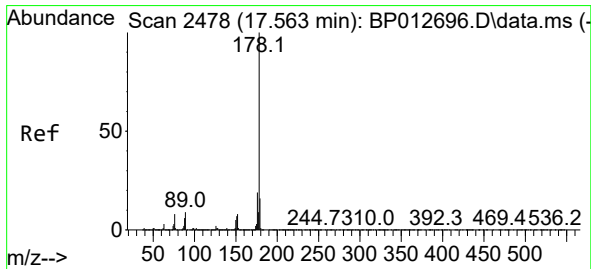
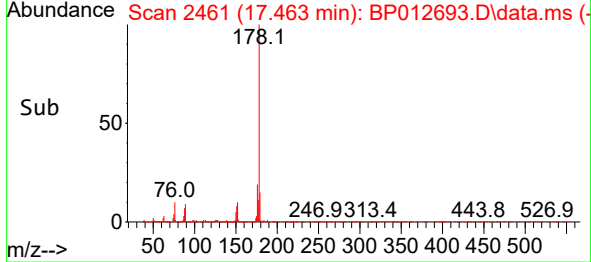
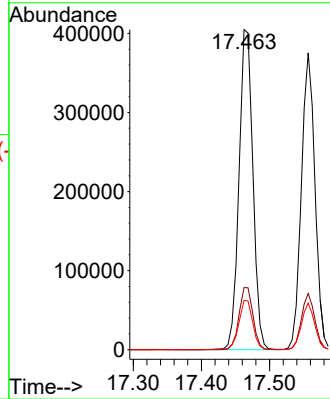
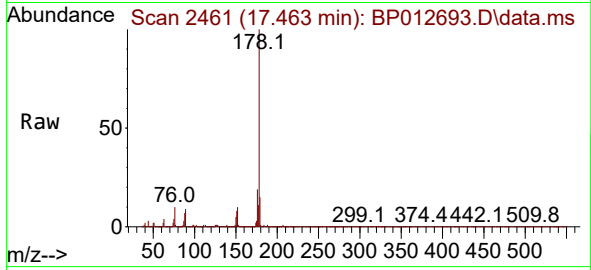




#71
 Phenanthrene
 Concen: 4.713 ng
 RT: 17.463 min Scan# 2461
 Delta R.T. -0.006 min
 Lab File: BP012693.D
 Acq: 22 Nov 2022 10:02

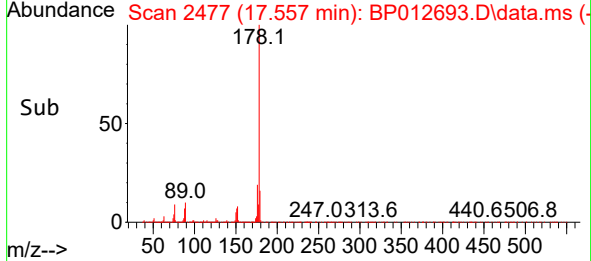
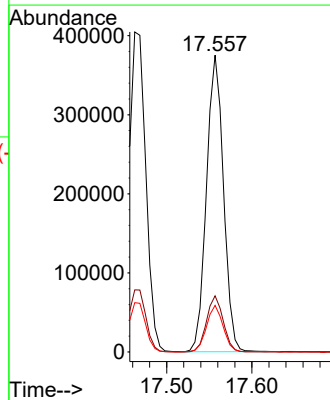
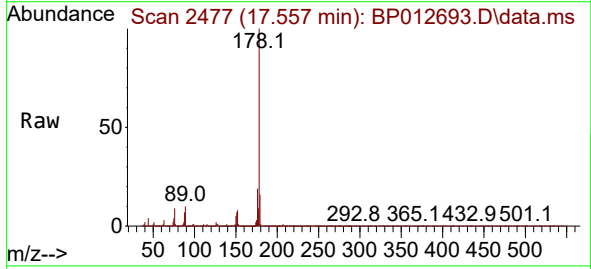
Instrument : BNA_P
 ClientSampleId : SSTDICC005

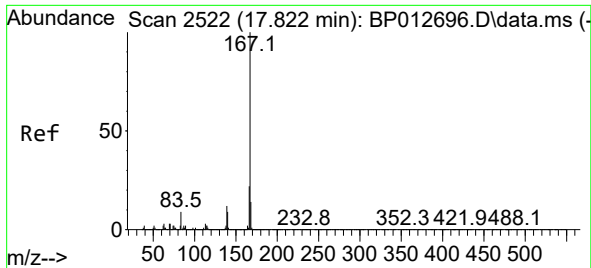
Tgt Ion	Resp	Lower	Upper
178	100		
176	19.4	15.8	23.6
179	15.4	12.4	18.6



#72
 Anthracene
 Concen: 4.484 ng
 RT: 17.557 min Scan# 2477
 Delta R.T. -0.006 min
 Lab File: BP012693.D
 Acq: 22 Nov 2022 10:02

Tgt Ion	Resp	Lower	Upper
178	100		
176	18.9	15.3	22.9
179	15.7	12.6	19.0

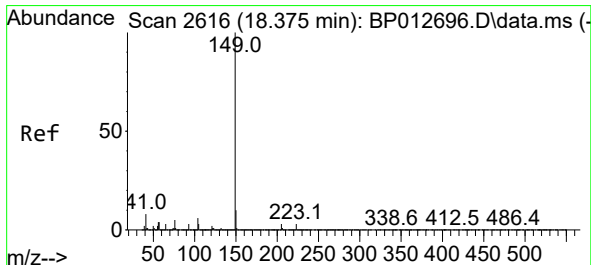
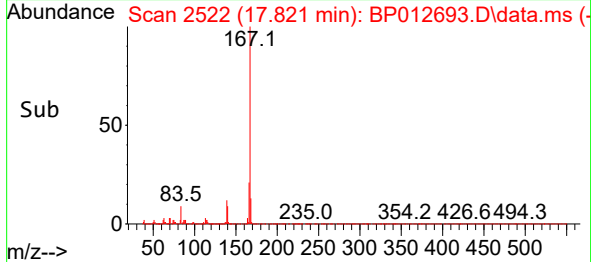
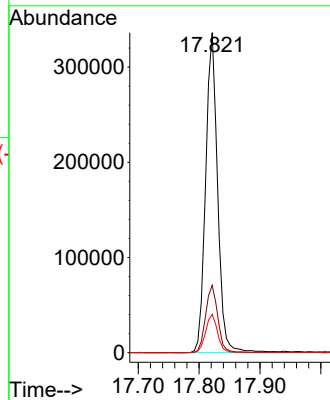
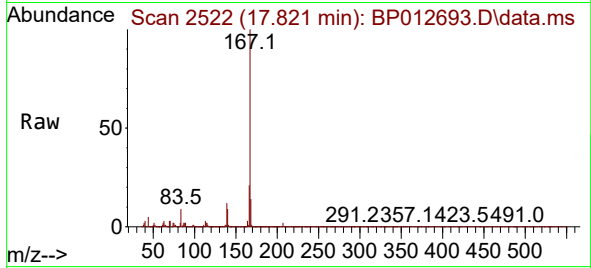




#73
 Carbazole
 Concen: 4.402 ng
 RT: 17.821 min Scan# 21
 Delta R.T. -0.000 min
 Lab File: BP012693.D
 Acq: 22 Nov 2022 10:02

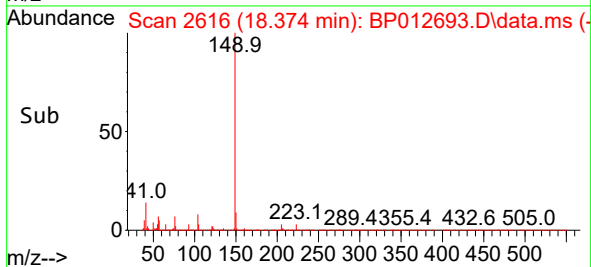
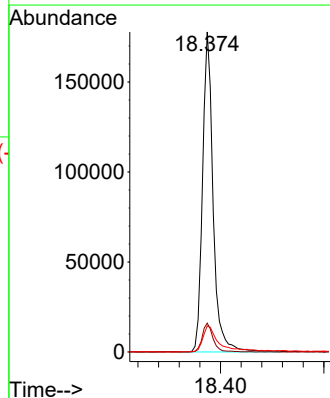
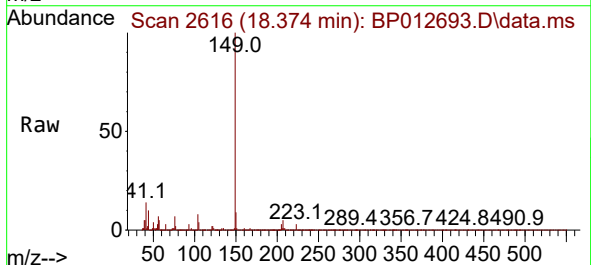
Instrument :
 BNA_P
 ClientSampleId :
 SSTDICC005

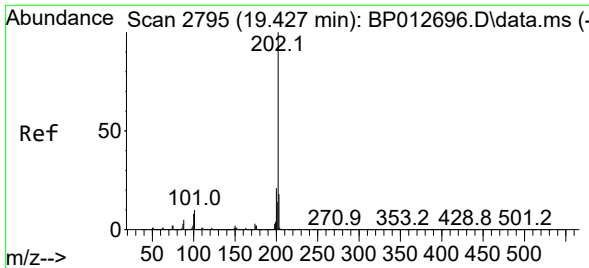
Tgt Ion:167 Resp: 458516
 Ion Ratio Lower Upper
 167 100
 166 21.0 17.4 26.2
 139 12.0 9.7 14.5



#74
 Di-n-butylphthalate
 Concen: 2.543 ng
 RT: 18.374 min Scan# 2616
 Delta R.T. -0.000 min
 Lab File: BP012693.D
 Acq: 22 Nov 2022 10:02

Tgt Ion:149 Resp: 252038
 Ion Ratio Lower Upper
 149 100
 150 9.0 7.7 11.5
 104 8.2 4.6 6.8#

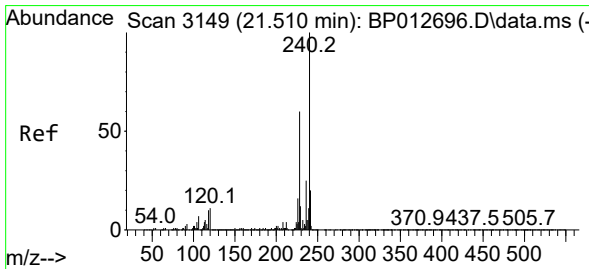
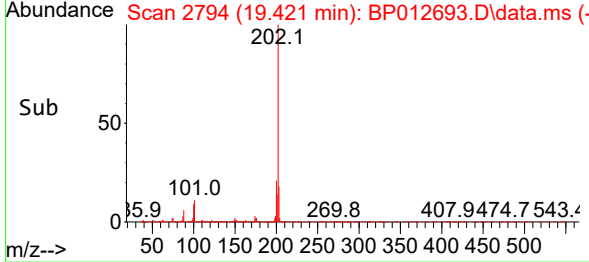
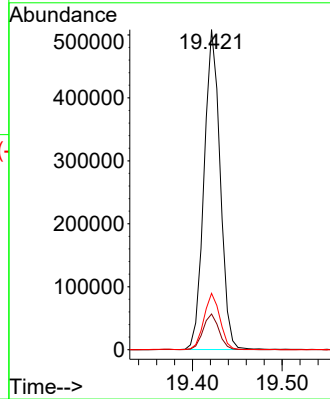
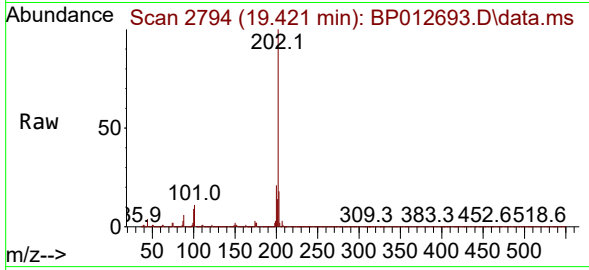




#75
 Fluoranthene
 Concen: 4.375 ng
 RT: 19.421 min Scan# 21
 Delta R.T. -0.006 min
 Lab File: BP012693.D
 Acq: 22 Nov 2022 10:02

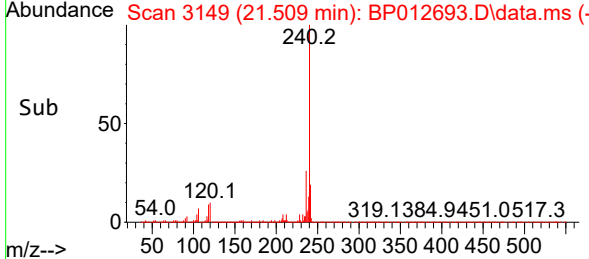
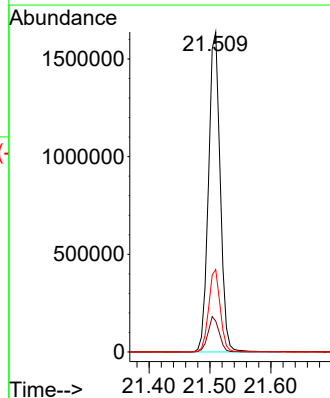
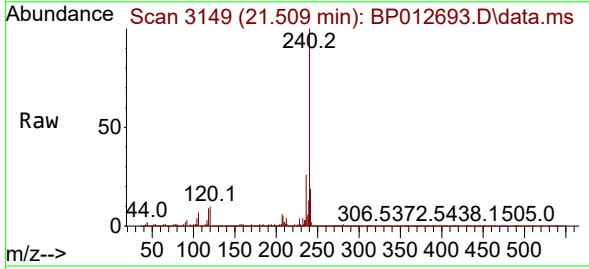
Instrument :
 BNA_P
 ClientSampleId :
 SSTDICC005

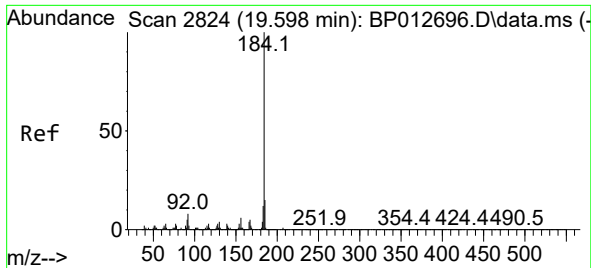
Tgt Ion	Resp	Lower	Upper
202	633281		
101	11.2	0.0	30.3
203	17.6	0.0	38.0



#76
 Chrysene-d12
 Concen: 20.000 ng
 RT: 21.509 min Scan# 3149
 Delta R.T. -0.000 min
 Lab File: BP012693.D
 Acq: 22 Nov 2022 10:02

Tgt Ion	Resp	Lower	Upper
240	2184411		
120	9.7	8.6	12.8
236	25.7	20.4	30.6





#77
 Benzidine
 Concen: 3.780 ng
 RT: 19.598 min Scan# 2824
 Delta R.T. -0.000 min
 Lab File: BP012693.D
 Acq: 22 Nov 2022 10:02

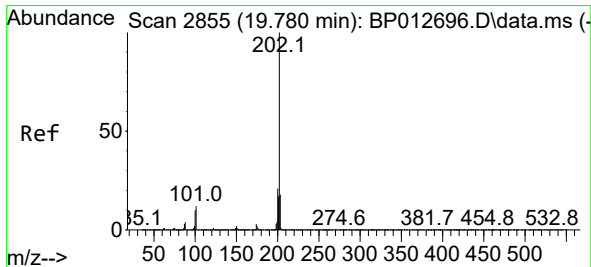
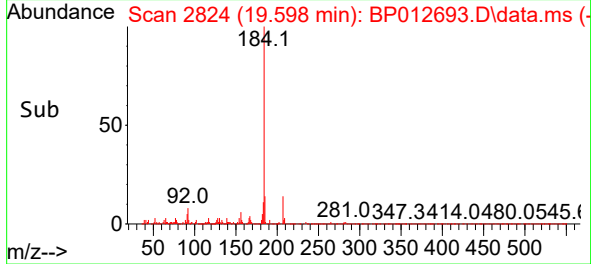
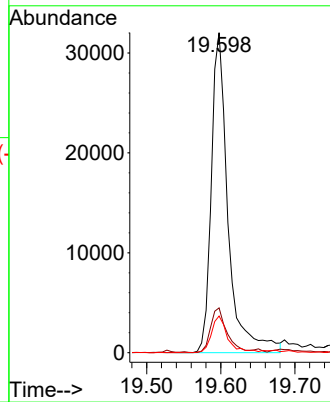
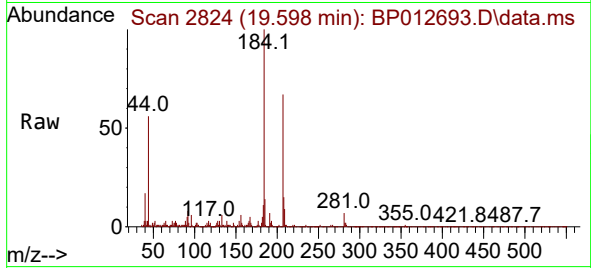
Instrument :

BNA_P

ClientSampleId :

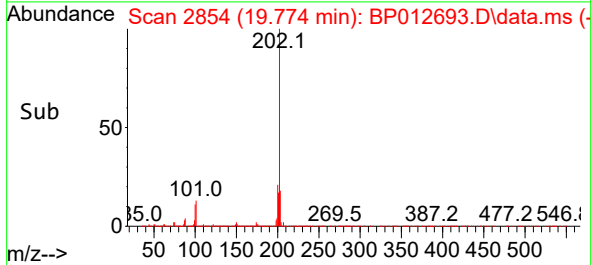
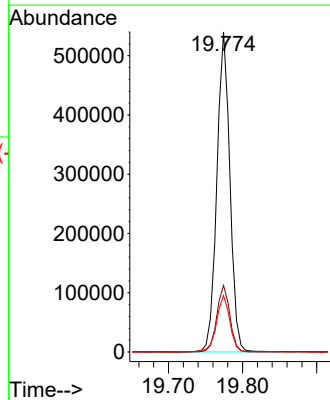
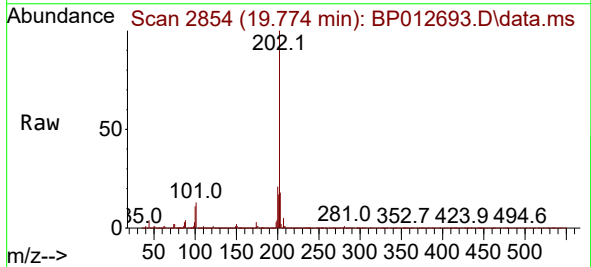
SSTDIC005

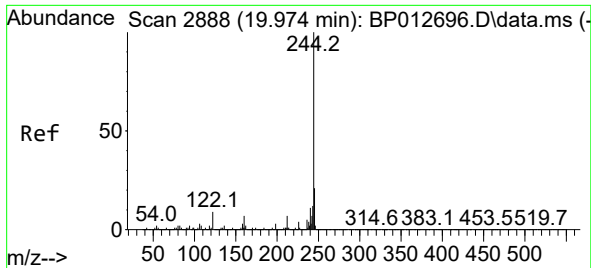
Tgt Ion	Ratio	Lower	Upper
184	100		
185	14.0	11.7	17.5
183	11.5	9.4	14.2



#78
 Pyrene
 Concen: 4.425 ng
 RT: 19.774 min Scan# 2854
 Delta R.T. -0.006 min
 Lab File: BP012693.D
 Acq: 22 Nov 2022 10:02

Tgt Ion	Ratio	Lower	Upper
202	100		
200	20.8	17.1	25.7
203	17.6	14.2	21.4



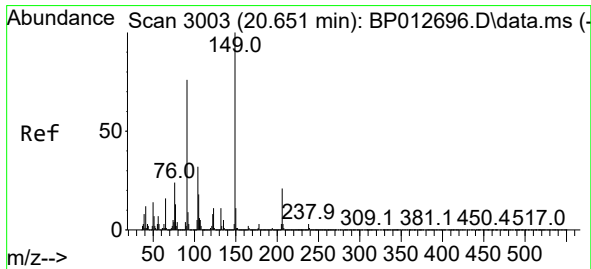
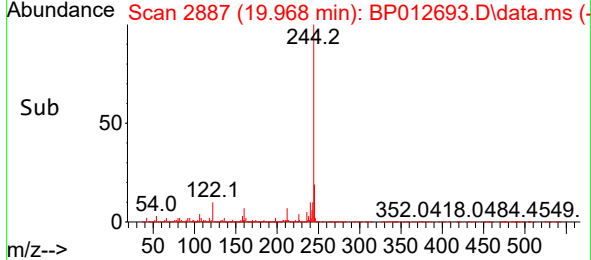
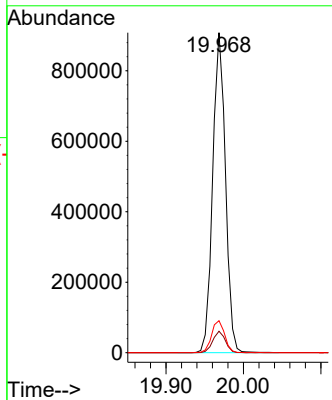
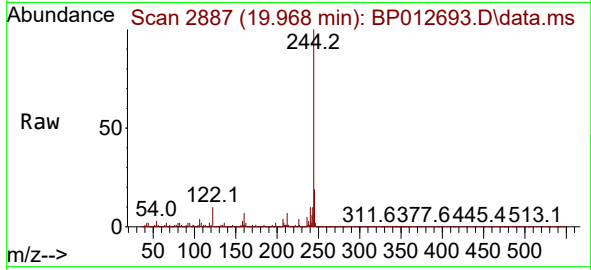


#79
 Terphenyl-d14
 Concen: 9.989 ng
 RT: 19.968 min Scan# 2887
 Delta R.T. -0.006 min
 Lab File: BP012693.D
 Acq: 22 Nov 2022 10:02

Instrument : BNA_P
 ClientSampleId : SSTDICC005

Tgt Ion:244 Resp: 1036957

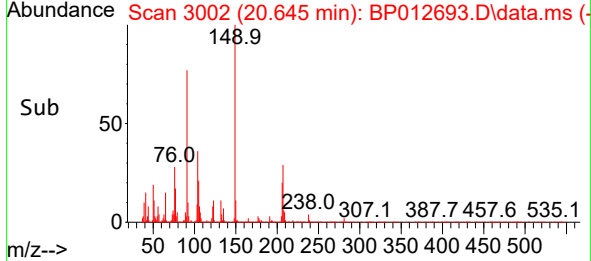
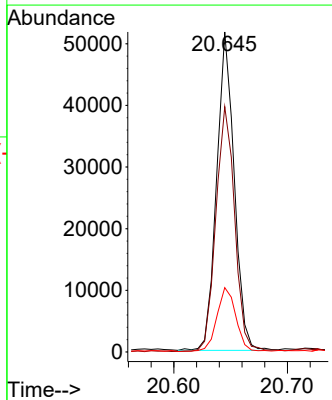
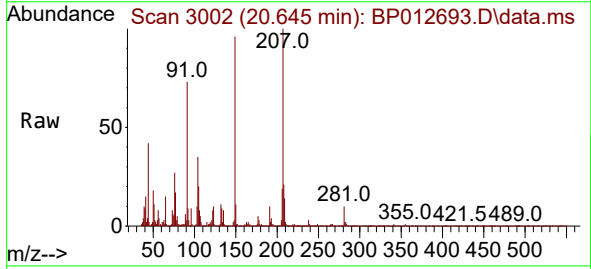
Ion	Ratio	Lower	Upper
244	100		
212	6.7	5.8	8.8
122	10.0	6.9	10.3

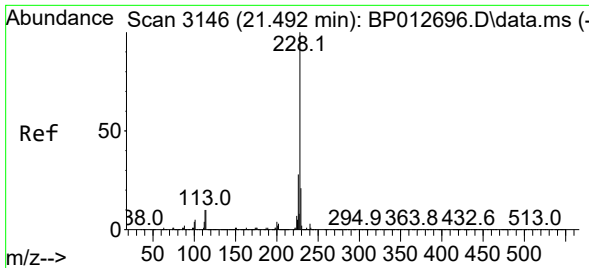


#80
 Butylbenzylphthalate
 Concen: 3.361 ng
 RT: 20.645 min Scan# 3002
 Delta R.T. -0.006 min
 Lab File: BP012693.D
 Acq: 22 Nov 2022 10:02

Tgt Ion:149 Resp: 55637

Ion	Ratio	Lower	Upper
149	100		
91	76.6	61.1	91.7
206	20.1	16.5	24.7



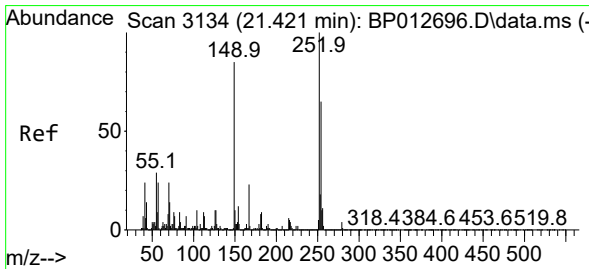
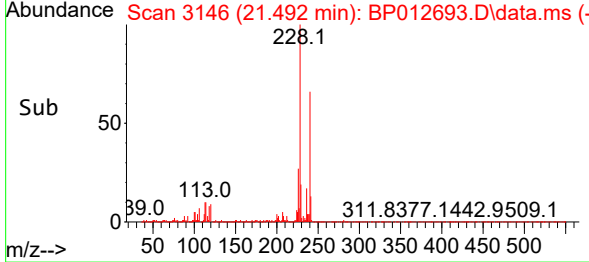
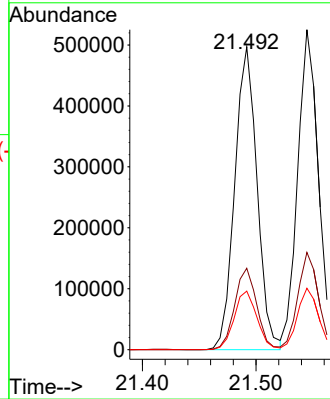
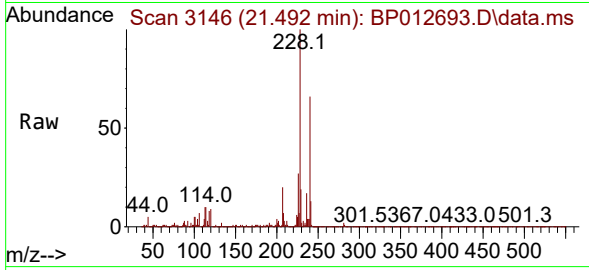


#81
 Benzo(a)anthracene
 Concen: 4.441 ng
 RT: 21.492 min Scan# 3146
 Delta R.T. -0.000 min
 Lab File: BP012693.D
 Acq: 22 Nov 2022 10:02

Instrument : BNA_P
 ClientSampleId : SSTDICC005

Tgt Ion:228 Resp: 677309

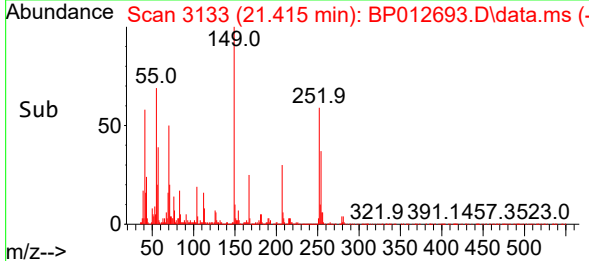
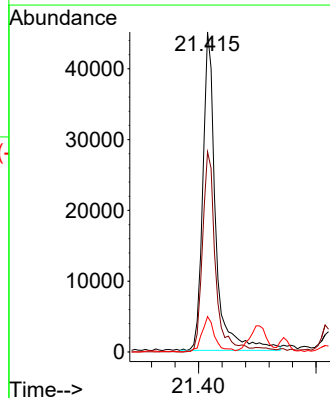
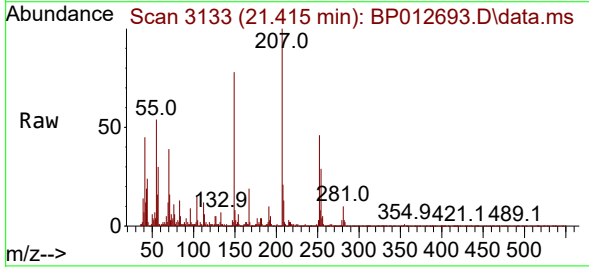
Ion	Ratio	Lower	Upper
228	100		
226	26.9	22.5	33.7
229	19.3	16.6	25.0

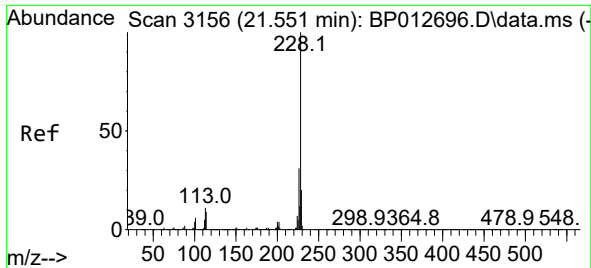


#82
 3,3'-Dichlorobenzidine
 Concen: 2.253 ng
 RT: 21.415 min Scan# 3133
 Delta R.T. -0.006 min
 Lab File: BP012693.D
 Acq: 22 Nov 2022 10:02

Tgt Ion:252 Resp: 68447

Ion	Ratio	Lower	Upper
252	100		
254	62.5	51.7	77.5
126	11.0	7.7	11.5

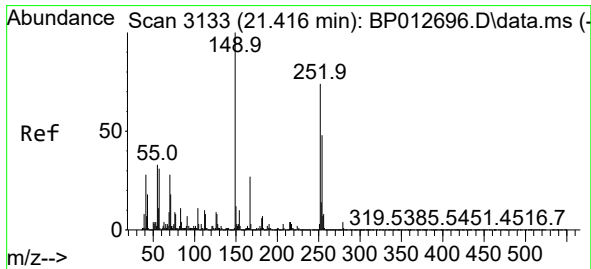
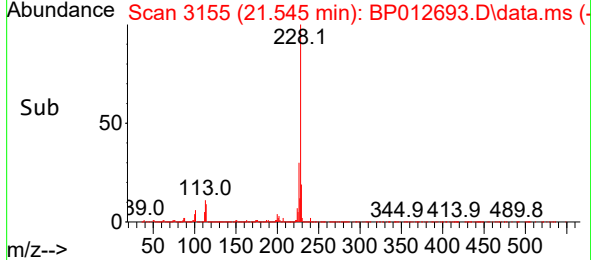
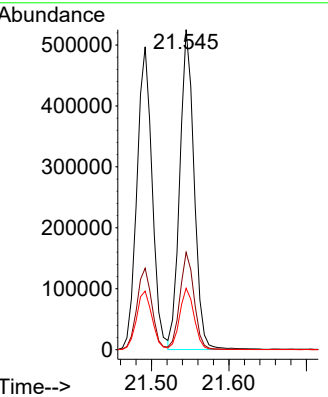
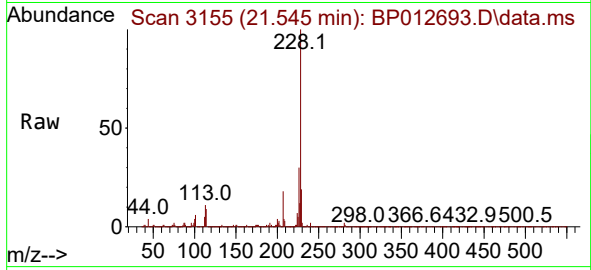




#83
 Chrysene
 Concen: 4.590 ng
 RT: 21.545 min Scan# 3155
 Delta R.T. -0.006 min
 Lab File: BP012693.D
 Acq: 22 Nov 2022 10:02

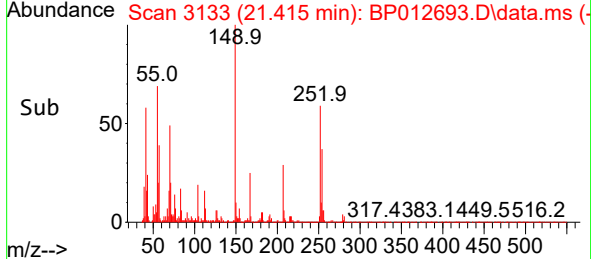
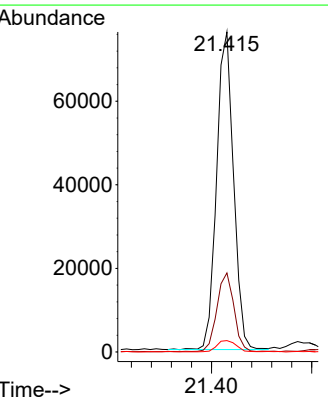
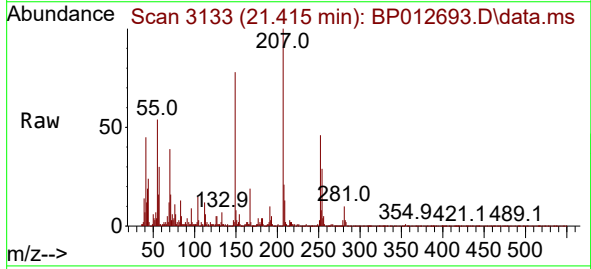
Instrument : BNA_P
 Client Sample Id : SSTDICC005

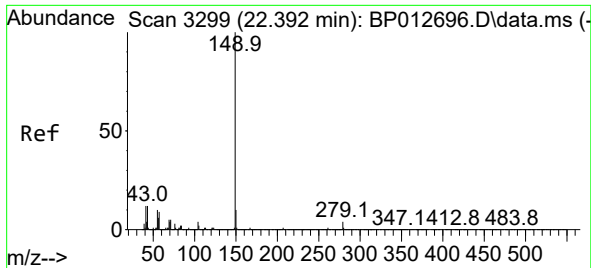
Tgt Ion	Resp	Lower	Upper
228	100		
226	30.4	25.0	37.4
229	19.2	16.3	24.5



#84
 Bis(2-ethylhexyl)phthalate
 Concen: 2.788 ng
 RT: 21.415 min Scan# 3133
 Delta R.T. -0.000 min
 Lab File: BP012693.D
 Acq: 22 Nov 2022 10:02

Tgt Ion	Resp	Lower	Upper
149	100		
167	24.7	21.5	32.3
279	3.5	3.2	4.8



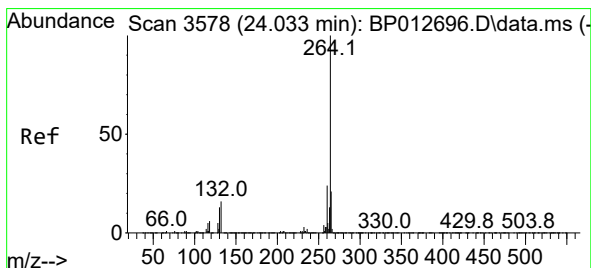
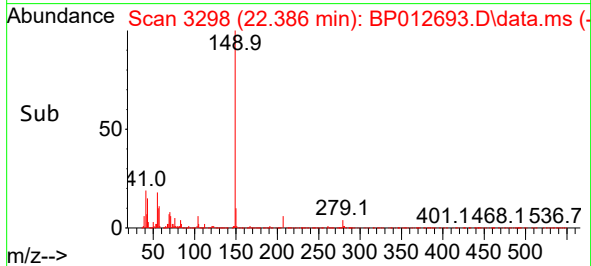
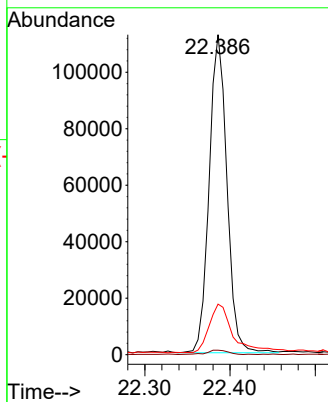
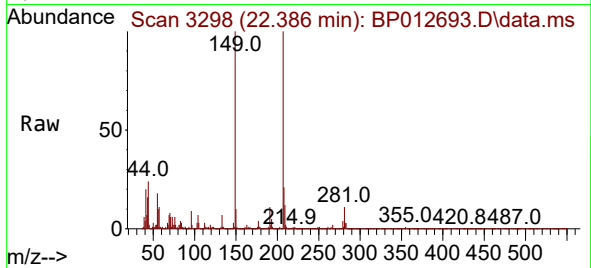


#85
 Di-n-octyl phthalate
 Concen: 2.194 ng
 RT: 22.386 min Scan# 31
 Delta R.T. -0.006 min
 Lab File: BP012693.D
 Acq: 22 Nov 2022 10:02

Instrument :
 BNA_P
 ClientSampleId :
 SSTDICC005

Tgt Ion:149 Resp: 162783

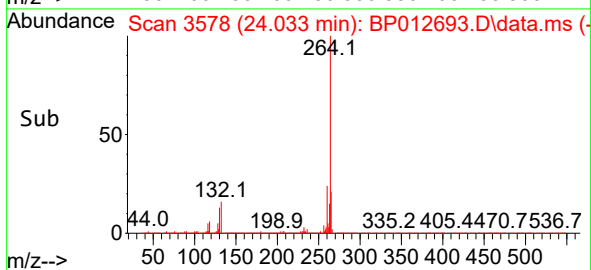
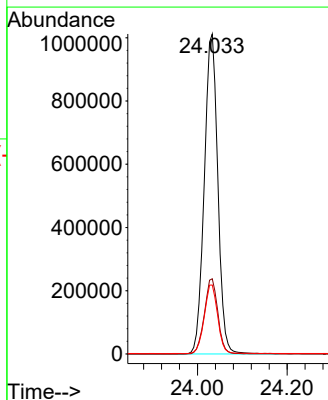
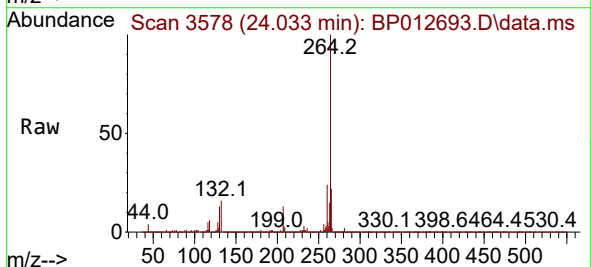
Ion	Ratio	Lower	Upper
149	100		
167	1.7	1.2	1.8
43	20.6	12.5	18.7

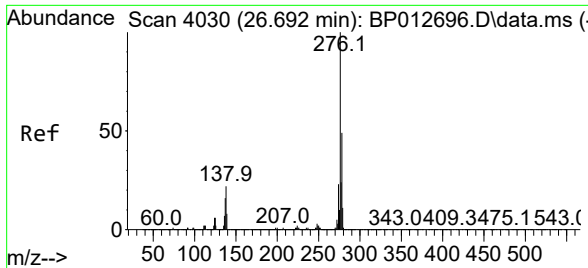


#86
 Perylene-d12
 Concen: 20.000 ng
 RT: 24.033 min Scan# 3578
 Delta R.T. -0.000 min
 Lab File: BP012693.D
 Acq: 22 Nov 2022 10:02

Tgt Ion:264 Resp: 2118754

Ion	Ratio	Lower	Upper
264	100		
260	23.5	19.0	28.4
265	21.6	17.1	25.7



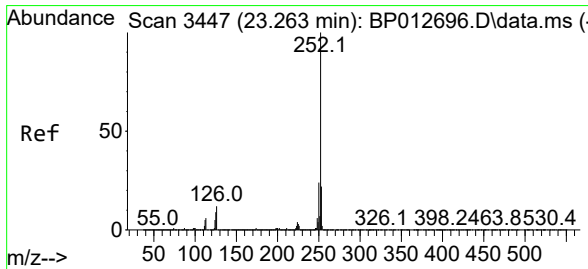
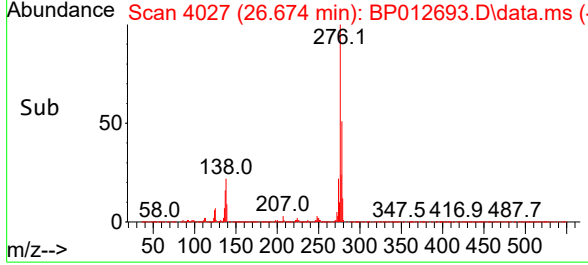
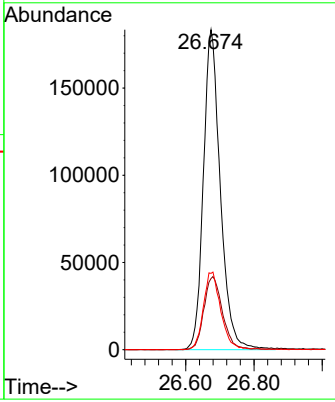
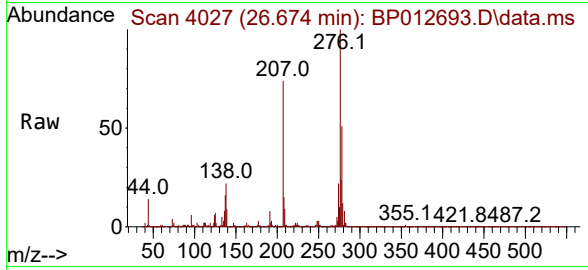


#87
 Indeno(1,2,3-cd)pyrene
 Concen: 4.040 ng
 RT: 26.674 min Scan# 4030
 Delta R.T. -0.018 min
 Lab File: BP012693.D
 Acq: 22 Nov 2022 10:02

Instrument : BNA_P
 ClientSampleId : SSTDICC005

Tgt Ion:276 Resp: 633643

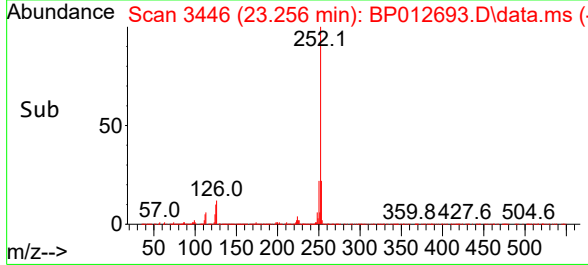
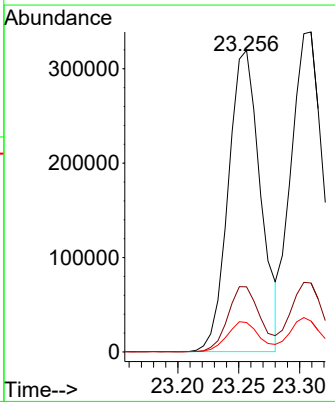
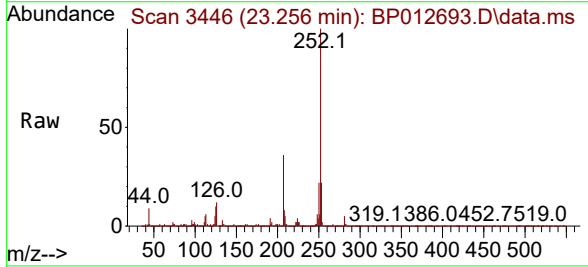
Ion	Ratio	Lower	Upper
276	100		
138	24.9	19.6	29.4
277	24.8	20.1	30.1

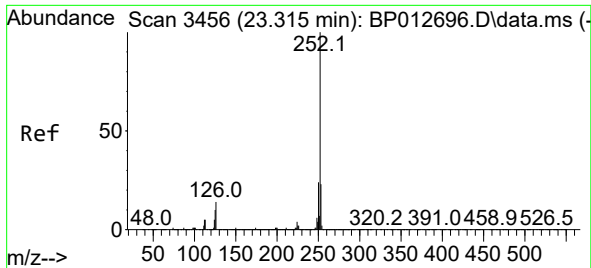


#88
 Benzo(b)fluoranthene
 Concen: 4.073 ng
 RT: 23.256 min Scan# 3446
 Delta R.T. -0.006 min
 Lab File: BP012693.D
 Acq: 22 Nov 2022 10:02

Tgt Ion:252 Resp: 587919

Ion	Ratio	Lower	Upper
252	100		
253	21.6	17.8	26.8
125	9.8	7.5	11.3



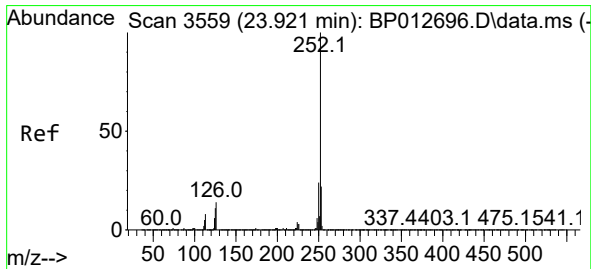
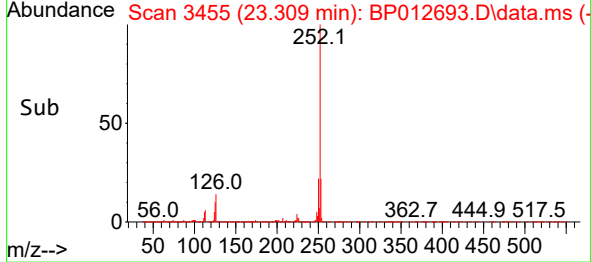
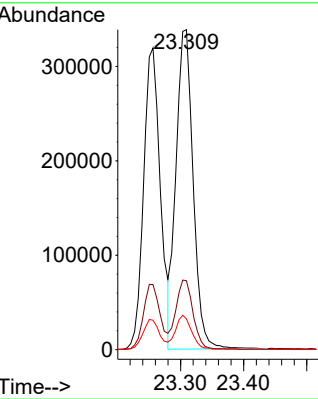
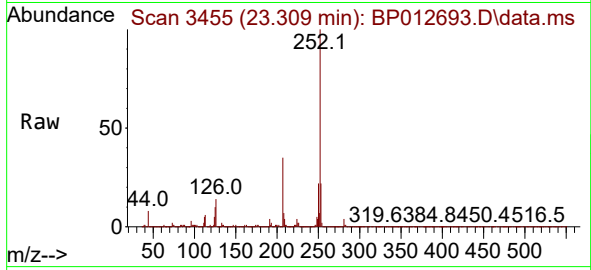


#89
 Benzo(k)fluoranthene
 Concen: 4.319 ng
 RT: 23.309 min Scan# 3455
 Delta R.T. -0.006 min
 Lab File: BP012693.D
 Acq: 22 Nov 2022 10:02

Instrument : BNA_P
 Client Sample Id : SSTDICC005

Tgt Ion: 252 Resp: 637157

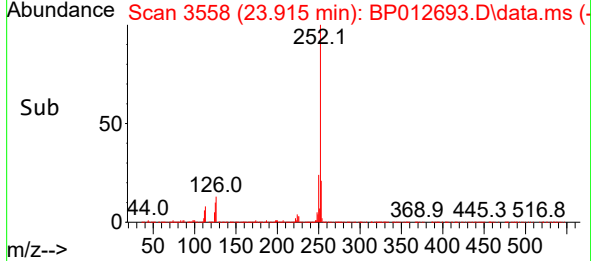
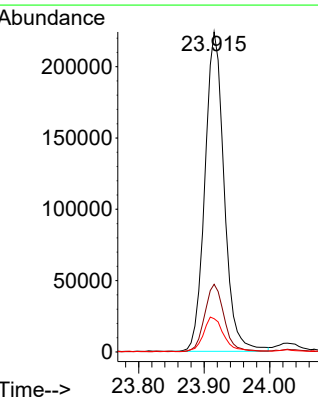
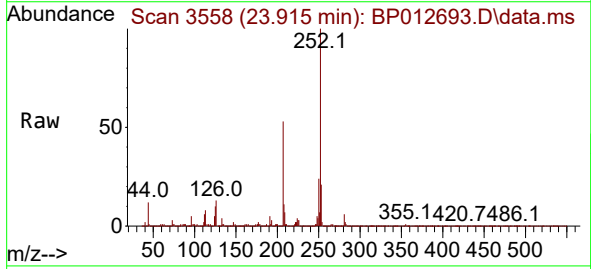
Ion	Ratio	Lower	Upper
252	100		
253	21.6	17.9	26.9
125	9.6	7.7	11.5

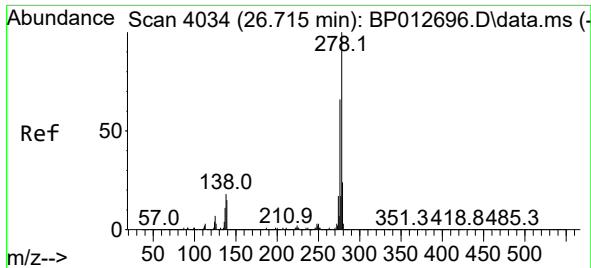


#90
 Benzo(a)pyrene
 Concen: 3.908 ng
 RT: 23.915 min Scan# 3558
 Delta R.T. -0.006 min
 Lab File: BP012693.D
 Acq: 22 Nov 2022 10:02

Tgt Ion: 252 Resp: 455135

Ion	Ratio	Lower	Upper
252	100		
253	21.1	17.7	26.5
125	10.4	9.0	13.4



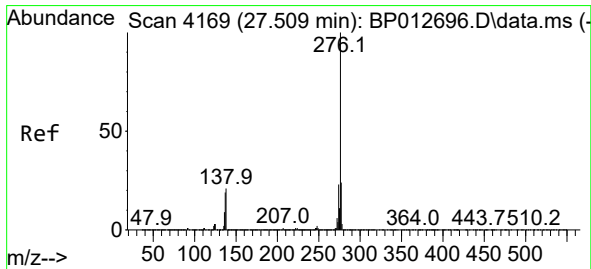
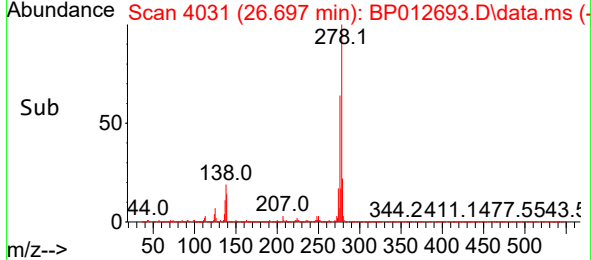
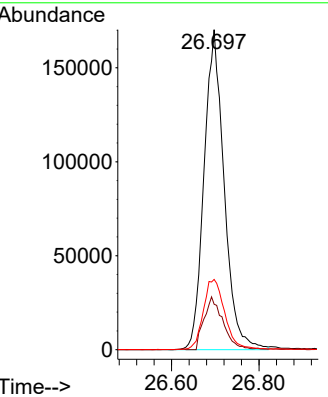
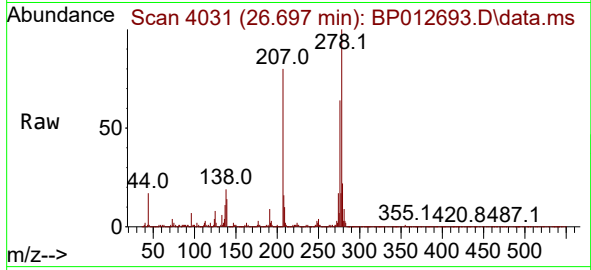


#91
 Dibenzo(a,h)anthracene
 Concen: 4.096 ng
 RT: 26.697 min Scan# 4031
 Delta R.T. -0.018 min
 Lab File: BP012693.D
 Acq: 22 Nov 2022 10:02

Instrument : BNA_P
 Client Sample Id : SSTDICC005

Tgt Ion: 278 Resp: 541878

Ion	Ratio	Lower	Upper
278	100		
139	14.2	12.2	18.2
279	22.0	19.0	28.6



#92
 Benzo(g,h,i)perylene
 Concen: 4.105 ng
 RT: 27.486 min Scan# 4165
 Delta R.T. -0.024 min
 Lab File: BP012693.D
 Acq: 22 Nov 2022 10:02

Tgt Ion: 276 Resp: 503216

Ion	Ratio	Lower	Upper
276	100		
277	23.4	19.4	29.2
138	20.5	17.1	25.7

