

Data Path : Z:\svoasrv\HPCHEM1\BNA_P\Data\BP113020\
 Data File : BP004114.D
 Acq On : 30 Nov 2020 16:22
 Operator : CG/JU
 Sample : L4891-04
 Misc :
 ALS Vial : 6 Sample Multiplier: 1

Instrument :
 BNA_P
 ClientSampleId :
 PAV-B3-112420-0-10

Quant Time: Nov 30 17:19:18 2020
 Quant Method : Z:\SVOASRV\HPCHEM1\BNA_P\METHODS\8270E-BP110320.M
 Quant Title : ASP BNA STANDARDS FOR 5 POINT CALIBRATION
 QLast Update : Mon Nov 23 16:42:41 2020
 Response via : Initial Calibration

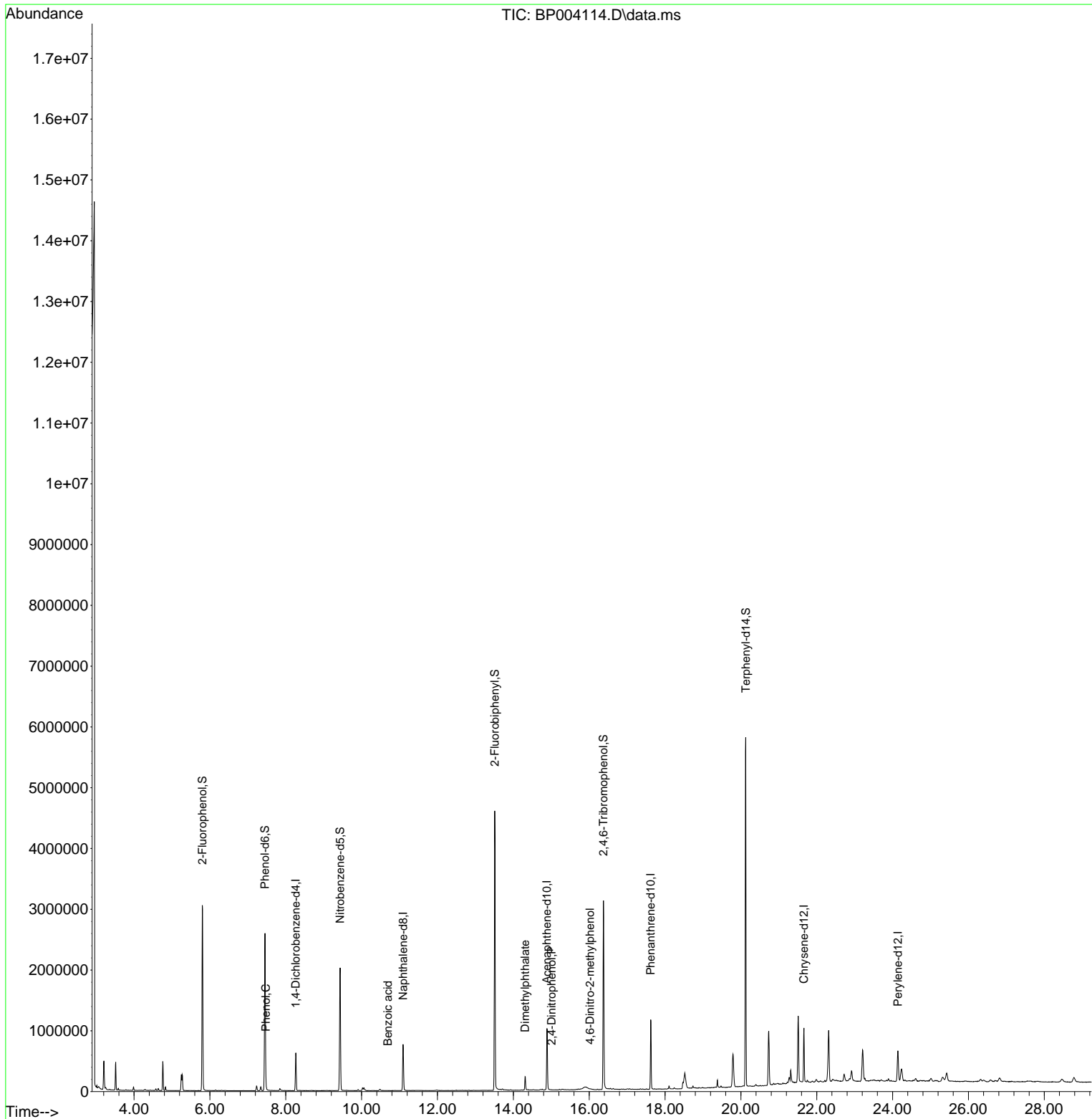
Compound	R.T.	QIon	Response	Conc	Units	Dev(Min)
Internal Standards						
1) 1,4-Dichlorobenzene-d4	8.263	152	163220	20.00	ng	0.00
21) Naphthalene-d8	11.093	136	609903	20.00	ng	# 0.00
39) Acenaphthene-d10	14.887	164	357462	20.00	ng	0.00
64) Phenanthrene-d10	17.622	188	697690	20.00	ng	# 0.00
76) Chrysene-d12	21.663	240	453076	20.00	ng	0.00
86) Perylene-d12	24.139	264	411035	20.00	ng	0.01
System Monitoring Compounds						
5) 2-Fluorophenol	5.805	112	1259014	128.74	ng	0.00
7) Phenol-d6	7.452	99	1424942	101.50	ng	0.00
23) Nitrobenzene-d5	9.434	82	1151266	92.45	ng	0.00
42) 2,4,6-Tribromophenol	16.375	330	617482	138.11	ng	0.00
45) 2-Fluorobiphenyl	13.510	172	2369425	92.67	ng	0.00
79) Terphenyl-d14	20.127	244	2502240	106.70	ng	0.00
Target Compounds						
9) Benzaldehyde	7.369	77	106	Below Cal	#	52
10) Phenol	7.475	94	30101	2.22	ng	# 62
32) Benzoic acid	10.693	122	131	8.33	ng	87
50) Dimethylphthalate	14.310	163	153326	5.49	ng	99
54) 2,4-Dinitrophenol	15.010	184	54	2.76	ng	# 34
65) 4,6-Dinitro-2-methylph...	16.022	198	95	6.36	ng	# 1

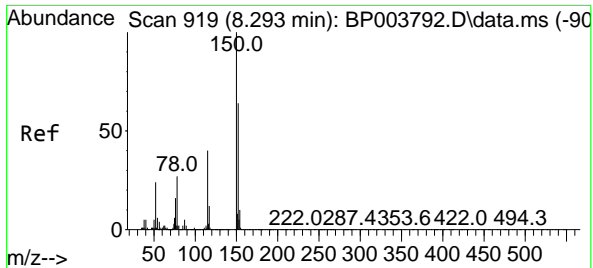
(#) = qualifier out of range (m) = manual integration (+) = signals summed

Data Path : Z:\svoasrv\HPCHEM1\BNA_P\Data\BP113020\
 Data File : BP004114.D
 Acq On : 30 Nov 2020 16:22
 Operator : CG/JU
 Sample : L4891-04
 Misc :
 ALS Vial : 6 Sample Multiplier: 1

Instrument :
 BNA_P
 ClientSampleId :
 PAV-B3-112420-0-10

Quant Time: Nov 30 17:19:18 2020
 Quant Method : Z:\SVOASRV\HPCHEM1\BNA_P\METHODS\8270E-BP110320.M
 Quant Title : ASP BNA STANDARDS FOR 5 POINT CALIBRATION
 QLast Update : Mon Nov 23 16:42:41 2020
 Response via : Initial Calibration

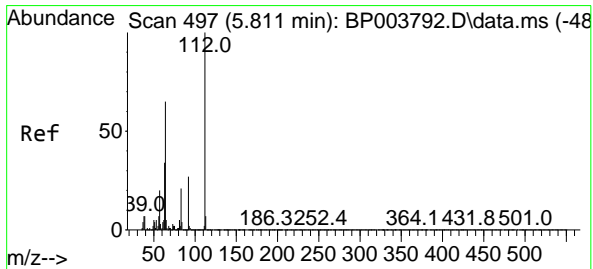
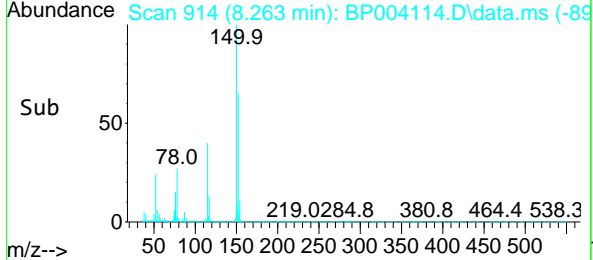
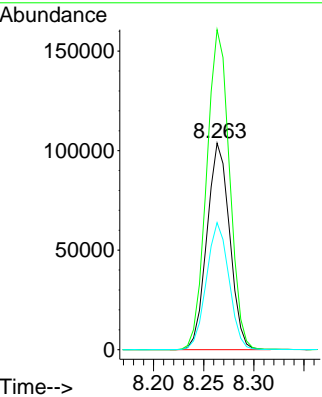
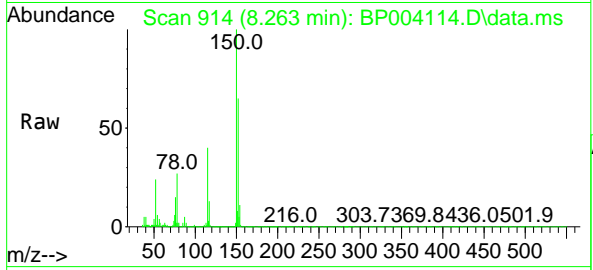




#1
 1,4-Dichlorobenzene-d4
 Concen: 20.00 ng
 RT: 8.263 min Scan# 914
 Delta R.T. -0.006 min
 Lab File: BP004114.D
 Acq: 30 Nov 2020 16:22

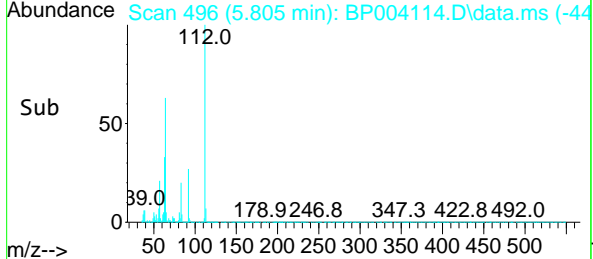
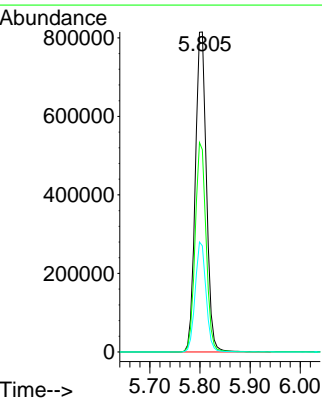
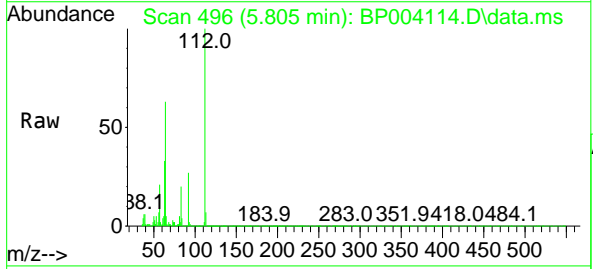
Instrument :
 BNA_P
ClientSampleId :
 PAV-B3-112420-0-10

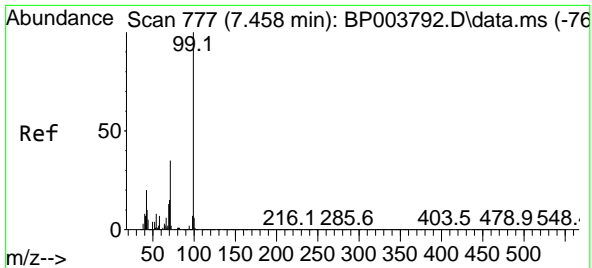
Tgt Ion	Resp	Lower	Upper
152	163220		
150	154.9	123.8	185.6
115	61.5	43.8	65.6



#5
 2-Fluorophenol
 Concen: 128.74 ng
 RT: 5.805 min Scan# 496
 Delta R.T. 0.000 min
 Lab File: BP004114.D
 Acq: 30 Nov 2020 16:22

Tgt Ion	Resp	Lower	Upper
112	1259014		
64	63.2	32.8	49.2#
63	33.1	17.0	25.4#



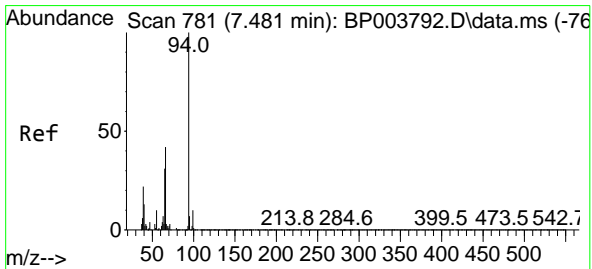
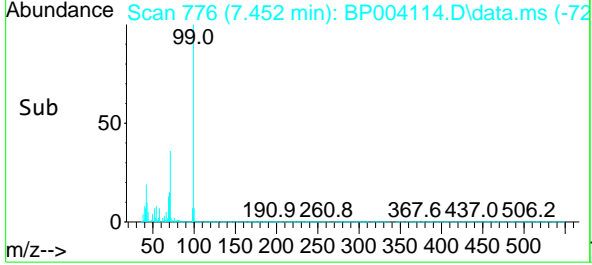
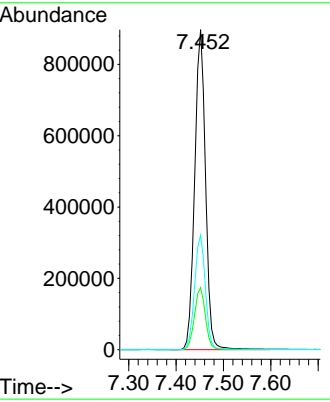
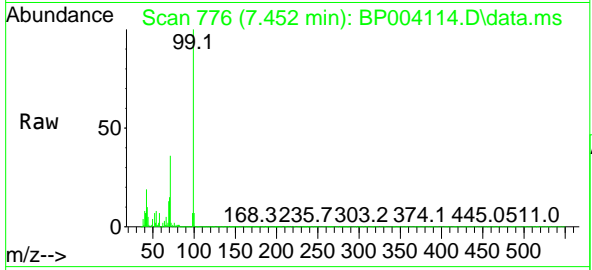


#7
 Phenol-d6
 Concen: 101.50 ng
 RT: 7.452 min Scan# 776
 Delta R.T. 0.000 min
 Lab File: BP004114.D
 Acq: 30 Nov 2020 16:22

Instrument :
 BNA_P
ClientSampleId :
 PAV-B3-112420-0-10

Tgt Ion: 99 Resp: 1424942

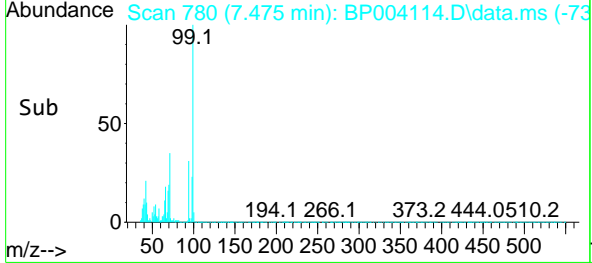
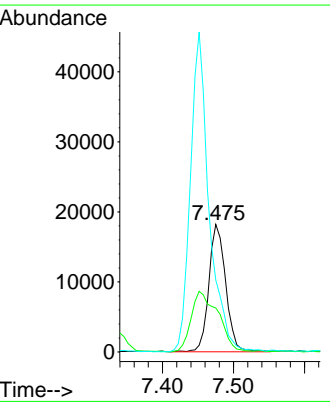
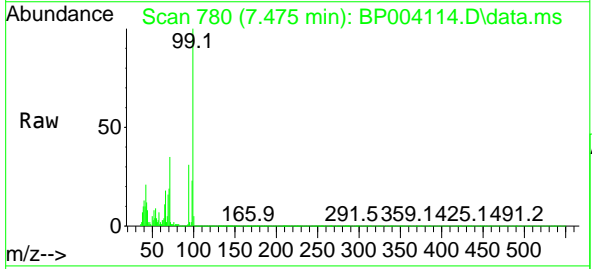
Ion	Ratio	Lower	Upper
99	100		
42	19.4	8.6	13.0#
71	35.8	23.4	35.2#

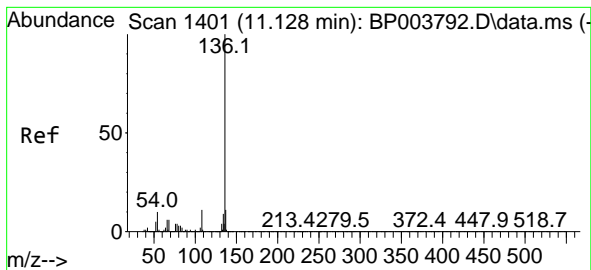


#10
 Phenol
 Concen: 2.22 ng
 RT: 7.475 min Scan# 780
 Delta R.T. -0.006 min
 Lab File: BP004114.D
 Acq: 30 Nov 2020 16:22

Tgt Ion: 94 Resp: 30101

Ion	Ratio	Lower	Upper
94	100		
65	34.5	2.3	42.3
66	56.3	10.9	50.9#

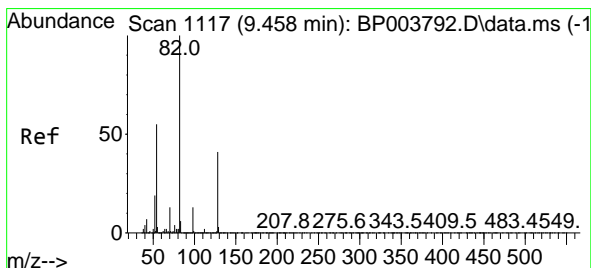
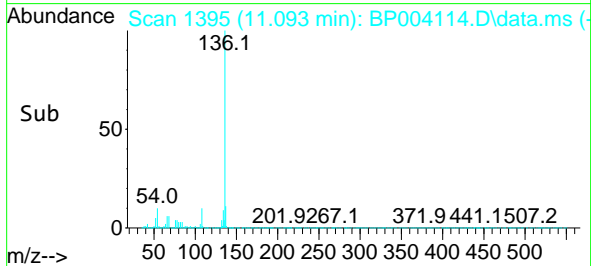
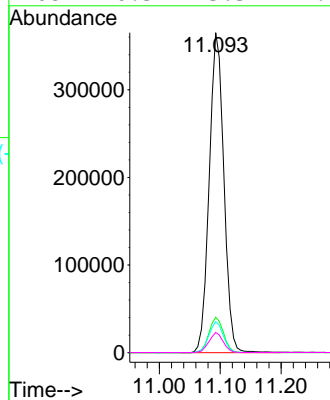
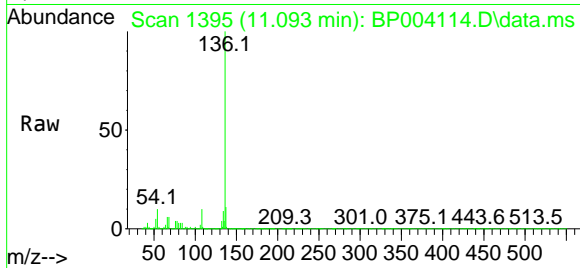




#21
 Naphthalene-d8
 Concen: 20.00 ng
 RT: 11.093 min Scan# 1395
 Delta R.T. -0.006 min
 Lab File: BP004114.D
 Acq: 30 Nov 2020 16:22

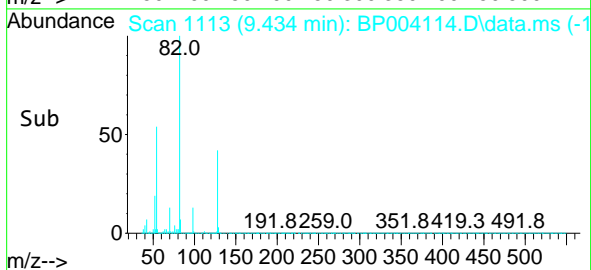
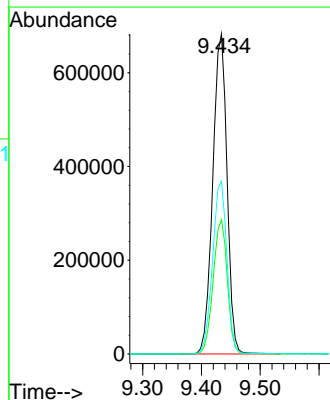
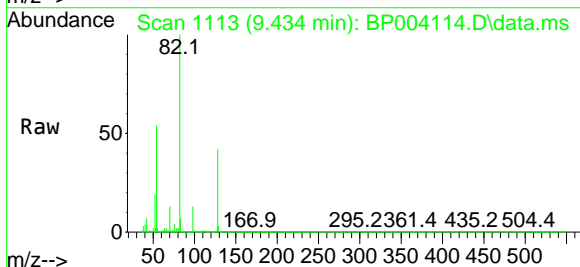
Instrument :
 BNA_P
 ClientSampleId :
 PAV-B3-112420-0-10

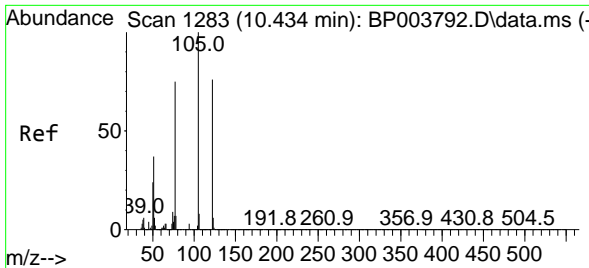
Tgt Ion	Resp	Lower	Upper
136	100		
137	11.0	8.6	13.0
54	9.7	3.6	5.4#
68	6.3	3.3	4.9#



#23
 Nitrobenzene-d5
 Concen: 92.45 ng
 RT: 9.434 min Scan# 1113
 Delta R.T. 0.000 min
 Lab File: BP004114.D
 Acq: 30 Nov 2020 16:22

Tgt Ion	Resp	Lower	Upper
82	100		
128	41.9	45.6	68.4#
54	54.0	30.1	45.1#



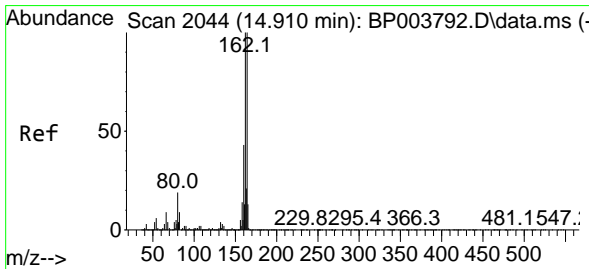
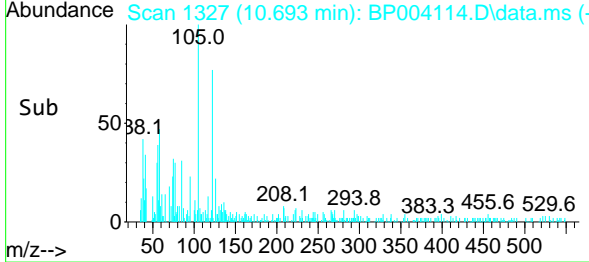
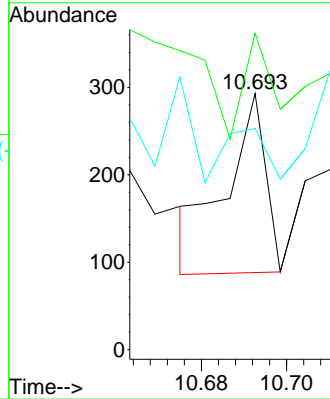
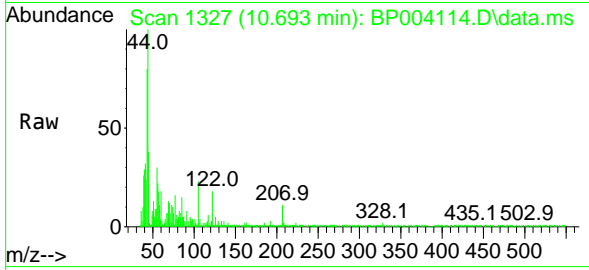


#32
 Benzoic acid
 Concen: 8.33 ng
 RT: 10.693 min Scan# 1327
 Delta R.T. 0.235 min
 Lab File: BP004114.D
 Acq: 30 Nov 2020 16:22

Instrument :
 BNA_P
ClientSampled :
 PAV-B3-112420-0-10

Tgt Ion:122 Resp: 131

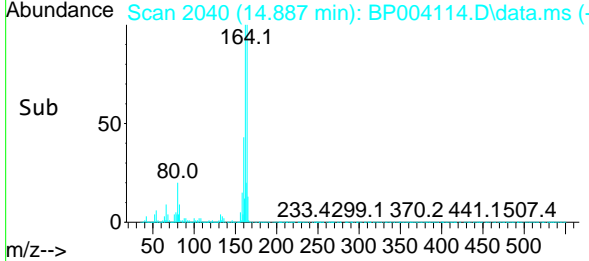
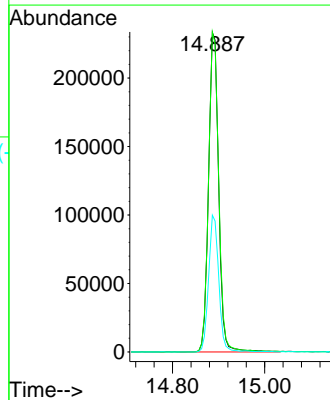
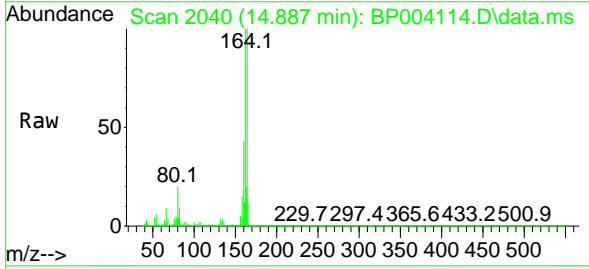
Ion	Ratio	Lower	Upper
122	100		
105	123.5	94.1	134.1
77	86.3	50.1	90.1

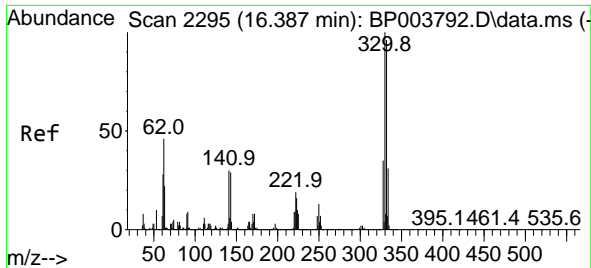


#39
 Acenaphthene-d10
 Concen: 20.00 ng
 RT: 14.887 min Scan# 2040
 Delta R.T. -0.006 min
 Lab File: BP004114.D
 Acq: 30 Nov 2020 16:22

Tgt Ion:164 Resp: 357462

Ion	Ratio	Lower	Upper
164	100		
162	100.2	79.4	119.2
160	42.8	36.1	54.1

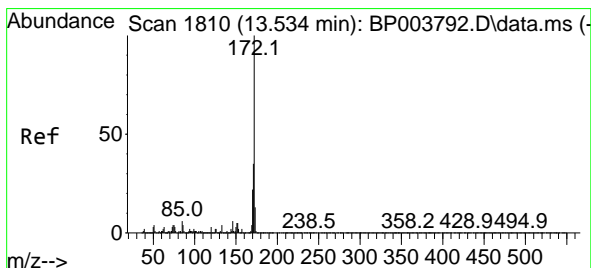
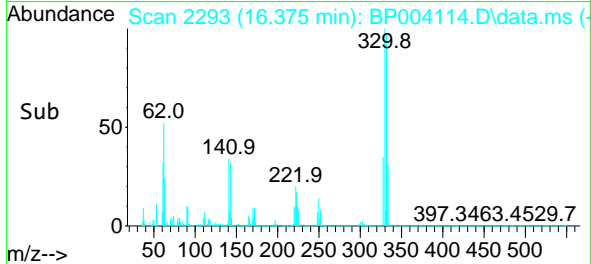
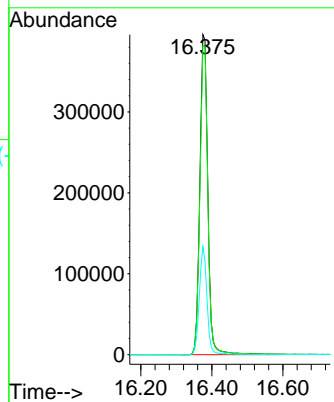
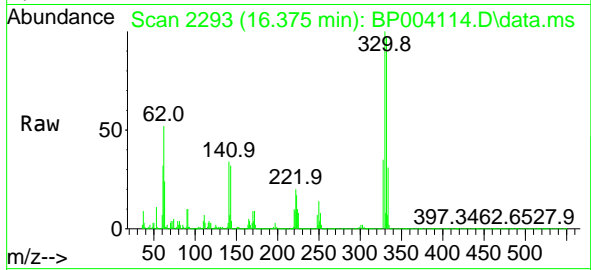




#42
 2,4,6-Tribromophenol
 Concen: 138.11 ng
 RT: 16.375 min Scan# 2293
 Delta R.T. 0.000 min
 Lab File: BP004114.D
 Acq: 30 Nov 2020 16:22

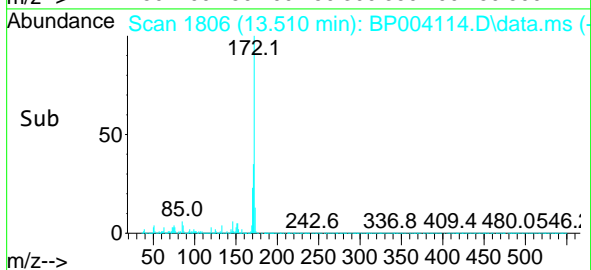
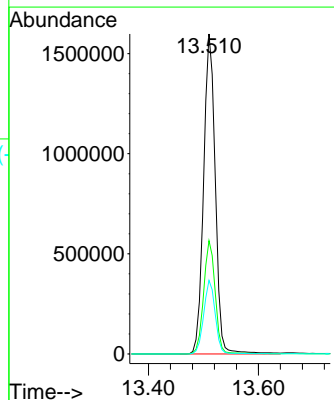
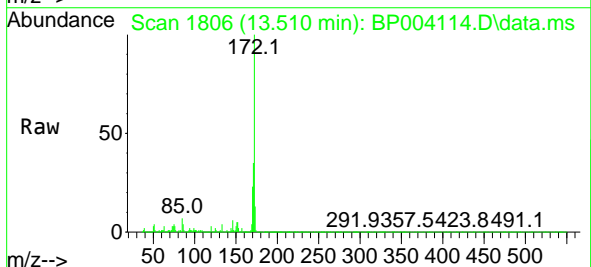
Instrument :
 BNA_P
ClientSampleId :
 PAV-B3-112420-0-10

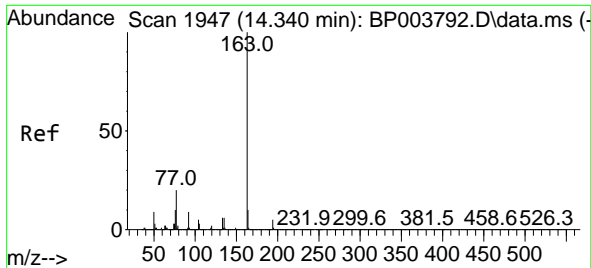
Tgt Ion	Resp	Lower	Upper
330	617482		
330	100		
332	96.2	77.1	115.7
141	32.3	23.4	35.2



#45
 2-Fluorobiphenyl
 Concen: 92.67 ng
 RT: 13.510 min Scan# 1806
 Delta R.T. 0.000 min
 Lab File: BP004114.D
 Acq: 30 Nov 2020 16:22

Tgt Ion	Resp	Lower	Upper
172	2369425		
172	100		
171	35.4	28.5	42.7
170	23.0	19.2	28.8

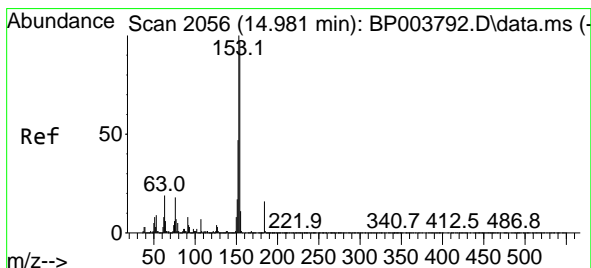
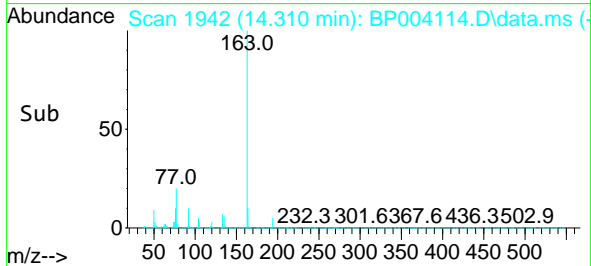
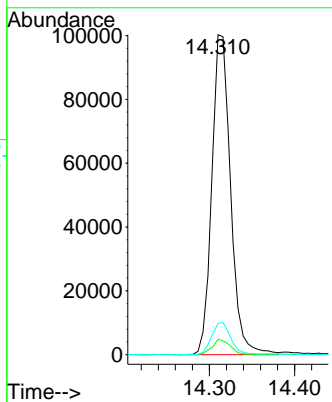
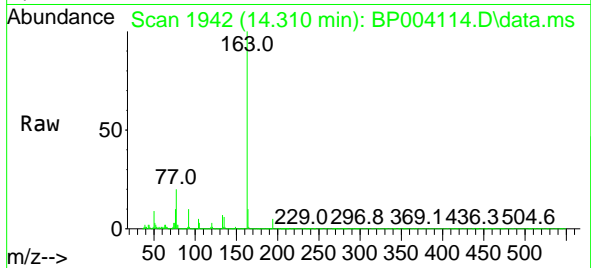




#50
 Dimethylphthalate
 Concen: 5.49 ng
 RT: 14.310 min Scan# 1942
 Delta R.T. -0.012 min
 Lab File: BP004114.D
 Acq: 30 Nov 2020 16:22

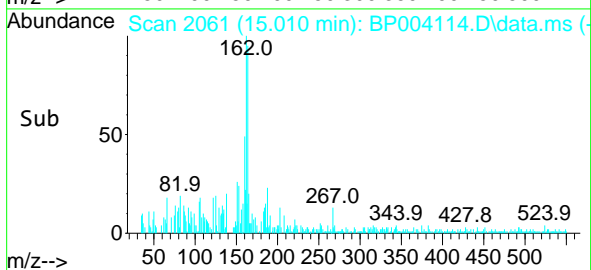
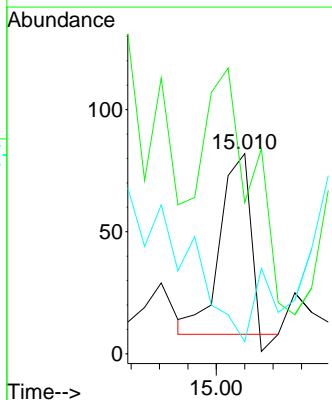
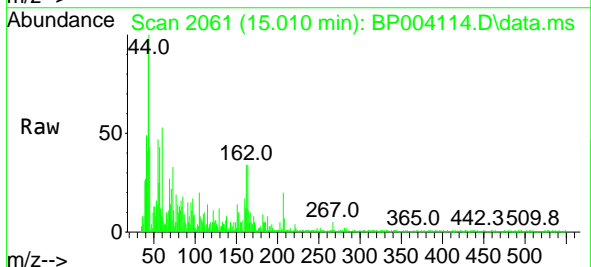
Instrument :
 BNA_P
ClientSampleId :
 PAV-B3-112420-0-10

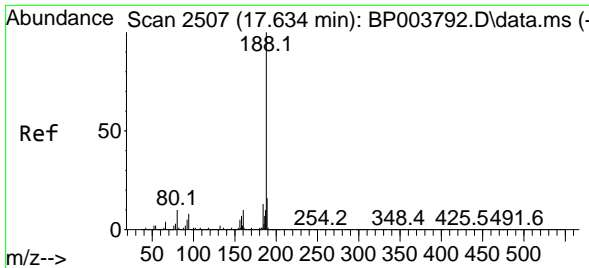
Tgt Ion	Resp	Lower	Upper
163	100		
194	4.8	3.3	4.9
164	9.8	8.2	12.2



#54
 2,4-Dinitrophenol
 Concen: 2.76 ng
 RT: 15.010 min Scan# 2061
 Delta R.T. 0.018 min
 Lab File: BP004114.D
 Acq: 30 Nov 2020 16:22

Tgt Ion	Resp	Lower	Upper
184	100		
63	75.6	32.3	48.5#
154	6.1	49.1	73.7#

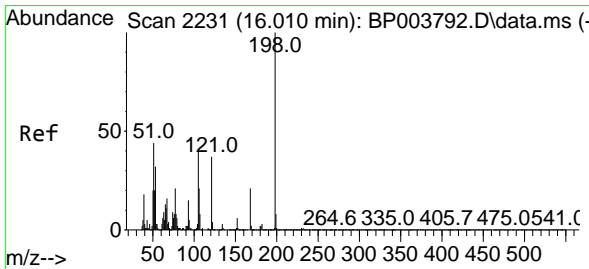
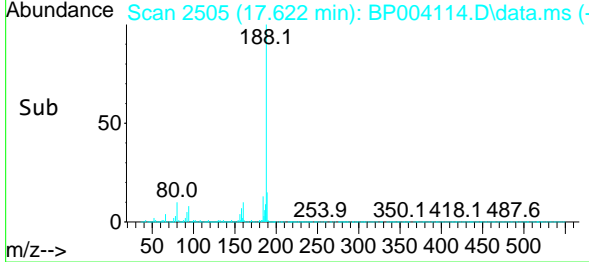
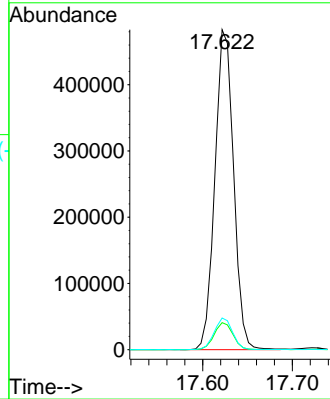
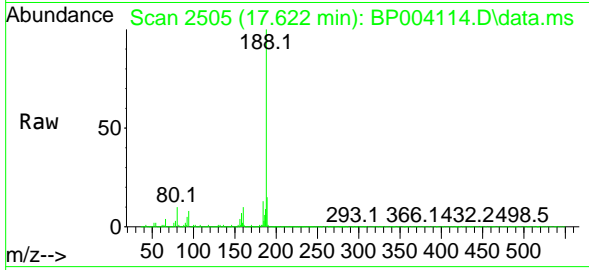




#64
 Phenanthrene-d10
 Concen: 20.00 ng
 RT: 17.622 min Scan# 2505
 Delta R.T. 0.000 min
 Lab File: BP004114.D
 Acq: 30 Nov 2020 16:22

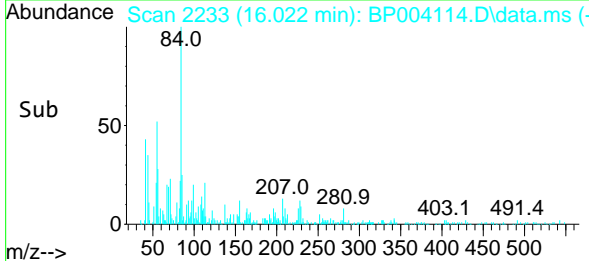
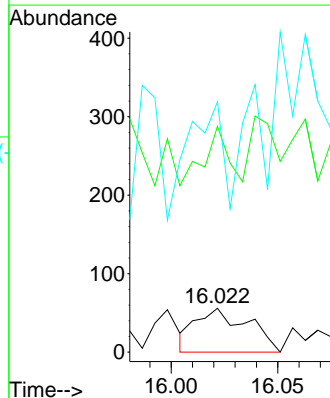
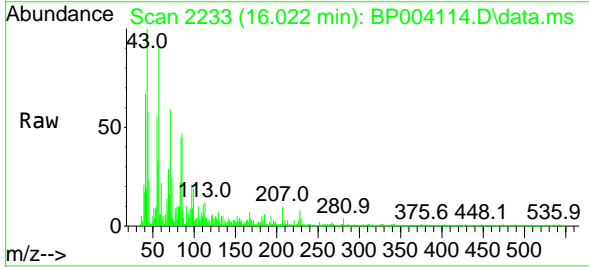
Instrument :
 BNA_P
ClientSampleId :
 PAV-B3-112420-0-10

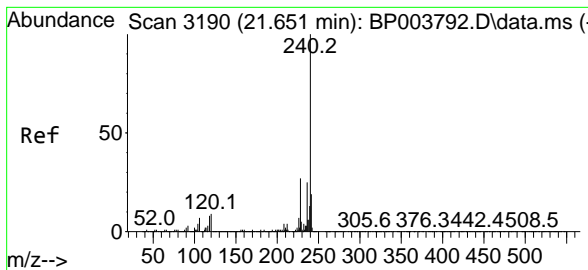
Tgt Ion	Resp	Lower	Upper
188	100		
94	8.4	6.2	9.2
80	9.9	6.2	9.2#



#65
 4,6-Dinitro-2-methylphenol
 Concen: 6.36 ng
 RT: 16.022 min Scan# 2233
 Delta R.T. 0.006 min
 Lab File: BP004114.D
 Acq: 30 Nov 2020 16:22

Tgt Ion	Resp	Lower	Upper
198	100		
51	514.3	6.4	46.4#
105	569.6	18.9	58.9#

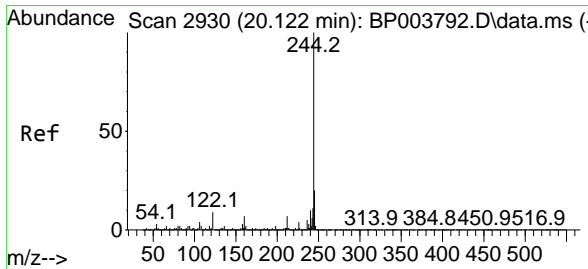
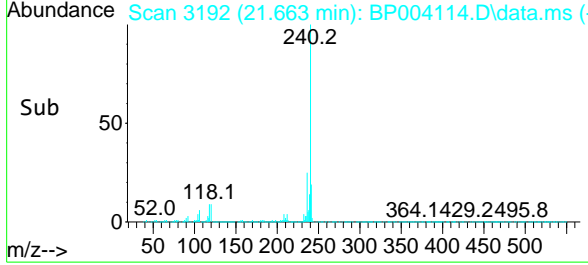
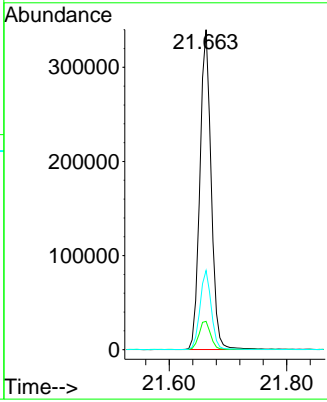
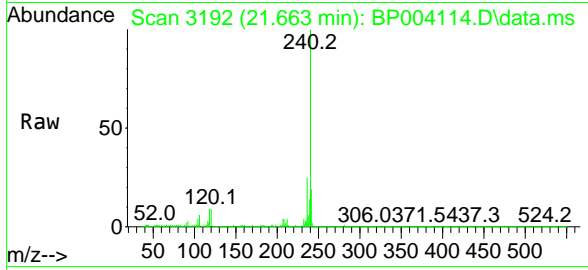




#76
 Chrysene-d12
 Concen: 20.00 ng
 RT: 21.663 min Scan# 3192
 Delta R.T. 0.000 min
 Lab File: BP004114.D
 Acq: 30 Nov 2020 16:22

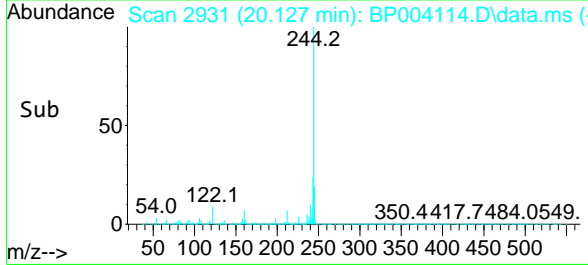
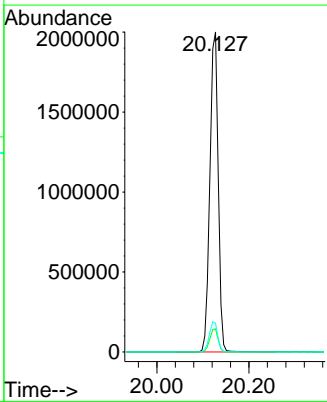
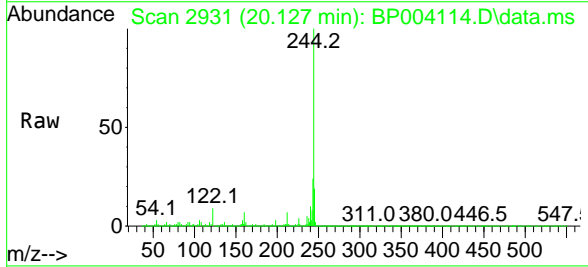
Instrument :
 BNA_P
ClientSampled :
 PAV-B3-112420-0-10

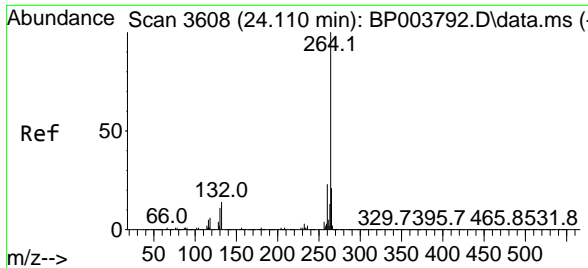
Tgt Ion	Resp	Lower	Upper
240	453076		
120	8.9	7.8	11.6
236	24.7	20.8	31.2



#79
 Terphenyl-d14
 Concen: 106.70 ng
 RT: 20.127 min Scan# 2931
 Delta R.T. 0.006 min
 Lab File: BP004114.D
 Acq: 30 Nov 2020 16:22

Tgt Ion	Resp	Lower	Upper
244	2502240		
212	7.2	5.8	8.6
122	9.0	7.8	11.8





#86
 Perylene-d12
 Concen: 20.00 ng
 RT: 24.139 min Scan# 3613
 Delta R.T. 0.012 min
 Lab File: BP004114.D
 Acq: 30 Nov 2020 16:22

Instrument :
 BNA_P
ClientSampled :
 PAV-B3-112420-0-10

Tgt Ion:264 Resp: 411035

Ion	Ratio	Lower	Upper
264	100		
260	23.0	18.8	28.2
265	21.3	17.4	26.2

