

Data Path : Z:\svoasrv\HPCHEM1\BNA_P\Data\BP121721\
 Data File : BP008470.D
 Acq On : 17 Dec 2021 14:22
 Operator : CG/JU
 Sample : PB141340BSD
 Misc :
 ALS Vial : 5 Sample Multiplier: 1

Instrument :
 BNA_P
 ClientSampleId :

Quant Time: Dec 18 06:14:28 2021
 Quant Method : Z:\svoasrv\HPCHEM1\BNA_P\Methods\8270E-BP121421.M
 Quant Title : ASP BNA STANDARDS FOR 5 POINT CALIBRATION
 QLast Update : Tue Dec 14 17:59:47 2021
 Response via : Initial Calibration

Compound	R.T.	QIon	Response	Conc	Units	Dev(Min)
Internal Standards						
1) 1,4-Dichlorobenzene-d4	7.728	152	65774	20.000	ng	-0.02
21) Naphthalene-d8	10.522	136	269996	20.000	ng	-0.02
39) Acenaphthene-d10	14.381	164	180560	20.000	ng	-0.02
64) Phenanthrene-d10	17.145	188	387357	20.000	ng	-0.02
76) Chrysene-d12	21.263	240	403261	20.000	ng	# 0.00
86) Perylene-d12	23.633	264	405521	20.000	ng	0.00
System Monitoring Compounds						
5) 2-Fluorophenol	5.328	112	559885	134.429	ng	-0.02
7) Phenol-d6	6.928	99	736283	131.626	ng	-0.01
23) Nitrobenzene-d5	8.893	82	481969	75.625	ng	-0.02
42) 2,4,6-Tribromophenol	15.892	330	339893	128.094	ng	-0.01
45) 2-Fluorobiphenyl	12.998	172	1055402	74.304	ng	-0.02
79) Terphenyl-d14	19.727	244	1781986	76.907	ng	0.00
Target Compounds						
2) 1,4-Dioxane	3.228	88	57846	36.085	ng	98
3) Pyridine	3.634	79	134719	26.833	ng	97
4) n-Nitrosodimethylamine	3.546	42	90436	45.642	ng	96
6) Aniline	7.063	93	234523	36.223	ng	96
8) 2-Chlorophenol	7.305	128	201122	47.379	ng	97
9) Benzaldehyde	6.887	77	22133	2.562	ng	98
10) Phenol	6.957	94	279983	49.290	ng	98
11) bis(2-Chloroethyl)ether	7.163	93	195057	41.160	ng	98
12) 1,3-Dichlorobenzene	7.616	146	199814	40.703	ng	99
13) 1,4-Dichlorobenzene	7.763	146	207487	41.532	ng	97
14) 1,2-Dichlorobenzene	8.075	146	198629	41.010	ng	98
15) Benzyl Alcohol	7.987	79	219124	48.699	ng	96
16) 2,2'-oxybis(1-Chloropr...	8.263	45	280708	41.868	ng	98
17) 2-Methylphenol	8.199	107	181423	48.280	ng	98
18) Hexachloroethane	8.793	117	76727	41.399	ng	97
19) n-Nitroso-di-n-propyla...	8.546	70	169155	40.770	ng	99
20) 3+4-Methylphenols	8.528	107	246526	47.632	ng	98
22) Acetophenone	8.563	105	307002	38.664	ng	# 98
24) Nitrobenzene	8.940	77	248702	41.577	ng	96
25) Isophorone	9.469	82	437625	41.036	ng	99
26) 2-Nitrophenol	9.646	139	108571	41.072	ng	96
27) 2,4-Dimethylphenol	9.722	122	191498	50.517	ng	99
28) bis(2-Chloroethoxy)met...	9.946	93	264347	40.100	ng	98
29) 2,4-Dichlorophenol	10.204	162	205229	44.055	ng	99
30) 1,2,4-Trichlorobenzene	10.387	180	212199	38.425	ng	97
31) Naphthalene	10.575	128	576528	40.719	ng	99
32) Benzoic acid	9.951	122	114833	41.322	ng	100
33) 4-Chloroaniline	10.710	127	117630	20.739	ng	98
34) Hexachlorobutadiene	10.851	225	147963	36.653	ng	98
35) Caprolactam	11.534	113	31228	35.400	ng	97
36) 4-Chloro-3-methylphenol	11.857	107	235738	45.288	ng	97
37) 2-Methylnaphthalene	12.193	142	426163	43.671	ng	99
38) 1-Methylnaphthalene	12.410	142	396418	41.726	ng	99
40) 1,2,4,5-Tetrachloroben...	12.569	216	257773	37.368	ng	100
41) Hexachlorocyclopentadiene	12.540	237	148630	78.086	ng	99
43) 2,4,6-Trichlorophenol	12.828	196	172079	39.705	ng	95

Data Path : Z:\svoasrv\HPCHEM1\BNA_P\Data\BP121721\
 Data File : BP008470.D
 Acq On : 17 Dec 2021 14:22
 Operator : CG/JU
 Sample : PB141340BSD
 Misc :
 ALS Vial : 5 Sample Multiplier: 1

Instrument :
 BNA_P
 ClientSampleId :

Quant Time: Dec 18 06:14:28 2021
 Quant Method : Z:\svoasrv\HPCHEM1\BNA_P\Methods\8270E-BP121421.M
 Quant Title : ASP BNA STANDARDS FOR 5 POINT CALIBRATION
 QLast Update : Tue Dec 14 17:59:47 2021
 Response via : Initial Calibration

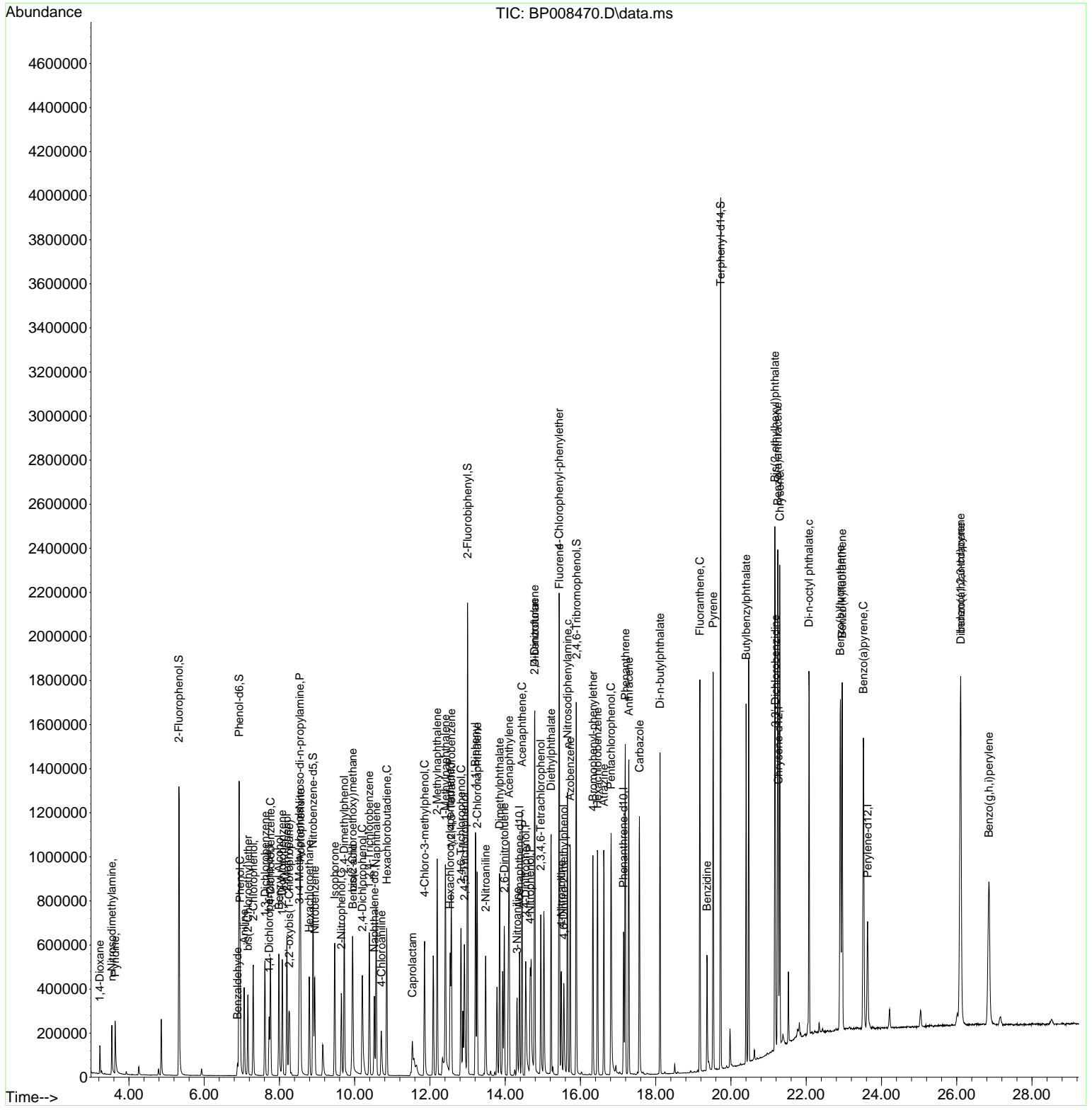
Compound	R.T.	QIon	Response	Conc	Units	Dev(Min)
44) 2,4,5-Trichlorophenol	12.916	196	191478	42.361	ng	97
46) 1,1'-Biphenyl	13.210	154	547034	39.213	ng	99
47) 2-Chloronaphthalene	13.257	162	442160	39.739	ng	99
48) 2-Nitroaniline	13.481	65	162627	43.456	ng	99
49) Acenaphthylene	14.104	152	683012	41.757	ng	99
50) Dimethylphthalate	13.851	163	577273	42.227	ng	100
51) 2,6-Dinitrotoluene	13.981	165	128020	44.858	ng	95
52) Acenaphthene	14.445	154	400290	41.144	ng	97
53) 3-Nitroaniline	14.316	138	83852	31.188	ng	97
54) 2,4-Dinitrophenol	14.545	184	154339	103.600	ng	94
55) Dibenzofuran	14.787	168	669058	40.423	ng	99
56) 4-Nitrophenol	14.663	139	161126	103.238	ng	82
57) 2,4-Dinitrotoluene	14.781	165	181192	47.522	ng #	82
58) Fluorene	15.439	166	546943	42.626	ng	100
59) 2,3,4,6-Tetrachlorophenol	14.945	232	159522	41.317	ng	98
60) Diethylphthalate	15.222	149	570378	43.963	ng	99
61) 4-Chlorophenyl-phenyle...	15.434	204	296431	40.432	ng	99
62) 4-Nitroaniline	15.492	138	107805	44.530	ng	93
63) Azobenzene	15.728	77	566280	43.054	ng	97
65) 4,6-Dinitro-2-methylph...	15.557	198	105129	41.539	ng	98
66) n-Nitrosodiphenylamine	15.657	169	479350	39.304	ng	100
67) 4-Bromophenyl-phenylether	16.333	248	193221	38.298	ng	99
68) Hexachlorobenzene	16.457	284	221203	39.811	ng	93
69) Atrazine	16.622	200	188446	70.140	ng	98
70) Pentachlorophenol	16.816	266	240462	96.837	ng	99
71) Phenanthrene	17.192	178	864142	41.183	ng	99
72) Anthracene	17.286	178	887275	42.860	ng	99
73) Carbazole	17.569	167	780892	41.220	ng	100
74) Di-n-butylphthalate	18.116	149	956628	44.014	ng	99
75) Fluoranthene	19.174	202	1058880	44.698	ng	98
77) Benzidine	19.363	184	333045	81.420	ng	96
78) Pyrene	19.527	202	1088177	37.716	ng	100
80) Butylbenzylphthalate	20.404	149	436321	41.537	ng	97
81) Benzo(a)anthracene	21.245	228	1099249	40.674	ng	98
82) 3,3'-Dichlorobenzidine	21.180	252	307710	24.746	ng	97
83) Chrysene	21.298	228	1087065	42.110	ng	99
84) Bis(2-ethylhexyl)phtha...	21.169	149	640681	43.318	ng #	98
85) Di-n-octyl phthalate	22.074	149	1137036	44.574	ng	99
87) Indeno(1,2,3-cd)pyrene	26.104	276	1226180	38.413	ng	96
88) Benzo(b)fluoranthene	22.910	252	1167843	47.874	ng	99
89) Benzo(k)fluoranthene	22.957	252	1102314	44.810	ng	98
90) Benzo(a)pyrene	23.521	252	1100253	51.966	ng	99
91) Dibenzo(a,h)anthracene	26.109	278	1057184	39.563	ng	97
92) Benzo(g,h,i)perylene	26.856	276	995725	37.630	ng	96

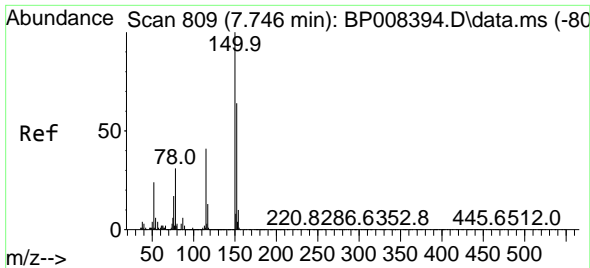
(#) = qualifier out of range (m) = manual integration (+) = signals summed

Data Path : Z:\svoasrv\HPCHEM1\BNA_P\Data\BP121721\
 Data File : BP008470.D
 Acq On : 17 Dec 2021 14:22
 Operator : CG/JU
 Sample : PB141340BSD
 Misc :
 ALS Vial : 5 Sample Multiplier: 1

Instrument :
 BNA_P
 ClientSampleId :

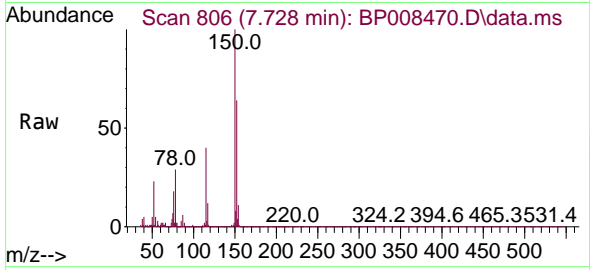
Quant Time: Dec 18 06:14:28 2021
 Quant Method : Z:\svoasrv\HPCHEM1\BNA_P\Methods\8270E-BP121421.M
 Quant Title : ASP BNA STANDARDS FOR 5 POINT CALIBRATION
 QLast Update : Tue Dec 14 17:59:47 2021
 Response via : Initial Calibration



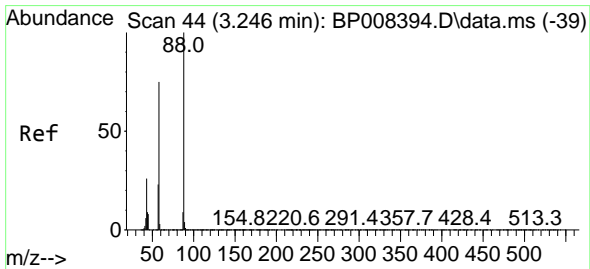
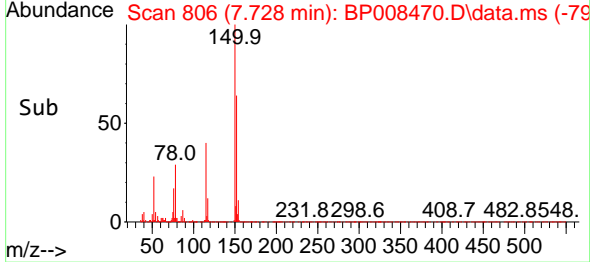
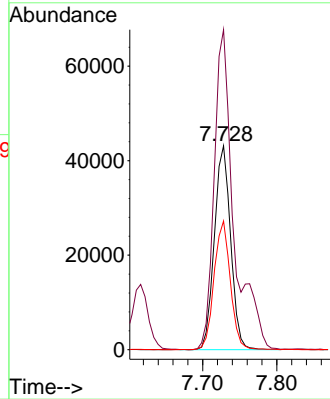


#1
 1,4-Dichlorobenzene-d4
 Concen: 20.000 ng
 RT: 7.728 min Scan# 80
 Delta R.T. -0.018 min
 Lab File: BP008470.D
 Acq: 17 Dec 2021 14:22

Instrument :
 BNA_P
 ClientSampleId :

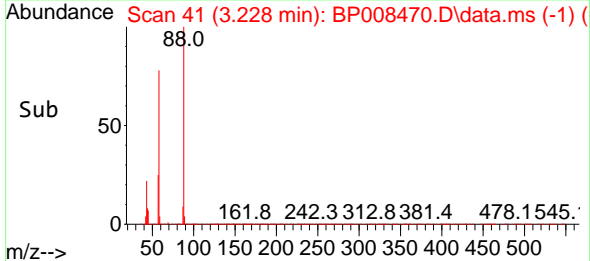
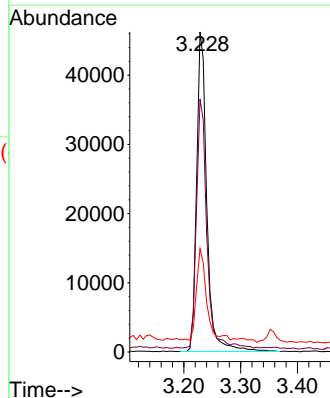
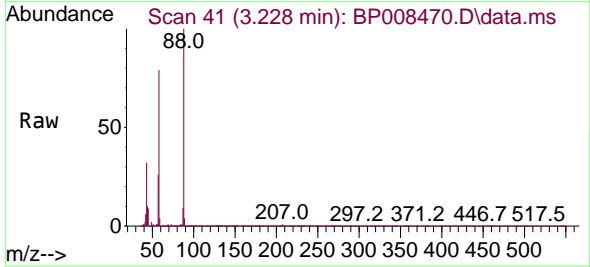


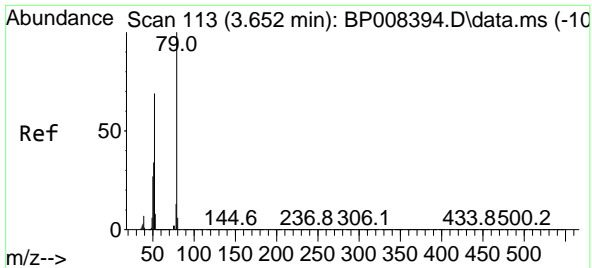
Tgt Ion:152 Resp: 65774
 Ion Ratio Lower Upper
 152 100
 150 157.0 125.7 188.5
 115 63.1 50.7 76.1



#2
 1,4-Dioxane
 Concen: 36.085 ng
 RT: 3.228 min Scan# 41
 Delta R.T. -0.018 min
 Lab File: BP008470.D
 Acq: 17 Dec 2021 14:22

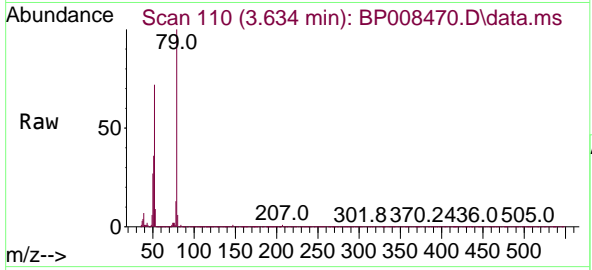
Tgt Ion: 88 Resp: 57846
 Ion Ratio Lower Upper
 88 100
 58 78.8 63.5 95.3
 43 27.1 23.4 35.2



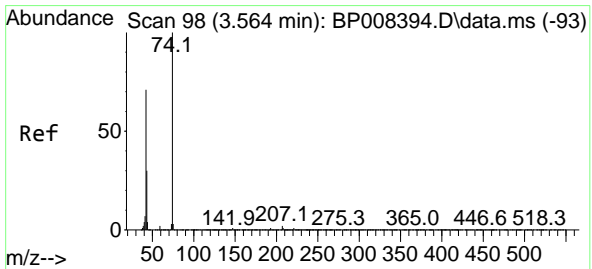
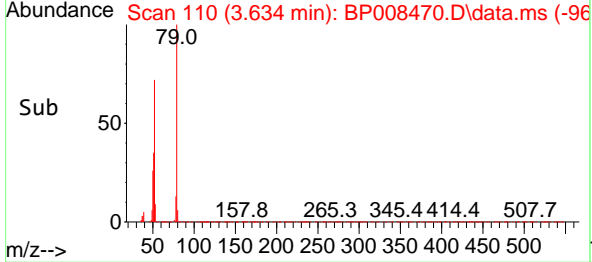
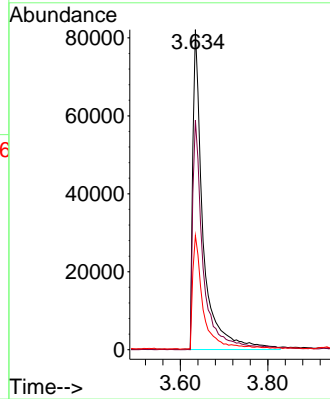


#3
 Pyridine
 Concen: 26.833 ng
 RT: 3.634 min Scan# 113
 Delta R.T. -0.018 min
 Lab File: BP008470.D
 Acq: 17 Dec 2021 14:22

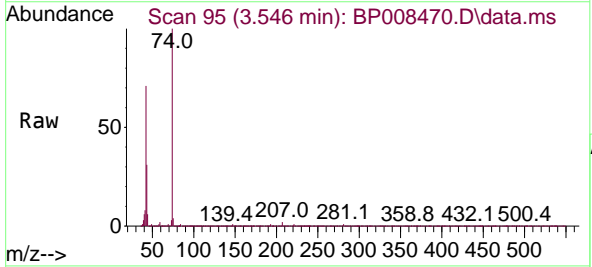
Instrument :
 BNA_P
 ClientSampleId :



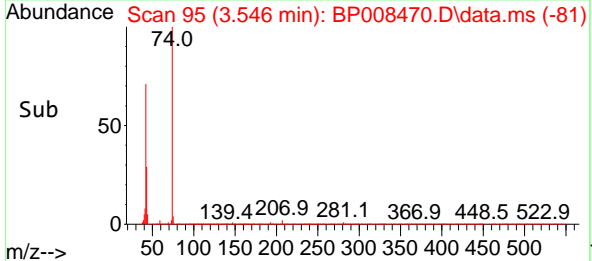
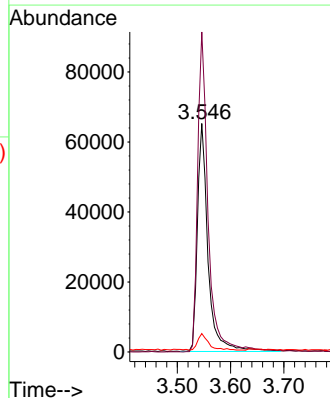
Tgt Ion: 79 Resp: 134719
 Ion Ratio Lower Upper
 79 100
 52 71.7 60.0 90.0
 51 35.6 29.6 44.4

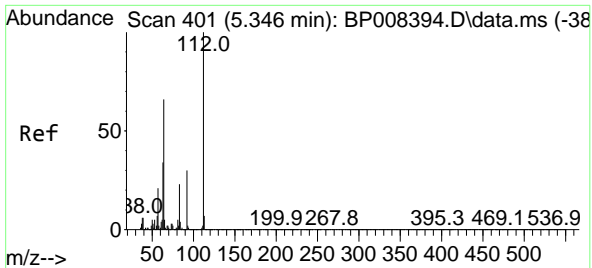


#4
 n-Nitrosodimethylamine
 Concen: 45.642 ng
 RT: 3.546 min Scan# 95
 Delta R.T. -0.018 min
 Lab File: BP008470.D
 Acq: 17 Dec 2021 14:22



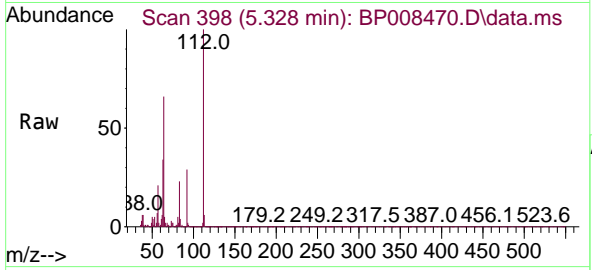
Tgt Ion: 42 Resp: 90436
 Ion Ratio Lower Upper
 42 100
 74 140.1 108.0 162.0
 44 8.0 5.8 8.6





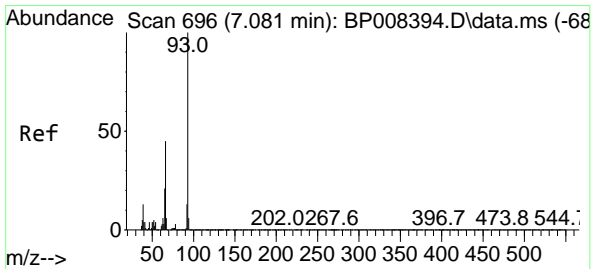
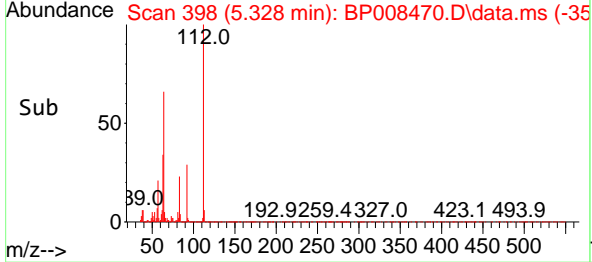
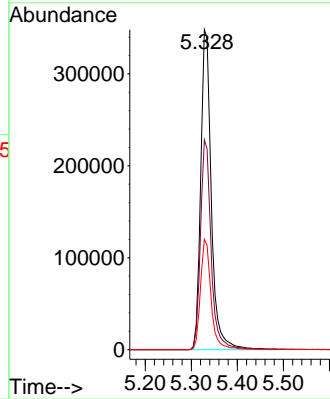
#5
 2-Fluorophenol
 Concen: 134.429 ng
 RT: 5.328 min Scan# 398
 Delta R.T. -0.018 min
 Lab File: BP008470.D
 Acq: 17 Dec 2021 14:22

Instrument :
 BNA_P
 ClientSampleId :



Tgt Ion:112 Resp: 559885

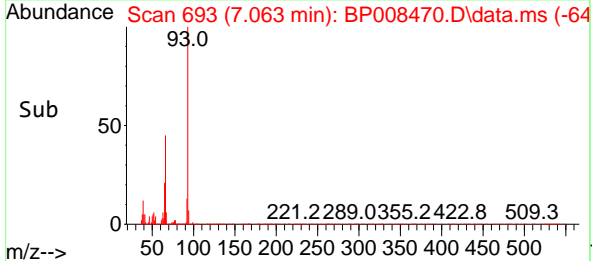
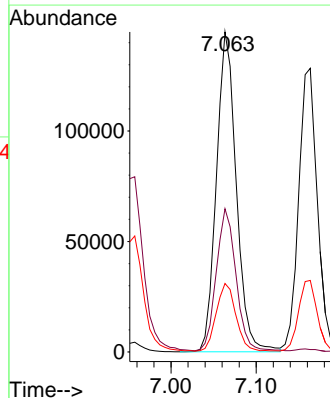
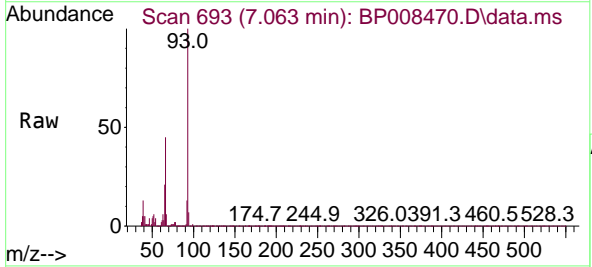
Ion	Ratio	Lower	Upper
112	100		
64	65.6	53.4	80.2
63	34.5	27.8	41.8

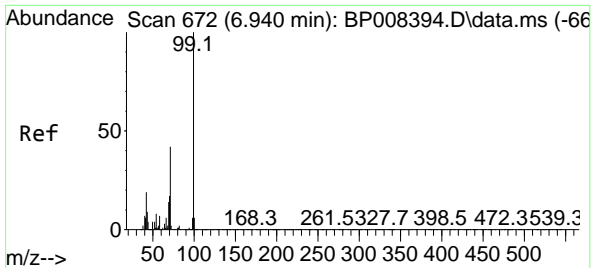


#6
 Aniline
 Concen: 36.223 ng
 RT: 7.063 min Scan# 693
 Delta R.T. -0.018 min
 Lab File: BP008470.D
 Acq: 17 Dec 2021 14:22

Tgt Ion: 93 Resp: 234523

Ion	Ratio	Lower	Upper
93	100		
66	44.8	32.9	49.3
65	21.4	17.5	26.3

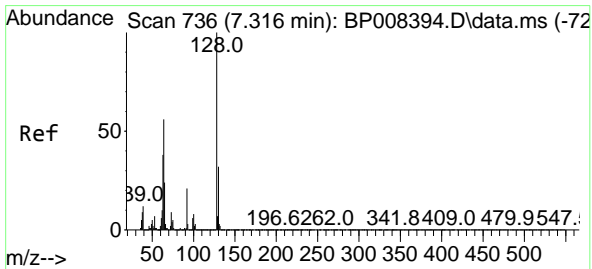
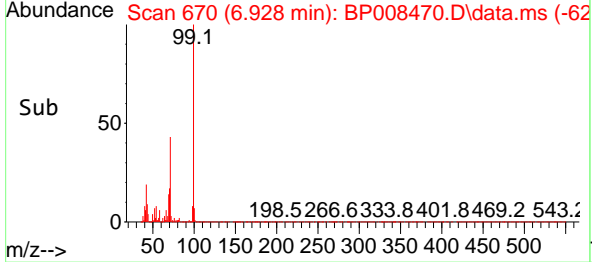
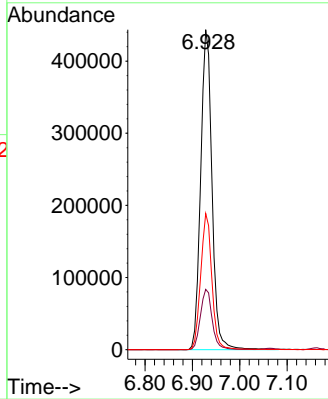
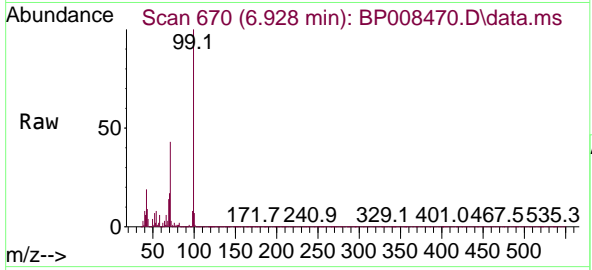




#7
 Phenol-d6
 Concen: 131.626 ng
 RT: 6.928 min Scan# 61
 Delta R.T. -0.012 min
 Lab File: BP008470.D
 Acq: 17 Dec 2021 14:22

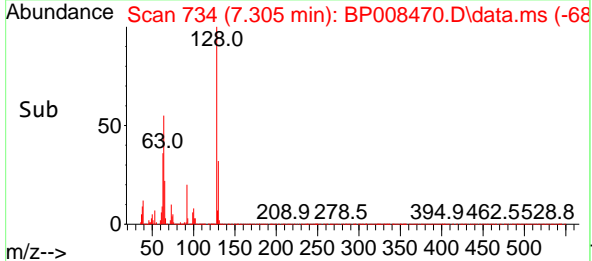
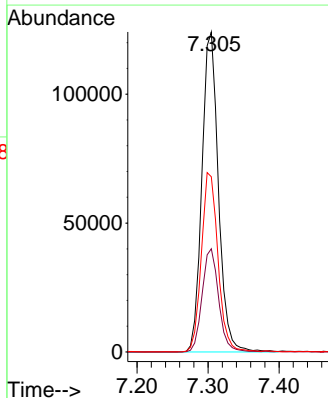
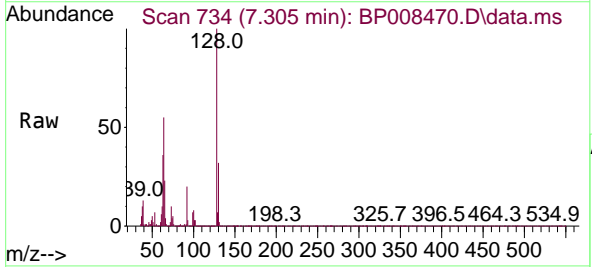
Instrument :
 BNA_P
 ClientSampleId :

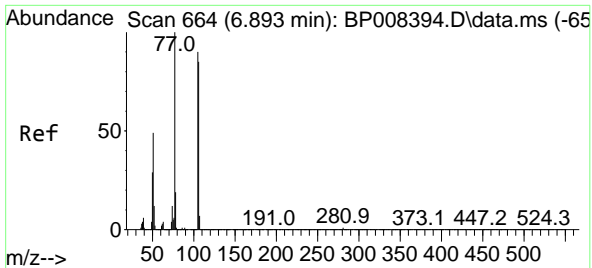
Tgt Ion	Resp	Lower	Upper
99	736283		
99	100		
42	18.9	14.6	22.0
71	42.6	31.1	46.7



#8
 2-Chlorophenol
 Concen: 47.379 ng
 RT: 7.305 min Scan# 734
 Delta R.T. -0.012 min
 Lab File: BP008470.D
 Acq: 17 Dec 2021 14:22

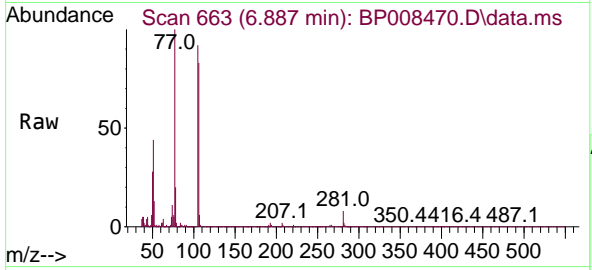
Tgt Ion	Resp	Lower	Upper
128	201122		
128	100		
130	32.3	13.5	53.5
64	54.7	37.4	77.4



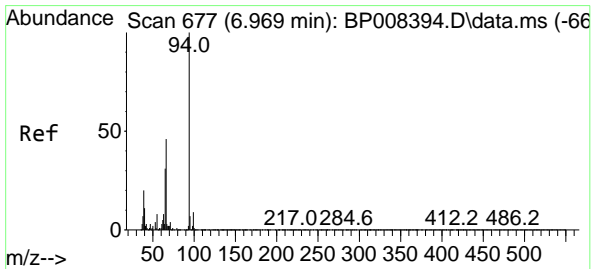
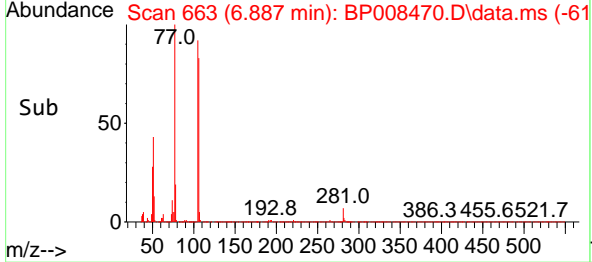
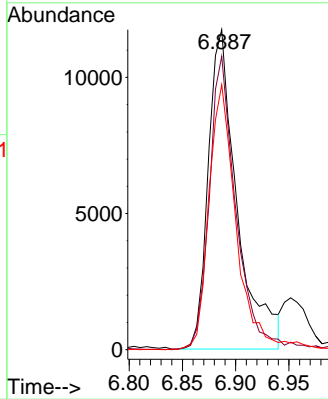


#9
Benzaldehyde
Concen: 2.562 ng
RT: 6.887 min Scan# 60
Delta R.T. -0.006 min
Lab File: BP008470.D
Acq: 17 Dec 2021 14:22

Instrument :
BNA_P
ClientSampleId :

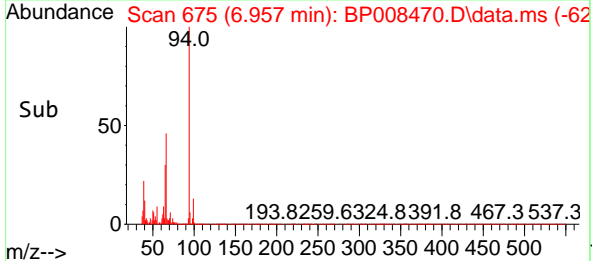
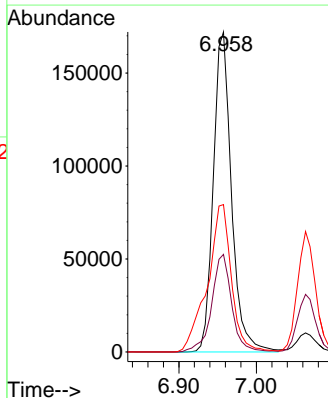
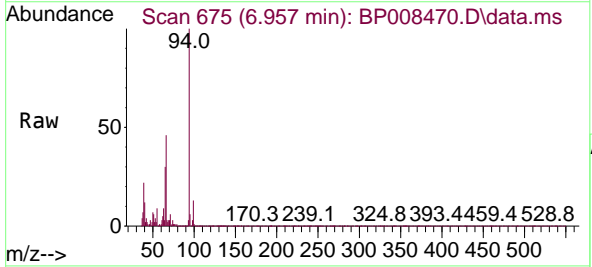


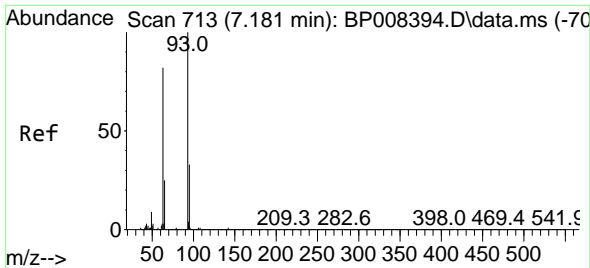
Tgt Ion: 77 Resp: 22133
Ion Ratio Lower Upper
77 100
105 91.7 71.8 111.8
106 82.8 67.3 107.3



#10
Phenol
Concen: 49.290 ng
RT: 6.957 min Scan# 675
Delta R.T. -0.012 min
Lab File: BP008470.D
Acq: 17 Dec 2021 14:22

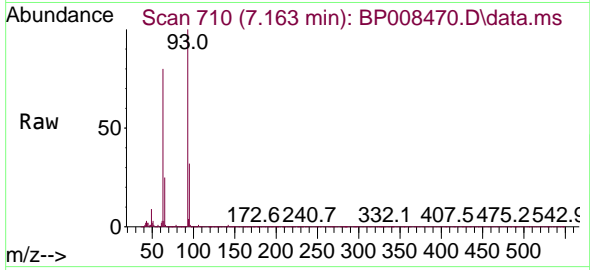
Tgt Ion: 94 Resp: 279983
Ion Ratio Lower Upper
94 100
65 30.5 10.9 50.9
66 46.1 24.3 64.3



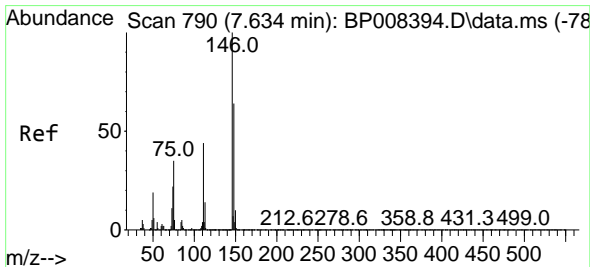
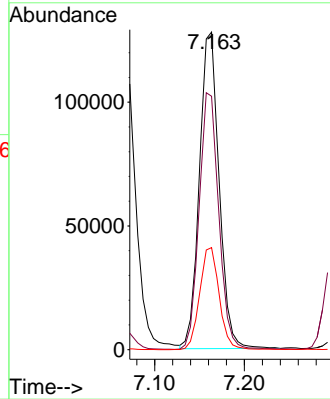
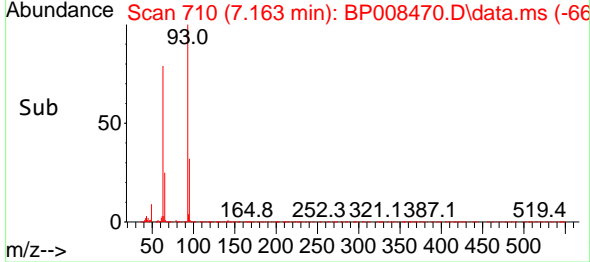


#11
 bis(2-Chloroethyl)ether
 Concen: 41.160 ng
 RT: 7.163 min Scan# 713
 Delta R.T. -0.018 min
 Lab File: BP008470.D
 Acq: 17 Dec 2021 14:22

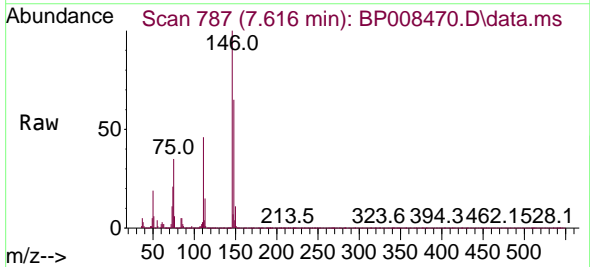
Instrument :
 BNA_P
 ClientSampleId :



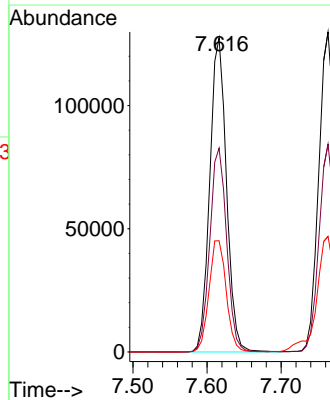
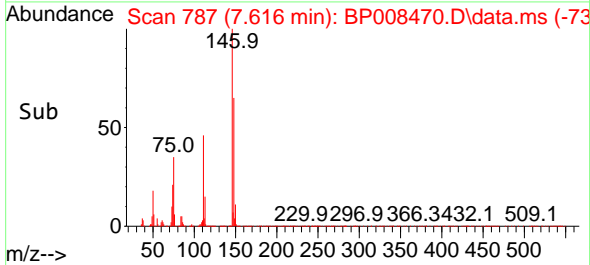
Tgt Ion: 93 Resp: 195057
 Ion Ratio Lower Upper
 93 100
 63 79.8 61.8 101.8
 95 32.1 12.5 52.5

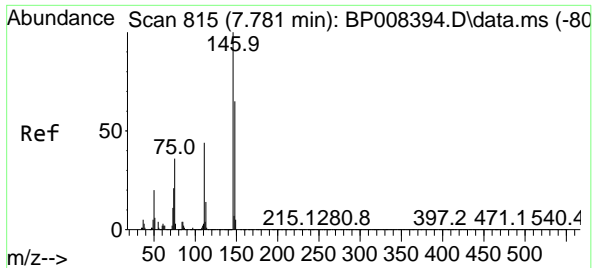


#12
 1,3-Dichlorobenzene
 Concen: 40.703 ng
 RT: 7.616 min Scan# 787
 Delta R.T. -0.018 min
 Lab File: BP008470.D
 Acq: 17 Dec 2021 14:22



Tgt Ion: 146 Resp: 199814
 Ion Ratio Lower Upper
 146 100
 148 64.9 51.9 77.9
 75 35.4 29.0 43.6



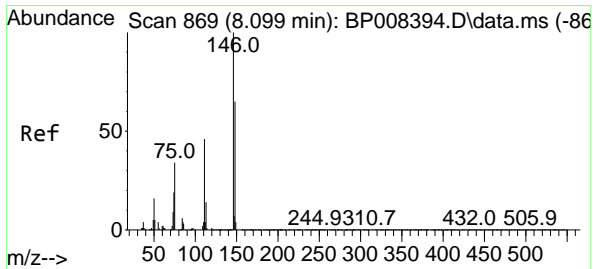
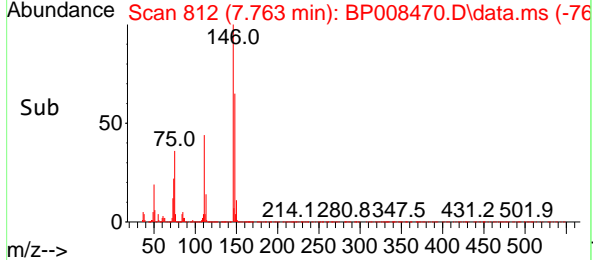
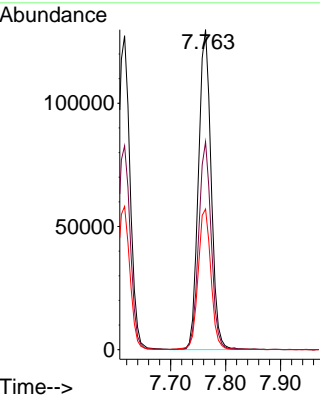
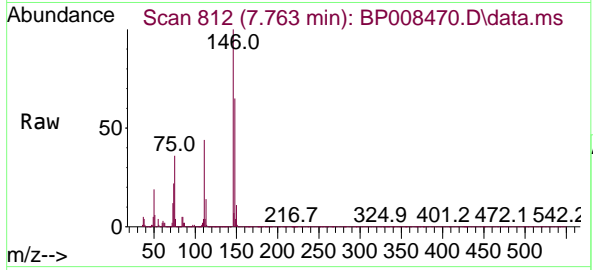


#13
 1,4-Dichlorobenzene
 Concen: 41.532 ng
 RT: 7.763 min Scan# 815
 Delta R.T. -0.018 min
 Lab File: BP008470.D
 Acq: 17 Dec 2021 14:22

Instrument :
 BNA_P
 ClientSampleId :

Tgt Ion:146 Resp: 207487

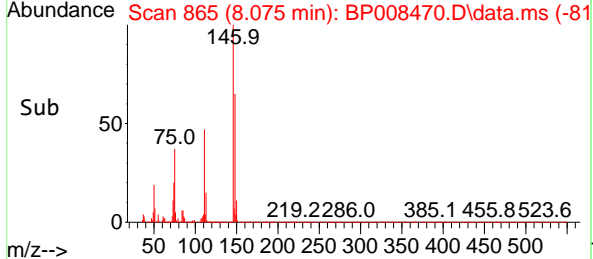
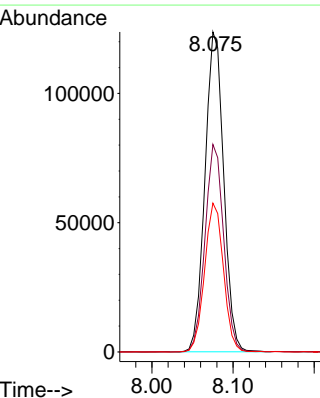
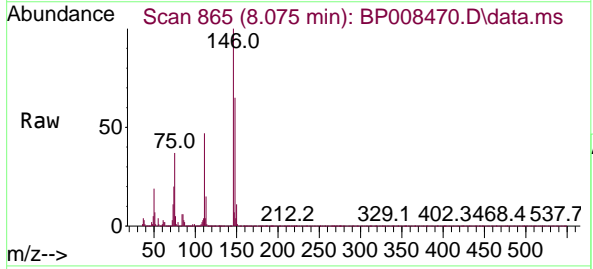
Ion	Ratio	Lower	Upper
146	100		
148	65.0	49.6	74.4
111	43.9	34.7	52.1

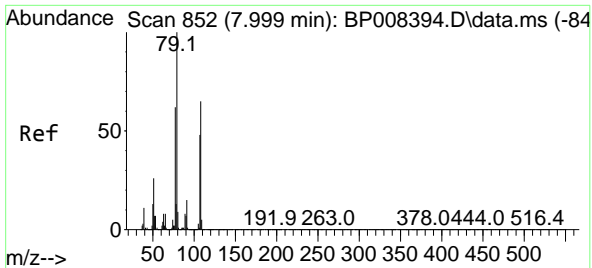


#14
 1,2-Dichlorobenzene
 Concen: 41.010 ng
 RT: 8.075 min Scan# 865
 Delta R.T. -0.024 min
 Lab File: BP008470.D
 Acq: 17 Dec 2021 14:22

Tgt Ion:146 Resp: 198629

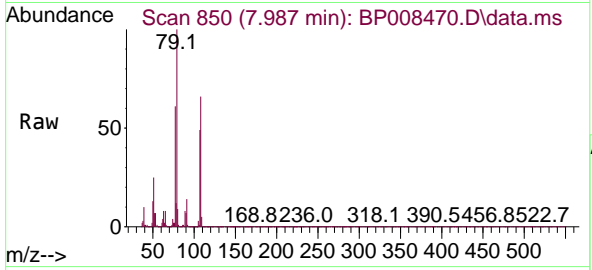
Ion	Ratio	Lower	Upper
146	100		
148	64.9	51.8	77.6
111	46.5	35.0	52.6





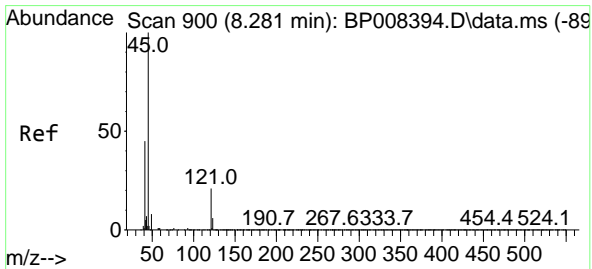
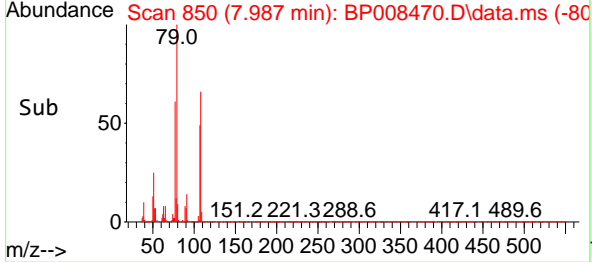
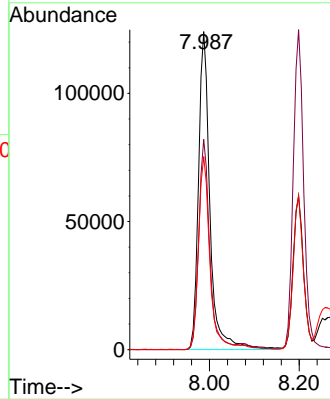
#15
 Benzyl Alcohol
 Concen: 48.699 ng
 RT: 7.987 min Scan# 81
 Delta R.T. -0.012 min
 Lab File: BP008470.D
 Acq: 17 Dec 2021 14:22

Instrument :
 BNA_P
 ClientSampleId :

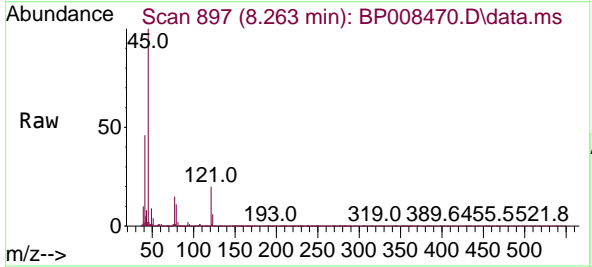


Tgt Ion: 79 Resp: 219124

Ion	Ratio	Lower	Upper
79	100		
108	66.1	55.5	83.3
77	60.7	51.0	76.6

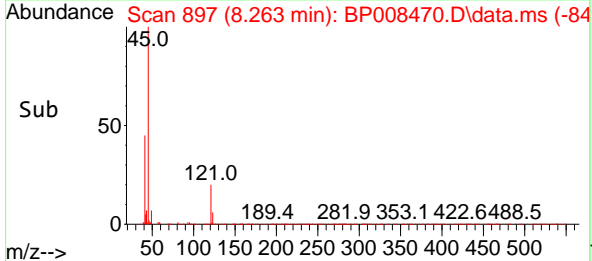
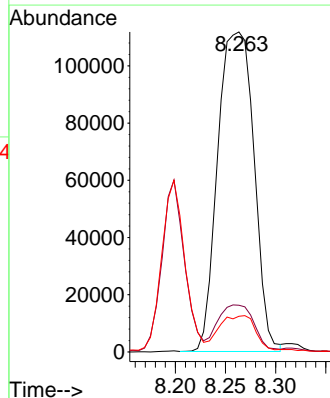


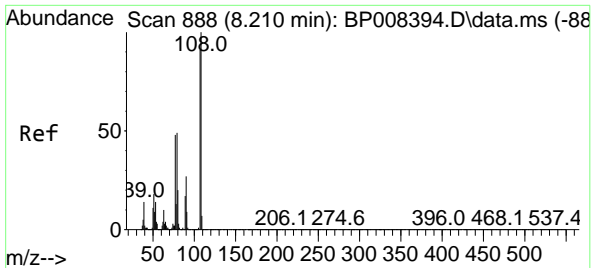
#16
 2,2'-oxybis(1-Chloropropane)
 Concen: 41.868 ng
 RT: 8.263 min Scan# 897
 Delta R.T. -0.018 min
 Lab File: BP008470.D
 Acq: 17 Dec 2021 14:22



Tgt Ion: 45 Resp: 280708

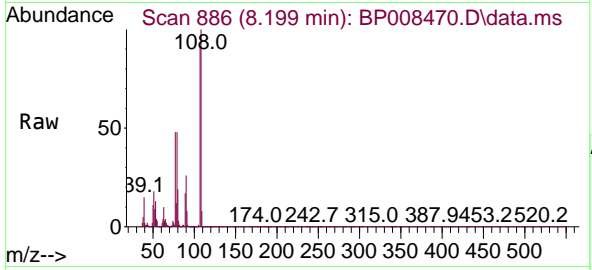
Ion	Ratio	Lower	Upper
45	100		
77	14.6	0.0	33.8
79	11.2	0.0	30.4





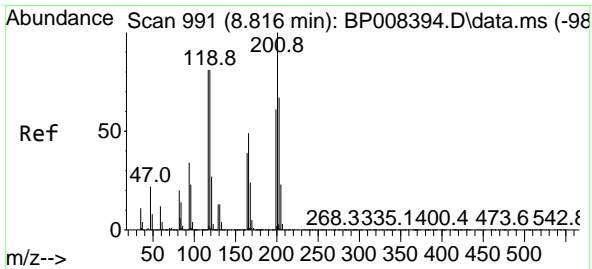
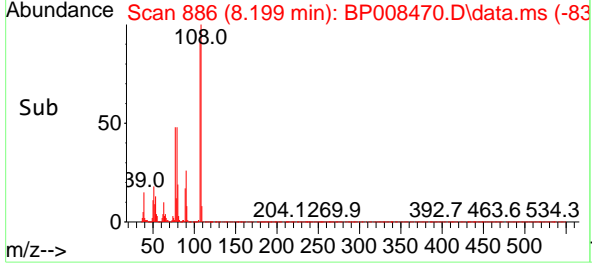
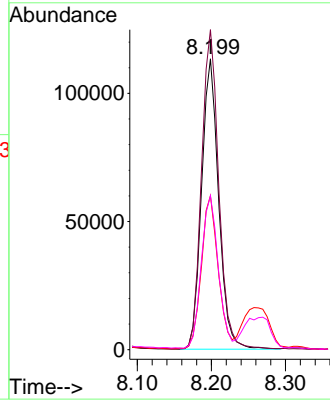
#17
 2-Methylphenol
 Concen: 48.280 ng
 RT: 8.199 min Scan# 81
 Delta R.T. -0.012 min
 Lab File: BP008470.D
 Acq: 17 Dec 2021 14:22

Instrument :
 BNA_P
 ClientSampleId :

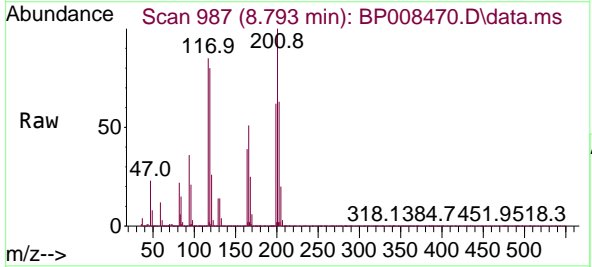


Tgt Ion:107 Resp: 181423

Ion	Ratio	Lower	Upper
107	100		
108	110.0	90.2	135.2
77	52.9	41.3	61.9
79	52.9	41.0	61.6

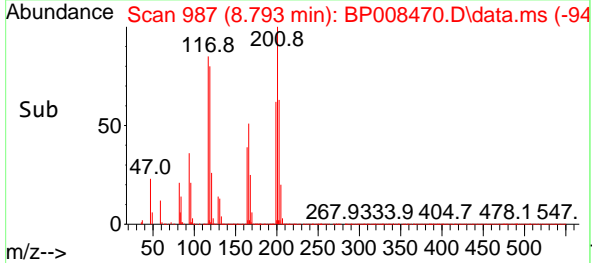
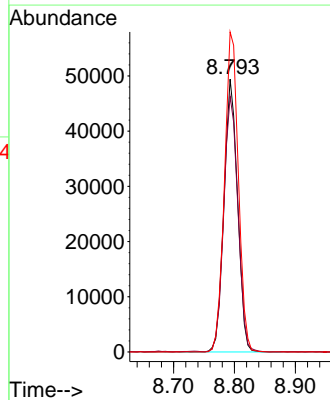


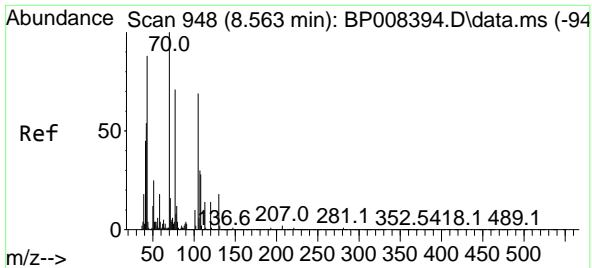
#18
 Hexachloroethane
 Concen: 41.399 ng
 RT: 8.793 min Scan# 987
 Delta R.T. -0.024 min
 Lab File: BP008470.D
 Acq: 17 Dec 2021 14:22



Tgt Ion:117 Resp: 76727

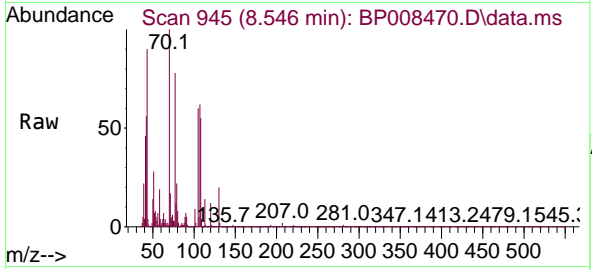
Ion	Ratio	Lower	Upper
117	100		
119	93.7	74.7	112.1
201	117.3	88.6	132.8



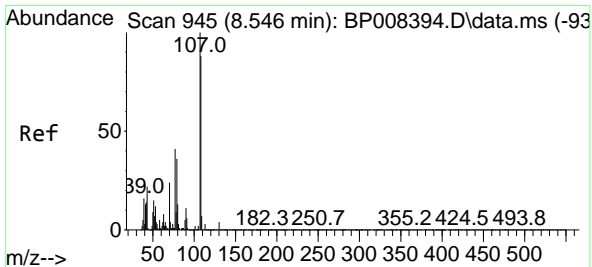
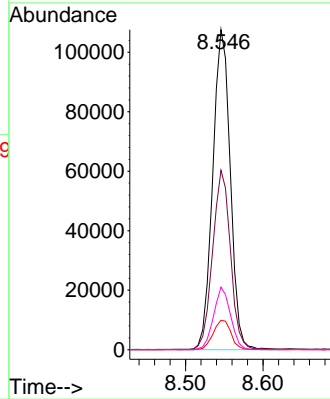
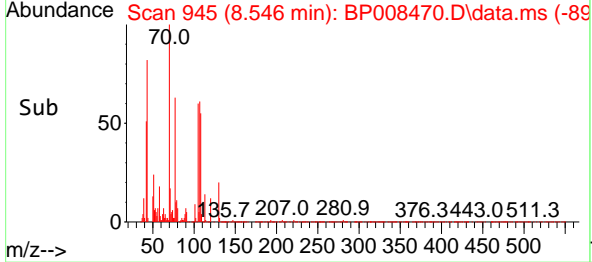


#19
 n-Nitroso-di-n-propylamine
 Concen: 40.770 ng
 RT: 8.546 min Scan# 94
 Delta R.T. -0.018 min
 Lab File: BP008470.D
 Acq: 17 Dec 2021 14:22

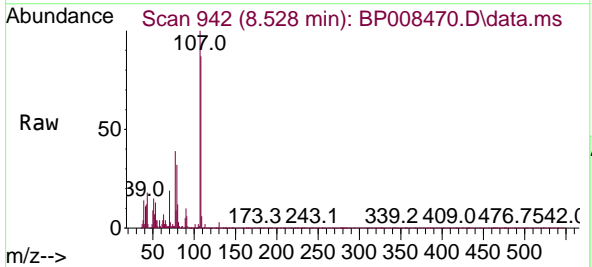
Instrument :
 BNA_P
 ClientSampleId :



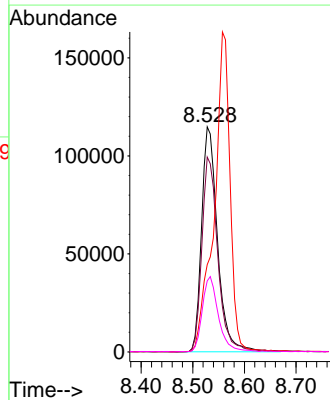
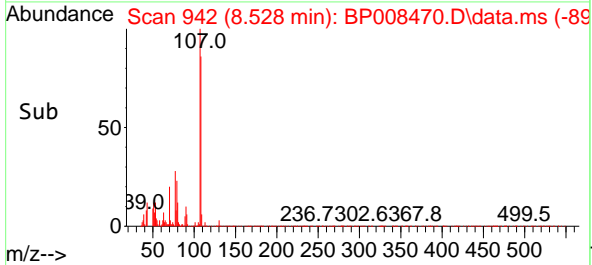
Tgt Ion: 70 Resp: 169155
 Ion Ratio Lower Upper
 70 100
 42 56.0 45.4 68.2
 101 9.2 7.6 11.4
 130 19.6 15.1 22.7

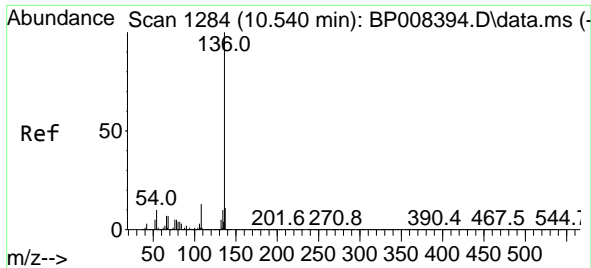


#20
 3+4-Methylphenols
 Concen: 47.632 ng
 RT: 8.528 min Scan# 942
 Delta R.T. -0.018 min
 Lab File: BP008470.D
 Acq: 17 Dec 2021 14:22



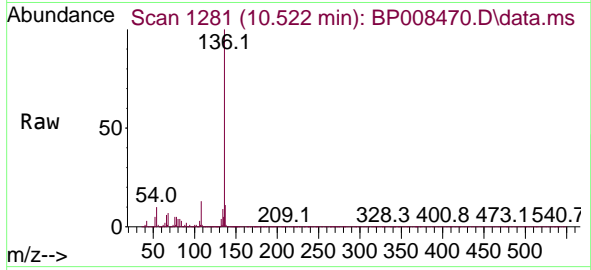
Tgt Ion: 107 Resp: 246526
 Ion Ratio Lower Upper
 107 100
 108 86.6 68.2 108.2
 77 38.8 16.9 56.9
 79 31.5 12.5 52.5





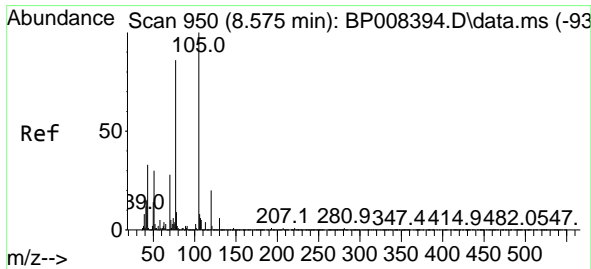
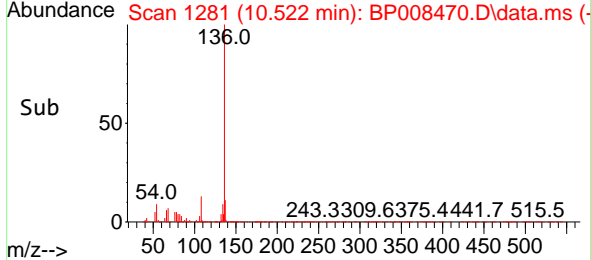
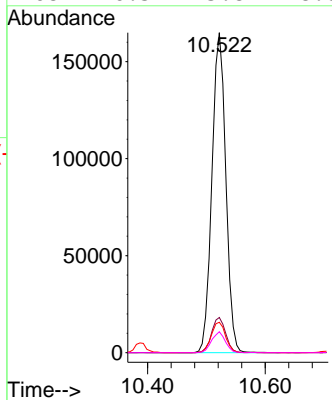
#21
 Naphthalene-d8
 Concen: 20.000 ng
 RT: 10.522 min Scan# 11
 Delta R.T. -0.018 min
 Lab File: BP008470.D
 Acq: 17 Dec 2021 14:22

Instrument :
 BNA_P
 ClientSampleId :



Tgt Ion:136 Resp: 269996

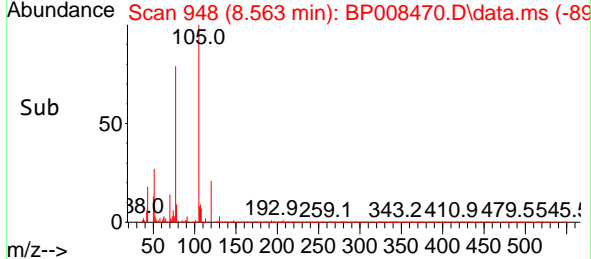
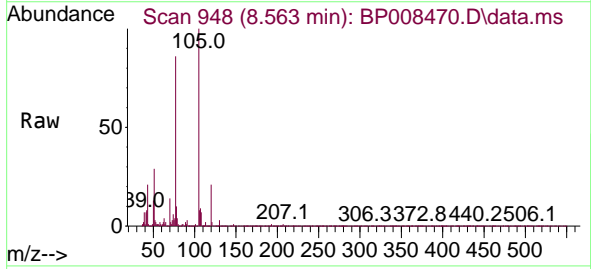
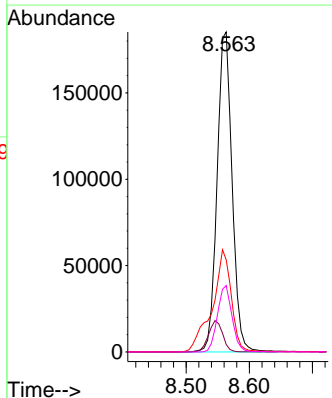
Ion	Ratio	Lower	Upper
136	100		
137	11.0	9.0	13.6
54	9.5	8.2	12.4
68	6.5	5.8	8.8

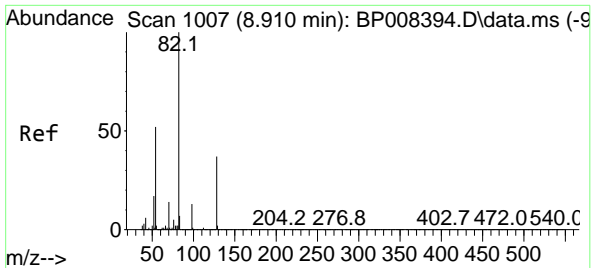


#22
 Acetophenone
 Concen: 38.664 ng
 RT: 8.563 min Scan# 948
 Delta R.T. -0.012 min
 Lab File: BP008470.D
 Acq: 17 Dec 2021 14:22

Tgt Ion:105 Resp: 307002

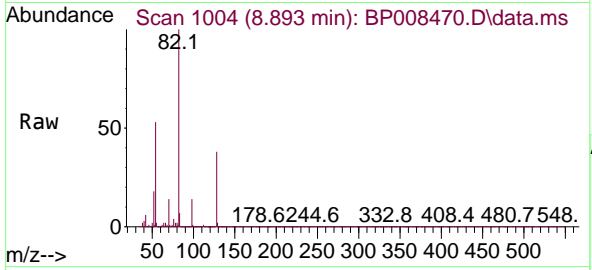
Ion	Ratio	Lower	Upper
105	100		
71	2.3	4.0	6.0#
51	28.8	23.8	35.6
120	20.8	16.0	24.0



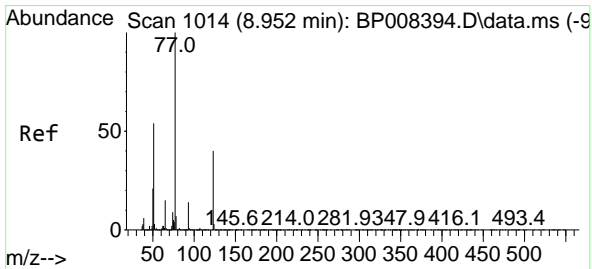
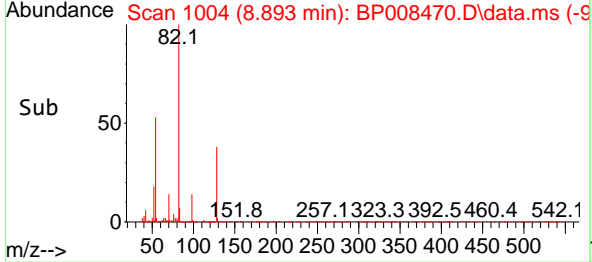
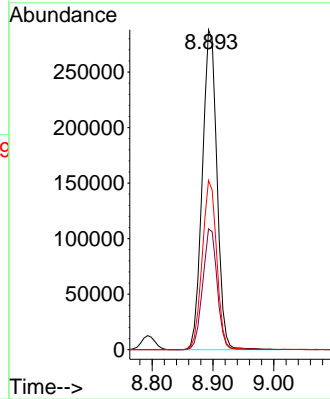


#23
 Nitrobenzene-d5
 Concen: 75.625 ng
 RT: 8.893 min Scan# 1004
 Delta R.T. -0.018 min
 Lab File: BP008470.D
 Acq: 17 Dec 2021 14:22

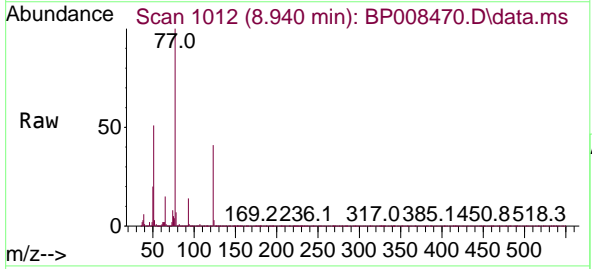
Instrument :
 BNA_P
 ClientSampleId :



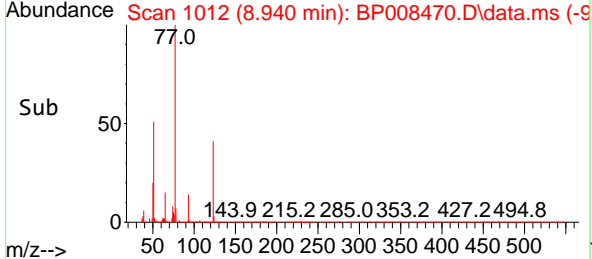
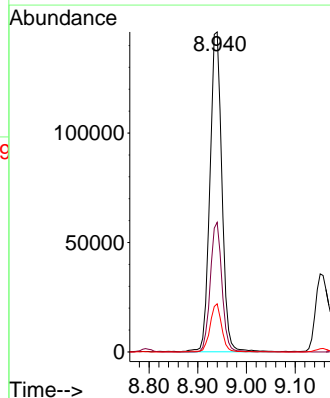
Tgt Ion: 82 Resp: 481969
 Ion Ratio Lower Upper
 82 100
 128 37.7 29.6 44.4
 54 52.9 42.7 64.1

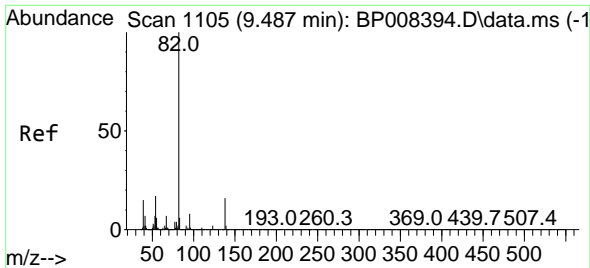


#24
 Nitrobenzene
 Concen: 41.577 ng
 RT: 8.940 min Scan# 1012
 Delta R.T. -0.012 min
 Lab File: BP008470.D
 Acq: 17 Dec 2021 14:22



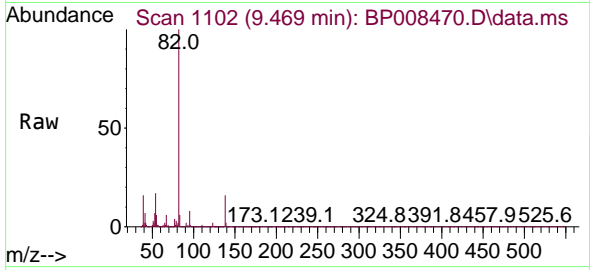
Tgt Ion: 77 Resp: 248702
 Ion Ratio Lower Upper
 77 100
 123 40.5 30.4 45.6
 65 15.0 11.3 16.9





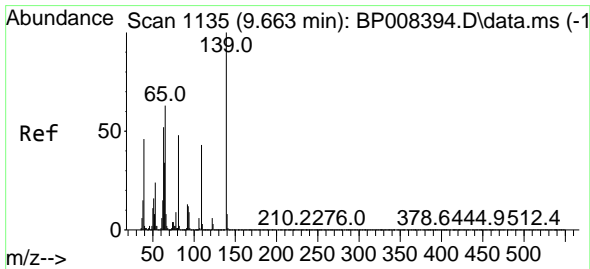
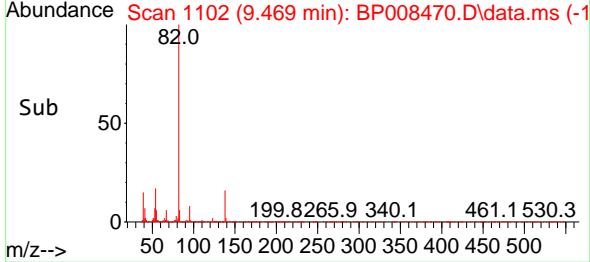
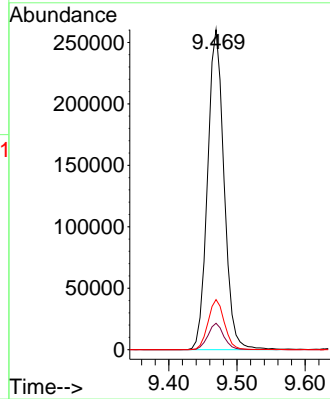
#25
 Isophorone
 Concen: 41.036 ng
 RT: 9.469 min Scan# 1102
 Delta R.T. -0.018 min
 Lab File: BP008470.D
 Acq: 17 Dec 2021 14:22

Instrument :
 BNA_P
 ClientSampleId :

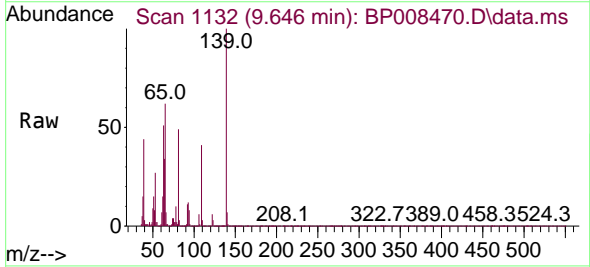


Tgt Ion: 82 Resp: 437625

Ion	Ratio	Lower	Upper
82	100		
95	8.2	5.9	8.9
138	15.7	12.7	19.1

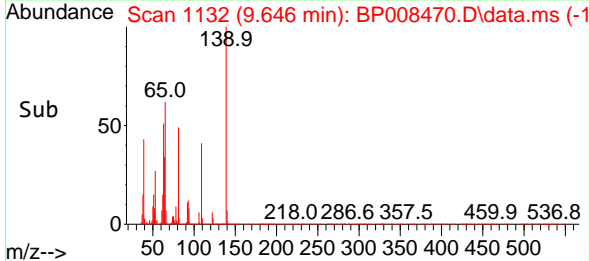
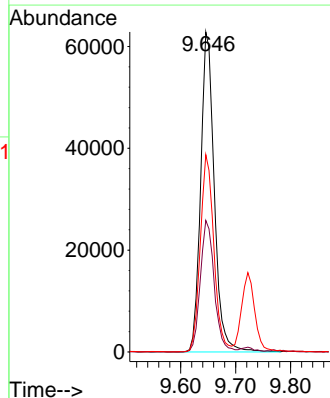


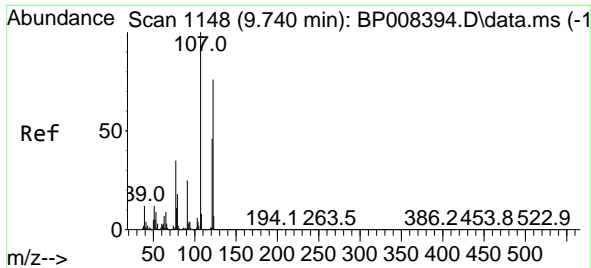
#26
 2-Nitrophenol
 Concen: 41.072 ng
 RT: 9.646 min Scan# 1132
 Delta R.T. -0.018 min
 Lab File: BP008470.D
 Acq: 17 Dec 2021 14:22



Tgt Ion: 139 Resp: 108571

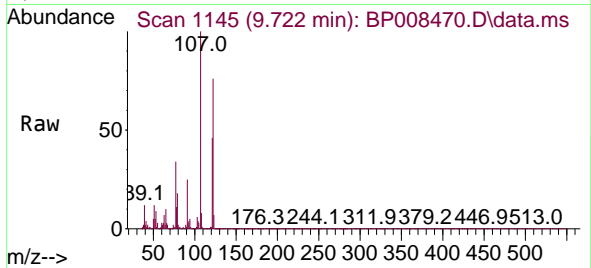
Ion	Ratio	Lower	Upper
139	100		
109	41.1	28.3	42.5
65	61.7	49.7	74.5



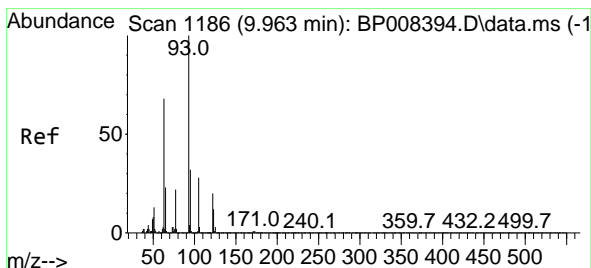
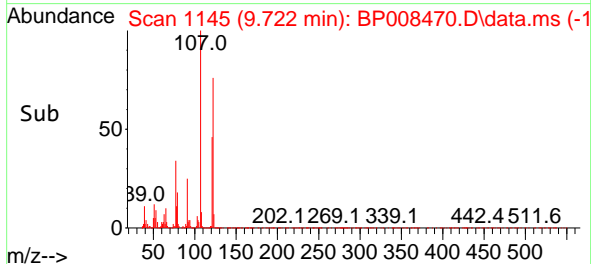
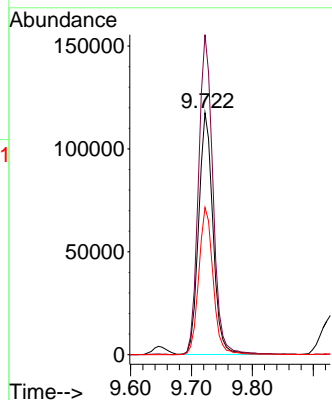


#27
 2,4-Dimethylphenol
 Concen: 50.517 ng
 RT: 9.722 min Scan# 1145
 Delta R.T. -0.018 min
 Lab File: BP008470.D
 Acq: 17 Dec 2021 14:22

Instrument :
 BNA_P
 ClientSampleId :

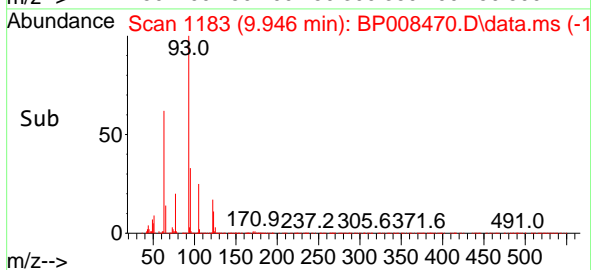
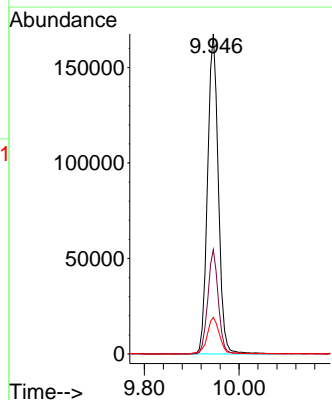
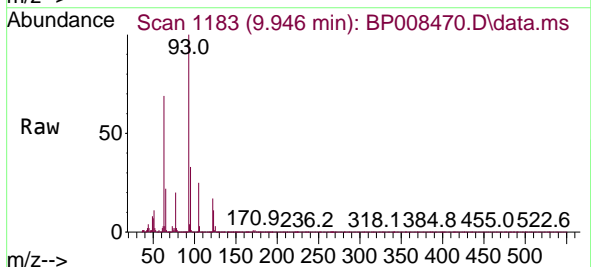


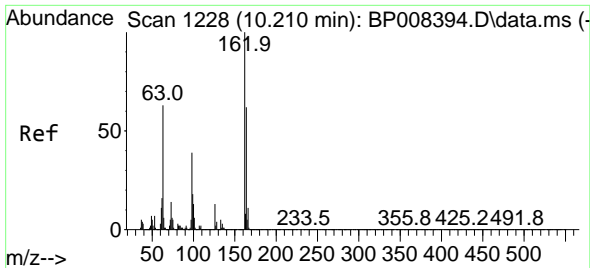
Tgt Ion:122 Resp: 191498
 Ion Ratio Lower Upper
 122 100
 107 132.2 106.6 160.0
 121 60.8 48.1 72.1



#28
 bis(2-Chloroethoxy)methane
 Concen: 40.100 ng
 RT: 9.946 min Scan# 1183
 Delta R.T. -0.018 min
 Lab File: BP008470.D
 Acq: 17 Dec 2021 14:22

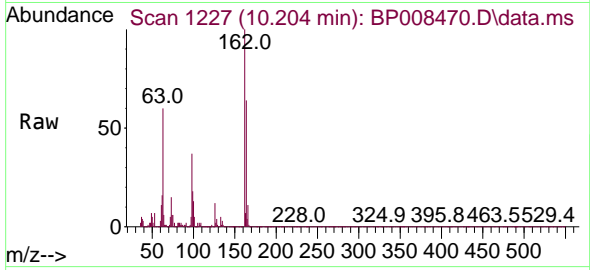
Tgt Ion: 93 Resp: 264347
 Ion Ratio Lower Upper
 93 100
 95 32.6 25.4 38.2
 123 11.5 7.8 11.6





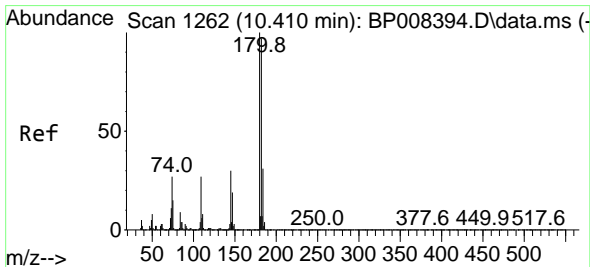
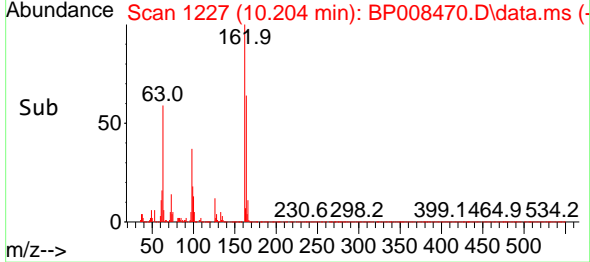
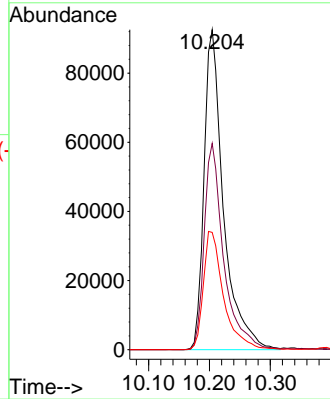
#29
 2,4-Dichlorophenol
 Concen: 44.055 ng
 RT: 10.204 min Scan# 11
 Delta R.T. -0.006 min
 Lab File: BP008470.D
 Acq: 17 Dec 2021 14:22

Instrument :
 BNA_P
 ClientSampleId :



Tgt Ion:162 Resp: 205229

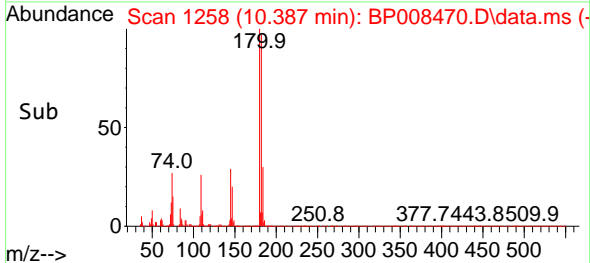
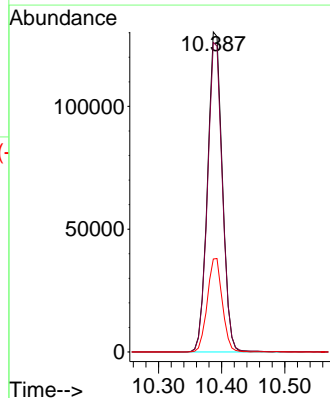
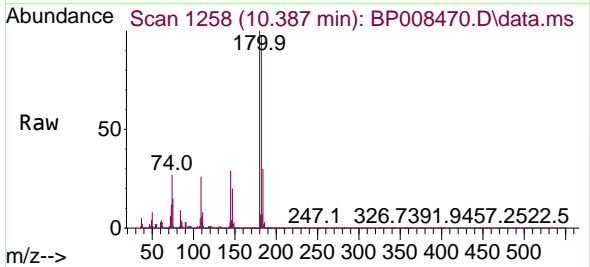
Ion	Ratio	Lower	Upper
162	100		
164	64.4	43.9	83.9
98	36.6	17.9	57.9

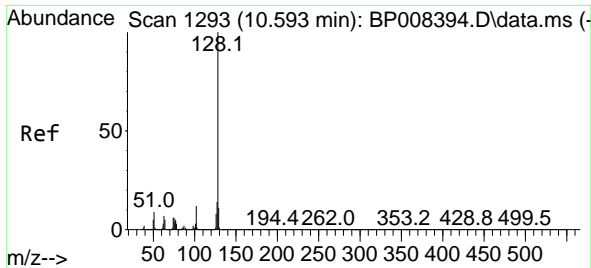


#30
 1,2,4-Trichlorobenzene
 Concen: 38.425 ng
 RT: 10.387 min Scan# 1258
 Delta R.T. -0.024 min
 Lab File: BP008470.D
 Acq: 17 Dec 2021 14:22

Tgt Ion:180 Resp: 212199

Ion	Ratio	Lower	Upper
180	100		
182	96.7	74.8	112.2
145	29.1	23.2	34.8

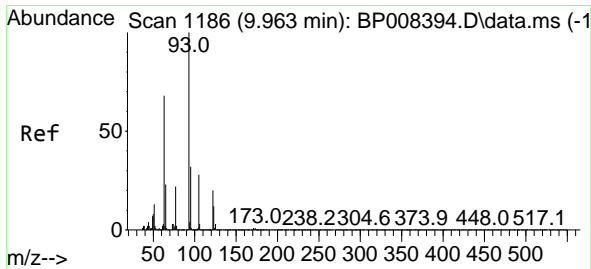
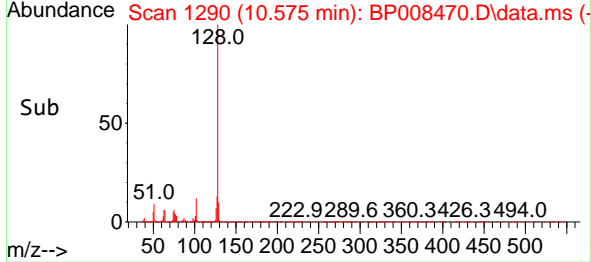
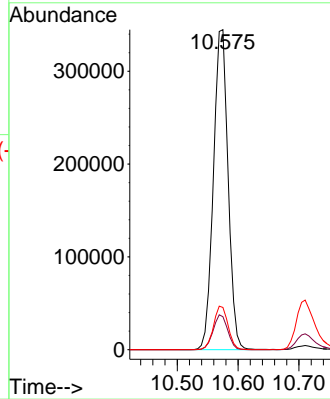
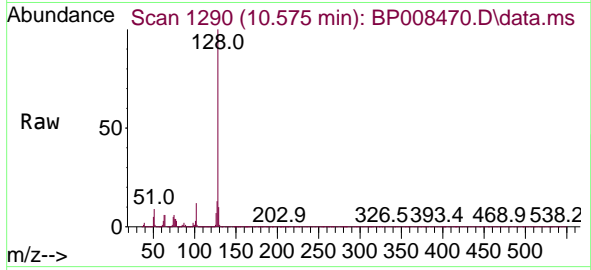




#31
 Naphthalene
 Concen: 40.719 ng
 RT: 10.575 min Scan# 1184
 Delta R.T. -0.018 min
 Lab File: BP008470.D
 Acq: 17 Dec 2021 14:22

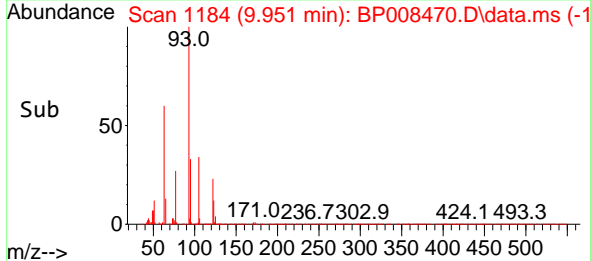
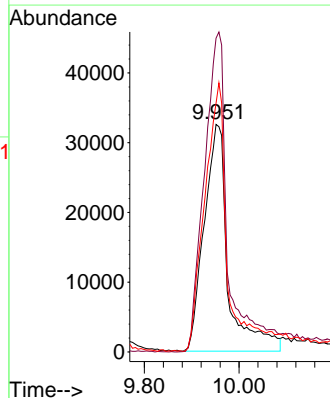
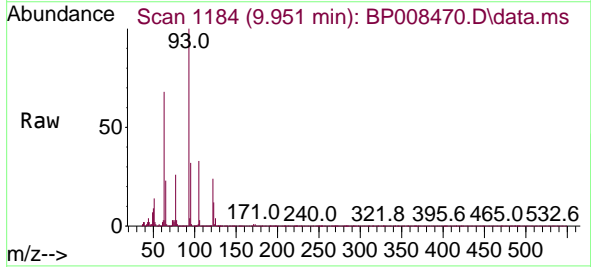
Instrument :
 BNA_P
 ClientSampleId :

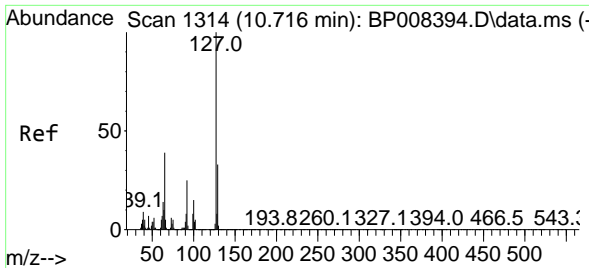
Tgt Ion:128 Resp: 576528
 Ion Ratio Lower Upper
 128 100
 129 10.3 8.5 12.7
 127 13.2 10.9 16.3



#32
 Benzoic acid
 Concen: 41.322 ng
 RT: 9.951 min Scan# 1184
 Delta R.T. -0.012 min
 Lab File: BP008470.D
 Acq: 17 Dec 2021 14:22

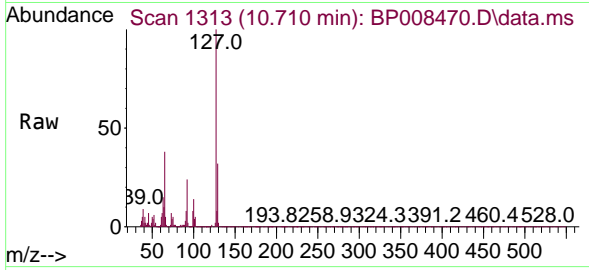
Tgt Ion:122 Resp: 114833
 Ion Ratio Lower Upper
 122 100
 105 137.9 117.4 157.4
 77 109.2 89.2 129.2





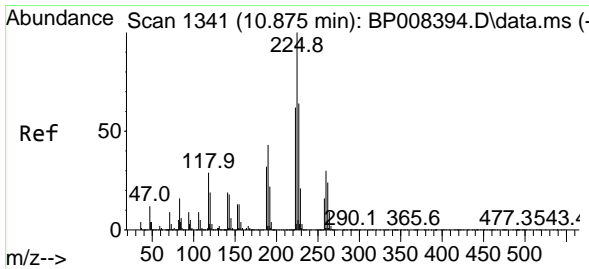
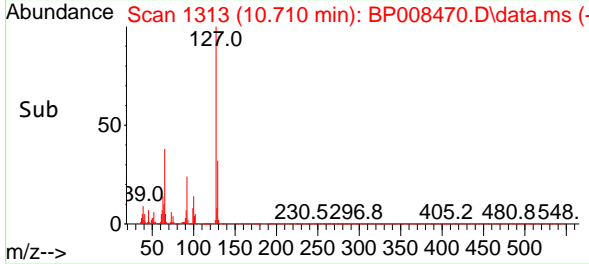
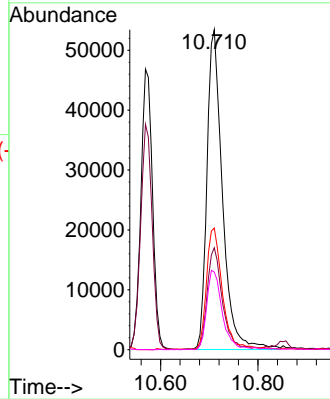
#33
 4-Chloroaniline
 Concen: 20.739 ng
 RT: 10.710 min Scan# 11
 Delta R.T. -0.006 min
 Lab File: BP008470.D
 Acq: 17 Dec 2021 14:22

Instrument :
 BNA_P
 ClientSampleId :

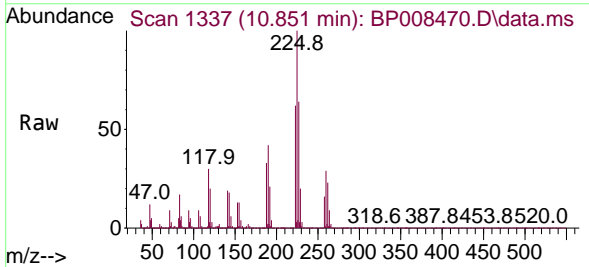


Tgt Ion:127 Resp: 117630

Ion	Ratio	Lower	Upper
127	100		
129	31.9	25.4	38.2
65	38.0	29.5	44.3
92	24.2	18.2	27.4

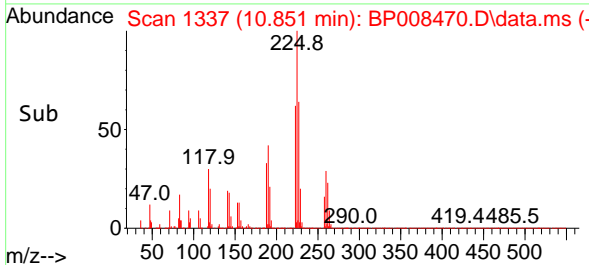
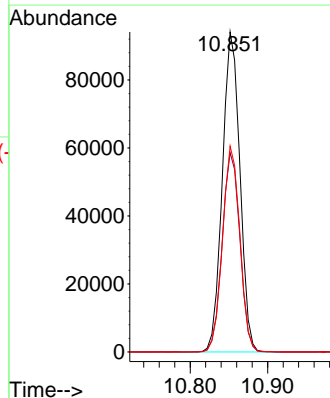


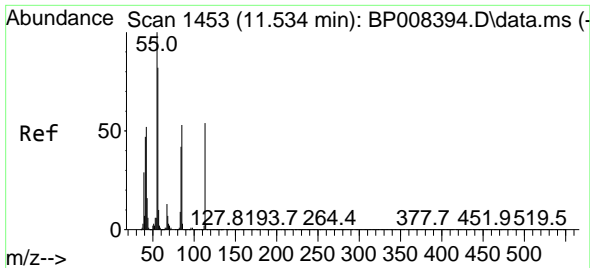
#34
 Hexachlorobutadiene
 Concen: 36.653 ng
 RT: 10.851 min Scan# 1337
 Delta R.T. -0.024 min
 Lab File: BP008470.D
 Acq: 17 Dec 2021 14:22



Tgt Ion:225 Resp: 147963

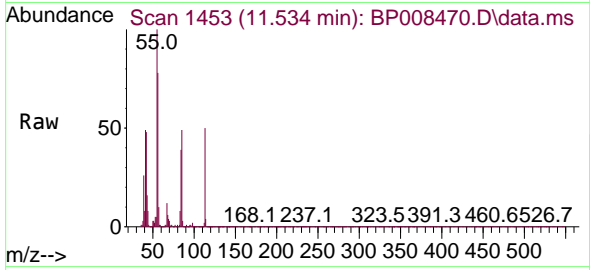
Ion	Ratio	Lower	Upper
225	100		
223	62.2	52.5	78.7
227	64.3	51.0	76.6



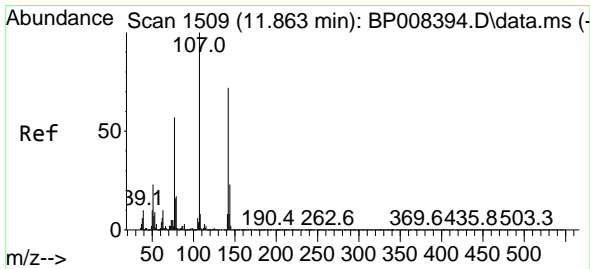
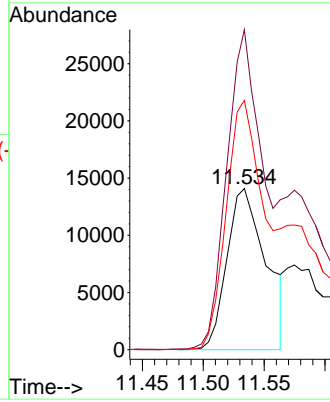
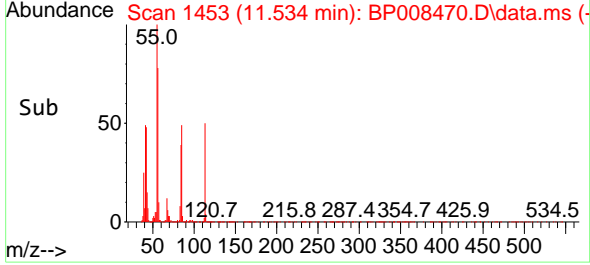


#35
 Caprolactam
 Concen: 35.400 ng
 RT: 11.534 min Scan# 1453
 Delta R.T. -0.000 min
 Lab File: BP008470.D
 Acq: 17 Dec 2021 14:22

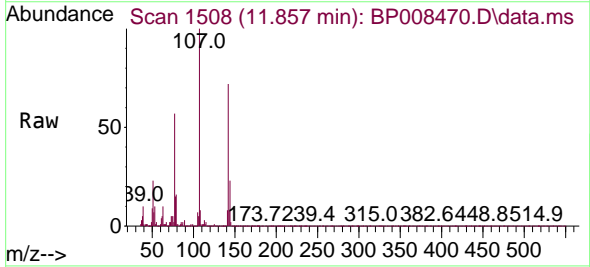
Instrument :
 BNA_P
 ClientSampleId :



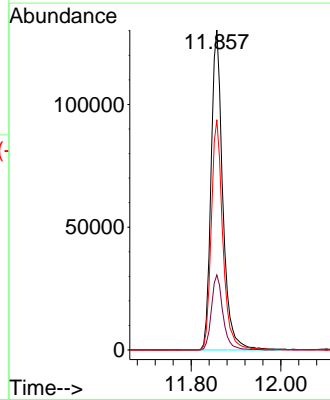
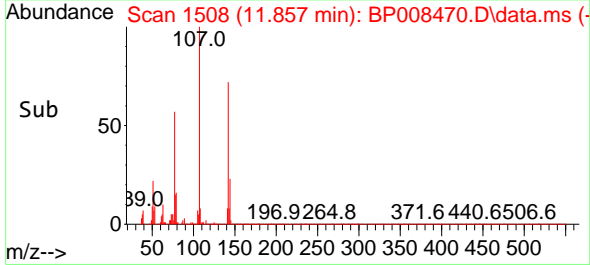
Tgt Ion:113 Resp: 31228
 Ion Ratio Lower Upper
 113 100
 55 198.5 174.2 214.2
 56 154.7 130.3 170.3

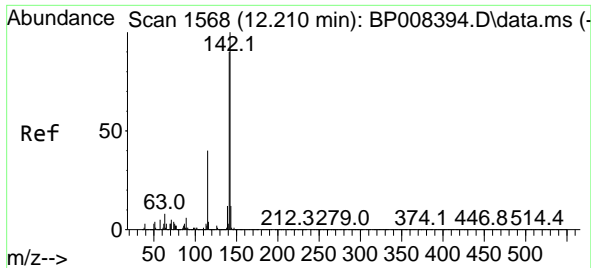


#36
 4-Chloro-3-methylphenol
 Concen: 45.288 ng
 RT: 11.857 min Scan# 1508
 Delta R.T. -0.006 min
 Lab File: BP008470.D
 Acq: 17 Dec 2021 14:22



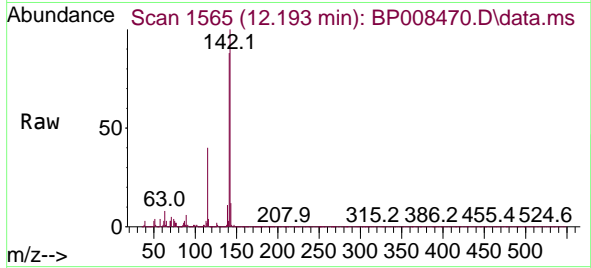
Tgt Ion:107 Resp: 235738
 Ion Ratio Lower Upper
 107 100
 144 23.4 19.7 29.5
 142 72.0 59.6 89.4



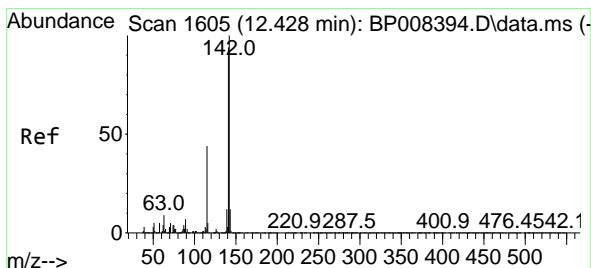
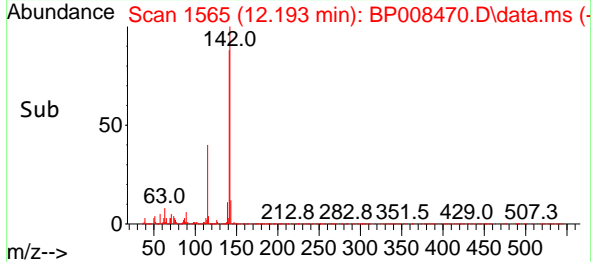
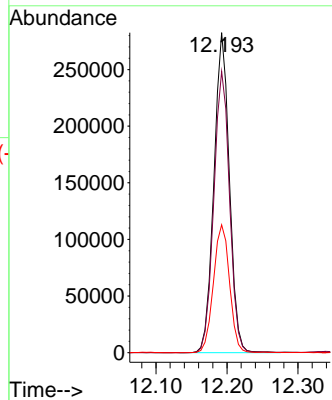


#37
 2-Methylnaphthalene
 Concen: 43.671 ng
 RT: 12.193 min Scan# 11
 Delta R.T. -0.018 min
 Lab File: BP008470.D
 Acq: 17 Dec 2021 14:22

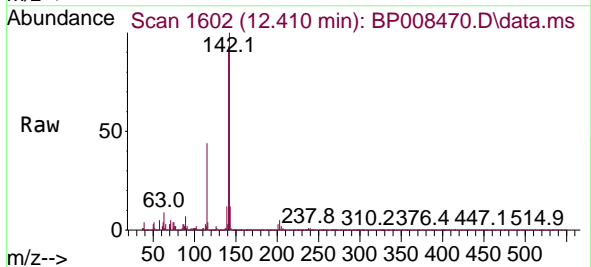
Instrument :
 BNA_P
 ClientSampleId :



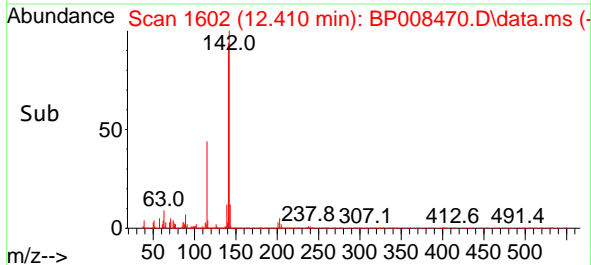
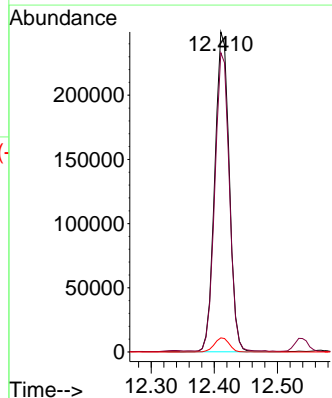
Tgt Ion:142 Resp: 426163
 Ion Ratio Lower Upper
 142 100
 141 87.9 70.7 106.1
 115 39.9 30.9 46.3

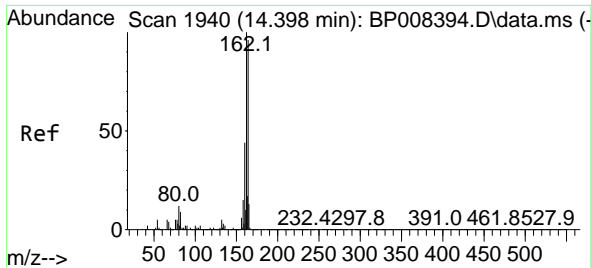


#38
 1-Methylnaphthalene
 Concen: 41.726 ng
 RT: 12.410 min Scan# 1602
 Delta R.T. -0.018 min
 Lab File: BP008470.D
 Acq: 17 Dec 2021 14:22



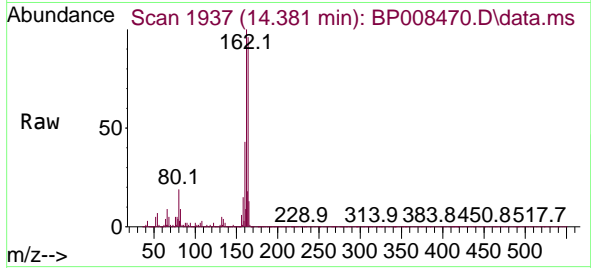
Tgt Ion:142 Resp: 396418
 Ion Ratio Lower Upper
 142 100
 141 93.5 74.2 111.4
 116 4.4 3.4 5.2



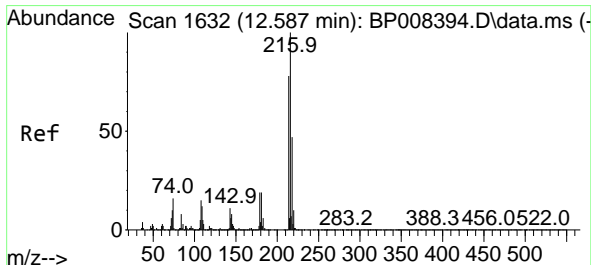
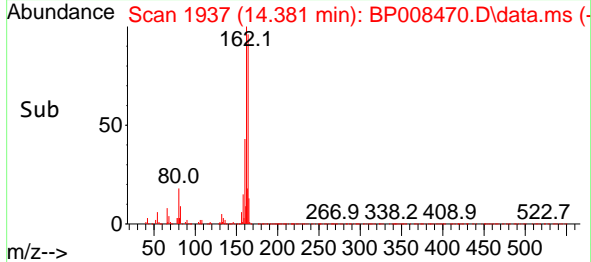
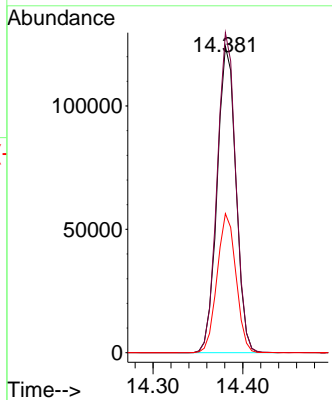


#39
 Acenaphthene-d10
 Concen: 20.000 ng
 RT: 14.381 min Scan# 1940
 Delta R.T. -0.017 min
 Lab File: BP008470.D
 Acq: 17 Dec 2021 14:22

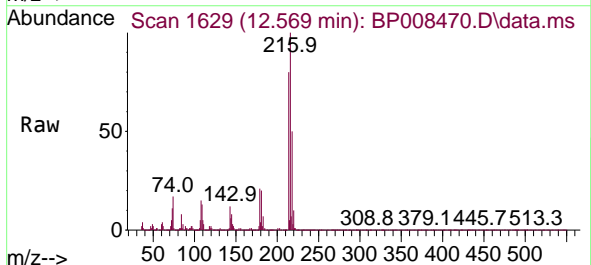
Instrument :
 BNA_P
 ClientSampleId :



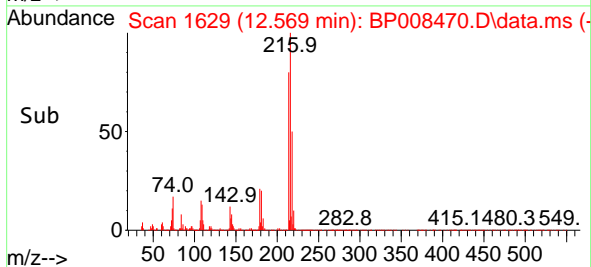
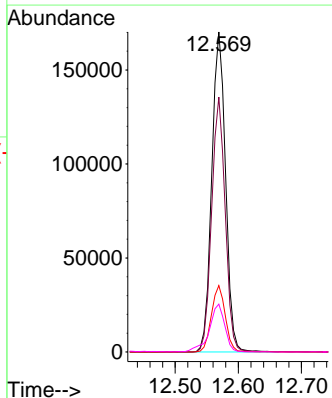
Tgt Ion:164 Resp: 180560
 Ion Ratio Lower Upper
 164 100
 162 104.4 81.9 122.9
 160 45.4 35.4 53.0

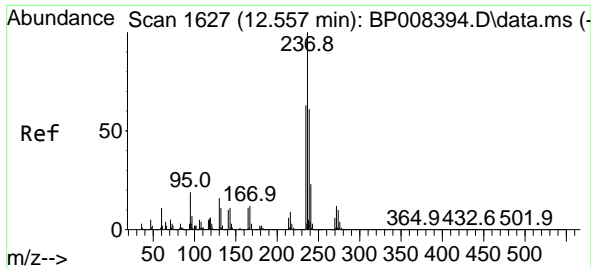


#40
 1,2,4,5-Tetrachlorobenzene
 Concen: 37.368 ng
 RT: 12.569 min Scan# 1629
 Delta R.T. -0.018 min
 Lab File: BP008470.D
 Acq: 17 Dec 2021 14:22



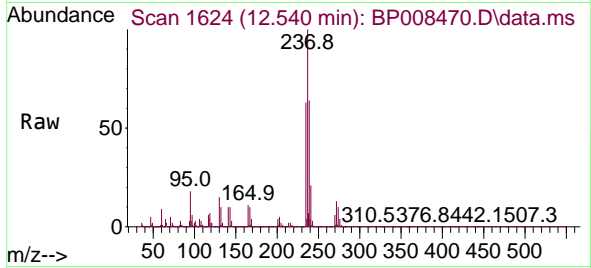
Tgt Ion:216 Resp: 257773
 Ion Ratio Lower Upper
 216 100
 214 78.2 62.5 93.7
 179 20.9 16.4 24.6
 108 16.7 13.8 20.8



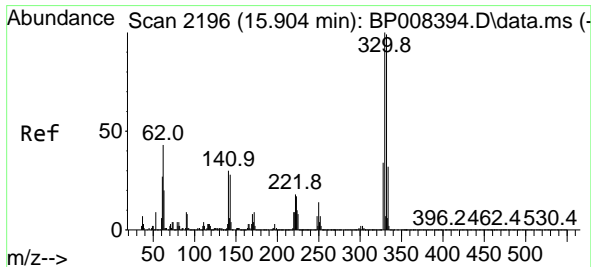
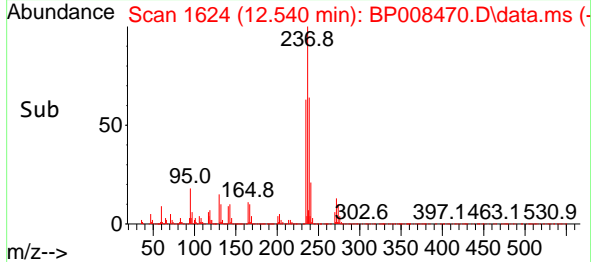
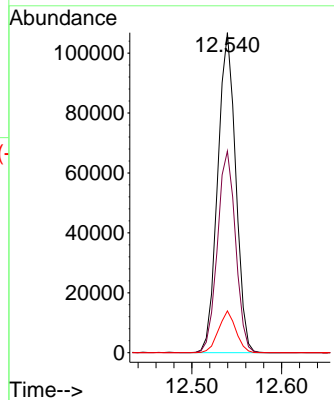


#41
 Hexachlorocyclopentadiene
 Concen: 78.086 ng
 RT: 12.540 min Scan# 10
 Delta R.T. -0.017 min
 Lab File: BP008470.D
 Acq: 17 Dec 2021 14:22

Instrument :
 BNA_P
 ClientSampleId :

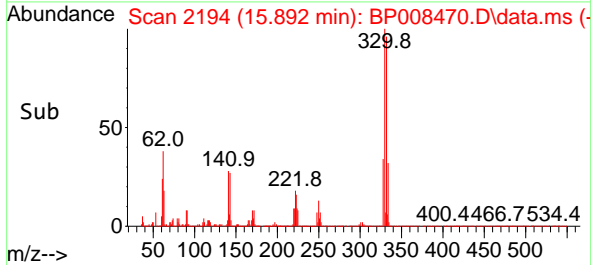
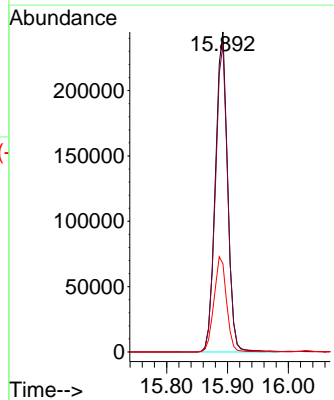
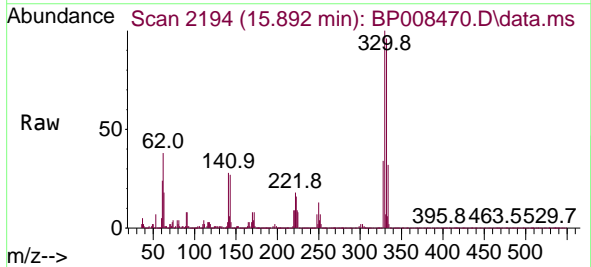


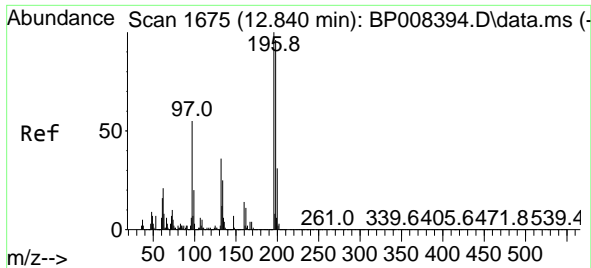
Tgt Ion:237 Resp: 148630
 Ion Ratio Lower Upper
 237 100
 235 63.0 42.3 82.3
 272 13.0 0.0 32.2



#42
 2,4,6-Tribromophenol
 Concen: 128.094 ng
 RT: 15.892 min Scan# 2194
 Delta R.T. -0.012 min
 Lab File: BP008470.D
 Acq: 17 Dec 2021 14:22

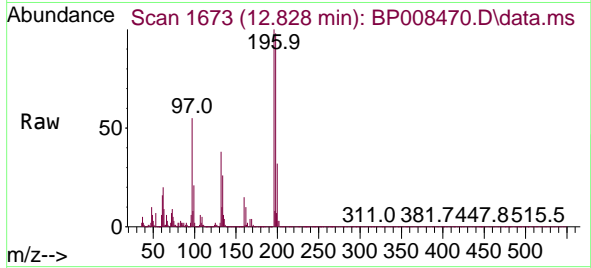
Tgt Ion:330 Resp: 339893
 Ion Ratio Lower Upper
 330 100
 332 96.9 77.0 115.4
 141 30.6 28.4 42.6



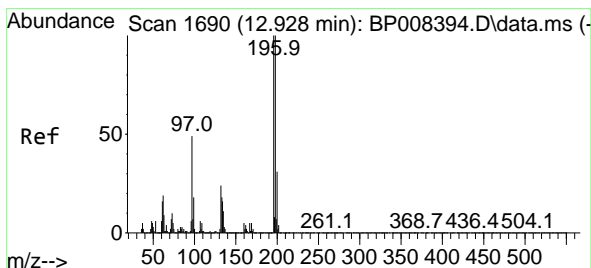
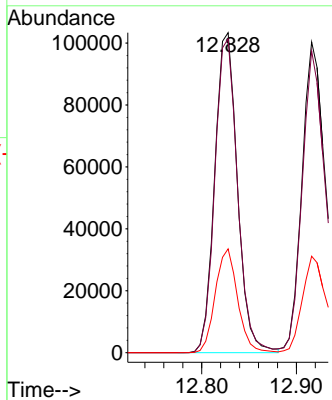
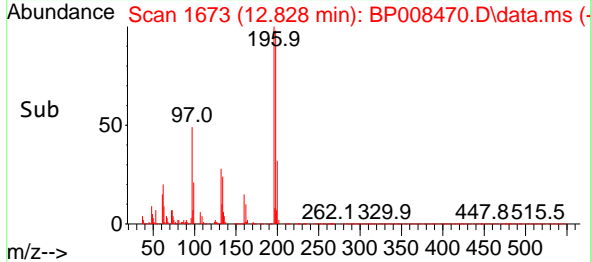


#43
 2,4,6-Trichlorophenol
 Concen: 39.705 ng
 RT: 12.828 min Scan# 1673
 Delta R.T. -0.012 min
 Lab File: BP008470.D
 Acq: 17 Dec 2021 14:22

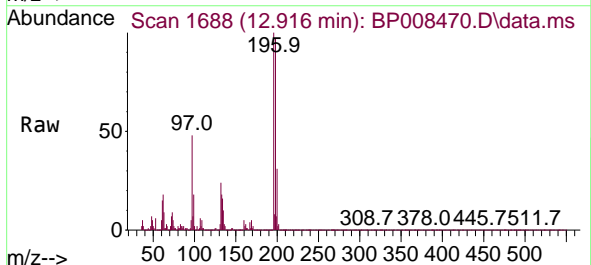
Instrument :
 BNA_P
 ClientSampleId :



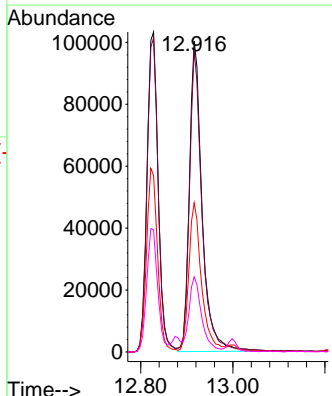
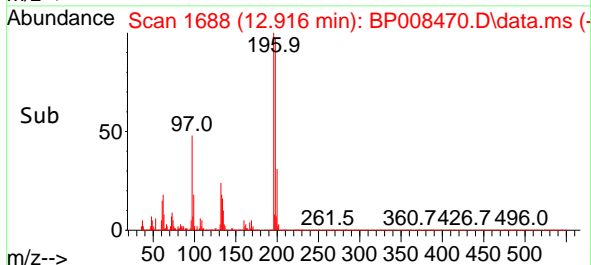
Tgt Ion:196 Resp: 172079
 Ion Ratio Lower Upper
 196 100
 198 98.1 74.8 112.2
 200 32.5 24.3 36.5

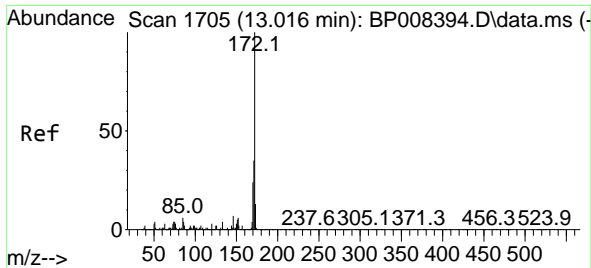


#44
 2,4,5-Trichlorophenol
 Concen: 42.361 ng
 RT: 12.916 min Scan# 1688
 Delta R.T. -0.012 min
 Lab File: BP008470.D
 Acq: 17 Dec 2021 14:22



Tgt Ion:196 Resp: 191478
 Ion Ratio Lower Upper
 196 100
 198 97.1 76.2 114.4
 97 48.0 40.8 61.2
 132 24.2 19.0 28.4

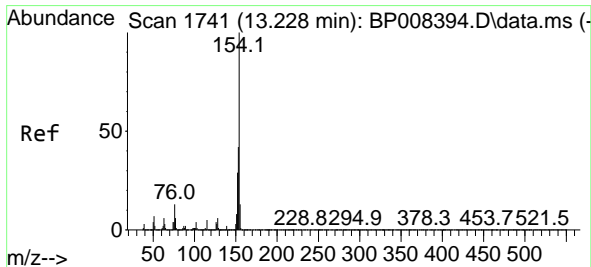
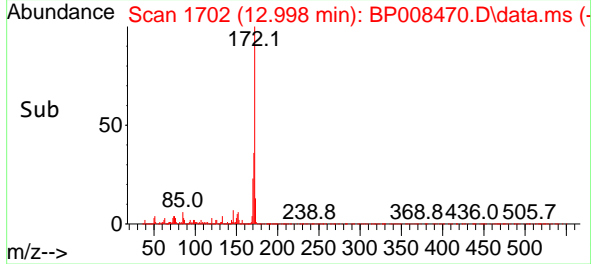
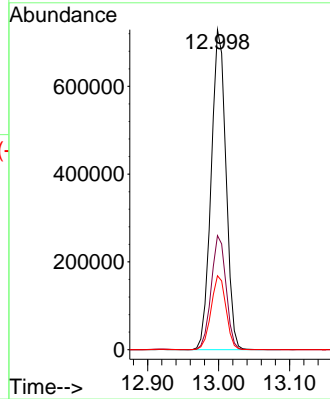
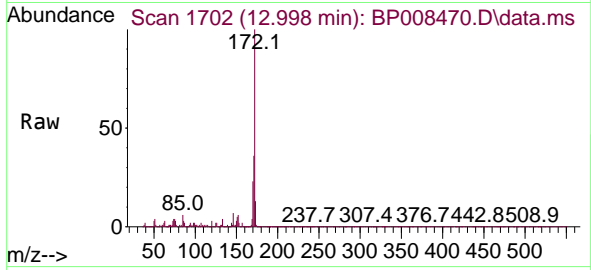




#45
 2-Fluorobiphenyl
 Concen: 74.304 ng
 RT: 12.998 min Scan# 1702
 Delta R.T. -0.018 min
 Lab File: BP008470.D
 Acq: 17 Dec 2021 14:22

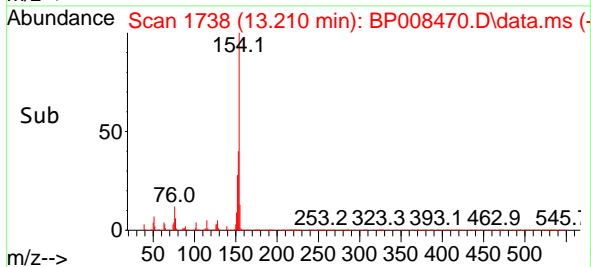
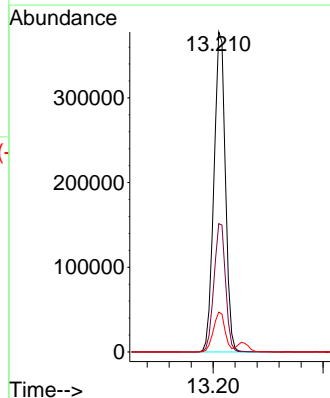
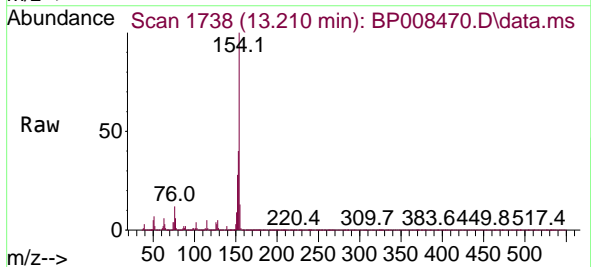
Instrument :
 BNA_P
 ClientSampleId :

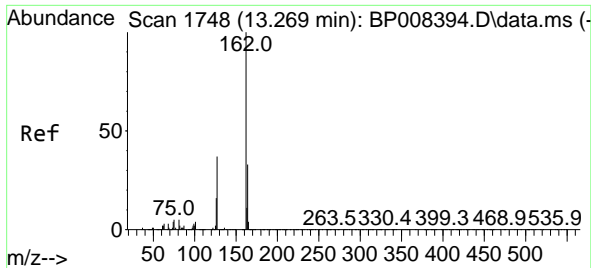
Tgt Ion:172 Resp: 1055402
 Ion Ratio Lower Upper
 172 100
 171 35.6 28.0 42.0
 170 23.1 18.9 28.3



#46
 1,1'-Biphenyl
 Concen: 39.213 ng
 RT: 13.210 min Scan# 1738
 Delta R.T. -0.018 min
 Lab File: BP008470.D
 Acq: 17 Dec 2021 14:22

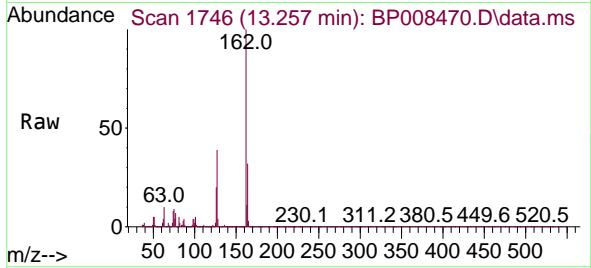
Tgt Ion:154 Resp: 547034
 Ion Ratio Lower Upper
 154 100
 153 40.1 19.7 59.7
 76 12.5 0.0 33.7



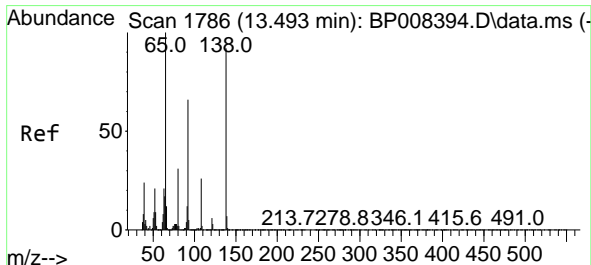
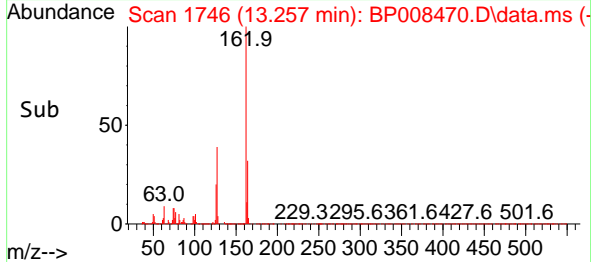
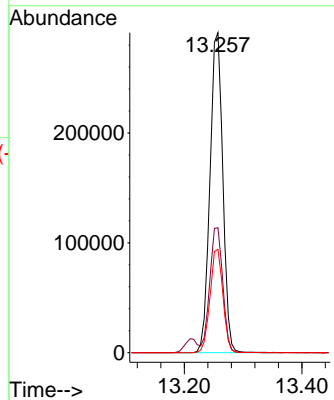


#47
 2-Chloronaphthalene
 Concen: 39.739 ng
 RT: 13.257 min Scan# 1746
 Delta R.T. -0.012 min
 Lab File: BP008470.D
 Acq: 17 Dec 2021 14:22

Instrument :
 BNA_P
 ClientSampleId :

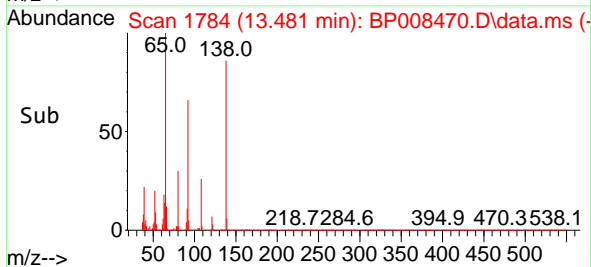
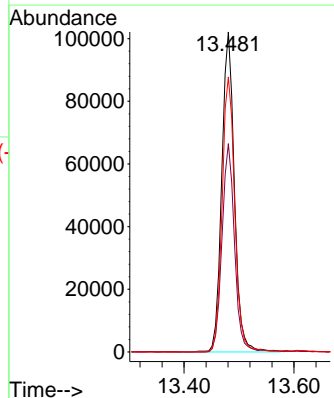
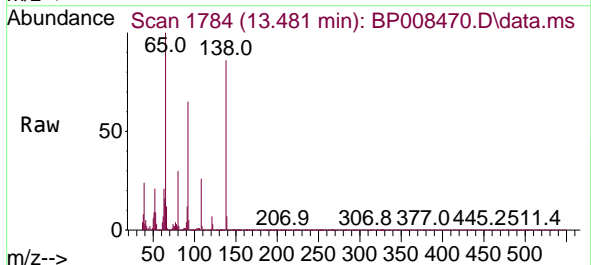


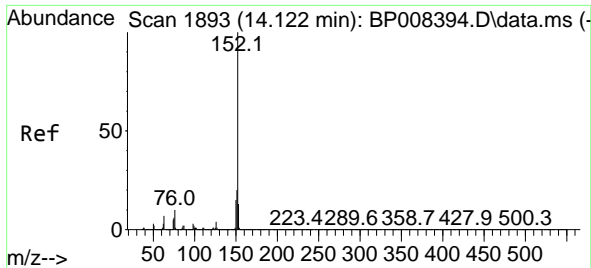
Tgt Ion:162 Resp: 442160
 Ion Ratio Lower Upper
 162 100
 127 39.1 31.3 46.9
 164 32.3 26.9 40.3



#48
 2-Nitroaniline
 Concen: 43.456 ng
 RT: 13.481 min Scan# 1784
 Delta R.T. -0.012 min
 Lab File: BP008470.D
 Acq: 17 Dec 2021 14:22

Tgt Ion: 65 Resp: 162627
 Ion Ratio Lower Upper
 65 100
 92 65.1 50.6 75.8
 138 86.0 68.7 103.1

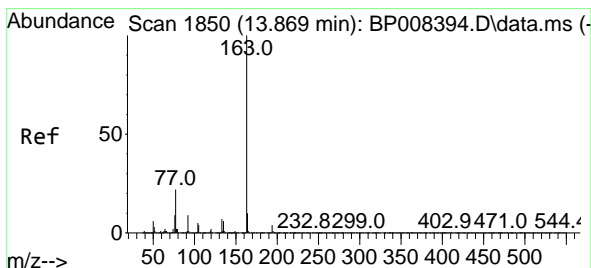
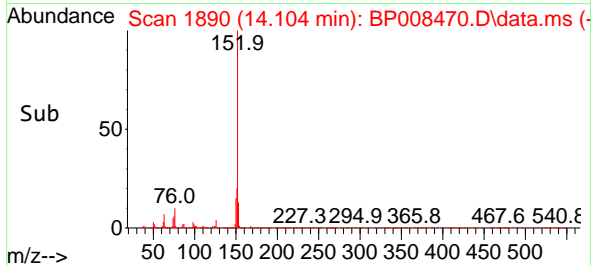
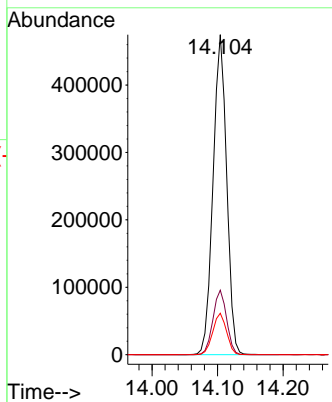
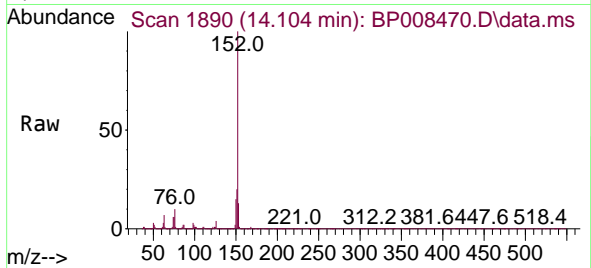




#49
 Acenaphthylene
 Concen: 41.757 ng
 RT: 14.104 min Scan# 1890
 Delta R.T. -0.018 min
 Lab File: BP008470.D
 Acq: 17 Dec 2021 14:22

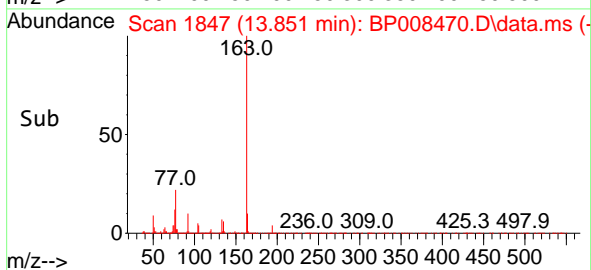
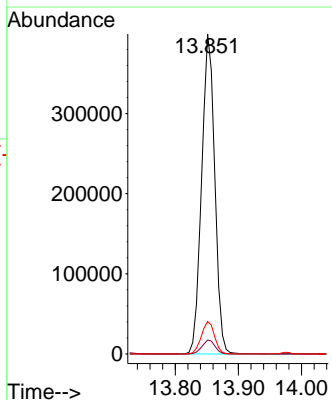
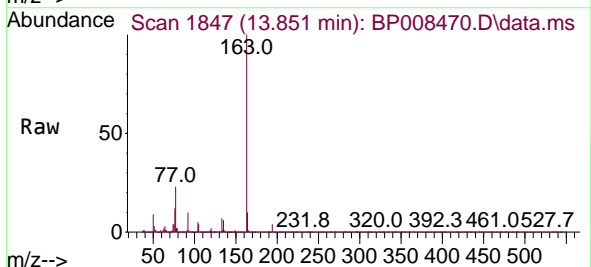
Instrument :
 BNA_P
 ClientSampleId :

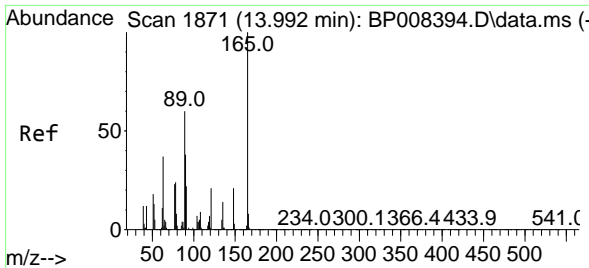
Tgt Ion	Resp	Lower	Upper
152	683012		
151	20.1	16.2	24.4
153	13.0	10.9	16.3



#50
 Dimethylphthalate
 Concen: 42.227 ng
 RT: 13.851 min Scan# 1847
 Delta R.T. -0.018 min
 Lab File: BP008470.D
 Acq: 17 Dec 2021 14:22

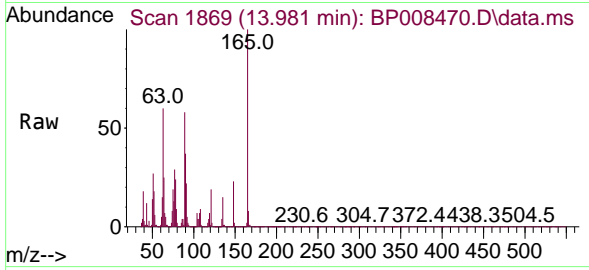
Tgt Ion	Resp	Lower	Upper
163	577273		
164	10.2	8.2	12.2
194	4.3	3.4	5.2



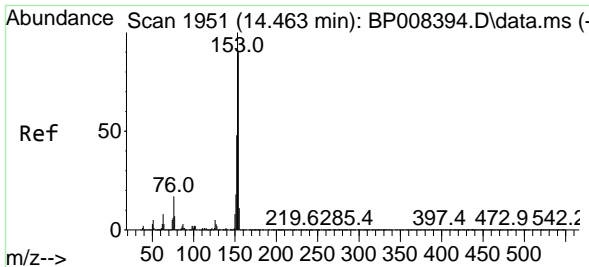
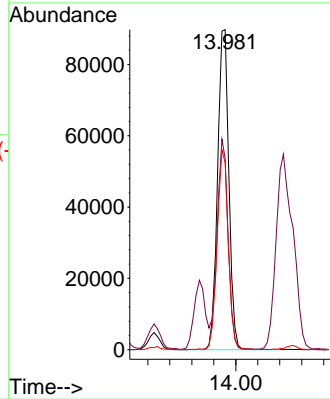
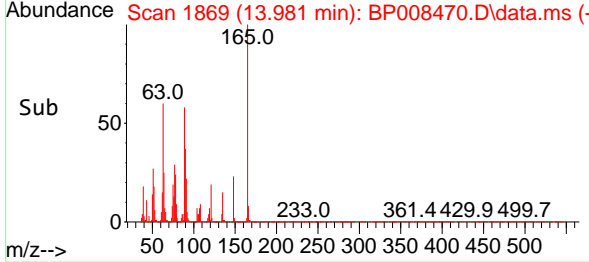


#51
 2,6-Dinitrotoluene
 Concen: 44.858 ng
 RT: 13.981 min Scan# 1869
 Delta R.T. -0.012 min
 Lab File: BP008470.D
 Acq: 17 Dec 2021 14:22

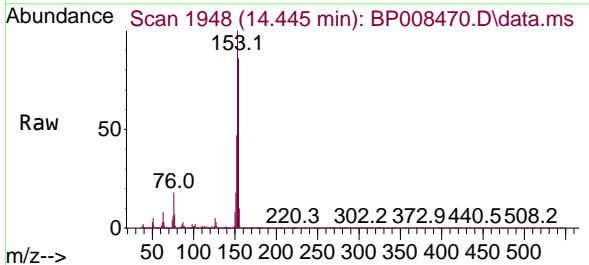
Instrument :
 BNA_P
 ClientSampleId :



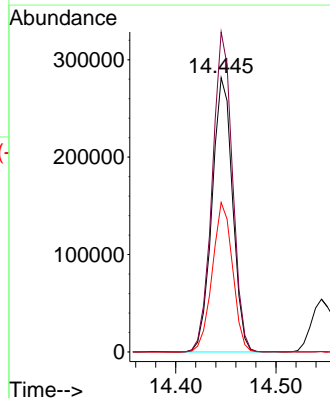
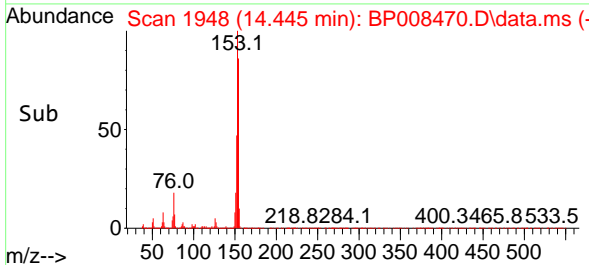
Tgt Ion:165 Resp: 128020
 Ion Ratio Lower Upper
 165 100
 63 59.6 50.8 76.2
 89 58.4 50.0 75.0

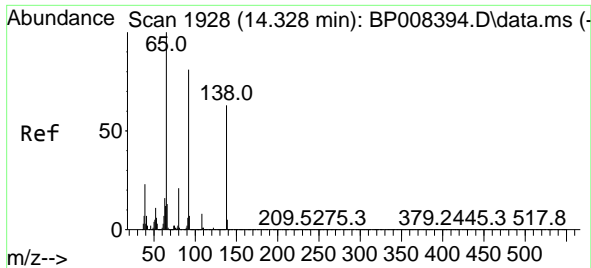


#52
 Acenaphthene
 Concen: 41.144 ng
 RT: 14.445 min Scan# 1948
 Delta R.T. -0.018 min
 Lab File: BP008470.D
 Acq: 17 Dec 2021 14:22



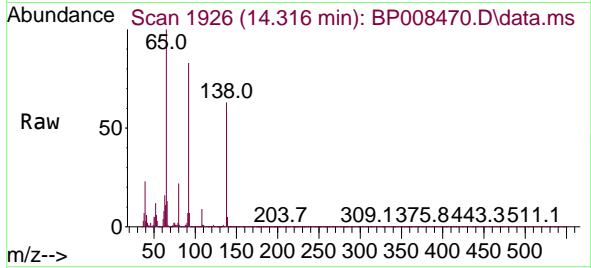
Tgt Ion:154 Resp: 400290
 Ion Ratio Lower Upper
 154 100
 153 116.7 90.3 135.5
 152 54.5 43.3 64.9



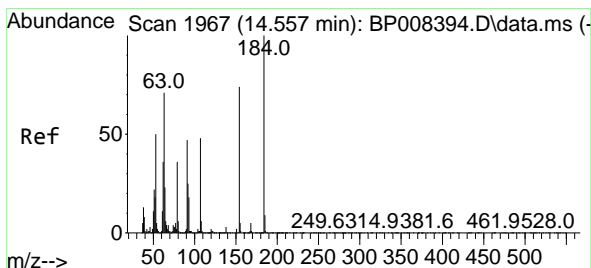
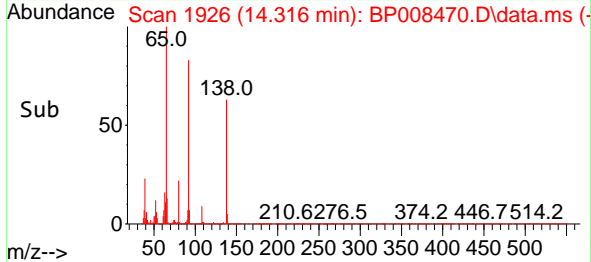
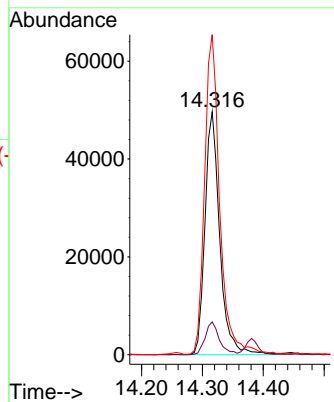


#53
 3-Nitroaniline
 Concen: 31.188 ng
 RT: 14.316 min Scan# 1926
 Delta R.T. -0.012 min
 Lab File: BP008470.D
 Acq: 17 Dec 2021 14:22

Instrument :
 BNA_P
 ClientSampleId :

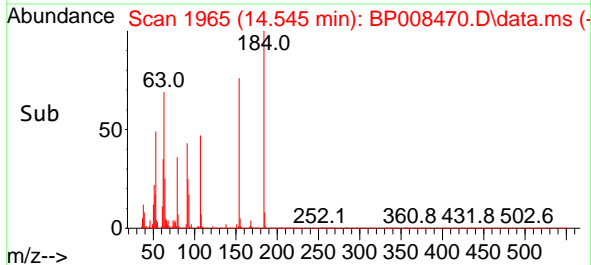
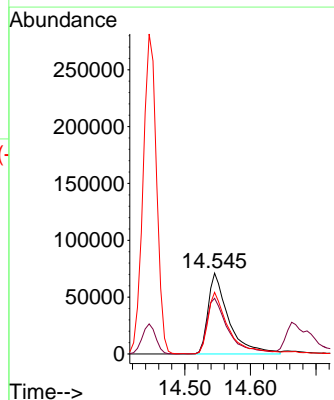
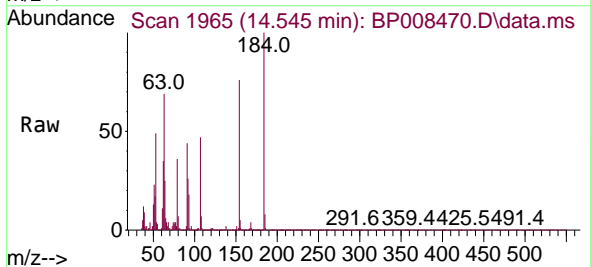


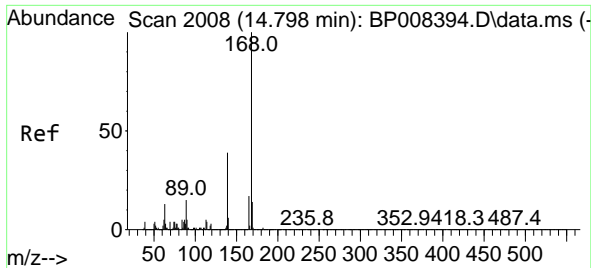
Tgt Ion:138 Resp: 83852
 Ion Ratio Lower Upper
 138 100
 108 13.5 9.2 13.8
 92 131.8 102.9 154.3



#54
 2,4-Dinitrophenol
 Concen: 103.600 ng
 RT: 14.545 min Scan# 1965
 Delta R.T. -0.012 min
 Lab File: BP008470.D
 Acq: 17 Dec 2021 14:22

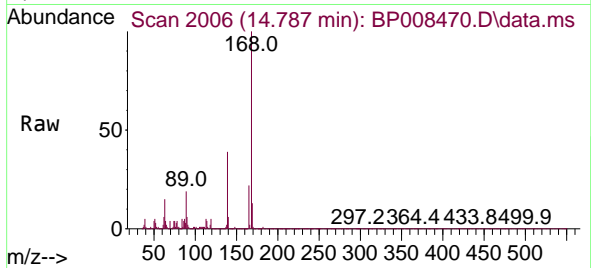
Tgt Ion:184 Resp: 154339
 Ion Ratio Lower Upper
 184 100
 63 69.0 53.8 80.6
 154 76.3 54.2 81.2



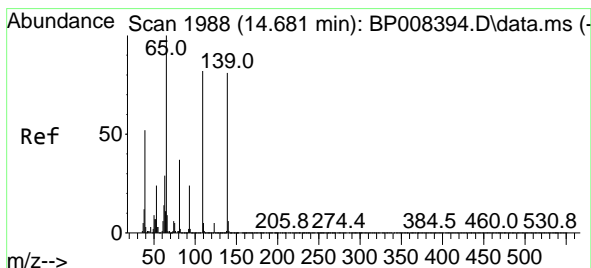
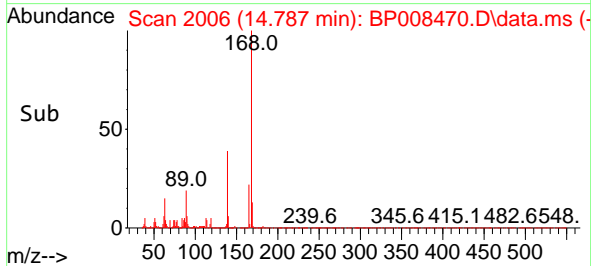
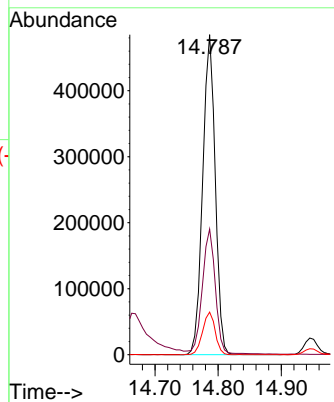


#55
 Dibenzenofuran
 Concen: 40.423 ng
 RT: 14.787 min Scan# 2008
 Delta R.T. -0.012 min
 Lab File: BP008470.D
 Acq: 17 Dec 2021 14:22

Instrument :
 BNA_P
 ClientSampleId :

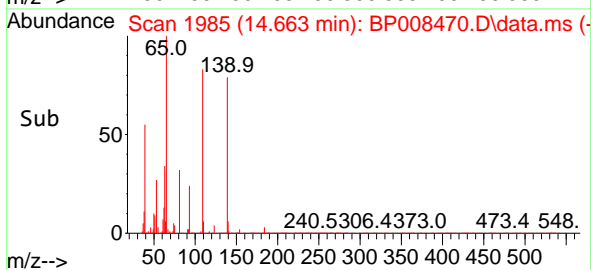
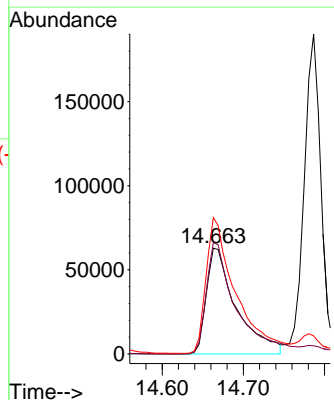
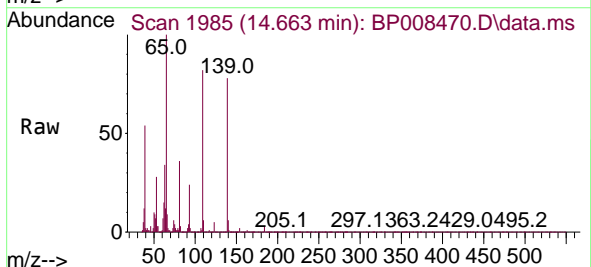


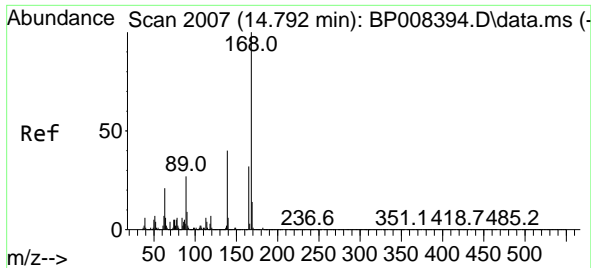
Tgt Ion:168 Resp: 669058
 Ion Ratio Lower Upper
 168 100
 139 39.2 30.6 46.0
 169 13.3 11.0 16.4



#56
 4-Nitrophenol
 Concen: 103.238 ng
 RT: 14.663 min Scan# 1985
 Delta R.T. -0.018 min
 Lab File: BP008470.D
 Acq: 17 Dec 2021 14:22

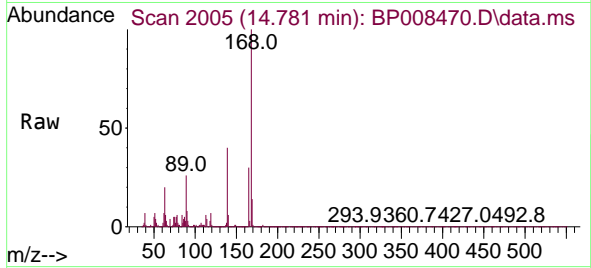
Tgt Ion:139 Resp: 161126
 Ion Ratio Lower Upper
 139 100
 109 105.5 65.9 105.9
 65 128.9 91.9 131.9



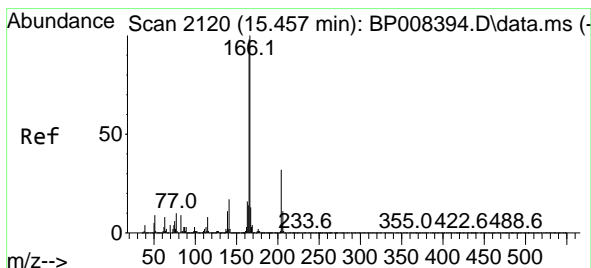
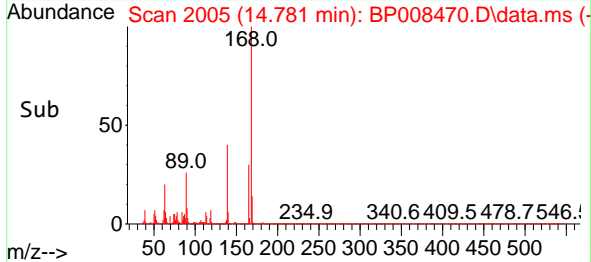
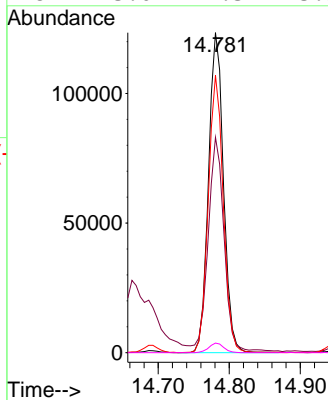


#57
 2,4-Dinitrotoluene
 Concen: 47.522 ng
 RT: 14.781 min Scan# 20
 Delta R.T. -0.012 min
 Lab File: BP008470.D
 Acq: 17 Dec 2021 14:22

Instrument :
 BNA_P
 ClientSampleId :

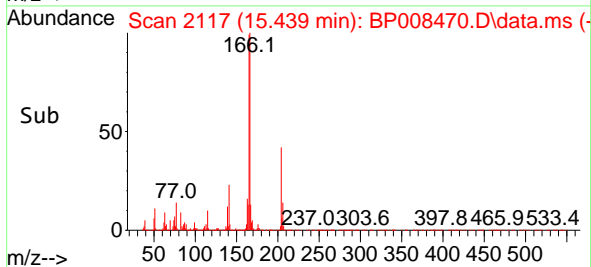
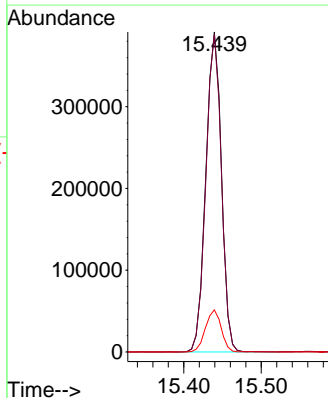
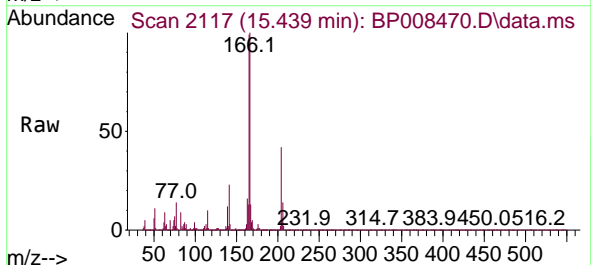


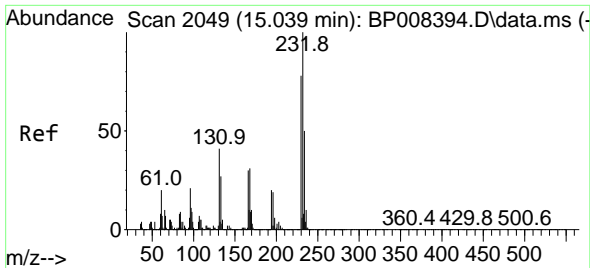
Tgt Ion:165 Resp: 181192
 Ion Ratio Lower Upper
 165 100
 63 67.3 38.9 58.3#
 89 86.6 60.5 90.7
 182 3.0 2.3 3.5



#58
 Fluorene
 Concen: 42.626 ng
 RT: 15.439 min Scan# 2117
 Delta R.T. -0.018 min
 Lab File: BP008470.D
 Acq: 17 Dec 2021 14:22

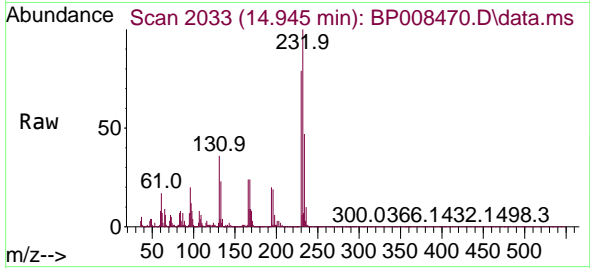
Tgt Ion:166 Resp: 546943
 Ion Ratio Lower Upper
 166 100
 165 99.4 79.4 119.2
 167 13.1 10.9 16.3





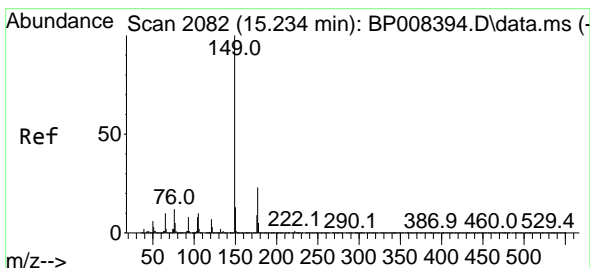
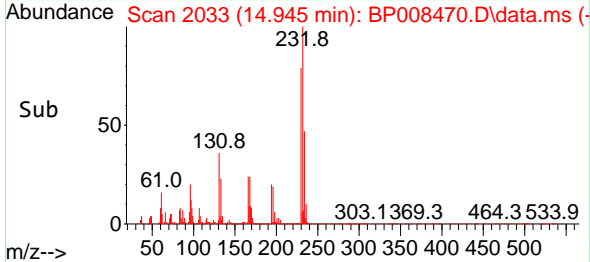
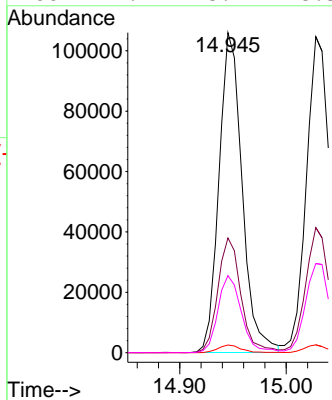
#59
 2,3,4,6-Tetrachlorophenol
 Concen: 41.317 ng
 RT: 14.945 min Scan# 2080
 Delta R.T. -0.094 min
 Lab File: BP008470.D
 Acq: 17 Dec 2021 14:22

Instrument : BNA_P
 ClientSampleId :



Tgt Ion:232 Resp: 159522

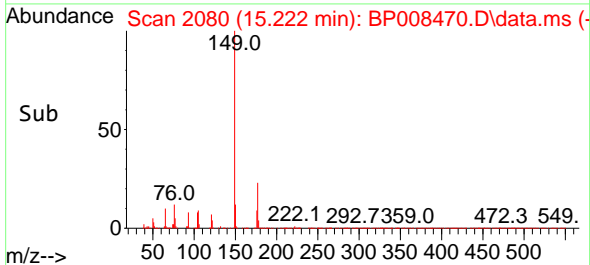
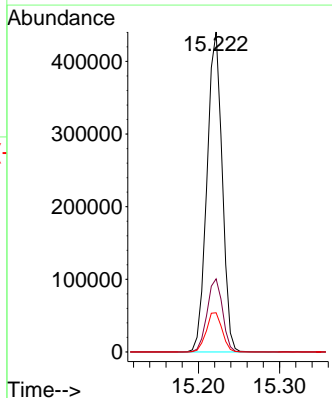
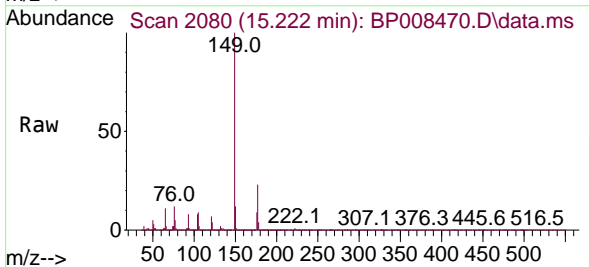
Ion	Ratio	Lower	Upper
232	100		
131	35.8	28.1	42.1
130	2.4	1.8	2.8
166	24.7	18.9	28.3

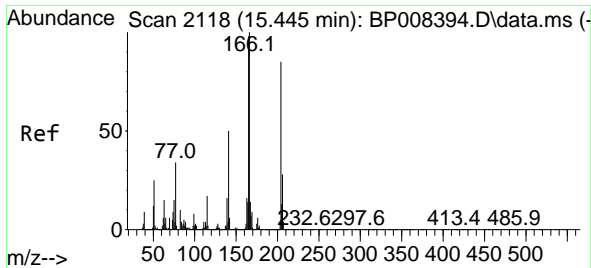


#60
 Diethylphthalate
 Concen: 43.963 ng
 RT: 15.222 min Scan# 2080
 Delta R.T. -0.012 min
 Lab File: BP008470.D
 Acq: 17 Dec 2021 14:22

Tgt Ion:149 Resp: 570378

Ion	Ratio	Lower	Upper
149	100		
177	22.8	18.2	27.2
150	12.3	10.3	15.5

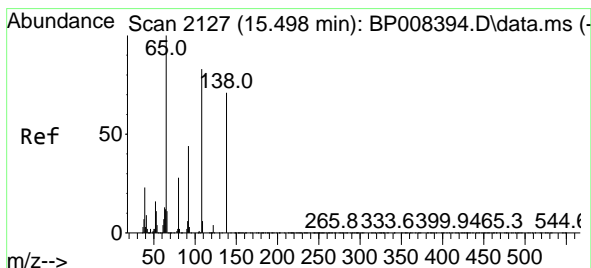
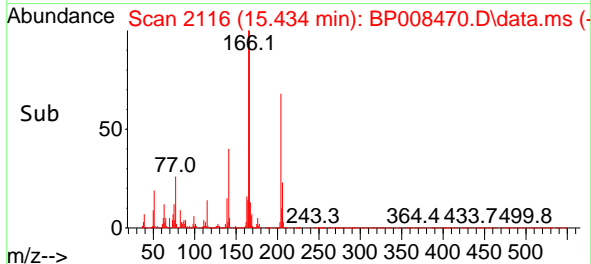
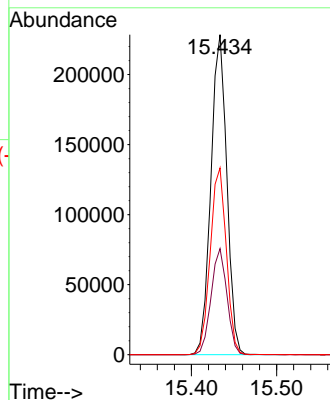
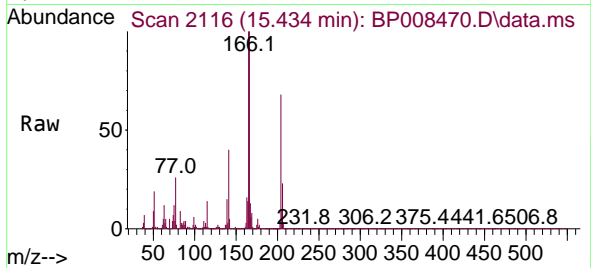




#61
 4-Chlorophenyl-phenylether
 Concen: 40.432 ng
 RT: 15.434 min Scan# 2118
 Delta R.T. -0.012 min
 Lab File: BP008470.D
 Acq: 17 Dec 2021 14:22

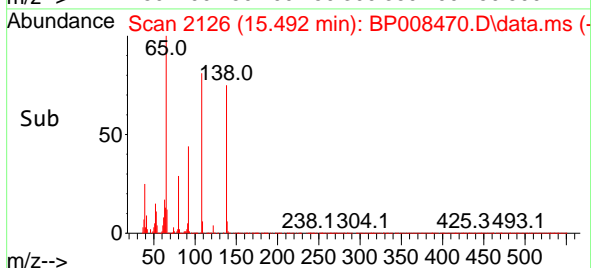
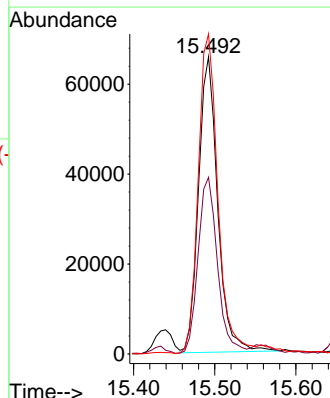
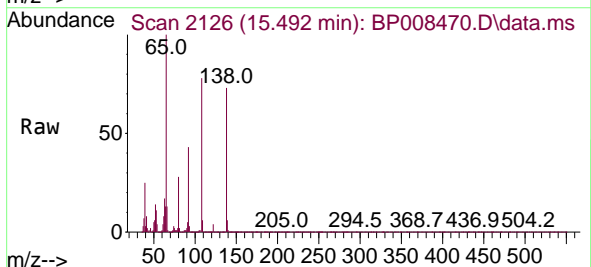
Instrument :
 BNA_P
 ClientSampleId :

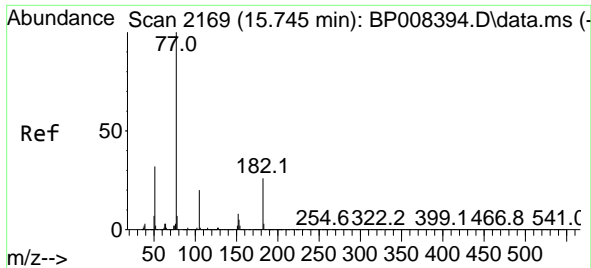
Tgt Ion:204 Resp: 296431
 Ion Ratio Lower Upper
 204 100
 206 33.2 26.1 39.1
 141 58.3 47.4 71.0



#62
 4-Nitroaniline
 Concen: 44.530 ng
 RT: 15.492 min Scan# 2126
 Delta R.T. -0.006 min
 Lab File: BP008470.D
 Acq: 17 Dec 2021 14:22

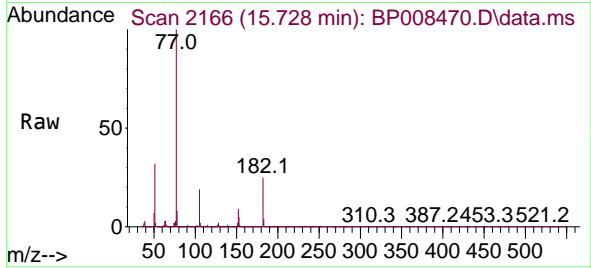
Tgt Ion:138 Resp: 107805
 Ion Ratio Lower Upper
 138 100
 92 59.4 40.8 80.8
 108 107.7 77.9 117.9



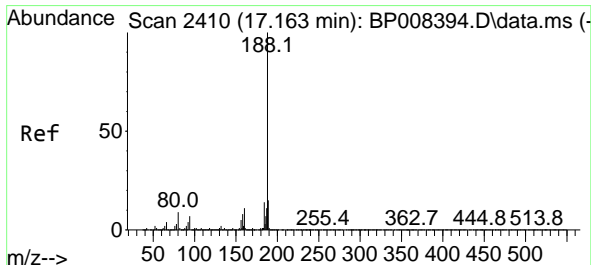
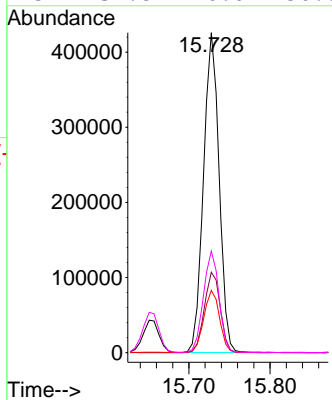
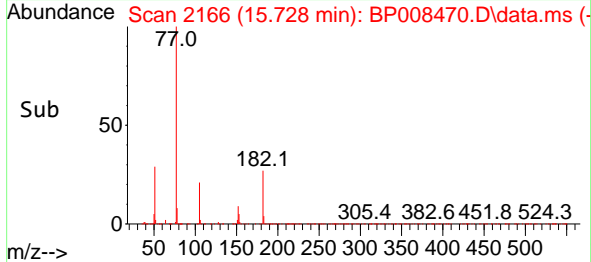


#63
 Azobenzene
 Concen: 43.054 ng
 RT: 15.728 min Scan# 2169
 Delta R.T. -0.018 min
 Lab File: BP008470.D
 Acq: 17 Dec 2021 14:22

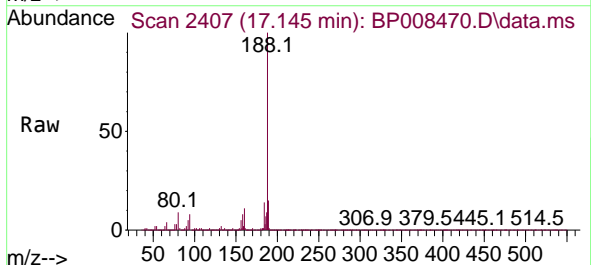
Instrument :
 BNA_P
 ClientSampleId :



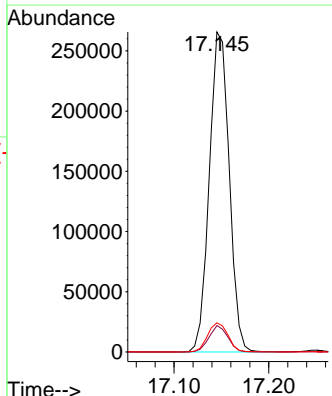
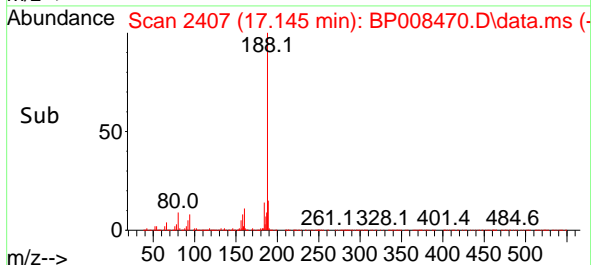
Tgt Ion: 77 Resp: 566280
 Ion Ratio Lower Upper
 77 100
 182 25.2 3.8 43.8
 105 19.5 0.5 40.5
 51 31.8 10.0 50.0

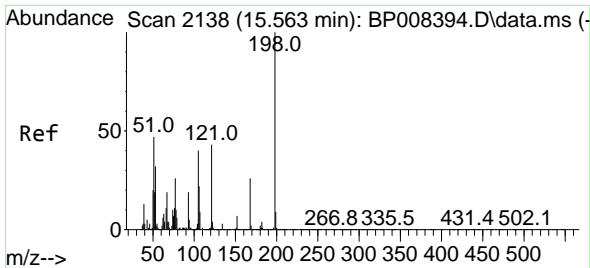


#64
 Phenanthrene-d10
 Concen: 20.000 ng
 RT: 17.145 min Scan# 2407
 Delta R.T. -0.018 min
 Lab File: BP008470.D
 Acq: 17 Dec 2021 14:22



Tgt Ion: 188 Resp: 387357
 Ion Ratio Lower Upper
 188 100
 94 8.3 7.2 10.8
 80 9.1 8.2 12.4

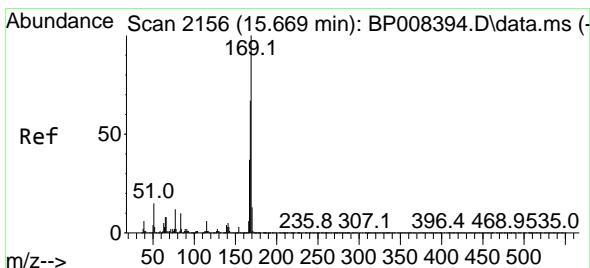
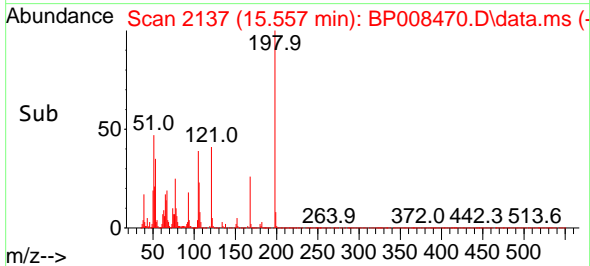
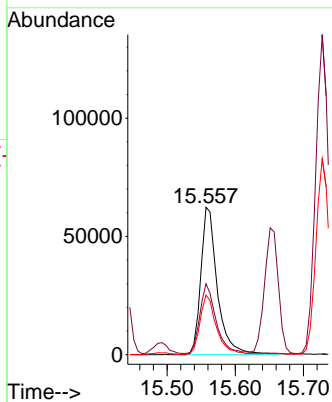
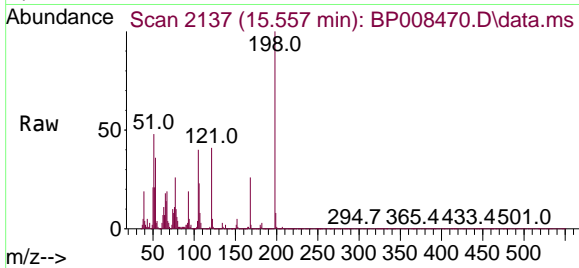




#65
 4,6-Dinitro-2-methylphenol
 Concen: 41.539 ng
 RT: 15.557 min Scan# 2154
 Delta R.T. -0.006 min
 Lab File: BP008470.D
 Acq: 17 Dec 2021 14:22

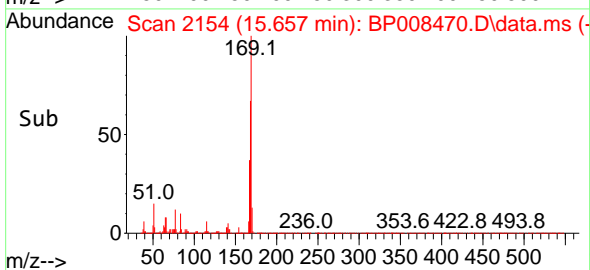
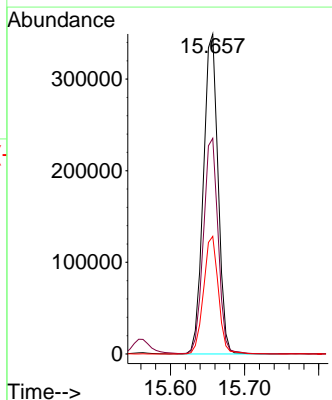
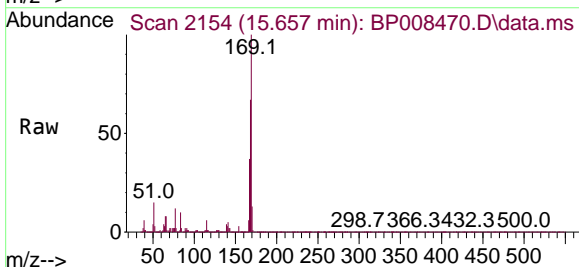
Instrument : BNA_P
 ClientSampleId :

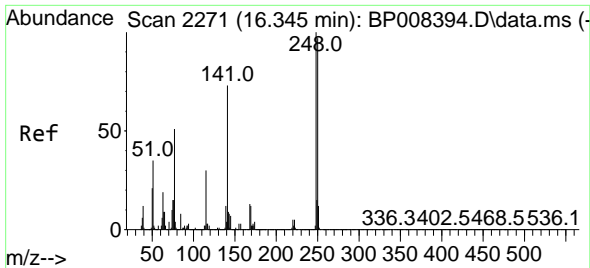
Tgt Ion	Resp	Lower	Upper
198	105129		
51	48.1	25.9	65.9
105	40.3	20.2	60.2



#66
 n-Nitrosodiphenylamine
 Concen: 39.304 ng
 RT: 15.657 min Scan# 2154
 Delta R.T. -0.012 min
 Lab File: BP008470.D
 Acq: 17 Dec 2021 14:22

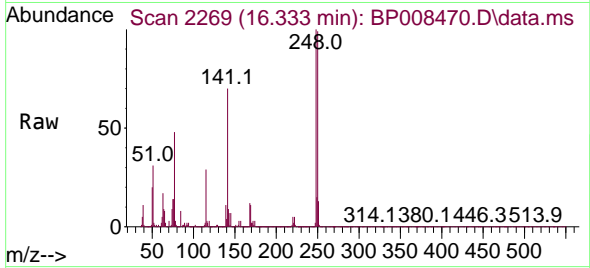
Tgt Ion	Resp	Lower	Upper
169	479350		
168	67.4	53.5	80.3
167	36.7	29.3	43.9



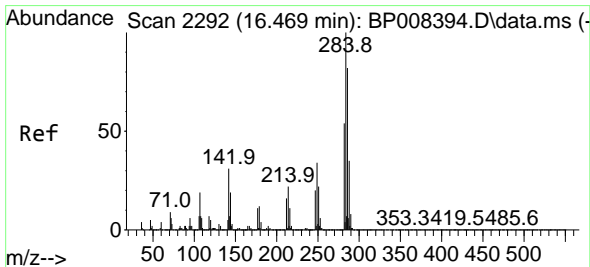
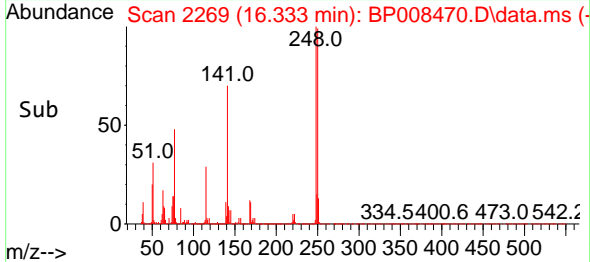
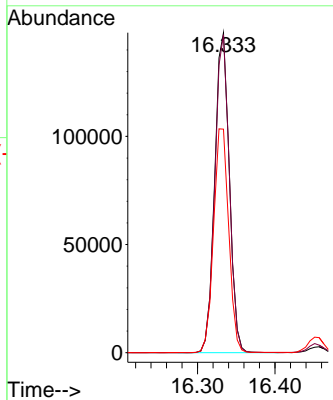


#67
 4-Bromophenyl-phenylether
 Concen: 38.298 ng
 RT: 16.333 min Scan# 21
 Delta R.T. -0.012 min
 Lab File: BP008470.D
 Acq: 17 Dec 2021 14:22

Instrument :
 BNA_P
 ClientSampleId :

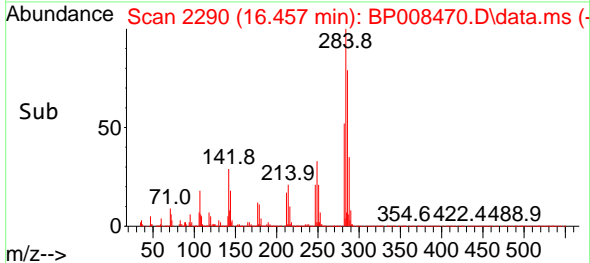
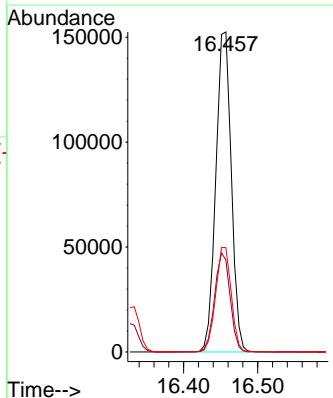
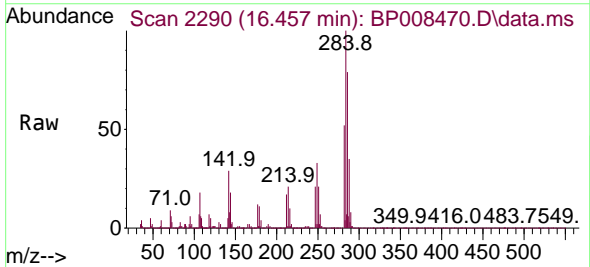


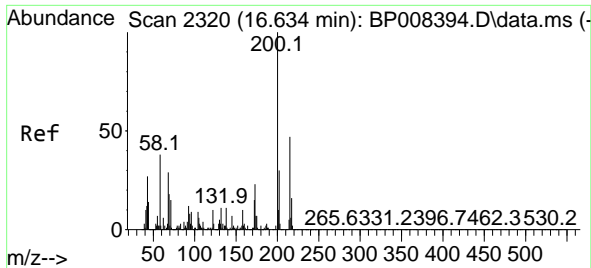
Tgt Ion:248 Resp: 193221
 Ion Ratio Lower Upper
 248 100
 250 99.4 78.6 117.8
 141 69.9 57.0 85.6



#68
 Hexachlorobenzene
 Concen: 39.811 ng
 RT: 16.457 min Scan# 2290
 Delta R.T. -0.012 min
 Lab File: BP008470.D
 Acq: 17 Dec 2021 14:22

Tgt Ion:284 Resp: 221203
 Ion Ratio Lower Upper
 284 100
 142 28.8 28.6 42.8
 249 32.6 27.1 40.7

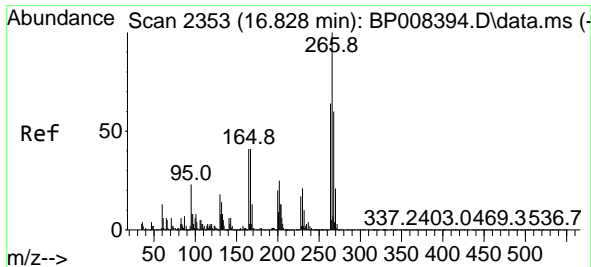
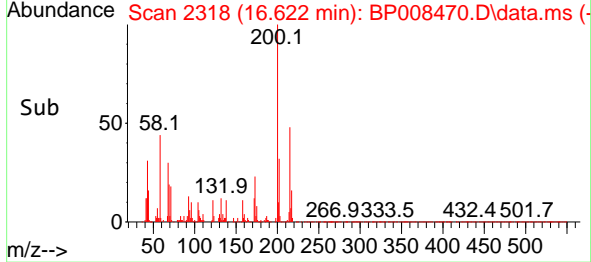
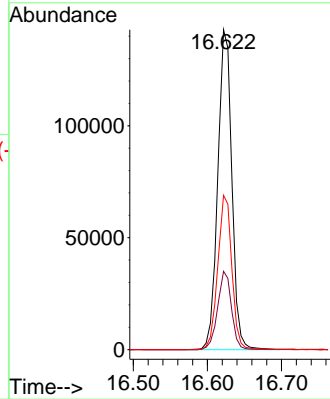
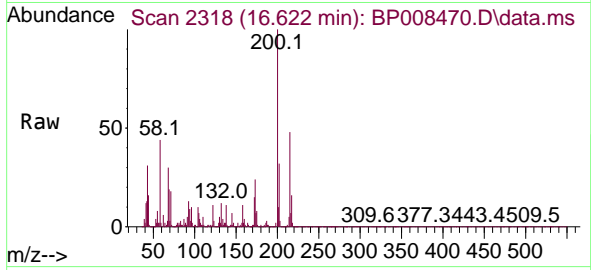




#69
 Atrazine
 Concen: 70.140 ng
 RT: 16.622 min Scan# 21
 Delta R.T. -0.012 min
 Lab File: BP008470.D
 Acq: 17 Dec 2021 14:22

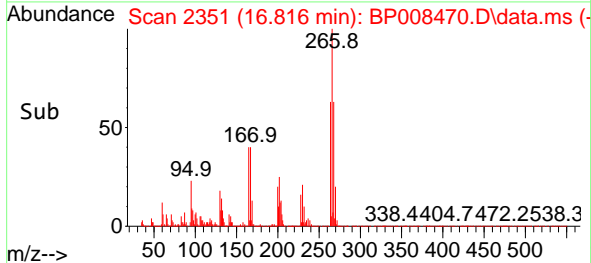
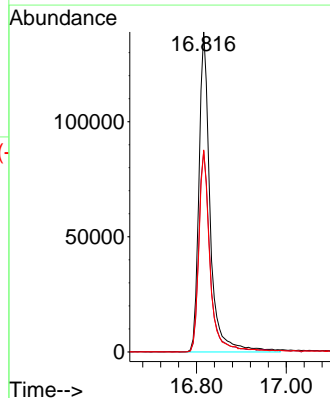
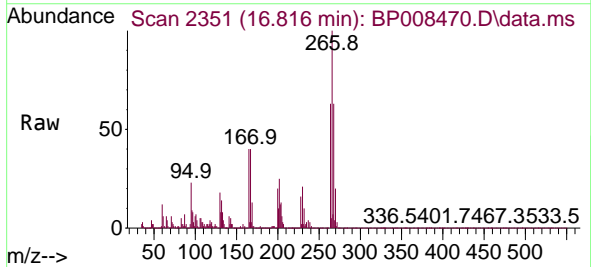
Instrument :
 BNA_P
 ClientSampleId :

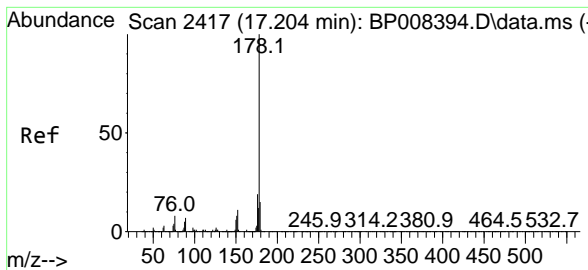
Tgt Ion:200 Resp: 188446
 Ion Ratio Lower Upper
 200 100
 173 24.5 6.8 46.8
 215 48.3 28.4 68.4



#70
 Pentachlorophenol
 Concen: 96.837 ng
 RT: 16.816 min Scan# 2351
 Delta R.T. -0.012 min
 Lab File: BP008470.D
 Acq: 17 Dec 2021 14:22

Tgt Ion:266 Resp: 240462
 Ion Ratio Lower Upper
 266 100
 268 62.7 50.1 75.1
 264 63.2 49.5 74.3

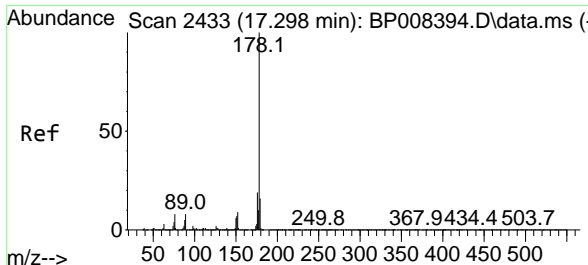
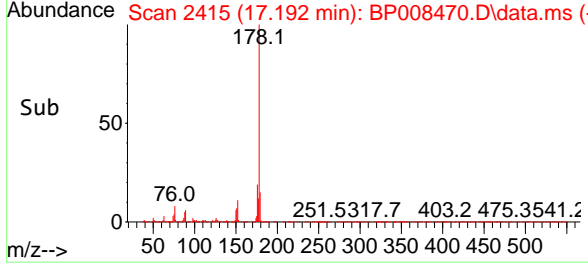
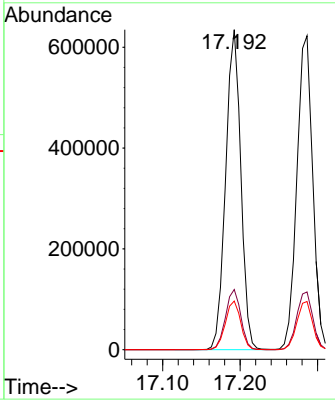
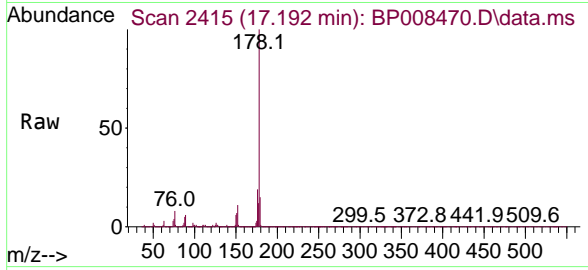




#71
 Phenanthrene
 Concen: 41.183 ng
 RT: 17.192 min Scan# 2415
 Delta R.T. -0.012 min
 Lab File: BP008470.D
 Acq: 17 Dec 2021 14:22

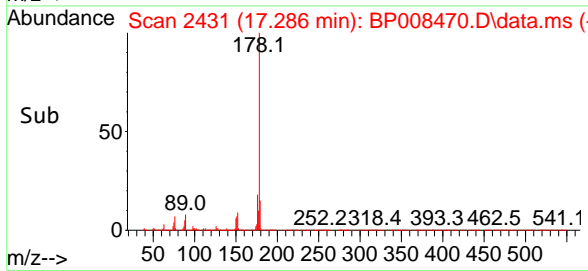
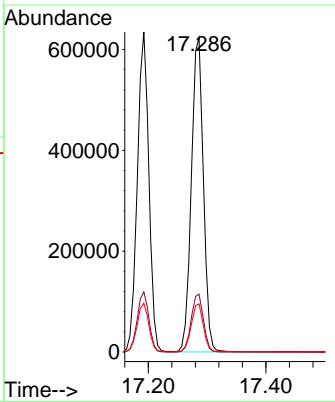
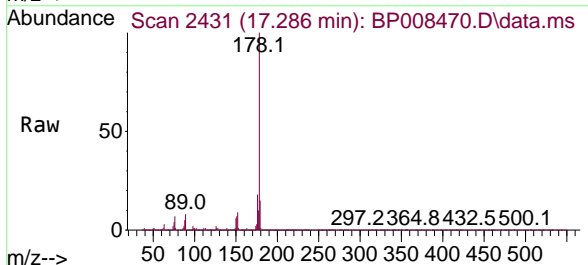
Instrument : BNA_P
 ClientSampleId :

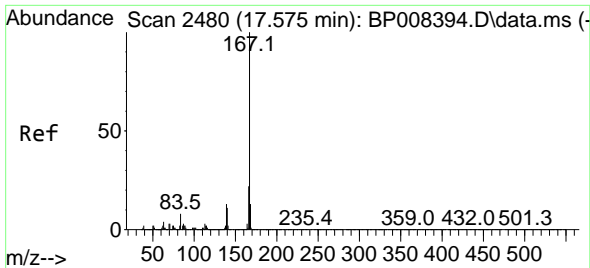
Tgt Ion	Resp	Lower	Upper
178	100		
176	18.8	15.3	22.9
179	15.2	12.5	18.7



#72
 Anthracene
 Concen: 42.860 ng
 RT: 17.286 min Scan# 2431
 Delta R.T. -0.012 min
 Lab File: BP008470.D
 Acq: 17 Dec 2021 14:22

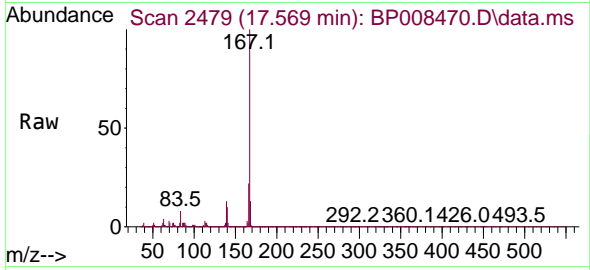
Tgt Ion	Resp	Lower	Upper
178	100		
176	18.4	15.1	22.7
179	15.3	12.3	18.5





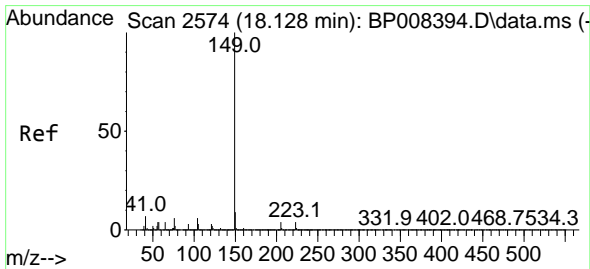
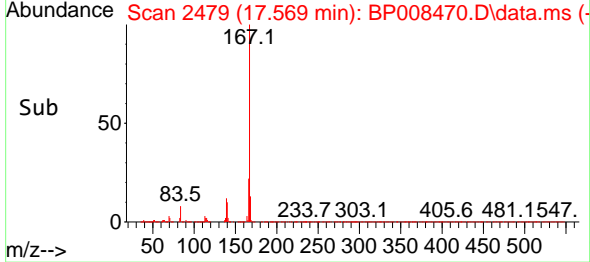
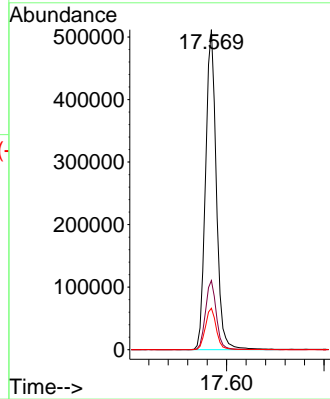
#73
 Carbazole
 Concen: 41.220 ng
 RT: 17.569 min Scan# 24
 Delta R.T. -0.006 min
 Lab File: BP008470.D
 Acq: 17 Dec 2021 14:22

Instrument :
 BNA_P
 ClientSampleId :



Tgt Ion:167 Resp: 780892

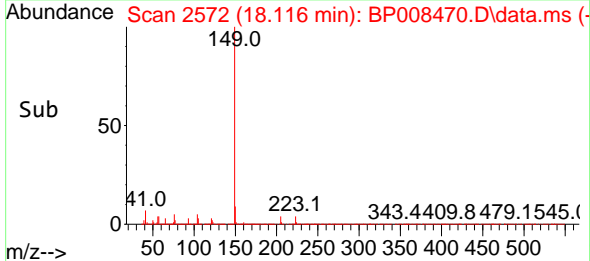
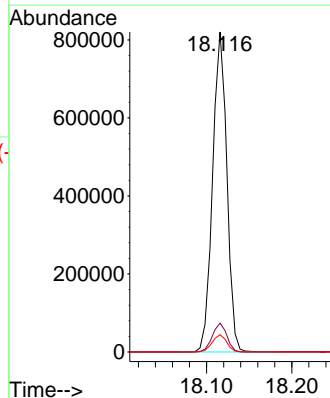
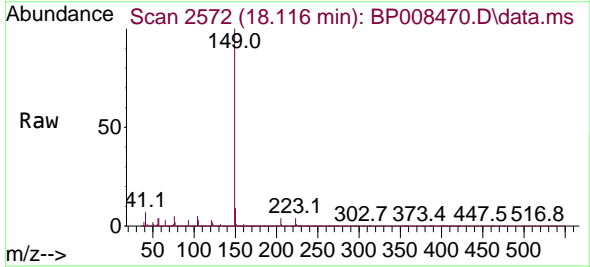
Ion	Ratio	Lower	Upper
167	100		
166	21.6	17.4	26.0
139	13.0	10.2	15.2

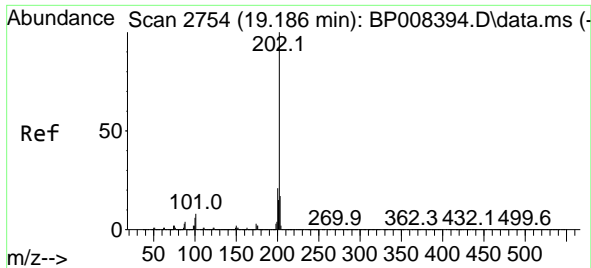


#74
 Di-n-butylphthalate
 Concen: 44.014 ng
 RT: 18.116 min Scan# 2572
 Delta R.T. -0.012 min
 Lab File: BP008470.D
 Acq: 17 Dec 2021 14:22

Tgt Ion:149 Resp: 956628

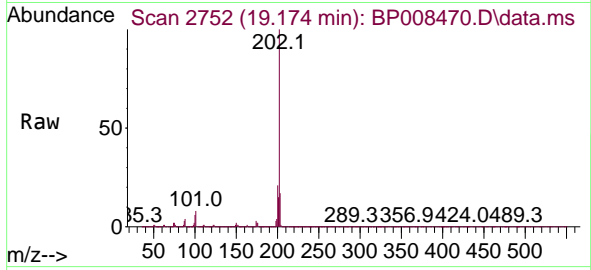
Ion	Ratio	Lower	Upper
149	100		
150	9.0	7.4	11.2
104	5.4	4.4	6.6





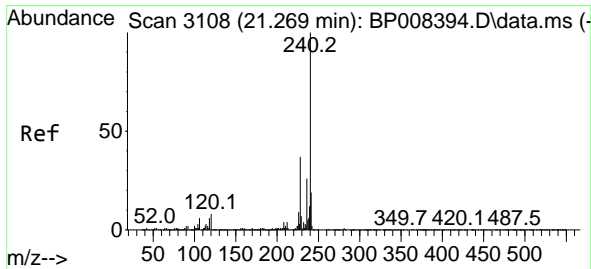
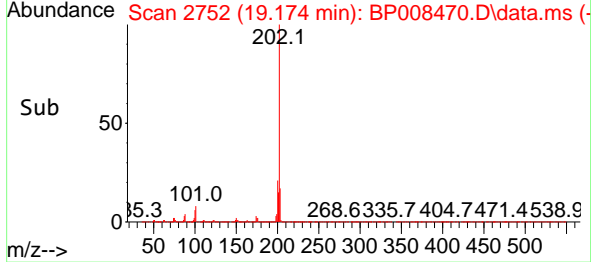
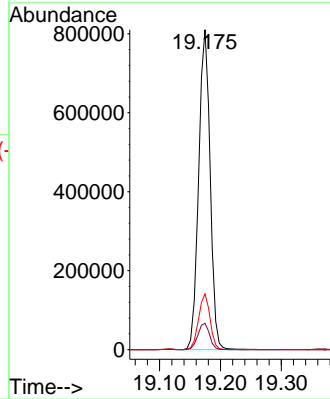
#75
 Fluoranthene
 Concen: 44.698 ng
 RT: 19.174 min Scan# 21
 Delta R.T. -0.012 min
 Lab File: BP008470.D
 Acq: 17 Dec 2021 14:22

Instrument :
 BNA_P
 ClientSampleId :



Tgt Ion: 202 Resp: 1058880

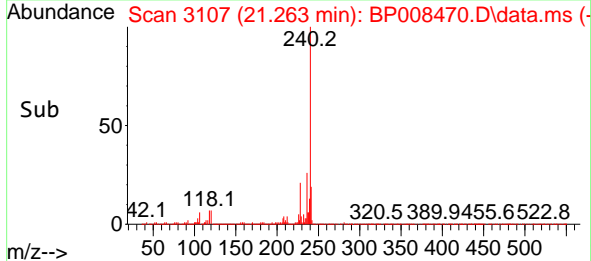
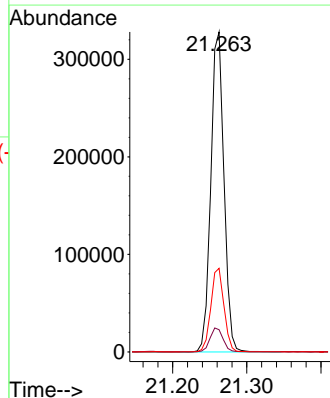
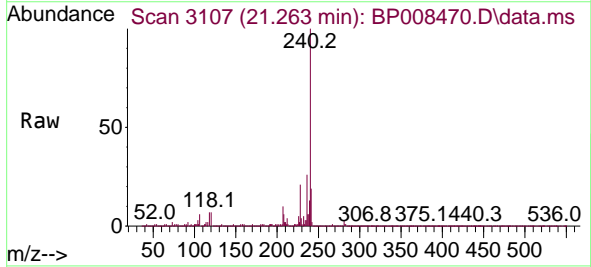
Ion	Ratio	Lower	Upper
202	100		
101	8.2	0.0	29.8
203	17.4	0.0	37.7

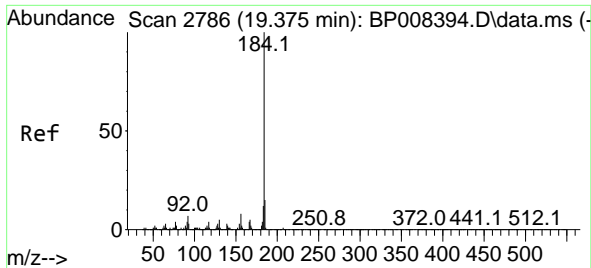


#76
 Chrysene-d12
 Concen: 20.000 ng
 RT: 21.263 min Scan# 3107
 Delta R.T. -0.006 min
 Lab File: BP008470.D
 Acq: 17 Dec 2021 14:22

Tgt Ion: 240 Resp: 403261

Ion	Ratio	Lower	Upper
240	100		
120	7.0	7.3	10.9#
236	26.2	21.4	32.2

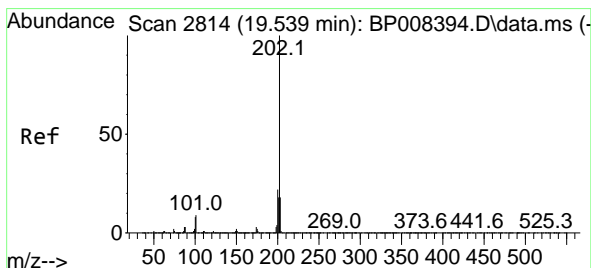
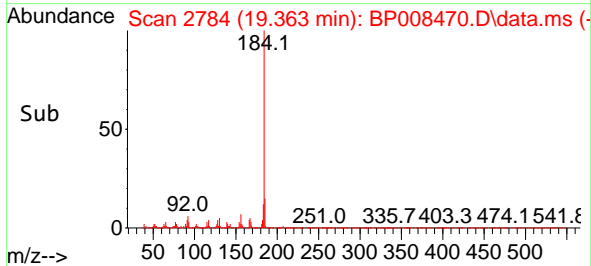
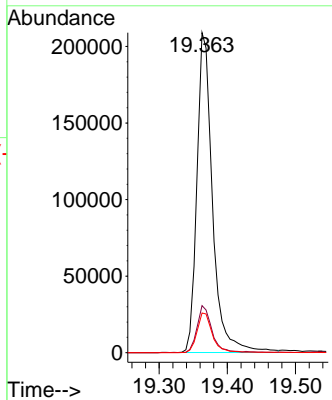
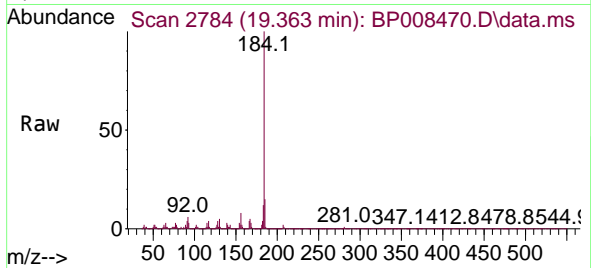




#77
 Benzidine
 Concen: 81.420 ng
 RT: 19.363 min Scan# 21
 Delta R.T. -0.012 min
 Lab File: BP008470.D
 Acq: 17 Dec 2021 14:22

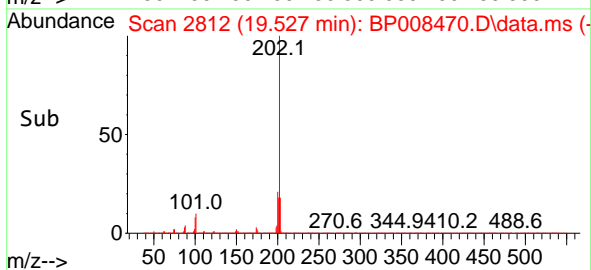
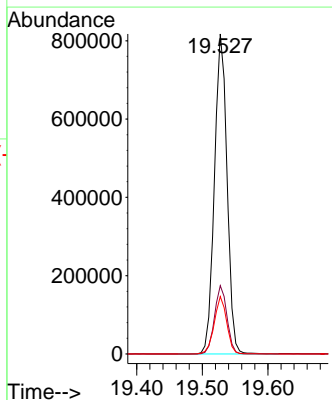
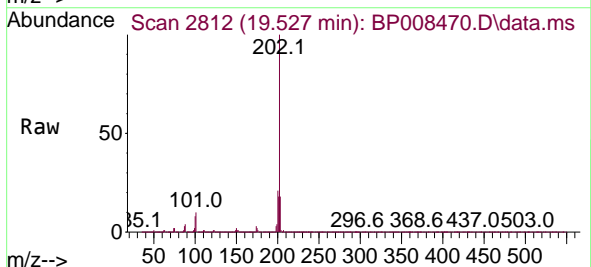
Instrument :
 BNA_P
 ClientSampleId :

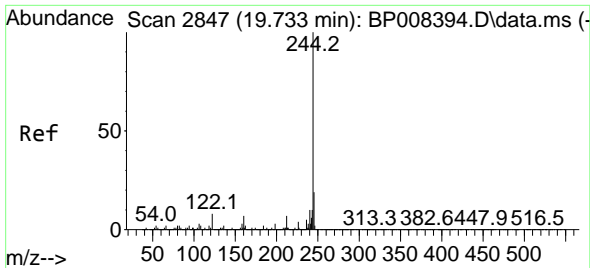
Tgt Ion	Resp	Lower	Upper
184	100		
185	14.7	10.3	15.5
183	12.4	9.1	13.7



#78
 Pyrene
 Concen: 37.716 ng
 RT: 19.527 min Scan# 2812
 Delta R.T. -0.012 min
 Lab File: BP008470.D
 Acq: 17 Dec 2021 14:22

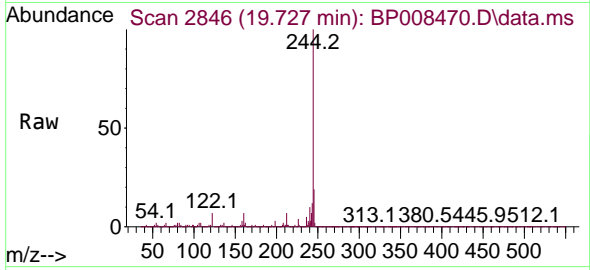
Tgt Ion	Resp	Lower	Upper
202	100		
200	21.4	17.1	25.7
203	18.0	14.2	21.2



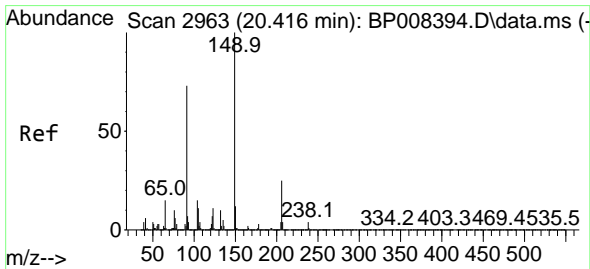
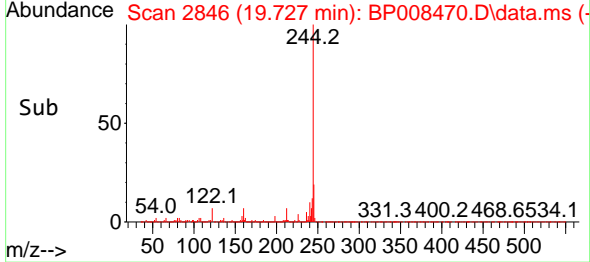
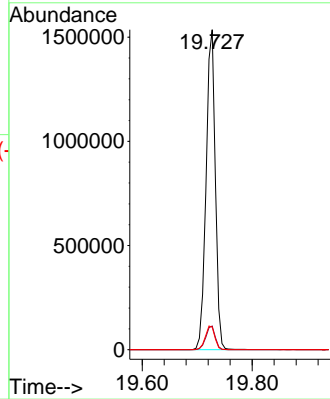


#79
 Terphenyl-d14
 Concen: 76.907 ng
 RT: 19.727 min Scan# 21
 Delta R.T. -0.006 min
 Lab File: BP008470.D
 Acq: 17 Dec 2021 14:22

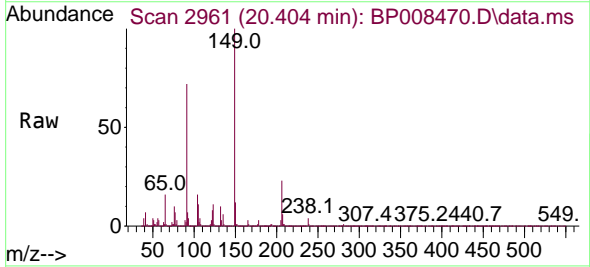
Instrument :
 BNA_P
 ClientSampleId :



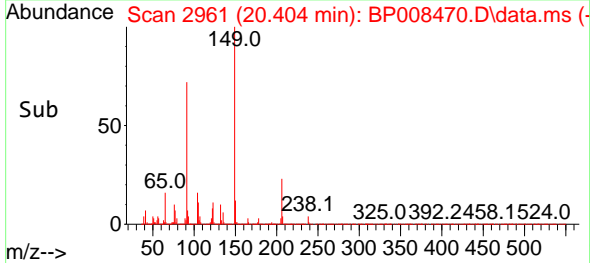
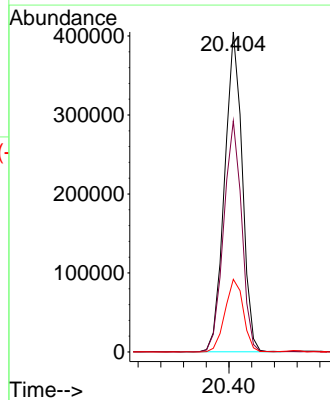
Tgt Ion:244 Resp: 1781986
 Ion Ratio Lower Upper
 244 100
 212 7.4 6.0 9.0
 122 7.0 6.6 9.8

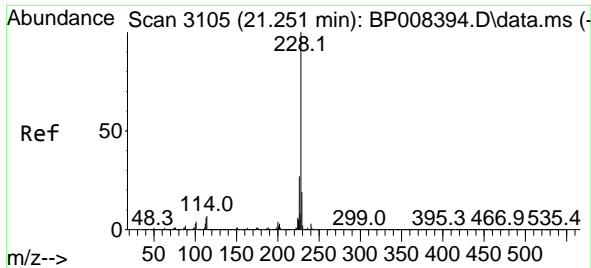


#80
 Butylbenzylphthalate
 Concen: 41.537 ng
 RT: 20.404 min Scan# 2961
 Delta R.T. -0.012 min
 Lab File: BP008470.D
 Acq: 17 Dec 2021 14:22



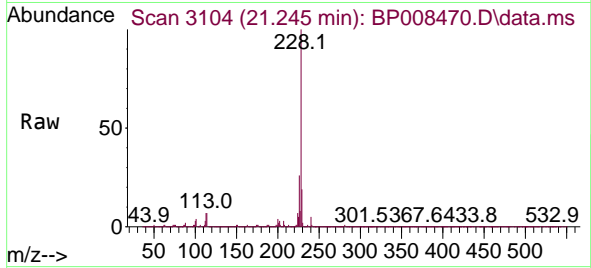
Tgt Ion:149 Resp: 436321
 Ion Ratio Lower Upper
 149 100
 91 72.2 59.8 89.8
 206 22.7 18.6 27.8



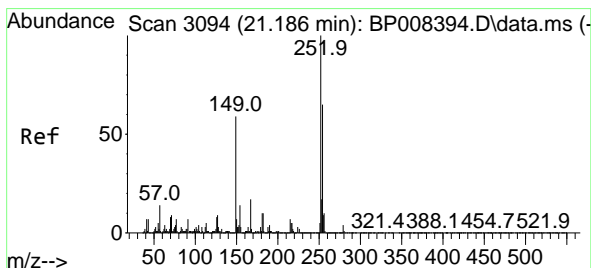
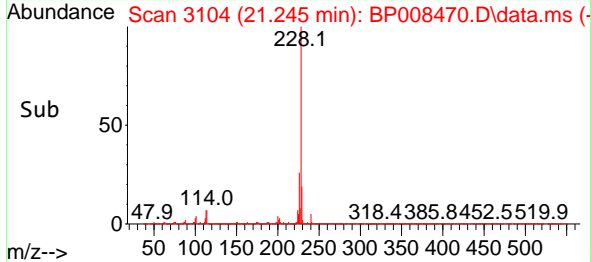
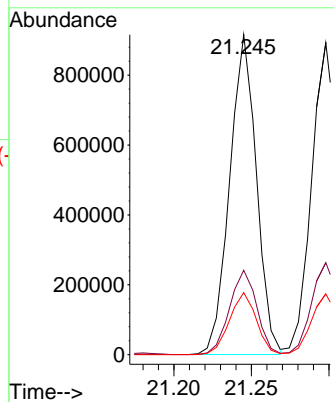


#81
 Benzo(a)anthracene
 Concen: 40.674 ng
 RT: 21.245 min Scan# 3104
 Delta R.T. -0.006 min
 Lab File: BP008470.D
 Acq: 17 Dec 2021 14:22

Instrument : BNA_P
 ClientSampleId :

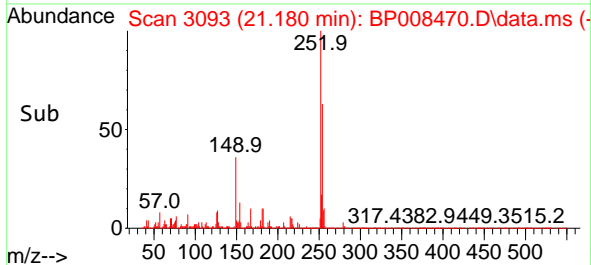
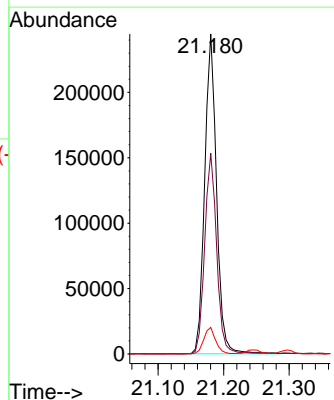
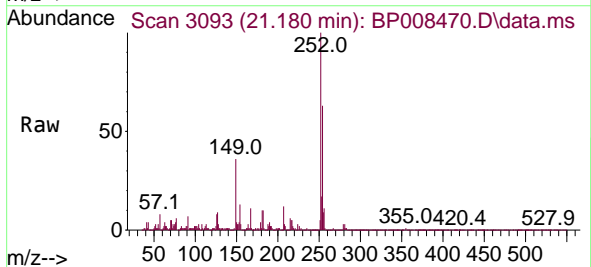


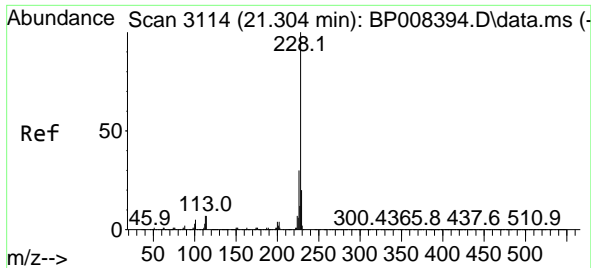
Tgt Ion:228 Resp: 1099249
 Ion Ratio Lower Upper
 228 100
 226 26.4 21.9 32.9
 229 19.4 15.9 23.9



#82
 3,3'-Dichlorobenzidine
 Concen: 24.746 ng
 RT: 21.180 min Scan# 3093
 Delta R.T. -0.006 min
 Lab File: BP008470.D
 Acq: 17 Dec 2021 14:22

Tgt Ion:252 Resp: 307710
 Ion Ratio Lower Upper
 252 100
 254 62.7 52.4 78.6
 126 8.3 7.6 11.4

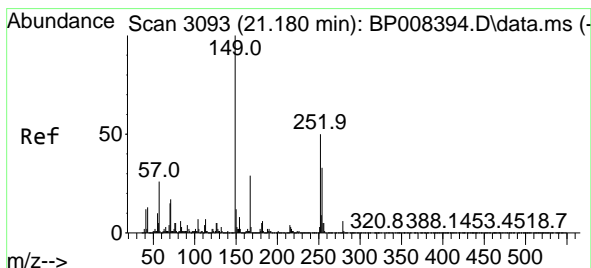
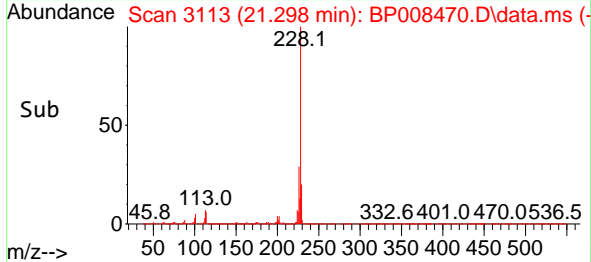
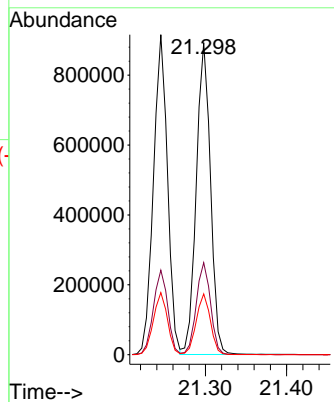
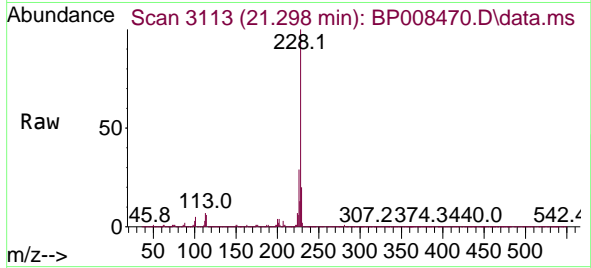




#83
 Chrysene
 Concen: 42.110 ng
 RT: 21.298 min Scan# 3113
 Delta R.T. -0.006 min
 Lab File: BP008470.D
 Acq: 17 Dec 2021 14:22

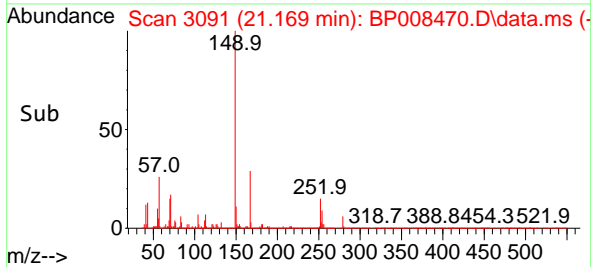
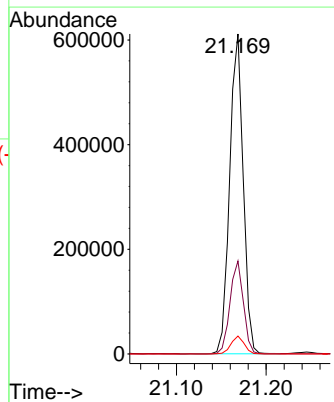
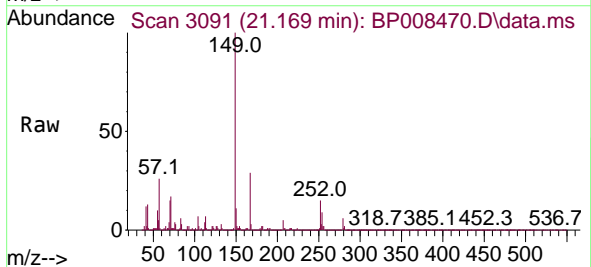
Instrument :
 BNA_P
 ClientSampleId :

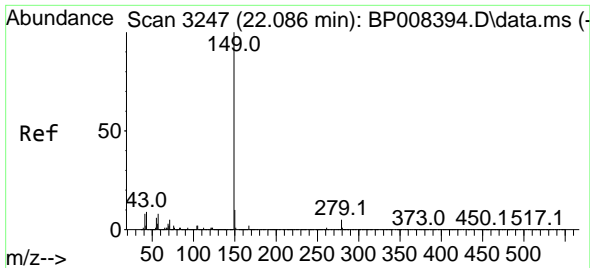
Tgt Ion:228 Resp: 1087065
 Ion Ratio Lower Upper
 228 100
 226 29.5 24.0 36.0
 229 19.5 15.8 23.8



#84
 Bis(2-ethylhexyl)phthalate
 Concen: 43.318 ng
 RT: 21.169 min Scan# 3091
 Delta R.T. -0.012 min
 Lab File: BP008470.D
 Acq: 17 Dec 2021 14:22

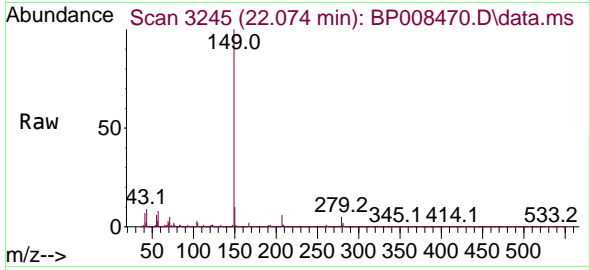
Tgt Ion:149 Resp: 640681
 Ion Ratio Lower Upper
 149 100
 167 29.0 22.5 33.7
 279 5.6 3.5 5.3#



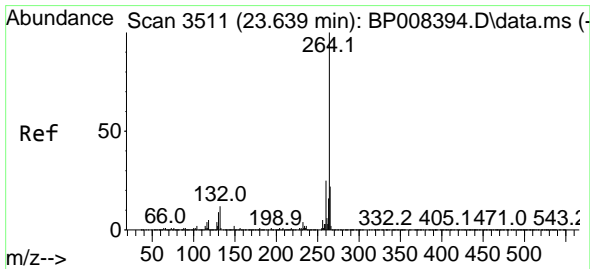
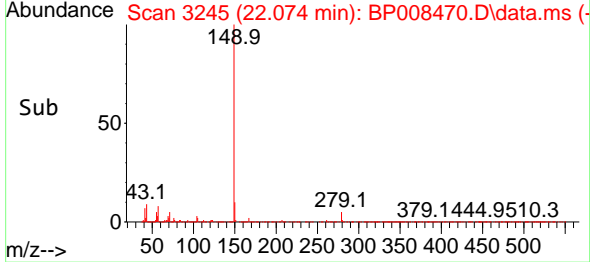
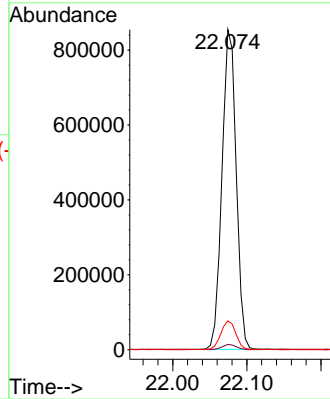


#85
 Di-n-octyl phthalate
 Concen: 44.574 ng
 RT: 22.074 min Scan# 31
 Delta R.T. -0.012 min
 Lab File: BP008470.D
 Acq: 17 Dec 2021 14:22

Instrument :
 BNA_P
 ClientSampleId :

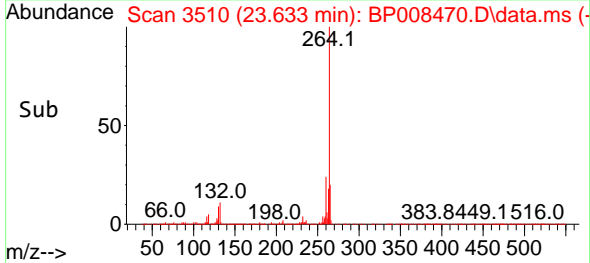
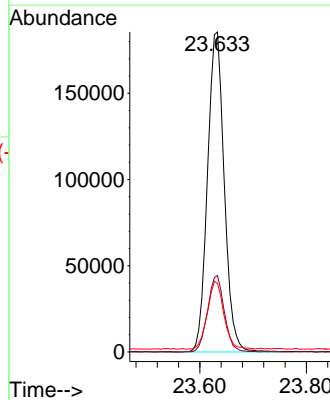
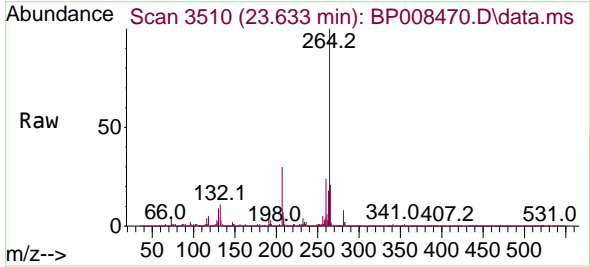


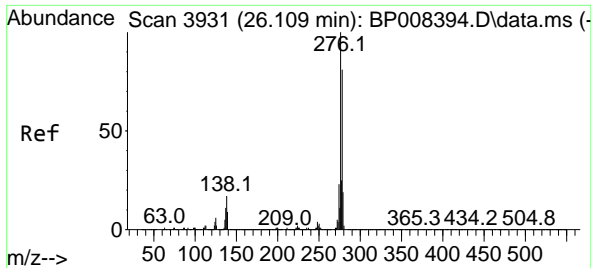
Tgt Ion:149 Resp: 1137036
 Ion Ratio Lower Upper
 149 100
 167 1.6 1.3 1.9
 43 9.3 7.9 11.9



#86
 Perylene-d12
 Concen: 20.000 ng
 RT: 23.633 min Scan# 3510
 Delta R.T. -0.006 min
 Lab File: BP008470.D
 Acq: 17 Dec 2021 14:22

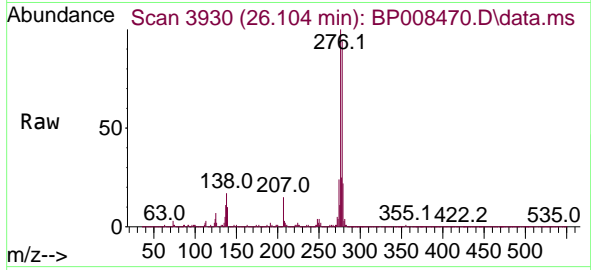
Tgt Ion:264 Resp: 405521
 Ion Ratio Lower Upper
 264 100
 260 23.9 19.4 29.2
 265 21.4 17.6 26.4



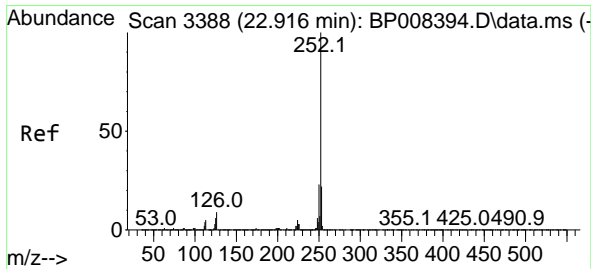
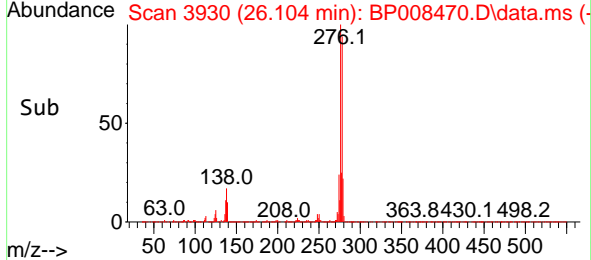
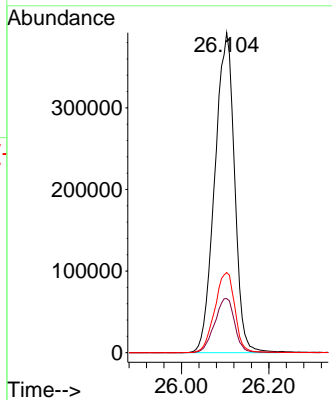


#87
 Indeno(1,2,3-cd)pyrene
 Concen: 38.413 ng
 RT: 26.104 min Scan# 3931
 Delta R.T. -0.006 min
 Lab File: BP008470.D
 Acq: 17 Dec 2021 14:22

Instrument : BNA_P
 ClientSampleId :

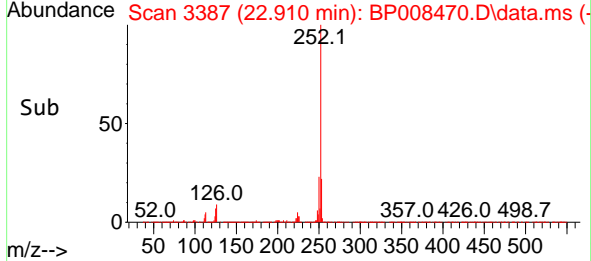
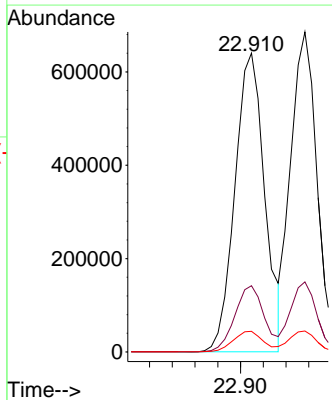
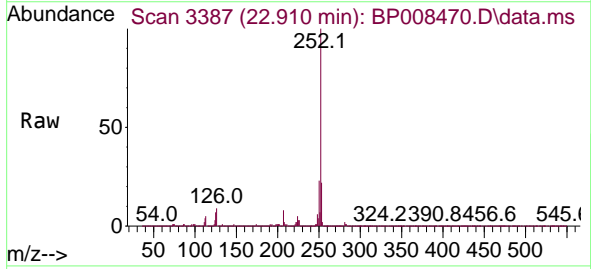


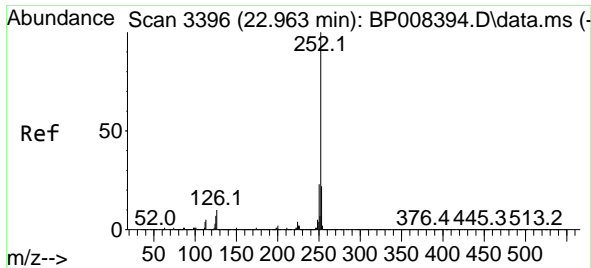
Tgt Ion: 276 Resp: 1226180
 Ion Ratio Lower Upper
 276 100
 138 17.2 16.6 25.0
 277 25.6 20.2 30.2



#88
 Benzo(b)fluoranthene
 Concen: 47.874 ng
 RT: 22.910 min Scan# 3387
 Delta R.T. -0.006 min
 Lab File: BP008470.D
 Acq: 17 Dec 2021 14:22

Tgt Ion: 252 Resp: 1167843
 Ion Ratio Lower Upper
 252 100
 253 22.2 17.7 26.5
 125 6.9 6.2 9.4



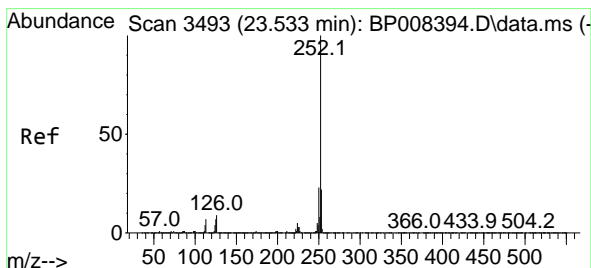
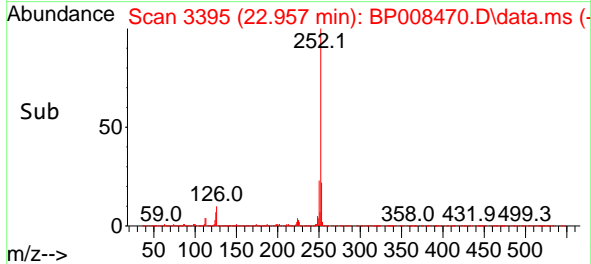
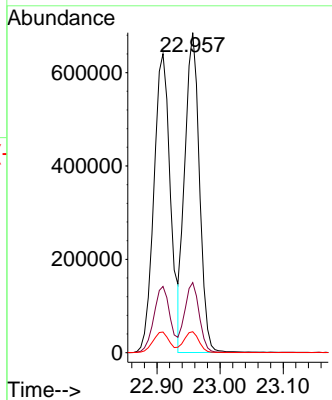
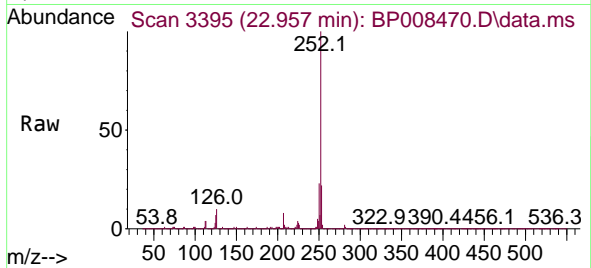


#89
 Benzo(k)fluoranthene
 Concen: 44.810 ng
 RT: 22.957 min Scan# 31
 Delta R.T. -0.006 min
 Lab File: BP008470.D
 Acq: 17 Dec 2021 14:22

Instrument : BNA_P
 ClientSampleId :

Tgt Ion:252 Resp: 1102314

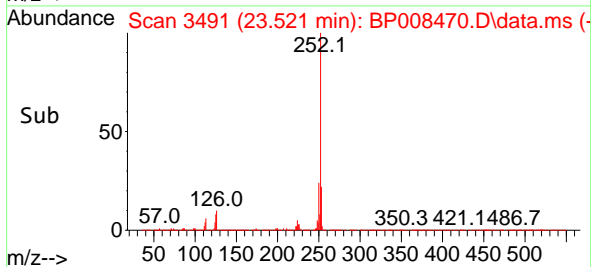
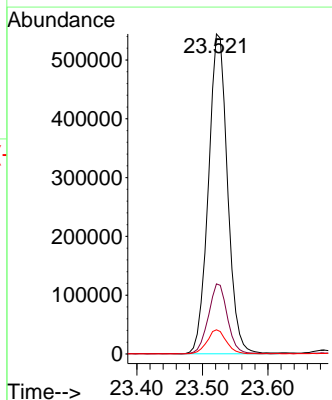
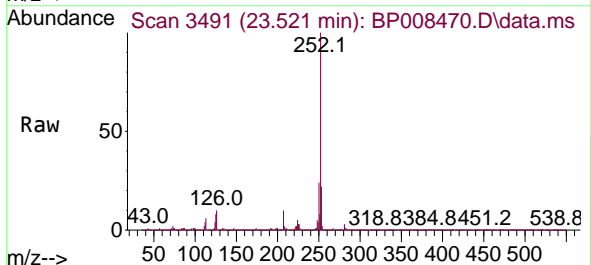
Ion	Ratio	Lower	Upper
252	100		
253	21.9	17.3	25.9
125	6.5	6.5	9.7

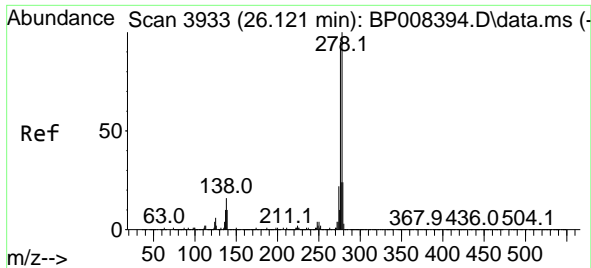


#90
 Benzo(a)pyrene
 Concen: 51.966 ng
 RT: 23.521 min Scan# 3491
 Delta R.T. -0.012 min
 Lab File: BP008470.D
 Acq: 17 Dec 2021 14:22

Tgt Ion:252 Resp: 1100253

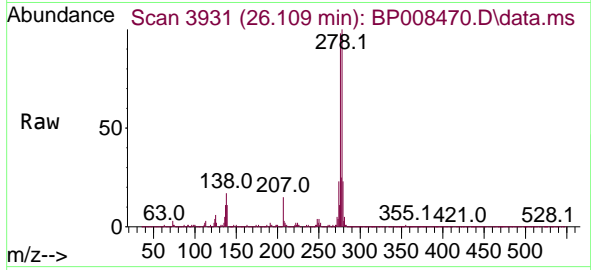
Ion	Ratio	Lower	Upper
252	100		
253	21.9	17.6	26.4
125	7.6	7.4	11.0



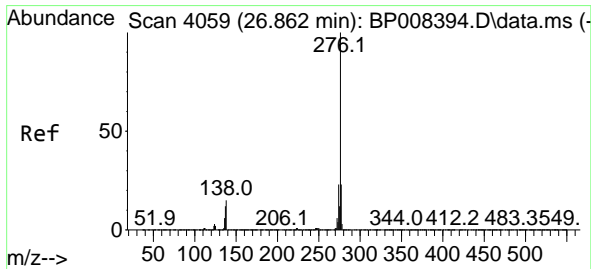
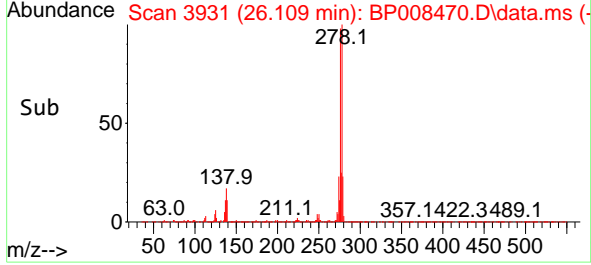
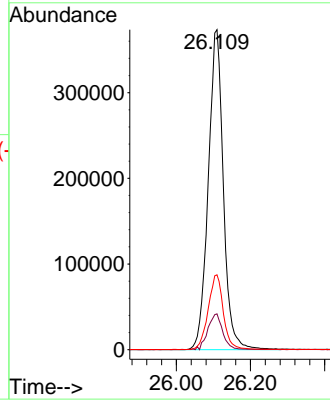


#91
 Dibenzo(a,h)anthracene
 Concen: 39.563 ng
 RT: 26.109 min Scan# 3931
 Delta R.T. -0.012 min
 Lab File: BP008470.D
 Acq: 17 Dec 2021 14:22

Instrument : BNA_P
 ClientSampleId :



Tgt Ion:278 Resp: 1057184
 Ion Ratio Lower Upper
 278 100
 139 11.2 10.8 16.2
 279 23.4 19.1 28.7



#92
 Benzo(g,h,i)perylene
 Concen: 37.630 ng
 RT: 26.856 min Scan# 4058
 Delta R.T. -0.006 min
 Lab File: BP008470.D
 Acq: 17 Dec 2021 14:22

Tgt Ion:276 Resp: 995725
 Ion Ratio Lower Upper
 276 100
 277 23.5 20.0 30.0
 138 14.7 14.1 21.1

