

Data Path : Z:\svoasrv\HPCHEM1\BNA_P\Data\BP122023\
 Data File : BP018983.D
 Acq On : 21 Dec 2023 04:29
 Operator : MA/JU
 Sample : PB157885BL
 Misc :
 ALS Vial : 34 Sample Multiplier: 1

Instrument :
 BNA_P
 ClientSampleId :
 SBLK885

Integration Parameters: LSCINT.P

Integrator: RTE
 Smoothing : OFF Filtering: 5
 Sampling : 1 Min Area: 0.1 % of largest Peak
 Start Thrs: 0.2 Max Peaks: 100
 Stop Thrs : 0 Peak Location: TOP

If leading or trailing edge < 100 prefer < Baseline drop else tangent >
 Peak separation: 5

Method : Z:\svoasrv\HPCHEM1\BNA_P\Methods\SFAM-EPA-BP120123.MA.M
 Title : SVOA CALIBRATION

Signal : TIC: BP018983.D\data.ms

peak #	R.T. min	first scan	max scan	last scan	PK TY	peak height	corr. area	corr. % max.	% of total
1	3.252	24	28	33	rBV	48012	59854	1.43%	0.166%
2	3.669	95	99	114	rBV	570645	788968	18.86%	2.186%
3	3.993	151	154	159	rVB	10421	12770	0.31%	0.035%
4	5.128	343	347	351	rBV2	6508	8964	0.21%	0.025%
5	6.999	653	665	680	rBV	597342	938377	22.43%	2.600%
6	7.163	686	693	702	rVB	473161	736344	17.60%	2.040%
7	7.352	719	725	735	rBV	615141	964469	23.05%	2.673%
8	7.822	798	805	815	rVV	566462	874795	20.91%	2.424%
9	8.540	920	927	937	rBV	704105	1131800	27.05%	3.136%
10	8.987	995	1003	1011	rBV	539572	873421	20.88%	2.420%
11	9.399	1070	1073	1077	rVB6	3505	4671	0.11%	0.013%
12	9.704	1118	1125	1135	rBV	449198	729598	17.44%	2.022%
13	10.240	1209	1216	1232	rBV	668019	1168477	27.93%	3.238%
14	10.616	1271	1280	1288	rBV	673281	1124826	26.89%	3.117%
15	10.763	1296	1305	1317	rBV	631625	1106852	26.46%	3.067%
16	11.893	1488	1497	1500	rVB10	2163	5383	0.13%	0.015%
17	12.210	1546	1551	1559	rBV3	11221	21756	0.52%	0.060%
18	13.357	1737	1746	1752	rBV8	8469	15507	0.37%	0.043%
19	13.875	1828	1834	1843	rBV	1139256	1519234	36.31%	4.210%
20	14.151	1872	1881	1894	rBV	1298546	1921971	45.94%	5.326%
21	14.239	1894	1896	1904	rVB8	2933	6224	0.15%	0.017%
22	14.457	1926	1933	1944	rBV	996603	1431726	34.22%	3.967%
23	14.675	1963	1970	1987	rBV	351617	718384	17.17%	1.991%
24	15.451	2095	2102	2110	rBV	1659939	2385241	57.01%	6.609%
25	15.575	2117	2123	2135	rBV	436425	626773	14.98%	1.737%
26	15.686	2140	2142	2149	rVB6	7730	11531	0.28%	0.032%
27	16.239	2231	2236	2239	rBV5	5830	8318	0.20%	0.023%
28	16.692	2309	2313	2319	rBV9	2706	4799	0.11%	0.013%
29	16.880	2342	2345	2349	rBV6	3512	5833	0.14%	0.016%
30	17.210	2394	2401	2411	rBV	1159309	1719624	41.10%	4.765%
31	17.304	2411	2417	2435	rVV	1757273	2584190	61.77%	7.161%
32	18.098	2550	2552	2559	rVB8	5856	7707	0.18%	0.021%
33	19.122	2722	2726	2733	rBV3	28412	39331	0.94%	0.109%
34	19.192	2735	2738	2742	rVV	18816	25595	0.61%	0.071%
35	19.545	2792	2798	2806	rBV	2508318	3301515	78.91%	9.148%
36	21.298	3091	3096	3105	rBV	1888641	2401976	57.41%	6.656%

Data Path : Z:\svoasrv\HPCHEM1\BNA_P\Data\BP122023\
Data File : BP018983.D
Acq On : 21 Dec 2023 04:29
Operator : MA/JU
Sample : PB157885BL
Misc :
ALS Vial : 34 Sample Multiplier: 1

Instrument :
BNA_P
ClientSampleId :
SBLK885

Integration Parameters: LSCINT.P
Integrator: RTE
Smoothing : OFF Filtering: 5
Sampling : 1 Min Area: 0.1 % of largest Peak
Start Thrs: 0.2 Max Peaks: 100
Stop Thrs : 0 Peak Location: TOP

If leading or trailing edge < 100 prefer < Baseline drop else tangent >
Peak separation: 5

Method : Z:\svoasrv\HPCHEM1\BNA_P\Methods\SFAM-EPA-BP120123.MA.M
Title : SVOA CALIBRATION

37	23.504	3464	3471	3485	rVB2	2110397	4183829	100.00%	11.593%
38	23.657	3491	3497	3507	rVB	1274036	2617796	62.57%	7.254%

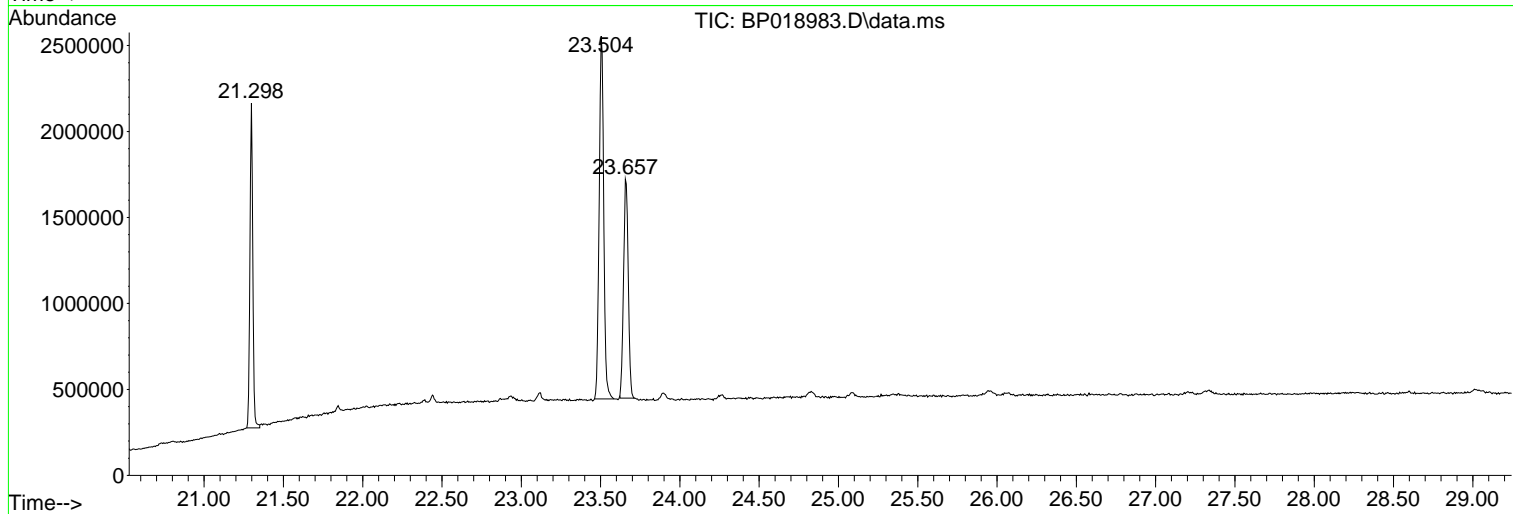
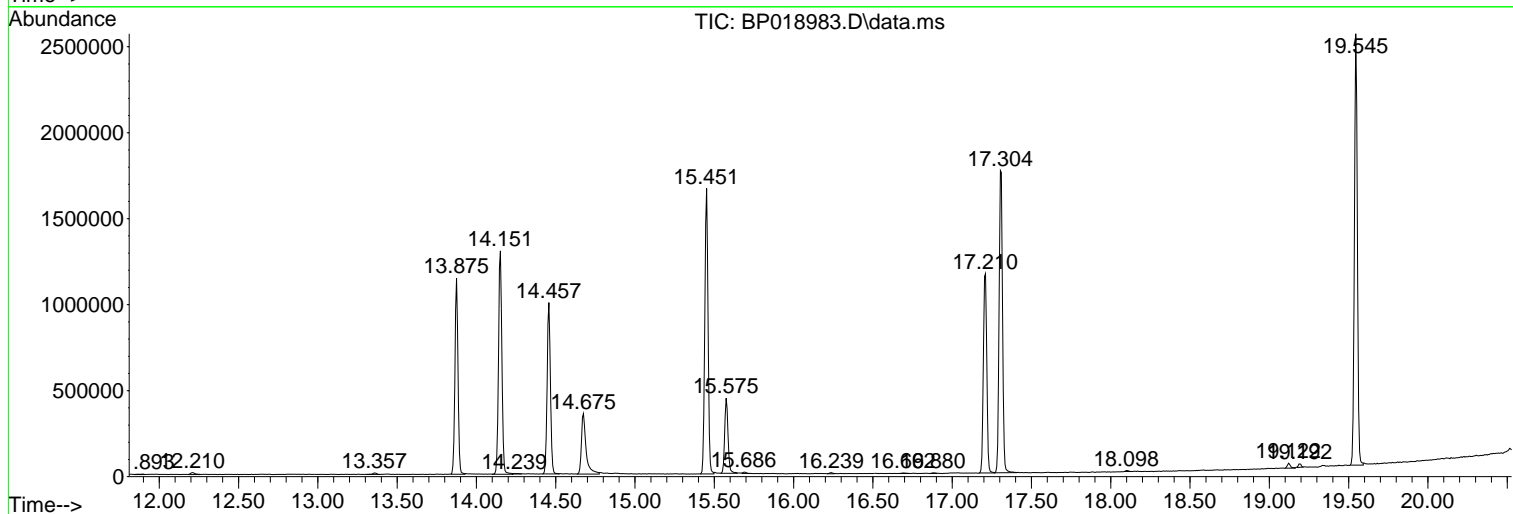
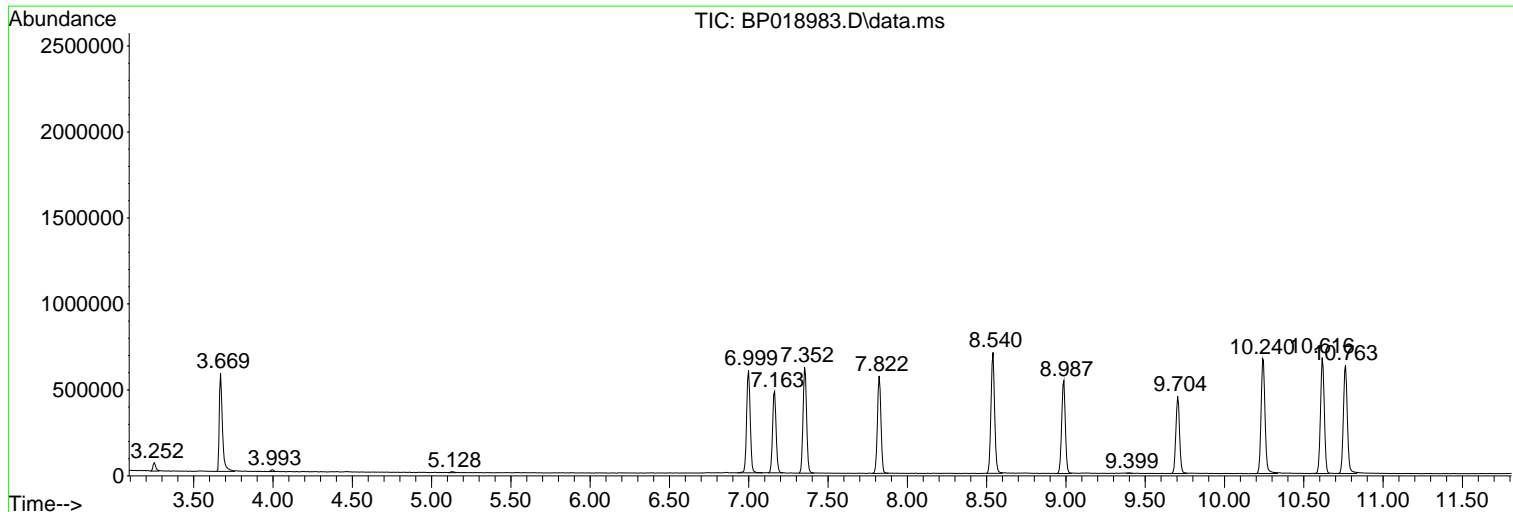
Sum of corrected areas: 36088429

Data Path : Z:\svoasrv\HPCHEM1\BNA_P\Data\BP122023\
 Data File : BP018983.D
 Acq On : 21 Dec 2023 04:29
 Operator : MA/JU
 Sample : PB157885BL
 Misc :
 ALS Vial : 34 Sample Multiplier: 1

Instrument :
 BNA_P
ClientSampleId :
 SBLK885

Quant Method : Z:\svoasrv\HPCHEM1\BNA_P\Methods\SFAM-EPA-BP120123.MA.M
 Quant Title : SVOA CALIBRATION

TIC Library : C:\DATABASE\NIST20.L
 TIC Integration Parameters: LSCINT.P



Library Search Compound Report

Data Path : Z:\svoasrv\HPCHEM1\BNA_P\Data\BP122023\
Data File : BP018983.D
Acq On : 21 Dec 2023 04:29
Operator : MA/JU
Sample : PB157885BL
Misc :
ALS Vial : 34 Sample Multiplier: 1

Instrument :
BNA_P
ClientSampleId :
SBLK885

Quant Method : Z:\svoasrv\HPCHEM1\BNA_P\Methods\SFAM-EPA-BP120123.MA.M
Quant Title : SVOA CALIBRATION

TIC Library : C:\DATABASE\NIST20.L
TIC Integration Parameters: LSCINT.P

No Library Search Compounds Detected

Data Path : Z:\svoasrv\HPCHEM1\BNA_P\Data\BP122023\
Data File : BP018983.D
Acq On : 21 Dec 2023 04:29
Operator : MA/JU
Sample : PB157885BL
Misc :
ALS Vial : 34 Sample Multiplier: 1

Instrument :
BNA_P
ClientSampleId :
SBLK885

Quant Method : Z:\svoasrv\HPCHEM1\BNA_P\Methods\SFAM-EPA-BP120123.MA.M
Quant Title : SVOA CALIBRATION

TIC Library : C:\DATABASE\NIST0.L
TIC Integration Parameters: LSCINT.P

TIC Top Hit name	RT	EstConc	Units	Response	#	RT	Resp	Conc
------------------	----	---------	-------	----------	---	----	------	------
