

Data Path : Z:\svoasrv\HPCHEM1\BNA_P\Data\BP122123\
 Data File : BP019011.D
 Acq On : 21 Dec 2023 21:54
 Operator : MA/JU
 Sample : 05808-08
 Misc :
 ALS Vial : 10 Sample Multiplier: 1

Instrument :
 BNA_P
 ClientSampleId :
 COB02

Integration Parameters: LSCINT.P

Integrator: RTE
 Smoothing : OFF Filtering: 5
 Sampling : 1 Min Area: 0.1 % of largest Peak
 Start Thrs: 0.2 Max Peaks: 100
 Stop Thrs : 0 Peak Location: TOP

If leading or trailing edge < 100 prefer < Baseline drop else tangent >
 Peak separation: 5

Method : Z:\svoasrv\HPCHEM1\BNA_P\Methods\SFAM-EPA-BP120123.MA.M
 Title : SVOA CALIBRATION

Signal : TIC: BP019011.D\data.ms

peak #	R.T. min	first scan	max scan	last scan	PK TY	peak height	corr. area	corr. % max.	% of total
1	3.534	73	76	84	rBV	94250	122772	0.10%	0.027%
2	3.675	97	100	111	rBV	90404	142018	0.12%	0.032%
3	6.993	653	664	678	rBV	614782	1001742	0.83%	0.224%
4	7.157	685	692	702	rVB	516692	802137	0.67%	0.179%
5	7.352	717	725	736	rBV	654722	1016847	0.85%	0.227%
6	7.704	778	785	795	rBV	1262189	2049878	1.71%	0.459%
7	7.822	797	805	808	rBV	569523	933657	0.78%	0.209%
8	7.857	808	811	817	rVB	410677	592676	0.49%	0.133%
9	8.169	857	864	875	rBV	2447437	4029793	3.35%	0.902%
10	8.534	915	926	939	rBV	798803	1295625	1.08%	0.290%
11	8.987	994	1003	1011	rBV	598261	1007742	0.84%	0.225%
12	9.546	1089	1098	1102	rBV	436625	782553	0.65%	0.175%
13	9.610	1102	1109	1118	rVV4	338861	1154034	0.96%	0.258%
14	9.704	1118	1125	1130	rVV	507987	862382	0.72%	0.193%
15	9.763	1130	1135	1142	rVB	480178	782957	0.65%	0.175%
16	9.998	1168	1175	1184	rVB	230682	416754	0.35%	0.093%
17	10.251	1208	1218	1231	rBV	721609	1429323	1.19%	0.320%
18	10.545	1247	1268	1273	rBV2	26828185	120184514	100.00%	26.887%
19	10.640	1279	1284	1291	rVB	806008	1183603	0.98%	0.265%
20	10.775	1299	1307	1316	rBV	678169	1206157	1.00%	0.270%
21	11.045	1337	1353	1358	rBV	23871562	70183118	58.40%	15.701%
22	11.734	1464	1470	1477	rBV2	178536	290523	0.24%	0.065%
23	11.904	1489	1499	1506	rBV	319029	723351	0.60%	0.162%
24	12.181	1539	1546	1555	rVB	701552	1129595	0.94%	0.253%
25	12.357	1568	1576	1594	rBV	908038	1629073	1.36%	0.364%
26	12.622	1609	1621	1624	rBV	9371595	18404713	15.31%	4.117%
27	12.663	1624	1628	1634	rVV	18063100	27926528	23.24%	6.248%
28	12.722	1634	1638	1647	rVB	375223	524369	0.44%	0.117%
29	13.192	1713	1718	1722	rBV	119416	191842	0.16%	0.043%
30	13.310	1722	1738	1743	rBV	27755873	109792402	91.35%	24.562%
31	13.875	1828	1834	1842	rVB	1400151	1928161	1.60%	0.431%
32	14.151	1875	1881	1888	rVB	1709351	2427463	2.02%	0.543%
33	14.263	1893	1900	1910	rBV	447055	970712	0.81%	0.217%
34	14.457	1923	1933	1938	rVV	1139275	1779287	1.48%	0.398%
35	14.522	1938	1944	1949	rVB2	89640	161937	0.13%	0.036%
36	14.610	1954	1959	1963	rVB	176921	268072	0.22%	0.060%

Data Path : Z:\svoasrv\HPCHEM1\BNA_P\Data\BP122123\
 Data File : BP019011.D
 Acq On : 21 Dec 2023 21:54
 Operator : MA/JU
 Sample : 05808-08
 Misc :
 ALS Vial : 10 Sample Multiplier: 1

Instrument :
 BNA_P
 ClientSampleId :
 COB02

Integration Parameters: LSCINT.P

Integrator: RTE
 Smoothing : OFF Filtering: 5
 Sampling : 1 Min Area: 0.1 % of largest Peak
 Start Thrs: 0.2 Max Peaks: 100
 Stop Thrs : 0 Peak Location: TOP

If leading or trailing edge < 100 prefer < Baseline drop else tangent >
 Peak separation: 5

Method : Z:\svoasrv\HPCHEM1\BNA_P\Methods\SFAM-EPA-BP120123.MA.M
 Title : SVOA CALIBRATION

37	14.669	1963	1969	1980	rBV	545259	940741	0.78%	0.210%
38	14.786	1980	1989	1994	rBV	20299316	33148953	27.58%	7.416%
39	15.451	2095	2102	2111	rVV	2125417	3168264	2.64%	0.709%
40	15.575	2117	2123	2132	rBV	601715	818398	0.68%	0.183%
41	15.710	2138	2146	2151	rVB4	99526	210268	0.17%	0.047%
42	15.922	2175	2182	2188	rBV4	91717	156103	0.13%	0.035%
43	16.186	2222	2227	2229	rVV2	66833	129933	0.11%	0.029%
44	16.222	2229	2233	2244	rVV	545585	826041	0.69%	0.185%
45	16.428	2261	2268	2275	rBV3	143890	282537	0.24%	0.063%
46	16.504	2275	2281	2288	rVB	803599	1112120	0.93%	0.249%
47	16.857	2334	2341	2353	rVB	193708	304809	0.25%	0.068%
48	17.104	2375	2383	2390	rBV4	99721	267922	0.22%	0.060%
49	17.204	2394	2400	2406	rBV	1481771	2073725	1.73%	0.464%
50	17.304	2411	2417	2424	rVV	2498364	3330171	2.77%	0.745%
51	17.798	2496	2501	2504	rBV	97420	165263	0.14%	0.037%
52	18.104	2545	2553	2562	rVB	699204	964264	0.80%	0.216%
53	18.269	2577	2581	2585	rBV2	279831	381044	0.32%	0.085%
54	18.545	2620	2628	2634	rBV	557361	947938	0.79%	0.212%
55	19.333	2758	2762	2773	rVV	339892	494748	0.41%	0.111%
56	19.545	2792	2798	2804	rVB	3577919	4551235	3.79%	1.018%
57	20.045	2876	2883	2885	rBV5	177941	305952	0.25%	0.068%
58	20.357	2931	2936	2945	rBV	2011698	2489220	2.07%	0.557%
59	20.933	3030	3034	3040	rVB	376921	470658	0.39%	0.105%
60	21.298	3091	3096	3101	rBV	2102287	2541396	2.11%	0.569%
61	23.504	3464	3471	3484	rVB2	2491232	4878731	4.06%	1.091%
62	23.657	3491	3497	3505	rVB	1359559	2710232	2.26%	0.606%

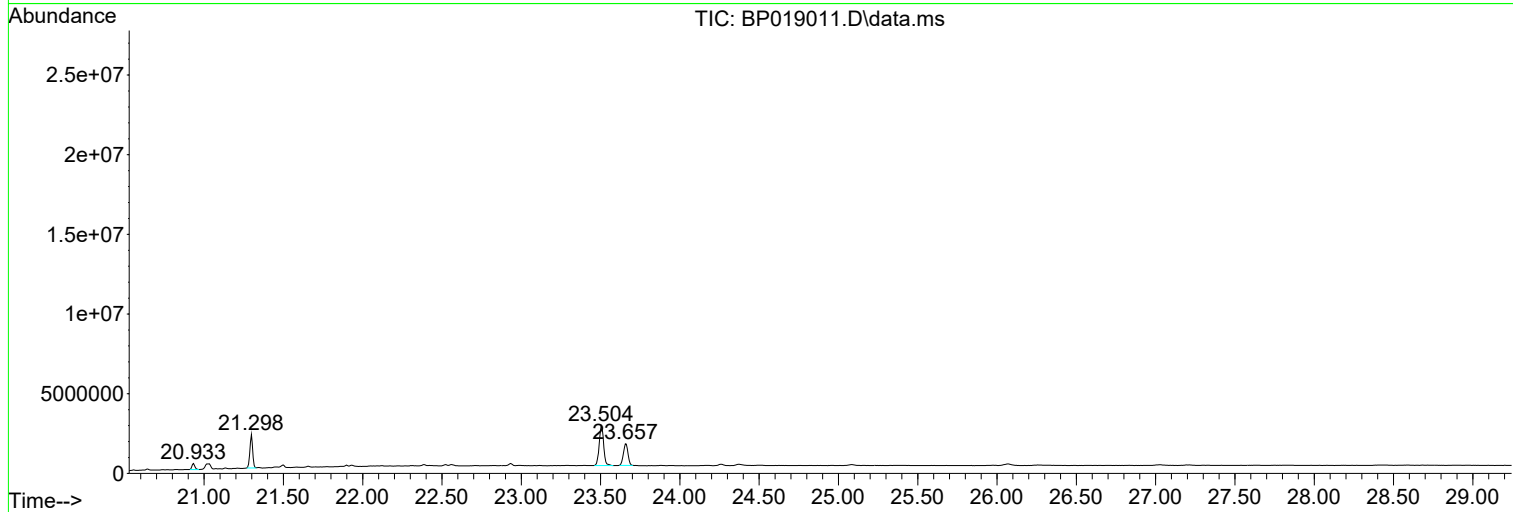
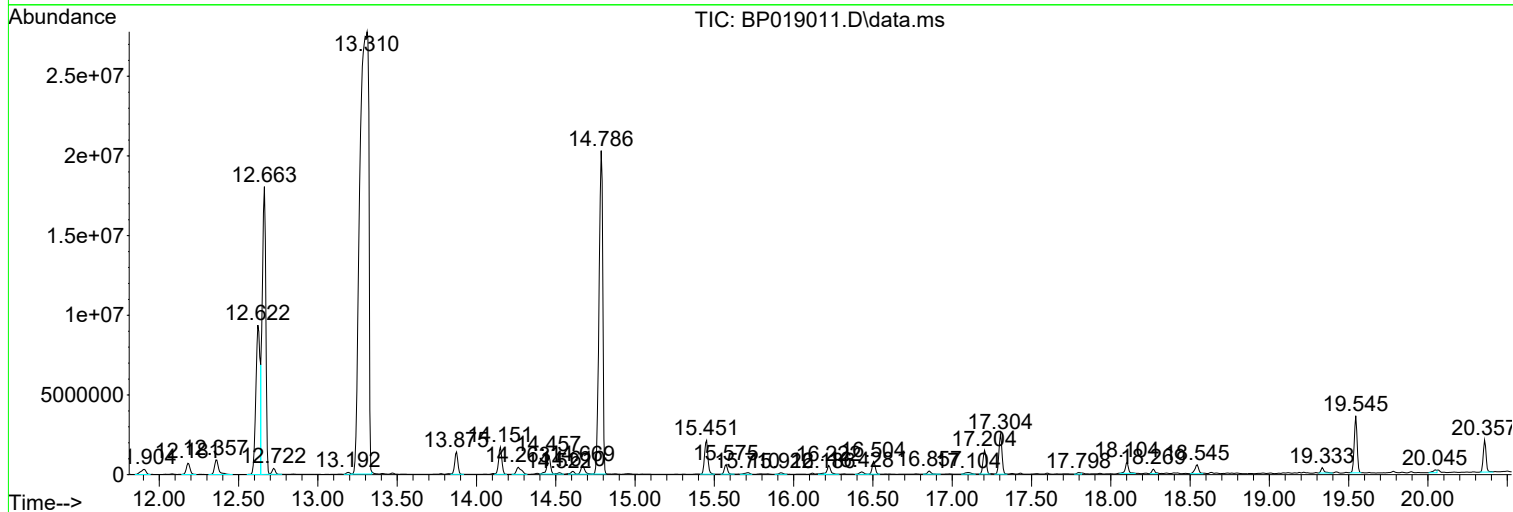
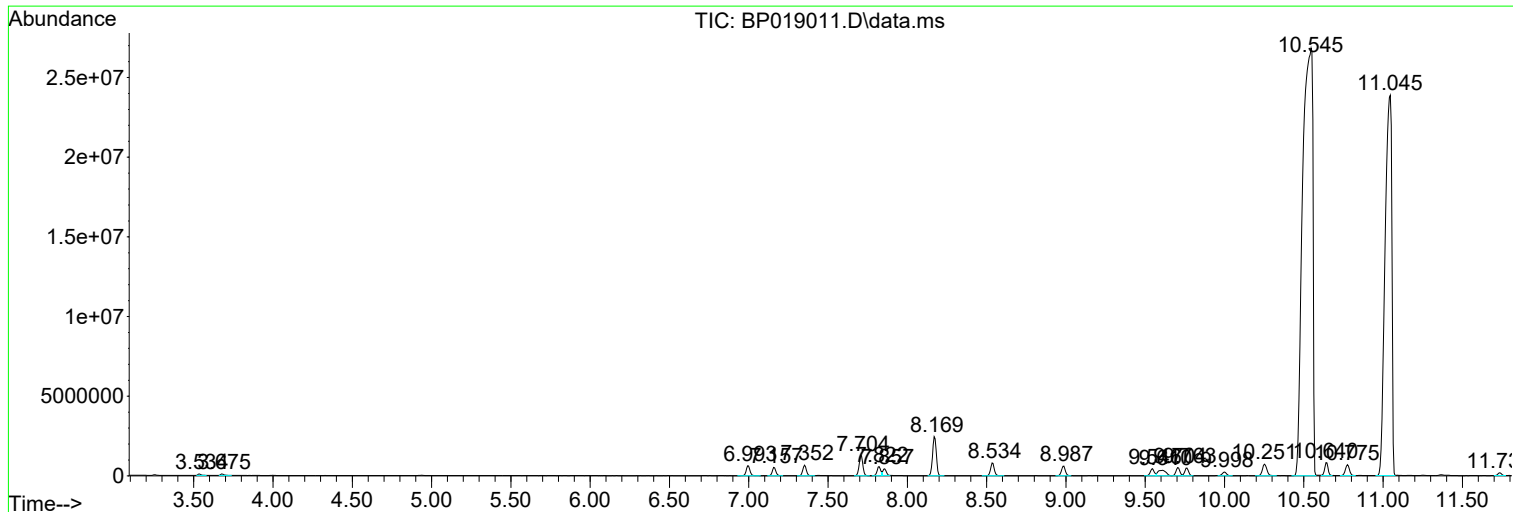
Sum of corrected areas: 446998976

Data Path : Z:\svoasrv\HPCHEM1\BNA_P\Data\BP122123\
 Data File : BP019011.D
 Acq On : 21 Dec 2023 21:54
 Operator : MA/JU
 Sample : 05808-08
 Misc :
 ALS Vial : 10 Sample Multiplier: 1

Instrument :
 BNA_P
 ClientSampleId :
 C0B02

Quant Method : Z:\svoasrv\HPCHEM1\BNA_P\Methods\SFAM-EPA-BP120123.MA.M
 Quant Title : SVOA CALIBRATION

TIC Library : C:\DATABASE\NIST20.L
 TIC Integration Parameters: LSCINT.P



Data Path : Z:\svoasrv\HPCHEM1\BNA_P\Data\BP122123\
 Data File : BP019011.D
 Acq On : 21 Dec 2023 21:54
 Operator : MA/JU
 Sample : 05808-08
 Misc :
 ALS Vial : 10 Sample Multiplier: 1

Instrument :
 BNA_P
 ClientSampleId :
 C0B02

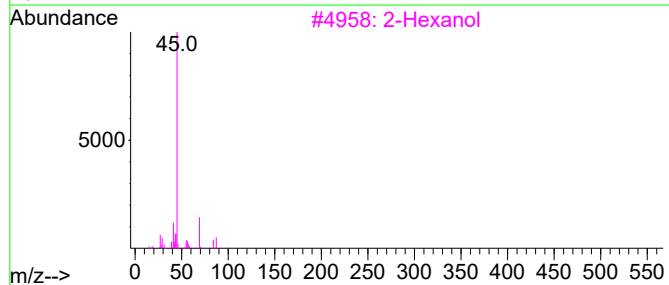
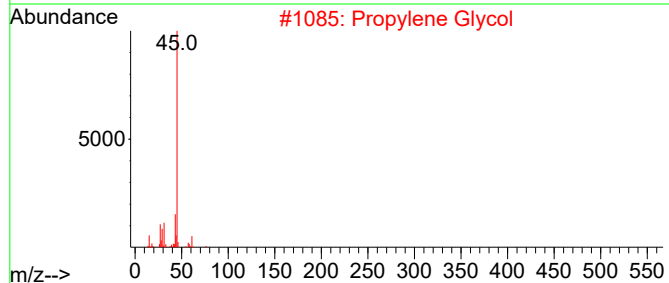
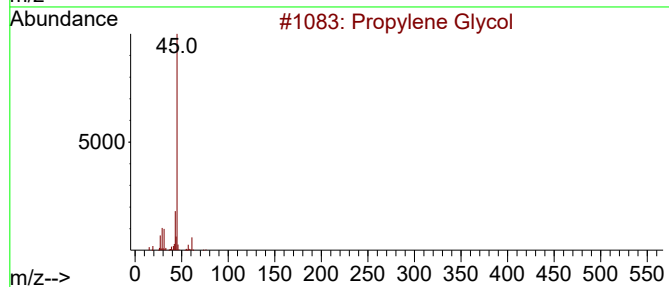
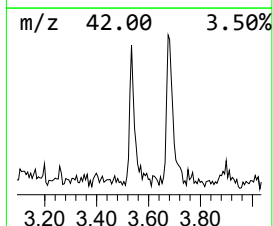
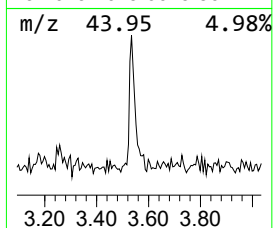
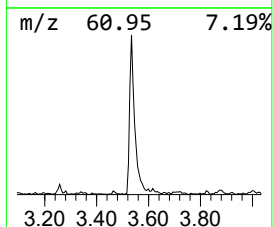
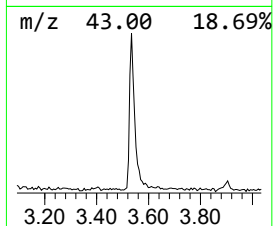
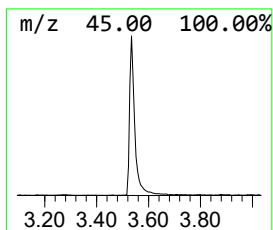
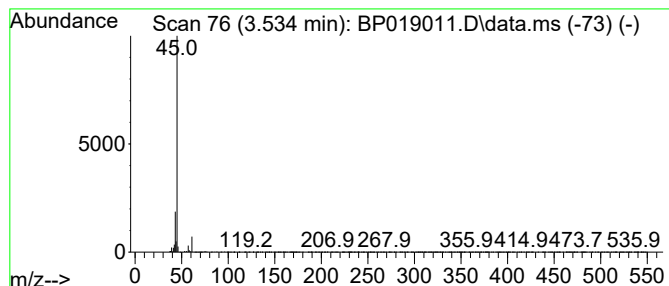
Quant Method : Z:\svoasrv\HPCHEM1\BNA_P\Methods\SFAM-EPA-BP120123.MA.M
 Quant Title : SVOA CALIBRATION

TIC Library : C:\DATABASE\NIST20.L
 TIC Integration Parameters: LSCINT.P

 Peak Number 1 Propylene Glycol Concentration Rank 24

R.T.	EstConc	Area	Relative to ISTD	R.T.
3.534	2.63 ng/ul	122772	1,4-Dichlorobenzene-d4	7.822

Hit#	of	5	Tentative ID	MW	MolForm	CAS#	Qual
1			Propylene Glycol	76	C3H8O2	000057-55-6	83
2			Propylene Glycol	76	C3H8O2	000057-55-6	9
3			2-Hexanol	102	C6H14O	000626-93-7	9
4			Propanoic acid, 2-hydroxy-, meth...	104	C4H8O3	000547-64-8	9
5			Propylene Glycol	76	C3H8O2	000057-55-6	9



Data Path : Z:\svoasrv\HPCHEM1\BNA_P\Data\BP122123\
 Data File : BP019011.D
 Acq On : 21 Dec 2023 21:54
 Operator : MA/JU
 Sample : 05808-08
 Misc :
 ALS Vial : 10 Sample Multiplier: 1

Instrument :
 BNA_P
 ClientSampleId :
 COB02

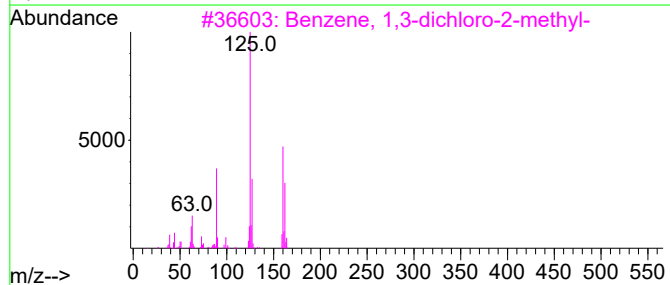
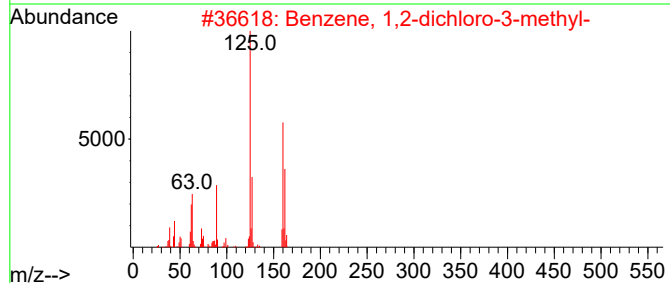
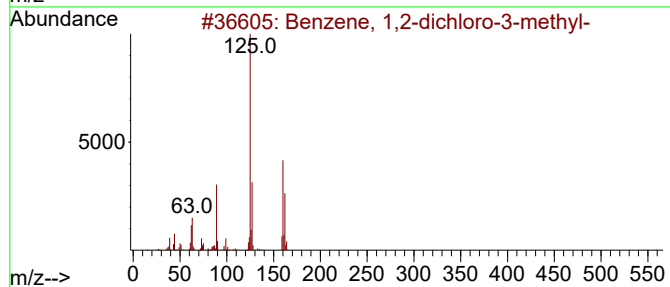
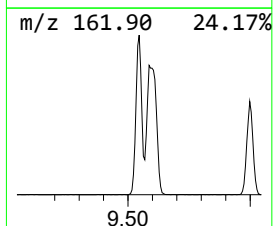
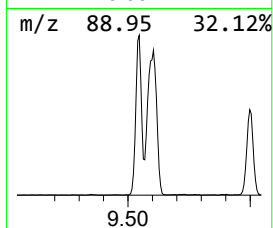
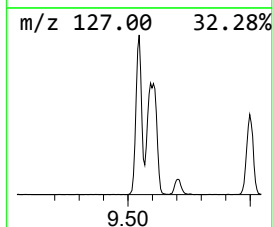
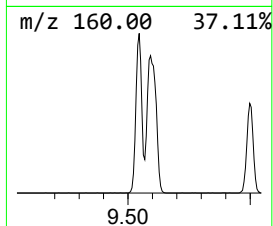
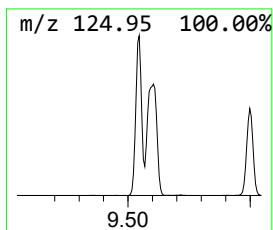
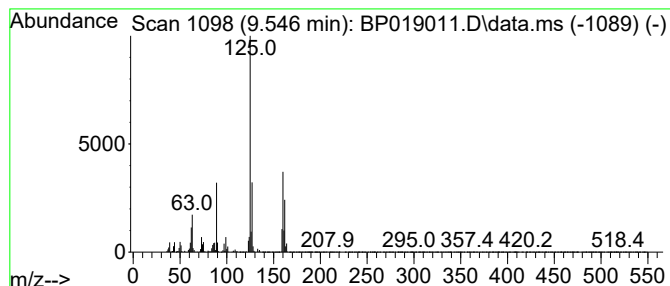
Quant Method : Z:\svoasrv\HPCHEM1\BNA_P\Methods\SFAM-EPA-BP120123.MA.M
 Quant Title : SVOA CALIBRATION

TIC Library : C:\DATABASE\NIST20.L
 TIC Integration Parameters: LSCINT.P

 Peak Number 4 Benzene, 1,2-dichloro-3-met... Concentration Rank 10

R.T.	EstConc	Area	Relative to ISTD	R.T.
9.546	13.22 ng/ul	782553	Naphthalene-d8	10.646

Hit#	of	5	Tentative ID	MW	MolForm	CAS#	Qual
1			Benzene, 1,2-dichloro-3-methyl-	160	C7H6Cl2	032768-54-0	98
2			Benzene, 1,2-dichloro-3-methyl-	160	C7H6Cl2	032768-54-0	97
3			Benzene, 1,3-dichloro-2-methyl-	160	C7H6Cl2	000118-69-4	97
4			Benzene, 1,3-dichloro-2-methyl-	160	C7H6Cl2	000118-69-4	97
5			Benzene, 1,2-dichloro-4-methyl-	160	C7H6Cl2	000095-75-0	97



Data Path : Z:\svoasrv\HPCHEM1\BNA_P\Data\BP122123\
 Data File : BP019011.D
 Acq On : 21 Dec 2023 21:54
 Operator : MA/JU
 Sample : 05808-08
 Misc :
 ALS Vial : 10 Sample Multiplier: 1

Instrument :
 BNA_P
 ClientSampleId :
 COB02

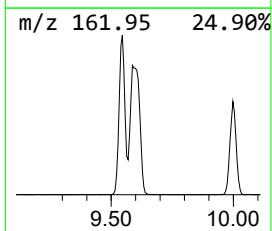
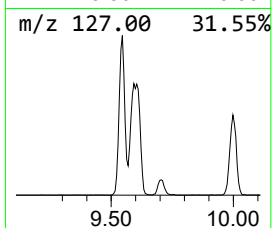
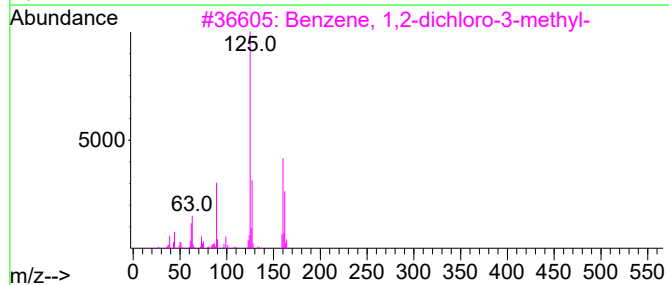
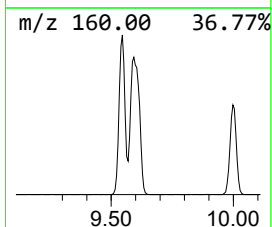
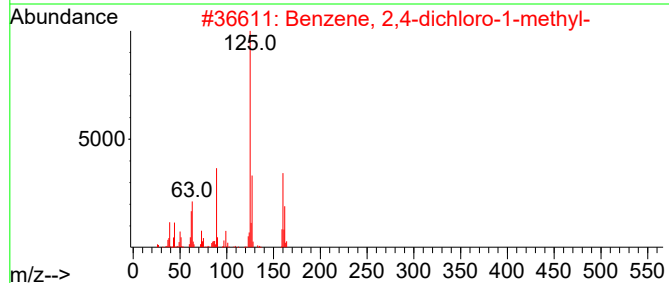
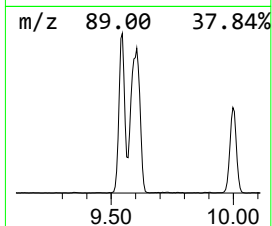
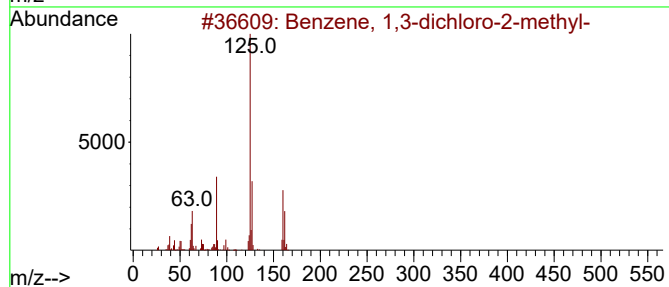
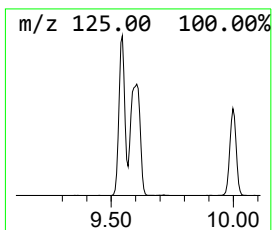
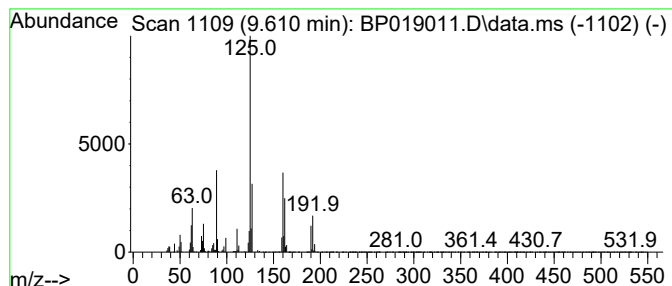
Quant Method : Z:\svoasrv\HPCHEM1\BNA_P\Methods\SFAM-EPA-BP120123.MA.M
 Quant Title : SVOA CALIBRATION

TIC Library : C:\DATABASE\NIST20.L
 TIC Integration Parameters: LSCINT.P

 Peak Number 5 Benzene, 1,3-dichloro-2-met... Concentration Rank 7

R.T.	EstConc	Area	Relative to ISTD	R.T.
9.610	19.50 ng/ul	1154030	Naphthalene-d8	10.646

Hit#	of	5	Tentative ID	MW	MolForm	CAS#	Qual
1			Benzene, 1,3-dichloro-2-methyl-	160	C7H6Cl2	000118-69-4	98
2			Benzene, 2,4-dichloro-1-methyl-	160	C7H6Cl2	000095-73-8	96
3			Benzene, 1,2-dichloro-3-methyl-	160	C7H6Cl2	032768-54-0	96
4			Benzene, 1,4-dichloro-2-methyl-	160	C7H6Cl2	019398-61-9	96
5			Benzene, 1,3-dichloro-2-methyl-	160	C7H6Cl2	000118-69-4	96



Data Path : Z:\svoasrv\HPCHEM1\BNA_P\Data\BP122123\
 Data File : BP019011.D
 Acq On : 21 Dec 2023 21:54
 Operator : MA/JU
 Sample : 05808-08
 Misc :
 ALS Vial : 10 Sample Multiplier: 1

Instrument :
 BNA_P
 ClientSampleId :
 C0B02

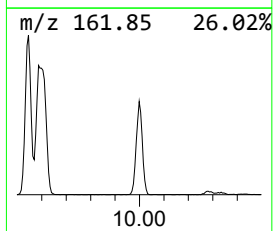
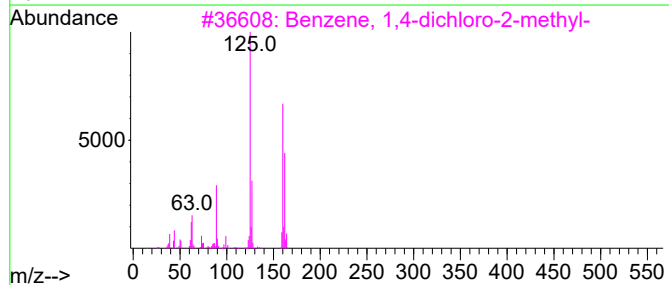
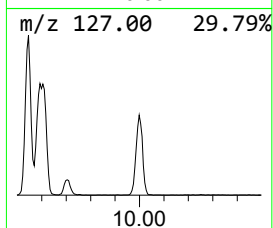
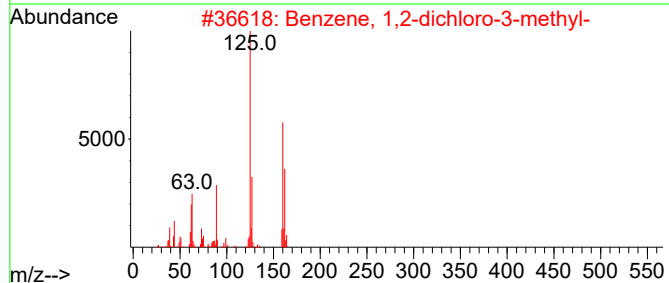
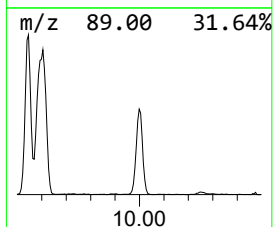
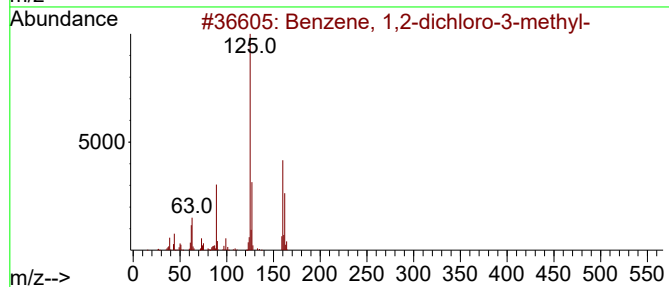
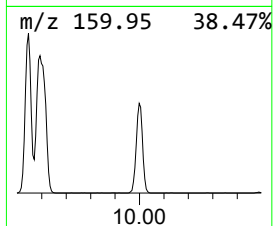
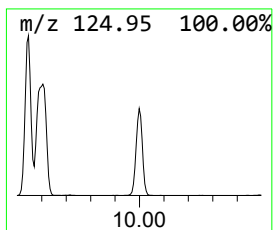
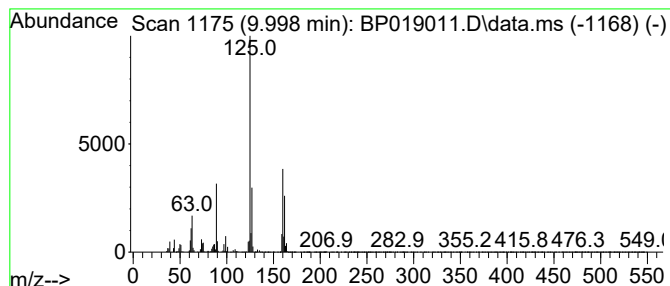
Quant Method : Z:\svoasrv\HPCHEM1\BNA_P\Methods\SFAM-EPA-BP120123.MA.M
 Quant Title : SVOA CALIBRATION

TIC Library : C:\DATABASE\NIST20.L
 TIC Integration Parameters: LSCINT.P

 Peak Number 7 Benzene, 1,4-dichloro-2-met... Concentration Rank 16

R.T.	EstConc	Area	Relative to ISTD	R.T.
9.998	7.04 ng/ul	416754	Naphthalene-d8	10.646

Hit#	of	5	Tentative ID	MW	MolForm	CAS#	Qual
1			Benzene, 1,2-dichloro-3-methyl-	160	C7H6Cl2	032768-54-0	98
2			Benzene, 1,2-dichloro-3-methyl-	160	C7H6Cl2	032768-54-0	97
3			Benzene, 1,4-dichloro-2-methyl-	160	C7H6Cl2	019398-61-9	97
4			Benzene, 1,2-dichloro-4-methyl-	160	C7H6Cl2	000095-75-0	97
5			Benzene, 1,2-dichloro-3-methyl-	160	C7H6Cl2	032768-54-0	97



Data Path : Z:\svoasrv\HPCHEM1\BNA_P\Data\BP122123\
 Data File : BP019011.D
 Acq On : 21 Dec 2023 21:54
 Operator : MA/JU
 Sample : 05808-08
 Misc :
 ALS Vial : 10 Sample Multiplier: 1

Instrument :
 BNA_P
 ClientSampleId :
 C0B02

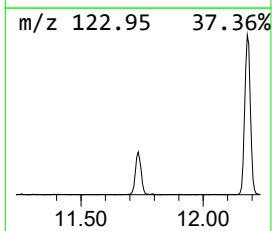
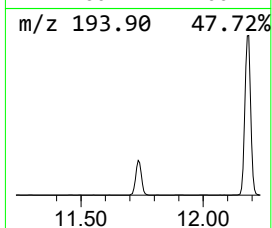
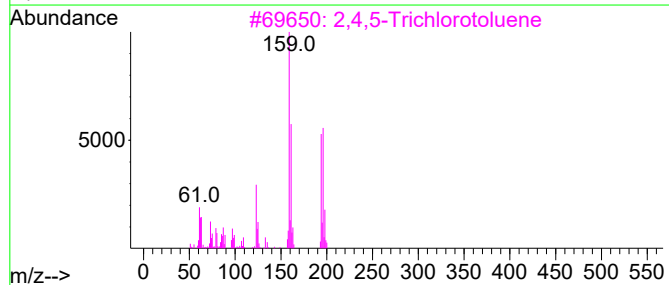
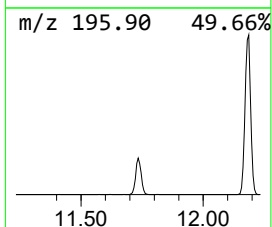
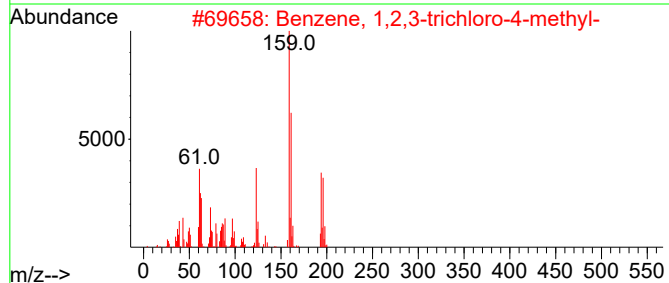
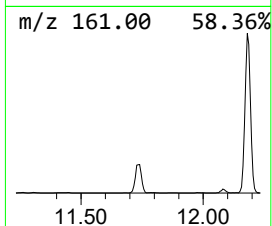
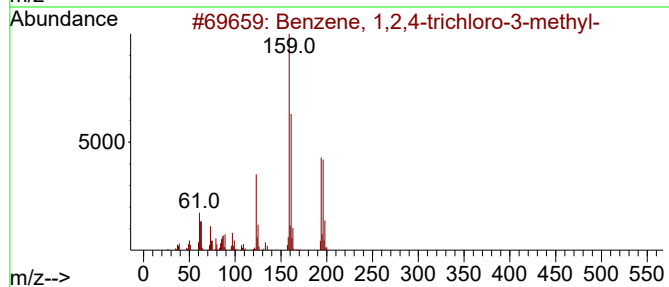
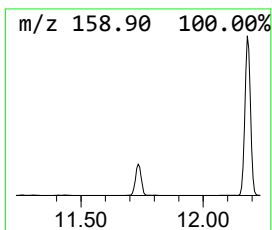
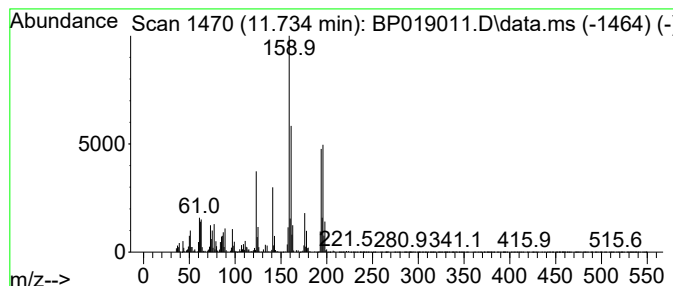
Quant Method : Z:\svoasrv\HPCHEM1\BNA_P\Methods\SFAM-EPA-BP120123.MA.M
 Quant Title : SVOA CALIBRATION

TIC Library : C:\DATABASE\NIST20.L
 TIC Integration Parameters: LSCINT.P

 Peak Number 10 Benzene, 1,2,4-trichloro-3-... Concentration Rank 18

R.T.	EstConc	Area	Relative to ISTD	R.T.
11.734	4.91 ng/ul	290523	Naphthalene-d8	10.646

Hit#	of	5	Tentative ID	MW	MolForm	CAS#	Qual
1			Benzene, 1,2,4-trichloro-3-methyl-	194	C7H5Cl3	002077-46-5	99
2			Benzene, 1,2,3-trichloro-4-methyl-	194	C7H5Cl3	007359-72-0	96
3			2,4,5-Trichlorotoluene	194	C7H5Cl3	006639-30-1	96
4			Benzene, 1,2-dichloro-4-(chlorom...	194	C7H5Cl3	000102-47-6	70
5			Benzene, 2,4-dichloro-1-(chlorom...	194	C7H5Cl3	000094-99-5	70



Data Path : Z:\svoasrv\HPCHEM1\BNA_P\Data\BP122123\
 Data File : BP019011.D
 Acq On : 21 Dec 2023 21:54
 Operator : MA/JU
 Sample : 05808-08
 Misc :
 ALS Vial : 10 Sample Multiplier: 1

Instrument :
 BNA_P
 ClientSampleId :
 C0B02

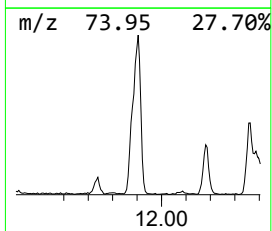
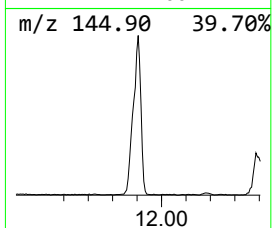
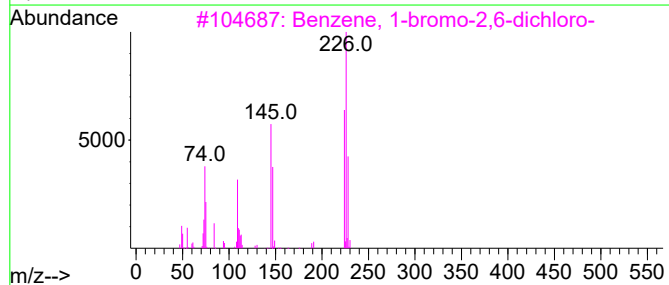
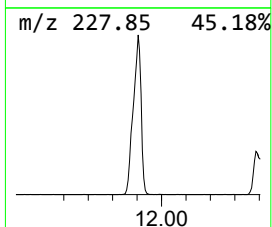
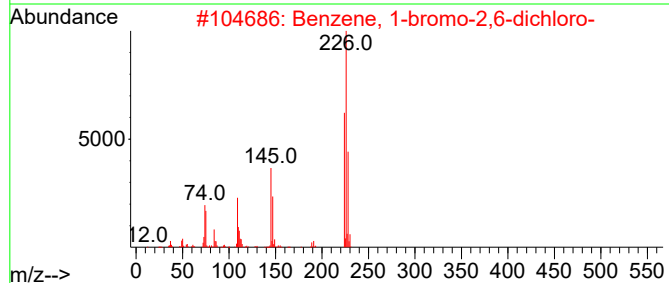
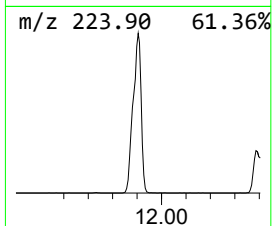
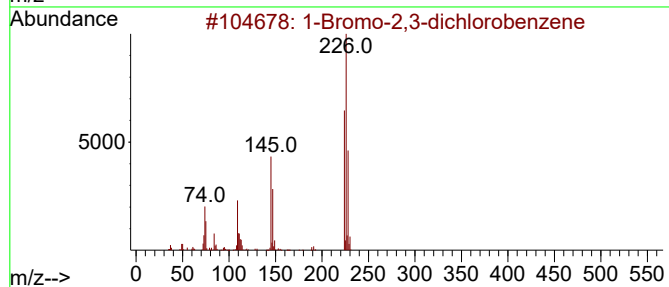
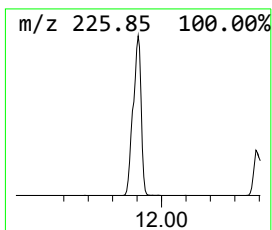
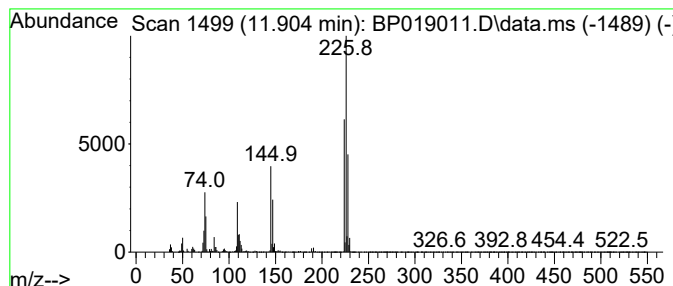
Quant Method : Z:\svoasrv\HPCHEM1\BNA_P\Methods\SFAM-EPA-BP120123.MA.M
 Quant Title : SVOA CALIBRATION

TIC Library : C:\DATABASE\NIST20.L
 TIC Integration Parameters: LSCINT.P

 Peak Number 11 1-Bromo-2,3-dichlorobenzene Concentration Rank 11

R.T.	EstConc	Area	Relative to ISTD	R.T.
11.904	12.22 ng/ul	723351	Naphthalene-d8	10.646

Hit#	of 5	Tentative ID	MW	MolForm	CAS#	Qual
1		1-Bromo-2,3-dichlorobenzene	224	C6H3BrCl2	056961-77-4	99
2		Benzene, 1-bromo-2,6-dichloro-	224	C6H3BrCl2	019393-92-1	99
3		Benzene, 1-bromo-2,6-dichloro-	224	C6H3BrCl2	019393-92-1	95
4		Benzene, 4-bromo-1,2-dichloro-	224	C6H3BrCl2	018282-59-2	95
5		1-Bromo-2,4-dichlorobenzene	224	C6H3BrCl2	001193-72-2	94



Data Path : Z:\svoasrv\HPCHEM1\BNA_P\Data\BP122123\
 Data File : BP019011.D
 Acq On : 21 Dec 2023 21:54
 Operator : MA/JU
 Sample : 05808-08
 Misc :
 ALS Vial : 10 Sample Multiplier: 1

Instrument :
 BNA_P
 ClientSampleId :
 C0B02

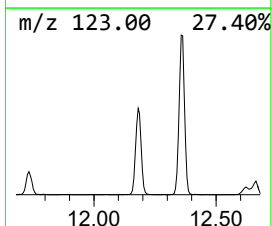
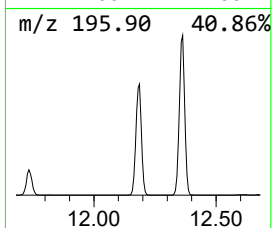
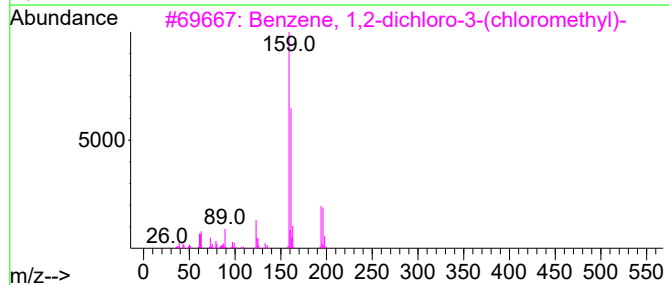
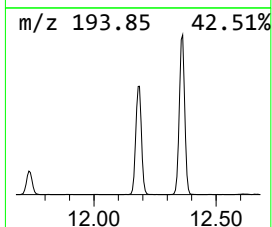
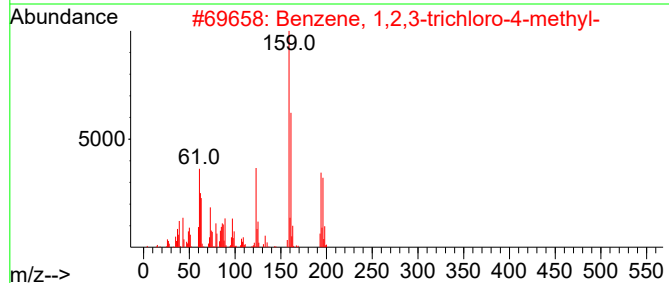
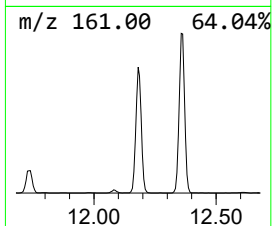
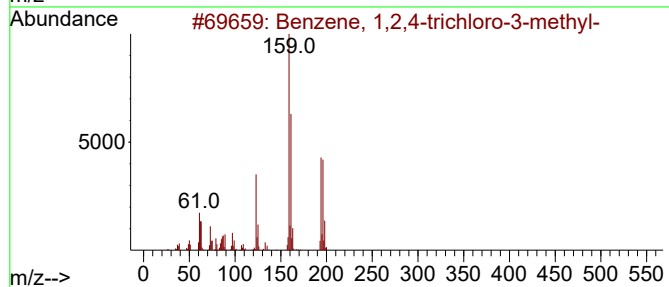
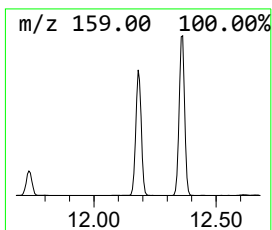
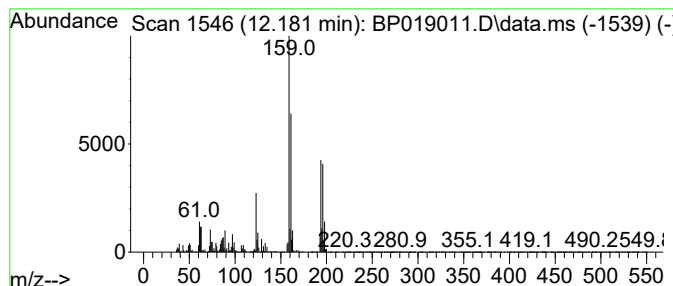
Quant Method : Z:\svoasrv\HPCHEM1\BNA_P\Methods\SFAM-EPA-BP120123.MA.M
 Quant Title : SVOA CALIBRATION

TIC Library : C:\DATABASE\NIST20.L
 TIC Integration Parameters: LSCINT.P

 Peak Number 12 Benzene, 1,2,3-trichloro-4-... Concentration Rank 8

R.T.	EstConc	Area	Relative to ISTD	R.T.
12.181	19.09 ng/ul	1129600	Naphthalene-d8	10.646

Hit#	of	5	Tentative ID	MW	MolForm	CAS#	Qual
1			Benzene, 1,2,4-trichloro-3-methyl-	194	C7H5Cl3	002077-46-5	99
2			Benzene, 1,2,3-trichloro-4-methyl-	194	C7H5Cl3	007359-72-0	98
3			Benzene, 1,2-dichloro-3-(chlorom...	194	C7H5Cl3	003290-01-5	95
4			2,4,5-Trichlorotoluene	194	C7H5Cl3	006639-30-1	94
5			Benzene, 2,4-dichloro-1-(chlorom...	194	C7H5Cl3	000094-99-5	93



Data Path : Z:\svoasrv\HPCHEM1\BNA_P\Data\BP122123\
 Data File : BP019011.D
 Acq On : 21 Dec 2023 21:54
 Operator : MA/JU
 Sample : 05808-08
 Misc :
 ALS Vial : 10 Sample Multiplier: 1

Instrument :
 BNA_P
 ClientSampleId :
 C0B02

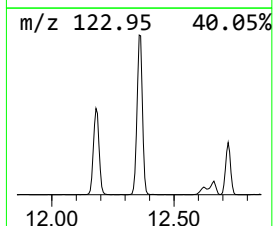
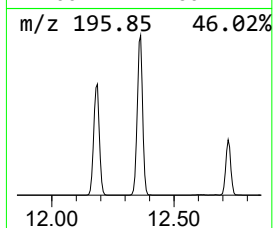
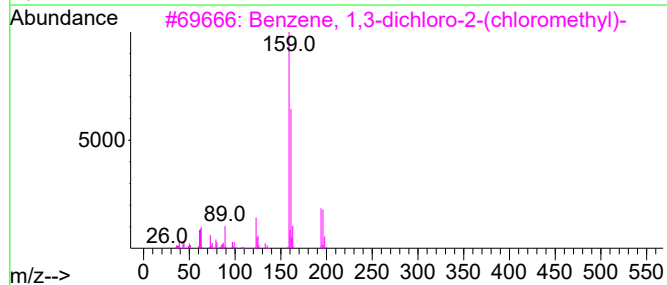
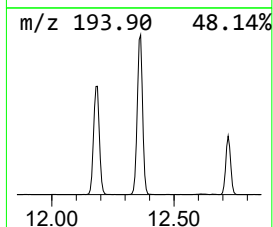
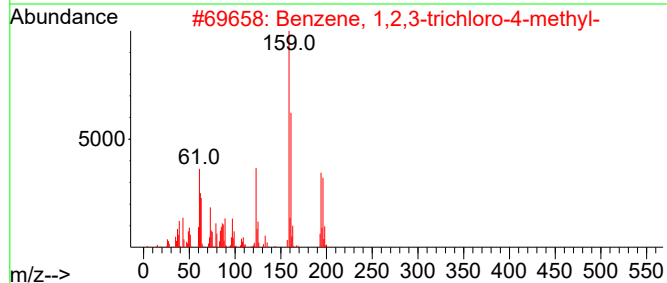
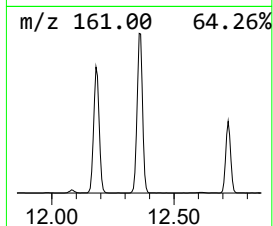
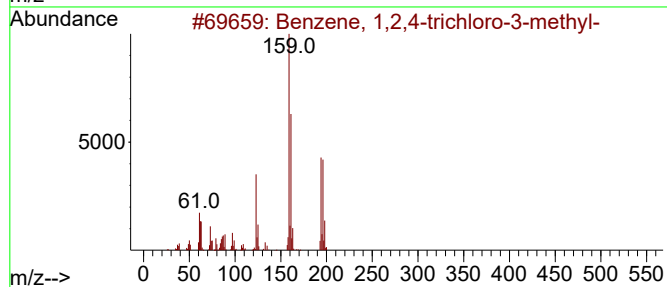
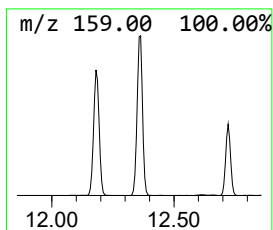
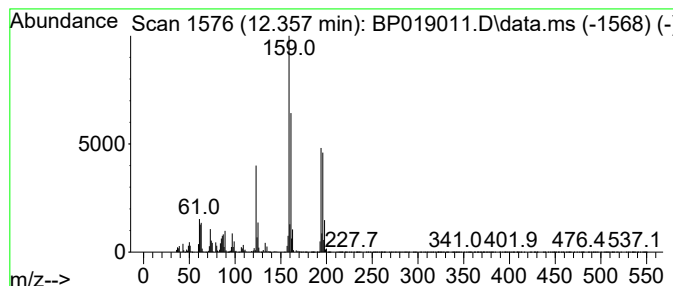
Quant Method : Z:\svoasrv\HPCHEM1\BNA_P\Methods\SFAM-EPA-BP120123.MA.M
 Quant Title : SVOA CALIBRATION

TIC Library : C:\DATABASE\NIST20.L
 TIC Integration Parameters: LSCINT.P

 Peak Number 13 Benzene, 1,3-dichloro-2-(ch... Concentration Rank 5

R.T.	EstConc	Area	Relative to ISTD	R.T.
12.357	27.53 ng/ul	1629070	Naphthalene-d8	10.646

Hit#	of	5	Tentative ID	MW	MolForm	CAS#	Qual
1			Benzene, 1,2,4-trichloro-3-methyl-	194	C7H5Cl3	002077-46-5	99
2			Benzene, 1,2,3-trichloro-4-methyl-	194	C7H5Cl3	007359-72-0	95
3			Benzene, 1,3-dichloro-2-(chlorom...	194	C7H5Cl3	002014-83-7	95
4			Benzene, 2,4-dichloro-1-(chlorom...	194	C7H5Cl3	000094-99-5	95
5			2,4,5-Trichlorotoluene	194	C7H5Cl3	006639-30-1	95



Data Path : Z:\svoasrv\HPCHEM1\BNA_P\Data\BP122123\
 Data File : BP019011.D
 Acq On : 21 Dec 2023 21:54
 Operator : MA/JU
 Sample : 05808-08
 Misc :
 ALS Vial : 10 Sample Multiplier: 1

Instrument :
 BNA_P
 ClientSampleId :
 C0B02

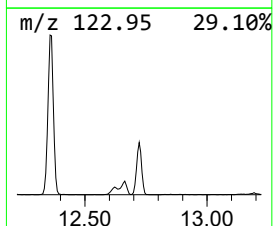
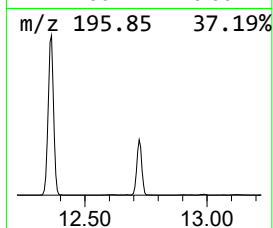
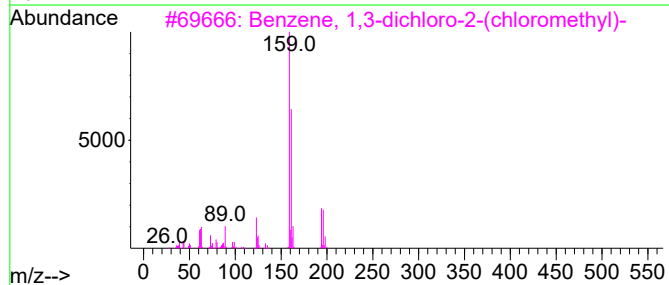
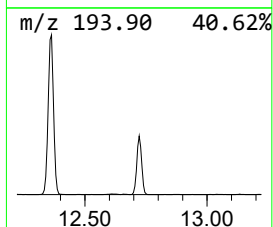
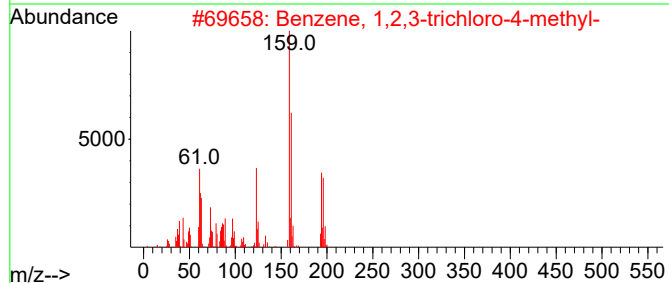
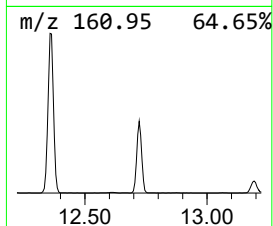
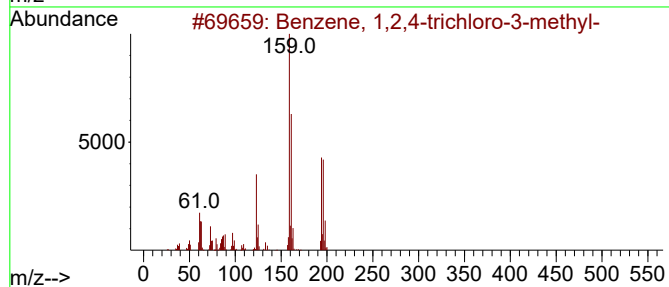
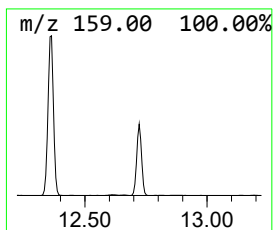
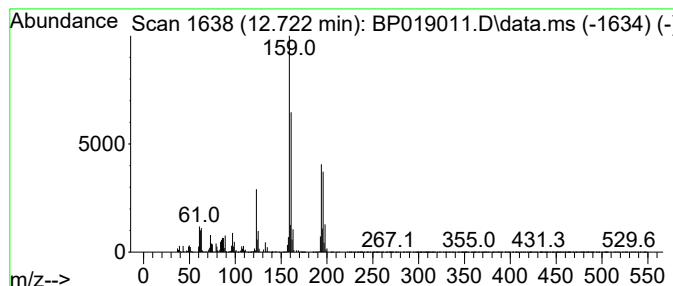
Quant Method : Z:\svoasrv\HPCHEM1\BNA_P\Methods\SFAM-EPA-BP120123.MA.M
 Quant Title : SVOA CALIBRATION

TIC Library : C:\DATABASE\NIST20.L
 TIC Integration Parameters: LSCINT.P

 Peak Number 14 Benzene, 2,4-dichloro-1-(ch... Concentration Rank 17

R.T.	EstConc	Area	Relative to ISTD	R.T.
12.722	5.89 ng/ul	524369	Acenaphthene-d10	14.457

Hit#	of	5	Tentative ID	MW	MolForm	CAS#	Qual
1			Benzene, 1,2,4-trichloro-3-methyl-	194	C7H5Cl3	002077-46-5	98
2			Benzene, 1,2,3-trichloro-4-methyl-	194	C7H5Cl3	007359-72-0	97
3			Benzene, 1,3-dichloro-2-(chlorom...	194	C7H5Cl3	002014-83-7	95
4			Benzene, 2,4-dichloro-1-(chlorom...	194	C7H5Cl3	000094-99-5	94
5			2,4,5-Trichlorotoluene	194	C7H5Cl3	006639-30-1	93



Data Path : Z:\svoasrv\HPCHEM1\BNA_P\Data\BP122123\
 Data File : BP019011.D
 Acq On : 21 Dec 2023 21:54
 Operator : MA/JU
 Sample : 05808-08
 Misc :
 ALS Vial : 10 Sample Multiplier: 1

Instrument :
 BNA_P
 ClientSampleId :
 COB02

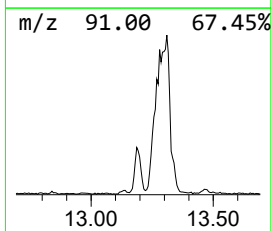
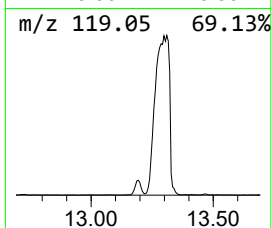
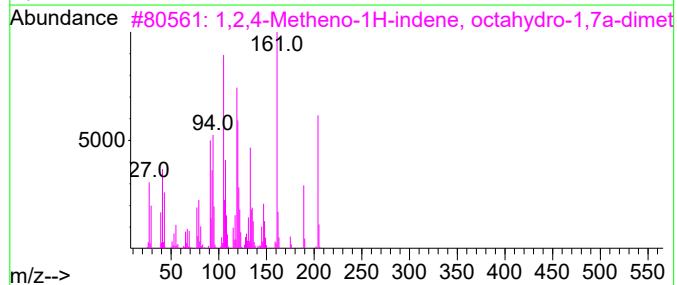
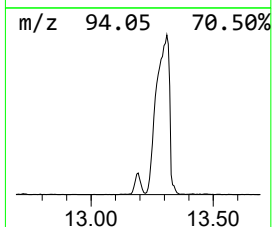
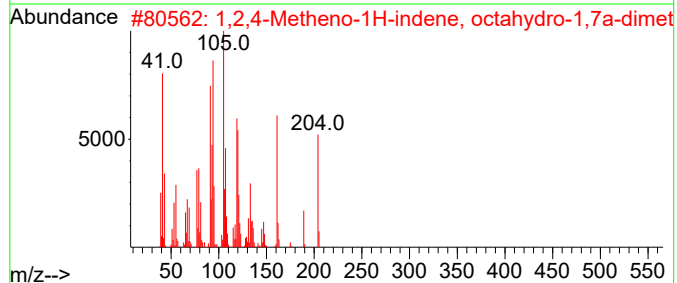
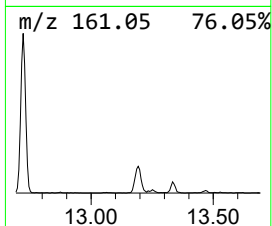
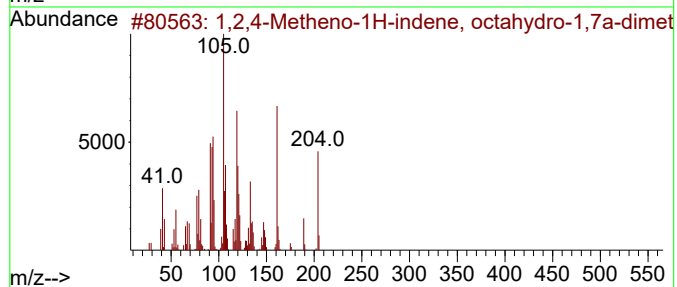
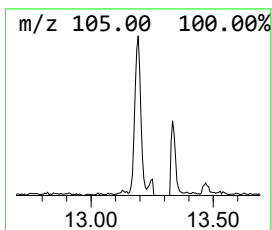
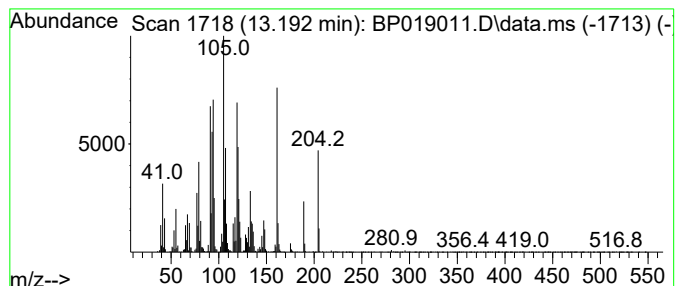
Quant Method : Z:\svoasrv\HPCHEM1\BNA_P\Methods\SFAM-EPA-BP120123.MA.M
 Quant Title : SVOA CALIBRATION

TIC Library : C:\DATABASE\NIST20.L
 TIC Integration Parameters: LSCINT.P

 Peak Number 15 1,2,4-Metheno-1H-indene, oc... Concentration Rank 28

R.T.	EstConc	Area	Relative to ISTD	R.T.
13.192	2.16 ng/ul	191842	Acenaphthene-d10	14.457

Hit#	of	5	Tentative ID	MW	MolForm	CAS#	Qual
1			1,2,4-Metheno-1H-indene, octahyd...	204	C15H24	022469-52-9	99
2			1,2,4-Metheno-1H-indene, octahyd...	204	C15H24	022469-52-9	99
3			1,2,4-Metheno-1H-indene, octahyd...	204	C15H24	022469-52-9	99
4			Cyclohexene, 6-ethenyl-6-methyl-...	204	C15H24	005951-67-7	97
5			Epizonarene	204	C15H24	041702-63-0	95



Data Path : Z:\svoasrv\HPCHEM1\BNA_P\Data\BP122123\
 Data File : BP019011.D
 Acq On : 21 Dec 2023 21:54
 Operator : MA/JU
 Sample : 05808-08
 Misc :
 ALS Vial : 10 Sample Multiplier: 1

Instrument :
 BNA_P
 ClientSampleId :
 C0B02

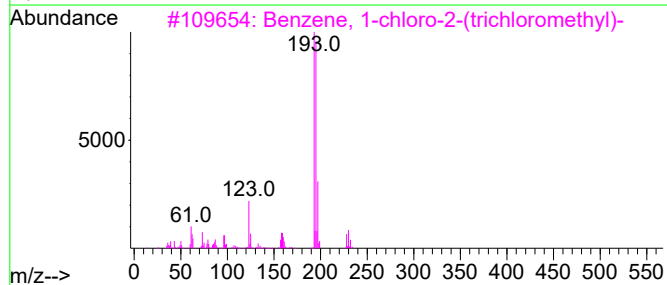
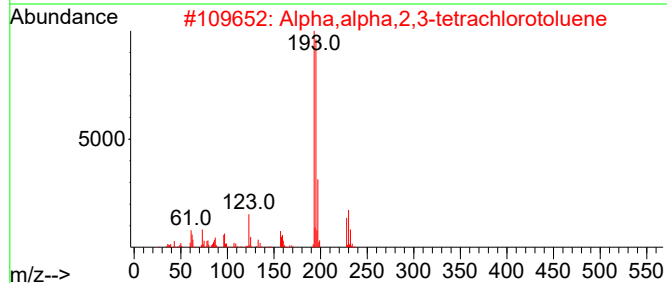
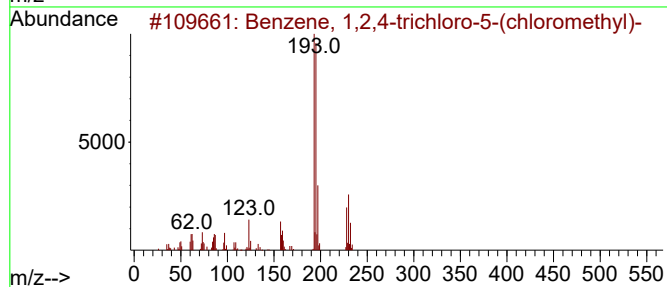
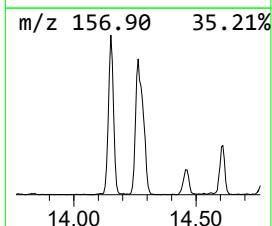
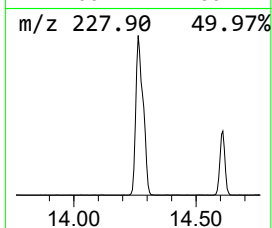
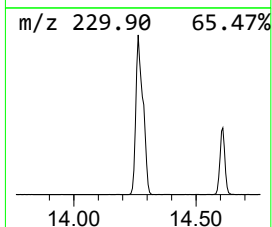
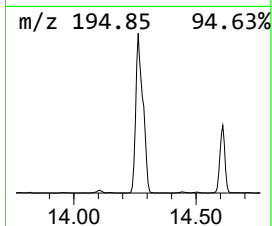
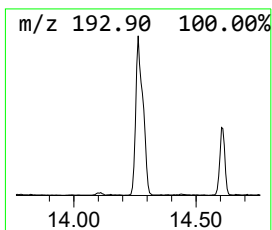
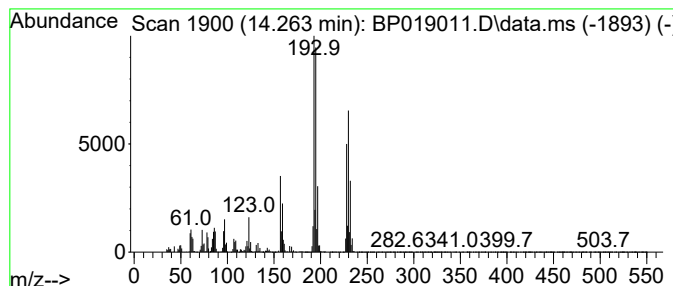
Quant Method : Z:\svoasrv\HPCHEM1\BNA_P\Methods\SFAM-EPA-BP120123.MA.M
 Quant Title : SVOA CALIBRATION

TIC Library : C:\DATABASE\NIST20.L
 TIC Integration Parameters: LSCINT.P

 Peak Number 16 Benzene, 1,2,4-trichloro-5-... Concentration Rank 12

R.T.	EstConc	Area	Relative to ISTD	R.T.
14.263	10.91 ng/ul	970712	Acenaphthene-d10	14.457

Hit#	of	5	Tentative ID	MW	MolForm	CAS#	Qual
1			Benzene, 1,2,4-trichloro-5-(chlo...	228	C7H4Cl4	003955-26-8	91
2			Alpha,alpha,2,3-tetrachlorotoluene	228	C7H4Cl4	057058-14-7	91
3			Benzene, 1-chloro-2-(trichlorome...	228	C7H4Cl4	002136-89-2	49
4			Benzene, 1-chloro-4-(trichlorome...	228	C7H4Cl4	005216-25-1	47
5			3,4,5-Trimethoxybenzoyl chloride	230	C10H11ClO4	004521-61-3	35



Data Path : Z:\svoasrv\HPCHEM1\BNA_P\Data\BP122123\
 Data File : BP019011.D
 Acq On : 21 Dec 2023 21:54
 Operator : MA/JU
 Sample : 05808-08
 Misc :
 ALS Vial : 10 Sample Multiplier: 1

Instrument :
 BNA_P
 ClientSampleId :
 C0B02

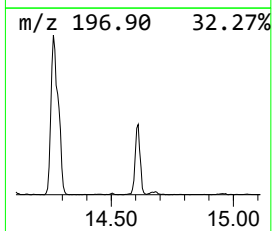
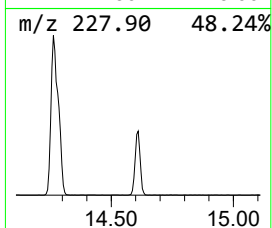
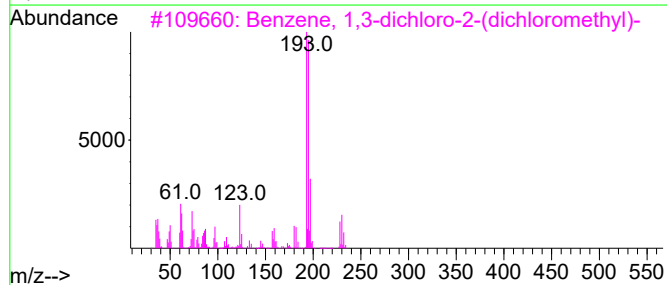
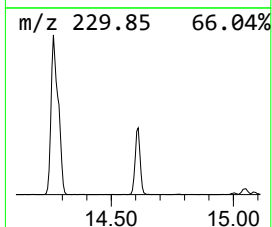
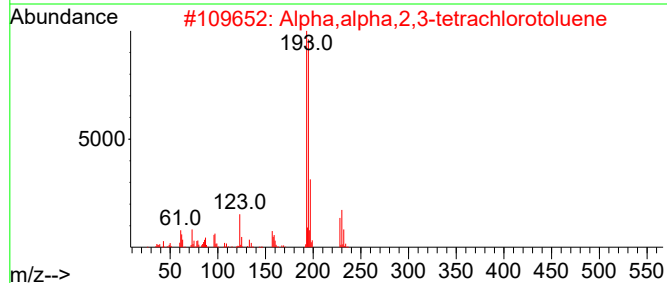
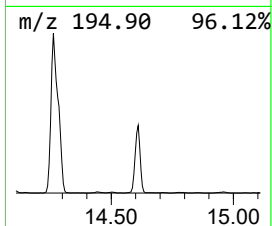
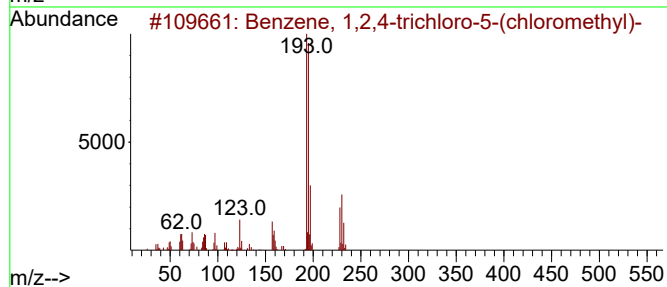
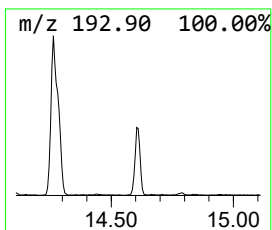
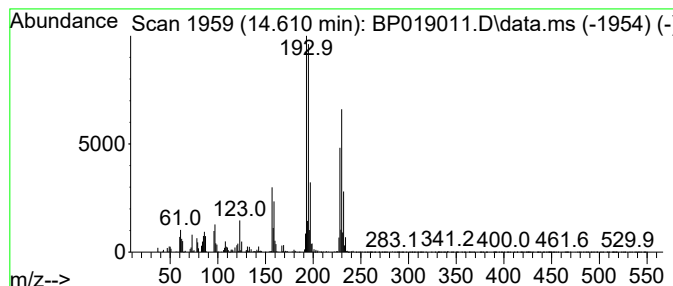
Quant Method : Z:\svoasrv\HPCHEM1\BNA_P\Methods\SFAM-EPA-BP120123.MA.M
 Quant Title : SVOA CALIBRATION

TIC Library : C:\DATABASE\NIST20.L
 TIC Integration Parameters: LSCINT.P

 Peak Number 17 Alpha,alpha,2,3-tetrachloro... Concentration Rank 22

R.T.	EstConc	Area	Relative to ISTD	R.T.
14.610	3.01 ng/ul	268072	Acenaphthene-d10	14.457

Hit#	of	5	Tentative ID	MW	MolForm	CAS#	Qual
1			Benzene, 1,2,4-trichloro-5-(chlo...	228	C7H4Cl4	003955-26-8	93
2			Alpha,alpha,2,3-tetrachlorotoluene	228	C7H4Cl4	057058-14-7	72
3			Benzene, 1,3-dichloro-2-(dichlor...	228	C7H4Cl4	000081-19-6	50
4			Benzene, 1-chloro-2-(trichlorome...	228	C7H4Cl4	002136-89-2	50
5			Benzene, 1-chloro-4-(trichlorome...	228	C7H4Cl4	005216-25-1	50



Data Path : Z:\svoasrv\HPCHEM1\BNA_P\Data\BP122123\
 Data File : BP019011.D
 Acq On : 21 Dec 2023 21:54
 Operator : MA/JU
 Sample : 05808-08
 Misc :
 ALS Vial : 10 Sample Multiplier: 1

Instrument :
 BNA_P
 ClientSampleId :
 C0B02

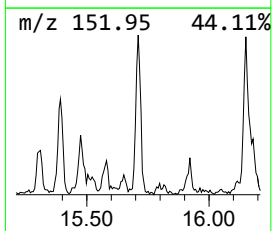
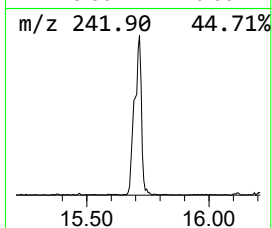
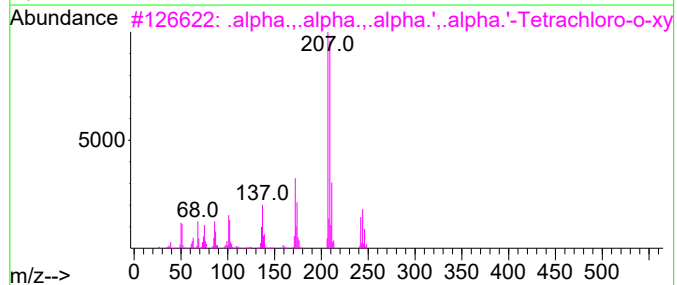
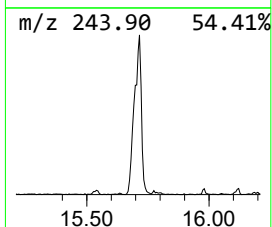
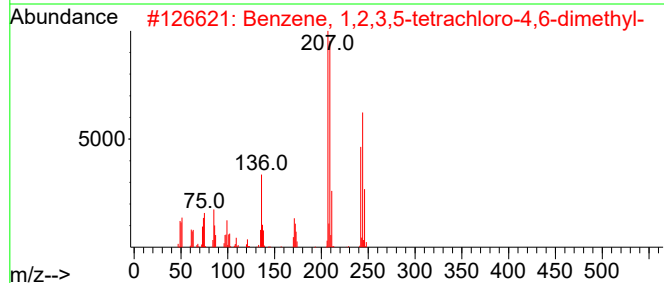
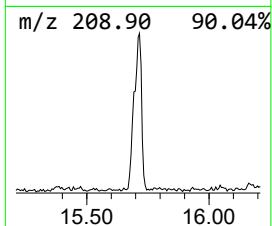
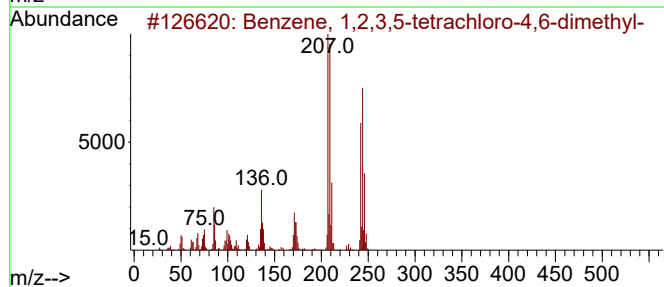
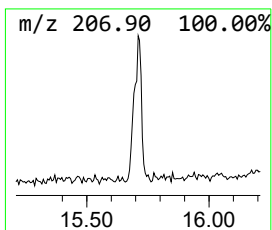
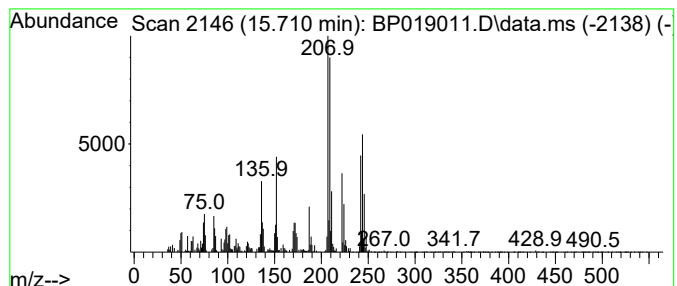
Quant Method : Z:\svoasrv\HPCHEM1\BNA_P\Methods\SFAM-EPA-BP120123.MA.M
 Quant Title : SVOA CALIBRATION

TIC Library : C:\DATABASE\NIST20.L
 TIC Integration Parameters: LSCINT.P

 Peak Number 18 Benzene, 1,2,3,5-tetrachlor... Concentration Rank 27

R.T.	EstConc	Area	Relative to ISTD	R.T.
15.710	2.36 ng/ul	210268	Acenaphthene-d10	14.457

Hit#	of	5	Tentative ID	MW	MolForm	CAS#	Qual
1			Benzene, 1,2,3,5-tetrachloro-4,6...	242	C8H6Cl4	000877-09-8	95
2			Benzene, 1,2,3,5-tetrachloro-4,6...	242	C8H6Cl4	000877-09-8	95
3			.alpha.,.alpha.,.alpha.',.alpha....	242	C8H6Cl4	025641-99-0	86
4			Quinoline, 3-bromo-	207	C9H6BrN	005332-24-1	60
5			Quinoline, 3-bromo-	207	C9H6BrN	005332-24-1	46



Data Path : Z:\svoasrv\HPCHEM1\BNA_P\Data\BP122123\
 Data File : BP019011.D
 Acq On : 21 Dec 2023 21:54
 Operator : MA/JU
 Sample : 05808-08
 Misc :
 ALS Vial : 10 Sample Multiplier: 1

Instrument :
 BNA_P
 ClientSampleId :
 C0B02

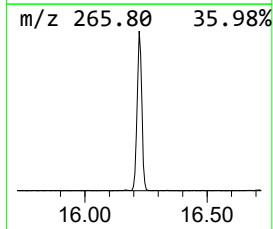
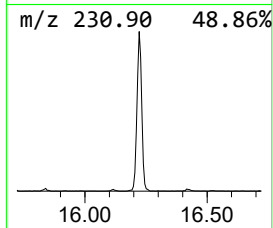
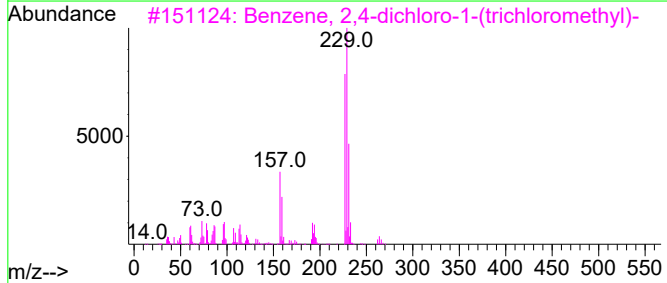
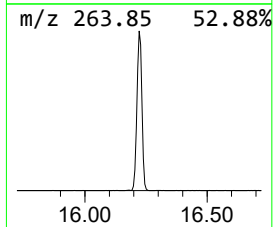
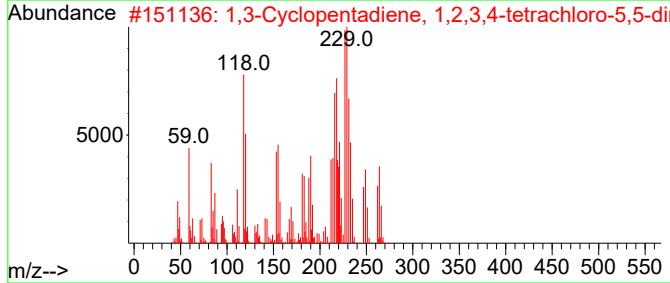
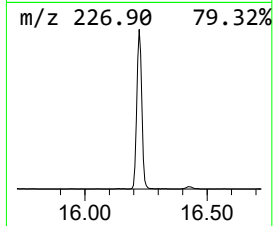
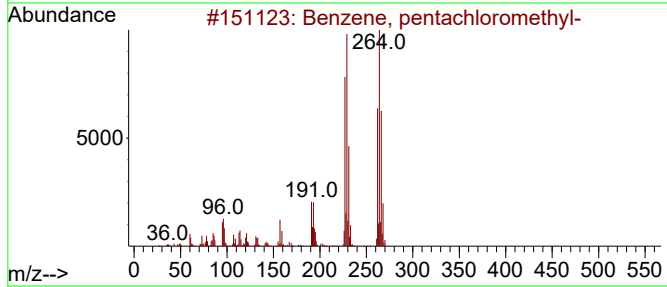
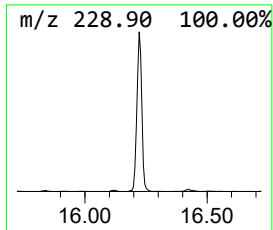
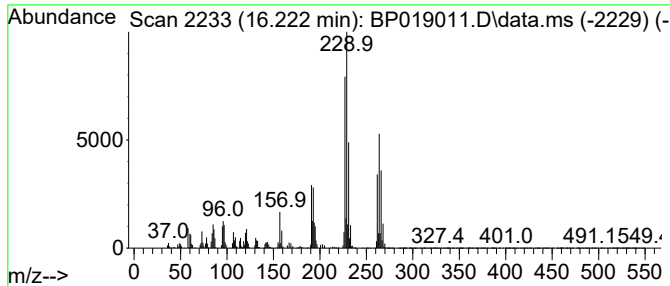
Quant Method : Z:\svoasrv\HPCHEM1\BNA_P\Methods\SFAM-EPA-BP120123.MA.M
 Quant Title : SVOA CALIBRATION

TIC Library : C:\DATABASE\NIST20.L
 TIC Integration Parameters: LSCINT.P

 Peak Number 19 Benzene, pentachloromethyl- Concentration Rank 15

R.T.	EstConc	Area	Relative to ISTD	R.T.
16.222	7.97 ng/ul	826041	Phenanthrene-d10	17.204

Hit#	of 5	Tentative ID	MW	MolForm	CAS#	Qual
1		Benzene, pentachloromethyl-	262	C7H3Cl5	000877-11-2	96
2		1,3-Cyclopentadiene, 1,2,3,4-tet...	262	C7H6Cl4O2	002207-27-4	80
3		Benzene, 2,4-dichloro-1-(trichlo...	262	C7H3Cl5	013014-18-1	68
4		Benzene, 2,4-dichloro-1-(trichlo...	262	C7H3Cl5	013014-18-1	64
5		Benzene, 1,2-dichloro-4-(trichlo...	262	C7H3Cl5	013014-24-9	59



Data Path : Z:\svoasrv\HPCHEM1\BNA_P\Data\BP122123\
 Data File : BP019011.D
 Acq On : 21 Dec 2023 21:54
 Operator : MA/JU
 Sample : 05808-08
 Misc :
 ALS Vial : 10 Sample Multiplier: 1

Instrument :
 BNA_P
 ClientSampleId :
 C0B02

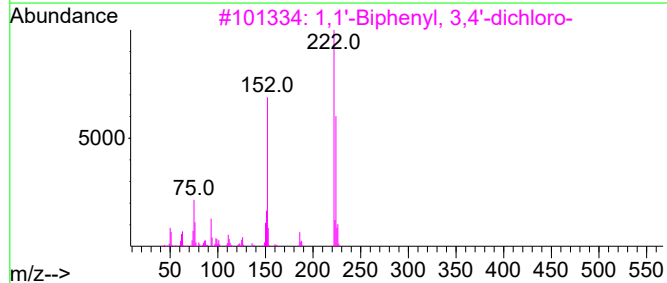
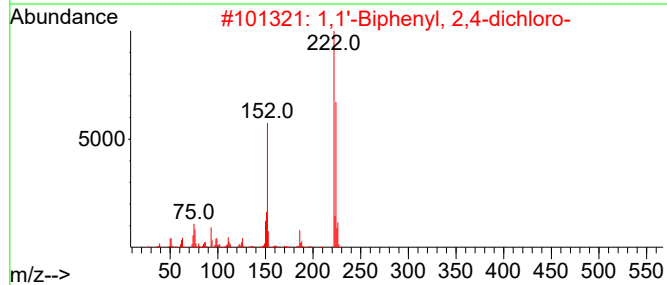
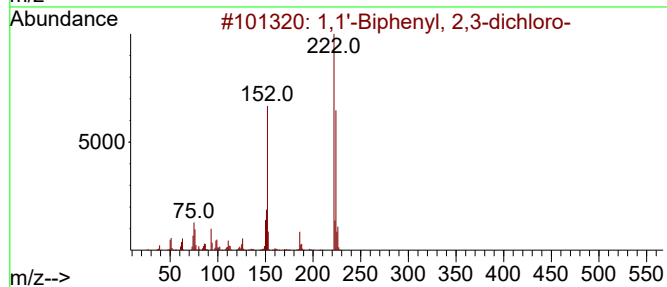
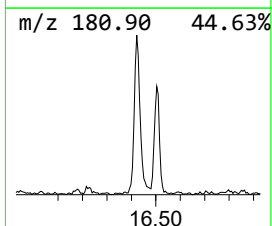
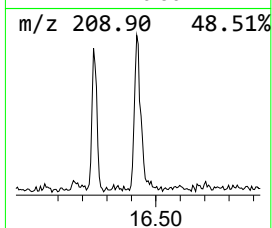
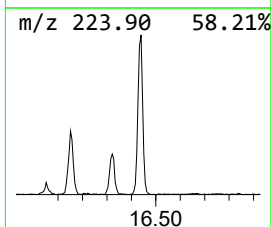
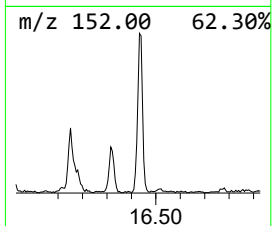
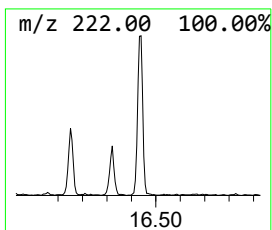
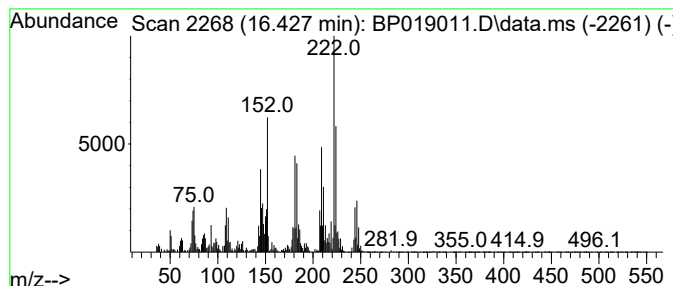
Quant Method : Z:\svoasrv\HPCHEM1\BNA_P\Methods\SFAM-EPA-BP120123.MA.M
 Quant Title : SVOA CALIBRATION

TIC Library : C:\DATABASE\NIST20.L
 TIC Integration Parameters: LSCINT.P

 Peak Number 20 1,1'-Biphenyl, 2,3-dichloro- Concentration Rank 23

R.T.	EstConc	Area	Relative to ISTD	R.T.
16.427	2.72 ng/ul	282537	Phenanthrene-d10	17.204

Hit#	of 5	Tentative ID	MW	MolForm	CAS#	Qual
1		1,1'-Biphenyl, 2,3-dichloro-	222	C12H8Cl2	016605-91-7	95
2		1,1'-Biphenyl, 2,4-dichloro-	222	C12H8Cl2	033284-50-3	95
3		1,1'-Biphenyl, 3,4'-dichloro-	222	C12H8Cl2	002974-90-5	93
4		1,1'-Biphenyl, 3,3'-dichloro-	222	C12H8Cl2	002050-67-1	93
5		1,1'-Biphenyl, 4,4'-dichloro-	222	C12H8Cl2	002050-68-2	84



Data Path : Z:\svoasrv\HPCHEM1\BNA_P\Data\BP122123\
 Data File : BP019011.D
 Acq On : 21 Dec 2023 21:54
 Operator : MA/JU
 Sample : 05808-08
 Misc :
 ALS Vial : 10 Sample Multiplier: 1

Instrument :
 BNA_P
 ClientSampleId :
 COB02

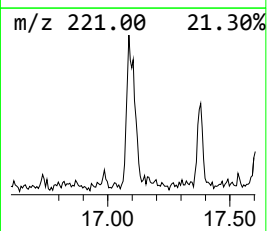
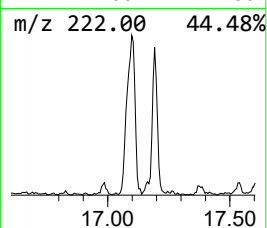
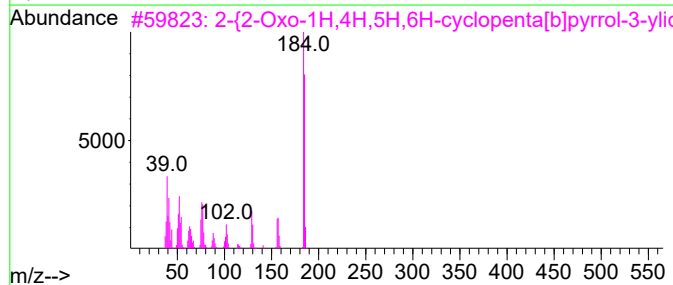
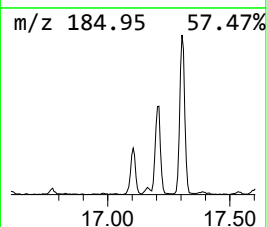
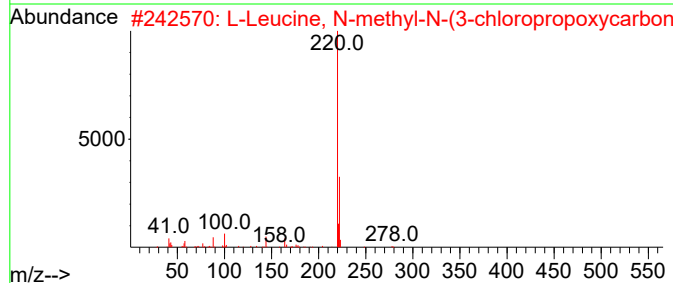
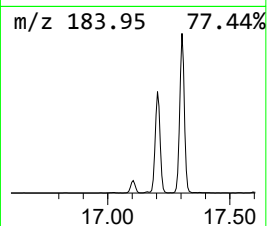
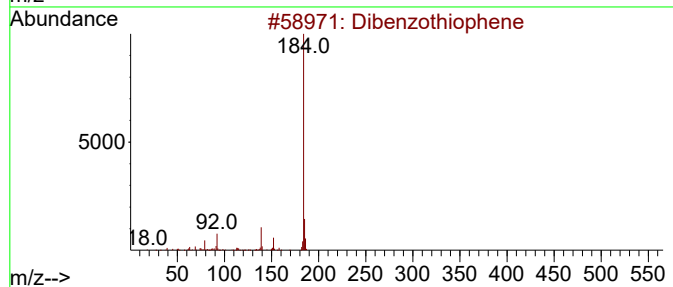
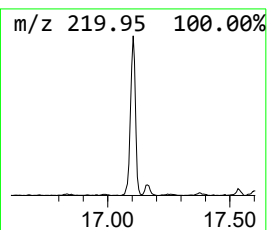
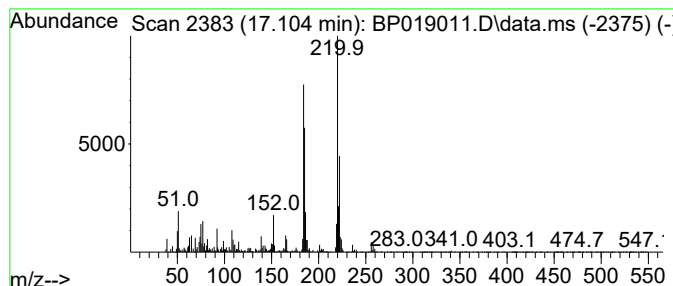
Quant Method : Z:\svoasrv\HPCHEM1\BNA_P\Methods\SFAM-EPA-BP120123.MA.M
 Quant Title : SVOA CALIBRATION

TIC Library : C:\DATABASE\NIST20.L
 TIC Integration Parameters: LSCINT.P

 Peak Number 21 unknown-01 Concentration Rank 25

R.T.	EstConc	Area	Relative to ISTD	R.T.
17.104	2.58 ng/ul	267922	Phenanthrene-d10	17.204

Hit#	of	5	Tentative ID	MW	MolForm	CAS#	Qual
1			Dibenzothiophene	184	C12H8S	000132-65-0	35
2			L-Leucine, N-methyl-N-(3-chloropropoxy)carbonate	335	C16H30ClNO4	1000392-40-1	27
3			2-{2-Oxo-1H,4H,5H,6H-cyclopenta[b]pyrrol-3-ylidene}propane	185	C10H7N3O	1000435-14-5	27
4			1,4-Diphenylpyrazole	220	C15H12N2	015132-01-1	22
5			(5E)-5-(2-Naphthylmethylene)-1,3-dioxane	255	C14H9NO2S	262844-46-2	22



Data Path : Z:\svoasrv\HPCHEM1\BNA_P\Data\BP122123\
 Data File : BP019011.D
 Acq On : 21 Dec 2023 21:54
 Operator : MA/JU
 Sample : 05808-08
 Misc :
 ALS Vial : 10 Sample Multiplier: 1

Instrument :
 BNA_P
 ClientSampleId :
 COB02

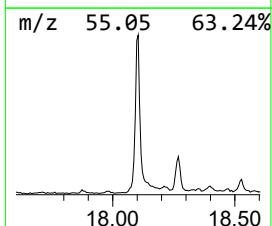
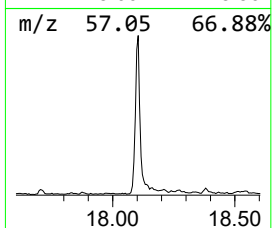
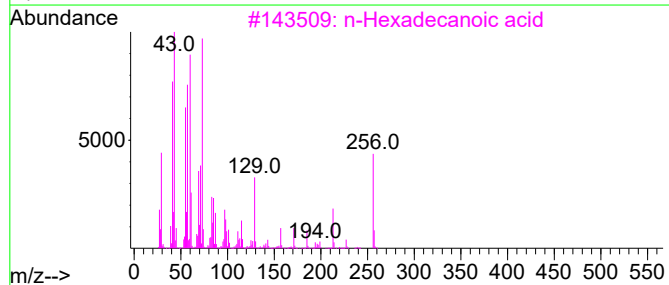
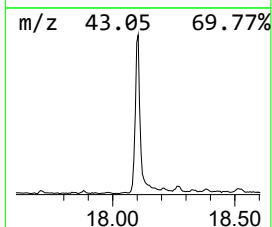
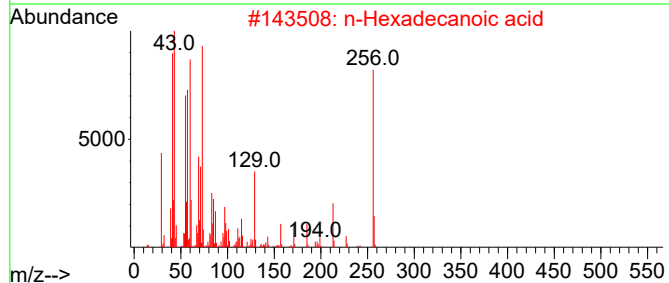
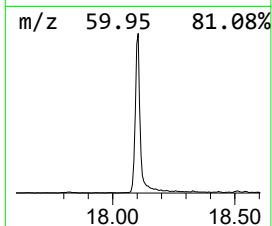
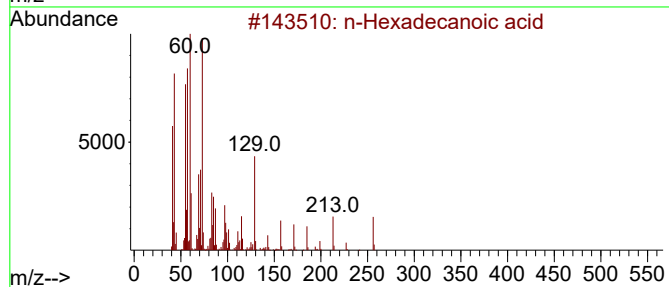
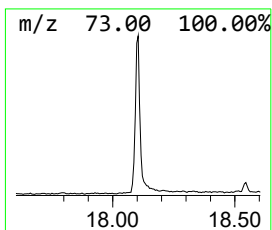
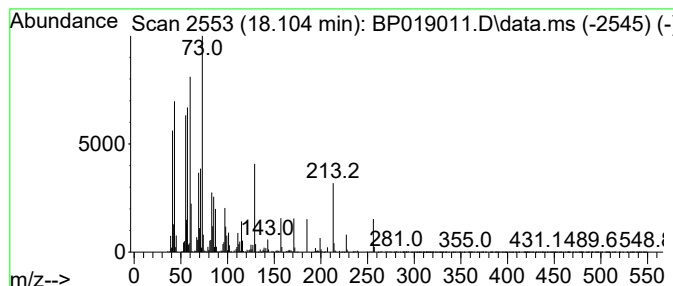
Quant Method : Z:\svoasrv\HPCHEM1\BNA_P\Methods\SFAM-EPA-BP120123.MA.M
 Quant Title : SVOA CALIBRATION

TIC Library : C:\DATABASE\NIST20.L
 TIC Integration Parameters: LSCINT.P

 Peak Number 22 n-Hexadecanoic acid Concentration Rank 13

R.T.	EstConc	Area	Relative to ISTD	R.T.
18.104	9.30 ng/ul	964264	Phenanthrene-d10	17.204

Hit#	of	5	Tentative ID	MW	MolForm	CAS#	Qual
1			n-Hexadecanoic acid	256	C16H32O2	000057-10-3	99
2			n-Hexadecanoic acid	256	C16H32O2	000057-10-3	99
3			n-Hexadecanoic acid	256	C16H32O2	000057-10-3	98
4			n-Hexadecanoic acid	256	C16H32O2	000057-10-3	95
5			Tetradecanoic acid	228	C14H28O2	000544-63-8	93



Data Path : Z:\svoasrv\HPCHEM1\BNA_P\Data\BP122123\
 Data File : BP019011.D
 Acq On : 21 Dec 2023 21:54
 Operator : MA/JU
 Sample : 05808-08
 Misc :
 ALS Vial : 10 Sample Multiplier: 1

Instrument :
 BNA_P
 ClientSampleId :
 COB02

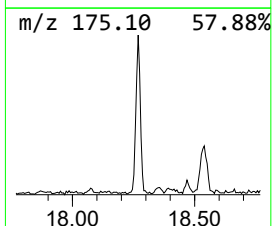
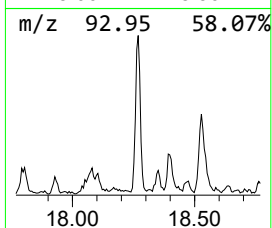
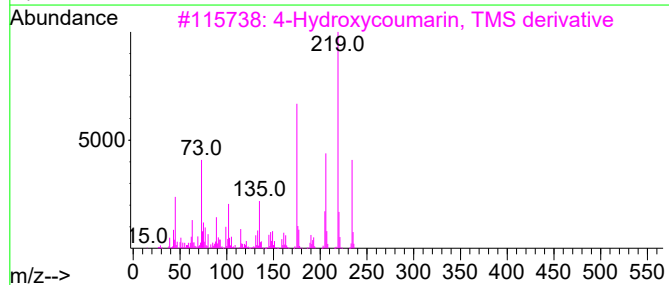
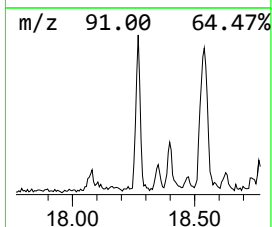
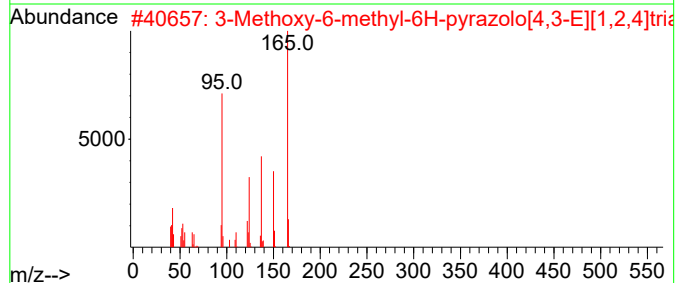
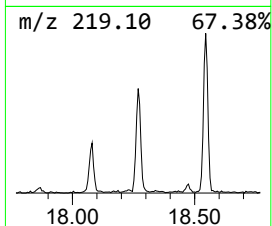
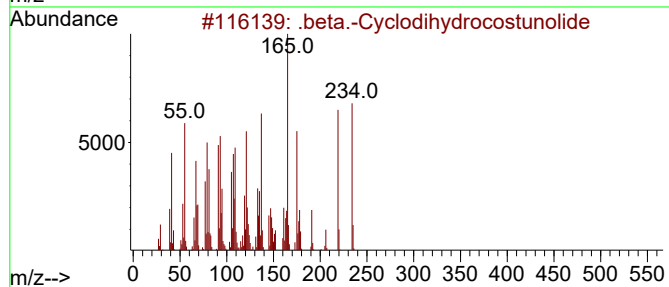
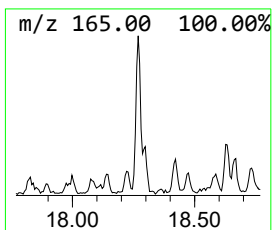
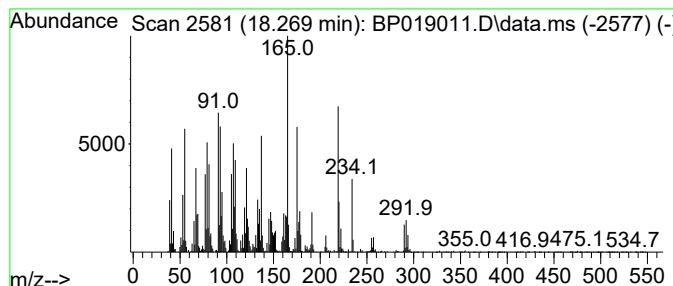
Quant Method : Z:\svoasrv\HPCHEM1\BNA_P\Methods\SFAM-EPA-BP120123.MA.M
 Quant Title : SVOA CALIBRATION

TIC Library : C:\DATABASE\NIST20.L
 TIC Integration Parameters: LSCINT.P

 Peak Number 23 .beta.-Cyclodihydrocostunolide Concentration Rank 21

R.T.	EstConc	Area	Relative to ISTD	R.T.
18.269	3.67 ng/ul	381044	Phenanthrene-d10	17.204

Hit#	of 5	Tentative ID	MW	MolForm	CAS#	Qual
1		.beta.-Cyclodihydrocostunolide	234	C15H22O2	022387-64-0	97
2		3-Methoxy-6-methyl-6H-pyrazolo[4...	165	C6H7N5O	037526-57-1	38
3		4-Hydroxycoumarin, TMS derivative	234	C12H14O3Si	1000333-10-4	20
4		(2R,3R,4aR,5S)-2-Hydroxy-4a,5-di...	234	C15H22O2	005090-90-4	20
5		4,6-Dimethyl-7-oxo-4,7-dihydro-t...	165	C6H7N5O	025623-69-2	18



Data Path : Z:\svoasrv\HPCHEM1\BNA_P\Data\BP122123\
 Data File : BP019011.D
 Acq On : 21 Dec 2023 21:54
 Operator : MA/JU
 Sample : 05808-08
 Misc :
 ALS Vial : 10 Sample Multiplier: 1

Instrument :
 BNA_P
 ClientSampleId :
 COB02

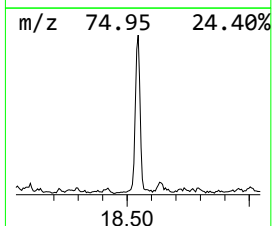
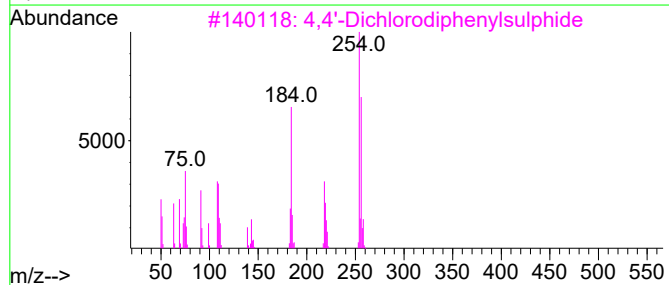
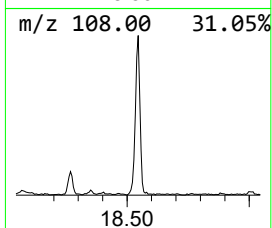
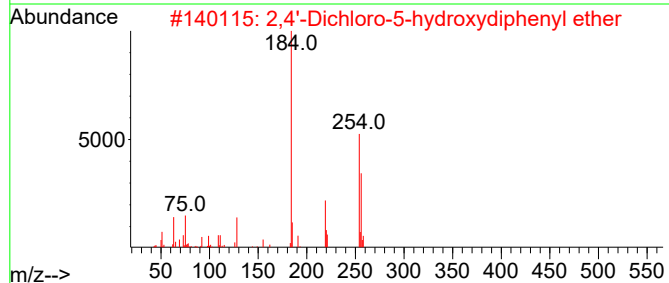
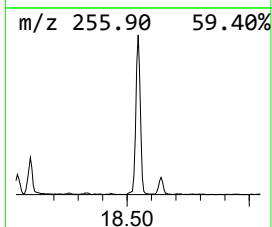
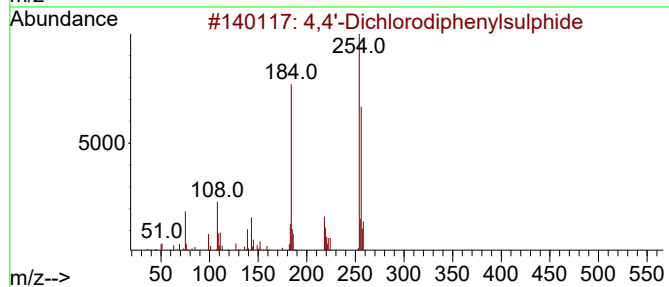
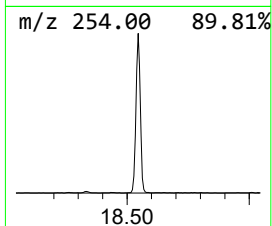
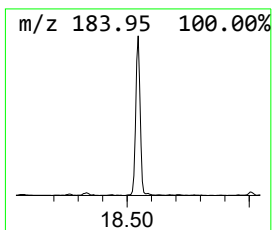
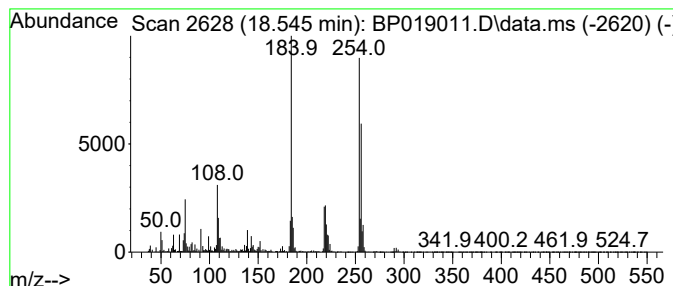
Quant Method : Z:\svoasrv\HPCHEM1\BNA_P\Methods\SFAM-EPA-BP120123.MA.M
 Quant Title : SVOA CALIBRATION

TIC Library : C:\DATABASE\NIST20.L
 TIC Integration Parameters: LSCINT.P

 Peak Number 24 4,4'-Dichlorodiphenylsulphide Concentration Rank 14

R.T.	EstConc	Area	Relative to ISTD	R.T.
18.545	9.14 ng/ul	947938	Phenanthrene-d10	17.204

Hit#	of 5	Tentative ID	MW	MolForm	CAS#	Qual
1		4,4'-Dichlorodiphenylsulphide	254	C12H8Cl2S	005181-10-2	95
2		2,4'-Dichloro-5-hydroxydiphenyl ...	254	C12H8Cl2O2	070870-55-2	89
3		4,4'-Dichlorodiphenylsulphide	254	C12H8Cl2S	005181-10-2	62
4		4-(2,4-Dichlorophenoxy)phenol	254	C12H8Cl2O2	040843-73-0	59
5		Cyclohexanol, 2-(4-bromophenyl)-	254	C12H15BrO	1000163-15-0	38



Data Path : Z:\svoasrv\HPCHEM1\BNA_P\Data\BP122123\
 Data File : BP019011.D
 Acq On : 21 Dec 2023 21:54
 Operator : MA/JU
 Sample : 05808-08
 Misc :
 ALS Vial : 10 Sample Multiplier: 1

Instrument :
 BNA_P
ClientSampleId :
 COB02

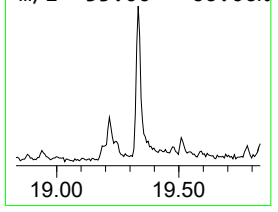
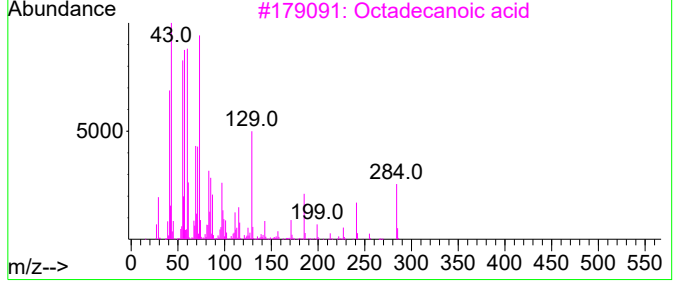
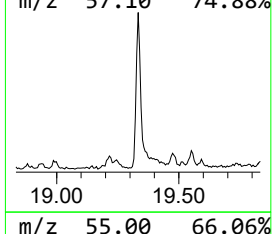
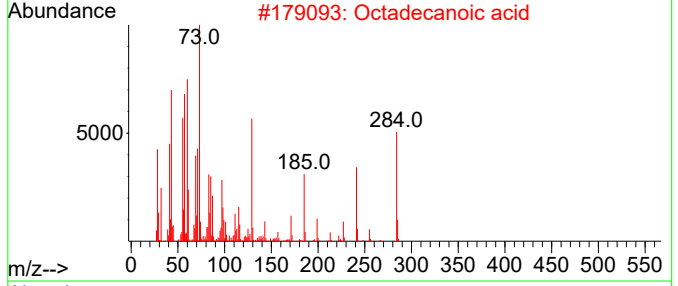
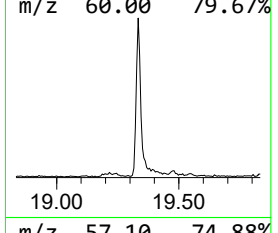
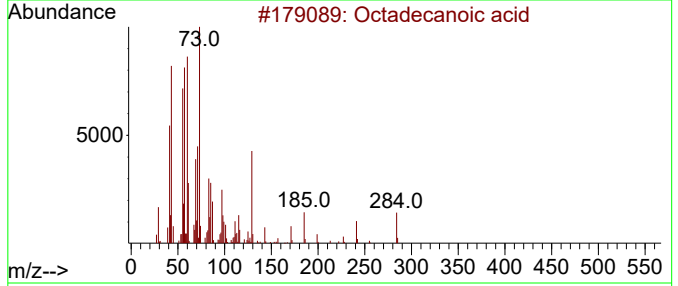
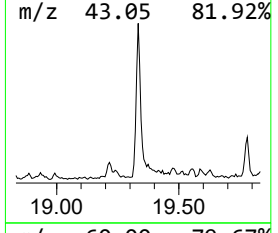
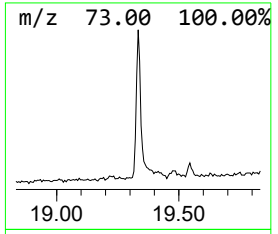
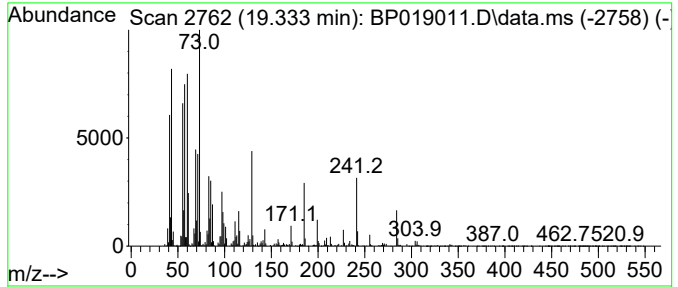
Quant Method : Z:\svoasrv\HPCHEM1\BNA_P\Methods\SFAM-EPA-BP120123.MA.M
 Quant Title : SVOA CALIBRATION

TIC Library : C:\DATABASE\NIST20.L
 TIC Integration Parameters: LSCINT.P

 Peak Number 25 Octadecanoic acid Concentration Rank 19

R.T.	EstConc	Area	Relative to ISTD	R.T.
19.333	3.89 ng/ul	494748	Chrysene-d12	21.298

Hit#	of	5	Tentative ID	MW	MolForm	CAS#	Qual
1			Octadecanoic acid	284	C18H36O2	000057-11-4	99
2			Octadecanoic acid	284	C18H36O2	000057-11-4	99
3			Octadecanoic acid	284	C18H36O2	000057-11-4	99
4			n-Hexadecanoic acid	256	C16H32O2	000057-10-3	83
5			Tetradecanoic acid	228	C14H28O2	000544-63-8	83



Data Path : Z:\svoasrv\HPCHEM1\BNA_P\Data\BP122123\
 Data File : BP019011.D
 Acq On : 21 Dec 2023 21:54
 Operator : MA/JU
 Sample : 05808-08
 Misc :
 ALS Vial : 10 Sample Multiplier: 1

Instrument :
 BNA_P
 ClientSampleId :
 C0B02

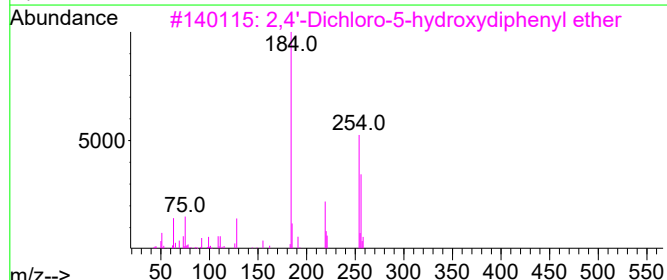
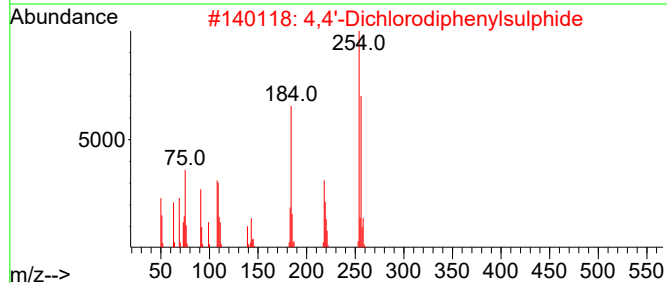
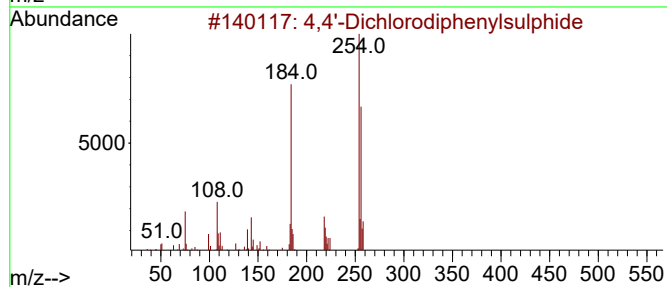
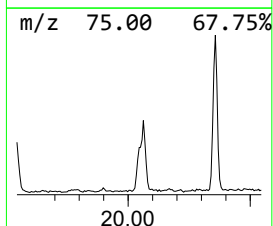
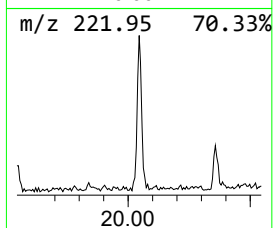
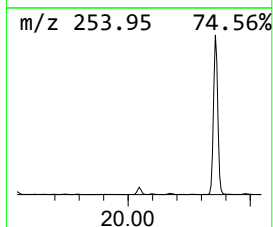
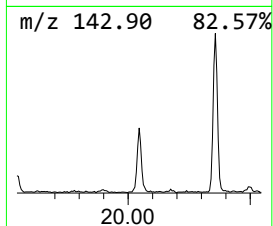
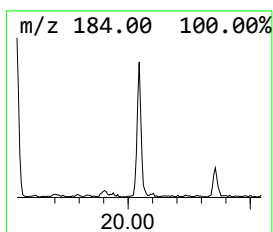
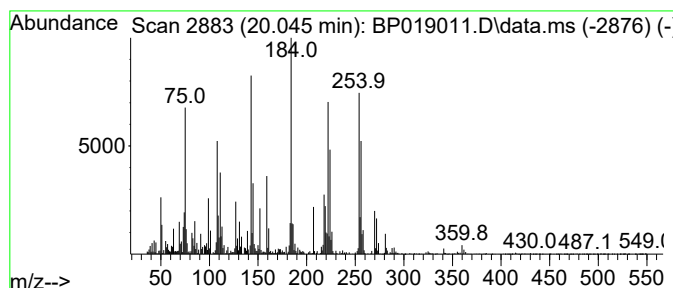
Quant Method : Z:\svoasrv\HPCHEM1\BNA_P\Methods\SFAM-EPA-BP120123.MA.M
 Quant Title : SVOA CALIBRATION

TIC Library : C:\DATABASE\NIST20.L
 TIC Integration Parameters: LSCINT.P

 Peak Number 26 2,4'-Dichloro-5-hydroxydiph... Concentration Rank 26

R.T.	EstConc	Area	Relative to ISTD	R.T.
20.045	2.41 ng/ul	305952	Chrysene-d12	21.298

Hit#	of 5	Tentative ID	MW	MolForm	CAS#	Qual
1		4,4'-Dichlorodiphenylsulphide	254	C12H8Cl2S	005181-10-2	60
2		4,4'-Dichlorodiphenylsulphide	254	C12H8Cl2S	005181-10-2	52
3		2,4'-Dichloro-5-hydroxydiphenyl ...	254	C12H8Cl2O2	070870-55-2	52
4		4-(2,4-Dichlorophenoxy)phenol	254	C12H8Cl2O2	040843-73-0	38
5		2-[3,4-Dichlorophenyl]-6-methyl-...	254	C11H8Cl2N2O	1000253-43-7	25



Data Path : Z:\svoasrv\HPCHEM1\BNA_P\Data\BP122123\
 Data File : BP019011.D
 Acq On : 21 Dec 2023 21:54
 Operator : MA/JU
 Sample : 05808-08
 Misc :
 ALS Vial : 10 Sample Multiplier: 1

Instrument :
 BNA_P
 ClientSampleId :
 C0B02

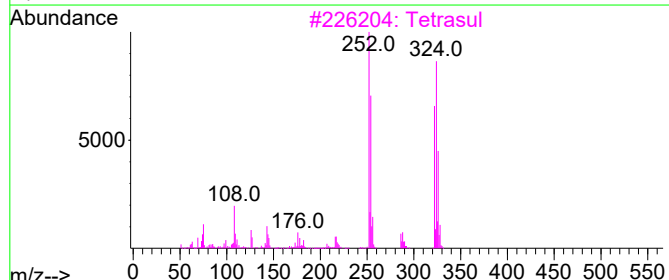
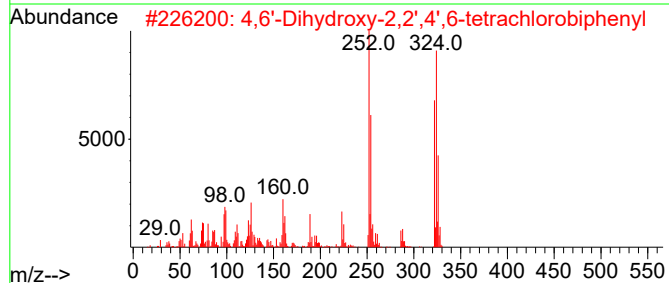
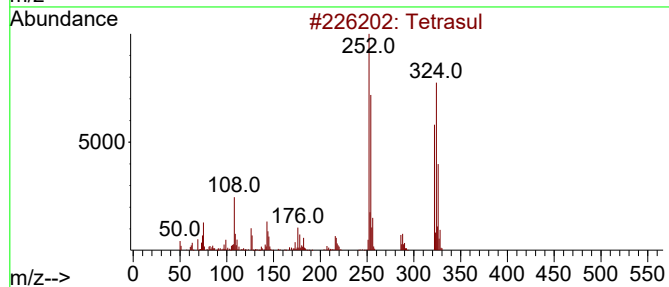
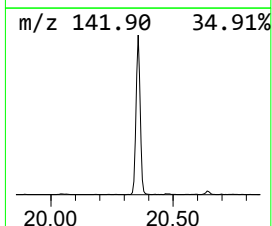
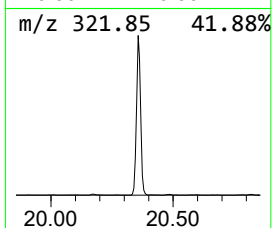
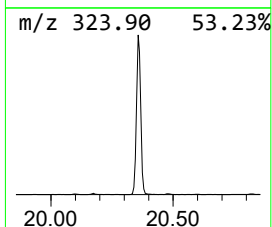
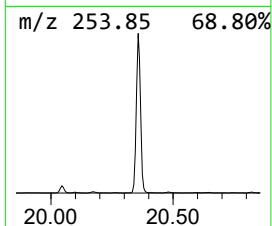
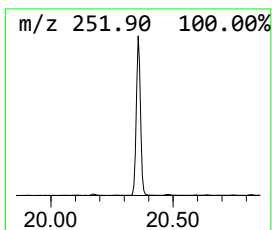
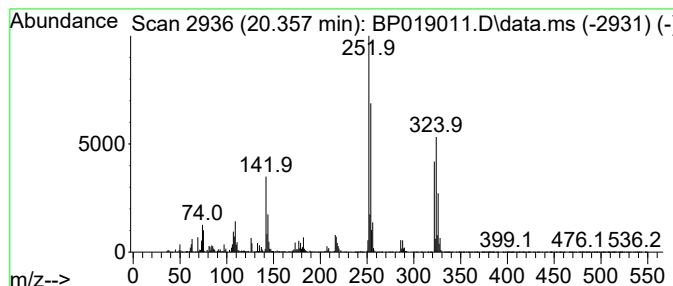
Quant Method : Z:\svoasrv\HPCHEM1\BNA_P\Methods\SFAM-EPA-BP120123.MA.M
 Quant Title : SVOA CALIBRATION

TIC Library : C:\DATABASE\NIST20.L
 TIC Integration Parameters: LSCINT.P

 Peak Number 27 Tetrasul Concentration Rank 6

R.T.	EstConc	Area	Relative to ISTD	R.T.
20.357	19.59 ng/ul	2489220	Chrysene-d12	21.298

Hit#	of	5	Tentative ID	MW	MolForm	CAS#	Qual
1			Tetrasul	322	C12H6Cl4S	002227-13-6	95
2			4,6'-Dihydroxy-2,2',4',6-tetrach...	322	C12H6Cl4O2	1000447-97-5	94
3			Tetrasul	322	C12H6Cl4S	002227-13-6	93
4			3,3'4,4'-Tetrachlorodiphenylsulfide	322	C12H6Cl4S	076745-12-5	92
5			Tetrasul	322	C12H6Cl4S	002227-13-6	76



Data Path : Z:\svoasrv\HPCHEM1\BNA_P\Data\BP122123\
 Data File : BP019011.D
 Acq On : 21 Dec 2023 21:54
 Operator : MA/JU
 Sample : 05808-08
 Misc :
 ALS Vial : 10 Sample Multiplier: 1

Instrument :
 BNA_P
 ClientSampleId :
 COB02

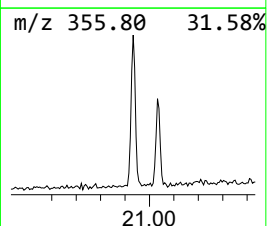
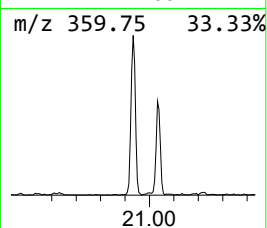
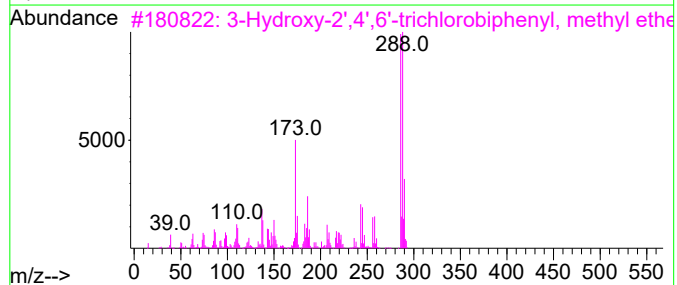
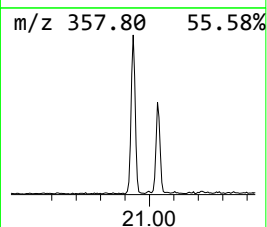
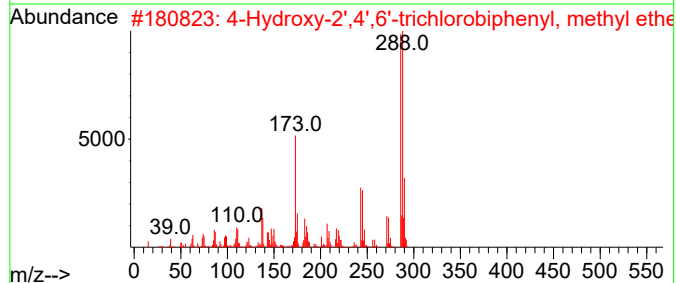
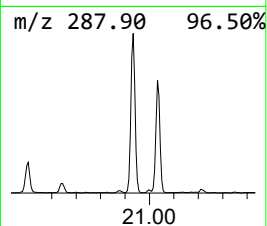
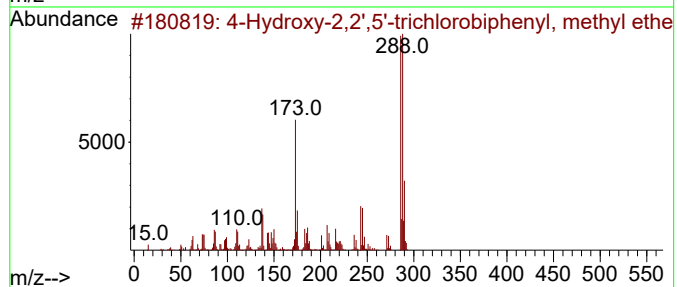
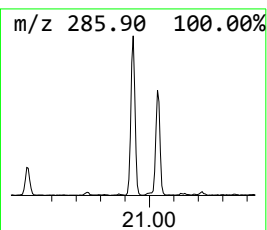
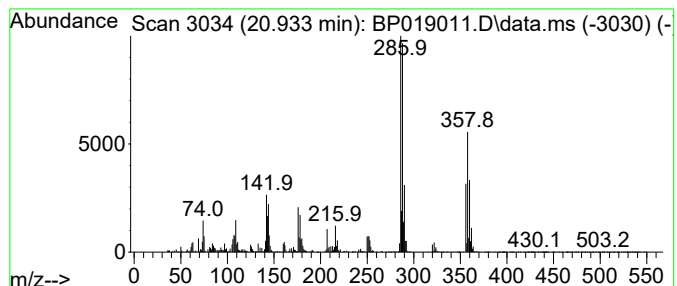
Quant Method : Z:\svoasrv\HPCHEM1\BNA_P\Methods\SFAM-EPA-BP120123.MA.M
 Quant Title : SVOA CALIBRATION

TIC Library : C:\DATABASE\NIST20.L
 TIC Integration Parameters: LSCINT.P

 Peak Number 28 4-Hydroxy-2,2',5'-trichloro... Concentration Rank 20

R.T.	EstConc	Area	Relative to ISTD	R.T.
20.933	3.70 ng/ul	470658	Chrysene-d12	21.298

Hit#	of	5	Tentative ID	MW	MolForm	CAS#	Qual
1			4-Hydroxy-2,2',5'-trichlorobiphe...	286	C13H9Cl3O	1010447-86-8	86
2			4-Hydroxy-2',4',6'-trichlorobiph...	286	C13H9Cl3O	1000447-87-0	70
3			3-Hydroxy-2',4',6'-trichlorobiph...	286	C13H9Cl3O	1000447-86-7	70
4			Dibenzo[b,e][1,4]dioxin, 1,2,4-t...	286	C12H5Cl3O2	039227-58-2	64
5			Dibenzo[b,e][1,4]dioxin, 1,2,4-t...	286	C12H5Cl3O2	039227-58-2	50



Data Path : Z:\svoasrv\HPCHEM1\BNA_P\Data\BP122123\
 Data File : BP019011.D
 Acq On : 21 Dec 2023 21:54
 Operator : MA/JU
 Sample : 05808-08
 Misc :
 ALS Vial : 10 Sample Multiplier: 1

Instrument :
 BNA_P
 ClientSampleId :
 COB02

Quant Method : Z:\svoasrv\HPCHEM1\BNA_P\Methods\SFAM-EPA-BP120123.MA.M
 Quant Title : SVOA CALIBRATION

TIC Library : C:\DATABASE\NIST0.L
 TIC Integration Parameters: LSCINT.P

TIC Top Hit name	RT	EstConc	Units	Response	--Internal Standard--			
					#	RT	Resp	Conc
Propylene Glycol	3.534	2.6	ng/ul	122772	1	7.822	933657	20.0
Benzene, 1,2-di...	9.546	13.2	ng/ul	782553	2	10.646	1183600	20.0
Benzene, 1,3-di...	9.610	19.5	ng/ul	1154030	2	10.646	1183600	20.0
Benzene, 1,4-di...	9.998	7.0	ng/ul	416754	2	10.646	1183600	20.0
Benzene, 1,2,4-...	11.734	4.9	ng/ul	290523	2	10.646	1183600	20.0
1-Bromo-2,3-dic...	11.904	12.2	ng/ul	723351	2	10.646	1183600	20.0
Benzene, 1,2,3-...	12.181	19.1	ng/ul	1129600	2	10.646	1183600	20.0
Benzene, 1,3-di...	12.357	27.5	ng/ul	1629070	2	10.646	1183600	20.0
Benzene, 2,4-di...	12.722	5.9	ng/ul	524369	3	14.457	1779290	20.0
1,2,4-Metheno-1...	13.192	2.2	ng/ul	191842	3	14.457	1779290	20.0
Benzene, 1,2,4-...	14.263	10.9	ng/ul	970712	3	14.457	1779290	20.0
Alpha,alpha,2,3...	14.610	3.0	ng/ul	268072	3	14.457	1779290	20.0
Benzene, 1,2,3,...	15.710	2.4	ng/ul	210268	3	14.457	1779290	20.0
Benzene, pentac...	16.222	8.0	ng/ul	826041	4	17.204	2073730	20.0
1,1'-Biphenyl, ...	16.427	2.7	ng/ul	282537	4	17.204	2073730	20.0
unknown-01	17.104	2.6	ng/ul	267922	4	17.204	2073730	20.0
n-Hexadecanoic ...	18.104	9.3	ng/ul	964264	4	17.204	2073730	20.0
.beta.-Cyclodih...	18.269	3.7	ng/ul	381044	4	17.204	2073730	20.0
4,4'-Dichlorodi...	18.545	9.1	ng/ul	947938	4	17.204	2073730	20.0
Octadecanoic acid	19.333	3.9	ng/ul	494748	5	21.298	2541400	20.0
2,4'-Dichloro-5...	20.045	2.4	ng/ul	305952	5	21.298	2541400	20.0
Tetrasul	20.357	19.6	ng/ul	2489220	5	21.298	2541400	20.0
4-Hydroxy-2,2',...	20.933	3.7	ng/ul	470658	5	21.298	2541400	20.0