

Data Path : Z:\svoasrv\HPCHEM1\BNA_P\Data\BP122222\
 Data File : BP013252.D
 Acq On : 22 Dec 2022 19:34
 Operator : CG/JU
 Sample : SSTDCCC020
 Misc :
 ALS Vial : 19 Sample Multiplier: 1

Instrument :
 BNA_P
 ClientSampleId :

Quant Time: Dec 22 21:48:32 2022
 Quant Method : Z:\svoasrv\HPCHEM1\BNA_P\Methods\SFAM-EPA-BP120722.M
 Quant Title : SVOA CALIBRATION
 QLast Update : Wed Dec 21 23:38:37 2022
 Response via : Initial Calibration

Compound	R.T.	QIon	Response	Conc	Units	Dev(Min)
Internal Standards						
1) 1,4-Dichlorobenzene-d4	7.946	152	625340	20.000	ng/ul	0.00
20) Naphthalene-d8	10.763	136	2720248	20.000	ng/ul	0.00
38) Acenaphthene-d10	14.593	164	1727494	20.000	ng/ul	0.00
64) Phenanthrene-d10	17.345	188	3637282	20.000	ng/ul	0.00
79) Chrysene-d12	21.433	240	2444594	20.000	ng/ul	0.00
88) Perylene-d12	23.910	264	2506013	20.000	ng/ul	0.00
System Monitoring Compounds						
3) 1,4-Dioxane-d8	3.334	96	114583	7.834	ng/uL	0.00
4) Pyridine-d5	3.764	84	878097	21.135	ng/ul	0.00
7) Phenol-d5	7.111	99	1089675	21.393	ng/ul	0.00
9) Bis-(2-Chloroethyl)eth...	7.275	67	665100	21.646	ng/ul	0.00
11) 2-Chlorophenol-d4	7.475	132	871423	21.733	ng/ul	0.00
15) 4-Methylphenol-d8	8.658	113	886524	21.242	ng/ul	0.00
21) Nitrobenzene-d5	9.116	128	436525	21.841	ng/ul	0.00
24) 2-Nitrophenol-d4	9.840	143	498674	22.162	ng/ul	0.00
28) 2,4-Dichlorophenol-d3	10.381	165	955833	21.870	ng/ul	0.00
31) 4-Chloroaniline-d4	10.899	131	1239656	20.092	ng/ul	0.00
46) Dimethylphthalate-d6	13.998	166	2623780	19.762	ng/ul	0.00
49) Acenaphthylene-d8	14.281	160	3090932	21.187	ng/ul	0.00
54) 4-Nitrophenol-d4	14.793	143	439341	18.396	ng/ul	0.00
60) Fluorene-d10	15.587	176	2310748	20.573	ng/ul	0.00
65) 4,6-Dinitro-2-methylph...	15.704	200	417160	17.822	ng/ul	0.00
73) Anthracene-d10	17.445	188	3502986	21.347	ng/ul	0.00
81) Pyrene-d10	19.681	212	3572425	25.459	ng/ul	0.00
92) Benzo(a)pyrene-d12	23.751	264	2589626	20.732	ng/ul	0.00
Target Compounds						
2) 1,4-Dioxane	3.370	88	118699	7.774	ng/uL	94
5) Pyridine	3.781	79	868539	21.034	ng/ul	96
6) Benzaldehyde	7.081	77	423938	21.256	ng/ul	97
8) Phenol	7.134	94	1113725	21.626	ng/ul	96
10) Bis(2-Chloroethyl)ether	7.369	93	886585	20.975	ng/ul	98
12) 2-Chlorophenol	7.511	128	884585	21.513	ng/ul	98
13) 2-Methylphenol	8.393	108	847619	21.111	ng/ul	98
14) 2,2'-oxybis(1-Chloropr...	8.481	45	1333004	22.982	ng/ul	98
16) Acetophenone	8.775	105	1385701	21.654	ng/ul	96
17) N-Nitroso-di-n-propyla...	8.763	70	695577	21.615	ng/ul	95
18) 4-Methylphenol	8.722	108	944382	21.235	ng/ul	98
19) Hexachloroethane	9.034	117	339078	20.636	ng/ul	98
22) Nitrobenzene	9.158	77	1028934	21.939	ng/ul	98
23) Isophorone	9.687	82	1944835	20.508	ng/ul	97
25) 2-Nitrophenol	9.869	139	526462	21.594	ng/ul	93
26) 2,4-Dimethylphenol	9.928	107	1019209	21.426	ng/ul	97
27) Bis(2-Chloroethoxy)met...	10.169	93	1229371	20.274	ng/ul	100
29) 2,4-Dichlorophenol	10.410	162	928539	21.689	ng/ul	99
30) Naphthalene	10.810	128	2962441	20.823	ng/ul	100
32) 4-Chloroaniline	10.922	127	1238221	20.280	ng/ul	99
33) Hexachlorobutadiene	11.093	225	628283	21.374	ng/ul	98
34) Caprolactam	11.710	113	266157	18.233	ng/ul	90
35) 4-Chloro-3-methylphenol	12.046	107	936182	21.428	ng/ul	100
36) 2-Methylnaphthalene	12.416	142	2008202	20.576	ng/ul	100

Data Path : Z:\svoasrv\HPCHEM1\BNA_P\Data\BP122222\
 Data File : BP013252.D
 Acq On : 22 Dec 2022 19:34
 Operator : CG/JU
 Sample : SSTDCCC020
 Misc :
 ALS Vial : 19 Sample Multiplier: 1

Instrument :
 BNA_P
 ClientSampleId :

Quant Time: Dec 22 21:48:32 2022
 Quant Method : Z:\svoasrv\HPCHEM1\BNA_P\Methods\SFAM-EPA-BP120722.M
 Quant Title : SVOA CALIBRATION
 QLast Update : Wed Dec 21 23:38:37 2022
 Response via : Initial Calibration

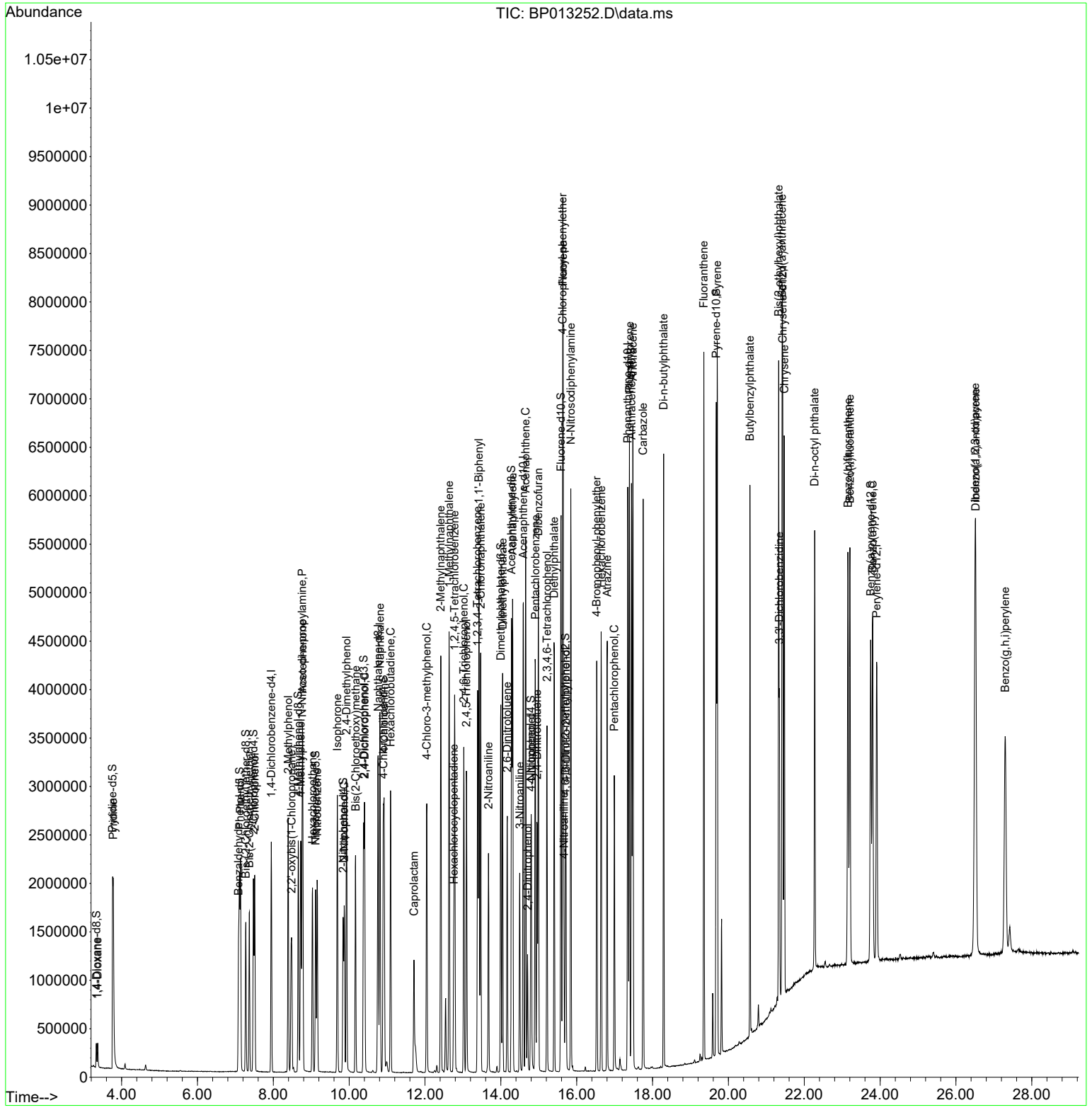
Compound	R.T.	QIon	Response	Conc	Units	Dev(Min)
37) 1-Methylnaphthalene	12.634	142	2061332	20.537	ng/ul	100
39) 1,2,4,5-Tetrachloroben...	12.781	216	1222974	21.986	ng/ul	98
40) Hexachlorocyclopentadiene	12.757	237	343792	9.497	ng/ul	98
41) 2,4,6-Trichlorophenol	13.022	196	788403	22.054	ng/ul	100
42) 2,4,5-Trichlorophenol	13.093	196	847558	22.072	ng/ul	99
43) 1,1'-Biphenyl	13.422	154	2730649	21.047	ng/ul	99
44) 2-Chloronaphthalene	13.469	162	2178055	21.330	ng/ul	100
45) 2-Nitroaniline	13.675	65	593869	23.988	ng/ul	98
47) Dimethylphthalate	14.046	163	2609575	19.831	ng/ul	99
48) 2,6-Dinitrotoluene	14.169	165	525368	21.483	ng/ul	100
50) Acenaphthylene	14.310	152	3296941	21.021	ng/ul	100
51) 3-Nitroaniline	14.498	138	478783	20.734	ng/ul	98
52) Acenaphthene	14.651	153	2261056	20.803	ng/ul	99
53) 2,4-Dinitrophenol	14.704	184	247883	14.829	ng/ul	98
55) 4-Nitrophenol	14.804	109	328585	20.164	ng/ul	93
56) Dibenzofuran	14.987	168	3202755	20.726	ng/ul	99
57) 2,4-Dinitrotoluene	14.957	165	738622	20.793	ng/ul	98
58) 2,3,4,6-Tetrachlorophenol	15.216	232	727120	20.749	ng/ul	99
59) Diethylphthalate	15.404	149	2495756	19.510	ng/ul	99
61) Fluorene	15.640	166	2585725	20.864	ng/ul	100
62) 4-Chlorophenyl-phenyle...	15.628	204	1369155	20.891	ng/ul	98
63) 4-Nitroaniline	15.663	138	410535	20.204	ng/ul	95
66) 4,6-Dinitro-2-methylph...	15.716	198	410277	17.937	ng/ul	93
67) N-Nitrosodiphenylamine	15.845	169	2184857	21.666	ng/ul	100
68) 4-Bromophenyl-phenylether	16.528	248	857855	21.718	ng/ul	99
69) Hexachlorobenzene	16.645	284	994828	21.211	ng/ul	98
70) Atrazine	16.804	200	825668	21.011	ng/ul	99
71) Pentachlorophenol	16.992	266	557687	19.634	ng/ul	97
72) Phenanthrene	17.392	178	3977018	20.992	ng/ul	100
74) Anthracene	17.481	178	4029419	21.301	ng/ul	100
75) 1,2,3,4-Tetrachloroben...	13.387	216	1208817	23.294	ng/uL	99
76) Pentachlorobenzene	14.910	250	1186102	22.418	ng/uL	100
77) Carbazole	17.751	167	3403438	21.364	ng/ul	99
78) Di-n-butylphthalate	18.292	149	4120247	21.242	ng/ul	100
80) Fluoranthene	19.351	202	4260110	26.749	ng/ul	100
82) Pyrene	19.704	202	4290873	26.119	ng/ul	100
83) Butylbenzylphthalate	20.569	149	1566535	24.683	ng/ul	96
84) 3,3'-Dichlorobenzidine	21.345	252	887611	16.073	ng/ul	98
85) Benzo(a)anthracene	21.416	228	3479350	21.440	ng/ul	99
86) Bis(2-ethylhexyl)phtha...	21.328	149	2149565	24.010	ng/ul	100
87) Chrysene	21.475	228	3237166	21.093	ng/ul	99
89) Di-n-octyl phthalate	22.275	149	3021141	21.519	ng/ul	100
90) Benzo(b)fluoranthene	23.151	252	3199323	20.021	ng/ul	100
91) Benzo(k)fluoranthene	23.204	252	3238711	20.439	ng/ul	100
93) Benzo(a)pyrene	23.804	252	2891914	20.784	ng/ul	100
94) Indeno(1,2,3-cd)pyrene	26.504	276	3921623	22.626	ng/ul	99
95) Dibenzo(a,h)anthracene	26.521	278	3268291	22.775	ng/ul	100
96) Benzo(g,h,i)perylene	27.298	276	3224738	23.176	ng/ul	98

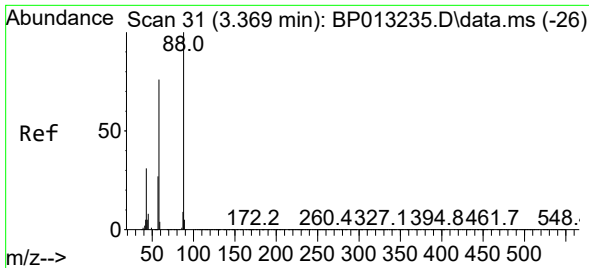
(#) = qualifier out of range (m) = manual integration (+) = signals summed

Data Path : Z:\svoasrv\HPCHEM1\BNA_P\Data\BP12222\
 Data File : BP013252.D
 Acq On : 22 Dec 2022 19:34
 Operator : CG/JU
 Sample : SSTCCCC020
 Misc :
 ALS Vial : 19 Sample Multiplier: 1

Instrument :
 BNA_P
 ClientSampleId :

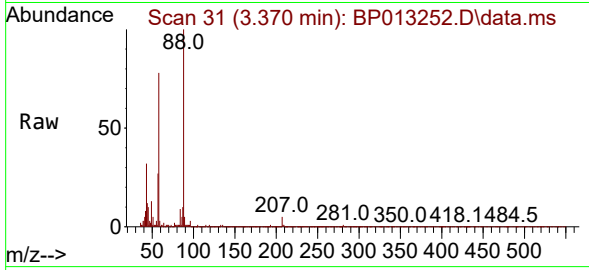
Quant Time: Dec 22 21:48:32 2022
 Quant Method : Z:\svoasrv\HPCHEM1\BNA_P\Methods\SFAM-EPA-BP120722.M
 Quant Title : SVOA CALIBRATION
 QLast Update : Wed Dec 21 23:38:37 2022
 Response via : Initial Calibration



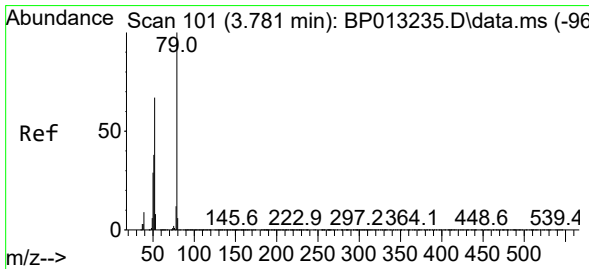
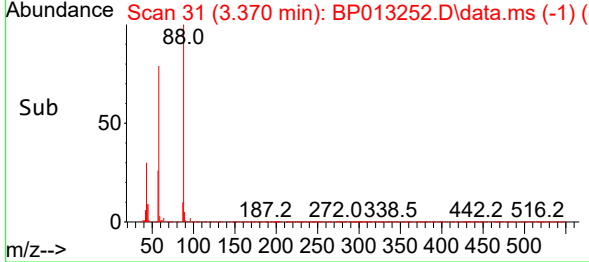
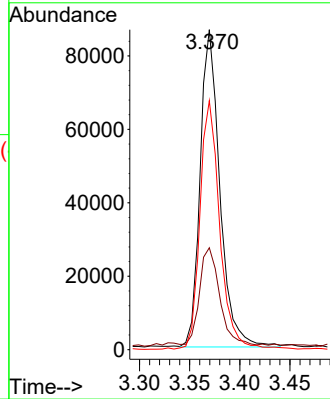


#2
 1,4-Dioxane
 Concen: 7.774 ng/uL
 RT: 3.370 min Scan# 31
 Delta R.T. 0.000 min
 Lab File: BP013252.D
 Acq: 22 Dec 2022 19:34

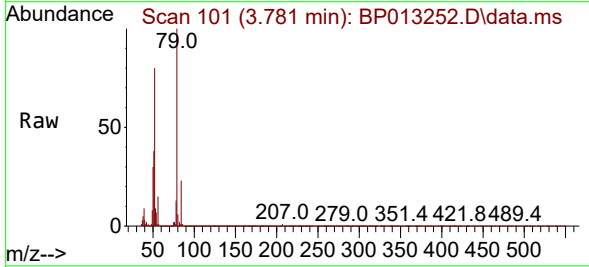
Instrument :
 BNA_P
 ClientSampleId :



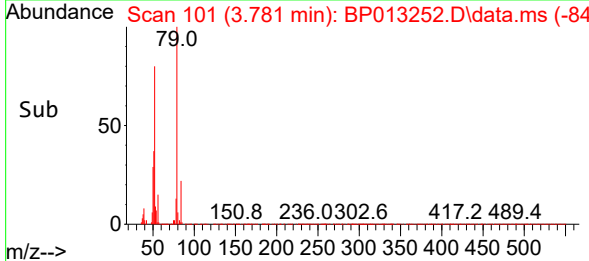
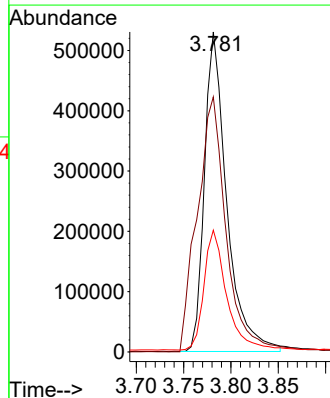
Tgt Ion: 88 Resp: 118699
 Ion Ratio Lower Upper
 88 100
 43 31.8 22.4 33.6
 58 77.8 58.2 87.4

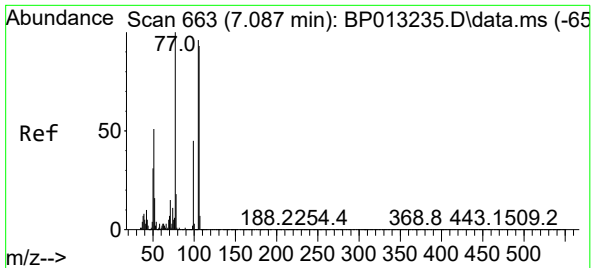


#5
 Pyridine
 Concen: 21.034 ng/uL
 RT: 3.781 min Scan# 101
 Delta R.T. 0.000 min
 Lab File: BP013252.D
 Acq: 22 Dec 2022 19:34



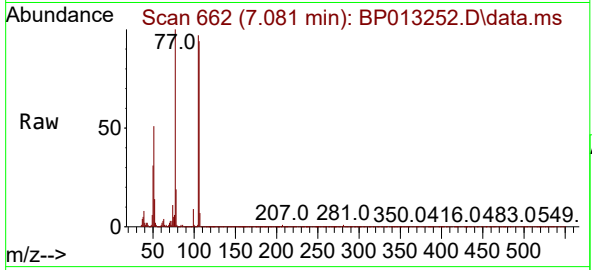
Tgt Ion: 79 Resp: 868539
 Ion Ratio Lower Upper
 79 100
 52 79.7 60.7 91.1
 51 38.0 28.9 43.3





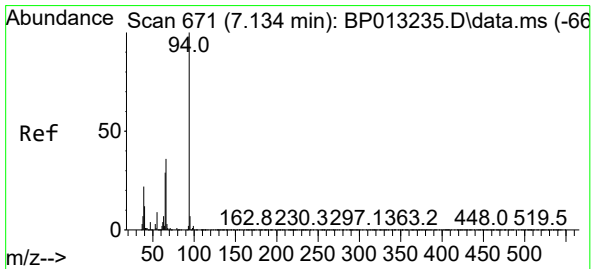
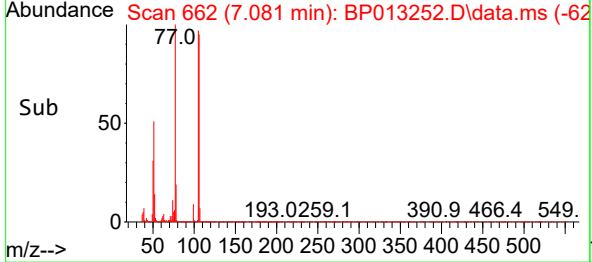
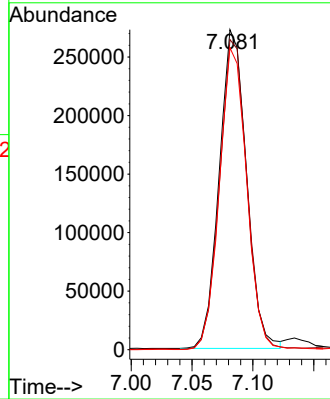
#6
Benzaldehyde
Concen: 21.256 ng/ul
RT: 7.081 min Scan# 601
Delta R.T. -0.006 min
Lab File: BP013252.D
Acq: 22 Dec 2022 19:34

Instrument :
BNA_P
ClientSampleId :



Tgt Ion: 77 Resp: 423938

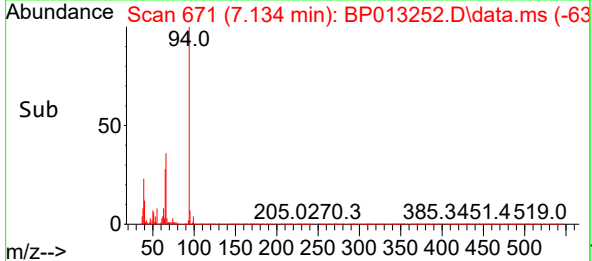
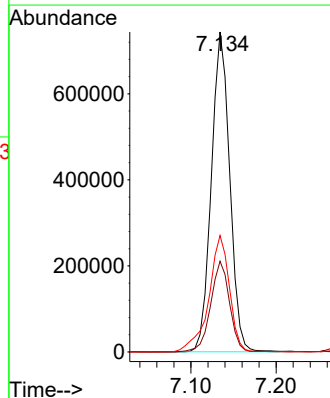
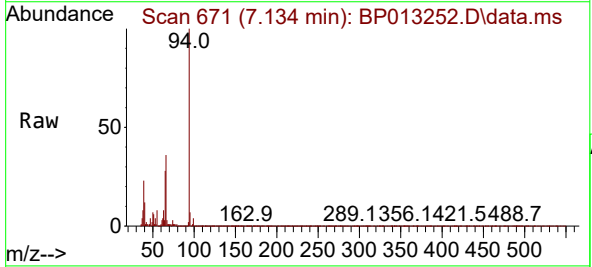
Ion	Ratio	Lower	Upper
77	100		
105	96.9	81.5	122.3
106	94.4	76.9	115.3

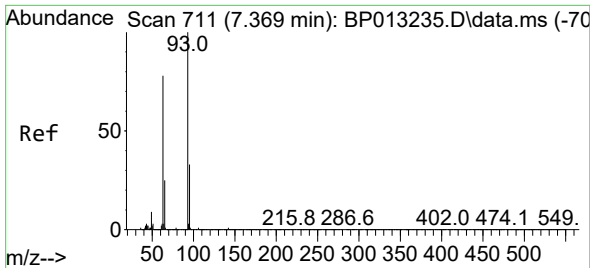


#8
Phenol
Concen: 21.626 ng/ul
RT: 7.134 min Scan# 671
Delta R.T. 0.000 min
Lab File: BP013252.D
Acq: 22 Dec 2022 19:34

Tgt Ion: 94 Resp: 1113725

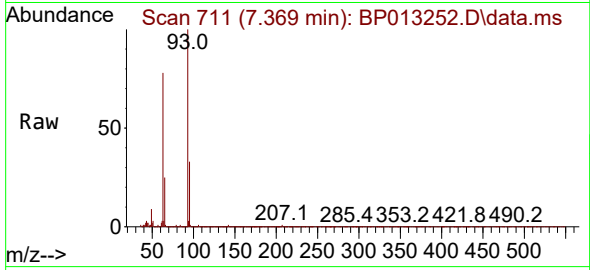
Ion	Ratio	Lower	Upper
94	100		
65	28.4	21.1	31.7
66	36.4	27.0	40.6



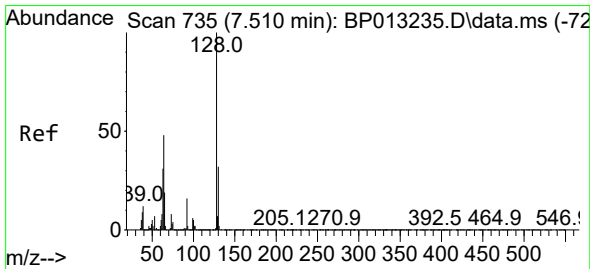
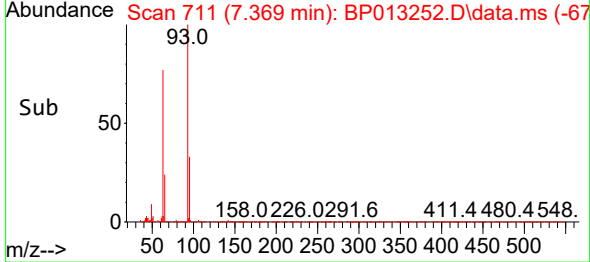
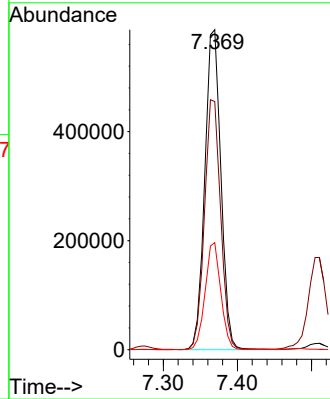


#10
 Bis(2-Chloroethyl)ether
 Concen: 20.975 ng/ul
 RT: 7.369 min Scan# 711
 Delta R.T. 0.000 min
 Lab File: BP013252.D
 Acq: 22 Dec 2022 19:34

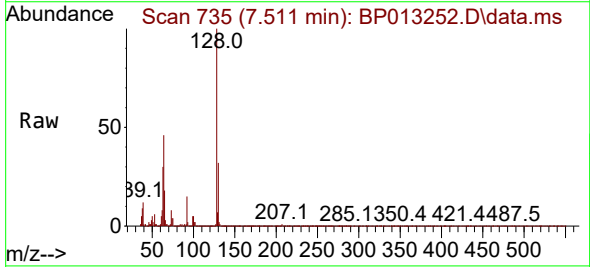
Instrument :
 BNA_P
 ClientSampleId :



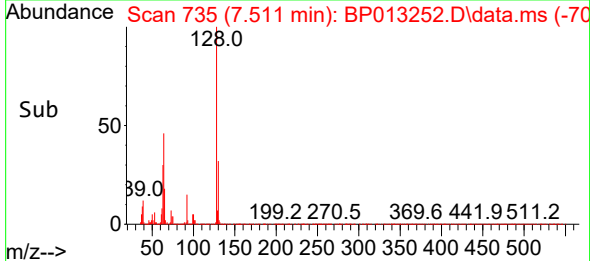
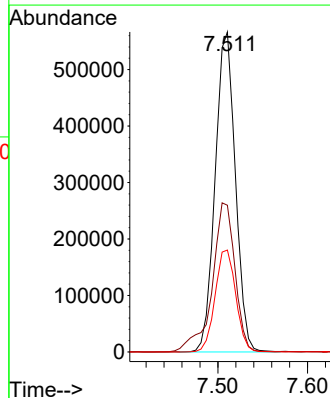
Tgt Ion: 93 Resp: 886585
 Ion Ratio Lower Upper
 93 100
 63 77.6 59.8 89.8
 95 33.4 26.4 39.6

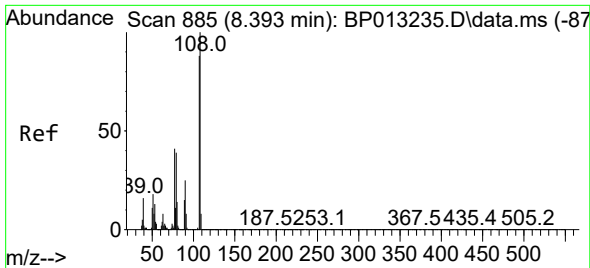


#12
 2-Chlorophenol
 Concen: 21.513 ng/ul
 RT: 7.511 min Scan# 735
 Delta R.T. 0.000 min
 Lab File: BP013252.D
 Acq: 22 Dec 2022 19:34



Tgt Ion: 128 Resp: 884585
 Ion Ratio Lower Upper
 128 100
 64 45.9 34.9 52.3
 130 31.8 25.8 38.6

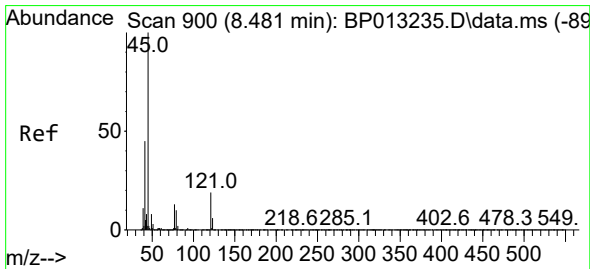
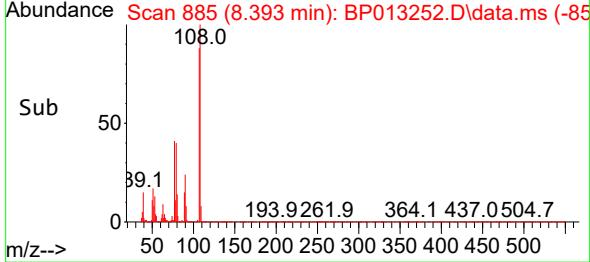
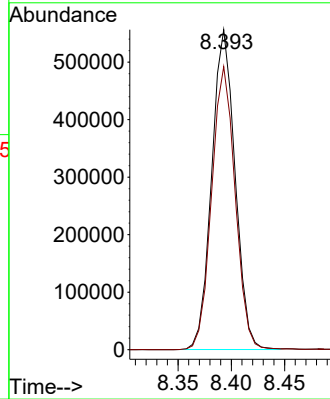
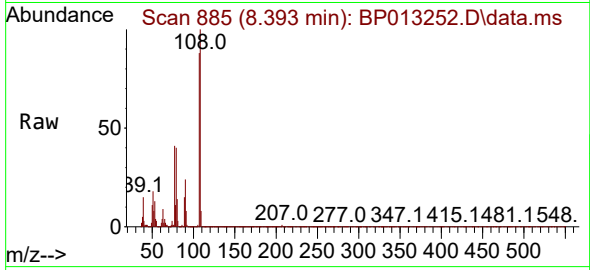




#13
 2-Methylphenol
 Concen: 21.111 ng/ul
 RT: 8.393 min Scan# 885
 Delta R.T. 0.000 min
 Lab File: BP013252.D
 Acq: 22 Dec 2022 19:34

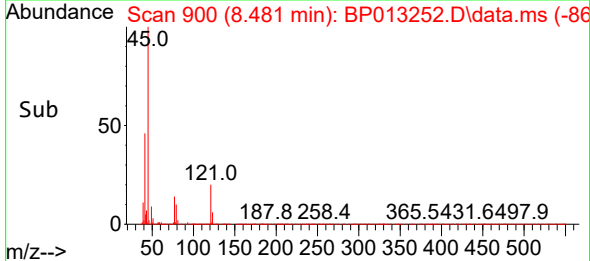
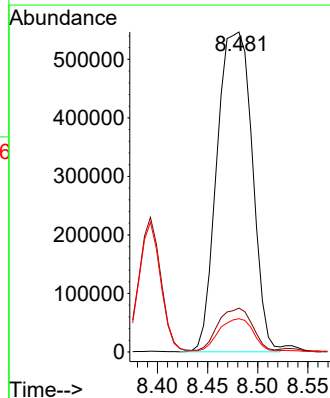
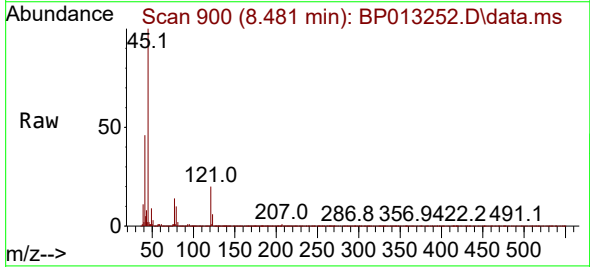
Instrument :
 BNA_P
 ClientSampleId :

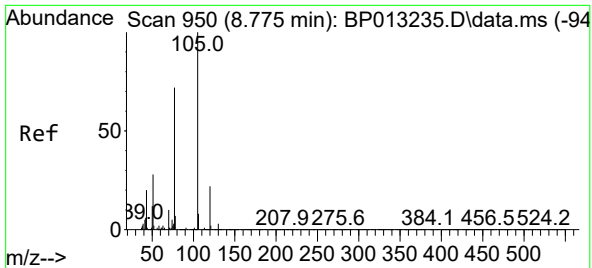
Tgt Ion:108 Resp: 847619
 Ion Ratio Lower Upper
 108 100
 107 88.5 69.1 103.7



#14
 2,2'-oxybis(1-Chloropropane)
 Concen: 22.982 ng/ul
 RT: 8.481 min Scan# 900
 Delta R.T. 0.006 min
 Lab File: BP013252.D
 Acq: 22 Dec 2022 19:34

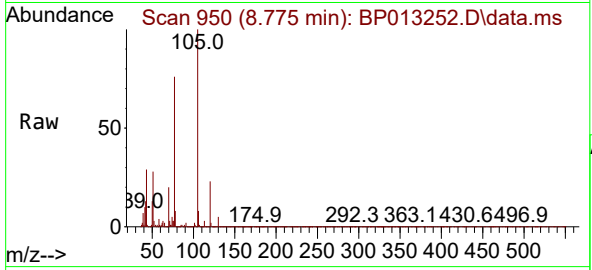
Tgt Ion: 45 Resp: 1333004
 Ion Ratio Lower Upper
 45 100
 77 13.7 11.0 16.6
 79 10.4 9.3 13.9





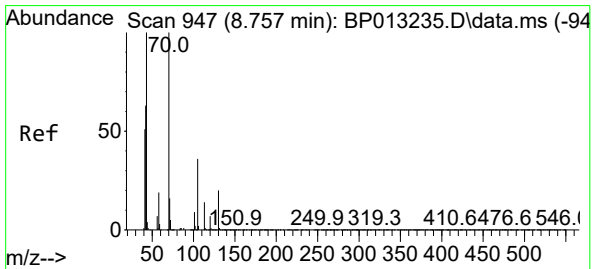
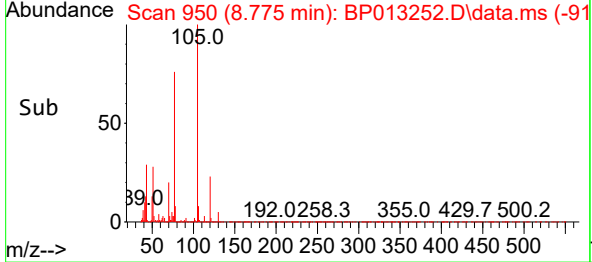
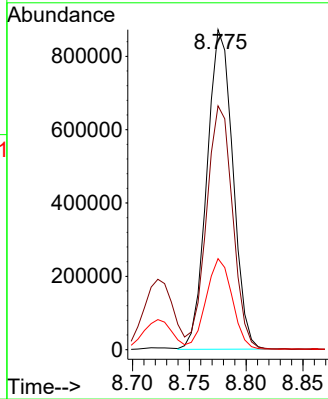
#16
 Acetophenone
 Concen: 21.654 ng/ul
 RT: 8.775 min Scan# 911
 Delta R.T. -0.006 min
 Lab File: BP013252.D
 Acq: 22 Dec 2022 19:34

Instrument :
 BNA_P
 ClientSampleId :

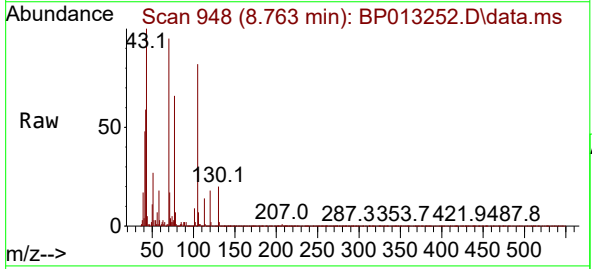


Tgt Ion: 105 Resp: 1385701

Ion	Ratio	Lower	Upper
105	100		
77	76.2	59.3	88.9
51	28.4	19.6	29.4

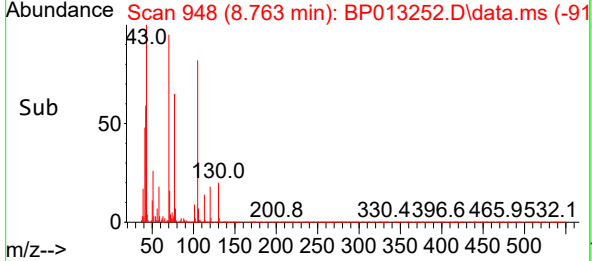
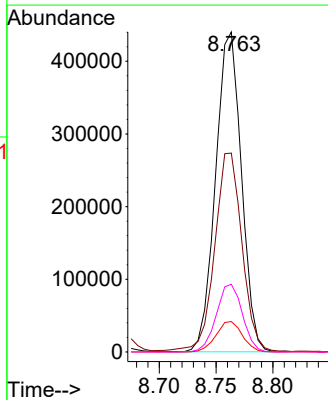


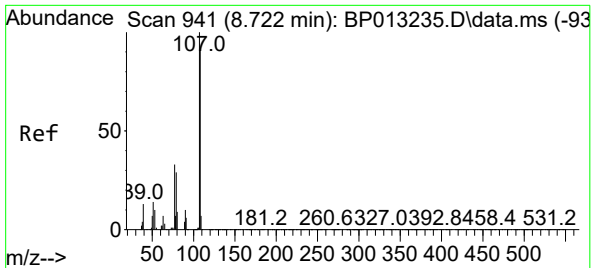
#17
 N-Nitroso-di-n-propylamine
 Concen: 21.615 ng/ul
 RT: 8.763 min Scan# 948
 Delta R.T. 0.000 min
 Lab File: BP013252.D
 Acq: 22 Dec 2022 19:34



Tgt Ion: 70 Resp: 695577

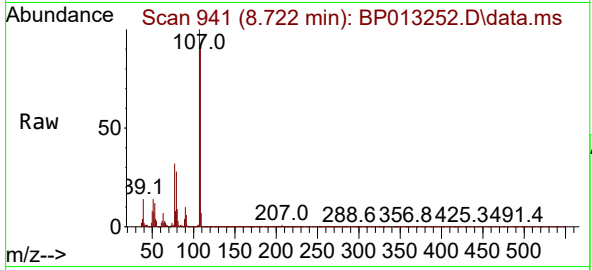
Ion	Ratio	Lower	Upper
70	100		
42	62.1	45.5	68.3
101	9.5	7.9	11.9
130	21.2	17.4	26.2



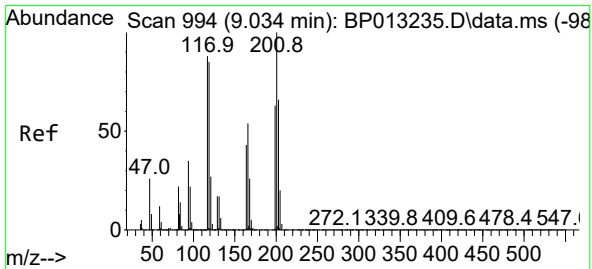
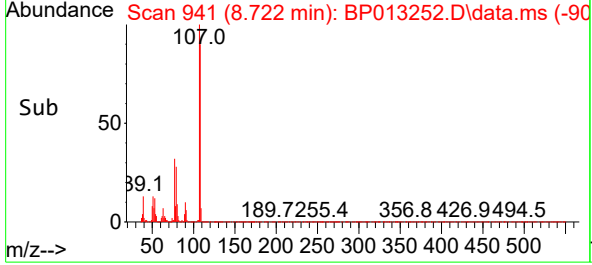
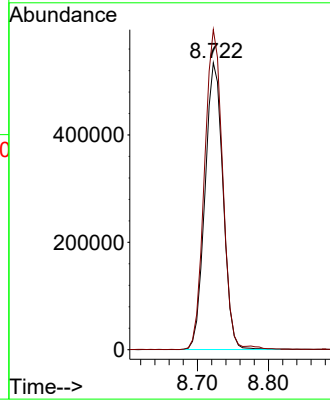


#18
 4-Methylphenol
 Concen: 21.235 ng/ul
 RT: 8.722 min Scan# 941
 Delta R.T. 0.000 min
 Lab File: BP013252.D
 Acq: 22 Dec 2022 19:34

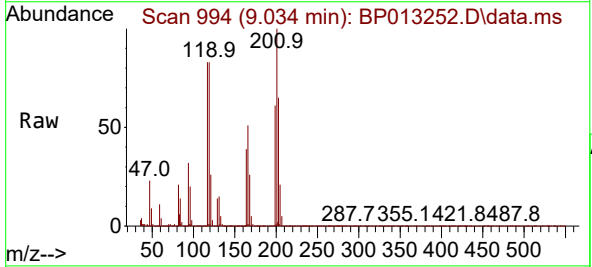
Instrument :
 BNA_P
 ClientSampleId :



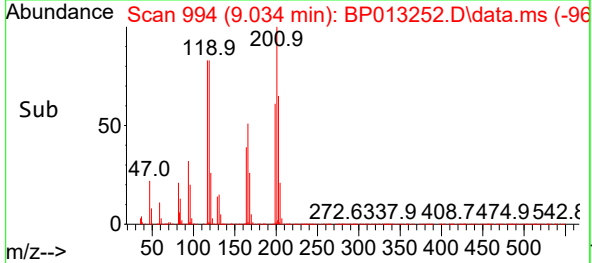
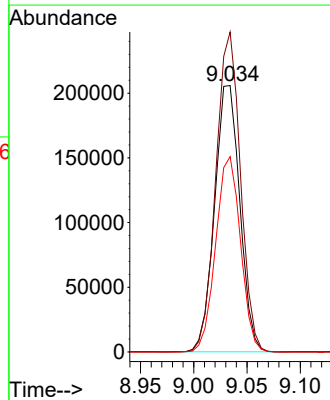
Tgt Ion:108 Resp: 944382
 Ion Ratio Lower Upper
 108 100
 107 111.6 87.4 131.2

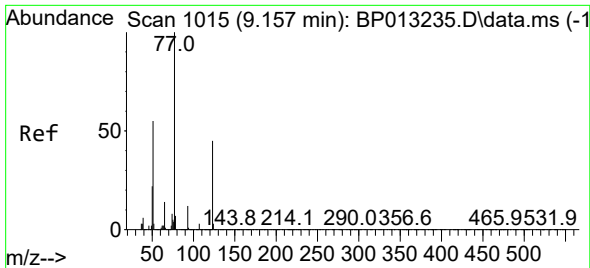


#19
 Hexachloroethane
 Concen: 20.636 ng/ul
 RT: 9.034 min Scan# 994
 Delta R.T. 0.000 min
 Lab File: BP013252.D
 Acq: 22 Dec 2022 19:34



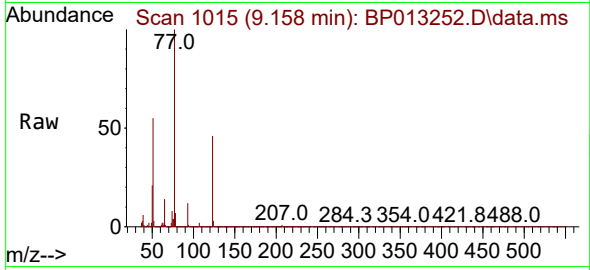
Tgt Ion:117 Resp: 339078
 Ion Ratio Lower Upper
 117 100
 201 120.1 93.7 140.5
 199 73.3 58.6 88.0



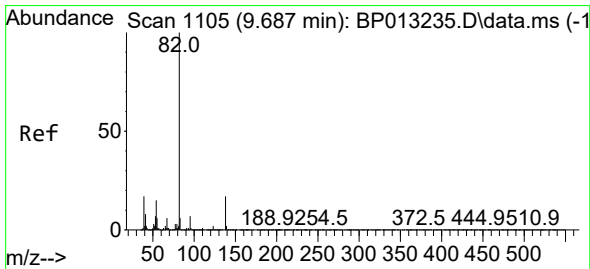
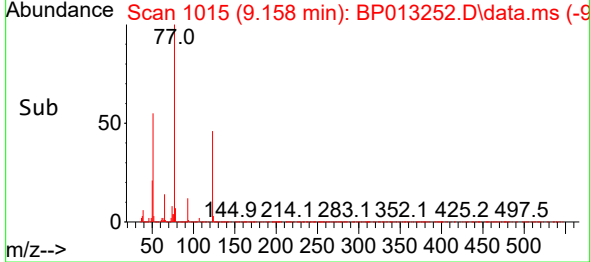
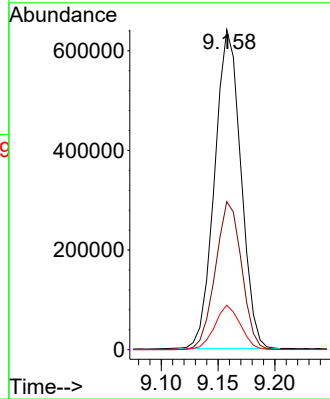


#22
 Nitrobenzene
 Concen: 21.939 ng/u1
 RT: 9.158 min Scan# 1015
 Delta R.T. -0.006 min
 Lab File: BP013252.D
 Acq: 22 Dec 2022 19:34

Instrument :
 BNA_P
 ClientSampleId :

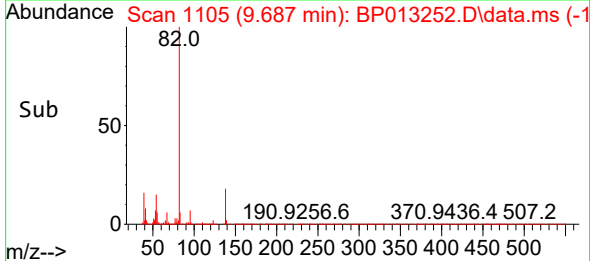
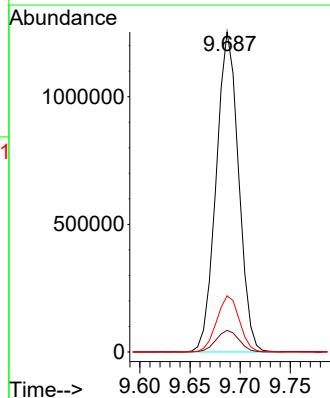
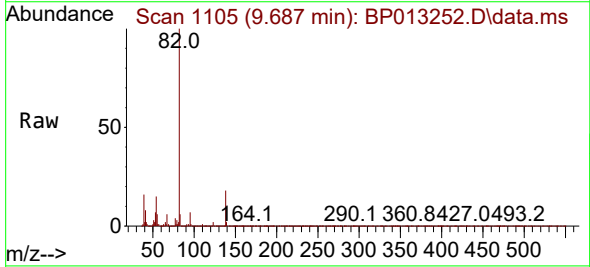


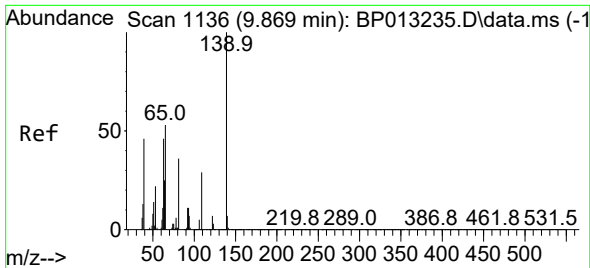
Tgt Ion: 77 Resp: 1028934
 Ion Ratio Lower Upper
 77 100
 123 46.2 38.3 57.5
 65 13.9 10.3 15.5



#23
 Isophorone
 Concen: 20.508 ng/u1
 RT: 9.687 min Scan# 1105
 Delta R.T. 0.000 min
 Lab File: BP013252.D
 Acq: 22 Dec 2022 19:34

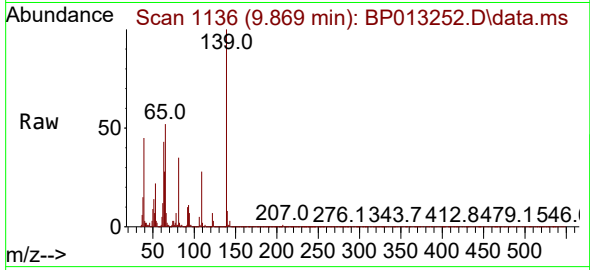
Tgt Ion: 82 Resp: 1944835
 Ion Ratio Lower Upper
 82 100
 95 6.7 5.4 8.2
 138 17.6 15.3 22.9



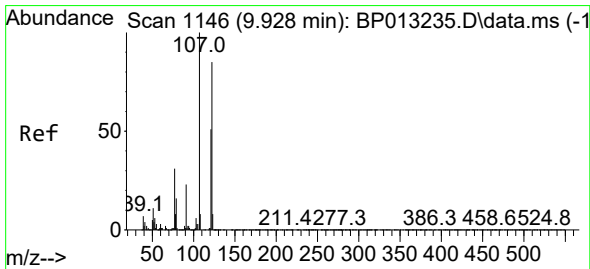
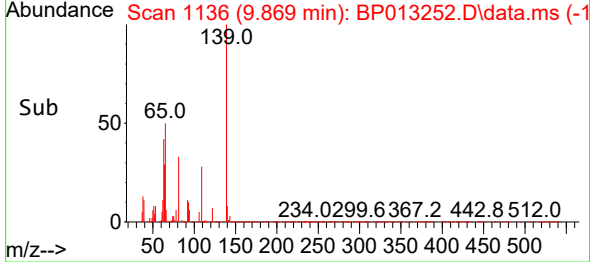
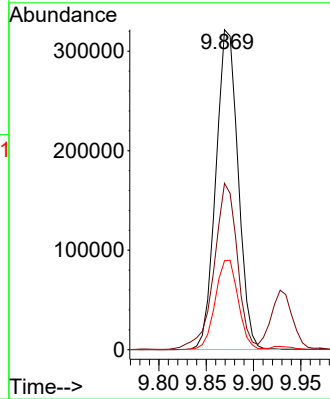


#25
 2-Nitrophenol
 Concen: 21.594 ng/ul
 RT: 9.869 min Scan# 1136
 Delta R.T. -0.006 min
 Lab File: BP013252.D
 Acq: 22 Dec 2022 19:34

Instrument :
 BNA_P
 ClientSampleId :

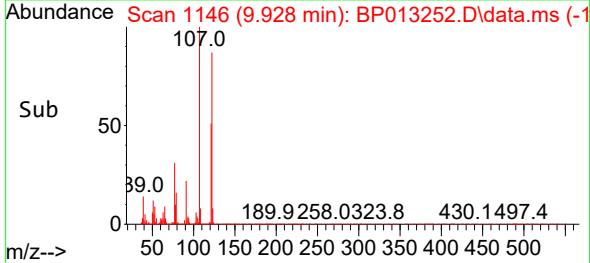
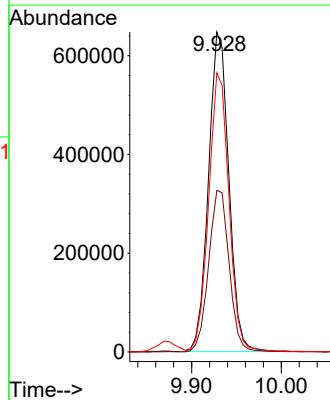
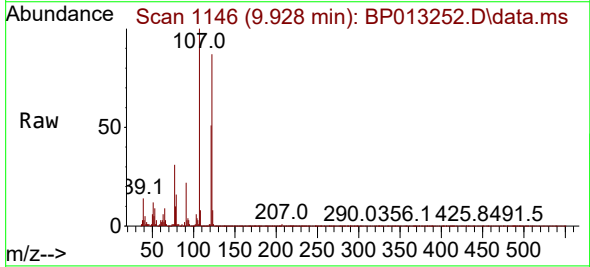


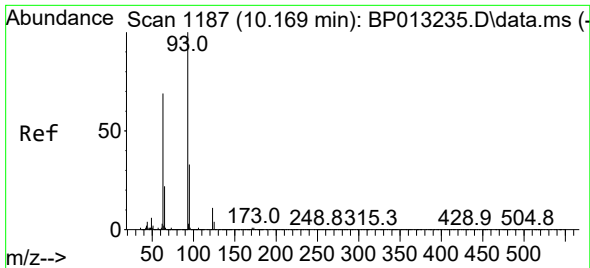
Tgt Ion:139 Resp: 526462
 Ion Ratio Lower Upper
 139 100
 65 52.0 36.6 54.8
 109 27.8 21.6 32.4



#26
 2,4-Dimethylphenol
 Concen: 21.426 ng/ul
 RT: 9.928 min Scan# 1146
 Delta R.T. -0.006 min
 Lab File: BP013252.D
 Acq: 22 Dec 2022 19:34

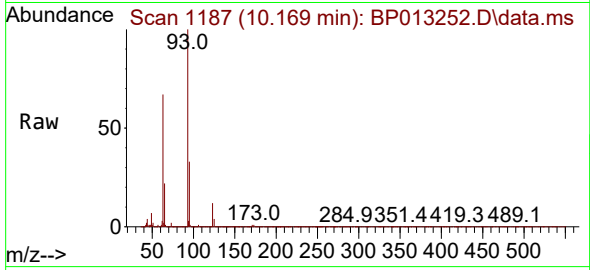
Tgt Ion:107 Resp: 1019209
 Ion Ratio Lower Upper
 107 100
 121 50.5 41.8 62.6
 122 87.2 72.6 108.8





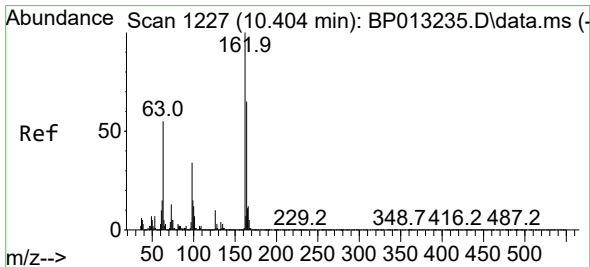
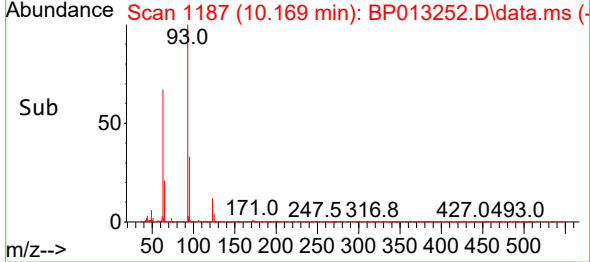
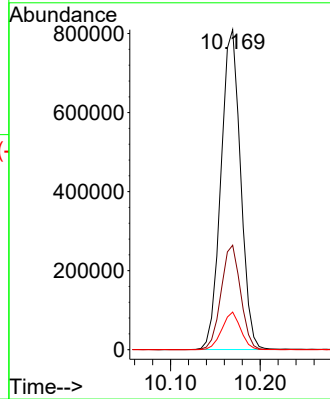
#27
 Bis(2-Chloroethoxy)methane
 Concen: 20.274 ng/ul
 RT: 10.169 min Scan# 1187
 Delta R.T. 0.000 min
 Lab File: BP013252.D
 Acq: 22 Dec 2022 19:34

Instrument :
 BNA_P
 ClientSampleId :

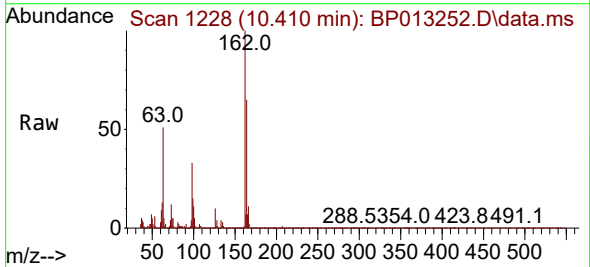


Tgt Ion: 93 Resp: 1229371

Ion	Ratio	Lower	Upper
93	100		
95	32.7	26.0	39.0
123	11.7	9.2	13.8

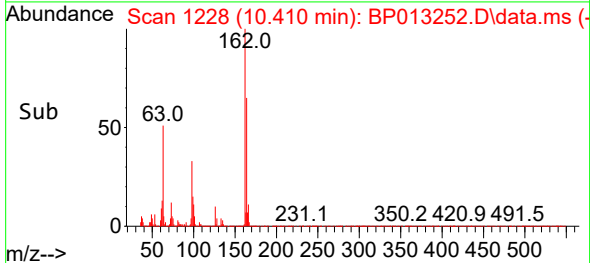
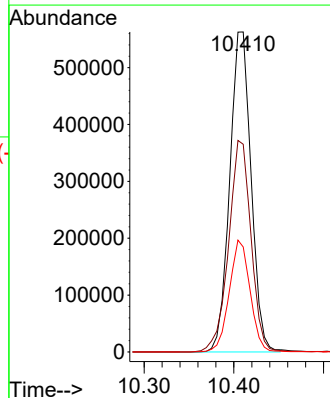


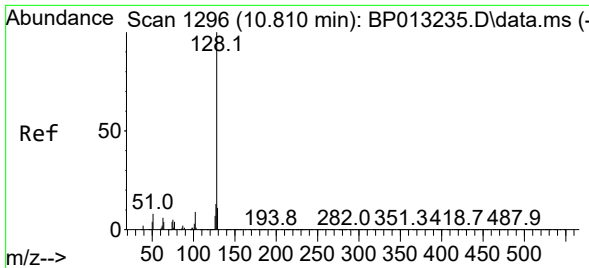
#29
 2,4-Dichlorophenol
 Concen: 21.689 ng/ul
 RT: 10.410 min Scan# 1228
 Delta R.T. 0.000 min
 Lab File: BP013252.D
 Acq: 22 Dec 2022 19:34



Tgt Ion: 162 Resp: 928539

Ion	Ratio	Lower	Upper
162	100		
164	64.9	52.5	78.7
98	32.8	26.6	39.8



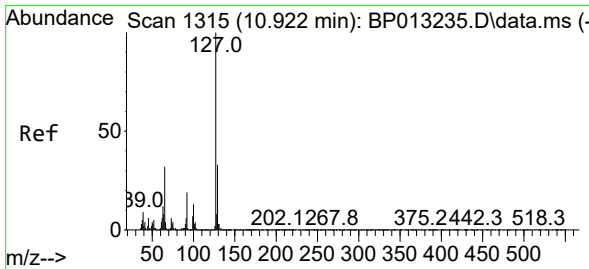
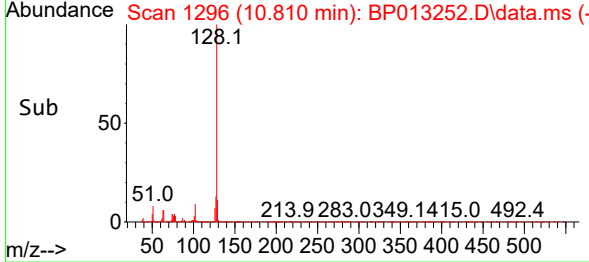
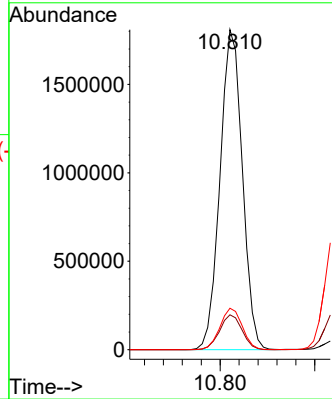
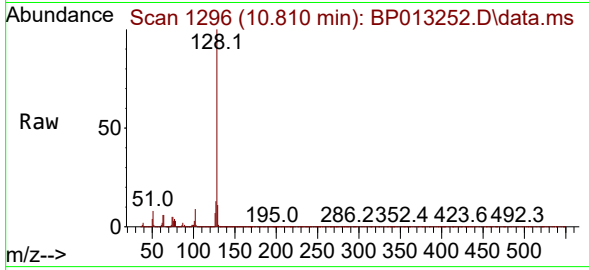


#30
 Naphthalene
 Concen: 20.823 ng/u1
 RT: 10.810 min Scan# 1296
 Delta R.T. -0.006 min
 Lab File: BP013252.D
 Acq: 22 Dec 2022 19:34

Instrument :
 BNA_P
 ClientSampleId :

Tgt Ion:128 Resp: 2962441

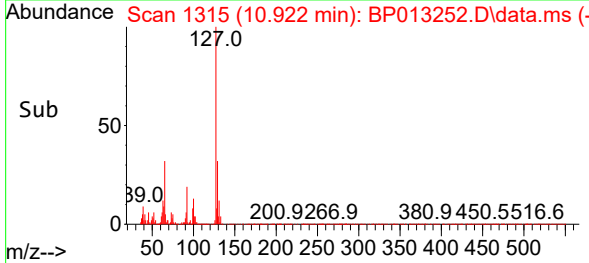
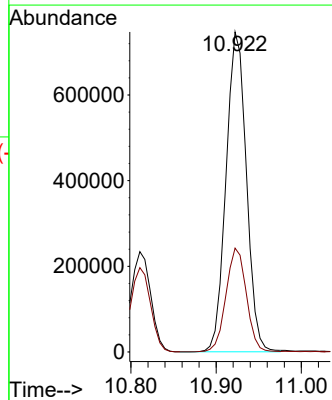
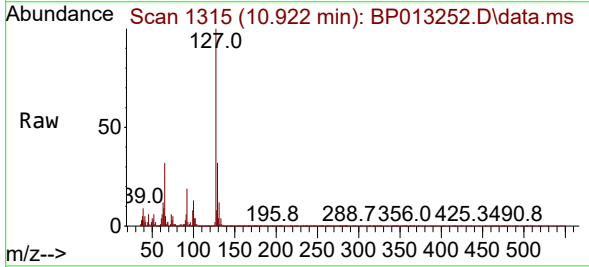
Ion	Ratio	Lower	Upper
128	100		
129	10.9	8.7	13.1
127	12.9	10.4	15.6

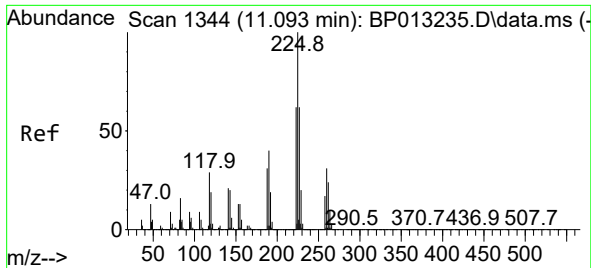


#32
 4-Chloroaniline
 Concen: 20.280 ng/u1
 RT: 10.922 min Scan# 1315
 Delta R.T. 0.000 min
 Lab File: BP013252.D
 Acq: 22 Dec 2022 19:34

Tgt Ion:127 Resp: 1238221

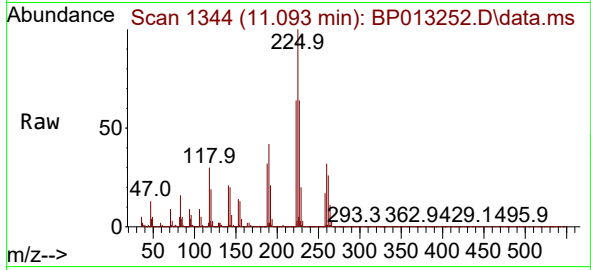
Ion	Ratio	Lower	Upper
127	100		
129	32.5	25.6	38.4



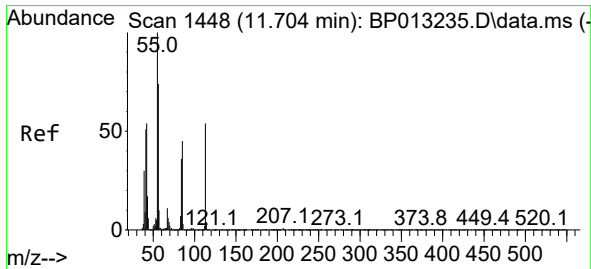
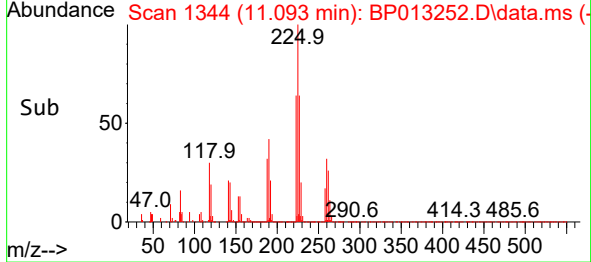
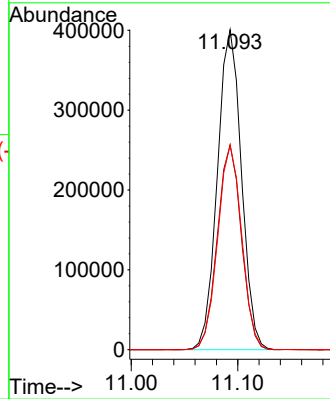


#33
 Hexachlorobutadiene
 Concen: 21.374 ng/uI
 RT: 11.093 min Scan# 11
 Delta R.T. 0.000 min
 Lab File: BP013252.D
 Acq: 22 Dec 2022 19:34

Instrument :
 BNA_P
 ClientSampleId :

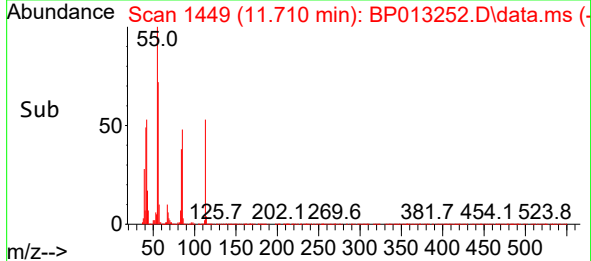
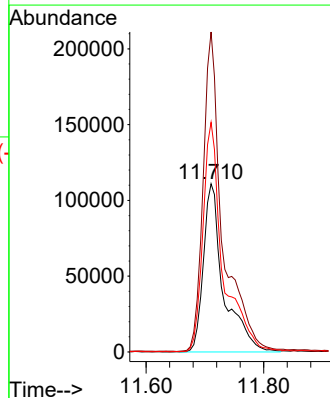
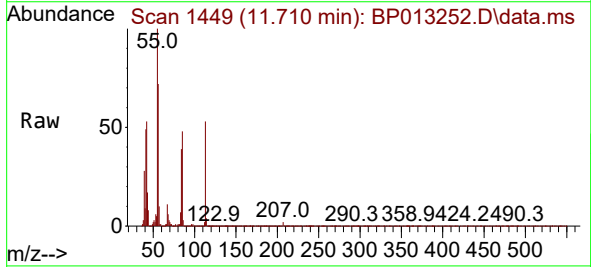


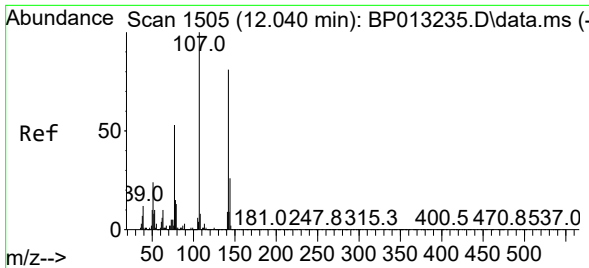
Tgt Ion:225 Resp: 628283
 Ion Ratio Lower Upper
 225 100
 223 64.0 49.2 73.8
 227 64.0 50.2 75.2



#34
 Caprolactam
 Concen: 18.233 ng/uI
 RT: 11.710 min Scan# 1449
 Delta R.T. 0.000 min
 Lab File: BP013252.D
 Acq: 22 Dec 2022 19:34

Tgt Ion:113 Resp: 266157
 Ion Ratio Lower Upper
 113 100
 55 190.4 141.9 212.9
 56 136.6 99.6 149.4



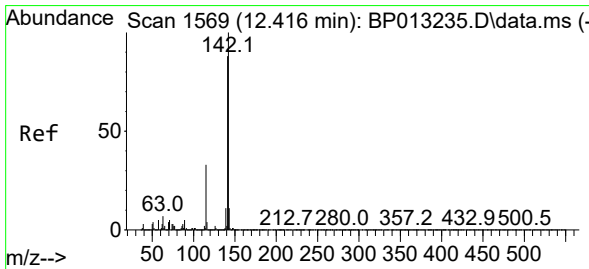
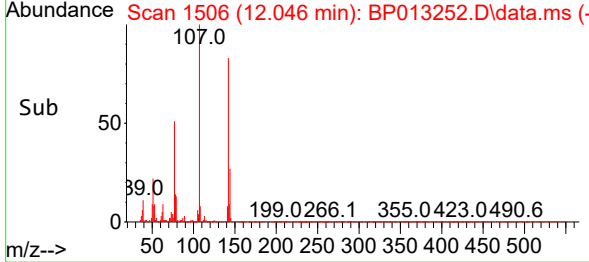
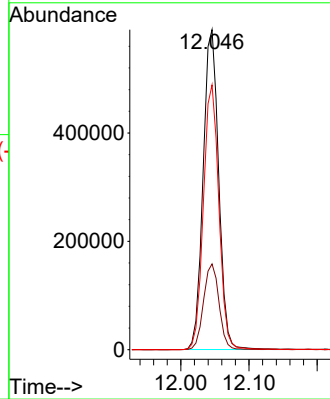
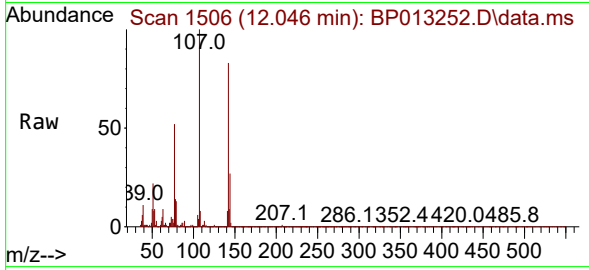


#35
 4-Chloro-3-methylphenol
 Concen: 21.428 ng/ul
 RT: 12.046 min Scan# 1506
 Delta R.T. 0.000 min
 Lab File: BP013252.D
 Acq: 22 Dec 2022 19:34

Instrument : BNA_P
 ClientSampleId :

Tgt Ion:107 Resp: 936182

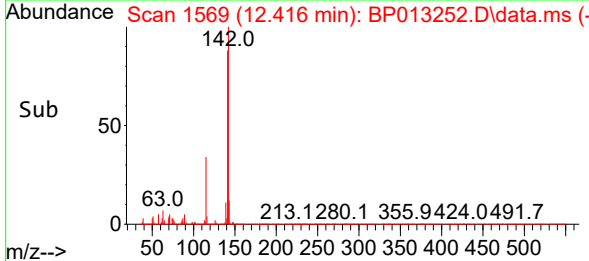
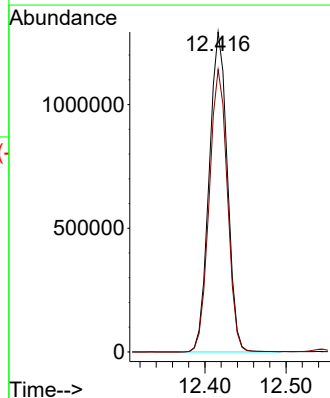
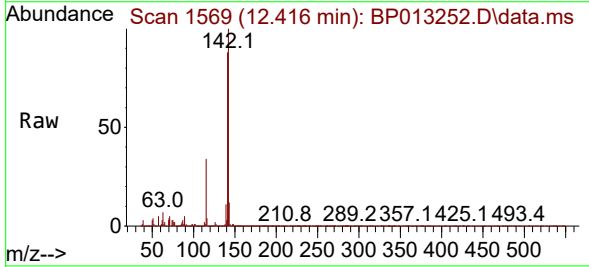
Ion	Ratio	Lower	Upper
107	100		
144	26.8	21.4	32.2
142	82.8	65.8	98.6

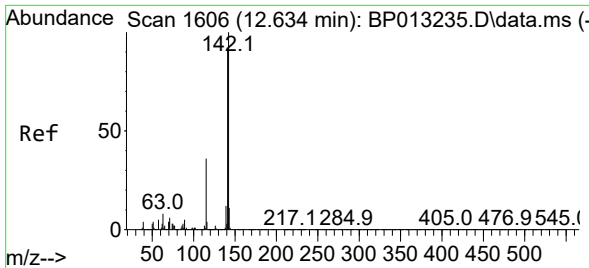


#36
 2-Methylnaphthalene
 Concen: 20.576 ng/ul
 RT: 12.416 min Scan# 1569
 Delta R.T. 0.000 min
 Lab File: BP013252.D
 Acq: 22 Dec 2022 19:34

Tgt Ion:142 Resp: 2008202

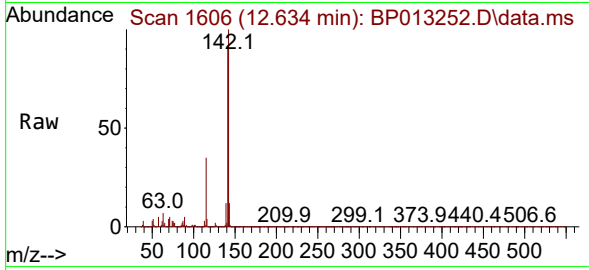
Ion	Ratio	Lower	Upper
142	100		
141	88.2	70.8	106.2



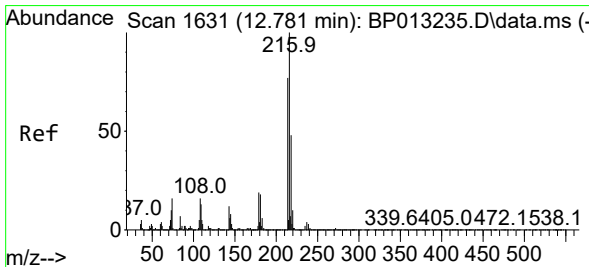
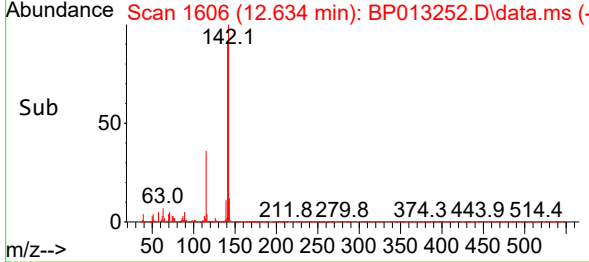
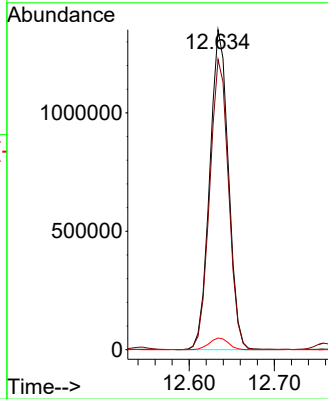


#37
 1-Methylnaphthalene
 Concen: 20.537 ng/ul
 RT: 12.634 min Scan# 1606
 Delta R.T. 0.000 min
 Lab File: BP013252.D
 Acq: 22 Dec 2022 19:34

Instrument : BNA_P
 ClientSampleId :

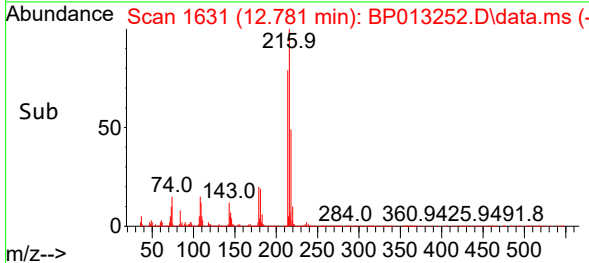
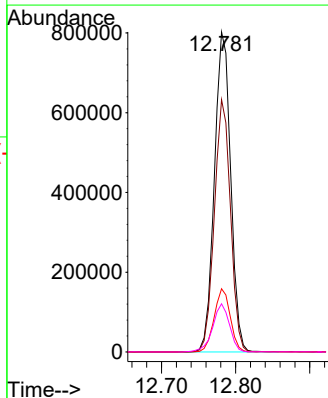
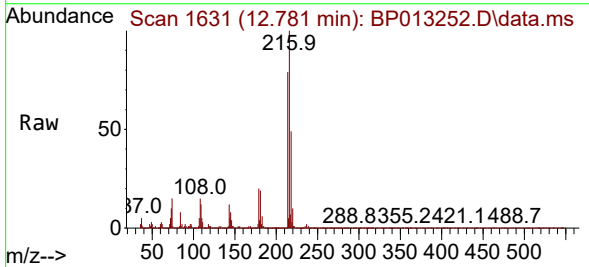


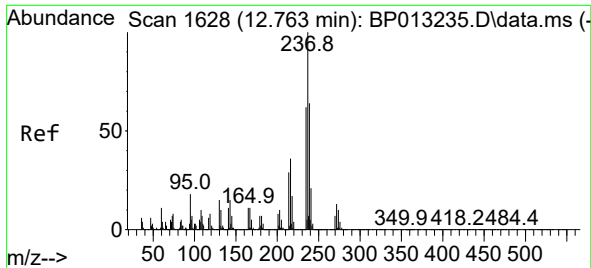
Tgt Ion:142 Resp: 2061332
 Ion Ratio Lower Upper
 142 100
 141 90.7 72.7 109.1
 116 3.7 2.7 4.1



#39
 1,2,4,5-Tetrachlorobenzene
 Concen: 21.986 ng/ul
 RT: 12.781 min Scan# 1631
 Delta R.T. -0.006 min
 Lab File: BP013252.D
 Acq: 22 Dec 2022 19:34

Tgt Ion:216 Resp: 1222974
 Ion Ratio Lower Upper
 216 100
 214 78.9 61.9 92.9
 179 19.7 15.0 22.6
 108 15.0 11.0 16.4

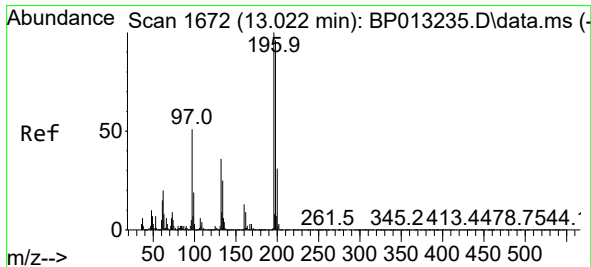
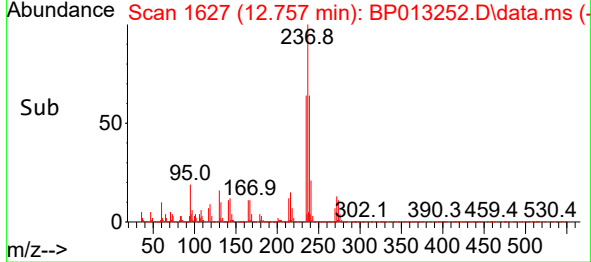
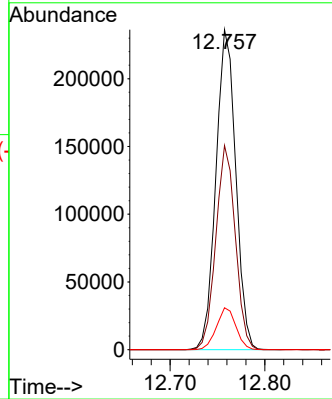
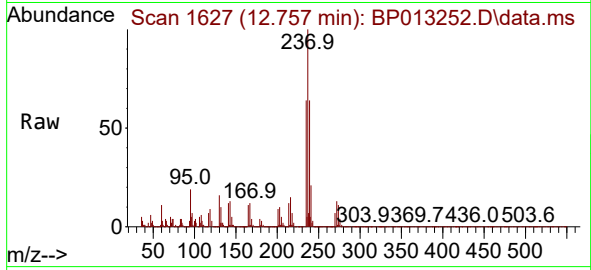




#40
 Hexachlorocyclopentadiene
 Concen: 9.497 ng/ul
 RT: 12.757 min Scan# 1627
 Delta R.T. -0.006 min
 Lab File: BP013252.D
 Acq: 22 Dec 2022 19:34

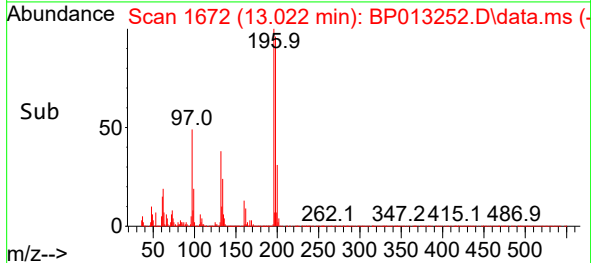
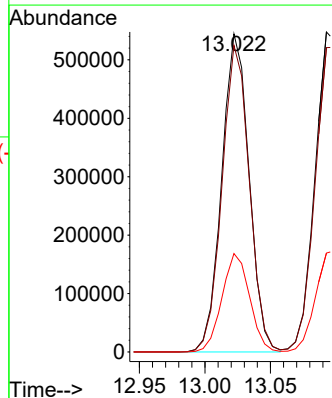
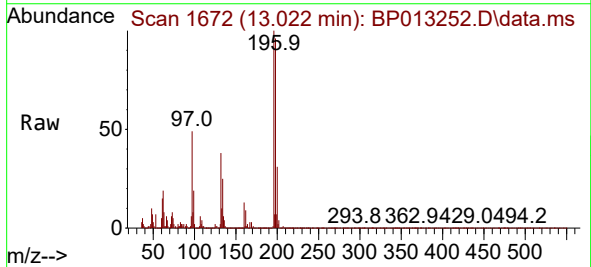
Instrument :
 BNA_P
 ClientSampleId :

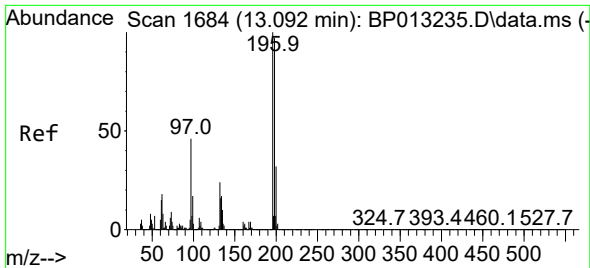
Tgt Ion:237 Resp: 343792
 Ion Ratio Lower Upper
 237 100
 235 63.8 49.7 74.5
 272 13.1 10.8 16.2



#41
 2,4,6-Trichlorophenol
 Concen: 22.054 ng/ul
 RT: 13.022 min Scan# 1672
 Delta R.T. 0.000 min
 Lab File: BP013252.D
 Acq: 22 Dec 2022 19:34

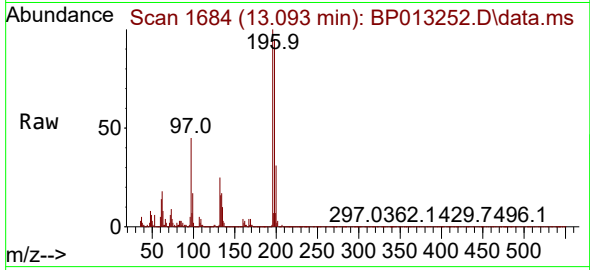
Tgt Ion:196 Resp: 788403
 Ion Ratio Lower Upper
 196 100
 198 96.4 77.0 115.6
 200 31.0 25.3 37.9



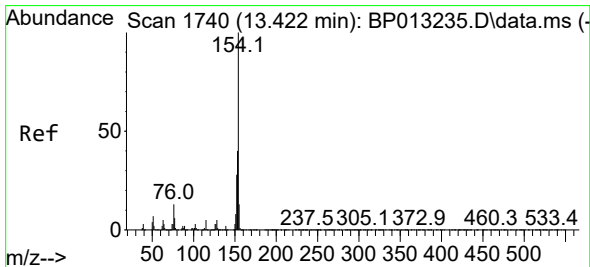
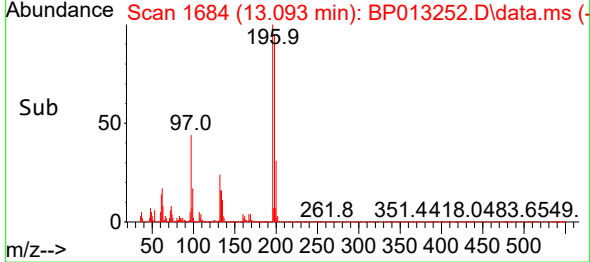
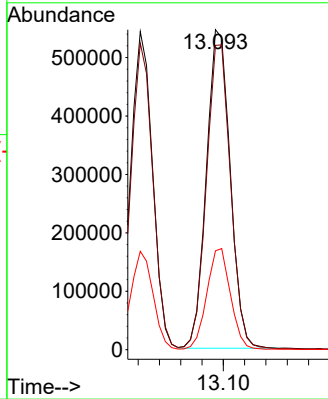


#42
 2,4,5-Trichlorophenol
 Concen: 22.072 ng/ul
 RT: 13.093 min Scan# 1684
 Delta R.T. -0.006 min
 Lab File: BP013252.D
 Acq: 22 Dec 2022 19:34

Instrument : BNA_P
 ClientSampleId :

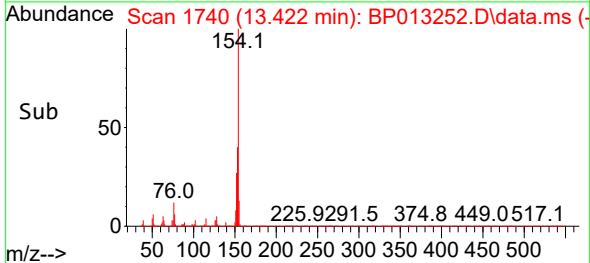
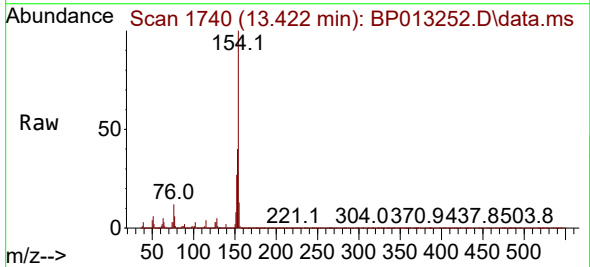
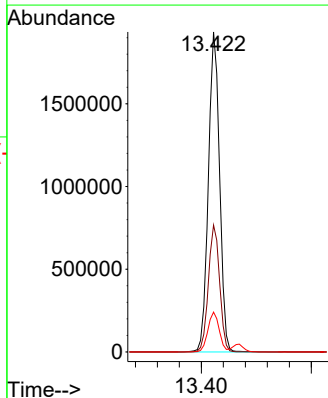


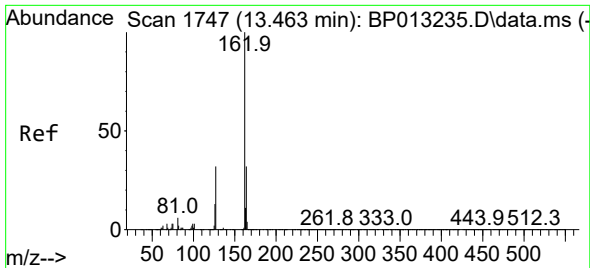
Tgt Ion:196 Resp: 847558
 Ion Ratio Lower Upper
 196 100
 198 95.1 77.1 115.7
 200 30.9 25.4 38.2



#43
 1,1'-Biphenyl
 Concen: 21.047 ng/ul
 RT: 13.422 min Scan# 1740
 Delta R.T. 0.000 min
 Lab File: BP013252.D
 Acq: 22 Dec 2022 19:34

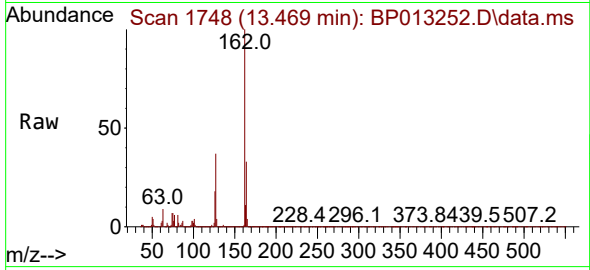
Tgt Ion:154 Resp: 2730649
 Ion Ratio Lower Upper
 154 100
 153 39.6 31.5 47.3
 76 12.4 9.6 14.4





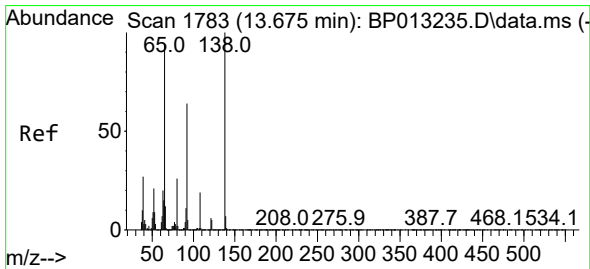
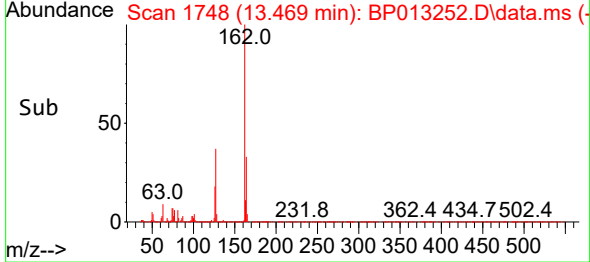
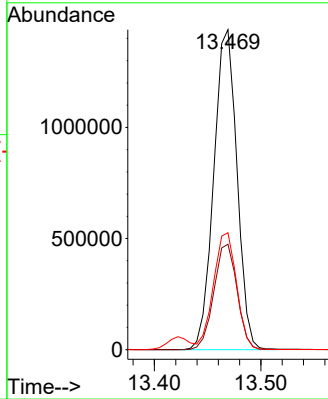
#44
 2-Chloronaphthalene
 Concen: 21.330 ng/ul
 RT: 13.469 min Scan# 1748
 Delta R.T. 0.000 min
 Lab File: BP013252.D
 Acq: 22 Dec 2022 19:34

Instrument : BNA_P
 ClientSampleId :



Tgt Ion: 162 Resp: 2178055

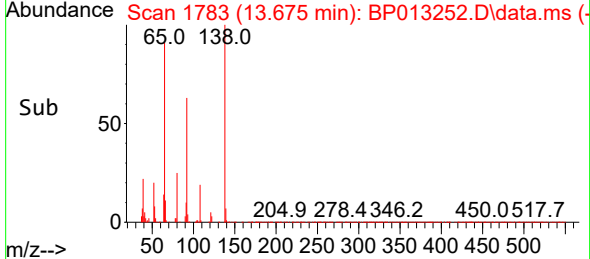
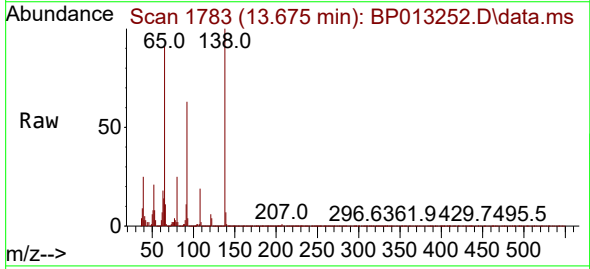
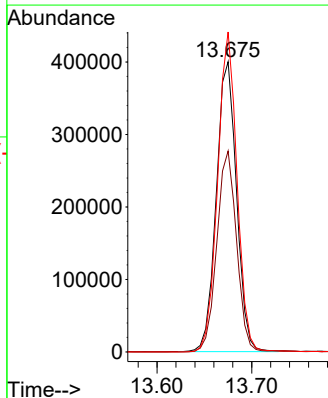
Ion	Ratio	Lower	Upper
162	100		
164	32.9	26.3	39.5
127	36.5	29.3	43.9

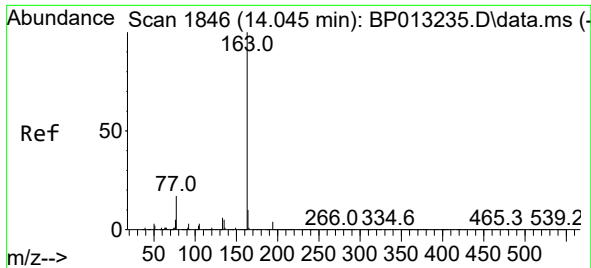


#45
 2-Nitroaniline
 Concen: 23.988 ng/ul
 RT: 13.675 min Scan# 1783
 Delta R.T. 0.000 min
 Lab File: BP013252.D
 Acq: 22 Dec 2022 19:34

Tgt Ion: 65 Resp: 593869

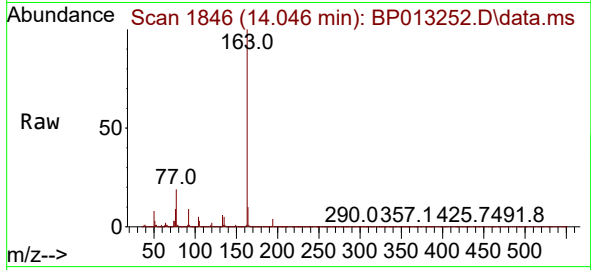
Ion	Ratio	Lower	Upper
65	100		
92	69.2	56.4	84.6
138	110.2	90.3	135.5



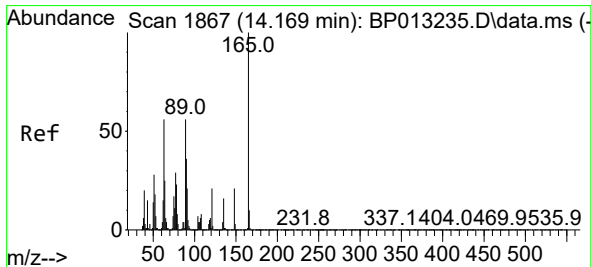
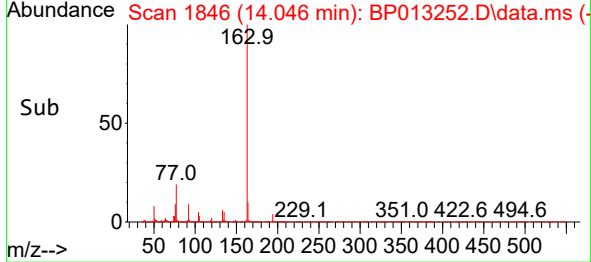
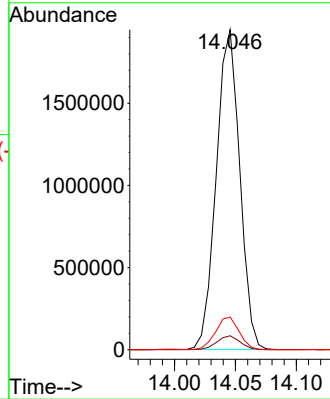


#47
 Dimethylphthalate
 Concen: 19.831 ng/ul
 RT: 14.046 min Scan# 1846
 Delta R.T. 0.000 min
 Lab File: BP013252.D
 Acq: 22 Dec 2022 19:34

Instrument :
 BNA_P
 ClientSampleId :

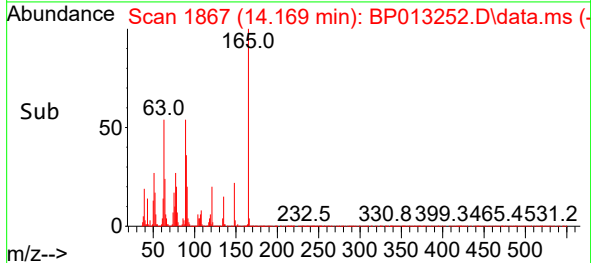
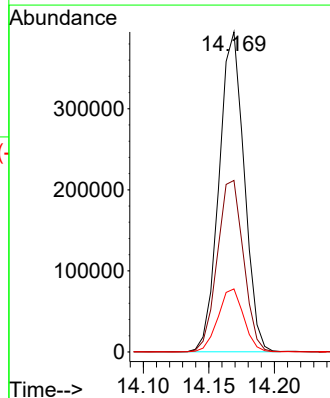
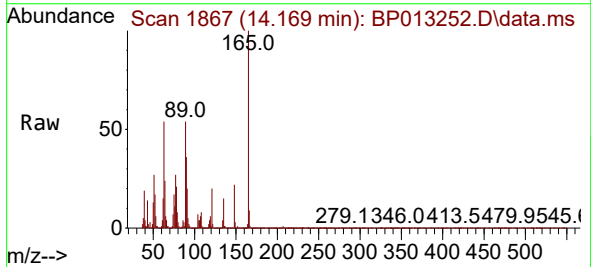


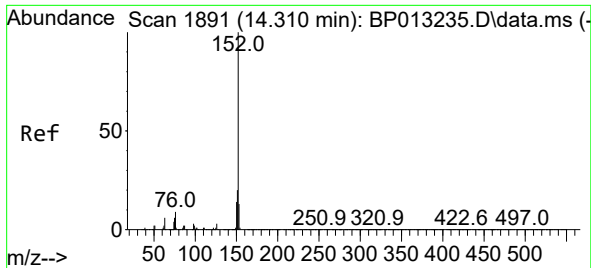
Tgt Ion:163 Resp: 2609575
 Ion Ratio Lower Upper
 163 100
 194 4.4 3.4 5.0
 164 10.2 8.3 12.5



#48
 2,6-Dinitrotoluene
 Concen: 21.483 ng/ul
 RT: 14.169 min Scan# 1867
 Delta R.T. 0.000 min
 Lab File: BP013252.D
 Acq: 22 Dec 2022 19:34

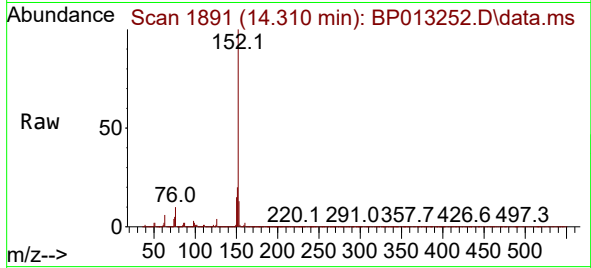
Tgt Ion:165 Resp: 525368
 Ion Ratio Lower Upper
 165 100
 89 53.6 43.0 64.4
 121 19.7 16.1 24.1



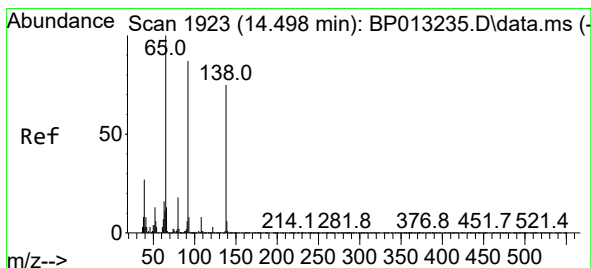
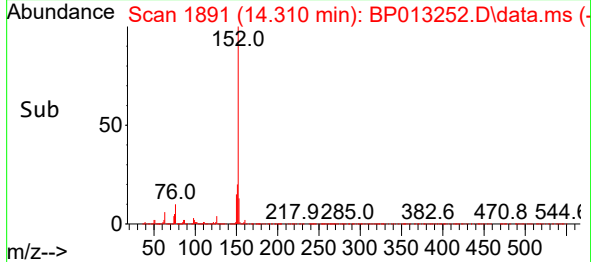
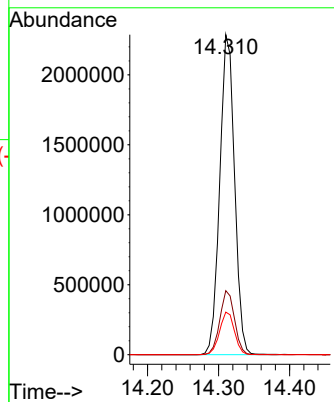


#50
 Acenaphthylene
 Concen: 21.021 ng/ul
 RT: 14.310 min Scan# 1891
 Delta R.T. -0.006 min
 Lab File: BP013252.D
 Acq: 22 Dec 2022 19:34

Instrument :
 BNA_P
 ClientSampleId :

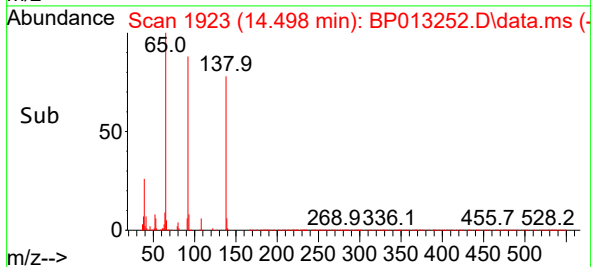
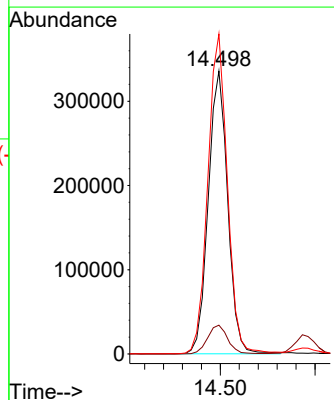
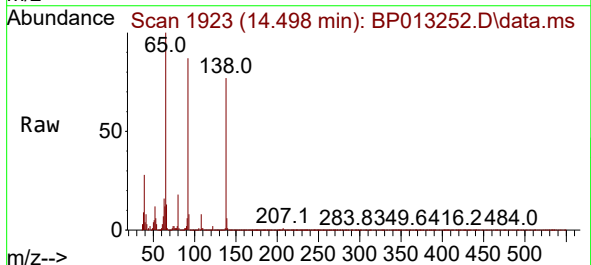


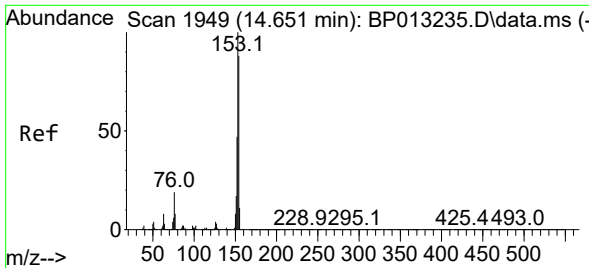
Tgt Ion:152 Resp: 3296941
 Ion Ratio Lower Upper
 152 100
 151 20.0 15.8 23.6
 153 13.3 10.6 16.0



#51
 3-Nitroaniline
 Concen: 20.734 ng/ul
 RT: 14.498 min Scan# 1923
 Delta R.T. 0.000 min
 Lab File: BP013252.D
 Acq: 22 Dec 2022 19:34

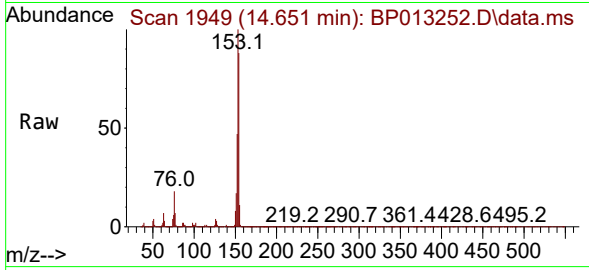
Tgt Ion:138 Resp: 478783
 Ion Ratio Lower Upper
 138 100
 108 10.2 8.6 13.0
 92 113.1 88.4 132.6





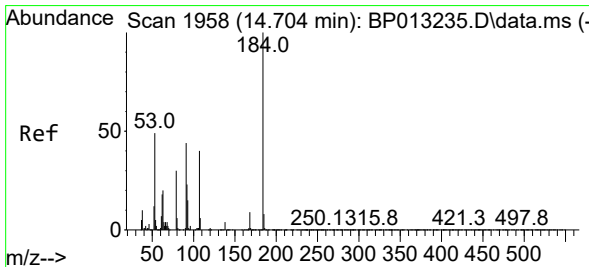
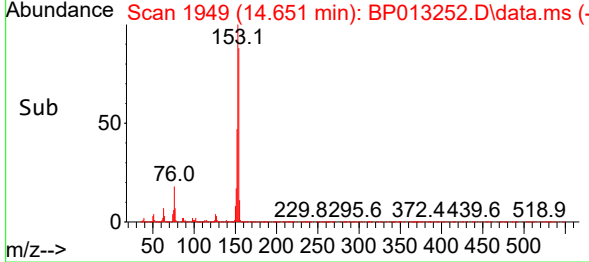
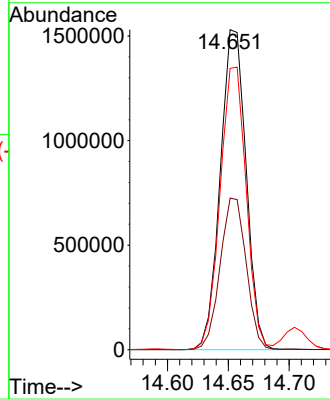
#52
 Acenaphthene
 Concen: 20.803 ng/ul
 RT: 14.651 min Scan# 1949
 Delta R.T. -0.006 min
 Lab File: BP013252.D
 Acq: 22 Dec 2022 19:34

Instrument :
 BNA_P
 ClientSampleId :

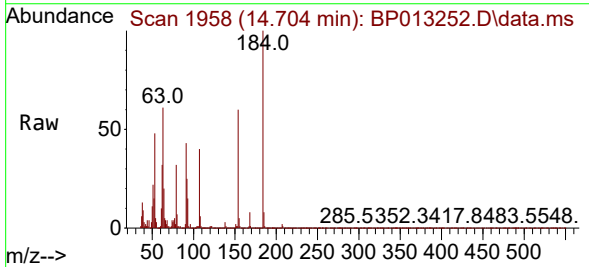


Tgt Ion:153 Resp: 2261056

Ion	Ratio	Lower	Upper
153	100		
152	47.4	38.2	57.4
154	87.9	70.8	106.2

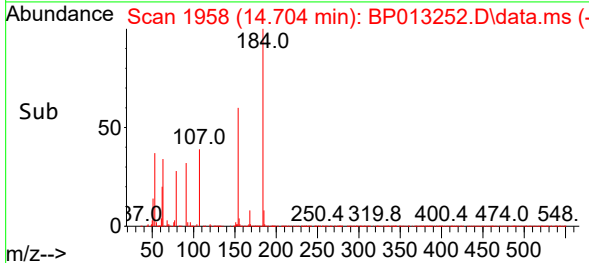
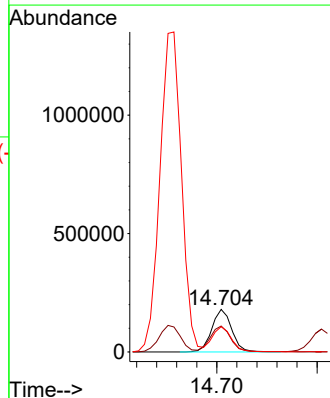


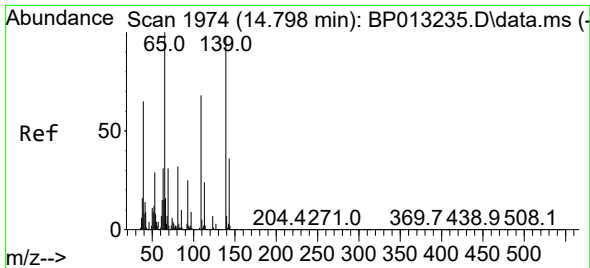
#53
 2,4-Dinitrophenol
 Concen: 14.829 ng/ul
 RT: 14.704 min Scan# 1958
 Delta R.T. 0.000 min
 Lab File: BP013252.D
 Acq: 22 Dec 2022 19:34



Tgt Ion:184 Resp: 247883

Ion	Ratio	Lower	Upper
184	100		
63	61.0	48.4	72.6
154	59.5	45.5	68.3

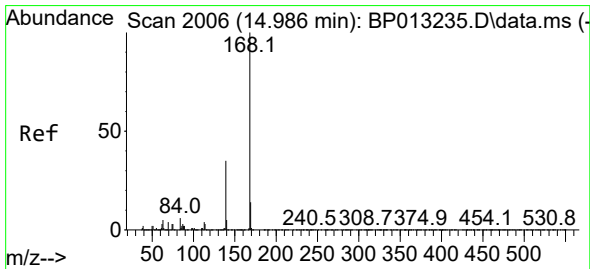
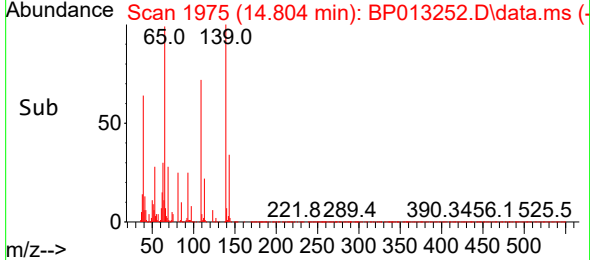
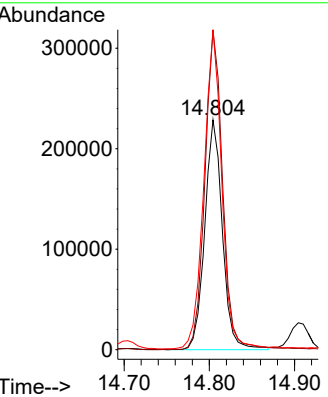
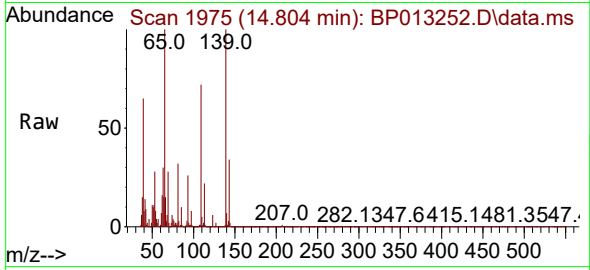




#55
 4-Nitrophenol
 Concen: 20.164 ng/ul
 RT: 14.804 min Scan# 1974
 Delta R.T. 0.000 min
 Lab File: BP013252.D
 Acq: 22 Dec 2022 19:34

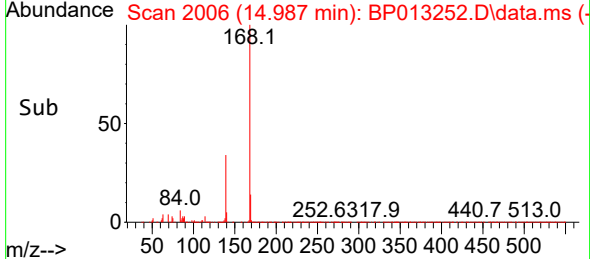
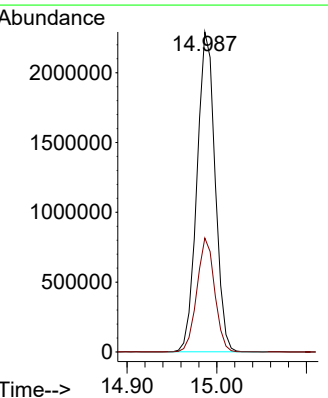
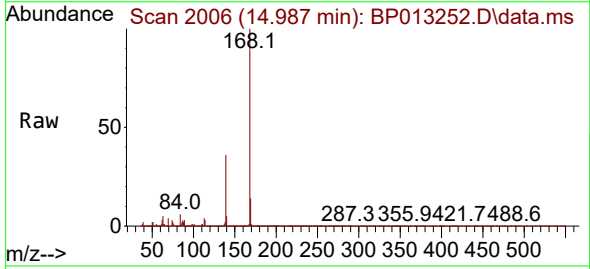
Instrument :
 BNA_P
 ClientSampleId :

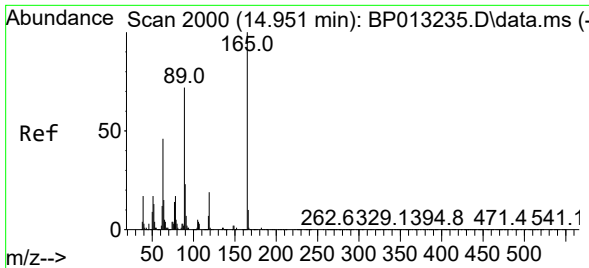
Tgt Ion:109 Resp: 328585
 Ion Ratio Lower Upper
 109 100
 139 139.1 120.8 181.2
 65 139.3 107.9 161.9



#56
 Dibenzofuran
 Concen: 20.726 ng/ul
 RT: 14.987 min Scan# 2006
 Delta R.T. 0.000 min
 Lab File: BP013252.D
 Acq: 22 Dec 2022 19:34

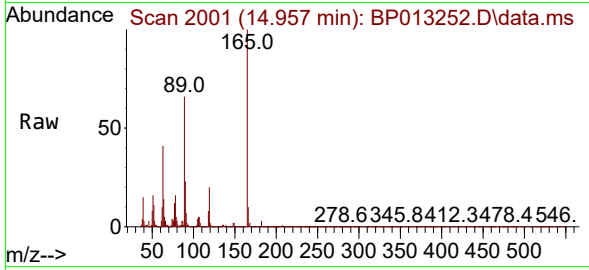
Tgt Ion:168 Resp: 3202755
 Ion Ratio Lower Upper
 168 100
 139 35.6 27.9 41.9



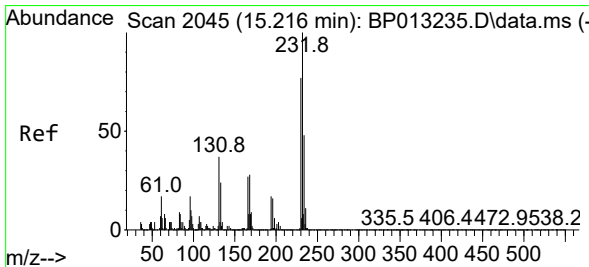
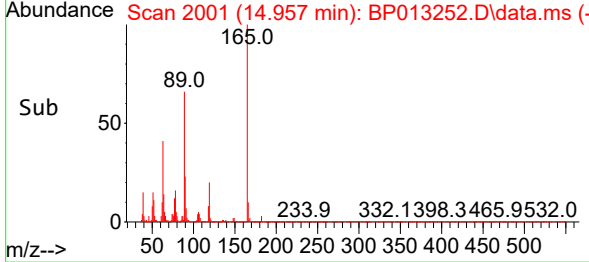
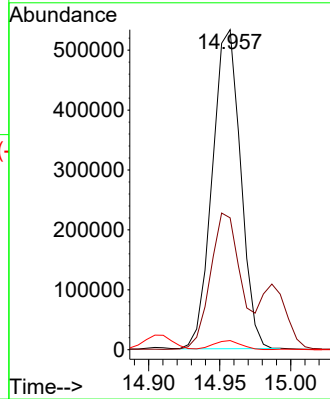


#57
 2,4-Dinitrotoluene
 Concen: 20.793 ng/ul
 RT: 14.957 min Scan# 2001
 Delta R.T. 0.000 min
 Lab File: BP013252.D
 Acq: 22 Dec 2022 19:34

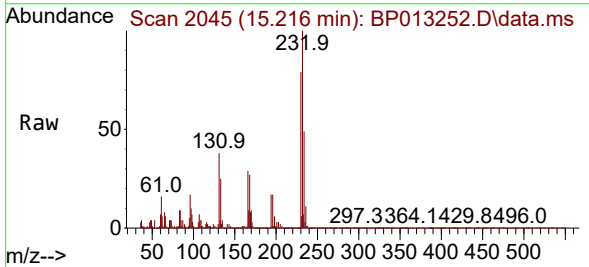
Instrument :
 BNA_P
 ClientSampleId :



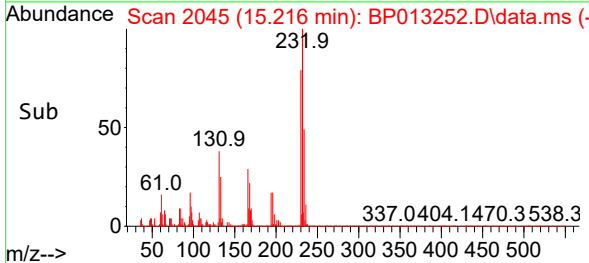
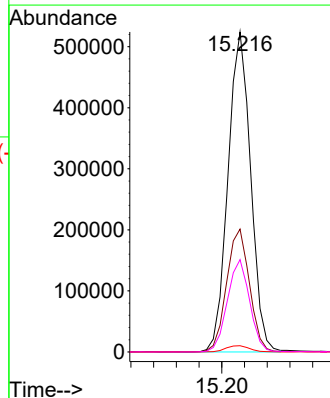
Tgt Ion:165 Resp: 738622
 Ion Ratio Lower Upper
 165 100
 63 41.2 31.8 47.6
 182 2.8 2.1 3.1

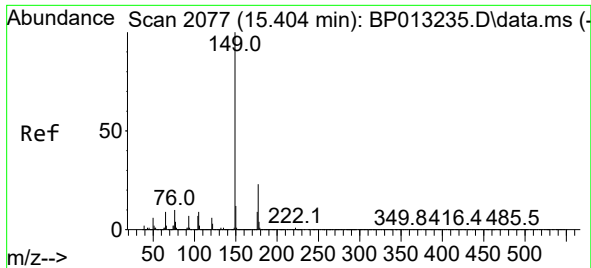


#58
 2,3,4,6-Tetrachlorophenol
 Concen: 20.749 ng/ul
 RT: 15.216 min Scan# 2045
 Delta R.T. 0.000 min
 Lab File: BP013252.D
 Acq: 22 Dec 2022 19:34



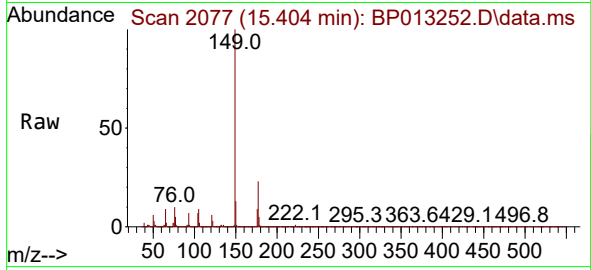
Tgt Ion:232 Resp: 727120
 Ion Ratio Lower Upper
 232 100
 131 38.4 31.8 47.6
 130 1.9 1.8 2.6
 166 28.8 22.9 34.3



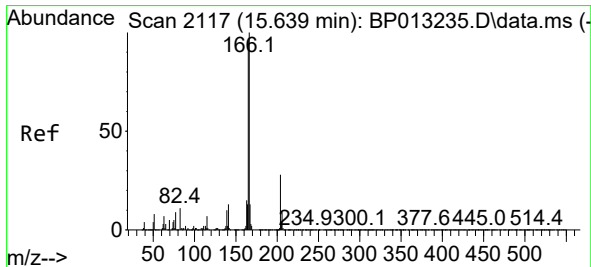
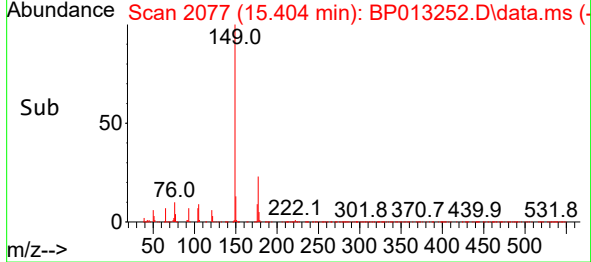
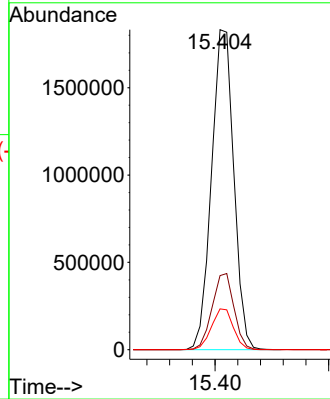


#59
 Diethylphthalate
 Concen: 19.510 ng/uI
 RT: 15.404 min Scan# 2077
 Delta R.T. -0.006 min
 Lab File: BP013252.D
 Acq: 22 Dec 2022 19:34

Instrument :
 BNA_P
 ClientSampleId :

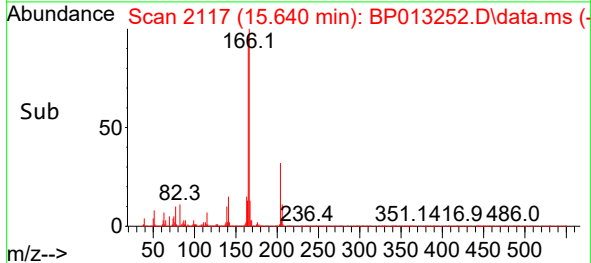
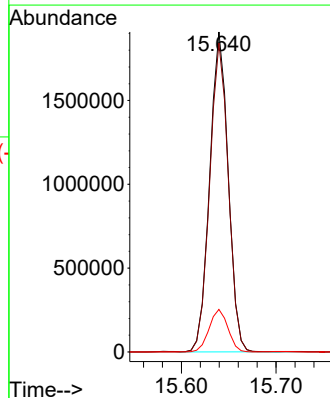
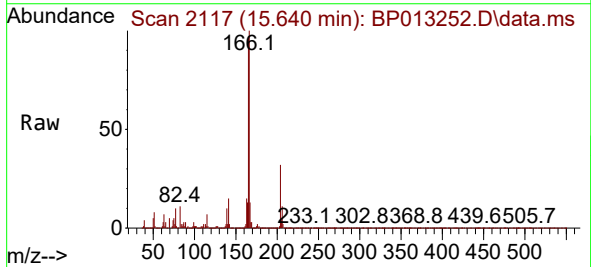


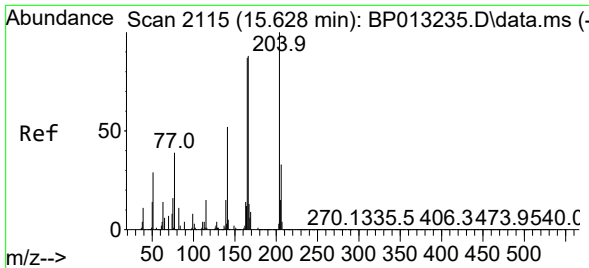
Tgt Ion:149 Resp: 2495756
 Ion Ratio Lower Upper
 149 100
 177 23.1 18.4 27.6
 150 12.8 9.9 14.9



#61
 Fluorene
 Concen: 20.864 ng/uI
 RT: 15.640 min Scan# 2117
 Delta R.T. 0.000 min
 Lab File: BP013252.D
 Acq: 22 Dec 2022 19:34

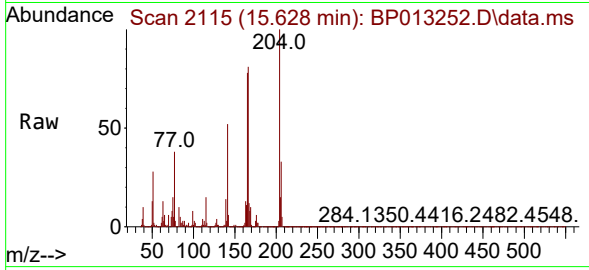
Tgt Ion:166 Resp: 2585725
 Ion Ratio Lower Upper
 166 100
 165 96.6 77.4 116.2
 167 13.3 10.6 16.0



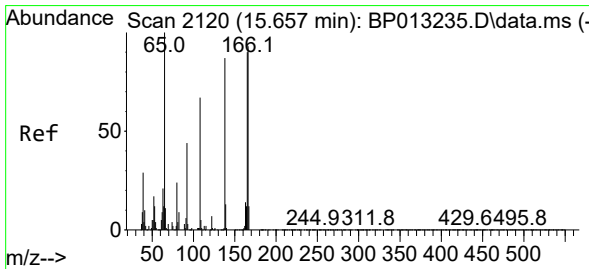
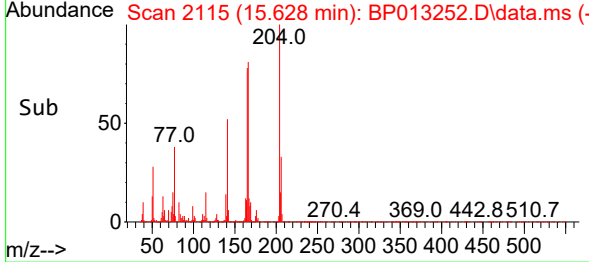
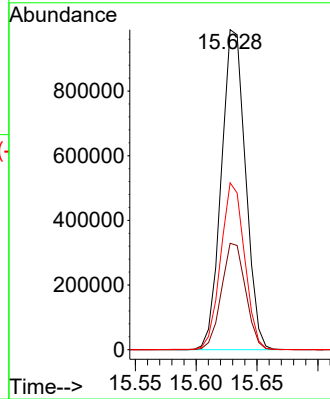


#62
 4-Chlorophenyl-phenylether
 Concen: 20.891 ng/ul
 RT: 15.628 min Scan# 2115
 Delta R.T. -0.006 min
 Lab File: BP013252.D
 Acq: 22 Dec 2022 19:34

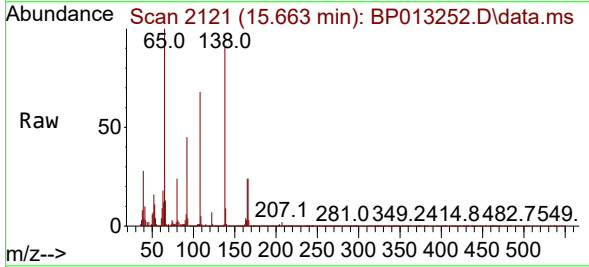
Instrument :
 BNA_P
 ClientSampleId :



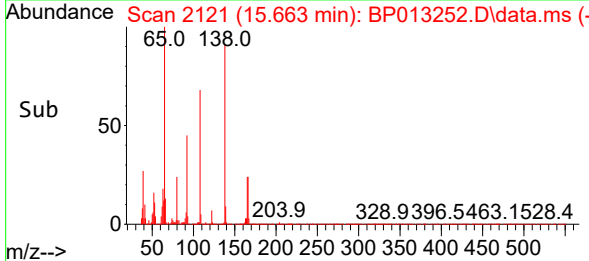
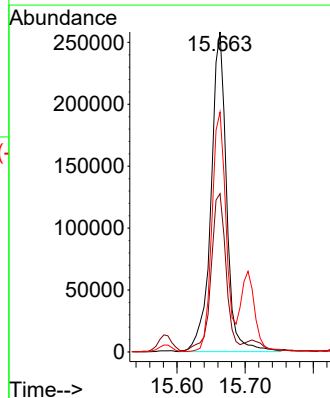
Tgt Ion:204 Resp: 1369155
 Ion Ratio Lower Upper
 204 100
 206 33.3 26.3 39.5
 141 52.1 40.4 60.6

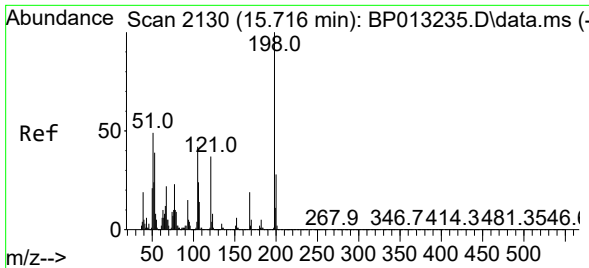


#63
 4-Nitroaniline
 Concen: 20.204 ng/ul
 RT: 15.663 min Scan# 2121
 Delta R.T. 0.000 min
 Lab File: BP013252.D
 Acq: 22 Dec 2022 19:34



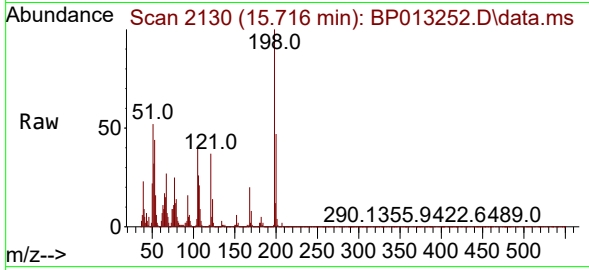
Tgt Ion:138 Resp: 410535
 Ion Ratio Lower Upper
 138 100
 92 49.5 39.0 58.4
 108 75.0 55.1 82.7





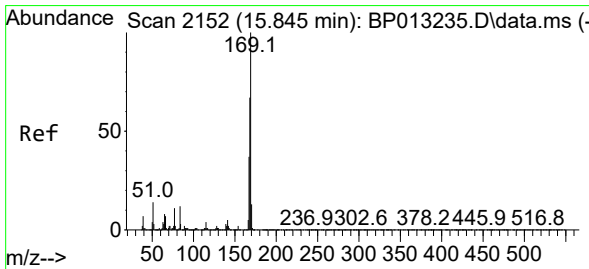
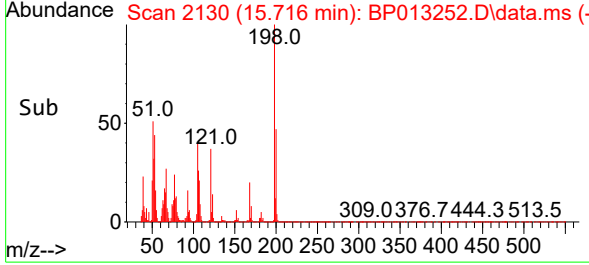
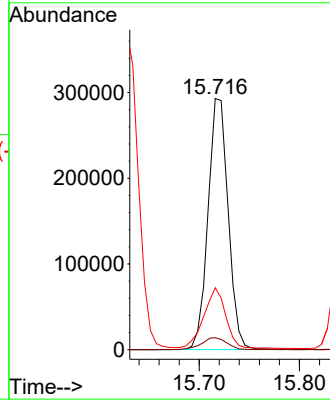
#66
 4,6-Dinitro-2-methylphenol
 Concen: 17.937 ng/ul
 RT: 15.716 min Scan# 2130
 Delta R.T. 0.000 min
 Lab File: BP013252.D
 Acq: 22 Dec 2022 19:34

Instrument :
 BNA_P
 ClientSampleId :



Tgt Ion:198 Resp: 410277

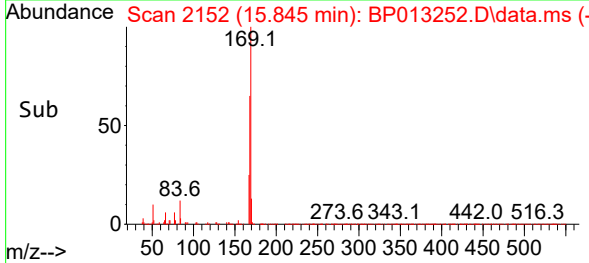
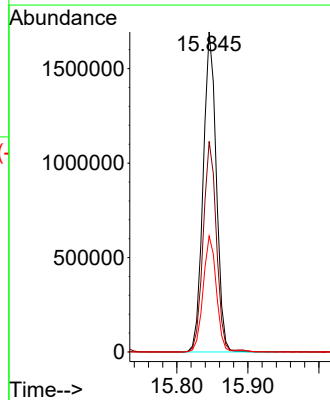
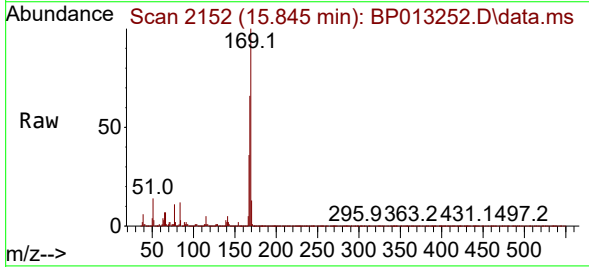
Ion	Ratio	Lower	Upper
198	100		
182	4.8	3.3	4.9
77	24.7	16.6	25.0

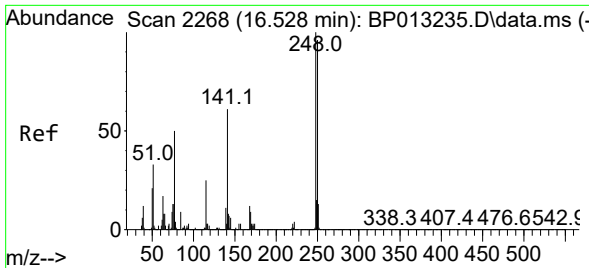


#67
 N-Nitrosodiphenylamine
 Concen: 21.666 ng/ul
 RT: 15.845 min Scan# 2152
 Delta R.T. 0.000 min
 Lab File: BP013252.D
 Acq: 22 Dec 2022 19:34

Tgt Ion:169 Resp: 2184857

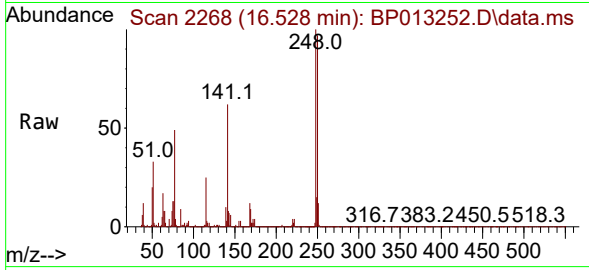
Ion	Ratio	Lower	Upper
169	100		
168	65.8	53.0	79.6
167	36.3	29.1	43.7



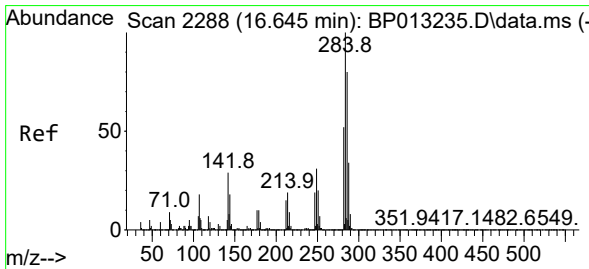
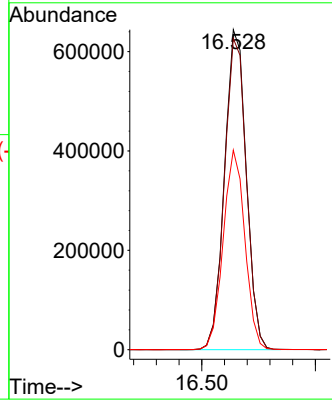
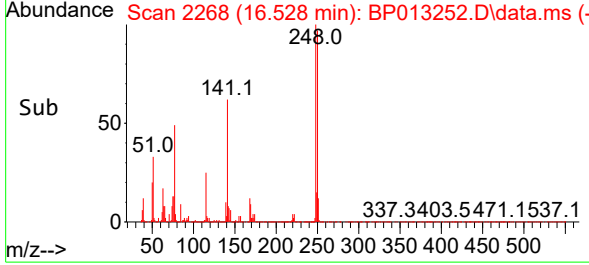


#68
 4-Bromophenyl-phenylether
 Concen: 21.718 ng/ul
 RT: 16.528 min Scan# 21
 Delta R.T. 0.000 min
 Lab File: BP013252.D
 Acq: 22 Dec 2022 19:34

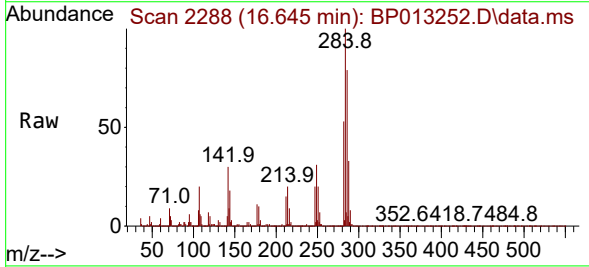
Instrument :
 BNA_P
 ClientSampleId :



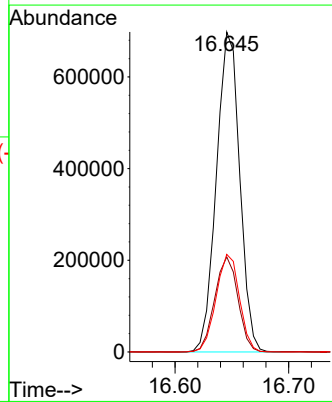
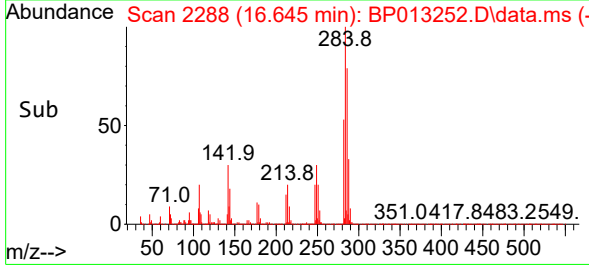
Tgt Ion:248 Resp: 857855
 Ion Ratio Lower Upper
 248 100
 250 97.2 77.4 116.0
 141 62.4 48.3 72.5

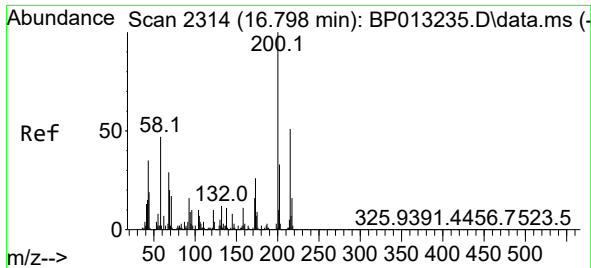


#69
 Hexachlorobenzene
 Concen: 21.211 ng/ul
 RT: 16.645 min Scan# 2288
 Delta R.T. 0.000 min
 Lab File: BP013252.D
 Acq: 22 Dec 2022 19:34



Tgt Ion:284 Resp: 994828
 Ion Ratio Lower Upper
 284 100
 142 29.7 22.6 34.0
 249 30.5 24.6 37.0

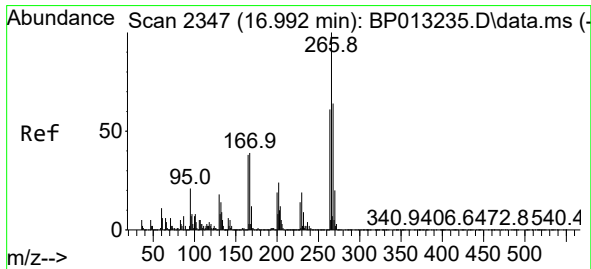
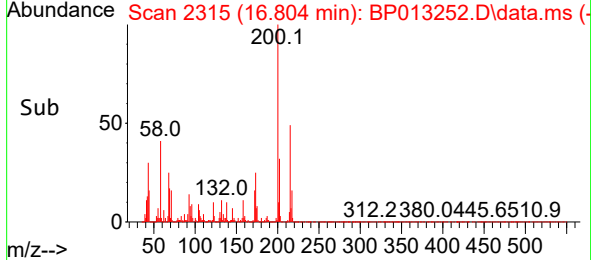
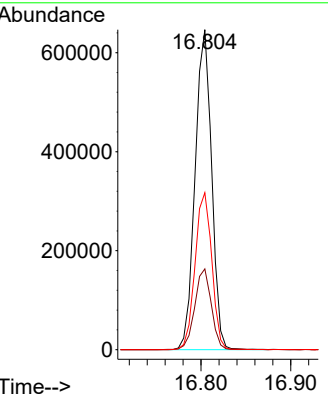
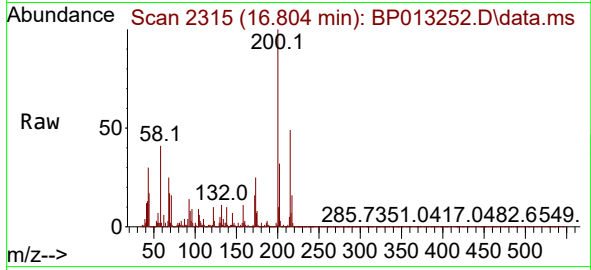




#70
 Atrazine
 Concen: 21.011 ng/ul
 RT: 16.804 min Scan# 21
 Delta R.T. 0.006 min
 Lab File: BP013252.D
 Acq: 22 Dec 2022 19:34

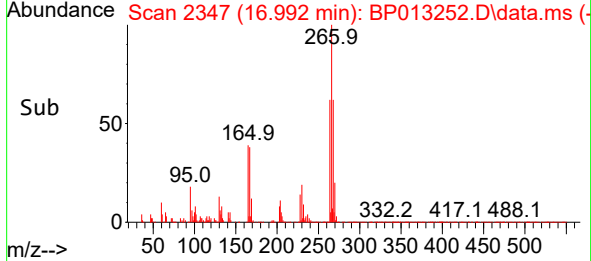
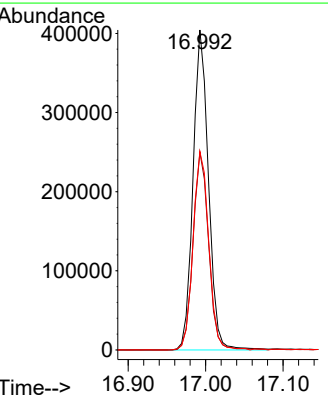
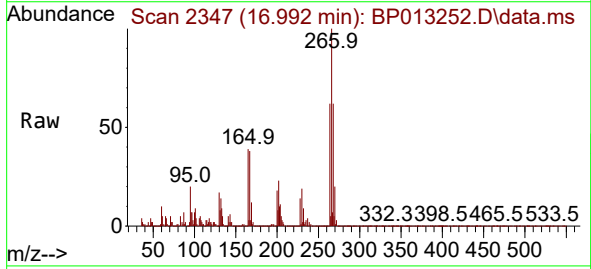
Instrument : BNA_P
 ClientSampleId :

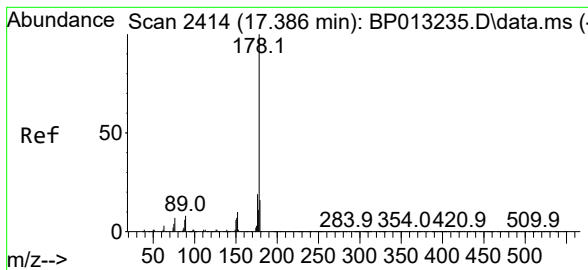
Tgt Ion	Resp	Lower	Upper
200	825668		
173	25.3	20.5	30.7
215	49.0	39.9	59.9



#71
 Pentachlorophenol
 Concen: 19.634 ng/ul
 RT: 16.992 min Scan# 2347
 Delta R.T. 0.000 min
 Lab File: BP013252.D
 Acq: 22 Dec 2022 19:34

Tgt Ion	Resp	Lower	Upper
266	557687		
264	61.8	50.9	76.3
268	62.0	51.4	77.2



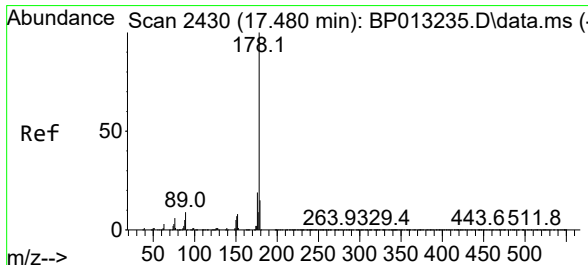
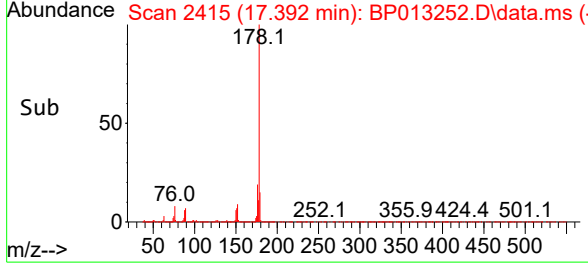
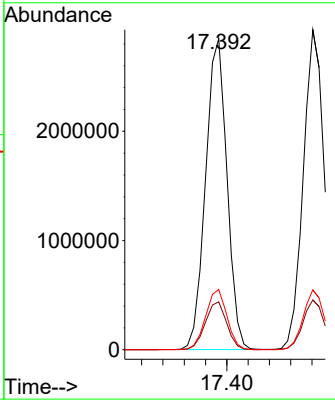
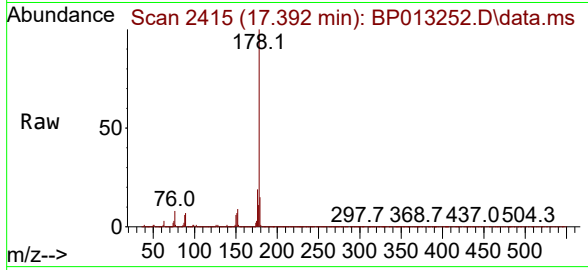


#72
 Phenanthrene
 Concen: 20.992 ng/uI
 RT: 17.392 min Scan# 2414
 Delta R.T. 0.000 min
 Lab File: BP013252.D
 Acq: 22 Dec 2022 19:34

Instrument : BNA_P
 ClientSampleId :

Tgt Ion:178 Resp: 3977018

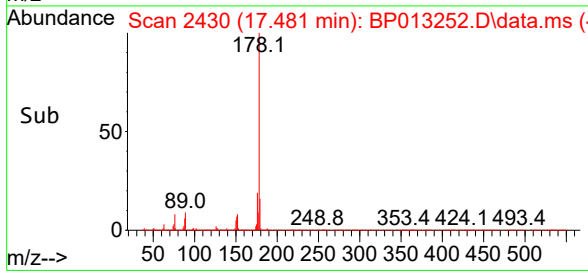
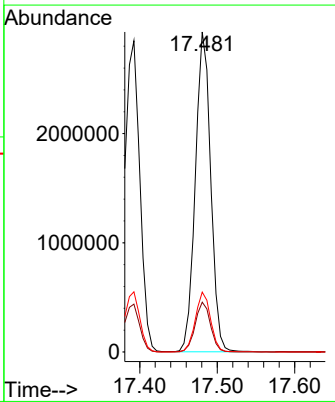
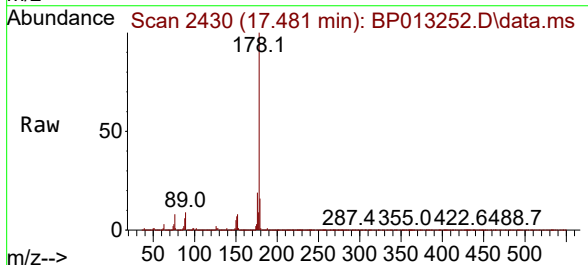
Ion	Ratio	Lower	Upper
178	100		
179	15.4	12.5	18.7
176	19.4	15.4	23.0

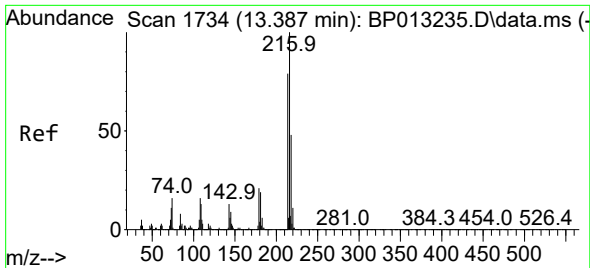


#74
 Anthracene
 Concen: 21.301 ng/uI
 RT: 17.481 min Scan# 2430
 Delta R.T. 0.000 min
 Lab File: BP013252.D
 Acq: 22 Dec 2022 19:34

Tgt Ion:178 Resp: 4029419

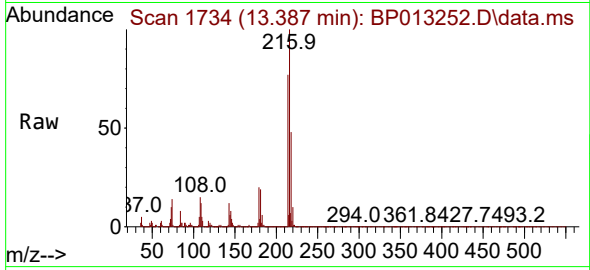
Ion	Ratio	Lower	Upper
178	100		
179	15.5	12.5	18.7
176	18.7	14.8	22.2





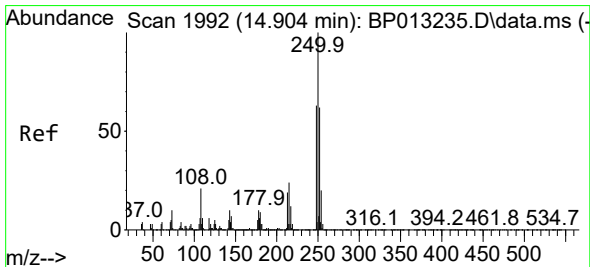
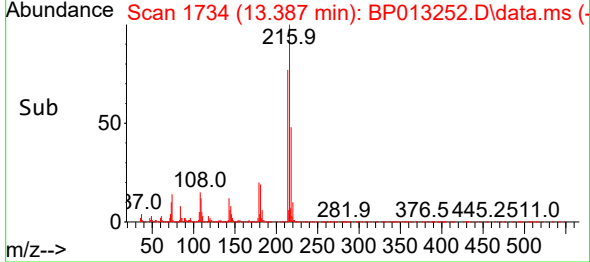
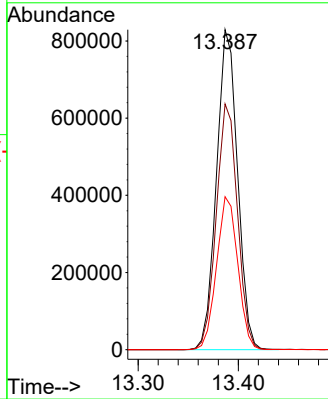
#75
 1,2,3,4-Tetrachlorobenzene
 Concen: 23.294 ng/uL
 RT: 13.387 min Scan# 1734
 Delta R.T. -0.006 min
 Lab File: BP013252.D
 Acq: 22 Dec 2022 19:34

Instrument :
 BNA_P
 ClientSampleId :

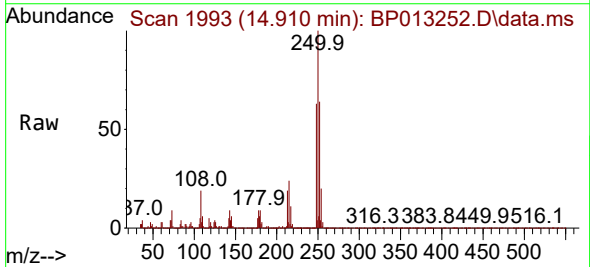


Tgt Ion: 216 Resp: 1208817

Ion	Ratio	Lower	Upper
216	100		
214	76.8	62.2	93.2
218	47.8	38.9	58.3

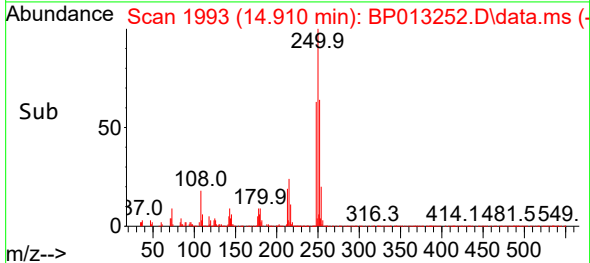
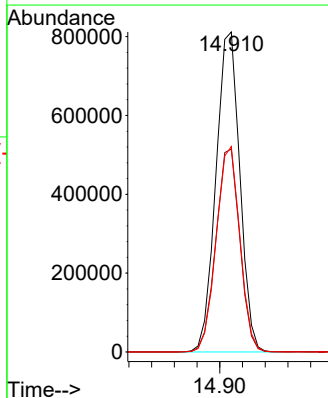


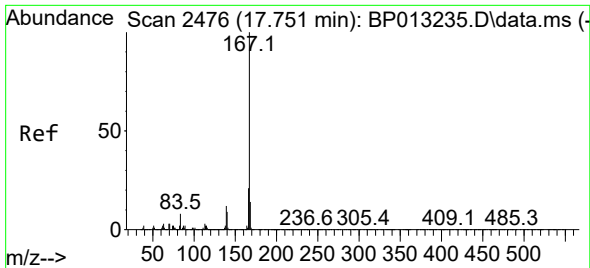
#76
 Pentachlorobenzene
 Concen: 22.418 ng/uL
 RT: 14.910 min Scan# 1993
 Delta R.T. 0.000 min
 Lab File: BP013252.D
 Acq: 22 Dec 2022 19:34



Tgt Ion: 250 Resp: 1186102

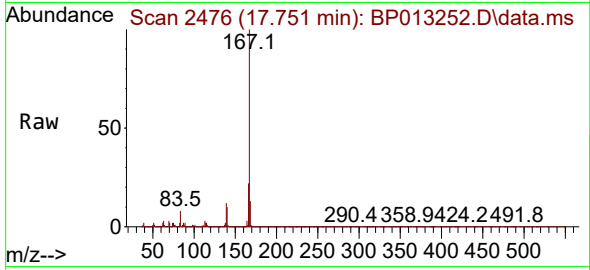
Ion	Ratio	Lower	Upper
250	100		
248	63.4	50.6	76.0
252	64.2	51.1	76.7



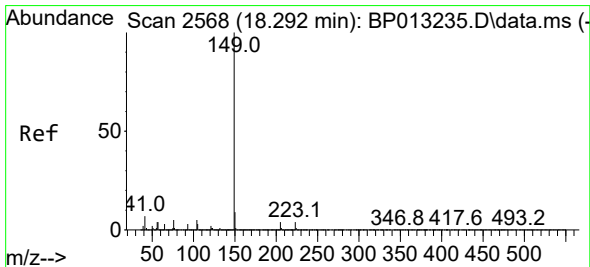
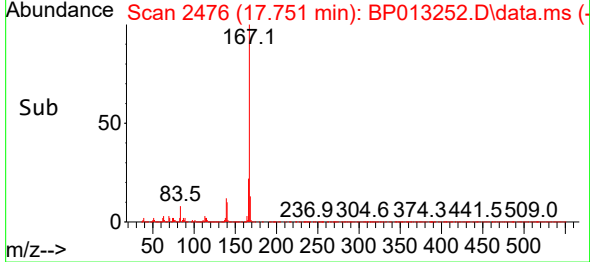
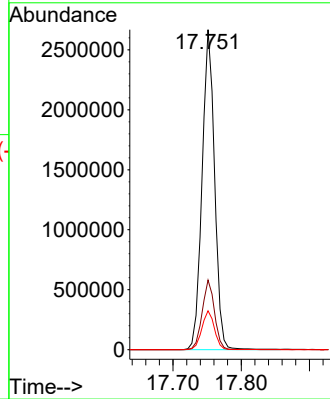


#77
 Carbazole
 Concen: 21.364 ng/ul
 RT: 17.751 min Scan# 2476
 Delta R.T. 0.000 min
 Lab File: BP013252.D
 Acq: 22 Dec 2022 19:34

Instrument :
 BNA_P
 ClientSampleId :

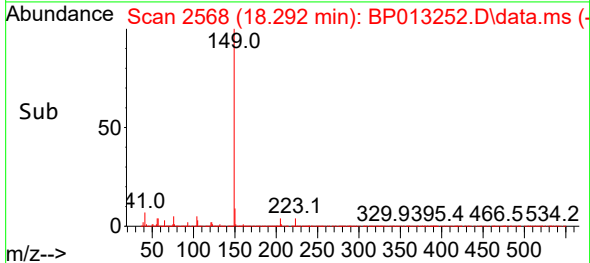
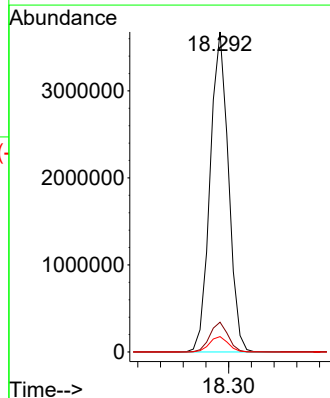
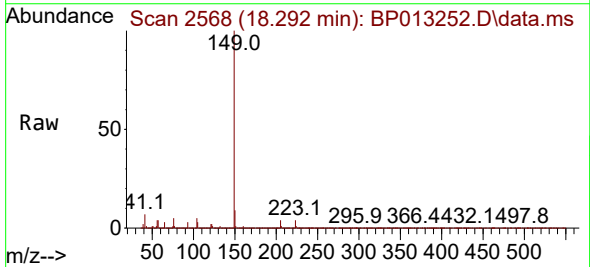


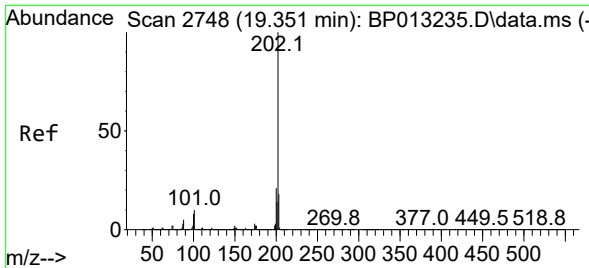
Tgt Ion:167 Resp: 3403438
 Ion Ratio Lower Upper
 167 100
 166 21.7 17.2 25.8
 139 12.1 9.4 14.2



#78
 Di-n-butylphthalate
 Concen: 21.242 ng/ul
 RT: 18.292 min Scan# 2568
 Delta R.T. 0.000 min
 Lab File: BP013252.D
 Acq: 22 Dec 2022 19:34

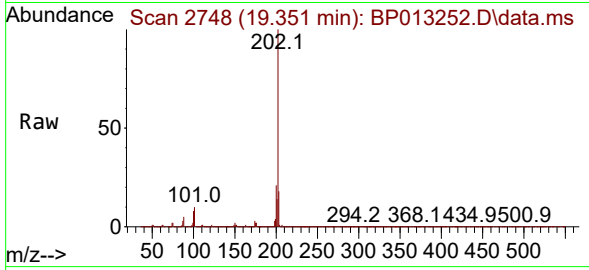
Tgt Ion:149 Resp: 4120247
 Ion Ratio Lower Upper
 149 100
 150 9.3 7.5 11.3
 104 4.8 3.8 5.6





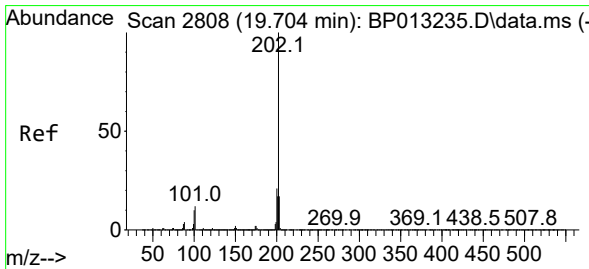
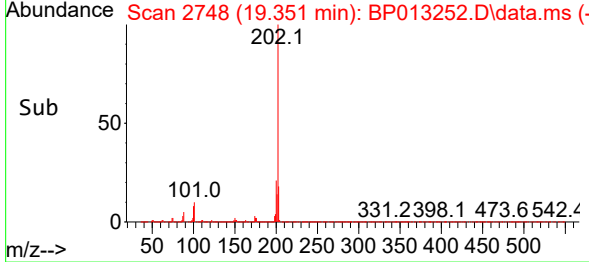
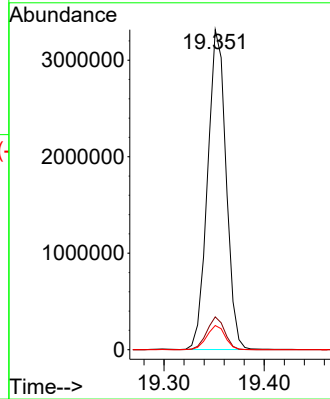
#80
 Fluoranthene
 Concen: 26.749 ng/u1
 RT: 19.351 min Scan# 2748
 Delta R.T. 0.000 min
 Lab File: BP013252.D
 Acq: 22 Dec 2022 19:34

Instrument :
 BNA_P
 ClientSampleId :



Tgt Ion:202 Resp: 4260110

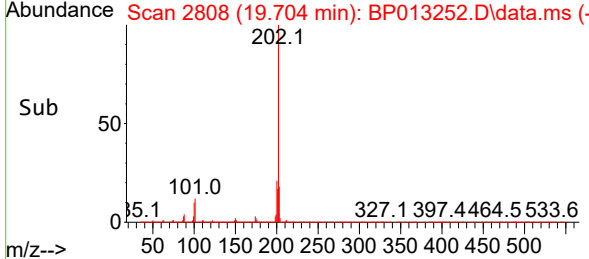
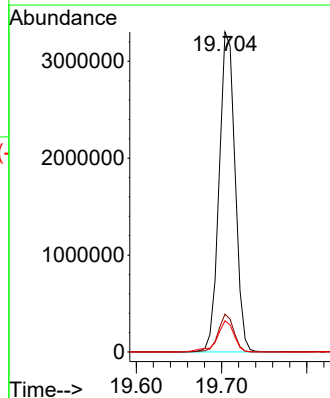
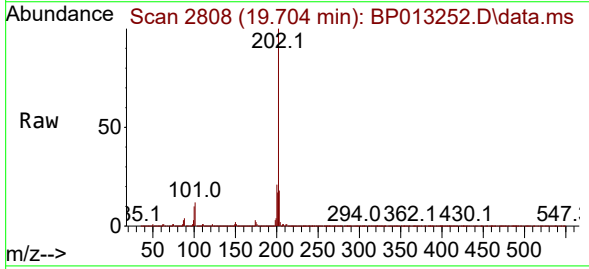
Ion	Ratio	Lower	Upper
202	100		
101	10.3	8.2	12.2
100	7.6	6.1	9.1

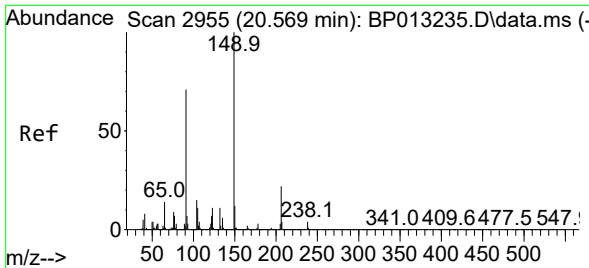


#82
 Pyrene
 Concen: 26.119 ng/u1
 RT: 19.704 min Scan# 2808
 Delta R.T. 0.000 min
 Lab File: BP013252.D
 Acq: 22 Dec 2022 19:34

Tgt Ion:202 Resp: 4290873

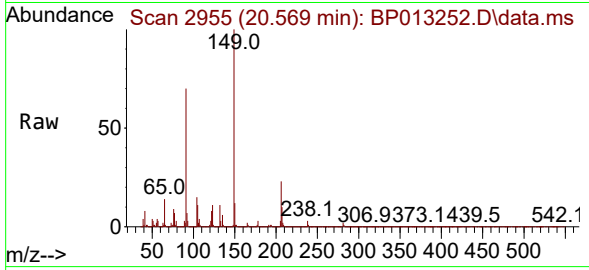
Ion	Ratio	Lower	Upper
202	100		
101	11.8	9.4	14.2
100	9.7	7.8	11.8





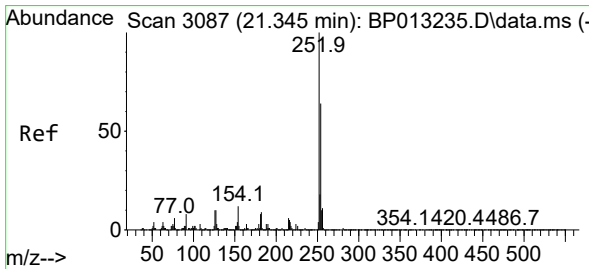
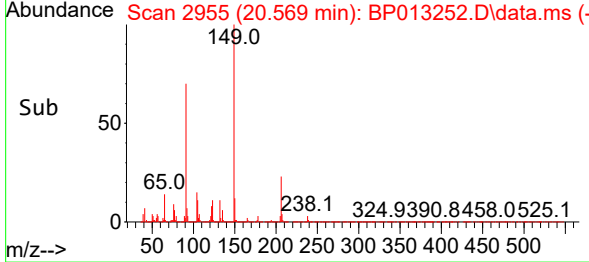
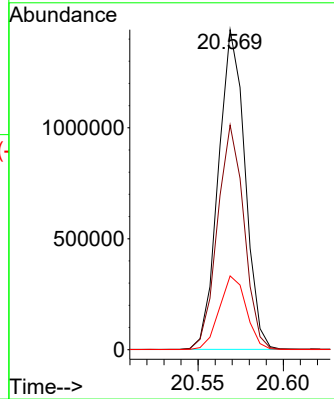
#83
 Butylbenzylphthalate
 Concen: 24.683 ng/ul
 RT: 20.569 min Scan# 2955
 Delta R.T. 0.000 min
 Lab File: BP013252.D
 Acq: 22 Dec 2022 19:34

Instrument : BNA_P
 ClientSampleId :



Tgt Ion:149 Resp: 1566535

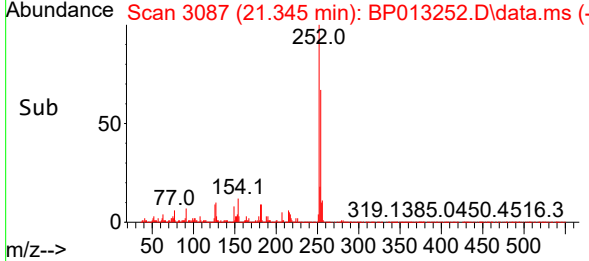
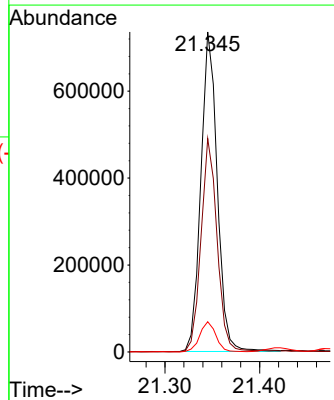
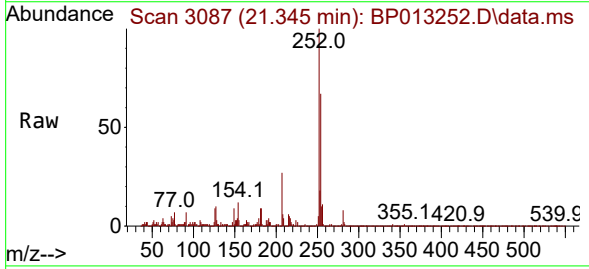
Ion	Ratio	Lower	Upper
149	100		
91	70.2	53.4	80.0
206	23.0	17.9	26.9

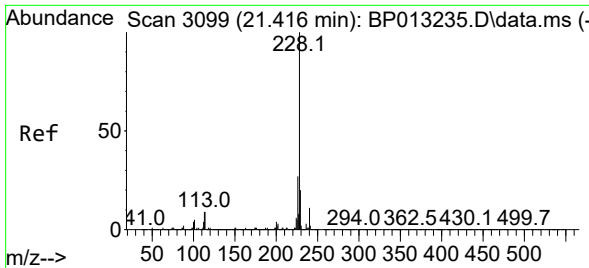


#84
 3,3'-Dichlorobenzidine
 Concen: 16.073 ng/ul
 RT: 21.345 min Scan# 3087
 Delta R.T. 0.000 min
 Lab File: BP013252.D
 Acq: 22 Dec 2022 19:34

Tgt Ion:252 Resp: 887611

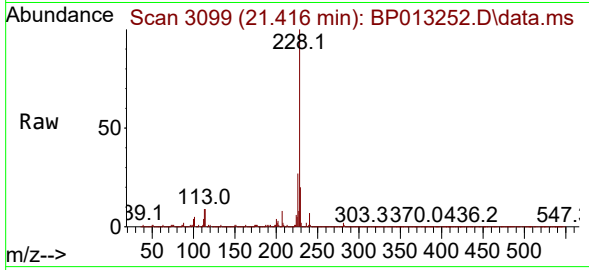
Ion	Ratio	Lower	Upper
252	100		
254	66.7	51.8	77.8
126	9.4	7.4	11.2



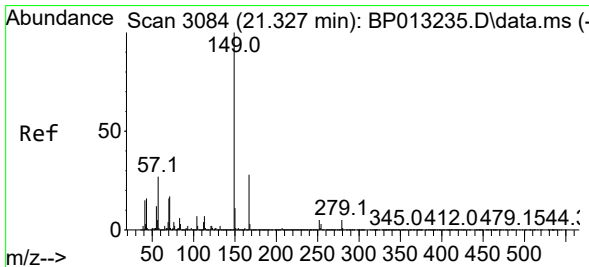
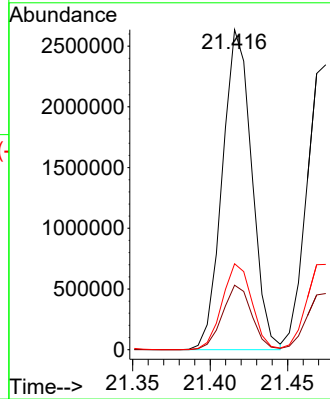
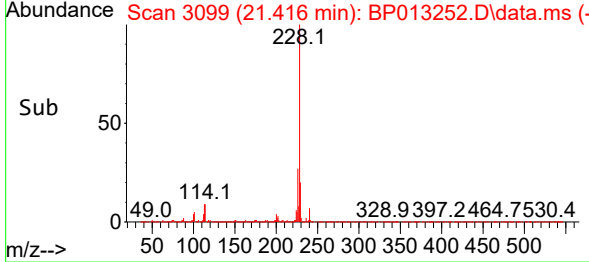


#85
 Benzo(a)anthracene
 Concen: 21.440 ng/uI
 RT: 21.416 min Scan# 3099
 Delta R.T. 0.000 min
 Lab File: BP013252.D
 Acq: 22 Dec 2022 19:34

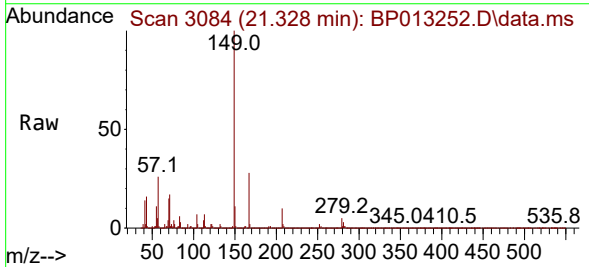
Instrument : BNA_P
 ClientSampleId :



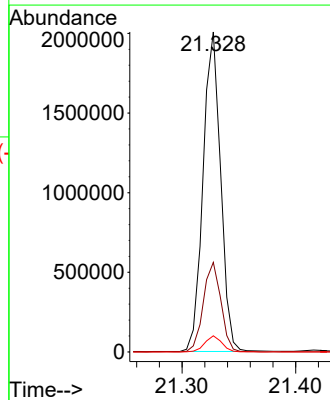
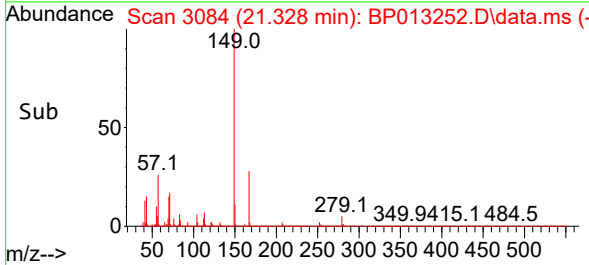
Tgt Ion:228 Resp: 3479350
 Ion Ratio Lower Upper
 228 100
 229 20.2 16.1 24.1
 226 26.8 22.0 33.0

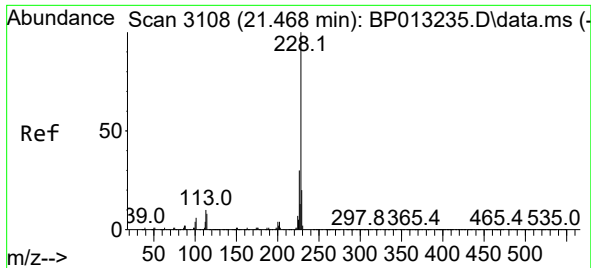


#86
 Bis(2-ethylhexyl)phthalate
 Concen: 24.010 ng/uI
 RT: 21.328 min Scan# 3084
 Delta R.T. 0.000 min
 Lab File: BP013252.D
 Acq: 22 Dec 2022 19:34



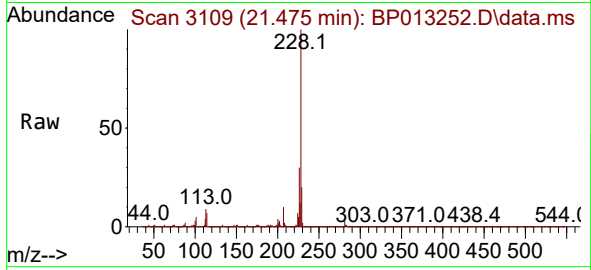
Tgt Ion:149 Resp: 2149565
 Ion Ratio Lower Upper
 149 100
 167 28.0 22.5 33.7
 279 5.1 3.8 5.8



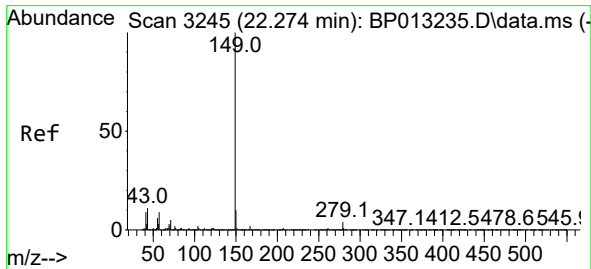
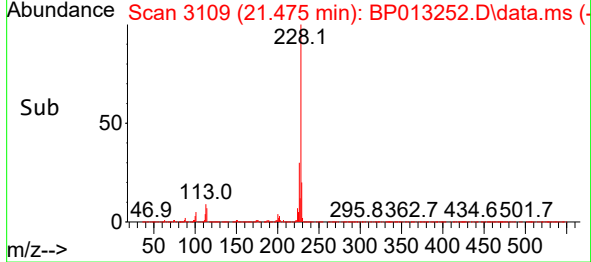
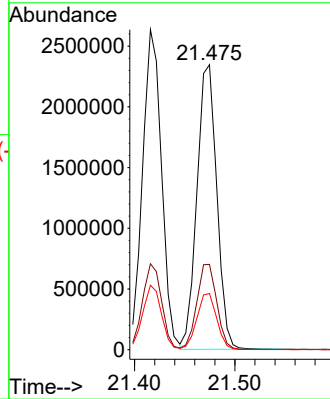


#87
 Chrysene
 Concen: 21.093 ng/u1
 RT: 21.475 min Scan# 3109
 Delta R.T. 0.006 min
 Lab File: BP013252.D
 Acq: 22 Dec 2022 19:34

Instrument :
 BNA_P
 ClientSampleId :

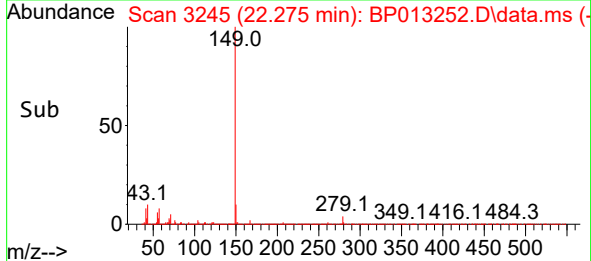
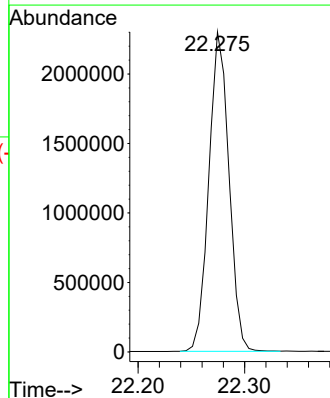
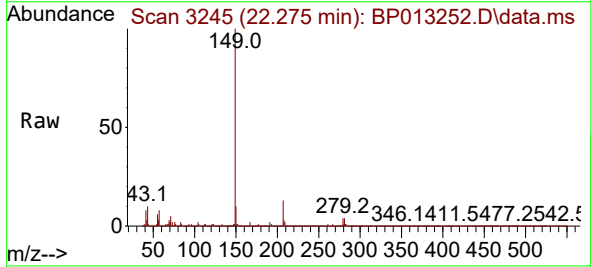


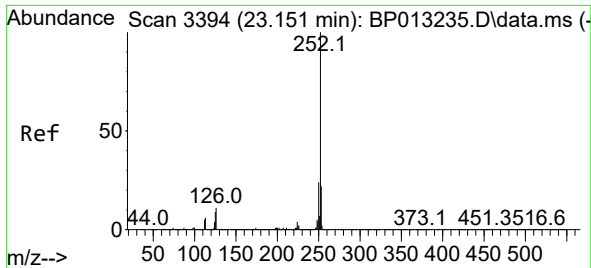
Tgt Ion:228 Resp: 3237166
 Ion Ratio Lower Upper
 228 100
 226 29.9 24.5 36.7
 229 19.7 16.0 24.0



#89
 Di-n-octyl phthalate
 Concen: 21.519 ng/u1
 RT: 22.275 min Scan# 3245
 Delta R.T. 0.000 min
 Lab File: BP013252.D
 Acq: 22 Dec 2022 19:34

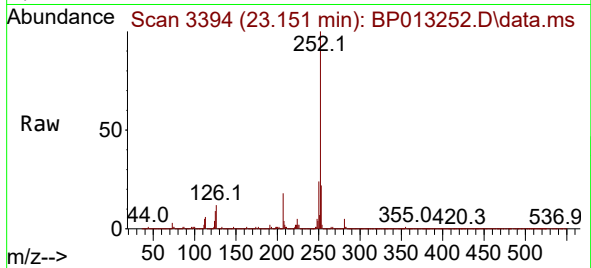
Tgt Ion:149 Resp: 3021141



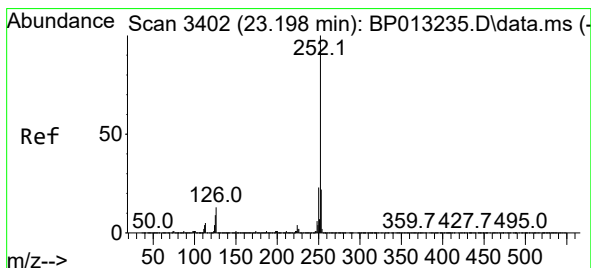
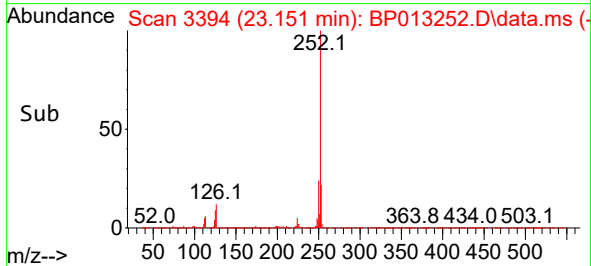
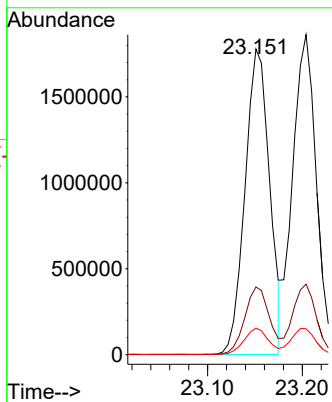


#90
 Benzo(b)fluoranthene
 Concen: 20.021 ng/u1
 RT: 23.151 min Scan# 31
 Delta R.T. 0.000 min
 Lab File: BP013252.D
 Acq: 22 Dec 2022 19:34

Instrument :
 BNA_P
 ClientSampleId :

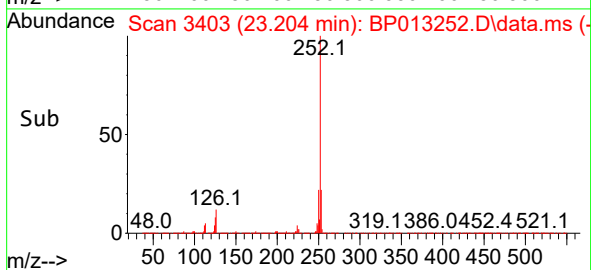
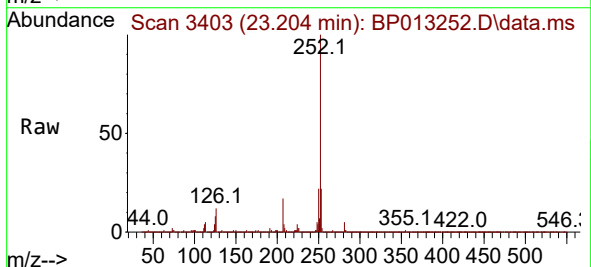
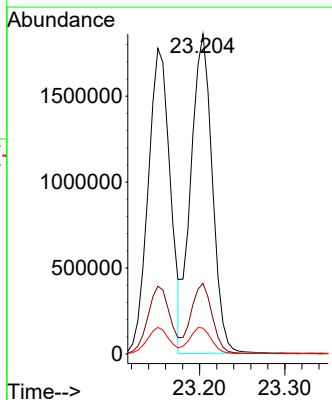


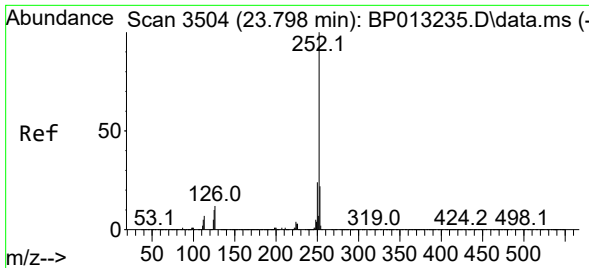
Tgt Ion:252 Resp: 3199323
 Ion Ratio Lower Upper
 252 100
 253 22.2 17.7 26.5
 125 8.7 6.8 10.2



#91
 Benzo(k)fluoranthene
 Concen: 20.439 ng/u1
 RT: 23.204 min Scan# 3403
 Delta R.T. 0.006 min
 Lab File: BP013252.D
 Acq: 22 Dec 2022 19:34

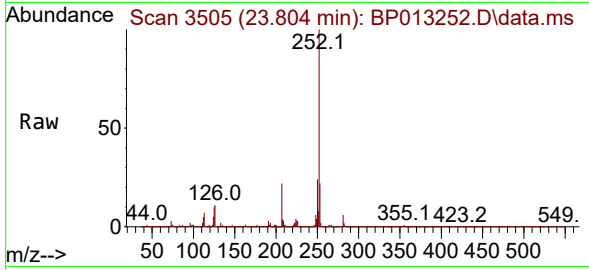
Tgt Ion:252 Resp: 3238711
 Ion Ratio Lower Upper
 252 100
 253 22.0 17.7 26.5
 125 8.1 6.8 10.2



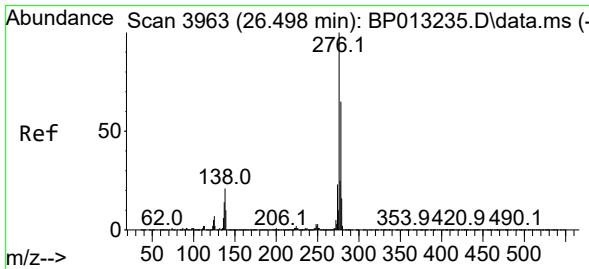
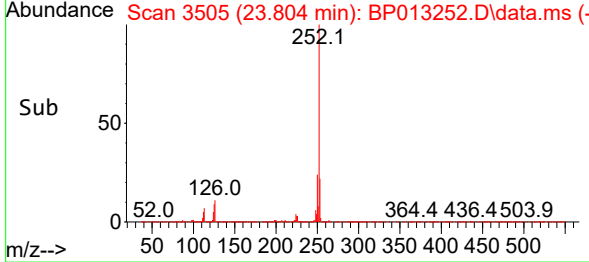
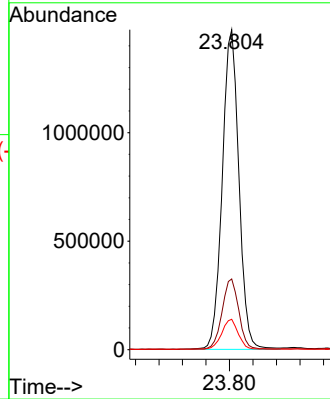


#93
 Benzo(a)pyrene
 Concen: 20.784 ng/u1
 RT: 23.804 min Scan# 31
 Delta R.T. 0.006 min
 Lab File: BP013252.D
 Acq: 22 Dec 2022 19:34

Instrument :
 BNA_P
 ClientSampleId :

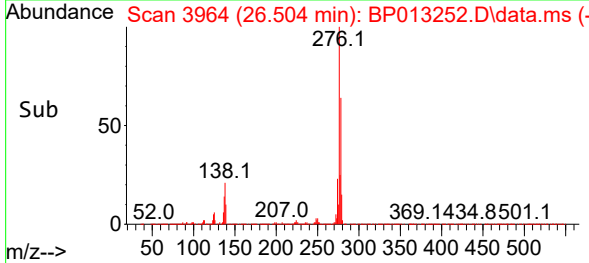
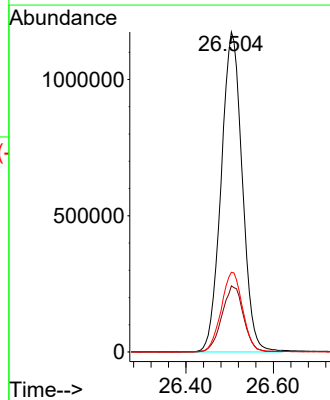
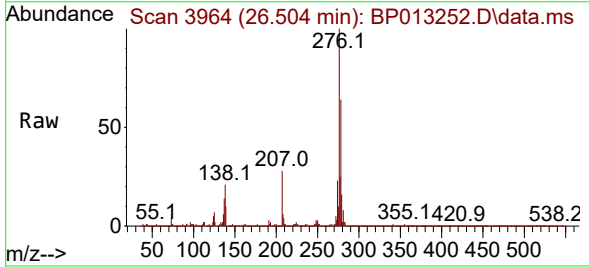


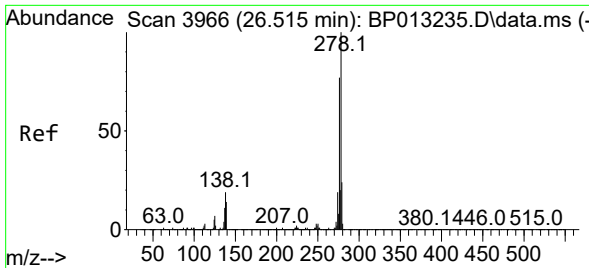
Tgt Ion:252 Resp: 2891914
 Ion Ratio Lower Upper
 252 100
 253 22.1 17.5 26.3
 125 9.5 7.5 11.3



#94
 Indeno(1,2,3-cd)pyrene
 Concen: 22.626 ng/u1
 RT: 26.504 min Scan# 3964
 Delta R.T. 0.000 min
 Lab File: BP013252.D
 Acq: 22 Dec 2022 19:34

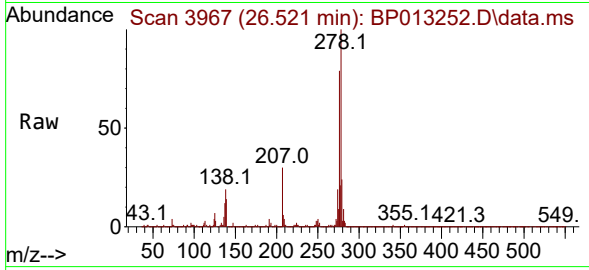
Tgt Ion:276 Resp: 3921623
 Ion Ratio Lower Upper
 276 100
 138 20.7 17.1 25.7
 277 24.9 20.0 30.0



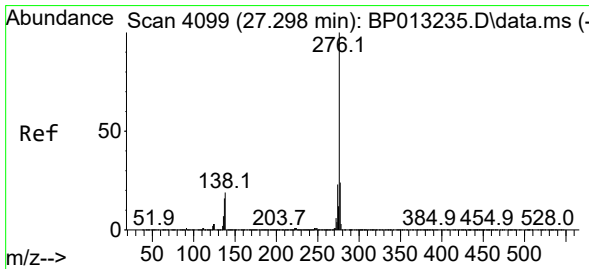
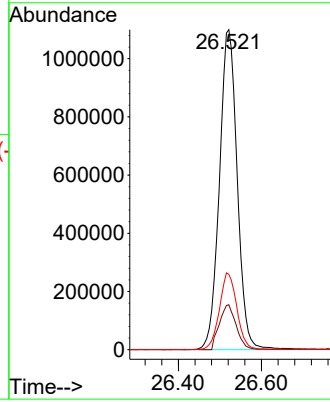
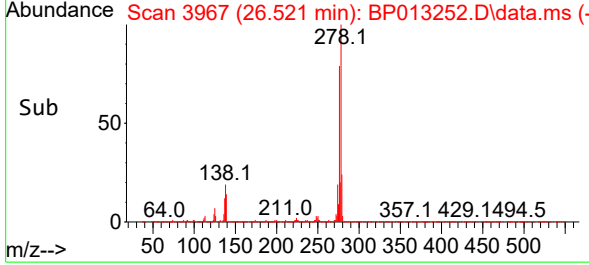


#95
 Dibenzo(a,h)anthracene
 Concen: 22.775 ng/ul
 RT: 26.521 min Scan# 3967
 Delta R.T. 0.000 min
 Lab File: BP013252.D
 Acq: 22 Dec 2022 19:34

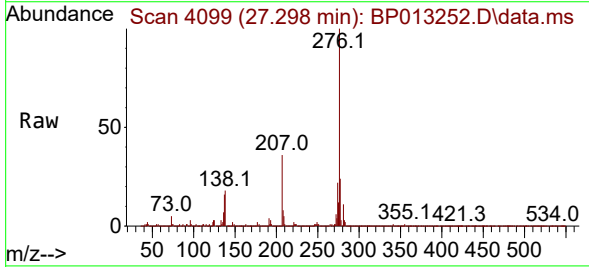
Instrument :
 BNA_P
 ClientSampleId :



Tgt Ion:278 Resp: 3268291
 Ion Ratio Lower Upper
 278 100
 139 14.0 11.1 16.7
 279 23.6 19.0 28.6



#96
 Benzo(g,h,i)perylene
 Concen: 23.176 ng/ul
 RT: 27.298 min Scan# 4099
 Delta R.T. 0.000 min
 Lab File: BP013252.D
 Acq: 22 Dec 2022 19:34



Tgt Ion:276 Resp: 3224738
 Ion Ratio Lower Upper
 276 100
 138 17.7 15.4 23.2
 277 23.7 19.1 28.7

