

Data Path : Z:\svoasrv\HPCHEM1\BNA\_G\Data\BG011522\  
 Data File : BG052003.D  
 Acq On : 15 Jan 2022 18:57  
 Operator : CG/JU  
 Sample : N1132-15  
 Misc :  
 ALS Vial : 14 Sample Multiplier: 1

Instrument :  
 BNA\_G  
 ClientSampleId :  
 BGLW6

Integration Parameters: LSCINT.P

Integrator: RTE  
 Smoothing : OFF  
 Sampling : 1  
 Start Thrs : 0.2  
 Stop Thrs : 0

Filtering: 5  
 Min Area: 0.1 % of largest Peak  
 Max Peaks: 100  
 Peak Location: TOP

If leading or trailing edge < 100 prefer < Baseline drop else tangent >  
 Peak separation: 5

Method : Z:\svoasrv\HPCHEM1\BNA\_G\Methods\SFAM-EPA-BG010622.M  
 Title : SVOA CALIBRATION

Signal : TIC: BG052003.D\data.ms

peak #	R.T. min	first scan	max scan	last scan	PK TY	peak height	corr. area	corr. % max.	% of total
1	3.570	10	14	18	rVB2	5437	6428	0.85%	0.083%
2	3.740	41	43	46	rVB2	1183	1233	0.16%	0.016%
3	3.911	71	72	77	rVB2	927	1042	0.14%	0.013%
4	3.999	83	87	97	rBV	56753	95987	12.70%	1.234%
5	4.122	105	108	111	rBV	786	1035	0.14%	0.013%
6	4.234	123	127	128	rBV2	1123	1209	0.16%	0.016%
7	4.357	144	148	149	rBV3	1497	1604	0.21%	0.021%
8	4.386	149	153	154	rBV2	1092	1116	0.15%	0.014%
9	4.710	205	208	211	rVB2	1372	1296	0.17%	0.017%
10	6.272	471	474	477	rBV	987	1387	0.18%	0.018%
11	6.536	515	519	522	rVB	844	1163	0.15%	0.015%
12	7.382	655	663	673	rBV2	98026	180875	23.93%	2.326%
13	7.547	685	691	699	rBV	75318	128431	16.99%	1.651%
14	7.770	722	729	736	rBV	99781	166031	21.97%	2.135%
15	8.246	804	810	816	rBV2	88269	145643	19.27%	1.873%
16	8.469	843	848	852	rBV	771	1458	0.19%	0.019%
17	8.945	922	929	936	rBV	124716	212057	28.06%	2.727%
18	9.415	1002	1009	1019	rVB	100771	183662	24.30%	2.362%
19	9.538	1024	1030	1032	rBV2	1162	2098	0.28%	0.027%
20	9.832	1076	1080	1085	rVB2	5970	8759	1.16%	0.113%
21	10.149	1126	1134	1141	rBV2	87364	156266	20.68%	2.009%
22	10.696	1220	1227	1236	rVB	128780	224520	29.71%	2.887%
23	10.831	1244	1250	1260	rBV3	17065	31340	4.15%	0.403%
24	11.083	1285	1293	1301	rVB	125238	217443	28.77%	2.796%
25	11.207	1305	1314	1323	rBV	122217	230621	30.52%	2.966%
26	12.475	1527	1530	1531	rBV2	1067	1277	0.17%	0.016%
27	12.652	1556	1560	1565	rVB4	1967	3416	0.45%	0.044%
28	12.951	1609	1611	1615	rVB3	1049	1229	0.16%	0.016%
29	13.104	1634	1637	1640	rBV	789	1120	0.15%	0.014%
30	13.251	1657	1662	1663	rBV	1137	1479	0.20%	0.019%
31	13.492	1697	1703	1706	rBV3	1884	2186	0.29%	0.028%
32	13.697	1733	1738	1742	rBV3	5415	6969	0.92%	0.090%
33	13.768	1746	1750	1752	rBV2	2228	2745	0.36%	0.035%
34	14.279	1830	1837	1844	rVB	248155	365421	48.35%	4.699%
35	14.355	1848	1850	1854	rBV2	900	1036	0.14%	0.013%
36	14.508	1872	1876	1877	rBV2	3471	3096	0.41%	0.040%

Data Path : Z:\svoasrv\HPCHEM1\BNA\_G\Data\BG011522\  
 Data File : BG052003.D  
 Acq On : 15 Jan 2022 18:57  
 Operator : CG/JU  
 Sample : N1132-15  
 Misc :  
 ALS Vial : 14 Sample Multiplier: 1

Instrument :  
 BNA\_G  
 ClientSampleId :  
 BGLW6

Integration Parameters: LSCINT.P

Integrator: RTE  
 Smoothing : OFF Filtering: 5  
 Sampling : 1 Min Area: 0.1 % of largest Peak  
 Start Thrs: 0.2 Max Peaks: 100  
 Stop Thrs : 0 Peak Location: TOP

If leading or trailing edge < 100 prefer < Baseline drop else tangent >  
 Peak separation: 5

Method : Z:\svoasrv\HPCHEM1\BNA\_G\Methods\SFAM-EPA-BG010622.M  
 Title : SVOA CALIBRATION

37	14.584	1883	1889	1897	rVB	286663	444694	58.84%	5.718%
38	14.761	1915	1919	1925	rVB2	2566	3781	0.50%	0.049%
39	14.890	1934	1941	1948	rVB	214708	336646	44.54%	4.329%
40	14.978	1952	1956	1961	rVB2	1621	2198	0.29%	0.028%
41	15.066	1961	1971	1985	rBV	95423	174258	23.06%	2.241%
42	15.283	2003	2008	2010	rVB2	1753	2142	0.28%	0.028%
43	15.513	2045	2047	2051	rBV3	1962	1957	0.26%	0.025%
44	15.665	2068	2073	2078	rBV3	4357	7092	0.94%	0.091%
45	15.712	2078	2081	2084	rVB2	3796	3968	0.53%	0.051%
46	15.877	2100	2109	2118	rBV	371914	556658	73.66%	7.158%
47	15.983	2121	2127	2138	rBV2	107047	159457	21.10%	2.050%
48	16.112	2144	2149	2156	rVB3	1862	3955	0.52%	0.051%
49	16.170	2156	2159	2162	rBV	835	1037	0.14%	0.013%
50	16.217	2165	2167	2170	rVB2	1237	1189	0.16%	0.015%
51	16.270	2172	2176	2181	rVB3	3114	4270	0.57%	0.055%
52	16.311	2181	2183	2187	rBV3	1976	2107	0.28%	0.027%
53	16.400	2196	2198	2203	rBV2	1498	1919	0.25%	0.025%
54	16.552	2221	2224	2225	rBV3	2520	1863	0.25%	0.024%
55	16.599	2230	2232	2236	rVB5	1576	1409	0.19%	0.018%
56	16.723	2249	2253	2255	rBV	924	1392	0.18%	0.018%
57	16.752	2255	2258	2262	rVB3	2420	4430	0.59%	0.057%
58	17.028	2302	2305	2312	rVB2	1529	2898	0.38%	0.037%
59	17.093	2315	2316	2320	rVB2	2009	1799	0.24%	0.023%
60	17.146	2322	2325	2326	rBV	1048	1223	0.16%	0.016%
61	17.310	2351	2353	2355	rBV3	1306	1381	0.18%	0.018%
62	17.369	2360	2363	2366	rVV3	4279	5247	0.69%	0.067%
63	17.422	2370	2372	2377	rVB6	1903	2364	0.31%	0.030%
64	17.527	2384	2390	2396	rVB2	5796	8036	1.06%	0.103%
65	17.574	2396	2398	2402	rBV3	997	1178	0.16%	0.015%
66	17.639	2402	2409	2415	rVV	307738	462886	61.25%	5.952%
67	17.739	2419	2426	2433	rVV	416736	646357	85.53%	8.311%
68	17.809	2433	2438	2442	rVB4	3626	5138	0.68%	0.066%
69	17.927	2456	2458	2460	rVB	1871	1577	0.21%	0.020%
70	18.115	2486	2490	2492	rBV3	3295	4028	0.53%	0.052%
71	18.174	2497	2500	2502	rBV4	1160	1158	0.15%	0.015%
72	18.285	2514	2519	2524	rBV	27219	34515	4.57%	0.444%
73	18.356	2529	2531	2534	rBV3	1511	1860	0.25%	0.024%
74	18.385	2534	2536	2539	rBV4	1634	1941	0.26%	0.025%
75	18.473	2549	2551	2552	rBV2	1283	1115	0.15%	0.014%
76	18.509	2554	2557	2559	rBV4	2931	3573	0.47%	0.046%

Data Path : Z:\svoasrv\HPCHEM1\BNA\_G\Data\BG011522\  
 Data File : BG052003.D  
 Acq On : 15 Jan 2022 18:57  
 Operator : CG/JU  
 Sample : N1132-15  
 Misc :  
 ALS Vial : 14 Sample Multiplier: 1

Instrument :  
 BNA\_G  
 ClientSampleId :  
 BGLW6

Integration Parameters: LSCINT.P

Integrator: RTE  
 Smoothing : OFF Filtering: 5  
 Sampling : 1 Min Area: 0.1 % of largest Peak  
 Start Thrs: 0.2 Max Peaks: 100  
 Stop Thrs : 0 Peak Location: TOP

If leading or trailing edge < 100 prefer < Baseline drop else tangent >  
 Peak separation: 5

Method : Z:\svoasrv\HPCHEM1\BNA\_G\Methods\SFAM-EPA-BG010622.M  
 Title : SVOA CALIBRATION

77	18.702	2586	2590	2593	rBV5	1454	1686	0.22%	0.022%
78	18.796	2604	2606	2610	rVB3	3354	4117	0.54%	0.053%
79	18.832	2610	2612	2614	rBV3	1684	1555	0.21%	0.020%
80	19.037	2645	2647	2648	rBV2	2474	1906	0.25%	0.025%
81	19.137	2662	2664	2667	rBV4	1873	1923	0.25%	0.025%
82	19.443	2710	2716	2721	rVB6	20623	29435	3.89%	0.379%
83	19.584	2735	2740	2743	rBV5	6667	10424	1.38%	0.134%
84	19.654	2748	2752	2756	rBV2	6481	9542	1.26%	0.123%
85	19.695	2758	2759	2763	rBV4	2253	2076	0.27%	0.027%
86	19.783	2771	2774	2775	rBV3	3206	2811	0.37%	0.036%
87	20.018	2807	2814	2820	rBV	531101	755749	100.00%	9.718%
88	20.218	2844	2848	2850	rBV5	3374	5595	0.74%	0.072%
89	21.569	3072	3078	3083	rBV10	14035	37445	4.95%	0.482%
90	21.957	3138	3144	3152	rVB	270308	468065	61.93%	6.019%
91	25.199	3687	3696	3710	rVB2	222307	663592	87.81%	8.533%
92	25.446	3728	3738	3755	rVB3	145507	483417	63.97%	6.216%

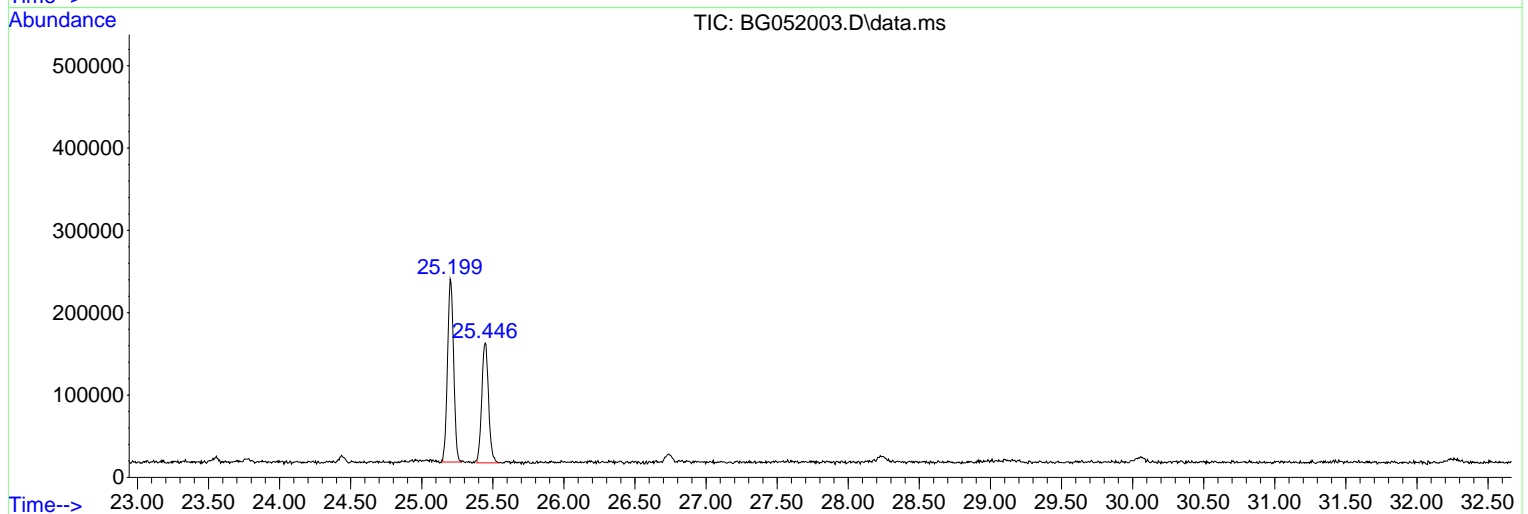
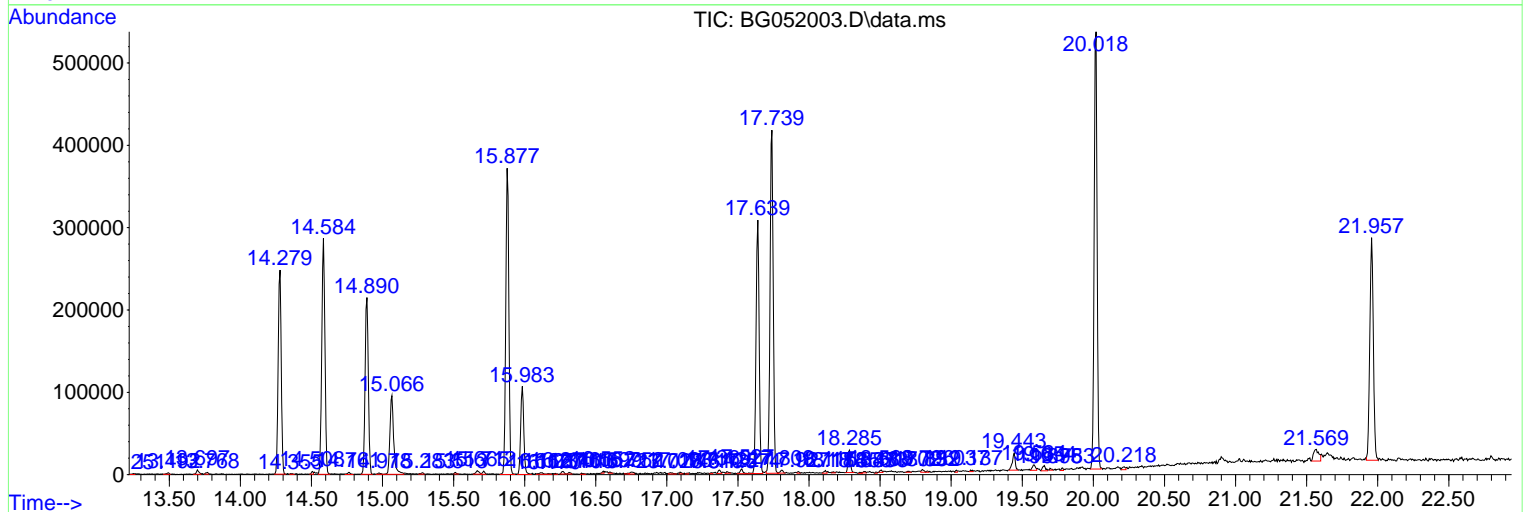
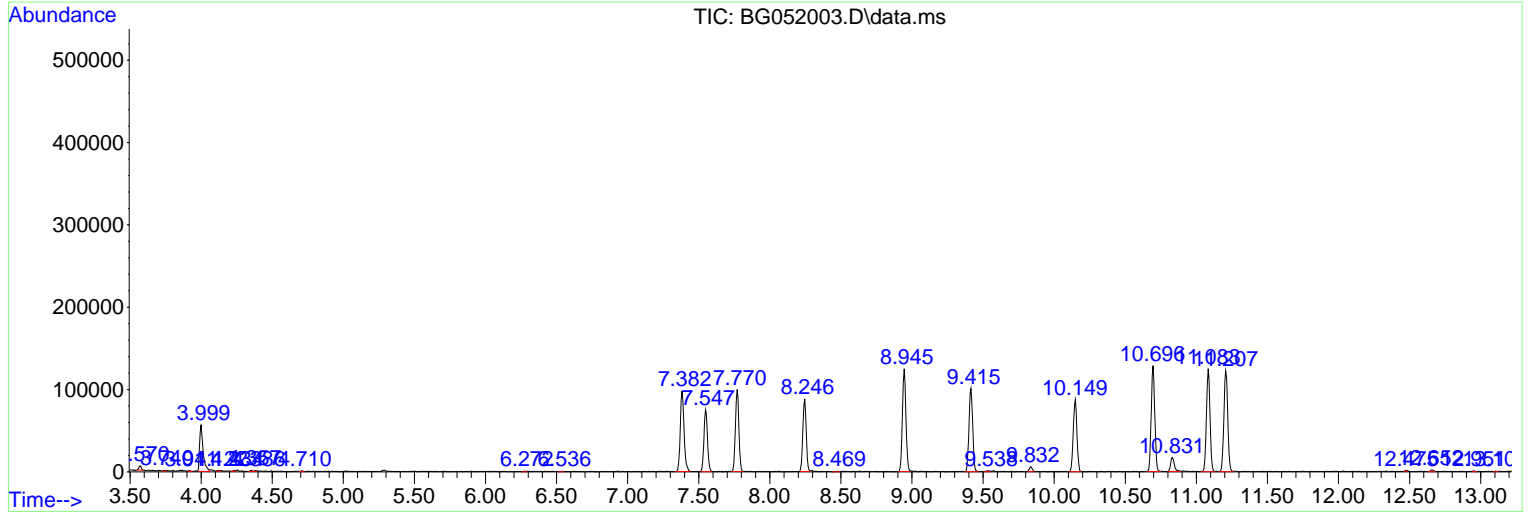
Sum of corrected areas: 7776712

Data Path : Z:\svoasrv\HPCHEM1\BNA\_G\Data\BG011522\  
 Data File : BG052003.D  
 Acq On : 15 Jan 2022 18:57  
 Operator : CG/JU  
 Sample : N1132-15  
 Misc :  
 ALS Vial : 14 Sample Multiplier: 1

**Instrument :**  
 BNA\_G  
**ClientSampleId :**  
 BGLW6

Quant Method : Z:\svoasrv\HPCHEM1\BNA\_G\Methods\SFAM-EPA-BG010622.M  
 Quant Title : SVOA CALIBRATION

TIC Library : C:\DATABASE\NIST20.L  
 TIC Integration Parameters: LSCINT.P



Data Path : Z:\svoasrv\HPCHEM1\BNA\_G\Data\BG011522\  
 Data File : BG052003.D  
 Acq On : 15 Jan 2022 18:57  
 Operator : CG/JU  
 Sample : N1132-15  
 Misc :  
 ALS Vial : 14 Sample Multiplier: 1

Instrument :  
 BNA\_G  
 ClientSampleId :  
 BGLW6

Quant Method : Z:\svoasrv\HPCHEM1\BNA\_G\Methods\SFAM-EPA-BG010622.M  
 Quant Title : SVOA CALIBRATION

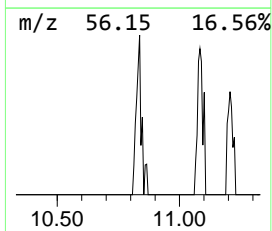
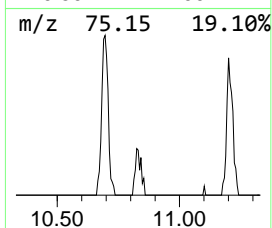
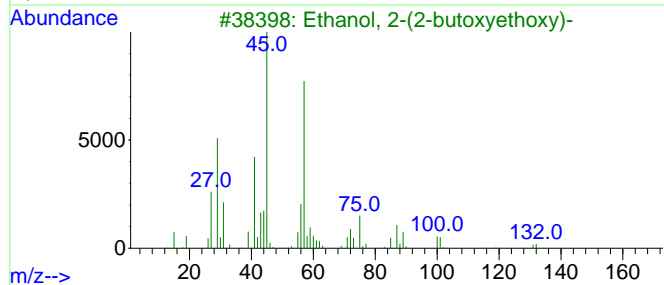
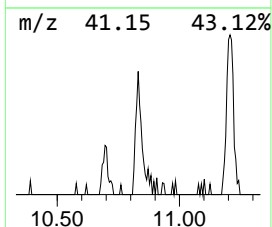
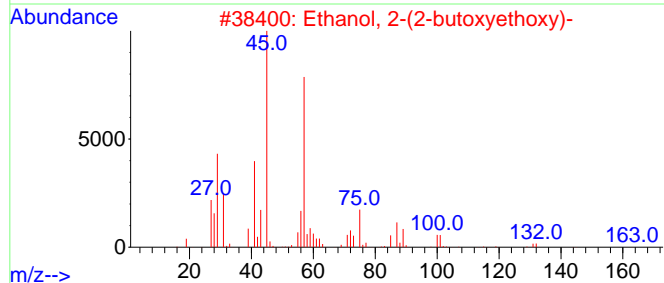
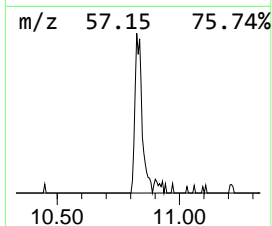
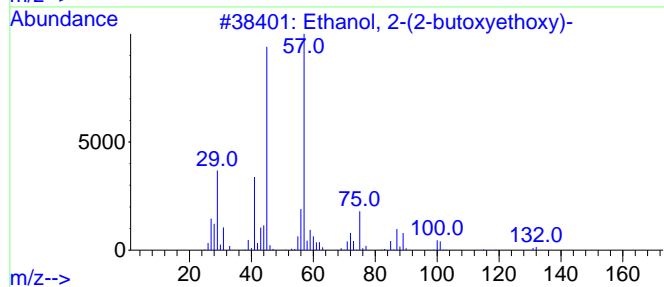
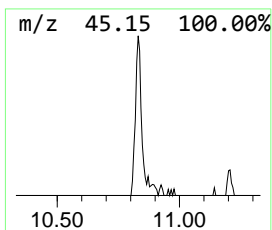
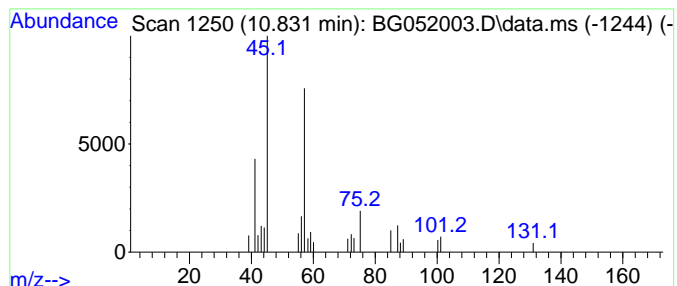
TIC Library : C:\DATABASE\NIST20.L  
 TIC Integration Parameters: LSCINT.P

\*\*\*\*\*  
 Peak Number 1 Ethanol, 2-(2-butoxyethoxy)- Concentration Rank 1

R.T.	EstConc	Area	Relative to ISTD	R.T.
10.831	2.88 ng/ul	31340	Naphthalene-d8	11.083

Hit#	of 5	Tentative ID	MW	MolForm	CAS#	Qual
1		Ethanol, 2-(2-butoxyethoxy)-	162	C8H18O3	000112-34-5	78
2		Ethanol, 2-(2-butoxyethoxy)-	162	C8H18O3	000112-34-5	72
3		Ethanol, 2-(2-butoxyethoxy)-	162	C8H18O3	000112-34-5	72
4		Ethanol, 2-[2-(2-methylpropoxy)e...	162	C8H18O3	018912-80-6	56
5		Ethanol, 2-(2-butoxyethoxy)-	162	C8H18O3	000112-34-5	53



Data Path : Z:\svoasrv\HPCHEM1\BNA\_G\Data\BG011522\  
Data File : BG052003.D  
Acq On : 15 Jan 2022 18:57  
Operator : CG/JU  
Sample : N1132-15  
Misc :  
ALS Vial : 14 Sample Multiplier: 1

Instrument :  
BNA\_G  
ClientSampleId :  
BGLW6

Quant Method : Z:\svoasrv\HPCHEM1\BNA\_G\Methods\SFAM-EPA-BG010622.M  
Quant Title : SVOA CALIBRATION

TIC Library : C:\DATABASE\NIST20.L  
TIC Integration Parameters: LSCINT.P

TIC Top Hit name	RT	EstConc	Units	Response	--Internal Standard--			
					#	RT	Resp	Conc
Ethanol, 2-(2-b...	10.831	2.9	ng/u1	31340	2	11.083	217443	20.0