

Data Path : Z:\svoasrv\HPCHEM1\BNA_G\Data\BG011823\
 Data File : BG056330.D
 Acq On : 18 Jan 2023 15:59
 Operator : CG/JU
 Sample : SSTDCCC040
 Misc :
 ALS Vial : 2 Sample Multiplier: 1

Instrument :
 BNA_G
 ClientSampleId :
 SSTDCCC040

Quant Time: Jan 19 00:32:34 2023
 Quant Method : Z:\svoasrv\HPCHEM1\BNA_G\Methods\8270-BG122722.M
 Quant Title : ASP BNA STANDARDS FOR 5 POINT CALIBRATION
 QLast Update : Thu Jan 19 00:31:30 2023
 Response via : Initial Calibration

Compound	R.T.	QIon	Response	Conc	Units	Dev(Min)	
Internal Standards							
1) 1,4-Dichlorobenzene-d4	8.306	152	45238	20.000	ng	0.00	
21) Naphthalene-d8	11.138	136	172146	20.000	ng	0.00	
39) Acenaphthene-d10	14.922	164	138852	20.000	ng	0.00	
64) Phenanthrene-d10	17.660	188	346161	20.000	ng	0.00	
76) Chrysene-d12	21.955	240	296539	20.000	ng	0.00	#
86) Perylene-d12	25.392	264	320599	20.000	ng	0.00	
System Monitoring Compounds							
5) 2-Fluorophenol	5.826	112	198649	78.405	ng	0.00	
7) Phenol-d6	7.448	99	297070	76.349	ng	0.00	
23) Nitrobenzene-d5	9.487	82	261385	77.668	ng	0.00	
42) 2,4,6-Tribromophenol	16.402	330	144795	82.338	ng	0.00	
45) 2-Fluorobiphenyl	13.547	172	841940	83.732	ng	0.00	
79) Terphenyl-d14	20.233	244	1403859	84.791	ng	0.00	
Target Compounds							
2) 1,4-Dioxane	3.635	88	40267	34.795	ng		Qvalue 95
3) Pyridine	4.058	79	126036	35.758	ng	#	93
4) n-Nitrosodimethylamine	3.970	42	25930	36.165	ng	#	82
6) Aniline	7.624	93	193116	37.847	ng		99
8) 2-Chlorophenol	7.865	128	105013	41.651	ng		96
9) Benzaldehyde	7.430	77	76300	32.980	ng		95
10) Phenol	7.477	94	149462	37.877	ng		96
11) bis(2-Chloroethyl)ether	7.712	93	104671	39.143	ng		98
12) 1,3-Dichlorobenzene	8.194	146	122909	40.055	ng		97
13) 1,4-Dichlorobenzene	8.347	146	125544	40.743	ng		97
14) 1,2-Dichlorobenzene	8.670	146	119139	40.071	ng		98
15) Benzyl Alcohol	8.541	79	105641	37.305	ng		98
16) 2,2'-oxybis(1-Chloropr...	8.829	45	22857	48.370	ng	#	71
17) 2-Methylphenol	8.741	107	113497	39.198	ng		97
18) Hexachloroethane	9.405	117	40304	43.056	ng		87
19) n-Nitroso-di-n-propyla...	9.111	70	87529	36.994	ng		98
20) 3+4-Methylphenols	9.070	107	160217	39.358	ng		96
22) Acetophenone	9.134	105	186314	38.278	ng	#	99
24) Nitrobenzene	9.528	77	128337	38.480	ng		96
25) Isophorone	10.045	82	257987	36.434	ng		98
26) 2-Nitrophenol	10.245	139	70807	41.494	ng		97
27) 2,4-Dimethylphenol	10.286	122	120796	38.812	ng		99
28) bis(2-Chloroethoxy)met...	10.521	93	143988	39.125	ng		97
29) 2,4-Dichlorophenol	10.779	162	139193	40.452	ng		99
30) 1,2,4-Trichlorobenzene	10.997	180	155896	39.925	ng		95
31) Naphthalene	11.197	128	371006	40.951	ng		98
32) Benzoic acid	10.427	122	79655	34.493	ng		99
33) 4-Chloroaniline	11.291	127	169441	39.172	ng		98
34) Hexachlorobutadiene	11.467	225	113947	40.574	ng		98
35) Caprolactam	12.066	113	43033	36.939	ng		92
36) 4-Chloro-3-methylphenol	12.389	107	132358	37.908	ng		99
37) 2-Methylnaphthalene	12.771	142	303283	39.646	ng		99
38) 1-Methylnaphthalene	12.989	142	283075	39.849	ng		98
40) 1,2,4,5-Tetrachloroben...	13.136	216	216764	41.652	ng		100
41) Hexachlorocyclopentadiene	13.106	237	124674	42.020	ng		95
43) 2,4,6-Trichlorophenol	13.365	196	141965	41.254	ng		96

Data Path : Z:\svoasrv\HPCHEM1\BNA_G\Data\BG011823\
 Data File : BG056330.D
 Acq On : 18 Jan 2023 15:59
 Operator : CG/JU
 Sample : SSTDCCC040
 Misc :
 ALS Vial : 2 Sample Multiplier: 1

Instrument :
 BNA_G
 ClientSampleId :
 SSTDCCC040

Quant Time: Jan 19 00:32:34 2023
 Quant Method : Z:\svoasrv\HPCHEM1\BNA_G\Methods\8270-BG122722.M
 Quant Title : ASP BNA STANDARDS FOR 5 POINT CALIBRATION
 QLast Update : Thu Jan 19 00:31:30 2023
 Response via : Initial Calibration

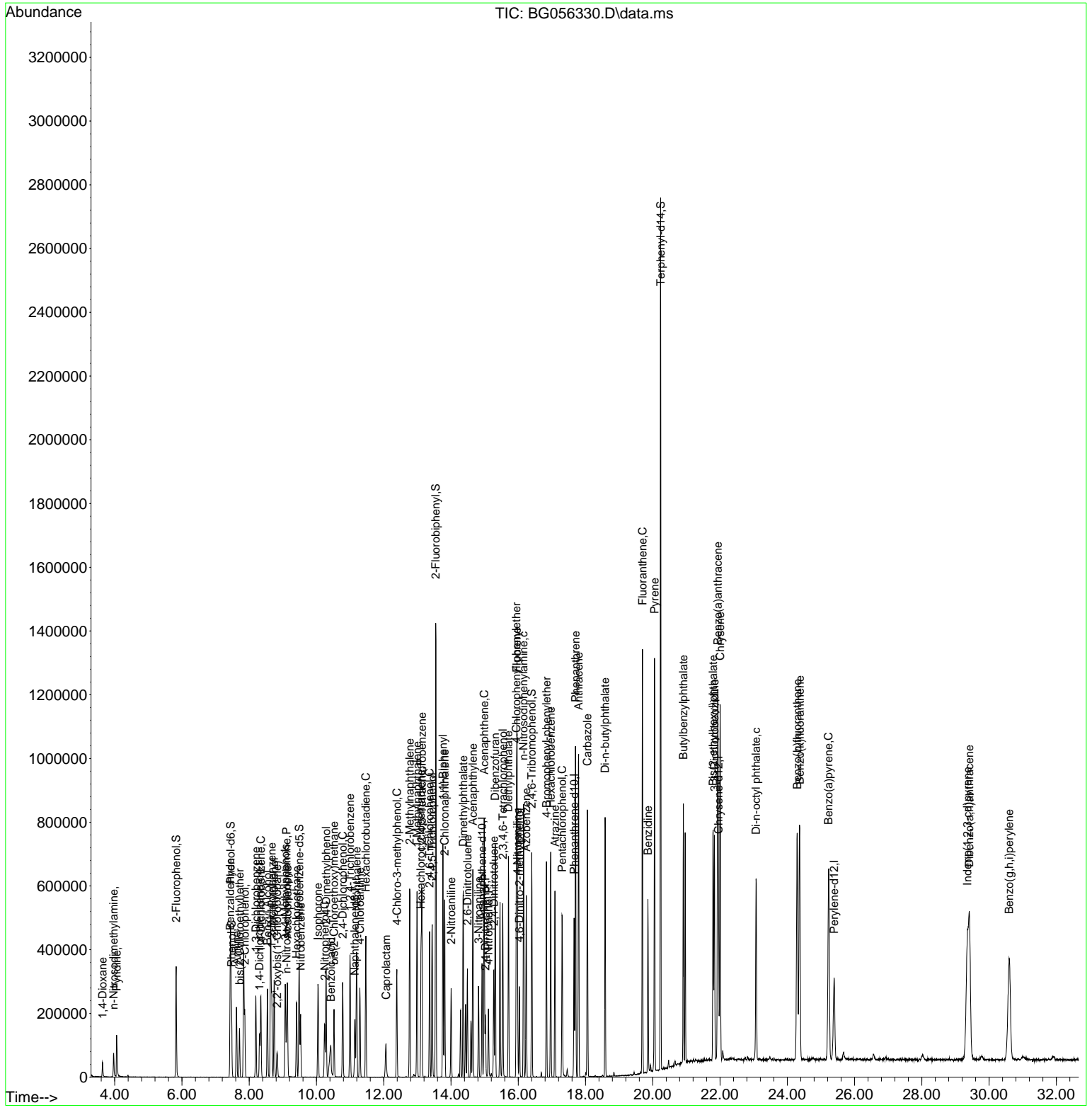
Compound	R.T.	QIon	Response	Conc	Units	Dev(Min)
44) 2,4,5-Trichlorophenol	13.441	196	164573	40.429	ng	97
46) 1,1'-Biphenyl	13.758	154	418112	42.046	ng	99
47) 2-Chloronaphthalene	13.811	162	327383	41.710	ng	98
48) 2-Nitroaniline	14.005	65	69362	41.476	ng	98
49) Acenaphthylene	14.651	152	525179	41.116	ng	99
50) Dimethylphthalate	14.364	163	447902	39.959	ng	99
51) 2,6-Dinitrotoluene	14.487	165	97735	40.920	ng	97
52) Acenaphthene	14.986	154	349574	42.080	ng	99
53) 3-Nitroaniline	14.822	138	94058	41.379	ng	90
54) 2,4-Dinitrophenol	15.022	184	67940	39.818	ng #	91
55) Dibenzofuran	15.315	168	561017	40.809	ng	98
56) 4-Nitrophenol	15.116	139	69325	39.655	ng	90
57) 2,4-Dinitrotoluene	15.274	165	137033	41.025	ng	90
58) Fluorene	15.962	166	441189	39.901	ng	99
59) 2,3,4,6-Tetrachlorophenol	15.539	232	146676	38.375	ng	94
60) Diethylphthalate	15.709	149	412267	39.219	ng	100
61) 4-Chlorophenyl-phenyle...	15.944	204	278011	40.289	ng	98
62) 4-Nitroaniline	15.979	138	95441	40.990	ng	96
63) Azobenzene	16.238	77	318879	39.310	ng	97
65) 4,6-Dinitro-2-methylph...	16.032	198	102420	43.915	ng	93
66) n-Nitrosodiphenylamine	16.156	169	402755	41.935	ng	98
67) 4-Bromophenyl-phenylether	16.837	248	182557	41.415	ng	98
68) Hexachlorobenzene	16.966	284	175075	42.571	ng	96
69) Atrazine	17.090	200	159793	40.145	ng	98
70) Pentachlorophenol	17.307	266	126284	39.974	ng	96
71) Phenanthrene	17.701	178	718119	40.031	ng	98
72) Anthracene	17.795	178	744388	40.225	ng	99
73) Carbazole	18.053	167	617618	39.705	ng	98
74) Di-n-butylphthalate	18.582	149	640930	41.334	ng	99
75) Fluoranthene	19.693	202	885385	37.837	ng	99
77) Benzidine	19.857	184	354964	34.157	ng	99
78) Pyrene	20.051	202	886425	42.410	ng	99
80) Butylbenzylphthalate	20.909	149	260011	43.361	ng	97
81) Benzo(a)anthracene	21.931	228	858933	41.239	ng	98
82) 3,3'-Dichlorobenzidine	21.831	252	305406	40.733	ng	97
83) Chrysene	22.002	228	807890	41.410	ng	99
84) Bis(2-ethylhexyl)phtha...	21.796	149	370947	42.938	ng	98
85) Di-n-octyl phthalate	23.071	149	608389	41.715	ng	100
87) Indeno(1,2,3-cd)pyrene	29.358	276	962387	41.276	ng	100
88) Benzo(b)fluoranthene	24.293	252	836538	41.068	ng	97
89) Benzo(k)fluoranthene	24.369	252	836240	41.226	ng	99
90) Benzo(a)pyrene	25.227	252	814746	41.009	ng	99
91) Dibenzo(a,h)anthracene	29.411	278	815805	41.733	ng	99
92) Benzo(g,h,i)perylene	30.597	276	778616	41.074	ng	99

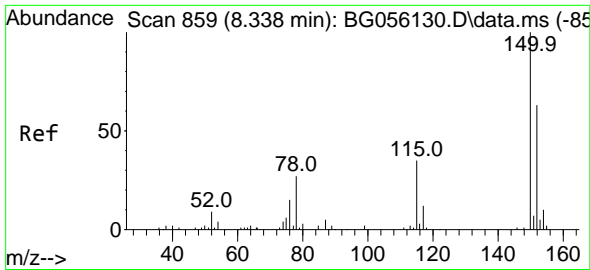
(#) = qualifier out of range (m) = manual integration (+) = signals summed

Data Path : Z:\svoasrv\HPCHEM1\BNA_G\Data\BG011823\
 Data File : BG056330.D
 Acq On : 18 Jan 2023 15:59
 Operator : CG/JU
 Sample : SSTDCCC040
 Misc :
 ALS Vial : 2 Sample Multiplier: 1

Instrument :
 BNA_G
 ClientSampleId :
 SSTDCCC040

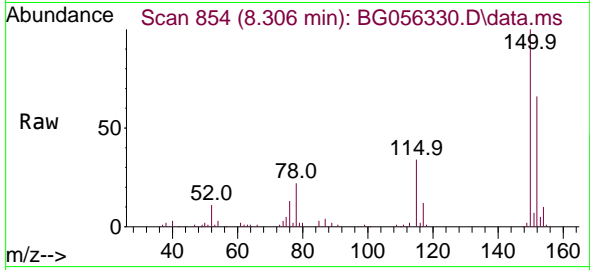
Quant Time: Jan 19 00:32:34 2023
 Quant Method : Z:\svoasrv\HPCHEM1\BNA_G\Methods\8270-BG122722.M
 Quant Title : ASP BNA STANDARDS FOR 5 POINT CALIBRATION
 QLast Update : Thu Jan 19 00:31:30 2023
 Response via : Initial Calibration



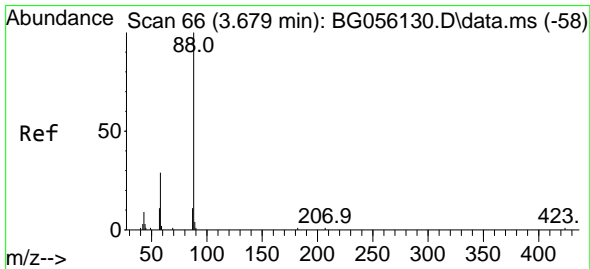
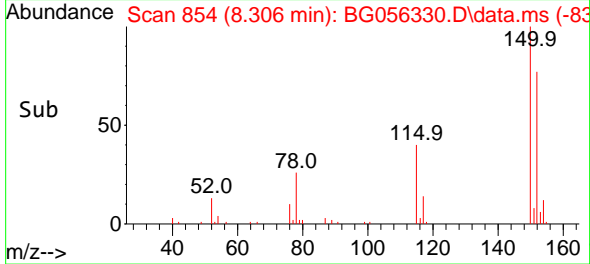
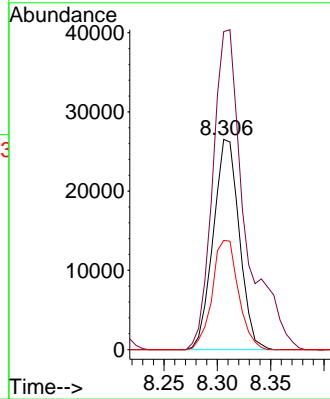


#1
 1,4-Dichlorobenzene-d4
 Concen: 20.000 ng
 RT: 8.306 min Scan# 81
 Delta R.T. -0.000 min
 Lab File: BG056330.D
 Acq: 18 Jan 2023 15:59

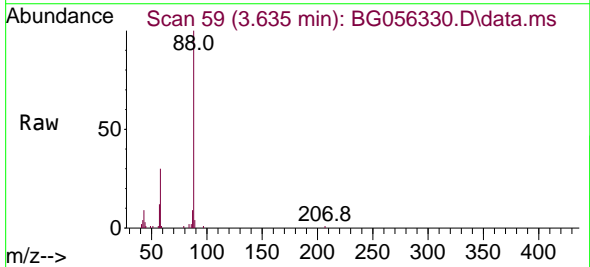
Instrument :
 BNA_G
 ClientSampleId :
 SSTDCCC040



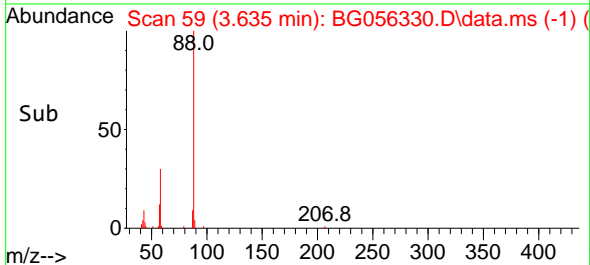
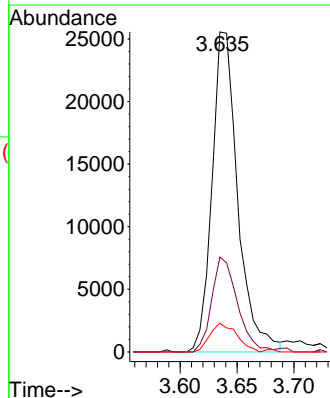
Tgt Ion:152 Resp: 45238
 Ion Ratio Lower Upper
 152 100
 150 151.3 127.9 191.9
 115 52.0 44.2 66.2

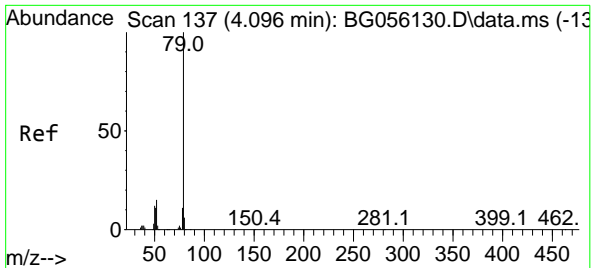


#2
 1,4-Dioxane
 Concen: 34.795 ng
 RT: 3.635 min Scan# 59
 Delta R.T. 0.000 min
 Lab File: BG056330.D
 Acq: 18 Jan 2023 15:59



Tgt Ion: 88 Resp: 40267
 Ion Ratio Lower Upper
 88 100
 58 30.1 21.4 32.0
 43 9.4 7.1 10.7



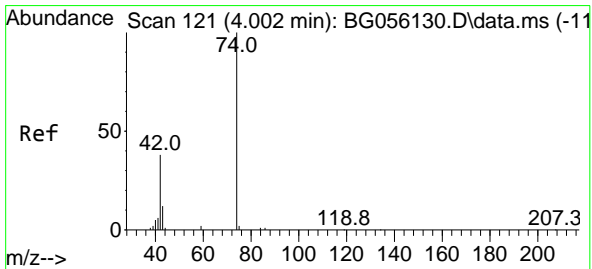
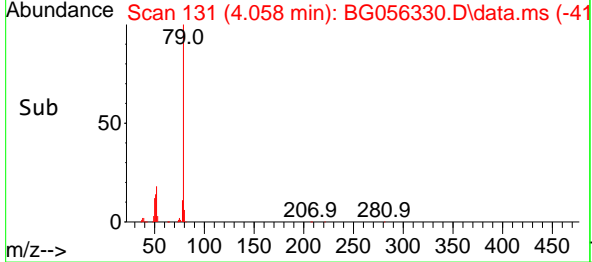
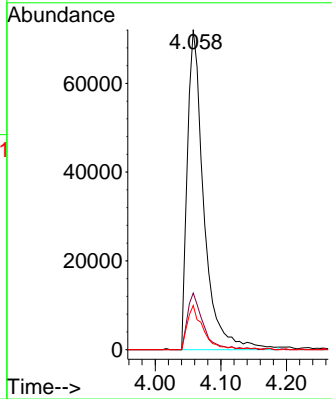
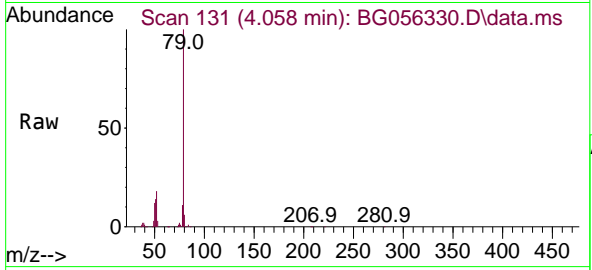


#3
 Pyridine
 Concen: 35.758 ng
 RT: 4.058 min Scan# 116
 Delta R.T. 0.000 min
 Lab File: BG056330.D
 Acq: 18 Jan 2023 15:59

Instrument : BNA_G
 ClientSampleId : SSTDCCC040

Tgt Ion: 79 Resp: 126036

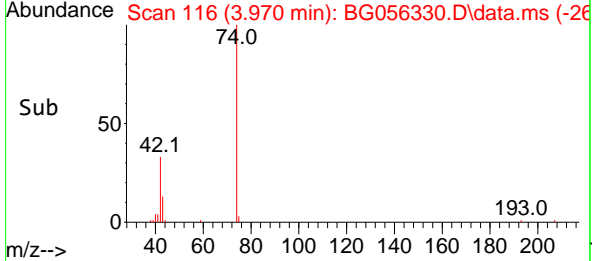
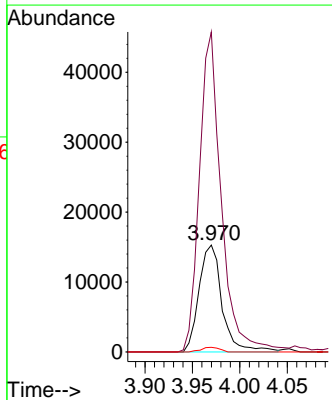
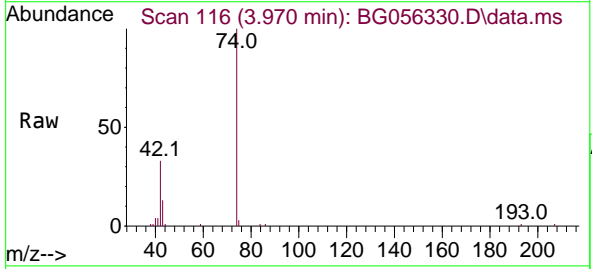
Ion	Ratio	Lower	Upper
79	100		
52	17.7	11.8	17.6#
51	13.8	8.8	13.2#

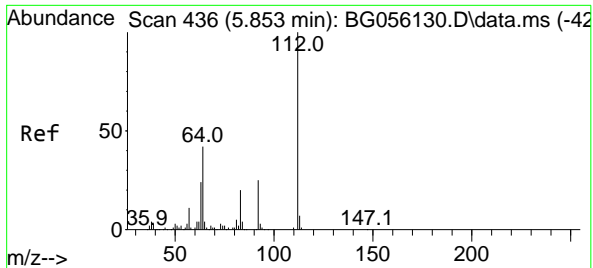


#4
 n-Nitrosodimethylamine
 Concen: 36.165 ng
 RT: 3.970 min Scan# 116
 Delta R.T. 0.000 min
 Lab File: BG056330.D
 Acq: 18 Jan 2023 15:59

Tgt Ion: 42 Resp: 25930

Ion	Ratio	Lower	Upper
42	100		
74	299.5	212.6	319.0
44	4.3	2.6	3.8#

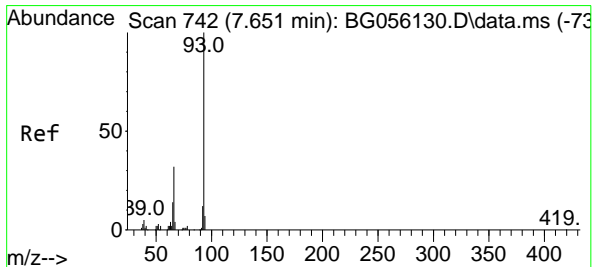
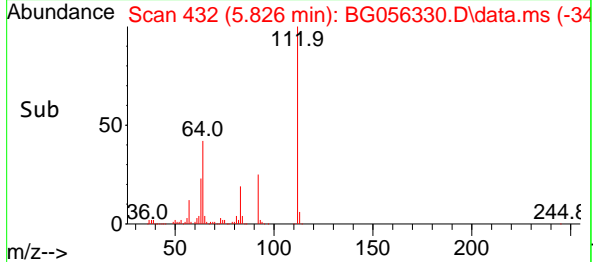
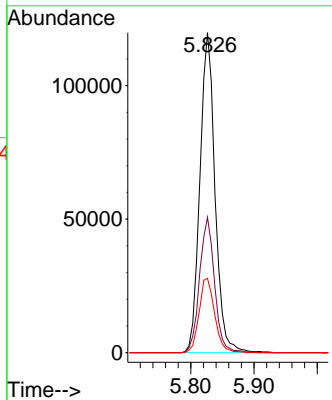
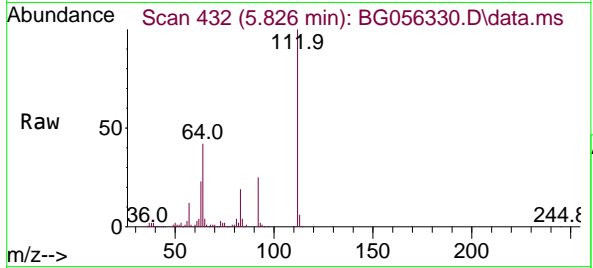




#5
 2-Fluorophenol
 Concen: 78.405 ng
 RT: 5.826 min Scan# 431
 Delta R.T. 0.000 min
 Lab File: BG056330.D
 Acq: 18 Jan 2023 15:59

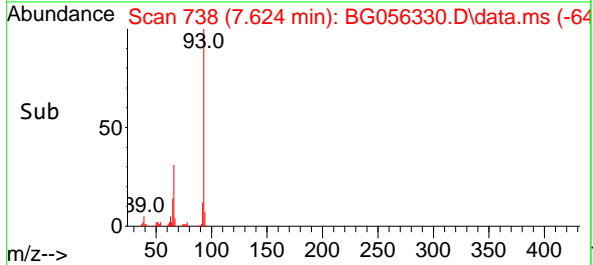
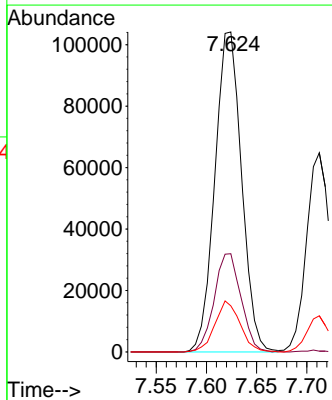
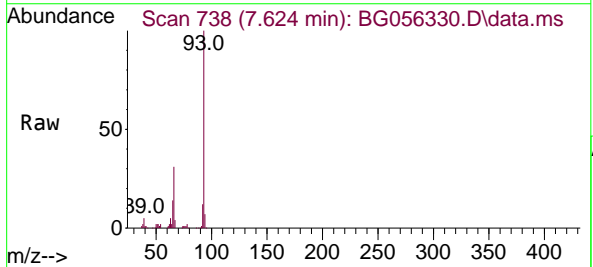
Instrument : BNA_G
 ClientSampleId : SSTDCCC040

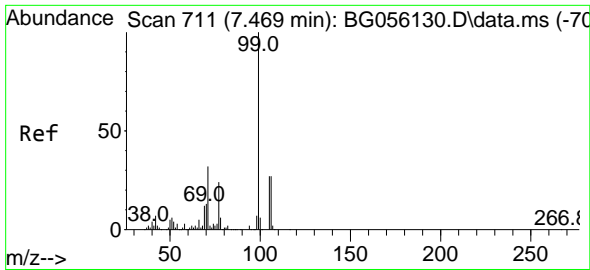
Tgt Ion	Resp	Lower	Upper
112	198649		
64	42.3	33.3	49.9
63	23.2	19.0	28.4



#6
 Aniline
 Concen: 37.847 ng
 RT: 7.624 min Scan# 738
 Delta R.T. 0.000 min
 Lab File: BG056330.D
 Acq: 18 Jan 2023 15:59

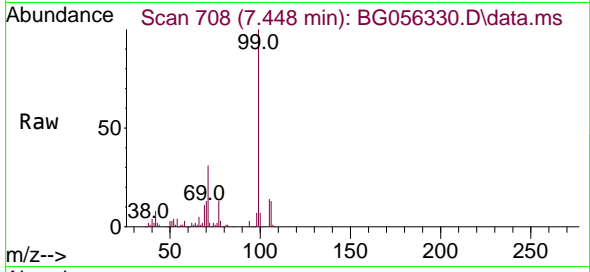
Tgt Ion	Resp	Lower	Upper
93	193116		
66	30.7	25.4	38.2
65	14.4	11.4	17.2



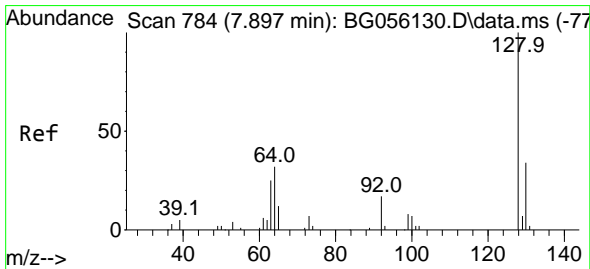
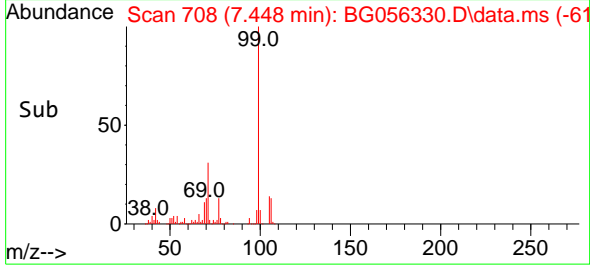
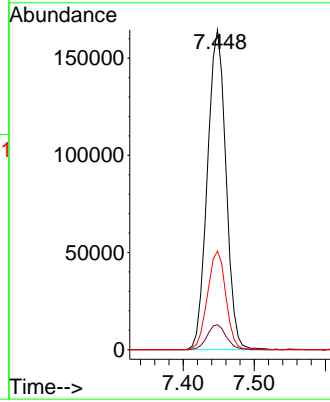


#7
 Phenol-d6
 Concen: 76.349 ng
 RT: 7.448 min Scan# 70
 Delta R.T. 0.000 min
 Lab File: BG056330.D
 Acq: 18 Jan 2023 15:59

Instrument :
 BNA_G
 ClientSampleId :
 SSTDCCC040

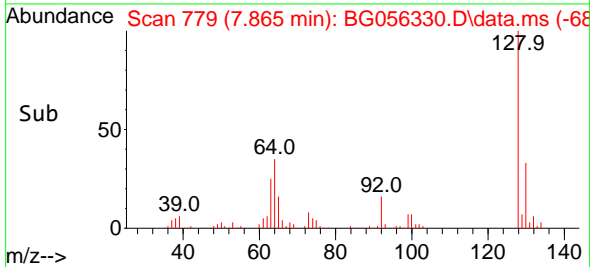
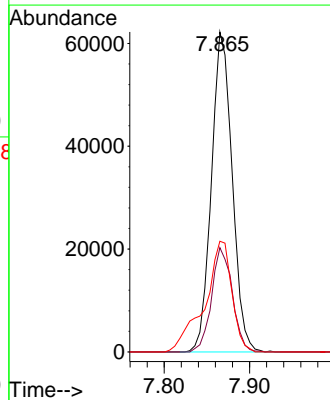
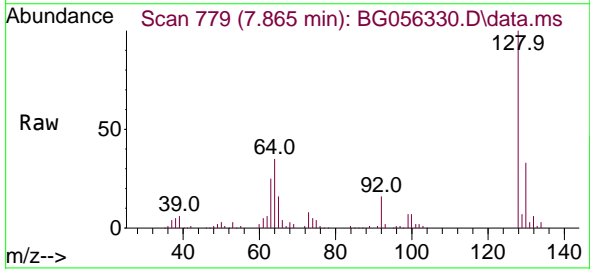


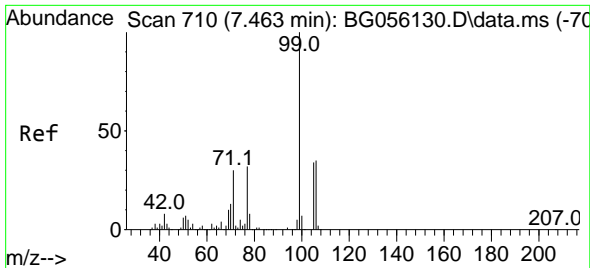
Tgt Ion: 99 Resp: 297070
 Ion Ratio Lower Upper
 99 100
 42 7.8 5.9 8.9
 71 30.8 25.4 38.2



#8
 2-Chlorophenol
 Concen: 41.651 ng
 RT: 7.865 min Scan# 779
 Delta R.T. 0.000 min
 Lab File: BG056330.D
 Acq: 18 Jan 2023 15:59

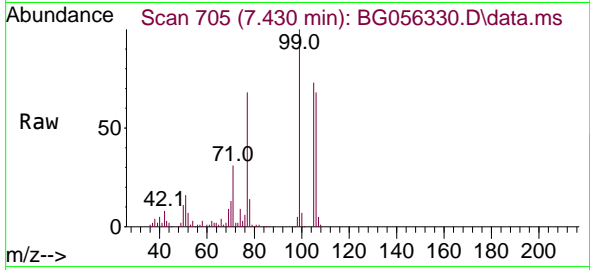
Tgt Ion: 128 Resp: 105013
 Ion Ratio Lower Upper
 128 100
 130 32.6 13.5 53.5
 64 34.6 18.0 58.0





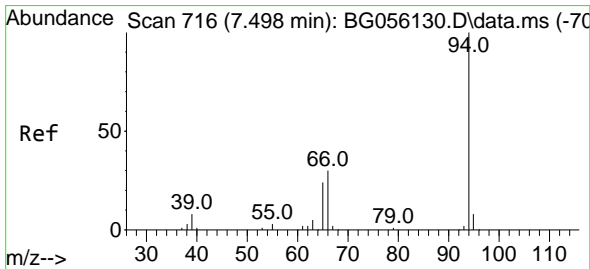
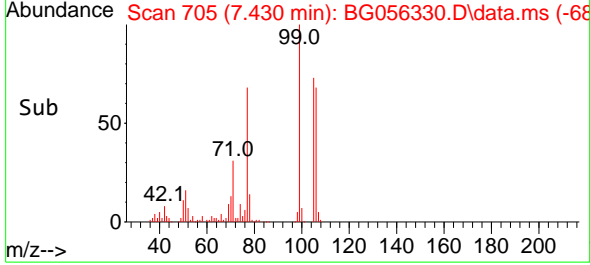
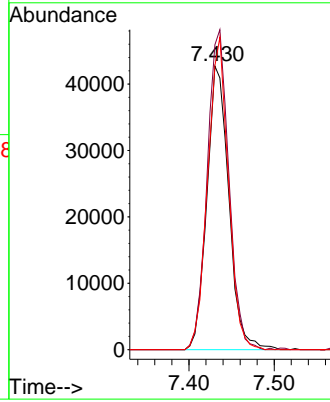
#9
 Benzaldehyde
 Concen: 32.980 ng
 RT: 7.430 min Scan# 705
 Delta R.T. 0.000 min
 Lab File: BG056330.D
 Acq: 18 Jan 2023 15:59

Instrument : BNA_G
 ClientSampleId : SSTDCCC040



Tgt Ion: 77 Resp: 76300

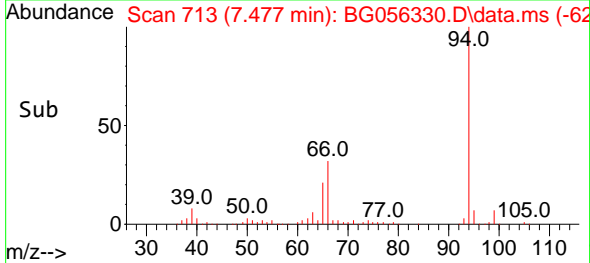
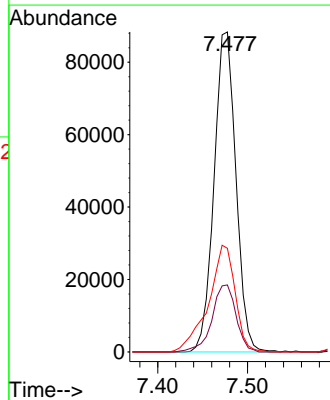
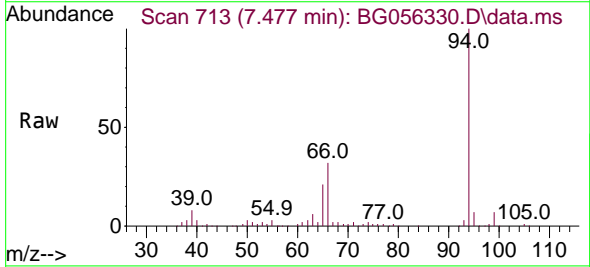
Ion	Ratio	Lower	Upper
77	100		
105	107.6	86.8	126.8
106	100.2	89.3	129.3

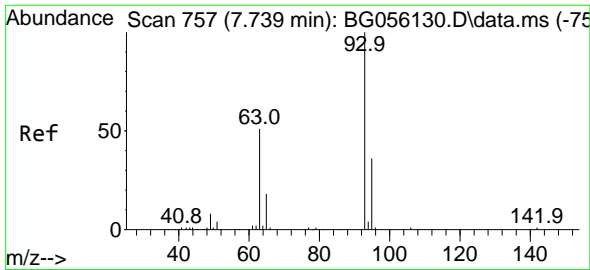


#10
 Phenol
 Concen: 37.877 ng
 RT: 7.477 min Scan# 713
 Delta R.T. 0.000 min
 Lab File: BG056330.D
 Acq: 18 Jan 2023 15:59

Tgt Ion: 94 Resp: 149462

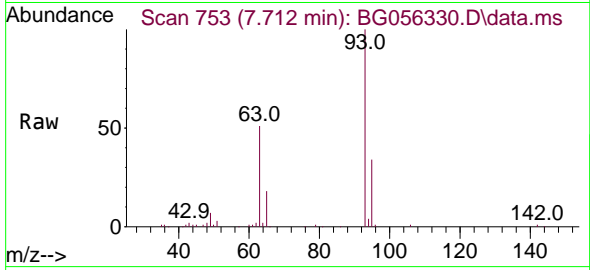
Ion	Ratio	Lower	Upper
94	100		
65	20.9	4.3	44.3
66	32.4	13.2	53.2





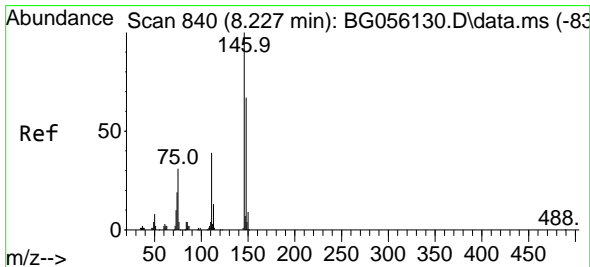
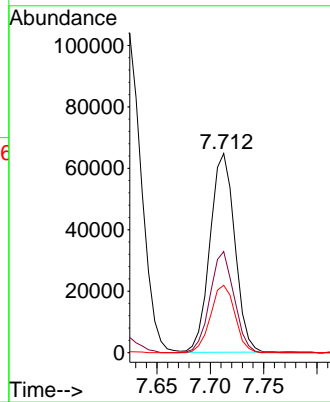
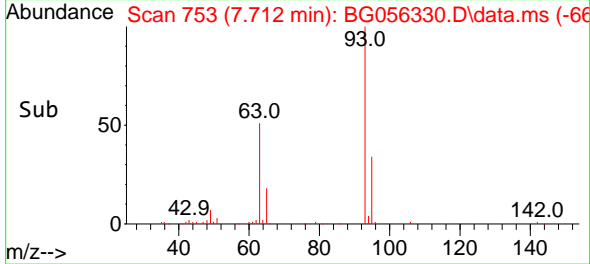
#11
 bis(2-Chloroethyl)ether
 Concen: 39.143 ng
 RT: 7.712 min Scan# 711
 Delta R.T. 0.000 min
 Lab File: BG056330.D
 Acq: 18 Jan 2023 15:59

Instrument : BNA_G
 ClientSampleId : SSTDCCC040

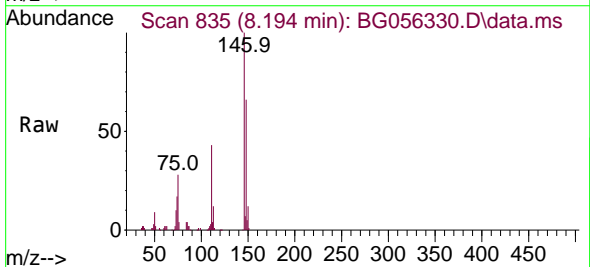


Tgt Ion: 93 Resp: 104671

Ion	Ratio	Lower	Upper
93	100		
63	50.7	30.5	70.5
95	33.8	15.9	55.9

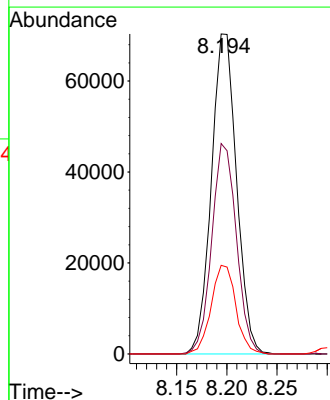
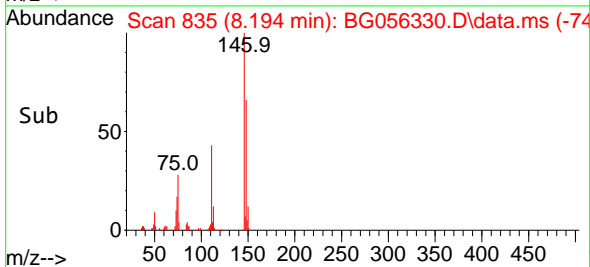


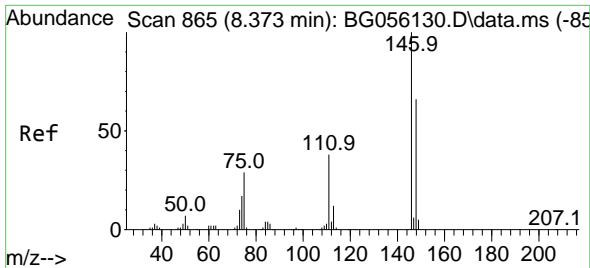
#12
 1,3-Dichlorobenzene
 Concen: 40.055 ng
 RT: 8.194 min Scan# 835
 Delta R.T. 0.000 min
 Lab File: BG056330.D
 Acq: 18 Jan 2023 15:59



Tgt Ion: 146 Resp: 122909

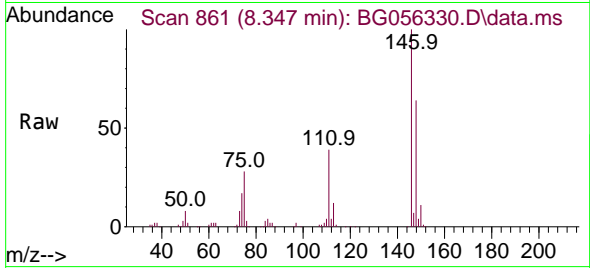
Ion	Ratio	Lower	Upper
146	100		
148	65.7	53.5	80.3
75	27.7	24.8	37.2



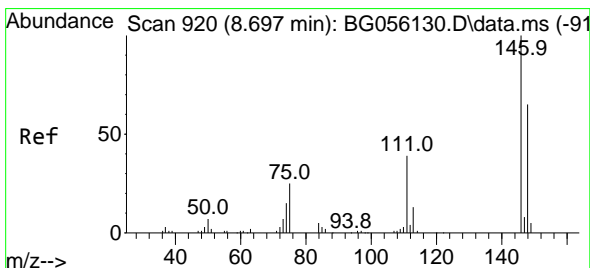
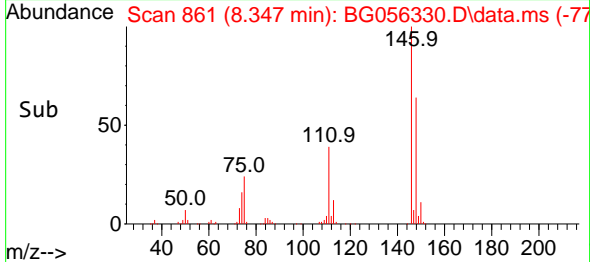
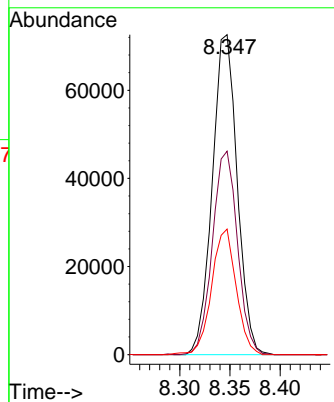


#13
 1,4-Dichlorobenzene
 Concen: 40.743 ng
 RT: 8.347 min Scan# 861
 Delta R.T. 0.000 min
 Lab File: BG056330.D
 Acq: 18 Jan 2023 15:59

Instrument :
 BNA_G
 ClientSampleId :
 SSTDCCC040

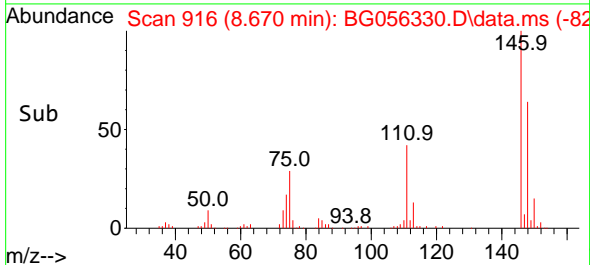
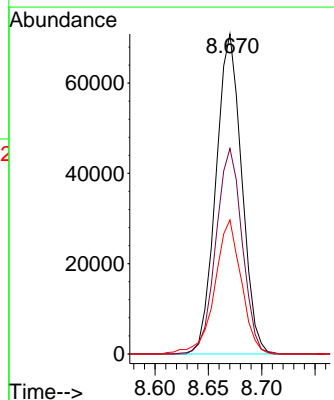
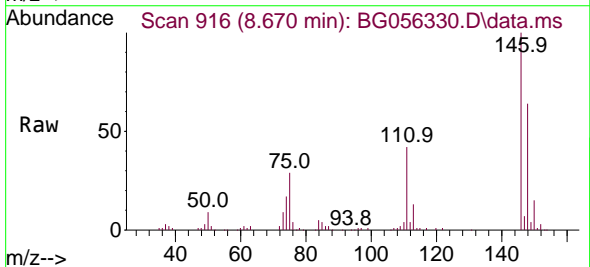


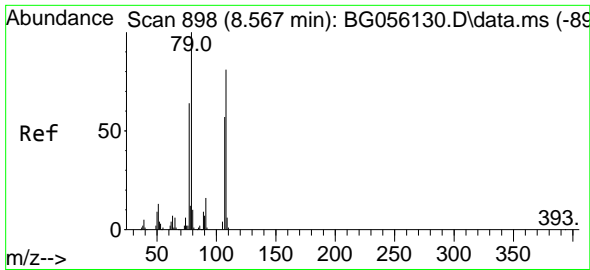
Tgt Ion:146 Resp: 125544
 Ion Ratio Lower Upper
 146 100
 148 63.6 52.8 79.2
 111 39.2 30.5 45.7



#14
 1,2-Dichlorobenzene
 Concen: 40.071 ng
 RT: 8.670 min Scan# 916
 Delta R.T. 0.000 min
 Lab File: BG056330.D
 Acq: 18 Jan 2023 15:59

Tgt Ion:146 Resp: 119139
 Ion Ratio Lower Upper
 146 100
 148 64.2 51.7 77.5
 111 41.9 31.5 47.3

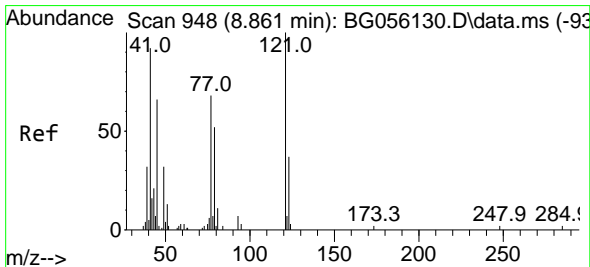
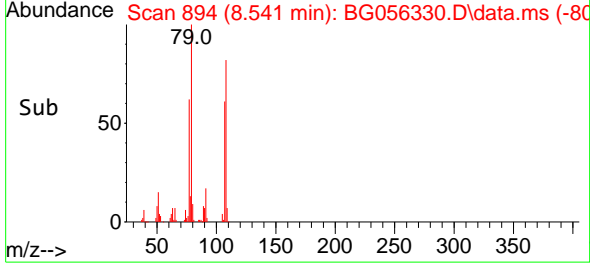
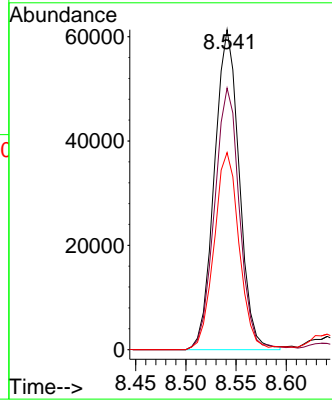
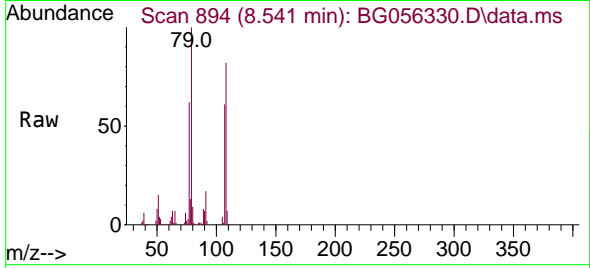




#15
 Benzyl Alcohol
 Concen: 37.305 ng
 RT: 8.541 min Scan# 898
 Delta R.T. 0.000 min
 Lab File: BG056330.D
 Acq: 18 Jan 2023 15:59

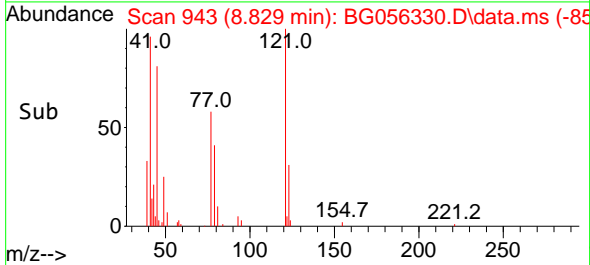
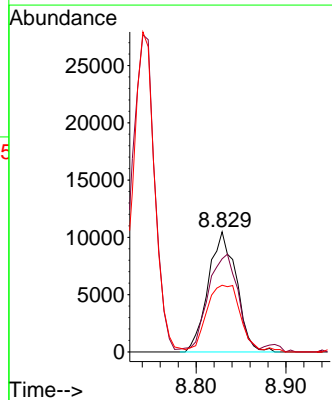
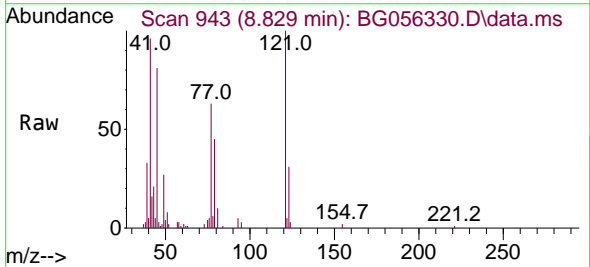
Instrument :
 BNA_G
 ClientSampleId :
 SSTDCCC040

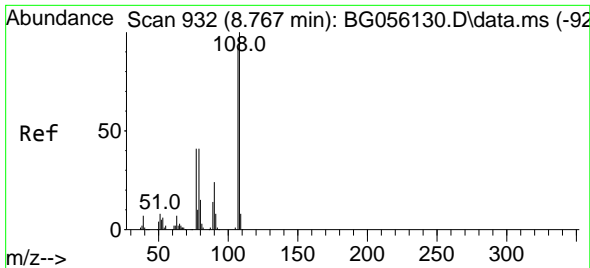
Tgt Ion: 79 Resp: 105641
 Ion Ratio Lower Upper
 79 100
 108 81.7 64.7 97.1
 77 61.6 51.5 77.3



#16
 2,2'-oxybis(1-Chloropropane)
 Concen: 48.370 ng
 RT: 8.829 min Scan# 943
 Delta R.T. 0.000 min
 Lab File: BG056330.D
 Acq: 18 Jan 2023 15:59

Tgt Ion: 45 Resp: 22857
 Ion Ratio Lower Upper
 45 100
 77 77.5 88.2 128.2#
 79 55.4 61.2 101.2#

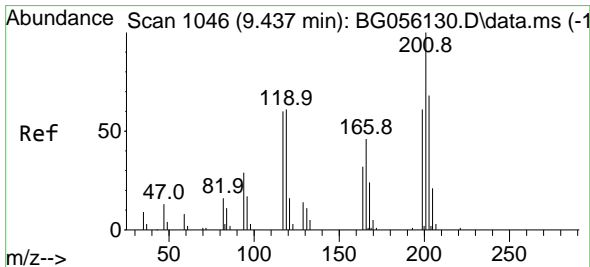
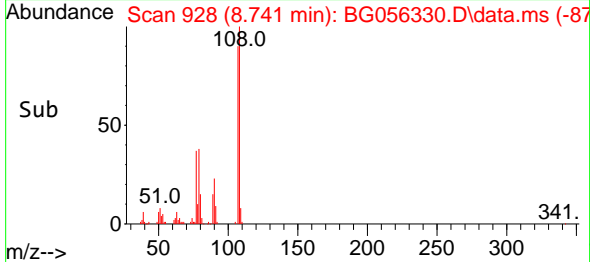
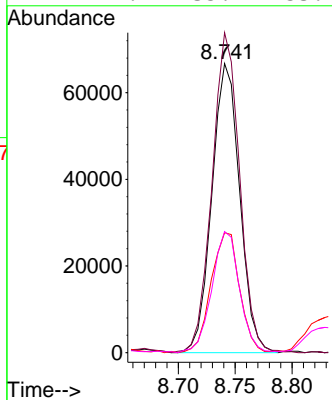
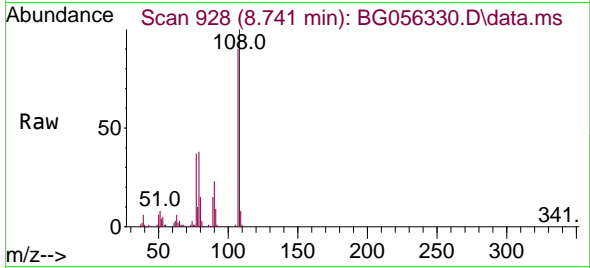




#17
 2-Methylphenol
 Concen: 39.198 ng
 RT: 8.741 min Scan# 91
 Delta R.T. 0.000 min
 Lab File: BG056330.D
 Acq: 18 Jan 2023 15:59

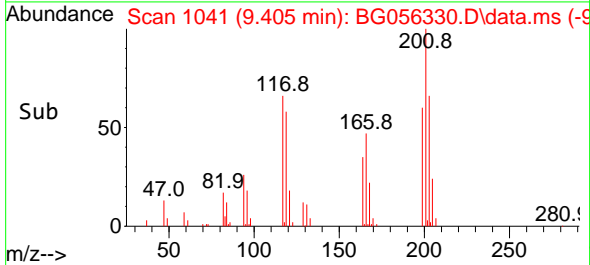
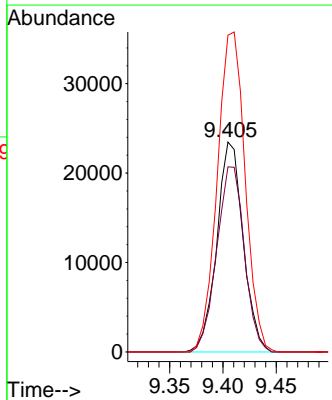
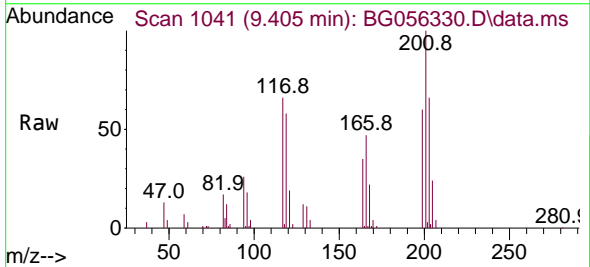
Instrument :
 BNA_G
 ClientSampleId :
 SSTDCCC040

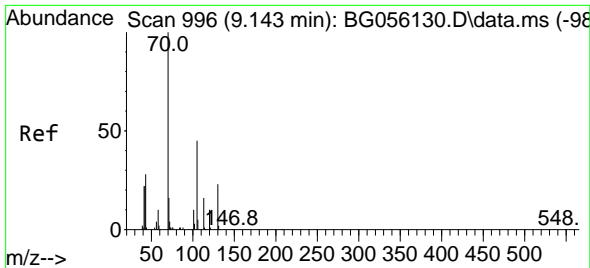
Tgt Ion	Resp	Lower	Upper
107	113497		
108	110.7	86.6	129.8
77	41.5	35.4	53.2
79	41.9	35.4	53.2



#18
 Hexachloroethane
 Concen: 43.056 ng
 RT: 9.405 min Scan# 1041
 Delta R.T. 0.000 min
 Lab File: BG056330.D
 Acq: 18 Jan 2023 15:59

Tgt Ion	Resp	Lower	Upper
117	40304		
119	88.2	81.8	122.6
201	151.0	134.2	201.2



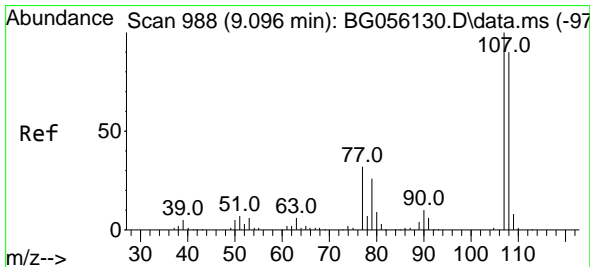
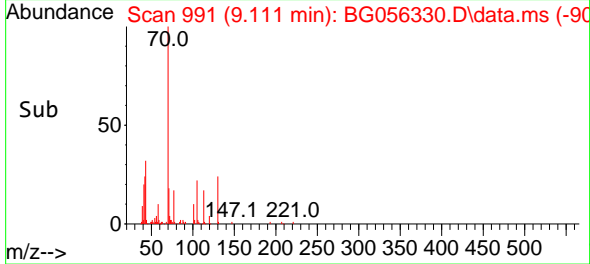
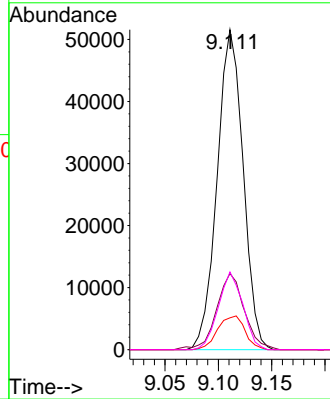
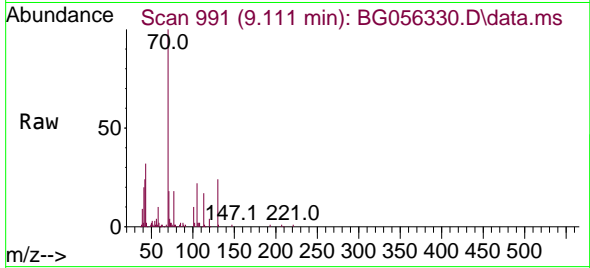


#19
 n-Nitroso-di-n-propylamine
 Concen: 36.994 ng
 RT: 9.111 min Scan# 996
 Delta R.T. 0.000 min
 Lab File: BG056330.D
 Acq: 18 Jan 2023 15:59

Instrument :
 BNA_G
 ClientSampleId :
 SSTDCCC040

Tgt Ion: 70 Resp: 87529

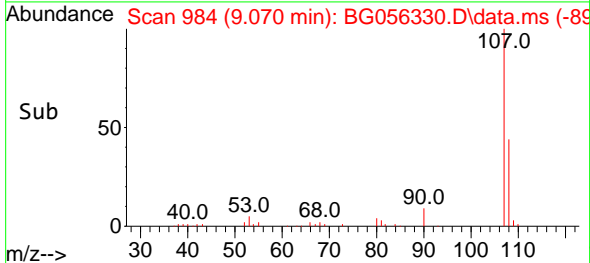
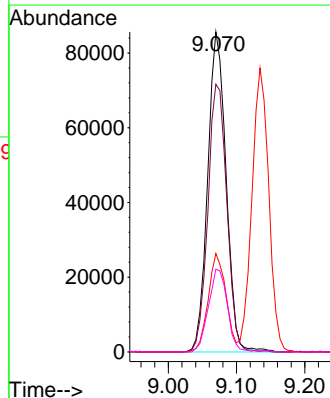
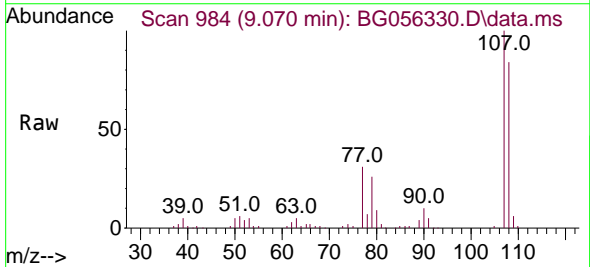
Ion	Ratio	Lower	Upper
70	100		
42	23.8	18.2	27.2
101	9.9	8.3	12.5
130	24.3	18.2	27.4

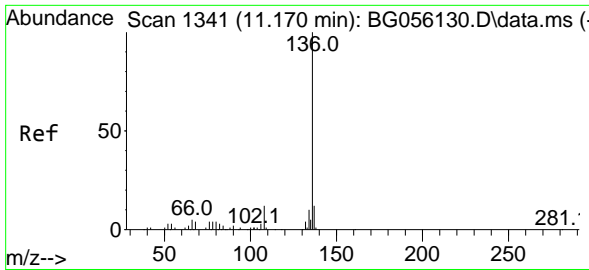


#20
 3+4-Methylphenols
 Concen: 39.358 ng
 RT: 9.070 min Scan# 984
 Delta R.T. 0.000 min
 Lab File: BG056330.D
 Acq: 18 Jan 2023 15:59

Tgt Ion: 107 Resp: 160217

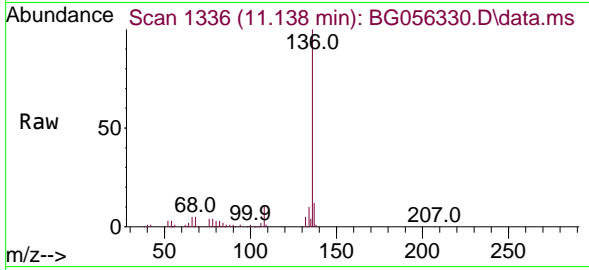
Ion	Ratio	Lower	Upper
107	100		
108	83.6	69.6	109.6
77	30.7	11.7	51.7
79	25.9	6.3	46.3





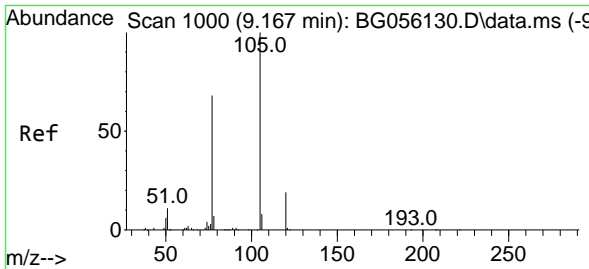
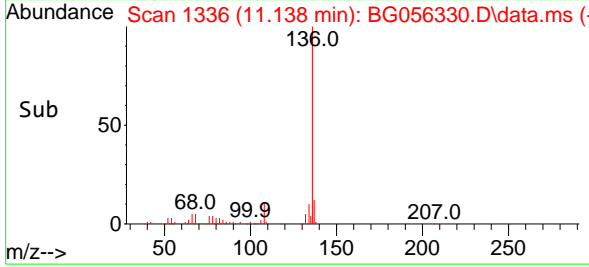
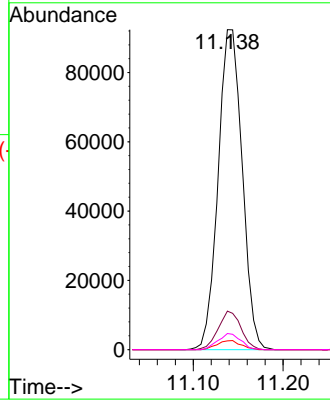
#21
 Naphthalene-d8
 Concen: 20.000 ng
 RT: 11.138 min Scan# 1341
 Delta R.T. 0.000 min
 Lab File: BG056330.D
 Acq: 18 Jan 2023 15:59

Instrument : BNA_G
 ClientSampleId : SSTDCCC040



Tgt Ion:136 Resp: 172146

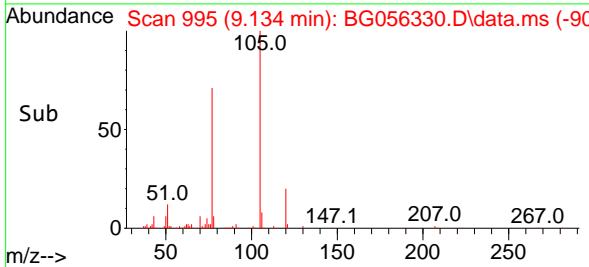
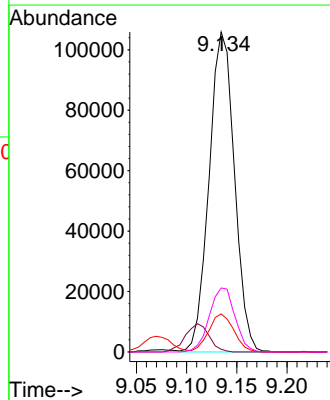
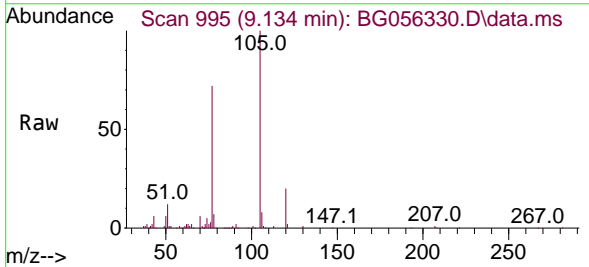
Ion	Ratio	Lower	Upper
136	100		
137	12.0	9.4	14.0
54	2.9	2.2	3.2
68	5.0	3.4	5.0

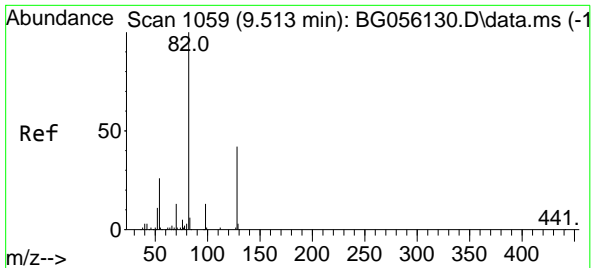


#22
 Acetophenone
 Concen: 38.278 ng
 RT: 9.134 min Scan# 995
 Delta R.T. 0.000 min
 Lab File: BG056330.D
 Acq: 18 Jan 2023 15:59

Tgt Ion:105 Resp: 186314

Ion	Ratio	Lower	Upper
105	100		
71	0.8	0.5	0.7#
51	11.9	9.3	13.9
120	20.0	15.5	23.3

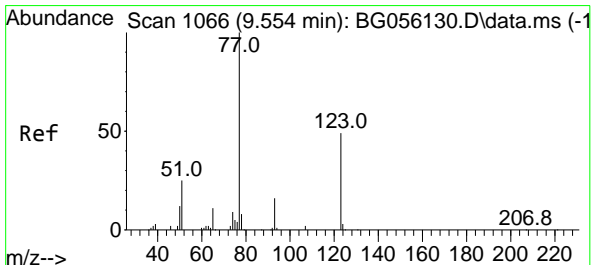
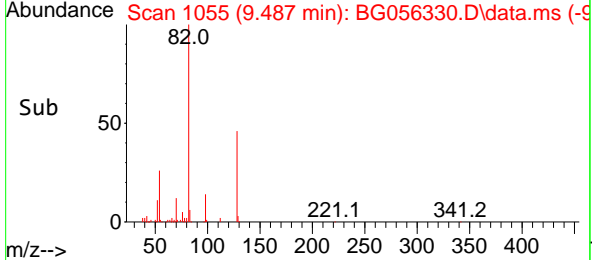
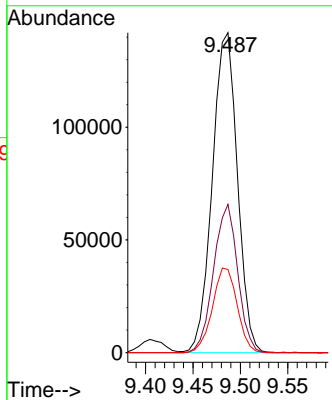
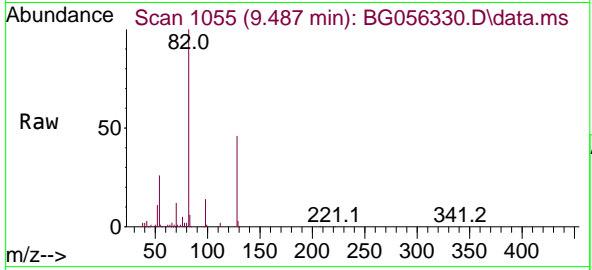




#23
 Nitrobenzene-d5
 Concen: 77.668 ng
 RT: 9.487 min Scan# 1055
 Delta R.T. 0.000 min
 Lab File: BG056330.D
 Acq: 18 Jan 2023 15:59

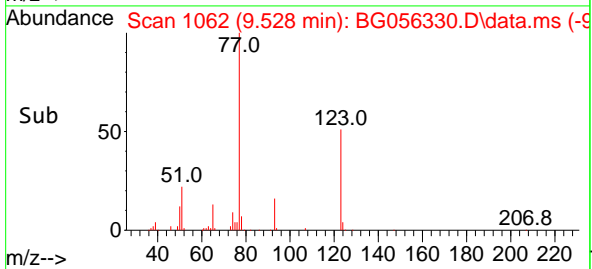
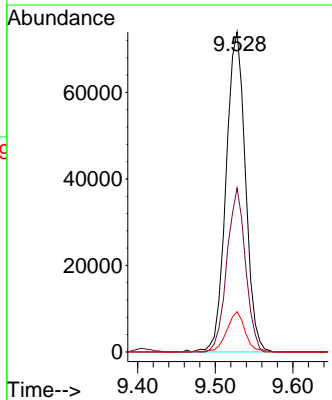
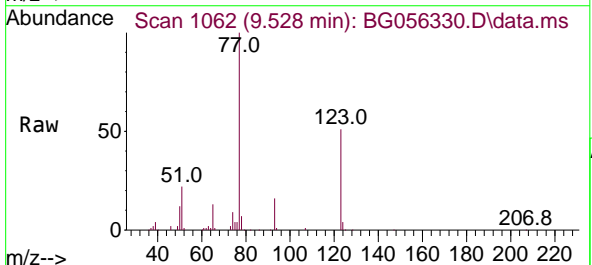
Instrument : BNA_G
 ClientSampleId : SSTDCCC040

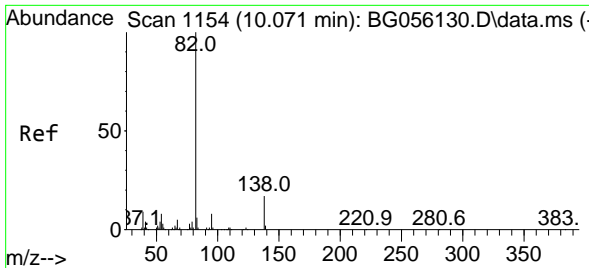
Tgt Ion	Resp	Lower	Upper
82	261385		
128	46.3	33.4	50.2
54	26.0	20.3	30.5



#24
 Nitrobenzene
 Concen: 38.480 ng
 RT: 9.528 min Scan# 1062
 Delta R.T. 0.000 min
 Lab File: BG056330.D
 Acq: 18 Jan 2023 15:59

Tgt Ion	Resp	Lower	Upper
77	128337		
123	51.2	38.8	58.2
65	12.6	9.1	13.7



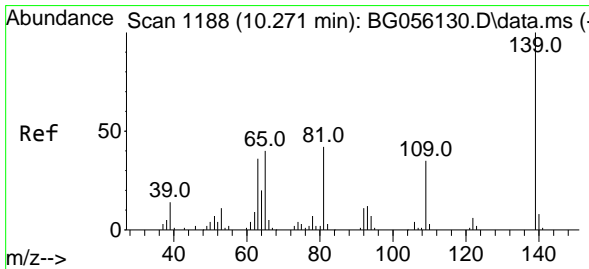
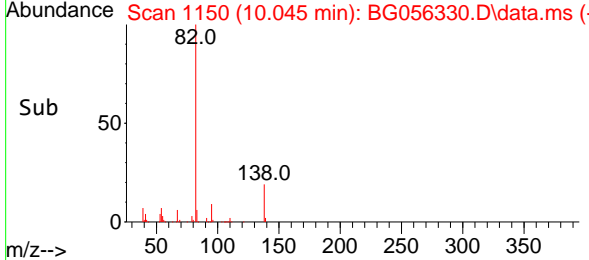
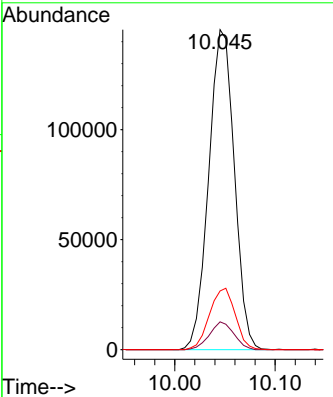
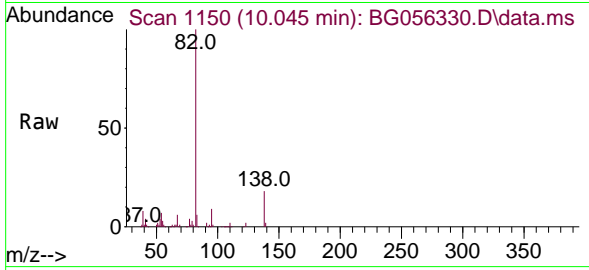


#25
 Isophorone
 Concen: 36.434 ng
 RT: 10.045 min Scan# 1150
 Delta R.T. 0.000 min
 Lab File: BG056330.D
 Acq: 18 Jan 2023 15:59

Instrument : BNA_G
 ClientSampleId : SSTDCCC040

Tgt Ion: 82 Resp: 257987

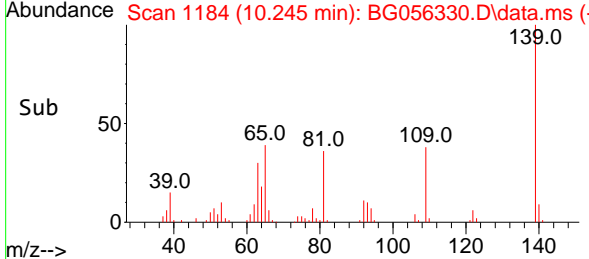
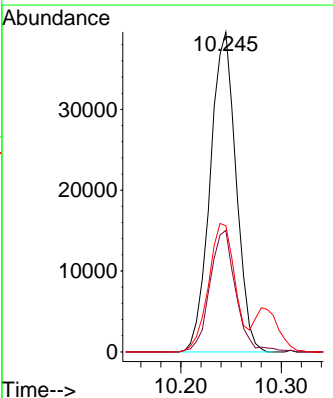
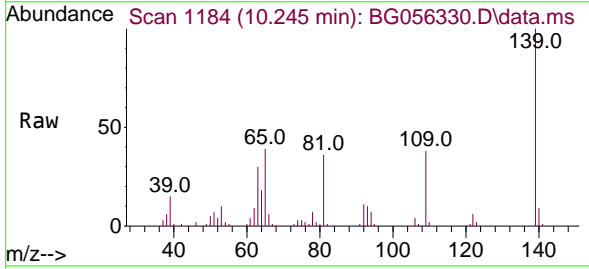
Ion	Ratio	Lower	Upper
82	100		
95	8.7	6.7	10.1
138	18.4	13.7	20.5

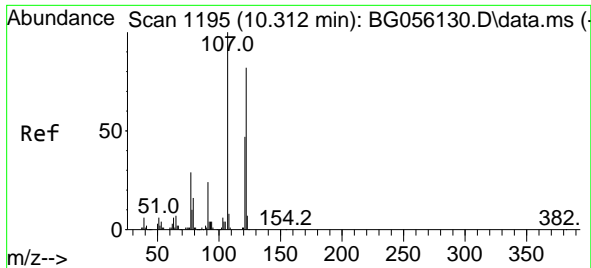


#26
 2-Nitrophenol
 Concen: 41.494 ng
 RT: 10.245 min Scan# 1184
 Delta R.T. 0.000 min
 Lab File: BG056330.D
 Acq: 18 Jan 2023 15:59

Tgt Ion: 139 Resp: 70807

Ion	Ratio	Lower	Upper
139	100		
109	38.0	28.4	42.6
65	39.4	32.1	48.1

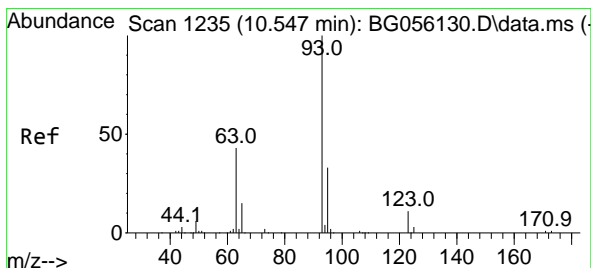
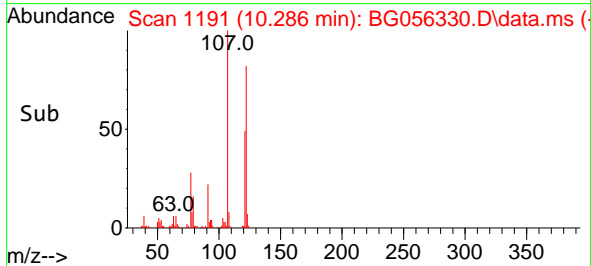
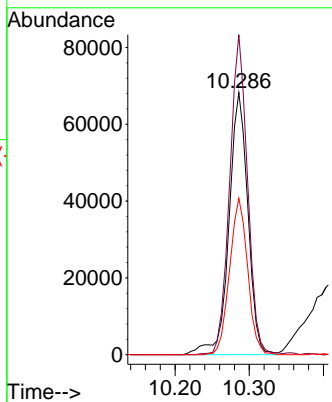
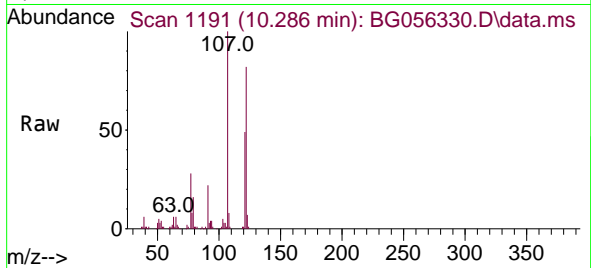




#27
 2,4-Dimethylphenol
 Concen: 38.812 ng
 RT: 10.286 min Scan# 1191
 Delta R.T. 0.000 min
 Lab File: BG056330.D
 Acq: 18 Jan 2023 15:59

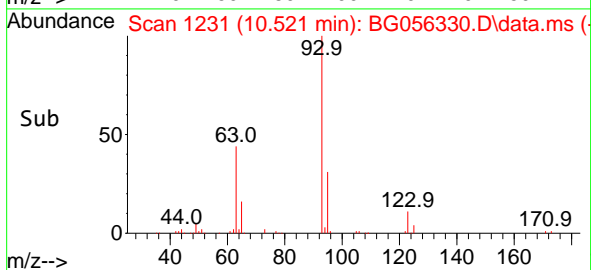
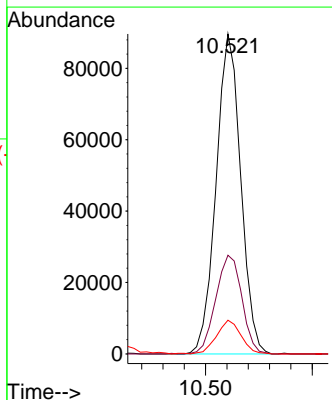
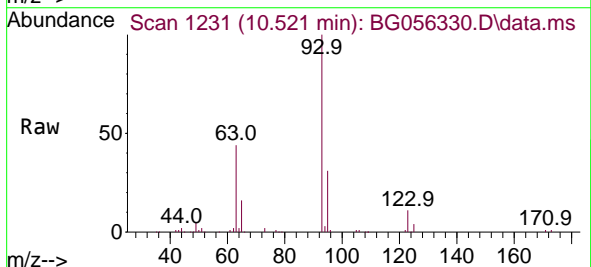
Instrument :
 BNA_G
 ClientSampleId :
 SSTDCCC040

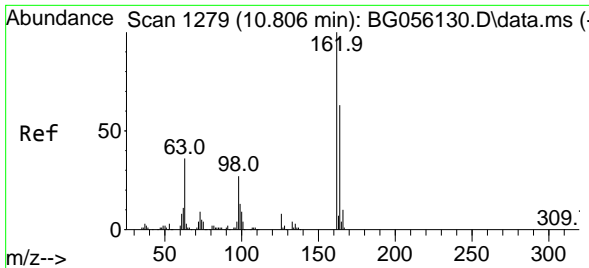
Tgt Ion	Resp	Lower	Upper
122	120796		
122	100		
107	122.2	97.5	146.3
121	59.7	45.9	68.9



#28
 bis(2-Chloroethoxy)methane
 Concen: 39.125 ng
 RT: 10.521 min Scan# 1231
 Delta R.T. 0.000 min
 Lab File: BG056330.D
 Acq: 18 Jan 2023 15:59

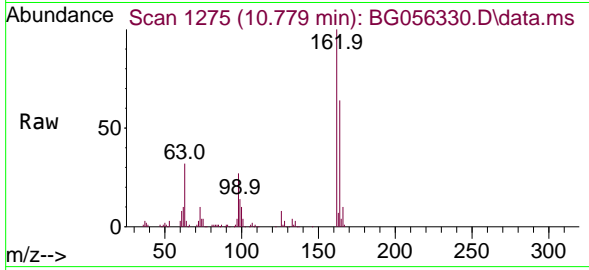
Tgt Ion	Resp	Lower	Upper
93	143988		
93	100		
95	30.8	26.2	39.2
123	10.5	9.0	13.6





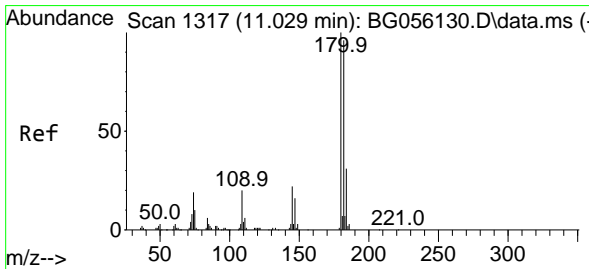
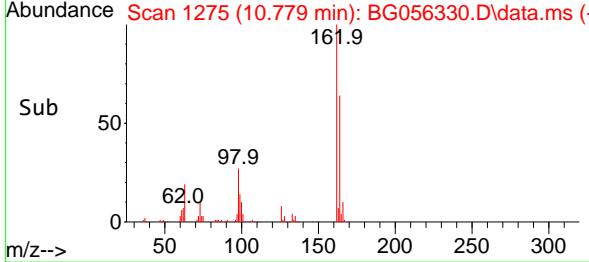
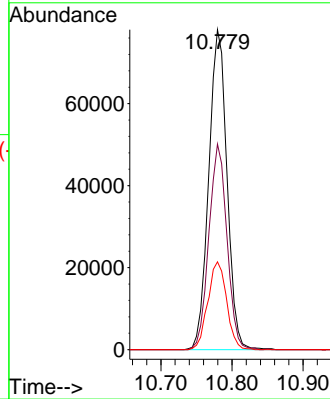
#29
 2,4-Dichlorophenol
 Concen: 40.452 ng
 RT: 10.779 min Scan# 11
 Delta R.T. 0.000 min
 Lab File: BG056330.D
 Acq: 18 Jan 2023 15:59

Instrument :
 BNA_G
 ClientSampleId :
 SSTDCCC040



Tgt Ion:162 Resp: 139193

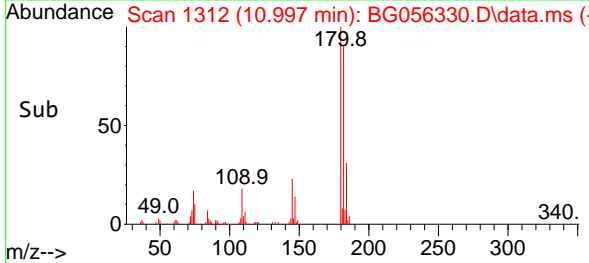
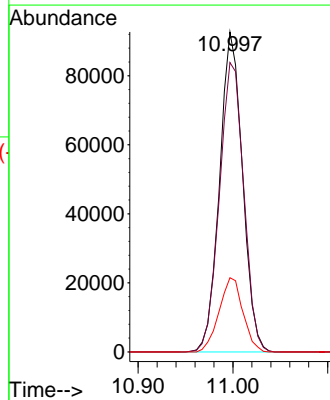
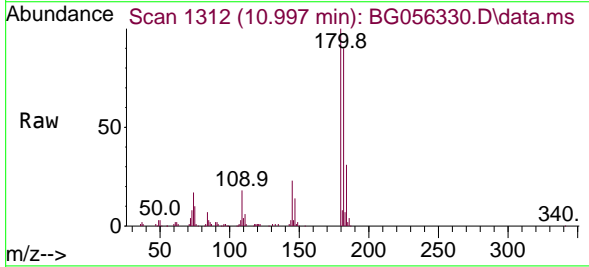
Ion	Ratio	Lower	Upper
162	100		
164	64.2	43.3	83.3
98	27.4	6.8	46.8

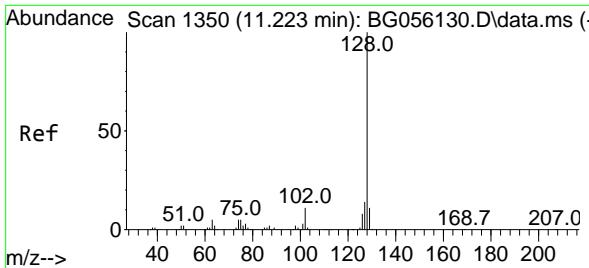


#30
 1,2,4-Trichlorobenzene
 Concen: 39.925 ng
 RT: 10.997 min Scan# 1312
 Delta R.T. 0.000 min
 Lab File: BG056330.D
 Acq: 18 Jan 2023 15:59

Tgt Ion:180 Resp: 155896

Ion	Ratio	Lower	Upper
180	100		
182	90.4	77.0	115.4
145	23.2	17.4	26.2



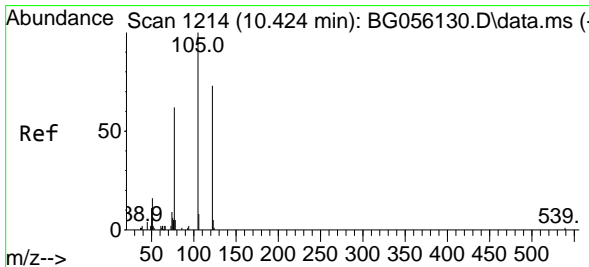
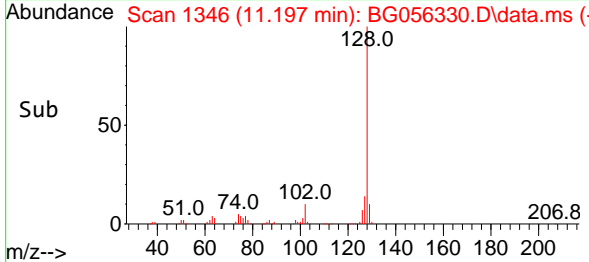
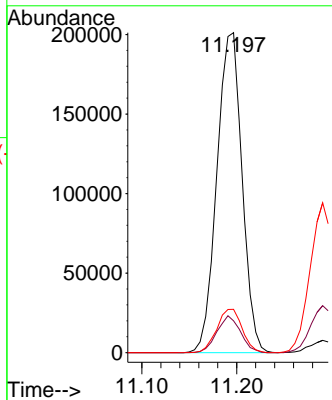
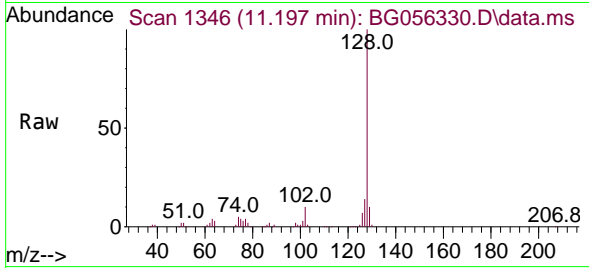


#31
 Naphthalene
 Concen: 40.951 ng
 RT: 11.197 min Scan# 11197
 Delta R.T. 0.000 min
 Lab File: BG056330.D
 Acq: 18 Jan 2023 15:59

Instrument :
 BNA_G
 ClientSampleId :
 SSTDCCC040

Tgt Ion:128 Resp: 371006

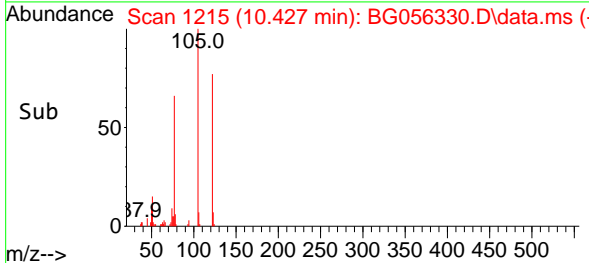
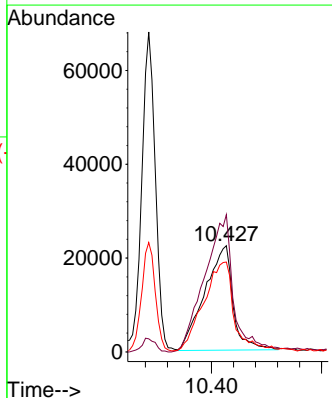
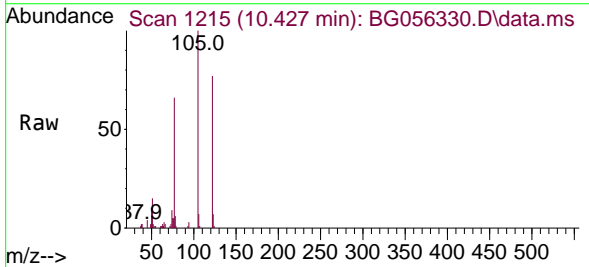
Ion	Ratio	Lower	Upper
128	100		
129	9.9	8.9	13.3
127	13.5	11.2	16.8

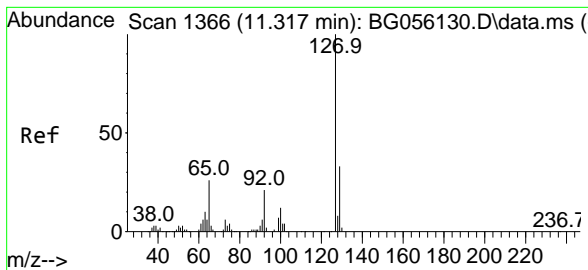


#32
 Benzoic acid
 Concen: 34.493 ng
 RT: 10.427 min Scan# 1215
 Delta R.T. 0.000 min
 Lab File: BG056330.D
 Acq: 18 Jan 2023 15:59

Tgt Ion:122 Resp: 79655

Ion	Ratio	Lower	Upper
122	100		
105	129.1	109.0	149.0
77	84.6	63.1	103.1



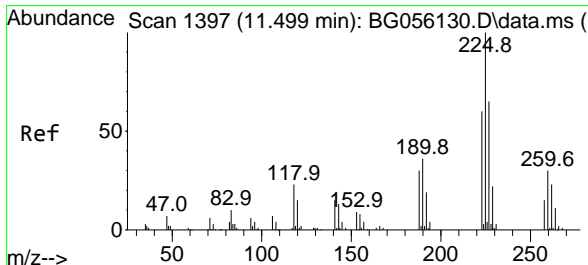
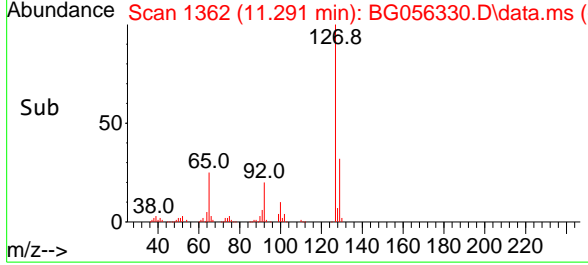
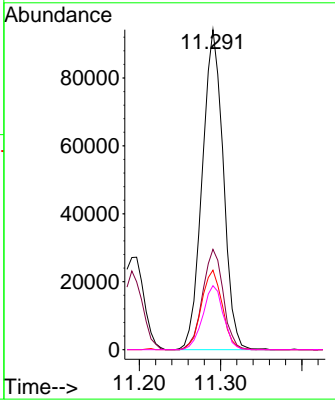
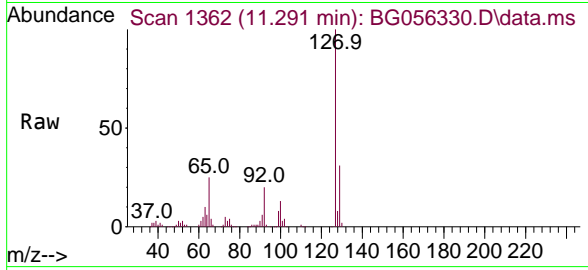


#33
 4-Chloroaniline
 Concen: 39.172 ng
 RT: 11.291 min Scan# 1362
 Delta R.T. 0.000 min
 Lab File: BG056330.D
 Acq: 18 Jan 2023 15:59

Instrument : BNA_G
 ClientSampleId : SSTDCCC040

Tgt Ion:127 Resp: 169441

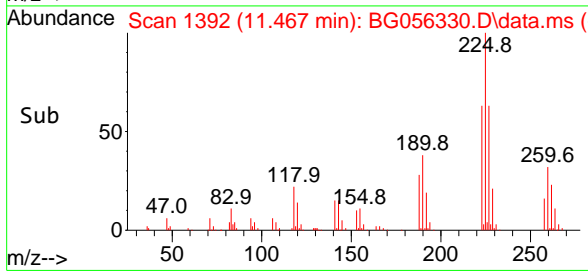
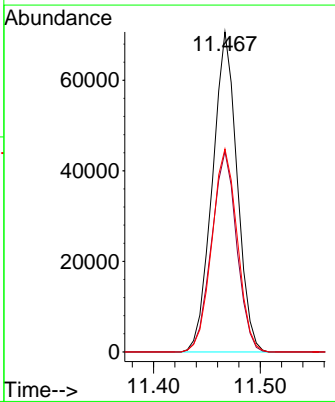
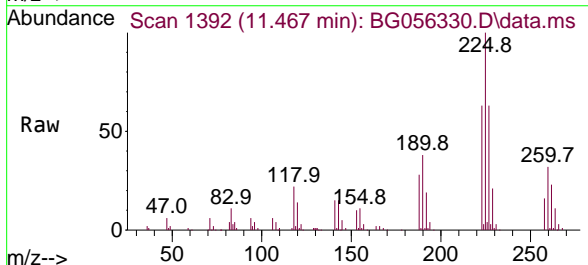
Ion	Ratio	Lower	Upper
127	100		
129	31.3	26.1	39.1
65	24.8	20.9	31.3
92	20.0	16.7	25.1

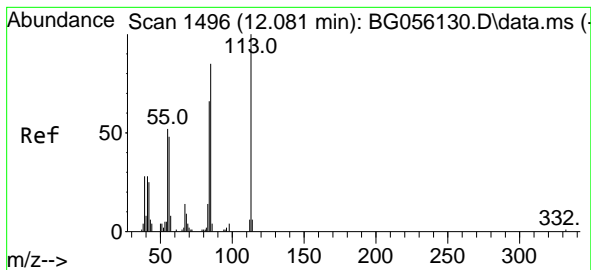


#34
 Hexachlorobutadiene
 Concen: 40.574 ng
 RT: 11.467 min Scan# 1392
 Delta R.T. 0.000 min
 Lab File: BG056330.D
 Acq: 18 Jan 2023 15:59

Tgt Ion:225 Resp: 113947

Ion	Ratio	Lower	Upper
225	100		
223	62.6	47.7	71.5
227	66.1	52.3	78.5



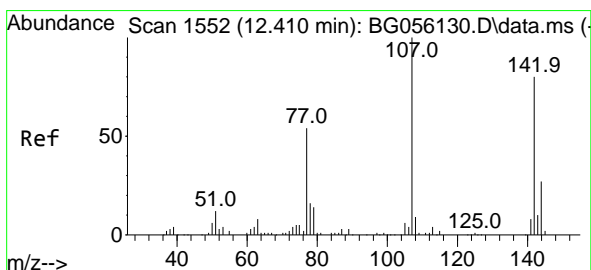
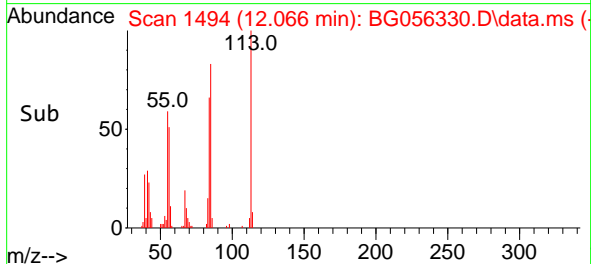
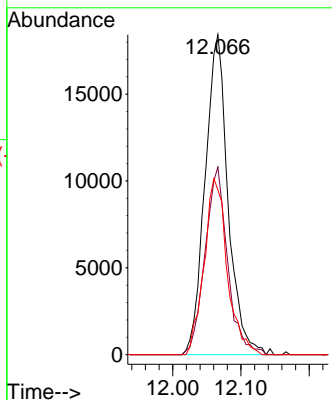
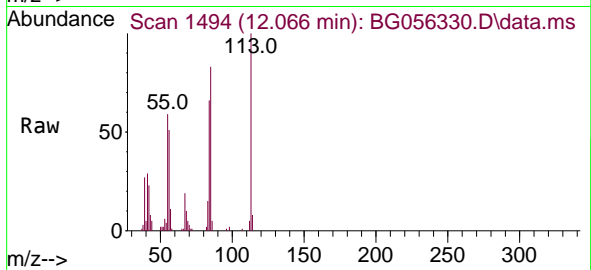


#35
 Caprolactam
 Concen: 36.939 ng
 RT: 12.066 min Scan# 1496
 Delta R.T. 0.000 min
 Lab File: BG056330.D
 Acq: 18 Jan 2023 15:59

Instrument :
 BNA_G
 ClientSampleId :
 SSTDCCC040

Tgt Ion:113 Resp: 43033

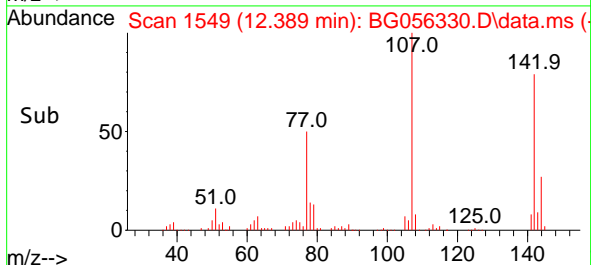
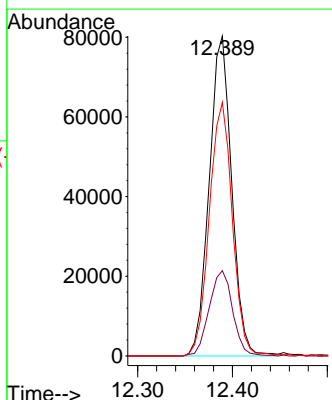
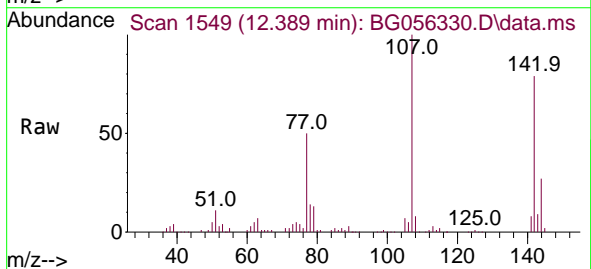
Ion	Ratio	Lower	Upper
113	100		
55	58.6	31.9	71.9
56	51.5	27.6	67.6

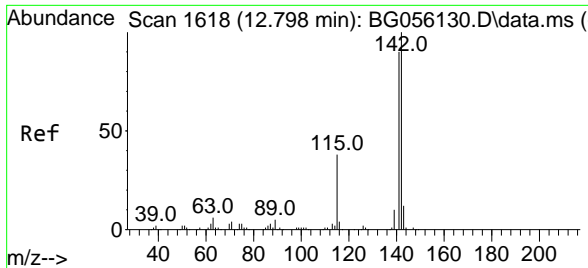


#36
 4-Chloro-3-methylphenol
 Concen: 37.908 ng
 RT: 12.389 min Scan# 1549
 Delta R.T. 0.000 min
 Lab File: BG056330.D
 Acq: 18 Jan 2023 15:59

Tgt Ion:107 Resp: 132358

Ion	Ratio	Lower	Upper
107	100		
144	26.6	21.5	32.3
142	79.2	63.8	95.6



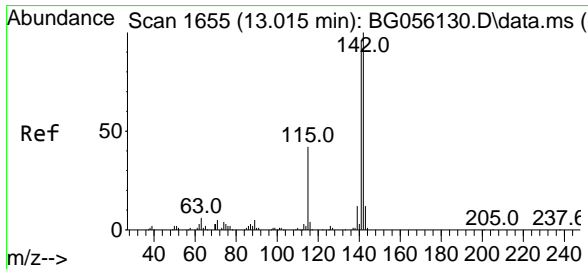
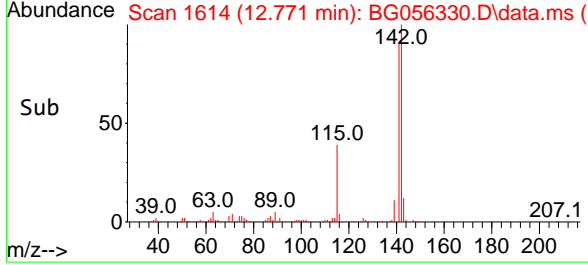
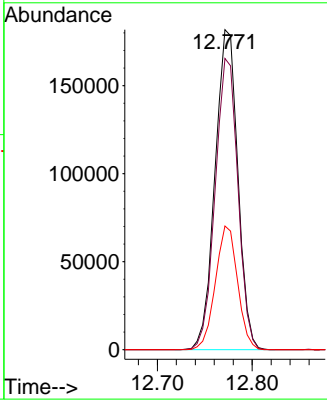
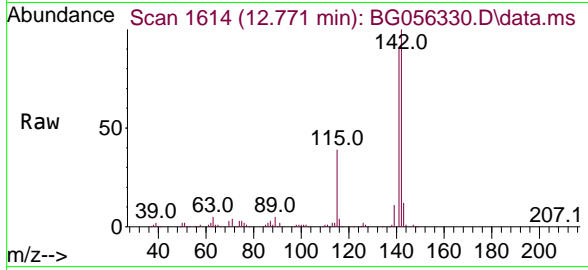


#37
 2-Methylnaphthalene
 Concen: 39.646 ng
 RT: 12.771 min Scan# 1614
 Delta R.T. 0.000 min
 Lab File: BG056330.D
 Acq: 18 Jan 2023 15:59

Instrument : BNA_G
 ClientSampleId : SSTDCCC040

Tgt Ion:142 Resp: 303283

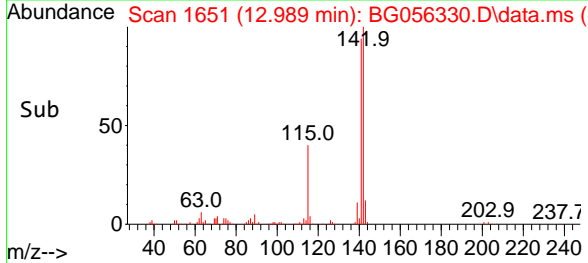
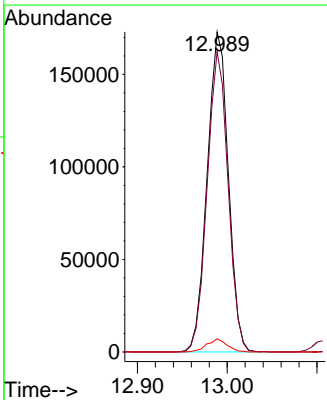
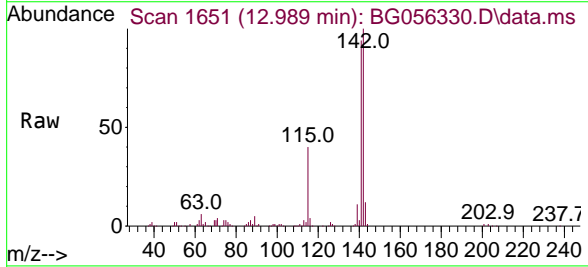
Ion	Ratio	Lower	Upper
142	100		
141	91.0	72.2	108.4
115	38.7	30.7	46.1

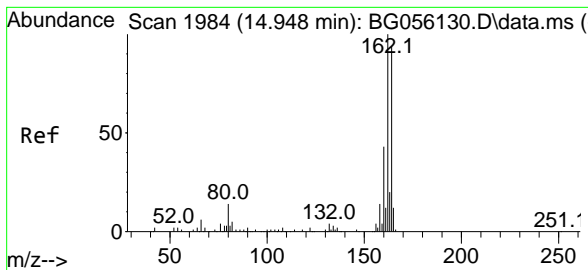


#38
 1-Methylnaphthalene
 Concen: 39.849 ng
 RT: 12.989 min Scan# 1651
 Delta R.T. 0.000 min
 Lab File: BG056330.D
 Acq: 18 Jan 2023 15:59

Tgt Ion:142 Resp: 283075

Ion	Ratio	Lower	Upper
142	100		
141	93.8	77.0	115.6
116	4.1	3.6	5.4



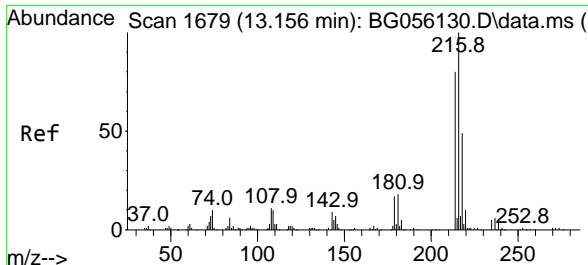
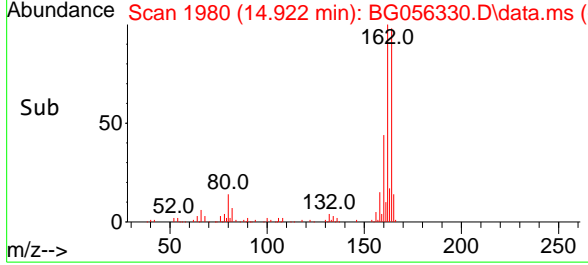
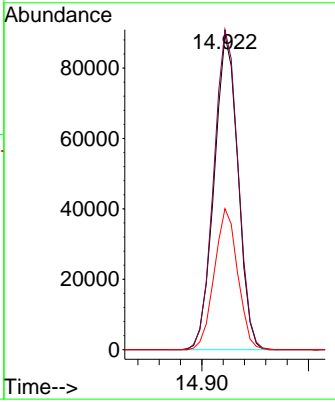
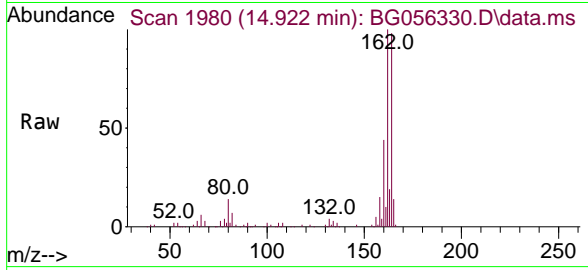


#39
 Acenaphthene-d10
 Concen: 20.000 ng
 RT: 14.922 min Scan# 1980
 Delta R.T. 0.000 min
 Lab File: BG056330.D
 Acq: 18 Jan 2023 15:59

Instrument : BNA_G
 ClientSampleId : SSTDCCC040

Tgt Ion:164 Resp: 138852

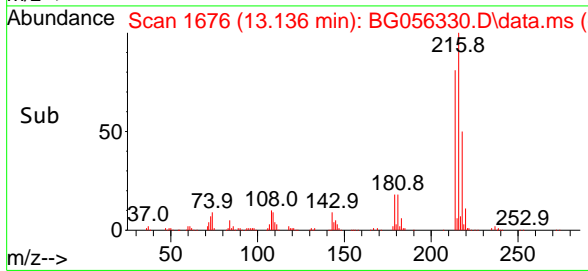
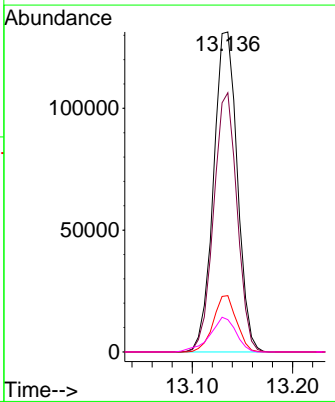
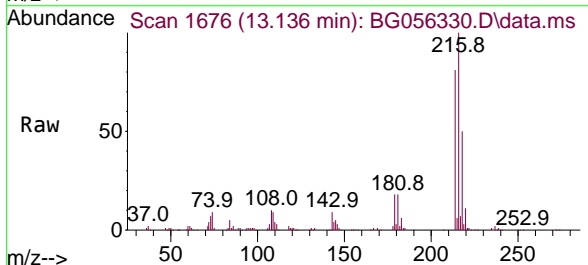
Ion	Ratio	Lower	Upper
164	100		
162	101.6	84.7	127.1
160	44.7	36.3	54.5

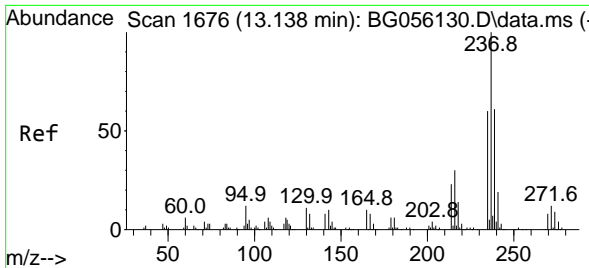


#40
 1,2,4,5-Tetrachlorobenzene
 Concen: 41.652 ng
 RT: 13.136 min Scan# 1676
 Delta R.T. 0.000 min
 Lab File: BG056330.D
 Acq: 18 Jan 2023 15:59

Tgt Ion:216 Resp: 216764

Ion	Ratio	Lower	Upper
216	100		
214	79.5	63.4	95.0
179	17.1	13.6	20.4
108	11.8	9.6	14.4

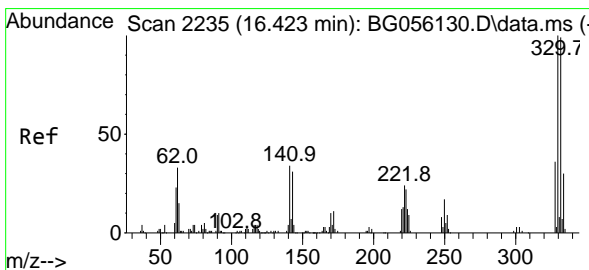
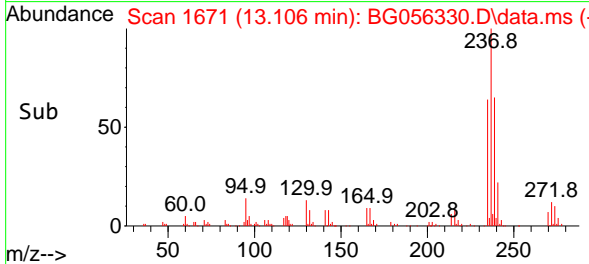
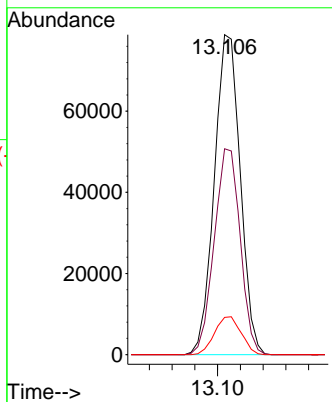
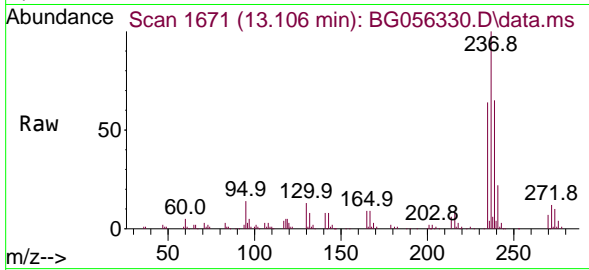




#41
 Hexachlorocyclopentadiene
 Concen: 42.020 ng
 RT: 13.106 min Scan# 1671
 Delta R.T. 0.000 min
 Lab File: BG056330.D
 Acq: 18 Jan 2023 15:59

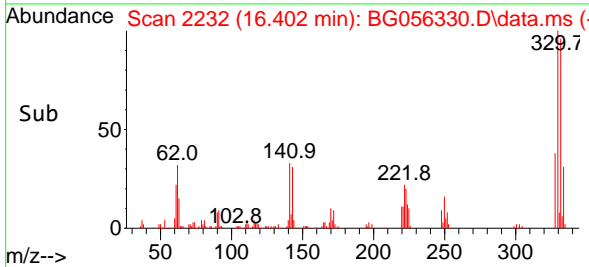
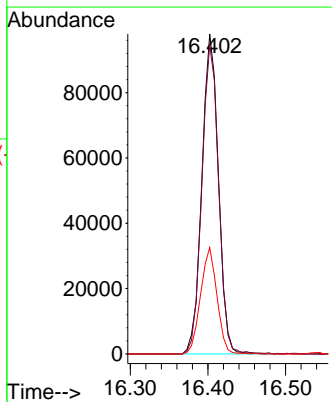
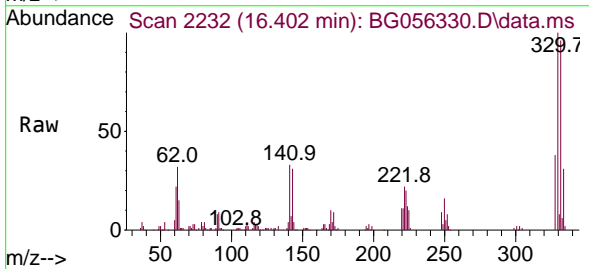
Instrument : BNA_G
 ClientSampleId : SSTDCCC040

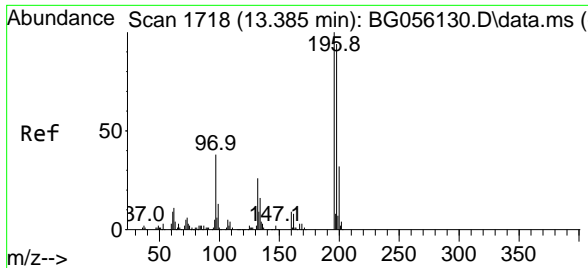
Tgt Ion	Resp	Lower	Upper
237	100		
235	64.3	40.3	80.3
272	11.6	0.0	32.5



#42
 2,4,6-Tribromophenol
 Concen: 82.338 ng
 RT: 16.402 min Scan# 2232
 Delta R.T. 0.000 min
 Lab File: BG056330.D
 Acq: 18 Jan 2023 15:59

Tgt Ion	Resp	Lower	Upper
330	100		
332	97.4	77.3	115.9
141	32.8	27.9	41.9



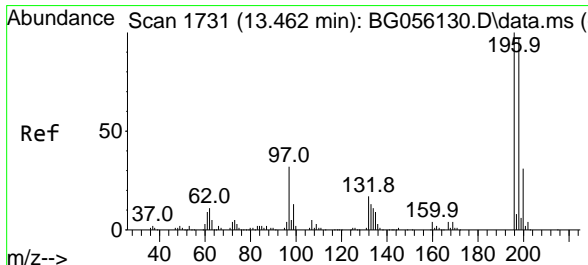
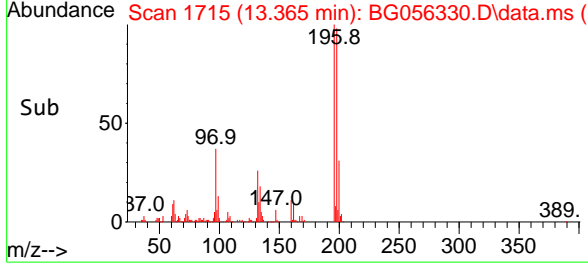
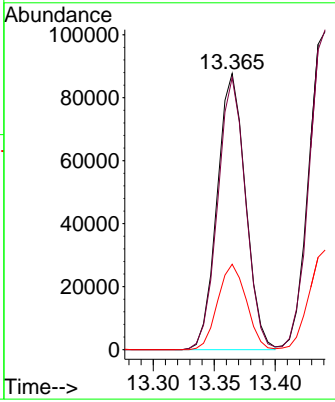
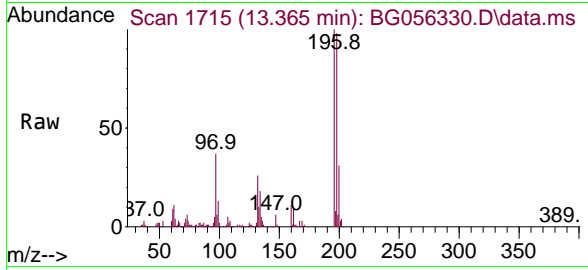


#43
 2,4,6-Trichlorophenol
 Concen: 41.254 ng
 RT: 13.365 min Scan# 1715
 Delta R.T. 0.000 min
 Lab File: BG056330.D
 Acq: 18 Jan 2023 15:59

Instrument : BNA_G
 ClientSampleId : SSTDCCC040

Tgt Ion:196 Resp: 141965

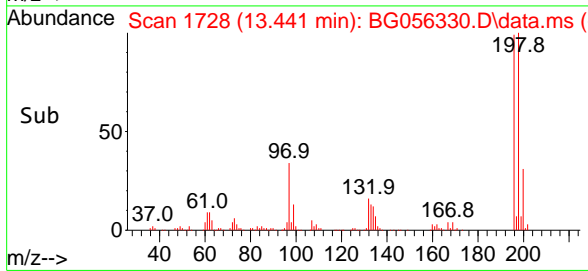
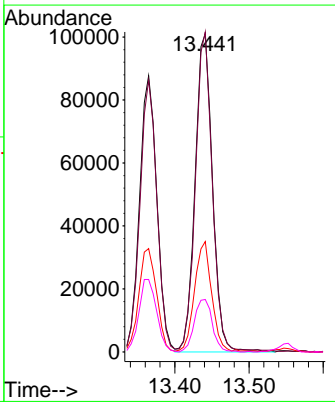
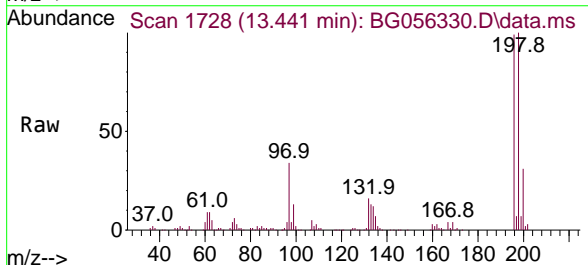
Ion	Ratio	Lower	Upper
196	100		
198	98.5	75.5	113.3
200	30.9	25.7	38.5

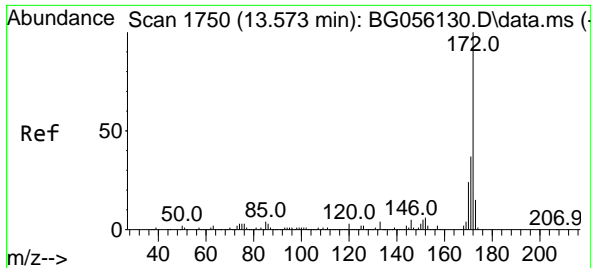


#44
 2,4,5-Trichlorophenol
 Concen: 40.429 ng
 RT: 13.441 min Scan# 1728
 Delta R.T. 0.000 min
 Lab File: BG056330.D
 Acq: 18 Jan 2023 15:59

Tgt Ion:196 Resp: 164573

Ion	Ratio	Lower	Upper
196	100		
198	100.6	78.0	117.0
97	34.7	25.7	38.5
132	16.5	13.6	20.4

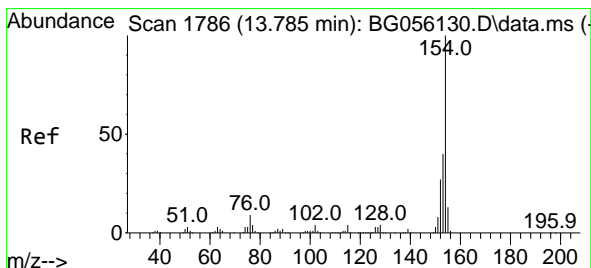
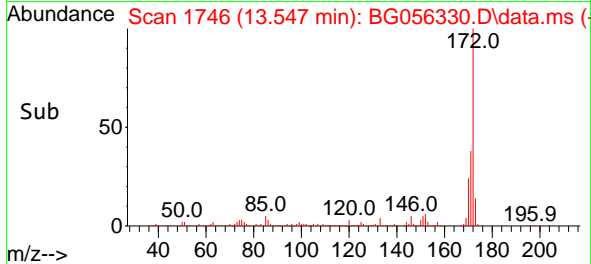
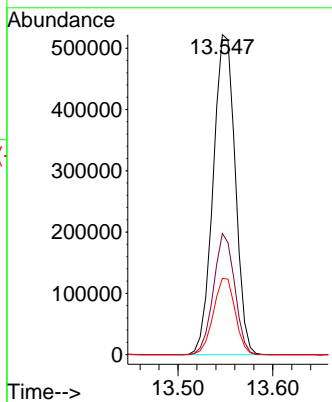
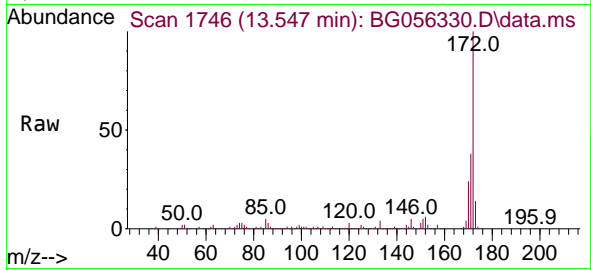




#45
 2-Fluorobiphenyl
 Concen: 83.732 ng
 RT: 13.547 min Scan# 1746
 Delta R.T. 0.000 min
 Lab File: BG056330.D
 Acq: 18 Jan 2023 15:59

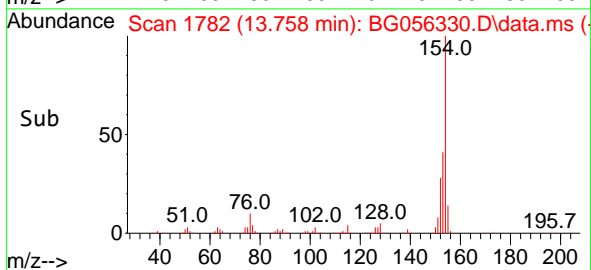
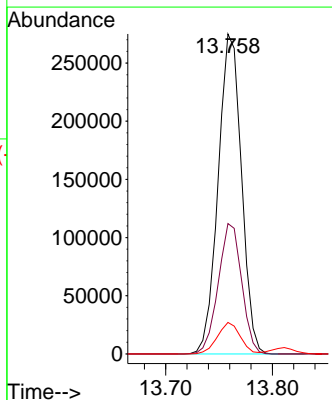
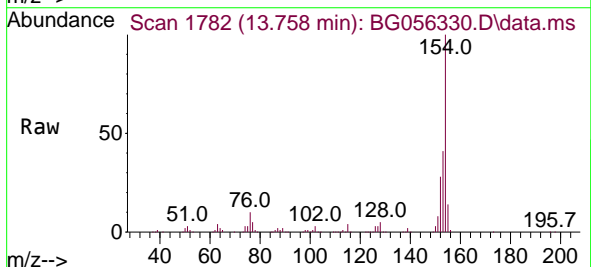
Instrument :
 BNA_G
 ClientSampleId :
 SSTDCCC040

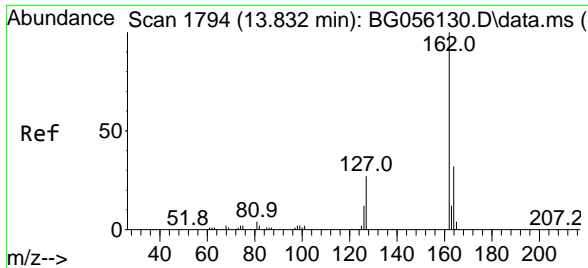
Tgt Ion	Resp	Lower	Upper
172	841940		
171	37.8	29.6	44.4
170	23.8	19.4	29.2



#46
 1,1'-Biphenyl
 Concen: 42.046 ng
 RT: 13.758 min Scan# 1782
 Delta R.T. 0.000 min
 Lab File: BG056330.D
 Acq: 18 Jan 2023 15:59

Tgt Ion	Resp	Lower	Upper
154	418112		
153	40.7	20.0	60.0
76	9.8	0.0	29.3



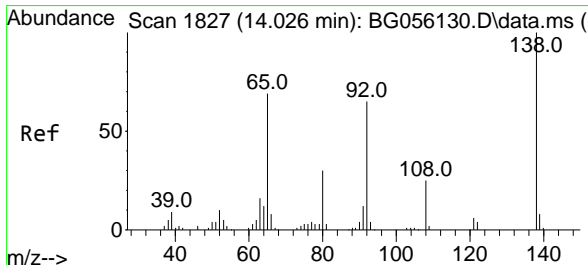
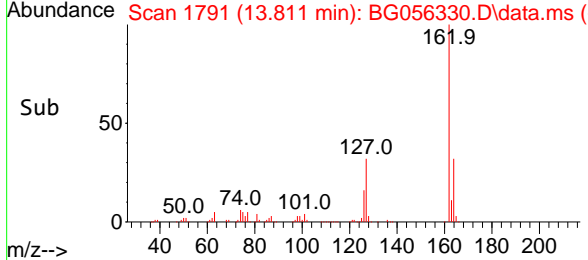
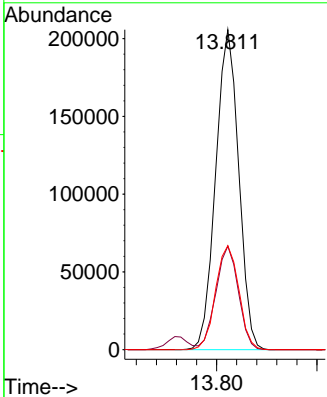
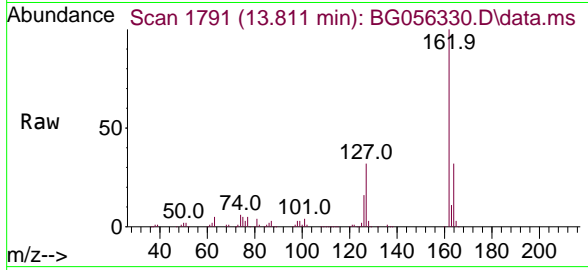


#47
 2-Chloronaphthalene
 Concen: 41.710 ng
 RT: 13.811 min Scan# 1791
 Delta R.T. 0.000 min
 Lab File: BG056330.D
 Acq: 18 Jan 2023 15:59

Instrument : BNA_G
 ClientSampleId : SSTDCCC040

Tgt Ion:162 Resp: 327383

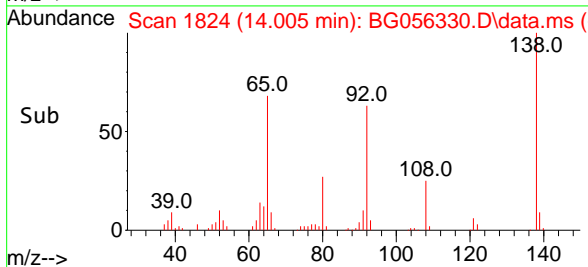
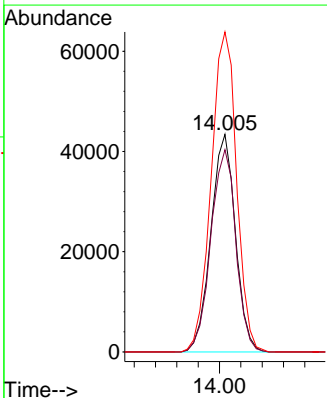
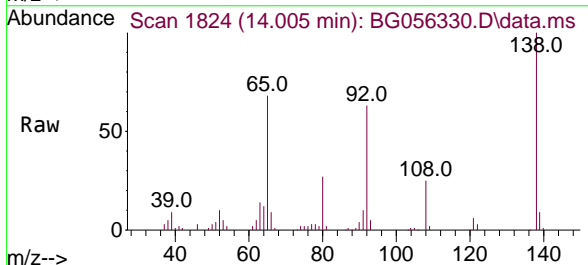
Ion	Ratio	Lower	Upper
162	100		
127	32.3	24.6	36.8
164	32.5	25.8	38.8

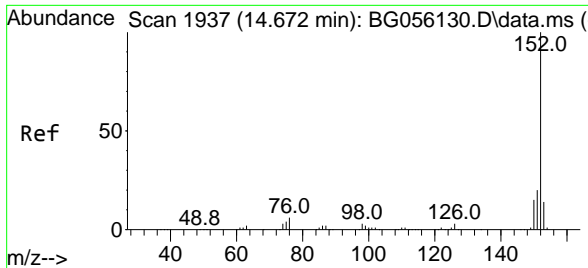


#48
 2-Nitroaniline
 Concen: 41.476 ng
 RT: 14.005 min Scan# 1824
 Delta R.T. 0.000 min
 Lab File: BG056330.D
 Acq: 18 Jan 2023 15:59

Tgt Ion: 65 Resp: 69362

Ion	Ratio	Lower	Upper
65	100		
92	92.9	76.0	114.0
138	147.1	116.6	174.8



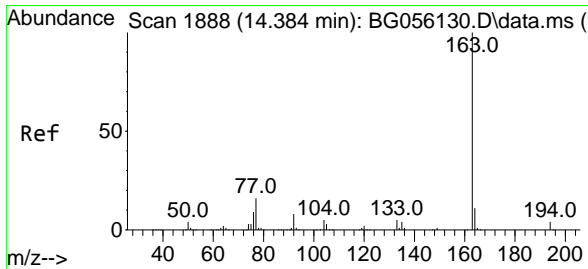
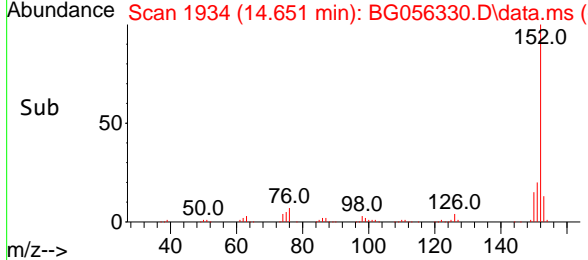
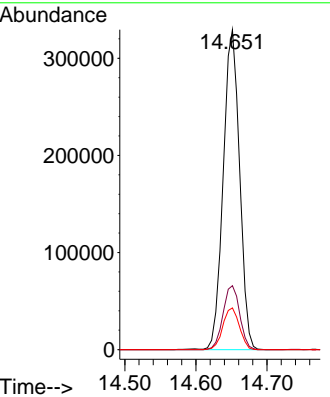
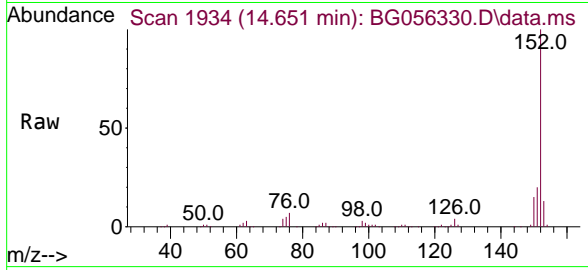


#49
 Acenaphthylene
 Concen: 41.116 ng
 RT: 14.651 min Scan# 1934
 Delta R.T. 0.000 min
 Lab File: BG056330.D
 Acq: 18 Jan 2023 15:59

Instrument : BNA_G
 ClientSampleId : SSTDCCC040

Tgt Ion:152 Resp: 525179

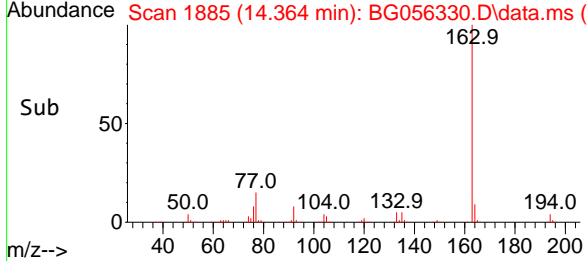
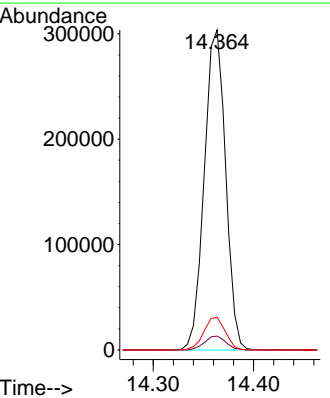
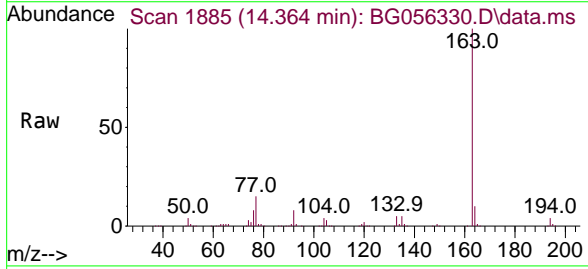
Ion	Ratio	Lower	Upper
152	100		
151	20.0	16.0	24.0
153	13.0	11.0	16.6

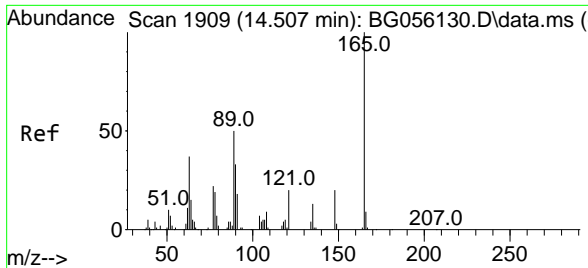


#50
 Dimethylphthalate
 Concen: 39.959 ng
 RT: 14.364 min Scan# 1885
 Delta R.T. 0.000 min
 Lab File: BG056330.D
 Acq: 18 Jan 2023 15:59

Tgt Ion:163 Resp: 447902

Ion	Ratio	Lower	Upper
163	100		
194	4.3	3.5	5.3
164	10.2	8.7	13.1



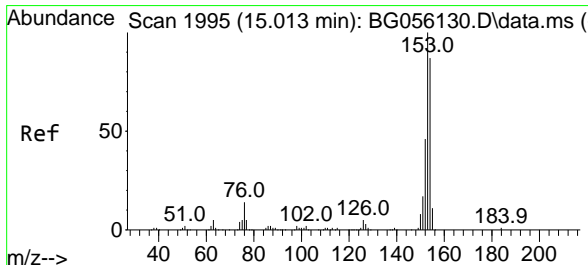
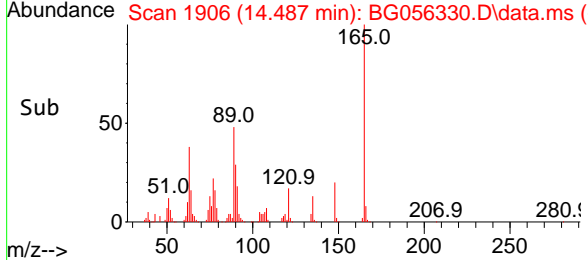
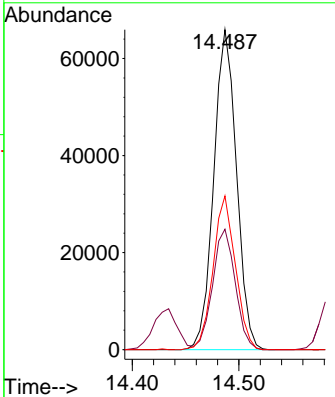
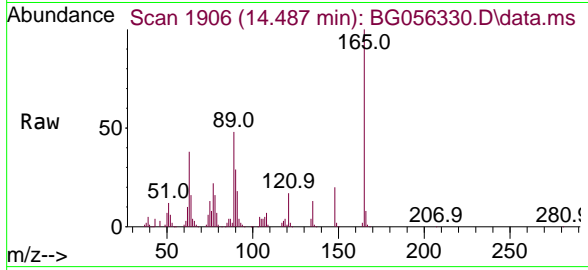


#51
 2,6-Dinitrotoluene
 Concen: 40.920 ng
 RT: 14.487 min Scan# 1906
 Delta R.T. 0.000 min
 Lab File: BG056330.D
 Acq: 18 Jan 2023 15:59

Instrument : BNA_G
 ClientSampleId : SSTDCCC040

Tgt Ion:165 Resp: 97735

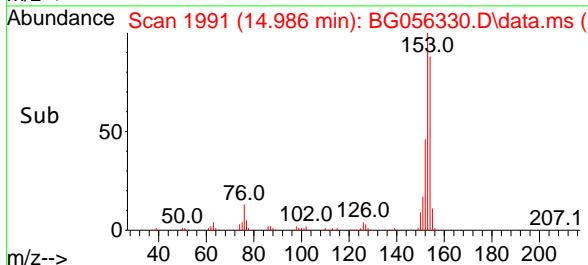
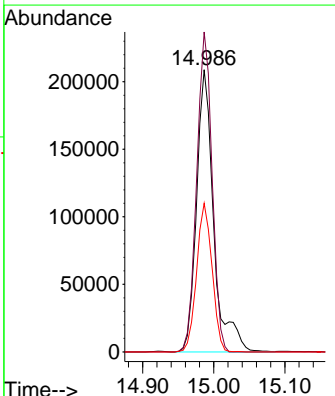
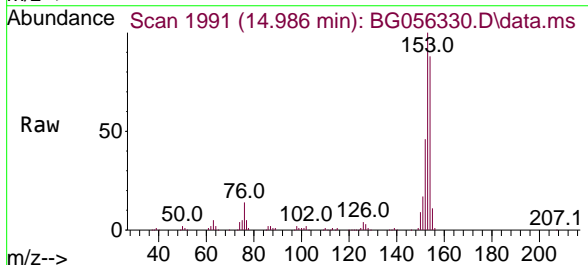
Ion	Ratio	Lower	Upper
165	100		
63	37.6	32.2	48.2
89	48.0	39.8	59.8

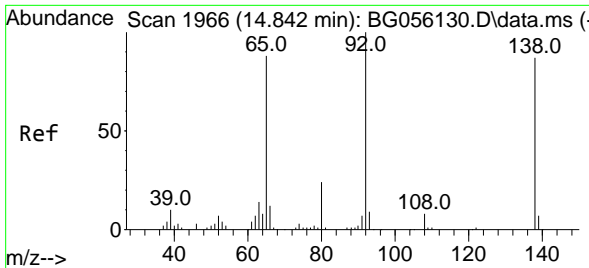


#52
 Acenaphthene
 Concen: 42.080 ng
 RT: 14.986 min Scan# 1991
 Delta R.T. 0.000 min
 Lab File: BG056330.D
 Acq: 18 Jan 2023 15:59

Tgt Ion:154 Resp: 349574

Ion	Ratio	Lower	Upper
154	100		
153	113.4	92.0	138.0
152	52.7	42.5	63.7

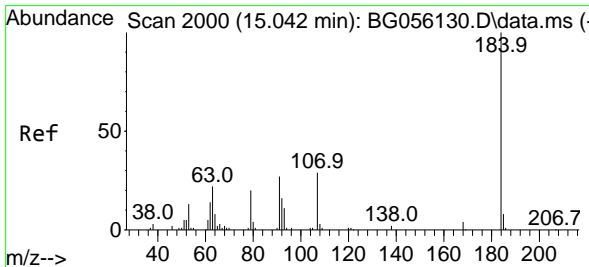
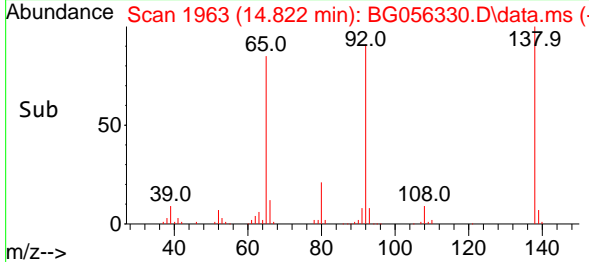
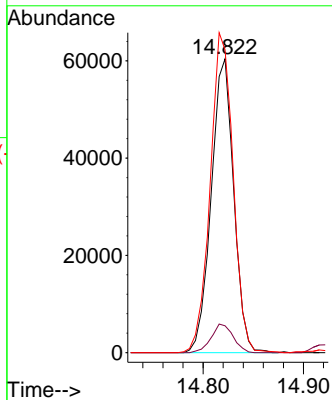
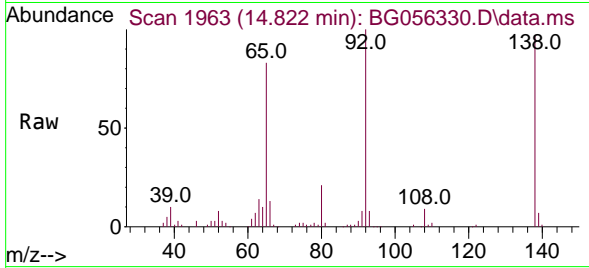




#53
 3-Nitroaniline
 Concen: 41.379 ng
 RT: 14.822 min Scan# 1963
 Delta R.T. 0.000 min
 Lab File: BG056330.D
 Acq: 18 Jan 2023 15:59

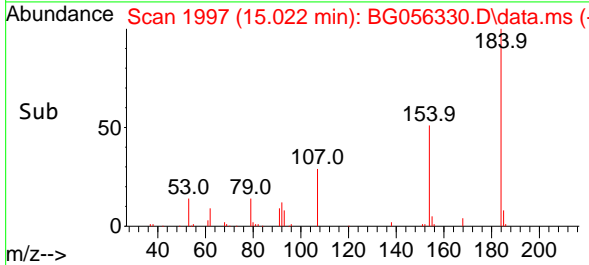
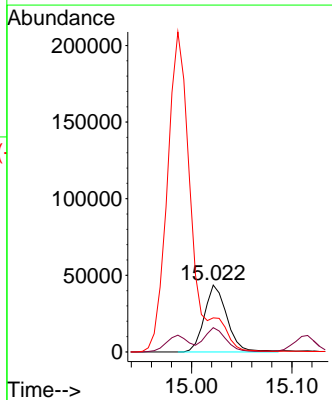
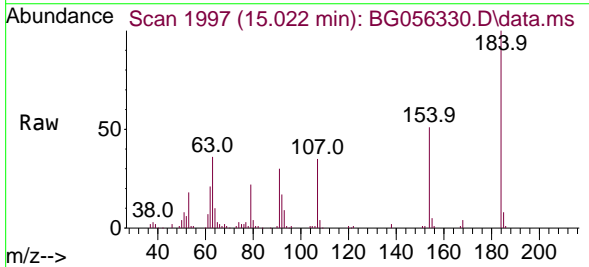
Instrument : BNA_G
 ClientSampleId : SSTDCCC040

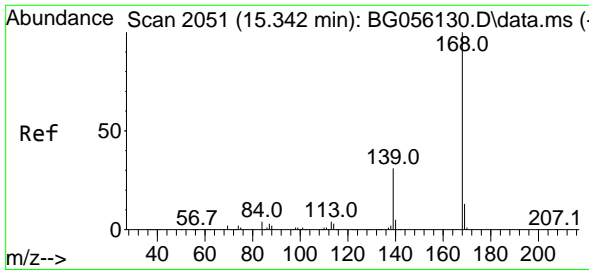
Tgt Ion	Resp	Lower	Upper
138	100		
108	9.1	7.6	11.4
92	103.0	91.7	137.5



#54
 2,4-Dinitrophenol
 Concen: 39.818 ng
 RT: 15.022 min Scan# 1997
 Delta R.T. 0.000 min
 Lab File: BG056330.D
 Acq: 18 Jan 2023 15:59

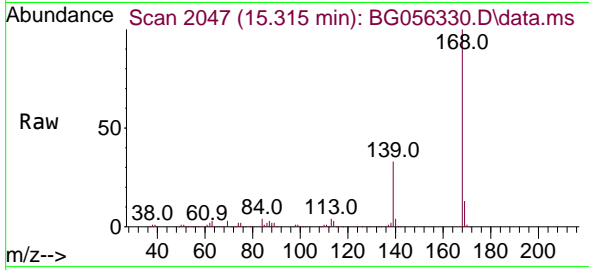
Tgt Ion	Resp	Lower	Upper
184	100		
63	36.2	24.0	36.0#
154	50.9	45.4	68.0



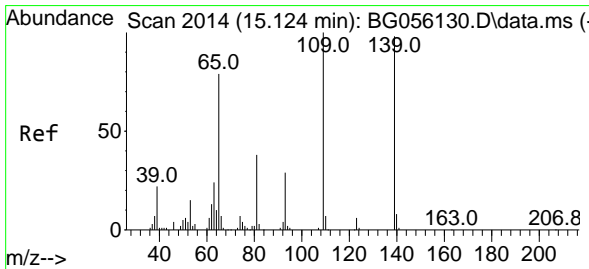
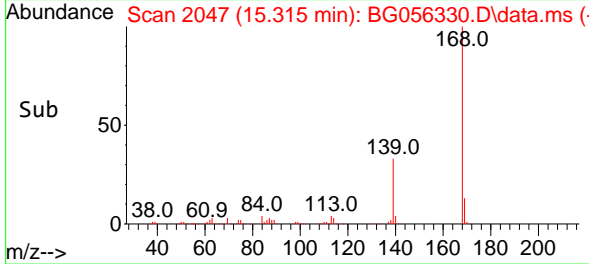
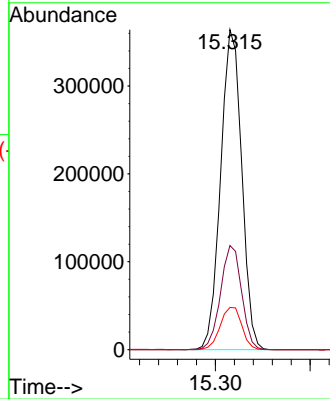


#55
 Dibenzofuran
 Concen: 40.809 ng
 RT: 15.315 min Scan# 2047
 Delta R.T. 0.000 min
 Lab File: BG056330.D
 Acq: 18 Jan 2023 15:59

Instrument : BNA_G
 ClientSampleId : SSTDCCC040

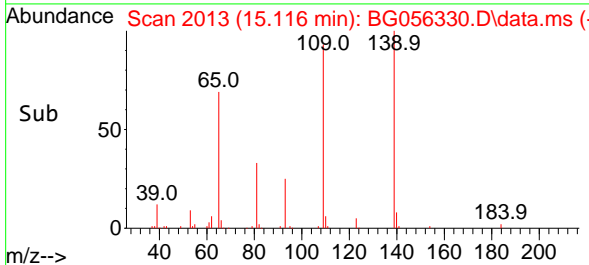
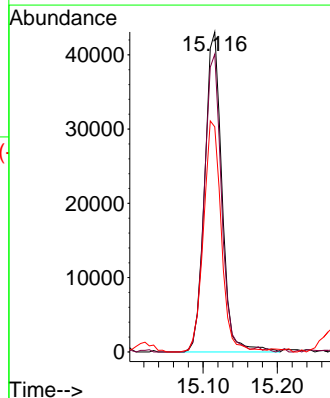
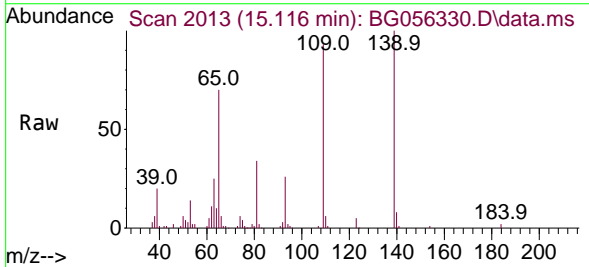


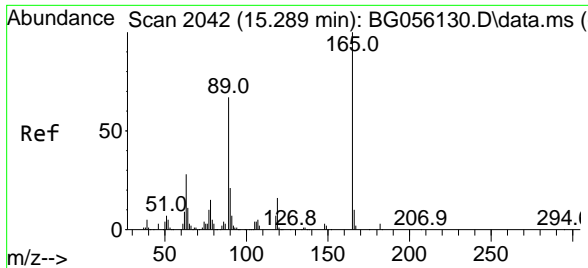
Tgt Ion:168 Resp: 561017
 Ion Ratio Lower Upper
 168 100
 139 32.5 24.7 37.1
 169 13.2 10.3 15.5



#56
 4-Nitrophenol
 Concen: 39.655 ng
 RT: 15.116 min Scan# 2013
 Delta R.T. 0.000 min
 Lab File: BG056330.D
 Acq: 18 Jan 2023 15:59

Tgt Ion:139 Resp: 69325
 Ion Ratio Lower Upper
 139 100
 109 93.0 82.2 122.2
 65 70.3 60.6 100.6



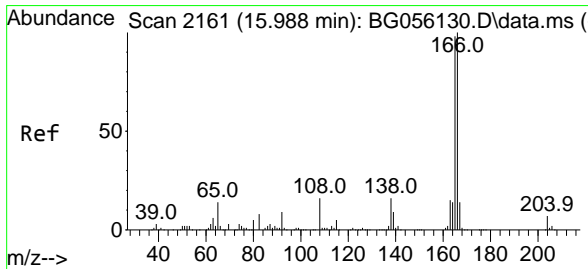
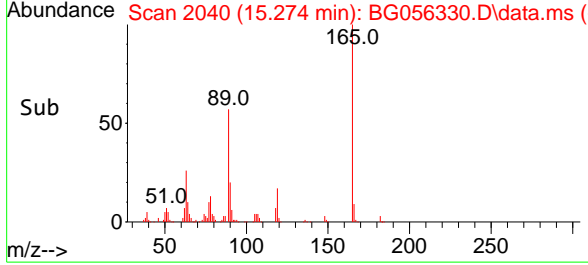
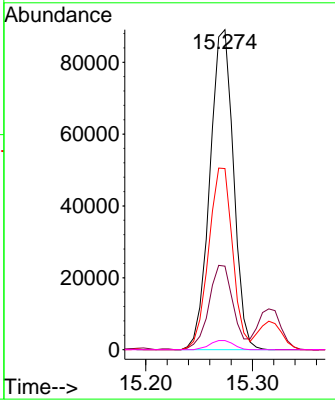
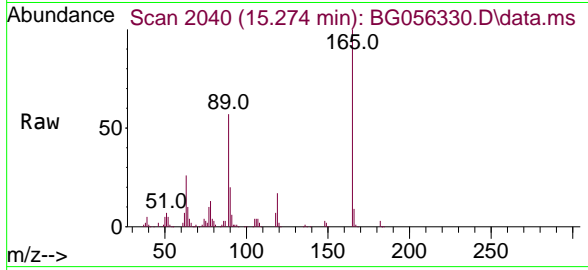


#57
 2,4-Dinitrotoluene
 Concen: 41.025 ng
 RT: 15.274 min Scan# 2040
 Delta R.T. 0.000 min
 Lab File: BG056330.D
 Acq: 18 Jan 2023 15:59

Instrument : BNA_G
 ClientSampleId : SSTDCCC040

Tgt Ion:165 Resp: 137033

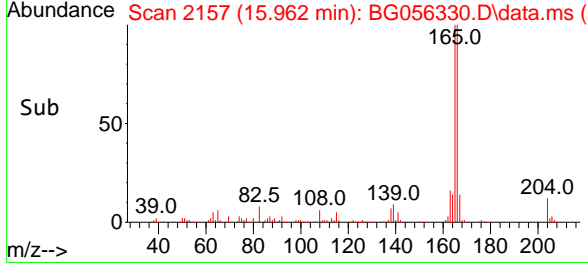
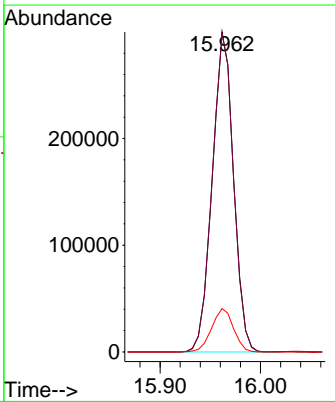
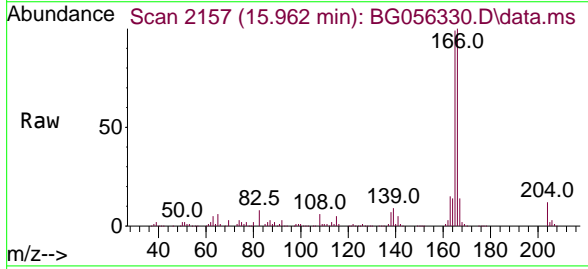
Ion	Ratio	Lower	Upper
165	100		
63	26.1	22.6	34.0
89	56.6	53.2	79.8
182	2.8	2.3	3.5

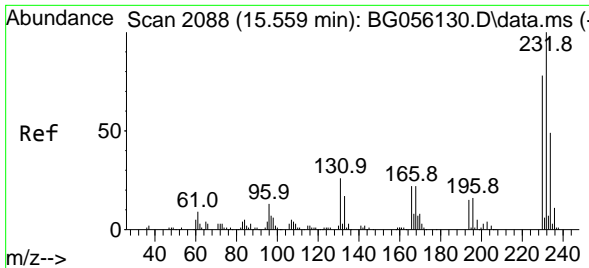


#58
 Fluorene
 Concen: 39.901 ng
 RT: 15.962 min Scan# 2157
 Delta R.T. 0.000 min
 Lab File: BG056330.D
 Acq: 18 Jan 2023 15:59

Tgt Ion:166 Resp: 441189

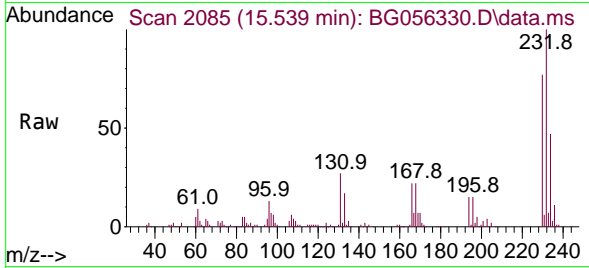
Ion	Ratio	Lower	Upper
166	100		
165	99.4	78.6	118.0
167	13.5	11.1	16.7



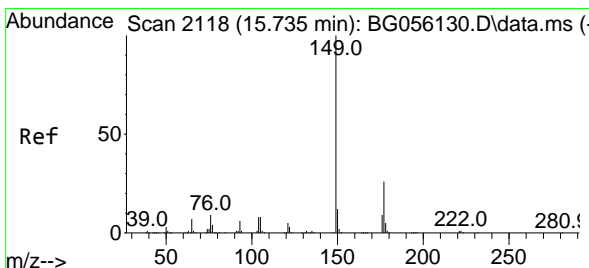
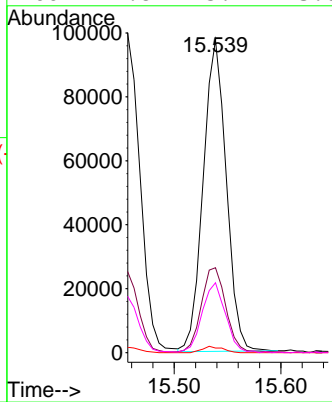
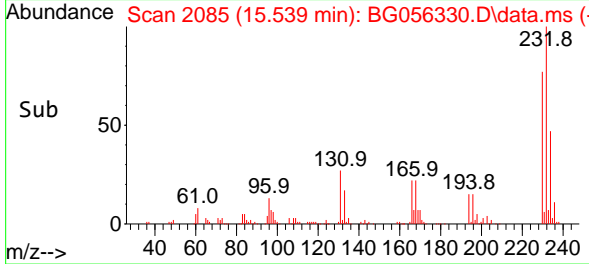


#59
 2,3,4,6-Tetrachlorophenol
 Concen: 38.375 ng
 RT: 15.539 min Scan# 2085
 Delta R.T. 0.000 min
 Lab File: BG056330.D
 Acq: 18 Jan 2023 15:59

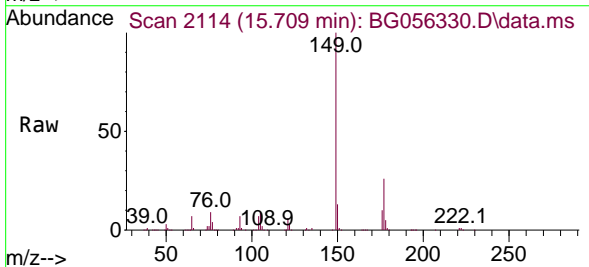
Instrument : BNA_G
 ClientSampleId : SSTDCCC040



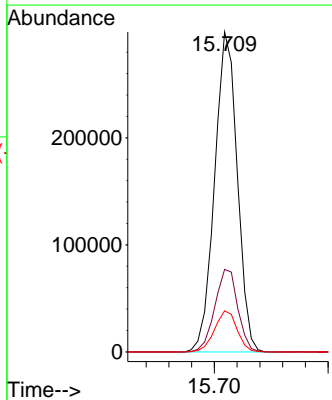
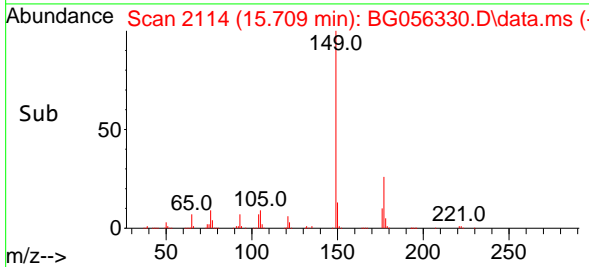
Tgt Ion:232 Resp: 146676
 Ion Ratio Lower Upper
 232 100
 131 29.4 21.4 32.2
 130 1.7 1.4 2.0
 166 22.8 15.4 23.0

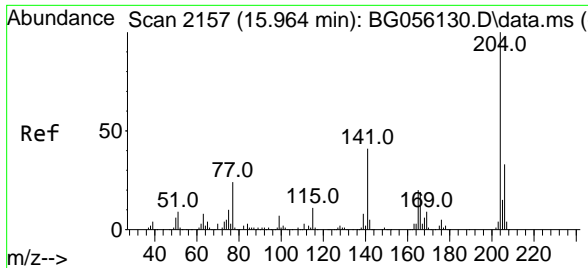


#60
 Diethylphthalate
 Concen: 39.219 ng
 RT: 15.709 min Scan# 2114
 Delta R.T. 0.000 min
 Lab File: BG056330.D
 Acq: 18 Jan 2023 15:59



Tgt Ion:149 Resp: 412267
 Ion Ratio Lower Upper
 149 100
 177 25.8 20.6 31.0
 150 12.8 9.9 14.9



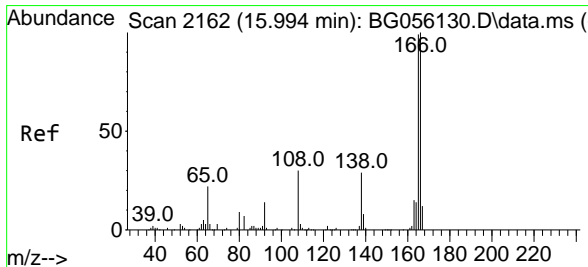
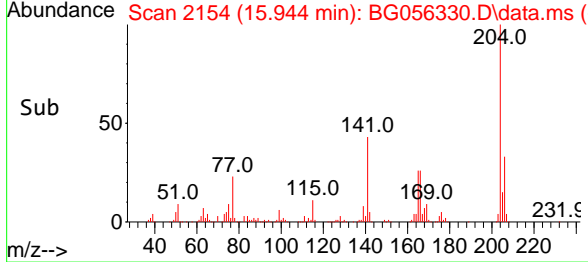
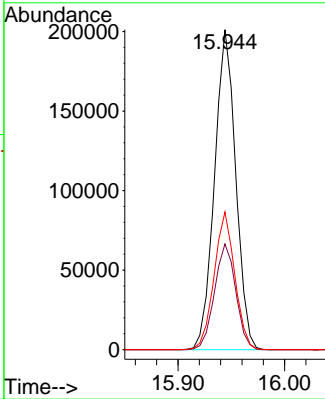
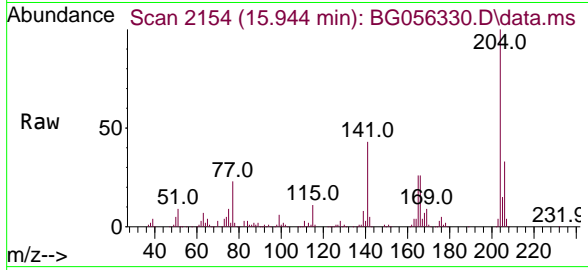


#61
 4-Chlorophenyl-phenylether
 Concen: 40.289 ng
 RT: 15.944 min Scan# 2154
 Delta R.T. 0.000 min
 Lab File: BG056330.D
 Acq: 18 Jan 2023 15:59

Instrument : BNA_G
 ClientSampleId : SSTDCCC040

Tgt Ion:204 Resp: 278011

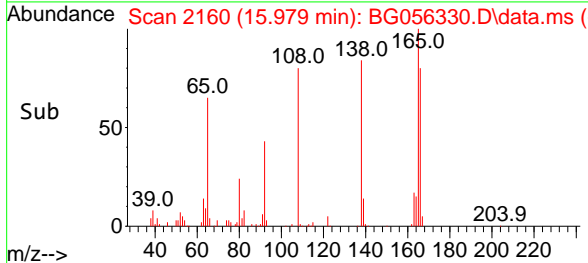
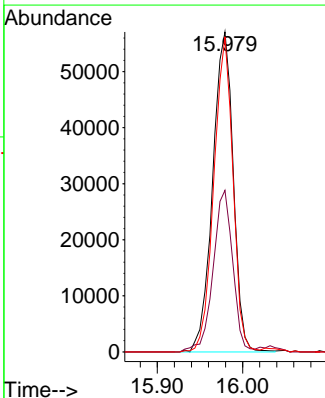
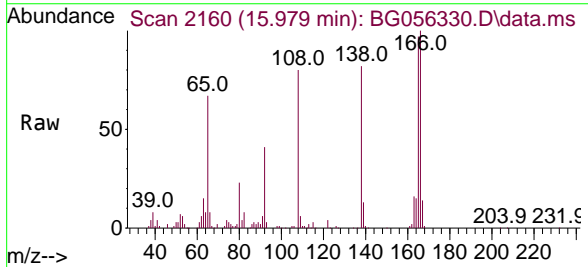
Ion	Ratio	Lower	Upper
204	100		
206	33.0	26.4	39.6
141	43.0	33.0	49.4

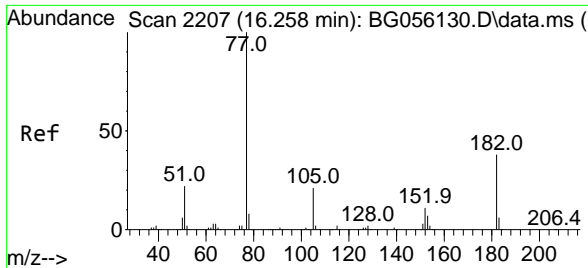


#62
 4-Nitroaniline
 Concen: 40.990 ng
 RT: 15.979 min Scan# 2160
 Delta R.T. 0.000 min
 Lab File: BG056330.D
 Acq: 18 Jan 2023 15:59

Tgt Ion:138 Resp: 95441

Ion	Ratio	Lower	Upper
138	100		
92	50.5	28.6	68.6
108	98.5	83.4	123.4

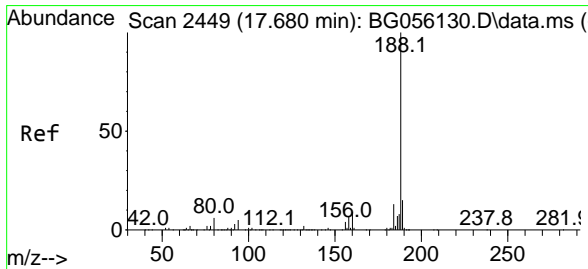
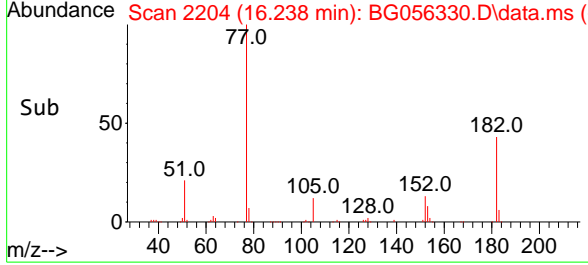
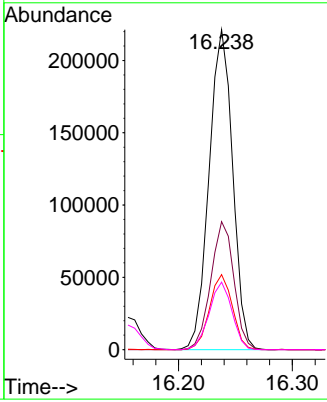
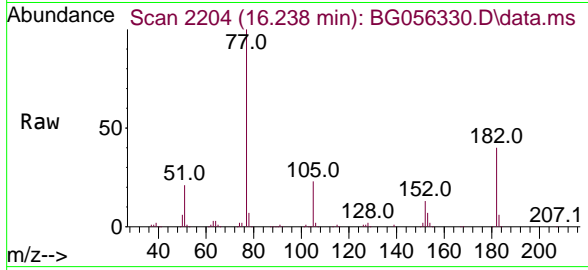




#63
 Azobenzene
 Concen: 39.310 ng
 RT: 16.238 min Scan# 21
 Delta R.T. 0.000 min
 Lab File: BG056330.D
 Acq: 18 Jan 2023 15:59

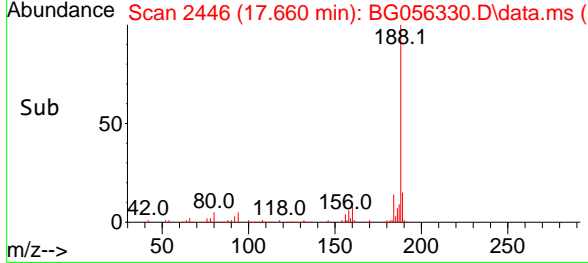
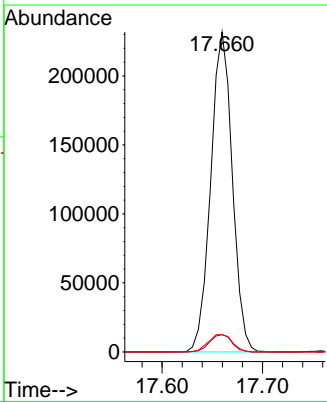
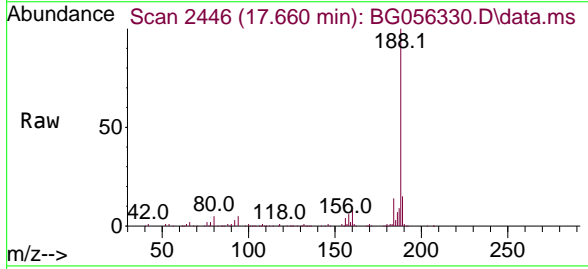
Instrument : BNA_G
 ClientSampleId : SSTDCCC040

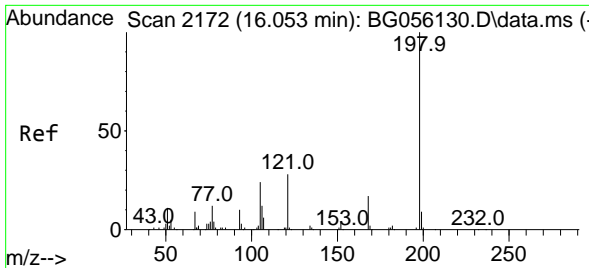
Tgt Ion	Resp	Lower	Upper
77	100		
182	40.0	18.5	58.5
105	23.4	1.4	41.4
51	21.1	1.5	41.5



#64
 Phenanthrene-d10
 Concen: 20.000 ng
 RT: 17.660 min Scan# 2446
 Delta R.T. 0.000 min
 Lab File: BG056330.D
 Acq: 18 Jan 2023 15:59

Tgt Ion	Resp	Lower	Upper
188	100		
94	5.4	4.2	6.2
80	5.4	5.0	7.4

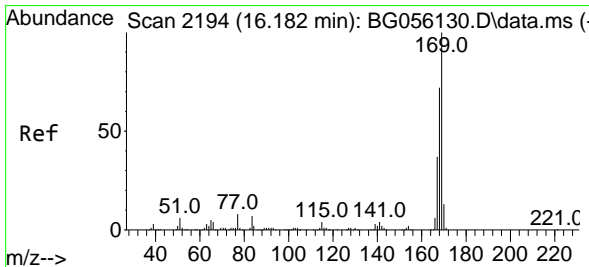
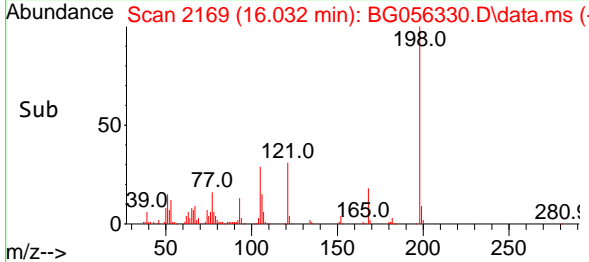
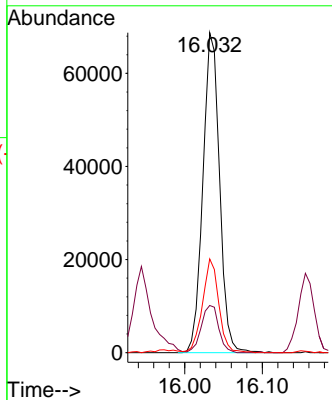
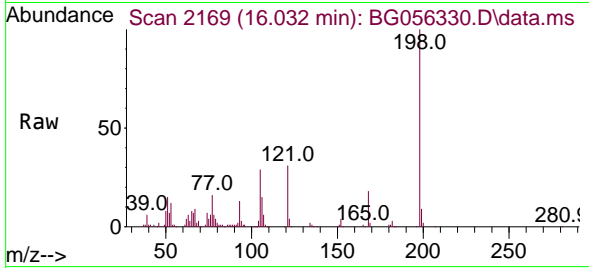




#65
 4,6-Dinitro-2-methylphenol
 Concen: 43.915 ng
 RT: 16.032 min Scan# 2190
 Delta R.T. 0.000 min
 Lab File: BG056330.D
 Acq: 18 Jan 2023 15:59

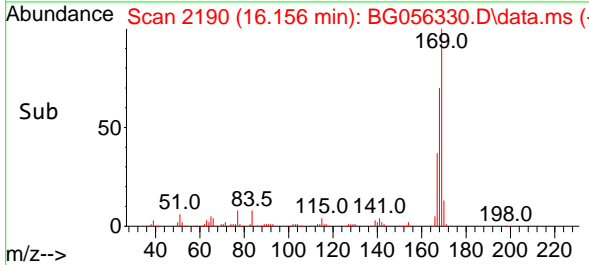
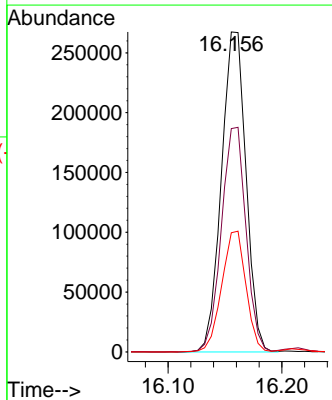
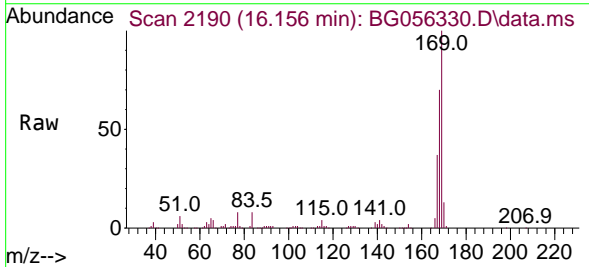
Instrument : BNA_G
 ClientSampleId : SSTDCCC040

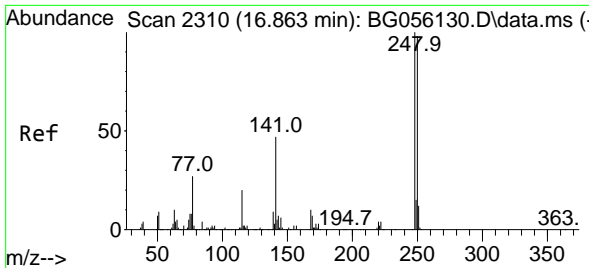
Tgt Ion:198 Resp: 102420
 Ion Ratio Lower Upper
 198 100
 51 14.7 0.0 33.2
 105 29.3 4.9 44.9



#66
 n-Nitrosodiphenylamine
 Concen: 41.935 ng
 RT: 16.156 min Scan# 2190
 Delta R.T. 0.000 min
 Lab File: BG056330.D
 Acq: 18 Jan 2023 15:59

Tgt Ion:169 Resp: 402755
 Ion Ratio Lower Upper
 169 100
 168 69.8 58.0 87.0
 167 37.2 30.0 45.0



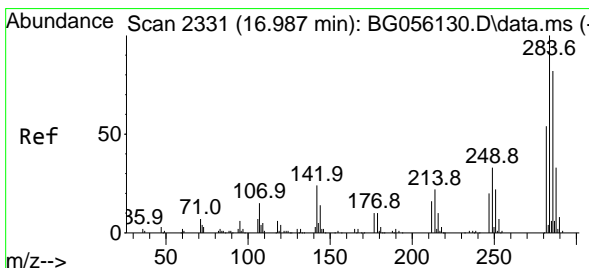
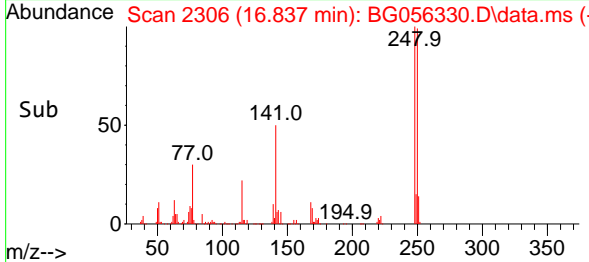
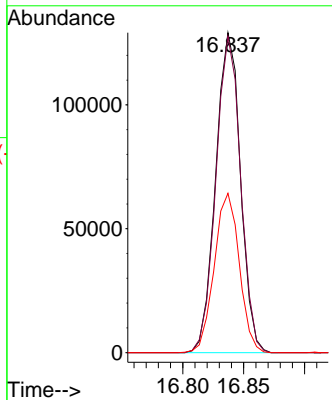
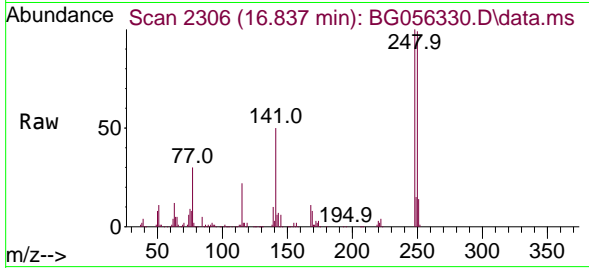


#67
 4-Bromophenyl-phenylether
 Concen: 41.415 ng
 RT: 16.837 min Scan# 2310
 Delta R.T. 0.000 min
 Lab File: BG056330.D
 Acq: 18 Jan 2023 15:59

Instrument :
 BNA_G
 ClientSampleId :
 SSTDCCC040

Tgt Ion:248 Resp: 182557

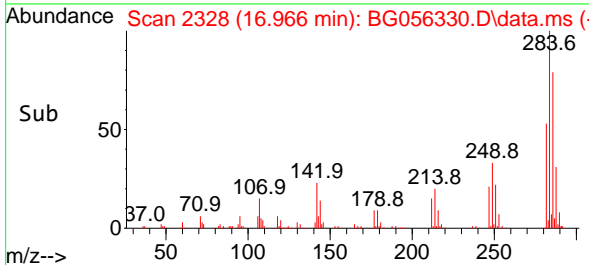
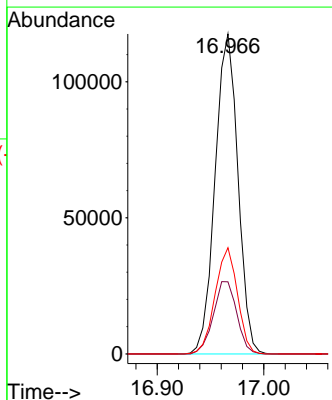
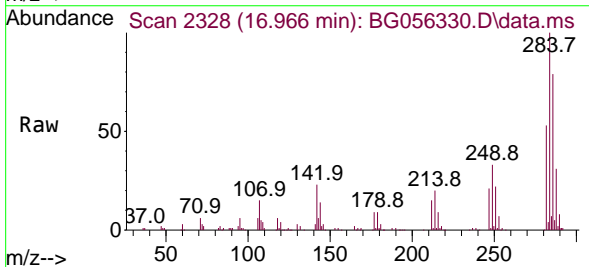
Ion	Ratio	Lower	Upper
248	100		
250	98.8	78.2	117.4
141	49.8	37.6	56.4

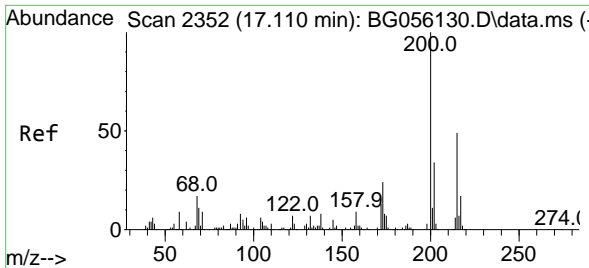


#68
 Hexachlorobenzene
 Concen: 42.571 ng
 RT: 16.966 min Scan# 2328
 Delta R.T. 0.000 min
 Lab File: BG056330.D
 Acq: 18 Jan 2023 15:59

Tgt Ion:284 Resp: 175075

Ion	Ratio	Lower	Upper
284	100		
142	22.6	19.0	28.6
249	35.6	26.6	39.8

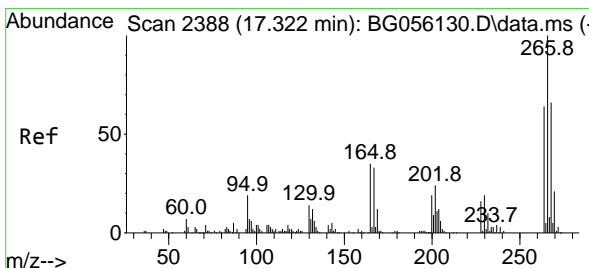
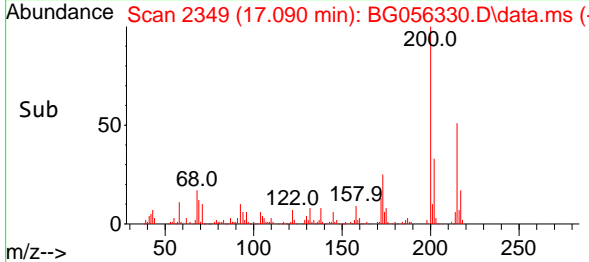
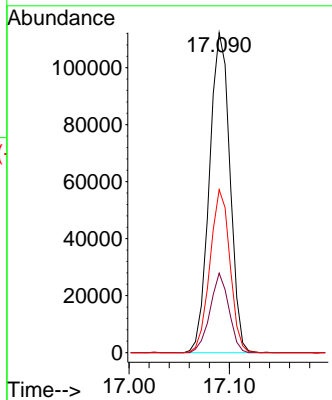
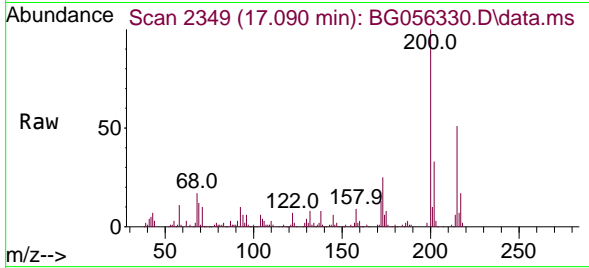




#69
 Atrazine
 Concen: 40.145 ng
 RT: 17.090 min Scan# 2349
 Delta R.T. 0.000 min
 Lab File: BG056330.D
 Acq: 18 Jan 2023 15:59

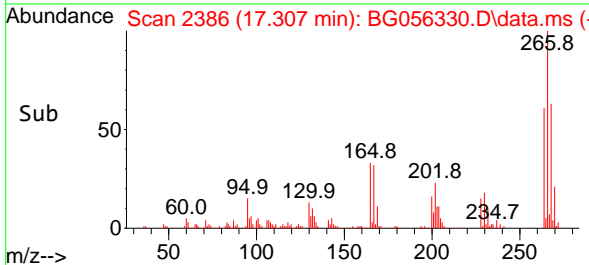
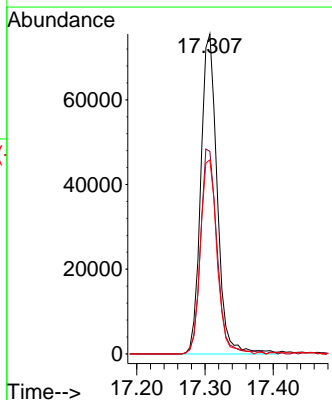
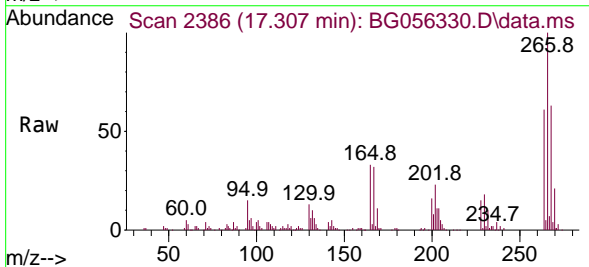
Instrument :
 BNA_G
 ClientSampleId :
 SSTDCCC040

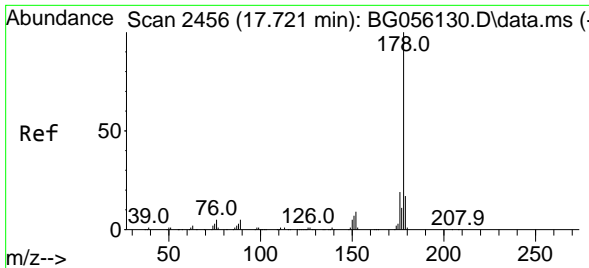
Tgt Ion:200 Resp: 159793
 Ion Ratio Lower Upper
 200 100
 173 24.8 4.0 44.0
 215 51.0 29.1 69.1



#70
 Pentachlorophenol
 Concen: 39.974 ng
 RT: 17.307 min Scan# 2386
 Delta R.T. 0.000 min
 Lab File: BG056330.D
 Acq: 18 Jan 2023 15:59

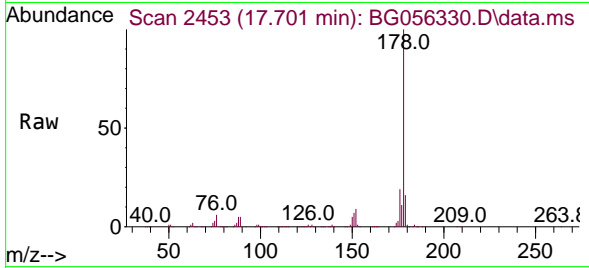
Tgt Ion:266 Resp: 126284
 Ion Ratio Lower Upper
 266 100
 268 63.3 53.0 79.4
 264 60.6 51.4 77.2





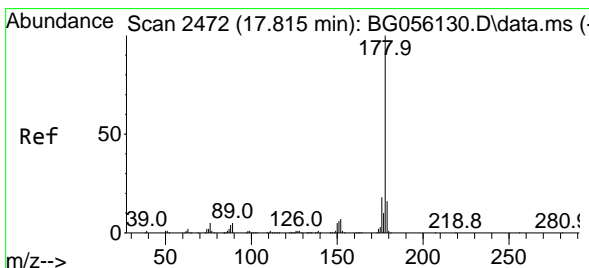
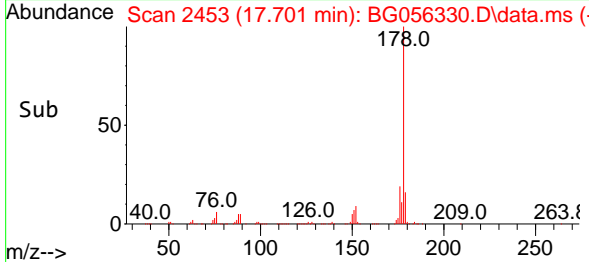
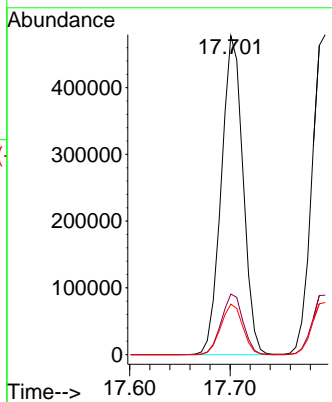
#71
 Phenanthrene
 Concen: 40.031 ng
 RT: 17.701 min Scan# 2469
 Delta R.T. 0.000 min
 Lab File: BG056330.D
 Acq: 18 Jan 2023 15:59

Instrument : BNA_G
 ClientSampleId : SSTDCCC040



Tgt Ion:178 Resp: 718119

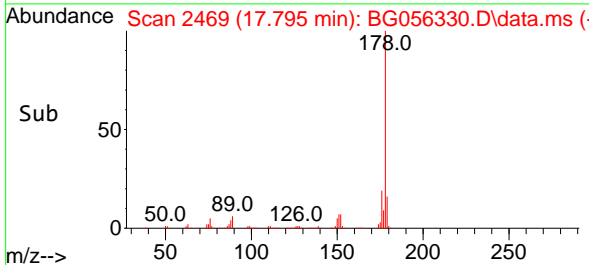
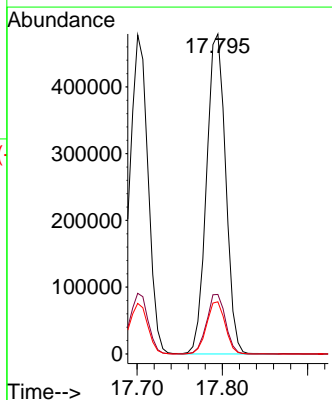
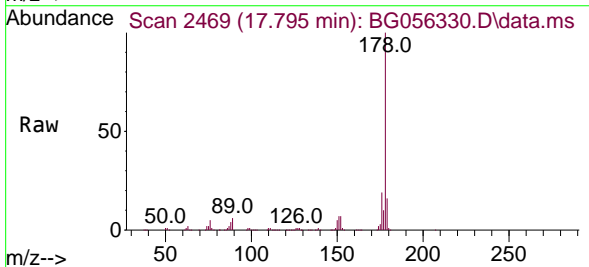
Ion	Ratio	Lower	Upper
178	100		
176	19.0	15.4	23.0
179	15.8	13.6	20.4

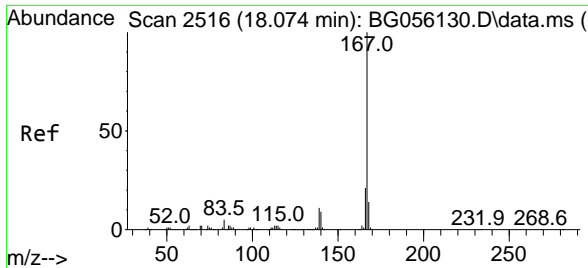


#72
 Anthracene
 Concen: 40.225 ng
 RT: 17.795 min Scan# 2469
 Delta R.T. 0.000 min
 Lab File: BG056330.D
 Acq: 18 Jan 2023 15:59

Tgt Ion:178 Resp: 744388

Ion	Ratio	Lower	Upper
178	100		
176	18.6	14.6	22.0
179	16.3	12.7	19.1



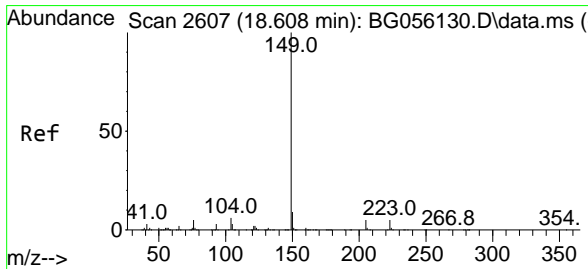
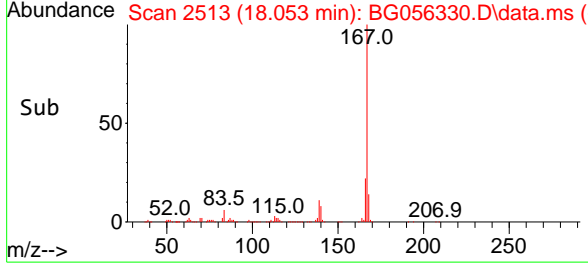
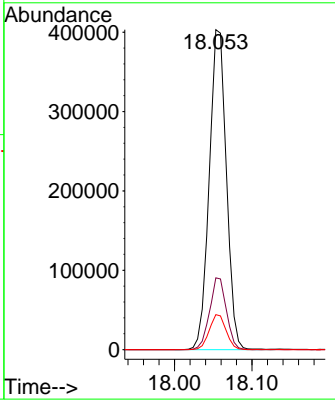
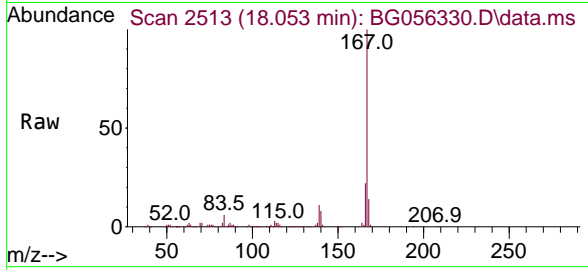


#73
 Carbazole
 Concen: 39.705 ng
 RT: 18.053 min Scan# 2513
 Delta R.T. 0.000 min
 Lab File: BG056330.D
 Acq: 18 Jan 2023 15:59

Instrument : BNA_G
 ClientSampleId : SSTDCCC040

Tgt Ion:167 Resp: 617618

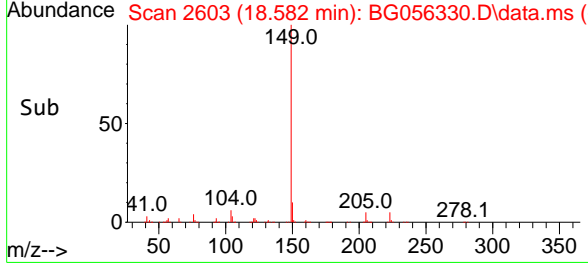
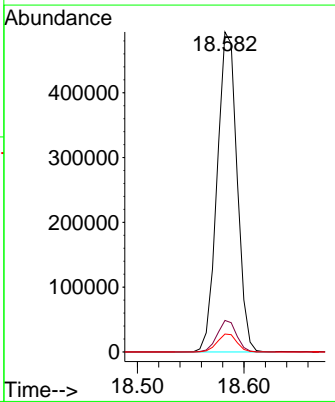
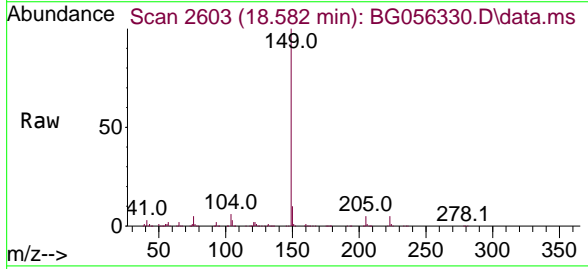
Ion	Ratio	Lower	Upper
167	100		
166	22.4	16.8	25.2
139	10.9	8.9	13.3

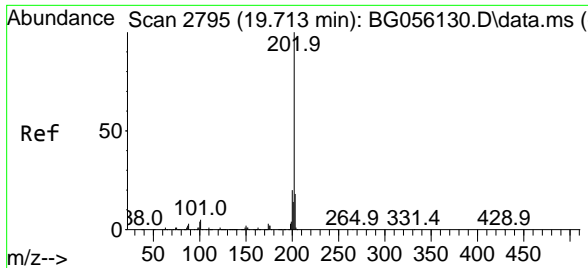


#74
 Di-n-butylphthalate
 Concen: 41.334 ng
 RT: 18.582 min Scan# 2603
 Delta R.T. 0.000 min
 Lab File: BG056330.D
 Acq: 18 Jan 2023 15:59

Tgt Ion:149 Resp: 640930

Ion	Ratio	Lower	Upper
149	100		
150	9.8	7.4	11.2
104	5.6	4.4	6.6

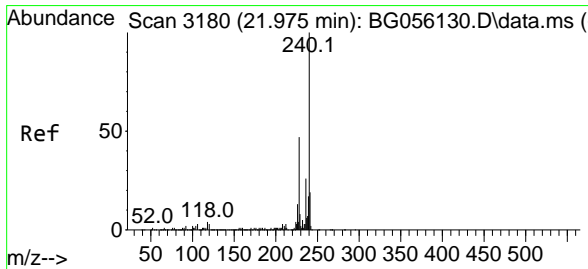
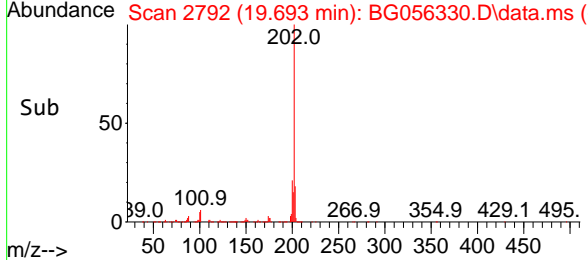
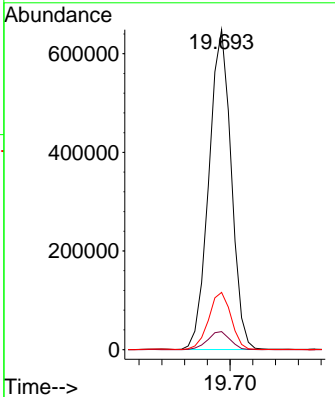
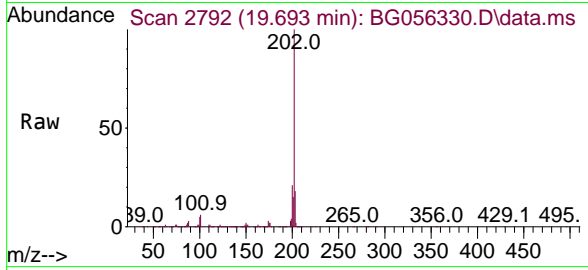




#75
 Fluoranthene
 Concen: 37.837 ng
 RT: 19.693 min Scan# 21
 Delta R.T. 0.000 min
 Lab File: BG056330.D
 Acq: 18 Jan 2023 15:59

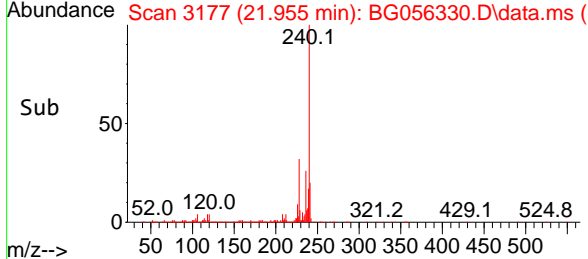
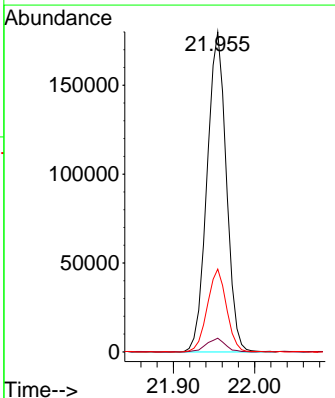
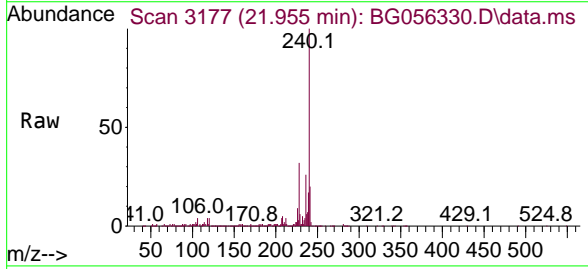
Instrument : BNA_G
 ClientSampleId : SSTDCCC040

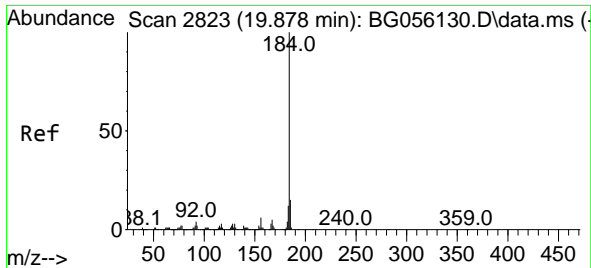
Tgt Ion	Resp	Lower	Upper
202	885385		
101	5.6	0.0	25.0
203	17.9	0.0	38.0



#76
 Chrysene-d12
 Concen: 20.000 ng
 RT: 21.955 min Scan# 3177
 Delta R.T. 0.000 min
 Lab File: BG056330.D
 Acq: 18 Jan 2023 15:59

Tgt Ion	Resp	Lower	Upper
240	296539		
120	4.3	2.6	4.0#
236	25.9	20.8	31.2

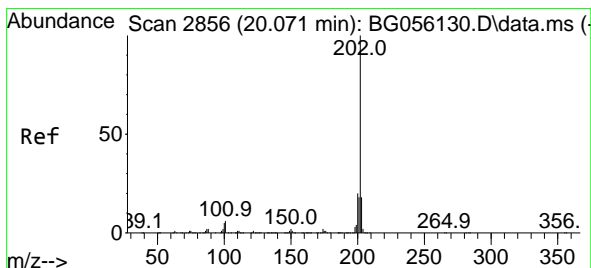
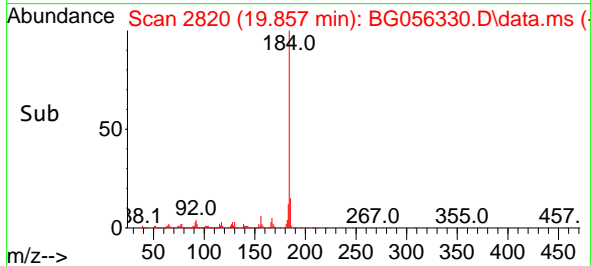
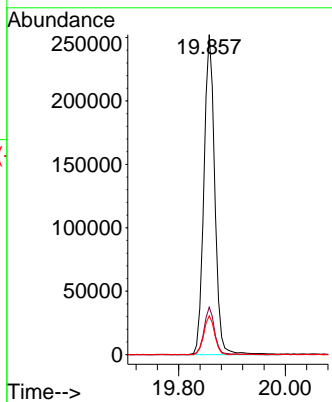
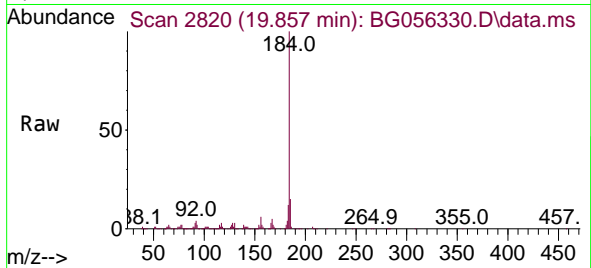




#77
 Benzidine
 Concen: 34.157 ng
 RT: 19.857 min Scan# 2819
 Delta R.T. 0.000 min
 Lab File: BG056330.D
 Acq: 18 Jan 2023 15:59

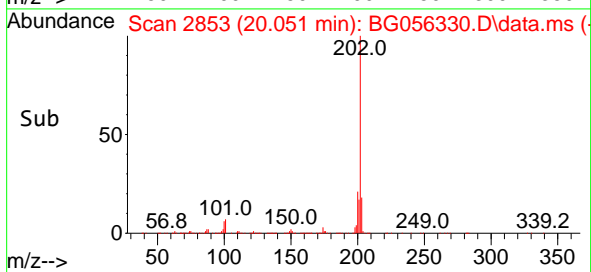
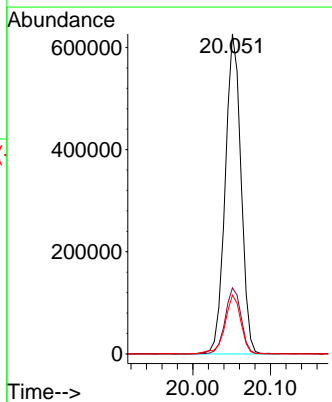
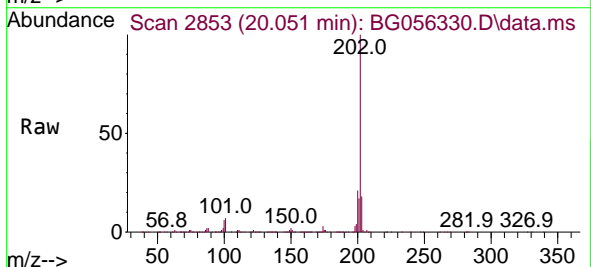
Instrument : BNA_G
 ClientSampleId : SSTDCCC040

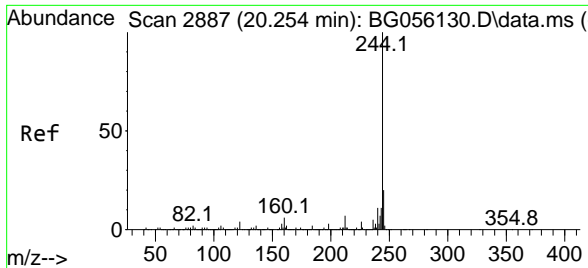
Tgt Ion	Resp	Lower	Upper
184	100		
185	14.8	12.2	18.2
183	12.1	9.4	14.0



#78
 Pyrene
 Concen: 42.410 ng
 RT: 20.051 min Scan# 2853
 Delta R.T. 0.000 min
 Lab File: BG056330.D
 Acq: 18 Jan 2023 15:59

Tgt Ion	Resp	Lower	Upper
202	100		
200	20.6	16.4	24.6
203	18.4	14.3	21.5



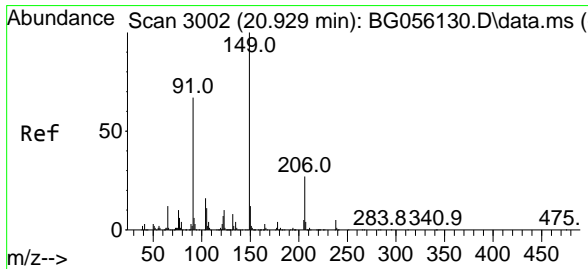
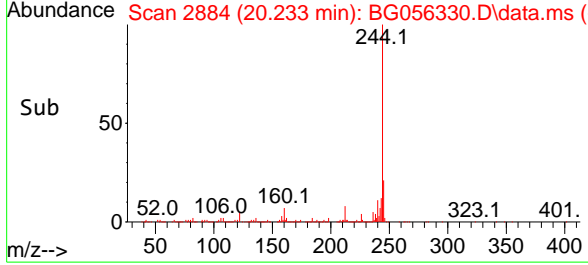
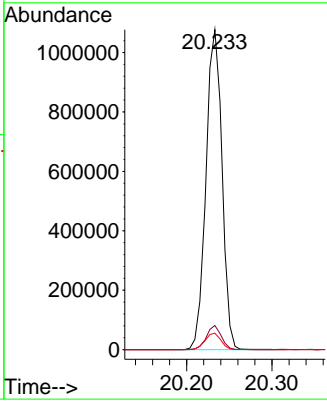
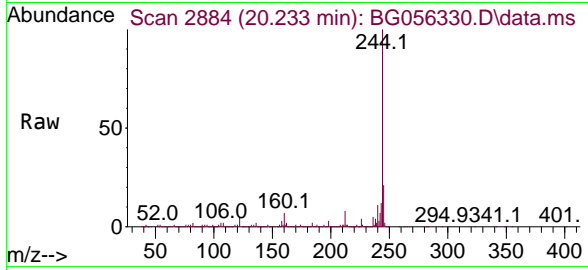


#79
 Terphenyl-d14
 Concen: 84.791 ng
 RT: 20.233 min Scan# 2884
 Delta R.T. 0.000 min
 Lab File: BG056330.D
 Acq: 18 Jan 2023 15:59

Instrument : BNA_G
 ClientSampleId : SSTDCCC040

Tgt Ion:244 Resp: 1403859

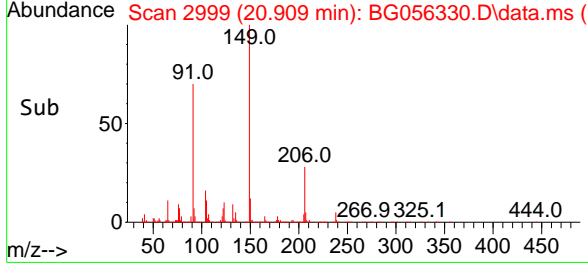
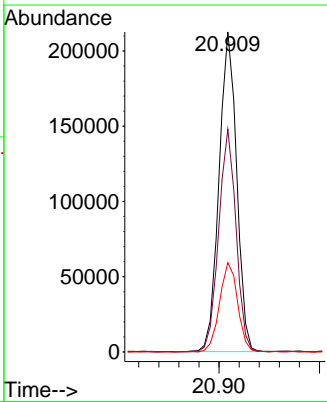
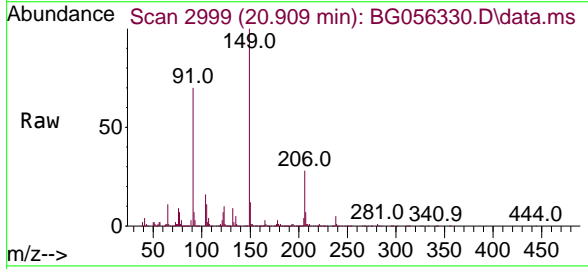
Ion	Ratio	Lower	Upper
244	100		
212	7.5	5.7	8.5
122	5.1	3.5	5.3

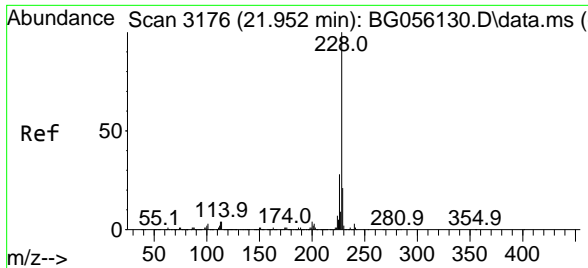


#80
 Butylbenzylphthalate
 Concen: 43.361 ng
 RT: 20.909 min Scan# 2999
 Delta R.T. 0.000 min
 Lab File: BG056330.D
 Acq: 18 Jan 2023 15:59

Tgt Ion:149 Resp: 260011

Ion	Ratio	Lower	Upper
149	100		
91	69.6	53.5	80.3
206	27.9	21.9	32.9



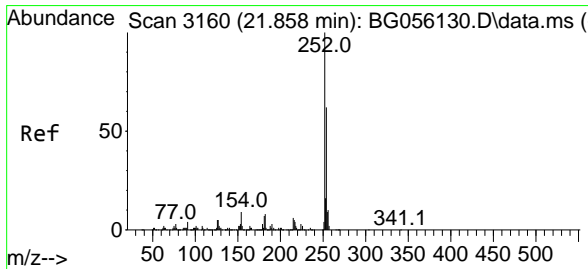
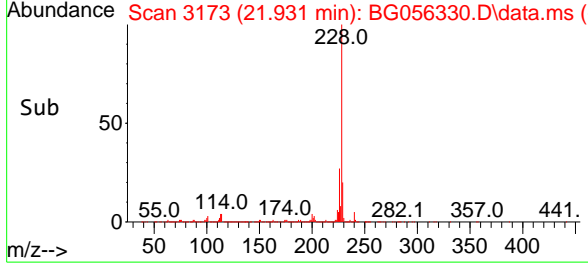
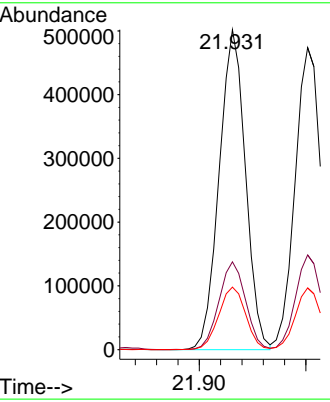
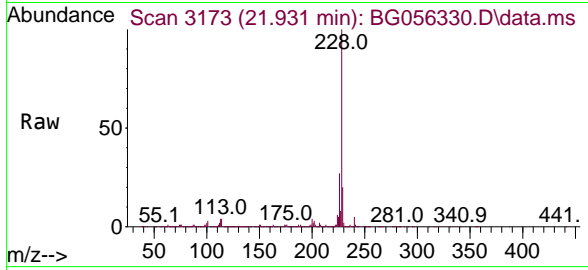


#81
 Benzo(a)anthracene
 Concen: 41.239 ng
 RT: 21.931 min Scan# 3156
 Delta R.T. 0.000 min
 Lab File: BG056330.D
 Acq: 18 Jan 2023 15:59

Instrument : BNA_G
 ClientSampleId : SSTDCCC040

Tgt Ion:228 Resp: 858933

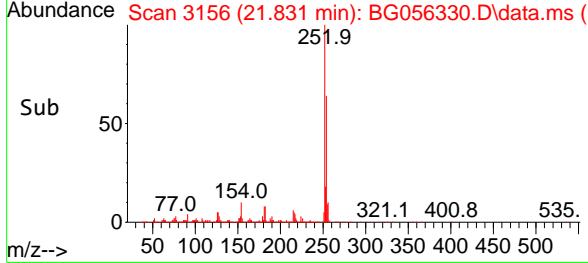
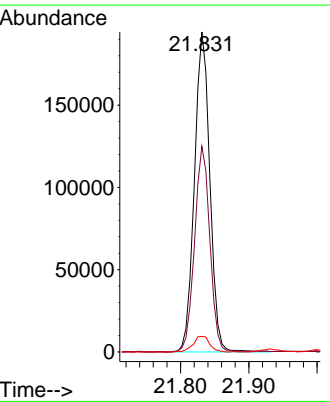
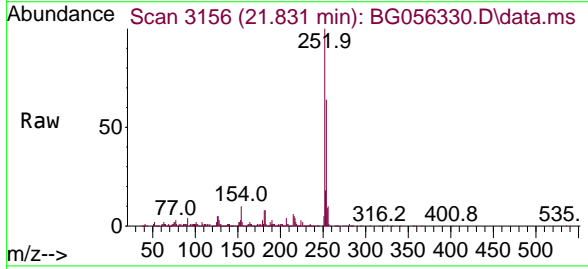
Ion	Ratio	Lower	Upper
228	100		
226	27.4	22.6	34.0
229	19.5	16.9	25.3

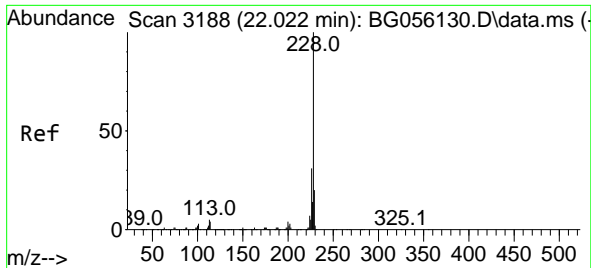


#82
 3,3'-Dichlorobenzidine
 Concen: 40.733 ng
 RT: 21.831 min Scan# 3156
 Delta R.T. 0.000 min
 Lab File: BG056330.D
 Acq: 18 Jan 2023 15:59

Tgt Ion:252 Resp: 305406

Ion	Ratio	Lower	Upper
252	100		
254	64.2	49.5	74.3
126	4.8	4.0	6.0



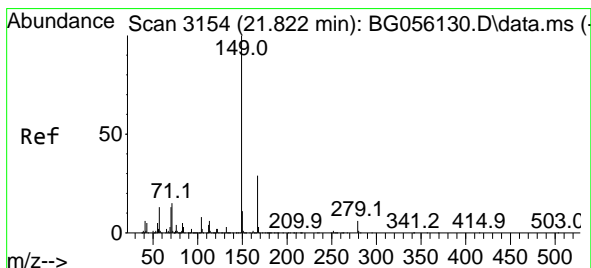
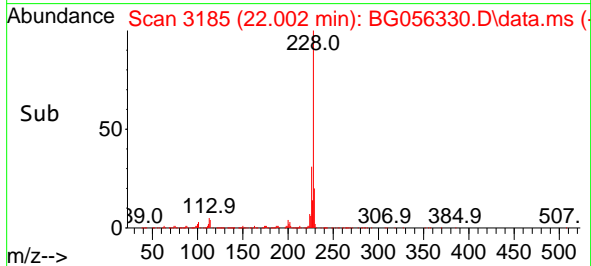
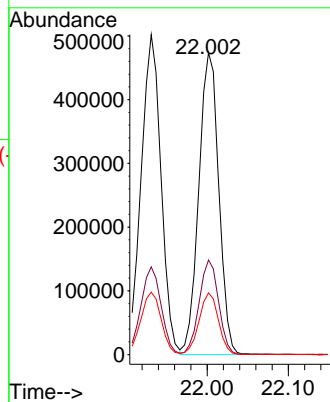
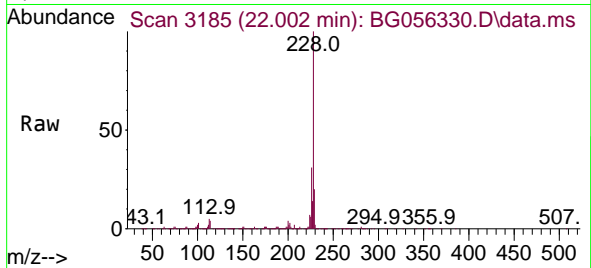


#83
 Chrysene
 Concen: 41.410 ng
 RT: 22.002 min Scan# 3185
 Delta R.T. 0.000 min
 Lab File: BG056330.D
 Acq: 18 Jan 2023 15:59

Instrument : BNA_G
 ClientSampleId : SSTDCCC040

Tgt Ion:228 Resp: 807890

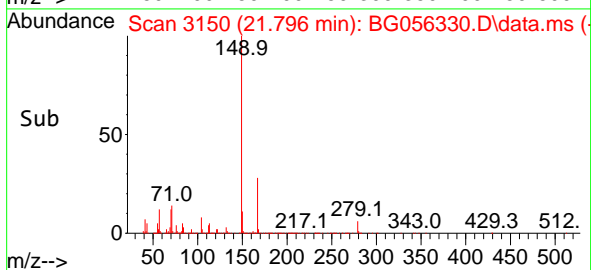
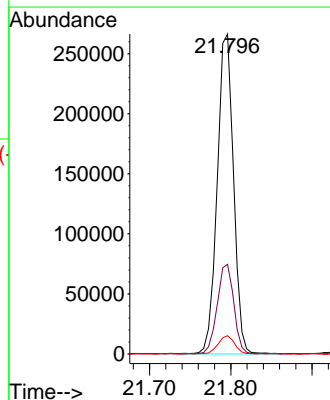
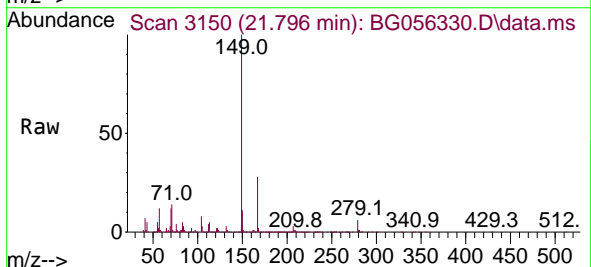
Ion	Ratio	Lower	Upper
228	100		
226	31.3	24.6	36.8
229	20.5	15.8	23.6

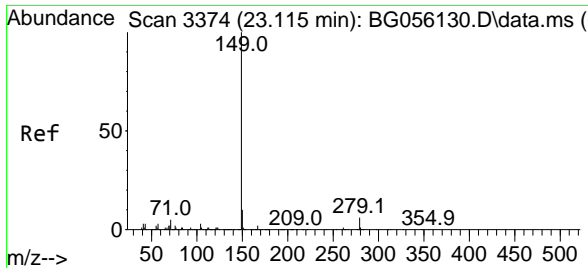


#84
 Bis(2-ethylhexyl)phthalate
 Concen: 42.938 ng
 RT: 21.796 min Scan# 3150
 Delta R.T. 0.000 min
 Lab File: BG056330.D
 Acq: 18 Jan 2023 15:59

Tgt Ion:149 Resp: 370947

Ion	Ratio	Lower	Upper
149	100		
167	28.0	23.4	35.2
279	5.7	4.7	7.1

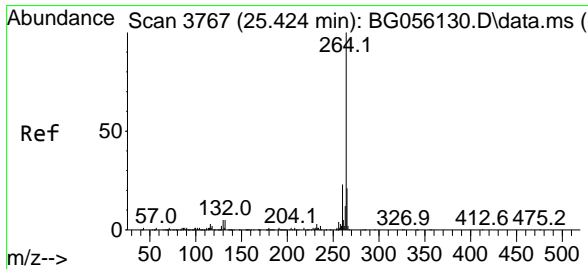
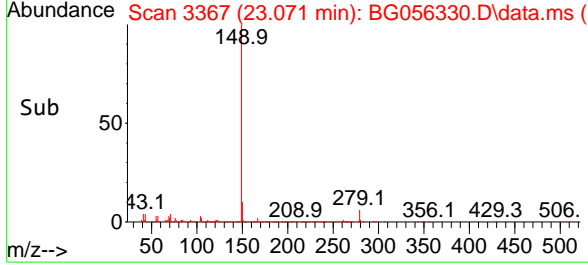
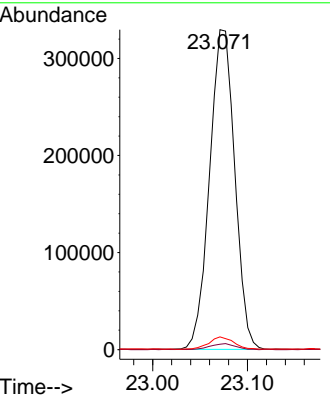
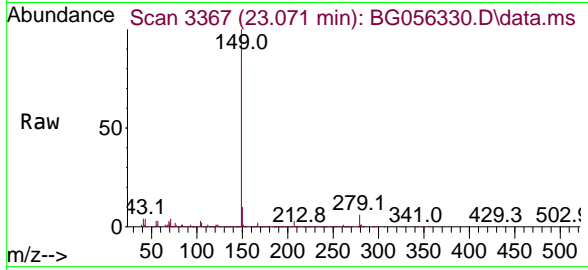




#85
 Di-n-octyl phthalate
 Concen: 41.715 ng
 RT: 23.071 min Scan# 3374
 Delta R.T. 0.000 min
 Lab File: BG056330.D
 Acq: 18 Jan 2023 15:59

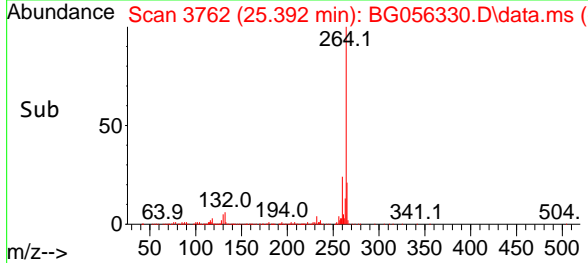
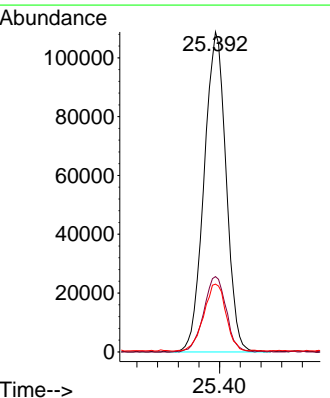
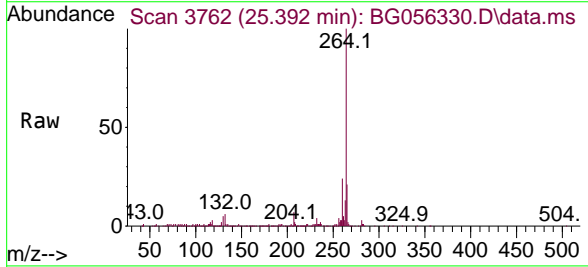
Instrument : BNA_G
 ClientSampleId : SSTDCCC040

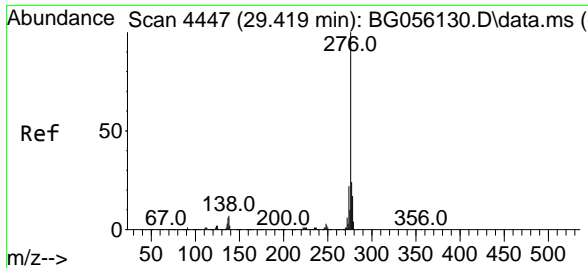
Tgt Ion	Resp	Lower	Upper
149	100		
167	1.9	1.4	2.2
43	3.8	2.9	4.3



#86
 Perylene-d12
 Concen: 20.000 ng
 RT: 25.392 min Scan# 3762
 Delta R.T. 0.000 min
 Lab File: BG056330.D
 Acq: 18 Jan 2023 15:59

Tgt Ion	Resp	Lower	Upper
264	100		
260	23.5	18.6	28.0
265	21.2	16.7	25.1



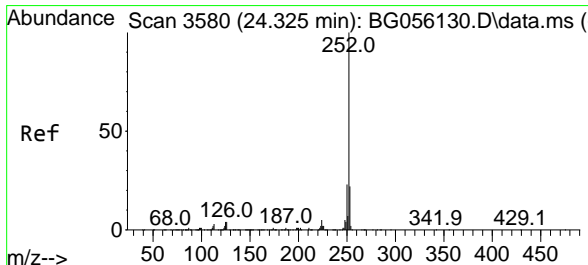
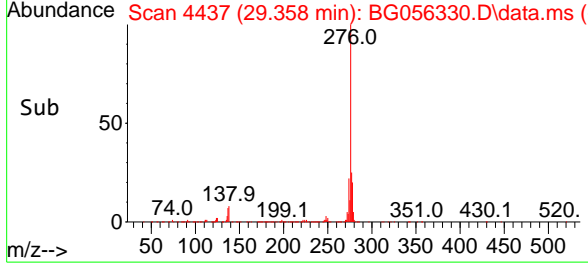
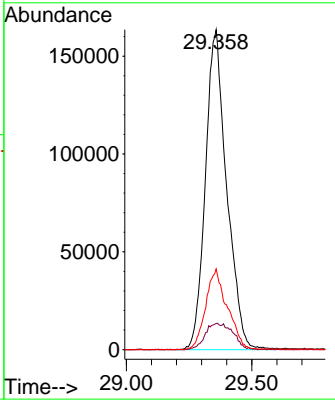
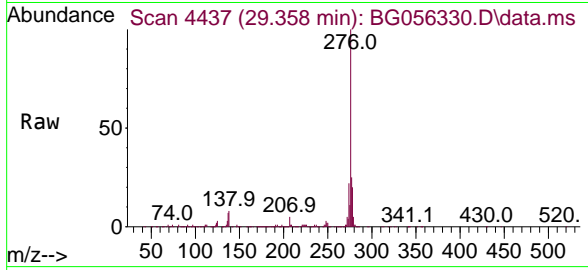


#87
 Indeno(1,2,3-cd)pyrene
 Concen: 41.276 ng
 RT: 29.358 min Scan# 4447
 Delta R.T. 0.000 min
 Lab File: BG056330.D
 Acq: 18 Jan 2023 15:59

Instrument : BNA_G
 ClientSampleId : SSTDCCC040

Tgt Ion: 276 Resp: 962387

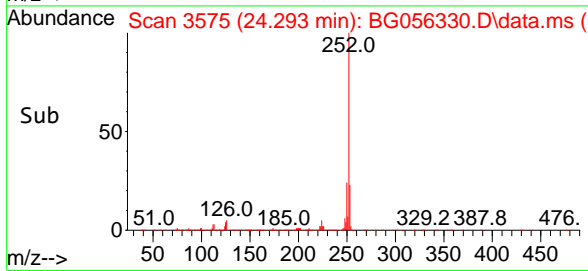
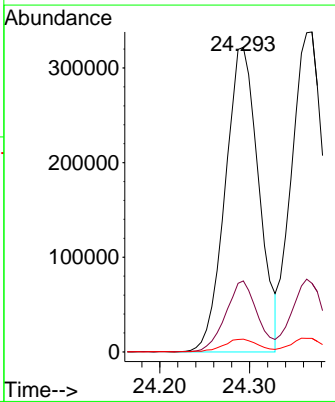
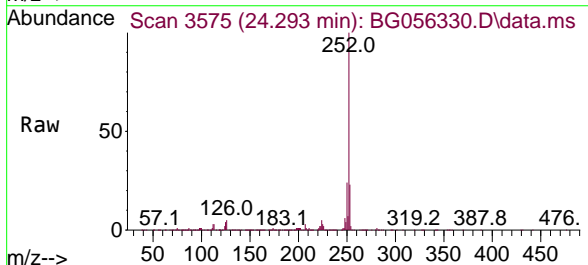
Ion	Ratio	Lower	Upper
276	100		
138	5.8	5.0	7.4
277	25.7	20.5	30.7

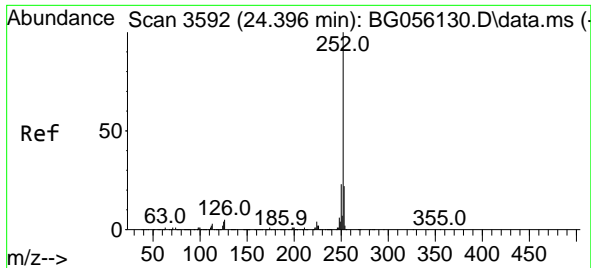


#88
 Benzo(b)fluoranthene
 Concen: 41.068 ng
 RT: 24.293 min Scan# 3575
 Delta R.T. 0.000 min
 Lab File: BG056330.D
 Acq: 18 Jan 2023 15:59

Tgt Ion: 252 Resp: 836538

Ion	Ratio	Lower	Upper
252	100		
253	23.3	17.4	26.2
125	4.2	3.0	4.4



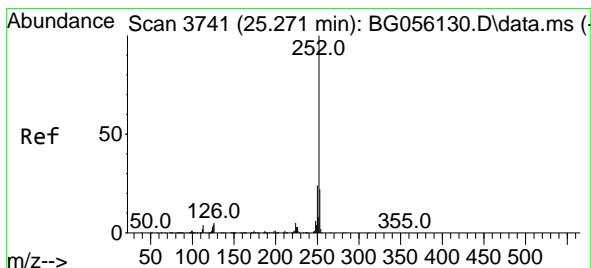
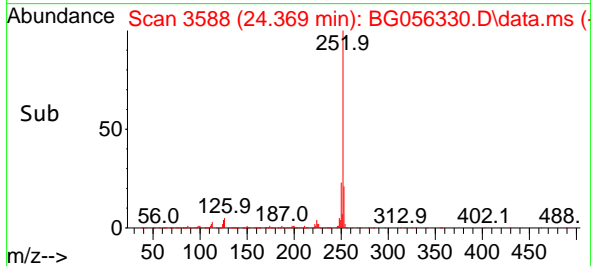
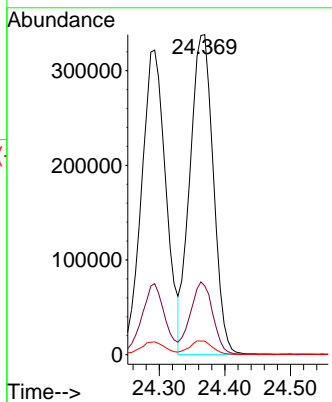
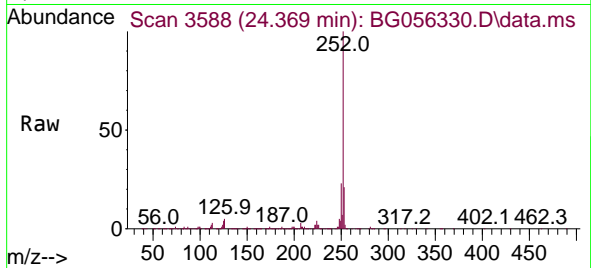


#89
 Benzo(k)fluoranthene
 Concen: 41.226 ng
 RT: 24.369 min Scan# 31
 Delta R.T. 0.000 min
 Lab File: BG056330.D
 Acq: 18 Jan 2023 15:59

Instrument :
 BNA_G
 ClientSampleId :
 SSTDCCC040

Tgt Ion:252 Resp: 836240

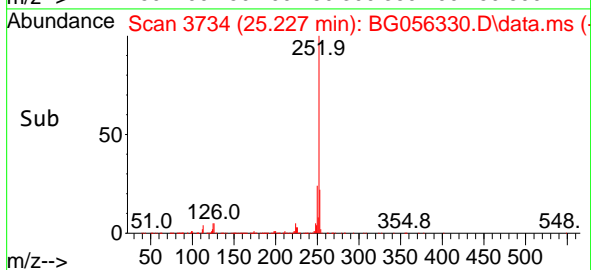
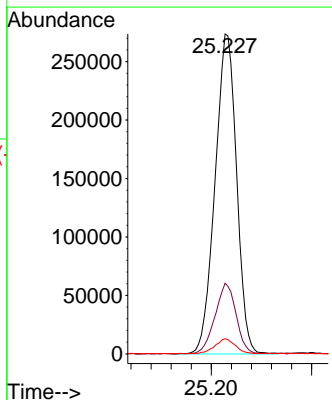
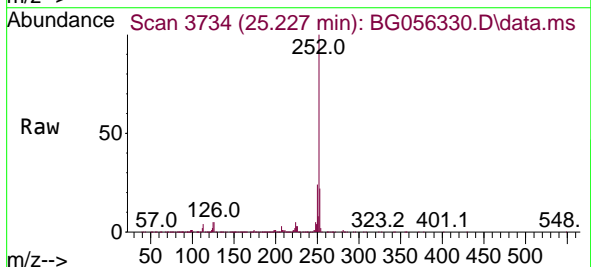
Ion	Ratio	Lower	Upper
252	100		
253	21.4	17.5	26.3
125	4.2	3.4	5.0

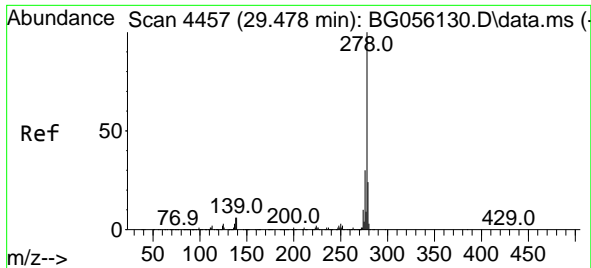


#90
 Benzo(a)pyrene
 Concen: 41.009 ng
 RT: 25.227 min Scan# 3734
 Delta R.T. 0.000 min
 Lab File: BG056330.D
 Acq: 18 Jan 2023 15:59

Tgt Ion:252 Resp: 814746

Ion	Ratio	Lower	Upper
252	100		
253	22.1	17.4	26.2
125	4.7	3.2	4.8

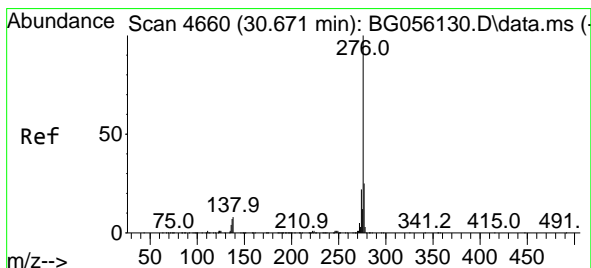
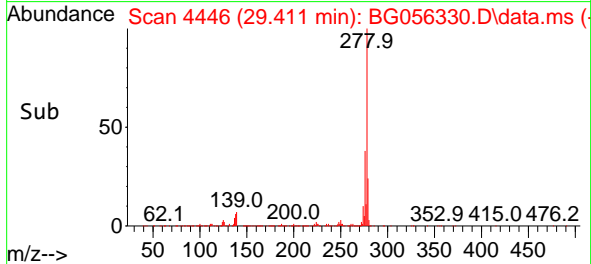
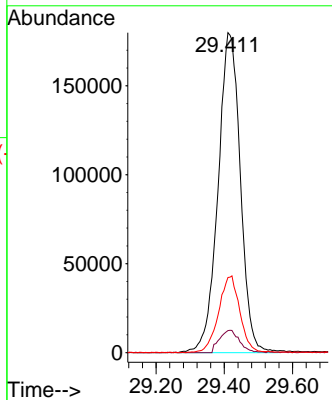
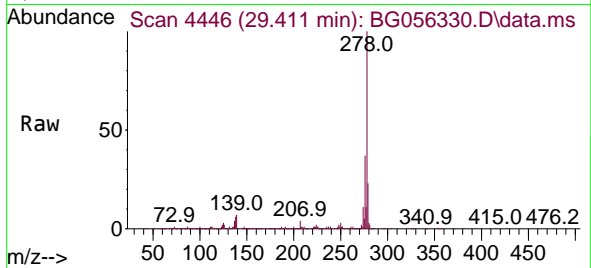




#91
 Dibenzo(a,h)anthracene
 Concen: 41.733 ng
 RT: 29.411 min Scan# 4446
 Delta R.T. 0.000 min
 Lab File: BG056330.D
 Acq: 18 Jan 2023 15:59

Instrument :
 BNA_G
 ClientSampleId :
 SSTDCCC040

Tgt Ion	Resp	Lower	Upper
278	815805	100	100
139	6.9	4.8	7.2
279	23.5	19.0	28.4



#92
 Benzo(g,h,i)perylene
 Concen: 41.074 ng
 RT: 30.597 min Scan# 4648
 Delta R.T. 0.000 min
 Lab File: BG056330.D
 Acq: 18 Jan 2023 15:59

Tgt Ion	Resp	Lower	Upper
276	778616	100	100
277	24.1	19.7	29.5
138	8.8	6.7	10.1

